

Data Path : Z:\svoasrv\HPCHEM1\BNA_F\Data\BF041122\
 Data File : BF127747.D
 Acq On : 11 Apr 2022 19:20
 Operator : CG\JU
 Sample : N2349-13 5X
 Misc :
 ALS Vial : 20 Sample Multiplier: 1

Instrument :
 BNA_F
 ClientSampleId :
 DEL-7

Integration Parameters: rteint.p
 Integrator: RTE
 Smoothing : ON
 Sampling : 1
 Start Thrs : 0.2
 Stop Thrs : 0
 Filtering: 5
 Min Area: 3 % of largest Peak
 Max Peaks: 100
 Peak Location: TOP

If leading or trailing edge < 100 prefer < Baseline drop else tangent >
 Peak separation: 5

Method : Z:\svoasrv\HPCHEM1\BNA_F\Methods\8270-BF040622.M
 Title : ASP BNA STANDARDS FOR 5 POINT CALIBRATION

Signal : TIC: BF127747.D\data.ms

peak #	R.T. min	first scan	max scan	last scan	PK TY	peak height	corr. area	corr. % max.	% of total
1	4.575	382	389	394	rBV	866176	953269	24.00%	4.468%
2	5.181	485	492	496	rBV	291832	306299	7.71%	1.436%
3	5.575	554	559	566	rVB	93410	98984	2.49%	0.464%
4	5.822	599	601	612	rBV	338516	407422	10.26%	1.909%
5	6.575	726	729	735	rVB	175504	147518	3.71%	0.691%
6	6.963	791	795	801	rBV	980580	804617	20.26%	3.771%
7	7.028	803	806	817	rVV2	38929	105284	2.65%	0.493%
8	7.310	852	854	860	rVB	273697	216206	5.44%	1.013%
9	7.522	887	890	893	rBV	331347	262254	6.60%	1.229%
10	8.251	1010	1014	1017	rBV	1091536	943410	23.75%	4.422%
11	9.322	1193	1196	1199	rBV	654472	489384	12.32%	2.294%
12	9.422	1210	1213	1216	rVB	155512	109445	2.76%	0.513%
13	9.916	1294	1297	1301	rVB2	72744	81161	2.04%	0.380%
14	10.010	1310	1313	1316	rVB	1219005	935486	23.56%	4.384%
15	10.428	1377	1384	1387	rVB4	92591	140570	3.54%	0.659%
16	10.910	1463	1466	1470	rBV2	155728	198537	5.00%	0.930%
17	11.357	1539	1542	1545	rBV2	184777	221254	5.57%	1.037%
18	11.386	1545	1547	1550	rVB	225775	181934	4.58%	0.853%
19	11.504	1563	1567	1570	rBV	1008298	868464	21.87%	4.070%
20	11.545	1570	1574	1577	rVV	288327	318867	8.03%	1.494%
21	11.627	1586	1588	1592	rBV2	66029	75887	1.91%	0.356%
22	11.669	1592	1595	1597	rBV2	72677	79648	2.01%	0.373%
23	11.733	1604	1606	1609	rBV	168696	163811	4.12%	0.768%
24	11.786	1612	1615	1617	rVV	438173	394689	9.94%	1.850%
25	11.833	1621	1623	1627	rVB2	126048	129406	3.26%	0.606%
26	11.951	1640	1643	1645	rBV2	166517	183136	4.61%	0.858%
27	11.992	1648	1650	1652	rVB	171283	144060	3.63%	0.675%
28	12.045	1657	1659	1663	rBV2	173304	188408	4.74%	0.883%
29	12.086	1663	1666	1667	rBV	158462	157803	3.97%	0.740%
30	12.169	1677	1680	1682	rBV	169702	148345	3.74%	0.695%
31	12.198	1682	1685	1687	rBV	741582	693419	17.46%	3.250%
32	12.351	1709	1711	1713	rBV	216093	225640	5.68%	1.058%
33	12.480	1730	1733	1736	rBV	892896	931782	23.46%	4.367%
34	12.592	1749	1752	1754	rBV	950852	906548	22.83%	4.249%
35	12.698	1767	1770	1773	rBV3	758953	1022805	25.75%	4.794%
36	12.733	1773	1776	1779	rBV	636367	741750	18.68%	3.476%

Data Path : Z:\svoasrv\HPCHEM1\BNA_F\Data\BF041122\
Data File : BF127747.D
Acq On : 11 Apr 2022 19:20
Operator : CG\JU
Sample : N2349-13 5X
Misc :
ALS Vial : 20 Sample Multiplier: 1

Instrument :
BNA_F
ClientSampleId :
DEL-7

Integration Parameters: rteint.p
Integrator: RTE
Smoothing : ON Filtering: 5
Sampling : 1 Min Area: 3 % of largest Peak
Start Thrs: 0.2 Max Peaks: 100
Stop Thrs : 0 Peak Location: TOP

If leading or trailing edge < 100 prefer < Baseline drop else tangent >
Peak separation: 5

Method : Z:\svoasrv\HPCHEM1\BNA_F\Methods\8270-BF040622.M
Title : ASP BNA STANDARDS FOR 5 POINT CALIBRATION

37	12.810	1786	1789	1791	rBV3	696213	895846	22.56%	4.199%
38	12.945	1810	1812	1814	rBV	555604	529900	13.34%	2.484%
39	12.969	1814	1816	1819	rVV	682284	702537	17.69%	3.293%
40	13.092	1833	1837	1846	rBV2	1601700	3971421	100.00%	18.613%
41	13.333	1875	1878	1881	rBV2	1002731	1259539	31.72%	5.903%

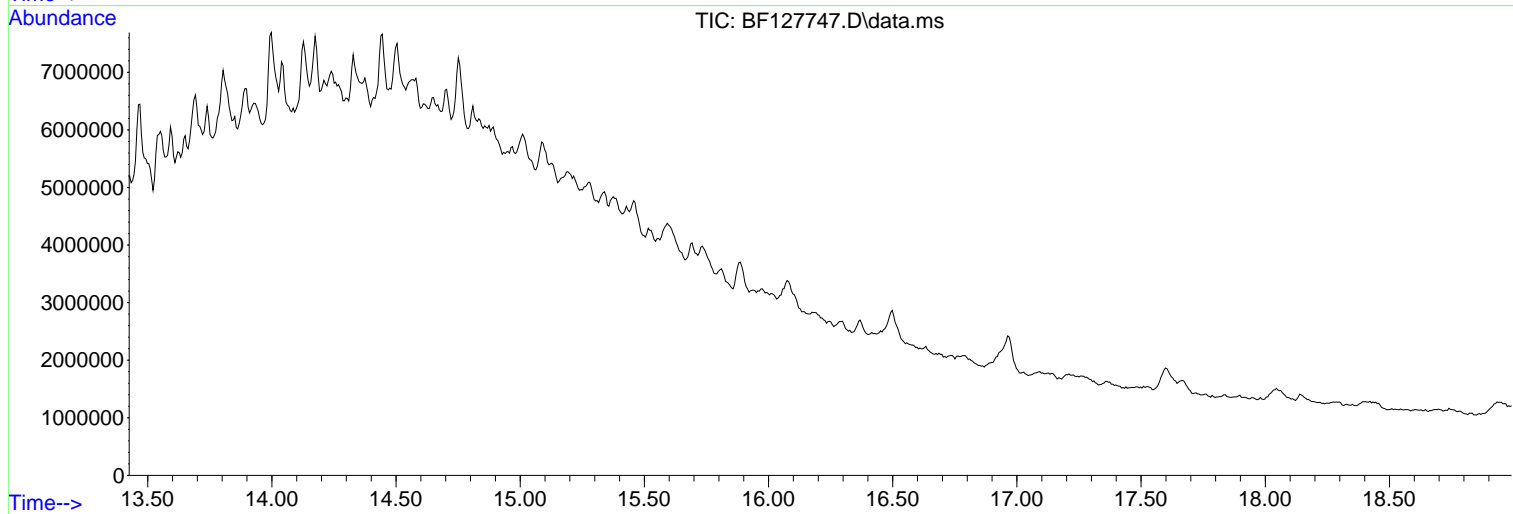
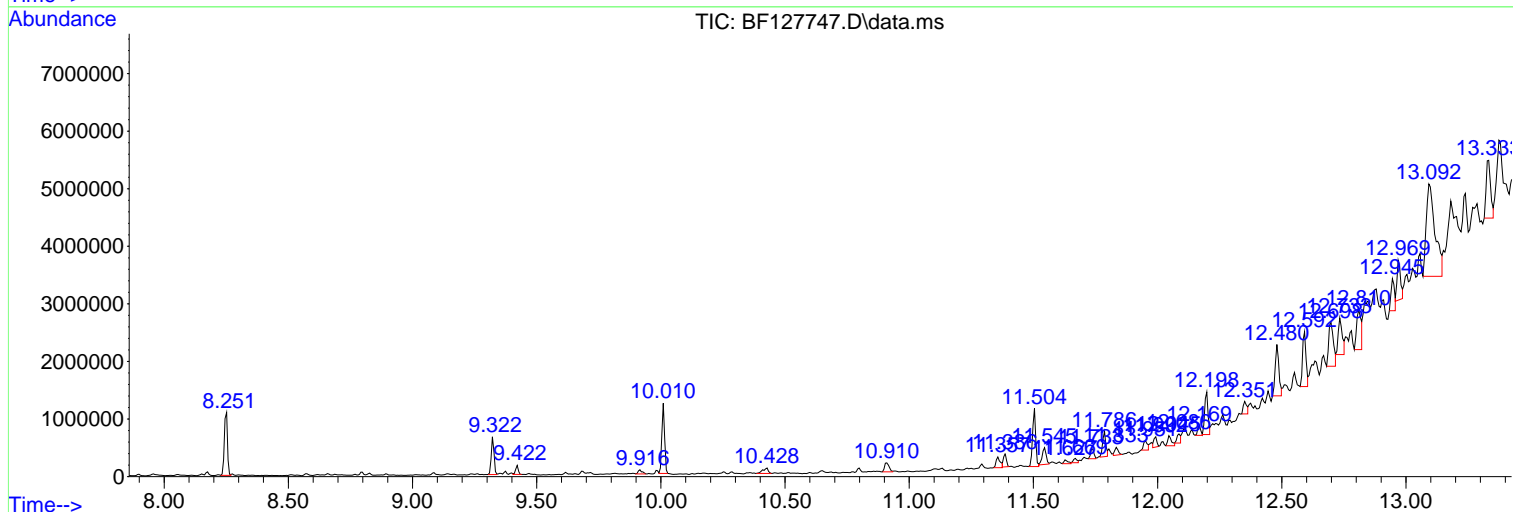
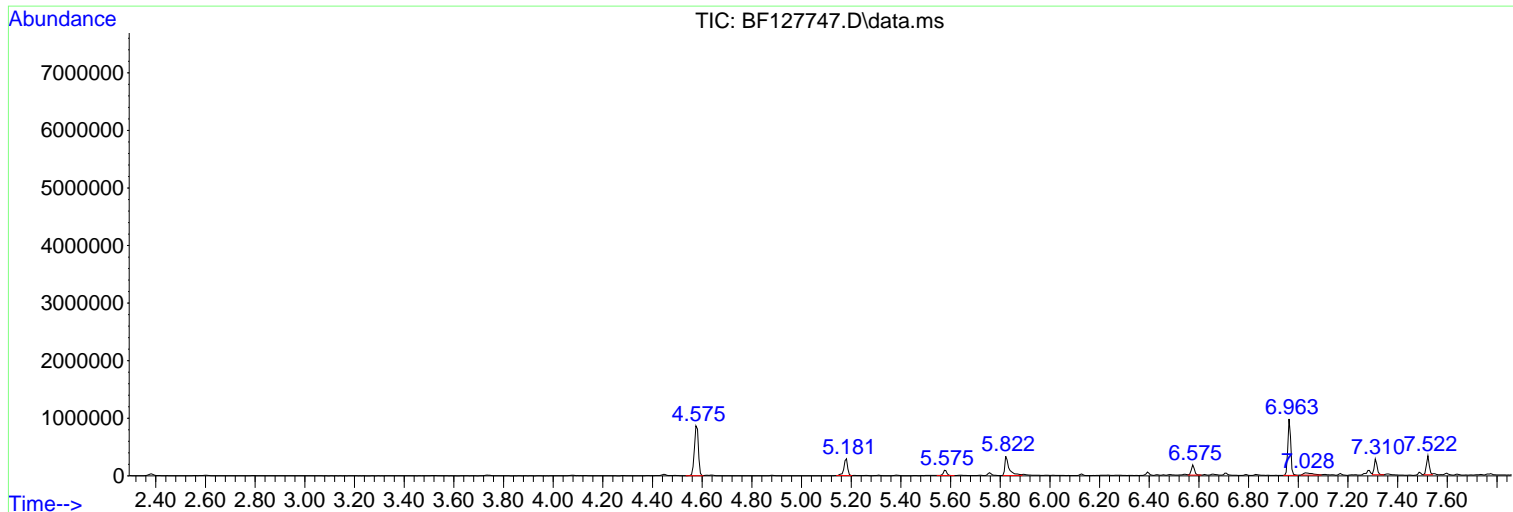
Sum of corrected areas: 21336745

Data Path : Z:\svoasrv\HPCHEM1\BNA_F\Data\BF041122\
 Data File : BF127747.D
 Acq On : 11 Apr 2022 19:20
 Operator : CG\JU
 Sample : N2349-13 5X
 Misc :
 ALS Vial : 20 Sample Multiplier: 1

Instrument :
 BNA_F
 ClientSampleId :
 DEL-7

Quant Method : Z:\svoasrv\HPCHEM1\BNA_F\Methods\8270-BF040622.M
 Quant Title : ASP BNA STANDARDS FOR 5 POINT CALIBRATION

TIC Library : C:\Database\NIST20.L
 TIC Integration Parameters: LSCINT.P



Data Path : Z:\svoasrv\HPCHEM1\BNA_F\Data\BF041122\
 Data File : BF127747.D
 Acq On : 11 Apr 2022 19:20
 Operator : CG\JU
 Sample : N2349-13 5X
 Misc :
 ALS Vial : 20 Sample Multiplier: 1

Instrument :
 BNA_F
 ClientSampleId :
 DEL-7

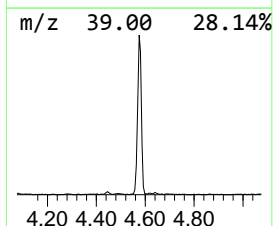
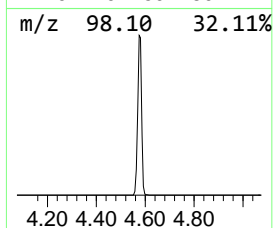
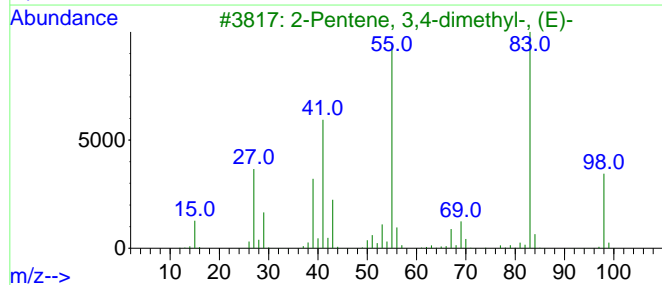
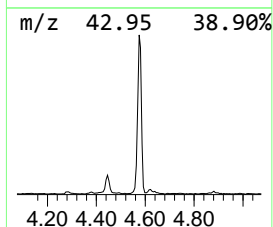
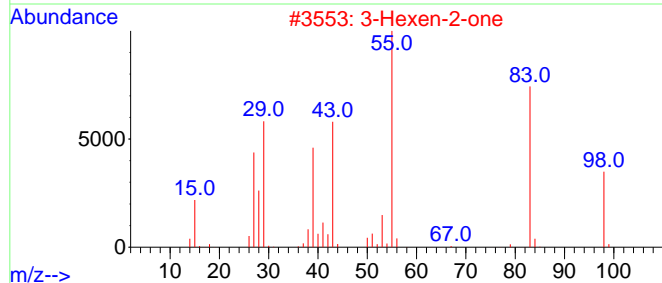
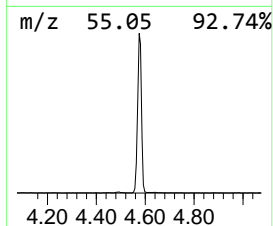
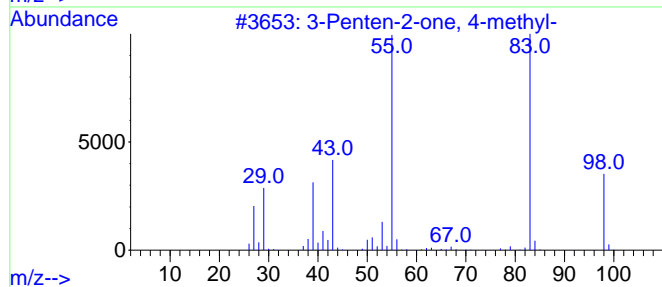
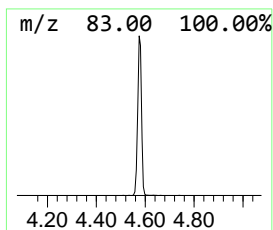
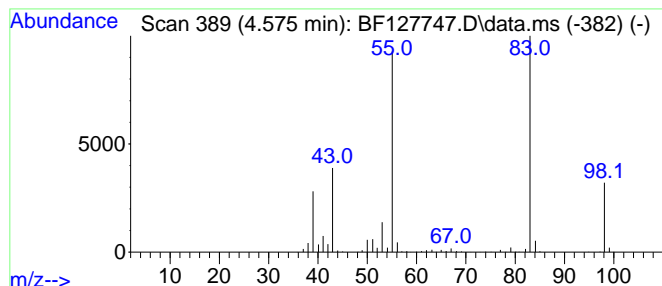
Quant Method : Z:\svoasrv\HPCHEM1\BNA_F\Methods\8270-BF040622.M
 Quant Title : ASP BNA STANDARDS FOR 5 POINT CALIBRATION

TIC Library : C:\Database\NIST20.L
 TIC Integration Parameters: LSCINT.P

 Peak Number 1 3-Penten-2-one, 4-methyl- Concentration Rank 1

R.T.	EstConc	Area	Relative to ISTD	R.T.
4.575	23.70 ng	953269	1,4-Dichlorobenzene-d4	6.963

Hit#	of 5	Tentative ID	MW	MolForm	CAS#	Qual
1		3-Penten-2-one, 4-methyl-	98	C6H10O	000141-79-7	95
2		3-Hexen-2-one	98	C6H10O	000763-93-9	91
3		2-Pentene, 3,4-dimethyl-, (E)-	98	C7H14	004914-92-5	90
4		2-Pentene, 3,4-dimethyl-, (Z)-	98	C7H14	004914-91-4	86
5		2-Pentene, 2,4-dimethyl-	98	C7H14	000625-65-0	86



Data Path : Z:\svoasrv\HPCHEM1\BNA_F\Data\BF041122\
 Data File : BF127747.D
 Acq On : 11 Apr 2022 19:20
 Operator : CG\JU
 Sample : N2349-13 5X
 Misc :
 ALS Vial : 20 Sample Multiplier: 1

Instrument :
 BNA_F
 ClientSampleId :
 DEL-7

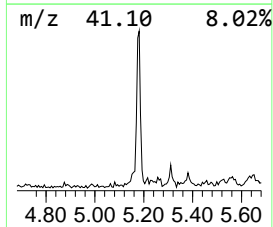
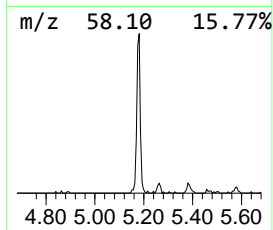
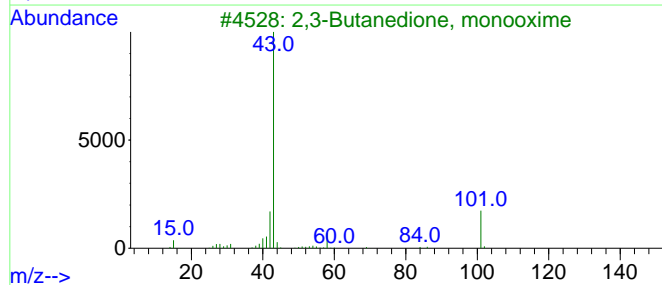
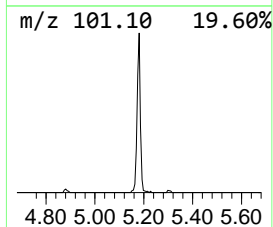
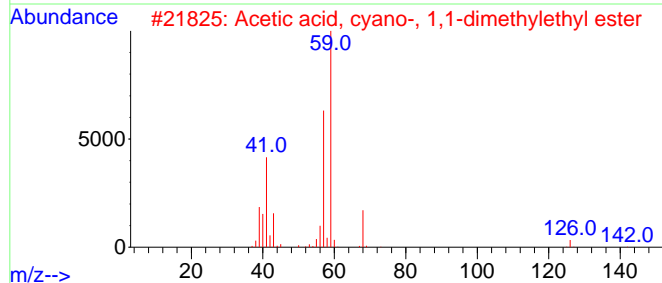
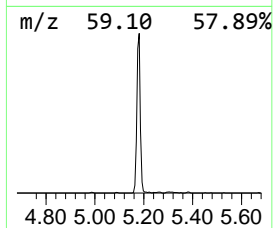
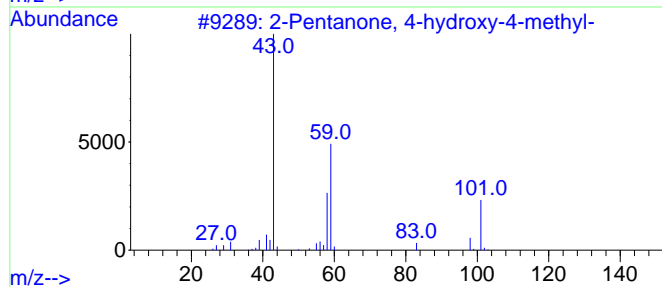
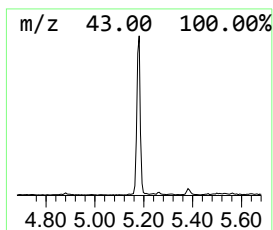
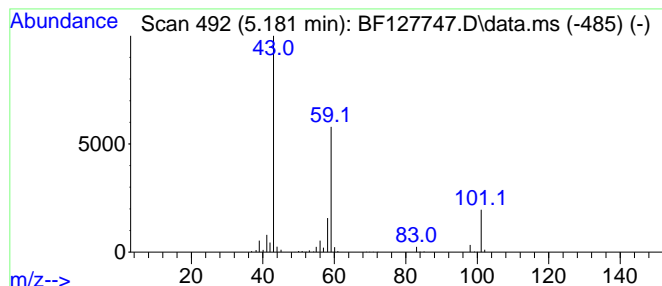
Quant Method : Z:\svoasrv\HPCHEM1\BNA_F\Methods\8270-BF040622.M
 Quant Title : ASP BNA STANDARDS FOR 5 POINT CALIBRATION

TIC Library : C:\Database\NIST20.L
 TIC Integration Parameters: LSCINT.P

 Peak Number 2 2-Pentanone, 4-hydroxy-4-me... Concentration Rank 12

R.T.	EstConc	Area	Relative to ISTD	R.T.
5.181	7.61 ng	306299	1,4-Dichlorobenzene-d4	6.963

Hit#	of	5	Tentative ID	MW	MolForm	CAS#	Qual
1			2-Pentanone, 4-hydroxy-4-methyl-	116	C6H12O2	000123-42-2	50
2			Acetic acid, cyano-, 1,1-dimethy...	141	C7H11NO2	001116-98-9	32
3			2,3-Butanedione, monooxime	101	C4H7NO2	000057-71-6	25
4			Propane, 2-methyl-2-(1-methyleth...	116	C7H16O	017348-59-3	23
5			1-Propen-2-ol, acetate	100	C5H8O2	000108-22-5	10



Data Path : Z:\svoasrv\HPCHEM1\BNA_F\Data\BF041122\
 Data File : BF127747.D
 Acq On : 11 Apr 2022 19:20
 Operator : CG\JU
 Sample : N2349-13 5X
 Misc :
 ALS Vial : 20 Sample Multiplier: 1

Instrument :
 BNA_F
 ClientSampleId :
 DEL-7

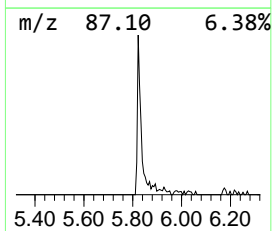
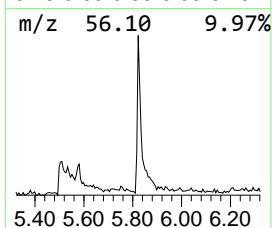
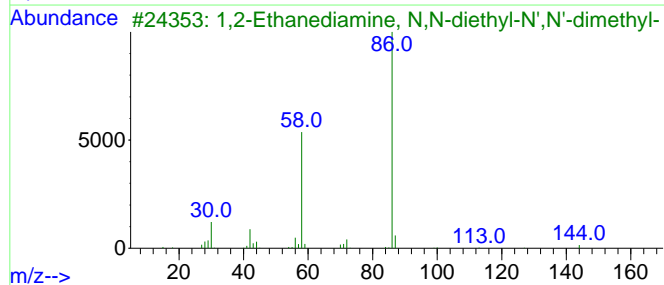
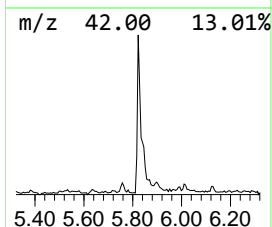
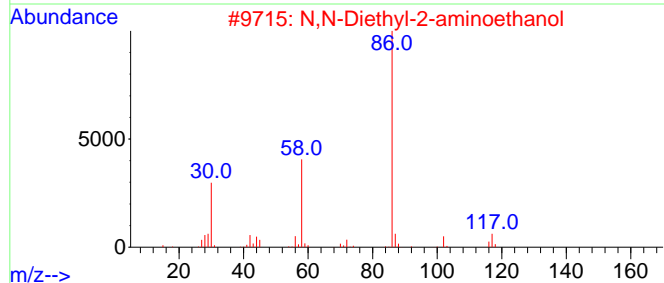
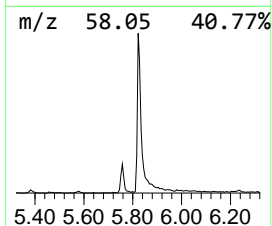
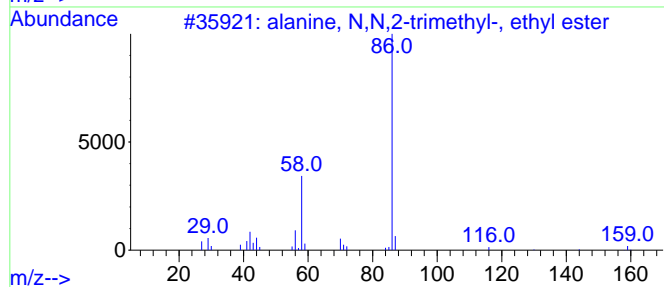
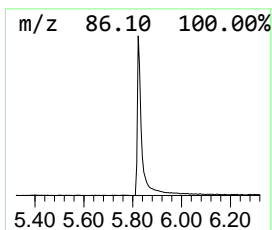
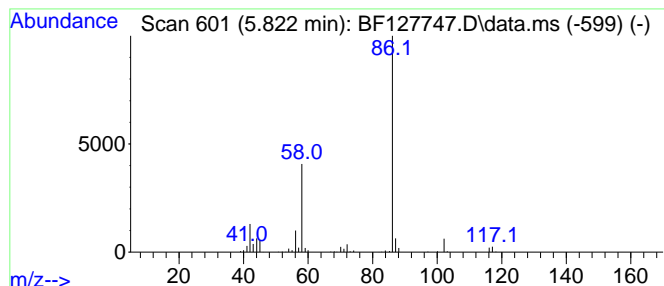
Quant Method : Z:\svoasrv\HPCHEM1\BNA_F\Methods\8270-BF040622.M
 Quant Title : ASP BNA STANDARDS FOR 5 POINT CALIBRATION

TIC Library : C:\Database\NIST20.L
 TIC Integration Parameters: LSCINT.P

 Peak Number 3 alanine, N,N,2-trimethyl-, ... Concentration Rank 9

R.T.	EstConc	Area	Relative to ISTD	R.T.
5.822	10.13 ng	407422	1,4-Dichlorobenzene-d4	6.963

Hit#	of	5	Tentative ID	MW	MolForm	CAS#	Qual
1			alanine, N,N,2-trimethyl-, ethyl...	159	C8H17NO2	1000404-38-4	78
2			N,N-Diethyl-2-aminoethanol	117	C6H15NO	000100-37-8	78
3			1,2-Ethanediamine, N,N-diethyl-N...	144	C8H20N2	000123-10-4	78
4			1-Propanamine, N,N-diethyl-	115	C7H17N	004458-31-5	78
5			Triethylamine	101	C6H15N	000121-44-8	78



Data Path : Z:\svoasrv\HPCHEM1\BNA_F\Data\BF041122\
 Data File : BF127747.D
 Acq On : 11 Apr 2022 19:20
 Operator : CG\JU
 Sample : N2349-13 5X
 Misc :
 ALS Vial : 20 Sample Multiplier: 1

Instrument :
 BNA_F
 ClientSampleId :
 DEL-7

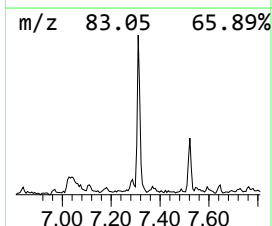
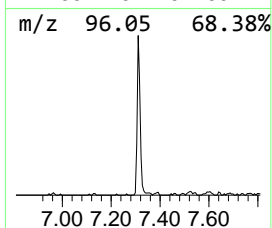
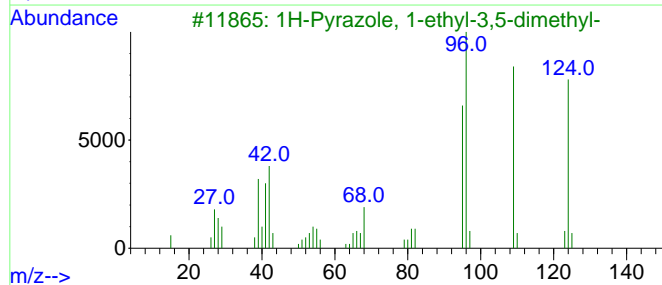
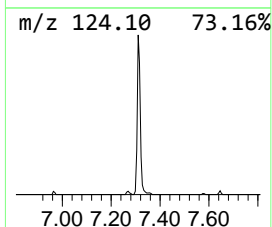
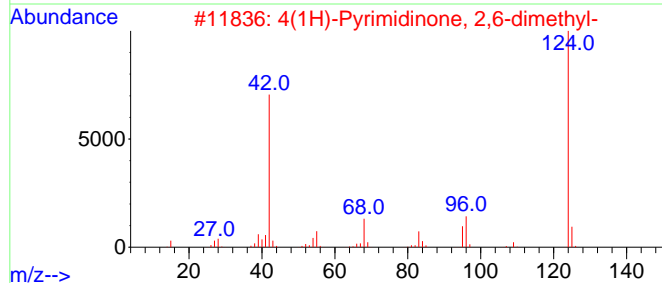
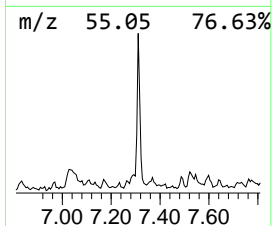
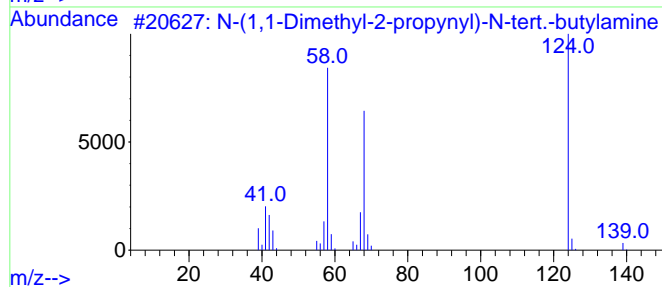
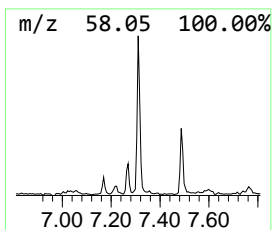
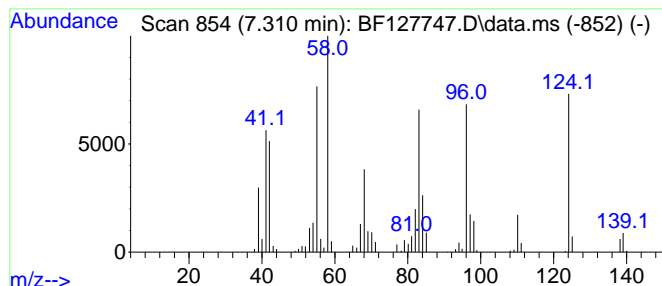
Quant Method : Z:\svoasrv\HPCHEM1\BNA_F\Methods\8270-BF040622.M
 Quant Title : ASP BNA STANDARDS FOR 5 POINT CALIBRATION

TIC Library : C:\Database\NIST20.L
 TIC Integration Parameters: LSCINT.P

 Peak Number 4 N-(1,1-Dimethyl-2-propynyl)... Concentration Rank 13

R.T.	EstConc	Area	Relative to ISTD	R.T.
7.310	5.37 ng	216206	1,4-Dichlorobenzene-d4	6.963

Hit#	of 5	Tentative ID	MW	MolForm	CAS#	Qual
1		N-(1,1-Dimethyl-2-propynyl)-N-te...	139	C9H17N	001118-17-8	64
2		4(1H)-Pyrimidinone, 2,6-dimethyl-	124	C6H8N2O	006622-92-0	38
3		1H-Pyrazole, 1-ethyl-3,5-dimethyl-	124	C7H12N2	017629-26-4	27
4		4-Methyl-1h-imidazole-5-carbalde...	124	C6H8N2O	368833-94-7	22
5		Cyclohexanone, 3-methoxy-	128	C7H12O2	017429-00-4	22



Data Path : Z:\svoasrv\HPCHEM1\BNA_F\Data\BF041122\
 Data File : BF127747.D
 Acq On : 11 Apr 2022 19:20
 Operator : CG\JU
 Sample : N2349-13 5X
 Misc :
 ALS Vial : 20 Sample Multiplier: 1

Instrument :
 BNA_F
 ClientSampleId :
 DEL-7

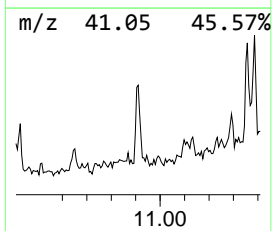
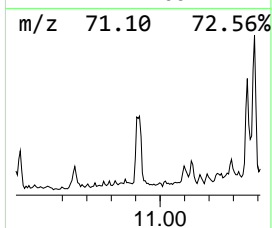
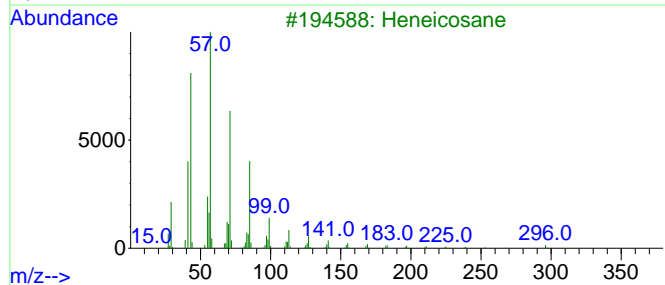
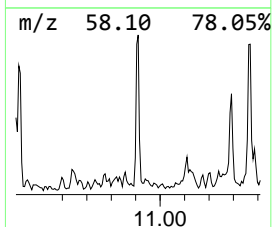
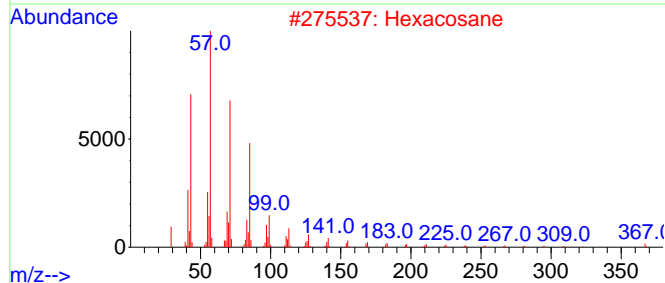
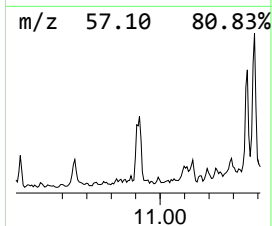
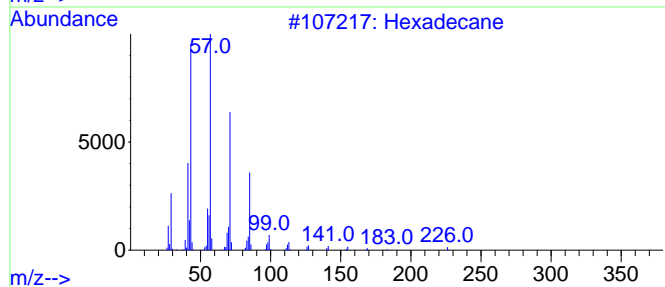
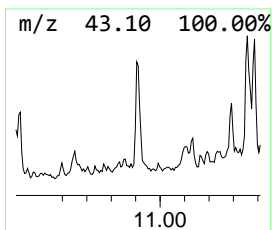
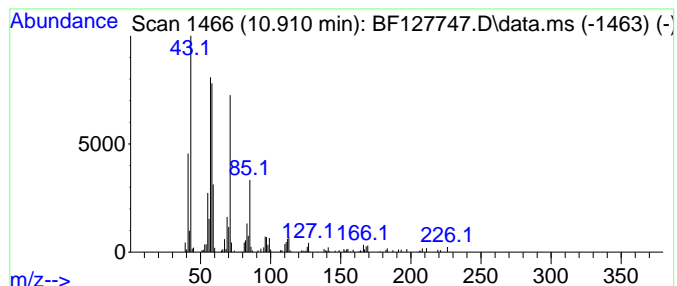
Quant Method : Z:\svoasrv\HPCHEM1\BNA_F\Methods\8270-BF040622.M
 Quant Title : ASP BNA STANDARDS FOR 5 POINT CALIBRATION

TIC Library : C:\Database\NIST20.L
 TIC Integration Parameters: LSCINT.P

 Peak Number 5 Hexadecane Concentration Rank 16

R.T.	EstConc	Area	Relative to ISTD	R.T.
10.910	4.57 ng	198537	Phenanthrene-d10	11.504

Hit#	of	5	Tentative ID	MW	MolForm	CAS#	Qual
1			Hexadecane	226	C16H34	000544-76-3	55
2			Hexacosane	366	C26H54	000630-01-3	38
3			Heneicosane	296	C21H44	000629-94-7	38
4			Pentadecane	212	C15H32	000629-62-9	38
5			Heptadecane	240	C17H36	000629-78-7	38



Data Path : Z:\svoasrv\HPCHEM1\BNA_F\Data\BF041122\
 Data File : BF127747.D
 Acq On : 11 Apr 2022 19:20
 Operator : CG\JU
 Sample : N2349-13 5X
 Misc :
 ALS Vial : 20 Sample Multiplier: 1

Instrument :
 BNA_F
 ClientSampleId :
 DEL-7

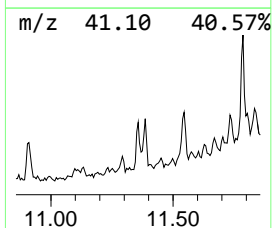
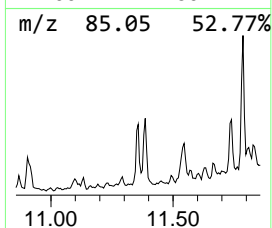
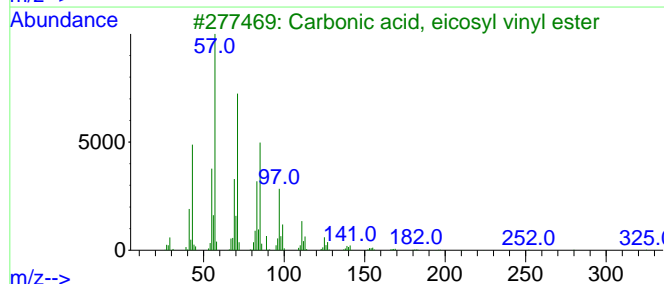
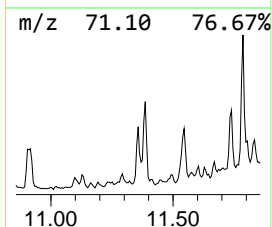
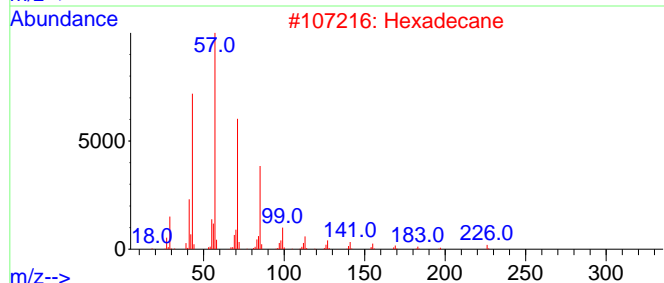
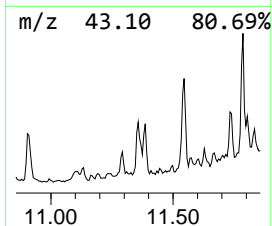
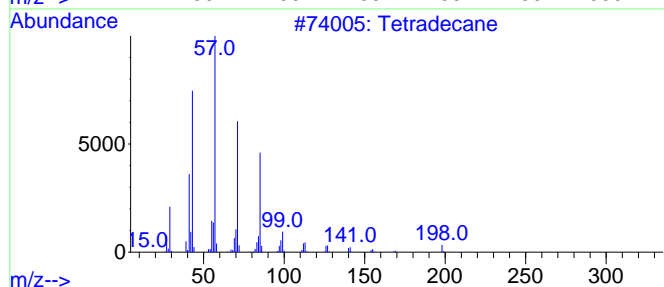
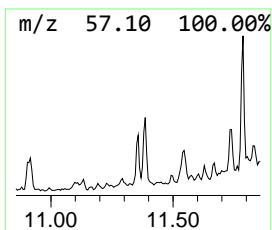
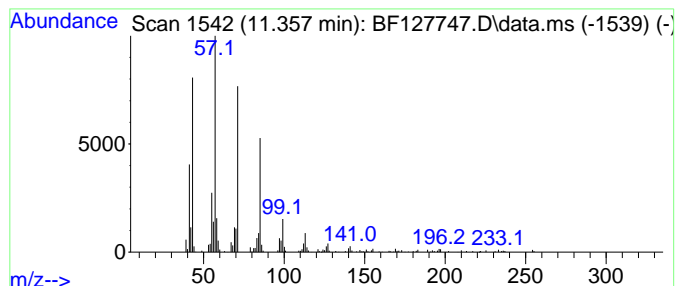
Quant Method : Z:\svoasrv\HPCHEM1\BNA_F\Methods\8270-BF040622.M
 Quant Title : ASP BNA STANDARDS FOR 5 POINT CALIBRATION

TIC Library : C:\Database\NIST20.L
 TIC Integration Parameters: LSCINT.P

 Peak Number 6 Tetradecane Concentration Rank 15

R.T.	EstConc	Area	Relative to ISTD	R.T.
11.357	5.10 ng	221254	Phenanthrene-d10	11.504

Hit#	of	5	Tentative ID	MW	MolForm	CAS#	Qual
1			Tetradecane	198	C14H30	000629-59-4	91
2			Hexadecane	226	C16H34	000544-76-3	90
3			Carbonic acid, eicosyl vinyl ester	368	C23H44O3	1000382-54-3	90
4			Hexadecane, 7,9-dimethyl-	254	C18H38	021164-95-4	83
5			Heptadecane	240	C17H36	000629-78-7	74



Data Path : Z:\svoasrv\HPCHEM1\BNA_F\Data\BF041122\
 Data File : BF127747.D
 Acq On : 11 Apr 2022 19:20
 Operator : CG\JU
 Sample : N2349-13 5X
 Misc :
 ALS Vial : 20 Sample Multiplier: 1

Instrument :
 BNA_F
 ClientSampleId :
 DEL-7

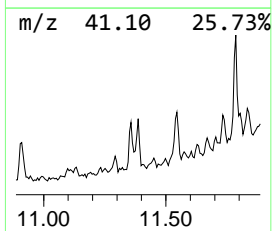
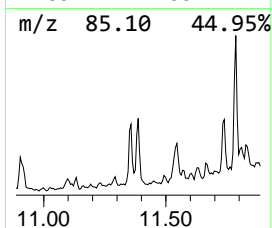
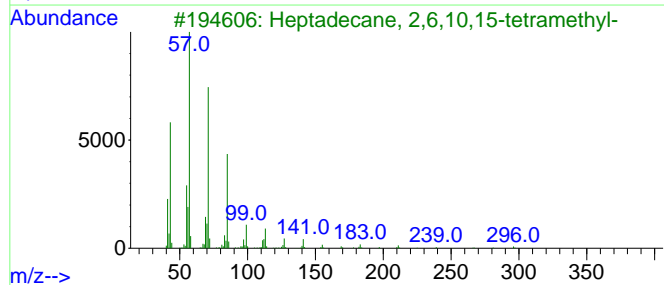
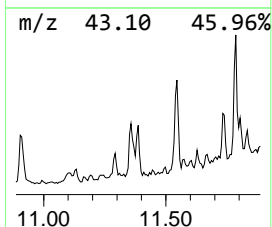
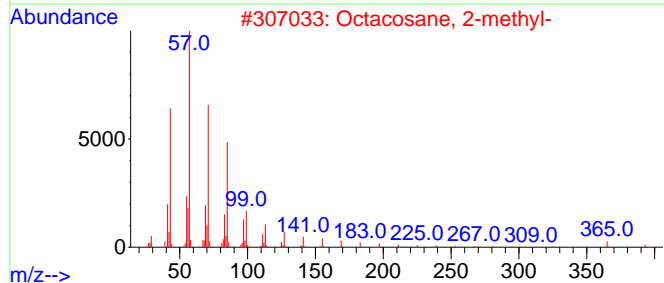
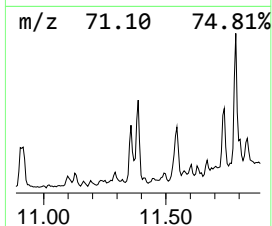
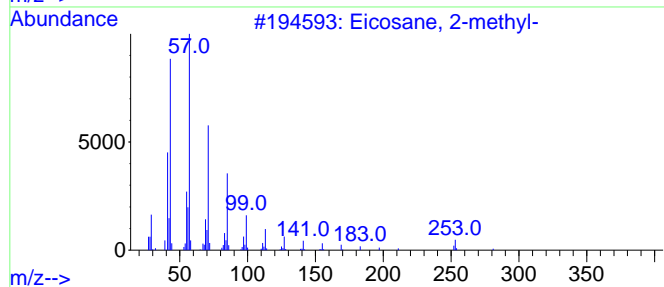
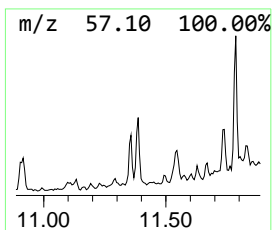
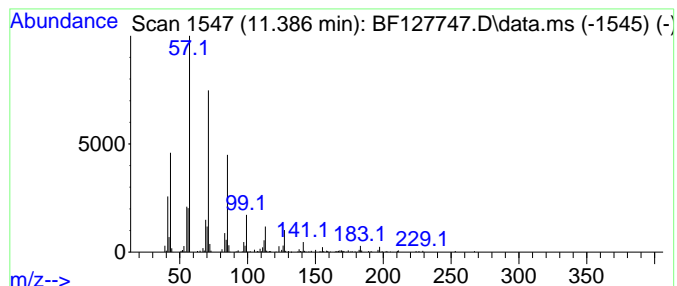
Quant Method : Z:\svoasrv\HPCHEM1\BNA_F\Methods\8270-BF040622.M
 Quant Title : ASP BNA STANDARDS FOR 5 POINT CALIBRATION

TIC Library : C:\Database\NIST20.L
 TIC Integration Parameters: LSCINT.P

 Peak Number 7 Eicosane, 2-methyl- Concentration Rank 19

R.T.	EstConc	Area	Relative to ISTD	R.T.
11.386	4.19 ng	181934	Phenanthrene-d10	11.504

Hit#	of	5	Tentative ID	MW	MolForm	CAS#	Qual
1			Eicosane, 2-methyl-	296	C21H44	001560-84-5	90
2			Octacosane, 2-methyl-	408	C29H60	001560-98-1	90
3			Heptadecane, 2,6,10,15-tetramethyl-	296	C21H44	054833-48-6	90
4			Heneicosane	296	C21H44	000629-94-7	90
5			Hexacosane	366	C26H54	000630-01-3	90



Data Path : Z:\svoasrv\HPCHEM1\BNA_F\Data\BF041122\
 Data File : BF127747.D
 Acq On : 11 Apr 2022 19:20
 Operator : CG\JU
 Sample : N2349-13 5X
 Misc :
 ALS Vial : 20 Sample Multiplier: 1

Instrument :
 BNA_F
 ClientSampleId :
 DEL-7

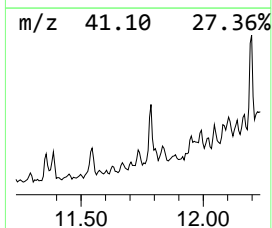
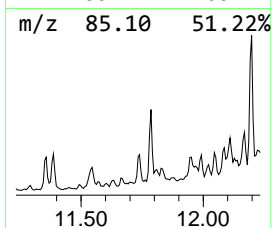
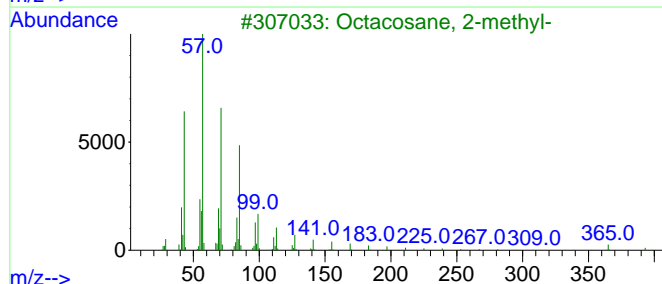
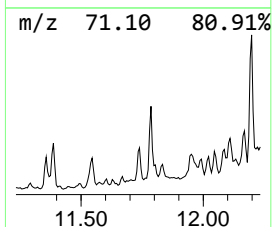
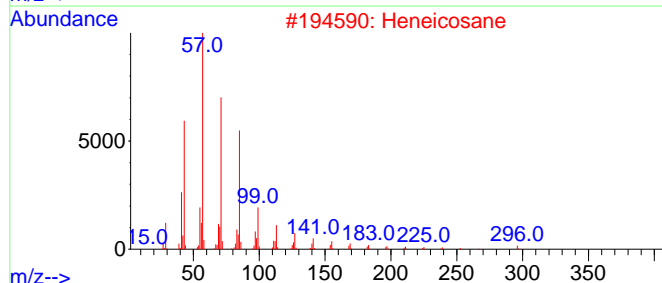
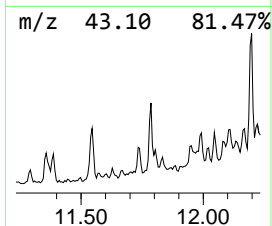
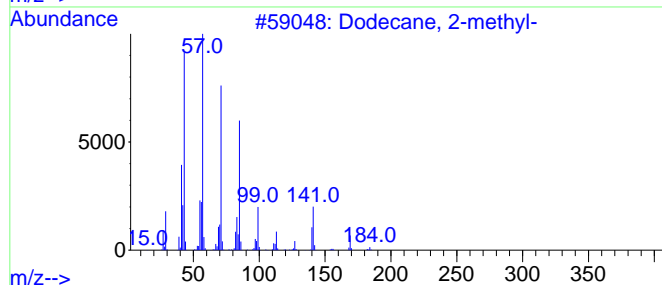
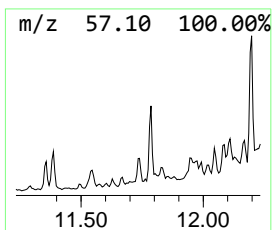
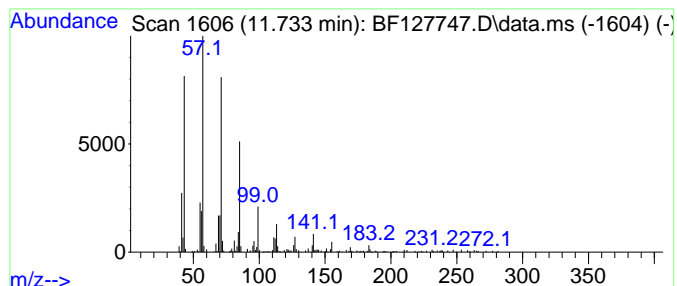
Quant Method : Z:\svoasrv\HPCHEM1\BNA_F\Methods\8270-BF040622.M
 Quant Title : ASP BNA STANDARDS FOR 5 POINT CALIBRATION

TIC Library : C:\Database\NIST20.L
 TIC Integration Parameters: LSCINT.P

 Peak Number 8 Dodecane, 2-methyl- Concentration Rank 20

R.T.	EstConc	Area	Relative to ISTD	R.T.
11.733	3.77 ng	163811	Phenanthrene-d10	11.504

Hit#	of 5	Tentative ID	MW	MolForm	CAS#	Qual
1		Dodecane, 2-methyl-	184	C13H28	001560-97-0	90
2		Heneicosane	296	C21H44	000629-94-7	90
3		Octacosane, 2-methyl-	408	C29H60	001560-98-1	90
4		Octacosane	394	C28H58	000630-02-4	90
5		Octadecane	254	C18H38	000593-45-3	90



Data Path : Z:\svoasrv\HPCHEM1\BNA_F\Data\BF041122\
 Data File : BF127747.D
 Acq On : 11 Apr 2022 19:20
 Operator : CG\JU
 Sample : N2349-13 5X
 Misc :
 ALS Vial : 20 Sample Multiplier: 1

Instrument :
 BNA_F
 ClientSampleId :
 DEL-7

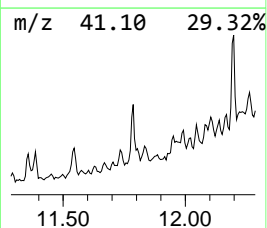
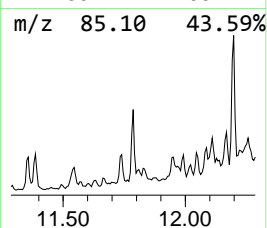
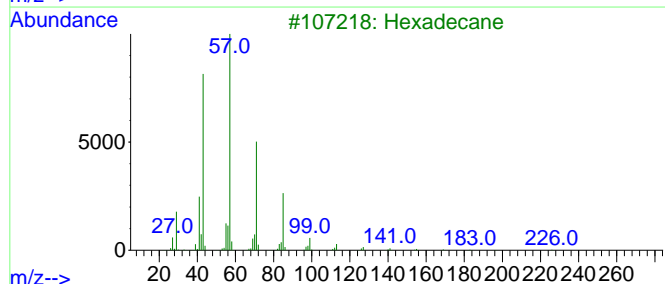
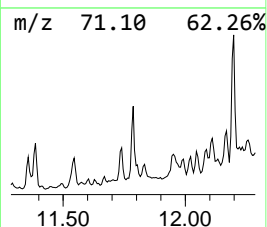
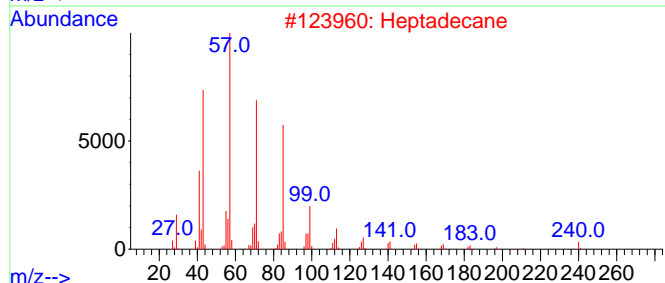
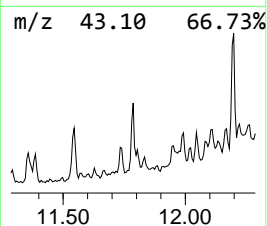
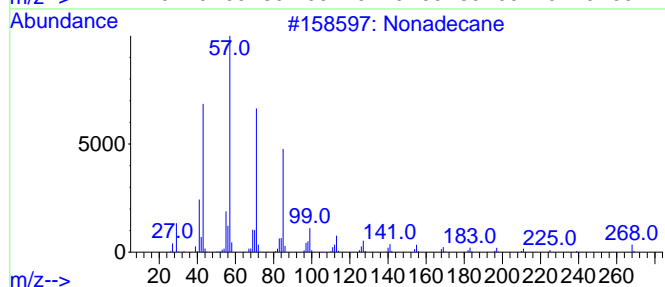
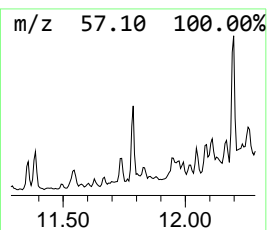
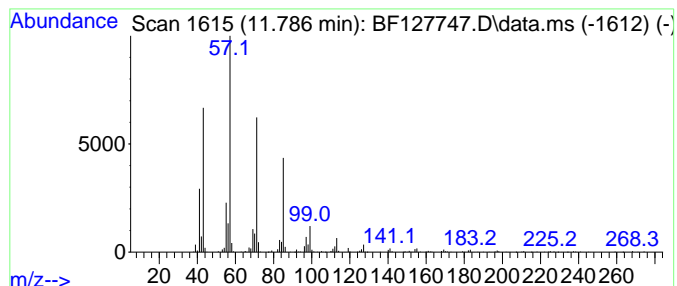
Quant Method : Z:\svoasrv\HPCHEM1\BNA_F\Methods\8270-BF040622.M
 Quant Title : ASP BNA STANDARDS FOR 5 POINT CALIBRATION

TIC Library : C:\Database\NIST20.L
 TIC Integration Parameters: LSCINT.P

 Peak Number 9 Nonadecane Concentration Rank 10

R.T.	EstConc	Area	Relative to ISTD	R.T.
11.786	9.09 ng	394689	Phenanthrene-d10	11.504

Hit#	of 5	Tentative ID	MW	MolForm	CAS#	Qual
1		Nonadecane	268	C19H40	000629-92-5	97
2		Heptadecane	240	C17H36	000629-78-7	90
3		Hexadecane	226	C16H34	000544-76-3	90
4		Tetracosane	338	C24H50	000646-31-1	90
5		Tridecane, 7-hexyl-	268	C19H40	007225-66-3	87



Data Path : Z:\svoasrv\HPCHEM1\BNA_F\Data\BF041122\
 Data File : BF127747.D
 Acq On : 11 Apr 2022 19:20
 Operator : CG\JU
 Sample : N2349-13 5X
 Misc :
 ALS Vial : 20 Sample Multiplier: 1

Instrument :
 BNA_F
 ClientSampleId :
 DEL-7

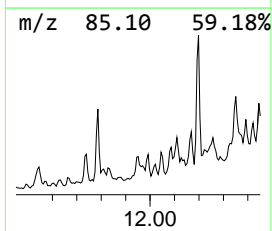
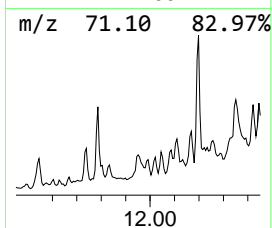
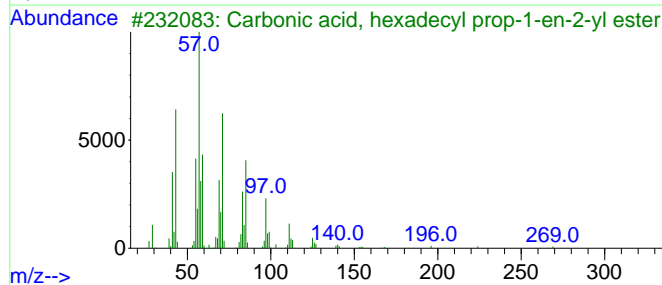
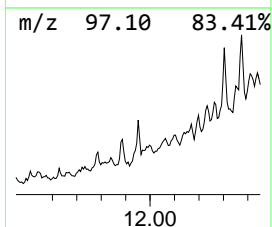
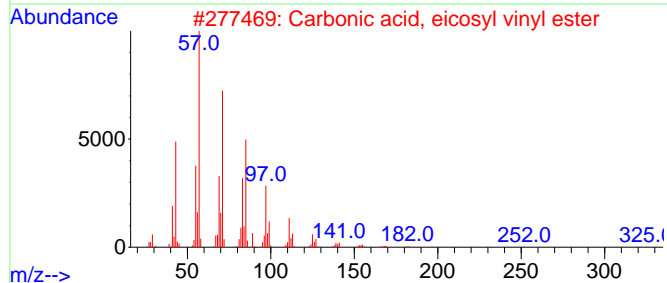
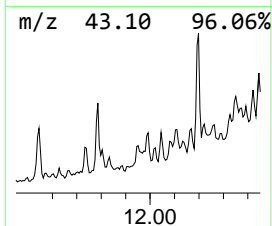
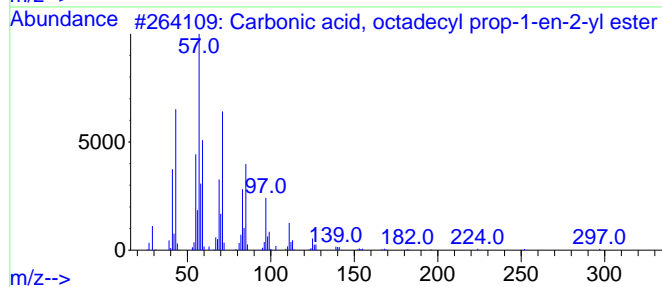
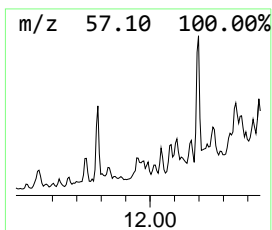
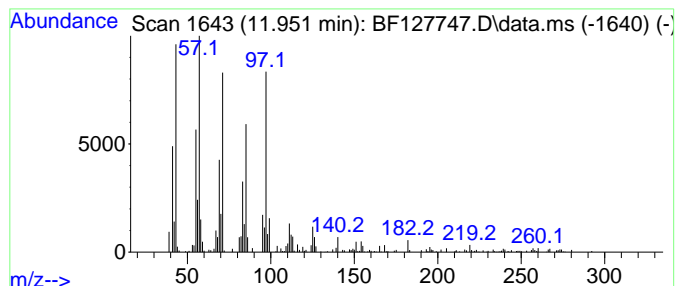
Quant Method : Z:\svoasrv\HPCHEM1\BNA_F\Methods\8270-BF040622.M
 Quant Title : ASP BNA STANDARDS FOR 5 POINT CALIBRATION

TIC Library : C:\Database\NIST20.L
 TIC Integration Parameters: LSCINT.P

 Peak Number 10 Carbonic acid, octadecyl pr... Concentration Rank 18

R.T.	EstConc	Area	Relative to ISTD	R.T.
11.951	4.22 ng	183136	Phenanthrene-d10	11.504

Hit#	of	5	Tentative ID	MW	MolForm	CAS#	Qual
1			Carbonic acid, octadecyl prop-1-...	354	C22H42O3	1000383-11-5	70
2			Carbonic acid, eicosyl vinyl ester	368	C23H44O3	1000382-54-3	68
3			Carbonic acid, hexadecyl prop-1-...	326	C20H38O3	1000382-90-3	62
4			Sulfurous acid, 2-propyl tetradec...	320	C17H36O3S	1010309-12-5	58
5			10-Methylnonadecane	282	C20H42	056862-62-5	53



Data Path : Z:\svoasrv\HPCHEM1\BNA_F\Data\BF041122\
 Data File : BF127747.D
 Acq On : 11 Apr 2022 19:20
 Operator : CG\JU
 Sample : N2349-13 5X
 Misc :
 ALS Vial : 20 Sample Multiplier: 1

Instrument :
 BNA_F
 ClientSampleId :
 DEL-7

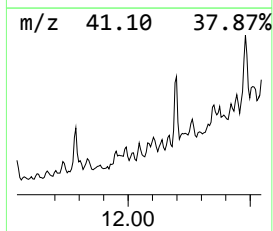
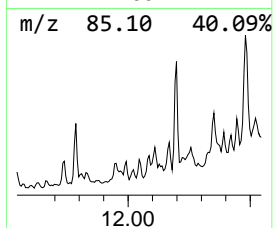
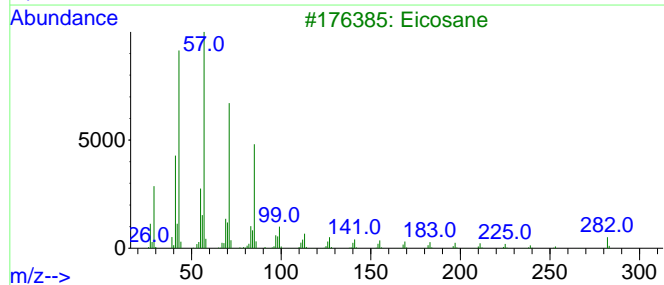
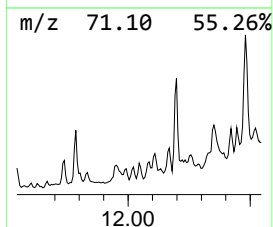
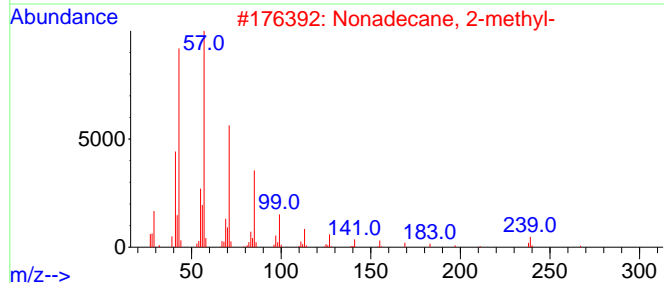
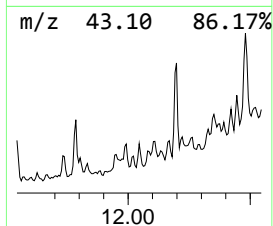
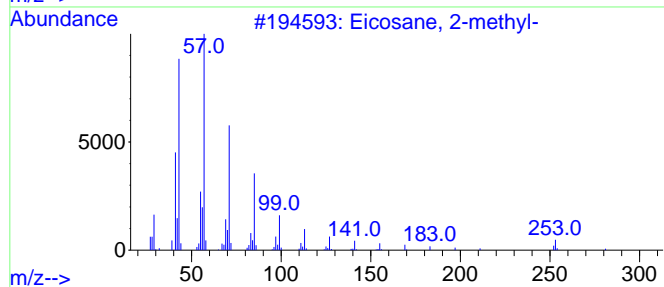
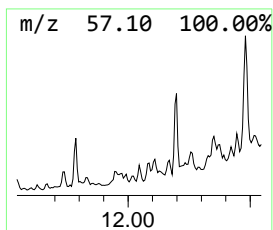
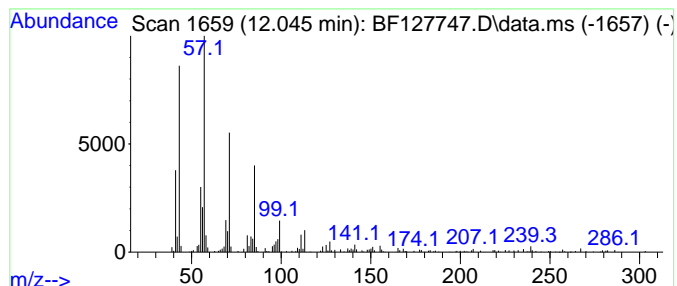
Quant Method : Z:\svoasrv\HPCHEM1\BNA_F\Methods\8270-BF040622.M
 Quant Title : ASP BNA STANDARDS FOR 5 POINT CALIBRATION

TIC Library : C:\Database\NIST20.L
 TIC Integration Parameters: LSCINT.P

 Peak Number 11 Nonadecane, 2-methyl- Concentration Rank 17

R.T.	EstConc	Area	Relative to ISTD	R.T.
12.045	4.34 ng	188408	Phenanthrene-d10	11.504

Hit#	of	5	Tentative ID	MW	MolForm	CAS#	Qual
1			Eicosane, 2-methyl-	296	C21H44	001560-84-5	91
2			Nonadecane, 2-methyl-	282	C20H42	001560-86-7	91
3			Eicosane	282	C20H42	000112-95-8	90
4			Tetradecane, 2,6,10-trimethyl-	240	C17H36	014905-56-7	90
5			Octadecane, 2-methyl-	268	C19H40	001560-88-9	90



Data Path : Z:\svoasrv\HPCHEM1\BNA_F\Data\BF041122\
 Data File : BF127747.D
 Acq On : 11 Apr 2022 19:20
 Operator : CG\JU
 Sample : N2349-13 5X
 Misc :
 ALS Vial : 20 Sample Multiplier: 1

Instrument :
 BNA_F
 ClientSampleId :
 DEL-7

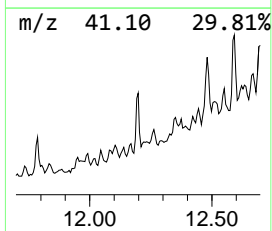
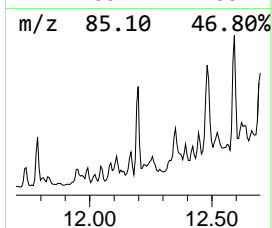
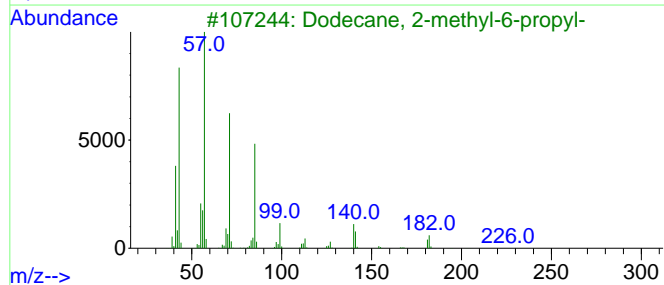
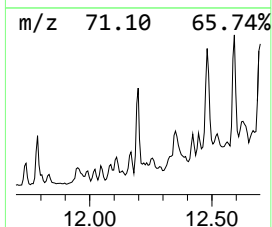
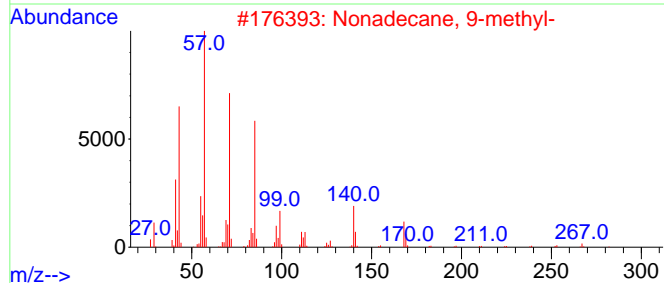
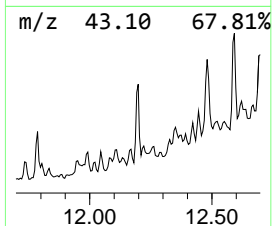
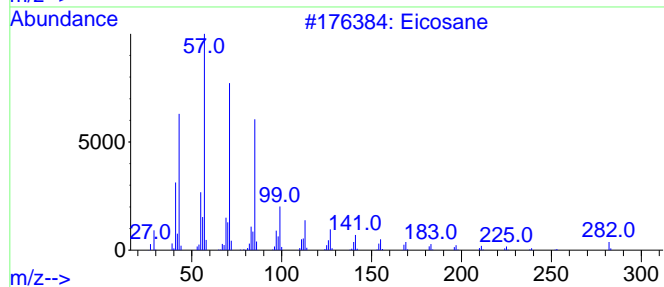
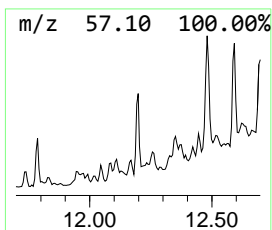
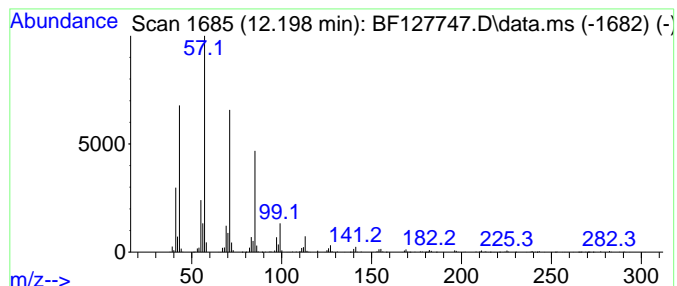
Quant Method : Z:\svoasrv\HPCHEM1\BNA_F\Methods\8270-BF040622.M
 Quant Title : ASP BNA STANDARDS FOR 5 POINT CALIBRATION

TIC Library : C:\Database\NIST20.L
 TIC Integration Parameters: LSCINT.P

 Peak Number 12 Eicosane Concentration Rank 7

R.T.	EstConc	Area	Relative to ISTD	R.T.
12.198	15.97 ng	693419	Phenanthrene-d10	11.504

Hit#	of 5	Tentative ID	MW	MolForm	CAS#	Qual
1		Eicosane	282	C20H42	000112-95-8	95
2		Nonadecane, 9-methyl-	282	C20H42	013287-24-6	94
3		Dodecane, 2-methyl-6-propyl-	226	C16H34	055045-08-4	93
4		Tridecane, 7-propyl-	226	C16H34	055045-09-5	93
5		Heneicosane	296	C21H44	000629-94-7	90



Data Path : Z:\svoasrv\HPCHEM1\BNA_F\Data\BF041122\
 Data File : BF127747.D
 Acq On : 11 Apr 2022 19:20
 Operator : CG\JU
 Sample : N2349-13 5X
 Misc :
 ALS Vial : 20 Sample Multiplier: 1

Instrument :
 BNA_F
 ClientSampleId :
 DEL-7

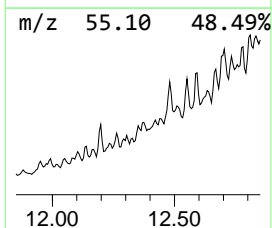
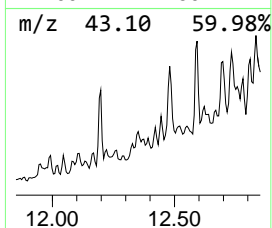
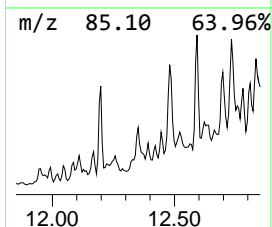
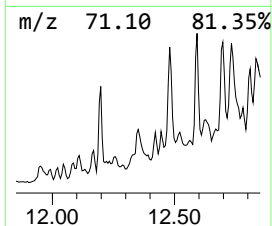
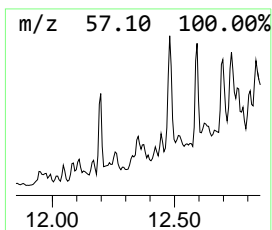
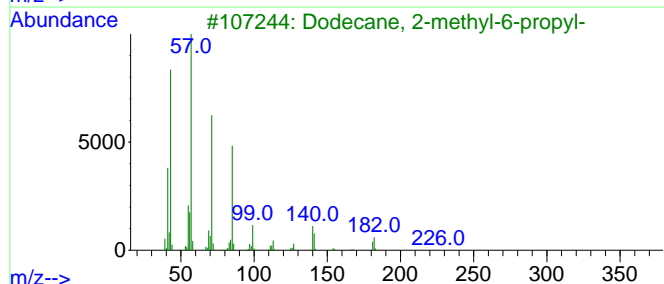
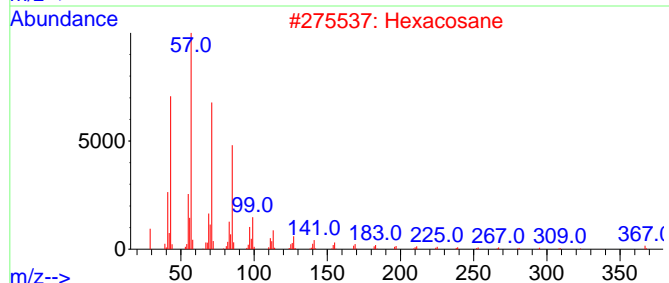
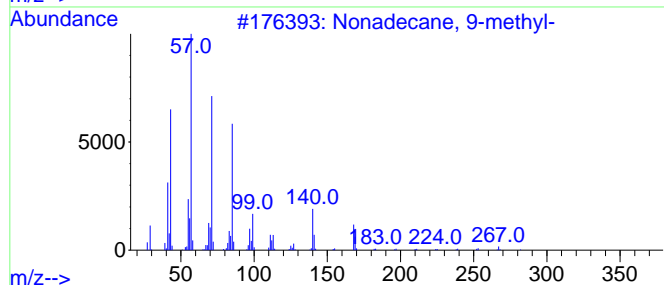
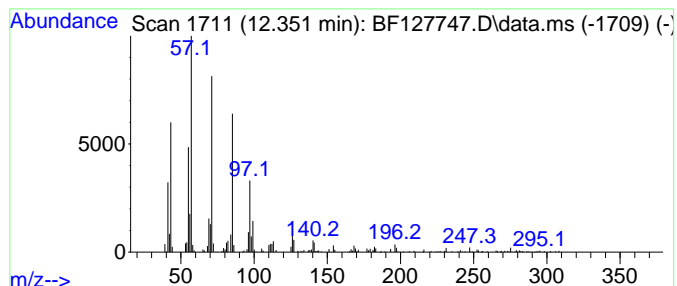
Quant Method : Z:\svoasrv\HPCHEM1\BNA_F\Methods\8270-BF040622.M
 Quant Title : ASP BNA STANDARDS FOR 5 POINT CALIBRATION

TIC Library : C:\Database\NIST20.L
 TIC Integration Parameters: LSCINT.P

 Peak Number 13 Nonadecane, 9-methyl- Concentration Rank 14

R.T.	EstConc	Area	Relative to ISTD	R.T.
12.351	5.20 ng	225640	Phenanthrene-d10	11.504

Hit#	of 5	Tentative ID	MW	MolForm	CAS#	Qual
1		Nonadecane, 9-methyl-	282	C20H42	013287-24-6	90
2		Hexacosane	366	C26H54	000630-01-3	83
3		Dodecane, 2-methyl-6-propyl-	226	C16H34	055045-08-4	76
4		Nonadecane	268	C19H40	000629-92-5	74
5		Tetradecane, 4-ethyl-	226	C16H34	055045-14-2	72



Data Path : Z:\svoasrv\HPCHEM1\BNA_F\Data\BF041122\
 Data File : BF127747.D
 Acq On : 11 Apr 2022 19:20
 Operator : CG\JU
 Sample : N2349-13 5X
 Misc :
 ALS Vial : 20 Sample Multiplier: 1

Instrument :
 BNA_F
 ClientSampleId :
 DEL-7

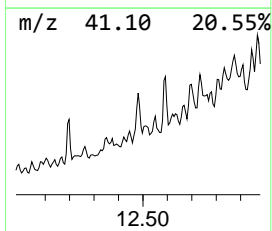
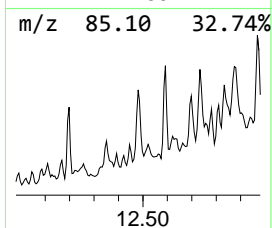
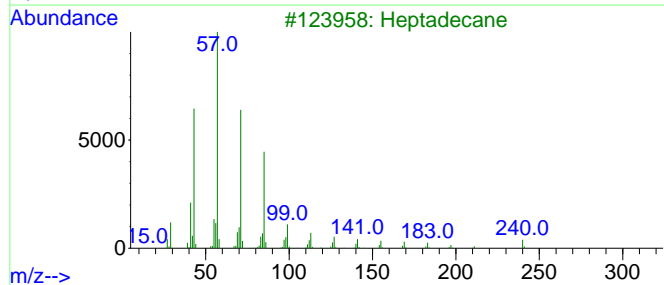
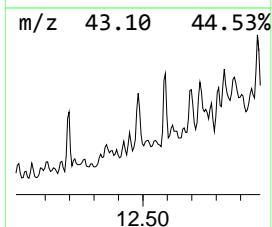
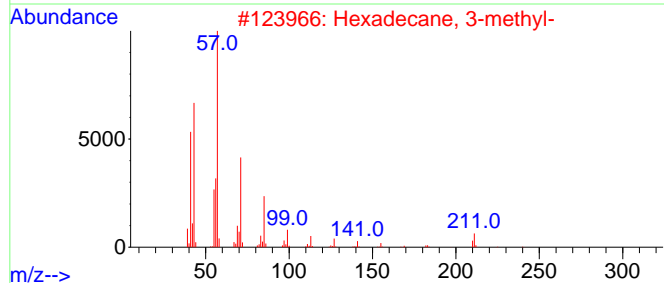
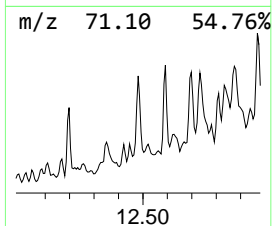
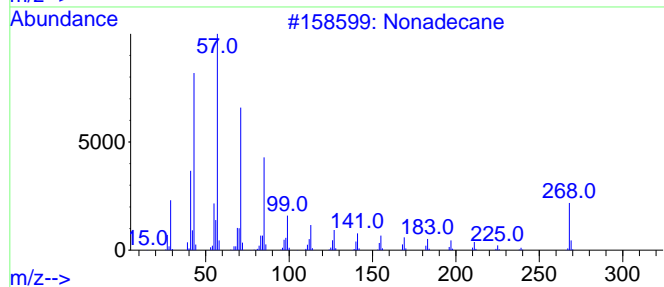
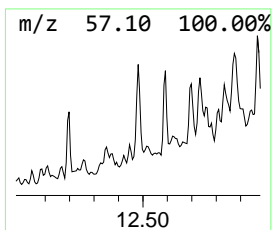
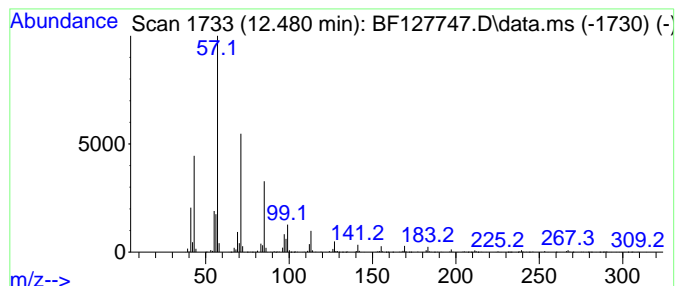
Quant Method : Z:\svoasrv\HPCHEM1\BNA_F\Methods\8270-BF040622.M
 Quant Title : ASP BNA STANDARDS FOR 5 POINT CALIBRATION

TIC Library : C:\Database\NIST20.L
 TIC Integration Parameters: LSCINT.P

 Peak Number 14 Hexadecane, 3-methyl- Concentration Rank 3

R.T.	EstConc	Area	Relative to ISTD	R.T.
12.480	21.46 ng	931782	Phenanthrene-d10	11.504

Hit#	of	5	Tentative ID	MW	MolForm	CAS#	Qual
1			Nonadecane	268	C19H40	000629-92-5	91
2			Hexadecane, 3-methyl-	240	C17H36	006418-43-5	87
3			Heptadecane	240	C17H36	000629-78-7	86
4			Nonadecane, 2-methyl-	282	C20H42	001560-86-7	80
5			Tetradecane, 1-iodo-	324	C14H29I	019218-94-1	80



Data Path : Z:\svoasrv\HPCHEM1\BNA_F\Data\BF041122\
 Data File : BF127747.D
 Acq On : 11 Apr 2022 19:20
 Operator : CG\JU
 Sample : N2349-13 5X
 Misc :
 ALS Vial : 20 Sample Multiplier: 1

Instrument :
 BNA_F
 ClientSampleId :
 DEL-7

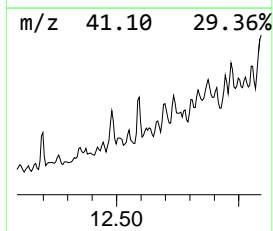
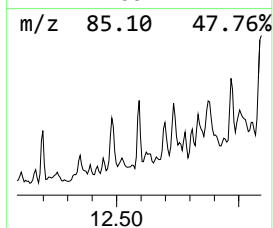
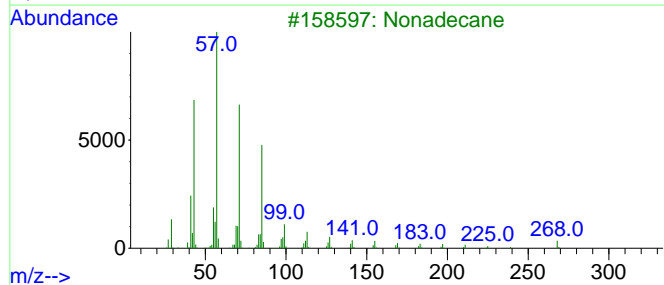
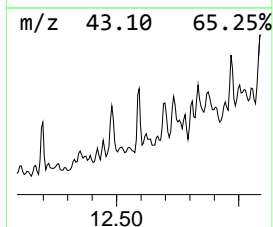
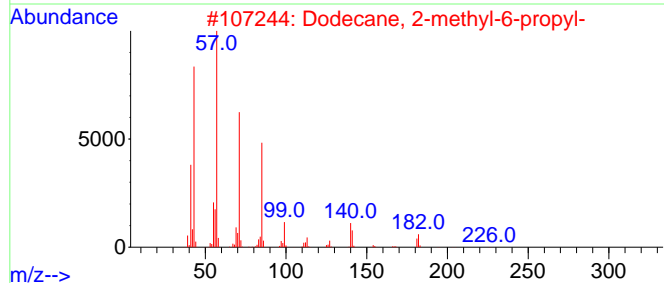
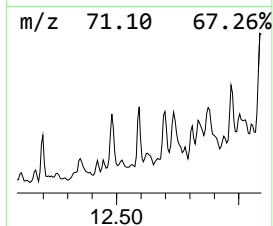
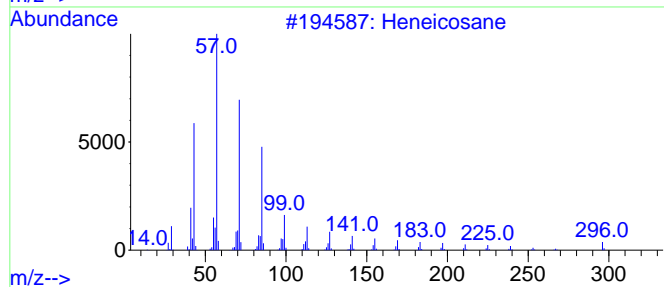
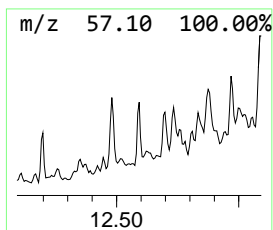
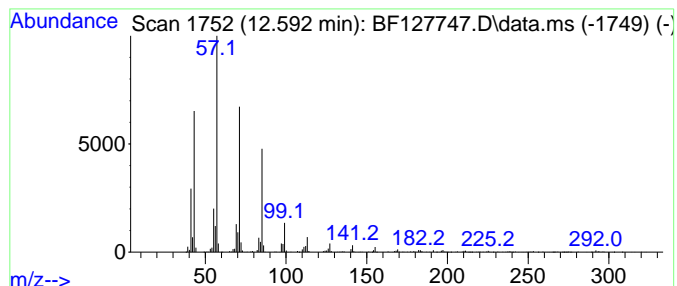
Quant Method : Z:\svoasrv\HPCHEM1\BNA_F\Methods\8270-BF040622.M
 Quant Title : ASP BNA STANDARDS FOR 5 POINT CALIBRATION

TIC Library : C:\Database\NIST20.L
 TIC Integration Parameters: LSCINT.P

 Peak Number 15 Heneicosane Concentration Rank 4

R.T.	EstConc	Area	Relative to ISTD	R.T.
12.592	20.88 ng	906548	Phenanthrene-d10	11.504

Hit#	of	5	Tentative ID	MW	MolForm	CAS#	Qual
1			Heneicosane	296	C21H44	000629-94-7	97
2			Dodecane, 2-methyl-6-propyl-	226	C16H34	055045-08-4	93
3			Nonadecane	268	C19H40	000629-92-5	91
4			Tridecane, 7-propyl-	226	C16H34	055045-09-5	90
5			Tetradecane, 4-ethyl-	226	C16H34	055045-14-2	87



Data Path : Z:\svoasrv\HPCHEM1\BNA_F\Data\BF041122\
 Data File : BF127747.D
 Acq On : 11 Apr 2022 19:20
 Operator : CG\JU
 Sample : N2349-13 5X
 Misc :
 ALS Vial : 20 Sample Multiplier: 1

Instrument :
 BNA_F
 ClientSampleId :
 DEL-7

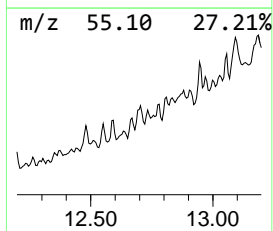
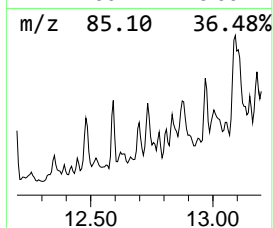
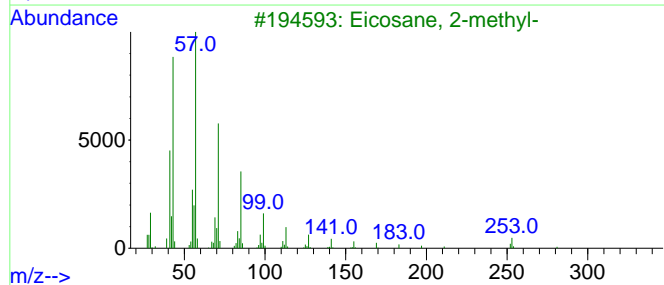
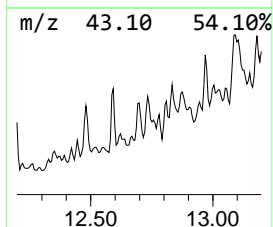
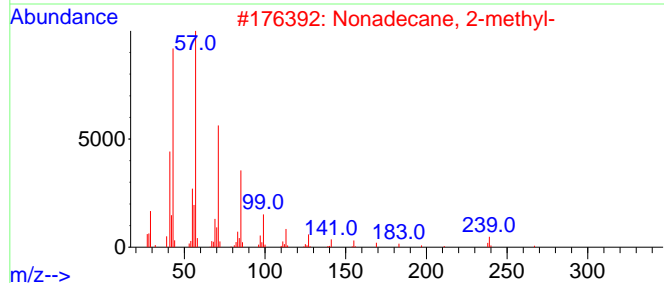
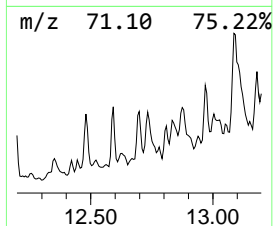
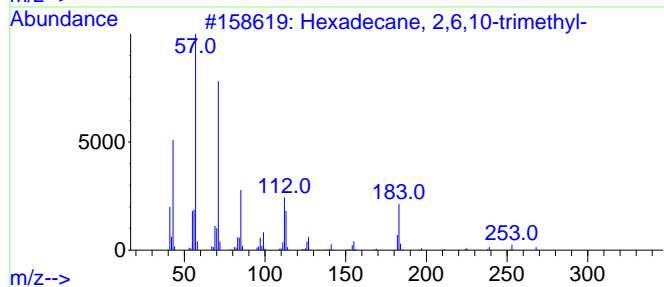
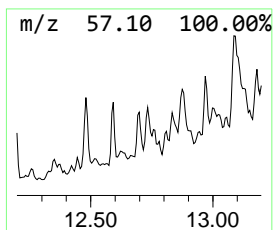
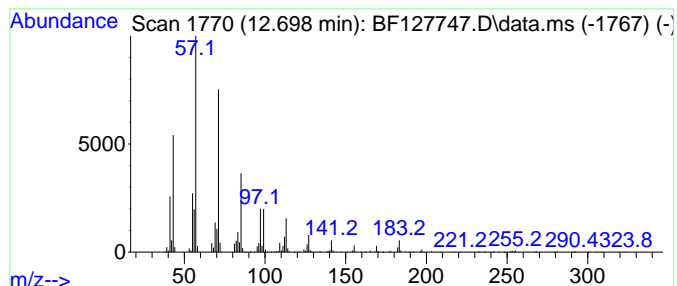
Quant Method : Z:\svoasrv\HPCHEM1\BNA_F\Methods\8270-BF040622.M
 Quant Title : ASP BNA STANDARDS FOR 5 POINT CALIBRATION

TIC Library : C:\Database\NIST20.L
 TIC Integration Parameters: LSCINT.P

 Peak Number 16 Hexadecane, 2,6,10-trimethyl- Concentration Rank 2

R.T.	EstConc	Area	Relative to ISTD	R.T.
12.698	23.55 ng	1022810	Phenanthrene-d10	11.504

Hit#	of	5	Tentative ID	MW	MolForm	CAS#	Qual
1			Hexadecane, 2,6,10-trimethyl-	268	C19H40	055000-52-7	86
2			Nonadecane, 2-methyl-	282	C20H42	001560-86-7	86
3			Eicosane, 2-methyl-	296	C21H44	001560-84-5	86
4			Octadecane	254	C18H38	000593-45-3	81
5			Pentadecane, 2,6,10,14-tetramethyl-	268	C19H40	001921-70-6	81



Data Path : Z:\svoasrv\HPCHEM1\BNA_F\Data\BF041122\
 Data File : BF127747.D
 Acq On : 11 Apr 2022 19:20
 Operator : CG\JU
 Sample : N2349-13 5X
 Misc :
 ALS Vial : 20 Sample Multiplier: 1

Instrument :
 BNA_F
 ClientSampleId :
 DEL-7

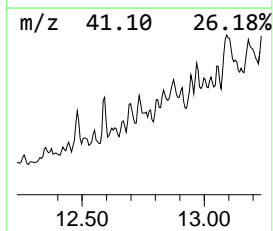
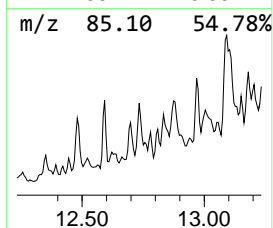
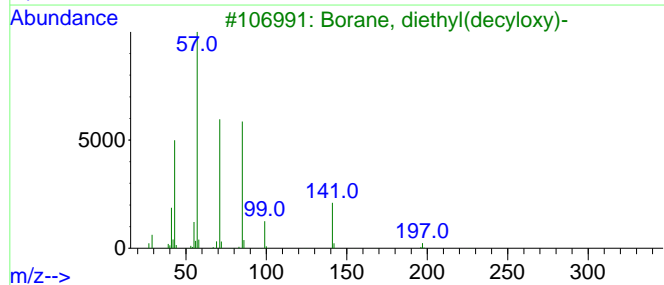
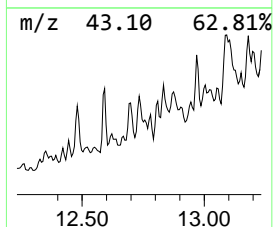
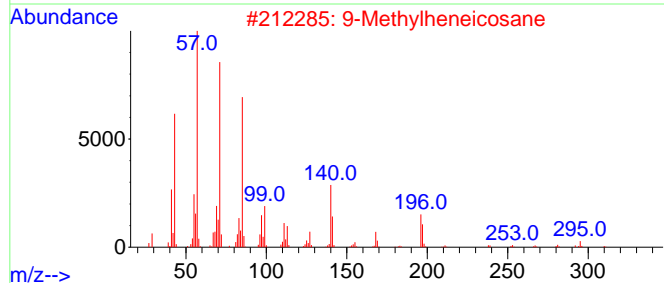
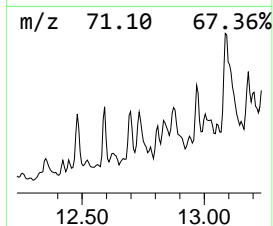
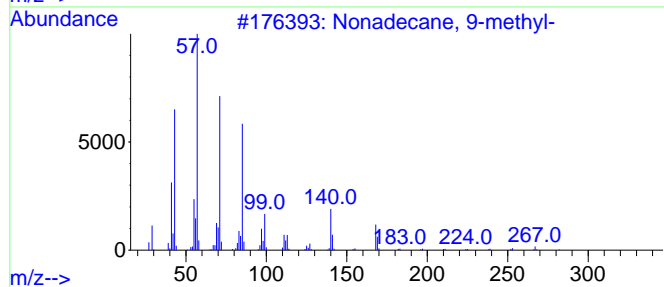
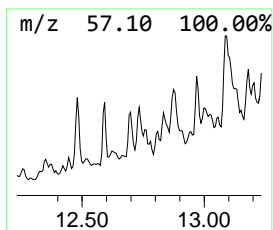
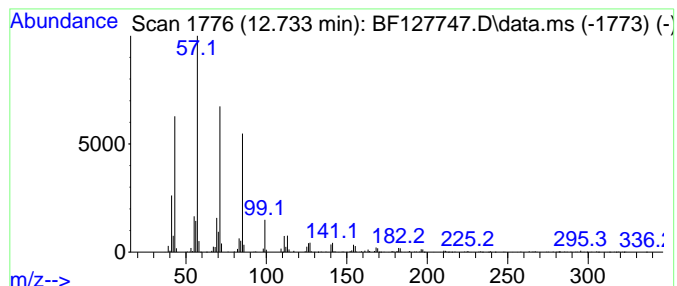
Quant Method : Z:\svoasrv\HPCHEM1\BNA_F\Methods\8270-BF040622.M
 Quant Title : ASP BNA STANDARDS FOR 5 POINT CALIBRATION

TIC Library : C:\Database\NIST20.L
 TIC Integration Parameters: LSCINT.P

 Peak Number 17 9-Methylheneicosane Concentration Rank 6

R.T.	EstConc	Area	Relative to ISTD	R.T.
12.733	17.08 ng	741750	Phenanthrene-d10	11.504

Hit#	of 5	Tentative ID	MW	MolForm	CAS#	Qual
1		Nonadecane, 9-methyl-	282	C20H42	013287-24-6	90
2		9-Methylheneicosane	310	C22H46	070475-51-3	87
3		Borane, diethyl(decyloxy)-	226	C14H31BO	1000152-34-3	81
4		Tridecane, 1-iodo-	310	C13H27I	035599-77-0	80
5		Heptadecane	240	C17H36	000629-78-7	76



Data Path : Z:\svoasrv\HPCHEM1\BNA_F\Data\BF041122\
 Data File : BF127747.D
 Acq On : 11 Apr 2022 19:20
 Operator : CG\JU
 Sample : N2349-13 5X
 Misc :
 ALS Vial : 20 Sample Multiplier: 1

Instrument :
 BNA_F
 ClientSampleId :
 DEL-7

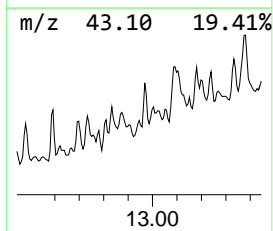
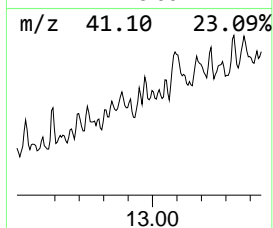
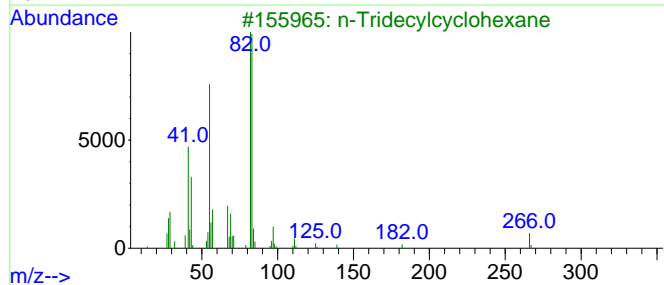
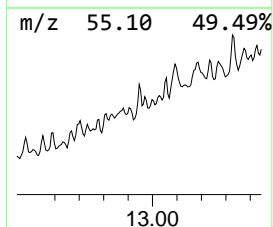
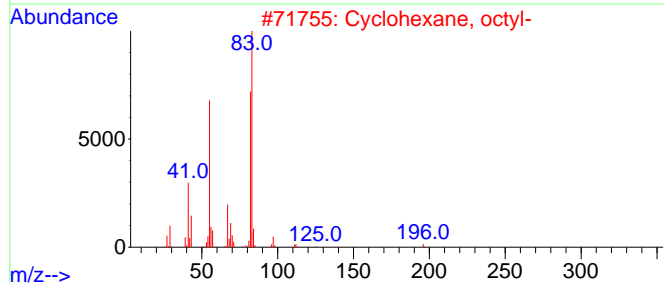
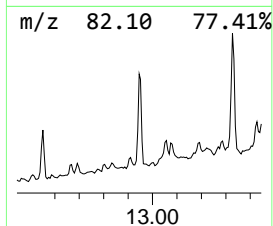
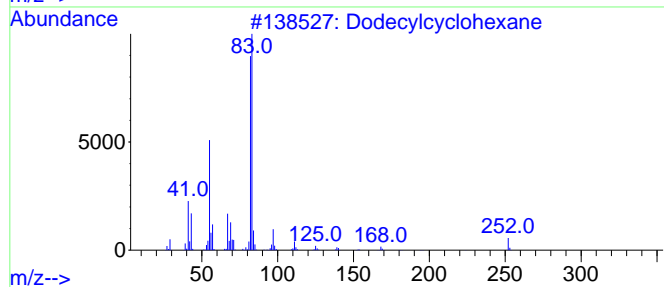
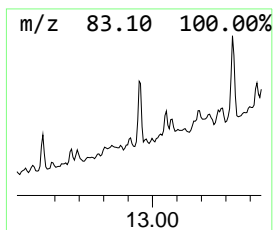
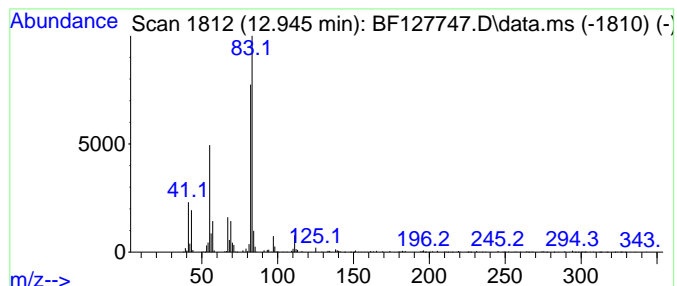
Quant Method : Z:\svoasrv\HPCHEM1\BNA_F\Methods\8270-BF040622.M
 Quant Title : ASP BNA STANDARDS FOR 5 POINT CALIBRATION

TIC Library : C:\Database\NIST20.L
 TIC Integration Parameters: LSCINT.P

 Peak Number 18 Dodecylcyclohexane Concentration Rank 11

R.T.	EstConc	Area	Relative to ISTD	R.T.
12.945	8.41 ng	529900	Chrysene-d12	14.174

Hit#	of 5	Tentative ID	MW	MolForm	CAS#	Qual
1		Dodecylcyclohexane	252	C18H36	001795-17-1	96
2		Cyclohexane, octyl-	196	C14H28	001795-15-9	91
3		n-Tridecylcyclohexane	266	C19H38	006006-33-3	91
4		Cyclohexane, undecyl-	238	C17H34	054105-66-7	91
5		n-Nonylcyclohexane	210	C15H30	002883-02-5	91



Data Path : Z:\svoasrv\HPCHEM1\BNA_F\Data\BF041122\
 Data File : BF127747.D
 Acq On : 11 Apr 2022 19:20
 Operator : CG\JU
 Sample : N2349-13 5X
 Misc :
 ALS Vial : 20 Sample Multiplier: 1

Instrument :
 BNA_F
 ClientSampleId :
 DEL-7

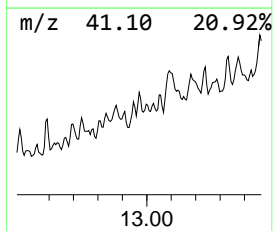
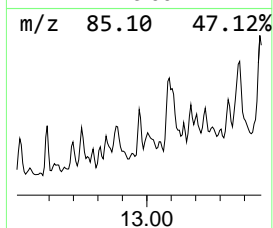
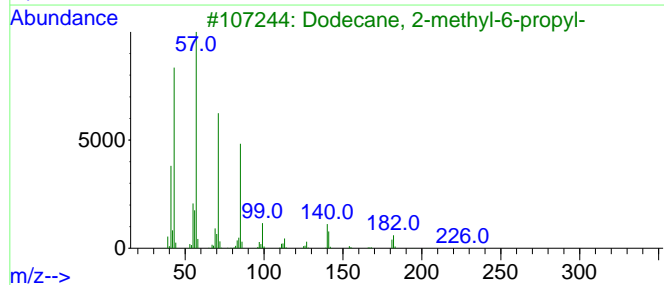
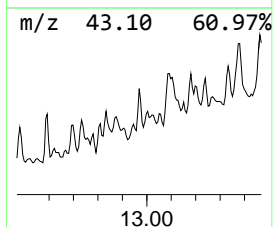
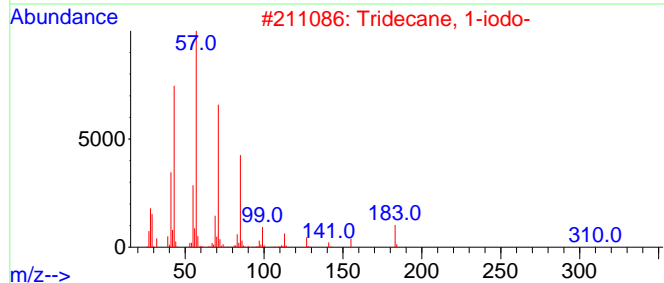
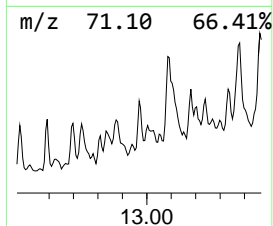
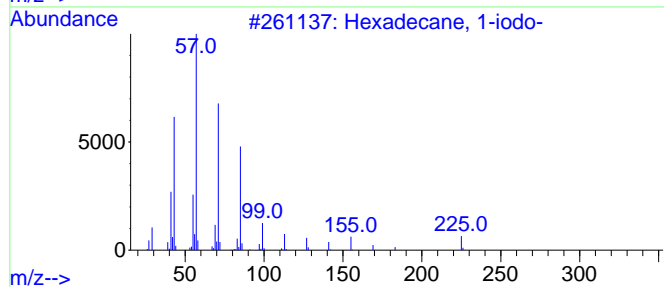
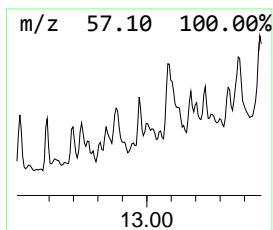
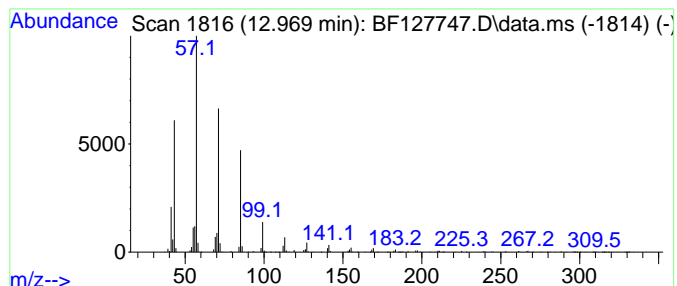
Quant Method : Z:\svoasrv\HPCHEM1\BNA_F\Methods\8270-BF040622.M
 Quant Title : ASP BNA STANDARDS FOR 5 POINT CALIBRATION

TIC Library : C:\Database\NIST20.L
 TIC Integration Parameters: LSCINT.P

 Peak Number 19 Hexadecane, 1-iodo- Concentration Rank 8

R.T.	EstConc	Area	Relative to ISTD	R.T.
12.969	11.16 ng	702537	Chrysene-d12	14.174

Hit#	of	5	Tentative ID	MW	MolForm	CAS#	Qual
1			Hexadecane, 1-iodo-	352	C16H33I	000544-77-4	90
2			Tridecane, 1-iodo-	310	C13H27I	035599-77-0	90
3			Dodecane, 2-methyl-6-propyl-	226	C16H34	055045-08-4	87
4			Tetradecane, 4-ethyl-	226	C16H34	055045-14-2	87
5			Tetradecane, 1-iodo-	324	C14H29I	019218-94-1	86



Data Path : Z:\svoasrv\HPCHEM1\BNA_F\Data\BF041122\
 Data File : BF127747.D
 Acq On : 11 Apr 2022 19:20
 Operator : CG\JU
 Sample : N2349-13 5X
 Misc :
 ALS Vial : 20 Sample Multiplier: 1

Instrument :
 BNA_F
 ClientSampleId :
 DEL-7

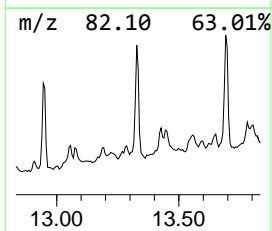
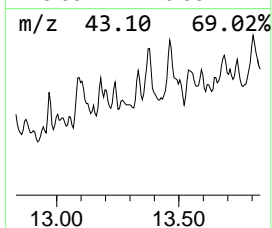
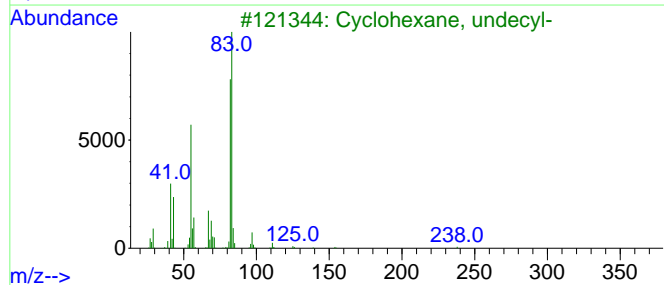
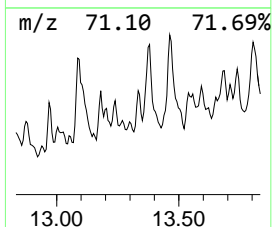
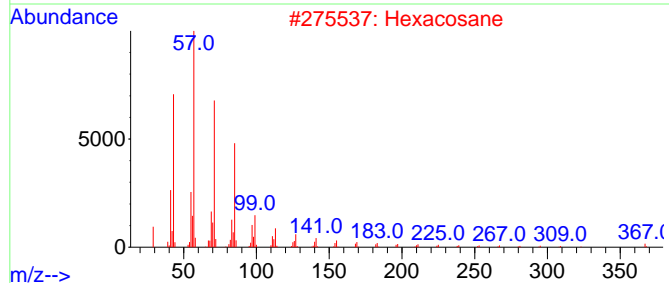
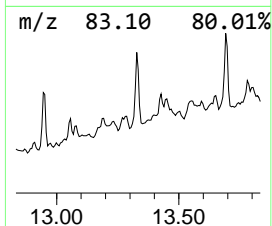
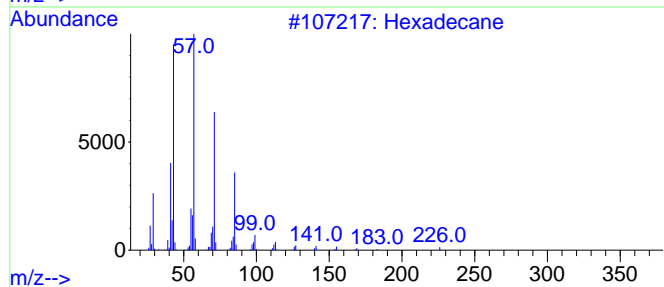
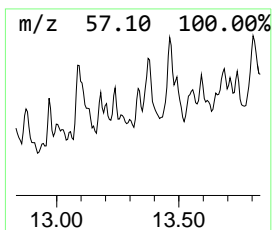
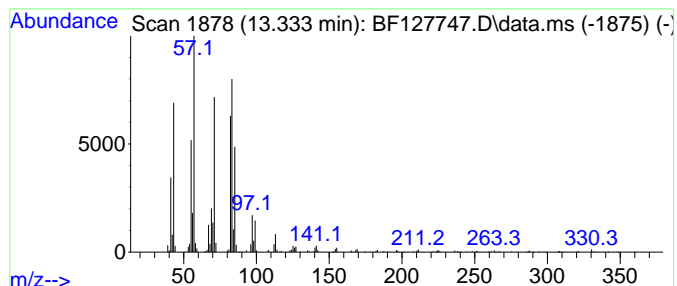
Quant Method : Z:\svoasrv\HPCHEM1\BNA_F\Methods\8270-BF040622.M
 Quant Title : ASP BNA STANDARDS FOR 5 POINT CALIBRATION

TIC Library : C:\Database\NIST20.L
 TIC Integration Parameters: LSCINT.P

 Peak Number 20 unknown13.333 Concentration Rank 5

R.T.	EstConc	Area	Relative to ISTD	R.T.
13.333	20.00 ng	1259540	Chrysene-d12	14.174

Hit#	of 5	Tentative ID	MW	MolForm	CAS#	Qual
1		Hexadecane	226	C16H34	000544-76-3	86
2		Hexacosane	366	C26H54	000630-01-3	49
3		Cyclohexane, undecyl-	238	C17H34	054105-66-7	46
4		Tritetracontane	605	C43H88	007098-21-7	46
5		10-Methylnonadecane	282	C20H42	056862-62-5	46



Data Path : Z:\svoasrv\HPCHEM1\BNA_F\Data\BF041122\
 Data File : BF127747.D
 Acq On : 11 Apr 2022 19:20
 Operator : CG\JU
 Sample : N2349-13 5X
 Misc :
 ALS Vial : 20 Sample Multiplier: 1

Instrument :
 BNA_F
 ClientSampleId :
 DEL-7

Quant Method : Z:\svoasrv\HPCHEM1\BNA_F\Methods\8270-BF040622.M
 Quant Title : ASP BNA STANDARDS FOR 5 POINT CALIBRATION

TIC Library : C:\Database\NIST20.L
 TIC Integration Parameters: LSCINT.P

TIC Top Hit name	RT	EstConc	Units	Response	--Internal Standard--			
					#	RT	Resp	Conc
3-Penten-2-one,...	4.575	23.7	ng	953269	1	6.963	804617	20.0
2-Pentanone, 4-...	5.181	7.6	ng	306299	1	6.963	804617	20.0
Alanine, N,N,2-...	5.822	10.1	ng	407422	1	6.963	804617	20.0
N-(1,1-Dimethyl...	7.310	5.4	ng	216206	1	6.963	804617	20.0
Hexadecane	10.910	4.6	ng	198537	4	11.504	868464	20.0
Tetradecane	11.357	5.1	ng	221254	4	11.504	868464	20.0
Eicosane, 2-met...	11.386	4.2	ng	181934	4	11.504	868464	20.0
Dodecane, 2-met...	11.733	3.8	ng	163811	4	11.504	868464	20.0
Nonadecane	11.786	9.1	ng	394689	4	11.504	868464	20.0
Carbonic acid, ...	11.951	4.2	ng	183136	4	11.504	868464	20.0
Nonadecane, 2-m...	12.045	4.3	ng	188408	4	11.504	868464	20.0
Eicosane	12.198	16.0	ng	693419	4	11.504	868464	20.0
Nonadecane, 9-m...	12.351	5.2	ng	225640	4	11.504	868464	20.0
Hexadecane, 3-m...	12.480	21.5	ng	931782	4	11.504	868464	20.0
Heneicosane	12.592	20.9	ng	906548	4	11.504	868464	20.0
Hexadecane, 2,6...	12.698	23.6	ng	1022810	4	11.504	868464	20.0
9-Methylheneico...	12.733	17.1	ng	741750	4	11.504	868464	20.0
Dodecylcyclohexane	12.945	8.4	ng	529900	5	14.174	1259540	20.0
Hexadecane, 1-i...	12.969	11.2	ng	702537	5	14.174	1259540	20.0
unknown13.333	13.333	20.0	ng	1259540	5	14.174	1259540	20.0