

Data Path : Z:\HPCHEM1\BNA_F\DATA\BF041315\
 Data File : BF078491.D
 Acq On : 14 Apr 2015 7:59
 Operator : TP/IZ
 Sample : G1787-05
 Misc :
 ALS Vial : 30 Sample Multiplier: 1

Instrument :
 BNA_F
ClientSampleId :
 LS-SD02B

Manual Integrations
APPROVED
 apatel
 4/14/2015 5:26:03 PM

Quant Time: Apr 14 11:38:33 2015
 Quant Method : Z:\HPCHEM1\BNA_F\METHODS\8270-BF040115.M
 Quant Title : ASP BNA STANDARDS FOR 5 POINT CALIBRATION
 QLast Update : Tue Apr 14 07:58:00 2015
 Response via : Initial Calibration

Internal Standards	R.T.	QIon	Response	Conc	Units	Dev(Min)
1) 1,4-Dichlorobenzene-d4	6.83	152	35433	20.00	ng	0.00
21) Naphthalene-d8	8.40	136	143613	20.00	ng	-0.01
38) Acenaphthene-d10	10.56	164	71557	20.00	ng	-0.01
63) Phenanthrene-d10	12.39	188	138833	20.00	ng	0.00
75) Chrysene-d12	15.65	240	145547	20.00	ng	0.00
86) Perylene-d12	17.38	264	156405	20.00	ng	0.09

System Monitoring Compounds

5) 2-Fluorophenol	5.08	112	269915	125.60	ng	0.01
7) Phenol-d6	6.43	99	362095	134.45	ng	0.00
23) Nitrobenzene-d5	7.53	82	206981	87.36	ng	0.00
41) 2,4,6-Tribromophenol	11.54	330	89393	150.63	ng	0.00
44) 2-Fluorobiphenyl	9.76	172	312361	62.40	ng	0.00
78) Terphenyl-d14	14.38	244	343661	53.35	ng	0.00

Target Compounds

Target Compounds	R.T.	QIon	Response	Conc	Units	Qvalue
10) Phenol	6.44	94	9451	2.93	ng	# 75
49) Dimethylphthalate	10.26	163	23201	4.32	ng	# 99
70) Phenanthrene	12.41	178	100522	12.52	ng	100
71) Anthracene	12.48	178	17825	2.25	ng	97
74) Fluoranthene	13.87	202	143757	16.97	ng	95
77) Pyrene	14.15	202	136993	14.99	ng	# 92
80) Benzo(a)anthracene	15.63	228	115649	13.35	ng	99
82) Chrysene	15.68	228	82655	10.16	ng	97
83) Bis(2-ethylhexyl)phthalate	15.73	149	90217	16.52	ng	# 95
87) Benzo(b)fluoranthene	16.94	252	187352m	19.38	ng	
88) Benzo(k)fluoranthene	16.96	252	76415m	8.90	ng	
89) Benzo(a)pyrene	17.31	252	175913	20.85	ng	# 94
90) Dibenzo(a,h)anthracene	18.65	278	29457	3.49	ng	# 82
91) Benzo(g,h,i)perylene	18.98	276	127584m	15.07	ng	

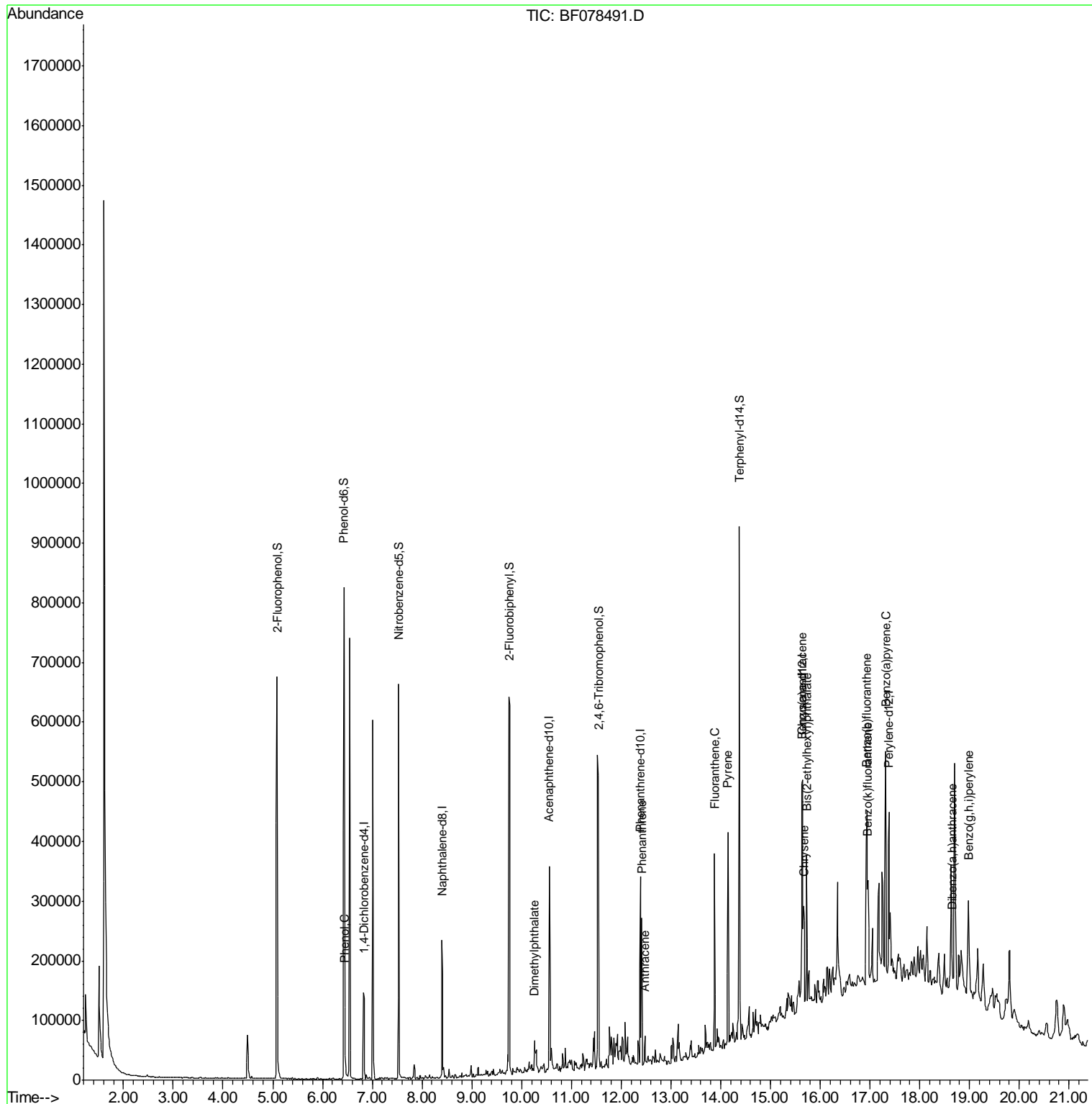
(#) = qualifier out of range (m) = manual integration (+) = signals summed

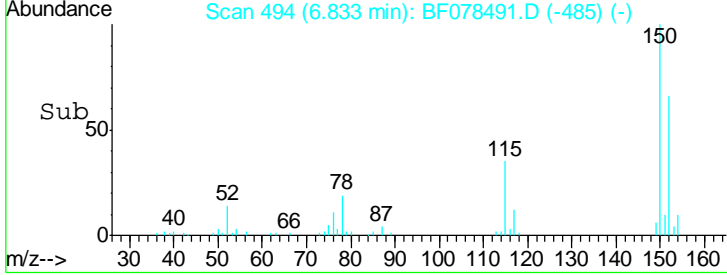
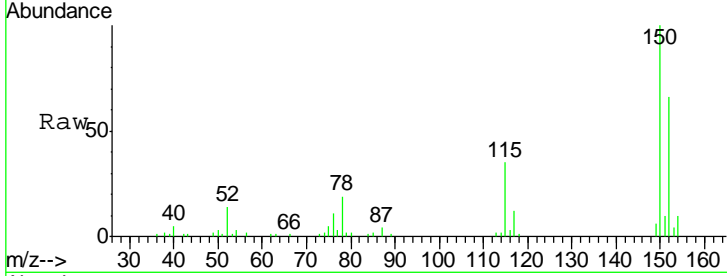
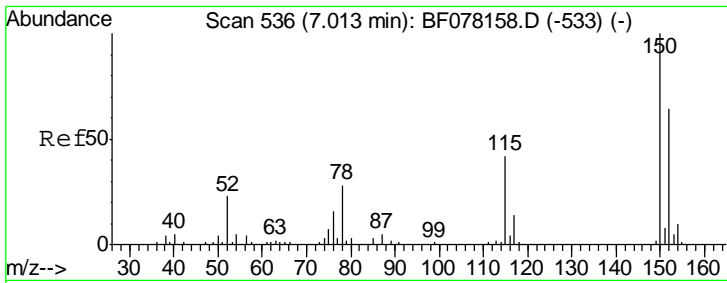
Data Path : Z:\HPCHEM1\BNA_F\DATA\BF041315\
 Data File : BF078491.D
 Acq On : 14 Apr 2015 7:59
 Operator : TP/IZ
 Sample : G1787-05
 Misc :
 ALS Vial : 30 Sample Multiplier: 1

Instrument :
 BNA_F
 Client Sampled :
 LS-SD02B

Manual Integrations
 APPROVED
 apatel
 4/14/2015 5:26:03 PM

Quant Time: Apr 14 11:38:33 2015
 Quant Method : Z:\HPCHEM1\BNA_F\METHODS\8270-BF040115.M
 Quant Title : ASP BNA STANDARDS FOR 5 POINT CALIBRATION
 QLast Update : Tue Apr 14 07:58:00 2015
 Response via : Initial Calibration



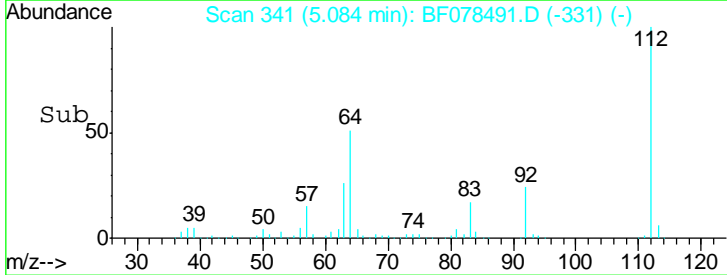
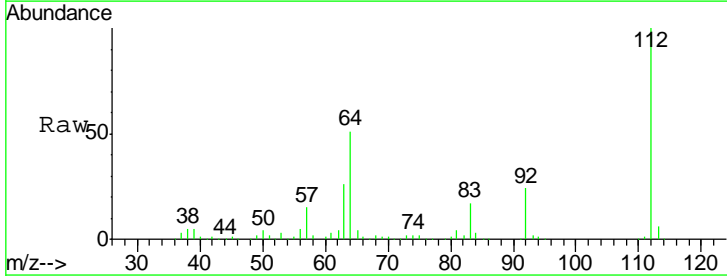
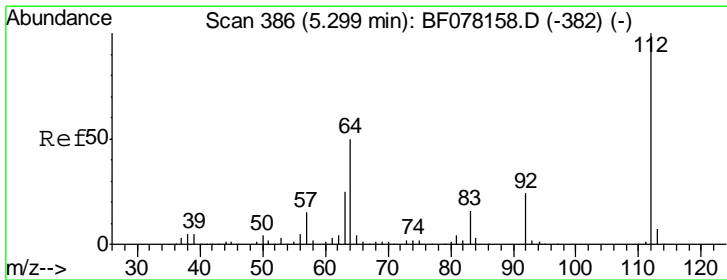
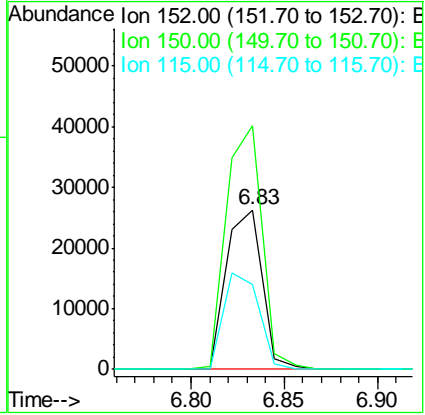


#1
 1,4-Dichlorobenzene-d4
 Concen: 20.00 ng
 RT: 6.83 min Scan# 494
 Delta R.T. -0.00 min
 Lab File: BF078491.D
 Acq: 14 Apr 2015 7:59

Tgt Ion	Resp	Lower	Upper
152	35433		
152	100		
150	152.6	125.9	188.9
115	53.2	52.7	79.1

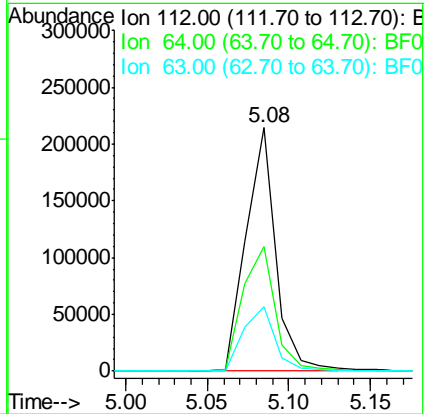
Instrument :
 BNA_F
 ClientSampled :
 LS-SD02B

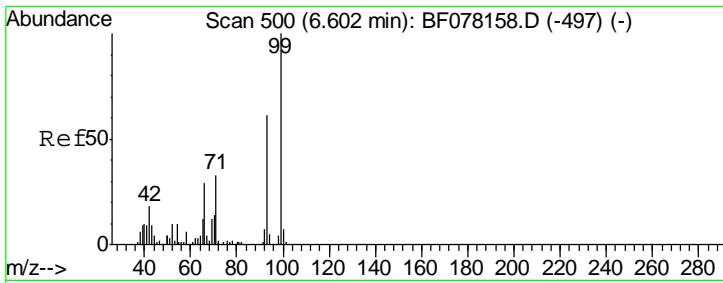
Manual Integrations
 APPROVED
 apatel
 4/14/2015 5:26:03 PM



#5
 2-Fluorophenol
 Concen: 125.60 ng
 RT: 5.08 min Scan# 341
 Delta R.T. 0.01 min
 Lab File: BF078491.D
 Acq: 14 Apr 2015 7:59

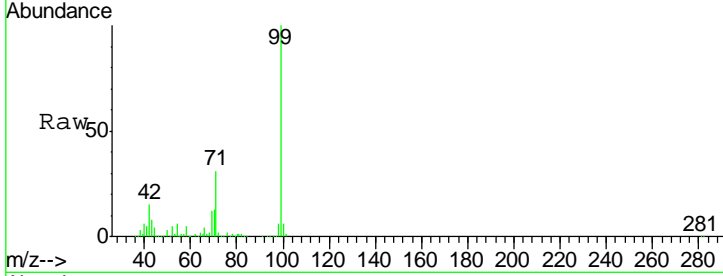
Tgt Ion	Resp	Lower	Upper
112	269915		
112	100		
64	51.2	39.9	59.9
63	26.5	20.2	30.4





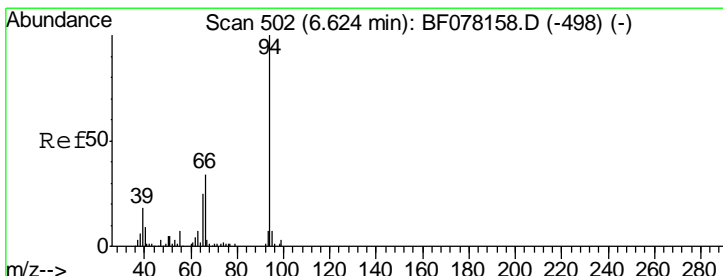
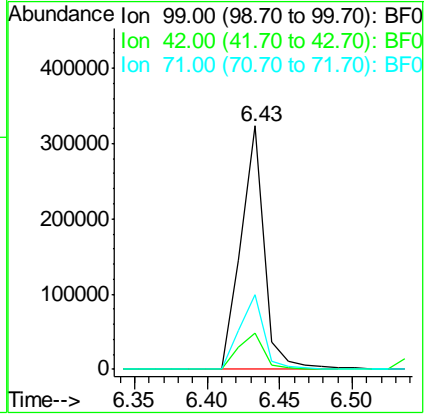
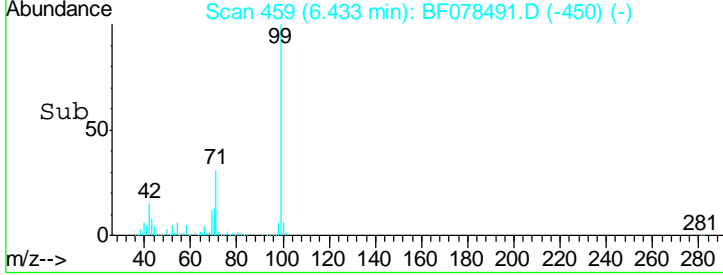
#7
 Phenol-d6
 Concen: 134.45 ng
 RT: 6.43 min Scan# 459
 Delta R.T. -0.00 min
 Lab File: BF078491.D
 Acq: 14 Apr 2015 7:59

Instrument :
 BNA_F
ClientSampled :
 LS-SD02B

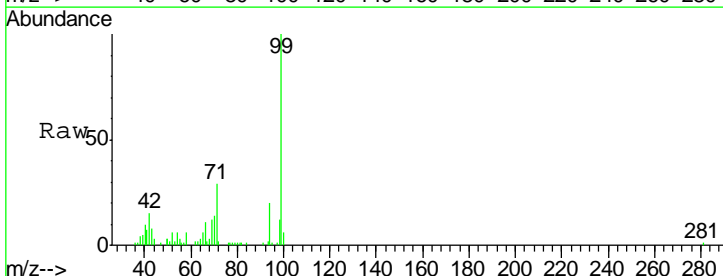


Tgt Ion	Resp	Lower	Upper
99	362095		
99	100		
42	15.1	14.8	22.2
71	30.5	26.6	39.8

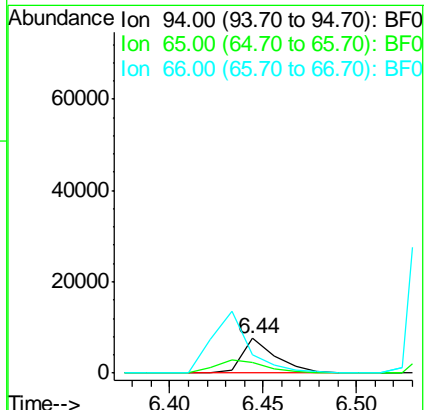
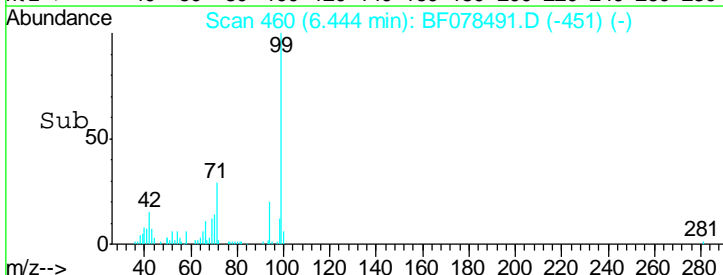
Manual Integrations
APPROVED
 apatel
 4/14/2015 5:26:03 PM

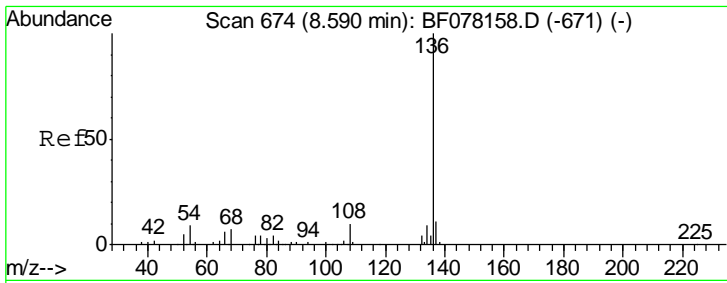


#10
 Phenol
 Concen: 2.93 ng
 RT: 6.44 min Scan# 460
 Delta R.T. -0.00 min
 Lab File: BF078491.D
 Acq: 14 Apr 2015 7:59



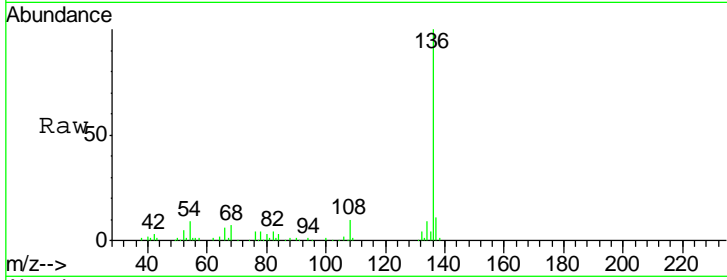
Tgt Ion	Resp	Lower	Upper
94	9451		
94	100		
65	30.1	4.9	44.9
66	54.0	13.8	53.8#





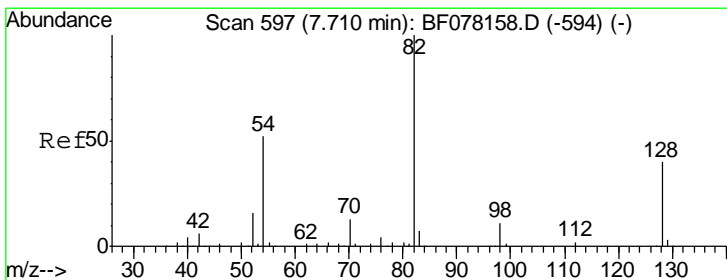
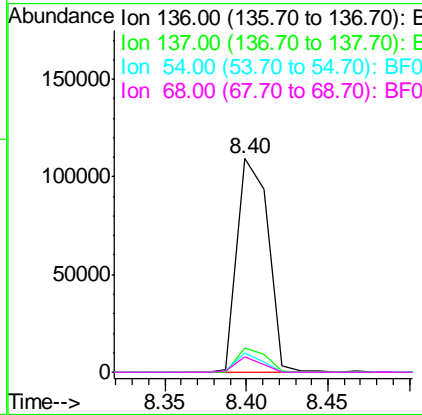
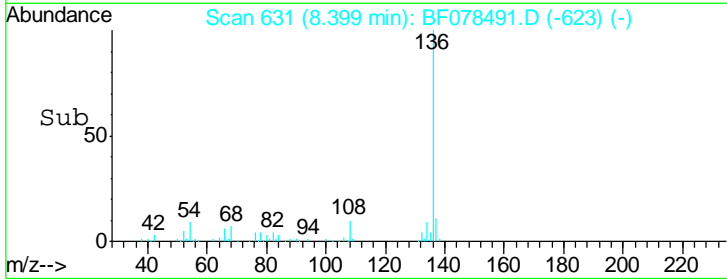
#21
 Naphthalene-d8
 Concen: 20.00 ng
 RT: 8.40 min Scan# 631
 Delta R.T. -0.01 min
 Lab File: BF078491.D
 Acq: 14 Apr 2015 7:59

Instrument :
 BNA_F
ClientSampled :
 LS-SD02B

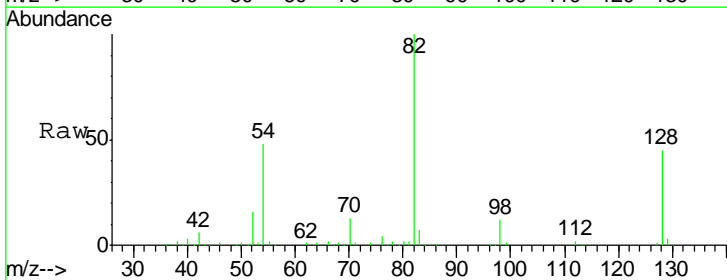


Tgt Ion	Resp	Lower	Upper
136	143613		
137	11.4	9.0	13.4
54	9.2	7.0	10.6
68	7.2	5.4	8.2

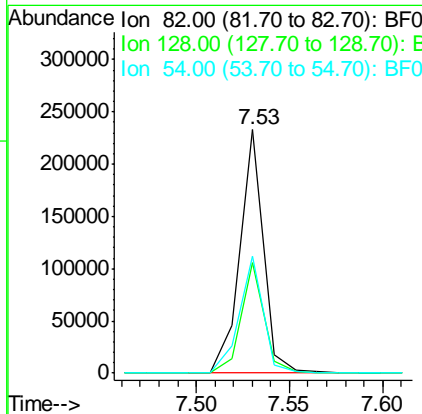
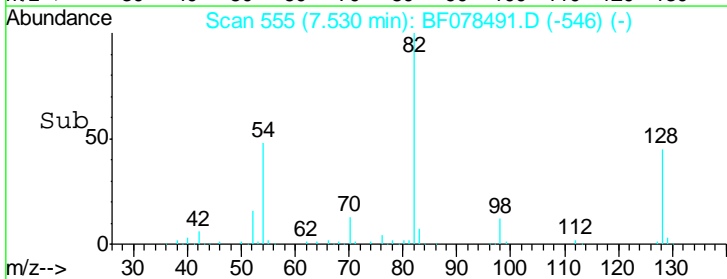
Manual Integrations
APPROVED
 apatel
 4/14/2015 5:26:03 PM

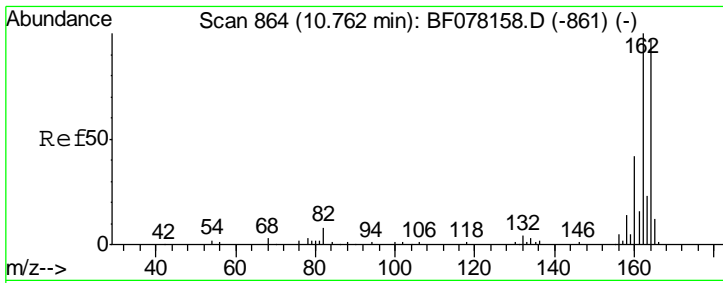


#23
 Nitrobenzene-d5
 Concen: 87.36 ng
 RT: 7.53 min Scan# 555
 Delta R.T. -0.00 min
 Lab File: BF078491.D
 Acq: 14 Apr 2015 7:59



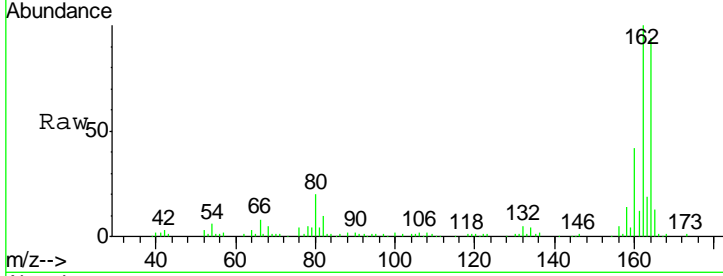
Tgt Ion	Resp	Lower	Upper
82	206981		
128	45.4	31.8	47.8
54	47.8	41.5	62.3





#38
 Acenaphthene-d10
 Concen: 20.00 ng
 RT: 10.56 min Scan# 820
 Delta R.T. -0.01 min
 Lab File: BF078491.D
 Acq: 14 Apr 2015 7:59

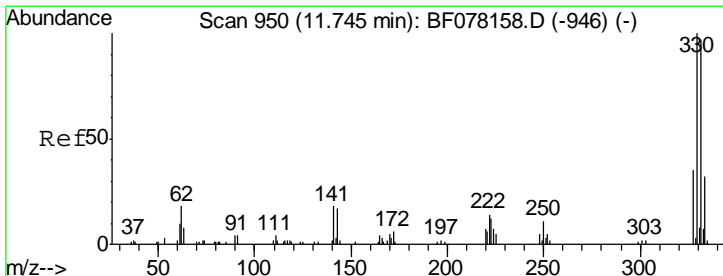
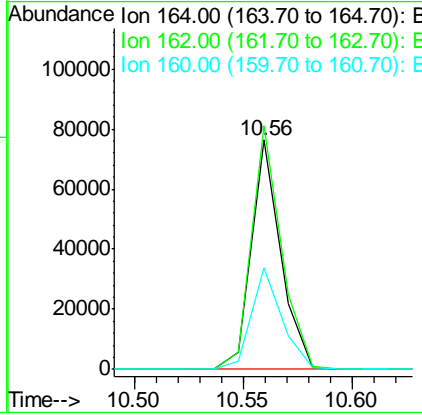
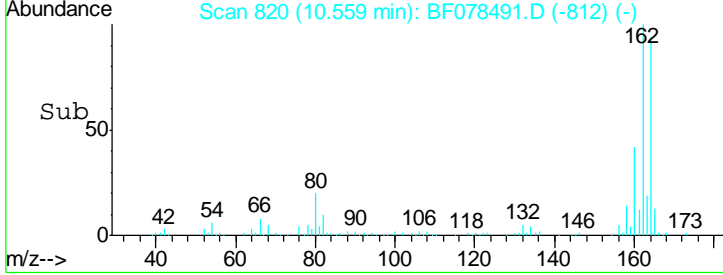
Instrument :
 BNA_F
 ClientSampled :
 LS-SD02B



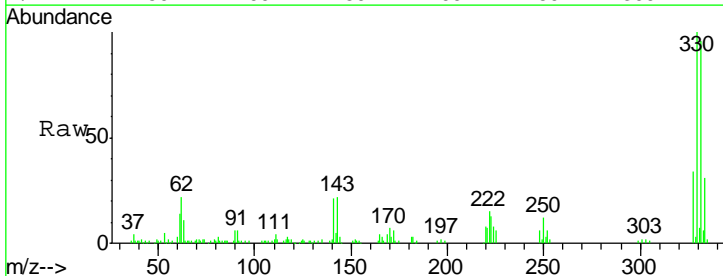
Tgt Ion:164 Resp: 71557

Ion	Ratio	Lower	Upper
164	100		
162	106.3	82.2	123.2
160	44.5	34.7	52.1

Manual Integrations
 APPROVED
 apatel
 4/14/2015 5:26:03 PM

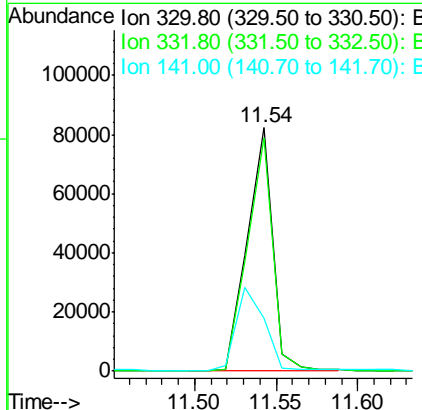
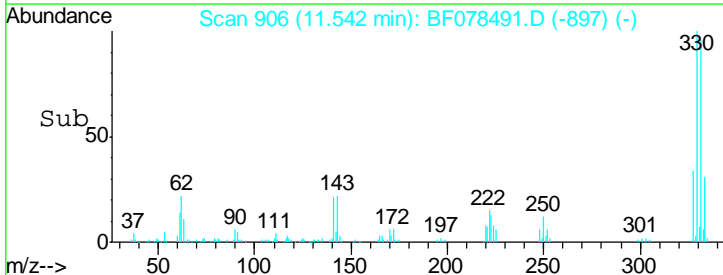


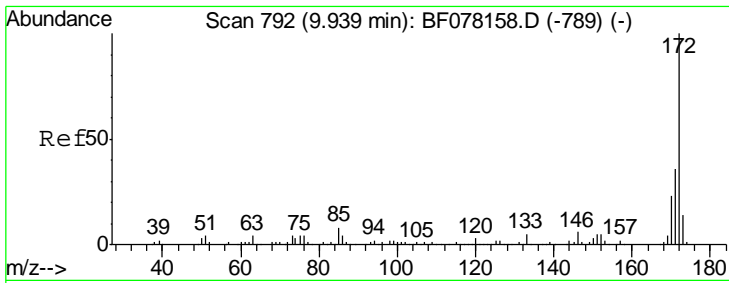
#41
 2,4,6-Tribromophenol
 Concen: 150.63 ng
 RT: 11.54 min Scan# 906
 Delta R.T. -0.00 min
 Lab File: BF078491.D
 Acq: 14 Apr 2015 7:59



Tgt Ion:330 Resp: 89393

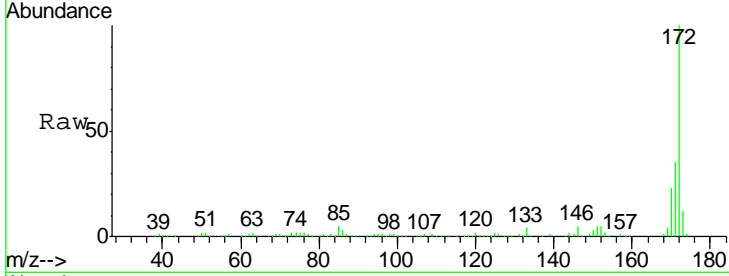
Ion	Ratio	Lower	Upper
330	100		
332	95.9	78.6	117.8
141	38.5	31.2	46.8





#44
 2-Fluorobiphenyl
 Concen: 62.40 ng
 RT: 9.76 min Scan# 750
 Delta R.T. -0.00 min
 Lab File: BF078491.D
 Acq: 14 Apr 2015 7:59

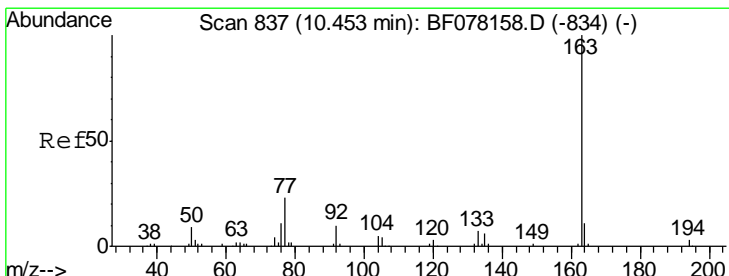
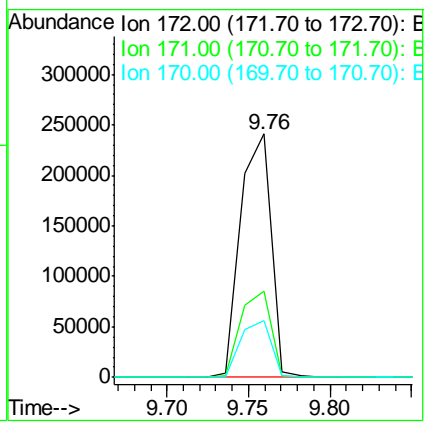
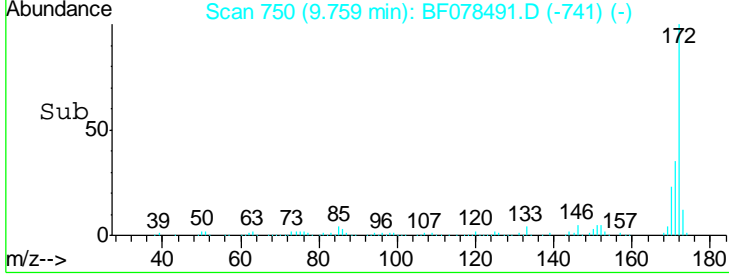
Instrument :
 BNA_F
 ClientSampled :
 LS-SD02B



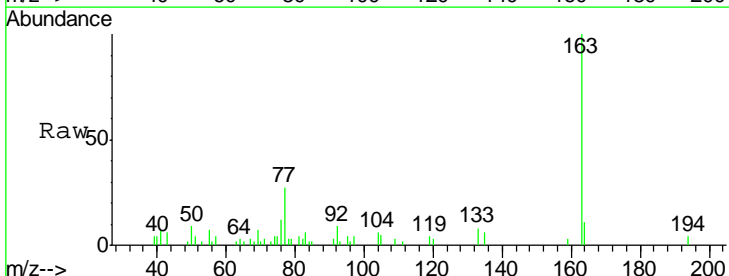
Tgt Ion: 172 Resp: 312361

Ion	Ratio	Lower	Upper
172	100		
171	35.2	28.6	42.8
170	23.5	18.5	27.7

Manual Integrations
 APPROVED
 apatel
 4/14/2015 5:26:03 PM

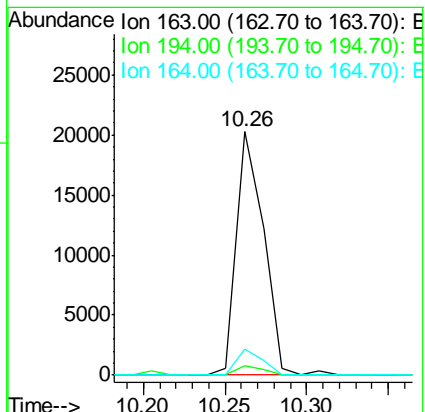
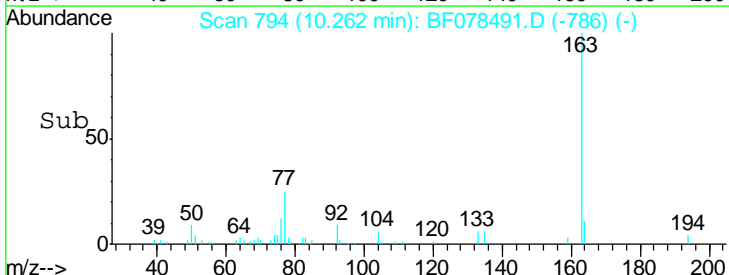


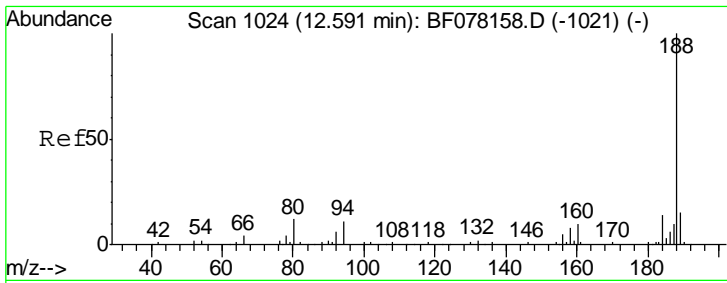
#49
 Dimethylphthalate
 Concen: 4.32 ng
 RT: 10.26 min Scan# 794
 Delta R.T. -0.01 min
 Lab File: BF078491.D
 Acq: 14 Apr 2015 7:59



Tgt Ion: 163 Resp: 23201

Ion	Ratio	Lower	Upper
163	100		
194	3.8	2.3	3.5#
164	10.7	8.6	13.0



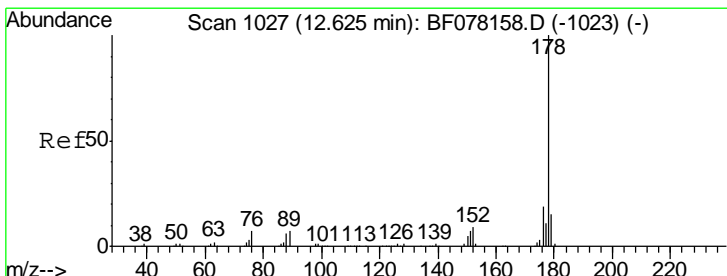
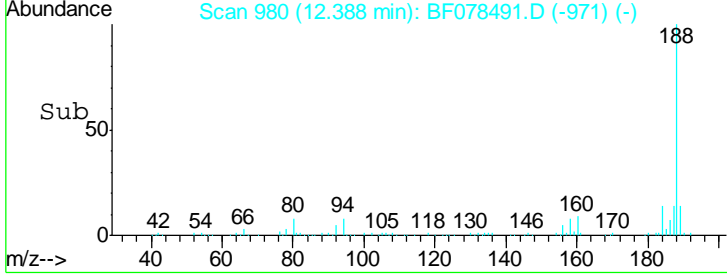
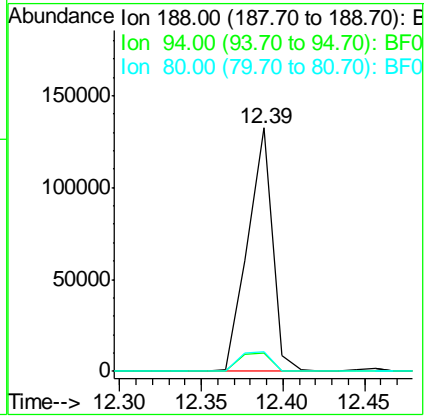
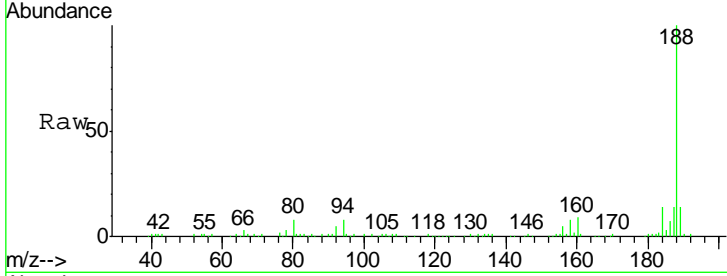


#63
 Phenanthrene-d10
 Concen: 20.00 ng
 RT: 12.39 min Scan# 980
 Delta R.T. -0.00 min
 Lab File: BF078491.D
 Acq: 14 Apr 2015 7:59

Instrument :
 BNA_F
 ClientSampled :
 LS-SD02B

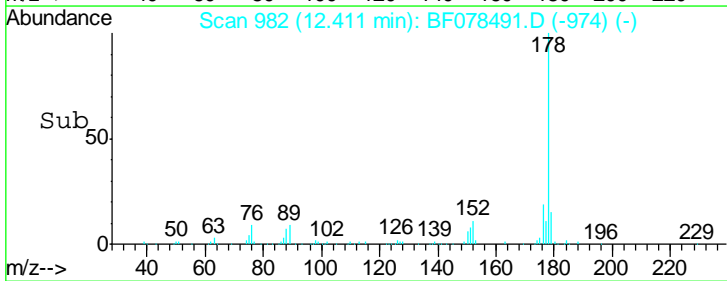
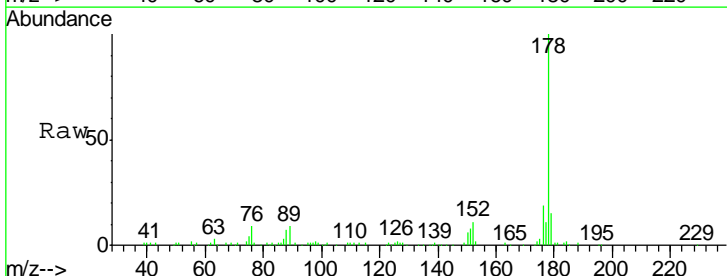
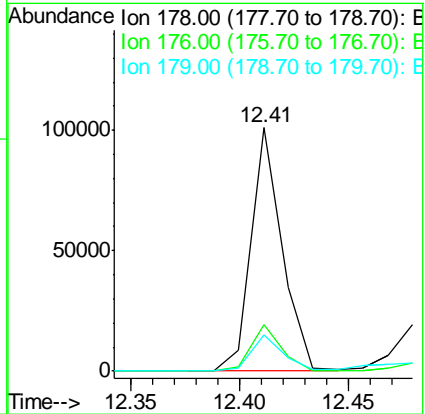
Tgt Ion	Resp	Lower	Upper
188	138833		
94	7.6	9.0	13.4#
80	8.1	9.5	14.3#

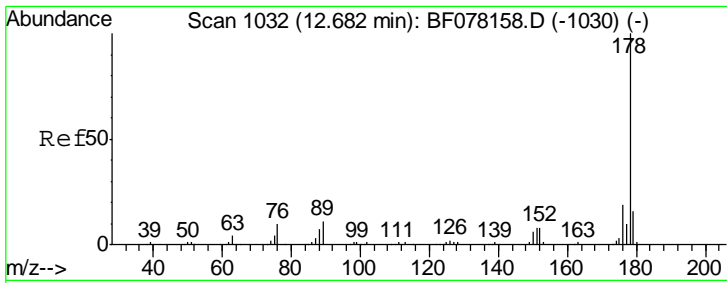
Manual Integrations
 APPROVED
 apatel
 4/14/2015 5:26:03 PM



#70
 Phenanthrene
 Concen: 12.52 ng
 RT: 12.41 min Scan# 982
 Delta R.T. -0.01 min
 Lab File: BF078491.D
 Acq: 14 Apr 2015 7:59

Tgt Ion	Resp	Lower	Upper
178	100522		
176	19.0	15.4	23.0
179	15.2	12.2	18.2



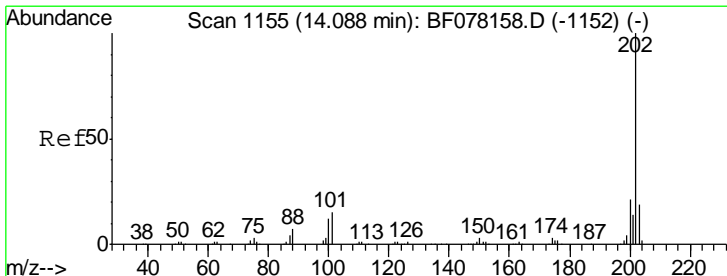
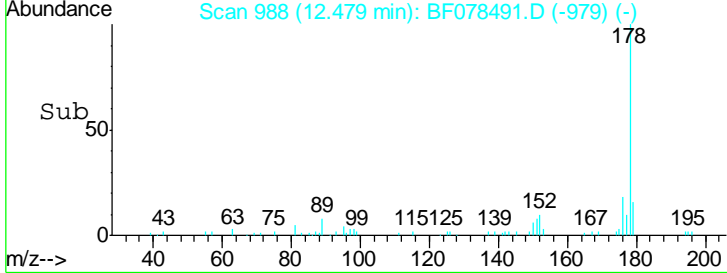
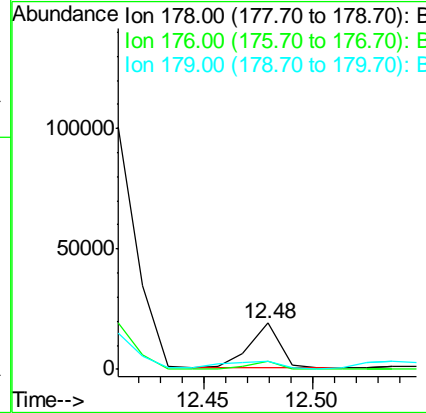
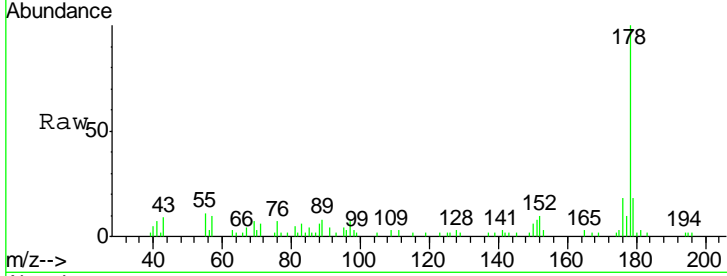


#71
 Anthracene
 Concen: 2.25 ng
 RT: 12.48 min Scan# 988
 Delta R.T. -0.00 min
 Lab File: BF078491.D
 Acq: 14 Apr 2015 7:59

Instrument :
 BNA_F
 ClientSampled :
 LS-SD02B

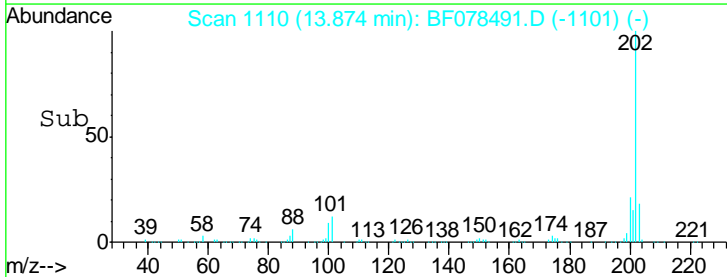
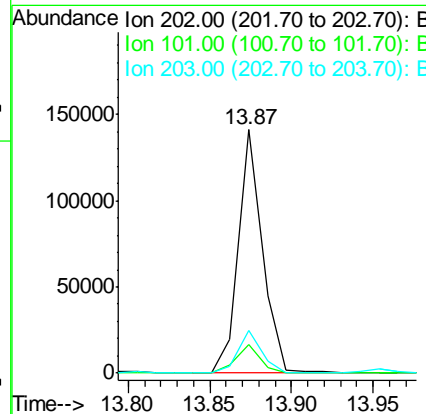
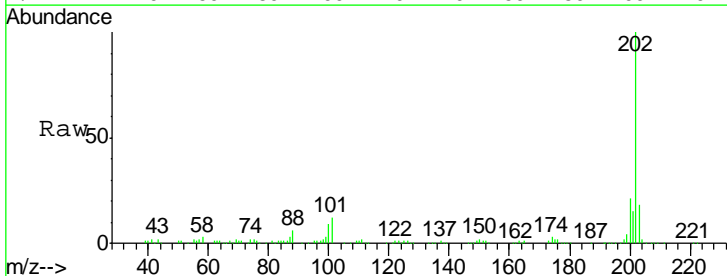
Tgt Ion	Resp	Lower	Upper
178	17825		
178	100		
176	18.1	14.8	22.2
179	18.1	12.4	18.6

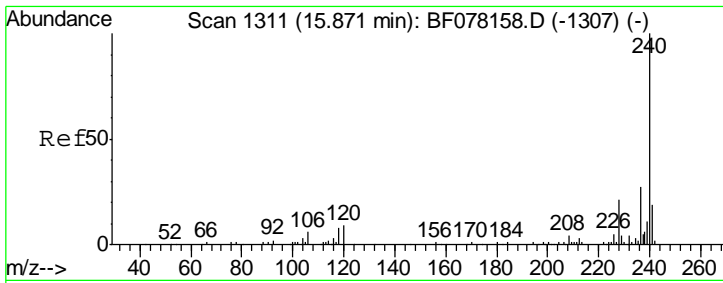
Manual Integrations
 APPROVED
 apatel
 4/14/2015 5:26:03 PM



#74
 Fluoranthene
 Concen: 16.97 ng
 RT: 13.87 min Scan# 1110
 Delta R.T. -0.00 min
 Lab File: BF078491.D
 Acq: 14 Apr 2015 7:59

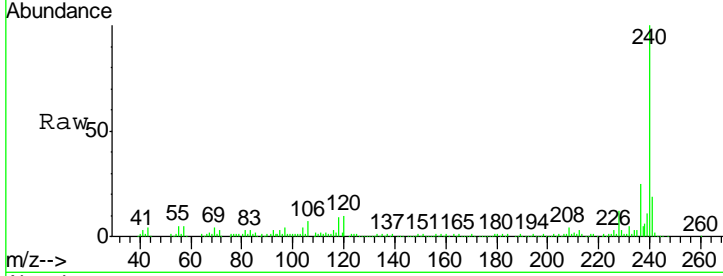
Tgt Ion	Resp	Lower	Upper
202	143757		
202	100		
101	11.8	0.0	35.2
203	17.6	0.0	38.5





#75
 Chrysene-d12
 Concen: 20.00 ng
 RT: 15.65 min Scan# 1265
 Delta R.T. -0.00 min
 Lab File: BF078491.D
 Acq: 14 Apr 2015 7:59

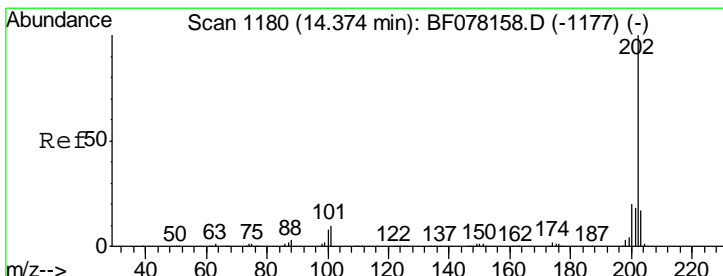
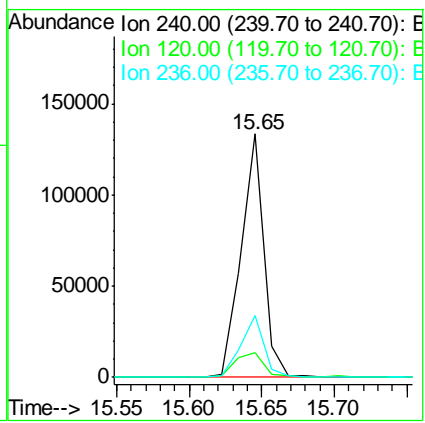
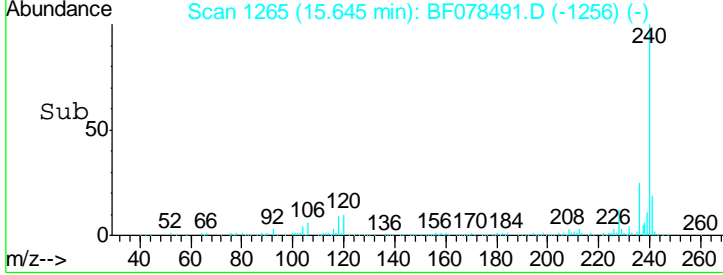
Instrument :
 BNA_F
 ClientSampled :
 LS-SD02B



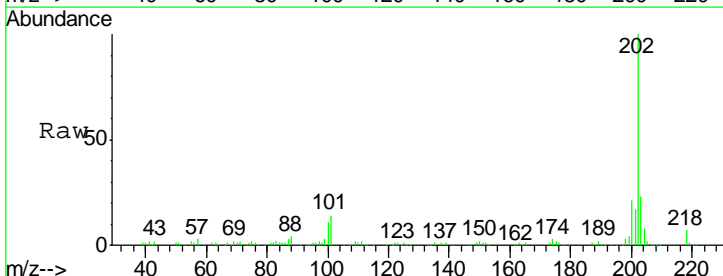
Tgt Ion: 240 Resp: 145547

Ion	Ratio	Lower	Upper
240	100		
120	10.2	7.1	10.7
236	25.4	21.4	32.2

Manual Integrations
 APPROVED
 apatel
 4/14/2015 5:26:03 PM

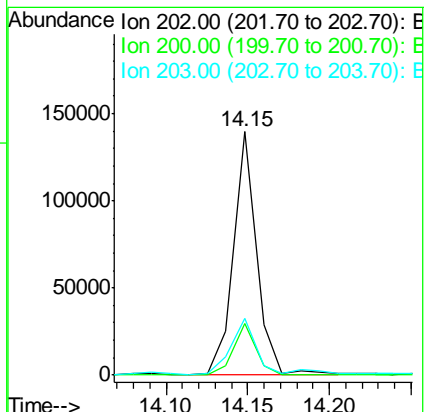
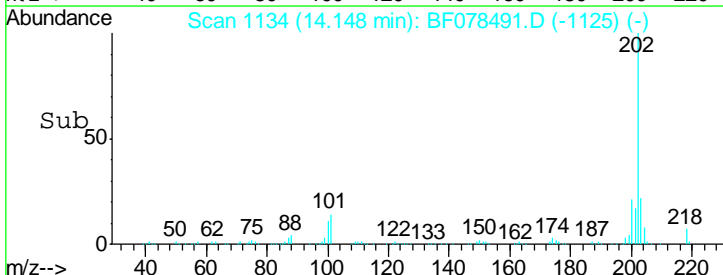


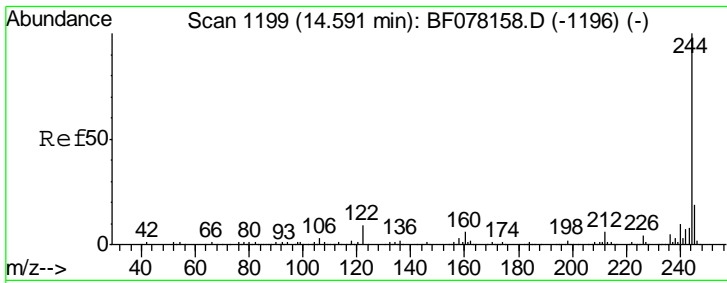
#77
 Pyrene
 Concen: 14.99 ng
 RT: 14.15 min Scan# 1134
 Delta R.T. -0.00 min
 Lab File: BF078491.D
 Acq: 14 Apr 2015 7:59



Tgt Ion: 202 Resp: 136993

Ion	Ratio	Lower	Upper
202	100		
200	21.4	16.3	24.5
203	23.4	13.8	20.6#



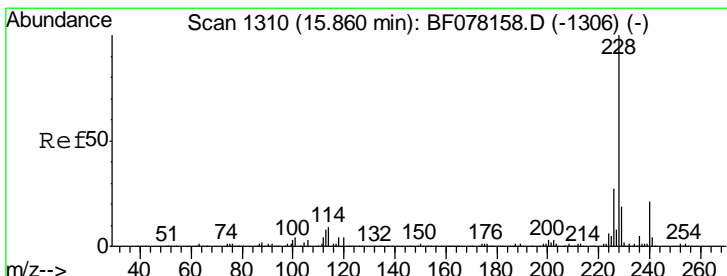
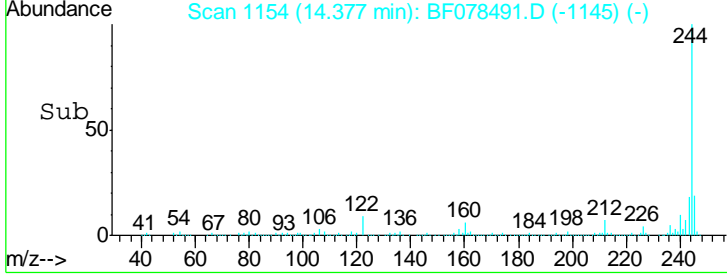
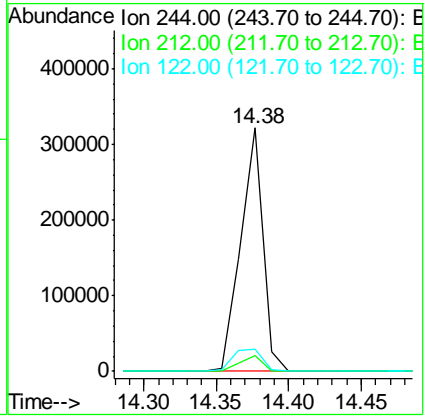
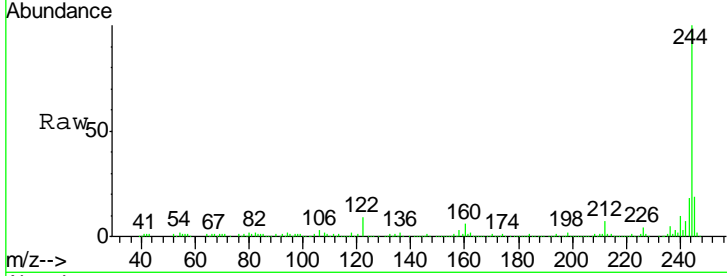


#78
 Terphenyl-d14
 Concen: 53.35 ng
 RT: 14.38 min Scan# 1154
 Delta R.T. -0.00 min
 Lab File: BF078491.D
 Acq: 14 Apr 2015 7:59

Instrument :
 BNA_F
 ClientSampled :
 LS-SD02B

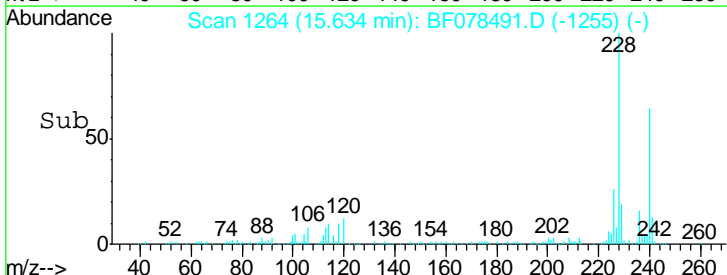
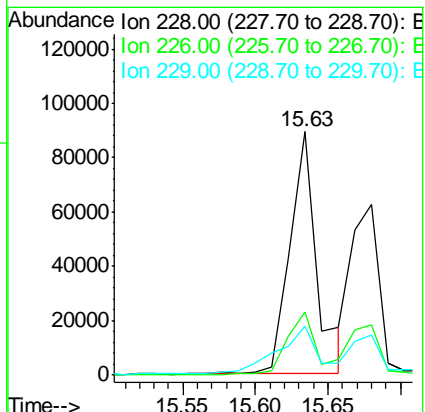
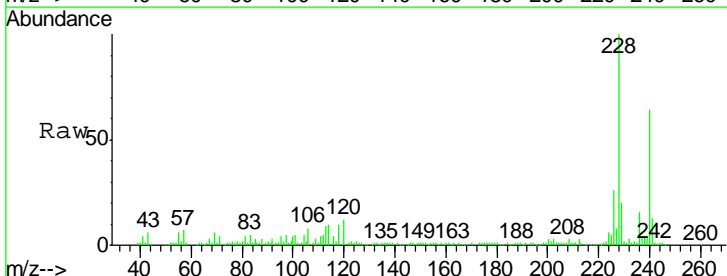
Tgt Ion	Ratio	Lower	Upper
244	100		
212	6.5	5.0	7.4
122	9.1	7.1	10.7

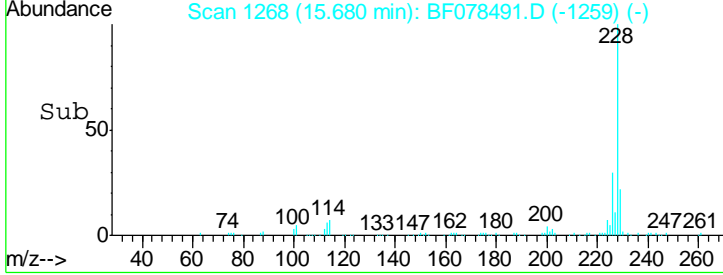
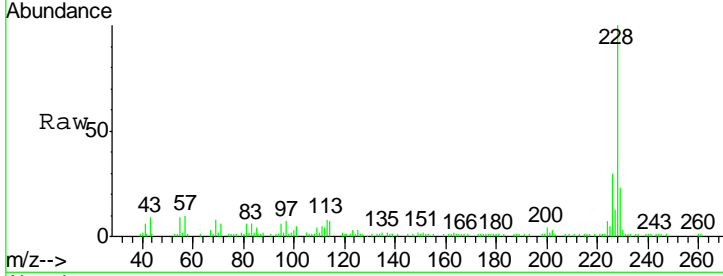
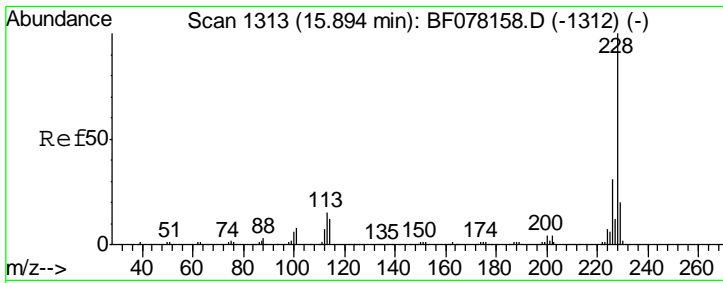
Manual Integrations
APPROVED
 apatel
 4/14/2015 5:26:03 PM



#80
 Benzo(a)anthracene
 Concen: 13.35 ng
 RT: 15.63 min Scan# 1264
 Delta R.T. -0.00 min
 Lab File: BF078491.D
 Acq: 14 Apr 2015 7:59

Tgt Ion	Ratio	Lower	Upper
228	100		
226	26.2	21.3	31.9
229	20.1	15.4	23.2



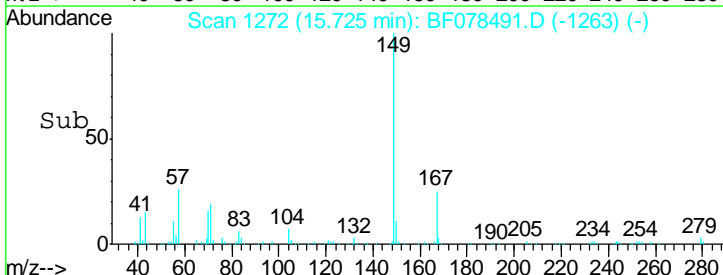
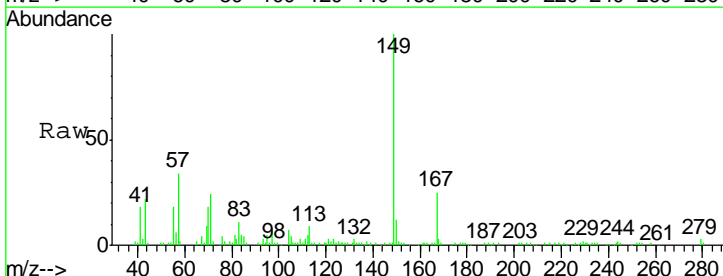
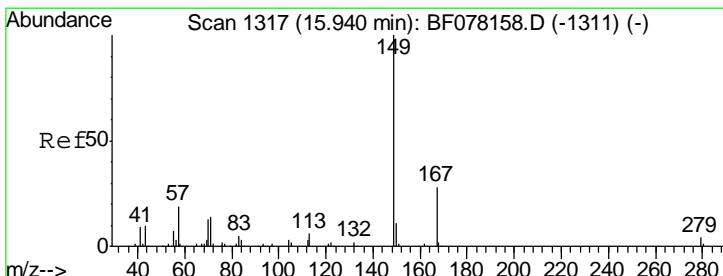
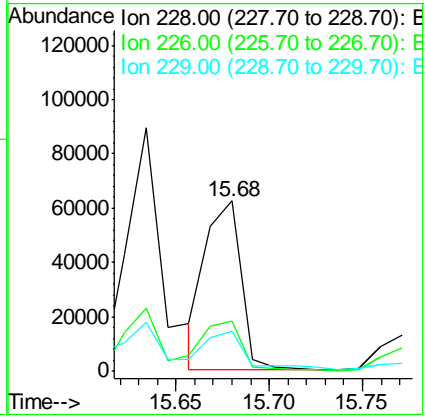


#82
 Chrysene
 Concen: 10.16 ng
 RT: 15.68 min Scan# 1268
 Delta R.T. -0.00 min
 Lab File: BF078491.D
 Acq: 14 Apr 2015 7:59

Tgt Ion	Resp	Lower	Upper
228	100		
226	29.8	24.2	36.4
229	23.2	15.8	23.8

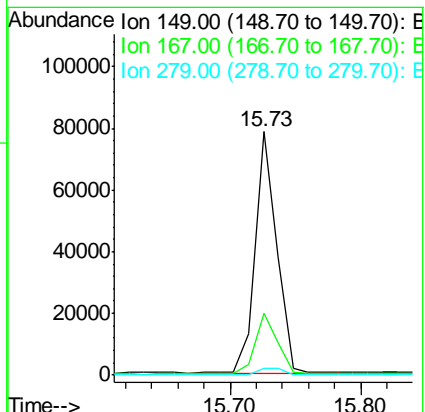
Instrument : BNA_F
 Client Sampled : LS-SD02B

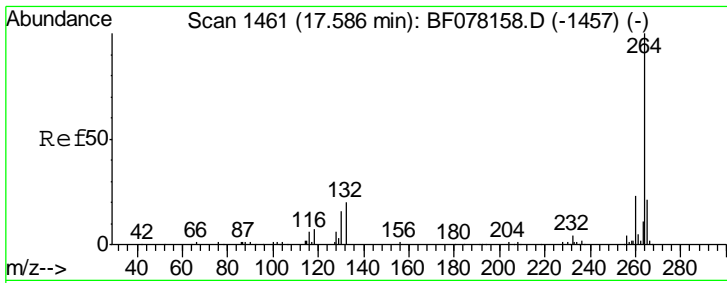
Manual Integrations
APPROVED
 apatel
 4/14/2015 5:26:03 PM



#83
 Bis(2-ethylhexyl)phthalate
 Concen: 16.52 ng
 RT: 15.73 min Scan# 1272
 Delta R.T. -0.00 min
 Lab File: BF078491.D
 Acq: 14 Apr 2015 7:59

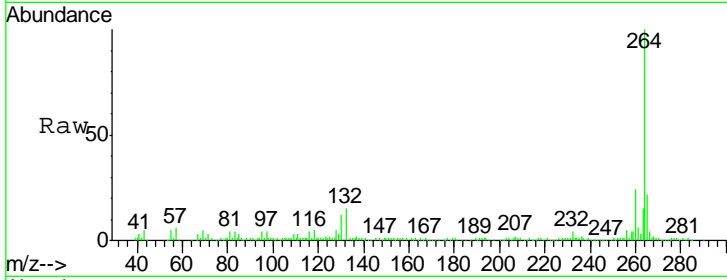
Tgt Ion	Resp	Lower	Upper
149	100		
167	25.3	22.2	33.2
279	2.6	3.2	4.8#





#86
 Perylene-d12
 Concen: 20.00 ng
 RT: 17.38 min Scan# 1417
 Delta R.T. 0.09 min
 Lab File: BF078491.D
 Acq: 14 Apr 2015 7:59

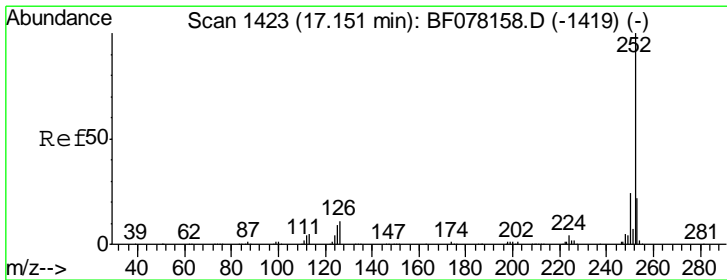
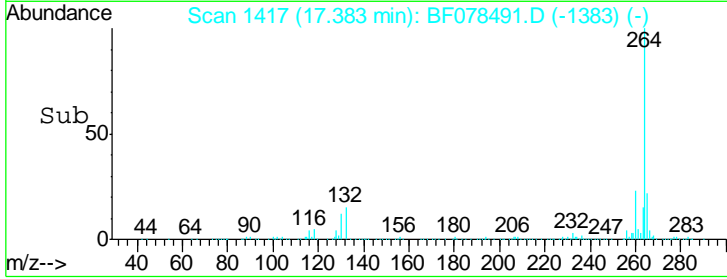
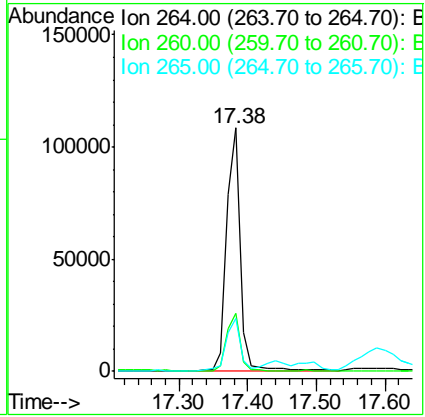
Instrument :
 BNA_F
 ClientSampled :
 LS-SD02B



Tgt Ion: 264 Resp: 156405

Ion	Ratio	Lower	Upper
264	100		
260	23.7	18.6	27.8
265	21.6	17.0	25.6

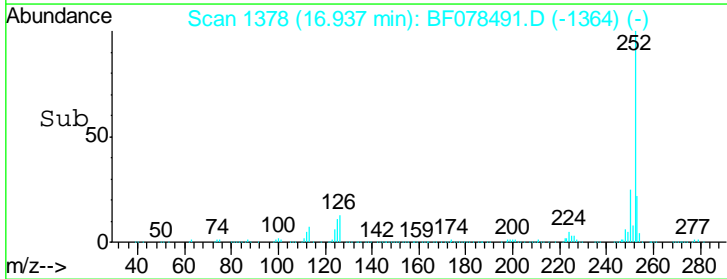
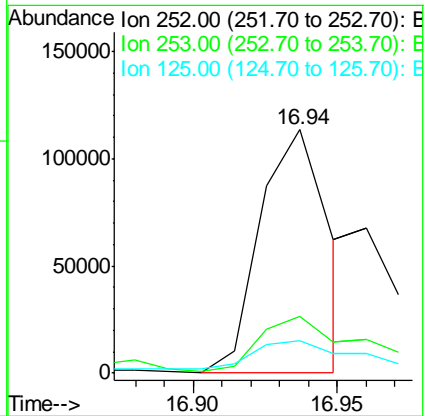
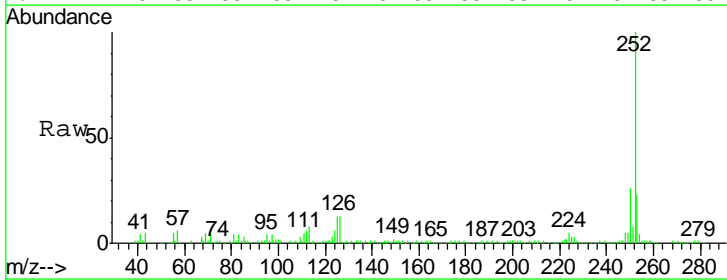
Manual Integrations
 APPROVED
 apatel
 4/14/2015 5:26:03 PM

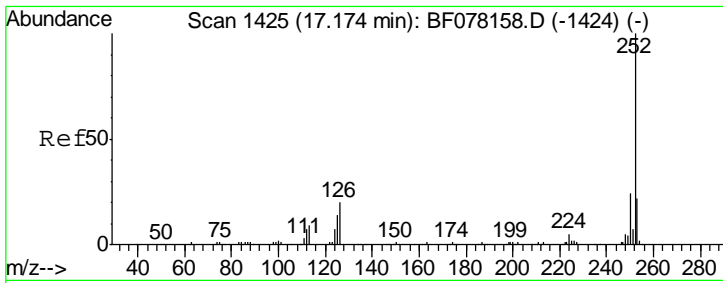


#87
 Benzo(b)fluoranthene
 Concen: 19.38 ng m
 RT: 16.94 min Scan# 1378
 Delta R.T. 0.06 min
 Lab File: BF078491.D
 Acq: 14 Apr 2015 7:59

Tgt Ion: 252 Resp: 187352

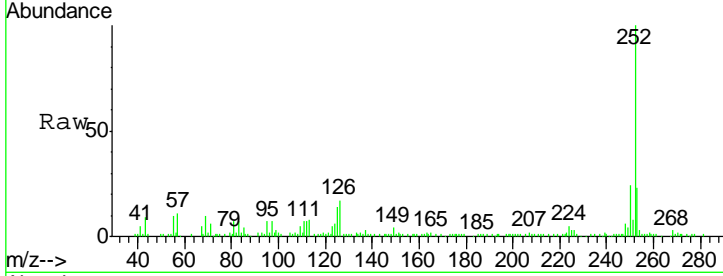
Ion	Ratio	Lower	Upper
252	100		
253	23.1	17.2	25.8
125	13.1	7.0	10.4#





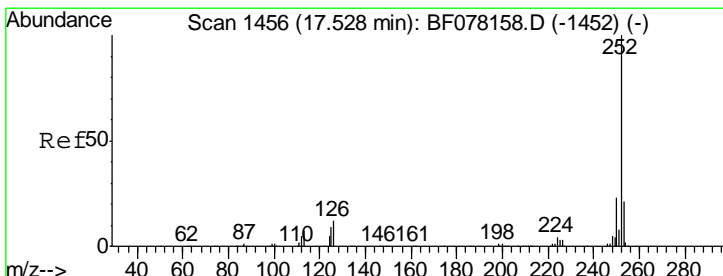
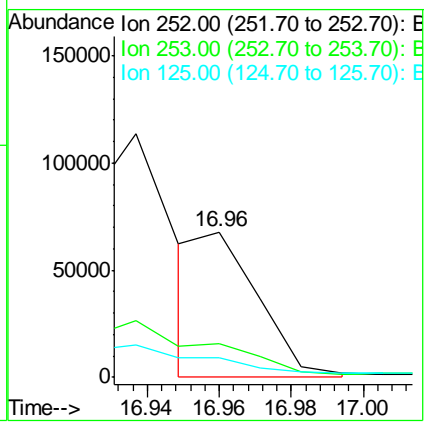
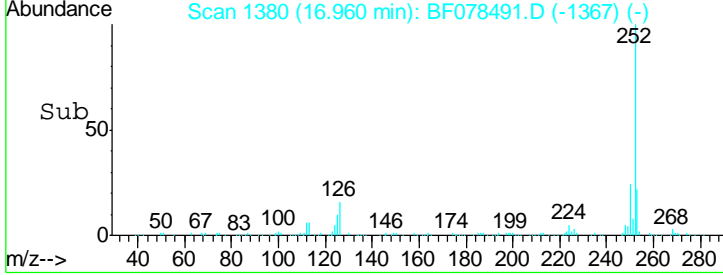
#88
 Benzo(k)fluoranthene
 Concen: 8.90 ng m
 RT: 16.96 min Scan# 1380
 Delta R.T. 0.05 min
 Lab File: BF078491.D
 Acq: 14 Apr 2015 7:59

Instrument :
 BNA_F
 ClientSampled :
 LS-SD02B

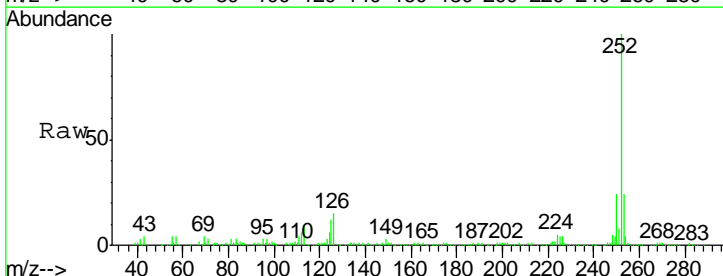


Tgt Ion	Resp	Lower	Upper
252	100		
253	23.0	17.5	26.3
125	13.7	11.6	17.4

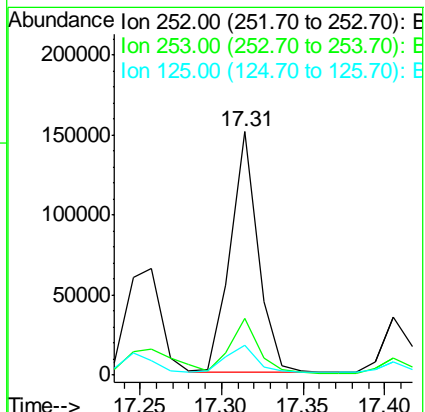
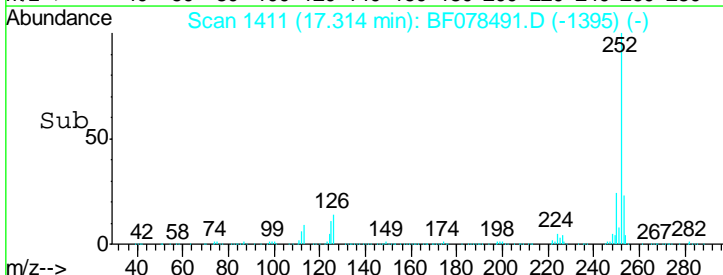
Manual Integrations
 APPROVED
 apatel
 4/14/2015 5:26:03 PM

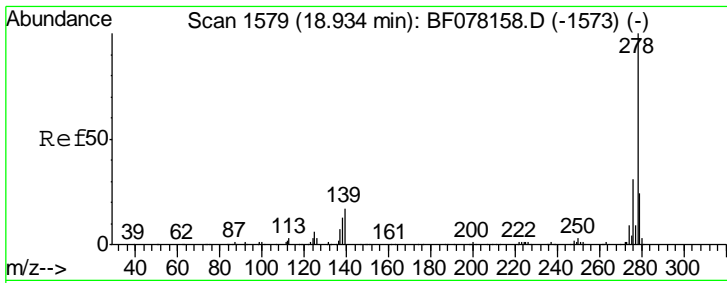


#89
 Benzo(a)pyrene
 Concen: 20.85 ng
 RT: 17.31 min Scan# 1411
 Delta R.T. 0.08 min
 Lab File: BF078491.D
 Acq: 14 Apr 2015 7:59



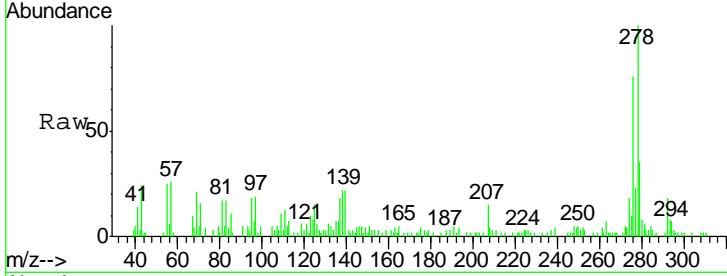
Tgt Ion	Resp	Lower	Upper
252	100		
253	23.6	16.8	25.2
125	12.1	7.4	11.0#





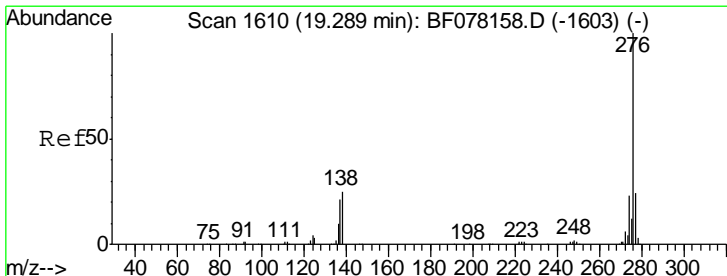
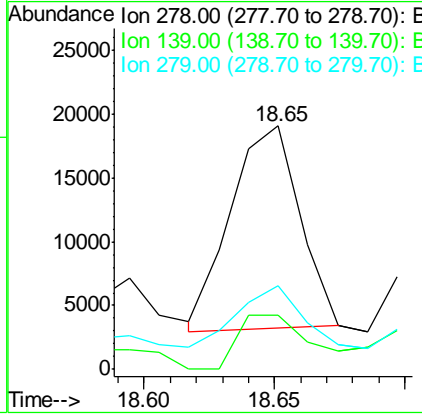
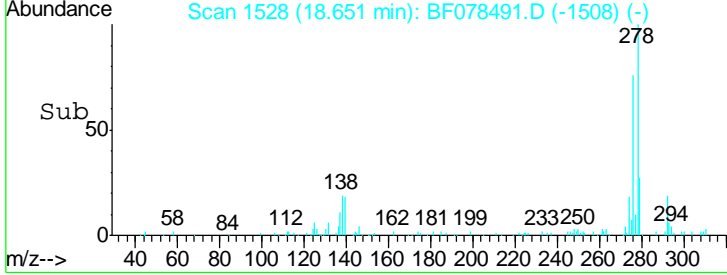
#90
 Dibenzo(a,h)anthracene
 Concen: 3.49 ng
 RT: 18.65 min Scan# 1528
 Delta R.T. 0.13 min
 Lab File: BF078491.D
 Acq: 14 Apr 2015 7:59

Instrument :
 BNA_F
 ClientSampled :
 LS-SD02B

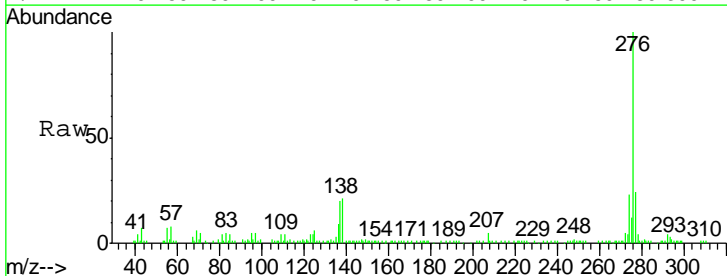


Tgt Ion	Resp	Lower	Upper
278	100		
139	22.1	13.6	20.4#
279	34.6	19.0	28.6#

Manual Integrations
 APPROVED
 apatel
 4/14/2015 5:26:03 PM



#91
 Benzo(g,h,i)perylene
 Concen: 15.07 ng m
 RT: 18.98 min Scan# 1557
 Delta R.T. 0.14 min
 Lab File: BF078491.D
 Acq: 14 Apr 2015 7:59



Tgt Ion	Resp	Lower	Upper
276	100		
277	24.2	19.0	28.4
138	21.4	19.9	29.9

