

Data Path : Z:\HPCHEM1\BNA F\DATA\BF041516\  
 Data File : BF086241.D  
 Acq On : 16 Apr 2016 3:44  
 Operator : UM/SJ  
 Sample : H2471-09  
 Misc :  
 ALS Vial : 24 Sample Multiplier: 1

Instrument :  
 BNA\_F  
 ClientSampleId :  
 CDMSH7

Quant Time: Apr 16 05:18:44 2016  
 Quant Method : Z:\HPCHEM1\BNA F\METHODS\8270-BF041516.M  
 Quant Title : ASP BNA STANDARDS FOR 5 POINT CALIBRATION  
 QLast Update : Fri Apr 15 15:56:31 2016  
 Response via : Initial Calibration

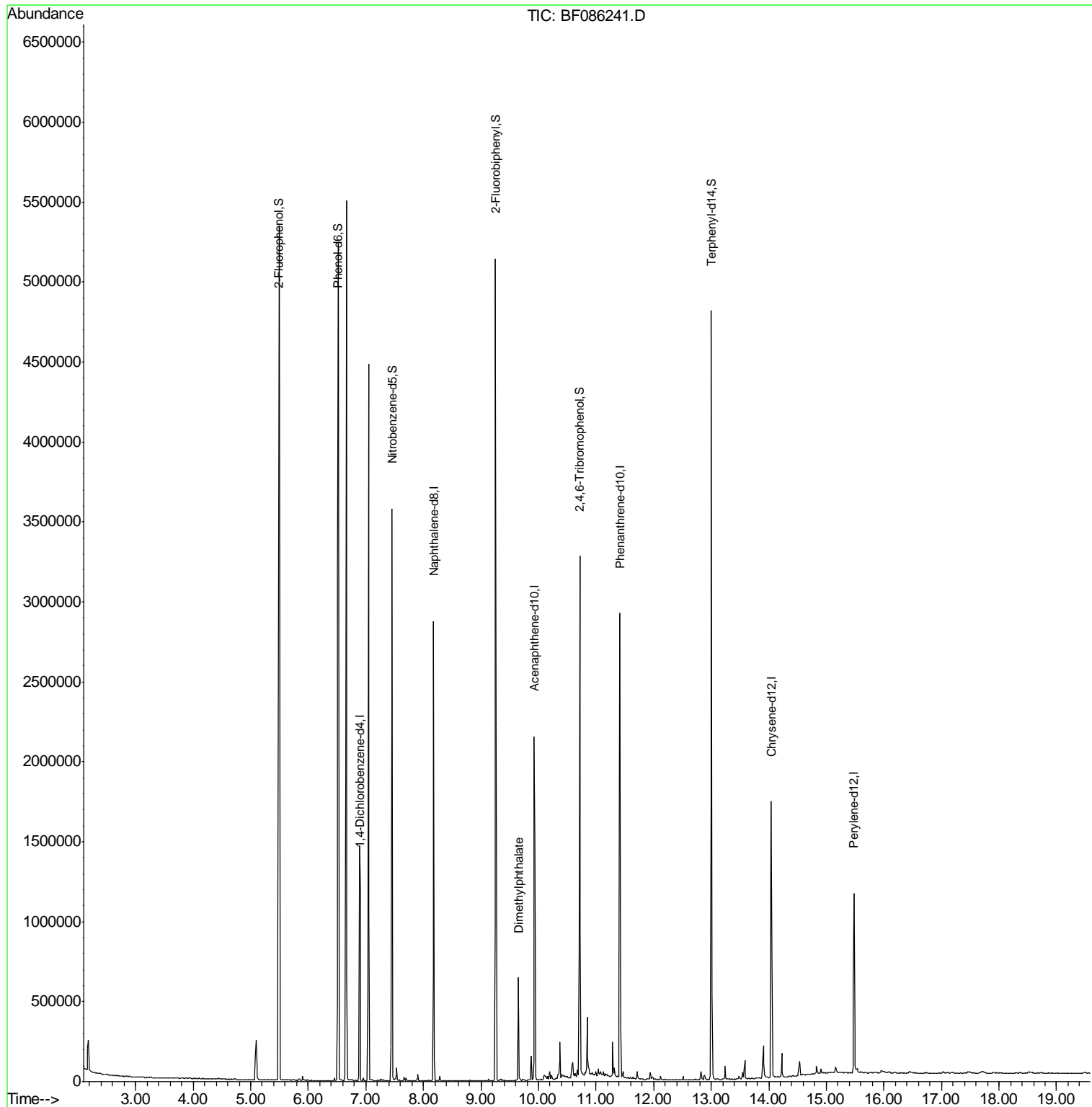
Internal Standards	R.T.	QIon	Response	Conc	Units	Dev(Min)
1) 1,4-Dichlorobenzene-d4	6.90	152	303821	20.00	ng	0.00
21) Naphthalene-d8	8.18	136	1241412	20.00	ng	0.00
38) Acenaphthene-d10	9.93	164	532527	20.00	ng	-0.01
63) Phenanthrene-d10	11.41	188	951125	20.00	ng	0.00
75) Chrysene-d12	14.04	240	612319	20.00	ng	-0.01
86) Perylene-d12	15.48	264	492248	20.00	ng	0.00
System Monitoring Compounds						
5) 2-Fluorophenol	5.49	112	1582798	85.36	ng	0.01
7) Phenol-d6	6.52	99	2154959	92.91	ng	0.00
23) Nitrobenzene-d5	7.46	82	1459032	67.79	ng	0.00
41) 2,4,6-Tribromophenol	10.72	330	387107	90.53	ng	-0.01
44) 2-Fluorobiphenyl	9.25	172	1891165	65.53	ng	-0.01
78) Terphenyl-d14	13.00	244	1475603	60.60	ng	0.00
Target Compounds						Qvalue
49) Dimethylphthalate	9.65	163	361099	9.33	ng	98

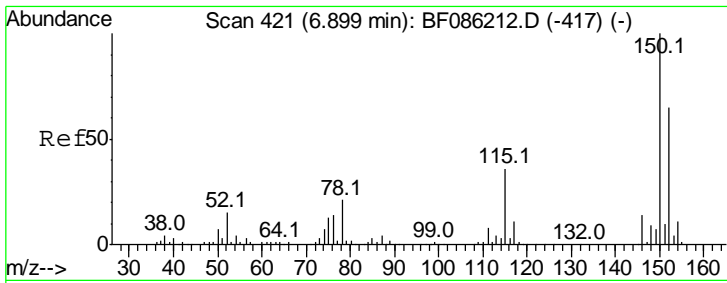
(#) = qualifier out of range (m) = manual integration (+) = signals summed

Data Path : Z:\HPCHEM1\BNA F\DATA\BF041516\  
 Data File : BF086241.D  
 Acq On : 16 Apr 2016 3:44  
 Operator : UM/SJ  
 Sample : H2471-09  
 Misc :  
 ALS Vial : 24 Sample Multiplier: 1

Instrument :  
 BNA\_F  
 ClientSampleId :  
 CDMSH7

Quant Time: Apr 16 05:18:44 2016  
 Quant Method : Z:\HPCHEM1\BNA F\METHODS\8270-BF041516.M  
 Quant Title : ASP BNA STANDARDS FOR 5 POINT CALIBRATION  
 QLast Update : Fri Apr 15 15:56:31 2016  
 Response via : Initial Calibration



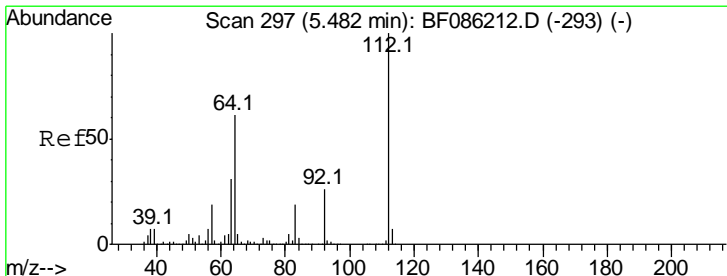
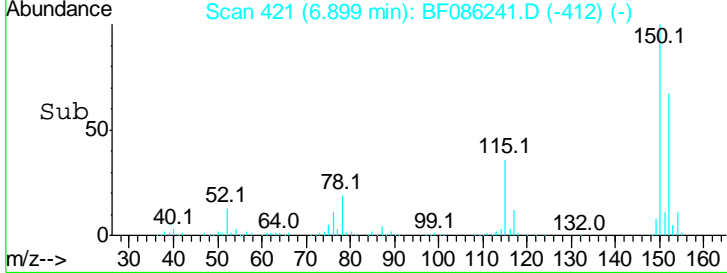
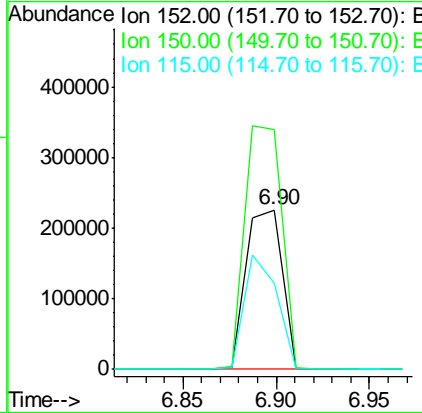
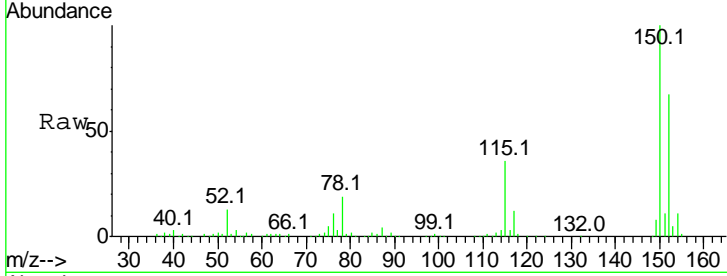


#1  
 1,4-Dichlorobenzene-d4  
 Concen: 20.00 ng  
 RT: 6.90 min Scan# 421  
 Delta R.T. -0.00 min  
 Lab File: BF086241.D  
 Acq: 16 Apr 2016 3:44

**Instrument :**  
 BNA\_F  
**ClientSampled :**  
 CDMSH7

Tgt Ion:152 Resp: 303821

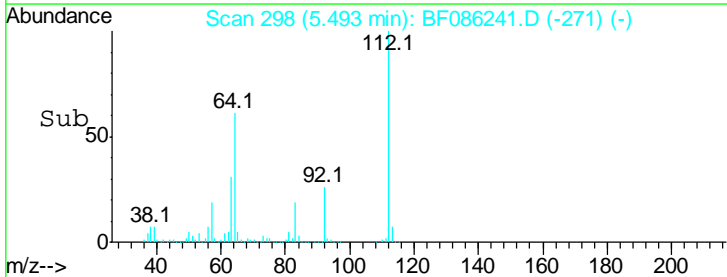
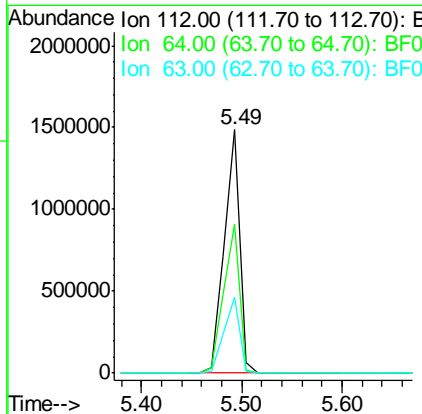
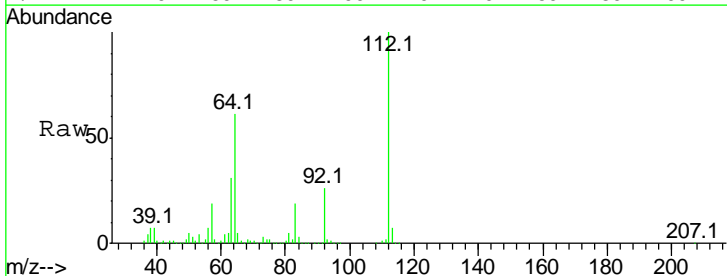
Ion	Ratio	Lower	Upper
152	100		
150	150.4	124.1	186.1
115	53.8	43.9	65.9

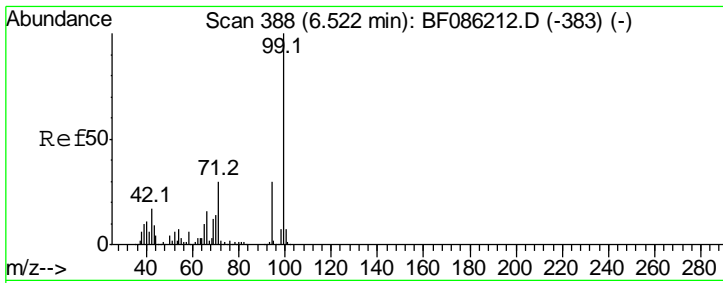


#5  
 2-Fluorophenol  
 Concen: 85.36 ng  
 RT: 5.49 min Scan# 298  
 Delta R.T. 0.01 min  
 Lab File: BF086241.D  
 Acq: 16 Apr 2016 3:44

Tgt Ion:112 Resp: 1582798

Ion	Ratio	Lower	Upper
112	100		
64	61.2	48.1	72.1
63	31.2	25.5	38.3

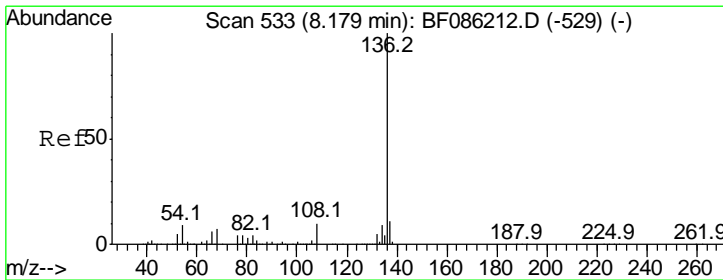
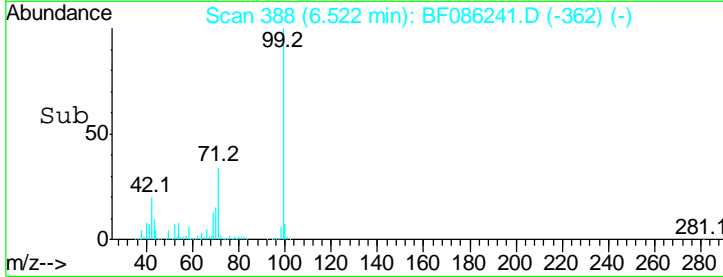
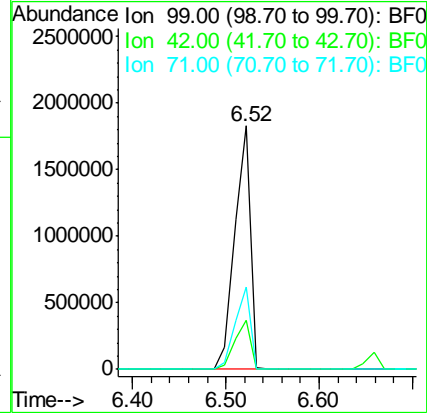
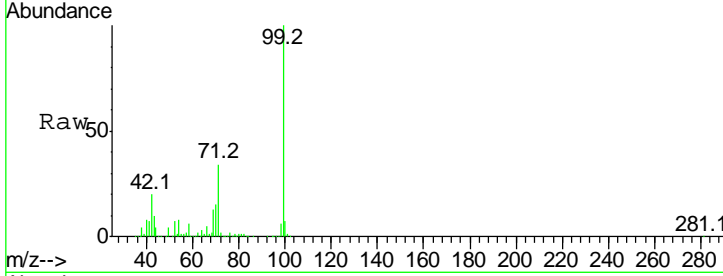




#7  
 Phenol-d6  
 Concen: 92.91 ng  
 RT: 6.52 min Scan# 388  
 Delta R.T. -0.00 min  
 Lab File: BF086241.D  
 Acq: 16 Apr 2016 3:44

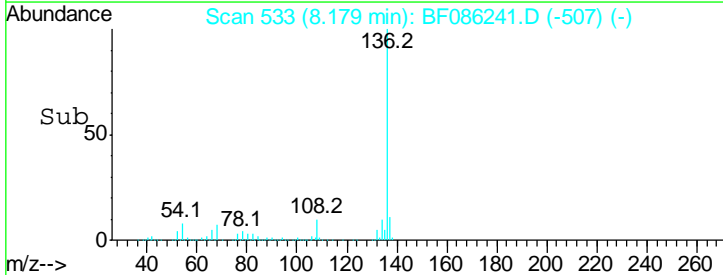
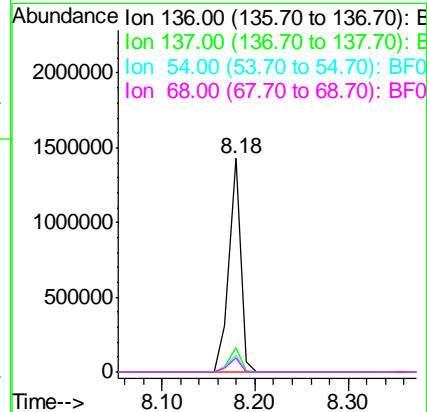
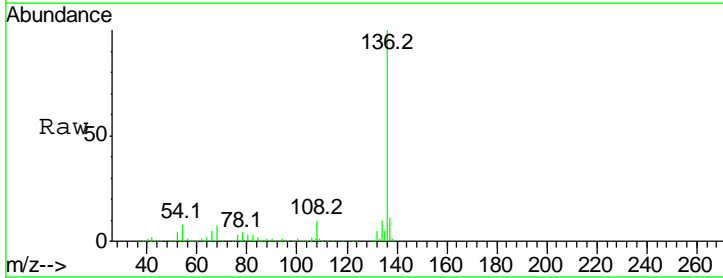
Instrument :  
 BNA\_F  
 ClientSampled :  
 CDMSH7

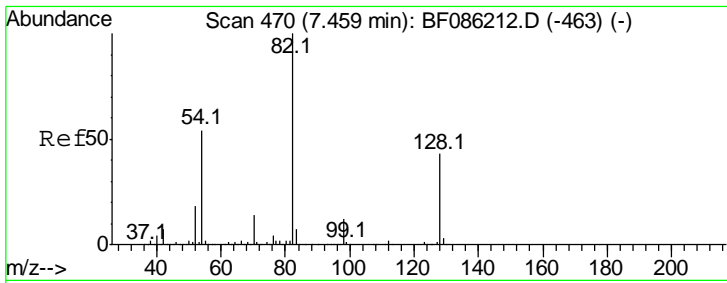
Tgt Ion	Resp	Lower	Upper
99	100		
42	20.2	15.4	23.2
71	33.9	25.6	38.4



#21  
 Naphthalene-d8  
 Concen: 20.00 ng  
 RT: 8.18 min Scan# 533  
 Delta R.T. -0.00 min  
 Lab File: BF086241.D  
 Acq: 16 Apr 2016 3:44

Tgt Ion	Resp	Lower	Upper
136	100		
137	11.3	9.1	13.7
54	7.7	7.3	10.9
68	6.6	5.7	8.5

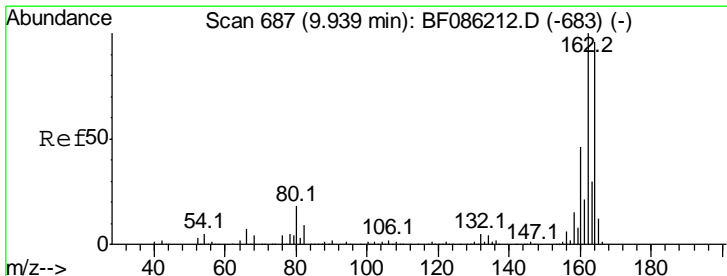
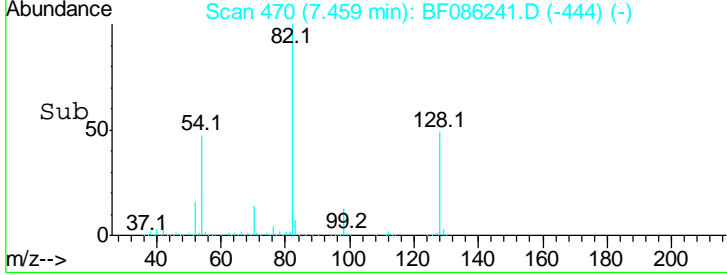
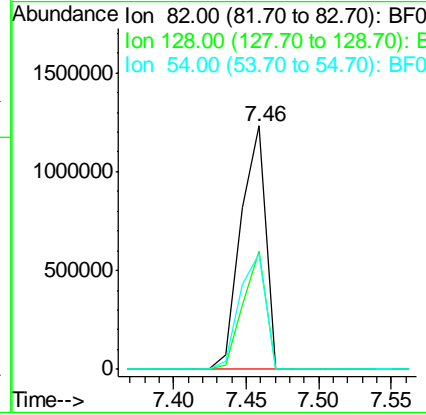
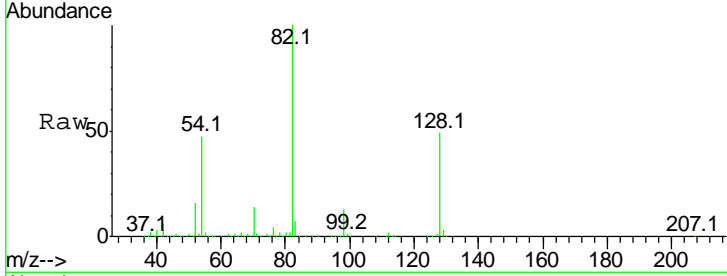




#23  
 Nitrobenzene-d5  
 Concen: 67.79 ng  
 RT: 7.46 min Scan# 470  
 Delta R.T. -0.00 min  
 Lab File: BF086241.D  
 Acq: 16 Apr 2016 3:44

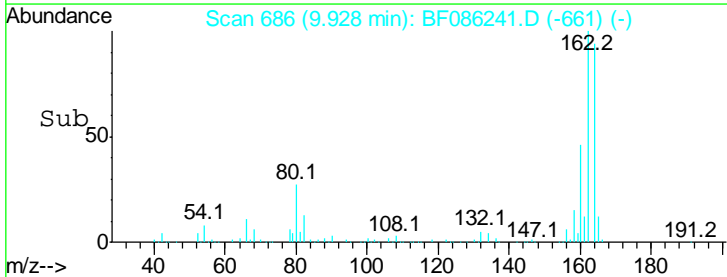
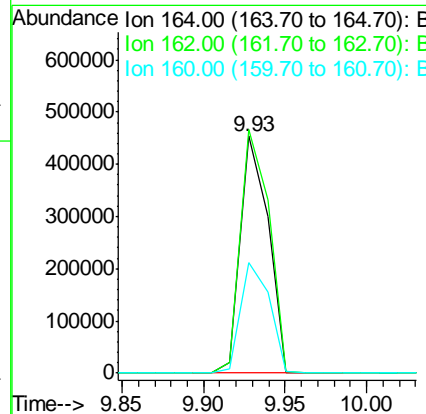
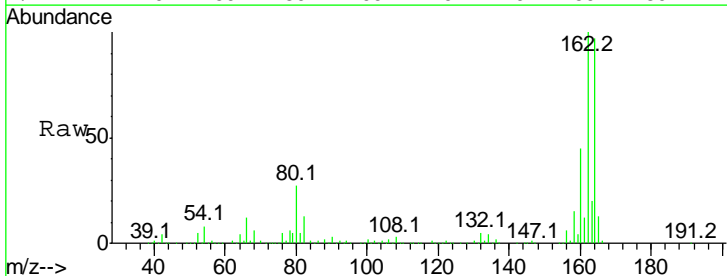
**Instrument :**  
 BNA\_F  
**ClientSampled :**  
 CDMSH7

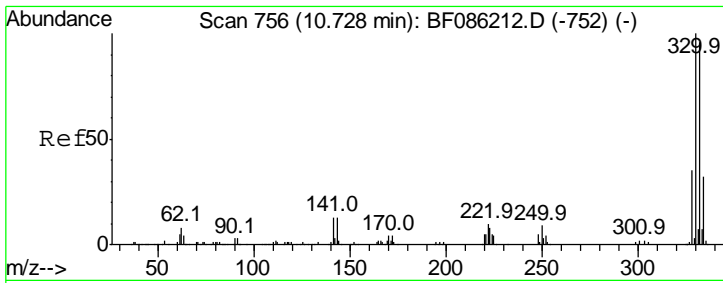
Tgt Ion	Resp	Lower	Upper
82	100		
128	48.7	35.4	53.2
54	47.3	43.4	65.0



#38  
 Acenaphthene-d10  
 Concen: 20.00 ng  
 RT: 9.93 min Scan# 686  
 Delta R.T. -0.01 min  
 Lab File: BF086241.D  
 Acq: 16 Apr 2016 3:44

Tgt Ion	Resp	Lower	Upper
164	100		
162	102.7	82.8	124.2
160	46.7	38.9	58.3

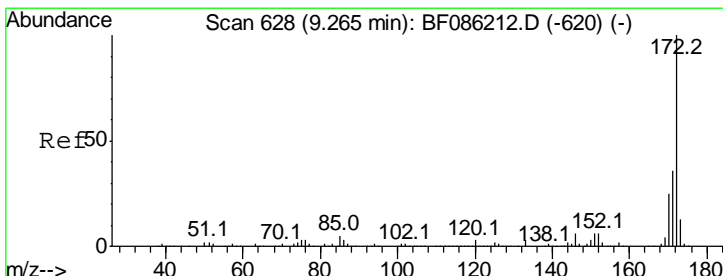
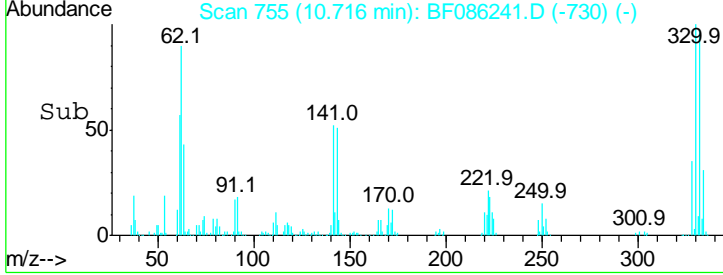
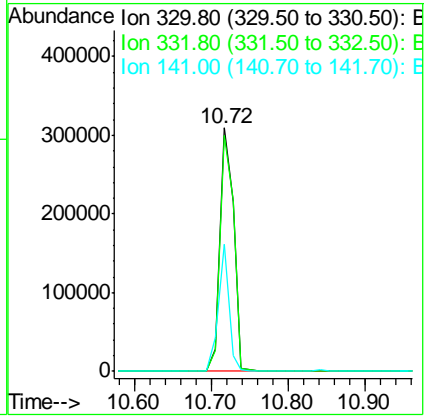
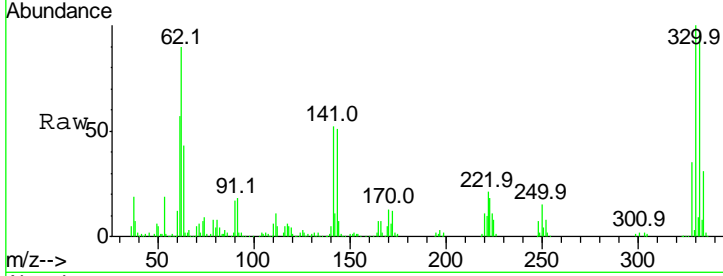




#41  
 2,4,6-Tribromophenol  
 Concen: 90.53 ng  
 RT: 10.72 min Scan# 755  
 Delta R.T. -0.01 min  
 Lab File: BF086241.D  
 Acq: 16 Apr 2016 3:44

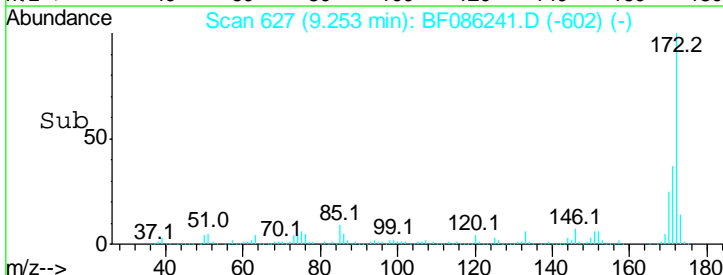
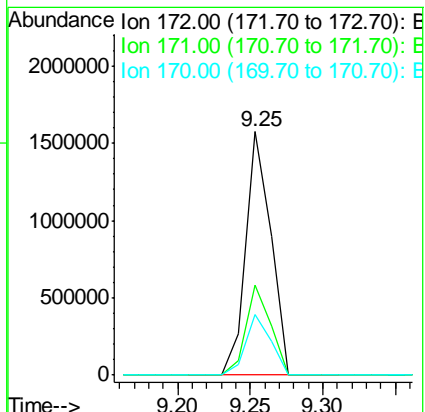
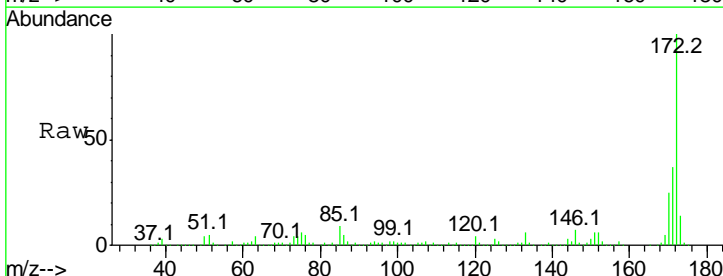
Instrument :  
 BNA\_F  
 ClientSampled :  
 CDM5H7

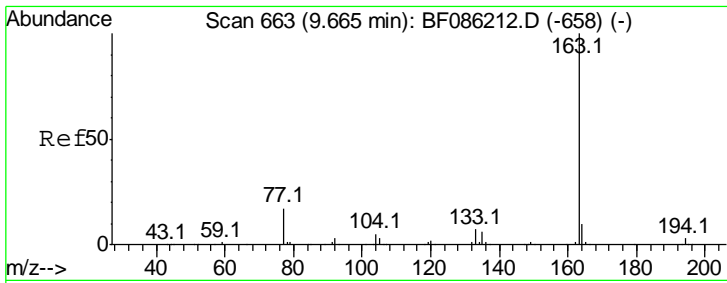
Tgt Ion	Resp	Lower	Upper
330	100		
332	98.4	78.7	118.1
141	40.9	28.6	42.8



#44  
 2-Fluorobiphenyl  
 Concen: 65.53 ng  
 RT: 9.25 min Scan# 627  
 Delta R.T. -0.01 min  
 Lab File: BF086241.D  
 Acq: 16 Apr 2016 3:44

Tgt Ion	Resp	Lower	Upper
172	100		
171	37.0	29.1	43.7
170	25.0	19.9	29.9



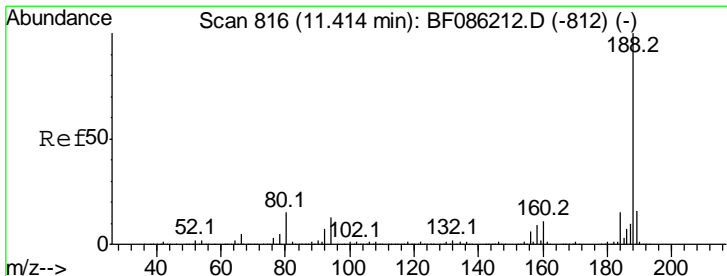
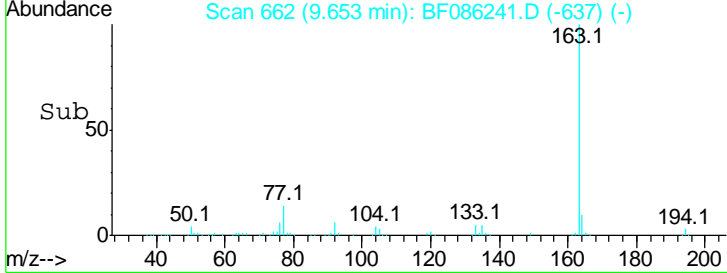
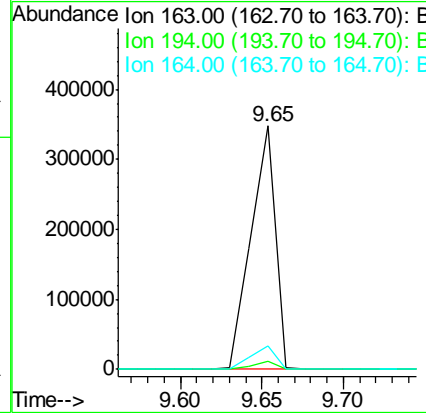
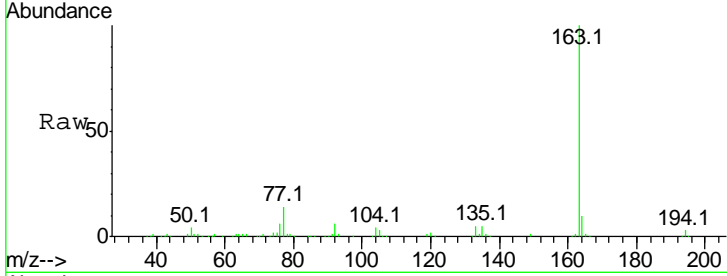


#49  
 Dimethylphthalate  
 Concen: 9.33 ng  
 RT: 9.65 min Scan# 662  
 Delta R.T. -0.01 min  
 Lab File: BF086241.D  
 Acq: 16 Apr 2016 3:44

Instrument :  
 BNA\_F  
 ClientSampleID :  
 CDMSH7

Tgt Ion:163 Resp: 361099

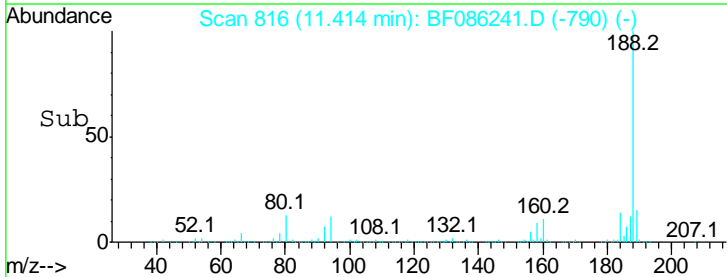
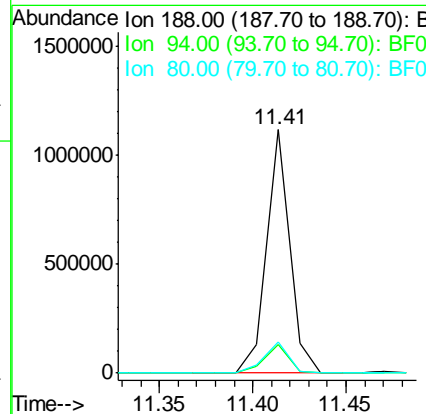
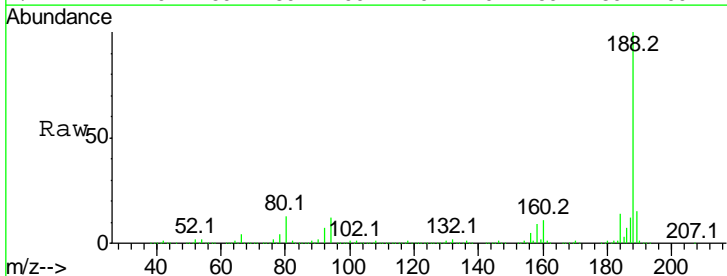
Ion	Ratio	Lower	Upper
163	100		
194	3.3	2.8	4.2
164	9.7	8.4	12.6

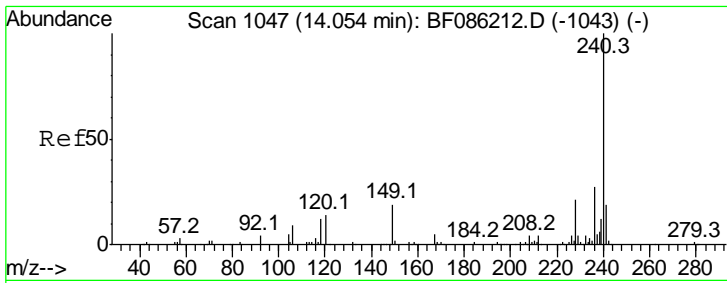


#63  
 Phenanthrene-d10  
 Concen: 20.00 ng  
 RT: 11.41 min Scan# 816  
 Delta R.T. -0.00 min  
 Lab File: BF086241.D  
 Acq: 16 Apr 2016 3:44

Tgt Ion:188 Resp: 951125

Ion	Ratio	Lower	Upper
188	100		
94	11.9	9.8	14.8
80	12.8	10.5	15.7

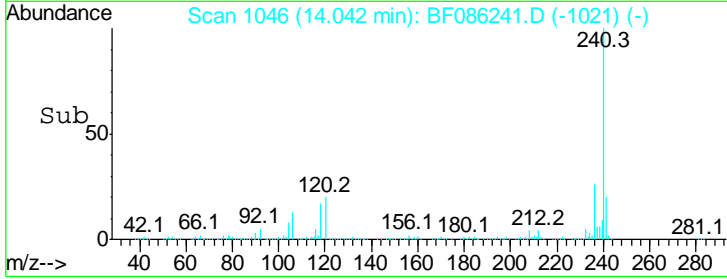
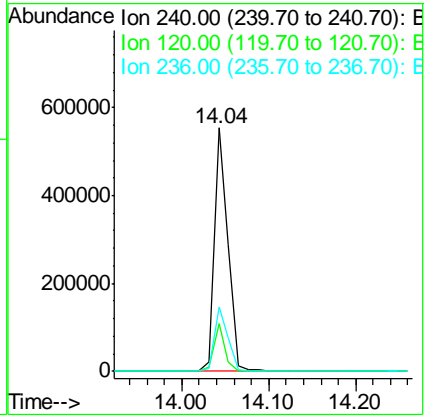
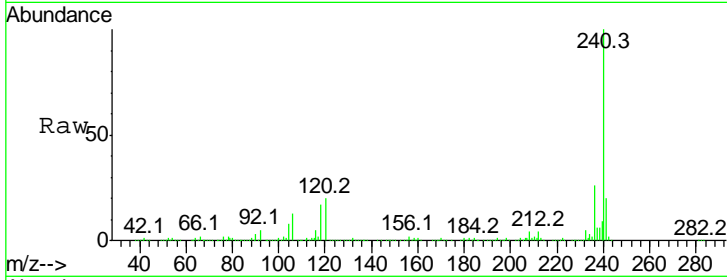




#75  
 Chrysene-d12  
 Concen: 20.00 ng  
 RT: 14.04 min Scan# 1046  
 Delta R.T. -0.01 min  
 Lab File: BF086241.D  
 Acq: 16 Apr 2016 3:44

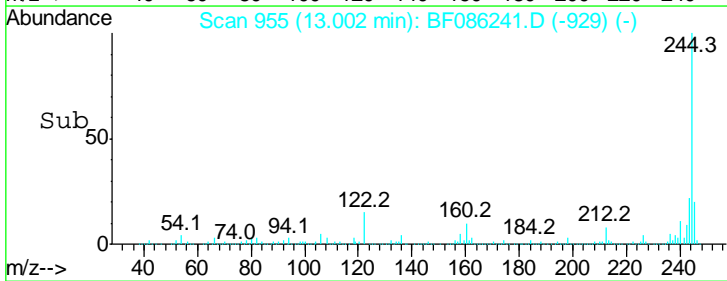
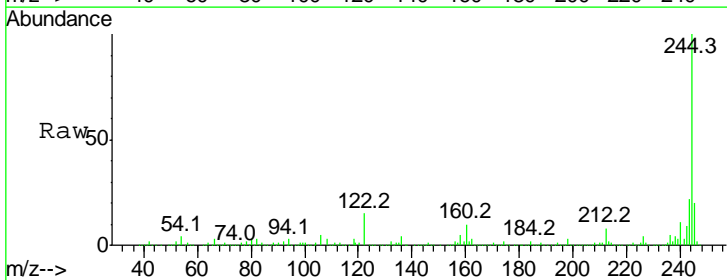
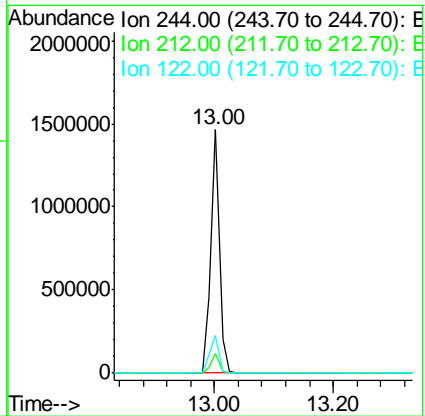
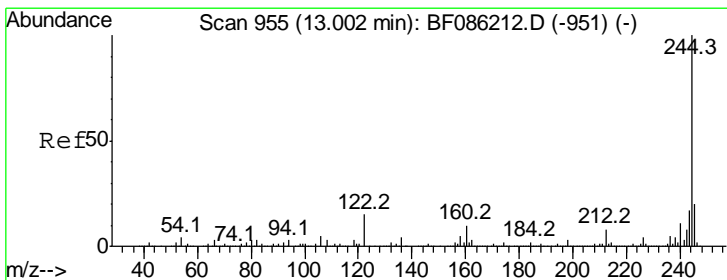
Instrument :  
 BNA\_F  
 ClientSampled :  
 CDMSH7

Tgt Ion	Resp	Lower	Upper
240	100		
120	19.6	9.3	13.9#
236	26.3	21.1	31.7

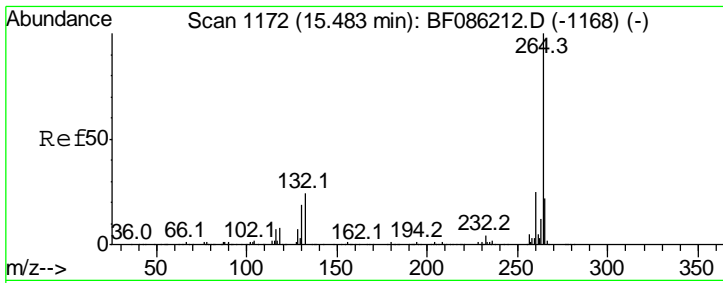


#78  
 Terphenyl-d14  
 Concen: 60.60 ng  
 RT: 13.00 min Scan# 955  
 Delta R.T. 0.00 min  
 Lab File: BF086241.D  
 Acq: 16 Apr 2016 3:44

Tgt Ion	Resp	Lower	Upper
244	100		
212	7.9	6.4	9.6
122	15.3	11.7	17.5







#86  
 Perylene-d12  
 Concen: 20.00 ng  
 RT: 15.48 min Scan# 1172  
 Delta R.T. -0.00 min  
 Lab File: BF086241.D  
 Acq: 16 Apr 2016 3:44

Instrument :  
 BNA\_F  
 ClientSampled :  
 CDMSH7

Tot Ion: 264 Resp: 492248

Ion	Ratio	Lower	Upper
264	100		
260	24.1	20.0	30.0
265	22.5	17.4	26.0

