

Data Path : Z:\HPCHEM1\BNA F\DATA\BF041516\  
 Data File : BF086257.D  
 Acq On : 16 Apr 2016 11:11  
 Operator : UM/SJ  
 Sample : H2471-01  
 Misc :  
 ALS Vial : 38 Sample Multiplier: 1

**Instrument :**  
 BNA\_F  
**Client Sampled :**  
 CDMSH1

**Manual Integrations**  
**APPROVED**  
 Sohil  
 4/18/2016 7:32:03 PM

Quant Time: Apr 18 05:06:52 2016  
 Quant Method : Z:\HPCHEM1\BNA F\METHODS\8270-BF041516.M  
 Quant Title : ASP BNA STANDARDS FOR 5 POINT CALIBRATION  
 QLast Update : Fri Apr 15 15:56:31 2016  
 Response via : Initial Calibration

Internal Standards	R.T.	QIon	Response	Conc	Units	Dev(Min)	
1) 1,4-Dichlorobenzene-d4	6.89	152	276785	20.00	ng	-0.01	
21) Naphthalene-d8	8.18	136	1188247	20.00	ng	0.00	
38) Acenaphthene-d10	9.93	164	503370	20.00	ng	-0.01	
63) Phenanthrene-d10	11.41	188	894694	20.00	ng	0.00	
75) Chrysene-d12	14.04	240	561995	20.00	ng	-0.01	
86) Perylene-d12	15.48	264	487947	20.00	ng	0.00	
<b>System Monitoring Compounds</b>							
5) 2-Fluorophenol	5.49	112	1674718	99.14	ng	0.01	
7) Phenol-d6	6.52	99	2238010	105.92	ng	0.00	
23) Nitrobenzene-d5	7.46	82	1459339	70.84	ng	0.00	
41) 2,4,6-Tribromophenol	10.72	330	360471	89.18	ng	-0.01	
44) 2-Fluorobiphenyl	9.25	172	1696361	62.19	ng	-0.01	
78) Terphenyl-d14	13.00	244	1390901	62.23	ng	0.00	
<b>Target Compounds</b>							
49) Dimethylphthalate	9.65	163	405367	11.08	ng		97
70) Phenanthrene	11.44	178	213955	5.01	ng		98
77) Pyrene	12.85	202	196817	4.56	ng		97
80) Benzo(a)anthracene	14.03	228	80172	2.60	ng		98
87) Benzo(b)fluoranthene	15.07	252	63558m	2.11	ng		

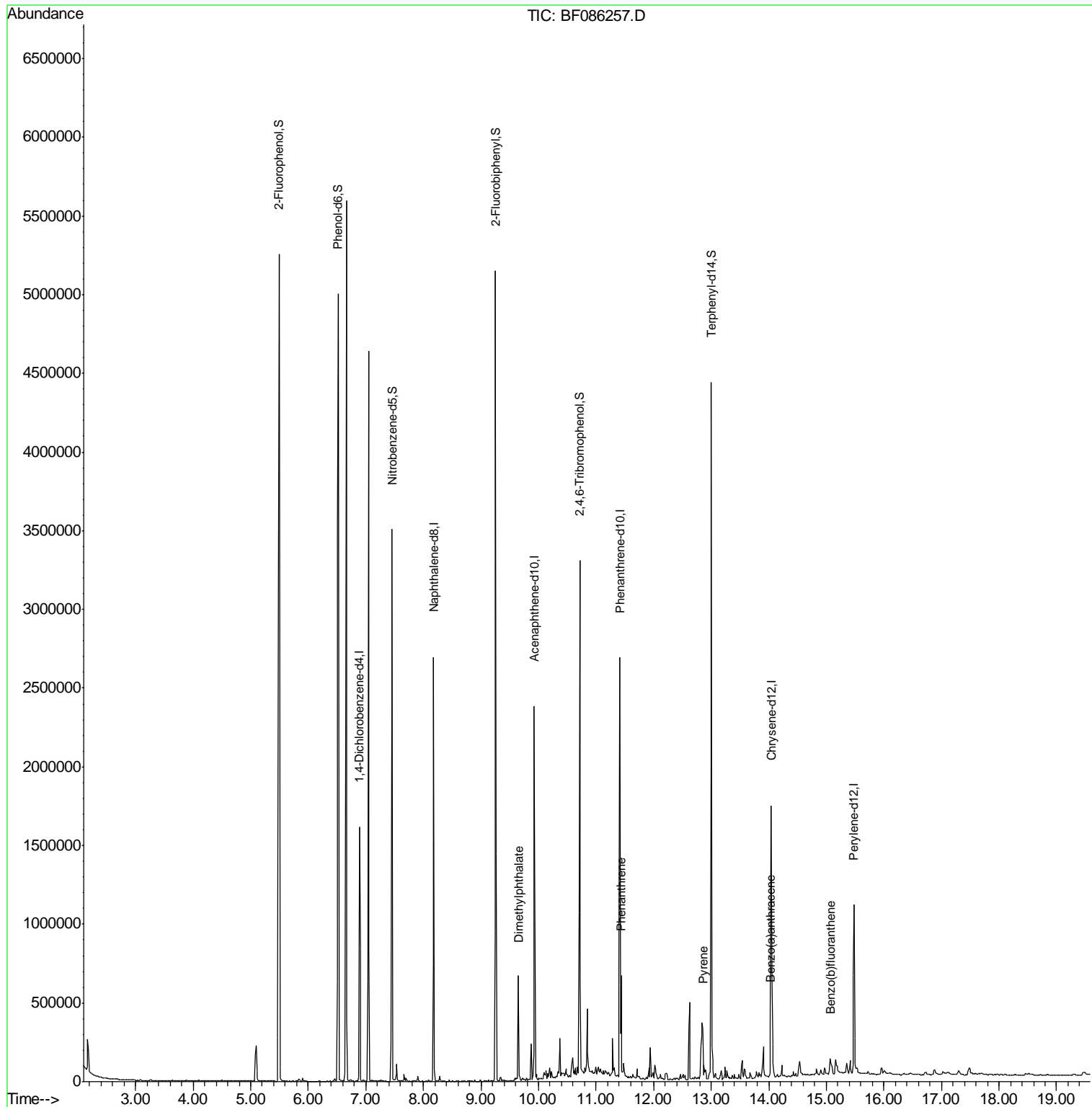
(#) = qualifier out of range (m) = manual integration (+) = signals summed

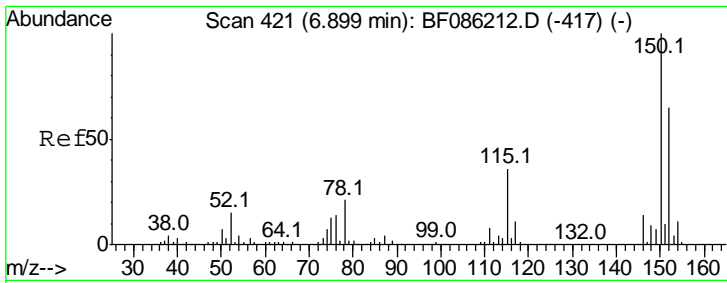
Data Path : Z:\HPCHEM1\BNA F\DATA\BF041516\  
 Data File : BF086257.D  
 Acq On : 16 Apr 2016 11:11  
 Operator : UM/SJ  
 Sample : H2471-01  
 Misc :  
 ALS Vial : 38 Sample Multiplier: 1

Instrument :  
 BNA\_F  
 ClientSampled :  
 CDMSH1

Manual Integrations  
 APPROVED  
 Sohil  
 4/18/2016 7:32:03 PM

Quant Time: Apr 18 05:06:52 2016  
 Quant Method : Z:\HPCHEM1\BNA F\METHODS\8270-BF041516.M  
 Quant Title : ASP BNA STANDARDS FOR 5 POINT CALIBRATION  
 QLast Update : Fri Apr 15 15:56:31 2016  
 Response via : Initial Calibration





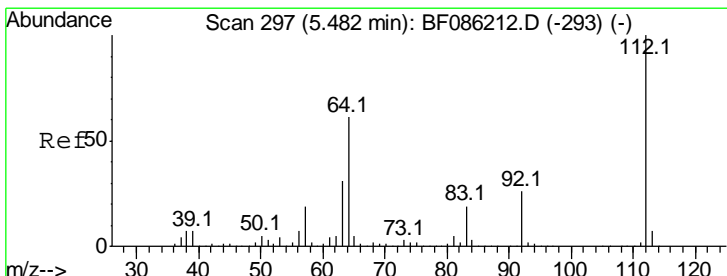
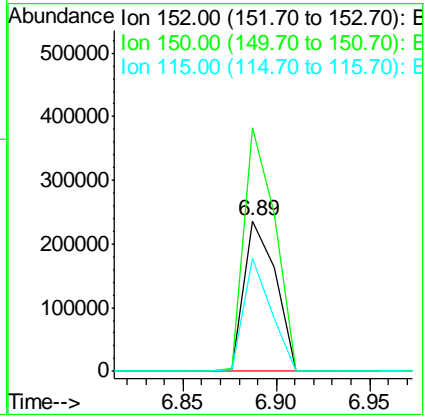
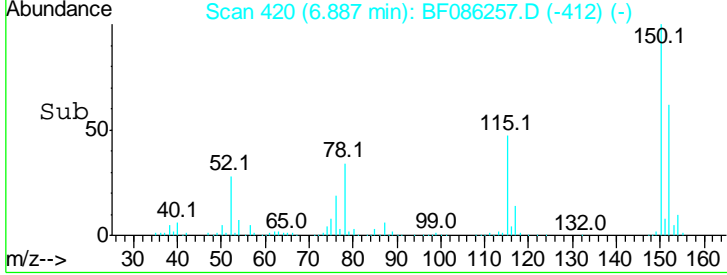
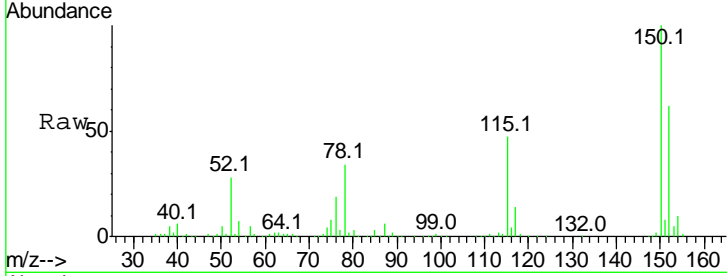
#1  
 1,4-Dichlorobenzene-d4  
 Concen: 20.00 ng  
 RT: 6.89 min Scan# 420  
 Delta R.T. -0.01 min  
 Lab File: BF086257.D  
 Acq: 16 Apr 2016 11:11

**Instrument :**  
 BNA\_F  
**ClientSampled :**  
 CDMSH1

Tgt Ion:152 Resp: 276785

Ion	Ratio	Lower	Upper
152	100		
150	161.5	124.1	186.1
115	75.2	43.9	65.9#

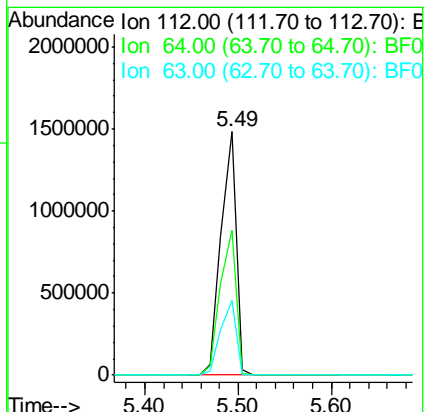
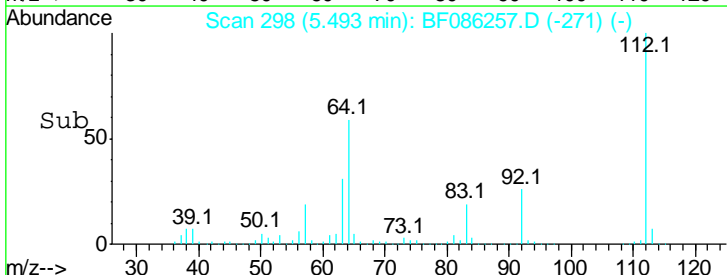
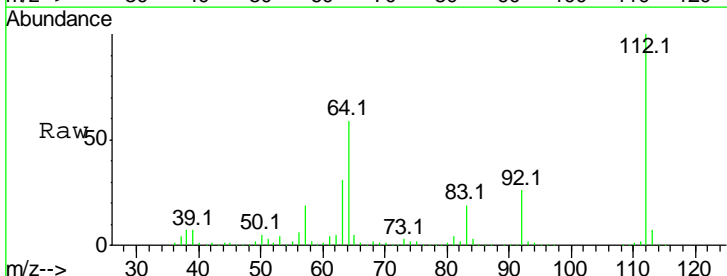
**Manual Integrations**  
**APPROVED**  
 Sohil  
 4/18/2016 7:32:03 PM

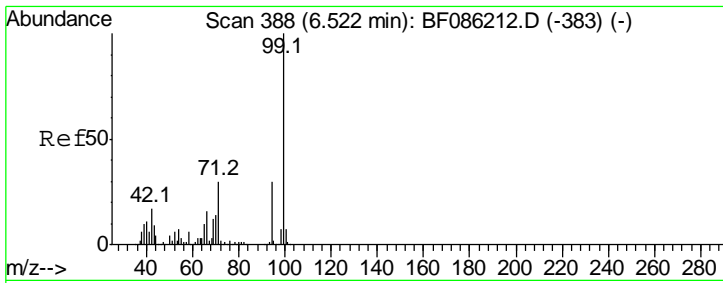


#5  
 2-Fluorophenol  
 Concen: 99.14 ng  
 RT: 5.49 min Scan# 298  
 Delta R.T. 0.01 min  
 Lab File: BF086257.D  
 Acq: 16 Apr 2016 11:11

Tgt Ion:112 Resp: 1674718

Ion	Ratio	Lower	Upper
112	100		
64	59.3	48.1	72.1
63	30.7	25.5	38.3



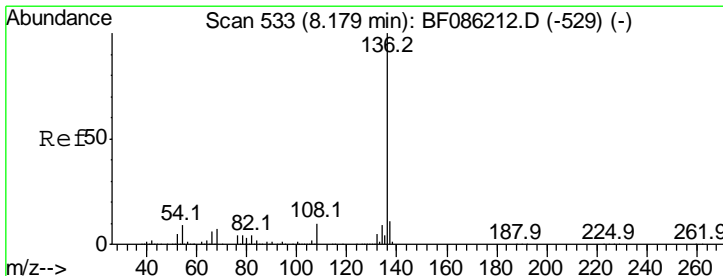
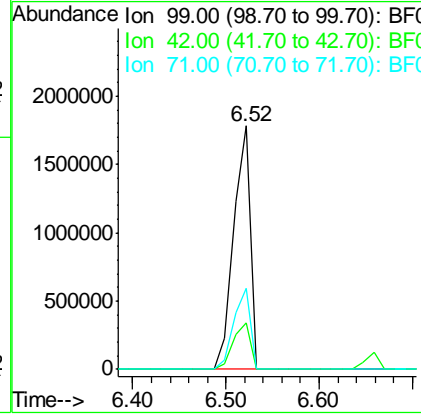
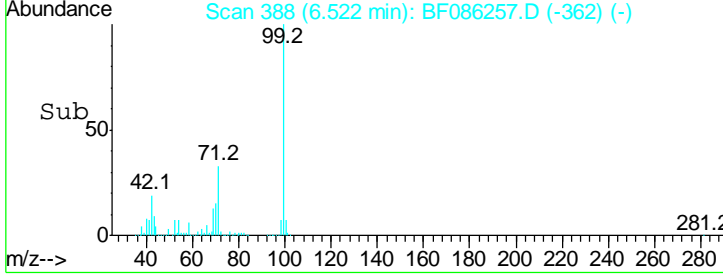
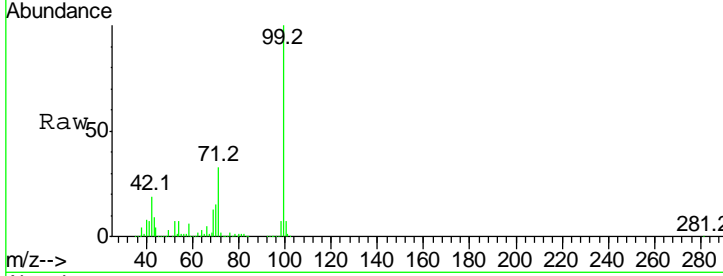


#7  
 Phenol-d6  
 Concen: 105.92 ng  
 RT: 6.52 min Scan# 388  
 Delta R.T. -0.00 min  
 Lab File: BF086257.D  
 Acq: 16 Apr 2016 11:11

**Instrument :**  
 BNA\_F  
**ClientSampled :**  
 CDMSH1

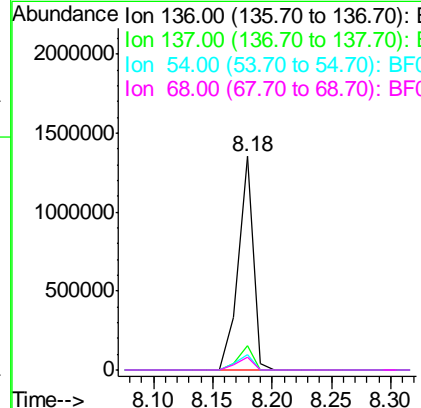
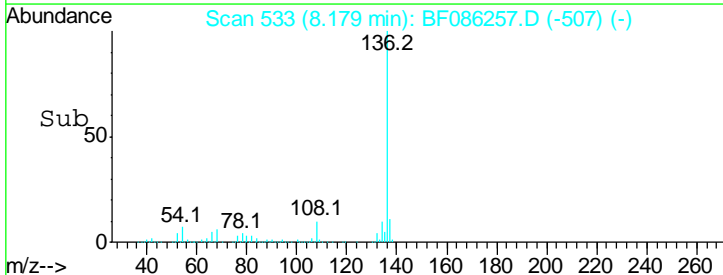
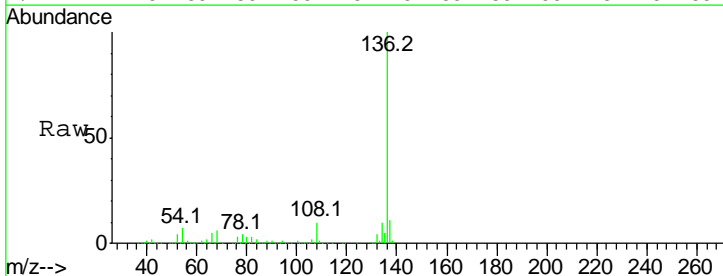
Tgt Ion	Resp	Lower	Upper
99	100		
42	19.0	15.4	23.2
71	33.0	25.6	38.4

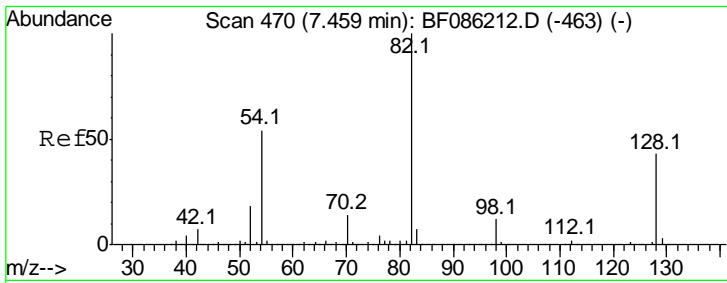
**Manual Integrations**  
**APPROVED**  
 Sohil  
 4/18/2016 7:32:03 PM



#21  
 Naphthalene-d8  
 Concen: 20.00 ng  
 RT: 8.18 min Scan# 533  
 Delta R.T. -0.00 min  
 Lab File: BF086257.D  
 Acq: 16 Apr 2016 11:11

Tgt Ion	Resp	Lower	Upper
136	100		
137	11.3	9.1	13.7
54	7.3	7.3	10.9
68	6.1	5.7	8.5





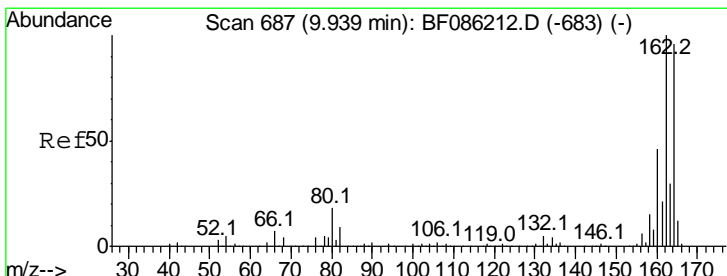
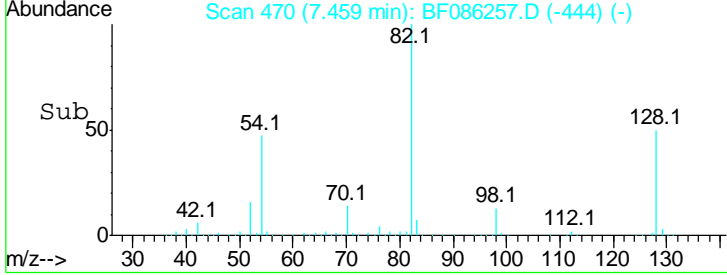
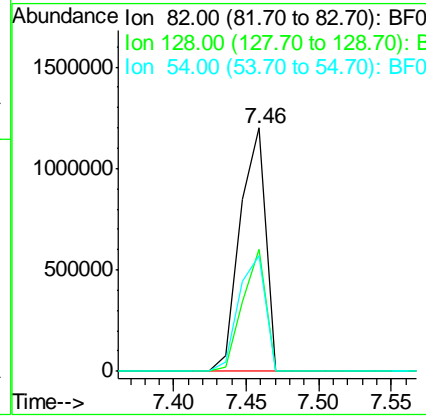
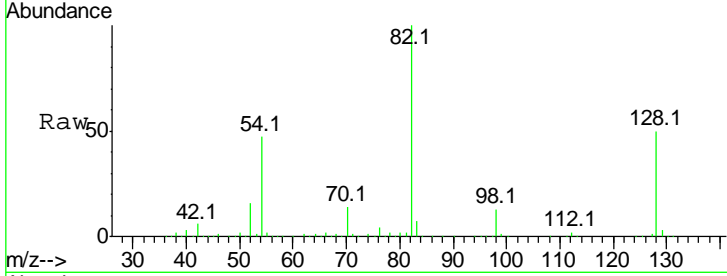
#23  
 Nitrobenzene-d5  
 Concen: 70.84 ng  
 RT: 7.46 min Scan# 470  
 Delta R.T. -0.00 min  
 Lab File: BF086257.D  
 Acq: 16 Apr 2016 11:11

**Instrument :**  
 BNA\_F  
**ClientSampled :**  
 CDMSH1

Tot Ion: 82 Resp: 1459339

Ion	Ratio	Lower	Upper
82	100		
128	49.9	35.4	53.2
54	47.4	43.4	65.0

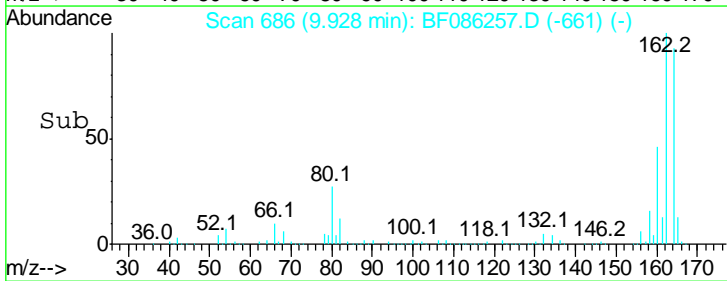
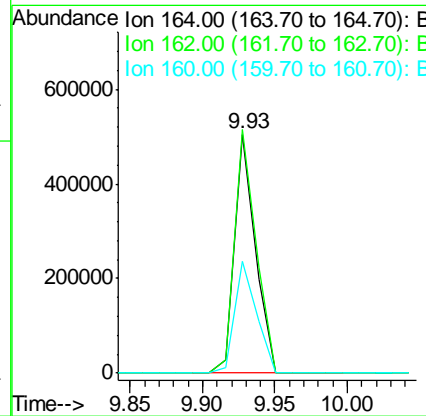
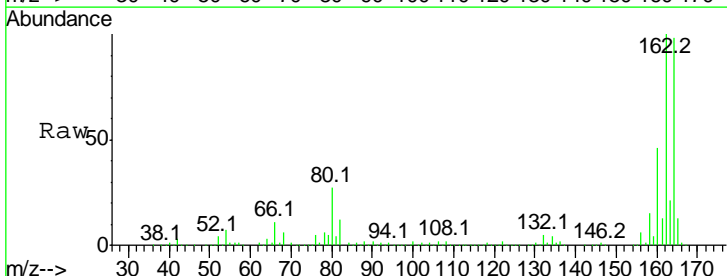
**Manual Integrations**  
**APPROVED**  
 Sohil  
 4/18/2016 7:32:03 PM

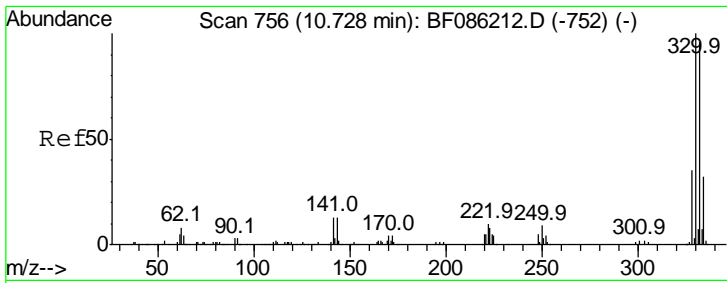


#38  
 Acenaphthene-d10  
 Concen: 20.00 ng  
 RT: 9.93 min Scan# 686  
 Delta R.T. -0.01 min  
 Lab File: BF086257.D  
 Acq: 16 Apr 2016 11:11

Tgt Ion: 164 Resp: 503370

Ion	Ratio	Lower	Upper
164	100		
162	101.9	82.8	124.2
160	46.7	38.9	58.3



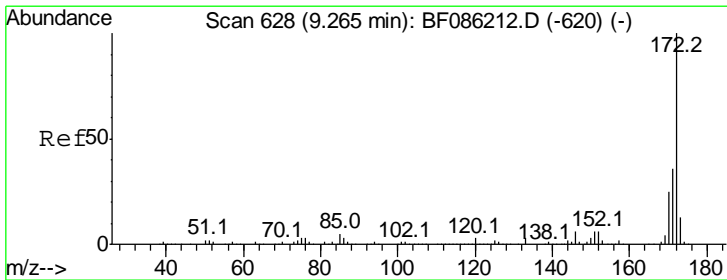
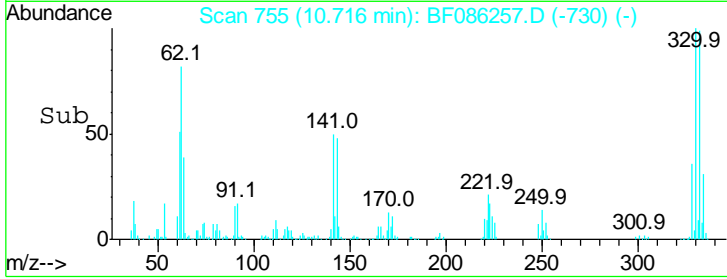
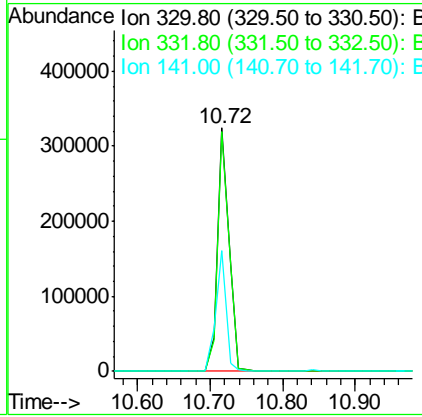
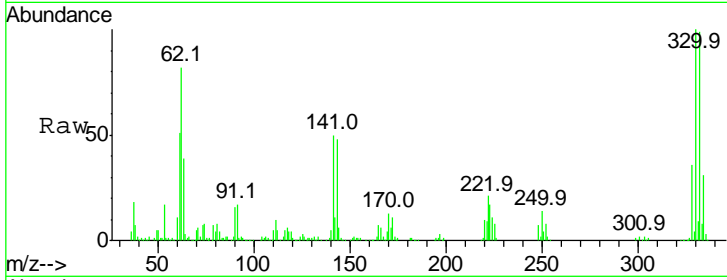


#41  
 2,4,6-Tribromophenol  
 Concen: 89.18 ng  
 RT: 10.72 min Scan# 755  
 Delta R.T. -0.01 min  
 Lab File: BF086257.D  
 Acq: 16 Apr 2016 11:11

Instrument :  
 BNA\_F  
 ClientSampled :  
 CDMSh1

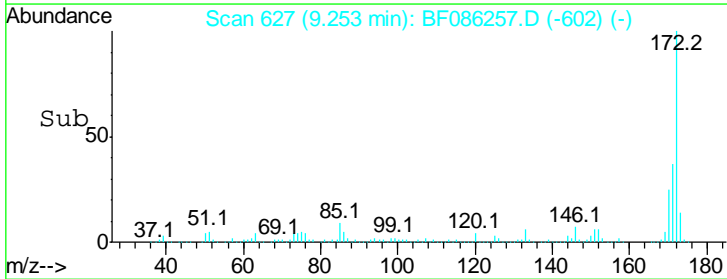
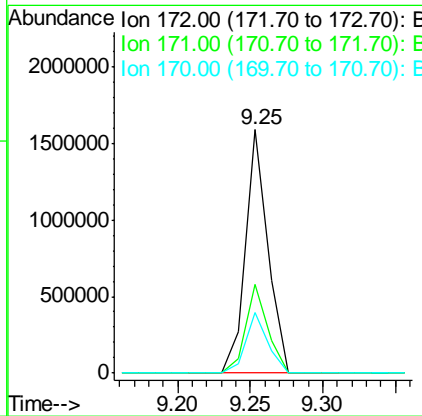
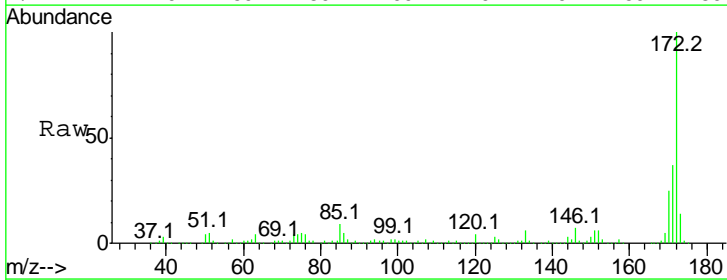
Tgt Ion	Resp	Lower	Upper
330	100		
332	98.4	78.7	118.1
141	45.1	28.6	42.8#

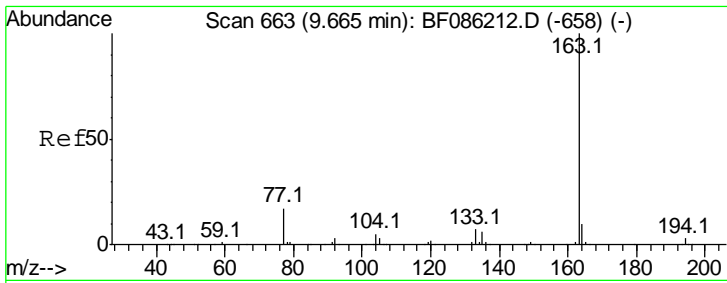
Manual Integrations  
 APPROVED  
 Sohil  
 4/18/2016 7:32:03 PM



#44  
 2-Fluorobiphenyl  
 Concen: 62.19 ng  
 RT: 9.25 min Scan# 627  
 Delta R.T. -0.01 min  
 Lab File: BF086257.D  
 Acq: 16 Apr 2016 11:11

Tgt Ion	Resp	Lower	Upper
172	100		
171	36.5	29.1	43.7
170	25.1	19.9	29.9



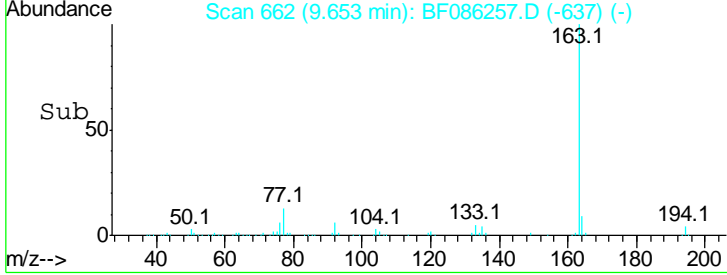
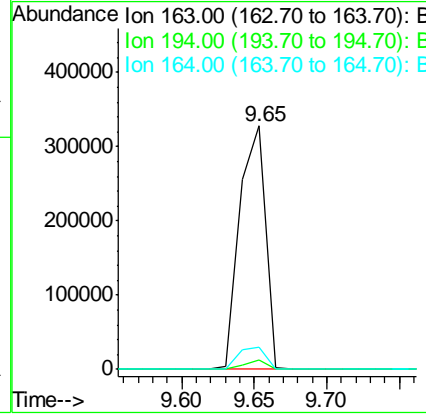
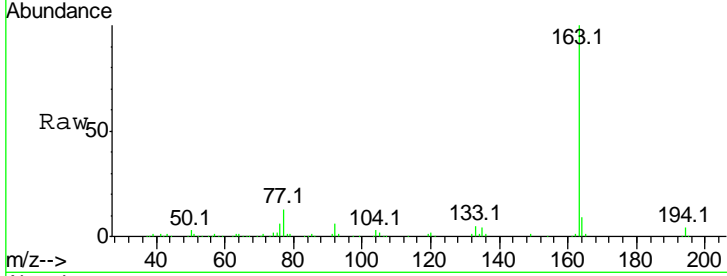


#49  
 Dimethylphthalate  
 Concen: 11.08 ng  
 RT: 9.65 min Scan# 662  
 Delta R.T. -0.01 min  
 Lab File: BF086257.D  
 Acq: 16 Apr 2016 11:11

Instrument :  
 BNA\_F  
 ClientSampled :  
 CDMSh1

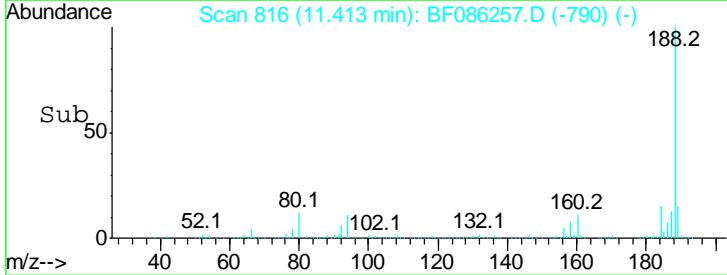
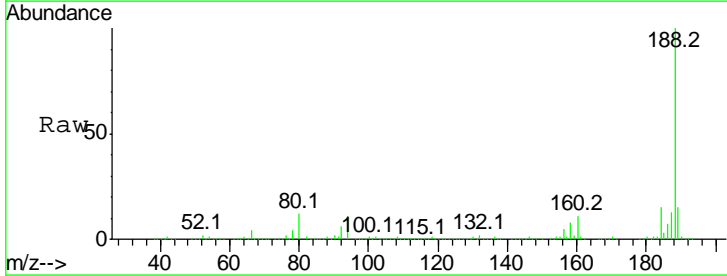
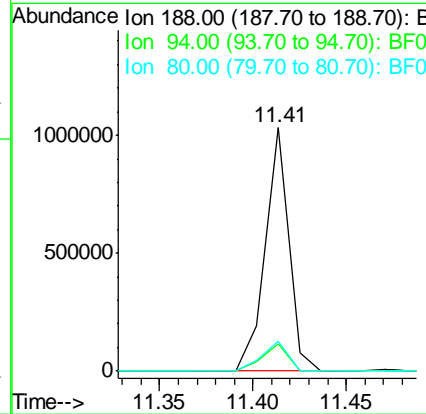
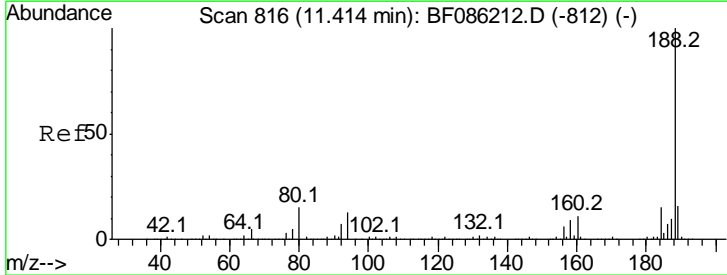
Tgt Ion	Resp	Lower	Upper
163	100		
194	3.7	2.8	4.2
164	9.2	8.4	12.6

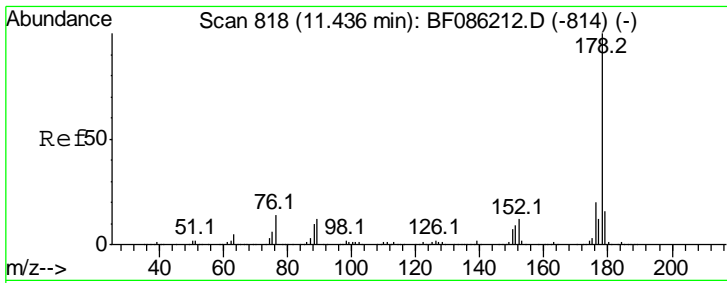
Manual Integrations  
**APPROVED**  
 Sohil  
 4/18/2016 7:32:03 PM



#63  
 Phenanthrene-d10  
 Concen: 20.00 ng  
 RT: 11.41 min Scan# 816  
 Delta R.T. -0.00 min  
 Lab File: BF086257.D  
 Acq: 16 Apr 2016 11:11

Tgt Ion	Resp	Lower	Upper
188	100		
94	11.1	9.8	14.8
80	12.1	10.5	15.7



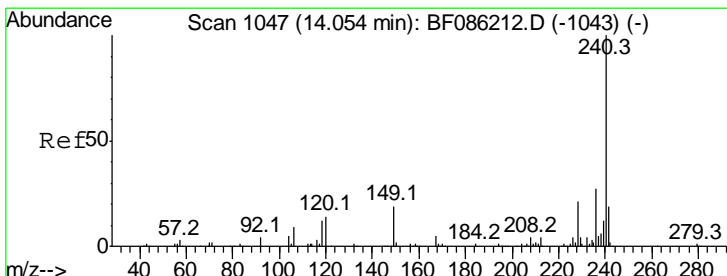
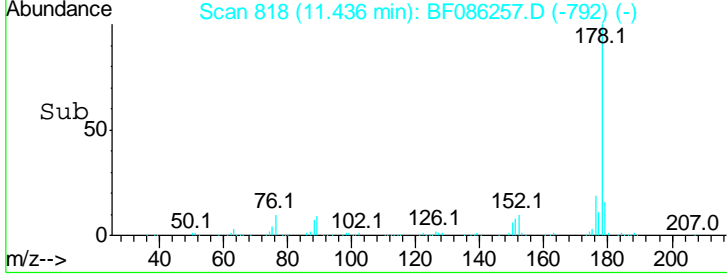
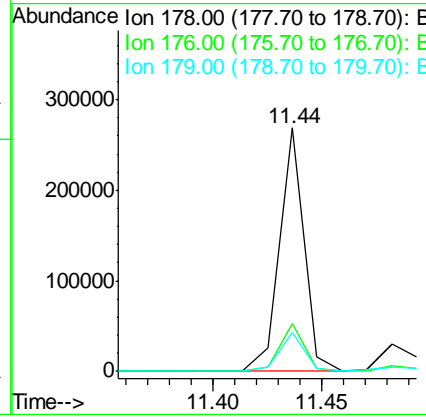
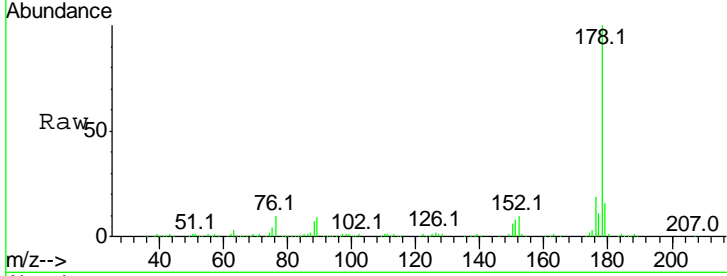


#70  
 Phenanthrene  
 Concen: 5.01 ng  
 RT: 11.44 min Scan# 818  
 Delta R.T. 0.00 min  
 Lab File: BF086257.D  
 Acq: 16 Apr 2016 11:11

Instrument :  
 BNA\_F  
 ClientSampled :  
 CDMSH1

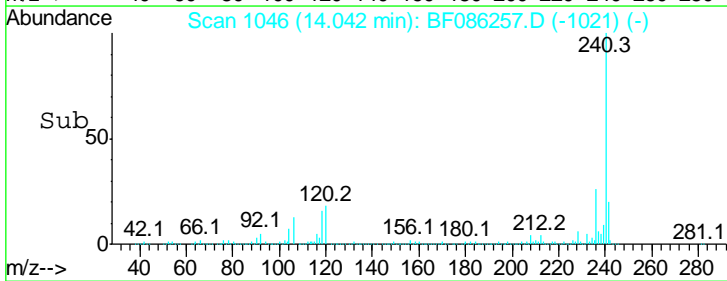
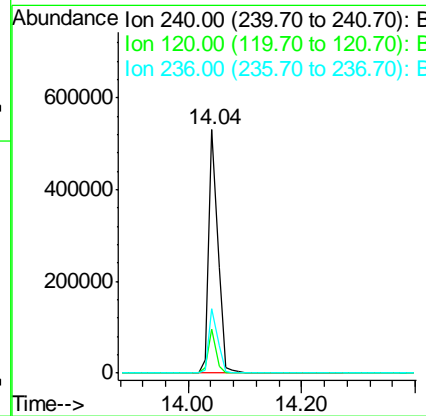
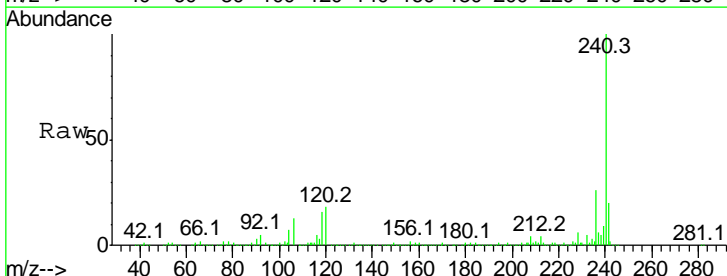
Tgt Ion	Resp	Lower	Upper
178	100		
176	19.4	16.3	24.5
179	15.7	13.0	19.6

Manual Integrations  
 APPROVED  
 Sohil  
 4/18/2016 7:32:03 PM

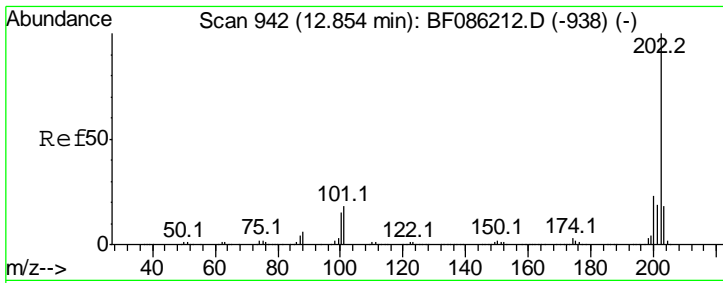


#75  
 Chrysene-d12  
 Concen: 20.00 ng  
 RT: 14.04 min Scan# 1046  
 Delta R.T. -0.01 min  
 Lab File: BF086257.D  
 Acq: 16 Apr 2016 11:11

Tgt Ion	Resp	Lower	Upper
240	100		
120	18.2	9.3	13.9#
236	26.3	21.1	31.7





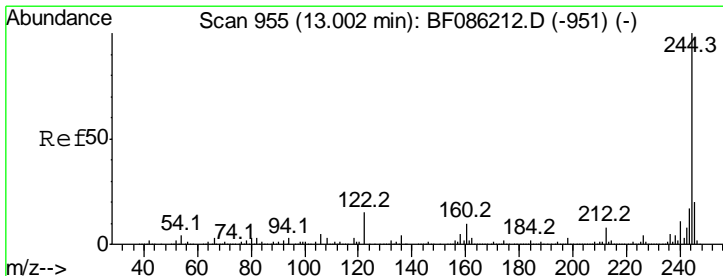
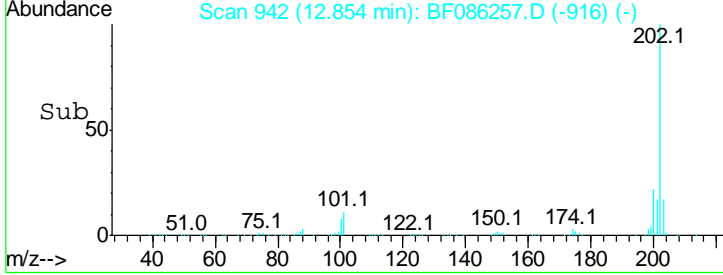
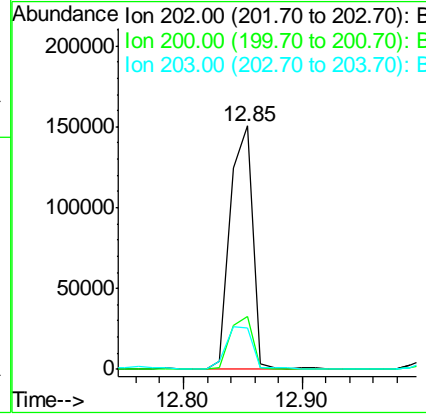
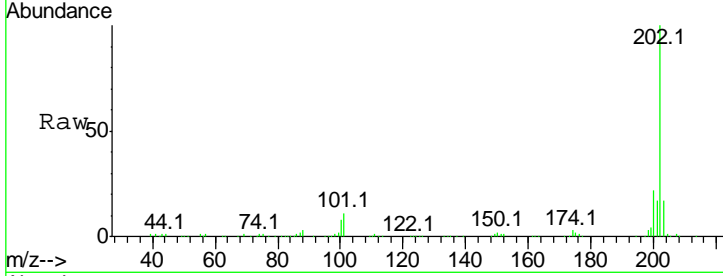


#77  
 Pyrene  
 Concen: 4.56 ng  
 RT: 12.85 min Scan# 942  
 Delta R.T. -0.00 min  
 Lab File: BF086257.D  
 Acq: 16 Apr 2016 11:11

Instrument :  
 BNA\_F  
 ClientSampled :  
 CDMSH1

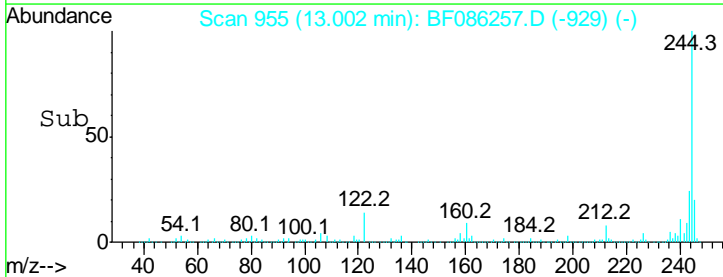
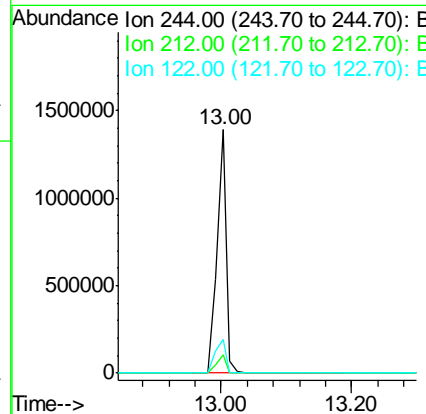
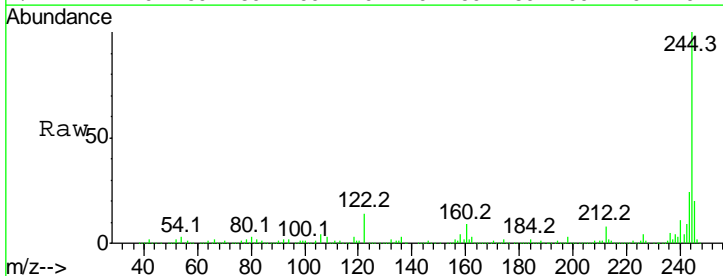
Tgt Ion	Resp	Lower	Upper
202	196817		
202	100		
200	21.6	18.3	27.5
203	17.1	14.9	22.3

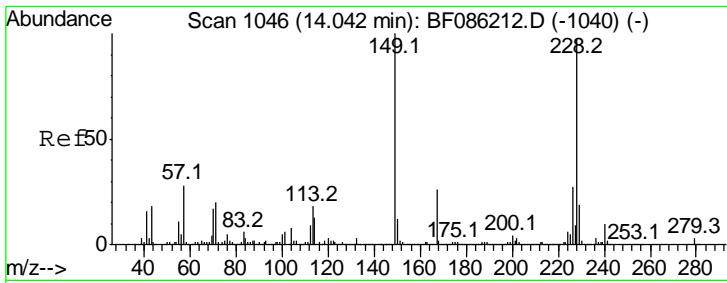
Manual Integrations  
**APPROVED**  
 Sohil  
 4/18/2016 7:32:03 PM



#78  
 Terphenyl-d14  
 Concen: 62.23 ng  
 RT: 13.00 min Scan# 955  
 Delta R.T. 0.00 min  
 Lab File: BF086257.D  
 Acq: 16 Apr 2016 11:11

Tgt Ion	Resp	Lower	Upper
244	1390901		
244	100		
212	7.5	6.4	9.6
122	13.8	11.7	17.5



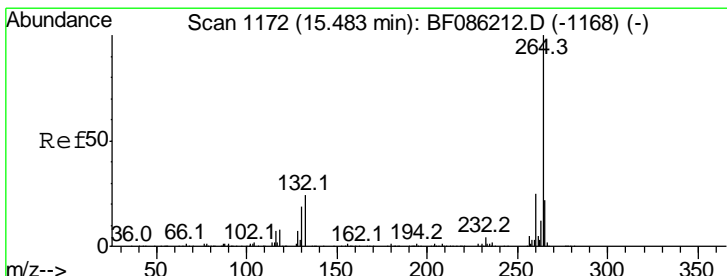
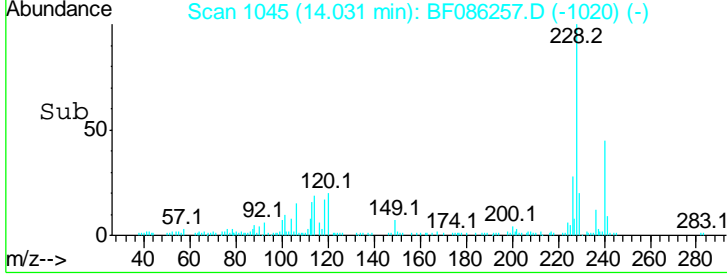
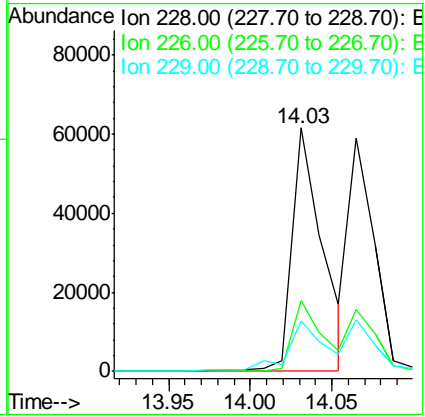
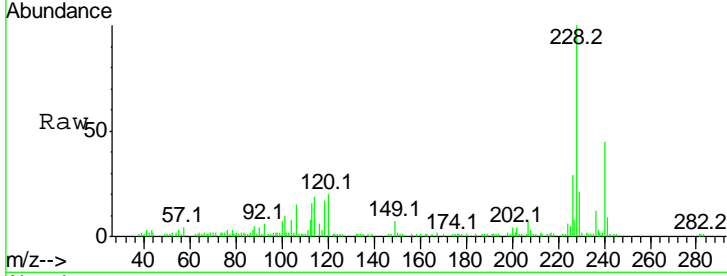


#80  
 Benzo(a)anthracene  
 Concen: 2.60 ng  
 RT: 14.03 min Scan# 1045  
 Delta R.T. -0.01 min  
 Lab File: BF086257.D  
 Acq: 16 Apr 2016 11:11

Instrument :  
 BNA\_F  
 Client Sampled :  
 CDMSH1

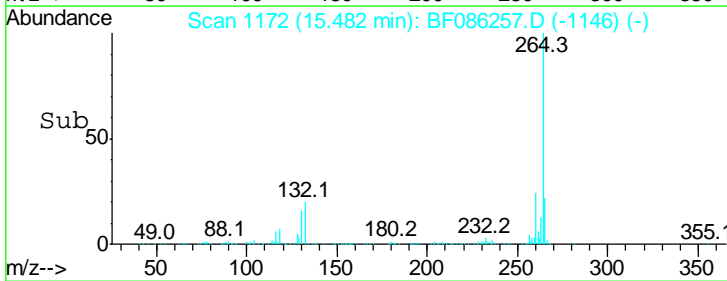
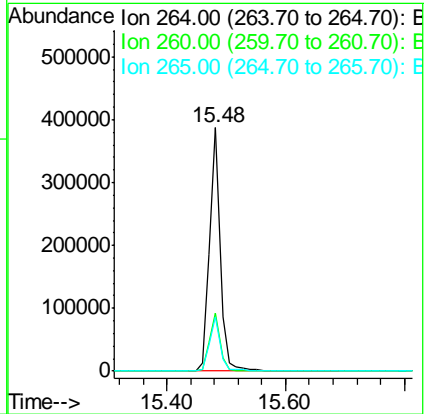
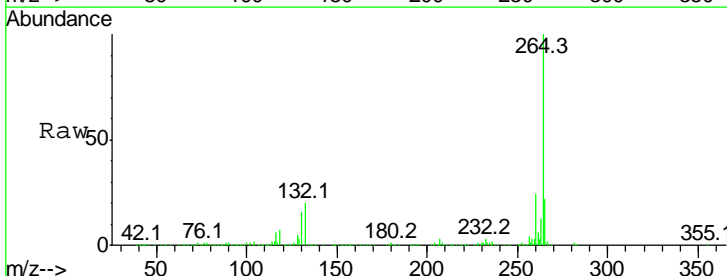
Tgt Ion	Resp	Lower	Upper
228	100		
226	28.9	22.5	33.7
229	20.9	16.2	24.2

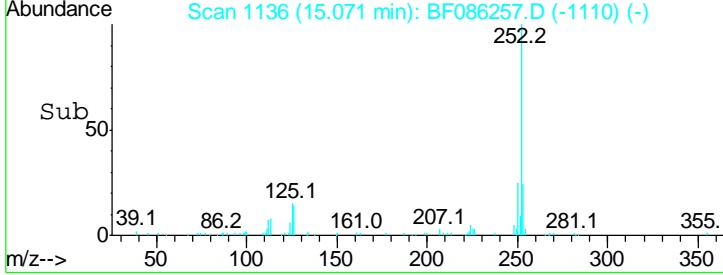
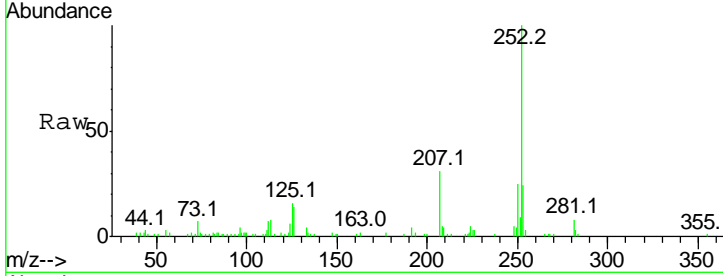
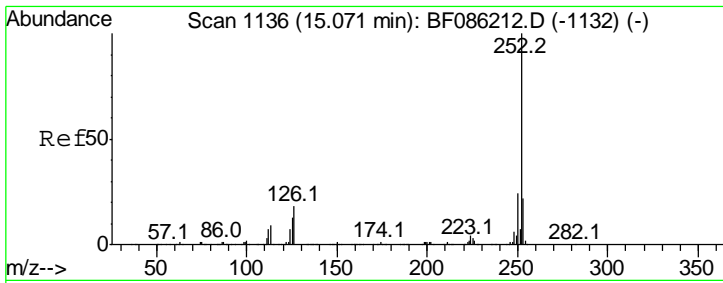
Manual Integrations  
 APPROVED  
 Sohil  
 4/18/2016 7:32:03 PM



#86  
 Perylene-d12  
 Concen: 20.00 ng  
 RT: 15.48 min Scan# 1172  
 Delta R.T. -0.00 min  
 Lab File: BF086257.D  
 Acq: 16 Apr 2016 11:11

Tgt Ion	Resp	Lower	Upper
264	100		
260	23.9	20.0	30.0
265	22.0	17.4	26.0





#87  
 Benzo(b)fluoranthene  
 Concen: 2.11 ng m  
 RT: 15.07 min Scan# 1136  
 Delta R.T. -0.00 min  
 Lab File: BF086257.D  
 Acq: 16 Apr 2016 11:11

Tot Ion	Ion	Ratio	Lower	Upper
63558	252	100		
	253	24.4	17.7	26.5
	125	16.1	10.3	15.5#

Instrument :  
 BNA\_F  
 ClientSampled :  
 CDMSH1

Manual Integrations  
 APPROVED  
 Sohil  
 4/18/2016 7:32:03 PM

