

Data Path : Z:\HPCHEM1\BNA F\DATA\BF041717\  
 Data File : BF094456.D  
 Acq On : 17 Apr 2017 18:23  
 Operator : SJ/MA  
 Sample : I2708-11  
 Misc :  
 ALS Vial : 8 Sample Multiplier: 1

**Instrument :**  
 BNA\_F  
**ClientSampleId :**  
 E2-XY9-BASE

**Manual Integrations**  
**APPROVED**

mohammad  
 4/18/2017 4:55:31 PM

Quant Time: Apr 18 02:19:55 2017  
 Quant Method : Z:\HPCHEM1\BNA F\METHODS\8270-BF041717.M  
 Quant Title : ASP BNA STANDARDS FOR 5 POINT CALIBRATION  
 QLast Update : Mon Apr 17 14:59:23 2017  
 Response via : Initial Calibration

Internal Standards	R.T.	QIon	Response	Conc	Units	Dev(Min)
1) 1,4-Dichlorobenzene-d4	5.76	152	143424	20.00	ng	0.00
21) Naphthalene-d8	7.26	136	590462	20.00	ng	0.00
38) Acenaphthene-d10	9.39	164	276692	20.00	ng	0.00
63) Phenanthrene-d10	11.22	188	502355	20.00	ng	0.00
75) Chrysene-d12	14.46	240	439708	20.00	ng	-0.01
86) Perylene-d12	16.08	264	307115	20.00	ng	0.00
<b>System Monitoring Compounds</b>						
5) 2-Fluorophenol	4.31	112	1116025	129.10	ng	0.00
7) Phenol-d6	5.39	99	1471529	144.39	ng	0.00
23) Nitrobenzene-d5	6.41	82	922667	96.49	ng	0.00
41) 2,4,6-Tribromophenol	10.37	330	275348	127.23	ng	0.00
44) 2-Fluorobiphenyl	8.58	172	1118779	59.49	ng	0.00
78) Terphenyl-d14	13.19	244	853114	51.86	ng	0.00
<b>Target Compounds</b>						<b>Qvalue</b>
49) Dimethylphthalate	9.09	163	737126	35.75	ng	98

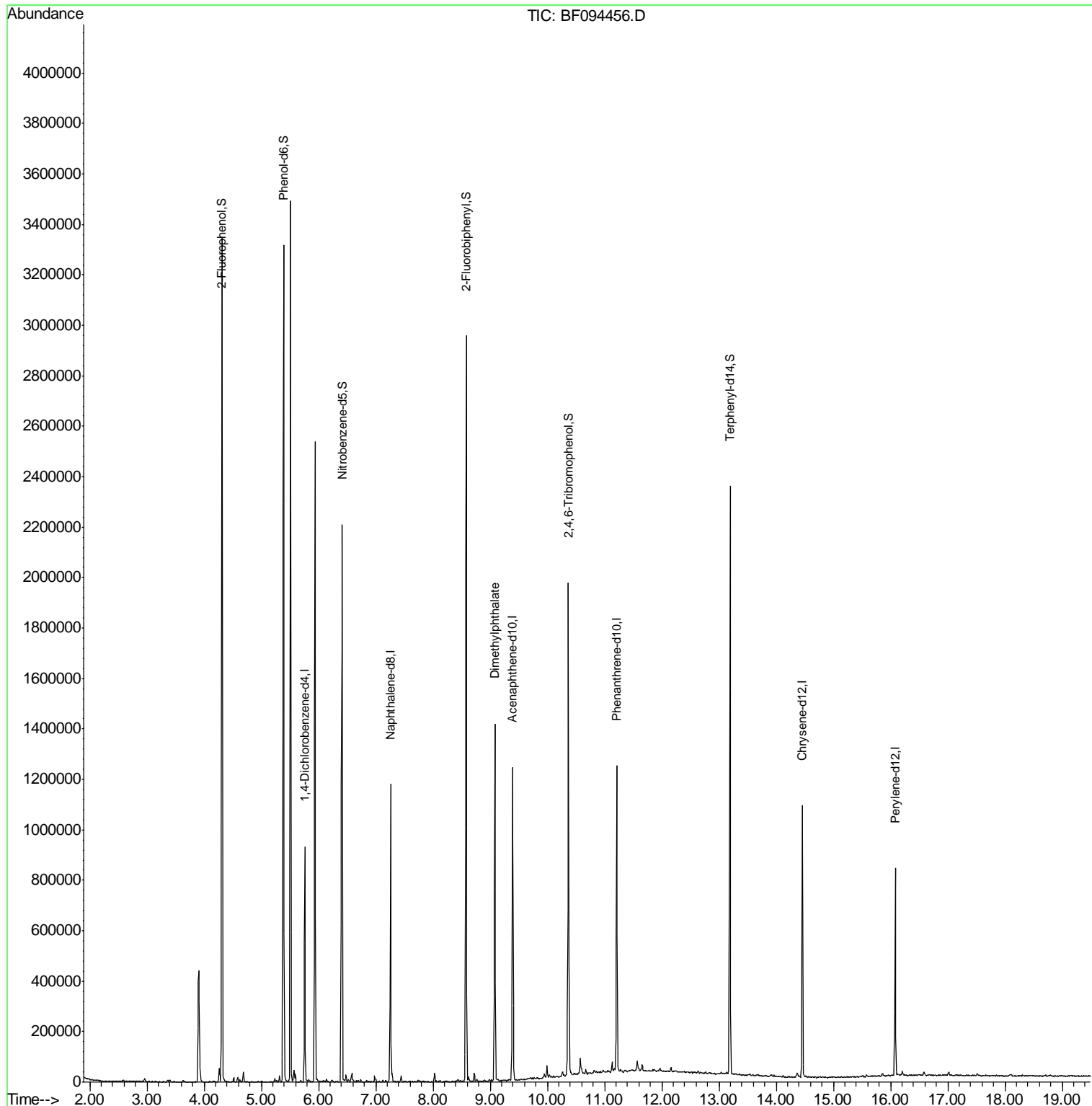
(#) = qualifier out of range (m) = manual integration (+) = signals summed

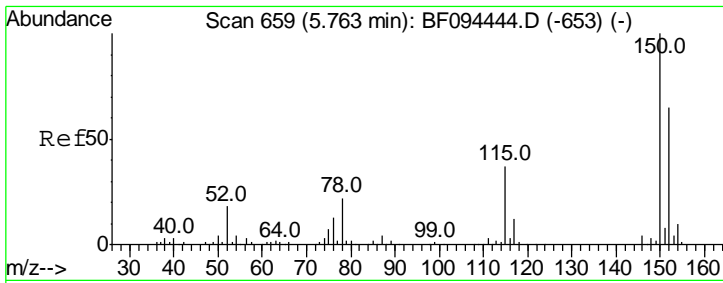
Data Path : Z:\HPCHEM1\BNA F\DATA\BF041717\  
 Data File : BF094456.D  
 Acq On : 17 Apr 2017 18:23  
 Operator : SJ/MA  
 Sample : I2708-11  
 Misc :  
 ALS Vial : 8 Sample Multiplier: 1

Instrument :  
 BNA\_F  
 ClientSampled :  
 E2-XY9-BASE

Manual Integrations  
 APPROVED  
 mohammad  
 4/18/2017 4:55:31 PM

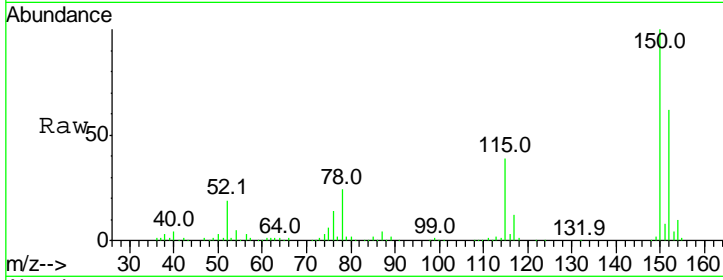
Quant Time: Apr 18 02:19:55 2017  
 Quant Method : Z:\HPCHEM1\BNA F\METHODS\8270-BF041717.M  
 Quant Title : ASP BNA STANDARDS FOR 5 POINT CALIBRATION  
 QLast Update : Mon Apr 17 14:59:23 2017  
 Response via : Initial Calibration





#1  
 1,4-Dichlorobenzene-d4  
 Concen: 20.00 ng  
 RT: 5.76 min Scan# 658  
 Delta R.T. -0.01 min  
 Lab File: BF094456.D  
 Acq: 17 Apr 2017 18:23

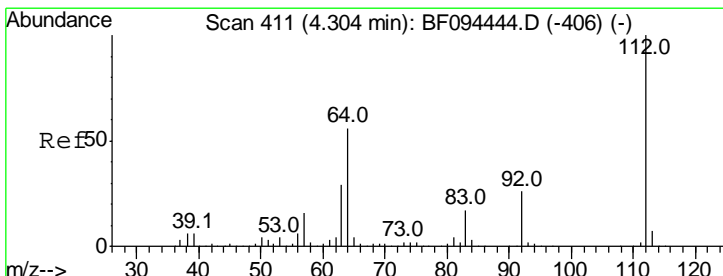
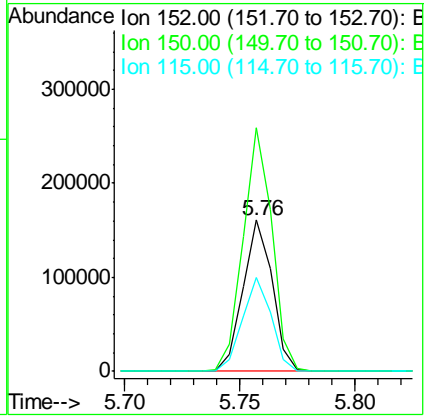
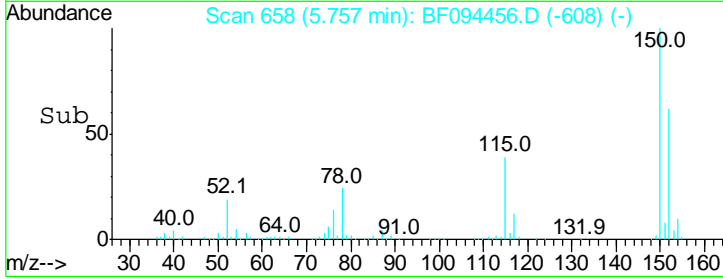
**Instrument :**  
 BNA\_F  
**ClientSampled :**  
 E2-XY9-BASE



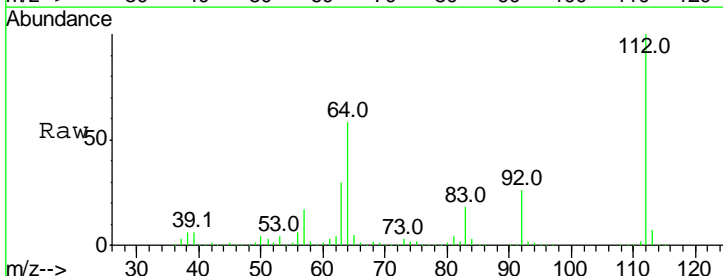
Tgt Ion:152 Resp: 143424

Ion	Ratio	Lower	Upper
152	100		
150	161.4	126.2	189.2
115	62.3	52.2	78.2

**Manual Integrations**  
**APPROVED**  
 mohammad  
 4/18/2017 4:55:31 PM

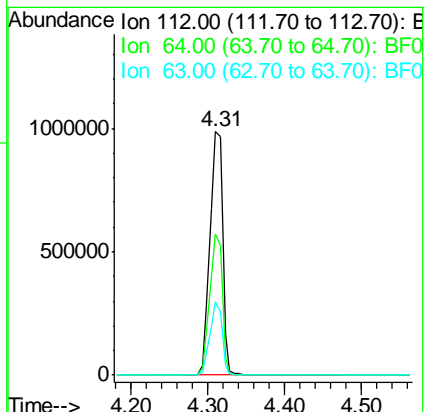
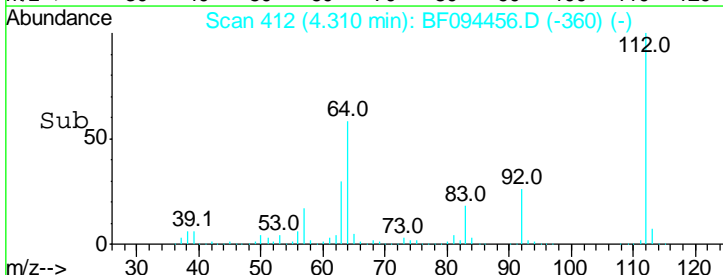


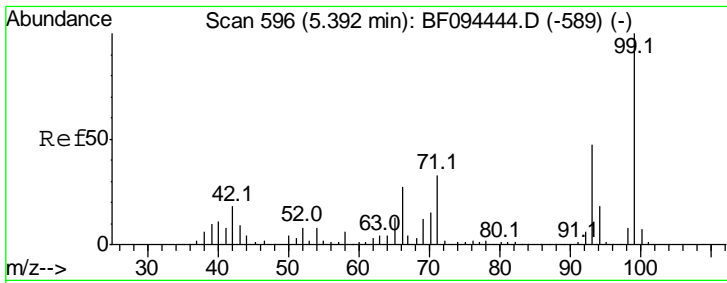
#5  
 2-Fluorophenol  
 Concen: 129.10 ng  
 RT: 4.31 min Scan# 412  
 Delta R.T. 0.01 min  
 Lab File: BF094456.D  
 Acq: 17 Apr 2017 18:23



Tgt Ion:112 Resp: 1116025

Ion	Ratio	Lower	Upper
112	100		
64	57.8	46.0	69.0
63	29.9	23.4	35.0





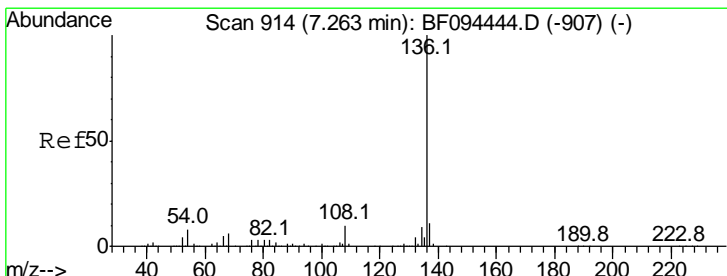
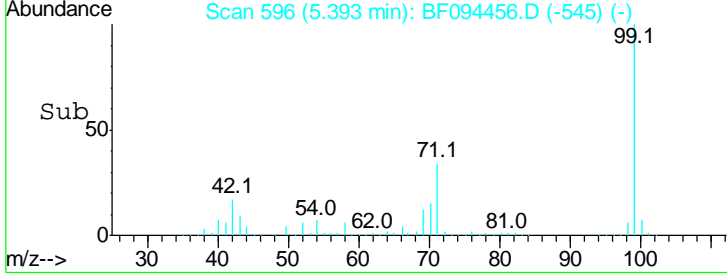
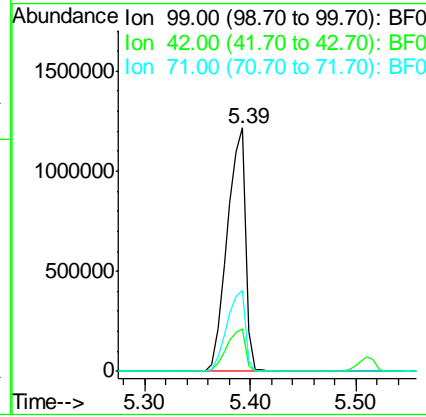
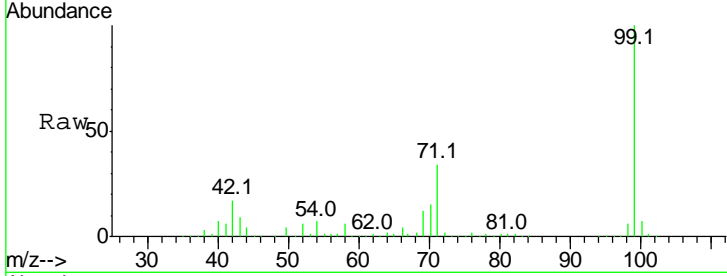
#7  
 Phenol-d6  
 Concen: 144.39 ng  
 RT: 5.39 min Scan# 596  
 Delta R.T. 0.00 min  
 Lab File: BF094456.D  
 Acq: 17 Apr 2017 18:23

**Instrument :**  
 BNA\_F  
**ClientSampled :**  
 E2-XY9-BASE

Tot Ion: 99 Resp: 1471529

Ion	Ratio	Lower	Upper
99	100		
42	17.4	13.5	20.3
71	33.5	24.5	36.7

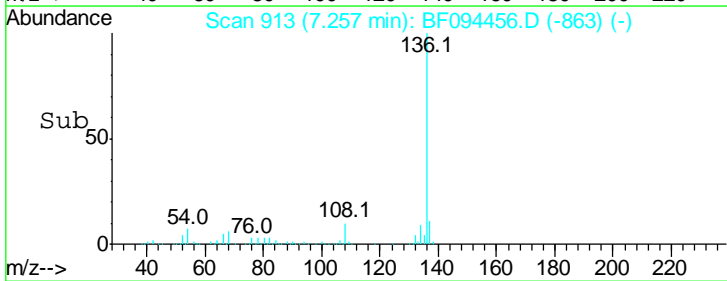
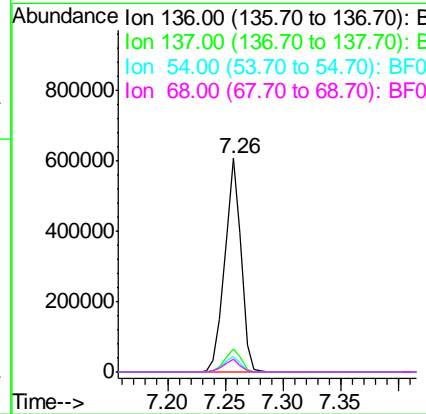
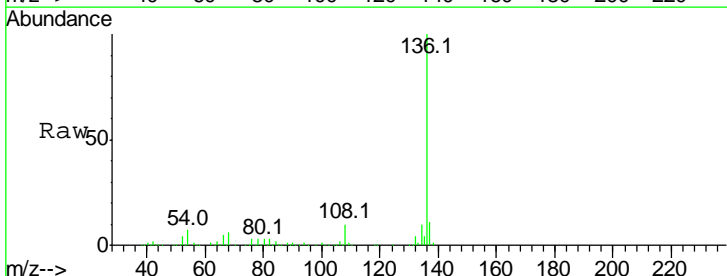
**Manual Integrations**  
**APPROVED**  
 mohammad  
 4/18/2017 4:55:31 PM

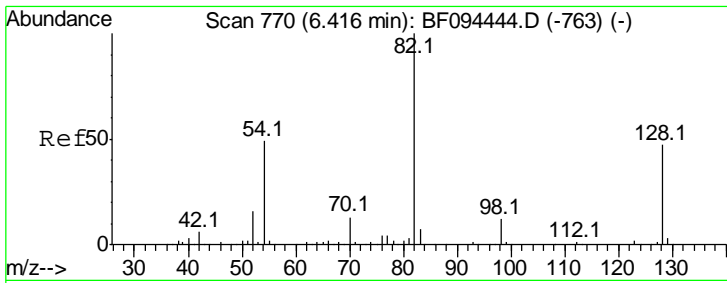


#21  
 Naphthalene-d8  
 Concen: 20.00 ng  
 RT: 7.26 min Scan# 913  
 Delta R.T. -0.01 min  
 Lab File: BF094456.D  
 Acq: 17 Apr 2017 18:23

Tgt Ion: 136 Resp: 590462

Ion	Ratio	Lower	Upper
136	100		
137	11.1	8.5	12.7
54	7.1	4.9	7.3
68	5.8	4.1	6.1





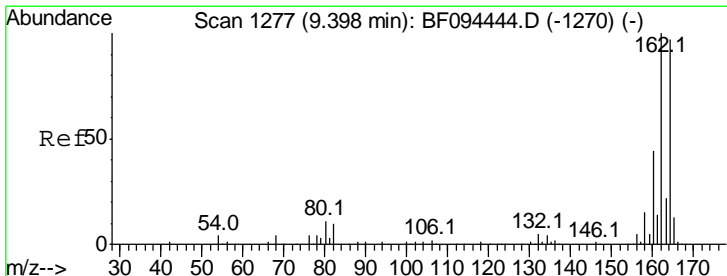
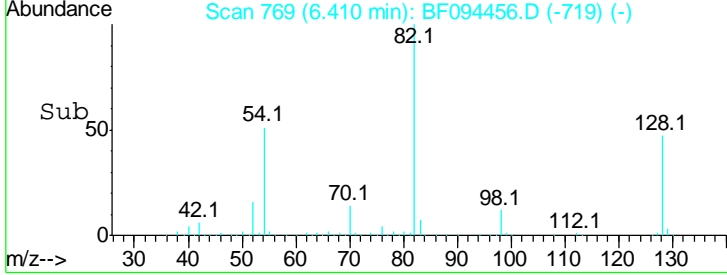
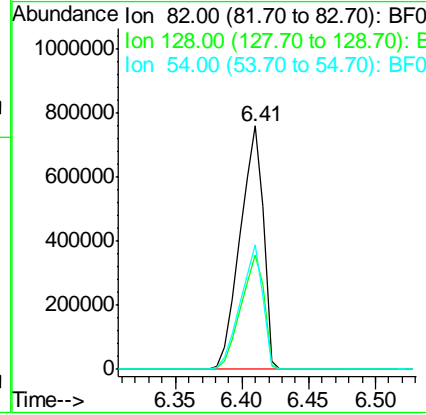
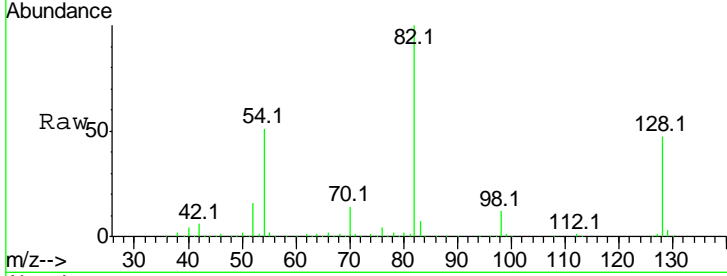
#23  
 Nitrobenzene-d5  
 Concen: 96.49 ng  
 RT: 6.41 min Scan# 769  
 Delta R.T. -0.01 min  
 Lab File: BF094456.D  
 Acq: 17 Apr 2017 18:23

**Instrument :**  
 BNA\_F  
**ClientSampled :**  
 E2-XY9-BASE

Tgt Ion	Resp	Lower	Upper
82	100		
128	46.9	34.0	51.0
54	51.1	42.2	63.2

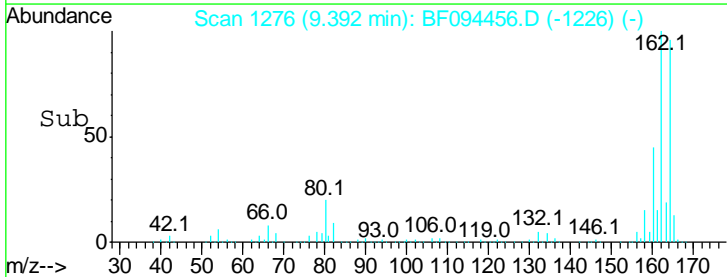
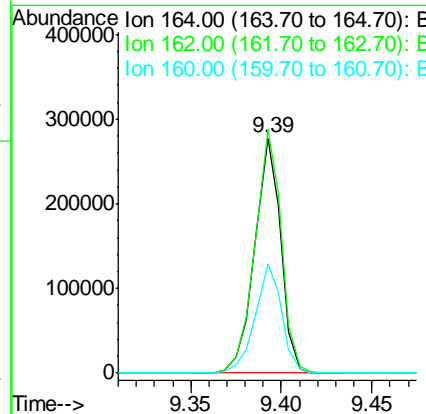
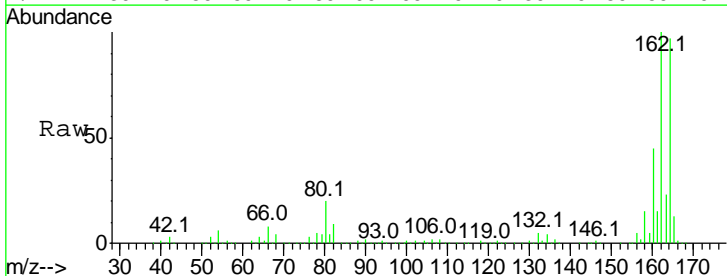
**Manual Integrations**  
**APPROVED**

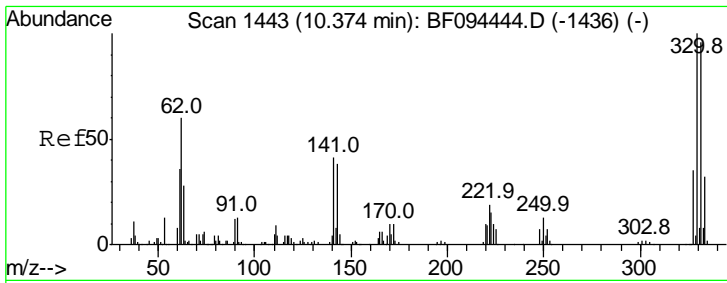
mohammad  
 4/18/2017 4:55:31 PM



#38  
 Acenaphthene-d10  
 Concen: 20.00 ng  
 RT: 9.39 min Scan# 1276  
 Delta R.T. -0.01 min  
 Lab File: BF094456.D  
 Acq: 17 Apr 2017 18:23

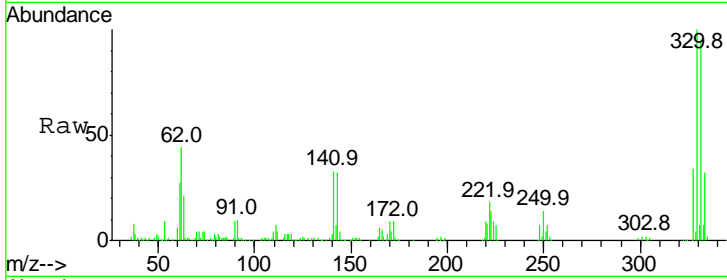
Tgt Ion	Resp	Lower	Upper
164	100		
162	103.6	82.6	123.8
160	46.6	36.2	54.2





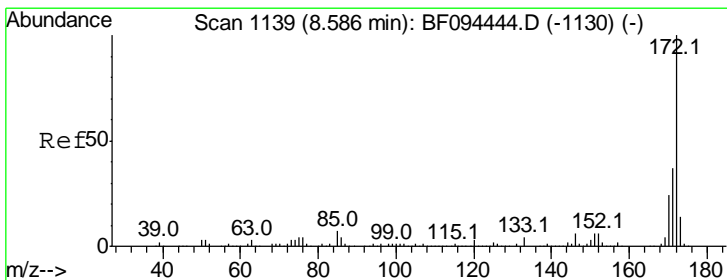
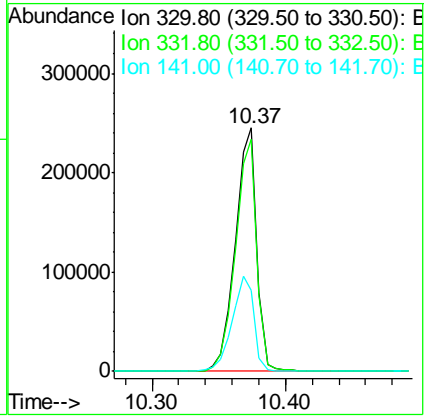
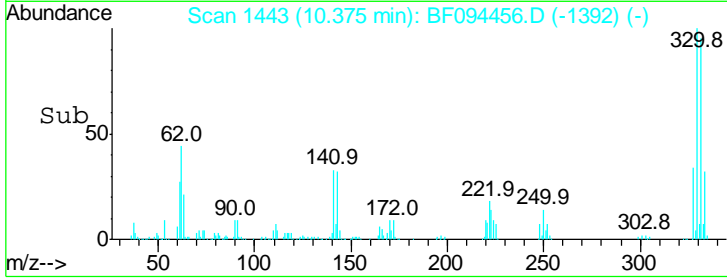
#41  
 2,4,6-Tribromophenol  
 Concen: 127.23 ng  
 RT: 10.37 min Scan# 1443  
 Delta R.T. 0.00 min  
 Lab File: BF094456.D  
 Acq: 17 Apr 2017 18:23

**Instrument :**  
 BNA\_F  
**ClientSampled :**  
 E2-XY9-BASE

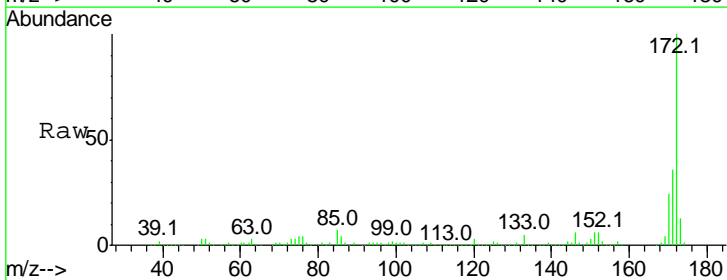


Tgt Ion	Resp	Lower	Upper
330	100		
332	95.2	76.6	115.0
141	40.5	31.4	47.2

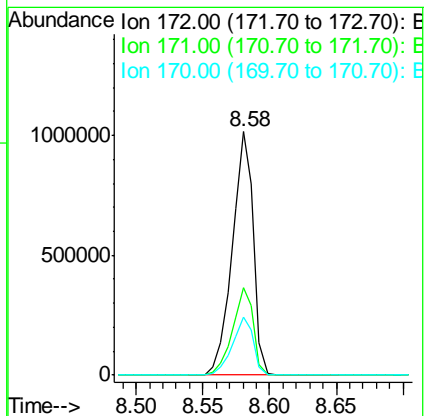
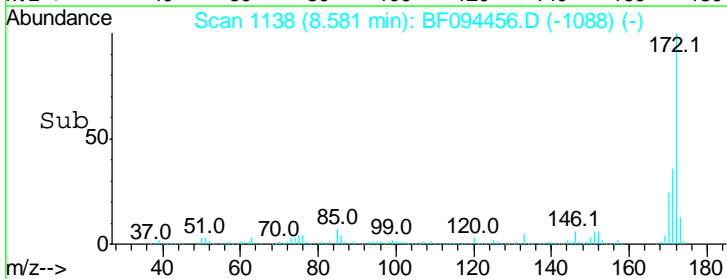
**Manual Integrations**  
**APPROVED**  
 mohammad  
 4/18/2017 4:55:31 PM

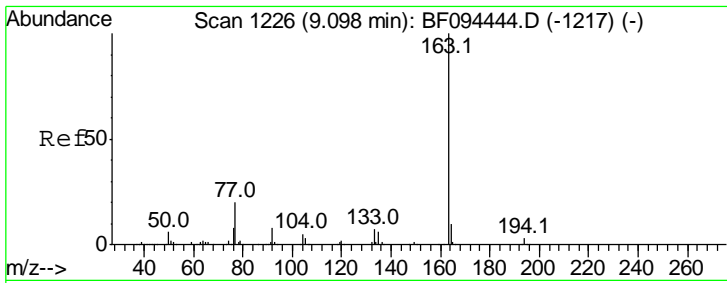


#44  
 2-Fluorobiphenyl  
 Concen: 59.49 ng  
 RT: 8.58 min Scan# 1138  
 Delta R.T. -0.01 min  
 Lab File: BF094456.D  
 Acq: 17 Apr 2017 18:23



Tgt Ion	Resp	Lower	Upper
172	100		
171	36.1	29.6	44.4
170	23.6	19.8	29.8





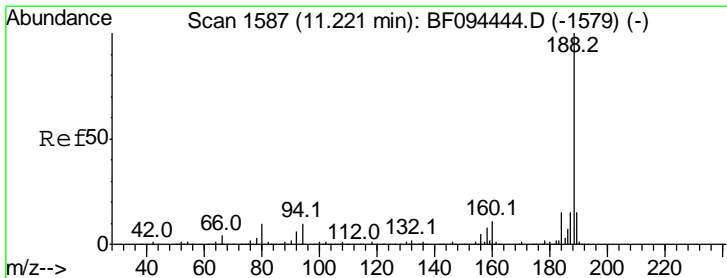
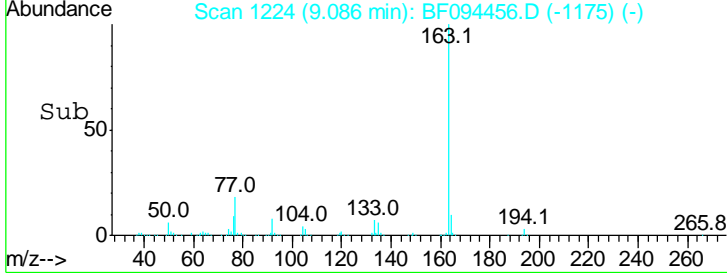
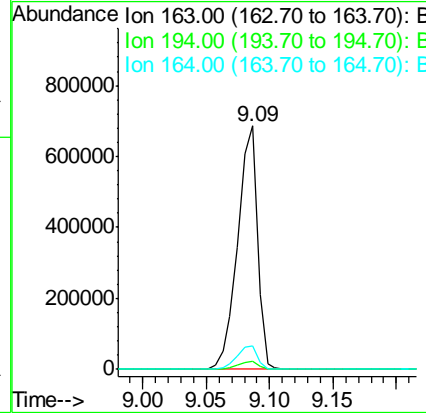
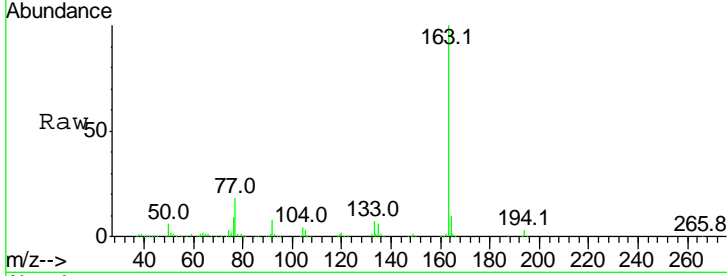
#49  
 Dimethylphthalate  
 Concen: 35.75 ng  
 RT: 9.09 min Scan# 1224  
 Delta R.T. -0.01 min  
 Lab File: BF094456.D  
 Acq: 17 Apr 2017 18:23

**Instrument :**  
 BNA\_F  
**ClientSampled :**  
 E2-XY9-BASE

Tgt Ion	Resp	Lower	Upper
163	100		
194	3.4	2.6	4.0
164	9.6	8.4	12.6

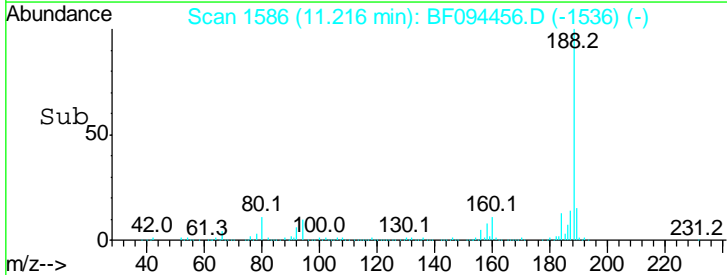
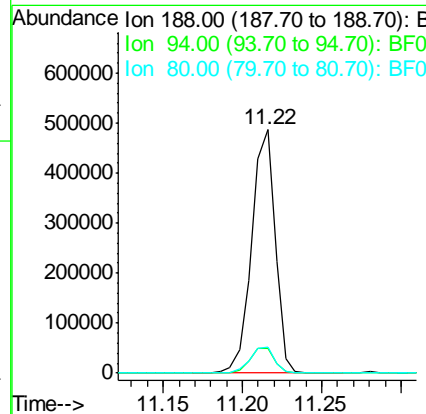
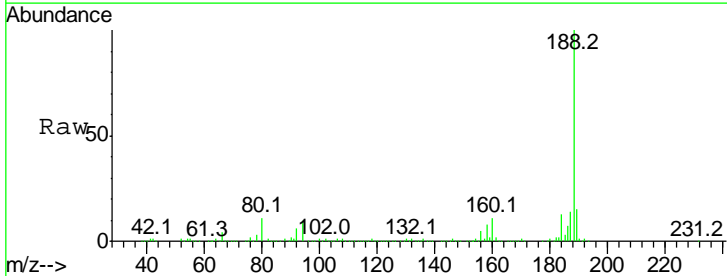
**Manual Integrations**  
**APPROVED**

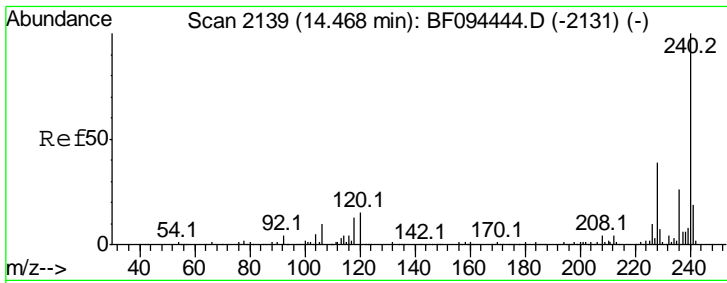
mohammad  
 4/18/2017 4:55:31 PM



#63  
 Phenanthrene-d10  
 Concen: 20.00 ng  
 RT: 11.22 min Scan# 1586  
 Delta R.T. -0.01 min  
 Lab File: BF094456.D  
 Acq: 17 Apr 2017 18:23

Tgt Ion	Resp	Lower	Upper
188	100		
94	10.2	9.4	14.2
80	10.5	10.2	15.2



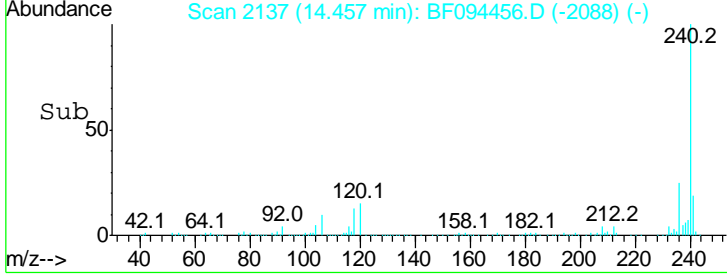
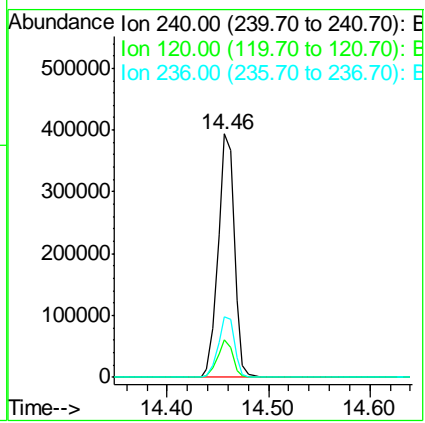
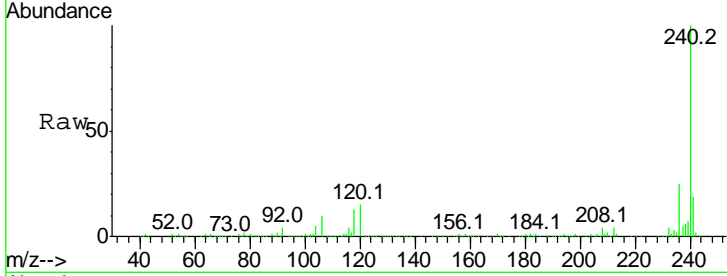


#75  
 Chrysene-d12  
 Concen: 20.00 ng  
 RT: 14.46 min Scan# 2137  
 Delta R.T. -0.01 min  
 Lab File: BF094456.D  
 Acq: 17 Apr 2017 18:23

**Instrument :**  
 BNA\_F  
**ClientSampled :**  
 E2-XY9-BASE

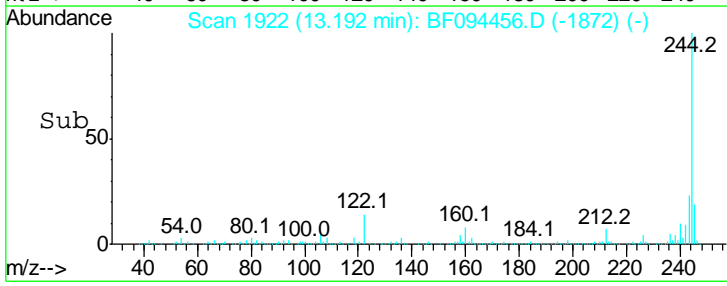
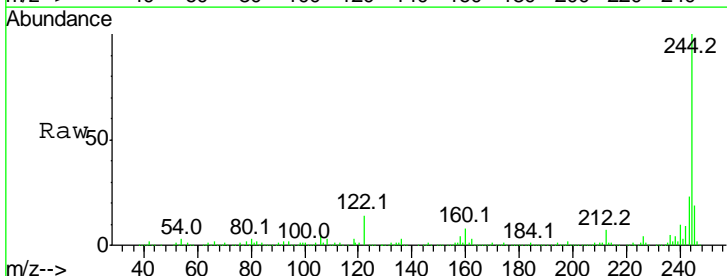
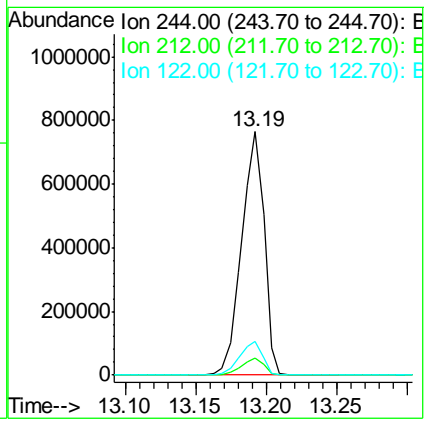
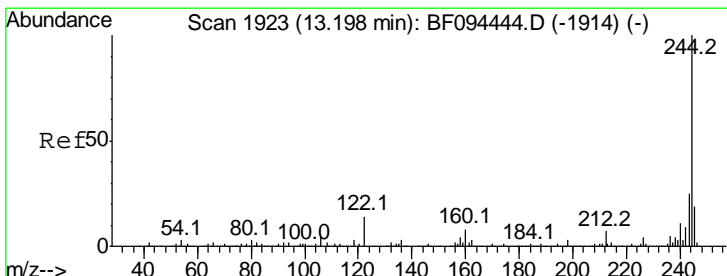
Tgt Ion	Resp	Lower	Upper
240	100		
120	15.5	5.8	8.8#
236	24.9	20.5	30.7

**Manual Integrations**  
**APPROVED**  
 mohammad  
 4/18/2017 4:55:31 PM

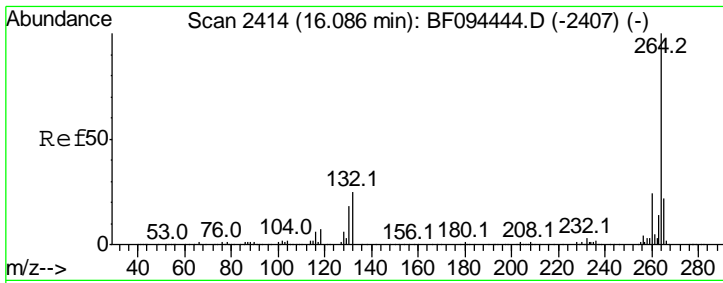


#78  
 Terphenyl-d14  
 Concen: 51.86 ng  
 RT: 13.19 min Scan# 1922  
 Delta R.T. -0.01 min  
 Lab File: BF094456.D  
 Acq: 17 Apr 2017 18:23

Tgt Ion	Resp	Lower	Upper
244	100		
212	7.2	6.0	9.0
122	13.7	10.3	15.5







#86  
 Perylene-d12  
 Concen: 20.00 ng  
 RT: 16.08 min Scan# 2413  
 Delta R.T. -0.01 min  
 Lab File: BF094456.D  
 Acq: 17 Apr 2017 18:23

**Instrument :**  
 BNA\_F  
**ClientSampleId :**  
 E2-XY9-BASE

Tot Ion	Ion	Resp	Lower	Upper
307115	264	100		
	260	23.5	19.5	29.3
	265	22.1	17.2	25.8

**Manual Integrations**  
**APPROVED**  
 mohammad  
 4/18/2017 4:55:31 PM

