

Data Path : Z:\svoasrv\HPCHEM1\BNA_F\Data\BF042121\
 Data File : BF123669.D
 Acq On : 21 Apr 2021 16:13
 Operator : JU/CG
 Sample : M2077-05
 Misc :
 ALS Vial : 11 Sample Multiplier: 1

Instrument :
 BNA_F
 ClientSampleId :
 SB-20-14.5-15.0-DUP

Integration Parameters: rteint.p
 Integrator: RTE
 Smoothing : ON
 Sampling : 1
 Start Thrs : 0.2
 Stop Thrs : 0
 Filtering: 5
 Min Area: 3 % of largest Peak
 Max Peaks: 100
 Peak Location: TOP

If leading or trailing edge < 100 prefer < Baseline drop else tangent >
 Peak separation: 5

Method : Z:\SVOASRV\HPCHEM1\BNA_F\METHODS\8270-BF041521.M
 Title : ASP BNA STANDARDS FOR 5 POINT CALIBRATION

Signal : TIC: BF123669.D\data.ms

peak #	R.T. min	first scan	max scan	last scan	PK TY	peak height	corr. area	corr. % max.	% of total
1	5.469	571	575	586	rBV	5751896	4927801	92.28%	5.996%
2	6.481	743	747	758	rBV	5165912	5034225	94.27%	6.125%
3	6.851	806	810	813	rBV	1546017	1325862	24.83%	1.613%
4	6.928	821	823	826	rVB	1111140	78559	1.47%	0.096%
5	7.028	837	840	844	rVB	725032	626494	11.73%	0.762%
6	7.410	901	905	908	rBV	3983663	3210063	60.11%	3.906%
7	7.498	916	920	924	rBV2	61923	61989	1.16%	0.075%
8	7.551	924	929	932	rBV	108266	131901	2.47%	0.160%
9	7.869	976	983	989	rBV4	99428	141996	2.66%	0.173%
10	8.134	1024	1028	1030	rBV	2114054	1730638	32.41%	2.106%
11	8.157	1030	1032	1035	rVV	1452750	1069570	20.03%	1.301%
12	8.204	1037	1040	1046	rVB	177913	156945	2.94%	0.191%
13	8.851	1146	1150	1153	rBV	1804450	1524575	28.55%	1.855%
14	8.898	1155	1158	1162	rVV	160996	152505	2.86%	0.186%
15	8.945	1162	1166	1170	rVB	1112430	941634	17.63%	1.146%
16	9.210	1207	1211	1215	rBV	5307782	4717335	88.34%	5.740%
17	9.310	1226	1228	1233	rVB	303685	252327	4.73%	0.307%
18	9.410	1242	1245	1250	rVB	106035	111516	2.09%	0.136%
19	9.481	1250	1257	1260	rBV	223718	324168	6.07%	0.394%
20	9.551	1264	1269	1271	rBV	340063	350951	6.57%	0.427%
21	9.575	1271	1273	1276	rVB	191572	156720	2.93%	0.191%
22	9.604	1276	1278	1282	rBV	208065	159488	2.99%	0.194%
23	9.669	1284	1289	1291	rBV2	112762	131386	2.46%	0.160%
24	9.751	1298	1303	1307	rVB2	124179	156250	2.93%	0.190%
25	9.892	1324	1327	1330	rVB	2149323	1634670	30.61%	1.989%
26	9.928	1330	1333	1336	rVB	1451678	1190477	22.29%	1.449%
27	9.957	1336	1338	1342	rVB	81456	57574	1.08%	0.070%
28	10.051	1349	1354	1356	rBV3	81251	93512	1.75%	0.114%
29	10.098	1358	1362	1365	rVB	1236333	998345	18.69%	1.215%
30	10.133	1366	1368	1372	rVB	92031	77686	1.45%	0.095%
31	10.210	1375	1381	1384	rBV3	89176	124005	2.32%	0.151%
32	10.239	1384	1386	1393	rVB4	71609	84664	1.59%	0.103%
33	10.298	1393	1396	1398	rBV2	70980	81560	1.53%	0.099%
34	10.322	1398	1400	1407	rVB5	54174	69118	1.29%	0.084%
35	10.439	1417	1420	1425	rVB	1623617	1356400	25.40%	1.650%
36	10.492	1425	1429	1430	rBV	84863	92520	1.73%	0.113%

Data Path : Z:\svoasrv\HPCHEM1\BNA_F\Data\BF042121\
 Data File : BF123669.D
 Acq On : 21 Apr 2021 16:13
 Operator : JU/CG
 Sample : M2077-05
 Misc :
 ALS Vial : 11 Sample Multiplier: 1

Instrument :
 BNA_F
 ClientSampleId :
 SB-20-14.5-15.0-DUP

Integration Parameters: rteint.p
 Integrator: RTE
 Smoothing : ON Filtering: 5
 Sampling : 1 Min Area: 3 % of largest Peak
 Start Thrs: 0.2 Max Peaks: 100
 Stop Thrs : 0 Peak Location: TOP

If leading or trailing edge < 100 prefer < Baseline drop else tangent >
 Peak separation: 5

Method : Z:\SVOASRV\HPCHEM1\BNA_F\METHODS\8270-BF041521.M
 Title : ASP BNA STANDARDS FOR 5 POINT CALIBRATION

37	10.510	1430	1432	1433	rVV	167355	153248	2.87%	0.186%
38	10.528	1433	1435	1437	rVV	245064	212730	3.98%	0.259%
39	10.557	1437	1440	1441	rVV2	126728	145231	2.72%	0.177%
40	10.575	1441	1443	1445	rVV2	160300	162527	3.04%	0.198%
41	10.598	1445	1447	1451	rVB	357484	279680	5.24%	0.340%
42	10.645	1451	1455	1457	rBV	81174	93806	1.76%	0.114%
43	10.681	1457	1461	1465	rVV	3754309	3432361	64.27%	4.176%
44	10.716	1465	1467	1472	rVB3	85818	117472	2.20%	0.143%
45	10.792	1475	1480	1486	rBV5	76585	143822	2.69%	0.175%
46	10.875	1490	1494	1497	rBV2	68575	84351	1.58%	0.103%
47	10.969	1505	1510	1511	rBV3	124607	164992	3.09%	0.201%
48	10.992	1511	1514	1516	rVB2	182468	192146	3.60%	0.234%
49	11.075	1525	1528	1530	rVB2	79674	64752	1.21%	0.079%
50	11.116	1530	1535	1536	rBV4	80873	89166	1.67%	0.108%
51	11.133	1536	1538	1541	rVB2	114834	128389	2.40%	0.156%
52	11.233	1551	1555	1558	rBV2	95317	154897	2.90%	0.188%
53	11.275	1558	1562	1568	rVB2	383638	452651	8.48%	0.551%
54	11.380	1577	1580	1582	rBV	1755977	1620320	30.34%	1.972%
55	11.410	1582	1585	1588	rVV	4077932	3369136	63.09%	4.099%
56	11.457	1588	1593	1596	rVB	515843	535524	10.03%	0.652%
57	11.492	1596	1599	1602	rBV	193077	177332	3.32%	0.216%
58	11.610	1613	1619	1622	rBV3	407232	554571	10.38%	0.675%
59	11.680	1628	1631	1634	rBV2	102637	103726	1.94%	0.126%
60	11.716	1634	1637	1642	rVV6	51696	70467	1.32%	0.086%
61	11.886	1663	1666	1668	rBV	315714	236703	4.43%	0.288%
62	11.916	1668	1671	1674	rVB	455460	398479	7.46%	0.485%
63	11.963	1676	1679	1681	rVB	130224	118802	2.22%	0.145%
64	11.998	1681	1685	1688	rBV2	607338	621751	11.64%	0.757%
65	12.022	1688	1689	1691	rVB	142575	72633	1.36%	0.088%
66	12.092	1698	1701	1704	rBV4	78325	103284	1.93%	0.126%
67	12.180	1713	1716	1719	rBV	204565	191736	3.59%	0.233%
68	12.610	1785	1789	1792	rBV	1893207	1611553	30.18%	1.961%
69	12.645	1792	1795	1797	rVV2	295454	247085	4.63%	0.301%
70	12.827	1821	1826	1829	rBV2	1212023	1324011	24.79%	1.611%
71	12.974	1847	1851	1854	rVB	3883933	3543013	66.35%	4.311%
72	13.157	1879	1882	1885	rVB	212109	201481	3.77%	0.245%
73	13.204	1888	1890	1891	rVV2	99546	77972	1.46%	0.095%
74	13.222	1891	1893	1896	rVB	209768	172401	3.23%	0.210%
75	13.551	1947	1949	1954	rVB	103007	96012	1.80%	0.117%
76	13.880	2002	2005	2007	rBV	170785	158810	2.97%	0.193%

Data Path : Z:\svoasrv\HPCHEM1\BNA_F\Data\BF042121\
 Data File : BF123669.D
 Acq On : 21 Apr 2021 16:13
 Operator : JU/CG
 Sample : M2077-05
 Misc :
 ALS Vial : 11 Sample Multiplier: 1

Instrument :
 BNA_F
 ClientSampleId :
 SB-20-14.5-15.0-DUP

Integration Parameters: rteint.p
 Integrator: RTE
 Smoothing : ON Filtering: 5
 Sampling : 1 Min Area: 3 % of largest Peak
 Start Thrs: 0.2 Max Peaks: 100
 Stop Thrs : 0 Peak Location: TOP

If leading or trailing edge < 100 prefer < Baseline drop else tangent >
 Peak separation: 5

Method : Z:\SVOASRV\HPCHEM1\BNA_F\METHODS\8270-BF041521.M
 Title : ASP BNA STANDARDS FOR 5 POINT CALIBRATION

77	13.910	2007	2010	2023	rVB6	155370	425638	7.97%	0.518%
78	14.027	2025	2030	2033	rVV2	1488621	1572024	29.44%	1.913%
79	14.051	2033	2034	2037	rVB	256369	161310	3.02%	0.196%
80	14.133	2046	2048	2052	rVB2	78598	59938	1.12%	0.073%
81	14.198	2056	2059	2061	rVV	86763	79266	1.48%	0.096%
82	14.321	2076	2080	2083	rBV	890863	840019	15.73%	1.022%
83	14.504	2108	2111	2115	rVB	257234	238200	4.46%	0.290%
84	14.816	2161	2164	2169	rVB	97008	101323	1.90%	0.123%
85	14.963	2185	2189	2198	rVB	1493023	1519433	28.45%	1.849%
86	15.074	2205	2208	2211	rBV2	161533	223698	4.19%	0.272%
87	15.157	2219	2222	2225	rBV	249792	262458	4.91%	0.319%
88	15.380	2257	2260	2266	rVB2	107523	161084	3.02%	0.196%
89	15.439	2267	2270	2277	rVB	143543	195074	3.65%	0.237%
90	15.510	2277	2282	2286	rBV	1023195	1293486	24.22%	1.574%
91	15.751	2318	2323	2332	rVB	818181	1098781	20.58%	1.337%
92	15.986	2359	2363	2370	rVB	419381	630501	11.81%	0.767%
93	16.804	2496	2502	2512	rBV2	575529	1103597	20.67%	1.343%
94	17.651	2638	2646	2664	rBV2	321401	1683508	31.52%	2.048%
95	17.821	2669	2675	2688	rVB4	518717	1298619	24.32%	1.580%
96	18.004	2700	2706	2714	rVB4	363873	837037	15.67%	1.018%
97	18.186	2728	2737	2758	rVB5	1390704	5035617	94.30%	6.127%
98	18.474	2775	2786	2803	rBV5	388234	2576614	48.25%	3.135%
99	18.709	2814	2826	2838	rVB2	1651202	5340249	100.00%	6.498%
100	18.939	2858	2865	2870	rBV9	166239	434927	8.14%	0.529%

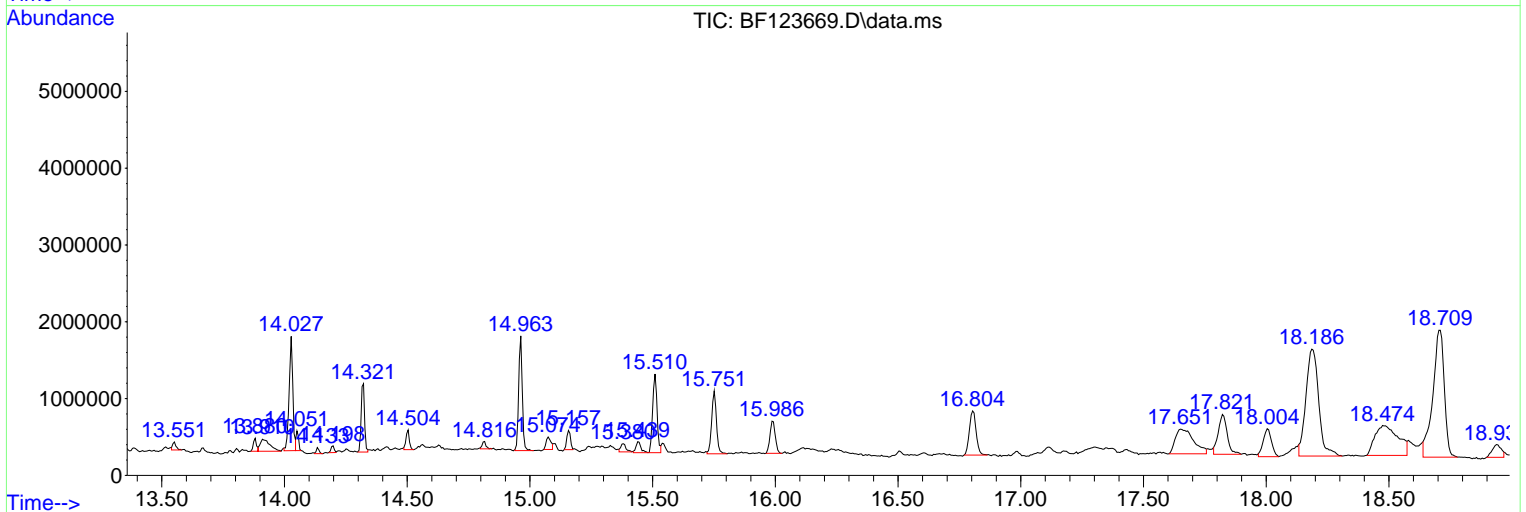
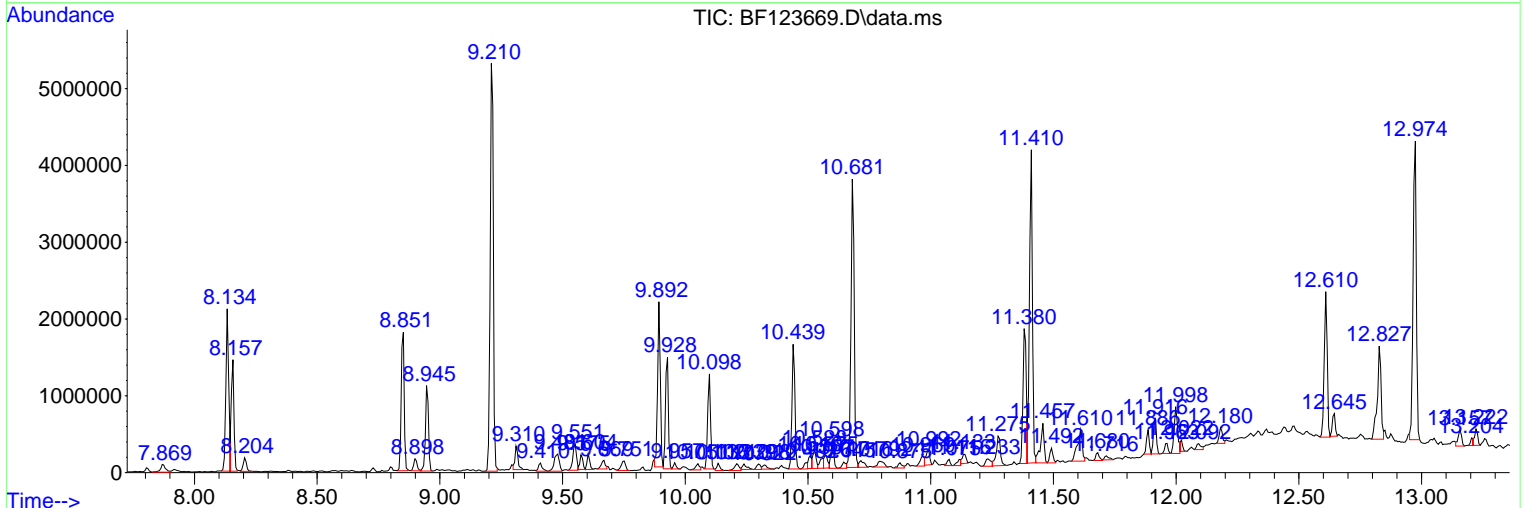
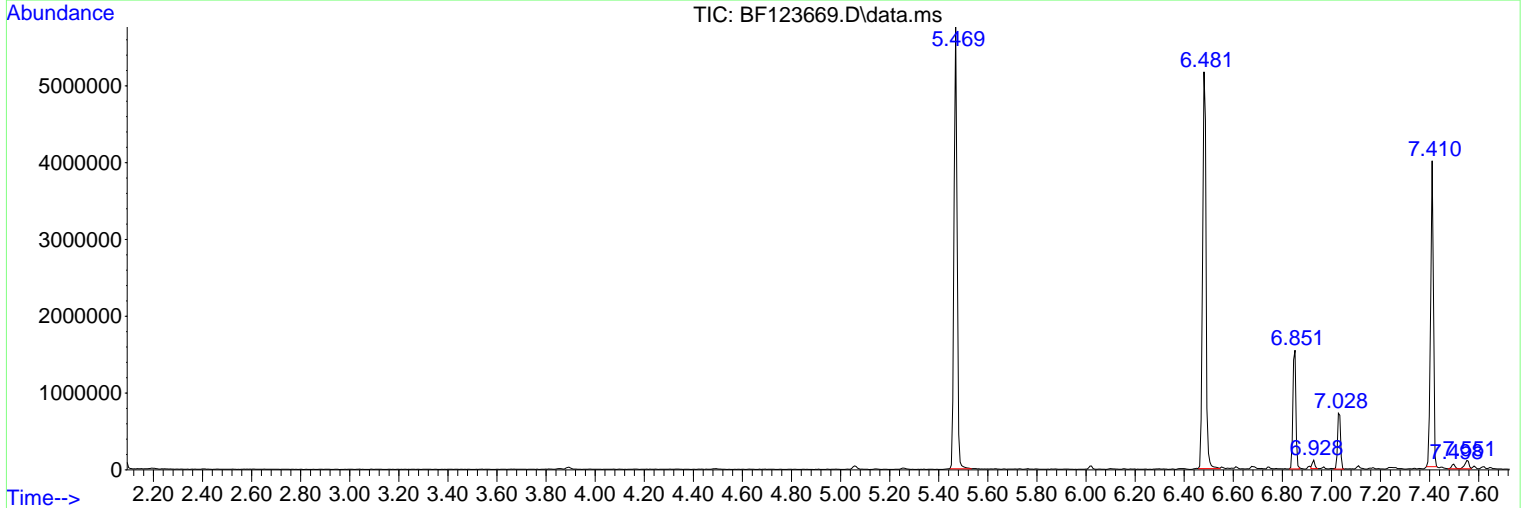
Sum of corrected areas: 82186853

Data Path : Z:\svoasrv\HPCHEM1\BNA_F\Data\BF042121\
 Data File : BF123669.D
 Acq On : 21 Apr 2021 16:13
 Operator : JU/CG
 Sample : M2077-05
 Misc :
 ALS Vial : 11 Sample Multiplier: 1

Instrument :
 BNA_F
ClientSampleId :
 SB-20-14.5-15.0-DUP

Quant Method : Z:\SVOASRV\HPCHEM1\BNA_F\METHODS\8270-BF041521.M
 Quant Title : ASP BNA STANDARDS FOR 5 POINT CALIBRATION

TIC Library : C:\DATABASE\NIST11.L
 TIC Integration Parameters: LSCINT.P



Data Path : Z:\svoasrv\HPCHEM1\BNA_F\Data\BF042121\
 Data File : BF123669.D
 Acq On : 21 Apr 2021 16:13
 Operator : JU/CG
 Sample : M2077-05
 Misc :
 ALS Vial : 11 Sample Multiplier: 1

Instrument :
 BNA_F
 ClientSampleId :
 SB-20-14.5-15.0-DUP

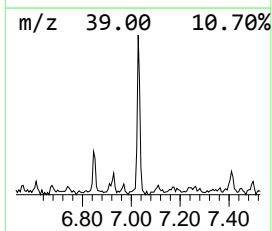
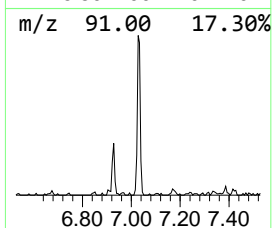
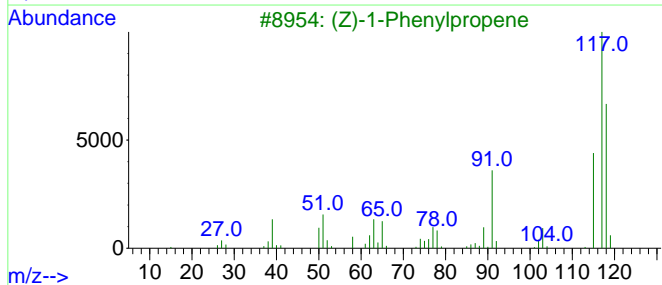
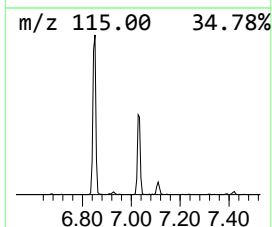
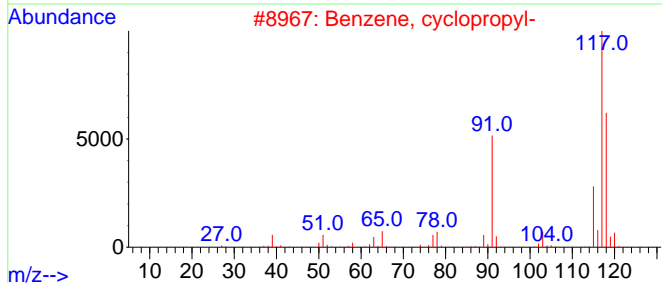
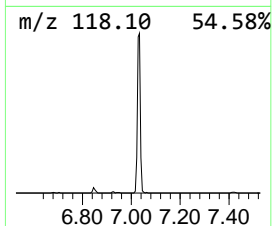
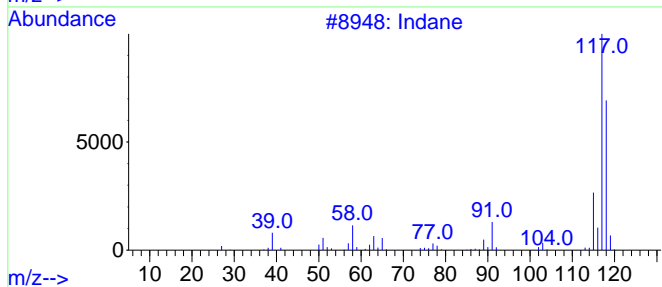
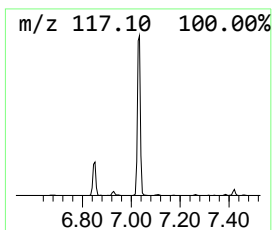
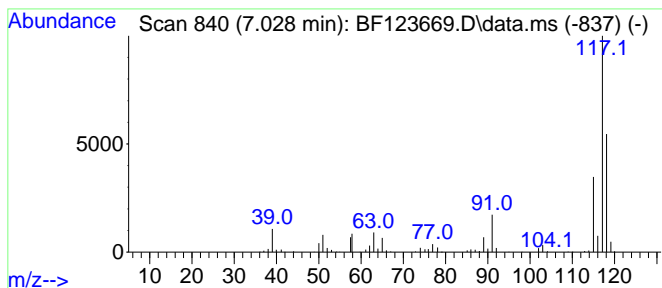
Quant Method : Z:\SVOASRV\HPCHEM1\BNA_F\METHODS\8270-BF041521.M
 Quant Title : ASP BNA STANDARDS FOR 5 POINT CALIBRATION

TIC Library : C:\DATABASE\NIST11.L
 TIC Integration Parameters: LSCINT.P

 Peak Number 1 Indane Concentration Rank 12

R.T.	EstConc	Area	Relative to ISTD	R.T.
7.028	9.45 ng	626494	1,4-Dichlorobenzene-d4	6.851

Hit#	of	5	Tentative ID	MW	MolForm	CAS#	Qual
1			Indane	118	C9H10	000496-11-7	94
2			Benzene, cyclopropyl-	118	C9H10	000873-49-4	83
3			(Z)-1-Phenylpropene	118	C9H10	000766-90-5	74
4			Benzene, 2-propenyl-	118	C9H10	000300-57-2	72
5			Tetracyclo[3.3.1.0(2,8).0(4,6)]-...	118	C9H10	1000191-13-7	72



Data Path : Z:\svoasrv\HPCHEM1\BNA_F\Data\BF042121\
 Data File : BF123669.D
 Acq On : 21 Apr 2021 16:13
 Operator : JU/CG
 Sample : M2077-05
 Misc :
 ALS Vial : 11 Sample Multiplier: 1

Instrument :
 BNA_F
 ClientSampleId :
 SB-20-14.5-15.0-DUP

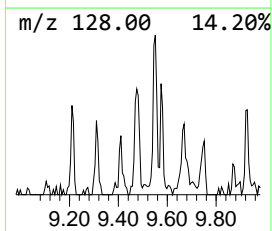
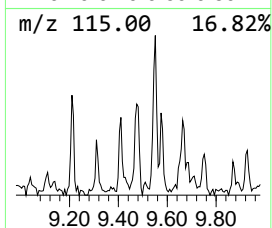
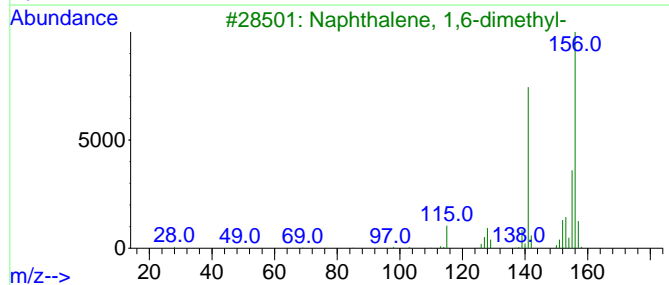
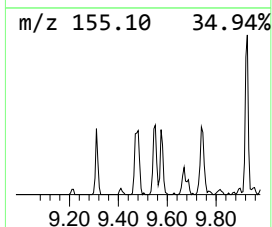
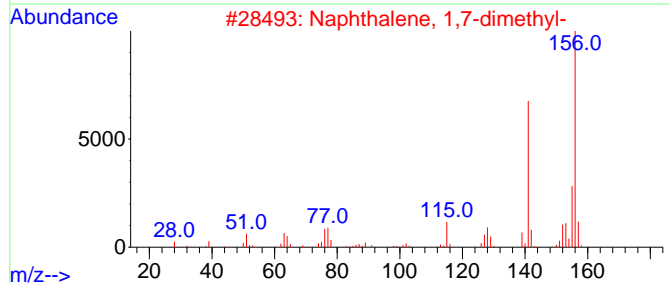
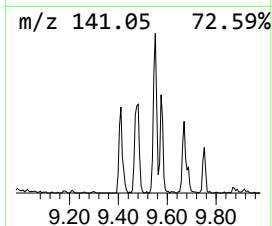
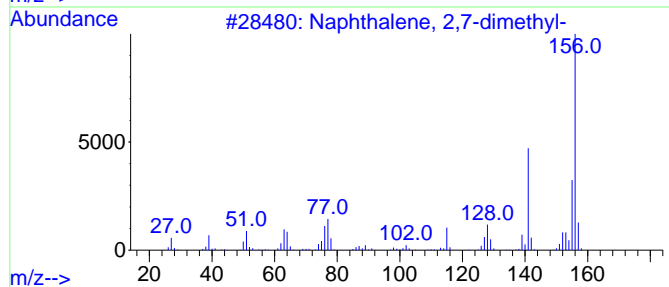
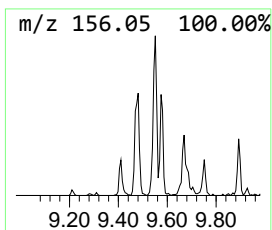
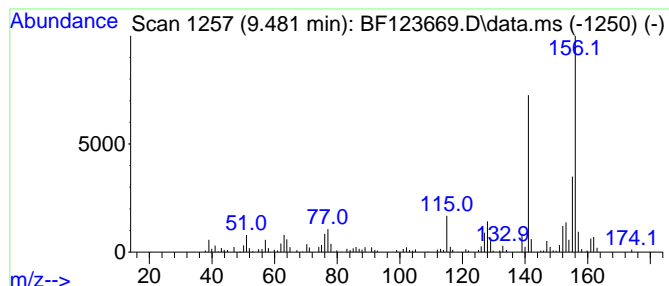
Quant Method : Z:\SVOASRV\HPCHEM1\BNA_F\METHODS\8270-BF041521.M
 Quant Title : ASP BNA STANDARDS FOR 5 POINT CALIBRATION

TIC Library : C:\DATABASE\NIST11.L
 TIC Integration Parameters: LSCINT.P

 Peak Number 2 Naphthalene, 2,7-dimethyl- Concentration Rank 20

R.T.	EstConc	Area	Relative to ISTD	R.T.
9.481	3.97 ng	324168	Acenaphthene-d10	9.892

Hit#	of	5	Tentative ID	MW	MolForm	CAS#	Qual
1			Naphthalene, 2,7-dimethyl-	156	C12H12	000582-16-1	96
2			Naphthalene, 1,7-dimethyl-	156	C12H12	000575-37-1	96
3			Naphthalene, 1,6-dimethyl-	156	C12H12	000575-43-9	95
4			Naphthalene, 1,3-dimethyl-	156	C12H12	000575-41-7	95
5			Naphthalene, 2,6-dimethyl-	156	C12H12	000581-42-0	94



Data Path : Z:\svoasrv\HPCHEM1\BNA_F\Data\BF042121\
 Data File : BF123669.D
 Acq On : 21 Apr 2021 16:13
 Operator : JU/CG
 Sample : M2077-05
 Misc :
 ALS Vial : 11 Sample Multiplier: 1

Instrument :
 BNA_F
 ClientSampleId :
 SB-20-14.5-15.0-DUP

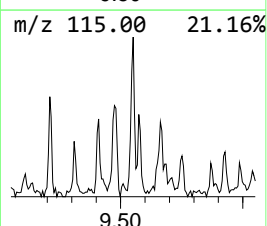
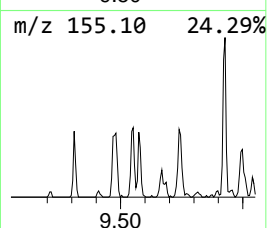
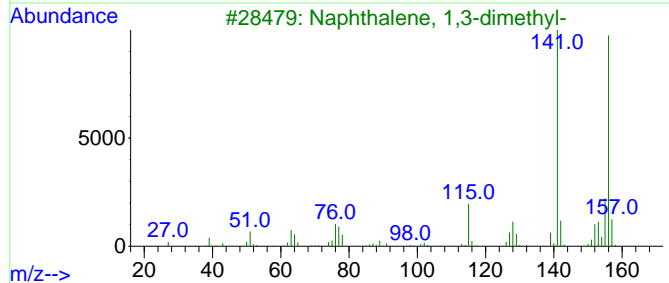
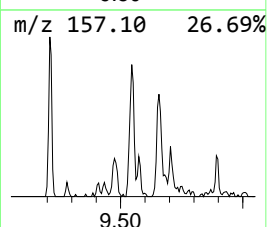
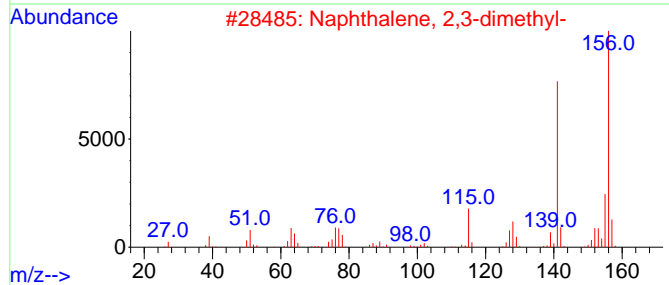
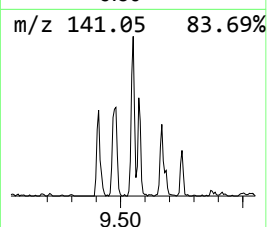
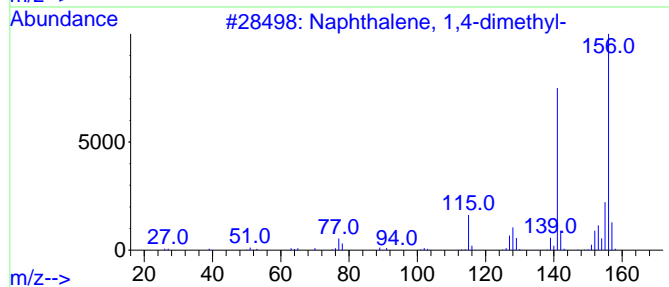
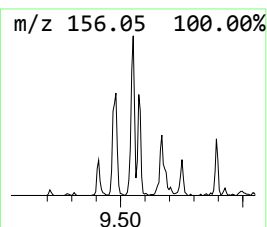
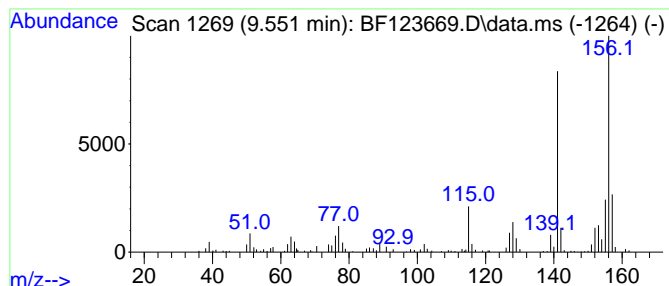
Quant Method : Z:\SVOASRV\HPCHEM1\BNA_F\METHODS\8270-BF041521.M
 Quant Title : ASP BNA STANDARDS FOR 5 POINT CALIBRATION

TIC Library : C:\DATABASE\NIST11.L
 TIC Integration Parameters: LSCINT.P

 Peak Number 3 Naphthalene, 1,4-dimethyl- Concentration Rank 18

R.T.	EstConc	Area	Relative to ISTD	R.T.
9.551	4.29 ng	350951	Acenaphthene-d10	9.892

Hit#	of	5	Tentative ID	MW	MolForm	CAS#	Qual
1			Naphthalene, 1,4-dimethyl-	156	C12H12	000571-58-4	96
2			Naphthalene, 2,3-dimethyl-	156	C12H12	000581-40-8	96
3			Naphthalene, 1,3-dimethyl-	156	C12H12	000575-41-7	96
4			Naphthalene, 2,7-dimethyl-	156	C12H12	000582-16-1	95
5			Naphthalene, 1,6-dimethyl-	156	C12H12	000575-43-9	95



Data Path : Z:\svoasrv\HPCHEM1\BNA_F\Data\BF042121\
 Data File : BF123669.D
 Acq On : 21 Apr 2021 16:13
 Operator : JU/CG
 Sample : M2077-05
 Misc :
 ALS Vial : 11 Sample Multiplier: 1

Instrument :
 BNA_F
 ClientSampleId :
 SB-20-14.5-15.0-DUP

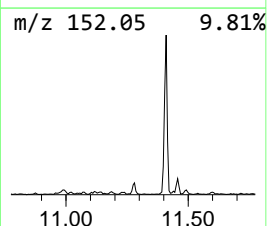
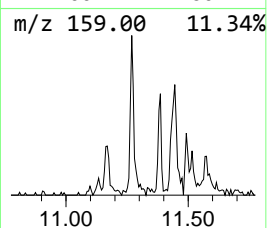
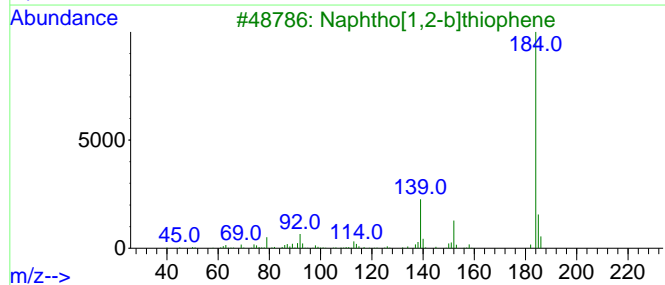
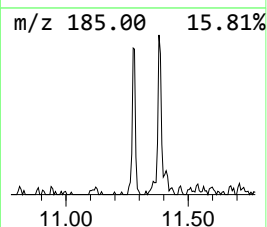
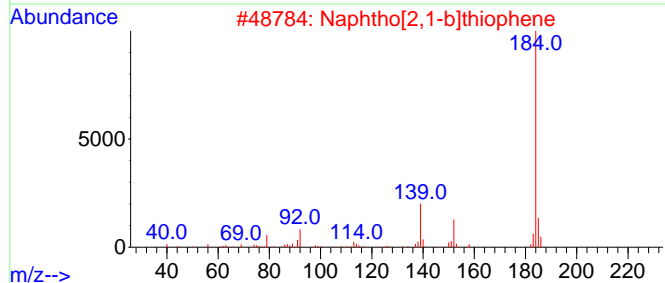
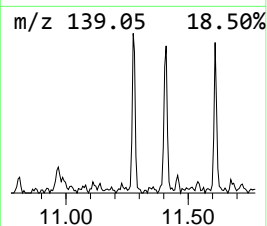
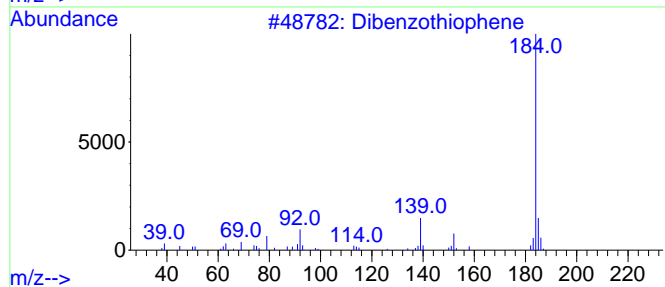
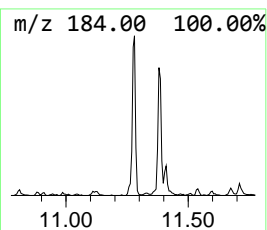
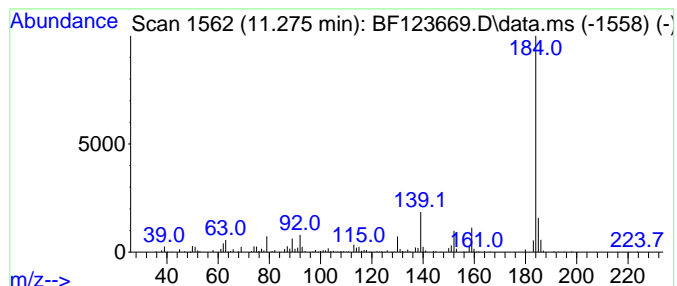
Quant Method : Z:\SVOASRV\HPCHEM1\BNA_F\METHODS\8270-BF041521.M
 Quant Title : ASP BNA STANDARDS FOR 5 POINT CALIBRATION

TIC Library : C:\DATABASE\NIST11.L
 TIC Integration Parameters: LSCINT.P

 Peak Number 4 Dibenzothiophene Concentration Rank 15

R.T.	EstConc	Area	Relative to ISTD	R.T.
11.275	5.59 ng	452651	Phenanthrene-d10	11.381

Hit#	of 5	Tentative ID	MW	MolForm	CAS#	Qual
1		Dibenzothiophene	184	C12H8S	000132-65-0	95
2		Naphtho[2,1-b]thiophene	184	C12H8S	000233-02-3	94
3		Naphtho[1,2-b]thiophene	184	C12H8S	000234-41-3	91
4		Naphtho[2,3-b]thiophene	184	C12H8S	000268-77-9	87
5		Azuleno(2,1-b)thiophene	184	C12H8S	000248-13-5	80



Data Path : Z:\svoasrv\HPCHEM1\BNA_F\Data\BF042121\
 Data File : BF123669.D
 Acq On : 21 Apr 2021 16:13
 Operator : JU/CG
 Sample : M2077-05
 Misc :
 ALS Vial : 11 Sample Multiplier: 1

Instrument :
 BNA_F
 ClientSampleId :
 SB-20-14.5-15.0-DUP

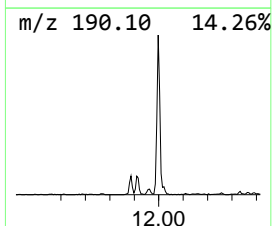
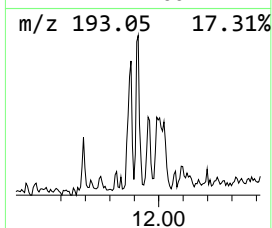
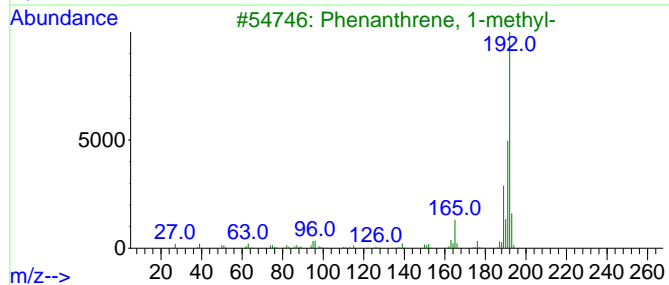
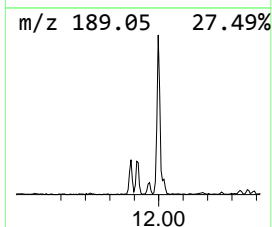
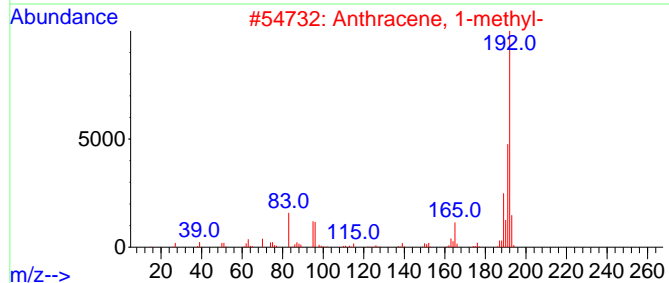
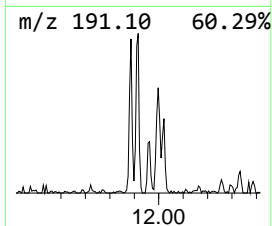
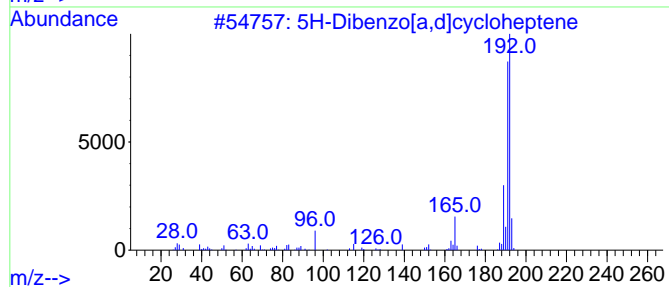
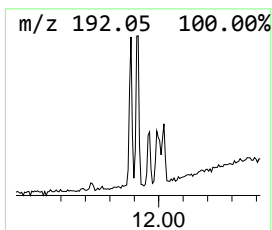
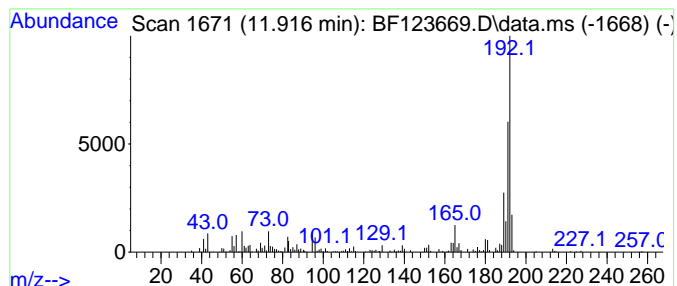
Quant Method : Z:\SVOASRV\HPCHEM1\BNA_F\METHODS\8270-BF041521.M
 Quant Title : ASP BNA STANDARDS FOR 5 POINT CALIBRATION

TIC Library : C:\DATABASE\NIST11.L
 TIC Integration Parameters: LSCINT.P

 Peak Number 5 5H-Dibenzo[a,d]cycloheptene Concentration Rank 17

R.T.	EstConc	Area	Relative to ISTD	R.T.
11.916	4.92 ng	398479	Phenanthrene-d10	11.381

Hit#	of 5	Tentative ID	MW	MolForm	CAS#	Qual
1		5H-Dibenzo[a,d]cycloheptene	192	C15H12	000256-81-5	94
2		Anthracene, 1-methyl-	192	C15H12	000610-48-0	93
3		Phenanthrene, 1-methyl-	192	C15H12	000832-69-9	93
4		Anthracene, 2-methyl-	192	C15H12	000613-12-7	91
5		Anthracene, 9-methyl-	192	C15H12	000779-02-2	89



Data Path : Z:\svoasrv\HPCHEM1\BNA_F\Data\BF042121\
 Data File : BF123669.D
 Acq On : 21 Apr 2021 16:13
 Operator : JU/CG
 Sample : M2077-05
 Misc :
 ALS Vial : 11 Sample Multiplier: 1

Instrument :
 BNA_F
 ClientSampleId :
 SB-20-14.5-15.0-DUP

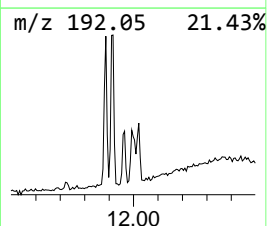
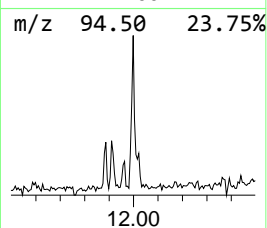
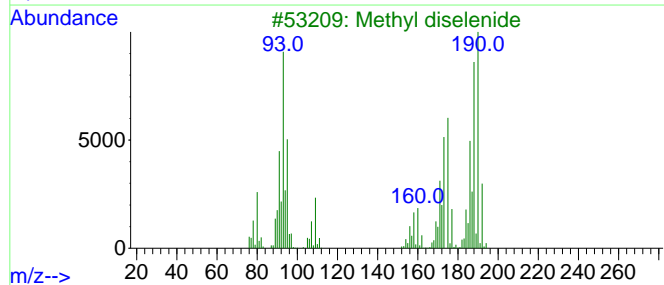
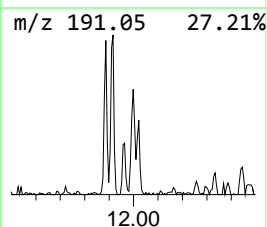
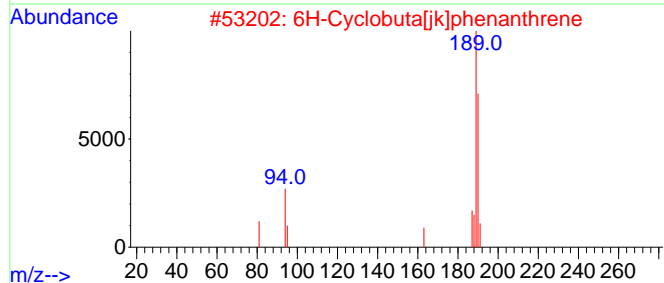
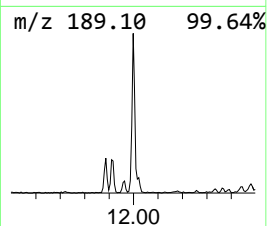
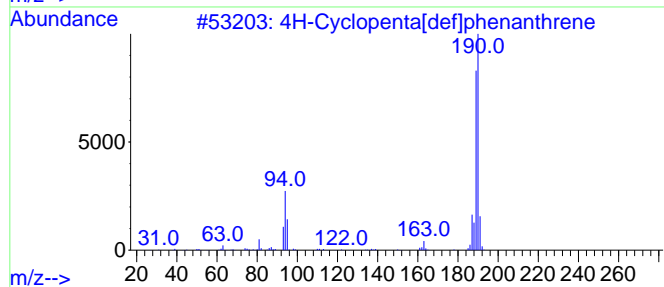
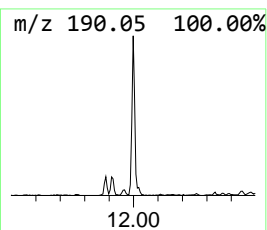
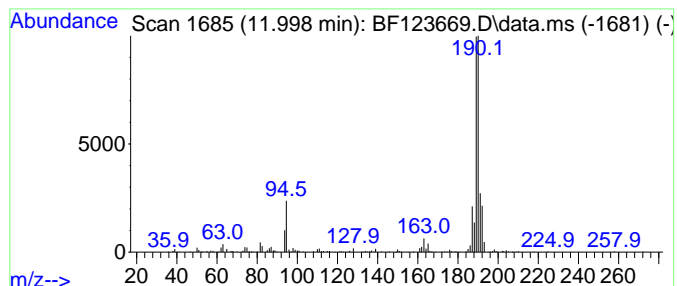
Quant Method : Z:\SVOASRV\HPCHEM1\BNA_F\METHODS\8270-BF041521.M
 Quant Title : ASP BNA STANDARDS FOR 5 POINT CALIBRATION

TIC Library : C:\DATABASE\NIST11.L
 TIC Integration Parameters: LSCINT.P

 Peak Number 6 4H-Cyclopenta[def]phenanthrene Concentration Rank 13

R.T.	EstConc	Area	Relative to ISTD	R.T.
11.998	7.67 ng	621751	Phenanthrene-d10	11.381

Hit#	of	5	Tentative ID	MW	MolForm	CAS#	Qual
1			4H-Cyclopenta[def]phenanthrene	190	C15H10	000203-64-5	94
2			6H-Cyclobuta[jk]phenanthrene	190	C15H10	083469-43-6	56
3			Methyl diselenide	190	C2H6Se2	007101-31-7	49
4			2,2'-Bis(4,5-dimethylimidazole)	190	C10H14N4	069286-06-2	45
5			1,4-Naphthalenedione, 2,5-dihydr...	190	C10H6O4	004923-55-1	25



Data Path : Z:\svoasrv\HPCHEM1\BNA_F\Data\BF042121\
 Data File : BF123669.D
 Acq On : 21 Apr 2021 16:13
 Operator : JU/CG
 Sample : M2077-05
 Misc :
 ALS Vial : 11 Sample Multiplier: 1

Instrument :
 BNA_F
 ClientSampleId :
 SB-20-14.5-15.0-DUP

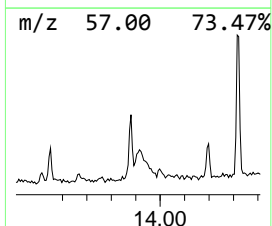
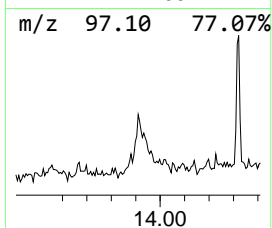
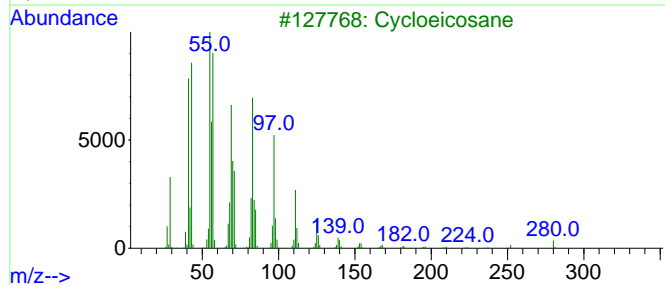
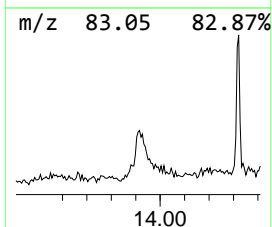
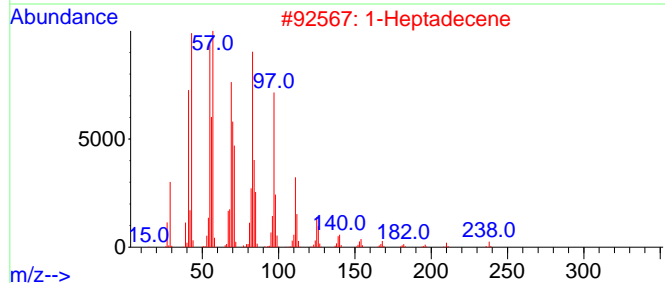
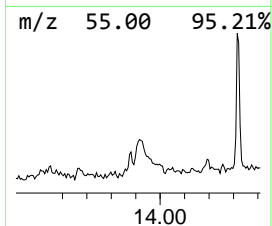
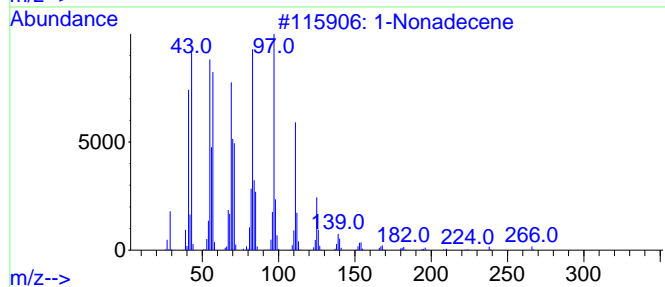
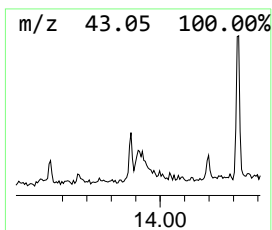
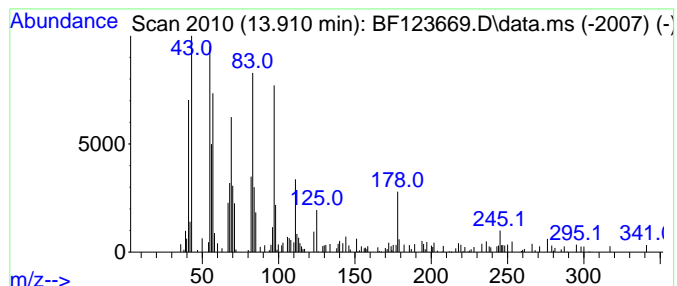
Quant Method : Z:\SVOASRV\HPCHEM1\BNA_F\METHODS\8270-BF041521.M
 Quant Title : ASP BNA STANDARDS FOR 5 POINT CALIBRATION

TIC Library : C:\DATABASE\NIST11.L
 TIC Integration Parameters: LSCINT.P

 Peak Number 7 1-Nonadecene Concentration Rank 16

R.T.	EstConc	Area	Relative to ISTD	R.T.
13.910	5.42 ng	425638	Chrysene-d12	14.027

Hit#	of	Tentative ID	MW	MolForm	CAS#	Qual
1	5	1-Nonadecene	266	C19H38	018435-45-5	87
2		1-Heptadecene	238	C17H34	006765-39-5	87
3		Cycloeicosane	280	C20H40	000296-56-0	87
4		n-Nonadecanol-1	284	C19H40O	001454-84-8	74
5		1-Hexadecanol	242	C16H34O	036653-82-4	70



Data Path : Z:\svoasrv\HPCHEM1\BNA_F\Data\BF042121\
 Data File : BF123669.D
 Acq On : 21 Apr 2021 16:13
 Operator : JU/CG
 Sample : M2077-05
 Misc :
 ALS Vial : 11 Sample Multiplier: 1

Instrument :
 BNA_F
 ClientSampleId :
 SB-20-14.5-15.0-DUP

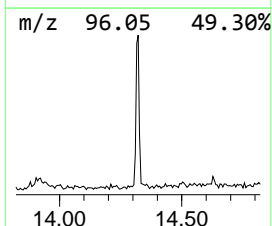
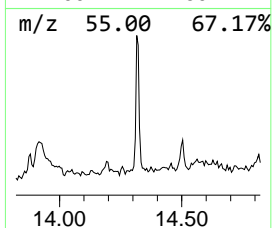
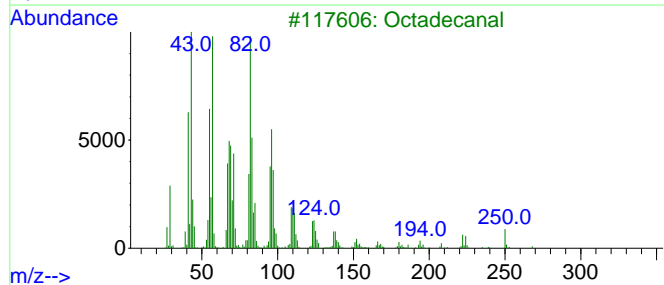
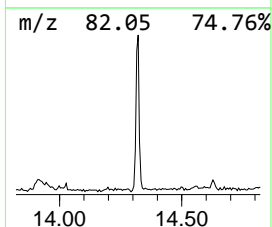
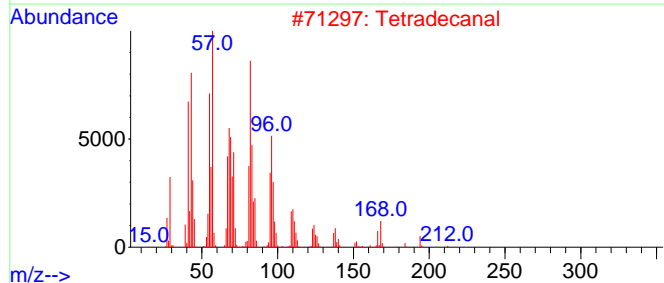
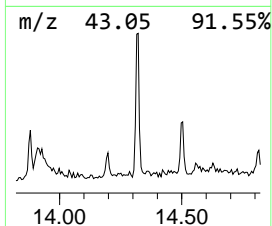
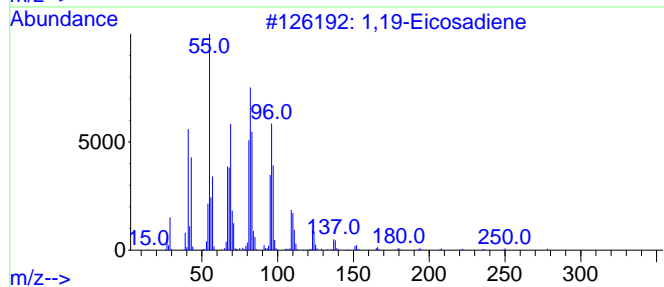
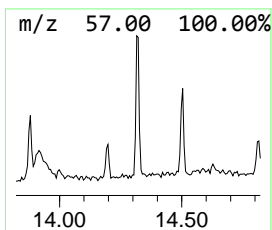
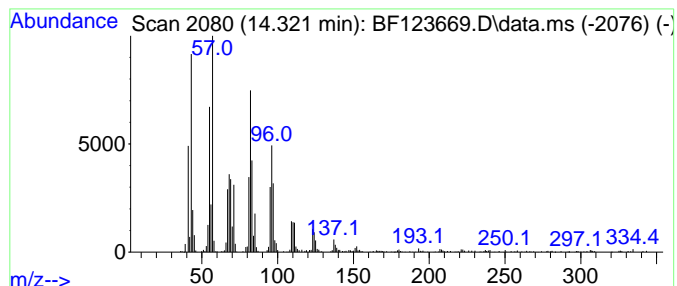
Quant Method : Z:\SVOASRV\HPCHEM1\BNA_F\METHODS\8270-BF041521.M
 Quant Title : ASP BNA STANDARDS FOR 5 POINT CALIBRATION

TIC Library : C:\DATABASE\NIST11.L
 TIC Integration Parameters: LSCINT.P

 Peak Number 8 1,19-Eicosadiene Concentration Rank 10

R.T.	EstConc	Area	Relative to ISTD	R.T.
14.321	10.69 ng	840019	Chrysene-d12	14.027

Hit#	of	5	Tentative ID	MW	MolForm	CAS#	Qual
1			1,19-Eicosadiene	278	C20H38	014811-95-1	98
2			Tetradecanal	212	C14H28O	000124-25-4	95
3			Octadecanal	268	C18H36O	000638-66-4	91
4			Oxirane, hexadecyl-	268	C18H36O	007390-81-0	91
5			17-Octadecenal	266	C18H34O	056554-86-0	91



Data Path : Z:\svoasrv\HPCHEM1\BNA_F\Data\BF042121\
 Data File : BF123669.D
 Acq On : 21 Apr 2021 16:13
 Operator : JU/CG
 Sample : M2077-05
 Misc :
 ALS Vial : 11 Sample Multiplier: 1

Instrument :
 BNA_F
 ClientSampleId :
 SB-20-14.5-15.0-DUP

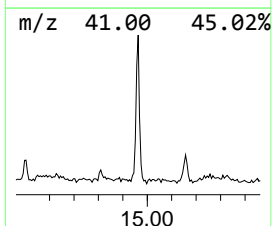
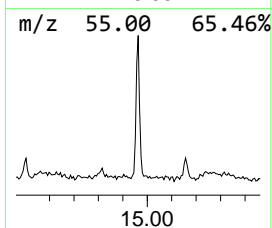
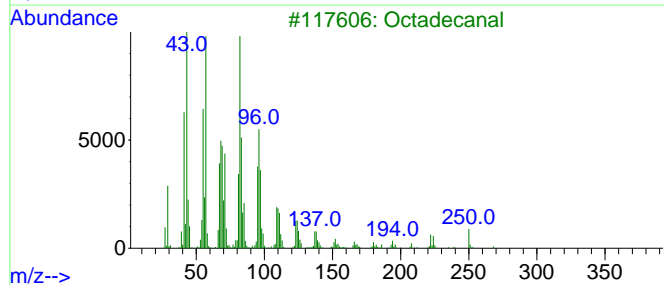
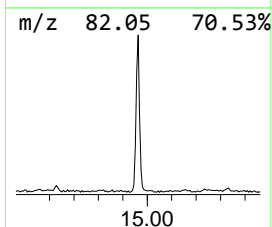
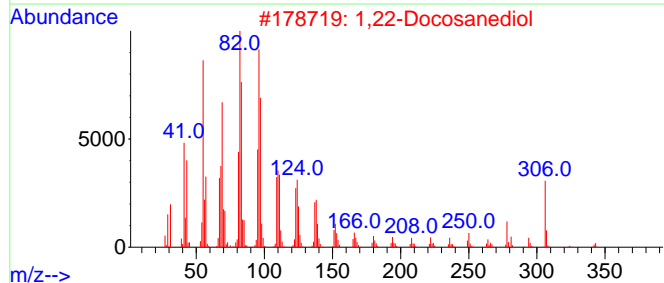
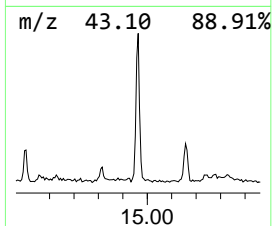
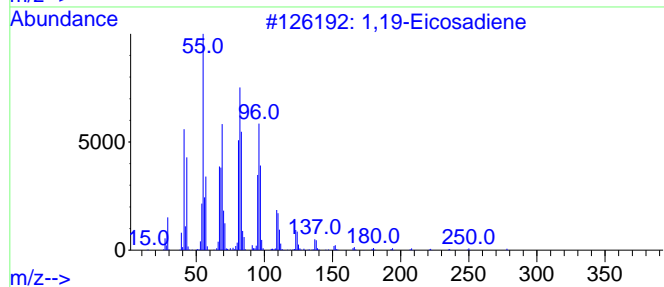
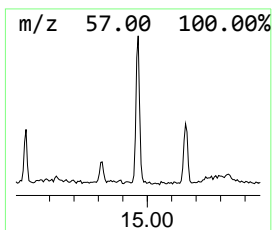
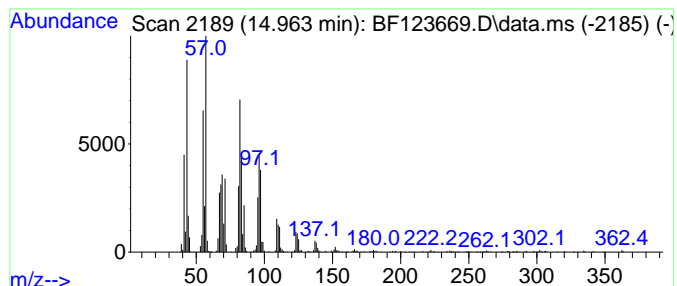
Quant Method : Z:\SVOASRV\HPCHEM1\BNA_F\METHODS\8270-BF041521.M
 Quant Title : ASP BNA STANDARDS FOR 5 POINT CALIBRATION

TIC Library : C:\DATABASE\NIST11.L
 TIC Integration Parameters: LSCINT.P

 Peak Number 9 1,22-Docosanediol Concentration Rank 5

R.T.	EstConc	Area	Relative to ISTD	R.T.
14.963	23.49 ng	1519430	Perylene-d12	15.510

Hit#	of	Tentative ID	MW	MolForm	CAS#	Qual
1	5	1,19-Eicosadiene	278	C20H38	014811-95-1	95
2		1,22-Docosanediol	342	C22H46O2	022513-81-1	93
3		Octadecanal	268	C18H36O	000638-66-4	91
4		1,16-Hexadecanediol	258	C16H34O2	007735-42-4	90
5		Oxirane, hexadecyl-	268	C18H36O	007390-81-0	90



Data Path : Z:\svoasrv\HPCHEM1\BNA_F\Data\BF042121\
 Data File : BF123669.D
 Acq On : 21 Apr 2021 16:13
 Operator : JU/CG
 Sample : M2077-05
 Misc :
 ALS Vial : 11 Sample Multiplier: 1

Instrument :
 BNA_F
 ClientSampleId :
 SB-20-14.5-15.0-DUP

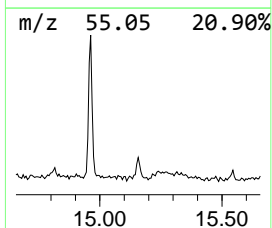
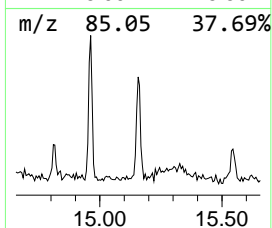
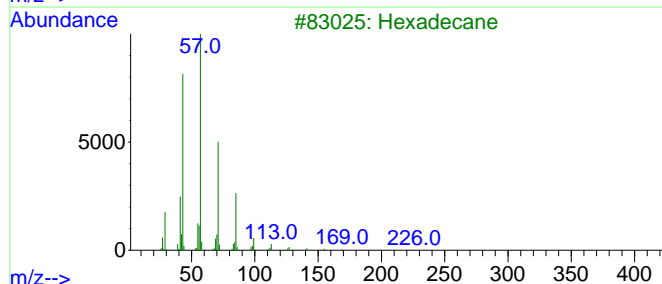
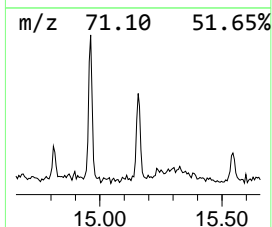
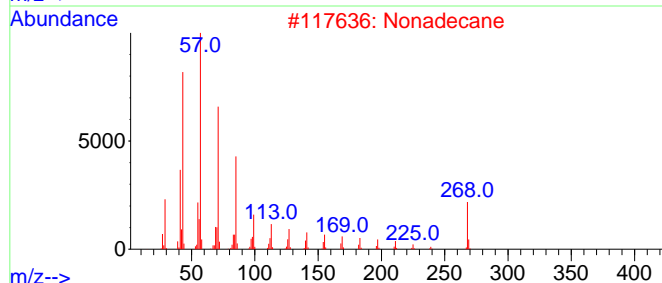
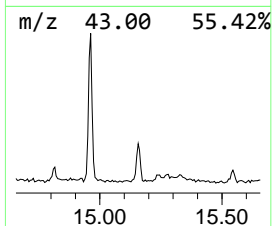
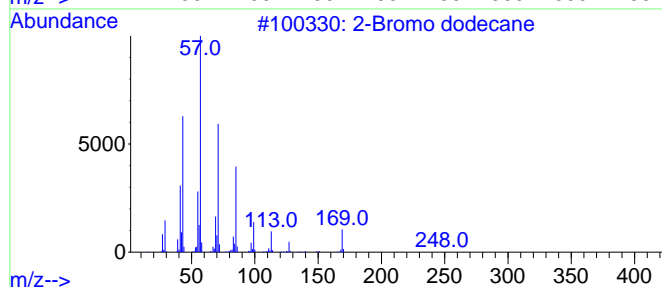
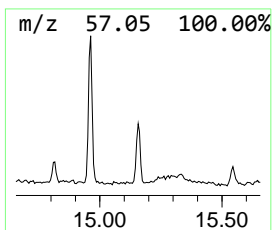
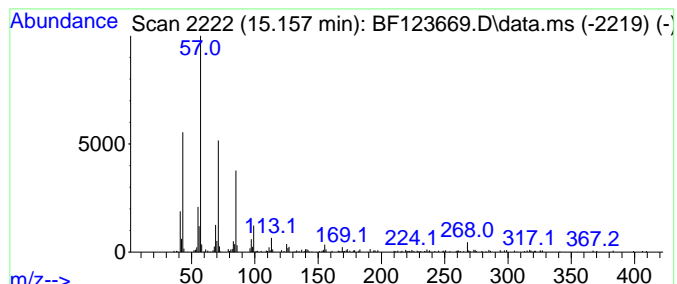
Quant Method : Z:\SVOASRV\HPCHEM1\BNA_F\METHODS\8270-BF041521.M
 Quant Title : ASP BNA STANDARDS FOR 5 POINT CALIBRATION

TIC Library : C:\DATABASE\NIST11.L
 TIC Integration Parameters: LSCINT.P

 Peak Number 10 2-Bromo dodecane Concentration Rank 19

R.T.	EstConc	Area	Relative to ISTD	R.T.
15.157	4.06 ng	262458	Perylene-d12	15.510

Hit#	of 5	Tentative ID	MW	MolForm	CAS#	Qual
1		2-Bromo dodecane	248	C12H25Br	013187-99-0	90
2		Nonadecane	268	C19H40	000629-92-5	87
3		Hexadecane	226	C16H34	000544-76-3	81
4		Tridecane, 6-propyl-	226	C16H34	055045-10-8	76
5		Heptadecane, 2-methyl-	254	C18H38	001560-89-0	74



Data Path : Z:\svoasrv\HPCHEM1\BNA_F\Data\BF042121\
 Data File : BF123669.D
 Acq On : 21 Apr 2021 16:13
 Operator : JU/CG
 Sample : M2077-05
 Misc :
 ALS Vial : 11 Sample Multiplier: 1

Instrument :
 BNA_F
 ClientSampleId :
 SB-20-14.5-15.0-DUP

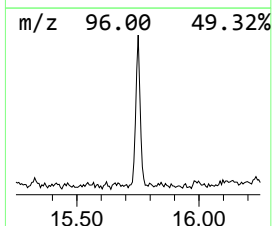
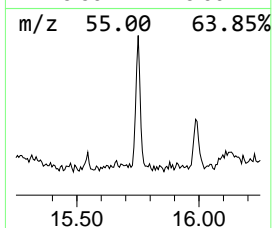
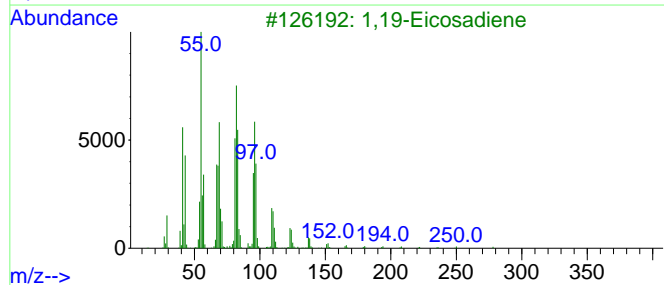
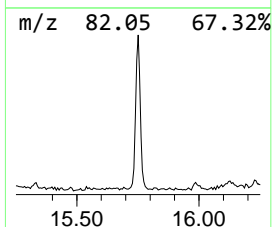
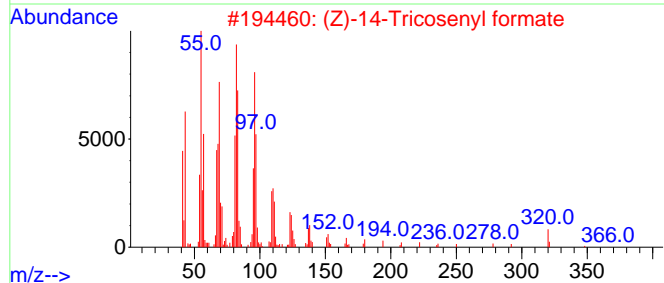
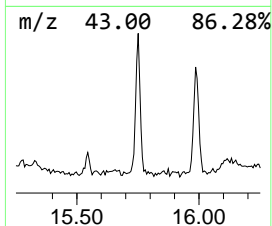
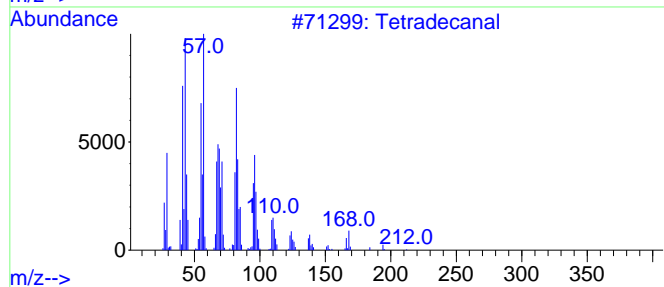
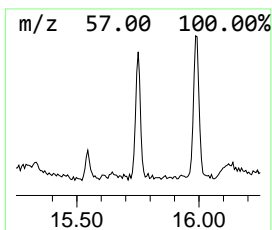
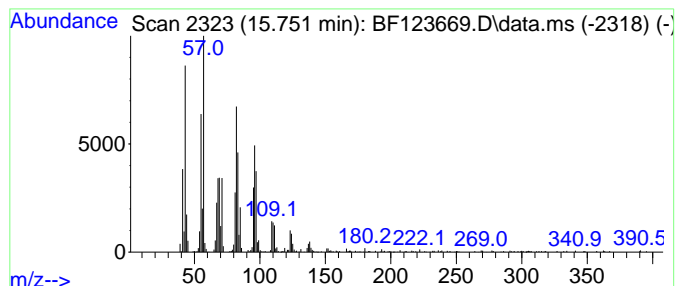
Quant Method : Z:\SVOASRV\HPCHEM1\BNA_F\METHODS\8270-BF041521.M
 Quant Title : ASP BNA STANDARDS FOR 5 POINT CALIBRATION

TIC Library : C:\DATABASE\NIST11.L
 TIC Integration Parameters: LSCINT.P

 Peak Number 11 Tetradecanal Concentration Rank 8

R.T.	EstConc	Area	Relative to ISTD	R.T.
15.751	16.99 ng	1098780	Perylene-d12	15.510

Hit#	of 5	Tentative ID	MW	MolForm	CAS#	Qual
1		Tetradecanal	212	C14H28O	000124-25-4	94
2		(Z)-14-Tricosenyl formate	366	C24H46O2	077899-10-6	93
3		1,19-Eicosadiene	278	C20H38	014811-95-1	93
4		Oxirane, hexadecyl-	268	C18H36O	007390-81-0	91
5		1,16-Hexadecanediol	258	C16H34O2	007735-42-4	90



Data Path : Z:\svoasrv\HPCHEM1\BNA_F\Data\BF042121\
 Data File : BF123669.D
 Acq On : 21 Apr 2021 16:13
 Operator : JU/CG
 Sample : M2077-05
 Misc :
 ALS Vial : 11 Sample Multiplier: 1

Instrument :
 BNA_F
 ClientSampleId :
 SB-20-14.5-15.0-DUP

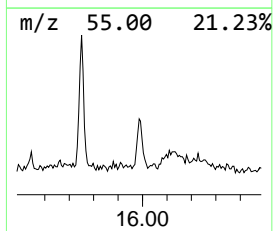
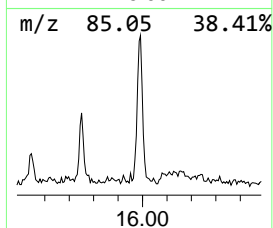
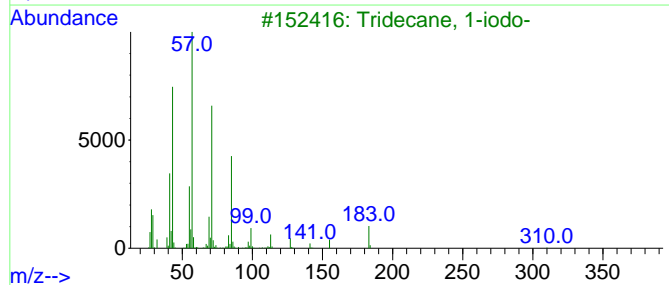
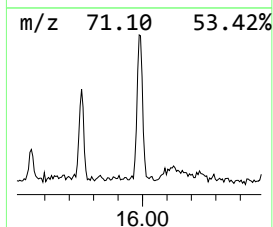
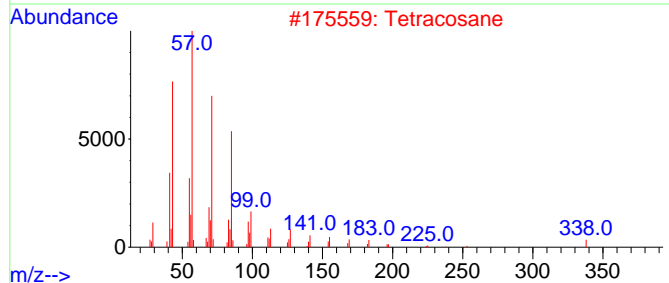
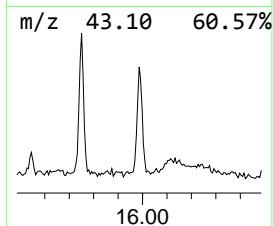
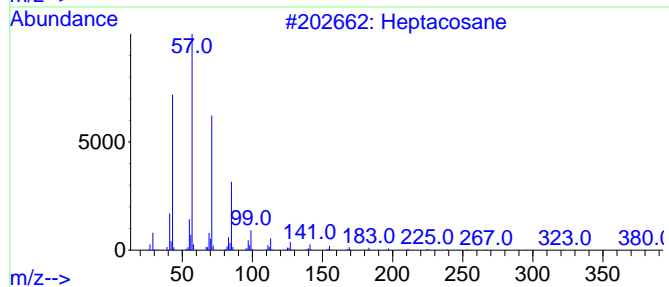
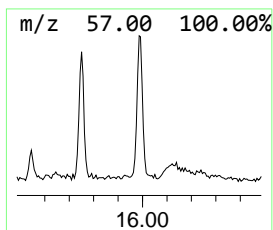
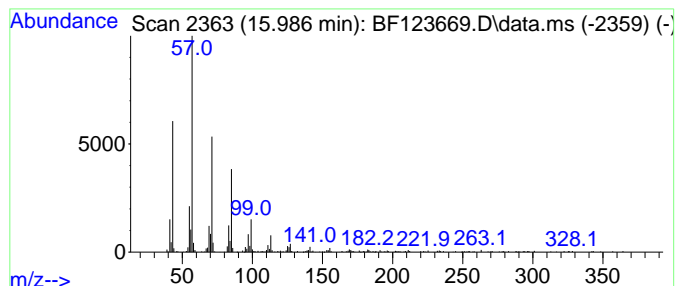
Quant Method : Z:\SVOASRV\HPCHEM1\BNA_F\METHODS\8270-BF041521.M
 Quant Title : ASP BNA STANDARDS FOR 5 POINT CALIBRATION

TIC Library : C:\DATABASE\NIST11.L
 TIC Integration Parameters: LSCINT.P

 Peak Number 12 Heptacosane Concentration Rank 11

R.T.	EstConc	Area	Relative to ISTD	R.T.
15.986	9.75 ng	630501	Perylene-d12	15.510

Hit# of 5	Tentative ID	MW	MolForm	CAS#	Qual
1	Heptacosane	380	C27H56	000593-49-7	91
2	Tetracosane	338	C24H50	000646-31-1	90
3	Tridecane, 1-iodo-	310	C13H27I	035599-77-0	86
4	Heptadecane, 2-methyl-	254	C18H38	001560-89-0	81
5	Eicosane, 10-methyl-	296	C21H44	054833-23-7	80



Data Path : Z:\svoasrv\HPCHEM1\BNA_F\Data\BF042121\
 Data File : BF123669.D
 Acq On : 21 Apr 2021 16:13
 Operator : JU/CG
 Sample : M2077-05
 Misc :
 ALS Vial : 11 Sample Multiplier: 1

Instrument :
 BNA_F
 ClientSampleId :
 SB-20-14.5-15.0-DUP

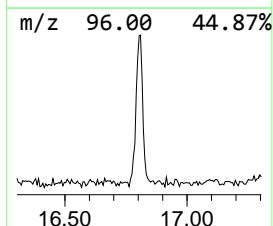
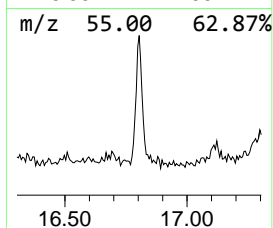
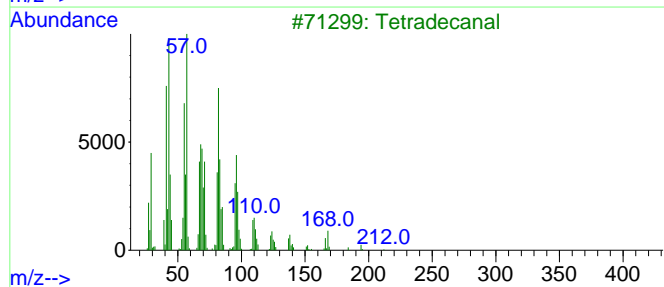
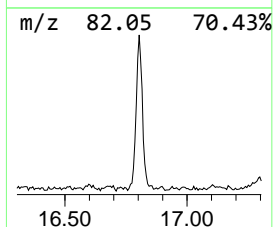
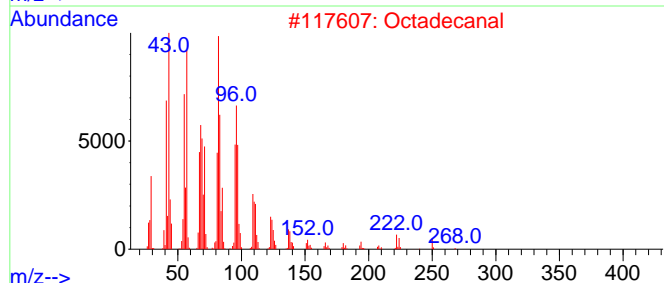
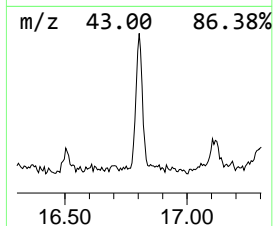
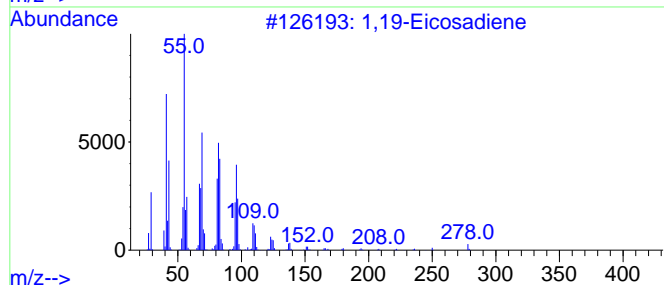
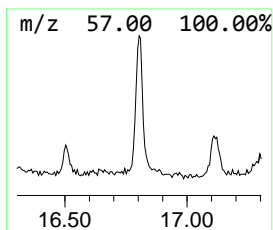
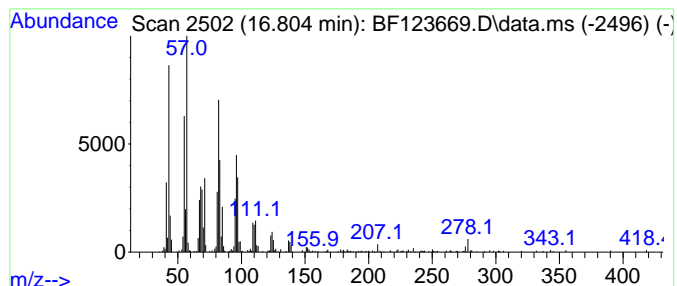
Quant Method : Z:\SVOASRV\HPCHEM1\BNA_F\METHODS\8270-BF041521.M
 Quant Title : ASP BNA STANDARDS FOR 5 POINT CALIBRATION

TIC Library : C:\DATABASE\NIST11.L
 TIC Integration Parameters: LSCINT.P

 Peak Number 13 Octadecanal Concentration Rank 7

R.T.	EstConc	Area	Relative to ISTD	R.T.
16.804	17.06 ng	1103600	Perylene-d12	15.510

Hit#	of 5	Tentative ID	MW	MolForm	CAS#	Qual
1		1,19-Eicosadiene	278	C20H38	014811-95-1	95
2		Octadecanal	268	C18H36O	000638-66-4	91
3		Tetradecanal	212	C14H28O	000124-25-4	90
4		Oxirane, hexadecyl-	268	C18H36O	007390-81-0	87
5		1,21-Docosadiene	306	C22H42	053057-53-7	86



Data Path : Z:\svoasrv\HPCHEM1\BNA_F\Data\BF042121\
 Data File : BF123669.D
 Acq On : 21 Apr 2021 16:13
 Operator : JU/CG
 Sample : M2077-05
 Misc :
 ALS Vial : 11 Sample Multiplier: 1

Instrument :
 BNA_F
 ClientSampleId :
 SB-20-14.5-15.0-DUP

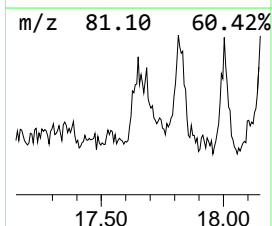
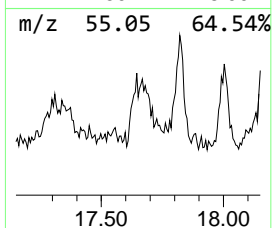
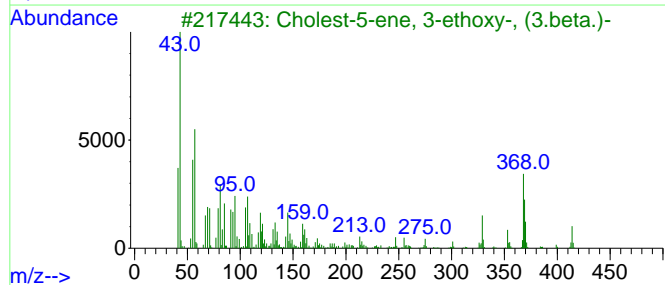
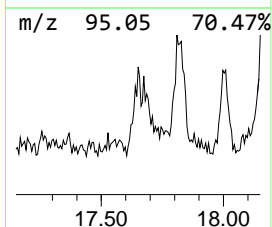
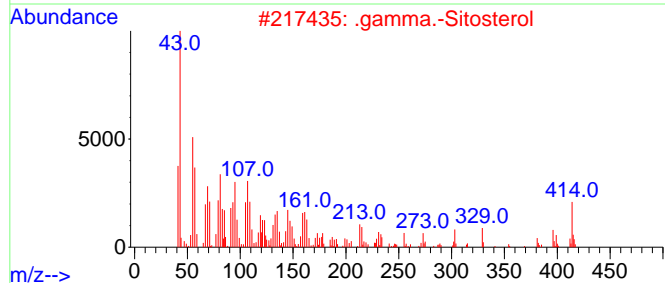
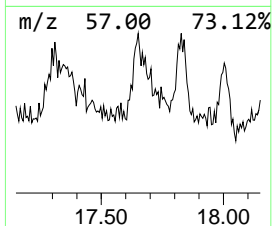
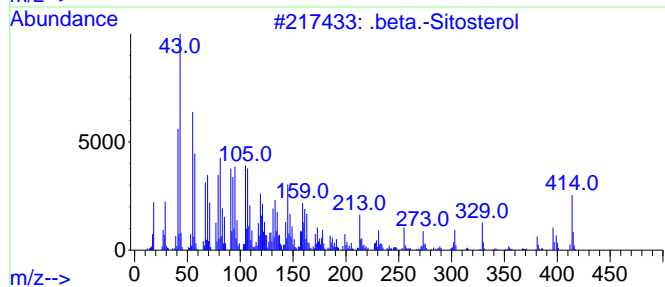
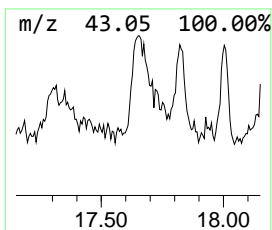
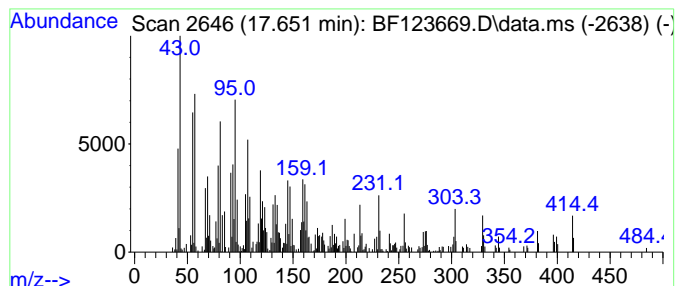
Quant Method : Z:\SVOASRV\HPCHEM1\BNA_F\METHODS\8270-BF041521.M
 Quant Title : ASP BNA STANDARDS FOR 5 POINT CALIBRATION

TIC Library : C:\DATABASE\NIST11.L
 TIC Integration Parameters: LSCINT.P

 Peak Number 14 .beta.-Sitosterol Concentration Rank 4

R.T.	EstConc	Area	Relative to ISTD	R.T.
17.651	26.03 ng	1683510	Perylene-d12	15.510

Hit#	of 5	Tentative ID	MW	MolForm	CAS#	Qual
1		.beta.-Sitosterol	414	C29H50O	000083-46-5	99
2		.gamma.-Sitosterol	414	C29H50O	000083-47-6	91
3		Cholest-5-ene, 3-ethoxy-, (3.beta...	414	C29H50O	000986-19-6	60
4		17-(1,5-Dimethylhexyl)-10,13-dim...	414	C29H50O	1000210-86-9	46
5		Ergost-7-en-3-ol, (3.beta.)-	400	C28H48O	026047-31-4	43



Data Path : Z:\svoasrv\HPCHEM1\BNA_F\Data\BF042121\
 Data File : BF123669.D
 Acq On : 21 Apr 2021 16:13
 Operator : JU/CG
 Sample : M2077-05
 Misc :
 ALS Vial : 11 Sample Multiplier: 1

Instrument :
 BNA_F
 ClientSampleId :
 SB-20-14.5-15.0-DUP

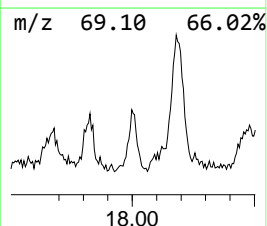
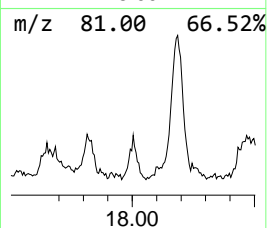
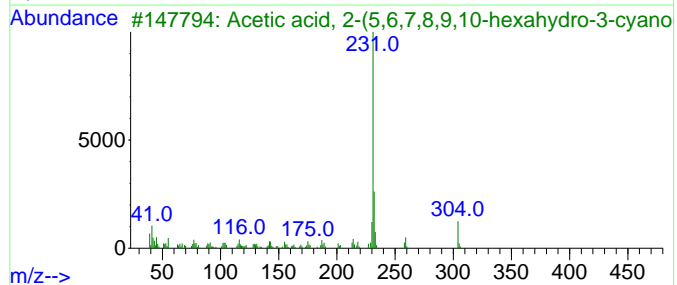
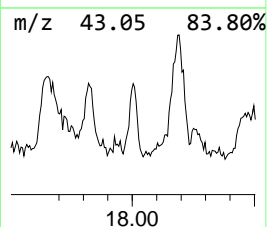
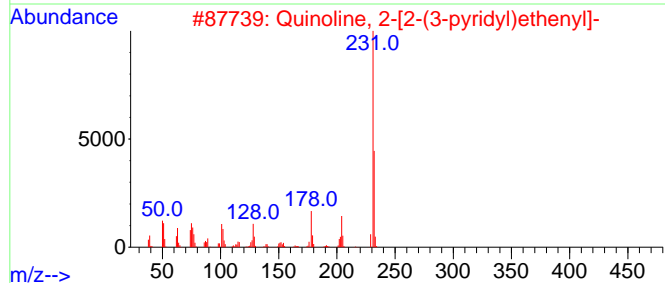
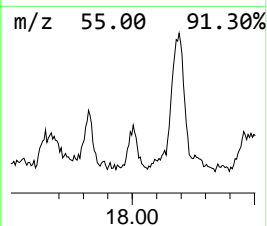
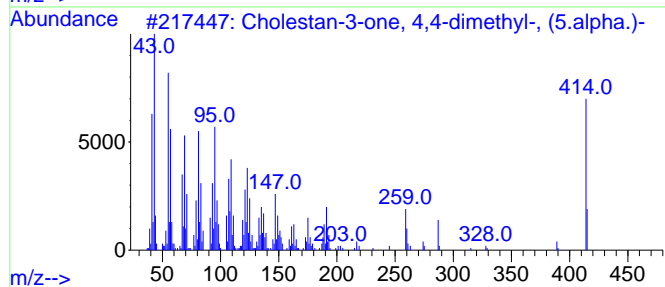
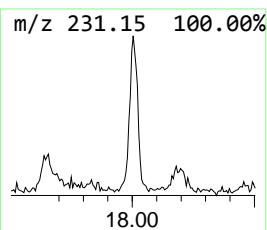
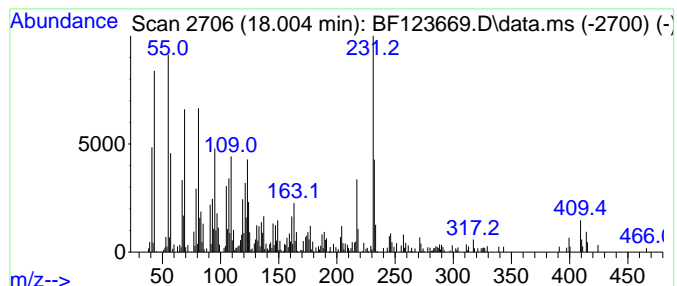
Quant Method : Z:\SVOASRV\HPCHEM1\BNA_F\METHODS\8270-BF041521.M
 Quant Title : ASP BNA STANDARDS FOR 5 POINT CALIBRATION

TIC Library : C:\DATABASE\NIST11.L
 TIC Integration Parameters: LSCINT.P

 Peak Number 16 unknown18.00 Concentration Rank 9

R.T.	EstConc	Area	Relative to ISTD	R.T.
18.004	12.94 ng	837037	Perylene-d12	15.510

Hit#	of 5	Tentative ID	MW	MolForm	CAS#	Qual
1		Cholestan-3-one, 4,4-dimethyl-, ...	414	C29H50O	002097-85-0	42
2		Quinoline, 2-[2-(3-pyridyl)ethen...	232	C16H12N2	001586-51-2	38
3		Acetic acid, 2-(5,6,7,8,9,10-hex...	304	C16H20N2O2S	166113-82-2	38
4		Benzoic acid, 2-(5-pyrazolylcarb...	231	C11H9N3O3	1000277-53-0	35
5		Germacra-1(10),4,11(13)-trien-12...	232	C15H20O2	000553-21-9	27



Data Path : Z:\svoasrv\HPCHEM1\BNA_F\Data\BF042121\
 Data File : BF123669.D
 Acq On : 21 Apr 2021 16:13
 Operator : JU/CG
 Sample : M2077-05
 Misc :
 ALS Vial : 11 Sample Multiplier: 1

Instrument :
 BNA_F
 ClientSampleId :
 SB-20-14.5-15.0-DUP

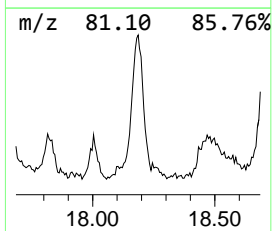
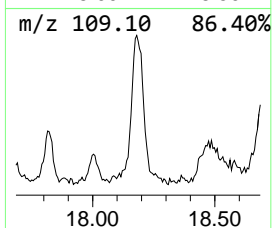
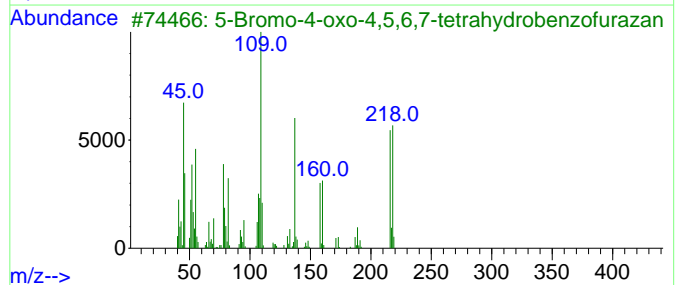
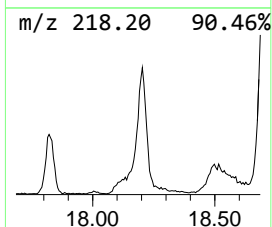
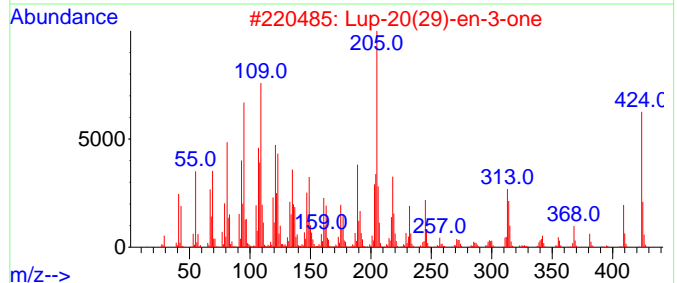
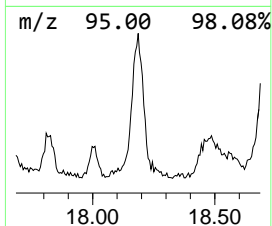
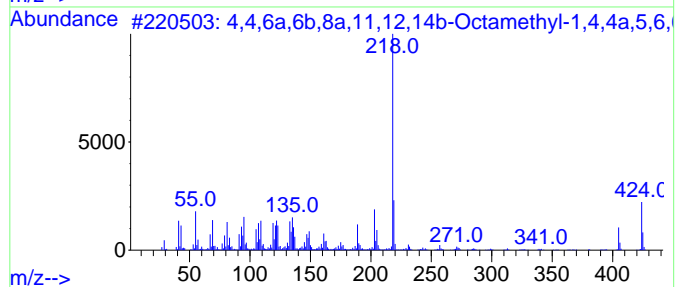
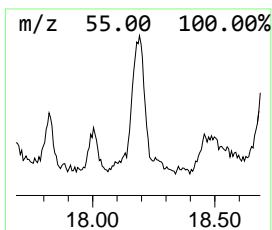
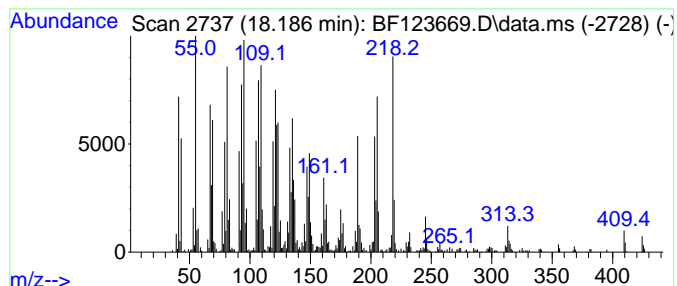
Quant Method : Z:\SVOASRV\HPCHEM1\BNA_F\METHODS\8270-BF041521.M
 Quant Title : ASP BNA STANDARDS FOR 5 POINT CALIBRATION

TIC Library : C:\DATABASE\NIST11.L
 TIC Integration Parameters: LSCINT.P

 Peak Number 17 4,4,6a,6b,8a,11,12,14b-Octa... Concentration Rank 2

R.T.	EstConc	Area	Relative to ISTD	R.T.
18.186	77.86 ng	5035620	Perylene-d12	15.510

Hit#	of 5	Tentative ID	MW	MolForm	CAS#	Qual
1		4,4,6a,6b,8a,11,12,14b-Octamethyl...	424	C30H48O	1000194-64-2	95
2		Lup-20(29)-en-3-one	424	C30H48O	001617-70-5	86
3		5-Bromo-4-oxo-4,5,6,7-tetrahydro...	216	C6H5BrN2O2	300574-36-1	59
4		4,4,6a,6b,8a,11,11,14b-Octamethyl...	424	C30H48O	1000194-62-4	55
5		(-)-Isolongifolol, methyl ether	236	C16H28O	1000333-80-8	45



Data Path : Z:\svoasrv\HPCHEM1\BNA_F\Data\BF042121\
 Data File : BF123669.D
 Acq On : 21 Apr 2021 16:13
 Operator : JU/CG
 Sample : M2077-05
 Misc :
 ALS Vial : 11 Sample Multiplier: 1

Instrument :
 BNA_F
 ClientSampleId :
 SB-20-14.5-15.0-DUP

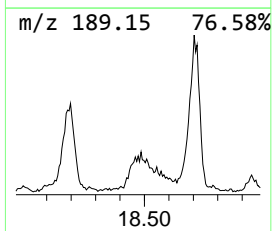
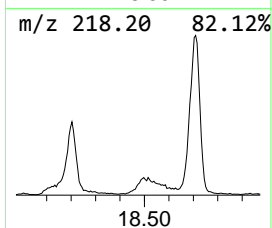
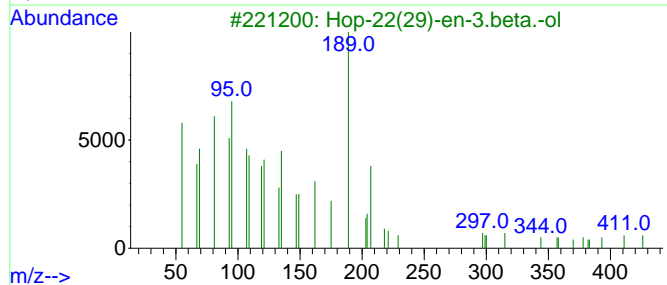
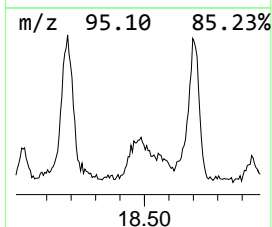
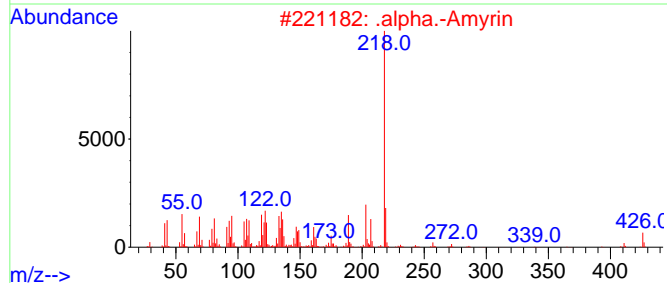
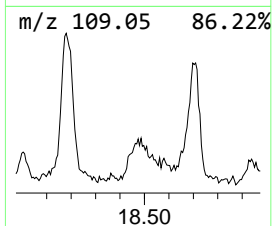
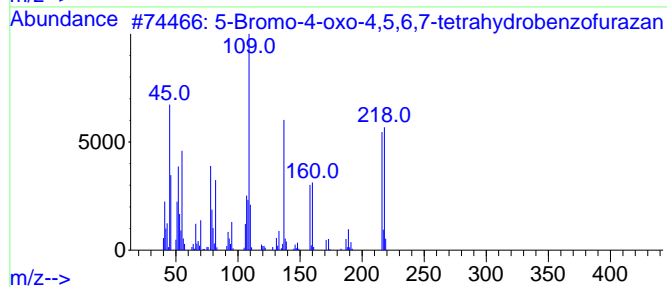
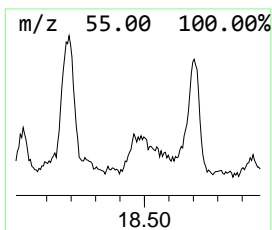
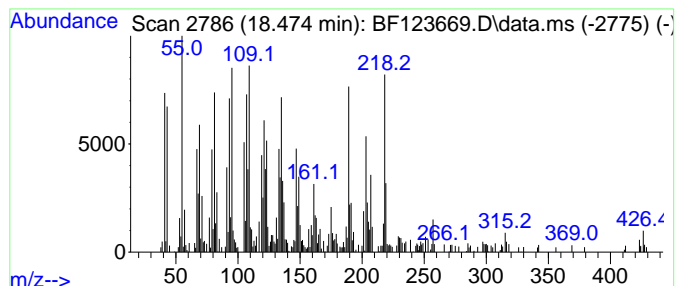
Quant Method : Z:\SVOASRV\HPCHEM1\BNA_F\METHODS\8270-BF041521.M
 Quant Title : ASP BNA STANDARDS FOR 5 POINT CALIBRATION

TIC Library : C:\DATABASE\NIST11.L
 TIC Integration Parameters: LSCINT.P

 Peak Number 18 5-Bromo-4-oxo-4,5,6,7-tetra... Concentration Rank 3

R.T.	EstConc	Area	Relative to ISTD	R.T.
18.474	39.84 ng	2576610	Perylene-d12	15.510

Hit#	of 5	Tentative ID	MW	MolForm	CAS#	Qual
1		5-Bromo-4-oxo-4,5,6,7-tetrahydro...	216	C6H5BrN2O2	300574-36-1	78
2		.alpha.-Amyrin	426	C30H50O	000638-95-9	58
3		Hop-22(29)-en-3.beta.-ol	426	C30H50O	058801-23-3	50
4		(-)-Isolongifolol, methyl ether	236	C16H28O	1000333-80-8	43
5		A'-Neogammacer-22(29)-en-3-one	424	C30H48O	025615-11-6	41



Data Path : Z:\svoasrv\HPCHEM1\BNA_F\Data\BF042121\
Data File : BF123669.D
Acq On : 21 Apr 2021 16:13
Operator : JU/CG
Sample : M2077-05
Misc :
ALS Vial : 11 Sample Multiplier: 1

Instrument :
BNA_F
ClientSampleId :
SB-20-14.5-15.0-DUP

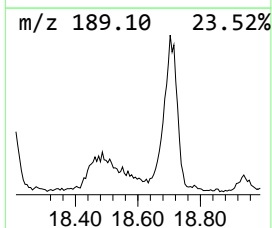
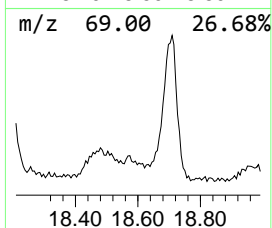
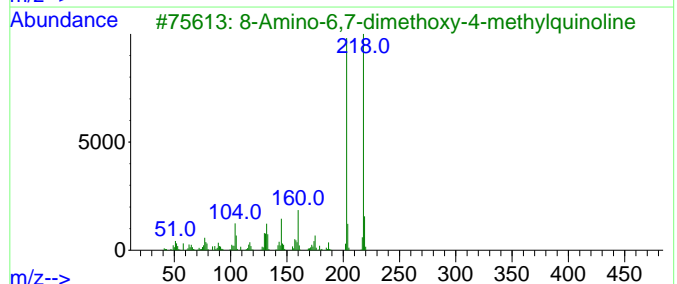
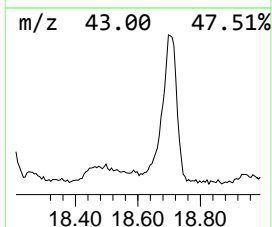
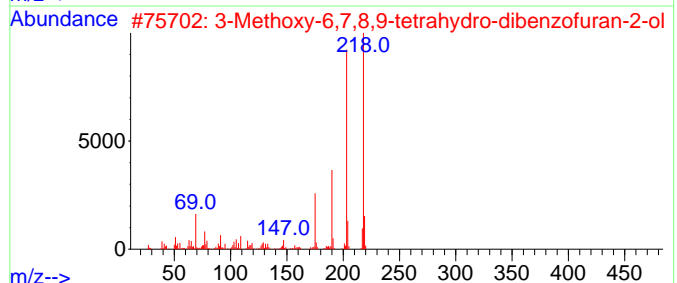
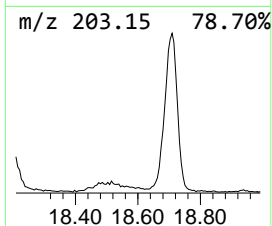
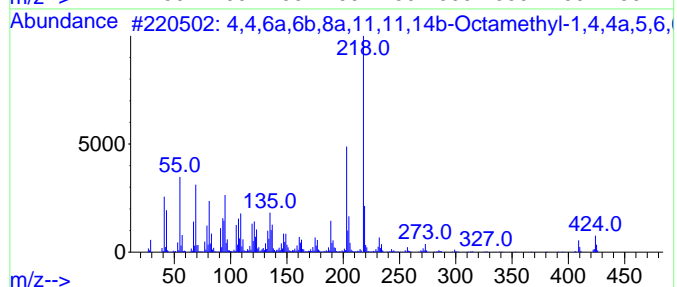
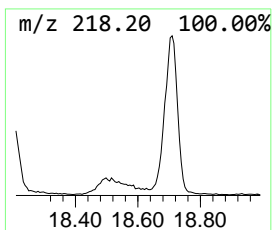
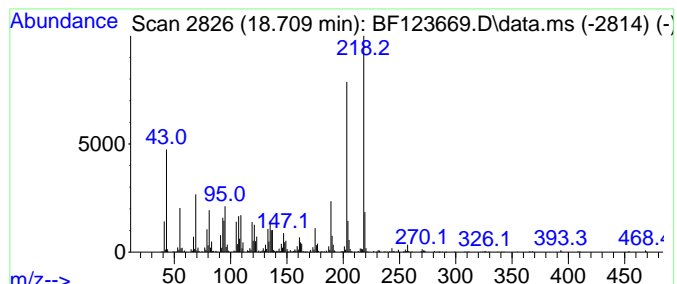
Quant Method : Z:\SVOASRV\HPCHEM1\BNA_F\METHODS\8270-BF041521.M
Quant Title : ASP BNA STANDARDS FOR 5 POINT CALIBRATION

TIC Library : C:\DATABASE\NIST11.L
TIC Integration Parameters: LSCINT.P

Peak Number 19 4,4,6a,6b,8a,11,11,14b-Octa... Concentration Rank 1

R.T.	EstConc	Area	Relative to ISTD	R.T.
18.709	82.57 ng	5340250	Perylene-d12	15.510

Hit#	of 5	Tentative ID	MW	MolForm	CAS#	Qual
1		4,4,6a,6b,8a,11,11,14b-Octamethy...	424	C30H48O	1000194-62-4	58
2		3-Methoxy-6,7,8,9-tetrahydro-dib...	218	C13H14O3	1000186-57-9	58
3		8-Amino-6,7-dimethoxy-4-methylqu...	218	C12H14N2O2	1000213-07-2	53
4		.beta.-Amyrin trimethylsilyl ether	498	C33H58OSi	001721-67-1	53
5		Olean-12-ene, 3-methoxy-, (3.bet...	440	C31H52O	014021-26-2	52



Data Path : Z:\svoasrv\HPCHEM1\BNA_F\Data\BF042121\
 Data File : BF123669.D
 Acq On : 21 Apr 2021 16:13
 Operator : JU/CG
 Sample : M2077-05
 Misc :
 ALS Vial : 11 Sample Multiplier: 1

Instrument :
 BNA_F
 ClientSampleId :
 SB-20-14.5-15.0-DUP

Quant Method : Z:\SVOASRV\HPCHEM1\BNA_F\METHODS\8270-BF041521.M
 Quant Title : ASP BNA STANDARDS FOR 5 POINT CALIBRATION

TIC Library : C:\DATABASE\NIST11.L
 TIC Integration Parameters: LSCINT.P

TIC Top Hit name	RT	EstConc	Units	Response	--Internal Standard--			
					#	RT	Resp	Conc
Indane	7.028	9.4	ng	626494	1	6.851	1325860	20.0
Naphthalene, 2,...	9.481	4.0	ng	324168	3	9.892	1634670	20.0
Naphthalene, 1,...	9.551	4.3	ng	350951	3	9.892	1634670	20.0
Dibenzothiophene	11.275	5.6	ng	452651	4	11.381	1620320	20.0
5H-Dibenzo[a,d]...	11.916	4.9	ng	398479	4	11.381	1620320	20.0
4H-Cyclopenta[d]...	11.998	7.7	ng	621751	4	11.381	1620320	20.0
1-Nonadecene	13.910	5.4	ng	425638	5	14.027	1572020	20.0
1,19-Eicosadiene	14.321	10.7	ng	840019	5	14.027	1572020	20.0
1,22-Docosanediol	14.963	23.5	ng	1519430	6	15.510	1293490	20.0
2-Bromo dodecane	15.157	4.1	ng	262458	6	15.510	1293490	20.0
Tetradecanal	15.751	17.0	ng	1098780	6	15.510	1293490	20.0
Heptacosane	15.986	9.8	ng	630501	6	15.510	1293490	20.0
Octadecanal	16.804	17.1	ng	1103600	6	15.510	1293490	20.0
.beta.-Sitosterol	17.651	26.0	ng	1683510	6	15.510	1293490	20.0
unknown18.00	18.004	12.9	ng	837037	6	15.510	1293490	20.0
4,4,6a,6b,8a,11...	18.186	77.9	ng	5035620	6	15.510	1293490	20.0
5-Bromo-4-oxo-4...	18.474	39.8	ng	2576610	6	15.510	1293490	20.0
4,4,6a,6b,8a,11...	18.709	82.6	ng	5340250	6	15.510	1293490	20.0
A'-Neogammacer-...	18.939	6.7	ng	434927	6	15.510	1293490	20.0