

Data Path : Z:\HPCHEM1\BNA F\DATA\BF042318\
 Data File : BF104737.D
 Acq On : 24 Apr 2018 5:39
 Operator : JU/SJ
 Sample : J2503-02
 Misc :
 ALS Vial : 38 Sample Multiplier: 1

Instrument :
 BNA_F
 ClientSampleId :

Quant Time: Apr 24 08:33:19 2018
 Quant Method : Z:\HPCHEM1\BNA F\METHODS\8270-BF040618.M
 Quant Title : ASP BNA STANDARDS FOR 5 POINT CALIBRATION
 QLast Update : Mon Apr 23 15:38:25 2018
 Response via : Initial Calibration

Internal Standards	R.T.	QIon	Response	Conc	Units	Dev(Min)
1) 1,4-Dichlorobenzene-d4	6.80	152	119154	20.00	ng	0.00
21) Naphthalene-d8	8.09	136	490818	20.00	ng	0.00
38) Acenaphthene-d10	9.85	164	208443	20.00	ng	0.00
63) Phenanthrene-d10	11.33	188	343978	20.00	ng	0.00
75) Chrysene-d12	13.98	240	222850	20.00	ng	0.00
86) Perylene-d12	15.45	264	168962	20.00	ng	0.00

System Monitoring Compounds

5) 2-Fluorophenol	5.45	112	912169	117.06	ng	0.03
7) Phenol-d6	6.46	99	1004820	104.95	ng	0.02
23) Nitrobenzene-d5	7.37	82	726270	96.62	ng	0.00
41) 2,4,6-Tribromophenol	10.65	330	260373	120.42	ng	0.00
44) 2-Fluorobiphenyl	9.17	172	1329757	100.78	ng	0.00
78) Terphenyl-d14	12.93	244	1058866	108.33	ng	0.00

Target Compounds

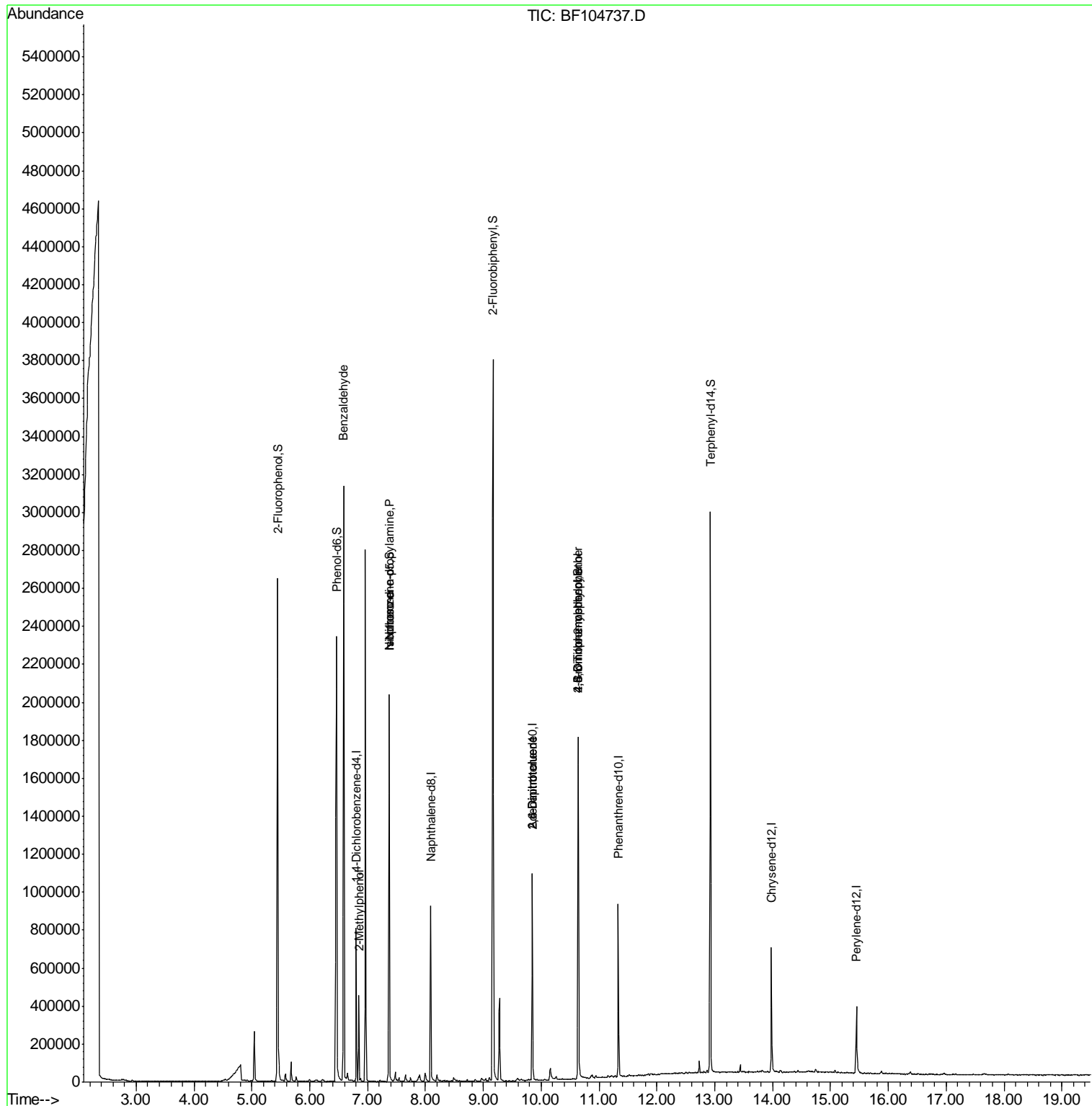
						Qvalue
9) Benzaldehyde	6.59	77	21132	2.083	ng	83
17) 2-Methylphenol	6.85	107	28439	3.978	ng	# 14
19) n-Nitroso-di-n-propylamine	7.37	70	94407	15.089	ng	# 74
25) Isophorone	7.37	82	726258	45.691	ng	# 64
50) 2,6-Dinitrotoluene	9.85	165	26663	8.766	ng	# 26
56) 2,4-Dinitrotoluene	9.85	165	26663	6.683	ng	# 23
64) 4,6-Dinitro-2-methylphenol	10.65	198	400	7.549	ng	# 1
66) 4-Bromophenyl-phenylether	10.64	248	14652	4.005	ng	# 1
76) Benzidine	12.93	184	13649	Below Cal		96

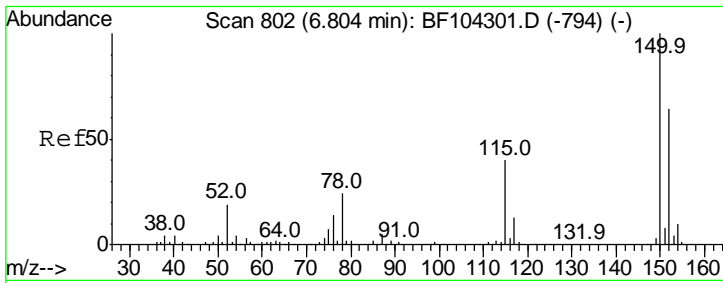
(#) = qualifier out of range (m) = manual integration (+) = signals summed

Data Path : Z:\HPCHEM1\BNA F\DATA\BF042318\
 Data File : BF104737.D
 Acq On : 24 Apr 2018 5:39
 Operator : JU/SJ
 Sample : J2503-02
 Misc :
 ALS Vial : 38 Sample Multiplier: 1

Instrument :
 BNA_F
 ClientSampled :

Quant Time: Apr 24 08:33:19 2018
 Quant Method : Z:\HPCHEM1\BNA F\METHODS\8270-BF040618.M
 Quant Title : ASP BNA STANDARDS FOR 5 POINT CALIBRATION
 QLast Update : Mon Apr 23 15:38:25 2018
 Response via : Initial Calibration

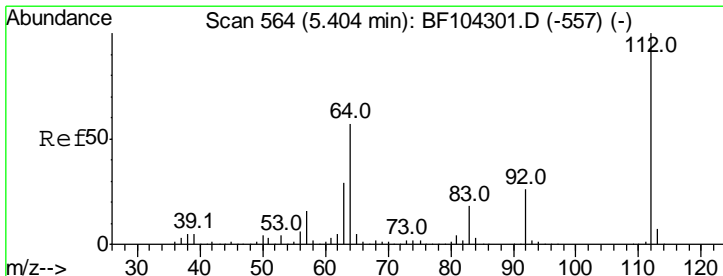
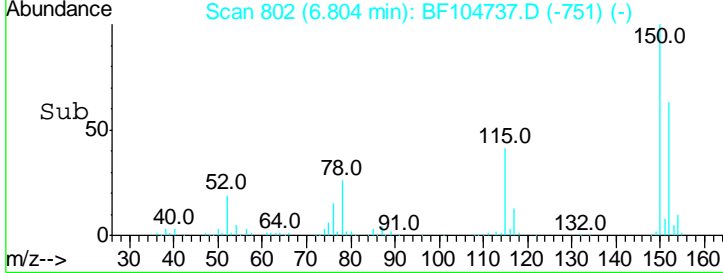
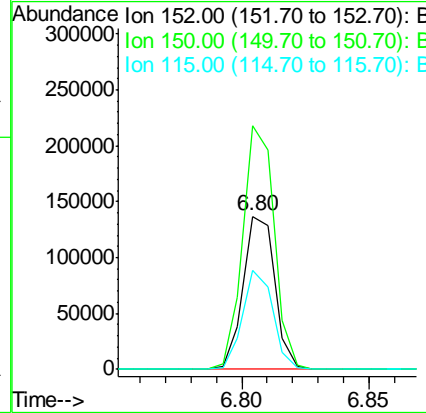
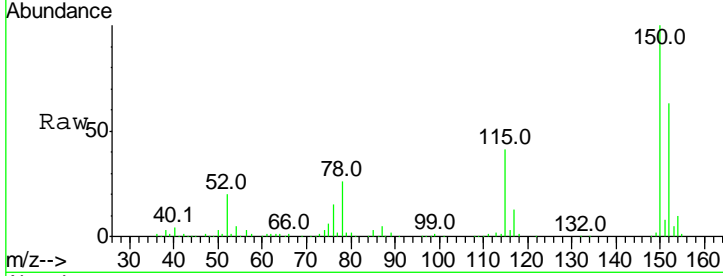




#1
 1,4-Dichlorobenzene-d4
 Concen: 20.000 ng
 RT: 6.80 min Scan# 802
 Delta R.T. -0.00 min
 Lab File: BF104737.D
 Acq: 24 Apr 2018 5:39

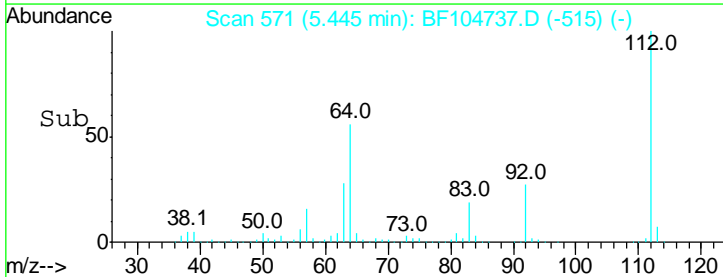
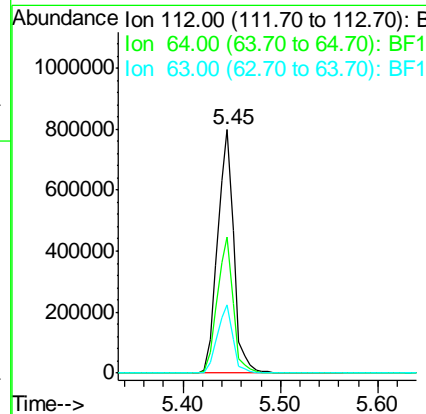
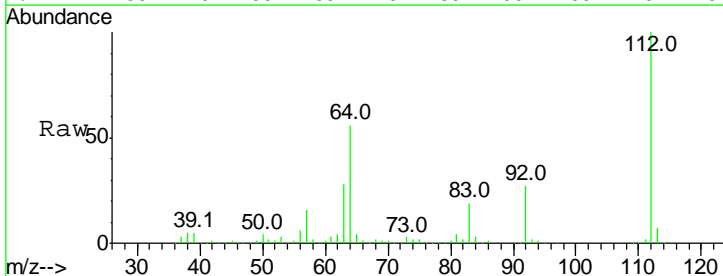
Instrument :
 BNA_F
 ClientSampled :

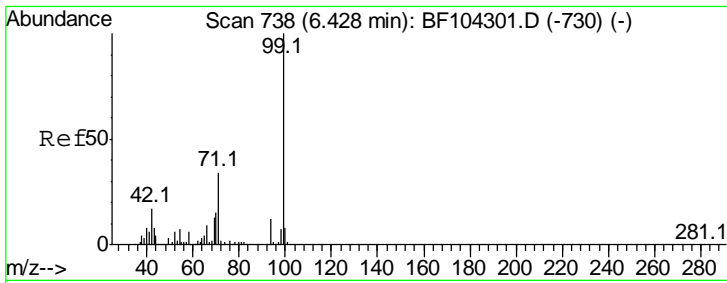
Tgt Ion	Resp	Lower	Upper
152	119154		
152	100		
150	158.9	124.6	186.8
115	64.5	50.1	75.1



#5
 2-Fluorophenol
 Concen: 117.055 ng
 RT: 5.45 min Scan# 571
 Delta R.T. 0.03 min
 Lab File: BF104737.D
 Acq: 24 Apr 2018 5:39

Tgt Ion	Resp	Lower	Upper
112	912169		
112	100		
64	56.1	47.9	71.9
63	28.0	23.7	35.5

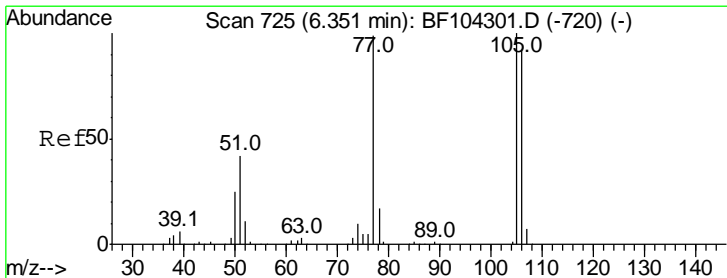
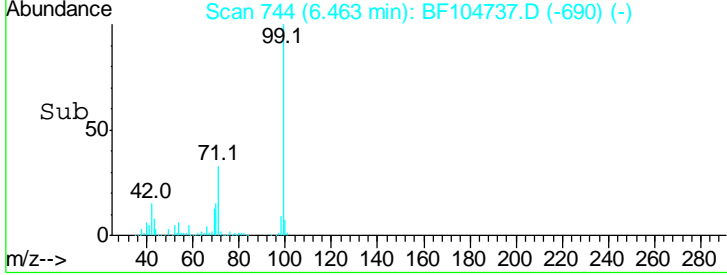
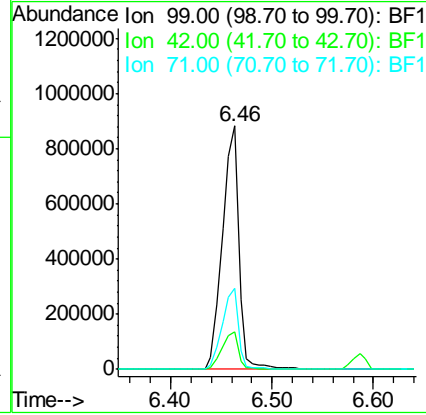
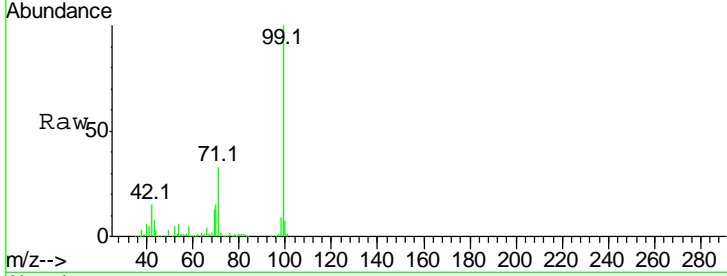




#7
 Phenol-d6
 Concen: 104.946 ng
 RT: 6.46 min Scan# 744
 Delta R.T. 0.02 min
 Lab File: BF104737.D
 Acq: 24 Apr 2018 5:39

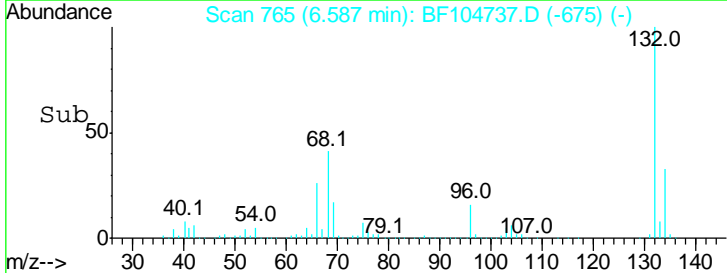
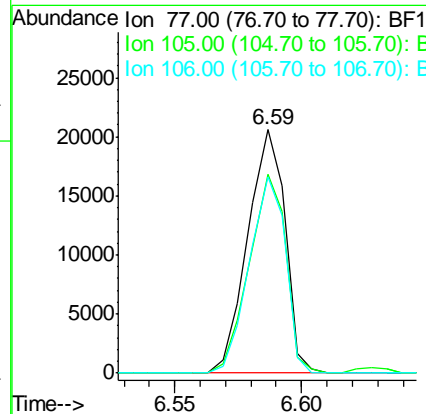
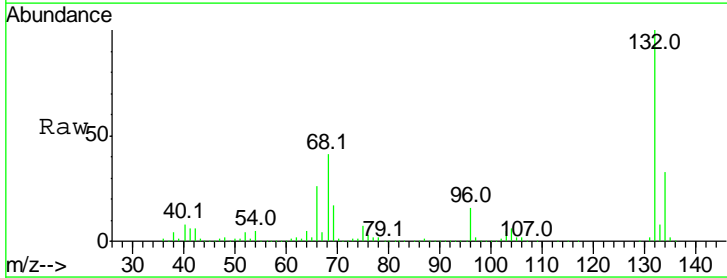
Instrument :
 BNA_F
 ClientSampled :

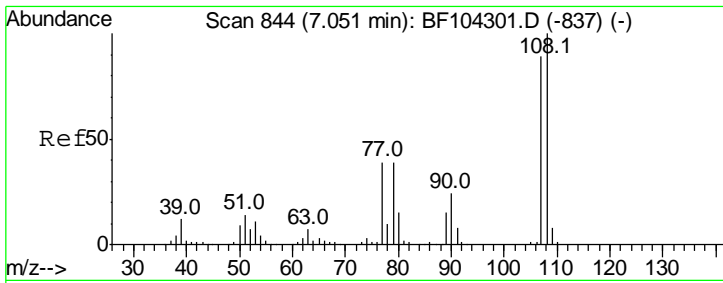
Tgt Ion	Resp	Lower	Upper
99	100		
42	15.4	14.5	21.7
71	33.2	25.4	38.0



#9
 Benzaldehyde
 Concen: 2.083 ng
 RT: 6.59 min Scan# 765
 Delta R.T. 0.23 min
 Lab File: BF104737.D
 Acq: 24 Apr 2018 5:39

Tgt Ion	Resp	Lower	Upper
77	100		
105	81.4	81.1	121.1
106	80.6	74.5	114.5

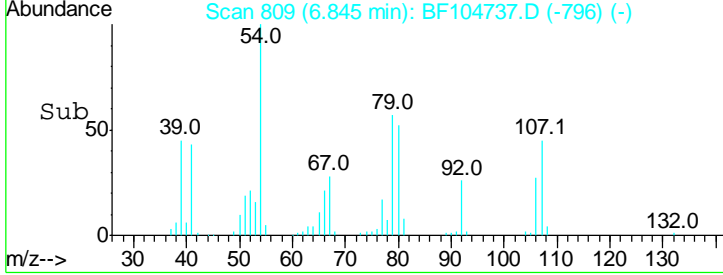
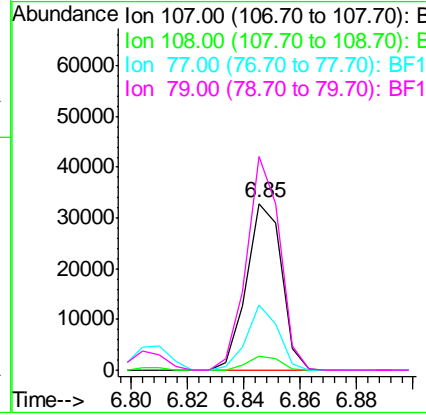
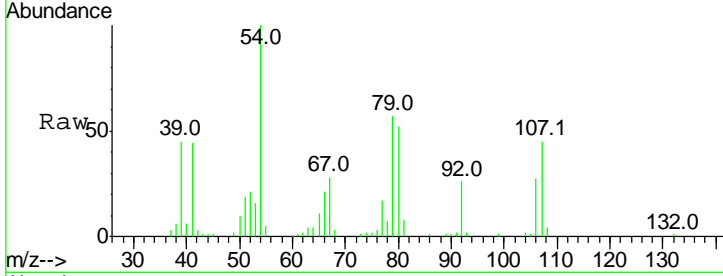




#17
 2-Methylphenol
 Concen: 3.978 ng
 RT: 6.85 min Scan# 809
 Delta R.T. -0.22 min
 Lab File: BF104737.D
 Acq: 24 Apr 2018 5:39

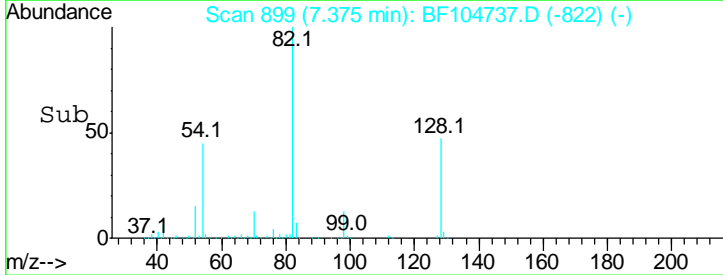
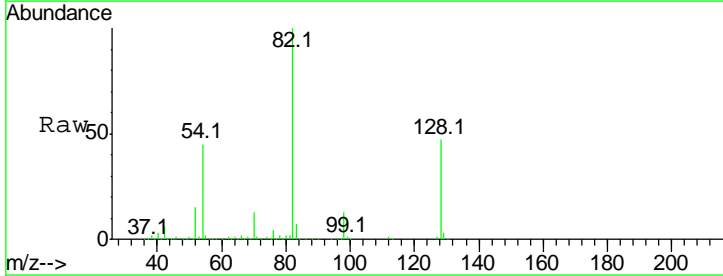
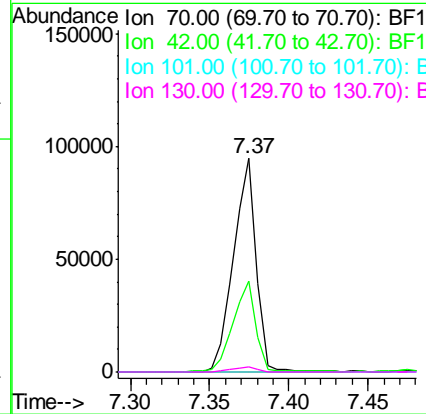
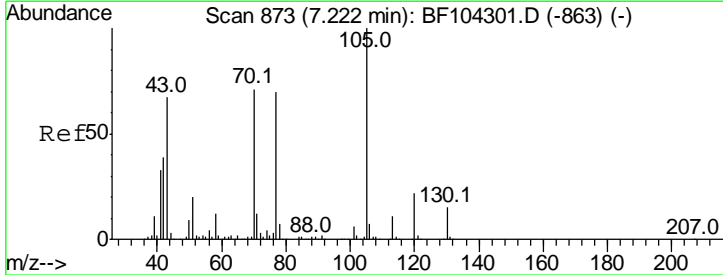
Instrument :
 BNA_F
 ClientSampled :

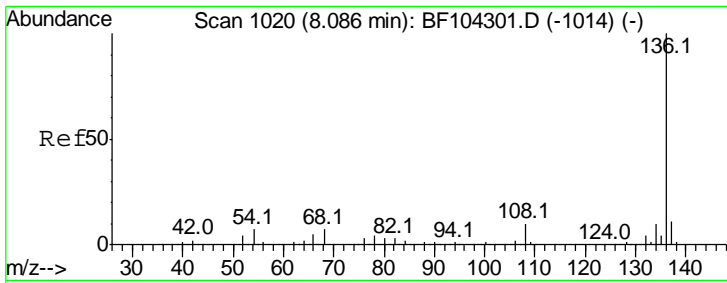
Tgt Ion	Resp	Lower	Upper
107	100		
108	8.6	91.7	137.5#
77	39.1	33.8	50.8
79	128.2	33.8	50.8#



#19
 n-Nitroso-di-n-propylamine
 Concen: 15.089 ng
 RT: 7.37 min Scan# 899
 Delta R.T. 0.15 min
 Lab File: BF104737.D
 Acq: 24 Apr 2018 5:39

Tgt Ion	Resp	Lower	Upper
70	100		
42	42.8	47.5	71.3#
101	0.0	7.4	11.2#
130	2.4	16.6	25.0#



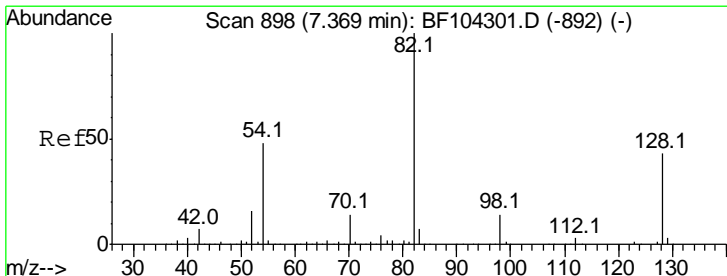
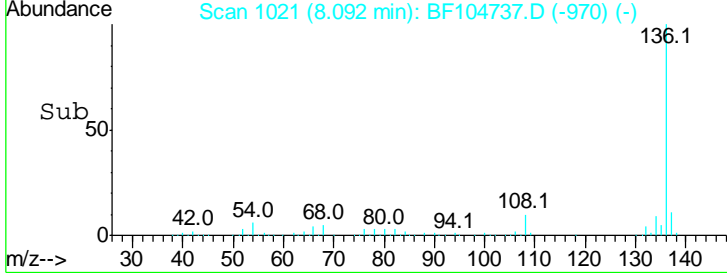
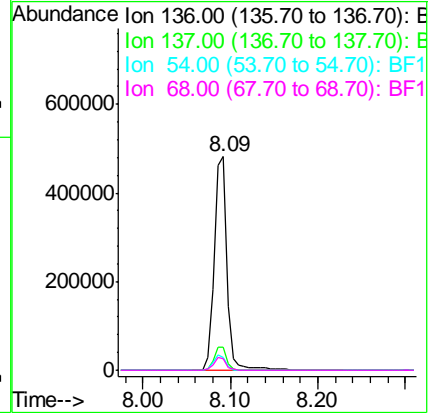
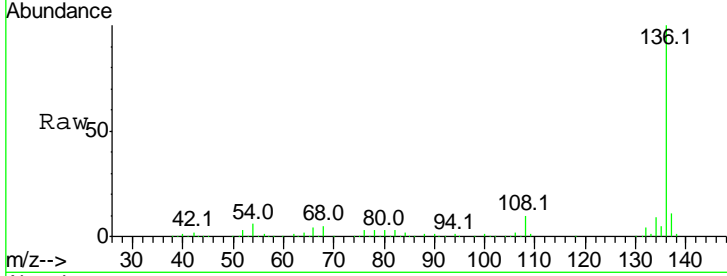


#21
 Naphthalene-d8
 Concen: 20.000 ng
 RT: 8.09 min Scan# 1021
 Delta R.T. -0.00 min
 Lab File: BF104737.D
 Acq: 24 Apr 2018 5:39

Instrument :
 BNA_F
 ClientSampled :

Tgt Ion: 136 Resp: 490818

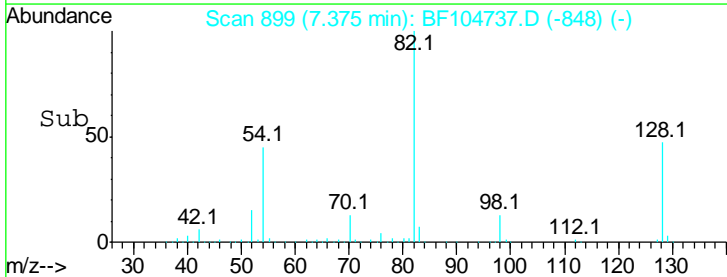
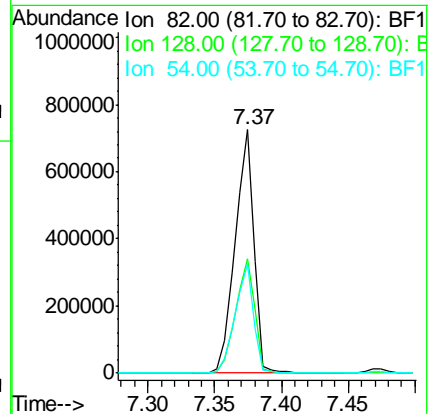
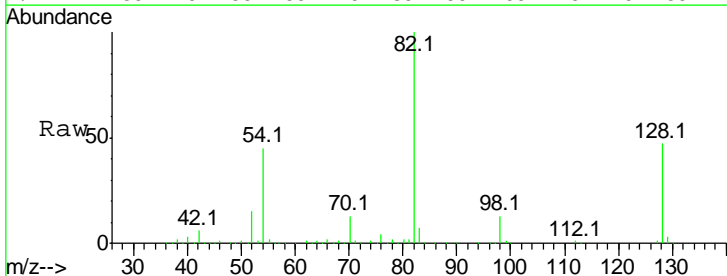
Ion	Ratio	Lower	Upper
136	100		
137	10.9	8.9	13.3
54	6.3	6.6	9.8#
68	5.4	5.0	7.4

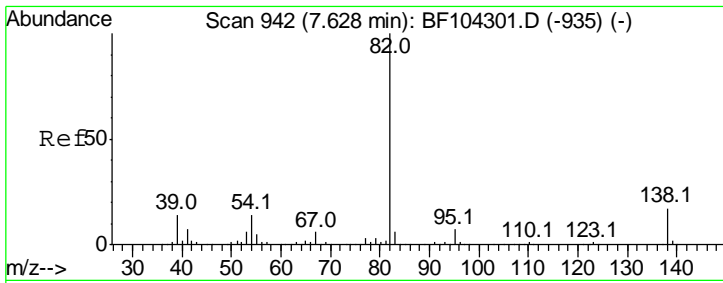


#23
 Nitrobenzene-d5
 Concen: 96.622 ng
 RT: 7.37 min Scan# 899
 Delta R.T. -0.00 min
 Lab File: BF104737.D
 Acq: 24 Apr 2018 5:39

Tgt Ion: 82 Resp: 726270

Ion	Ratio	Lower	Upper
82	100		
128	46.7	36.1	54.1
54	44.8	41.4	62.2

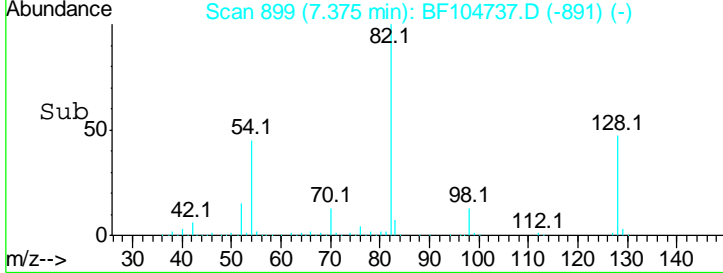
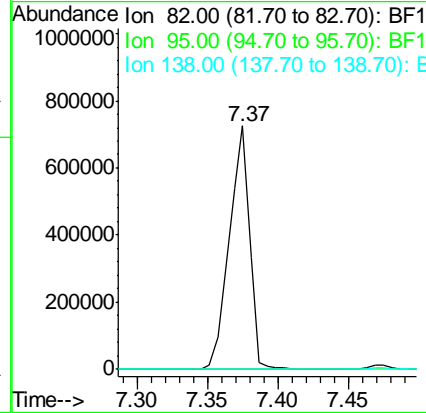
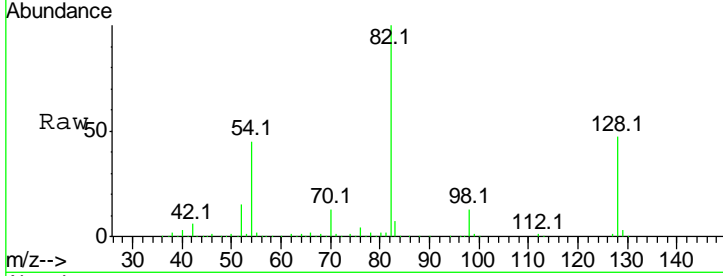




#25
 Isophorone
 Concen: 45.691 ng
 RT: 7.37 min Scan# 899
 Delta R.T. -0.25 min
 Lab File: BF104737.D
 Acq: 24 Apr 2018 5:39

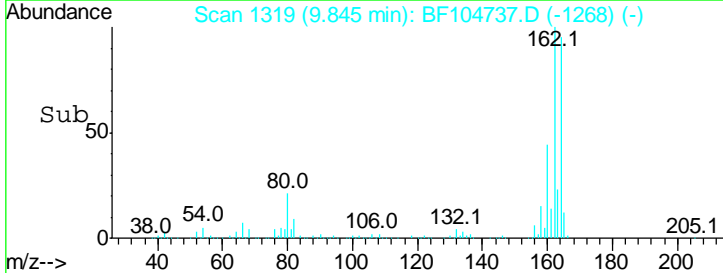
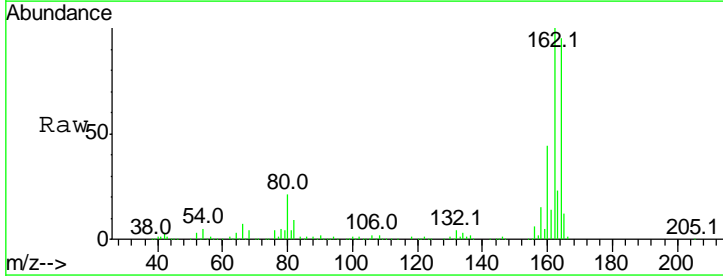
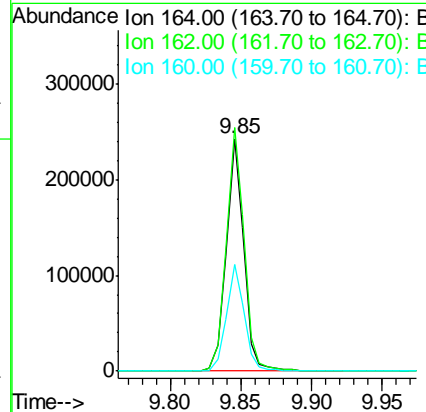
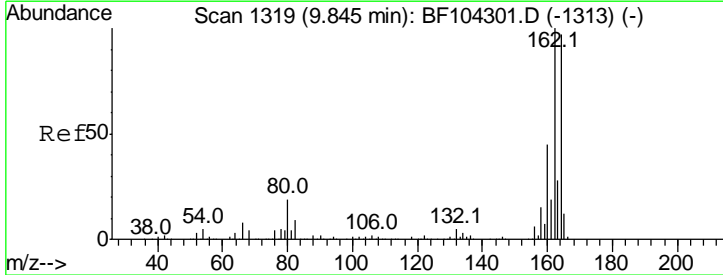
Instrument :
 BNA_F
 ClientSampled :

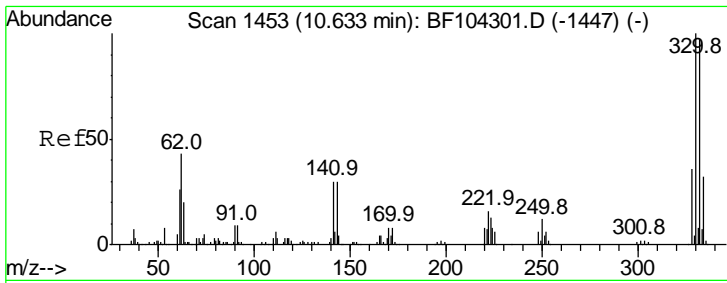
Tgt Ion	Resp	Lower	Upper
82	100		
95	0.0	5.2	7.8#
138	0.0	14.9	22.3#



#38
 Acenaphthene-d10
 Concen: 20.000 ng
 RT: 9.85 min Scan# 1319
 Delta R.T. -0.00 min
 Lab File: BF104737.D
 Acq: 24 Apr 2018 5:39

Tgt Ion	Resp	Lower	Upper
164	100		
162	104.9	86.1	129.1
160	46.2	38.3	57.5

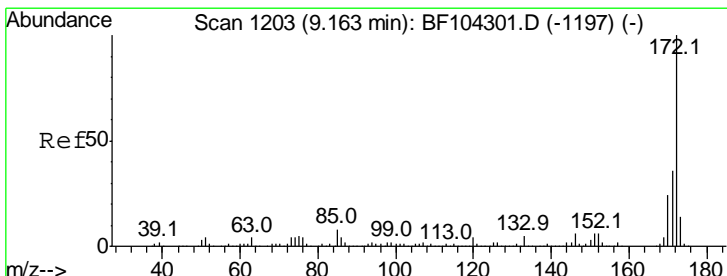
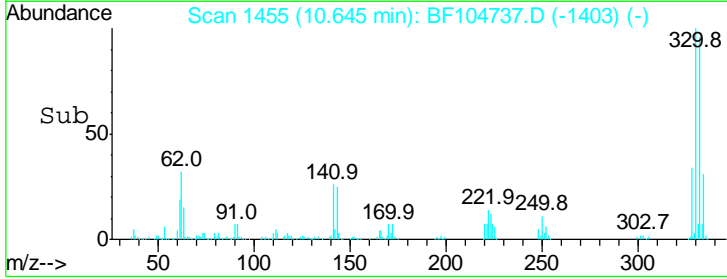
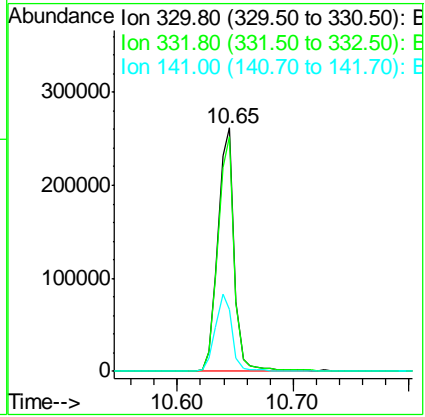
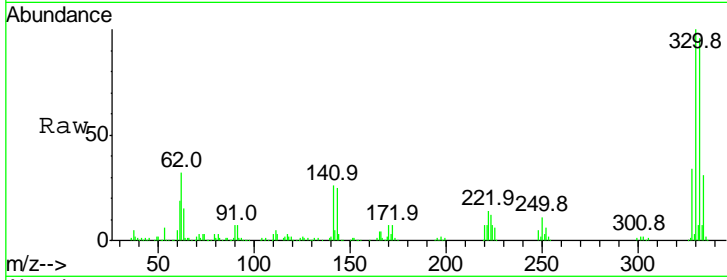




#41
 2,4,6-Tribromophenol
 Concen: 120.418 ng
 RT: 10.65 min Scan# 1455
 Delta R.T. 0.01 min
 Lab File: BF104737.D
 Acq: 24 Apr 2018 5:39

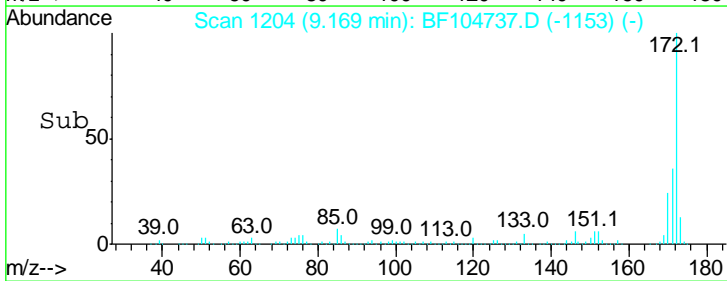
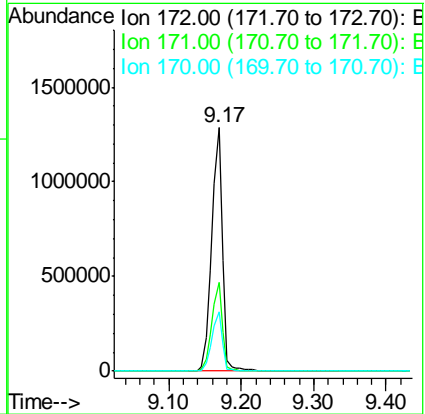
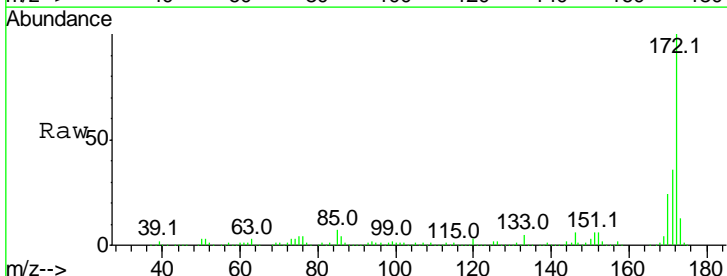
Instrument :
 BNA_F
 ClientSampled :

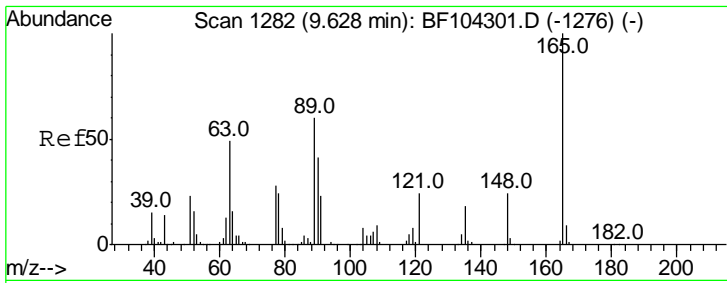
Tgt Ion	Resp	Lower	Upper
330	100		
332	96.4	77.0	115.6
141	32.5	29.9	44.9



#44
 2-Fluorobiphenyl
 Concen: 100.780 ng
 RT: 9.17 min Scan# 1204
 Delta R.T. -0.00 min
 Lab File: BF104737.D
 Acq: 24 Apr 2018 5:39

Tgt Ion	Resp	Lower	Upper
172	100		
171	36.4	29.7	44.5
170	24.4	19.6	29.4

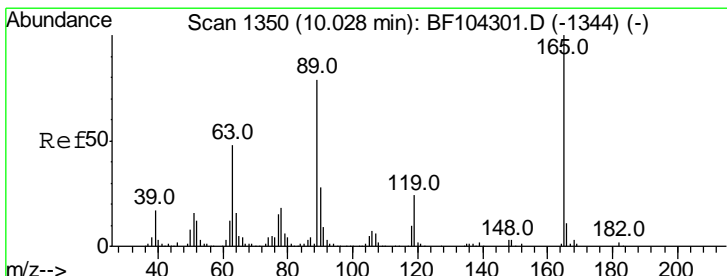
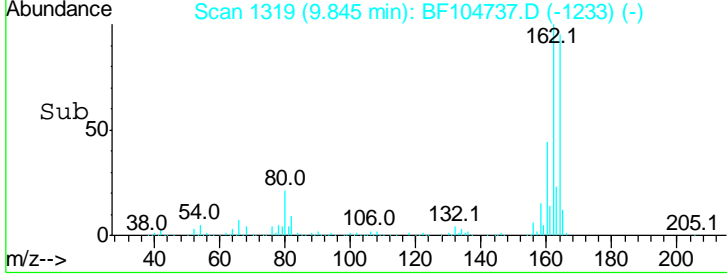
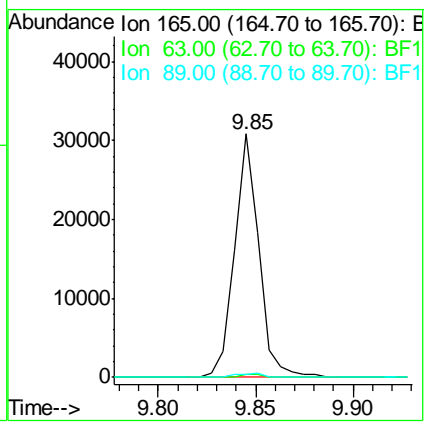
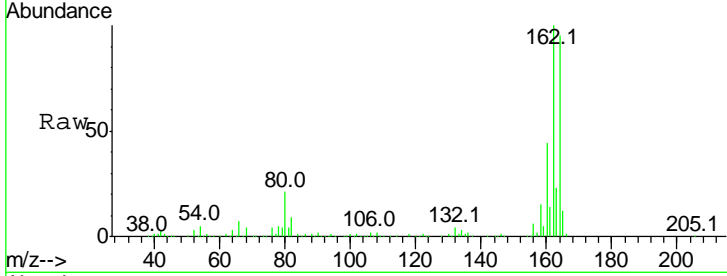




#50
 2,6-Dinitrotoluene
 Concen: 8.766 ng
 RT: 9.85 min Scan# 1319
 Delta R.T. 0.21 min
 Lab File: BF104737.D
 Acq: 24 Apr 2018 5:39

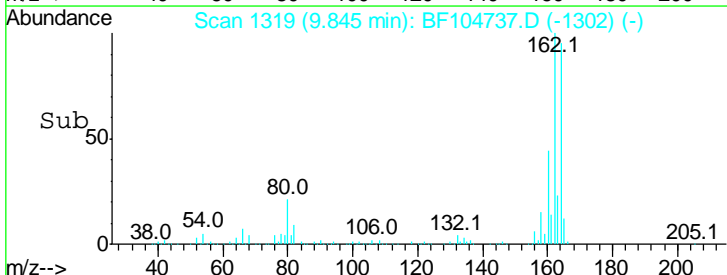
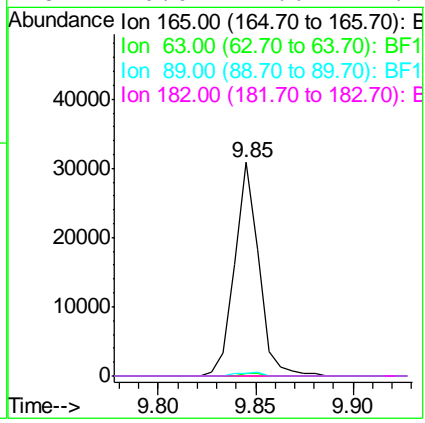
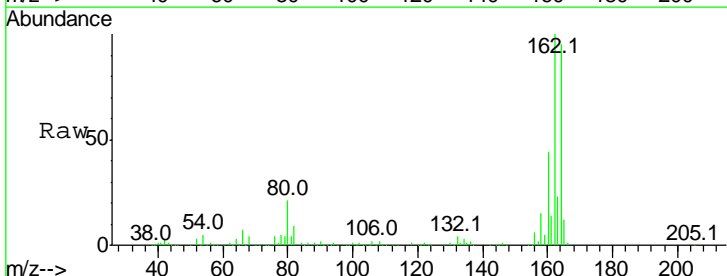
Instrument :
 BNA_F
 ClientSampled :

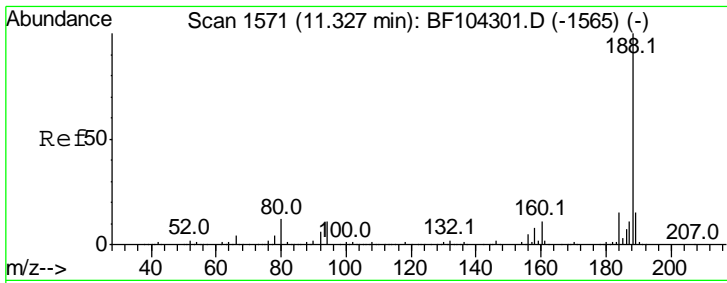
Tgt Ion	Resp	Lower	Upper
165	100		
63	1.3	44.7	67.1#
89	1.4	44.0	66.0#



#56
 2,4-Dinitrotoluene
 Concen: 6.683 ng
 RT: 9.85 min Scan# 1319
 Delta R.T. -0.20 min
 Lab File: BF104737.D
 Acq: 24 Apr 2018 5:39

Tgt Ion	Resp	Lower	Upper
165	100		
63	1.3	36.4	54.6#
89	1.4	57.8	86.6#
182	0.0	1.6	2.4#

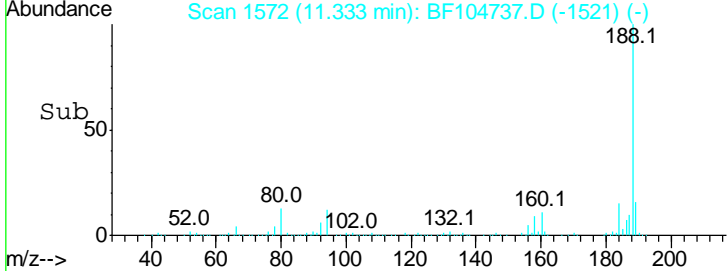
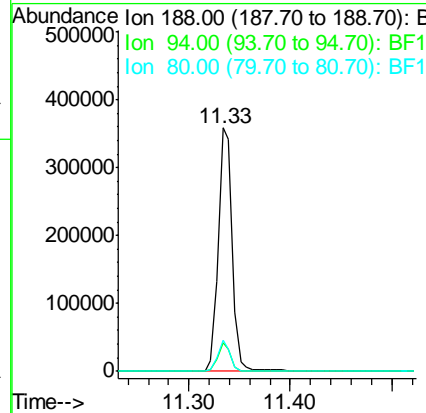
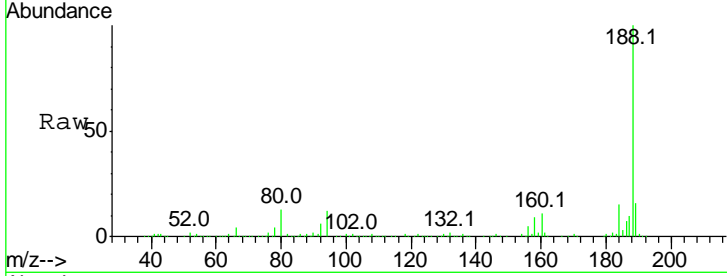




#63
 Phenanthrene-d10
 Concen: 20.000 ng
 RT: 11.33 min Scan# 1572
 Delta R.T. -0.00 min
 Lab File: BF104737.D
 Acq: 24 Apr 2018 5:39

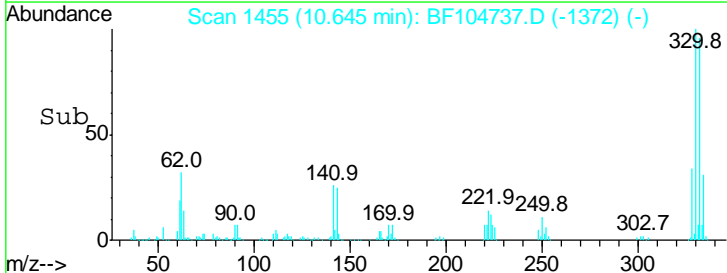
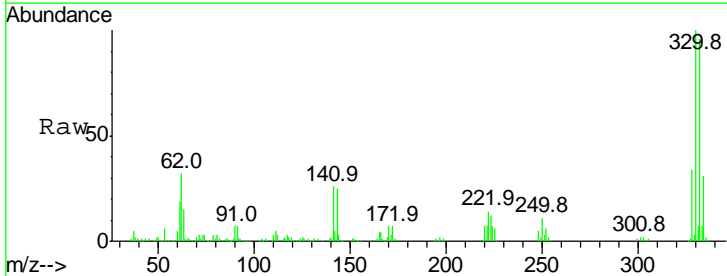
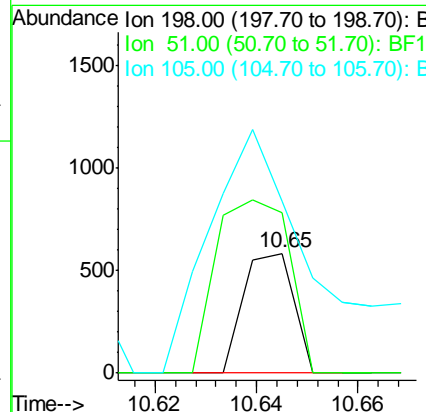
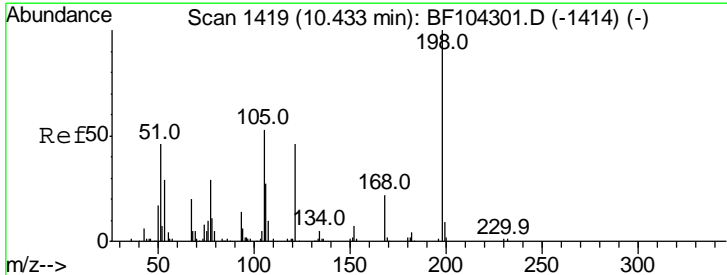
Instrument :
 BNA_F
 ClientSampled :

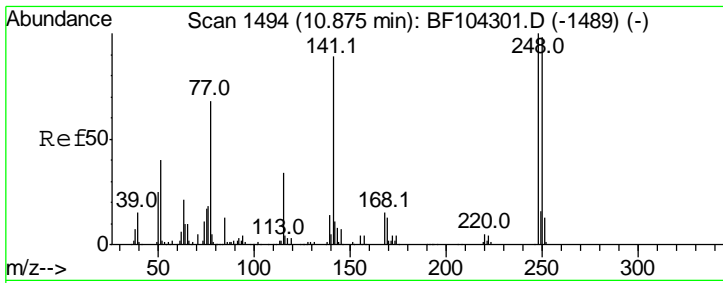
Tgt Ion	Resp	Lower	Upper
188	100		
94	11.5	8.5	12.7
80	12.7	9.2	13.8



#64
 4,6-Dinitro-2-methylphenol
 Concen: 7.549 ng
 RT: 10.65 min Scan# 1455
 Delta R.T. 0.19 min
 Lab File: BF104737.D
 Acq: 24 Apr 2018 5:39

Tgt Ion	Resp	Lower	Upper
198	100		
51	133.6	37.7	77.7#
105	143.4	36.3	76.3#

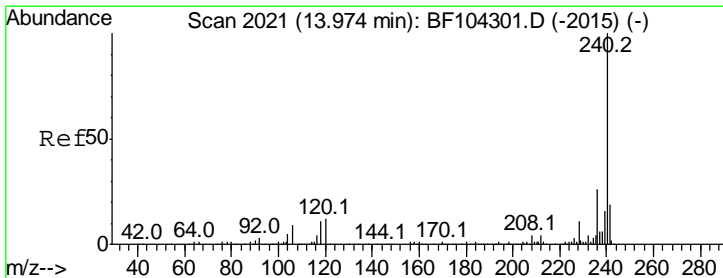
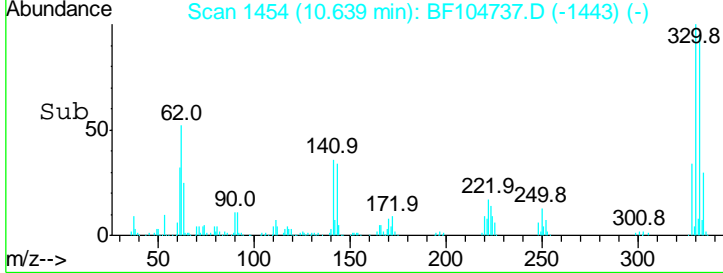
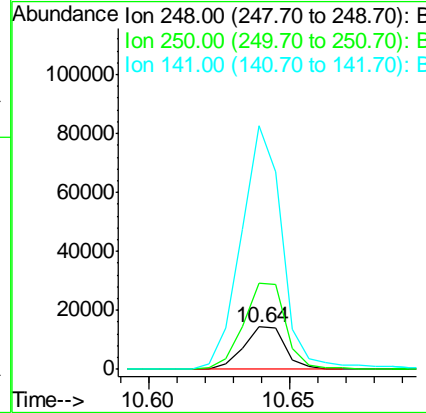
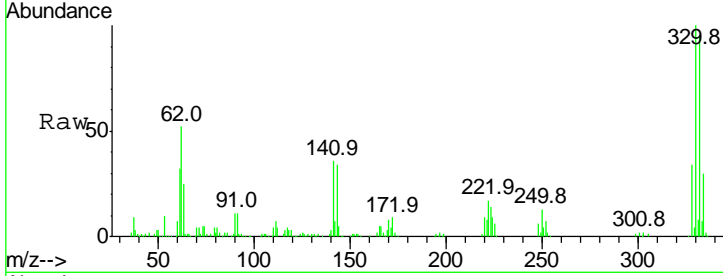




#66
 4-Bromophenyl-phenylether
 Concen: 4.005 ng
 RT: 10.64 min Scan# 1454
 Delta R.T. -0.24 min
 Lab File: BF104737.D
 Acq: 24 Apr 2018 5:39

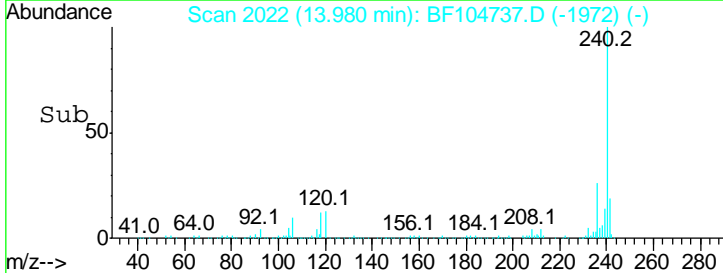
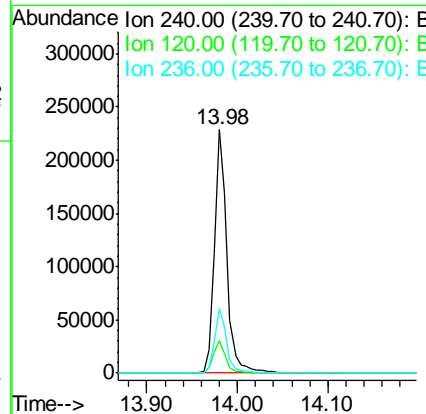
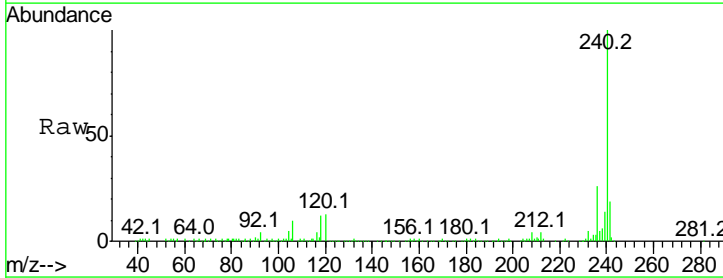
Instrument :
 BNA_F
 ClientSampled :

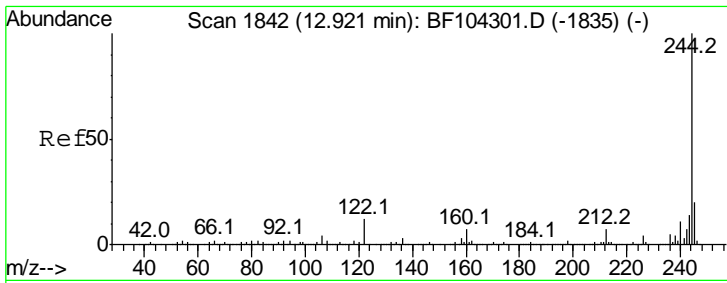
Tgt Ion	Resp	Lower	Upper
248	14652		
250	204.5	76.9	115.3#
141	576.6	74.4	111.6#



#75
 Chrysene-d12
 Concen: 20.000 ng
 RT: 13.98 min Scan# 2022
 Delta R.T. -0.01 min
 Lab File: BF104737.D
 Acq: 24 Apr 2018 5:39

Tgt Ion	Resp	Lower	Upper
240	222850		
120	13.3	9.5	14.3
236	26.3	20.7	31.1



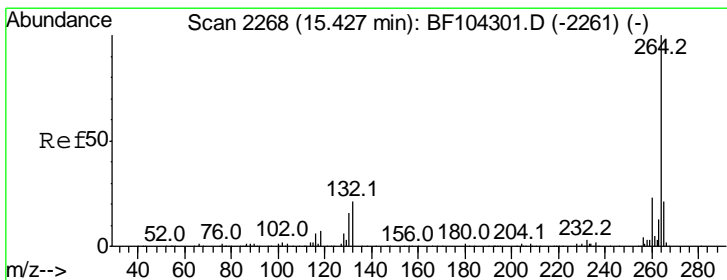
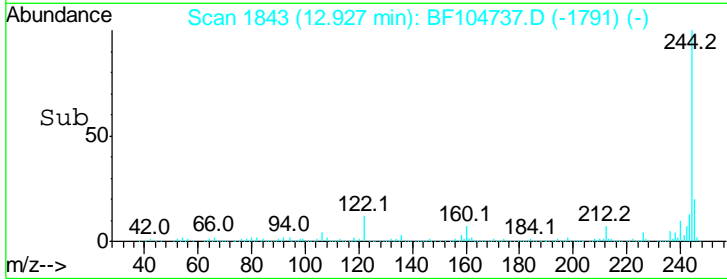
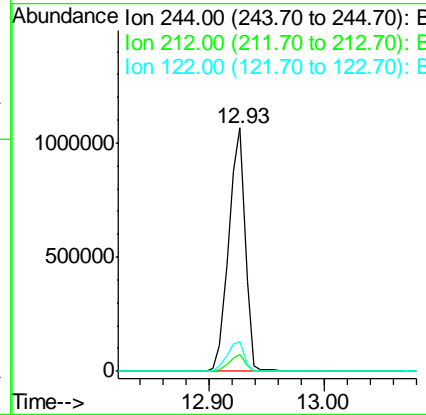
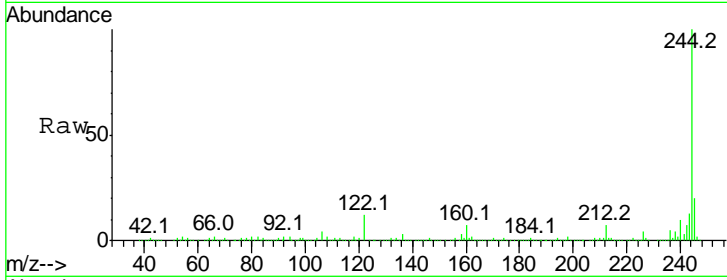


#78
 Terphenyl-d14
 Concen: 108.325 ng
 RT: 12.93 min Scan# 1843
 Delta R.T. 0.01 min
 Lab File: BF104737.D
 Acq: 24 Apr 2018 5:39

Instrument :
 BNA_F
 ClientSampled :

Tgt Ion: 244 Resp: 1058866

Ion	Ratio	Lower	Upper
244	100		
212	7.0	5.4	8.0
122	12.0	11.0	16.4



#86
 Perylene-d12
 Concen: 20.000 ng
 RT: 15.45 min Scan# 2272
 Delta R.T. -0.00 min
 Lab File: BF104737.D
 Acq: 24 Apr 2018 5:39

Tgt Ion: 264 Resp: 168962

Ion	Ratio	Lower	Upper
264	100		
260	23.7	19.2	28.8
265	20.4	17.5	26.3

