

Data Path : Z:\HPCHEM1\BNA F\DATA\BF042517\
 Data File : BF094635.D
 Acq On : 26 Apr 2017 5:59
 Operator : SJ/MA
 Sample : I2813-03 5X
 Misc :
 ALS Vial : 38 Sample Multiplier: 1

Instrument :
 BNA_F
Client Sampled :
 E2-W8-SSW

Manual Integrations
APPROVED
 mohammad
 4/26/2017 2:22:43 PM

Quant Time: Apr 26 13:50:57 2017
 Quant Method : Z:\HPCHEM1\BNA F\METHODS\8270-BF041717.M
 Quant Title : ASP BNA STANDARDS FOR 5 POINT CALIBRATION
 QLast Update : Mon Apr 17 14:59:23 2017
 Response via : Initial Calibration

Internal Standards	R.T.	QIon	Response	Conc	Units	Dev(Min)	
1) 1,4-Dichlorobenzene-d4	5.75	152	119614	20.00	ng	-0.01	
21) Naphthalene-d8	7.25	136	462963	20.00	ng	-0.01	
38) Acenaphthene-d10	9.38	164	179016	20.00	ng	-0.02	
63) Phenanthrene-d10	11.20	188	275797	20.00	ng	-0.02	
75) Chrysene-d12	14.46	240	250125	20.00	ng	0.00	
86) Perylene-d12	16.08	264	181232	20.00	ng	0.00	
System Monitoring Compounds							
5) 2-Fluorophenol	4.30	112	250838	34.79	ng	0.00	
7) Phenol-d6	5.37	99	303507	35.71	ng	-0.02	
23) Nitrobenzene-d5	6.40	82	171795	22.91	ng	-0.02	
41) 2,4,6-Tribromophenol	10.35	330	41490	29.63	ng	-0.02	
44) 2-Fluorobiphenyl	8.57	172	288734	23.73	ng	-0.02	
78) Terphenyl-d14	13.18	244	164524	17.58	ng	-0.02	
Target Compounds							
49) Dimethylphthalate	9.07	163	32598	2.44	ng		98
70) Phenanthrene	11.23	178	136750	8.81	ng		96
71) Anthracene	11.30	178	42701	2.66	ng		96
74) Fluoranthene	12.69	202	224808	13.97	ng		99
77) Pyrene	12.97	202	241871	13.84	ng		97
80) Benzo(a)anthracene	14.44	228	95807m	6.59	ng		
82) Chrysene	14.49	228	102277m	7.70	ng		
85) Indeno(1,2,3-cd)pyrene	17.36	276	32975	2.61	ng		91
87) Benzo(b)fluoranthene	15.68	252	88203m	7.96	ng		
88) Benzo(k)fluoranthene	15.71	252	29728m	2.83	ng		
89) Benzo(a)pyrene	16.02	252	69232	6.71	ng	#	94
91) Benzo(a,h,i)perylene	17.73	276	39442	4.52	ng		97

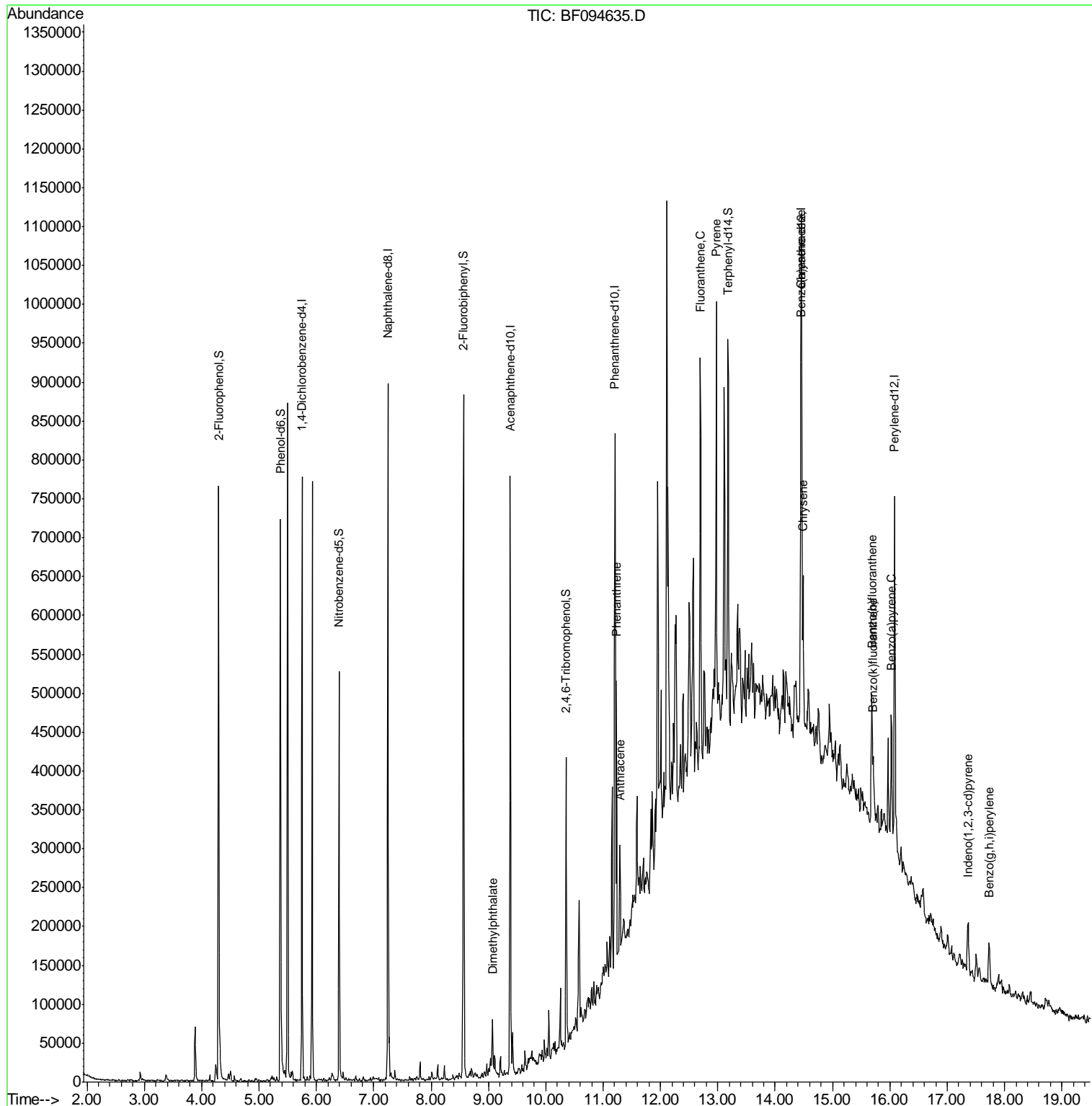
(#) = qualifier out of range (m) = manual integration (+) = signals summed

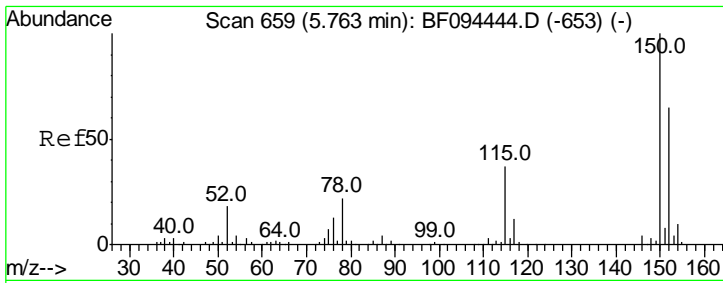
Data Path : Z:\HPCHEM1\BNA F\DATA\BF042517\
 Data File : BF094635.D
 Acq On : 26 Apr 2017 5:59
 Operator : SJ/MA
 Sample : I2813-03 5X
 Misc :
 ALS Vial : 38 Sample Multiplier: 1

Instrument :
 BNA_F
 Client Sampled :
 E2-W8-SSW

Manual Integrations
APPROVED
 mohammad
 4/26/2017 2:22:43 PM

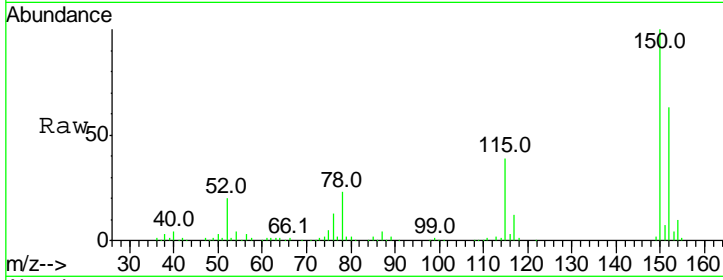
Quant Time: Apr 26 13:50:57 2017
 Quant Method : Z:\HPCHEM1\BNA F\METHODS\8270-BF041717.M
 Quant Title : ASP BNA STANDARDS FOR 5 POINT CALIBRATION
 QLast Update : Mon Apr 17 14:59:23 2017
 Response via : Initial Calibration





#1
 1,4-Dichlorobenzene-d4
 Concen: 20.00 ng
 RT: 5.75 min Scan# 648
 Delta R.T. -0.01 min
 Lab File: BF094635.D
 Acq: 26 Apr 2017 5:59

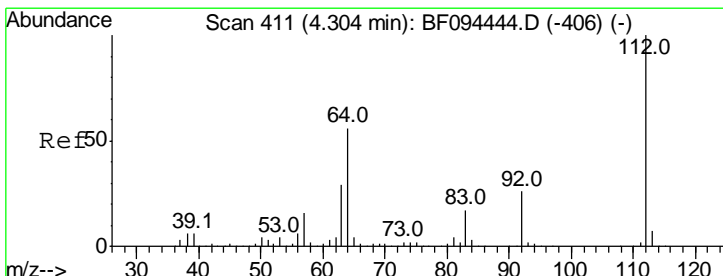
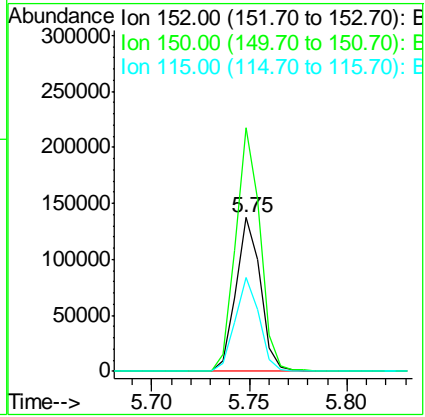
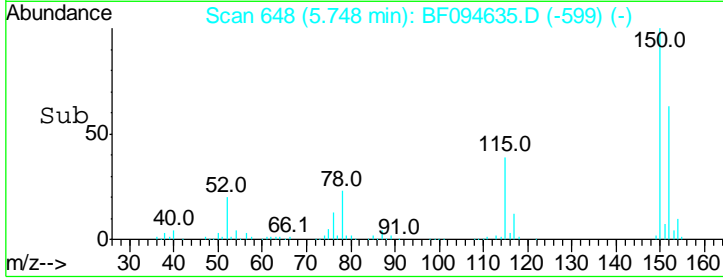
Instrument :
 BNA_F
ClientSampled :
 E2-W8-SSW



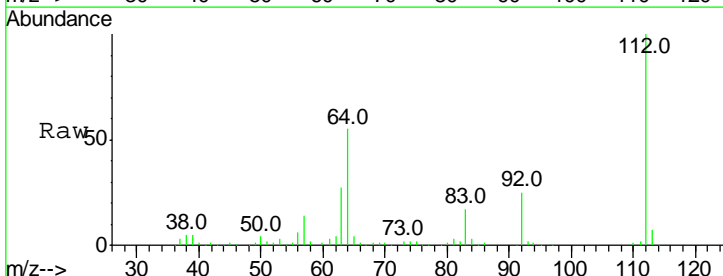
Tgt Ion: 152 Resp: 119614

Ion	Ratio	Lower	Upper
152	100		
150	158.3	126.2	189.2
115	61.1	52.2	78.2

Manual Integrations
APPROVED
 mohammad
 4/26/2017 2:22:43 PM

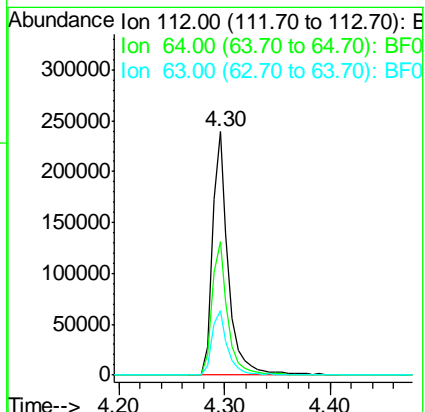
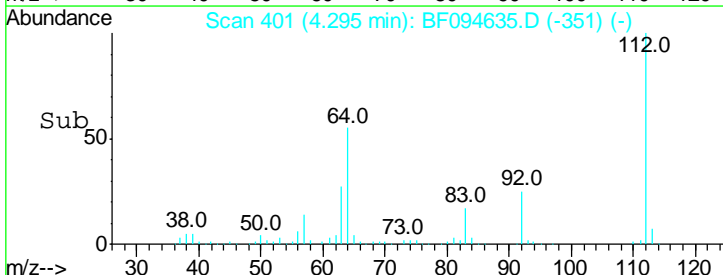


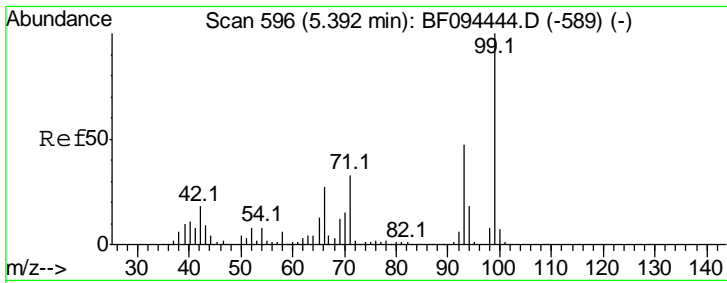
#5
 2-Fluorophenol
 Concen: 34.79 ng
 RT: 4.30 min Scan# 401
 Delta R.T. -0.01 min
 Lab File: BF094635.D
 Acq: 26 Apr 2017 5:59



Tgt Ion: 112 Resp: 250838

Ion	Ratio	Lower	Upper
112	100		
64	54.9	46.0	69.0
63	26.5	23.4	35.0





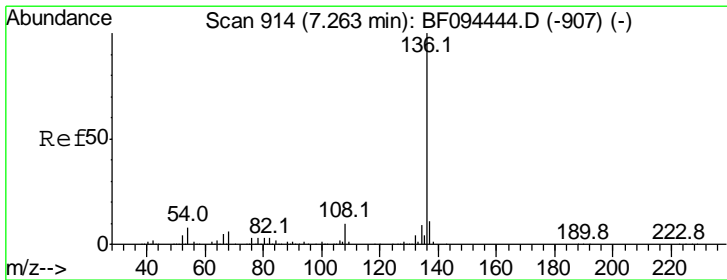
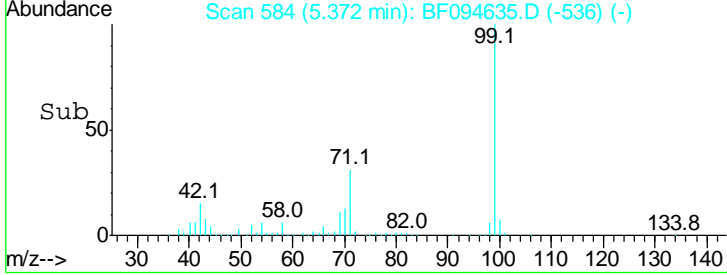
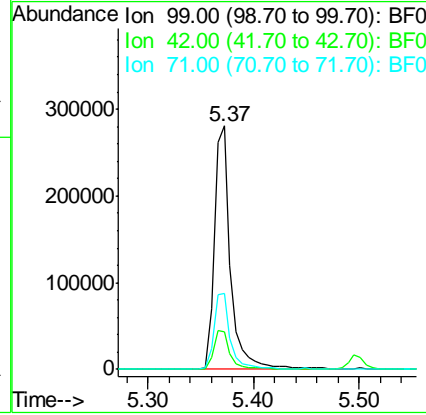
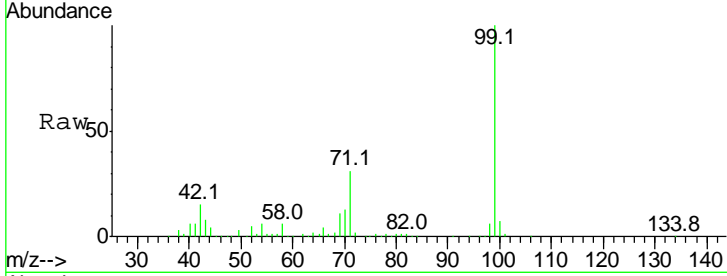
#7
 Phenol-d6
 Concen: 35.71 ng
 RT: 5.37 min Scan# 584
 Delta R.T. -0.02 min
 Lab File: BF094635.D
 Acq: 26 Apr 2017 5:59

Instrument :
 BNA_F
ClientSampled :
 E2-W8-SSW

Tgt Ion	Resp	Lower	Upper
99	100		
42	15.5	13.5	20.3
71	30.9	24.5	36.7

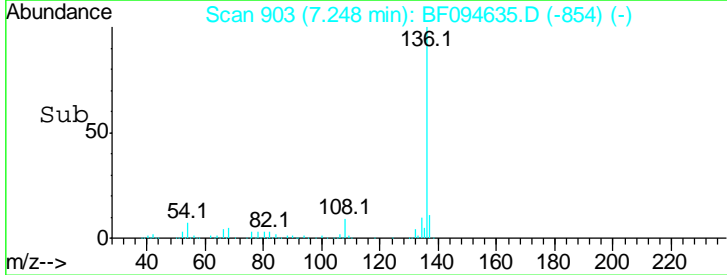
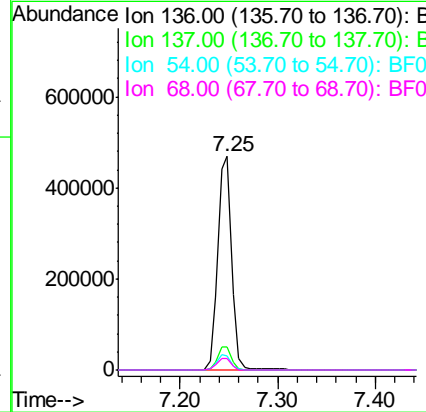
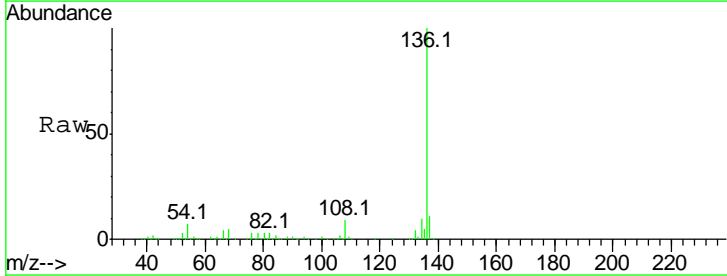
Manual Integrations
APPROVED

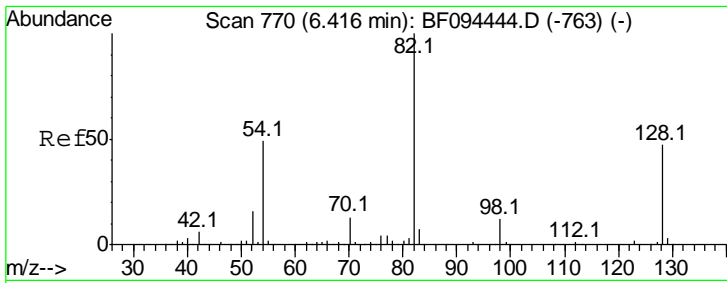
mohammad
 4/26/2017 2:22:43 PM



#21
 Naphthalene-d8
 Concen: 20.00 ng
 RT: 7.25 min Scan# 903
 Delta R.T. -0.01 min
 Lab File: BF094635.D
 Acq: 26 Apr 2017 5:59

Tgt Ion	Resp	Lower	Upper
136	100		
137	10.9	8.5	12.7
54	6.7	4.9	7.3
68	5.3	4.1	6.1





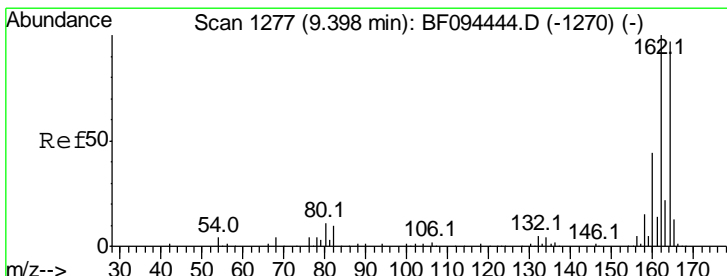
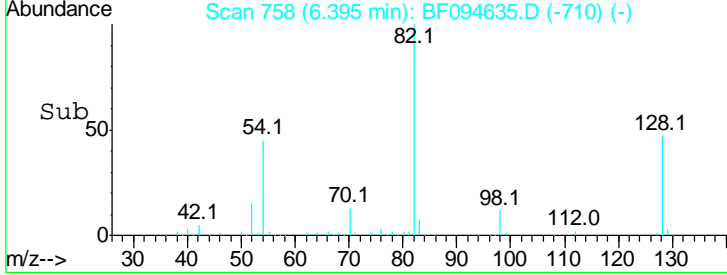
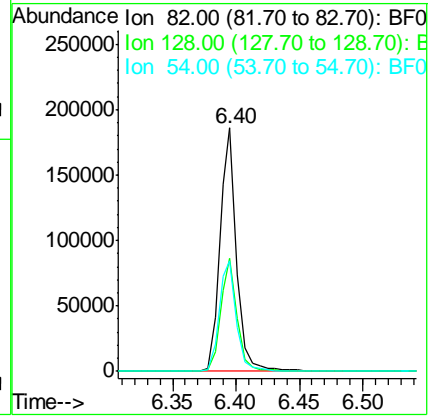
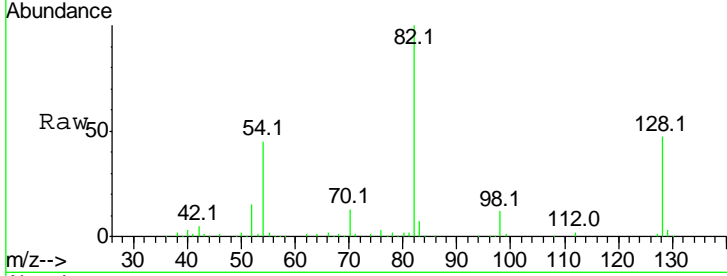
#23
 Nitrobenzene-d5
 Concen: 22.91 ng
 RT: 6.40 min Scan# 758
 Delta R.T. -0.02 min
 Lab File: BF094635.D
 Acq: 26 Apr 2017 5:59

Instrument :
 BNA_F
ClientSampled :
 E2-W8-SSW

Tgt Ion: 82 Resp: 171795

Ion	Ratio	Lower	Upper
82	100		
128	46.6	34.0	51.0
54	45.3	42.2	63.2

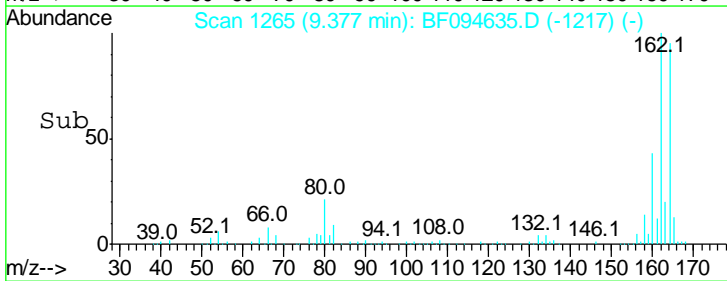
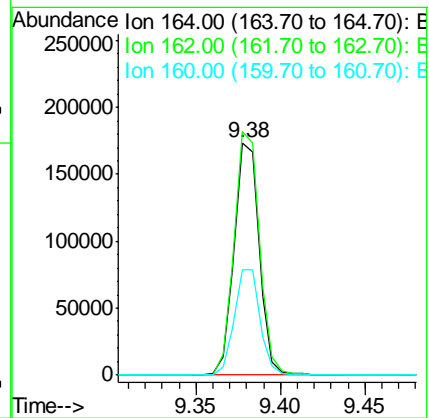
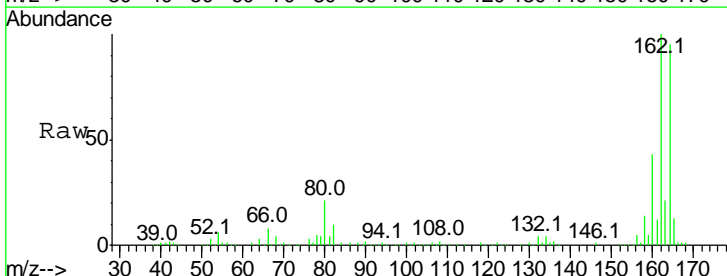
Manual Integrations
APPROVED
 mohammad
 4/26/2017 2:22:43 PM

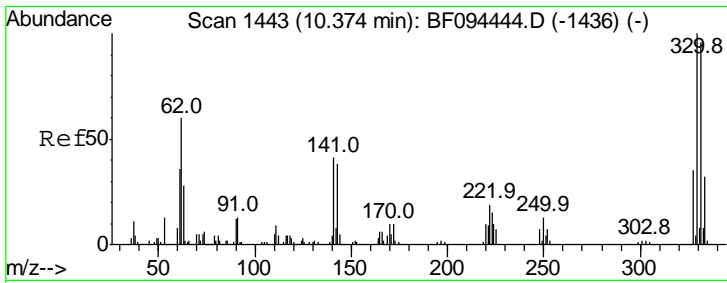


#38
 Acenaphthene-d10
 Concen: 20.00 ng
 RT: 9.38 min Scan# 1265
 Delta R.T. -0.02 min
 Lab File: BF094635.D
 Acq: 26 Apr 2017 5:59

Tgt Ion: 164 Resp: 179016

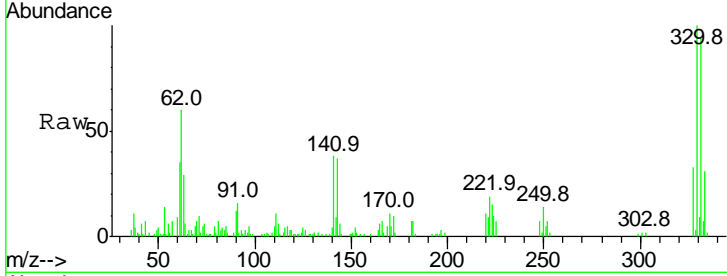
Ion	Ratio	Lower	Upper
164	100		
162	104.9	82.6	123.8
160	45.5	36.2	54.2





#41
 2,4,6-Tribromophenol
 Concen: 29.63 ng
 RT: 10.35 min Scan# 1431
 Delta R.T. -0.02 min
 Lab File: BF094635.D
 Acq: 26 Apr 2017 5:59

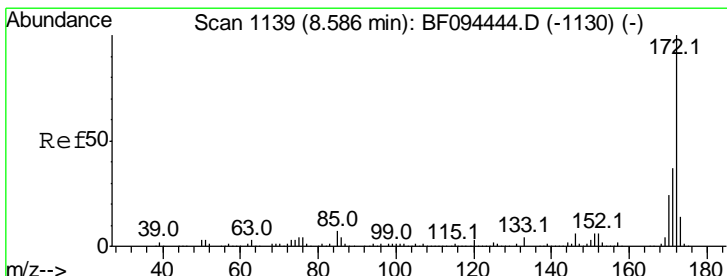
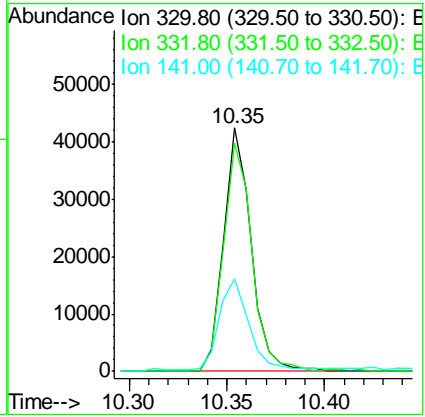
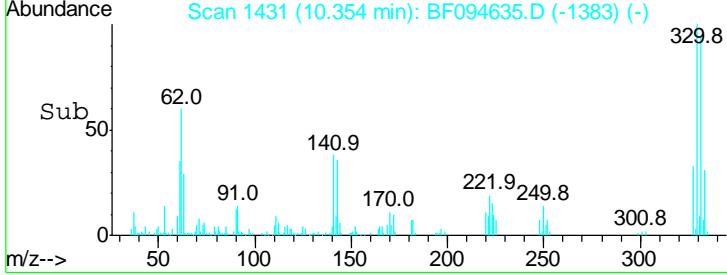
Instrument :
 BNA_F
ClientSampled :
 E2-W8-SSW



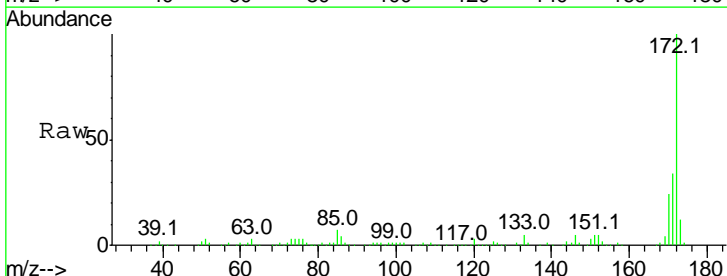
Tgt Ion: 330 Resp: 41490

Ion	Ratio	Lower	Upper
330	100		
332	96.7	76.6	115.0
141	39.8	31.4	47.2

Manual Integrations
APPROVED
 mohammad
 4/26/2017 2:22:43 PM

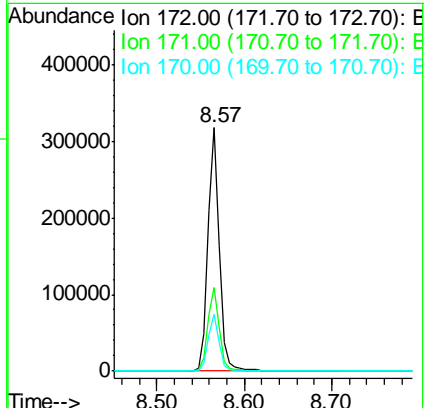
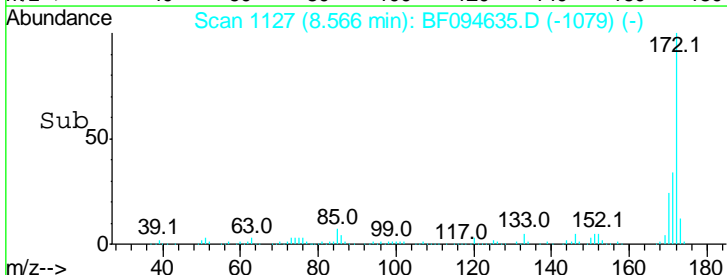


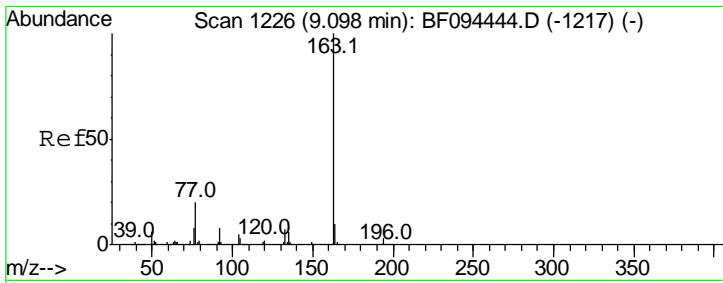
#44
 2-Fluorobiphenyl
 Concen: 23.73 ng
 RT: 8.57 min Scan# 1127
 Delta R.T. -0.02 min
 Lab File: BF094635.D
 Acq: 26 Apr 2017 5:59



Tgt Ion: 172 Resp: 288734

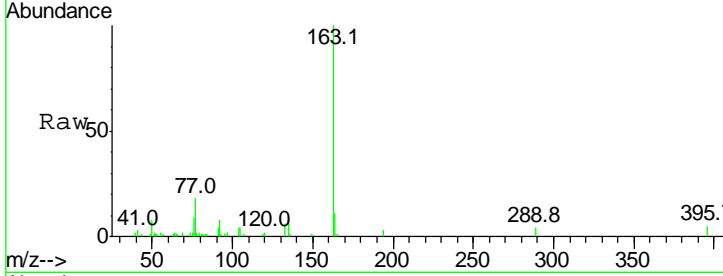
Ion	Ratio	Lower	Upper
172	100		
171	34.3	29.6	44.4
170	23.6	19.8	29.8





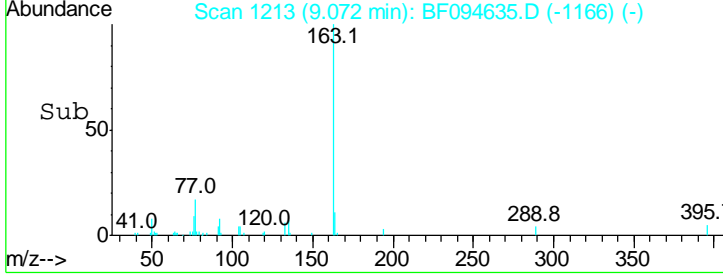
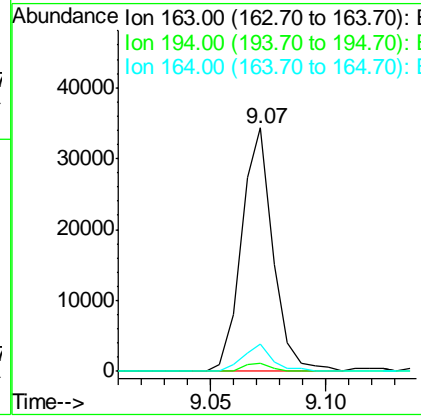
#49
 Dimethylphthalate
 Concen: 2.44 ng
 RT: 9.07 min Scan# 1213
 Delta R.T. -0.03 min
 Lab File: BF094635.D
 Acq: 26 Apr 2017 5:59

Instrument :
 BNA_F
ClientSampled :
 E2-W8-SSW

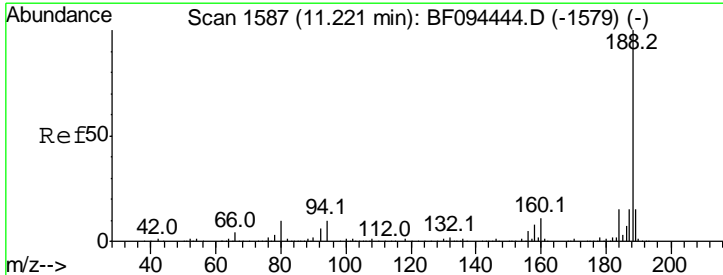


Tgt Ion	Resp	Lower	Upper
163	100		
194	3.5	2.6	4.0
164	11.2	8.4	12.6

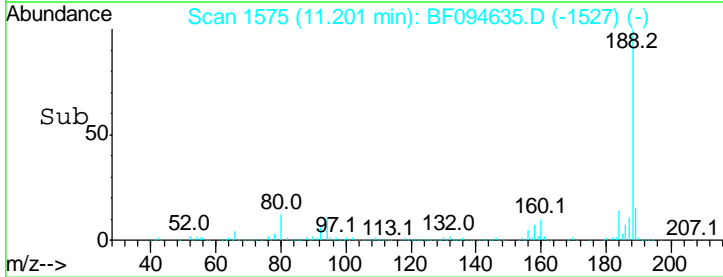
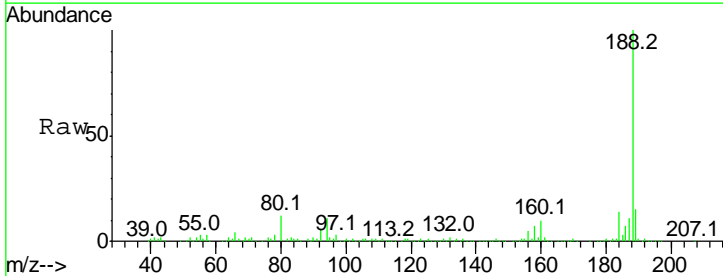
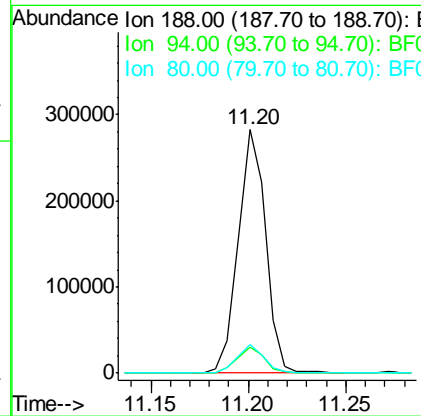
Manual Integrations
APPROVED
 mohammad
 4/26/2017 2:22:43 PM

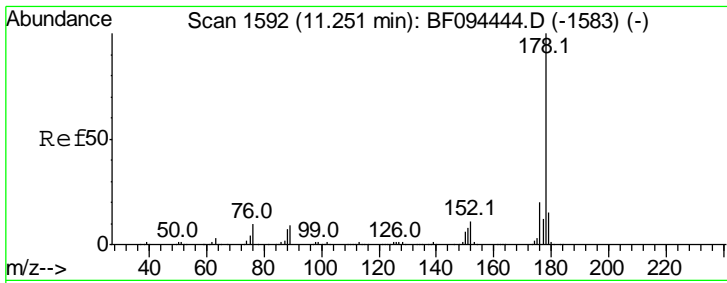


#63
 Phenanthrene-d10
 Concen: 20.00 ng
 RT: 11.20 min Scan# 1575
 Delta R.T. -0.02 min
 Lab File: BF094635.D
 Acq: 26 Apr 2017 5:59



Tgt Ion	Resp	Lower	Upper
188	100		
94	10.9	9.4	14.2
80	11.8	10.2	15.2





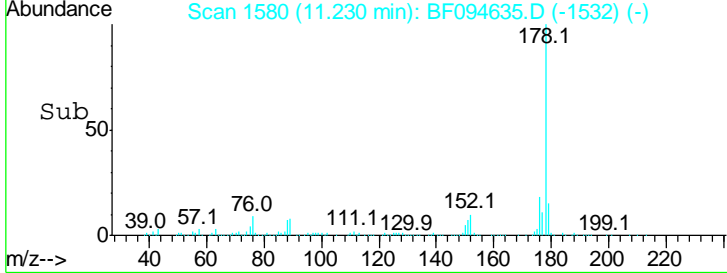
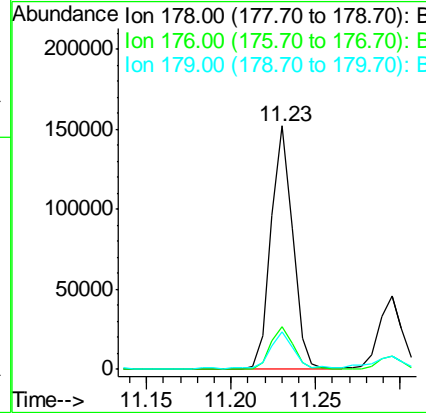
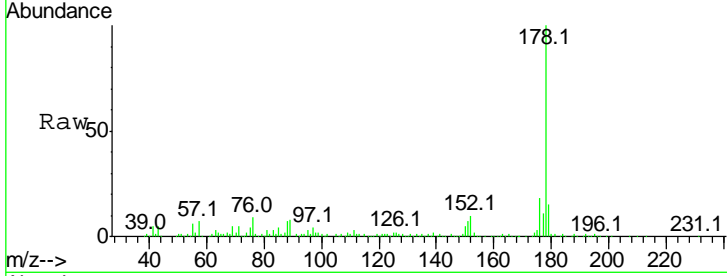
#70
 Phenanthrene
 Concen: 8.81 ng
 RT: 11.23 min Scan# 1580
 Delta R.T. -0.02 min
 Lab File: BF094635.D
 Acq: 26 Apr 2017 5:59

Instrument :
 BNA_F
ClientSampled :
 E2-W8-SSW

Tgt Ion	Resp	Lower	Upper
178	100		
176	17.6	16.2	24.4
179	15.4	12.6	19.0

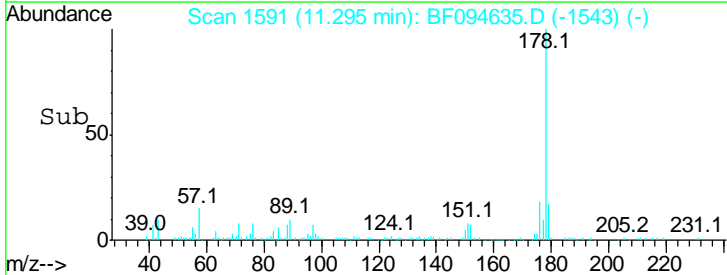
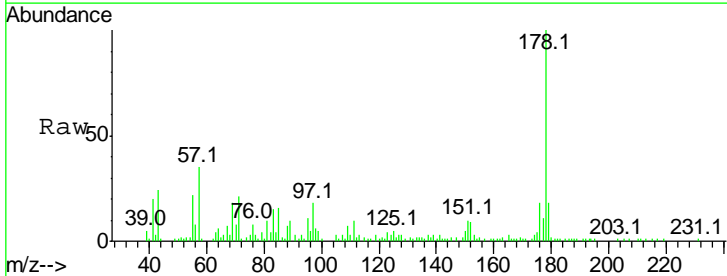
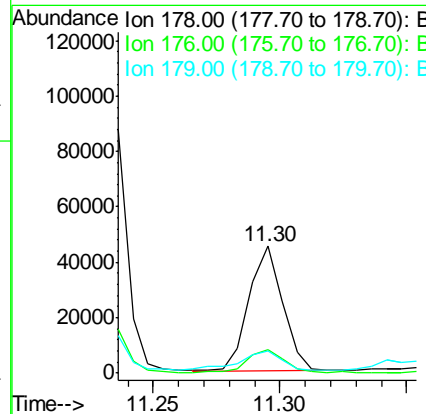
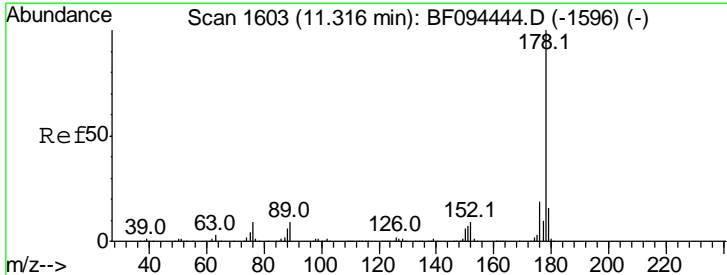
Manual Integrations
APPROVED

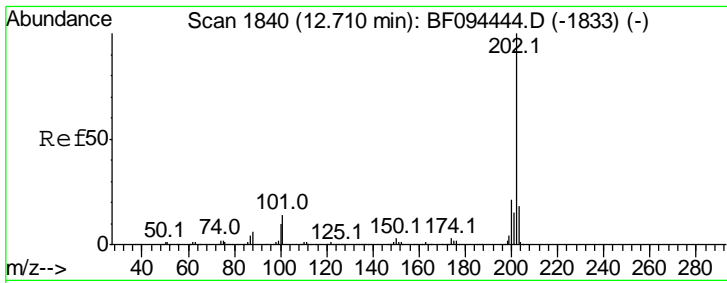
mohammad
 4/26/2017 2:22:43 PM



#71
 Anthracene
 Concen: 2.66 ng
 RT: 11.30 min Scan# 1591
 Delta R.T. -0.02 min
 Lab File: BF094635.D
 Acq: 26 Apr 2017 5:59

Tgt Ion	Resp	Lower	Upper
178	100		
176	18.1	15.8	23.8
179	17.8	12.7	19.1





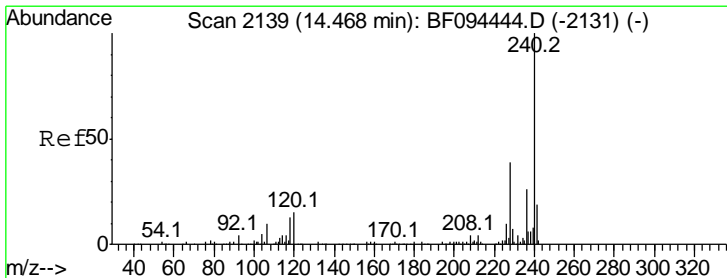
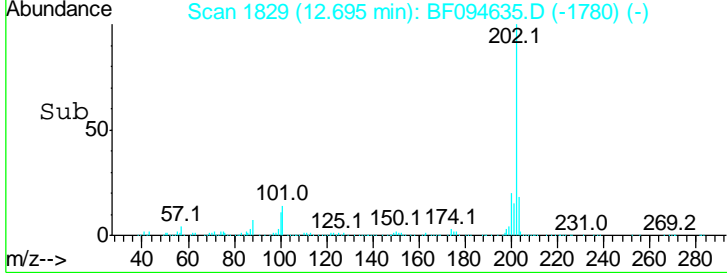
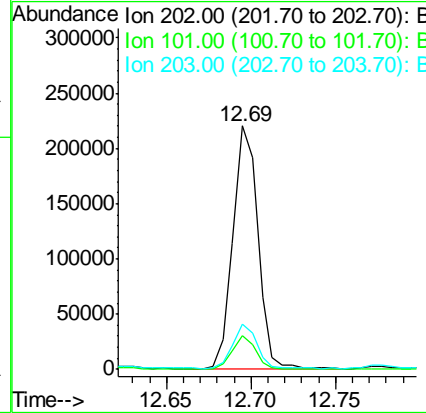
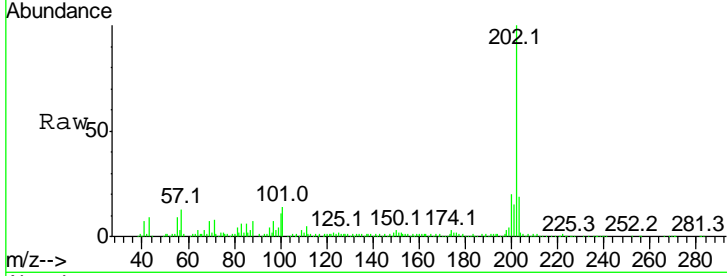
#74
 Fluoranthene
 Concen: 13.97 ng
 RT: 12.69 min Scan# 1829
 Delta R.T. -0.01 min
 Lab File: BF094635.D
 Acq: 26 Apr 2017 5:59

Instrument :
 BNA_F
ClientSampled :
 E2-W8-SSW

Tgt Ion	Ratio	Lower	Upper
202	100		
101	13.8	0.0	33.2
203	18.5	0.0	38.1

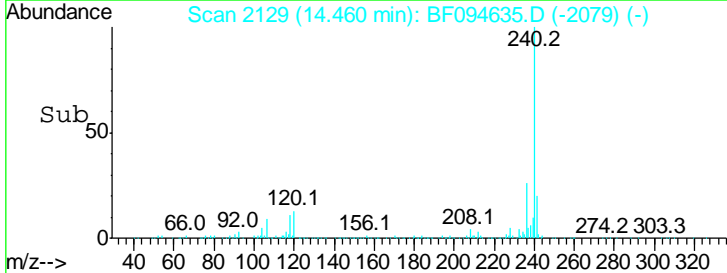
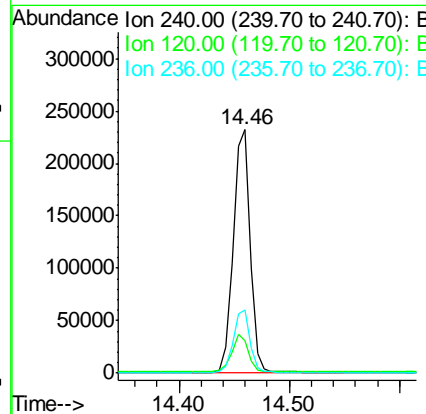
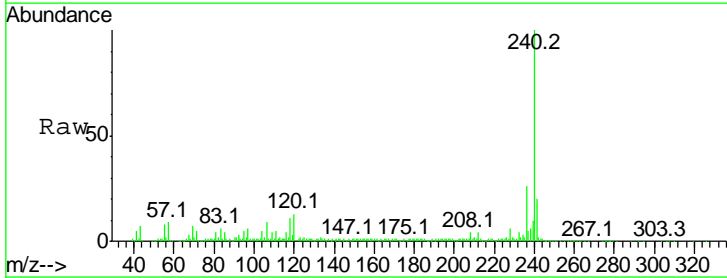
Manual Integrations
APPROVED

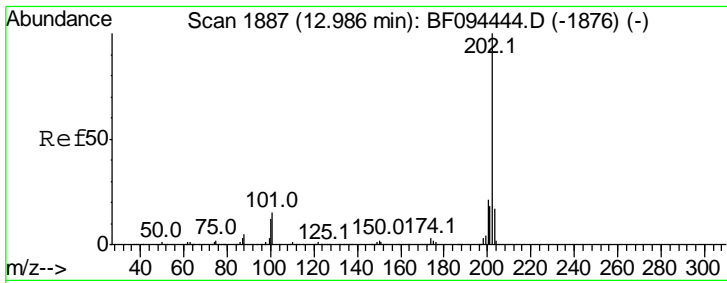
mohammad
 4/26/2017 2:22:43 PM



#75
 Chrysene-d12
 Concen: 20.00 ng
 RT: 14.46 min Scan# 2129
 Delta R.T. -0.01 min
 Lab File: BF094635.D
 Acq: 26 Apr 2017 5:59

Tgt Ion	Ratio	Lower	Upper
240	100		
120	13.3	5.8	8.8#
236	25.8	20.5	30.7





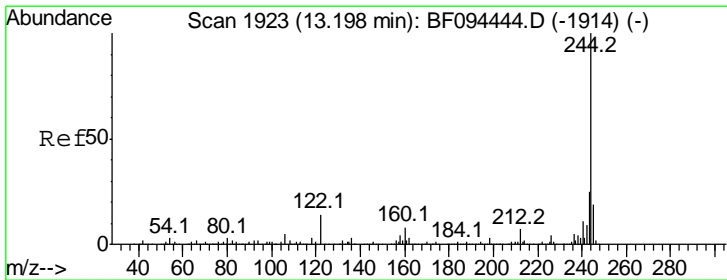
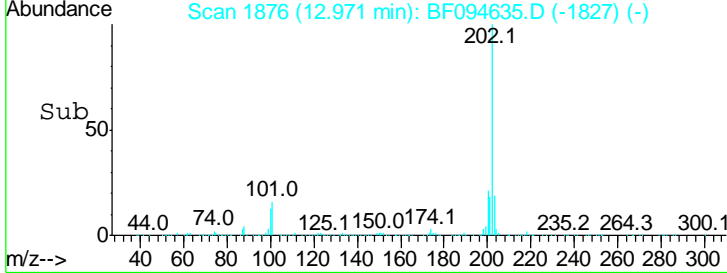
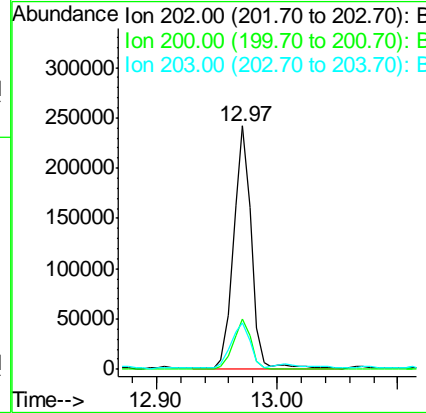
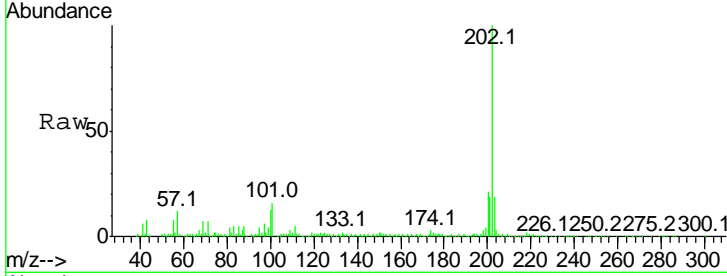
#77
 Pyrene
 Concen: 13.84 ng
 RT: 12.97 min Scan# 1876
 Delta R.T. -0.01 min
 Lab File: BF094635.D
 Acq: 26 Apr 2017 5:59

Instrument :
 BNA_F
ClientSampled :
 E2-W8-SSW

Tgt Ion	Ratio	Lower	Upper
202	100		
200	20.8	17.6	26.4
203	19.2	14.4	21.6

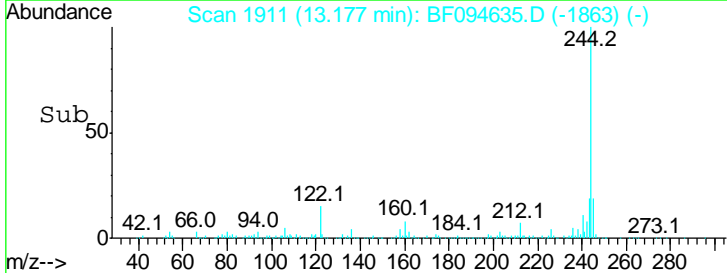
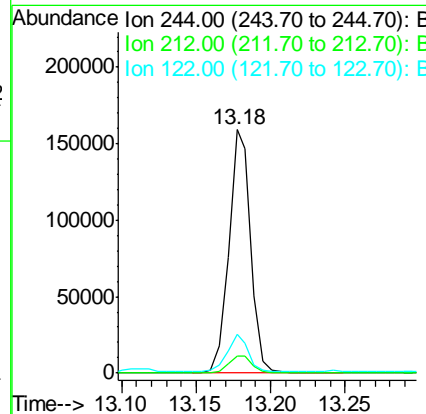
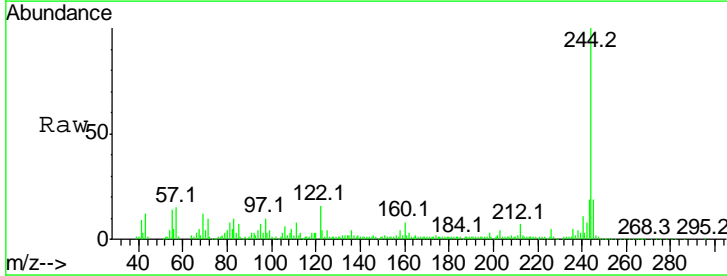
Manual Integrations
APPROVED

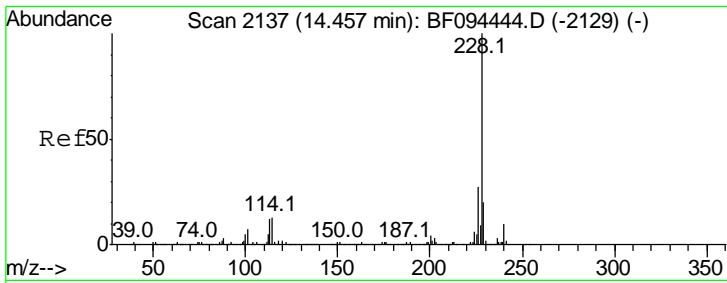
mohammad
 4/26/2017 2:22:43 PM



#78
 Terphenyl-d14
 Concen: 17.58 ng
 RT: 13.18 min Scan# 1911
 Delta R.T. -0.02 min
 Lab File: BF094635.D
 Acq: 26 Apr 2017 5:59

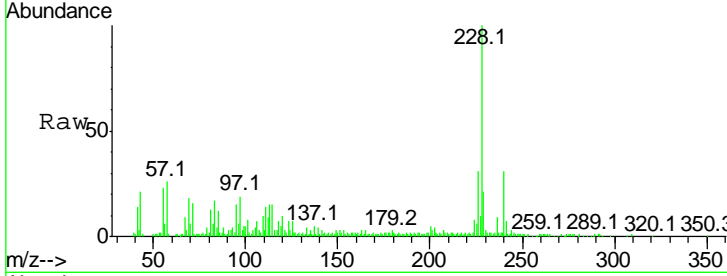
Tgt Ion	Ratio	Lower	Upper
244	100		
212	6.9	6.0	9.0
122	16.0	10.3	15.5#





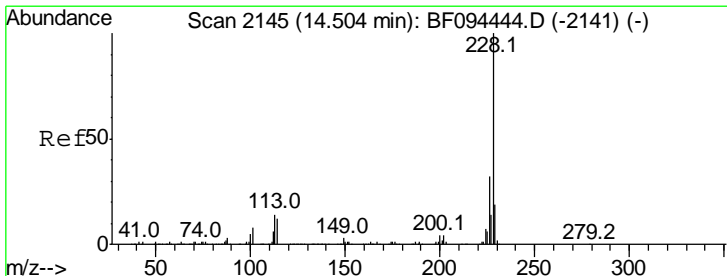
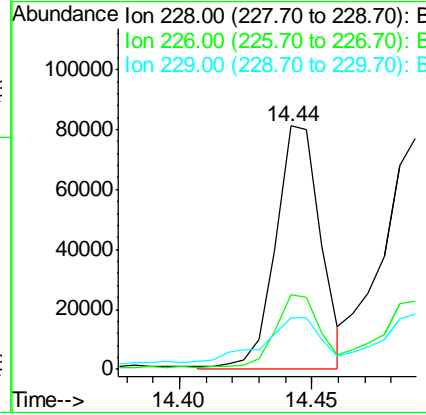
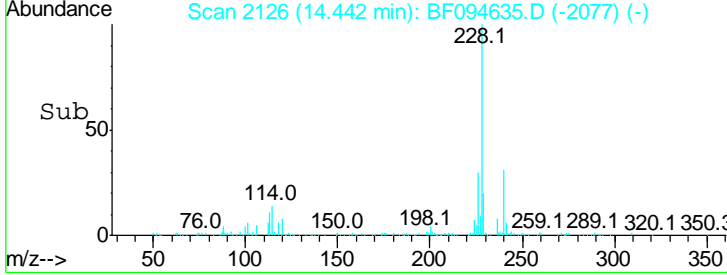
#80
 Benzo(a)anthracene
 Concen: 6.59 ng m
 RT: 14.44 min Scan# 2126
 Delta R.T. -0.01 min
 Lab File: BF094635.D
 Acq: 26 Apr 2017 5:59

Instrument :
 BNA_F
 ClientSampled :
 E2-W8-SSW

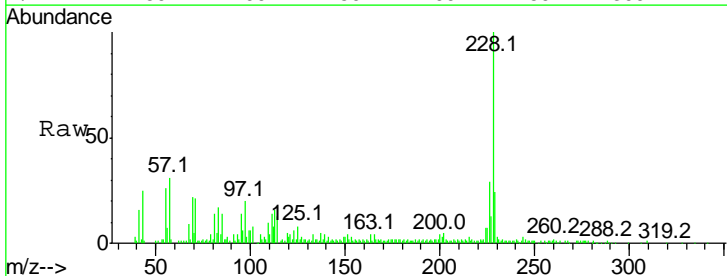


Tgt Ion	Resp	Lower	Upper
228	100		
226	30.7	22.6	33.8
229	21.0	16.3	24.5

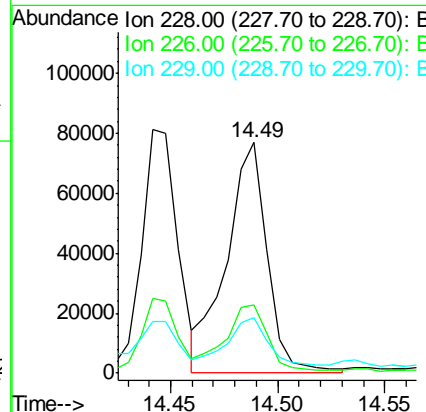
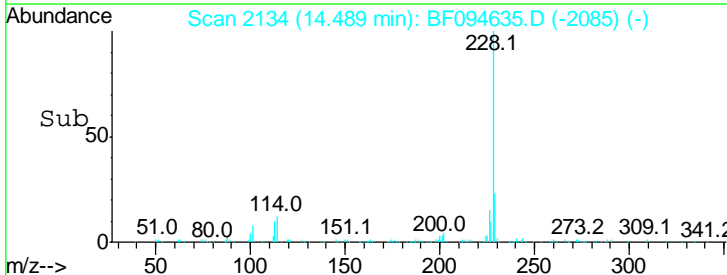
Manual Integrations
 APPROVED
 mohammad
 4/26/2017 2:22:43 PM

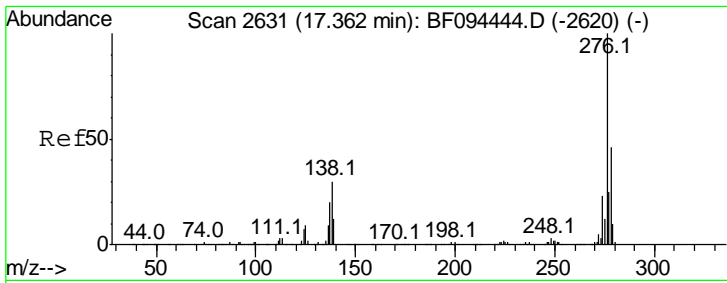


#82
 Chrysene
 Concen: 7.70 ng m
 RT: 14.49 min Scan# 2134
 Delta R.T. -0.01 min
 Lab File: BF094635.D
 Acq: 26 Apr 2017 5:59



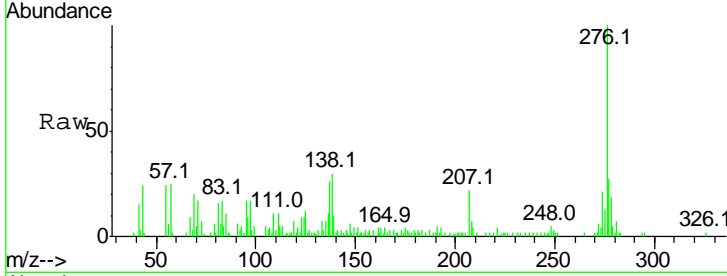
Tgt Ion	Resp	Lower	Upper
228	100		
226	29.5	24.9	37.3
229	24.2	15.8	23.6#





#85
 Indeno(1,2,3-cd)pyrene
 Concen: 2.61 ng
 RT: 17.36 min Scan# 2622
 Delta R.T. -0.00 min
 Lab File: BF094635.D
 Acq: 26 Apr 2017 5:59

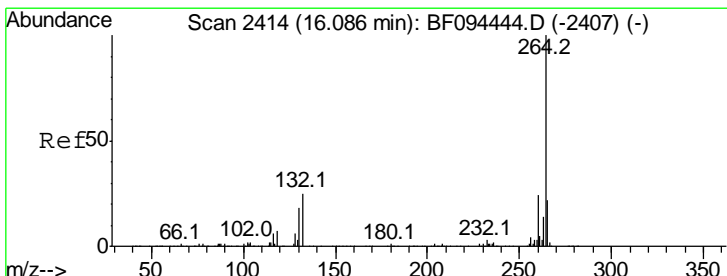
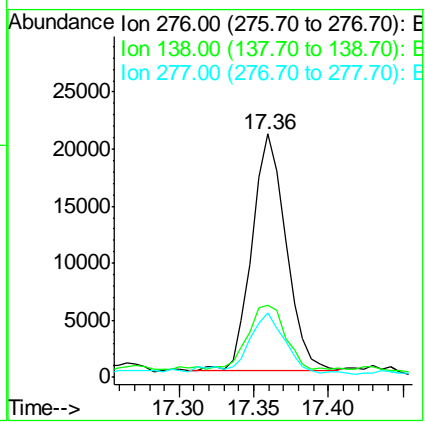
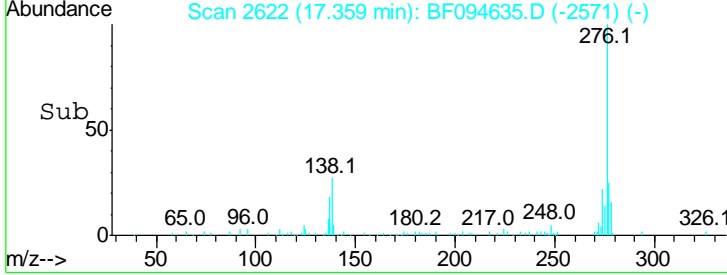
Instrument :
 BNA_F
ClientSampled :
 E2-W8-SSW



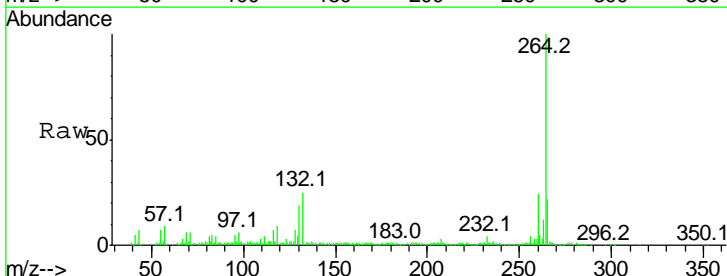
Tgt Ion: 276 Resp: 32975

Ion	Ratio	Lower	Upper
276	100		
138	30.0	27.8	41.6
277	29.9	20.2	30.4

Manual Integrations
APPROVED
 mohammad
 4/26/2017 2:22:43 PM

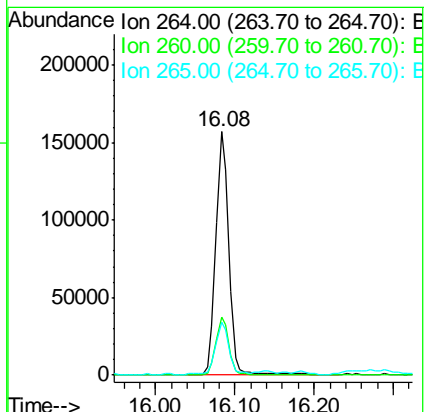
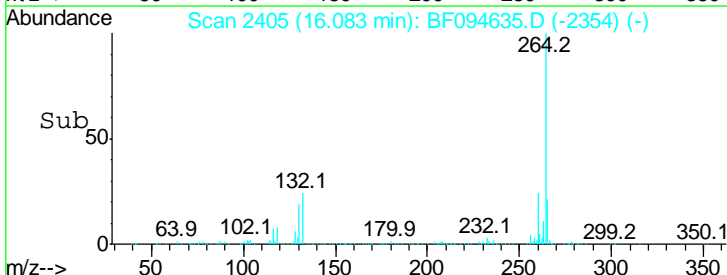


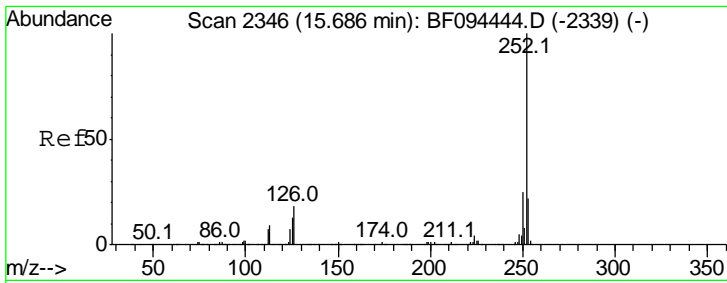
#86
 Perylene-d12
 Concen: 20.00 ng
 RT: 16.08 min Scan# 2405
 Delta R.T. -0.00 min
 Lab File: BF094635.D
 Acq: 26 Apr 2017 5:59



Tgt Ion: 264 Resp: 181232

Ion	Ratio	Lower	Upper
264	100		
260	23.8	19.5	29.3
265	21.8	17.2	25.8



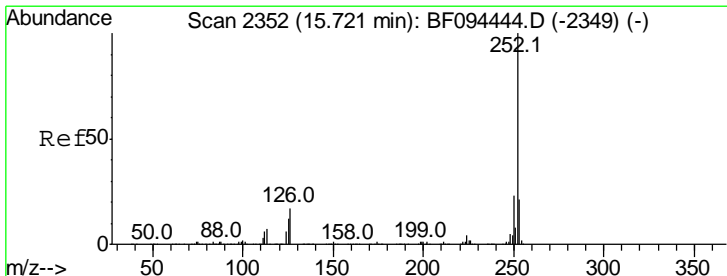
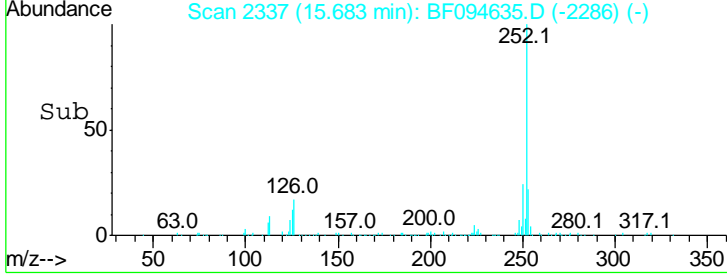
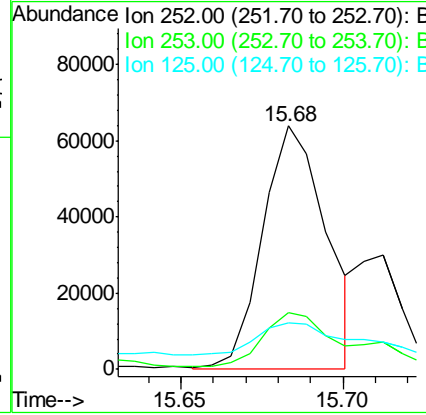
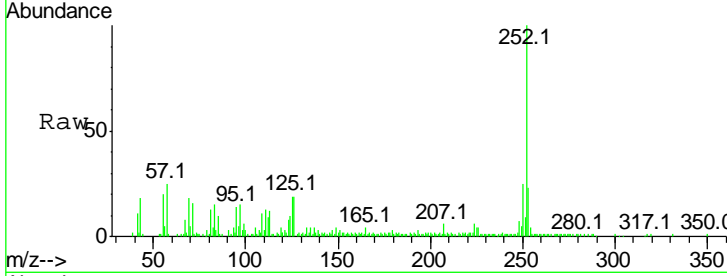


#87
 Benzo(b)fluoranthene
 Concen: 7.96 ng m
 RT: 15.68 min Scan# 2337
 Delta R.T. -0.00 min
 Lab File: BF094635.D
 Acq: 26 Apr 2017 5:59

Instrument :
 BNA_F
 ClientSampled :
 E2-W8-SSW

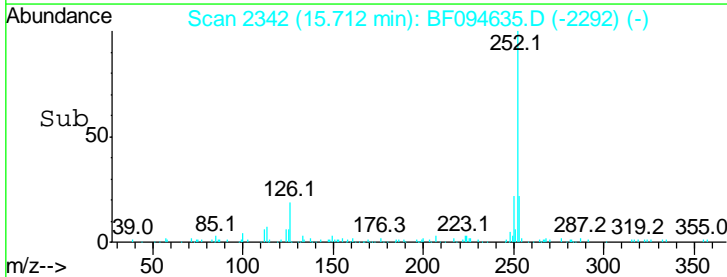
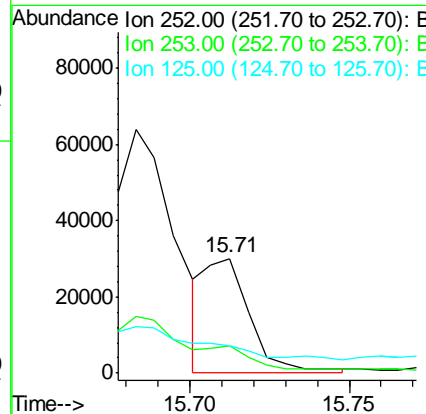
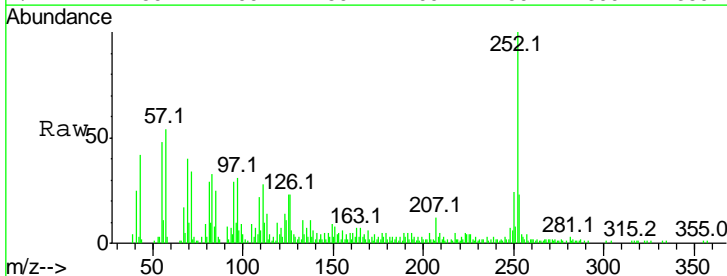
Tgt Ion	Resp	Lower	Upper
252	100		
253	23.1	18.1	27.1
125	19.1	9.8	14.8#

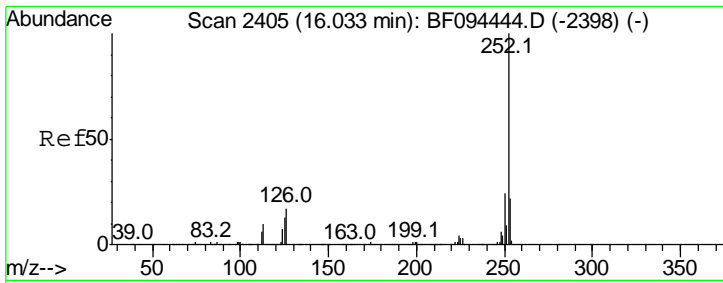
Manual Integrations
APPROVED
 mohammad
 4/26/2017 2:22:43 PM



#88
 Benzo(k)fluoranthene
 Concen: 2.83 ng m
 RT: 15.71 min Scan# 2342
 Delta R.T. -0.01 min
 Lab File: BF094635.D
 Acq: 26 Apr 2017 5:59

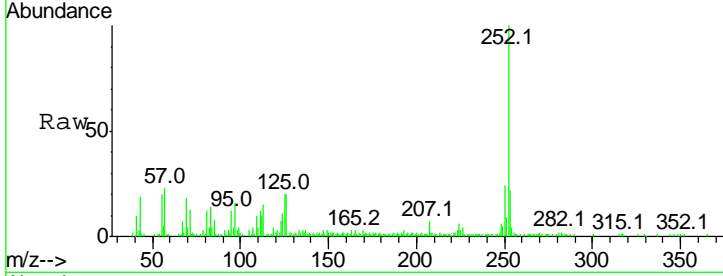
Tgt Ion	Resp	Lower	Upper
252	100		
253	23.5	18.4	27.6
125	23.3	13.1	19.7#





#89
 Benzo(a)pyrene
 Concen: 6.71 ng
 RT: 16.02 min Scan# 2395
 Delta R.T. -0.01 min
 Lab File: BF094635.D
 Acq: 26 Apr 2017 5:59

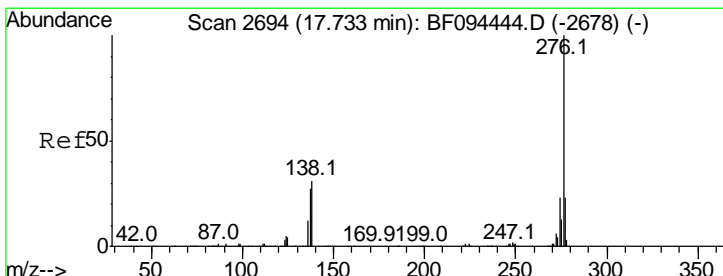
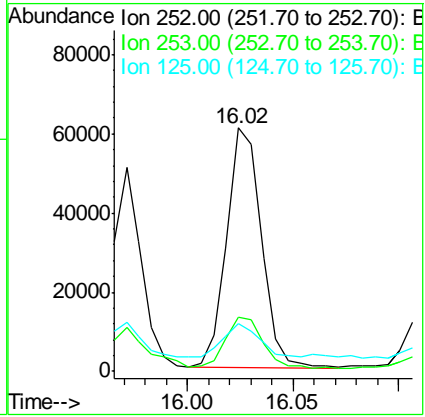
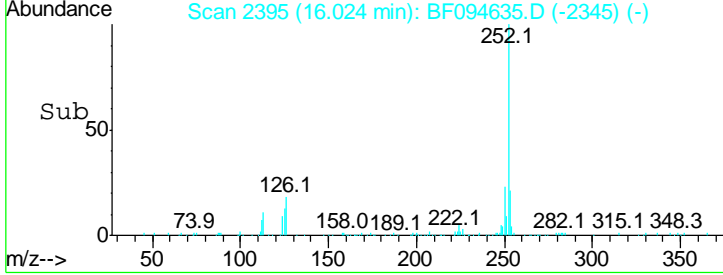
Instrument :
 BNA_F
ClientSampled :
 E2-W8-SSW



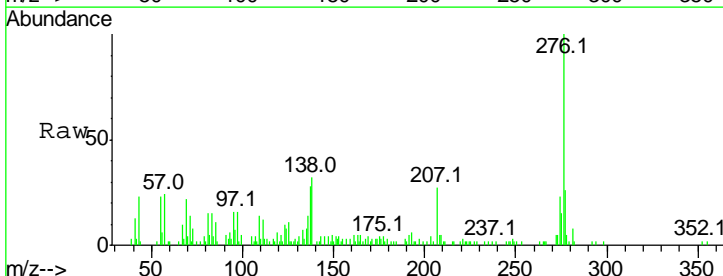
Tgt Ion: 252 Resp: 69232

Ion	Ratio	Lower	Upper
252	100		
253	22.4	17.5	26.3
125	19.6	11.0	16.4

Manual Integrations
APPROVED
 mohammad
 4/26/2017 2:22:43 PM



#91
 Benzo(g,h,i)perylene
 Concen: 4.52 ng
 RT: 17.73 min Scan# 2685
 Delta R.T. -0.00 min
 Lab File: BF094635.D
 Acq: 26 Apr 2017 5:59



Tgt Ion: 276 Resp: 39442

Ion	Ratio	Lower	Upper
276	100		
277	25.7	18.6	28.0
138	32.3	25.4	38.0

