

Data Path : Z:\HPCHEM1\BNA F\DATA\BF042517\
 Data File : BF094626.D
 Acq On : 26 Apr 2017 1:59
 Operator : SJ/MA
 Sample : I2820-05
 Misc :
 ALS Vial : 29 Sample Multiplier: 1

Instrument :
 BNA_F
 ClientSampleId :
 HY-SB434A

Integration Parameters: rteint.p
 Integrator: RTE
 Smoothing : ON
 Sampling : 1
 Start Thrs: 0.2
 Stop Thrs : 0

Filtering: 5
 Min Area: 3 % of largest Peak
 Max Peaks: 100
 Peak Location: TOP

If leading or trailing edge < 100 prefer < Baseline drop else tangent >
 Peak separation: 5

Method : Z:\HPCHEM1\BNA F\METHODS\8270-BF041717.M
 Title : ASP BNA STANDARDS FOR 5 POINT CALIBRATION

Signal : TIC

peak #	R.T. min	first scan	max scan	last scan	PK TY	peak height	corr. area	corr. % max.	% of total
1	3.913	329	336	342	rBV2	301890	527785	11.22%	0.402%
2	4.307	398	403	409	rBV	3197984	3211331	68.27%	2.447%
3	4.937	507	510	513	rVV	961320	1011934	21.51%	0.771%
4	5.143	538	545	553	rBV3	323729	722275	15.35%	0.550%
5	5.237	557	561	565	rBV	423252	533661	11.34%	0.407%
6	5.384	580	586	590	rVV	2841678	3679972	78.23%	2.804%
7	5.466	596	600	603	rBV2	413053	635265	13.50%	0.484%
8	5.507	603	607	610	rVV	3445331	3730973	79.32%	2.843%
9	5.707	635	641	644	rBV2	403152	634088	13.48%	0.483%
10	5.754	646	649	653	rVB	861767	794501	16.89%	0.605%
11	5.931	673	679	689	rVB3	3067792	4703949	100.00%	3.585%
12	6.048	694	699	700	rBV3	436893	521354	11.08%	0.397%
13	6.066	700	702	709	rVB3	426696	661542	14.06%	0.504%
14	6.201	723	725	729	rVB	623570	601450	12.79%	0.458%
15	6.407	747	760	763	rBV4	2302774	4543975	96.60%	3.463%
16	6.495	772	775	776	rBV2	398162	412020	8.76%	0.314%
17	6.513	776	778	783	rVB3	751371	809009	17.20%	0.616%
18	6.660	794	803	805	rVB4	610602	1129528	24.01%	0.861%
19	6.690	805	808	815	rBV4	959616	1186492	25.22%	0.904%
20	6.760	815	820	823	rVB3	440979	596124	12.67%	0.454%
21	6.819	823	830	833	rBV3	1312793	2101728	44.68%	1.602%
22	6.866	835	838	842	rVB3	648395	681963	14.50%	0.520%
23	6.948	848	852	855	rVB3	1018095	1284949	27.32%	0.979%
24	7.001	859	861	865	rVB3	547835	558707	11.88%	0.426%
25	7.148	883	886	893	rVB5	446137	780037	16.58%	0.594%
26	7.207	893	896	897	rBV	593648	496242	10.55%	0.378%
27	7.225	897	899	900	rVV	591228	519858	11.05%	0.396%
28	7.254	900	904	908	rVV2	1943943	2714381	57.70%	2.068%
29	7.295	908	911	912	rVV2	624185	697849	14.84%	0.532%
30	7.319	912	915	919	rVB2	1127954	1331230	28.30%	1.014%
31	7.384	922	926	931	rVB4	673705	912754	19.40%	0.696%
32	7.495	942	945	948	rBV2	1430723	1522868	32.37%	1.160%
33	7.519	948	949	952	rVV2	611273	516086	10.97%	0.393%
34	7.554	952	955	958	rVV2	467736	521422	11.08%	0.397%

Data Path : Z:\HPCHEM1\BNA F\DATA\BF042517\
 Data File : BF094626.D
 Acq On : 26 Apr 2017 1:59
 Operator : SJ/MA
 Sample : I2820-05
 Misc :
 ALS Vial : 29 Sample Multiplier: 1

Instrument :
 BNA_F
 ClientSampleId :
 HY-SB434A

Integration Parameters: rteint.p
 Integrator: RTE
 Smoothing : ON
 Sampling : 1
 Start Thrs: 0.2
 Stop Thrs : 0

Filtering: 5
 Min Area: 3 % of largest Peak
 Max Peaks: 100
 Peak Location: TOP

If leading or trailing edge < 100 prefer < Baseline drop else tangent >
 Peak separation: 5

Method : Z:\HPCHEM1\BNA F\METHODS\8270-BF041717.M
 Title : ASP BNA STANDARDS FOR 5 POINT CALIBRATION

35	7.590	958	961	966	rVV4	766026	1378363	29.30%	1.050%
36	7.637	966	969	971	rVB2	1178054	1210443	25.73%	0.922%
37	7.666	971	974	979	rBV3	333154	620758	13.20%	0.473%
38	7.713	979	982	984	rVV3	507818	634023	13.48%	0.483%
39	7.731	984	985	990	rVB	798385	717682	15.26%	0.547%
40	7.819	995	1000	1005	rBV2	2606036	3456152	73.47%	2.634%
41	7.872	1005	1009	1013	rBV	1734993	1851486	39.36%	1.411%
42	7.937	1017	1020	1024	rVB4	867875	1209894	25.72%	0.922%
43	7.978	1024	1027	1029	rBV	889502	724713	15.41%	0.552%
44	8.001	1029	1031	1033	rBV2	494652	481647	10.24%	0.367%
45	8.025	1033	1035	1037	rBV2	493608	454578	9.66%	0.346%
46	8.060	1038	1041	1044	rVB	1134632	1031270	21.92%	0.786%
47	8.113	1047	1050	1056	rVB6	898109	1419285	30.17%	1.082%
48	8.189	1059	1063	1066	rVB4	409273	534188	11.36%	0.407%
49	8.242	1066	1072	1074	rBV2	1999753	2597240	55.21%	1.979%
50	8.266	1074	1076	1080	rBV2	1647929	1766616	37.56%	1.346%
51	8.342	1086	1089	1091	rBV3	495112	542104	11.52%	0.413%
52	8.466	1107	1110	1113	rBV4	485802	520751	11.07%	0.397%
53	8.531	1117	1121	1122	rBV2	739121	871540	18.53%	0.664%
54	8.554	1122	1125	1127	rVV2	2417722	2840208	60.38%	2.164%
55	8.578	1127	1129	1131	rVV	2710678	2237329	47.56%	1.705%
56	8.666	1140	1144	1146	rBV4	393975	596668	12.68%	0.455%
57	8.695	1146	1149	1152	rVB3	631694	637397	13.55%	0.486%
58	8.736	1152	1156	1157	rBV4	402082	518707	11.03%	0.395%
59	8.760	1157	1160	1164	rVV	1045972	1379660	29.33%	1.051%
60	8.807	1164	1168	1172	rVB3	1160979	1758252	37.38%	1.340%
61	8.901	1179	1184	1190	rBV2	1877032	3234977	68.77%	2.465%
62	8.989	1195	1199	1202	rVV	2458221	3541978	75.30%	2.699%
63	9.019	1202	1204	1207	rVV	2224258	2160367	45.93%	1.646%
64	9.048	1207	1209	1212	rVV2	581093	641166	13.63%	0.489%
65	9.078	1212	1214	1216	rVV	564674	531943	11.31%	0.405%
66	9.119	1216	1221	1224	rVV3	2793509	3998744	85.01%	3.047%
67	9.148	1224	1226	1229	rVB3	987738	894033	19.01%	0.681%
68	9.231	1237	1240	1244	rVB3	649087	921583	19.59%	0.702%
69	9.395	1261	1268	1271	rBV4	1078732	1987230	42.25%	1.514%
70	9.431	1271	1274	1276	rVV	790692	864737	18.38%	0.659%
71	9.460	1276	1279	1281	rVB3	745901	752784	16.00%	0.574%

Data Path : Z:\HPCHEM1\BNA F\DATA\BF042517\
 Data File : BF094626.D
 Acq On : 26 Apr 2017 1:59
 Operator : SJ/MA
 Sample : I2820-05
 Misc :
 ALS Vial : 29 Sample Multiplier: 1

Instrument :
 BNA_F
 ClientSampleId :
 HY-SB434A

Integration Parameters: rteint.p
 Integrator: RTE
 Smoothing : ON Filtering: 5
 Sampling : 1 Min Area: 3 % of largest Peak
 Start Thrs: 0.2 Max Peaks: 100
 Stop Thrs : 0 Peak Location: TOP

If leading or trailing edge < 100 prefer < Baseline drop else tangent >
 Peak separation: 5

Method : Z:\HPCHEM1\BNA F\METHODS\8270-BF041717.M
 Title : ASP BNA STANDARDS FOR 5 POINT CALIBRATION

72	9.536	1289	1292	1298	rVB	1276566	2092729	44.49%	1.595%
73	9.589	1298	1301	1304	rVB	759310	691737	14.71%	0.527%
74	9.660	1307	1313	1316	rBV	1353254	2028814	43.13%	1.546%
75	9.707	1316	1321	1325	rVB2	1502696	2007900	42.69%	1.530%
76	9.772	1328	1332	1334	rBV4	652585	761943	16.20%	0.581%
77	9.801	1334	1337	1340	rBV	812575	821442	17.46%	0.626%
78	9.831	1340	1342	1346	rVB2	1114126	1081281	22.99%	0.824%
79	9.907	1349	1355	1357	rBV4	846738	1529787	32.52%	1.166%
80	10.066	1379	1382	1386	rVB2	1083398	1192608	25.35%	0.909%
81	10.113	1386	1390	1392	rBV2	993736	1363459	28.99%	1.039%
82	10.266	1412	1416	1419	rVB	1977671	2173741	46.21%	1.656%
83	10.372	1430	1434	1439	rVB5	1222757	2122093	45.11%	1.617%
84	10.425	1440	1443	1446	rBV3	498770	530047	11.27%	0.404%
85	10.536	1459	1462	1465	rVB2	610840	650709	13.83%	0.496%
86	10.595	1468	1472	1475	rVV	2514736	2932022	62.33%	2.234%
87	10.783	1501	1504	1506	rVV	849114	920497	19.57%	0.701%
88	10.813	1506	1509	1512	rVV3	582896	834362	17.74%	0.636%
89	10.848	1513	1515	1520	rVB3	536719	528224	11.23%	0.403%
90	11.166	1565	1569	1572	rVB	1686614	1932562	41.08%	1.473%
91	11.213	1574	1577	1579	rVV	637457	662918	14.09%	0.505%
92	11.242	1579	1582	1584	rVB	647888	602524	12.81%	0.459%
93	11.836	1679	1683	1686	rBV	678590	810336	17.23%	0.617%
94	11.872	1686	1689	1695	rVB	847936	911564	19.38%	0.695%
95	11.966	1702	1705	1707	rBV	420508	434700	9.24%	0.331%
96	12.519	1794	1799	1802	rVV2	628268	890111	18.92%	0.678%
97	12.554	1802	1805	1808	rVV2	309160	421643	8.96%	0.321%
98	13.189	1908	1913	1916	rVB	2061905	2274677	48.36%	1.733%
99	14.454	2124	2128	2133	rBV	665294	696999	14.82%	0.531%
100	16.083	2401	2405	2412	rVB	433505	520831	11.07%	0.397%

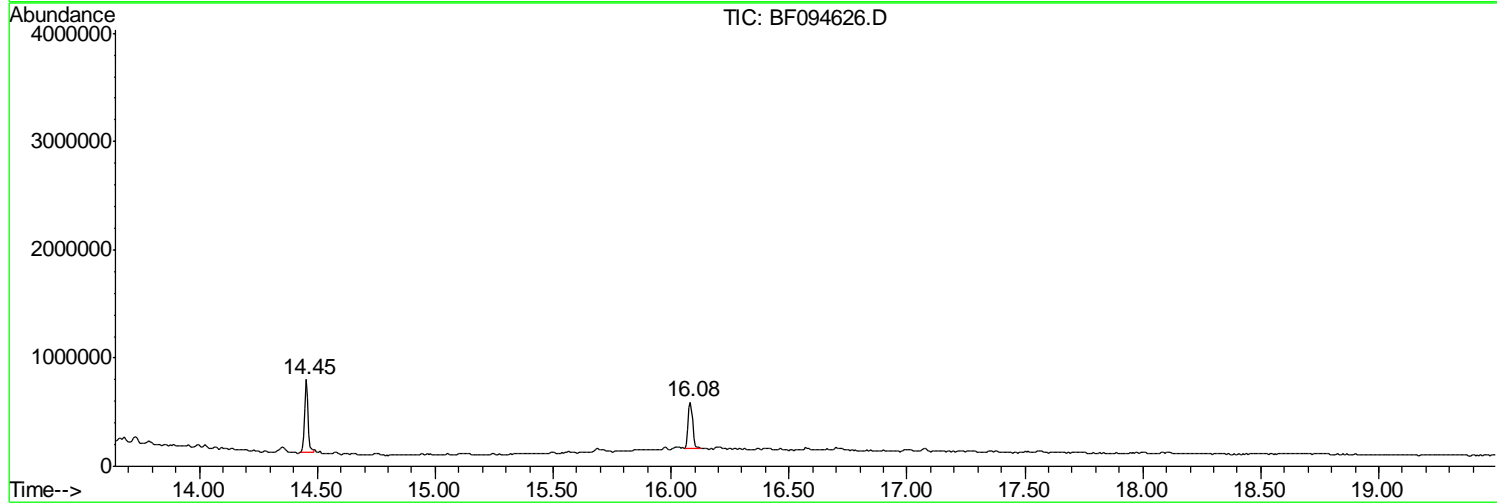
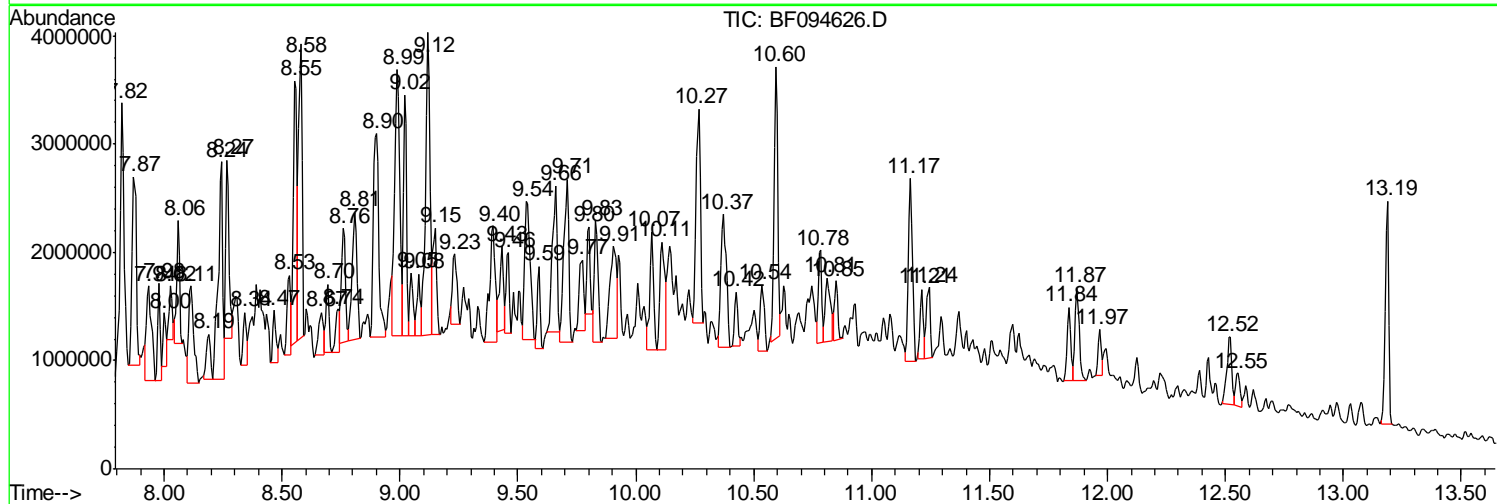
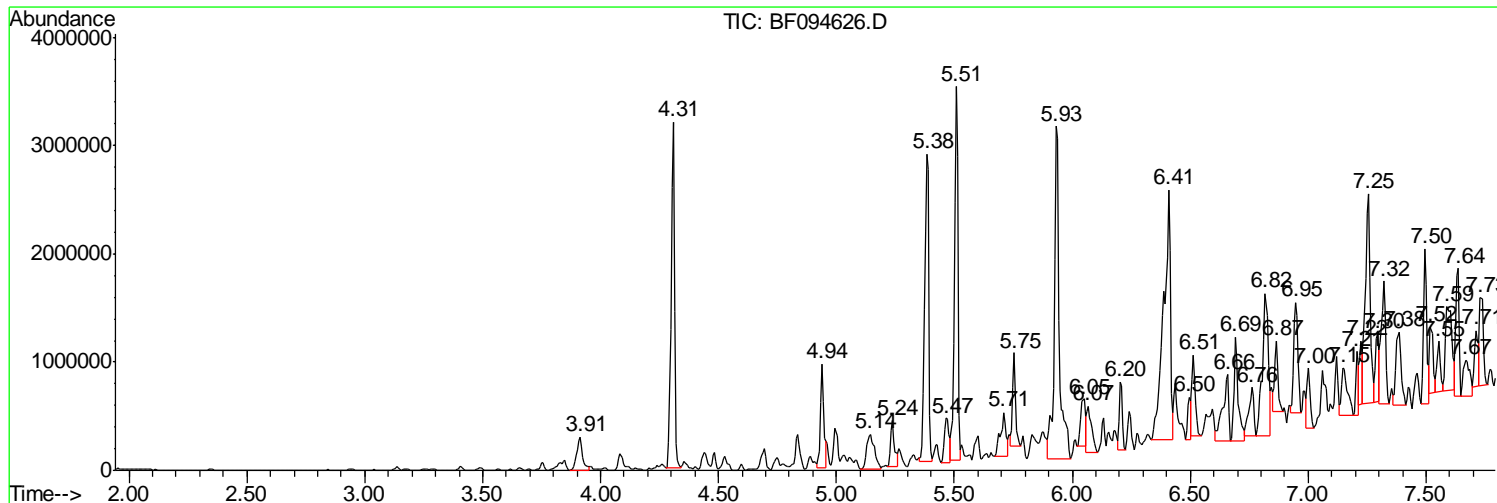
Sum of corrected areas: 131230058

Data Path : Z:\HPCHEM1\BNA F\DATA\BF042517\
 Data File : BF094626.D
 Acq On : 26 Apr 2017 1:59
 Operator : SJ/MA
 Sample : I2820-05
 Misc :
 ALS Vial : 29 Sample Multiplier: 1

Instrument :
 BNA_F
Client Sampled :
 HY-SB434A

Quant Method : Z:\HPCHEM1\BNA F\METHODS\8270-BF041717.M
 Quant Title : ASP BNA STANDARDS FOR 5 POINT CALIBRATION

TIC Library : C:\DATABASE\NIST11.L
 TIC Integration Parameters: LSCINT.P



Data Path : Z:\HPCHEM1\BNA F\DATA\BF042517\
 Data File : BF094626.D
 Acq On : 26 Apr 2017 1:59
 Operator : SJ/MA
 Sample : I2820-05
 Misc :
 ALS Vial : 29 Sample Multiplier: 1

Instrument :
 BNA_F
 ClientSampled :
 HY-SB434A

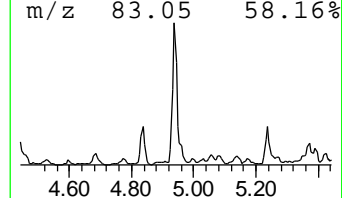
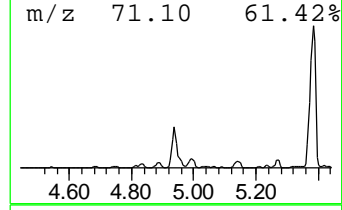
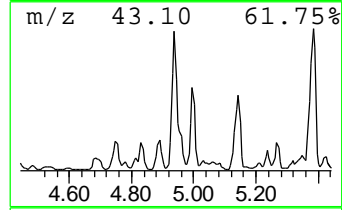
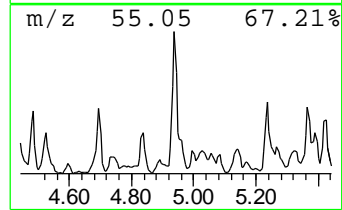
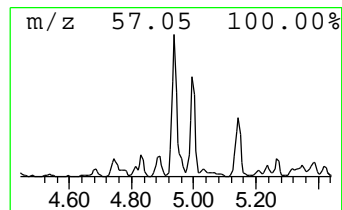
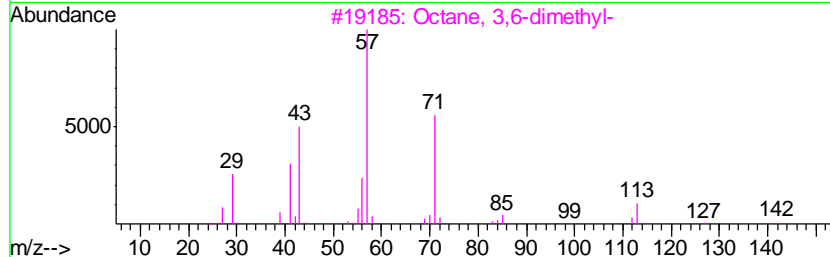
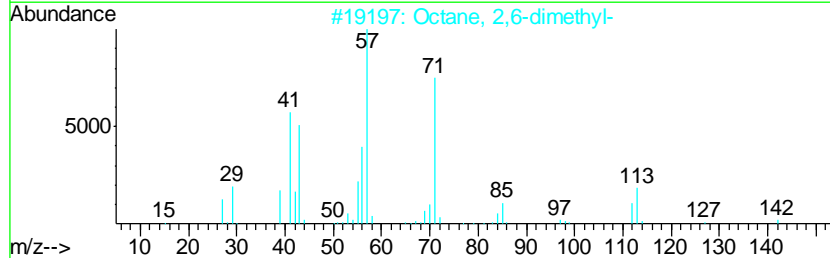
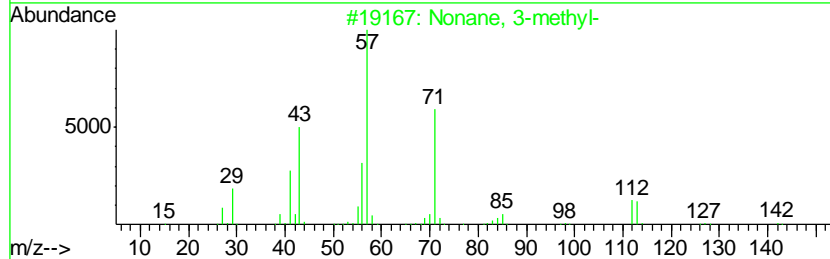
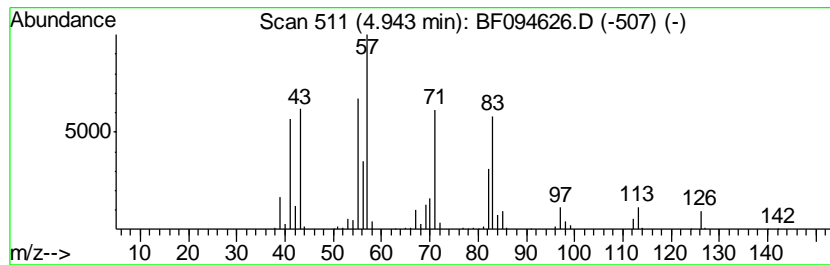
Quant Method : Z:\HPCHEM1\BNA F\METHODS\8270-BF041717.M
 Quant Title : ASP BNA STANDARDS FOR 5 POINT CALIBRATION

TIC Library : C:\DATABASE\NIST11.L
 TIC Integration Parameters: LSCINT.P

 Peak Number 1 unknown4.94 Concentration Rank 9

R.T.	EstConc	Area	Relative to ISTD	R.T.
4.94	25.47 ng	1011930	1,4-Dichlorobenzene-d4	5.75

Hit#	of	Tentative ID	MW	MolForm	CAS#	Qual
1	5	Nonane, 3-methyl-	142	C10H22	005911-04-6	46
2		Octane, 2,6-dimethyl-	142	C10H22	002051-30-1	43
3		Octane, 3,6-dimethyl-	142	C10H22	015869-94-0	43
4		Nonane, 3,7-dimethyl-	156	C11H24	017302-32-8	35
5		Decane, 3-methyl-	156	C11H24	013151-34-3	35



Data Path : Z:\HPCHEM1\BNA F\DATA\BF042517\
 Data File : BF094626.D
 Acq On : 26 Apr 2017 1:59
 Operator : SJ/MA
 Sample : I2820-05
 Misc :
 ALS Vial : 29 Sample Multiplier: 1

Instrument :
 BNA_F
 ClientSampled :
 HY-SB434A

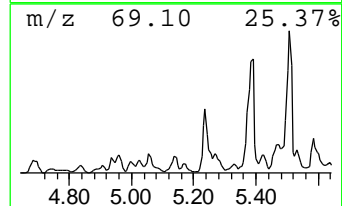
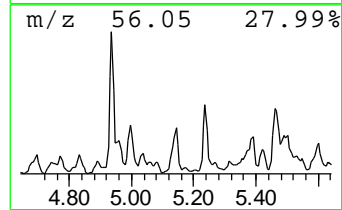
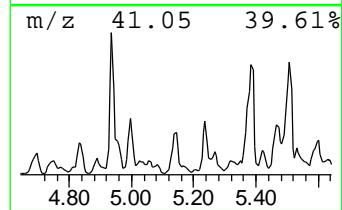
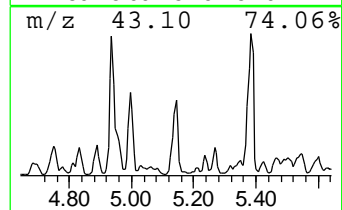
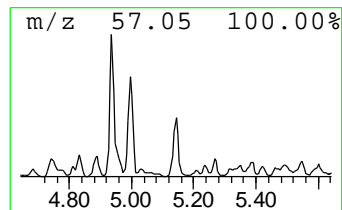
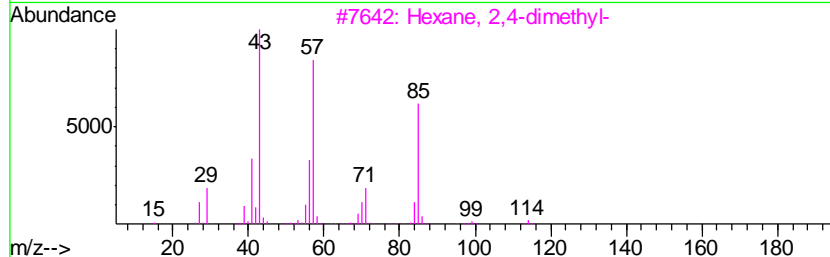
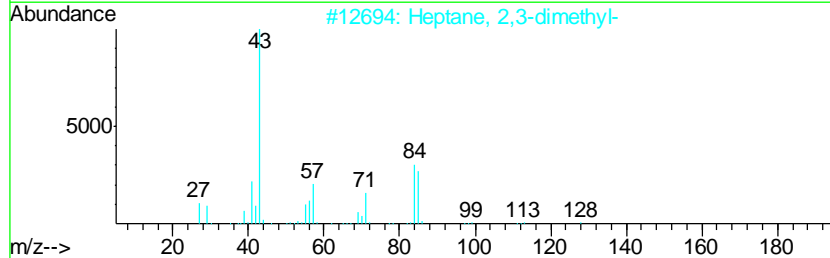
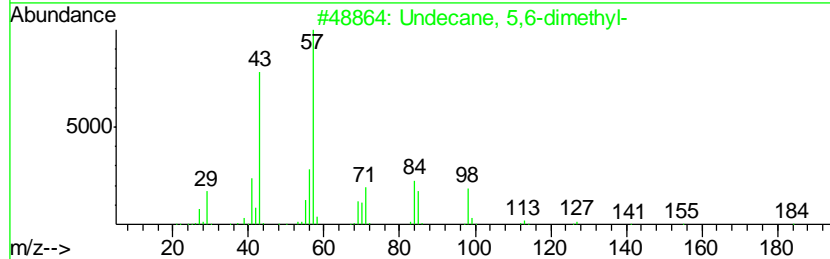
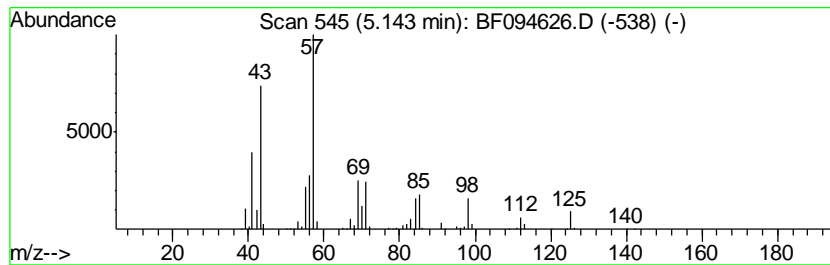
Quant Method : Z:\HPCHEM1\BNA F\METHODS\8270-BF041717.M
 Quant Title : ASP BNA STANDARDS FOR 5 POINT CALIBRATION

TIC Library : C:\DATABASE\NIST11.L
 TIC Integration Parameters: LSCINT.P

 Peak Number 2 Undecane, 5,6-dimethyl- Concentration Rank 18

R.T.	EstConc	Area	Relative to ISTD	R.T.
5.14	18.18 ng	722275	1,4-Dichlorobenzene-d4	5.75

Hit#	of	Tentative ID	MW	MolForm	CAS#	Qual
1	5	Undecane, 5,6-dimethyl-	184	C13H28	017615-91-7	64
2		Heptane, 2,3-dimethyl-	128	C9H20	003074-71-3	53
3		Hexane, 2,4-dimethyl-	114	C8H18	000589-43-5	53
4		Octane, 4-ethyl-	142	C10H22	015869-86-0	52
5		Oxalic acid, isobutyl nonyl ester	272	C15H28O4	1000309-37-4	50



Data Path : Z:\HPCHEM1\BNA F\DATA\BF042517\
 Data File : BF094626.D
 Acq On : 26 Apr 2017 1:59
 Operator : SJ/MA
 Sample : I2820-05
 Misc :
 ALS Vial : 29 Sample Multiplier: 1

Instrument :
 BNA_F
 ClientSampleID :
 HY-SB434A

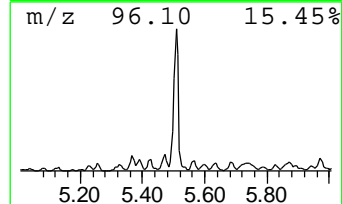
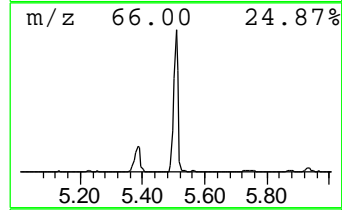
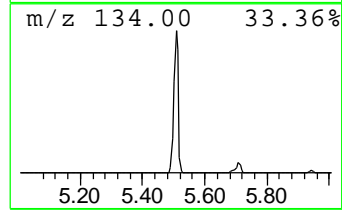
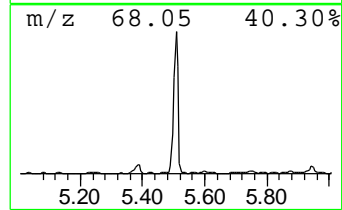
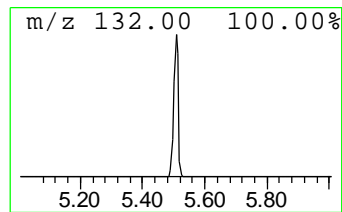
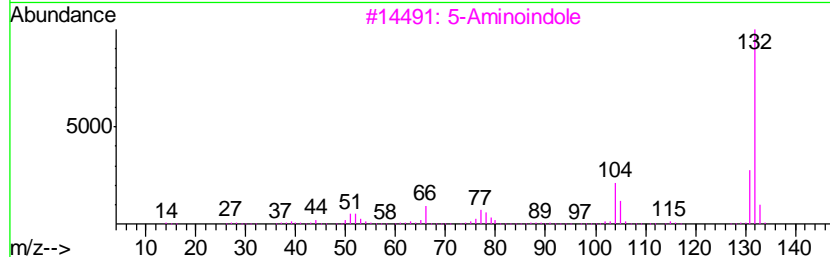
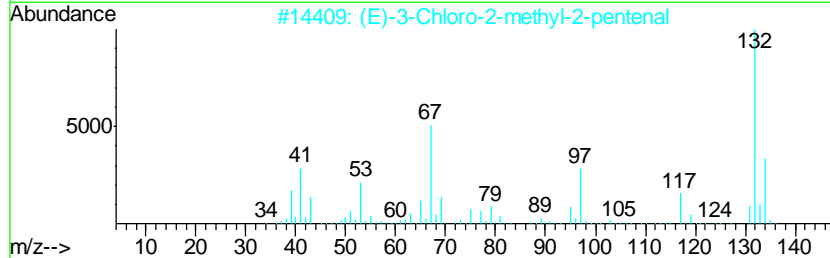
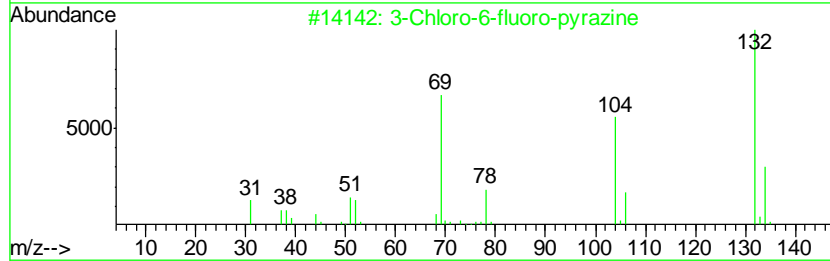
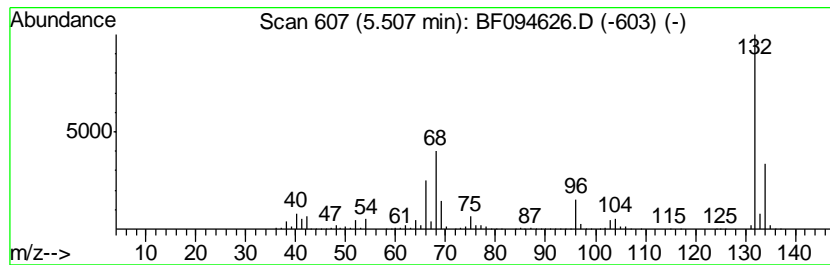
Quant Method : Z:\HPCHEM1\BNA F\METHODS\8270-BF041717.M
 Quant Title : ASP BNA STANDARDS FOR 5 POINT CALIBRATION

TIC Library : C:\DATABASE\NIST11.L
 TIC Integration Parameters: LSCINT.P

 Peak Number 3 unknown5.51 Concentration Rank 2

R.T.	EstConc	Area	Relative to ISTD	R.T.
5.51	93.92 ng	3730970	1,4-Dichlorobenzene-d4	5.75

Hit#	of	Tentative ID	MW	MolForm	CAS#	Qual
1	5	3-Chloro-6-fluoro-pyrazine	132	C4H2ClFN2	1000146-10-7	27
2		(E)-3-Chloro-2-methyl-2-pentenal	132	C6H9ClO	031357-76-3	17
3		5-Aminoindole	132	C8H8N2	005192-03-0	12
4		Tranylcypromine-propionyl	189	C12H15NO	1000123-86-3	10
5		5-Fluoro-2-chloropyrimidine	132	C4H2ClFN2	062802-42-0	9



Data Path : Z:\HPCHEM1\BNA F\DATA\BF042517\
 Data File : BF094626.D
 Acq On : 26 Apr 2017 1:59
 Operator : SJ/MA
 Sample : I2820-05
 Misc :
 ALS Vial : 29 Sample Multiplier: 1

Instrument :
 BNA_F
 ClientSampled :
 HY-SB434A

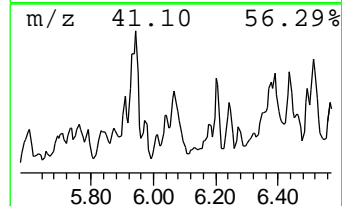
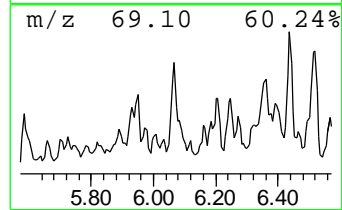
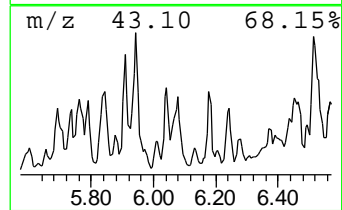
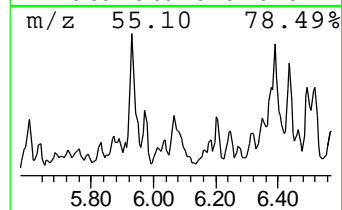
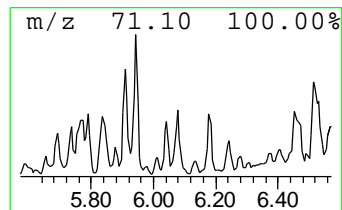
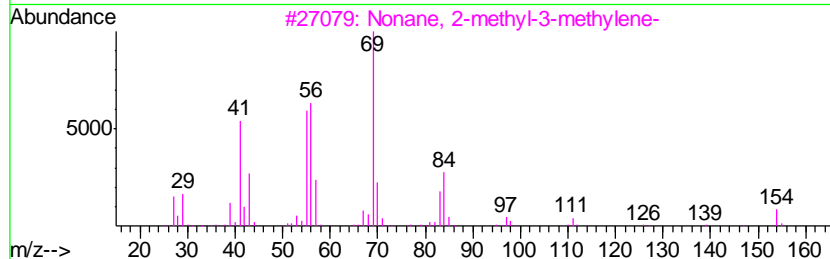
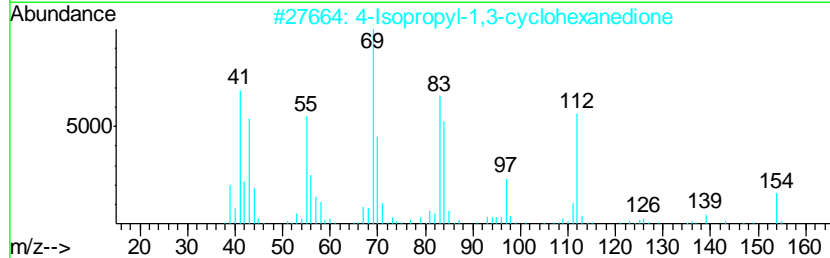
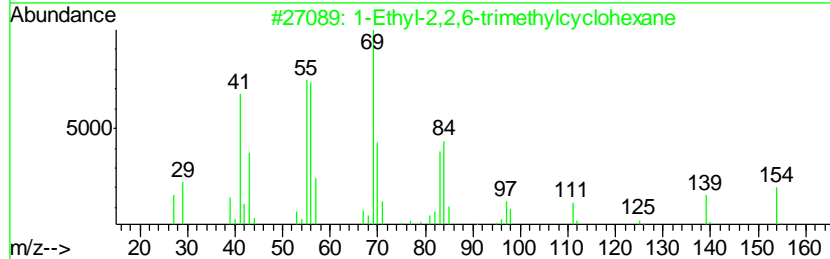
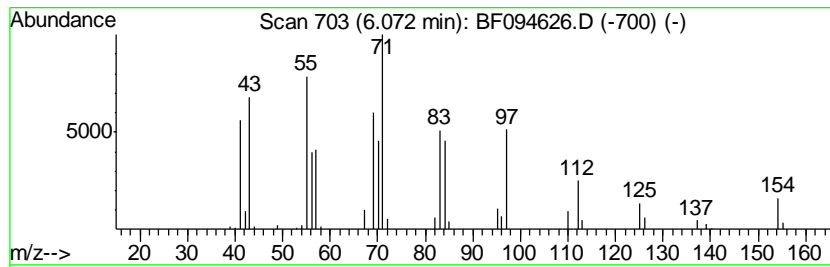
Quant Method : Z:\HPCHEM1\BNA F\METHODS\8270-BF041717.M
 Quant Title : ASP BNA STANDARDS FOR 5 POINT CALIBRATION

TIC Library : C:\DATABASE\NIST11.L
 TIC Integration Parameters: LSCINT.P

 Peak Number 5 1-Ethyl-2,2,6-trimethylcycl... Concentration Rank 20

R.T.	EstConc	Area	Relative to ISTD	R.T.
6.07	16.65 ng	661542	1,4-Dichlorobenzene-d4	5.75

Hit#	of	Tentative ID	MW	MolForm	CAS#	Qual
1	5	1-Ethyl-2,2,6-trimethylcyclohexane	154	C11H22	071186-27-1	83
2		4-Isopropyl-1,3-cyclohexanedione	154	C9H14O2	062831-62-3	68
3		Nonane, 2-methyl-3-methylene-	154	C11H22	055499-08-6	64
4		5-Undecene	154	C11H22	004941-53-1	64
5		Cyclopentane, hexyl-	154	C11H22	004457-00-5	53



Data Path : Z:\HPCHEM1\BNA F\DATA\BF042517\
 Data File : BF094626.D
 Acq On : 26 Apr 2017 1:59
 Operator : SJ/MA
 Sample : I2820-05
 Misc :
 ALS Vial : 29 Sample Multiplier: 1

Instrument :
 BNA_F
 ClientSampled :
 HY-SB434A

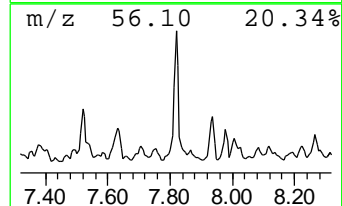
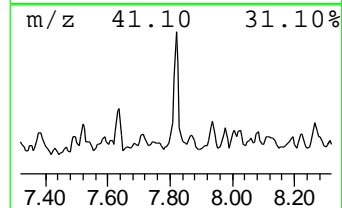
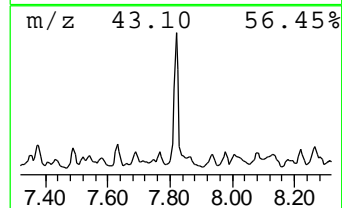
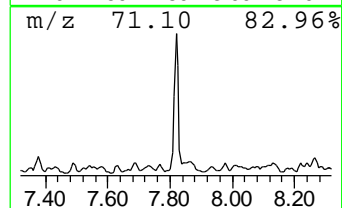
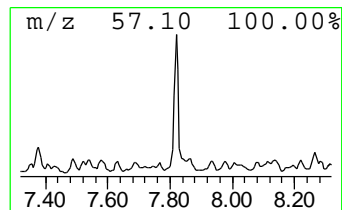
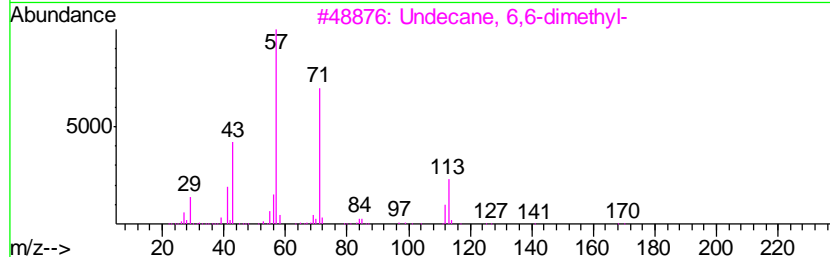
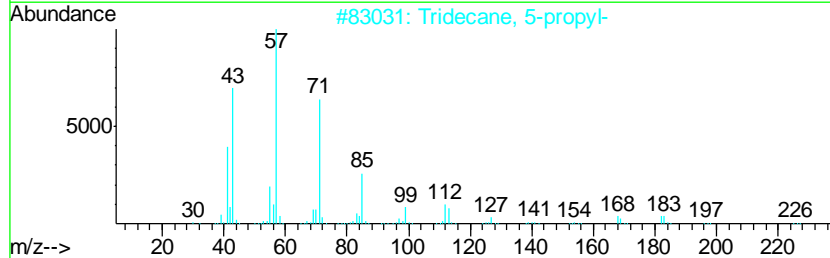
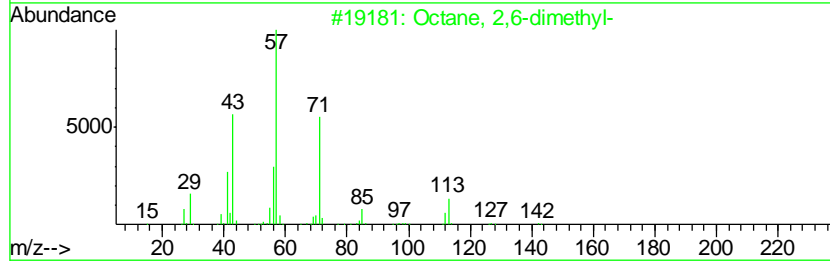
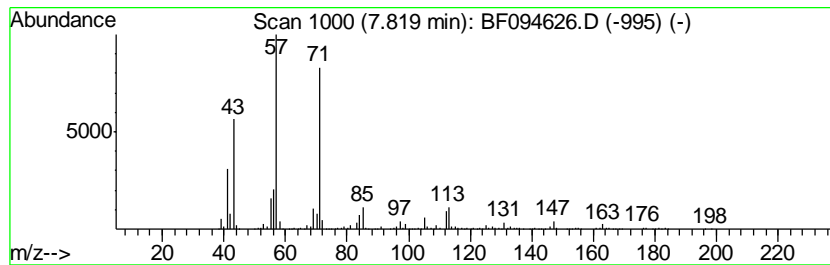
Quant Method : Z:\HPCHEM1\BNA F\METHODS\8270-BF041717.M
 Quant Title : ASP BNA STANDARDS FOR 5 POINT CALIBRATION

TIC Library : C:\DATABASE\NIST11.L
 TIC Integration Parameters: LSCINT.P

 Peak Number 6 Octane, 2,6-dimethyl- Concentration Rank 10

R.T.	EstConc	Area	Relative to ISTD	R.T.
7.82	25.47 ng	3456150	Naphthalene-d8	7.25

Hit#	of	Tentative ID	MW	MolForm	CAS#	Qual
1	5	Octane, 2,6-dimethyl-	142	C10H22	002051-30-1	86
2		Tridecane, 5-propyl-	226	C16H34	055045-11-9	64
3		Undecane, 6,6-dimethyl-	184	C13H28	017312-76-4	64
4		Octane, 2,3,7-trimethyl-	156	C11H24	062016-34-6	59
5		Octane, 2-bromo-	192	C8H17Br	000557-35-7	53



Data Path : Z:\HPCHEM1\BNA F\DATA\BF042517\
 Data File : BF094626.D
 Acq On : 26 Apr 2017 1:59
 Operator : SJ/MA
 Sample : I2820-05
 Misc :
 ALS Vial : 29 Sample Multiplier: 1

Instrument :
 BNA_F
 ClientSampleID :
 HY-SB434A

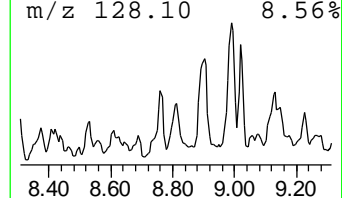
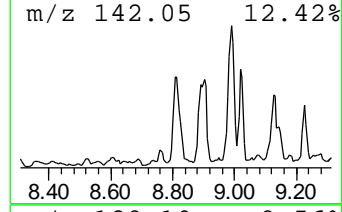
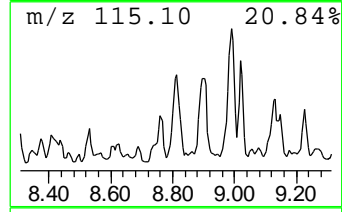
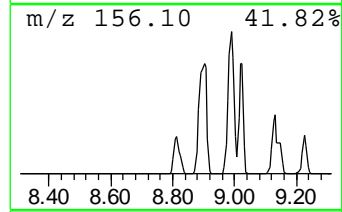
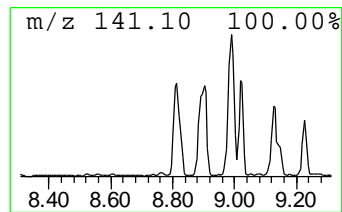
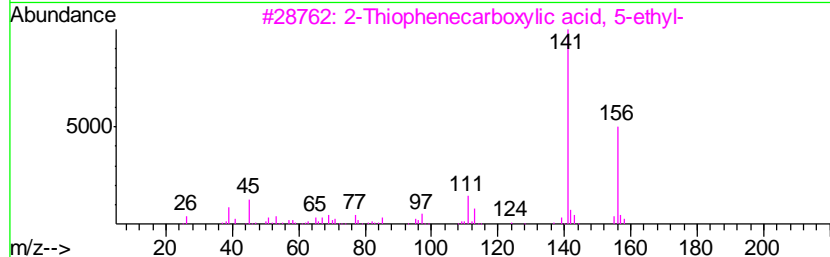
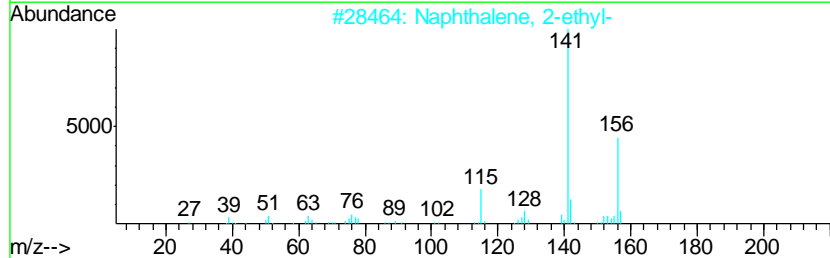
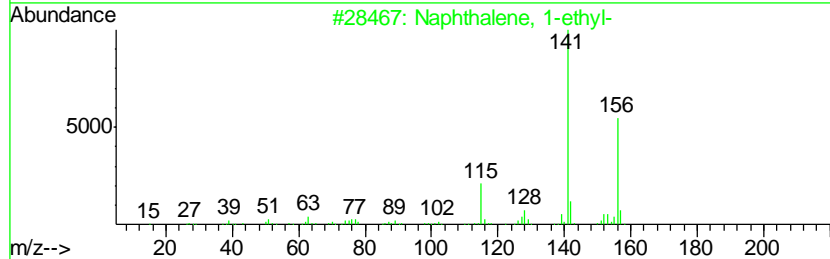
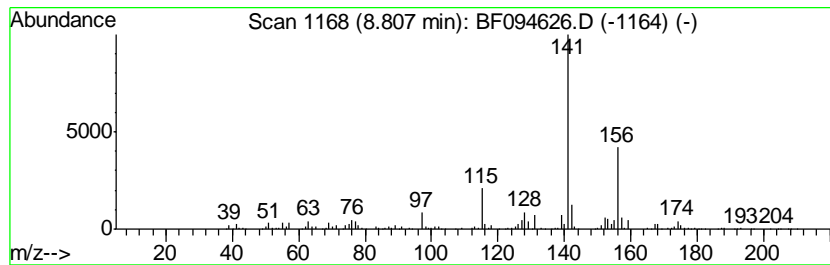
Quant Method : Z:\HPCHEM1\BNA F\METHODS\8270-BF041717.M
 Quant Title : ASP BNA STANDARDS FOR 5 POINT CALIBRATION

TIC Library : C:\DATABASE\NIST11.L
 TIC Integration Parameters: LSCINT.P

 Peak Number 7 Naphthalene, 1-ethyl- Concentration Rank 19

R.T.	EstConc	Area	Relative to ISTD	R.T.
8.81	17.70 ng	1758250	Acenaphthene-d10	9.39

Hit#	of	Tentative ID	MW	MolForm	CAS#	Qual
1	5	Naphthalene, 1-ethyl-	156	C12H12	001127-76-0	95
2		Naphthalene, 2-ethyl-	156	C12H12	000939-27-5	95
3		2-Thiophenecarboxylic acid, 5-et...	156	C7H8O2S	023229-72-3	64
4		Naphthalene, 1-propyl-	170	C13H14	002765-18-6	50
5		Naphthalene, 2,3-dimethyl-	156	C12H12	000581-40-8	49



Data Path : Z:\HPCHEM1\BNA F\DATA\BF042517\
 Data File : BF094626.D
 Acq On : 26 Apr 2017 1:59
 Operator : SJ/MA
 Sample : I2820-05
 Misc :
 ALS Vial : 29 Sample Multiplier: 1

Instrument :
 BNA_F
 ClientSampled :
 HY-SB434A

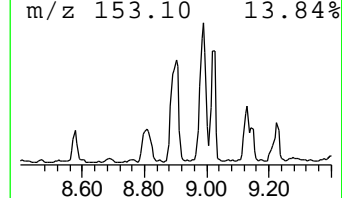
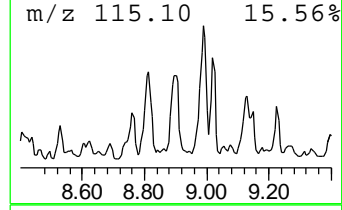
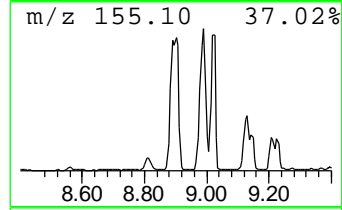
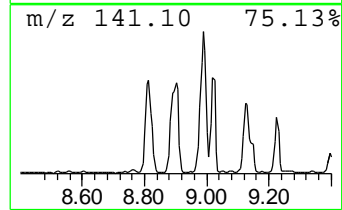
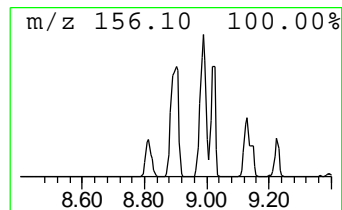
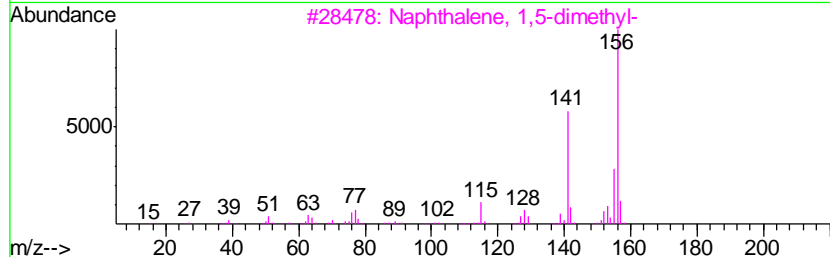
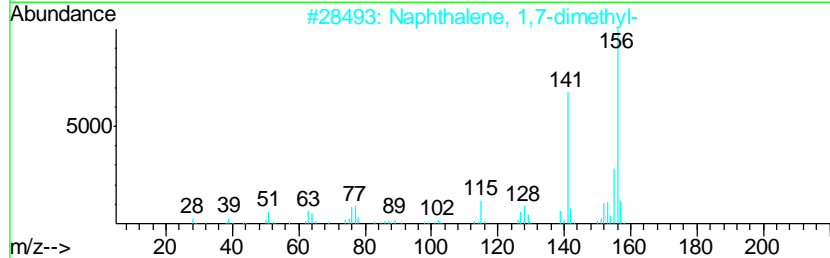
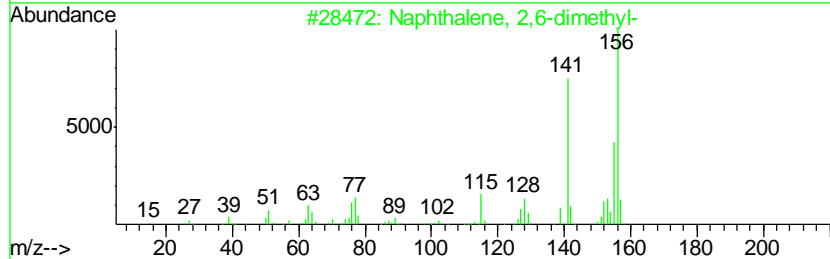
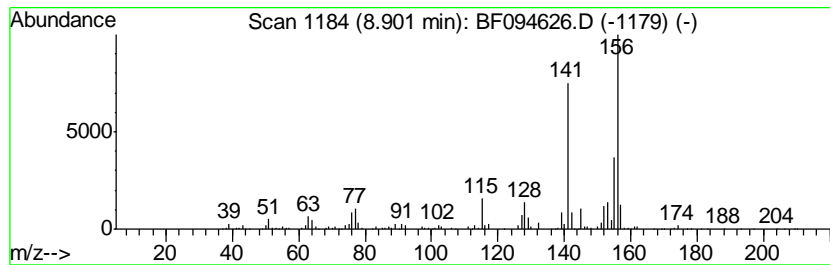
Quant Method : Z:\HPCHEM1\BNA F\METHODS\8270-BF041717.M
 Quant Title : ASP BNA STANDARDS FOR 5 POINT CALIBRATION

TIC Library : C:\DATABASE\NIST11.L
 TIC Integration Parameters: LSCINT.P

 Peak Number 8 Naphthalene, 2,6-dimethyl- Concentration Rank 5

R.T.	EstConc	Area	Relative to ISTD	R.T.
8.90	32.56 ng	3234980	Acenaphthene-d10	9.39

Hit#	of	Tentative ID	MW	MolForm	CAS#	Qual
1	5	Naphthalene, 2,6-dimethyl-	156	C12H12	000581-42-0	98
2		Naphthalene, 1,7-dimethyl-	156	C12H12	000575-37-1	97
3		Naphthalene, 1,5-dimethyl-	156	C12H12	000571-61-9	97
4		Naphthalene, 1,6-dimethyl-	156	C12H12	000575-43-9	97
5		Naphthalene, 1,3-dimethyl-	156	C12H12	000575-41-7	96



Data Path : Z:\HPCHEM1\BNA F\DATA\BF042517\
 Data File : BF094626.D
 Acq On : 26 Apr 2017 1:59
 Operator : SJ/MA
 Sample : I2820-05
 Misc :
 ALS Vial : 29 Sample Multiplier: 1

Instrument :
 BNA_F
 ClientSampled :
 HY-SB434A

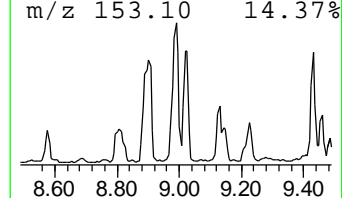
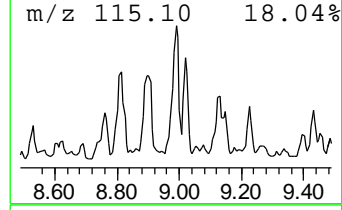
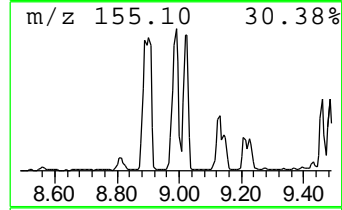
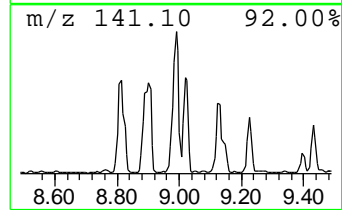
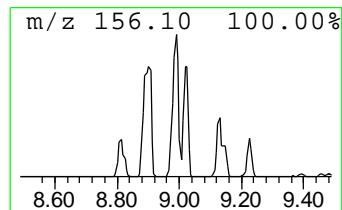
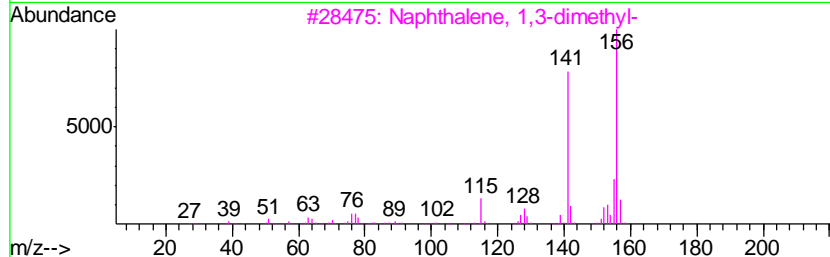
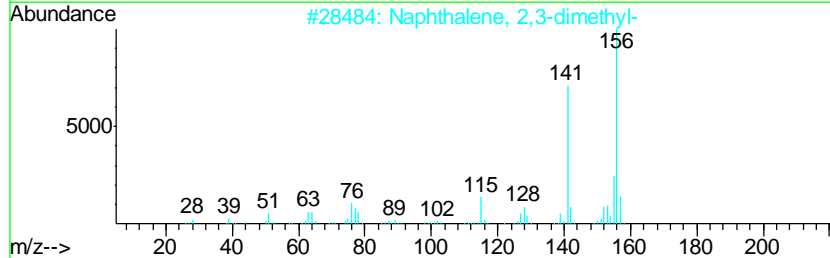
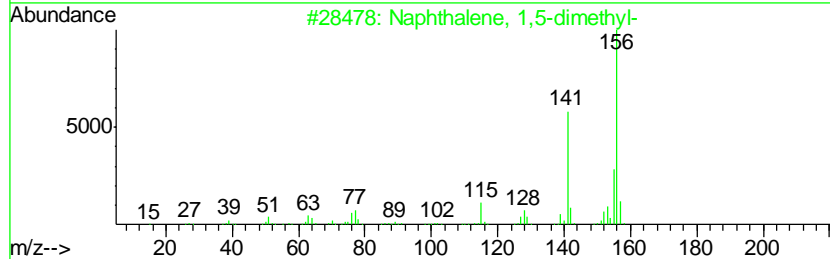
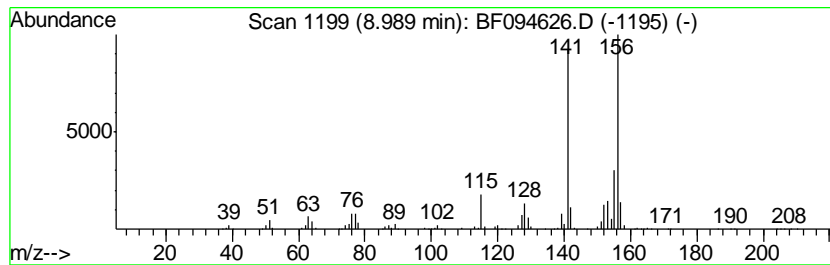
Quant Method : Z:\HPCHEM1\BNA F\METHODS\8270-BF041717.M
 Quant Title : ASP BNA STANDARDS FOR 5 POINT CALIBRATION

TIC Library : C:\DATABASE\NIST11.L
 TIC Integration Parameters: LSCINT.P

 Peak Number 9 Naphthalene, 1,5-dimethyl- Concentration Rank 4

R.T.	EstConc	Area	Relative to ISTD	R.T.
8.99	35.65 ng	3541980	Acenaphthene-d10	9.39

Hit#	of	Tentative ID	MW	MolForm	CAS#	Qual
1	5	Naphthalene, 1,5-dimethyl-	156	C12H12	000571-61-9	97
2		Naphthalene, 2,3-dimethyl-	156	C12H12	000581-40-8	97
3		Naphthalene, 1,3-dimethyl-	156	C12H12	000575-41-7	97
4		Naphthalene, 2,6-dimethyl-	156	C12H12	000581-42-0	97
5		Naphthalene, 1,4-dimethyl-	156	C12H12	000571-58-4	97



Data Path : Z:\HPCHEM1\BNA F\DATA\BF042517\
 Data File : BF094626.D
 Acq On : 26 Apr 2017 1:59
 Operator : SJ/MA
 Sample : I2820-05
 Misc :
 ALS Vial : 29 Sample Multiplier: 1

Instrument :
 BNA_F
 ClientSampled :
 HY-SB434A

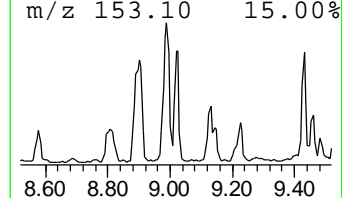
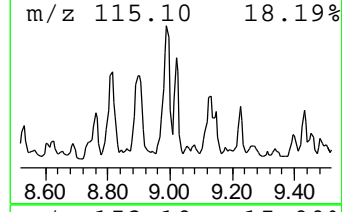
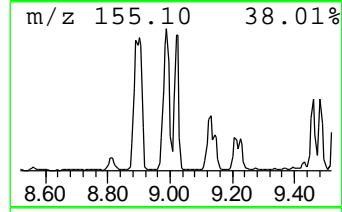
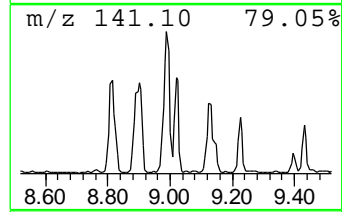
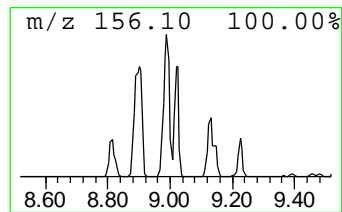
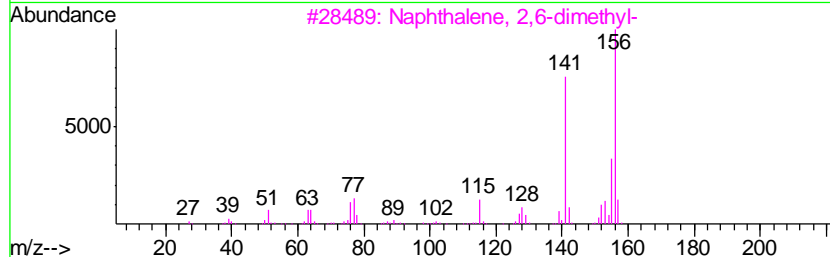
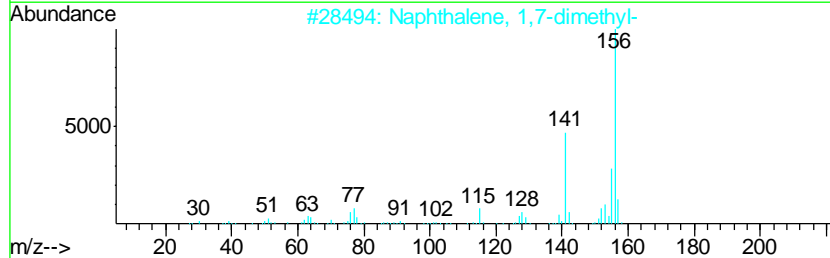
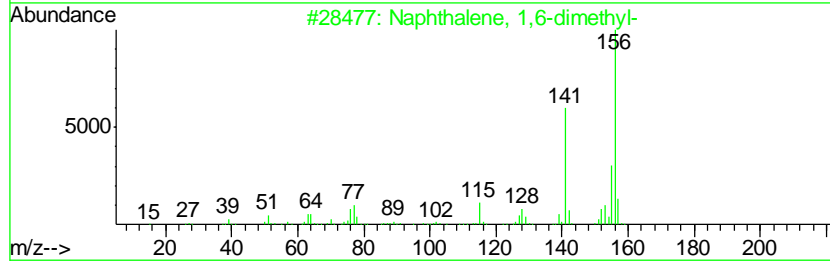
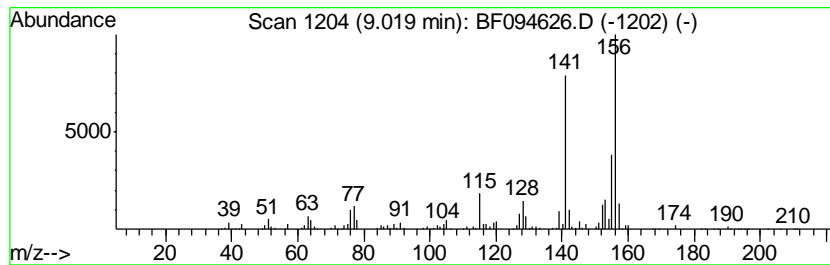
Quant Method : Z:\HPCHEM1\BNA F\METHODS\8270-BF041717.M
 Quant Title : ASP BNA STANDARDS FOR 5 POINT CALIBRATION

TIC Library : C:\DATABASE\NIST11.L
 TIC Integration Parameters: LSCINT.P

 Peak Number 10 Naphthalene, 1,6-dimethyl- Concentration Rank 13

R.T.	EstConc	Area	Relative to ISTD	R.T.
9.02	21.74 ng	2160370	Acenaphthene-d10	9.39

Hit#	of	Tentative ID	MW	MolForm	CAS#	Qual
1	5	Naphthalene, 1,6-dimethyl-	156	C12H12	000575-43-9	97
2		Naphthalene, 1,7-dimethyl-	156	C12H12	000575-37-1	97
3		Naphthalene, 2,6-dimethyl-	156	C12H12	000581-42-0	97
4		Naphthalene, 2,7-dimethyl-	156	C12H12	000582-16-1	97
5		Naphthalene, 1,5-dimethyl-	156	C12H12	000571-61-9	97



Data Path : Z:\HPCHEM1\BNA F\DATA\BF042517\
 Data File : BF094626.D
 Acq On : 26 Apr 2017 1:59
 Operator : SJ/MA
 Sample : I2820-05
 Misc :
 ALS Vial : 29 Sample Multiplier: 1

Instrument :
 BNA_F
 ClientSampleID :
 HY-SB434A

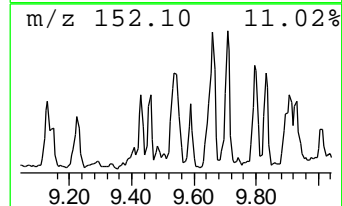
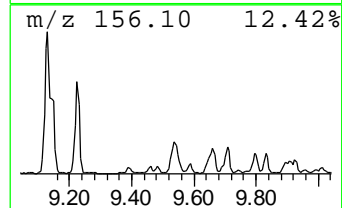
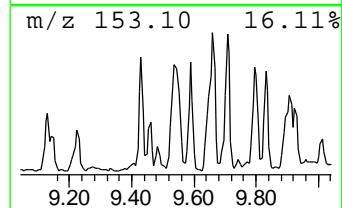
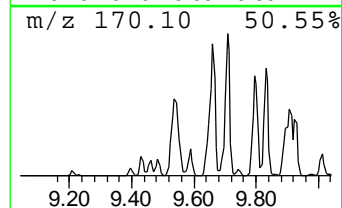
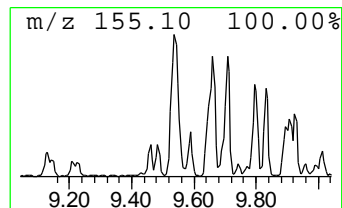
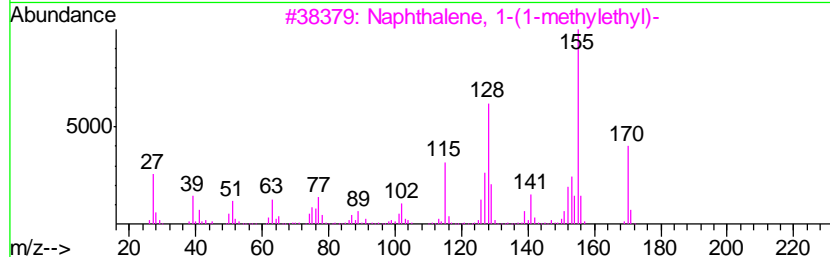
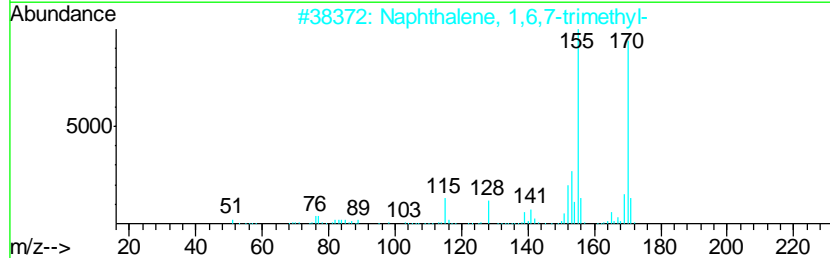
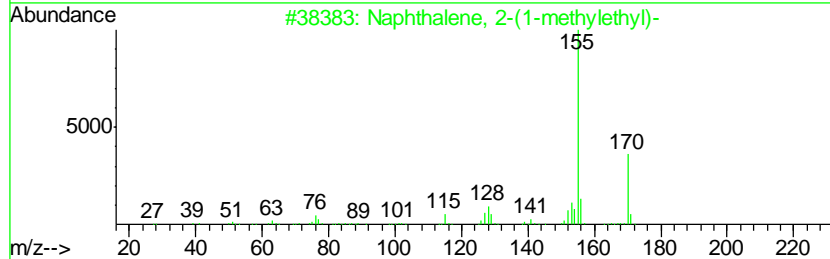
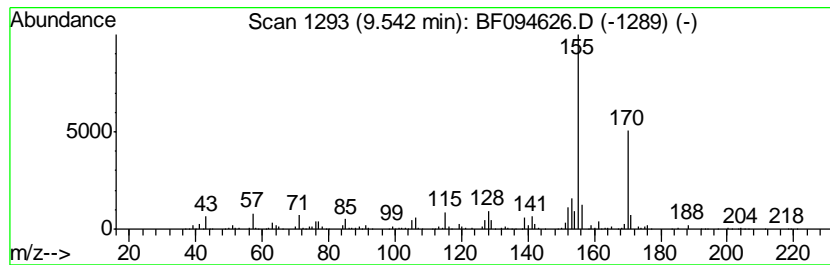
Quant Method : Z:\HPCHEM1\BNA F\METHODS\8270-BF041717.M
 Quant Title : ASP BNA STANDARDS FOR 5 POINT CALIBRATION

TIC Library : C:\DATABASE\NIST11.L
 TIC Integration Parameters: LSCINT.P

 Peak Number 11 Naphthalene, 2-(1-methyleth... Concentration Rank 14

R.T.	EstConc	Area	Relative to ISTD	R.T.
9.54	21.06 ng	2092730	Acenaphthene-d10	9.39

Hit#	of	Tentative ID	MW	MolForm	CAS#	Qual
1	5	Naphthalene, 2-(1-methylethyl)-	170	C13H14	002027-17-0	91
2		Naphthalene, 1,6,7-trimethyl-	170	C13H14	002245-38-7	89
3		Naphthalene, 1-(1-methylethyl)-	170	C13H14	006158-45-8	76
4		Naphthalene, 1,4,6-trimethyl-	170	C13H14	002131-42-2	76
5		Ethanone, 1-(1-Naphthalenyl)-	170	C12H10O	000941-98-0	72



Data Path : Z:\HPCHEM1\BNA F\DATA\BF042517\
 Data File : BF094626.D
 Acq On : 26 Apr 2017 1:59
 Operator : SJ/MA
 Sample : I2820-05
 Misc :
 ALS Vial : 29 Sample Multiplier: 1

Instrument :
 BNA_F
 ClientSampleID :
 HY-SB434A

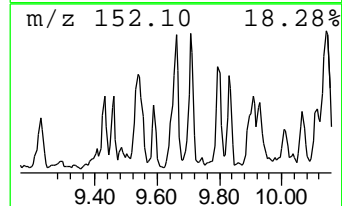
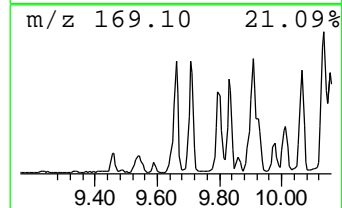
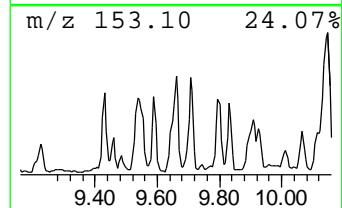
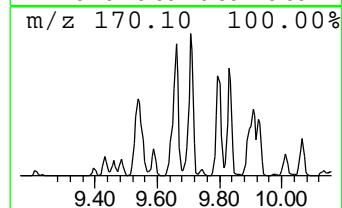
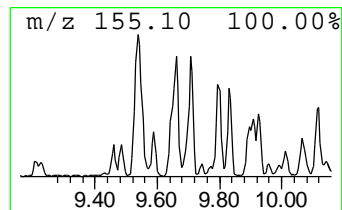
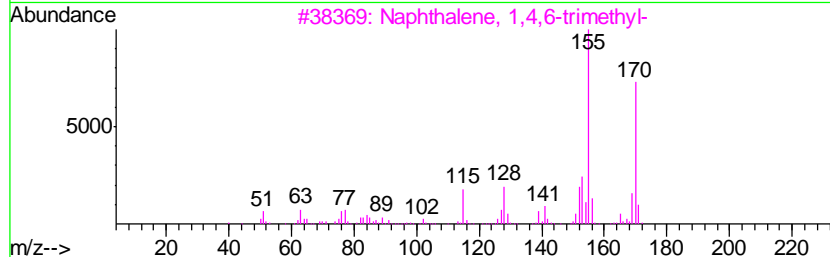
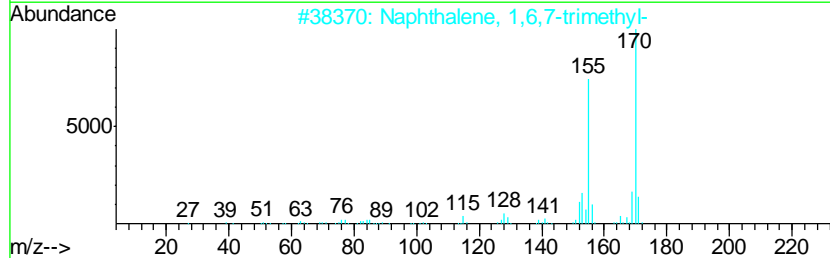
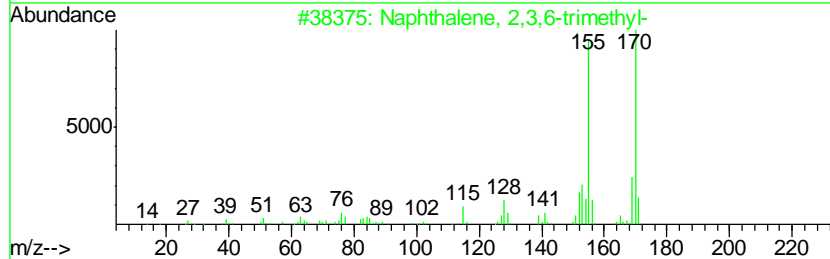
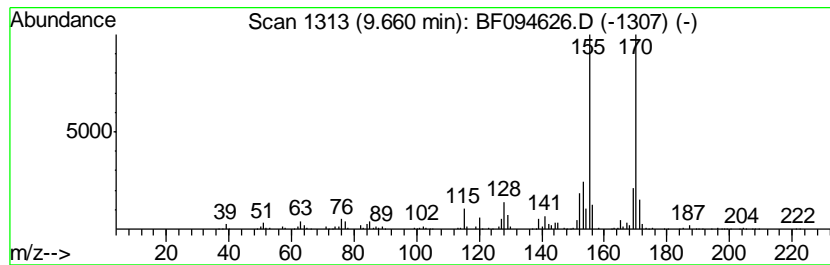
Quant Method : Z:\HPCHEM1\BNA F\METHODS\8270-BF041717.M
 Quant Title : ASP BNA STANDARDS FOR 5 POINT CALIBRATION

TIC Library : C:\DATABASE\NIST11.L
 TIC Integration Parameters: LSCINT.P

 Peak Number 12 Naphthalene, 2,3,6-trimethyl- Concentration Rank 15

R.T.	EstConc	Area	Relative to ISTD	R.T.
9.66	20.42 ng	2028810	Acenaphthene-d10	9.39

Hit#	of	Tentative ID	MW	MolForm	CAS#	Qual
1	5	Naphthalene, 2,3,6-trimethyl-	170	C13H14	000829-26-5	98
2		Naphthalene, 1,6,7-trimethyl-	170	C13H14	002245-38-7	97
3		Naphthalene, 1,4,6-trimethyl-	170	C13H14	002131-42-2	97
4		Naphthalene, 1,4,5-trimethyl-	170	C13H14	002131-41-1	93
5		3-(2-Methyl-propenyl)-1H-indene	170	C13H14	1000187-78-5	91



Data Path : Z:\HPCHEM1\BNA F\DATA\BF042517\
 Data File : BF094626.D
 Acq On : 26 Apr 2017 1:59
 Operator : SJ/MA
 Sample : I2820-05
 Misc :
 ALS Vial : 29 Sample Multiplier: 1

Instrument :
 BNA_F
 ClientSampled :
 HY-SB434A

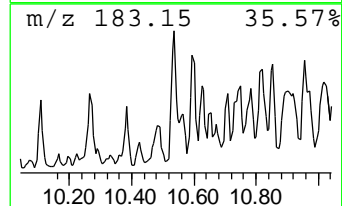
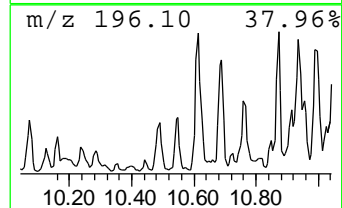
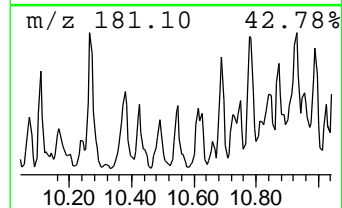
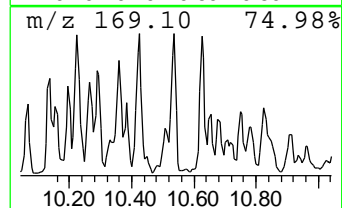
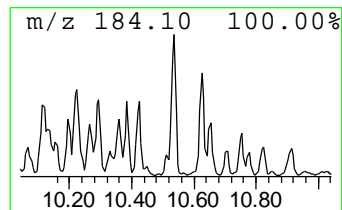
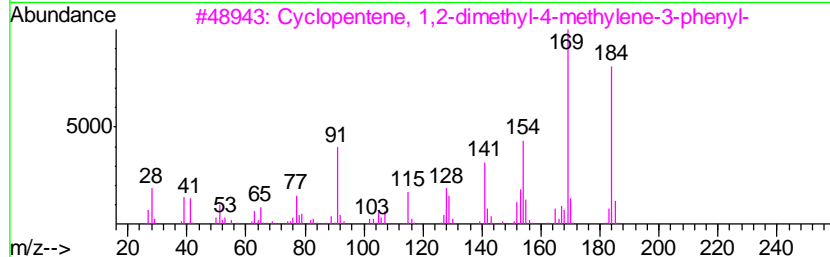
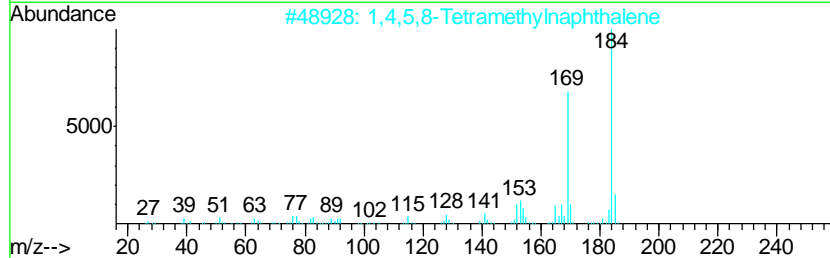
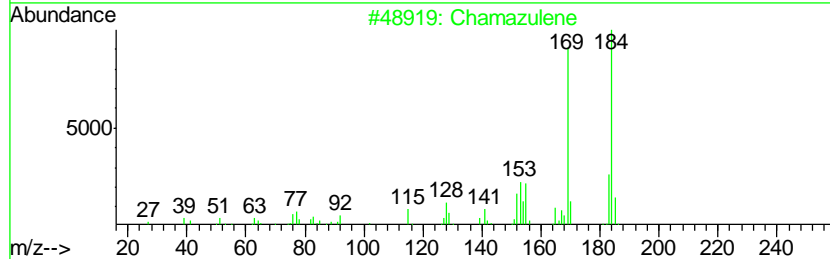
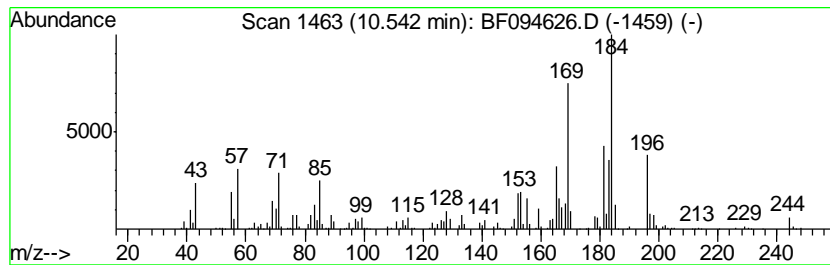
Quant Method : Z:\HPCHEM1\BNA F\METHODS\8270-BF041717.M
 Quant Title : ASP BNA STANDARDS FOR 5 POINT CALIBRATION

TIC Library : C:\DATABASE\NIST11.L
 TIC Integration Parameters: LSCINT.P

 Peak Number 14 Chamazulene Concentration Rank 17

R.T.	EstConc	Area	Relative to ISTD	R.T.
10.54	19.63 ng	650709	Phenanthrene-d10	11.21

Hit#	of	Tentative ID	MW	MolForm	CAS#	Qual
1	5	Chamazulene	184	C14H16	000529-05-5	94
2		1,4,5,8-Tetramethylnaphthalene	184	C14H16	002717-39-7	92
3		Cyclopentene, 1,2-dimethyl-4-met...	184	C14H16	1000152-22-4	83
4		Naphthalene, 1,2,3,4-tetramethyl-	184	C14H16	003031-15-0	74
5		Naphthalene, 1-methyl-7-(1-methy...	184	C14H16	000490-65-3	74



Data Path : Z:\HPCHEM1\BNA F\DATA\BF042517\
 Data File : BF094626.D
 Acq On : 26 Apr 2017 1:59
 Operator : SJ/MA
 Sample : I2820-05
 Misc :
 ALS Vial : 29 Sample Multiplier: 1

Instrument :
 BNA_F
 ClientSampleID :
 HY-SB434A

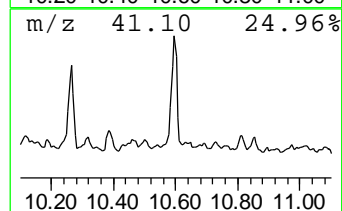
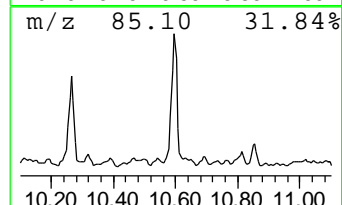
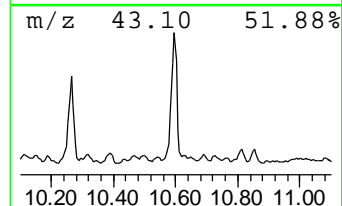
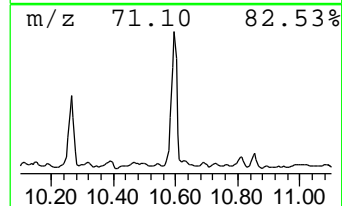
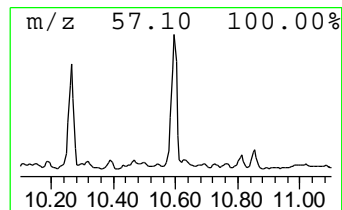
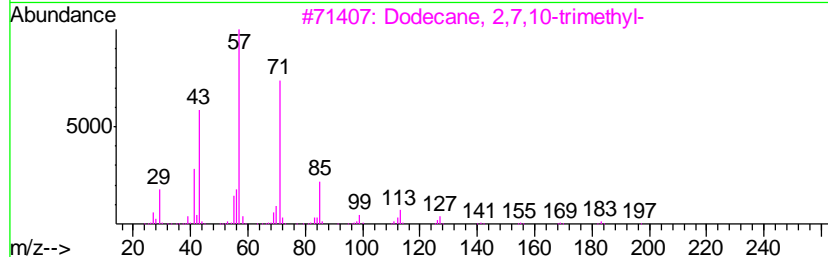
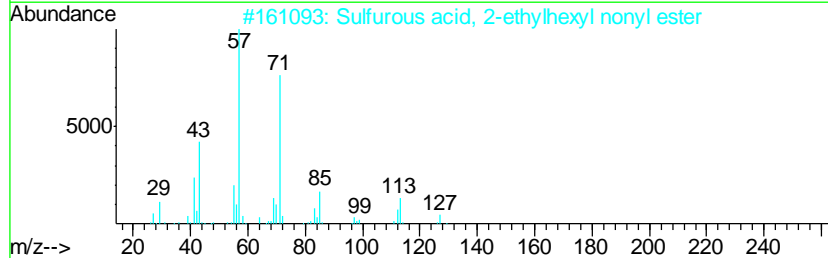
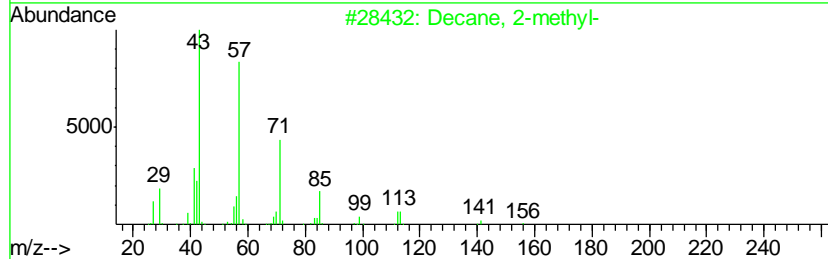
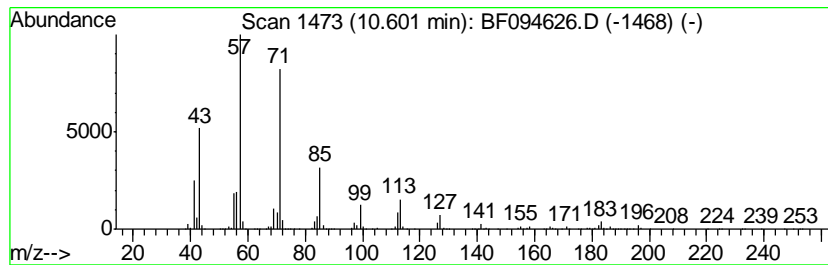
Quant Method : Z:\HPCHEM1\BNA F\METHODS\8270-BF041717.M
 Quant Title : ASP BNA STANDARDS FOR 5 POINT CALIBRATION

TIC Library : C:\DATABASE\NIST11.L
 TIC Integration Parameters: LSCINT.P

 Peak Number 15 Decane, 2-methyl- Concentration Rank 3

R.T.	EstConc	Area	Relative to ISTD	R.T.
10.60	88.46 ng	2932020	Phenanthrene-d10	11.21

Hit#	of	Tentative ID	MW	MolForm	CAS#	Qual
1	5	Decane, 2-methyl-	156	C11H24	006975-98-0	86
2		Sulfurous acid, 2-ethylhexyl non...	320	C17H36O3S	1000309-19-2	72
3		Dodecane, 2,7,10-trimethyl-	212	C15H32	074645-98-0	72
4		Sulfurous acid, dodecyl 2-ethylh...	362	C20H42O3S	1000309-19-5	72
5		Sulfurous acid, 2-ethylhexyl pen...	264	C13H28O3S	1000309-18-9	64



Data Path : Z:\HPCHEM1\BNA F\DATA\BF042517\
 Data File : BF094626.D
 Acq On : 26 Apr 2017 1:59
 Operator : SJ/MA
 Sample : I2820-05
 Misc :
 ALS Vial : 29 Sample Multiplier: 1

Instrument :
 BNA_F
 ClientSampled :
 HY-SB434A

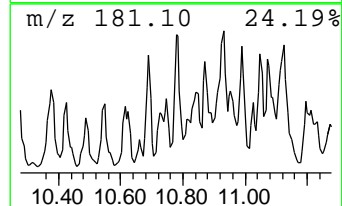
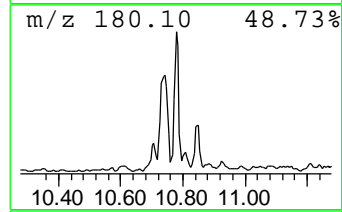
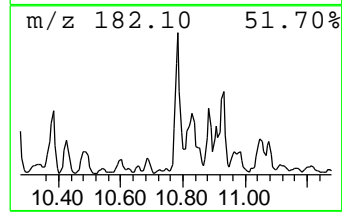
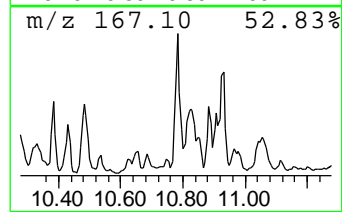
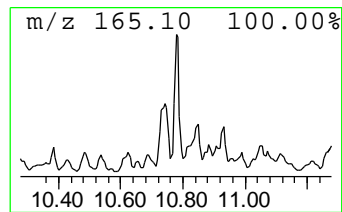
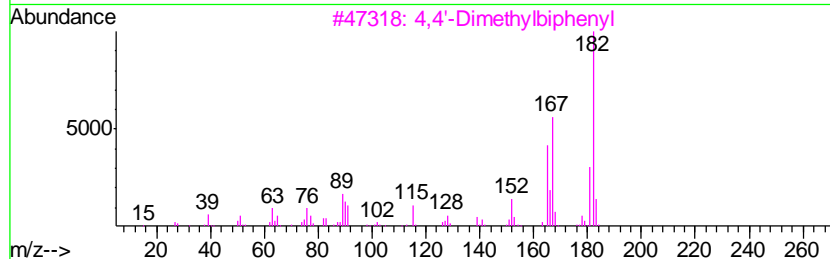
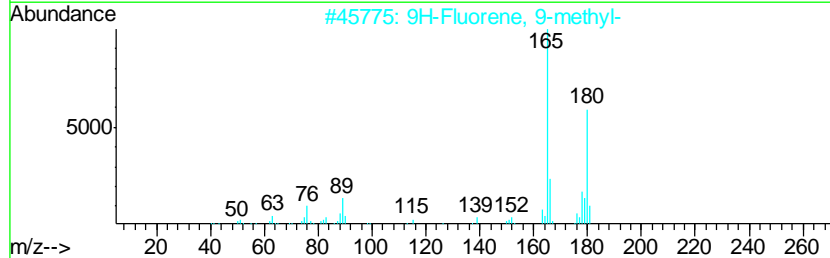
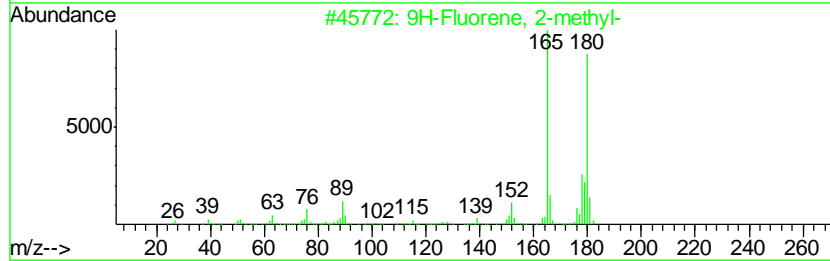
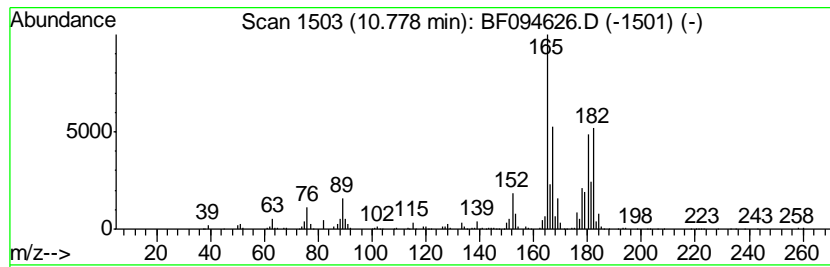
Quant Method : Z:\HPCHEM1\BNA F\METHODS\8270-BF041717.M
 Quant Title : ASP BNA STANDARDS FOR 5 POINT CALIBRATION

TIC Library : C:\DATABASE\NIST11.L
 TIC Integration Parameters: LSCINT.P

 Peak Number 16 9H-Fluorene, 2-methyl- Concentration Rank 6

R.T.	EstConc	Area	Relative to ISTD	R.T.
10.78	27.77 ng	920497	Phenanthrene-d10	11.21

Hit#	of	Tentative ID	MW	MolForm	CAS#	Qual
1	5	9H-Fluorene, 2-methyl-	180	C14H12	001430-97-3	50
2		9H-Fluorene, 9-methyl-	180	C14H12	002523-37-7	50
3		4,4'-Dimethylbiphenyl	182	C14H14	000613-33-2	49
4		1,4-Methanonaphthalene,1,4-dihyd...	182	C14H14	007350-72-3	43
5		Pentacyclo[6.4.0.1(1,8).1(2,7)]t...	180	C14H12	086120-84-5	38



Data Path : Z:\HPCHEM1\BNA F\DATA\BF042517\
 Data File : BF094626.D
 Acq On : 26 Apr 2017 1:59
 Operator : SJ/MA
 Sample : I2820-05
 Misc :
 ALS Vial : 29 Sample Multiplier: 1

Instrument :
 BNA_F
 ClientSampled :
 HY-SB434A

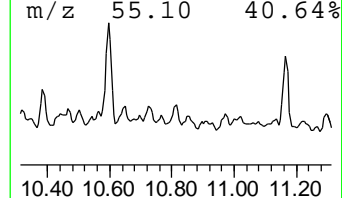
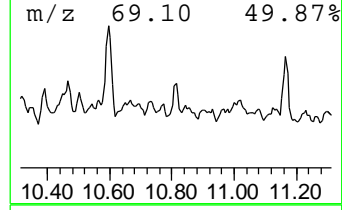
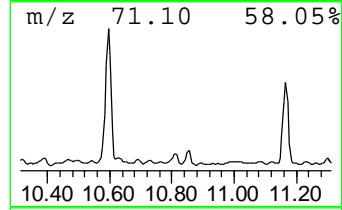
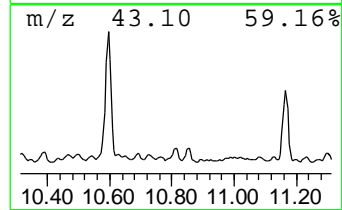
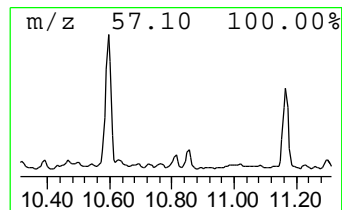
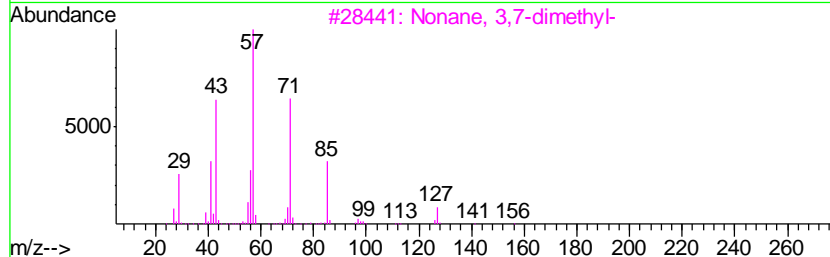
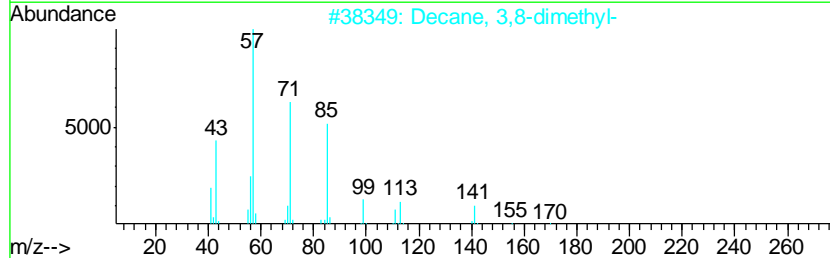
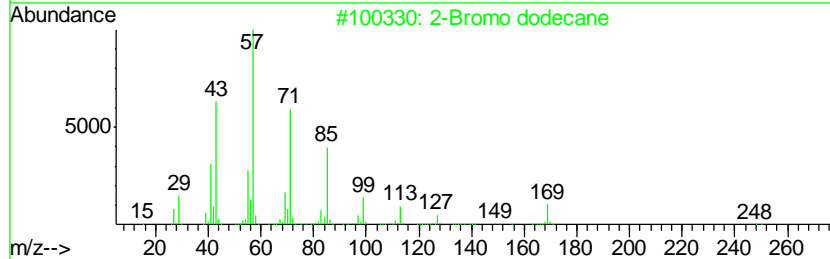
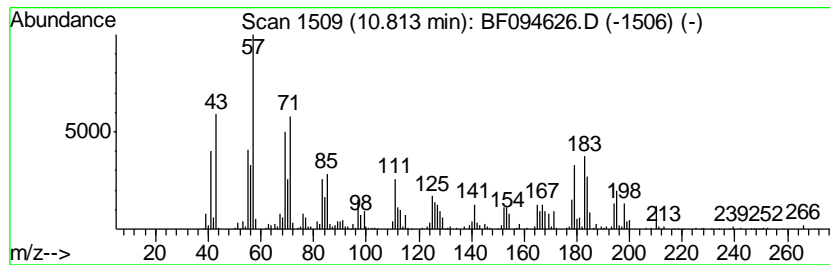
Quant Method : Z:\HPCHEM1\BNA F\METHODS\8270-BF041717.M
 Quant Title : ASP BNA STANDARDS FOR 5 POINT CALIBRATION

TIC Library : C:\DATABASE\NIST11.L
 TIC Integration Parameters: LSCINT.P

 Peak Number 17 unknown1.81 Concentration Rank 11

R.T.	EstConc	Area	Relative to ISTD	R.T.
10.81	25.17 ng	834362	Phenanthrene-d10	11.21

Hit#	of	Tentative ID	MW	MolForm	CAS#	Qual
1	5	2-Bromo dodecane	248	C12H25Br	013187-99-0	35
2		Decane, 3,8-dimethyl-	170	C12H26	017312-55-9	30
3		Nonane, 3,7-dimethyl-	156	C11H24	017302-32-8	20
4		Decane	142	C10H22	000124-18-5	20
5		Decane, 3,6-dimethyl-	170	C12H26	017312-53-7	20



Data Path : Z:\HPCHEM1\BNA_F\DATA\BF042517\
 Data File : BF094626.D
 Acq On : 26 Apr 2017 1:59
 Operator : SJ/MA
 Sample : I2820-05
 Misc :
 ALS Vial : 29 Sample Multiplier: 1

Instrument :
 BNA_F
 ClientSampleId :
 HY-SB434A

Quant Method : Z:\HPCHEM1\BNA_F\METHODS\8270-BF041717.M
 Quant Title : ASP BNA STANDARDS FOR 5 POINT CALIBRATION

TIC Library : C:\DATABASE\NIST11.L
 TIC Integration Parameters: LSCINT.P

TIC Top Hit name	RT	EstConc	Units	Response	--Internal Standard--			
					#	RT	Resp	Conc
unknown4.94	4.94	25.5	ng	1011930	1	5.75	794501	20.0
Undecane, 5,6-dim...	5.14	18.2	ng	722275	1	5.75	794501	20.0
unknown5.51	5.51	93.9	ng	3730970	1	5.75	794501	20.0
1-Ethyl-2,2,6-tri...	6.07	16.6	ng	661542	1	5.75	794501	20.0
Octane, 2,6-dimet...	7.82	25.5	ng	3456150	2	7.25	2714380	20.0
Naphthalene, 1-et...	8.81	17.7	ng	1758250	3	9.39	1987230	20.0
Naphthalene, 2,6-...	8.90	32.6	ng	3234980	3	9.39	1987230	20.0
Naphthalene, 1,5-...	8.99	35.6	ng	3541980	3	9.39	1987230	20.0
Naphthalene, 1,6-...	9.02	21.7	ng	2160370	3	9.39	1987230	20.0
Naphthalene, 2-(1...	9.54	21.1	ng	2092730	3	9.39	1987230	20.0
Naphthalene, 2,3,...	9.66	20.4	ng	2028810	3	9.39	1987230	20.0
Chamazulene	10.54	19.6	ng	650709	4	11.21	662918	20.0
Decane, 2-methyl-	10.60	88.5	ng	2932020	4	11.21	662918	20.0
9H-Fluorene, 2-me...	10.78	27.8	ng	920497	4	11.21	662918	20.0
unknown1.81	10.81	25.2	ng	834362	4	11.21	662918	20.0