

Data Path : Z:\svoasrv\HPCHEM1\BNA_F\Data\BF042522\
 Data File : BF127889.D
 Acq On : 25 Apr 2022 19:23
 Operator : CG\JU
 Sample : N2548-01MSD
 Misc :
 ALS Vial : 11 Sample Multiplier: 1

Instrument :
 BNA_F
 ClientSampleId :
 MH-8SMSD

Quant Time: Apr 26 05:40:04 2022
 Quant Method : Z:\svoasrv\HPCHEM1\BNA_F\Methods\8270-BF042222.M
 Quant Title : ASP BNA STANDARDS FOR 5 POINT CALIBRATION
 QLast Update : Sun Apr 24 00:43:03 2022
 Response via : Initial Calibration

Compound	R.T.	QIon	Response	Conc	Units	Dev(Min)
Internal Standards						
1) 1,4-Dichlorobenzene-d4	6.940	152	158391	20.000	ng	0.00
21) Naphthalene-d8	8.228	136	630318	20.000	ng	0.00
39) Acenaphthene-d10	9.986	164	361956	20.000	ng	0.00
64) Phenanthrene-d10	11.475	188	651098	20.000	ng	0.00
76) Chrysene-d12	14.121	240	372472	20.000	ng	# 0.00
86) Perylene-d12	15.633	264	325516	20.000	ng	0.00
System Monitoring Compounds						
5) 2-Fluorophenol	5.569	112	1018633	102.434	ng	0.00
7) Phenol-d6	6.569	99	1342181	104.018	ng	0.00
23) Nitrobenzene-d5	7.510	82	964201	71.933	ng	0.00
42) 2,4,6-Tribromophenol	10.780	330	386776	106.149	ng	0.00
45) 2-Fluorobiphenyl	9.304	172	1559150	72.873	ng	0.00
79) Terphenyl-d14	13.063	244	1716237	84.255	ng	0.00
Target Compounds						
2) 1,4-Dioxane	2.852	88	181020	38.152	ng	Qvalue 100
3) Pyridine	3.610	79	472047	38.829	ng	99
4) n-Nitrosodimethylamine	3.575	42	262967	44.688	ng	97
6) Aniline	6.604	93	615253	40.132	ng	99
8) 2-Chlorophenol	6.728	128	482777	46.775	ng	97
9) Benzaldehyde	6.498	77	322596	40.413	ng	98
10) Phenol	6.581	94	582782	44.781	ng	98
11) bis(2-Chloroethyl)ether	6.675	93	492600	45.629	ng	96
12) 1,3-Dichlorobenzene	6.881	146	512263	43.118	ng	96
13) 1,4-Dichlorobenzene	6.957	146	515153	43.441	ng	98
14) 1,2-Dichlorobenzene	7.110	146	496393	45.217	ng	99
15) Benzyl Alcohol	7.081	79	443521	50.545	ng	99
16) 2,2'-oxybis(1-Chloropr...	7.210	45	762400	46.207	ng	99
17) 2-Methylphenol	7.187	107	397747	44.665	ng	97
18) Hexachloroethane	7.451	117	197899	45.393	ng	95
19) n-Nitroso-di-n-propyla...	7.357	70	360612	45.654	ng	98
20) 3+4-Methylphenols	7.340	107	476404	44.285	ng	90
22) Acetophenone	7.351	105	643092	41.860	ng	96
24) Nitrobenzene	7.528	77	569850	44.119	ng	99
25) Isophorone	7.763	82	1070734	47.461	ng	100
26) 2-Nitrophenol	7.839	139	253329	46.027	ng	97
27) 2,4-Dimethylphenol	7.869	122	454912	49.760	ng	99
28) bis(2-Chloroethoxy)met...	7.969	93	620548	42.920	ng	99
29) 2,4-Dichlorophenol	8.081	162	410721	42.884	ng	99
30) 1,2,4-Trichlorobenzene	8.163	180	449051	41.276	ng	100
31) Naphthalene	8.251	128	1355107	42.211	ng	99
32) Benzoic acid	7.998	122	290204	44.288	ng	98
33) 4-Chloroaniline	8.292	127	252274	19.861	ng	100
34) Hexachlorobutadiene	8.357	225	285660	41.686	ng	98
35) Caprolactam	8.675	113	74968	24.249	ng	99
36) 4-Chloro-3-methylphenol	8.775	107	455625	44.544	ng	100
37) 2-Methylnaphthalene	8.939	142	913901	43.075	ng	100
38) 1-Methylnaphthalene	9.039	142	866762	42.030	ng	100
40) 1,2,4,5-Tetrachloroben...	9.104	216	436683	40.931	ng	99
41) Hexachlorocyclopentadiene	9.086	237	524937	90.816	ng	99
43) 2,4,6-Trichlorophenol	9.216	196	302476	43.088	ng	99

Data Path : Z:\svoasrv\HPCHEM1\BNA_F\Data\BF042522\
 Data File : BF127889.D
 Acq On : 25 Apr 2022 19:23
 Operator : CG\JU
 Sample : N2548-01MSD
 Misc :
 ALS Vial : 11 Sample Multiplier: 1

Instrument :
 BNA_F
 ClientSampleId :
 MH-8SMSD

Quant Time: Apr 26 05:40:04 2022
 Quant Method : Z:\svoasrv\HPCHEM1\BNA_F\Methods\8270-BF042222.M
 Quant Title : ASP BNA STANDARDS FOR 5 POINT CALIBRATION
 QLast Update : Sun Apr 24 00:43:03 2022
 Response via : Initial Calibration

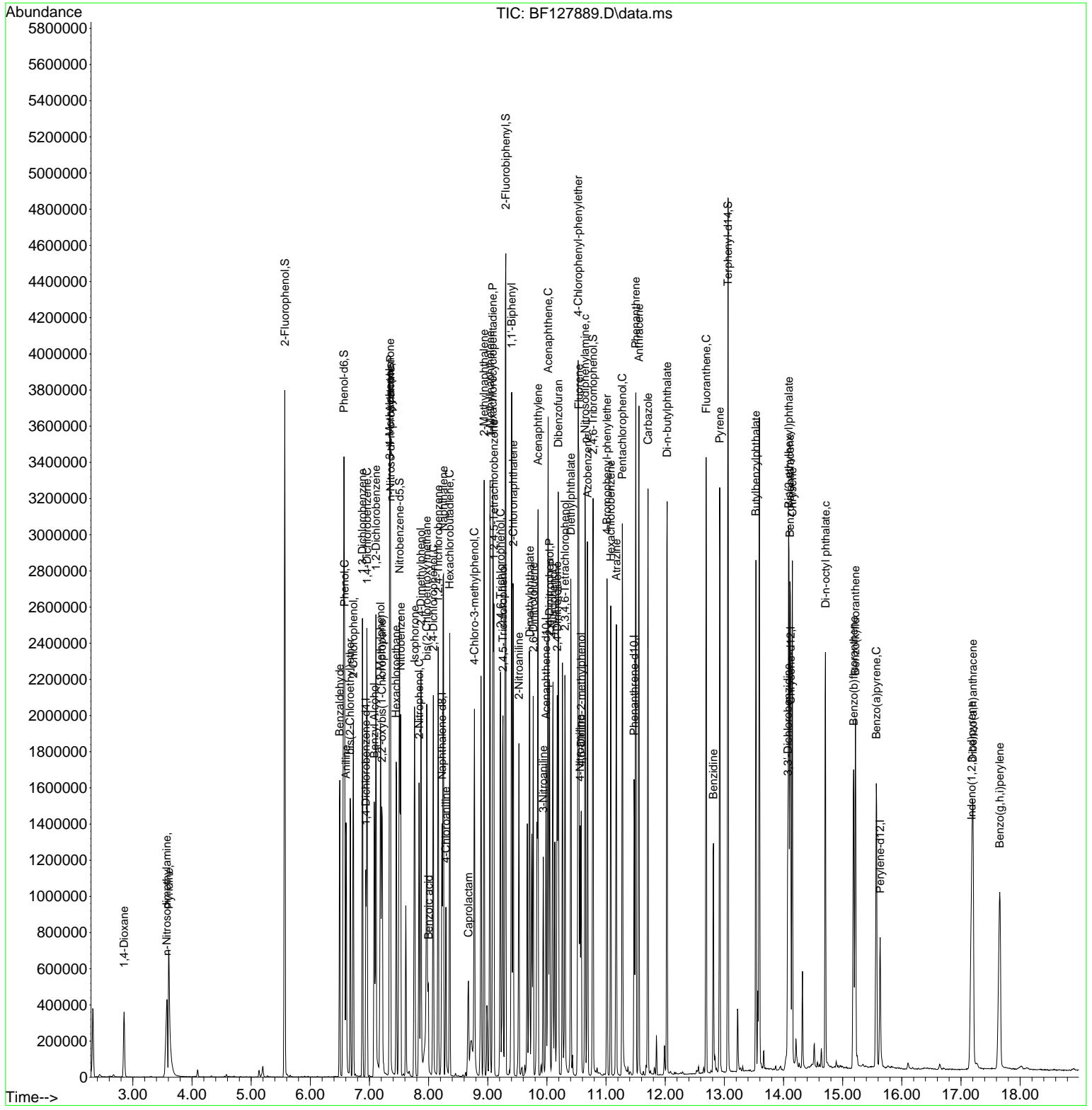
Compound	R.T.	QIon	Response	Conc	Units	Dev(Min)
44) 2,4,5-Trichlorophenol	9.257	196	317048	41.546	ng	95
46) 1,1'-Biphenyl	9.404	154	1138066	42.447	ng	100
47) 2-Chloronaphthalene	9.433	162	839325	41.121	ng	100
48) 2-Nitroaniline	9.528	65	306604	44.408	ng	98
49) Acenaphthylene	9.851	152	1379977	44.199	ng	100
50) Dimethylphthalate	9.710	163	1043913	43.004	ng	99
51) 2,6-Dinitrotoluene	9.769	165	241875	46.021	ng	96
52) Acenaphthene	10.022	154	867087	41.309	ng	99
53) 3-Nitroaniline	9.939	138	164066	28.111	ng	98
54) 2,4-Dinitrophenol	10.045	184	254206	91.841	ng	# 82
55) Dibenzofuran	10.192	168	1241680	41.001	ng	99
56) 4-Nitrophenol	10.104	139	367740	82.516	ng	98
57) 2,4-Dinitrotoluene	10.175	165	318919	45.810	ng	# 87
58) Fluorene	10.539	166	925829	40.969	ng	99
59) 2,3,4,6-Tetrachlorophenol	10.304	232	276801	43.134	ng	99
60) Diethylphthalate	10.404	149	1033394	43.413	ng	99
61) 4-Chlorophenyl-phenyle...	10.528	204	459801	40.946	ng	99
62) 4-Nitroaniline	10.563	138	237754	41.669	ng	99
63) Azobenzene	10.686	77	1114483	42.549	ng	99
65) 4,6-Dinitro-2-methylph...	10.580	198	175799	45.441	ng	95
66) n-Nitrosodiphenylamine	10.645	169	851312	42.020	ng	99
67) 4-Bromophenyl-phenylether	11.016	248	307405	42.590	ng	100
68) Hexachlorobenzene	11.080	284	328932	43.254	ng	99
69) Atrazine	11.175	200	307711	49.119	ng	97
70) Pentachlorophenol	11.275	266	371702	83.084	ng	97
71) Phenanthrene	11.504	178	1402359	41.147	ng	99
72) Anthracene	11.557	178	1409409	41.513	ng	99
73) Carbazole	11.710	167	1271568	38.861	ng	100
74) Di-n-butylphthalate	12.033	149	1599413	43.470	ng	100
75) Fluoranthene	12.692	202	1437893	40.086	ng	99
77) Benzidine	12.816	184	519741	73.746	ng	98
78) Pyrene	12.922	202	1425142	47.398	ng	99
80) Butylbenzylphthalate	13.533	149	608321	51.617	ng	99
81) Benzo(a)anthracene	14.110	228	1073970	43.259	ng	99
82) 3,3'-Dichlorobenzidine	14.074	252	248848	31.569	ng	100
83) Chrysene	14.151	228	1011728	42.671	ng	99
84) Bis(2-ethylhexyl)phtha...	14.092	149	796359	50.955	ng	100
85) Di-n-octyl phthalate	14.710	149	1132526	46.760	ng	99
87) Indeno(1,2,3-cd)pyrene	17.180	276	1074348	49.446	ng	99
88) Benzo(b)fluoranthene	15.186	252	889904	43.526	ng	100
89) Benzo(k)fluoranthene	15.215	252	886741	43.049	ng	98
90) Benzo(a)pyrene	15.568	252	877945	51.768	ng	99
91) Dibenzo(a,h)anthracene	17.204	278	917793	52.670	ng	98
92) Benzo(g,h,i)perylene	17.656	276	963267	52.455	ng	99

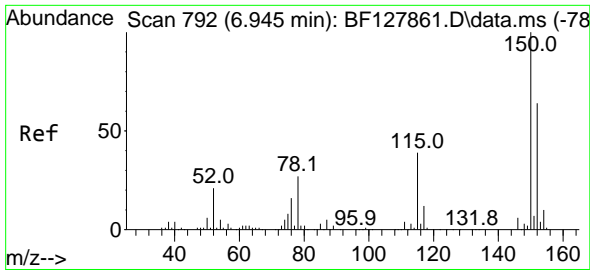
(#) = qualifier out of range (m) = manual integration (+) = signals summed

Data Path : Z:\svoasrv\HPCHEM1\BNA_F\Data\BF042522\
 Data File : BF127889.D
 Acq On : 25 Apr 2022 19:23
 Operator : CG\JU
 Sample : N2548-01MSD
 Misc :
 ALS Vial : 11 Sample Multiplier: 1

Instrument :
 BNA_F
 ClientSampleId :
 MH-8SMSD

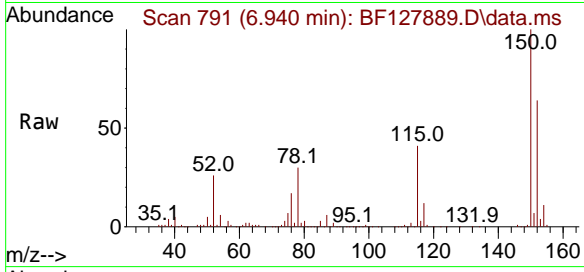
Quant Time: Apr 26 05:40:04 2022
 Quant Method : Z:\svoasrv\HPCHEM1\BNA_F\Methods\8270-BF042222.M
 Quant Title : ASP BNA STANDARDS FOR 5 POINT CALIBRATION
 QLast Update : Sun Apr 24 00:43:03 2022
 Response via : Initial Calibration



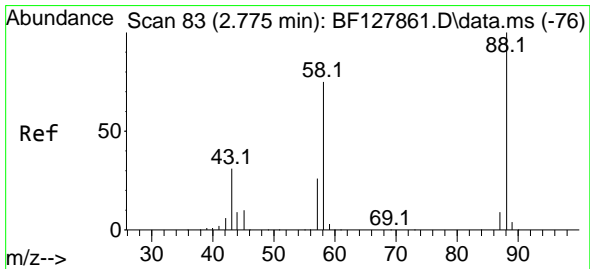
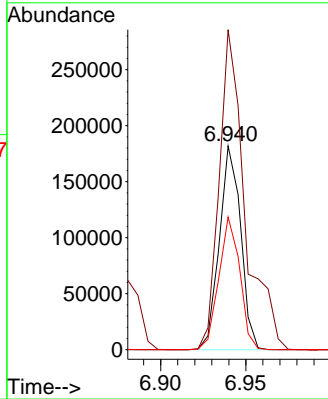
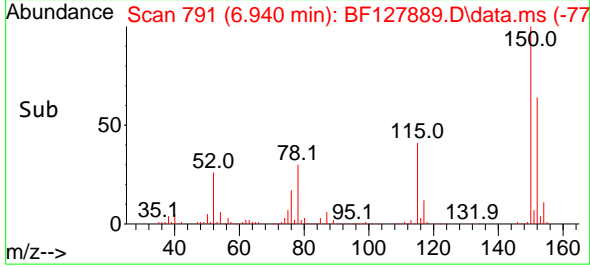


#1
 1,4-Dichlorobenzene-d4
 Concen: 20.000 ng
 RT: 6.940 min Scan# 792
 Delta R.T. -0.005 min
 Lab File: BF127889.D
 Acq: 25 Apr 2022 19:23

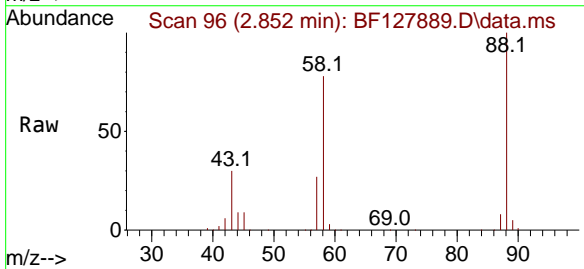
Instrument :
 BNA_F
 ClientSampleId :
 MH-8SMSD



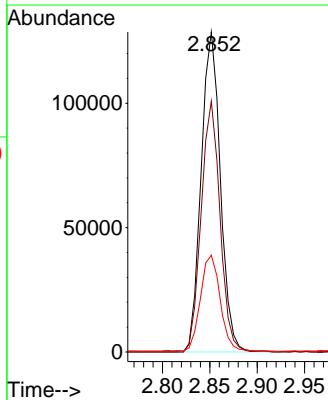
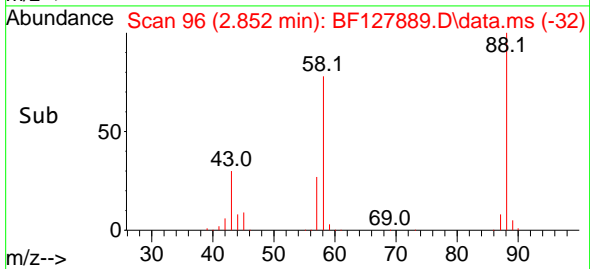
Tgt Ion:152 Resp: 158391
 Ion Ratio Lower Upper
 152 100
 150 157.1 125.3 187.9
 115 65.1 48.8 73.2

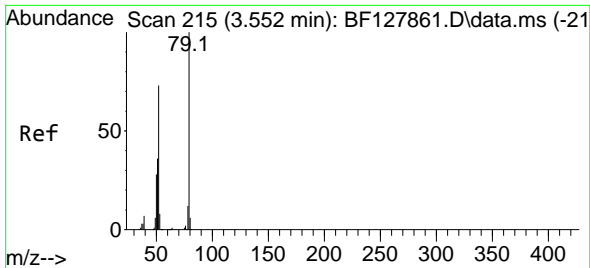


#2
 1,4-Dioxane
 Concen: 38.152 ng
 RT: 2.852 min Scan# 96
 Delta R.T. 0.076 min
 Lab File: BF127889.D
 Acq: 25 Apr 2022 19:23



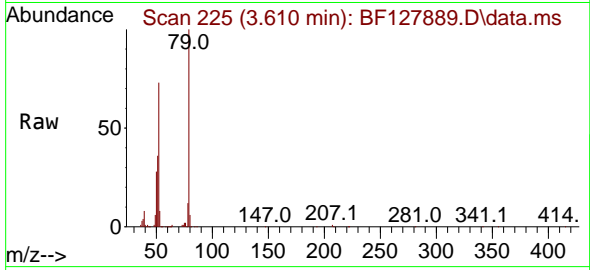
Tgt Ion: 88 Resp: 181020
 Ion Ratio Lower Upper
 88 100
 58 76.6 61.0 91.4
 43 31.0 24.9 37.3



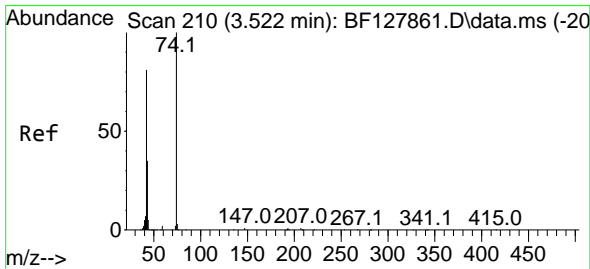
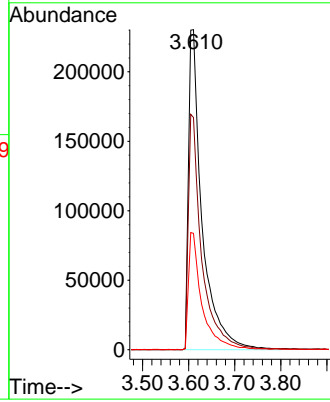
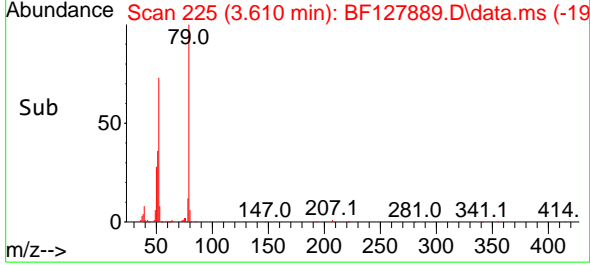


#3
 Pyridine
 Concen: 38.829 ng
 RT: 3.610 min Scan# 219
 Delta R.T. 0.059 min
 Lab File: BF127889.D
 Acq: 25 Apr 2022 19:23

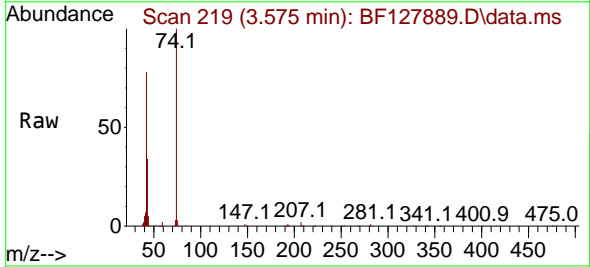
Instrument :
 BNA_F
 ClientSampleId :
 MH-8SMSD



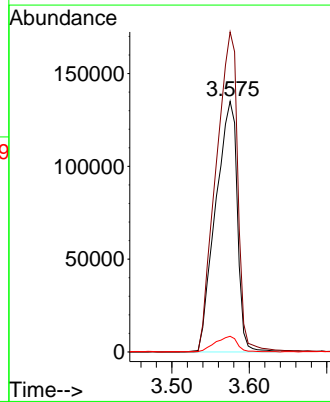
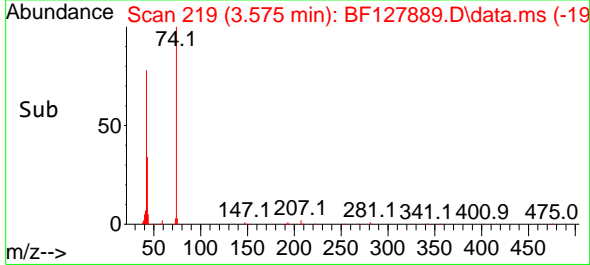
Tgt Ion: 79 Resp: 472047
 Ion Ratio Lower Upper
 79 100
 52 72.5 58.3 87.5
 51 36.4 28.6 42.8

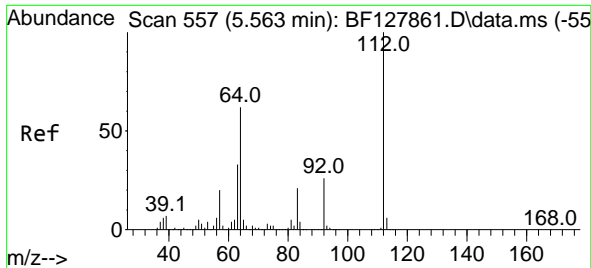


#4
 n-Nitrosodimethylamine
 Concen: 44.688 ng
 RT: 3.575 min Scan# 219
 Delta R.T. 0.053 min
 Lab File: BF127889.D
 Acq: 25 Apr 2022 19:23



Tgt Ion: 42 Resp: 262967
 Ion Ratio Lower Upper
 42 100
 74 127.7 99.0 148.4
 44 6.2 5.2 7.8

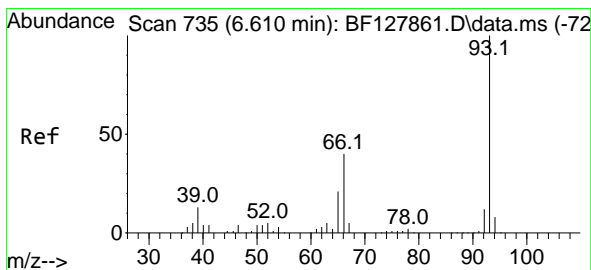
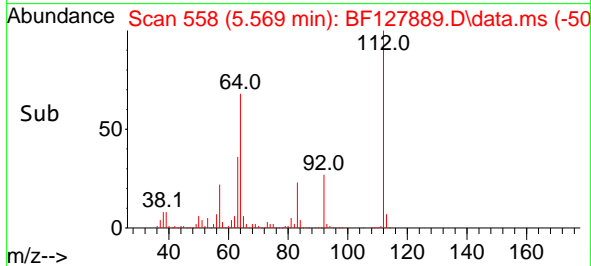
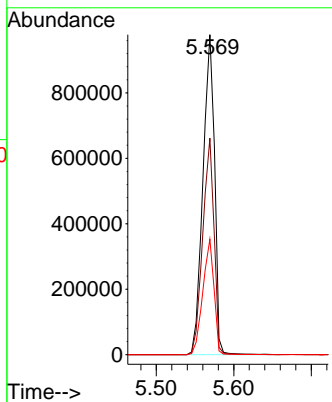
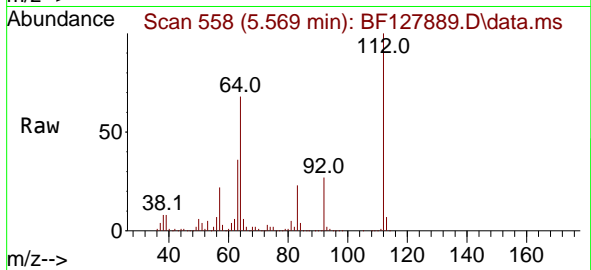




#5
 2-Fluorophenol
 Concen: 102.434 ng
 RT: 5.569 min Scan# 51
 Delta R.T. 0.006 min
 Lab File: BF127889.D
 Acq: 25 Apr 2022 19:23

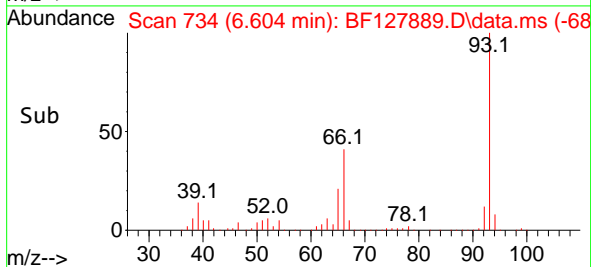
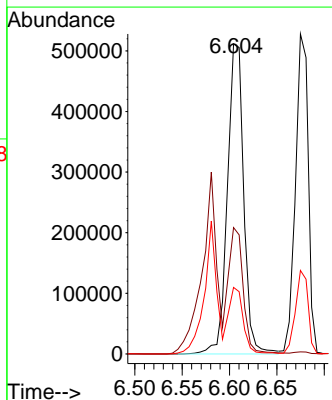
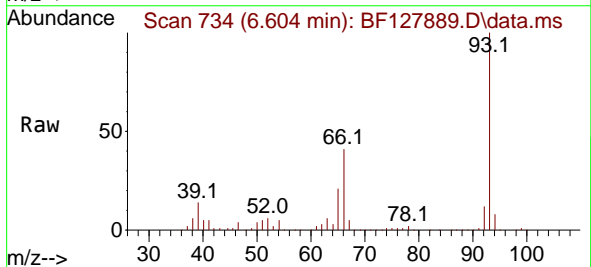
Instrument :
 BNA_F
 ClientSampleId :
 MH-8SMSD

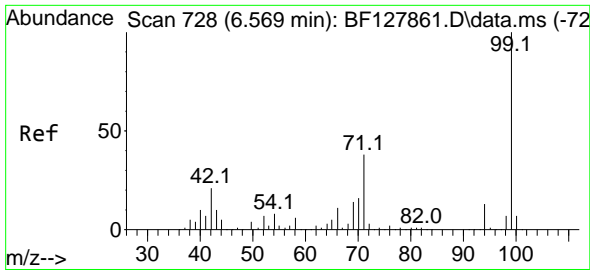
Tgt Ion:112 Resp: 1018633
 Ion Ratio Lower Upper
 112 100
 64 67.7 49.5 74.3
 63 36.1 26.3 39.5



#6
 Aniline
 Concen: 40.132 ng
 RT: 6.604 min Scan# 734
 Delta R.T. -0.006 min
 Lab File: BF127889.D
 Acq: 25 Apr 2022 19:23

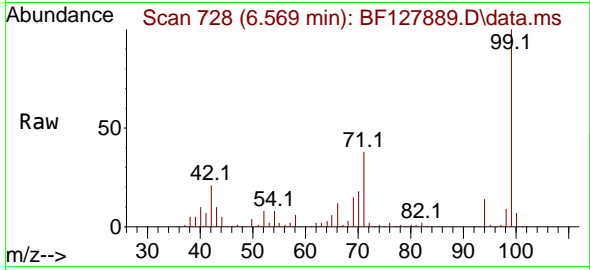
Tgt Ion: 93 Resp: 615253
 Ion Ratio Lower Upper
 93 100
 66 40.8 32.2 48.4
 65 21.5 16.7 25.1



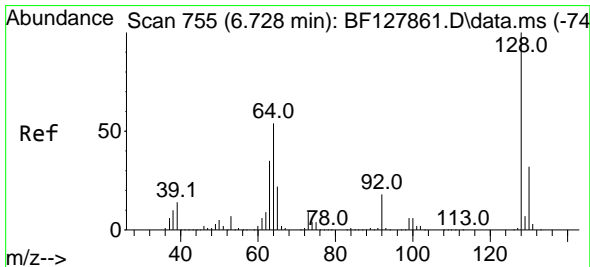
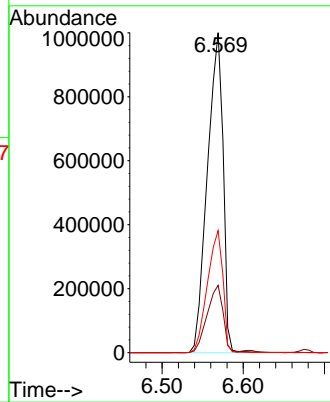
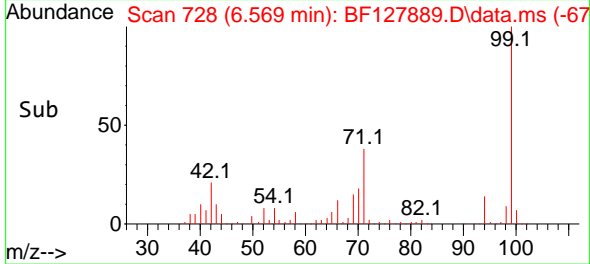


#7
 Phenol-d6
 Concen: 104.018 ng
 RT: 6.569 min Scan# 71
 Delta R.T. -0.000 min
 Lab File: BF127889.D
 Acq: 25 Apr 2022 19:23

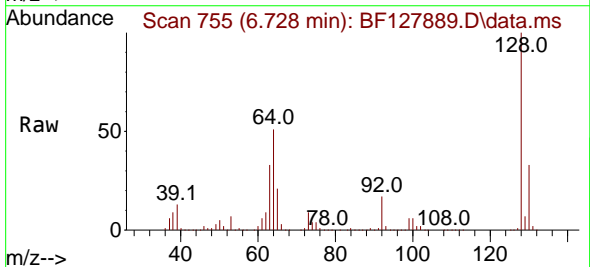
Instrument :
 BNA_F
 ClientSampleId :
 MH-8SMSD



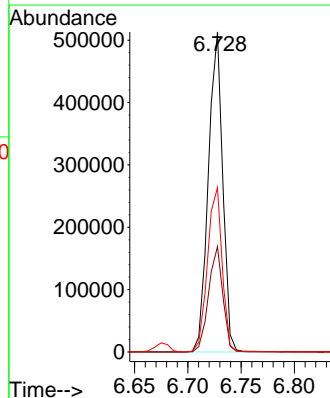
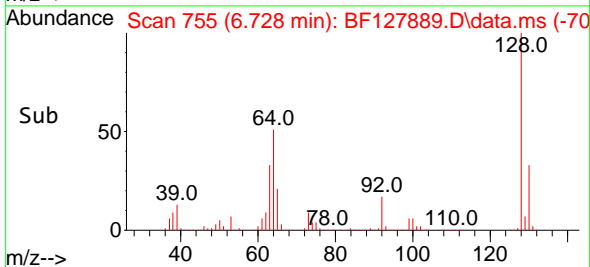
Tgt Ion: 99 Resp: 1342181
 Ion Ratio Lower Upper
 99 100
 42 21.1 16.6 24.8
 71 38.2 30.0 45.0

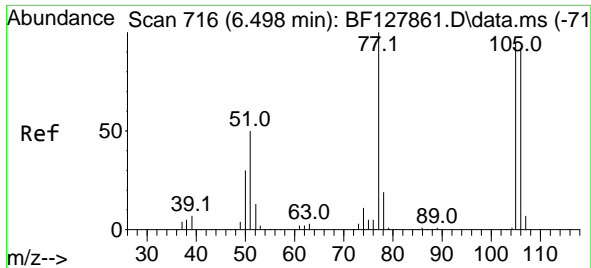


#8
 2-Chlorophenol
 Concen: 46.775 ng
 RT: 6.728 min Scan# 755
 Delta R.T. -0.000 min
 Lab File: BF127889.D
 Acq: 25 Apr 2022 19:23



Tgt Ion: 128 Resp: 482777
 Ion Ratio Lower Upper
 128 100
 130 33.0 11.6 51.6
 64 51.3 33.8 73.8

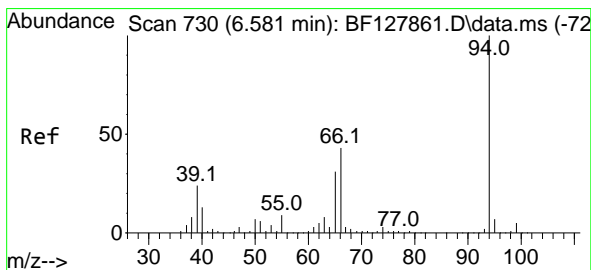
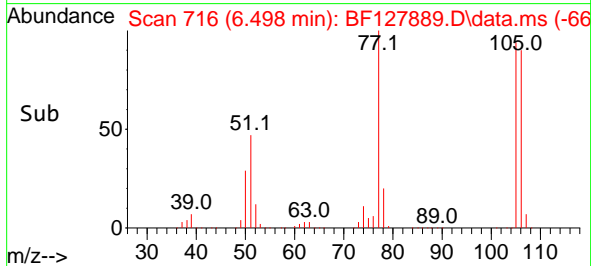
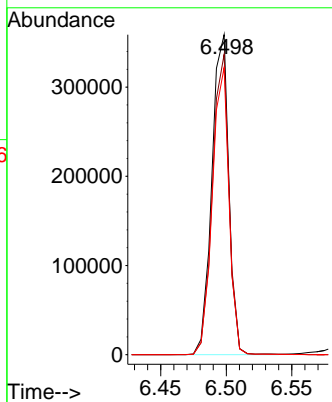
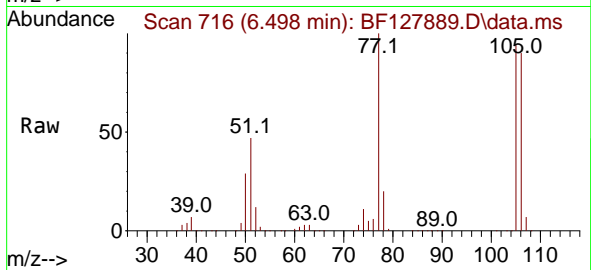




#9
Benzaldehyde
Concen: 40.413 ng
RT: 6.498 min Scan# 71
Delta R.T. 0.000 min
Lab File: BF127889.D
Acq: 25 Apr 2022 19:23

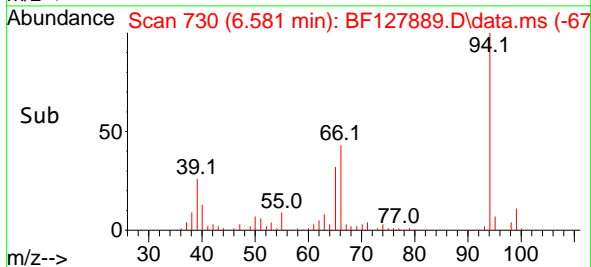
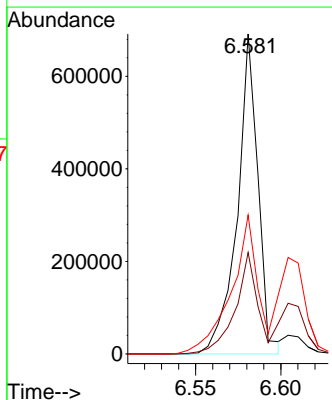
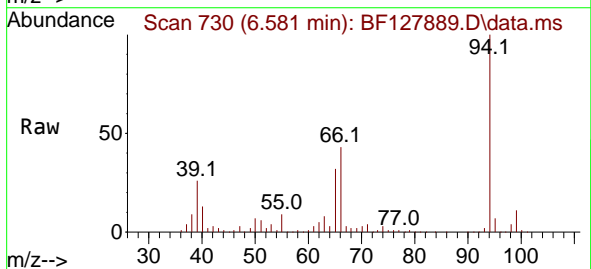
Instrument : BNA_F
ClientSampleId : MH-8SMSD

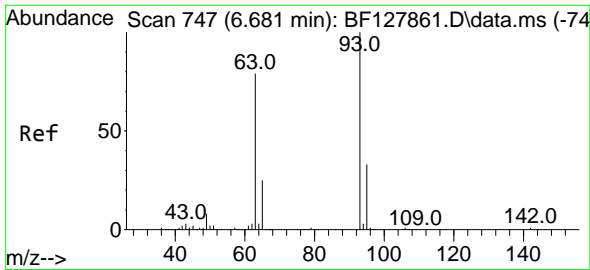
Tgt Ion	Resp	Lower	Upper
77	100		
105	93.9	74.9	114.9
106	89.7	72.2	112.2



#10
Phenol
Concen: 44.781 ng
RT: 6.581 min Scan# 730
Delta R.T. -0.000 min
Lab File: BF127889.D
Acq: 25 Apr 2022 19:23

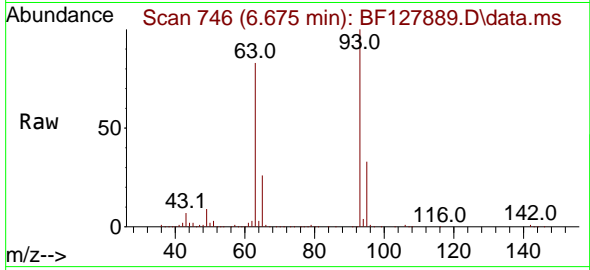
Tgt Ion	Resp	Lower	Upper
94	100		
65	31.7	10.6	50.6
66	43.4	22.6	62.6



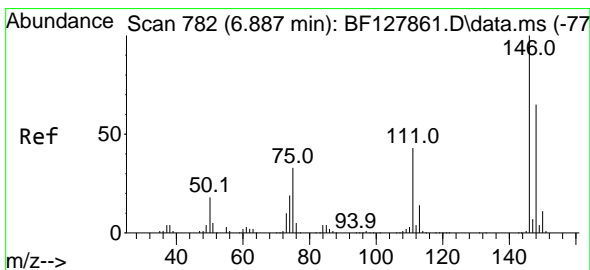
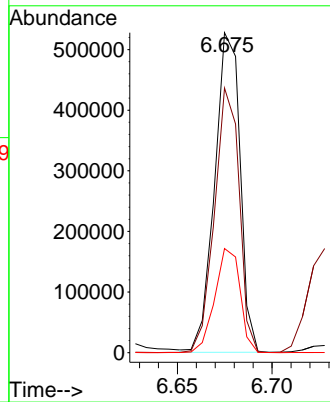
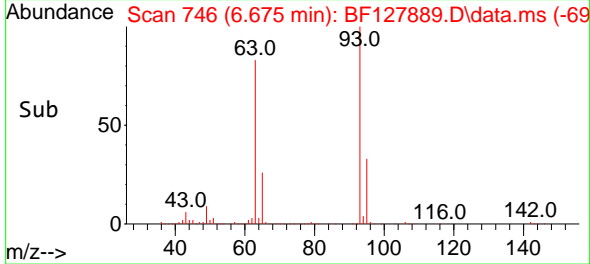


#11
 bis(2-Chloroethyl)ether
 Concen: 45.629 ng
 RT: 6.675 min Scan# 746
 Delta R.T. -0.006 min
 Lab File: BF127889.D
 Acq: 25 Apr 2022 19:23

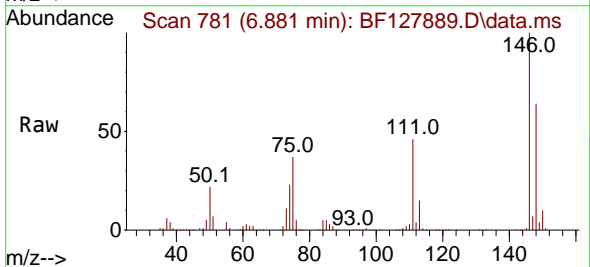
Instrument : BNA_F
 ClientSampleId : MH-8SMSD



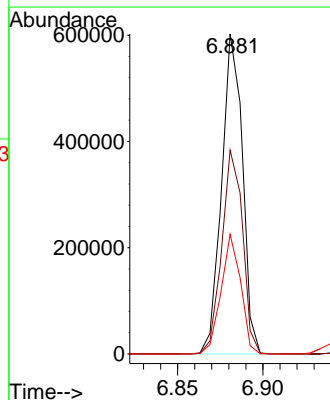
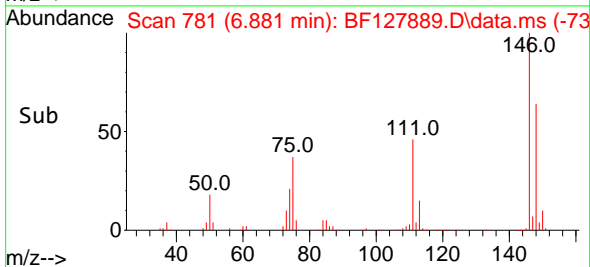
Tgt Ion: 93 Resp: 492600
 Ion Ratio Lower Upper
 93 100
 63 82.7 58.6 98.6
 95 32.6 12.9 52.9

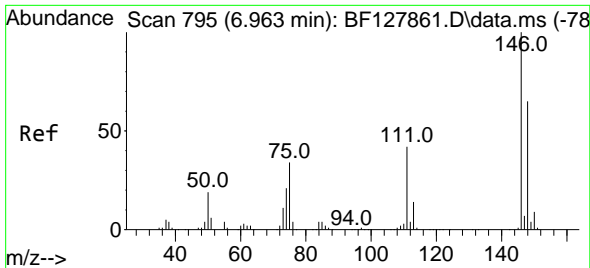


#12
 1,3-Dichlorobenzene
 Concen: 43.118 ng
 RT: 6.881 min Scan# 781
 Delta R.T. -0.006 min
 Lab File: BF127889.D
 Acq: 25 Apr 2022 19:23



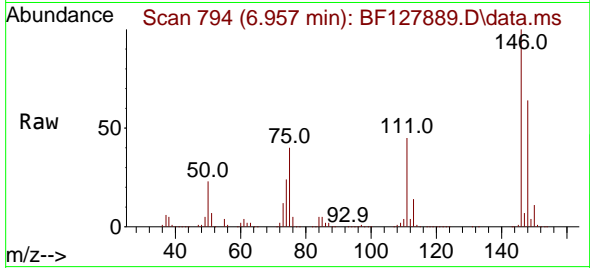
Tgt Ion: 146 Resp: 512263
 Ion Ratio Lower Upper
 146 100
 148 63.7 52.1 78.1
 75 37.4 26.2 39.4



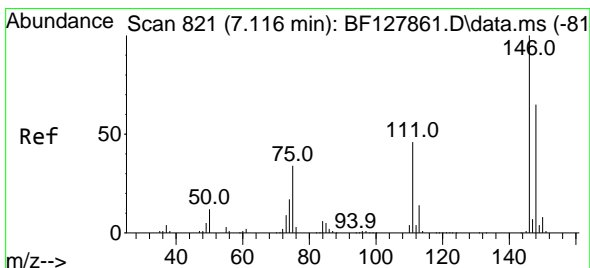
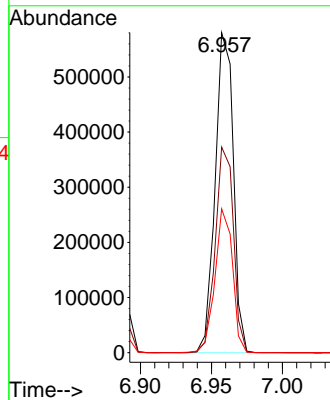
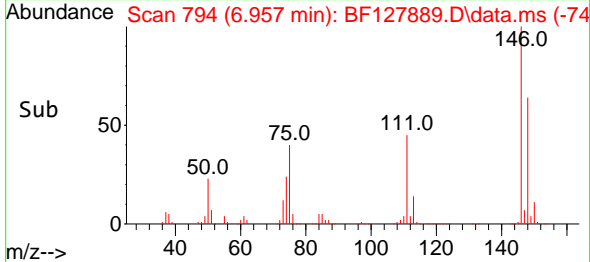


#13
 1,4-Dichlorobenzene
 Concen: 43.441 ng
 RT: 6.957 min Scan# 794
 Delta R.T. -0.006 min
 Lab File: BF127889.D
 Acq: 25 Apr 2022 19:23

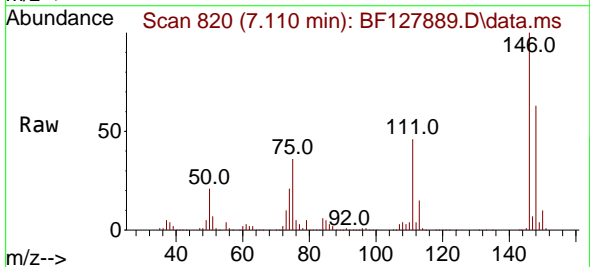
Instrument :
 BNA_F
 Client Sample Id :
 MH-8SMSD



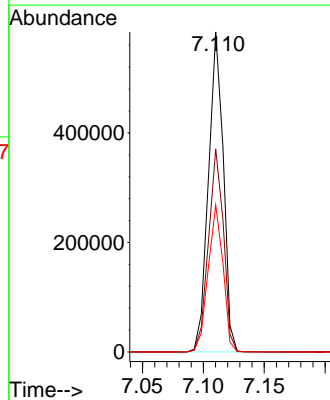
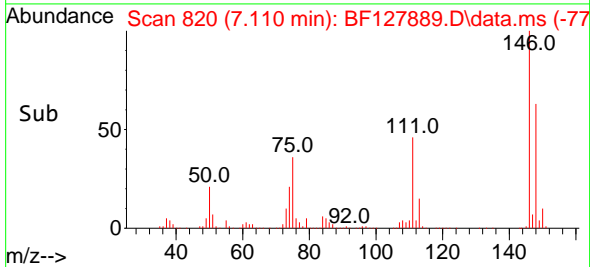
Tgt Ion:146 Resp: 515153
 Ion Ratio Lower Upper
 146 100
 148 64.3 52.3 78.5
 111 45.0 33.9 50.9

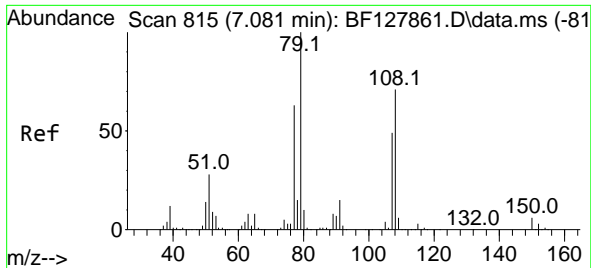


#14
 1,2-Dichlorobenzene
 Concen: 45.217 ng
 RT: 7.110 min Scan# 820
 Delta R.T. -0.006 min
 Lab File: BF127889.D
 Acq: 25 Apr 2022 19:23



Tgt Ion:146 Resp: 496393
 Ion Ratio Lower Upper
 146 100
 148 63.4 51.8 77.6
 111 45.9 36.6 55.0

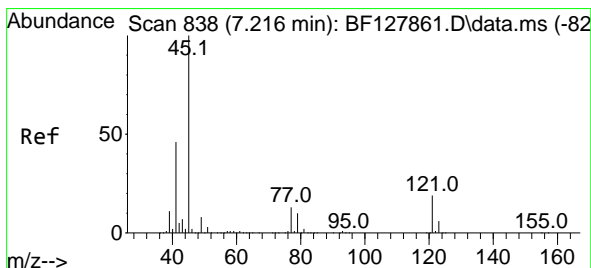
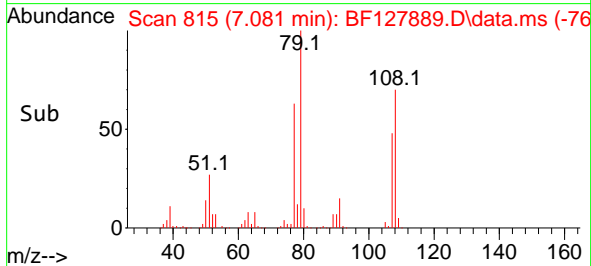
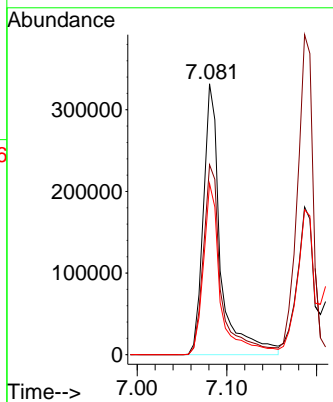
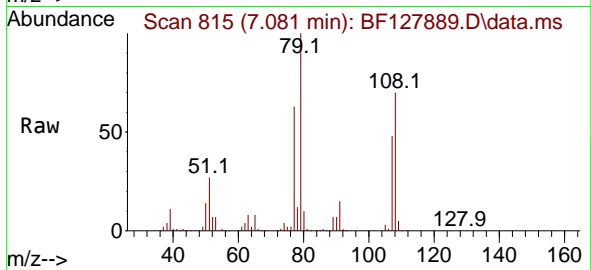




#15
Benzyl Alcohol
Concen: 50.545 ng
RT: 7.081 min Scan# 815
Delta R.T. -0.000 min
Lab File: BF127889.D
Acq: 25 Apr 2022 19:23

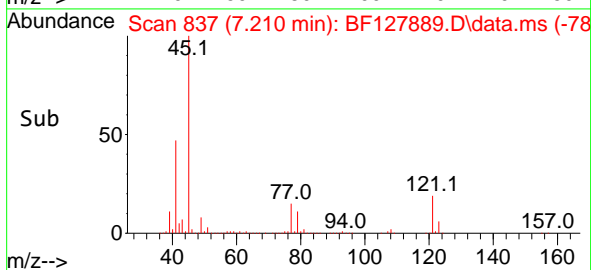
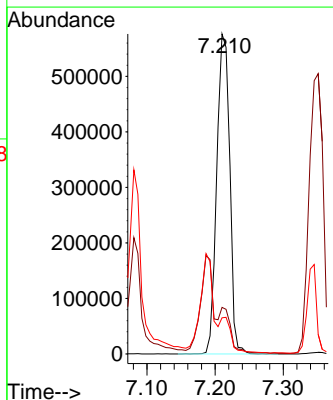
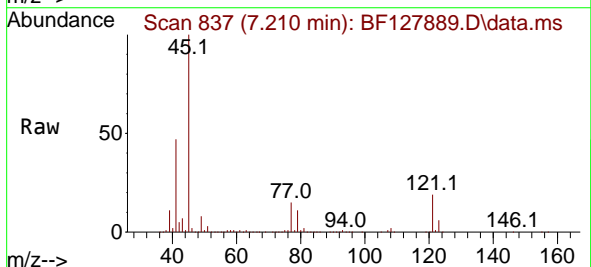
Instrument : BNA_F
Client SampleId : MH-8SMSD

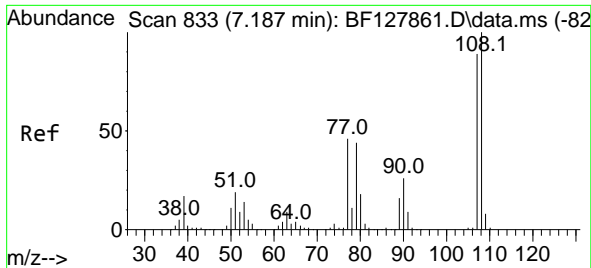
Tgt Ion: 79 Resp: 443521
Ion Ratio Lower Upper
79 100
108 70.1 57.0 85.6
77 63.1 50.2 75.4



#16
2,2'-oxybis(1-Chloropropane)
Concen: 46.207 ng
RT: 7.210 min Scan# 837
Delta R.T. -0.006 min
Lab File: BF127889.D
Acq: 25 Apr 2022 19:23

Tgt Ion: 45 Resp: 762400
Ion Ratio Lower Upper
45 100
77 14.5 0.0 34.9
79 11.3 0.0 31.6



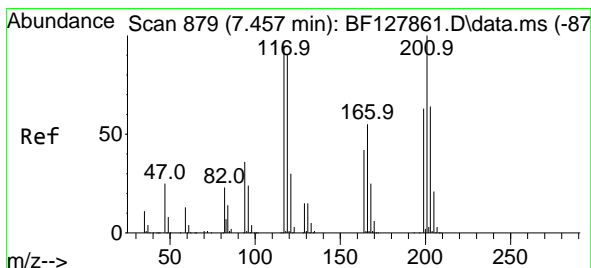
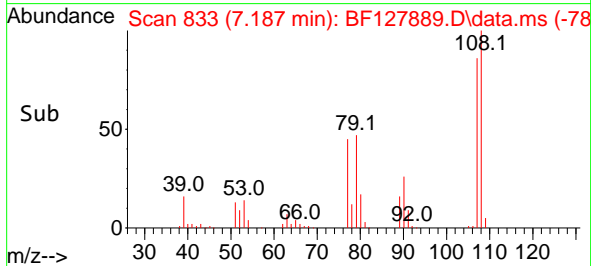
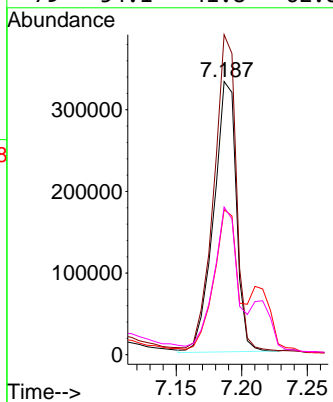
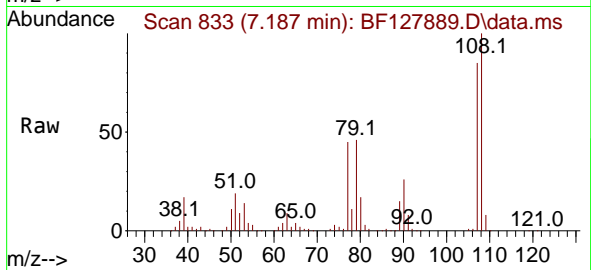


#17
 2-Methylphenol
 Concen: 44.665 ng
 RT: 7.187 min Scan# 811
 Delta R.T. -0.000 min
 Lab File: BF127889.D
 Acq: 25 Apr 2022 19:23

Instrument : BNA_F
 ClientSampleId : MH-8SMSD

Tgt Ion:107 Resp: 397747

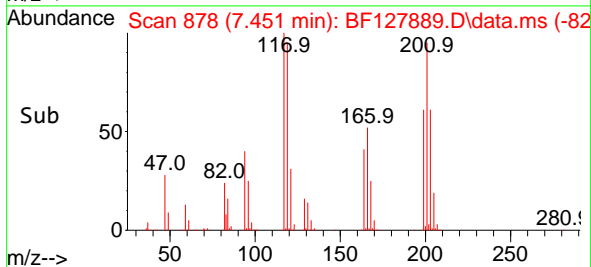
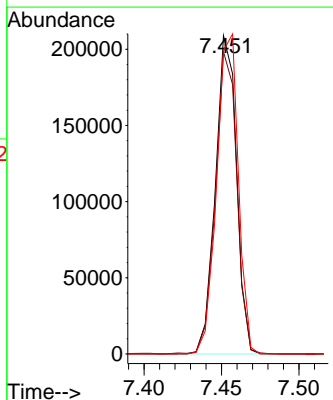
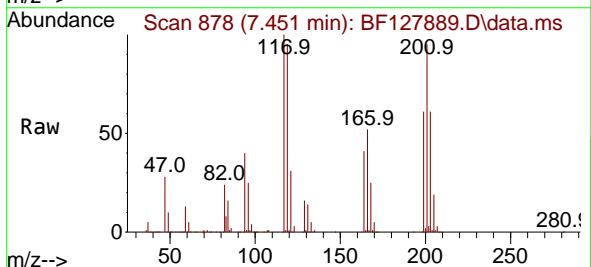
Ion	Ratio	Lower	Upper
107	100		
108	117.2	90.2	135.2
77	53.1	41.9	62.9
79	54.1	41.8	62.8

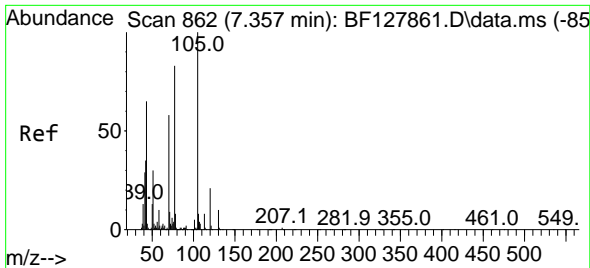


#18
 Hexachloroethane
 Concen: 45.393 ng
 RT: 7.451 min Scan# 878
 Delta R.T. -0.006 min
 Lab File: BF127889.D
 Acq: 25 Apr 2022 19:23

Tgt Ion:117 Resp: 197899

Ion	Ratio	Lower	Upper
117	100		
119	94.9	76.2	114.4
201	95.3	84.4	126.6



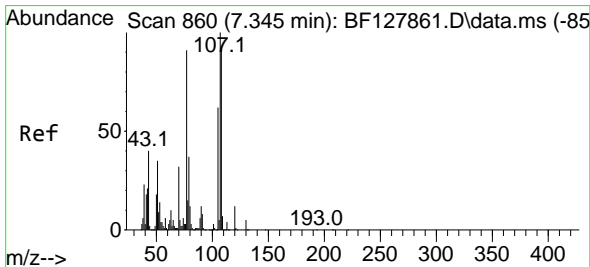
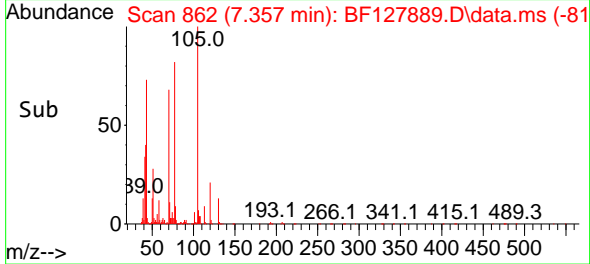
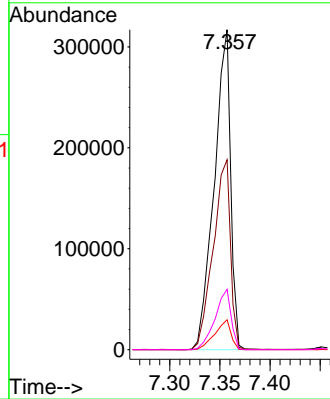
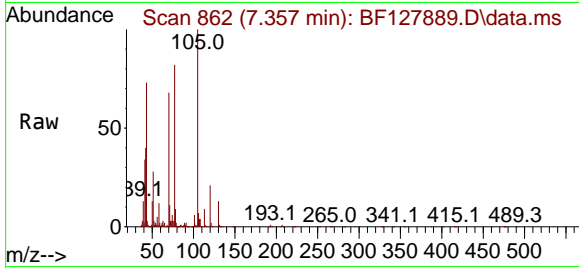


#19
 n-Nitroso-di-n-propylamine
 Concen: 45.654 ng
 RT: 7.357 min Scan# 80
 Delta R.T. -0.000 min
 Lab File: BF127889.D
 Acq: 25 Apr 2022 19:23

Instrument :
 BNA_F
 ClientSampleId :
 MH-8SMSD

Tgt Ion: 70 Resp: 360612

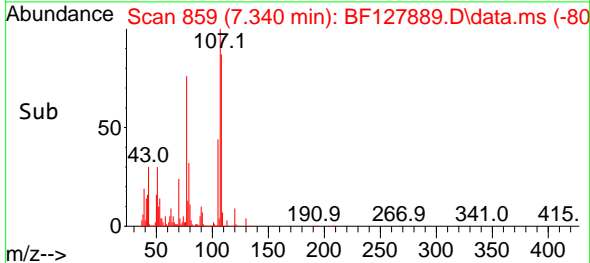
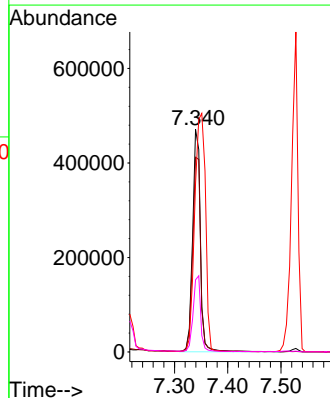
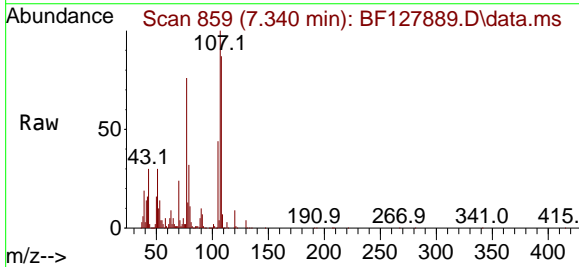
Ion	Ratio	Lower	Upper
70	100		
42	59.3	48.7	73.1
101	9.4	7.2	10.8
130	18.9	14.4	21.6

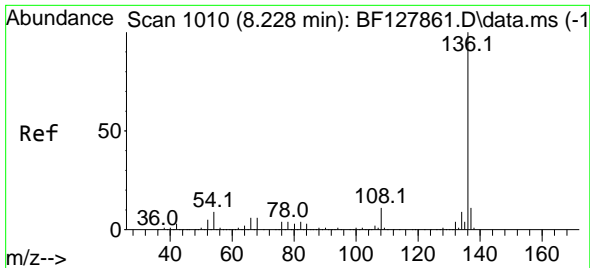


#20
 3+4-Methylphenols
 Concen: 44.285 ng
 RT: 7.340 min Scan# 859
 Delta R.T. -0.006 min
 Lab File: BF127889.D
 Acq: 25 Apr 2022 19:23

Tgt Ion: 107 Resp: 476404

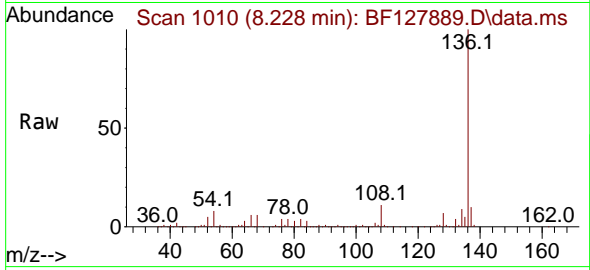
Ion	Ratio	Lower	Upper
107	100		
108	87.5	73.4	113.4
77	75.9	71.1	111.1
79	32.5	17.1	57.1



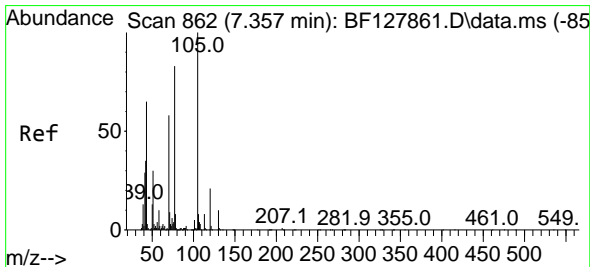
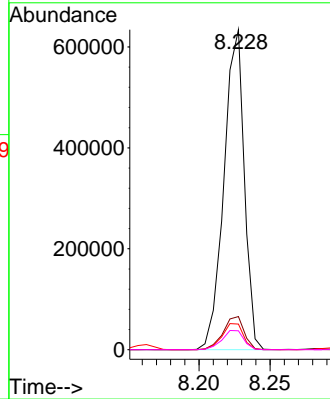
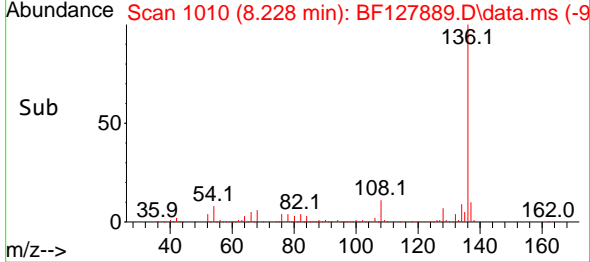


#21
 Naphthalene-d8
 Concen: 20.000 ng
 RT: 8.228 min Scan# 10
 Delta R.T. -0.000 min
 Lab File: BF127889.D
 Acq: 25 Apr 2022 19:23

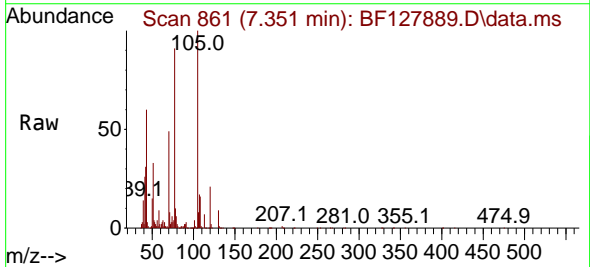
Instrument : BNA_F
 ClientSampleId : MH-8SMSD



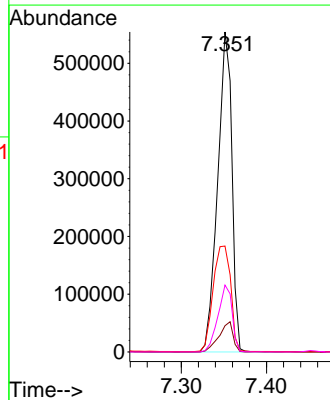
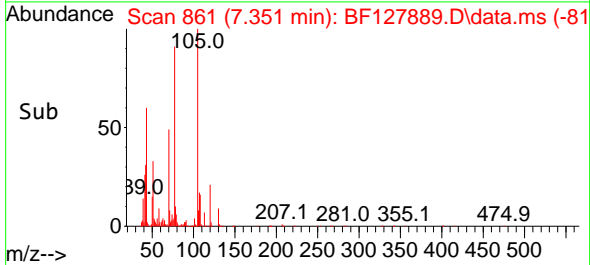
Tgt Ion:136 Resp: 630318
 Ion Ratio Lower Upper
 136 100
 137 10.4 8.6 13.0
 54 8.0 6.8 10.2
 68 5.9 5.1 7.7

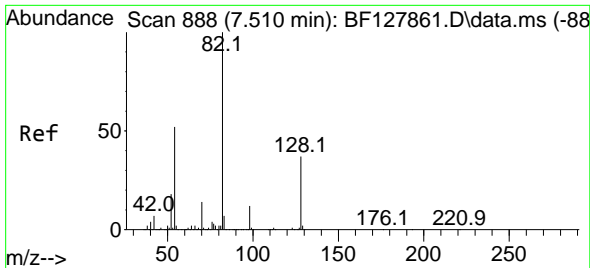


#22
 Acetophenone
 Concen: 41.860 ng
 RT: 7.351 min Scan# 861
 Delta R.T. -0.006 min
 Lab File: BF127889.D
 Acq: 25 Apr 2022 19:23



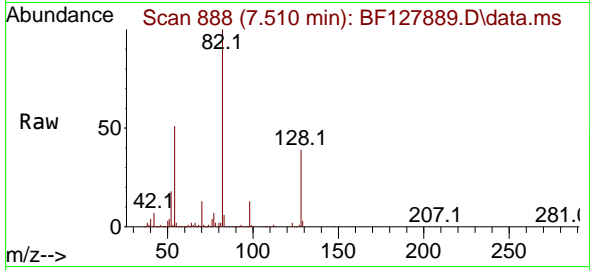
Tgt Ion:105 Resp: 643092
 Ion Ratio Lower Upper
 105 100
 71 8.2 7.3 10.9
 51 33.1 23.7 35.5
 120 20.9 17.0 25.6





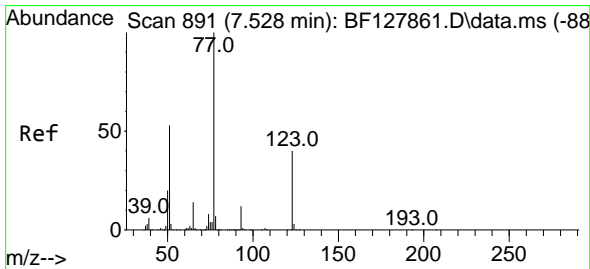
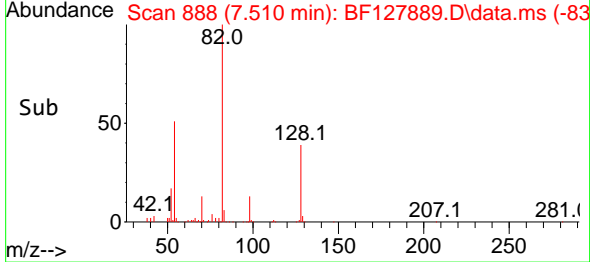
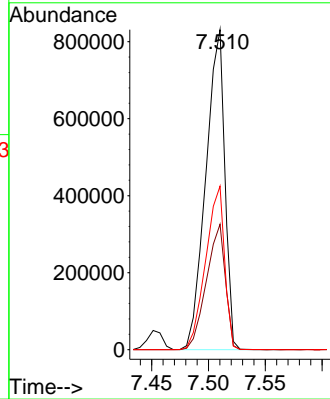
#23
 Nitrobenzene-d5
 Concen: 71.933 ng
 RT: 7.510 min Scan# 811
 Delta R.T. -0.000 min
 Lab File: BF127889.D
 Acq: 25 Apr 2022 19:23

Instrument :
 BNA_F
 ClientSampleId :
 MH-8SMSD



Tgt Ion: 82 Resp: 964201

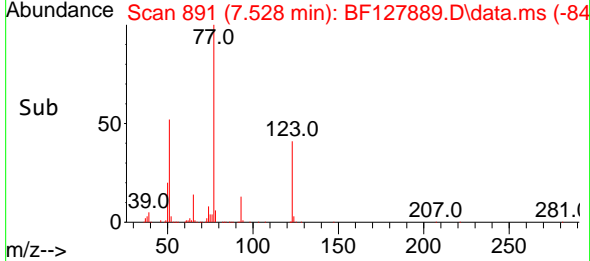
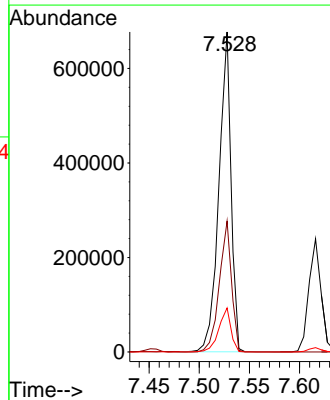
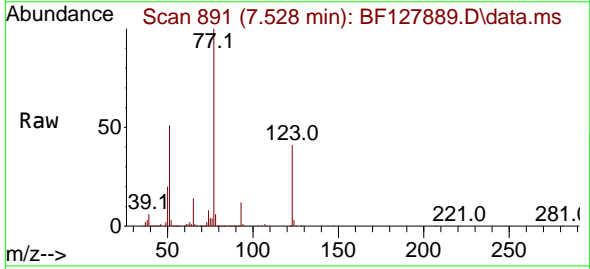
Ion	Ratio	Lower	Upper
82	100		
128	39.2	30.0	45.0
54	51.1	41.3	61.9

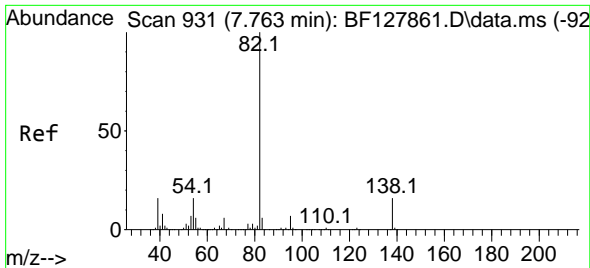


#24
 Nitrobenzene
 Concen: 44.119 ng
 RT: 7.528 min Scan# 891
 Delta R.T. -0.000 min
 Lab File: BF127889.D
 Acq: 25 Apr 2022 19:23

Tgt Ion: 77 Resp: 569850

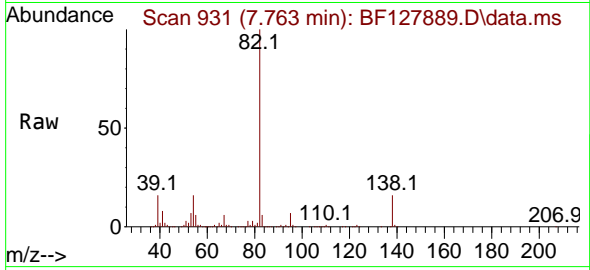
Ion	Ratio	Lower	Upper
77	100		
123	40.9	32.0	48.0
65	13.8	11.0	16.6





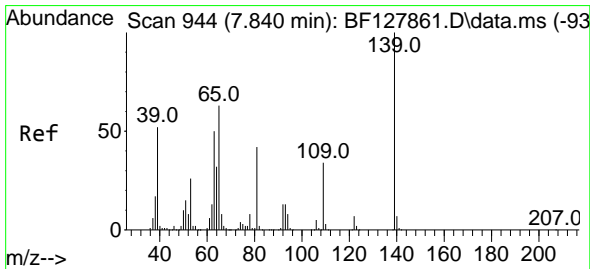
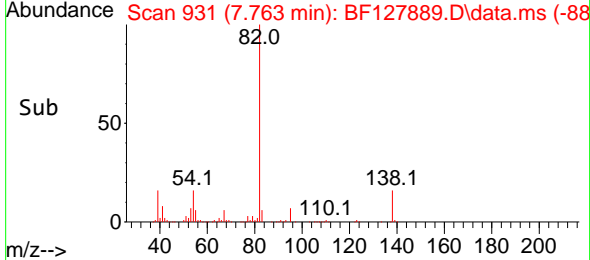
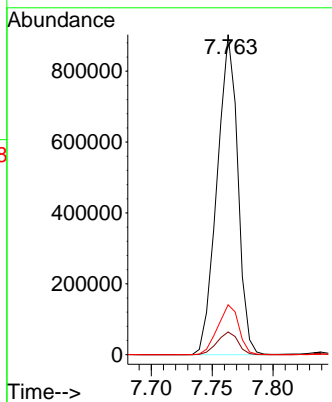
#25
 Isophorone
 Concen: 47.461 ng
 RT: 7.763 min Scan# 91
 Delta R.T. -0.000 min
 Lab File: BF127889.D
 Acq: 25 Apr 2022 19:23

Instrument : BNA_F
 ClientSampleId : MH-8SMSD

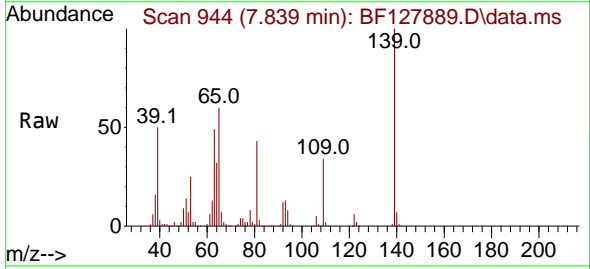


Tgt Ion: 82 Resp: 1070734

Ion	Ratio	Lower	Upper
82	100		
95	7.1	5.6	8.4
138	15.6	12.5	18.7

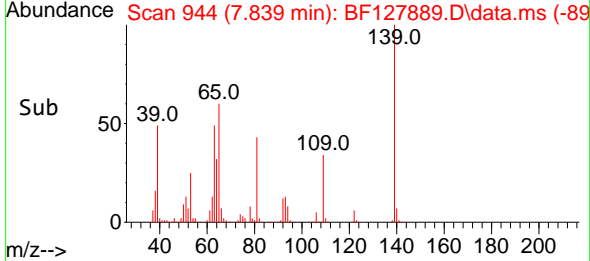
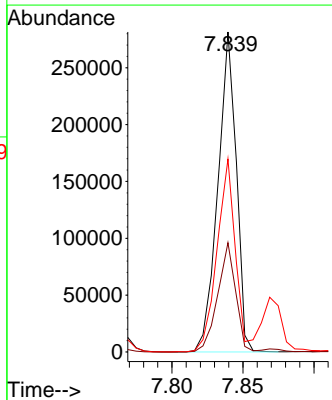


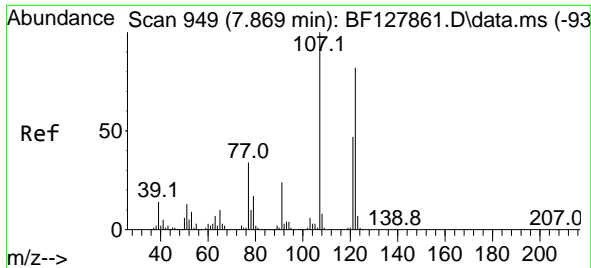
#26
 2-Nitrophenol
 Concen: 46.027 ng
 RT: 7.839 min Scan# 944
 Delta R.T. -0.000 min
 Lab File: BF127889.D
 Acq: 25 Apr 2022 19:23



Tgt Ion: 139 Resp: 253329

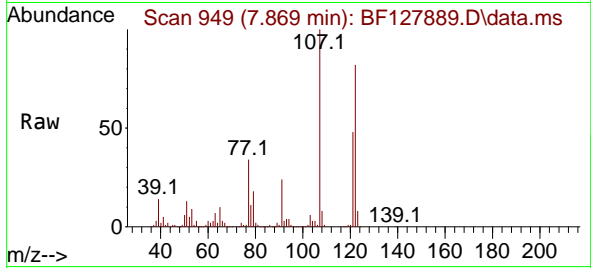
Ion	Ratio	Lower	Upper
139	100		
109	34.2	27.4	41.2
65	60.3	50.8	76.2



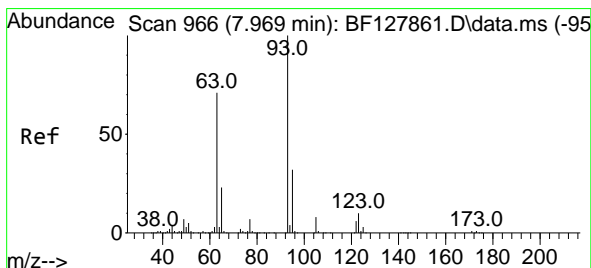
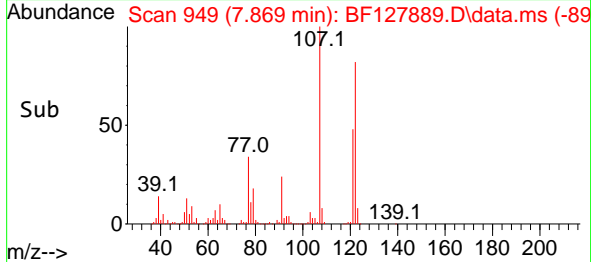
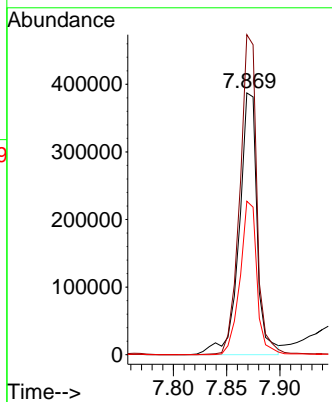


#27
 2,4-Dimethylphenol
 Concen: 49.760 ng
 RT: 7.869 min Scan# 949
 Delta R.T. -0.000 min
 Lab File: BF127889.D
 Acq: 25 Apr 2022 19:23

Instrument :
 BNA_F
 ClientSampleId :
 MH-8SMSD

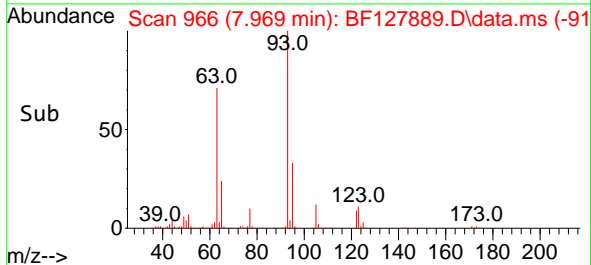
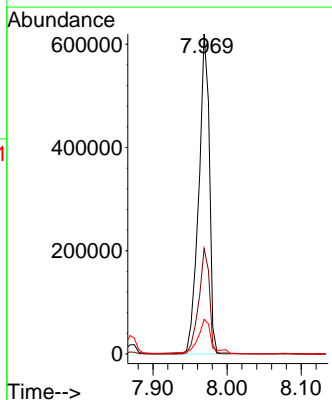
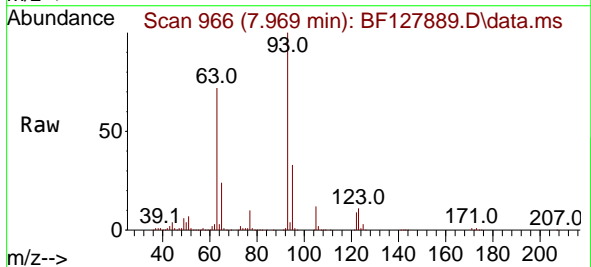


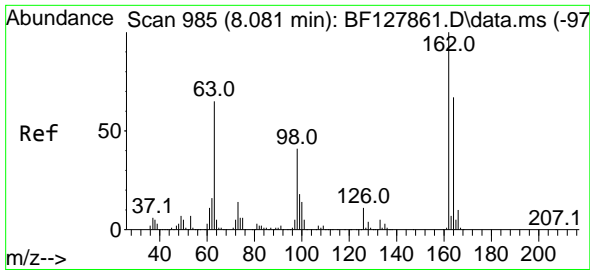
Tgt Ion:122 Resp: 454912
 Ion Ratio Lower Upper
 122 100
 107 122.3 97.5 146.3
 121 58.6 46.0 69.0



#28
 bis(2-Chloroethoxy)methane
 Concen: 42.920 ng
 RT: 7.969 min Scan# 966
 Delta R.T. -0.000 min
 Lab File: BF127889.D
 Acq: 25 Apr 2022 19:23

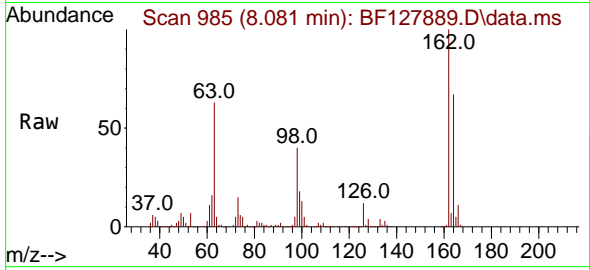
Tgt Ion: 93 Resp: 620548
 Ion Ratio Lower Upper
 93 100
 95 32.9 25.7 38.5
 123 10.8 8.3 12.5



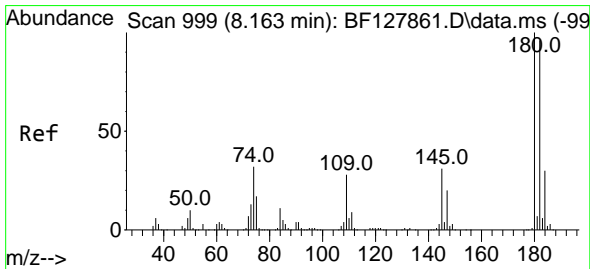
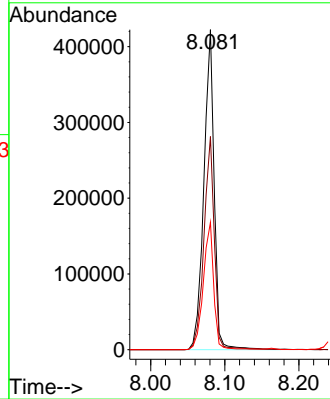
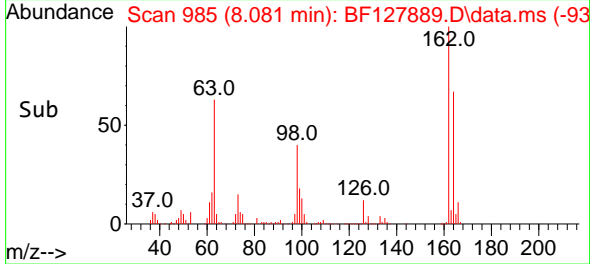


#29
 2,4-Dichlorophenol
 Concen: 42.884 ng
 RT: 8.081 min Scan# 985
 Delta R.T. -0.000 min
 Lab File: BF127889.D
 Acq: 25 Apr 2022 19:23

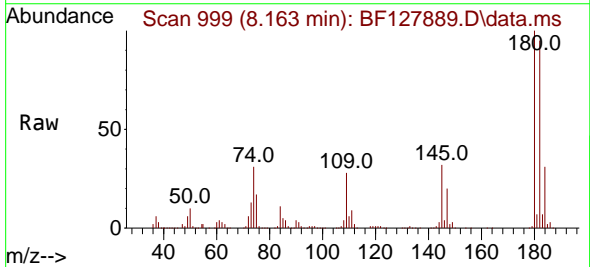
Instrument :
 BNA_F
 ClientSampleId :
 MH-8SMSD



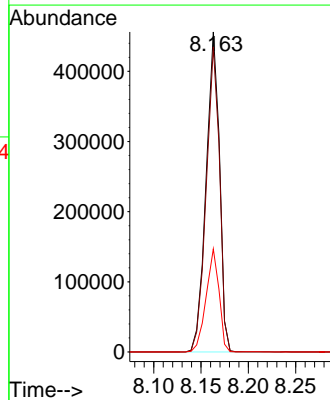
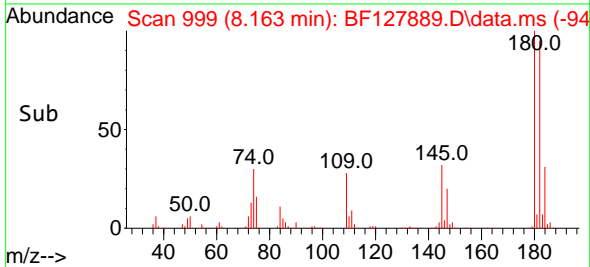
Tgt Ion:162 Resp: 410721
 Ion Ratio Lower Upper
 162 100
 164 66.6 47.1 87.1
 98 39.8 20.7 60.7

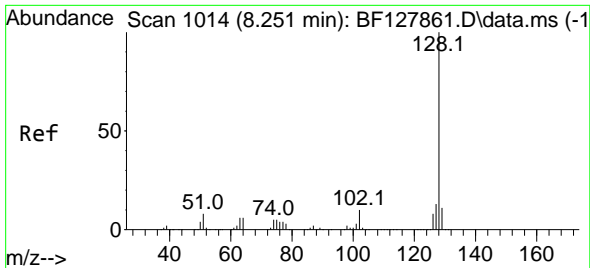


#30
 1,2,4-Trichlorobenzene
 Concen: 41.276 ng
 RT: 8.163 min Scan# 999
 Delta R.T. -0.000 min
 Lab File: BF127889.D
 Acq: 25 Apr 2022 19:23



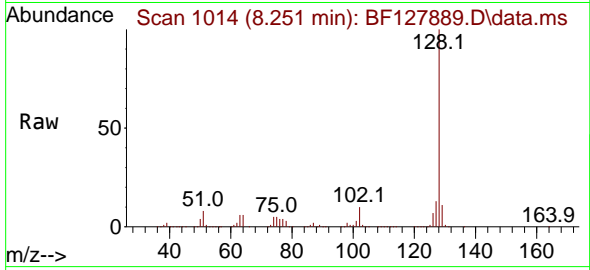
Tgt Ion:180 Resp: 449051
 Ion Ratio Lower Upper
 180 100
 182 95.3 76.4 114.6
 145 32.2 25.1 37.7



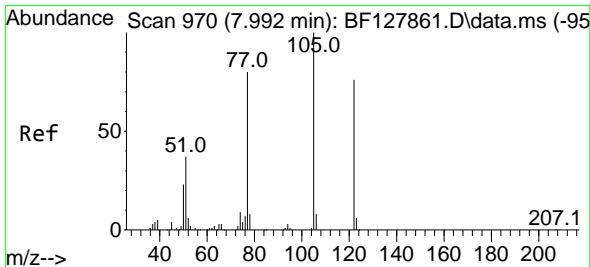
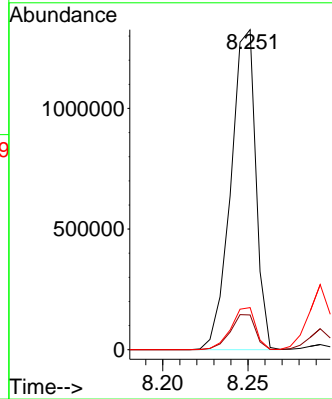
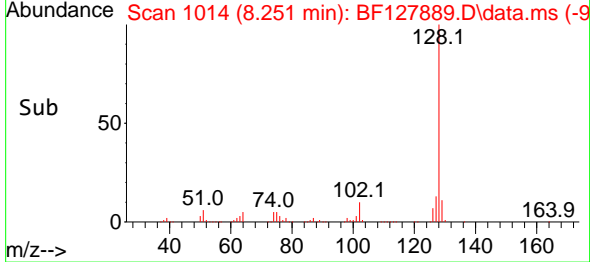


#31
 Naphthalene
 Concen: 42.211 ng
 RT: 8.251 min Scan# 1014
 Delta R.T. -0.000 min
 Lab File: BF127889.D
 Acq: 25 Apr 2022 19:23

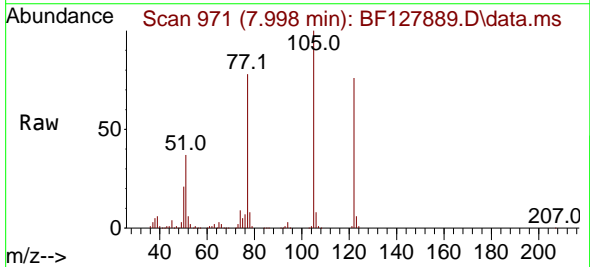
Instrument :
 BNA_F
 ClientSampleId :
 MH-8SMSD



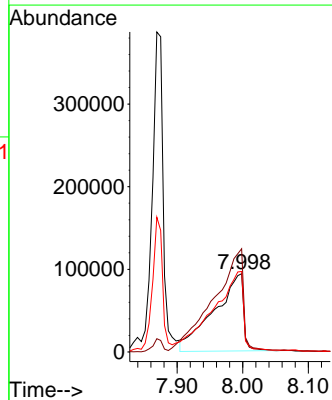
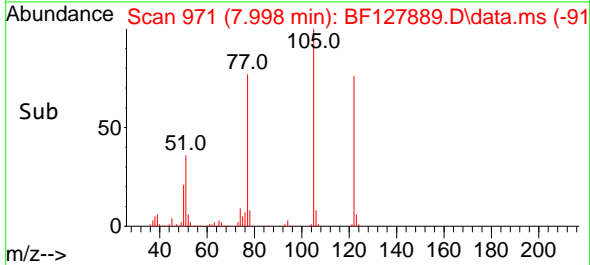
Tgt Ion:128 Resp: 1355107
 Ion Ratio Lower Upper
 128 100
 129 10.8 9.0 13.4
 127 13.2 10.6 16.0

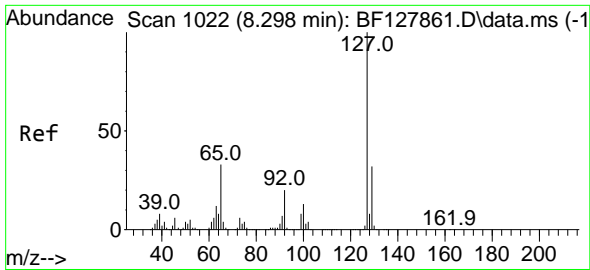


#32
 Benzoic acid
 Concen: 44.288 ng
 RT: 7.998 min Scan# 971
 Delta R.T. 0.006 min
 Lab File: BF127889.D
 Acq: 25 Apr 2022 19:23



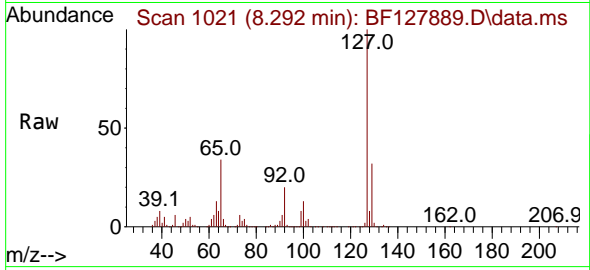
Tgt Ion:122 Resp: 290204
 Ion Ratio Lower Upper
 122 100
 105 131.9 107.9 147.9
 77 102.9 82.5 122.5





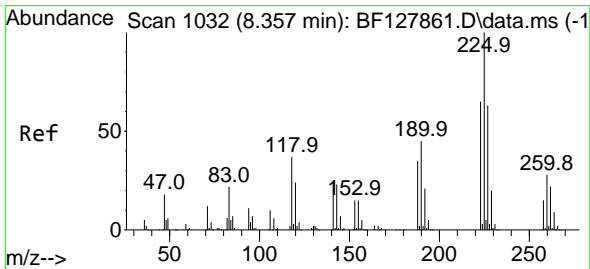
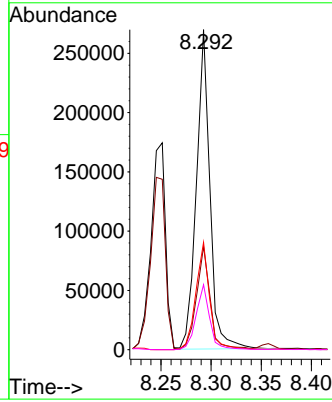
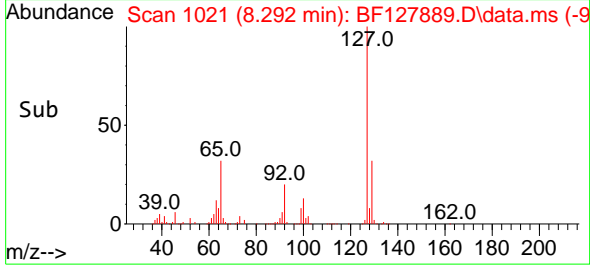
#33
 4-Chloroaniline
 Concen: 19.861 ng
 RT: 8.292 min Scan# 1021
 Delta R.T. -0.006 min
 Lab File: BF127889.D
 Acq: 25 Apr 2022 19:23

Instrument : BNA_F
 Client Sample Id : MH-8SMSD

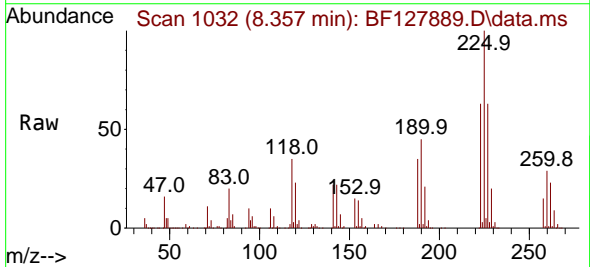


Tgt Ion:127 Resp: 252274

Ion	Ratio	Lower	Upper
127	100		
129	32.2	25.8	38.8
65	33.6	26.7	40.1
92	20.3	16.0	24.0

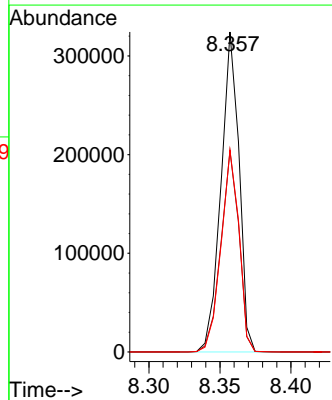
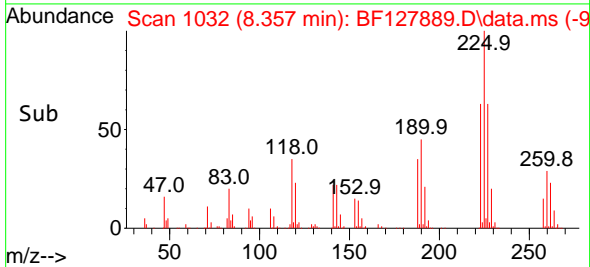


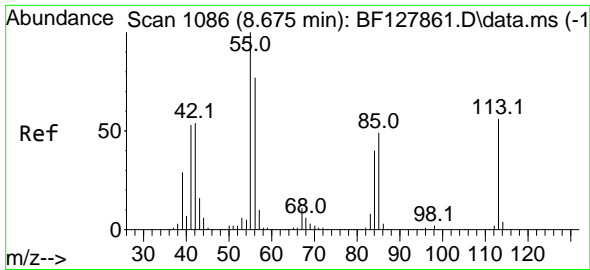
#34
 Hexachlorobutadiene
 Concen: 41.686 ng
 RT: 8.357 min Scan# 1032
 Delta R.T. -0.000 min
 Lab File: BF127889.D
 Acq: 25 Apr 2022 19:23



Tgt Ion:225 Resp: 285660

Ion	Ratio	Lower	Upper
225	100		
223	62.9	52.0	78.0
227	63.1	50.7	76.1

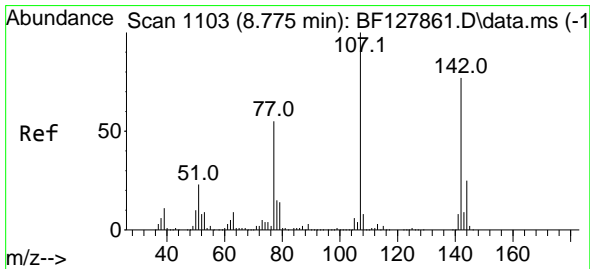
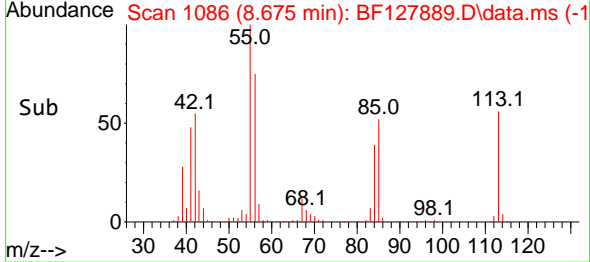
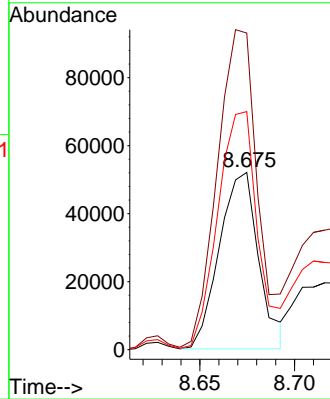
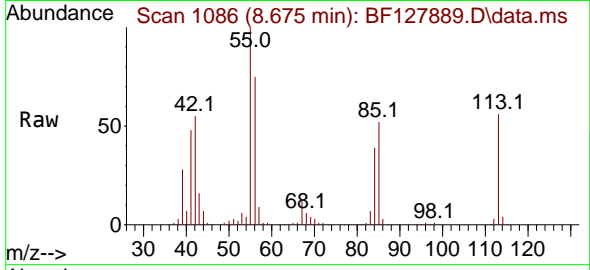




#35
 Caprolactam
 Concen: 24.249 ng
 RT: 8.675 min Scan# 1086
 Delta R.T. -0.000 min
 Lab File: BF127889.D
 Acq: 25 Apr 2022 19:23

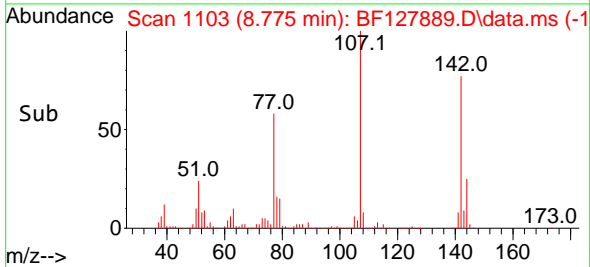
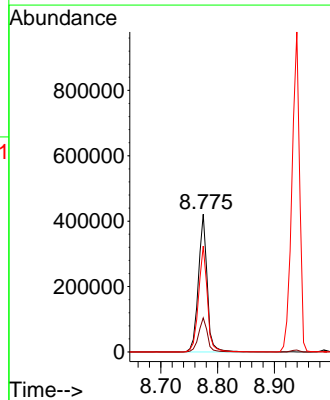
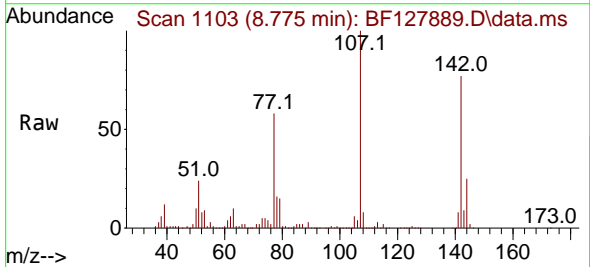
Instrument : BNA_F
 ClientSampleId : MH-8SMSD

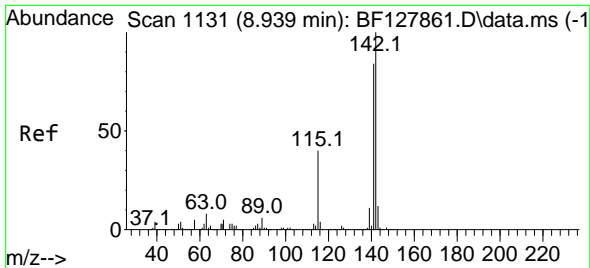
Tgt Ion:113 Resp: 74968
 Ion Ratio Lower Upper
 113 100
 55 178.6 157.4 197.4
 56 134.3 116.1 156.1



#36
 4-Chloro-3-methylphenol
 Concen: 44.544 ng
 RT: 8.775 min Scan# 1103
 Delta R.T. -0.000 min
 Lab File: BF127889.D
 Acq: 25 Apr 2022 19:23

Tgt Ion:107 Resp: 455625
 Ion Ratio Lower Upper
 107 100
 144 24.8 20.2 30.4
 142 76.9 61.5 92.3

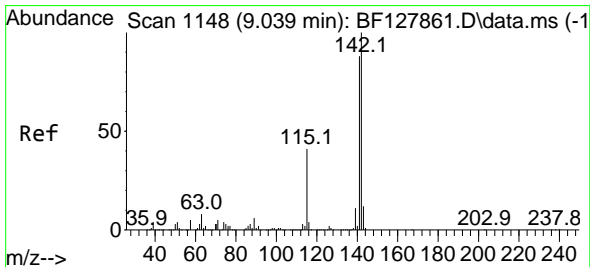
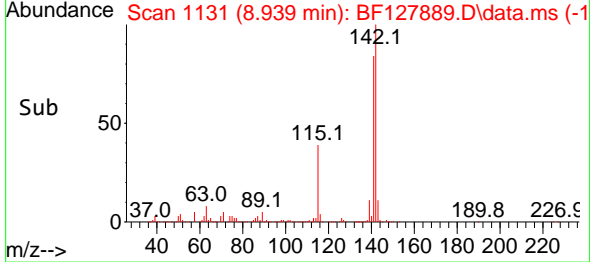
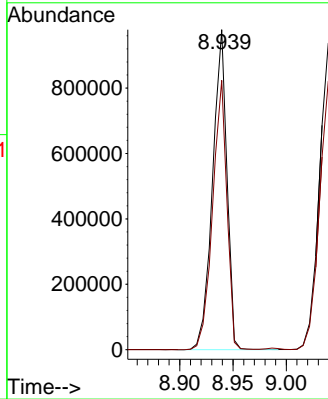
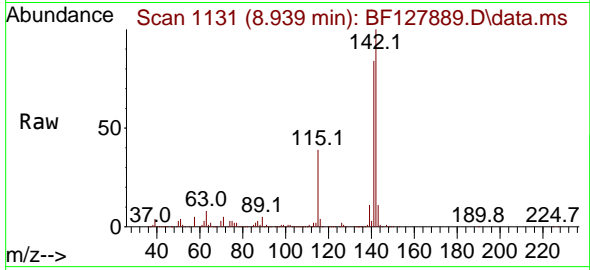




#37
 2-Methylnaphthalene
 Concen: 43.075 ng
 RT: 8.939 min Scan# 1131
 Delta R.T. -0.000 min
 Lab File: BF127889.D
 Acq: 25 Apr 2022 19:23

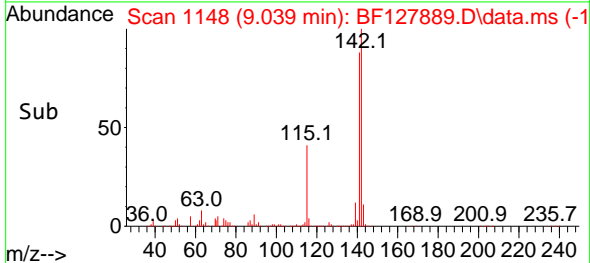
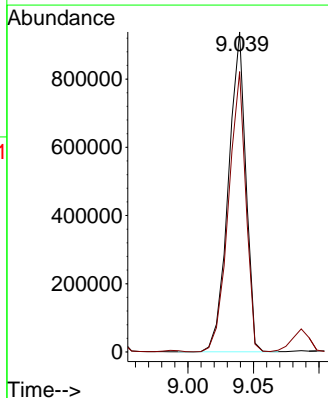
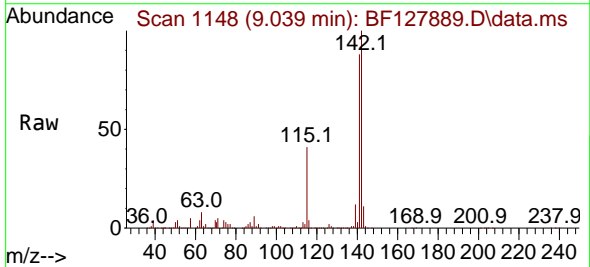
Instrument : BNA_F
 ClientSampleId : MH-8SMSD

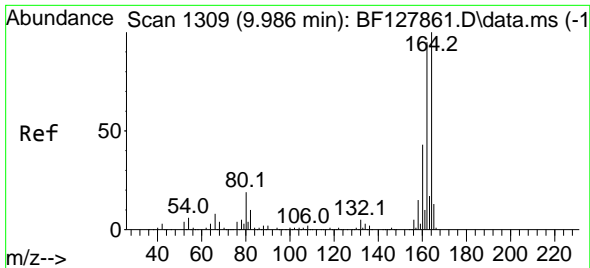
Tgt Ion:142 Resp: 913901
 Ion Ratio Lower Upper
 142 100
 141 84.1 67.4 101.2



#38
 1-Methylnaphthalene
 Concen: 42.030 ng
 RT: 9.039 min Scan# 1148
 Delta R.T. -0.000 min
 Lab File: BF127889.D
 Acq: 25 Apr 2022 19:23

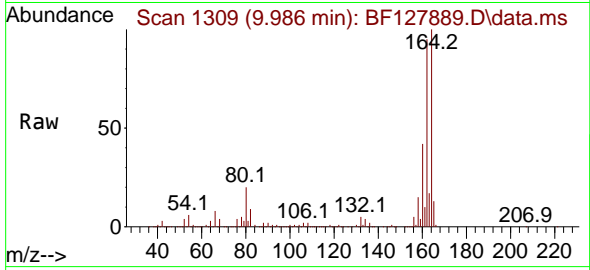
Tgt Ion:142 Resp: 866762
 Ion Ratio Lower Upper
 142 100
 141 87.6 70.1 105.1



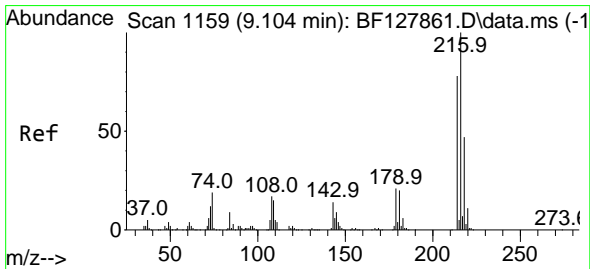
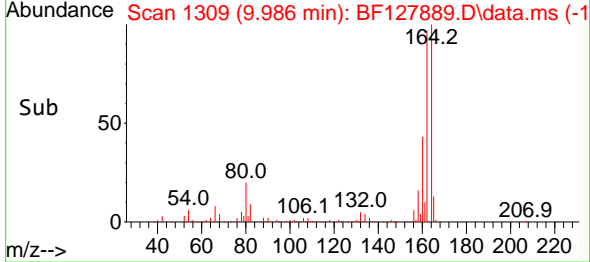
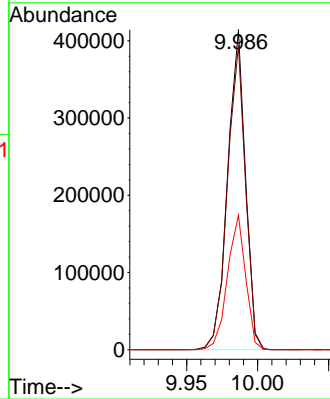


#39
 Acenaphthene-d10
 Concen: 20.000 ng
 RT: 9.986 min Scan# 111
 Delta R.T. -0.000 min
 Lab File: BF127889.D
 Acq: 25 Apr 2022 19:23

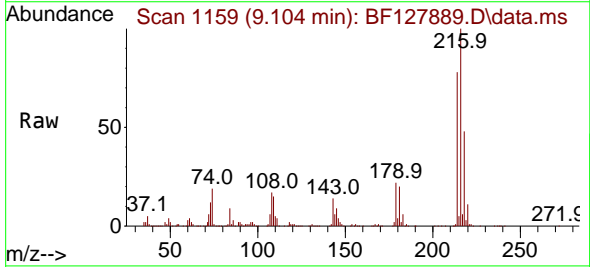
Instrument : BNA_F
 Client Sample Id : MH-8SMSD



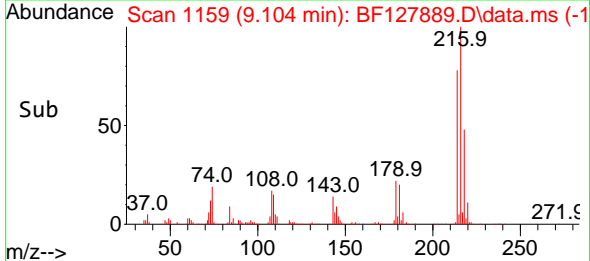
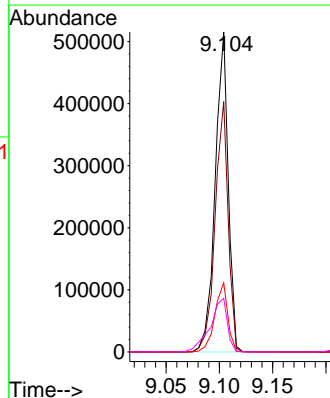
Tgt Ion:164 Resp: 361956
 Ion Ratio Lower Upper
 164 100
 162 95.1 76.0 114.0
 160 42.0 34.8 52.2

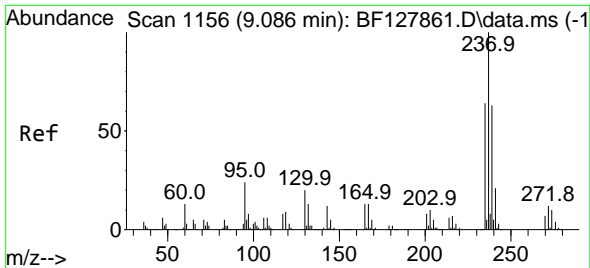


#40
 1,2,4,5-Tetrachlorobenzene
 Concen: 40.931 ng
 RT: 9.104 min Scan# 1159
 Delta R.T. -0.000 min
 Lab File: BF127889.D
 Acq: 25 Apr 2022 19:23



Tgt Ion:216 Resp: 436683
 Ion Ratio Lower Upper
 216 100
 214 78.2 62.6 94.0
 179 21.5 16.9 25.3
 108 22.2 15.6 23.4

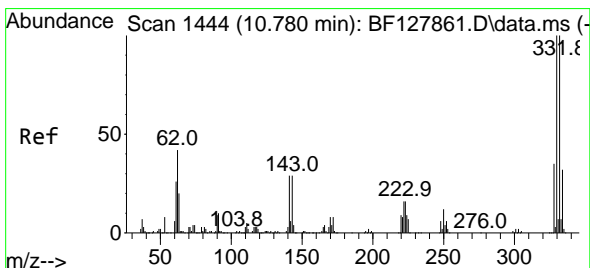
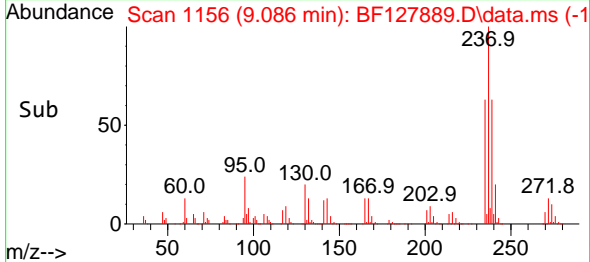
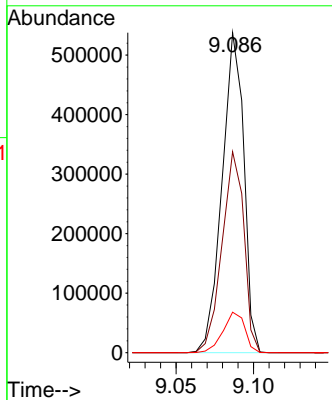
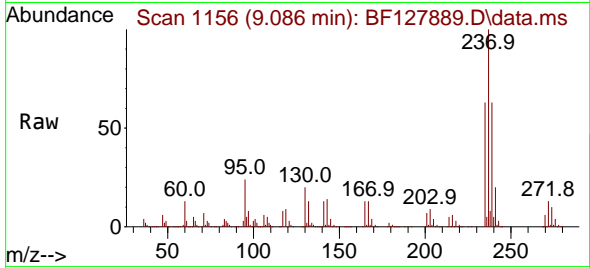




#41
 Hexachlorocyclopentadiene
 Concen: 90.816 ng
 RT: 9.086 min Scan# 1156
 Delta R.T. -0.000 min
 Lab File: BF127889.D
 Acq: 25 Apr 2022 19:23

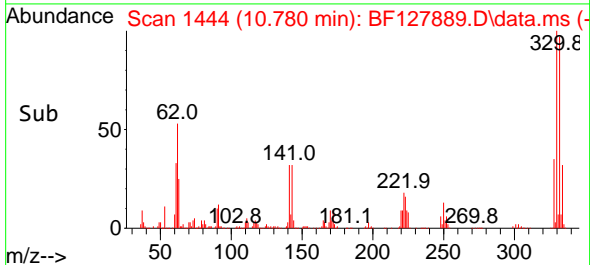
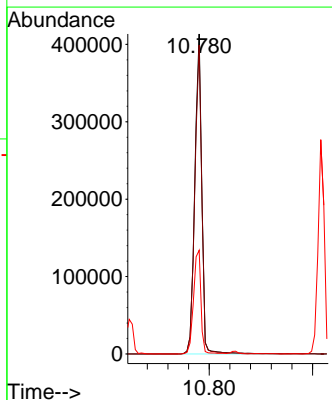
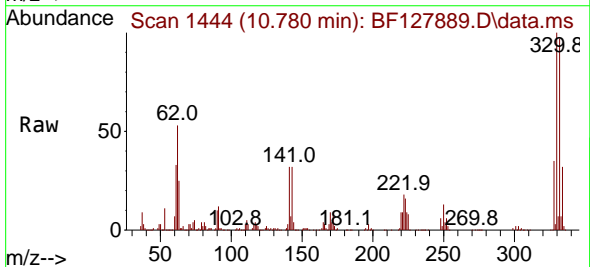
Instrument : BNA_F
 Client Sample Id : MH-8SMSD

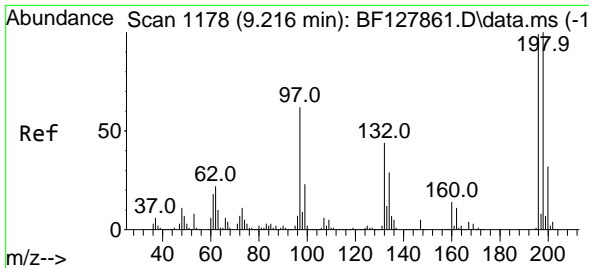
Tgt Ion	Resp	Lower	Upper
237	100		
235	62.8	43.6	83.6
272	12.7	0.0	32.1



#42
 2,4,6-Tribromophenol
 Concen: 106.149 ng
 RT: 10.780 min Scan# 1444
 Delta R.T. -0.000 min
 Lab File: BF127889.D
 Acq: 25 Apr 2022 19:23

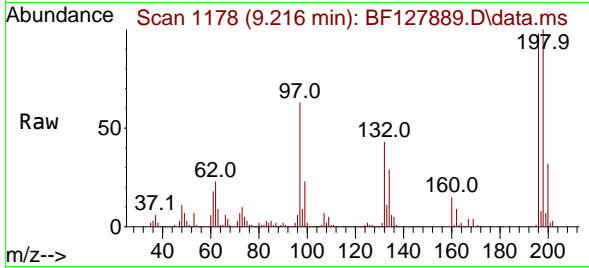
Tgt Ion	Resp	Lower	Upper
330	100		
332	96.7	79.0	118.4
141	34.4	28.9	43.3



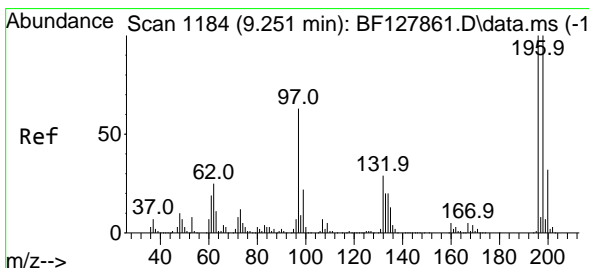
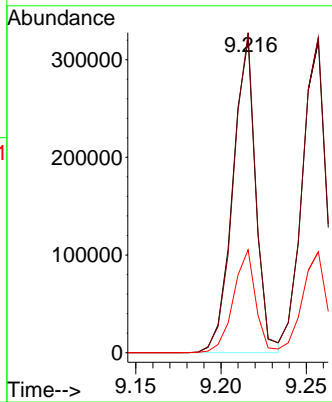
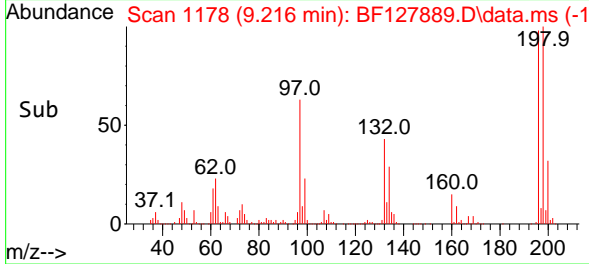


#43
 2,4,6-Trichlorophenol
 Concen: 43.088 ng
 RT: 9.216 min Scan# 1178
 Delta R.T. -0.000 min
 Lab File: BF127889.D
 Acq: 25 Apr 2022 19:23

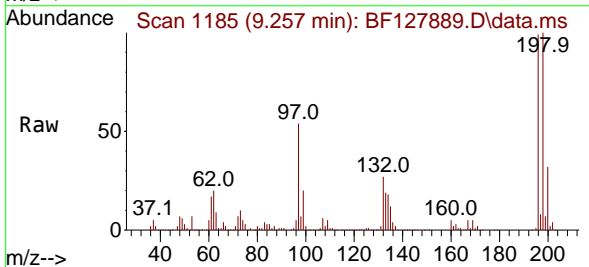
Instrument : BNA_F
 Client Sample Id : MH-8SMSD



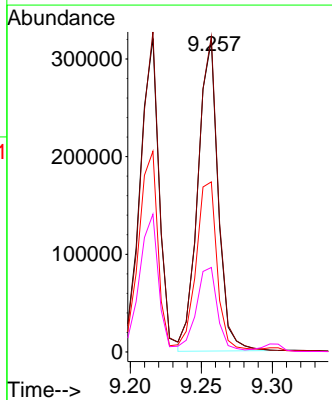
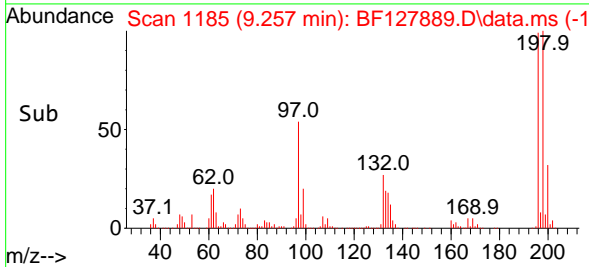
Tgt Ion:196 Resp: 302476
 Ion Ratio Lower Upper
 196 100
 198 102.1 80.4 120.6
 200 32.8 25.9 38.9

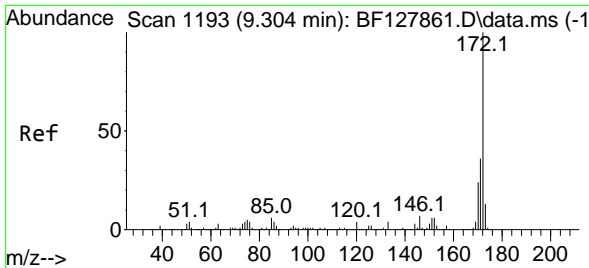


#44
 2,4,5-Trichlorophenol
 Concen: 41.546 ng
 RT: 9.257 min Scan# 1185
 Delta R.T. 0.006 min
 Lab File: BF127889.D
 Acq: 25 Apr 2022 19:23



Tgt Ion:196 Resp: 317048
 Ion Ratio Lower Upper
 196 100
 198 101.3 80.2 120.2
 97 54.7 50.3 75.5
 132 27.1 23.8 35.6

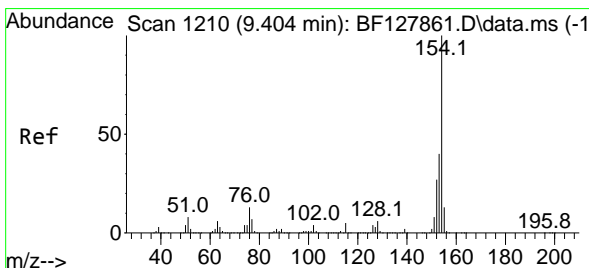
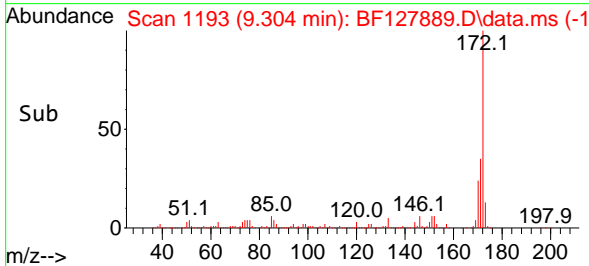
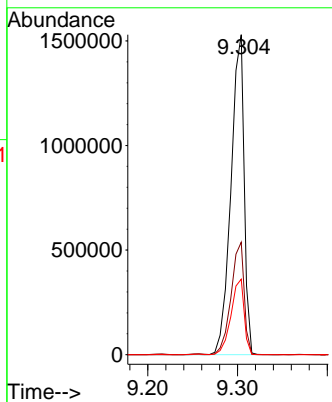
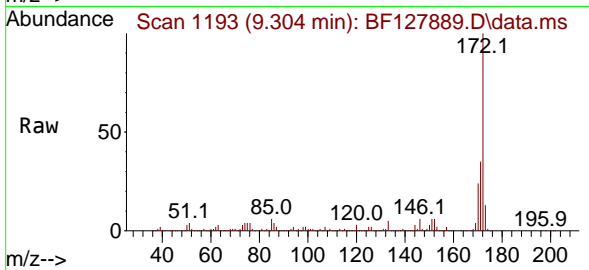




#45
 2-Fluorobiphenyl
 Concen: 72.873 ng
 RT: 9.304 min Scan# 1193
 Delta R.T. 0.000 min
 Lab File: BF127889.D
 Acq: 25 Apr 2022 19:23

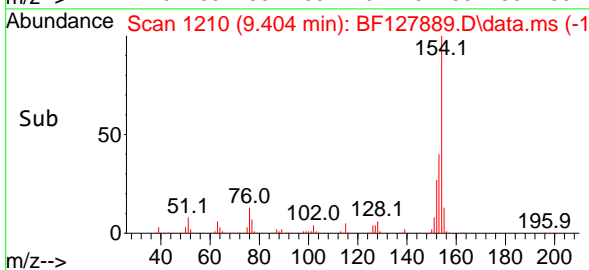
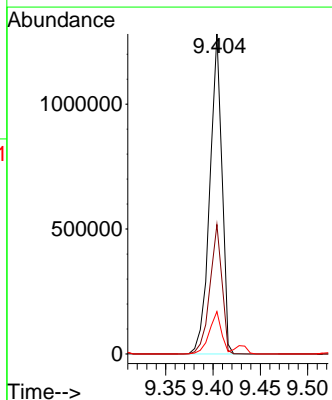
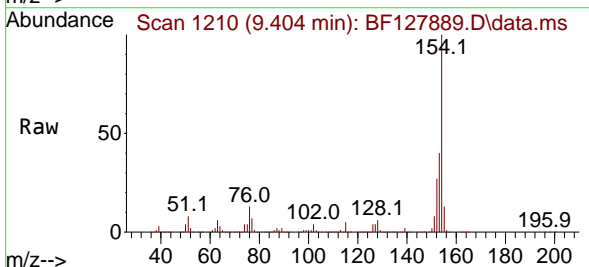
Instrument : BNA_F
 ClientSampleId : MH-8SMSD

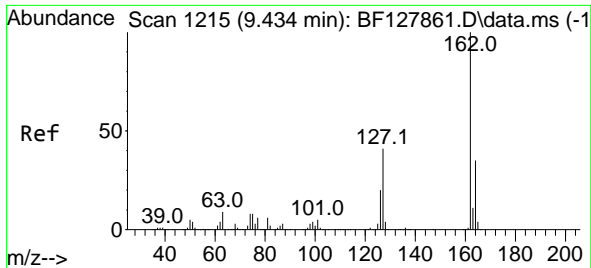
Tgt Ion:172 Resp: 1559150
 Ion Ratio Lower Upper
 172 100
 171 35.1 28.6 42.8
 170 23.6 19.1 28.7



#46
 1,1'-Biphenyl
 Concen: 42.447 ng
 RT: 9.404 min Scan# 1210
 Delta R.T. 0.000 min
 Lab File: BF127889.D
 Acq: 25 Apr 2022 19:23

Tgt Ion:154 Resp: 1138066
 Ion Ratio Lower Upper
 154 100
 153 40.4 20.4 60.4
 76 13.3 0.0 33.2



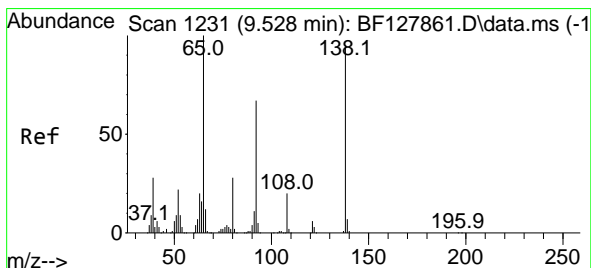
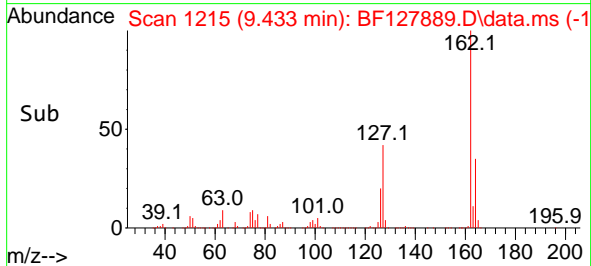
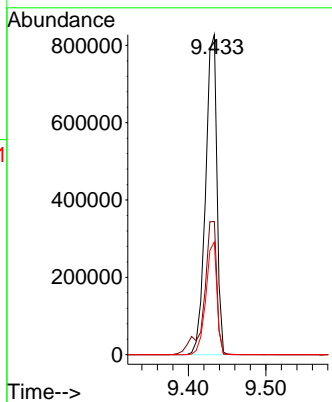
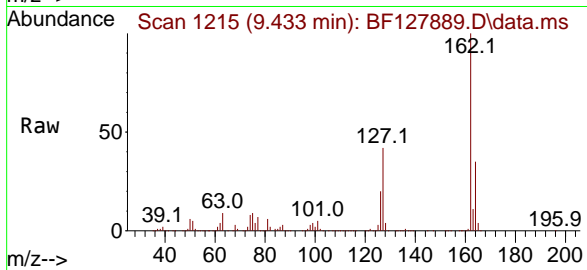


#47
 2-Chloronaphthalene
 Concen: 41.121 ng
 RT: 9.433 min Scan# 11
 Delta R.T. -0.000 min
 Lab File: BF127889.D
 Acq: 25 Apr 2022 19:23

Instrument : BNA_F
 ClientSampleId : MH-8SMSD

Tgt Ion:162 Resp: 839325

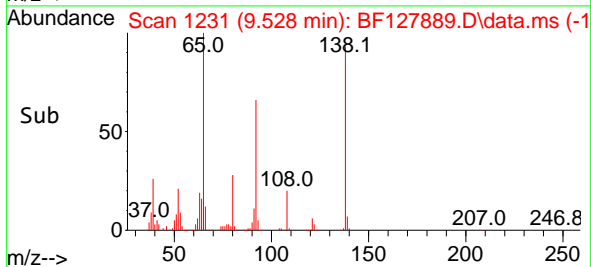
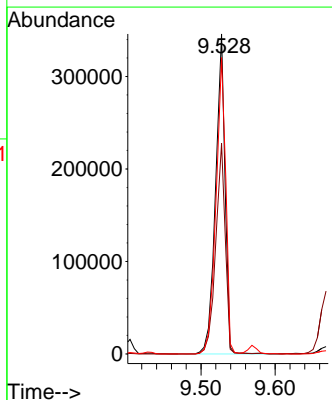
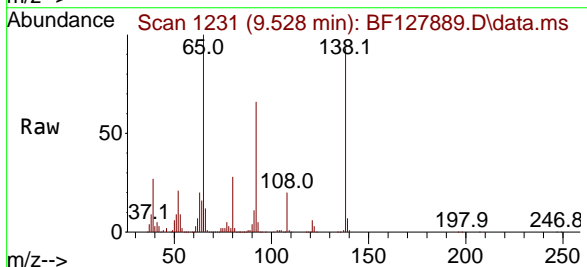
Ion	Ratio	Lower	Upper
162	100		
127	41.6	32.9	49.3
164	35.2	28.2	42.2

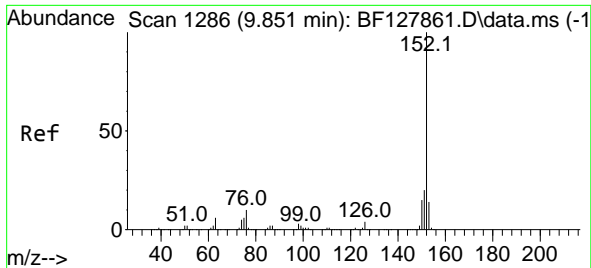


#48
 2-Nitroaniline
 Concen: 44.408 ng
 RT: 9.528 min Scan# 1231
 Delta R.T. -0.000 min
 Lab File: BF127889.D
 Acq: 25 Apr 2022 19:23

Tgt Ion: 65 Resp: 306604

Ion	Ratio	Lower	Upper
65	100		
92	65.8	53.7	80.5
138	92.6	76.4	114.6



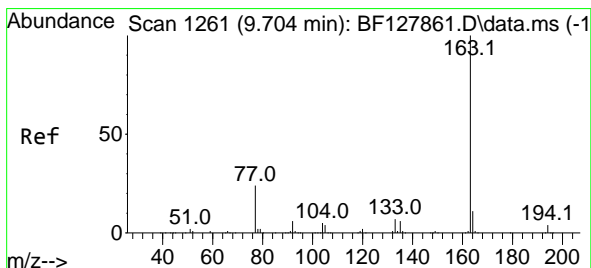
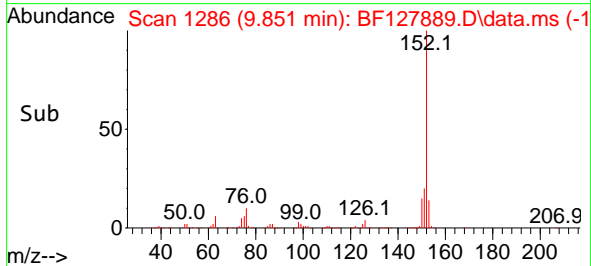
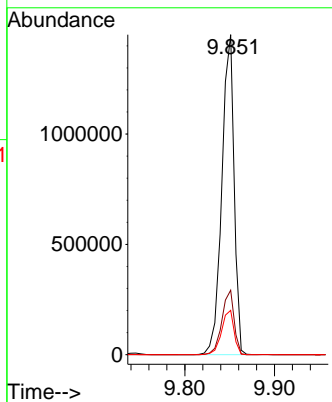
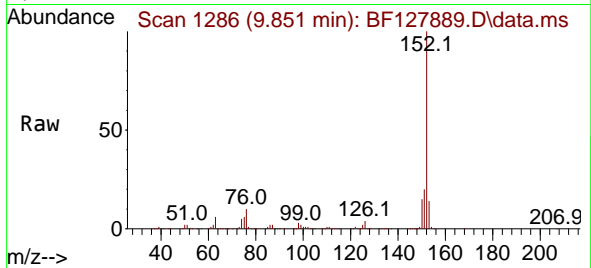


#49
 Acenaphthylene
 Concen: 44.199 ng
 RT: 9.851 min Scan# 11
 Delta R.T. -0.000 min
 Lab File: BF127889.D
 Acq: 25 Apr 2022 19:23

Instrument :
 BNA_F
 ClientSampleId :
 MH-8SMSD

Tgt Ion:152 Resp: 1379977

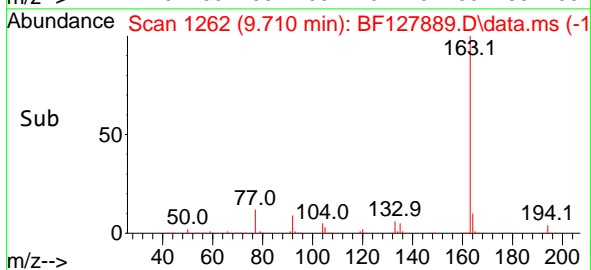
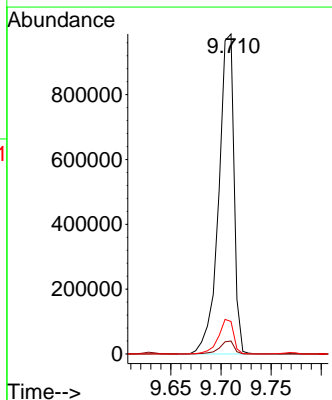
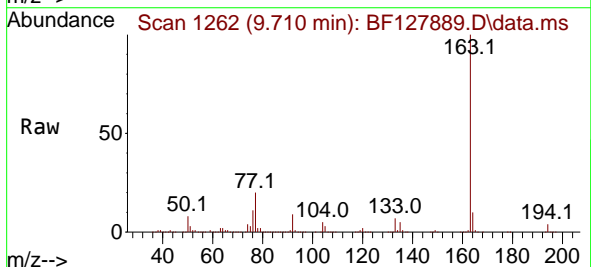
Ion	Ratio	Lower	Upper
152	100		
151	20.2	16.2	24.2
153	13.8	11.2	16.8

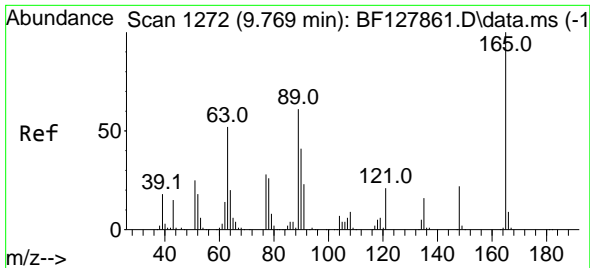


#50
 Dimethylphthalate
 Concen: 43.004 ng
 RT: 9.710 min Scan# 1262
 Delta R.T. 0.006 min
 Lab File: BF127889.D
 Acq: 25 Apr 2022 19:23

Tgt Ion:163 Resp: 1043913

Ion	Ratio	Lower	Upper
163	100		
194	4.1	3.1	4.7
164	10.2	8.6	13.0

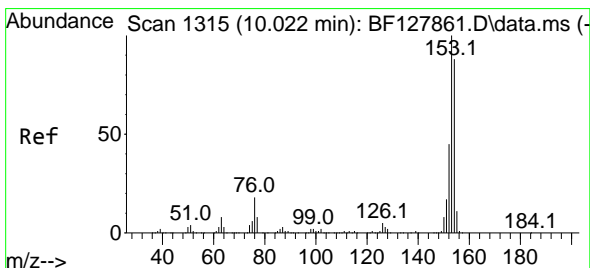
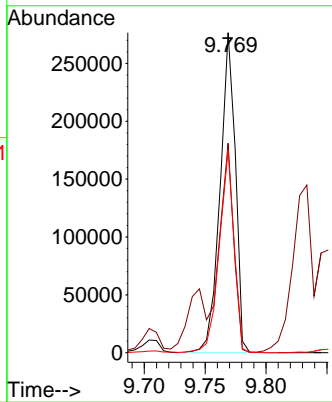
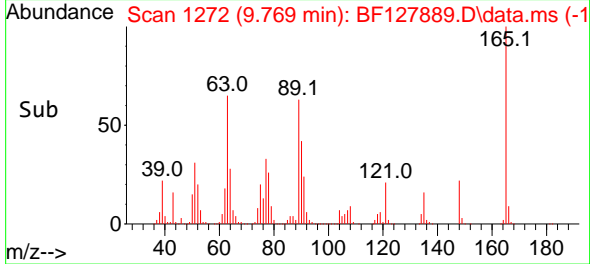
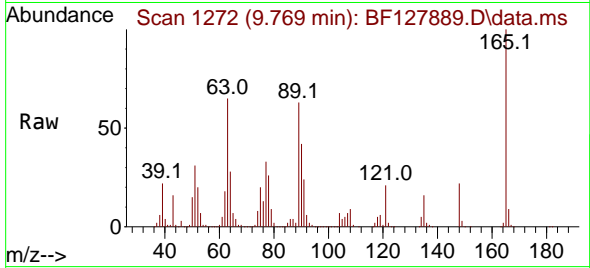




#51
 2,6-Dinitrotoluene
 Concen: 46.021 ng
 RT: 9.769 min Scan# 111
 Delta R.T. -0.000 min
 Lab File: BF127889.D
 Acq: 25 Apr 2022 19:23

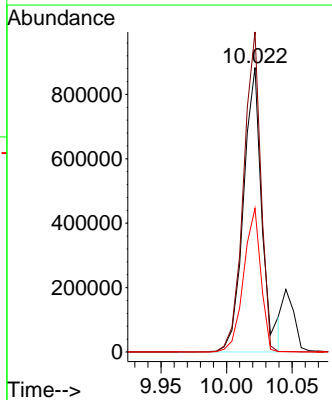
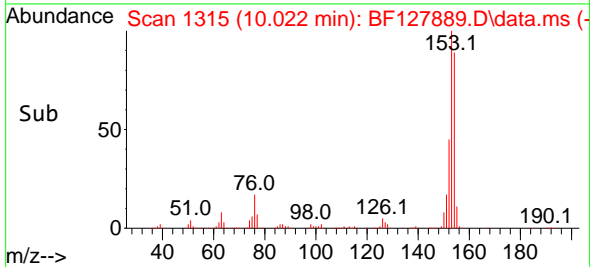
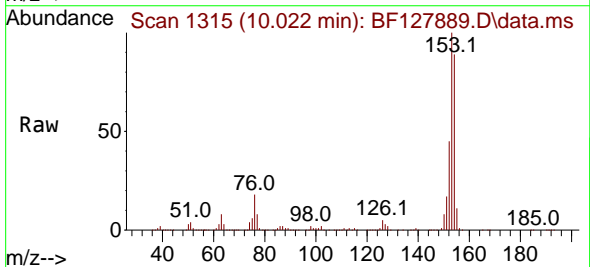
Instrument : BNA_F
 Client Sample Id : MH-8SMSD

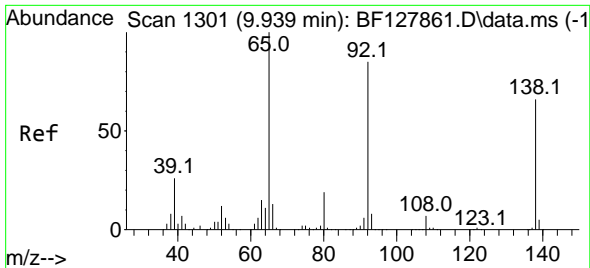
Tgt Ion	Resp	Lower	Upper
165	100		
63	65.5	49.5	74.3
89	63.3	49.0	73.4



#52
 Acenaphthene
 Concen: 41.309 ng
 RT: 10.022 min Scan# 1315
 Delta R.T. -0.000 min
 Lab File: BF127889.D
 Acq: 25 Apr 2022 19:23

Tgt Ion	Resp	Lower	Upper
154	100		
153	112.5	90.5	135.7
152	50.5	41.0	61.6



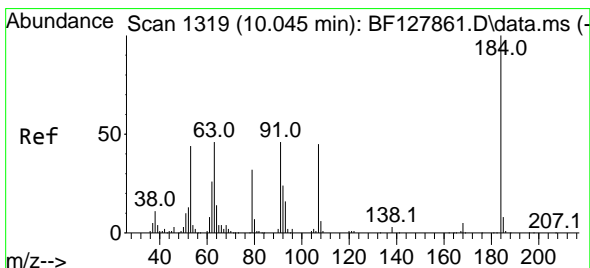
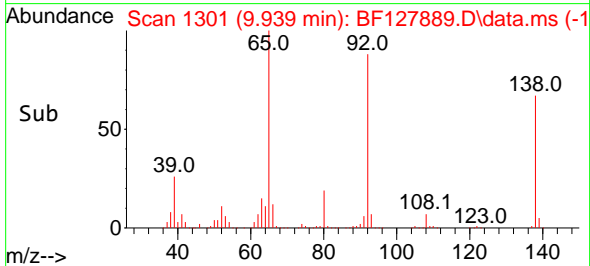
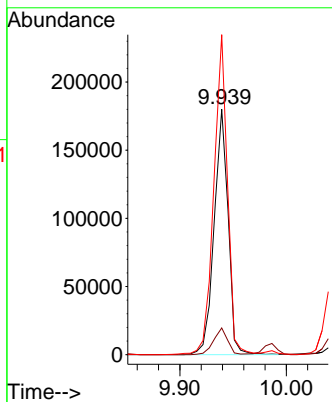
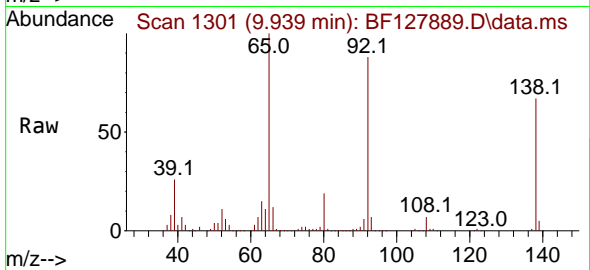


#53
 3-Nitroaniline
 Concen: 28.111 ng
 RT: 9.939 min Scan# 1301
 Delta R.T. 0.000 min
 Lab File: BF127889.D
 Acq: 25 Apr 2022 19:23

Instrument : BNA_F
 ClientSampleId : MH-8SMSD

Tgt Ion:138 Resp: 164066

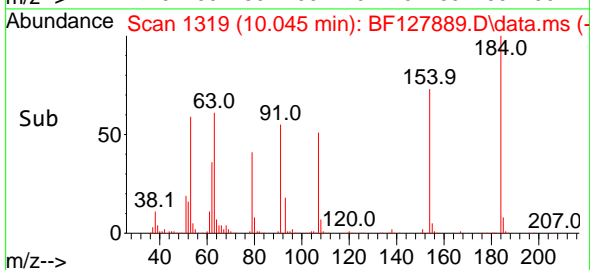
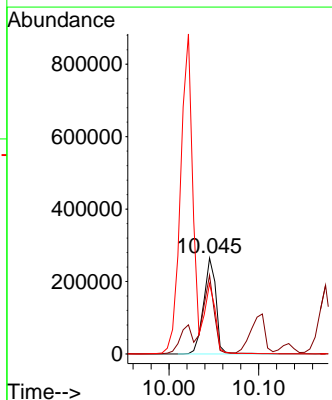
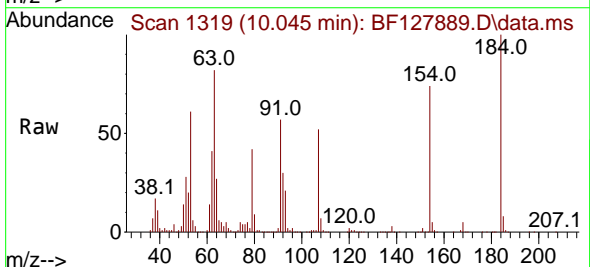
Ion	Ratio	Lower	Upper
138	100		
108	10.9	8.2	12.4
92	130.4	102.7	154.1

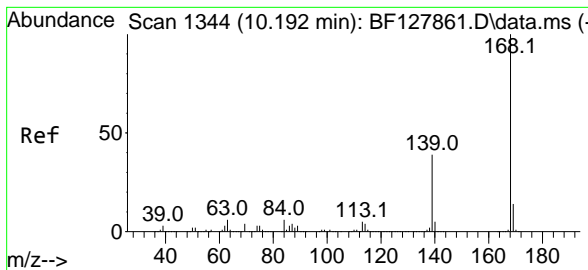


#54
 2,4-Dinitrophenol
 Concen: 91.841 ng
 RT: 10.045 min Scan# 1319
 Delta R.T. 0.000 min
 Lab File: BF127889.D
 Acq: 25 Apr 2022 19:23

Tgt Ion:184 Resp: 254206

Ion	Ratio	Lower	Upper
184	100		
63	82.3	50.0	75.0#
154	73.5	51.7	77.5



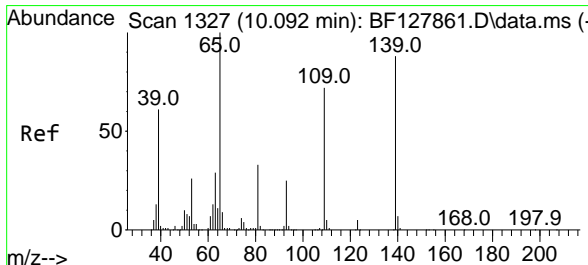
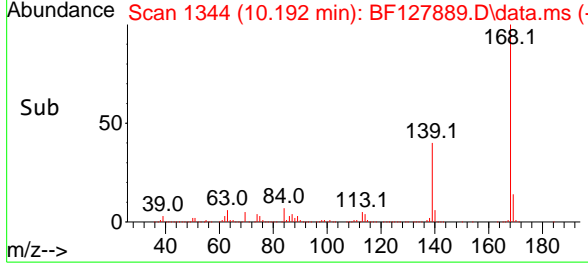
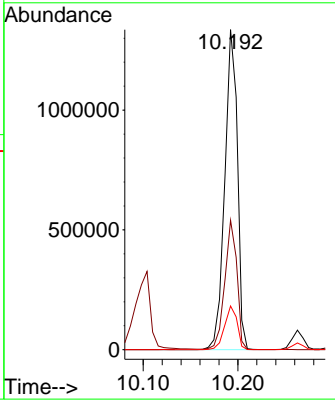
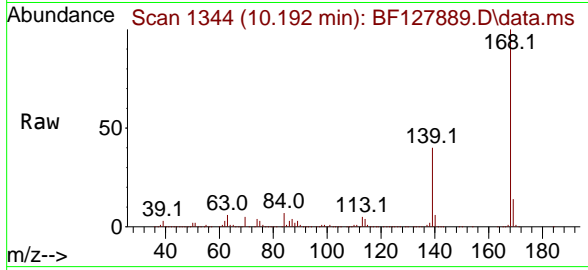


#55
 Dibenzofuran
 Concen: 41.001 ng
 RT: 10.192 min Scan# 11
 Delta R.T. -0.000 min
 Lab File: BF127889.D
 Acq: 25 Apr 2022 19:23

Instrument : BNA_F
 ClientSampleId : MH-8SMSD

Tgt Ion:168 Resp: 1241680

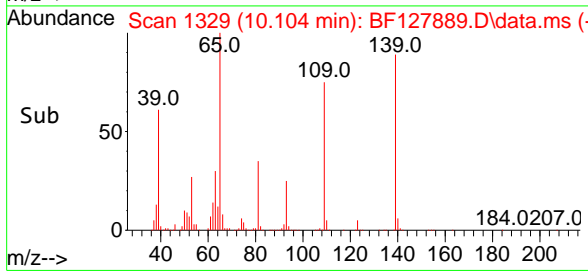
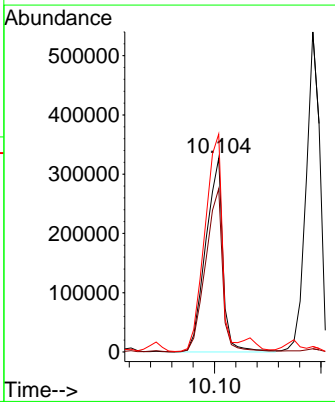
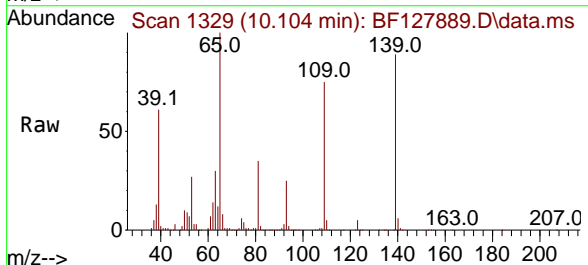
Ion	Ratio	Lower	Upper
168	100		
139	40.4	31.7	47.5
169	13.7	10.9	16.3

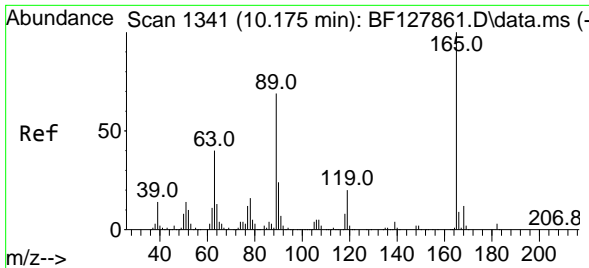


#56
 4-Nitrophenol
 Concen: 82.516 ng
 RT: 10.104 min Scan# 1329
 Delta R.T. 0.012 min
 Lab File: BF127889.D
 Acq: 25 Apr 2022 19:23

Tgt Ion:139 Resp: 367740

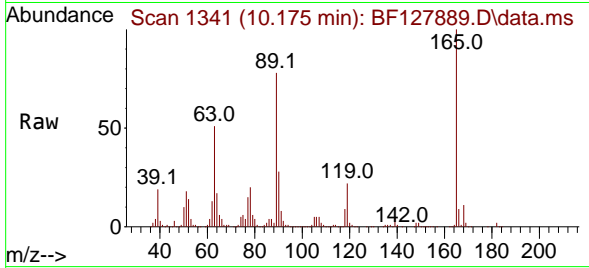
Ion	Ratio	Lower	Upper
139	100		
109	84.3	61.9	101.9
65	112.5	93.5	133.5





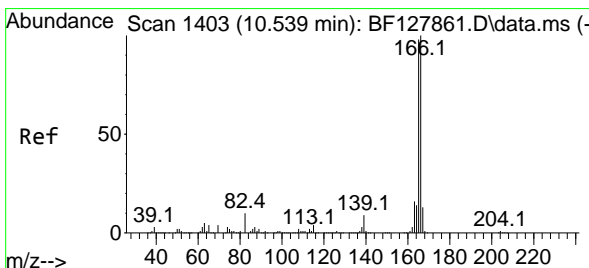
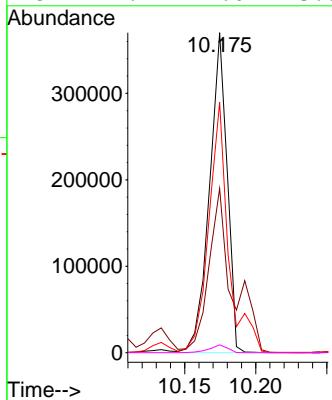
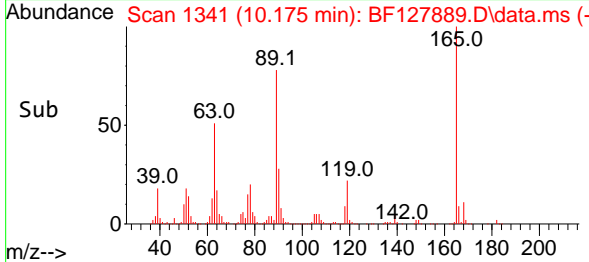
#57
 2,4-Dinitrotoluene
 Concen: 45.810 ng
 RT: 10.175 min Scan# 11
 Delta R.T. -0.000 min
 Lab File: BF127889.D
 Acq: 25 Apr 2022 19:23

Instrument :
 BNA_F
 ClientSampleId :
 MH-8SMSD

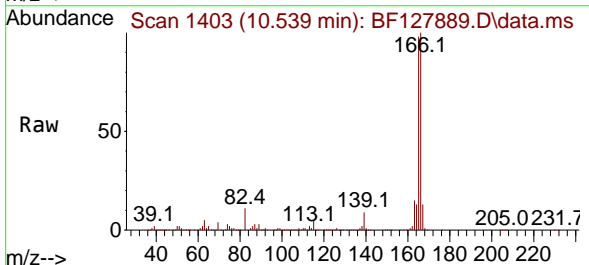


Tgt Ion:165 Resp: 318919

Ion	Ratio	Lower	Upper
165	100		
63	51.3	32.6	49.0#
89	78.3	55.2	82.8
182	2.4	2.0	3.0

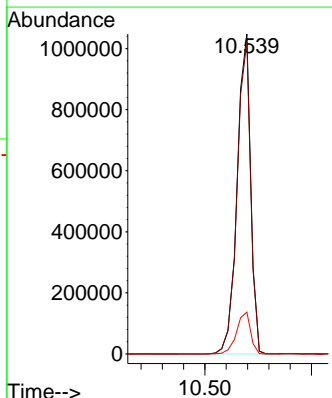
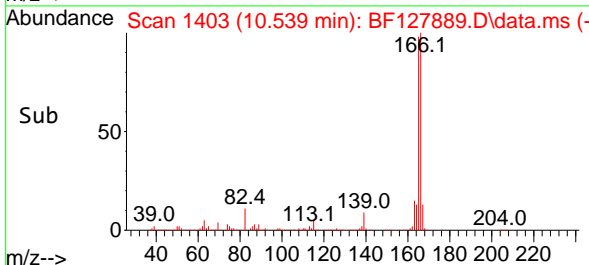


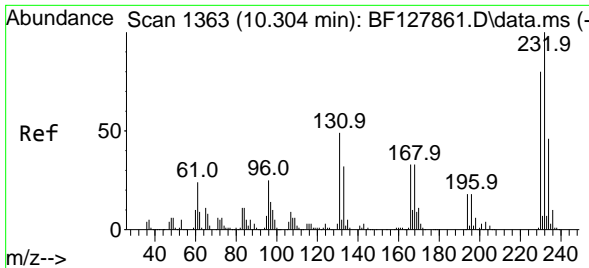
#58
 Fluorene
 Concen: 40.969 ng
 RT: 10.539 min Scan# 1403
 Delta R.T. -0.000 min
 Lab File: BF127889.D
 Acq: 25 Apr 2022 19:23



Tgt Ion:166 Resp: 925829

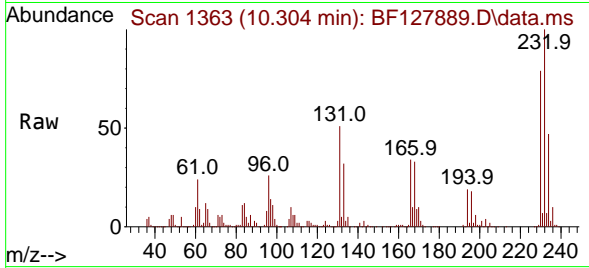
Ion	Ratio	Lower	Upper
166	100		
165	97.6	78.6	117.8
167	13.1	10.5	15.7





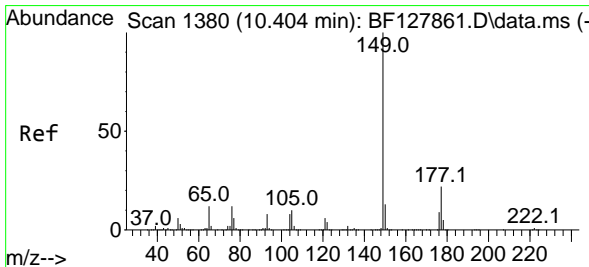
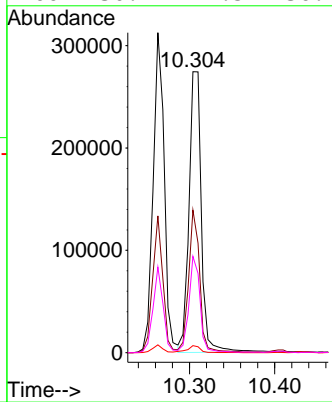
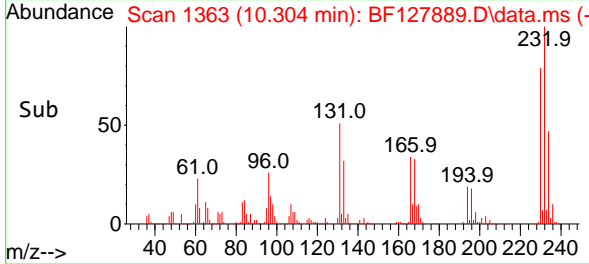
#59
 2,3,4,6-Tetrachlorophenol
 Concen: 43.134 ng
 RT: 10.304 min Scan# 1363
 Delta R.T. -0.000 min
 Lab File: BF127889.D
 Acq: 25 Apr 2022 19:23

Instrument : BNA_F
 ClientSampleId : MH-8SMSD

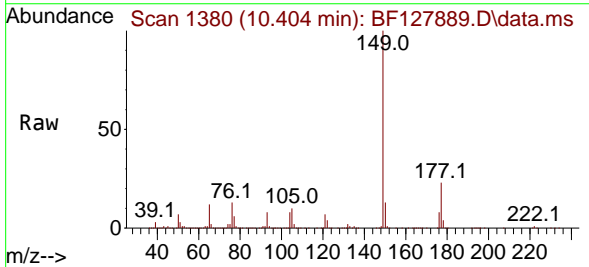


Tgt Ion: 232 Resp: 276801

Ion	Ratio	Lower	Upper
232	100		
131	44.9	35.4	53.2
130	2.8	1.9	2.9
166	30.2	24.5	36.7

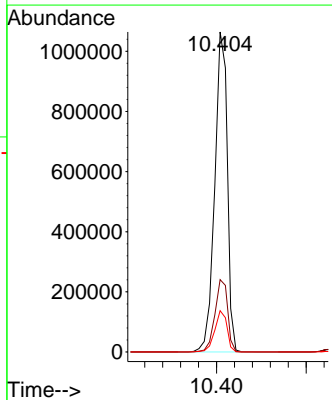
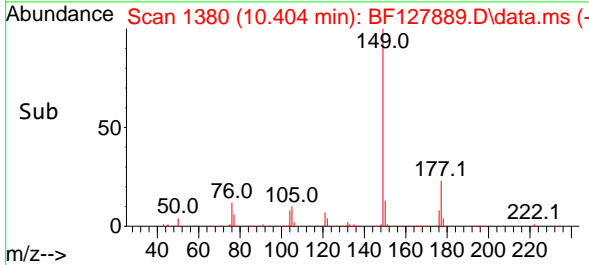


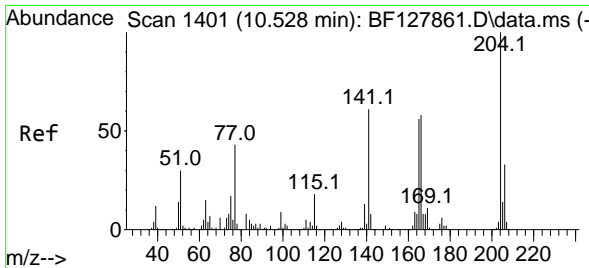
#60
 Diethylphthalate
 Concen: 43.413 ng
 RT: 10.404 min Scan# 1380
 Delta R.T. -0.000 min
 Lab File: BF127889.D
 Acq: 25 Apr 2022 19:23



Tgt Ion: 149 Resp: 1033394

Ion	Ratio	Lower	Upper
149	100		
177	22.6	17.8	26.8
150	12.9	10.2	15.2

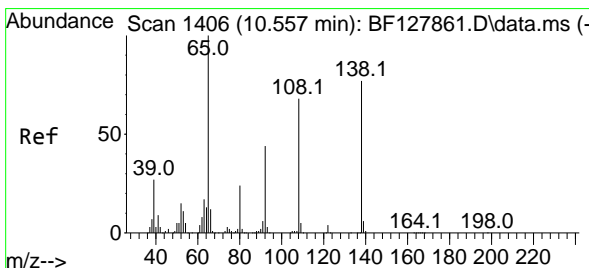
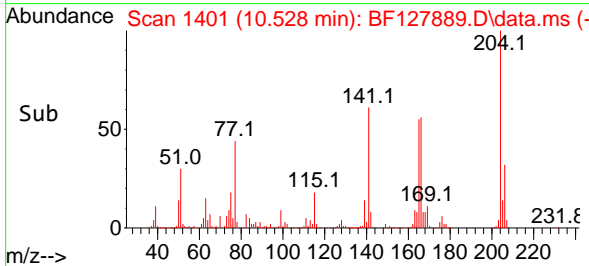
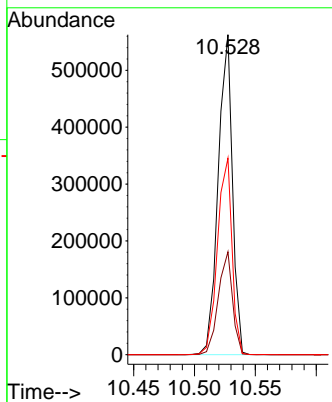
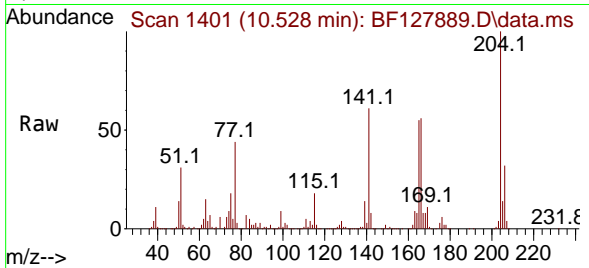




#61
 4-Chlorophenyl-phenylether
 Concen: 40.946 ng
 RT: 10.528 min Scan# 1401
 Delta R.T. -0.000 min
 Lab File: BF127889.D
 Acq: 25 Apr 2022 19:23

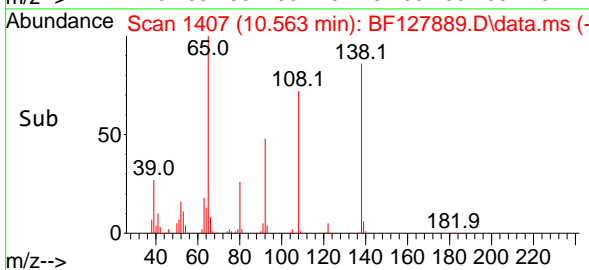
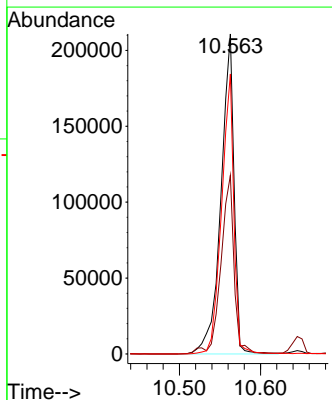
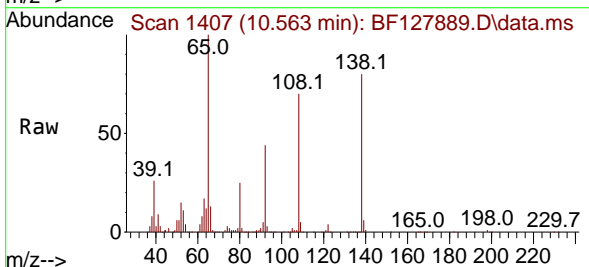
Instrument : BNA_F
 ClientSampleId : MH-8SMSD

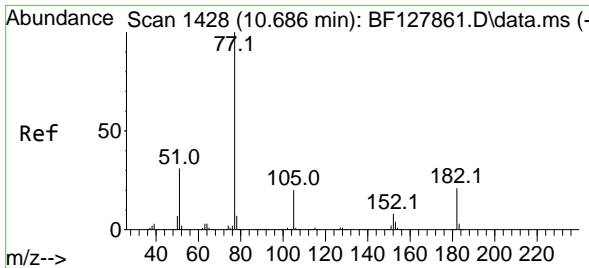
Tgt Ion	Resp	Lower	Upper
204	459801		
206	32.1	26.5	39.7
141	61.4	48.7	73.1



#62
 4-Nitroaniline
 Concen: 41.669 ng
 RT: 10.563 min Scan# 1407
 Delta R.T. 0.006 min
 Lab File: BF127889.D
 Acq: 25 Apr 2022 19:23

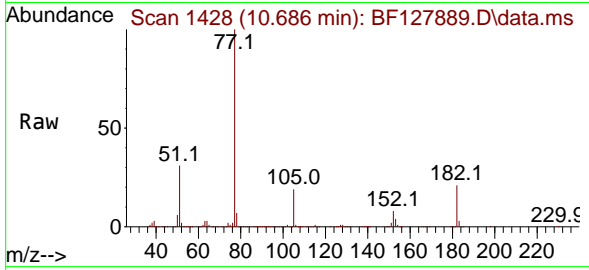
Tgt Ion	Resp	Lower	Upper
138	237754		
92	55.8	37.4	77.4
108	87.5	68.4	108.4





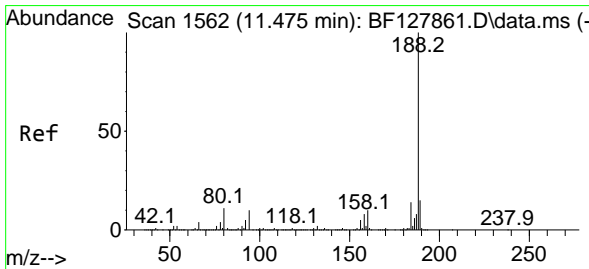
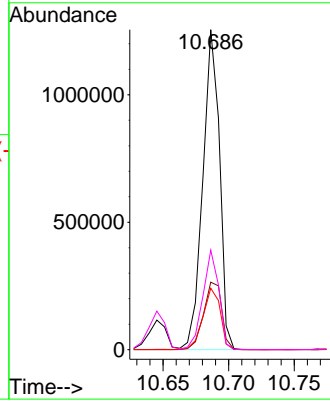
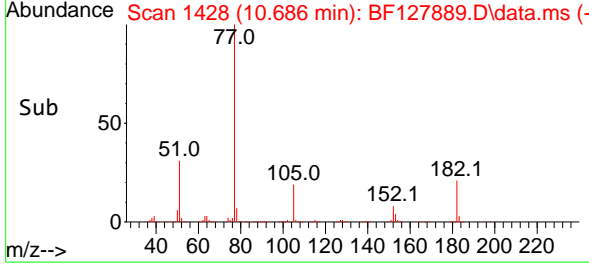
#63
 Azobenzene
 Concen: 42.549 ng
 RT: 10.686 min Scan# 1428
 Delta R.T. -0.000 min
 Lab File: BF127889.D
 Acq: 25 Apr 2022 19:23

Instrument : BNA_F
 ClientSampleId : MH-8SMSD

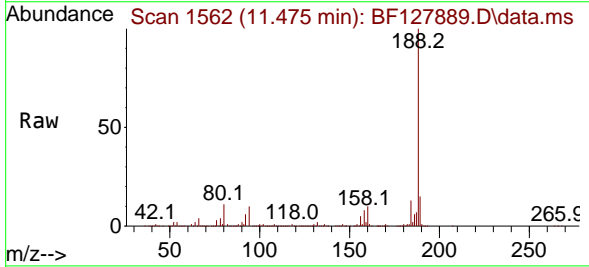


Tgt Ion: 77 Resp: 1114483

Ion	Ratio	Lower	Upper
77	100		
182	21.1	1.2	41.2
105	19.2	0.0	39.8
51	31.1	11.2	51.2

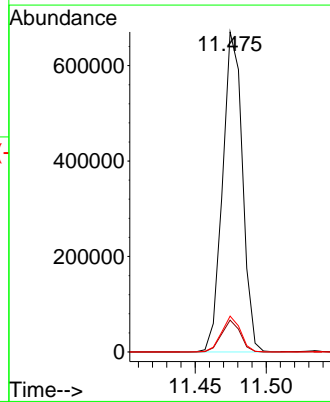
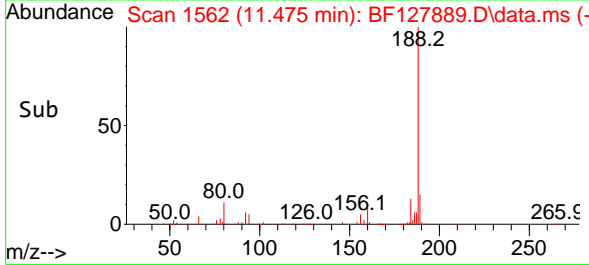


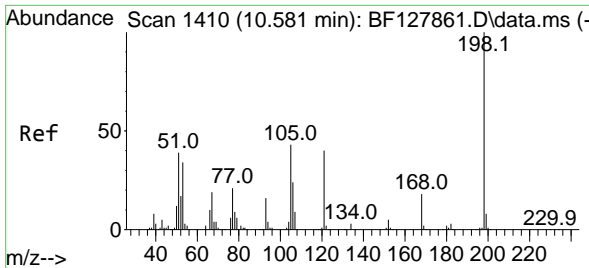
#64
 Phenanthrene-d10
 Concen: 20.000 ng
 RT: 11.475 min Scan# 1562
 Delta R.T. -0.000 min
 Lab File: BF127889.D
 Acq: 25 Apr 2022 19:23



Tgt Ion: 188 Resp: 651098

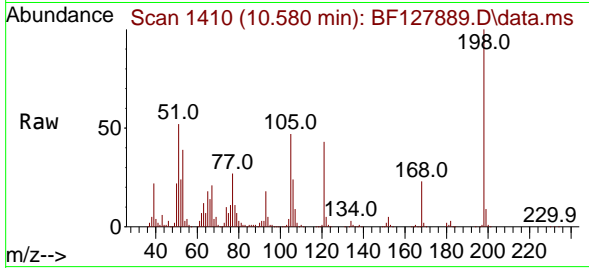
Ion	Ratio	Lower	Upper
188	100		
94	10.0	8.0	12.0
80	11.2	8.9	13.3



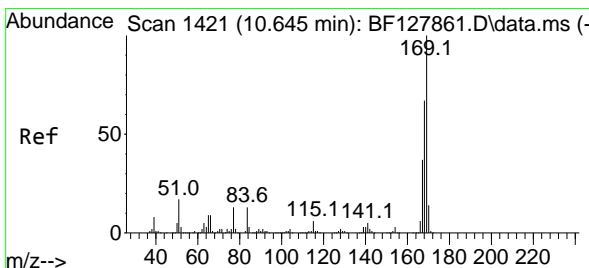
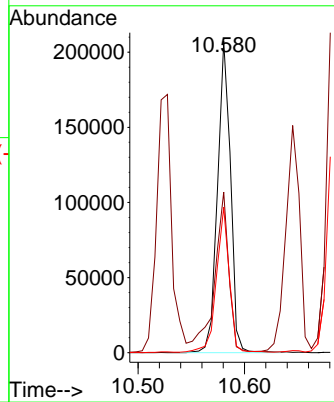
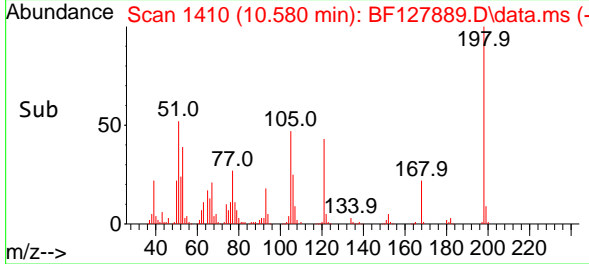


#65
 4,6-Dinitro-2-methylphenol
 Concen: 45.441 ng
 RT: 10.580 min Scan# 1410
 Delta R.T. -0.000 min
 Lab File: BF127889.D
 Acq: 25 Apr 2022 19:23

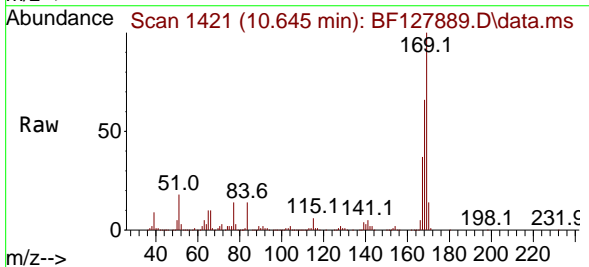
Instrument : BNA_F
 Client Sample Id : MH-8SMSD



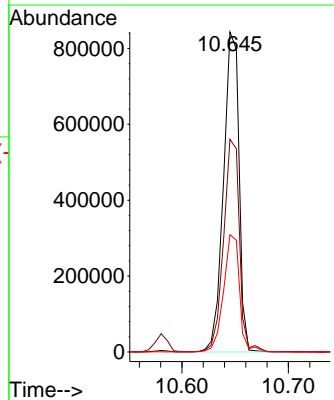
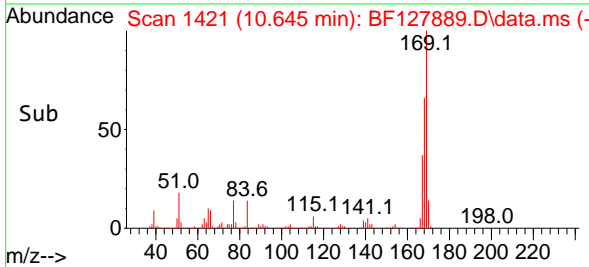
Tgt Ion:198 Resp: 175799
 Ion Ratio Lower Upper
 198 100
 51 51.6 28.4 68.4
 105 46.7 23.4 63.4

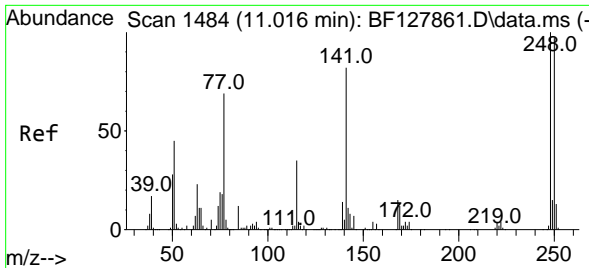


#66
 n-Nitrosodiphenylamine
 Concen: 42.020 ng
 RT: 10.645 min Scan# 1421
 Delta R.T. -0.000 min
 Lab File: BF127889.D
 Acq: 25 Apr 2022 19:23



Tgt Ion:169 Resp: 851312
 Ion Ratio Lower Upper
 169 100
 168 66.4 53.8 80.6
 167 36.6 29.5 44.3



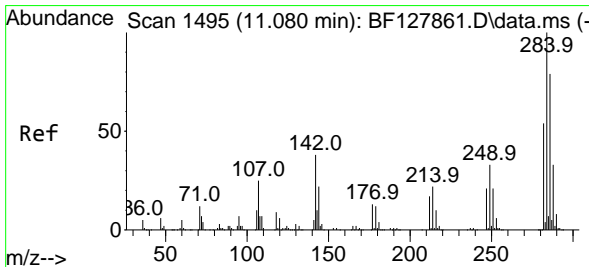
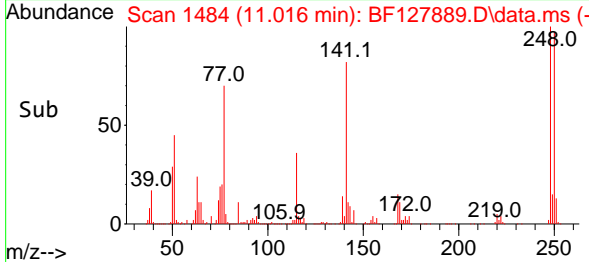
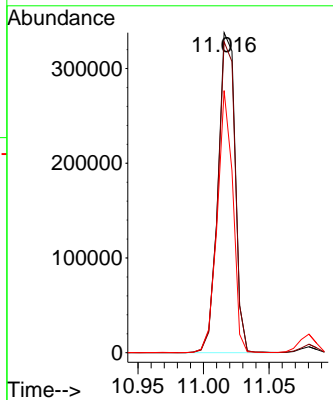
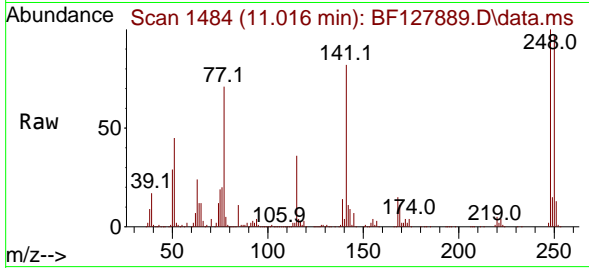


#67
 4-Bromophenyl-phenylether
 Concen: 42.590 ng
 RT: 11.016 min Scan# 1484
 Delta R.T. -0.000 min
 Lab File: BF127889.D
 Acq: 25 Apr 2022 19:23

Instrument : BNA_F
 ClientSampleId : MH-8SMSD

Tgt Ion:248 Resp: 307405

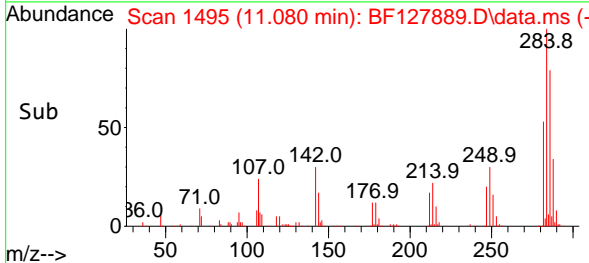
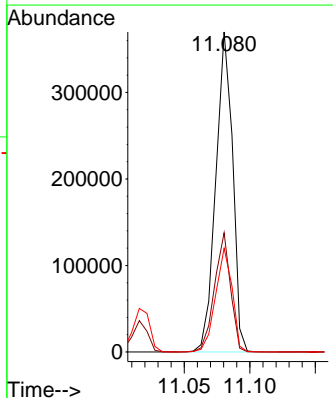
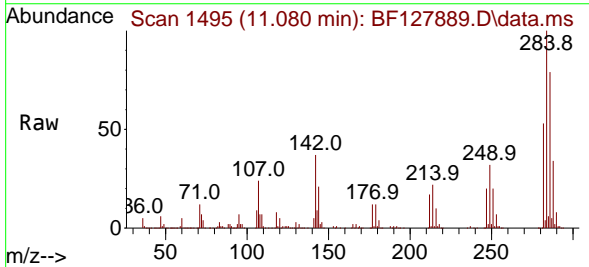
Ion	Ratio	Lower	Upper
248	100		
250	97.1	77.7	116.5
141	81.9	65.6	98.4

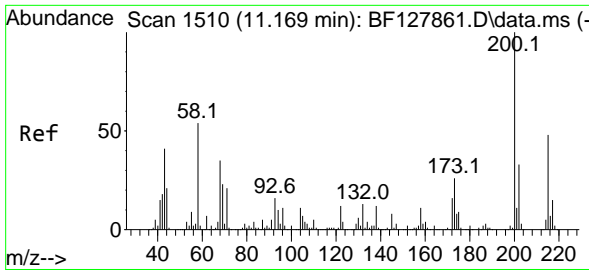


#68
 Hexachlorobenzene
 Concen: 43.254 ng
 RT: 11.080 min Scan# 1495
 Delta R.T. -0.000 min
 Lab File: BF127889.D
 Acq: 25 Apr 2022 19:23

Tgt Ion:284 Resp: 328932

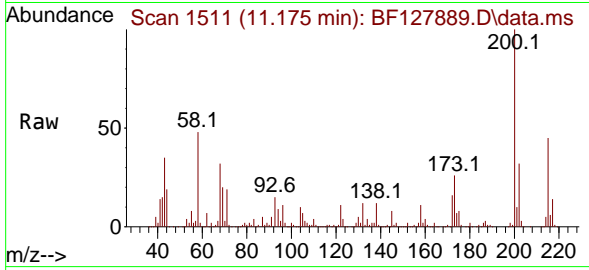
Ion	Ratio	Lower	Upper
284	100		
142	37.3	30.2	45.4
249	32.4	26.1	39.1



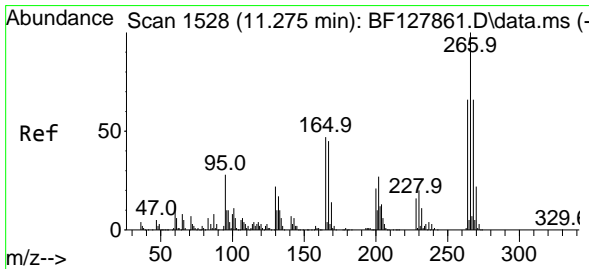
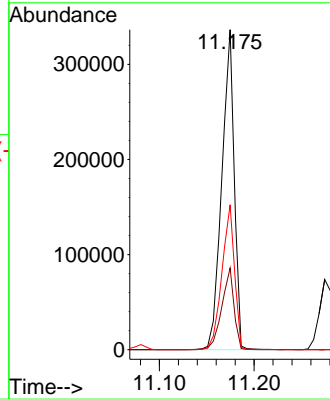
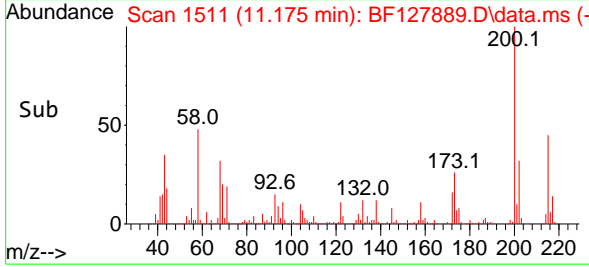


#69
 Atrazine
 Concen: 49.119 ng
 RT: 11.175 min Scan# 11
 Delta R.T. 0.006 min
 Lab File: BF127889.D
 Acq: 25 Apr 2022 19:23

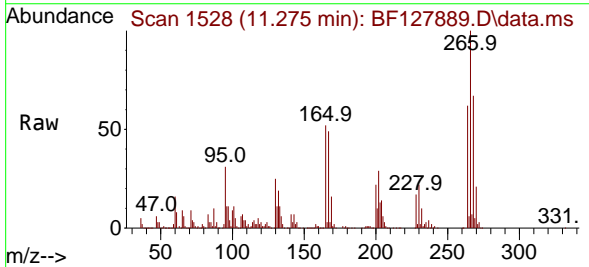
Instrument :
 BNA_F
 ClientSampleId :
 MH-8SMSD



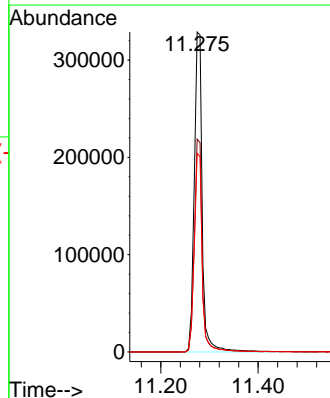
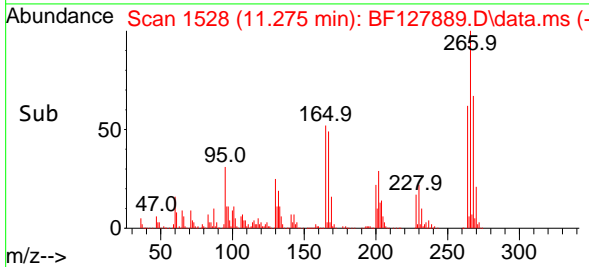
Tgt Ion:200 Resp: 307711
 Ion Ratio Lower Upper
 200 100
 173 25.6 6.0 46.0
 215 45.3 28.1 68.1

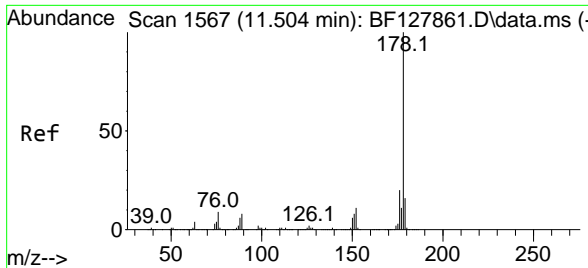


#70
 Pentachlorophenol
 Concen: 83.084 ng
 RT: 11.275 min Scan# 1528
 Delta R.T. -0.000 min
 Lab File: BF127889.D
 Acq: 25 Apr 2022 19:23



Tgt Ion:266 Resp: 371702
 Ion Ratio Lower Upper
 266 100
 268 66.5 53.0 79.6
 264 62.1 53.1 79.7



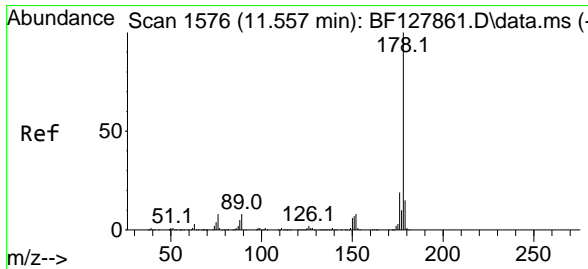
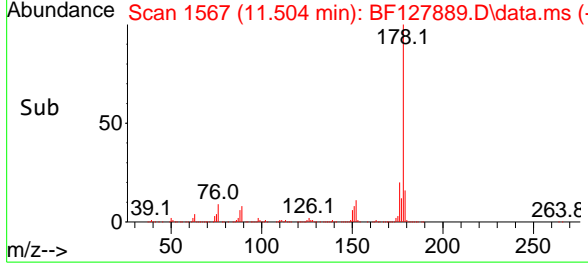
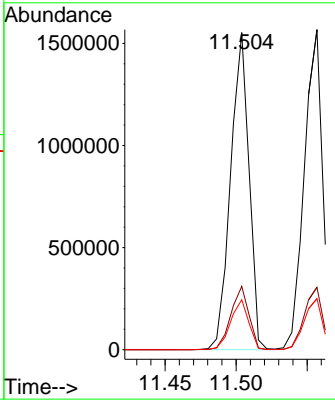
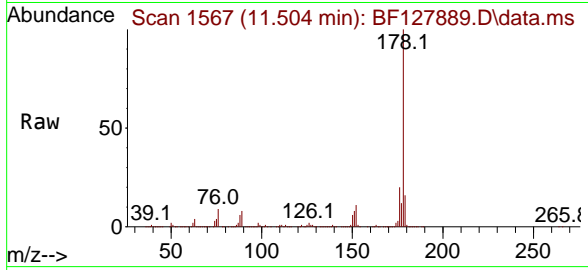


#71
 Phenanthrene
 Concen: 41.147 ng
 RT: 11.504 min Scan# 11576
 Delta R.T. -0.000 min
 Lab File: BF127889.D
 Acq: 25 Apr 2022 19:23

Instrument : BNA_F
 ClientSampleId : MH-8SMSD

Tgt Ion:178 Resp: 1402359

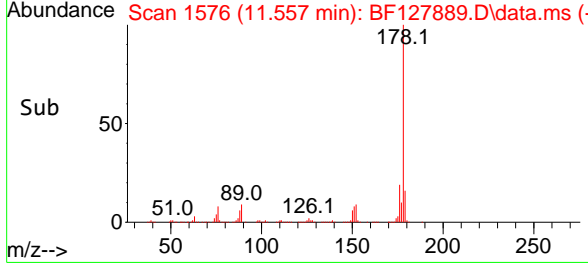
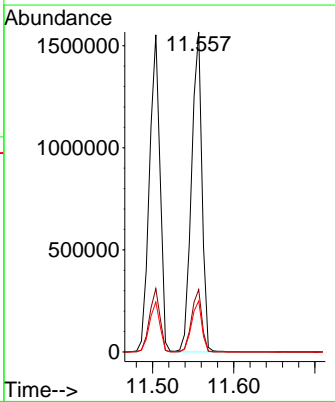
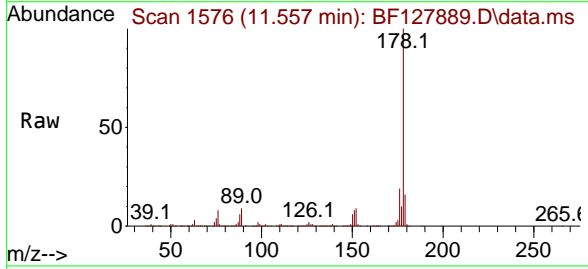
Ion	Ratio	Lower	Upper
178	100		
176	20.0	15.7	23.5
179	15.7	12.6	19.0

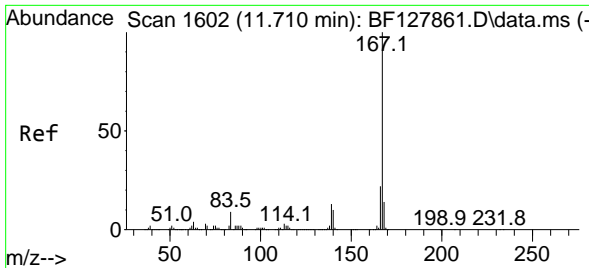


#72
 Anthracene
 Concen: 41.513 ng
 RT: 11.557 min Scan# 1576
 Delta R.T. -0.000 min
 Lab File: BF127889.D
 Acq: 25 Apr 2022 19:23

Tgt Ion:178 Resp: 1409409

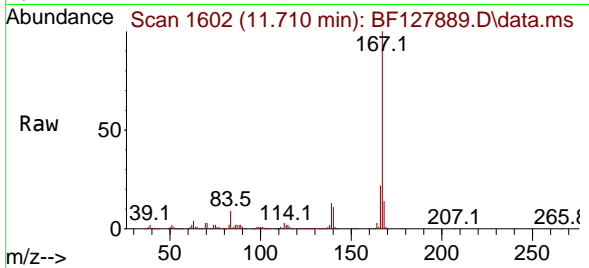
Ion	Ratio	Lower	Upper
178	100		
176	19.5	15.0	22.6
179	16.0	12.4	18.6



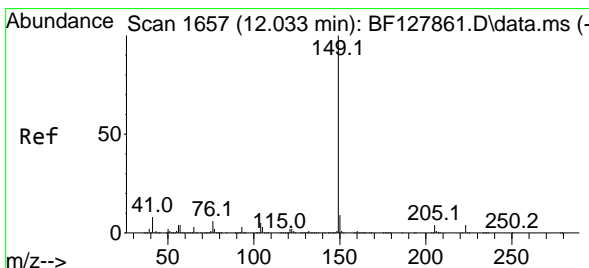
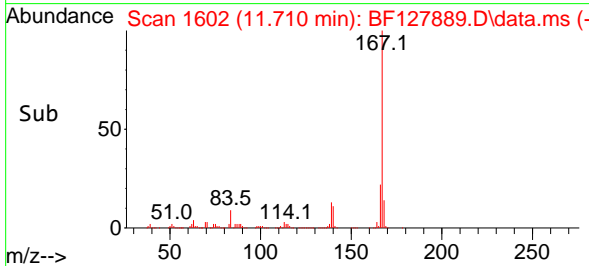
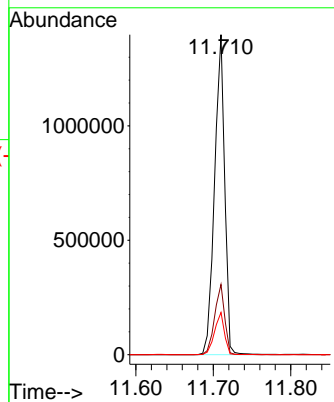


#73
 Carbazole
 Concen: 38.861 ng
 RT: 11.710 min Scan# 1602
 Delta R.T. -0.000 min
 Lab File: BF127889.D
 Acq: 25 Apr 2022 19:23

Instrument : BNA_F
 Client Sample Id : MH-8SMSD

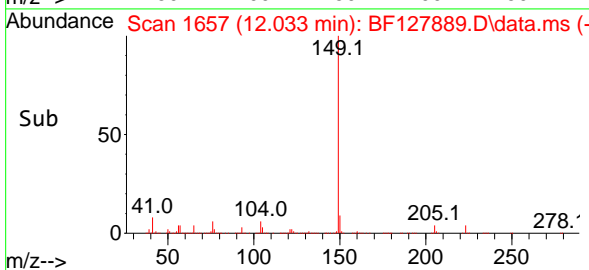
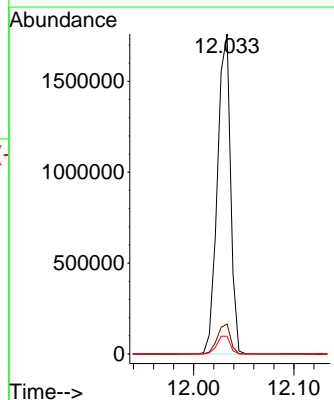
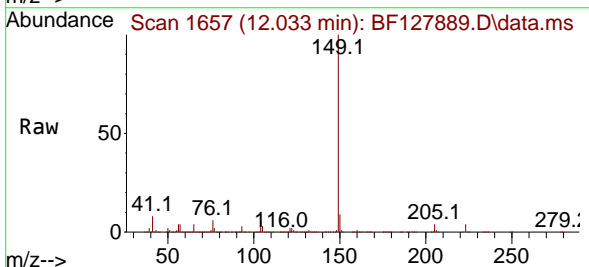


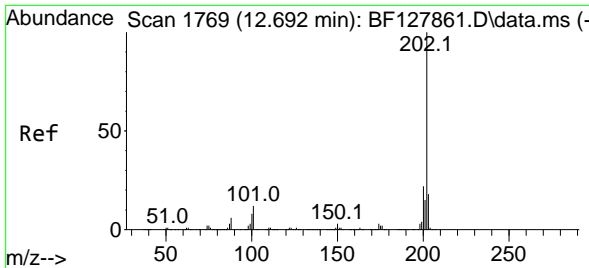
Tgt Ion:167 Resp: 1271568
 Ion Ratio Lower Upper
 167 100
 166 21.9 17.6 26.4
 139 13.2 10.7 16.1



#74
 Di-n-butylphthalate
 Concen: 43.470 ng
 RT: 12.033 min Scan# 1657
 Delta R.T. -0.000 min
 Lab File: BF127889.D
 Acq: 25 Apr 2022 19:23

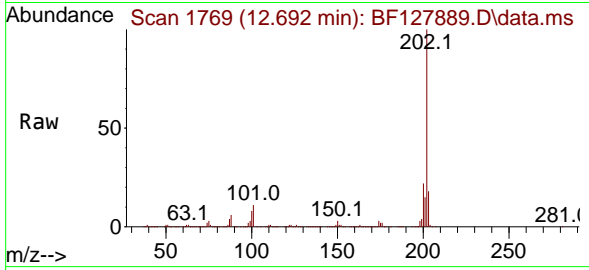
Tgt Ion:149 Resp: 1599413
 Ion Ratio Lower Upper
 149 100
 150 9.3 7.5 11.3
 104 5.6 4.3 6.5



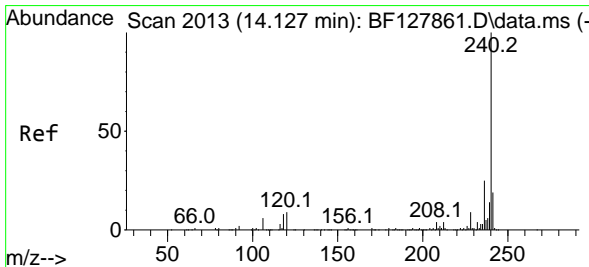
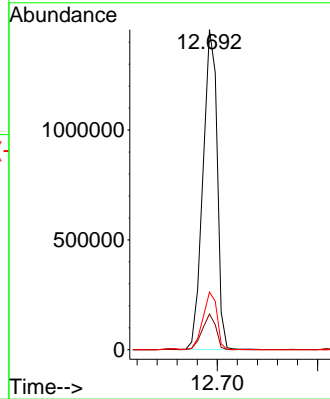
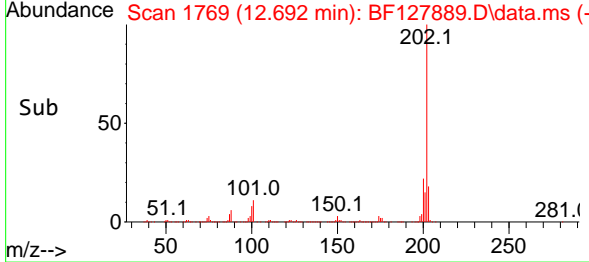


#75
 Fluoranthene
 Concen: 40.086 ng
 RT: 12.692 min Scan# 11
 Delta R.T. -0.000 min
 Lab File: BF127889.D
 Acq: 25 Apr 2022 19:23

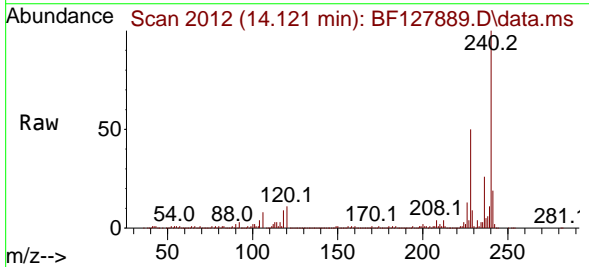
Instrument :
 BNA_F
 ClientSampleId :
 MH-8SMSD



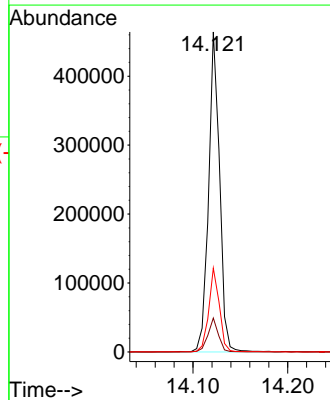
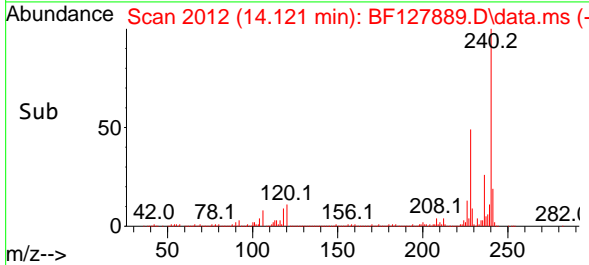
Tgt Ion:202 Resp: 1437893
 Ion Ratio Lower Upper
 202 100
 101 11.2 0.0 31.6
 203 18.0 0.0 38.1

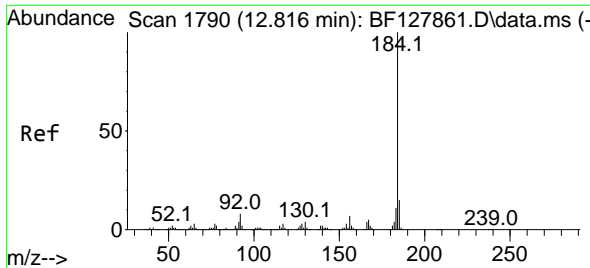


#76
 Chrysene-d12
 Concen: 20.000 ng
 RT: 14.121 min Scan# 2012
 Delta R.T. -0.006 min
 Lab File: BF127889.D
 Acq: 25 Apr 2022 19:23



Tgt Ion:240 Resp: 372472
 Ion Ratio Lower Upper
 240 100
 120 10.6 7.0 10.6#
 236 26.2 20.3 30.5

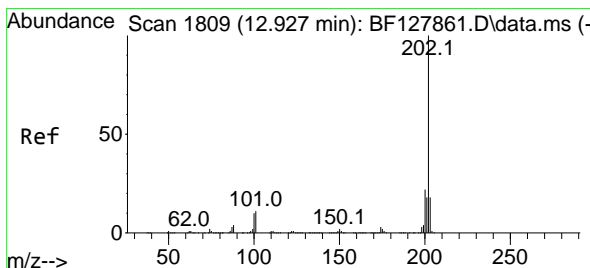
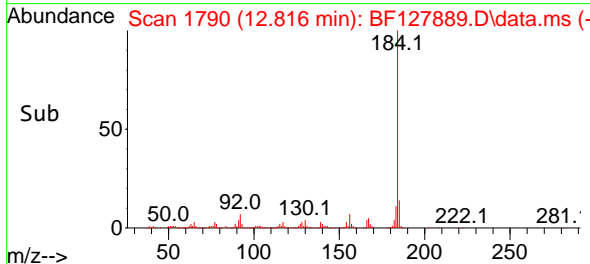
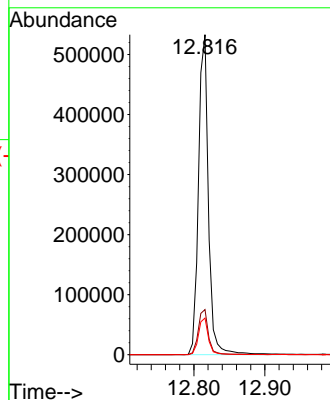
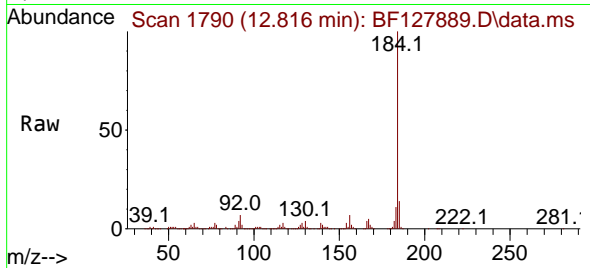




#77
 Benzidine
 Concen: 73.746 ng
 RT: 12.816 min Scan# 11
 Delta R.T. -0.000 min
 Lab File: BF127889.D
 Acq: 25 Apr 2022 19:23

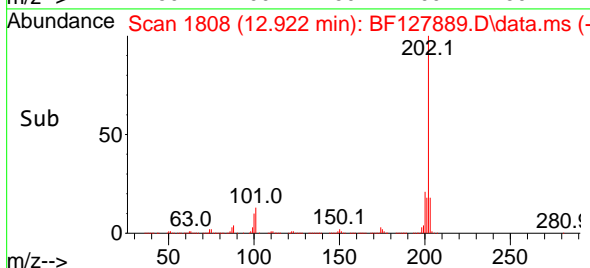
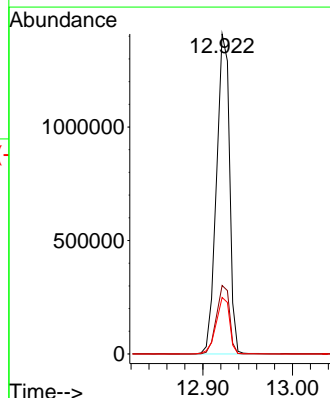
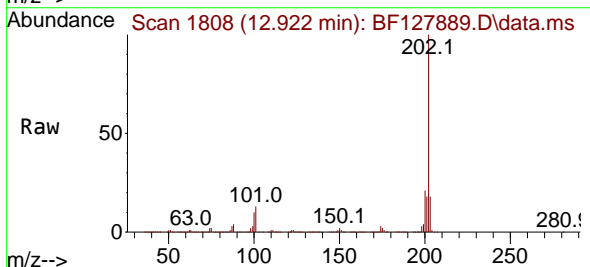
Instrument :
 BNA_F
 ClientSampleId :
 MH-8SMSD

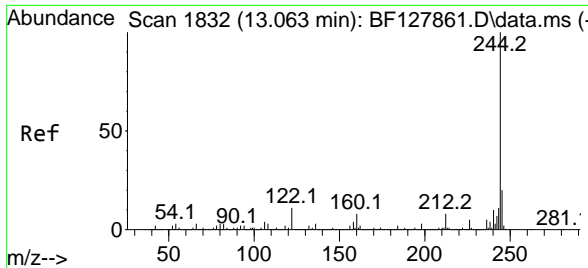
Tgt Ion:184 Resp: 519741
 Ion Ratio Lower Upper
 184 100
 185 14.1 12.1 18.1
 183 11.5 9.0 13.4



#78
 Pyrene
 Concen: 47.398 ng
 RT: 12.922 min Scan# 1808
 Delta R.T. -0.006 min
 Lab File: BF127889.D
 Acq: 25 Apr 2022 19:23

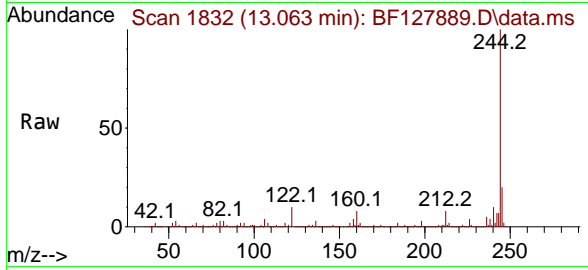
Tgt Ion:202 Resp: 1425142
 Ion Ratio Lower Upper
 202 100
 200 21.4 17.4 26.2
 203 17.6 14.0 21.0



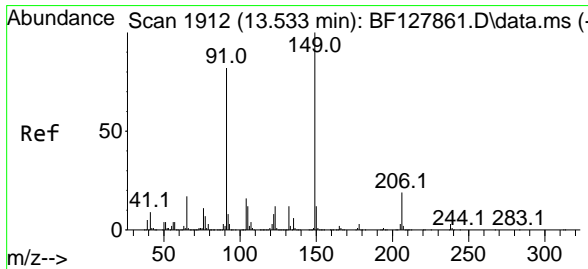
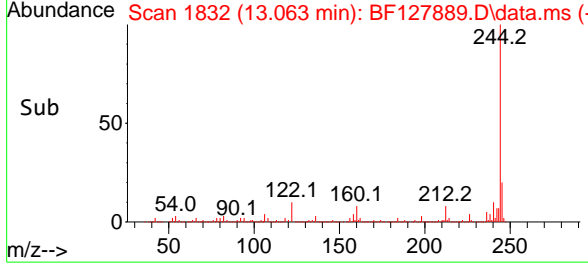
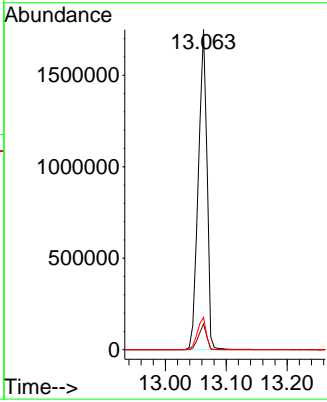


#79
 Terphenyl-d14
 Concen: 84.255 ng
 RT: 13.063 min Scan# 11
 Delta R.T. -0.000 min
 Lab File: BF127889.D
 Acq: 25 Apr 2022 19:23

Instrument : BNA_F
 ClientSampleId : MH-8SMSD

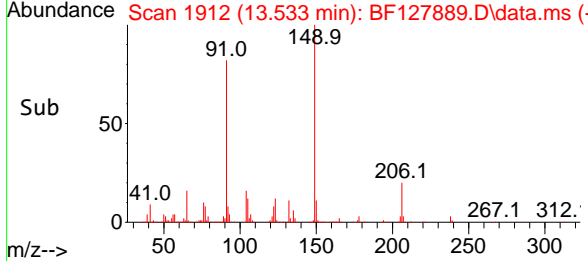
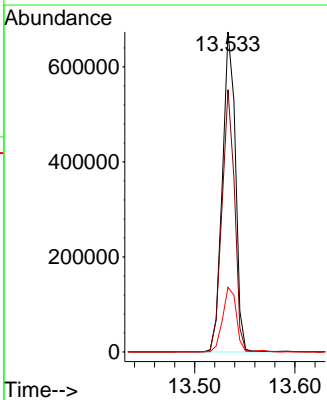
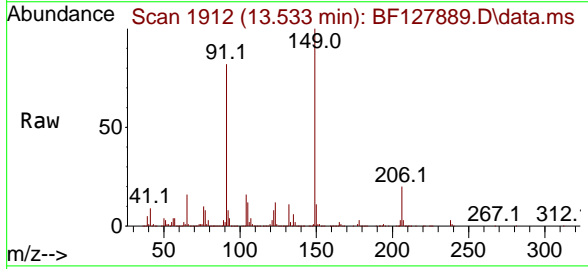


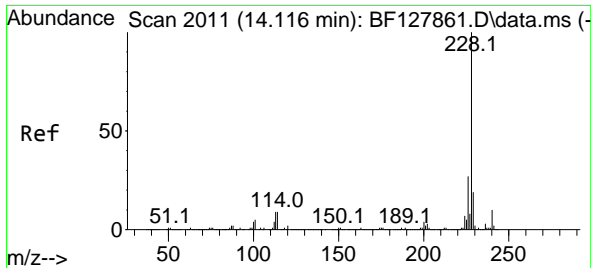
Tgt Ion:244 Resp: 1716237
 Ion Ratio Lower Upper
 244 100
 212 8.0 6.2 9.4
 122 10.1 8.6 12.8



#80
 Butylbenzylphthalate
 Concen: 51.617 ng
 RT: 13.533 min Scan# 1912
 Delta R.T. -0.000 min
 Lab File: BF127889.D
 Acq: 25 Apr 2022 19:23

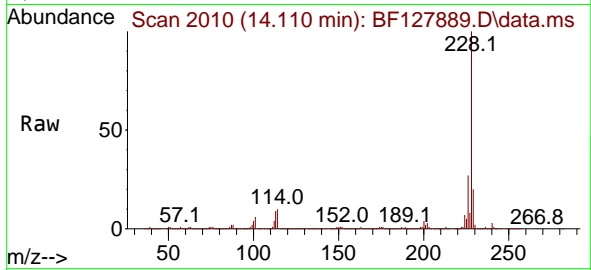
Tgt Ion:149 Resp: 608321
 Ion Ratio Lower Upper
 149 100
 91 81.9 65.8 98.6
 206 20.2 15.4 23.2



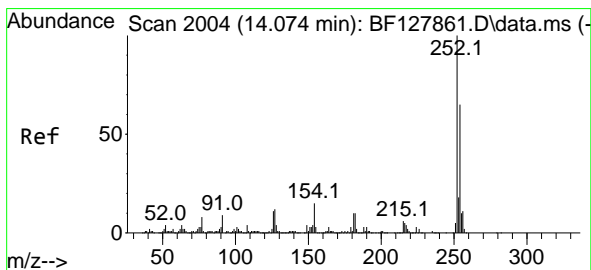
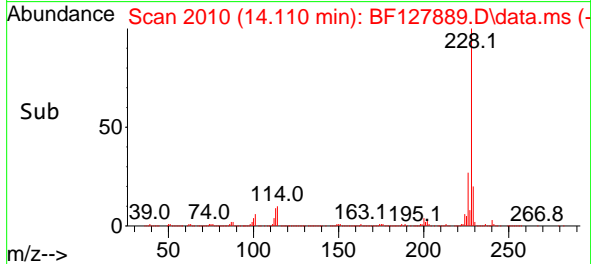
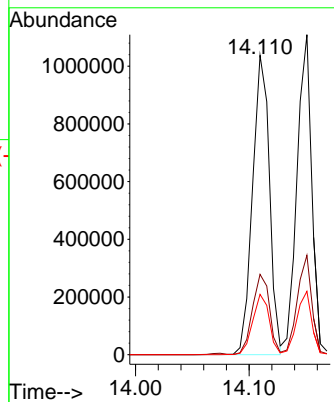


#81
 Benzo(a)anthracene
 Concen: 43.259 ng
 RT: 14.110 min Scan# 2011
 Delta R.T. -0.006 min
 Lab File: BF127889.D
 Acq: 25 Apr 2022 19:23

Instrument : BNA_F
 ClientSampleId : MH-8SMSD

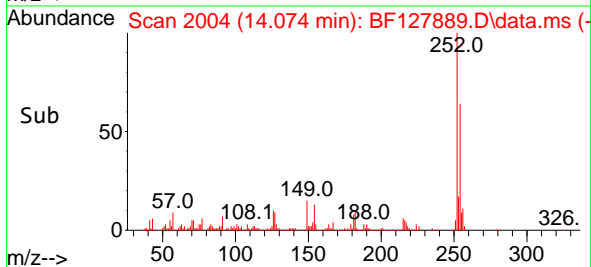
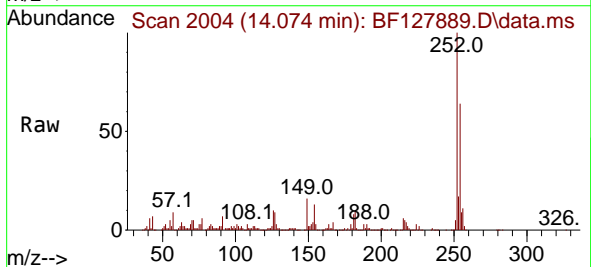
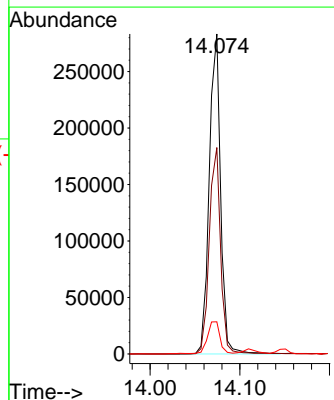


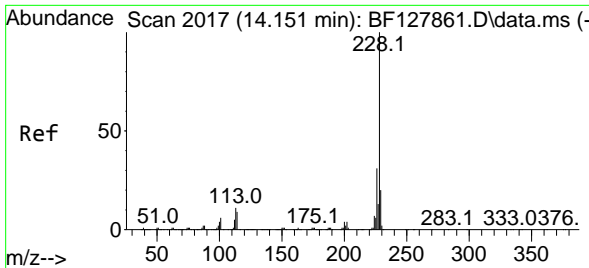
Tgt Ion:228 Resp: 1073970
 Ion Ratio Lower Upper
 228 100
 226 26.9 21.7 32.5
 229 20.2 15.4 23.2



#82
 3,3'-Dichlorobenzidine
 Concen: 31.569 ng
 RT: 14.074 min Scan# 2004
 Delta R.T. -0.000 min
 Lab File: BF127889.D
 Acq: 25 Apr 2022 19:23

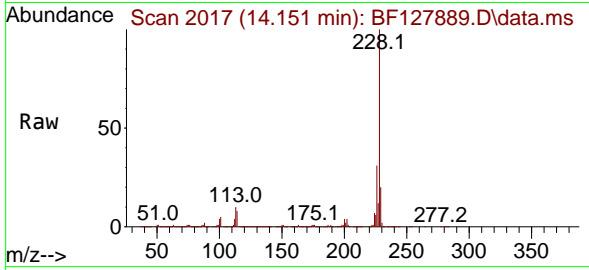
Tgt Ion:252 Resp: 248848
 Ion Ratio Lower Upper
 252 100
 254 64.5 51.6 77.4
 126 10.0 8.8 13.2



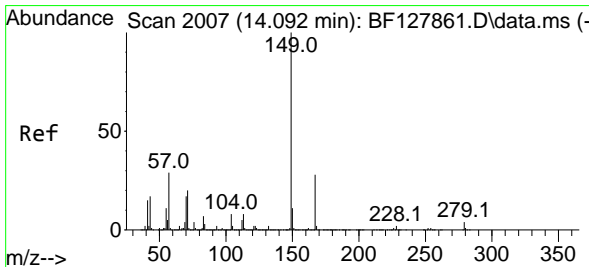
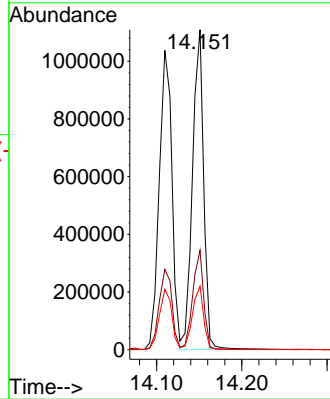
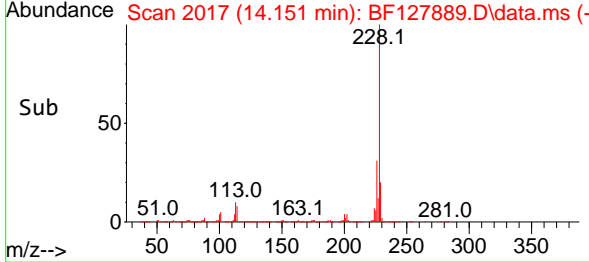


#83
 Chrysene
 Concen: 42.671 ng
 RT: 14.151 min Scan# 2017
 Delta R.T. -0.000 min
 Lab File: BF127889.D
 Acq: 25 Apr 2022 19:23

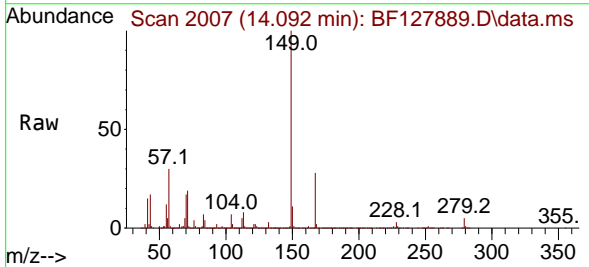
Instrument : BNA_F
 ClientSampleId : MH-8SMSD



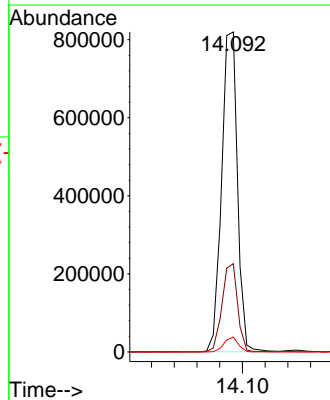
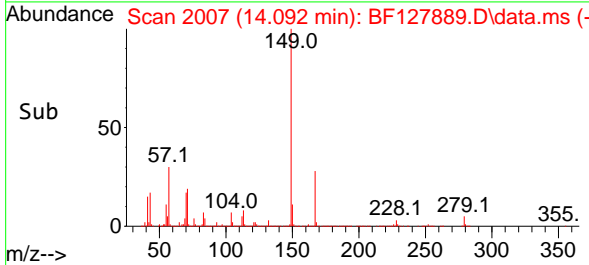
Tgt Ion:228 Resp: 1011728
 Ion Ratio Lower Upper
 228 100
 226 31.0 24.4 36.6
 229 19.8 15.8 23.8

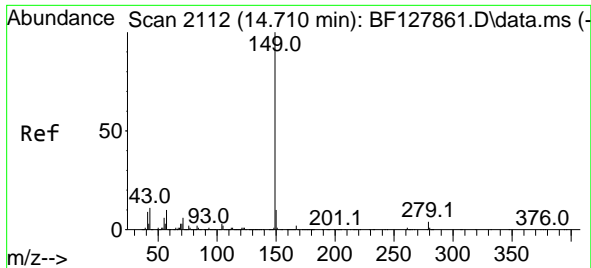


#84
 Bis(2-ethylhexyl)phthalate
 Concen: 50.955 ng
 RT: 14.092 min Scan# 2007
 Delta R.T. -0.000 min
 Lab File: BF127889.D
 Acq: 25 Apr 2022 19:23



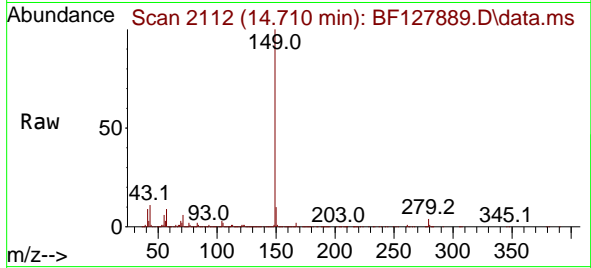
Tgt Ion:149 Resp: 796359
 Ion Ratio Lower Upper
 149 100
 167 27.6 22.0 33.0
 279 4.7 3.4 5.0



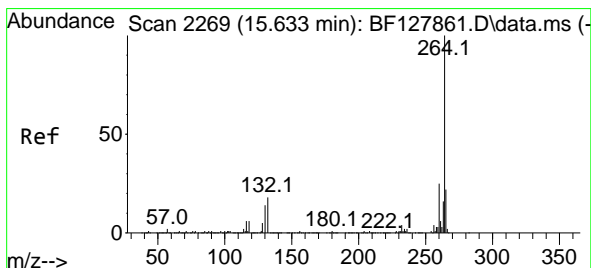
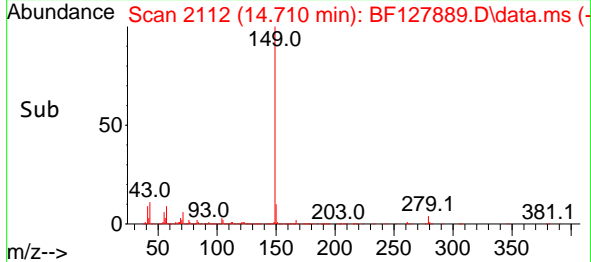
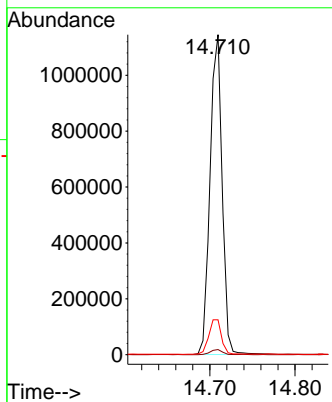


#85
 Di-n-octyl phthalate
 Concen: 46.760 ng
 RT: 14.710 min Scan# 2112
 Delta R.T. -0.000 min
 Lab File: BF127889.D
 Acq: 25 Apr 2022 19:23

Instrument : BNA_F
 ClientSampleId : MH-8SMSD

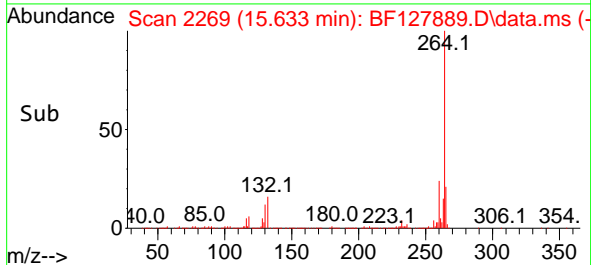
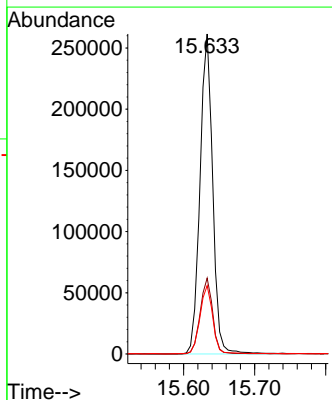
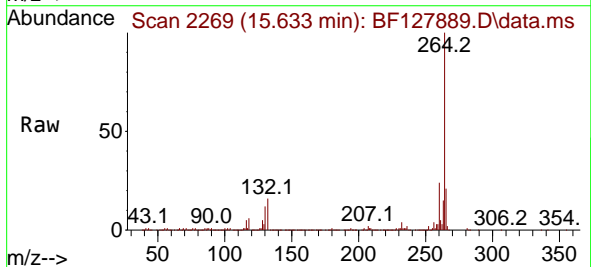


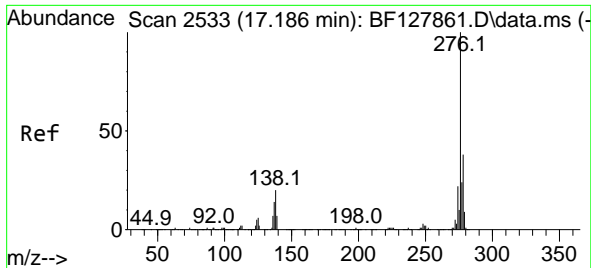
Tgt Ion:149 Resp: 1132526
 Ion Ratio Lower Upper
 149 100
 167 1.5 1.3 1.9
 43 11.4 8.9 13.3



#86
 Perylene-d12
 Concen: 20.000 ng
 RT: 15.633 min Scan# 2269
 Delta R.T. -0.000 min
 Lab File: BF127889.D
 Acq: 25 Apr 2022 19:23

Tgt Ion:264 Resp: 325516
 Ion Ratio Lower Upper
 264 100
 260 23.7 20.1 30.1
 265 21.4 17.5 26.3



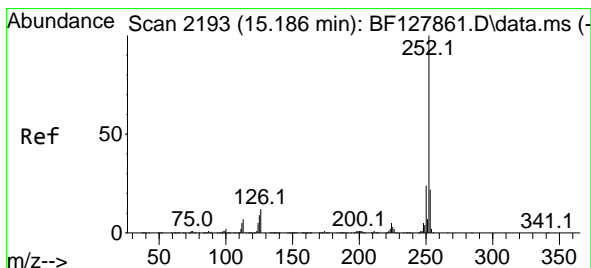
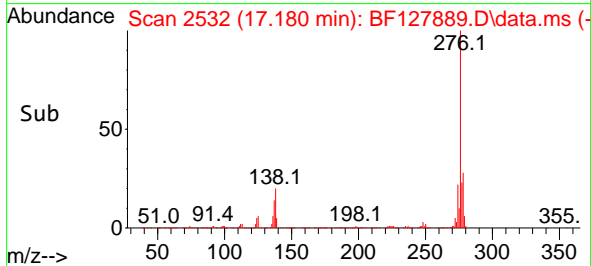
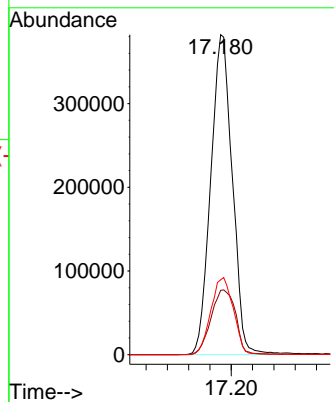
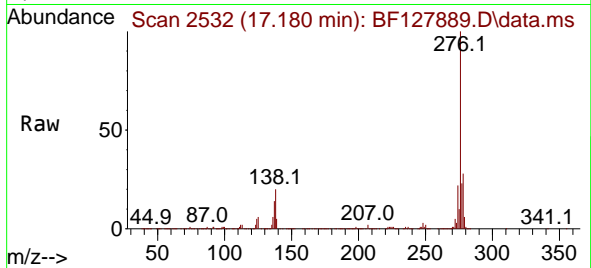


#87
 Indeno(1,2,3-cd)pyrene
 Concen: 49.446 ng
 RT: 17.180 min Scan# 211
 Delta R.T. -0.006 min
 Lab File: BF127889.D
 Acq: 25 Apr 2022 19:23

Instrument : BNA_F
 ClientSampleId : MH-8SMSD

Tgt Ion: 276 Resp: 1074348

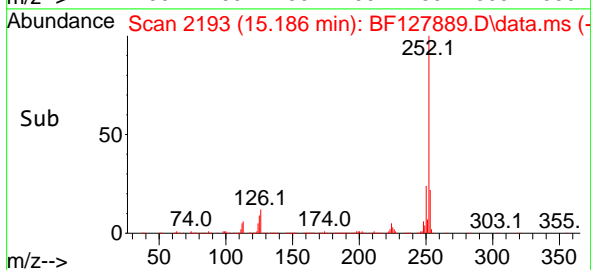
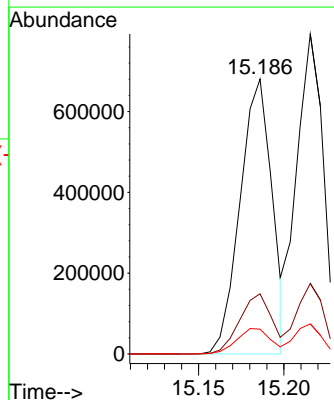
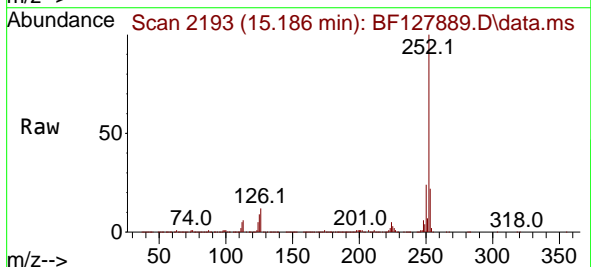
Ion	Ratio	Lower	Upper
276	100		
138	23.2	19.0	28.4
277	25.5	20.1	30.1

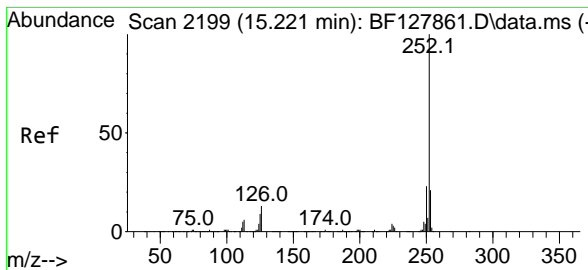


#88
 Benzo(b)fluoranthene
 Concen: 43.526 ng
 RT: 15.186 min Scan# 2193
 Delta R.T. -0.000 min
 Lab File: BF127889.D
 Acq: 25 Apr 2022 19:23

Tgt Ion: 252 Resp: 889904

Ion	Ratio	Lower	Upper
252	100		
253	21.9	17.4	26.2
125	9.0	7.4	11.2



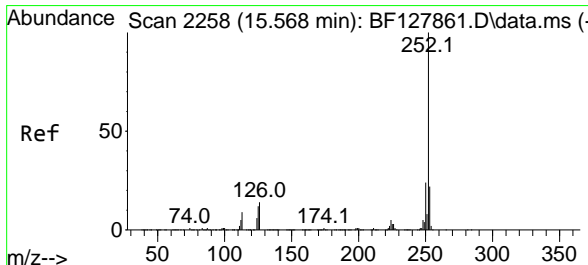
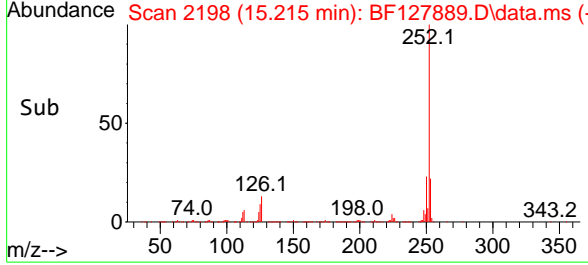
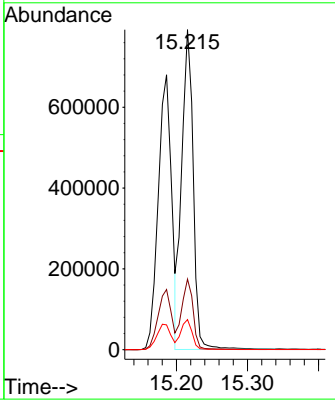
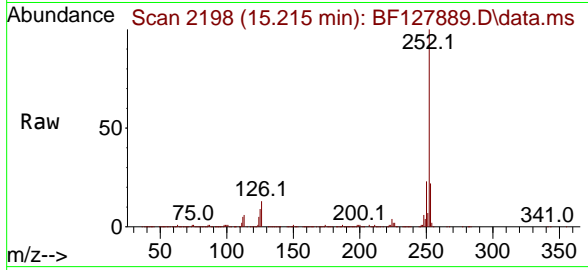


#89
 Benzo(k)fluoranthene
 Concen: 43.049 ng
 RT: 15.215 min Scan# 2198
 Delta R.T. -0.006 min
 Lab File: BF127889.D
 Acq: 25 Apr 2022 19:23

Instrument : BNA_F
 ClientSampleId : MH-8SMSD

Tgt Ion:252 Resp: 886741

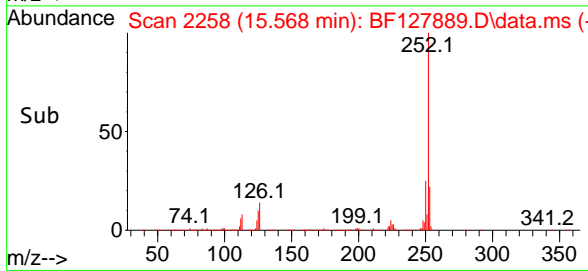
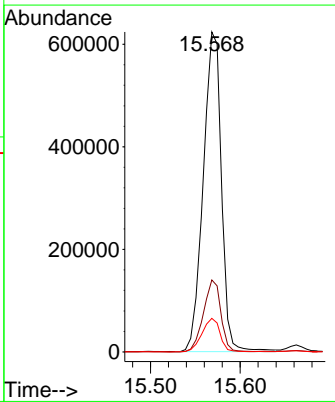
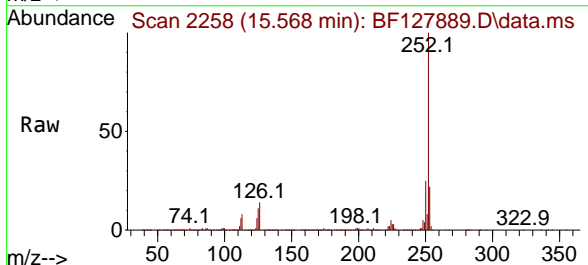
Ion	Ratio	Lower	Upper
252	100		
253	22.1	17.0	25.4
125	9.4	6.8	10.2

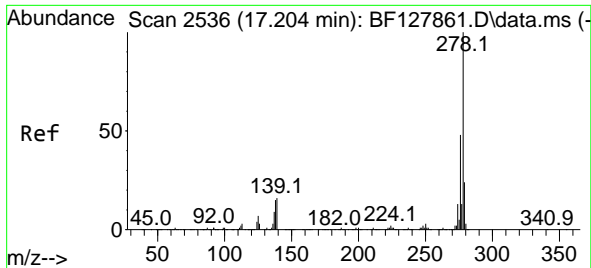


#90
 Benzo(a)pyrene
 Concen: 51.768 ng
 RT: 15.568 min Scan# 2258
 Delta R.T. -0.000 min
 Lab File: BF127889.D
 Acq: 25 Apr 2022 19:23

Tgt Ion:252 Resp: 877945

Ion	Ratio	Lower	Upper
252	100		
253	22.5	17.8	26.6
125	10.5	9.2	13.8



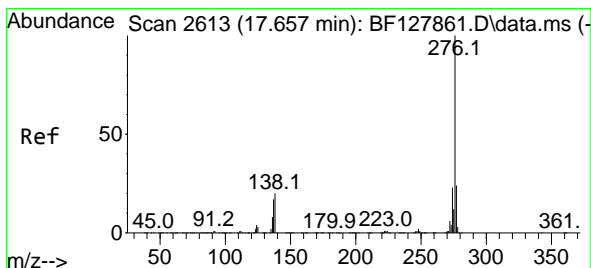
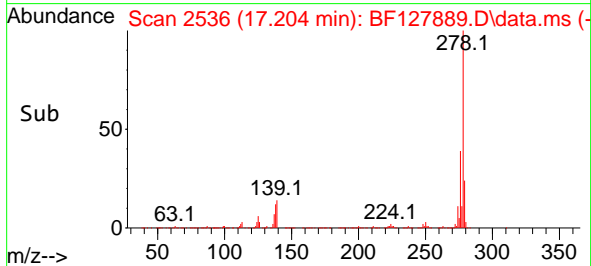
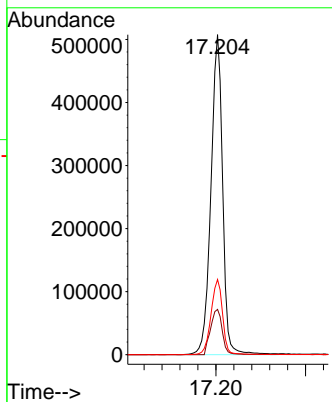
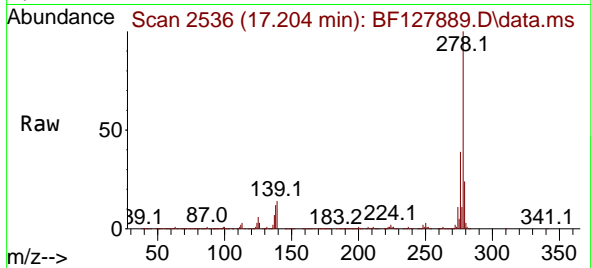


#91
 Dibenzo(a,h)anthracene
 Concen: 52.670 ng
 RT: 17.204 min Scan# 21
 Delta R.T. -0.000 min
 Lab File: BF127889.D
 Acq: 25 Apr 2022 19:23

Instrument :
 BNA_F
 ClientSampleId :
 MH-8SMSD

Tgt Ion: 278 Resp: 917793

Ion	Ratio	Lower	Upper
278	100		
139	14.2	12.6	19.0
279	23.5	18.9	28.3



#92
 Benzo(g,h,i)perylene
 Concen: 52.455 ng
 RT: 17.656 min Scan# 2613
 Delta R.T. -0.000 min
 Lab File: BF127889.D
 Acq: 25 Apr 2022 19:23

Tgt Ion: 276 Resp: 963267

Ion	Ratio	Lower	Upper
276	100		
277	24.2	18.8	28.2
138	20.3	16.2	24.2

