

Data Path : Z:\svoasrv\HPCHEM1\BNA_F\Data\BF050222\
 Data File : BF128015.D
 Acq On : 02 May 2022 09:56
 Operator : CG\JU
 Sample : SSTDCCC040
 Misc :
 ALS Vial : 2 Sample Multiplier: 1

Instrument :
 BNA_F
 ClientSampleId :
 SSTDCCC040

Quant Time: May 02 14:35:40 2022
 Quant Method : Z:\svoasrv\HPCHEM1\BNA_F\Methods\8270-BF042222.M
 Quant Title : ASP BNA STANDARDS FOR 5 POINT CALIBRATION
 QLast Update : Thu Apr 28 05:13:03 2022
 Response via : Initial Calibration

Compound	R.T.	QIon	Response	Conc Units	Dev(Min)
Internal Standards					
1) 1,4-Dichlorobenzene-d4	6.934	152	123453	20.000 ng	0.00
21) Naphthalene-d8	8.216	136	455442	20.000 ng	0.00
39) Acenaphthene-d10	9.975	164	264185	20.000 ng	0.00
64) Phenanthrene-d10	11.469	188	489841	20.000 ng	0.00
76) Chrysene-d12	14.121	240	322187	20.000 ng	0.00
86) Perylene-d12	15.633	264	251007	20.000 ng	0.01
System Monitoring Compounds					
5) 2-Fluorophenol	5.551	112	625140	80.655 ng	0.00
7) Phenol-d6	6.563	99	844570	83.977 ng	0.00
23) Nitrobenzene-d5	7.504	82	850681	87.832 ng	0.00
42) 2,4,6-Tribromophenol	10.775	330	245235	92.212 ng	0.00
45) 2-Fluorobiphenyl	9.292	172	1359346	87.047 ng	0.00
79) Terphenyl-d14	13.057	244	1546959	87.797 ng	0.00
Target Compounds					
2) 1,4-Dioxane	2.769	88	146354	39.576 ng	Qvalue 97
3) Pyridine	3.540	79	396654	41.862 ng	98
4) n-Nitrosodimethylamine	3.516	42	194172	42.336 ng	97
6) Aniline	6.598	93	503070	42.101 ng	99
8) 2-Chlorophenol	6.722	128	330777	41.118 ng	97
9) Benzaldehyde	6.487	77	221287	35.567 ng	96
10) Phenol	6.575	94	456582	45.012 ng	94
11) bis(2-Chloroethyl)ether	6.669	93	346177	41.141 ng	97
12) 1,3-Dichlorobenzene	6.875	146	371887	40.161 ng	98
13) 1,4-Dichlorobenzene	6.951	146	378281	40.927 ng	98
14) 1,2-Dichlorobenzene	7.104	146	345195	40.343 ng	99
15) Benzyl Alcohol	7.075	79	316476	46.274 ng	97
16) 2,2'-oxybis(1-Chloropr...	7.204	45	536615	41.727 ng	98
17) 2-Methylphenol	7.181	107	295193	42.530 ng	96
18) Hexachloroethane	7.440	117	143400	42.201 ng	94
19) n-Nitroso-di-n-propyla...	7.345	70	265126	43.065 ng	98
20) 3+4-Methylphenols	7.340	107	350847	41.844 ng	# 83
22) Acetophenone	7.345	105	465153	41.903 ng	95
24) Nitrobenzene	7.522	77	407826	43.698 ng	98
25) Isophorone	7.757	82	706274	43.327 ng	99
26) 2-Nitrophenol	7.834	139	180336	45.345 ng	96
27) 2,4-Dimethylphenol	7.863	122	277664	42.034 ng	97
28) bis(2-Chloroethoxy)met...	7.957	93	442024	42.311 ng	99
29) 2,4-Dichlorophenol	8.075	162	288963	41.756 ng	99
30) 1,2,4-Trichlorobenzene	8.157	180	328937	41.845 ng	99
31) Naphthalene	8.239	128	954478	41.147 ng	99
32) Benzoic acid	7.998	122	165250	34.902 ng	96
33) 4-Chloroaniline	8.287	127	392426	42.757 ng	97
34) Hexachlorobutadiene	8.345	225	218654	44.160 ng	98
35) Caprolactam	8.675	113	96827	43.346 ng	94
36) 4-Chloro-3-methylphenol	8.769	107	328880	44.499 ng	95
37) 2-Methylnaphthalene	8.928	142	646842	42.194 ng	99
38) 1-Methylnaphthalene	9.028	142	624468	41.908 ng	99
40) 1,2,4,5-Tetrachloroben...	9.092	216	324739	41.703 ng	99
41) Hexachlorocyclopentadiene	9.075	237	171908	40.747 ng	99
43) 2,4,6-Trichlorophenol	9.210	196	213226	41.616 ng	98

Data Path : Z:\svoasrv\HPCHEM1\BNA_F\Data\BF050222\
 Data File : BF128015.D
 Acq On : 02 May 2022 09:56
 Operator : CG\JU
 Sample : SSTDCCC040
 Misc :
 ALS Vial : 2 Sample Multiplier: 1

Instrument :
 BNA_F
 ClientSampleId :
 SSTDCCC040

Quant Time: May 02 14:35:40 2022
 Quant Method : Z:\svoasrv\HPCHEM1\BNA_F\Methods\8270-BF042222.M
 Quant Title : ASP BNA STANDARDS FOR 5 POINT CALIBRATION
 QLast Update : Thu Apr 28 05:13:03 2022
 Response via : Initial Calibration

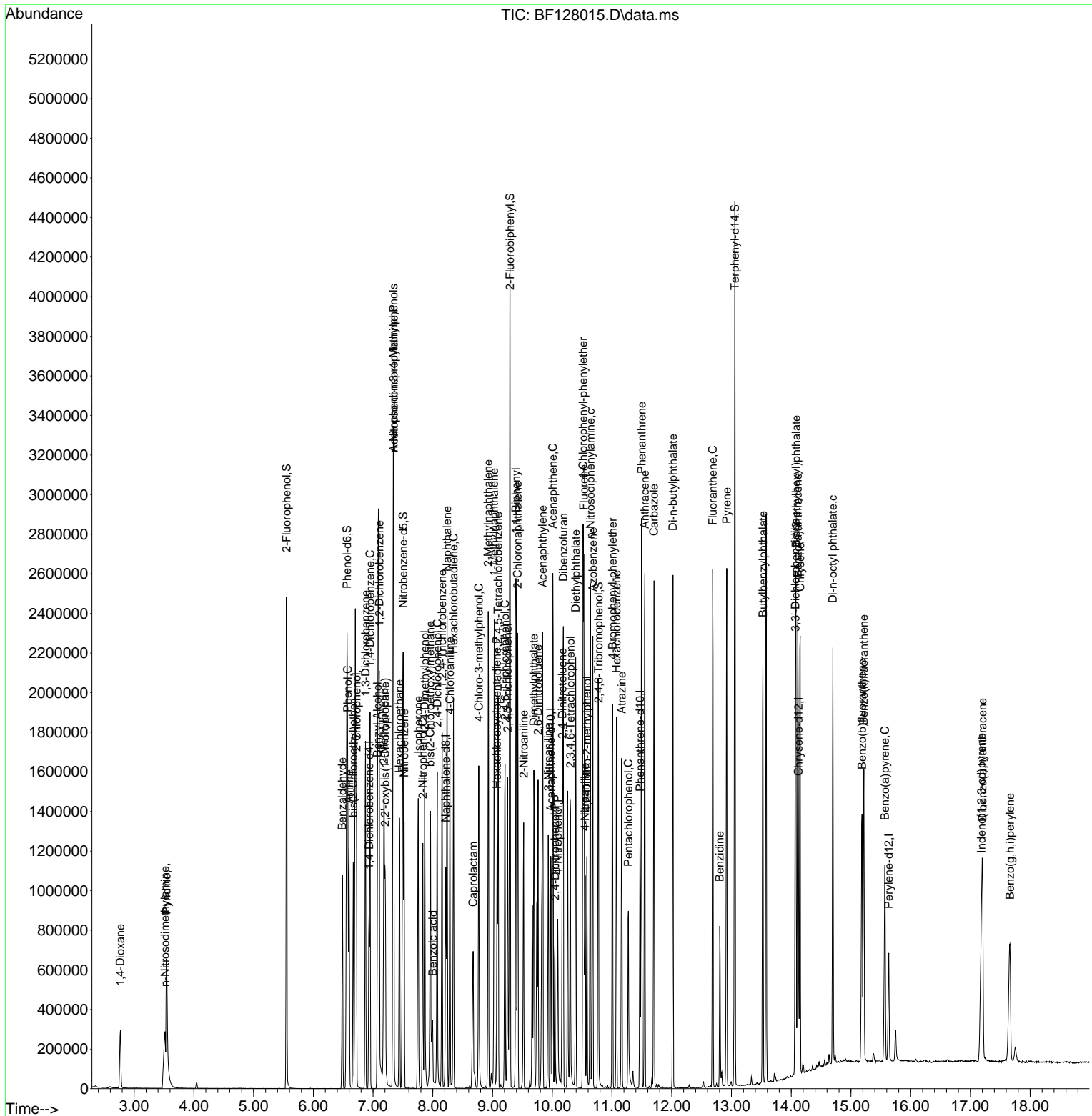
Compound	R.T.	QIon	Response	Conc	Units	Dev(Min)
44) 2,4,5-Trichlorophenol	9.251	196	235113	42.211	ng	99
46) 1,1'-Biphenyl	9.392	154	805821	41.178	ng	99
47) 2-Chloronaphthalene	9.422	162	600705	40.322	ng	96
48) 2-Nitroaniline	9.522	65	227990	45.242	ng	98
49) Acenaphthylene	9.839	152	929302	40.780	ng	100
50) Dimethylphthalate	9.692	163	748342	42.237	ng	100
51) 2,6-Dinitrotoluene	9.763	165	163692	42.672	ng	97
52) Acenaphthene	10.010	154	575921	37.591	ng	100
53) 3-Nitroaniline	9.933	138	179050	42.033	ng	98
54) 2,4-Dinitrophenol	10.045	184	92146	45.611	ng	91
55) Dibenzofuran	10.186	168	891956	40.353	ng	99
56) 4-Nitrophenol	10.092	139	126883	39.007	ng	91
57) 2,4-Dinitrotoluene	10.169	165	216522	42.612	ng #	83
58) Fluorene	10.528	166	693402	42.040	ng	99
59) 2,3,4,6-Tetrachlorophenol	10.304	232	201926	43.111	ng	99
60) Diethylphthalate	10.392	149	730791	42.063	ng	100
61) 4-Chlorophenyl-phenyle...	10.516	204	352535	43.012	ng	97
62) 4-Nitroaniline	10.551	138	176360	42.348	ng	93
63) Azobenzene	10.680	77	809729	42.355	ng	97
65) 4,6-Dinitro-2-methylph...	10.580	198	137143	47.119	ng	91
66) n-Nitrosodiphenylamine	10.639	169	613256	40.235	ng	98
67) 4-Bromophenyl-phenylether	11.010	248	225072	41.448	ng	96
68) Hexachlorobenzene	11.075	284	239751	41.906	ng	99
69) Atrazine	11.163	200	192918	40.933	ng	96
70) Pentachlorophenol	11.275	266	127341	37.834	ng	99
71) Phenanthrene	11.498	178	1016469	39.642	ng	99
72) Anthracene	11.551	178	1026618	40.193	ng	100
73) Carbazole	11.704	167	965300	39.213	ng	100
74) Di-n-butylphthalate	12.022	149	1154214	41.697	ng	100
75) Fluoranthene	12.686	202	1082139	40.100	ng	99
77) Benzidine	12.804	184	311068	51.026	ng	99
78) Pyrene	12.922	202	1091588	41.970	ng	99
80) Butylbenzylphthalate	13.527	149	469055	46.012	ng	94
81) Benzo(a)anthracene	14.110	228	894960	41.675	ng	99
82) 3,3'-Dichlorobenzidine	14.069	252	271327	39.793	ng	98
83) Chrysene	14.151	228	836603	40.792	ng	99
84) Bis(2-ethylhexyl)phtha...	14.080	149	608651	45.023	ng	99
85) Di-n-octyl phthalate	14.698	149	926791	44.238	ng	99
87) Indeno(1,2,3-cd)pyrene	17.186	276	669974	39.988	ng	97
88) Benzo(b)fluoranthene	15.186	252	683245	43.338	ng	98
89) Benzo(k)fluoranthene	15.215	252	651286	41.004	ng	98
90) Benzo(a)pyrene	15.568	252	535276	40.932	ng	97
91) Dibenzo(a,h)anthracene	17.204	278	547762	40.766	ng	97
92) Benzo(g,h,i)perylene	17.662	276	565066	39.905	ng	97

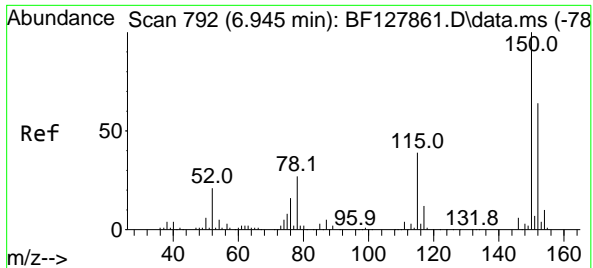
(#) = qualifier out of range (m) = manual integration (+) = signals summed

Data Path : Z:\svoasrv\HPCHEM1\BNA_F\Data\BF050222\
 Data File : BF128015.D
 Acq On : 02 May 2022 09:56
 Operator : CG\JU
 Sample : SSTDCCC040
 Misc :
 ALS Vial : 2 Sample Multiplier: 1

Instrument :
 BNA_F
 ClientSampleId :
 SSTDCCC040

Quant Time: May 02 14:35:40 2022
 Quant Method : Z:\svoasrv\HPCHEM1\BNA_F\Methods\8270-BF042222.M
 Quant Title : ASP BNA STANDARDS FOR 5 POINT CALIBRATION
 QLast Update : Thu Apr 28 05:13:03 2022
 Response via : Initial Calibration

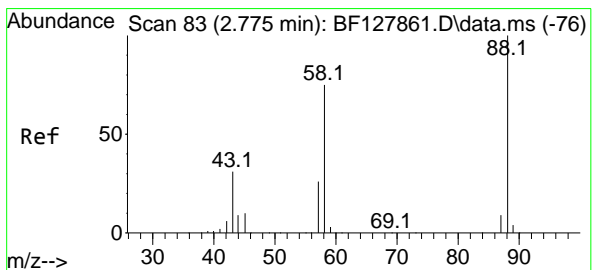
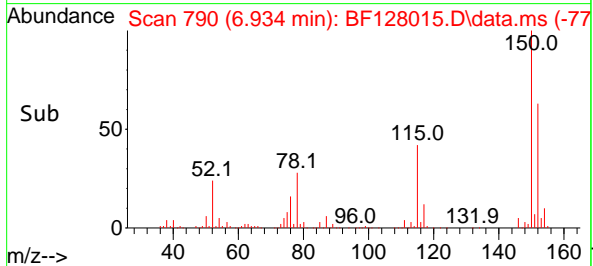
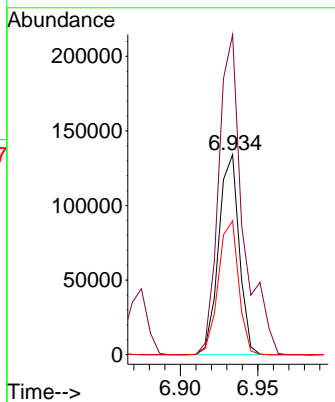
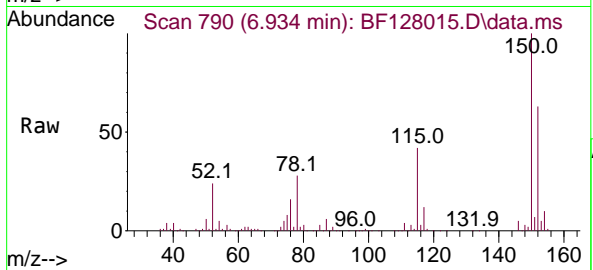




#1
 1,4-Dichlorobenzene-d4
 Concen: 20.000 ng
 RT: 6.934 min Scan# 792
 Delta R.T. -0.000 min
 Lab File: BF128015.D
 Acq: 02 May 2022 09:56

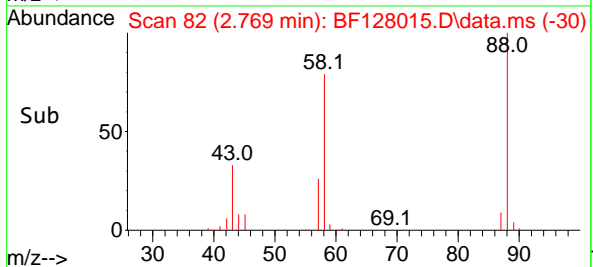
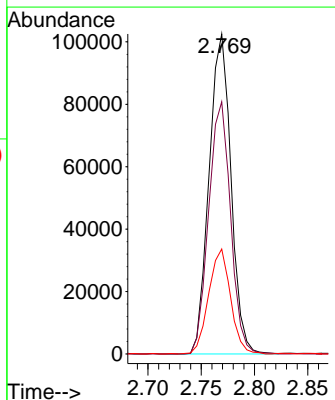
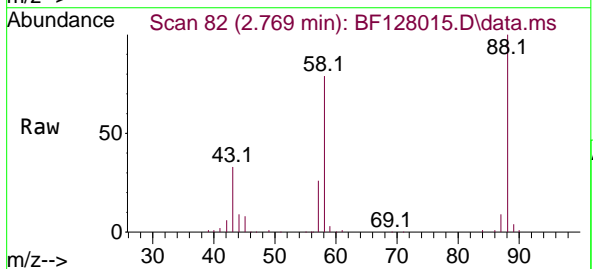
Instrument :
 BNA_F
 ClientSampleId :
 SSTDCCC040

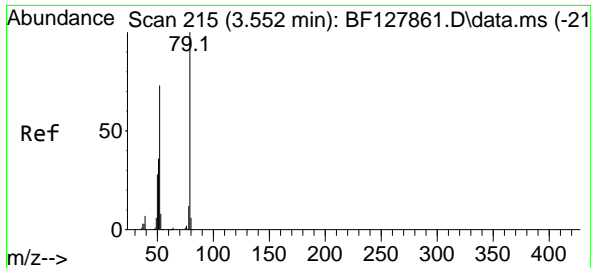
Tgt Ion:152 Resp: 123453
 Ion Ratio Lower Upper
 152 100
 150 160.0 125.3 187.9
 115 66.9 48.8 73.2



#2
 1,4-Dioxane
 Concen: 39.576 ng
 RT: 2.769 min Scan# 82
 Delta R.T. 0.006 min
 Lab File: BF128015.D
 Acq: 02 May 2022 09:56

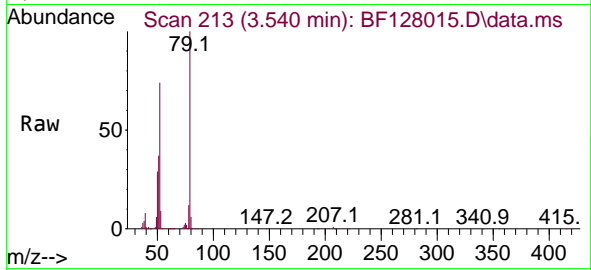
Tgt Ion: 88 Resp: 146354
 Ion Ratio Lower Upper
 88 100
 58 78.8 61.0 91.4
 43 32.9 24.9 37.3



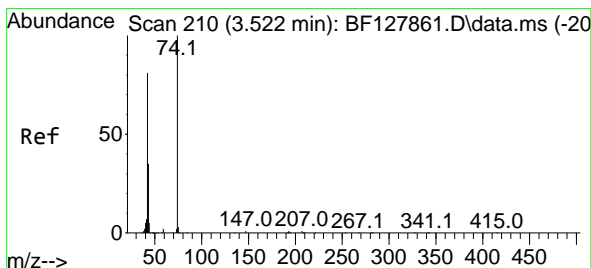
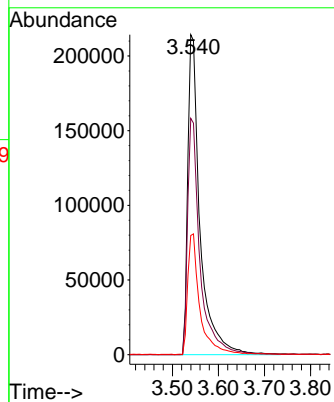
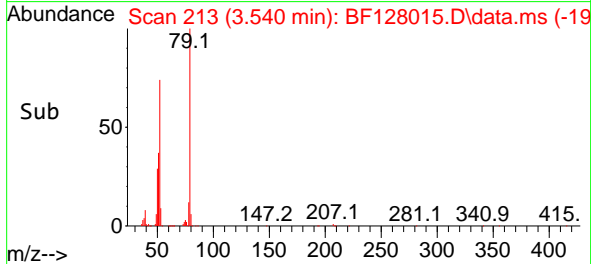


#3
 Pyridine
 Concen: 41.862 ng
 RT: 3.540 min Scan# 215
 Delta R.T. 0.000 min
 Lab File: BF128015.D
 Acq: 02 May 2022 09:56

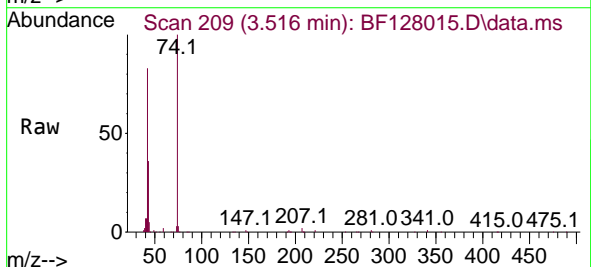
Instrument :
 BNA_F
 ClientSampleId :
 SSTDCCC040



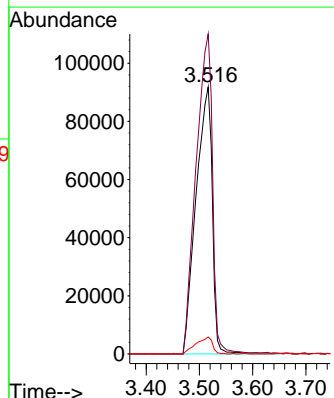
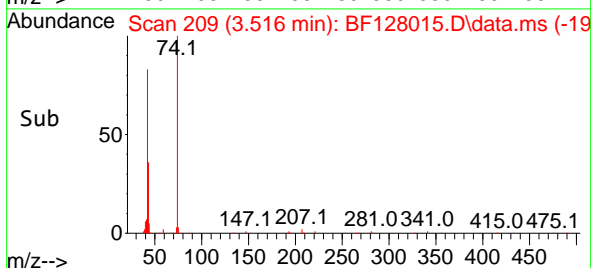
Tgt Ion: 79 Resp: 396654
 Ion Ratio Lower Upper
 79 100
 52 73.8 58.3 87.5
 51 37.2 28.6 42.8

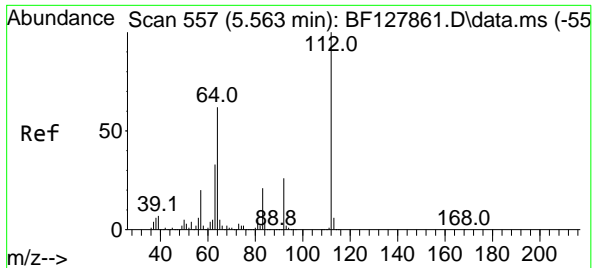


#4
 n-Nitrosodimethylamine
 Concen: 42.336 ng
 RT: 3.516 min Scan# 209
 Delta R.T. 0.006 min
 Lab File: BF128015.D
 Acq: 02 May 2022 09:56



Tgt Ion: 42 Resp: 194172
 Ion Ratio Lower Upper
 42 100
 74 119.8 99.0 148.4
 44 6.3 5.2 7.8

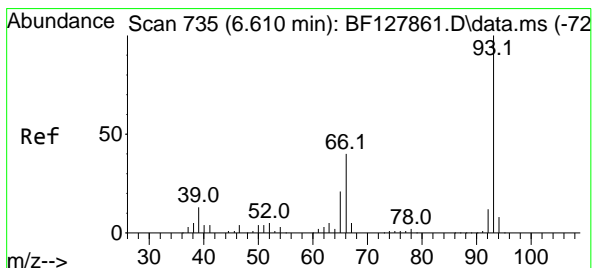
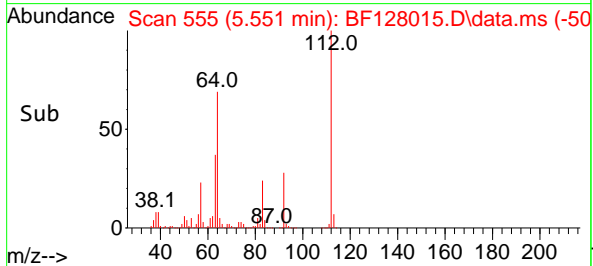
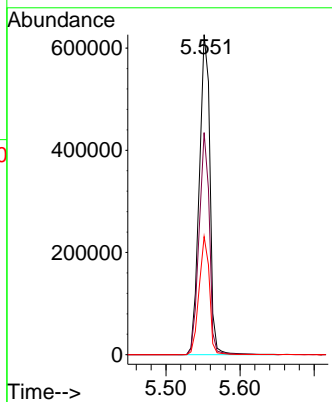
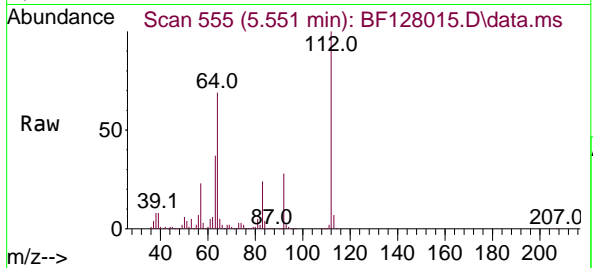




#5
 2-Fluorophenol
 Concen: 80.655 ng
 RT: 5.551 min Scan# 51
 Delta R.T. 0.000 min
 Lab File: BF128015.D
 Acq: 02 May 2022 09:56

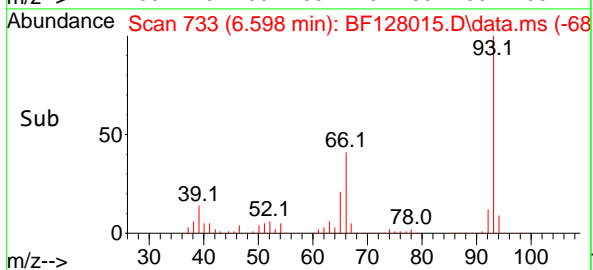
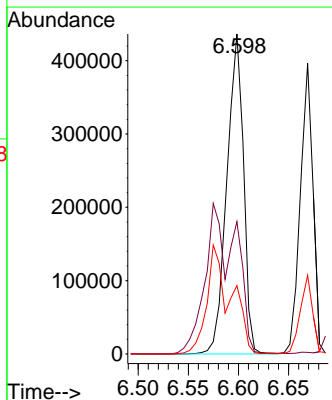
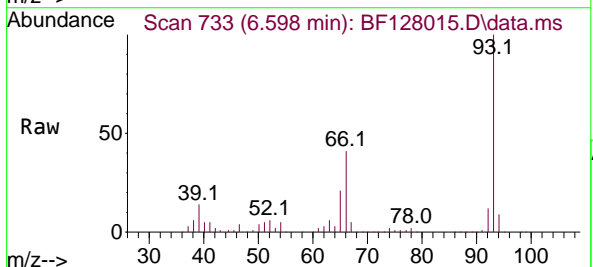
Instrument :
 BNA_F
 ClientSampleId :
 SSTDCCC040

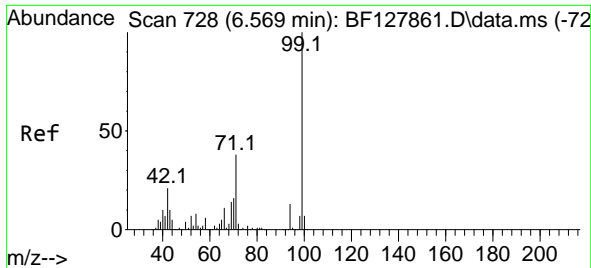
Tgt Ion:112 Resp: 625140
 Ion Ratio Lower Upper
 112 100
 64 69.4 49.5 74.3
 63 36.9 26.3 39.5



#6
 Aniline
 Concen: 42.101 ng
 RT: 6.598 min Scan# 733
 Delta R.T. 0.000 min
 Lab File: BF128015.D
 Acq: 02 May 2022 09:56

Tgt Ion: 93 Resp: 503070
 Ion Ratio Lower Upper
 93 100
 66 41.4 32.2 48.4
 65 21.3 16.7 25.1



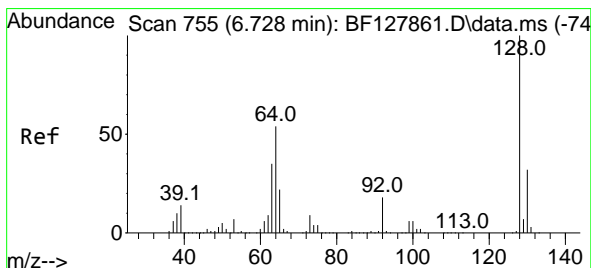
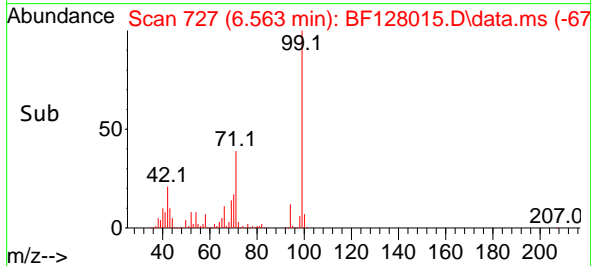
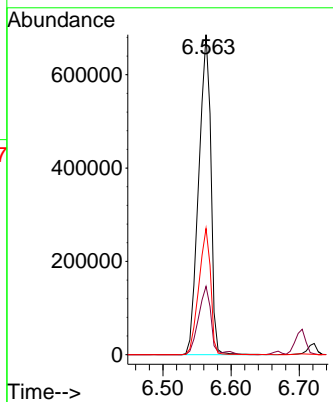
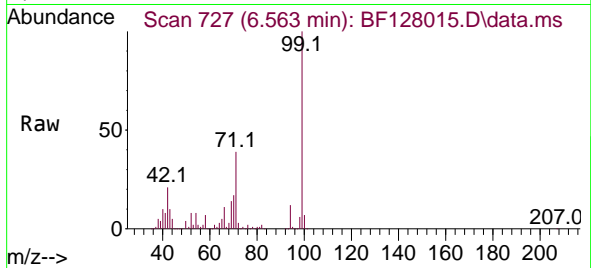


#7
 Phenol-d6
 Concen: 83.977 ng
 RT: 6.563 min Scan# 71
 Delta R.T. 0.000 min
 Lab File: BF128015.D
 Acq: 02 May 2022 09:56

Instrument :
 BNA_F
 ClientSampleId :
 SSTDCCC040

Tgt Ion: 99 Resp: 844570

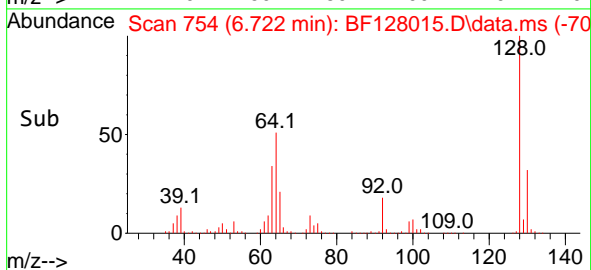
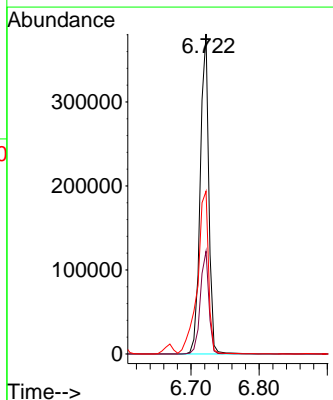
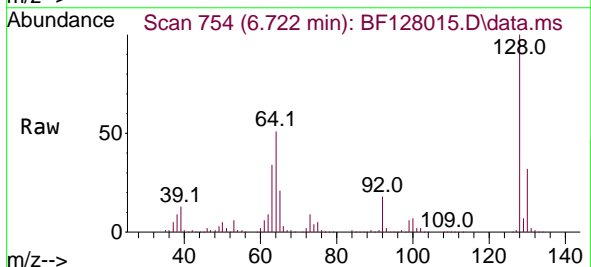
Ion	Ratio	Lower	Upper
99	100		
42	21.3	16.6	24.8
71	39.5	30.0	45.0

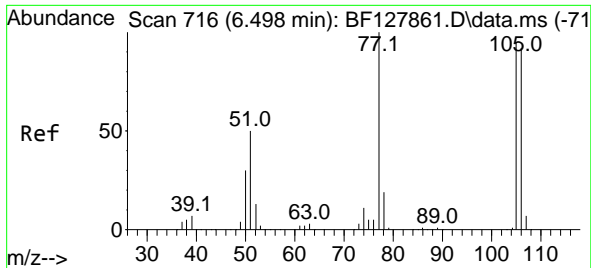


#8
 2-Chlorophenol
 Concen: 41.118 ng
 RT: 6.722 min Scan# 754
 Delta R.T. 0.000 min
 Lab File: BF128015.D
 Acq: 02 May 2022 09:56

Tgt Ion: 128 Resp: 330777

Ion	Ratio	Lower	Upper
128	100		
130	32.1	11.6	51.6
64	50.8	33.8	73.8

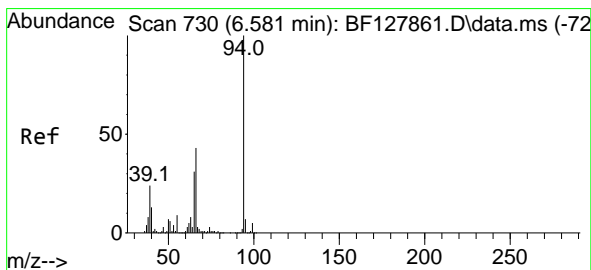
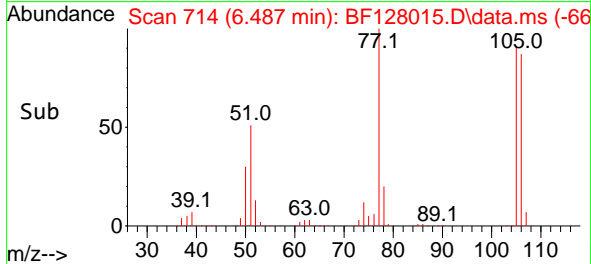
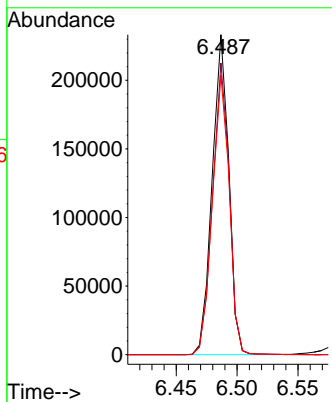
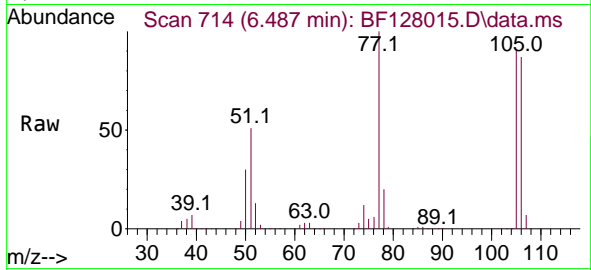




#9
 Benzaldehyde
 Concen: 35.567 ng
 RT: 6.487 min Scan# 716
 Delta R.T. 0.000 min
 Lab File: BF128015.D
 Acq: 02 May 2022 09:56

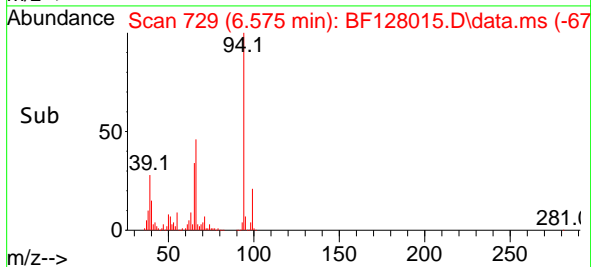
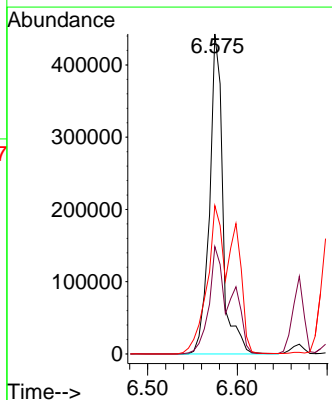
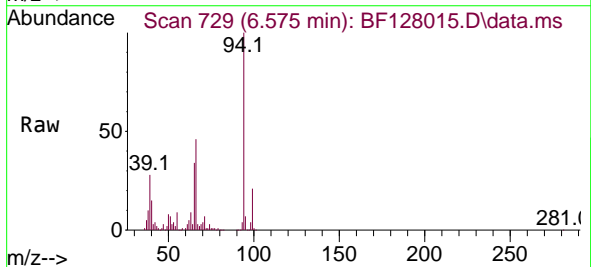
Instrument :
 BNA_F
 ClientSampleId :
 SSTDCCC040

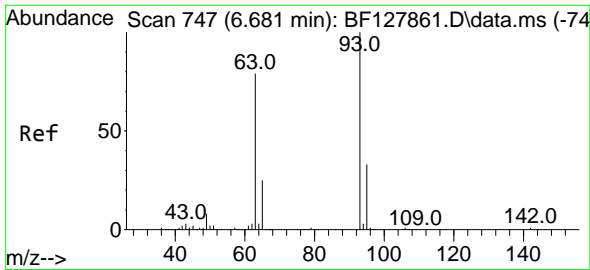
Tgt Ion: 77 Resp: 221287
 Ion Ratio Lower Upper
 77 100
 105 91.2 74.9 114.9
 106 87.4 72.2 112.2



#10
 Phenol
 Concen: 45.012 ng
 RT: 6.575 min Scan# 729
 Delta R.T. 0.000 min
 Lab File: BF128015.D
 Acq: 02 May 2022 09:56

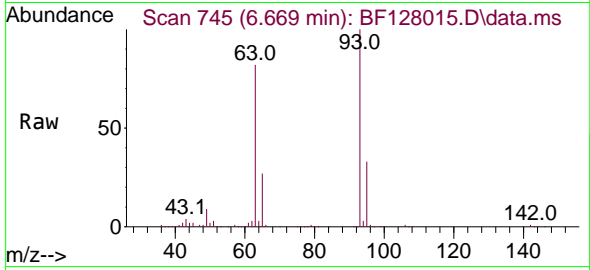
Tgt Ion: 94 Resp: 456582
 Ion Ratio Lower Upper
 94 100
 65 33.5 10.6 50.6
 66 46.4 22.6 62.6





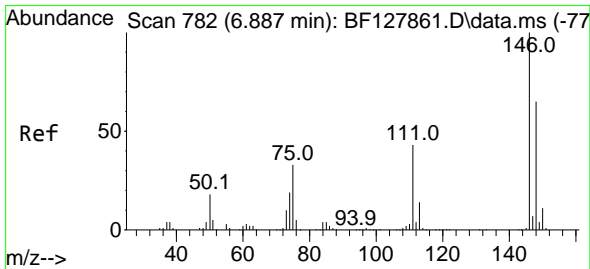
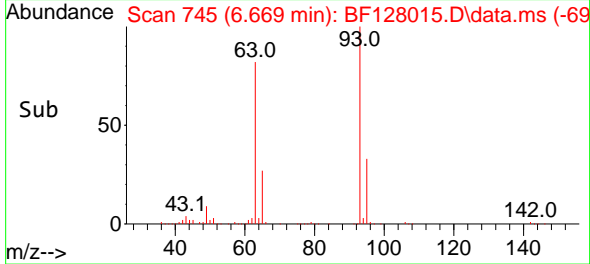
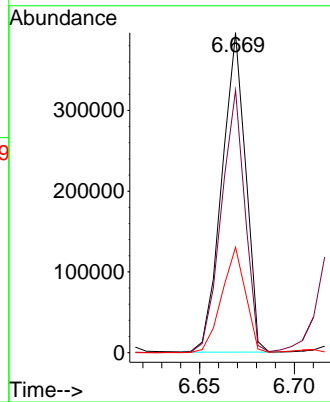
#11
 bis(2-Chloroethyl)ether
 Concen: 41.141 ng
 RT: 6.669 min Scan# 74
 Delta R.T. 0.000 min
 Lab File: BF128015.D
 Acq: 02 May 2022 09:56

Instrument :
 BNA_F
 ClientSampleId :
 SSTDCCC040

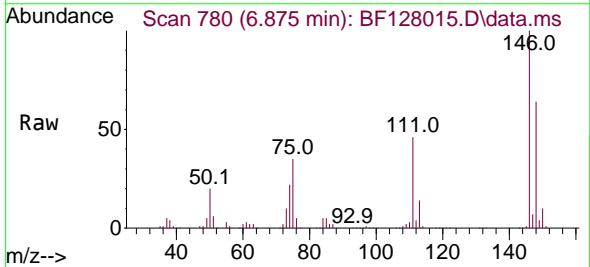


Tgt Ion: 93 Resp: 346177

Ion	Ratio	Lower	Upper
93	100		
63	82.0	58.6	98.6
95	33.0	12.9	52.9

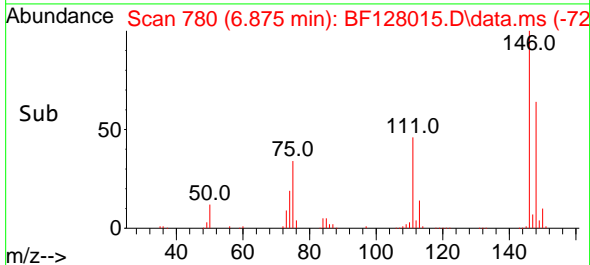
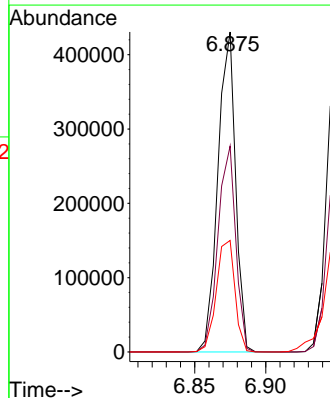


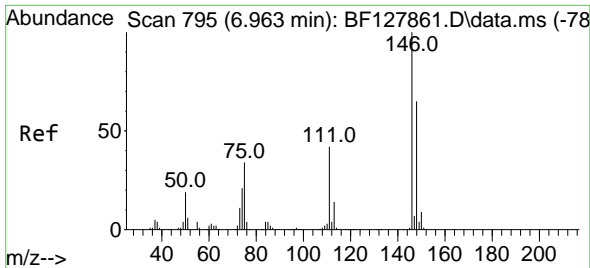
#12
 1,3-Dichlorobenzene
 Concen: 40.161 ng
 RT: 6.875 min Scan# 780
 Delta R.T. 0.000 min
 Lab File: BF128015.D
 Acq: 02 May 2022 09:56



Tgt Ion: 146 Resp: 371887

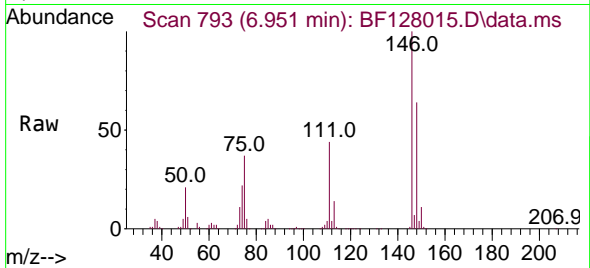
Ion	Ratio	Lower	Upper
146	100		
148	64.4	52.1	78.1
75	34.9	26.2	39.4



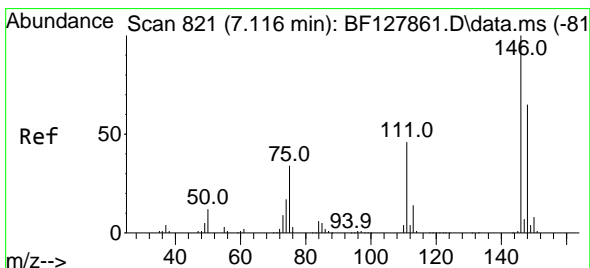
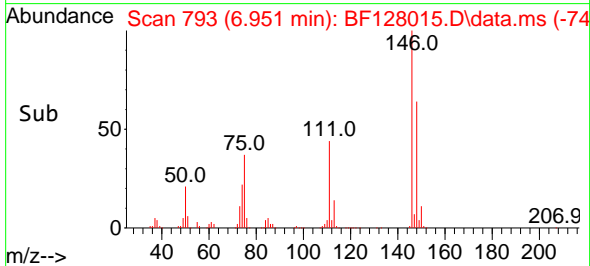
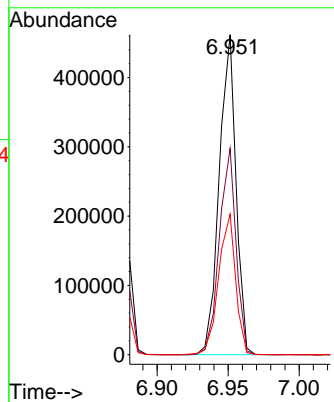


#13
 1,4-Dichlorobenzene
 Concen: 40.927 ng
 RT: 6.951 min Scan# 795
 Delta R.T. 0.000 min
 Lab File: BF128015.D
 Acq: 02 May 2022 09:56

Instrument :
 BNA_F
 ClientSampleId :
 SSTDCCC040

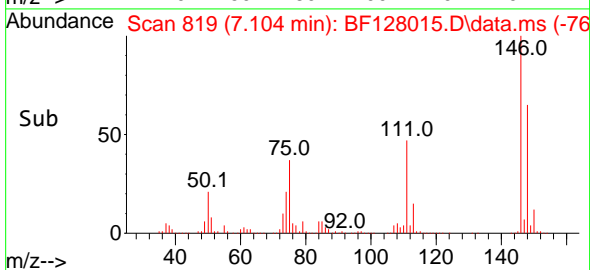
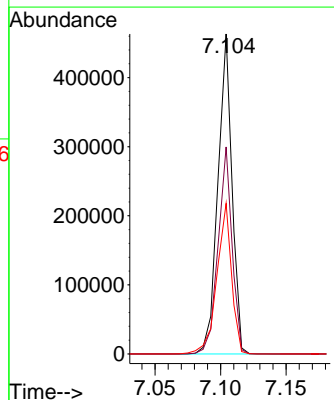
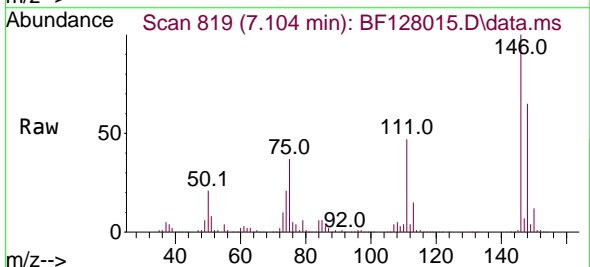


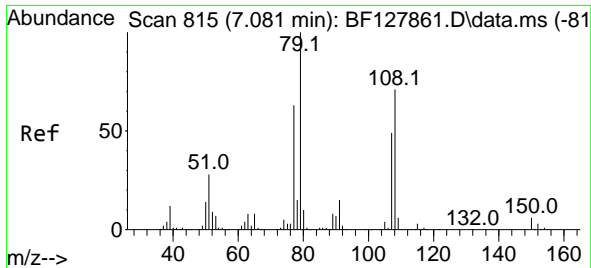
Tgt Ion:146 Resp: 378281
 Ion Ratio Lower Upper
 146 100
 148 64.5 52.3 78.5
 111 43.9 33.9 50.9



#14
 1,2-Dichlorobenzene
 Concen: 40.343 ng
 RT: 7.104 min Scan# 819
 Delta R.T. 0.000 min
 Lab File: BF128015.D
 Acq: 02 May 2022 09:56

Tgt Ion:146 Resp: 345195
 Ion Ratio Lower Upper
 146 100
 148 64.7 51.8 77.6
 111 47.0 36.6 55.0



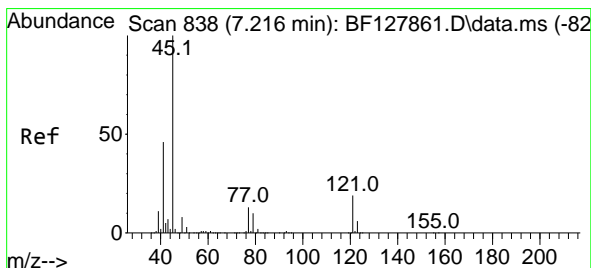
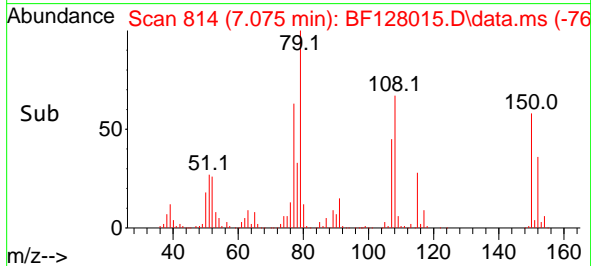
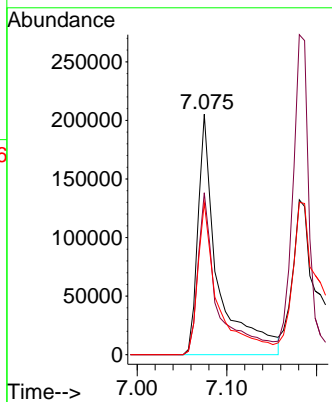
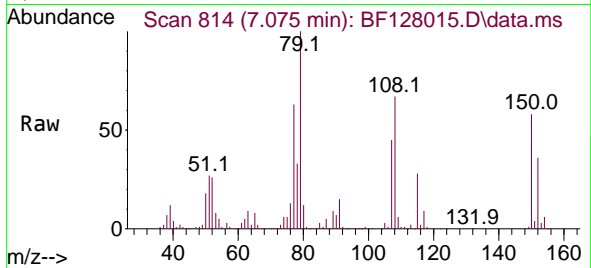


#15
 Benzyl Alcohol
 Concen: 46.274 ng
 RT: 7.075 min Scan# 815
 Delta R.T. 0.000 min
 Lab File: BF128015.D
 Acq: 02 May 2022 09:56

Instrument : BNA_F
 ClientSampleId : SSTDCCC040

Tgt Ion: 79 Resp: 316476

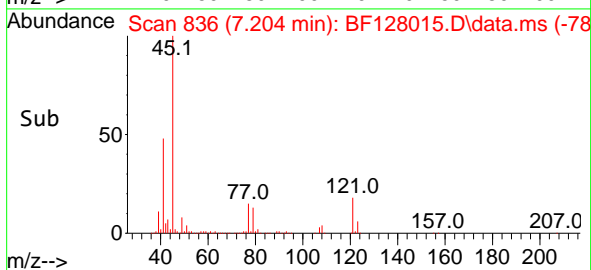
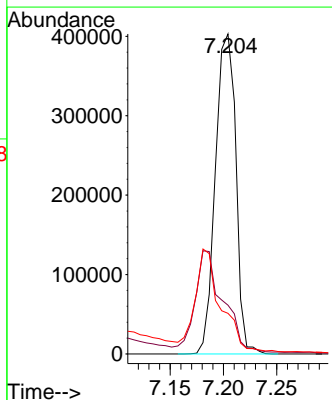
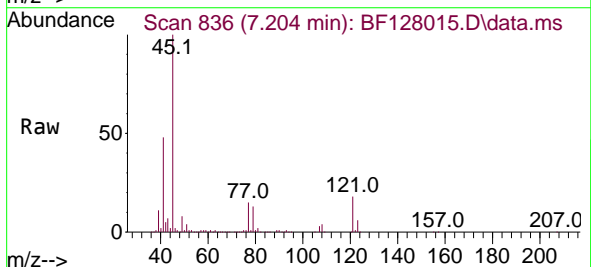
Ion	Ratio	Lower	Upper
79	100		
108	67.4	57.0	85.6
77	63.1	50.2	75.4

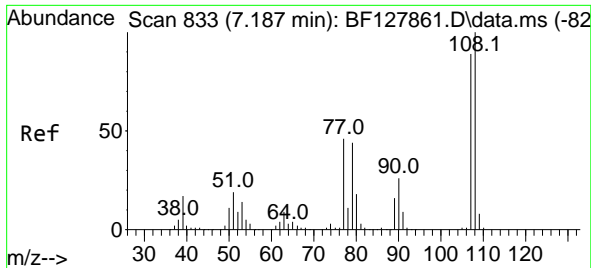


#16
 2,2'-oxybis(1-Chloropropane)
 Concen: 41.727 ng
 RT: 7.204 min Scan# 836
 Delta R.T. 0.000 min
 Lab File: BF128015.D
 Acq: 02 May 2022 09:56

Tgt Ion: 45 Resp: 536615

Ion	Ratio	Lower	Upper
45	100		
77	15.3	0.0	34.9
79	12.7	0.0	31.6



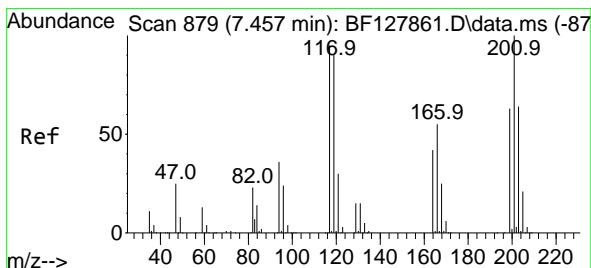
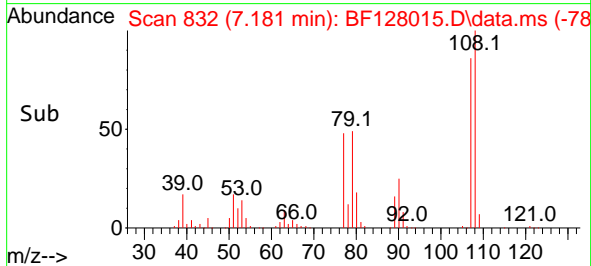
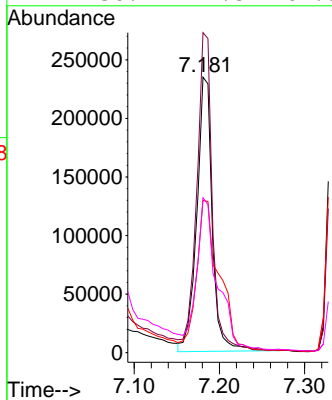
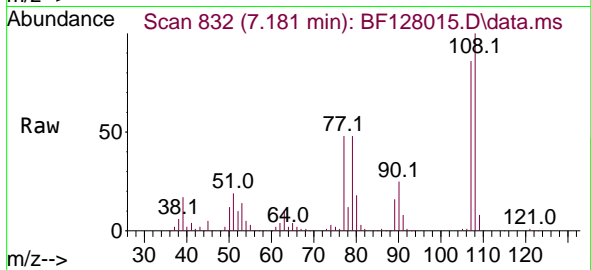


#17
 2-Methylphenol
 Concen: 42.530 ng
 RT: 7.181 min Scan# 811
 Delta R.T. 0.000 min
 Lab File: BF128015.D
 Acq: 02 May 2022 09:56

Instrument : BNA_F
 ClientSampleId : SSTDCCC040

Tgt Ion:107 Resp: 295193

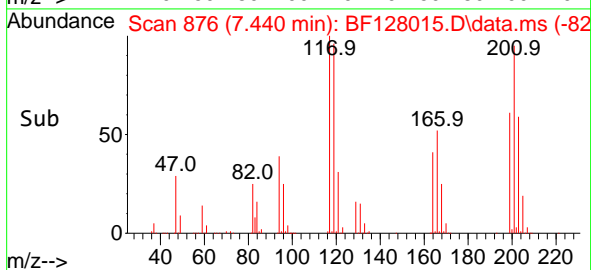
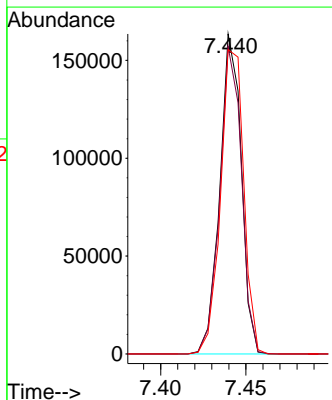
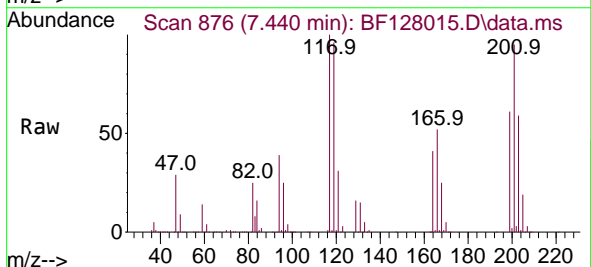
Ion	Ratio	Lower	Upper
107	100		
108	116.1	90.2	135.2
77	55.3	41.9	62.9
79	56.2	41.8	62.8

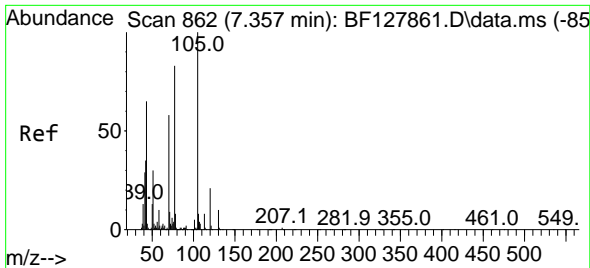


#18
 Hexachloroethane
 Concen: 42.201 ng
 RT: 7.440 min Scan# 876
 Delta R.T. -0.006 min
 Lab File: BF128015.D
 Acq: 02 May 2022 09:56

Tgt Ion:117 Resp: 143400

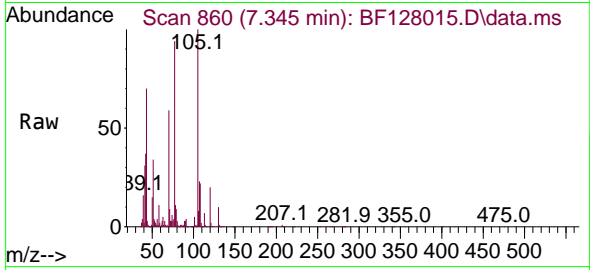
Ion	Ratio	Lower	Upper
117	100		
119	96.1	76.2	114.4
201	95.1	84.4	126.6



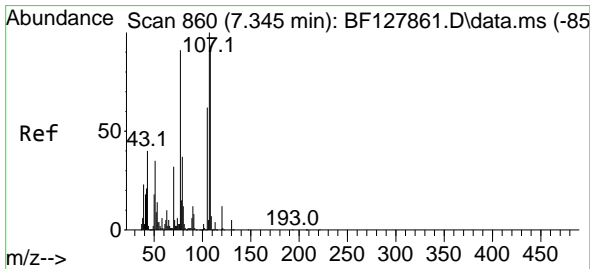
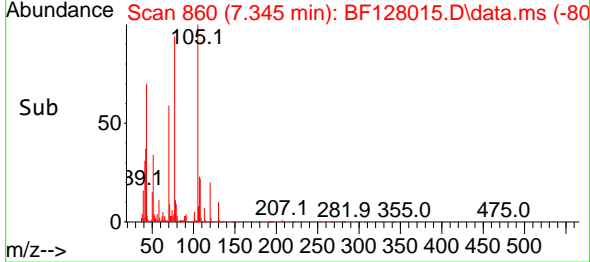
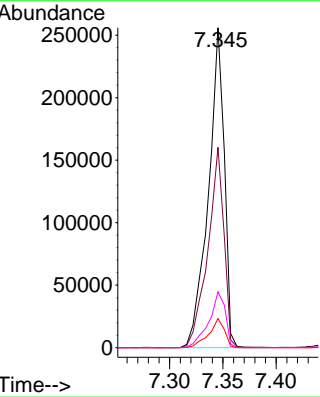


#19
 n-Nitroso-di-n-propylamine
 Concen: 43.065 ng
 RT: 7.345 min Scan# 80
 Delta R.T. 0.000 min
 Lab File: BF128015.D
 Acq: 02 May 2022 09:56

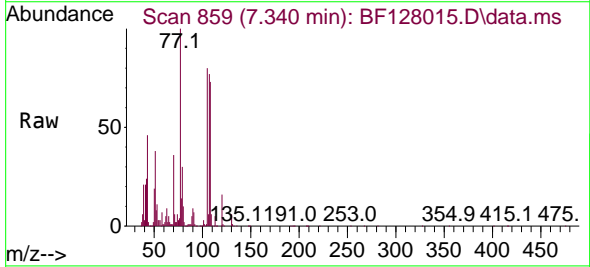
Instrument :
 BNA_F
 ClientSampleId :
 SSTDCCC040



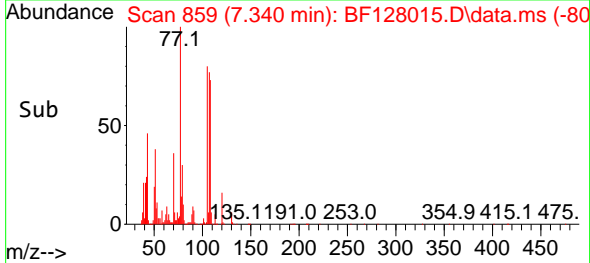
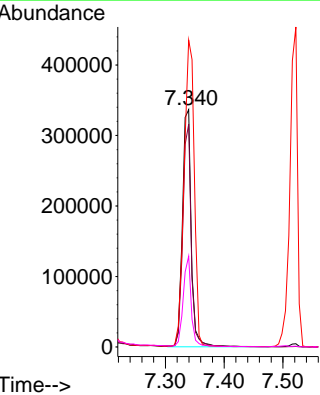
Tgt Ion: 70 Resp: 265126
 Ion Ratio Lower Upper
 70 100
 42 62.6 48.7 73.1
 101 9.1 7.2 10.8
 130 17.4 14.4 21.6

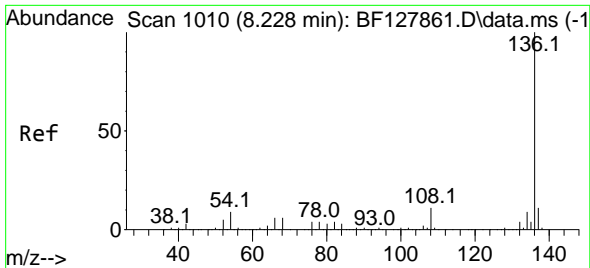


#20
 3+4-Methylphenols
 Concen: 41.844 ng
 RT: 7.340 min Scan# 859
 Delta R.T. 0.006 min
 Lab File: BF128015.D
 Acq: 02 May 2022 09:56



Tgt Ion: 107 Resp: 350847
 Ion Ratio Lower Upper
 107 100
 108 93.8 73.4 113.4
 77 129.3 71.1 111.1#
 79 38.2 17.1 57.1



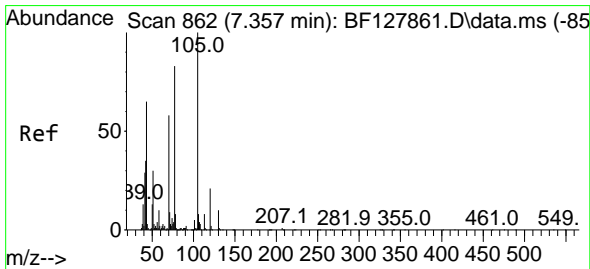
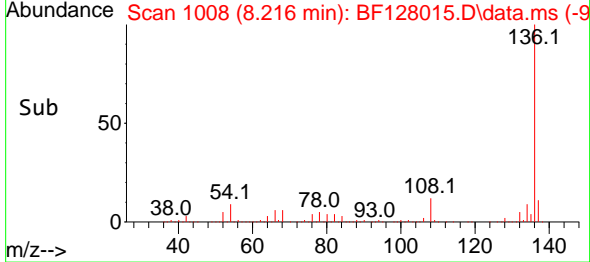
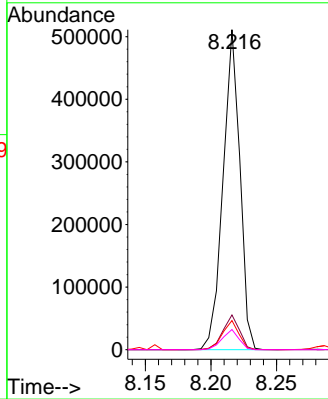
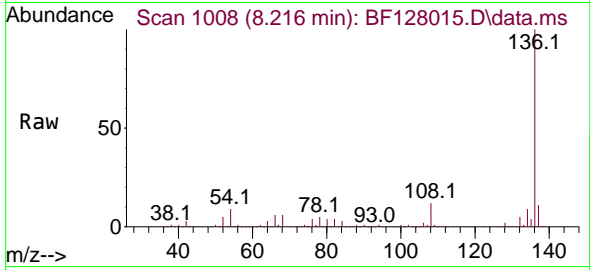


#21
 Naphthalene-d8
 Concen: 20.000 ng
 RT: 8.216 min Scan# 10
 Delta R.T. 0.000 min
 Lab File: BF128015.D
 Acq: 02 May 2022 09:56

Instrument :
 BNA_F
 ClientSampleId :
 SSTDCCC040

Tgt Ion:136 Resp: 455442

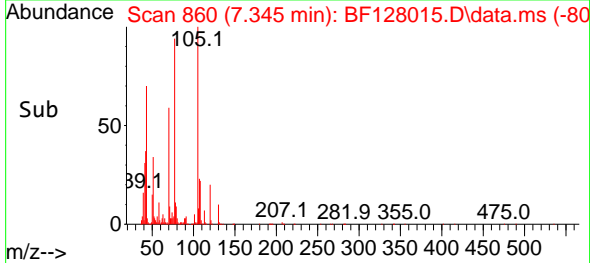
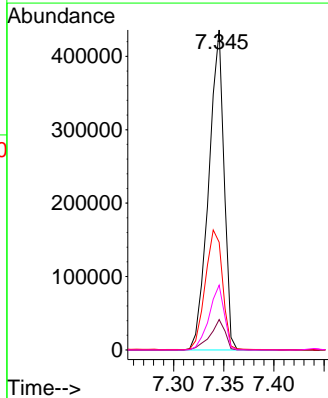
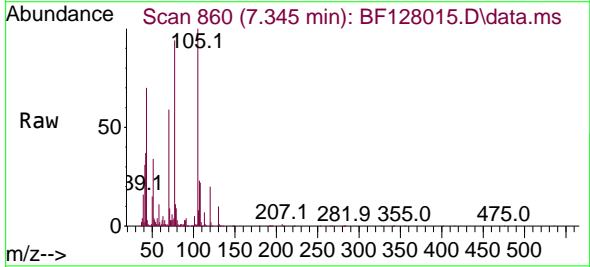
Ion	Ratio	Lower	Upper
136	100		
137	10.9	8.6	13.0
54	9.1	6.8	10.2
68	6.3	5.1	7.7

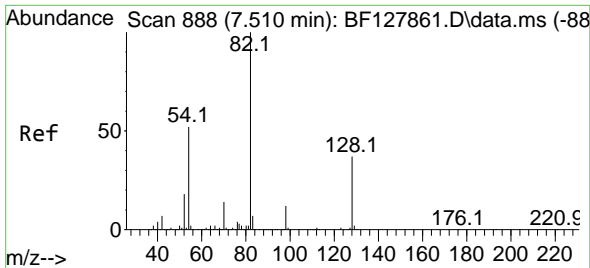


#22
 Acetophenone
 Concen: 41.903 ng
 RT: 7.345 min Scan# 860
 Delta R.T. 0.000 min
 Lab File: BF128015.D
 Acq: 02 May 2022 09:56

Tgt Ion:105 Resp: 465153

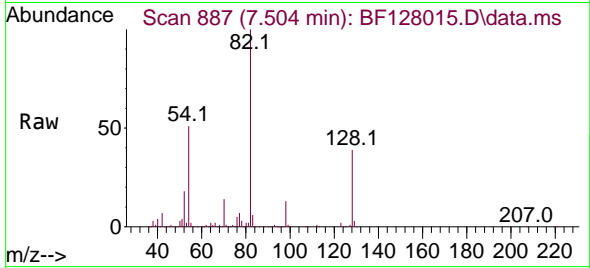
Ion	Ratio	Lower	Upper
105	100		
71	9.5	7.3	10.9
51	33.6	23.7	35.5
120	20.3	17.0	25.6



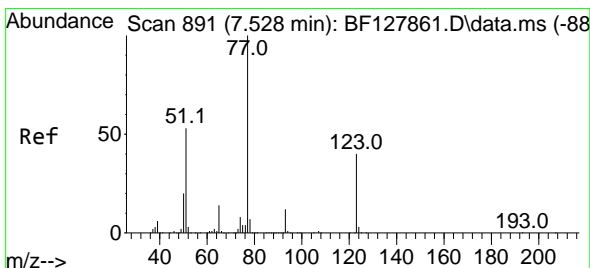
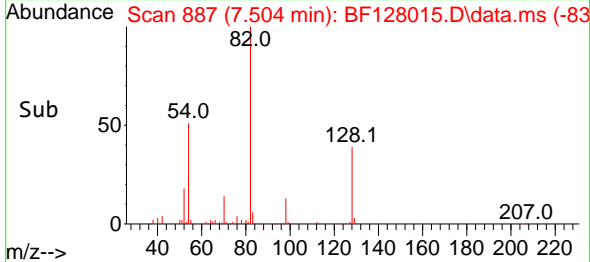
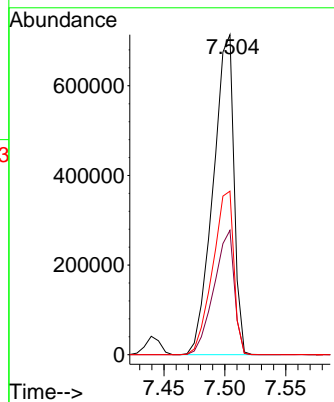


#23
 Nitrobenzene-d5
 Concen: 87.832 ng
 RT: 7.504 min Scan# 81
 Delta R.T. 0.000 min
 Lab File: BF128015.D
 Acq: 02 May 2022 09:56

Instrument :
 BNA_F
 ClientSampleId :
 SSTDCCC040

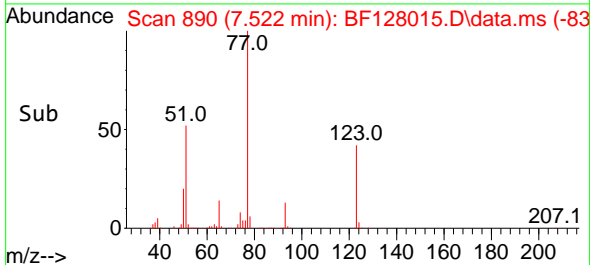
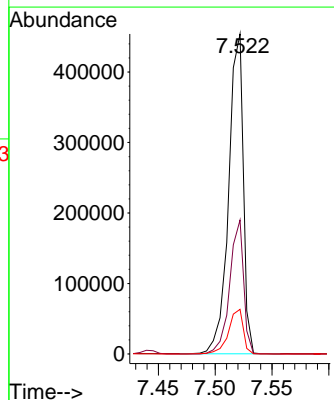
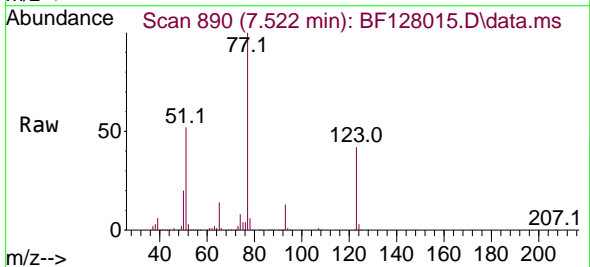


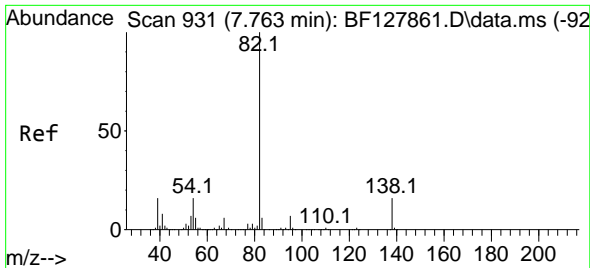
Tgt Ion: 82 Resp: 850681
 Ion Ratio Lower Upper
 82 100
 128 38.9 30.0 45.0
 54 51.1 41.3 61.9



#24
 Nitrobenzene
 Concen: 43.698 ng
 RT: 7.522 min Scan# 890
 Delta R.T. 0.000 min
 Lab File: BF128015.D
 Acq: 02 May 2022 09:56

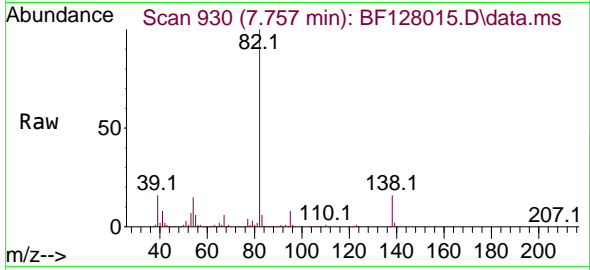
Tgt Ion: 77 Resp: 407826
 Ion Ratio Lower Upper
 77 100
 123 41.9 32.0 48.0
 65 14.0 11.0 16.6



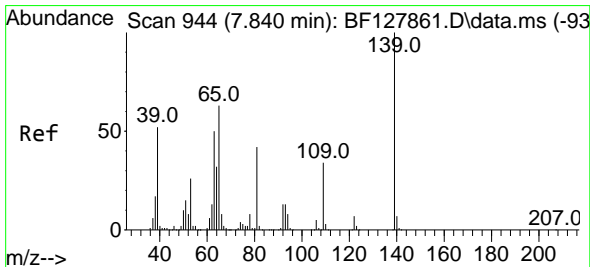
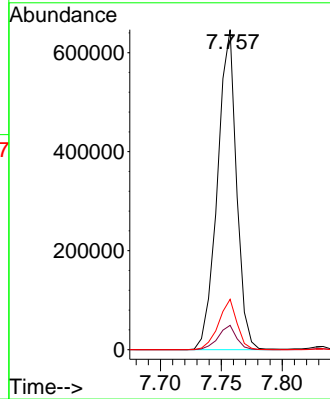
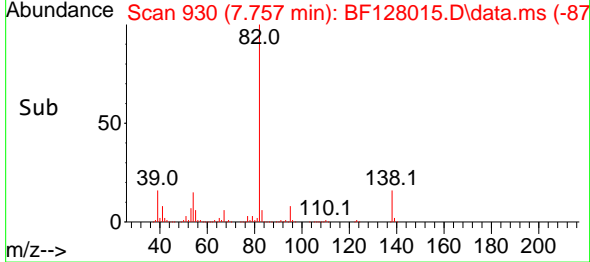


#25
 Isophorone
 Concen: 43.327 ng
 RT: 7.757 min Scan# 911
 Delta R.T. 0.000 min
 Lab File: BF128015.D
 Acq: 02 May 2022 09:56

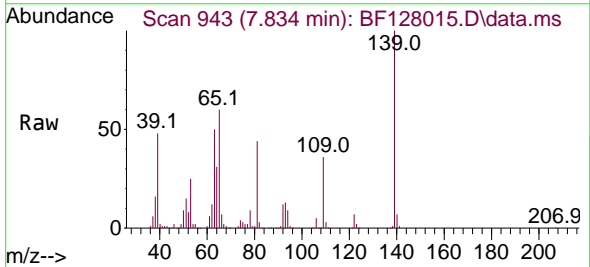
Instrument :
 BNA_F
 ClientSampleId :
 SSTDCCC040



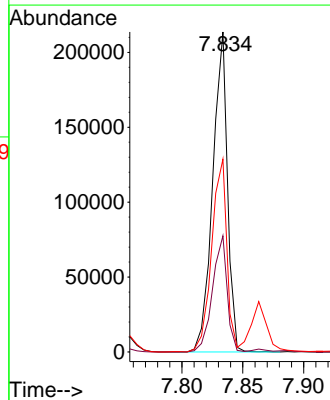
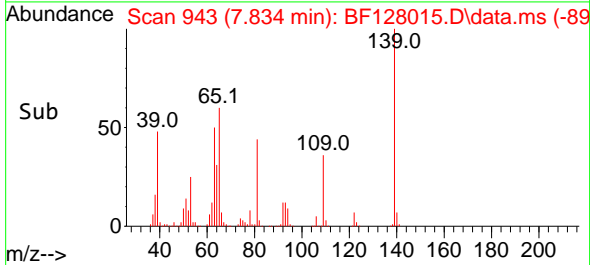
Tgt Ion: 82 Resp: 706274
 Ion Ratio Lower Upper
 82 100
 95 7.6 5.6 8.4
 138 15.8 12.5 18.7

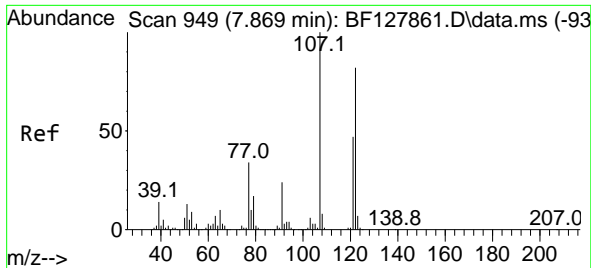


#26
 2-Nitrophenol
 Concen: 45.345 ng
 RT: 7.834 min Scan# 943
 Delta R.T. 0.000 min
 Lab File: BF128015.D
 Acq: 02 May 2022 09:56



Tgt Ion: 139 Resp: 180336
 Ion Ratio Lower Upper
 139 100
 109 36.3 27.4 41.2
 65 60.2 50.8 76.2

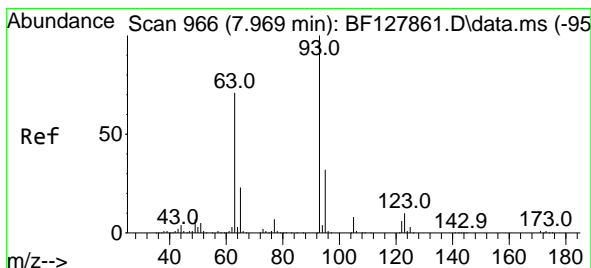
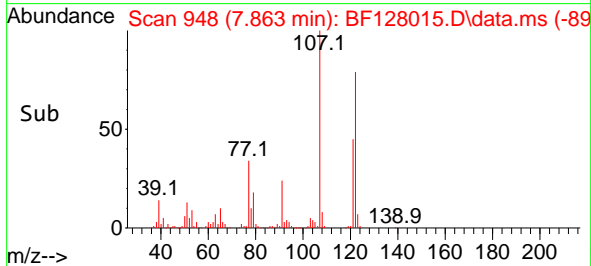
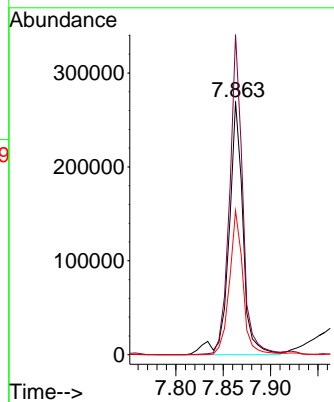
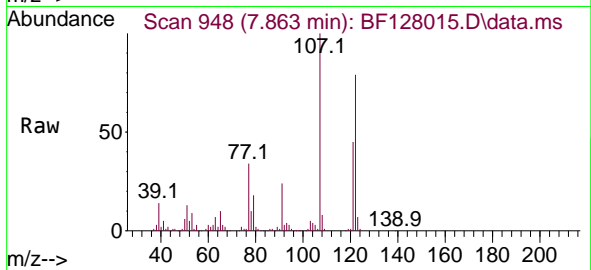




#27
 2,4-Dimethylphenol
 Concen: 42.034 ng
 RT: 7.863 min Scan# 94
 Delta R.T. 0.000 min
 Lab File: BF128015.D
 Acq: 02 May 2022 09:56

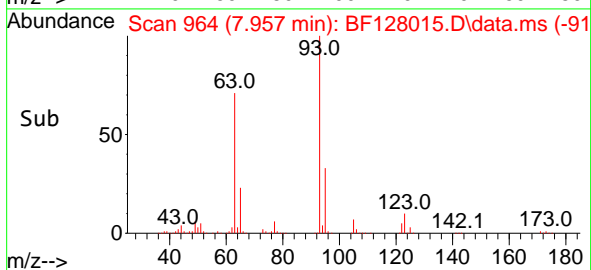
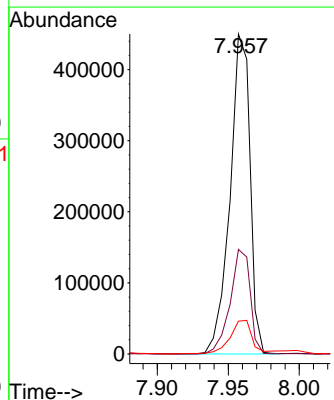
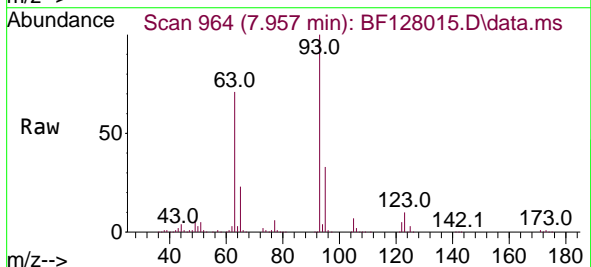
Instrument :
 BNA_F
 ClientSampleId :
 SSTDCCC040

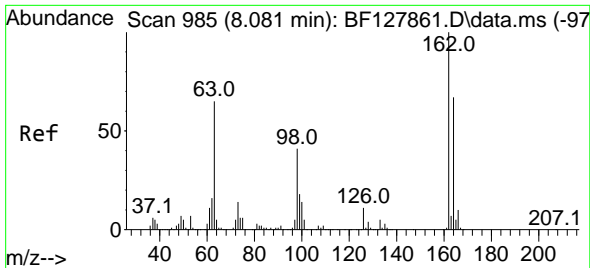
Tgt Ion:122 Resp: 277664
 Ion Ratio Lower Upper
 122 100
 107 126.4 97.5 146.3
 121 56.9 46.0 69.0



#28
 bis(2-Chloroethoxy)methane
 Concen: 42.311 ng
 RT: 7.957 min Scan# 964
 Delta R.T. -0.006 min
 Lab File: BF128015.D
 Acq: 02 May 2022 09:56

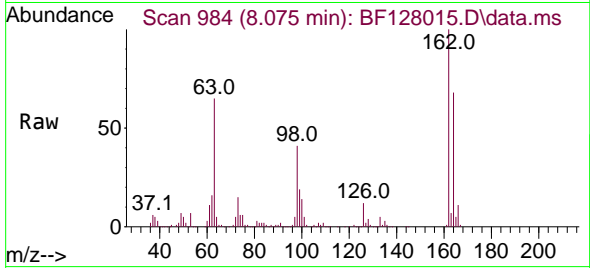
Tgt Ion: 93 Resp: 442024
 Ion Ratio Lower Upper
 93 100
 95 32.6 25.7 38.5
 123 10.2 8.3 12.5



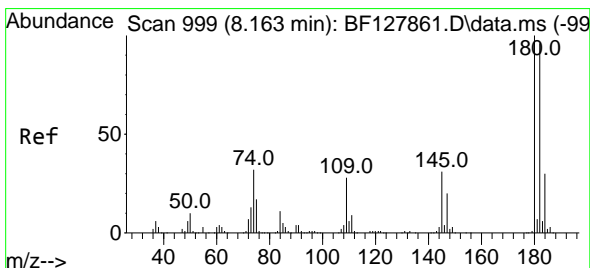
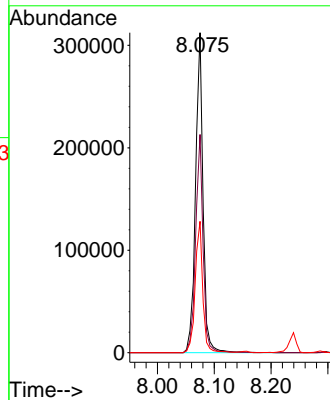
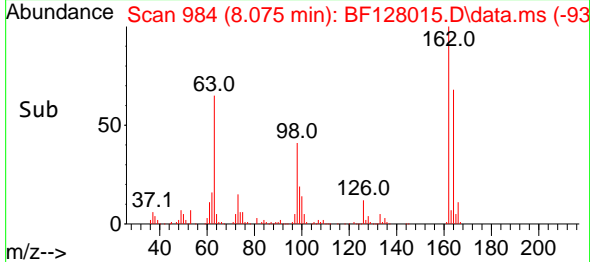


#29
 2,4-Dichlorophenol
 Concen: 41.756 ng
 RT: 8.075 min Scan# 985
 Delta R.T. 0.000 min
 Lab File: BF128015.D
 Acq: 02 May 2022 09:56

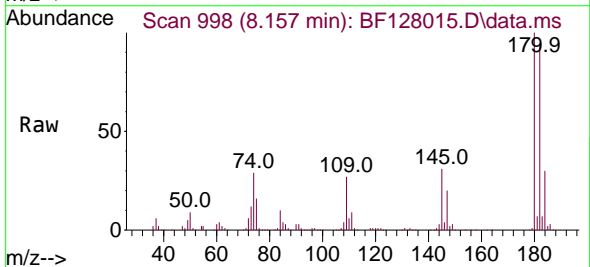
Instrument :
 BNA_F
 ClientSampleId :
 SSTDCCC040



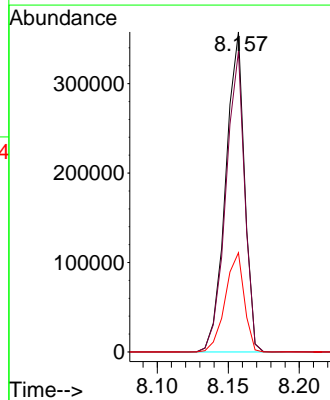
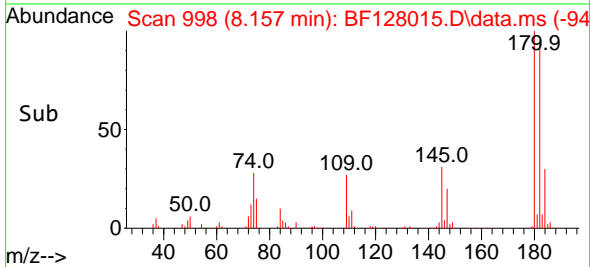
Tgt Ion:162 Resp: 288963
 Ion Ratio Lower Upper
 162 100
 164 68.2 47.1 87.1
 98 41.0 20.7 60.7

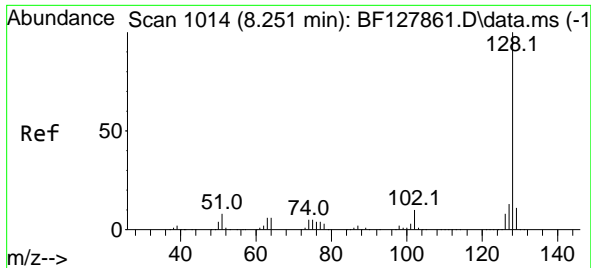


#30
 1,2,4-Trichlorobenzene
 Concen: 41.845 ng
 RT: 8.157 min Scan# 998
 Delta R.T. 0.000 min
 Lab File: BF128015.D
 Acq: 02 May 2022 09:56



Tgt Ion:180 Resp: 328937
 Ion Ratio Lower Upper
 180 100
 182 93.9 76.4 114.6
 145 31.0 25.1 37.7

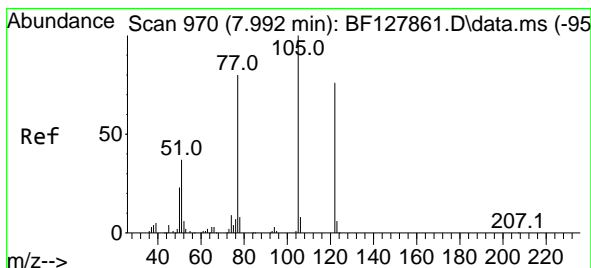
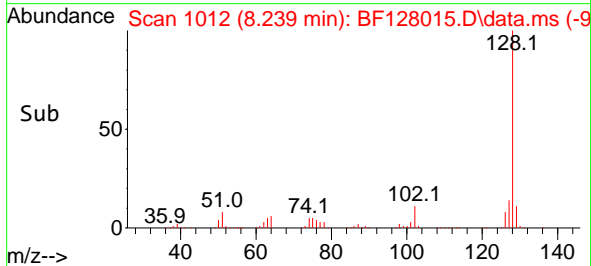
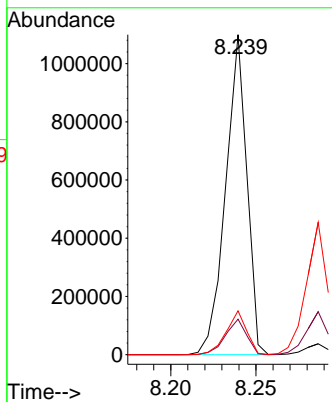
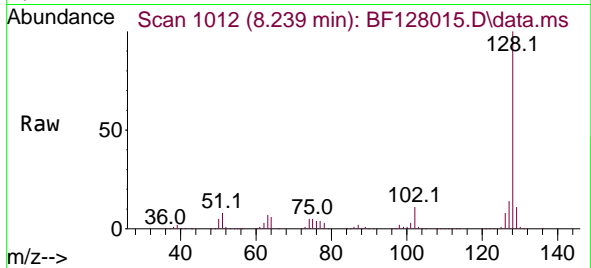




#31
 Naphthalene
 Concen: 41.147 ng
 RT: 8.239 min Scan# 1014
 Delta R.T. 0.000 min
 Lab File: BF128015.D
 Acq: 02 May 2022 09:56

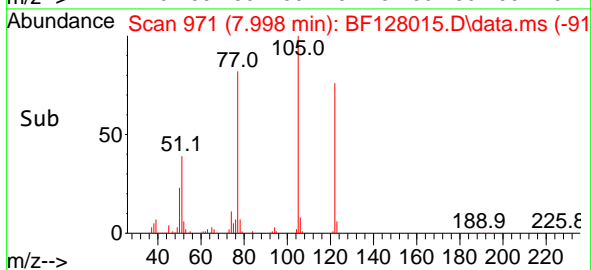
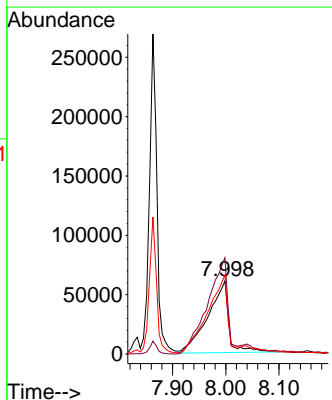
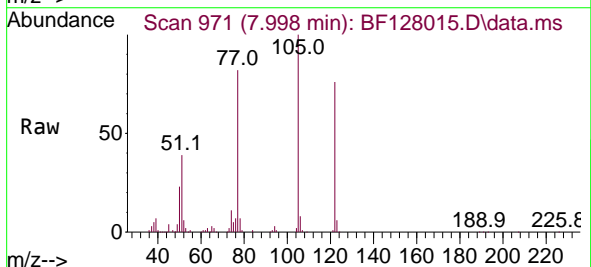
Instrument :
 BNA_F
 ClientSampleId :
 SSTDCCC040

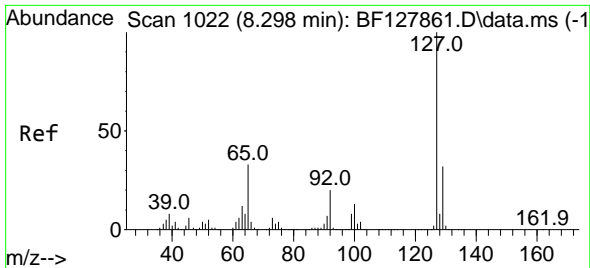
Tgt Ion:128 Resp: 954478
 Ion Ratio Lower Upper
 128 100
 129 11.1 9.0 13.4
 127 13.7 10.6 16.0



#32
 Benzoic acid
 Concen: 34.902 ng
 RT: 7.998 min Scan# 971
 Delta R.T. 0.012 min
 Lab File: BF128015.D
 Acq: 02 May 2022 09:56

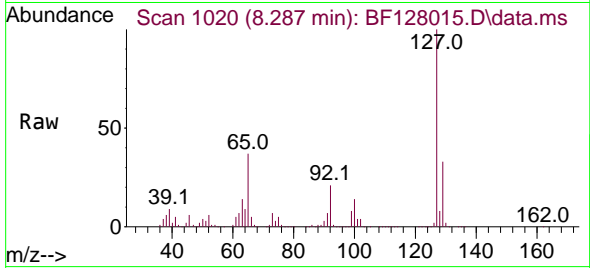
Tgt Ion:122 Resp: 165250
 Ion Ratio Lower Upper
 122 100
 105 131.9 107.9 147.9
 77 107.8 82.5 122.5





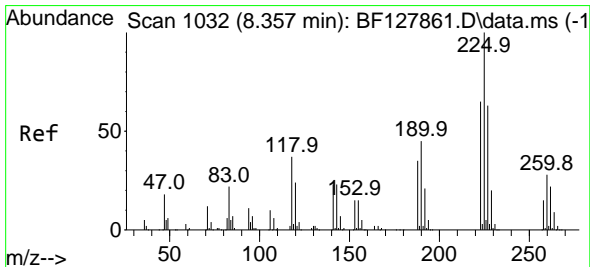
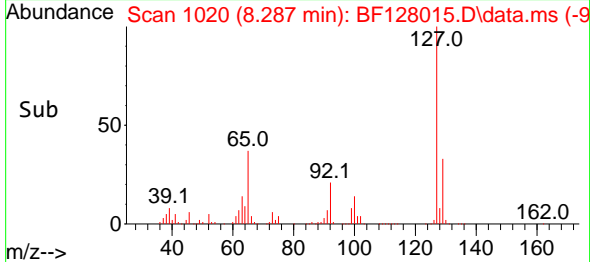
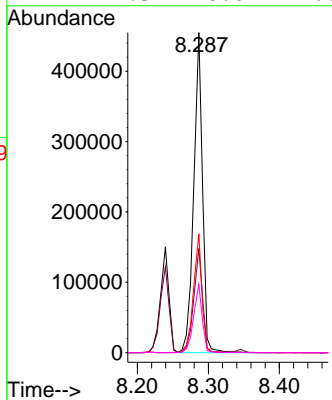
#33
 4-Chloroaniline
 Concen: 42.757 ng
 RT: 8.287 min Scan# 1020
 Delta R.T. 0.000 min
 Lab File: BF128015.D
 Acq: 02 May 2022 09:56

Instrument :
 BNA_F
 ClientSampleId :
 SSTDCCC040



Tgt Ion:127 Resp: 392426

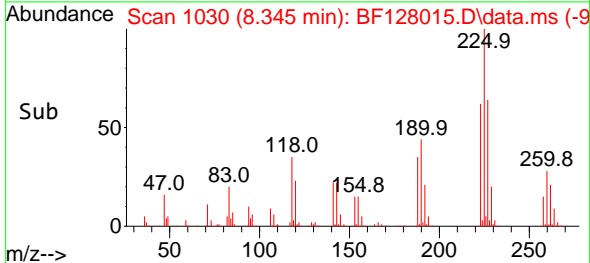
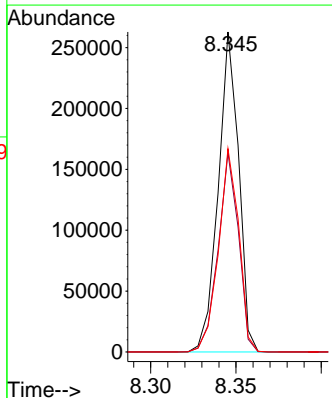
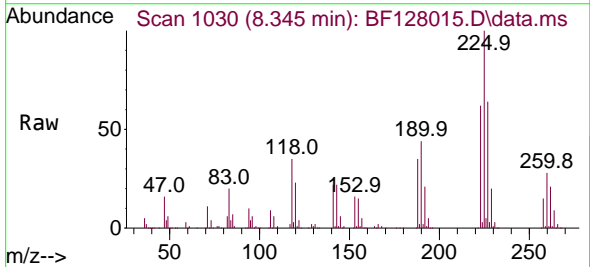
Ion	Ratio	Lower	Upper
127	100		
129	32.6	25.8	38.8
65	37.1	26.7	40.1
92	21.3	16.0	24.0

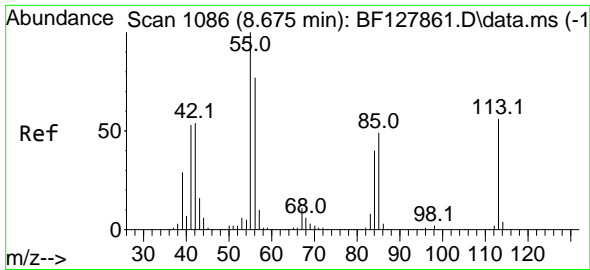


#34
 Hexachlorobutadiene
 Concen: 44.160 ng
 RT: 8.345 min Scan# 1030
 Delta R.T. -0.006 min
 Lab File: BF128015.D
 Acq: 02 May 2022 09:56

Tgt Ion:225 Resp: 218654

Ion	Ratio	Lower	Upper
225	100		
223	62.2	52.0	78.0
227	63.6	50.7	76.1

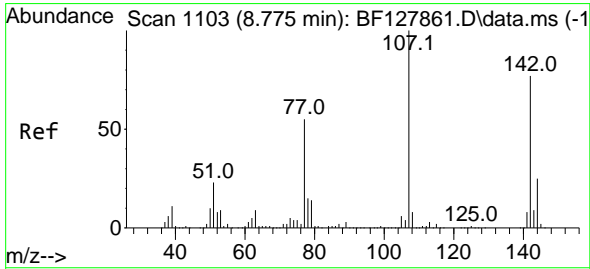
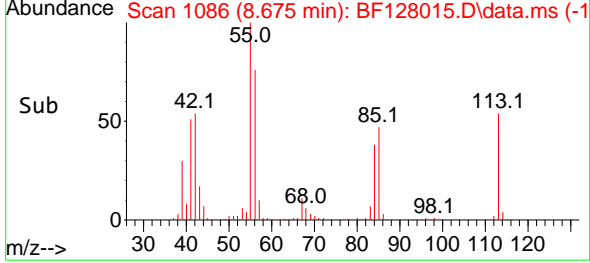
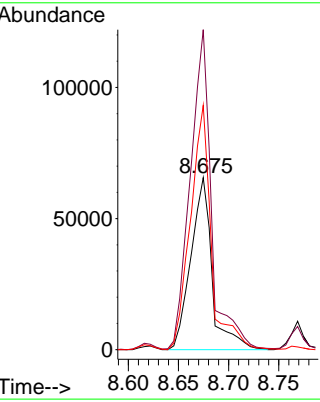
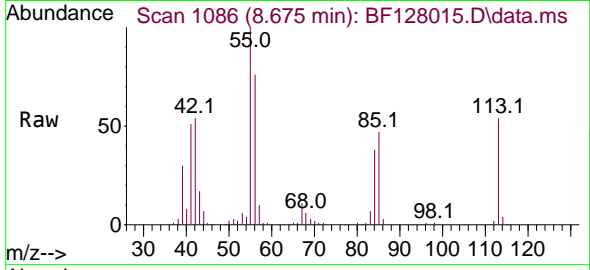




#35
 Caprolactam
 Concen: 43.346 ng
 RT: 8.675 min Scan# 10
 Delta R.T. 0.006 min
 Lab File: BF128015.D
 Acq: 02 May 2022 09:56

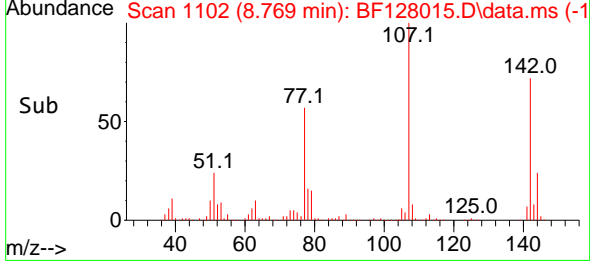
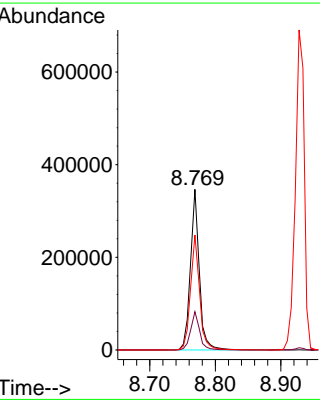
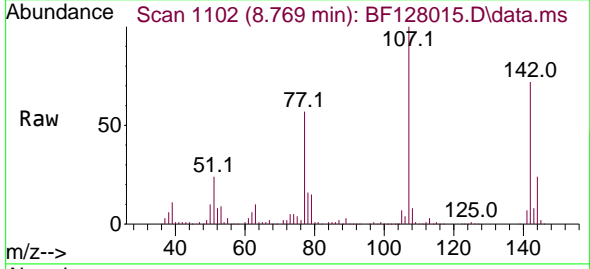
Instrument :
 BNA_F
 ClientSampleId :
 SSTDCCC040

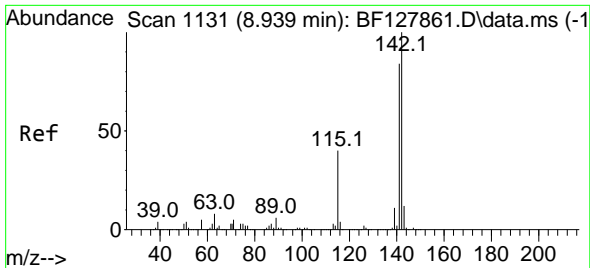
Tgt Ion:113 Resp: 96827
 Ion Ratio Lower Upper
 113 100
 55 186.1 157.4 197.4
 56 142.1 116.1 156.1



#36
 4-Chloro-3-methylphenol
 Concen: 44.499 ng
 RT: 8.769 min Scan# 1102
 Delta R.T. 0.006 min
 Lab File: BF128015.D
 Acq: 02 May 2022 09:56

Tgt Ion:107 Resp: 328880
 Ion Ratio Lower Upper
 107 100
 144 23.8 20.2 30.4
 142 71.5 61.5 92.3

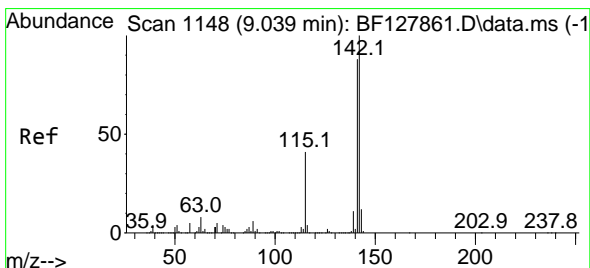
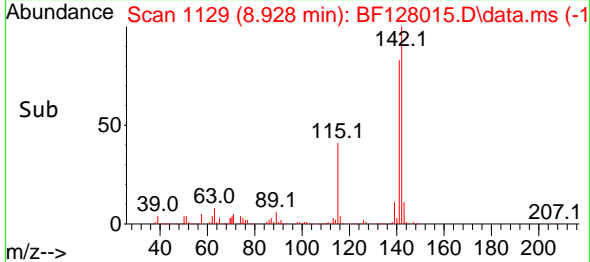
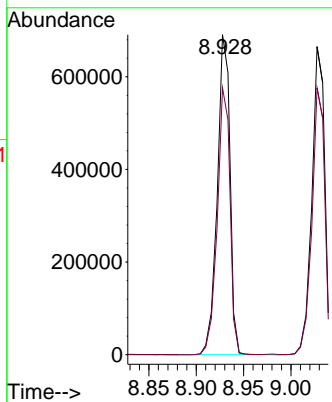
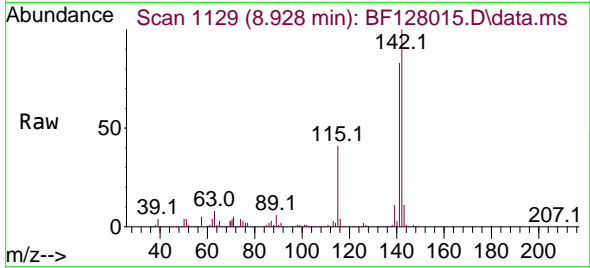




#37
 2-Methylnaphthalene
 Concen: 42.194 ng
 RT: 8.928 min Scan# 1129
 Delta R.T. -0.006 min
 Lab File: BF128015.D
 Acq: 02 May 2022 09:56

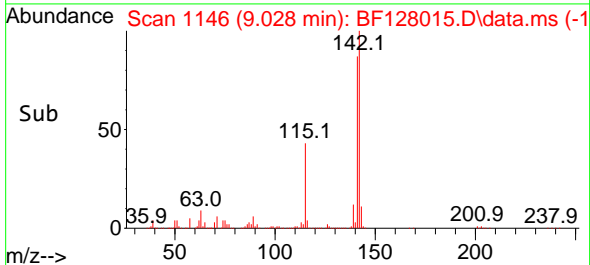
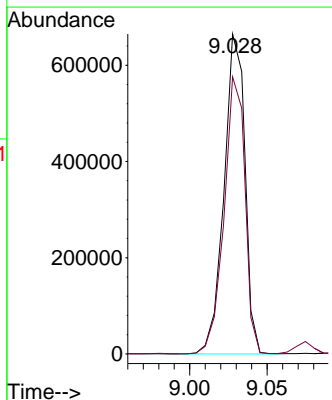
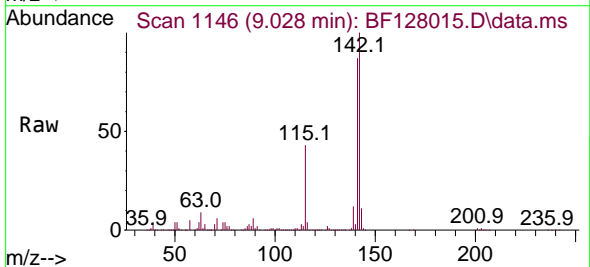
Instrument :
 BNA_F
 ClientSampleId :
 SSTDCCC040

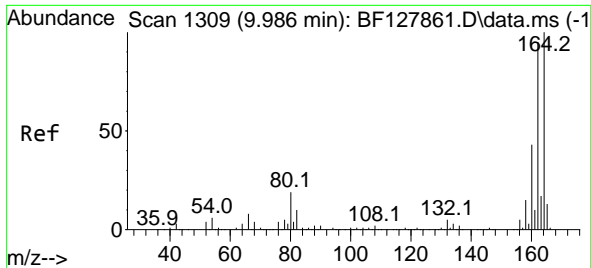
Tgt Ion:142 Resp: 646842
 Ion Ratio Lower Upper
 142 100
 141 83.4 67.4 101.2



#38
 1-Methylnaphthalene
 Concen: 41.908 ng
 RT: 9.028 min Scan# 1146
 Delta R.T. -0.006 min
 Lab File: BF128015.D
 Acq: 02 May 2022 09:56

Tgt Ion:142 Resp: 624468
 Ion Ratio Lower Upper
 142 100
 141 86.6 70.1 105.1

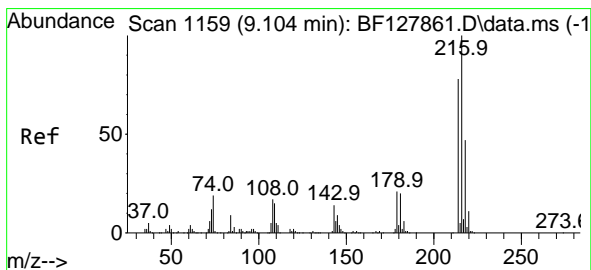
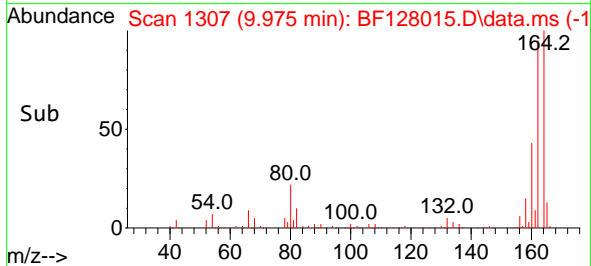
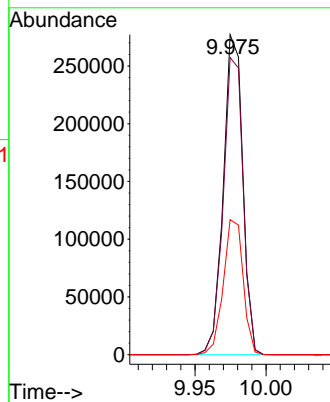
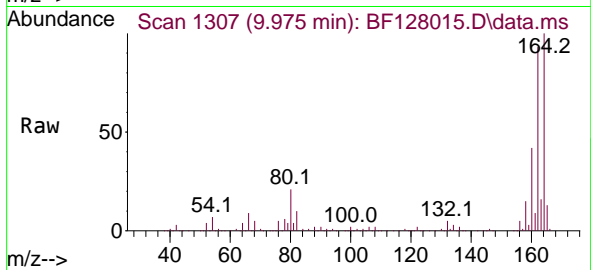




#39
 Acenaphthene-d10
 Concen: 20.000 ng
 RT: 9.975 min Scan# 111
 Delta R.T. 0.000 min
 Lab File: BF128015.D
 Acq: 02 May 2022 09:56

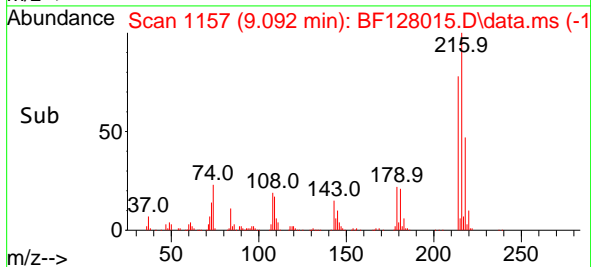
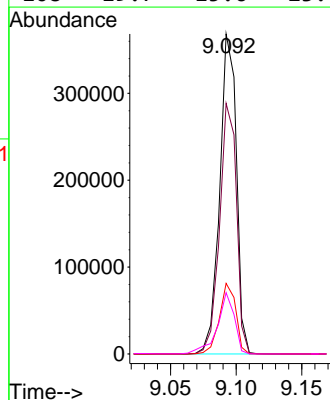
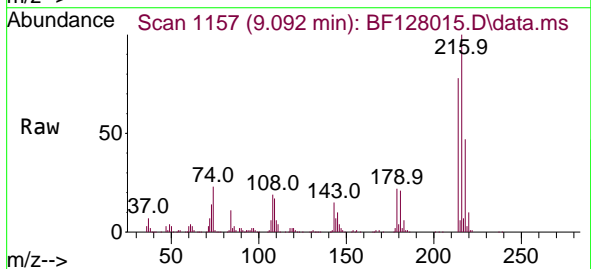
Instrument :
 BNA_F
 ClientSampleId :
 SSTDCCC040

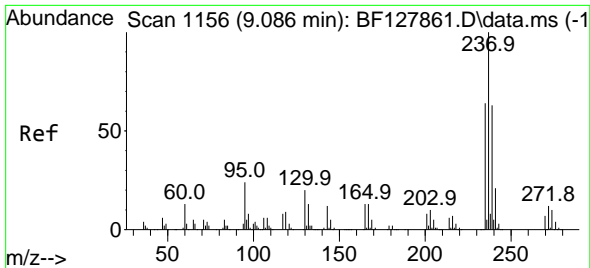
Tgt Ion:164 Resp: 264185
 Ion Ratio Lower Upper
 164 100
 162 92.9 76.0 114.0
 160 42.2 34.8 52.2



#40
 1,2,4,5-Tetrachlorobenzene
 Concen: 41.703 ng
 RT: 9.092 min Scan# 1157
 Delta R.T. 0.000 min
 Lab File: BF128015.D
 Acq: 02 May 2022 09:56

Tgt Ion:216 Resp: 324739
 Ion Ratio Lower Upper
 216 100
 214 79.3 62.6 94.0
 179 21.7 16.9 25.3
 108 19.7 15.6 23.4



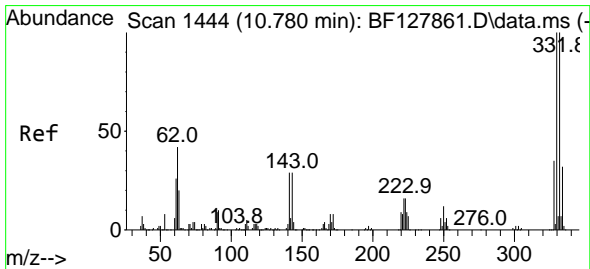
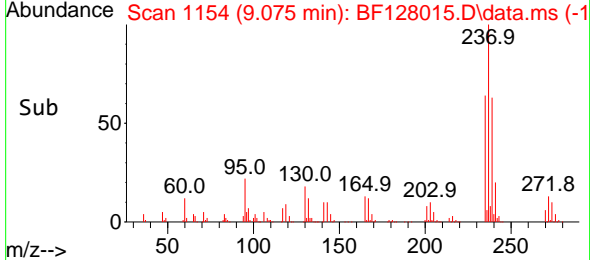
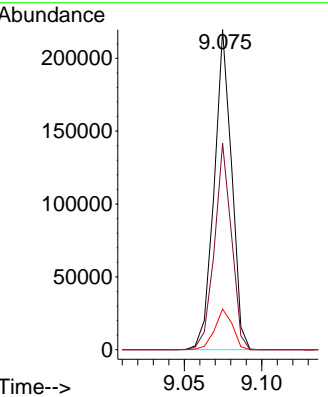
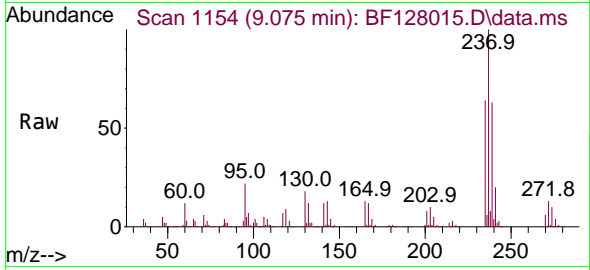


#41
 Hexachlorocyclopentadiene
 Concen: 40.747 ng
 RT: 9.075 min Scan# 1154
 Delta R.T. -0.006 min
 Lab File: BF128015.D
 Acq: 02 May 2022 09:56

Instrument :
 BNA_F
 ClientSampleId :
 SSTDCCC040

Tgt Ion:237 Resp: 171908

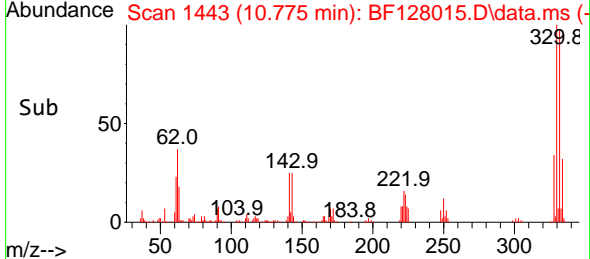
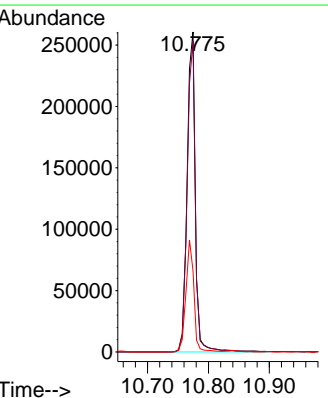
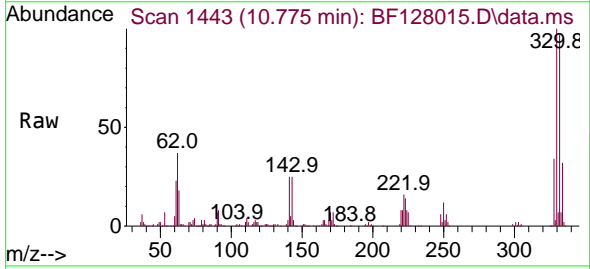
Ion	Ratio	Lower	Upper
237	100		
235	64.5	43.6	83.6
272	12.7	0.0	32.1

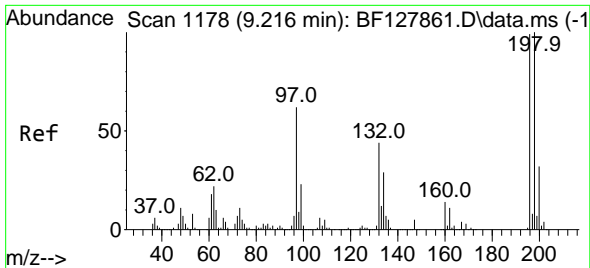


#42
 2,4,6-Tribromophenol
 Concen: 92.212 ng
 RT: 10.775 min Scan# 1443
 Delta R.T. 0.006 min
 Lab File: BF128015.D
 Acq: 02 May 2022 09:56

Tgt Ion:330 Resp: 245235

Ion	Ratio	Lower	Upper
330	100		
332	96.8	79.0	118.4
141	33.7	28.9	43.3

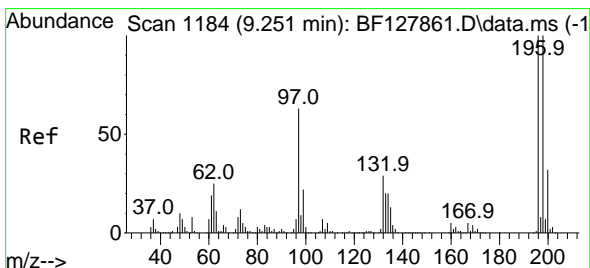
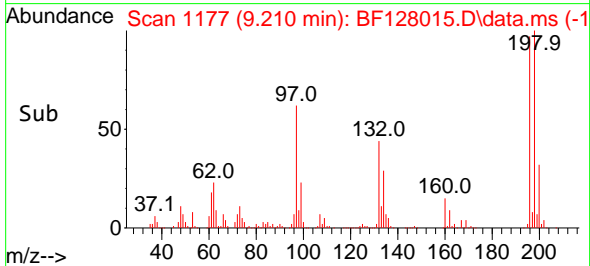
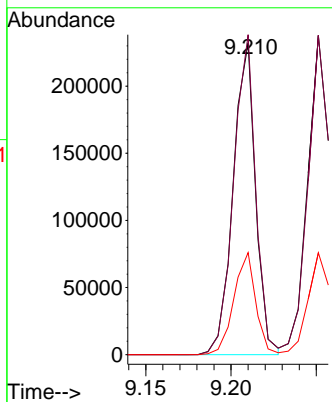
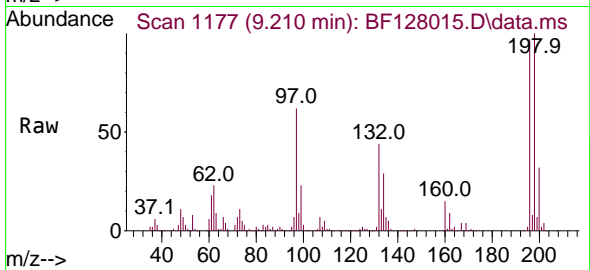




#43
 2,4,6-Trichlorophenol
 Concen: 41.616 ng
 RT: 9.210 min Scan# 1177
 Delta R.T. 0.006 min
 Lab File: BF128015.D
 Acq: 02 May 2022 09:56

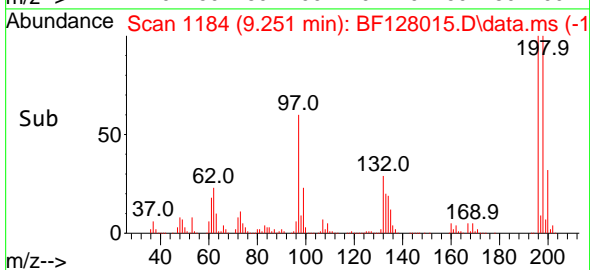
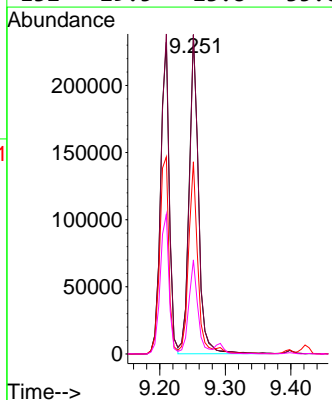
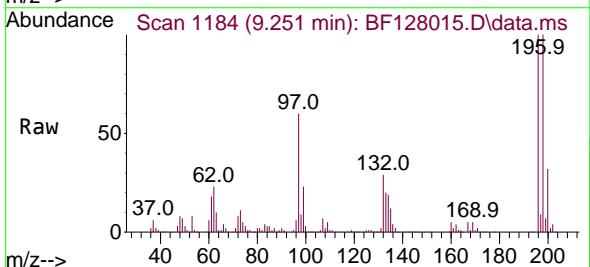
Instrument :
 BNA_F
 ClientSampleId :
 SSTDCCC040

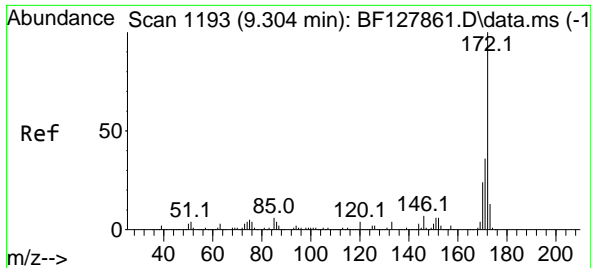
Tgt Ion:196 Resp: 213226
 Ion Ratio Lower Upper
 196 100
 198 102.6 80.4 120.6
 200 32.7 25.9 38.9



#44
 2,4,5-Trichlorophenol
 Concen: 42.211 ng
 RT: 9.251 min Scan# 1184
 Delta R.T. 0.006 min
 Lab File: BF128015.D
 Acq: 02 May 2022 09:56

Tgt Ion:196 Resp: 235113
 Ion Ratio Lower Upper
 196 100
 198 100.0 80.2 120.2
 97 60.2 50.3 75.5
 132 29.5 23.8 35.6

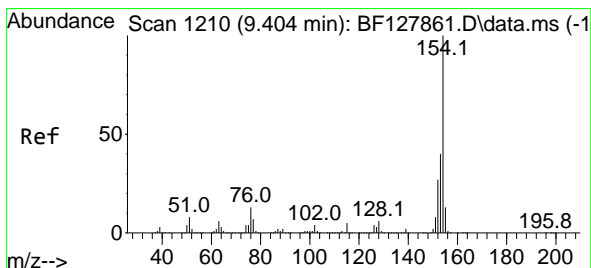
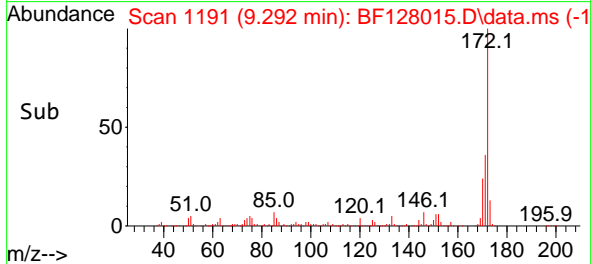
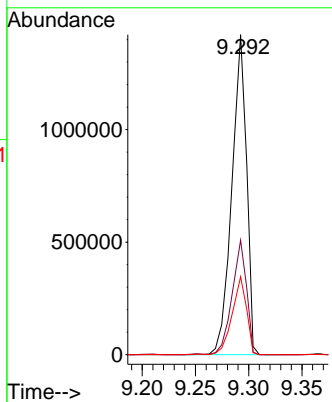
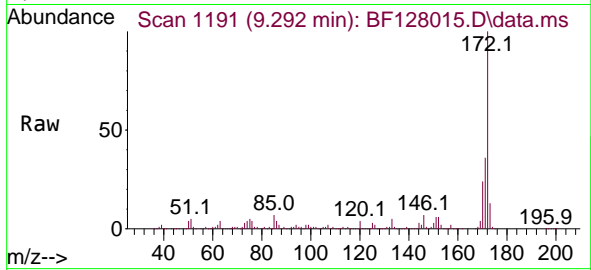




#45
 2-Fluorobiphenyl
 Concen: 87.047 ng
 RT: 9.292 min Scan# 1191
 Delta R.T. 0.000 min
 Lab File: BF128015.D
 Acq: 02 May 2022 09:56

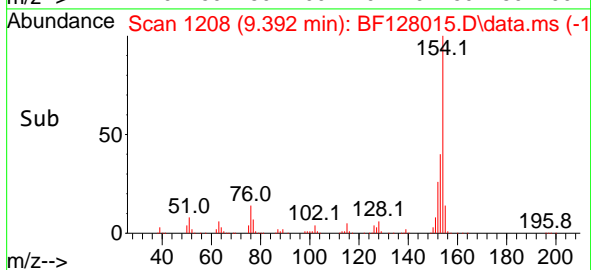
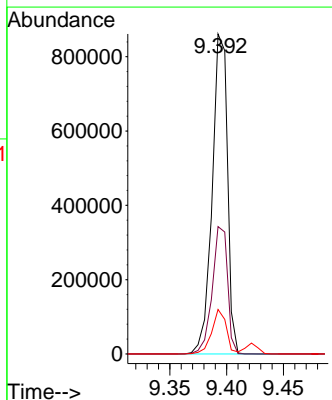
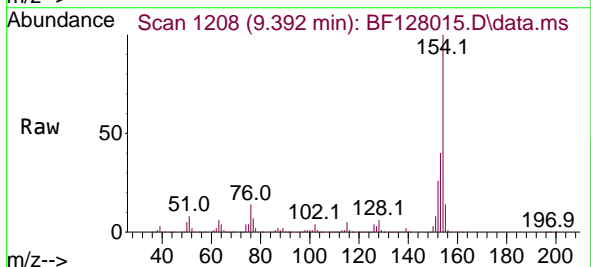
Instrument :
 BNA_F
 ClientSampleId :
 SSTDCCC040

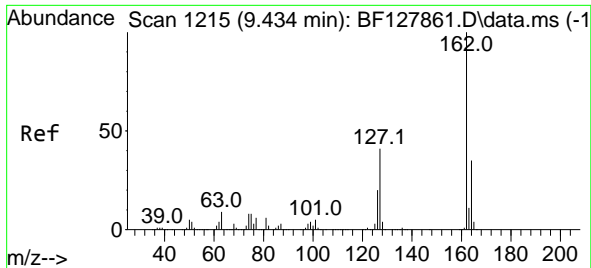
Tgt Ion:172 Resp: 1359346
 Ion Ratio Lower Upper
 172 100
 171 35.8 28.6 42.8
 170 24.3 19.1 28.7



#46
 1,1'-Biphenyl
 Concen: 41.178 ng
 RT: 9.392 min Scan# 1208
 Delta R.T. -0.006 min
 Lab File: BF128015.D
 Acq: 02 May 2022 09:56

Tgt Ion:154 Resp: 805821
 Ion Ratio Lower Upper
 154 100
 153 39.8 20.4 60.4
 76 13.9 0.0 33.2



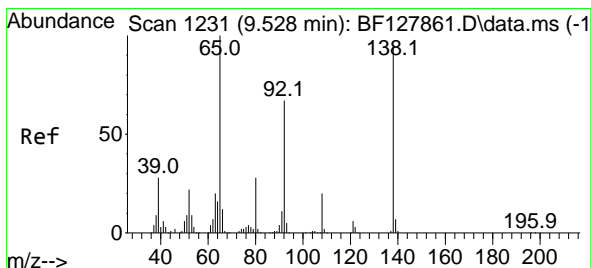
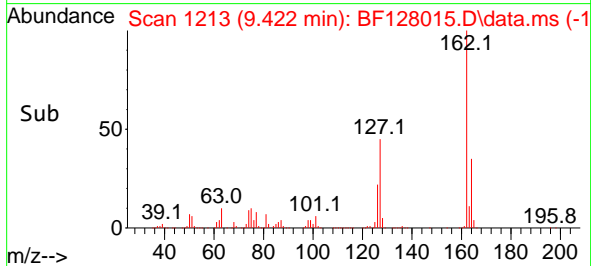
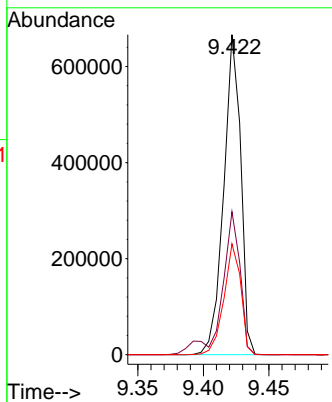
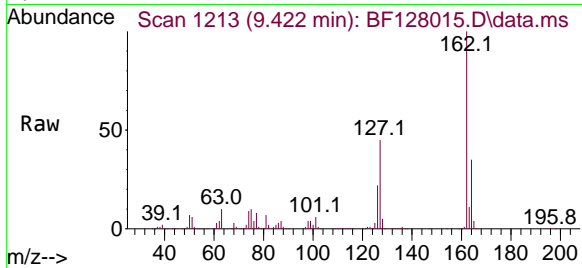


#47
 2-Chloronaphthalene
 Concen: 40.322 ng
 RT: 9.422 min Scan# 11
 Delta R.T. 0.000 min
 Lab File: BF128015.D
 Acq: 02 May 2022 09:56

Instrument :
 BNA_F
 ClientSampleId :
 SSTDCCC040

Tgt Ion:162 Resp: 600705

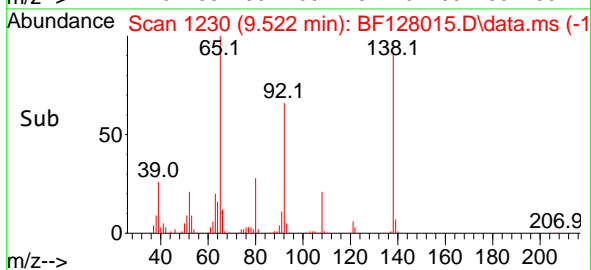
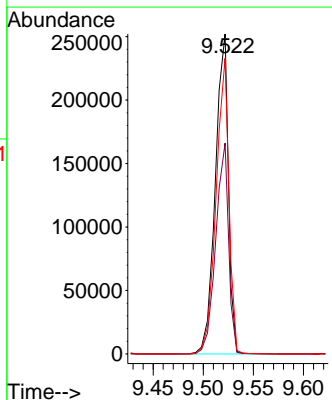
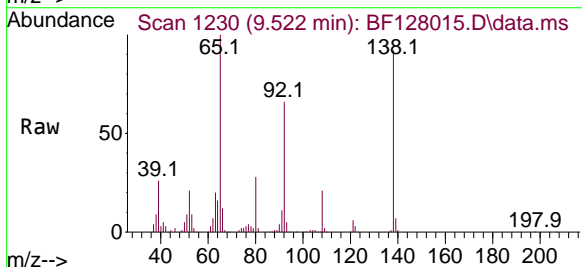
Ion	Ratio	Lower	Upper
162	100		
127	44.7	32.9	49.3
164	34.6	28.2	42.2

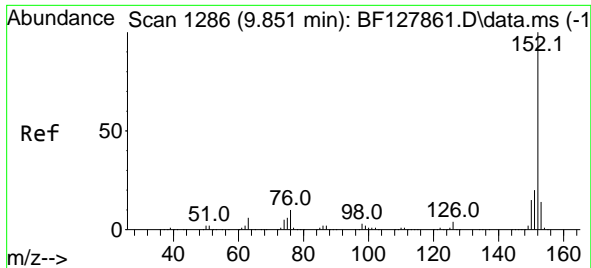


#48
 2-Nitroaniline
 Concen: 45.242 ng
 RT: 9.522 min Scan# 1230
 Delta R.T. 0.000 min
 Lab File: BF128015.D
 Acq: 02 May 2022 09:56

Tgt Ion: 65 Resp: 227990

Ion	Ratio	Lower	Upper
65	100		
92	65.9	53.7	80.5
138	92.5	76.4	114.6





#49
 Acenaphthylene
 Concen: 40.780 ng
 RT: 9.839 min Scan# 11
 Delta R.T. 0.000 min
 Lab File: BF128015.D
 Acq: 02 May 2022 09:56

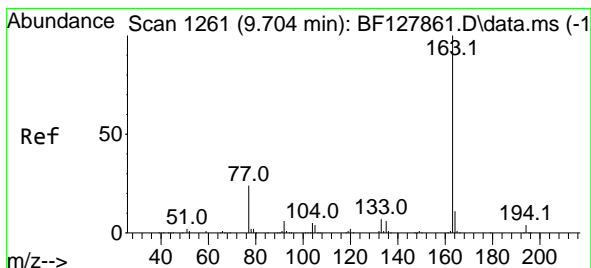
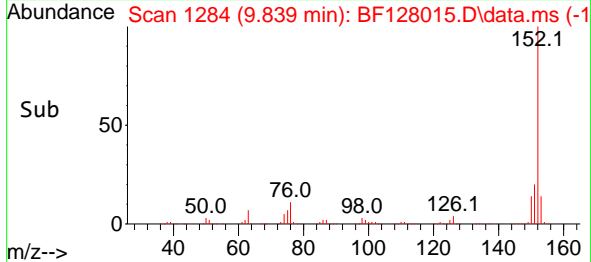
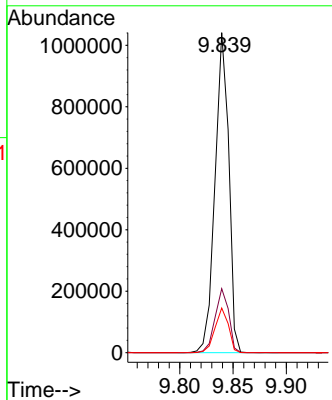
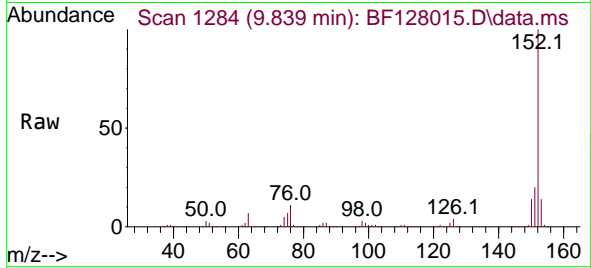
Instrument :

BNA_F

ClientSampleId :

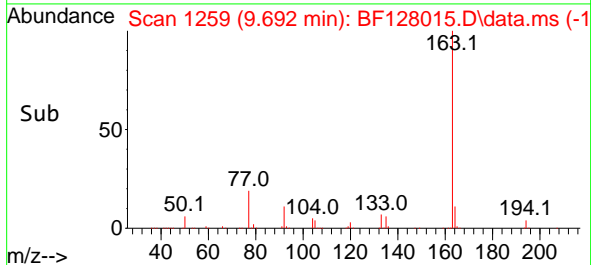
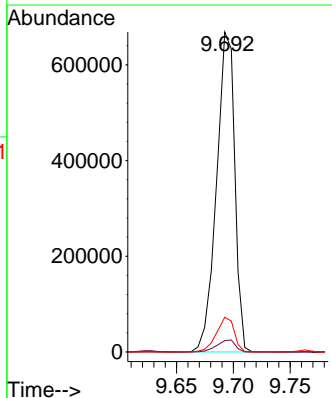
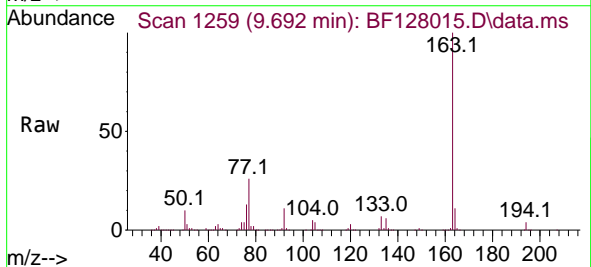
SSTDCCC040

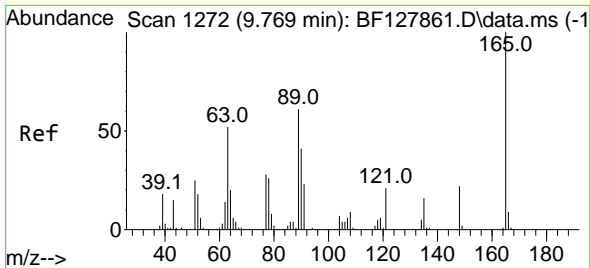
Tgt Ion:152 Resp: 929302
 Ion Ratio Lower Upper
 152 100
 151 20.0 16.2 24.2
 153 13.9 11.2 16.8



#50
 Dimethylphthalate
 Concen: 42.237 ng
 RT: 9.692 min Scan# 1259
 Delta R.T. -0.006 min
 Lab File: BF128015.D
 Acq: 02 May 2022 09:56

Tgt Ion:163 Resp: 748342
 Ion Ratio Lower Upper
 163 100
 194 3.6 3.1 4.7
 164 10.8 8.6 13.0



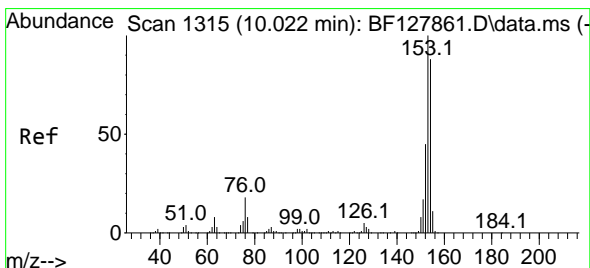
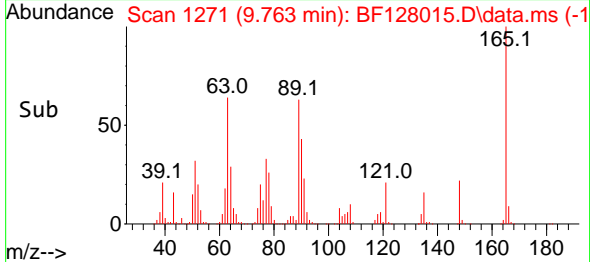
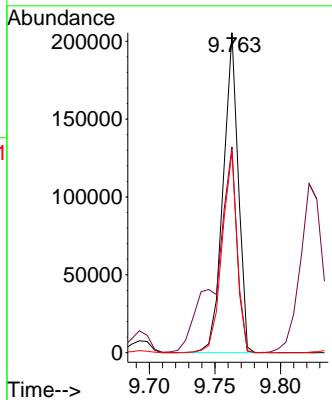
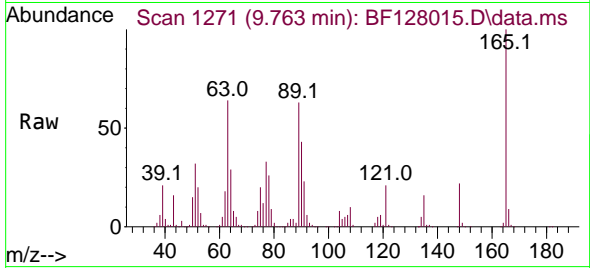


#51
 2,6-Dinitrotoluene
 Concen: 42.672 ng
 RT: 9.763 min Scan# 11
 Delta R.T. 0.000 min
 Lab File: BF128015.D
 Acq: 02 May 2022 09:56

Instrument :
 BNA_F
 ClientSampleId :
 SSTDCCC040

Tgt Ion:165 Resp: 163692

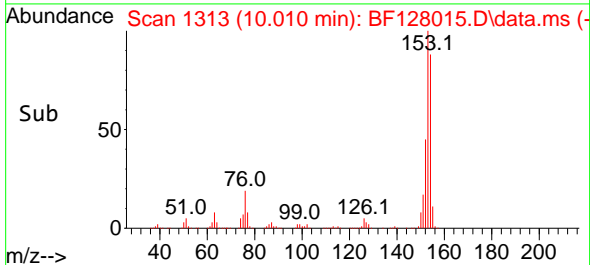
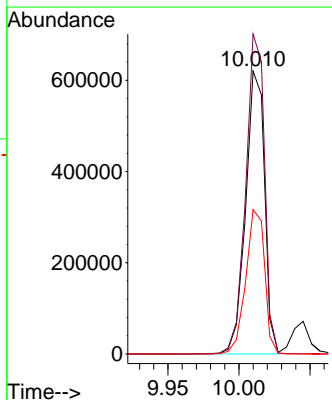
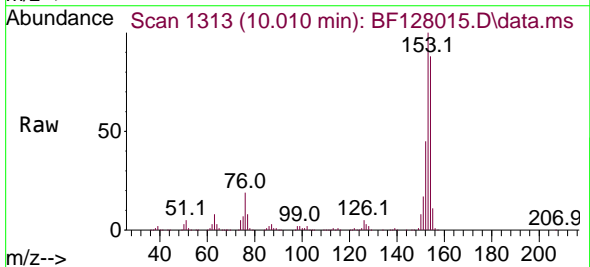
Ion	Ratio	Lower	Upper
165	100		
63	64.3	49.5	74.3
89	62.9	49.0	73.4

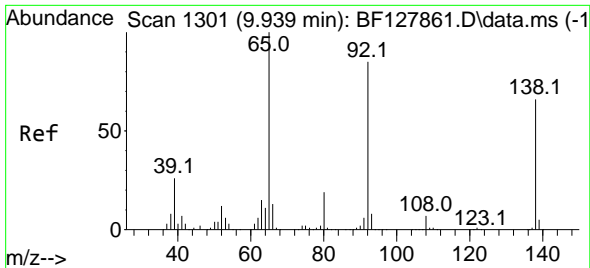


#52
 Acenaphthene
 Concen: 37.591 ng
 RT: 10.010 min Scan# 1313
 Delta R.T. 0.000 min
 Lab File: BF128015.D
 Acq: 02 May 2022 09:56

Tgt Ion:154 Resp: 575921

Ion	Ratio	Lower	Upper
154	100		
153	113.1	90.5	135.7
152	51.0	41.0	61.6





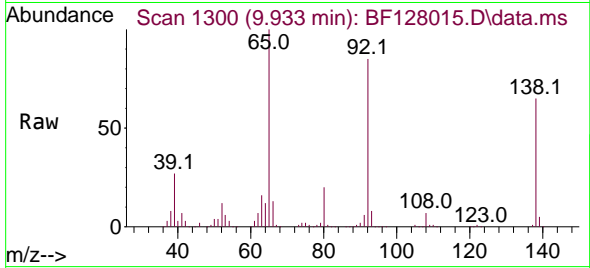
#53
 3-Nitroaniline
 Concen: 42.033 ng
 RT: 9.933 min Scan# 1300
 Delta R.T. 0.000 min
 Lab File: BF128015.D
 Acq: 02 May 2022 09:56

Instrument :

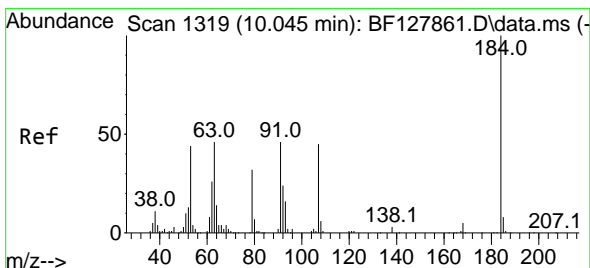
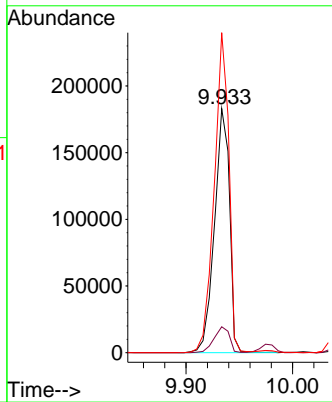
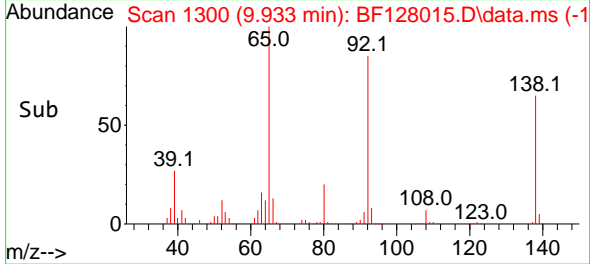
BNA_F

ClientSampleId :

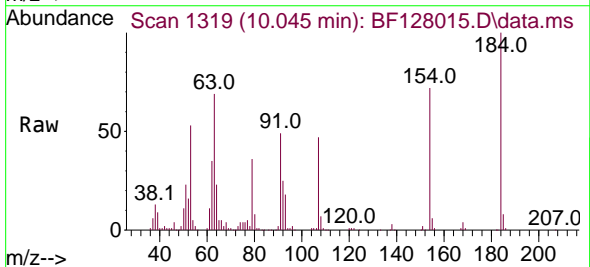
SSTDCCC040



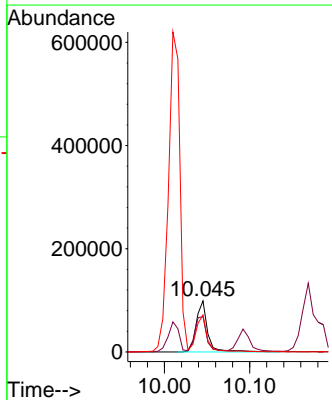
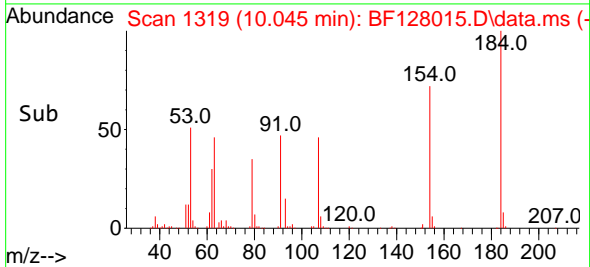
Tgt Ion:138 Resp: 179050
 Ion Ratio Lower Upper
 138 100
 108 10.7 8.2 12.4
 92 131.2 102.7 154.1

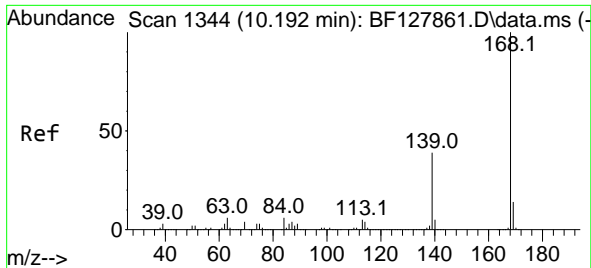


#54
 2,4-Dinitrophenol
 Concen: 45.611 ng
 RT: 10.045 min Scan# 1319
 Delta R.T. 0.012 min
 Lab File: BF128015.D
 Acq: 02 May 2022 09:56



Tgt Ion:184 Resp: 92146
 Ion Ratio Lower Upper
 184 100
 63 69.2 50.0 75.0
 154 72.4 51.7 77.5

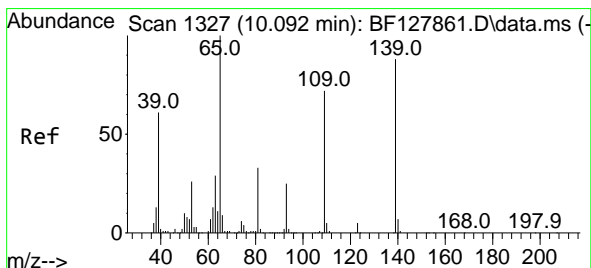
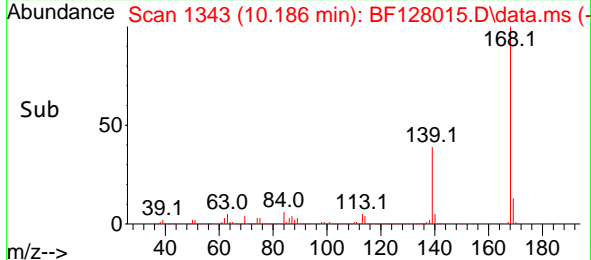
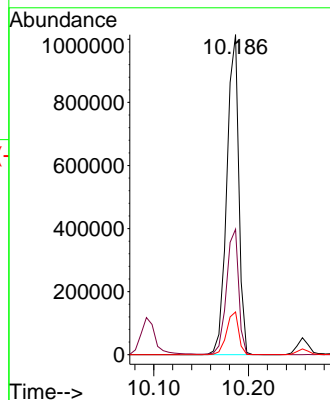
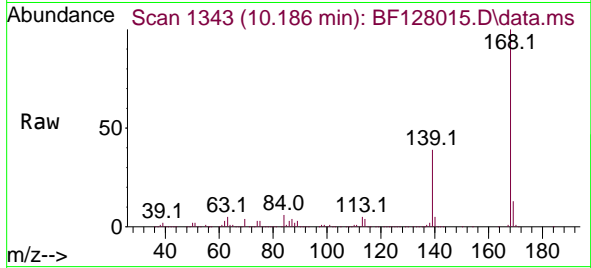




#55
 Dibenzofuran
 Concen: 40.353 ng
 RT: 10.186 min Scan# 11
 Delta R.T. 0.006 min
 Lab File: BF128015.D
 Acq: 02 May 2022 09:56

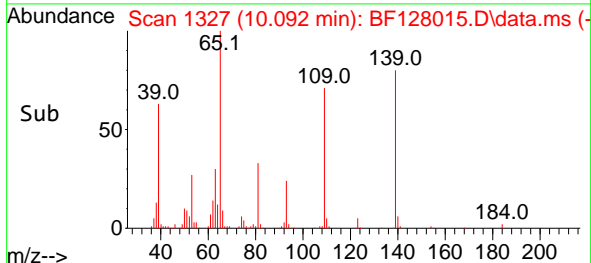
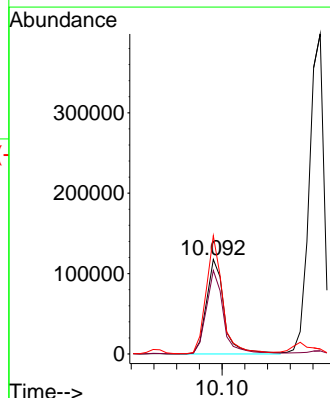
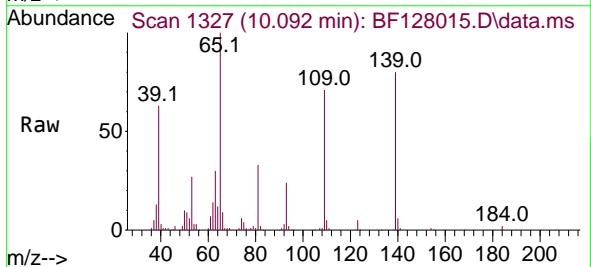
Instrument :
 BNA_F
 ClientSampleId :
 SSTDCCC040

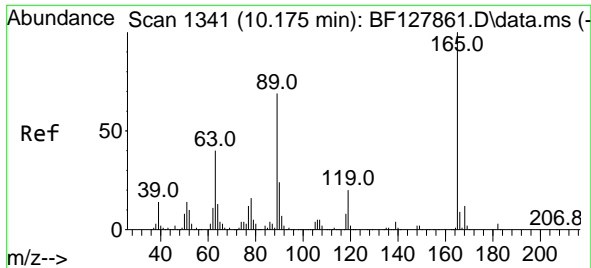
Tgt Ion:168 Resp: 891956
 Ion Ratio Lower Upper
 168 100
 139 39.2 31.7 47.5
 169 13.4 10.9 16.3



#56
 4-Nitrophenol
 Concen: 39.007 ng
 RT: 10.092 min Scan# 1327
 Delta R.T. 0.006 min
 Lab File: BF128015.D
 Acq: 02 May 2022 09:56

Tgt Ion:139 Resp: 126883
 Ion Ratio Lower Upper
 139 100
 109 88.4 61.9 101.9
 65 125.1 93.5 133.5



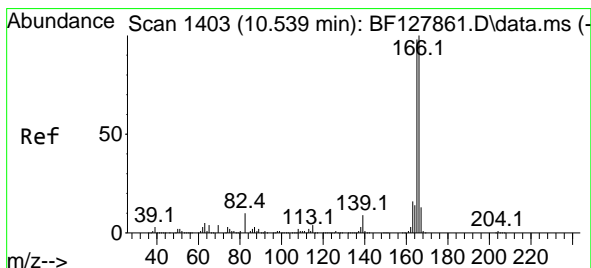
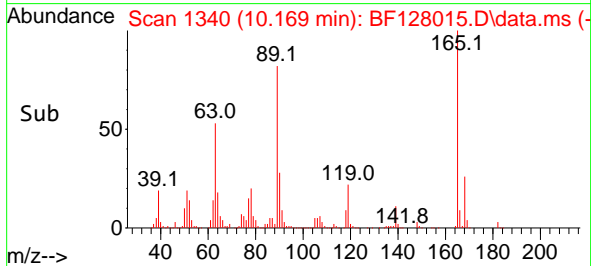
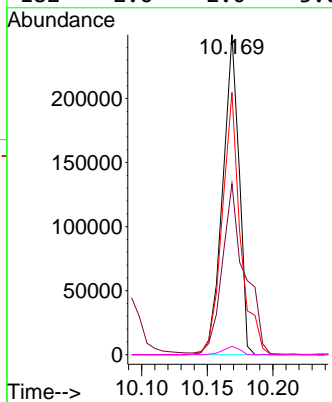
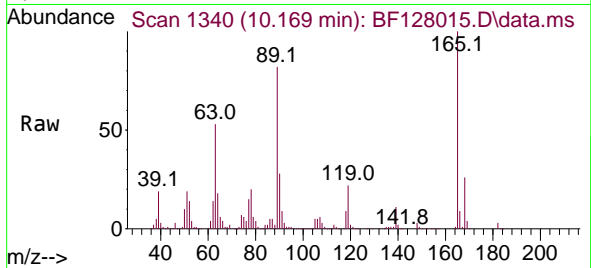


#57
 2,4-Dinitrotoluene
 Concen: 42.612 ng
 RT: 10.169 min Scan# 11
 Delta R.T. 0.006 min
 Lab File: BF128015.D
 Acq: 02 May 2022 09:56

Instrument :
 BNA_F
 ClientSampleId :
 SSTDCCC040

Tgt Ion:165 Resp: 216522

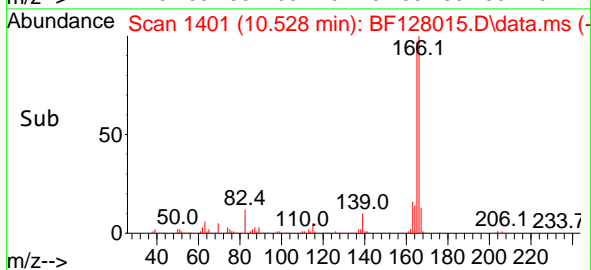
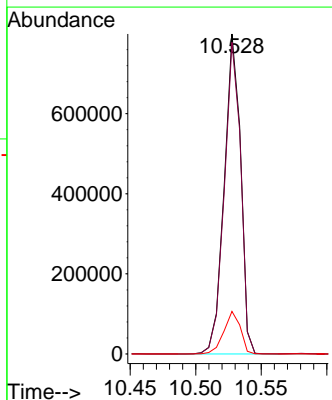
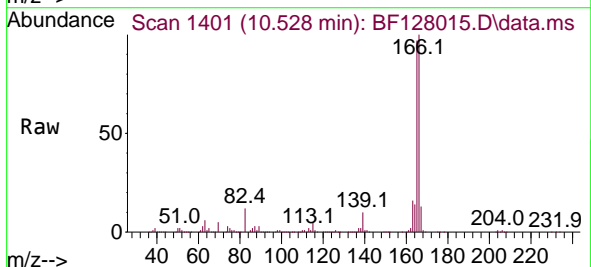
Ion	Ratio	Lower	Upper
165	100		
63	53.4	32.6	49.0#
89	82.0	55.2	82.8
182	2.6	2.0	3.0

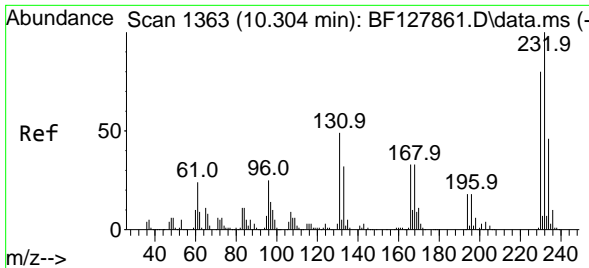


#58
 Fluorene
 Concen: 42.040 ng
 RT: 10.528 min Scan# 1401
 Delta R.T. 0.000 min
 Lab File: BF128015.D
 Acq: 02 May 2022 09:56

Tgt Ion:166 Resp: 693402

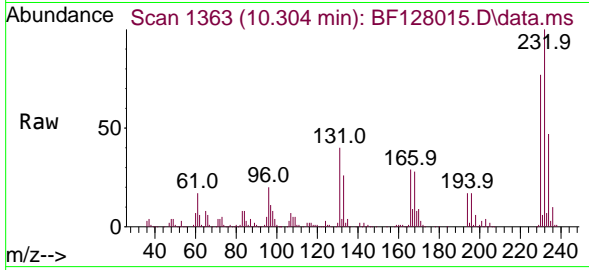
Ion	Ratio	Lower	Upper
166	100		
165	97.4	78.6	117.8
167	13.3	10.5	15.7



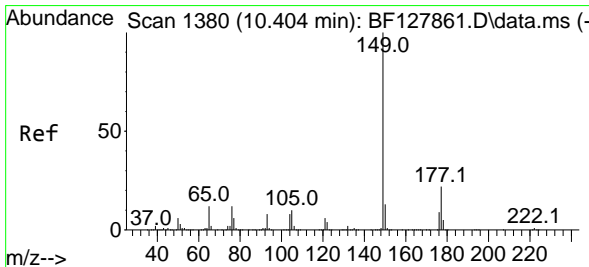
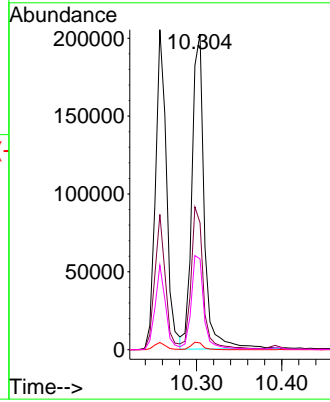
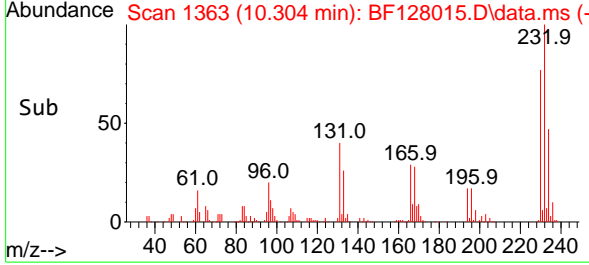


#59
 2,3,4,6-Tetrachlorophenol
 Concen: 43.111 ng
 RT: 10.304 min Scan# 11
 Delta R.T. 0.006 min
 Lab File: BF128015.D
 Acq: 02 May 2022 09:56

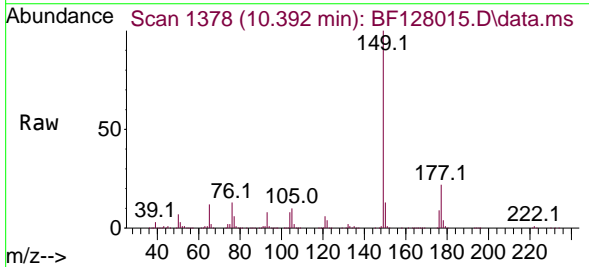
Instrument :
 BNA_F
 ClientSampleId :
 SSTDCCC040



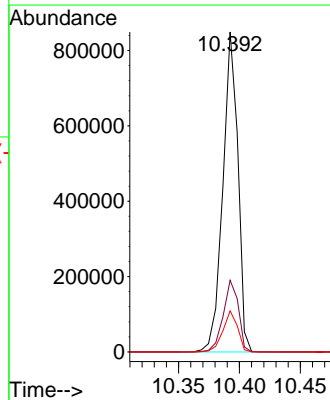
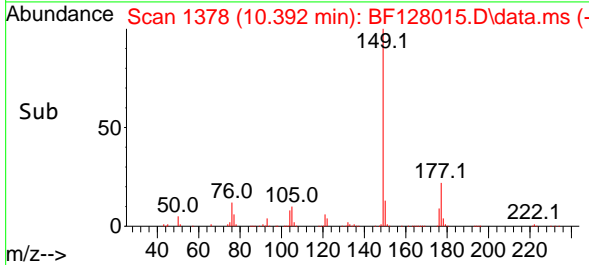
Tgt Ion:232 Resp: 201926
 Ion Ratio Lower Upper
 232 100
 131 43.9 35.4 53.2
 130 2.4 1.9 2.9
 166 30.1 24.5 36.7

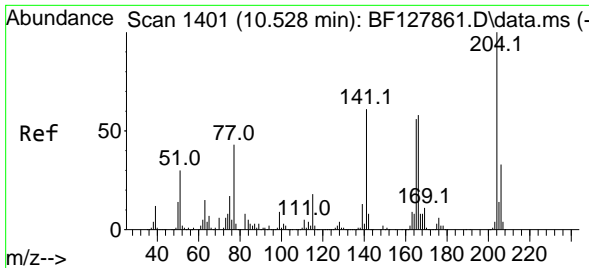


#60
 Diethylphthalate
 Concen: 42.063 ng
 RT: 10.392 min Scan# 1378
 Delta R.T. 0.000 min
 Lab File: BF128015.D
 Acq: 02 May 2022 09:56



Tgt Ion:149 Resp: 730791
 Ion Ratio Lower Upper
 149 100
 177 22.4 17.8 26.8
 150 12.9 10.2 15.2



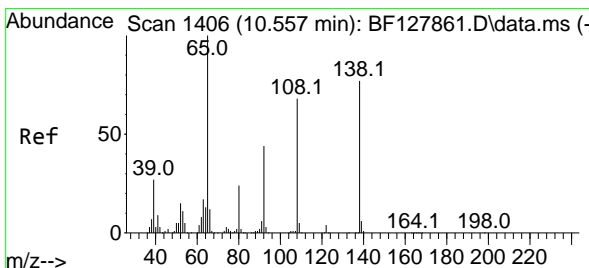
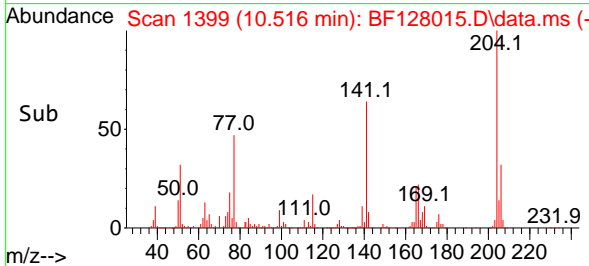
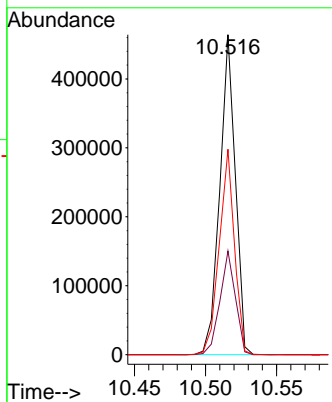
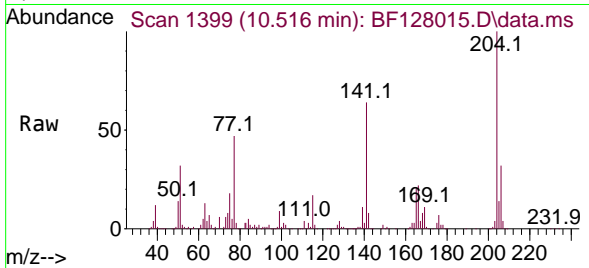


#61
 4-Chlorophenyl-phenylether
 Concen: 43.012 ng
 RT: 10.516 min Scan# 11
 Delta R.T. 0.000 min
 Lab File: BF128015.D
 Acq: 02 May 2022 09:56

Instrument :
 BNA_F
 ClientSampleId :
 SSTDCCC040

Tgt Ion: 204 Resp: 352535

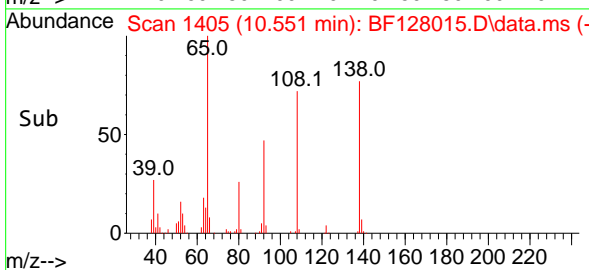
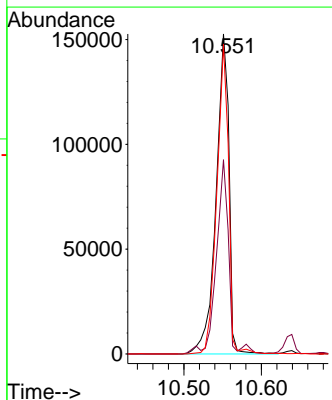
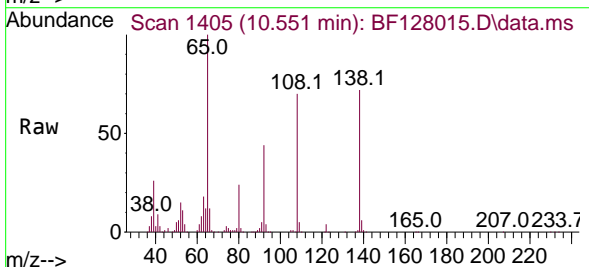
Ion	Ratio	Lower	Upper
204	100		
206	32.4	26.5	39.7
141	64.2	48.7	73.1

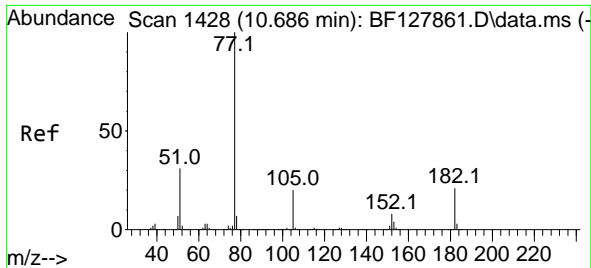


#62
 4-Nitroaniline
 Concen: 42.348 ng
 RT: 10.551 min Scan# 1405
 Delta R.T. 0.000 min
 Lab File: BF128015.D
 Acq: 02 May 2022 09:56

Tgt Ion: 138 Resp: 176360

Ion	Ratio	Lower	Upper
138	100		
92	60.7	37.4	77.4
108	96.8	68.4	108.4



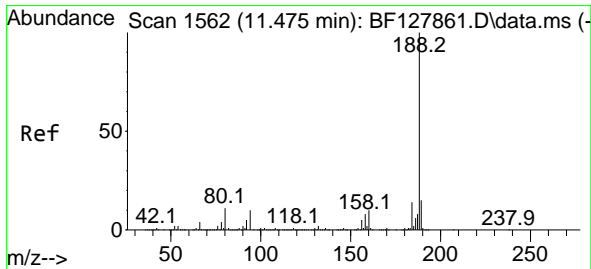
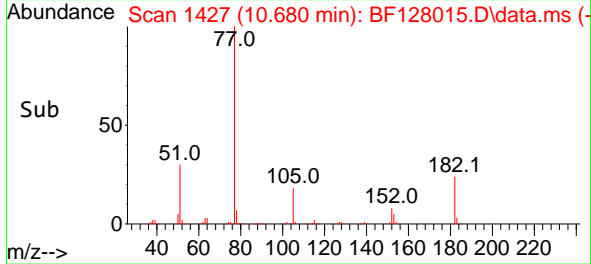
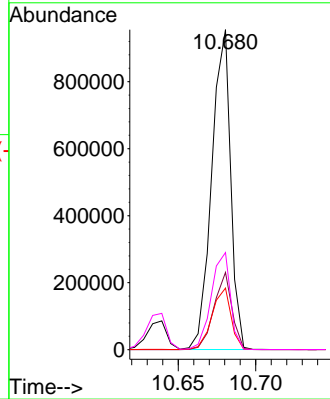
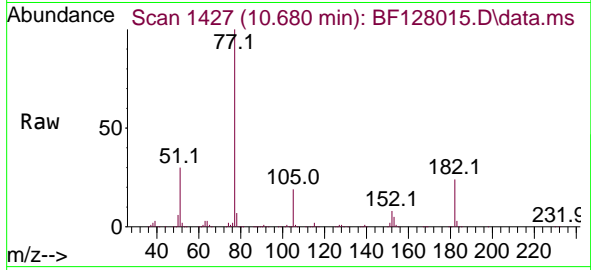


#63
 Azobenzene
 Concen: 42.355 ng
 RT: 10.680 min Scan# 14
 Delta R.T. 0.000 min
 Lab File: BF128015.D
 Acq: 02 May 2022 09:56

Instrument :
 BNA_F
 ClientSampleId :
 SSTDCCC040

Tgt Ion: 77 Resp: 809729

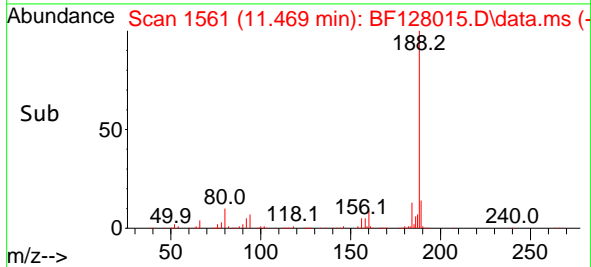
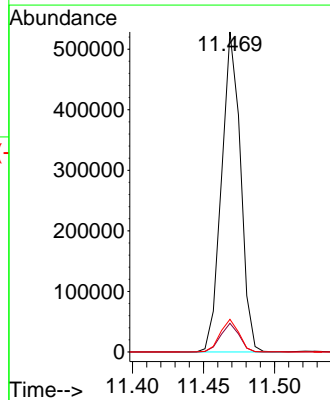
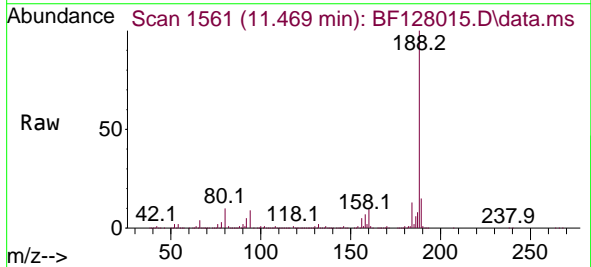
Ion	Ratio	Lower	Upper
77	100		
182	24.2	1.2	41.2
105	19.2	0.0	39.8
51	30.4	11.2	51.2

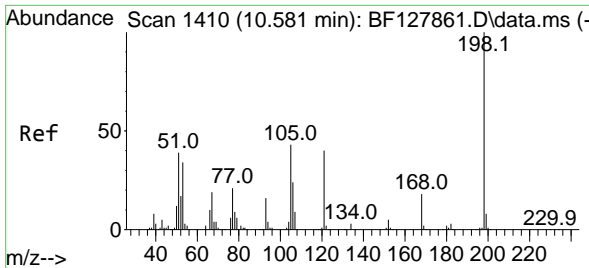


#64
 Phenanthrene-d10
 Concen: 20.000 ng
 RT: 11.469 min Scan# 1561
 Delta R.T. 0.000 min
 Lab File: BF128015.D
 Acq: 02 May 2022 09:56

Tgt Ion: 188 Resp: 489841

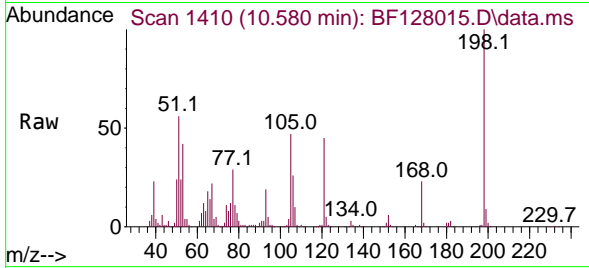
Ion	Ratio	Lower	Upper
188	100		
94	9.0	8.0	12.0
80	10.2	8.9	13.3



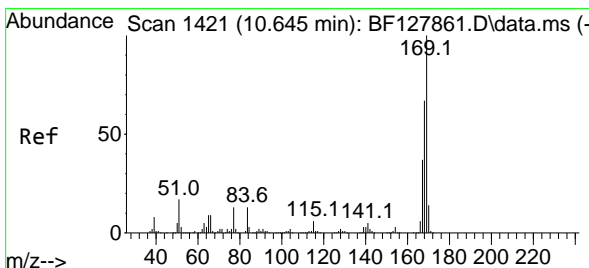
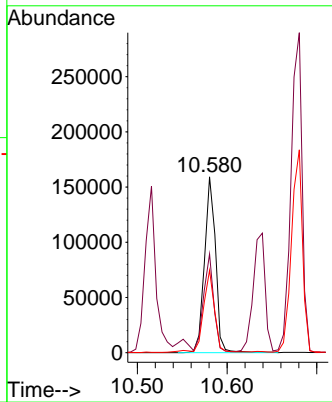
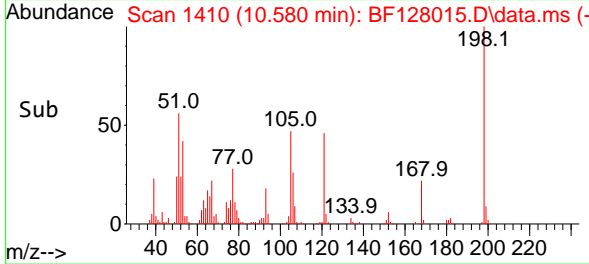


#65
 4,6-Dinitro-2-methylphenol
 Concen: 47.119 ng
 RT: 10.580 min Scan# 1410
 Delta R.T. 0.006 min
 Lab File: BF128015.D
 Acq: 02 May 2022 09:56

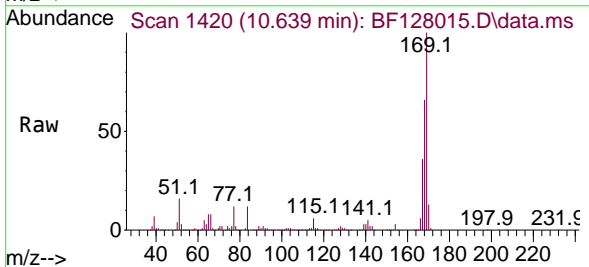
Instrument :
 BNA_F
 ClientSampleId :
 SSTDCCC040



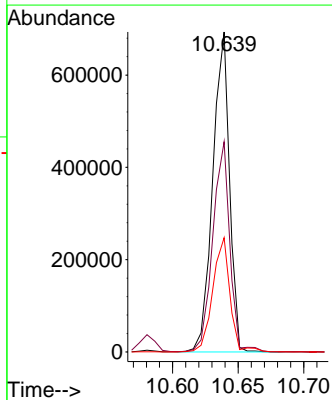
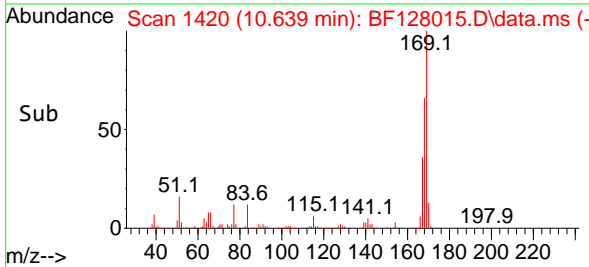
Tgt Ion:198 Resp: 137143
 Ion Ratio Lower Upper
 198 100
 51 56.1 28.4 68.4
 105 46.9 23.4 63.4

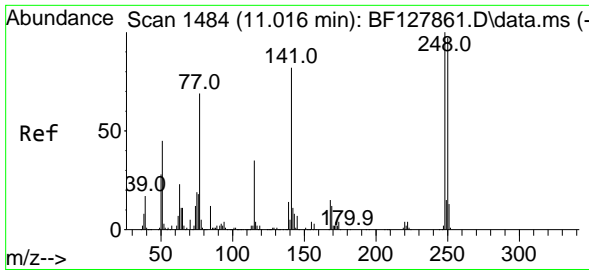


#66
 n-Nitrosodiphenylamine
 Concen: 40.235 ng
 RT: 10.639 min Scan# 1420
 Delta R.T. 0.000 min
 Lab File: BF128015.D
 Acq: 02 May 2022 09:56



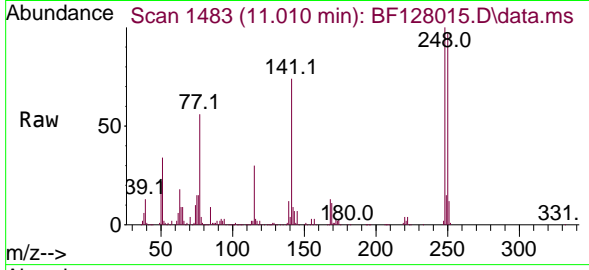
Tgt Ion:169 Resp: 613256
 Ion Ratio Lower Upper
 169 100
 168 65.7 53.8 80.6
 167 35.7 29.5 44.3



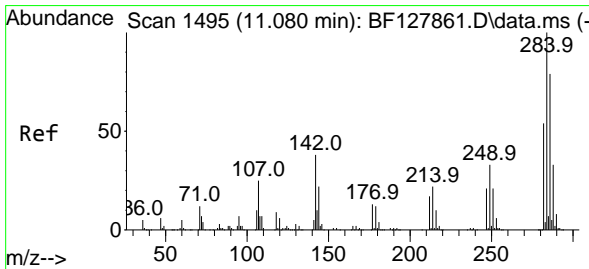
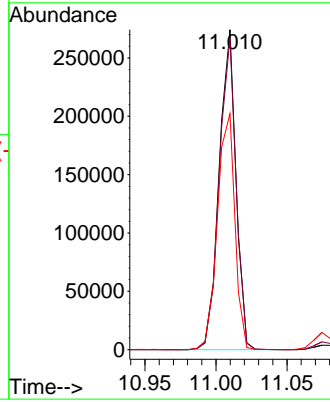
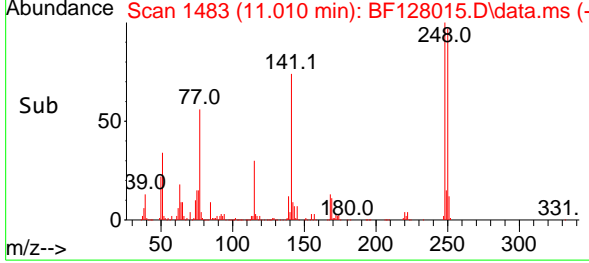


#67
 4-Bromophenyl-phenylether
 Concen: 41.448 ng
 RT: 11.010 min Scan# 1483
 Delta R.T. 0.000 min
 Lab File: BF128015.D
 Acq: 02 May 2022 09:56

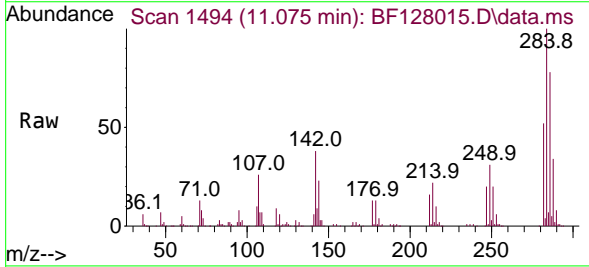
Instrument : BNA_F
 ClientSampleId : SSTDCCC040



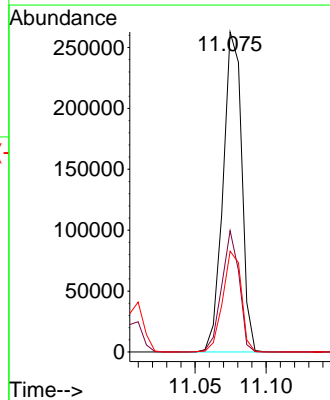
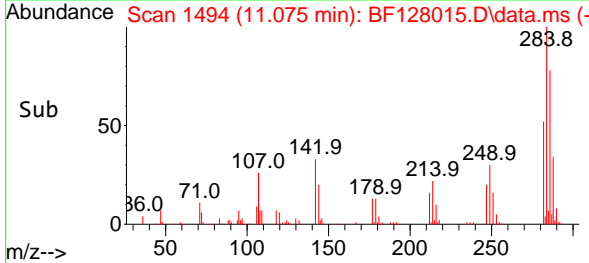
Tgt Ion:248 Resp: 225072
 Ion Ratio Lower Upper
 248 100
 250 97.5 77.7 116.5
 141 73.7 65.6 98.4

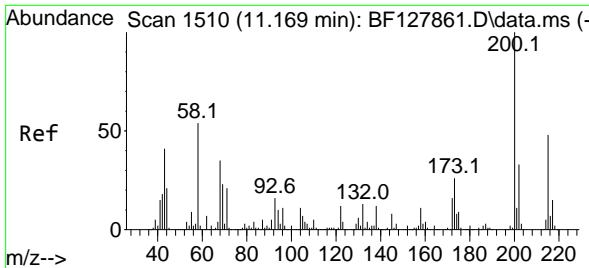


#68
 Hexachlorobenzene
 Concen: 41.906 ng
 RT: 11.075 min Scan# 1494
 Delta R.T. 0.000 min
 Lab File: BF128015.D
 Acq: 02 May 2022 09:56



Tgt Ion:284 Resp: 239751
 Ion Ratio Lower Upper
 284 100
 142 37.9 30.2 45.4
 249 31.5 26.1 39.1

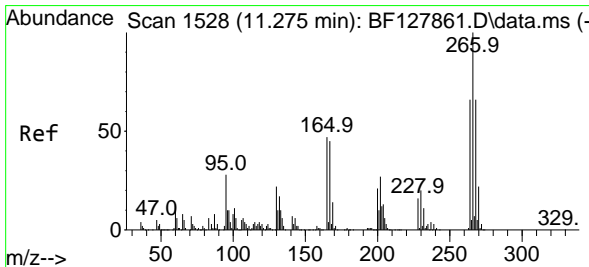
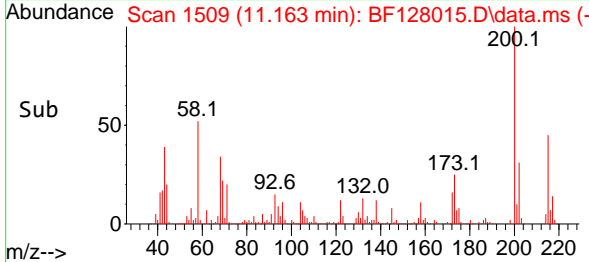
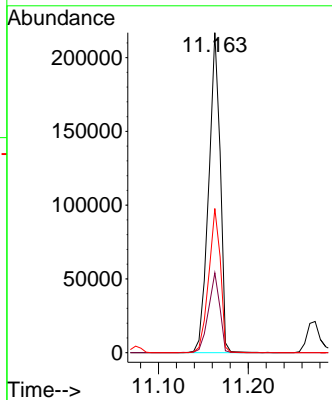
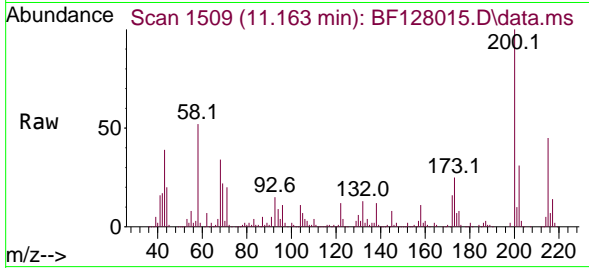




#69
 Atrazine
 Concen: 40.933 ng
 RT: 11.163 min Scan# 1509
 Delta R.T. 0.000 min
 Lab File: BF128015.D
 Acq: 02 May 2022 09:56

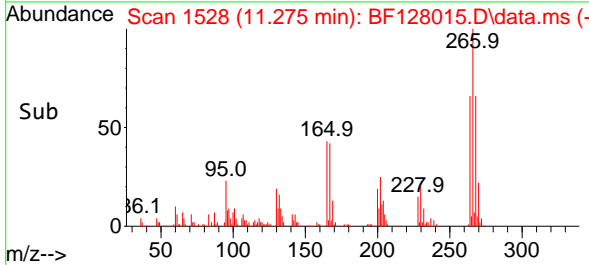
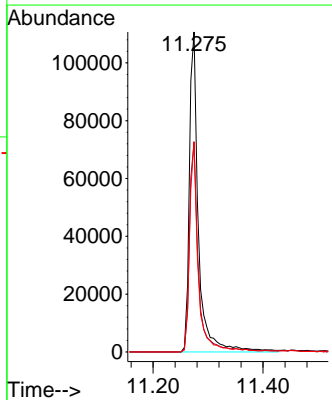
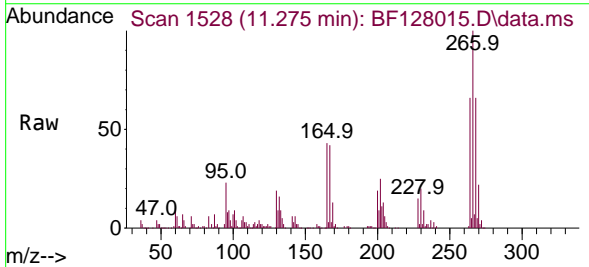
Instrument : BNA_F
 Client Sample Id : SSTDCCC040

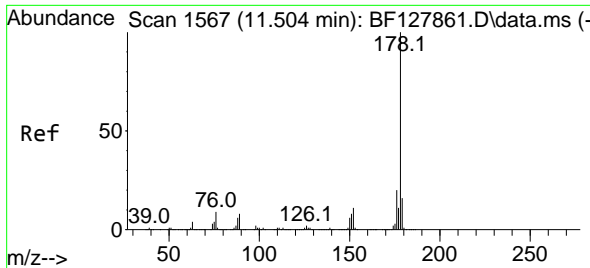
Tgt Ion	Resp	Lower	Upper
200	192918		
173	24.9	6.0	46.0
215	45.0	28.1	68.1



#70
 Pentachlorophenol
 Concen: 37.834 ng
 RT: 11.275 min Scan# 1528
 Delta R.T. 0.006 min
 Lab File: BF128015.D
 Acq: 02 May 2022 09:56

Tgt Ion	Resp	Lower	Upper
266	127341		
268	65.7	53.0	79.6
264	65.6	53.1	79.7

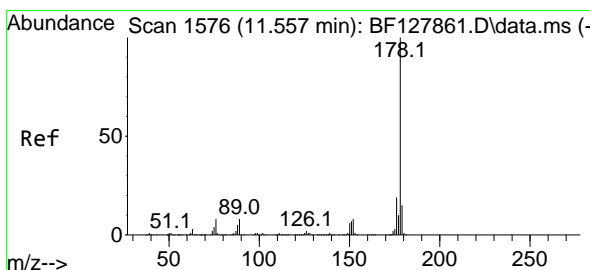
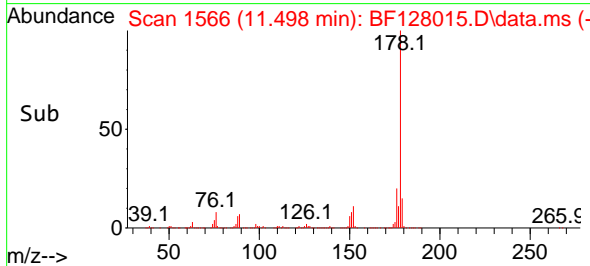
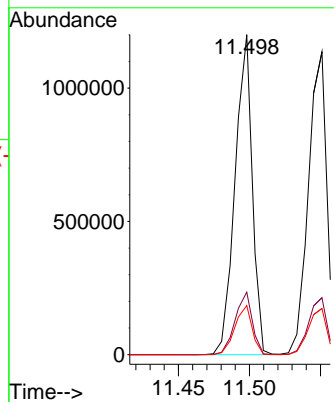
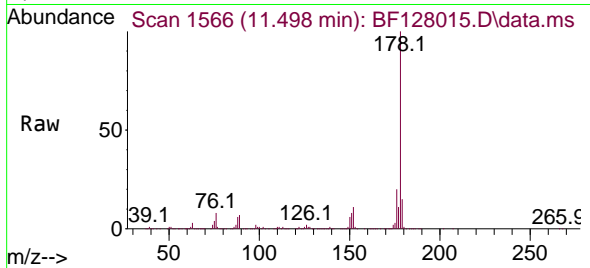




#71
 Phenanthrene
 Concen: 39.642 ng
 RT: 11.498 min Scan# 11
 Delta R.T. 0.006 min
 Lab File: BF128015.D
 Acq: 02 May 2022 09:56

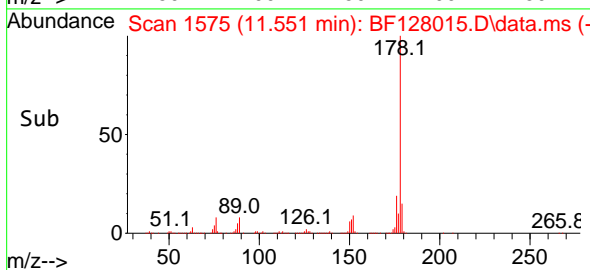
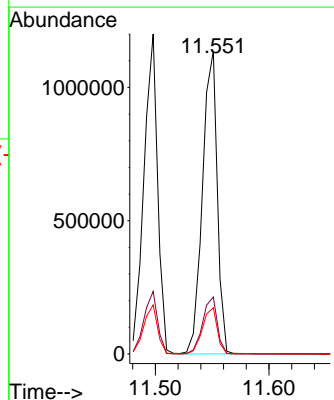
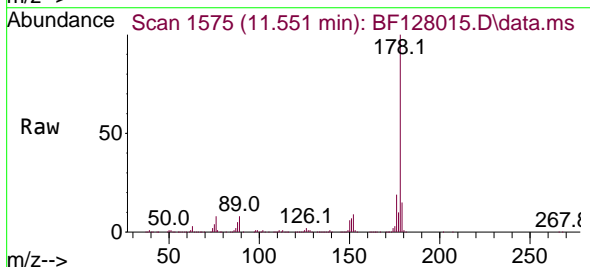
Instrument :
 BNA_F
 ClientSampleId :
 SSTDCCC040

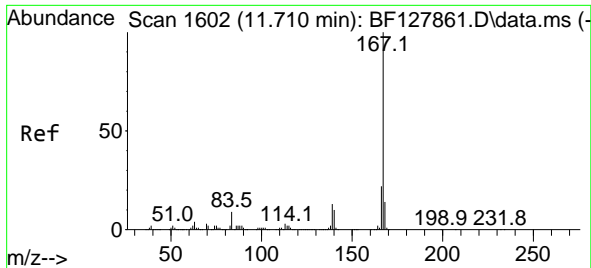
Tgt Ion:178 Resp: 1016469
 Ion Ratio Lower Upper
 178 100
 176 19.5 15.7 23.5
 179 15.3 12.6 19.0



#72
 Anthracene
 Concen: 40.193 ng
 RT: 11.551 min Scan# 1575
 Delta R.T. 0.006 min
 Lab File: BF128015.D
 Acq: 02 May 2022 09:56

Tgt Ion:178 Resp: 1026618
 Ion Ratio Lower Upper
 178 100
 176 18.8 15.0 22.6
 179 15.3 12.4 18.6

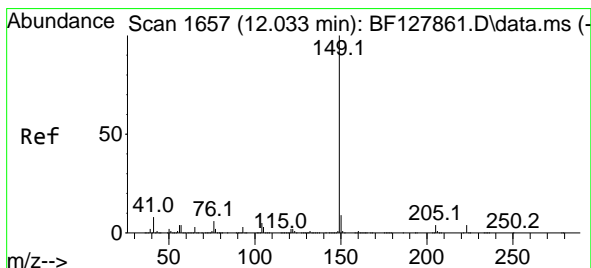
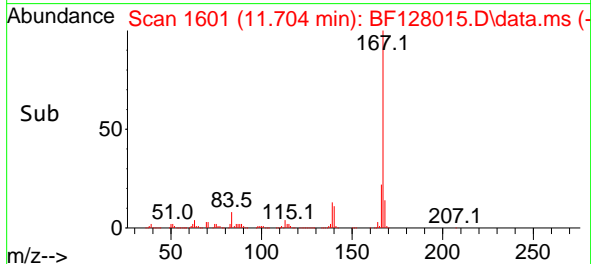
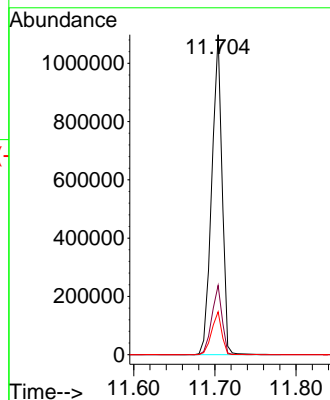
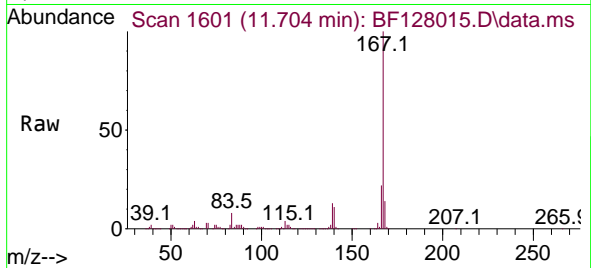




#73
 Carbazole
 Concen: 39.213 ng
 RT: 11.704 min Scan# 11
 Delta R.T. 0.006 min
 Lab File: BF128015.D
 Acq: 02 May 2022 09:56

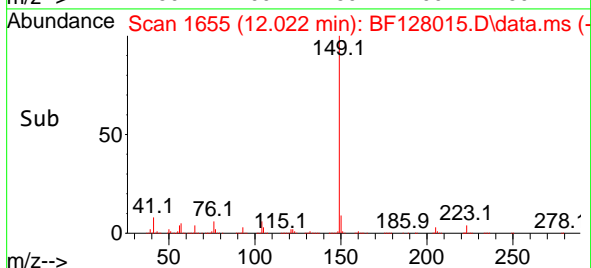
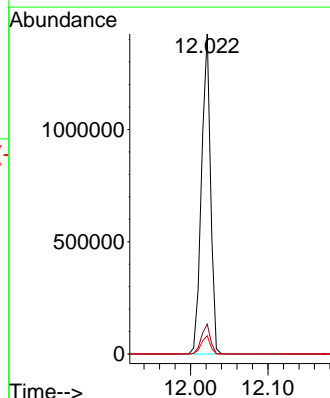
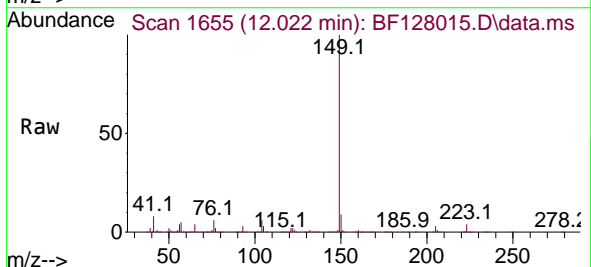
Instrument : BNA_F
 ClientSampleId : SSTDCCC040

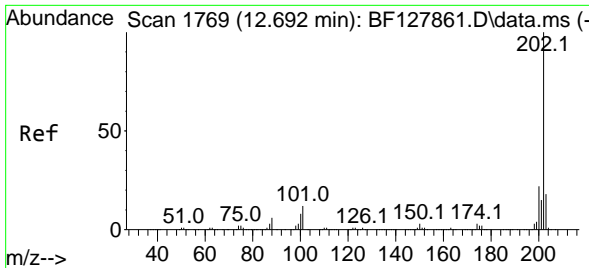
Tgt Ion:167 Resp: 965300
 Ion Ratio Lower Upper
 167 100
 166 21.6 17.6 26.4
 139 13.4 10.7 16.1



#74
 Di-n-butylphthalate
 Concen: 41.697 ng
 RT: 12.022 min Scan# 1655
 Delta R.T. 0.000 min
 Lab File: BF128015.D
 Acq: 02 May 2022 09:56

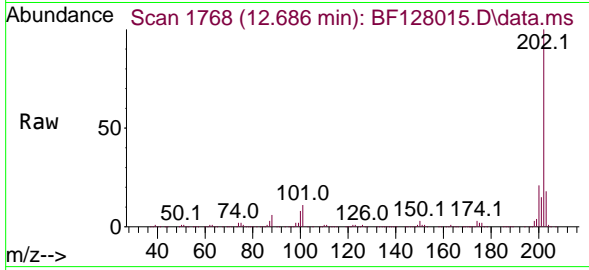
Tgt Ion:149 Resp: 1154214
 Ion Ratio Lower Upper
 149 100
 150 9.3 7.5 11.3
 104 5.7 4.3 6.5



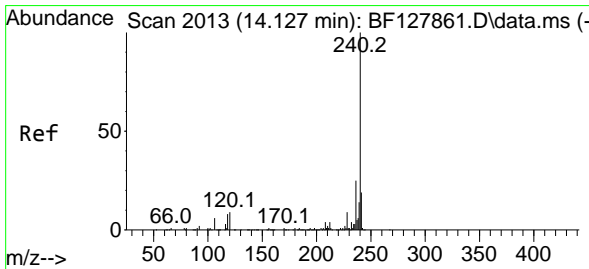
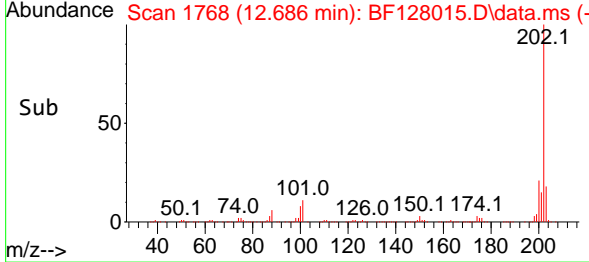
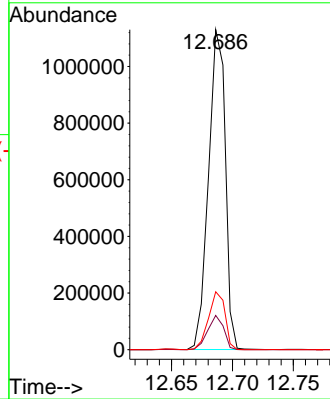


#75
 Fluoranthene
 Concen: 40.100 ng
 RT: 12.686 min Scan# 11
 Delta R.T. 0.000 min
 Lab File: BF128015.D
 Acq: 02 May 2022 09:56

Instrument :
 BNA_F
 ClientSampleId :
 SSTDCCC040

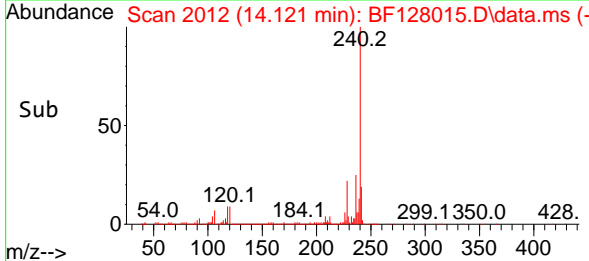
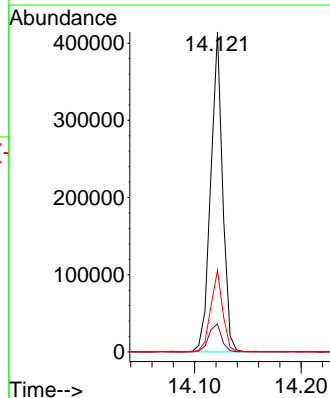
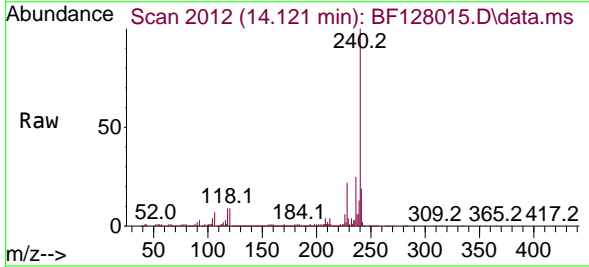


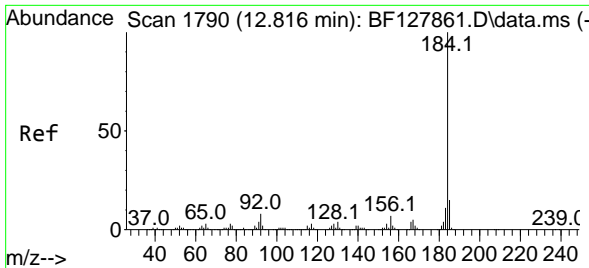
Tgt Ion:202 Resp: 1082139
 Ion Ratio Lower Upper
 202 100
 101 10.7 0.0 31.6
 203 18.1 0.0 38.1



#76
 Chrysene-d12
 Concen: 20.000 ng
 RT: 14.121 min Scan# 2012
 Delta R.T. 0.006 min
 Lab File: BF128015.D
 Acq: 02 May 2022 09:56

Tgt Ion:240 Resp: 322187
 Ion Ratio Lower Upper
 240 100
 120 8.8 7.0 10.6
 236 25.5 20.3 30.5

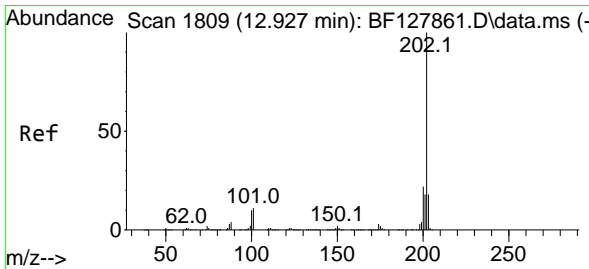
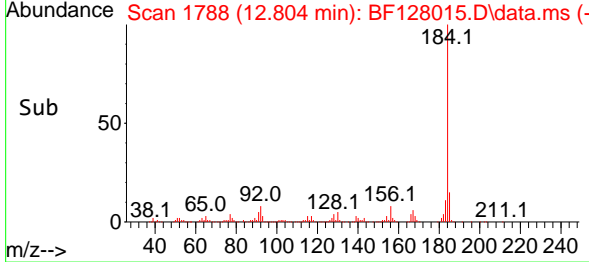
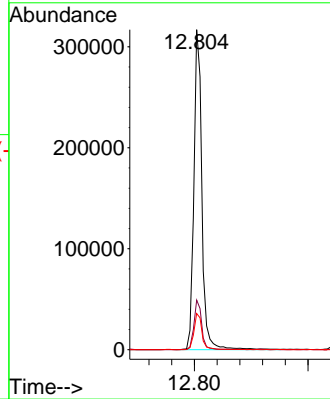
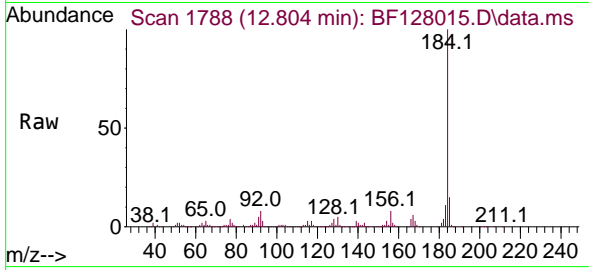




#77
 Benzidine
 Concen: 51.026 ng
 RT: 12.804 min Scan# 11
 Delta R.T. 0.000 min
 Lab File: BF128015.D
 Acq: 02 May 2022 09:56

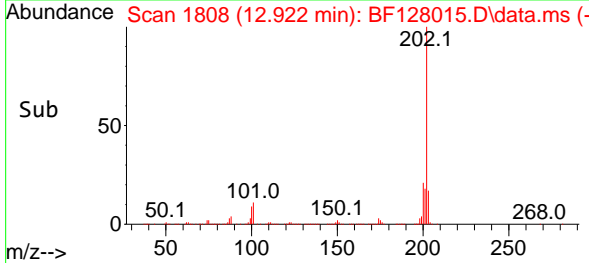
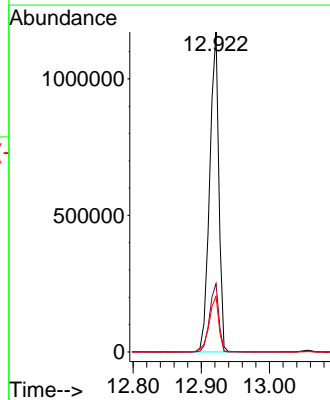
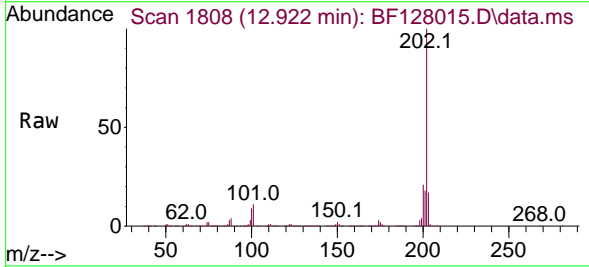
Instrument :
 BNA_F
 ClientSampleId :
 SSTDCCC040

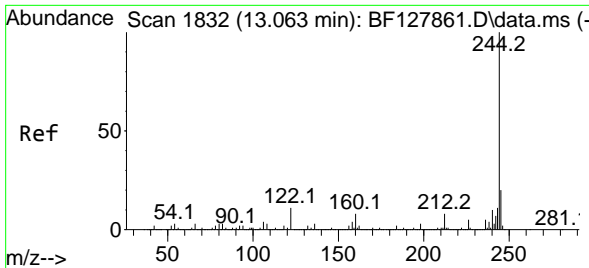
Tgt Ion:184 Resp: 311068
 Ion Ratio Lower Upper
 184 100
 185 15.5 12.1 18.1
 183 11.3 9.0 13.4



#78
 Pyrene
 Concen: 41.970 ng
 RT: 12.922 min Scan# 1808
 Delta R.T. 0.006 min
 Lab File: BF128015.D
 Acq: 02 May 2022 09:56

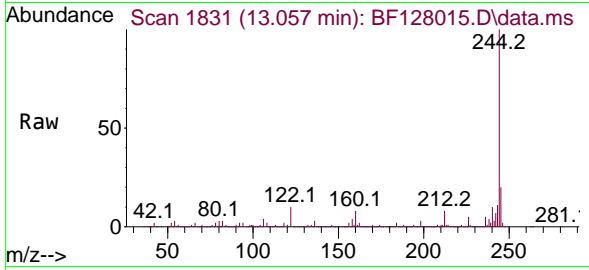
Tgt Ion:202 Resp: 1091588
 Ion Ratio Lower Upper
 202 100
 200 21.4 17.4 26.2
 203 17.4 14.0 21.0



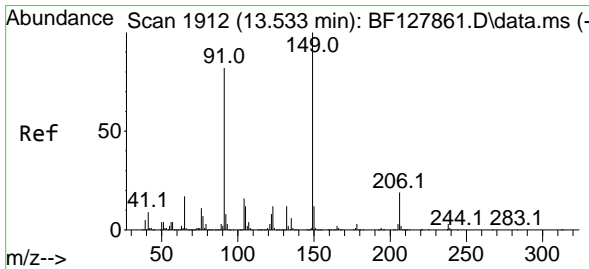
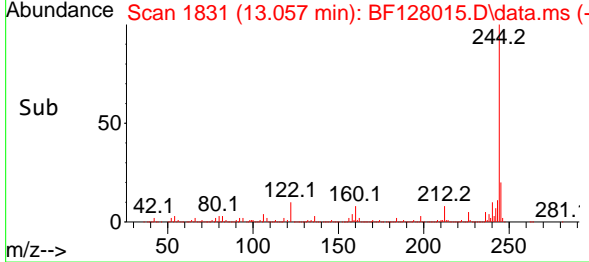
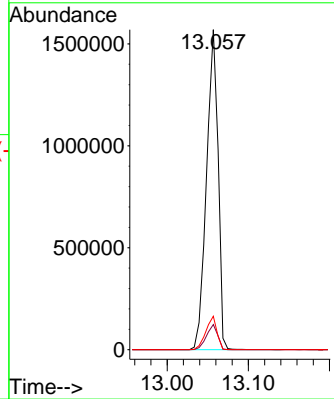


#79
 Terphenyl-d14
 Concen: 87.797 ng
 RT: 13.057 min Scan# 11
 Delta R.T. 0.000 min
 Lab File: BF128015.D
 Acq: 02 May 2022 09:56

Instrument : BNA_F
 ClientSampleId : SSTDCCC040

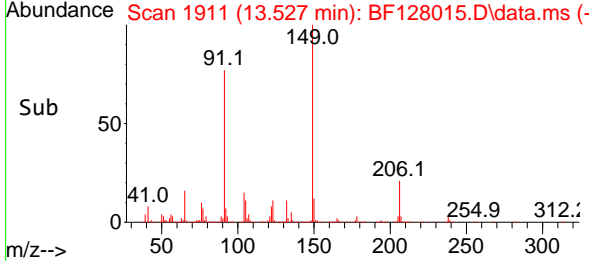
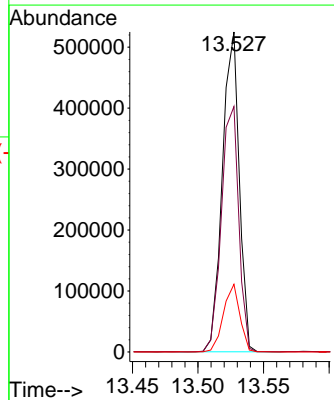
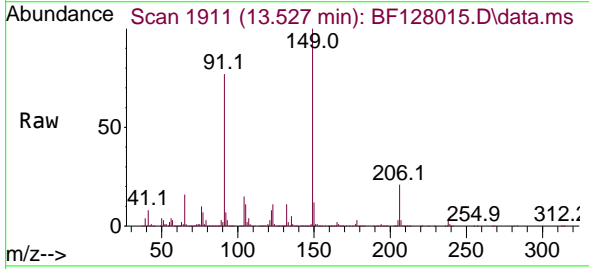


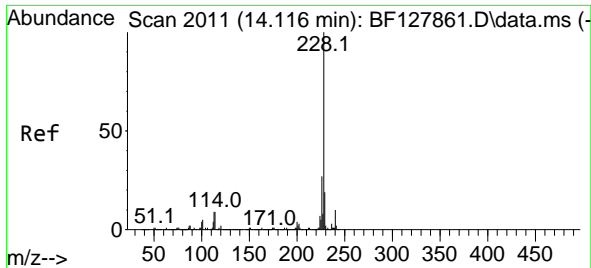
Tgt Ion:244 Resp: 1546959
 Ion Ratio Lower Upper
 244 100
 212 7.8 6.2 9.4
 122 10.4 8.6 12.8



#80
 Butylbenzylphthalate
 Concen: 46.012 ng
 RT: 13.527 min Scan# 1911
 Delta R.T. 0.000 min
 Lab File: BF128015.D
 Acq: 02 May 2022 09:56

Tgt Ion:149 Resp: 469055
 Ion Ratio Lower Upper
 149 100
 91 76.7 65.8 98.6
 206 21.2 15.4 23.2



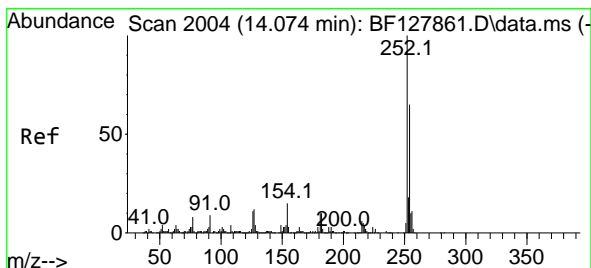
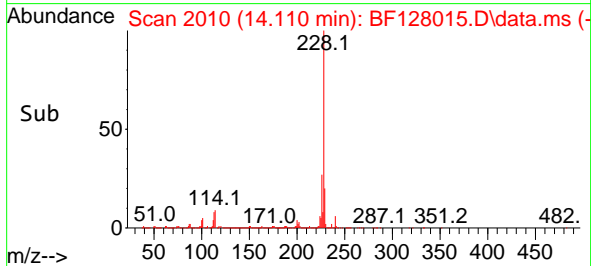
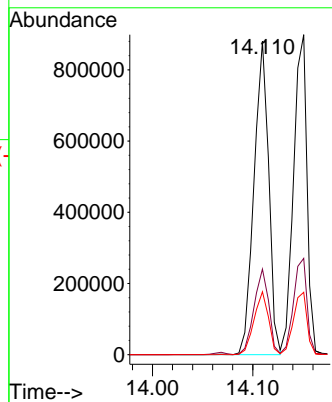
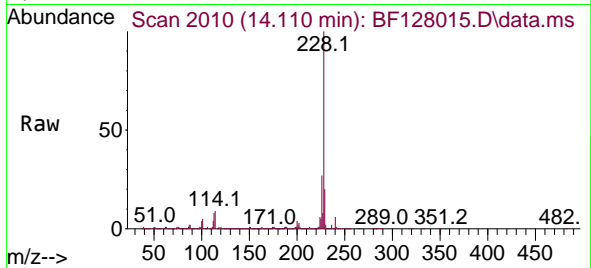


#81
 Benzo(a)anthracene
 Concen: 41.675 ng
 RT: 14.110 min Scan# 2003
 Delta R.T. 0.006 min
 Lab File: BF128015.D
 Acq: 02 May 2022 09:56

Instrument :
 BNA_F
 ClientSampleId :
 SSTDCCC040

Tgt Ion:228 Resp: 894960

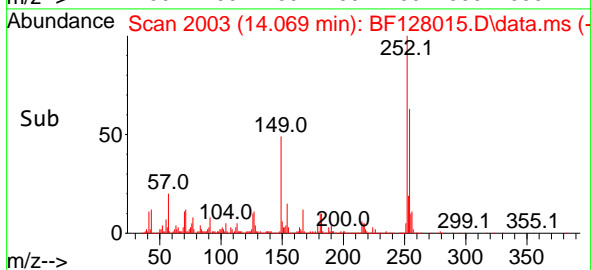
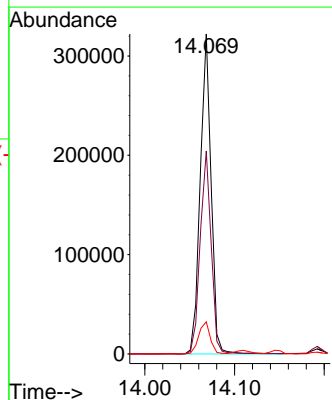
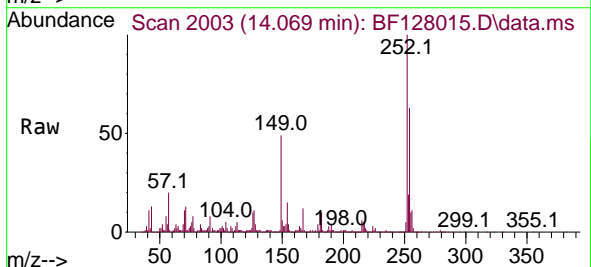
Ion	Ratio	Lower	Upper
228	100		
226	27.3	21.7	32.5
229	20.1	15.4	23.2

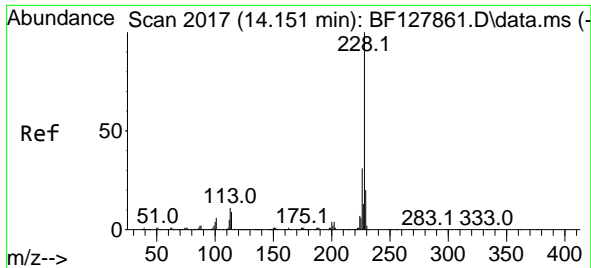


#82
 3,3'-Dichlorobenzidine
 Concen: 39.793 ng
 RT: 14.069 min Scan# 2003
 Delta R.T. 0.006 min
 Lab File: BF128015.D
 Acq: 02 May 2022 09:56

Tgt Ion:252 Resp: 271327

Ion	Ratio	Lower	Upper
252	100		
254	63.4	51.6	77.4
126	10.1	8.8	13.2

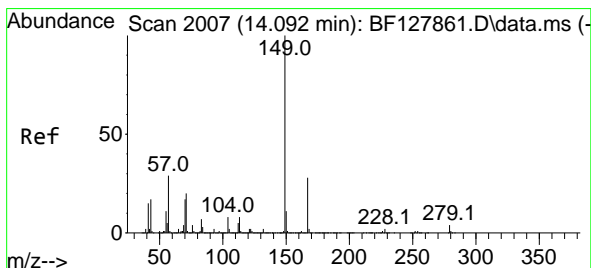
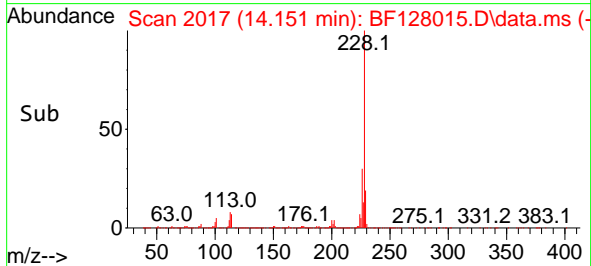
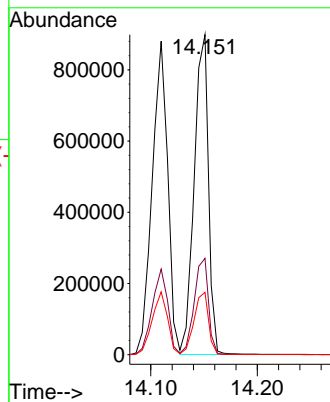
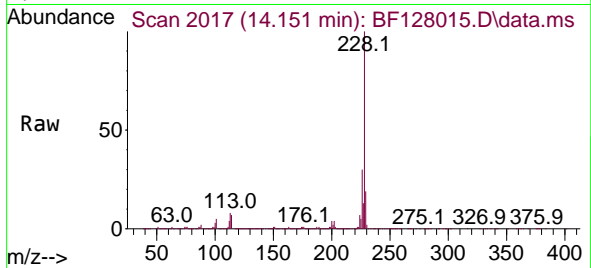




#83
 Chrysene
 Concen: 40.792 ng
 RT: 14.151 min Scan# 20
 Delta R.T. 0.012 min
 Lab File: BF128015.D
 Acq: 02 May 2022 09:56

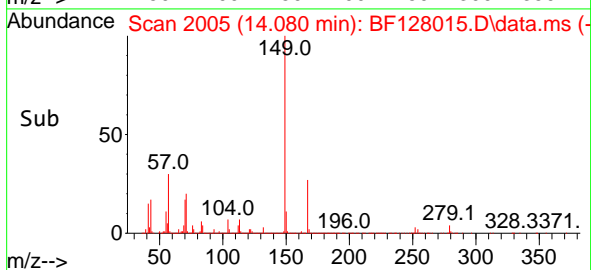
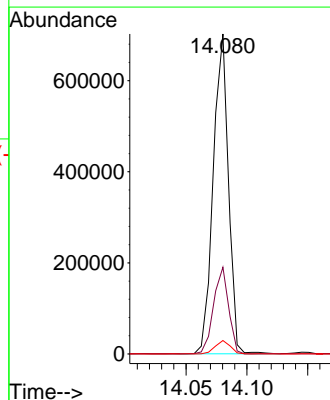
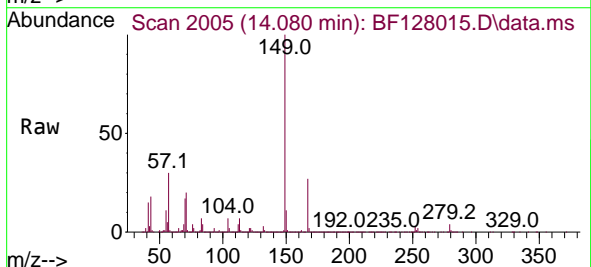
Instrument :
 BNA_F
 ClientSampleId :
 SSTDCCC040

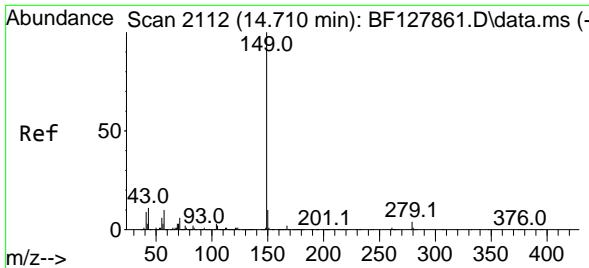
Tgt Ion:228 Resp: 836603
 Ion Ratio Lower Upper
 228 100
 226 30.1 24.4 36.6
 229 19.5 15.8 23.8



#84
 Bis(2-ethylhexyl)phthalate
 Concen: 45.023 ng
 RT: 14.080 min Scan# 2005
 Delta R.T. 0.000 min
 Lab File: BF128015.D
 Acq: 02 May 2022 09:56

Tgt Ion:149 Resp: 608651
 Ion Ratio Lower Upper
 149 100
 167 27.1 22.0 33.0
 279 4.2 3.4 5.0



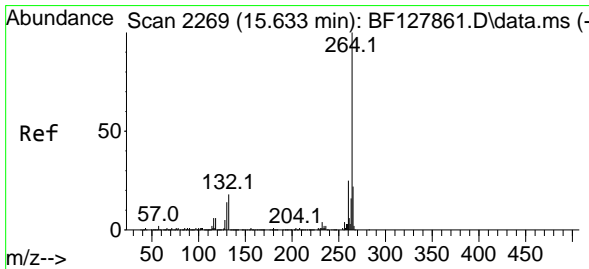
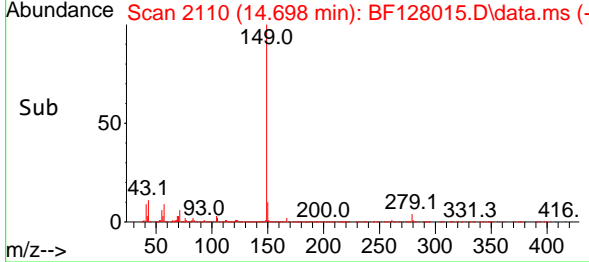
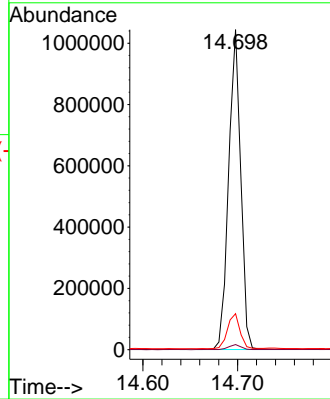
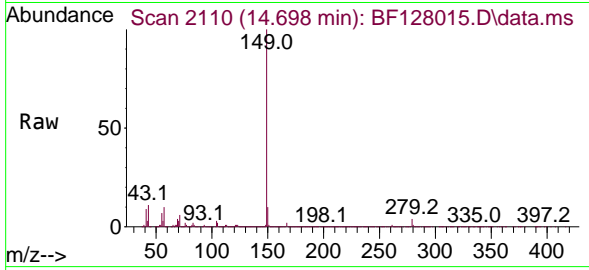


#85
 Di-n-octyl phthalate
 Concen: 44.238 ng
 RT: 14.698 min Scan# 2110
 Delta R.T. 0.000 min
 Lab File: BF128015.D
 Acq: 02 May 2022 09:56

Instrument :
 BNA_F
 ClientSampleId :
 SSTDCCC040

Tgt Ion:149 Resp: 926791

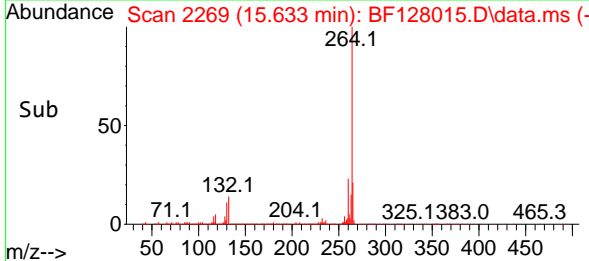
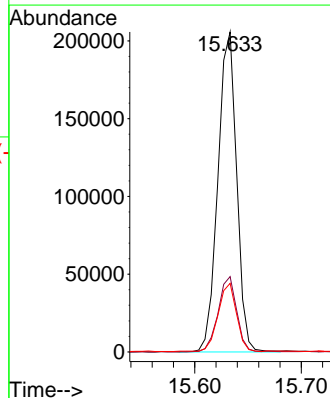
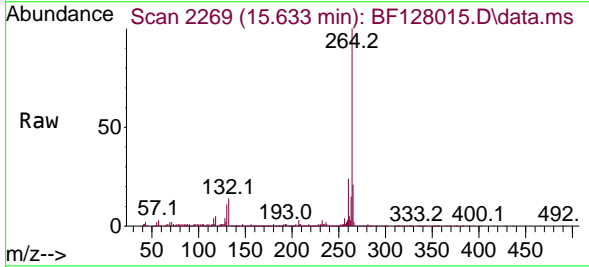
Ion	Ratio	Lower	Upper
149	100		
167	1.6	1.3	1.9
43	11.4	8.9	13.3

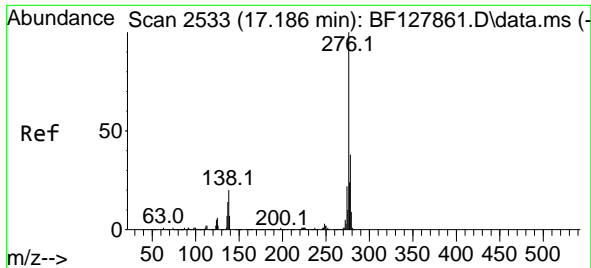


#86
 Perylene-d12
 Concen: 20.000 ng
 RT: 15.633 min Scan# 2269
 Delta R.T. 0.012 min
 Lab File: BF128015.D
 Acq: 02 May 2022 09:56

Tgt Ion:264 Resp: 251007

Ion	Ratio	Lower	Upper
264	100		
260	23.5	20.1	30.1
265	21.5	17.5	26.3





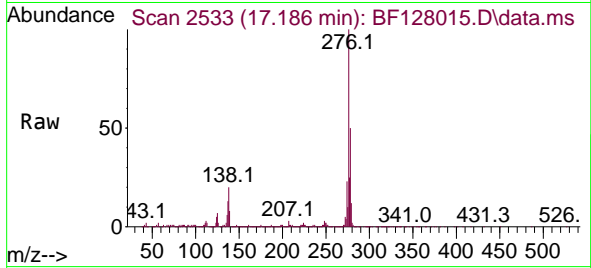
#87
 Indeno(1,2,3-cd)pyrene
 Concen: 39.988 ng
 RT: 17.186 min Scan# 211
 Delta R.T. 0.018 min
 Lab File: BF128015.D
 Acq: 02 May 2022 09:56

Instrument :

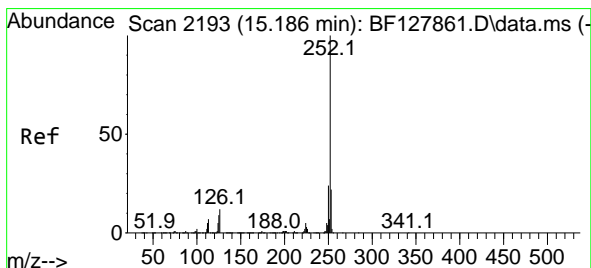
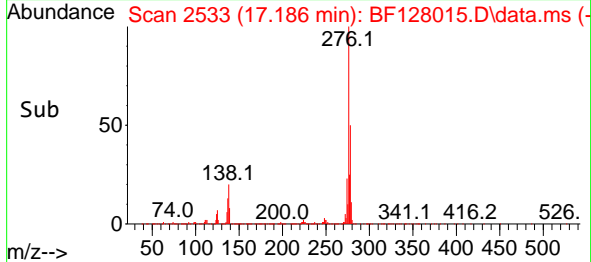
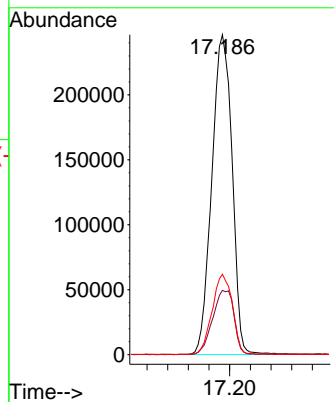
BNA_F

ClientSampleId :

SSTDCCC040

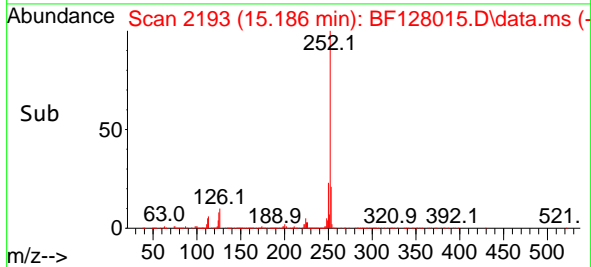
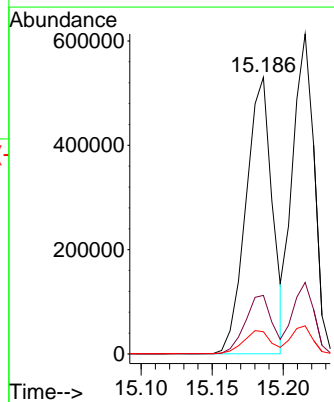
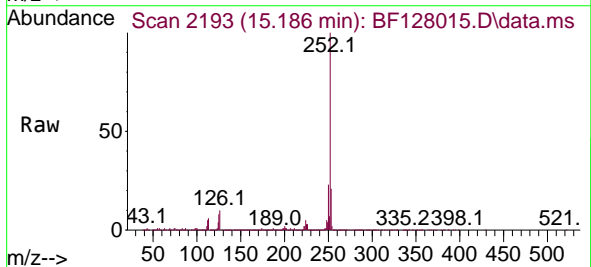


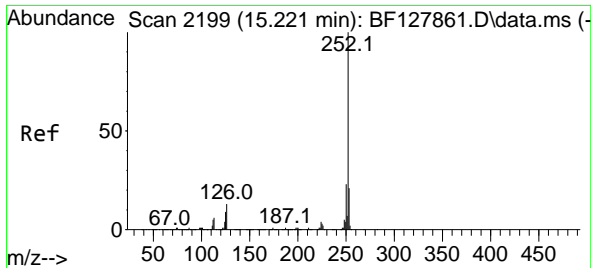
Tgt Ion:276 Resp: 669974
 Ion Ratio Lower Upper
 276 100
 138 21.0 19.0 28.4
 277 25.4 20.1 30.1



#88
 Benzo(b)fluoranthene
 Concen: 43.338 ng
 RT: 15.186 min Scan# 2193
 Delta R.T. 0.012 min
 Lab File: BF128015.D
 Acq: 02 May 2022 09:56

Tgt Ion:252 Resp: 683245
 Ion Ratio Lower Upper
 252 100
 253 21.2 17.4 26.2
 125 8.0 7.4 11.2



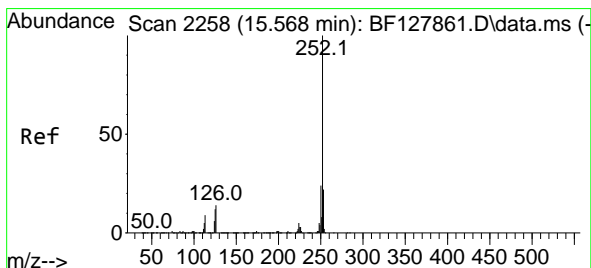
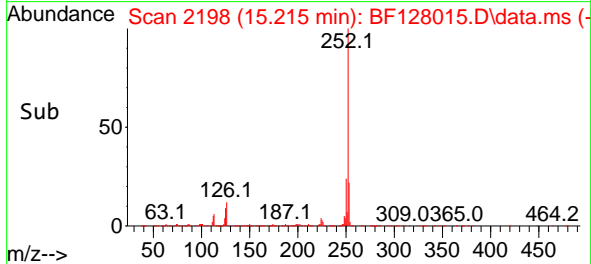
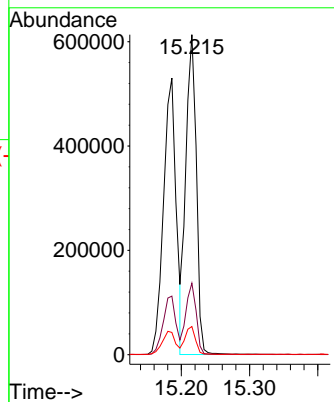
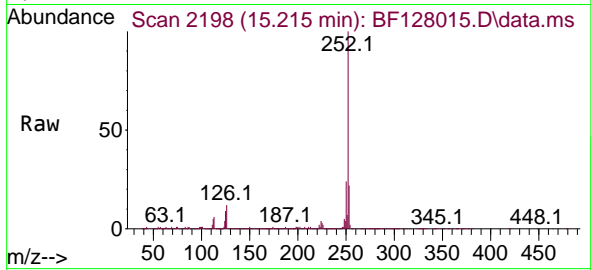


#89
 Benzo(k)fluoranthene
 Concen: 41.004 ng
 RT: 15.215 min Scan# 2198
 Delta R.T. 0.006 min
 Lab File: BF128015.D
 Acq: 02 May 2022 09:56

Instrument : BNA_F
 ClientSampleId : SSTDCCC040

Tgt Ion:252 Resp: 651286

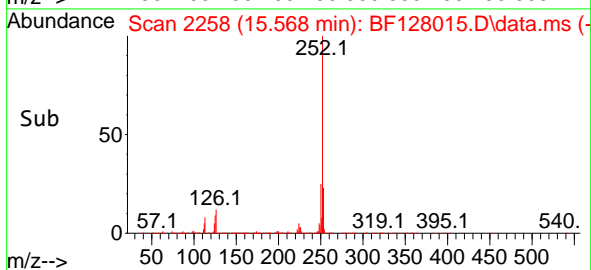
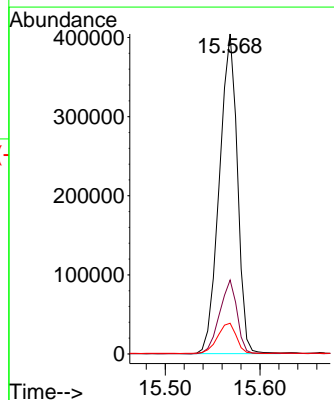
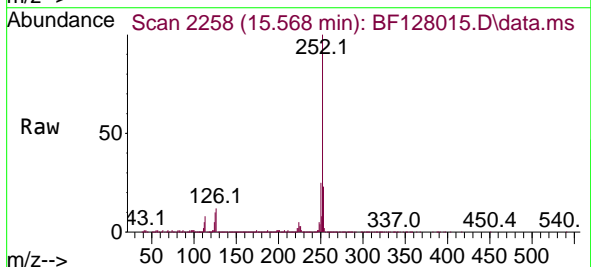
Ion	Ratio	Lower	Upper
252	100		
253	22.3	17.0	25.4
125	8.8	6.8	10.2

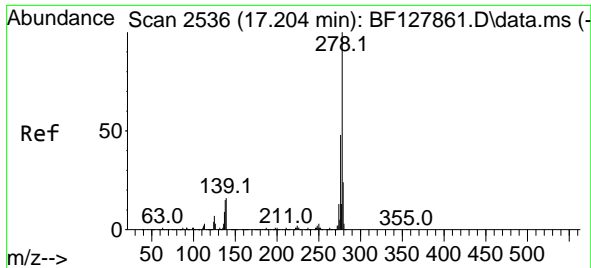


#90
 Benzo(a)pyrene
 Concen: 40.932 ng
 RT: 15.568 min Scan# 2258
 Delta R.T. 0.012 min
 Lab File: BF128015.D
 Acq: 02 May 2022 09:56

Tgt Ion:252 Resp: 535276

Ion	Ratio	Lower	Upper
252	100		
253	23.1	17.8	26.6
125	9.6	9.2	13.8





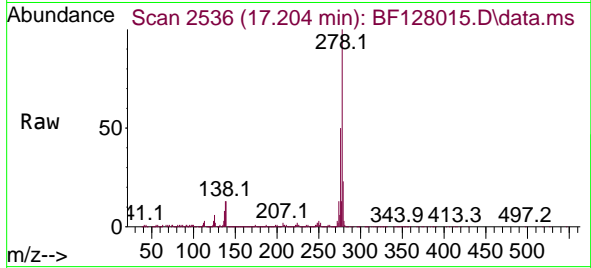
#91
 Dibenzo(a,h)anthracene
 Concen: 40.766 ng
 RT: 17.204 min Scan# 21
 Delta R.T. 0.018 min
 Lab File: BF128015.D
 Acq: 02 May 2022 09:56

Instrument :

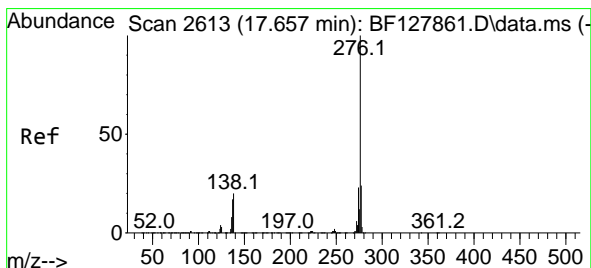
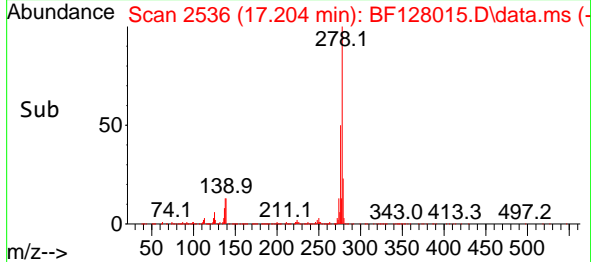
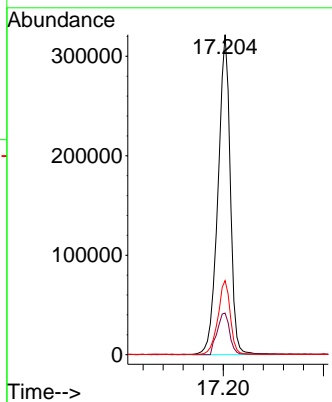
BNA_F

ClientSampleId :

SSTDCCC040



Tgt Ion:278 Resp: 547762
 Ion Ratio Lower Upper
 278 100
 139 13.0 12.6 19.0
 279 23.1 18.9 28.3



#92
 Benzo(g,h,i)perylene
 Concen: 39.905 ng
 RT: 17.662 min Scan# 2614
 Delta R.T. 0.024 min
 Lab File: BF128015.D
 Acq: 02 May 2022 09:56

Tgt Ion:276 Resp: 565066
 Ion Ratio Lower Upper
 276 100
 277 23.2 18.8 28.2
 138 17.6 16.2 24.2

