

Data Path : Z:\HPCHEM1\BNA F\DATA\BF050316\
 Data File : BF086652.D
 Acq On : 3 May 2016 18:51
 Operator : UM/SJ
 Sample : H2685-10 4X
 Misc :
 ALS Vial : 42 Sample Multiplier: 1

Instrument :
 BNA_F
Client Sampled :
 26WARD-2B-CS-1(0-10FTBGS)

Manual Integrations
APPROVED
 sohil
 5/4/2016 6:53:13 PM

Quant Time: May 04 04:32:04 2016
 Quant Method : Z:\HPCHEM1\BNA F\METHODS\8270-BF042716.M
 Quant Title : ASP BNA STANDARDS FOR 5 POINT CALIBRATION
 QLast Update : Wed Apr 27 14:20:52 2016
 Response via : Initial Calibration

Internal Standards	R.T.	QIon	Response	Conc	Units	Dev(Min)
1) 1,4-Dichlorobenzene-d4	6.75	152	156640	20.00	ng	-0.06
21) Naphthalene-d8	8.04	136	624690	20.00	ng	-0.06
38) Acenaphthene-d10	9.79	164	275501	20.00	ng	-0.06
63) Phenanthrene-d10	11.26	188	384173	20.00	ng	-0.06
75) Chrysene-d12	13.91	240	327485	20.00	ng	-0.06
86) Perylene-d12	15.30	264	270361	20.00	ng	-0.06
System Monitoring Compounds						
5) 2-Fluorophenol	5.33	112	257390	28.34	ng	-0.06
7) Phenol-d6	6.38	99	351140	27.70	ng	-0.06
23) Nitrobenzene-d5	7.31	82	198555	17.13	ng	-0.07
41) 2,4,6-Tribromophenol	10.58	330	52227	17.98	ng	-0.06
44) 2-Fluorobiphenyl	9.12	172	374247	16.20	ng	-0.06
78) Terphenyl-d14	12.85	244	243227	16.36	ng	-0.06
Target Compounds						
70) Phenanthrene	11.29	178	51186	2.54	ng	98
74) Fluoranthene	12.48	202	96033	4.72	ng	97
77) Pyrene	12.71	202	92434	3.92	ng	98
80) Benzo(a)anthracene	13.89	228	47943	2.75	ng	# 94
82) Chrysene	13.93	228	52950m	2.79	ng	
87) Benzo(b)fluoranthene	14.91	252	49501m	3.11	ng	
89) Benzo(a)pyrene	15.24	252	30048	2.00	ng	# 68

(#) = qualifier out of range (m) = manual integration (+) = signals summed

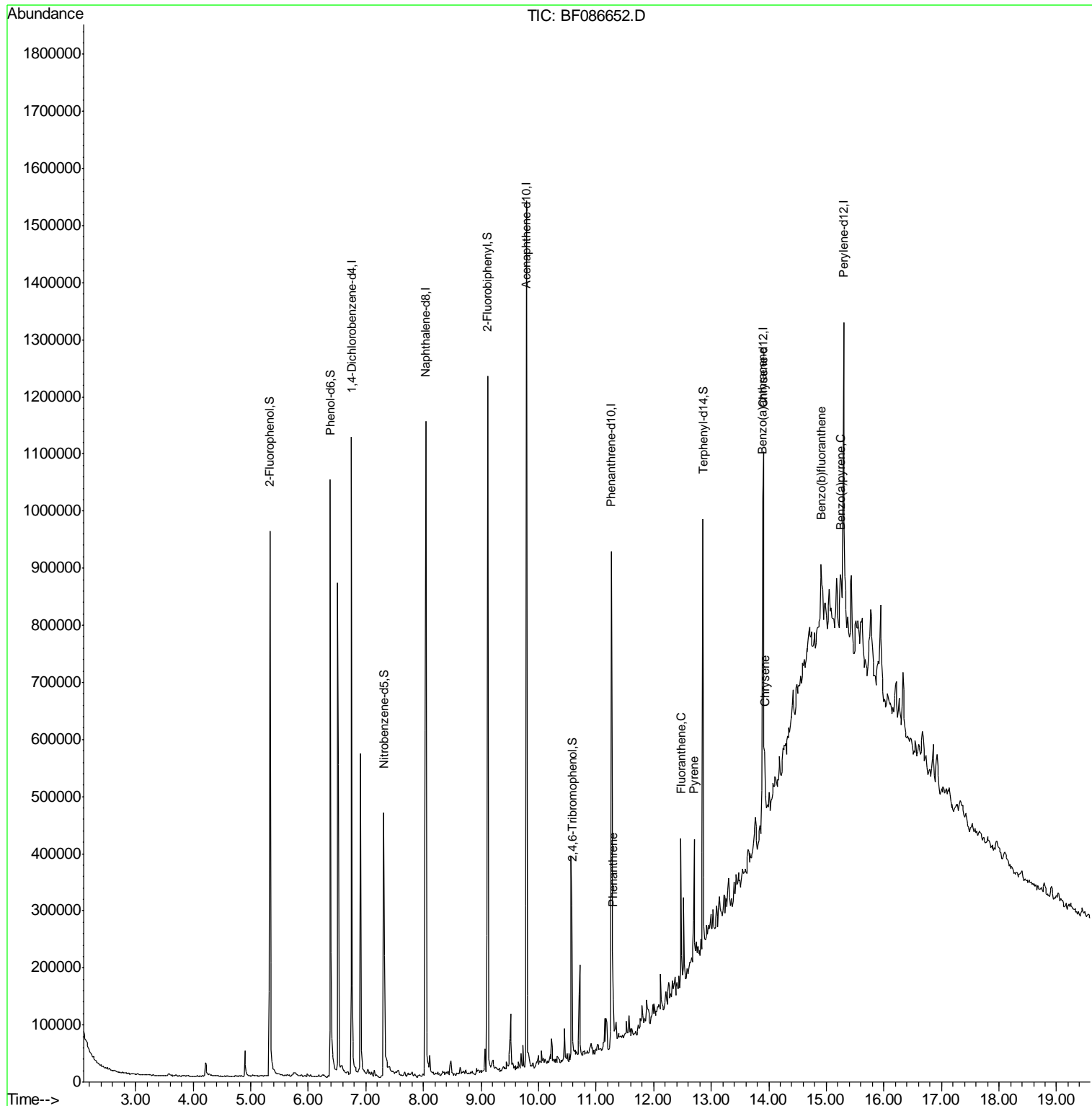
Data Path : Z:\HPCHEM1\BNA F\DATA\BF050316\
 Data File : BF086652.D
 Acq On : 3 May 2016 18:51
 Operator : UM/SJ
 Sample : H2685-10 4X
 Misc :
 ALS Vial : 42 Sample Multiplier: 1

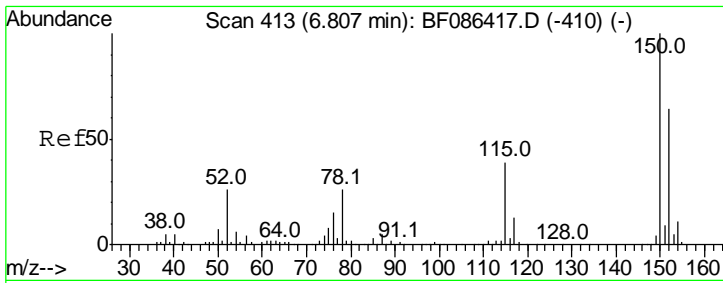
Instrument :
 BNA_F
 Client Sampled :
 26WARD-2B-CS-1(0-10FTBGS)

Manual Integrations
 APPROVED

sohil
 5/4/2016 6:53:13 PM

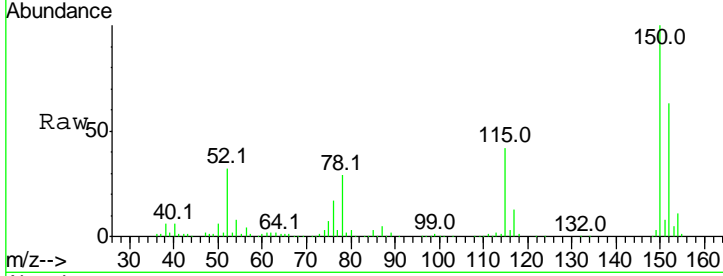
Quant Time: May 04 04:32:04 2016
 Quant Method : Z:\HPCHEM1\BNA F\METHODS\8270-BF042716.M
 Quant Title : ASP BNA STANDARDS FOR 5 POINT CALIBRATION
 QLast Update : Wed Apr 27 14:20:52 2016
 Response via : Initial Calibration





#1
 1,4-Dichlorobenzene-d4
 Concen: 20.00 ng
 RT: 6.75 min Scan# 408
 Delta R.T. -0.06 min
 Lab File: BF086652.D
 Acq: 3 May 2016 18:51

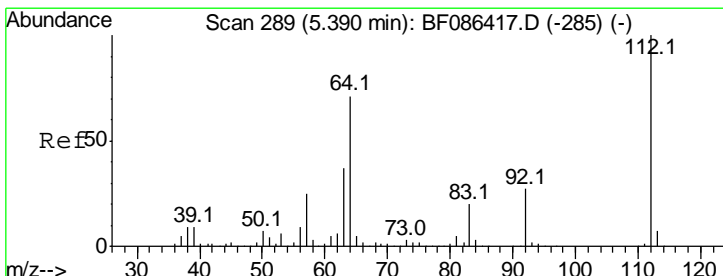
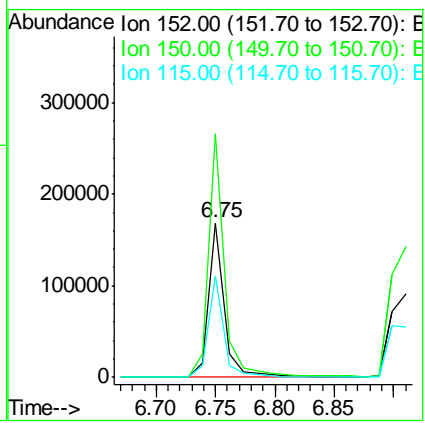
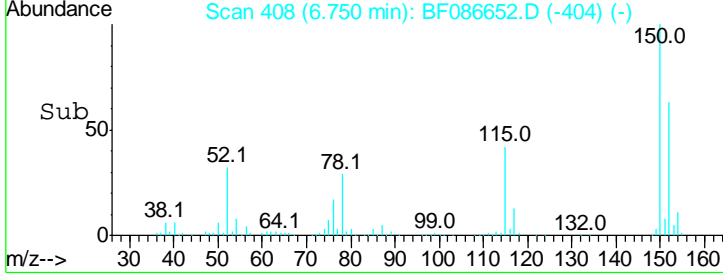
Instrument :
 BNA_F
ClientSampled :
 26WARD-2B-CS-1(0-10FTBGS)



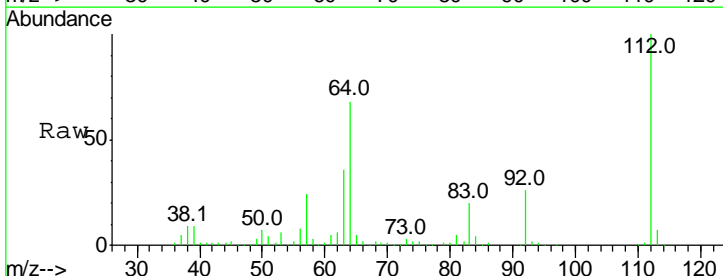
Tgt Ion:152 Resp: 156640

Ion	Ratio	Lower	Upper
152	100		
150	157.6	125.8	188.6
115	65.7	51.5	77.3

Manual Integrations
APPROVED
 sohil
 5/4/2016 6:53:13 PM

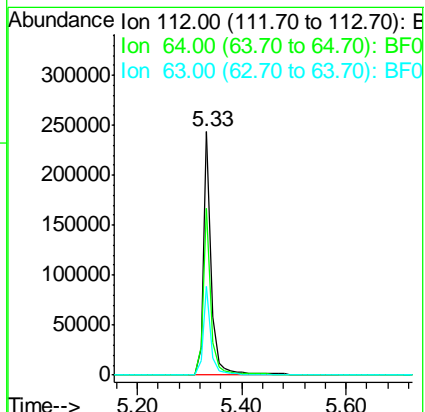
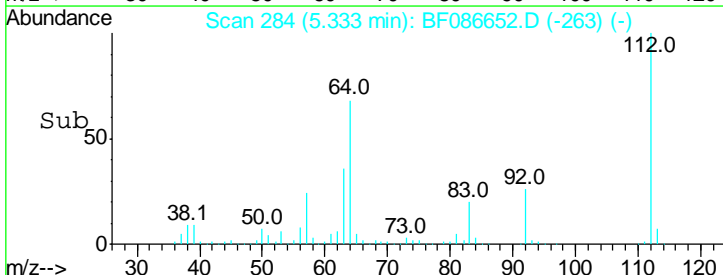


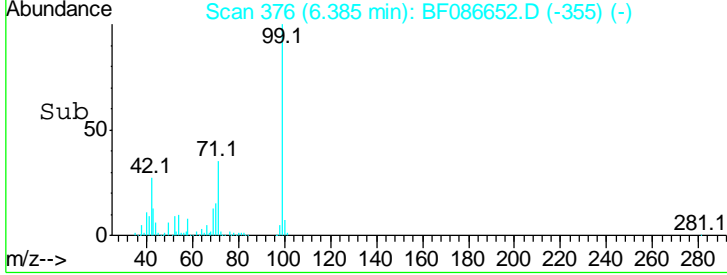
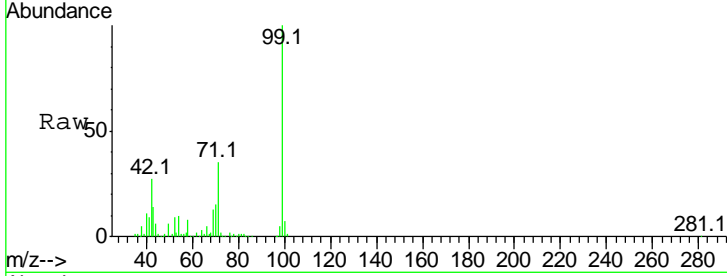
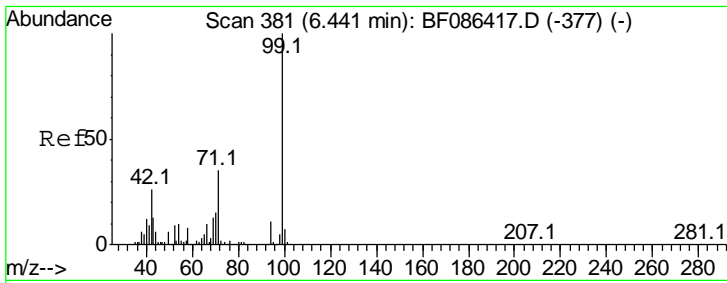
#5
 2-Fluorophenol
 Concen: 28.34 ng
 RT: 5.33 min Scan# 284
 Delta R.T. -0.06 min
 Lab File: BF086652.D
 Acq: 3 May 2016 18:51



Tgt Ion:112 Resp: 257390

Ion	Ratio	Lower	Upper
112	100		
64	68.3	52.1	78.1
63	36.5	25.7	38.5



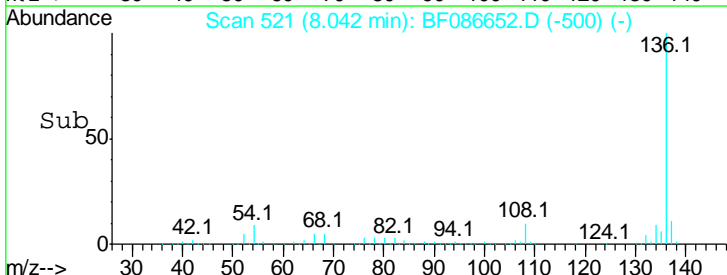
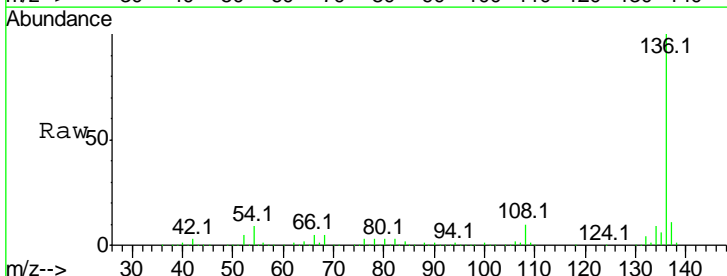
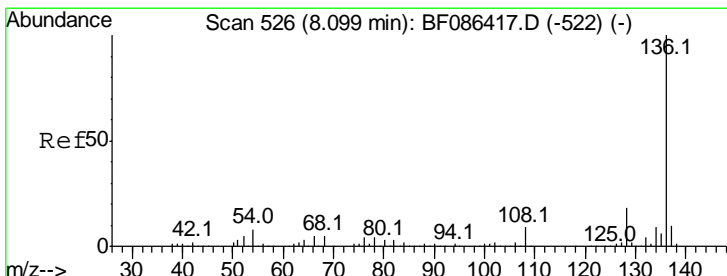
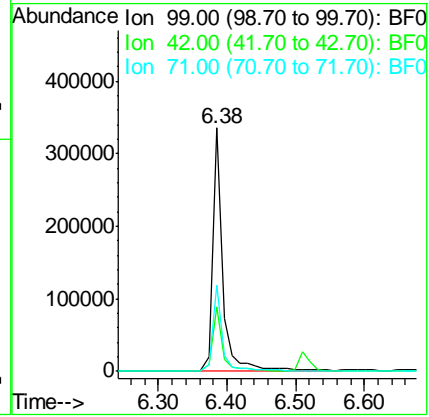


#7
 Phenol-d6
 Concen: 27.70 ng
 RT: 6.38 min Scan# 376
 Delta R.T. -0.06 min
 Lab File: BF086652.D
 Acq: 3 May 2016 18:51

Tgt Ion	Resp	Lower	Upper
99	100		
42	26.7	13.6	20.4#
71	35.2	24.6	36.8

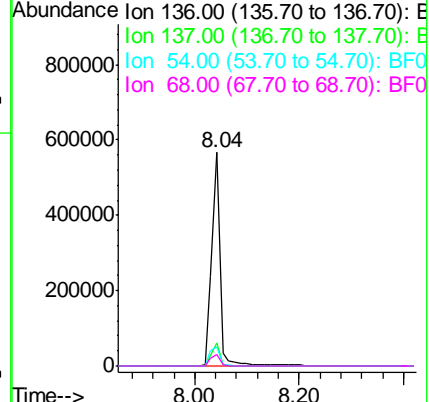
Instrument :
 BNA_F
ClientSampled :
 26WARD-2B-CS-1(0-10FTBGS)

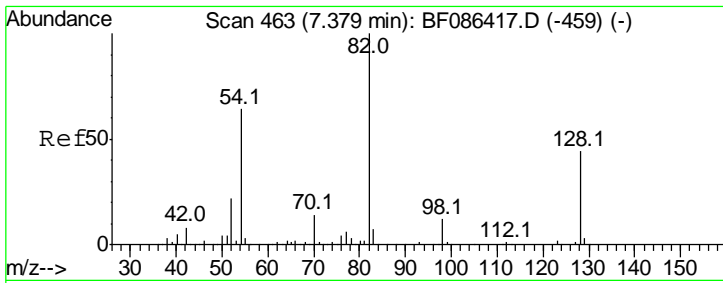
Manual Integrations
APPROVED
 sohil
 5/4/2016 6:53:13 PM



#21
 Naphthalene-d8
 Concen: 20.00 ng
 RT: 8.04 min Scan# 521
 Delta R.T. -0.06 min
 Lab File: BF086652.D
 Acq: 3 May 2016 18:51

Tgt Ion	Resp	Lower	Upper
136	100		
137	10.5	8.8	13.2
54	8.7	5.0	7.4#
68	5.4	4.4	6.6



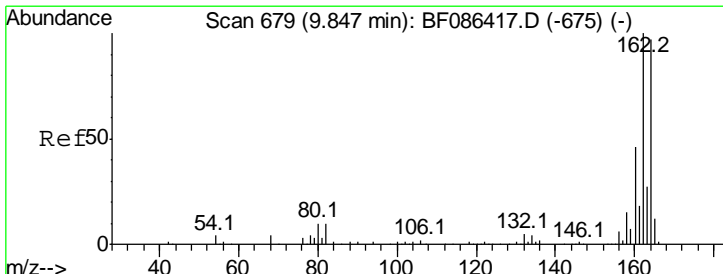
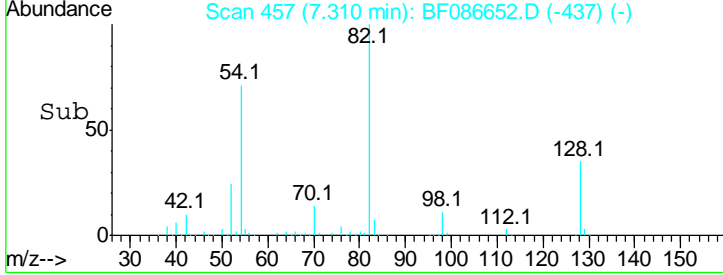
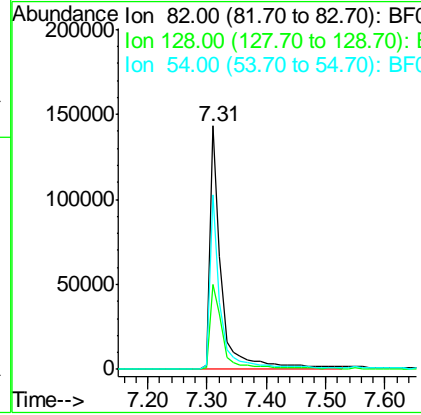
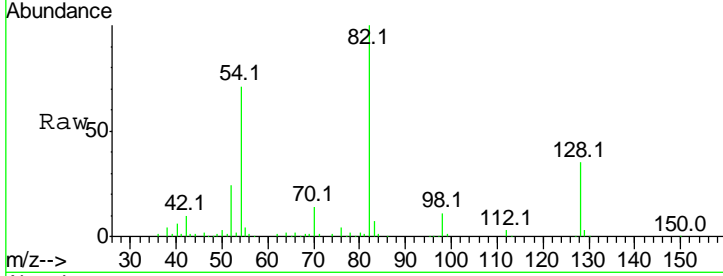


#23
 Nitrobenzene-d5
 Concen: 17.13 ng
 RT: 7.31 min Scan# 457
 Delta R.T. -0.07 min
 Lab File: BF086652.D
 Acq: 3 May 2016 18:51

Instrument :
 BNA_F
ClientSampled :
 26WARD-2B-CS-1(0-10FTBGS)

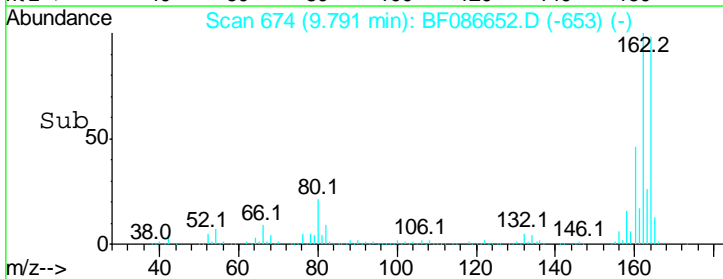
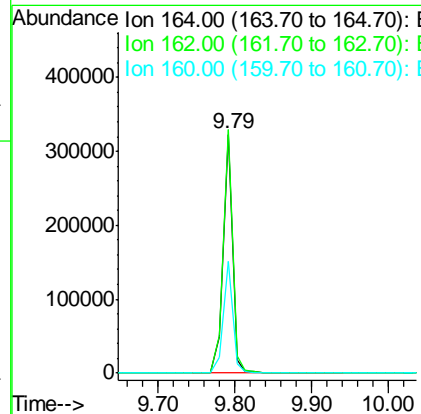
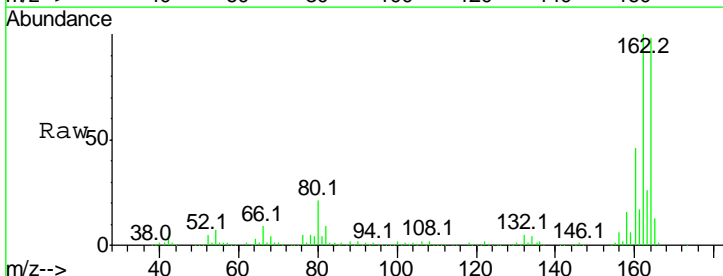
Tgt Ion	Resp	Lower	Upper
82	198555		
82	100		
128	34.8	40.6	61.0#
54	71.5	38.1	57.1#

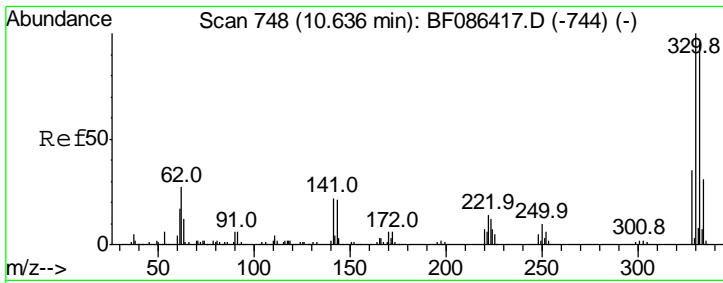
Manual Integrations
APPROVED
 sohil
 5/4/2016 6:53:13 PM



#38
 Acenaphthene-d10
 Concen: 20.00 ng
 RT: 9.79 min Scan# 674
 Delta R.T. -0.06 min
 Lab File: BF086652.D
 Acq: 3 May 2016 18:51

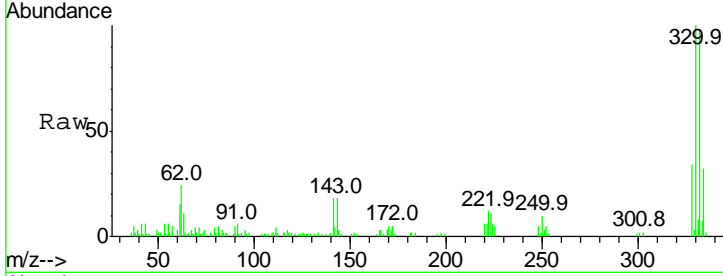
Tgt Ion	Resp	Lower	Upper
164	275501		
164	100		
162	102.0	82.8	124.2
160	46.7	36.9	55.3





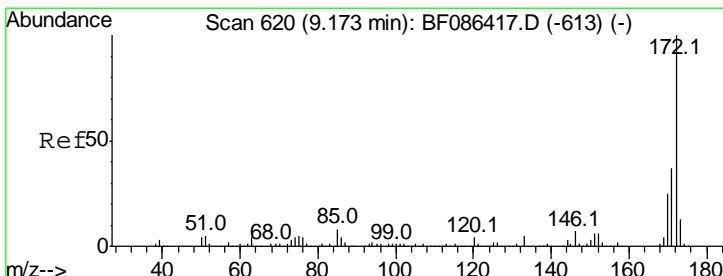
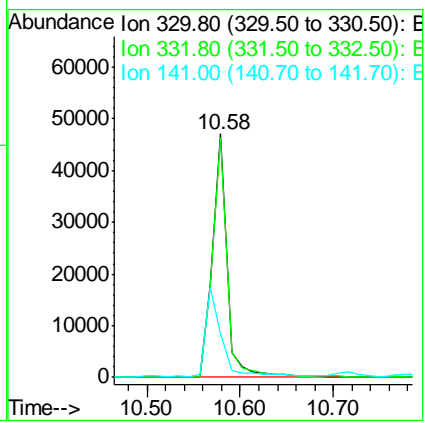
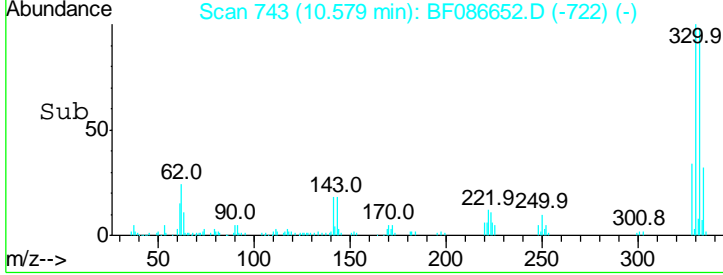
#41
 2,4,6-Tribromophenol
 Concen: 17.98 ng
 RT: 10.58 min Scan# 743
 Delta R.T. -0.06 min
 Lab File: BF086652.D
 Acq: 3 May 2016 18:51

Instrument :
 BNA_F
ClientSampled :
 26WARD-2B-CS-1(0-10FTBGS)

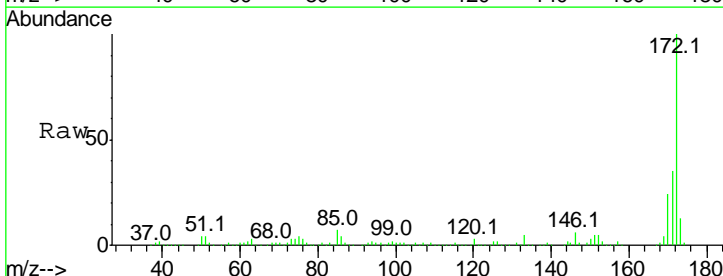


Tgt Ion	Resp	Lower	Upper
330	100		
332	97.2	79.0	118.4
141	42.4	31.2	46.8

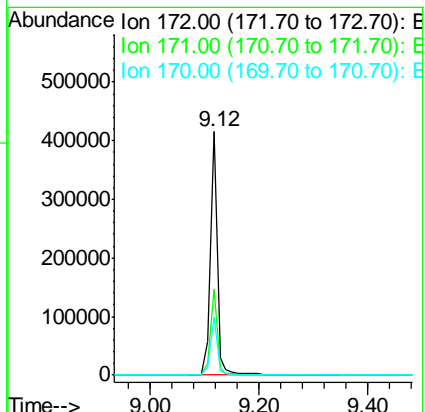
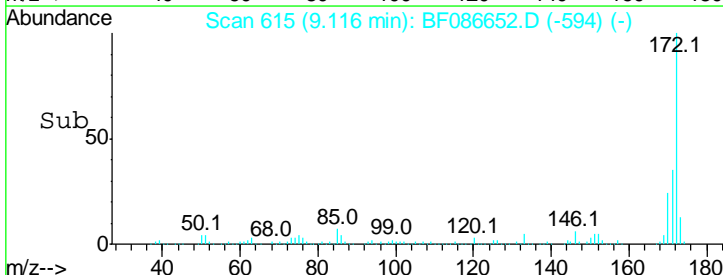
Manual Integrations
APPROVED
 sohil
 5/4/2016 6:53:13 PM

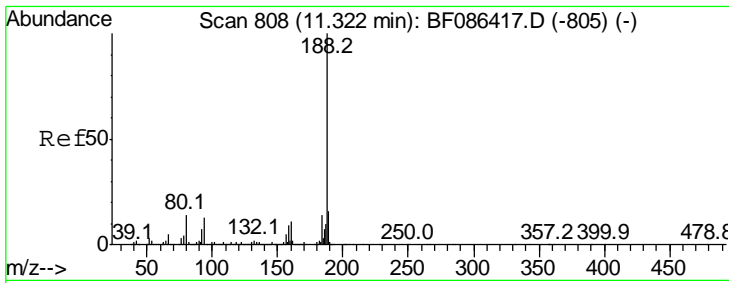


#44
 2-Fluorobiphenyl
 Concen: 16.20 ng
 RT: 9.12 min Scan# 615
 Delta R.T. -0.06 min
 Lab File: BF086652.D
 Acq: 3 May 2016 18:51



Tgt Ion	Resp	Lower	Upper
172	100		
171	35.3	29.0	43.6
170	23.6	19.8	29.8



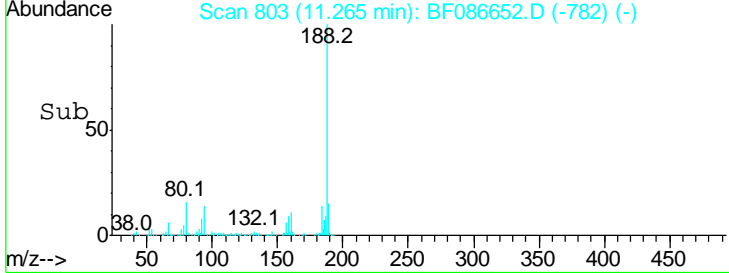
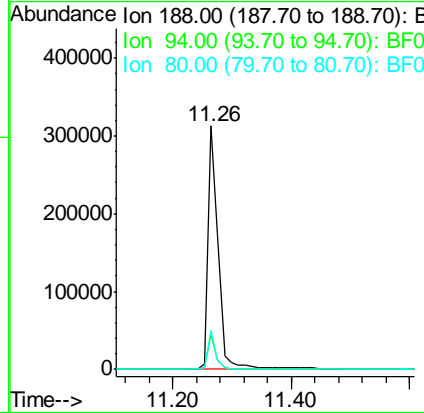
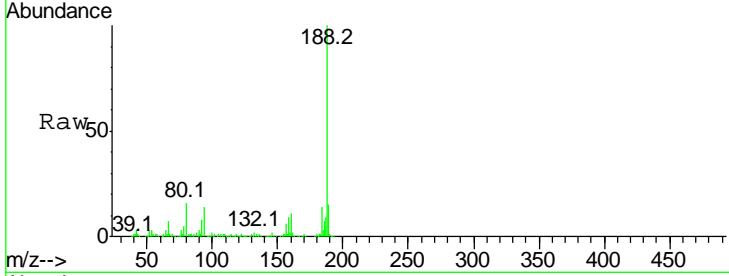


#63
 Phenanthrene-d10
 Concen: 20.00 ng
 RT: 11.26 min Scan# 803
 Delta R.T. -0.06 min
 Lab File: BF086652.D
 Acq: 3 May 2016 18:51

Instrument :
 BNA_F
 ClientSampled :
 26WARD-2B-CS-1(0-10FTBGS)

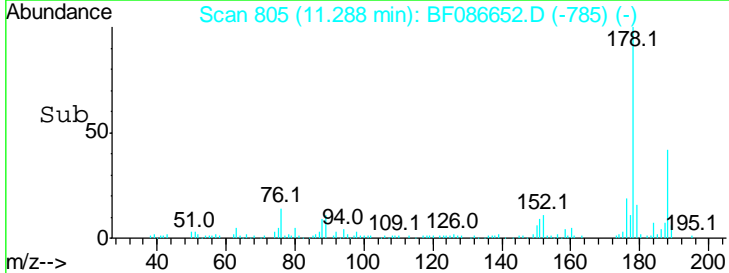
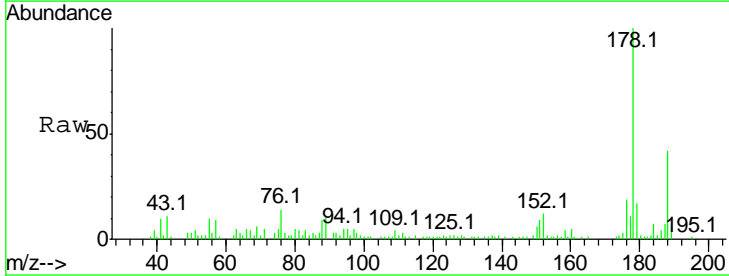
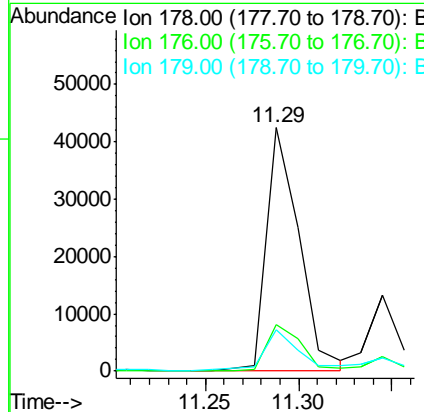
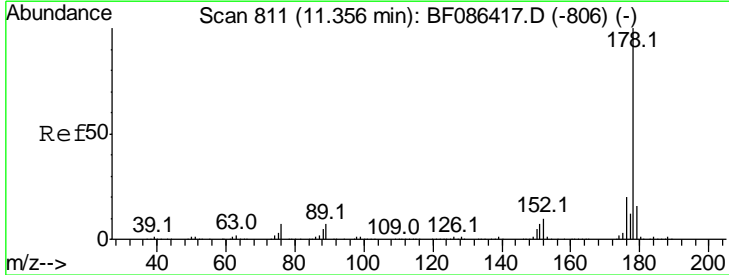
Tgt Ion	Ratio	Lower	Upper
188	100		
94	14.3	6.8	10.2#
80	15.8	7.1	10.7#

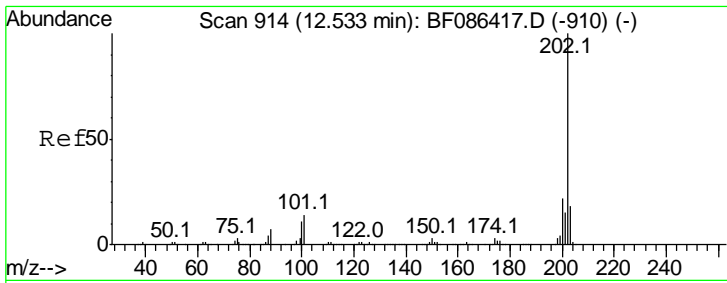
Manual Integrations
APPROVED
 sohil
 5/4/2016 6:53:13 PM



#70
 Phenanthrene
 Concen: 2.54 ng
 RT: 11.29 min Scan# 805
 Delta R.T. -0.07 min
 Lab File: BF086652.D
 Acq: 3 May 2016 18:51

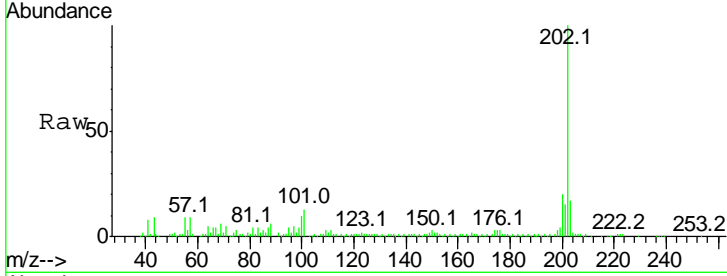
Tgt Ion	Ratio	Lower	Upper
178	100		
176	19.1	16.0	24.0
179	17.0	12.6	18.8





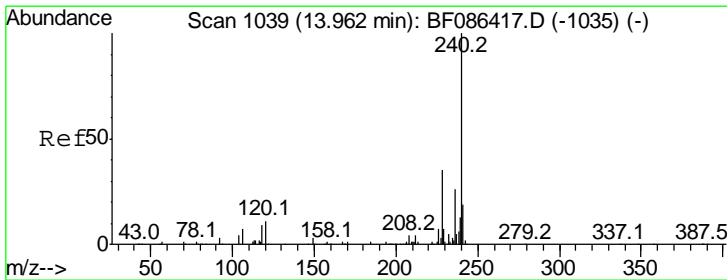
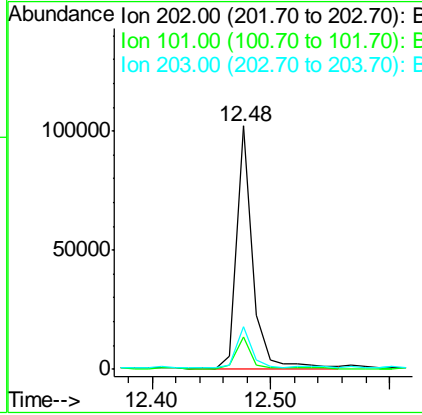
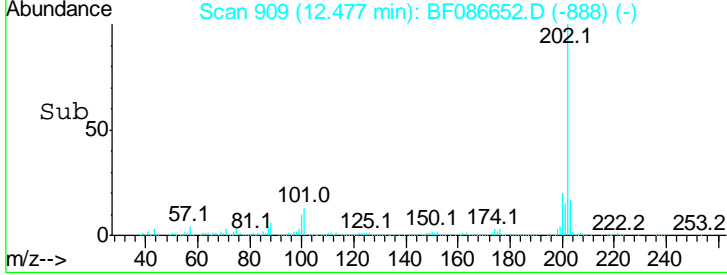
#74
 Fluoranthene
 Concen: 4.72 ng
 RT: 12.48 min Scan# 909
 Delta R.T. -0.06 min
 Lab File: BF086652.D
 Acq: 3 May 2016 18:51

Instrument :
 BNA_F
ClientSampleId :
 26WARD-2B-CS-1(0-10FTBGS)

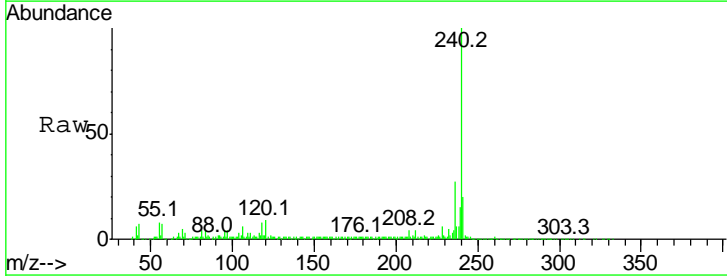


Tgt Ion	Resp	Lower	Upper
202	100		
101	13.1	0.0	35.4
203	17.4	0.0	38.1

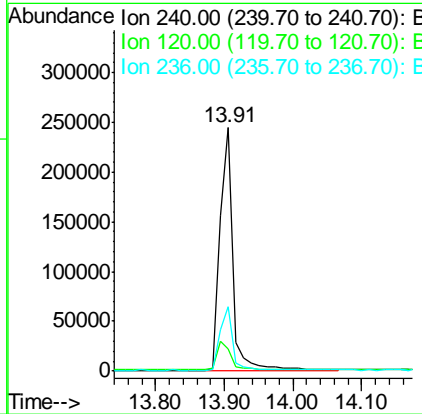
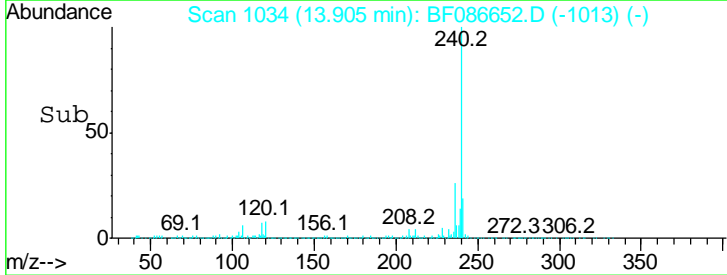
Manual Integrations
APPROVED
 sohil
 5/4/2016 6:53:13 PM

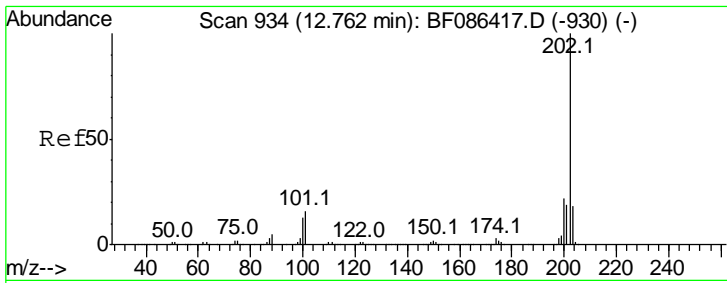


#75
 Chrysene-d12
 Concen: 20.00 ng
 RT: 13.91 min Scan# 1034
 Delta R.T. -0.06 min
 Lab File: BF086652.D
 Acq: 3 May 2016 18:51



Tgt Ion	Resp	Lower	Upper
240	100		
120	9.0	11.2	16.8#
236	26.6	21.2	31.8



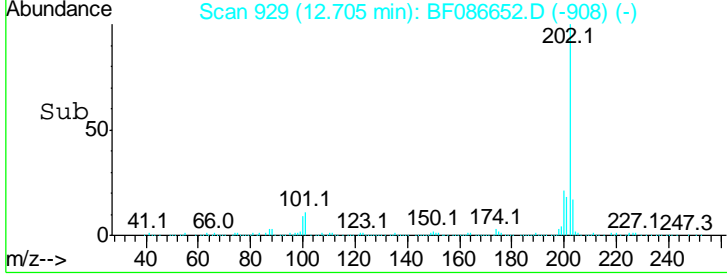
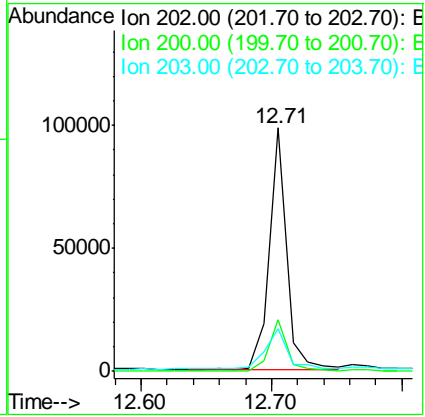
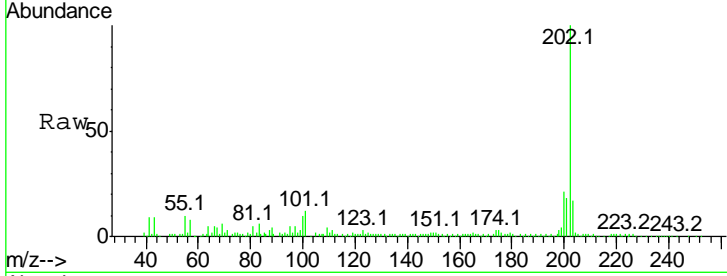


#77
 Pyrene
 Concen: 3.92 ng
 RT: 12.71 min Scan# 929
 Delta R.T. -0.06 min
 Lab File: BF086652.D
 Acq: 3 May 2016 18:51

Instrument :
 BNA_F
ClientSampled :
 26WARD-2B-CS-1(0-10FTBGS)

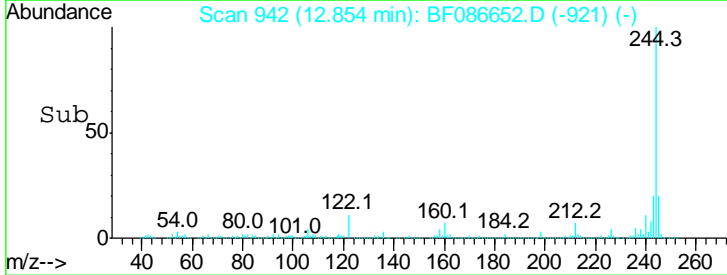
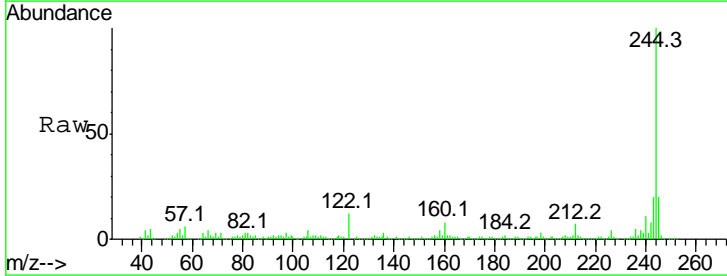
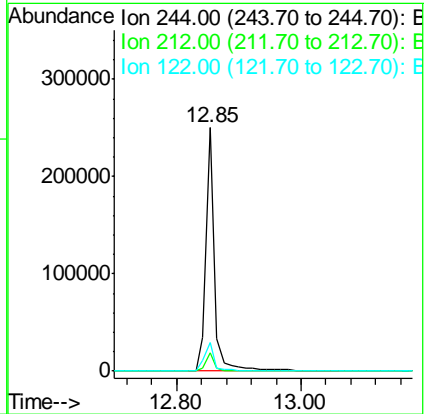
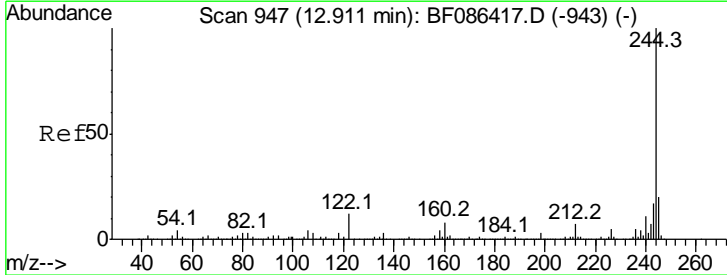
Tgt Ion	Resp	Lower	Upper
202	100		
200	20.9	17.7	26.5
203	17.4	14.2	21.4

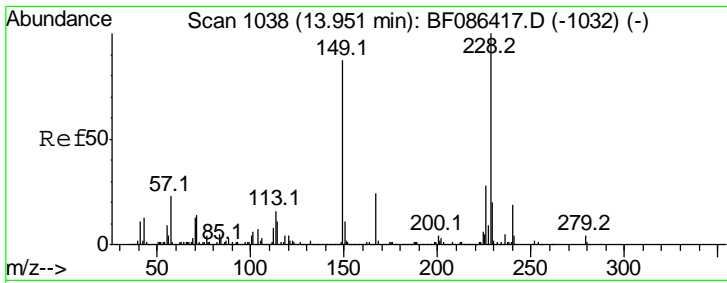
Manual Integrations
APPROVED
 sohil
 5/4/2016 6:53:13 PM



#78
 Terphenyl-d14
 Concen: 16.36 ng
 RT: 12.85 min Scan# 942
 Delta R.T. -0.06 min
 Lab File: BF086652.D
 Acq: 3 May 2016 18:51

Tgt Ion	Resp	Lower	Upper
244	100		
212	7.4	6.2	9.2
122	11.6	12.0	18.0#



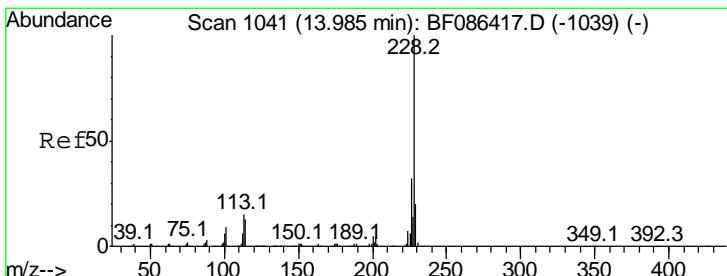
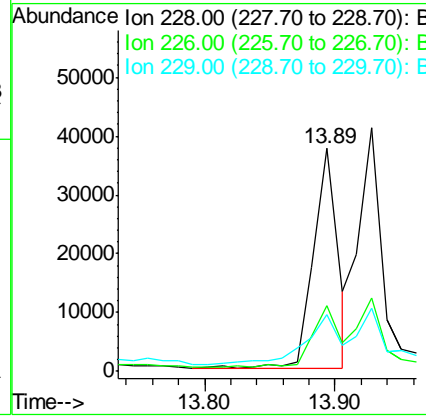
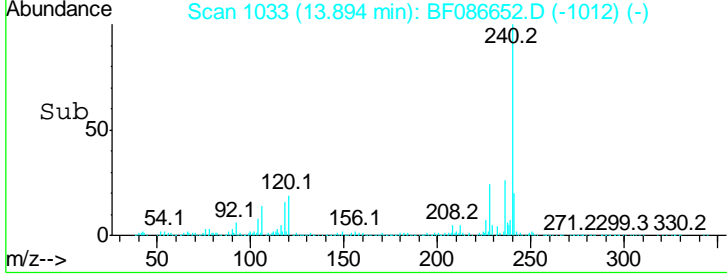
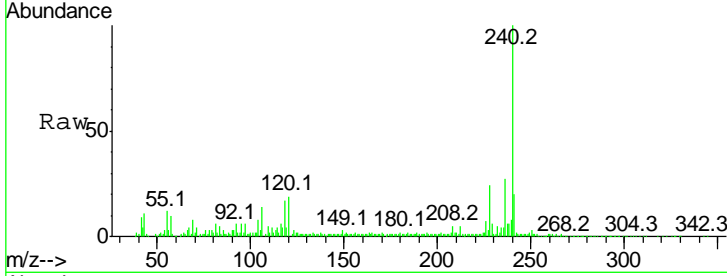


#80
 Benzo(a)anthracene
 Concen: 2.75 ng
 RT: 13.89 min Scan# 1033
 Delta R.T. -0.06 min
 Lab File: BF086652.D
 Acq: 3 May 2016 18:51

Instrument : BNA_F
 Client Sampled : 26WARD-2B-CS-1(0-10FTBGS)

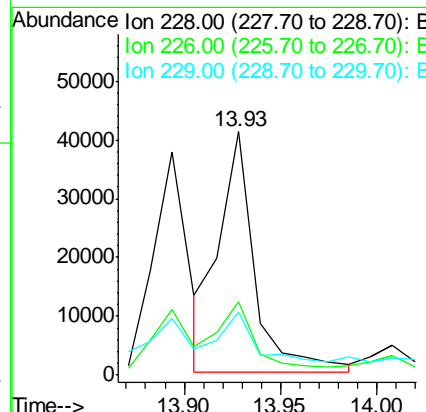
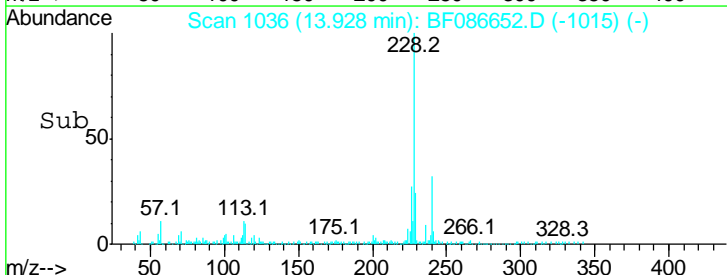
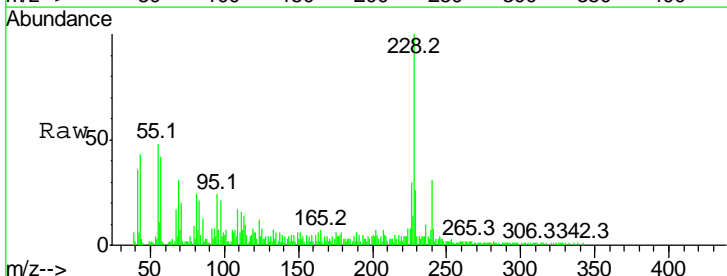
Tgt Ion	Resp	Lower	Upper
228	100		
226	29.5	22.5	33.7
229	25.3	16.6	25.0

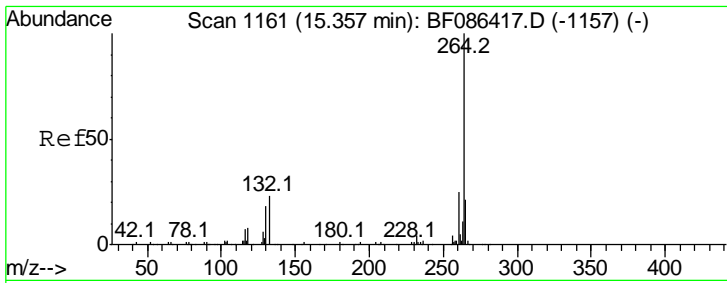
Manual Integrations
 APPROVED
 sohil
 5/4/2016 6:53:13 PM



#82
 Chrysene
 Concen: 2.79 ng m
 RT: 13.93 min Scan# 1036
 Delta R.T. -0.06 min
 Lab File: BF086652.D
 Acq: 3 May 2016 18:51

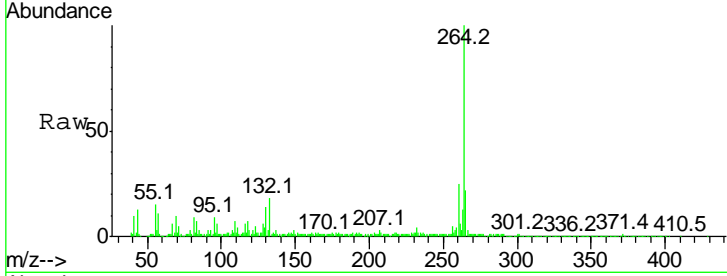
Tgt Ion	Resp	Lower	Upper
228	100		
226	30.2	24.4	36.6
229	25.9	15.8	23.8





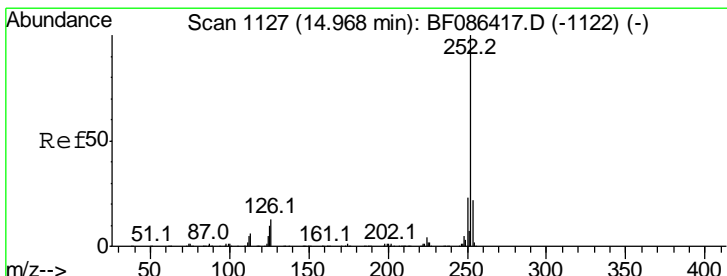
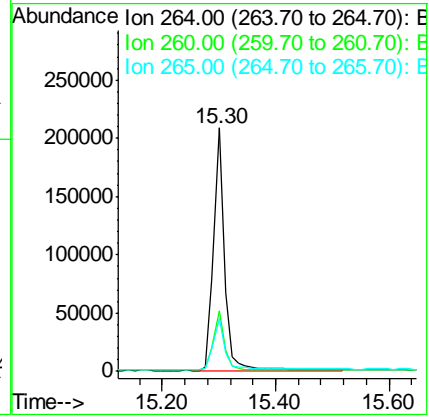
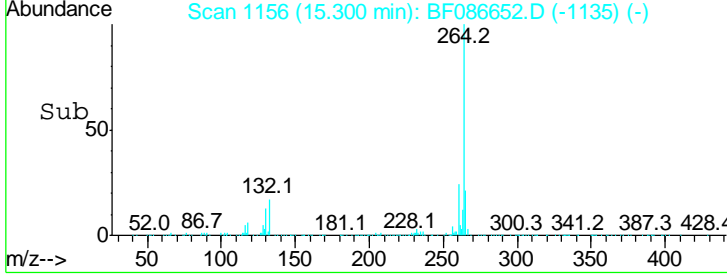
#86
 Perylene-d12
 Concen: 20.00 ng
 RT: 15.30 min Scan# 1156
 Delta R.T. -0.06 min
 Lab File: BF086652.D
 Acq: 3 May 2016 18:51

Instrument :
 BNA_F
ClientSampleId :
 26WARD-2B-CS-1(0-10FTBGS)

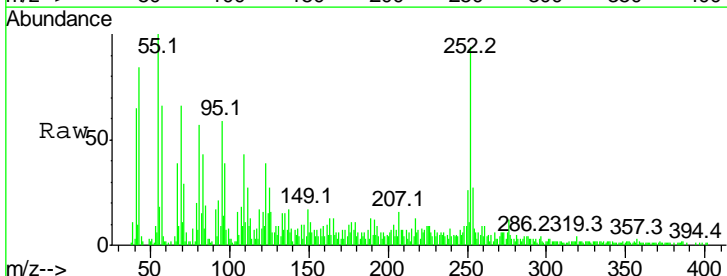


Tgt Ion	Resp	Lower	Upper
264	100		
260	24.6	19.5	29.3
265	22.0	17.3	25.9

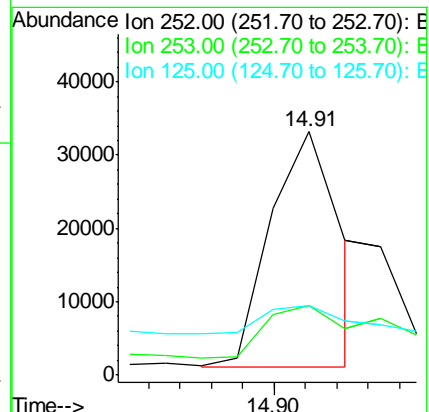
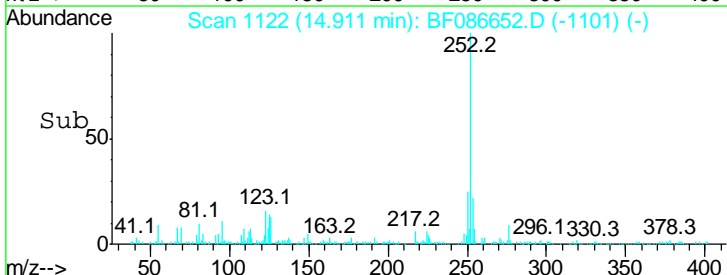
Manual Integrations
APPROVED
 sohil
 5/4/2016 6:53:13 PM

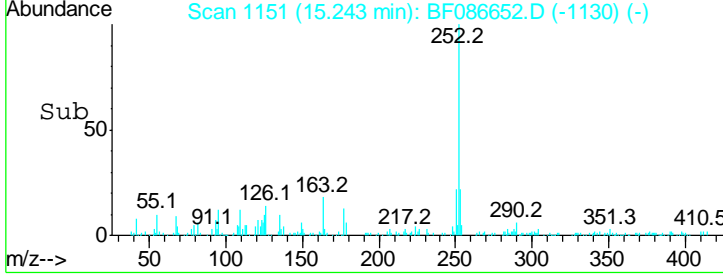
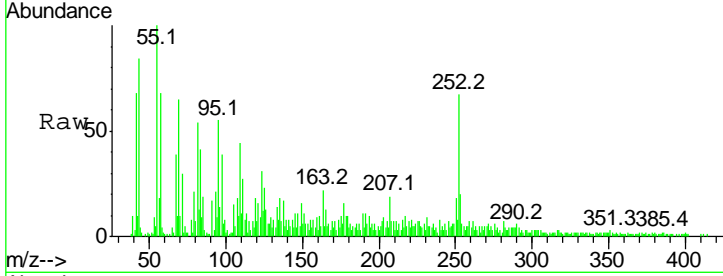
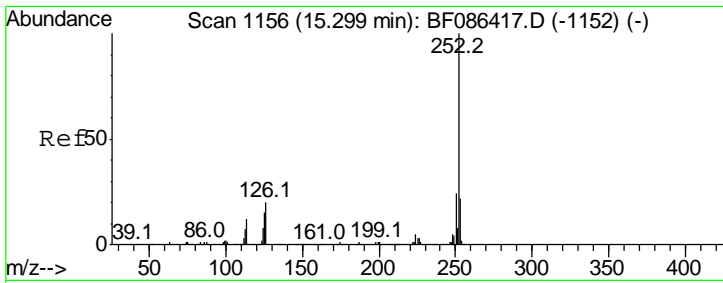


#87
 Benzo(b)fluoranthene
 Concen: 3.11 ng m
 RT: 14.91 min Scan# 1122
 Delta R.T. -0.06 min
 Lab File: BF086652.D
 Acq: 3 May 2016 18:51



Tgt Ion	Resp	Lower	Upper
252	100		
253	28.5	17.8	26.6#
125	28.3	11.4	17.0#





#89
 Benzo(a)pyrene
 Concen: 2.00 ng
 RT: 15.24 min Scan# 1151
 Delta R.T. -0.06 min
 Lab File: BF086652.D
 Acq: 3 May 2016 18:51

Tot Ion	Ratio	Lower	Upper
252	100		
253	29.8	17.2	25.8#
125	34.4	9.0	13.6#

Instrument :
 BNA_F
 Client Sampled :
 26WARD-2B-CS-1(0-10FTBGS)

Manual Integrations
 APPROVED
 sohil
 5/4/2016 6:53:13 PM

