

Data Path : Z:\svoasrv\HPCHEM1\BNA\_F\Data\BF050322\  
 Data File : BF128041.D  
 Acq On : 03 May 2022 12:57  
 Operator : CG\JU  
 Sample : PB144533BL  
 Misc :  
 ALS Vial : 3 Sample Multiplier: 1

Instrument :  
 BNA\_F  
 ClientSampleId :  
 PB144533BL

Quant Time: May 04 04:25:56 2022  
 Quant Method : Z:\svoasrv\HPCHEM1\BNA\_F\Methods\8270-BF042222.M  
 Quant Title : ASP BNA STANDARDS FOR 5 POINT CALIBRATION  
 QLast Update : Wed May 04 04:23:29 2022  
 Response via : Initial Calibration

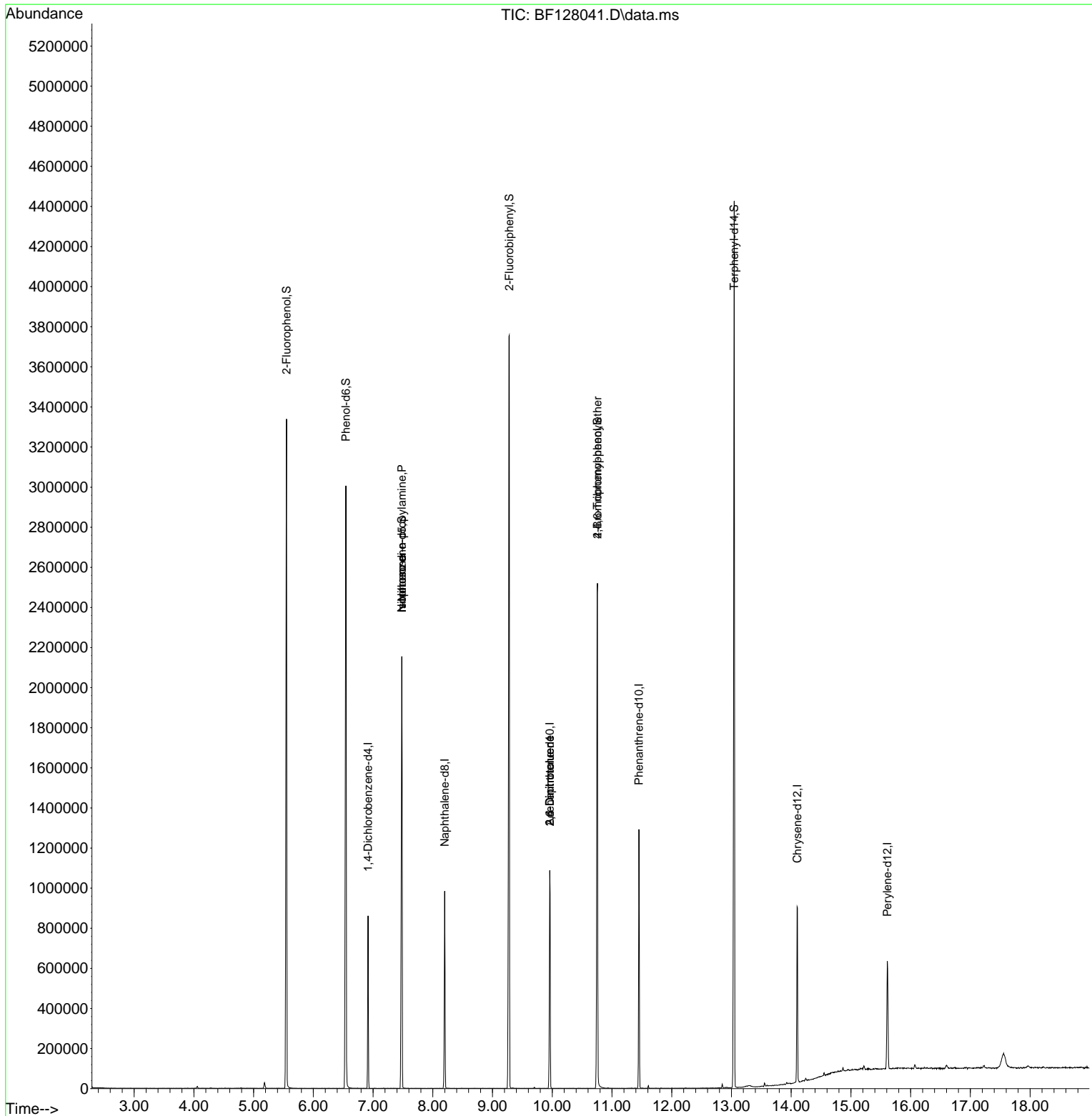
Compound	R.T.	QIon	Response	Conc	Units	Dev(Min)
Internal Standards						
1) 1,4-Dichlorobenzene-d4	6.916	152	107055	20.000	ng	0.00
21) Naphthalene-d8	8.199	136	417759	20.000	ng	0.00
39) Acenaphthene-d10	9.957	164	242063	20.000	ng	0.00
64) Phenanthrene-d10	11.451	188	445618	20.000	ng	0.00
76) Chrysene-d12	14.104	240	320959	20.000	ng	0.00
86) Perylene-d12	15.610	264	247947	20.000	ng	0.00
System Monitoring Compounds						
5) 2-Fluorophenol	5.552	112	856283	127.399	ng	0.01
7) Phenol-d6	6.546	99	1143557	131.123	ng	0.00
23) Nitrobenzene-d5	7.481	82	831505	93.597	ng	0.00
42) 2,4,6-Tribromophenol	10.757	330	342506	140.557	ng	0.00
45) 2-Fluorobiphenyl	9.281	172	1377616	96.280	ng	0.00
79) Terphenyl-d14	13.045	244	1637157	93.272	ng	0.00
Target Compounds						
19) n-Nitroso-di-n-propyla...	7.481	70	113731	21.303	ng	# 80
25) Isophorone	7.481	82	831661	55.621	ng	# 68
51) 2,6-Dinitrotoluene	9.957	165	31772	9.039	ng	# 22
57) 2,4-Dinitrotoluene	9.957	165	31772	6.824	ng	# 26
67) 4-Bromophenyl-phenylether	10.757	248	21127	4.277	ng	# 1

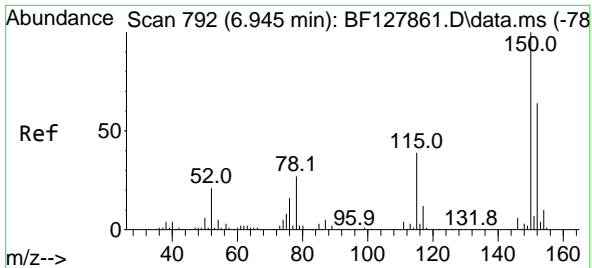
(#) = qualifier out of range (m) = manual integration (+) = signals summed

Data Path : Z:\svoasrv\HPCHEM1\BNA\_F\Data\BF050322\  
 Data File : BF128041.D  
 Acq On : 03 May 2022 12:57  
 Operator : CG\JU  
 Sample : PB144533BL  
 Misc :  
 ALS Vial : 3 Sample Multiplier: 1

Instrument :  
 BNA\_F  
 ClientSampleId :  
 PB144533BL

Quant Time: May 04 04:25:56 2022  
 Quant Method : Z:\svoasrv\HPCHEM1\BNA\_F\Methods\8270-BF042222.M  
 Quant Title : ASP BNA STANDARDS FOR 5 POINT CALIBRATION  
 QLast Update : Wed May 04 04:23:29 2022  
 Response via : Initial Calibration

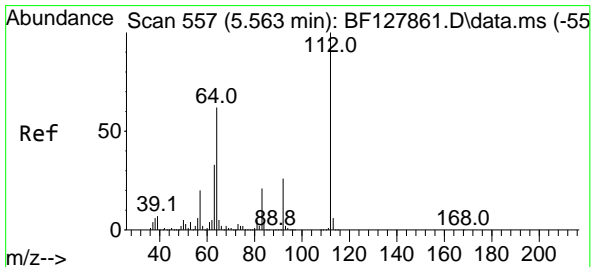
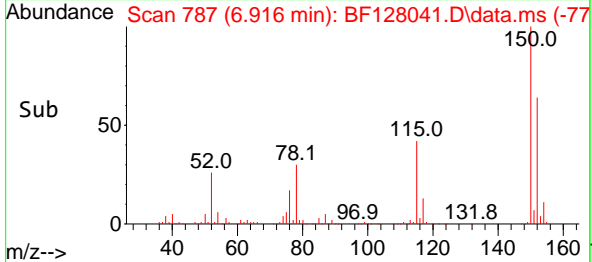
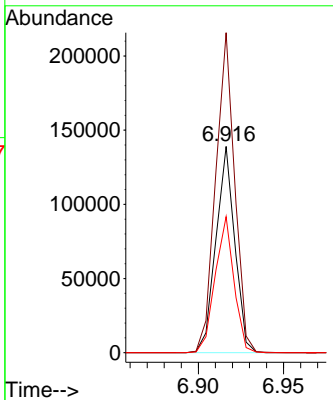
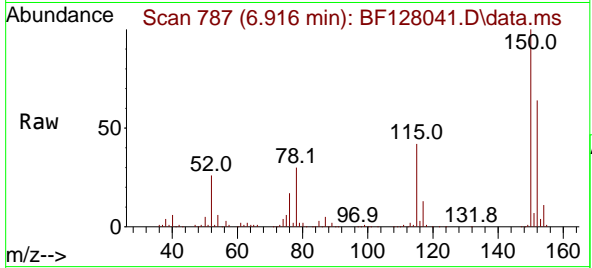




#1  
 1,4-Dichlorobenzene-d4  
 Concen: 20.000 ng  
 RT: 6.916 min Scan# 71  
 Delta R.T. 0.000 min  
 Lab File: BF128041.D  
 Acq: 03 May 2022 12:57

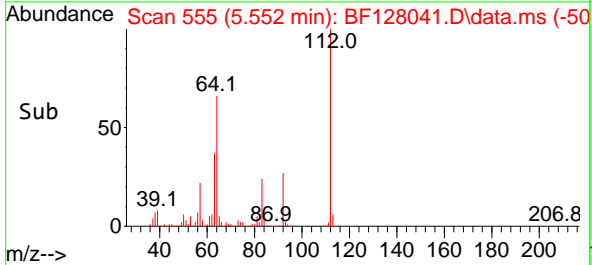
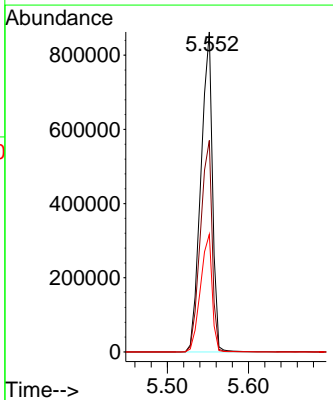
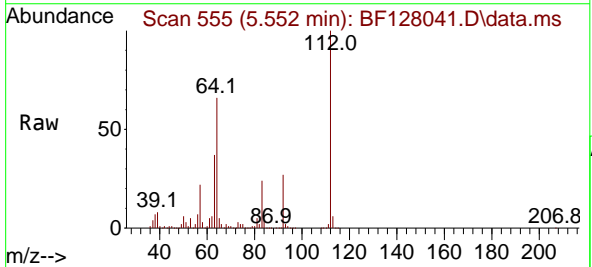
Instrument :  
 BNA\_F  
 ClientSampleId :  
 PB144533BL

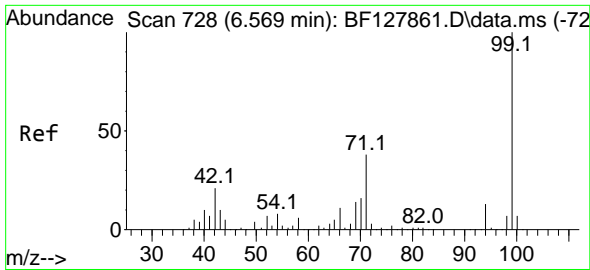
Tgt Ion:152 Resp: 107055  
 Ion Ratio Lower Upper  
 152 100  
 150 155.1 125.3 187.9  
 115 65.9 48.8 73.2



#5  
 2-Fluorophenol  
 Concen: 127.399 ng  
 RT: 5.552 min Scan# 555  
 Delta R.T. 0.012 min  
 Lab File: BF128041.D  
 Acq: 03 May 2022 12:57

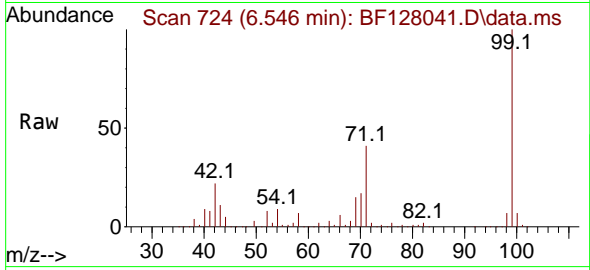
Tgt Ion:112 Resp: 856283  
 Ion Ratio Lower Upper  
 112 100  
 64 66.1 49.5 74.3  
 63 36.7 26.3 39.5



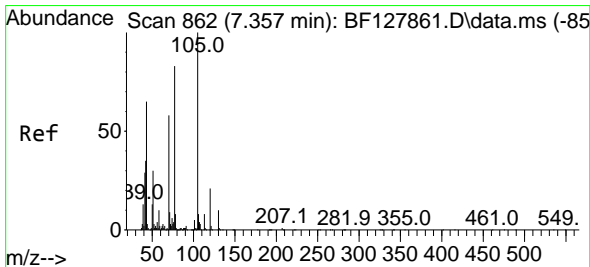
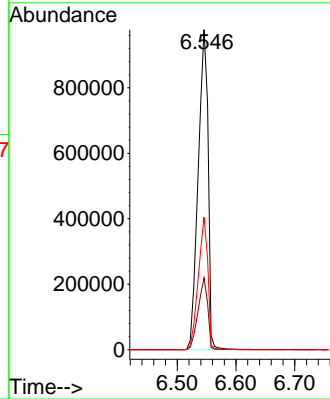
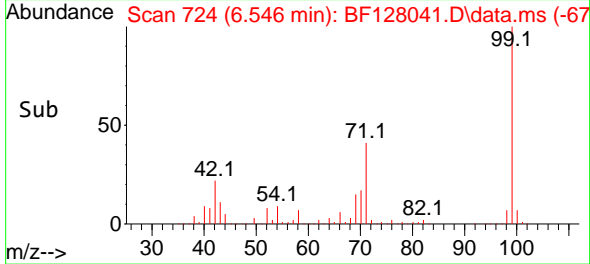


#7  
 Phenol-d6  
 Concen: 131.123 ng  
 RT: 6.546 min Scan# 71  
 Delta R.T. -0.006 min  
 Lab File: BF128041.D  
 Acq: 03 May 2022 12:57

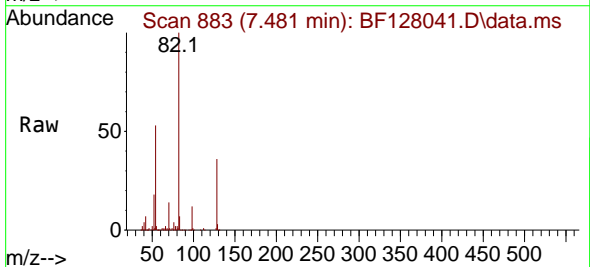
Instrument :  
 BNA\_F  
 ClientSampleId :  
 PB144533BL



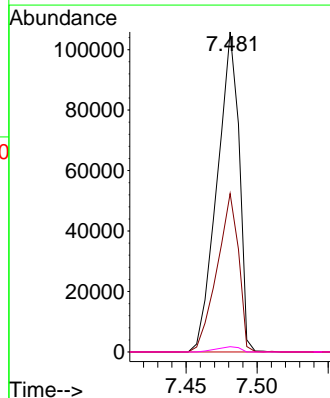
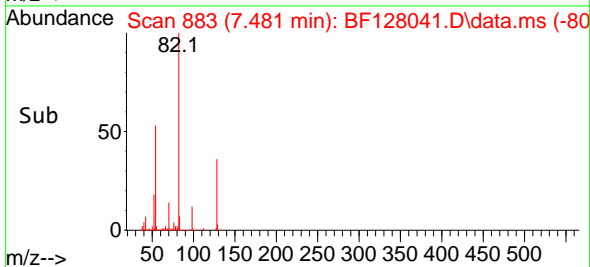
Tgt Ion: 99 Resp: 1143557  
 Ion Ratio Lower Upper  
 99 100  
 42 22.4 16.6 24.8  
 71 41.4 30.0 45.0

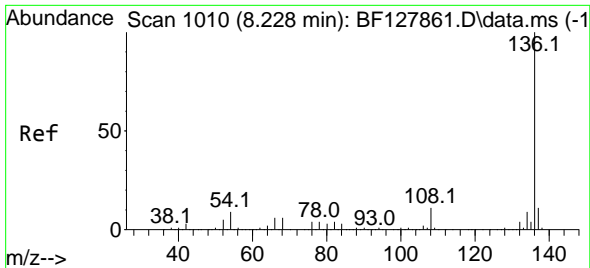


#19  
 n-Nitroso-di-n-propylamine  
 Concen: 21.303 ng  
 RT: 7.481 min Scan# 883  
 Delta R.T. 0.147 min  
 Lab File: BF128041.D  
 Acq: 03 May 2022 12:57



Tgt Ion: 70 Resp: 113731  
 Ion Ratio Lower Upper  
 70 100  
 42 49.5 48.7 73.1  
 101 0.0 7.2 10.8#  
 130 1.7 14.4 21.6#



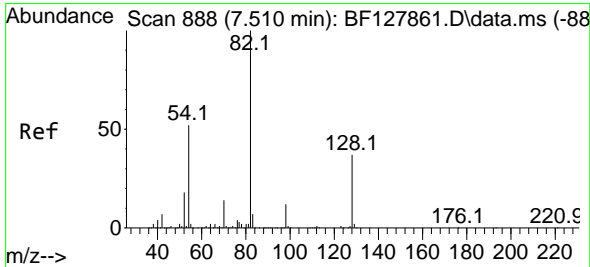
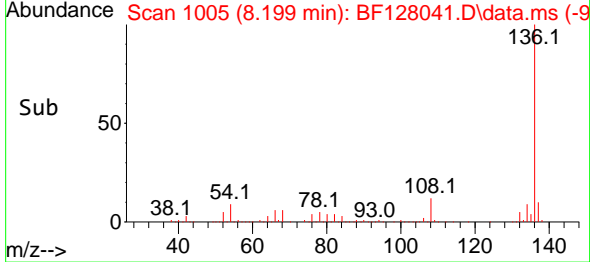
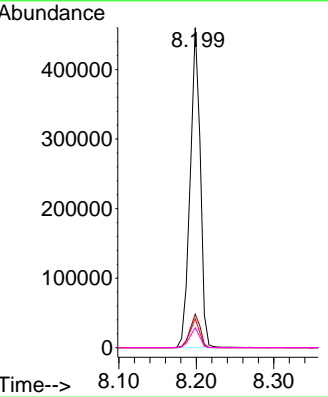
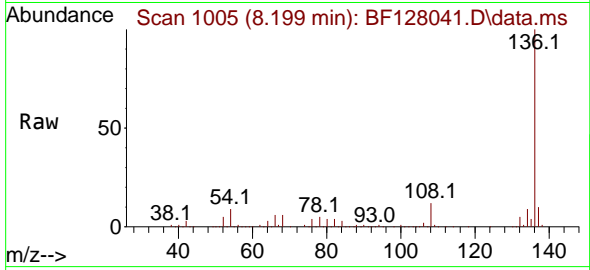


#21  
 Naphthalene-d8  
 Concen: 20.000 ng  
 RT: 8.199 min Scan# 1010  
 Delta R.T. -0.006 min  
 Lab File: BF128041.D  
 Acq: 03 May 2022 12:57

Instrument : BNA\_F  
 ClientSampleId : PB144533BL

Tgt Ion:136 Resp: 417759

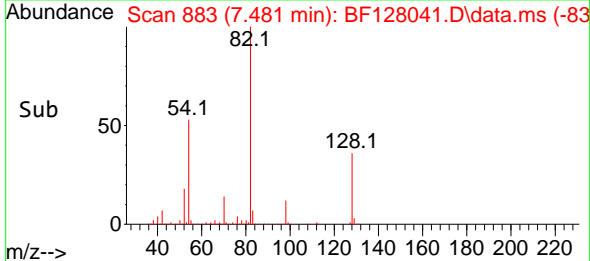
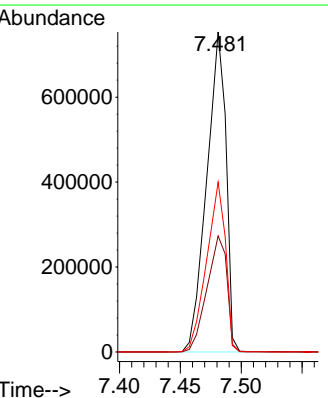
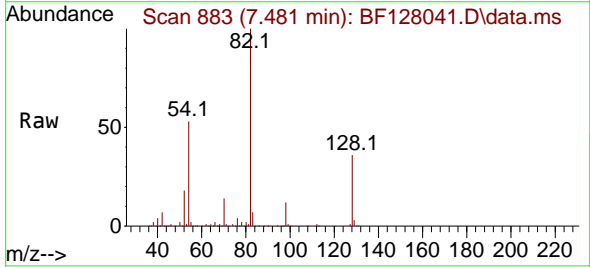
Ion	Ratio	Lower	Upper
136	100		
137	10.5	8.6	13.0
54	9.0	6.8	10.2
68	6.3	5.1	7.7

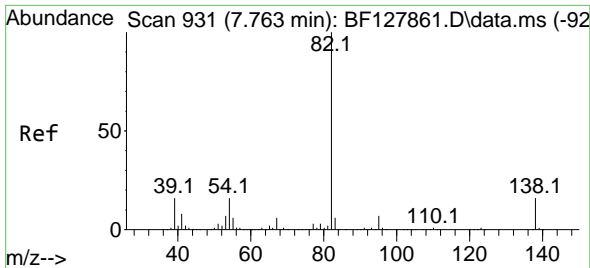


#23  
 Nitrobenzene-d5  
 Concen: 93.597 ng  
 RT: 7.481 min Scan# 883  
 Delta R.T. -0.006 min  
 Lab File: BF128041.D  
 Acq: 03 May 2022 12:57

Tgt Ion: 82 Resp: 831505

Ion	Ratio	Lower	Upper
82	100		
128	36.2	30.0	45.0
54	53.0	41.3	61.9

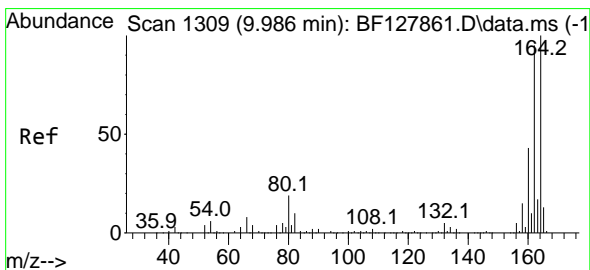
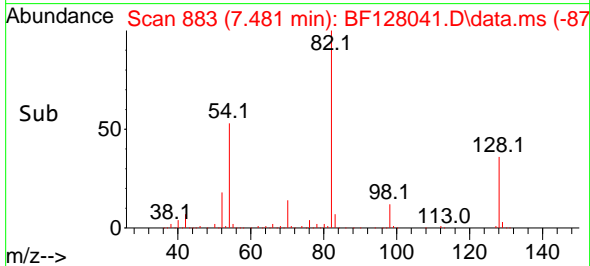
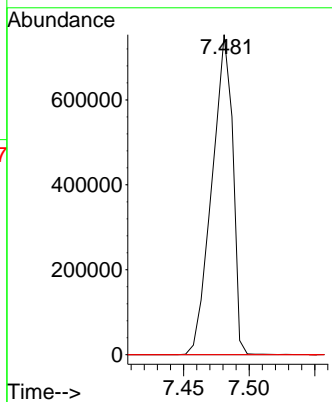
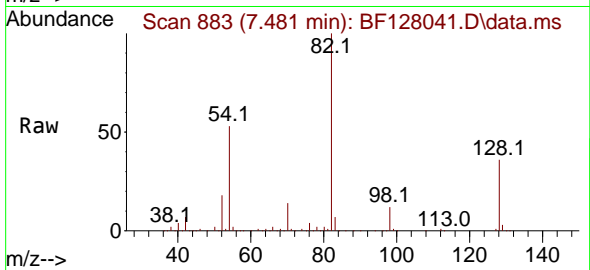




#25  
 Isophorone  
 Concen: 55.621 ng  
 RT: 7.481 min Scan# 81  
 Delta R.T. -0.259 min  
 Lab File: BF128041.D  
 Acq: 03 May 2022 12:57

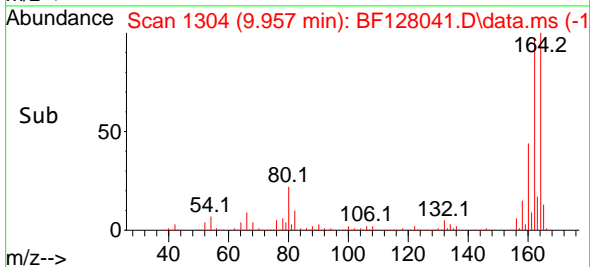
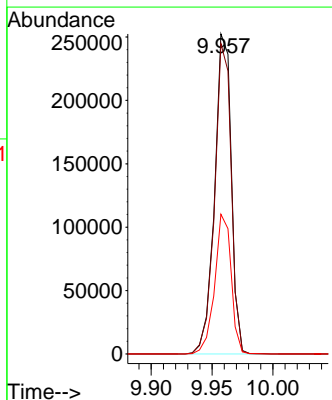
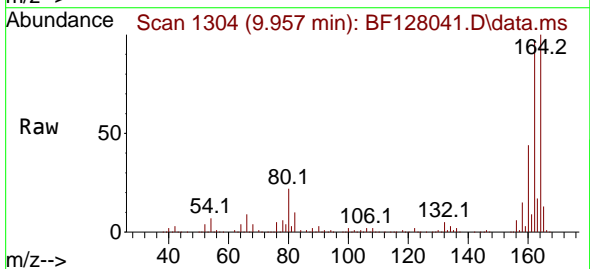
Instrument :  
 BNA\_F  
 ClientSampleId :  
 PB144533BL

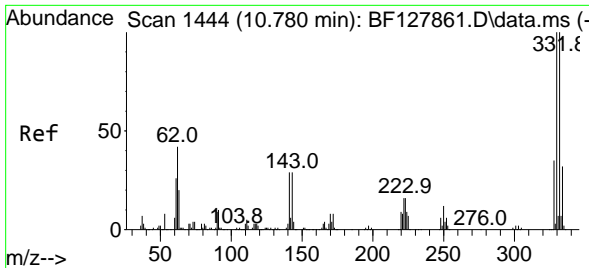
Tgt Ion: 82 Resp: 831661  
 Ion Ratio Lower Upper  
 82 100  
 95 0.0 5.6 8.4#  
 138 0.0 12.5 18.7#



#39  
 Acenaphthene-d10  
 Concen: 20.000 ng  
 RT: 9.957 min Scan# 1304  
 Delta R.T. -0.006 min  
 Lab File: BF128041.D  
 Acq: 03 May 2022 12:57

Tgt Ion:164 Resp: 242063  
 Ion Ratio Lower Upper  
 164 100  
 162 97.0 76.0 114.0  
 160 43.7 34.8 52.2





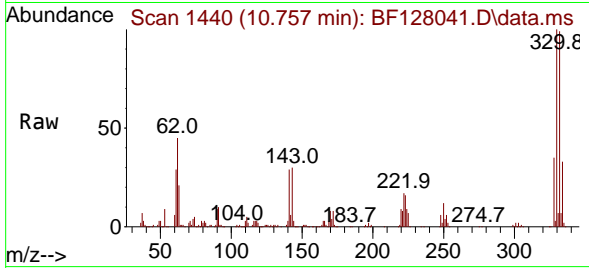
#42  
 2,4,6-Tribromophenol  
 Concen: 140.557 ng  
 RT: 10.757 min Scan# 14  
 Delta R.T. 0.000 min  
 Lab File: BF128041.D  
 Acq: 03 May 2022 12:57

Instrument :

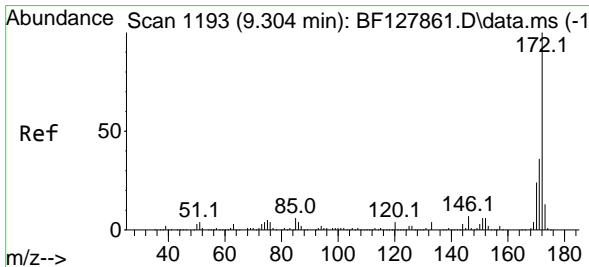
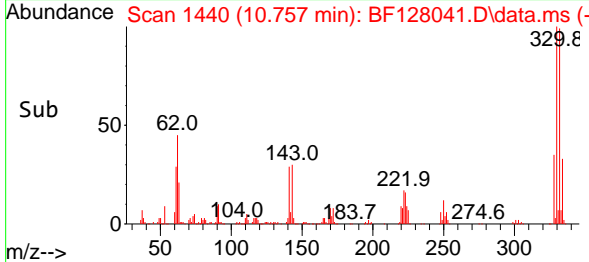
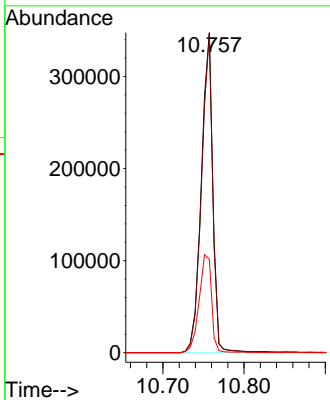
BNA\_F

ClientSampleId :

PB144533BL

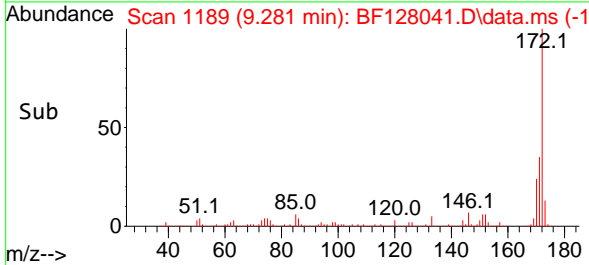
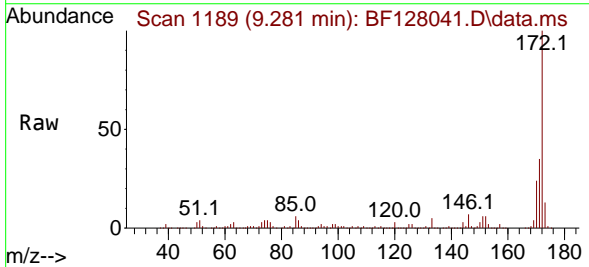
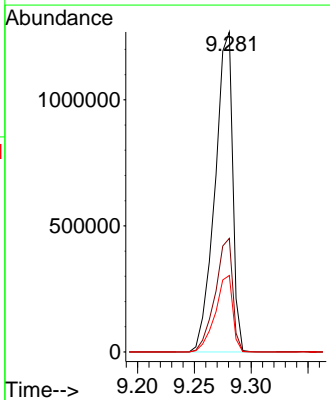


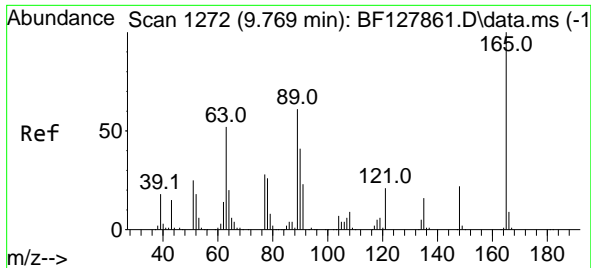
Tgt Ion:330 Resp: 342506  
 Ion Ratio Lower Upper  
 330 100  
 332 97.3 79.0 118.4  
 141 33.4 28.9 43.3



#45  
 2-Fluorobiphenyl  
 Concen: 96.280 ng  
 RT: 9.281 min Scan# 1189  
 Delta R.T. 0.000 min  
 Lab File: BF128041.D  
 Acq: 03 May 2022 12:57

Tgt Ion:172 Resp: 1377616  
 Ion Ratio Lower Upper  
 172 100  
 171 35.5 28.6 42.8  
 170 23.9 19.1 28.7

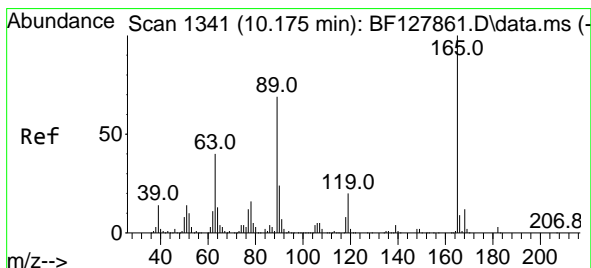
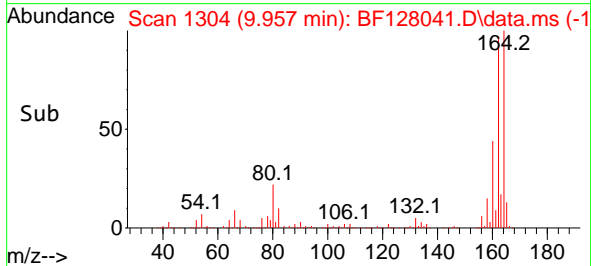
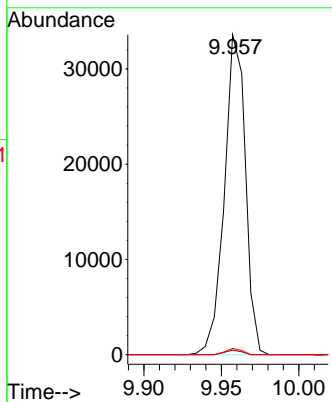
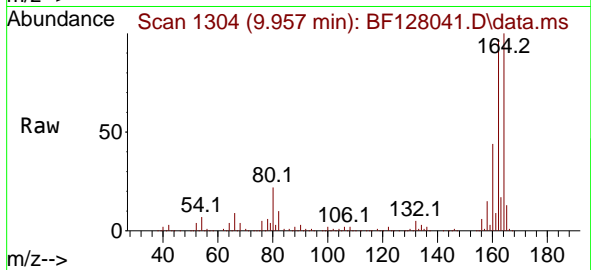




#51  
 2,6-Dinitrotoluene  
 Concen: 9.039 ng  
 RT: 9.957 min Scan# 11  
 Delta R.T. 0.206 min  
 Lab File: BF128041.D  
 Acq: 03 May 2022 12:57

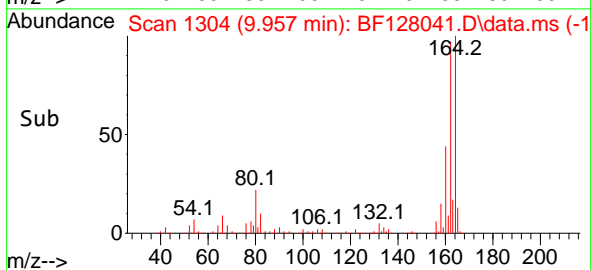
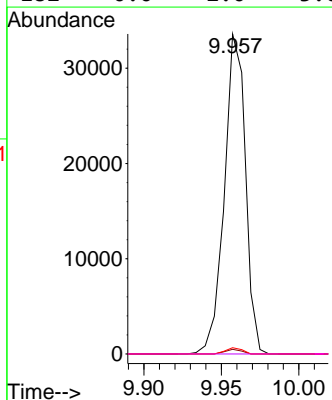
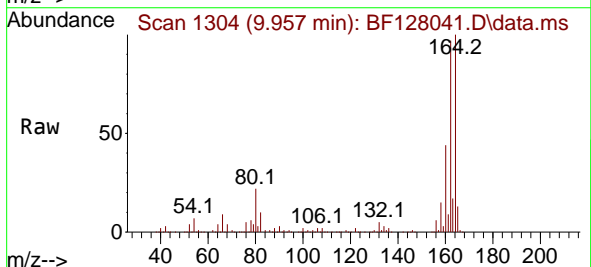
Instrument : BNA\_F  
 ClientSampleId : PB144533BL

Tgt Ion	Resp	Lower	Upper
165	100		
63	1.5	49.5	74.3#
89	1.9	49.0	73.4#

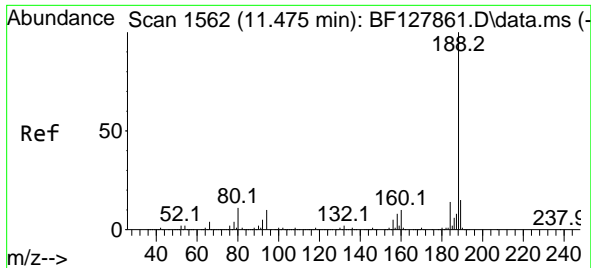


#57  
 2,4-Dinitrotoluene  
 Concen: 6.824 ng  
 RT: 9.957 min Scan# 1304  
 Delta R.T. -0.200 min  
 Lab File: BF128041.D  
 Acq: 03 May 2022 12:57

Tgt Ion	Resp	Lower	Upper
165	100		
63	1.5	32.6	49.0#
89	1.9	55.2	82.8#
182	0.0	2.0	3.0#





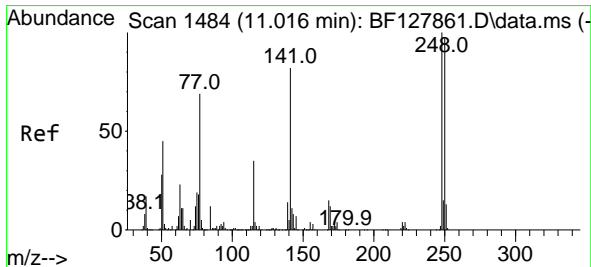
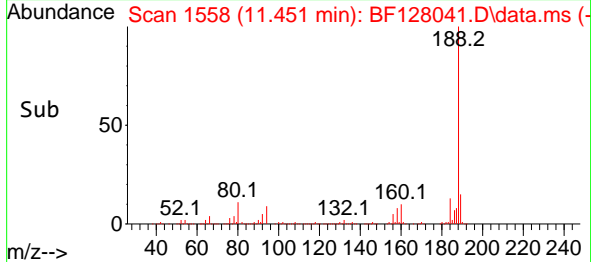
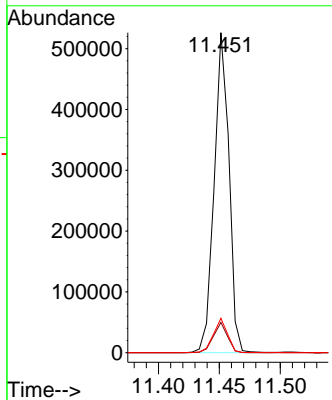
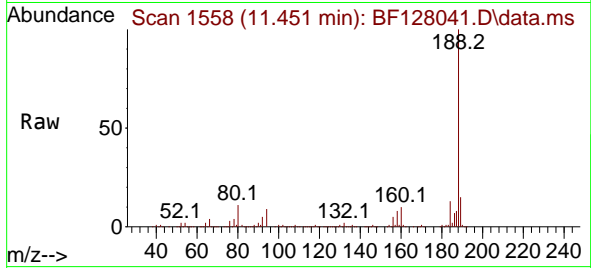


#64  
 Phenanthrene-d10  
 Concen: 20.000 ng  
 RT: 11.451 min Scan# 11  
 Delta R.T. -0.006 min  
 Lab File: BF128041.D  
 Acq: 03 May 2022 12:57

Instrument :  
 BNA\_F  
 ClientSampleId :  
 PB144533BL

Tgt Ion:188 Resp: 445618

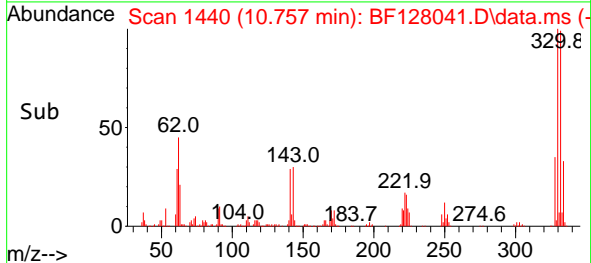
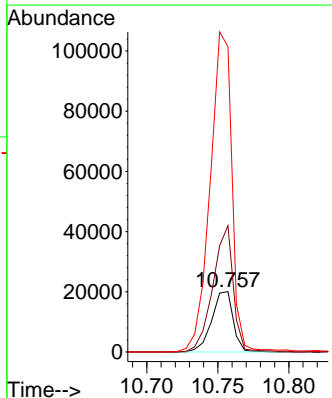
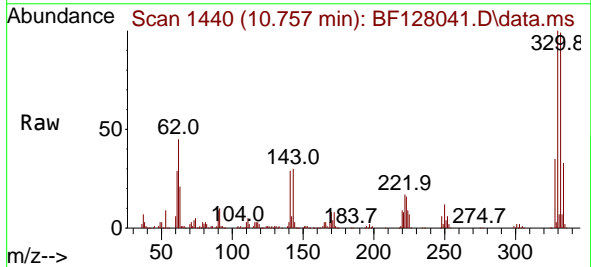
Ion	Ratio	Lower	Upper
188	100		
94	9.4	8.0	12.0
80	10.7	8.9	13.3

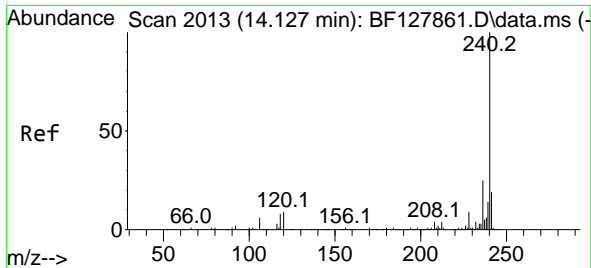


#67  
 4-Bromophenyl-phenylether  
 Concen: 4.277 ng  
 RT: 10.757 min Scan# 1440  
 Delta R.T. -0.241 min  
 Lab File: BF128041.D  
 Acq: 03 May 2022 12:57

Tgt Ion:248 Resp: 21127

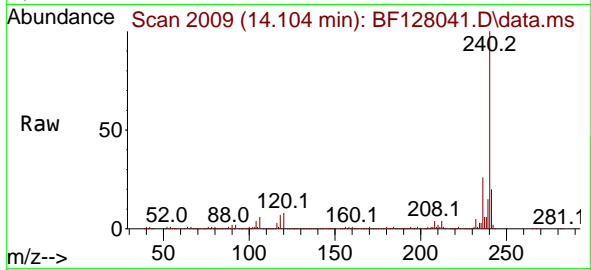
Ion	Ratio	Lower	Upper
248	100		
250	209.5	77.7	116.5#
141	506.8	65.6	98.4#



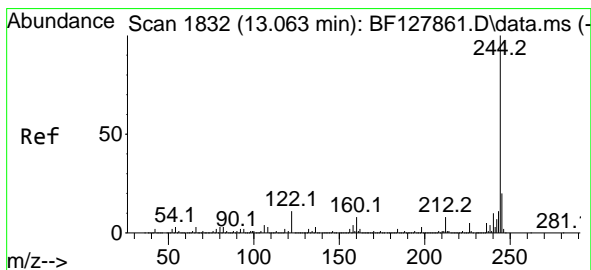
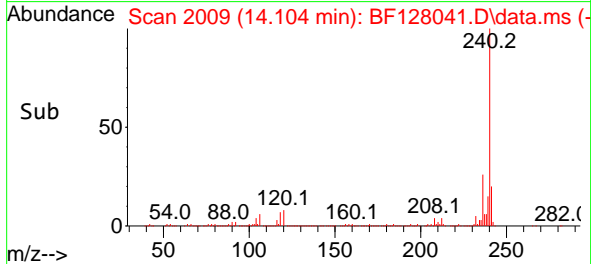
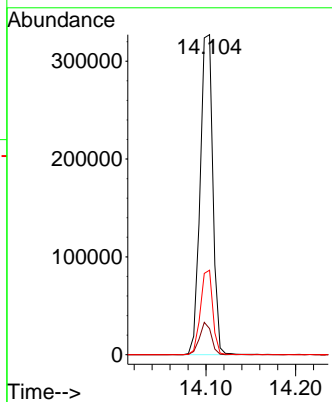


#76  
 Chrysene-d12  
 Concen: 20.000 ng  
 RT: 14.104 min Scan# 2013  
 Delta R.T. 0.000 min  
 Lab File: BF128041.D  
 Acq: 03 May 2022 12:57

Instrument :  
 BNA\_F  
 ClientSampleId :  
 PB144533BL

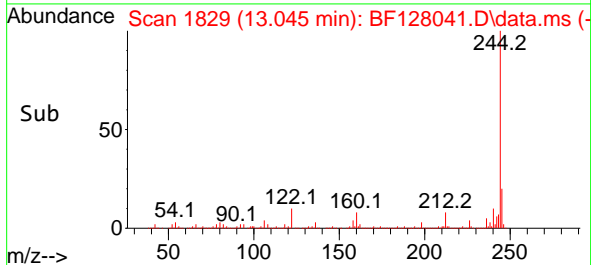
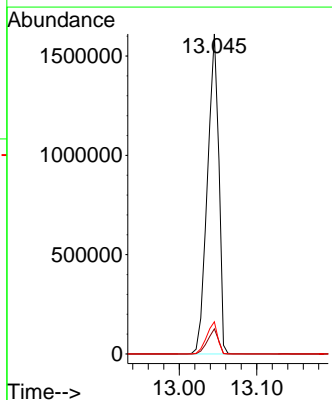
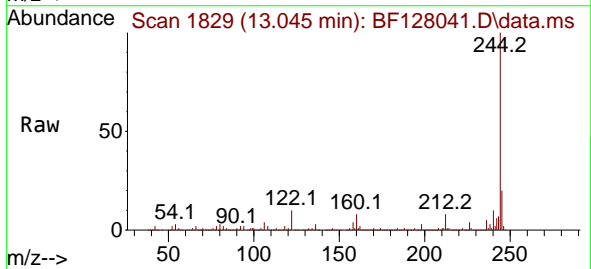


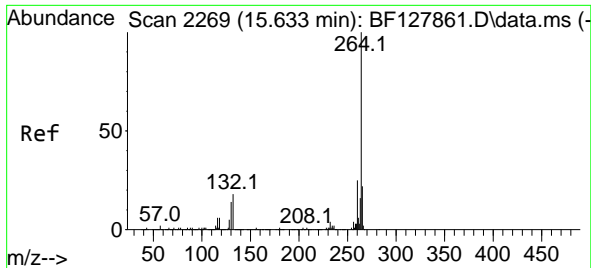
Tgt Ion:240 Resp: 320959  
 Ion Ratio Lower Upper  
 240 100  
 120 8.2 7.0 10.6  
 236 26.4 20.3 30.5



#79  
 Terphenyl-d14  
 Concen: 93.272 ng  
 RT: 13.045 min Scan# 1829  
 Delta R.T. 0.000 min  
 Lab File: BF128041.D  
 Acq: 03 May 2022 12:57

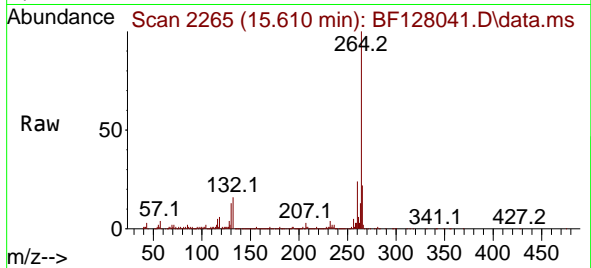
Tgt Ion:244 Resp: 1637157  
 Ion Ratio Lower Upper  
 244 100  
 212 7.9 6.2 9.4  
 122 10.1 8.6 12.8





#86  
 Perylene-d12  
 Concen: 20.000 ng  
 RT: 15.610 min Scan# 21  
 Delta R.T. 0.000 min  
 Lab File: BF128041.D  
 Acq: 03 May 2022 12:57

Instrument :  
 BNA\_F  
 ClientSampleId :  
 PB144533BL



Tgt Ion:264 Resp: 247947  
 Ion Ratio Lower Upper  
 264 100  
 260 23.5 20.1 30.1  
 265 21.6 17.5 26.3

