

Data Path : Z:\svoasrv\HPCHEM1\BNA_F\Data\BF050323\
 Data File : BF133222.D
 Acq On : 03 May 2023 22:56
 Operator : CG\JU
 Sample : SP6188
 Misc : 8270/625 SPIKE
 ALS Vial : 24 Sample Multiplier: 1

Instrument :
 BNA_F
 ClientSampleId :
 DFTPP

Quant Time: May 04 01:43:07 2023
 Quant Method : Z:\svoasrv\HPCHEM1\BNA_F\Methods\8270-BF042123.M
 Quant Title : ASP BNA STANDARDS FOR 5 POINT CALIBRATION
 QLast Update : Wed May 03 17:31:52 2023
 Response via : Initial Calibration

Compound	R.T.	QIon	Response	Conc	Units	Dev(Min)
Internal Standards						
1) 1,4-Dichlorobenzene-d4	6.728	152	190699	20.000	ng	0.00
21) Naphthalene-d8	8.016	136	767103	20.000	ng	0.00
39) Acenaphthene-d10	9.769	164	365170	20.000	ng	0.00
64) Phenanthrene-d10	11.251	188	541503	20.000	ng	# 0.00
76) Chrysene-d12	13.886	240	332486	20.000	ng	0.00
86) Perylene-d12	15.304	264	295539	20.000	ng	0.00
System Monitoring Compounds						
5) 2-Fluorophenol	0.000	112	0	0.000	ng	
7) Phenol-d6	6.516	99	33031	2.108	ng	0.14
23) Nitrobenzene-d5	7.245	82	54659	3.846	ng	-0.05
42) 2,4,6-Tribromophenol	10.545	330	56	0.015	ng	-0.01
45) 2-Fluorobiphenyl	9.051	172	687	0.031	ng	-0.04
79) Terphenyl-d14	12.827	244	684	0.035	ng	-0.01
Target Compounds						
						Qvalue
2) 1,4-Dioxane	2.481	88	301516	51.493	ng	97
3) Pyridine	3.169	79	738713	47.499	ng	98
4) n-Nitrosodimethylamine	3.140	42	393487	48.847	ng	96
6) Aniline	6.392	93	666877	33.044	ng	100
8) 2-Chlorophenol	6.516	128	662446	51.683	ng	96
9) Benzaldehyde	6.281	77	552845	Below Cal		98
10) Phenol	6.381	94	840890	48.646	ng	92
11) bis(2-Chloroethyl)ether	6.463	93	637480	49.145	ng	99
12) 1,3-Dichlorobenzene	6.669	146	717606	52.659	ng	98
13) 1,4-Dichlorobenzene	6.751	146	725875	53.148	ng	96
14) 1,2-Dichlorobenzene	6.898	146	694797	55.181	ng	96
15) Benzyl Alcohol	6.881	79	556445	51.410	ng	98
16) 2,2'-oxybis(1-Chloropr...	7.010	45	1075535	47.739	ng	95
17) 2-Methylphenol	6.998	107	558069	47.549	ng	99
18) Hexachloroethane	7.245	117	244439	51.479	ng	98
19) n-Nitroso-di-n-propyla...	7.151	70	422653	43.328	ng	96
20) 3+4-Methylphenols	7.151	107	645405	46.695	ng	# 72
22) Acetophenone	7.139	105	874148	49.193	ng	# 96
24) Nitrobenzene	7.316	77	687400	47.733	ng	98
25) Isophorone	7.557	82	1271817	47.134	ng	99
26) 2-Nitrophenol	7.633	139	334308	48.129	ng	96
27) 2,4-Dimethylphenol	7.680	122	607343	50.992	ng	97
28) bis(2-Chloroethoxy)met...	7.769	93	768317	48.131	ng	99
29) 2,4-Dichlorophenol	7.880	162	530359	48.914	ng	98
30) 1,2,4-Trichlorobenzene	7.957	180	570206	50.762	ng	98
31) Naphthalene	8.039	128	1825050	47.586	ng	99
32) Benzoic acid	7.680	122	607343	82.552	ng	# 12
33) 4-Chloroaniline	8.086	127	478002	30.847	ng	99
34) Hexachlorobutadiene	8.157	225	315390	50.658	ng	99
35) Caprolactam	8.451	113	130984	35.960	ng	94
36) 4-Chloro-3-methylphenol	8.580	107	549343	46.982	ng	96
37) 2-Methylnaphthalene	8.727	142	1192049	45.462	ng	99
38) 1-Methylnaphthalene	8.827	142	1101317	44.898	ng	100
40) 1,2,4,5-Tetrachloroben...	8.898	216	491382	50.047	ng	99
41) Hexachlorocyclopentadiene	8.886	237	219069	38.258	ng	99
43) 2,4,6-Trichlorophenol	9.010	196	282044	41.538	ng	100

Data Path : Z:\svoasrv\HPCHEM1\BNA_F\Data\BF050323\
 Data File : BF133222.D
 Acq On : 03 May 2023 22:56
 Operator : CG\JU
 Sample : SP6188
 Misc : 8270/625 SPIKE
 ALS Vial : 24 Sample Multiplier: 1

Instrument :
 BNA_F
 ClientSampleId :
 DFTPP

Quant Time: May 04 01:43:07 2023
 Quant Method : Z:\svoasrv\HPCHEM1\BNA_F\Methods\8270-BF042123.M
 Quant Title : ASP BNA STANDARDS FOR 5 POINT CALIBRATION
 QLast Update : Wed May 03 17:31:52 2023
 Response via : Initial Calibration

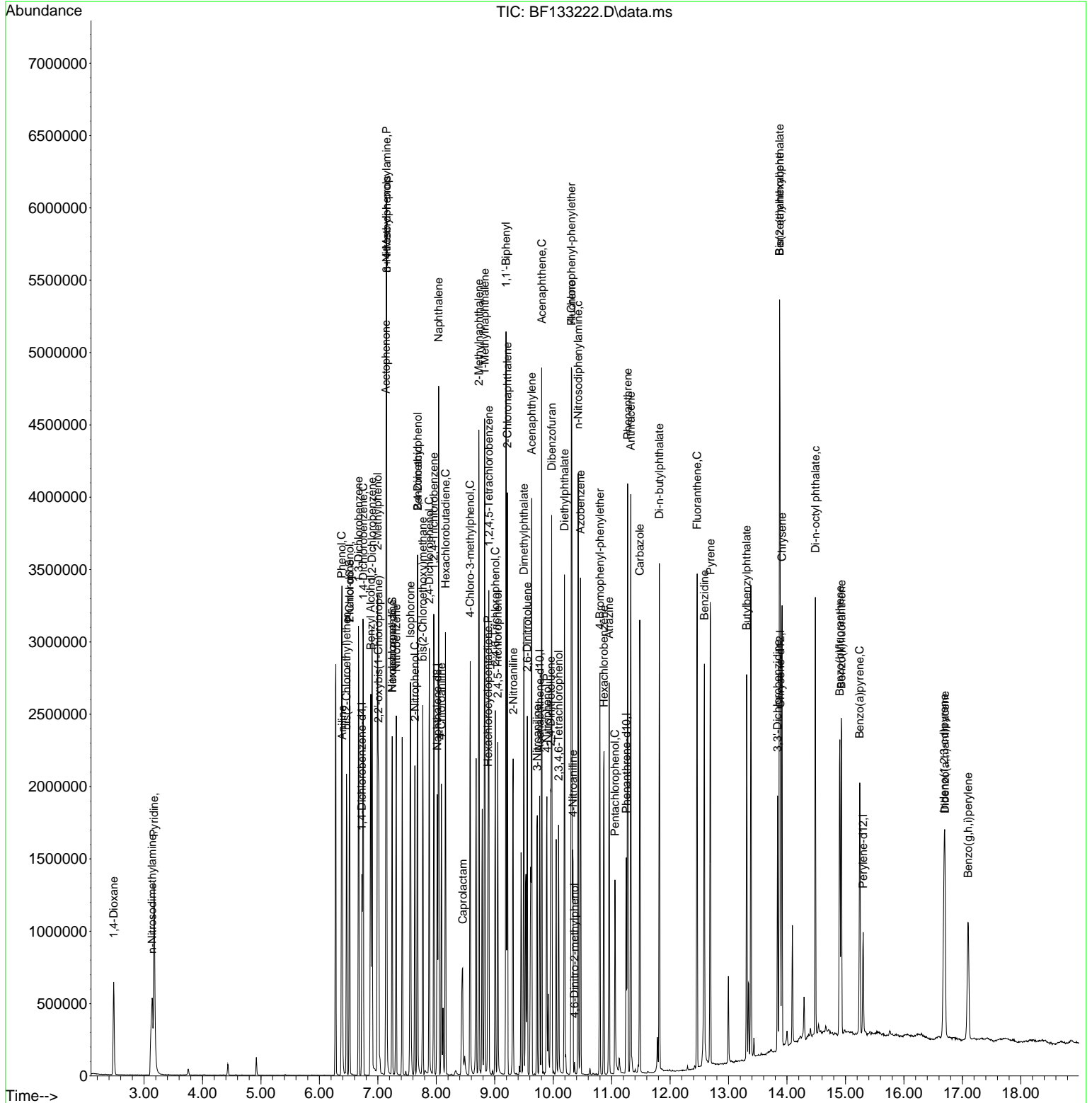
Compound	R.T.	QIon	Response	Conc	Units	Dev(Min)
44) 2,4,5-Trichlorophenol	9.051	196	301379	38.378	ng	99
46) 1,1'-Biphenyl	9.192	154	1431990	49.453	ng	100
47) 2-Chloronaphthalene	9.216	162	1068065	50.394	ng	99
48) 2-Nitroaniline	9.316	65	345665	49.349	ng	94
49) Acenaphthylene	9.633	152	1589375	46.933	ng	99
50) Dimethylphthalate	9.498	163	1278567	50.213	ng	99
51) 2,6-Dinitrotoluene	9.557	165	280656	48.972	ng	94
52) Acenaphthene	9.804	154	972994	42.899	ng	99
53) 3-Nitroaniline	9.727	138	302475	44.389	ng	95
55) Dibenzofuran	9.974	168	1424814	46.052	ng	98
56) 4-Nitrophenol	9.892	139	338170	64.075	ng	97
57) 2,4-Dinitrotoluene	9.957	165	345557	47.281	ng	96
58) Fluorene	10.316	166	1011117	44.607	ng	99
59) 2,3,4,6-Tetrachlorophenol	10.092	232	188904	31.029	ng	99
60) Diethylphthalate	10.192	149	1159784	48.222	ng	100
61) 4-Chlorophenyl-phenyle...	10.310	204	493846	44.707	ng	96
62) 4-Nitroaniline	10.339	138	302699	48.332	ng	95
63) Azobenzene	10.469	77	1095379	42.993	ng	98
65) 4,6-Dinitro-2-methylph...	10.363	198	8103	2.469	ng	# 70
66) n-Nitrosodiphenylamine	10.427	169	935186	53.242	ng	99
67) 4-Bromophenyl-phenylether	10.798	248	301220	51.290	ng	97
68) Hexachlorobenzene	10.869	284	303104	50.367	ng	98
69) Atrazine	10.957	200	305274	60.316	ng	99
70) Pentachlorophenol	11.057	266	163081	38.050	ng	98
71) Phenanthrene	11.274	178	1363379	46.845	ng	100
72) Anthracene	11.327	178	1415291	47.517	ng	99
73) Carbazole	11.480	167	1253189	47.252	ng	100
74) Di-n-butylphthalate	11.816	149	1593981	53.109	ng	100
75) Fluoranthene	12.463	202	1281352	43.868	ng	97
77) Benzidine	12.586	184	992836	176.582	ng	# 93
78) Pyrene	12.692	202	1327121	46.563	ng	100
80) Butylbenzylphthalate	13.310	149	585002	57.969	ng	93
81) Benzo(a)anthracene	13.874	228	1067779	46.701	ng	99
82) 3,3'-Dichlorobenzidine	13.839	252	330480	52.322	ng	99
83) Chrysene	13.915	228	1051984	46.022	ng	99
84) Bis(2-ethylhexyl)phtha...	13.874	149	736571	58.149	ng	99
85) Di-n-octyl phthalate	14.486	149	1380444	66.836	ng	97
87) Indeno(1,2,3-cd)pyrene	16.686	276	801275	47.664	ng	99
88) Benzo(b)fluoranthene	14.904	252	976101	51.915	ng	99
89) Benzo(k)fluoranthene	14.933	252	891771	47.847	ng	99
90) Benzo(a)pyrene	15.245	252	785307	45.888	ng	100
91) Dibenzo(a,h)anthracene	16.703	278	680569	48.539	ng	98
92) Benzo(g,h,i)perylene	17.098	276	630617	45.557	ng	99

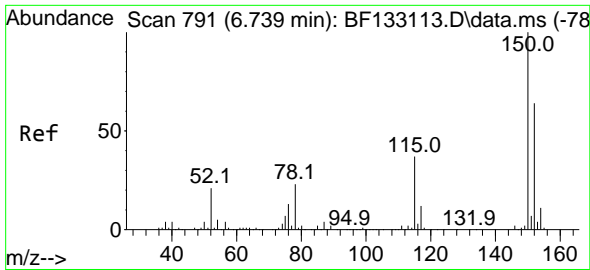
(#) = qualifier out of range (m) = manual integration (+) = signals summed

Data Path : Z:\svoasrv\HPCHEM1\BNA_F\Data\BF050323\
 Data File : BF133222.D
 Acq On : 03 May 2023 22:56
 Operator : CG\JU
 Sample : SP6188
 Misc : 8270/625 SPIKE
 ALS Vial : 24 Sample Multiplier: 1

Instrument :
 BNA_F
 ClientSampleId :
 DFTPP

Quant Time: May 04 01:43:07 2023
 Quant Method : Z:\svoasrv\HPCHEM1\BNA_F\Methods\8270-BF042123.M
 Quant Title : ASP BNA STANDARDS FOR 5 POINT CALIBRATION
 QLast Update : Wed May 03 17:31:52 2023
 Response via : Initial Calibration

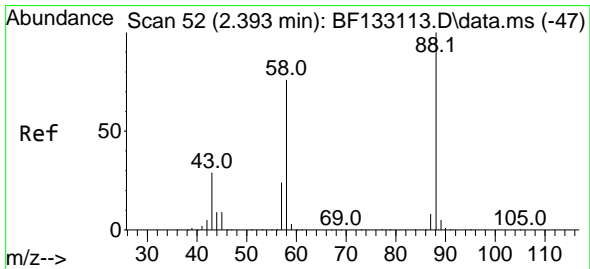
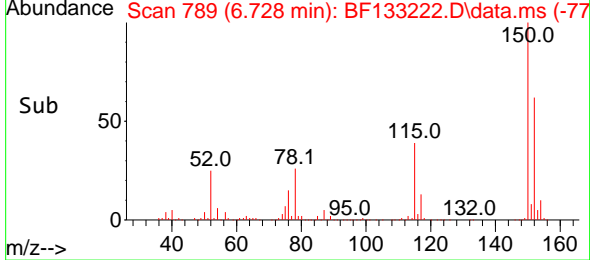
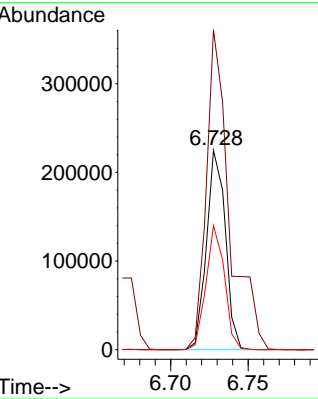
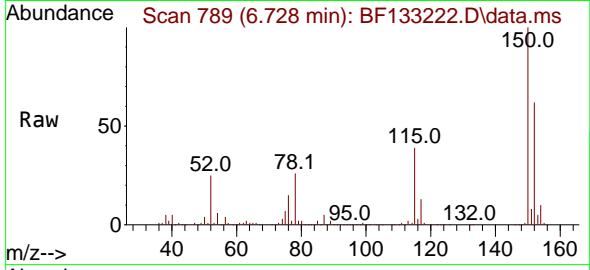




#1
 1,4-Dichlorobenzene-d4
 Concen: 20.000 ng
 RT: 6.728 min Scan# 71
 Delta R.T. -0.006 min
 Lab File: BF133222.D
 Acq: 03 May 2023 22:56

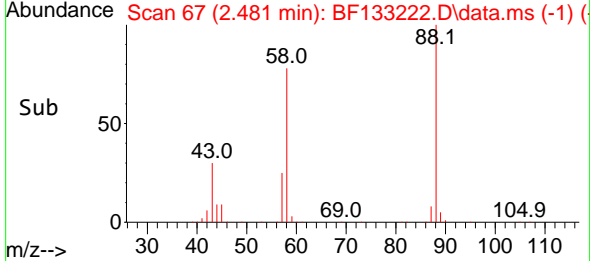
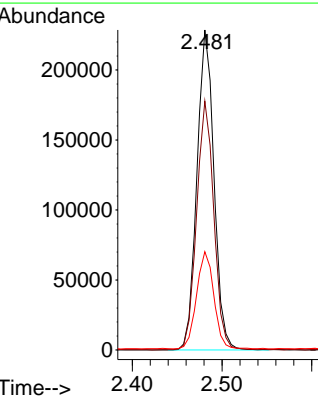
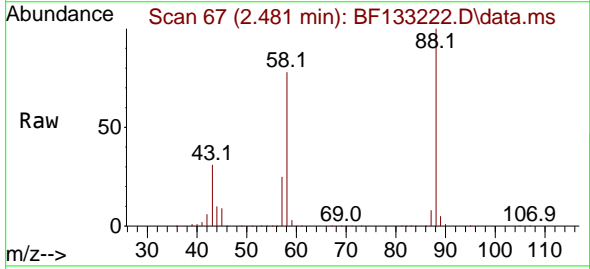
Instrument :
 BNA_F
 ClientSampleId :
 DFTPP

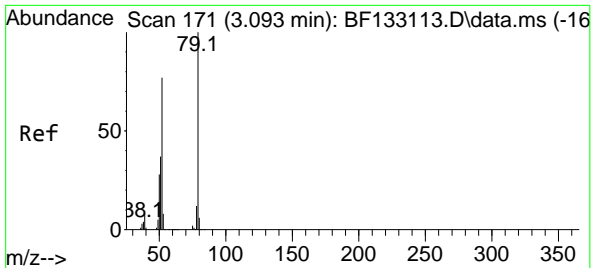
Tgt Ion:152 Resp: 190699
 Ion Ratio Lower Upper
 152 100
 150 160.5 124.8 187.2
 115 62.2 49.9 74.9



#2
 1,4-Dioxane
 Concen: 51.493 ng
 RT: 2.481 min Scan# 67
 Delta R.T. 0.105 min
 Lab File: BF133222.D
 Acq: 03 May 2023 22:56

Tgt Ion: 88 Resp: 301516
 Ion Ratio Lower Upper
 88 100
 58 78.6 64.7 97.1
 43 30.9 26.2 39.2



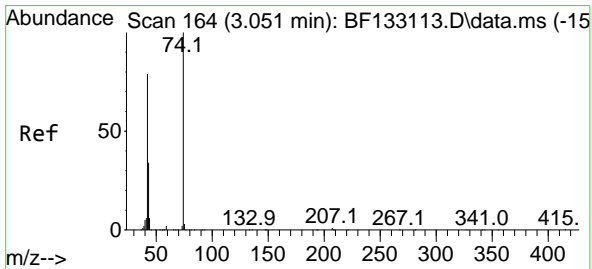
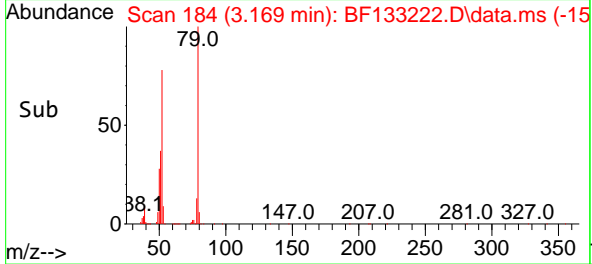
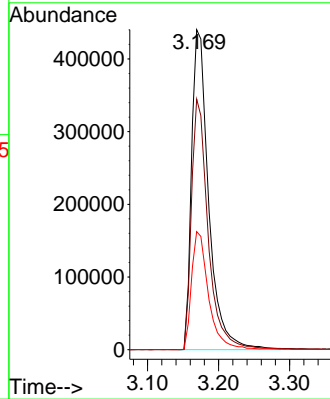
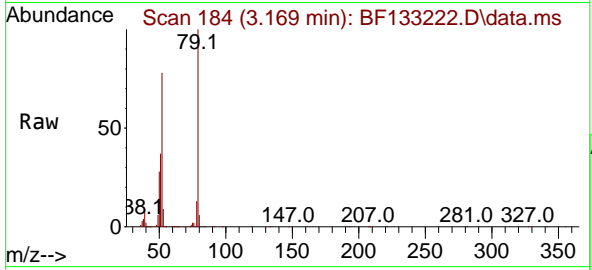


#3
 Pyridine
 Concen: 47.499 ng
 RT: 3.169 min Scan# 118
 Delta R.T. 0.094 min
 Lab File: BF133222.D
 Acq: 03 May 2023 22:56

Instrument :
 BNA_F
 ClientSampleId :
 DFTPP

Tgt Ion: 79 Resp: 738713

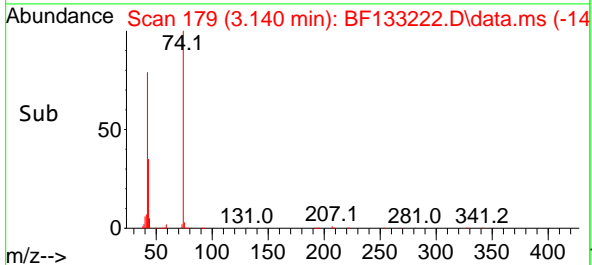
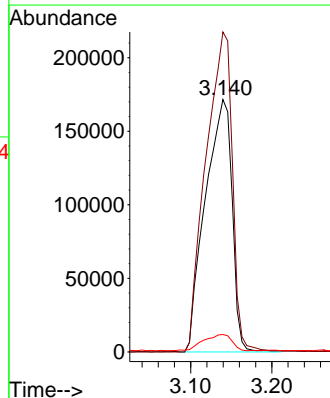
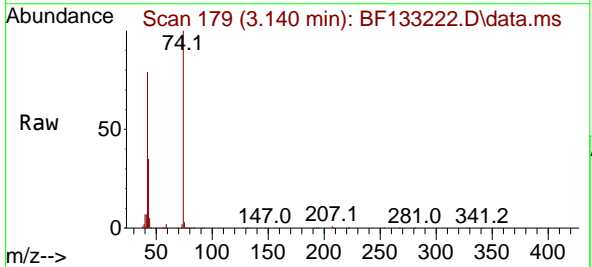
Ion	Ratio	Lower	Upper
79	100		
52	78.3	64.6	96.8
51	36.9	30.0	45.0

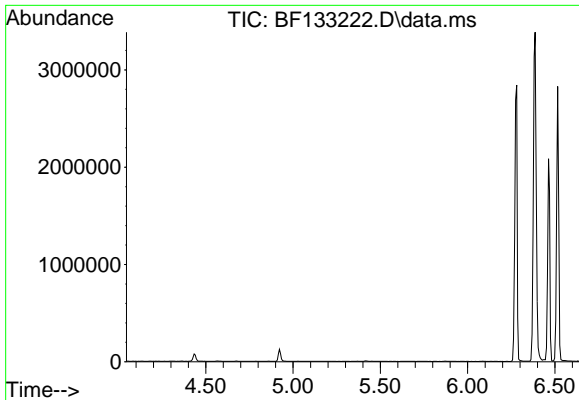


#4
 n-Nitrosodimethylamine
 Concen: 48.847 ng
 RT: 3.140 min Scan# 179
 Delta R.T. 0.105 min
 Lab File: BF133222.D
 Acq: 03 May 2023 22:56

Tgt Ion: 42 Resp: 393487

Ion	Ratio	Lower	Upper
42	100		
74	126.7	98.0	147.0
44	6.9	5.8	8.8

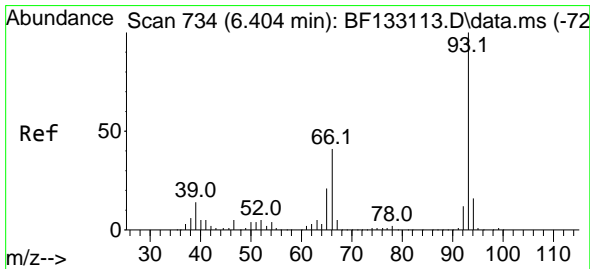
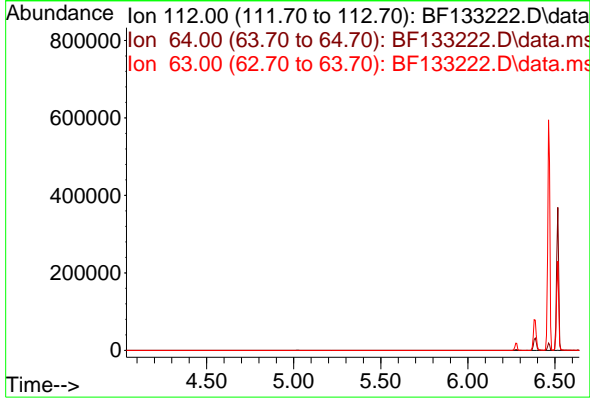




#5
 2-Fluorophenol
 Concen: 0.000 ng
 Expected RT: 5.34 min
 Lab File: BF133222.D
 Acq: 03 May 2023 22:56

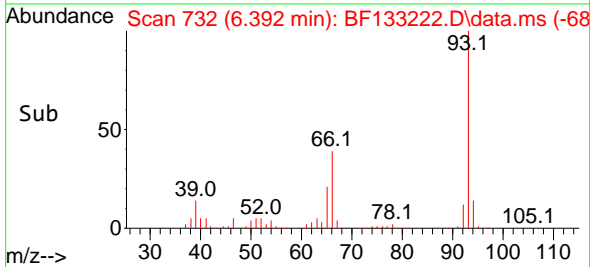
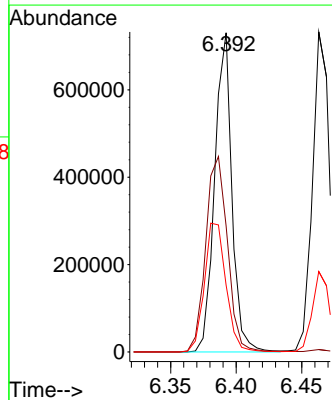
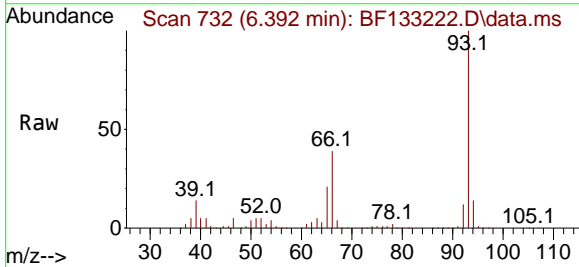
Instrument :
 BNA_F
 ClientSampleId :
 DFTPP

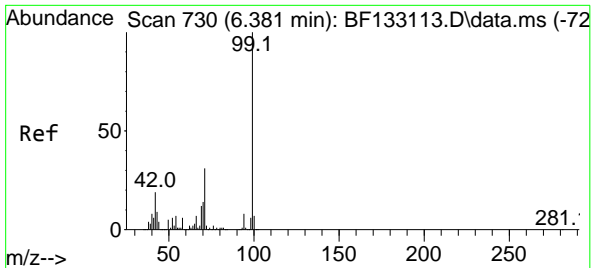
Tgt Ion: 112
 Sig Exp Ratio
 112 100
 64 58.5
 63 29.8



#6
 Aniline
 Concen: 33.044 ng
 RT: 6.392 min Scan# 732
 Delta R.T. -0.006 min
 Lab File: BF133222.D
 Acq: 03 May 2023 22:56

Tgt Ion: 93 Resp: 666877
 Ion Ratio Lower Upper
 93 100
 66 39.5 31.5 47.3
 65 20.9 16.4 24.6

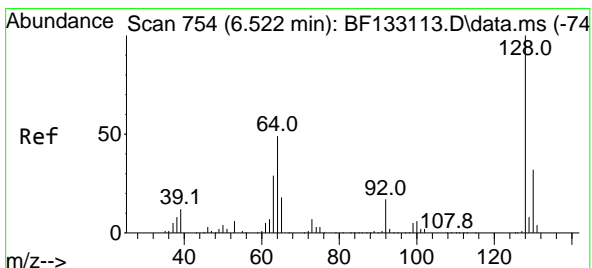
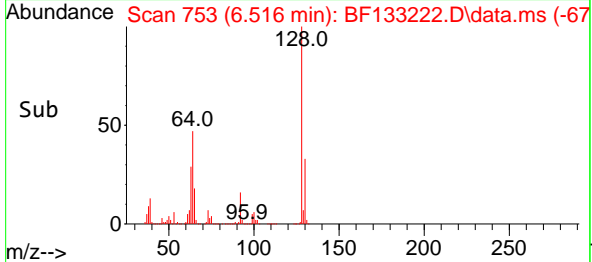
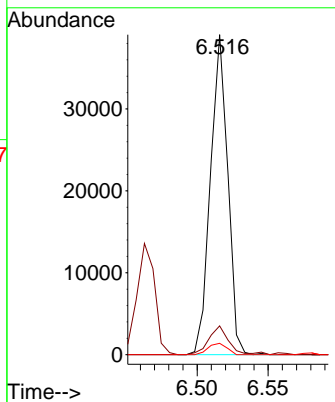
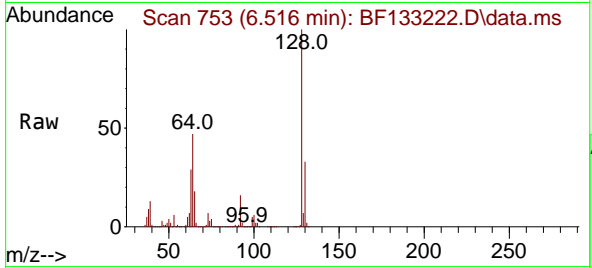




#7
 Phenol-d6
 Concen: 2.108 ng
 RT: 6.516 min Scan# 71
 Delta R.T. 0.141 min
 Lab File: BF133222.D
 Acq: 03 May 2023 22:56

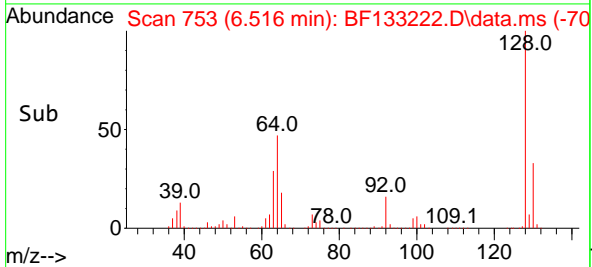
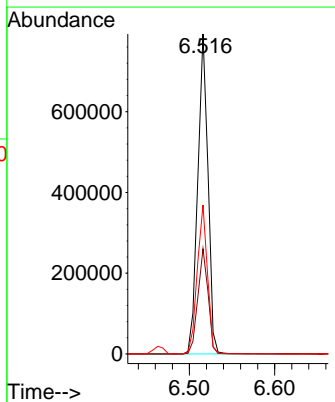
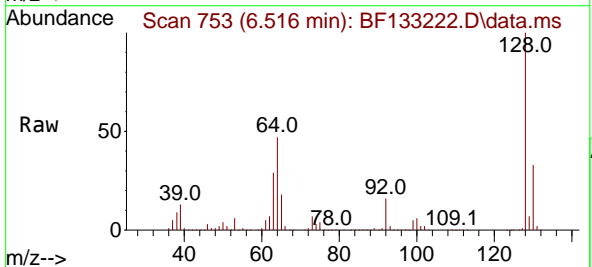
Instrument :
 BNA_F
 ClientSampleId :
 DFTPP

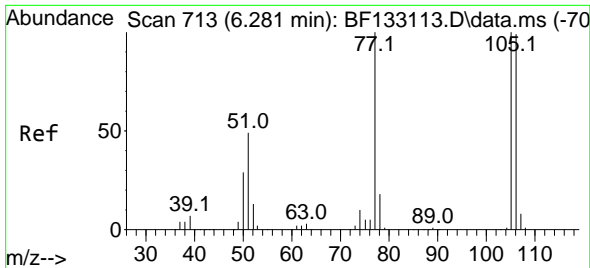
Tgt Ion: 99 Resp: 33031
 Ion Ratio Lower Upper
 99 100
 42 9.0 16.3 24.5#
 71 3.5 25.6 38.4#



#8
 2-Chlorophenol
 Concen: 51.683 ng
 RT: 6.516 min Scan# 753
 Delta R.T. -0.000 min
 Lab File: BF133222.D
 Acq: 03 May 2023 22:56

Tgt Ion:128 Resp: 662446
 Ion Ratio Lower Upper
 128 100
 130 32.9 12.2 52.2
 64 46.6 30.3 70.3

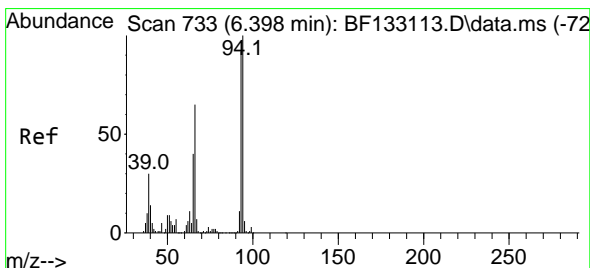
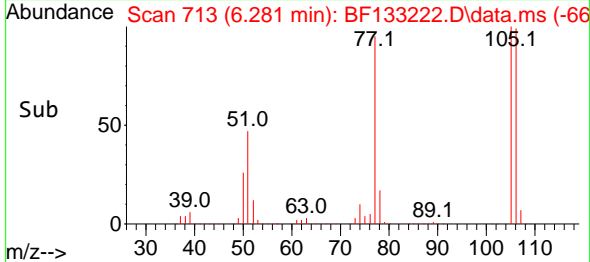
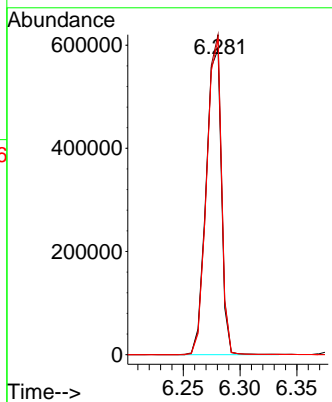
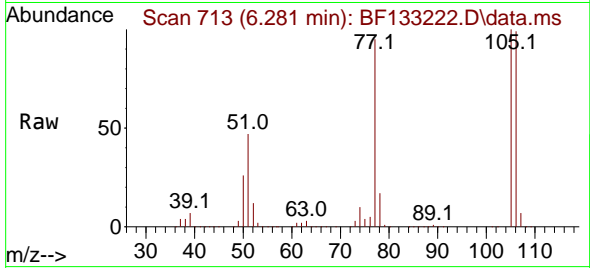




#9
Benzaldehyde
Concen: Below Cal
RT: 6.281 min Scan# 713
Delta R.T. 0.005 min
Lab File: BF133222.D
Acq: 03 May 2023 22:56

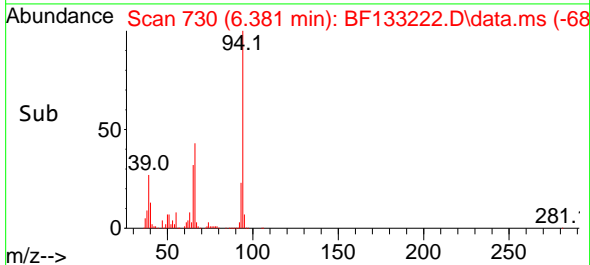
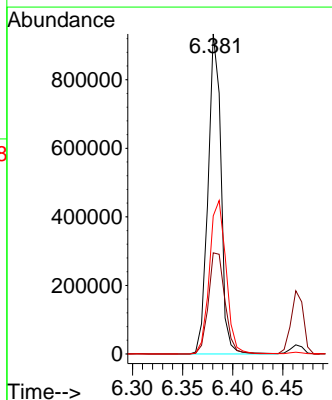
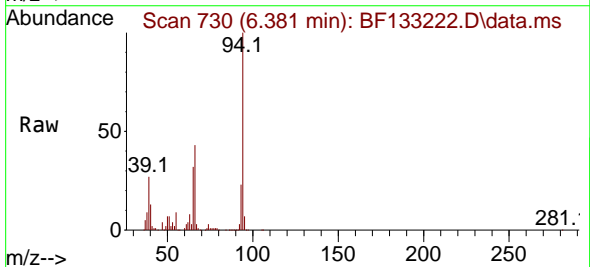
Instrument : BNA_F
ClientSampleId : DFTPP

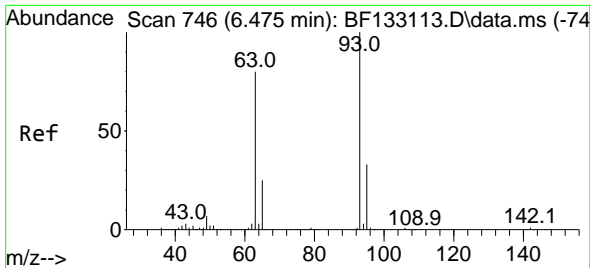
Tgt Ion: 77 Resp: 552845
Ion Ratio Lower Upper
77 100
105 104.7 82.3 122.3
106 103.3 80.8 120.8



#10
Phenol
Concen: 48.646 ng
RT: 6.381 min Scan# 730
Delta R.T. -0.006 min
Lab File: BF133222.D
Acq: 03 May 2023 22:56

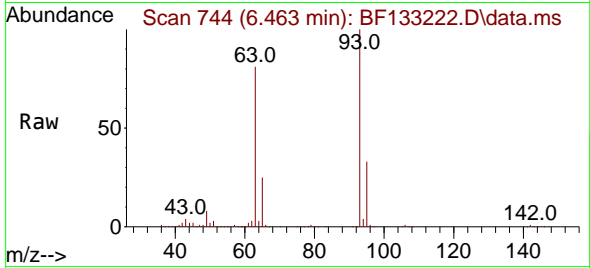
Tgt Ion: 94 Resp: 840890
Ion Ratio Lower Upper
94 100
65 31.6 8.6 48.6
66 43.2 17.3 57.3





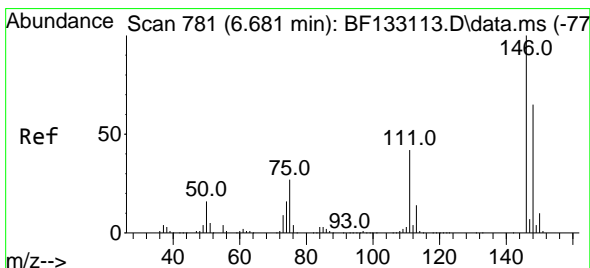
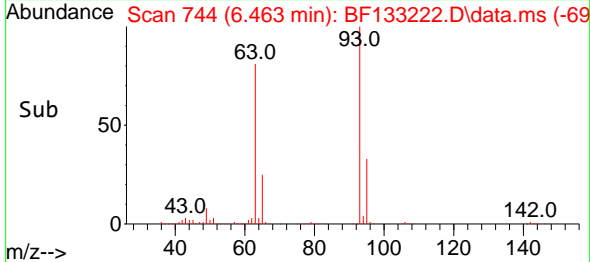
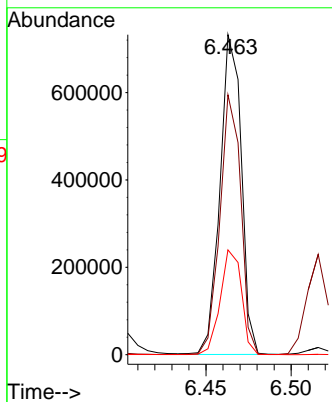
#11
 bis(2-Chloroethyl)ether
 Concen: 49.145 ng
 RT: 6.463 min Scan# 744
 Delta R.T. -0.006 min
 Lab File: BF133222.D
 Acq: 03 May 2023 22:56

Instrument : BNA_F
 ClientSampleId : DFTPP



Tgt Ion: 93 Resp: 637480

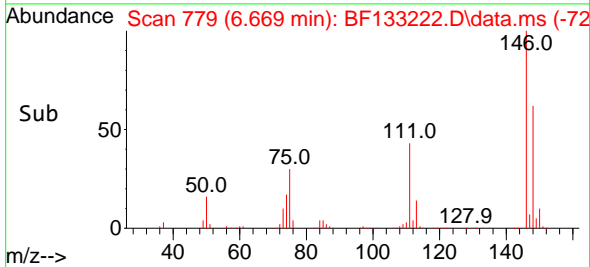
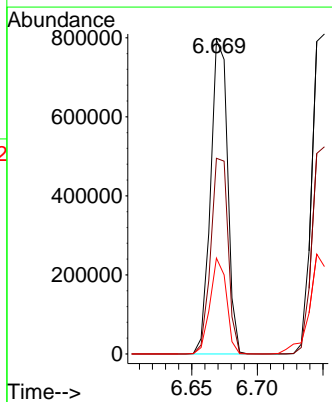
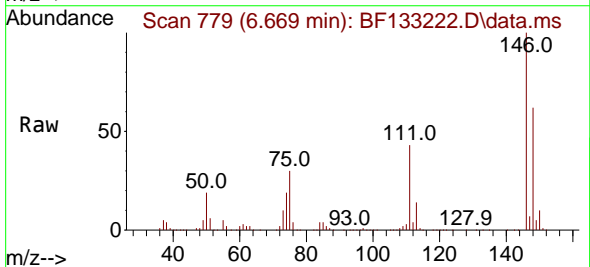
Ion	Ratio	Lower	Upper
93	100		
63	81.2	60.6	100.6
95	32.7	12.9	52.9

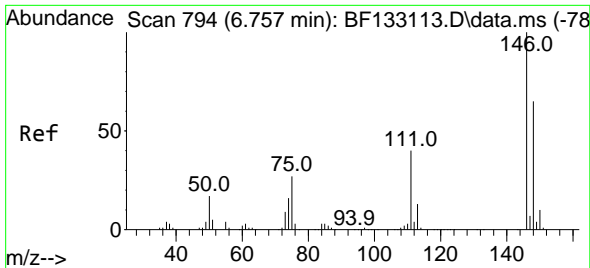


#12
 1,3-Dichlorobenzene
 Concen: 52.659 ng
 RT: 6.669 min Scan# 779
 Delta R.T. -0.006 min
 Lab File: BF133222.D
 Acq: 03 May 2023 22:56

Tgt Ion: 146 Resp: 717606

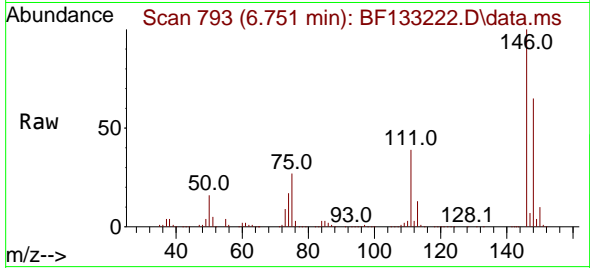
Ion	Ratio	Lower	Upper
146	100		
148	62.3	51.0	76.4
75	30.5	24.8	37.2



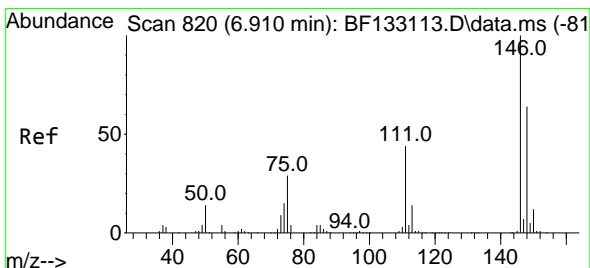
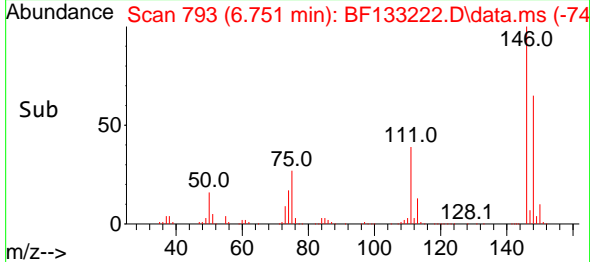
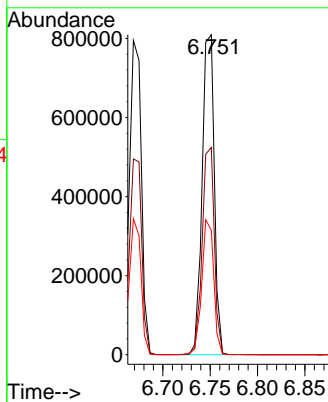


#13
 1,4-Dichlorobenzene
 Concen: 53.148 ng
 RT: 6.751 min Scan# 74
 Delta R.T. -0.000 min
 Lab File: BF133222.D
 Acq: 03 May 2023 22:56

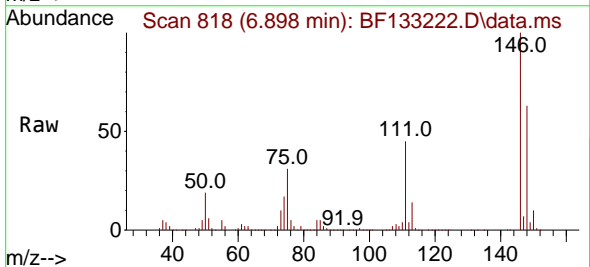
Instrument :
 BNA_F
 ClientSampleId :
 DFTPP



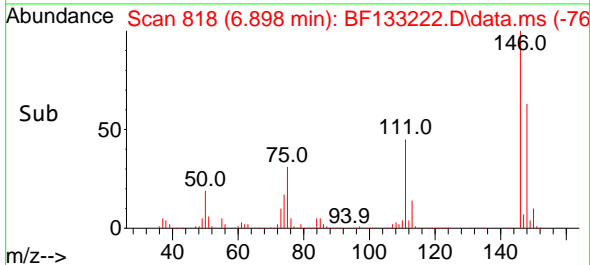
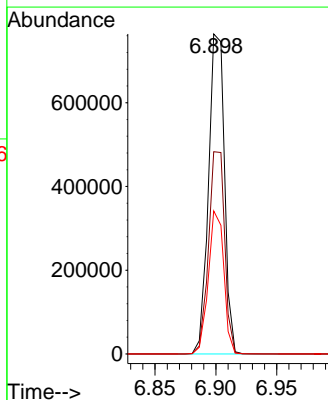
Tgt Ion:146 Resp: 725875
 Ion Ratio Lower Upper
 146 100
 148 64.8 50.3 75.5
 111 38.9 33.8 50.6

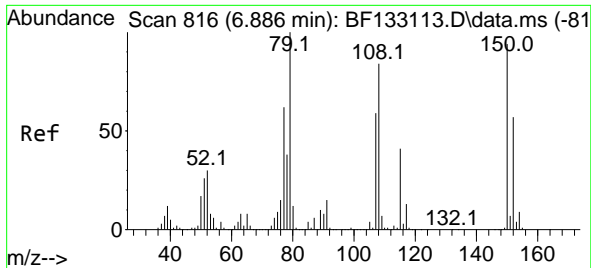


#14
 1,2-Dichlorobenzene
 Concen: 55.181 ng
 RT: 6.898 min Scan# 818
 Delta R.T. -0.006 min
 Lab File: BF133222.D
 Acq: 03 May 2023 22:56



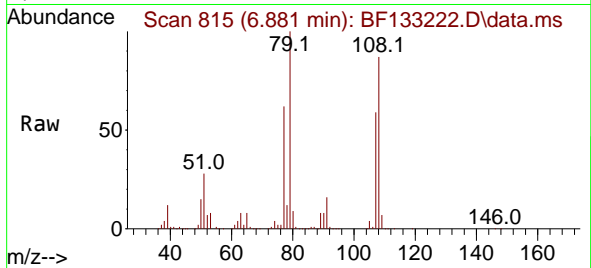
Tgt Ion:146 Resp: 694797
 Ion Ratio Lower Upper
 146 100
 148 63.2 52.2 78.2
 111 44.7 32.8 49.2



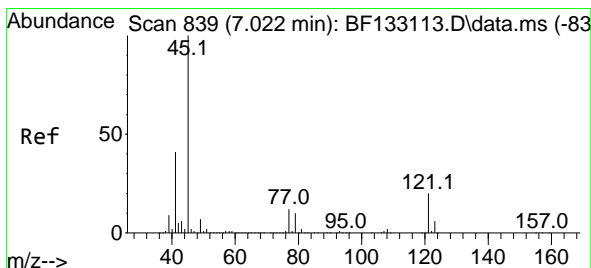
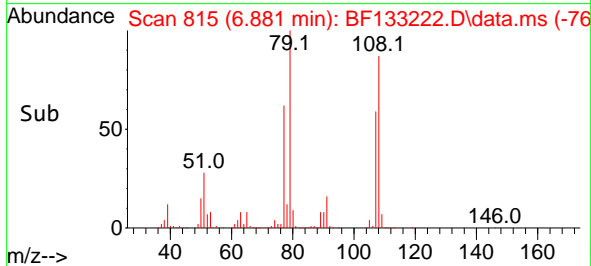
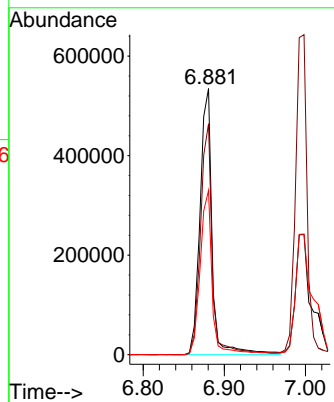


#15
 Benzyl Alcohol
 Concen: 51.410 ng
 RT: 6.881 min Scan# 816
 Delta R.T. -0.000 min
 Lab File: BF133222.D
 Acq: 03 May 2023 22:56

Instrument :
 BNA_F
 ClientSampleId :
 DFTPP

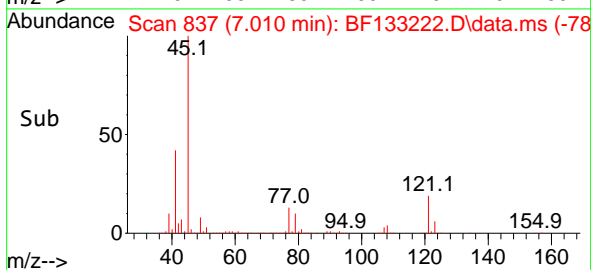
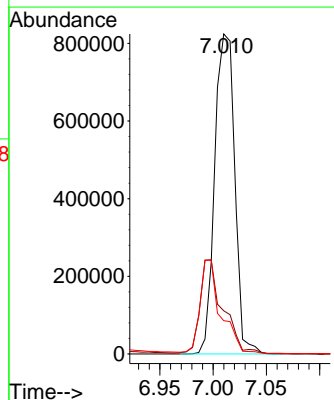
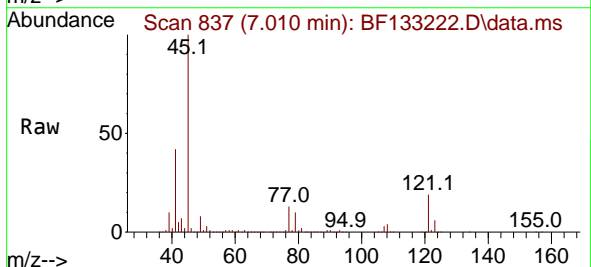


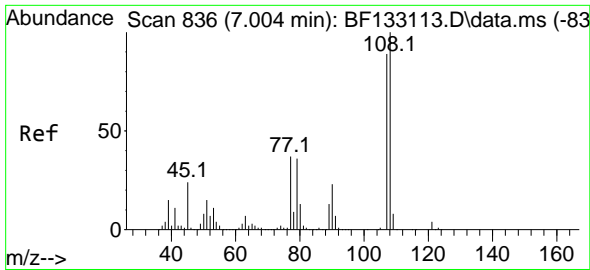
Tgt Ion: 79 Resp: 556445
 Ion Ratio Lower Upper
 79 100
 108 86.7 66.6 99.8
 77 61.7 49.2 73.8



#16
 2,2'-oxybis(1-Chloropropane)
 Concen: 47.739 ng
 RT: 7.010 min Scan# 837
 Delta R.T. -0.006 min
 Lab File: BF133222.D
 Acq: 03 May 2023 22:56

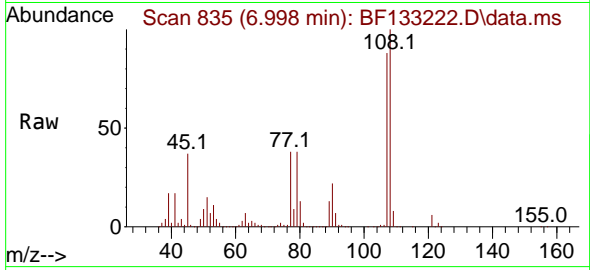
Tgt Ion: 45 Resp: 1075535
 Ion Ratio Lower Upper
 45 100
 77 13.5 0.0 31.5
 79 10.4 0.0 28.7



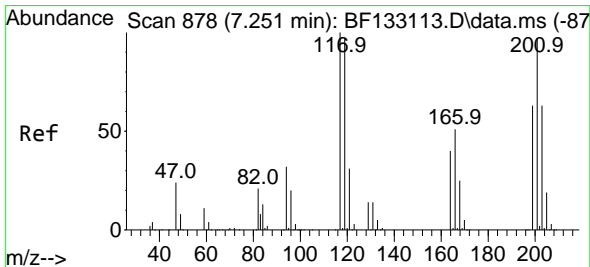
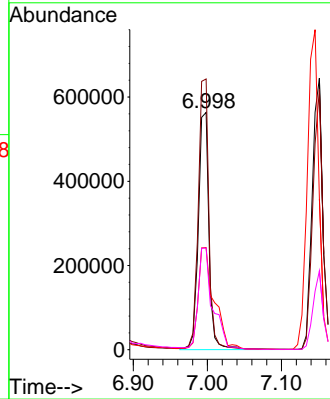
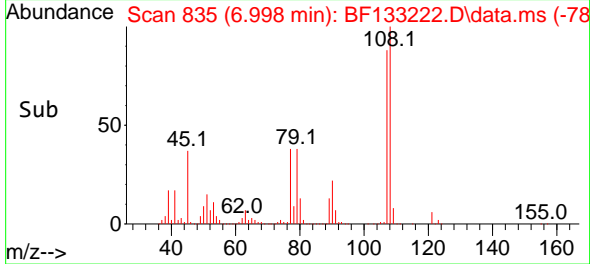


#17
 2-Methylphenol
 Concen: 47.549 ng
 RT: 6.998 min Scan# 811
 Delta R.T. 0.005 min
 Lab File: BF133222.D
 Acq: 03 May 2023 22:56

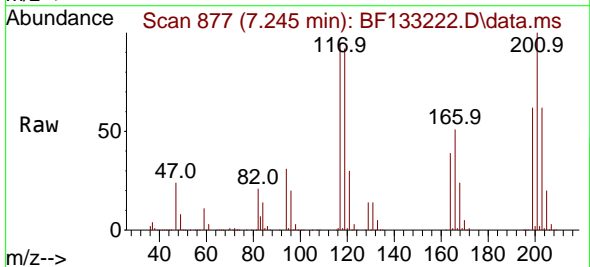
Instrument :
 BNA_F
 ClientSampleId :
 DFTPP



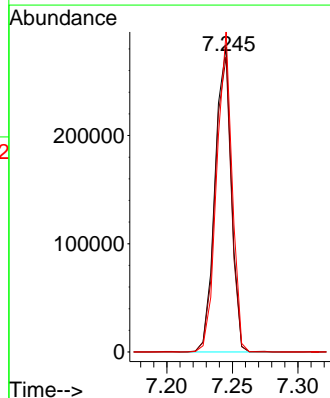
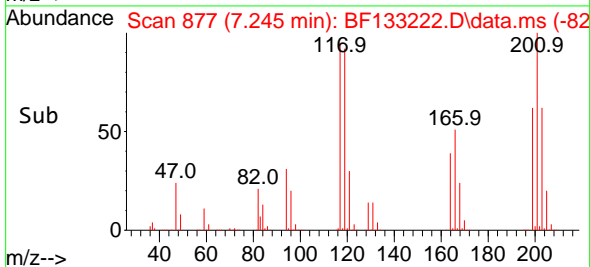
Tgt Ion:107 Resp: 558069
 Ion Ratio Lower Upper
 107 100
 108 114.1 92.4 138.6
 77 43.0 33.8 50.8
 79 42.9 33.1 49.7

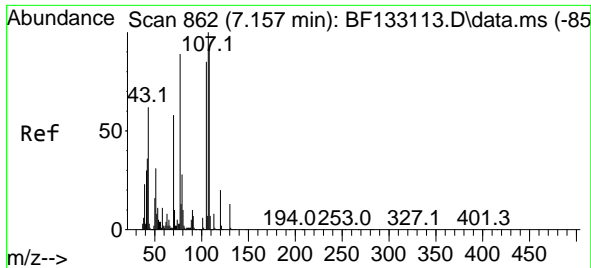


#18
 Hexachloroethane
 Concen: 51.479 ng
 RT: 7.245 min Scan# 877
 Delta R.T. -0.000 min
 Lab File: BF133222.D
 Acq: 03 May 2023 22:56



Tgt Ion:117 Resp: 244439
 Ion Ratio Lower Upper
 117 100
 119 96.8 78.2 117.4
 201 105.0 81.7 122.5



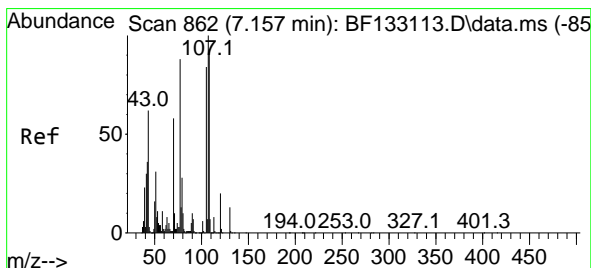
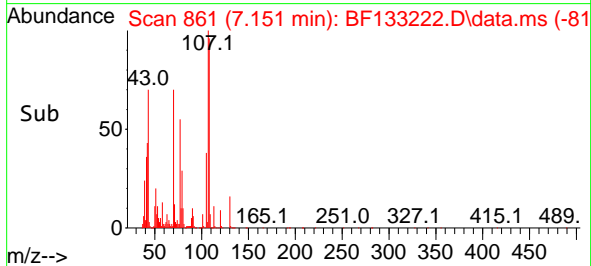
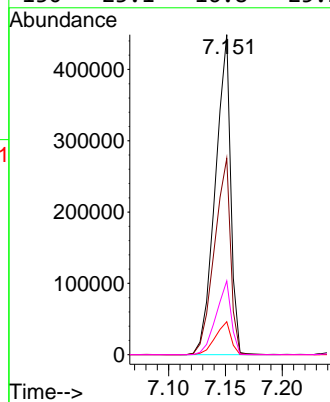
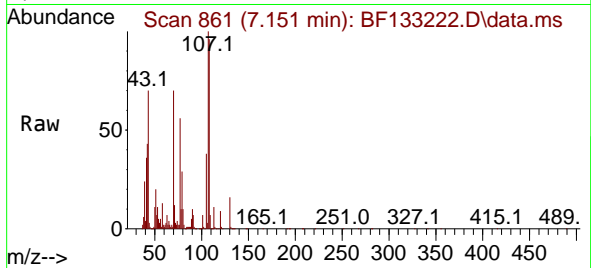


#19
 n-Nitroso-di-n-propylamine
 Concen: 43.328 ng
 RT: 7.151 min Scan# 801
 Delta R.T. -0.000 min
 Lab File: BF133222.D
 Acq: 03 May 2023 22:56

Instrument :
 BNA_F
 ClientSampleId :
 DFTPP

Tgt Ion: 70 Resp: 422653

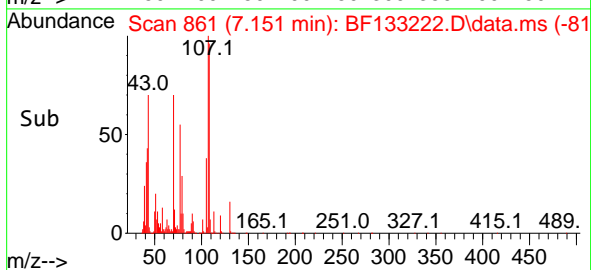
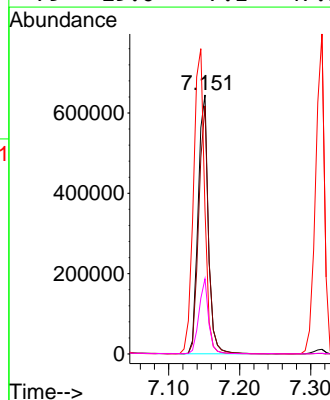
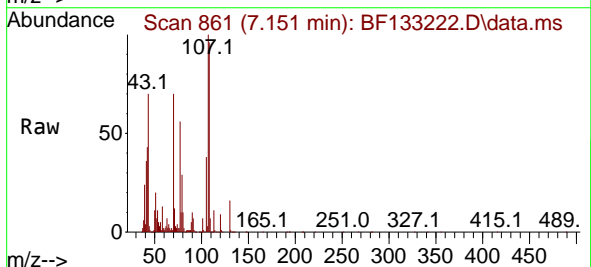
Ion	Ratio	Lower	Upper
70	100		
42	61.3	51.8	77.6
101	10.3	8.0	12.0
130	23.1	16.8	25.2

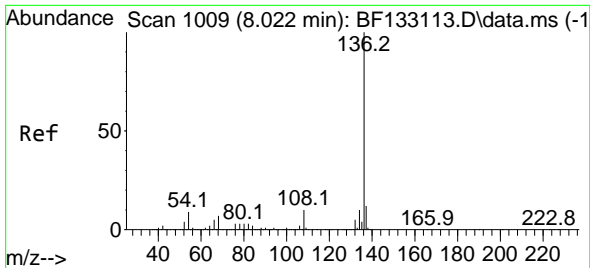


#20
 3+4-Methylphenols
 Concen: 46.695 ng
 RT: 7.151 min Scan# 861
 Delta R.T. -0.000 min
 Lab File: BF133222.D
 Acq: 03 May 2023 22:56

Tgt Ion: 107 Resp: 645405

Ion	Ratio	Lower	Upper
107	100		
108	95.8	70.5	110.5
77	55.5	91.7	131.7#
79	29.0	7.1	47.1

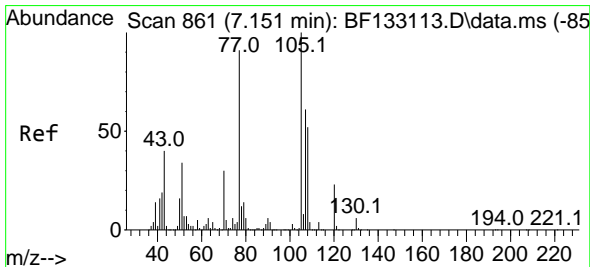
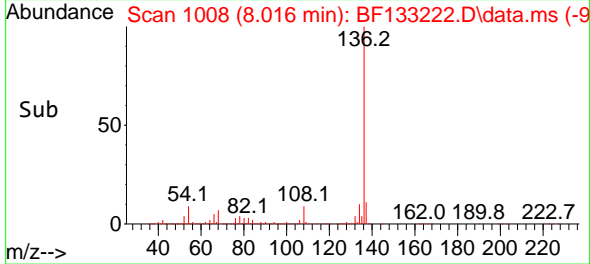
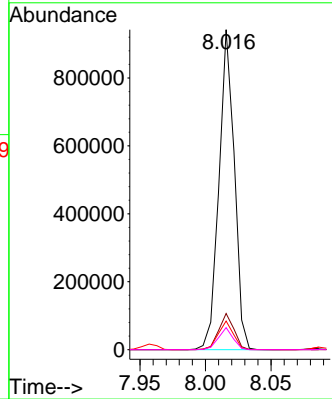
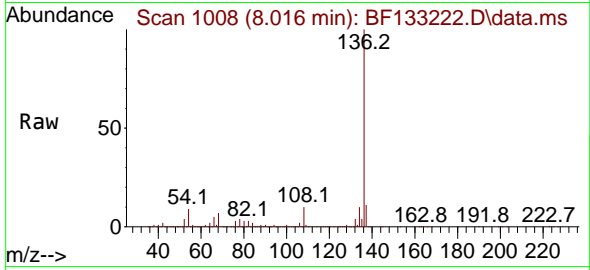




#21
 Naphthalene-d8
 Concen: 20.000 ng
 RT: 8.016 min Scan# 1009
 Delta R.T. -0.000 min
 Lab File: BF133222.D
 Acq: 03 May 2023 22:56

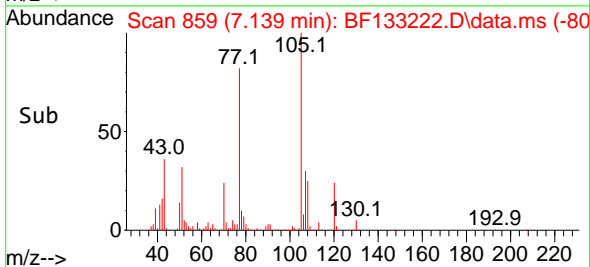
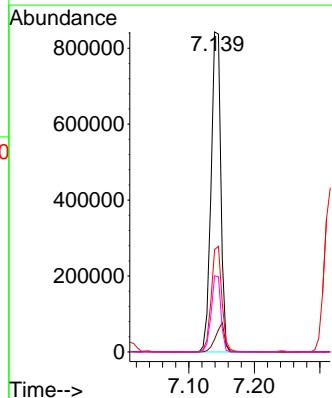
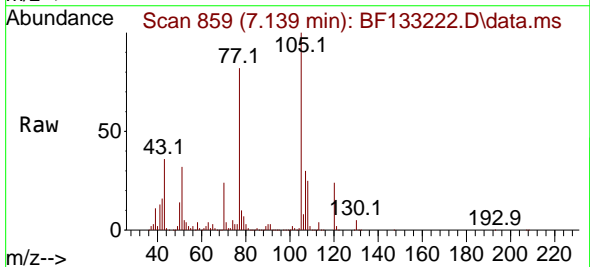
Instrument :
 BNA_F
 ClientSampleId :
 DFTPP

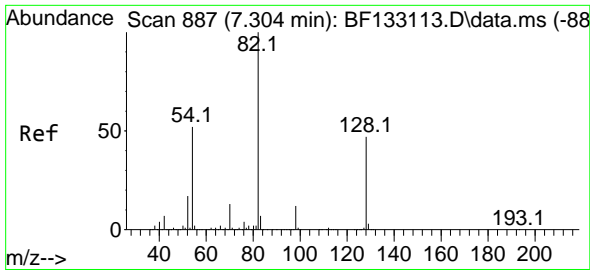
Tgt Ion:136 Resp: 767103
 Ion Ratio Lower Upper
 136 100
 137 11.3 8.6 13.0
 54 8.9 7.0 10.4
 68 6.9 5.4 8.2



#22
 Acetophenone
 Concen: 49.193 ng
 RT: 7.139 min Scan# 859
 Delta R.T. -0.006 min
 Lab File: BF133222.D
 Acq: 03 May 2023 22:56

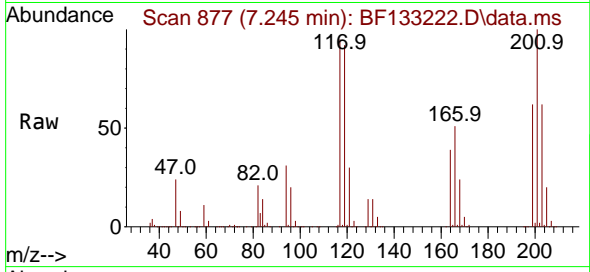
Tgt Ion:105 Resp: 874148
 Ion Ratio Lower Upper
 105 100
 71 4.0 4.6 7.0#
 51 32.0 28.2 42.2
 120 23.8 18.4 27.6



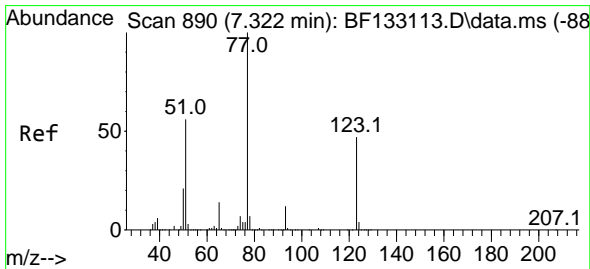
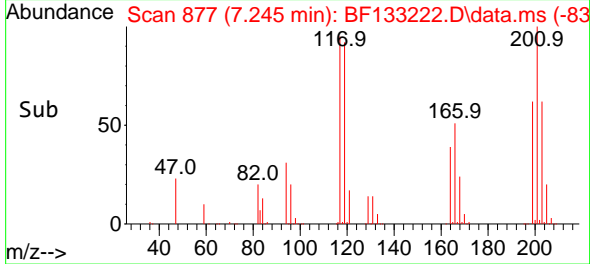
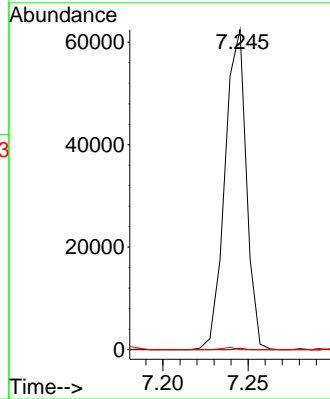


#23
 Nitrobenzene-d5
 Concen: 3.846 ng
 RT: 7.245 min Scan# 81
 Delta R.T. -0.053 min
 Lab File: BF133222.D
 Acq: 03 May 2023 22:56

Instrument :
 BNA_F
 ClientSampleId :
 DFTPP

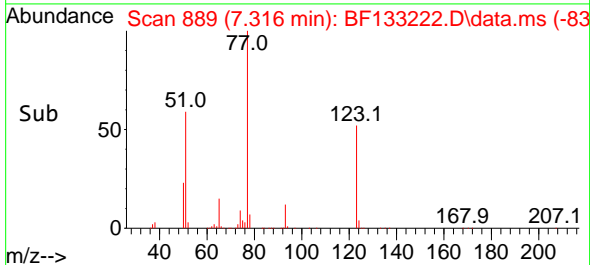
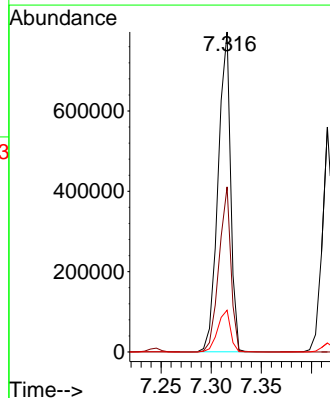
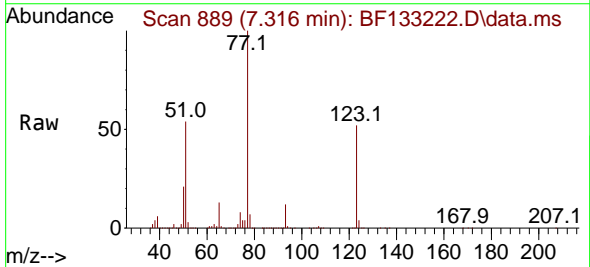


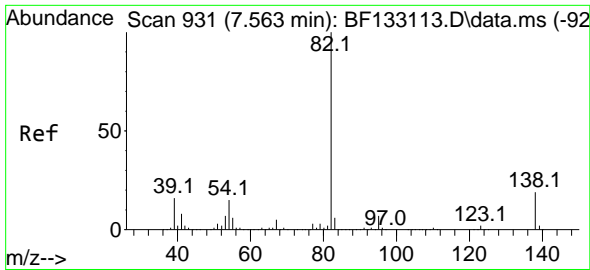
Tgt Ion: 82 Resp: 54659
 Ion Ratio Lower Upper
 82 100
 128 0.4 37.7 56.5#
 54 0.0 43.0 64.4#



#24
 Nitrobenzene
 Concen: 47.733 ng
 RT: 7.316 min Scan# 889
 Delta R.T. -0.000 min
 Lab File: BF133222.D
 Acq: 03 May 2023 22:56

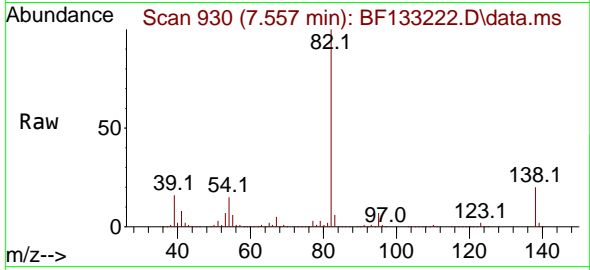
Tgt Ion: 77 Resp: 687400
 Ion Ratio Lower Upper
 77 100
 123 51.6 39.9 59.9
 65 13.1 10.7 16.1



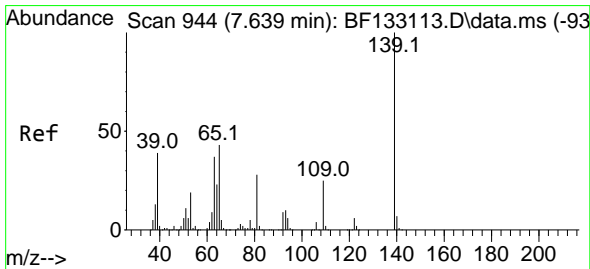
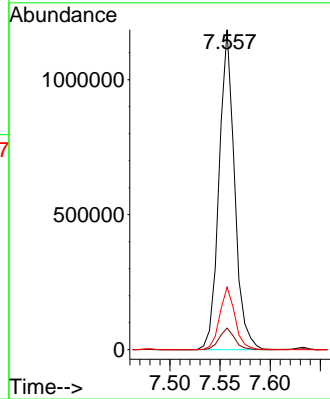
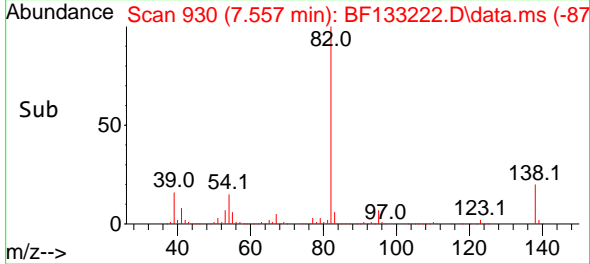


#25
 Isophorone
 Concen: 47.134 ng
 RT: 7.557 min Scan# 913
 Delta R.T. -0.000 min
 Lab File: BF133222.D
 Acq: 03 May 2023 22:56

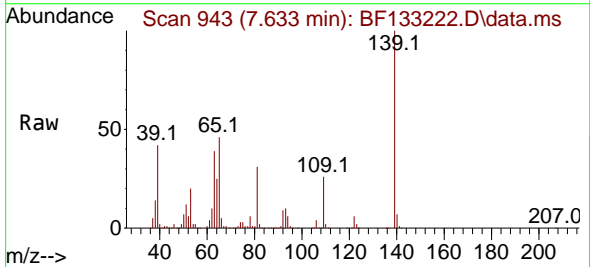
Instrument : BNA_F
 ClientSampleId : DFTPP



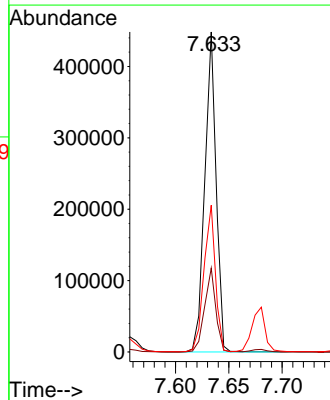
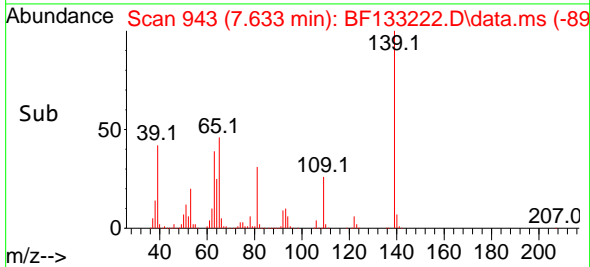
Tgt Ion: 82 Resp: 1271817
 Ion Ratio Lower Upper
 82 100
 95 6.7 5.4 8.0
 138 19.5 16.0 24.0

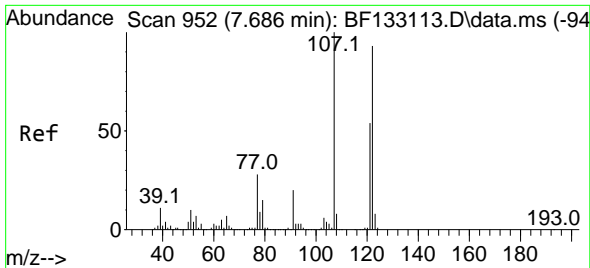


#26
 2-Nitrophenol
 Concen: 48.129 ng
 RT: 7.633 min Scan# 943
 Delta R.T. -0.000 min
 Lab File: BF133222.D
 Acq: 03 May 2023 22:56



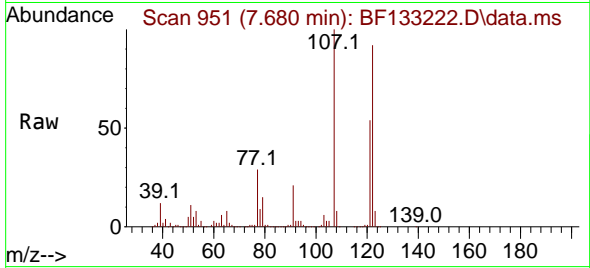
Tgt Ion: 139 Resp: 334308
 Ion Ratio Lower Upper
 139 100
 109 26.2 21.6 32.4
 65 45.9 39.8 59.6



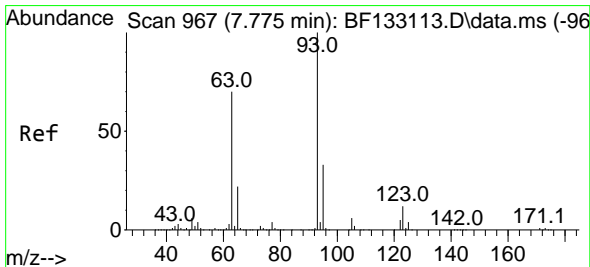
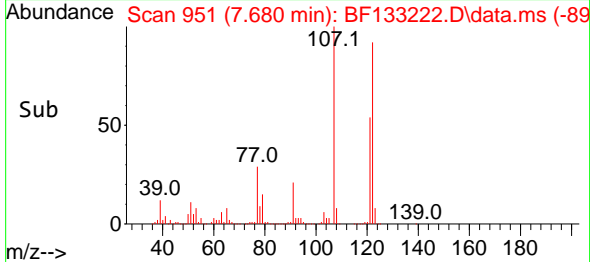
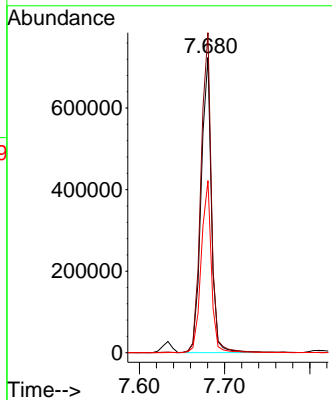


#27
 2,4-Dimethylphenol
 Concen: 50.992 ng
 RT: 7.680 min Scan# 91
 Delta R.T. 0.005 min
 Lab File: BF133222.D
 Acq: 03 May 2023 22:56

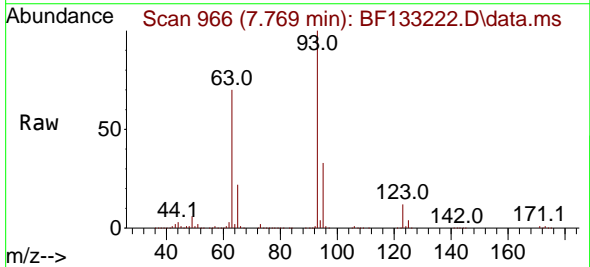
Instrument :
 BNA_F
 ClientSampleId :
 DFTPP



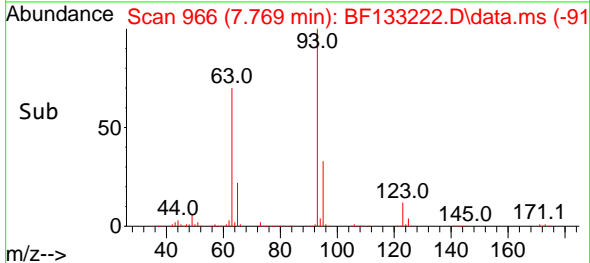
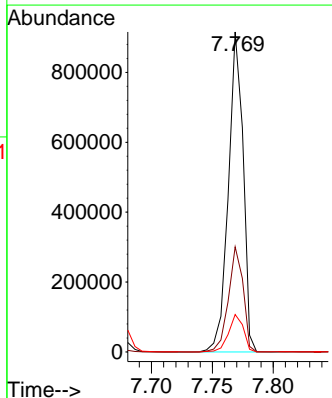
Tgt Ion:122 Resp: 607343
 Ion Ratio Lower Upper
 122 100
 107 108.4 89.7 134.5
 121 58.3 46.0 69.0

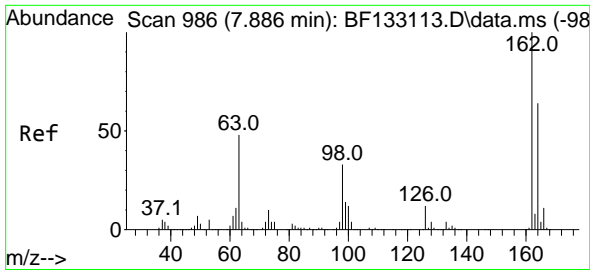


#28
 bis(2-Chloroethoxy)methane
 Concen: 48.131 ng
 RT: 7.769 min Scan# 966
 Delta R.T. -0.000 min
 Lab File: BF133222.D
 Acq: 03 May 2023 22:56



Tgt Ion: 93 Resp: 768317
 Ion Ratio Lower Upper
 93 100
 95 32.9 26.4 39.6
 123 11.7 10.3 15.5



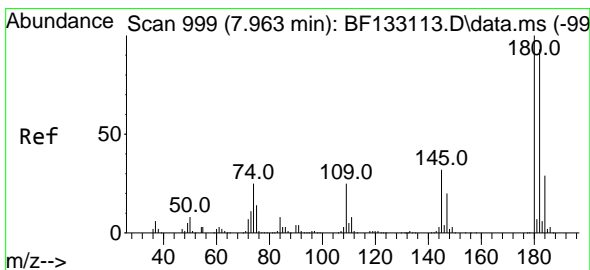
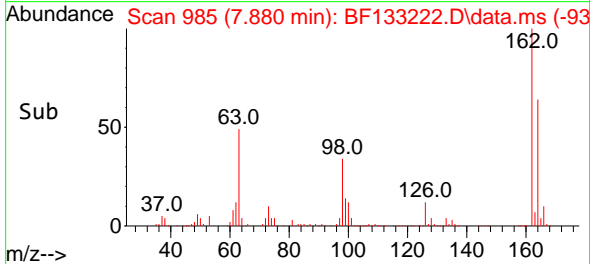
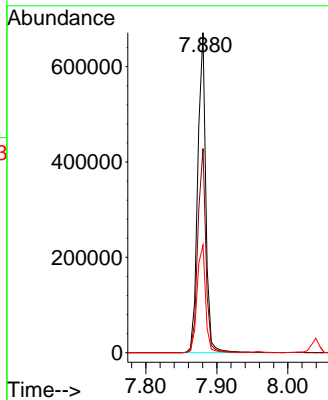
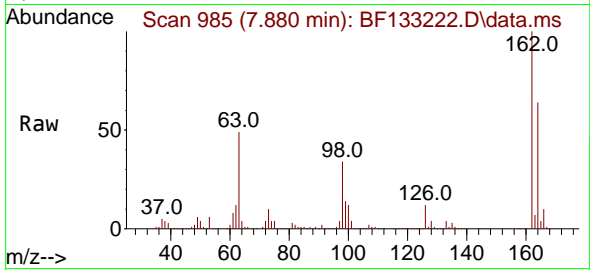


#29
 2,4-Dichlorophenol
 Concen: 48.914 ng
 RT: 7.880 min Scan# 91
 Delta R.T. 0.005 min
 Lab File: BF133222.D
 Acq: 03 May 2023 22:56

Instrument :
 BNA_F
 ClientSampleId :
 DFTPP

Tgt Ion:162 Resp: 530359

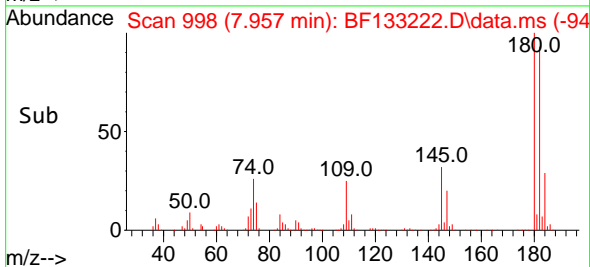
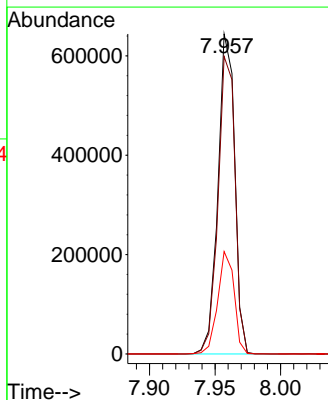
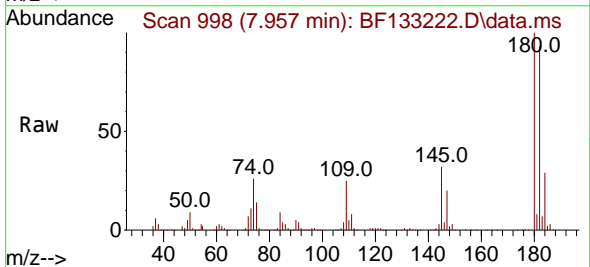
Ion	Ratio	Lower	Upper
162	100		
164	63.8	43.9	83.9
98	33.6	17.0	57.0

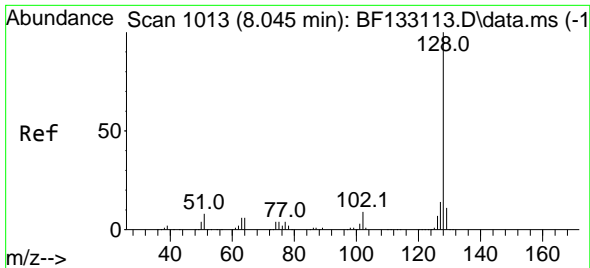


#30
 1,2,4-Trichlorobenzene
 Concen: 50.762 ng
 RT: 7.957 min Scan# 998
 Delta R.T. -0.000 min
 Lab File: BF133222.D
 Acq: 03 May 2023 22:56

Tgt Ion:180 Resp: 570206

Ion	Ratio	Lower	Upper
180	100		
182	92.9	75.9	113.9
145	32.0	25.3	37.9

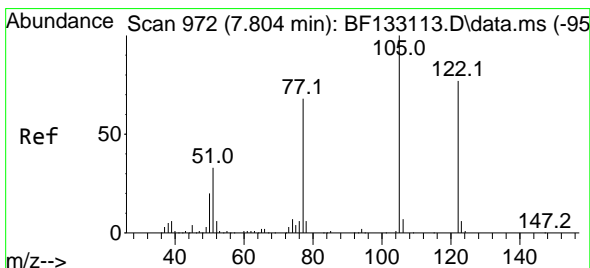
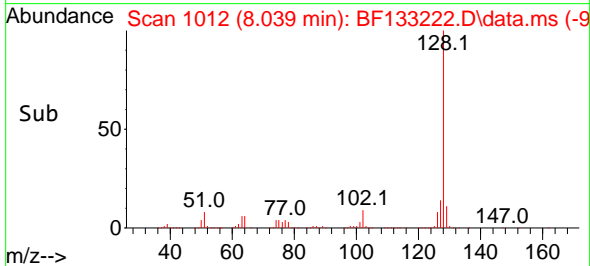
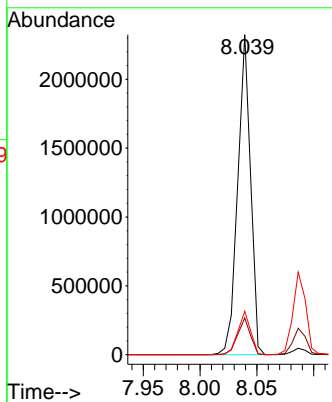
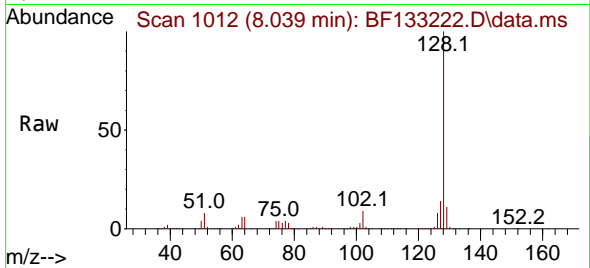




#31
 Naphthalene
 Concen: 47.586 ng
 RT: 8.039 min Scan# 1013
 Delta R.T. -0.000 min
 Lab File: BF133222.D
 Acq: 03 May 2023 22:56

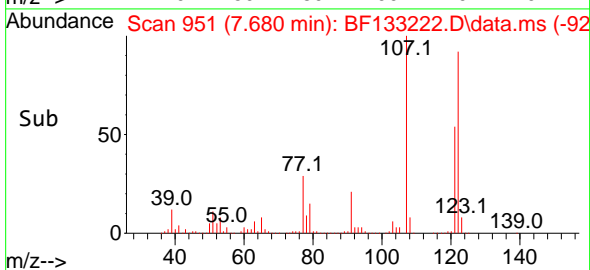
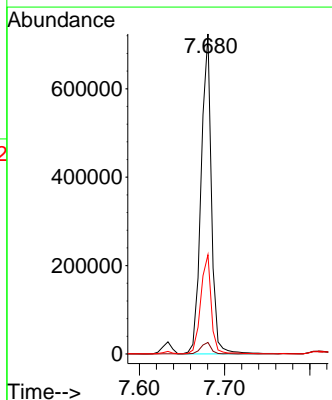
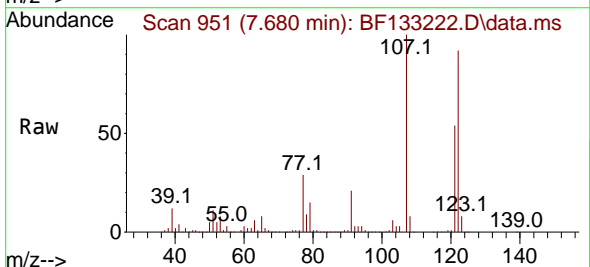
Instrument :
 BNA_F
 ClientSampleId :
 DFTPP

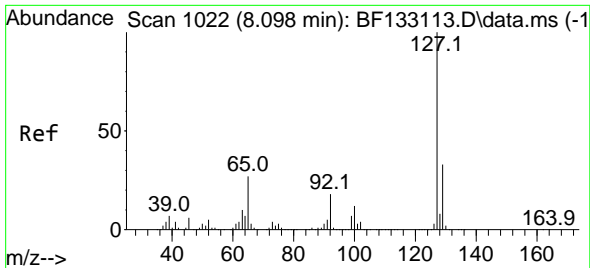
Tgt Ion:128 Resp: 1825050
 Ion Ratio Lower Upper
 128 100
 129 11.5 8.8 13.2
 127 13.6 10.7 16.1



#32
 Benzoic acid
 Concen: 82.552 ng
 RT: 7.680 min Scan# 951
 Delta R.T. -0.118 min
 Lab File: BF133222.D
 Acq: 03 May 2023 22:56

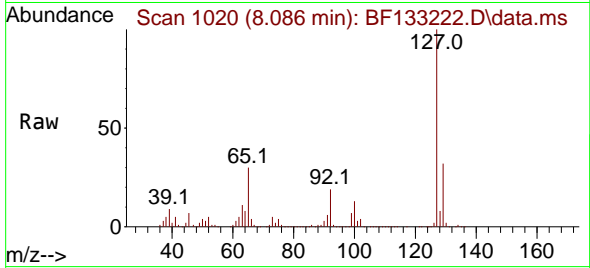
Tgt Ion:122 Resp: 607343
 Ion Ratio Lower Upper
 122 100
 105 3.6 104.2 144.2#
 77 31.0 69.7 109.7#





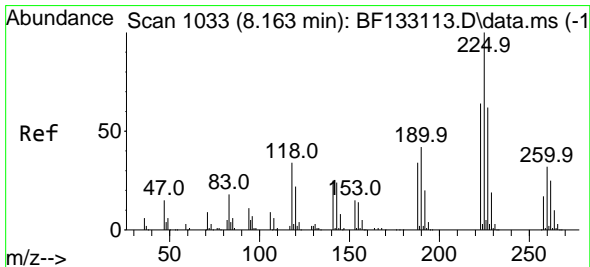
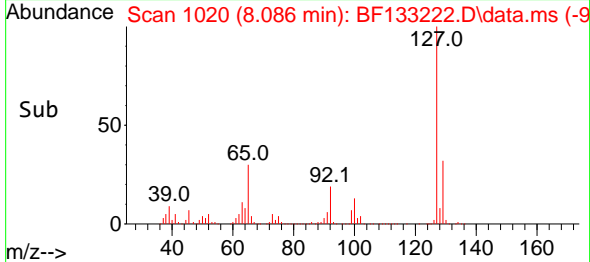
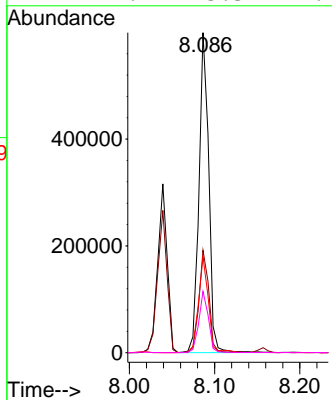
#33
 4-Chloroaniline
 Concen: 30.847 ng
 RT: 8.086 min Scan# 1020
 Delta R.T. -0.000 min
 Lab File: BF133222.D
 Acq: 03 May 2023 22:56

Instrument : BNA_F
 Client Sample Id : DFTPP



Tgt Ion:127 Resp: 478002

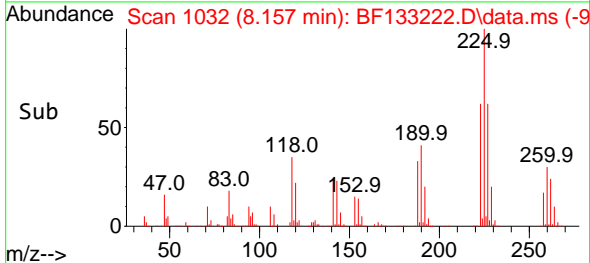
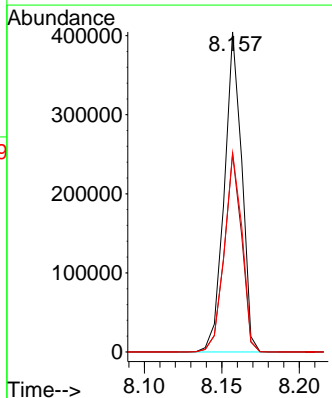
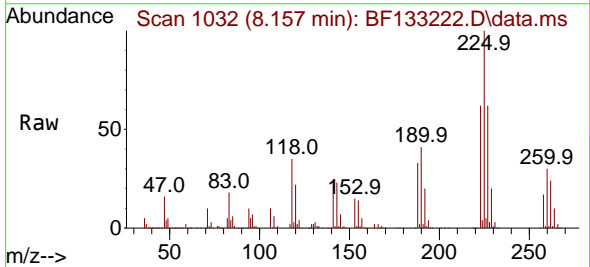
Ion	Ratio	Lower	Upper
127	100		
129	32.0	25.8	38.8
65	29.9	23.6	35.4
92	19.2	15.3	22.9

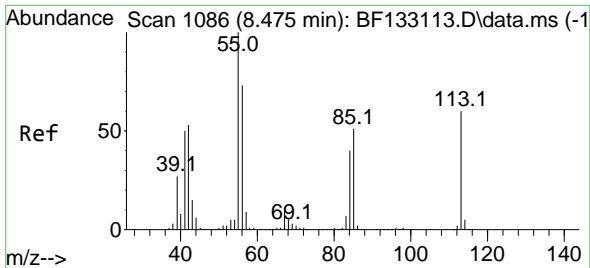


#34
 Hexachlorobutadiene
 Concen: 50.658 ng
 RT: 8.157 min Scan# 1032
 Delta R.T. -0.000 min
 Lab File: BF133222.D
 Acq: 03 May 2023 22:56

Tgt Ion:225 Resp: 315390

Ion	Ratio	Lower	Upper
225	100		
223	62.0	50.9	76.3
227	62.3	50.3	75.5

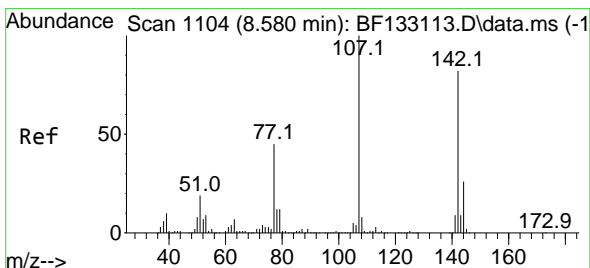
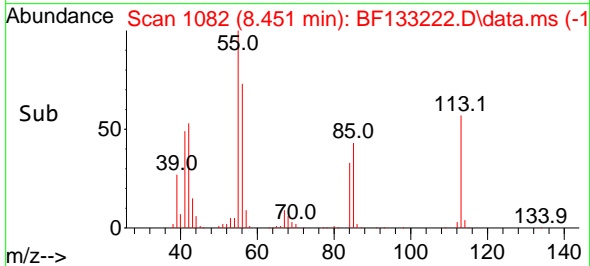
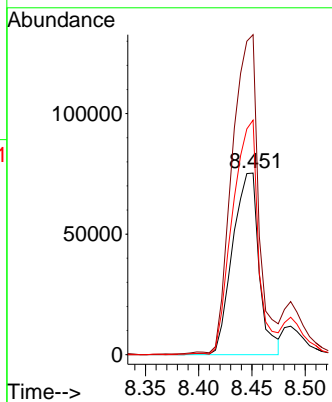
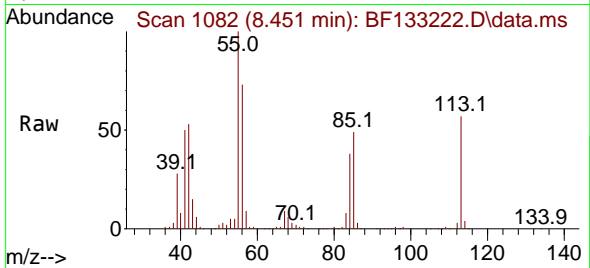




#35
 Caprolactam
 Concen: 35.960 ng
 RT: 8.451 min Scan# 1082
 Delta R.T. -0.012 min
 Lab File: BF133222.D
 Acq: 03 May 2023 22:56

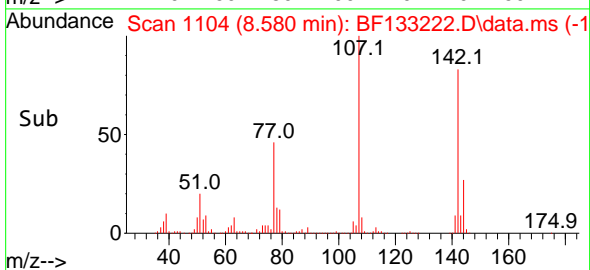
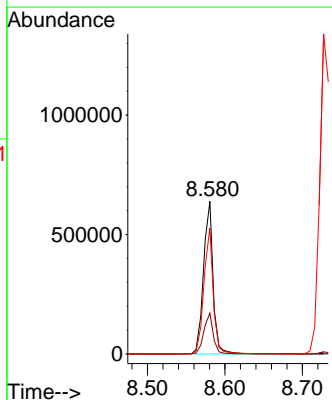
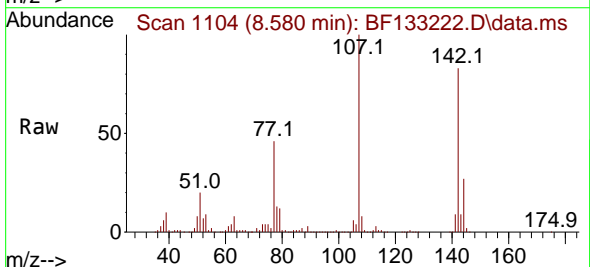
Instrument :
 BNA_F
 ClientSampleId :
 DFTPP

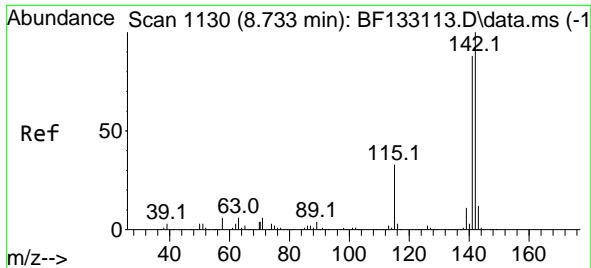
Tgt Ion:113 Resp: 130984
 Ion Ratio Lower Upper
 113 100
 55 176.2 167.1 207.1
 56 129.1 114.5 154.5



#36
 4-Chloro-3-methylphenol
 Concen: 46.982 ng
 RT: 8.580 min Scan# 1104
 Delta R.T. 0.005 min
 Lab File: BF133222.D
 Acq: 03 May 2023 22:56

Tgt Ion:107 Resp: 549343
 Ion Ratio Lower Upper
 107 100
 144 26.9 20.6 30.8
 142 82.6 62.8 94.2

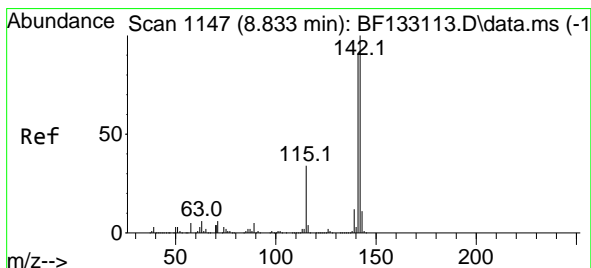
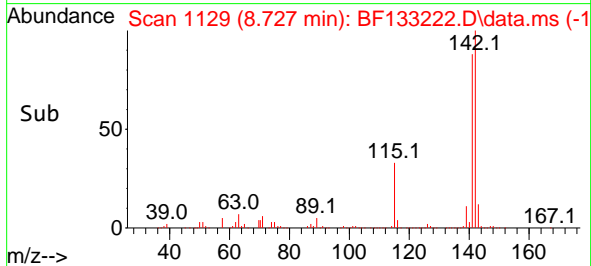
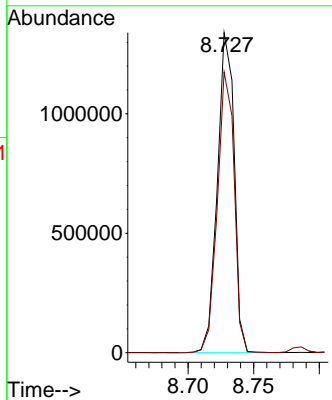
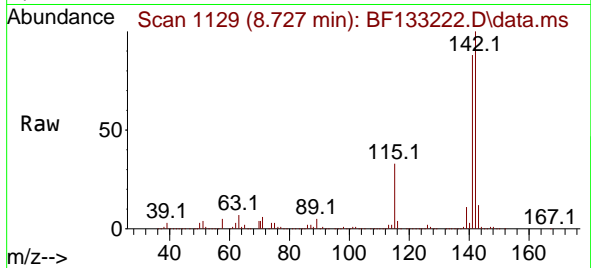




#37
 2-Methylnaphthalene
 Concen: 45.462 ng
 RT: 8.727 min Scan# 1129
 Delta R.T. -0.000 min
 Lab File: BF133222.D
 Acq: 03 May 2023 22:56

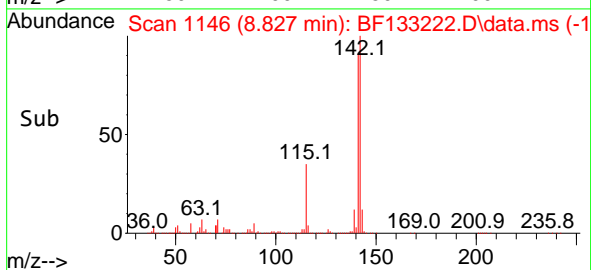
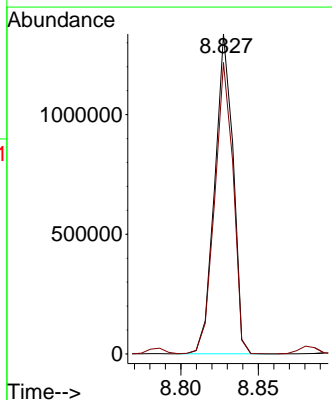
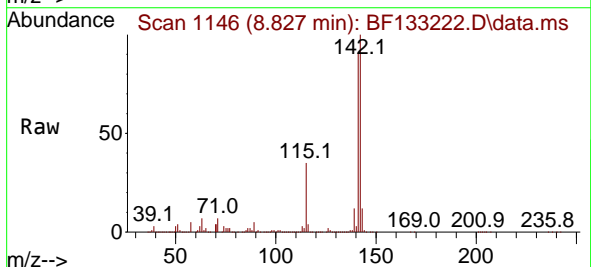
Instrument :
 BNA_F
 ClientSampleId :
 DFTPP

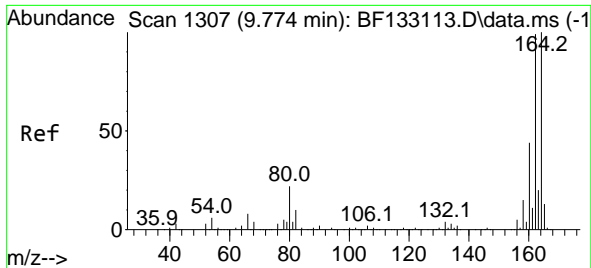
Tgt Ion:142 Resp: 1192049
 Ion Ratio Lower Upper
 142 100
 141 87.8 69.4 104.0



#38
 1-Methylnaphthalene
 Concen: 44.898 ng
 RT: 8.827 min Scan# 1146
 Delta R.T. -0.000 min
 Lab File: BF133222.D
 Acq: 03 May 2023 22:56

Tgt Ion:142 Resp: 1101317
 Ion Ratio Lower Upper
 142 100
 141 91.1 73.1 109.7



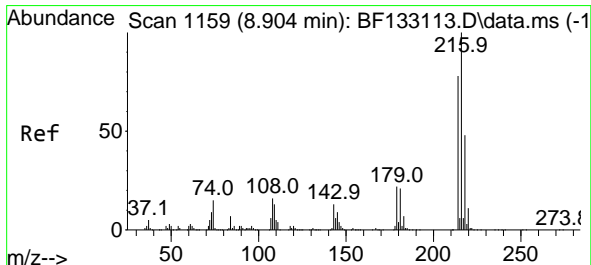
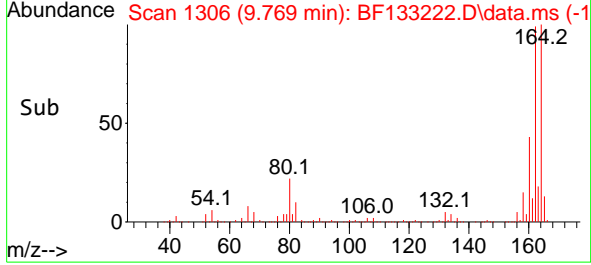
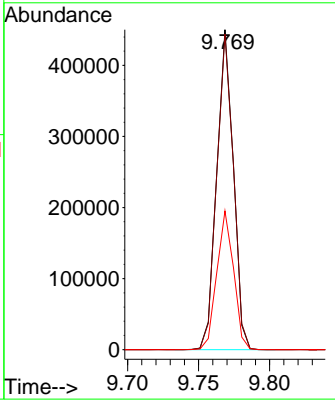
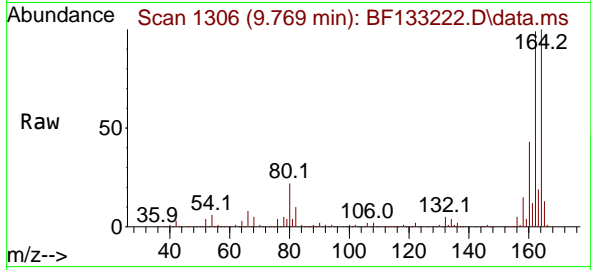


#39
 Acenaphthene-d10
 Concen: 20.000 ng
 RT: 9.769 min Scan# 111
 Delta R.T. -0.000 min
 Lab File: BF133222.D
 Acq: 03 May 2023 22:56

Instrument : BNA_F
 ClientSampleId : DFTPP

Tgt Ion:164 Resp: 365170

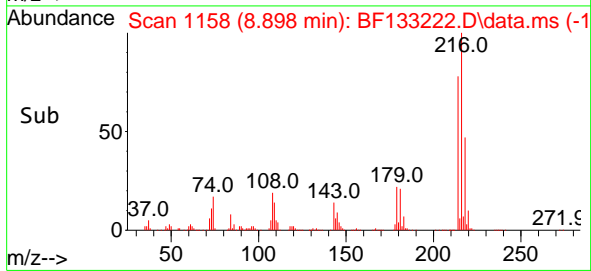
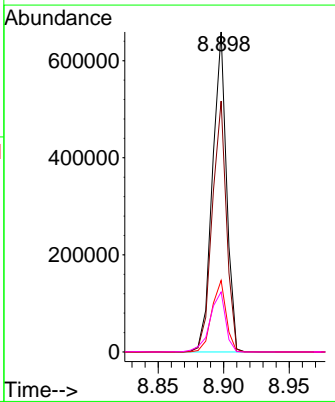
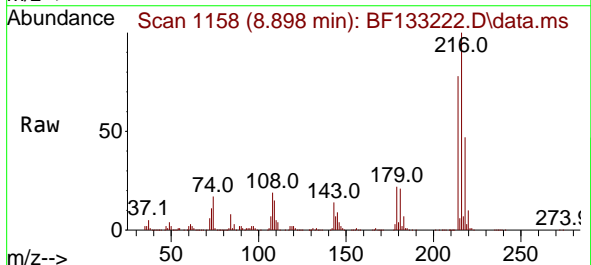
Ion	Ratio	Lower	Upper
164	100		
162	98.7	78.7	118.1
160	43.4	35.8	53.6

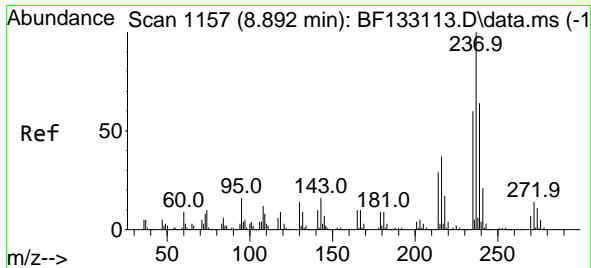


#40
 1,2,4,5-Tetrachlorobenzene
 Concen: 50.047 ng
 RT: 8.898 min Scan# 1158
 Delta R.T. -0.000 min
 Lab File: BF133222.D
 Acq: 03 May 2023 22:56

Tgt Ion:216 Resp: 491382

Ion	Ratio	Lower	Upper
216	100		
214	79.0	63.5	95.3
179	22.7	17.4	26.2
108	20.9	17.4	26.0



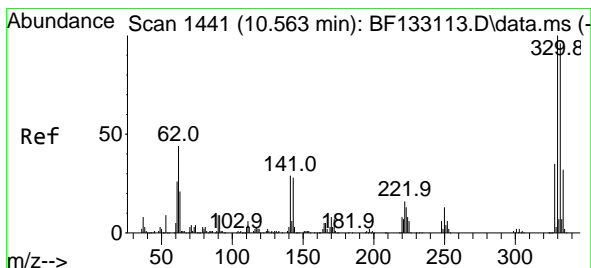
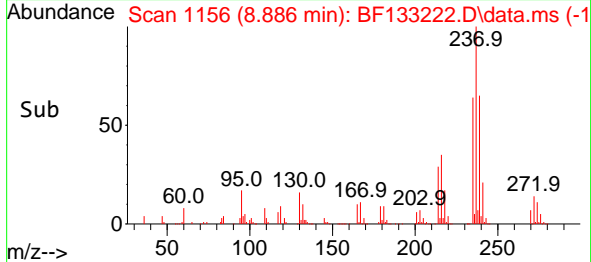
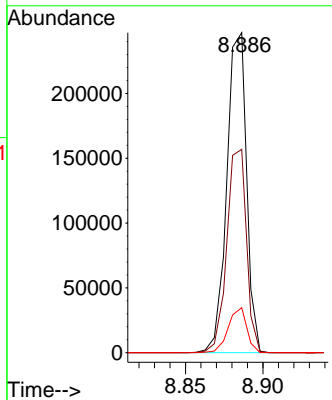
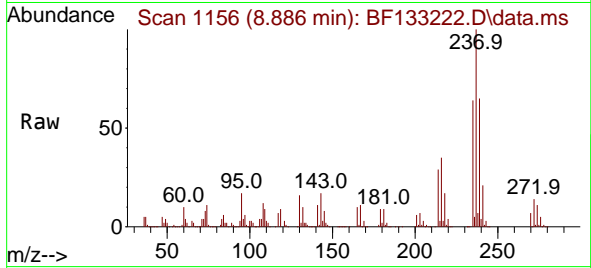


#41
 Hexachlorocyclopentadiene
 Concen: 38.258 ng
 RT: 8.886 min Scan# 1156
 Delta R.T. 0.005 min
 Lab File: BF133222.D
 Acq: 03 May 2023 22:56

Instrument :
 BNA_F
 ClientSampleId :
 DFTPP

Tgt Ion:237 Resp: 219069

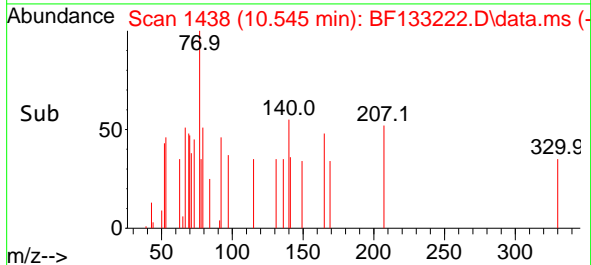
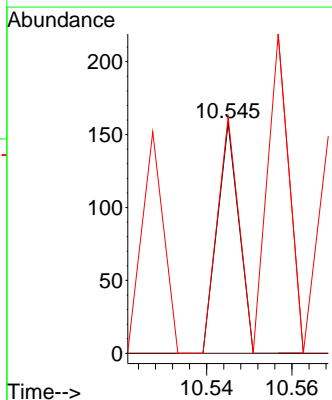
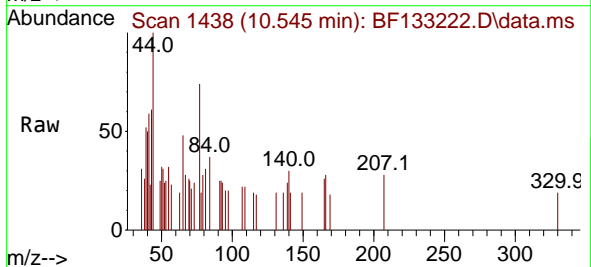
Ion	Ratio	Lower	Upper
237	100		
235	63.6	43.5	83.5
272	14.1	0.0	32.7

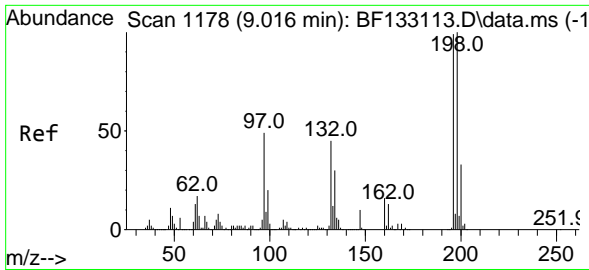


#42
 2,4,6-Tribromophenol
 Concen: 0.015 ng
 RT: 10.545 min Scan# 1438
 Delta R.T. -0.012 min
 Lab File: BF133222.D
 Acq: 03 May 2023 22:56

Tgt Ion:330 Resp: 56

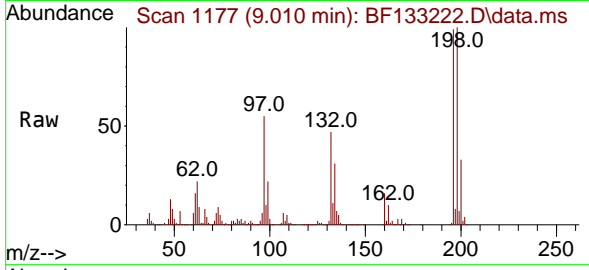
Ion	Ratio	Lower	Upper
330	100		
332	0.0	77.1	115.7#
141	0.0	25.8	38.8#



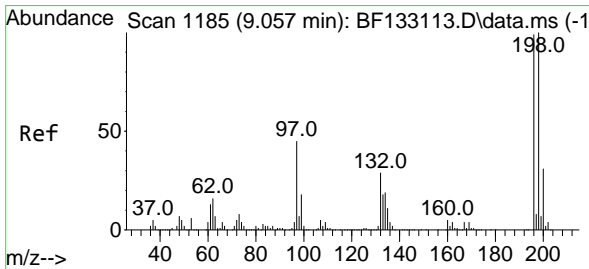
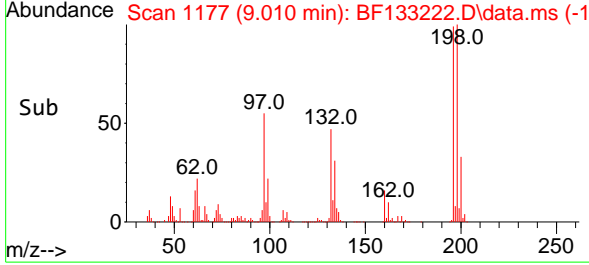
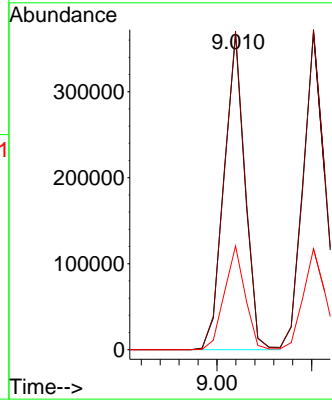


#43
 2,4,6-Trichlorophenol
 Concen: 41.538 ng
 RT: 9.010 min Scan# 1177
 Delta R.T. -0.000 min
 Lab File: BF133222.D
 Acq: 03 May 2023 22:56

Instrument :
 BNA_F
 ClientSampleId :
 DFTPP

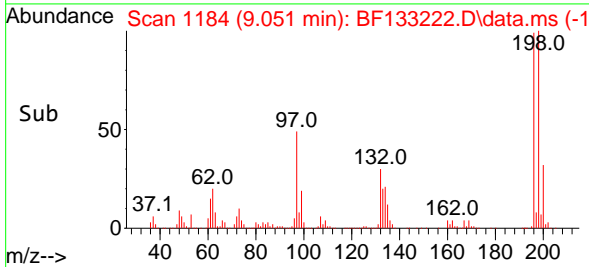
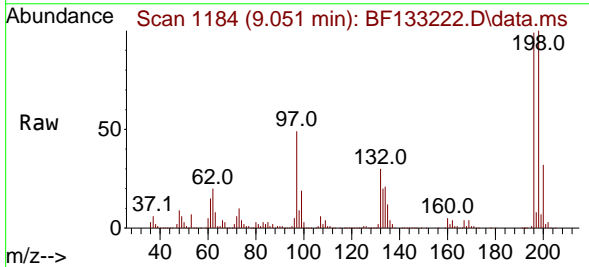
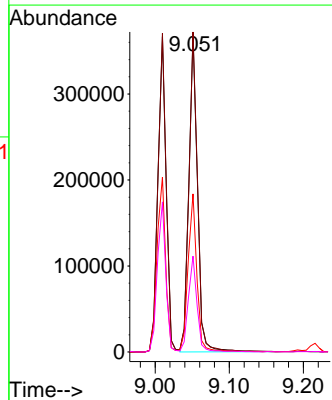


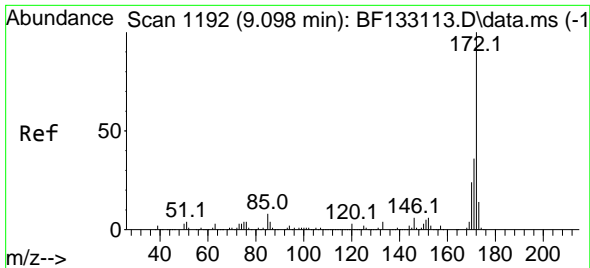
Tgt Ion:196 Resp: 282044
 Ion Ratio Lower Upper
 196 100
 198 101.0 81.0 121.6
 200 32.9 26.1 39.1



#44
 2,4,5-Trichlorophenol
 Concen: 38.378 ng
 RT: 9.051 min Scan# 1184
 Delta R.T. -0.000 min
 Lab File: BF133222.D
 Acq: 03 May 2023 22:56

Tgt Ion:196 Resp: 301379
 Ion Ratio Lower Upper
 196 100
 198 100.8 80.9 121.3
 97 49.8 41.3 61.9
 132 30.2 24.7 37.1

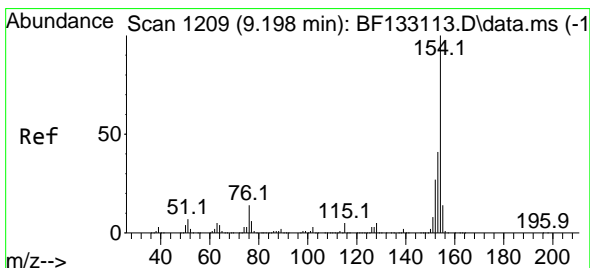
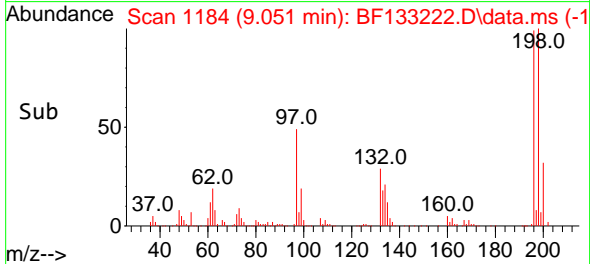
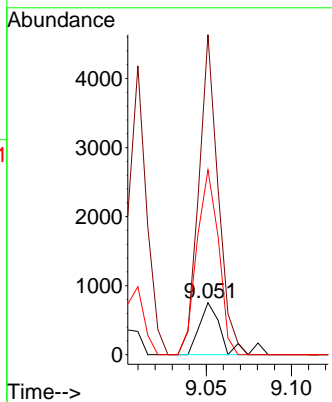
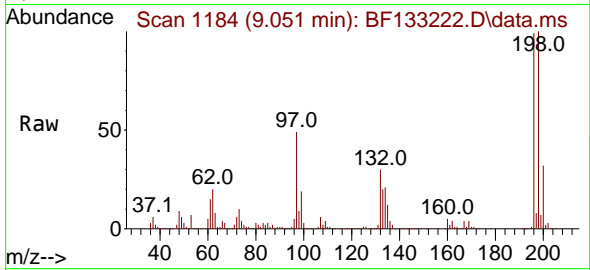




#45
 2-Fluorobiphenyl
 Concen: 0.031 ng
 RT: 9.051 min Scan# 1118
 Delta R.T. -0.042 min
 Lab File: BF133222.D
 Acq: 03 May 2023 22:56

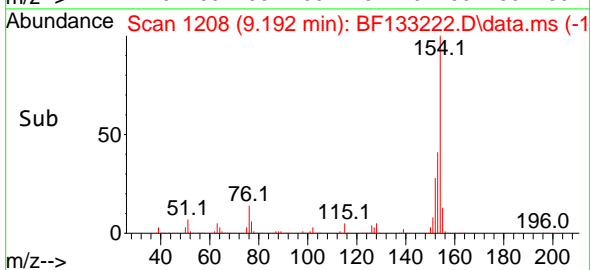
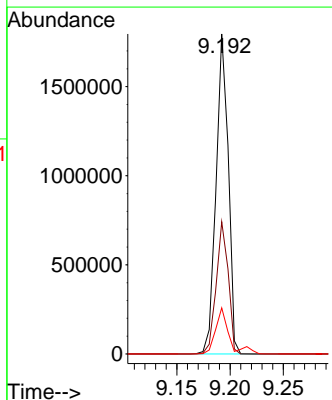
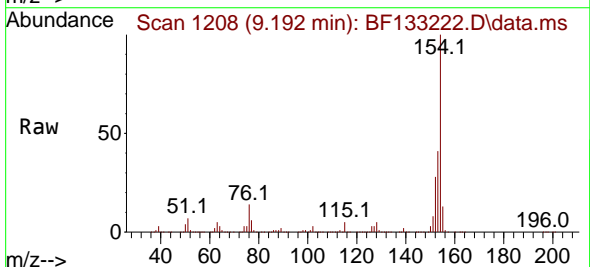
Instrument :
 BNA_F
 ClientSampleId :
 DFTPP

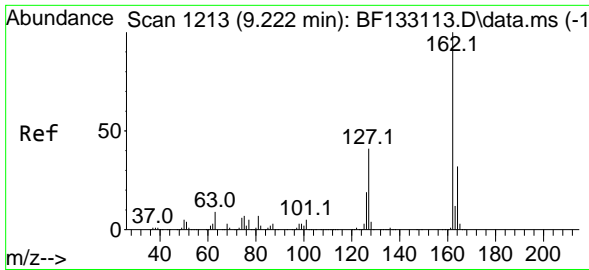
Tgt Ion	Resp	Lower	Upper
172	100		
171	614.7	28.8	43.2#
170	354.9	19.4	29.2#



#46
 1,1'-Biphenyl
 Concen: 49.453 ng
 RT: 9.192 min Scan# 1208
 Delta R.T. -0.000 min
 Lab File: BF133222.D
 Acq: 03 May 2023 22:56

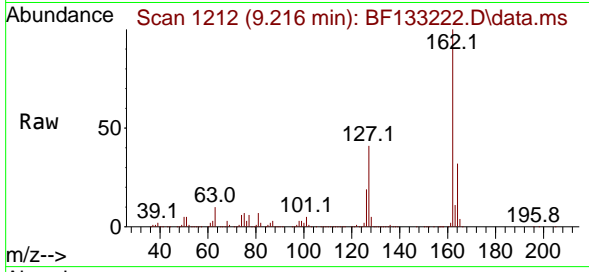
Tgt Ion	Resp	Lower	Upper
154	100		
153	41.3	21.0	61.0
76	14.4	0.0	34.5



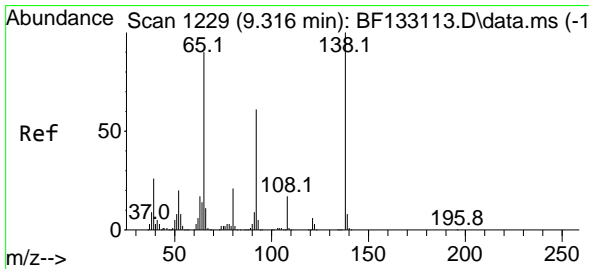
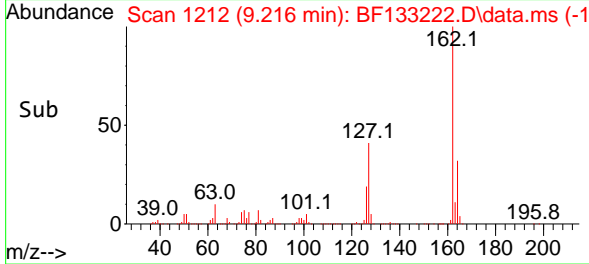
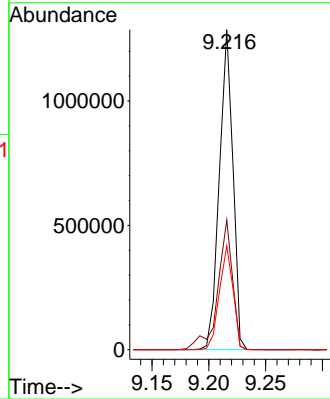


#47
 2-Chloronaphthalene
 Concen: 50.394 ng
 RT: 9.216 min Scan# 11
 Delta R.T. -0.000 min
 Lab File: BF133222.D
 Acq: 03 May 2023 22:56

Instrument :
 BNA_F
 ClientSampleId :
 DFTPP

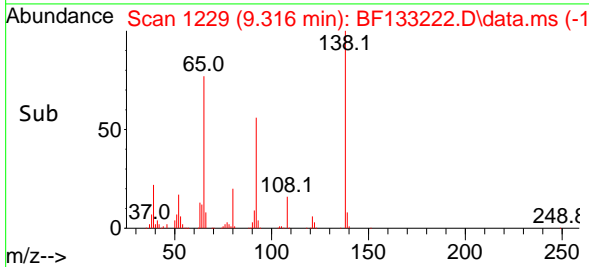
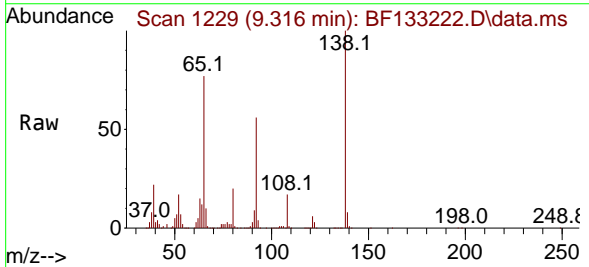
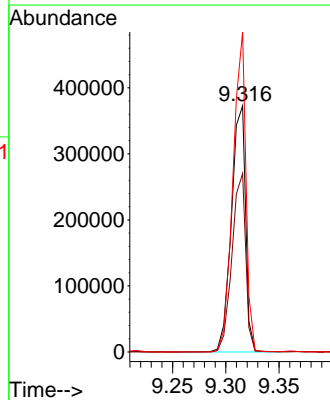


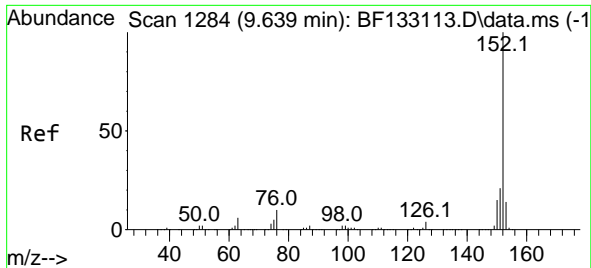
Tgt Ion:162 Resp: 1068065
 Ion Ratio Lower Upper
 162 100
 127 40.5 32.3 48.5
 164 32.4 26.8 40.2



#48
 2-Nitroaniline
 Concen: 49.349 ng
 RT: 9.316 min Scan# 1229
 Delta R.T. -0.000 min
 Lab File: BF133222.D
 Acq: 03 May 2023 22:56

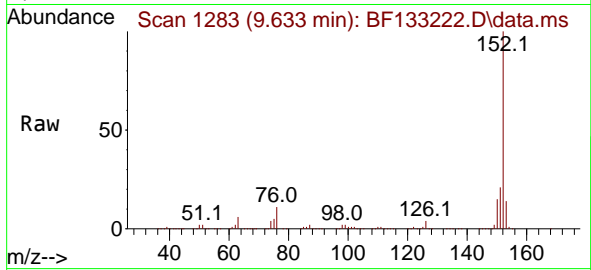
Tgt Ion: 65 Resp: 345665
 Ion Ratio Lower Upper
 65 100
 92 72.5 55.4 83.0
 138 130.0 98.2 147.2



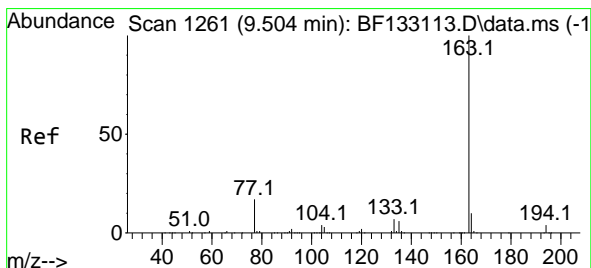
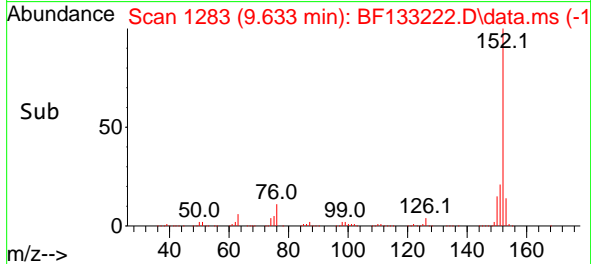
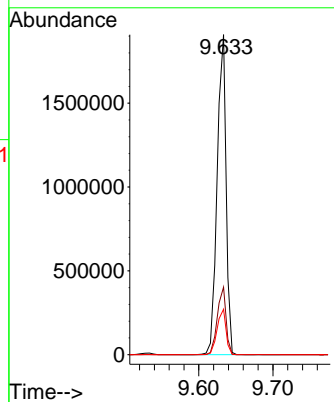


#49
 Acenaphthylene
 Concen: 46.933 ng
 RT: 9.633 min Scan# 11
 Delta R.T. -0.000 min
 Lab File: BF133222.D
 Acq: 03 May 2023 22:56

Instrument :
 BNA_F
 ClientSampleId :
 DFTPP

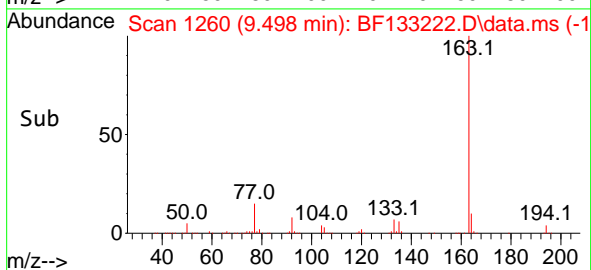
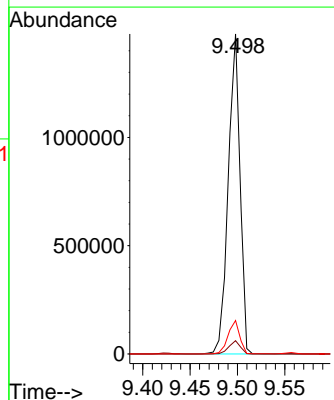
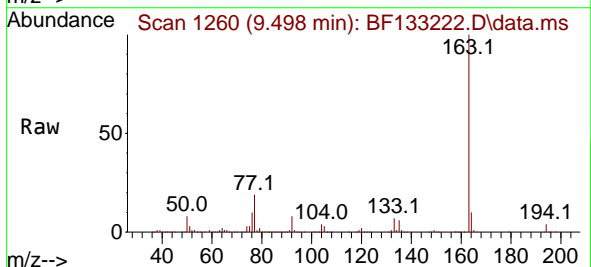


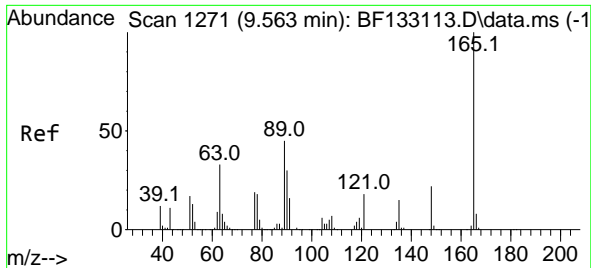
Tgt Ion:152 Resp: 1589375
 Ion Ratio Lower Upper
 152 100
 151 21.1 16.6 24.8
 153 14.2 11.5 17.3



#50
 Dimethylphthalate
 Concen: 50.213 ng
 RT: 9.498 min Scan# 1260
 Delta R.T. -0.000 min
 Lab File: BF133222.D
 Acq: 03 May 2023 22:56

Tgt Ion:163 Resp: 1278567
 Ion Ratio Lower Upper
 163 100
 194 4.2 3.1 4.7
 164 10.5 8.5 12.7



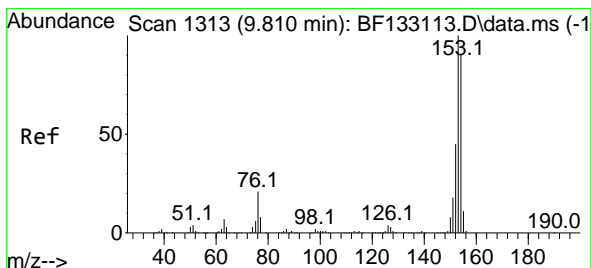
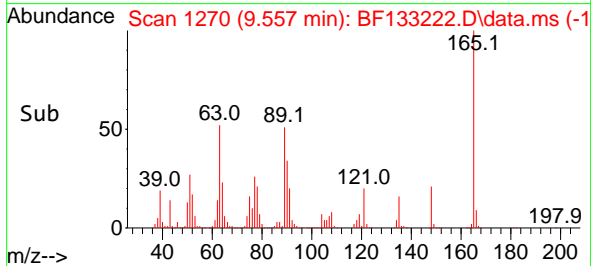
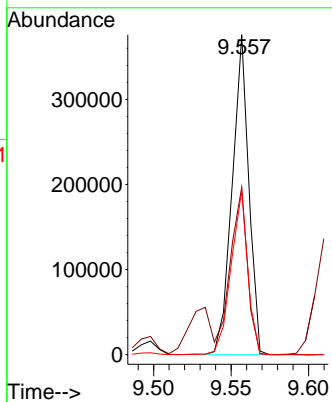
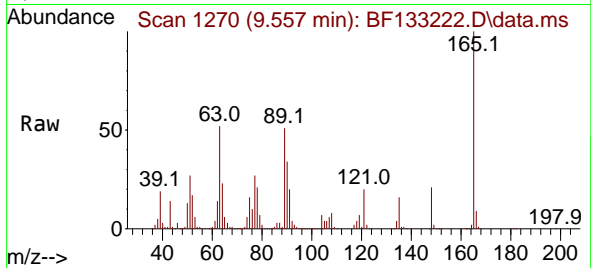


#51
 2,6-Dinitrotoluene
 Concen: 48.972 ng
 RT: 9.557 min Scan# 11
 Delta R.T. -0.000 min
 Lab File: BF133222.D
 Acq: 03 May 2023 22:56

Instrument :
 BNA_F
 ClientSampleId :
 DFTPP

Tgt Ion:165 Resp: 280656

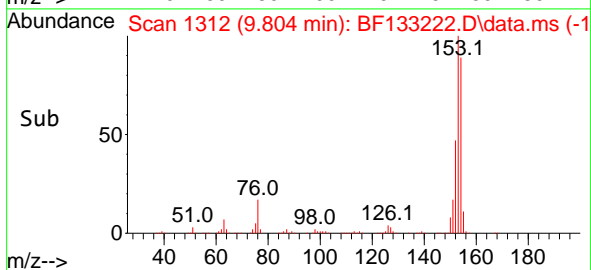
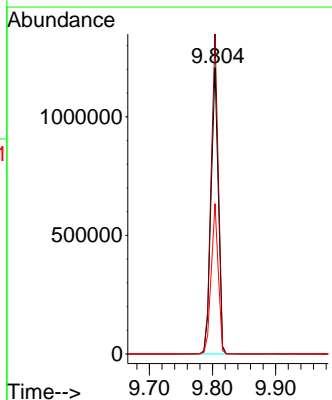
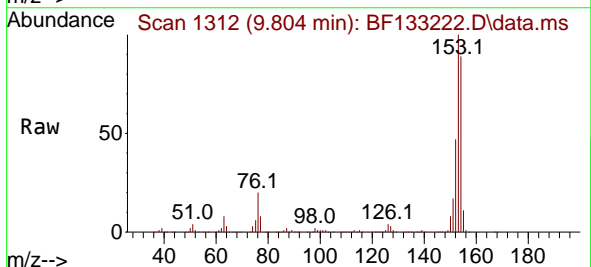
Ion	Ratio	Lower	Upper
165	100		
63	52.4	45.9	68.9
89	51.4	44.0	66.0

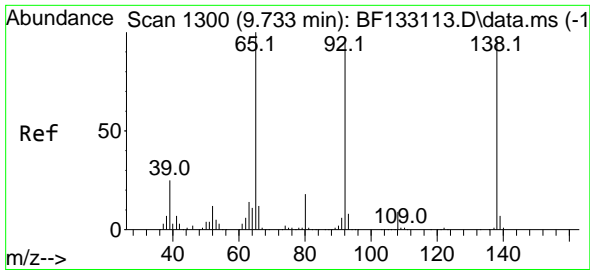


#52
 Acenaphthene
 Concen: 42.899 ng
 RT: 9.804 min Scan# 1312
 Delta R.T. -0.000 min
 Lab File: BF133222.D
 Acq: 03 May 2023 22:56

Tgt Ion:154 Resp: 972994

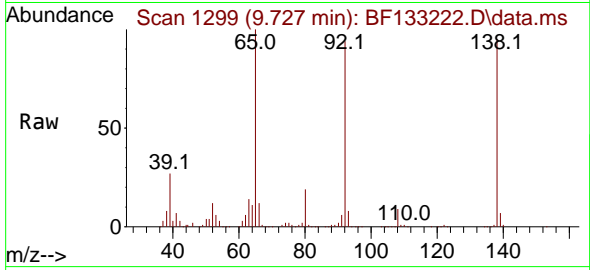
Ion	Ratio	Lower	Upper
154	100		
153	111.7	89.0	133.6
152	52.5	40.4	60.6



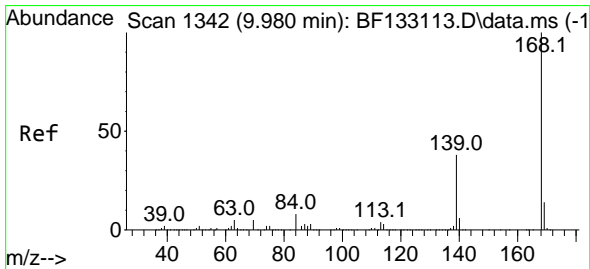
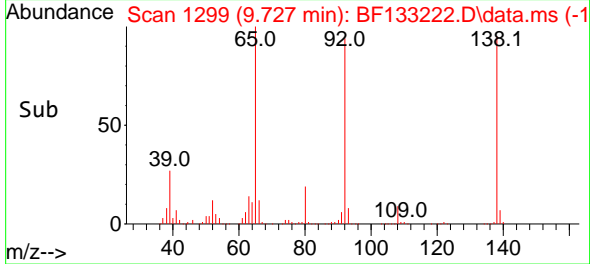
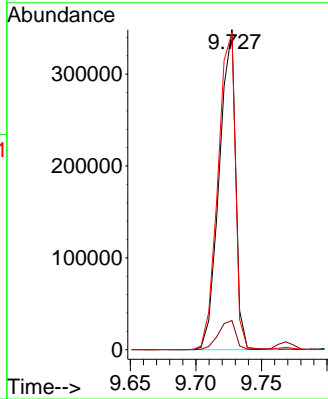


#53
 3-Nitroaniline
 Concen: 44.389 ng
 RT: 9.727 min Scan# 11
 Delta R.T. -0.000 min
 Lab File: BF133222.D
 Acq: 03 May 2023 22:56

Instrument :
 BNA_F
 ClientSampleId :
 DFTPP

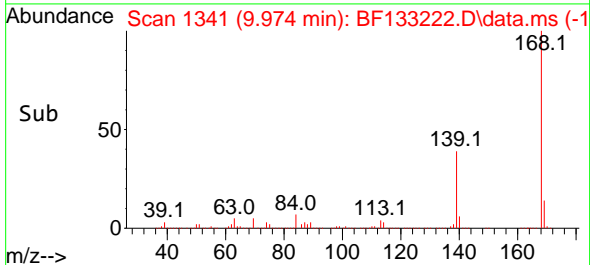
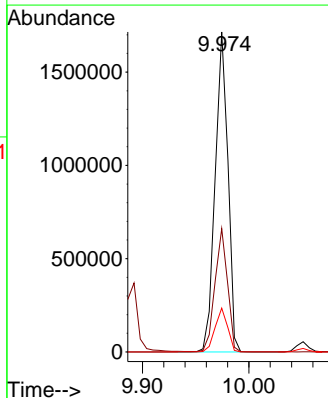
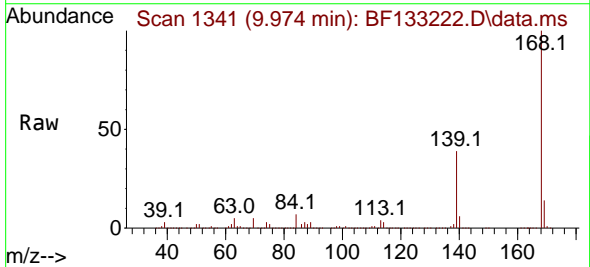


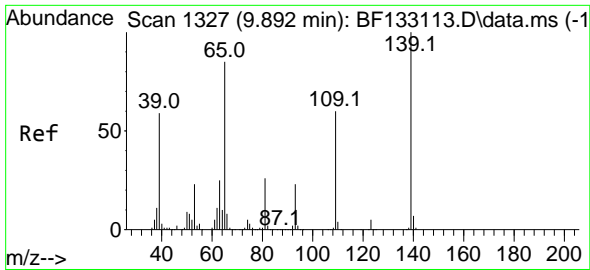
Tgt Ion:138 Resp: 302475
 Ion Ratio Lower Upper
 138 100
 108 9.1 8.0 12.0
 92 99.0 83.6 125.4



#55
 Dibenzofuran
 Concen: 46.052 ng
 RT: 9.974 min Scan# 1341
 Delta R.T. -0.000 min
 Lab File: BF133222.D
 Acq: 03 May 2023 22:56

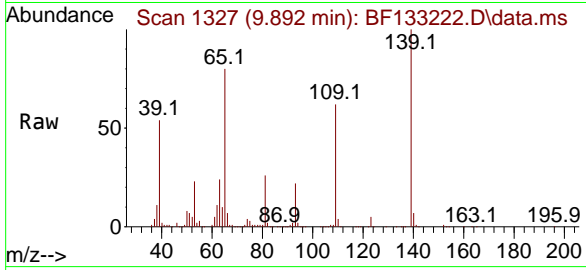
Tgt Ion:168 Resp: 1424814
 Ion Ratio Lower Upper
 168 100
 139 38.6 29.8 44.8
 169 13.7 10.8 16.2



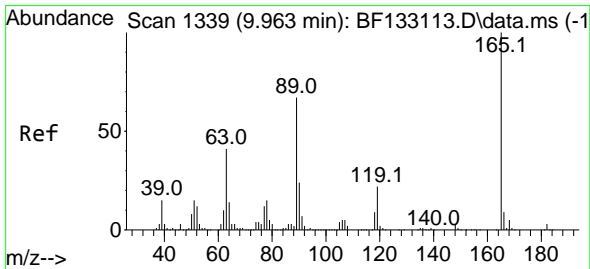
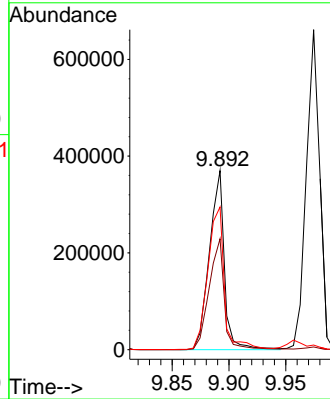
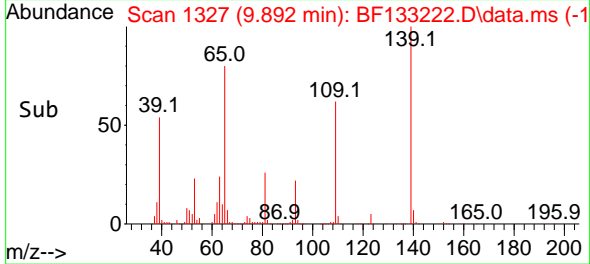


#56
 4-Nitrophenol
 Concen: 64.075 ng
 RT: 9.892 min Scan# 1327
 Delta R.T. 0.005 min
 Lab File: BF133222.D
 Acq: 03 May 2023 22:56

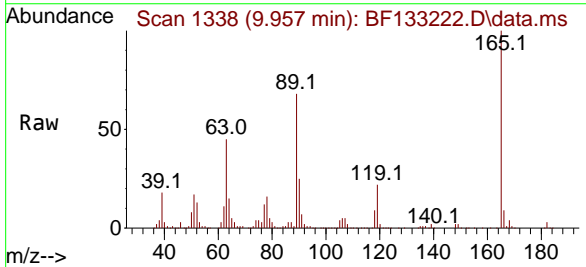
Instrument :
 BNA_F
 ClientSampleId :
 DFTPP



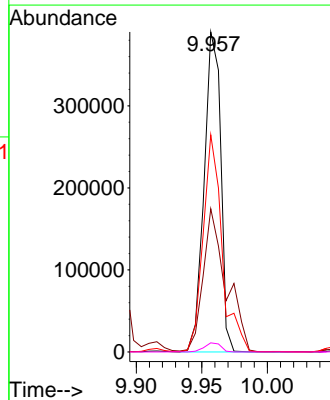
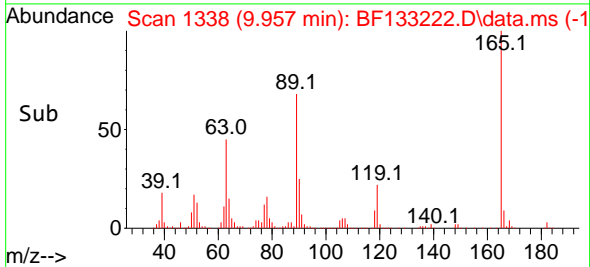
Tgt Ion:139 Resp: 338170
 Ion Ratio Lower Upper
 139 100
 109 61.9 39.4 79.4
 65 79.7 57.5 97.5

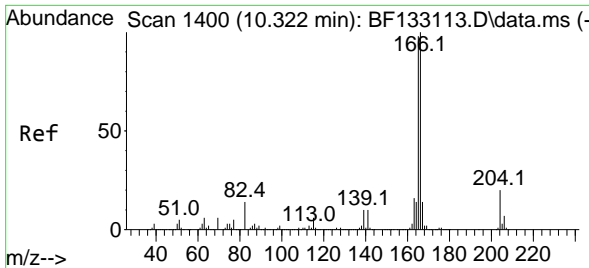


#57
 2,4-Dinitrotoluene
 Concen: 47.281 ng
 RT: 9.957 min Scan# 1338
 Delta R.T. -0.000 min
 Lab File: BF133222.D
 Acq: 03 May 2023 22:56



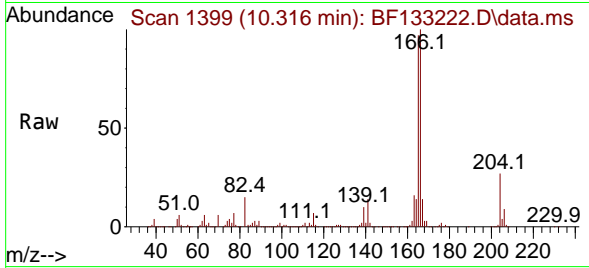
Tgt Ion:165 Resp: 345557
 Ion Ratio Lower Upper
 165 100
 63 44.8 37.7 56.5
 89 67.9 57.0 85.4
 182 2.9 2.1 3.1



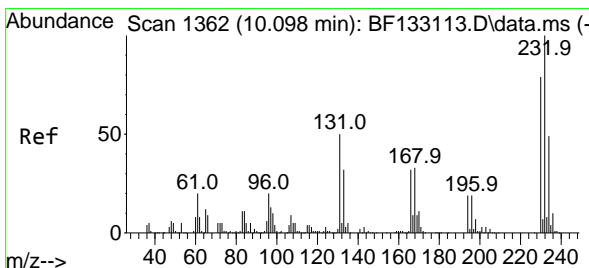
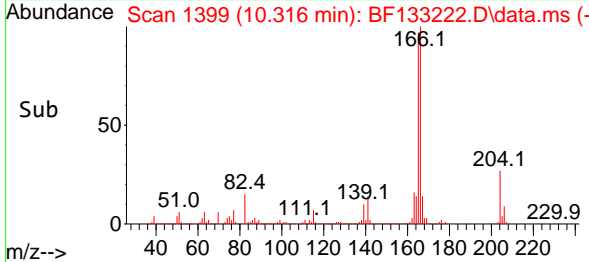
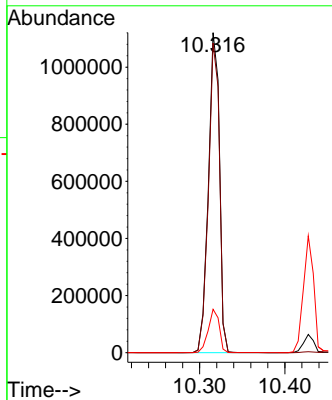


#58
 Fluorene
 Concen: 44.607 ng
 RT: 10.316 min Scan# 11
 Delta R.T. -0.000 min
 Lab File: BF133222.D
 Acq: 03 May 2023 22:56

Instrument :
 BNA_F
 ClientSampleId :
 DFTPP

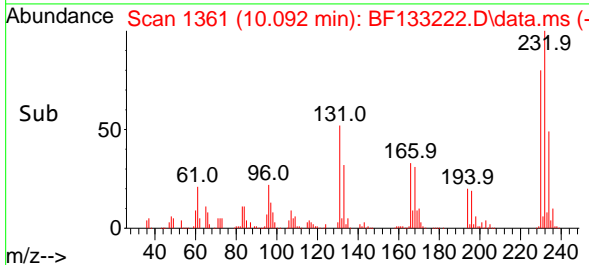
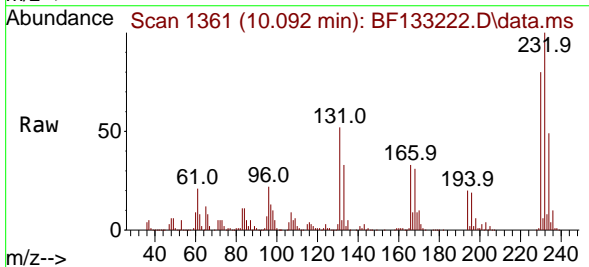
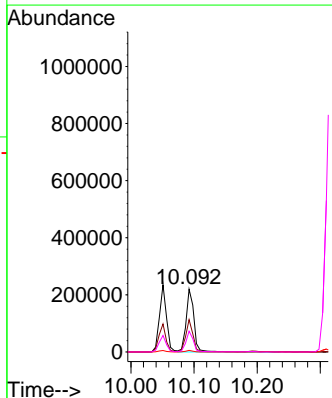


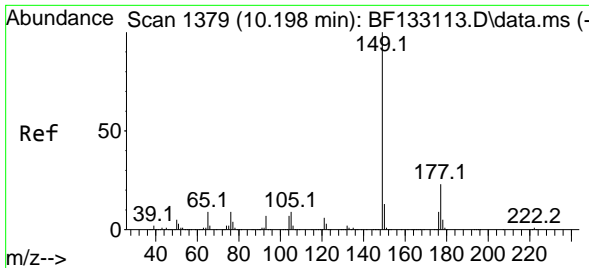
Tgt Ion:166 Resp: 1011117
 Ion Ratio Lower Upper
 166 100
 165 96.8 78.6 117.8
 167 13.5 11.0 16.4



#59
 2,3,4,6-Tetrachlorophenol
 Concen: 31.029 ng
 RT: 10.092 min Scan# 1361
 Delta R.T. -0.000 min
 Lab File: BF133222.D
 Acq: 03 May 2023 22:56

Tgt Ion:232 Resp: 188904
 Ion Ratio Lower Upper
 232 100
 131 48.0 38.0 57.0
 130 2.4 1.8 2.8
 166 30.5 24.7 37.1

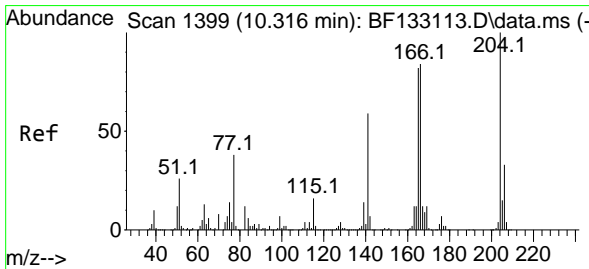
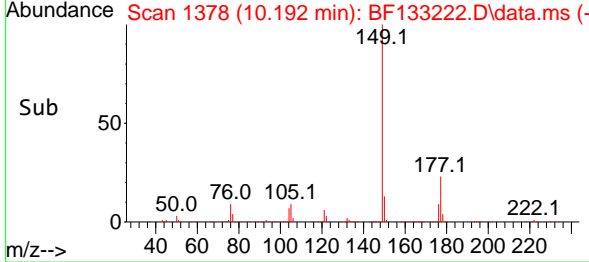
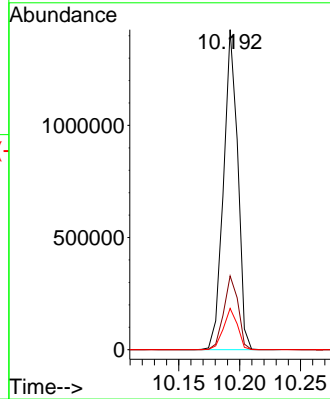
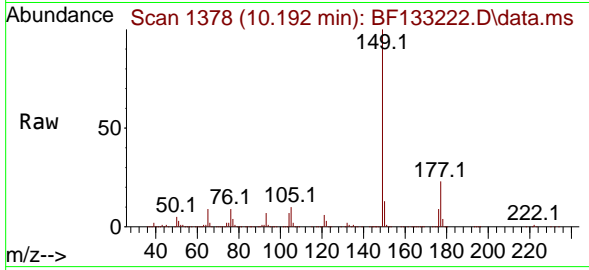




#60
 Diethylphthalate
 Concen: 48.222 ng
 RT: 10.192 min Scan# 11
 Delta R.T. -0.000 min
 Lab File: BF133222.D
 Acq: 03 May 2023 22:56

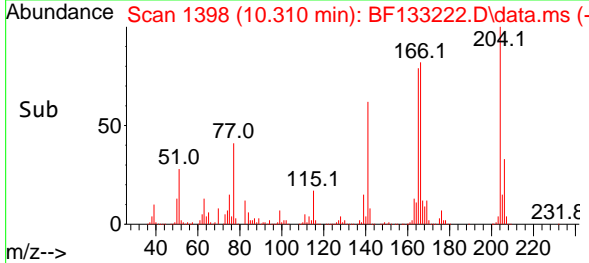
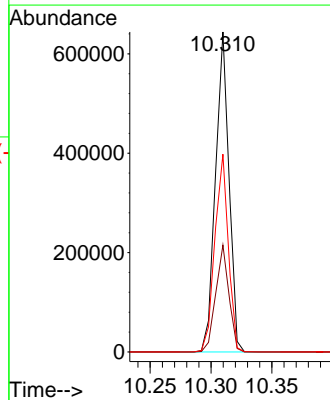
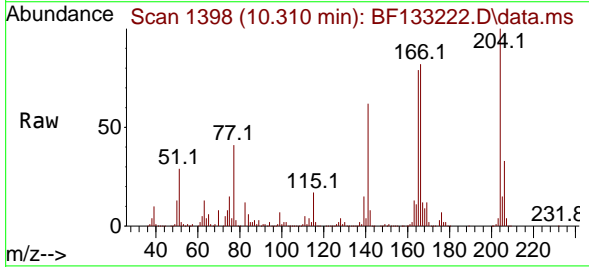
Instrument :
 BNA_F
 ClientSampleId :
 DFTPP

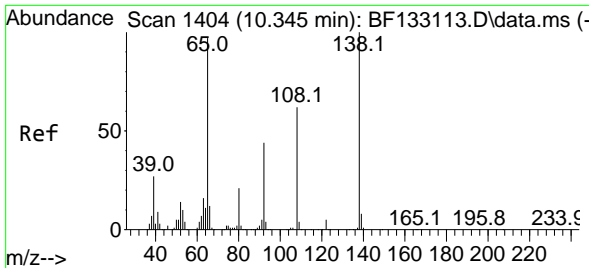
Tgt Ion:149 Resp: 1159784
 Ion Ratio Lower Upper
 149 100
 177 23.1 18.2 27.4
 150 12.9 10.2 15.4



#61
 4-Chlorophenyl-phenylether
 Concen: 44.707 ng
 RT: 10.310 min Scan# 1398
 Delta R.T. -0.000 min
 Lab File: BF133222.D
 Acq: 03 May 2023 22:56

Tgt Ion:204 Resp: 493846
 Ion Ratio Lower Upper
 204 100
 206 33.4 26.1 39.1
 141 61.8 46.1 69.1



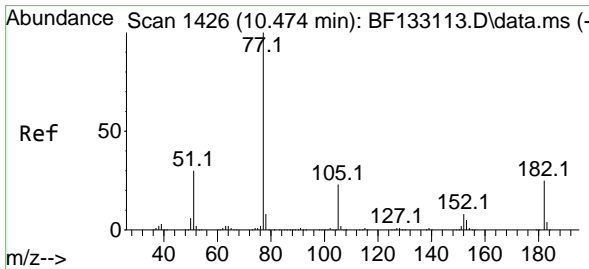
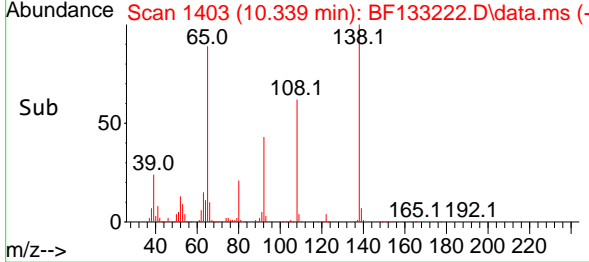
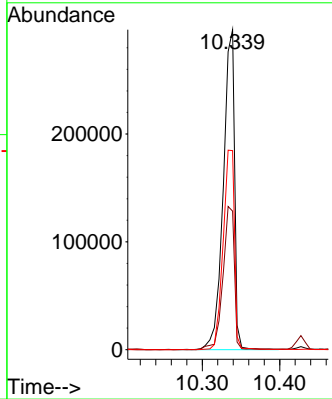
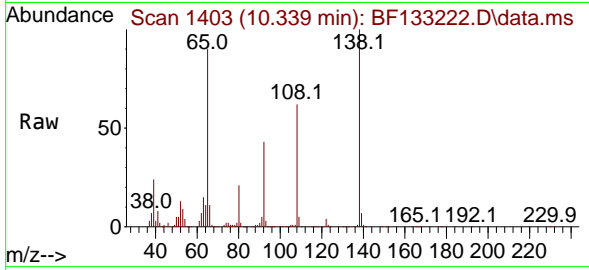


#62
 4-Nitroaniline
 Concen: 48.332 ng
 RT: 10.339 min Scan# 1403
 Delta R.T. -0.000 min
 Lab File: BF133222.D
 Acq: 03 May 2023 22:56

Instrument : BNA_F
 ClientSampleId : DFTPP

Tgt Ion:138 Resp: 302699

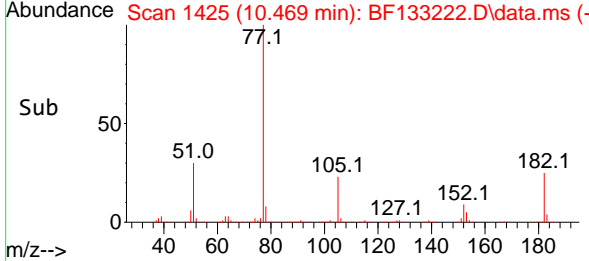
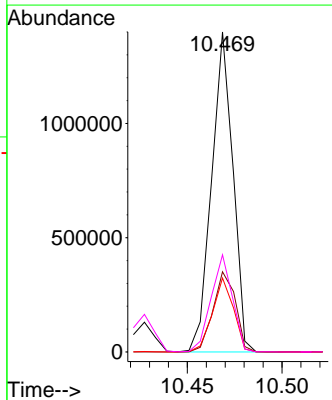
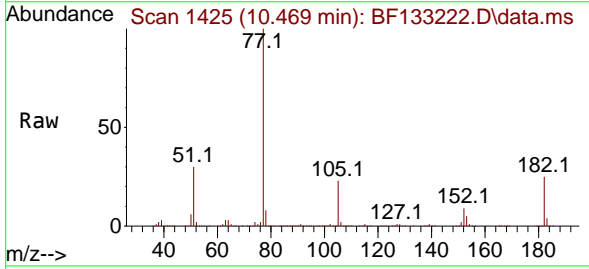
Ion	Ratio	Lower	Upper
138	100		
92	43.3	27.7	67.7
108	62.2	45.2	85.2

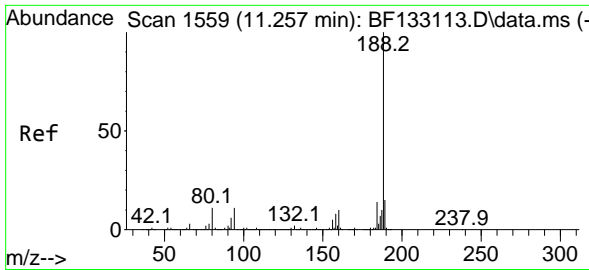


#63
 Azobenzene
 Concen: 42.993 ng
 RT: 10.469 min Scan# 1425
 Delta R.T. -0.000 min
 Lab File: BF133222.D
 Acq: 03 May 2023 22:56

Tgt Ion: 77 Resp: 1095379

Ion	Ratio	Lower	Upper
77	100		
182	25.1	5.9	45.9
105	23.1	2.3	42.3
51	30.4	11.1	51.1

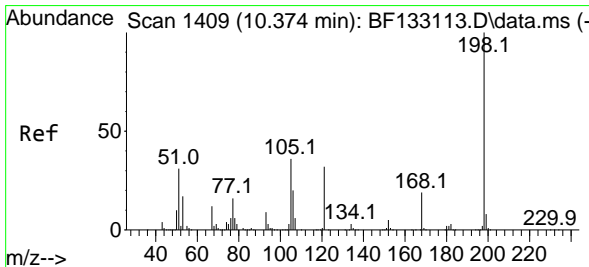
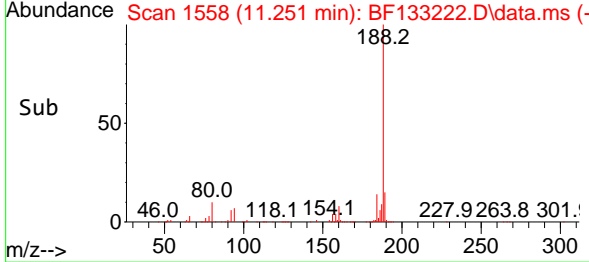
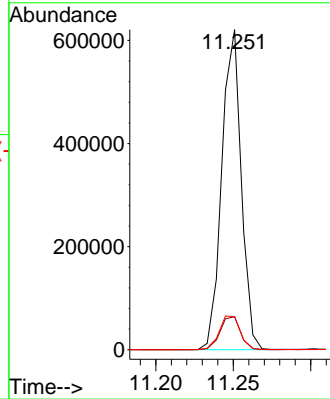
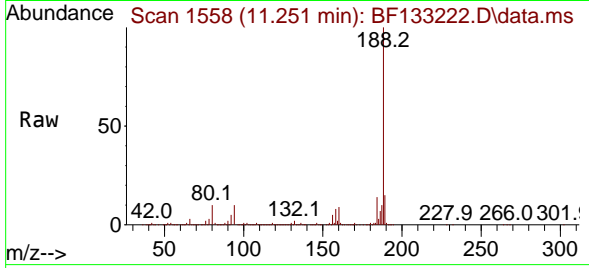




#64
 Phenanthrene-d10
 Concen: 20.000 ng
 RT: 11.251 min Scan# 11
 Delta R.T. -0.000 min
 Lab File: BF133222.D
 Acq: 03 May 2023 22:56

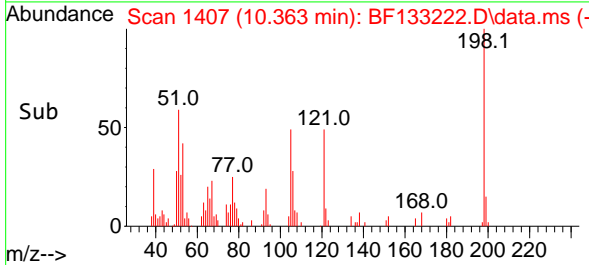
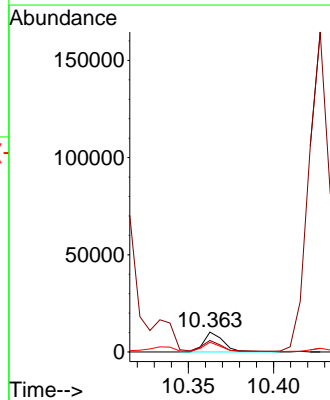
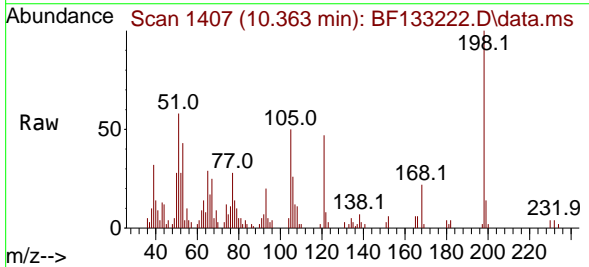
Instrument :
 BNA_F
 ClientSampleId :
 DFTPP

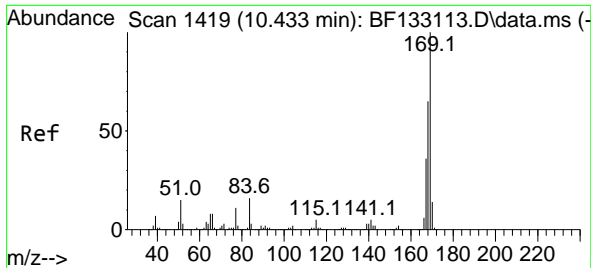
Tgt Ion:188 Resp: 541503
 Ion Ratio Lower Upper
 188 100
 94 10.3 9.7 14.5
 80 10.3 10.4 15.6#



#65
 4,6-Dinitro-2-methylphenol
 Concen: 2.469 ng
 RT: 10.363 min Scan# 1407
 Delta R.T. -0.006 min
 Lab File: BF133222.D
 Acq: 03 May 2023 22:56

Tgt Ion:198 Resp: 8103
 Ion Ratio Lower Upper
 198 100
 51 58.5 15.5 55.5#
 105 49.6 16.7 56.7



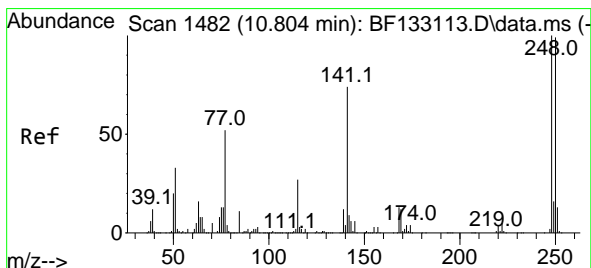
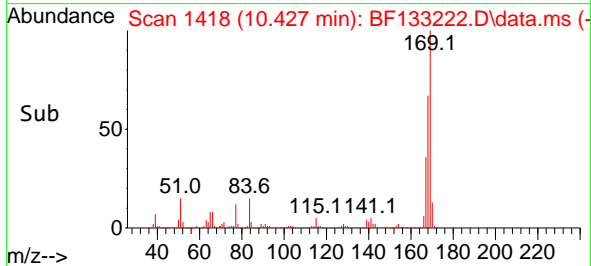
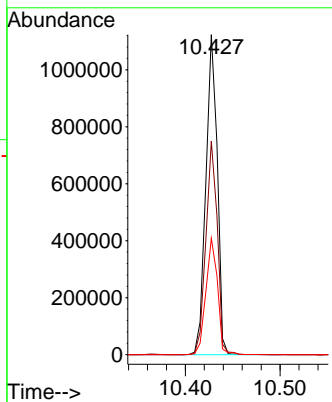
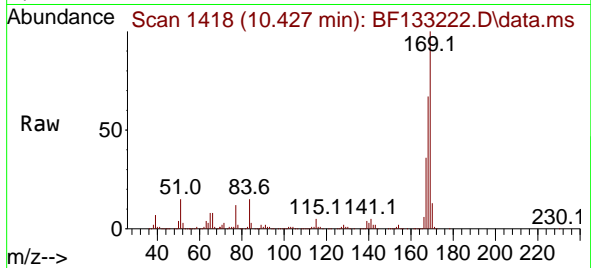


#66
 n-Nitrosodiphenylamine
 Concen: 53.242 ng
 RT: 10.427 min Scan# 1419
 Delta R.T. -0.006 min
 Lab File: BF133222.D
 Acq: 03 May 2023 22:56

Instrument :
 BNA_F
 ClientSampleId :
 DFTPP

Tgt Ion:169 Resp: 935186

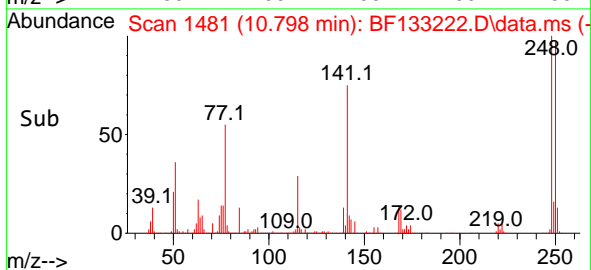
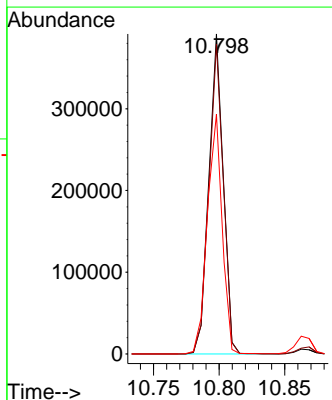
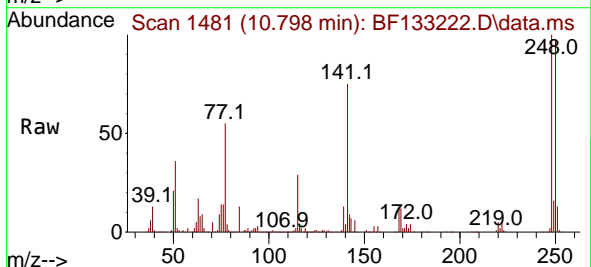
Ion	Ratio	Lower	Upper
169	100		
168	66.7	53.8	80.8
167	36.4	29.7	44.5

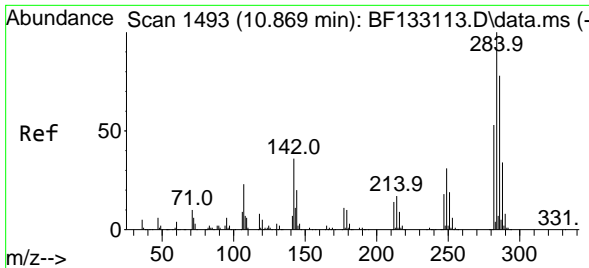


#67
 4-Bromophenyl-phenylether
 Concen: 51.290 ng
 RT: 10.798 min Scan# 1481
 Delta R.T. -0.000 min
 Lab File: BF133222.D
 Acq: 03 May 2023 22:56

Tgt Ion:248 Resp: 301220

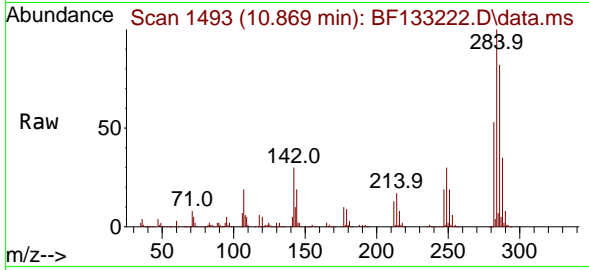
Ion	Ratio	Lower	Upper
248	100		
250	96.8	78.7	118.1
141	74.9	56.3	84.5



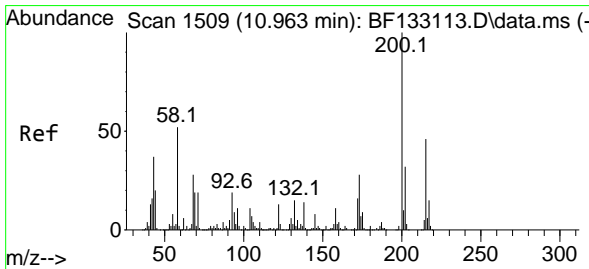
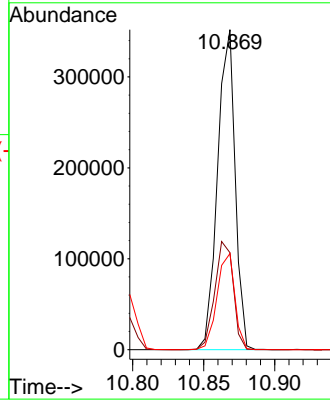
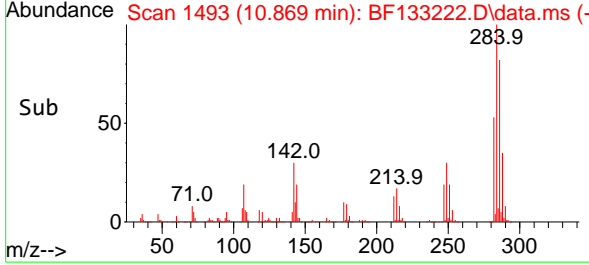


#68
 Hexachlorobenzene
 Concen: 50.367 ng
 RT: 10.869 min Scan# 14
 Delta R.T. -0.000 min
 Lab File: BF133222.D
 Acq: 03 May 2023 22:56

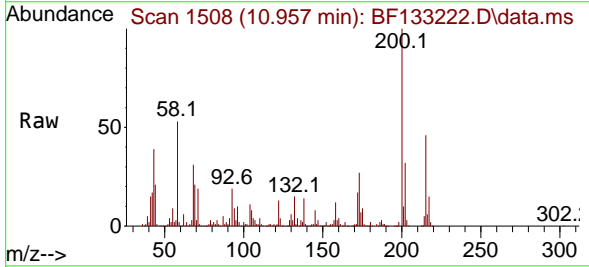
Instrument :
 BNA_F
 ClientSampleId :
 DFTPP



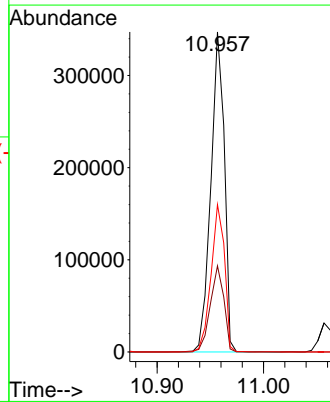
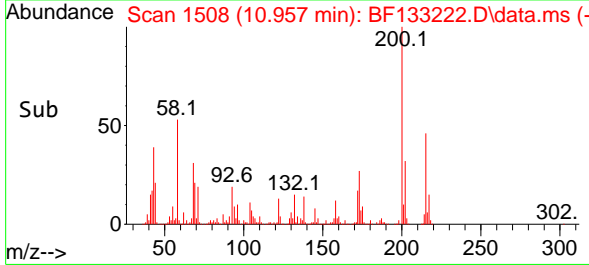
Tgt Ion:284 Resp: 303104
 Ion Ratio Lower Upper
 284 100
 142 30.3 26.0 39.0
 249 30.0 23.7 35.5

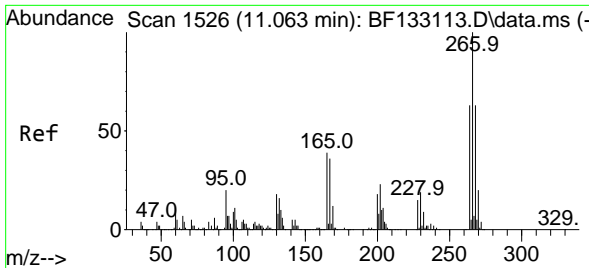


#69
 Atrazine
 Concen: 60.316 ng
 RT: 10.957 min Scan# 1508
 Delta R.T. -0.000 min
 Lab File: BF133222.D
 Acq: 03 May 2023 22:56



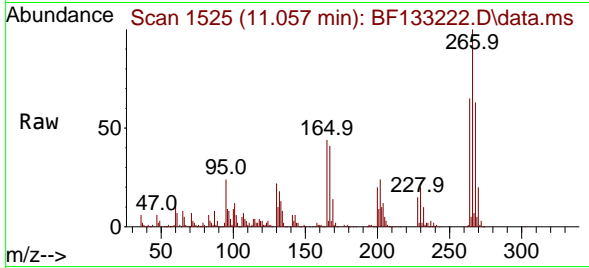
Tgt Ion:200 Resp: 305274
 Ion Ratio Lower Upper
 200 100
 173 26.9 6.2 46.2
 215 46.1 26.3 66.3



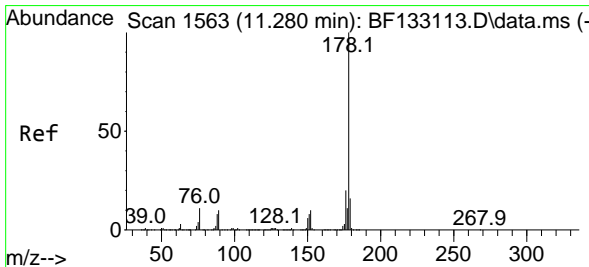
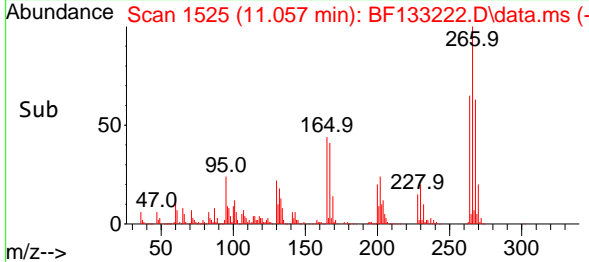
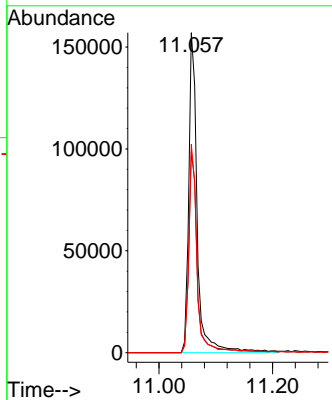


#70
 Pentachlorophenol
 Concen: 38.050 ng
 RT: 11.057 min Scan# 11
 Delta R.T. -0.000 min
 Lab File: BF133222.D
 Acq: 03 May 2023 22:56

Instrument :
 BNA_F
 ClientSampleId :
 DFTPP

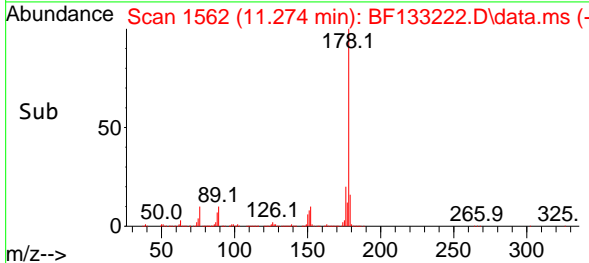
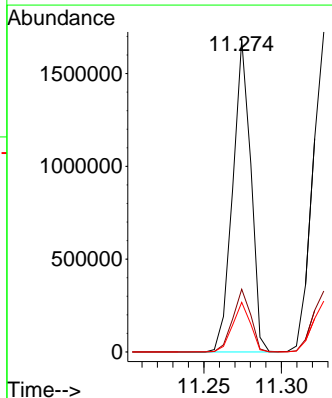
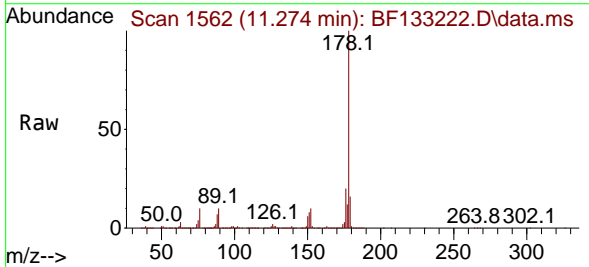


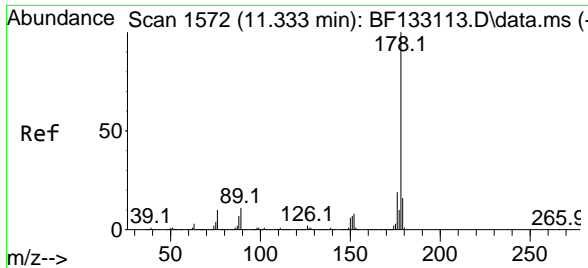
Tgt Ion:266 Resp: 163081
 Ion Ratio Lower Upper
 266 100
 268 62.8 48.8 73.2
 264 65.1 50.6 76.0



#71
 Phenanthrene
 Concen: 46.845 ng
 RT: 11.274 min Scan# 1562
 Delta R.T. -0.000 min
 Lab File: BF133222.D
 Acq: 03 May 2023 22:56

Tgt Ion:178 Resp: 1363379
 Ion Ratio Lower Upper
 178 100
 176 20.0 15.9 23.9
 179 15.9 12.5 18.7



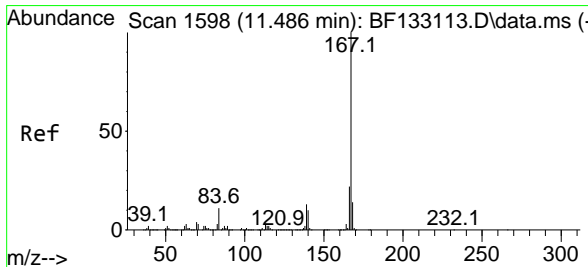
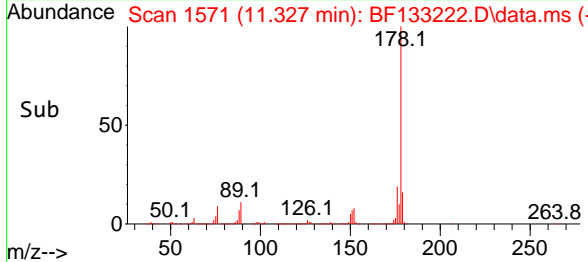
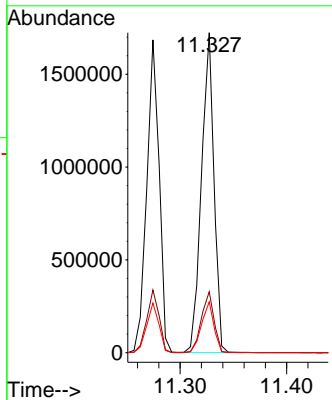
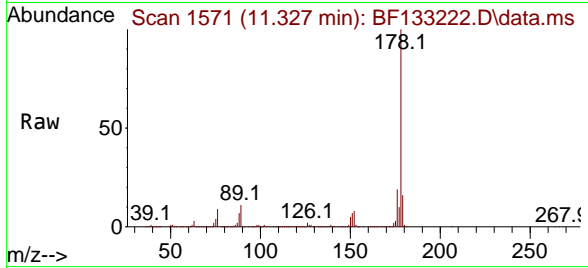


#72
 Anthracene
 Concen: 47.517 ng
 RT: 11.327 min Scan# 11
 Delta R.T. -0.000 min
 Lab File: BF133222.D
 Acq: 03 May 2023 22:56

Instrument : BNA_F
 ClientSampleId : DFTPP

Tgt Ion:178 Resp: 1415291

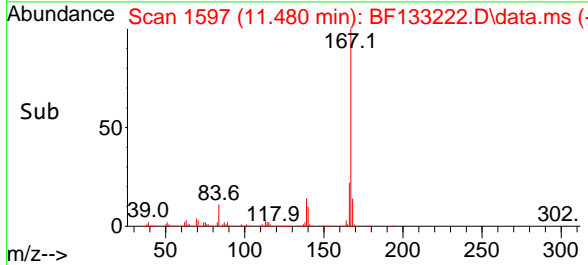
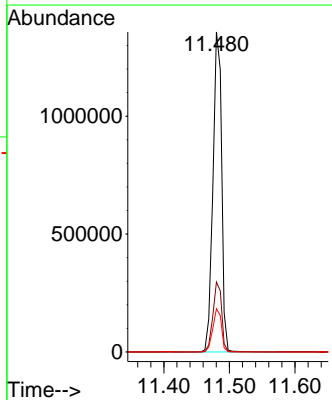
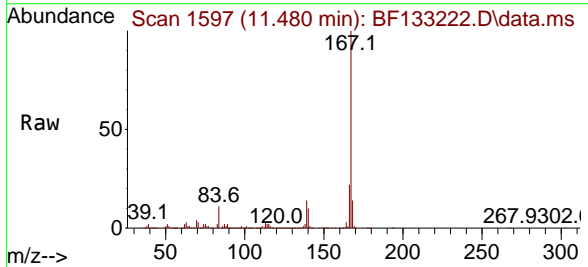
Ion	Ratio	Lower	Upper
178	100		
176	19.1	15.4	23.0
179	15.9	12.4	18.6

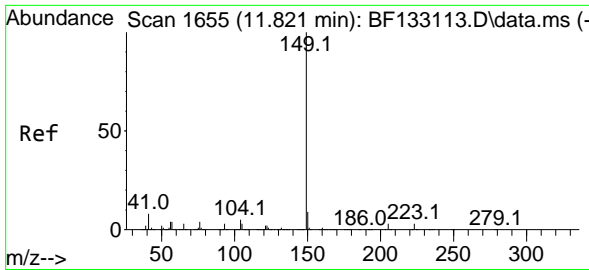


#73
 Carbazole
 Concen: 47.252 ng
 RT: 11.480 min Scan# 1597
 Delta R.T. -0.006 min
 Lab File: BF133222.D
 Acq: 03 May 2023 22:56

Tgt Ion:167 Resp: 1253189

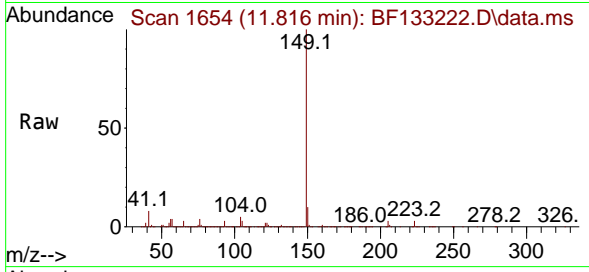
Ion	Ratio	Lower	Upper
167	100		
166	21.8	17.4	26.0
139	13.5	10.6	16.0



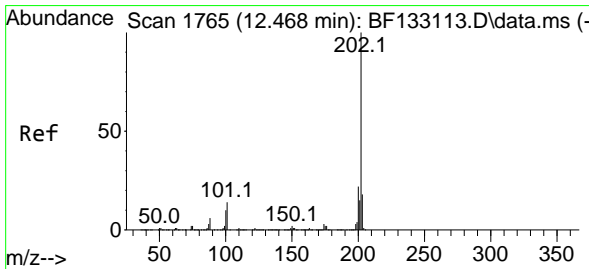
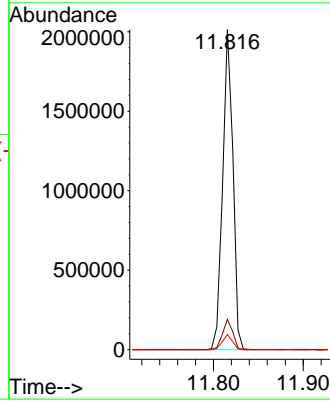
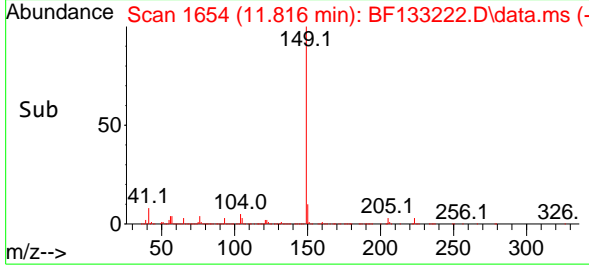


#74
 Di-n-butylphthalate
 Concen: 53.109 ng
 RT: 11.816 min Scan# 1654
 Delta R.T. -0.000 min
 Lab File: BF133222.D
 Acq: 03 May 2023 22:56

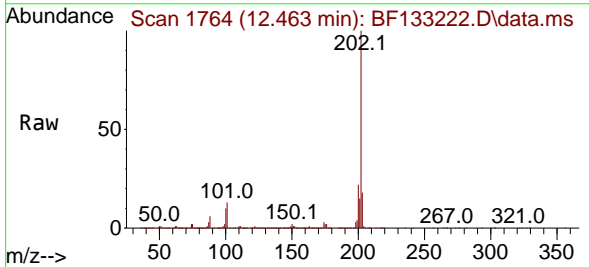
Instrument : BNA_F
 ClientSampleId : DFTPP



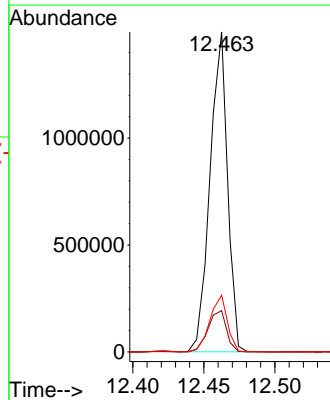
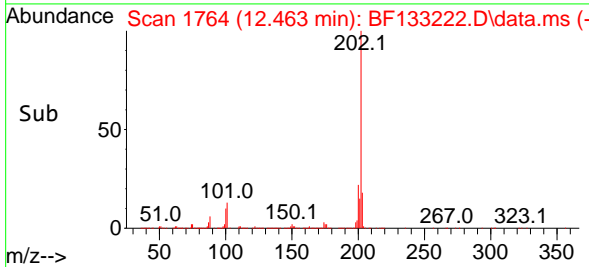
Tgt Ion:149 Resp: 1593981
 Ion Ratio Lower Upper
 149 100
 150 9.5 7.6 11.4
 104 4.7 4.0 6.0

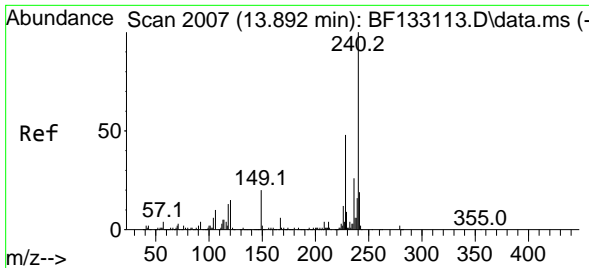


#75
 Fluoranthene
 Concen: 43.868 ng
 RT: 12.463 min Scan# 1764
 Delta R.T. -0.000 min
 Lab File: BF133222.D
 Acq: 03 May 2023 22:56



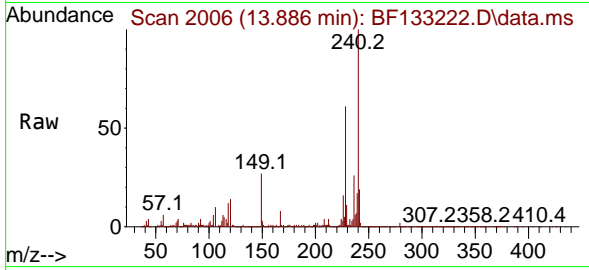
Tgt Ion:202 Resp: 1281352
 Ion Ratio Lower Upper
 202 100
 101 12.9 0.0 35.3
 203 17.7 0.0 38.1



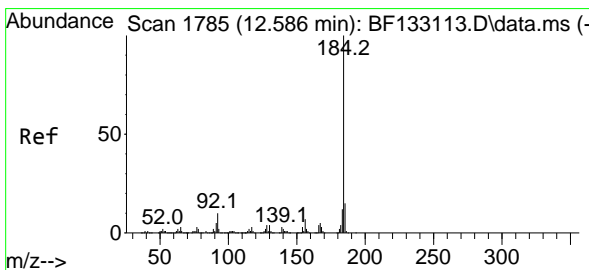
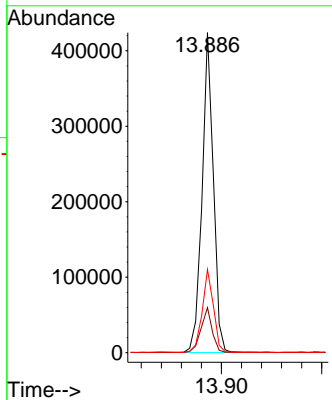
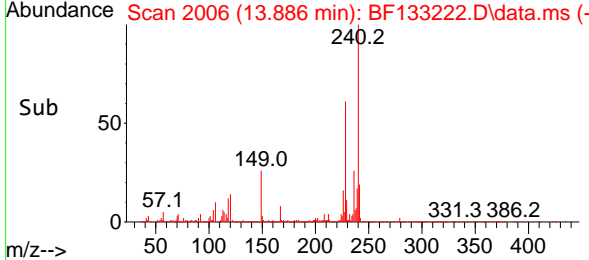


#76
 Chrysene-d12
 Concen: 20.000 ng
 RT: 13.886 min Scan# 2006
 Delta R.T. -0.006 min
 Lab File: BF133222.D
 Acq: 03 May 2023 22:56

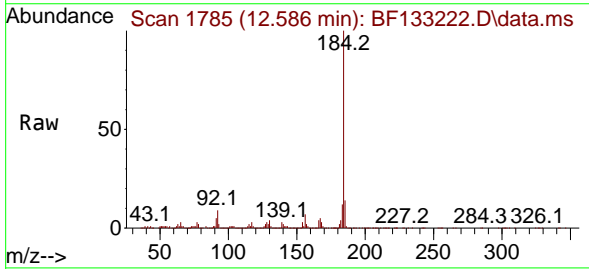
Instrument : BNA_F
 Client Sample Id : DFTPP



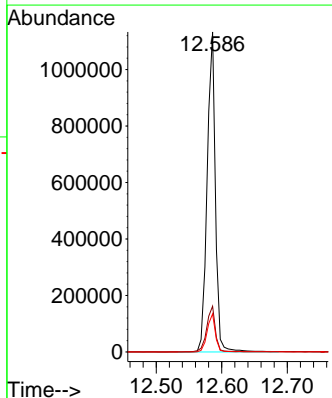
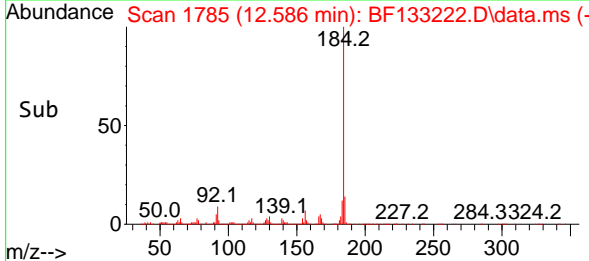
Tgt Ion:240 Resp: 332486
 Ion Ratio Lower Upper
 240 100
 120 14.1 10.5 15.7
 236 26.0 21.5 32.3

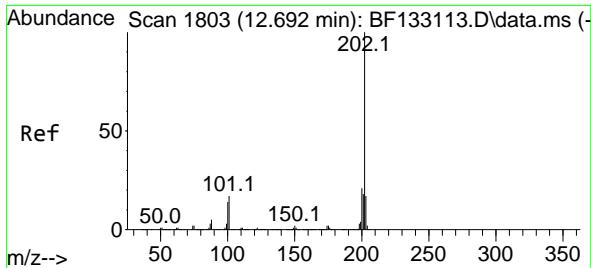


#77
 Benzidine
 Concen: 176.582 ng
 RT: 12.586 min Scan# 1785
 Delta R.T. 0.005 min
 Lab File: BF133222.D
 Acq: 03 May 2023 22:56



Tgt Ion:184 Resp: 992836
 Ion Ratio Lower Upper
 184 100
 185 14.3 15.4 23.2#
 183 11.9 9.4 14.0



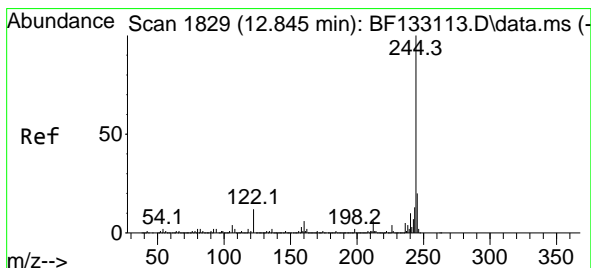
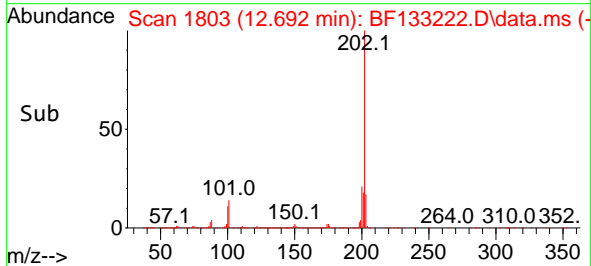
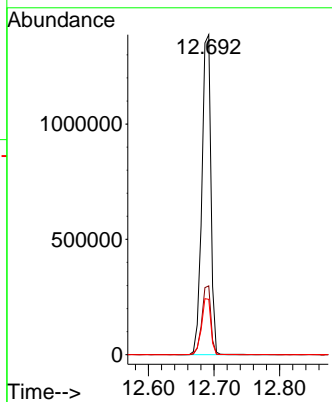
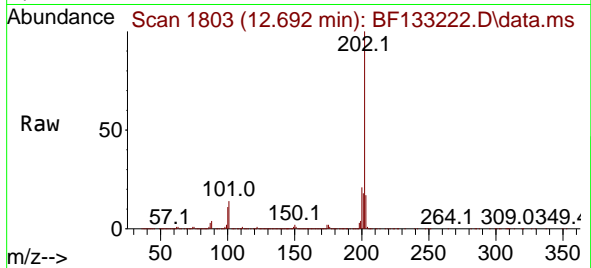


#78
 Pyrene
 Concen: 46.563 ng
 RT: 12.692 min Scan# 1803
 Delta R.T. -0.000 min
 Lab File: BF133222.D
 Acq: 03 May 2023 22:56

Instrument : BNA_F
 ClientSampleId : DFTPP

Tgt Ion:202 Resp: 1327121

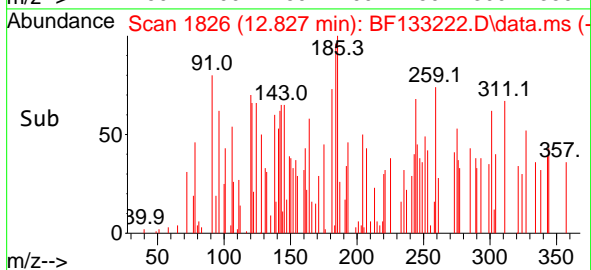
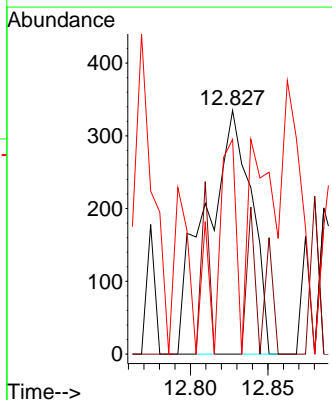
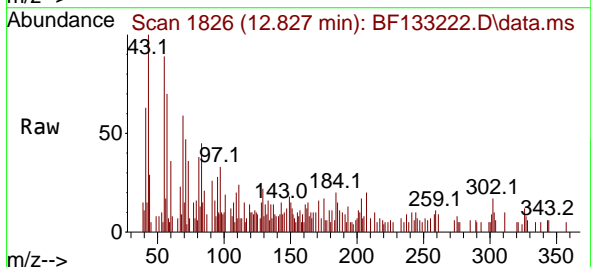
Ion	Ratio	Lower	Upper
202	100		
200	21.5	17.1	25.7
203	17.3	14.1	21.1

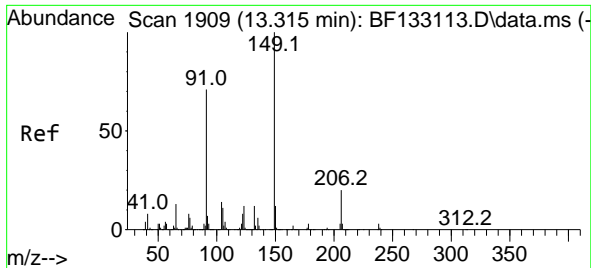


#79
 Terphenyl-d14
 Concen: 0.035 ng
 RT: 12.827 min Scan# 1826
 Delta R.T. -0.012 min
 Lab File: BF133222.D
 Acq: 03 May 2023 22:56

Tgt Ion:244 Resp: 684

Ion	Ratio	Lower	Upper
244	100		
212	0.0	5.1	7.7#
122	88.1	8.6	13.0#

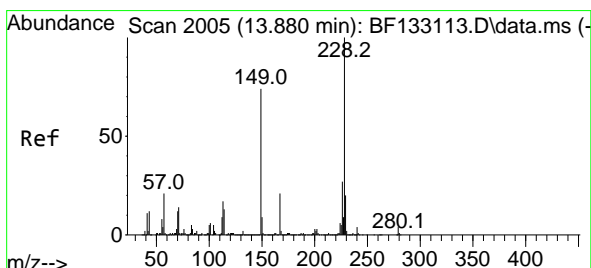
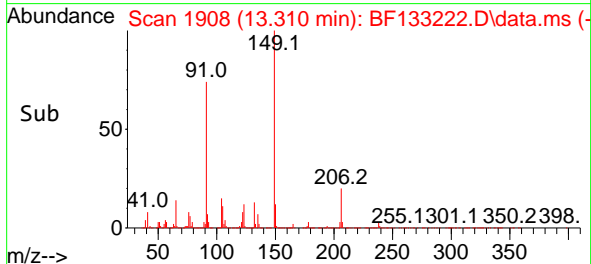
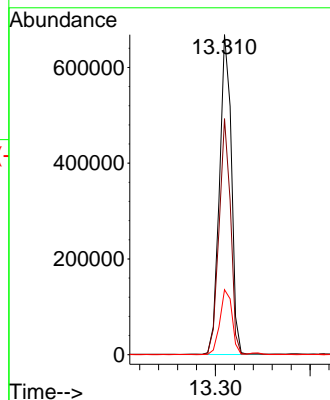
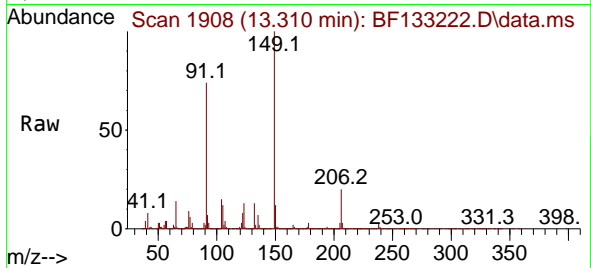




#80
 Butylbenzylphthalate
 Concen: 57.969 ng
 RT: 13.310 min Scan# 1909
 Delta R.T. -0.006 min
 Lab File: BF133222.D
 Acq: 03 May 2023 22:56

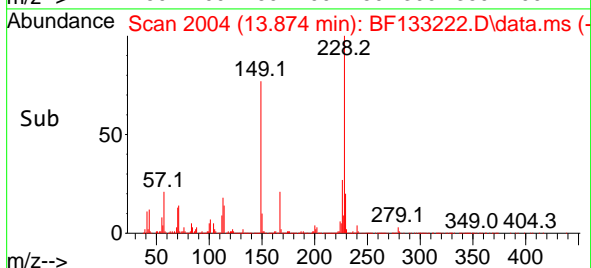
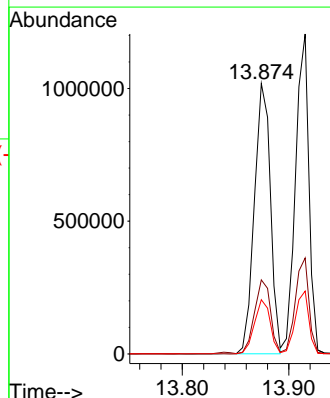
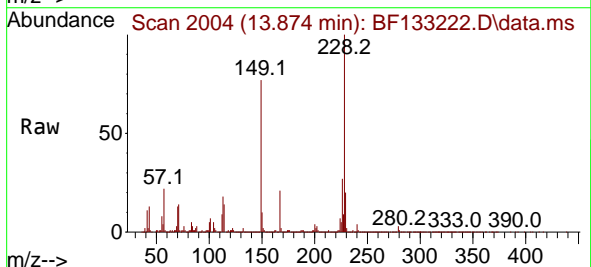
Instrument :
 BNA_F
 ClientSampleId :
 DFTPP

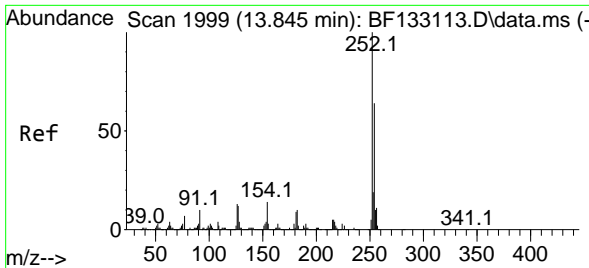
Tgt Ion:149 Resp: 585002
 Ion Ratio Lower Upper
 149 100
 91 73.7 53.8 80.6
 206 20.3 17.5 26.3



#81
 Benzo(a)anthracene
 Concen: 46.701 ng
 RT: 13.874 min Scan# 2004
 Delta R.T. -0.006 min
 Lab File: BF133222.D
 Acq: 03 May 2023 22:56

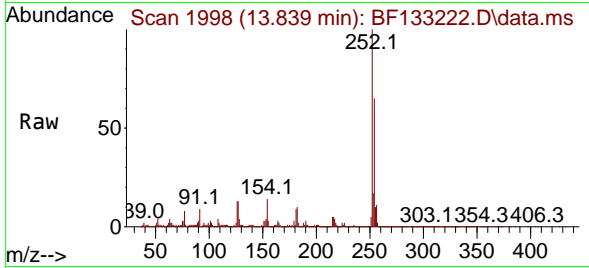
Tgt Ion:228 Resp: 1067779
 Ion Ratio Lower Upper
 228 100
 226 27.4 22.2 33.4
 229 20.1 16.0 24.0



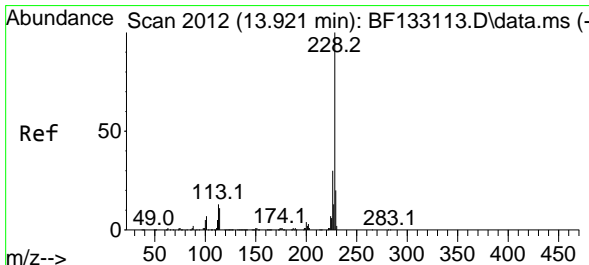
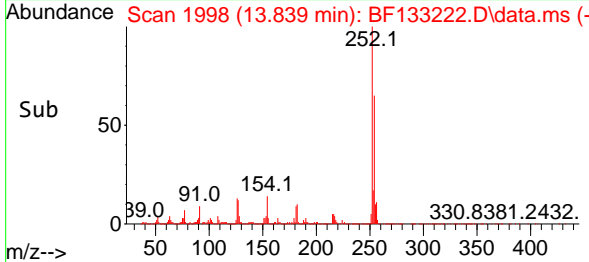
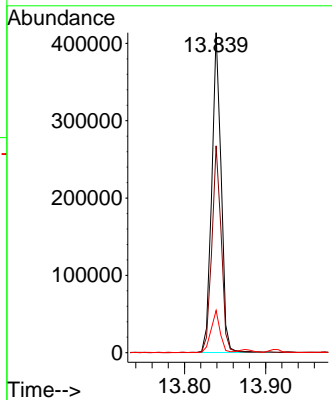


#82
 3,3'-Dichlorobenzidine
 Concen: 52.322 ng
 RT: 13.839 min Scan# 1999
 Delta R.T. -0.006 min
 Lab File: BF133222.D
 Acq: 03 May 2023 22:56

Instrument :
 BNA_F
 ClientSampleId :
 DFTPP

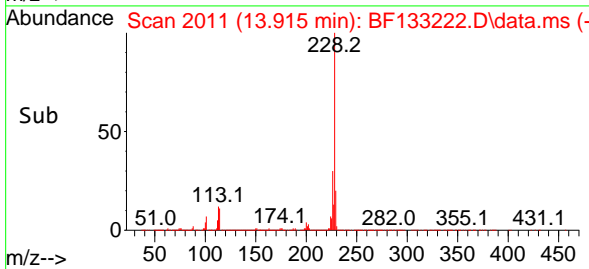
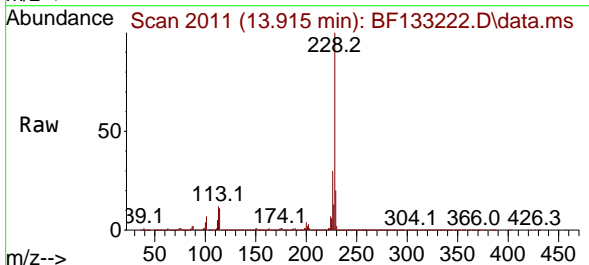
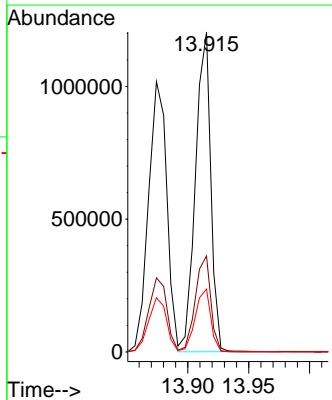


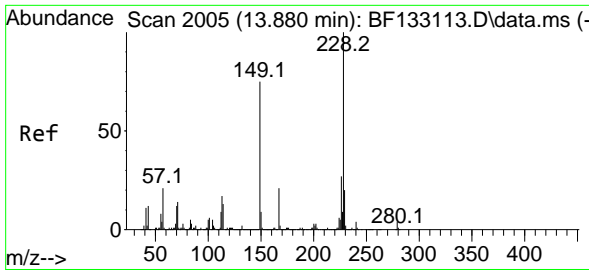
Tgt Ion:252 Resp: 330480
 Ion Ratio Lower Upper
 252 100
 254 64.6 51.5 77.3
 126 13.2 9.5 14.3



#83
 Chrysene
 Concen: 46.022 ng
 RT: 13.915 min Scan# 2011
 Delta R.T. -0.000 min
 Lab File: BF133222.D
 Acq: 03 May 2023 22:56

Tgt Ion:228 Resp: 1051984
 Ion Ratio Lower Upper
 228 100
 226 30.0 24.7 37.1
 229 19.7 16.1 24.1



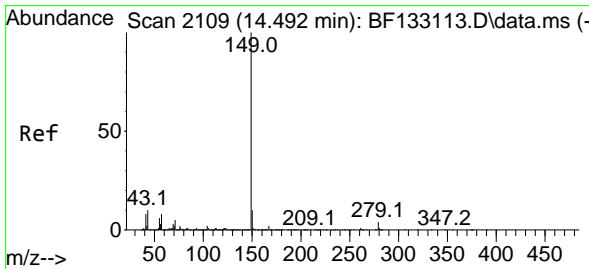
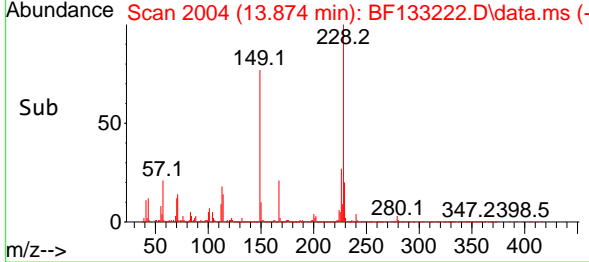
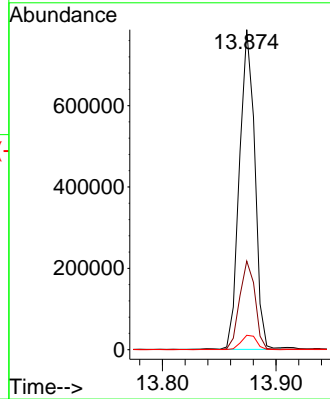
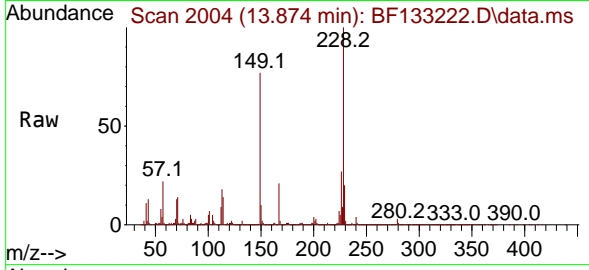


#84
 Bis(2-ethylhexyl)phthalate
 Concen: 58.149 ng
 RT: 13.874 min Scan# 2004
 Delta R.T. -0.000 min
 Lab File: BF133222.D
 Acq: 03 May 2023 22:56

Instrument :
 BNA_F
 ClientSampleId :
 DFTPP

Tgt Ion:149 Resp: 736571

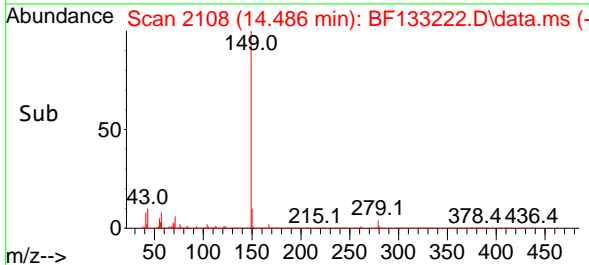
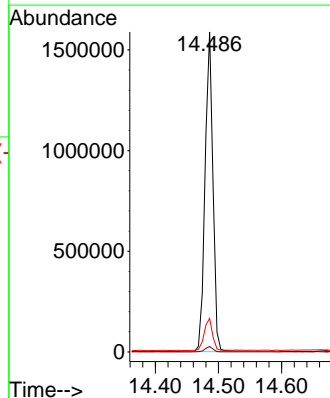
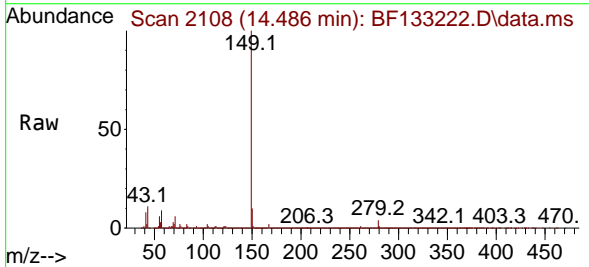
Ion	Ratio	Lower	Upper
149	100		
167	27.7	22.5	33.7
279	4.5	4.2	6.4

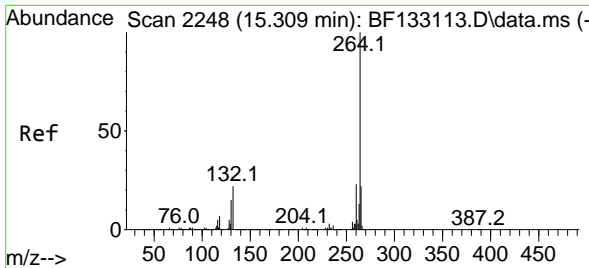


#85
 Di-n-octyl phthalate
 Concen: 66.836 ng
 RT: 14.486 min Scan# 2108
 Delta R.T. -0.000 min
 Lab File: BF133222.D
 Acq: 03 May 2023 22:56

Tgt Ion:149 Resp: 1380444

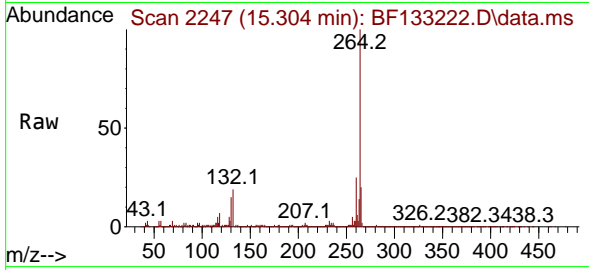
Ion	Ratio	Lower	Upper
149	100		
167	1.6	1.2	1.8
43	10.6	9.5	14.3





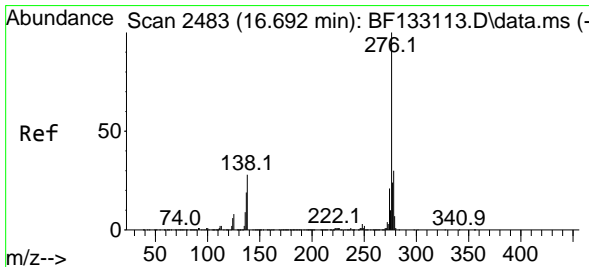
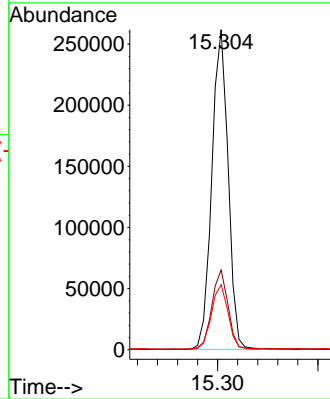
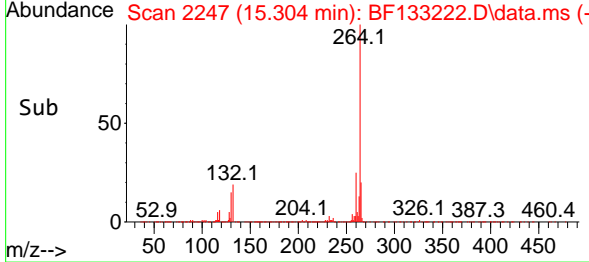
#86
 Perylene-d12
 Concen: 20.000 ng
 RT: 15.304 min Scan# 21
 Delta R.T. -0.000 min
 Lab File: BF133222.D
 Acq: 03 May 2023 22:56

Instrument :
 BNA_F
 ClientSampleId :
 DFTPP

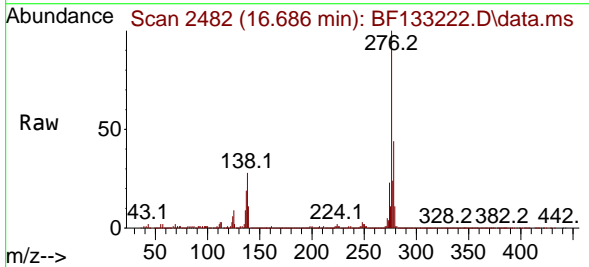


Tgt Ion: 264 Resp: 295539

Ion	Ratio	Lower	Upper
264	100		
260	24.9	18.8	28.2
265	20.3	17.0	25.4

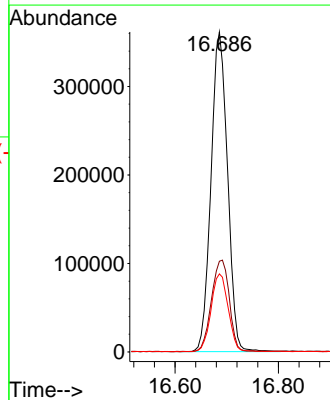
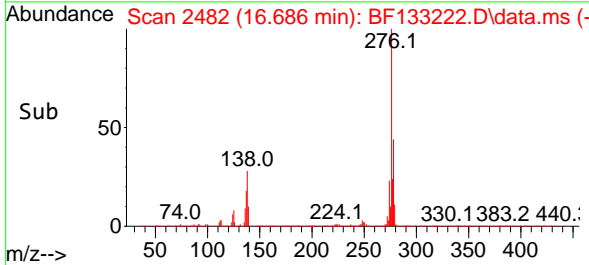


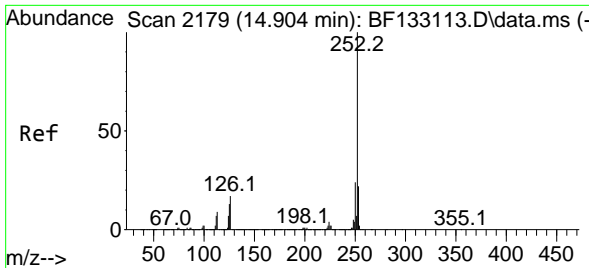
#87
 Indeno(1,2,3-cd)pyrene
 Concen: 47.664 ng
 RT: 16.686 min Scan# 2482
 Delta R.T. -0.006 min
 Lab File: BF133222.D
 Acq: 03 May 2023 22:56



Tgt Ion: 276 Resp: 801275

Ion	Ratio	Lower	Upper
276	100		
138	30.8	25.5	38.3
277	25.4	20.4	30.6



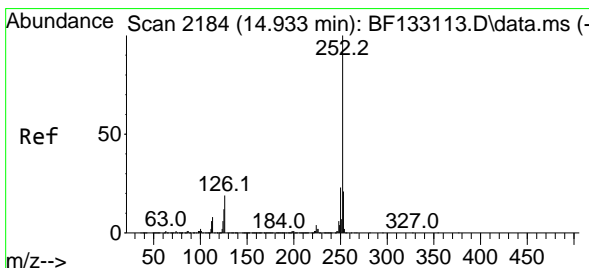
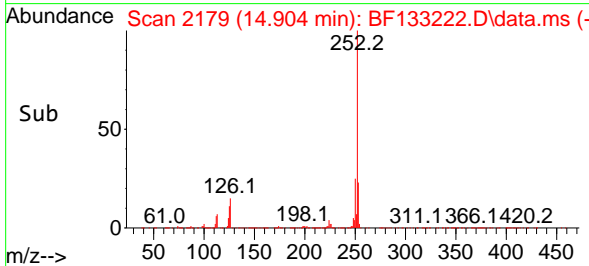
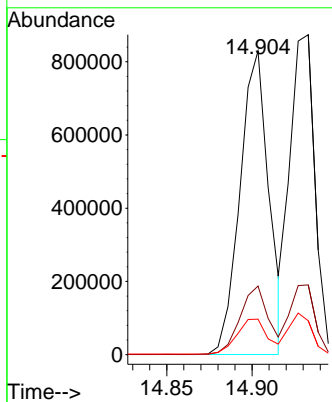
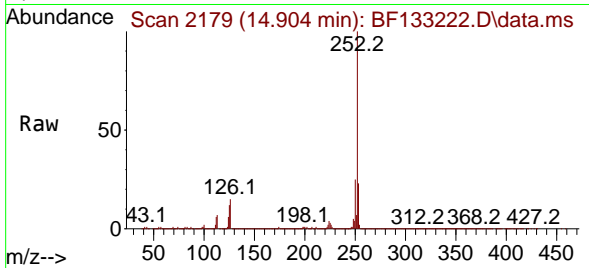


#88
 Benzo(b)fluoranthene
 Concen: 51.915 ng
 RT: 14.904 min Scan# 2179
 Delta R.T. -0.000 min
 Lab File: BF133222.D
 Acq: 03 May 2023 22:56

Instrument :
 BNA_F
 ClientSampleId :
 DFTPP

Tgt Ion:252 Resp: 976101

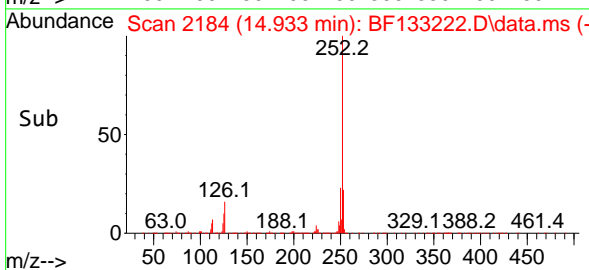
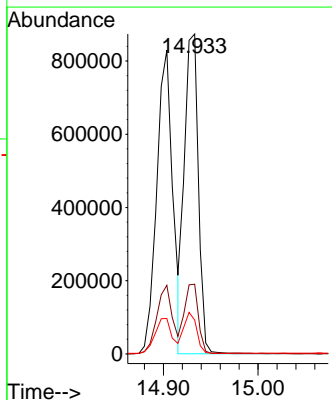
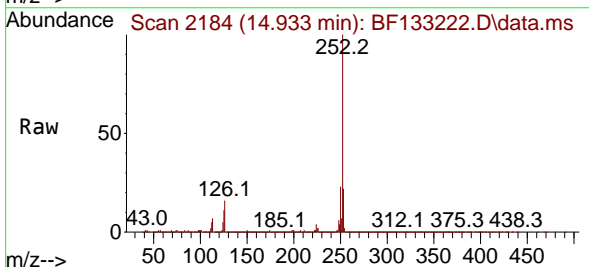
Ion	Ratio	Lower	Upper
252	100		
253	22.6	17.6	26.4
125	11.7	8.9	13.3

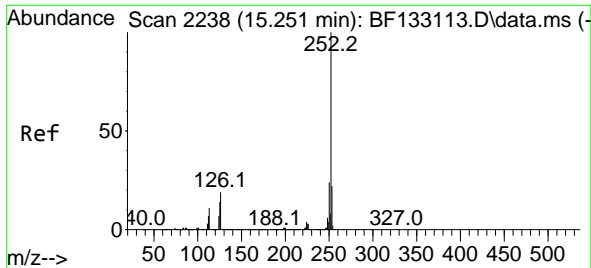


#89
 Benzo(k)fluoranthene
 Concen: 47.847 ng
 RT: 14.933 min Scan# 2184
 Delta R.T. -0.000 min
 Lab File: BF133222.D
 Acq: 03 May 2023 22:56

Tgt Ion:252 Resp: 891771

Ion	Ratio	Lower	Upper
252	100		
253	21.8	17.7	26.5
125	10.6	9.0	13.4



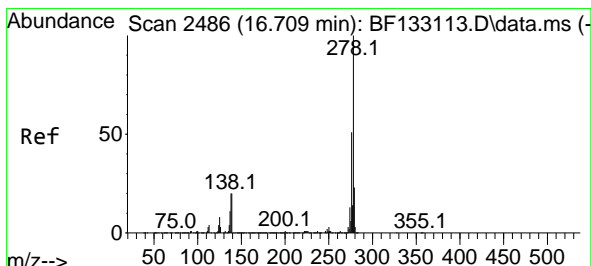
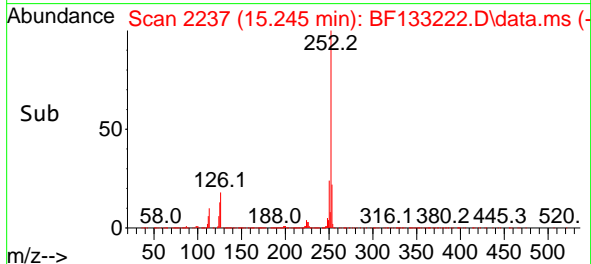
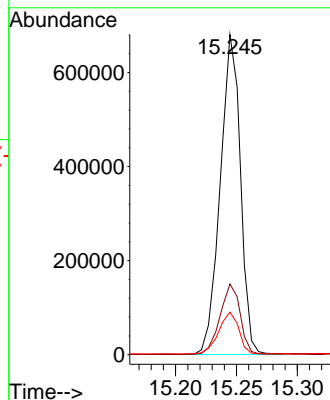
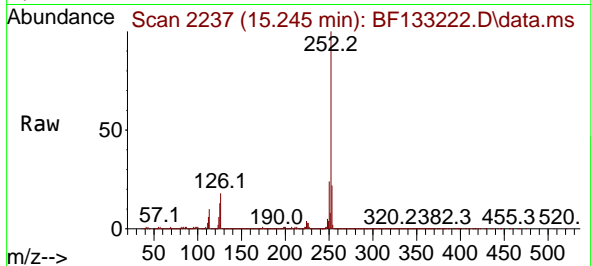


#90
 Benzo(a)pyrene
 Concen: 45.888 ng
 RT: 15.245 min Scan# 21
 Delta R.T. -0.006 min
 Lab File: BF133222.D
 Acq: 03 May 2023 22:56

Instrument :
 BNA_F
 ClientSampleId :
 DFTPP

Tgt Ion:252 Resp: 785307

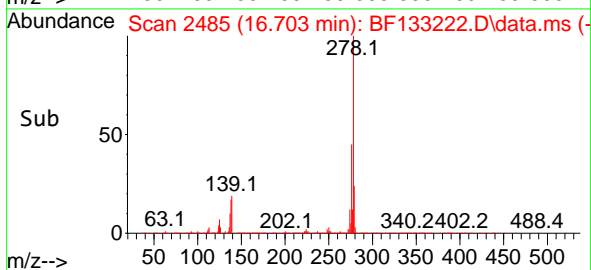
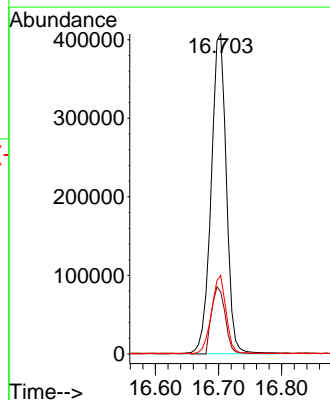
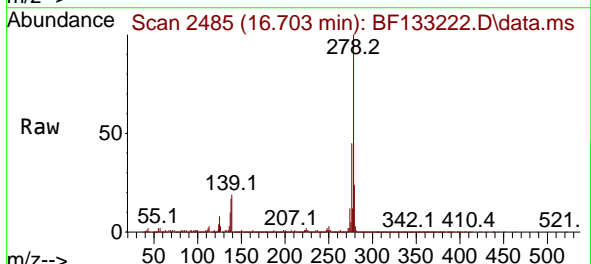
Ion	Ratio	Lower	Upper
252	100		
253	22.1	17.7	26.5
125	13.3	10.5	15.7

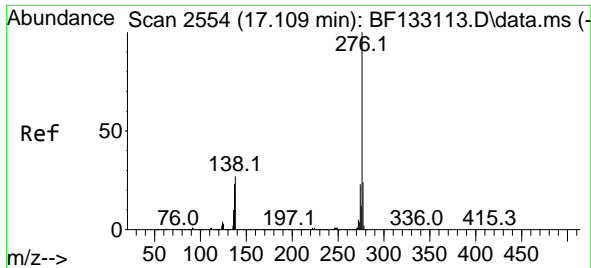


#91
 Dibenzo(a,h)anthracene
 Concen: 48.539 ng
 RT: 16.703 min Scan# 2485
 Delta R.T. -0.000 min
 Lab File: BF133222.D
 Acq: 03 May 2023 22:56

Tgt Ion:278 Resp: 680569

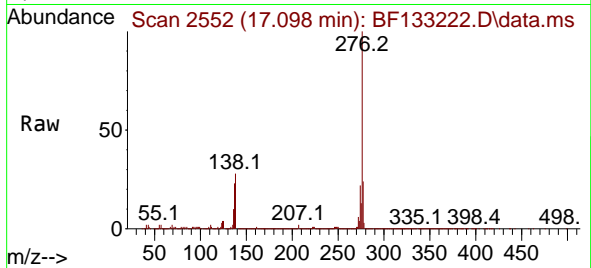
Ion	Ratio	Lower	Upper
278	100		
139	19.5	16.6	24.8
279	24.5	18.8	28.2





#92
 Benzo(g,h,i)perylene
 Concen: 45.557 ng
 RT: 17.098 min Scan# 21
 Delta R.T. -0.006 min
 Lab File: BF133222.D
 Acq: 03 May 2023 22:56

Instrument :
 BNA_F
 ClientSampleId :
 DFTPP



Tgt Ion: 276 Resp: 630617
 Ion Ratio Lower Upper
 276 100
 277 24.0 19.4 29.0
 138 27.5 22.7 34.1

