

Data Path : Z:\HPCHEM1\BNA F\DATA\BF050516\
 Data File : BF086719.D
 Acq On : 5 May 2016 21:45
 Operator : UM/SJ
 Sample : H2762-02
 Misc :
 ALS Vial : 23 Sample Multiplier: 1

Instrument :
 BNA_F
 ClientSampleId :
 TEC-B1COMP

Integration Parameters: rteint.p
 Integrator: RTE
 Smoothing : ON
 Sampling : 1
 Start Thrs: 0.2
 Stop Thrs : 0

Filtering: 5
 Min Area: 3 % of largest Peak
 Max Peaks: 100
 Peak Location: TOP

If leading or trailing edge < 100 prefer < Baseline drop else tangent >
 Peak separation: 5

Method : Z:\HPCHEM1\BNA F\METHODS\8270-BF050416.M
 Title : ASP BNA STANDARDS FOR 5 POINT CALIBRATION

Signal : TIC

peak #	R.T. min	first scan	max scan	last scan	PK TY	peak height	corr. area	corr. % max.	% of total
1	5.173	266	270	272	rBV	8092113	11961143	14.39%	1.297%
2	5.276	276	279	282	rBV2	4362248	10668285	12.83%	1.157%
3	5.321	282	283	286	rVV	4478784	5122197	6.16%	0.556%
4	5.550	298	303	305	rBV	5793623	6515716	7.84%	0.707%
5	6.258	361	365	366	rBV	7472356	10135048	12.19%	1.099%
6	6.293	366	368	369	rVB	5215031	7150554	8.60%	0.776%
7	6.327	369	371	373	rBV	3998943	4649656	5.59%	0.504%
8	6.384	373	376	377	rVV	3484978	5711652	6.87%	0.619%
9	6.418	377	379	380	rVV	2882920	3633195	4.37%	0.394%
10	6.498	384	386	388	rBV	3769407	5801016	6.98%	0.629%
11	6.567	388	392	395	rVB2	9046150	14684680	17.66%	1.593%
12	6.796	408	412	414	rVV2	3906759	7391588	8.89%	0.802%
13	6.853	414	417	419	rVV	1876076	3355107	4.04%	0.364%
14	6.944	419	425	426	rVB	10414674	28536366	34.32%	3.095%
15	7.013	426	431	433	rBV2	7132201	13541135	16.29%	1.469%
16	7.059	433	435	439	rVB	4235314	5161180	6.21%	0.560%
17	7.287	452	455	456	rVV	4240211	7689293	9.25%	0.834%
18	7.310	456	457	459	rVV2	4560437	3905503	4.70%	0.424%
19	7.344	459	460	463	rVV2	3501301	6025816	7.25%	0.654%
20	7.516	472	475	476	rBV	1973994	2866207	3.45%	0.311%
21	7.539	476	477	480	rVB	3176667	3493589	4.20%	0.379%
22	7.699	488	491	494	rVB	4625240	7032578	8.46%	0.763%
23	7.790	494	499	500	rBV2	7567662	17850709	21.47%	1.936%
24	7.836	500	503	507	rVV2	6980933	15923685	19.15%	1.727%
25	8.144	516	530	533	rBV	13545284	83137561	100.00%	9.017%
26	8.384	549	551	553	rBV	2354468	3869743	4.65%	0.420%
27	8.499	556	561	562	rVV2	3304555	7750250	9.32%	0.841%
28	8.544	562	565	567	rVV	2797185	5256644	6.32%	0.570%
29	8.579	567	568	573	rVV3	913862	2432795	2.93%	0.264%
30	8.659	573	575	576	rVV	2665105	3167199	3.81%	0.344%
31	8.796	576	587	590	rVV2	9722846	41225170	49.59%	4.471%
32	8.899	590	596	598	rVV	9416320	29082592	34.98%	3.154%
33	9.104	611	614	616	rBV	4315165	5464939	6.57%	0.593%
34	9.219	620	624	626	rVB2	6855242	11452337	13.78%	1.242%

Data Path : Z:\HPCHEM1\BNA F\DATA\BF050516\
 Data File : BF086719.D
 Acq On : 5 May 2016 21:45
 Operator : UM/SJ
 Sample : H2762-02
 Misc :
 ALS Vial : 23 Sample Multiplier: 1

Instrument :
 BNA_F
 ClientSampleId :
 TEC-B1COMP

Integration Parameters: rteint.p
 Integrator: RTE
 Smoothing : ON
 Sampling : 1
 Start Thrs: 0.2
 Stop Thrs : 0

Filtering: 5
 Min Area: 3 % of largest Peak
 Max Peaks: 100
 Peak Location: TOP

If leading or trailing edge < 100 prefer < Baseline drop else tangent >
 Peak separation: 5

Method : Z:\HPCHEM1\BNA F\METHODS\8270-BF050416.M
 Title : ASP BNA STANDARDS FOR 5 POINT CALIBRATION

35	9.322	626	633	635	rVB	7439102	16407847	19.74%	1.780%
36	9.390	635	639	642	rBV2	7146131	18634263	22.41%	2.021%
37	9.470	642	646	648	rVV	7162681	22772752	27.39%	2.470%
38	9.585	652	656	659	rVB	6535055	14627126	17.59%	1.586%
39	9.665	659	663	665	rBV2	7932002	12298931	14.79%	1.334%
40	9.859	670	680	681	rBV3	8404016	30282734	36.42%	3.284%
41	9.893	681	683	685	rVB	3170261	4385854	5.28%	0.476%
42	9.939	685	687	689	rBV2	1290053	2484330	2.99%	0.269%
43	9.996	689	692	693	rVV	5533775	7418972	8.92%	0.805%
44	10.030	693	695	699	rVB	4079859	6265226	7.54%	0.680%
45	10.110	699	702	703	rBV	4927633	8454506	10.17%	0.917%
46	10.190	707	709	711	rBV	3531824	7453860	8.97%	0.808%
47	10.247	713	714	716	rVB	4494545	3157736	3.80%	0.342%
48	10.305	716	719	721	rBV2	3961836	8960144	10.78%	0.972%
49	10.362	721	724	726	rVV	6599942	13380005	16.09%	1.451%
50	10.407	726	728	729	rVV	3008573	4238815	5.10%	0.460%
51	10.453	729	732	734	rVV2	4498866	7192098	8.65%	0.780%
52	10.499	734	736	737	rVV	2205273	3740382	4.50%	0.406%
53	10.567	739	742	746	rVV2	4366701	8088952	9.73%	0.877%
54	10.693	751	753	757	rVV	4739910	6943413	8.35%	0.753%
55	10.773	757	760	763	rVV5	1217297	3952756	4.75%	0.429%
56	10.887	766	770	771	rVV	5262100	11108163	13.36%	1.205%
57	10.922	771	773	774	rVV	4045409	6423685	7.73%	0.697%
58	10.967	774	777	778	rVV	4158877	6363032	7.65%	0.690%
59	11.025	780	782	784	rVV3	2480946	5398279	6.49%	0.585%
60	11.082	785	787	789	rVV	3165786	4566974	5.49%	0.495%
61	11.128	789	791	792	rVV	1625832	2451386	2.95%	0.266%
62	11.162	792	794	799	rVB4	4617272	9075451	10.92%	0.984%
63	11.345	802	810	811	rBV	8857932	31458387	37.84%	3.412%
64	11.379	811	813	815	rVV2	6795832	11284553	13.57%	1.224%
65	11.436	817	818	820	rVV2	1708287	2687186	3.23%	0.291%
66	11.516	823	825	827	rVV3	1335355	3082077	3.71%	0.334%
67	11.573	827	830	831	rVV2	2883431	4920733	5.92%	0.534%
68	11.608	831	833	838	rVV2	2403056	4538955	5.46%	0.492%
69	11.779	845	848	850	rVV	4798589	11420663	13.74%	1.239%
70	11.825	850	852	853	rVV	5192572	7236045	8.70%	0.785%
71	11.859	853	855	857	rVV	2864845	6102579	7.34%	0.662%

Data Path : Z:\HPCHEM1\BNA F\DATA\BF050516\
 Data File : BF086719.D
 Acq On : 5 May 2016 21:45
 Operator : UM/SJ
 Sample : H2762-02
 Misc :
 ALS Vial : 23 Sample Multiplier: 1

Instrument :
 BNA_F
 ClientSampleId :
 TEC-B1COMP

Integration Parameters: rteint.p
 Integrator: RTE
 Smoothing : ON
 Sampling : 1
 Start Thrs: 0.2
 Stop Thrs : 0

Filtering: 5
 Min Area: 3 % of largest Peak
 Max Peaks: 100
 Peak Location: TOP

If leading or trailing edge < 100 prefer < Baseline drop else tangent >
 Peak separation: 5

Method : Z:\HPCHEM1\BNA F\METHODS\8270-BF050416.M
 Title : ASP BNA STANDARDS FOR 5 POINT CALIBRATION

72	11.905	857	859	863	rVV2	6256760	15288726	18.39%	1.658%
73	12.065	871	873	878	rVB2	3227882	5609609	6.75%	0.608%
74	12.213	883	886	887	rVV2	1988512	3198938	3.85%	0.347%
75	12.248	887	889	893	rVV2	2169570	4349138	5.23%	0.472%
76	12.328	893	896	898	rVV	3632854	7590203	9.13%	0.823%
77	12.362	898	899	902	rVV3	3551743	7093877	8.53%	0.769%
78	12.431	902	905	907	rVV2	2020427	4422433	5.32%	0.480%
79	12.511	908	912	915	rVV	6179850	13638901	16.41%	1.479%
80	12.591	917	919	921	rVV	3866422	4477527	5.39%	0.486%
81	12.739	927	932	934	rVV	6623177	15772715	18.97%	1.711%
82	12.853	940	942	946	rVB2	2792919	4335119	5.21%	0.470%
83	12.933	946	949	952	rVB3	2350479	3911658	4.71%	0.424%
84	13.048	952	959	960	rVB	3961637	9434680	11.35%	1.023%
85	13.105	960	964	966	rBV	3396921	6119173	7.36%	0.664%
86	13.151	966	968	971	rVB	2439628	3579083	4.31%	0.388%
87	13.231	971	975	977	rBV2	2201944	4227287	5.08%	0.458%
88	13.265	977	978	982	rVB	3343034	3638302	4.38%	0.395%
89	13.425	990	992	997	rVB3	869762	2499410	3.01%	0.271%
90	13.905	1030	1034	1035	rBV	5292209	11141073	13.40%	1.208%
91	13.939	1035	1037	1040	rVV	5730084	7885361	9.48%	0.855%
92	14.282	1065	1067	1069	rVV	2533595	3992495	4.80%	0.433%
93	14.374	1072	1075	1077	rVV3	1422765	3183466	3.83%	0.345%
94	14.431	1077	1080	1082	rVV2	2223748	3439275	4.14%	0.373%
95	14.911	1118	1122	1128	rBV	3562307	9787452	11.77%	1.062%
96	15.185	1143	1146	1148	rBV	2627853	4156638	5.00%	0.451%
97	15.254	1148	1152	1154	rVV	4020637	8219880	9.89%	0.892%
98	15.494	1167	1173	1176	rBV	641808	2468491	2.97%	0.268%
99	16.625	1267	1272	1275	rBV	1702945	3805487	4.58%	0.413%
100	17.037	1301	1308	1313	rBV	1373945	3835644	4.61%	0.416%

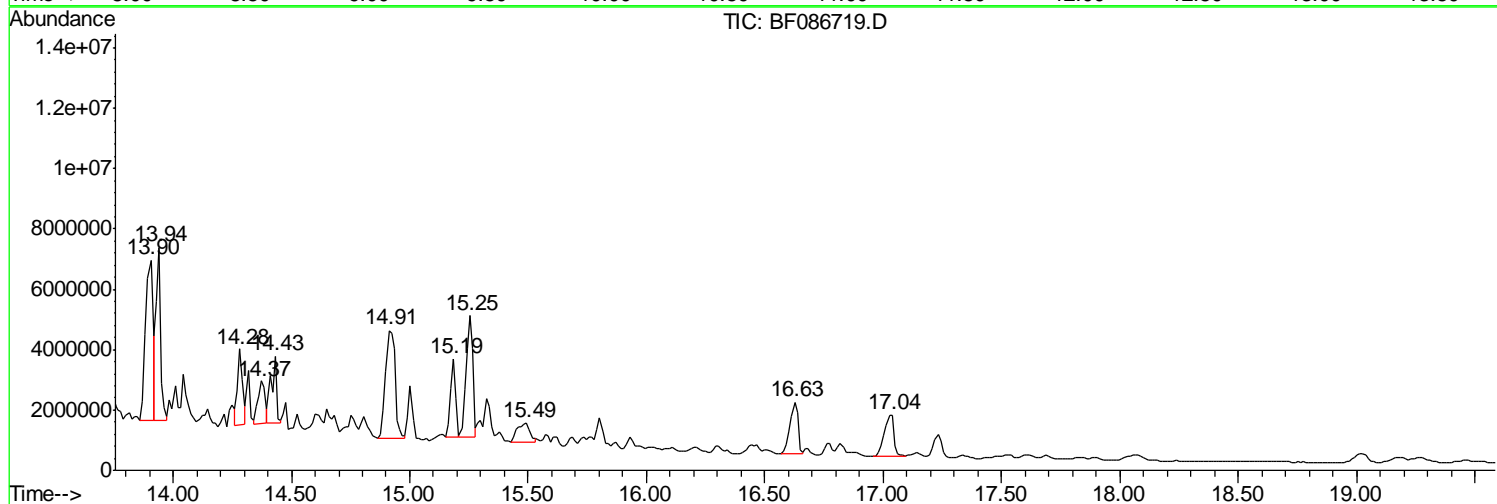
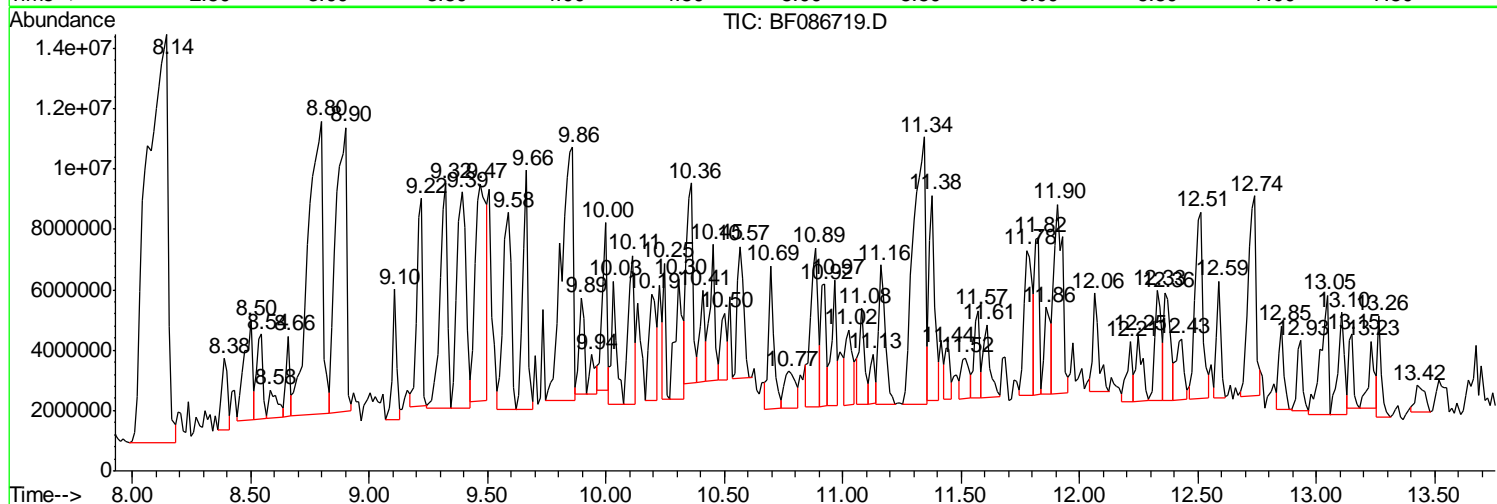
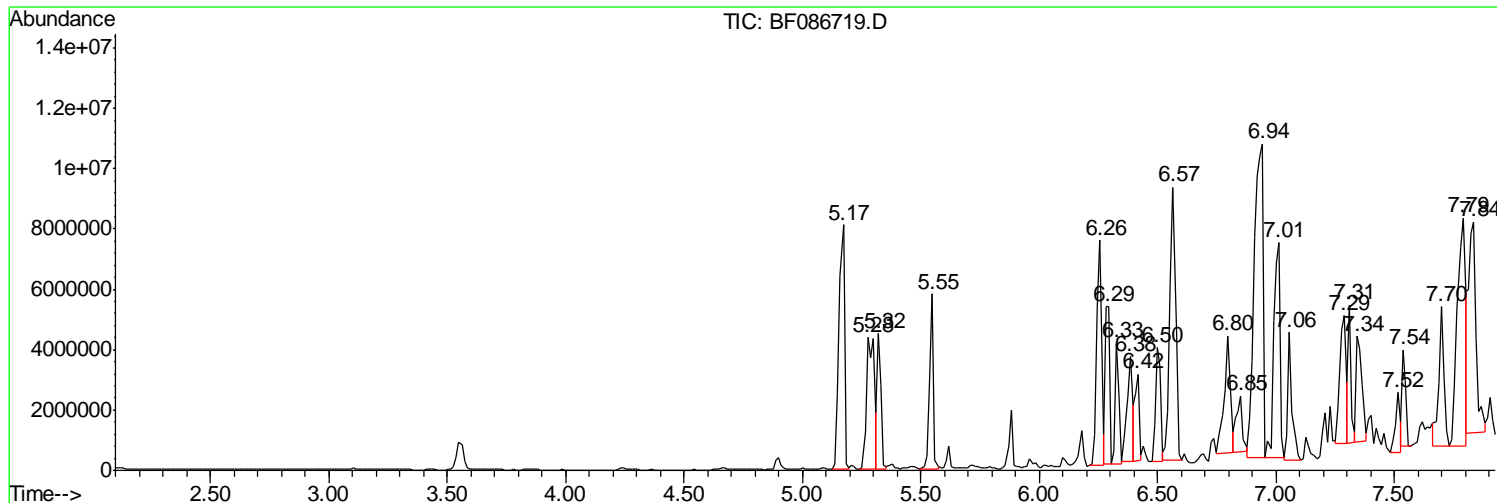
Sum of corrected areas: 922006019

Data Path : Z:\HPCHEM1\BNA F\DATA\BF050516\
 Data File : BF086719.D
 Acq On : 5 May 2016 21:45
 Operator : UM/SJ
 Sample : H2762-02
 Misc :
 ALS Vial : 23 Sample Multiplier: 1

Instrument :
 BNA_F
 ClientSampled :
 TEC-B1COMP

Quant Method : Z:\HPCHEM1\BNA F\METHODS\8270-BF050416.M
 Quant Title : ASP BNA STANDARDS FOR 5 POINT CALIBRATION

TIC Library : C:\DATABASE\NIST02.L
 TIC Integration Parameters: LSCINT.P



Data Path : Z:\HPCHEM1\BNA F\DATA\BF050516\
 Data File : BF086719.D
 Acq On : 5 May 2016 21:45
 Operator : UM/SJ
 Sample : H2762-02
 Misc :
 ALS Vial : 23 Sample Multiplier: 1

Instrument :
 BNA_F
 ClientSampleID :
 TEC-B1COMP

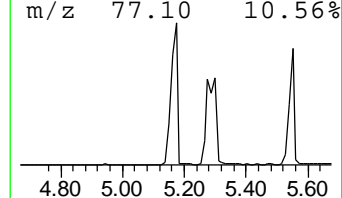
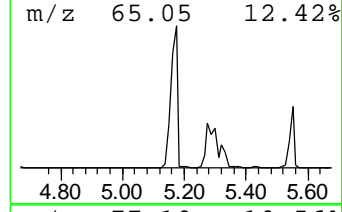
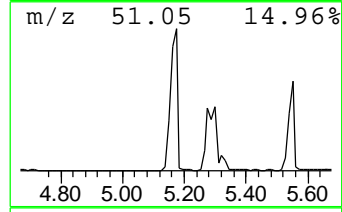
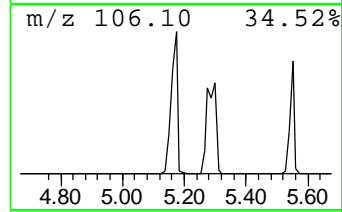
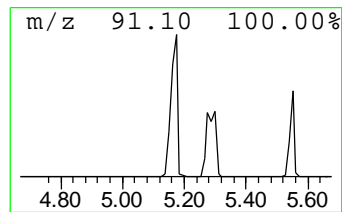
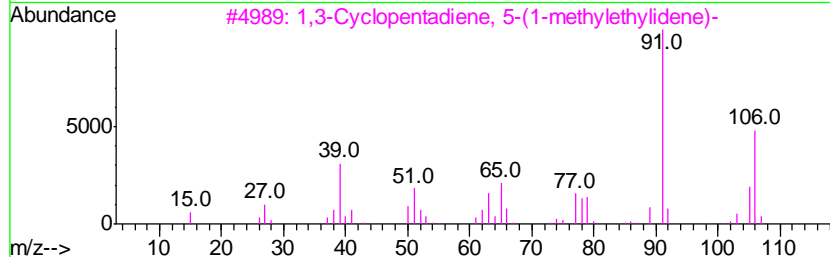
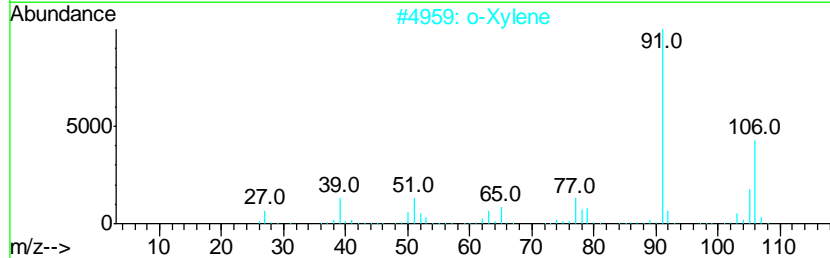
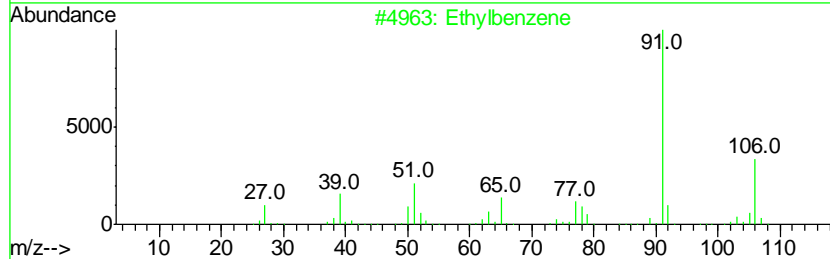
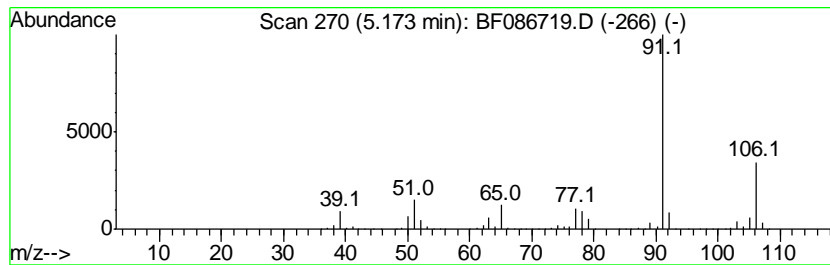
Quant Method : Z:\HPCHEM1\BNA F\METHODS\8270-BF050416.M
 Quant Title : ASP BNA STANDARDS FOR 5 POINT CALIBRATION

TIC Library : C:\DATABASE\NIST02.L
 TIC Integration Parameters: LSCINT.P

 Peak Number 1 Ethylbenzene Concentration Rank 4

R.T.	EstConc	Area	Relative to ISTD	R.T.
5.17	64.73 ng	11961100	1,4-Dichlorobenzene-d4	6.74

Hit#	of	Tentative ID	MW	MolForm	CAS#	Qual
1	5	Ethylbenzene	106	C8H10	000100-41-4	95
2		o-Xylene	106	C8H10	000095-47-6	91
3		1,3-Cyclopentadiene, 5-(1-methyl...	106	C8H10	002175-91-9	80
4		p-Xylene	106	C8H10	000106-42-3	80
5		Benzene, 1,3-dimethyl-	106	C8H10	000108-38-3	59



Data Path : Z:\HPCHEM1\BNA F\DATA\BF050516\
 Data File : BF086719.D
 Acq On : 5 May 2016 21:45
 Operator : UM/SJ
 Sample : H2762-02
 Misc :
 ALS Vial : 23 Sample Multiplier: 1

Instrument :
 BNA_F
 ClientSampleID :
 TEC-B1COMP

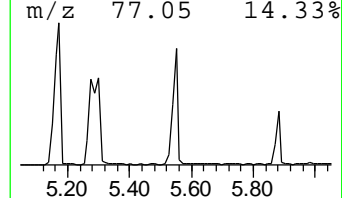
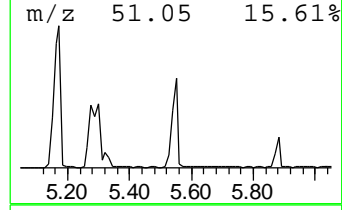
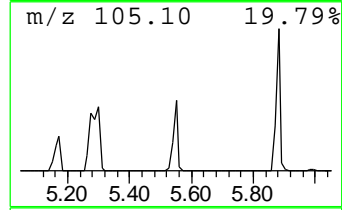
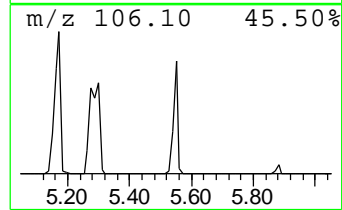
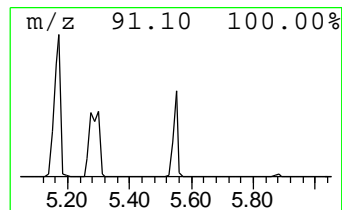
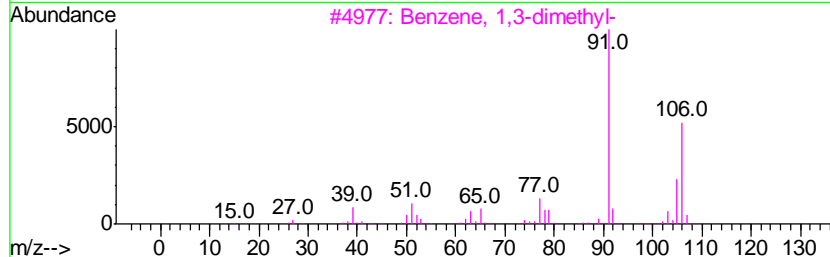
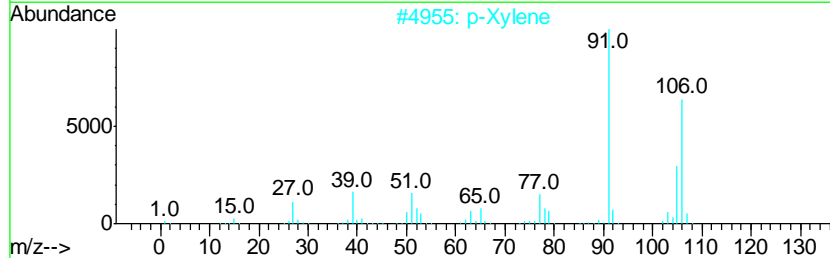
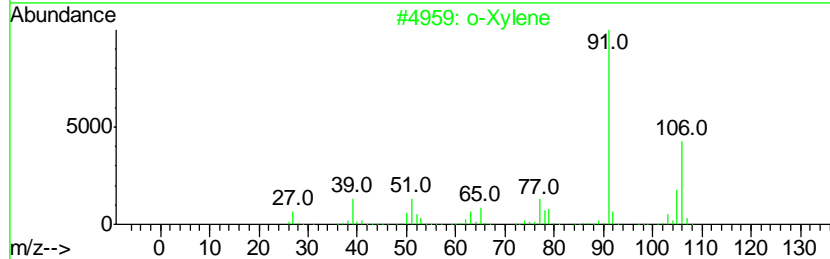
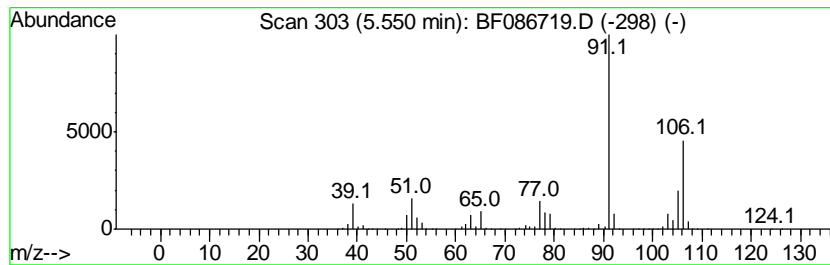
Quant Method : Z:\HPCHEM1\BNA F\METHODS\8270-BF050416.M
 Quant Title : ASP BNA STANDARDS FOR 5 POINT CALIBRATION

TIC Library : C:\DATABASE\NIST02.L
 TIC Integration Parameters: LSCINT.P

 Peak Number 2 o-Xylene Concentration Rank 9

R.T.	EstConc	Area	Relative to ISTD	R.T.
5.55	35.26 ng	6515720	1,4-Dichlorobenzene-d4	6.74

Hit#	of	Tentative ID	MW	MolForm	CAS#	Qual
1	5	o-Xylene	106	C8H10	000095-47-6	97
2		p-Xylene	106	C8H10	000106-42-3	95
3		Benzene, 1,3-dimethyl-	106	C8H10	000108-38-3	94
4		1,3-Cyclopentadiene, 5-(1-methyl...)	106	C8H10	002175-91-9	86
5		Ethylbenzene	106	C8H10	000100-41-4	81



Data Path : Z:\HPCHEM1\BNA F\DATA\BF050516\
 Data File : BF086719.D
 Acq On : 5 May 2016 21:45
 Operator : UM/SJ
 Sample : H2762-02
 Misc :
 ALS Vial : 23 Sample Multiplier: 1

Instrument :
 BNA_F
 ClientSampleId :
 TEC-B1COMP

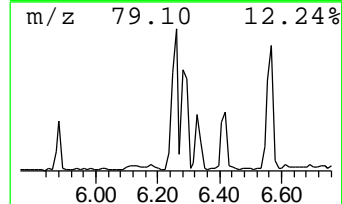
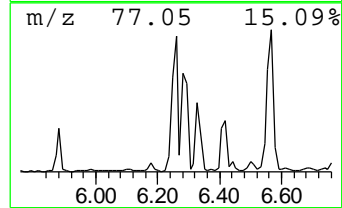
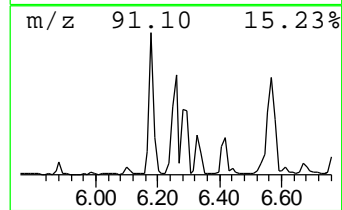
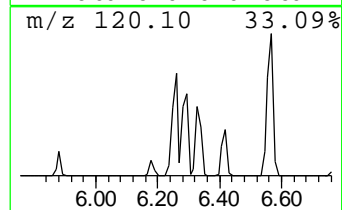
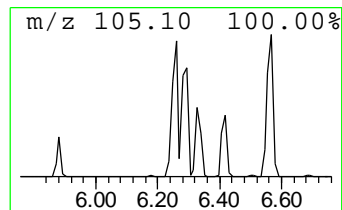
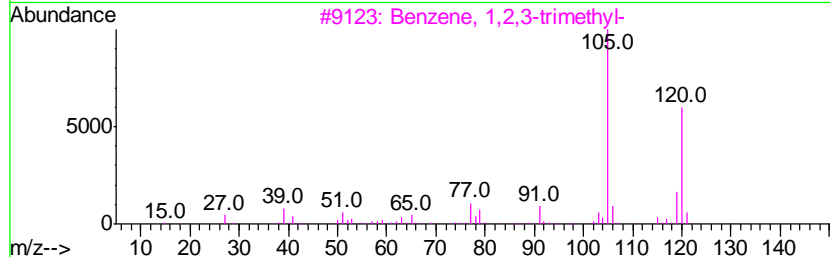
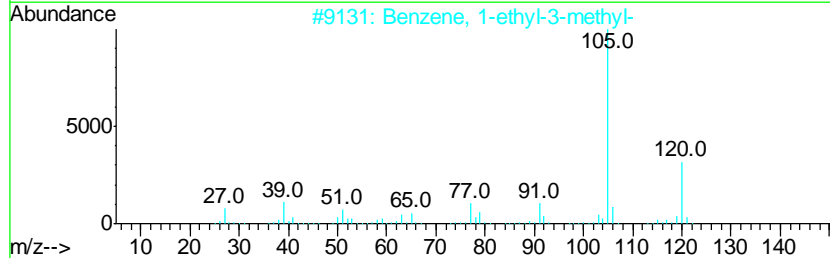
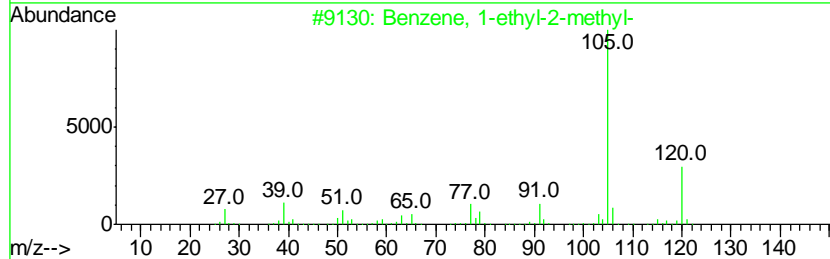
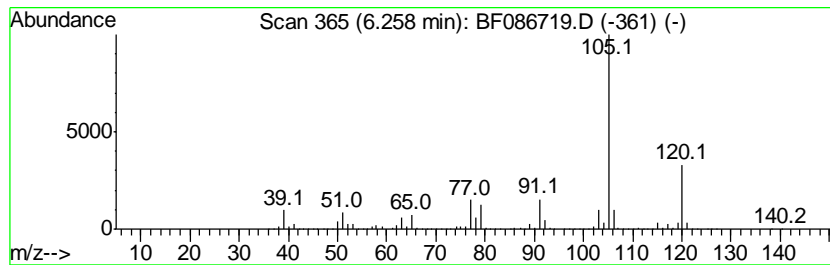
Quant Method : Z:\HPCHEM1\BNA F\METHODS\8270-BF050416.M
 Quant Title : ASP BNA STANDARDS FOR 5 POINT CALIBRATION

TIC Library : C:\DATABASE\NIST02.L
 TIC Integration Parameters: LSCINT.P

 Peak Number 3 Benzene, 1-ethyl-2-methyl- Concentration Rank 6

R.T.	EstConc	Area	Relative to ISTD	R.T.
6.26	54.85 ng	10135000	1,4-Dichlorobenzene-d4	6.74

Hit#	of	Tentative ID	MW	MolForm	CAS#	Qual
1	5	Benzene, 1-ethyl-2-methyl-	120	C9H12	000611-14-3	95
2		Benzene, 1-ethyl-3-methyl-	120	C9H12	000620-14-4	94
3		Benzene, 1,2,3-trimethyl-	120	C9H12	000526-73-8	91
4		Benzene, 1-ethyl-4-methyl-	120	C9H12	000622-96-8	91
5		Benzene, 1,3,5-trimethyl-	120	C9H12	000108-67-8	91



Data Path : Z:\HPCHEM1\BNA F\DATA\BF050516\
 Data File : BF086719.D
 Acq On : 5 May 2016 21:45
 Operator : UM/SJ
 Sample : H2762-02
 Misc :
 ALS Vial : 23 Sample Multiplier: 1

Instrument :
 BNA_F
 ClientSampleID :
 TEC-B1COMP

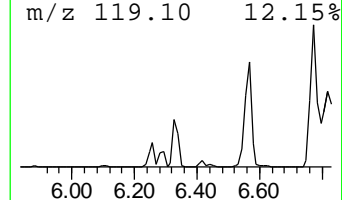
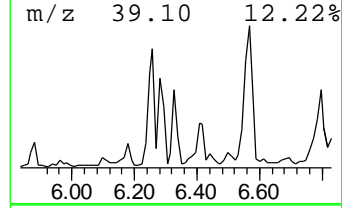
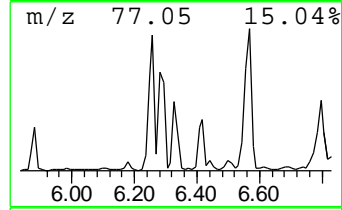
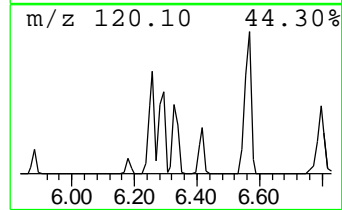
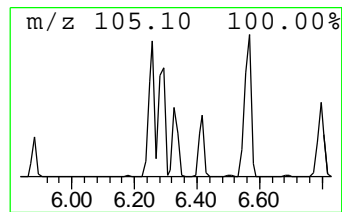
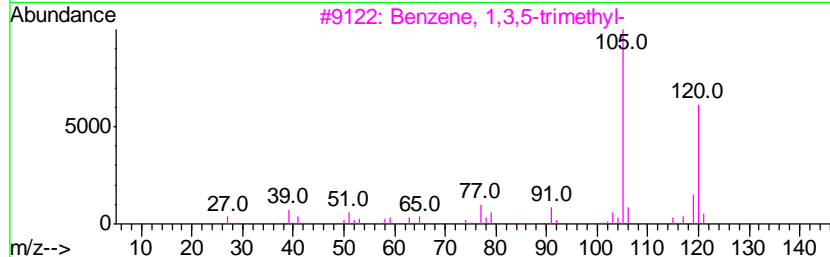
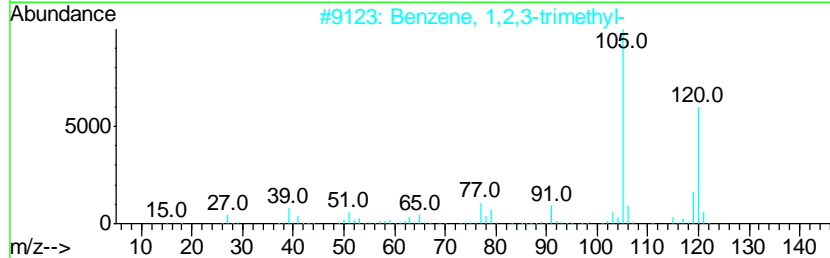
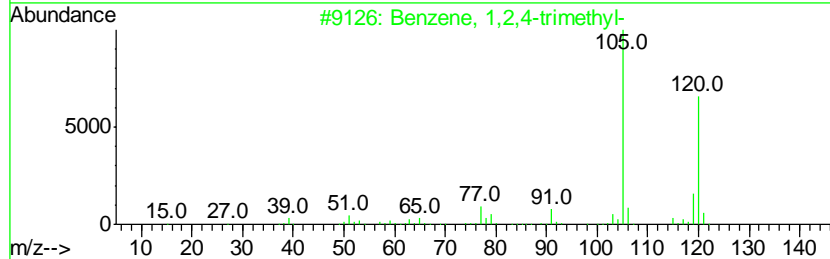
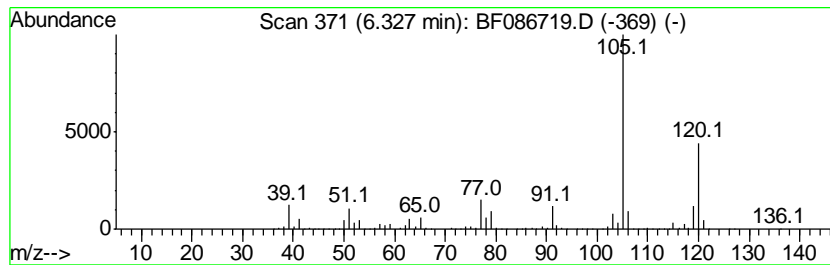
Quant Method : Z:\HPCHEM1\BNA F\METHODS\8270-BF050416.M
 Quant Title : ASP BNA STANDARDS FOR 5 POINT CALIBRATION

TIC Library : C:\DATABASE\NIST02.L
 TIC Integration Parameters: LSCINT.P

 Peak Number 5 Benzene, 1,2,4-trimethyl- Concentration Rank 13

R.T.	EstConc	Area	Relative to ISTD	R.T.
6.33	25.16 ng	4649660	1,4-Dichlorobenzene-d4	6.74

Hit#	of	Tentative ID	MW	MolForm	CAS#	Qual
1	5	Benzene, 1,2,4-trimethyl-	120	C9H12	000095-63-6	95
2		Benzene, 1,2,3-trimethyl-	120	C9H12	000526-73-8	95
3		Benzene, 1,3,5-trimethyl-	120	C9H12	000108-67-8	94
4		Benzene, 1-ethyl-2-methyl-	120	C9H12	000611-14-3	87
5		Benzene, 1-ethyl-3-methyl-	120	C9H12	000620-14-4	87



Data Path : Z:\HPCHEM1\BNA F\DATA\BF050516\
 Data File : BF086719.D
 Acq On : 5 May 2016 21:45
 Operator : UM/SJ
 Sample : H2762-02
 Misc :
 ALS Vial : 23 Sample Multiplier: 1

Instrument :
 BNA_F
 ClientSampleID :
 TEC-B1COMP

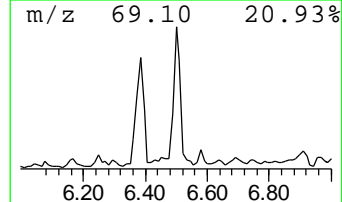
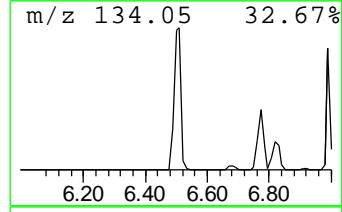
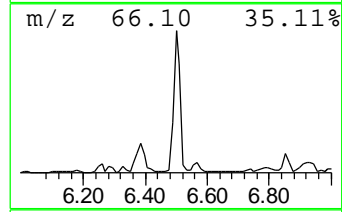
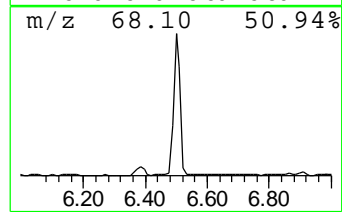
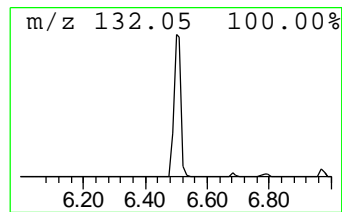
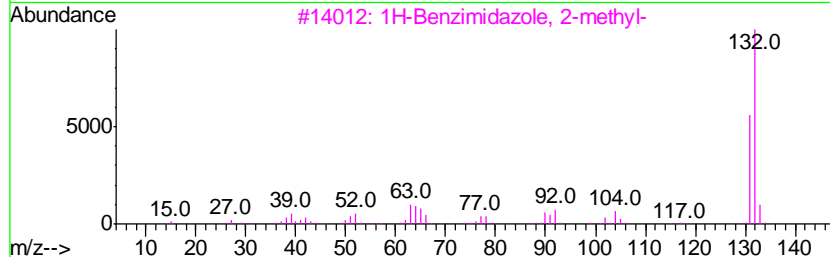
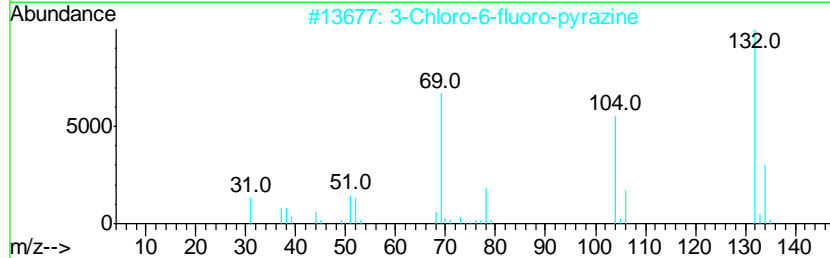
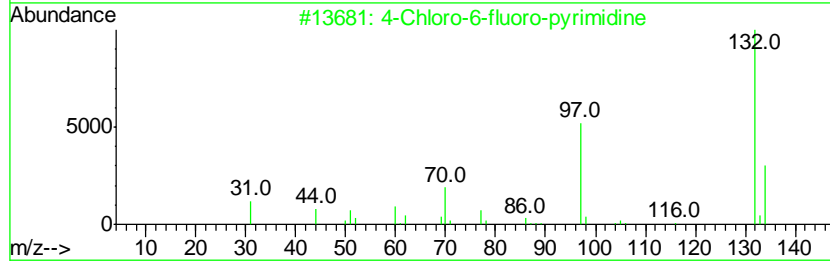
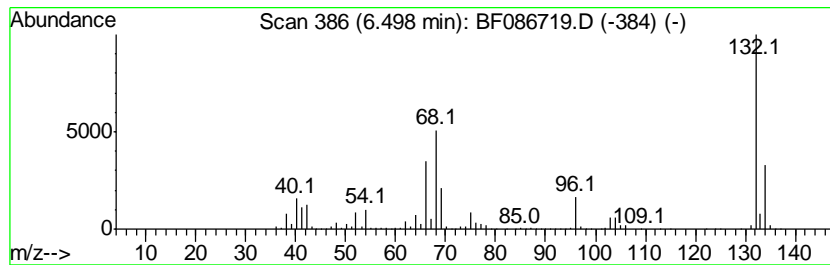
Quant Method : Z:\HPCHEM1\BNA F\METHODS\8270-BF050416.M
 Quant Title : ASP BNA STANDARDS FOR 5 POINT CALIBRATION

TIC Library : C:\DATABASE\NIST02.L
 TIC Integration Parameters: LSCINT.P

 Peak Number 6 unknown6.50 Concentration Rank 11

R.T.	EstConc	Area	Relative to ISTD	R.T.
6.50	31.39 ng	5801020	1,4-Dichlorobenzene-d4	6.74

Hit#	of	Tentative ID	MW	MolForm	CAS#	Qual
1	5	4-Chloro-6-fluoro-pyrimidine	132	C4H2ClFN2	051422-01-6	27
2		3-Chloro-6-fluoro-pyrazine	132	C4H2ClFN2	1000146-10-7	27
3		1H-Benzimidazole, 2-methyl-	132	C8H8N2	000615-15-6	22
4		Tranvlcypromine-propionyl	189	C12H15NO	1000123-86-3	22
5		Pyrazolo(2,3-a)pyridine, 7-methyl-	132	C8H8N2	034760-58-2	22



Data Path : Z:\HPCHEM1\BNA F\DATA\BF050516\
 Data File : BF086719.D
 Acq On : 5 May 2016 21:45
 Operator : UM/SJ
 Sample : H2762-02
 Misc :
 ALS Vial : 23 Sample Multiplier: 1

Instrument :
 BNA_F
 ClientSampleID :
 TEC-B1COMP

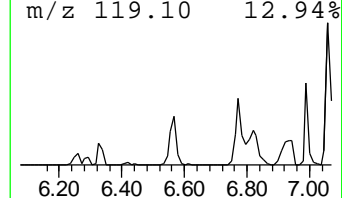
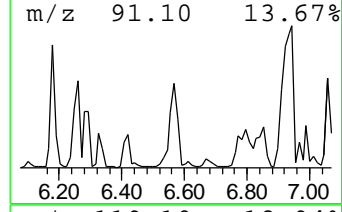
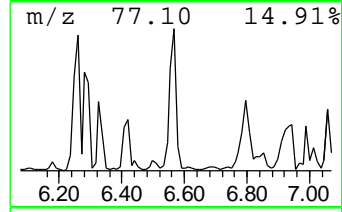
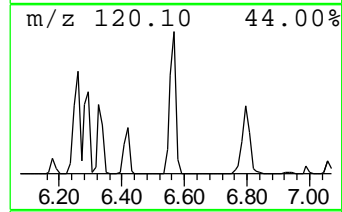
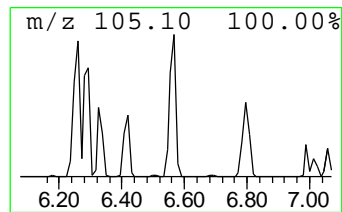
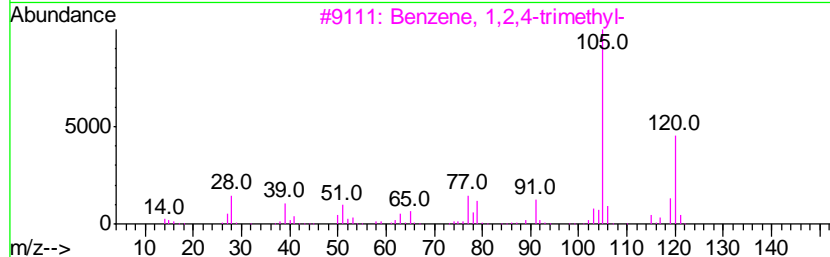
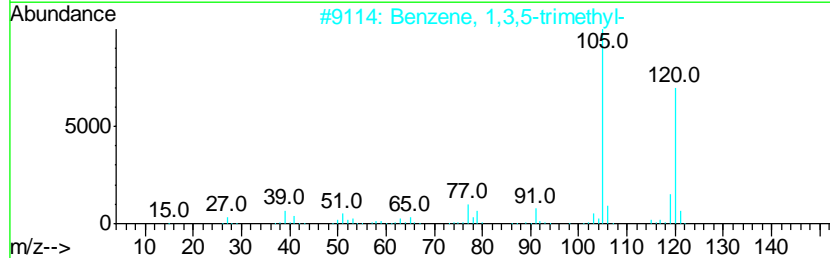
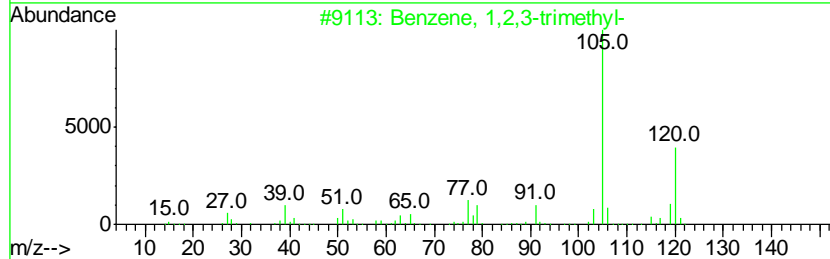
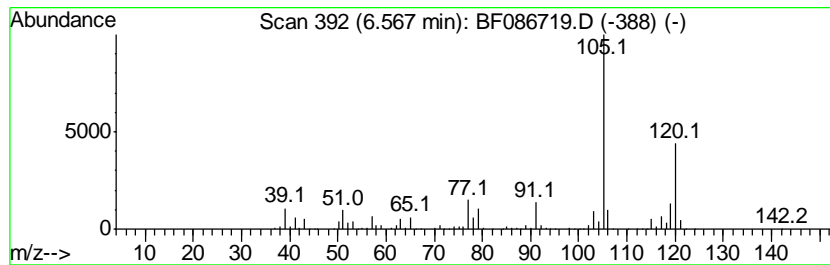
Quant Method : Z:\HPCHEM1\BNA F\METHODS\8270-BF050416.M
 Quant Title : ASP BNA STANDARDS FOR 5 POINT CALIBRATION

TIC Library : C:\DATABASE\NIST02.L
 TIC Integration Parameters: LSCINT.P

 Peak Number 7 Benzene, 1,2,3-trimethyl- Concentration Rank 2

R.T.	EstConc	Area	Relative to ISTD	R.T.
6.57	79.47 ng	14684700	1,4-Dichlorobenzene-d4	6.74

Hit#	of	Tentative ID	MW	MolForm	CAS#	Qual
1	5	Benzene, 1,2,3-trimethyl-	120	C9H12	000526-73-8	94
2		Benzene, 1,3,5-trimethyl-	120	C9H12	000108-67-8	93
3		Benzene, 1,2,4-trimethyl-	120	C9H12	000095-63-6	93
4		Benzene, 1-ethyl-3-methyl-	120	C9H12	000620-14-4	90
5		Benzene, 1-ethyl-4-methyl-	120	C9H12	000622-96-8	90



Data Path : Z:\HPCHEM1\BNA F\DATA\BF050516\
 Data File : BF086719.D
 Acq On : 5 May 2016 21:45
 Operator : UM/SJ
 Sample : H2762-02
 Misc :
 ALS Vial : 23 Sample Multiplier: 1

Instrument :
 BNA_F
 ClientSampleID :
 TEC-B1COMP

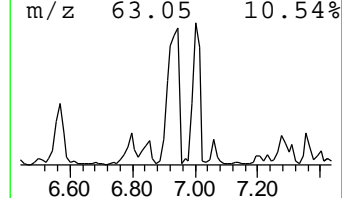
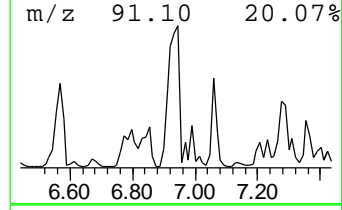
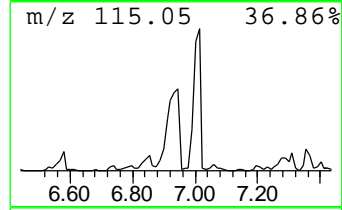
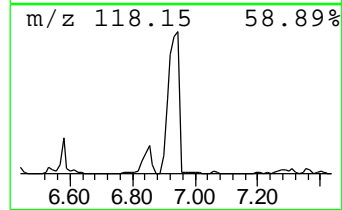
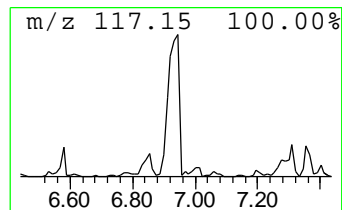
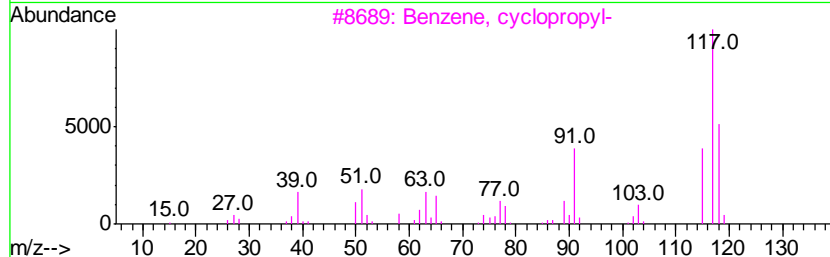
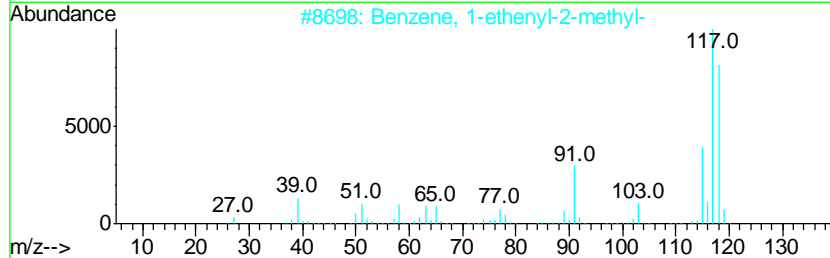
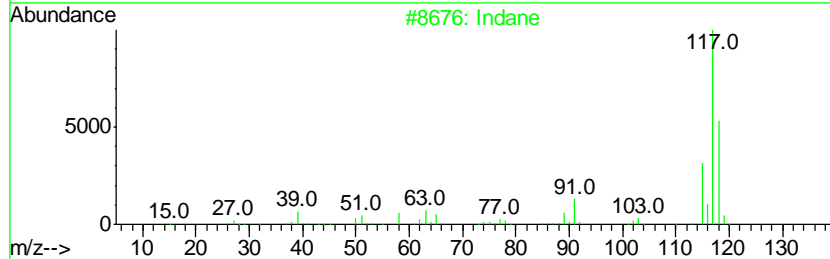
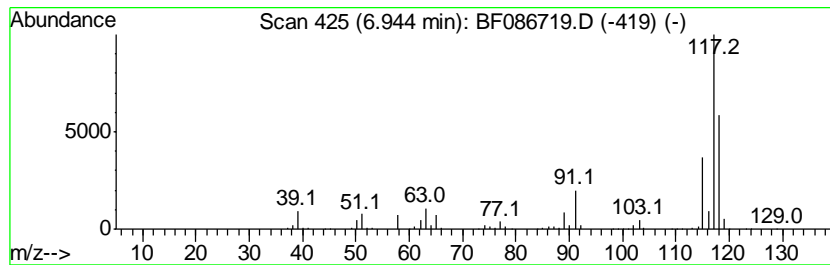
Quant Method : Z:\HPCHEM1\BNA F\METHODS\8270-BF050416.M
 Quant Title : ASP BNA STANDARDS FOR 5 POINT CALIBRATION

TIC Library : C:\DATABASE\NIST02.L
 TIC Integration Parameters: LSCINT.P

 Peak Number 9 Indane Concentration Rank 1

R.T.	EstConc	Area	Relative to ISTD	R.T.
6.94	154.43 ng	28536400	1,4-Dichlorobenzene-d4	6.74

Hit#	of	Tentative ID	MW	MolForm	CAS#	Qual
1	5	Indane	118	C9H10	000496-11-7	94
2		Benzene, 1-ethenyl-2-methyl-	118	C9H10	000611-15-4	90
3		Benzene, cyclopropyl-	118	C9H10	000873-49-4	81
4		Benzene, 2-propenyl-	118	C9H10	000300-57-2	80
5		Tetracyclo[3.3.1.0(2,8).0(4,6)]-...	118	C9H10	1000191-13-7	72



Data Path : Z:\HPCHEM1\BNA F\DATA\BF050516\
 Data File : BF086719.D
 Acq On : 5 May 2016 21:45
 Operator : UM/SJ
 Sample : H2762-02
 Misc :
 ALS Vial : 23 Sample Multiplier: 1

Instrument :
 BNA_F
 ClientSampleID :
 TEC-B1COMP

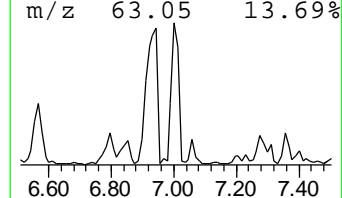
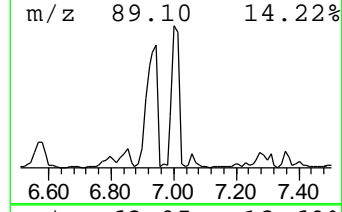
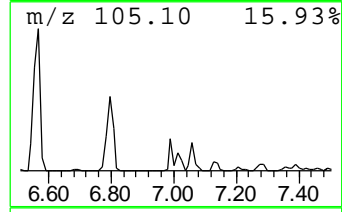
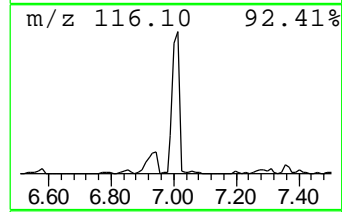
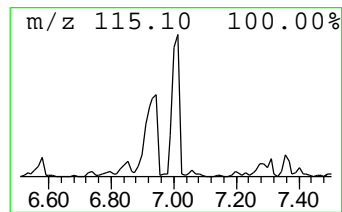
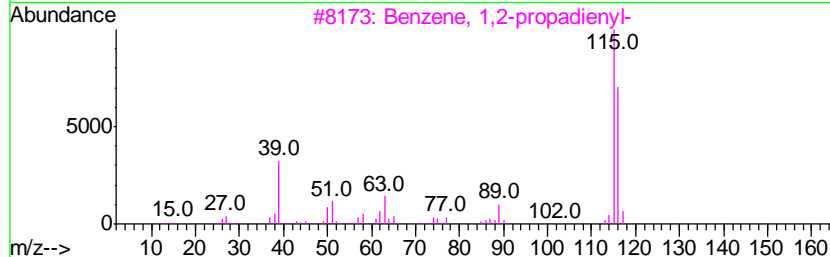
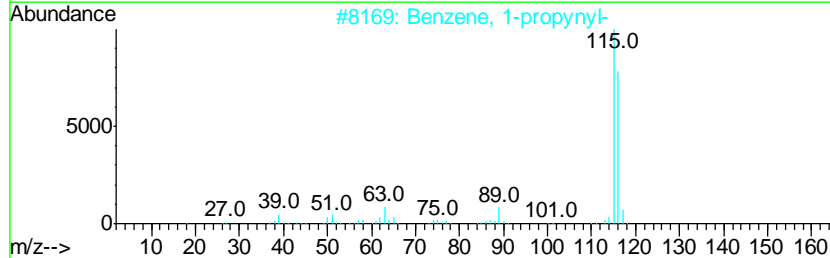
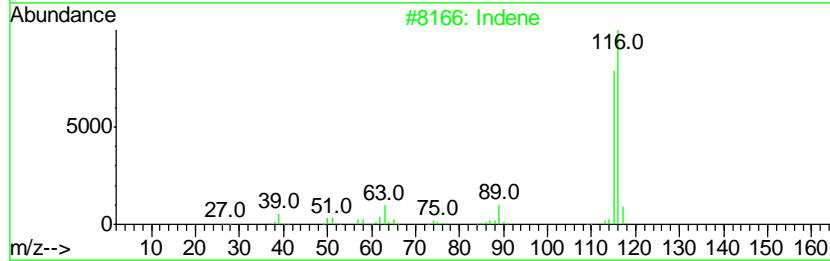
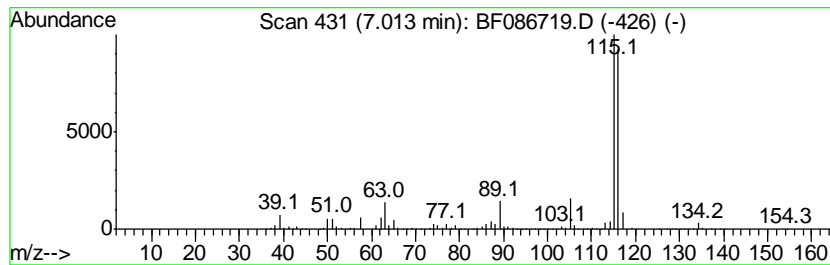
Quant Method : Z:\HPCHEM1\BNA F\METHODS\8270-BF050416.M
 Quant Title : ASP BNA STANDARDS FOR 5 POINT CALIBRATION

TIC Library : C:\DATABASE\NIST02.L
 TIC Integration Parameters: LSCINT.P

 Peak Number 10 Indene Concentration Rank 3

R.T.	EstConc	Area	Relative to ISTD	R.T.
7.01	73.28 ng	13541100	1,4-Dichlorobenzene-d4	6.74

Hit#	of	Tentative ID	MW	MolForm	CAS#	Qual
1	5	Indene	116	C9H8	000095-13-6	97
2		Benzene, 1-propynyl-	116	C9H8	000673-32-5	91
3		Benzene, 1,2-propadienyl-	116	C9H8	002327-99-3	90
4		Benzene, 1-ethynyl-2-methyl-	116	C9H8	000766-47-2	87
5		Benzene, 1-ethynyl-4-methyl-	116	C9H8	000766-97-2	87



Data Path : Z:\HPCHEM1\BNA F\DATA\BF050516\
 Data File : BF086719.D
 Acq On : 5 May 2016 21:45
 Operator : UM/SJ
 Sample : H2762-02
 Misc :
 ALS Vial : 23 Sample Multiplier: 1

Instrument :
 BNA_F
 ClientSampleID :
 TEC-B1COMP

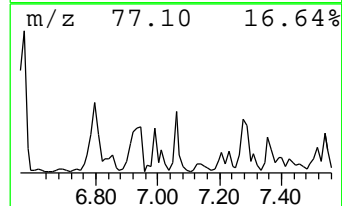
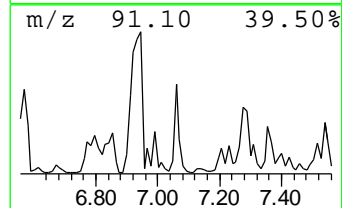
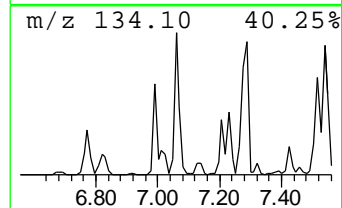
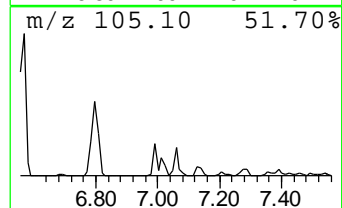
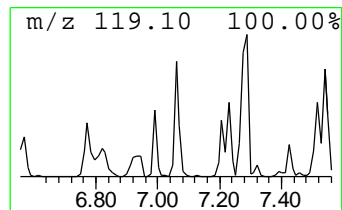
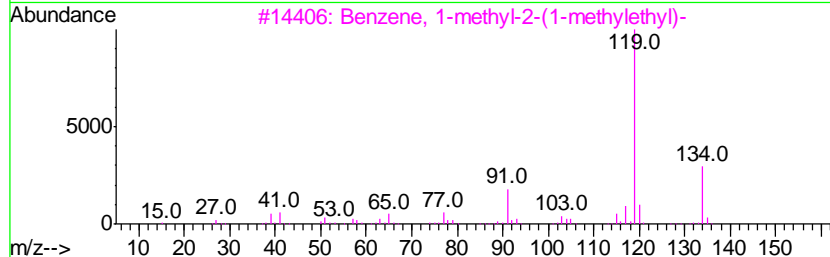
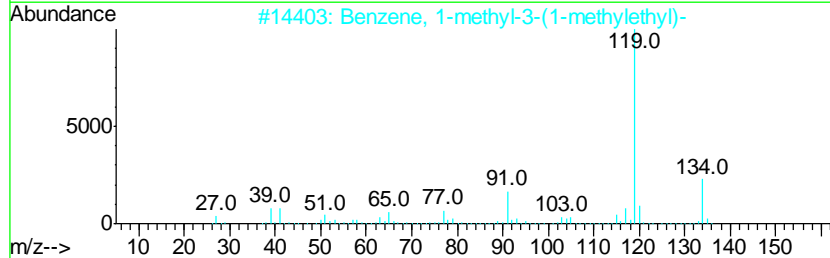
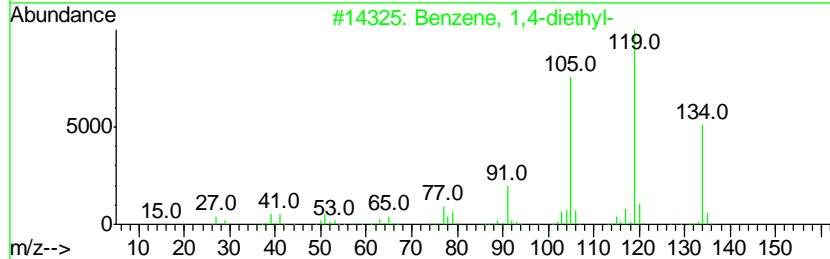
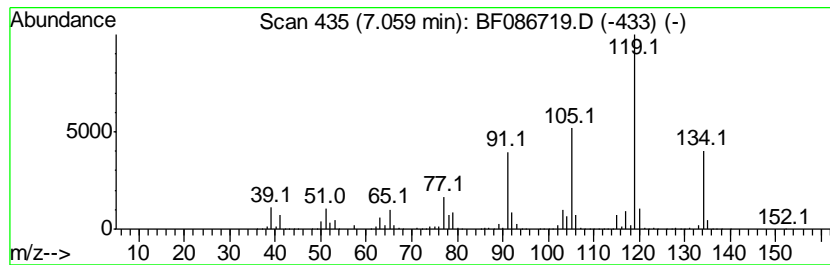
Quant Method : Z:\HPCHEM1\BNA F\METHODS\8270-BF050416.M
 Quant Title : ASP BNA STANDARDS FOR 5 POINT CALIBRATION

TIC Library : C:\DATABASE\NIST02.L
 TIC Integration Parameters: LSCINT.P

 Peak Number 11 Benzene, 1,4-diethyl- Concentration Rank 12

R.T.	EstConc	Area	Relative to ISTD	R.T.
7.06	27.93 ng	5161180	1,4-Dichlorobenzene-d4	6.74

Hit#	of	Tentative ID	MW	MolForm	CAS#	Qual
1	5	Benzene, 1,4-diethyl-	134	C10H14	000105-05-5	94
2		Benzene, 1-methyl-3-(1-methyleth...	134	C10H14	000535-77-3	93
3		Benzene, 1-methyl-2-(1-methyleth...	134	C10H14	000527-84-4	93
4		1,3-Cyclopentadiene, 1,2,3,4-tet...	134	C10H14	076089-59-3	91
5		Benzene, 1,2,3,4-tetramethyl-	134	C10H14	000488-23-3	91



Data Path : Z:\HPCHEM1\BNA F\DATA\BF050516\
 Data File : BF086719.D
 Acq On : 5 May 2016 21:45
 Operator : UM/SJ
 Sample : H2762-02
 Misc :
 ALS Vial : 23 Sample Multiplier: 1

Instrument :
 BNA_F
 ClientSampleId :
 TEC-B1COMP

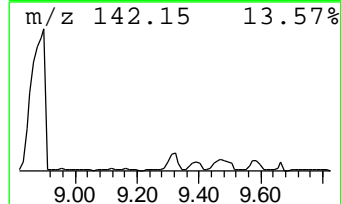
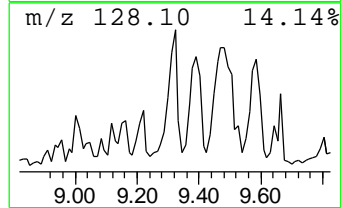
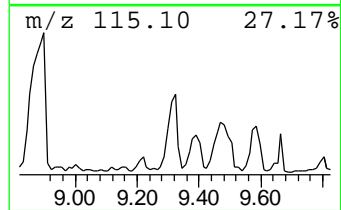
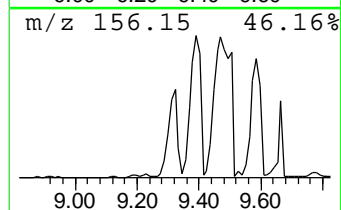
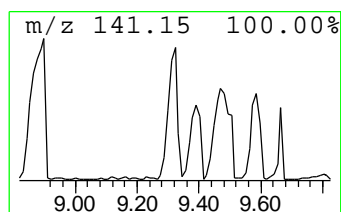
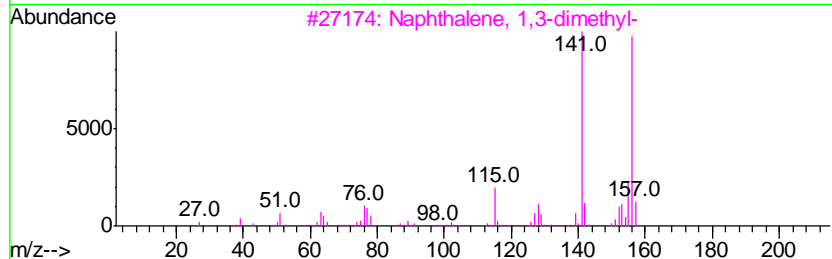
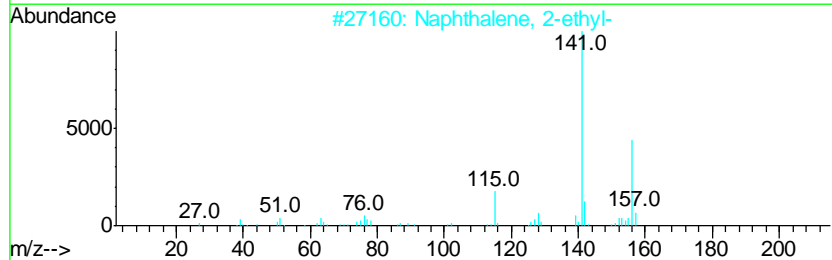
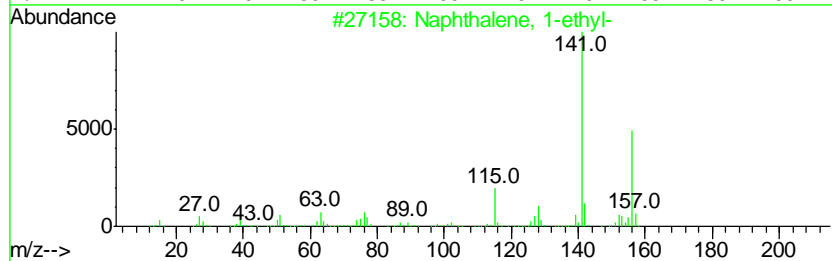
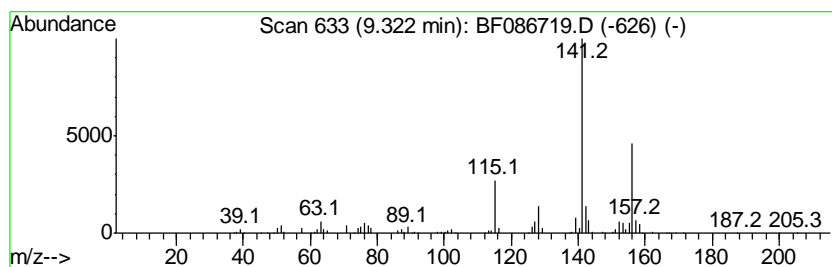
Quant Method : Z:\HPCHEM1\BNA F\METHODS\8270-BF050416.M
 Quant Title : ASP BNA STANDARDS FOR 5 POINT CALIBRATION

TIC Library : C:\DATABASE\NIST02.L
 TIC Integration Parameters: LSCINT.P

 Peak Number 12 Naphthalene, 1-ethyl- Concentration Rank 16

R.T.	EstConc	Area	Relative to ISTD	R.T.
9.32	21.67 ng	16407800	Acenaphthene-d10	9.79

Hit#	of	Tentative ID	MW	MolForm	CAS#	Qual
1	5	Naphthalene, 1-ethyl-	156	C12H12	001127-76-0	95
2		Naphthalene, 2-ethyl-	156	C12H12	000939-27-5	94
3		Naphthalene, 1,3-dimethyl-	156	C12H12	000575-41-7	90
4		2-Thiophenecarboxylic acid, 5-et...	156	C7H8O2S	023229-72-3	45
5		Methyl phenylphosphinic acid	156	C7H9O2P	004271-13-0	42



Data Path : Z:\HPCHEM1\BNA F\DATA\BF050516\
 Data File : BF086719.D
 Acq On : 5 May 2016 21:45
 Operator : UM/SJ
 Sample : H2762-02
 Misc :
 ALS Vial : 23 Sample Multiplier: 1

Instrument :
 BNA_F
 ClientSampleID :
 TEC-B1COMP

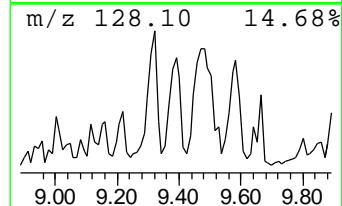
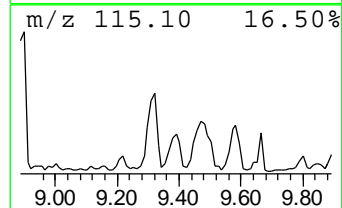
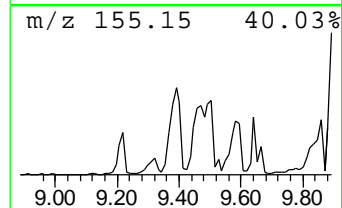
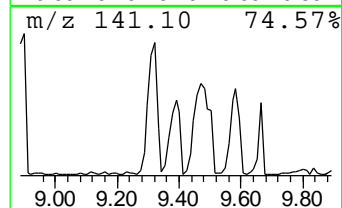
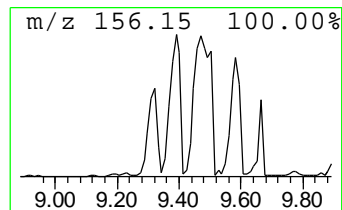
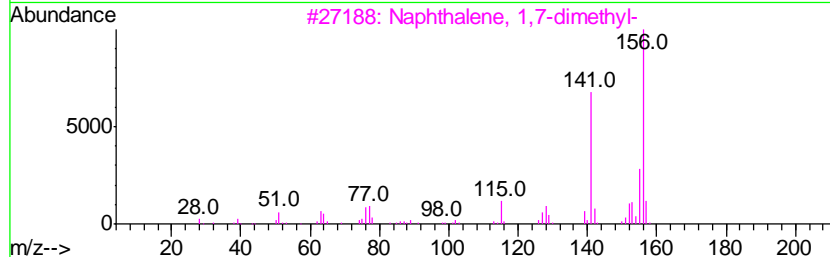
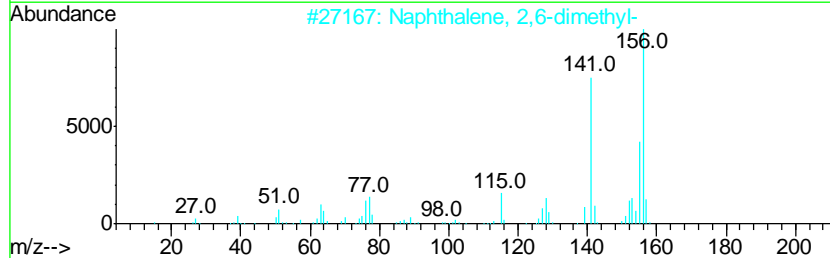
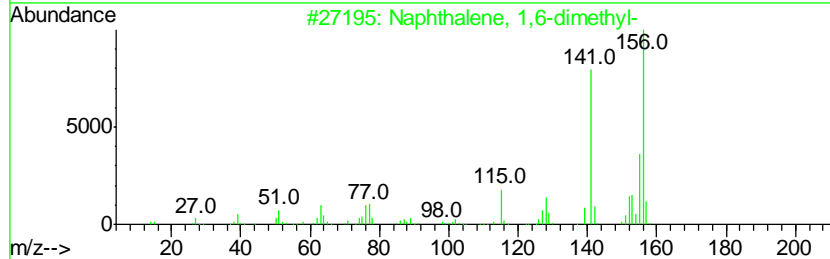
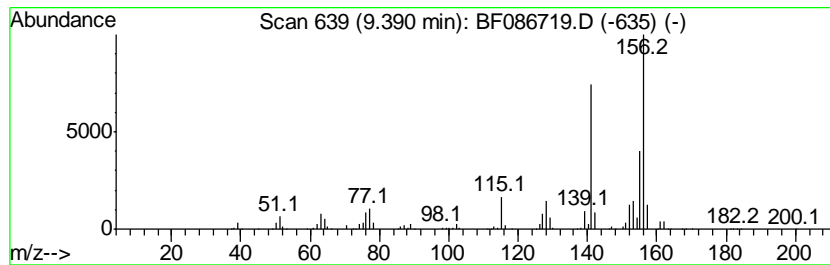
Quant Method : Z:\HPCHEM1\BNA F\METHODS\8270-BF050416.M
 Quant Title : ASP BNA STANDARDS FOR 5 POINT CALIBRATION

TIC Library : C:\DATABASE\NIST02.L
 TIC Integration Parameters: LSCINT.P

 Peak Number 13 Naphthalene, 1,6-dimethyl- Concentration Rank 14

R.T.	EstConc	Area	Relative to ISTD	R.T.
9.39	24.61 ng	18634300	Acenaphthene-d10	9.79

Hit#	of	Tentative ID	MW	MolForm	CAS#	Qual
1	5	Naphthalene, 1,6-dimethyl-	156	C12H12	000575-43-9	98
2		Naphthalene, 2,6-dimethyl-	156	C12H12	000581-42-0	98
3		Naphthalene, 1,7-dimethyl-	156	C12H12	000575-37-1	97
4		Naphthalene, 1,3-dimethyl-	156	C12H12	000575-41-7	96
5		Naphthalene, 1,2-dimethyl-	156	C12H12	000573-98-8	96



Data Path : Z:\HPCHEM1\BNA F\DATA\BF050516\
 Data File : BF086719.D
 Acq On : 5 May 2016 21:45
 Operator : UM/SJ
 Sample : H2762-02
 Misc :
 ALS Vial : 23 Sample Multiplier: 1

Instrument :
 BNA_F
 ClientSampled :
 TEC-B1COMP

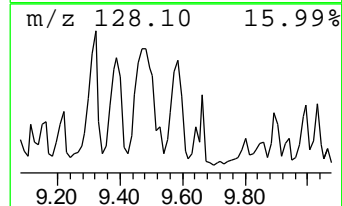
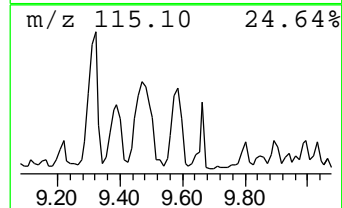
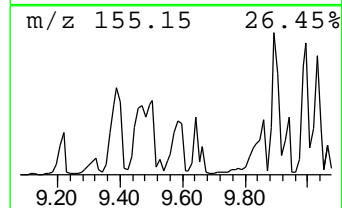
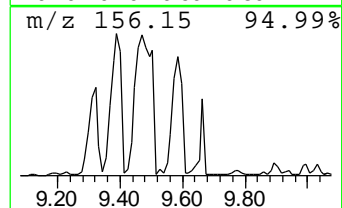
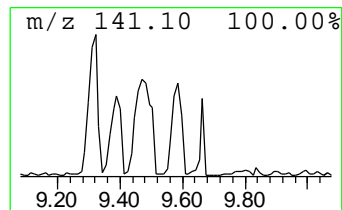
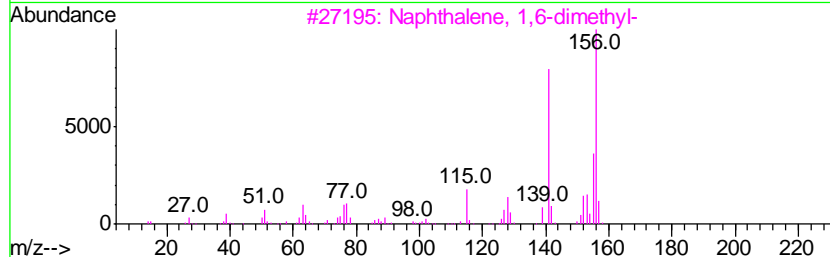
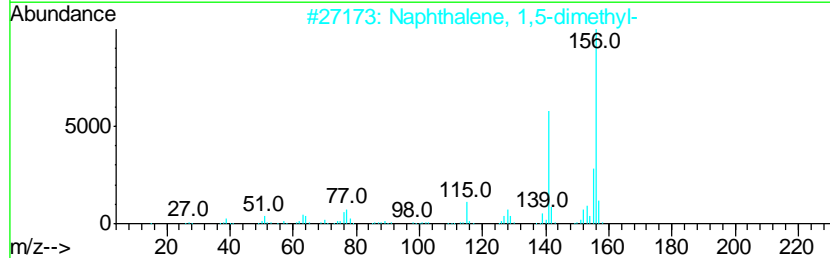
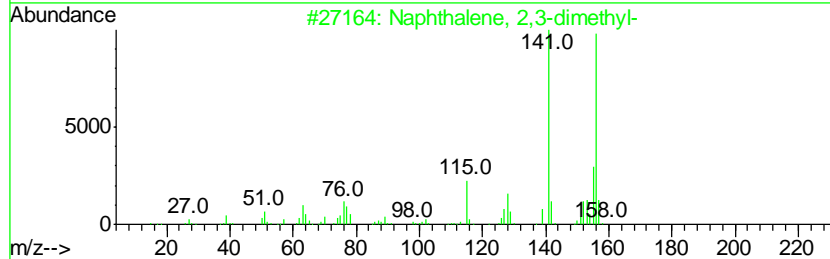
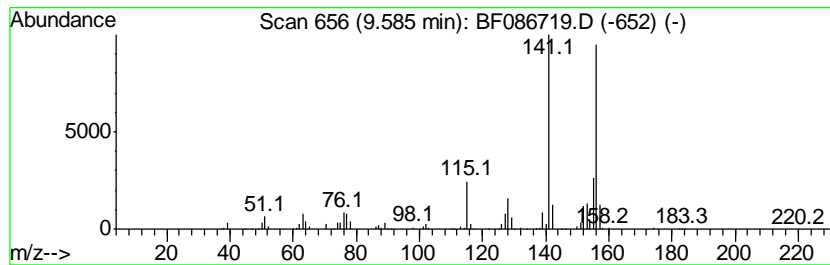
Quant Method : Z:\HPCHEM1\BNA F\METHODS\8270-BF050416.M
 Quant Title : ASP BNA STANDARDS FOR 5 POINT CALIBRATION

TIC Library : C:\DATABASE\NIST02.L
 TIC Integration Parameters: LSCINT.P

 Peak Number 14 Naphthalene, 2,3-dimethyl- Concentration Rank 19

R.T.	EstConc	Area	Relative to ISTD	R.T.
9.58	19.32 ng	14627100	Acenaphthene-d10	9.79

Hit#	of	Tentative ID	MW	MolForm	CAS#	Qual
1	5	Naphthalene, 2,3-dimethyl-	156	C12H12	000581-40-8	98
2		Naphthalene, 1,5-dimethyl-	156	C12H12	000571-61-9	97
3		Naphthalene, 1,6-dimethyl-	156	C12H12	000575-43-9	97
4		Naphthalene, 1,7-dimethyl-	156	C12H12	000575-37-1	96
5		Naphthalene, 1,3-dimethyl-	156	C12H12	000575-41-7	96



Data Path : Z:\HPCHEM1\BNA F\DATA\BF050516\
 Data File : BF086719.D
 Acq On : 5 May 2016 21:45
 Operator : UM/SJ
 Sample : H2762-02
 Misc :
 ALS Vial : 23 Sample Multiplier: 1

Instrument :
 BNA_F
 ClientSampleId :
 TEC-B1COMP

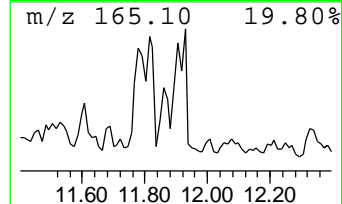
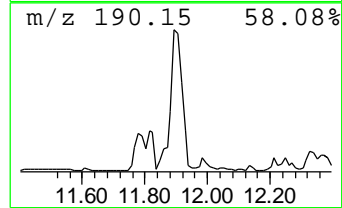
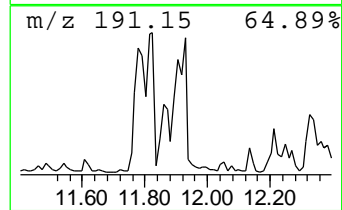
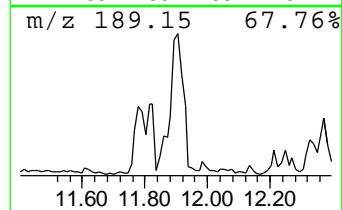
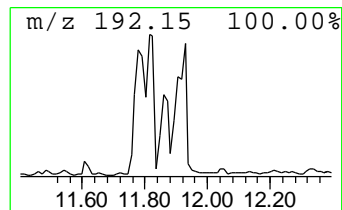
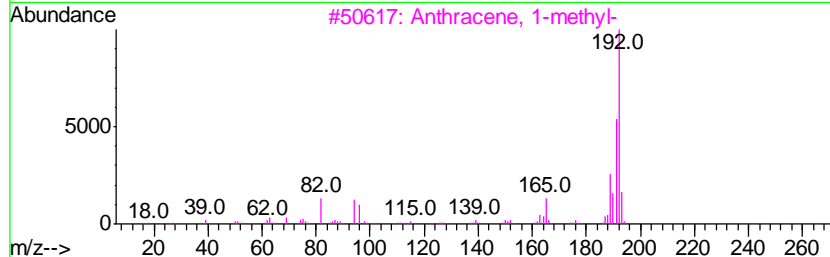
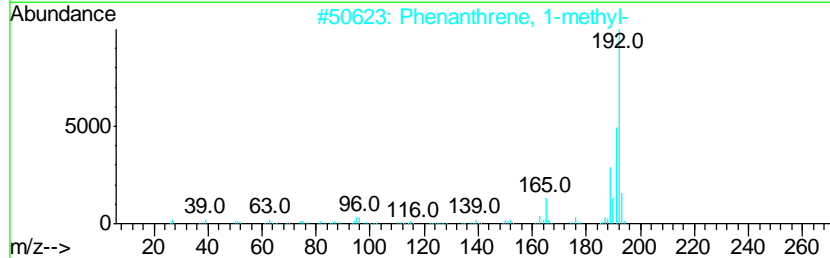
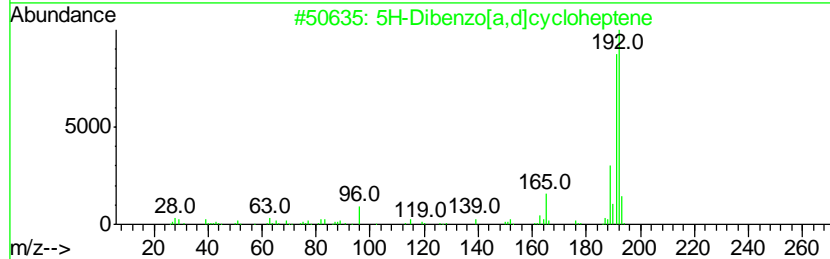
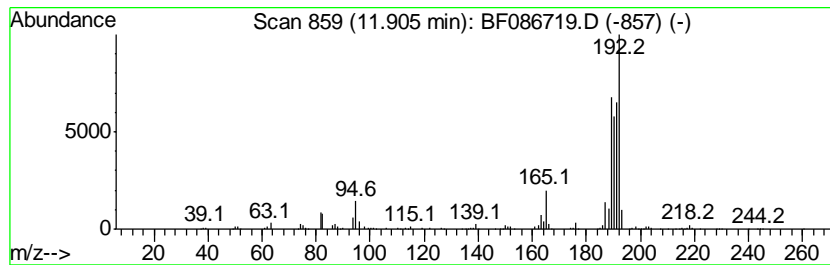
Quant Method : Z:\HPCHEM1\BNA F\METHODS\8270-BF050416.M
 Quant Title : ASP BNA STANDARDS FOR 5 POINT CALIBRATION

TIC Library : C:\DATABASE\NIST02.L
 TIC Integration Parameters: LSCINT.P

 Peak Number 15 5H-Dibenzo[a,d]cycloheptene Concentration Rank 18

R.T.	EstConc	Area	Relative to ISTD	R.T.
11.90	19.44 ng	15288700	Phenanthrene-d10	11.28

Hit#	of	Tentative ID	MW	MolForm	CAS#	Qual
1	5	5H-Dibenzo[a,d]cycloheptene	192	C15H12	000256-81-5	55
2		Phenanthrene, 1-methyl-	192	C15H12	000832-69-9	49
3		Anthracene, 1-methyl-	192	C15H12	000610-48-0	49
4		Phenanthrene, 2-methyl-	192	C15H12	002531-84-2	49
5		5-Bromo-2-thiophenecarboxaldehyde	190	C5H3BrOS	004701-17-1	49



Data Path : Z:\HPCHEM1\BNA F\DATA\BF050516\
 Data File : BF086719.D
 Acq On : 5 May 2016 21:45
 Operator : UM/SJ
 Sample : H2762-02
 Misc :
 ALS Vial : 23 Sample Multiplier: 1

Instrument :
 BNA_F
 ClientSampleID :
 TEC-B1COMP

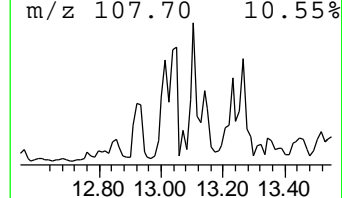
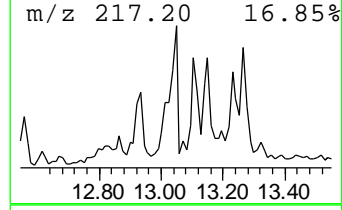
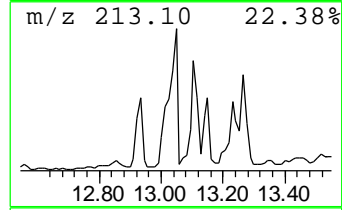
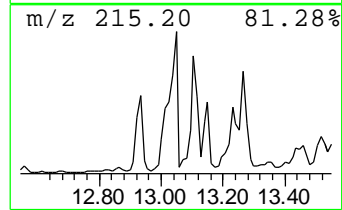
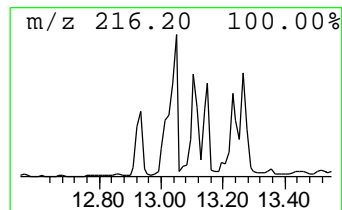
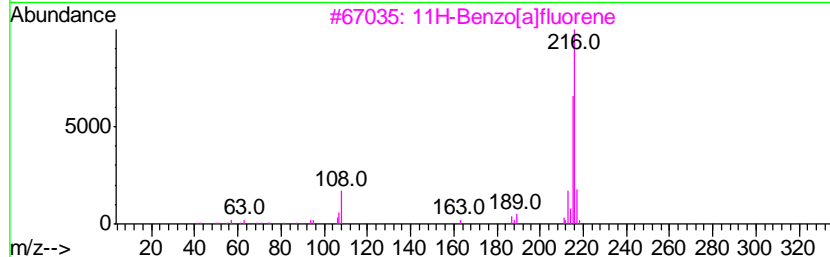
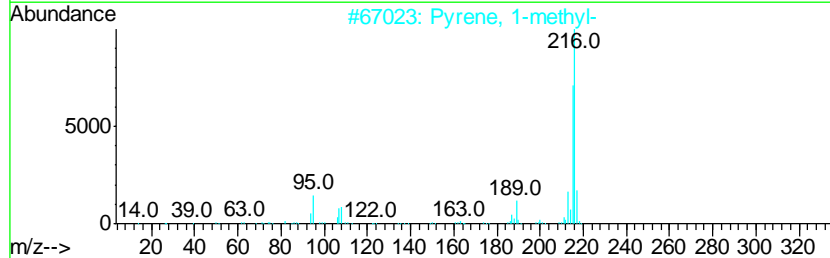
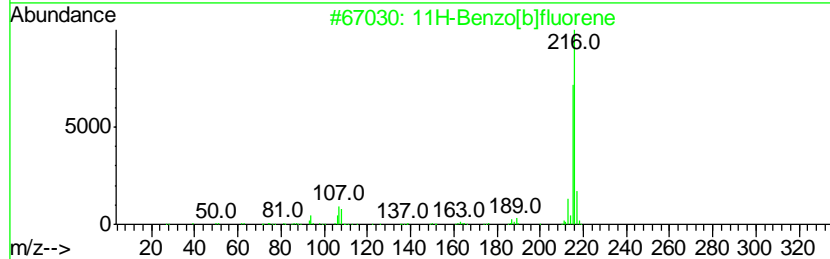
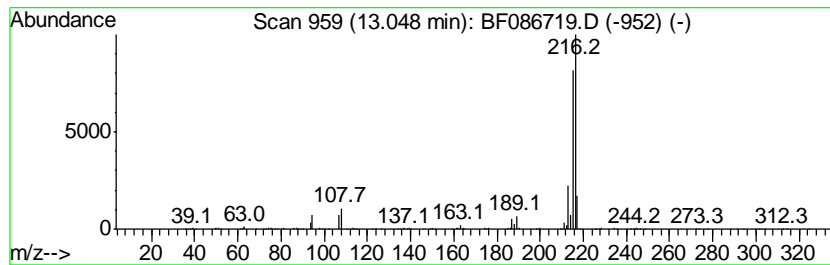
Quant Method : Z:\HPCHEM1\BNA F\METHODS\8270-BF050416.M
 Quant Title : ASP BNA STANDARDS FOR 5 POINT CALIBRATION

TIC Library : C:\DATABASE\NIST02.L
 TIC Integration Parameters: LSCINT.P

 Peak Number 17 11H-Benzo[b]fluorene Concentration Rank 10

R.T.	EstConc	Area	Relative to ISTD	R.T.
13.05	33.87 ng	9434680	Chrysene-d12	13.92

Hit#	of	Tentative ID	MW	MolForm	CAS#	Qual
1	5	11H-Benzo[b]fluorene	216	C17H12	000243-17-4	94
2		Pyrene, 1-methyl-	216	C17H12	002381-21-7	93
3		11H-Benzo[a]fluorene	216	C17H12	000238-84-6	91
4		Fluoranthene, 2-methyl-	216	C17H12	033543-31-6	91
5		7H-Benzo[c]fluorene	216	C17H12	000205-12-9	72



Data Path : Z:\HPCHEM1\BNA F\DATA\BF050516\
 Data File : BF086719.D
 Acq On : 5 May 2016 21:45
 Operator : UM/SJ
 Sample : H2762-02
 Misc :
 ALS Vial : 23 Sample Multiplier: 1

Instrument :
 BNA_F
 ClientSampleId :
 TEC-B1COMP

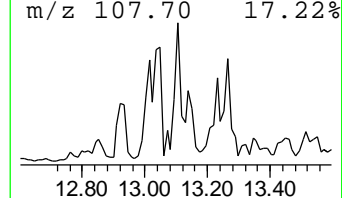
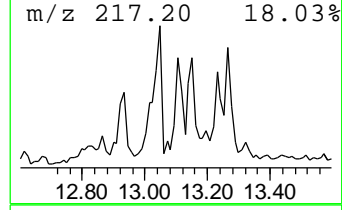
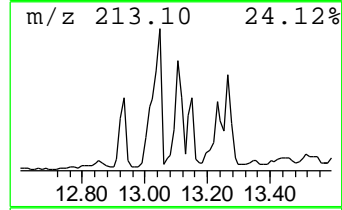
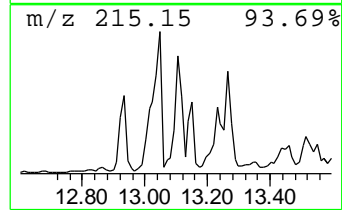
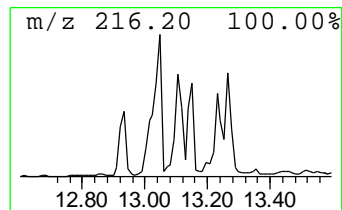
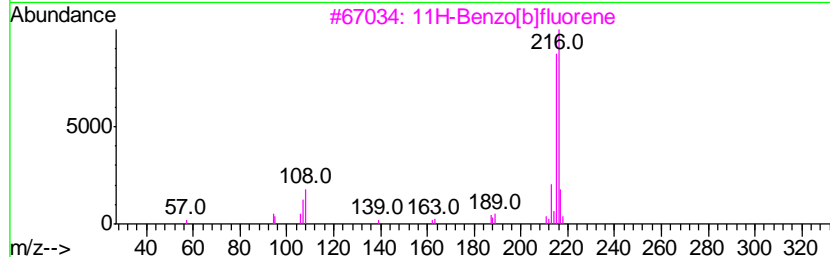
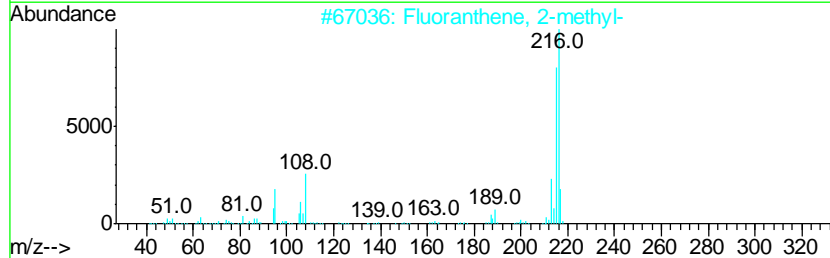
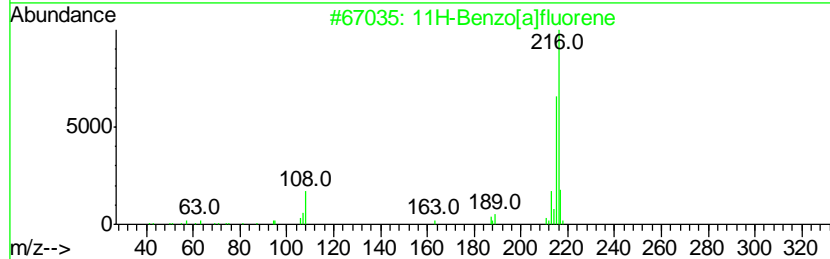
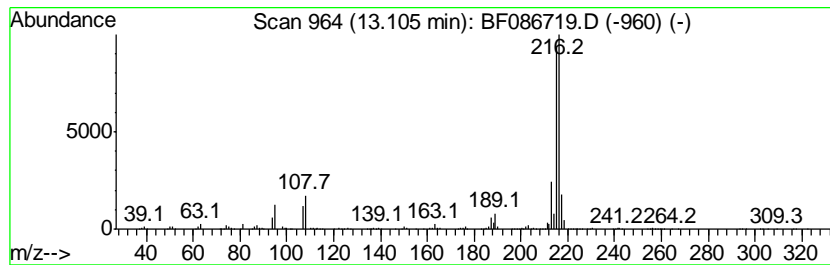
Quant Method : Z:\HPCHEM1\BNA F\METHODS\8270-BF050416.M
 Quant Title : ASP BNA STANDARDS FOR 5 POINT CALIBRATION

TIC Library : C:\DATABASE\NIST02.L
 TIC Integration Parameters: LSCINT.P

 Peak Number 18 11H-Benzo[a]fluorene Concentration Rank 15

R.T.	EstConc	Area	Relative to ISTD	R.T.
13.10	21.97 ng	6119170	Chrysene-d12	13.92

Hit#	of	Tentative ID	MW	MolForm	CAS#	Qual
1	5	11H-Benzo[a]fluorene	216	C17H12	000238-84-6	94
2		Fluoranthene, 2-methyl-	216	C17H12	033543-31-6	93
3		11H-Benzo[b]fluorene	216	C17H12	000243-17-4	91
4		Pyrene, 1-methyl-	216	C17H12	002381-21-7	91
5		7H-Benzo[c]fluorene	216	C17H12	000205-12-9	74



Data Path : Z:\HPCHEM1\BNA_F\DATA\BF050516\
 Data File : BF086719.D
 Acq On : 5 May 2016 21:45
 Operator : UM/SJ
 Sample : H2762-02
 Misc :
 ALS Vial : 23 Sample Multiplier: 1

Instrument :
 BNA_F
 ClientSampleId :
 TEC-B1COMP

Quant Method : Z:\HPCHEM1\BNA_F\METHODS\8270-BF050416.M
 Quant Title : ASP BNA STANDARDS FOR 5 POINT CALIBRATION

TIC Library : C:\DATABASE\NIST02.L
 TIC Integration Parameters: LSCINT.P

TIC Top Hit name	RT	EstConc	Units	Response	--Internal Standard--			
					#	RT	Resp	Conc
Ethylbenzene	5.17	64.7	ng	11961100	1	6.74	7391590	40.0
o-Xylene	5.55	35.3	ng	6515720	1	6.74	7391590	40.0
Benzene, 1-ethyl-...	6.26	54.9	ng	10135000	1	6.74	7391590	40.0
Benzene, 1,2,4-tr...	6.33	25.2	ng	4649660	1	6.74	7391590	40.0
unknown6.50	6.50	31.4	ng	5801020	1	6.74	7391590	40.0
Benzene, 1,2,3-tr...	6.57	79.5	ng	14684700	1	6.74	7391590	40.0
Indane	6.94	154.4	ng	28536400	1	6.74	7391590	40.0
Indene	7.01	73.3	ng	13541100	1	6.74	7391590	40.0
Benzene, 1,4-diet...	7.06	27.9	ng	5161180	1	6.74	7391590	40.0
Naphthalene, 1-et...	9.32	21.7	ng	16407800	3	9.79	30282700	40.0
Naphthalene, 1,6-...	9.39	24.6	ng	18634300	3	9.79	30282700	40.0
Naphthalene, 2,3-...	9.58	19.3	ng	14627100	3	9.79	30282700	40.0
5H-Dibenzo[a,d]cy...	11.90	19.4	ng	15288700	4	11.28	31458400	40.0
11H-Benzo[b]fluorene	13.05	33.9	ng	9434680	5	13.92	11141100	40.0
11H-Benzo[a]fluorene	13.10	22.0	ng	6119170	5	13.92	11141100	40.0