

Data Path : Z:\HPCHEM1\BNA F\DATA\BF050615\  
 Data File : BF078986.D  
 Acq On : 7 May 2015 8:34  
 Operator : TP/IZ  
 Sample : G2046-05  
 Misc :  
 ALS Vial : 33 Sample Multiplier: 1

Instrument :  
 BNA\_F  
 ClientSampleId :

Quant Time: May 07 12:45:38 2015  
 Quant Method : Z:\HPCHEM1\BNA F\METHODS\8270-BF043015.M  
 Quant Title : ASP BNA STANDARDS FOR 5 POINT CALIBRATION  
 QLast Update : Thu Apr 30 19:07:47 2015  
 Response via : Initial Calibration

Internal Standards	R.T.	QIon	Response	Conc	Units	Dev(Min)
1) 1,4-Dichlorobenzene-d4	7.35	152	101297	20.00	ng	-0.02
21) Naphthalene-d8	8.92	136	437414	20.00	ng	-0.02
38) Acenaphthene-d10	11.11	164	211727	20.00	ng	-0.02
63) Phenanthrene-d10	12.95	188	406099	20.00	ng	-0.02
75) Chrysene-d12	16.26	240	451812	20.00	ng	-0.03
86) Perylene-d12	18.06	264	446381	20.00	ng	-0.06
System Monitoring Compounds						
5) 2-Fluorophenol	5.66	112	391122	66.46	ng	-0.01
7) Phenol-d6	6.90	99	338673	43.54	ng	-0.02
23) Nitrobenzene-d5	8.04	82	689446	90.59	ng	-0.02
41) 2,4,6-Tribromophenol	12.09	330	344948	150.60	ng	-0.02
44) 2-Fluorobiphenyl	10.27	172	1247329	82.08	ng	-0.02
78) Terphenyl-d14	14.95	244	1408590	74.64	ng	-0.02

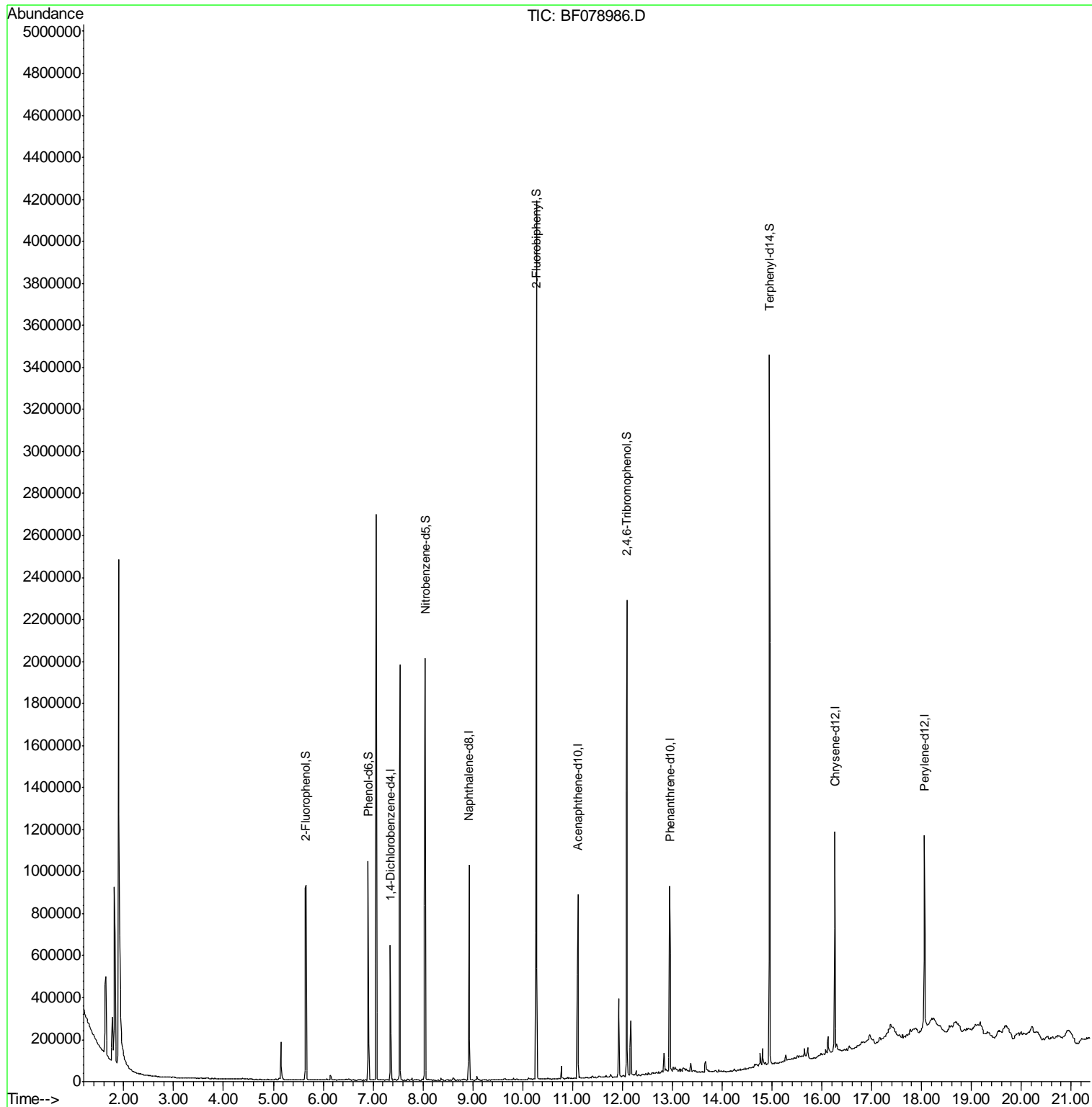
Target Compounds Qvalue

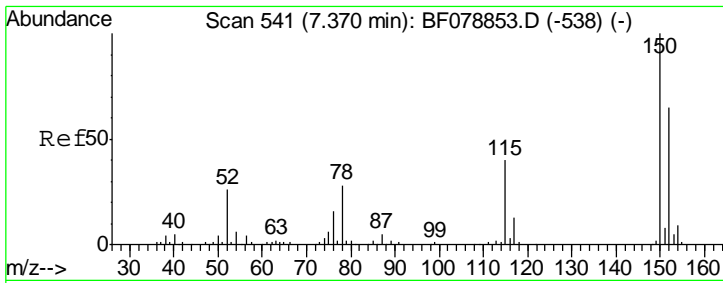
(#) = qualifier out of range (m) = manual integration (+) = signals summed

Data Path : Z:\HPCHEM1\BNA F\DATA\BF050615\  
 Data File : BF078986.D  
 Acq On : 7 May 2015 8:34  
 Operator : TP/IZ  
 Sample : G2046-05  
 Misc :  
 ALS Vial : 33 Sample Multiplier: 1

Instrument :  
 BNA\_F  
 ClientSampled :

Quant Time: May 07 12:45:38 2015  
 Quant Method : Z:\HPCHEM1\BNA F\METHODS\8270-BF043015.M  
 Quant Title : ASP BNA STANDARDS FOR 5 POINT CALIBRATION  
 QLast Update : Thu Apr 30 19:07:47 2015  
 Response via : Initial Calibration



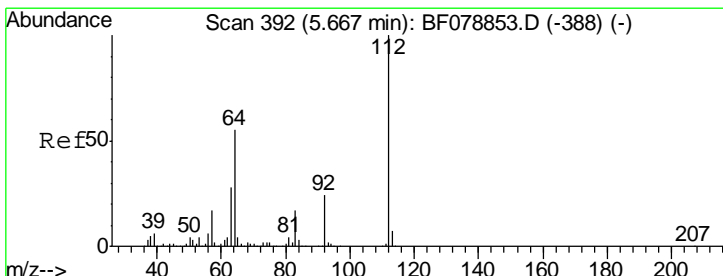
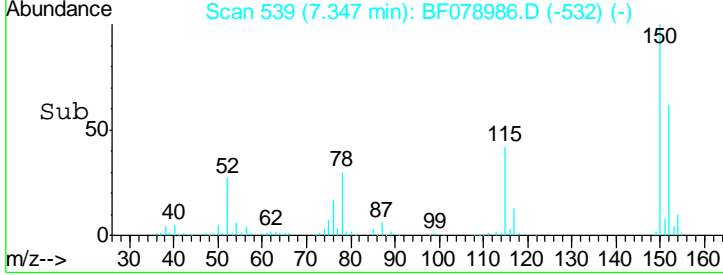
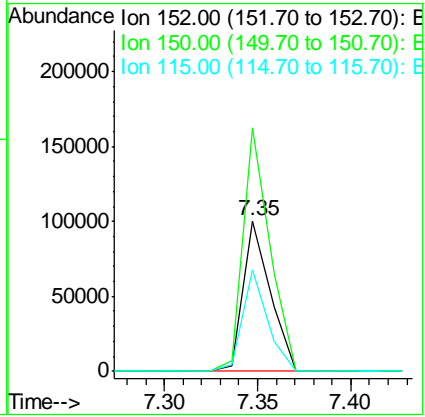
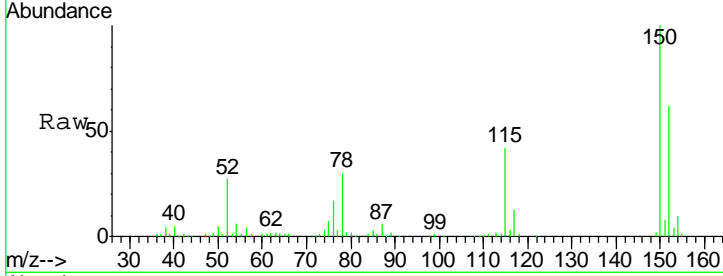


#1  
 1,4-Dichlorobenzene-d4  
 Concen: 20.00 ng  
 RT: 7.35 min Scan# 539  
 Delta R.T. -0.02 min  
 Lab File: BF078986.D  
 Acq: 7 May 2015 8:34

Instrument :  
 BNA\_F  
 ClientSampled :

Tgt Ion:152 Resp: 101297

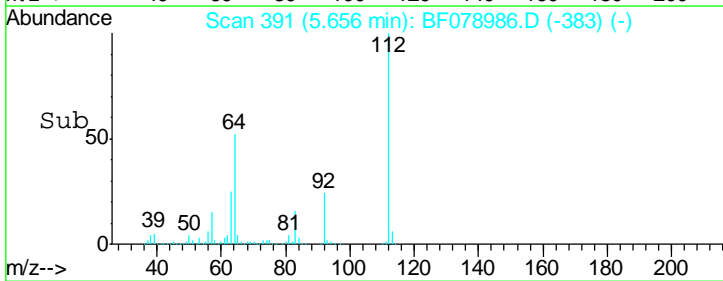
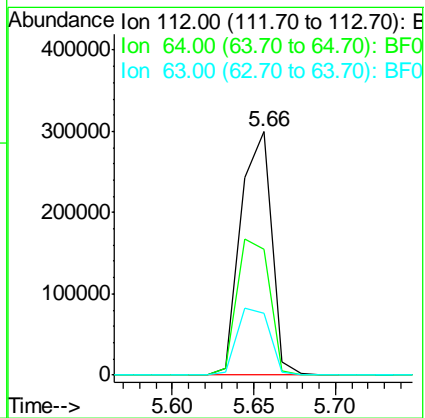
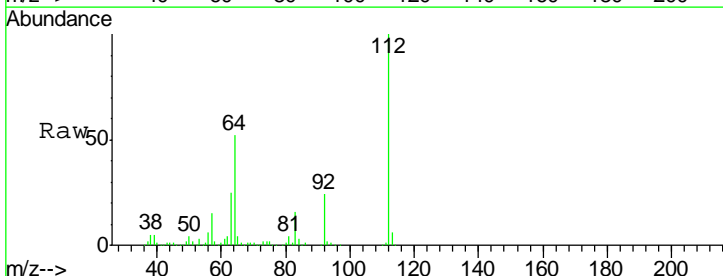
Ion	Ratio	Lower	Upper
152	100		
150	162.1	122.0	183.0
115	67.3	46.3	69.5

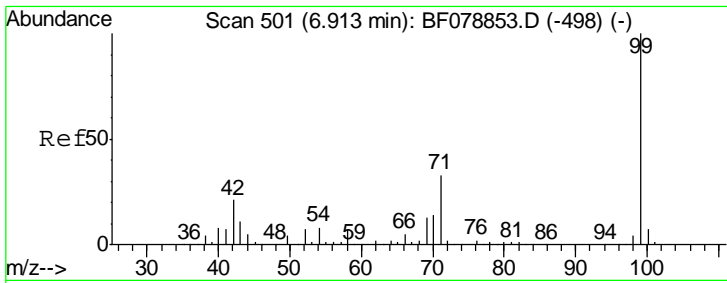


#5  
 2-Fluorophenol  
 Concen: 66.46 ng  
 RT: 5.66 min Scan# 391  
 Delta R.T. -0.01 min  
 Lab File: BF078986.D  
 Acq: 7 May 2015 8:34

Tgt Ion:112 Resp: 391122

Ion	Ratio	Lower	Upper
112	100		
64	51.5	53.5	80.3#
63	25.3	27.5	41.3#

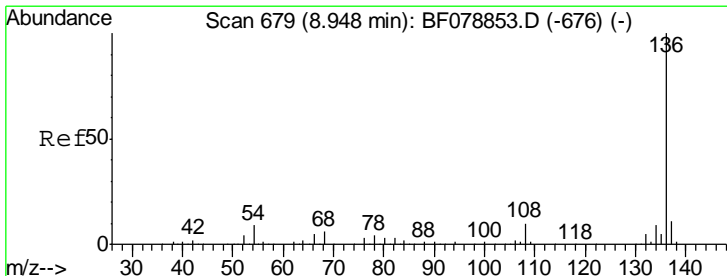
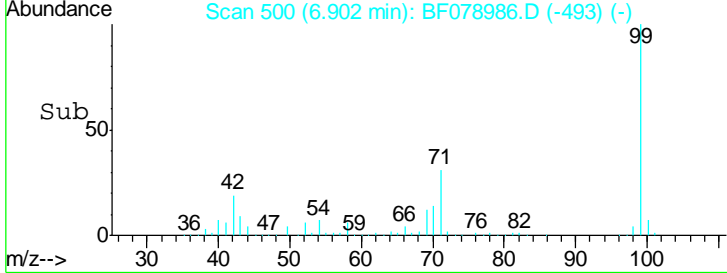
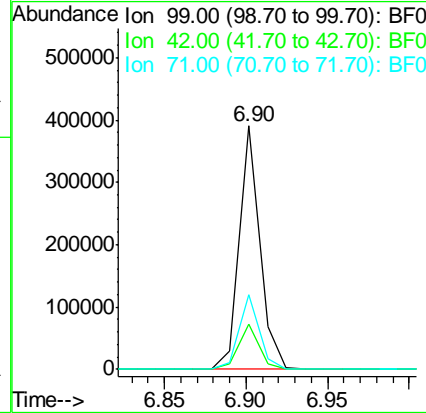
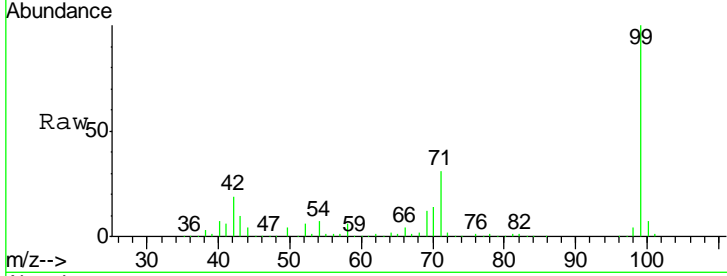




#7  
 Phenol-d6  
 Concen: 43.54 ng  
 RT: 6.90 min Scan# 500  
 Delta R.T. -0.02 min  
 Lab File: BF078986.D  
 Acq: 7 May 2015 8:34

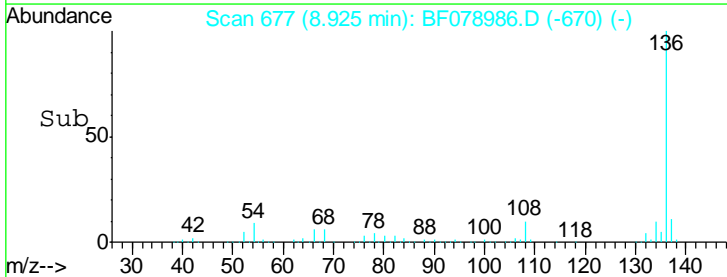
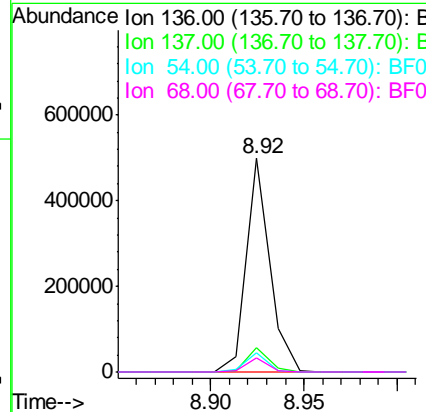
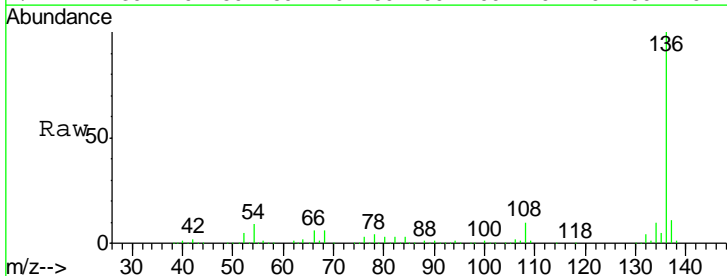
Instrument :  
 BNA\_F  
 ClientSampled :

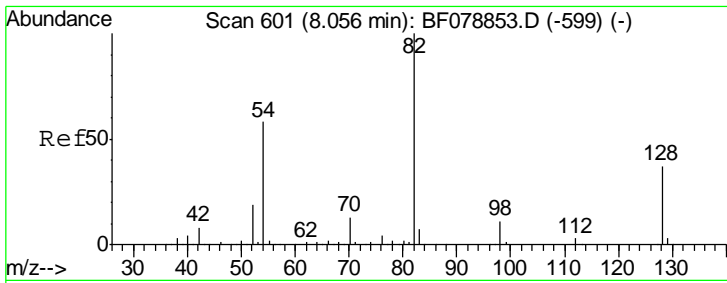
Tgt Ion	Resp	Lower	Upper
99	338673		
42	18.5	12.8	19.2
71	30.6	23.4	35.2



#21  
 Naphthalene-d8  
 Concen: 20.00 ng  
 RT: 8.92 min Scan# 677  
 Delta R.T. -0.02 min  
 Lab File: BF078986.D  
 Acq: 7 May 2015 8:34

Tgt Ion	Resp	Lower	Upper
136	437414		
137	11.4	8.7	13.1
54	8.9	5.8	8.8#
68	6.4	4.2	6.4#

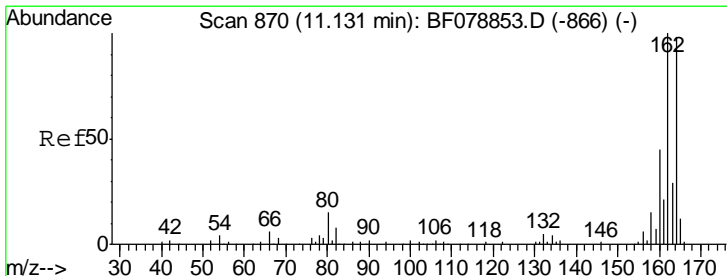
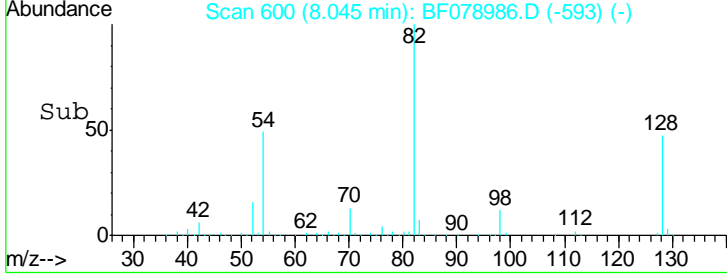
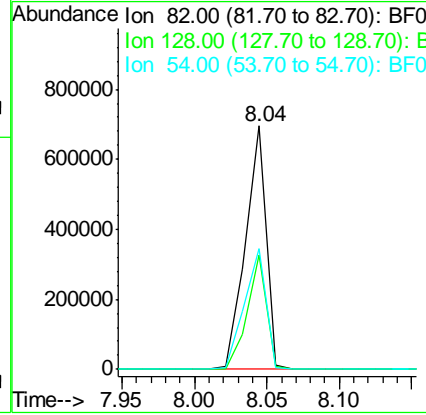
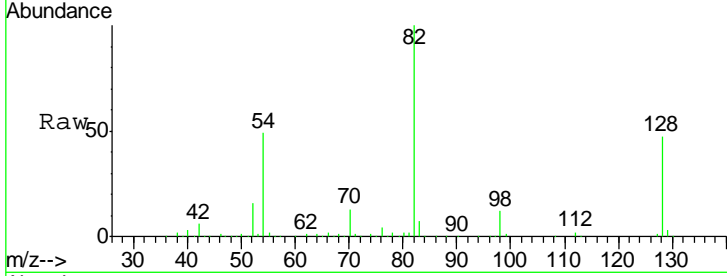




#23  
 Nitrobenzene-d5  
 Concen: 90.59 ng  
 RT: 8.04 min Scan# 600  
 Delta R.T. -0.02 min  
 Lab File: BF078986.D  
 Acq: 7 May 2015 8:34

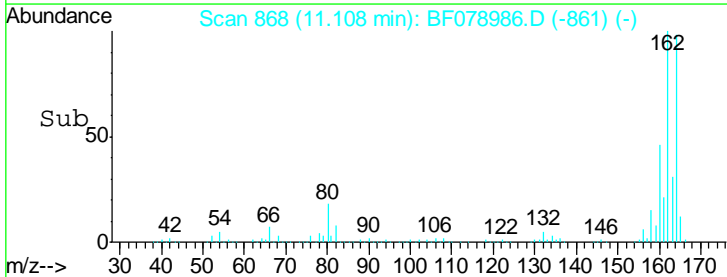
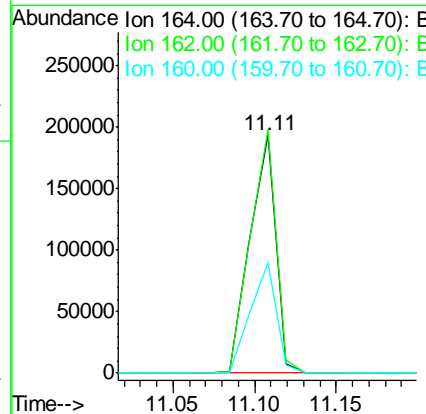
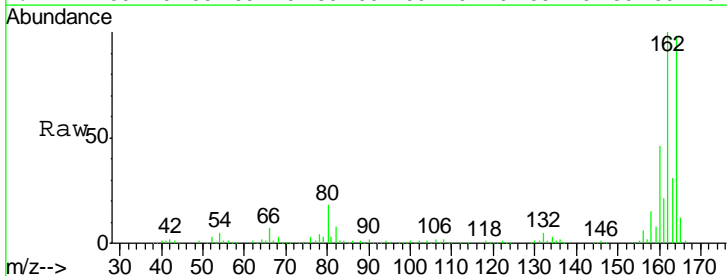
Instrument :  
 BNA\_F  
 ClientSampled :

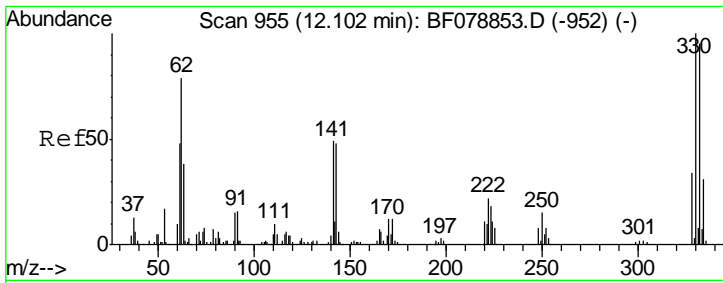
Tgt Ion	Resp	Lower	Upper
82	689446		
128	47.0	30.0	45.0#
54	49.4	46.4	69.6



#38  
 Acenaphthene-d10  
 Concen: 20.00 ng  
 RT: 11.11 min Scan# 868  
 Delta R.T. -0.02 min  
 Lab File: BF078986.D  
 Acq: 7 May 2015 8:34

Tgt Ion	Resp	Lower	Upper
164	211727		
162	102.2	82.7	124.1
160	46.5	35.8	53.8

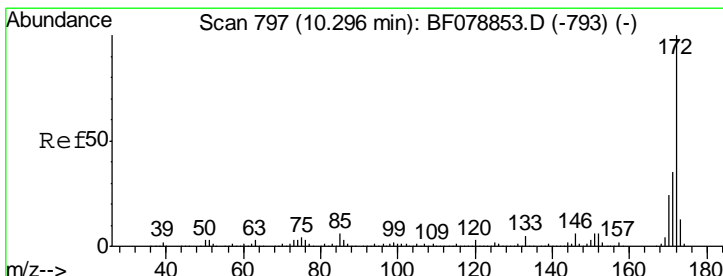
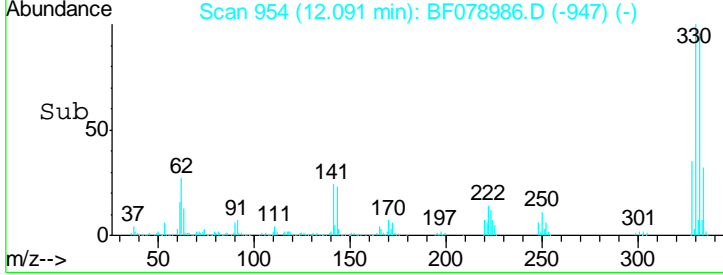
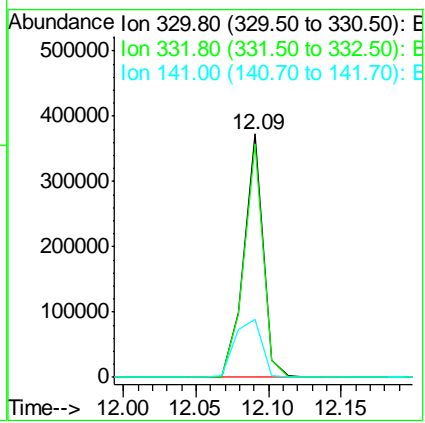
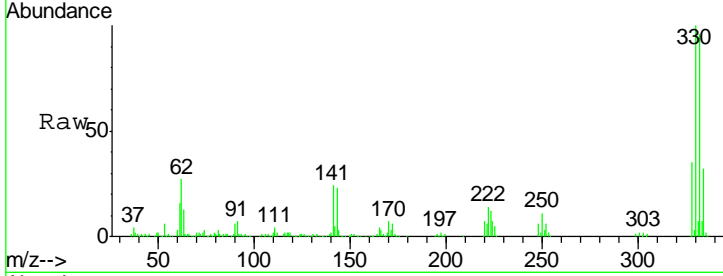




#41  
 2,4,6-Tribromophenol  
 Concen: 150.60 ng  
 RT: 12.09 min Scan# 954  
 Delta R.T. -0.02 min  
 Lab File: BF078986.D  
 Acq: 7 May 2015 8:34

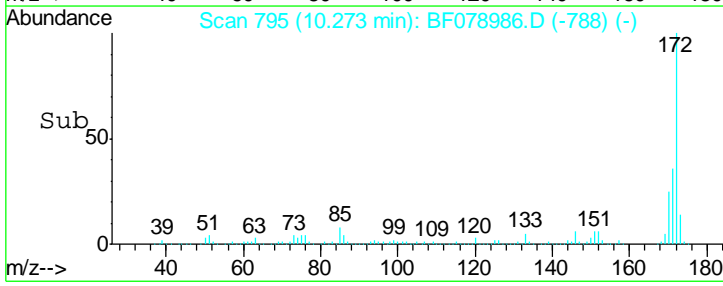
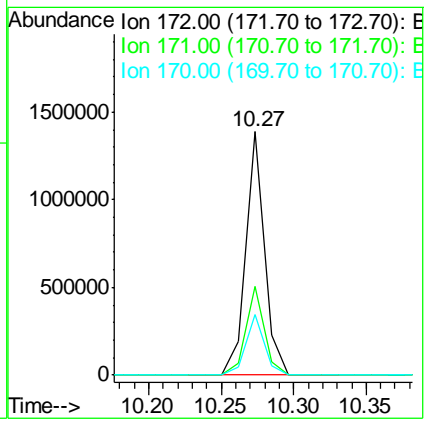
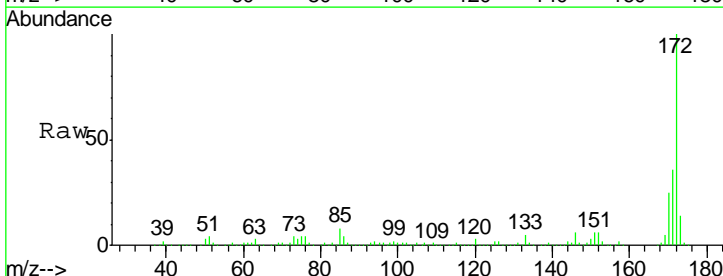
Instrument :  
 BNA\_F  
 ClientSampled :

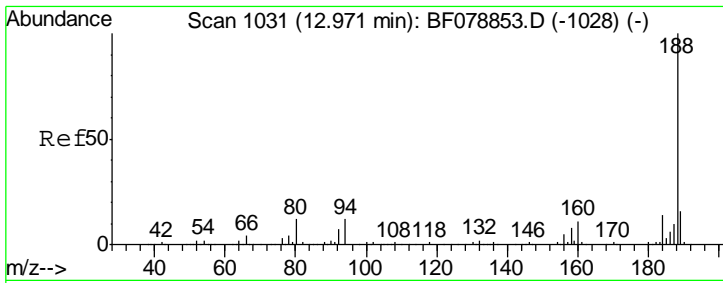
Tgt Ion	Resp	Lower	Upper
330	100		
332	96.5	0.0	0.0#
141	33.5	0.0	0.0#



#44  
 2-Fluorobiphenyl  
 Concen: 82.08 ng  
 RT: 10.27 min Scan# 795  
 Delta R.T. -0.02 min  
 Lab File: BF078986.D  
 Acq: 7 May 2015 8:34

Tgt Ion	Resp	Lower	Upper
172	100		
171	36.5	27.9	41.9
170	25.1	19.4	29.0

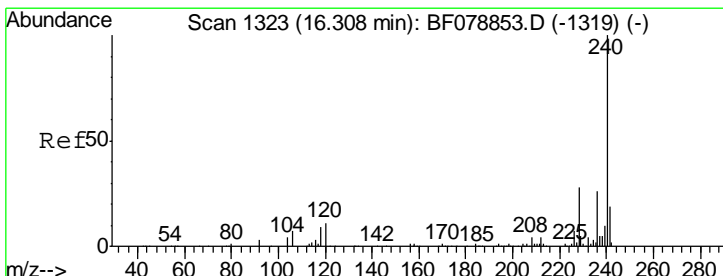
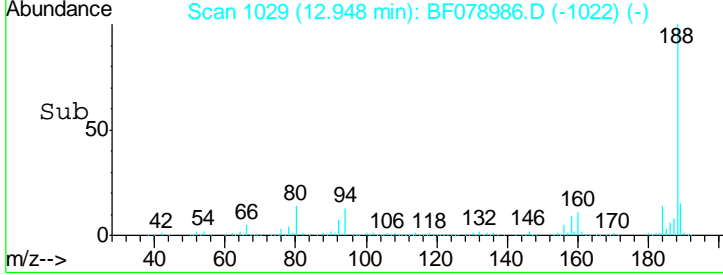
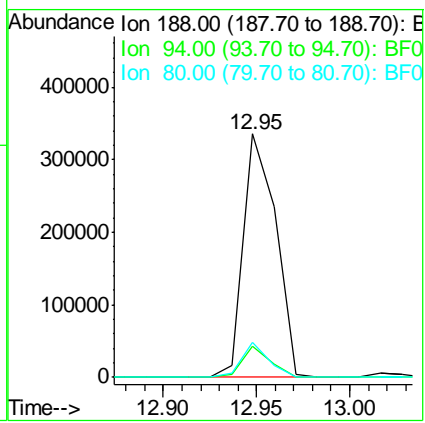
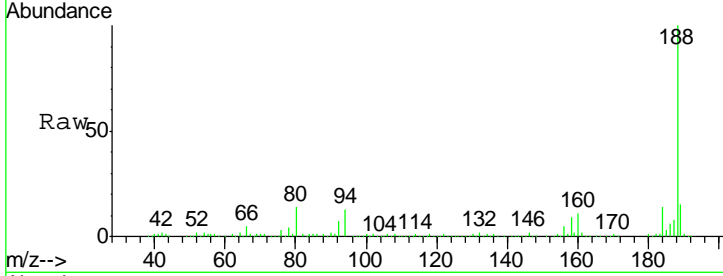




#63  
 Phenanthrene-d10  
 Concen: 20.00 ng  
 RT: 12.95 min Scan# 1029  
 Delta R.T. -0.02 min  
 Lab File: BF078986.D  
 Acq: 7 May 2015 8:34

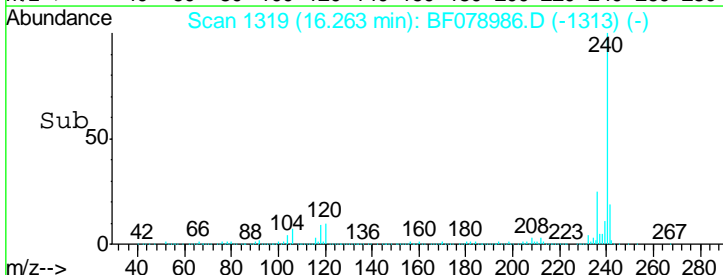
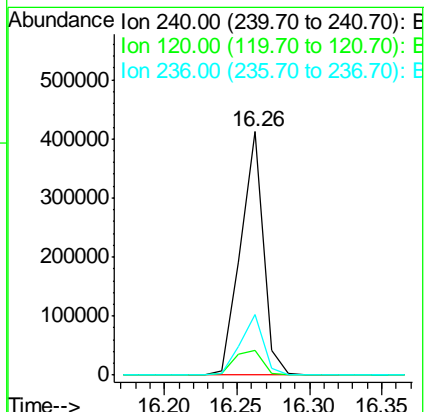
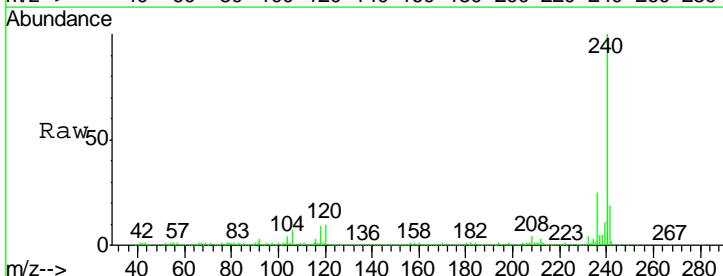
Instrument :  
 BNA\_F  
 ClientSampled :

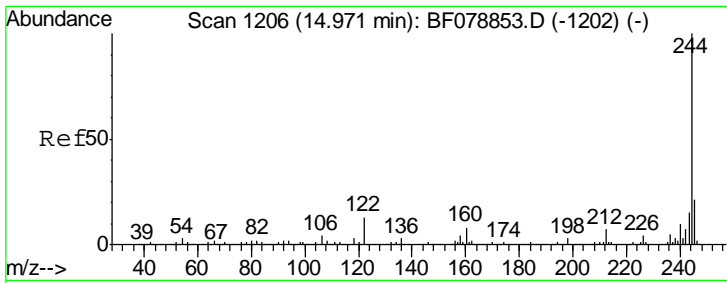
Tgt Ion	Resp	Lower	Upper
188	100		
94	13.0	8.2	12.2#
80	14.5	8.9	13.3#



#75  
 Chrysene-d12  
 Concen: 20.00 ng  
 RT: 16.26 min Scan# 1319  
 Delta R.T. -0.03 min  
 Lab File: BF078986.D  
 Acq: 7 May 2015 8:34

Tgt Ion	Resp	Lower	Upper
240	100		
120	10.1	9.7	14.5
236	25.1	20.2	30.4



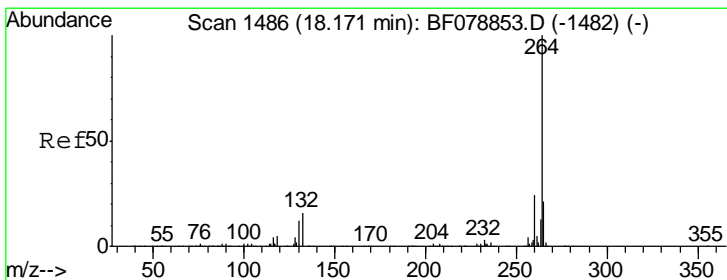
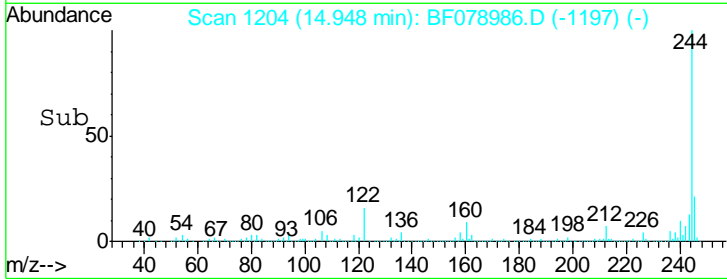
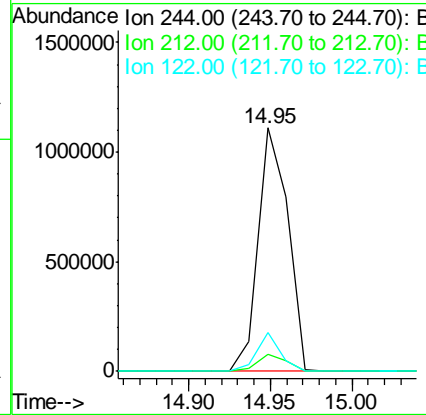
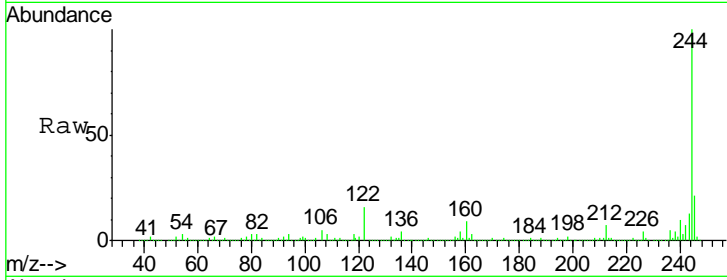


#78  
 Terphenyl-d14  
 Concen: 74.64 ng  
 RT: 14.95 min Scan# 1204  
 Delta R.T. -0.02 min  
 Lab File: BF078986.D  
 Acq: 7 May 2015 8:34

Instrument :  
 BNA\_F  
 ClientSampled :

Tgt Ion: 244 Resp: 1408590

Ion	Ratio	Lower	Upper
244	100		
212	7.2	5.6	8.4
122	16.1	10.3	15.5#



#86  
 Perylene-d12  
 Concen: 20.00 ng  
 RT: 18.06 min Scan# 1476  
 Delta R.T. -0.06 min  
 Lab File: BF078986.D  
 Acq: 7 May 2015 8:34

Tgt Ion: 264 Resp: 446381

Ion	Ratio	Lower	Upper
264	100		
260	24.4	19.4	29.2
265	21.6	18.3	27.5

