

Data Path : Z:\svoasrv\HPCHEM1\BNA_F\Data\BF050621\
 Data File : BF123858.D
 Acq On : 6 May 2021 17:00
 Operator : JU/CG
 Sample : M2304-05
 Misc :
 ALS Vial : 15 Sample Multiplier: 1

Instrument :
 BNA_F
 ClientSampleId :
 OWL-C6-GW

Quant Time: May 06 17:28:39 2021
 Quant Method : Z:\SVOASRV\HPCHEM1\BNA_F\METHODS\8270-BF042721.M
 Quant Title : ASP BNA STANDARDS FOR 5 POINT CALIBRATION
 QLast Update : Wed May 05 13:09:28 2021
 Response via : Initial Calibration

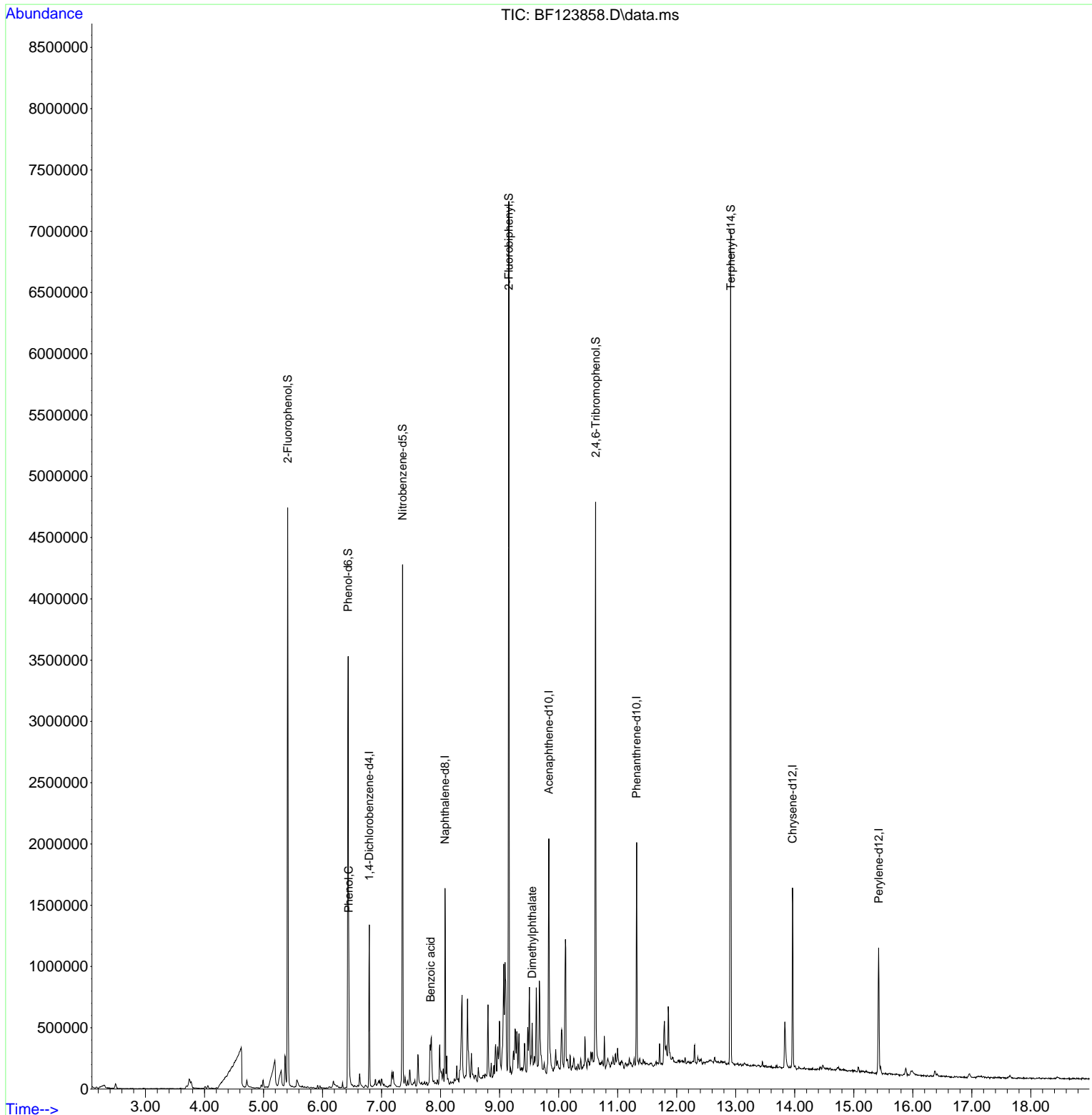
Compound	R.T.	QIon	Response	Conc	Units	Dev(Min)	
Internal Standards							
1) 1,4-Dichlorobenzene-d4	6.792	152	166324	20.00	ng	0.00	
21) Naphthalene-d8	8.075	136	619943	20.00	ng	# 0.00	
39) Acenaphthene-d10	9.833	164	336829	20.00	ng	0.00	
64) Phenanthrene-d10	11.322	188	590867	20.00	ng	0.00	
76) Chrysene-d12	13.963	240	528715	20.00	ng	#-0.01	
86) Perylene-d12	15.421	264	441815	20.00	ng	0.00	
System Monitoring Compounds							
5) 2-Fluorophenol	5.410	112	1039251	98.99	ng	0.00	
7) Phenol-d6	6.434	99	961870	66.51	ng	0.00	
23) Nitrobenzene-d5	7.357	82	1238316	90.17	ng	0.00	
42) 2,4,6-Tribromophenol	10.627	330	530117	126.42	ng	0.00	
45) 2-Fluorobiphenyl	9.157	172	1869291	80.82	ng	0.00	
79) Terphenyl-d14	12.916	244	2200551	80.15	ng	0.00	
Target Compounds							Qvalue
10) Phenol	6.445	94	192362	12.38	ng		91
32) Benzoic acid	7.833	122	52315	12.76	ng		91
50) Dimethylphthalate	9.551	163	84084	3.54	ng		97

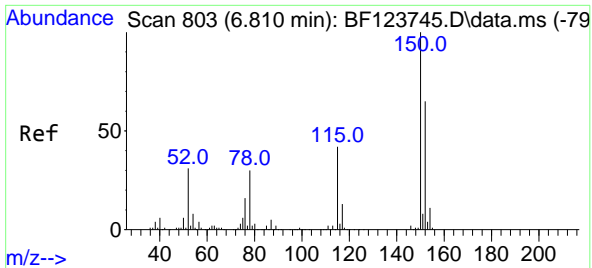
(#) = qualifier out of range (m) = manual integration (+) = signals summed

Data Path : Z:\svoasrv\HPCHEM1\BNA_F\Data\BF050621\
 Data File : BF123858.D
 Acq On : 6 May 2021 17:00
 Operator : JU/CG
 Sample : M2304-05
 Misc :
 ALS Vial : 15 Sample Multiplier: 1

Instrument :
 BNA_F
 ClientSampleId :
 OWL-C6-GW

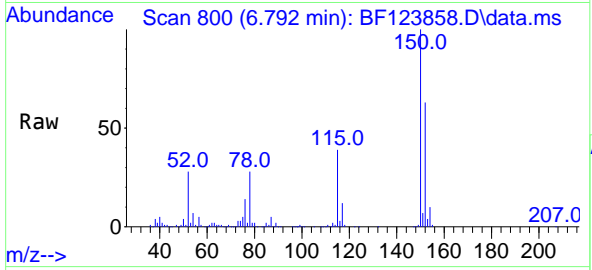
Quant Time: May 06 17:28:39 2021
 Quant Method : Z:\SVOASRV\HPCHEM1\BNA_F\METHODS\8270-BF042721.M
 Quant Title : ASP BNA STANDARDS FOR 5 POINT CALIBRATION
 QLast Update : Wed May 05 13:09:28 2021
 Response via : Initial Calibration





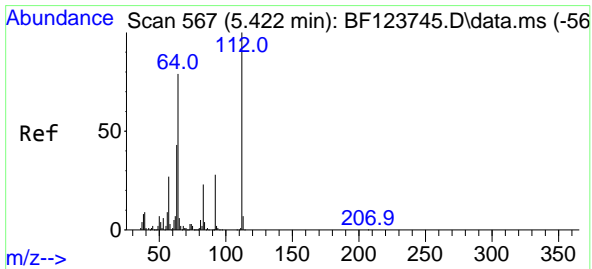
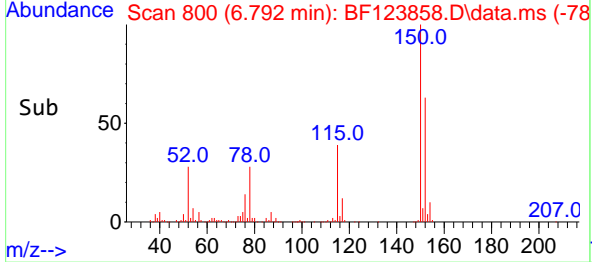
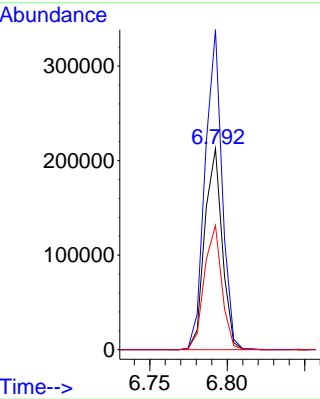
#1
 1,4-Dichlorobenzene-d4
 Concen: 20.00 ng
 RT: 6.792 min Scan# 800
 Delta R.T. -0.006 min
 Lab File: BF123858.D
 Acq: 6 May 2021 17:00

Instrument :
 BNA_F
 ClientSampled :
 OWL-C6-GW

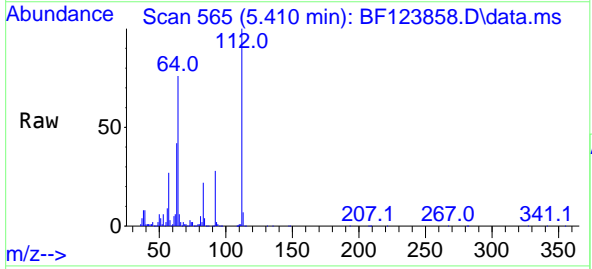


Tgt Ion:152 Resp: 166324

Ion	Ratio	Lower	Upper
152	100		
150	159.1	127.0	190.6
115	61.7	54.3	81.5

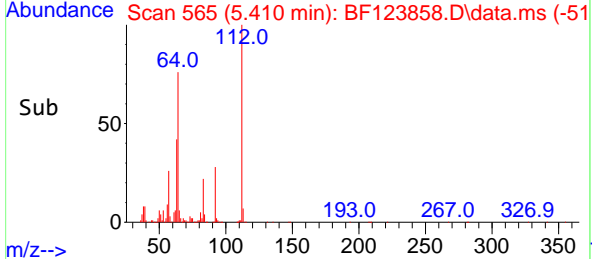
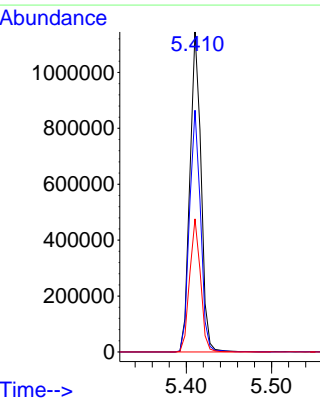


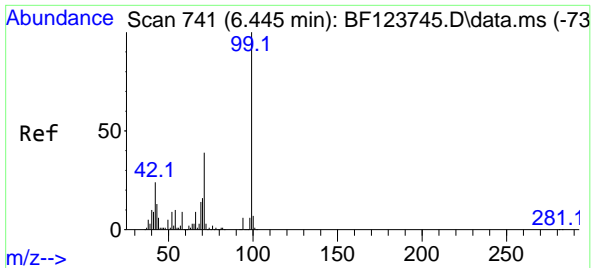
#5
 2-Fluorophenol
 Concen: 98.99 ng
 RT: 5.410 min Scan# 565
 Delta R.T. -0.000 min
 Lab File: BF123858.D
 Acq: 6 May 2021 17:00



Tgt Ion:112 Resp: 1039251

Ion	Ratio	Lower	Upper
112	100		
64	75.6	61.4	92.0
63	41.6	33.0	49.4

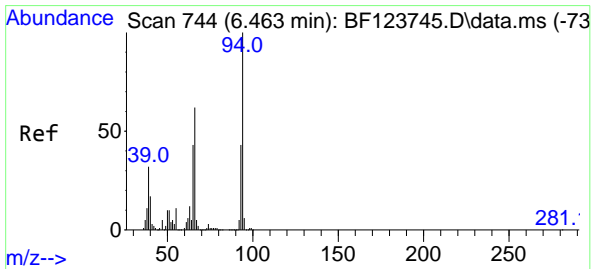
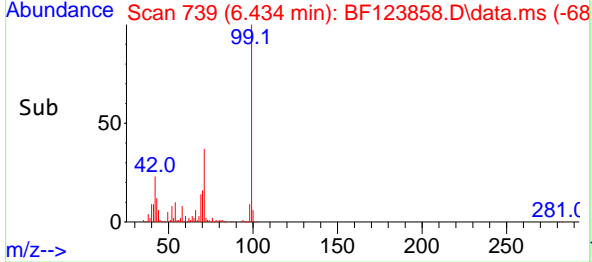
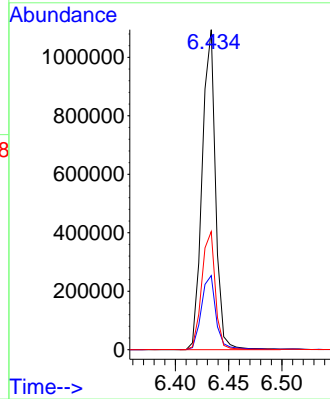
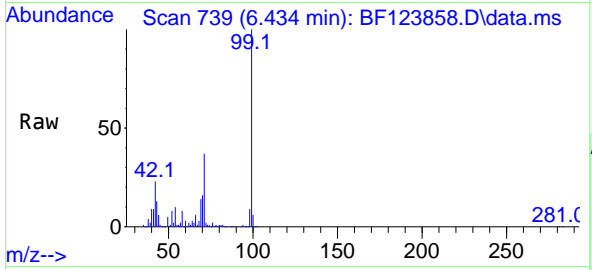




#7
Phenol-d6
Concen: 66.51 ng
RT: 6.434 min Scan# 739
Delta R.T. -0.006 min
Lab File: BF123858.D
Acq: 6 May 2021 17:00

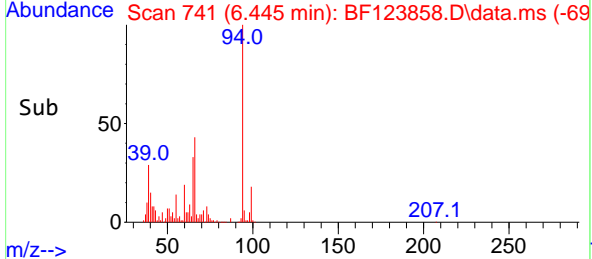
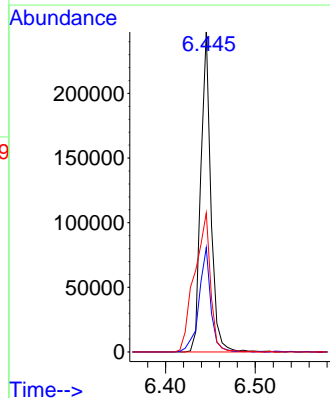
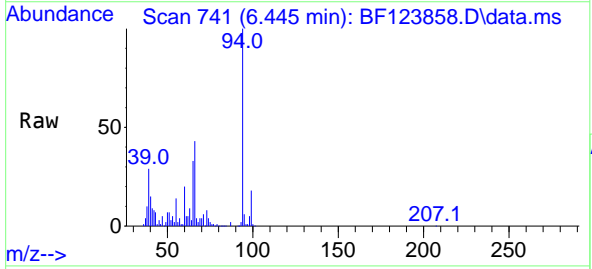
Instrument :
BNA_F
ClientSampleId :
OWL-C6-GW

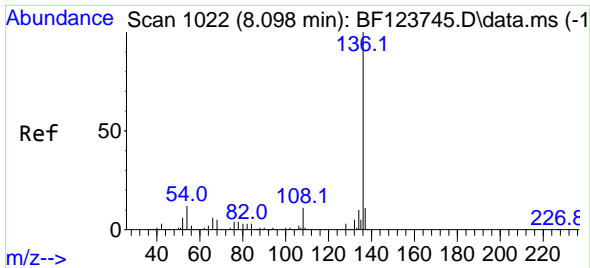
Tgt Ion: 99 Resp: 961870
Ion Ratio Lower Upper
99 100
42 23.1 19.8 29.8
71 36.9 31.1 46.7



#10
Phenol
Concen: 12.38 ng
RT: 6.445 min Scan# 741
Delta R.T. -0.006 min
Lab File: BF123858.D
Acq: 6 May 2021 17:00

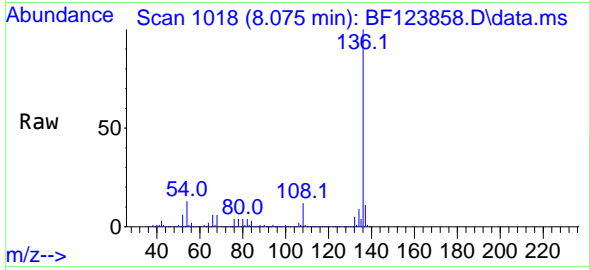
Tgt Ion: 94 Resp: 192362
Ion Ratio Lower Upper
94 100
65 32.6 18.1 58.1
66 43.5 29.0 69.0



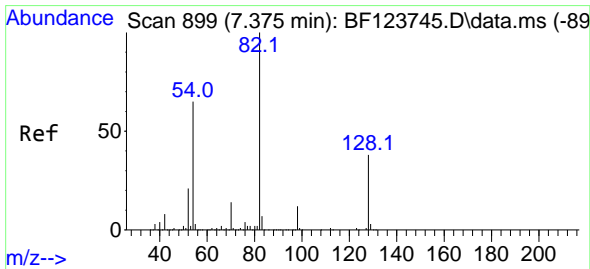
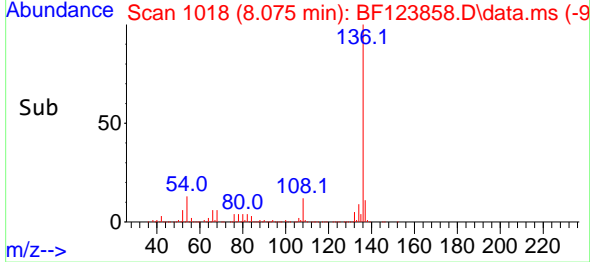
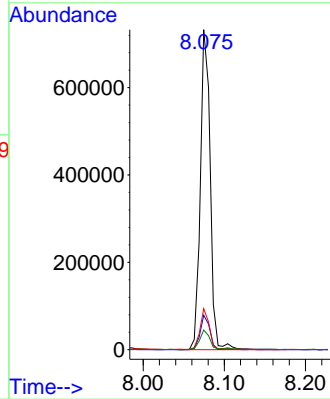


#21
 Naphthalene-d8
 Concen: 20.00 ng
 RT: 8.075 min Scan# 1018
 Delta R.T. -0.006 min
 Lab File: BF123858.D
 Acq: 6 May 2021 17:00

Instrument :
 BNA_F
 ClientSampled :
 OWL-C6-GW

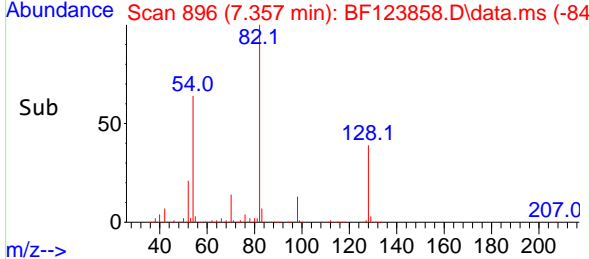
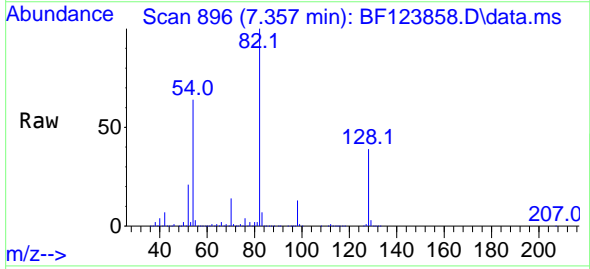
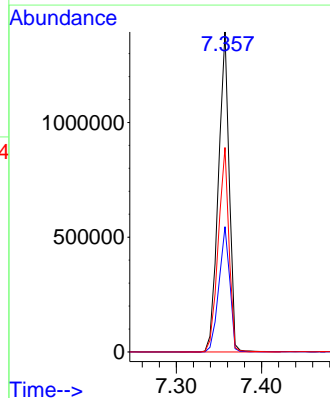


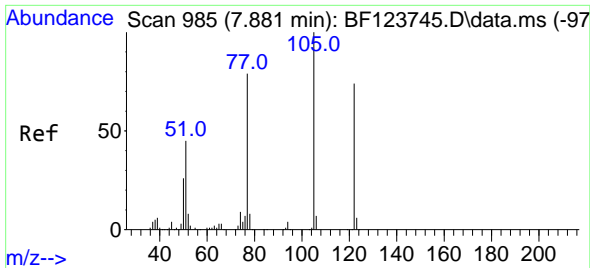
Tgt Ion:136 Resp: 619943
 Ion Ratio Lower Upper
 136 100
 137 10.7 8.7 13.1
 54 12.8 9.8 14.6
 68 6.1 4.1 6.1#



#23
 Nitrobenzene-d5
 Concen: 90.17 ng
 RT: 7.357 min Scan# 896
 Delta R.T. -0.006 min
 Lab File: BF123858.D
 Acq: 6 May 2021 17:00

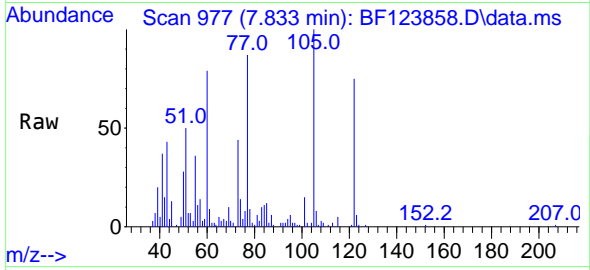
Tgt Ion: 82 Resp: 1238316
 Ion Ratio Lower Upper
 82 100
 128 39.1 29.4 44.2
 54 63.9 54.1 81.1



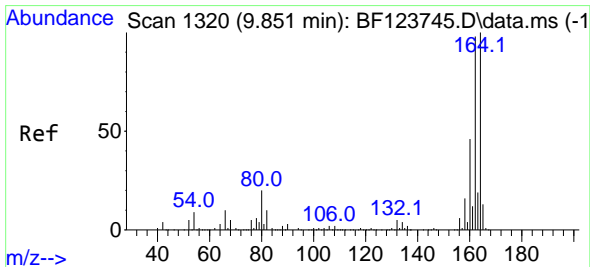
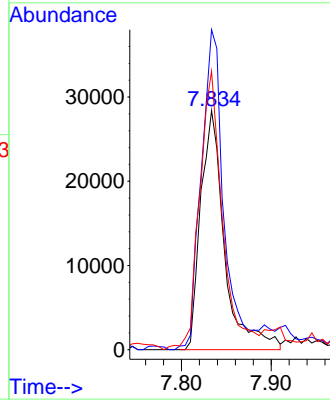
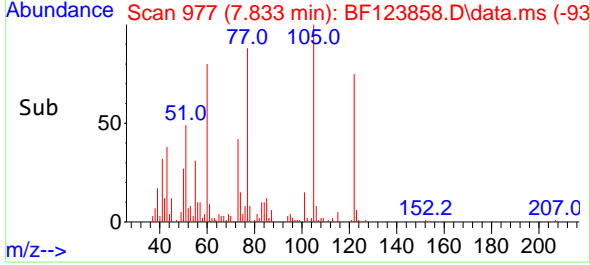


#32
 Benzoic acid
 Concen: 12.76 ng
 RT: 7.833 min Scan# 977
 Delta R.T. -0.041 min
 Lab File: BF123858.D
 Acq: 6 May 2021 17:00

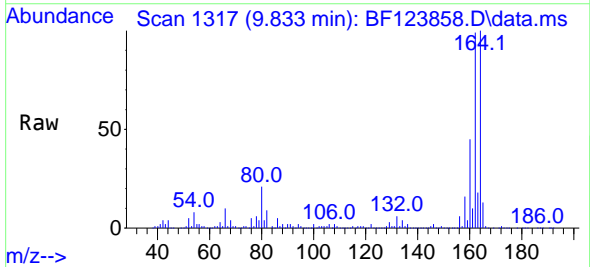
Instrument :
 BNA_F
 ClientSampleId :
 OWL-C6-GW



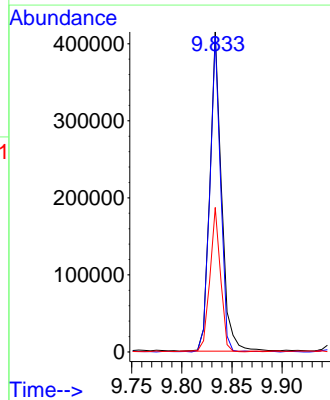
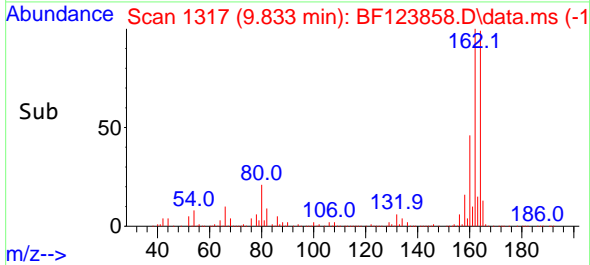
Tgt Ion:122 Resp: 52315
 Ion Ratio Lower Upper
 122 100
 105 133.8 107.8 147.8
 77 116.4 81.6 121.6

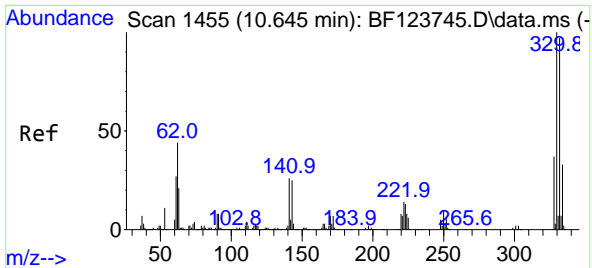


#39
 Acenaphthene-d10
 Concen: 20.00 ng
 RT: 9.833 min Scan# 1317
 Delta R.T. -0.006 min
 Lab File: BF123858.D
 Acq: 6 May 2021 17:00



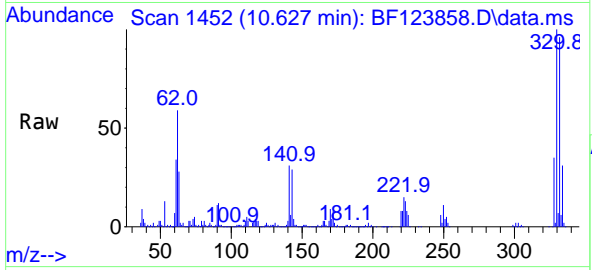
Tgt Ion:164 Resp: 336829
 Ion Ratio Lower Upper
 164 100
 162 98.6 80.7 121.1
 160 45.1 37.3 55.9



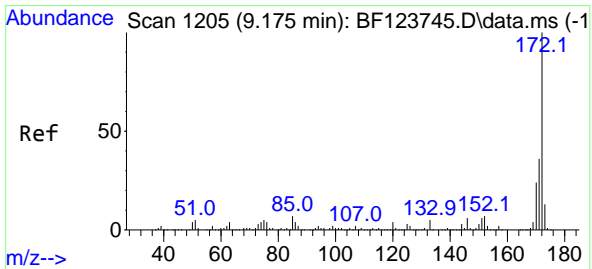
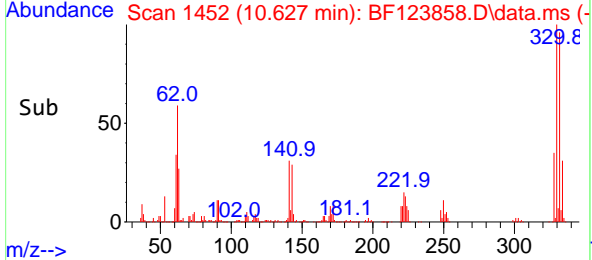
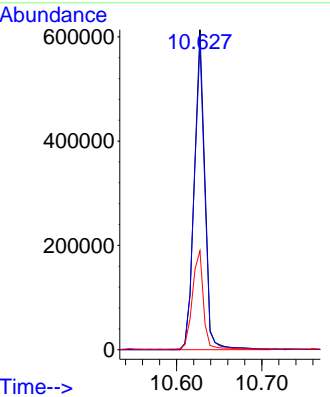


#42
 2,4,6-Tribromophenol
 Concen: 126.42 ng
 RT: 10.627 min Scan# 1452
 Delta R.T. -0.006 min
 Lab File: BF123858.D
 Acq: 6 May 2021 17:00

Instrument :
 BNA_F
ClientSampled :
 OWL-C6-GW

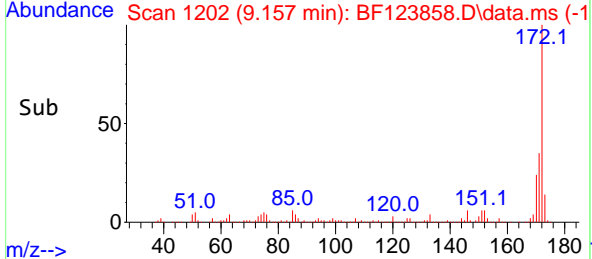
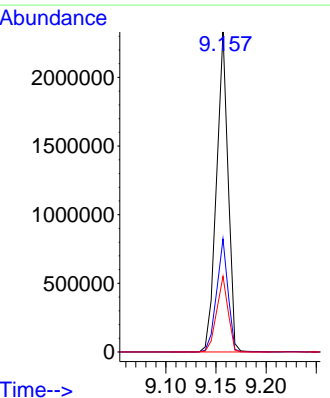
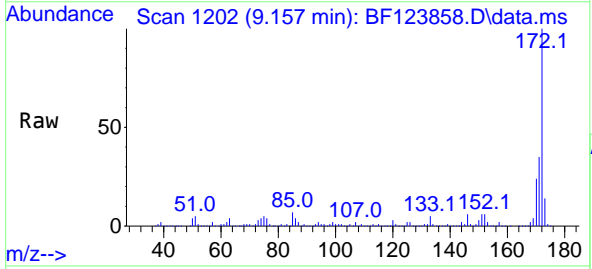


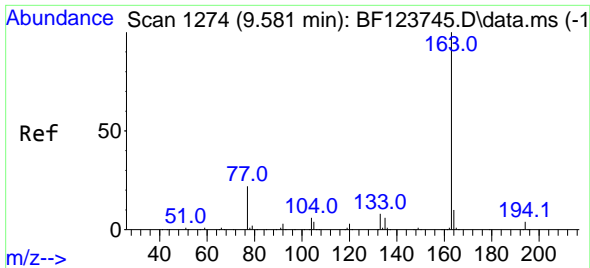
Tgt Ion:330 Resp: 530117
 Ion Ratio Lower Upper
 330 100
 332 96.1 77.1 115.7
 141 31.8 27.9 41.9



#45
 2-Fluorobiphenyl
 Concen: 80.82 ng
 RT: 9.157 min Scan# 1202
 Delta R.T. -0.006 min
 Lab File: BF123858.D
 Acq: 6 May 2021 17:00

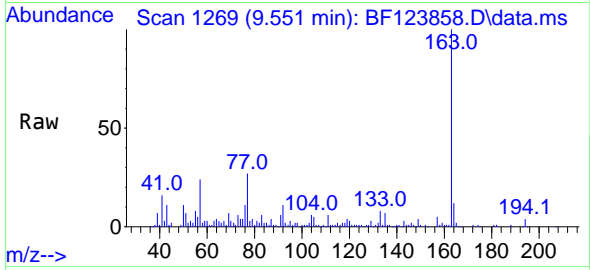
Tgt Ion:172 Resp: 1869291
 Ion Ratio Lower Upper
 172 100
 171 35.3 28.1 42.1
 170 23.6 19.2 28.8



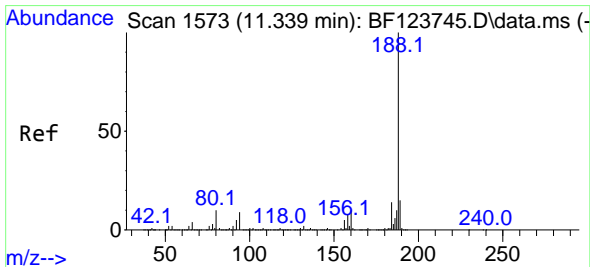
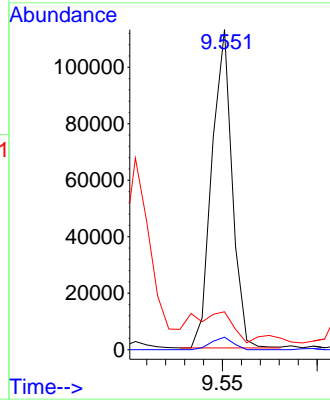
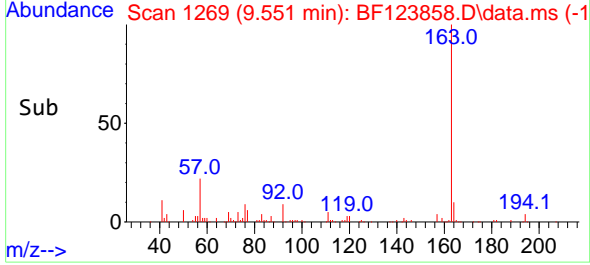


#50
 Dimethylphthalate
 Concen: 3.54 ng
 RT: 9.551 min Scan# 1269
 Delta R.T. -0.012 min
 Lab File: BF123858.D
 Acq: 6 May 2021 17:00

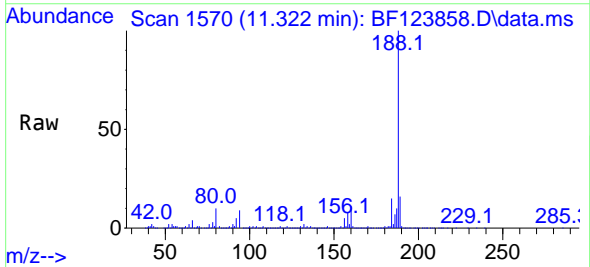
Instrument :
 BNA_F
 ClientSampleId :
 OWL-C6-GW



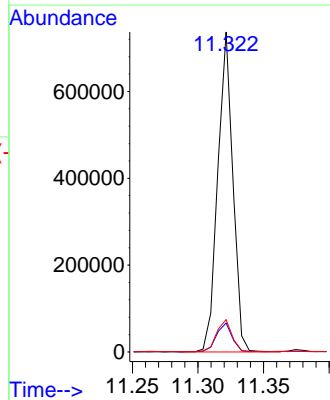
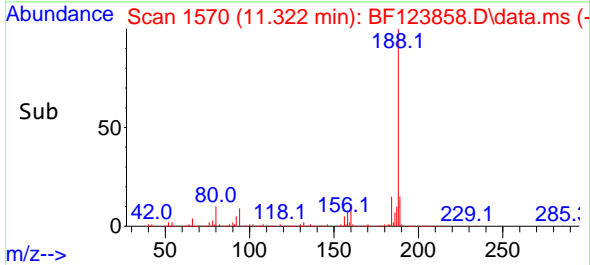
Tgt Ion:163 Resp: 84084
 Ion Ratio Lower Upper
 163 100
 194 3.9 3.1 4.7
 164 11.8 8.2 12.2

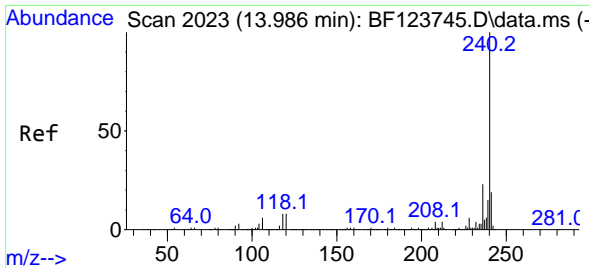


#64
 Phenanthrene-d10
 Concen: 20.00 ng
 RT: 11.322 min Scan# 1570
 Delta R.T. -0.006 min
 Lab File: BF123858.D
 Acq: 6 May 2021 17:00



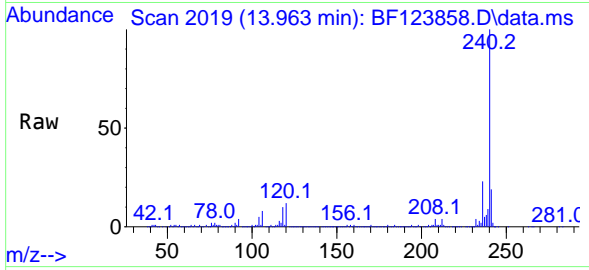
Tgt Ion:188 Resp: 590867
 Ion Ratio Lower Upper
 188 100
 94 9.1 6.9 10.3
 80 10.1 8.2 12.2



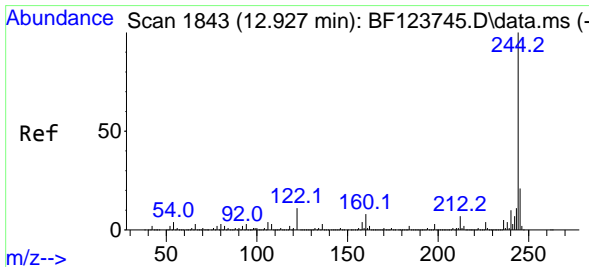
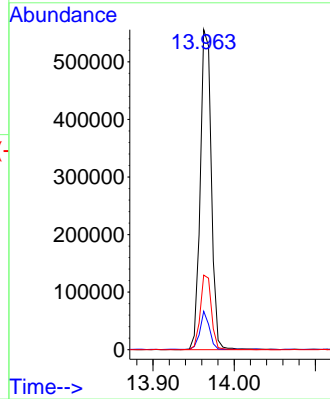
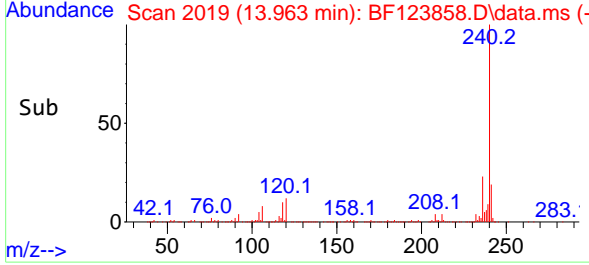


#76
 Chrysene-d12
 Concen: 20.00 ng
 RT: 13.963 min Scan# 2019
 Delta R.T. -0.012 min
 Lab File: BF123858.D
 Acq: 6 May 2021 17:00

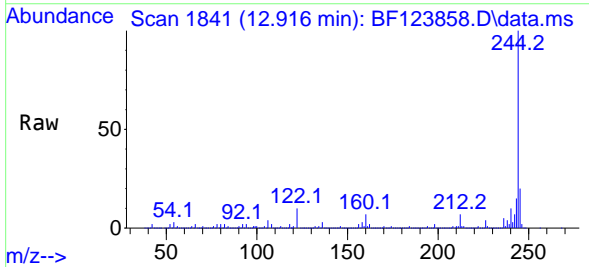
Instrument :
 BNA_F
ClientSampled :
 OWL-C6-GW



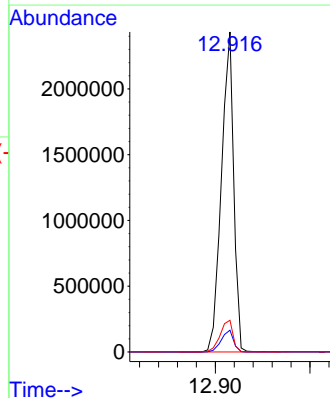
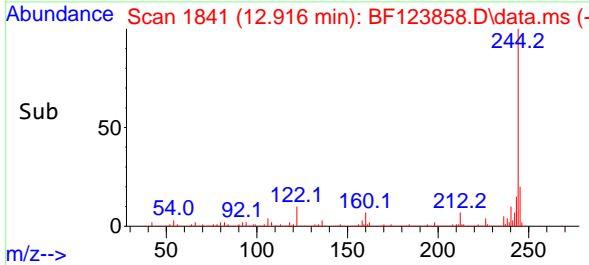
Tgt Ion:240 Resp: 528715
 Ion Ratio Lower Upper
 240 100
 120 12.0 7.2 10.8#
 236 23.3 19.0 28.4

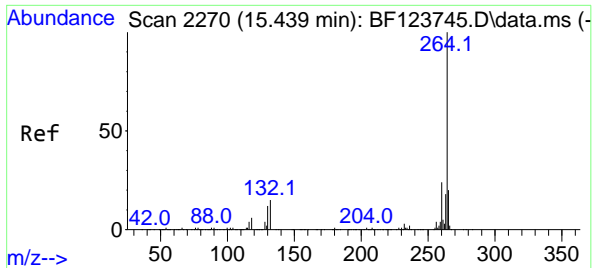


#79
 Terphenyl-d14
 Concen: 80.15 ng
 RT: 12.916 min Scan# 1841
 Delta R.T. -0.000 min
 Lab File: BF123858.D
 Acq: 6 May 2021 17:00



Tgt Ion:244 Resp: 2200551
 Ion Ratio Lower Upper
 244 100
 212 6.8 5.7 8.5
 122 9.9 9.7 14.5





#86
 Perylene-d12
 Concen: 20.00 ng
 RT: 15.421 min Scan# 2267
 Delta R.T. -0.006 min
 Lab File: BF123858.D
 Acq: 6 May 2021 17:00

Instrument :
 BNA_F
 ClientSampled :
 OWL-C6-GW

Tgt Ion:264 Resp: 441815

Ion	Ratio	Lower	Upper
264	100		
260	23.3	18.7	28.1
265	21.1	17.8	26.8

