

Data Path : Z:\HPCHEM1\BNA F\DATA\BF051017\
 Data File : BF095068.D
 Acq On : 10 May 2017 21:42
 Operator : SJ/MA
 Sample : I3037-10 5X
 Misc :
 ALS Vial : 14 Sample Multiplier: 1

Instrument :
 BNA_F
 ClientSampleId :
 HY-SB409-GW

Integration Parameters: rteint.p
 Integrator: RTE
 Smoothing : ON
 Sampling : 1
 Start Thrs: 0.2
 Stop Thrs : 0

Filtering: 5
 Min Area: 3 % of largest Peak
 Max Peaks: 100
 Peak Location: TOP

If leading or trailing edge < 100 prefer < Baseline drop else tangent >
 Peak separation: 5

Method : Z:\HPCHEM1\BNA F\METHODS\8270-BF050217.M
 Title : ASP BNA STANDARDS FOR 5 POINT CALIBRATION

Signal : TIC

peak #	R.T. min	first scan	max scan	last scan	PK TY	peak height	corr. area	corr. % max.	% of total
1	7.378	921	925	933	rVV	212113	451557	18.95%	0.841%
2	7.442	933	936	942	rVV3	71749	152832	6.41%	0.285%
3	7.707	977	981	985	rBV	308877	410847	17.24%	0.766%
4	7.789	990	995	1001	rVB2	145587	215056	9.03%	0.401%
5	7.942	1017	1021	1025	rBV2	360068	513392	21.55%	0.957%
6	7.978	1025	1027	1039	rVB4	156852	244328	10.25%	0.455%
7	8.125	1039	1052	1057	rBV4	128426	305286	12.81%	0.569%
8	8.572	1125	1128	1131	rBV2	169759	227972	9.57%	0.425%
9	8.601	1131	1133	1137	rVB2	201849	217041	9.11%	0.404%
10	8.895	1179	1183	1189	rBV4	122135	208365	8.75%	0.388%
11	8.954	1189	1193	1194	rBV	158916	183901	7.72%	0.343%
12	9.019	1201	1204	1207	rVB	145395	148678	6.24%	0.277%
13	9.148	1221	1226	1231	rBV4	231412	414141	17.38%	0.772%
14	9.225	1236	1239	1242	rBV	179560	187106	7.85%	0.349%
15	9.324	1251	1256	1258	rBV2	337995	542564	22.77%	1.011%
16	9.413	1266	1271	1278	rVB6	159625	434019	18.22%	0.809%
17	9.577	1296	1299	1305	rVB4	77646	147249	6.18%	0.274%
18	9.724	1316	1324	1327	rBV	749019	1396292	58.60%	2.602%
19	9.830	1336	1342	1350	rVB4	306589	602349	25.28%	1.122%
20	9.936	1356	1360	1364	rVB2	588355	714325	29.98%	1.331%
21	10.013	1369	1373	1378	rVB4	167828	222578	9.34%	0.415%
22	10.089	1378	1386	1391	rBV5	243038	626104	26.28%	1.167%
23	10.136	1391	1394	1398	rBV3	119566	190712	8.00%	0.355%
24	10.207	1402	1406	1411	rVB5	319206	438786	18.42%	0.818%
25	10.260	1411	1415	1421	rBV5	331618	574366	24.11%	1.070%
26	10.348	1427	1430	1433	rBV4	159689	229538	9.63%	0.428%
27	10.383	1433	1436	1441	rVB2	155764	239219	10.04%	0.446%
28	10.524	1454	1460	1463	rVV2	742785	994516	41.74%	1.853%
29	10.560	1463	1466	1469	rVB3	273435	352137	14.78%	0.656%
30	10.736	1492	1496	1498	rBV3	114516	153182	6.43%	0.285%
31	10.807	1505	1508	1514	rVB4	310026	456089	19.14%	0.850%
32	10.889	1514	1522	1529	rBV4	426338	832894	34.96%	1.552%
33	10.954	1529	1533	1536	rBV	240300	252120	10.58%	0.470%
34	11.042	1543	1548	1553	rBV	1130077	1514531	63.57%	2.822%

Data Path : Z:\HPCHEM1\BNA F\DATA\BF051017\
 Data File : BF095068.D
 Acq On : 10 May 2017 21:42
 Operator : SJ/MA
 Sample : I3037-10 5X
 Misc :
 ALS Vial : 14 Sample Multiplier: 1

Instrument :
 BNA_F
 ClientSampleId :
 HY-SB409-GW

Integration Parameters: rteint.p
 Integrator: RTE
 Smoothing : ON
 Sampling : 1
 Start Thrs: 0.2
 Stop Thrs : 0

Filtering: 5
 Min Area: 3 % of largest Peak
 Max Peaks: 100
 Peak Location: TOP

If leading or trailing edge < 100 prefer < Baseline drop else tangent >
 Peak separation: 5

Method : Z:\HPCHEM1\BNA F\METHODS\8270-BF050217.M
 Title : ASP BNA STANDARDS FOR 5 POINT CALIBRATION

35	11.089	1553	1556	1558	rBV	217704	282499	11.86%	0.526%
36	11.224	1575	1579	1582	rBV4	164458	232587	9.76%	0.433%
37	11.266	1582	1586	1589	rBV2	384859	458255	19.23%	0.854%
38	11.466	1617	1620	1622	rVV3	130994	155435	6.52%	0.290%
39	11.501	1622	1626	1630	rVB	1347837	1550272	65.07%	2.889%
40	11.542	1630	1633	1639	rVB6	164570	269384	11.31%	0.502%
41	11.601	1639	1643	1646	rBV3	209980	267065	11.21%	0.498%
42	11.736	1659	1666	1671	rBV4	534621	931240	39.08%	1.735%
43	11.795	1672	1676	1683	rBV3	345633	759793	31.89%	1.416%
44	11.907	1692	1695	1697	rBV	731435	965734	40.53%	1.800%
45	12.036	1712	1717	1720	rVB	1093734	1542947	64.76%	2.875%
46	12.071	1720	1723	1726	rBV	661580	786346	33.00%	1.465%
47	12.213	1741	1747	1749	rBV2	512426	971136	40.76%	1.810%
48	12.248	1749	1753	1757	rVB	1318122	1742535	73.13%	3.247%
49	12.342	1764	1769	1773	rBV3	456556	737686	30.96%	1.375%
50	12.389	1774	1777	1778	rVV	137134	169421	7.11%	0.316%
51	12.418	1778	1782	1789	rVB4	533156	812206	34.09%	1.513%
52	12.560	1802	1806	1812	rBV3	488006	867881	36.43%	1.617%
53	12.613	1812	1815	1820	rVV2	408306	511485	21.47%	0.953%
54	12.765	1836	1841	1847	rVB	462896	888357	37.28%	1.655%
55	12.830	1848	1852	1856	rVB3	327721	452445	18.99%	0.843%
56	12.871	1856	1859	1861	rBV2	158853	178019	7.47%	0.332%
57	12.907	1862	1865	1866	rBV2	204326	217496	9.13%	0.405%
58	12.930	1866	1869	1873	rVB	576998	649261	27.25%	1.210%
59	12.989	1877	1879	1882	rBV	367054	369342	15.50%	0.688%
60	13.107	1895	1899	1904	rVB2	711319	1084556	45.52%	2.021%
61	13.154	1904	1907	1911	rBV	399188	437285	18.35%	0.815%
62	13.230	1917	1920	1922	rBV2	269021	355788	14.93%	0.663%
63	13.254	1922	1924	1926	rVV2	360246	404377	16.97%	0.754%
64	13.277	1926	1928	1931	rVV	302869	336747	14.13%	0.627%
65	13.307	1931	1933	1939	rVB3	177340	275938	11.58%	0.514%
66	13.395	1944	1948	1952	rVV5	162927	273831	11.49%	0.510%
67	13.460	1955	1959	1966	rVB2	551103	903738	37.93%	1.684%
68	13.548	1967	1974	1979	rBV5	404943	1108067	46.51%	2.065%
69	13.595	1979	1982	1987	rVB5	197032	290452	12.19%	0.541%
70	13.671	1992	1995	1999	rBV2	203687	231732	9.73%	0.432%
71	13.765	2007	2011	2016	rVB	991123	1400580	58.78%	2.610%

Data Path : Z:\HPCHEM1\BNA F\DATA\BF051017\
 Data File : BF095068.D
 Acq On : 10 May 2017 21:42
 Operator : SJ/MA
 Sample : I3037-10 5X
 Misc :
 ALS Vial : 14 Sample Multiplier: 1

Instrument :
 BNA_F
 ClientSampleId :
 HY-SB409-GW

Integration Parameters: rteint.p
 Integrator: RTE
 Smoothing : ON Filtering: 5
 Sampling : 1 Min Area: 3 % of largest Peak
 Start Thrs: 0.2 Max Peaks: 100
 Stop Thrs : 0 Peak Location: TOP

If leading or trailing edge < 100 prefer < Baseline drop else tangent >
 Peak separation: 5

Method : Z:\HPCHEM1\BNA F\METHODS\8270-BF050217.M
 Title : ASP BNA STANDARDS FOR 5 POINT CALIBRATION

72	13.865	2024	2028	2032	rBV3	253246	379109	15.91%	0.706%
73	14.083	2063	2065	2072	rVB2	261234	317816	13.34%	0.592%
74	14.207	2080	2086	2090	rBV	1615443	2382649	100.00%	4.440%
75	14.336	2105	2108	2110	rBV3	191124	239748	10.06%	0.447%
76	14.401	2116	2119	2124	rVB	319746	337233	14.15%	0.628%
77	14.542	2140	2143	2147	rVB2	226769	328010	13.77%	0.611%
78	14.589	2147	2151	2155	rBV5	204137	289039	12.13%	0.539%
79	14.683	2165	2167	2170	rVB4	187422	206934	8.69%	0.386%
80	14.959	2209	2214	2218	rBV3	1304793	1936133	81.26%	3.608%
81	15.001	2218	2221	2226	rVB	1000620	1129927	47.42%	2.106%
82	15.083	2232	2235	2240	rVB2	213957	281047	11.80%	0.524%
83	15.130	2240	2243	2246	rVB	136445	148929	6.25%	0.278%
84	15.177	2248	2251	2255	rVV2	129168	162411	6.82%	0.303%
85	15.495	2301	2305	2310	rBV3	197899	336092	14.11%	0.626%
86	15.748	2344	2348	2350	rVV	393784	430904	18.09%	0.803%
87	15.783	2351	2354	2360	rVV	464314	643018	26.99%	1.198%
88	15.901	2370	2374	2376	rVV2	342112	461485	19.37%	0.860%
89	15.936	2377	2380	2388	rVB	306297	434052	18.22%	0.809%
90	16.442	2463	2466	2469	rVB	182573	205508	8.63%	0.383%
91	16.542	2479	2483	2487	rBV2	299284	469518	19.71%	0.875%
92	16.742	2514	2517	2521	rBV	279409	294301	12.35%	0.548%
93	17.048	2565	2569	2573	rVB	803166	932697	39.15%	1.738%
94	17.283	2605	2609	2617	rVB	618023	724136	30.39%	1.349%
95	17.636	2667	2669	2675	rBV	118466	168912	7.09%	0.315%
96	18.630	2833	2838	2841	rBV2	536640	715457	30.03%	1.333%
97	18.665	2842	2844	2851	rVB	128664	192197	8.07%	0.358%
98	20.188	3099	3103	3109	rVB	123568	158269	6.64%	0.295%
99	20.241	3109	3112	3116	rBV	153568	185893	7.80%	0.346%
100	20.300	3118	3122	3131	rVB	371484	507938	21.32%	0.946%

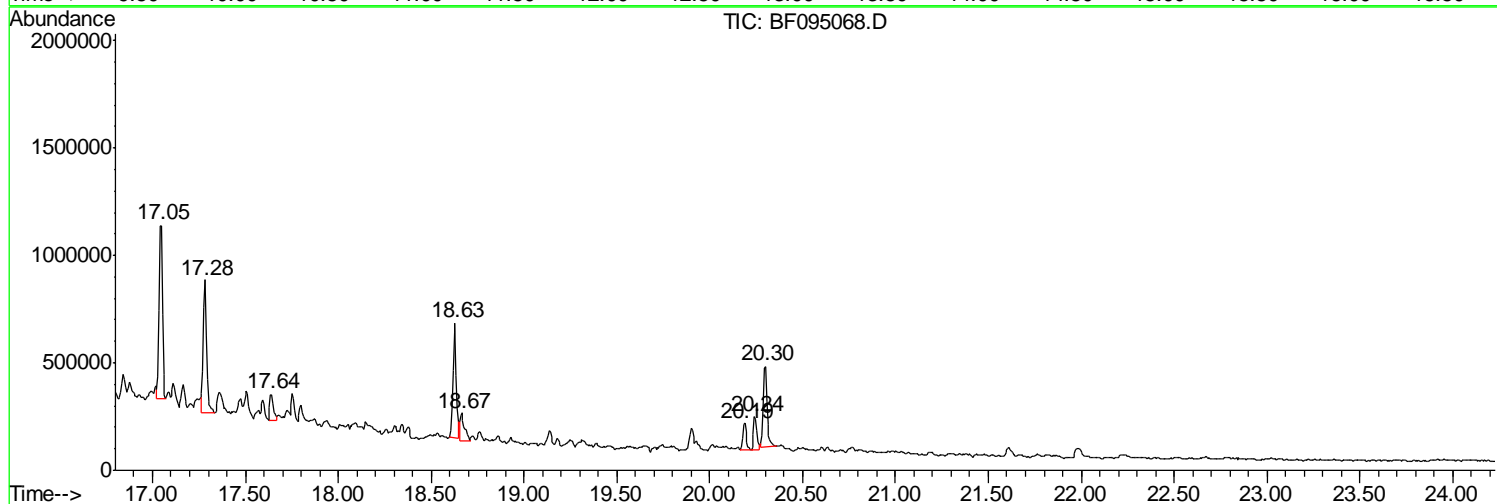
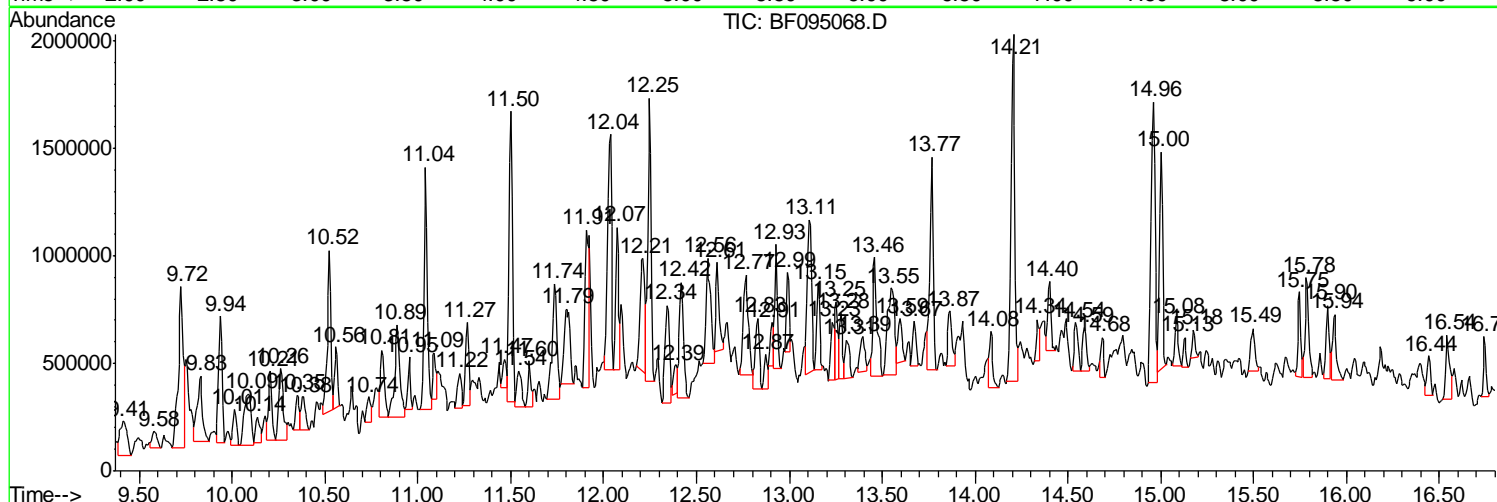
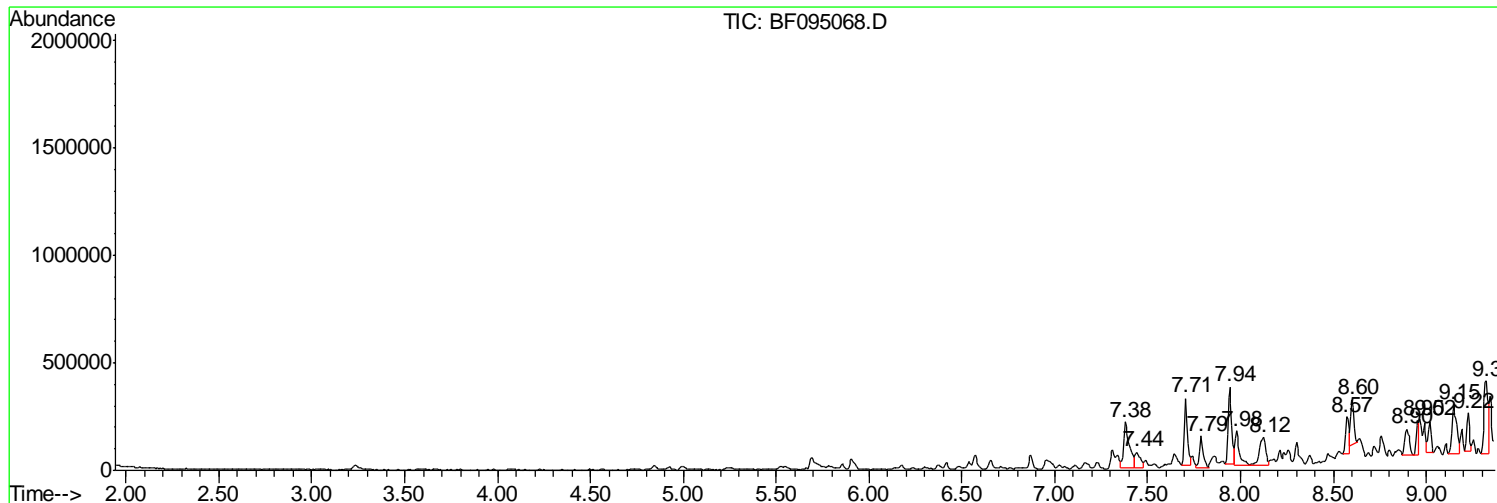
Sum of corrected areas: 53665352

Data Path : Z:\HPCHEM1\BNA F\DATA\BF051017\
 Data File : BF095068.D
 Acq On : 10 May 2017 21:42
 Operator : SJ/MA
 Sample : I3037-10 5X
 Misc :
 ALS Vial : 14 Sample Multiplier: 1

Instrument :
 BNA_F
 Client Sampled :
 HY-SB409-GW

Quant Method : Z:\HPCHEM1\BNA F\METHODS\8270-BF050217.M
 Quant Title : ASP BNA STANDARDS FOR 5 POINT CALIBRATION

TIC Library : C:\DATABASE\NIST11.L
 TIC Integration Parameters: LSCINT.P



Data Path : Z:\HPCHEM1\BNA F\DATA\BF051017\
 Data File : BF095068.D
 Acq On : 10 May 2017 21:42
 Operator : SJ/MA
 Sample : I3037-10 5X
 Misc :
 ALS Vial : 14 Sample Multiplier: 1

Instrument :
 BNA_F
 ClientSampleID :
 HY-SB409-GW

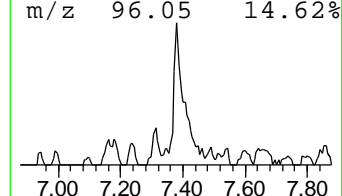
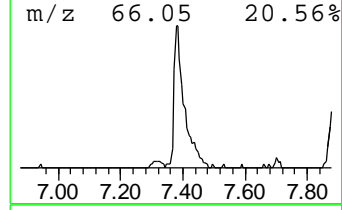
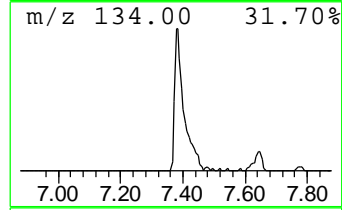
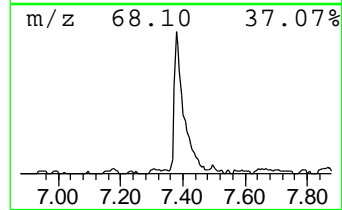
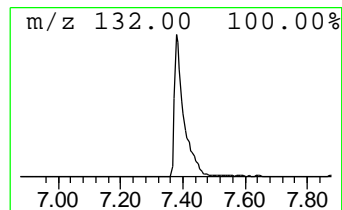
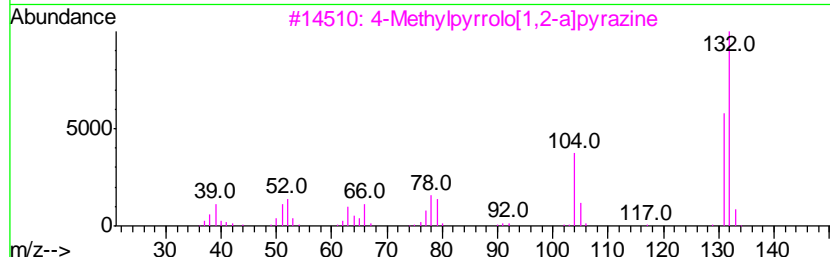
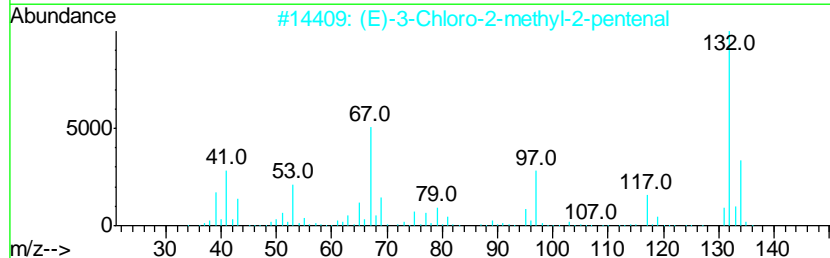
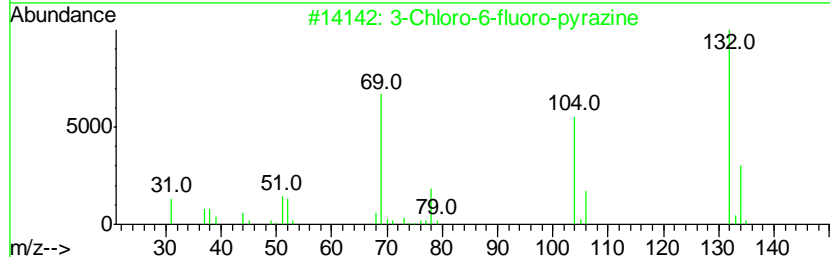
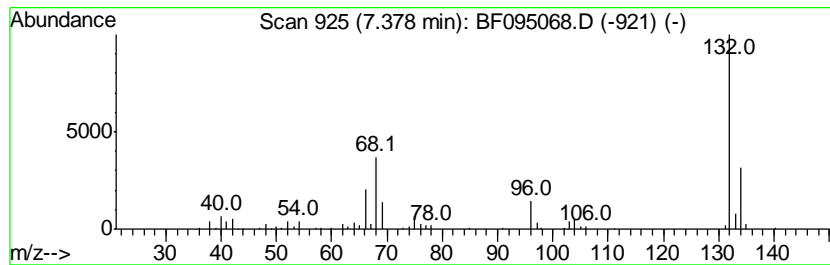
Quant Method : Z:\HPCHEM1\BNA F\METHODS\8270-BF050217.M
 Quant Title : ASP BNA STANDARDS FOR 5 POINT CALIBRATION

TIC Library : C:\DATABASE\NIST11.L
 TIC Integration Parameters: LSCINT.P

 Peak Number 1 unknown7.38 Concentration Rank 9

R.T.	EstConc	Area	Relative to ISTD	R.T.
7.38	21.98 ng	451557	1,4-Dichlorobenzene-d4	7.71

Hit#	of	Tentative ID	MW	MolForm	CAS#	Qual
1	5	3-Chloro-6-fluoro-pyrazine	132	C4H2ClFN2	1000146-10-7	38
2		(E)-3-Chloro-2-methyl-2-pentenal	132	C6H9ClO	031357-76-3	38
3		4-Methylpyrrolo[1,2-a]pyrazine	132	C8H8N2	064608-60-2	9
4		2H-Cyclopenta[d]pyridazine, 2-me...	132	C8H8N2	022291-85-6	9
5		4-Chloro-6-fluoro-pyrimidine	132	C4H2ClFN2	051422-01-6	9



Data Path : Z:\HPCHEM1\BNA F\DATA\BF051017\
 Data File : BF095068.D
 Acq On : 10 May 2017 21:42
 Operator : SJ/MA
 Sample : I3037-10 5X
 Misc :
 ALS Vial : 14 Sample Multiplier: 1

Instrument :
 BNA_F
 ClientSampleID :
 HY-SB409-GW

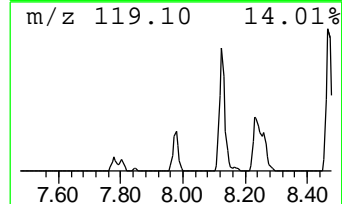
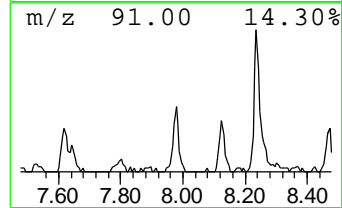
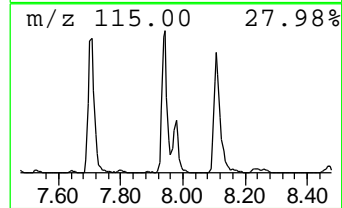
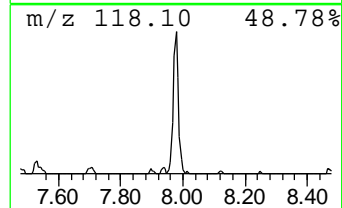
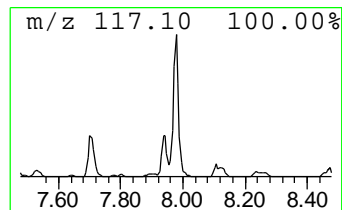
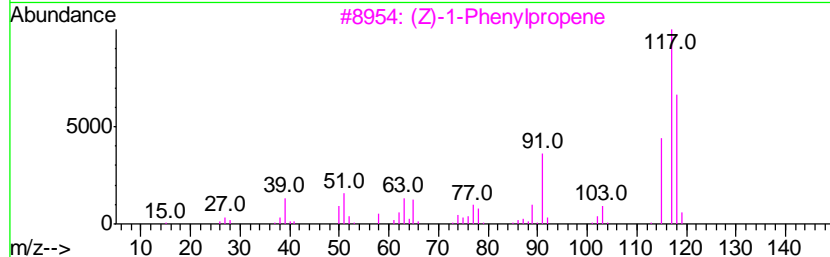
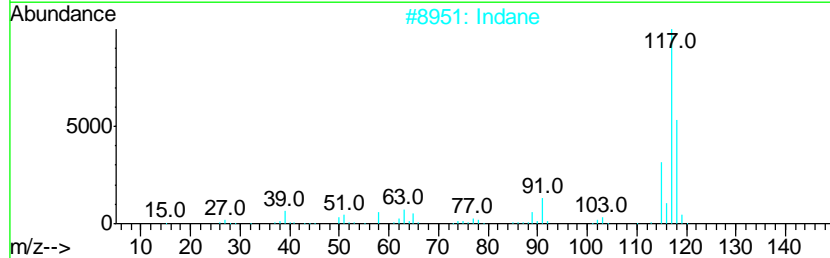
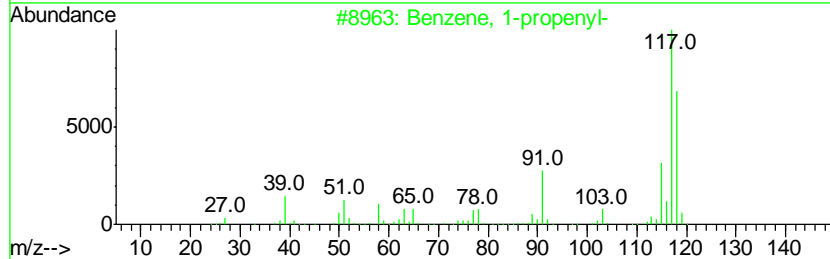
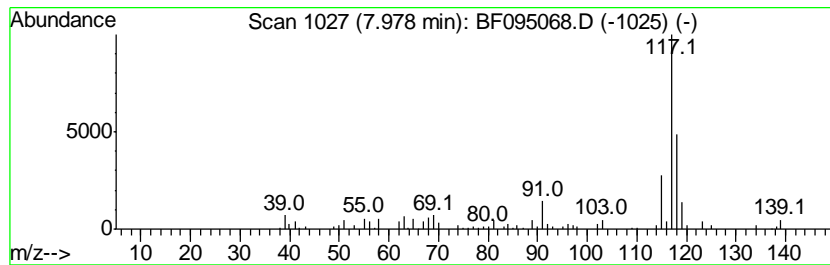
Quant Method : Z:\HPCHEM1\BNA F\METHODS\8270-BF050217.M
 Quant Title : ASP BNA STANDARDS FOR 5 POINT CALIBRATION

TIC Library : C:\DATABASE\NIST11.L
 TIC Integration Parameters: LSCINT.P

 Peak Number 3 Benzene, 1-propenyl- Concentration Rank 20

R.T.	EstConc	Area	Relative to ISTD	R.T.
7.98	11.89 ng	244328	1,4-Dichlorobenzene-d4	7.71

Hit#	of	Tentative ID	MW	MolForm	CAS#	Qual
1	5	Benzene, 1-propenyl-	118	C9H10	000637-50-3	68
2		Indane	118	C9H10	000496-11-7	68
3		(Z)-1-Phenylpropene	118	C9H10	000766-90-5	59
4		1,3-Methanopentalene, 1,2,3,5-te...	118	C9H10	128600-88-4	58
5		Deltacyclene	118	C9H10	007785-10-6	50



Data Path : Z:\HPCHEM1\BNA F\DATA\BF051017\
 Data File : BF095068.D
 Acq On : 10 May 2017 21:42
 Operator : SJ/MA
 Sample : I3037-10 5X
 Misc :
 ALS Vial : 14 Sample Multiplier: 1

Instrument :
 BNA_F
 ClientSampleID :
 HY-SB409-GW

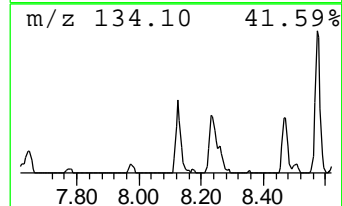
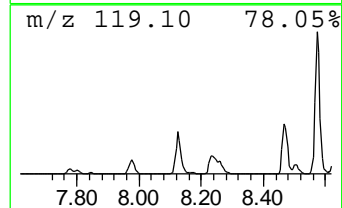
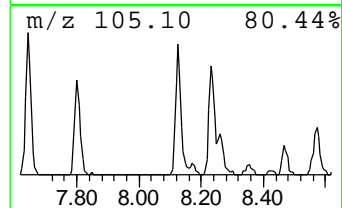
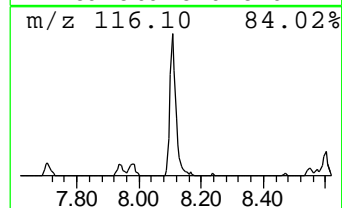
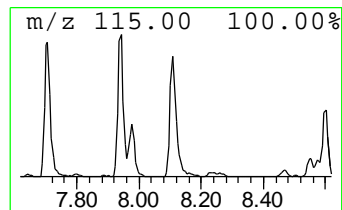
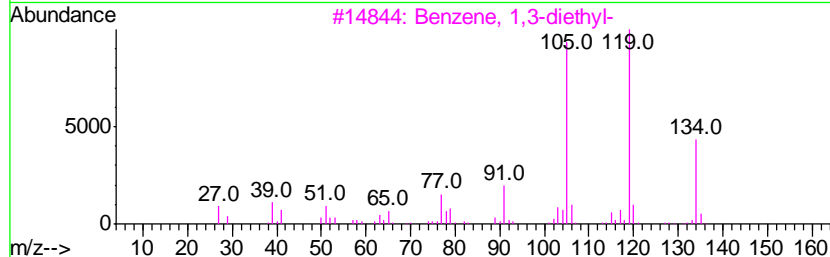
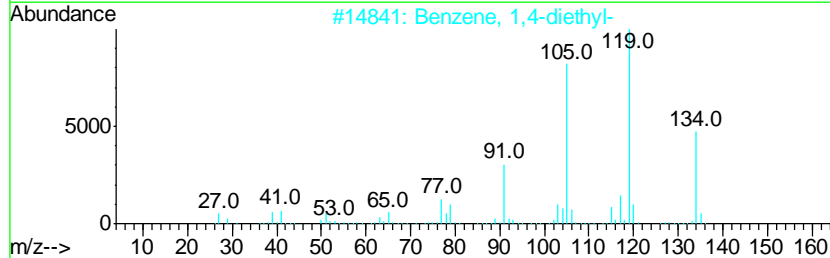
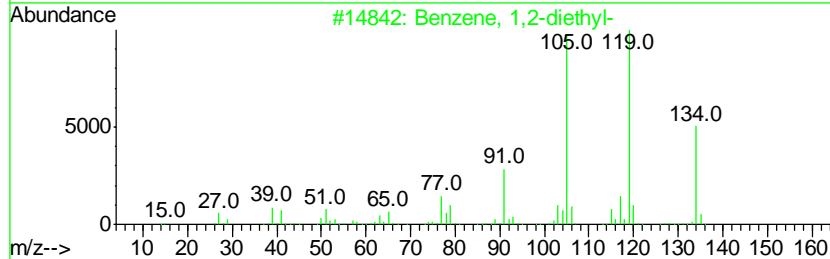
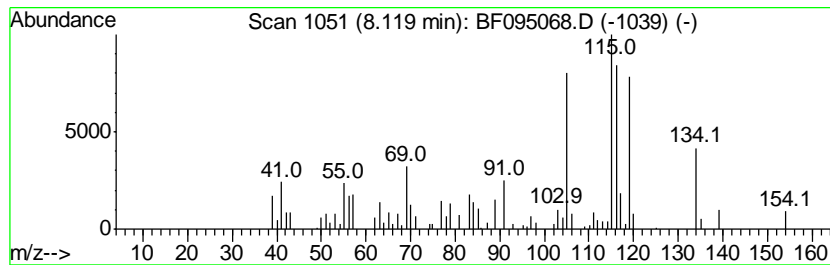
Quant Method : Z:\HPCHEM1\BNA F\METHODS\8270-BF050217.M
 Quant Title : ASP BNA STANDARDS FOR 5 POINT CALIBRATION

TIC Library : C:\DATABASE\NIST11.L
 TIC Integration Parameters: LSCINT.P

 Peak Number 4 Benzene, 1,2-diethyl- Concentration Rank 17

R.T.	EstConc	Area	Relative to ISTD	R.T.
8.12	14.86 ng	305286	1,4-Dichlorobenzene-d4	7.71

Hit#	of	Tentative ID	MW	MolForm	CAS#	Qual
1	5	Benzene, 1,2-diethyl-	134	C10H14	000135-01-3	93
2		Benzene, 1,4-diethyl-	134	C10H14	000105-05-5	93
3		Benzene, 1,3-diethyl-	134	C10H14	000141-93-5	92
4		1,3,8-p-Menthatriene	134	C10H14	018368-95-1	60
5		Benzene, 1-ethyl-3,5-dimethyl-	134	C10H14	000934-74-7	53



Data Path : Z:\HPCHEM1\BNA F\DATA\BF051017\
 Data File : BF095068.D
 Acq On : 10 May 2017 21:42
 Operator : SJ/MA
 Sample : I3037-10 5X
 Misc :
 ALS Vial : 14 Sample Multiplier: 1

Instrument :
 BNA_F
 ClientSampled :
 HY-SB409-GW

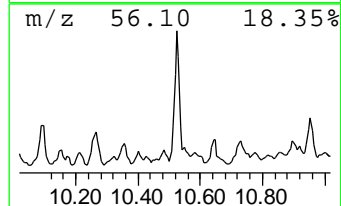
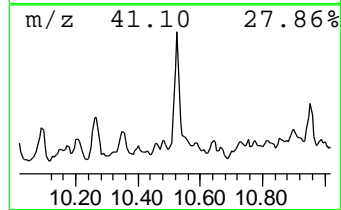
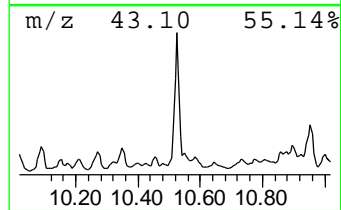
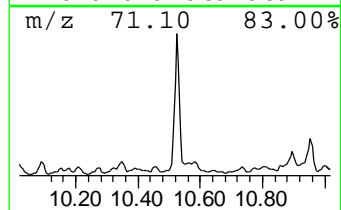
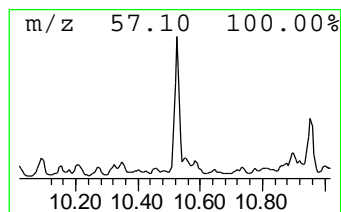
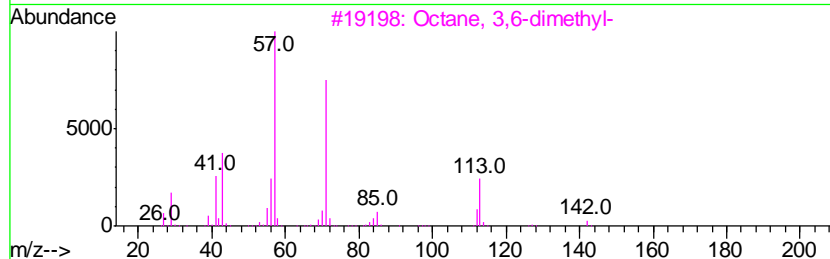
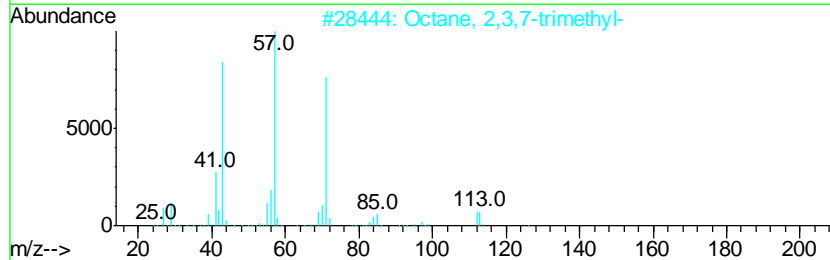
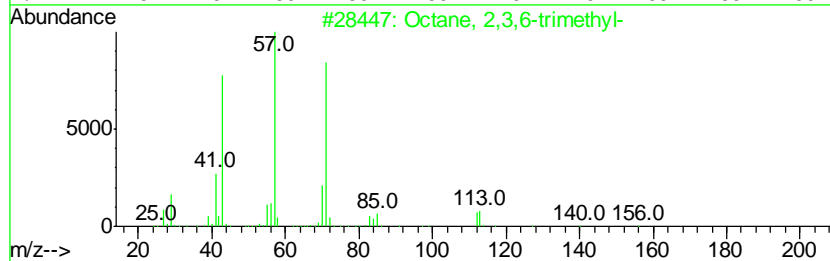
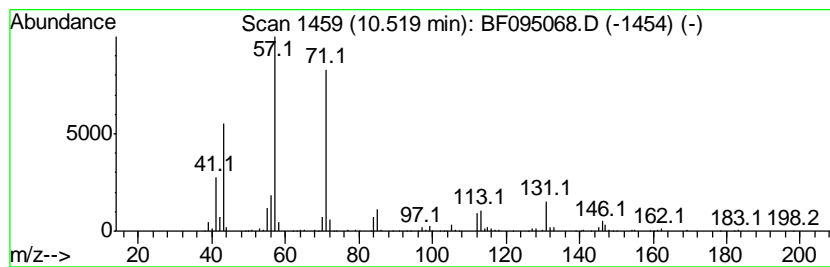
Quant Method : Z:\HPCHEM1\BNA F\METHODS\8270-BF050217.M
 Quant Title : ASP BNA STANDARDS FOR 5 POINT CALIBRATION

TIC Library : C:\DATABASE\NIST11.L
 TIC Integration Parameters: LSCINT.P

 Peak Number 5 Octane, 2,3,6-trimethyl- Concentration Rank 19

R.T.	EstConc	Area	Relative to ISTD	R.T.
10.52	14.25 ng	994516	Naphthalene-d8	9.72

Hit#	of	Tentative ID	MW	MolForm	CAS#	Qual
1	5	Octane, 2,3,6-trimethyl-	156	C11H24	062016-33-5	83
2		Octane, 2,3,7-trimethyl-	156	C11H24	062016-34-6	83
3		Octane, 3,6-dimethyl-	142	C10H22	015869-94-0	78
4		Sulfurous acid, decyl 2-ethylhex...	334	C18H38O3S	1000309-19-3	72
5		Sulfurous acid, 2-ethylhexyl pen...	264	C13H28O3S	1000309-18-9	64



Data Path : Z:\HPCHEM1\BNA F\DATA\BF051017\
 Data File : BF095068.D
 Acq On : 10 May 2017 21:42
 Operator : SJ/MA
 Sample : I3037-10 5X
 Misc :
 ALS Vial : 14 Sample Multiplier: 1

Instrument :
 BNA_F
 ClientSampleID :
 HY-SB409-GW

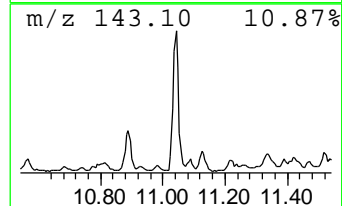
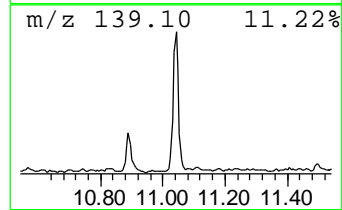
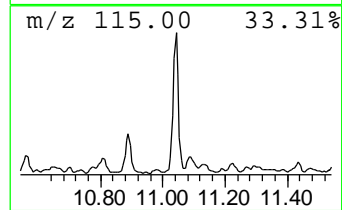
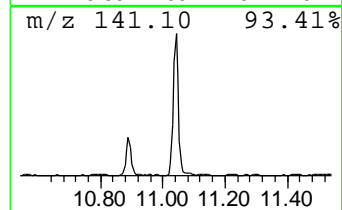
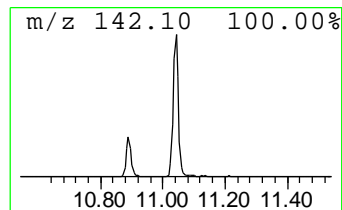
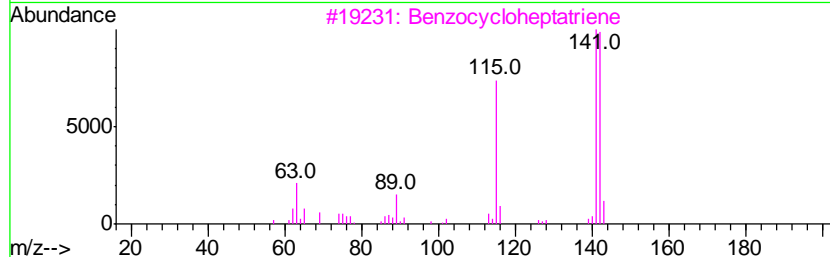
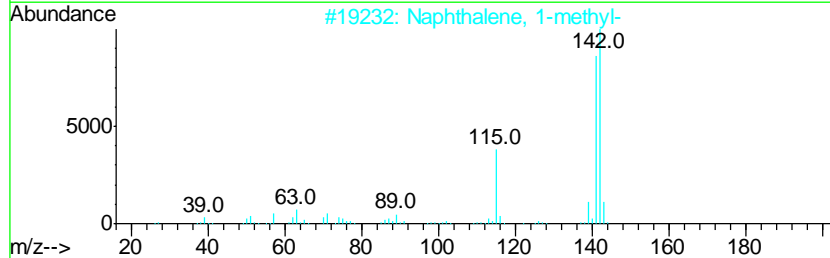
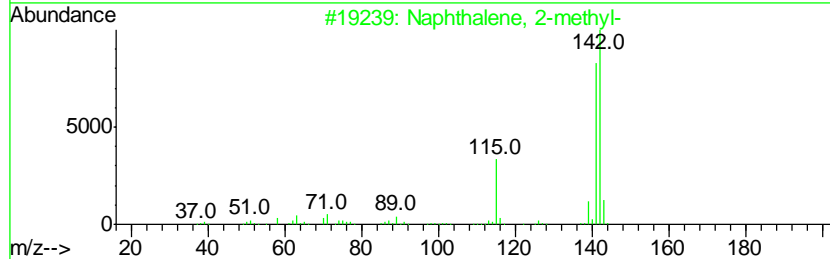
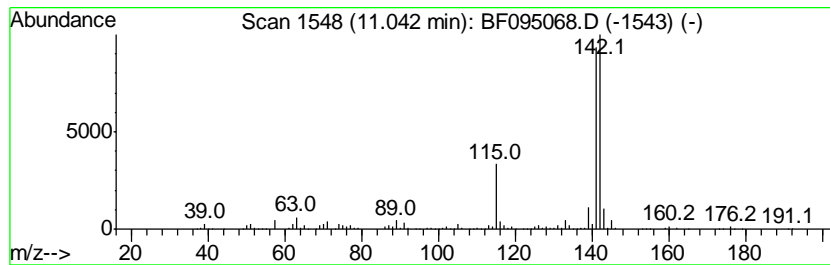
Quant Method : Z:\HPCHEM1\BNA F\METHODS\8270-BF050217.M
 Quant Title : ASP BNA STANDARDS FOR 5 POINT CALIBRATION

TIC Library : C:\DATABASE\NIST11.L
 TIC Integration Parameters: LSCINT.P

 Peak Number 6 Naphthalene, 1-methyl- Concentration Rank 10

R.T.	EstConc	Area	Relative to ISTD	R.T.
11.04	21.69 ng	1514530	Naphthalene-d8	9.72

Hit#	of	Tentative ID	MW	MolForm	CAS#	Qual
1	5	Naphthalene, 2-methyl-	142	C11H10	000091-57-6	96
2		Naphthalene, 1-methyl-	142	C11H10	000090-12-0	94
3		Benzocycloheptatriene	142	C11H10	000264-09-5	93
4		1,4-Methanonaphthalene, 1,4-dihy...	142	C11H10	004453-90-1	90
5		1H-Indene, 1-ethylidene-	142	C11H10	002471-83-2	86



Data Path : Z:\HPCHEM1\BNA F\DATA\BF051017\
 Data File : BF095068.D
 Acq On : 10 May 2017 21:42
 Operator : SJ/MA
 Sample : I3037-10 5X
 Misc :
 ALS Vial : 14 Sample Multiplier: 1

Instrument :
 BNA_F
 ClientSampleID :
 HY-SB409-GW

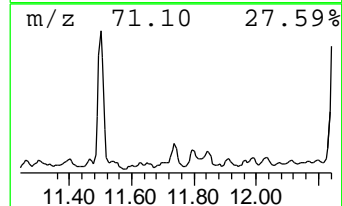
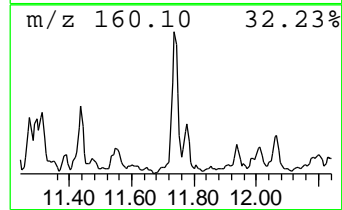
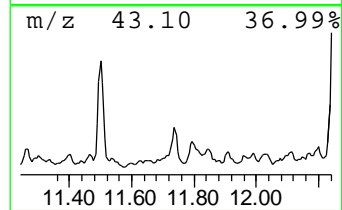
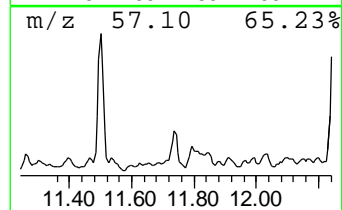
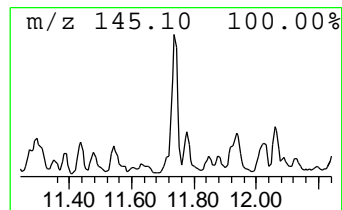
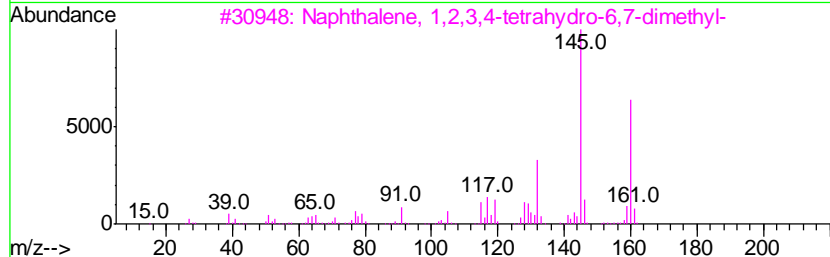
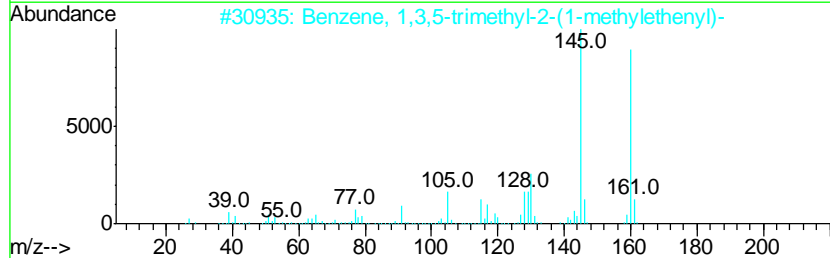
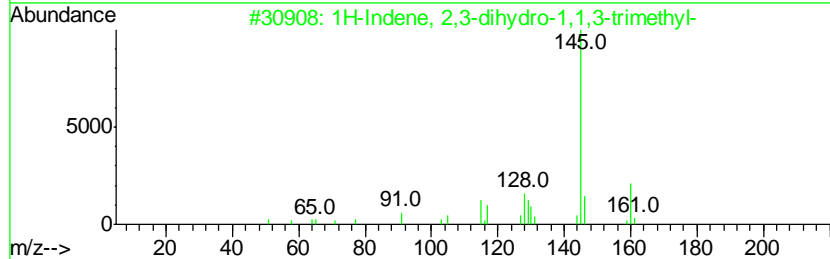
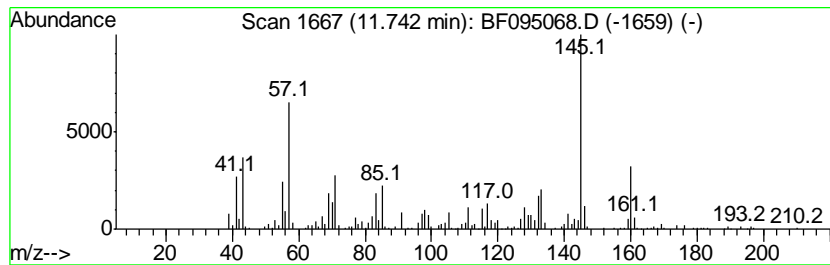
Quant Method : Z:\HPCHEM1\BNA F\METHODS\8270-BF050217.M
 Quant Title : ASP BNA STANDARDS FOR 5 POINT CALIBRATION

TIC Library : C:\DATABASE\NIST11.L
 TIC Integration Parameters: LSCINT.P

 Peak Number 7 1H-Indene, 2,3-dihydro-1,1,... Concentration Rank 11

R.T.	EstConc	Area	Relative to ISTD	R.T.
11.74	21.46 ng	931240	Acenaphthene-d10	12.56

Hit#	of	Tentative ID	MW	MolForm	CAS#	Qual
1	5	1H-Indene, 2,3-dihydro-1,1,3-tri...	160	C12H16	002613-76-5	95
2		Benzene, 1,3,5-trimethyl-2-(1-me...	160	C12H16	014679-13-1	83
3		Naphthalene, 1,2,3,4-tetrahydro-...	160	C12H16	001076-61-5	76
4		Naphthalene, 1,2,3,4-tetrahydro-...	160	C12H16	021693-54-9	76
5		Naphthalene, 1,2,3,4-tetrahydro-...	160	C12H16	021564-91-0	76



Data Path : Z:\HPCHEM1\BNA F\DATA\BF051017\
 Data File : BF095068.D
 Acq On : 10 May 2017 21:42
 Operator : SJ/MA
 Sample : I3037-10 5X
 Misc :
 ALS Vial : 14 Sample Multiplier: 1

Instrument :
 BNA_F
 ClientSampleID :
 HY-SB409-GW

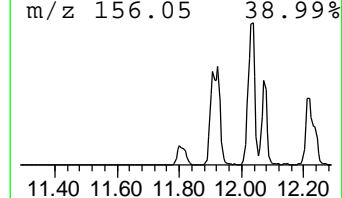
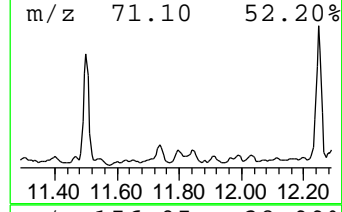
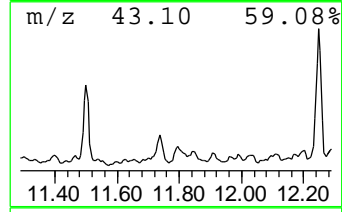
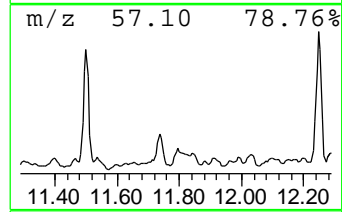
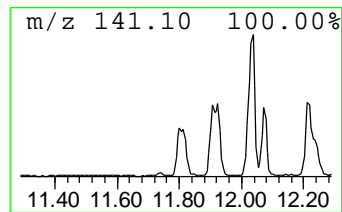
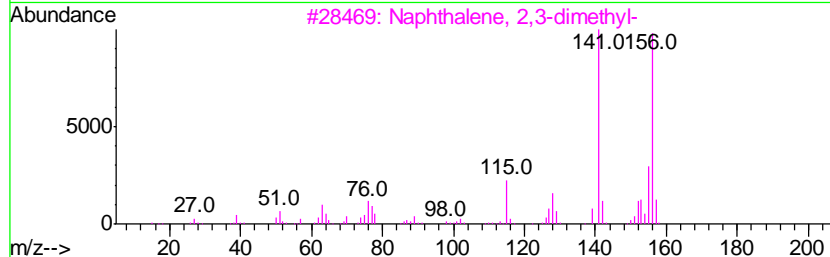
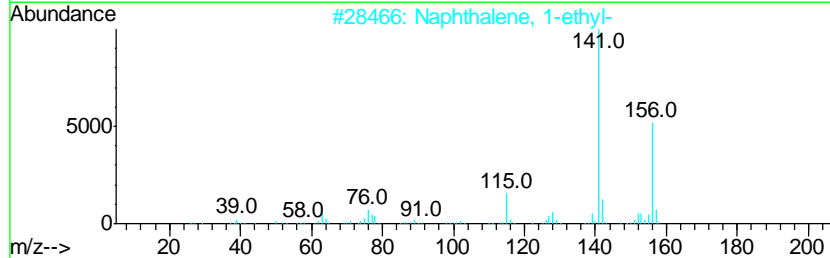
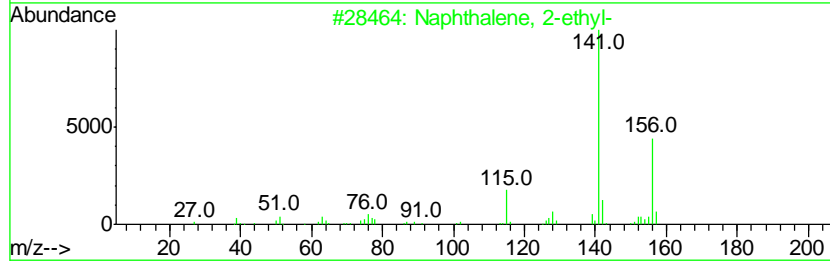
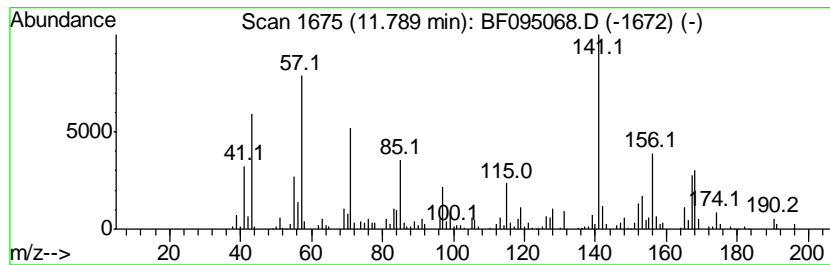
Quant Method : Z:\HPCHEM1\BNA F\METHODS\8270-BF050217.M
 Quant Title : ASP BNA STANDARDS FOR 5 POINT CALIBRATION

TIC Library : C:\DATABASE\NIST11.L
 TIC Integration Parameters: LSCINT.P

 Peak Number 8 Naphthalene, 2-ethyl- Concentration Rank 15

R.T.	EstConc	Area	Relative to ISTD	R.T.
11.79	17.51 ng	759793	Acenaphthene-d10	12.56

Hit#	of	Tentative ID	MW	MolForm	CAS#	Qual
1	5	Naphthalene, 2-ethyl-	156	C12H12	000939-27-5	92
2		Naphthalene, 1-ethyl-	156	C12H12	001127-76-0	70
3		Naphthalene, 2,3-dimethyl-	156	C12H12	000581-40-8	49
4		3,4-Dihydro-4,4,6-trimethyl-2-py...	156	C7H12N2S	005392-23-4	43
5		2-Thiophenecarboxylic acid, 5-et...	156	C7H8O2S	023229-72-3	43



Data Path : Z:\HPCHEM1\BNA F\DATA\BF051017\
 Data File : BF095068.D
 Acq On : 10 May 2017 21:42
 Operator : SJ/MA
 Sample : I3037-10 5X
 Misc :
 ALS Vial : 14 Sample Multiplier: 1

Instrument :
 BNA_F
 ClientSampleId :
 HY-SB409-GW

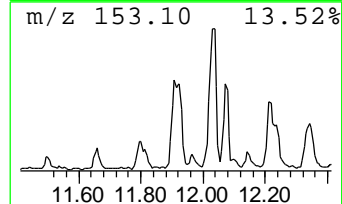
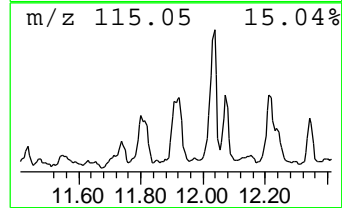
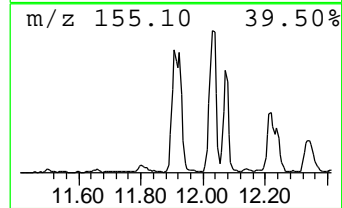
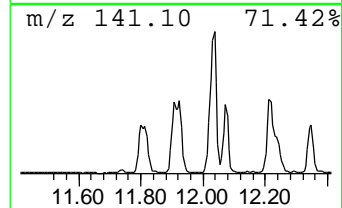
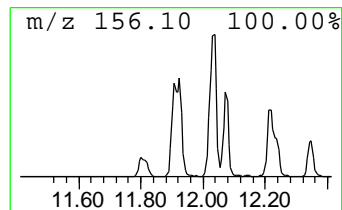
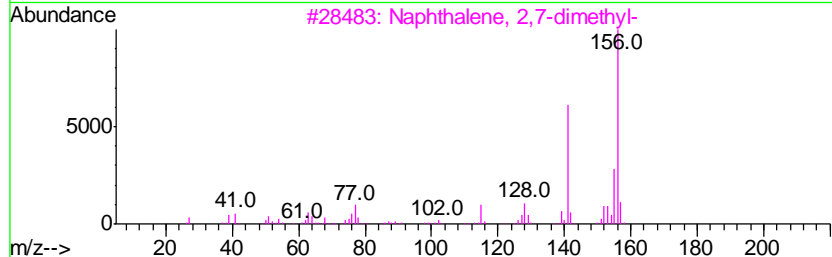
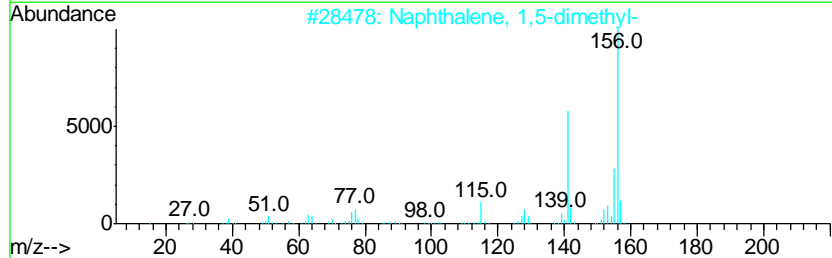
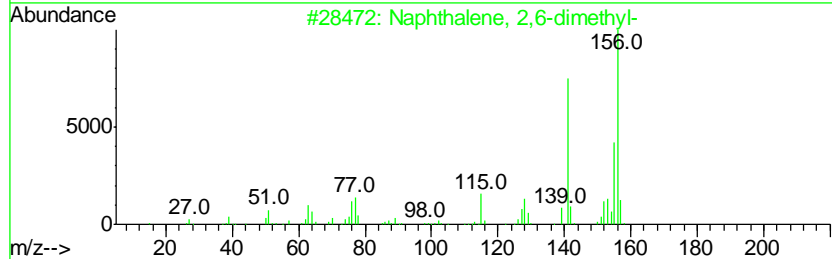
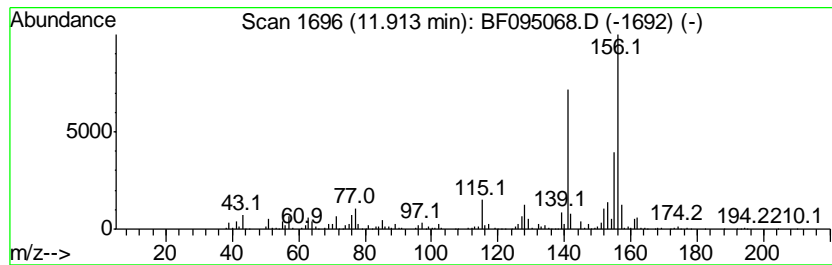
Quant Method : Z:\HPCHEM1\BNA F\METHODS\8270-BF050217.M
 Quant Title : ASP BNA STANDARDS FOR 5 POINT CALIBRATION

TIC Library : C:\DATABASE\NIST11.L
 TIC Integration Parameters: LSCINT.P

 Peak Number 9 Naphthalene, 2,6-dimethyl- Concentration Rank 8

R.T.	EstConc	Area	Relative to ISTD	R.T.
11.91	22.26 ng	965734	Acenaphthene-d10	12.56

Hit#	of	Tentative ID	MW	MolForm	CAS#	Qual
1	5	Naphthalene, 2,6-dimethyl-	156	C12H12	000581-42-0	98
2		Naphthalene, 1,5-dimethyl-	156	C12H12	000571-61-9	97
3		Naphthalene, 2,7-dimethyl-	156	C12H12	000582-16-1	97
4		Naphthalene, 1,3-dimethyl-	156	C12H12	000575-41-7	96
5		Naphthalene, 1,6-dimethyl-	156	C12H12	000575-43-9	96



Data Path : Z:\HPCHEM1\BNA F\DATA\BF051017\
 Data File : BF095068.D
 Acq On : 10 May 2017 21:42
 Operator : SJ/MA
 Sample : I3037-10 5X
 Misc :
 ALS Vial : 14 Sample Multiplier: 1

Instrument :
 BNA_F
 ClientSampleId :
 HY-SB409-GW

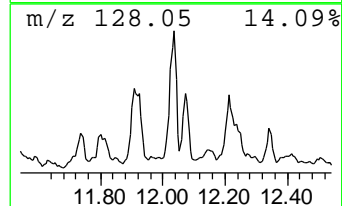
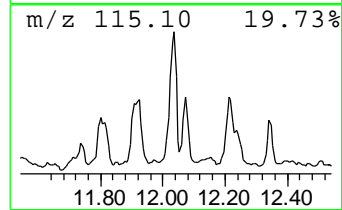
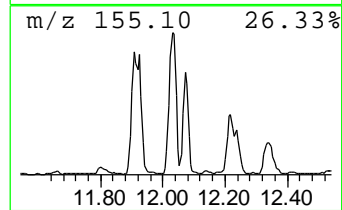
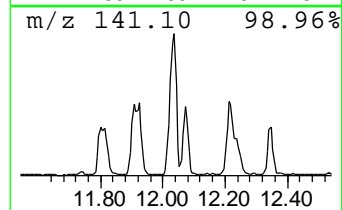
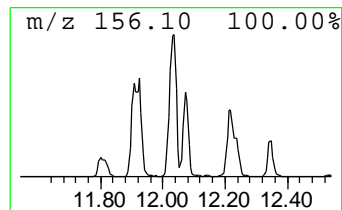
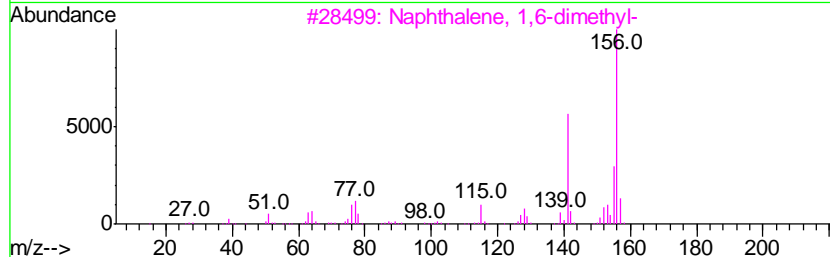
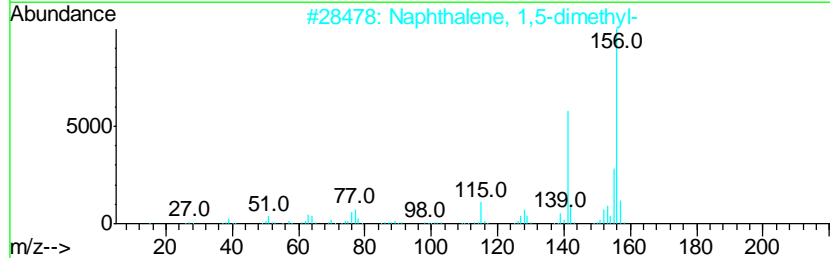
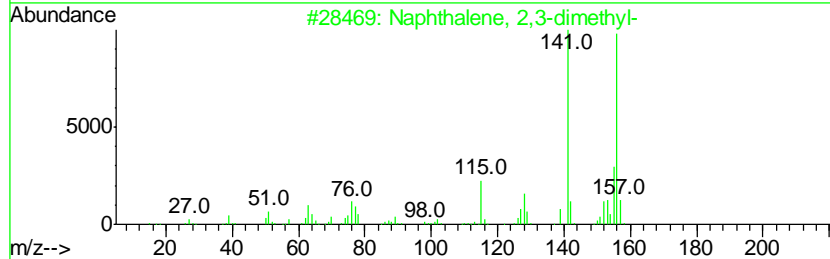
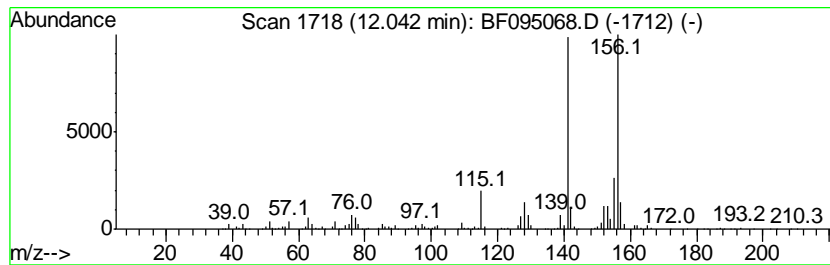
Quant Method : Z:\HPCHEM1\BNA F\METHODS\8270-BF050217.M
 Quant Title : ASP BNA STANDARDS FOR 5 POINT CALIBRATION

TIC Library : C:\DATABASE\NIST11.L
 TIC Integration Parameters: LSCINT.P

 Peak Number 10 Naphthalene, 2,3-dimethyl- Concentration Rank 2

R.T.	EstConc	Area	Relative to ISTD	R.T.
12.04	35.56 ng	1542950	Acenaphthene-d10	12.56

Hit#	of	Tentative ID	MW	MolForm	CAS#	Qual
1	5	Naphthalene, 2,3-dimethyl-	156	C12H12	000581-40-8	97
2		Naphthalene, 1,5-dimethyl-	156	C12H12	000571-61-9	97
3		Naphthalene, 1,6-dimethyl-	156	C12H12	000575-43-9	97
4		Naphthalene, 2,7-dimethyl-	156	C12H12	000582-16-1	97
5		Naphthalene, 1,4-dimethyl-	156	C12H12	000571-58-4	97



Data Path : Z:\HPCHEM1\BNA F\DATA\BF051017\
 Data File : BF095068.D
 Acq On : 10 May 2017 21:42
 Operator : SJ/MA
 Sample : I3037-10 5X
 Misc :
 ALS Vial : 14 Sample Multiplier: 1

Instrument :
 BNA_F
 ClientSampleID :
 HY-SB409-GW

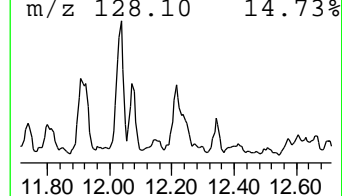
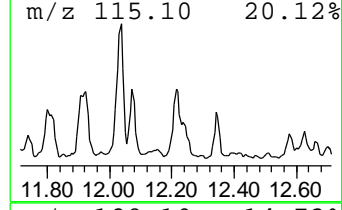
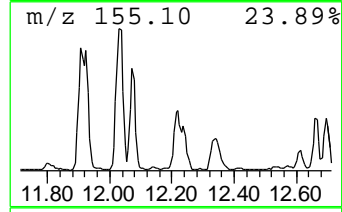
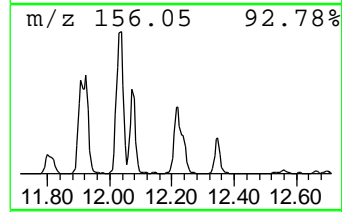
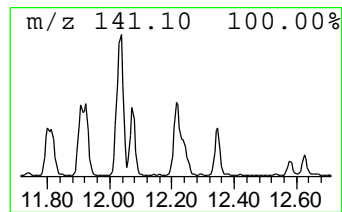
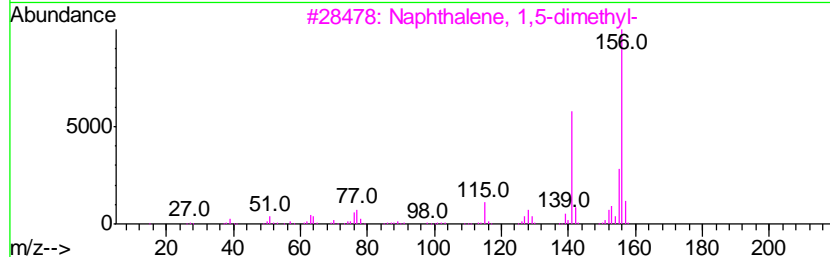
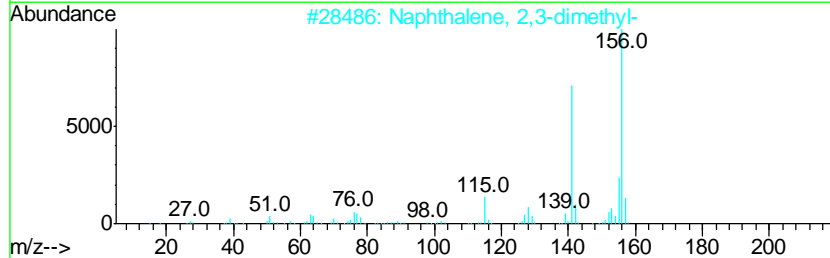
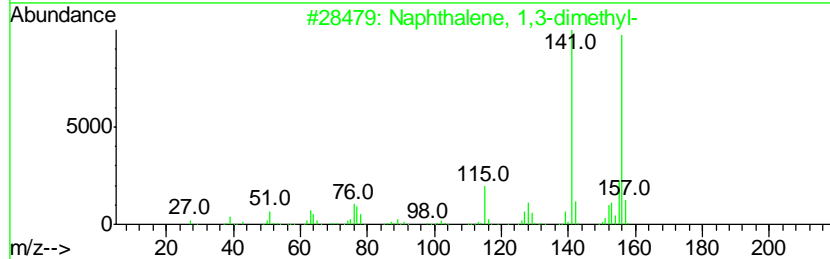
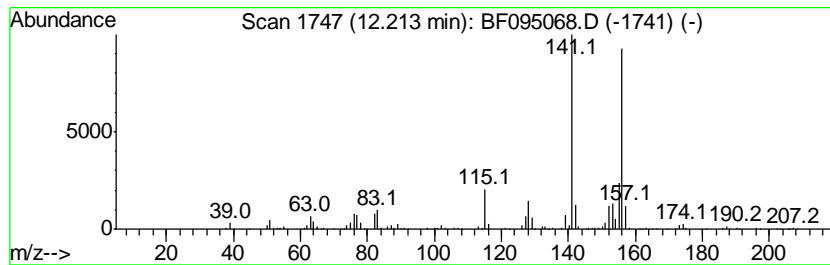
Quant Method : Z:\HPCHEM1\BNA F\METHODS\8270-BF050217.M
 Quant Title : ASP BNA STANDARDS FOR 5 POINT CALIBRATION

TIC Library : C:\DATABASE\NIST11.L
 TIC Integration Parameters: LSCINT.P

 Peak Number 12 Naphthalene, 1,3-dimethyl- Concentration Rank 7

R.T.	EstConc	Area	Relative to ISTD	R.T.
12.21	22.38 ng	971136	Acenaphthene-d10	12.56

Hit#	of	Tentative ID	MW	MolForm	CAS#	Qual
1	5	Naphthalene, 1,3-dimethyl-	156	C12H12	000575-41-7	98
2		Naphthalene, 2,3-dimethyl-	156	C12H12	000581-40-8	97
3		Naphthalene, 1,5-dimethyl-	156	C12H12	000571-61-9	96
4		Naphthalene, 1,8-dimethyl-	156	C12H12	000569-41-5	96
5		Naphthalene, 1,4-dimethyl-	156	C12H12	000571-58-4	96



Data Path : Z:\HPCHEM1\BNA F\DATA\BF051017\
 Data File : BF095068.D
 Acq On : 10 May 2017 21:42
 Operator : SJ/MA
 Sample : I3037-10 5X
 Misc :
 ALS Vial : 14 Sample Multiplier: 1

Instrument :
 BNA_F
 ClientSampleID :
 HY-SB409-GW

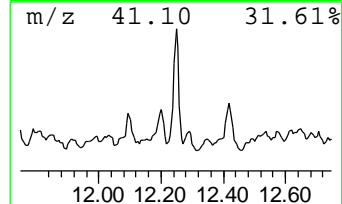
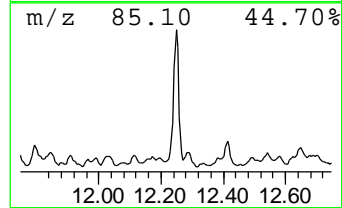
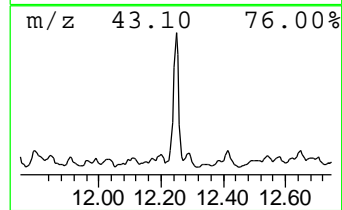
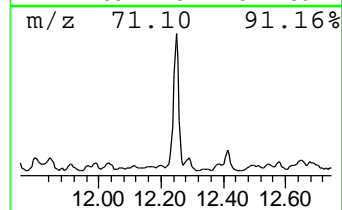
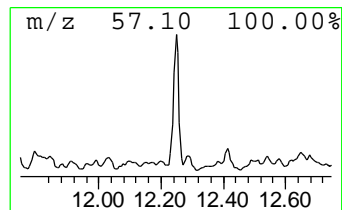
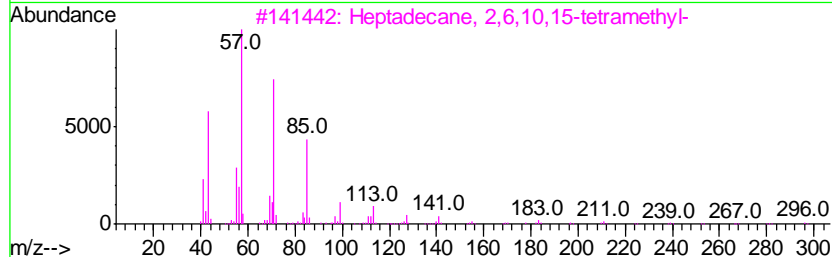
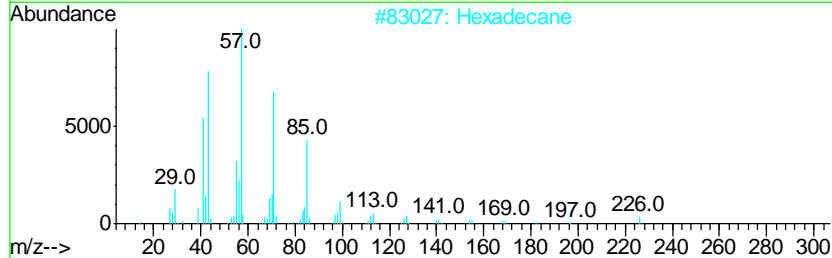
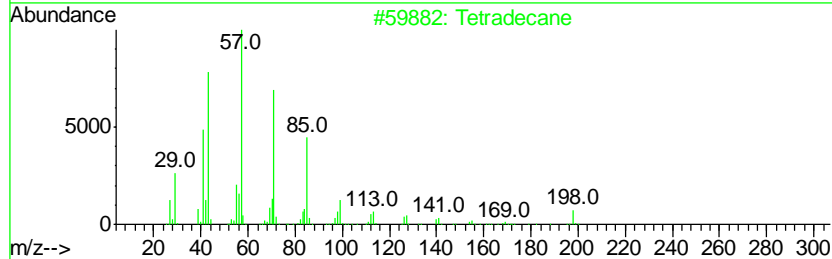
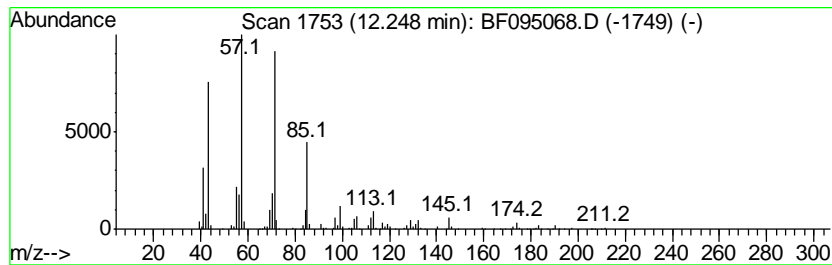
Quant Method : Z:\HPCHEM1\BNA F\METHODS\8270-BF050217.M
 Quant Title : ASP BNA STANDARDS FOR 5 POINT CALIBRATION

TIC Library : C:\DATABASE\NIST11.L
 TIC Integration Parameters: LSCINT.P

 Peak Number 13 Tetradecane Concentration Rank 1

R.T.	EstConc	Area	Relative to ISTD	R.T.
12.25	40.16 ng	1742540	Acenaphthene-d10	12.56

Hit#	of	Tentative ID	MW	MolForm	CAS#	Qual
1	5	Tetradecane	198	C14H30	000629-59-4	86
2		Hexadecane	226	C16H34	000544-76-3	78
3		Heptadecane, 2,6,10,15-tetramethyl-	296	C21H44	054833-48-6	72
4		Heptadecane, 2,6,10,14-tetramethyl-	296	C21H44	018344-37-1	64
5		Sulfurous acid, hexyl pentyl ester	236	C11H24O3S	1000309-14-1	64



Data Path : Z:\HPCHEM1\BNA F\DATA\BF051017\
 Data File : BF095068.D
 Acq On : 10 May 2017 21:42
 Operator : SJ/MA
 Sample : I3037-10 5X
 Misc :
 ALS Vial : 14 Sample Multiplier: 1

Instrument :
 BNA_F
 ClientSampleID :
 HY-SB409-GW

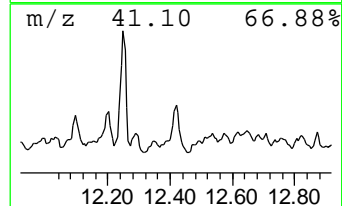
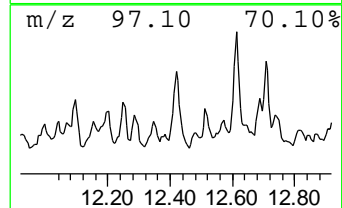
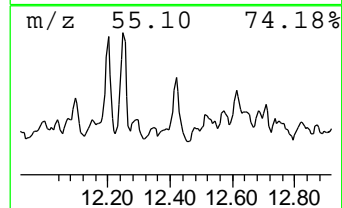
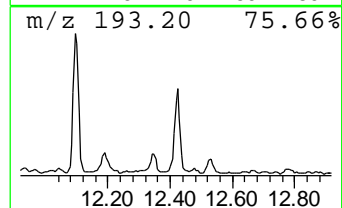
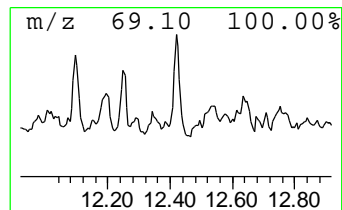
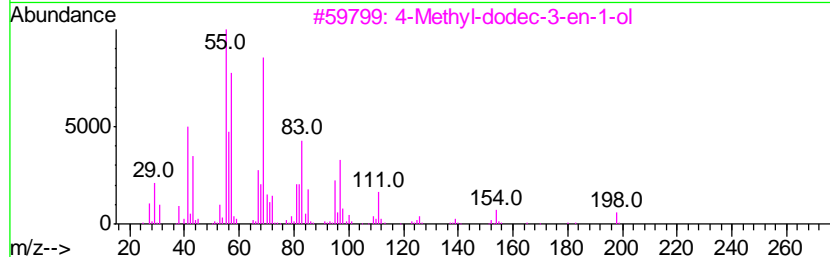
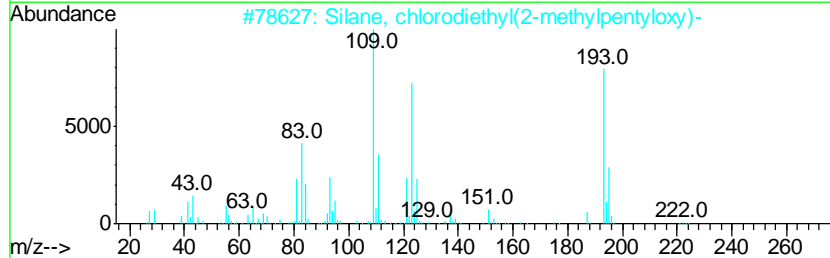
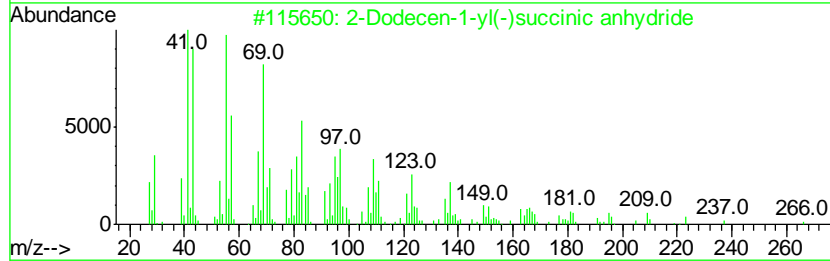
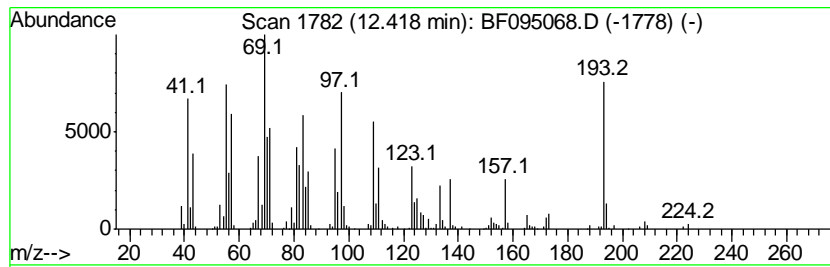
Quant Method : Z:\HPCHEM1\BNA F\METHODS\8270-BF050217.M
 Quant Title : ASP BNA STANDARDS FOR 5 POINT CALIBRATION

TIC Library : C:\DATABASE\NIST11.L
 TIC Integration Parameters: LSCINT.P

 Peak Number 14 2-Dodecen-1-yl(-)succinic a... Concentration Rank 13

R.T.	EstConc	Area	Relative to ISTD	R.T.
12.42	18.72 ng	812206	Acenaphthene-d10	12.56

Hit#	of	Tentative ID	MW	MolForm	CAS#	Qual
1	5	2-Dodecen-1-yl(-)succinic anhydride	266	C16H26O3	019780-11-1	50
2		Silane, chlorodiethyl(2-methylpe...	222	C10H23ClOSi	1000363-12-7	42
3		4-Methyl-dodec-3-en-1-ol	198	C13H26O	1000192-41-0	38
4		6-Octen-1-ol, 3,7-dimethyl-, for...	184	C11H20O2	000105-85-1	30
5		Oxiranecarboxaldehyde, 3-methyl-...	168	C10H16O2	016996-12-6	25



Data Path : Z:\HPCHEM1\BNA F\DATA\BF051017\
 Data File : BF095068.D
 Acq On : 10 May 2017 21:42
 Operator : SJ/MA
 Sample : I3037-10 5X
 Misc :
 ALS Vial : 14 Sample Multiplier: 1

Instrument :
 BNA_F
 ClientSampled :
 HY-SB409-GW

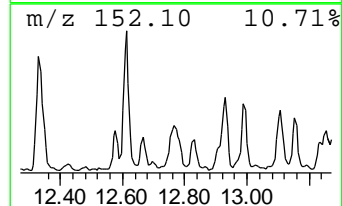
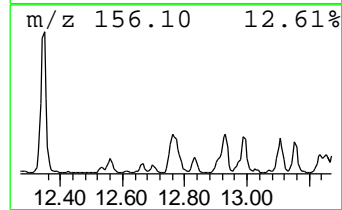
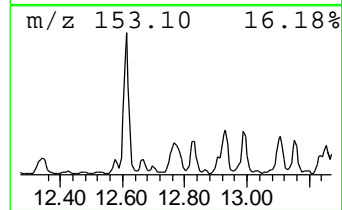
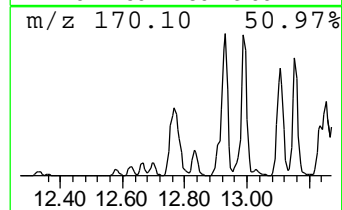
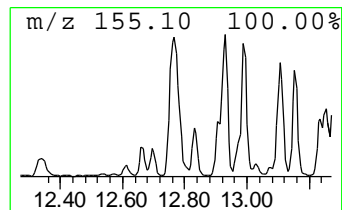
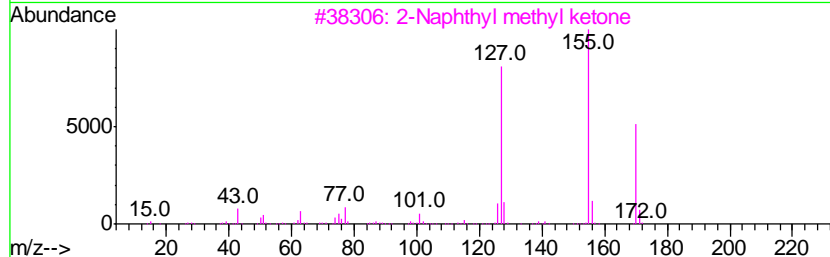
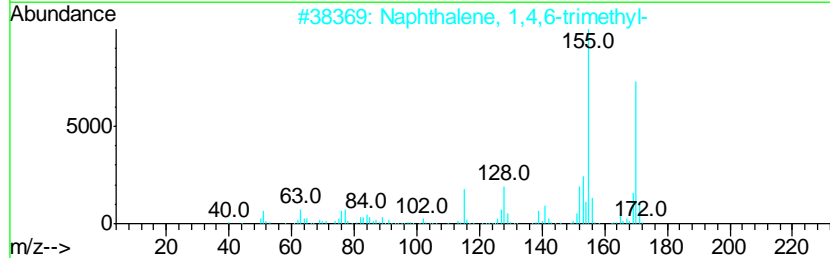
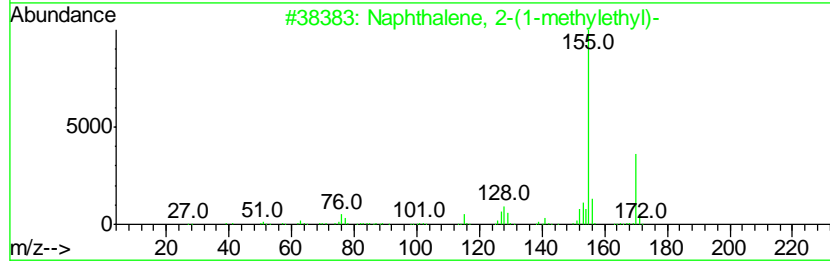
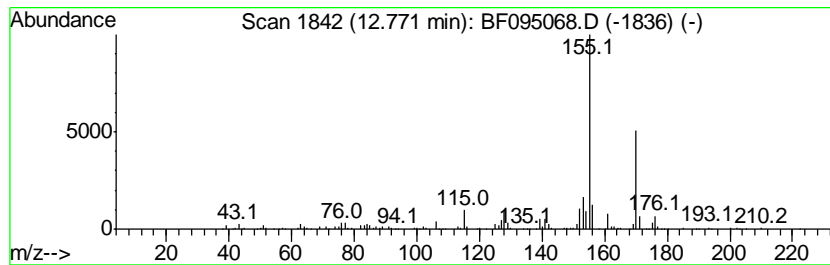
Quant Method : Z:\HPCHEM1\BNA F\METHODS\8270-BF050217.M
 Quant Title : ASP BNA STANDARDS FOR 5 POINT CALIBRATION

TIC Library : C:\DATABASE\NIST11.L
 TIC Integration Parameters: LSCINT.P

 Peak Number 15 Naphthalene, 2-(1-methyleth... Concentration Rank 12

R.T.	EstConc	Area	Relative to ISTD	R.T.
12.77	20.47 ng	888357	Acenaphthene-d10	12.56

Hit#	of	Tentative ID	MW	MolForm	CAS#	Qual
1	5	Naphthalene, 2-(1-methylethyl)-	170	C13H14	002027-17-0	91
2		Naphthalene, 1,4,6-trimethyl-	170	C13H14	002131-42-2	86
3		2-Naphthyl methyl ketone	170	C12H10O	000093-08-3	72
4		Naphthalene, 1,6,7-trimethyl-	170	C13H14	002245-38-7	70
5		Ethanone, 1-(1-Naphthalenyl)-	170	C12H10O	000941-98-0	64



Data Path : Z:\HPCHEM1\BNA F\DATA\BF051017\
 Data File : BF095068.D
 Acq On : 10 May 2017 21:42
 Operator : SJ/MA
 Sample : I3037-10 5X
 Misc :
 ALS Vial : 14 Sample Multiplier: 1

Instrument :
 BNA_F
 ClientSampleId :
 HY-SB409-GW

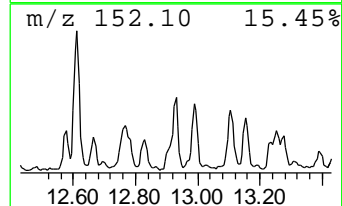
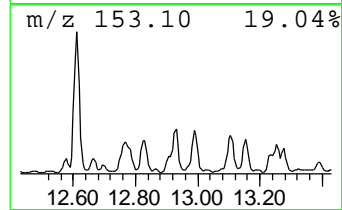
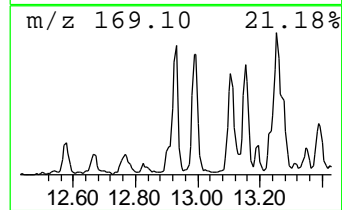
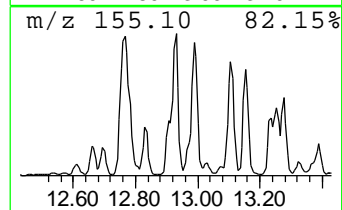
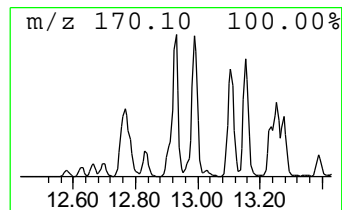
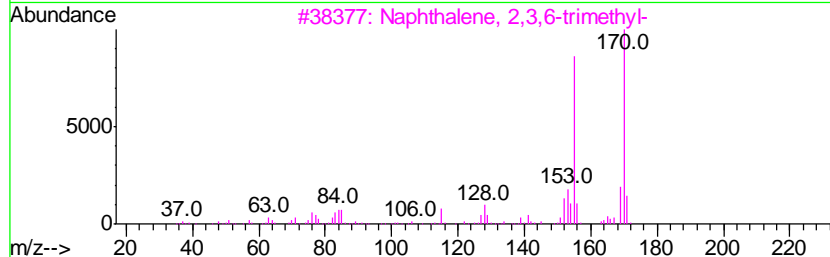
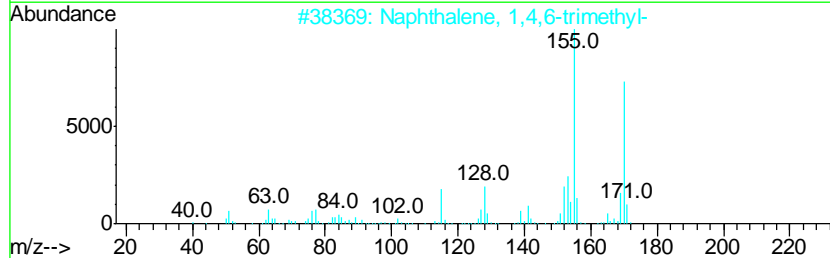
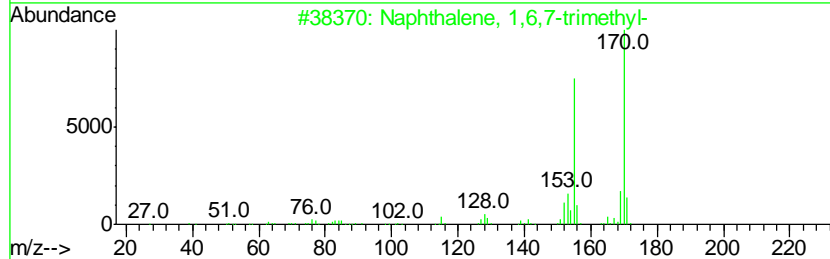
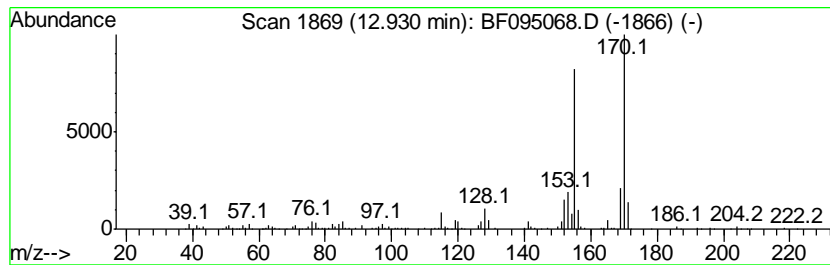
Quant Method : Z:\HPCHEM1\BNA F\METHODS\8270-BF050217.M
 Quant Title : ASP BNA STANDARDS FOR 5 POINT CALIBRATION

TIC Library : C:\DATABASE\NIST11.L
 TIC Integration Parameters: LSCINT.P

 Peak Number 16 Naphthalene, 1,6,7-trimethyl- Concentration Rank 16

R.T.	EstConc	Area	Relative to ISTD	R.T.
12.93	14.96 ng	649261	Acenaphthene-d10	12.56

Hit#	of	Tentative ID	MW	MolForm	CAS#	Qual
1	5	Naphthalene, 1,6,7-trimethyl-	170	C13H14	002245-38-7	97
2		Naphthalene, 1,4,6-trimethyl-	170	C13H14	002131-42-2	95
3		Naphthalene, 2,3,6-trimethyl-	170	C13H14	000829-26-5	95
4		Naphthalene, 1,4,5-trimethyl-	170	C13H14	002131-41-1	91
5		3-(2-Methyl-propenyl)-1H-indene	170	C13H14	1000187-78-5	87



Data Path : Z:\HPCHEM1\BNA F\DATA\BF051017\
 Data File : BF095068.D
 Acq On : 10 May 2017 21:42
 Operator : SJ/MA
 Sample : I3037-10 5X
 Misc :
 ALS Vial : 14 Sample Multiplier: 1

Instrument :
 BNA_F
 ClientSampled :
 HY-SB409-GW

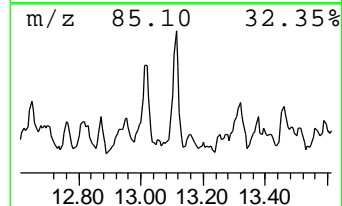
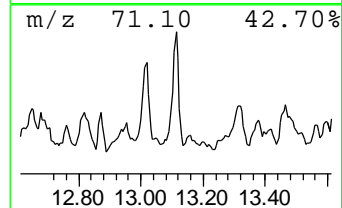
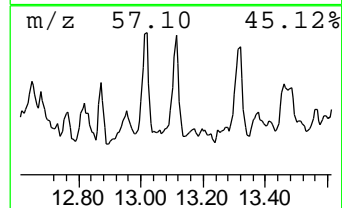
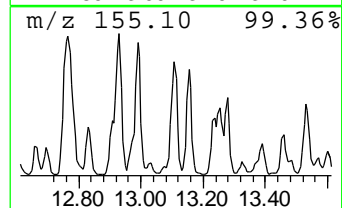
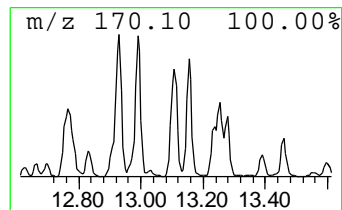
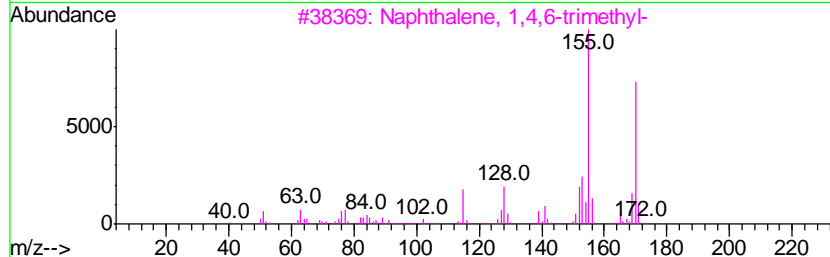
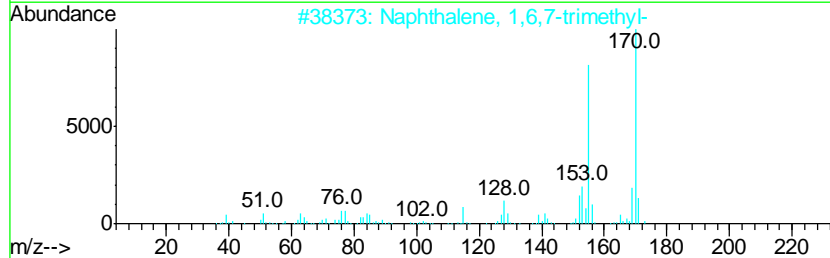
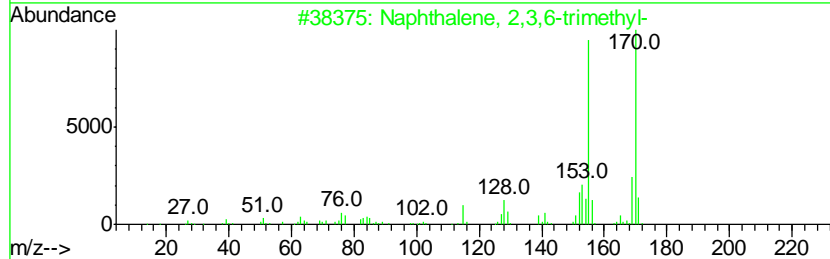
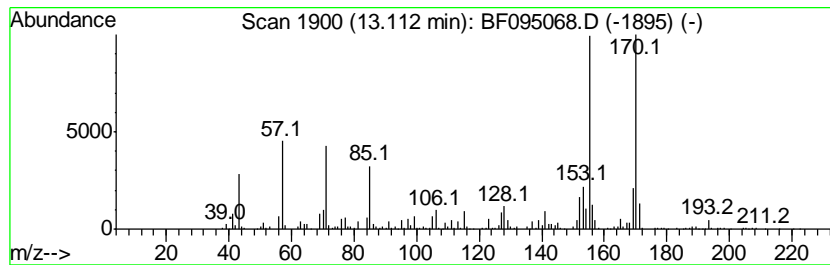
Quant Method : Z:\HPCHEM1\BNA F\METHODS\8270-BF050217.M
 Quant Title : ASP BNA STANDARDS FOR 5 POINT CALIBRATION

TIC Library : C:\DATABASE\NIST11.L
 TIC Integration Parameters: LSCINT.P

 Peak Number 17 Naphthalene, 2,3,6-trimethyl- Concentration Rank 4

R.T.	EstConc	Area	Relative to ISTD	R.T.
13.11	24.99 ng	1084560	Acenaphthene-d10	12.56

Hit#	of	Tentative ID	MW	MolForm	CAS#	Qual
1	5	Naphthalene, 2,3,6-trimethyl-	170	C13H14	000829-26-5	98
2		Naphthalene, 1,6,7-trimethyl-	170	C13H14	002245-38-7	97
3		Naphthalene, 1,4,6-trimethyl-	170	C13H14	002131-42-2	96
4		Naphthalene, 1,4,5-trimethyl-	170	C13H14	002131-41-1	95
5		4,6,8-Trimethylazulene	170	C13H14	000941-81-1	91



Data Path : Z:\HPCHEM1\BNA F\DATA\BF051017\
 Data File : BF095068.D
 Acq On : 10 May 2017 21:42
 Operator : SJ/MA
 Sample : I3037-10 5X
 Misc :
 ALS Vial : 14 Sample Multiplier: 1

Instrument :
 BNA_F
 ClientSampled :
 HY-SB409-GW

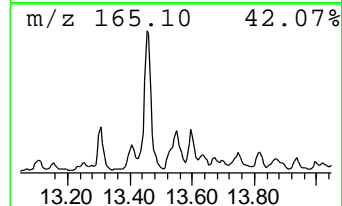
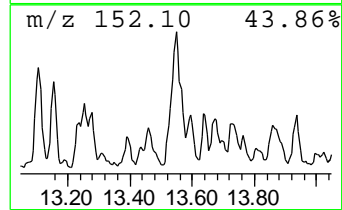
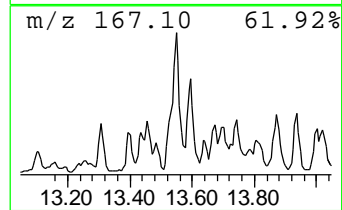
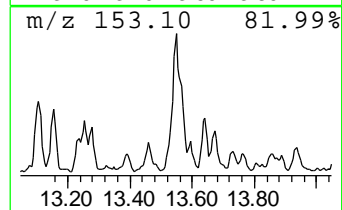
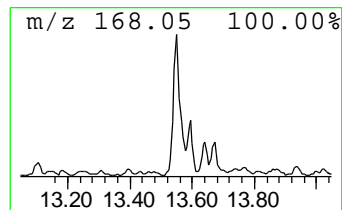
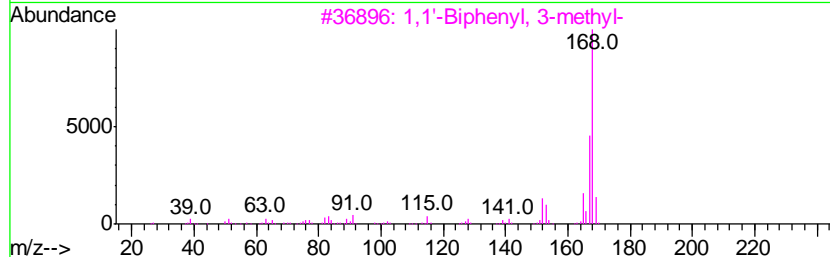
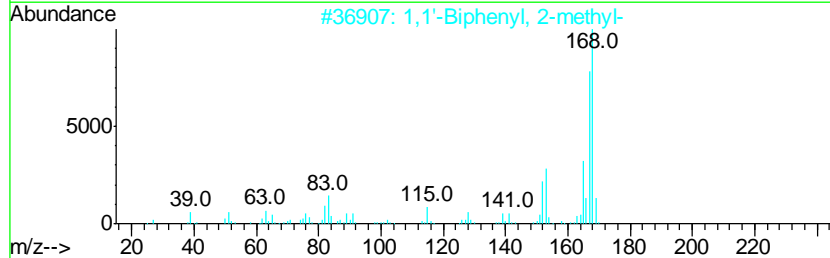
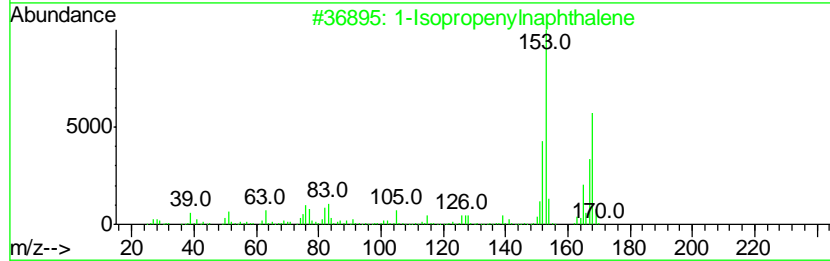
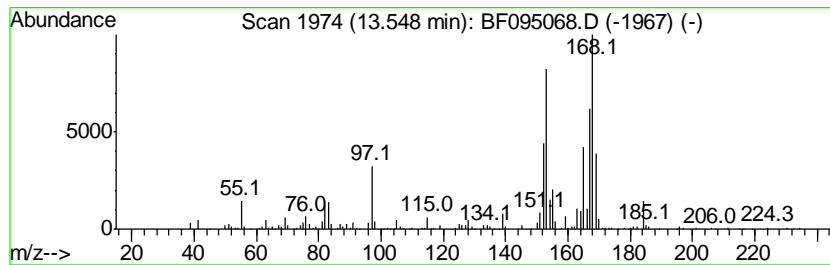
Quant Method : Z:\HPCHEM1\BNA F\METHODS\8270-BF050217.M
 Quant Title : ASP BNA STANDARDS FOR 5 POINT CALIBRATION

TIC Library : C:\DATABASE\NIST11.L
 TIC Integration Parameters: LSCINT.P

 Peak Number 18 1-Isopropenylnaphthalene Concentration Rank 3

R.T.	EstConc	Area	Relative to ISTD	R.T.
13.55	25.54 ng	1108070	Acenaphthene-d10	12.56

Hit#	of	Tentative ID	MW	MolForm	CAS#	Qual
1	5	1-Isopropenylnaphthalene	168	C13H12	001855-47-6	64
2		1,1'-Biphenyl, 2-methyl-	168	C13H12	000643-58-3	46
3		1,1'-Biphenyl, 3-methyl-	168	C13H12	000643-93-6	43
4		1-Methoxy-2-methyl-4-(methylthio...	168	C9H12OS	050390-78-8	35
5		1,1'-Biphenyl, 4-methyl-	168	C13H12	000644-08-6	30



Data Path : Z:\HPCHEM1\BNA F\DATA\BF051017\
 Data File : BF095068.D
 Acq On : 10 May 2017 21:42
 Operator : SJ/MA
 Sample : I3037-10 5X
 Misc :
 ALS Vial : 14 Sample Multiplier: 1

Instrument :
 BNA_F
 ClientSampled :
 HY-SB409-GW

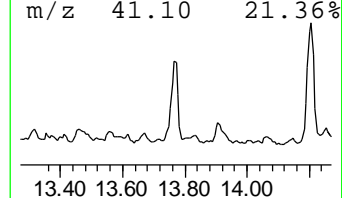
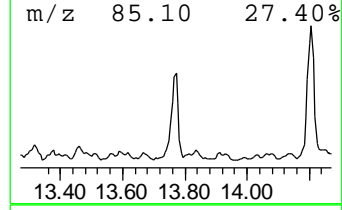
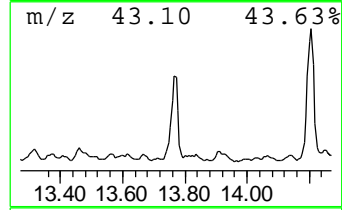
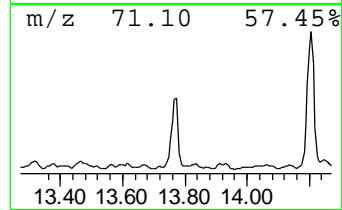
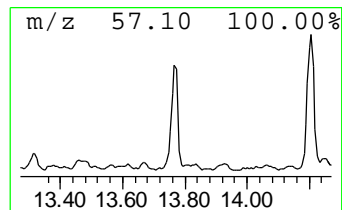
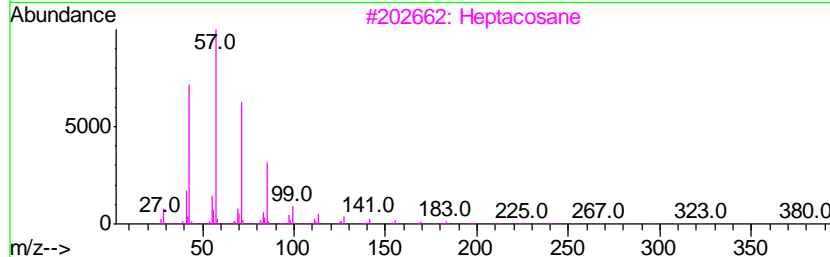
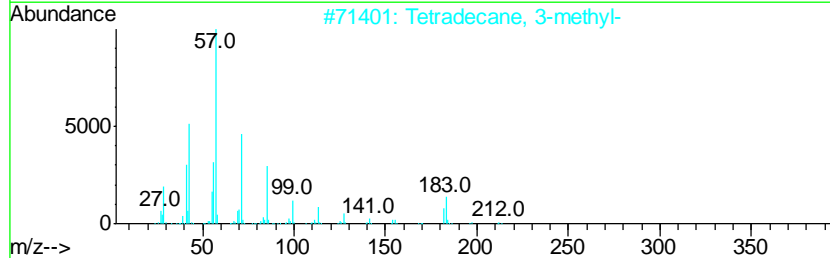
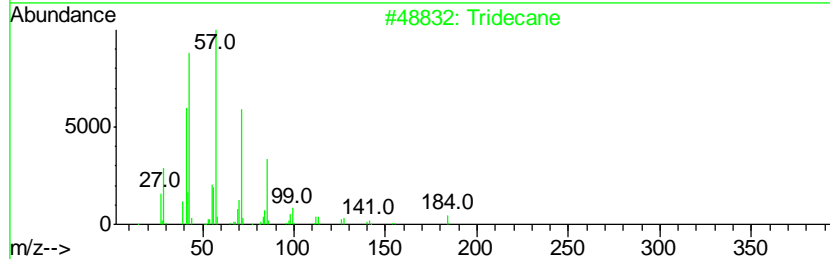
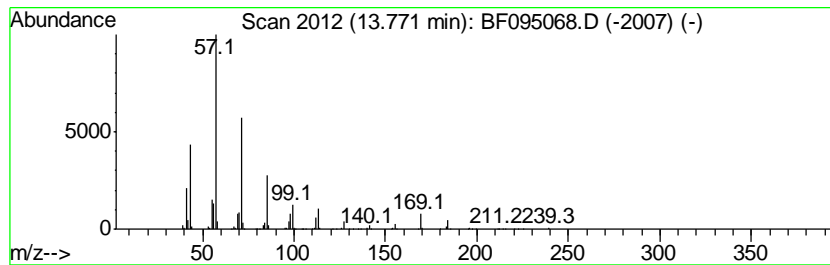
Quant Method : Z:\HPCHEM1\BNA F\METHODS\8270-BF050217.M
 Quant Title : ASP BNA STANDARDS FOR 5 POINT CALIBRATION

TIC Library : C:\DATABASE\NIST11.L
 TIC Integration Parameters: LSCINT.P

 Peak Number 19 Tridecane Concentration Rank 18

R.T.	EstConc	Area	Relative to ISTD	R.T.
13.77	14.47 ng	1400580	Phenanthrene-d10	14.97

Hit#	of	Tentative ID	MW	MolForm	CAS#	Qual
1	5	Tridecane	184	C13H28	000629-50-5	83
2		Tetradecane, 3-methyl-	212	C15H32	018435-22-8	72
3		Heptacosane	380	C27H56	000593-49-7	72
4		Hexadecane, 2,6,10,14-tetramethyl-	282	C20H42	000638-36-8	64
5		Heptadecane, 2,6,10,15-tetramethyl-	296	C21H44	054833-48-6	64



Data Path : Z:\HPCHEM1\BNA F\DATA\BF051017\
 Data File : BF095068.D
 Acq On : 10 May 2017 21:42
 Operator : SJ/MA
 Sample : I3037-10 5X
 Misc :
 ALS Vial : 14 Sample Multiplier: 1

Instrument :
 BNA_F
 ClientSampleID :
 HY-SB409-GW

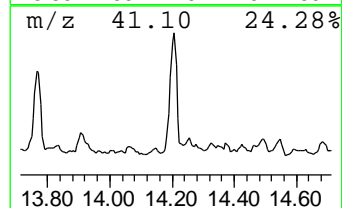
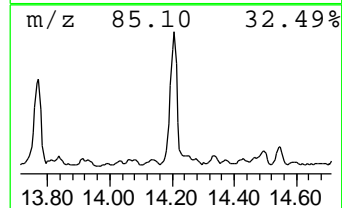
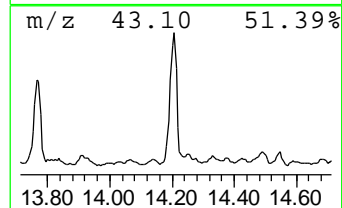
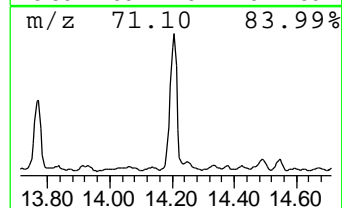
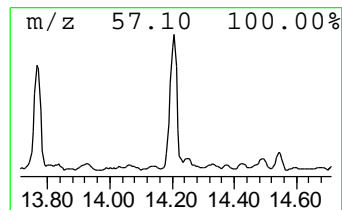
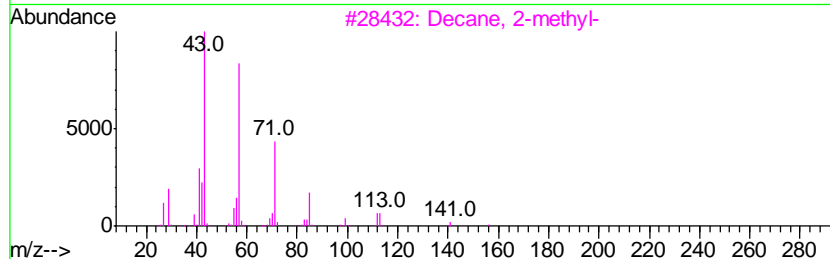
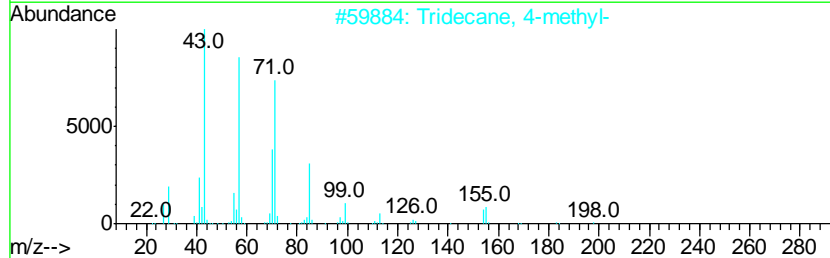
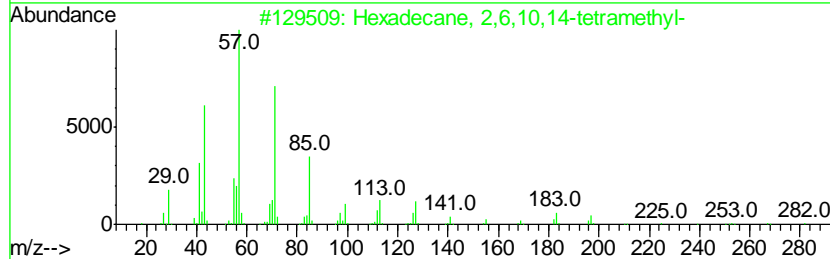
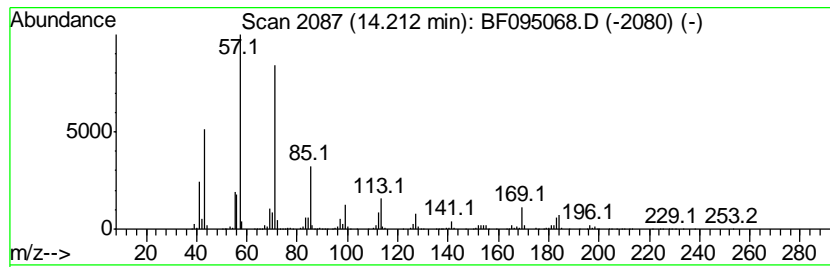
Quant Method : Z:\HPCHEM1\BNA F\METHODS\8270-BF050217.M
 Quant Title : ASP BNA STANDARDS FOR 5 POINT CALIBRATION

TIC Library : C:\DATABASE\NIST11.L
 TIC Integration Parameters: LSCINT.P

 Peak Number 20 Hexadecane, 2,6,10,14-tetra... Concentration Rank 6

R.T.	EstConc	Area	Relative to ISTD	R.T.
14.21	24.61 ng	2382650	Phenanthrene-d10	14.97

Hit#	of	Tentative ID	MW	MolForm	CAS#	Qual
1	5	Hexadecane, 2,6,10,14-tetramethyl-	282	C20H42	000638-36-8	83
2		Tridecane, 4-methyl-	198	C14H30	026730-12-1	81
3		Decane, 2-methyl-	156	C11H24	006975-98-0	81
4		Dodecane, 2,7,10-trimethyl-	212	C15H32	074645-98-0	72
5		Dodecane, 4,6-dimethyl-	198	C14H30	061141-72-8	72



Data Path : Z:\HPCHEM1\BNA_F\DATA\BF051017\
 Data File : BF095068.D
 Acq On : 10 May 2017 21:42
 Operator : SJ/MA
 Sample : I3037-10 5X
 Misc :
 ALS Vial : 14 Sample Multiplier: 1

Instrument :
 BNA_F
 ClientSampleId :
 HY-SB409-GW

Quant Method : Z:\HPCHEM1\BNA_F\METHODS\8270-BF050217.M
 Quant Title : ASP BNA STANDARDS FOR 5 POINT CALIBRATION

TIC Library : C:\DATABASE\NIST11.L
 TIC Integration Parameters: LSCINT.P

TIC Top Hit name	RT	EstConc	Units	Response	--Internal Standard--			
					#	RT	Resp	Conc
unknown7.38	7.38	22.0	ng	451557	1	7.71	410847	20.0
Benzene, 1-propenyl-	7.98	11.9	ng	244328	1	7.71	410847	20.0
Benzene, 1,2-diet...	8.12	14.9	ng	305286	1	7.71	410847	20.0
Octane, 2,3,6-tri...	10.52	14.3	ng	994516	2	9.72	1396290	20.0
Naphthalene, 1-me...	11.04	21.7	ng	1514530	2	9.72	1396290	20.0
1H-Indene, 2,3-di...	11.74	21.5	ng	931240	3	12.56	867881	20.0
Naphthalene, 2-et...	11.79	17.5	ng	759793	3	12.56	867881	20.0
Naphthalene, 2,6-...	11.91	22.3	ng	965734	3	12.56	867881	20.0
Naphthalene, 2,3-...	12.04	35.6	ng	1542950	3	12.56	867881	20.0
Naphthalene, 1,3-...	12.21	22.4	ng	971136	3	12.56	867881	20.0
Tetradecane	12.25	40.2	ng	1742540	3	12.56	867881	20.0
2-Dodecen-1-yl(-)...	12.42	18.7	ng	812206	3	12.56	867881	20.0
Naphthalene, 2-(1...	12.77	20.5	ng	888357	3	12.56	867881	20.0
Naphthalene, 1,6,...	12.93	15.0	ng	649261	3	12.56	867881	20.0
Naphthalene, 2,3,...	13.11	25.0	ng	1084560	3	12.56	867881	20.0
1-Isopropenylnaph...	13.55	25.5	ng	1108070	3	12.56	867881	20.0
Tridecane	13.77	14.5	ng	1400580	4	14.97	1936130	20.0
Hexadecane, 2,6,1...	14.21	24.6	ng	2382650	4	14.97	1936130	20.0