

Data Path : Z:\HPCHEM1\BNA F\DATA\BF051315\
 Data File : BF079201.D
 Acq On : 13 May 2015 18:49
 Operator : TP/IZ
 Sample : G2194-03
 Misc :
 ALS Vial : 6 Sample Multiplier: 1

Instrument :
 BNA_F
ClientSampleId :
 TU021-SB-15-6.5

Manual Integrations
APPROVED
 apatel
 5/14/2015 5:00:56 PM

Quant Time: May 14 01:35:33 2015
 Quant Method : Z:\HPCHEM1\BNA F\METHODS\8270-BF043015.M
 Quant Title : ASP BNA STANDARDS FOR 5 POINT CALIBRATION
 QLast Update : Thu May 14 00:58:22 2015
 Response via : Initial Calibration

Internal Standards	R.T.	QIon	Response	Conc	Units	Dev(Min)
1) 1,4-Dichlorobenzene-d4	7.23	152	49191	20.00	ng	0.00
21) Naphthalene-d8	8.81	136	191835	20.00	ng	0.00
38) Acenaphthene-d10	10.98	164	91889	20.00	ng	0.00
63) Phenanthrene-d10	12.83	188	189046	20.00	ng	0.00
75) Chrysene-d12	16.34	240	204481m	20.00	ng	0.18
86) Perylene-d12	18.50	264	212119m	20.00	ng	0.48
System Monitoring Compounds						
5) 2-Fluorophenol	5.53	112	446087	156.10	ng	0.00
7) Phenol-d6	6.80	99	593767	157.19	ng	0.00
23) Nitrobenzene-d5	7.93	82	370232	110.92	ng	0.00
41) 2,4,6-Tribromophenol	11.96	330	164596	165.58	ng	0.00
44) 2-Fluorobiphenyl	10.16	172	643332	97.54	ng	0.00
78) Terphenyl-d14	14.88	244	786206m	92.05	ng	0.06
Target Compounds						Qvalue
49) Dimethylphthalate	10.66	163	158995	23.58	ng	100

(#) = qualifier out of range (m) = manual integration (+) = signals summed

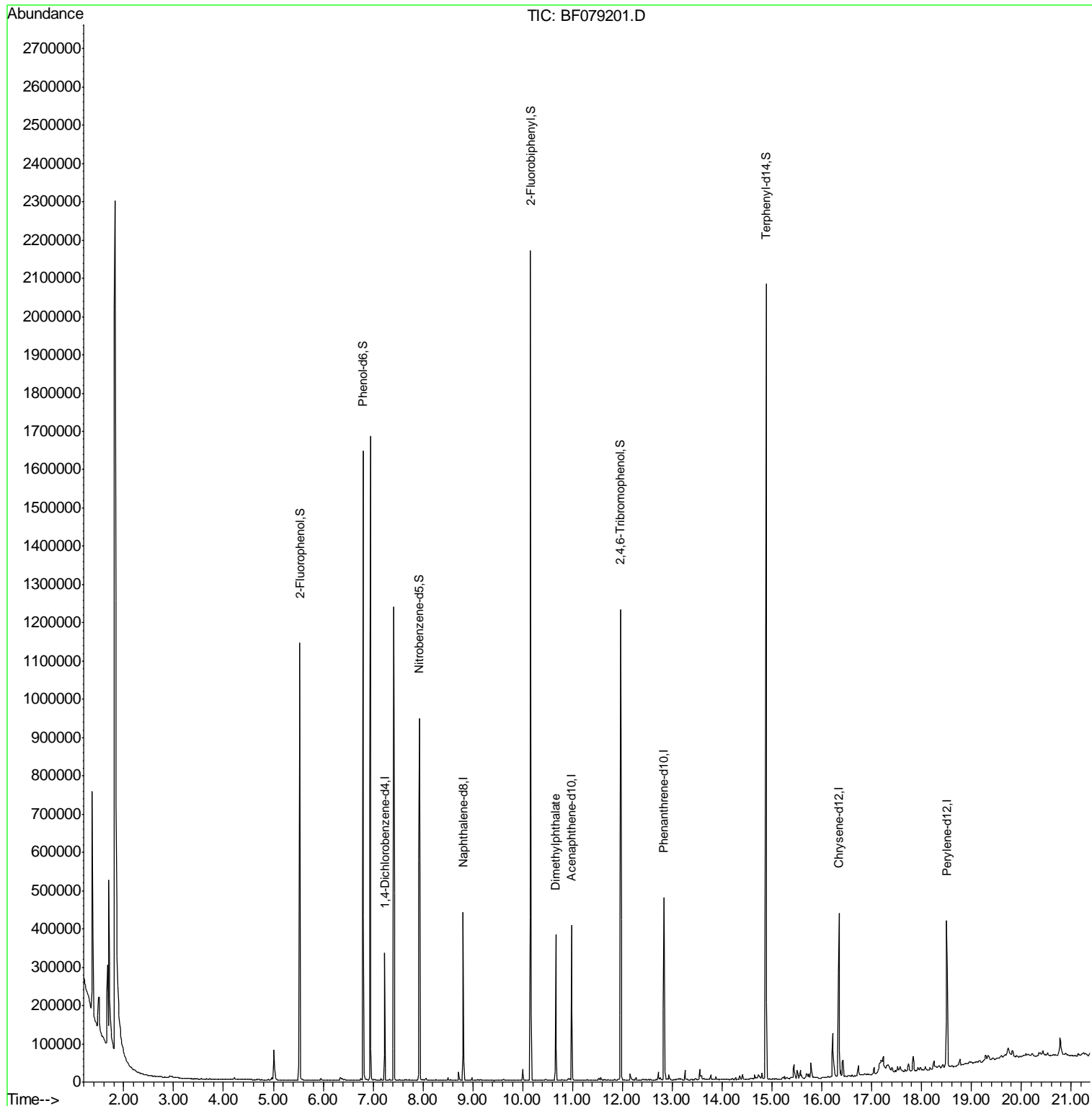
Data Path : Z:\HPCHEM1\BNA F\DATA\BF051315\
 Data File : BF079201.D
 Acq On : 13 May 2015 18:49
 Operator : TP/IZ
 Sample : G2194-03
 Misc :
 ALS Vial : 6 Sample Multiplier: 1

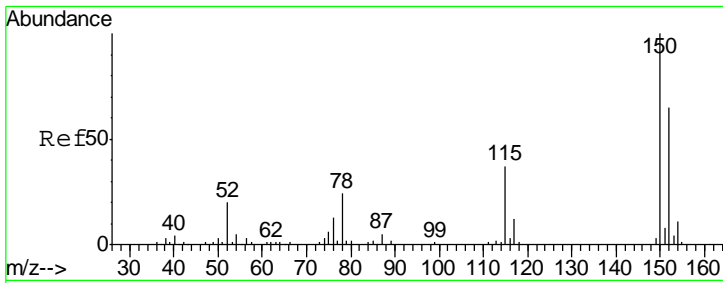
Instrument :
 BNA_F
 ClientSampleID :
 TU021-SB-15-6.5

Manual Integrations
 APPROVED

apatel
 5/14/2015 5:00:56 PM

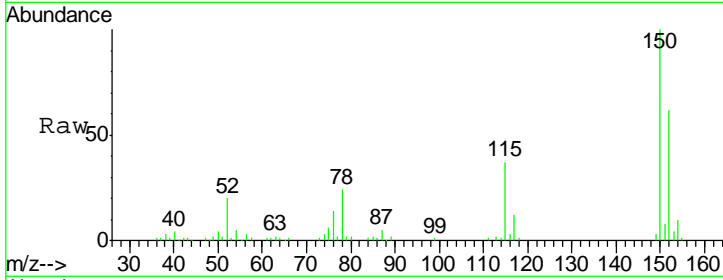
Quant Time: May 14 01:35:33 2015
 Quant Method : Z:\HPCHEM1\BNA F\METHODS\8270-BF043015.M
 Quant Title : ASP BNA STANDARDS FOR 5 POINT CALIBRATION
 QLast Update : Thu May 14 00:58:22 2015
 Response via : Initial Calibration





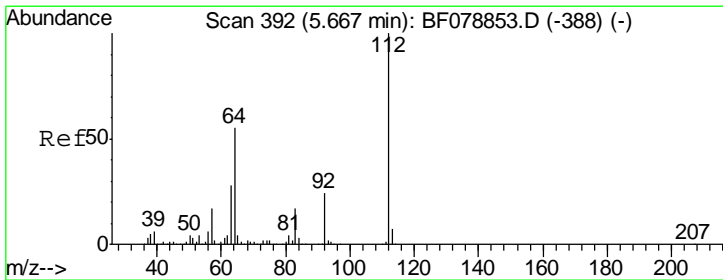
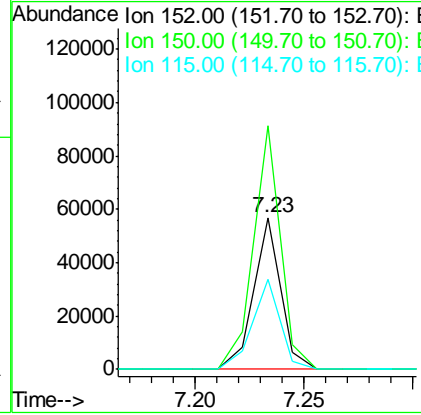
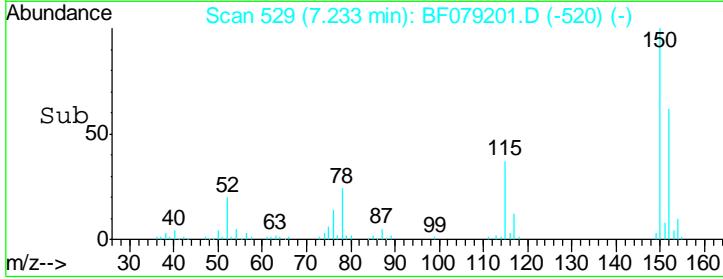
#1
 1,4-Dichlorobenzene-d4
 Concen: 20.00 ng
 RT: 7.23 min Scan# 529
 Delta R.T. 0.00 min
 Lab File: BF079201.D
 Acq: 13 May 2015 18:49

Instrument :
 BNA_F
ClientSampled :
 TU021-SB-15-6.5

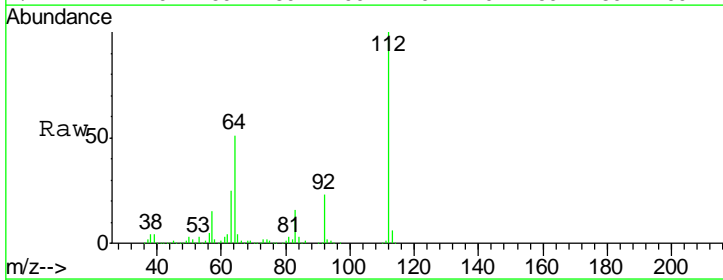


Tgt Ion	Resp	Lower	Upper
152	49191		
152	100		
150	160.2	122.0	183.0
115	59.5	46.3	69.5

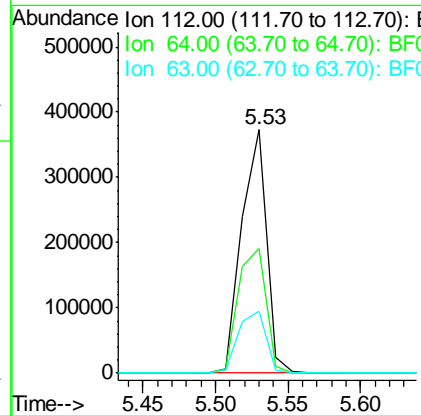
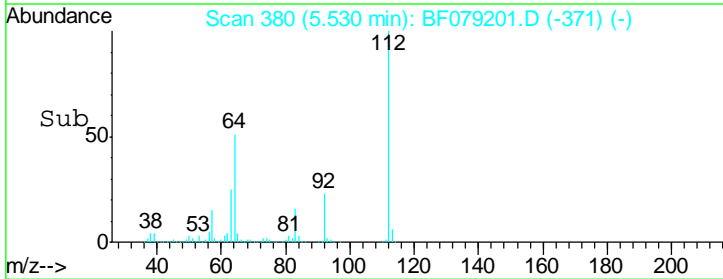
Manual Integrations
APPROVED
 apatel
 5/14/2015 5:00:56 PM

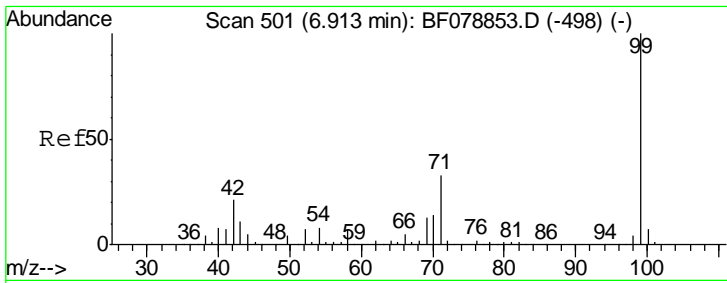


#5
 2-Fluorophenol
 Concen: 156.10 ng
 RT: 5.53 min Scan# 380
 Delta R.T. 0.00 min
 Lab File: BF079201.D
 Acq: 13 May 2015 18:49



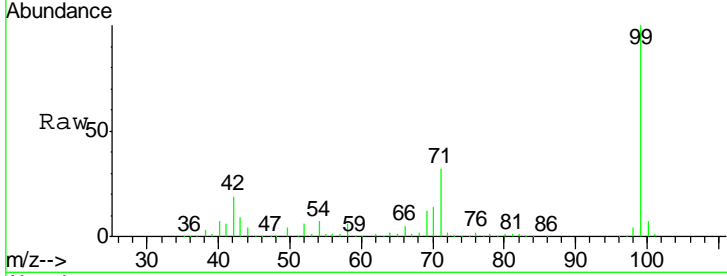
Tgt Ion	Resp	Lower	Upper
112	446087		
112	100		
64	51.0	53.5	80.3#
63	25.3	27.5	41.3#





#7
 Phenol-d6
 Concen: 157.19 ng
 RT: 6.80 min Scan# 491
 Delta R.T. 0.00 min
 Lab File: BF079201.D
 Acq: 13 May 2015 18:49

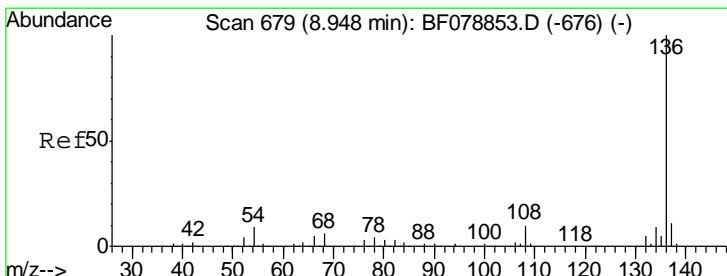
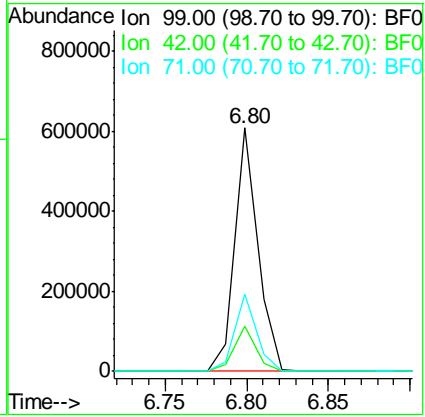
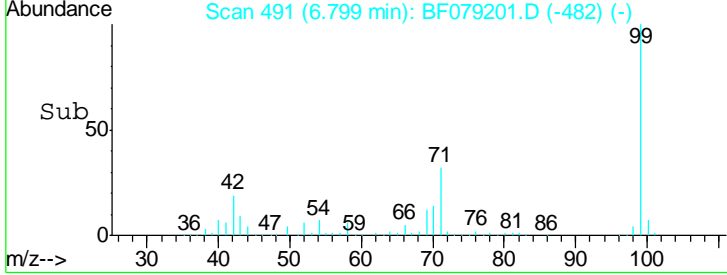
Instrument :
 BNA_F
ClientSampled :
 TU021-SB-15-6.5



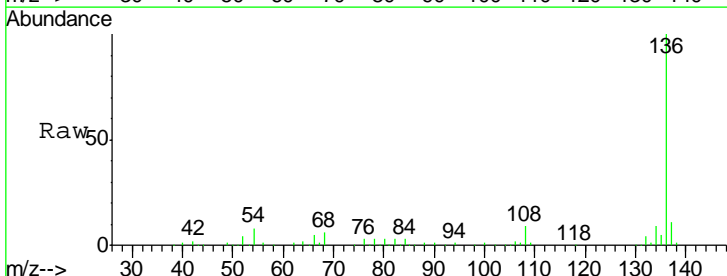
Tgt Ion: 99 Resp: 593767

Ion	Ratio	Lower	Upper
99	100		
42	18.6	12.8	19.2
71	31.7	23.4	35.2

Manual Integrations
APPROVED
 apatel
 5/14/2015 5:00:56 PM

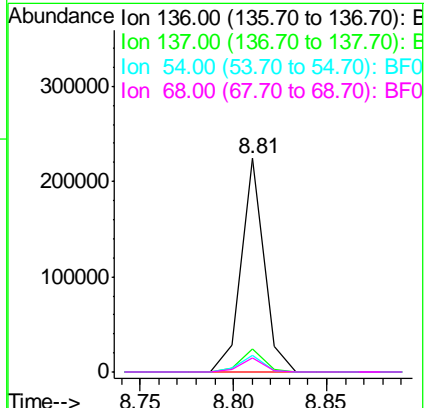
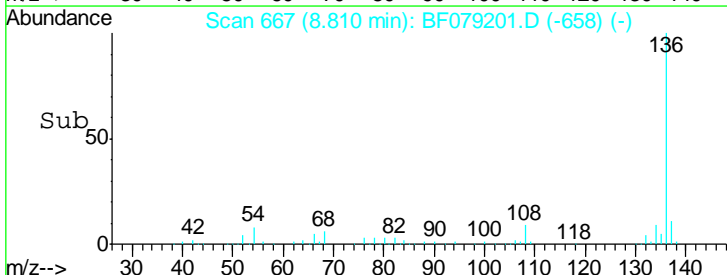


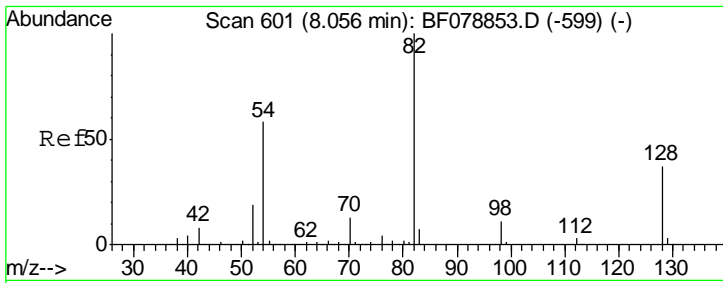
#21
 Naphthalene-d8
 Concen: 20.00 ng
 RT: 8.81 min Scan# 667
 Delta R.T. 0.00 min
 Lab File: BF079201.D
 Acq: 13 May 2015 18:49



Tgt Ion: 136 Resp: 191835

Ion	Ratio	Lower	Upper
136	100		
137	10.8	8.7	13.1
54	8.0	5.8	8.8
68	6.4	4.2	6.4#



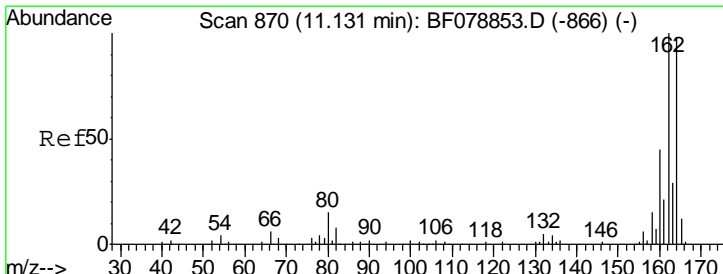
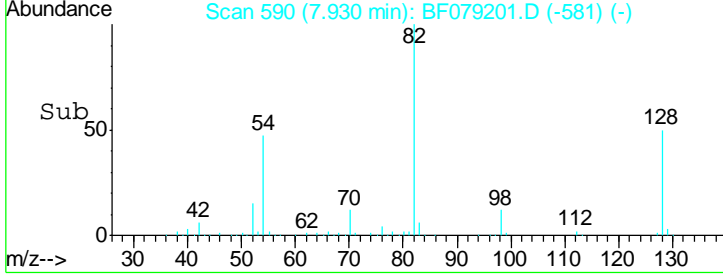
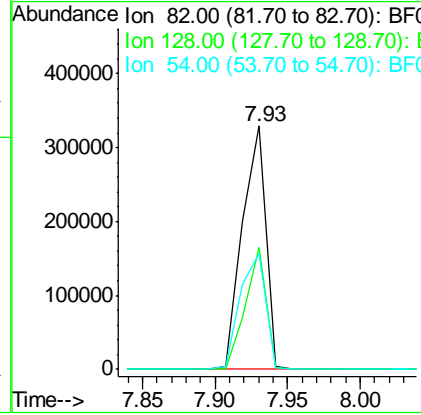
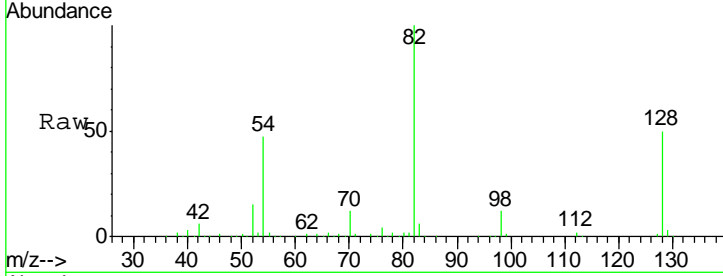


#23
 Nitrobenzene-d5
 Concen: 110.92 ng
 RT: 7.93 min Scan# 590
 Delta R.T. 0.00 min
 Lab File: BF079201.D
 Acq: 13 May 2015 18:49

Instrument :
 BNA_F
ClientSampled :
 TU021-SB-15-6.5

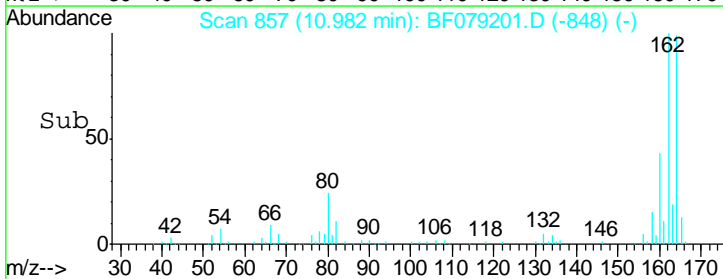
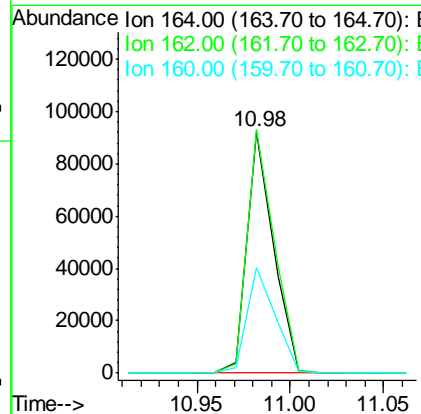
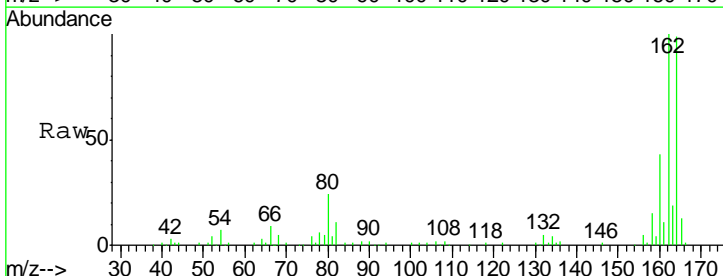
Tgt Ion	Resp	Lower	Upper
82	370232		
128	50.2	30.0	45.0#
54	47.3	46.4	69.6

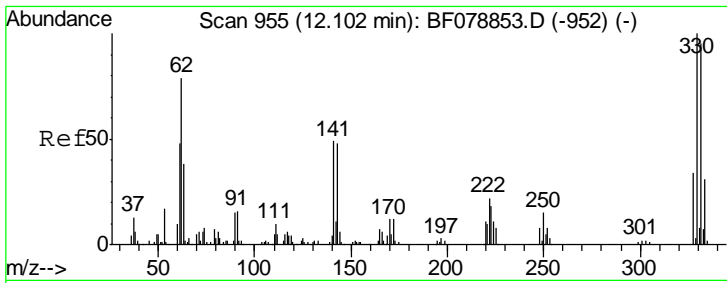
Manual Integrations
APPROVED
 apatel
 5/14/2015 5:00:56 PM



#38
 Acenaphthene-d10
 Concen: 20.00 ng
 RT: 10.98 min Scan# 857
 Delta R.T. 0.00 min
 Lab File: BF079201.D
 Acq: 13 May 2015 18:49

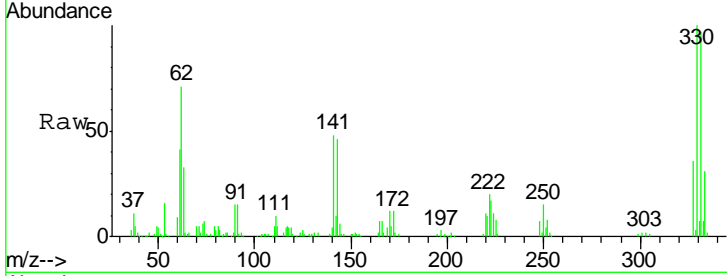
Tgt Ion	Resp	Lower	Upper
164	91889		
162	100.9	82.7	124.1
160	43.6	35.8	53.8





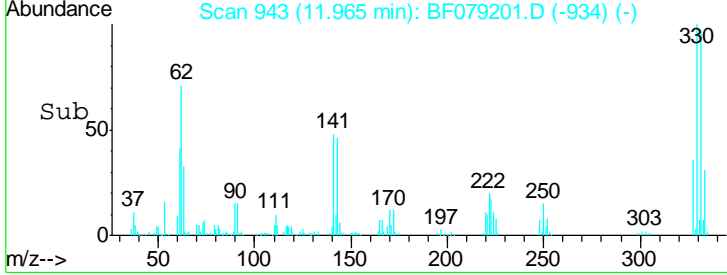
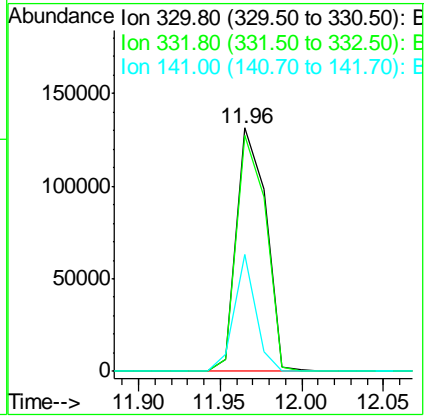
#41
 2,4,6-Tribromophenol
 Concen: 165.58 ng
 RT: 11.96 min Scan# 943
 Delta R.T. 0.00 min
 Lab File: BF079201.D
 Acq: 13 May 2015 18:49

Instrument :
 BNA_F
 ClientSampled :
 TU021-SB-15-6.5



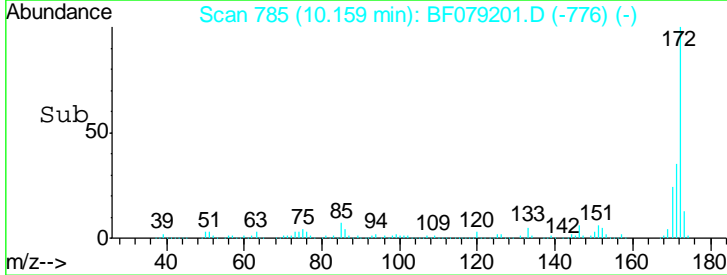
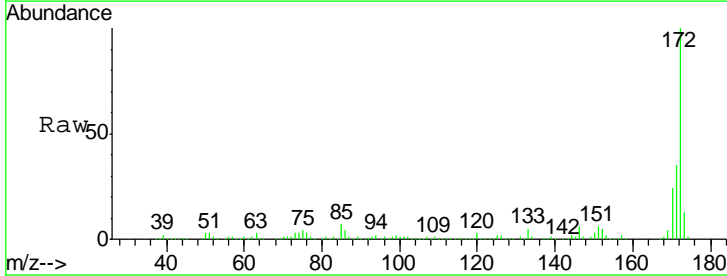
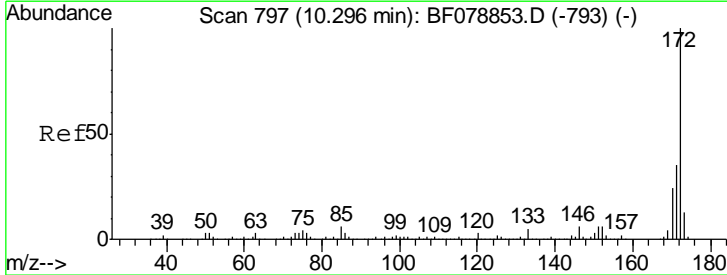
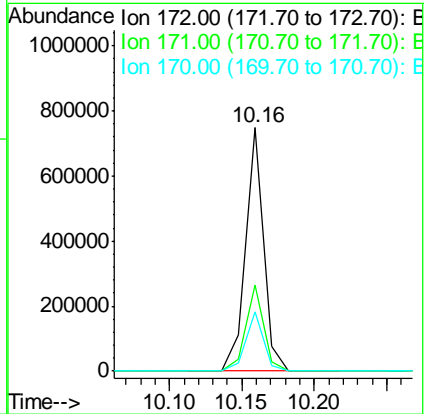
Tgt Ion	Resp	Lower	Upper
330	100		
332	96.6	0.0	0.0#
141	34.6	0.0	0.0#

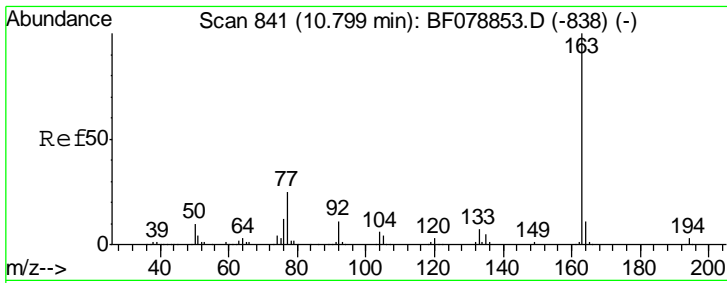
Manual Integrations
 APPROVED
 apatel
 5/14/2015 5:00:56 PM



#44
 2-Fluorobiphenyl
 Concen: 97.54 ng
 RT: 10.16 min Scan# 785
 Delta R.T. 0.00 min
 Lab File: BF079201.D
 Acq: 13 May 2015 18:49

Tgt Ion	Resp	Lower	Upper
172	100		
171	35.2	27.9	41.9
170	24.4	19.4	29.0



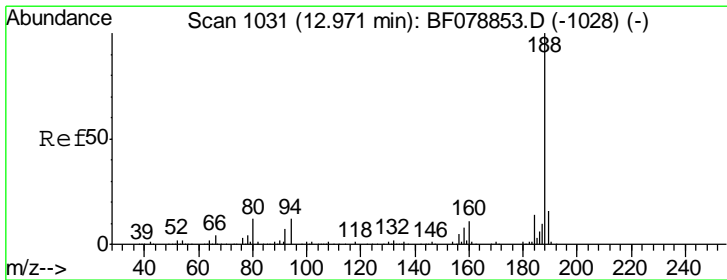
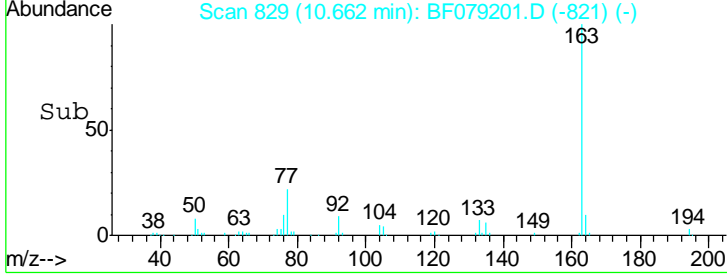
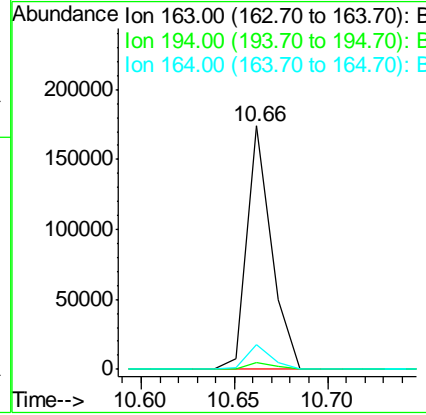
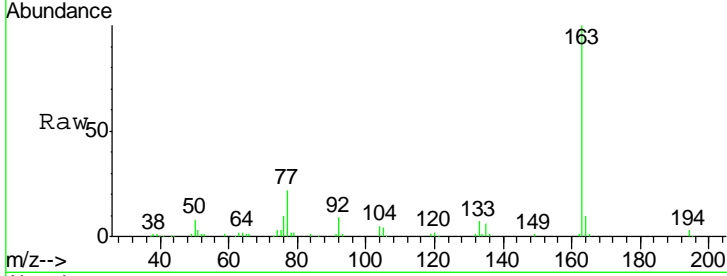


#49
 Dimethylphthalate
 Concen: 23.58 ng
 RT: 10.66 min Scan# 829
 Delta R.T. -0.01 min
 Lab File: BF079201.D
 Acq: 13 May 2015 18:49

Instrument :
 BNA_F
 ClientSampled :
 TU021-SB-15-6.5

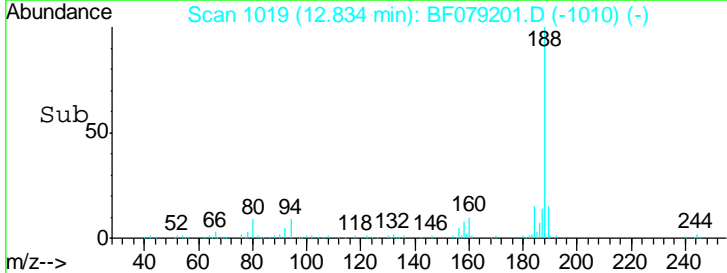
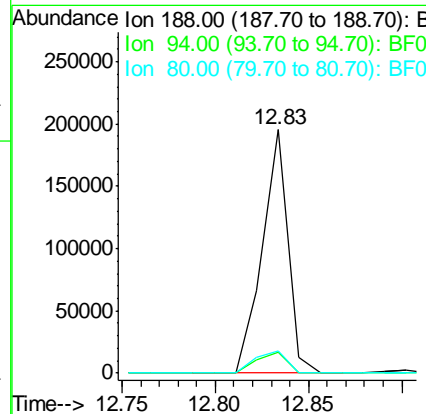
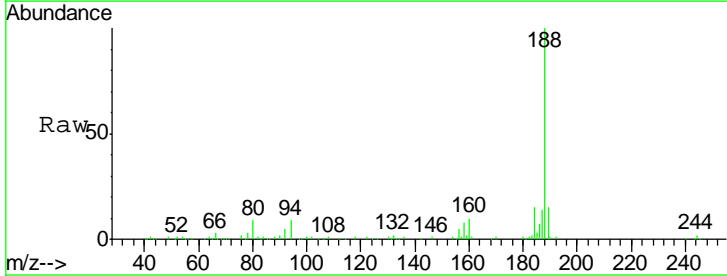
Tgt Ion	Resp	Lower	Upper
163	158995		
194	3.0	2.6	4.0
164	10.2	8.1	12.1

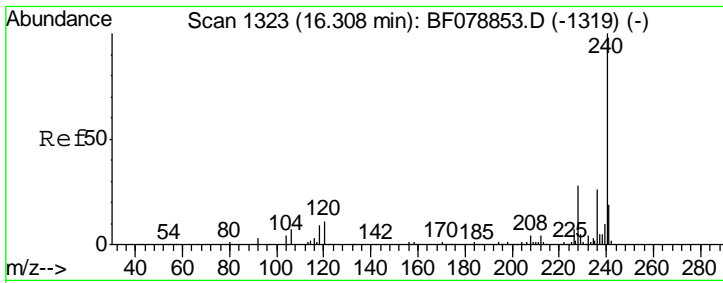
Manual Integrations
 APPROVED
 apatel
 5/14/2015 5:00:56 PM



#63
 Phenanthrene-d10
 Concen: 20.00 ng
 RT: 12.83 min Scan# 1019
 Delta R.T. 0.00 min
 Lab File: BF079201.D
 Acq: 13 May 2015 18:49

Tgt Ion	Resp	Lower	Upper
188	189046		
94	8.8	8.2	12.2
80	9.2	8.9	13.3



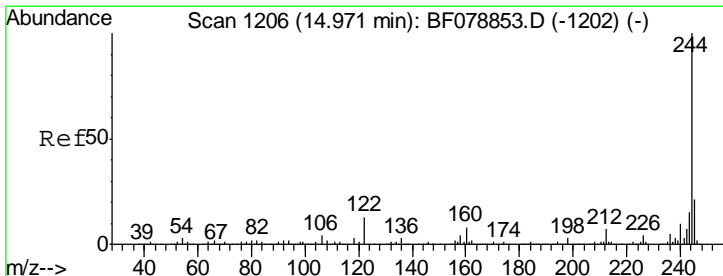
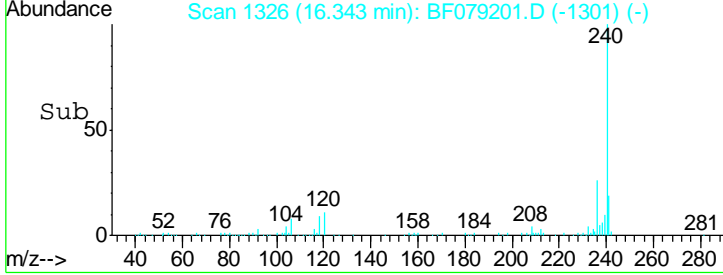
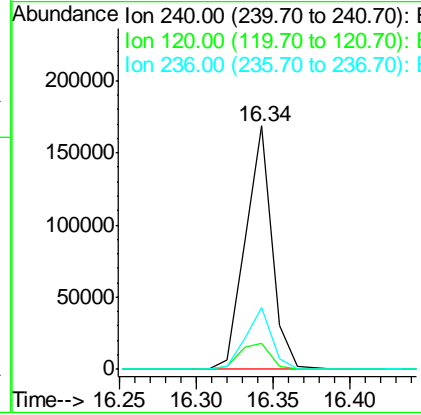
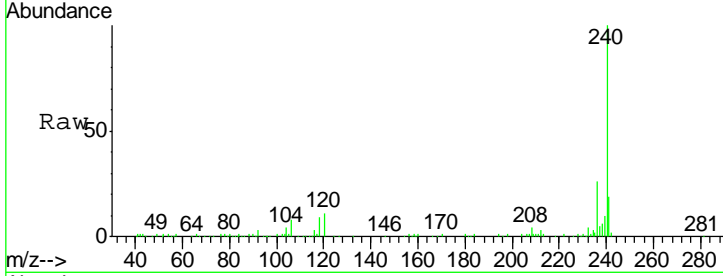


#75
 Chrysene-d12
 Concen: 20.00 ng m
 RT: 16.34 min Scan# 1326
 Delta R.T. 0.18 min
 Lab File: BF079201.D
 Acq: 13 May 2015 18:49

Instrument :
 BNA_F
 Client Sampled :
 TU021-SB-15-6.5

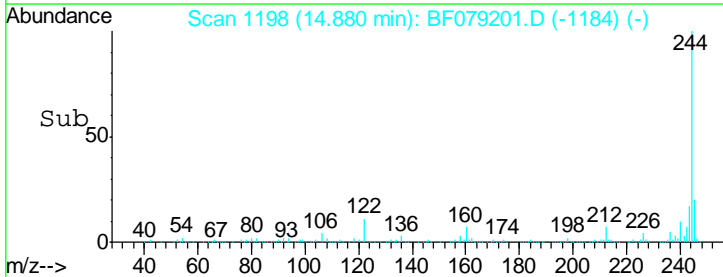
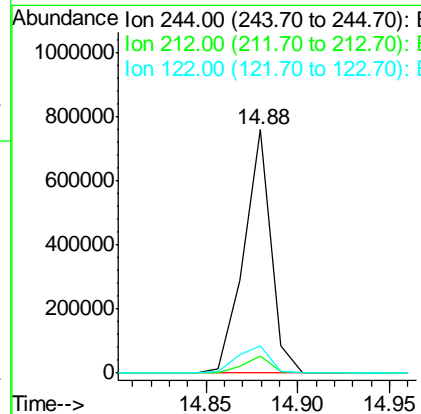
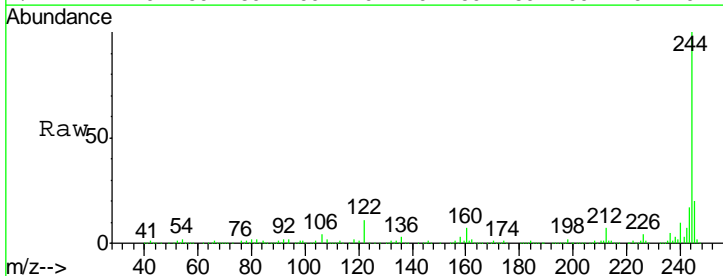
Tgt Ion	Resp	Lower	Upper
240	100		
120	10.8	9.7	14.5
236	25.6	20.2	30.4

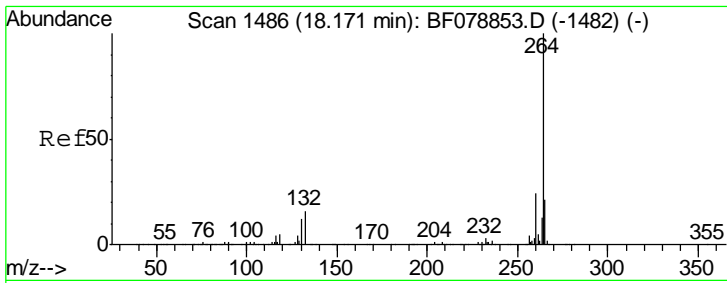
Manual Integrations
 APPROVED
 apatel
 5/14/2015 5:00:56 PM



#78
 Terphenyl-d14
 Concen: 92.05 ng m
 RT: 14.88 min Scan# 1198
 Delta R.T. 0.06 min
 Lab File: BF079201.D
 Acq: 13 May 2015 18:49

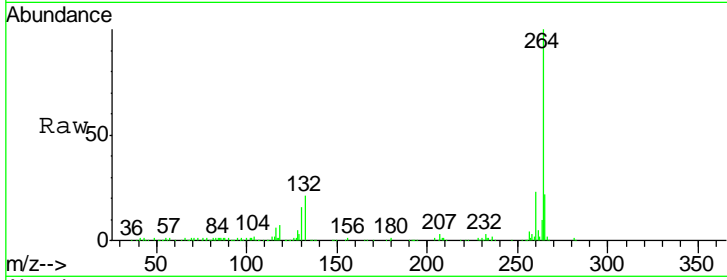
Tgt Ion	Resp	Lower	Upper
244	100		
212	6.9	5.6	8.4
122	11.0	10.3	15.5





#86
 Perylene-d12
 Concen: 20.00 ng/ml
 RT: 18.50 min Scan# 1515
 Delta R.T. 0.48 min
 Lab File: BF079201.D
 Acq: 13 May 2015 18:49

Instrument :
 BNA_F
ClientSampled :
 TU021-SB-15-6.5



Tot Ion: 264 Resp: 212119

Ion	Ratio	Lower	Upper
264	100		
260	23.3	19.4	29.2
265	21.9	18.3	27.5

Manual Integrations
APPROVED
 apatel
 5/14/2015 5:00:56 PM

