

Data Path : Z:\HPCHEM1\BNA F\DATA\BF051316\
 Data File : BF087015.D
 Acq On : 14 May 2016 12:49
 Operator : UM/SJ
 Sample : H2947-13
 Misc :
 ALS Vial : 39 Sample Multiplier: 1

Instrument :
 BNA_F
 ClientSampleId :
 KBFIELDBLNK1-5-5-16

Quant Time: May 16 01:56:44 2016
 Quant Method : Z:\HPCHEM1\BNA F\METHODS\8270-BF050916.M
 Quant Title : ASP BNA STANDARDS FOR 5 POINT CALIBRATION
 QLast Update : Mon May 16 01:11:12 2016
 Response via : Initial Calibration

Internal Standards	R.T.	QIon	Response	Conc	Units	Dev(Min)
1) 1,4-Dichlorobenzene-d4	6.62	152	139844	20.00	ng	0.00
21) Naphthalene-d8	7.90	136	583875	20.00	ng	-0.01
38) Acenaphthene-d10	9.64	164	282186	20.00	ng	-0.01
63) Phenanthrene-d10	11.12	188	525396	20.00	ng	-0.01
75) Chrysene-d12	13.75	240	380625	20.00	ng	-0.01
86) Perylene-d12	15.11	264	309998	20.00	ng	0.00
System Monitoring Compounds						
5) 2-Fluorophenol	5.20	112	588959	71.32	ng	0.00
7) Phenol-d6	6.27	99	479953	43.49	ng	-0.01
23) Nitrobenzene-d5	7.19	82	1061738	91.31	ng	0.00
41) 2,4,6-Tribromophenol	10.44	330	412424	138.05	ng	0.00
44) 2-Fluorobiphenyl	8.98	172	1647062	98.10	ng	0.00
78) Terphenyl-d14	12.72	244	1711345	95.40	ng	0.01

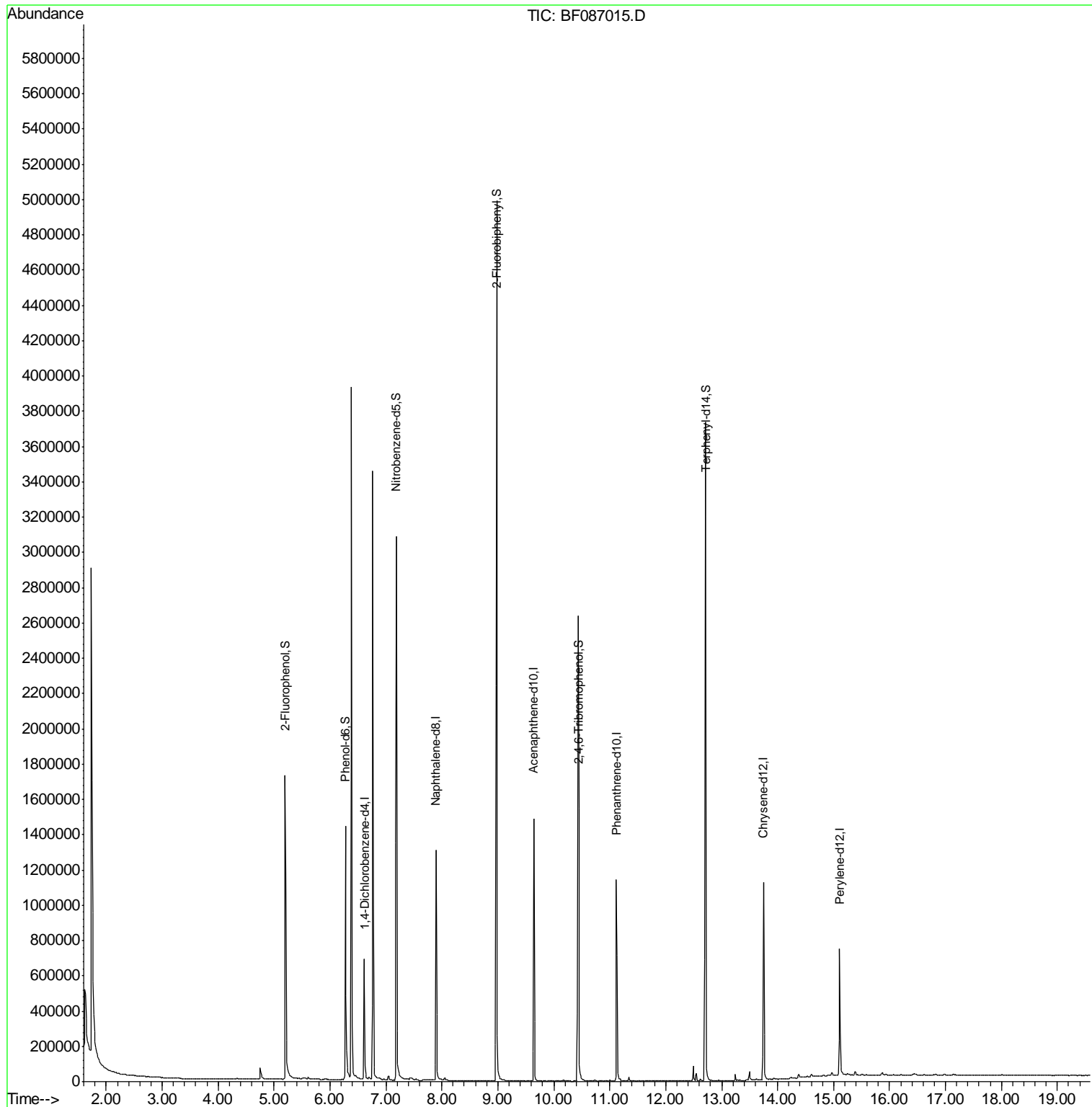
Target Compounds Qvalue

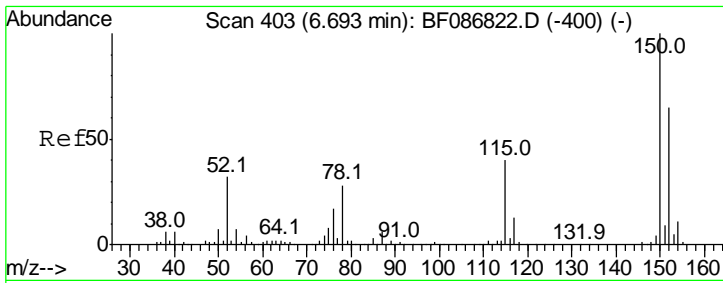
(#) = qualifier out of range (m) = manual integration (+) = signals summed

Data Path : Z:\HPCHEM1\BNA F\DATA\BF051316\
 Data File : BF087015.D
 Acq On : 14 May 2016 12:49
 Operator : UM/SJ
 Sample : H2947-13
 Misc :
 ALS Vial : 39 Sample Multiplier: 1

Instrument :
 BNA_F
ClientSampled :
 KBFIELDBLNK1-5-5-16

Quant Time: May 16 01:56:44 2016
 Quant Method : Z:\HPCHEM1\BNA F\METHODS\8270-BF050916.M
 Quant Title : ASP BNA STANDARDS FOR 5 POINT CALIBRATION
 QLast Update : Mon May 16 01:11:12 2016
 Response via : Initial Calibration

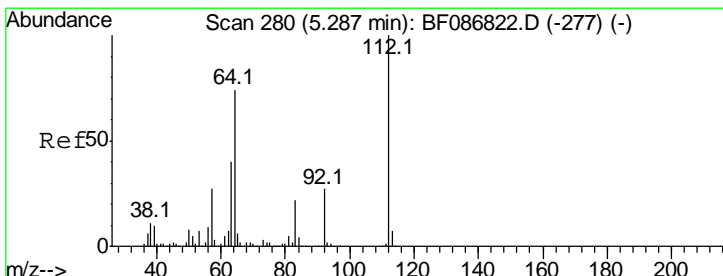
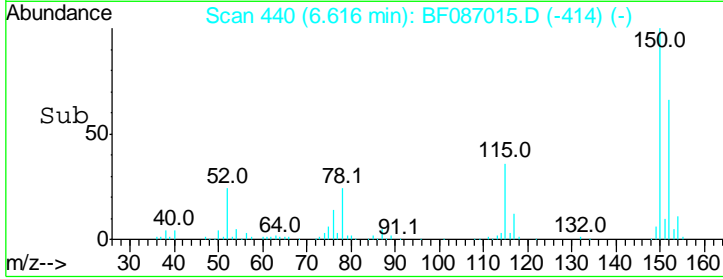
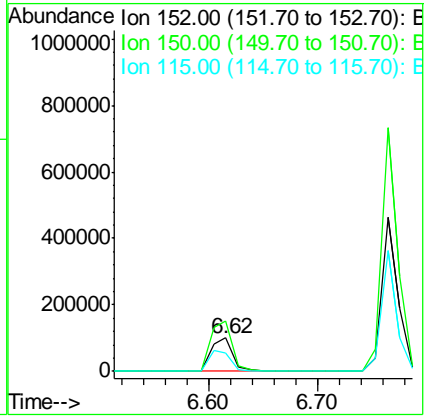
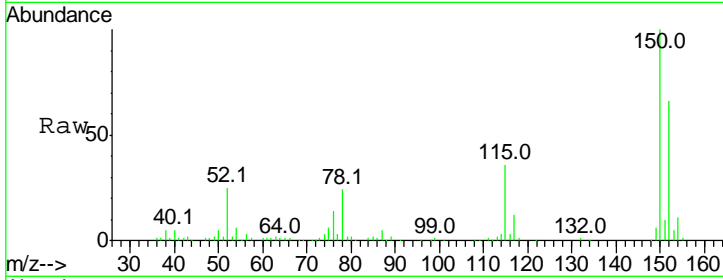




#1
 1,4-Dichlorobenzene-d4
 Concen: 20.00 ng
 RT: 6.62 min Scan# 440
 Delta R.T. -0.00 min
 Lab File: BF087015.D
 Acq: 14 May 2016 12:49

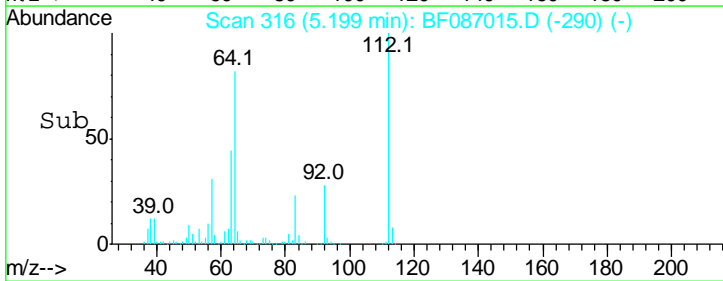
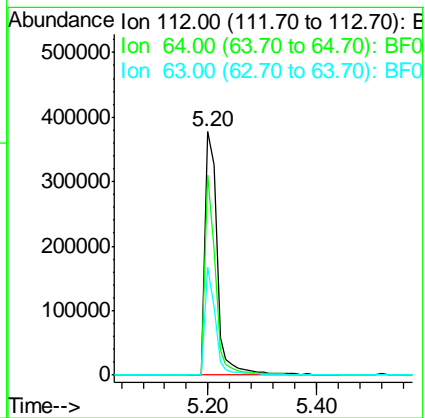
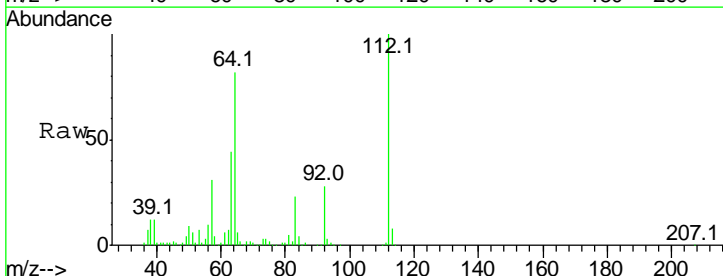
Instrument :
 BNA_F
ClientSampleId :
 KBFIELDBLNK1-5-5-16

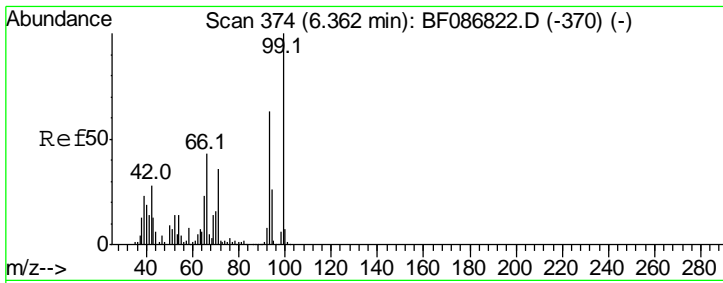
Tgt Ion	Resp	Lower	Upper
152	139844		
152	100		
150	152.6	125.8	188.6
115	55.1	51.5	77.3



#5
 2-Fluorophenol
 Concen: 71.32 ng
 RT: 5.20 min Scan# 316
 Delta R.T. -0.00 min
 Lab File: BF087015.D
 Acq: 14 May 2016 12:49

Tgt Ion	Resp	Lower	Upper
112	588959		
112	100		
64	82.0	52.1	78.1#
63	44.4	25.7	38.5#

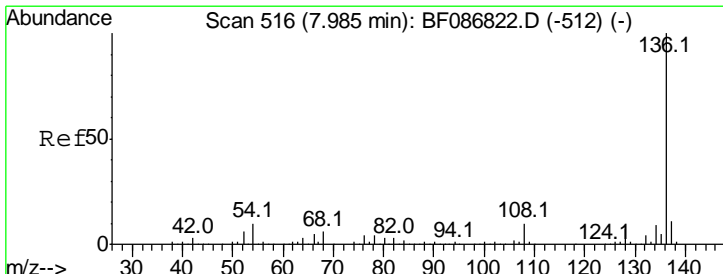
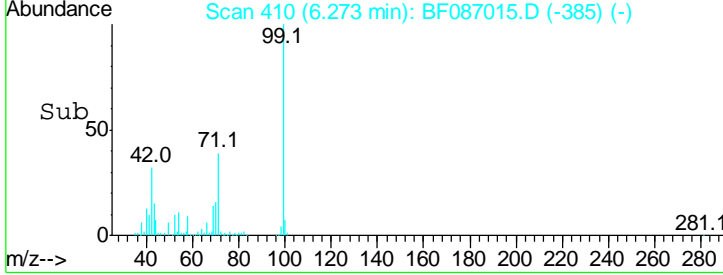
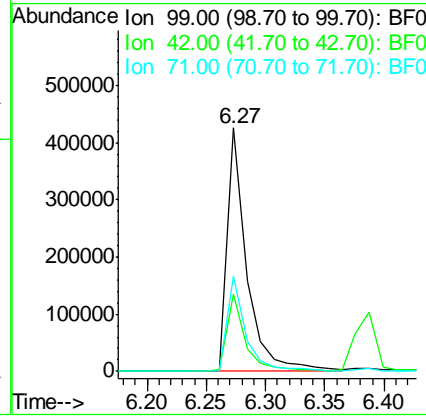
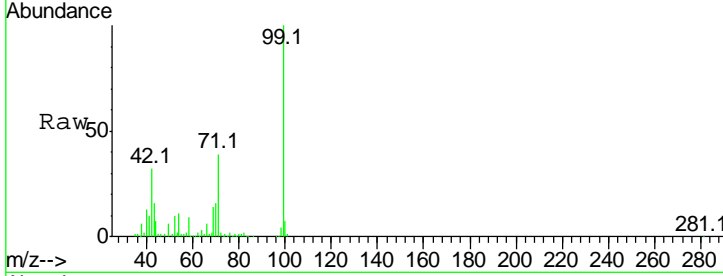




#7
 Phenol-d6
 Concen: 43.49 ng
 RT: 6.27 min Scan# 410
 Delta R.T. -0.01 min
 Lab File: BF087015.D
 Acq: 14 May 2016 12:49

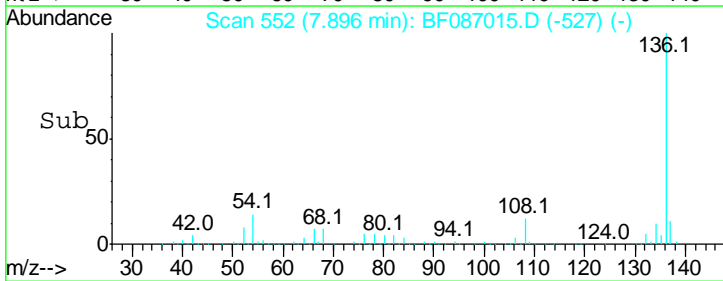
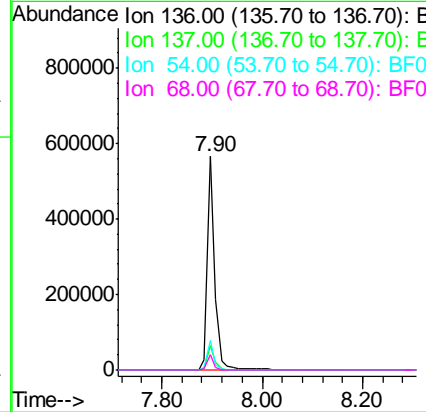
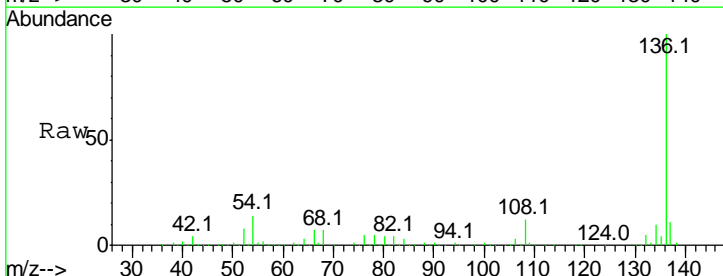
Instrument :
 BNA_F
ClientSampleId :
 KBFIELDBLNK1-5-5-16

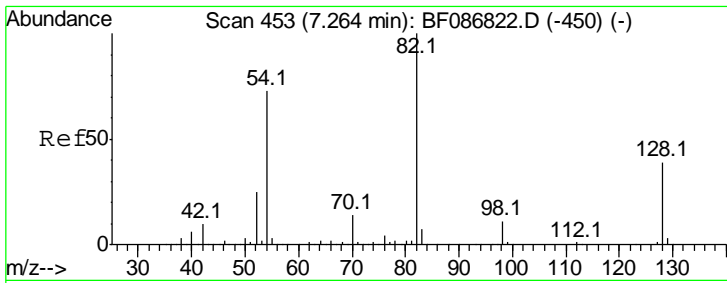
Tgt Ion	Resp	Lower	Upper
99	100		
42	31.7	13.6	20.4#
71	38.9	24.6	36.8#



#21
 Naphthalene-d8
 Concen: 20.00 ng
 RT: 7.90 min Scan# 552
 Delta R.T. -0.01 min
 Lab File: BF087015.D
 Acq: 14 May 2016 12:49

Tgt Ion	Resp	Lower	Upper
136	100		
137	11.3	8.8	13.2
54	13.7	5.0	7.4#
68	7.0	4.4	6.6#

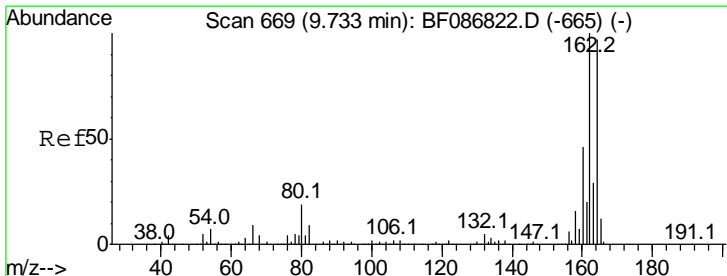
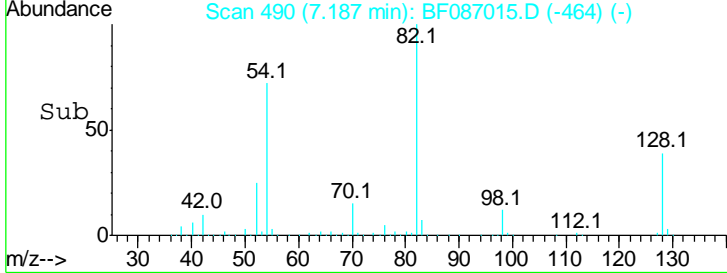
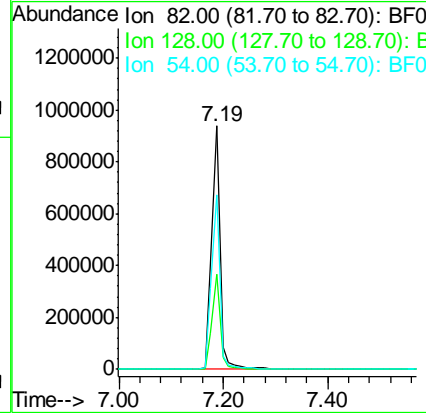
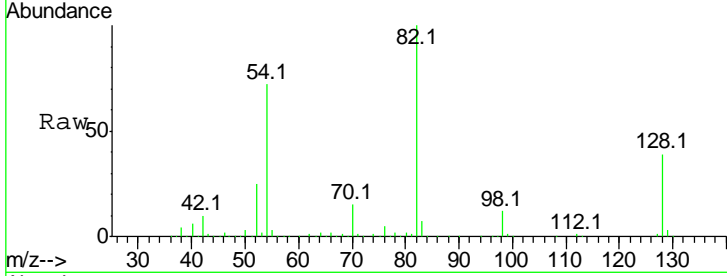




#23
 Nitrobenzene-d5
 Concen: 91.31 ng
 RT: 7.19 min Scan# 490
 Delta R.T. -0.00 min
 Lab File: BF087015.D
 Acq: 14 May 2016 12:49

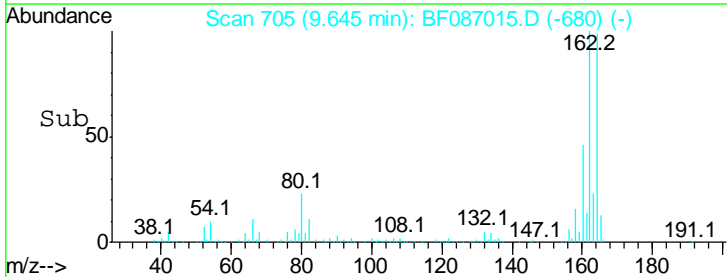
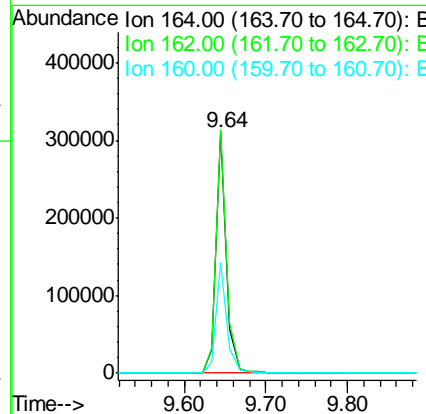
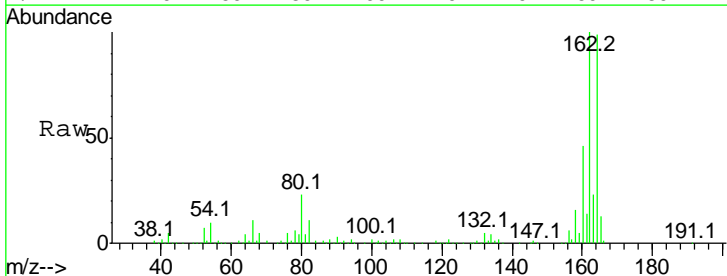
Instrument :
 BNA_F
ClientSampleId :
 KBFIELDBLNK1-5-5-16

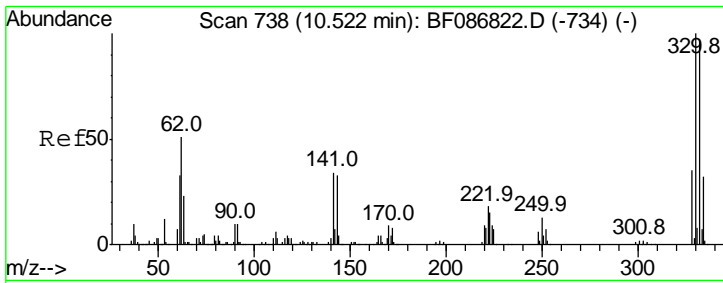
Tgt Ion	Resp	Lower	Upper
82	1061738		
82	100		
128	39.2	40.6	61.0#
54	71.8	38.1	57.1#



#38
 Acenaphthene-d10
 Concen: 20.00 ng
 RT: 9.64 min Scan# 705
 Delta R.T. -0.01 min
 Lab File: BF087015.D
 Acq: 14 May 2016 12:49

Tgt Ion	Resp	Lower	Upper
164	282186		
164	100		
162	101.2	82.8	124.2
160	46.2	36.9	55.3

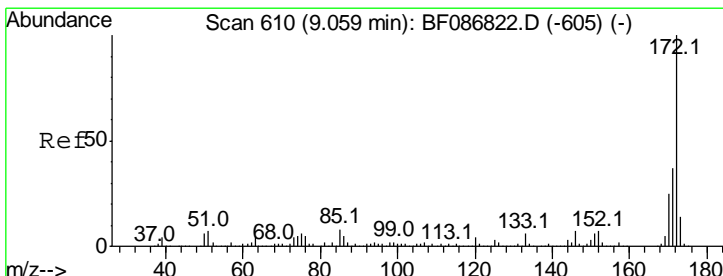
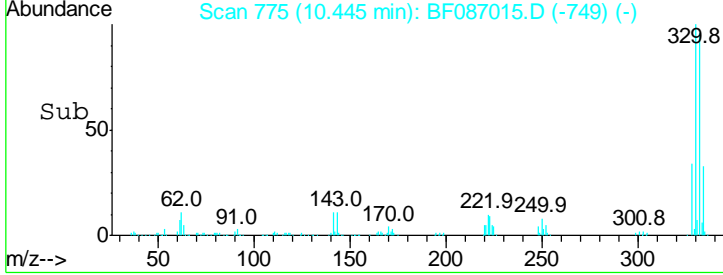
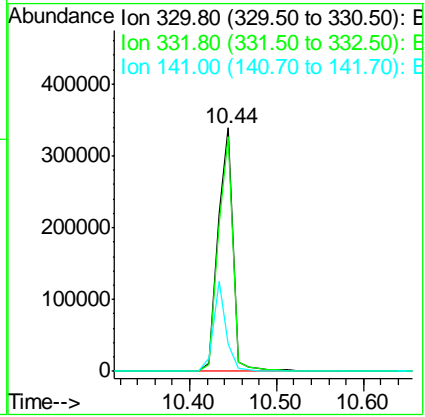
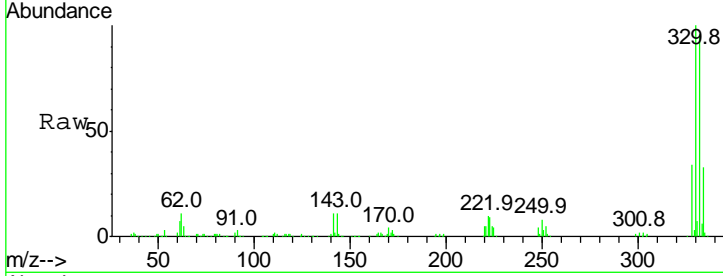




#41
 2,4,6-Tribromophenol
 Concen: 138.05 ng
 RT: 10.44 min Scan# 775
 Delta R.T. -0.00 min
 Lab File: BF087015.D
 Acq: 14 May 2016 12:49

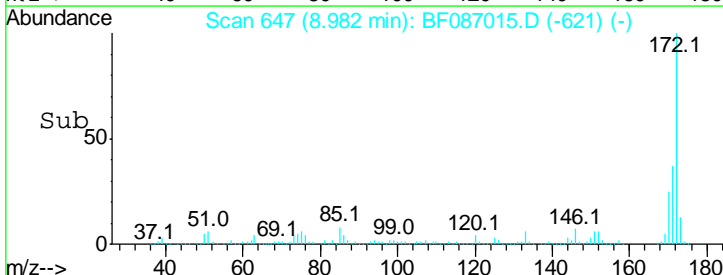
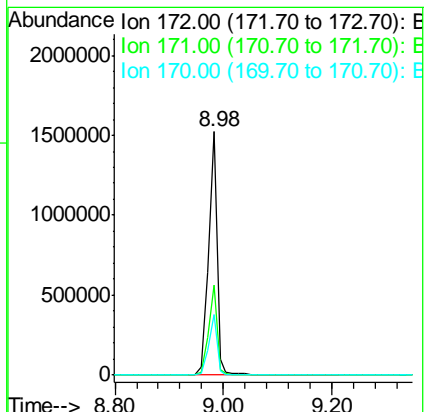
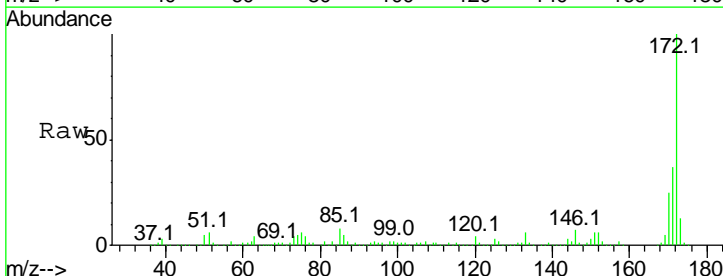
Instrument :
 BNA_F
ClientSampleId :
 KBFIELDBLNK1-5-5-16

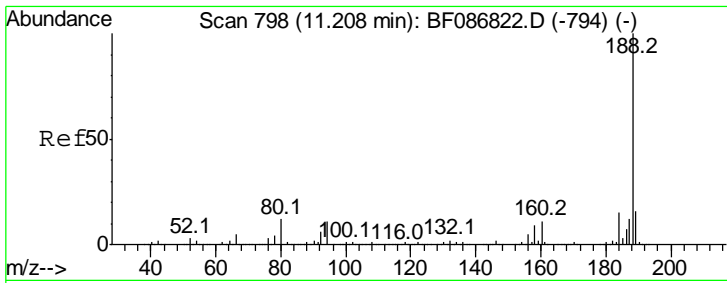
Tgt Ion	Resp	Lower	Upper
330	100		
332	96.3	79.0	118.4
141	31.8	31.2	46.8



#44
 2-Fluorobiphenyl
 Concen: 98.10 ng
 RT: 8.98 min Scan# 647
 Delta R.T. -0.00 min
 Lab File: BF087015.D
 Acq: 14 May 2016 12:49

Tgt Ion	Resp	Lower	Upper
172	100		
171	36.8	29.0	43.6
170	24.9	19.8	29.8

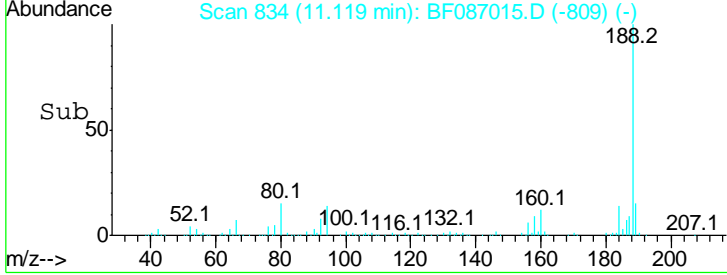
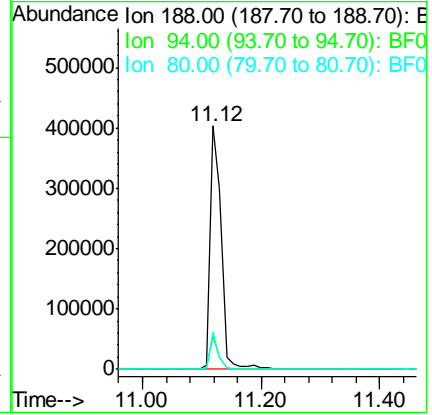
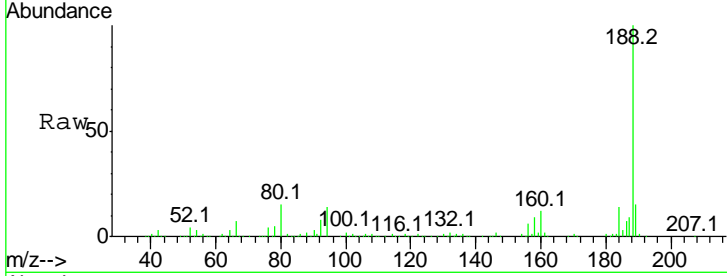




#63
 Phenanthrene-d10
 Concen: 20.00 ng
 RT: 11.12 min Scan# 834
 Delta R.T. -0.01 min
 Lab File: BF087015.D
 Acq: 14 May 2016 12:49

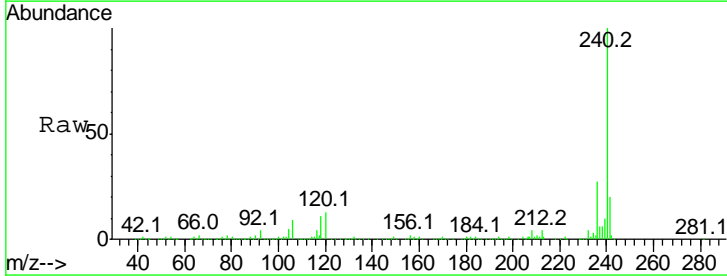
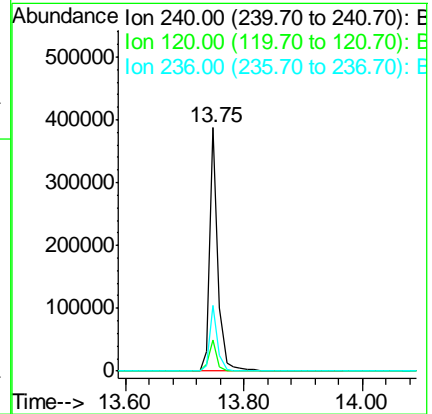
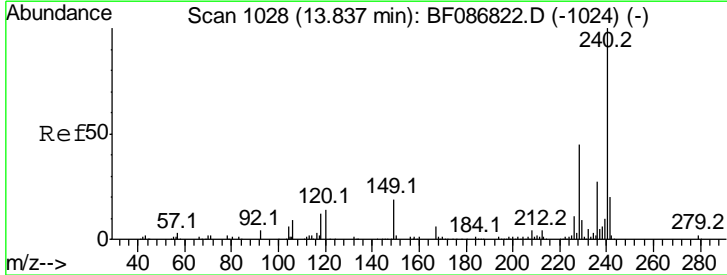
Instrument :
 BNA_F
ClientSampled :
 KBFIELDLBNK1-5-5-16

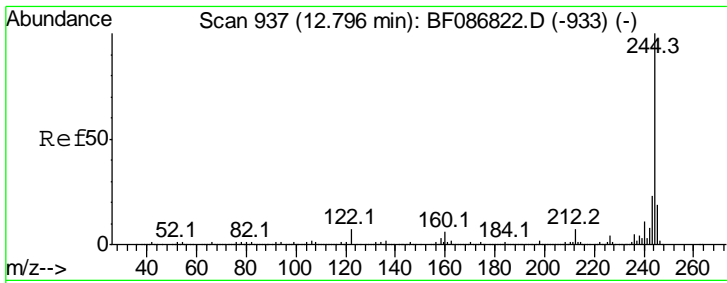
Tgt Ion	Resp	Lower	Upper
188	100		
94	13.8	6.8	10.2#
80	15.3	7.1	10.7#



#75
 Chrysene-d12
 Concen: 20.00 ng
 RT: 13.75 min Scan# 1064
 Delta R.T. -0.01 min
 Lab File: BF087015.D
 Acq: 14 May 2016 12:49

Tgt Ion	Resp	Lower	Upper
240	100		
120	12.9	11.2	16.8
236	26.7	21.2	31.8



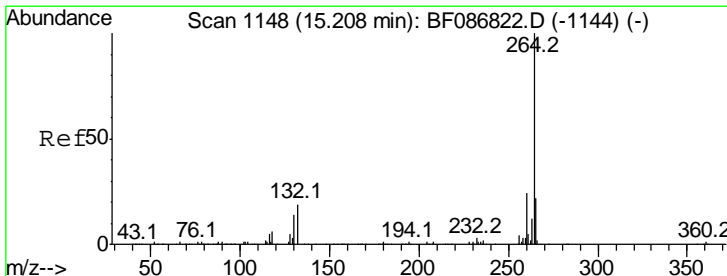
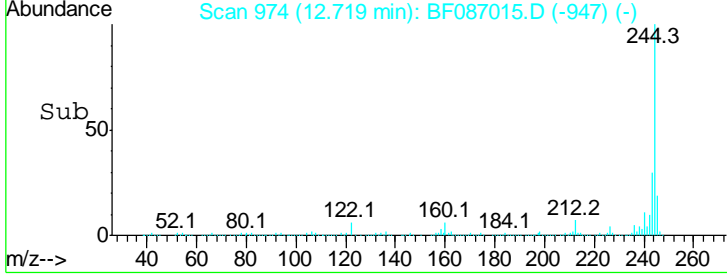
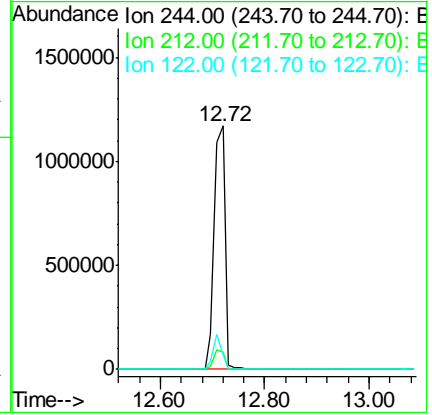
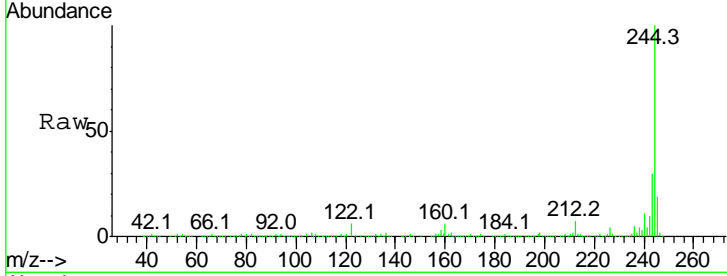


#78
 Terphenyl-d14
 Concen: 95.40 ng
 RT: 12.72 min Scan# 974
 Delta R.T. 0.01 min
 Lab File: BF087015.D
 Acq: 14 May 2016 12:49

Instrument :
 BNA_F
ClientSampleId :
 KBFIELDBLNK1-5-5-16

Tgt Ion: 244 Resp: 1711345

Ion	Ratio	Lower	Upper
244	100		
212	6.8	6.2	9.2
122	6.1	12.0	18.0#



#86
 Perylene-d12
 Concen: 20.00 ng
 RT: 15.11 min Scan# 1183
 Delta R.T. -0.00 min
 Lab File: BF087015.D
 Acq: 14 May 2016 12:49

Tgt Ion: 264 Resp: 309998

Ion	Ratio	Lower	Upper
264	100		
260	24.0	19.5	29.3
265	22.0	17.3	25.9

