

Data Path : Z:\HPCHEM1\BNA F\DATA\BF051517\
 Data File : BF095141.D
 Acq On : 15 May 2017 23:32
 Operator : SJ/MA
 Sample : I3140-07 5X
 Misc :
 ALS Vial : 19 Sample Multiplier: 1

Instrument :
 BNA_F
 ClientSampleId :
 BERM-2-2

Integration Parameters: rteint.p
 Integrator: RTE
 Smoothing : ON Filtering: 5
 Sampling : 1 Min Area: 3 % of largest Peak
 Start Thrs: 0.2 Max Peaks: 100
 Stop Thrs : 0 Peak Location: TOP

If leading or trailing edge < 100 prefer < Baseline drop else tangent >
 Peak separation: 5

Method : Z:\HPCHEM1\BNA F\METHODS\8270-BF050217.M
 Title : ASP BNA STANDARDS FOR 5 POINT CALIBRATION

Signal : TIC

peak #	R.T. min	first scan	max scan	last scan	PK TY	peak height	corr. area	corr. % max.	% of total
1	1.960	3	4	15	rVB	96067	119212	6.24%	0.529%
2	5.119	537	541	553	rBV3	15063	39025	2.04%	0.173%
3	5.790	651	655	665	rBV	38840	110292	5.77%	0.490%
4	7.354	918	921	936	rBV	41786	139862	7.32%	0.621%
5	7.460	936	939	958	rVB	104909	242573	12.69%	1.077%
6	7.778	989	993	1005	rBV	310411	398674	20.86%	1.770%
7	8.013	1029	1033	1045	rBV	123861	185528	9.71%	0.824%
8	8.689	1145	1148	1158	rBV2	34746	82359	4.31%	0.366%
9	9.795	1331	1336	1354	rBV	396089	571380	29.89%	2.537%
10	11.566	1633	1637	1652	rBV	153950	227072	11.88%	1.008%
11	12.407	1776	1780	1789	rBV	16610	25061	1.31%	0.111%
12	12.625	1812	1817	1823	rBV2	422400	558387	29.21%	2.479%
13	12.677	1823	1826	1837	rVB	77543	110949	5.80%	0.493%
14	12.983	1874	1878	1888	rBV	18422	32966	1.72%	0.146%
15	13.530	1966	1971	1982	rBV2	47657	80596	4.22%	0.358%
16	13.936	2036	2040	2049	rBV3	56399	92653	4.85%	0.411%
17	14.871	2195	2199	2203	rVB	24760	27623	1.45%	0.123%
18	15.030	2221	2226	2229	rBV	384635	454445	23.78%	2.018%
19	15.066	2229	2232	2242	rVV	662947	826671	43.25%	3.670%
20	15.148	2242	2246	2258	rVB	201088	297787	15.58%	1.322%
21	15.448	2293	2297	2305	rVB	40299	64662	3.38%	0.287%
22	15.813	2355	2359	2362	rBV	58120	69126	3.62%	0.307%
23	15.854	2362	2366	2372	rVV	80990	100352	5.25%	0.446%
24	15.924	2374	2378	2381	rVV2	44040	53855	2.82%	0.239%
25	15.960	2381	2384	2388	rVV2	139835	183801	9.62%	0.816%
26	16.001	2388	2391	2397	rVB2	49450	74439	3.89%	0.330%
27	16.254	2430	2434	2441	rVB	46238	57073	2.99%	0.253%
28	16.307	2441	2443	2449	rBV2	21678	29040	1.52%	0.129%
29	16.507	2473	2477	2480	rBV2	17651	23787	1.24%	0.106%
30	16.607	2490	2494	2497	rBV	51331	57232	2.99%	0.254%
31	16.648	2497	2501	2505	rVV3	24756	35737	1.87%	0.159%
32	16.724	2510	2514	2521	rBV2	56769	80680	4.22%	0.358%
33	16.812	2524	2529	2540	rBV	1555811	1856734	97.14%	8.243%
34	16.912	2542	2546	2549	rBV3	25808	38556	2.02%	0.171%

Data Path : Z:\HPCHEM1\BNA F\DATA\BF051517\
 Data File : BF095141.D
 Acq On : 15 May 2017 23:32
 Operator : SJ/MA
 Sample : I3140-07 5X
 Misc :
 ALS Vial : 19 Sample Multiplier: 1

Instrument :
 BNA_F
 ClientSampleId :
 BERM-2-2

Integration Parameters: rteint.p
 Integrator: RTE
 Smoothing : ON
 Sampling : 1
 Start Thrs: 0.2
 Stop Thrs : 0

Filtering: 5
 Min Area: 3 % of largest Peak
 Max Peaks: 100
 Peak Location: TOP

If leading or trailing edge < 100 prefer < Baseline drop else tangent >
 Peak separation: 5

Method : Z:\HPCHEM1\BNA F\METHODS\8270-BF050217.M
 Title : ASP BNA STANDARDS FOR 5 POINT CALIBRATION

35	16.942	2549	2551	2557	rVB2	16505	21018	1.10%	0.093%
36	17.007	2558	2562	2567	rBV2	43998	66453	3.48%	0.295%
37	17.112	2572	2580	2585	rBV	1639331	1911323	100.00%	8.486%
38	17.201	2589	2595	2597	rVB2	30665	35604	1.86%	0.158%
39	17.224	2597	2599	2604	rVB	15295	20198	1.06%	0.090%
40	17.301	2608	2612	2616	rBV	86909	104059	5.44%	0.462%
41	17.348	2616	2620	2627	rVB	197856	256048	13.40%	1.137%
42	17.407	2627	2630	2631	rBV	41613	38193	2.00%	0.170%
43	17.430	2631	2634	2640	rVB2	73759	112930	5.91%	0.501%
44	17.483	2640	2643	2646	rVB2	18689	21320	1.12%	0.095%
45	17.542	2648	2653	2655	rBV2	77592	129114	6.76%	0.573%
46	17.571	2655	2658	2664	rVB	259804	306224	16.02%	1.360%
47	17.624	2664	2667	2669	rBV4	25042	30696	1.61%	0.136%
48	17.659	2669	2673	2677	rVB	221301	238516	12.48%	1.059%
49	17.707	2677	2681	2688	rBV3	151184	260469	13.63%	1.156%
50	17.824	2697	2701	2705	rVB	68190	77792	4.07%	0.345%
51	17.865	2705	2708	2713	rBV	54635	78437	4.10%	0.348%
52	17.907	2713	2715	2719	rVB4	16031	19478	1.02%	0.086%
53	18.001	2729	2731	2735	rVB5	20610	20812	1.09%	0.092%
54	18.136	2751	2754	2761	rVB4	28337	42234	2.21%	0.188%
55	18.212	2764	2767	2771	rBV3	41762	64457	3.37%	0.286%
56	18.254	2771	2774	2778	rVV	67061	78962	4.13%	0.351%
57	18.289	2778	2780	2783	rVB2	24065	24023	1.26%	0.107%
58	18.318	2783	2785	2790	rBV3	26183	29652	1.55%	0.132%
59	18.377	2790	2795	2797	rBV	158832	199062	10.41%	0.884%
60	18.407	2797	2800	2803	rVV2	157716	175731	9.19%	0.780%
61	18.436	2803	2805	2809	rVV	136191	158125	8.27%	0.702%
62	18.471	2809	2811	2816	rVB2	104923	119822	6.27%	0.532%
63	18.530	2816	2821	2825	rBV	66880	83186	4.35%	0.369%
64	18.595	2829	2832	2836	rVB	61970	68463	3.58%	0.304%
65	18.689	2840	2848	2852	rBV2	1118245	1794198	93.87%	7.966%
66	18.736	2852	2856	2867	rVV	1078578	1471296	76.98%	6.532%
67	18.830	2868	2872	2876	rVB	169439	199249	10.42%	0.885%
68	18.912	2882	2886	2893	rBV5	38850	80782	4.23%	0.359%
69	18.977	2893	2897	2901	rVV	146245	181005	9.47%	0.804%
70	19.018	2901	2904	2910	rVB4	60320	94660	4.95%	0.420%
71	19.159	2924	2928	2930	rBV	40510	53941	2.82%	0.239%

Data Path : Z:\HPCHEM1\BNA F\DATA\BF051517\
 Data File : BF095141.D
 Acq On : 15 May 2017 23:32
 Operator : SJ/MA
 Sample : I3140-07 5X
 Misc :
 ALS Vial : 19 Sample Multiplier: 1

Instrument :
 BNA_F
 ClientSampleId :
 BERM-2-2

Integration Parameters: rteint.p
 Integrator: RTE
 Smoothing : ON Filtering: 5
 Sampling : 1 Min Area: 3 % of largest Peak
 Start Thrs: 0.2 Max Peaks: 100
 Stop Thrs : 0 Peak Location: TOP

If leading or trailing edge < 100 prefer < Baseline drop else tangent >
 Peak separation: 5

Method : Z:\HPCHEM1\BNA F\METHODS\8270-BF050217.M
 Title : ASP BNA STANDARDS FOR 5 POINT CALIBRATION

72	19.201	2931	2935	2939	rVV	158451	189243	9.90%	0.840%
73	19.242	2939	2942	2946	rVB2	80328	104254	5.45%	0.463%
74	19.318	2947	2955	2958	rBV3	116777	193767	10.14%	0.860%
75	19.353	2958	2961	2963	rBV3	70196	89545	4.68%	0.398%
76	19.453	2976	2978	2985	rVB2	46733	61726	3.23%	0.274%
77	19.595	2999	3002	3004	rBV3	32970	43722	2.29%	0.194%
78	19.618	3004	3006	3015	rVB5	66969	125619	6.57%	0.558%
79	19.806	3035	3038	3043	rBV	110197	141045	7.38%	0.626%
80	19.971	3061	3066	3068	rBV	1009197	1442207	75.46%	6.403%
81	19.995	3068	3070	3076	rVB	498538	520999	27.26%	2.313%
82	20.048	3077	3079	3081	rBV	35591	24401	1.28%	0.108%
83	20.077	3081	3084	3087	rBV	189772	190923	9.99%	0.848%
84	20.259	3111	3115	3119	rBV	597950	682785	35.72%	3.031%
85	20.318	3121	3125	3131	rVV	803928	925480	48.42%	4.109%
86	20.377	3131	3135	3137	rVV	330326	392462	20.53%	1.742%
87	20.406	3137	3140	3145	rVB	184723	242920	12.71%	1.078%
88	21.536	3329	3332	3335	rBV2	38641	51345	2.69%	0.228%
89	21.706	3356	3361	3369	rBV	268012	520299	27.22%	2.310%
90	21.865	3383	3388	3392	rBV2	54965	105667	5.53%	0.469%
91	22.094	3422	3427	3435	rBV	191354	385538	20.17%	1.712%
92	22.336	3463	3468	3471	rBV2	37192	74848	3.92%	0.332%

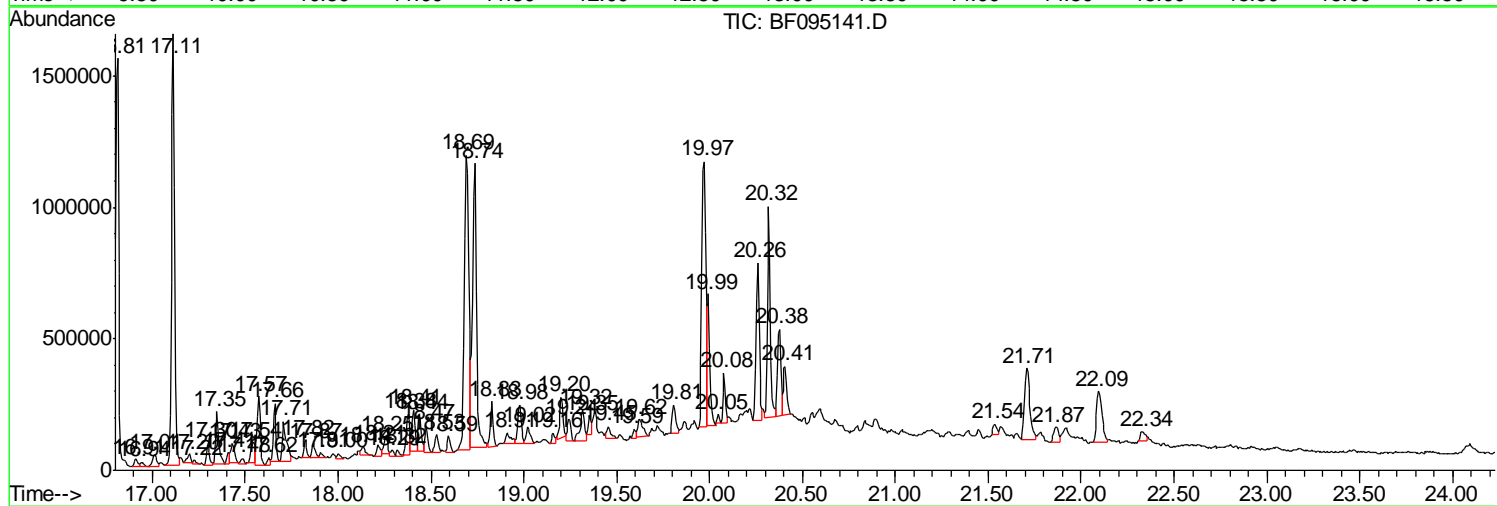
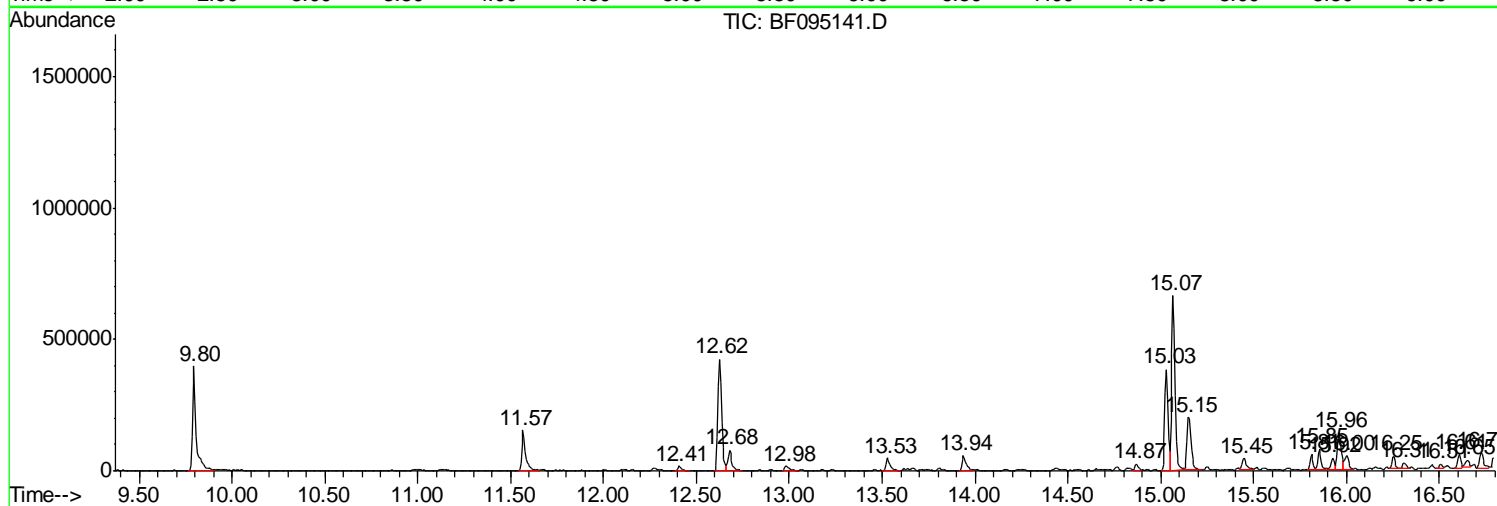
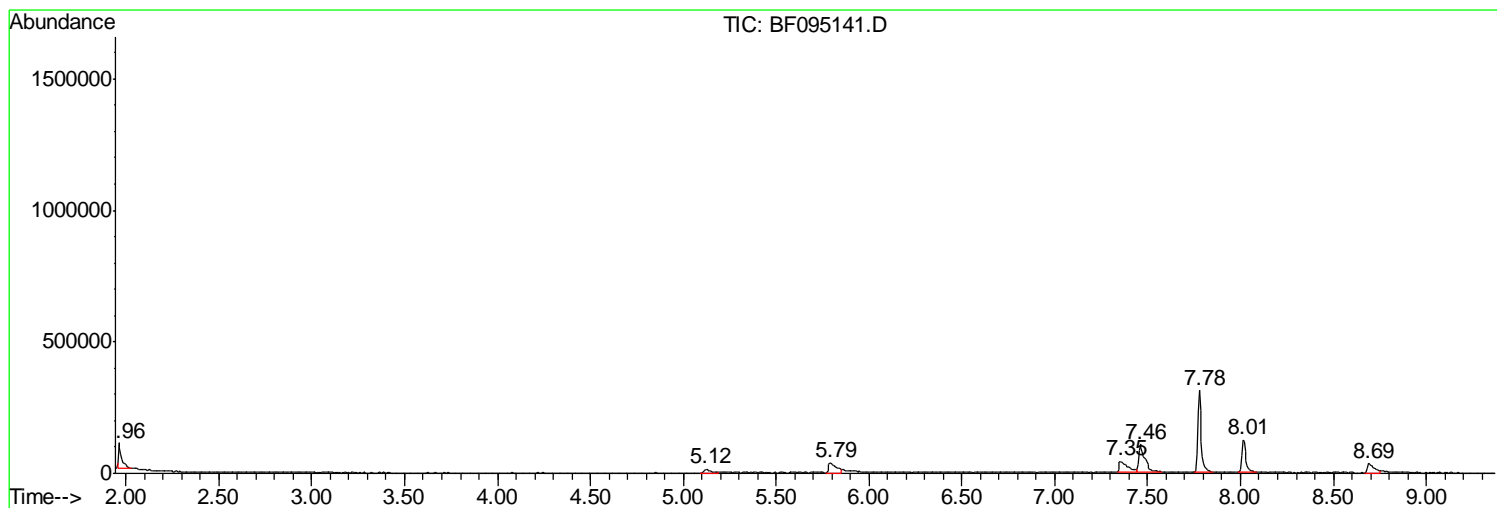
Sum of corrected areas: 22524516

Data Path : Z:\HPCHEM1\BNA F\DATA\BF051517\
 Data File : BF095141.D
 Acq On : 15 May 2017 23:32
 Operator : SJ/MA
 Sample : I3140-07 5X
 Misc :
 ALS Vial : 19 Sample Multiplier: 1

Instrument :
 BNA_F
 ClientSampleId :
 BERM-2-2

Quant Method : Z:\HPCHEM1\BNA F\METHODS\8270-BF050217.M
 Quant Title : ASP BNA STANDARDS FOR 5 POINT CALIBRATION

TIC Library : C:\DATABASE\NIST11.L
 TIC Integration Parameters: LSCINT.P



Data Path : Z:\HPCHEM1\BNA F\DATA\BF051517\
 Data File : BF095141.D
 Acq On : 15 May 2017 23:32
 Operator : SJ/MA
 Sample : I3140-07 5X
 Misc :
 ALS Vial : 19 Sample Multiplier: 1

Instrument :
 BNA_F
 ClientSampleID :
 BERM-2-2

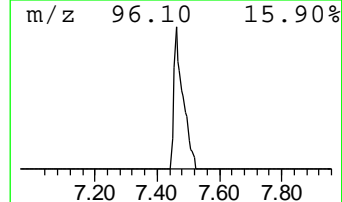
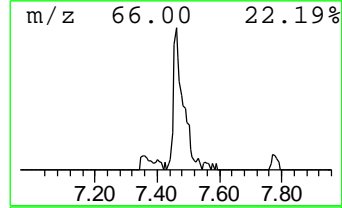
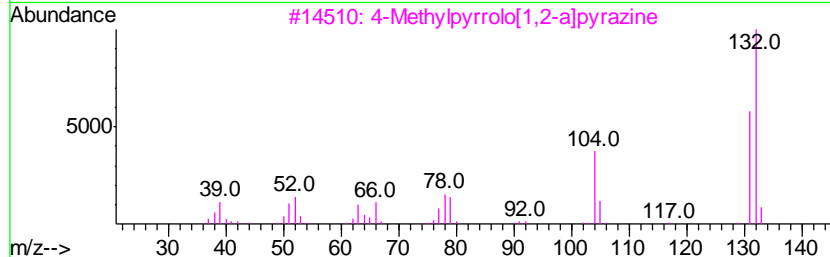
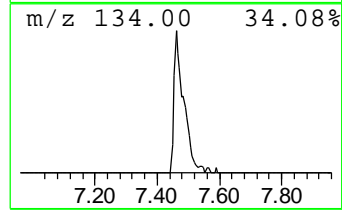
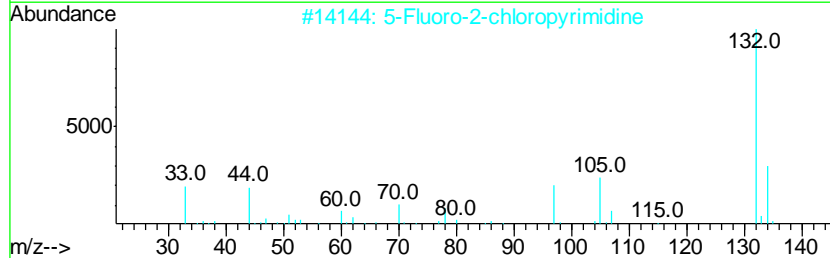
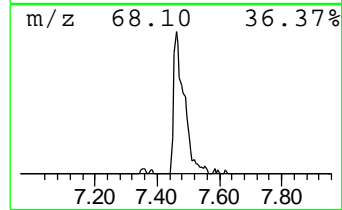
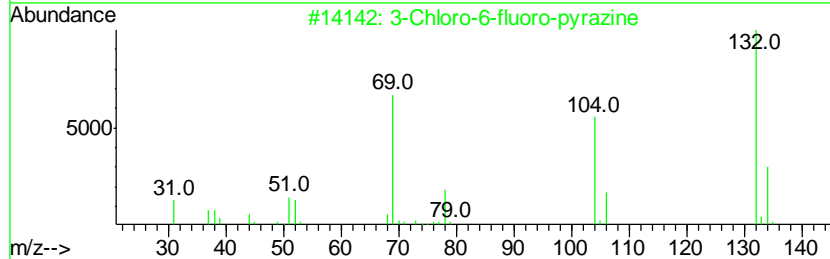
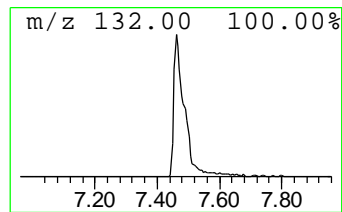
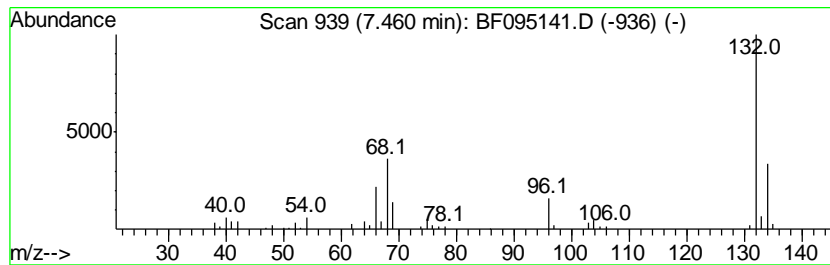
Quant Method : Z:\HPCHEM1\BNA F\METHODS\8270-BF050217.M
 Quant Title : ASP BNA STANDARDS FOR 5 POINT CALIBRATION

TIC Library : C:\DATABASE\NIST11.L
 TIC Integration Parameters: LSCINT.P

 Peak Number 2 unknown7.46 Concentration Rank 2

R.T.	EstConc	Area	Relative to ISTD	R.T.
7.46	12.17 ng	242573	1,4-Dichlorobenzene-d4	7.78

Hit#	of	Tentative ID	MW	MolForm	CAS#	Qual
1	5	3-Chloro-6-fluoro-pyrazine	132	C4H2ClFN2	1000146-10-7	25
2		5-Fluoro-2-chloropyrimidine	132	C4H2ClFN2	062802-42-0	17
3		4-Methylpyrrolo[1,2-a]pyrazine	132	C8H8N2	064608-60-2	9
4		1,3,5-Trifluorobenzene	132	C6H3F3	000372-38-3	9
5		(E)-3-Chloro-2-methyl-2-pentenal	132	C6H9ClO	031357-76-3	9



Data Path : Z:\HPCHEM1\BNA F\DATA\BF051517\
 Data File : BF095141.D
 Acq On : 15 May 2017 23:32
 Operator : SJ/MA
 Sample : I3140-07 5X
 Misc :
 ALS Vial : 19 Sample Multiplier: 1

Instrument :
 BNA_F
 ClientSampled :
 BERM-2-2

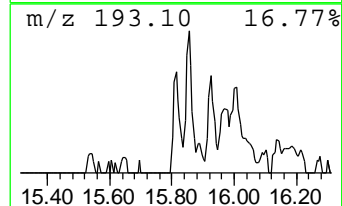
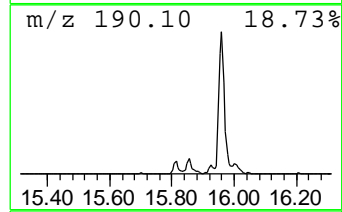
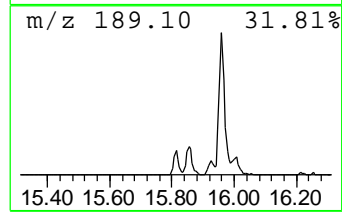
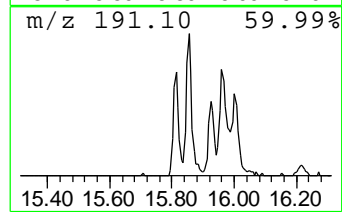
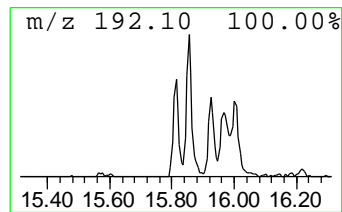
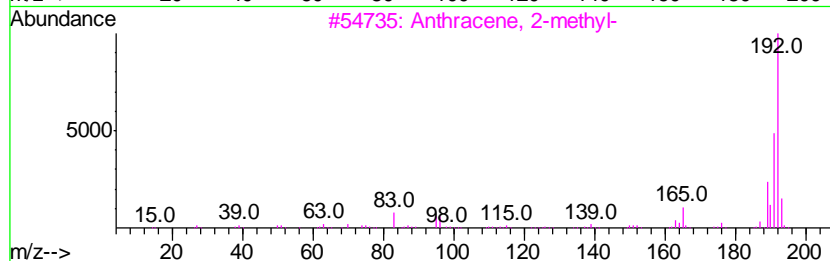
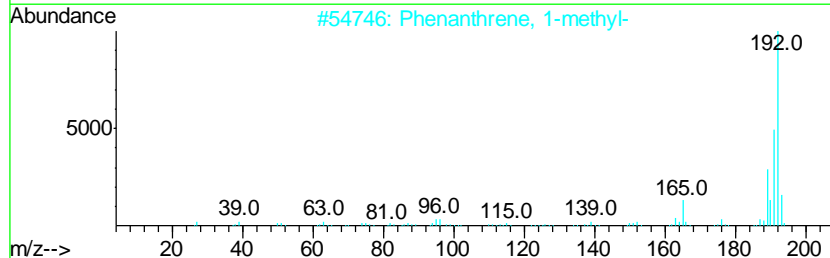
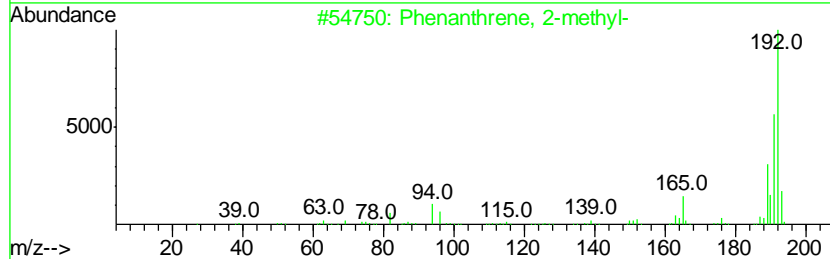
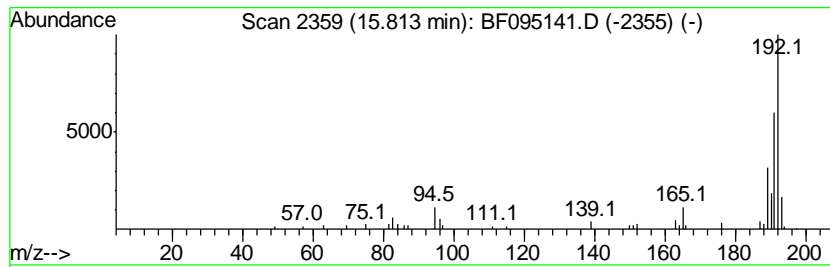
Quant Method : Z:\HPCHEM1\BNA F\METHODS\8270-BF050217.M
 Quant Title : ASP BNA STANDARDS FOR 5 POINT CALIBRATION

TIC Library : C:\DATABASE\NIST11.L
 TIC Integration Parameters: LSCINT.P

 Peak Number 4 Phenanthrene, 2-methyl- Concentration Rank 15

R.T.	EstConc	Area	Relative to ISTD	R.T.
15.81	3.04 ng	69126	Phenanthrene-d10	15.03

Hit#	of	Tentative ID	MW	MolForm	CAS#	Qual
1	5	Phenanthrene, 2-methyl-	192	C15H12	002531-84-2	96
2		Phenanthrene, 1-methyl-	192	C15H12	000832-69-9	96
3		Anthracene, 2-methyl-	192	C15H12	000613-12-7	94
4		Anthracene, 9-methyl-	192	C15H12	000779-02-2	94
5		Anthracene, 1-methyl-	192	C15H12	000610-48-0	90



Data Path : Z:\HPCHEM1\BNA F\DATA\BF051517\
 Data File : BF095141.D
 Acq On : 15 May 2017 23:32
 Operator : SJ/MA
 Sample : I3140-07 5X
 Misc :
 ALS Vial : 19 Sample Multiplier: 1

Instrument :
 BNA_F
 ClientSampleId :
 BERM-2-2

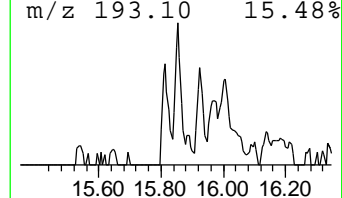
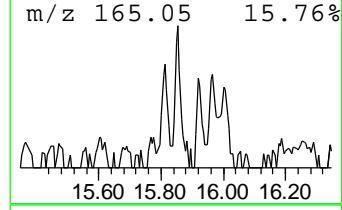
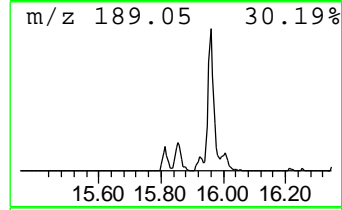
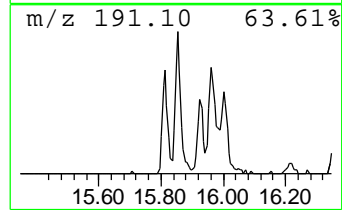
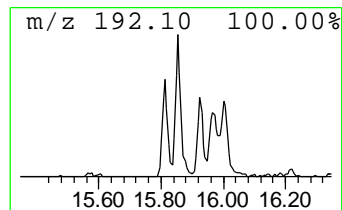
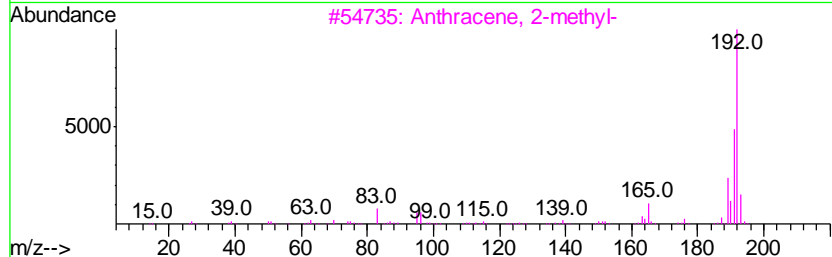
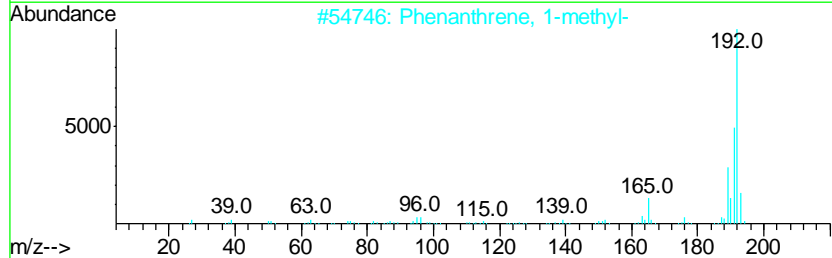
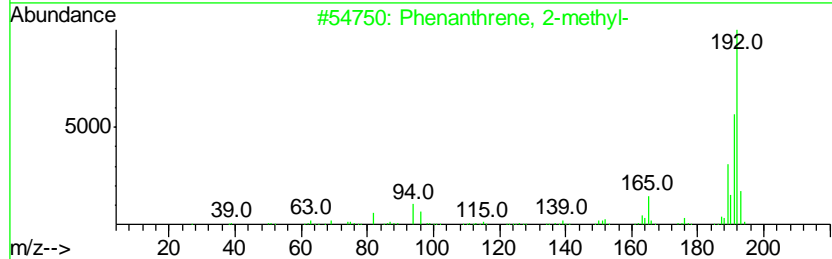
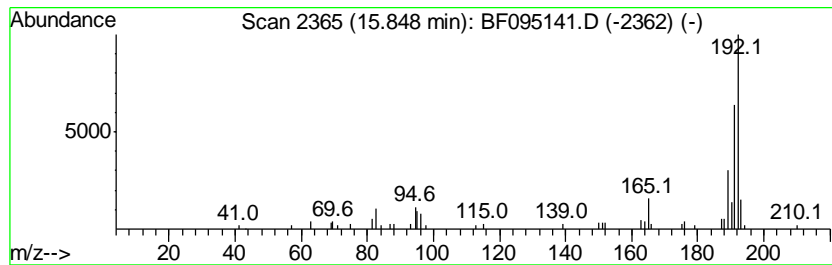
Quant Method : Z:\HPCHEM1\BNA F\METHODS\8270-BF050217.M
 Quant Title : ASP BNA STANDARDS FOR 5 POINT CALIBRATION

TIC Library : C:\DATABASE\NIST11.L
 TIC Integration Parameters: LSCINT.P

 Peak Number 5 Phenanthrene, 1-methyl- Concentration Rank 10

R.T.	EstConc	Area	Relative to ISTD	R.T.
15.85	4.42 ng	100352	Phenanthrene-d10	15.03

Hit#	of	Tentative ID	MW	MolForm	CAS#	Qual
1	5	Phenanthrene, 2-methyl-	192	C15H12	002531-84-2	97
2		Phenanthrene, 1-methyl-	192	C15H12	000832-69-9	96
3		Anthracene, 2-methyl-	192	C15H12	000613-12-7	96
4		Anthracene, 9-methyl-	192	C15H12	000779-02-2	95
5		Anthracene, 1-methyl-	192	C15H12	000610-48-0	94



Data Path : Z:\HPCHEM1\BNA F\DATA\BF051517\
 Data File : BF095141.D
 Acq On : 15 May 2017 23:32
 Operator : SJ/MA
 Sample : I3140-07 5X
 Misc :
 ALS Vial : 19 Sample Multiplier: 1

Instrument :
 BNA_F
 ClientSampleID :
 BERM-2-2

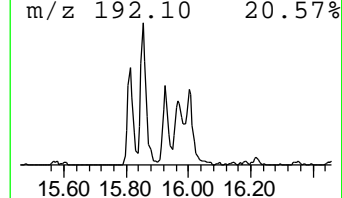
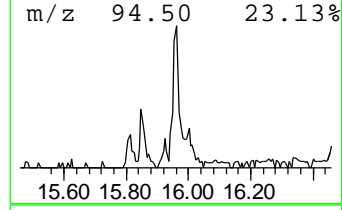
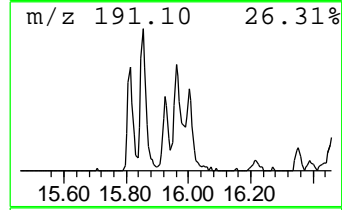
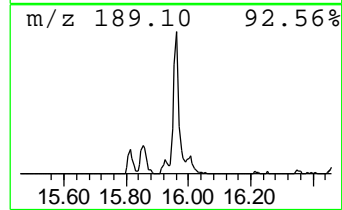
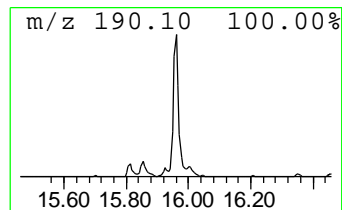
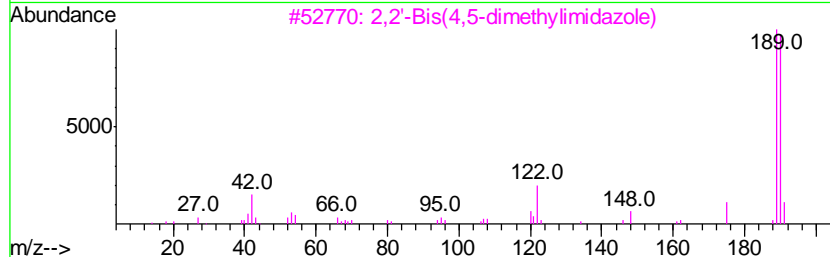
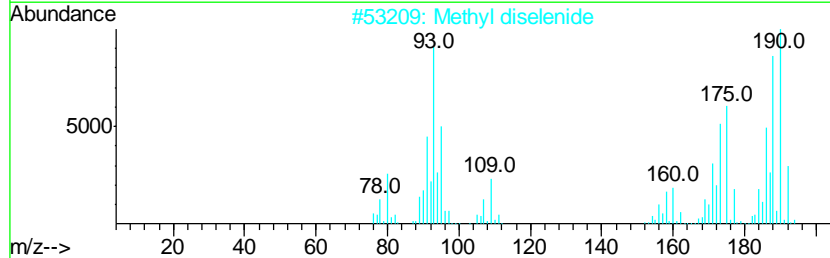
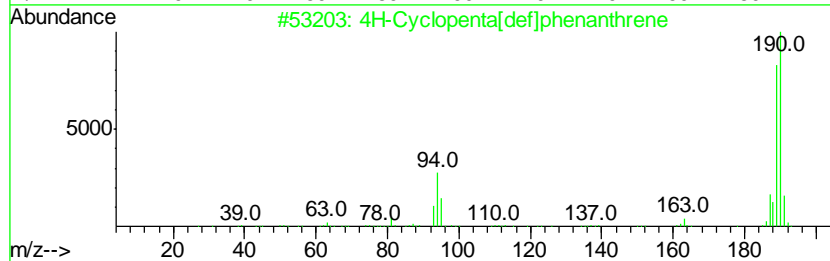
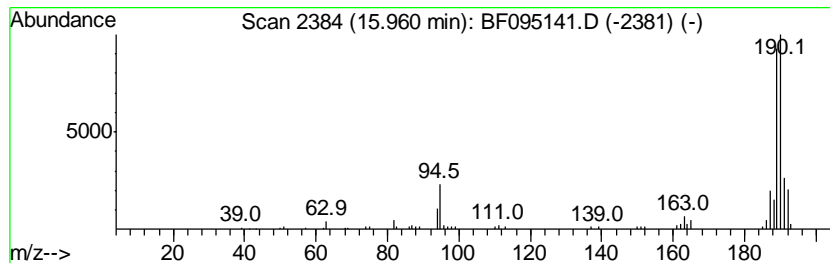
Quant Method : Z:\HPCHEM1\BNA F\METHODS\8270-BF050217.M
 Quant Title : ASP BNA STANDARDS FOR 5 POINT CALIBRATION

TIC Library : C:\DATABASE\NIST11.L
 TIC Integration Parameters: LSCINT.P

 Peak Number 6 4H-Cyclopenta[def]phenanthrene Concentration Rank 5

R.T.	EstConc	Area	Relative to ISTD	R.T.
15.96	8.09 ng	183801	Phenanthrene-d10	15.03

Hit#	of	Tentative ID	MW	MolForm	CAS#	Qual
1	5	4H-Cyclopenta[def]phenanthrene	190	C15H10	000203-64-5	93
2		Methyl diselenide	190	C2H6Se2	007101-31-7	49
3		2,2'-Bis(4,5-dimethylimidazole)	190	C10H14N4	069286-06-2	40
4		6H-Cyclobuta[ik]phenanthrene	190	C15H10	083469-43-6	33
5		2,6-Dichlorobenzaldoxime	189	C7H5Cl2NO	025185-95-9	18



Data Path : Z:\HPCHEM1\BNA F\DATA\BF051517\
 Data File : BF095141.D
 Acq On : 15 May 2017 23:32
 Operator : SJ/MA
 Sample : I3140-07 5X
 Misc :
 ALS Vial : 19 Sample Multiplier: 1

Instrument :
 BNA_F
 ClientSampleID :
 BERM-2-2

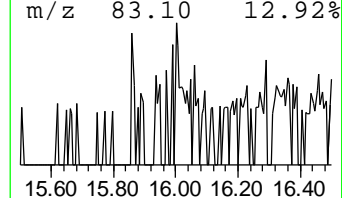
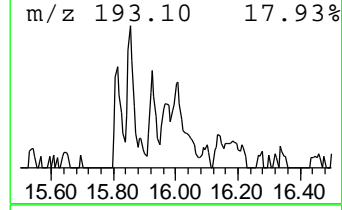
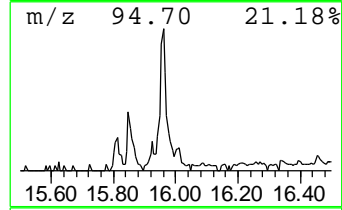
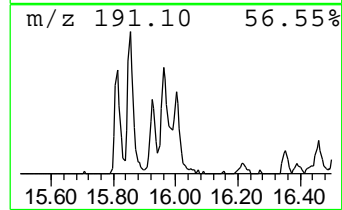
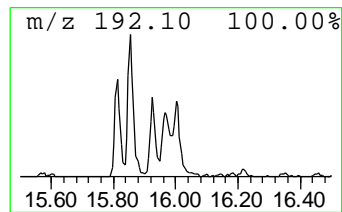
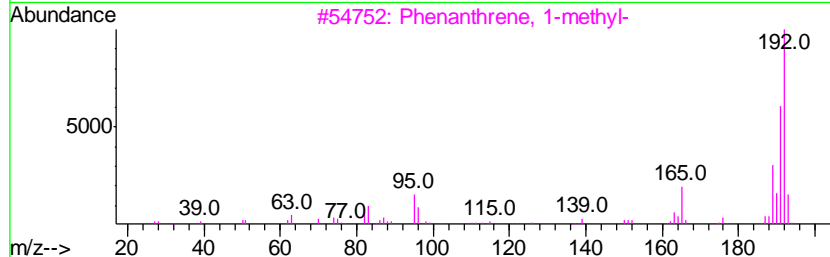
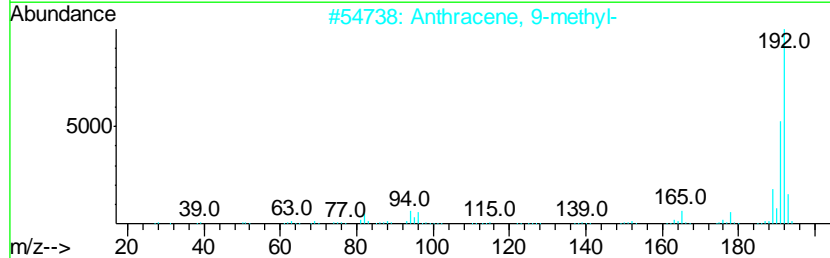
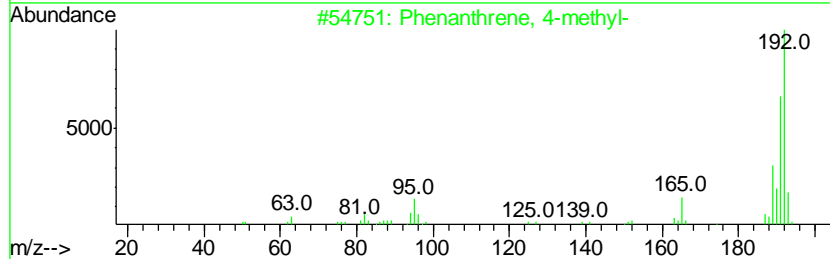
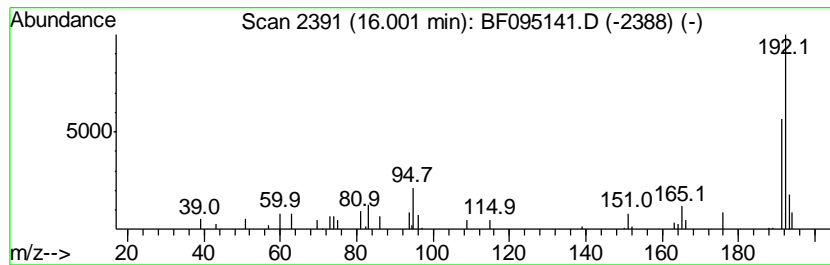
Quant Method : Z:\HPCHEM1\BNA F\METHODS\8270-BF050217.M
 Quant Title : ASP BNA STANDARDS FOR 5 POINT CALIBRATION

TIC Library : C:\DATABASE\NIST11.L
 TIC Integration Parameters: LSCINT.P

 Peak Number 7 Phenanthrene, 4-methyl- Concentration Rank 14

R.T.	EstConc	Area	Relative to ISTD	R.T.
16.00	3.28 ng	74439	Phenanthrene-d10	15.03

Hit#	of	Tentative ID	MW	MolForm	CAS#	Qual
1	5	Phenanthrene, 4-methyl-	192	C15H12	000832-64-4	90
2		Anthracene, 9-methyl-	192	C15H12	000779-02-2	74
3		Phenanthrene, 1-methyl-	192	C15H12	000832-69-9	72
4		Phenanthrene, 2-methyl-	192	C15H12	002531-84-2	72
5		Phenanthrene, 3-methyl-	192	C15H12	000832-71-3	72



Data Path : Z:\HPCHEM1\BNA F\DATA\BF051517\
 Data File : BF095141.D
 Acq On : 15 May 2017 23:32
 Operator : SJ/MA
 Sample : I3140-07 5X
 Misc :
 ALS Vial : 19 Sample Multiplier: 1

Instrument :
 BNA_F
 ClientSampleID :
 BERM-2-2

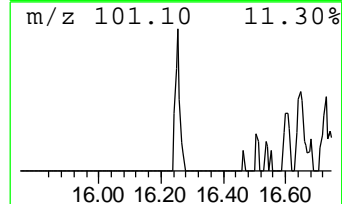
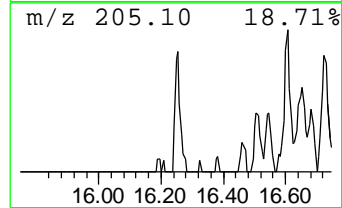
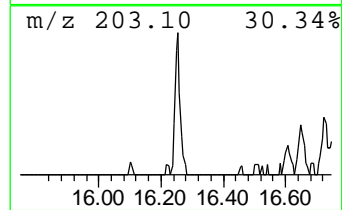
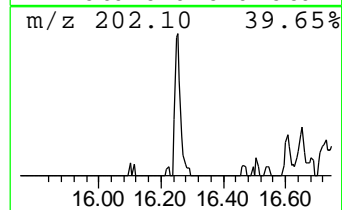
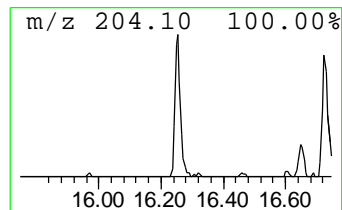
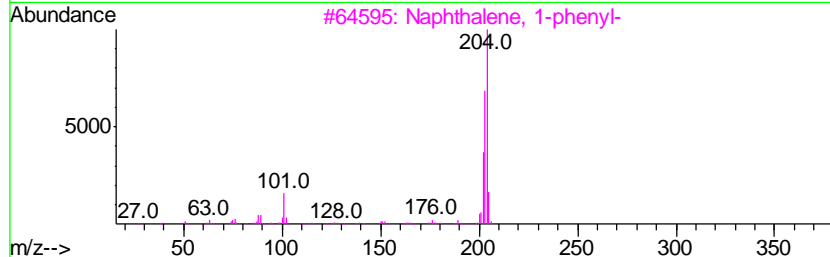
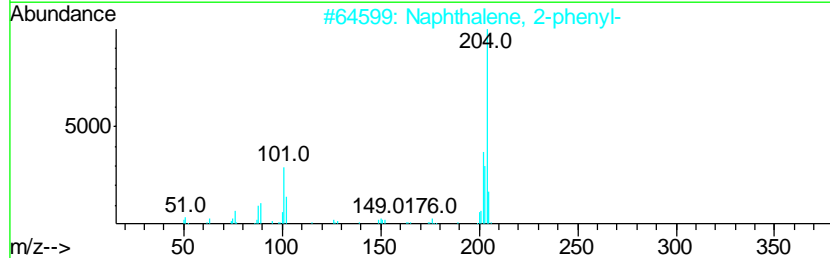
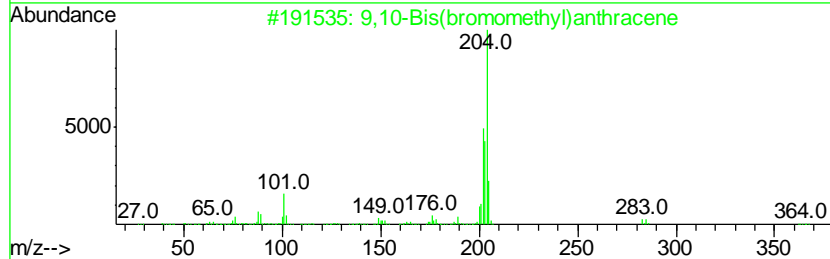
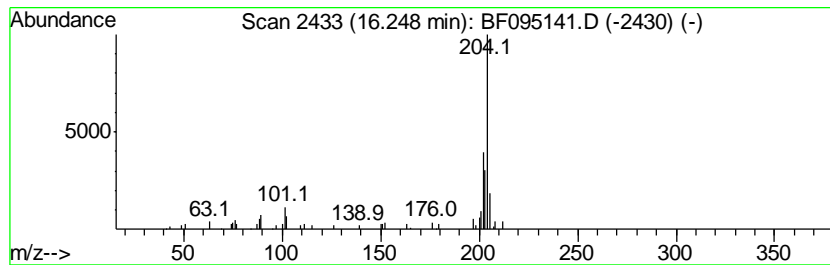
Quant Method : Z:\HPCHEM1\BNA F\METHODS\8270-BF050217.M
 Quant Title : ASP BNA STANDARDS FOR 5 POINT CALIBRATION

TIC Library : C:\DATABASE\NIST11.L
 TIC Integration Parameters: LSCINT.P

 Peak Number 8 9,10-Bis(bromomethyl)anthra... Concentration Rank 20

R.T.	EstConc	Area	Relative to ISTD	R.T.
16.25	2.51 ng	57073	Phenanthrene-d10	15.03

Hit#	of	Tentative ID	MW	MolForm	CAS#	Qual
1	5	9,10-Bis(bromomethyl)anthracene	362	C16H12Br2	034373-96-1	91
2		Naphthalene, 2-phenyl-	204	C16H12	000612-94-2	90
3		Naphthalene, 1-phenyl-	204	C16H12	000605-02-7	86
4		5,16[1',2'] : 8,13[1'',2'']-Dibenz...	408	C32H24	005672-97-9	86
5		Tricyclo[8.2.2.2(4,7)]hexadeca-2...	204	C16H12	006572-60-7	74



Data Path : Z:\HPCHEM1\BNA F\DATA\BF051517\
 Data File : BF095141.D
 Acq On : 15 May 2017 23:32
 Operator : SJ/MA
 Sample : I3140-07 5X
 Misc :
 ALS Vial : 19 Sample Multiplier: 1

Instrument :
 BNA_F
 ClientSampleID :
 BERM-2-2

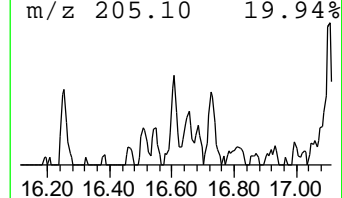
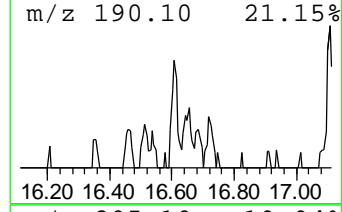
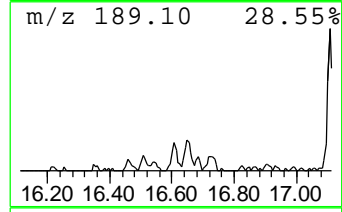
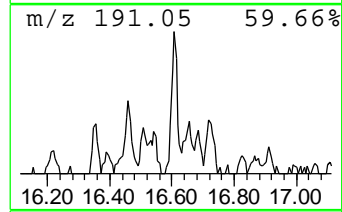
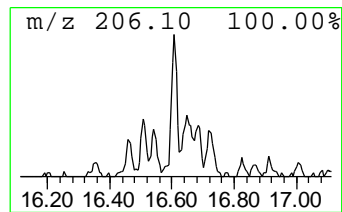
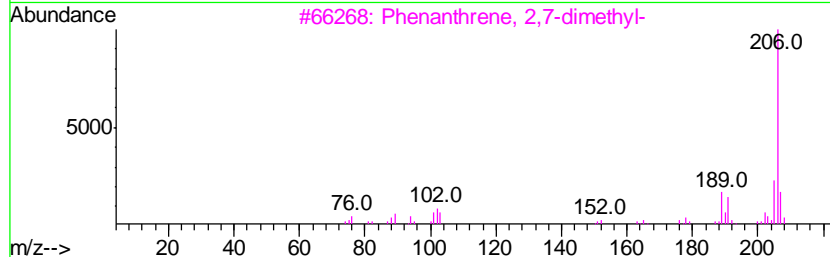
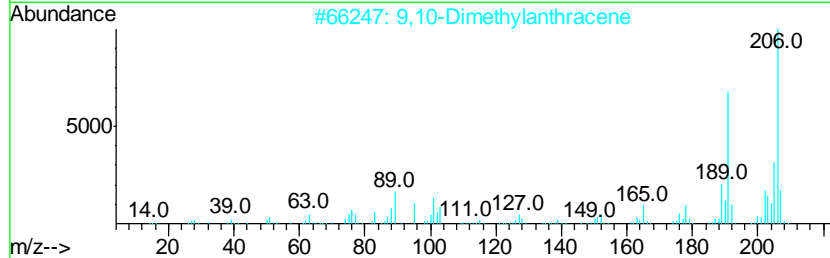
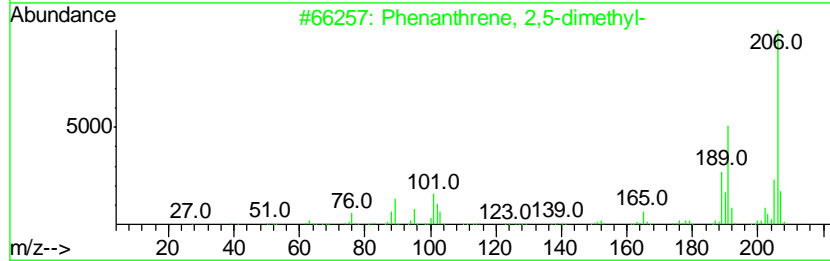
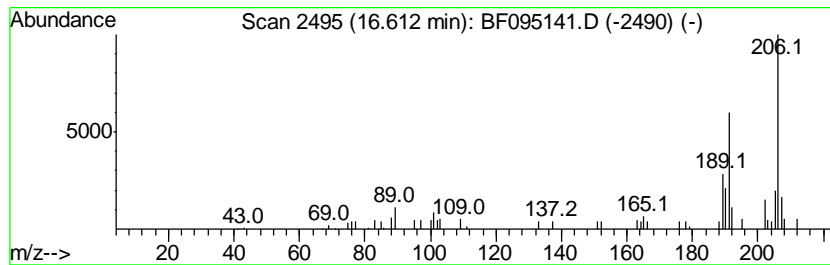
Quant Method : Z:\HPCHEM1\BNA F\METHODS\8270-BF050217.M
 Quant Title : ASP BNA STANDARDS FOR 5 POINT CALIBRATION

TIC Library : C:\DATABASE\NIST11.L
 TIC Integration Parameters: LSCINT.P

 Peak Number 9 Phenanthrene, 2,5-dimethyl- Concentration Rank 19

R.T.	EstConc	Area	Relative to ISTD	R.T.
16.61	2.52 ng	57232	Phenanthrene-d10	15.03

Hit#	of	Tentative ID	MW	MolForm	CAS#	Qual
1	5	Phenanthrene, 2,5-dimethyl-	206	C16H14	003674-66-6	94
2		9,10-Dimethylanthracene	206	C16H14	000781-43-1	87
3		Phenanthrene, 2,7-dimethyl-	206	C16H14	001576-69-8	86
4		Phenanthrene, 4,5-dimethyl-	206	C16H14	003674-69-9	80
5		Phenanthrene, 2,3-dimethyl-	206	C16H14	003674-65-5	74



Data Path : Z:\HPCHEM1\BNA F\DATA\BF051517\
 Data File : BF095141.D
 Acq On : 15 May 2017 23:32
 Operator : SJ/MA
 Sample : I3140-07 5X
 Misc :
 ALS Vial : 19 Sample Multiplier: 1

Instrument :
 BNA_F
 ClientSampleID :
 BERM-2-2

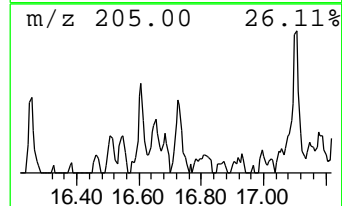
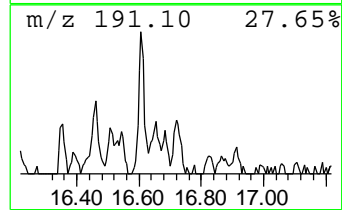
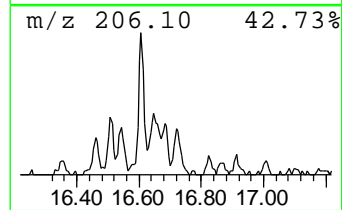
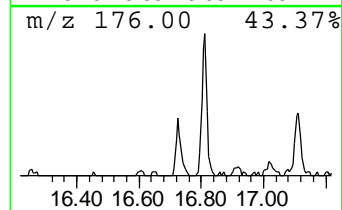
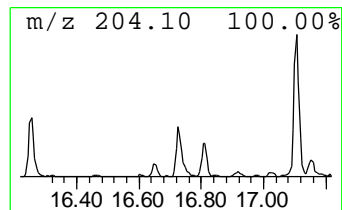
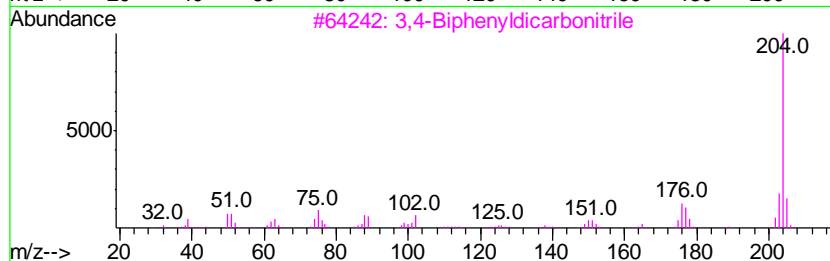
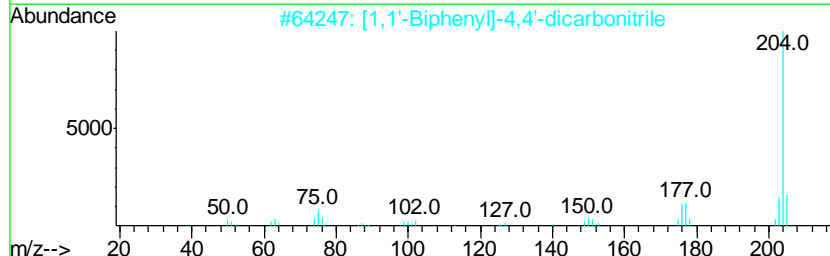
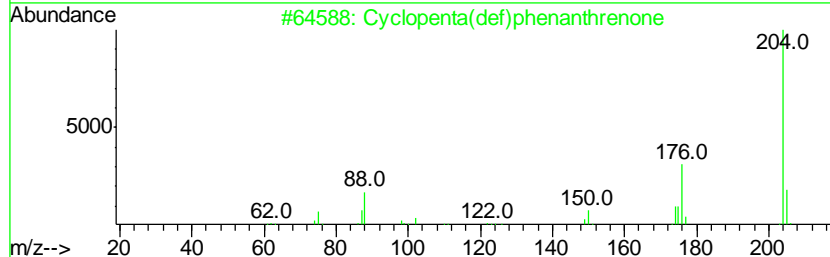
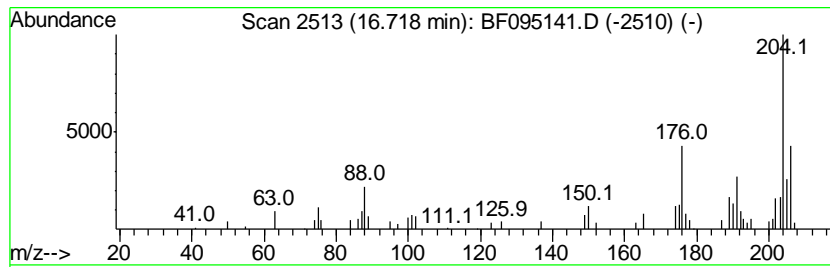
Quant Method : Z:\HPCHEM1\BNA F\METHODS\8270-BF050217.M
 Quant Title : ASP BNA STANDARDS FOR 5 POINT CALIBRATION

TIC Library : C:\DATABASE\NIST11.L
 TIC Integration Parameters: LSCINT.P

 Peak Number 10 Cyclopenta(def)phenanthrene Concentration Rank 12

R.T.	EstConc	Area	Relative to ISTD	R.T.
16.72	3.55 ng	80680	Phenanthrene-d10	15.03

Hit#	of	Tentative ID	MW	MolForm	CAS#	Qual
1	5	Cyclopenta(def)phenanthrene	204	C15H8O	005737-13-3	70
2		[1,1'-Biphenyl]-4,4'-dicarbonitrile	204	C14H8N2	001591-30-6	50
3		3,4-Biphenyldicarbonitrile	204	C14H8N2	004128-63-6	47
4		Tricyclo[8.2.2.2(4,7)]hexadeca-2...	204	C16H12	006572-60-7	46
5		[1,1'-Biphenyl]-2,2'-dicarbonitrile	204	C14H8N2	004341-02-0	38



Data Path : Z:\HPCHEM1\BNA F\DATA\BF051517\
 Data File : BF095141.D
 Acq On : 15 May 2017 23:32
 Operator : SJ/MA
 Sample : I3140-07 5X
 Misc :
 ALS Vial : 19 Sample Multiplier: 1

Instrument :
 BNA_F
 ClientSampleId :
 BERM-2-2

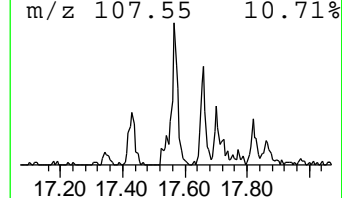
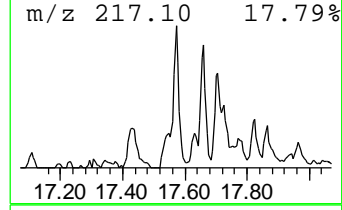
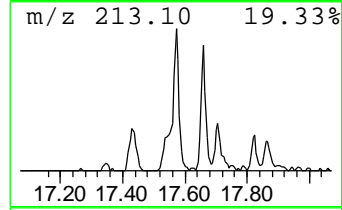
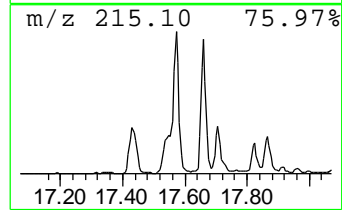
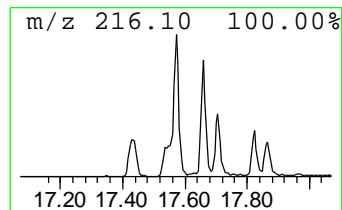
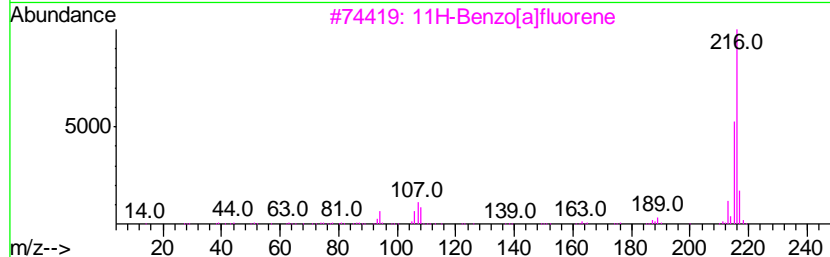
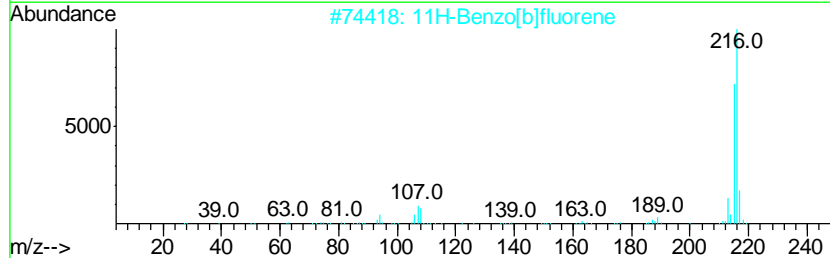
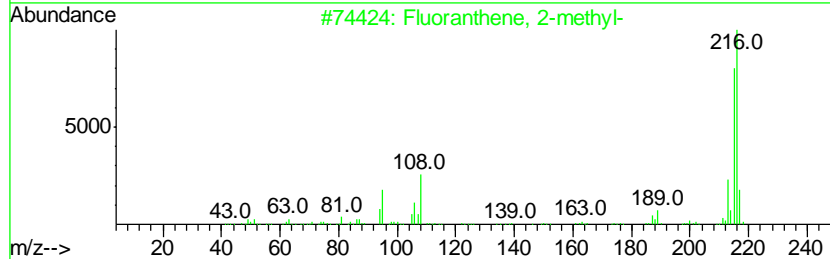
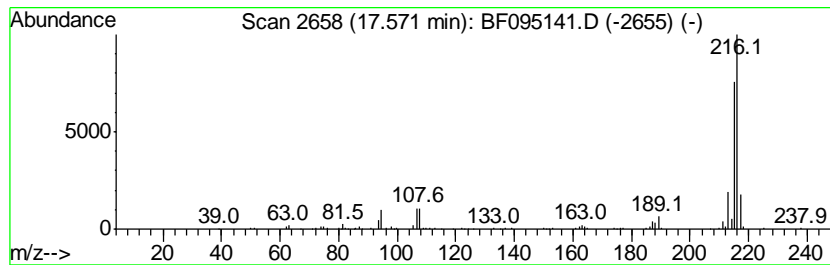
Quant Method : Z:\HPCHEM1\BNA F\METHODS\8270-BF050217.M
 Quant Title : ASP BNA STANDARDS FOR 5 POINT CALIBRATION

TIC Library : C:\DATABASE\NIST11.L
 TIC Integration Parameters: LSCINT.P

 Peak Number 11 Fluoranthene, 2-methyl- Concentration Rank 13

R.T.	EstConc	Area	Relative to ISTD	R.T.
17.57	3.41 ng	306224	Chrysene-d12	18.70

Hit#	of	Tentative ID	MW	MolForm	CAS#	Qual
1	5	Fluoranthene, 2-methyl-	216	C17H12	033543-31-6	95
2		11H-Benzo[b]fluorene	216	C17H12	000243-17-4	95
3		11H-Benzo[a]fluorene	216	C17H12	000238-84-6	94
4		Pyrene, 1-methyl-	216	C17H12	002381-21-7	90
5		7H-Benzo[c]fluorene	216	C17H12	000205-12-9	74



Data Path : Z:\HPCHEM1\BNA F\DATA\BF051517\
 Data File : BF095141.D
 Acq On : 15 May 2017 23:32
 Operator : SJ/MA
 Sample : I3140-07 5X
 Misc :
 ALS Vial : 19 Sample Multiplier: 1

Instrument :
 BNA_F
 ClientSampleID :
 BERM-2-2

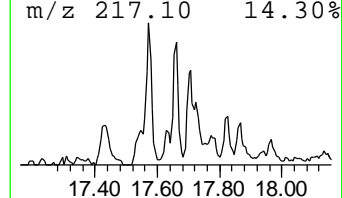
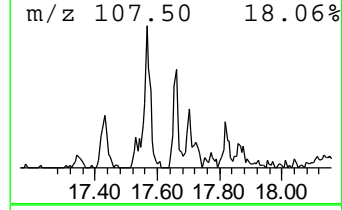
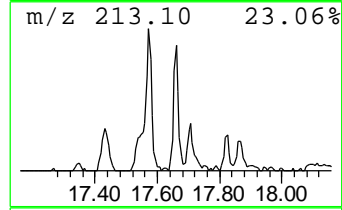
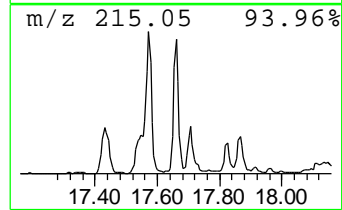
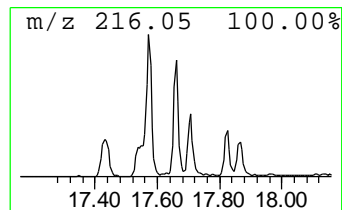
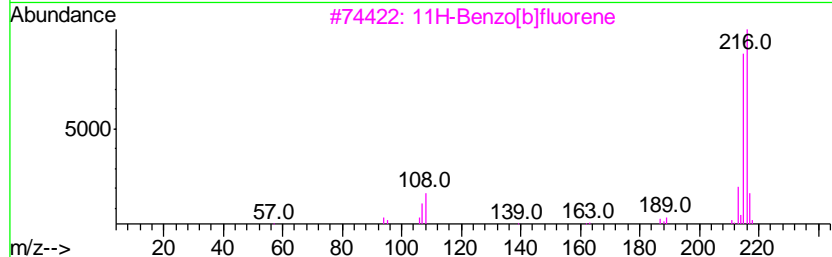
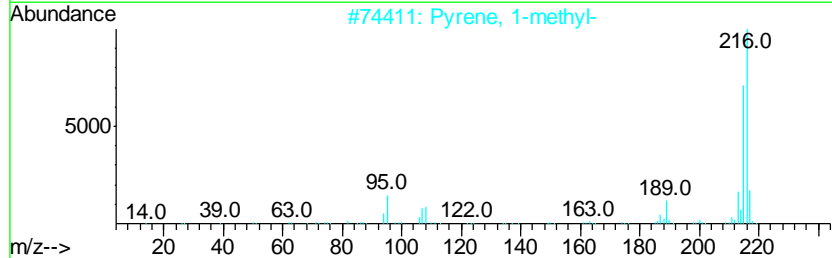
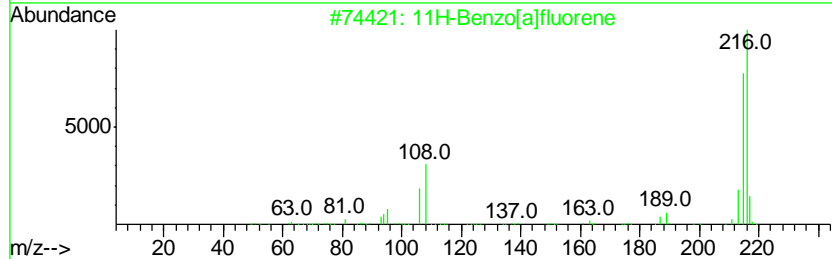
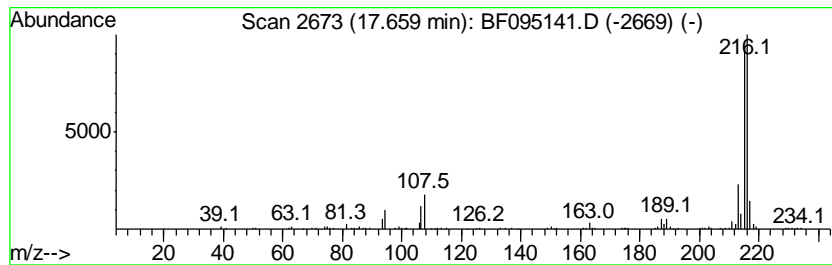
Quant Method : Z:\HPCHEM1\BNA F\METHODS\8270-BF050217.M
 Quant Title : ASP BNA STANDARDS FOR 5 POINT CALIBRATION

TIC Library : C:\DATABASE\NIST11.L
 TIC Integration Parameters: LSCINT.P

 Peak Number 12 11H-Benzo[a]fluorene Concentration Rank 17

R.T.	EstConc	Area	Relative to ISTD	R.T.
17.66	2.66 ng	238516	Chrysene-d12	18.70

Hit#	of	Tentative ID	MW	MolForm	CAS#	Qual
1	5	11H-Benzo[a]fluorene	216	C17H12	000238-84-6	93
2		Pyrene, 1-methyl-	216	C17H12	002381-21-7	90
3		11H-Benzo[b]fluorene	216	C17H12	000243-17-4	83
4		7H-Benzo[c]fluorene	216	C17H12	000205-12-9	81
5		Fluoranthene, 2-methyl-	216	C17H12	033543-31-6	70



Data Path : Z:\HPCHEM1\BNA F\DATA\BF051517\
 Data File : BF095141.D
 Acq On : 15 May 2017 23:32
 Operator : SJ/MA
 Sample : I3140-07 5X
 Misc :
 ALS Vial : 19 Sample Multiplier: 1

Instrument :
 BNA_F
 ClientSampled :
 BERM-2-2

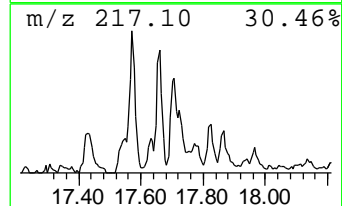
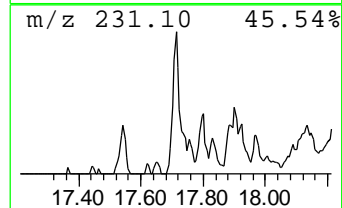
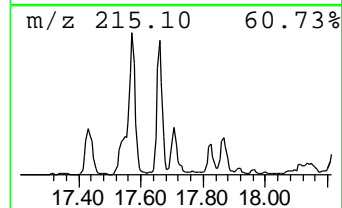
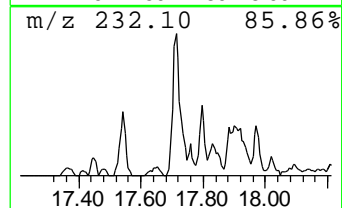
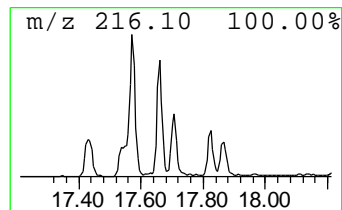
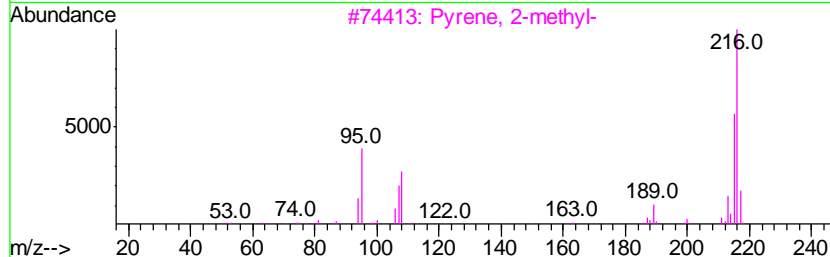
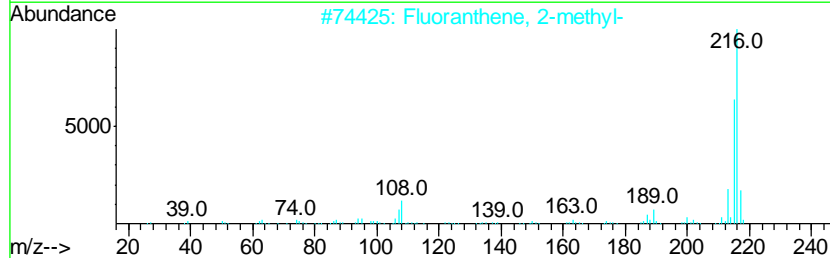
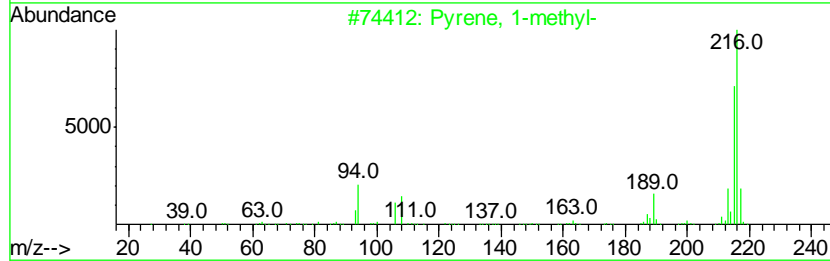
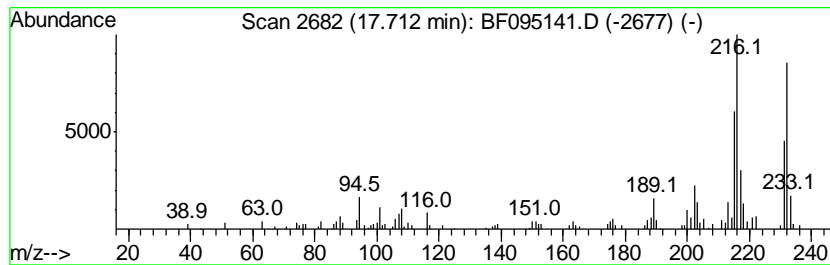
Quant Method : Z:\HPCHEM1\BNA F\METHODS\8270-BF050217.M
 Quant Title : ASP BNA STANDARDS FOR 5 POINT CALIBRATION

TIC Library : C:\DATABASE\NIST11.L
 TIC Integration Parameters: LSCINT.P

 Peak Number 13 Pyrene, 1-methyl- Concentration Rank 16

R.T.	EstConc	Area	Relative to ISTD	R.T.
17.71	2.90 ng	260469	Chrysene-d12	18.70

Hit#	of	Tentative ID	MW	MolForm	CAS#	Qual
1	5	Pyrene, 1-methyl-	216	C17H12	002381-21-7	95
2		Fluoranthene, 2-methyl-	216	C17H12	033543-31-6	90
3		Pyrene, 2-methyl-	216	C17H12	003442-78-2	83
4		11H-Benzo[a]fluorene	216	C17H12	000238-84-6	60
5		Pyrene, 4-methyl-	216	C17H12	003353-12-6	55



Data Path : Z:\HPCHEM1\BNA F\DATA\BF051517\
 Data File : BF095141.D
 Acq On : 15 May 2017 23:32
 Operator : SJ/MA
 Sample : I3140-07 5X
 Misc :
 ALS Vial : 19 Sample Multiplier: 1

Instrument :
 BNA_F
 ClientSampled :
 BERM-2-2

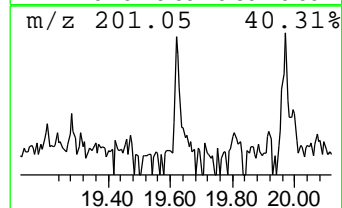
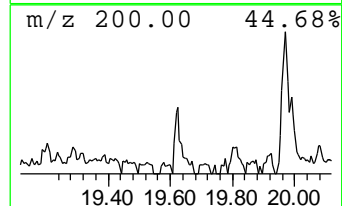
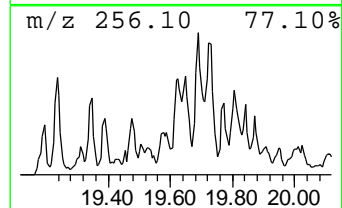
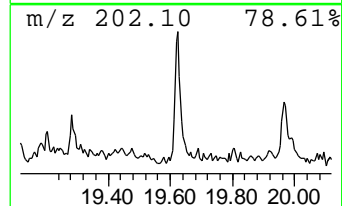
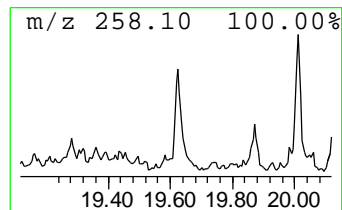
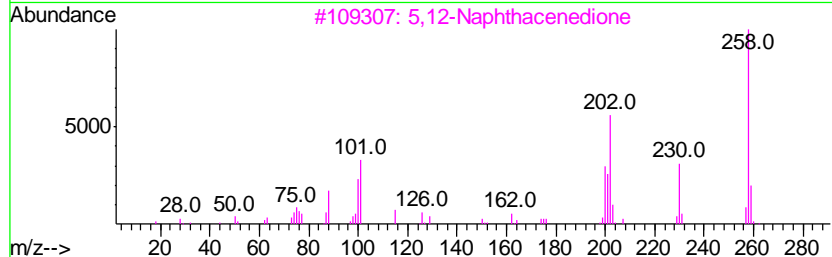
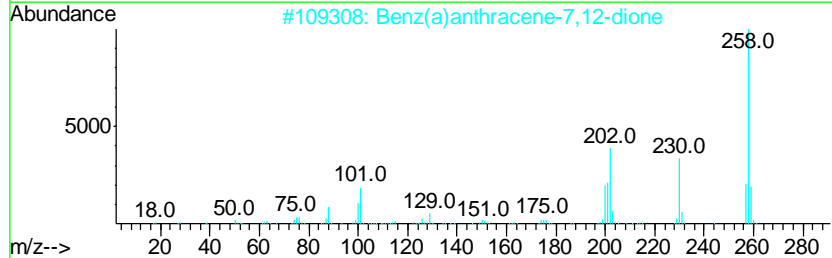
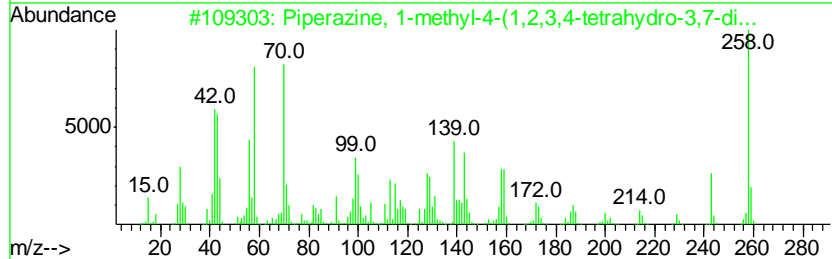
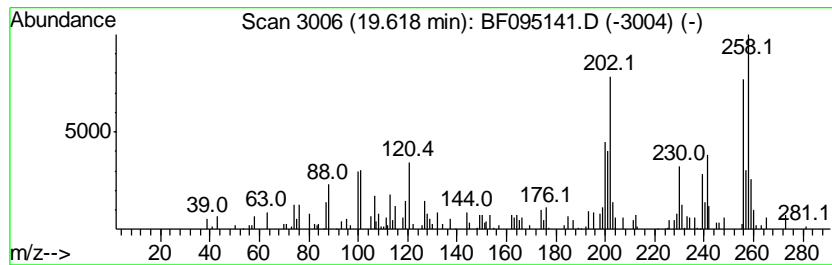
Quant Method : Z:\HPCHEM1\BNA F\METHODS\8270-BF050217.M
 Quant Title : ASP BNA STANDARDS FOR 5 POINT CALIBRATION

TIC Library : C:\DATABASE\NIST11.L
 TIC Integration Parameters: LSCINT.P

 Peak Number 14 Piperazine, 1-methyl-4-(1,2... Concentration Rank 7

R.T.	EstConc	Area	Relative to ISTD	R.T.
19.62	6.40 ng	125619	Perylene-d12	20.38

Hit#	of	Tentative ID	MW	MolForm	CAS#	Qual
1	5	Piperazine, 1-methyl-4-(1,2,3,4-...	258	C17H26N2	055591-14-5	90
2		Benz(a)anthracene-7,12-dione	258	C18H10O2	002498-66-0	83
3		5,12-Naphthacenedione	258	C18H10O2	001090-13-7	78
4		1,2-Dihydro-2,4'-biquinoline	258	C18H14N2	1000326-82-7	35
5		Benzo[c]phenanthrene, 1,12-dimet...	256	C20H16	004076-43-1	20



Data Path : Z:\HPCHEM1\BNA F\DATA\BF051517\
 Data File : BF095141.D
 Acq On : 15 May 2017 23:32
 Operator : SJ/MA
 Sample : I3140-07 5X
 Misc :
 ALS Vial : 19 Sample Multiplier: 1

Instrument :
 BNA_F
 ClientSampleID :
 BERM-2-2

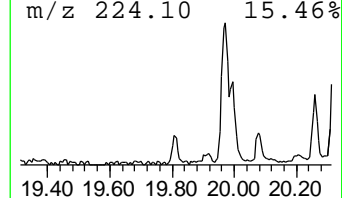
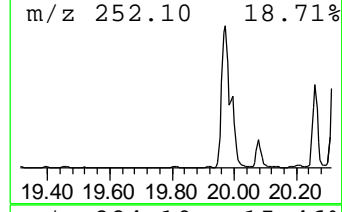
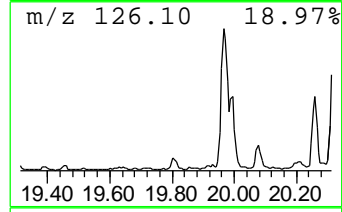
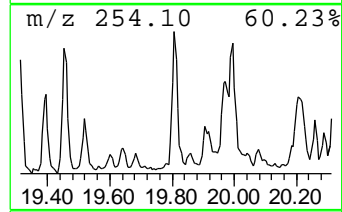
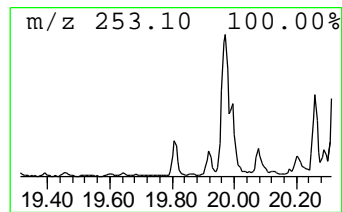
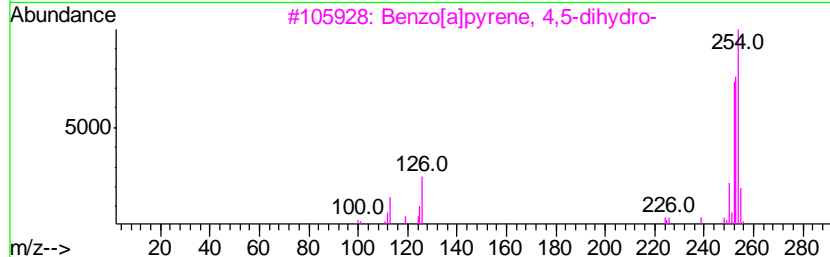
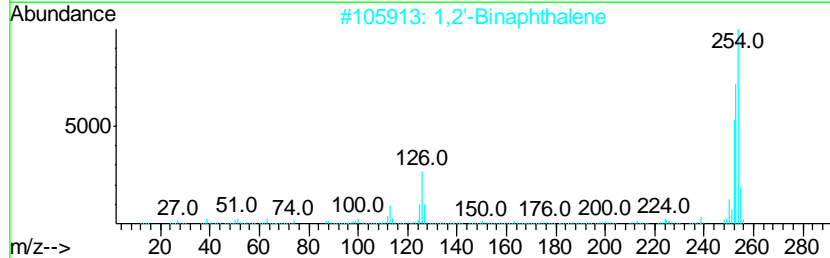
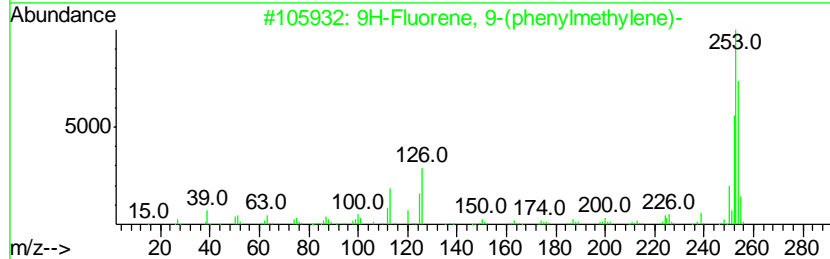
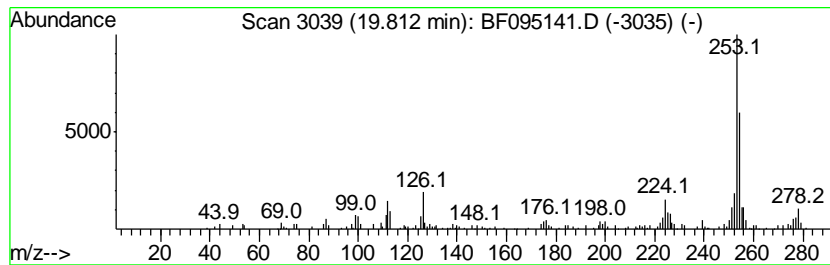
Quant Method : Z:\HPCHEM1\BNA F\METHODS\8270-BF050217.M
 Quant Title : ASP BNA STANDARDS FOR 5 POINT CALIBRATION

TIC Library : C:\DATABASE\NIST11.L
 TIC Integration Parameters: LSCINT.P

 Peak Number 15 9H-Fluorene, 9-(phenylmethy... Concentration Rank 6

R.T.	EstConc	Area	Relative to ISTD	R.T.
19.81	7.19 ng	141045	Perylene-d12	20.38

Hit#	of	Tentative ID	MW	MolForm	CAS#	Qual
1	5	9H-Fluorene, 9-(phenylmethylene)-	254	C20H14	001836-87-9	83
2		1,2'-Binaphthalene	254	C20H14	004325-74-0	55
3		Benzo[a]pyrene, 4,5-dihydro-	254	C20H14	057652-66-1	55
4		Pyrido[2,3-a]indole, 5-methoxy-2...	254	C16H18N2O	201991-45-9	53
5		4,5-Dihydrobenzo[e]pyrene	254	C20H14	095676-42-9	52



Data Path : Z:\HPCHEM1\BNA F\DATA\BF051517\
 Data File : BF095141.D
 Acq On : 15 May 2017 23:32
 Operator : SJ/MA
 Sample : I3140-07 5X
 Misc :
 ALS Vial : 19 Sample Multiplier: 1

Instrument :
 BNA_F
 ClientSampleID :
 BERM-2-2

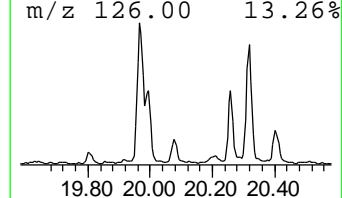
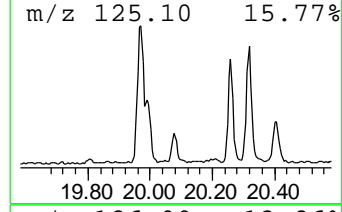
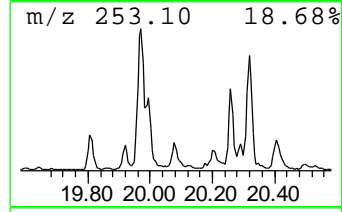
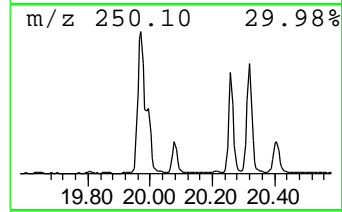
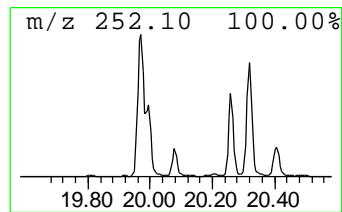
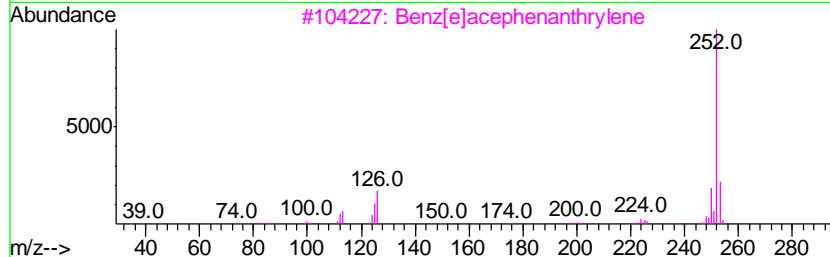
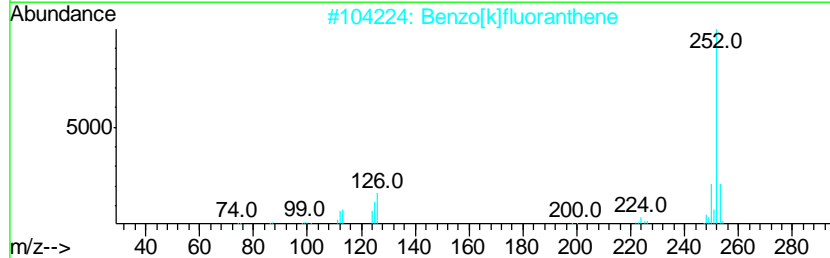
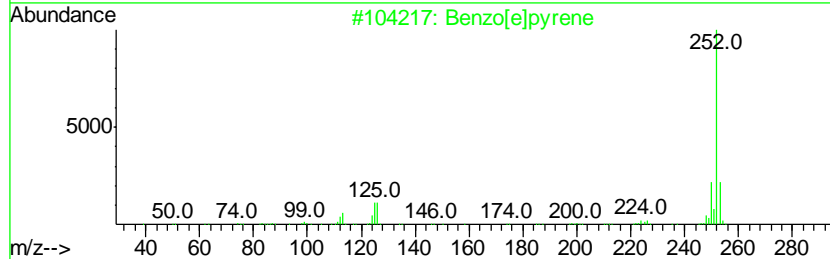
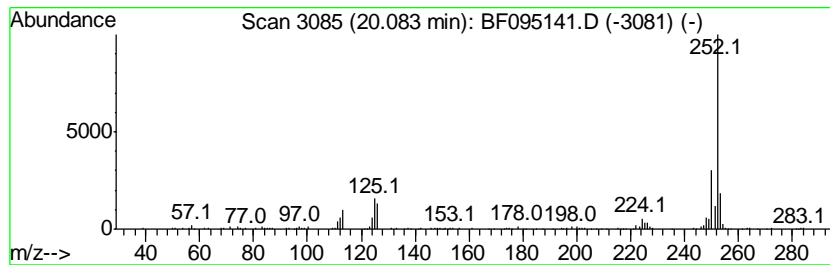
Quant Method : Z:\HPCHEM1\BNA F\METHODS\8270-BF050217.M
 Quant Title : ASP BNA STANDARDS FOR 5 POINT CALIBRATION

TIC Library : C:\DATABASE\NIST11.L
 TIC Integration Parameters: LSCINT.P

 Peak Number 16 Benzo[e]pyrene Concentration Rank 3

R.T.	EstConc	Area	Relative to ISTD	R.T.
20.08	9.73 ng	190923	Perylene-d12	20.38

Hit#	of	Tentative ID	MW	MolForm	CAS#	Qual
1	5	Benzo[e]pyrene	252	C20H12	000192-97-2	98
2		Benzo[k]fluoranthene	252	C20H12	000207-08-9	97
3		Benz[e]acephenanthrylene	252	C20H12	000205-99-2	96
4		Perylene	252	C20H12	000198-55-0	96
5		Benzo[a]pyrene	252	C20H12	000050-32-8	95



Data Path : Z:\HPCHEM1\BNA F\DATA\BF051517\
 Data File : BF095141.D
 Acq On : 15 May 2017 23:32
 Operator : SJ/MA
 Sample : I3140-07 5X
 Misc :
 ALS Vial : 19 Sample Multiplier: 1

Instrument :
 BNA_F
 ClientSampleID :
 BERM-2-2

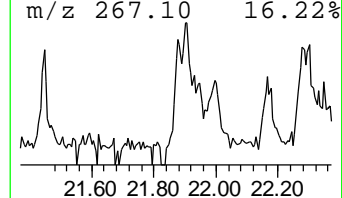
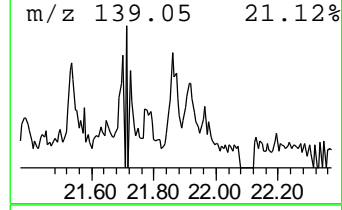
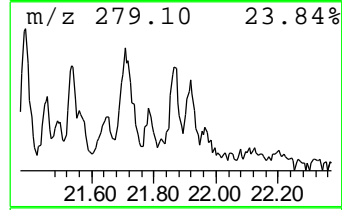
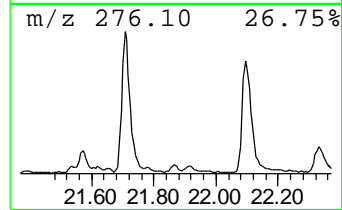
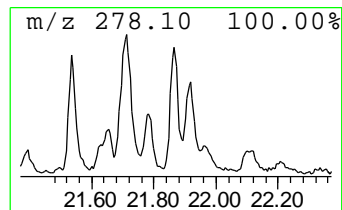
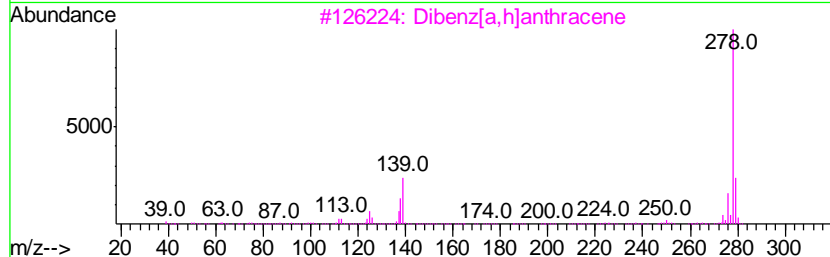
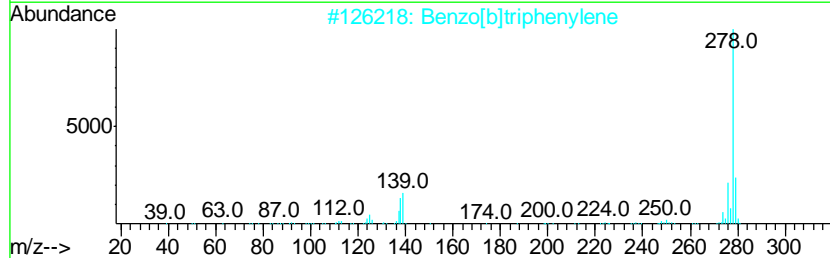
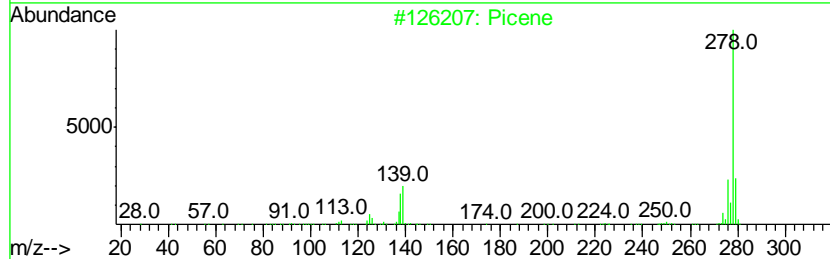
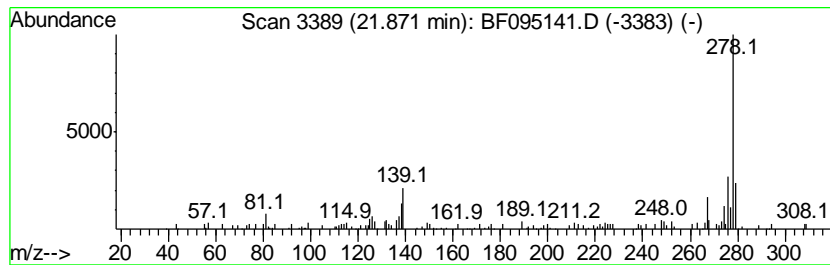
Quant Method : Z:\HPCHEM1\BNA F\METHODS\8270-BF050217.M
 Quant Title : ASP BNA STANDARDS FOR 5 POINT CALIBRATION

TIC Library : C:\DATABASE\NIST11.L
 TIC Integration Parameters: LSCINT.P

 Peak Number 19 Picene Concentration Rank 9

R.T.	EstConc	Area	Relative to ISTD	R.T.
21.87	5.38 ng	105667	Perylene-d12	20.38

Hit#	of	Tentative ID	MW	MolForm	CAS#	Qual
1	5	Picene	278	C22H14	000213-46-7	96
2		Benzo[b]triphenylene	278	C22H14	000215-58-7	95
3		Dibenz[a,h]anthracene	278	C22H14	000053-70-3	94
4		Benzo[b]chrysene	278	C22H14	000214-17-5	90
5		Pentaphene	278	C22H14	000222-93-5	81



Data Path : Z:\HPCHEM1\BNA F\DATA\BF051517\
 Data File : BF095141.D
 Acq On : 15 May 2017 23:32
 Operator : SJ/MA
 Sample : I3140-07 5X
 Misc :
 ALS Vial : 19 Sample Multiplier: 1

Instrument :
 BNA_F
 ClientSampled :
 BERM-2-2

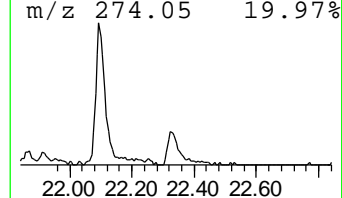
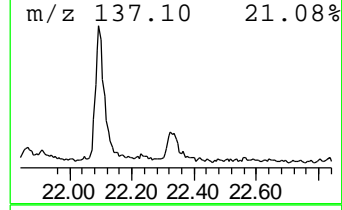
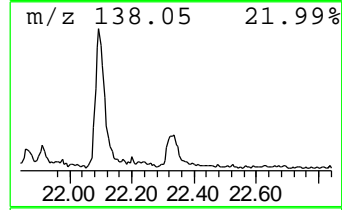
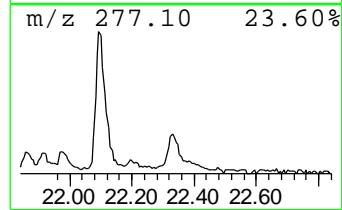
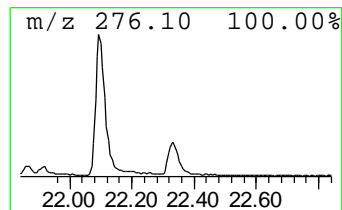
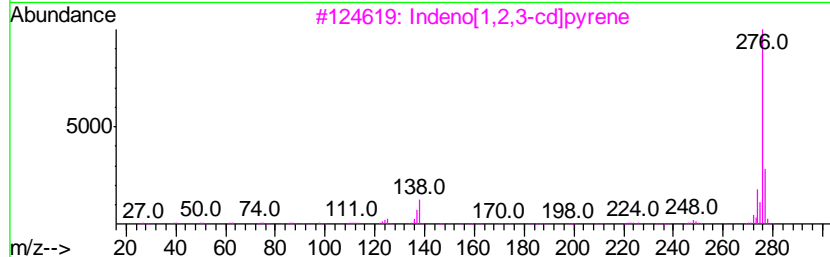
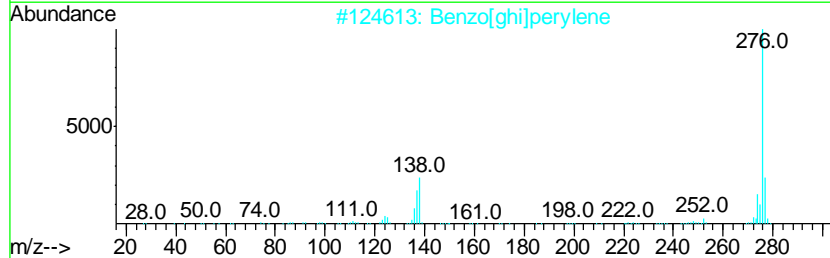
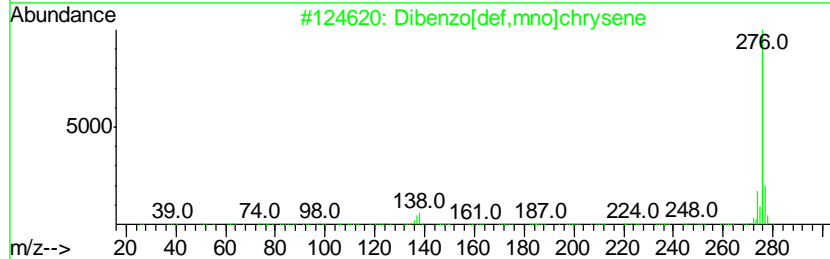
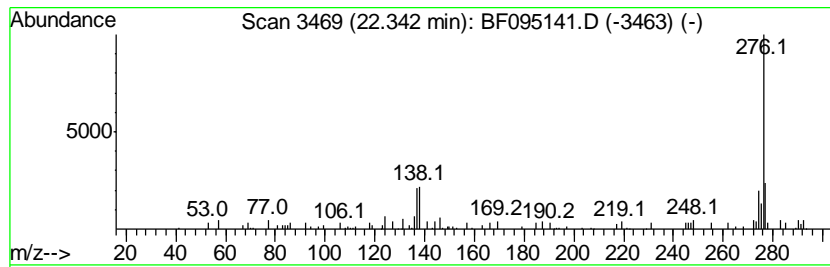
Quant Method : Z:\HPCHEM1\BNA F\METHODS\8270-BF050217.M
 Quant Title : ASP BNA STANDARDS FOR 5 POINT CALIBRATION

TIC Library : C:\DATABASE\NIST11.L
 TIC Integration Parameters: LSCINT.P

 Peak Number 20 Dibenzo[def,mno]chrysene Concentration Rank 11

R.T.	EstConc	Area	Relative to ISTD	R.T.
22.34	3.81 ng	74848	Perylene-d12	20.38

Hit#	of	Tentative ID	MW	MolForm	CAS#	Qual
1	5	Dibenzo[def,mno]chrysene	276	C22H12	000191-26-4	87
2		Benzo[ghi]perylene	276	C22H12	000191-24-2	81
3		Indeno[1,2,3-cd]pyrene	276	C22H12	000193-39-5	74
4		Indeno[1,2,3-cd]fluoranthene	276	C22H12	000193-43-1	64
5		1-Naphthalenecarboxylic acid, 2-...	276	C18H12O3	038119-11-8	43



Data Path : Z:\HPCHEM1\BNA_F\DATA\BF051517\
 Data File : BF095141.D
 Acq On : 15 May 2017 23:32
 Operator : SJ/MA
 Sample : I3140-07 5X
 Misc :
 ALS Vial : 19 Sample Multiplier: 1

Instrument :
 BNA_F
 ClientSampleId :
 BERM-2-2

Quant Method : Z:\HPCHEM1\BNA_F\METHODS\8270-BF050217.M
 Quant Title : ASP BNA STANDARDS FOR 5 POINT CALIBRATION

TIC Library : C:\DATABASE\NIST11.L
 TIC Integration Parameters: LSCINT.P

TIC Top Hit name	RT	EstConc	Units	Response	--Internal Standard--			
					#	RT	Resp	Conc
unknown7.46	7.46	12.2	ng	242573	1	7.78	398674	20.0
Phenanthrene, 2-m...	15.81	3.0	ng	69126	4	15.03	454445	20.0
Phenanthrene, 1-m...	15.85	4.4	ng	100352	4	15.03	454445	20.0
4H-Cyclopenta[def...	15.96	8.1	ng	183801	4	15.03	454445	20.0
Phenanthrene, 4-m...	16.00	3.3	ng	74439	4	15.03	454445	20.0
9,10-Bis(bromomet...	16.25	2.5	ng	57073	4	15.03	454445	20.0
Phenanthrene, 2,5...	16.61	2.5	ng	57232	4	15.03	454445	20.0
Cyclopenta(def)ph...	16.72	3.5	ng	80680	4	15.03	454445	20.0
Fluoranthene, 2-m...	17.57	3.4	ng	306224	5	18.70	1794200	20.0
11H-Benzo[a]fluorene	17.66	2.7	ng	238516	5	18.70	1794200	20.0
Pyrene, 1-methyl-	17.71	2.9	ng	260469	5	18.70	1794200	20.0
Piperazine, 1-met...	19.62	6.4	ng	125619	6	20.38	392462	20.0
9H-Fluorene, 9-(p...	19.81	7.2	ng	141045	6	20.38	392462	20.0
Benzo[e]pyrene	20.08	9.7	ng	190923	6	20.38	392462	20.0
Picene	21.87	5.4	ng	105667	6	20.38	392462	20.0
Dibenzo[def,mno]c...	22.34	3.8	ng	74848	6	20.38	392462	20.0