

Data Path : Z:\HPCHEM1\BNA F\DATA\BF051517\
 Data File : BF095154.D
 Acq On : 16 May 2017 12:21
 Operator : SJ/MA
 Sample : I3140-09 10X
 Misc :
 ALS Vial : 30 Sample Multiplier: 1

Instrument :
 BNA_F
 ClientSampled :
 TB-12-6

Integration Parameters: rteint.p
 Integrator: RTE
 Smoothing : ON
 Sampling : 1
 Start Thrs: 0.2
 Stop Thrs : 0

Filtering: 5
 Min Area: 3 % of largest Peak
 Max Peaks: 100
 Peak Location: TOP

If leading or trailing edge < 100 prefer < Baseline drop else tangent >
 Peak separation: 5

Method : Z:\HPCHEM1\BNA F\METHODS\8270-BF050217.M
 Title : ASP BNA STANDARDS FOR 5 POINT CALIBRATION

Signal : TIC

peak #	R.T. min	first scan	max scan	last scan	PK TY	peak height	corr. area	corr. % max.	% of total
1	1.966	3	5	18	rVB	35194	52148	7.81%	0.780%
2	6.654	798	802	806	rBV3	6970	8271	1.24%	0.124%
3	7.542	947	953	957	rBV6	3438	7433	1.11%	0.111%
4	7.778	989	993	1004	rBV	186392	295577	44.28%	4.424%
5	8.030	1032	1036	1038	rBV	10655	12254	1.84%	0.183%
6	9.795	1331	1336	1339	rBV	319971	391010	58.58%	5.852%
7	9.830	1339	1342	1356	rVB	97167	169553	25.40%	2.537%
8	10.971	1533	1536	1546	rBV2	11084	25074	3.76%	0.375%
9	11.118	1558	1561	1567	rBV	8749	15325	2.30%	0.229%
10	11.577	1633	1639	1648	rBV3	10506	23009	3.45%	0.344%
11	12.107	1724	1729	1733	rBV4	4731	6916	1.04%	0.104%
12	12.277	1754	1758	1760	rBV2	9591	9936	1.49%	0.149%
13	12.624	1813	1817	1823	rBV2	302361	434735	65.13%	6.506%
14	12.677	1823	1826	1837	rVB	55786	90393	13.54%	1.353%
15	12.983	1872	1878	1888	rBV	20420	42229	6.33%	0.632%
16	13.171	1904	1910	1914	rBV5	4080	7480	1.12%	0.112%
17	13.460	1956	1959	1965	rVB6	5333	6716	1.01%	0.101%
18	13.530	1965	1971	1981	rVV	50233	86972	13.03%	1.302%
19	13.618	1981	1986	1991	rVV6	4357	9650	1.45%	0.144%
20	13.665	1991	1994	2000	rVV4	4611	7457	1.12%	0.112%
21	13.818	2012	2020	2028	rBV5	7280	18455	2.76%	0.276%
22	13.942	2036	2041	2043	rBV3	6271	9352	1.40%	0.140%
23	14.236	2088	2091	2093	rBV4	6075	8943	1.34%	0.134%
24	14.259	2093	2095	2102	rVB4	10497	13249	1.98%	0.198%
25	14.765	2178	2181	2188	rBV4	3800	7444	1.12%	0.111%
26	14.871	2196	2199	2206	rVB	12522	15554	2.33%	0.233%
27	15.030	2218	2226	2229	rBV	296602	364009	54.53%	5.448%
28	15.065	2229	2232	2243	rVV	323073	439954	65.91%	6.584%
29	15.153	2243	2247	2258	rVB	97417	148146	22.19%	2.217%
30	15.248	2260	2263	2268	rBV6	6019	7657	1.15%	0.115%
31	15.448	2295	2297	2304	rVV	19339	30671	4.59%	0.459%
32	15.624	2322	2327	2333	rBV5	6496	12219	1.83%	0.183%
33	15.812	2356	2359	2363	rBV	29717	31153	4.67%	0.466%
34	15.853	2363	2366	2372	rVV	31166	38327	5.74%	0.574%

Data Path : Z:\HPCHEM1\BNA F\DATA\BF051517\
 Data File : BF095154.D
 Acq On : 16 May 2017 12:21
 Operator : SJ/MA
 Sample : I3140-09 10X
 Misc :
 ALS Vial : 30 Sample Multiplier: 1

Instrument :
 BNA_F
 ClientSampleId :
 TB-12-6

Integration Parameters: rteint.p
 Integrator: RTE
 Smoothing : ON
 Sampling : 1
 Start Thrs: 0.2
 Stop Thrs : 0

Filtering: 5
 Min Area: 3 % of largest Peak
 Max Peaks: 100
 Peak Location: TOP

If leading or trailing edge < 100 prefer < Baseline drop else tangent >
 Peak separation: 5

Method : Z:\HPCHEM1\BNA F\METHODS\8270-BF050217.M
 Title : ASP BNA STANDARDS FOR 5 POINT CALIBRATION

35	15.930	2375	2379	2381	rBV	10671	14615	2.19%	0.219%
36	15.959	2381	2384	2389	rVV2	50260	72953	10.93%	1.092%
37	16.006	2390	2392	2396	rVB2	14541	15501	2.32%	0.232%
38	16.253	2431	2434	2442	rVB	19584	21127	3.16%	0.316%
39	16.312	2442	2444	2449	rBV4	6612	7917	1.19%	0.118%
40	16.506	2473	2477	2480	rBV2	6307	7624	1.14%	0.114%
41	16.606	2491	2494	2498	rVB3	12335	13430	2.01%	0.201%
42	16.730	2511	2515	2518	rVB5	8292	11114	1.66%	0.166%
43	16.806	2524	2528	2539	rVB	363854	481088	72.07%	7.200%
44	16.889	2539	2542	2547	rBV	139777	156344	23.42%	2.340%
45	17.012	2560	2563	2566	rBV2	8764	11501	1.72%	0.172%
46	17.112	2572	2580	2591	rBV	347410	465736	69.77%	6.970%
47	17.206	2591	2596	2598	rVB5	4965	8039	1.20%	0.120%
48	17.259	2603	2605	2609	rVV3	6172	7728	1.16%	0.116%
49	17.306	2609	2613	2617	rVV	17145	22101	3.31%	0.331%
50	17.353	2617	2621	2627	rVB2	27066	43064	6.45%	0.644%
51	17.430	2627	2634	2638	rBV5	14618	35790	5.36%	0.536%
52	17.542	2649	2653	2656	rVV5	14909	26386	3.95%	0.395%
53	17.577	2656	2659	2664	rVB	41561	50731	7.60%	0.759%
54	17.665	2670	2674	2678	rBV	32625	36461	5.46%	0.546%
55	17.712	2678	2682	2684	rVV2	18672	24236	3.63%	0.363%
56	17.730	2684	2685	2689	rVB3	14438	9234	1.38%	0.138%
57	17.830	2698	2702	2705	rVB3	15803	15836	2.37%	0.237%
58	17.865	2705	2708	2713	rVV4	11408	20115	3.01%	0.301%
59	17.906	2713	2715	2725	rVB8	11420	26052	3.90%	0.390%
60	18.177	2758	2761	2764	rVB3	8575	9679	1.45%	0.145%
61	18.224	2766	2769	2772	rVV5	6835	9446	1.42%	0.141%
62	18.265	2772	2776	2779	rVB4	16387	19638	2.94%	0.294%
63	18.306	2779	2783	2784	rBV4	5735	6750	1.01%	0.101%
64	18.383	2792	2796	2798	rBV	15540	19746	2.96%	0.296%
65	18.412	2798	2801	2804	rVV3	25426	31868	4.77%	0.477%
66	18.447	2804	2807	2810	rVV	19696	19843	2.97%	0.297%
67	18.483	2810	2813	2818	rVB2	16250	18764	2.81%	0.281%
68	18.536	2819	2822	2825	rBV3	12650	18135	2.72%	0.271%
69	18.594	2829	2832	2838	rVB5	16841	24989	3.74%	0.374%
70	18.694	2841	2849	2853	rBV2	420726	667525	100.00%	9.990%
71	18.730	2853	2855	2867	rVB3	138289	239811	35.93%	3.589%

Data Path : Z:\HPCHEM1\BNA F\DATA\BF051517\
 Data File : BF095154.D
 Acq On : 16 May 2017 12:21
 Operator : SJ/MA
 Sample : I3140-09 10X
 Misc :
 ALS Vial : 30 Sample Multiplier: 1

Instrument :
 BNA_F
 ClientSampleId :
 TB-12-6

Integration Parameters: rteint.p
 Integrator: RTE
 Smoothing : ON
 Sampling : 1
 Start Thrs: 0.2
 Stop Thrs : 0

Filtering: 5
 Min Area: 3 % of largest Peak
 Max Peaks: 100
 Peak Location: TOP

If leading or trailing edge < 100 prefer < Baseline drop else tangent >
 Peak separation: 5

Method : Z:\HPCHEM1\BNA F\METHODS\8270-BF050217.M
 Title : ASP BNA STANDARDS FOR 5 POINT CALIBRATION

72	18.830	2867	2872	2877	rBV4	32700	47427	7.10%	0.710%
73	18.994	2895	2900	2903	rBV5	25177	41898	6.28%	0.627%
74	19.153	2924	2927	2929	rBV3	17970	22802	3.42%	0.341%
75	19.206	2934	2936	2940	rVV2	34047	45712	6.85%	0.684%
76	19.247	2941	2943	2946	rVV4	19147	19724	2.95%	0.295%
77	19.283	2946	2949	2951	rVB4	14341	11279	1.69%	0.169%
78	19.324	2952	2956	2958	rBV5	10609	14200	2.13%	0.213%
79	19.383	2958	2966	2969	rBV6	40071	76985	11.53%	1.152%
80	19.453	2976	2978	2980	rBV3	14747	15308	2.29%	0.229%
81	19.494	2983	2985	2986	rBV2	9011	9381	1.41%	0.140%
82	19.747	3026	3028	3032	rBV4	19645	18585	2.78%	0.278%
83	19.812	3037	3039	3042	rBV3	16187	21181	3.17%	0.317%
84	19.965	3062	3065	3069	rBV	103390	168249	25.20%	2.518%
85	20.106	3087	3089	3092	rVB3	28742	27027	4.05%	0.404%
86	20.265	3113	3116	3119	rBV	55516	53143	7.96%	0.795%
87	20.324	3123	3126	3129	rVV	62073	73313	10.98%	1.097%
88	20.377	3131	3135	3145	rVV	235162	351579	52.67%	5.262%
89	20.841	3211	3214	3217	rVB2	36205	43467	6.51%	0.651%
90	21.724	3361	3364	3368	rVB3	38866	61027	9.14%	0.913%
91	23.059	3589	3591	3596	rVB6	20694	21427	3.21%	0.321%

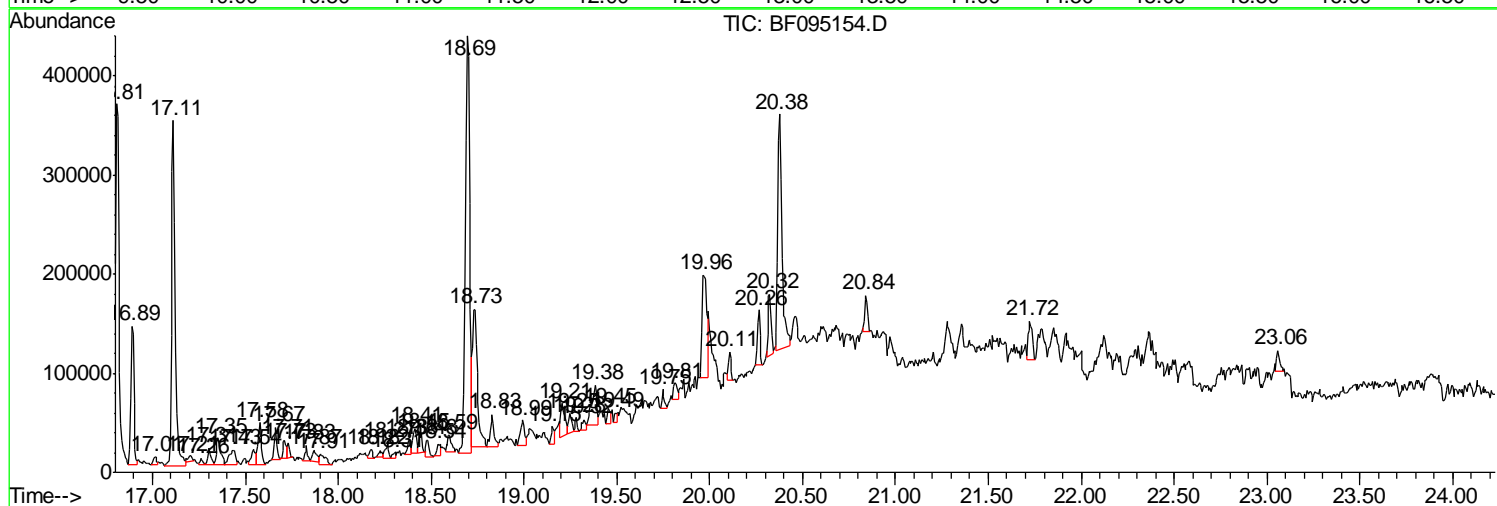
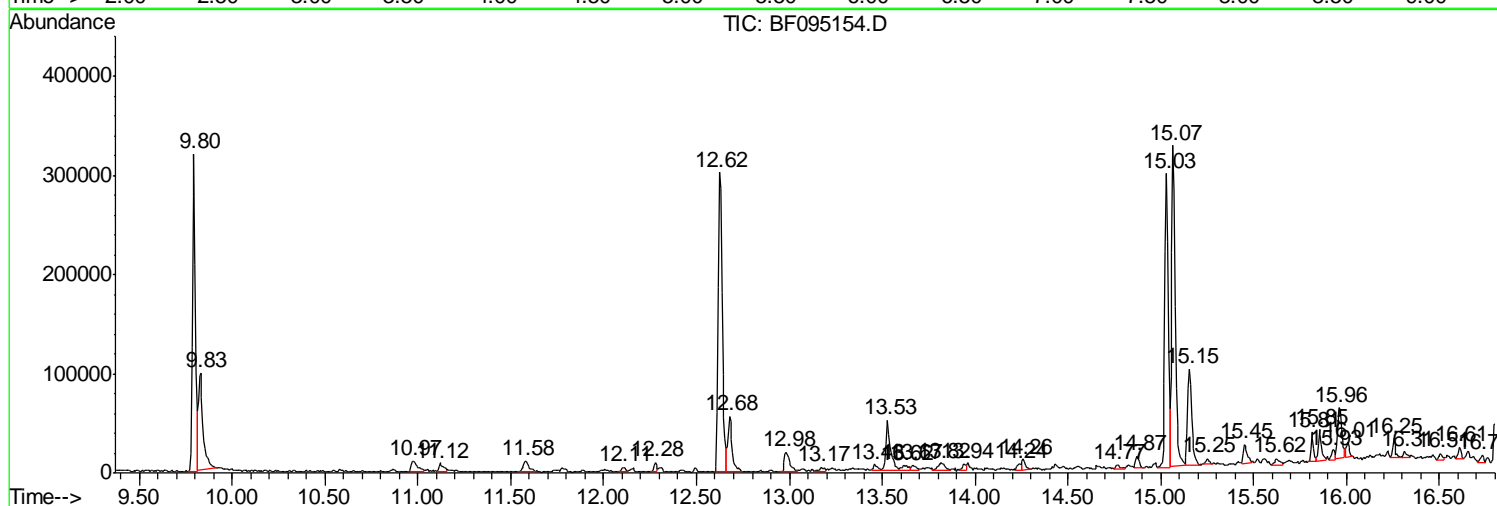
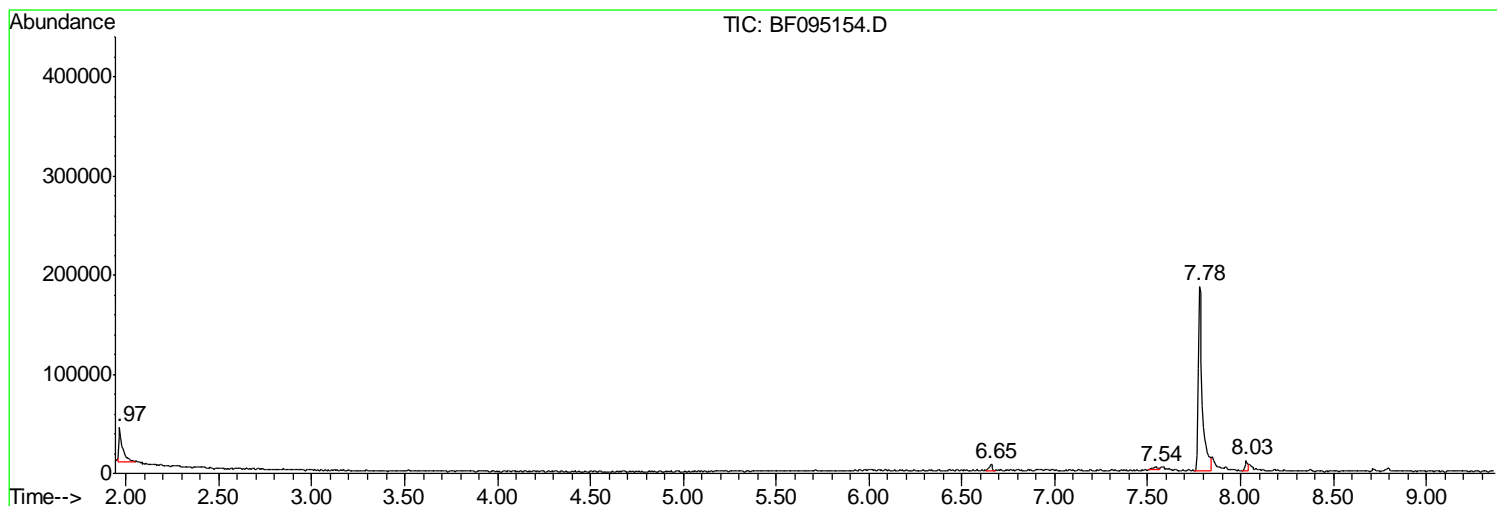
Sum of corrected areas: 6681902

Data Path : Z:\HPCHEM1\BNA F\DATA\BF051517\
 Data File : BF095154.D
 Acq On : 16 May 2017 12:21
 Operator : SJ/MA
 Sample : I3140-09 10X
 Misc :
 ALS Vial : 30 Sample Multiplier: 1

Instrument :
 BNA_F
 ClientSampled :
 TB-12-6

Quant Method : Z:\HPCHEM1\BNA F\METHODS\8270-BF050217.M
 Quant Title : ASP BNA STANDARDS FOR 5 POINT CALIBRATION

TIC Library : C:\DATABASE\NIST11.L
 TIC Integration Parameters: LSCINT.P



Data Path : Z:\HPCHEM1\BNA F\DATA\BF051517\
 Data File : BF095154.D
 Acq On : 16 May 2017 12:21
 Operator : SJ/MA
 Sample : I3140-09 10X
 Misc :
 ALS Vial : 30 Sample Multiplier: 1

Instrument :
 BNA_F
 ClientSampleID :
 TB-12-6

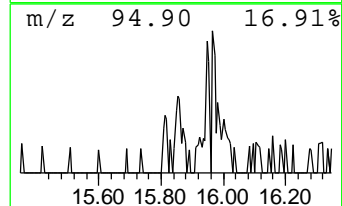
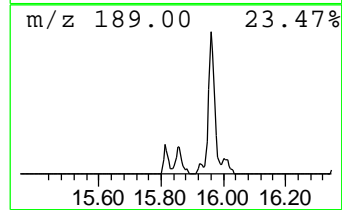
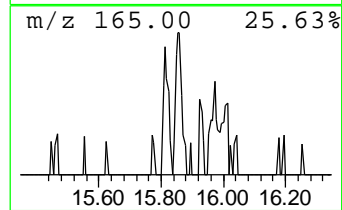
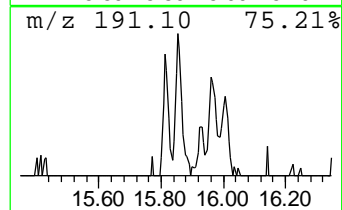
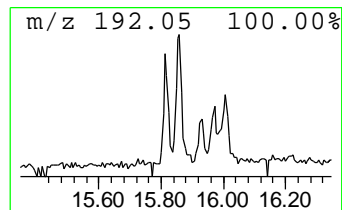
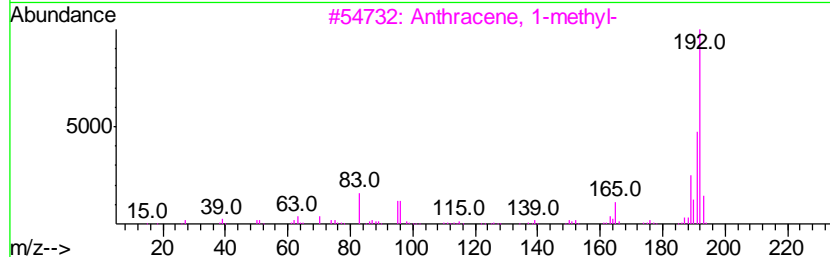
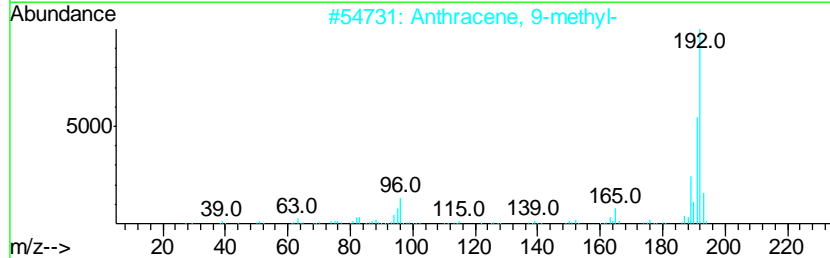
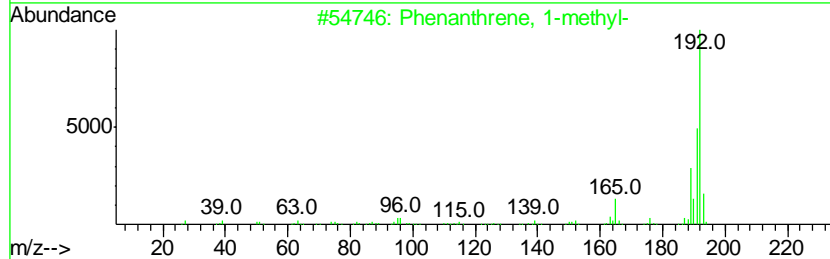
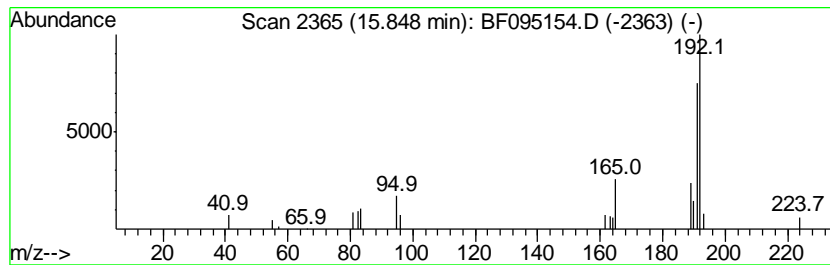
Quant Method : Z:\HPCHEM1\BNA F\METHODS\8270-BF050217.M
 Quant Title : ASP BNA STANDARDS FOR 5 POINT CALIBRATION

TIC Library : C:\DATABASE\NIST11.L
 TIC Integration Parameters: LSCINT.P

 Peak Number 2 Phenanthrene, 1-methyl- Concentration Rank 7

R.T.	EstConc	Area	Relative to ISTD	R.T.
15.85	2.11 ng	38327	Phenanthrene-d10	15.03

Hit#	of	Tentative ID	MW	MolForm	CAS#	Qual
1	5	Phenanthrene, 1-methyl-	192	C15H12	000832-69-9	93
2		Anthracene, 9-methyl-	192	C15H12	000779-02-2	87
3		Anthracene, 1-methyl-	192	C15H12	000610-48-0	87
4		Phenanthrene, 2-methyl-	192	C15H12	002531-84-2	81
5		Phenanthrene, 4-methyl-	192	C15H12	000832-64-4	81



Data Path : Z:\HPCHEM1\BNA F\DATA\BF051517\
 Data File : BF095154.D
 Acq On : 16 May 2017 12:21
 Operator : SJ/MA
 Sample : I3140-09 10X
 Misc :
 ALS Vial : 30 Sample Multiplier: 1

Instrument :
 BNA_F
 ClientSampled :
 TB-12-6

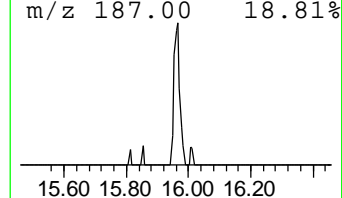
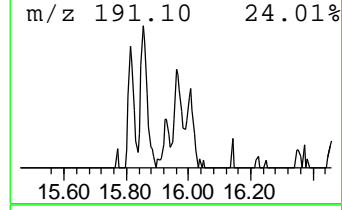
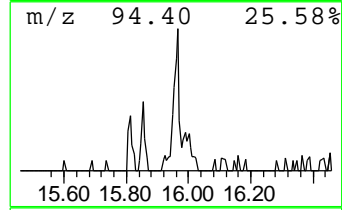
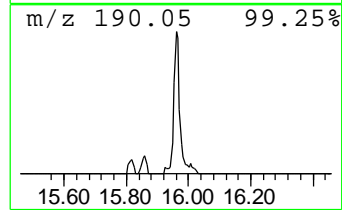
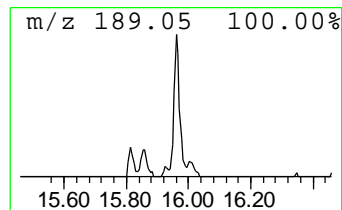
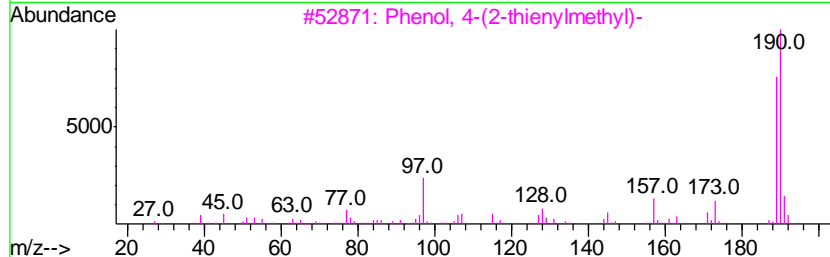
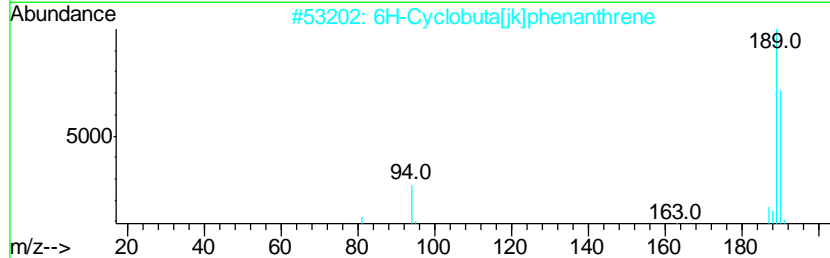
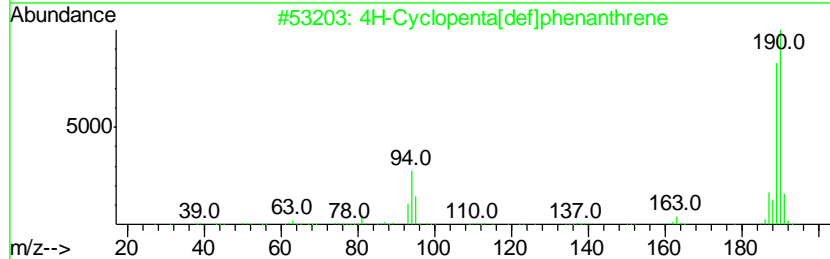
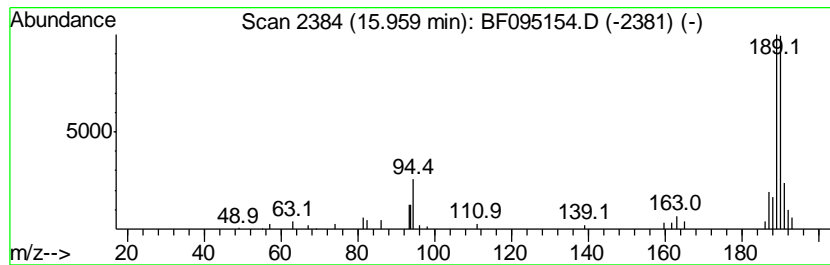
Quant Method : Z:\HPCHEM1\BNA F\METHODS\8270-BF050217.M
 Quant Title : ASP BNA STANDARDS FOR 5 POINT CALIBRATION

TIC Library : C:\DATABASE\NIST11.L
 TIC Integration Parameters: LSCINT.P

 Peak Number 3 4H-Cyclopenta[def]phenanthrene Concentration Rank 2

R.T.	EstConc	Area	Relative to ISTD	R.T.
15.96	4.01 ng	72953	Phenanthrene-d10	15.03

Hit#	of	Tentative ID	MW	MolForm	CAS#	Qual
1	5	4H-Cyclopenta[def]phenanthrene	190	C15H10	000203-64-5	87
2		6H-Cyclobuta[jk]phenanthrene	190	C15H10	083469-43-6	72
3		Phenol, 4-(2-thienylmethyl)-	190	C11H10OS	091680-55-6	45
4		Thiophene-3-carboxaldehyde, 5-ch...	190	C5H4BClO3S	036155-87-0	42
5		1,4-Naphthalenedione, 2,5-dihydr...	190	C10H6O4	004923-55-1	32



Data Path : Z:\HPCHEM1\BNA F\DATA\BF051517\
 Data File : BF095154.D
 Acq On : 16 May 2017 12:21
 Operator : SJ/MA
 Sample : I3140-09 10X
 Misc :
 ALS Vial : 30 Sample Multiplier: 1

Instrument :
 BNA_F
 ClientSampleID :
 TB-12-6

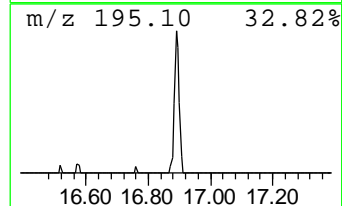
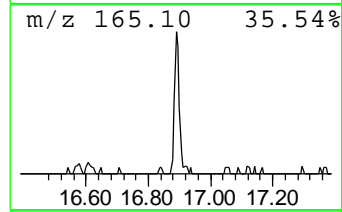
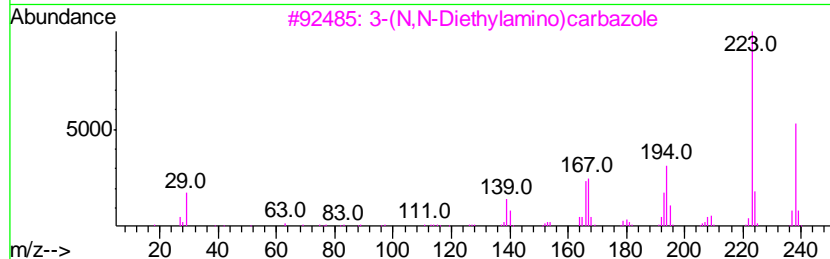
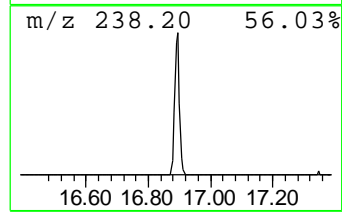
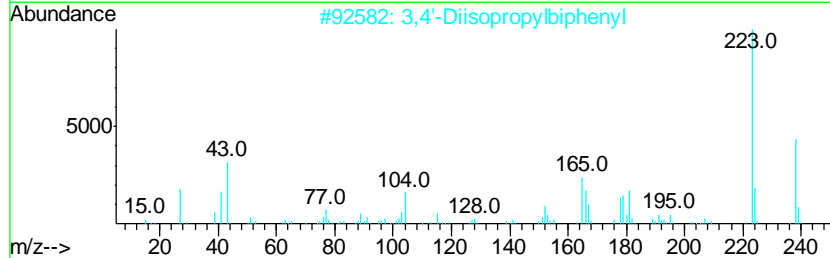
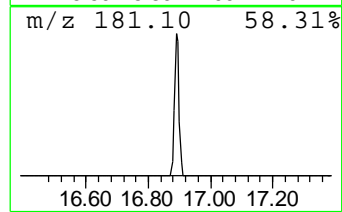
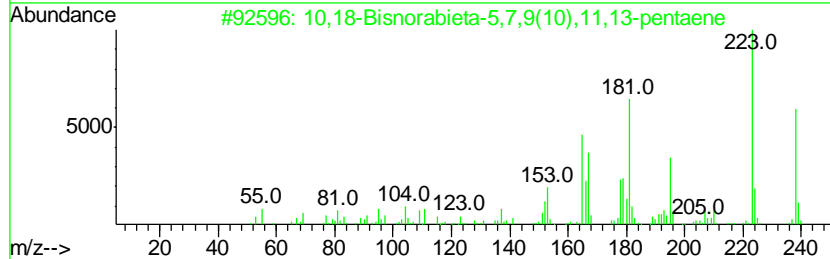
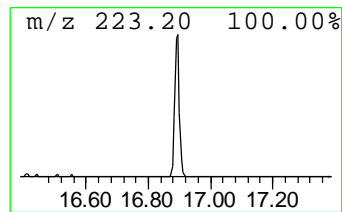
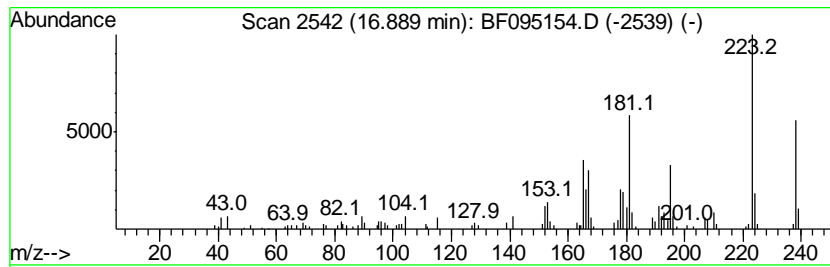
Quant Method : Z:\HPCHEM1\BNA F\METHODS\8270-BF050217.M
 Quant Title : ASP BNA STANDARDS FOR 5 POINT CALIBRATION

TIC Library : C:\DATABASE\NIST11.L
 TIC Integration Parameters: LSCINT.P

 Peak Number 4 10,18-Bisnorabieta-5,7,9(10... Concentration Rank 1

R.T.	EstConc	Area	Relative to ISTD	R.T.
16.89	4.68 ng	156344	Chrysene-d12	18.70

Hit#	of	Tentative ID	MW	MolForm	CAS#	Qual
1	5	10,18-Bisnorabieta-5,7,9(10),11,...	238	C18H22	006566-19-4	99
2		3,4'-Diisopropylbiphenyl	238	C18H22	061434-46-6	76
3		3-(N,N-Diethylamino)carbazole	238	C16H18N2	054994-31-9	58
4		Anthracene, 1,4-dimethoxy-	238	C16H14O2	013076-29-4	49
5		6-(Methylamino)phenanthren-3-ol	223	C15H13NO	098033-23-9	49



Data Path : Z:\HPCHEM1\BNA F\DATA\BF051517\
 Data File : BF095154.D
 Acq On : 16 May 2017 12:21
 Operator : SJ/MA
 Sample : I3140-09 10X
 Misc :
 ALS Vial : 30 Sample Multiplier: 1

Instrument :
 BNA_F
 ClientSampled :
 TB-12-6

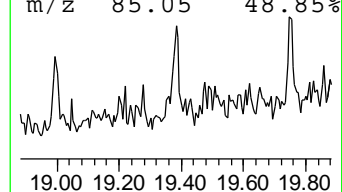
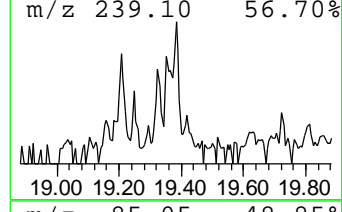
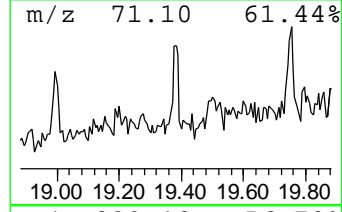
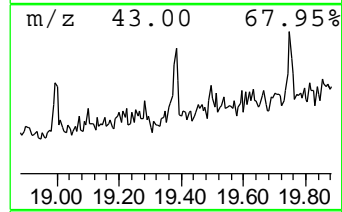
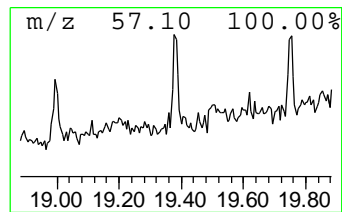
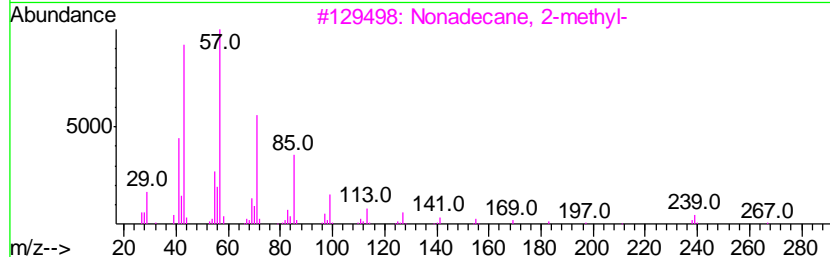
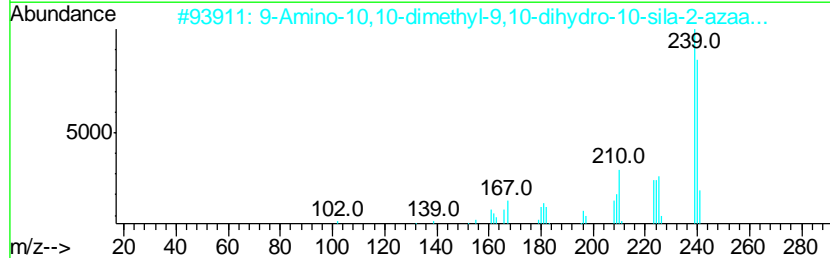
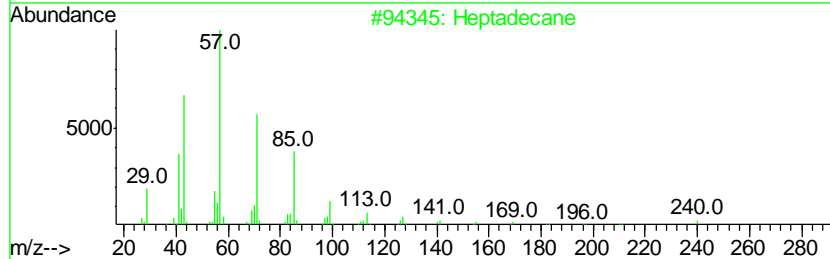
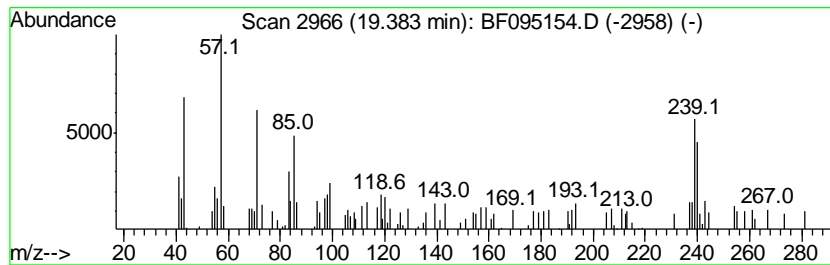
Quant Method : Z:\HPCHEM1\BNA F\METHODS\8270-BF050217.M
 Quant Title : ASP BNA STANDARDS FOR 5 POINT CALIBRATION

TIC Library : C:\DATABASE\NIST11.L
 TIC Integration Parameters: LSCINT.P

 Peak Number 5 unknown19.38 Concentration Rank 6

R.T.	EstConc	Area	Relative to ISTD	R.T.
19.38	2.31 ng	76985	Chrysene-d12	18.70

Hit#	of	Tentative ID	MW	MolForm	CAS#	Qual
1	5	Heptadecane	240	C17H36	000629-78-7	42
2		9-Amino-10,10-dimethyl-9,10-dihy...	240	C14H16N2Si	092973-65-4	38
3		Nonadecane, 2-methyl-	282	C20H42	001560-86-7	27
4		Octadecane	254	C18H38	000593-45-3	25
5		Imidazolo[2,1-b]thiazole, 5-(3-i...	239	C13H9N3S	327097-37-0	18



Data Path : Z:\HPCHEM1\BNA F\DATA\BF051517\
 Data File : BF095154.D
 Acq On : 16 May 2017 12:21
 Operator : SJ/MA
 Sample : I3140-09 10X
 Misc :
 ALS Vial : 30 Sample Multiplier: 1

Instrument :
 BNA_F
 ClientSampleId :
 TB-12-6

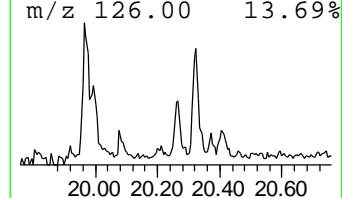
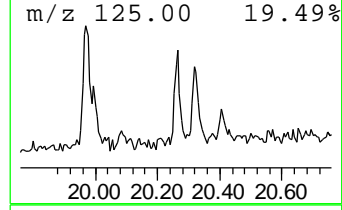
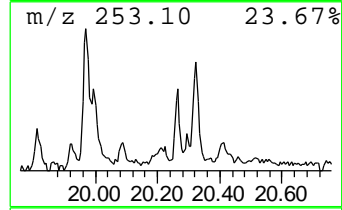
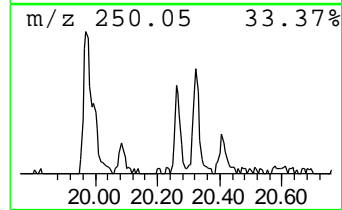
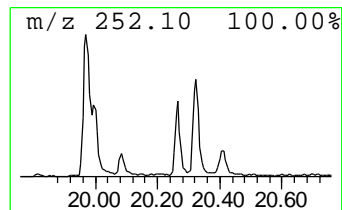
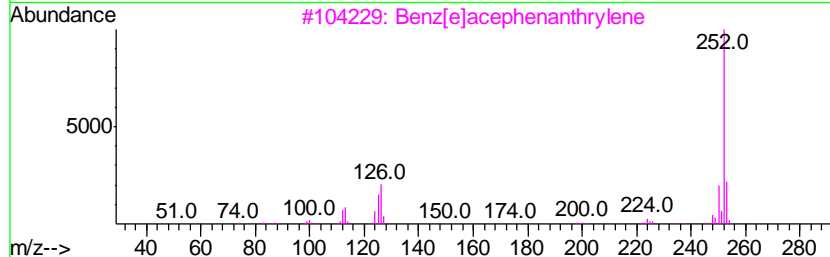
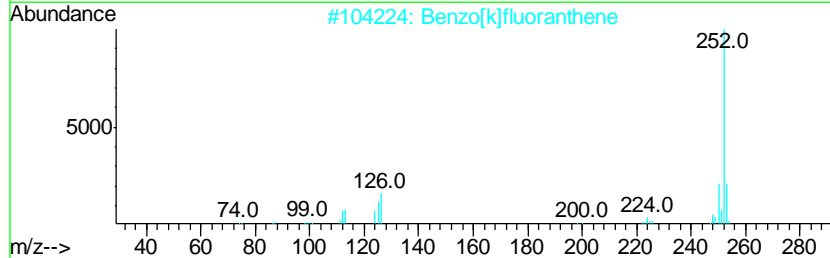
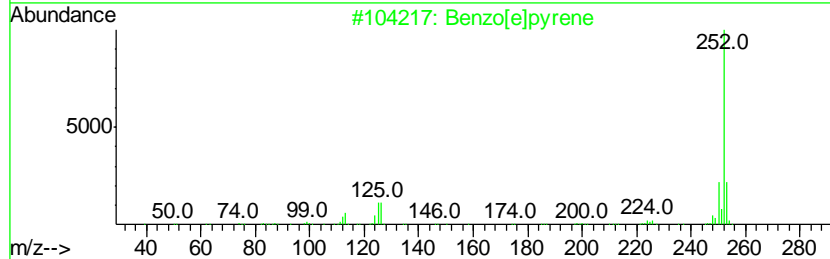
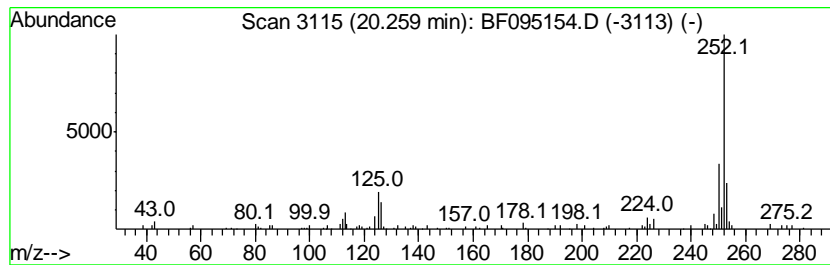
Quant Method : Z:\HPCHEM1\BNA F\METHODS\8270-BF050217.M
 Quant Title : ASP BNA STANDARDS FOR 5 POINT CALIBRATION

TIC Library : C:\DATABASE\NIST11.L
 TIC Integration Parameters: LSCINT.P

 Peak Number 6 Benzo[e]pyrene Concentration Rank 4

R.T.	EstConc	Area	Relative to ISTD	R.T.
20.26	3.02 ng	53143	Perylene-d12	20.38

Hit#	of	Tentative ID	MW	MolForm	CAS#	Qual
1	5	Benzo[e]pyrene	252	C20H12	000192-97-2	94
2		Benzo[k]fluoranthene	252	C20H12	000207-08-9	93
3		Benz[e]acephenanthrylene	252	C20H12	000205-99-2	90
4		Benzo[i]fluoranthene	252	C20H12	000205-82-3	89
5		Perylene	252	C20H12	000198-55-0	89



Data Path : Z:\HPCHEM1\BNA F\DATA\BF051517\
 Data File : BF095154.D
 Acq On : 16 May 2017 12:21
 Operator : SJ/MA
 Sample : I3140-09 10X
 Misc :
 ALS Vial : 30 Sample Multiplier: 1

Instrument :
 BNA_F
 ClientSampleId :
 TB-12-6

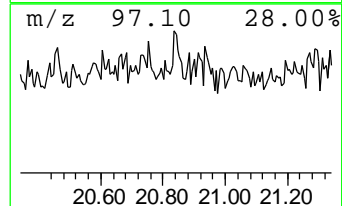
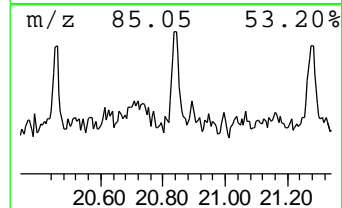
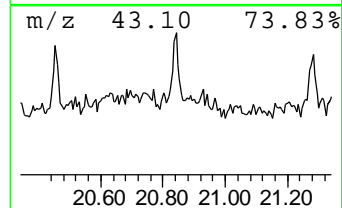
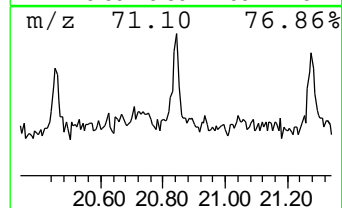
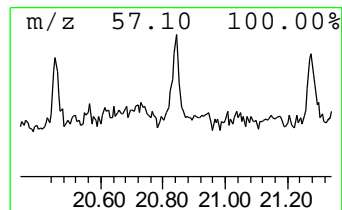
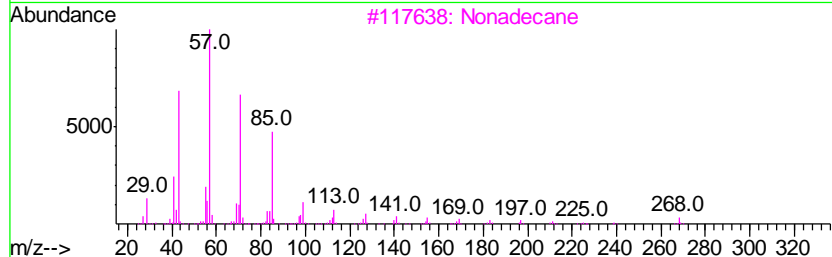
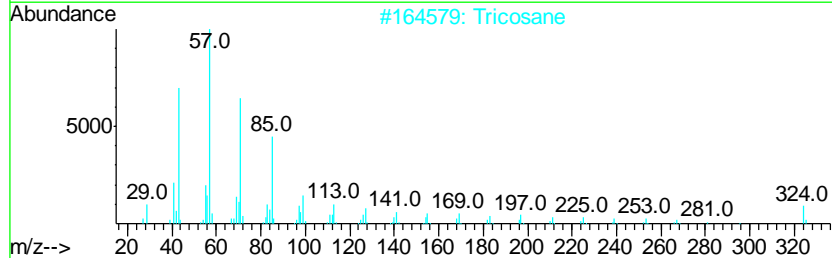
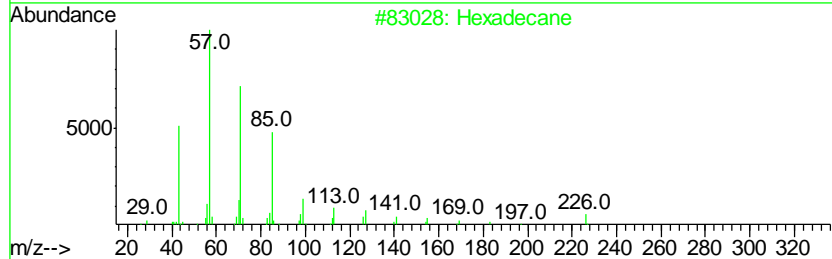
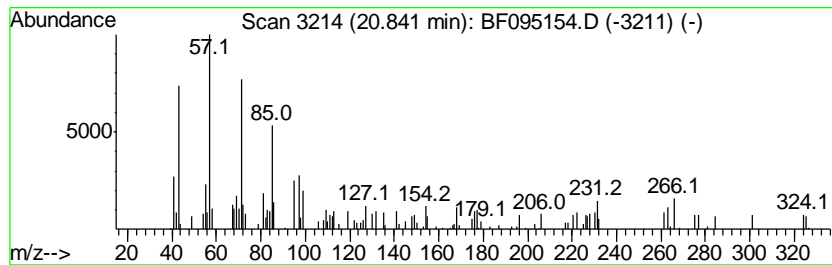
Quant Method : Z:\HPCHEM1\BNA F\METHODS\8270-BF050217.M
 Quant Title : ASP BNA STANDARDS FOR 5 POINT CALIBRATION

TIC Library : C:\DATABASE\NIST11.L
 TIC Integration Parameters: LSCINT.P

 Peak Number 7 Hexadecane Concentration Rank 5

R.T.	EstConc	Area	Relative to ISTD	R.T.
20.84	2.47 ng	43467	Perylene-d12	20.38

Hit#	of	Tentative ID	MW	MolForm	CAS#	Qual
1	5	Hexadecane	226	C16H34	000544-76-3	78
2		Tricosane	324	C23H48	000638-67-5	64
3		Nonadecane	268	C19H40	000629-92-5	60
4		Heneicosane	296	C21H44	000629-94-7	52
5		Hexacosane	366	C26H54	000630-01-3	52



Data Path : Z:\HPCHEM1\BNA_F\DATA\BF051517\
Data File : BF095154.D
Acq On : 16 May 2017 12:21
Operator : SJ/MA
Sample : I3140-09 10X
Misc :
ALS Vial : 30 Sample Multiplier: 1

Instrument :
BNA_F
ClientSampleId :
TB-12-6

Quant Method : Z:\HPCHEM1\BNA_F\METHODS\8270-BF050217.M
Quant Title : ASP BNA STANDARDS FOR 5 POINT CALIBRATION

TIC Library : C:\DATABASE\NIST11.L
TIC Integration Parameters: LSCINT.P

TIC Top Hit name	RT	EstConc	Units	Response	--Internal Standard--			
					#	RT	Resp	Conc
Phenanthrene, 1-m...	15.85	2.1 ng		38327	4	15.03	364009	20.0
4H-Cyclopenta[def...	15.96	4.0 ng		72953	4	15.03	364009	20.0
10,18-Bisnorabiet...	16.89	4.7 ng		156344	5	18.70	667525	20.0
unknown19.38	19.38	2.3 ng		76985	5	18.70	667525	20.0
Benzo[e]pyrene	20.26	3.0 ng		53143	6	20.38	351579	20.0
Hexadecane	20.84	2.5 ng		43467	6	20.38	351579	20.0