

Data Path : Z:\SVOASRV\HPCHEM1\BNA F\DATA\BF051520\
 Data File : BF120323.D
 Acq On : 15 May 2020 15:59
 Operator : MA/SJ
 Sample : L2664-01
 Misc :
 ALS Vial : 11 Sample Multiplier: 1

Instrument :
 BNA_F
 ClientSampleId :
 0363-COMPOSITE-1

Quant Time: May 15 16:32:25 2020
 Quant Method : Z:\SVOASRV\HPCHEM1\BNA F\METHODS\8270-BF051420.M
 Quant Title : ASP BNA STANDARDS FOR 5 POINT CALIBRATION
 QLast Update : Fri May 15 12:31:31 2020
 Response via : Initial Calibration

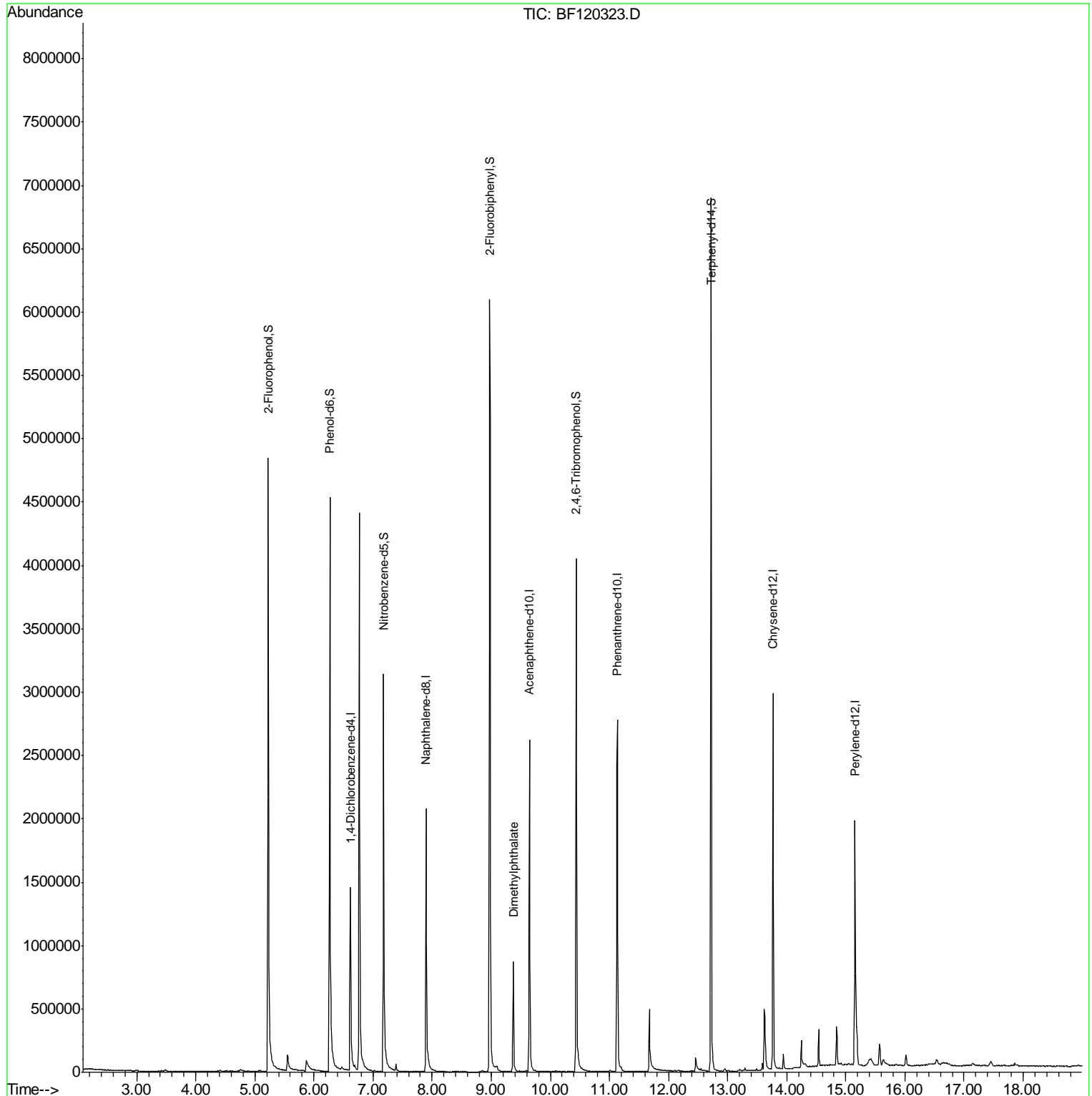
Internal Standards	R.T.	QIon	Response	Conc	Units	Dev(Min)
1) 1,4-Dichlorobenzene-d4	6.62	152	322389	20.00	ng	0.00
21) Naphthalene-d8	7.90	136	1218639	20.00	ng	0.00
39) Acenaphthene-d10	9.65	164	657296	20.00	ng	0.00
64) Phenanthrene-d10	11.13	188	1227869	20.00	ng	0.00
76) Chrysene-d12	13.77	240	1115951	20.00	ng	0.00
87) Perylene-d12	15.16	264	887839	20.00	ng	0.00
System Monitoring Compounds						
5) 2-Fluorophenol	5.22	112	1621039	97.83	ng	0.00
7) Phenol-d6	6.27	99	2052096	97.94	ng	0.00
23) Nitrobenzene-d5	7.18	82	1258337	70.70	ng	-0.01
42) 2,4,6-Tribromophenol	10.44	330	565331	105.49	ng	0.00
45) 2-Fluorobiphenyl	8.97	172	2359340	73.74	ng	0.00
79) Terphenyl-d14	12.72	244	2698768	53.43	ng	0.00
Target Compounds						Qvalue
50) Dimethylphthalate	9.37	163	398322	9.586	ng	98

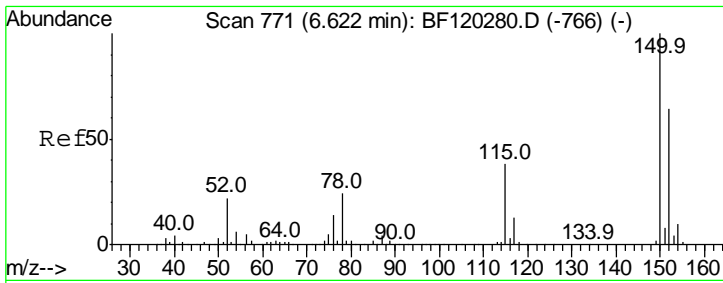
(#) = qualifier out of range (m) = manual integration (+) = signals summed

Data Path : Z:\SVOASRV\HPCHEM1\BNA F\DATA\BF051520\
Data File : BF120323.D
Acq On : 15 May 2020 15:59
Operator : MA/SJ
Sample : L2664-01
Misc :
ALS Vial : 11 Sample Multiplier: 1

Instrument :
BNA_F
ClientSampleId :
0363-COMPOSITE-1

Quant Time: May 15 16:32:25 2020
Quant Method : Z:\SVOASRV\HPCHEM1\BNA F\METHODS\8270-BF051420.M
Quant Title : ASP BNA STANDARDS FOR 5 POINT CALIBRATION
QLast Update : Fri May 15 12:31:31 2020
Response via : Initial Calibration

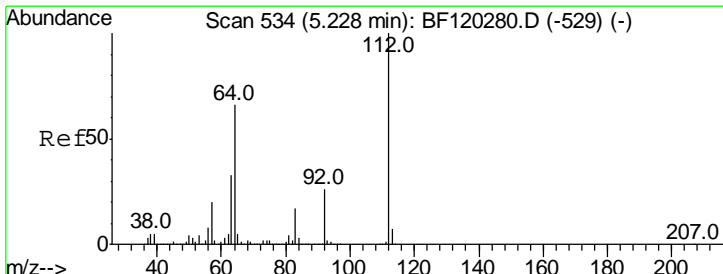
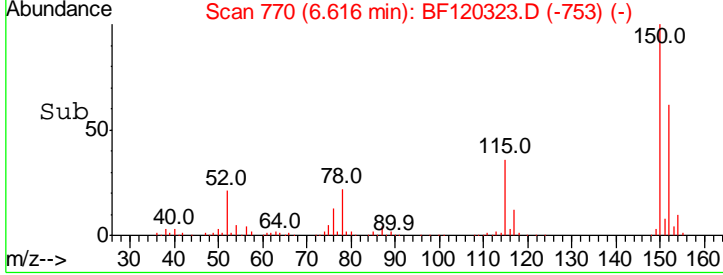
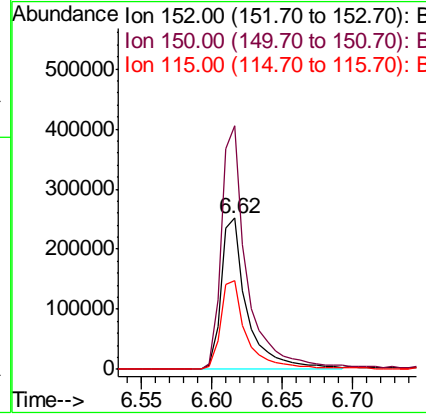
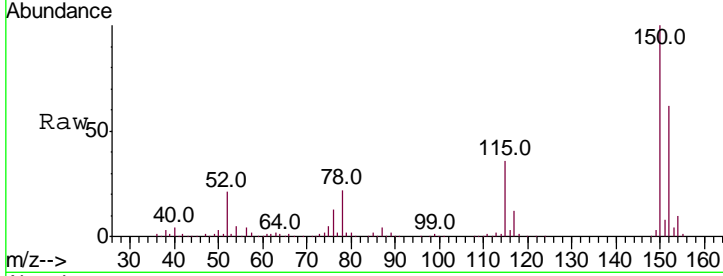




#1
 1,4-Dichlorobenzene-d4
 Concen: 20.000 ng
 RT: 6.62 min Scan# 770
 Delta R.T. -0.00 min
 Lab File: BF120323.D
 Acq: 15 May 2020 15:59

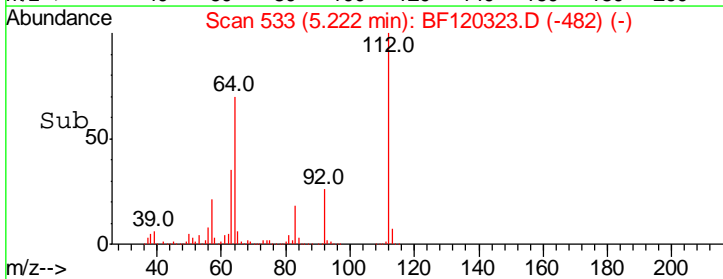
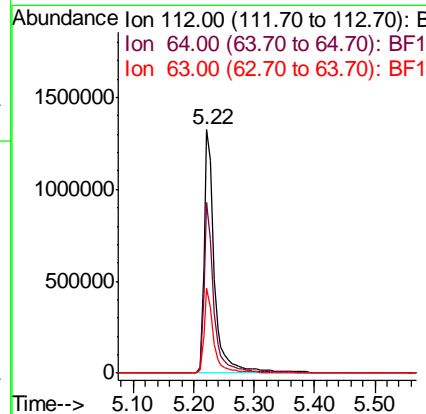
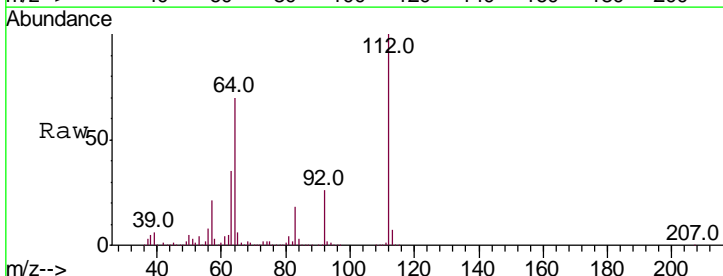
Instrument :
 BNA_F
ClientSampleId :
 0363-COMPOSITE-1

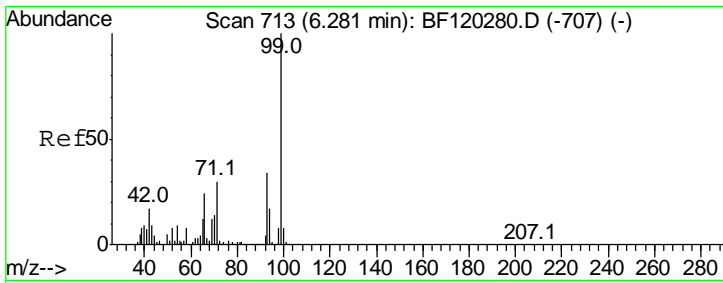
Tgt Ion	Resp	Lower	Upper
152	322389		
152	100		
150	160.8	126.2	189.2
115	58.6	47.9	71.9



#5
 2-Fluorophenol
 Concen: 97.834 ng
 RT: 5.22 min Scan# 533
 Delta R.T. -0.00 min
 Lab File: BF120323.D
 Acq: 15 May 2020 15:59

Tgt Ion	Resp	Lower	Upper
112	1621039		
112	100		
64	70.2	52.7	79.1
63	34.8	26.2	39.4



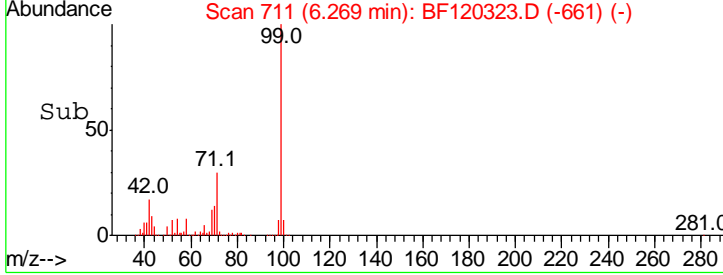
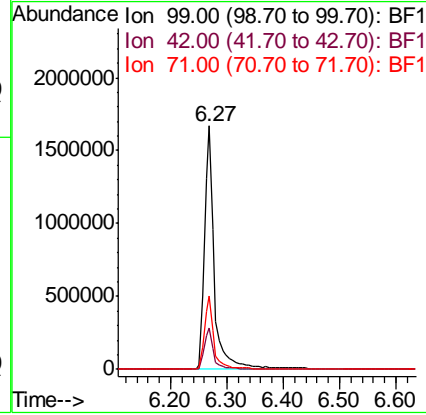
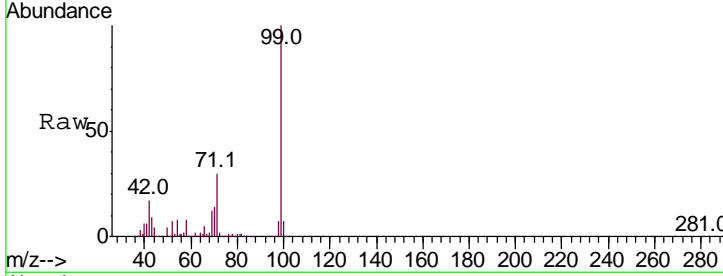


#7
 Phenol-d6
 Concen: 97.936 ng
 RT: 6.27 min Scan# 711
 Delta R.T. -0.01 min
 Lab File: BF120323.D
 Acq: 15 May 2020 15:59

Instrument :
 BNA_F
ClientSampleId :
 0363-COMPOSITE-1

Tgt Ion: 99 Resp: 2052096

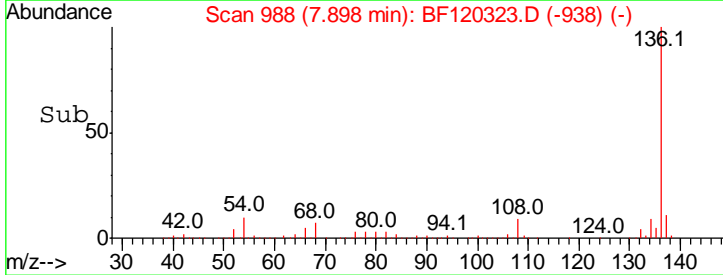
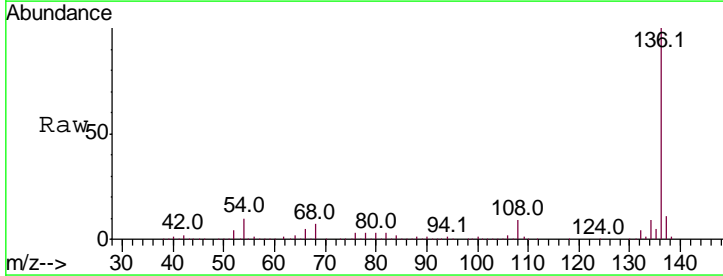
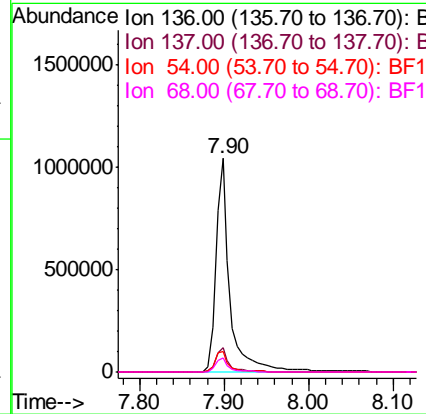
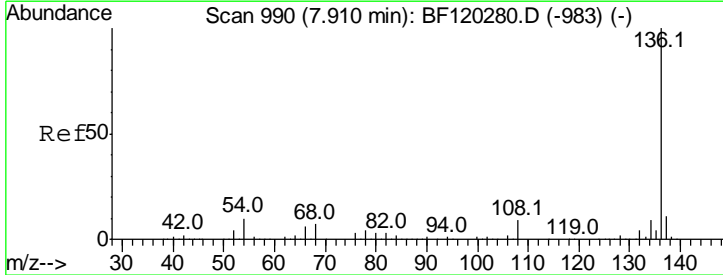
Ion	Ratio	Lower	Upper
99	100		
42	16.9	13.6	20.4
71	30.3	24.2	36.4

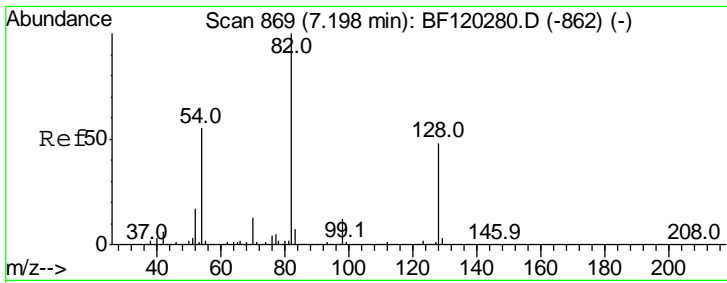


#21
 Naphthalene-d8
 Concen: 20.000 ng
 RT: 7.90 min Scan# 988
 Delta R.T. -0.01 min
 Lab File: BF120323.D
 Acq: 15 May 2020 15:59

Tgt Ion: 136 Resp: 1218639

Ion	Ratio	Lower	Upper
136	100		
137	11.3	9.1	13.7
54	9.7	7.9	11.9
68	6.5	5.4	8.2

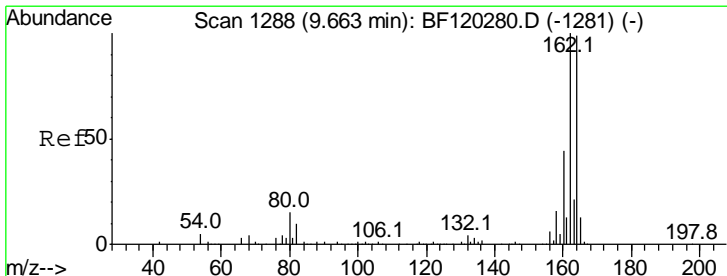
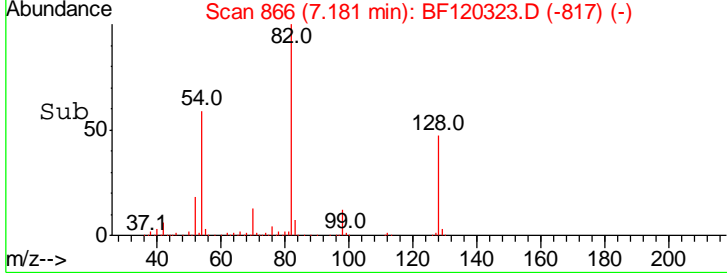
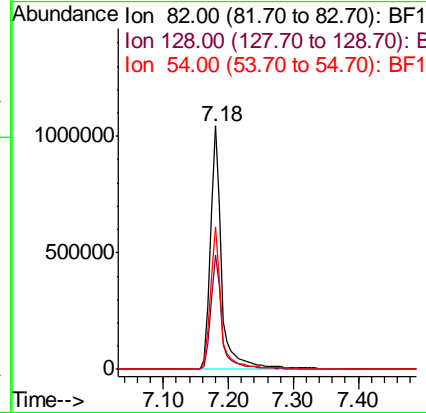
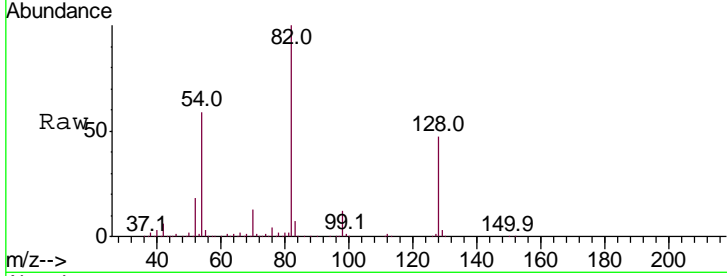




#23
 Nitrobenzene-d5
 Concen: 70.697 ng
 RT: 7.18 min Scan# 866
 Delta R.T. -0.01 min
 Lab File: BF120323.D
 Acq: 15 May 2020 15:59

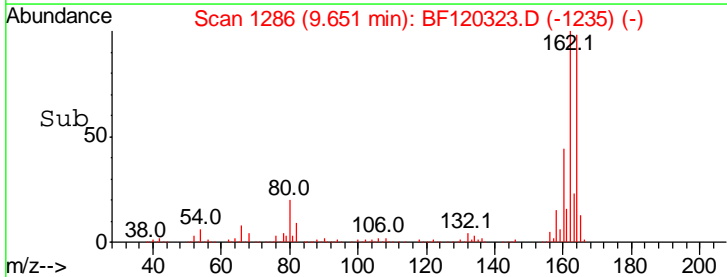
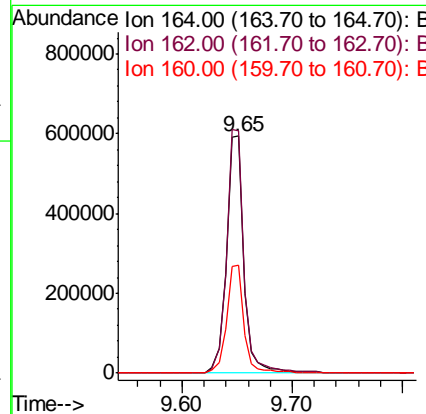
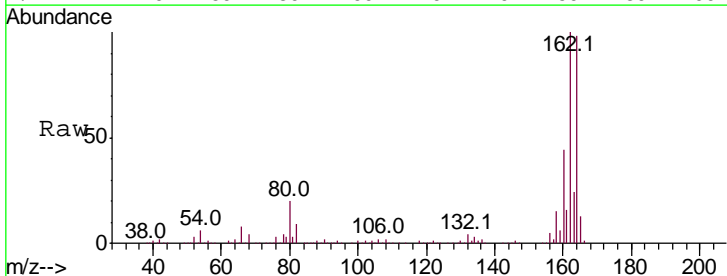
Instrument :
 BNA_F
ClientSampleId :
 0363-COMPOSITE-1

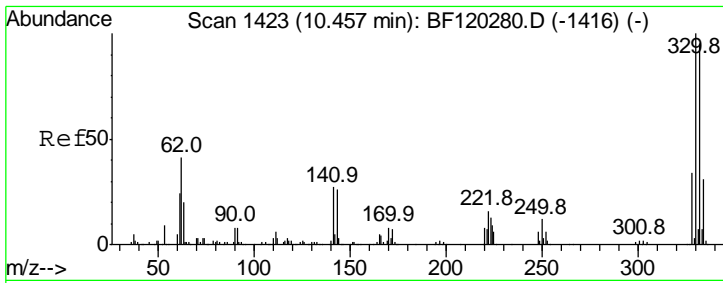
Tgt Ion	Resp	Lower	Upper
82	1258337		
82	100		
128	47.2	38.3	57.5
54	58.6	43.9	65.9



#39
 Acenaphthene-d10
 Concen: 20.000 ng
 RT: 9.65 min Scan# 1286
 Delta R.T. -0.00 min
 Lab File: BF120323.D
 Acq: 15 May 2020 15:59

Tgt Ion	Resp	Lower	Upper
164	657296		
164	100		
162	102.3	81.2	121.8
160	45.5	35.8	53.6

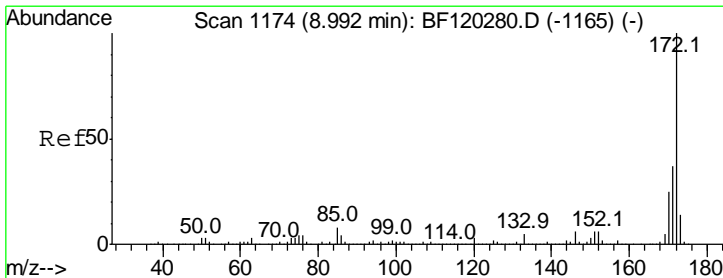
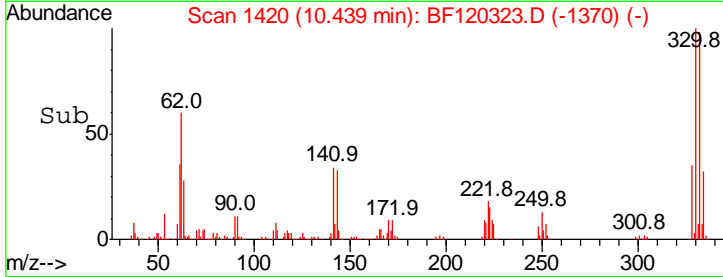
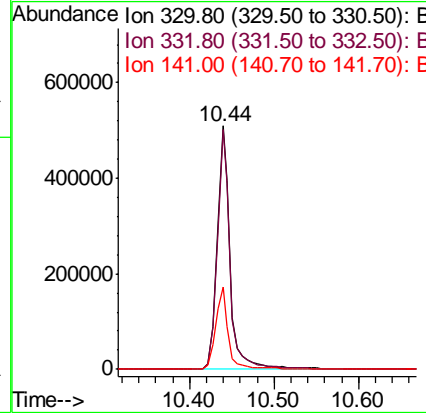
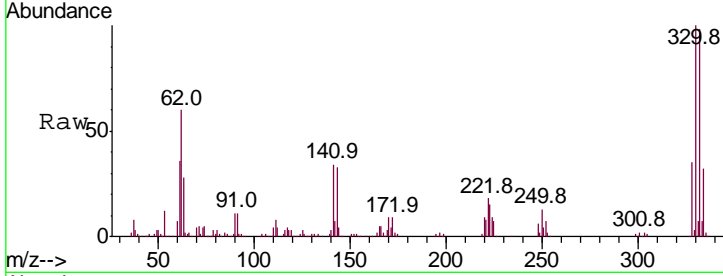




#42
 2,4,6-Tribromophenol
 Concen: 105.487 ng
 RT: 10.44 min Scan# 1420
 Delta R.T. -0.01 min
 Lab File: BF120323.D
 Acq: 15 May 2020 15:59

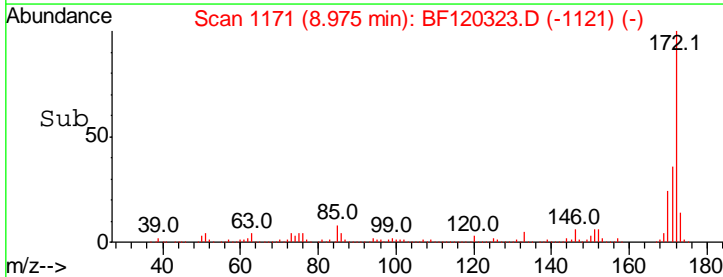
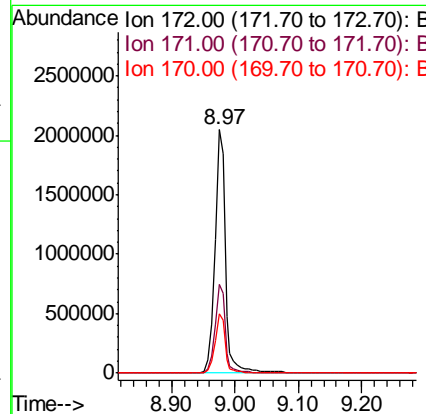
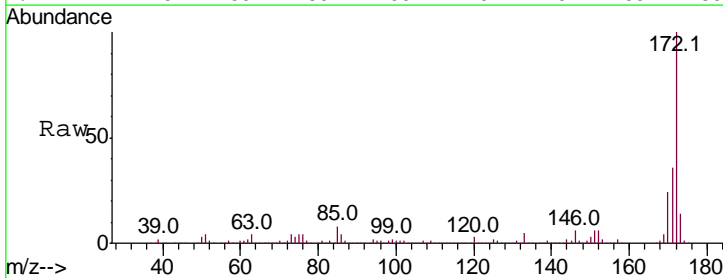
Instrument :
 BNA_F
ClientSampled :
 0363-COMPOSITE-1

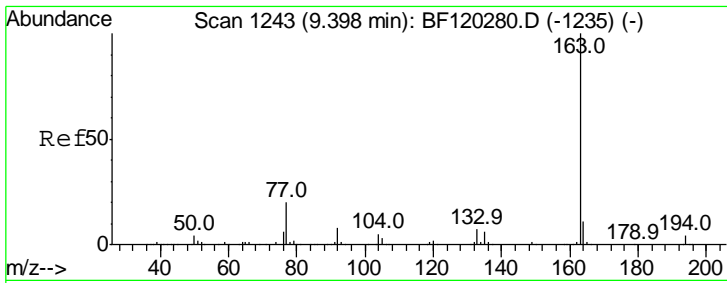
Tgt Ion	Resp	Lower	Upper
330	100		
332	97.4	76.5	114.7
141	32.8	25.4	38.0



#45
 2-Fluorobiphenyl
 Concen: 73.744 ng
 RT: 8.97 min Scan# 1171
 Delta R.T. -0.01 min
 Lab File: BF120323.D
 Acq: 15 May 2020 15:59

Tgt Ion	Resp	Lower	Upper
172	100		
171	36.3	29.7	44.5
170	24.4	19.9	29.9

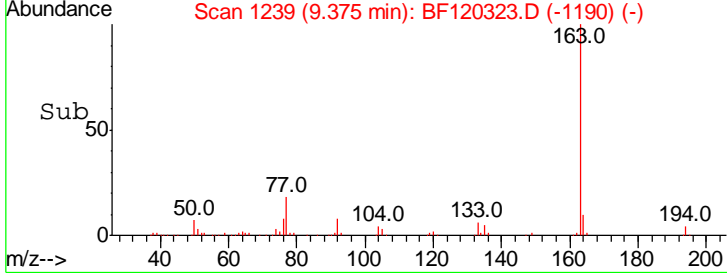
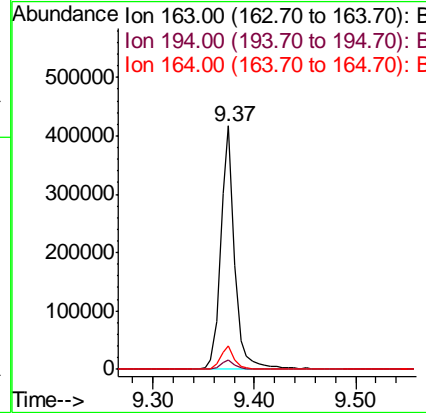
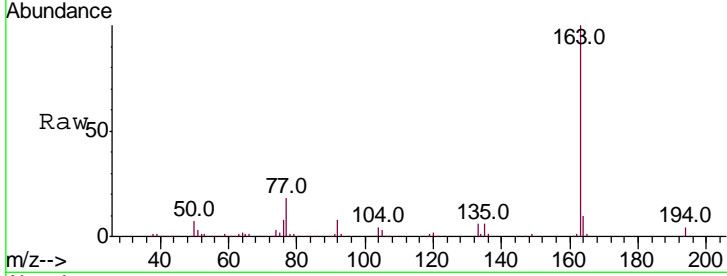




#50
 Dimethylphthalate
 Concen: 9.586 ng
 RT: 9.37 min Scan# 1239
 Delta R.T. -0.01 min
 Lab File: BF120323.D
 Acq: 15 May 2020 15:59

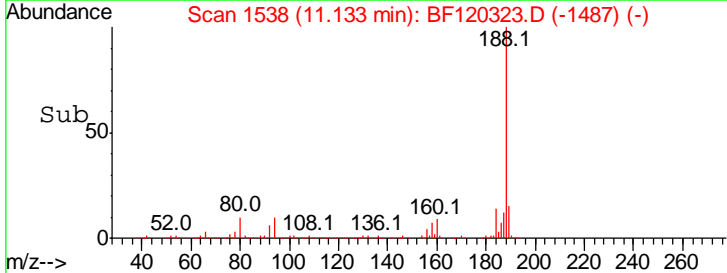
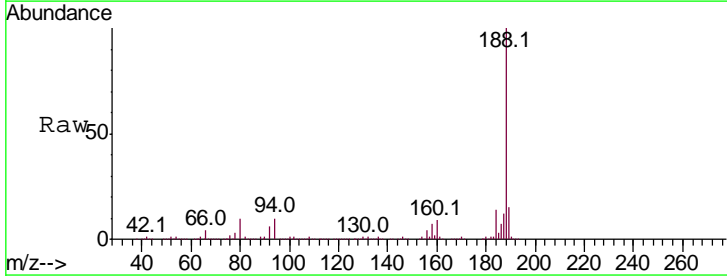
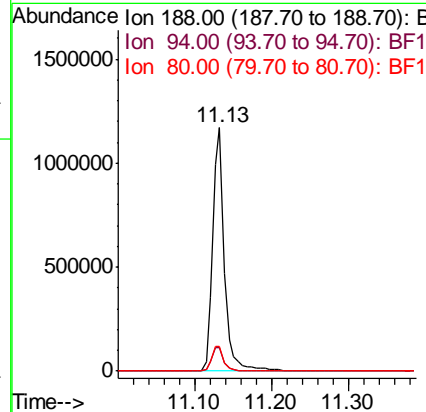
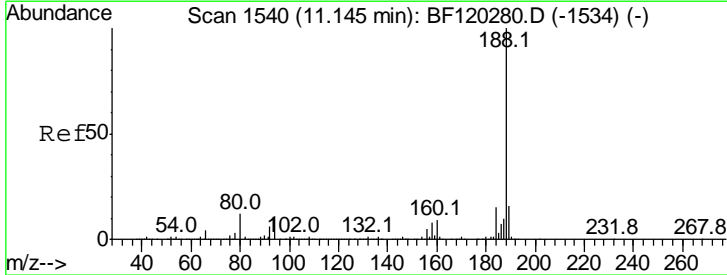
Instrument :
 BNA_F
ClientSampled :
 0363-COMPOSITE-1

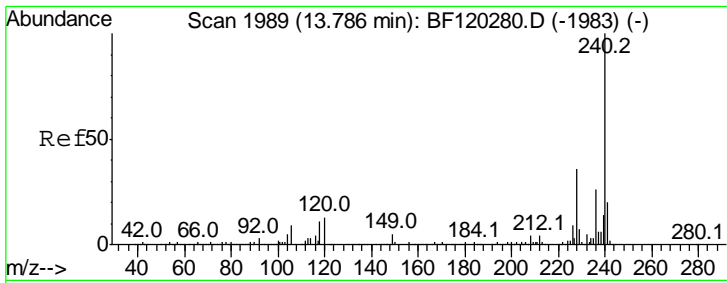
Tgt Ion	Resp	Lower	Upper
163	100		
194	3.9	3.1	4.7
164	9.5	8.6	12.8



#64
 Phenanthrene-d10
 Concen: 20.000 ng
 RT: 11.13 min Scan# 1538
 Delta R.T. -0.00 min
 Lab File: BF120323.D
 Acq: 15 May 2020 15:59

Tgt Ion	Resp	Lower	Upper
188	100		
94	9.8	8.6	13.0
80	9.9	9.2	13.8



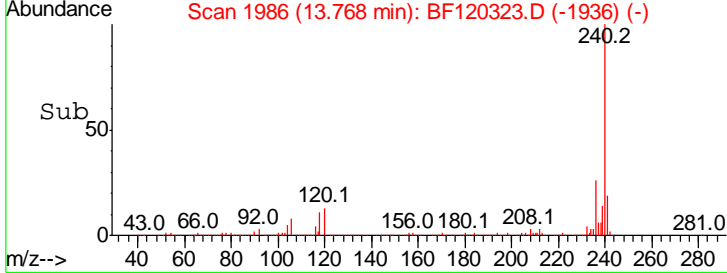
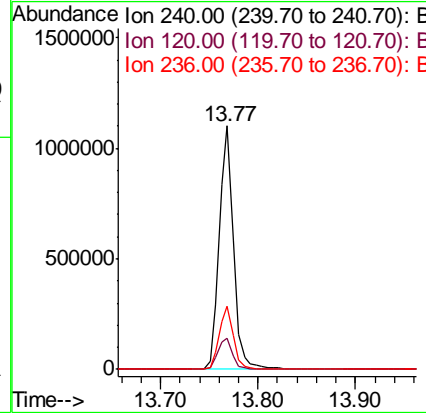
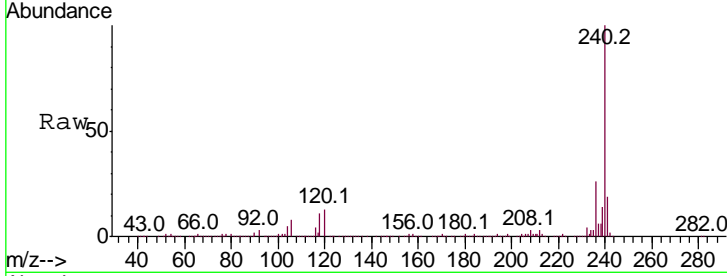


#76
 Chrysene-d12
 Concen: 20.000 ng
 RT: 13.77 min Scan# 1986
 Delta R.T. -0.01 min
 Lab File: BF120323.D
 Acq: 15 May 2020 15:59

Instrument :
 BNA_F
 ClientSampled :
 0363-COMPOSITE-1

Tgt Ion: 240 Resp: 1115951

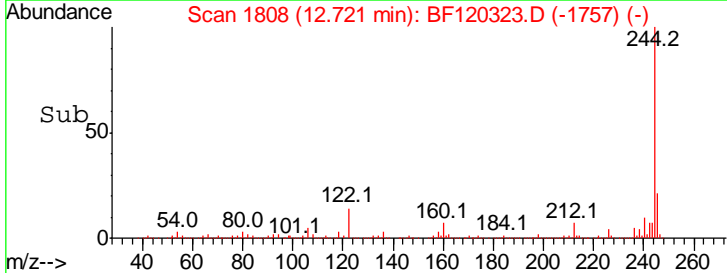
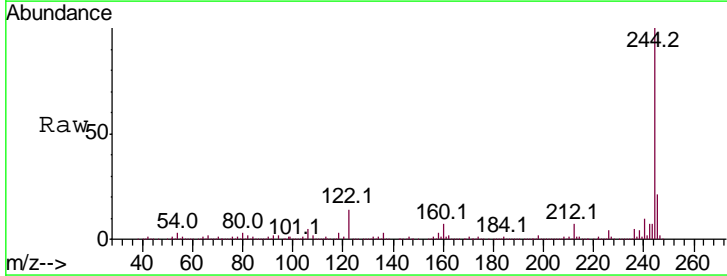
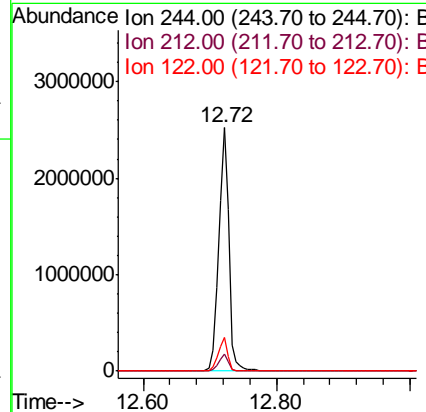
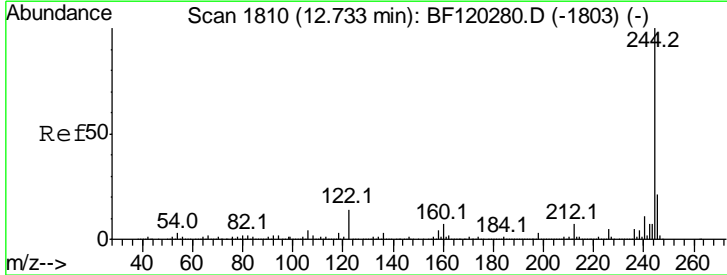
Ion	Ratio	Lower	Upper
240	100		
120	12.6	10.4	15.6
236	26.1	21.0	31.6

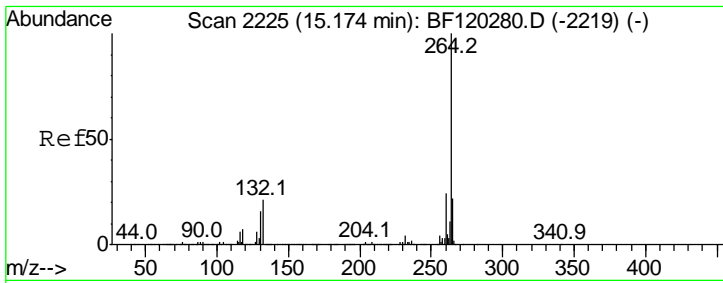


#79
 Terphenyl-d14
 Concen: 53.427 ng
 RT: 12.72 min Scan# 1808
 Delta R.T. -0.00 min
 Lab File: BF120323.D
 Acq: 15 May 2020 15:59

Tgt Ion: 244 Resp: 2698768

Ion	Ratio	Lower	Upper
244	100		
212	6.8	5.8	8.6
122	13.8	10.8	16.2





#87
 Perylene-d12
 Concen: 20.000 ng
 RT: 15.16 min Scan# 2222
 Delta R.T. -0.01 min
 Lab File: BF120323.D
 Acq: 15 May 2020 15:59

Instrument :
 BNA_F
ClientSampleId :
 0363-COMPOSITE-1

Tot Ion: 264 Resp: 887839

Ion	Ratio	Lower	Upper
264	100		
260	23.8	19.0	28.6
265	22.4	17.5	26.3

