

Data Path : Z:\SVOASRV\HPCHEM1\BNA F\DATA\BF051619\
 Data File : BF114328.D
 Acq On : 17 May 2019 00:37
 Operator : JU/SJ
 Sample : K2867-07
 Misc :
 ALS Vial : 25 Sample Multiplier: 1

Instrument :
 BNA_F
 ClientSampleId :
 CONCRETE-D

Quant Time: May 17 08:46:47 2019
 Quant Method : Z:\SVOASRV\HPCHEM1\BNA F\METHODS\8270-BF051019.M
 Quant Title : ASP BNA STANDARDS FOR 5 POINT CALIBRATION
 QLast Update : Fri May 10 15:56:46 2019
 Response via : Initial Calibration

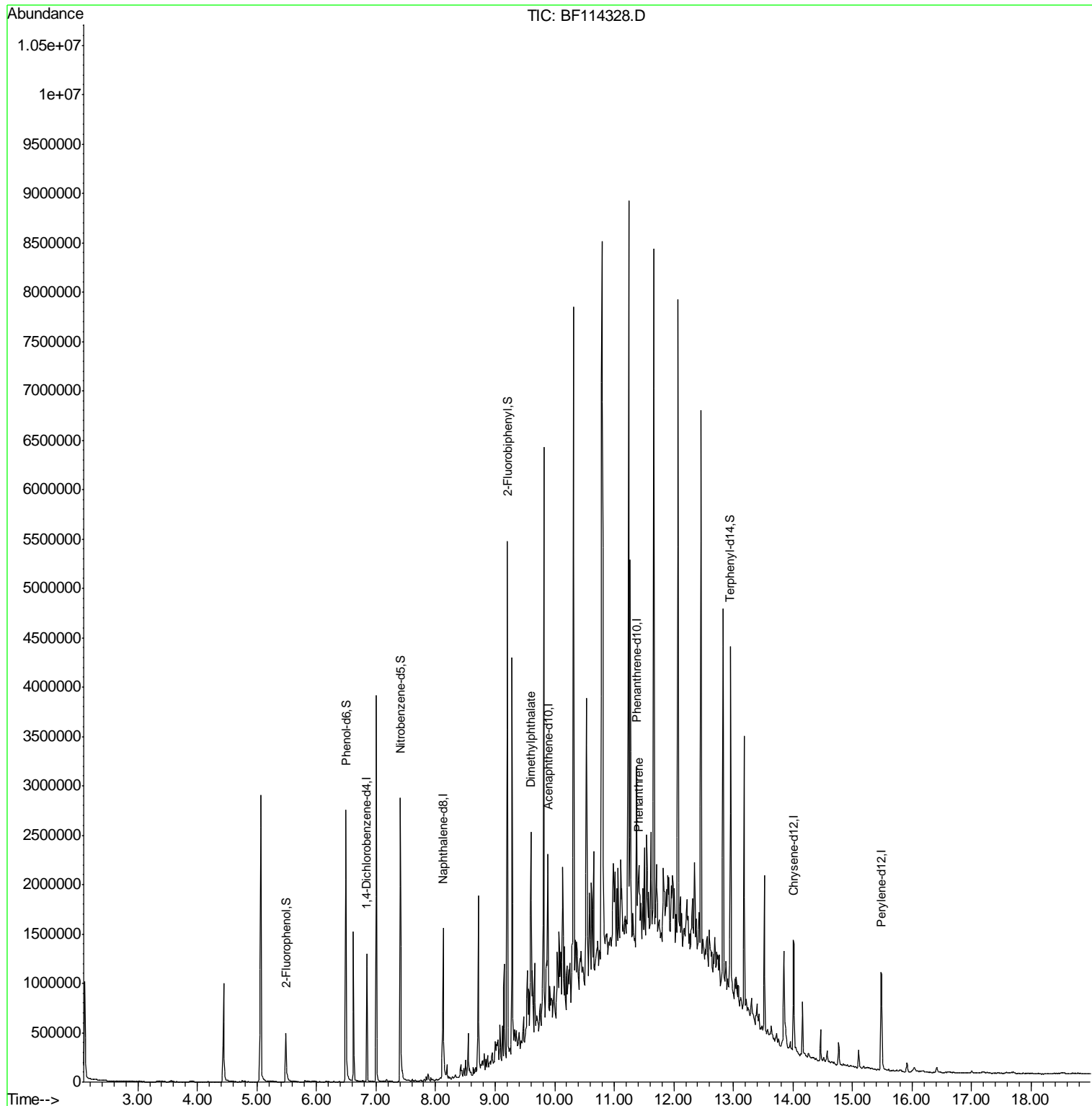
Internal Standards	R.T.	QIon	Response	Conc	Units	Dev(Min)
1) 1,4-Dichlorobenzene-d4	6.85	152	190991	20.00	ng	0.00
21) Naphthalene-d8	8.13	136	733742	20.00	ng	0.00
39) Acenaphthene-d10	9.89	164	321533	20.00	ng	0.00
64) Phenanthrene-d10	11.37	188	533139	20.00	ng	0.00
76) Chrysene-d12	14.02	240	411834	20.00	ng	0.00
87) Perylene-d12	15.48	264	488653	20.00	ng	-0.02
System Monitoring Compounds						
5) 2-Fluorophenol	5.49	112	185349	15.62	ng	0.00
7) Phenol-d6	6.49	99	977596	69.64	ng	0.00
23) Nitrobenzene-d5	7.41	82	922090	70.53	ng	0.00
42) 2,4,6-Tribromophenol	10.68	330	926	0.28	ng	0.00
45) 2-Fluorobiphenyl	9.20	172	1581397	74.40	ng	0.00
79) Terphenyl-d14	12.96	244	1273317	63.74	ng	0.00
Target Compounds						
50) Dimethylphthalate	9.60	163	132675	5.621	ng	# 96
71) Phenanthrene	11.40	178	180198	6.947	ng	98

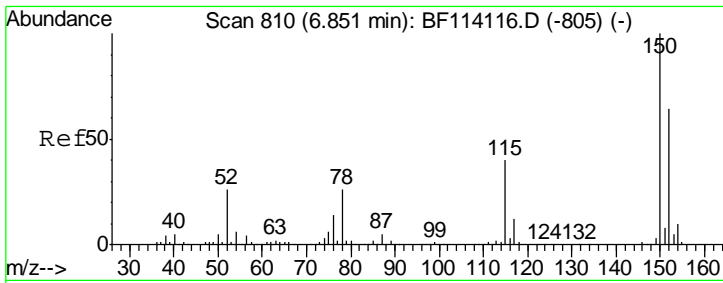
(#) = qualifier out of range (m) = manual integration (+) = signals summed

Data Path : Z:\SVOASRV\HPCHEM1\BNA F\DATA\BF051619\
 Data File : BF114328.D
 Acq On : 17 May 2019 00:37
 Operator : JU/SJ
 Sample : K2867-07
 Misc :
 ALS Vial : 25 Sample Multiplier: 1

Instrument :
 BNA_F
 ClientSampleId :
 CONCRETE-D

Quant Time: May 17 08:46:47 2019
 Quant Method : Z:\SVOASRV\HPCHEM1\BNA F\METHODS\8270-BF051019.M
 Quant Title : ASP BNA STANDARDS FOR 5 POINT CALIBRATION
 QLast Update : Fri May 10 15:56:46 2019
 Response via : Initial Calibration

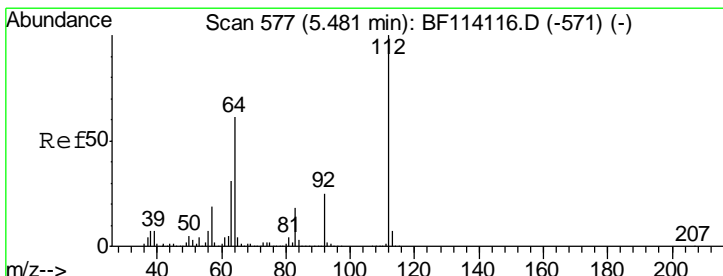
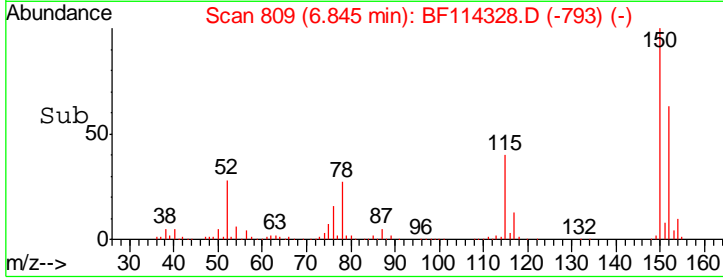
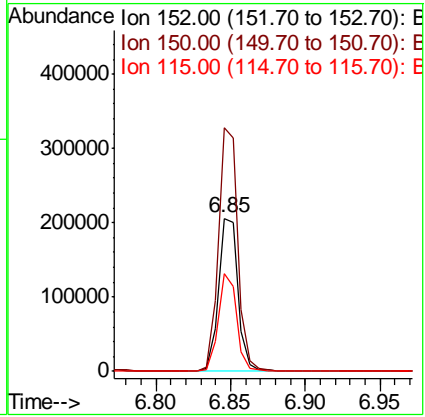
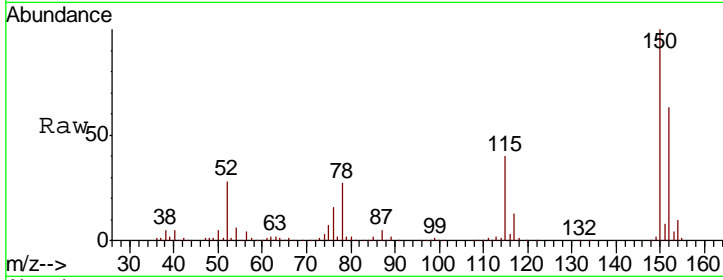




#1
 1,4-Dichlorobenzene-d4
 Concen: 20.000 ng
 RT: 6.85 min Scan# 809
 Delta R.T. -0.01 min
 Lab File: BF114328.D
 Acq: 17 May 2019 00:37

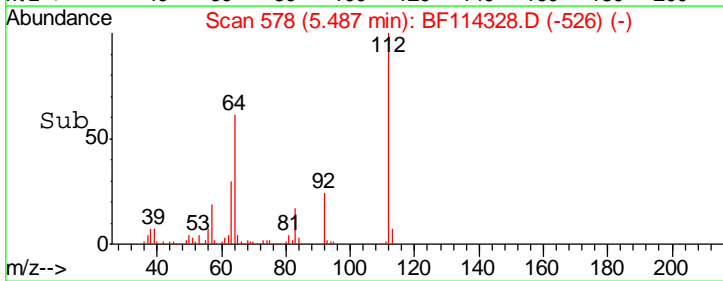
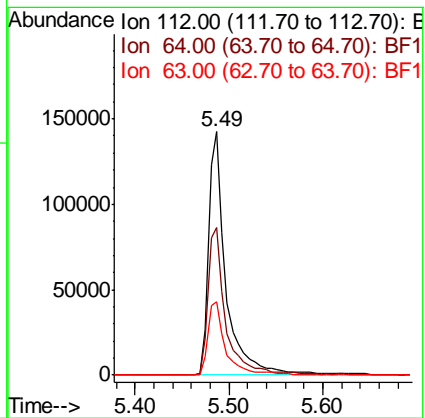
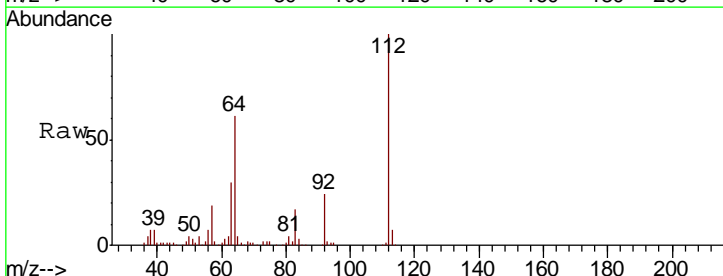
Instrument :
 BNA_F
ClientSampled :
 CONCRETE-D

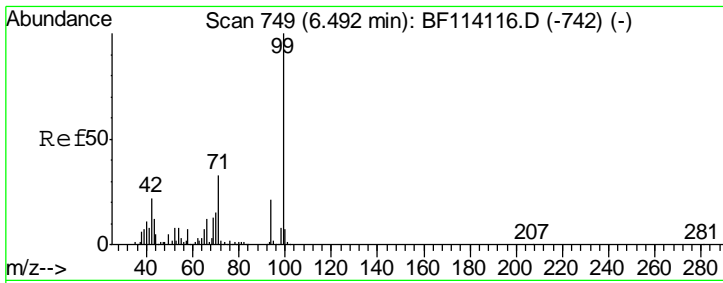
Tgt Ion	Resp	Lower	Upper
152	190991		
150	158.8	124.3	186.5
115	64.1	49.1	73.7



#5
 2-Fluorophenol
 Concen: 15.617 ng
 RT: 5.49 min Scan# 578
 Delta R.T. 0.01 min
 Lab File: BF114328.D
 Acq: 17 May 2019 00:37

Tgt Ion	Resp	Lower	Upper
112	185349		
64	60.7	49.0	73.6
63	30.3	24.6	37.0

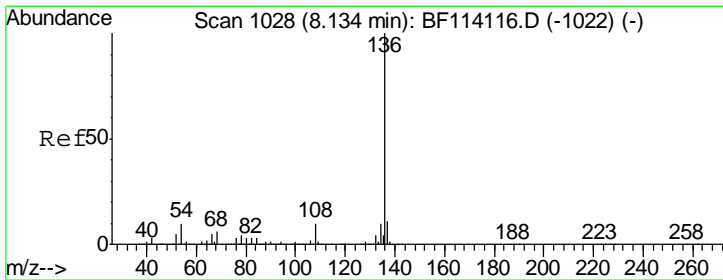
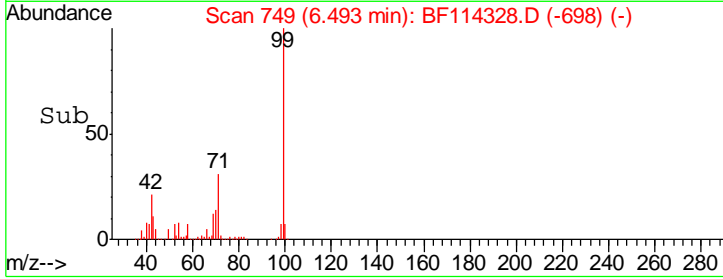
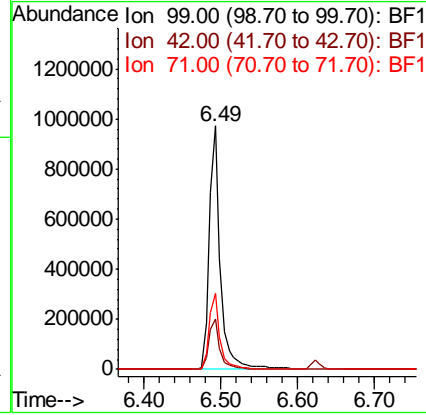
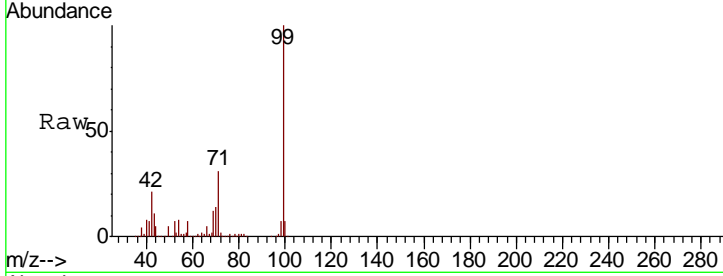




#7
 Phenol-d6
 Concen: 69.645 ng
 RT: 6.49 min Scan# 749
 Delta R.T. 0.00 min
 Lab File: BF114328.D
 Acq: 17 May 2019 00:37

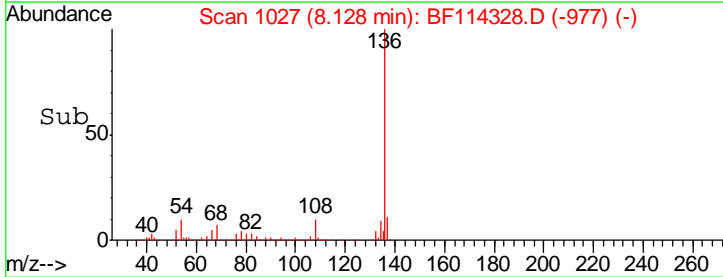
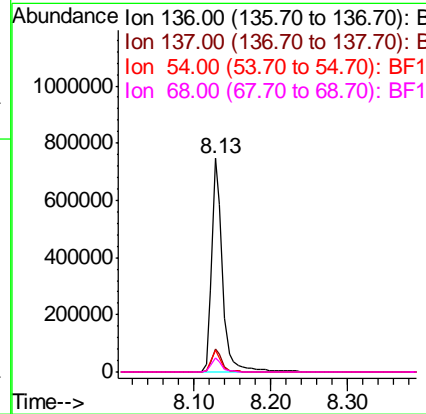
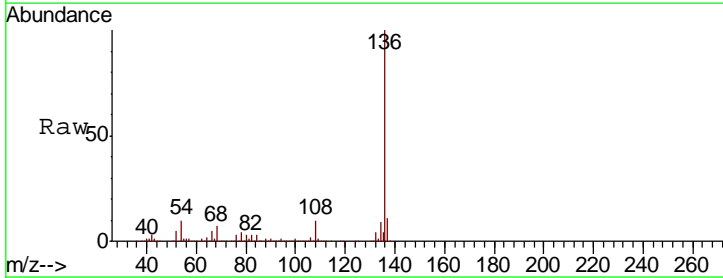
Instrument :
 BNA_F
 ClientSampled :
 CONCRETE-D

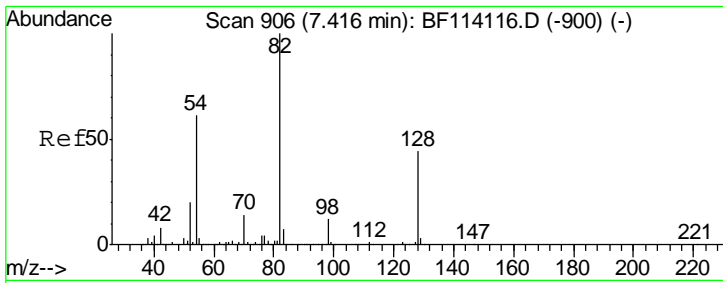
Tgt Ion	Resp	Lower	Upper
99	977596		
42	20.9	17.9	26.9
71	31.1	26.2	39.2



#21
 Naphthalene-d8
 Concen: 20.000 ng
 RT: 8.13 min Scan# 1027
 Delta R.T. -0.01 min
 Lab File: BF114328.D
 Acq: 17 May 2019 00:37

Tgt Ion	Resp	Lower	Upper
136	733742		
137	11.0	8.8	13.2
54	10.0	7.8	11.8
68	6.7	5.1	7.7

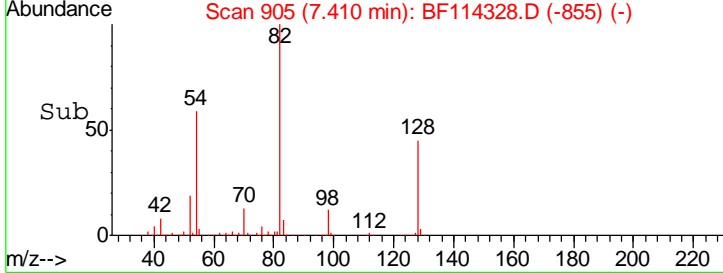
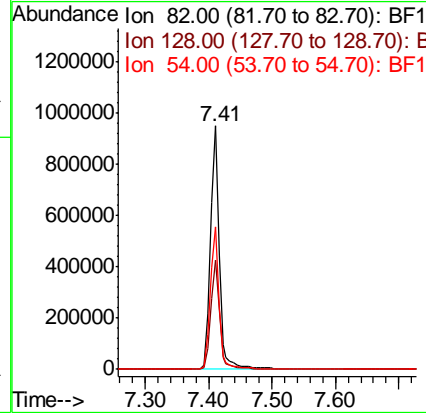
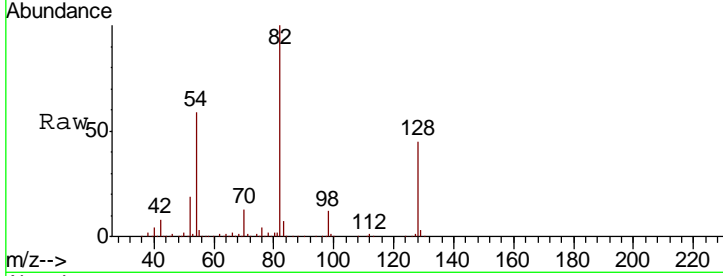




#23
 Nitrobenzene-d5
 Concen: 70.526 ng
 RT: 7.41 min Scan# 905
 Delta R.T. -0.01 min
 Lab File: BF114328.D
 Acq: 17 May 2019 00:37

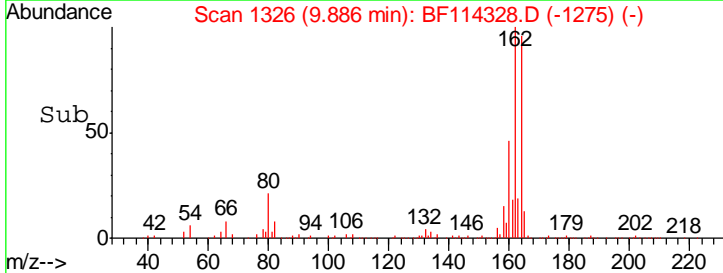
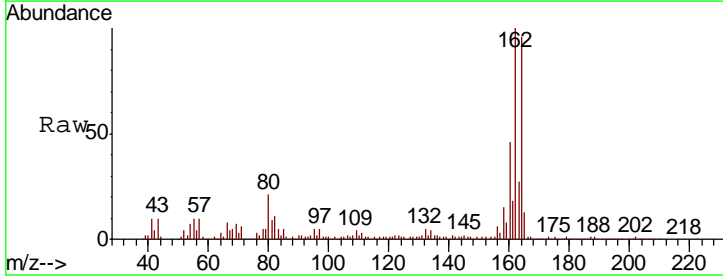
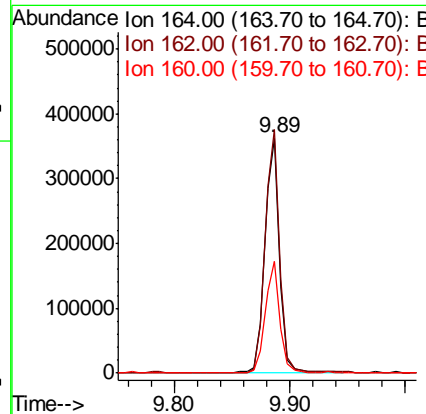
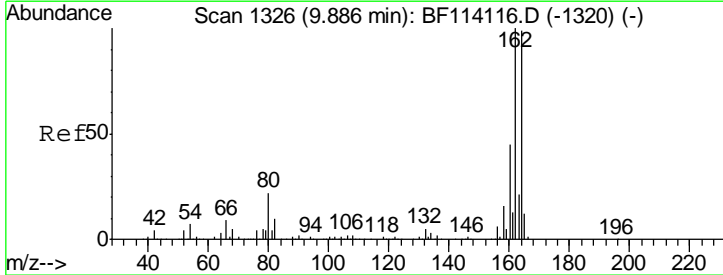
Instrument :
 BNA_F
ClientSampled :
 CONCRETE-D

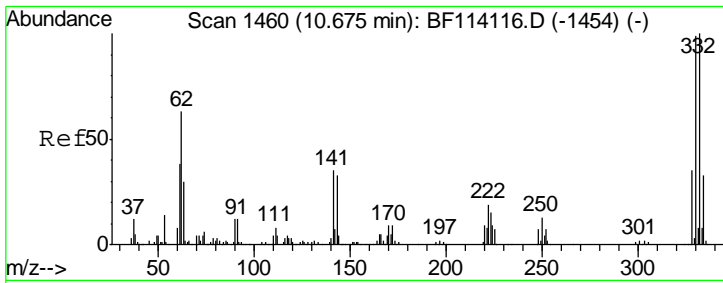
Tgt Ion	Resp	Lower	Upper
82	922090		
128	44.7	35.5	53.3
54	58.6	48.5	72.7



#39
 Acenaphthene-d10
 Concen: 20.000 ng
 RT: 9.89 min Scan# 1326
 Delta R.T. 0.00 min
 Lab File: BF114328.D
 Acq: 17 May 2019 00:37

Tgt Ion	Resp	Lower	Upper
164	321533		
162	103.7	80.6	120.8
160	47.5	36.5	54.7

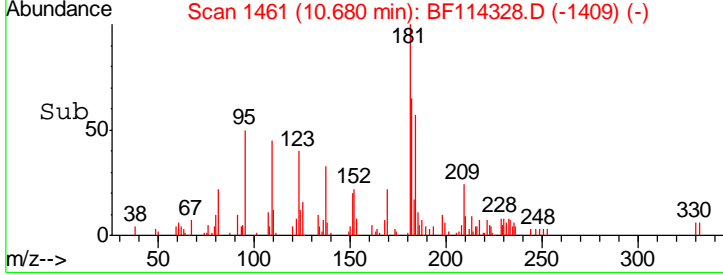
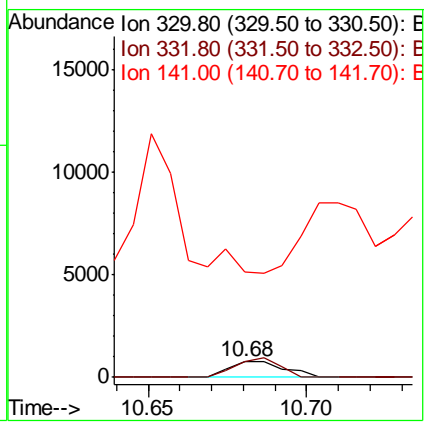
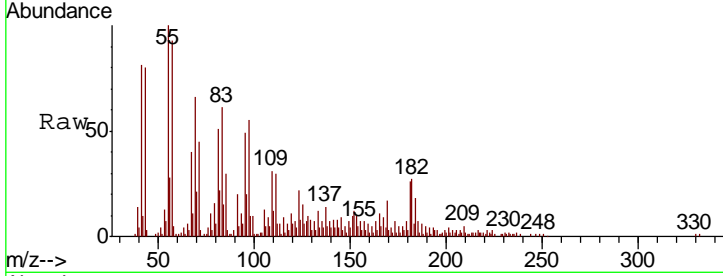




#42
 2,4,6-Tribromophenol
 Concen: 0.279 ng
 RT: 10.68 min Scan# 1461
 Delta R.T. 0.01 min
 Lab File: BF114328.D
 Acq: 17 May 2019 00:37

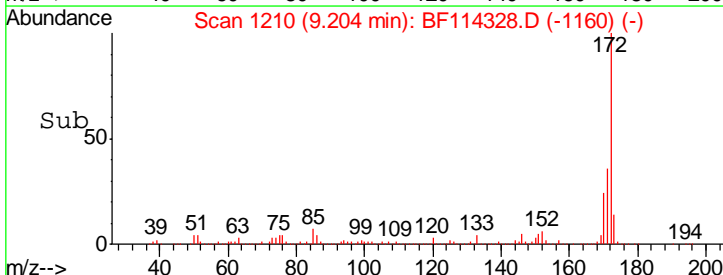
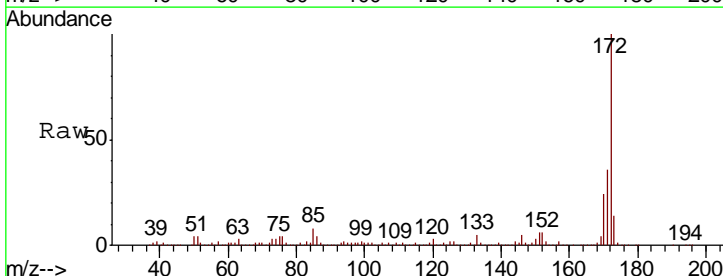
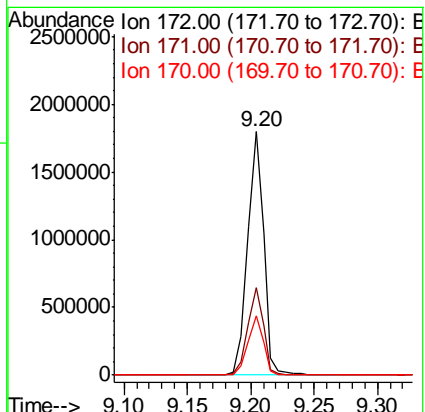
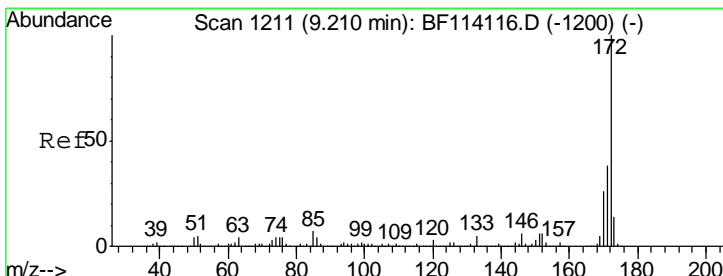
Instrument :
 BNA_F
ClientSampled :
 CONCRETE-D

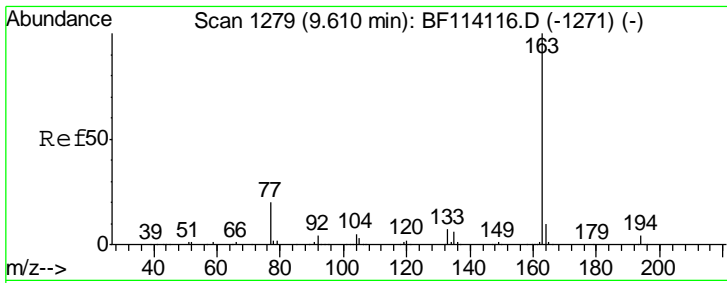
Tgt Ion	Resp	Lower	Upper
330	100		
332	97.6	81.4	122.2
141	0.0	26.6	40.0#



#45
 2-Fluorobiphenyl
 Concen: 74.397 ng
 RT: 9.20 min Scan# 1210
 Delta R.T. -0.01 min
 Lab File: BF114328.D
 Acq: 17 May 2019 00:37

Tgt Ion	Resp	Lower	Upper
172	100		
171	36.2	30.7	46.1
170	24.1	20.5	30.7

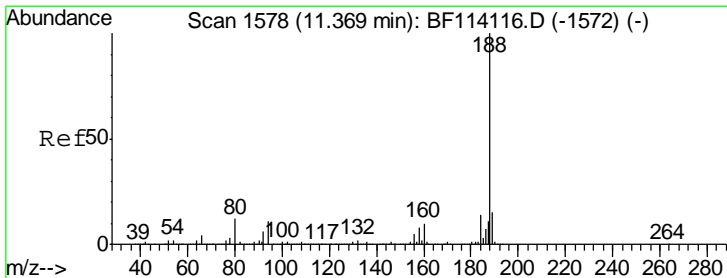
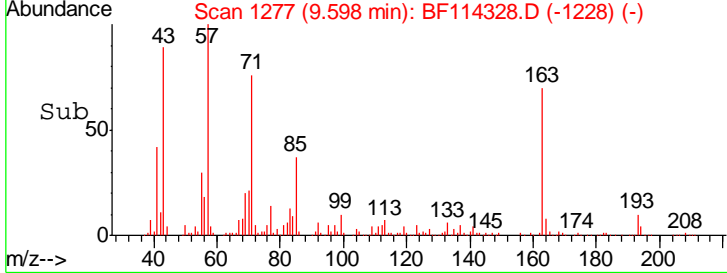
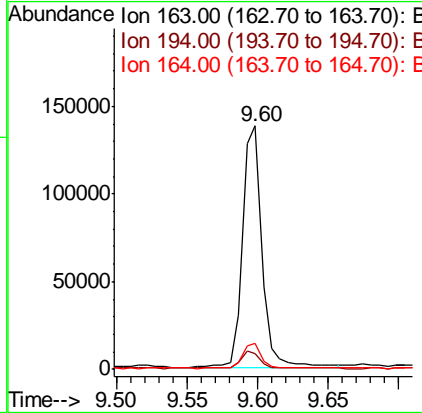
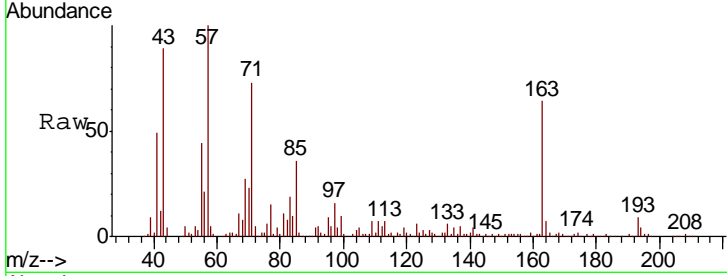




#50
 Dimethylphthalate
 Concen: 5.621 ng
 RT: 9.60 min Scan# 1277
 Delta R.T. -0.01 min
 Lab File: BF114328.D
 Acq: 17 May 2019 00:37

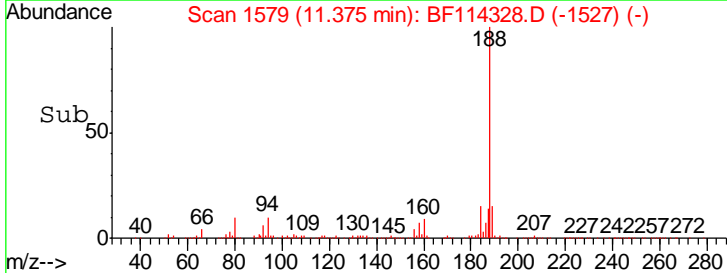
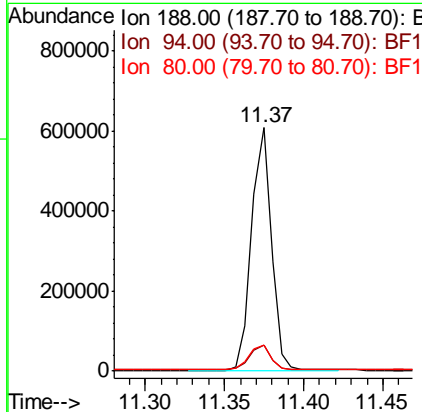
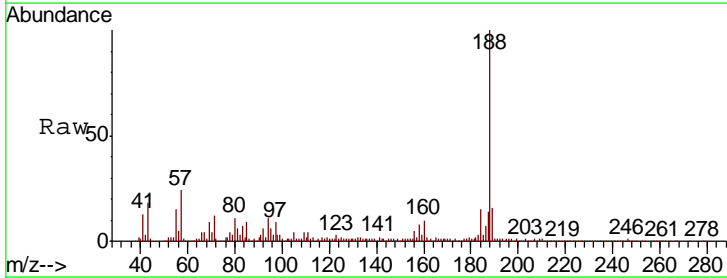
Instrument :
 BNA_F
ClientSampled :
 CONCRETE-D

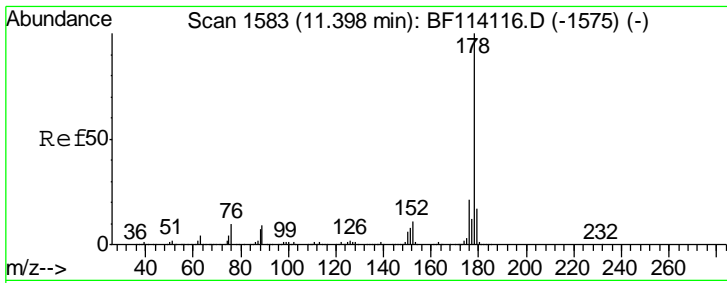
Tgt Ion	Resp	Lower	Upper
163	132675		
194	6.6	3.4	5.0#
164	10.9	8.2	12.2



#64
 Phenanthrene-d10
 Concen: 20.000 ng
 RT: 11.37 min Scan# 1579
 Delta R.T. 0.01 min
 Lab File: BF114328.D
 Acq: 17 May 2019 00:37

Tgt Ion	Resp	Lower	Upper
188	533139		
94	10.6	8.4	12.6
80	10.8	9.2	13.8

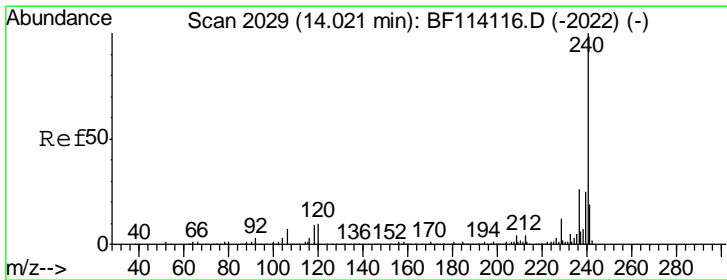
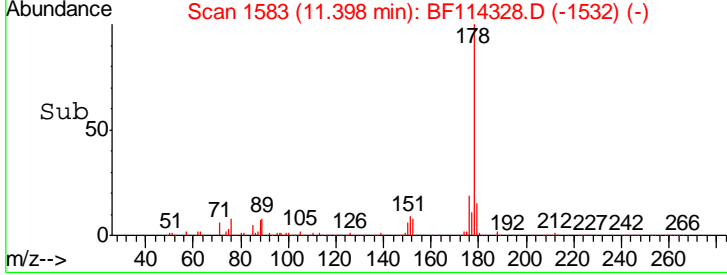
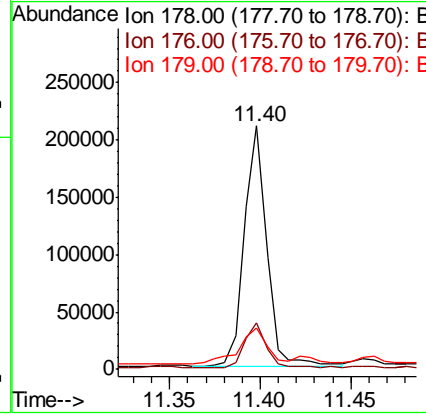
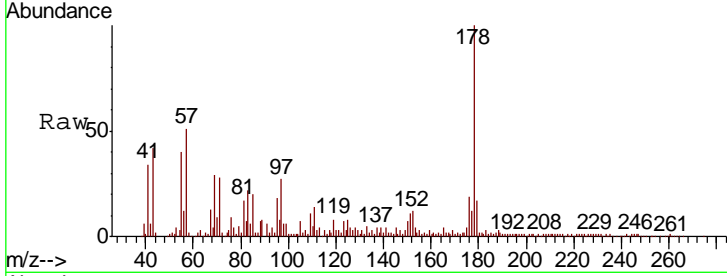




#71
 Phenanthrene
 Concen: 6.947 ng
 RT: 11.40 min Scan# 1583
 Delta R.T. 0.00 min
 Lab File: BF114328.D
 Acq: 17 May 2019 00:37

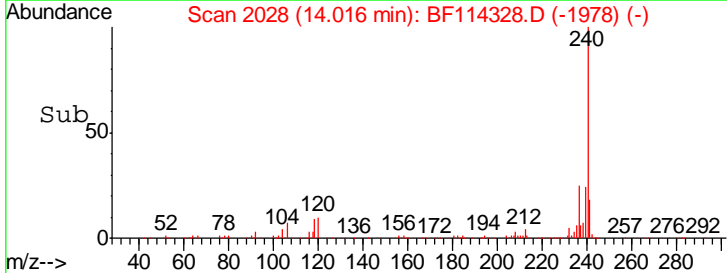
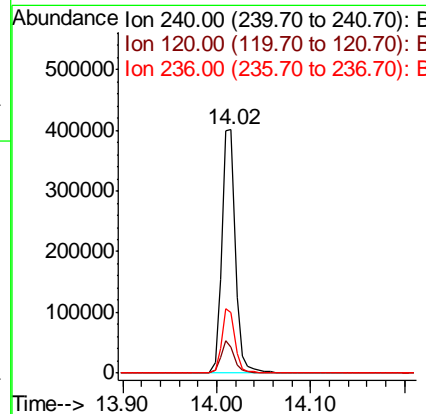
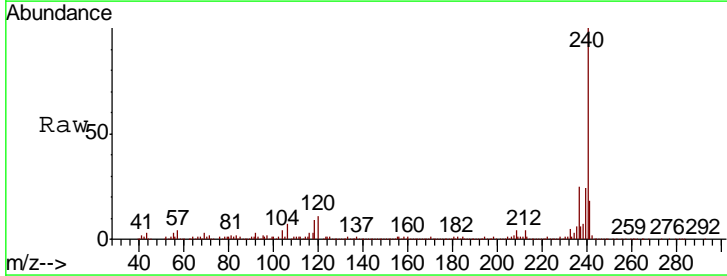
Instrument :
 BNA_F
 ClientSampled :
 CONCRETE-D

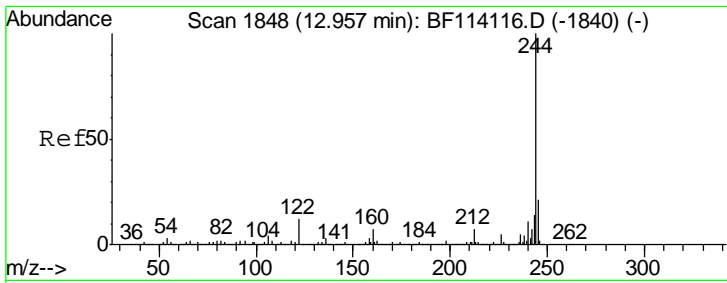
Tgt Ion	Resp	Lower	Upper
178	180198		
176	19.2	16.4	24.6
179	17.2	13.2	19.8



#76
 Chrysene-d12
 Concen: 20.000 ng
 RT: 14.02 min Scan# 2028
 Delta R.T. -0.01 min
 Lab File: BF114328.D
 Acq: 17 May 2019 00:37

Tgt Ion	Resp	Lower	Upper
240	411834		
120	10.6	8.3	12.5
236	25.0	20.8	31.2



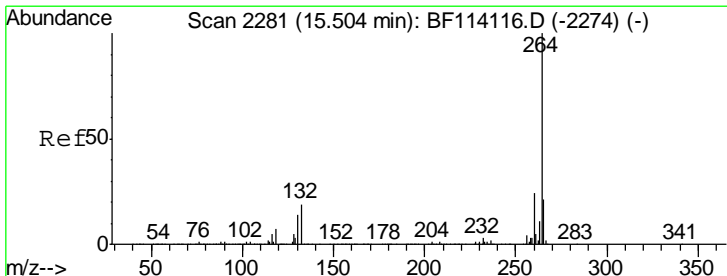
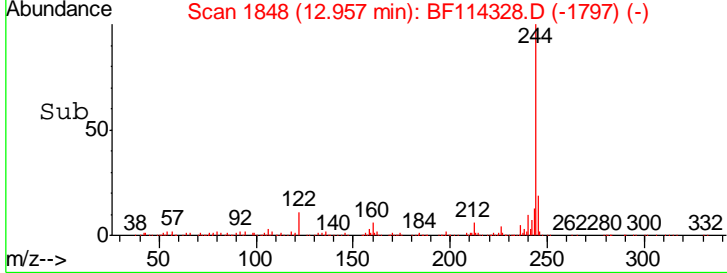
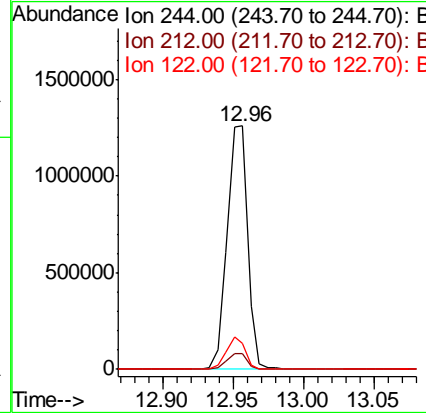
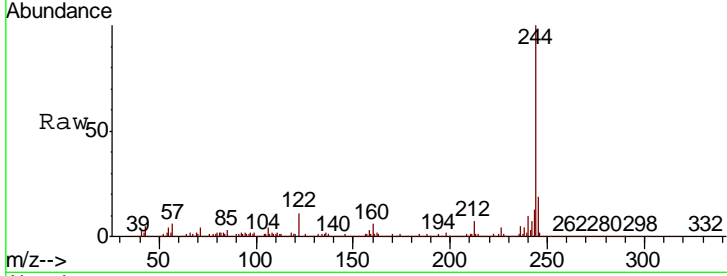


#79
 Terphenyl-d14
 Concen: 63.736 ng
 RT: 12.96 min Scan# 1848
 Delta R.T. 0.00 min
 Lab File: BF114328.D
 Acq: 17 May 2019 00:37

Instrument :
 BNA_F
 ClientSampled :
 CONCRETE-D

Tgt Ion: 244 Resp: 1273317

Ion	Ratio	Lower	Upper
244	100		
212	6.6	5.8	8.6
122	10.7	9.4	14.2



#87
 Perylene-d12
 Concen: 20.000 ng
 RT: 15.48 min Scan# 2277
 Delta R.T. -0.02 min
 Lab File: BF114328.D
 Acq: 17 May 2019 00:37

Tgt Ion: 264 Resp: 488653

Ion	Ratio	Lower	Upper
264	100		
260	25.1	19.4	29.0
265	21.8	16.9	25.3

