

Data Path : Z:\HPCHEM1\BNA F\DATA\BF051817\
 Data File : BF095242.D
 Acq On : 19 May 2017 1:50
 Operator : SJ/MA
 Sample : I3189-01
 Misc :
 ALS Vial : 21 Sample Multiplier: 1

Instrument :
 BNA_F
 ClientSampleId :

Quant Time: May 19 04:04:15 2017
 Quant Method : Z:\HPCHEM1\BNA F\METHODS\8270-BF050217.M
 Quant Title : ASP BNA STANDARDS FOR 5 POINT CALIBRATION
 QLast Update : Thu May 18 17:07:53 2017
 Response via : Initial Calibration

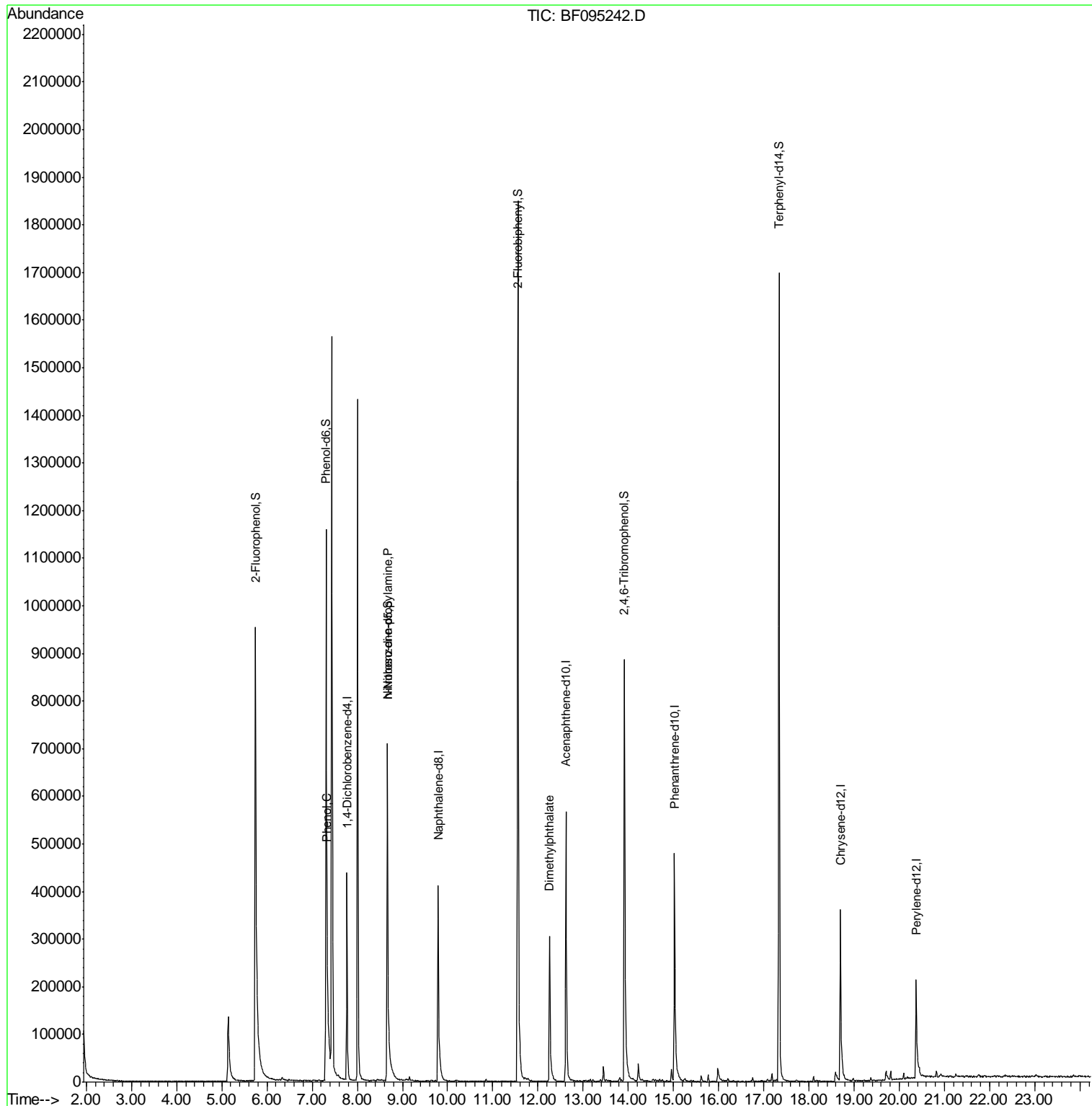
Internal Standards	R.T.	QIon	Response	Conc	Units	Dev(Min)
1) 1,4-Dichlorobenzene-d4	7.77	152	99761	20.00	ng	0.00
21) Naphthalene-d8	9.79	136	401979	20.00	ng	0.00
38) Acenaphthene-d10	12.62	164	194926	20.00	ng	0.00
63) Phenanthrene-d10	15.02	188	354999	20.00	ng	0.00
75) Chrysene-d12	18.69	240	235176	20.00	ng	0.00
86) Perylene-d12	20.37	264	158288	20.00	ng	0.00
System Monitoring Compounds						
5) 2-Fluorophenol	5.74	112	721369	120.56	ng	0.00
7) Phenol-d6	7.31	99	834185	116.19	ng	0.00
23) Nitrobenzene-d5	8.67	82	478621	75.08	ng	0.00
41) 2,4,6-Tribromophenol	13.92	330	191557	119.99	ng	0.00
44) 2-Fluorobiphenyl	11.55	172	990795	73.16	ng	0.00
78) Terphenyl-d14	17.34	244	742545	69.54	ng	0.00
Target Compounds						
10) Phenol	7.33	94	18705	2.47	ng	# 60
19) n-Nitroso-di-n-propylamine	8.67	70	57140	11.77	ng	# 73
49) Dimethylphthalate	12.26	163	269204	16.82	ng	98

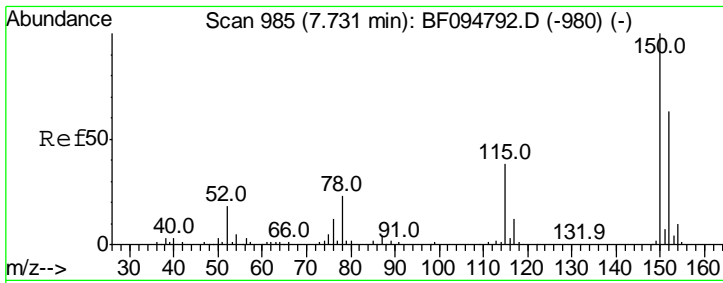
(#) = qualifier out of range (m) = manual integration (+) = signals summed

Data Path : Z:\HPCHEM1\BNA F\DATA\BF051817\
 Data File : BF095242.D
 Acq On : 19 May 2017 1:50
 Operator : SJ/MA
 Sample : I3189-01
 Misc :
 ALS Vial : 21 Sample Multiplier: 1

Instrument :
 BNA_F
 ClientSampled :

Quant Time: May 19 04:04:15 2017
 Quant Method : Z:\HPCHEM1\BNA F\METHODS\8270-BF050217.M
 Quant Title : ASP BNA STANDARDS FOR 5 POINT CALIBRATION
 QLast Update : Thu May 18 17:07:53 2017
 Response via : Initial Calibration



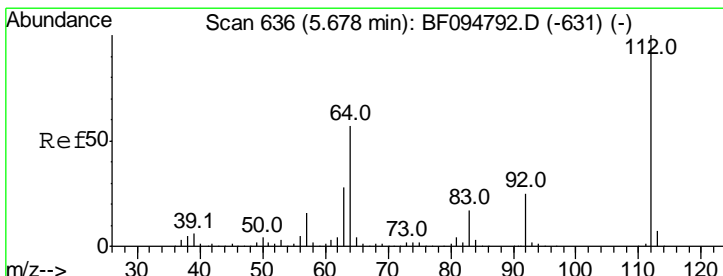
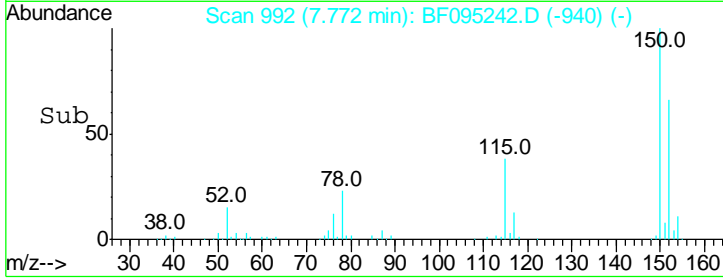
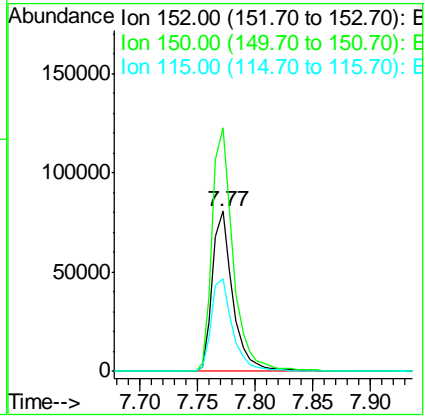
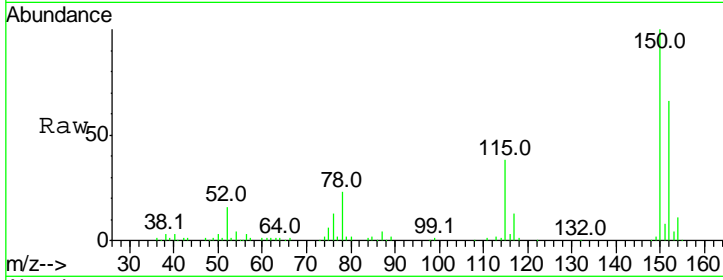


#1
 1,4-Dichlorobenzene-d4
 Concen: 20.00 ng
 RT: 7.77 min Scan# 992
 Delta R.T. 0.01 min
 Lab File: BF095242.D
 Acq: 19 May 2017 1:50

Instrument :
 BNA_F
 ClientSampled :

Tot Ion:152 Resp: 99761

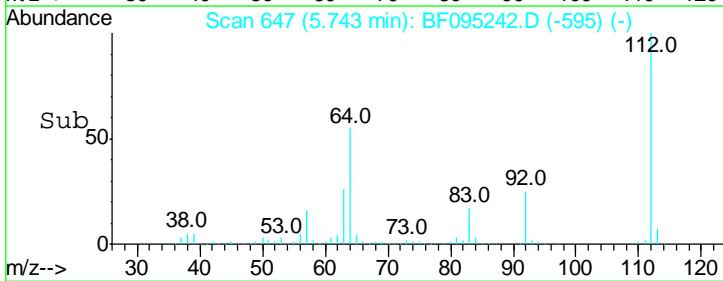
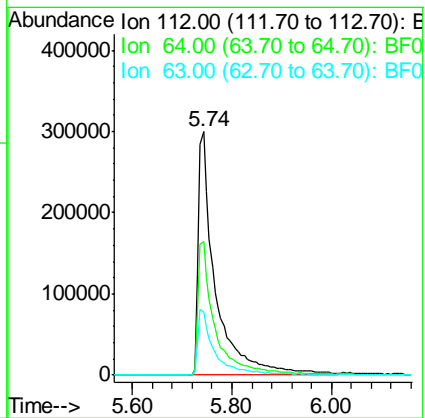
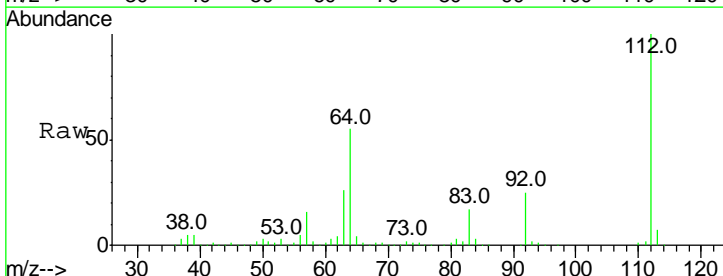
Ion	Ratio	Lower	Upper
152	100		
150	152.3	126.2	189.2
115	57.7	52.2	78.2

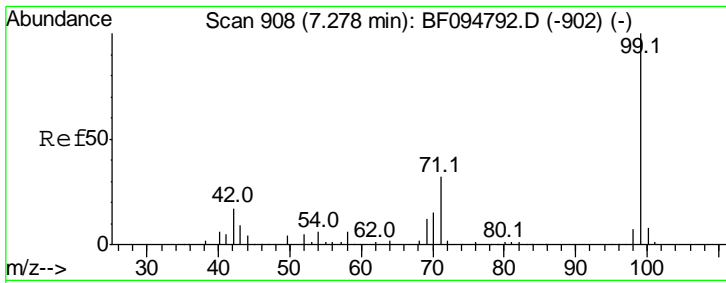


#5
 2-Fluorophenol
 Concen: 120.56 ng
 RT: 5.74 min Scan# 647
 Delta R.T. 0.01 min
 Lab File: BF095242.D
 Acq: 19 May 2017 1:50

Tgt Ion:112 Resp: 721369

Ion	Ratio	Lower	Upper
112	100		
64	54.6	46.0	69.0
63	26.1	23.4	35.0

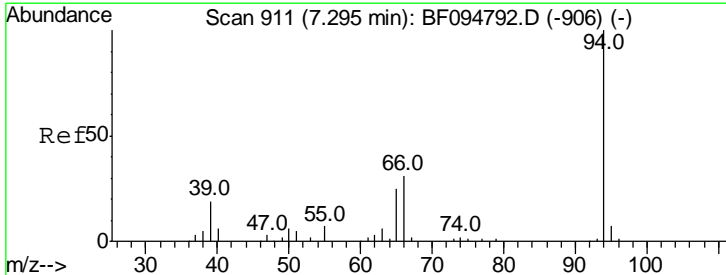
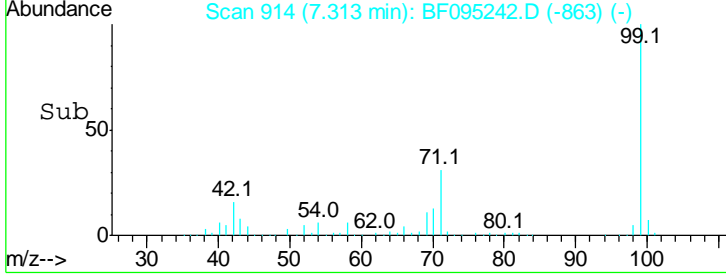
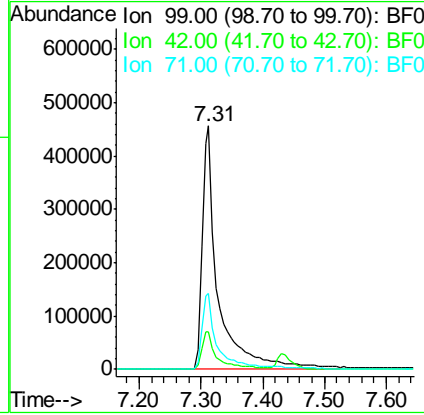
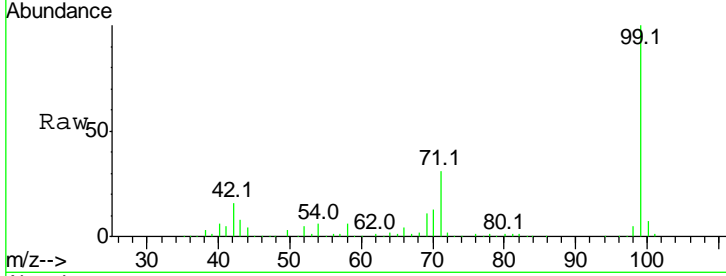




#7
 Phenol-d6
 Concen: 116.19 ng
 RT: 7.31 min Scan# 914
 Delta R.T. 0.00 min
 Lab File: BF095242.D
 Acq: 19 May 2017 1:50

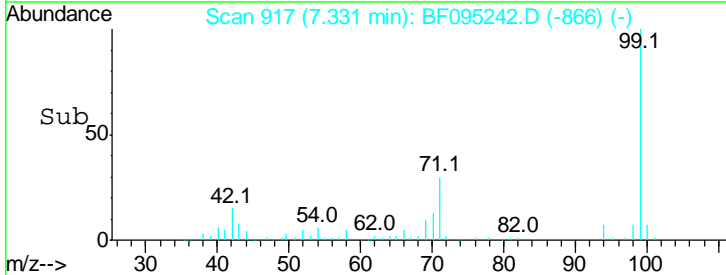
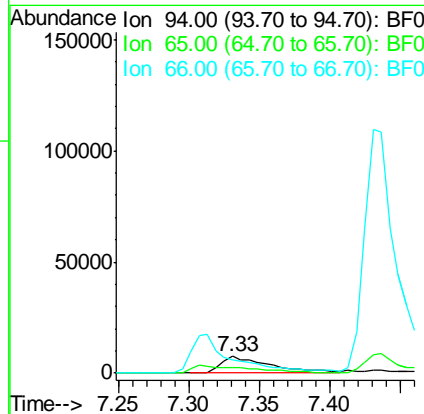
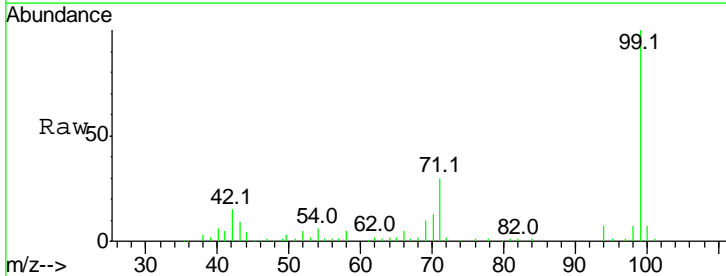
Instrument :
 BNA_F
 ClientSampled :

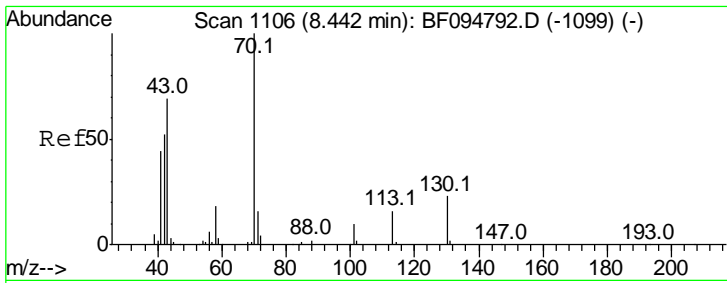
Tgt Ion	Resp	Lower	Upper
99	100		
42	15.5	13.5	20.3
71	31.3	24.5	36.7



#10
 Phenol
 Concen: 2.47 ng
 RT: 7.33 min Scan# 917
 Delta R.T. 0.00 min
 Lab File: BF095242.D
 Acq: 19 May 2017 1:50

Tgt Ion	Resp	Lower	Upper
94	100		
65	33.7	9.9	49.9
66	83.3	23.1	63.1#

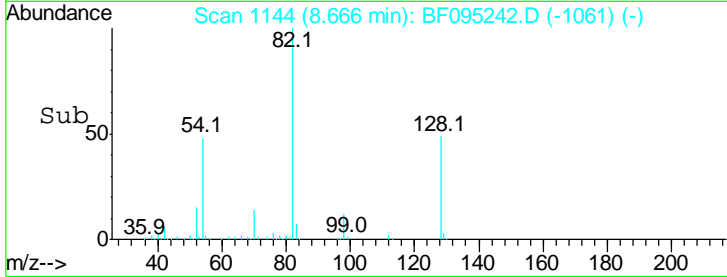
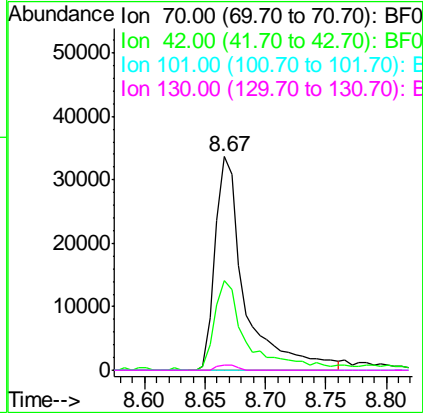
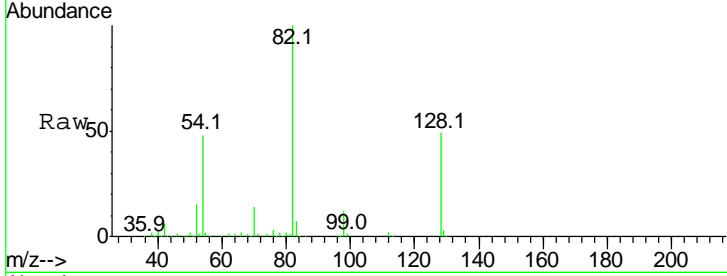




#19
 n-Nitroso-di-n-propylamine
 Concen: 11.77 ng
 RT: 8.67 min Scan# 1144
 Delta R.T. 0.19 min
 Lab File: BF095242.D
 Acq: 19 May 2017 1:50

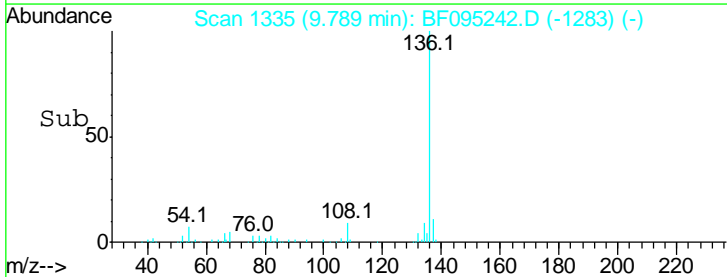
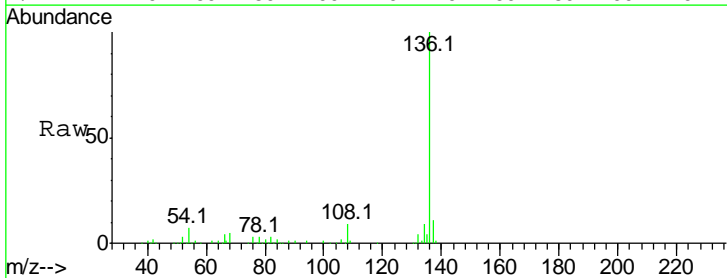
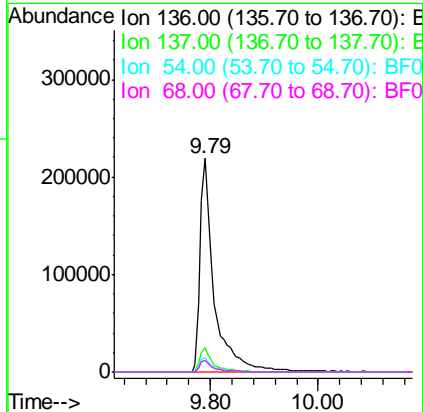
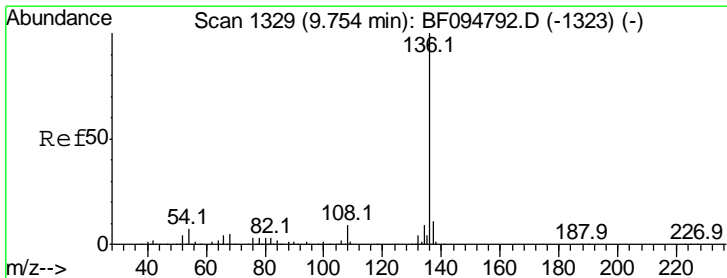
Instrument :
 BNA_F
 ClientSampleId :

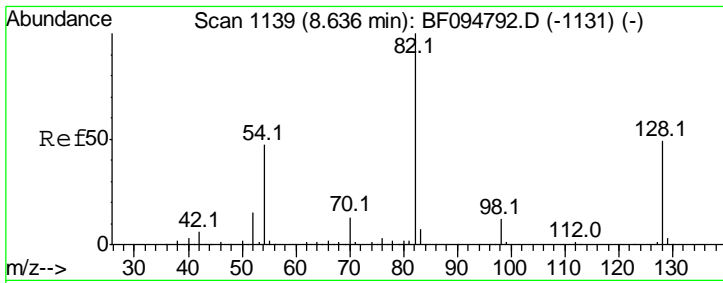
Tgt Ion	Resp	Lower	Upper
70	57140		
42	41.8	47.2	70.8#
101	0.0	7.2	10.8#
130	2.4	15.9	23.9#



#21
 Naphthalene-d8
 Concen: 20.00 ng
 RT: 9.79 min Scan# 1335
 Delta R.T. 0.01 min
 Lab File: BF095242.D
 Acq: 19 May 2017 1:50

Tgt Ion	Resp	Lower	Upper
136	401979		
137	11.2	8.5	12.7
54	6.7	4.9	7.3
68	5.5	4.1	6.1

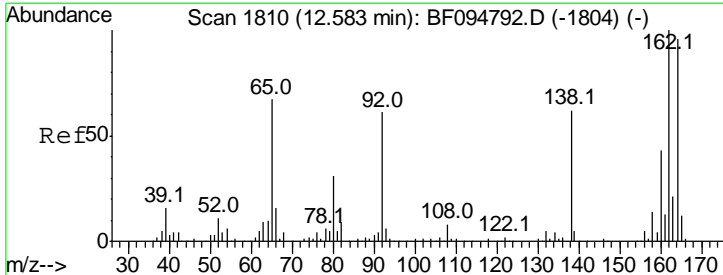
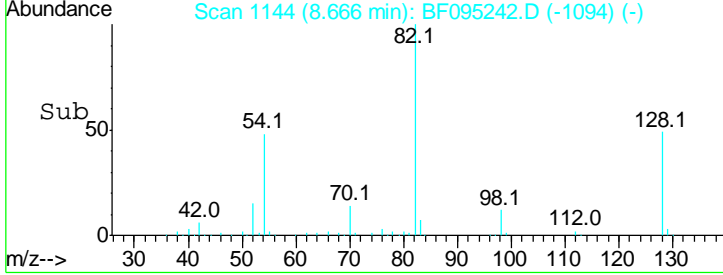
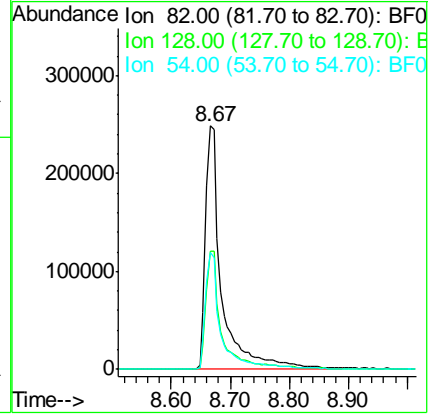
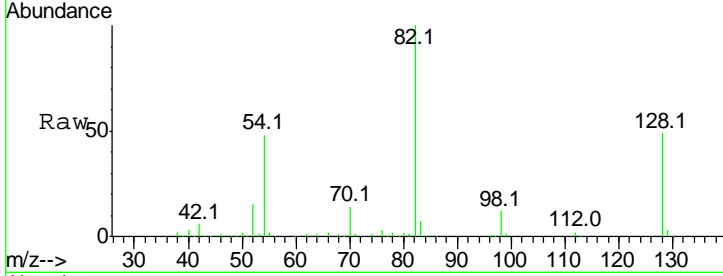




#23
 Nitrobenzene-d5
 Concen: 75.08 ng
 RT: 8.67 min Scan# 1144
 Delta R.T. -0.01 min
 Lab File: BF095242.D
 Acq: 19 May 2017 1:50

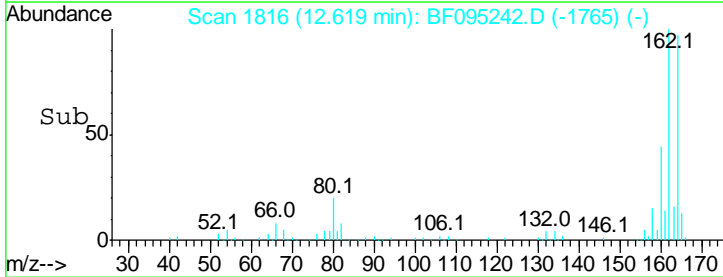
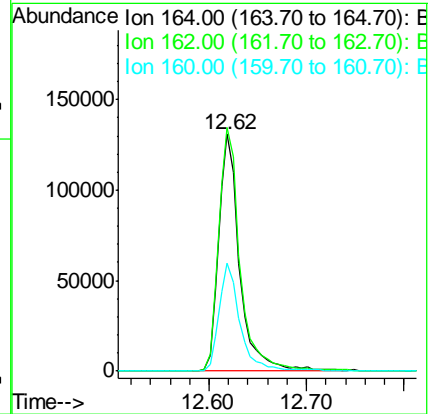
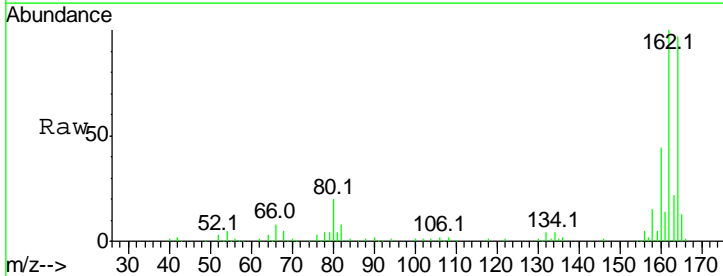
Instrument :
 BNA_F
 ClientSampled :

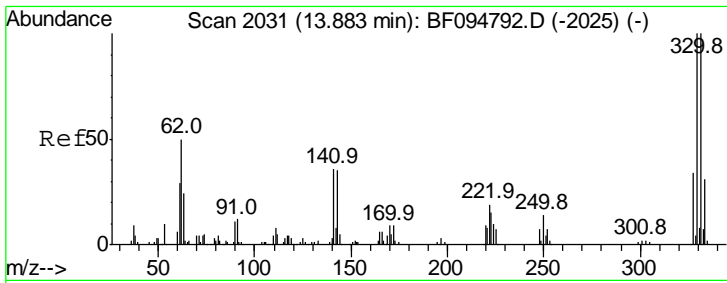
Tgt Ion	Resp	Lower	Upper
82	100		
128	48.5	34.0	51.0
54	48.2	42.2	63.2



#38
 Acenaphthene-d10
 Concen: 20.00 ng
 RT: 12.62 min Scan# 1816
 Delta R.T. 0.00 min
 Lab File: BF095242.D
 Acq: 19 May 2017 1:50

Tgt Ion	Resp	Lower	Upper
164	100		
162	102.7	82.6	123.8
160	45.3	36.2	54.2

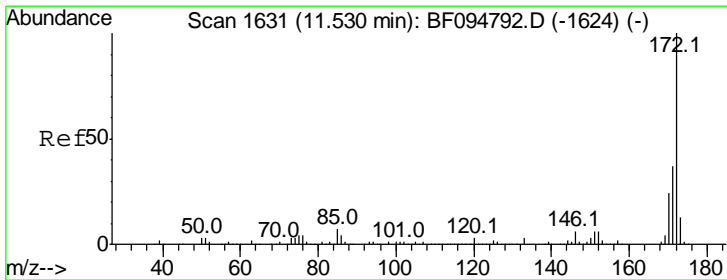
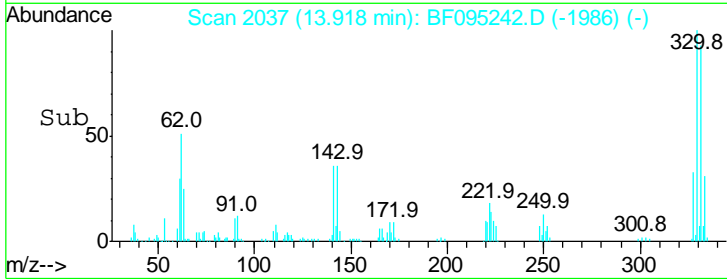
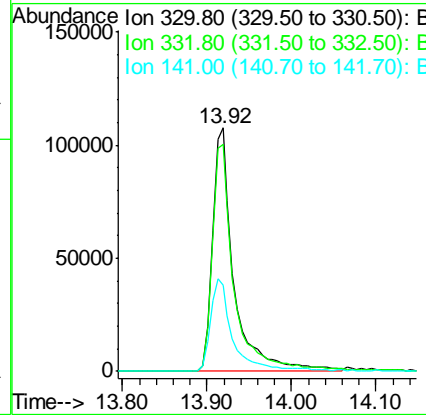
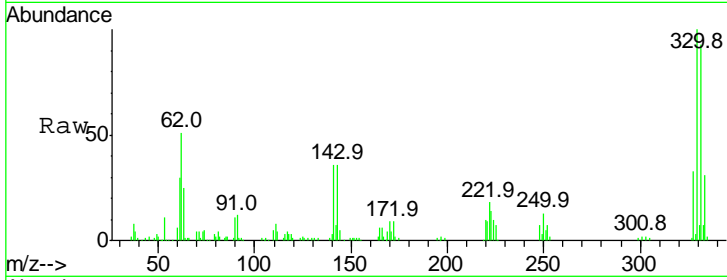




#41
 2,4,6-Tribromophenol
 Concen: 119.99 ng
 RT: 13.92 min Scan# 2037
 Delta R.T. 0.00 min
 Lab File: BF095242.D
 Acq: 19 May 2017 1:50

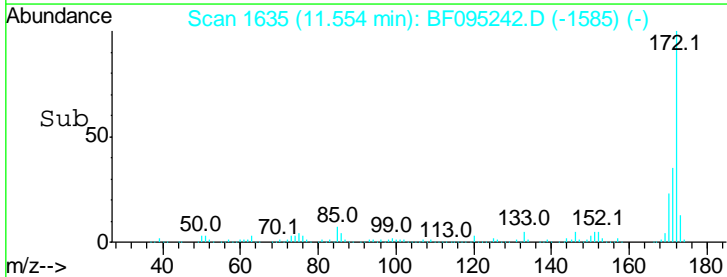
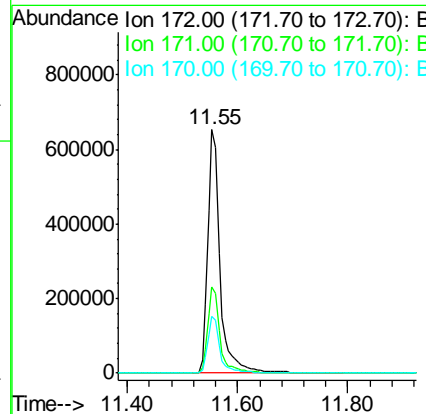
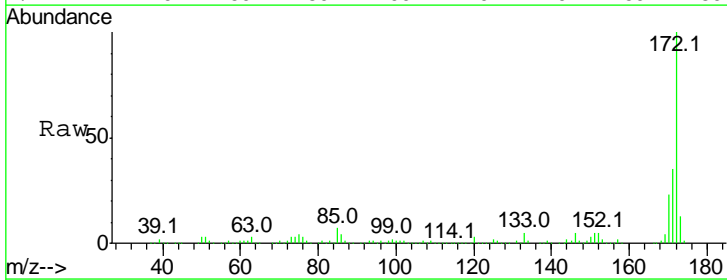
Instrument :
 BNA_F
 ClientSampled :

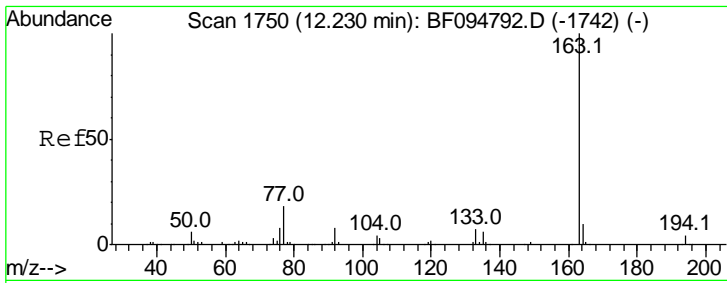
Tgt Ion	Resp	Lower	Upper
330	100		
332	95.6	76.6	115.0
141	39.6	31.4	47.2



#44
 2-Fluorobiphenyl
 Concen: 73.16 ng
 RT: 11.55 min Scan# 1635
 Delta R.T. -0.01 min
 Lab File: BF095242.D
 Acq: 19 May 2017 1:50

Tgt Ion	Resp	Lower	Upper
172	100		
171	35.5	29.6	44.4
170	23.3	19.8	29.8

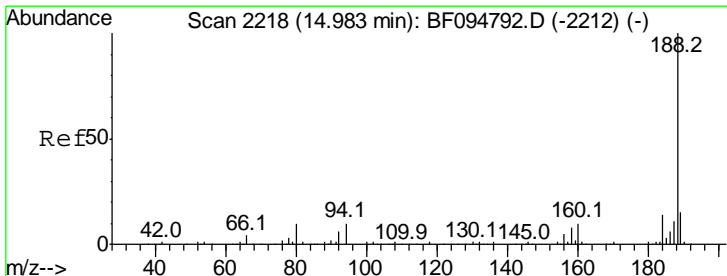
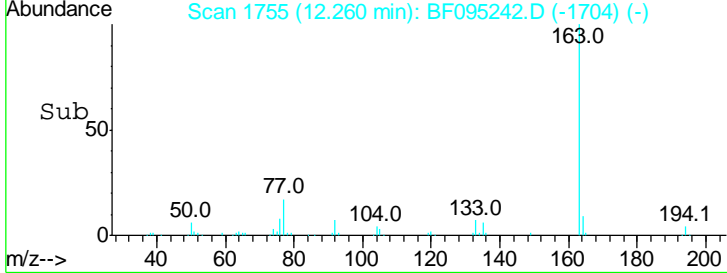
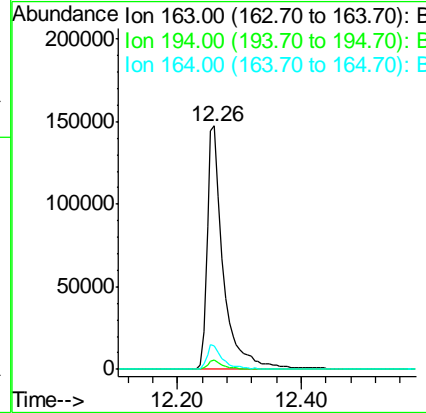
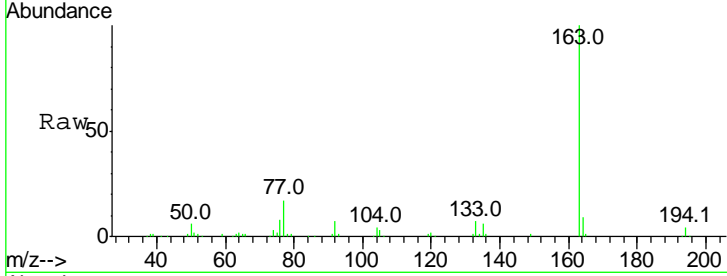




#49
 Dimethylphthalate
 Concen: 16.82 ng
 RT: 12.26 min Scan# 1755
 Delta R.T. 0.00 min
 Lab File: BF095242.D
 Acq: 19 May 2017 1:50

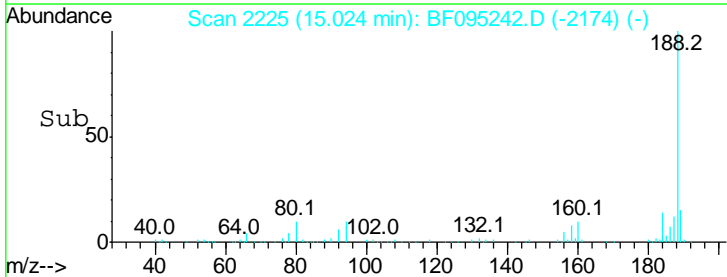
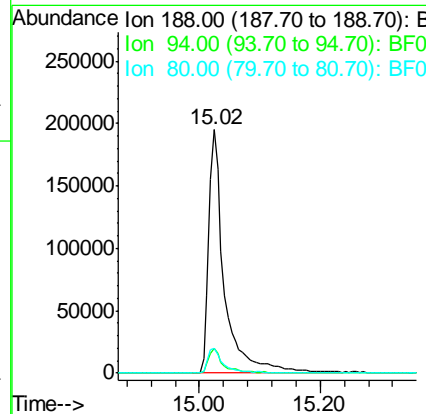
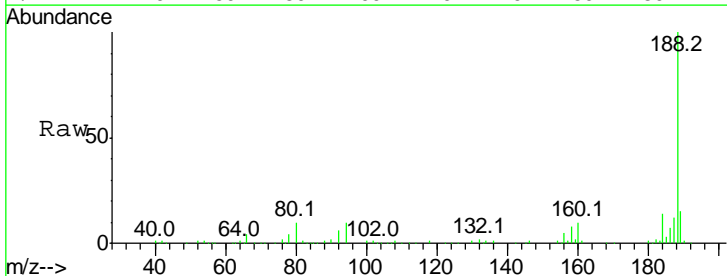
Instrument :
 BNA_F
 ClientSampled :

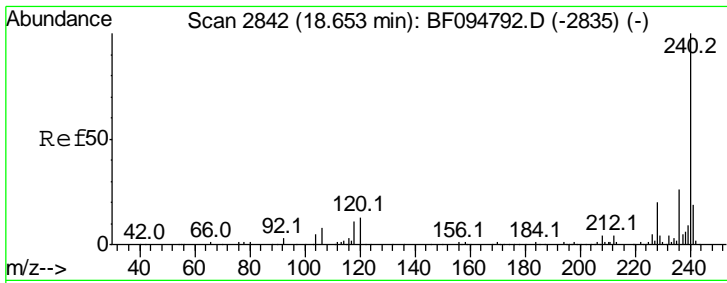
Tgt Ion	Resp	Lower	Upper
163	100		
194	3.7	2.6	4.0
164	9.4	8.4	12.6



#63
 Phenanthrene-d10
 Concen: 20.00 ng
 RT: 15.02 min Scan# 2225
 Delta R.T. 0.00 min
 Lab File: BF095242.D
 Acq: 19 May 2017 1:50

Tgt Ion	Resp	Lower	Upper
188	100		
94	10.4	9.4	14.2
80	10.3	10.2	15.2

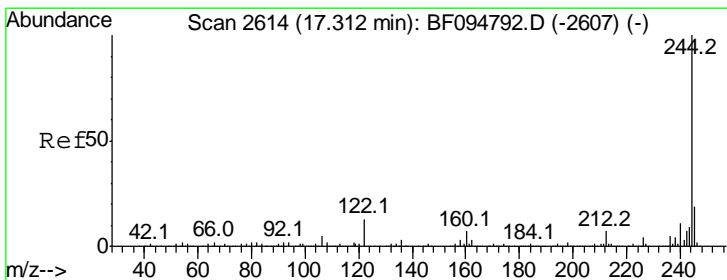
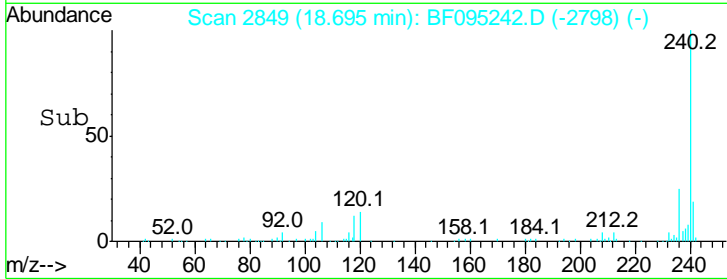
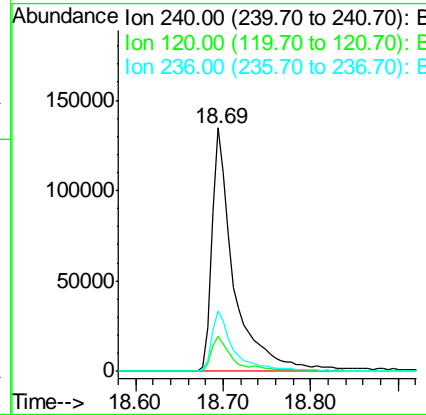
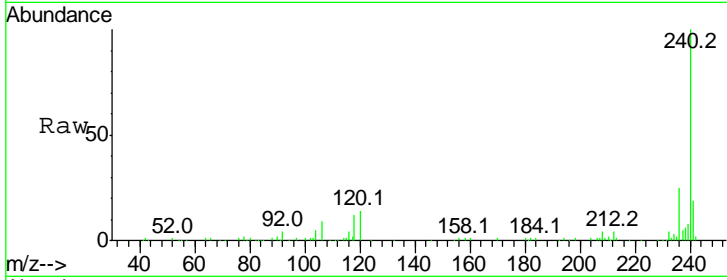




#75
 Chrysene-d12
 Concen: 20.00 ng
 RT: 18.69 min Scan# 2849
 Delta R.T. 0.00 min
 Lab File: BF095242.D
 Acq: 19 May 2017 1:50

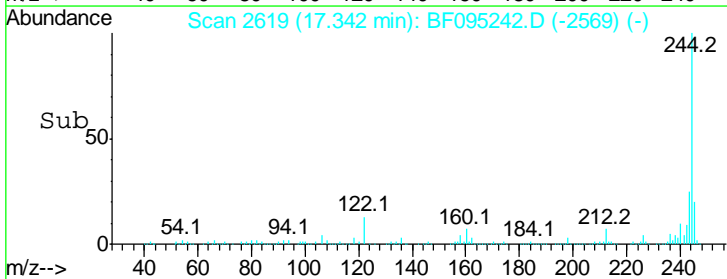
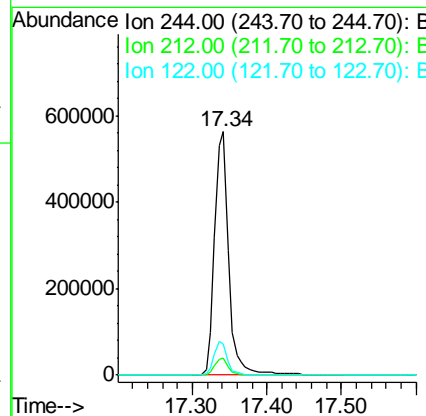
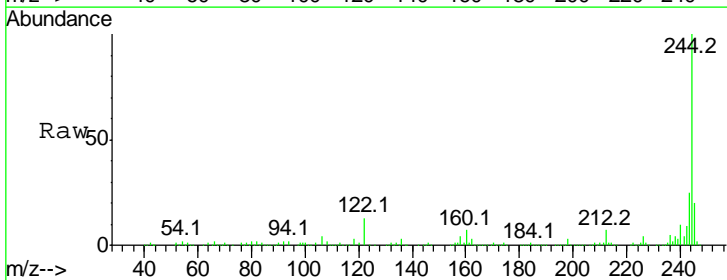
Instrument :
 BNA_F
 ClientSampled :

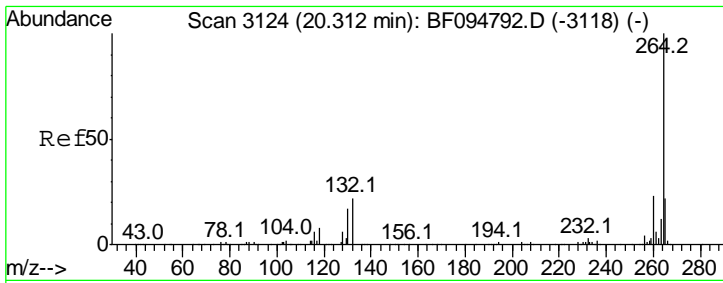
Tgt Ion	Resp	Lower	Upper
240	100		
120	14.3	5.8	8.8#
236	24.7	20.5	30.7



#78
 Terphenyl-d14
 Concen: 69.54 ng
 RT: 17.34 min Scan# 2619
 Delta R.T. -0.01 min
 Lab File: BF095242.D
 Acq: 19 May 2017 1:50

Tgt Ion	Resp	Lower	Upper
244	100		
212	7.0	6.0	9.0
122	12.9	10.3	15.5





#86
 Perylene-d12
 Concen: 20.00 ng
 RT: 20.37 min Scan# 3134
 Delta R.T. 0.01 min
 Lab File: BF095242.D
 Acq: 19 May 2017 1:50

Instrument :
 BNA_F
 ClientSampled :

Tot Ion	Ion	Ratio	Lower	Upper
264	264	100		
260	260	22.3	19.5	29.3
265	265	20.6	17.2	25.8

