

Data Path : Z:\HPCHEM1\BNA\_F\Data\BF052115\  
 Data File : BF079415.D  
 Acq On : 21 May 2015 21:03  
 Operator : TP/IZ  
 Sample : G2325-07  
 Misc :  
 ALS Vial : 15 Sample Multiplier: 1

Instrument :  
 BNA\_F  
 ClientSampleId :  
 MW4

Manual Integrations  
 APPROVED

apatel  
 5/22/2015 4:31:20 PM

Quant Time: May 22 01:23:40 2015  
 Quant Method : Z:\HPCHEM1\BNA\_F\METHODS\8270-BF043015.M  
 Quant Title : ASP BNA STANDARDS FOR 5 POINT CALIBRATION  
 QLast Update : Fri May 22 01:11:00 2015  
 Response via : Initial Calibration

Compound	R.T.	QIon	Response	Conc	Units	Dev(Min)
Internal Standards						
1) 1,4-Dichlorobenzene-d4	7.073	152	57030	20.00	ng	0.00
21) Naphthalene-d8	8.650	136	234570	20.00	ng	# 0.00
38) Acenaphthene-d10	10.811	164	115714	20.00	ng	-0.01
63) Phenanthrene-d10	12.651	188	226749	20.00	ng	0.00
75) Chrysene-d12	15.954	240	228620	20.00	ng	-0.01
86) Perylene-d12	17.771	264	231159	20.00	ng	-0.02
System Monitoring Compounds						
5) 2-Fluorophenol	5.347	112	205503m	62.03	ng	0.00
7) Phenol-d6	6.639	99	161531	36.89	ng	-0.01
23) Nitrobenzene-d5	7.770	82	375673	92.04	ng	0.00
41) 2,4,6-Tribromophenol	11.794	330	180801	144.43	ng	-0.01
44) 2-Fluorobiphenyl	9.999	172	797036	95.96	ng	0.00
78) Terphenyl-d14	14.651	244	831723	87.10	ng	0.00

Target Compounds Qvalue

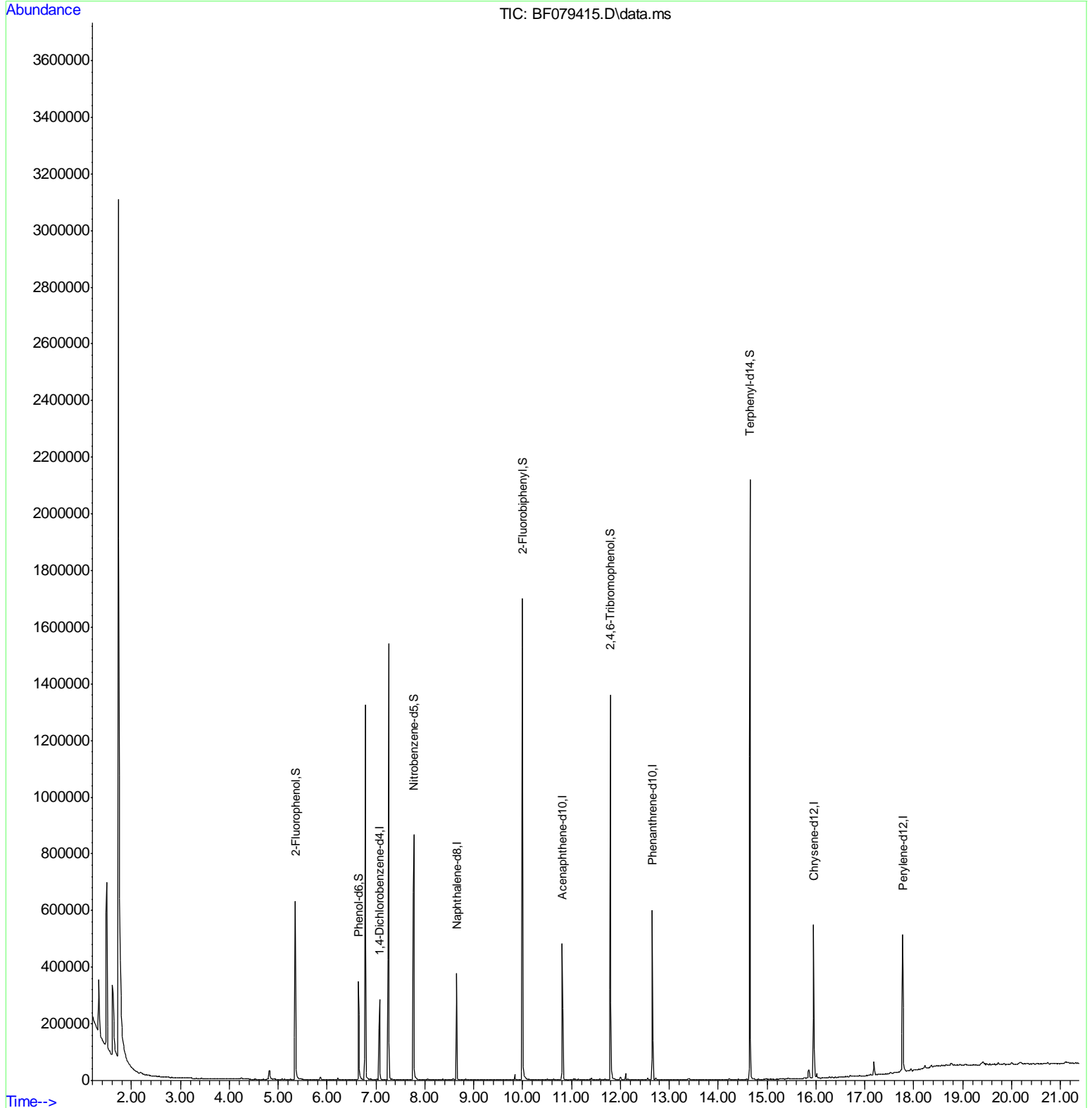
(#) = qualifier out of range (m) = manual integration (+) = signals summed

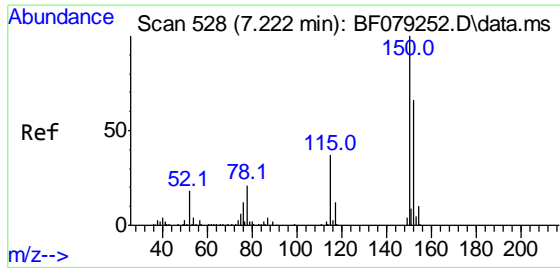
Data Path : Z:\HPCHEM1\BNA\_F\Data\BF052115\  
 Data File : BF079415.D  
 Acq On : 21 May 2015 21:03  
 Operator : TP/IZ  
 Sample : G2325-07  
 Misc :  
 ALS Vial : 15 Sample Multiplier: 1

Instrument :  
 BNA\_F  
 ClientSampled :  
 MW4

Manual Integrations  
 APPROVED  
 apatel  
 5/22/2015 4:31:20 PM

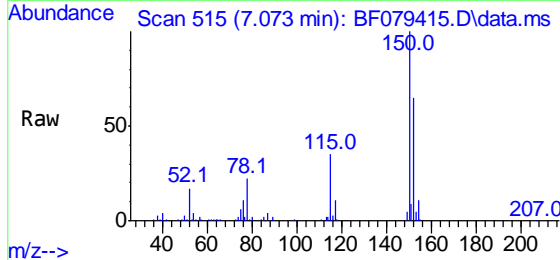
Quant Time: May 22 01:23:40 2015  
 Quant Method : Z:\HPCHEM1\BNA\_F\METHODS\8270-BF043015.M  
 Quant Title : ASP BNA STANDARDS FOR 5 POINT CALIBRATION  
 QLast Update : Fri May 22 01:11:00 2015  
 Response via : Initial Calibration





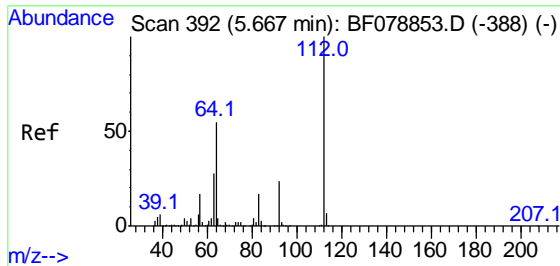
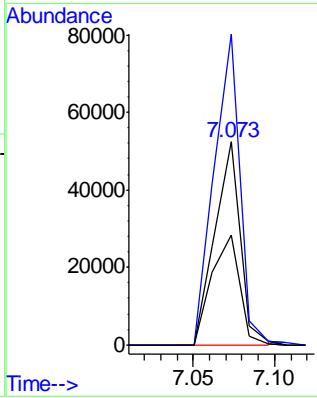
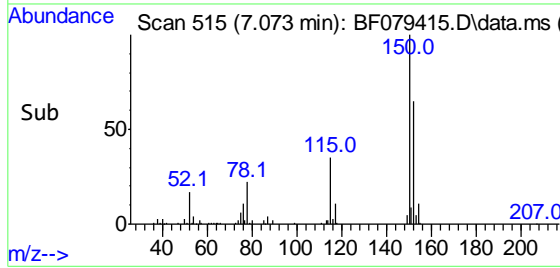
#1  
 1,4-Dichlorobenzene-d4  
 Concen: 20.00 ng  
 RT: 7.073 min Scan# 515  
 Delta R.T. 0.000 min  
 Lab File: BF079415.D  
 Acq: 21 May 2015 21:03

**Instrument :**  
 BNA\_F  
**ClientSampled :**  
 MW4

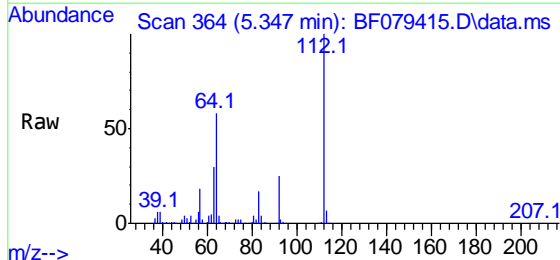


Tgt Ion:152 Resp: 57030  
 Ion Ratio Lower Upper  
 152 100  
 150 153.3 123.8 185.8  
 115 53.9 49.4 74.0

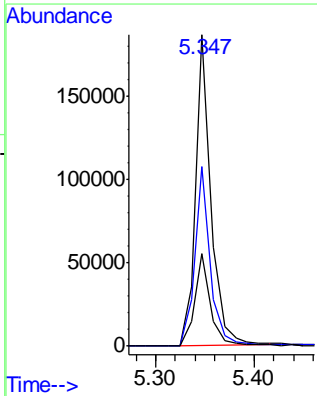
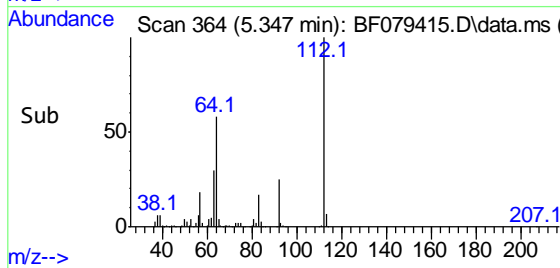
**Manual Integrations**  
**APPROVED**  
 apatel  
 5/22/2015 4:31:20 PM

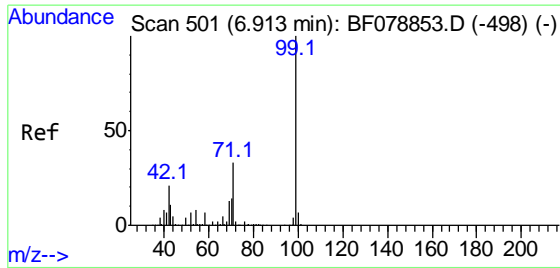


#5  
 2-Fluorophenol  
 Concen: 62.03 ng m  
 RT: 5.347 min Scan# 364  
 Delta R.T. 0.000 min  
 Lab File: BF079415.D  
 Acq: 21 May 2015 21:03



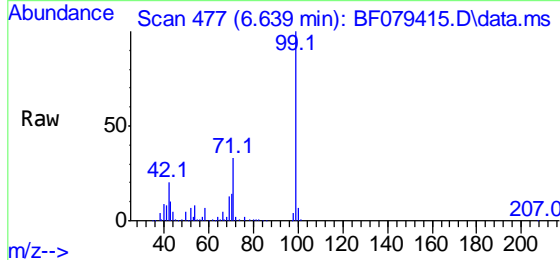
Tgt Ion:112 Resp: 205503  
 Ion Ratio Lower Upper  
 112 100  
 64 57.6 44.2 66.2  
 63 29.5 22.7 34.1





#7  
 Phenol-d6  
 Concen: 36.89 ng  
 RT: 6.639 min Scan# 477  
 Delta R.T. -0.011 min  
 Lab File: BF079415.D  
 Acq: 21 May 2015 21:03

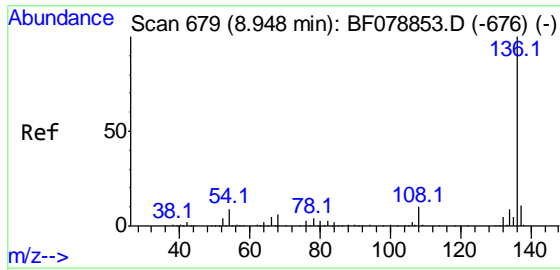
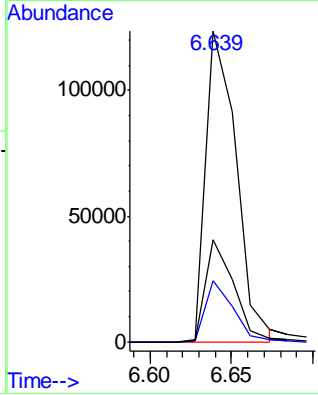
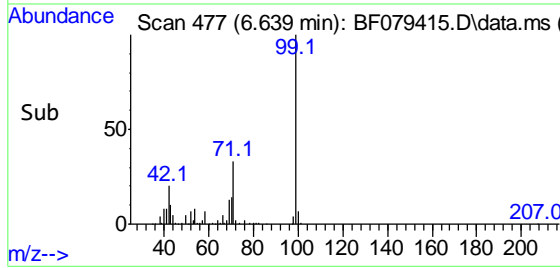
**Instrument :**  
 BNA\_F  
**ClientSampled :**  
 MW4



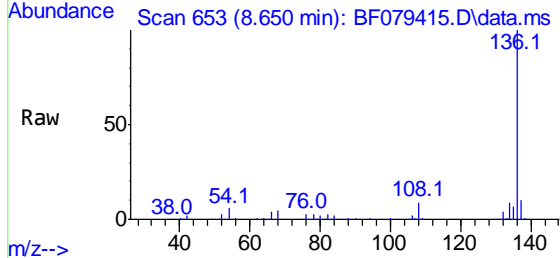
Tgt Ion: 99 Resp: 161531  

Ion	Ratio	Lower	Upper
99	100		
42	19.9	17.1	25.7
71	32.8	26.3	39.5

**Manual Integrations**  
**APPROVED**  
 apatel  
 5/22/2015 4:31:20 PM

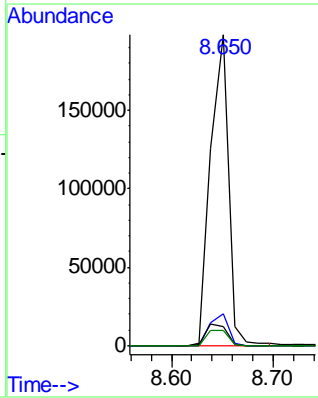
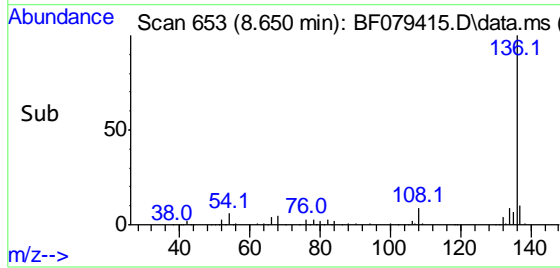


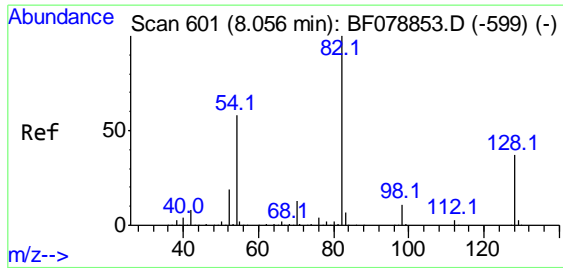
#21  
 Naphthalene-d8  
 Concen: 20.00 ng  
 RT: 8.650 min Scan# 653  
 Delta R.T. 0.000 min  
 Lab File: BF079415.D  
 Acq: 21 May 2015 21:03



Tgt Ion:136 Resp: 234570  

Ion	Ratio	Lower	Upper
136	100		
137	10.1	8.8	13.2
54	6.1	6.9	10.3#
68	4.7	4.9	7.3#





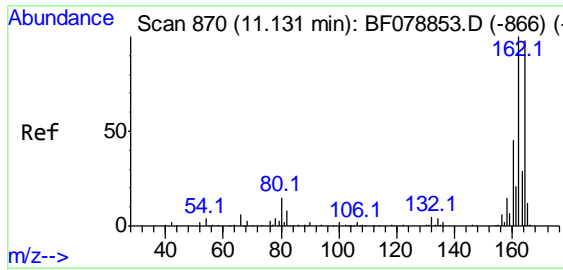
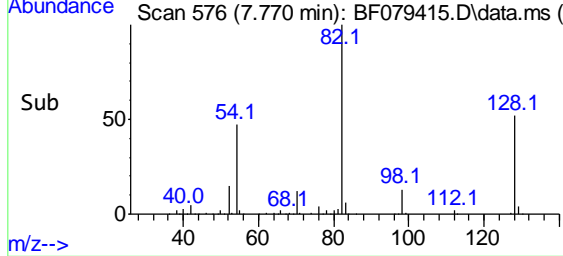
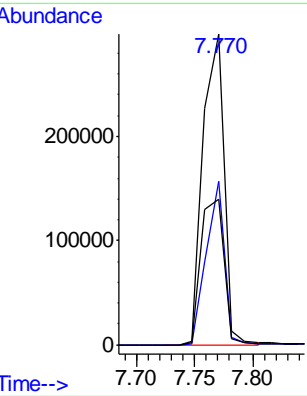
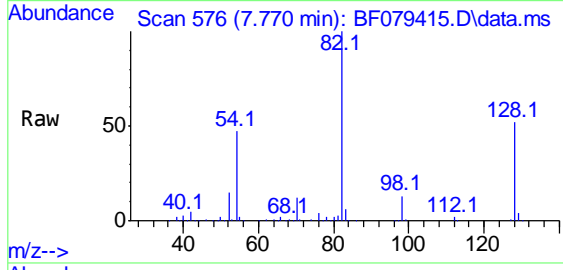
#23  
 Nitrobenzene-d5  
 Concen: 92.04 ng  
 RT: 7.770 min Scan# 576  
 Delta R.T. 0.000 min  
 Lab File: BF079415.D  
 Acq: 21 May 2015 21:03

**Instrument :**  
 BNA\_F  
**ClientSampled :**  
 MW4

Tgt Ion: 82 Resp: 375673

Ion	Ratio	Lower	Upper
82	100		
128	52.5	29.7	44.5#
54	47.0	46.2	69.4

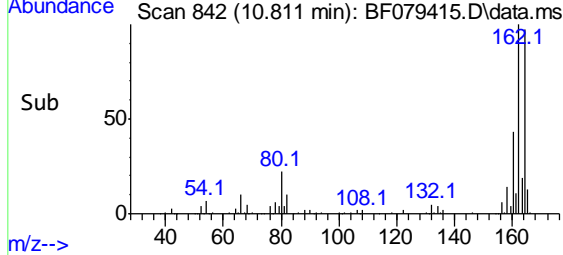
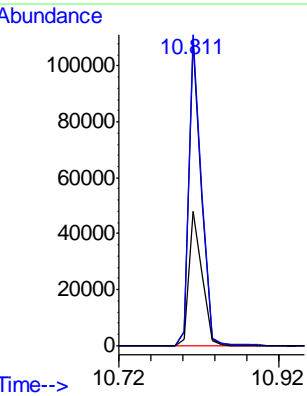
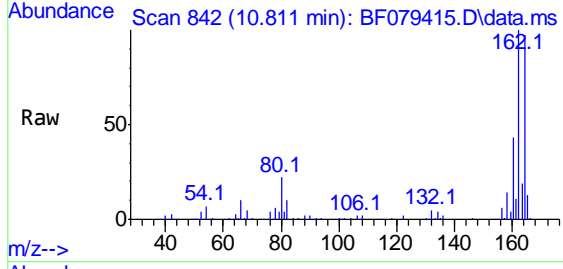
**Manual Integrations**  
**APPROVED**  
 apatel  
 5/22/2015 4:31:20 PM

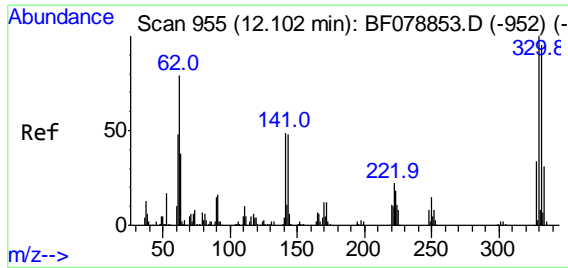


#38  
 Acenaphthene-d10  
 Concen: 20.00 ng  
 RT: 10.811 min Scan# 842  
 Delta R.T. -0.011 min  
 Lab File: BF079415.D  
 Acq: 21 May 2015 21:03

Tgt Ion: 164 Resp: 115714

Ion	Ratio	Lower	Upper
164	100		
162	102.6	81.4	122.0
160	44.5	36.6	54.8





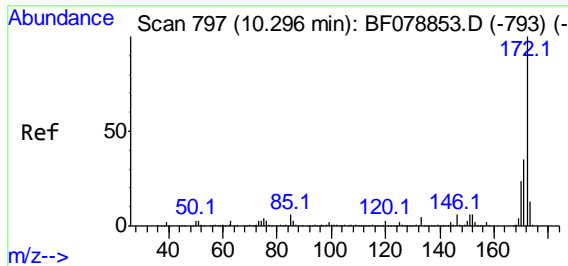
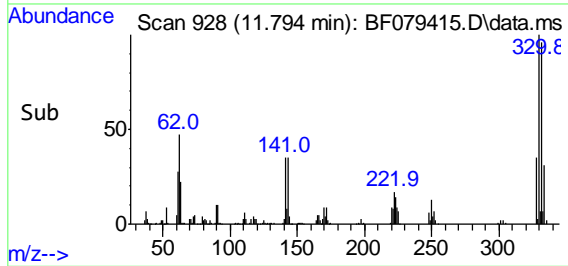
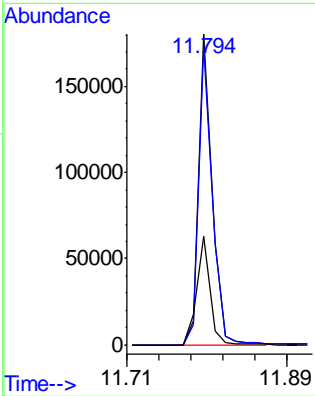
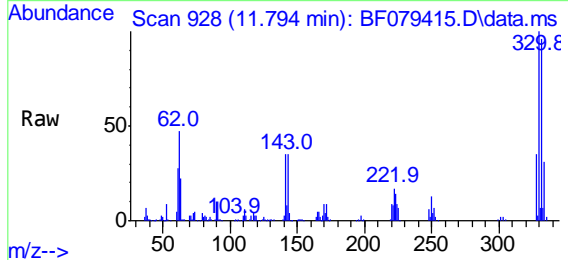
#41  
 2,4,6-Tribromophenol  
 Concen: 144.43 ng  
 RT: 11.794 min Scan# 928  
 Delta R.T. -0.011 min  
 Lab File: BF079415.D  
 Acq: 21 May 2015 21:03

**Instrument :**  
 BNA\_F  
**ClientSampled :**  
 MW4

Tgt Ion: 330 Resp: 180801

Ion	Ratio	Lower	Upper
330	100		
332	96.4	76.9	115.3
141	34.7	27.8	41.8

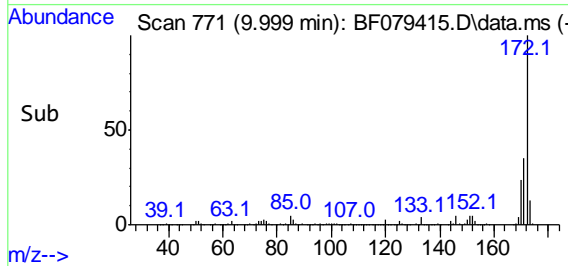
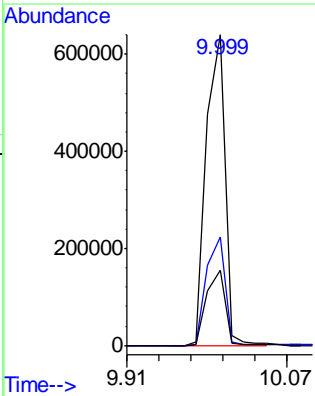
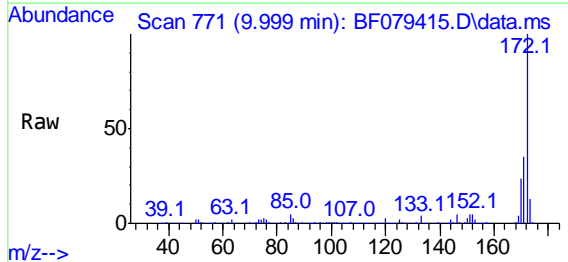
**Manual Integrations**  
**APPROVED**  
 apatel  
 5/22/2015 4:31:20 PM

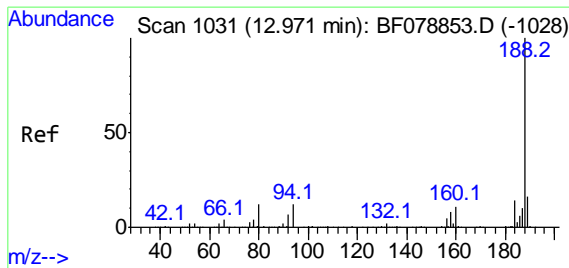


#44  
 2-Fluorobiphenyl  
 Concen: 95.96 ng  
 RT: 9.999 min Scan# 771  
 Delta R.T. 0.000 min  
 Lab File: BF079415.D  
 Acq: 21 May 2015 21:03

Tgt Ion: 172 Resp: 797036

Ion	Ratio	Lower	Upper
172	100		
171	35.0	28.3	42.5
170	24.3	19.4	29.2



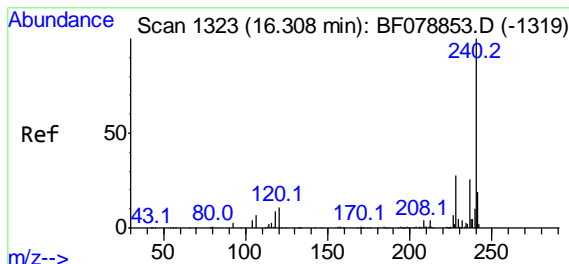
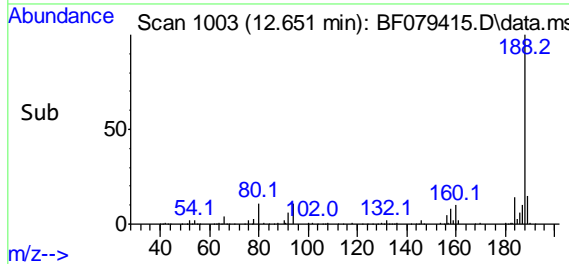
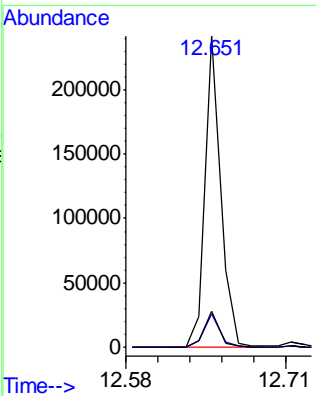
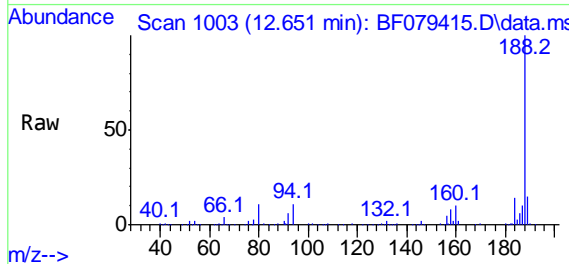


#63  
 Phenanthrene-d10  
 Concen: 20.00 ng  
 RT: 12.651 min Scan# 1003  
 Delta R.T. 0.000 min  
 Lab File: BF079415.D  
 Acq: 21 May 2015 21:03

**Instrument :**  
 BNA\_F  
**ClientSampled :**  
 MW4

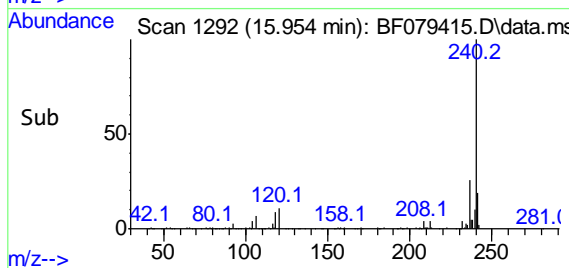
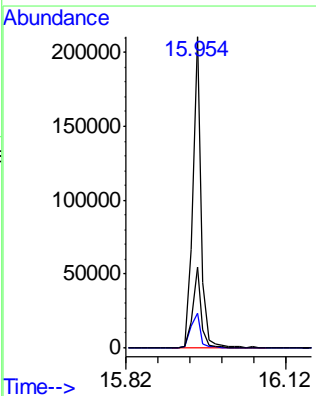
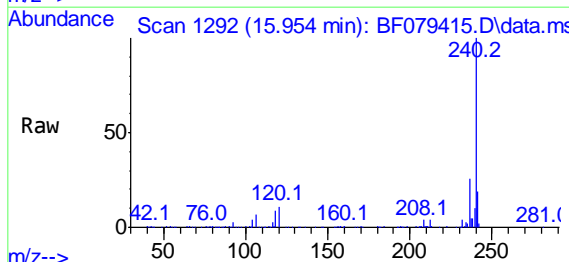
Tgt Ion	Resp	Lower	Upper
188	100		
94	10.5	9.4	14.0
80	11.5	9.8	14.6

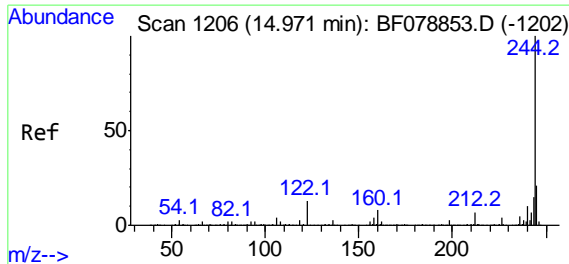
**Manual Integrations**  
**APPROVED**  
 apatel  
 5/22/2015 4:31:20 PM



#75  
 Chrysene-d12  
 Concen: 20.00 ng  
 RT: 15.954 min Scan# 1292  
 Delta R.T. -0.011 min  
 Lab File: BF079415.D  
 Acq: 21 May 2015 21:03

Tgt Ion	Resp	Lower	Upper
240	100		
120	11.2	8.6	12.8
236	25.9	21.0	31.6





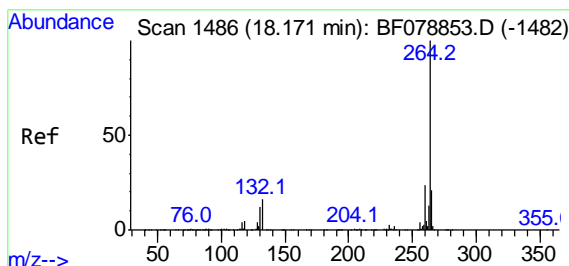
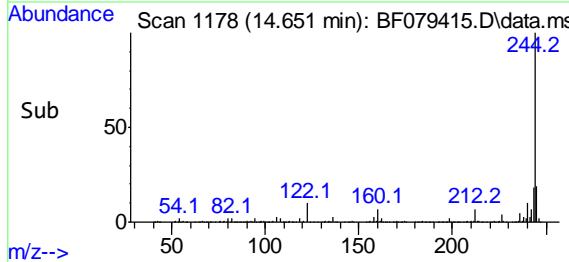
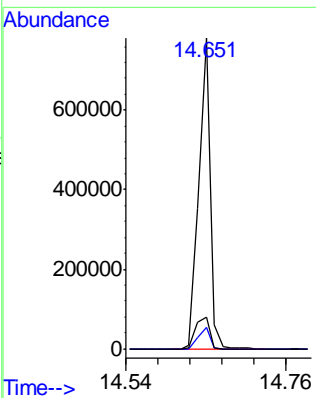
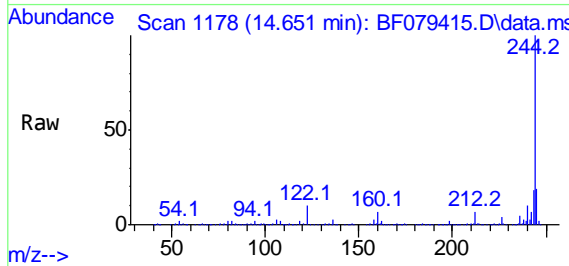
#78  
 Terphenyl-d14  
 Concen: 87.10 ng  
 RT: 14.651 min Scan# 1178  
 Delta R.T. 0.000 min  
 Lab File: BF079415.D  
 Acq: 21 May 2015 21:03

**Instrument :**  
 BNA\_F  
**ClientSampled :**  
 MW4

Tgt Ion:244 Resp: 831723

Ion	Ratio	Lower	Upper
244	100		
212	6.7	5.6	8.4
122	10.3	10.5	15.7#

**Manual Integrations**  
**APPROVED**  
 apatel  
 5/22/2015 4:31:20 PM



#86  
 Perylene-d12  
 Concen: 20.00 ng  
 RT: 17.771 min Scan# 1451  
 Delta R.T. -0.023 min  
 Lab File: BF079415.D  
 Acq: 21 May 2015 21:03

Tgt Ion:264 Resp: 231159

Ion	Ratio	Lower	Upper
264	100		
260	24.2	19.2	28.8
265	22.2	17.2	25.8

