

Data Path : Z:\HPCHEM1\BNA F\DATA\BF052217\
 Data File : BF095342.D
 Acq On : 23 May 2017 8:17
 Operator : SJ/MA
 Sample : I3249-18
 Misc :
 ALS Vial : 34 Sample Multiplier: 1

Instrument :
 BNA_F
 ClientSampleId :
 SB-12COMP

Quant Time: May 23 11:37:08 2017
 Quant Method : Z:\HPCHEM1\BNA F\METHODS\8270-BF050217.M
 Quant Title : ASP BNA STANDARDS FOR 5 POINT CALIBRATION
 QLast Update : Thu May 18 17:07:53 2017
 Response via : Initial Calibration

Internal Standards	R.T.	QIon	Response	Conc	Units	Dev(Min)
1) 1,4-Dichlorobenzene-d4	7.76	152	88103	20.00	ng	0.00
21) Naphthalene-d8	9.78	136	343254	20.00	ng	0.00
38) Acenaphthene-d10	12.61	164	154831	20.00	ng	0.00
63) Phenanthrene-d10	15.02	188	222348	20.00	ng	0.00
75) Chrysene-d12	18.69	240	192596	20.00	ng	0.00
86) Perylene-d12	20.37	264	155857	20.00	ng	0.00
System Monitoring Compounds						
5) 2-Fluorophenol	5.74	112	686650	129.94	ng	0.00
7) Phenol-d6	7.31	99	769414	121.35	ng	0.00
23) Nitrobenzene-d5	8.66	82	505305	92.83	ng	-0.01
41) 2,4,6-Tribromophenol	13.91	330	154288	121.68	ng	0.00
44) 2-Fluorobiphenyl	11.55	172	1010186	93.91	ng	-0.01
78) Terphenyl-d14	17.33	244	684726	78.31	ng	-0.02

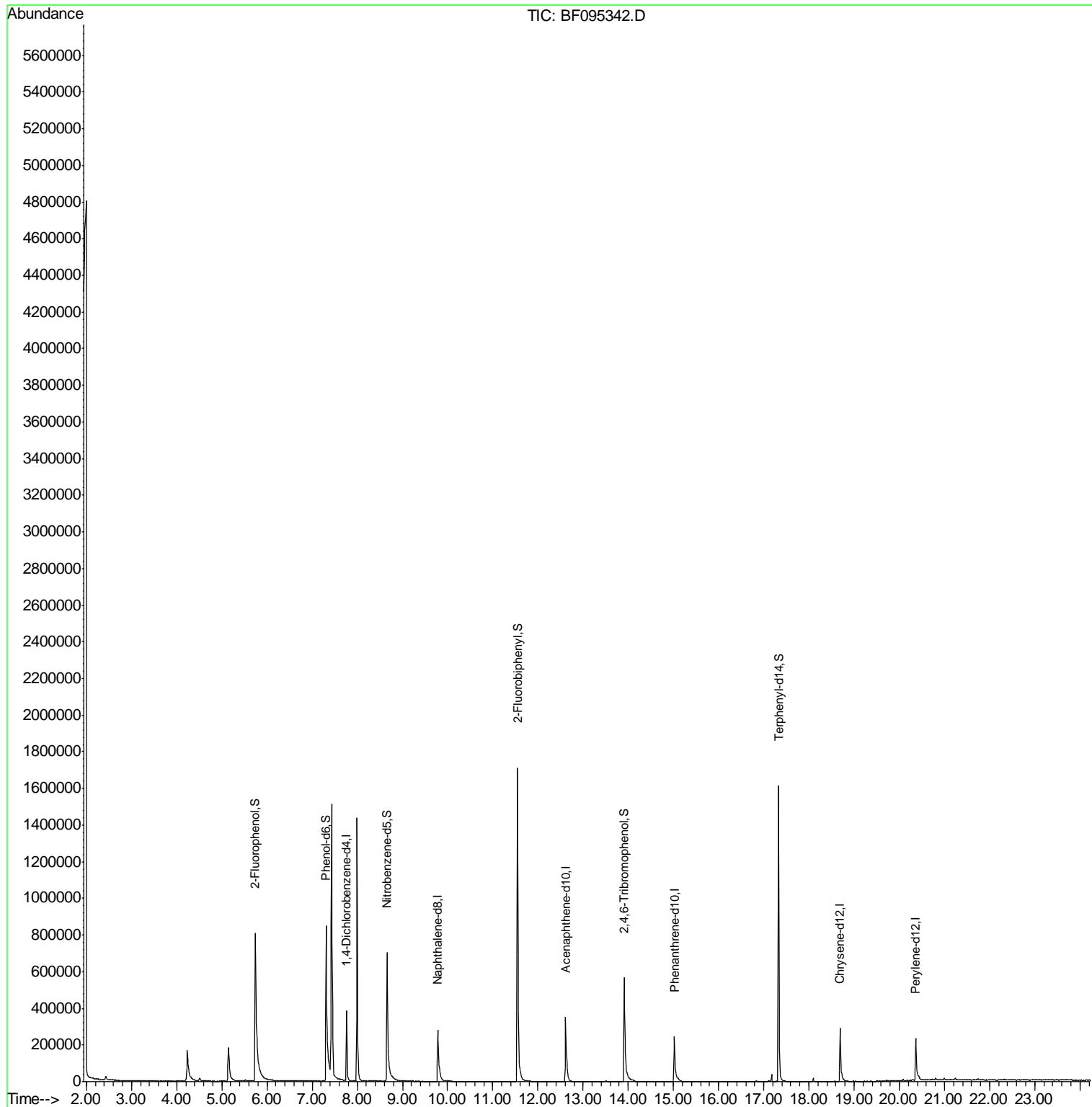
Target Compounds Qvalue

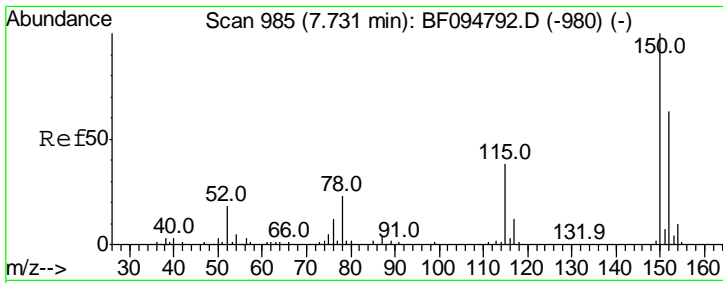
(#) = qualifier out of range (m) = manual integration (+) = signals summed

Data Path : Z:\HPCHEM1\BNA F\DATA\BF052217\
 Data File : BF095342.D
 Acq On : 23 May 2017 8:17
 Operator : SJ/MA
 Sample : I3249-18
 Misc :
 ALS Vial : 34 Sample Multiplier: 1

Instrument :
 BNA_F
 ClientSampleId :
 SB-12COMP

Quant Time: May 23 11:37:08 2017
 Quant Method : Z:\HPCHEM1\BNA F\METHODS\8270-BF050217.M
 Quant Title : ASP BNA STANDARDS FOR 5 POINT CALIBRATION
 QLast Update : Thu May 18 17:07:53 2017
 Response via : Initial Calibration



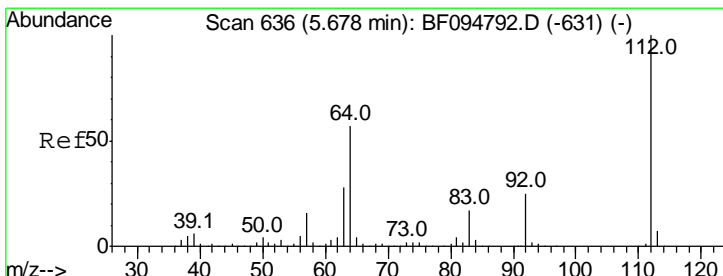
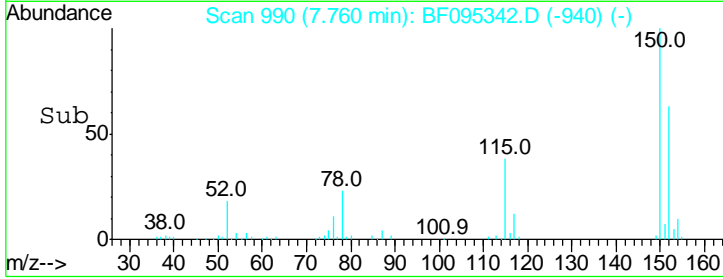
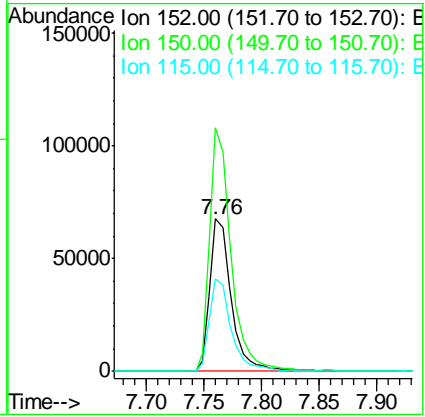
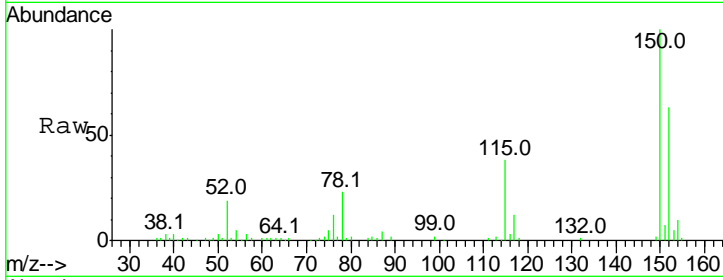


#1
 1,4-Dichlorobenzene-d4
 Concen: 20.00 ng
 RT: 7.76 min Scan# 990
 Delta R.T. -0.01 min
 Lab File: BF095342.D
 Acq: 23 May 2017 8:17

Instrument :
 BNA_F
ClientSampleId :
 SB-12COMP

Tgt Ion:152 Resp: 88103

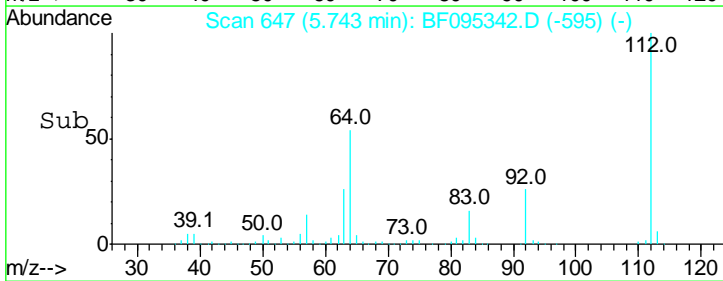
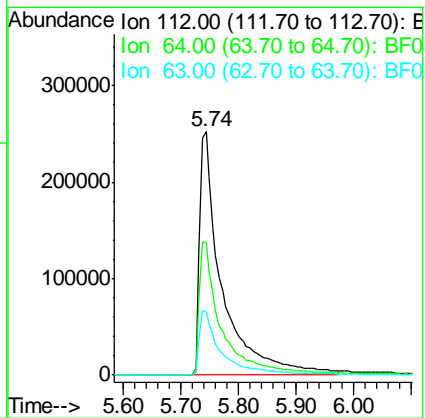
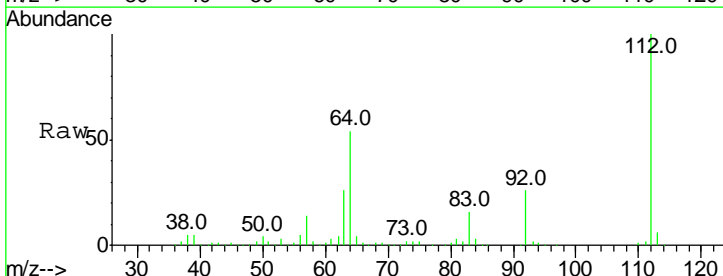
Ion	Ratio	Lower	Upper
152	100		
150	159.8	126.2	189.2
115	61.1	52.2	78.2

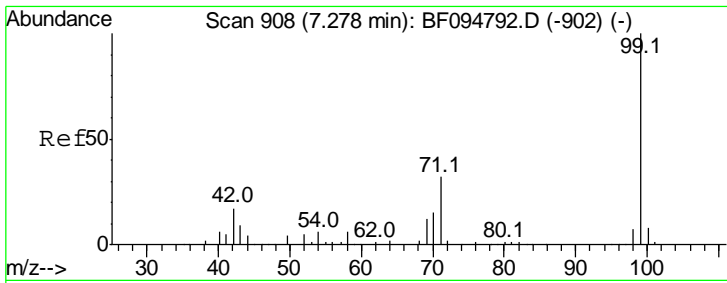


#5
 2-Fluorophenol
 Concen: 129.94 ng
 RT: 5.74 min Scan# 647
 Delta R.T. 0.01 min
 Lab File: BF095342.D
 Acq: 23 May 2017 8:17

Tgt Ion:112 Resp: 686650

Ion	Ratio	Lower	Upper
112	100		
64	54.3	46.0	69.0
63	26.1	23.4	35.0



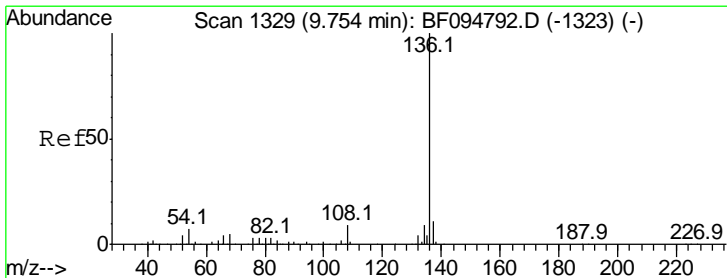
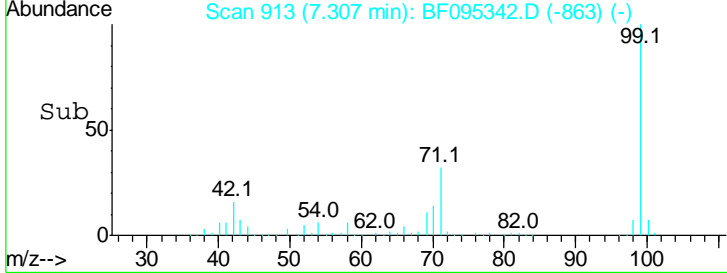
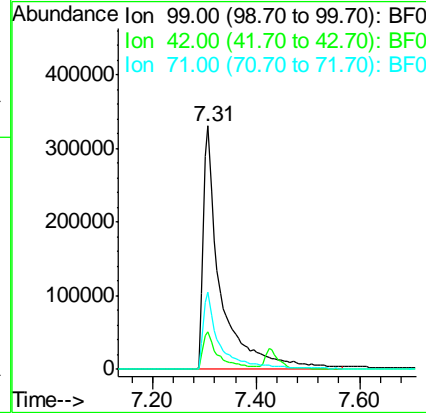
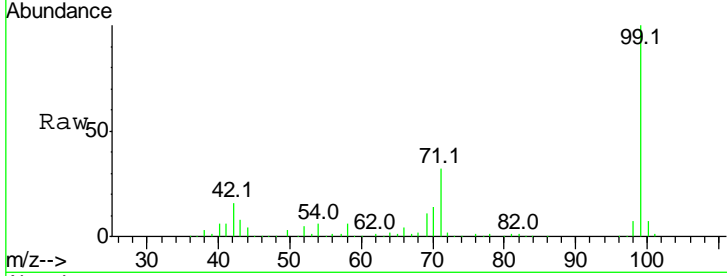


#7
 Phenol-d6
 Concen: 121.35 ng
 RT: 7.31 min Scan# 913
 Delta R.T. -0.01 min
 Lab File: BF095342.D
 Acq: 23 May 2017 8:17

Instrument :
 BNA_F
 ClientSampled :
 SB-12COMP

Tot Ion: 99 Resp: 769414

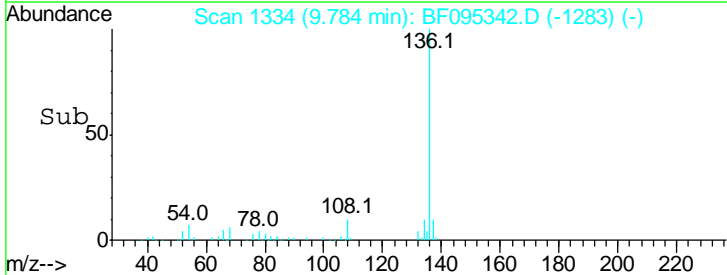
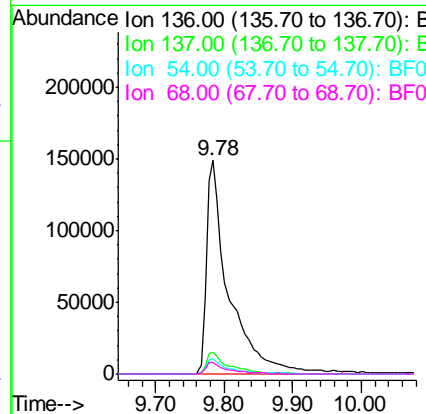
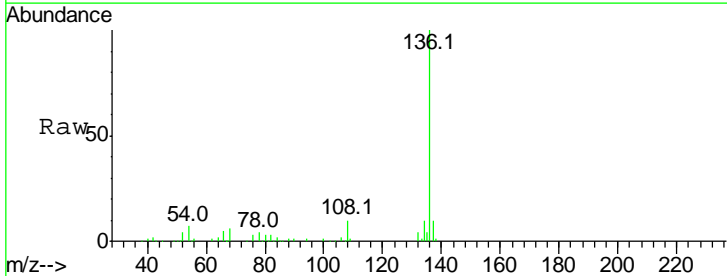
Ion	Ratio	Lower	Upper
99	100		
42	15.5	13.5	20.3
71	31.5	24.5	36.7

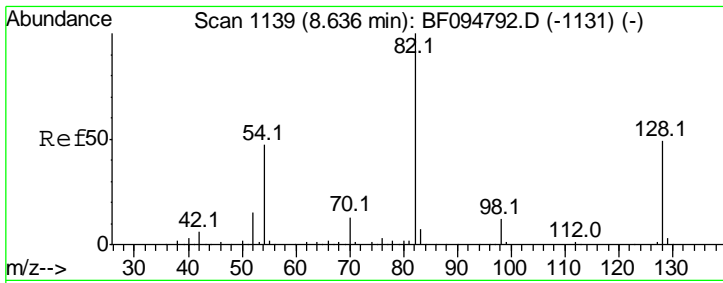


#21
 Naphthalene-d8
 Concen: 20.00 ng
 RT: 9.78 min Scan# 1334
 Delta R.T. 0.00 min
 Lab File: BF095342.D
 Acq: 23 May 2017 8:17

Tgt Ion: 136 Resp: 343254

Ion	Ratio	Lower	Upper
136	100		
137	10.4	8.5	12.7
54	6.9	4.9	7.3
68	5.5	4.1	6.1

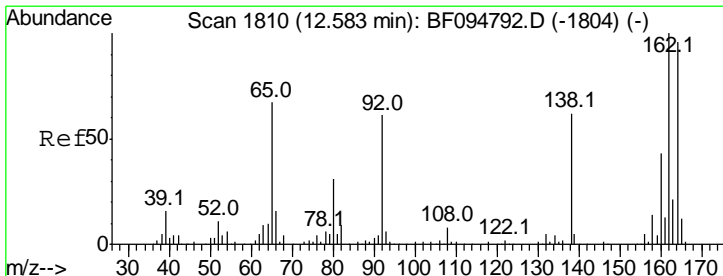
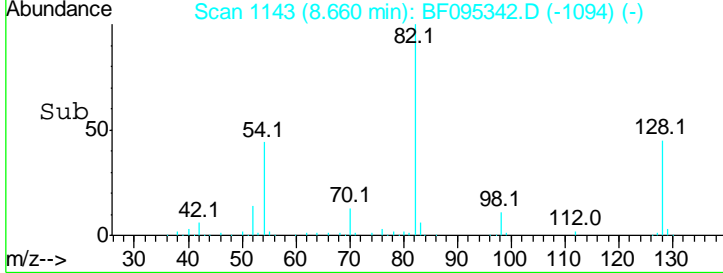
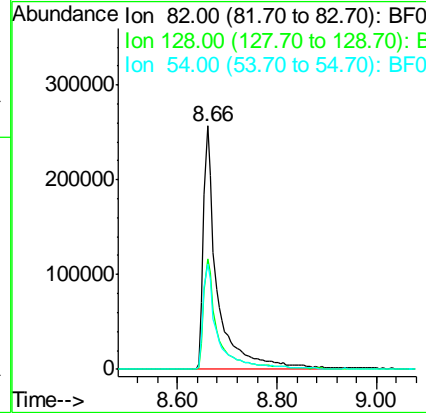
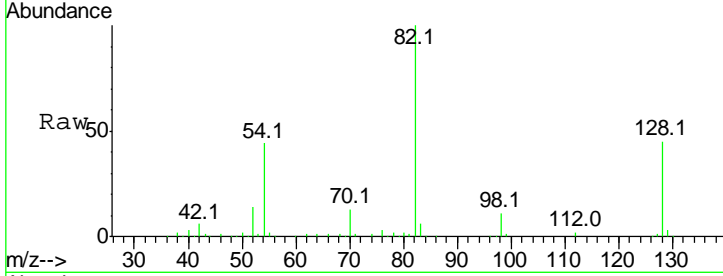




#23
 Nitrobenzene-d5
 Concen: 92.83 ng
 RT: 8.66 min Scan# 1143
 Delta R.T. -0.01 min
 Lab File: BF095342.D
 Acq: 23 May 2017 8:17

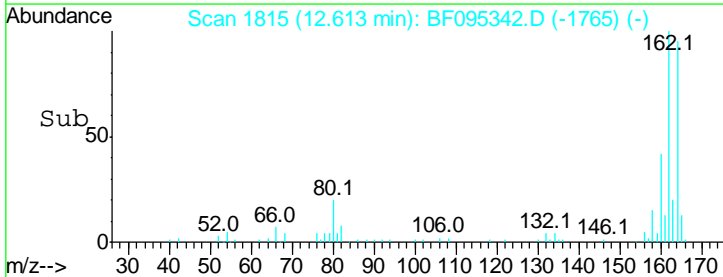
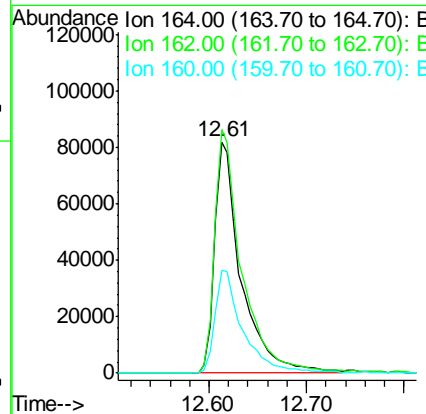
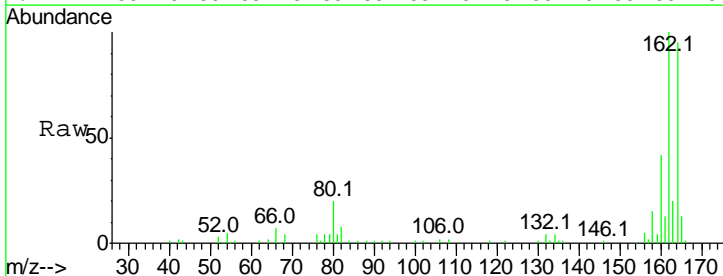
Instrument :
 BNA_F
 ClientSampled :
 SB-12COMP

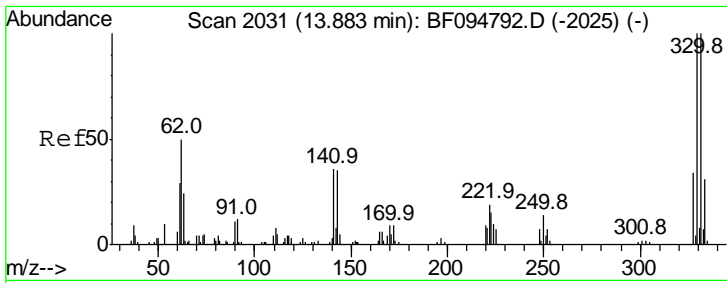
Tgt Ion	Resp	Lower	Upper
82	100		
128	45.2	34.0	51.0
54	43.5	42.2	63.2



#38
 Acenaphthene-d10
 Concen: 20.00 ng
 RT: 12.61 min Scan# 1815
 Delta R.T. -0.01 min
 Lab File: BF095342.D
 Acq: 23 May 2017 8:17

Tgt Ion	Resp	Lower	Upper
164	100		
162	105.2	82.6	123.8
160	44.6	36.2	54.2



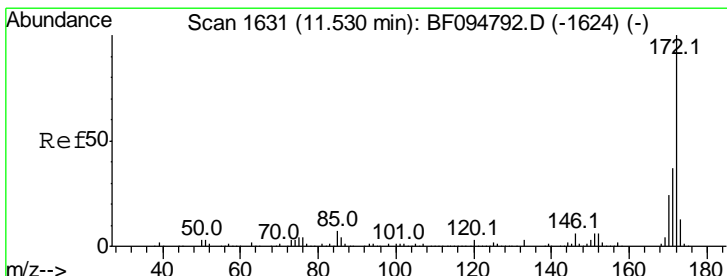
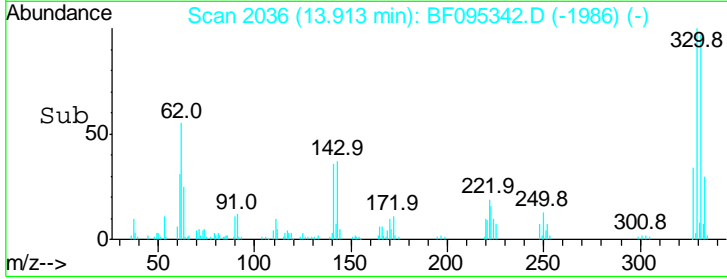
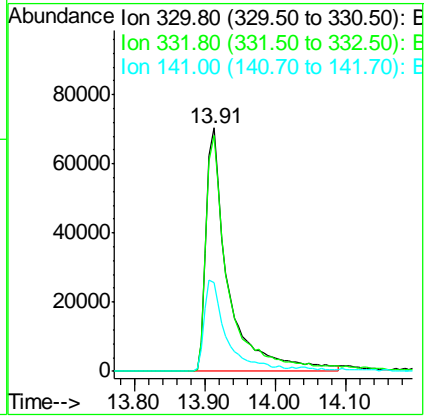
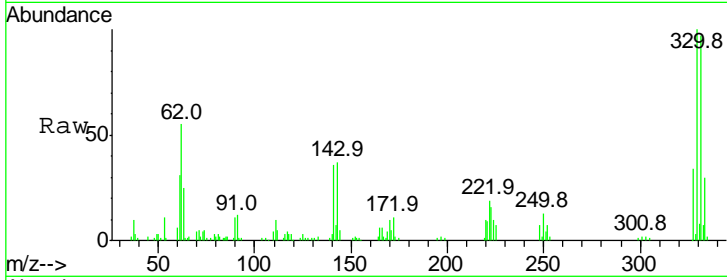


#41
 2,4,6-Tribromophenol
 Concen: 121.68 ng
 RT: 13.91 min Scan# 2036
 Delta R.T. -0.01 min
 Lab File: BF095342.D
 Acq: 23 May 2017 8:17

Instrument :
 BNA_F
ClientSampled :
 SB-12COMP

Tgt Ion: 330 Resp: 154288

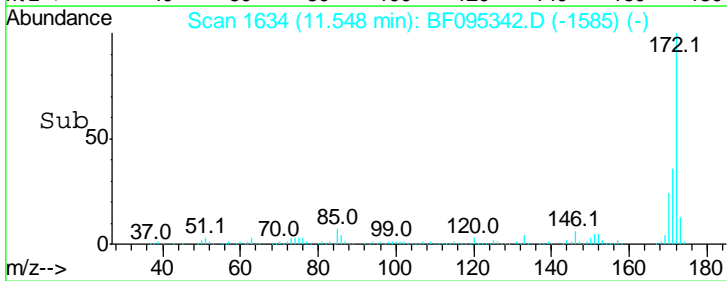
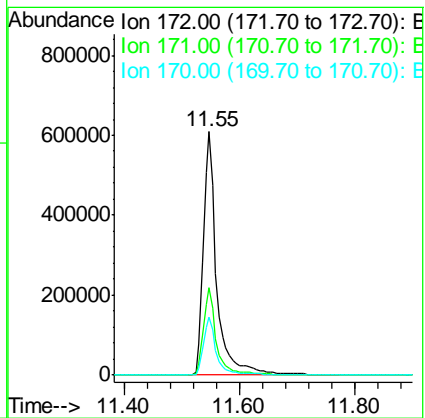
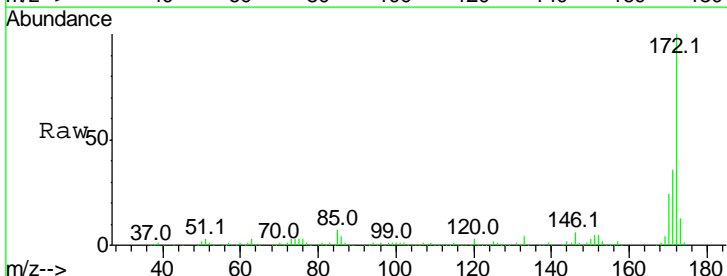
Ion	Ratio	Lower	Upper
330	100		
332	97.5	76.6	115.0
141	38.0	31.4	47.2

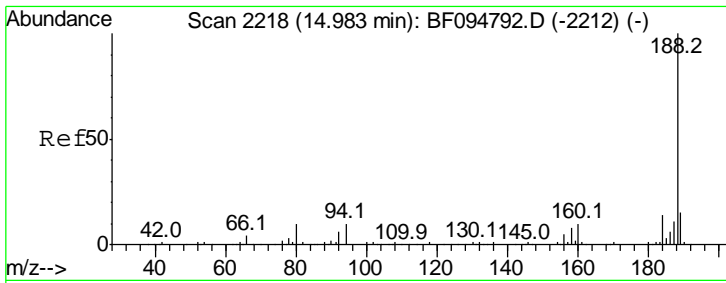


#44
 2-Fluorobiphenyl
 Concen: 93.91 ng
 RT: 11.55 min Scan# 1634
 Delta R.T. -0.01 min
 Lab File: BF095342.D
 Acq: 23 May 2017 8:17

Tgt Ion: 172 Resp: 1010186

Ion	Ratio	Lower	Upper
172	100		
171	36.0	29.6	44.4
170	23.8	19.8	29.8

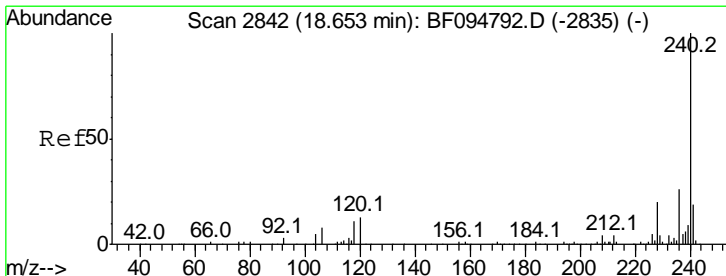
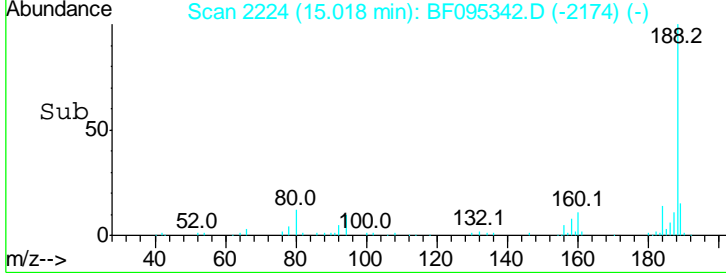
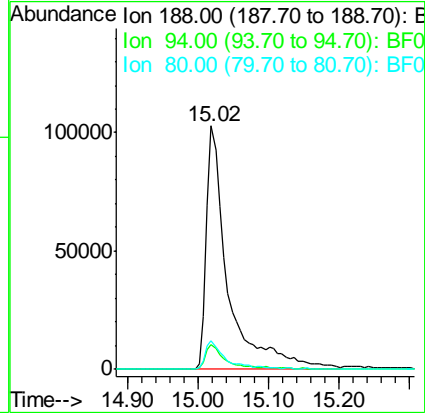
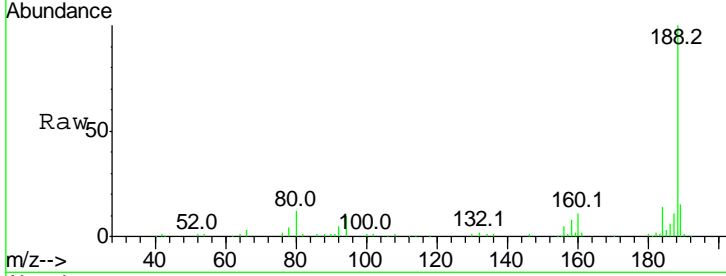




#63
 Phenanthrene-d10
 Concen: 20.00 ng
 RT: 15.02 min Scan# 2224
 Delta R.T. -0.01 min
 Lab File: BF095342.D
 Acq: 23 May 2017 8:17

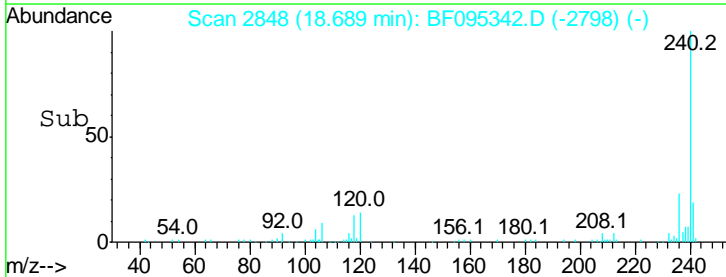
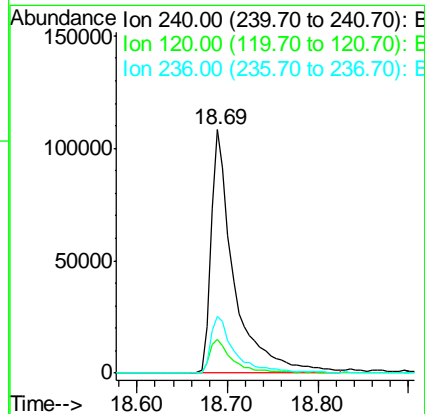
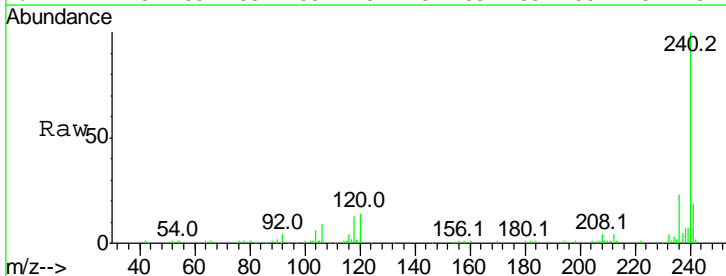
Instrument :
 BNA_F
 ClientSampled :
 SB-12COMP

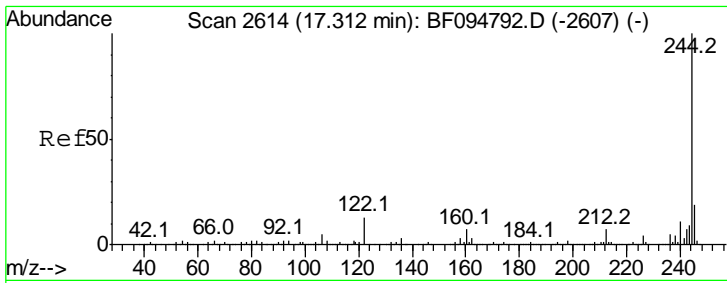
Tgt Ion	Resp	Lower	Upper
188	100		
94	10.2	9.4	14.2
80	11.6	10.2	15.2



#75
 Chrysene-d12
 Concen: 20.00 ng
 RT: 18.69 min Scan# 2848
 Delta R.T. -0.01 min
 Lab File: BF095342.D
 Acq: 23 May 2017 8:17

Tgt Ion	Resp	Lower	Upper
240	100		
120	13.7	5.8	8.8#
236	23.4	20.5	30.7

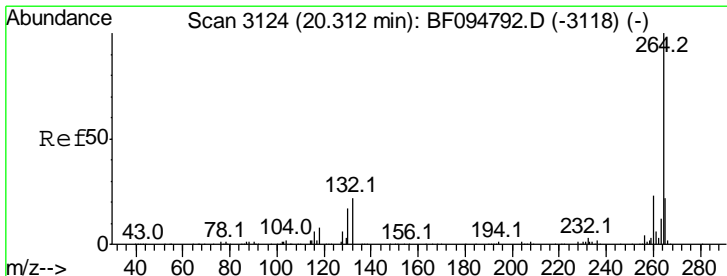
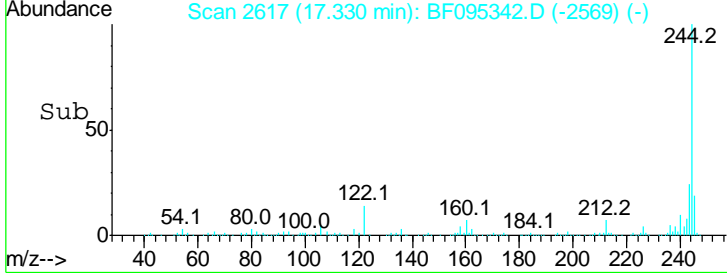
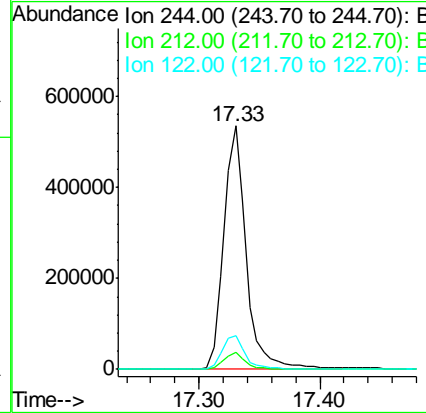
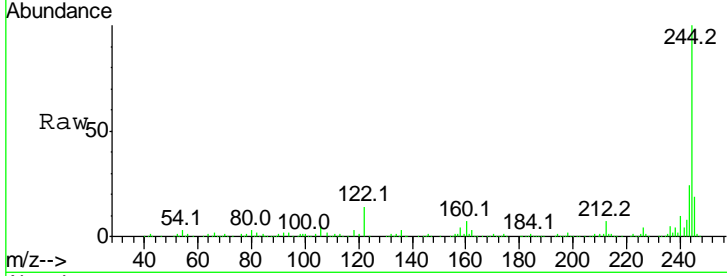




#78
 Terphenyl-d14
 Concen: 78.31 ng
 RT: 17.33 min Scan# 2617
 Delta R.T. -0.02 min
 Lab File: BF095342.D
 Acq: 23 May 2017 8:17

Instrument :
 BNA_F
 ClientSampled :
 SB-12COMP

Tgt Ion	Resp	Lower	Upper
244	100		
212	6.8	6.0	9.0
122	13.9	10.3	15.5



#86
 Perylene-d12
 Concen: 20.00 ng
 RT: 20.37 min Scan# 3133
 Delta R.T. 0.00 min
 Lab File: BF095342.D
 Acq: 23 May 2017 8:17

Tgt Ion	Resp	Lower	Upper
264	100		
260	23.2	19.5	29.3
265	21.1	17.2	25.8

