

Data Path : Z:\svoasrv\HPCHEM1\BNA_F\Data\BF052325\
 Data File : BF142528.D
 Acq On : 23 May 2025 11:41
 Operator : RC/JU
 Sample : PB168126BL
 Misc :
 ALS Vial : 3 Sample Multiplier: 1

Instrument :
 BNA_F
 ClientSampleId :
 PB168126BL

Quant Time: May 23 12:05:51 2025
 Quant Method : Z:\svoasrv\HPCHEM1\BNA_F\Methods\8270-BF052025.M
 Quant Title : ASP BNA STANDARDS FOR 5 POINT CALIBRATION
 QLast Update : Tue May 20 16:26:47 2025
 Response via : Initial Calibration

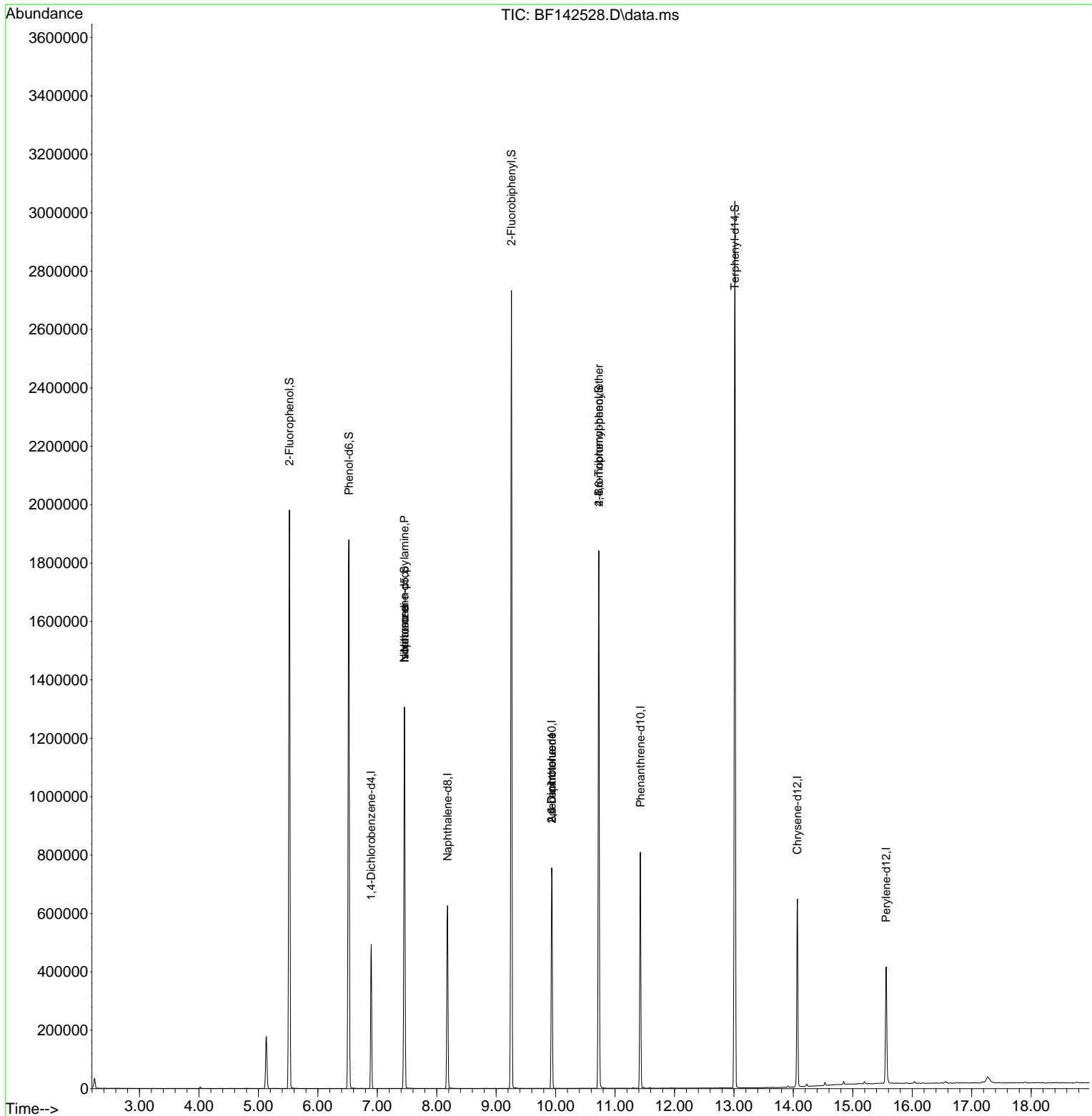
Compound	R.T.	QIon	Response	Conc	Units	Dev(Min)
Internal Standards						
1) 1,4-Dichlorobenzene-d4	6.898	152	108646	20.000	ng	0.00
21) Naphthalene-d8	8.181	136	416736	20.000	ng	0.00
39) Acenaphthene-d10	9.933	164	234758	20.000	ng	-0.01
64) Phenanthrene-d10	11.428	188	439276	20.000	ng	0.00
76) Chrysene-d12	14.069	240	317833	20.000	ng	0.00
86) Perylene-d12	15.563	264	240419	20.000	ng	0.00
System Monitoring Compounds						
5) 2-Fluorophenol	5.522	112	794724	123.237	ng	0.00
7) Phenol-d6	6.522	99	955076	123.033	ng	-0.01
23) Nitrobenzene-d5	7.457	82	588896	77.055	ng	-0.02
42) 2,4,6-Tribromophenol	10.728	330	339357	130.246	ng	-0.01
45) 2-Fluorobiphenyl	9.257	172	1288490	73.649	ng	-0.01
79) Terphenyl-d14	13.016	244	1527119	65.660	ng	0.00
Target Compounds						
19) n-Nitroso-di-n-propyla...	7.457	70	78305	16.276	ng	# 77
25) Isophorone	7.457	82	551527	43.163	ng	# 63
51) 2,6-Dinitrotoluene	9.933	165	29929	8.952	ng	# 27
57) 2,4-Dinitrotoluene	9.933	165	29929	6.855	ng	# 28
67) 4-Bromophenyl-phenylether	10.728	248	21055	4.054	ng	# 1

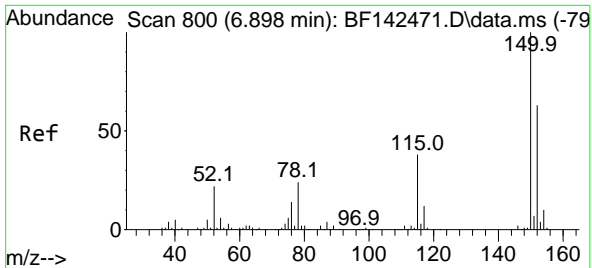
(#) = qualifier out of range (m) = manual integration (+) = signals summed

Data Path : Z:\svoasrv\HPCHEM1\BNA_F\Data\BF052325\
 Data File : BF142528.D
 Acq On : 23 May 2025 11:41
 Operator : RC/JU
 Sample : PB168126BL
 Misc :
 ALS Vial : 3 Sample Multiplier: 1

Instrument :
 BNA_F
 ClientSampleId :
 PB168126BL

Quant Time: May 23 12:05:51 2025
 Quant Method : Z:\svoasrv\HPCHEM1\BNA_F\Methods\8270-BF052025.M
 Quant Title : ASP BNA STANDARDS FOR 5 POINT CALIBRATION
 QLast Update : Tue May 20 16:26:47 2025
 Response via : Initial Calibration

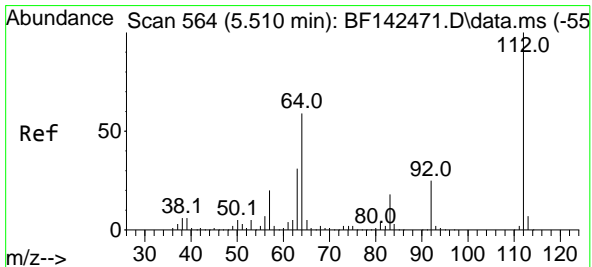
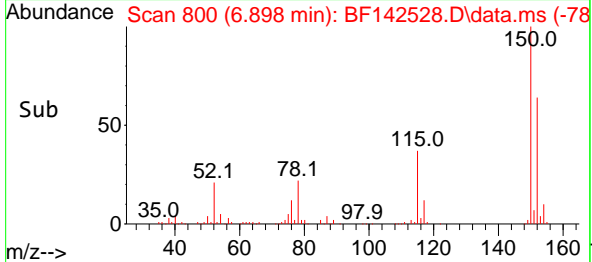
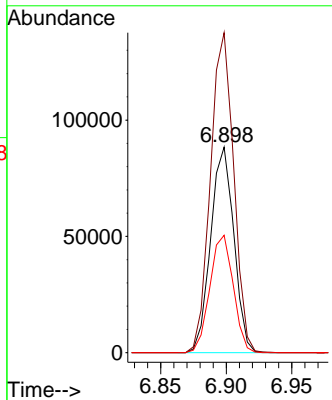
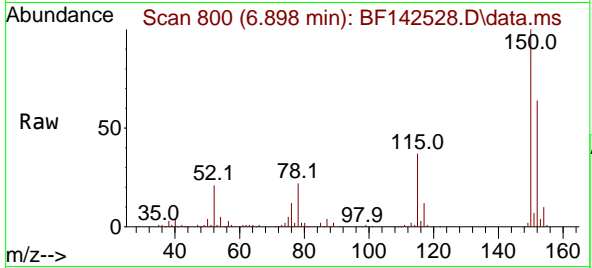




#1
 1,4-Dichlorobenzene-d4
 Concen: 20.000 ng
 RT: 6.898 min Scan# 800
 Delta R.T. -0.006 min
 Lab File: BF142528.D
 Acq: 23 May 2025 11:41

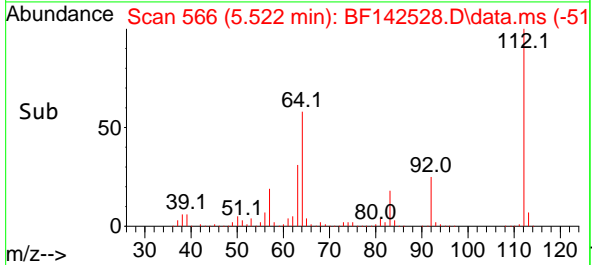
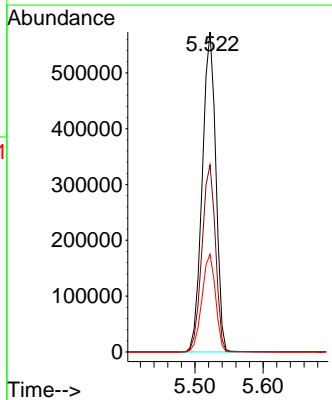
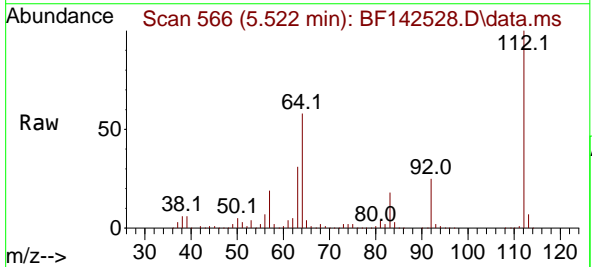
Instrument :
 BNA_F
 Client Sample Id :
 PB168126BL

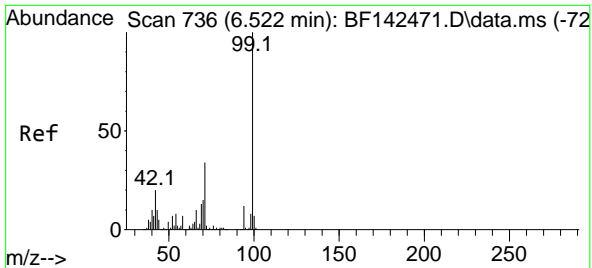
Tgt Ion:152 Resp: 108646
 Ion Ratio Lower Upper
 152 100
 150 155.6 128.2 192.4
 115 57.1 48.3 72.5



#5
 2-Fluorophenol
 Concen: 123.237 ng
 RT: 5.522 min Scan# 566
 Delta R.T. 0.006 min
 Lab File: BF142528.D
 Acq: 23 May 2025 11:41

Tgt Ion:112 Resp: 794724
 Ion Ratio Lower Upper
 112 100
 64 58.5 47.5 71.3
 63 30.5 24.9 37.3



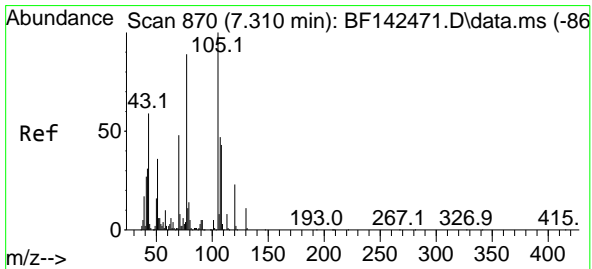
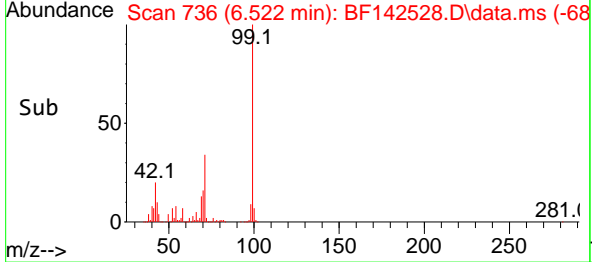
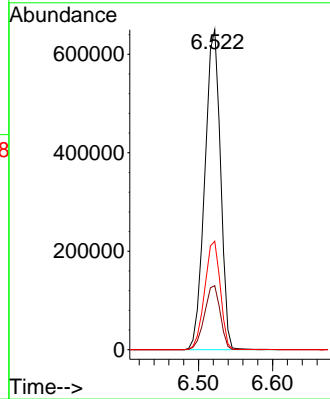
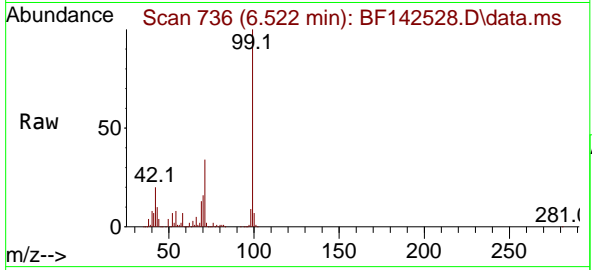


#7
Pheno1-d6
Concen: 123.033 ng
RT: 6.522 min Scan# 71
Delta R.T. -0.012 min
Lab File: BF142528.D
Acq: 23 May 2025 11:41

Instrument :
BNA_F
ClientSampleId :
PB168126BL

Tgt Ion: 99 Resp: 955076

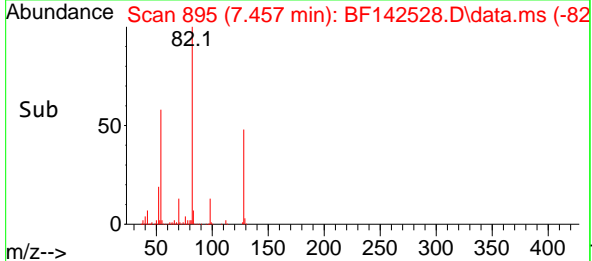
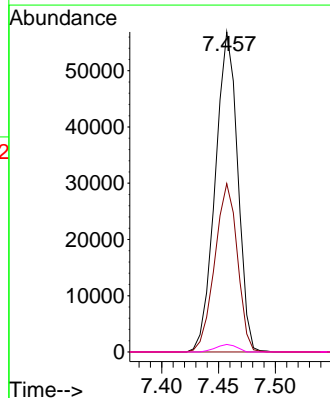
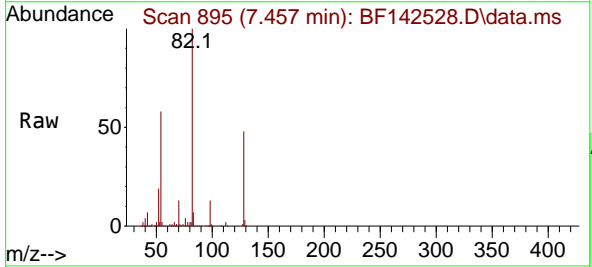
Ion	Ratio	Lower	Upper
99	100		
42	20.0	16.2	24.2
71	33.9	27.3	40.9

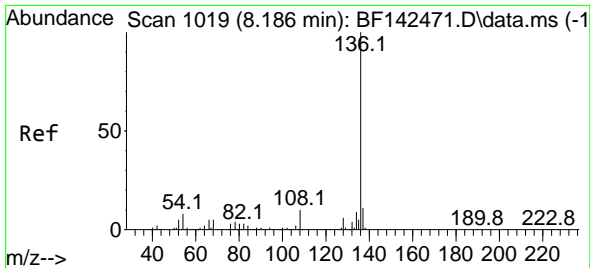


#19
n-Nitroso-di-n-propylamine
Concen: 16.276 ng
RT: 7.457 min Scan# 895
Delta R.T. 0.130 min
Lab File: BF142528.D
Acq: 23 May 2025 11:41

Tgt Ion: 70 Resp: 78305

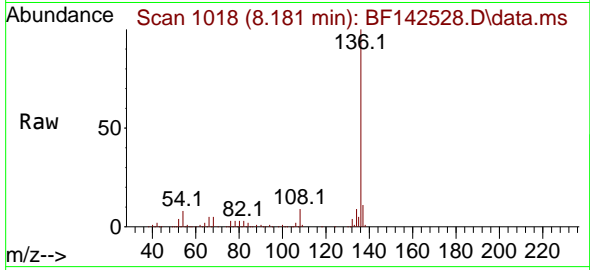
Ion	Ratio	Lower	Upper
70	100		
42	52.6	52.4	78.6
101	0.0	7.8	11.8#
130	2.3	18.0	27.0#



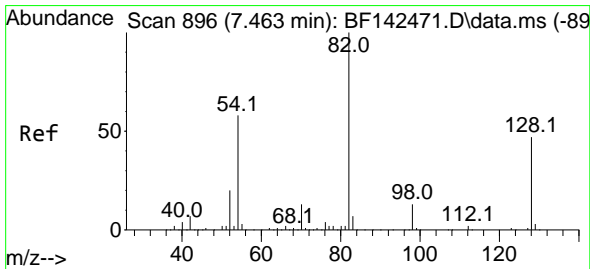
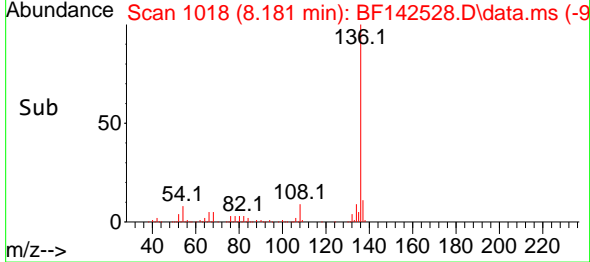
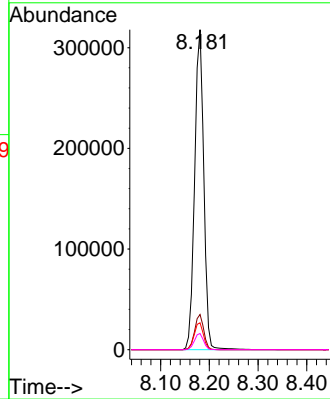


#21
 Naphthalene-d8
 Concen: 20.000 ng
 RT: 8.181 min Scan# 1019
 Delta R.T. -0.006 min
 Lab File: BF142528.D
 Acq: 23 May 2025 11:41

Instrument : BNA_F
 Client Sample Id : PB168126BL

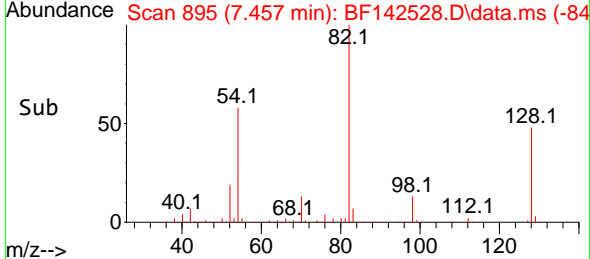
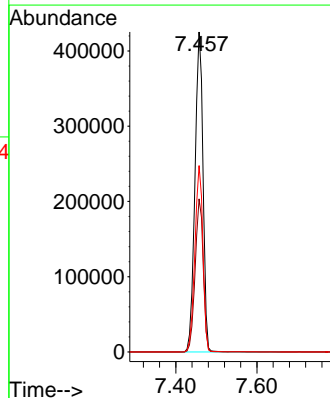
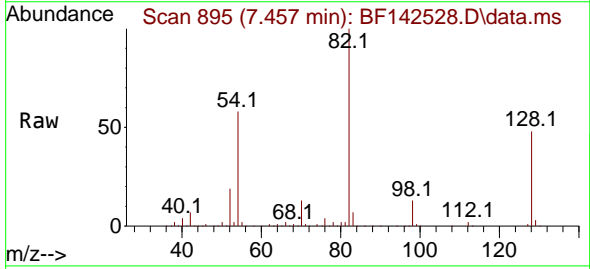


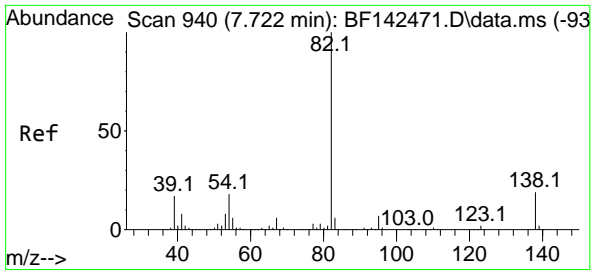
Tgt Ion: 136 Resp: 416736
 Ion Ratio Lower Upper
 136 100
 137 11.0 8.6 13.0
 54 8.4 6.6 10.0
 68 5.0 4.1 6.1



#23
 Nitrobenzene-d5
 Concen: 77.055 ng
 RT: 7.457 min Scan# 895
 Delta R.T. -0.017 min
 Lab File: BF142528.D
 Acq: 23 May 2025 11:41

Tgt Ion: 82 Resp: 588896
 Ion Ratio Lower Upper
 82 100
 128 47.9 37.4 56.2
 54 58.2 46.6 70.0

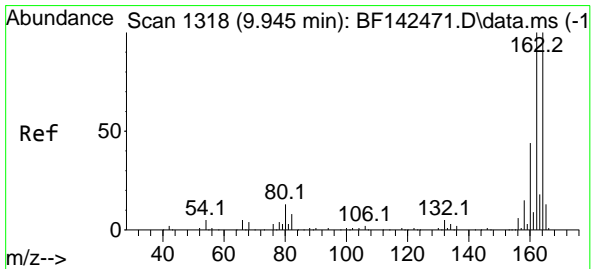
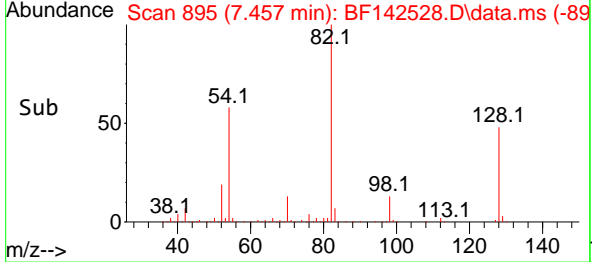
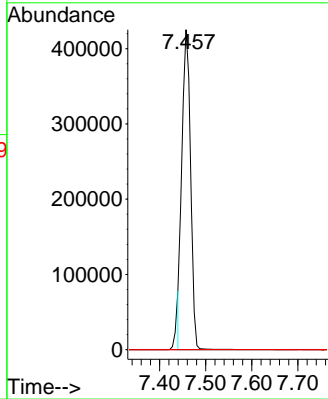
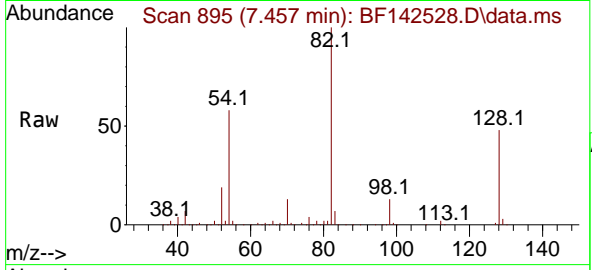




#25
 Isophorone
 Concen: 43.163 ng
 RT: 7.457 min Scan# 89
 Delta R.T. -0.276 min
 Lab File: BF142528.D
 Acq: 23 May 2025 11:41

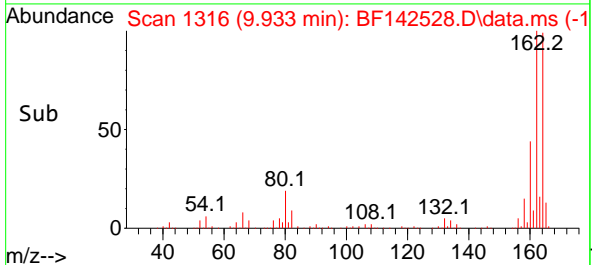
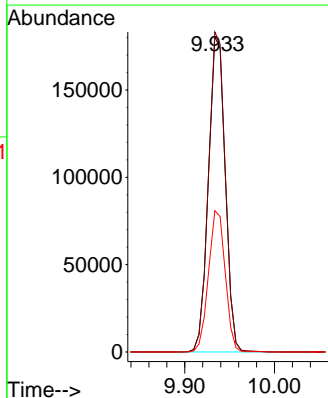
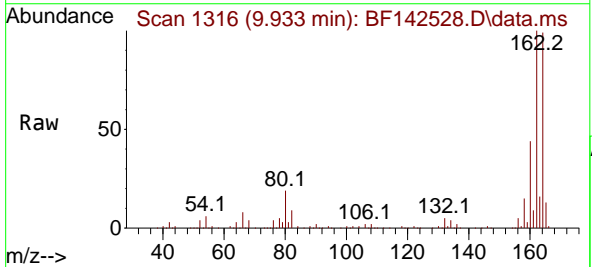
Instrument :
 BNA_F
 ClientSampleId :
 PB168126BL

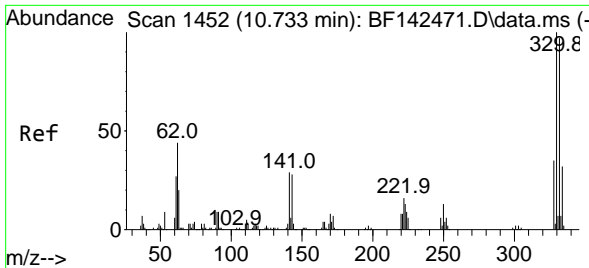
Tgt Ion: 82 Resp: 551527
 Ion Ratio Lower Upper
 82 100
 95 0.0 6.0 9.0#
 138 0.0 15.5 23.3#



#39
 Acenaphthene-d10
 Concen: 20.000 ng
 RT: 9.933 min Scan# 1316
 Delta R.T. -0.012 min
 Lab File: BF142528.D
 Acq: 23 May 2025 11:41

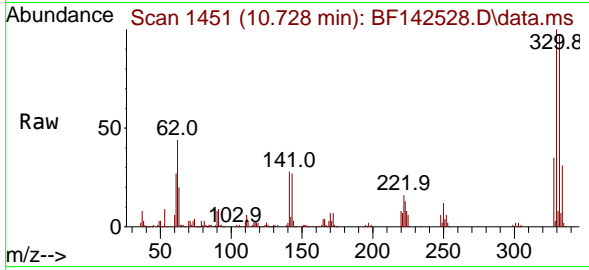
Tgt Ion:164 Resp: 234758
 Ion Ratio Lower Upper
 164 100
 162 101.5 80.2 120.4
 160 44.8 35.6 53.4



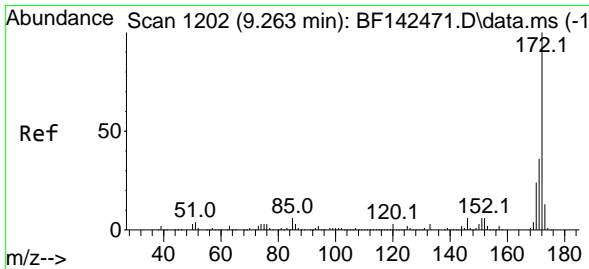
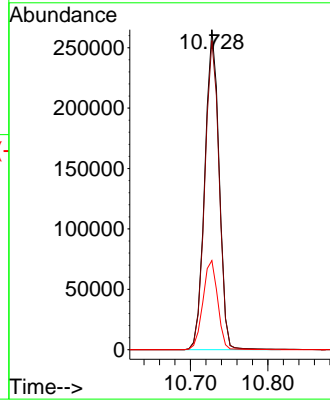
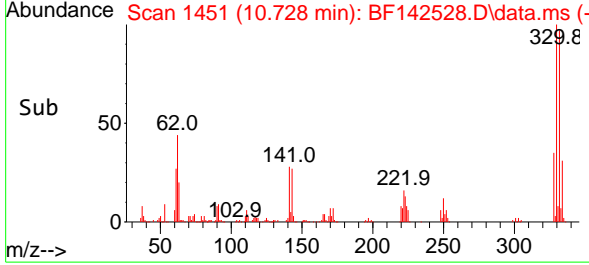


#42
 2,4,6-Tribromophenol
 Concen: 130.246 ng
 RT: 10.728 min Scan# 1451
 Delta R.T. -0.012 min
 Lab File: BF142528.D
 Acq: 23 May 2025 11:41

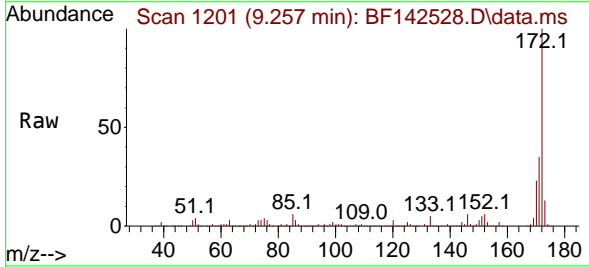
Instrument :
 BNA_F
 ClientSampleId :
 PB168126BL



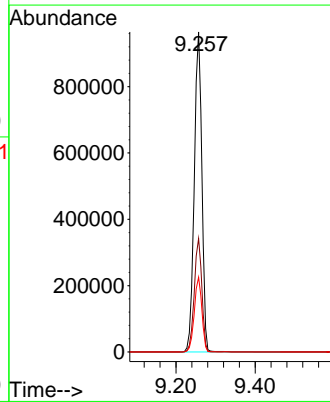
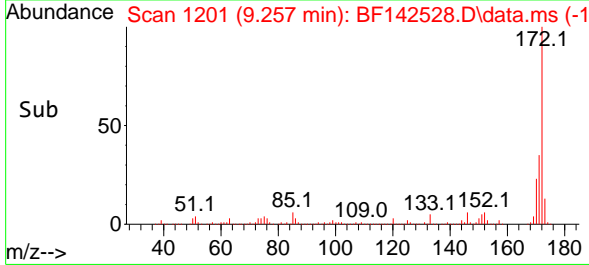
Tgt Ion:330 Resp: 339357
 Ion Ratio Lower Upper
 330 100
 332 96.4 77.6 116.4
 141 28.7 24.6 36.8

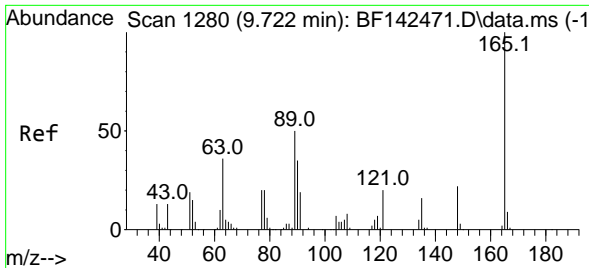


#45
 2-Fluorobiphenyl
 Concen: 73.649 ng
 RT: 9.257 min Scan# 1201
 Delta R.T. -0.012 min
 Lab File: BF142528.D
 Acq: 23 May 2025 11:41



Tgt Ion:172 Resp: 1288490
 Ion Ratio Lower Upper
 172 100
 171 35.5 28.6 42.8
 170 23.4 18.9 28.3

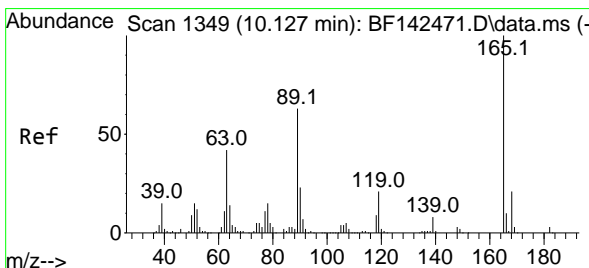
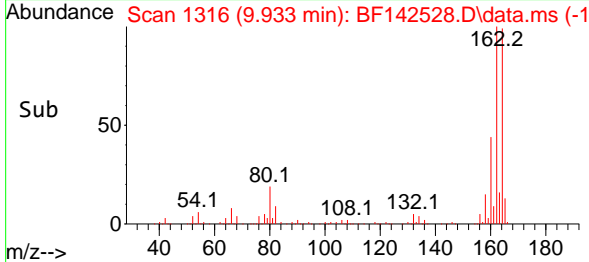
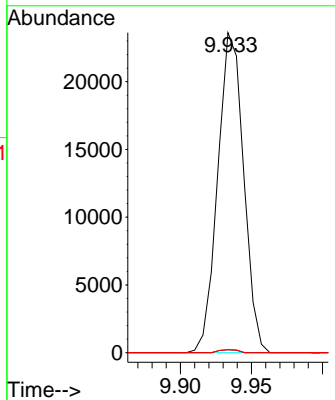
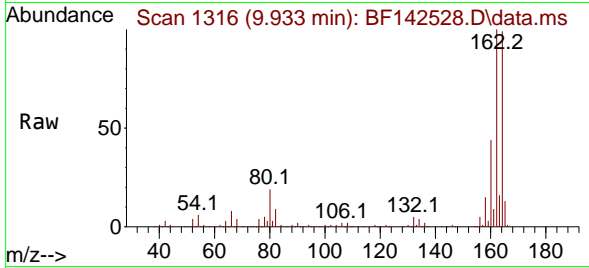




#51
 2,6-Dinitrotoluene
 Concen: 8.952 ng
 RT: 9.933 min Scan# 1316
 Delta R.T. 0.206 min
 Lab File: BF142528.D
 Acq: 23 May 2025 11:41

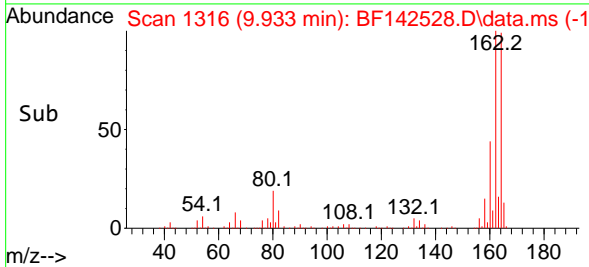
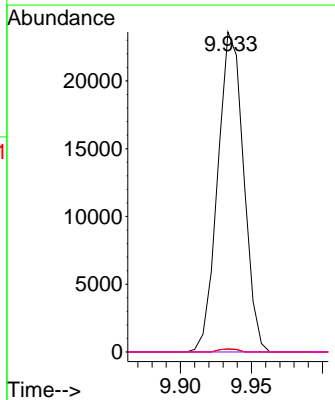
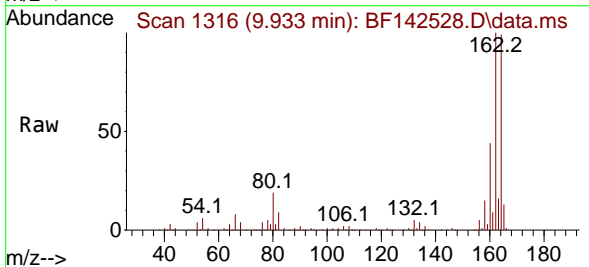
Instrument :
 BNA_F
 ClientSampleId :
 PB168126BL

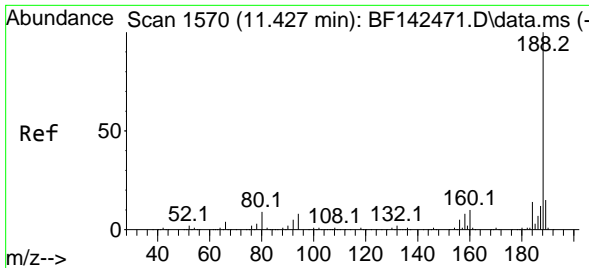
Tgt Ion	Resp	Lower	Upper
165	100		
63	0.9	42.9	64.3#
89	1.0	40.2	60.4#



#57
 2,4-Dinitrotoluene
 Concen: 6.855 ng
 RT: 9.933 min Scan# 1316
 Delta R.T. -0.200 min
 Lab File: BF142528.D
 Acq: 23 May 2025 11:41

Tgt Ion	Resp	Lower	Upper
165	100		
63	0.9	33.6	50.4#
89	1.0	50.2	75.4#
182	0.0	2.2	3.4#

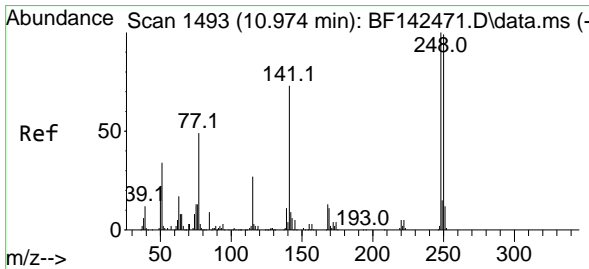
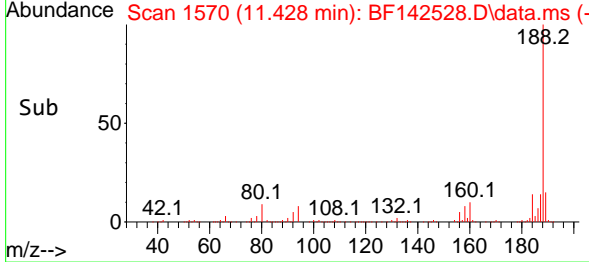
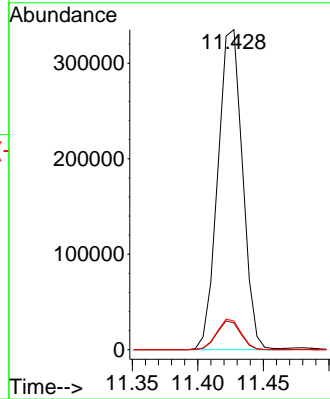
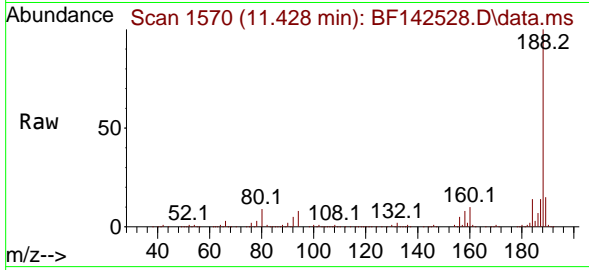




#64
 Phenanthrene-d10
 Concen: 20.000 ng
 RT: 11.428 min Scan# 11
 Delta R.T. -0.006 min
 Lab File: BF142528.D
 Acq: 23 May 2025 11:41

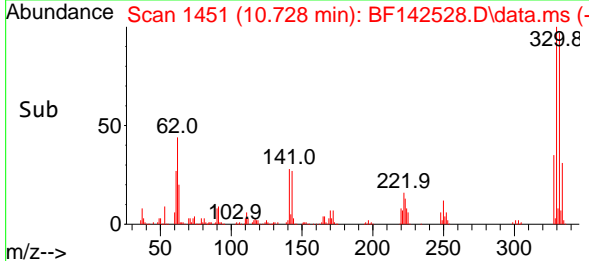
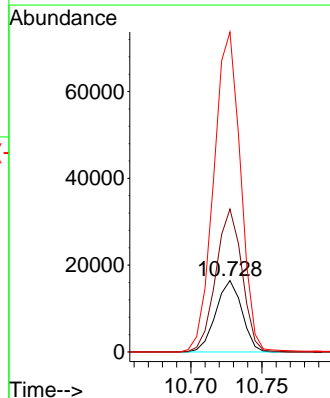
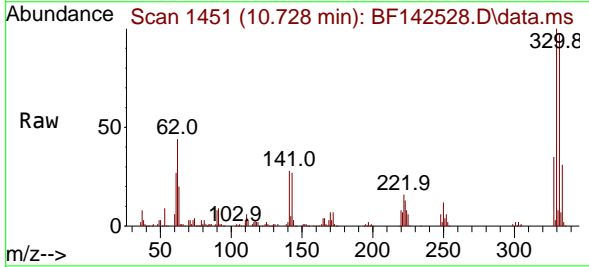
Instrument :
 BNA_F
 ClientSampleId :
 PB168126BL

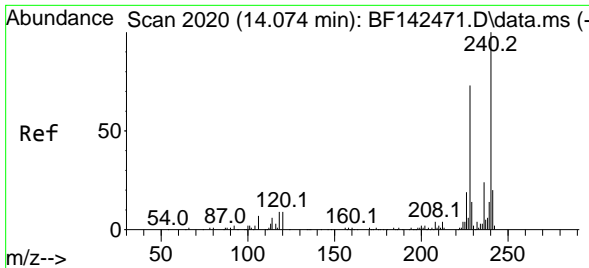
Tgt Ion:188 Resp: 439276
 Ion Ratio Lower Upper
 188 100
 94 8.3 6.6 10.0
 80 8.9 7.4 11.0



#67
 4-Bromophenyl-phenylether
 Concen: 4.054 ng
 RT: 10.728 min Scan# 1451
 Delta R.T. -0.247 min
 Lab File: BF142528.D
 Acq: 23 May 2025 11:41

Tgt Ion:248 Resp: 21055
 Ion Ratio Lower Upper
 248 100
 250 200.3 79.0 118.4#
 141 448.4 58.4 87.6#



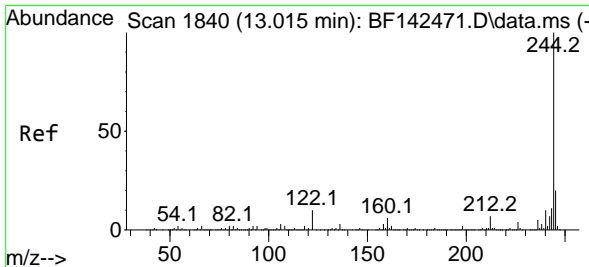
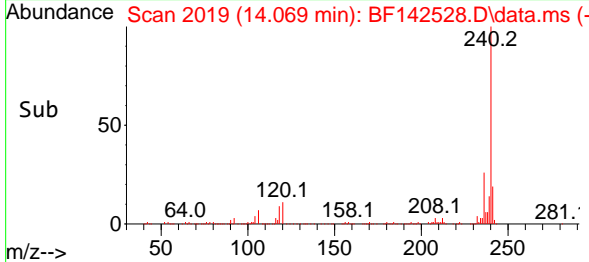
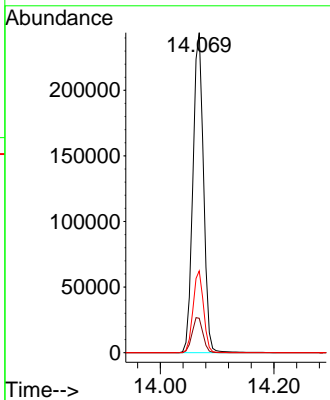
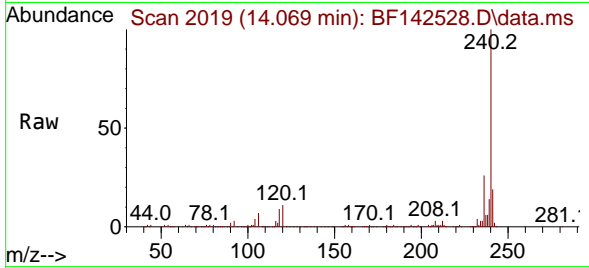


#76
 Chrysene-d12
 Concen: 20.000 ng
 RT: 14.069 min Scan# 2019
 Delta R.T. -0.006 min
 Lab File: BF142528.D
 Acq: 23 May 2025 11:41

Instrument : BNA_F
 Client Sample Id : PB168126BL

Tgt Ion: 240 Resp: 317833

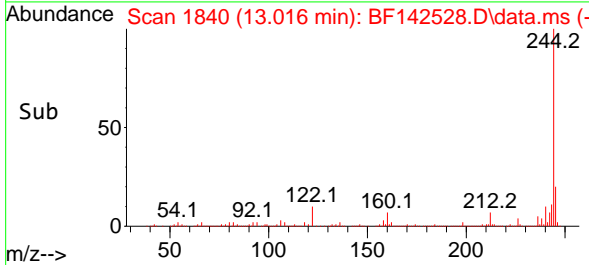
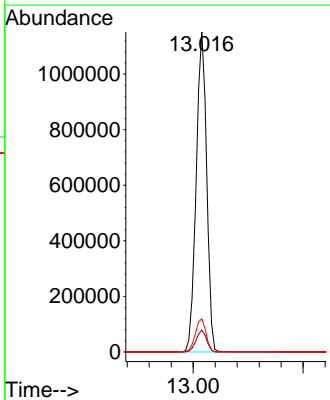
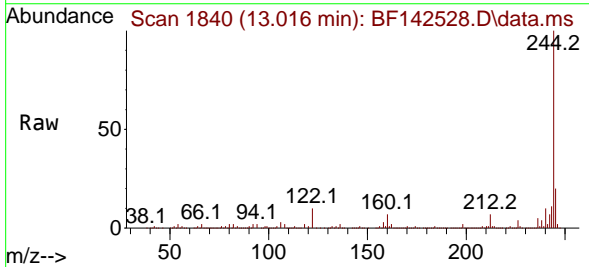
Ion	Ratio	Lower	Upper
240	100		
120	10.8	7.5	11.3
236	25.6	19.6	29.4

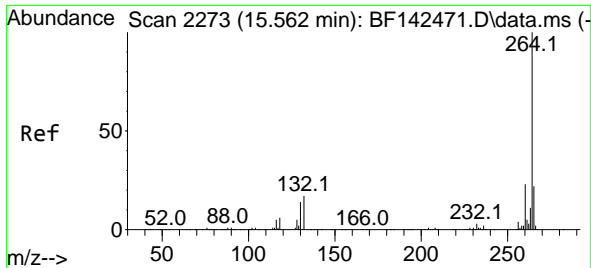


#79
 Terphenyl-d14
 Concen: 65.660 ng
 RT: 13.016 min Scan# 1840
 Delta R.T. 0.000 min
 Lab File: BF142528.D
 Acq: 23 May 2025 11:41

Tgt Ion: 244 Resp: 1527119

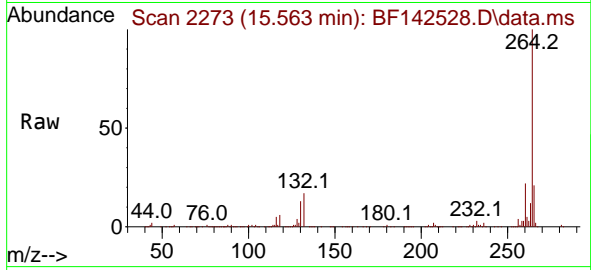
Ion	Ratio	Lower	Upper
244	100		
212	6.8	5.3	7.9
122	10.4	8.2	12.2





#86
 Perylene-d12
 Concen: 20.000 ng
 RT: 15.563 min Scan# 21
 Delta R.T. -0.006 min
 Lab File: BF142528.D
 Acq: 23 May 2025 11:41

Instrument :
 BNA_F
 ClientSampleId :
 PB168126BL



Tgt Ion:264 Resp: 240419

Ion	Ratio	Lower	Upper
264	100		
260	22.3	18.6	28.0
265	20.8	17.7	26.5

