

Data Path : Z:\HPCHEM1\BNA_F\DATA\BF052715\
 Data File : BF079521.D
 Acq On : 27 May 2015 16:34
 Operator : TP/IZ
 Sample : G2359-11
 Misc :
 ALS Vial : 5 Sample Multiplier: 1

Instrument :
 BNA_F
ClientSampled :
 SB-26D

Manual Integrations
APPROVED
 apatel
 5/28/2015 12:03:26 PM

Quant Time: May 28 01:07:27 2015
 Quant Method : Z:\HPCHEM1\BNA_F\METHODS\8270-BF052615.M
 Quant Title : ASP BNA STANDARDS FOR 5 POINT CALIBRATION
 QLast Update : Thu May 28 00:48:25 2015
 Response via : Initial Calibration

| Internal Standards | R.T. | QIon | Response | Conc | Units | Dev(Min) |
|------------------------------------|-------|------|----------|--------|-------|---------------|
| 1) 1,4-Dichlorobenzene-d4 | 7.00 | 152 | 63096 | 20.00 | ng | 0.00 |
| 21) Naphthalene-d8 | 8.58 | 136 | 265563 | 20.00 | ng | 0.00 |
| 38) Acenaphthene-d10 | 10.74 | 164 | 135015 | 20.00 | ng | 0.00 |
| 63) Phenanthrene-d10 | 12.58 | 188 | 260913 | 20.00 | ng | 0.00 |
| 75) Chrysene-d12 | 15.89 | 240 | 264065 | 20.00 | ng | -0.06 |
| 86) Perylene-d12 | 17.69 | 264 | 282991 | 20.00 | ng | -0.19 |
| System Monitoring Compounds | | | | | | |
| 5) 2-Fluorophenol | 5.28 | 112 | 452353m | 124.35 | ng | 0.00 |
| 7) Phenol-d6 | 6.59 | 99 | 603217m | 130.10 | ng | 0.00 |
| 23) Nitrobenzene-d5 | 7.70 | 82 | 341694 | 74.38 | ng | 0.00 |
| 41) 2,4,6-Tribromophenol | 11.73 | 330 | 186513 | 125.77 | ng | -0.01 |
| 44) 2-Fluorobiphenyl | 9.93 | 172 | 652092 | 68.91 | ng | 0.00 |
| 78) Terphenyl-d14 | 14.58 | 244 | 763773 | 67.88 | ng | -0.01 |
| Target Compounds | | | | | | Qvalue |
| 31) Naphthalene | 8.60 | 128 | 231873 | 18.19 | ng | 99 |
| 37) 2-Methylnaphthalene | 9.46 | 142 | 105781 | 11.96 | ng | 98 |
| 49) Dimethylphthalate | 10.43 | 163 | 356886 | 35.87 | ng | 98 |
| 51) Acenaphthene | 10.79 | 154 | 26952 | 3.41 | ng | 96 |
| 70) Phenanthrene | 12.61 | 178 | 184036 | 12.86 | ng | 99 |
| 74) Fluoranthene | 14.08 | 202 | 40836 | 2.66 | ng | 94 |
| 77) Pyrene | 14.37 | 202 | 41188 | 2.52 | ng | 97 |

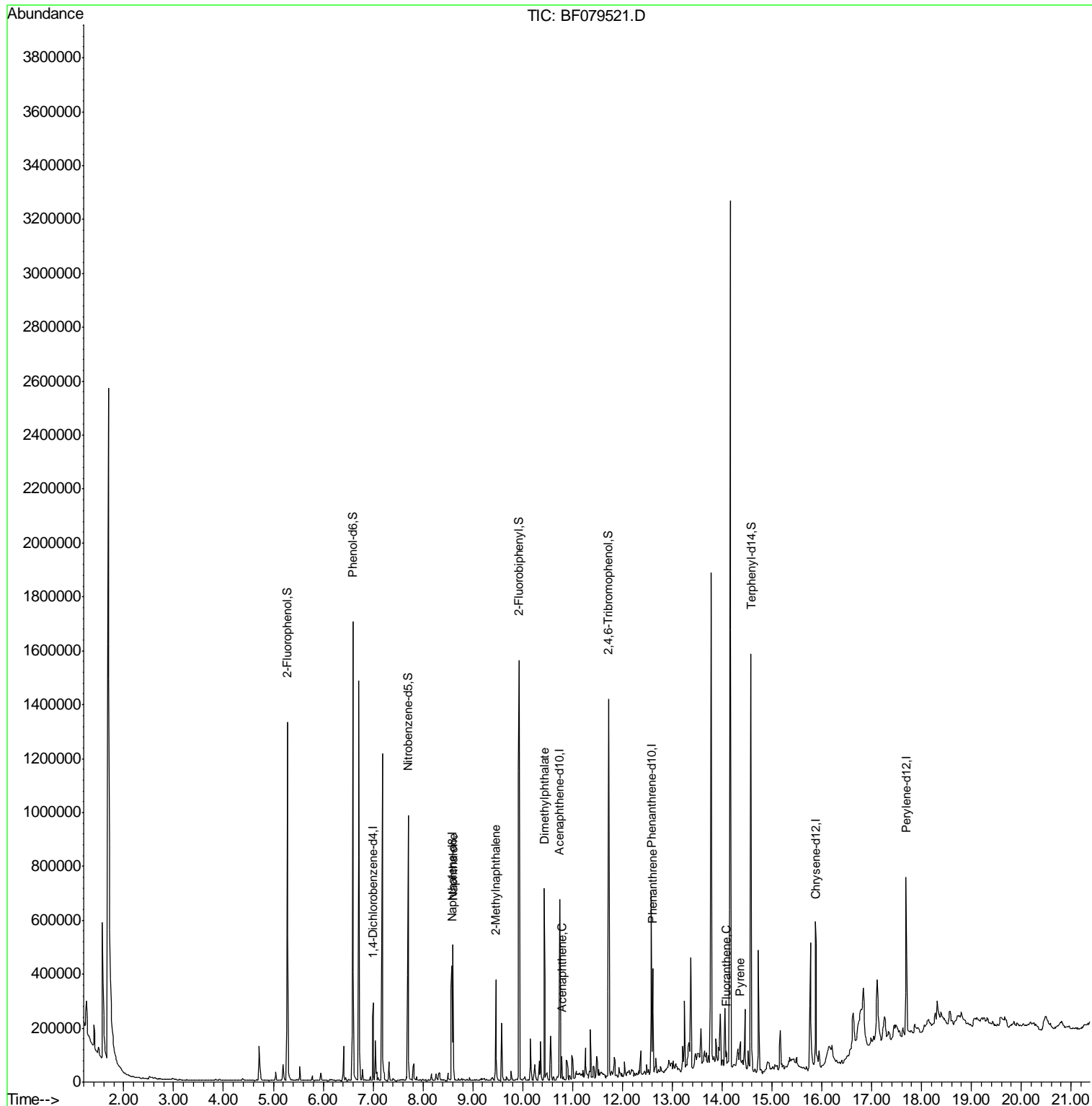
(#) = qualifier out of range (m) = manual integration (+) = signals summed

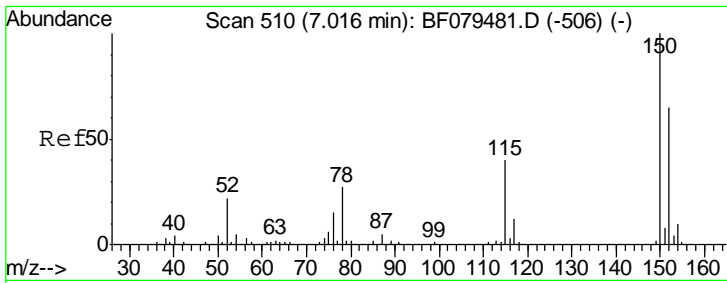
Data Path : Z:\HPCHEM1\BNA_F\DATA\BF052715\
 Data File : BF079521.D
 Acq On : 27 May 2015 16:34
 Operator : TP/IZ
 Sample : G2359-11
 Misc :
 ALS Vial : 5 Sample Multiplier: 1

Instrument :
 BNA_F
 ClientSampled :
 SB-26D

Manual Integrations
 APPROVED
 apatel
 5/28/2015 12:03:26 PM

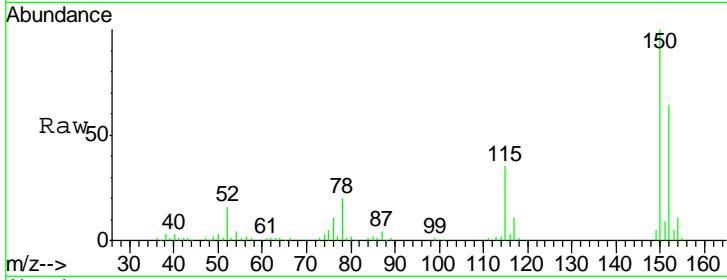
Quant Time: May 28 01:07:27 2015
 Quant Method : Z:\HPCHEM1\BNA_F\METHODS\8270-BF052615.M
 Quant Title : ASP BNA STANDARDS FOR 5 POINT CALIBRATION
 QLast Update : Thu May 28 00:48:25 2015
 Response via : Initial Calibration





#1
 1,4-Dichlorobenzene-d4
 Concen: 20.00 ng
 RT: 7.00 min Scan# 509
 Delta R.T. 0.00 min
 Lab File: BF079521.D
 Acq: 27 May 2015 16:34

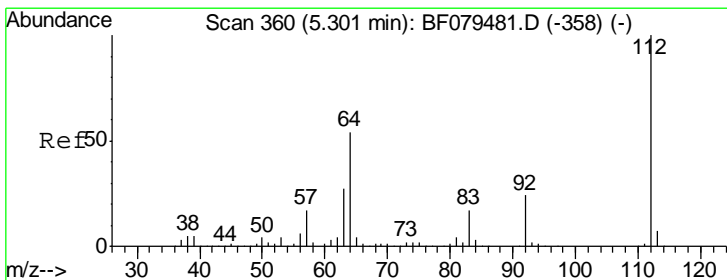
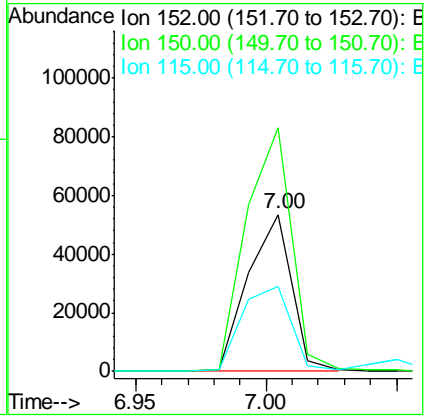
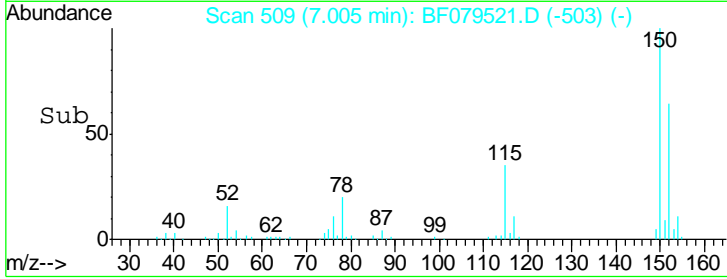
Instrument :
 BNA_F
ClientSampled :
 SB-26D



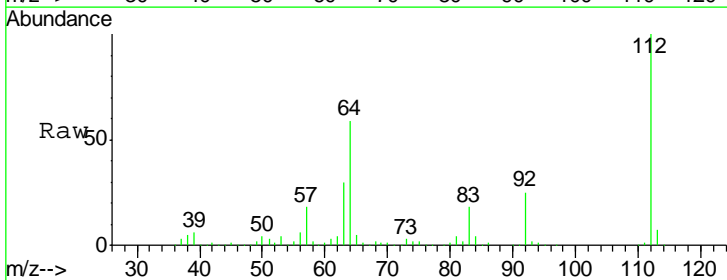
Tgt Ion:152 Resp: 63096

| Ion | Ratio | Lower | Upper |
|-----|-------|-------|-------|
| 152 | 100 | | |
| 150 | 155.3 | 124.0 | 186.0 |
| 115 | 54.4 | 49.6 | 74.4 |

Manual Integrations
APPROVED
 apatel
 5/28/2015 12:03:26 PM

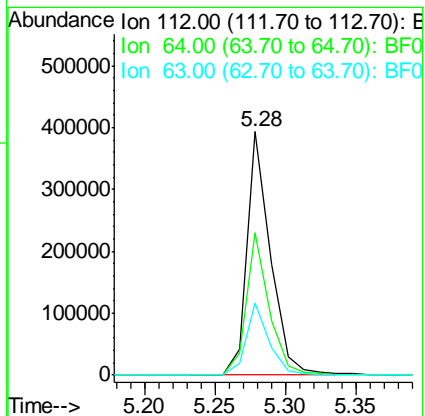
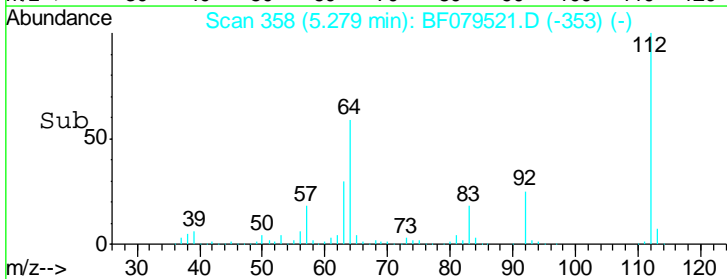


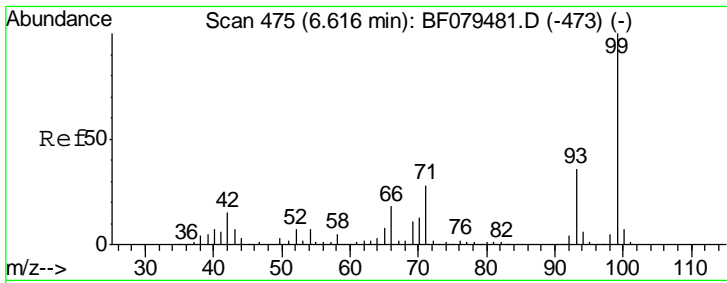
#5
 2-Fluorophenol
 Concen: 124.35 ng m
 RT: 5.28 min Scan# 358
 Delta R.T. 0.00 min
 Lab File: BF079521.D
 Acq: 27 May 2015 16:34



Tgt Ion:112 Resp: 452353

| Ion | Ratio | Lower | Upper |
|-----|-------|-------|-------|
| 112 | 100 | | |
| 64 | 58.6 | 43.5 | 65.3 |
| 63 | 29.6 | 21.8 | 32.8 |



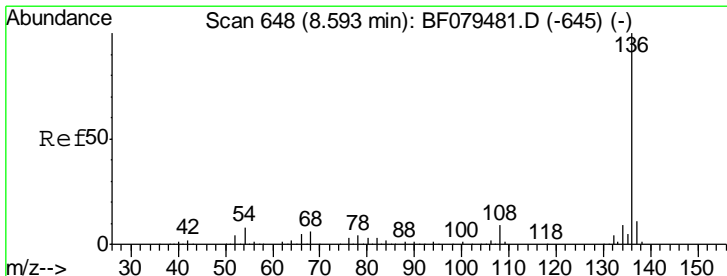
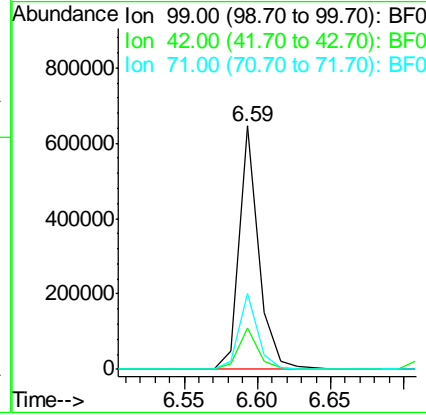
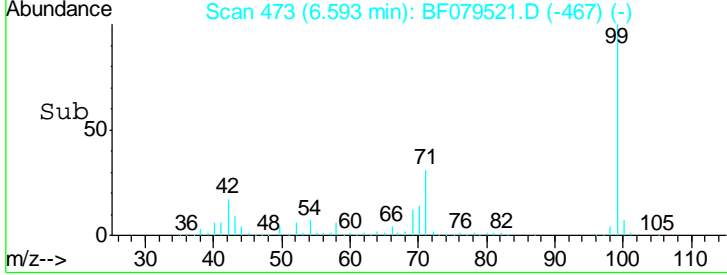
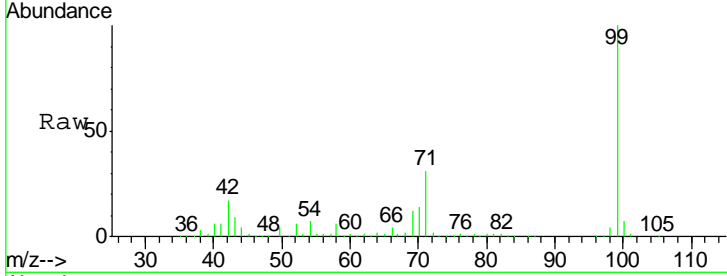


#7
 Phenol-d6
 Concen: 130.10 ng m
 RT: 6.59 min Scan# 473
 Delta R.T. 0.00 min
 Lab File: BF079521.D
 Acq: 27 May 2015 16:34

Instrument :
 BNA_F
ClientSampled :
 SB-26D

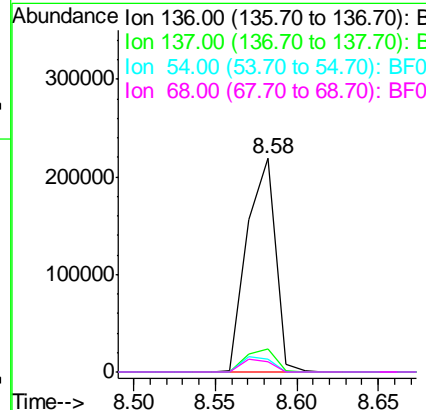
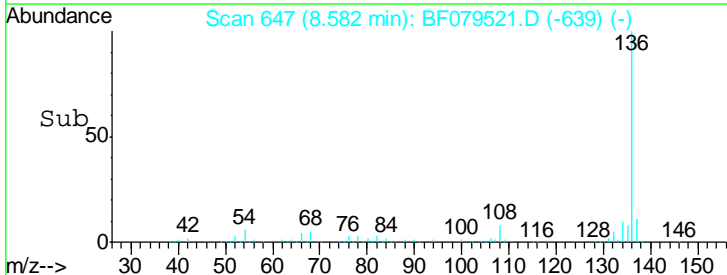
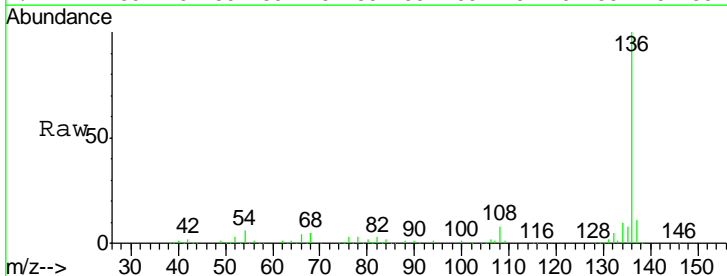
| Tgt Ion | Resp | Lower | Upper |
|---------|--------|-------|-------|
| 99 | 603217 | | |
| 42 | 16.9 | 11.9 | 17.9 |
| 71 | 31.0 | 22.1 | 33.1 |

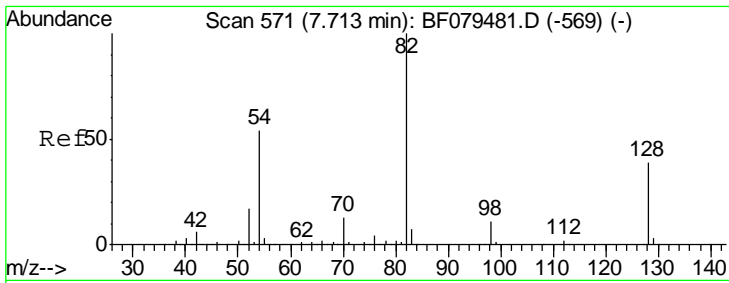
Manual Integrations
APPROVED
 apatel
 5/28/2015 12:03:26 PM



#21
 Naphthalene-d8
 Concen: 20.00 ng
 RT: 8.58 min Scan# 647
 Delta R.T. 0.00 min
 Lab File: BF079521.D
 Acq: 27 May 2015 16:34

| Tgt Ion | Resp | Lower | Upper |
|---------|--------|-------|-------|
| 136 | 265563 | | |
| 137 | 10.6 | 8.5 | 12.7 |
| 54 | 5.9 | 6.6 | 9.8# |
| 68 | 4.8 | 4.7 | 7.1 |



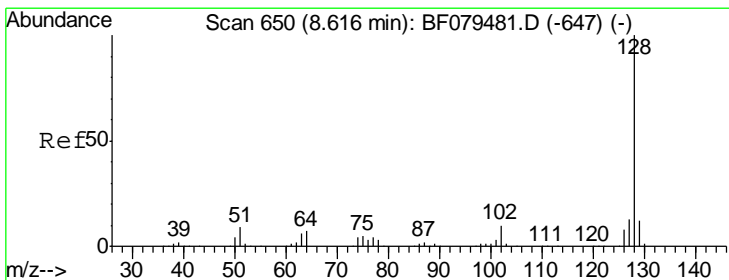
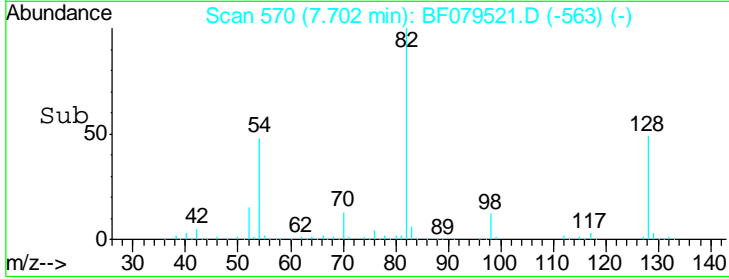
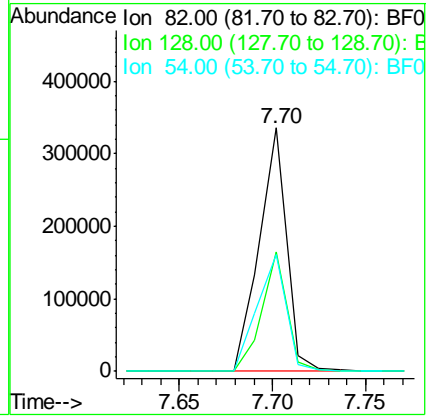
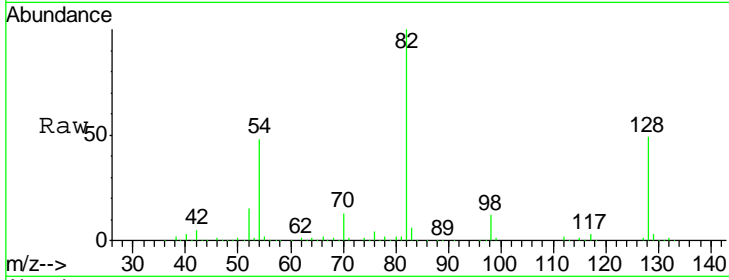


#23
 Nitrobenzene-d5
 Concen: 74.38 ng
 RT: 7.70 min Scan# 570
 Delta R.T. 0.00 min
 Lab File: BF079521.D
 Acq: 27 May 2015 16:34

Instrument :
 BNA_F
 ClientSampled :
 SB-26D

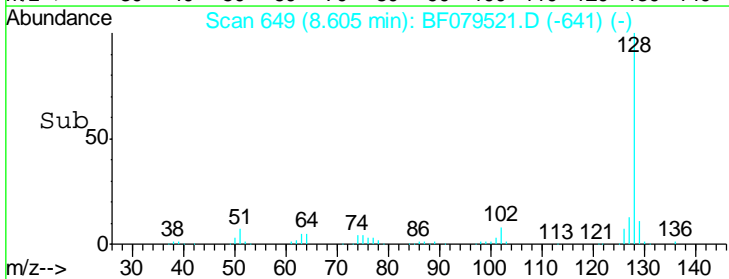
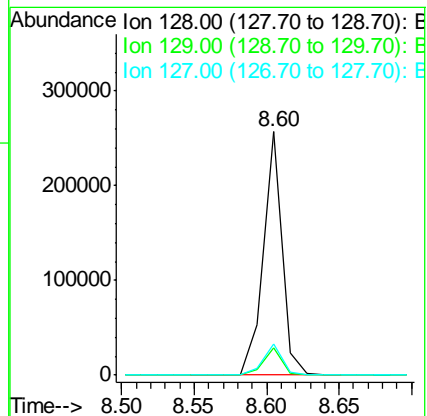
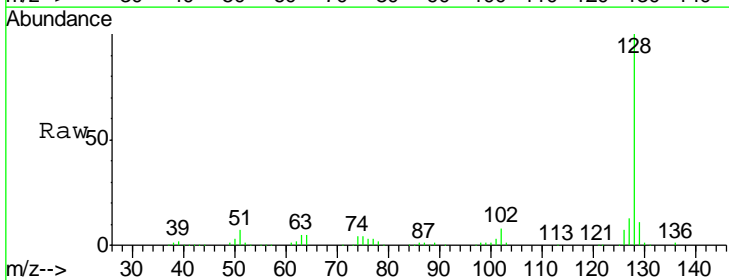
| Tgt Ion | Resp | Lower | Upper |
|---------|------|-------|-------|
| 82 | 100 | | |
| 128 | 48.8 | 30.8 | 46.2# |
| 54 | 47.8 | 42.8 | 64.2 |

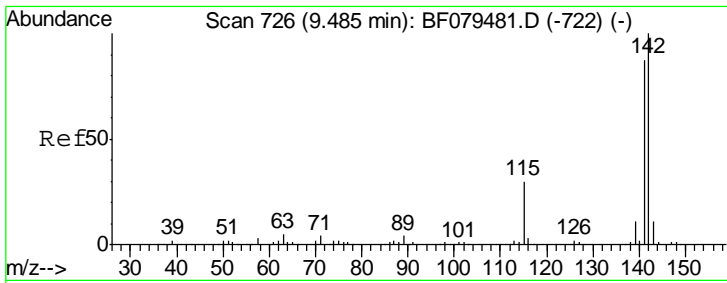
Manual Integrations
APPROVED
 apatel
 5/28/2015 12:03:26 PM



#31
 Naphthalene
 Concen: 18.19 ng
 RT: 8.60 min Scan# 649
 Delta R.T. 0.00 min
 Lab File: BF079521.D
 Acq: 27 May 2015 16:34

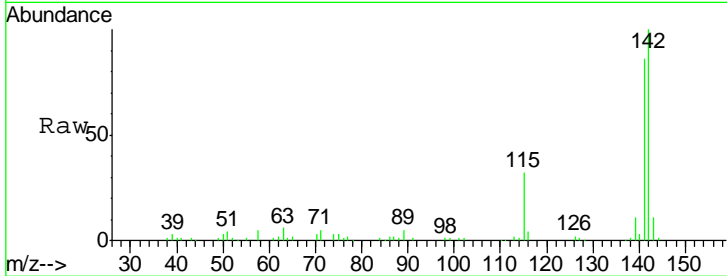
| Tgt Ion | Resp | Lower | Upper |
|---------|------|-------|-------|
| 128 | 100 | | |
| 129 | 11.1 | 9.3 | 13.9 |
| 127 | 12.8 | 10.6 | 15.8 |





#37
 2-Methylnaphthalene
 Concen: 11.96 ng
 RT: 9.46 min Scan# 724
 Delta R.T. 0.00 min
 Lab File: BF079521.D
 Acq: 27 May 2015 16:34

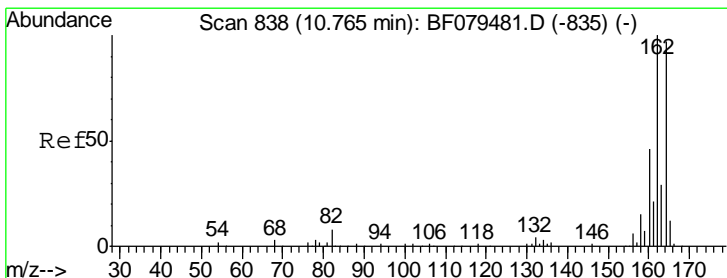
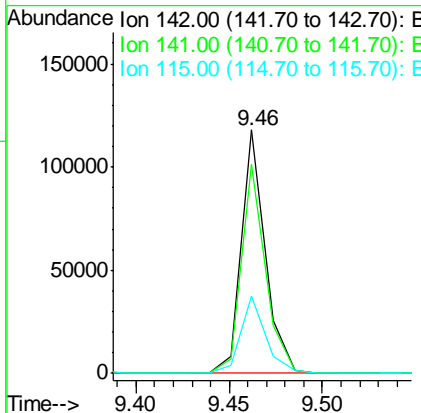
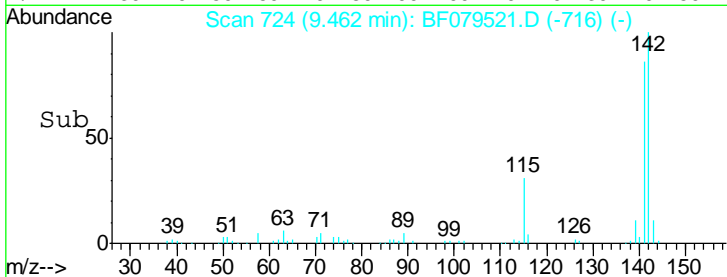
Instrument :
 BNA_F
 ClientSampled :
 SB-26D



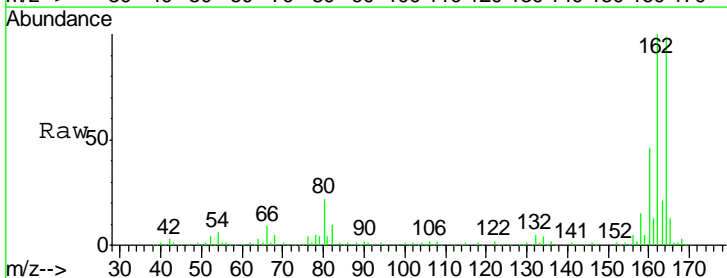
Tgt Ion:142 Resp: 105781

| Ion | Ratio | Lower | Upper |
|-----|-------|-------|-------|
| 142 | 100 | | |
| 141 | 86.0 | 69.5 | 104.3 |
| 115 | 31.9 | 23.8 | 35.6 |

Manual Integrations
 APPROVED
 apatel
 5/28/2015 12:03:26 PM

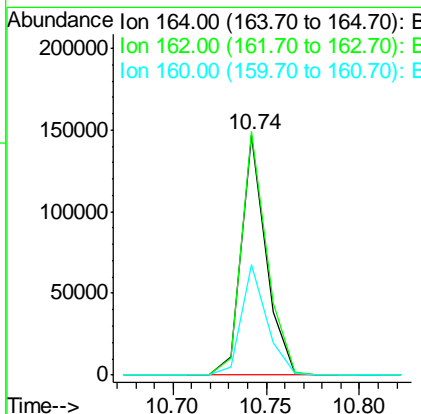
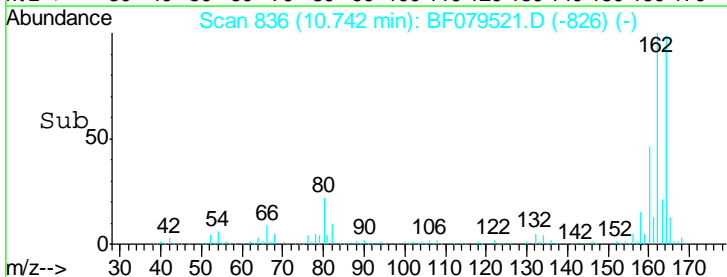


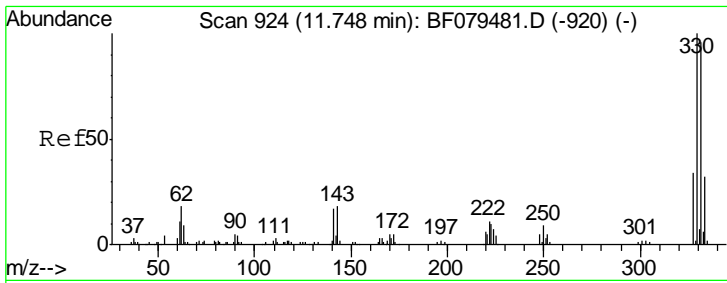
#38
 Acenaphthene-d10
 Concen: 20.00 ng
 RT: 10.74 min Scan# 836
 Delta R.T. 0.00 min
 Lab File: BF079521.D
 Acq: 27 May 2015 16:34



Tgt Ion:164 Resp: 135015

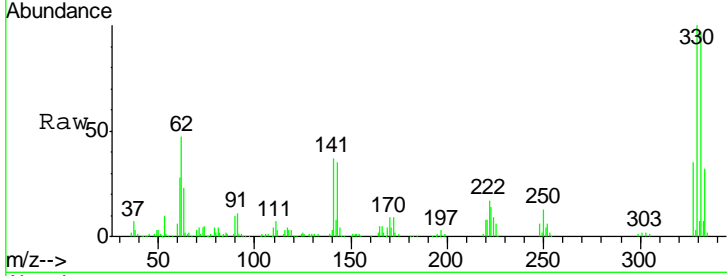
| Ion | Ratio | Lower | Upper |
|-----|-------|-------|-------|
| 164 | 100 | | |
| 162 | 101.5 | 82.6 | 124.0 |
| 160 | 46.2 | 37.7 | 56.5 |





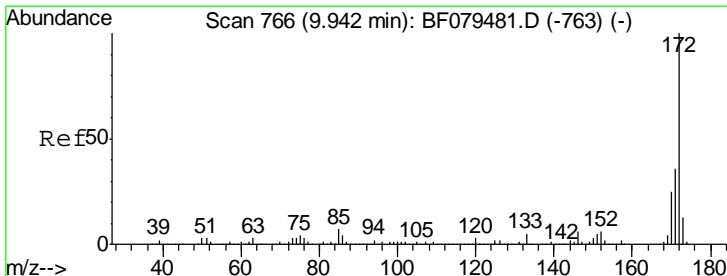
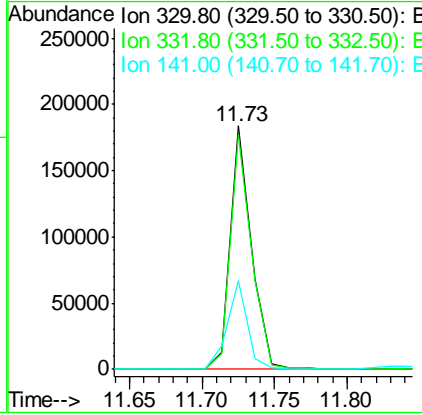
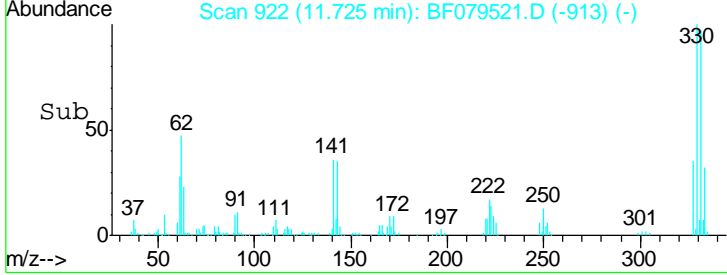
#41
 2,4,6-Tribromophenol
 Concen: 125.77 ng
 RT: 11.73 min Scan# 922
 Delta R.T. -0.01 min
 Lab File: BF079521.D
 Acq: 27 May 2015 16:34

Instrument :
 BNA_F
ClientSampled :
 SB-26D

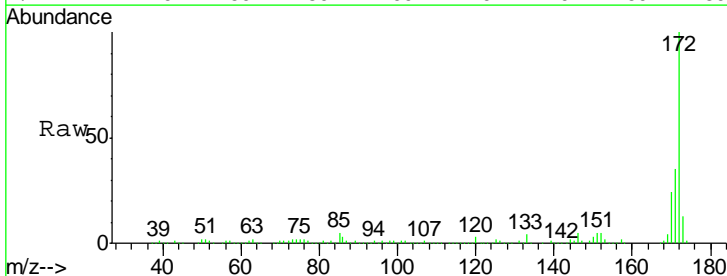


| Tgt Ion | Resp | Lower | Upper |
|---------|--------|-------|-------|
| 330 | 186513 | | |
| 332 | 96.9 | 0.0 | 0.0# |
| 141 | 35.8 | 0.0 | 0.0# |

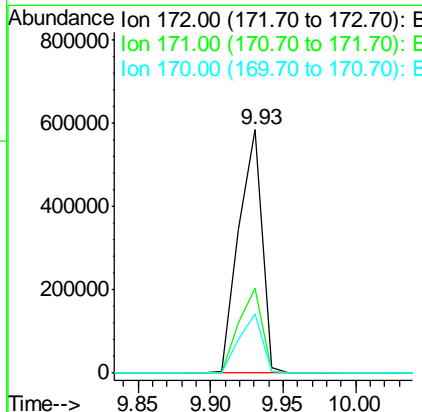
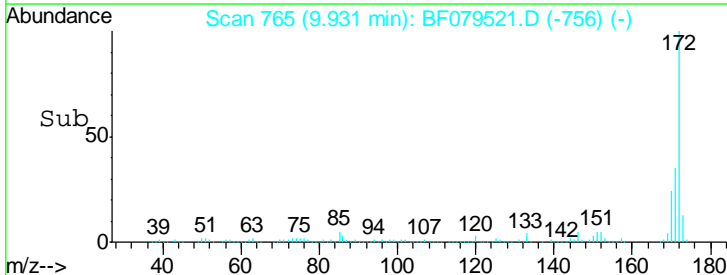
Manual Integrations
APPROVED
 apatel
 5/28/2015 12:03:26 PM

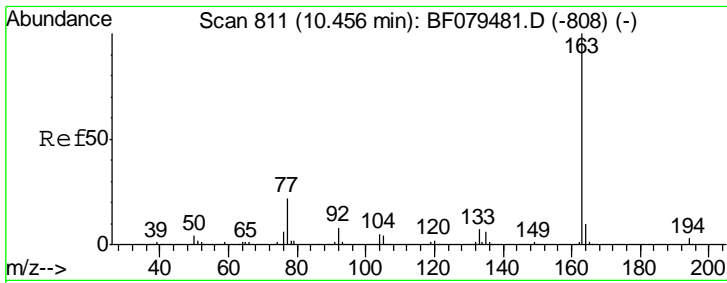


#44
 2-Fluorobiphenyl
 Concen: 68.91 ng
 RT: 9.93 min Scan# 765
 Delta R.T. 0.00 min
 Lab File: BF079521.D
 Acq: 27 May 2015 16:34



| Tgt Ion | Resp | Lower | Upper |
|---------|--------|-------|-------|
| 172 | 652092 | | |
| 171 | 34.8 | 28.5 | 42.7 |
| 170 | 24.1 | 19.7 | 29.5 |



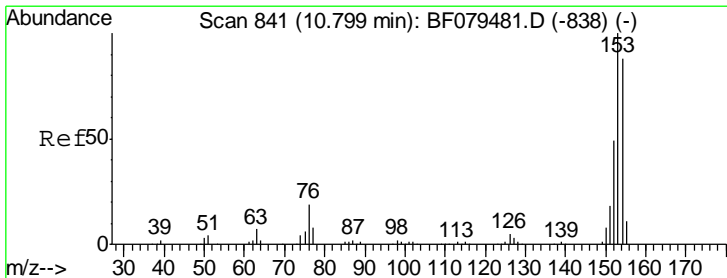
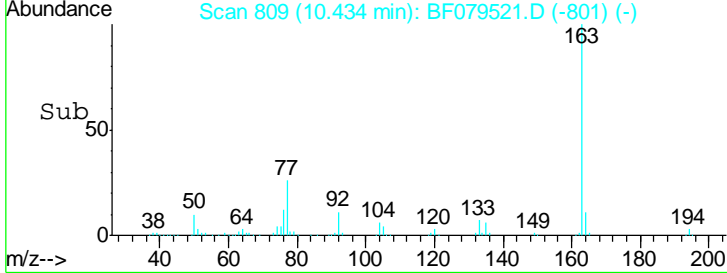
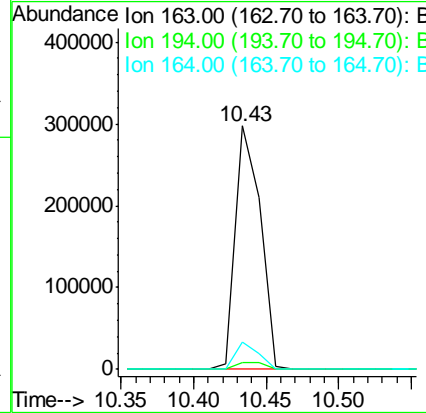
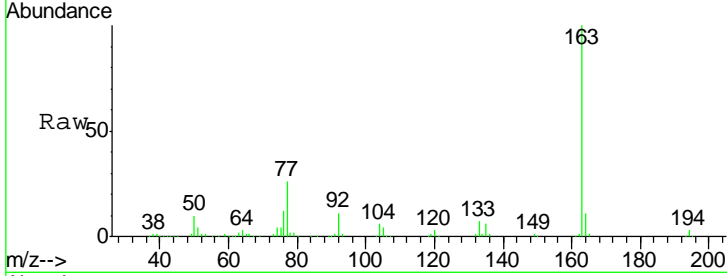


#49
 Dimethylphthalate
 Concen: 35.87 ng
 RT: 10.43 min Scan# 809
 Delta R.T. -0.01 min
 Lab File: BF079521.D
 Acq: 27 May 2015 16:34

Instrument :
 BNA_F
 ClientSampled :
 SB-26D

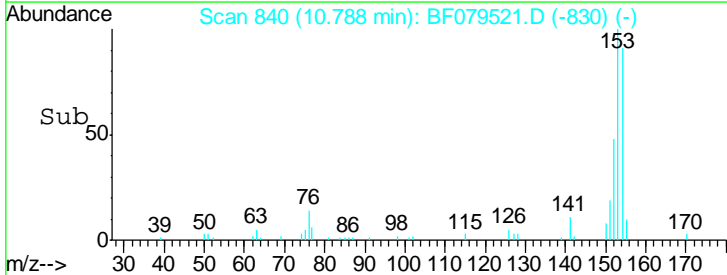
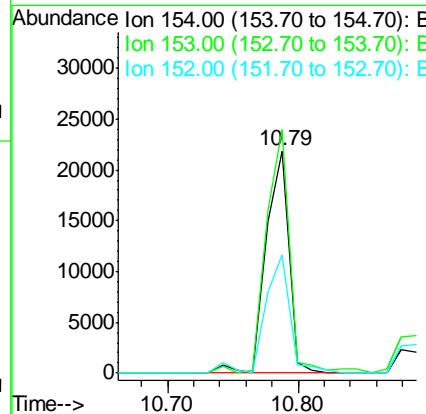
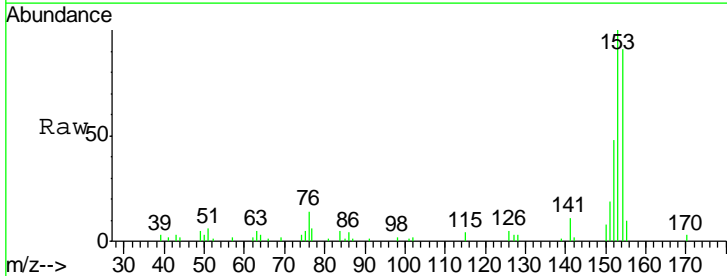
| Tgt Ion | Resp | Lower | Upper |
|---------|------|-------|-------|
| 163 | 100 | | |
| 194 | 2.8 | 2.4 | 3.6 |
| 164 | 11.1 | 8.2 | 12.4 |

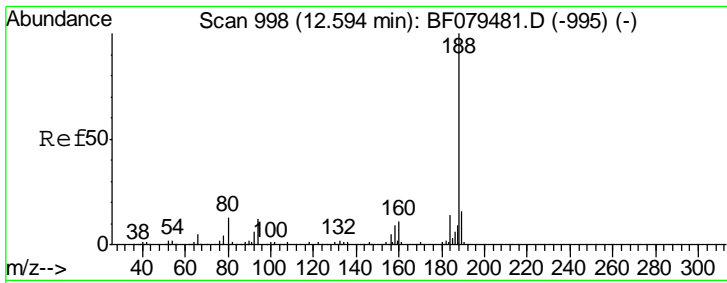
Manual Integrations
APPROVED
 apatel
 5/28/2015 12:03:26 PM



#51
 Acenaphthene
 Concen: 3.41 ng
 RT: 10.79 min Scan# 840
 Delta R.T. 0.00 min
 Lab File: BF079521.D
 Acq: 27 May 2015 16:34

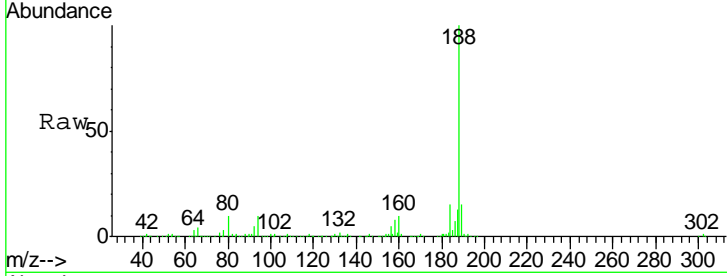
| Tgt Ion | Resp | Lower | Upper |
|---------|-------|-------|-------|
| 154 | 100 | | |
| 153 | 109.7 | 91.1 | 136.7 |
| 152 | 53.0 | 44.6 | 66.8 |





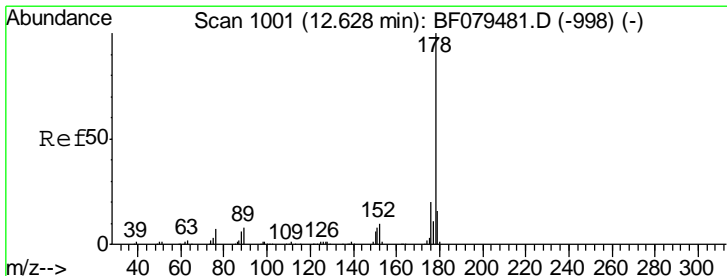
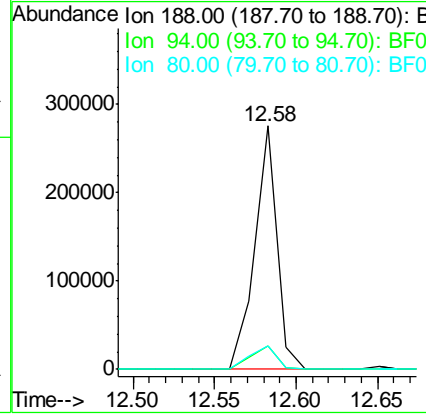
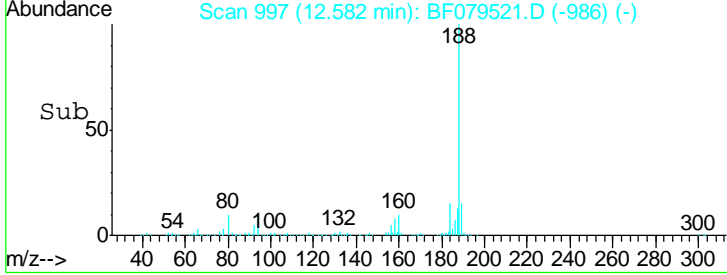
#63
 Phenanthrene-d10
 Concen: 20.00 ng
 RT: 12.58 min Scan# 997
 Delta R.T. 0.00 min
 Lab File: BF079521.D
 Acq: 27 May 2015 16:34

Instrument :
 BNA_F
ClientSampled :
 SB-26D

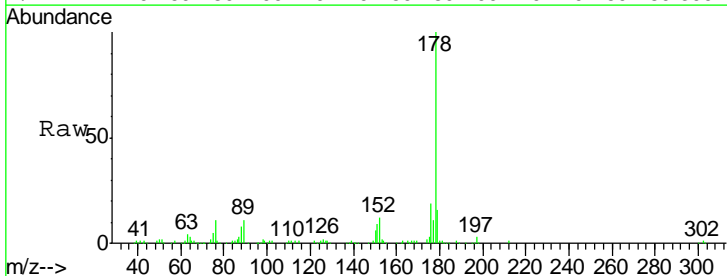


| Tgt Ion | Resp | Lower | Upper |
|---------|------|-------|-------|
| 188 | 100 | | |
| 94 | 9.5 | 9.8 | 14.6# |
| 80 | 9.6 | 10.5 | 15.7# |

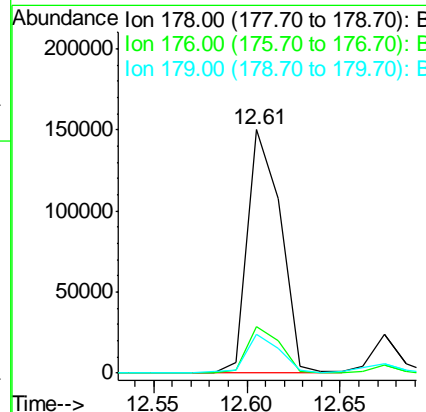
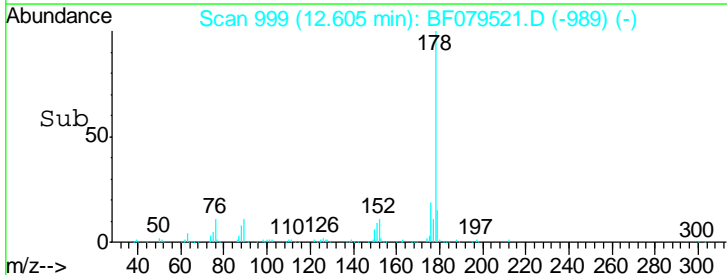
Manual Integrations
APPROVED
 apatel
 5/28/2015 12:03:26 PM

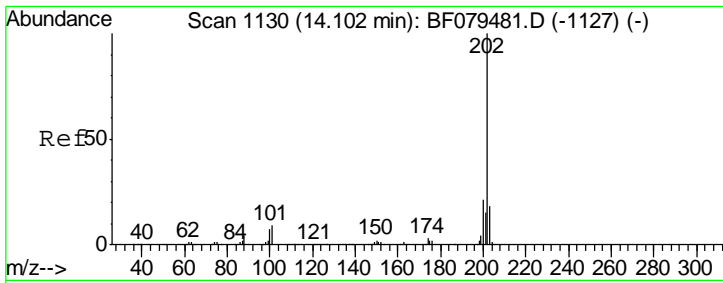


#70
 Phenanthrene
 Concen: 12.86 ng
 RT: 12.61 min Scan# 999
 Delta R.T. -0.01 min
 Lab File: BF079521.D
 Acq: 27 May 2015 16:34



| Tgt Ion | Resp | Lower | Upper |
|---------|------|-------|-------|
| 178 | 100 | | |
| 176 | 19.1 | 15.7 | 23.5 |
| 179 | 15.7 | 12.4 | 18.6 |



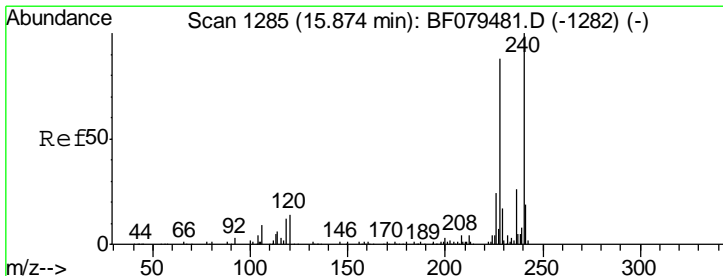
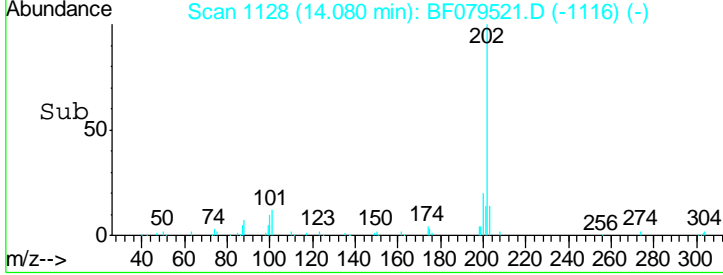
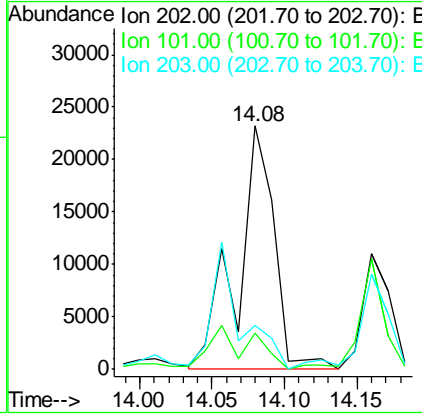
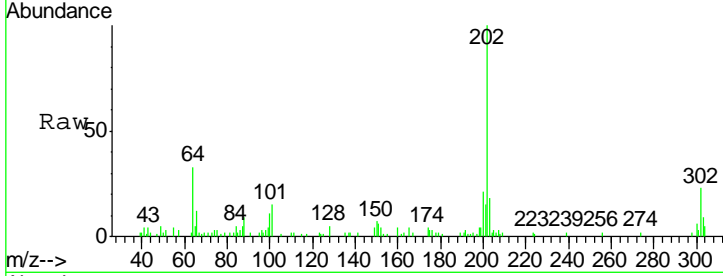


#74
 Fluoranthene
 Concen: 2.66 ng
 RT: 14.08 min Scan# 1128
 Delta R.T. -0.01 min
 Lab File: BF079521.D
 Acq: 27 May 2015 16:34

Instrument :
 BNA_F
 ClientSampled :
 SB-26D

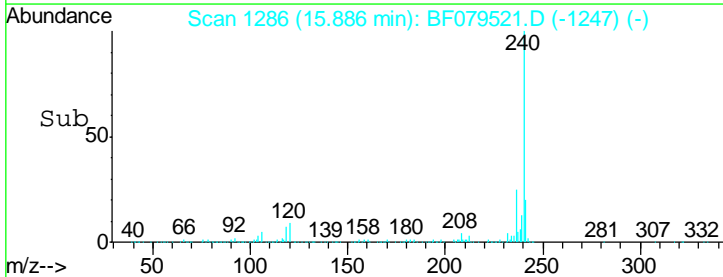
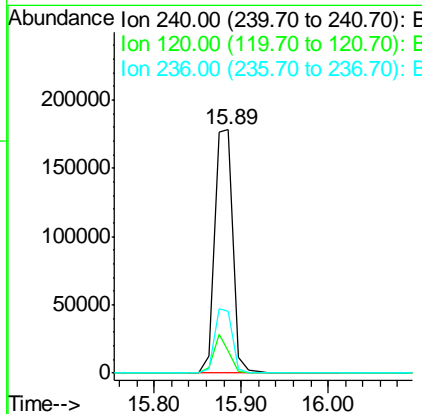
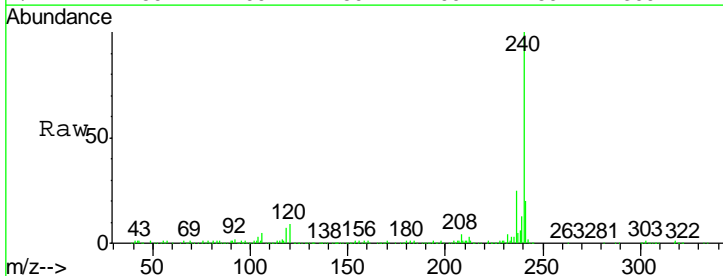
| Tgt Ion | Resp | Lower | Upper |
|---------|-------|-------|-------|
| 202 | 40836 | | |
| 101 | 15.1 | 0.0 | 29.3 |
| 203 | 18.3 | 0.0 | 37.6 |

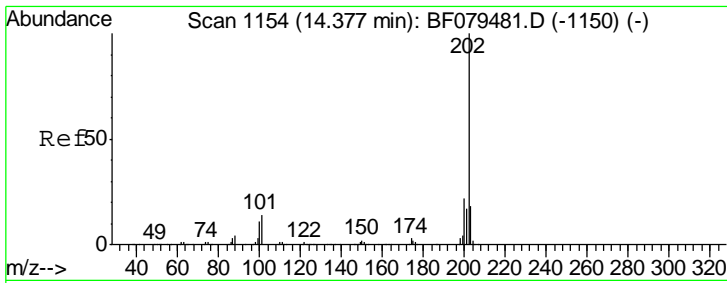
Manual Integrations
 APPROVED
 apatel
 5/28/2015 12:03:26 PM



#75
 Chrysene-d12
 Concen: 20.00 ng
 RT: 15.89 min Scan# 1286
 Delta R.T. -0.06 min
 Lab File: BF079521.D
 Acq: 27 May 2015 16:34

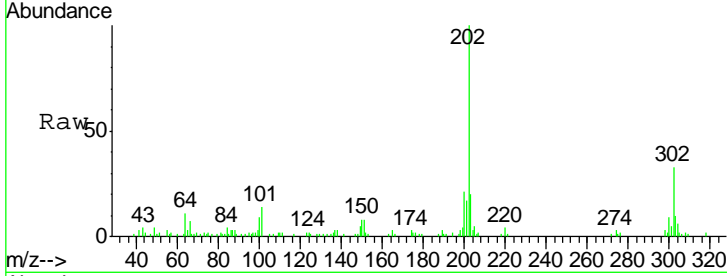
| Tgt Ion | Resp | Lower | Upper |
|---------|--------|-------|-------|
| 240 | 264065 | | |
| 120 | 9.2 | 10.8 | 16.2# |
| 236 | 25.2 | 21.0 | 31.6 |





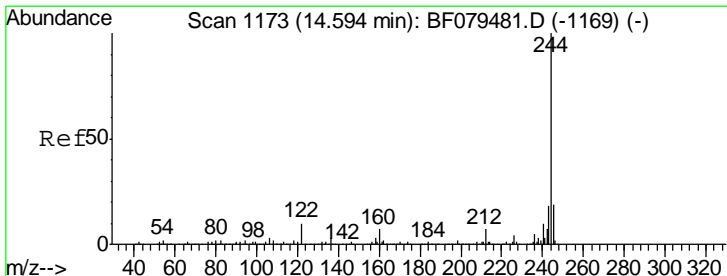
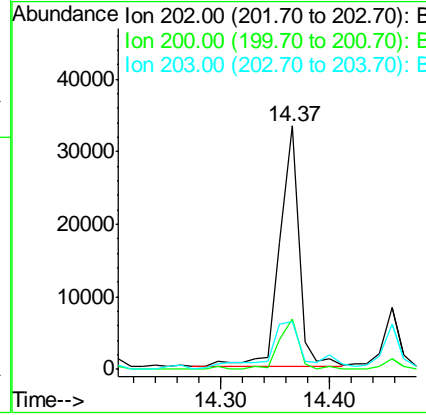
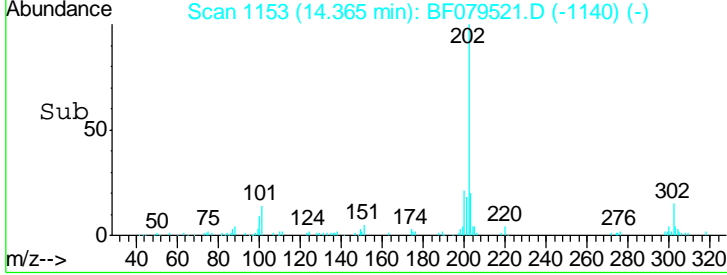
#77
 Pyrene
 Concen: 2.52 ng
 RT: 14.37 min Scan# 1153
 Delta R.T. 0.00 min
 Lab File: BF079521.D
 Acq: 27 May 2015 16:34

Instrument :
 BNA_F
 ClientSampled :
 SB-26D

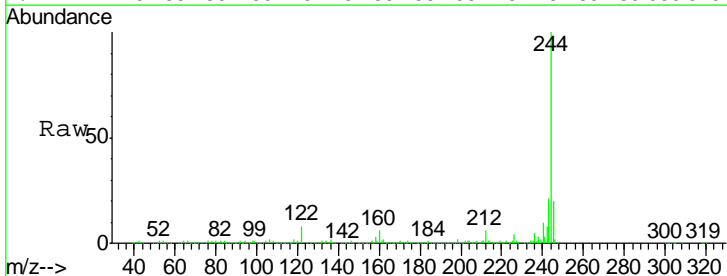


| Tgt Ion | Resp | Lower | Upper |
|---------|-------|-------|-------|
| 202 | 41188 | | |
| 200 | 20.6 | 17.5 | 26.3 |
| 203 | 19.5 | 14.4 | 21.6 |

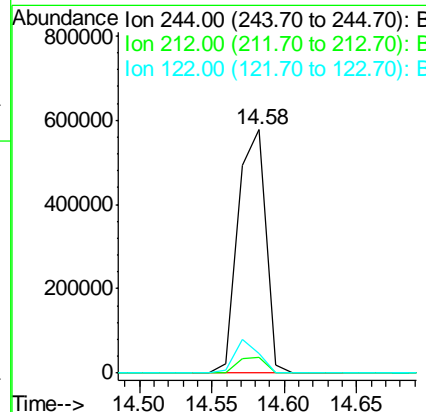
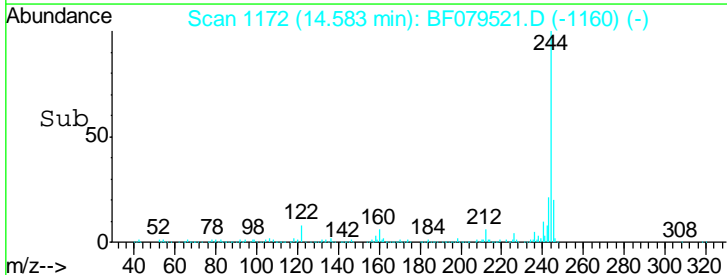
Manual Integrations
 APPROVED
 apatel
 5/28/2015 12:03:26 PM

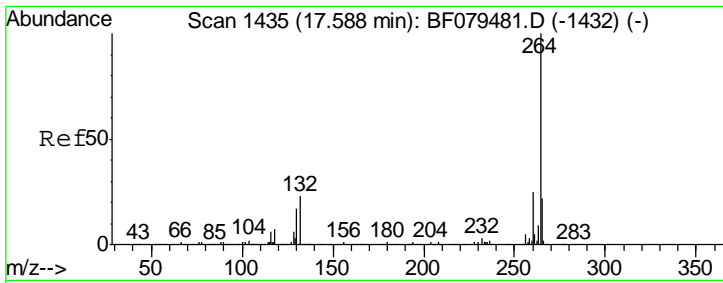


#78
 Terphenyl-d14
 Concen: 67.88 ng
 RT: 14.58 min Scan# 1172
 Delta R.T. -0.01 min
 Lab File: BF079521.D
 Acq: 27 May 2015 16:34



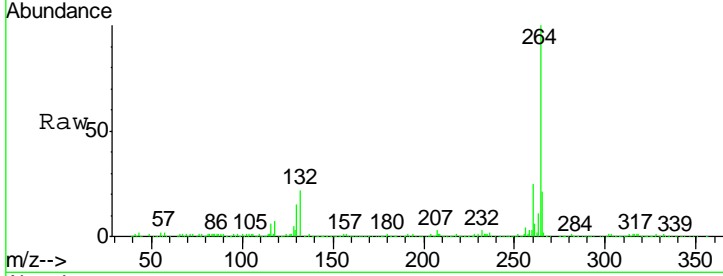
| Tgt Ion | Resp | Lower | Upper |
|---------|--------|-------|-------|
| 244 | 763773 | | |
| 212 | 6.2 | 5.2 | 7.8 |
| 122 | 8.2 | 8.0 | 12.0 |





#86
 Perylene-d12
 Concen: 20.00 ng
 RT: 17.69 min Scan# 1444
 Delta R.T. -0.19 min
 Lab File: BF079521.D
 Acq: 27 May 2015 16:34

Instrument :
 BNA_F
ClientSampled :
 SB-26D



Tgt Ion: 264 Resp: 282991

| Ion | Ratio | Lower | Upper |
|-----|-------|-------|-------|
| 264 | 100 | | |
| 260 | 24.9 | 19.8 | 29.8 |
| 265 | 21.2 | 17.8 | 26.6 |

Manual Integrations
APPROVED
 apatel
 5/28/2015 12:03:26 PM

