

Data Path : Z:\svoasrv\HPCHEM1\BNA\_F\Data\BF052722\  
 Data File : BF128534.D  
 Acq On : 28 May 2022 03:31  
 Operator : CG\JU  
 Sample : N2924-01  
 Misc :  
 ALS Vial : 22 Sample Multiplier: 1

Instrument :  
 BNA\_F  
 ClientSampleId :  
 P024-SS009-0006-01

Quant Time: May 28 04:01:29 2022  
 Quant Method : Z:\svoasrv\HPCHEM1\BNA\_F\Methods\8270-BF052622.M  
 Quant Title : ASP BNA STANDARDS FOR 5 POINT CALIBRATION  
 QLast Update : Fri May 27 01:51:59 2022  
 Response via : Initial Calibration

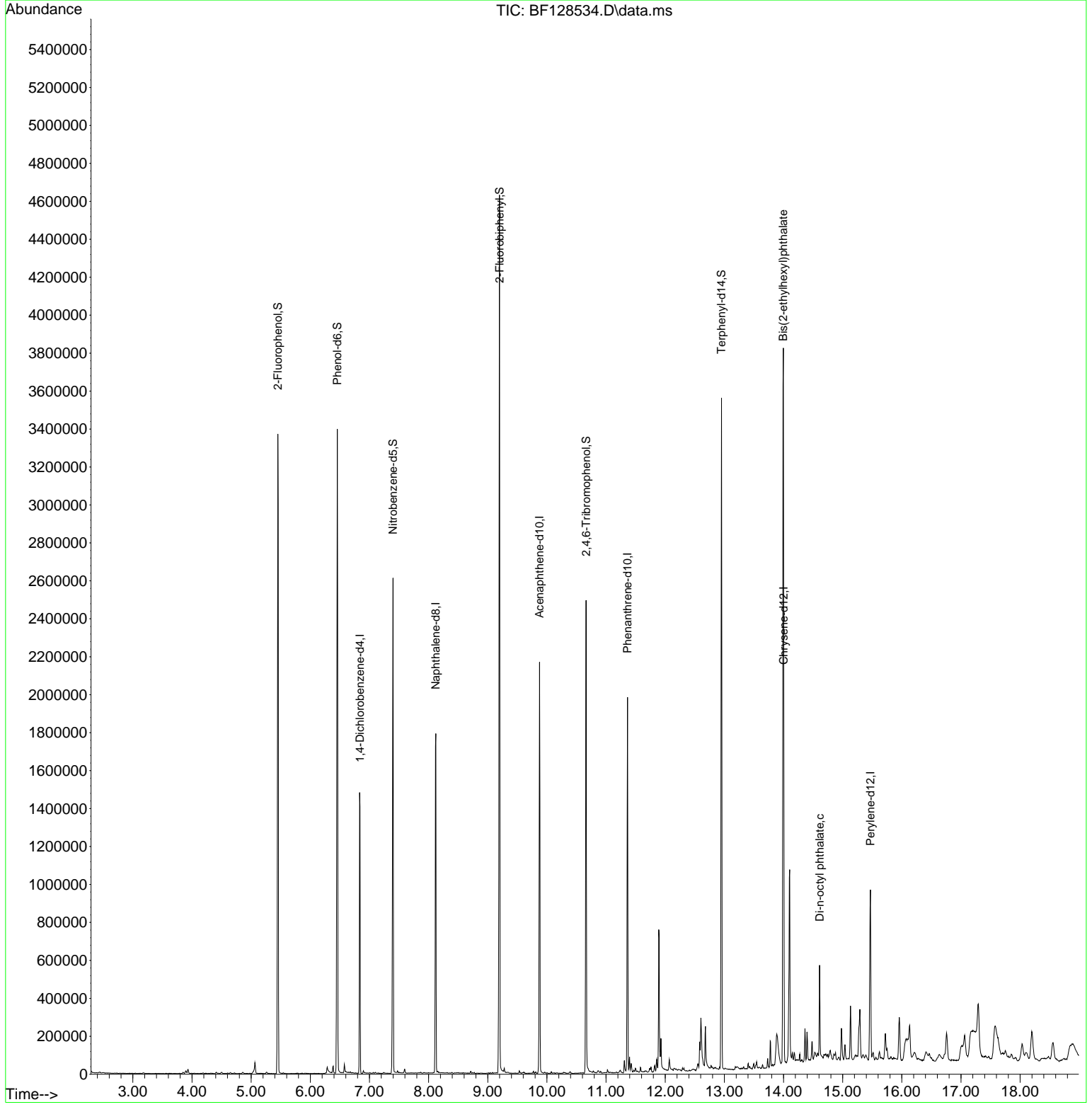
Compound	R.T.	QIon	Response	Conc	Units	Dev(Min)	
Internal Standards							
1) 1,4-Dichlorobenzene-d4	6.839	152	216647	20.000	ng	0.00	
21) Naphthalene-d8	8.122	136	804739	20.000	ng	0.00	
39) Acenaphthene-d10	9.875	164	419289	20.000	ng	0.00	
64) Phenanthrene-d10	11.363	188	676715	20.000	ng	0.00	
76) Chrysene-d12	14.004	240	376676	20.000	ng	0.00	
86) Perylene-d12	15.468	264	410631	20.000	ng	0.00	
System Monitoring Compounds							
5) 2-Fluorophenol	5.451	112	917593	70.156	ng	0.00	
7) Phenol-d6	6.457	99	1162668	69.719	ng	-0.01	
23) Nitrobenzene-d5	7.398	82	776605	55.671	ng	-0.01	
42) 2,4,6-Tribromophenol	10.663	330	271236	67.963	ng	-0.01	
45) 2-Fluorobiphenyl	9.198	172	1411907	54.708	ng	0.00	
79) Terphenyl-d14	12.951	244	1118714	57.378	ng	0.00	
Target Compounds							
84) Bis(2-ethylhexyl)phtha...	13.992	149	931966	64.377	ng		Qvalue 99
85) Di-n-octyl phthalate	14.610	149	212246	8.329	ng		# 97

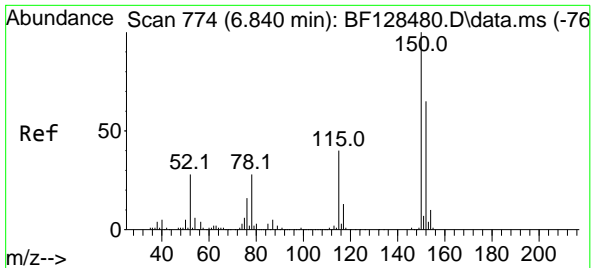
(#) = qualifier out of range (m) = manual integration (+) = signals summed

Data Path : Z:\svoasrv\HPCHEM1\BNA\_F\Data\BF052722\  
 Data File : BF128534.D  
 Acq On : 28 May 2022 03:31  
 Operator : CG\JU  
 Sample : N2924-01  
 Misc :  
 ALS Vial : 22 Sample Multiplier: 1

Instrument :  
 BNA\_F  
 ClientSampleId :  
 P024-SS009-0006-01

Quant Time: May 28 04:01:29 2022  
 Quant Method : Z:\svoasrv\HPCHEM1\BNA\_F\Methods\8270-BF052622.M  
 Quant Title : ASP BNA STANDARDS FOR 5 POINT CALIBRATION  
 QLast Update : Fri May 27 01:51:59 2022  
 Response via : Initial Calibration



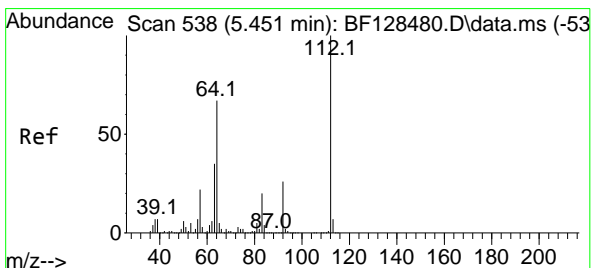
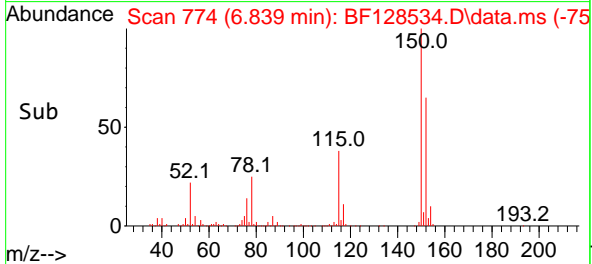
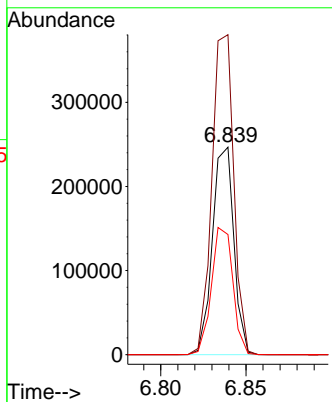
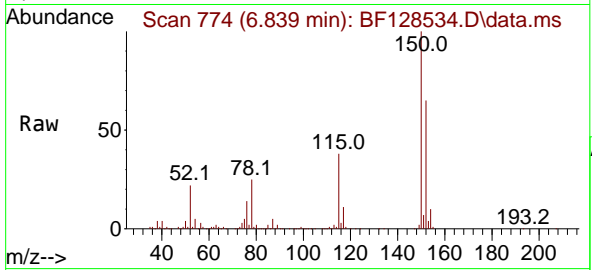


#1  
 1,4-Dichlorobenzene-d4  
 Concen: 20.000 ng  
 RT: 6.839 min Scan# 774  
 Delta R.T. -0.001 min  
 Lab File: BF128534.D  
 Acq: 28 May 2022 03:31

Instrument : BNA\_F  
 ClientSampleId : P024-SS009-0006-01

Tgt Ion:152 Resp: 216647

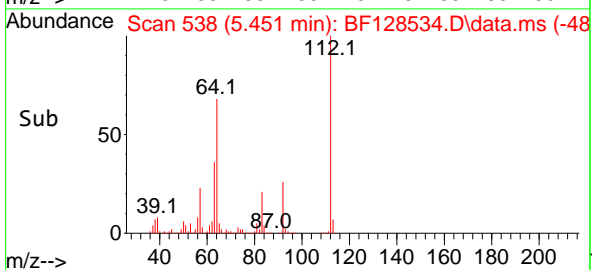
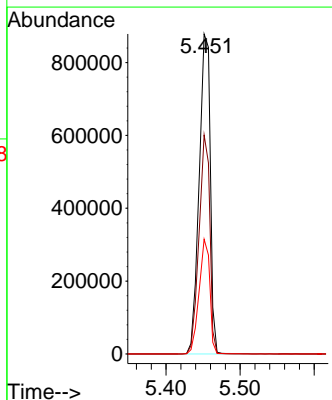
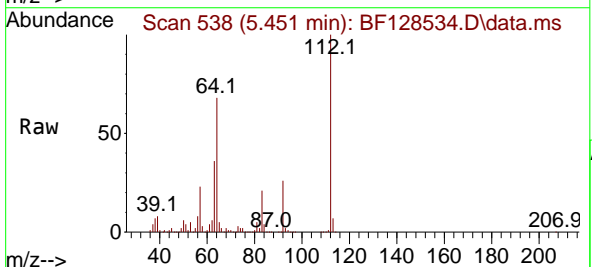
Ion	Ratio	Lower	Upper
152	100		
150	154.2	123.7	185.5
115	57.9	49.9	74.9

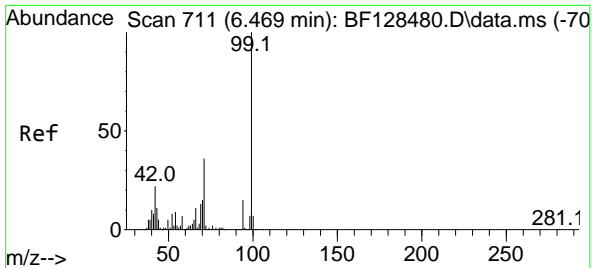


#5  
 2-Fluorophenol  
 Concen: 70.156 ng  
 RT: 5.451 min Scan# 538  
 Delta R.T. -0.000 min  
 Lab File: BF128534.D  
 Acq: 28 May 2022 03:31

Tgt Ion:112 Resp: 917593

Ion	Ratio	Lower	Upper
112	100		
64	68.5	53.3	79.9
63	35.9	28.0	42.0

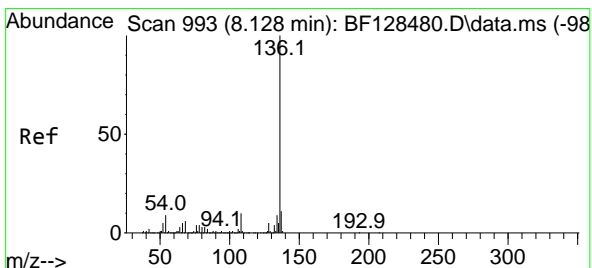
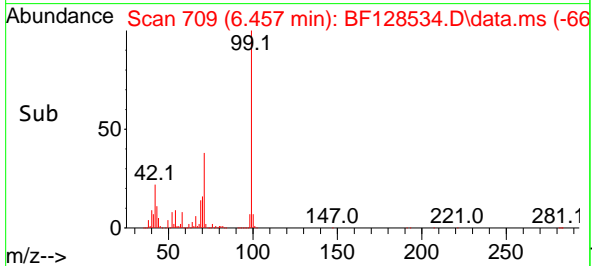
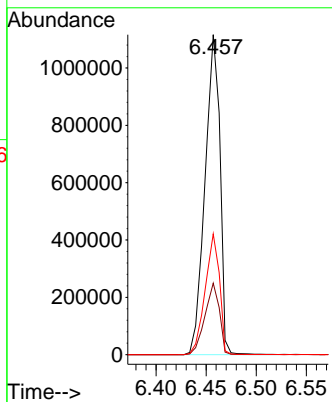
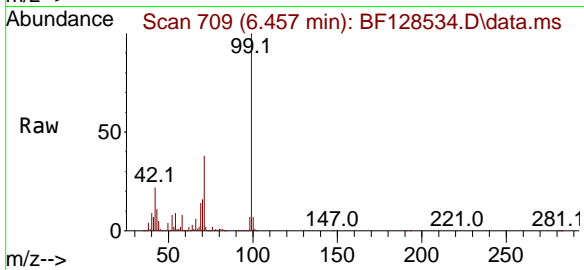




#7  
Phenol-d6  
Concen: 69.719 ng  
RT: 6.457 min Scan# 709  
Delta R.T. -0.012 min  
Lab File: BF128534.D  
Acq: 28 May 2022 03:31

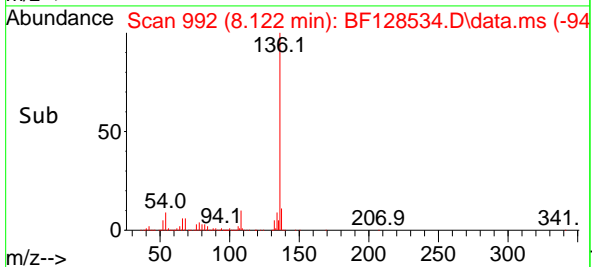
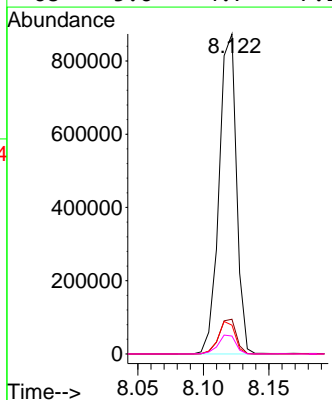
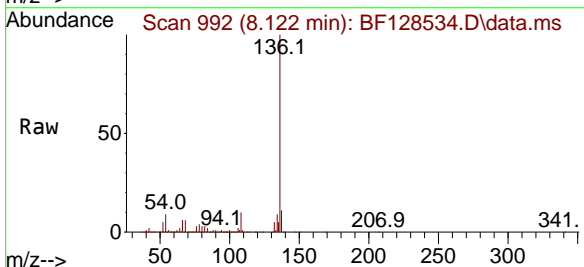
Instrument :  
BNA\_F  
ClientSampleId :  
P024-SS009-0006-01

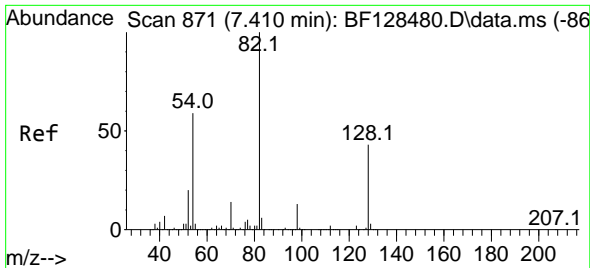
Tgt Ion: 99 Resp: 1162668  
Ion Ratio Lower Upper  
99 100  
42 22.3 17.3 25.9  
71 37.7 28.9 43.3



#21  
Naphthalene-d8  
Concen: 20.000 ng  
RT: 8.122 min Scan# 992  
Delta R.T. -0.006 min  
Lab File: BF128534.D  
Acq: 28 May 2022 03:31

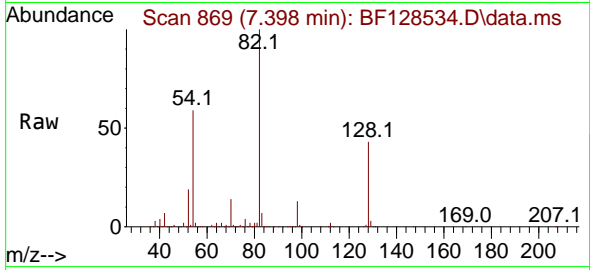
Tgt Ion: 136 Resp: 804739  
Ion Ratio Lower Upper  
136 100  
137 10.9 8.8 13.2  
54 9.0 7.5 11.3  
68 5.6 4.7 7.1



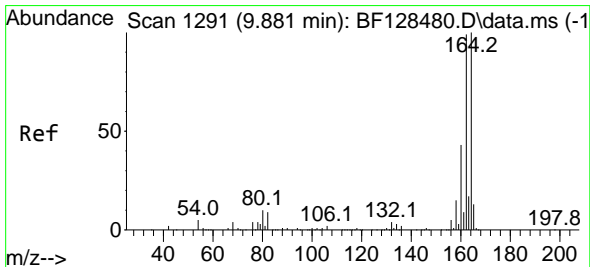
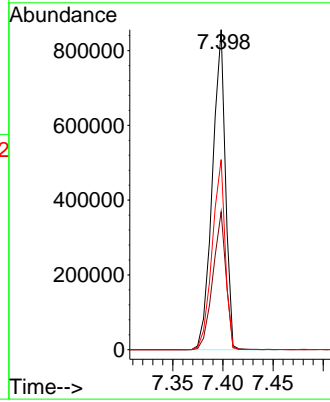
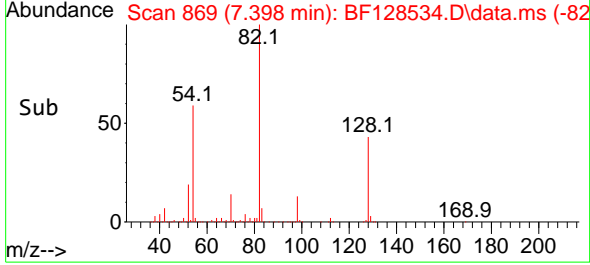


#23  
 Nitrobenzene-d5  
 Concen: 55.671 ng  
 RT: 7.398 min Scan# 80  
 Delta R.T. -0.012 min  
 Lab File: BF128534.D  
 Acq: 28 May 2022 03:31

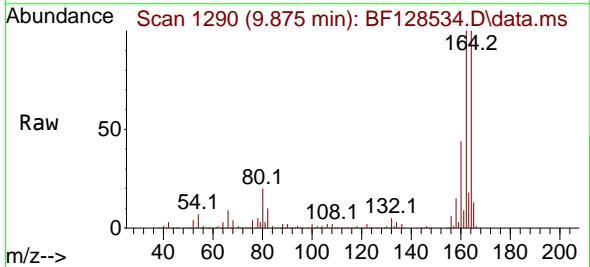
Instrument :  
 BNA\_F  
 ClientSampleId :  
 P024-SS009-0006-01



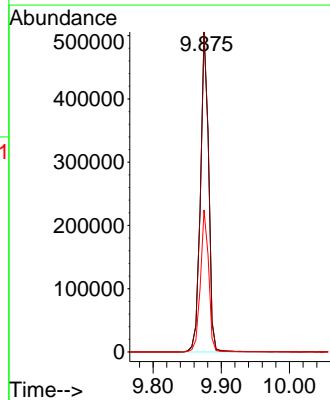
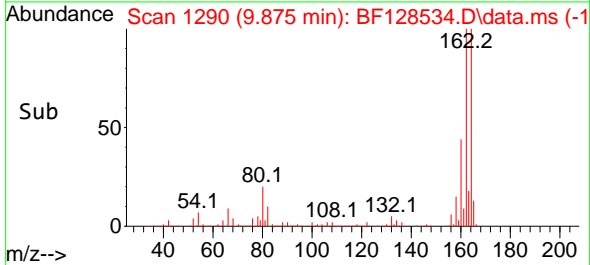
Tgt Ion: 82 Resp: 776605  
 Ion Ratio Lower Upper  
 82 100  
 128 43.1 34.0 51.0  
 54 59.4 46.9 70.3

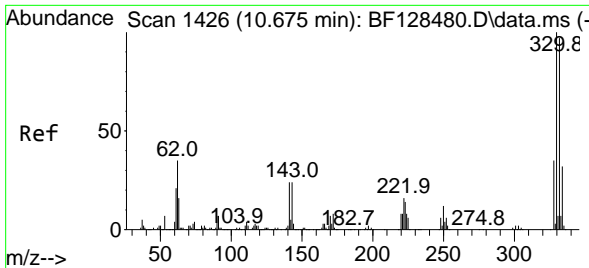


#39  
 Acenaphthene-d10  
 Concen: 20.000 ng  
 RT: 9.875 min Scan# 1290  
 Delta R.T. -0.006 min  
 Lab File: BF128534.D  
 Acq: 28 May 2022 03:31



Tgt Ion: 164 Resp: 419289  
 Ion Ratio Lower Upper  
 164 100  
 162 100.2 79.5 119.3  
 160 44.5 34.2 51.4

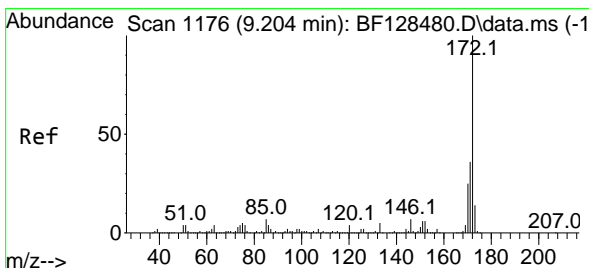
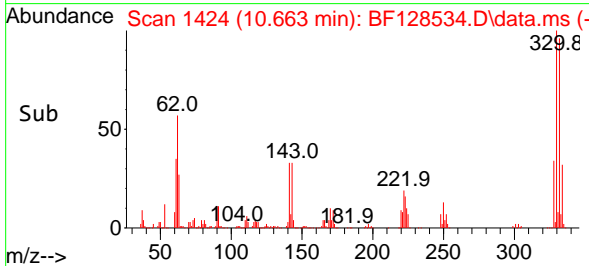
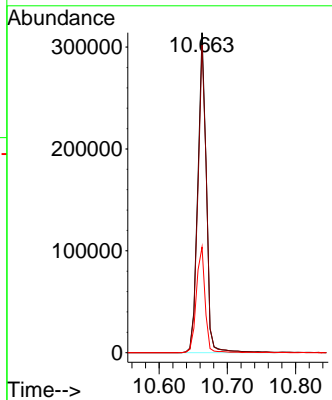
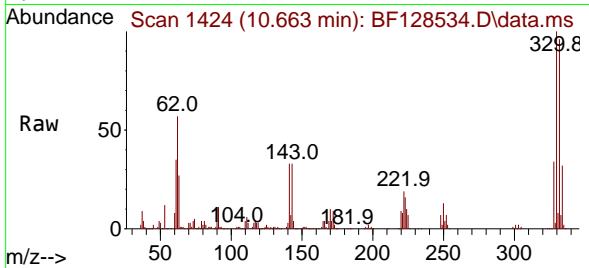




#42  
 2,4,6-Tribromophenol  
 Concen: 67.963 ng  
 RT: 10.663 min Scan# 1424  
 Delta R.T. -0.012 min  
 Lab File: BF128534.D  
 Acq: 28 May 2022 03:31

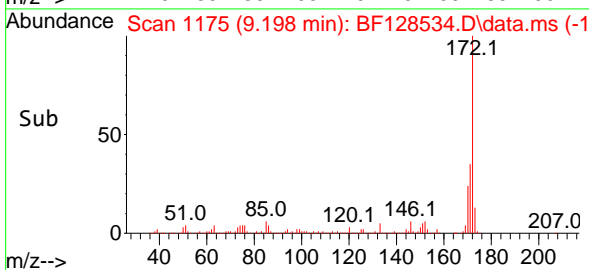
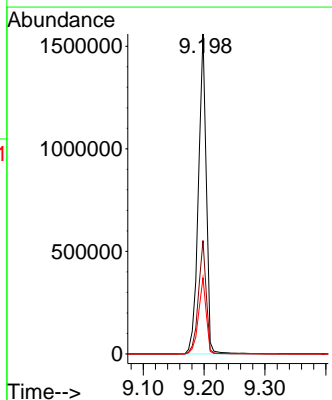
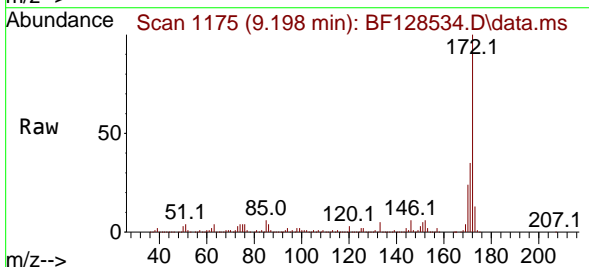
Instrument : BNA\_F  
 ClientSampleId : P024-SS009-0006-01

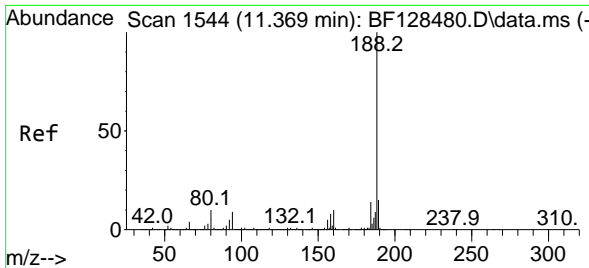
Tgt Ion: 330 Resp: 271236  
 Ion Ratio Lower Upper  
 330 100  
 332 96.5 76.8 115.2  
 141 34.0 28.0 42.0



#45  
 2-Fluorobiphenyl  
 Concen: 54.708 ng  
 RT: 9.198 min Scan# 1175  
 Delta R.T. -0.006 min  
 Lab File: BF128534.D  
 Acq: 28 May 2022 03:31

Tgt Ion: 172 Resp: 1411907  
 Ion Ratio Lower Upper  
 172 100  
 171 35.4 28.8 43.2  
 170 23.8 19.8 29.8



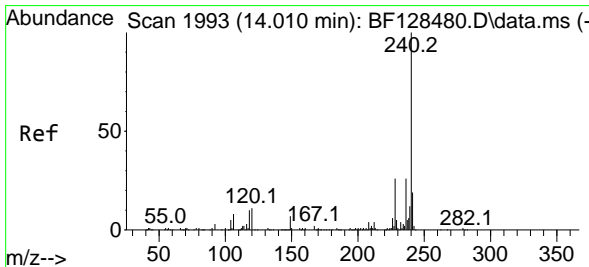
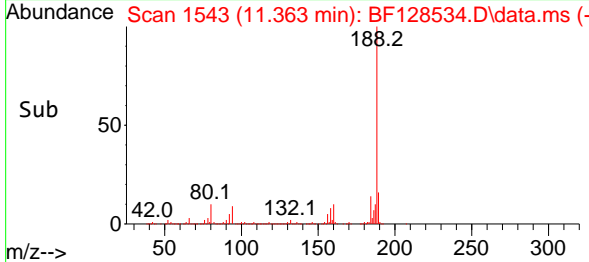
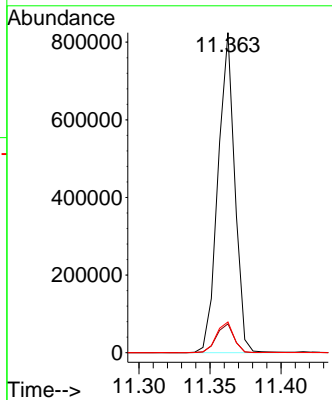
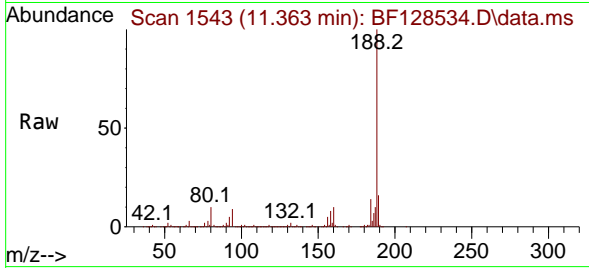


#64  
 Phenanthrene-d10  
 Concen: 20.000 ng  
 RT: 11.363 min Scan# 11  
 Delta R.T. -0.006 min  
 Lab File: BF128534.D  
 Acq: 28 May 2022 03:31

Instrument :  
 BNA\_F  
 ClientSampleId :  
 P024-SS009-0006-01

Tgt Ion:188 Resp: 676715

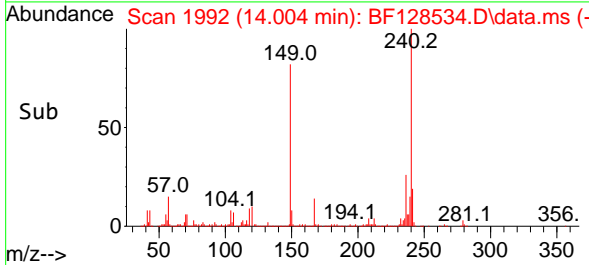
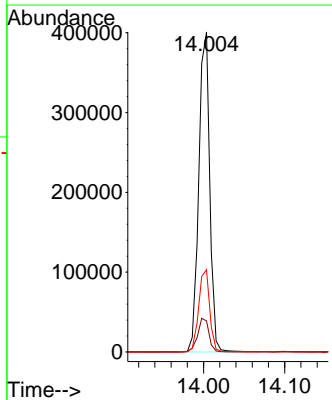
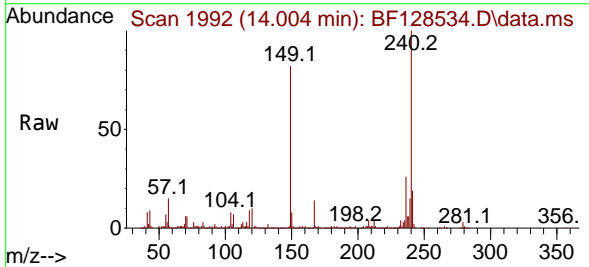
Ion	Ratio	Lower	Upper
188	100		
94	9.0	7.0	10.6
80	9.6	7.6	11.4

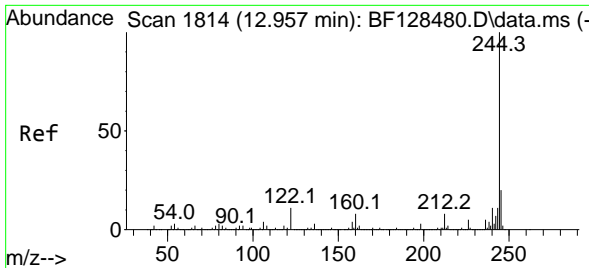


#76  
 Chrysene-d12  
 Concen: 20.000 ng  
 RT: 14.004 min Scan# 1992  
 Delta R.T. -0.006 min  
 Lab File: BF128534.D  
 Acq: 28 May 2022 03:31

Tgt Ion:240 Resp: 376676

Ion	Ratio	Lower	Upper
240	100		
120	9.7	8.9	13.3
236	25.7	20.8	31.2



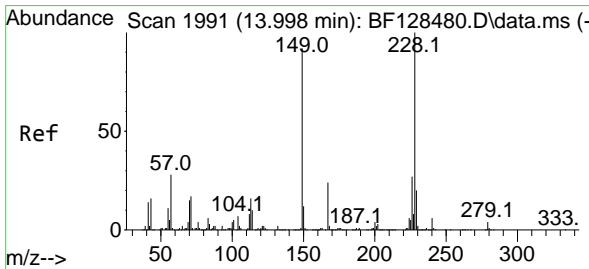
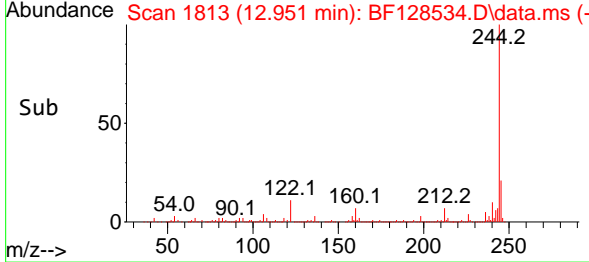
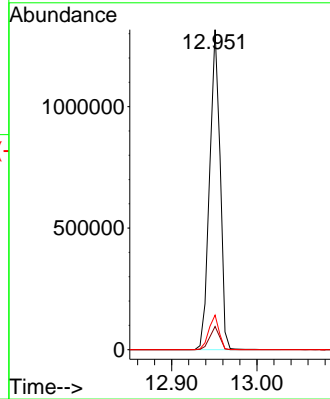
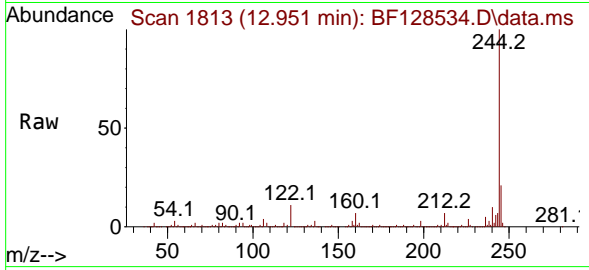


#79  
 Terphenyl-d14  
 Concen: 57.378 ng  
 RT: 12.951 min Scan# 111  
 Delta R.T. -0.006 min  
 Lab File: BF128534.D  
 Acq: 28 May 2022 03:31

Instrument : BNA\_F  
 ClientSampleId : P024-SS009-0006-01

Tgt Ion:244 Resp: 1118714

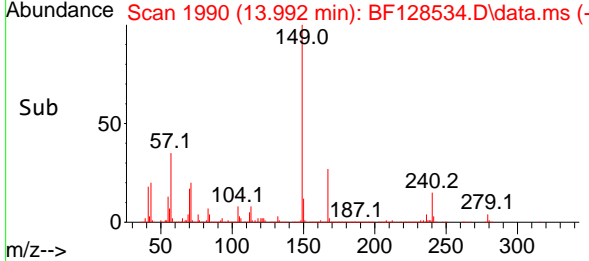
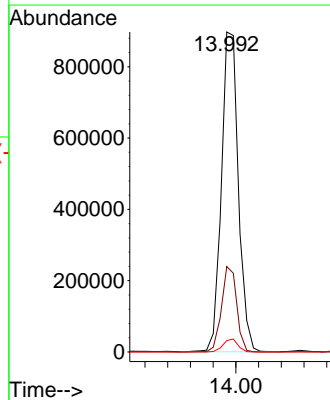
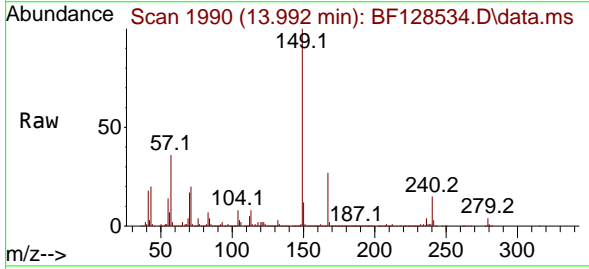
Ion	Ratio	Lower	Upper
244	100		
212	7.3	6.1	9.1
122	10.8	8.8	13.2



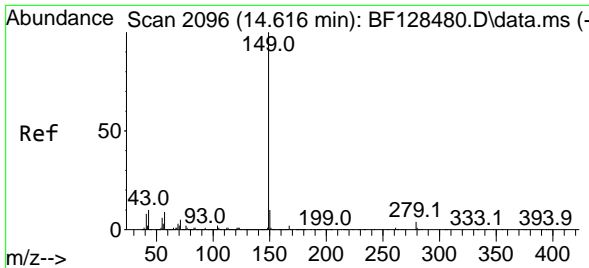
#84  
 Bis(2-ethylhexyl)phthalate  
 Concen: 64.377 ng  
 RT: 13.992 min Scan# 1990  
 Delta R.T. -0.006 min  
 Lab File: BF128534.D  
 Acq: 28 May 2022 03:31

Tgt Ion:149 Resp: 931966

Ion	Ratio	Lower	Upper
149	100		
167	26.7	21.0	31.4
279	3.6	3.1	4.7





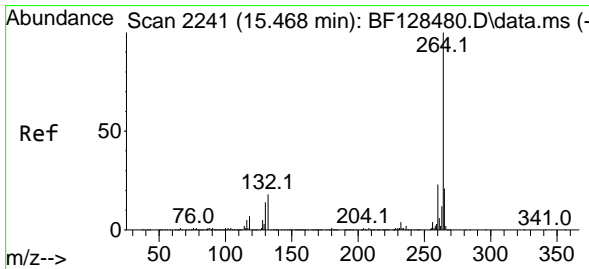
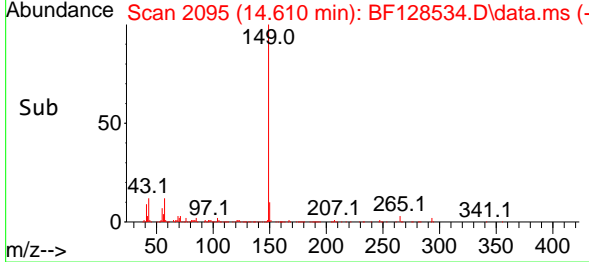
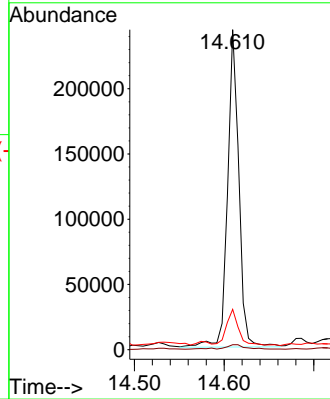
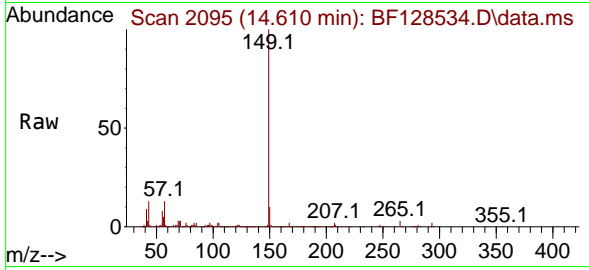


#85  
 Di-n-octyl phthalate  
 Concen: 8.329 ng  
 RT: 14.610 min Scan# 2095  
 Delta R.T. -0.006 min  
 Lab File: BF128534.D  
 Acq: 28 May 2022 03:31

Instrument : BNA\_F  
 ClientSampleId : P024-SS009-0006-01

Tgt Ion:149 Resp: 212246

Ion	Ratio	Lower	Upper
149	100		
167	2.6	1.3	1.9#
43	12.6	9.2	13.8



#86  
 Perylene-d12  
 Concen: 20.000 ng  
 RT: 15.468 min Scan# 2241  
 Delta R.T. -0.000 min  
 Lab File: BF128534.D  
 Acq: 28 May 2022 03:31

Tgt Ion:264 Resp: 410631

Ion	Ratio	Lower	Upper
264	100		
260	23.9	18.4	27.6
265	21.8	17.2	25.8

