

Data Path : Z:\svoasrv\HPCHEM1\BNA_F\Data\BF060425\
 Data File : BF142615.D
 Acq On : 04 Jun 2025 19:17
 Operator : RC/JU
 Sample : Q2173-18
 Misc :
 ALS Vial : 15 Sample Multiplier: 1

Instrument :
 BNA_F
 ClientSampleId :
 OR-400-CF-402B-COMP-25

Quant Time: Jun 05 01:26:39 2025
 Quant Method : Z:\svoasrv\HPCHEM1\BNA_F\Methods\8270-BF052025.M
 Quant Title : ASP BNA STANDARDS FOR 5 POINT CALIBRATION
 QLast Update : Tue May 20 16:26:47 2025
 Response via : Initial Calibration

Compound	R.T.	QIon	Response	Conc	Units	Dev(Min)
Internal Standards						
1) 1,4-Dichlorobenzene-d4	6.898	152	124223	20.000	ng	0.00
21) Naphthalene-d8	8.175	136	466072	20.000	ng	-0.01
39) Acenaphthene-d10	9.933	164	236677	20.000	ng	-0.01
64) Phenanthrene-d10	11.422	188	344398	20.000	ng	-0.01
76) Chrysene-d12	14.063	240	221306	20.000	ng	-0.01
86) Perylene-d12	15.557	264	263649	20.000	ng	-0.01
System Monitoring Compounds						
5) 2-Fluorophenol	5.528	112	859634	116.587	ng	0.01
7) Phenol-d6	6.522	99	952989	107.370	ng	-0.01
23) Nitrobenzene-d5	7.457	82	686718	80.344	ng	-0.02
42) 2,4,6-Tribromophenol	10.722	330	310099	118.051	ng	-0.02
45) 2-Fluorobiphenyl	9.251	172	1365487	77.418	ng	-0.02
79) Terphenyl-d14	13.010	244	1043585	64.440	ng	0.00

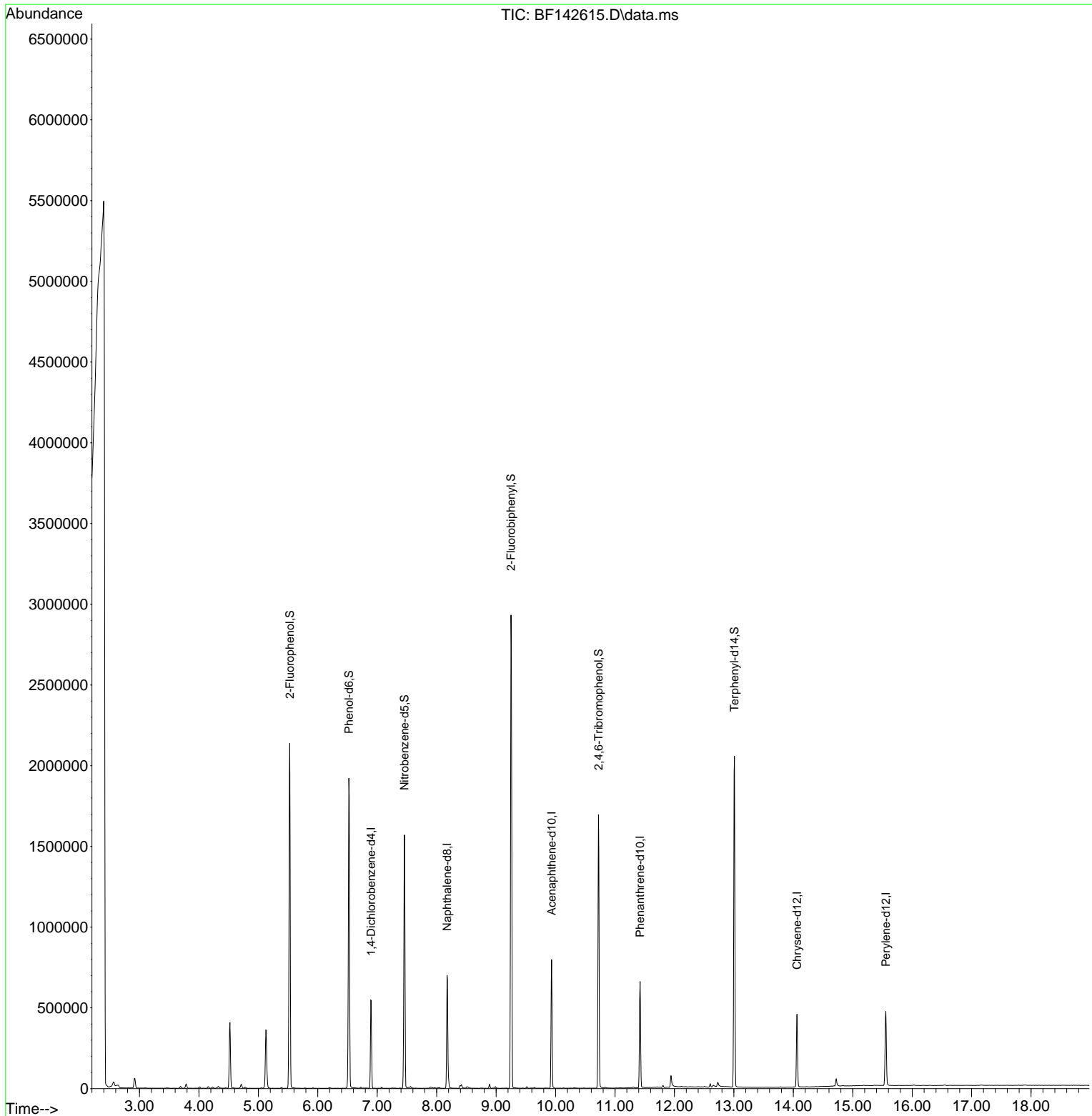
Target Compounds Qvalue

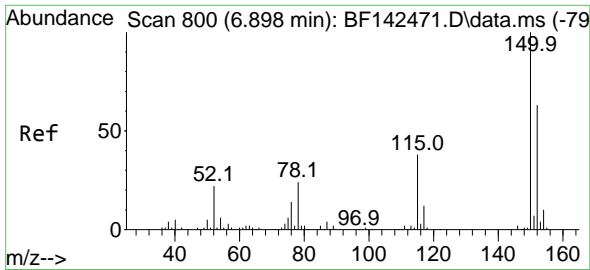
(#) = qualifier out of range (m) = manual integration (+) = signals summed

Data Path : Z:\svoasrv\HPCHEM1\BNA_F\Data\BF060425\
 Data File : BF142615.D
 Acq On : 04 Jun 2025 19:17
 Operator : RC/JU
 Sample : Q2173-18
 Misc :
 ALS Vial : 15 Sample Multiplier: 1

Instrument :
 BNA_F
 ClientSampleId :
 OR-400-CF-402B-COMP-25

Quant Time: Jun 05 01:26:39 2025
 Quant Method : Z:\svoasrv\HPCHEM1\BNA_F\Methods\8270-BF052025.M
 Quant Title : ASP BNA STANDARDS FOR 5 POINT CALIBRATION
 QLast Update : Tue May 20 16:26:47 2025
 Response via : Initial Calibration

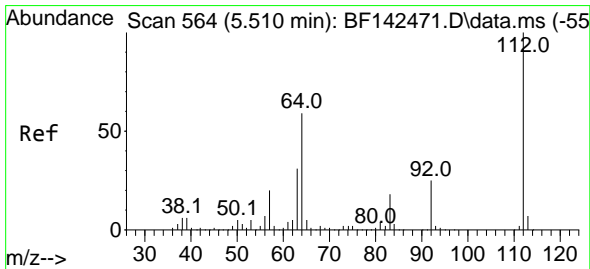
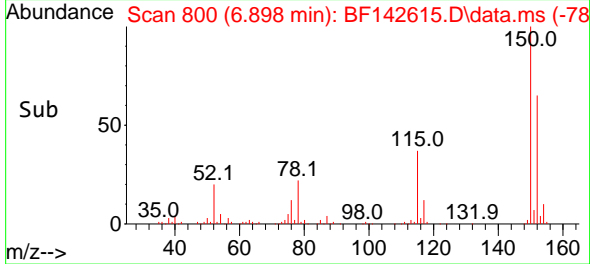
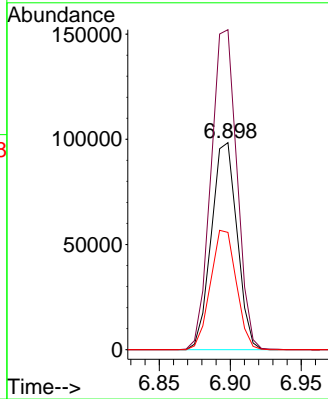
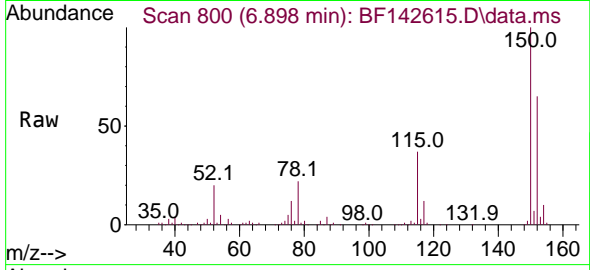




#1
 1,4-Dichlorobenzene-d4
 Concen: 20.000 ng
 RT: 6.898 min Scan# 80
 Delta R.T. -0.006 min
 Lab File: BF142615.D
 Acq: 04 Jun 2025 19:17

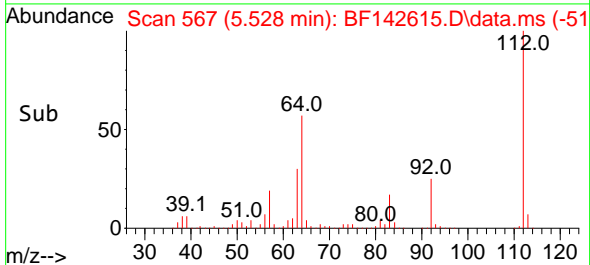
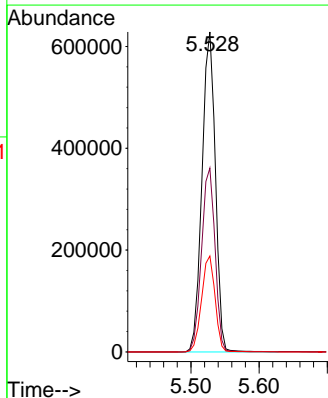
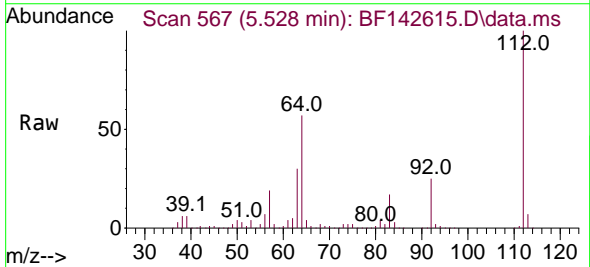
Instrument :
 BNA_F
 ClientSampleId :
 OR-400-CF-402B-COMP-25

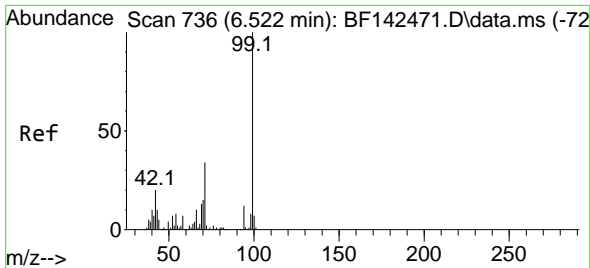
Tgt Ion:152 Resp: 124223
 Ion Ratio Lower Upper
 152 100
 150 154.6 128.2 192.4
 115 56.6 48.3 72.5



#5
 2-Fluorophenol
 Concen: 116.587 ng
 RT: 5.528 min Scan# 567
 Delta R.T. 0.012 min
 Lab File: BF142615.D
 Acq: 04 Jun 2025 19:17

Tgt Ion:112 Resp: 859634
 Ion Ratio Lower Upper
 112 100
 64 57.4 47.5 71.3
 63 30.0 24.9 37.3

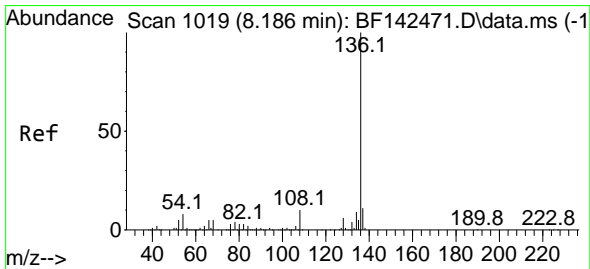
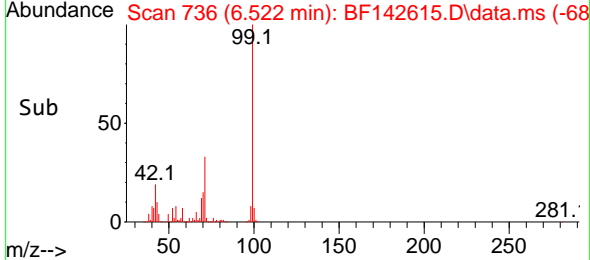
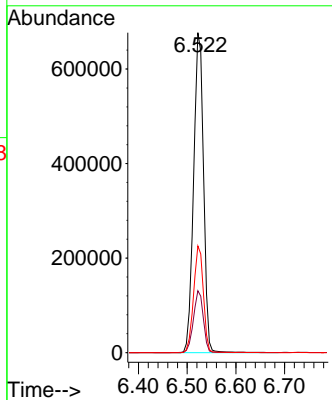
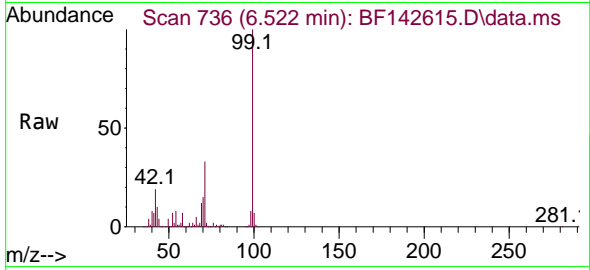




#7
 Phenol-d6
 Concen: 107.370 ng
 RT: 6.522 min Scan# 736
 Delta R.T. -0.012 min
 Lab File: BF142615.D
 Acq: 04 Jun 2025 19:17

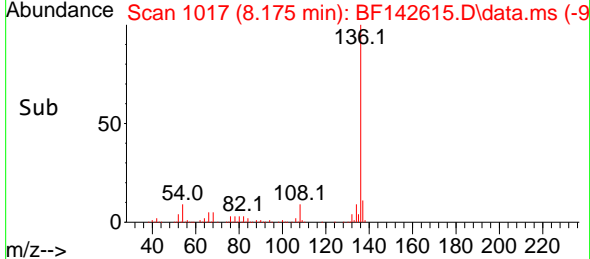
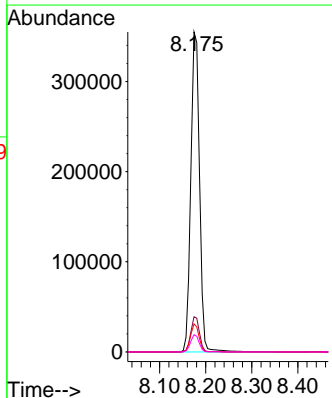
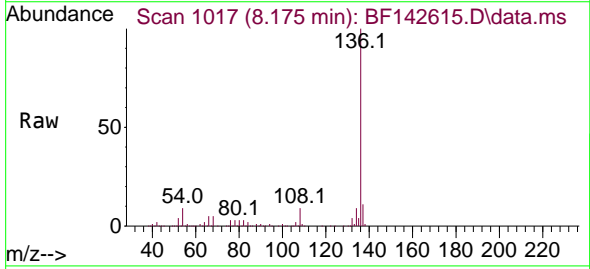
Instrument : BNA_F
 ClientSampleId : OR-400-CF-402B-COMP-25

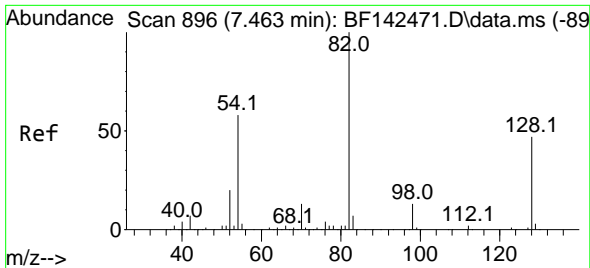
Tgt Ion	Resp	Lower	Upper
99	100		
42	19.3	16.2	24.2
71	33.3	27.3	40.9



#21
 Naphthalene-d8
 Concen: 20.000 ng
 RT: 8.175 min Scan# 1017
 Delta R.T. -0.012 min
 Lab File: BF142615.D
 Acq: 04 Jun 2025 19:17

Tgt Ion	Resp	Lower	Upper
136	100		
137	11.0	8.6	13.0
54	8.7	6.6	10.0
68	5.4	4.1	6.1



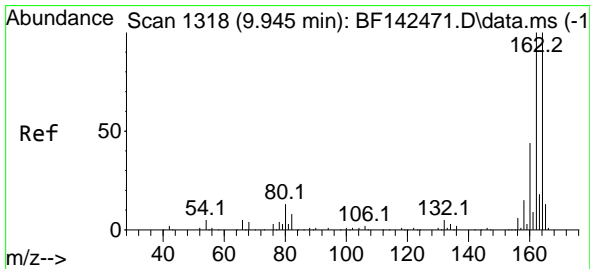
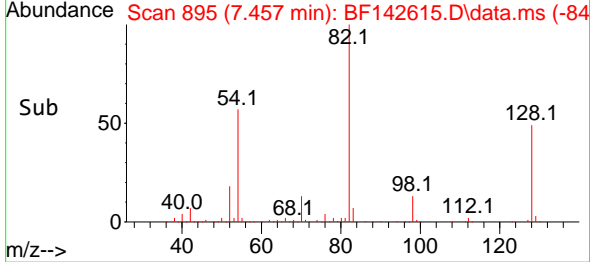
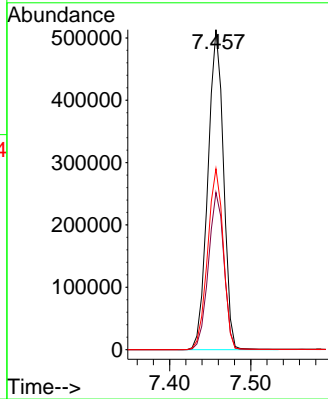
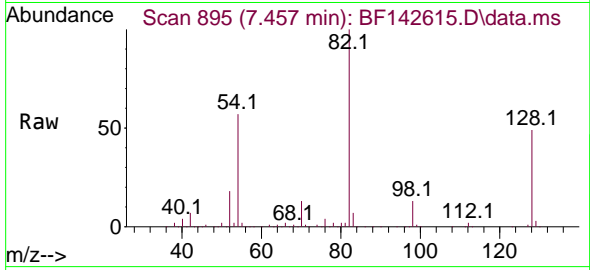


#23
 Nitrobenzene-d5
 Concen: 80.344 ng
 RT: 7.457 min Scan# 895
 Delta R.T. -0.018 min
 Lab File: BF142615.D
 Acq: 04 Jun 2025 19:17

Instrument : BNA_F
 ClientSampleId : OR-400-CF-402B-COMP-25

Tgt Ion: 82 Resp: 686718

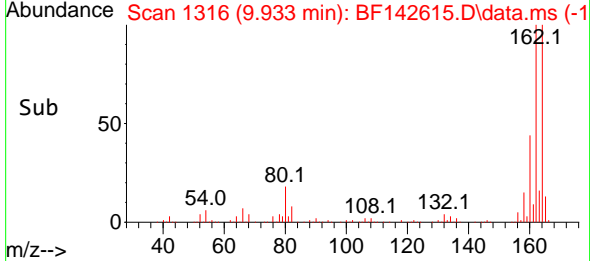
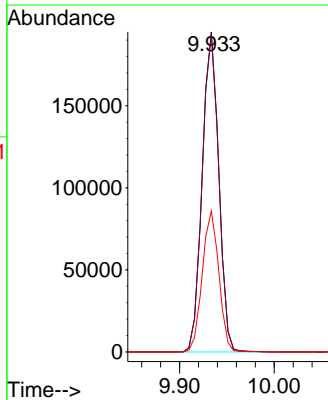
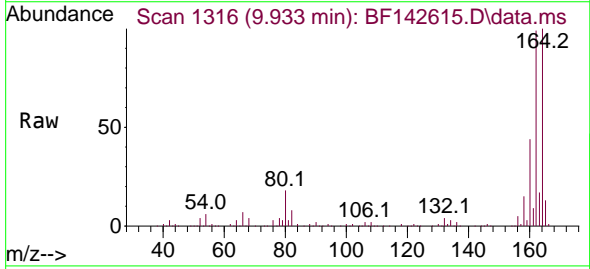
Ion	Ratio	Lower	Upper
82	100		
128	49.1	37.4	56.2
54	56.5	46.6	70.0

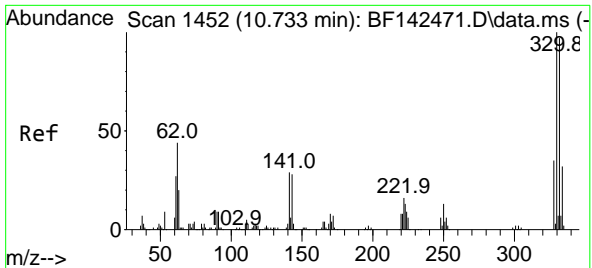


#39
 Acenaphthene-d10
 Concen: 20.000 ng
 RT: 9.933 min Scan# 1316
 Delta R.T. -0.012 min
 Lab File: BF142615.D
 Acq: 04 Jun 2025 19:17

Tgt Ion: 164 Resp: 236677

Ion	Ratio	Lower	Upper
164	100		
162	99.4	80.2	120.4
160	44.0	35.6	53.4



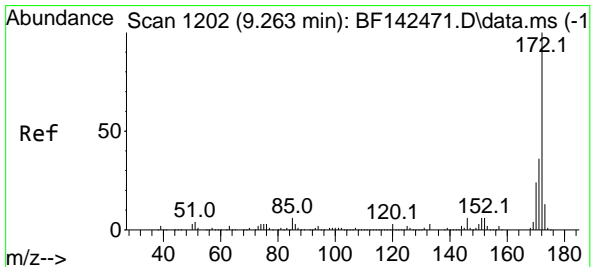
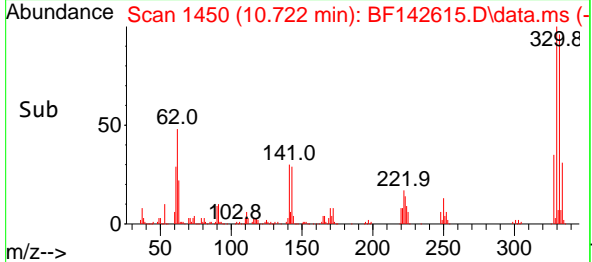
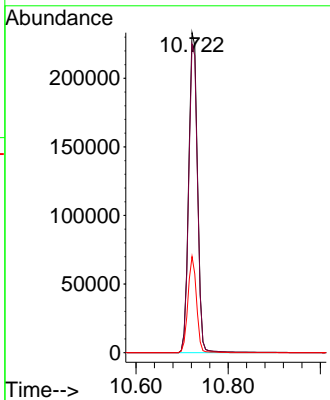
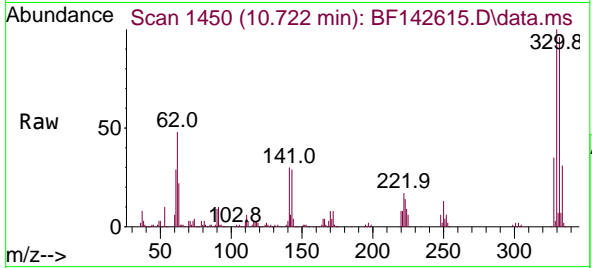


#42
 2,4,6-Tribromophenol
 Concen: 118.051 ng
 RT: 10.722 min Scan# 14
 Delta R.T. -0.018 min
 Lab File: BF142615.D
 Acq: 04 Jun 2025 19:17

Instrument : BNA_F
 ClientSampleId : OR-400-CF-402B-COMP-25

Tgt Ion:330 Resp: 310099

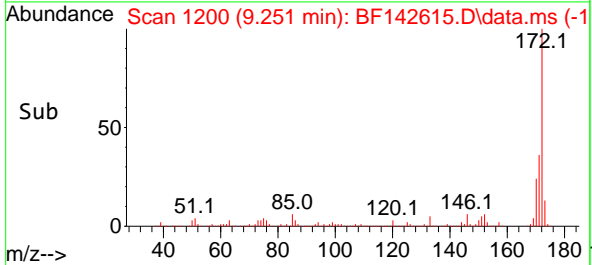
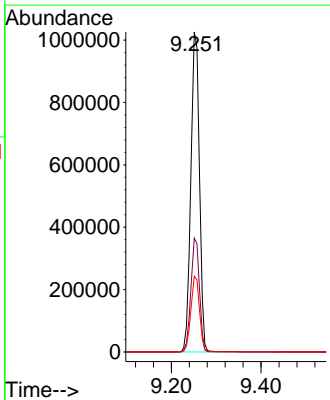
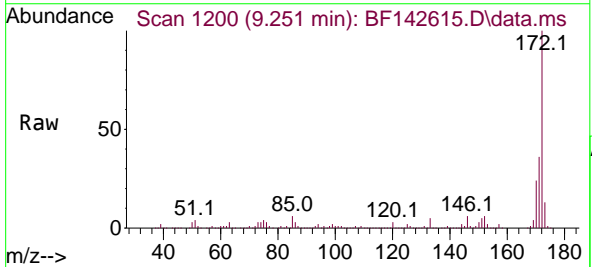
Ion	Ratio	Lower	Upper
330	100		
332	96.5	77.6	116.4
141	29.2	24.6	36.8

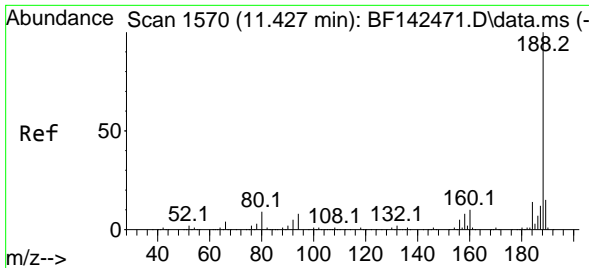


#45
 2-Fluorobiphenyl
 Concen: 77.418 ng
 RT: 9.251 min Scan# 1200
 Delta R.T. -0.018 min
 Lab File: BF142615.D
 Acq: 04 Jun 2025 19:17

Tgt Ion:172 Resp: 1365487

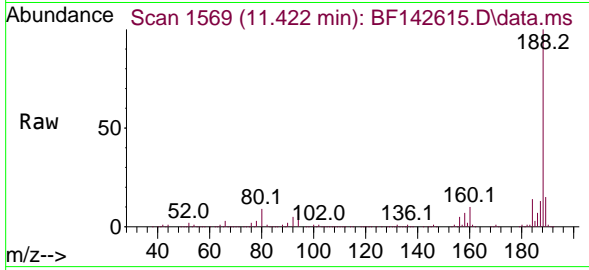
Ion	Ratio	Lower	Upper
172	100		
171	35.6	28.6	42.8
170	23.6	18.9	28.3



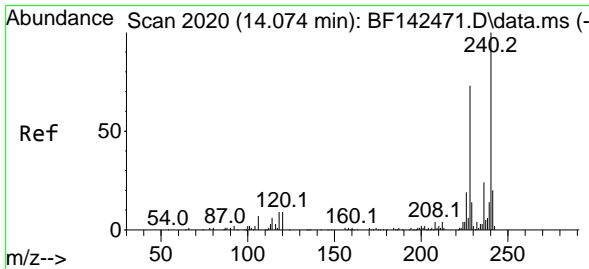
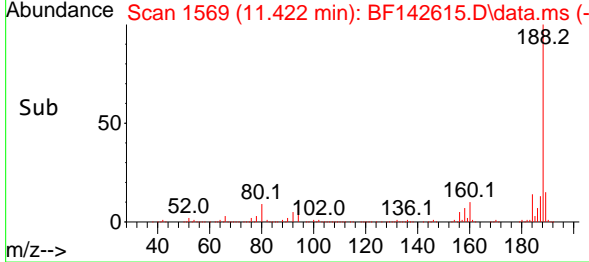
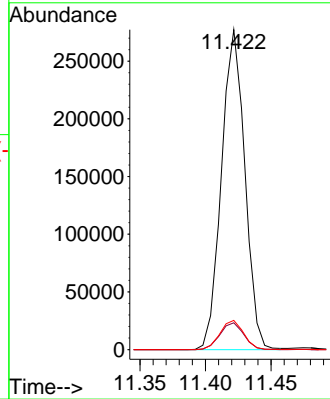


#64
 Phenanthrene-d10
 Concen: 20.000 ng
 RT: 11.422 min Scan# 11
 Delta R.T. -0.012 min
 Lab File: BF142615.D
 Acq: 04 Jun 2025 19:17

Instrument : BNA_F
 ClientSampleId : OR-400-CF-402B-COMP-25

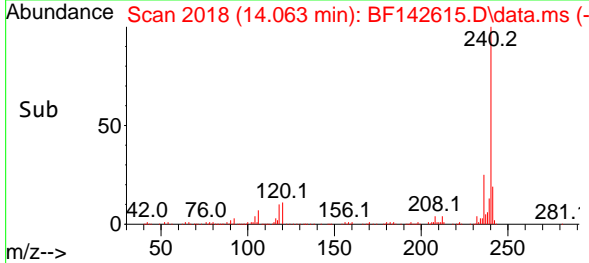
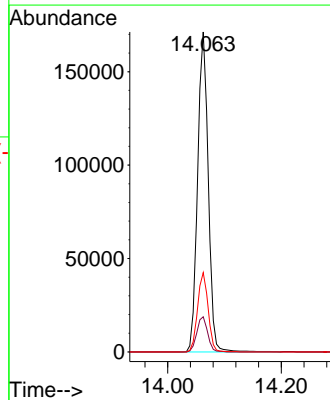
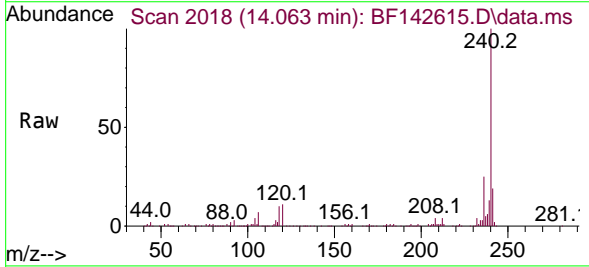


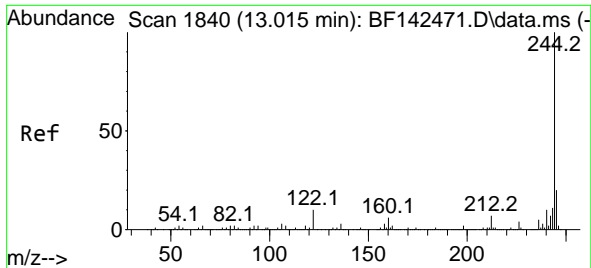
Tgt Ion:188 Resp: 344398
 Ion Ratio Lower Upper
 188 100
 94 8.4 6.6 10.0
 80 9.1 7.4 11.0



#76
 Chrysene-d12
 Concen: 20.000 ng
 RT: 14.063 min Scan# 2018
 Delta R.T. -0.012 min
 Lab File: BF142615.D
 Acq: 04 Jun 2025 19:17

Tgt Ion:240 Resp: 221306
 Ion Ratio Lower Upper
 240 100
 120 11.0 7.5 11.3
 236 24.8 19.6 29.4



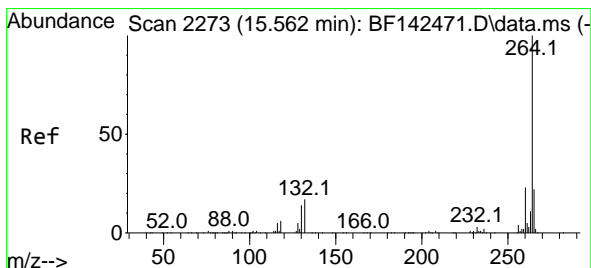
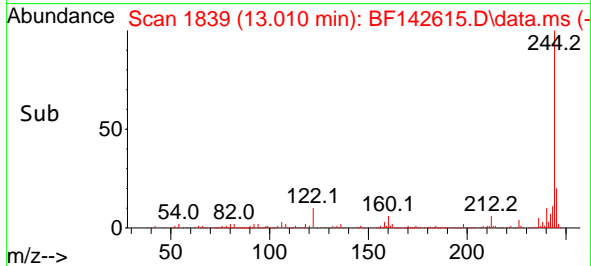
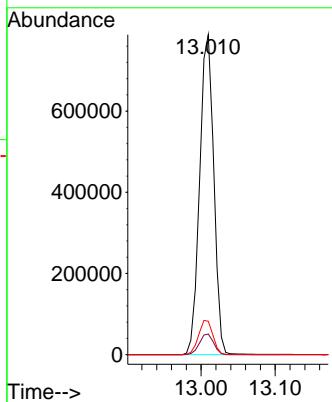
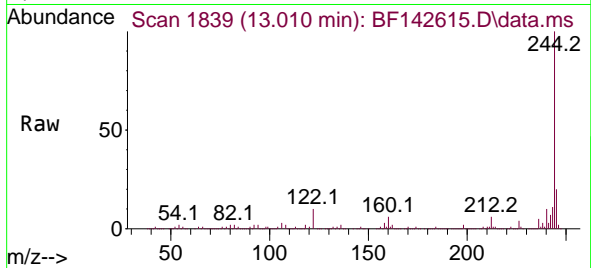


#79
 Terphenyl-d14
 Concen: 64.440 ng
 RT: 13.010 min Scan# 1839
 Delta R.T. -0.006 min
 Lab File: BF142615.D
 Acq: 04 Jun 2025 19:17

Instrument :
 BNA_F
 ClientSampleId :
 OR-400-CF-402B-COMP-25

Tgt Ion:244 Resp: 1043585

Ion	Ratio	Lower	Upper
244	100		
212	6.4	5.3	7.9
122	10.4	8.2	12.2



#86
 Perylene-d12
 Concen: 20.000 ng
 RT: 15.557 min Scan# 2272
 Delta R.T. -0.012 min
 Lab File: BF142615.D
 Acq: 04 Jun 2025 19:17

Tgt Ion:264 Resp: 263649

Ion	Ratio	Lower	Upper
264	100		
260	23.5	18.6	28.0
265	21.4	17.7	26.5

