

Data Path : Z:\HPCHEM1\BNA_F\DATA\BF060517\
 Data File : BF095689.D
 Acq On : 5 Jun 2017 23:45
 Operator : SJ/MA
 Sample : I3449-01
 Misc :
 ALS Vial : 14 Sample Multiplier: 1

Instrument :
 BNA_F
 ClientSampleId :
 CARSONS-STOCKPILE(COMP)

Integration Parameters: rteint.p
 Integrator: RTE
 Smoothing : ON
 Sampling : 1
 Start Thrs: 0.2
 Stop Thrs : 0

Filtering: 5
 Min Area: 3 % of largest Peak
 Max Peaks: 100
 Peak Location: TOP

If leading or trailing edge < 100 prefer < Baseline drop else tangent >
 Peak separation: 5

Method : Z:\HPCHEM1\BNA_F\METHODS\8270-BF060517.M
 Title : ASP BNA STANDARDS FOR 5 POINT CALIBRATION

Signal : TIC

peak #	R.T. min	first scan	max scan	last scan	PK TY	peak height	corr. area	corr. % max.	% of total
1	1.601	8	11	51	rVB	577208	1192370	46.02%	2.625%
2	4.607	517	522	545	rBV	85862	235901	9.10%	0.519%
3	5.154	611	615	629	rBV	29099	65650	2.53%	0.145%
4	5.295	635	639	659	rBV	1318271	2291957	88.46%	5.046%
5	6.954	916	921	933	rBV	1564466	2323551	89.68%	5.115%
6	7.054	933	938	947	rVV	1902861	2590991	100.00%	5.704%
7	7.136	947	952	959	rVV2	42827	89145	3.44%	0.196%
8	7.395	992	996	1008	rBV	476803	633001	24.43%	1.393%
9	7.636	1032	1037	1055	rVB	1228891	1732189	66.85%	3.813%
10	8.313	1146	1152	1168	rBV	1137998	1533865	59.20%	3.377%
11	9.424	1337	1341	1346	rBV	595572	760236	29.34%	1.674%
12	9.460	1346	1347	1355	rVV	75332	83229	3.21%	0.183%
13	10.242	1474	1480	1483	rBV	41764	60181	2.32%	0.132%
14	10.513	1522	1526	1531	rVB	51968	60964	2.35%	0.134%
15	10.595	1534	1540	1548	rVB	86270	122931	4.74%	0.271%
16	10.742	1559	1565	1573	rBV	60539	84509	3.26%	0.186%
17	11.207	1638	1644	1654	rVB	1861219	2324125	89.70%	5.116%
18	11.436	1677	1683	1687	rBV	57091	75485	2.91%	0.166%
19	11.730	1729	1733	1737	rVB	51888	65463	2.53%	0.144%
20	11.771	1737	1740	1746	rVB2	52397	78916	3.05%	0.174%
21	11.901	1757	1762	1769	rVV	443121	546214	21.08%	1.202%
22	12.024	1779	1783	1792	rVV	85771	138997	5.36%	0.306%
23	12.248	1816	1821	1826	rBV2	622347	804135	31.04%	1.770%
24	12.295	1826	1829	1836	rVB2	69159	94923	3.66%	0.209%
25	12.795	1910	1914	1920	rVB3	47342	70118	2.71%	0.154%
26	13.107	1959	1967	1971	rBV2	88226	138474	5.34%	0.305%
27	13.148	1971	1974	1983	rVB6	34001	69737	2.69%	0.154%
28	13.542	2036	2041	2049	rBV	983926	1260742	48.66%	2.775%
29	13.771	2076	2080	2088	rVB3	42936	63938	2.47%	0.141%
30	13.883	2094	2099	2111	rBV2	98285	247521	9.55%	0.545%
31	14.606	2217	2222	2224	rBV	59321	74800	2.89%	0.165%
32	14.642	2224	2228	2231	rVV	537390	661080	25.51%	1.455%
33	14.677	2231	2234	2240	rVB	163517	221302	8.54%	0.487%
34	14.765	2242	2249	2256	rBV	107766	153265	5.92%	0.337%

Data Path : Z:\HPCHEM1\BNA_F\DATA\BF060517\
 Data File : BF095689.D
 Acq On : 5 Jun 2017 23:45
 Operator : SJ/MA
 Sample : I3449-01
 Misc :
 ALS Vial : 14 Sample Multiplier: 1

Instrument :
 BNA_F
 ClientSampleId :
 CARSONS-STOCKPILE(COMP)

Integration Parameters: rteint.p
 Integrator: RTE
 Smoothing : ON
 Sampling : 1
 Start Thrs: 0.2
 Stop Thrs : 0

Filtering: 5
 Min Area: 3 % of largest Peak
 Max Peaks: 100
 Peak Location: TOP

If leading or trailing edge < 100 prefer < Baseline drop else tangent >
 Peak separation: 5

Method : Z:\HPCHEM1\BNA_F\METHODS\8270-BF060517.M
 Title : ASP BNA STANDARDS FOR 5 POINT CALIBRATION

35	15.289	2334	2338	2345	rVB3	57499	82993	3.20%	0.183%
36	15.442	2359	2364	2368	rBV	120758	148281	5.72%	0.326%
37	15.483	2368	2371	2378	rVV	126376	171005	6.60%	0.376%
38	15.559	2380	2384	2386	rBV	62163	66674	2.57%	0.147%
39	15.595	2386	2390	2394	rVV2	180380	243294	9.39%	0.536%
40	15.659	2398	2401	2410	rVB2	147221	201783	7.79%	0.444%
41	15.895	2437	2441	2450	rVB	154346	204366	7.89%	0.450%
42	16.106	2473	2477	2482	rBV2	42888	60544	2.34%	0.133%
43	16.153	2482	2485	2489	rBV	55599	76504	2.95%	0.168%
44	16.253	2497	2502	2506	rBV	178845	243341	9.39%	0.536%
45	16.295	2506	2509	2513	rVV2	80381	117846	4.55%	0.259%
46	16.371	2518	2522	2527	rVB	193459	232915	8.99%	0.513%
47	16.459	2531	2537	2542	rBV	1756700	2067635	79.80%	4.552%
48	16.506	2542	2545	2549	rVB	61408	71554	2.76%	0.158%
49	16.559	2550	2554	2557	rBV	94871	123286	4.76%	0.271%
50	16.648	2566	2569	2576	rVB3	59135	100892	3.89%	0.222%
51	16.759	2582	2588	2594	rBV	2116758	2503535	96.62%	5.511%
52	16.848	2598	2603	2606	rBV3	53254	89851	3.47%	0.198%
53	16.883	2606	2609	2613	rVB	56746	79249	3.06%	0.174%
54	16.948	2617	2620	2624	rBV2	168328	192091	7.41%	0.423%
55	17.012	2624	2631	2636	rBV	1259765	1482340	57.21%	3.263%
56	17.083	2640	2643	2646	rVB2	99580	119863	4.63%	0.264%
57	17.195	2657	2662	2665	rBV3	148832	290624	11.22%	0.640%
58	17.230	2665	2668	2672	rVB	232539	276305	10.66%	0.608%
59	17.312	2679	2682	2686	rVB	170733	191081	7.37%	0.421%
60	17.359	2686	2690	2698	rBV2	248043	389763	15.04%	0.858%
61	17.471	2707	2709	2713	rVB	129105	134036	5.17%	0.295%
62	17.512	2713	2716	2719	rBV	95278	88209	3.40%	0.194%
63	17.871	2774	2777	2779	rBV2	71651	80103	3.09%	0.176%
64	17.906	2781	2783	2788	rVB	169465	194868	7.52%	0.429%
65	18.030	2800	2804	2806	rBV	133314	158820	6.13%	0.350%
66	18.059	2806	2809	2811	rVV2	206544	217420	8.39%	0.479%
67	18.089	2811	2814	2817	rVV	150412	149998	5.79%	0.330%
68	18.124	2817	2820	2826	rVB2	128413	165607	6.39%	0.365%
69	18.189	2827	2831	2833	rBV	151154	174572	6.74%	0.384%
70	18.218	2833	2836	2839	rVB	93637	92205	3.56%	0.203%
71	18.347	2852	2858	2862	rBV2	1343118	2155610	83.20%	4.745%

Data Path : Z:\HPCHEM1\BNA_F\DATA\BF060517\
 Data File : BF095689.D
 Acq On : 5 Jun 2017 23:45
 Operator : SJ/MA
 Sample : I3449-01
 Misc :
 ALS Vial : 14 Sample Multiplier: 1

Instrument :
 BNA_F
 ClientSampleId :
 CARSONS-STOCKPILE(COMP)

Integration Parameters: rteint.p
 Integrator: RTE
 Smoothing : ON
 Sampling : 1
 Start Thrs: 0.2
 Stop Thrs : 0

Filtering: 5
 Min Area: 3 % of largest Peak
 Max Peaks: 100
 Peak Location: TOP

If leading or trailing edge < 100 prefer < Baseline drop else tangent >
 Peak separation: 5

Method : Z:\HPCHEM1\BNA_F\METHODS\8270-BF060517.M
 Title : ASP BNA STANDARDS FOR 5 POINT CALIBRATION

72	18.389	2862	2865	2871	rVB	1057845	1202179	46.40%	2.646%
73	18.477	2877	2880	2884	rVB	255290	281159	10.85%	0.619%
74	18.559	2891	2894	2897	rBV3	60356	70927	2.74%	0.156%
75	18.630	2903	2906	2910	rVB2	121791	134781	5.20%	0.297%
76	18.677	2911	2914	2919	rVB4	77875	106831	4.12%	0.235%
77	18.818	2934	2938	2939	rBV2	77090	92622	3.57%	0.204%
78	18.859	2940	2945	2949	rVV	254533	337804	13.04%	0.744%
79	18.900	2949	2952	2955	rVB2	146844	157518	6.08%	0.347%
80	18.971	2961	2964	2967	rVB2	149300	145990	5.63%	0.321%
81	19.006	2967	2970	2972	rBV3	96087	126840	4.90%	0.279%
82	19.106	2985	2987	2994	rVB2	74692	105961	4.09%	0.233%
83	19.459	3044	3047	3052	rVB	169158	175264	6.76%	0.386%
84	19.624	3070	3075	3078	rBV	1222723	1904864	73.52%	4.193%
85	19.647	3078	3079	3084	rVB	731230	492576	19.01%	1.084%
86	19.730	3090	3093	3097	rVB2	301625	323406	12.48%	0.712%
87	19.906	3119	3123	3127	rBV	701511	810741	31.29%	1.785%
88	19.971	3130	3134	3138	rVV	1069105	1206280	46.56%	2.656%
89	20.024	3139	3143	3145	rVV	390363	417655	16.12%	0.919%
90	20.047	3145	3147	3151	rVB	271691	293926	11.34%	0.647%
91	20.183	3167	3170	3174	rBV2	85329	116962	4.51%	0.257%
92	20.830	3276	3280	3283	rBV2	57316	105247	4.06%	0.232%
93	21.200	3337	3343	3350	rBV	517579	886563	34.22%	1.952%
94	21.330	3361	3365	3369	rBV	93518	139182	5.37%	0.306%
95	21.371	3369	3372	3377	rVB2	97231	137792	5.32%	0.303%
96	21.530	3394	3399	3406	rBV	362881	610362	23.56%	1.344%
97	21.724	3428	3432	3440	rVB	103282	190526	7.35%	0.419%
98	23.235	3682	3689	3698	rVB2	69116	187393	7.23%	0.413%
99	23.388	3708	3715	3721	rBV3	58729	169065	6.53%	0.372%
100	24.094	3829	3835	3842	rVB3	38630	106305	4.10%	0.234%

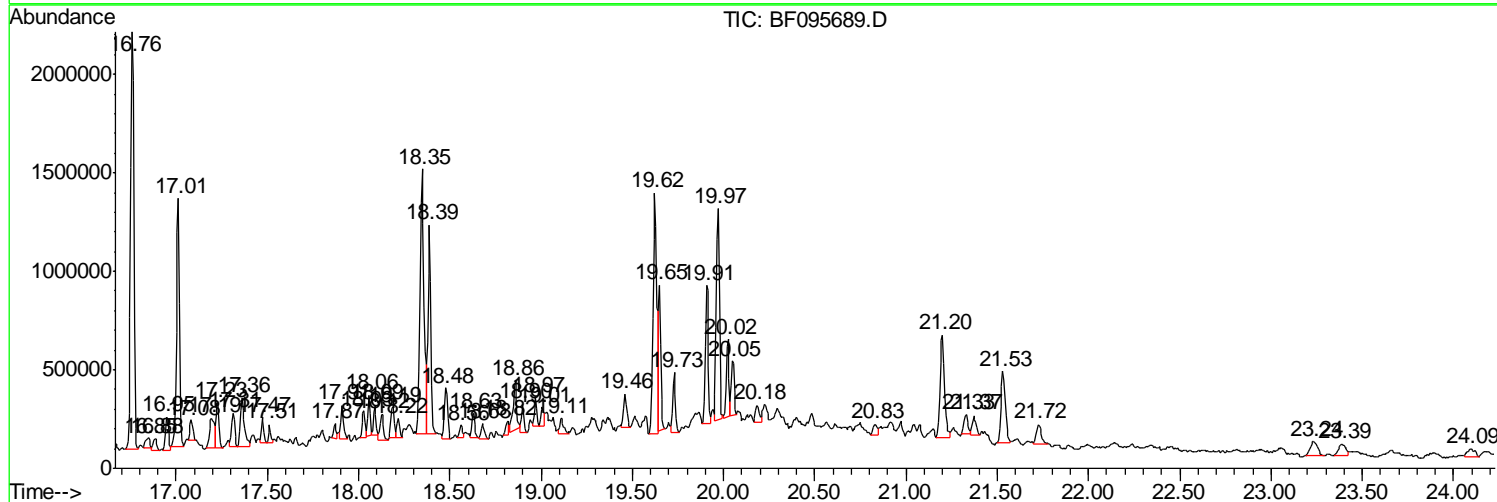
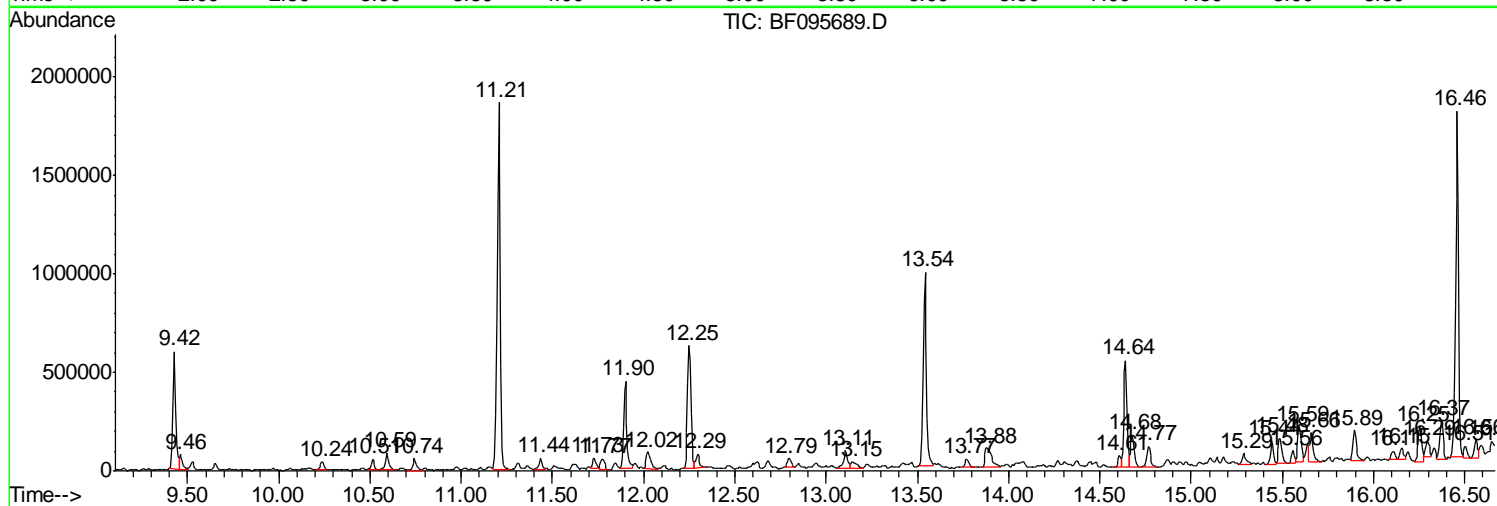
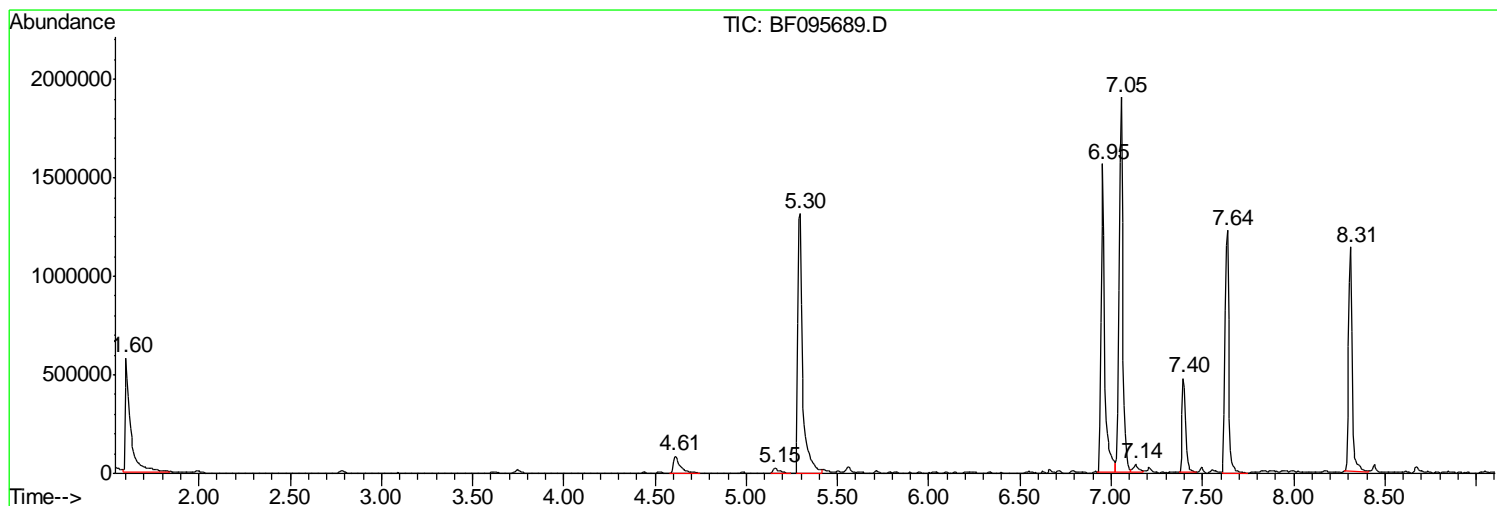
Sum of corrected areas: 45425689

Data Path : Z:\HPCHEM1\BNA_F\DATA\BF060517\
 Data File : BF095689.D
 Acq On : 5 Jun 2017 23:45
 Operator : SJ/MA
 Sample : I3449-01
 Misc :
 ALS Vial : 14 Sample Multiplier: 1

Instrument :
 BNA_F
Client Sampled :
 CARSONS-STOCKPILE(COMP)

Quant Method : Z:\HPCHEM1\BNA_F\METHODS\8270-BF060517.M
 Quant Title : ASP BNA STANDARDS FOR 5 POINT CALIBRATION

TIC Library : C:\DATABASE\NIST11.L
 TIC Integration Parameters: LSCINT.P



Data Path : Z:\HPCHEM1\BNA_F\DATA\BF060517\
 Data File : BF095689.D
 Acq On : 5 Jun 2017 23:45
 Operator : SJ/MA
 Sample : I3449-01
 Misc :
 ALS Vial : 14 Sample Multiplier: 1

Instrument :
 BNA_F
 ClientSampled :
 CARSONS-STOCKPILE(COMP)

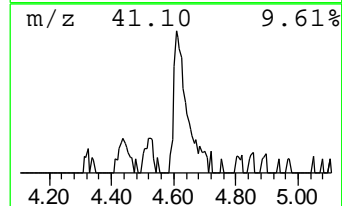
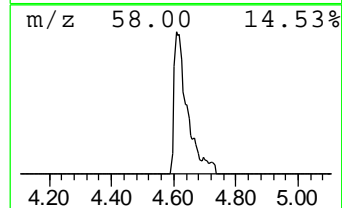
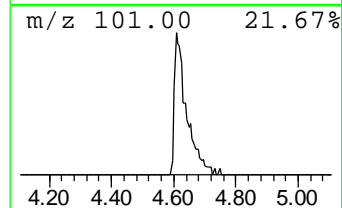
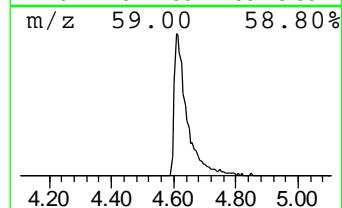
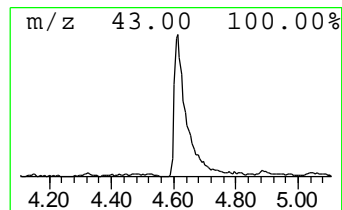
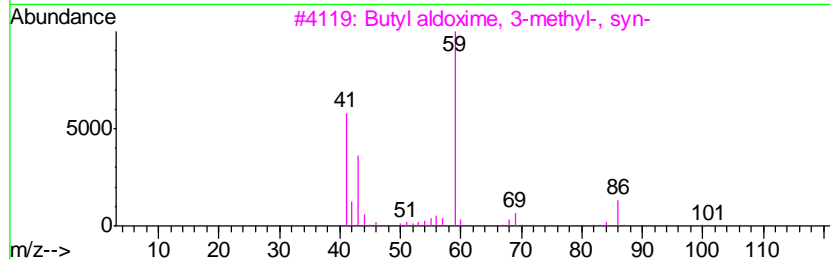
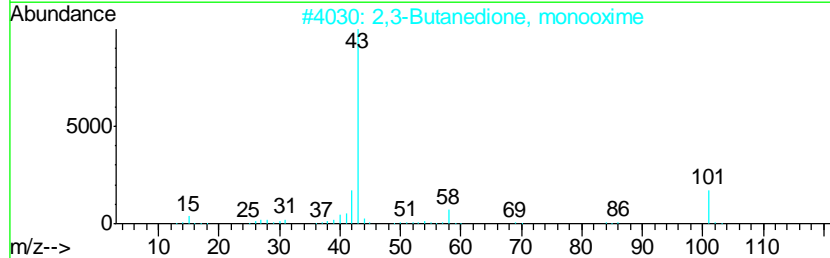
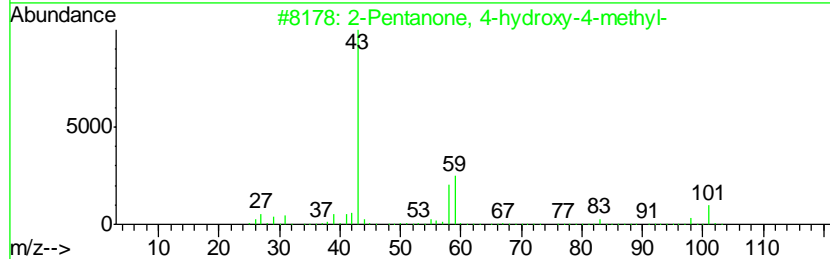
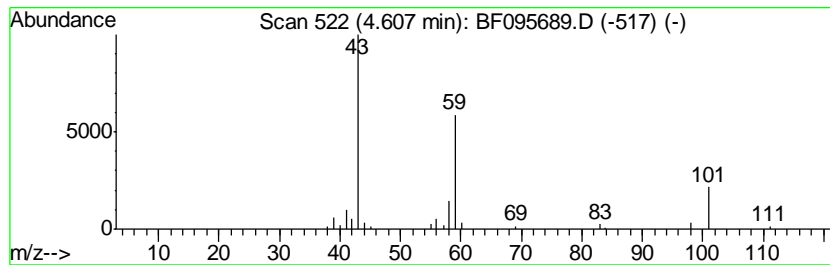
Quant Method : Z:\HPCHEM1\BNA_F\METHODS\8270-BF060517.M
 Quant Title : ASP BNA STANDARDS FOR 5 POINT CALIBRATION

TIC Library : C:\DATABASE\NIST11.L
 TIC Integration Parameters: LSCINT.P

 Peak Number 2 2-Pentanone, 4-hydroxy-4-me... Concentration Rank 11

R.T.	EstConc	Area	Relative to ISTD	R.T.
4.61	7.45 ng	235901	1,4-Dichlorobenzene-d4	7.40

Hit#	of	Tentative ID	MW	MolForm	CAS#	Qual
1	5	2-Pentanone, 4-hydroxy-4-methyl-	116	C6H12O2	000123-42-2	72
2		2,3-Butanedione, monooxime	101	C4H7NO2	000057-71-6	25
3		Butyl aldoxime, 3-methyl-, syn-	101	C5H11NO	005780-40-5	25
4		3-Hydroxy-3-methyl-2-butanone	102	C5H10O2	000115-22-0	9
5		3-Hexanol	102	C6H14O	000623-37-0	9



Data Path : Z:\HPCHEM1\BNA_F\DATA\BF060517\
 Data File : BF095689.D
 Acq On : 5 Jun 2017 23:45
 Operator : SJ/MA
 Sample : I3449-01
 Misc :
 ALS Vial : 14 Sample Multiplier: 1

Instrument :
 BNA_F
 ClientSampleId :
 CARSONS-STOCKPILE(COMP)

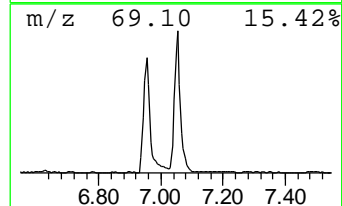
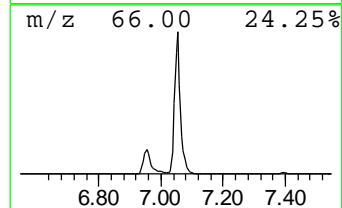
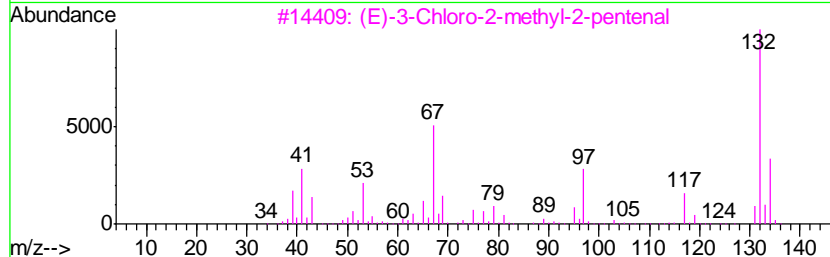
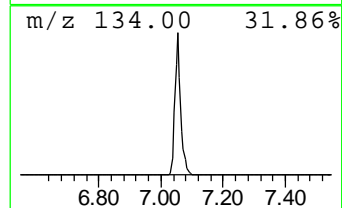
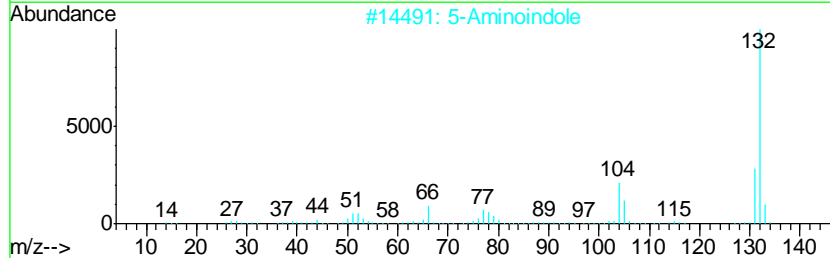
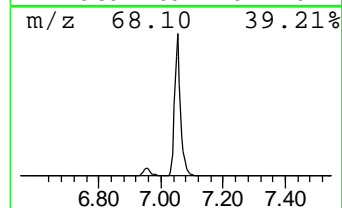
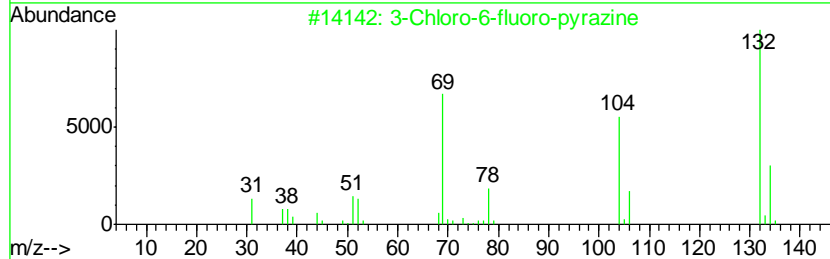
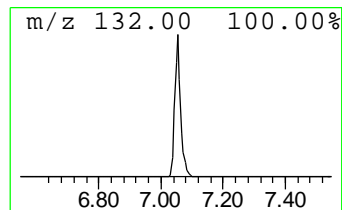
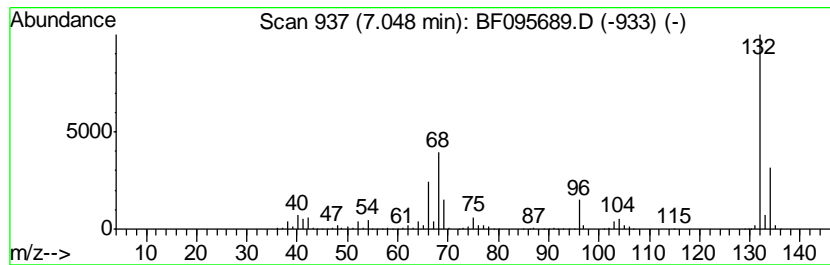
Quant Method : Z:\HPCHEM1\BNA_F\METHODS\8270-BF060517.M
 Quant Title : ASP BNA STANDARDS FOR 5 POINT CALIBRATION

TIC Library : C:\DATABASE\NIST11.L
 TIC Integration Parameters: LSCINT.P

 Peak Number 3 unknown7.05 Concentration Rank 1

R.T.	EstConc	Area	Relative to ISTD	R.T.
7.05	81.86 ng	2590990	1,4-Dichlorobenzene-d4	7.40

Hit#	of	Tentative ID	MW	MolForm	CAS#	Qual
1	5	3-Chloro-6-fluoro-pyrazine	132	C4H2ClFN2	1000146-10-7	35
2		5-Aminoindole	132	C8H8N2	005192-03-0	12
3		(E)-3-Chloro-2-methyl-2-pentenal	132	C6H9ClO	031357-76-3	12
4		1H-Benzimidazole, 2-methyl-	132	C8H8N2	000615-15-6	10
5		4-Chloro-6-fluoro-pyrimidine	132	C4H2ClFN2	051422-01-6	9



Data Path : Z:\HPCHEM1\BNA_F\DATA\BF060517\
 Data File : BF095689.D
 Acq On : 5 Jun 2017 23:45
 Operator : SJ/MA
 Sample : I3449-01
 Misc :
 ALS Vial : 14 Sample Multiplier: 1

Instrument :
 BNA_F
 ClientSampleID :
 CARSONS-STOCKPILE(COMP)

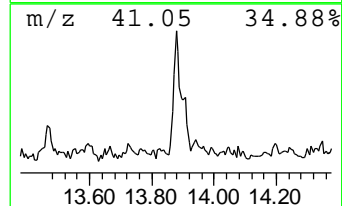
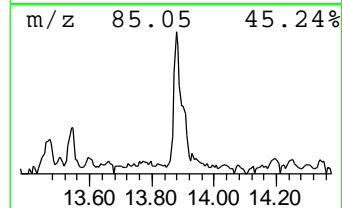
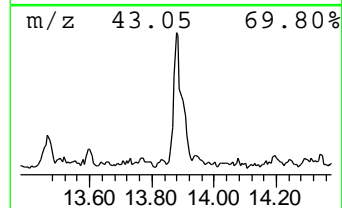
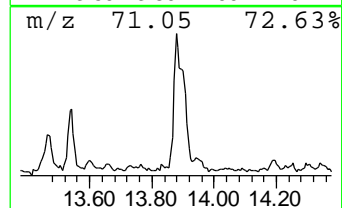
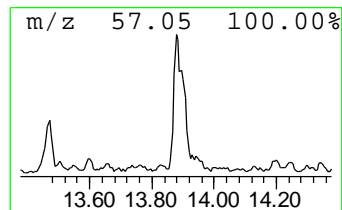
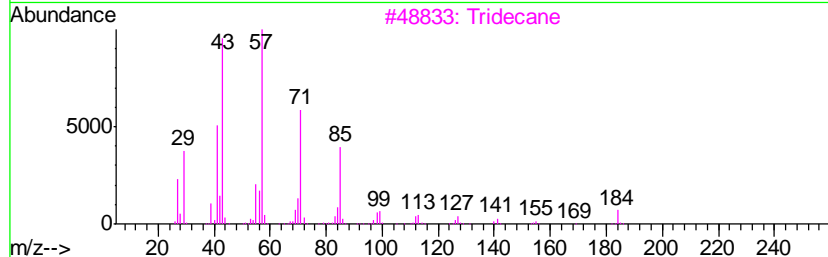
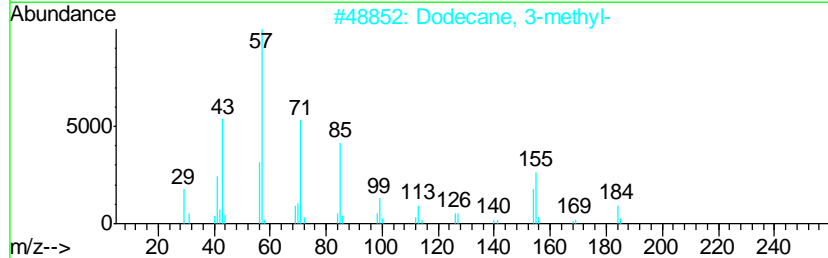
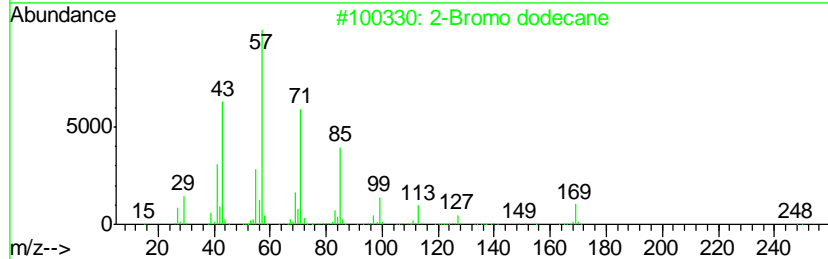
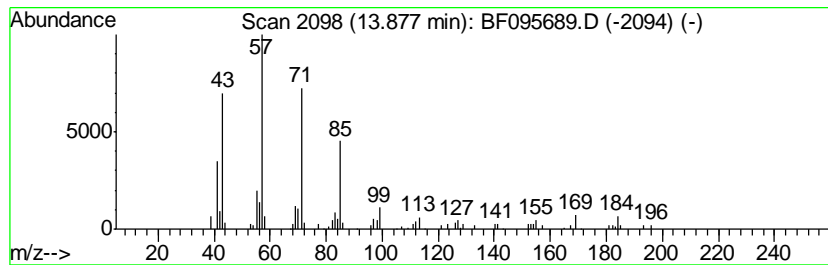
Quant Method : Z:\HPCHEM1\BNA_F\METHODS\8270-BF060517.M
 Quant Title : ASP BNA STANDARDS FOR 5 POINT CALIBRATION

TIC Library : C:\DATABASE\NIST11.L
 TIC Integration Parameters: LSCINT.P

 Peak Number 5 2-Bromo dodecane Concentration Rank 10

R.T.	EstConc	Area	Relative to ISTD	R.T.
13.88	7.49 ng	247521	Phenanthrene-d10	14.64

Hit#	of	Tentative ID	MW	MolForm	CAS#	Qual
1	5	2-Bromo dodecane	248	C12H25Br	013187-99-0	81
2		Dodecane, 3-methyl-	184	C13H28	017312-57-1	68
3		Tridecane	184	C13H28	000629-50-5	68
4		Eicosane, 10-methyl-	296	C21H44	054833-23-7	64
5		Tridecane, 1-iodo-	310	C13H27I	035599-77-0	62



Data Path : Z:\HPCHEM1\BNA_F\DATA\BF060517\
 Data File : BF095689.D
 Acq On : 5 Jun 2017 23:45
 Operator : SJ/MA
 Sample : I3449-01
 Misc :
 ALS Vial : 14 Sample Multiplier: 1

Instrument :
 BNA_F
 ClientSampleID :
 CARSONS-STOCKPILE(COMP)

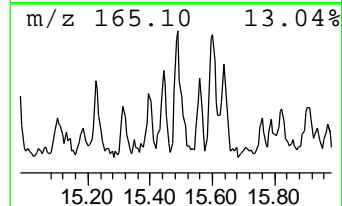
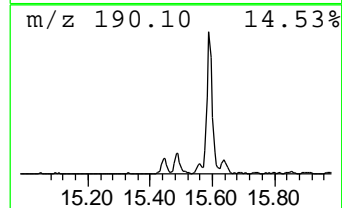
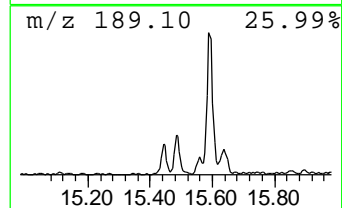
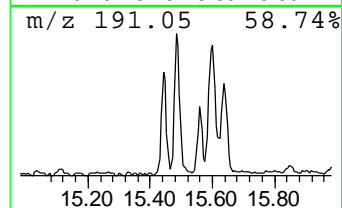
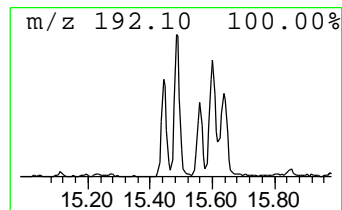
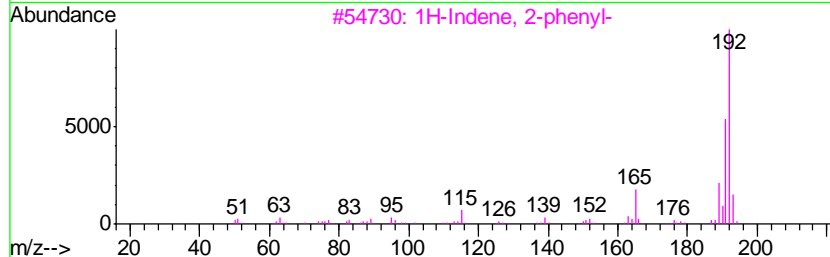
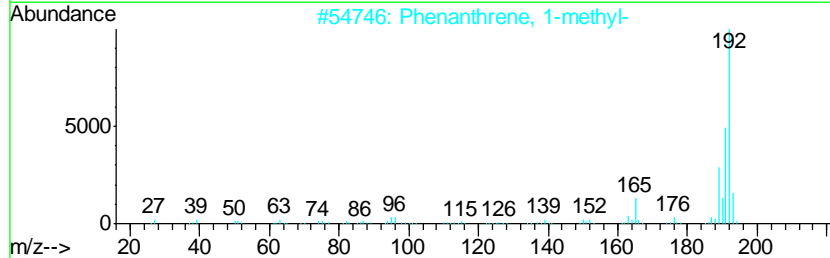
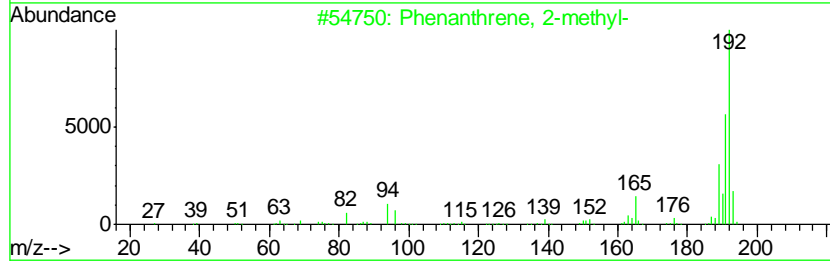
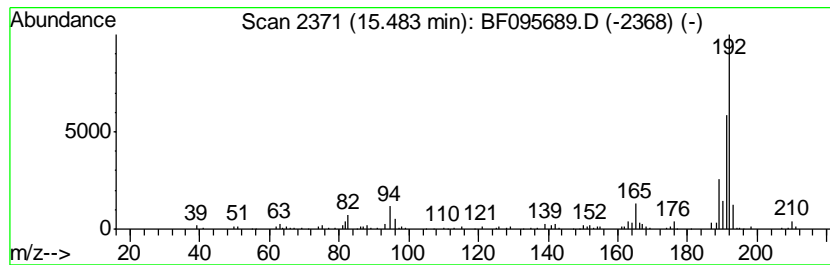
Quant Method : Z:\HPCHEM1\BNA_F\METHODS\8270-BF060517.M
 Quant Title : ASP BNA STANDARDS FOR 5 POINT CALIBRATION

TIC Library : C:\DATABASE\NIST11.L
 TIC Integration Parameters: LSCINT.P

 Peak Number 6 Phenanthrene, 2-methyl- Concentration Rank 20

R.T.	EstConc	Area	Relative to ISTD	R.T.
15.48	5.17 ng	171005	Phenanthrene-d10	14.64

Hit#	of	Tentative ID	MW	MolForm	CAS#	Qual
1	5	Phenanthrene, 2-methyl-	192	C15H12	002531-84-2	93
2		Phenanthrene, 1-methyl-	192	C15H12	000832-69-9	93
3		1H-Indene, 2-phenyl-	192	C15H12	004505-48-0	90
4		1H-Cyclopropa[1]phenanthrene, 1a, ...	192	C15H12	000949-41-7	90
5		Anthracene, 1-methyl-	192	C15H12	000610-48-0	90



Data Path : Z:\HPCHEM1\BNA_F\DATA\BF060517\
 Data File : BF095689.D
 Acq On : 5 Jun 2017 23:45
 Operator : SJ/MA
 Sample : I3449-01
 Misc :
 ALS Vial : 14 Sample Multiplier: 1

Instrument :
 BNA_F
 ClientSampleID :
 CARSONS-STOCKPILE(COMP)

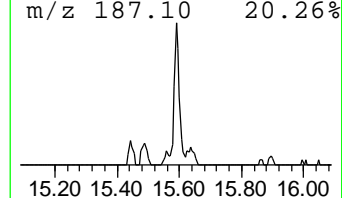
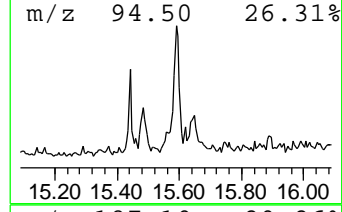
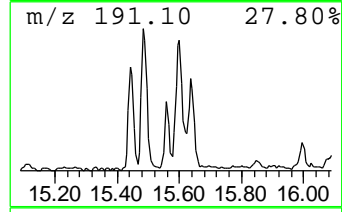
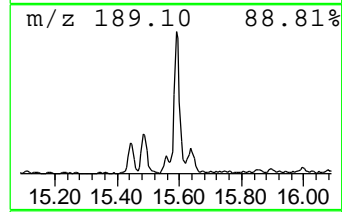
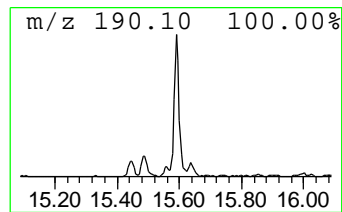
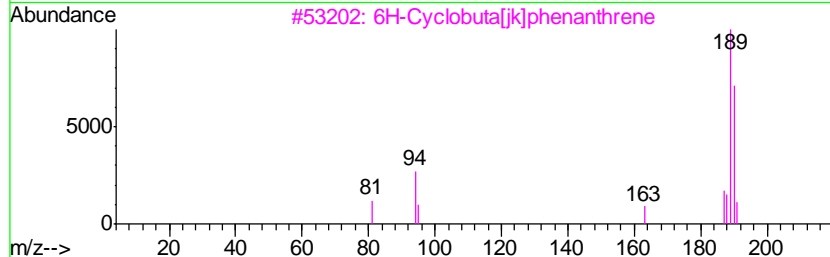
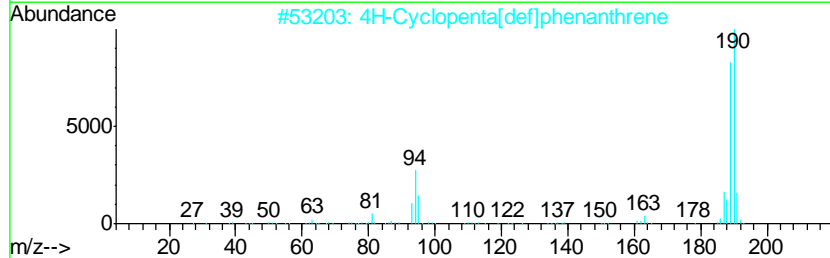
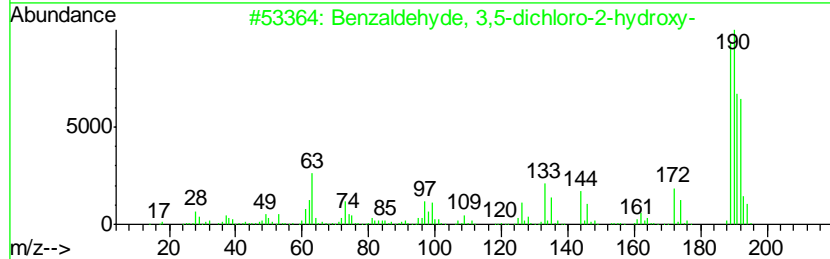
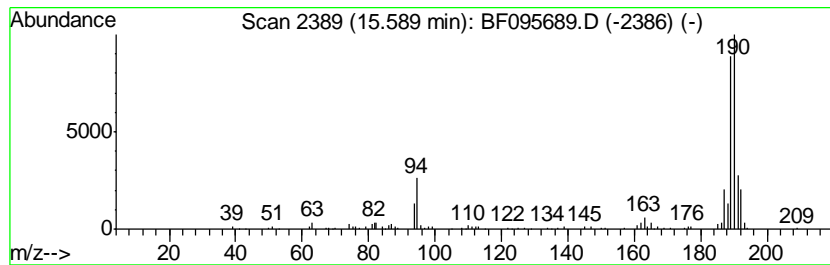
Quant Method : Z:\HPCHEM1\BNA_F\METHODS\8270-BF060517.M
 Quant Title : ASP BNA STANDARDS FOR 5 POINT CALIBRATION

TIC Library : C:\DATABASE\NIST11.L
 TIC Integration Parameters: LSCINT.P

 Peak Number 7 Benzaldehyde, 3,5-dichloro-... Concentration Rank 13

R.T.	EstConc	Area	Relative to ISTD	R.T.
15.59	7.36 ng	243294	Phenanthrene-d10	14.64

Hit#	of	Tentative ID	MW	MolForm	CAS#	Qual
1	5	Benzaldehyde, 3,5-dichloro-2-hyd...	190	C7H4Cl2O2	000090-60-8	72
2		4H-Cyclopenta[def]phenanthrene	190	C15H10	000203-64-5	70
3		6H-Cyclobuta[jk]phenanthrene	190	C15H10	083469-43-6	58
4		5H-Dibenzo[a,d]cycloheptene	192	C15H12	000256-81-5	25
5		Phenanthrene, 4-methyl-	192	C15H12	000832-64-4	25



Data Path : Z:\HPCHEM1\BNA_F\DATA\BF060517\
 Data File : BF095689.D
 Acq On : 5 Jun 2017 23:45
 Operator : SJ/MA
 Sample : I3449-01
 Misc :
 ALS Vial : 14 Sample Multiplier: 1

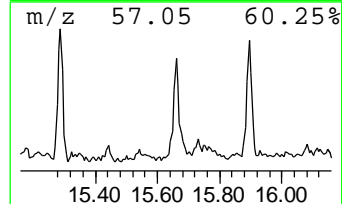
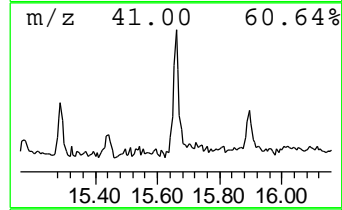
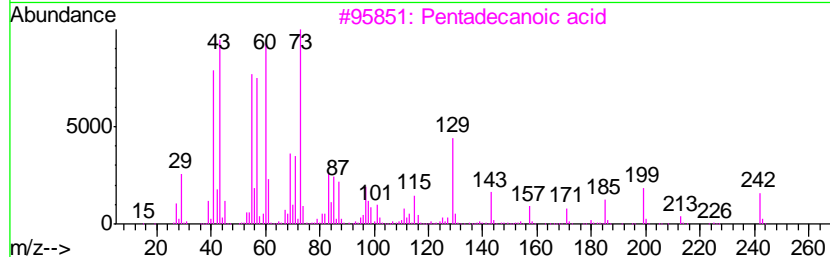
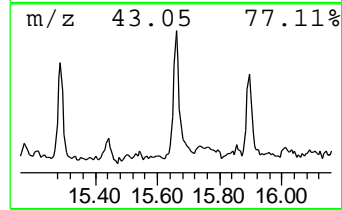
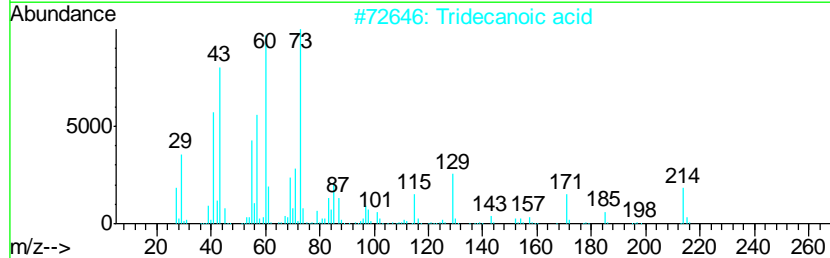
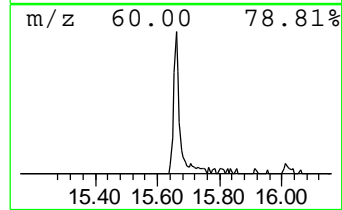
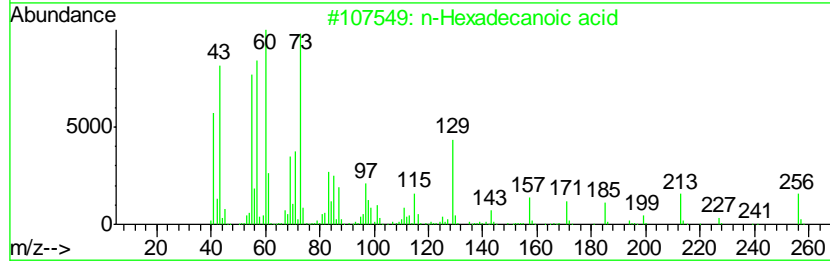
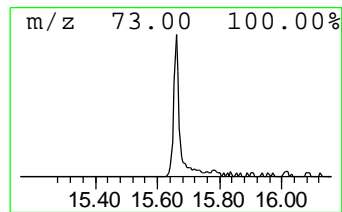
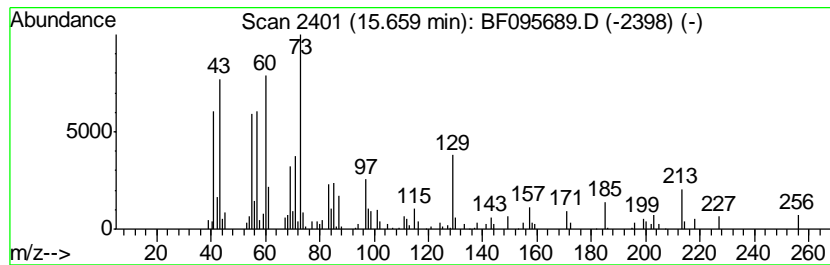
Instrument :
 BNA_F
 ClientSampleId :
 CARSONS-STOCKPILE(COMP)

Quant Method : Z:\HPCHEM1\BNA_F\METHODS\8270-BF060517.M
 Quant Title : ASP BNA STANDARDS FOR 5 POINT CALIBRATION

TIC Library : C:\DATABASE\NIST11.L
 TIC Integration Parameters: LSCINT.P

 Peak Number 8 n-Hexadecanoic acid Concentration Rank 18

R.T.	EstConc	Area	Relative to ISTD	R.T.		
15.66	6.10 ng	201783	Phenanthrene-d10	14.64		
Hit# of	5	Tentative ID	MW	MolForm	CAS#	Qual
1		n-Hexadecanoic acid	256	C16H32O2	000057-10-3	98
2		Tridecanoic acid	214	C13H26O2	000638-53-9	90
3		Pentadecanoic acid	242	C15H30O2	001002-84-2	81
4		Dodecanoic acid	200	C12H24O2	000143-07-7	64
5		Tetradecanoic acid	228	C14H28O2	000544-63-8	64



Data Path : Z:\HPCHEM1\BNA_F\DATA\BF060517\
 Data File : BF095689.D
 Acq On : 5 Jun 2017 23:45
 Operator : SJ/MA
 Sample : I3449-01
 Misc :
 ALS Vial : 14 Sample Multiplier: 1

Instrument :
 BNA_F
 ClientSampleId :
 CARSONS-STOCKPILE(COMP)

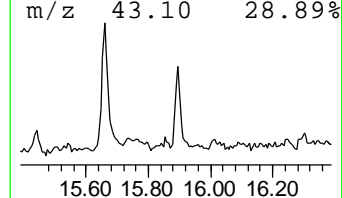
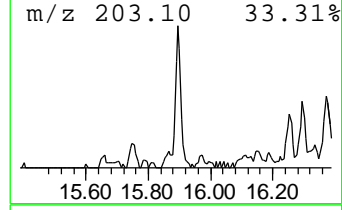
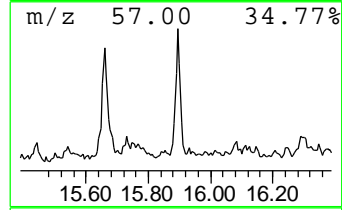
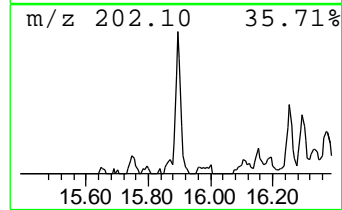
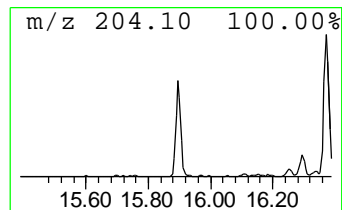
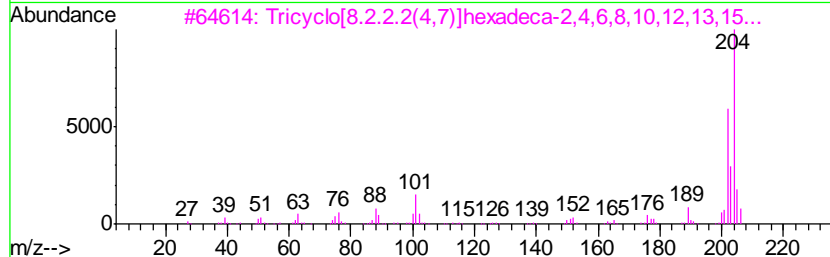
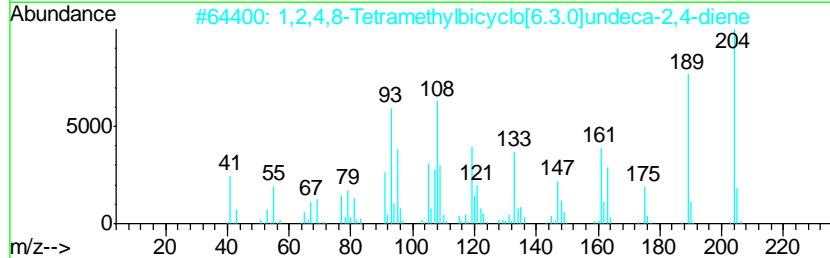
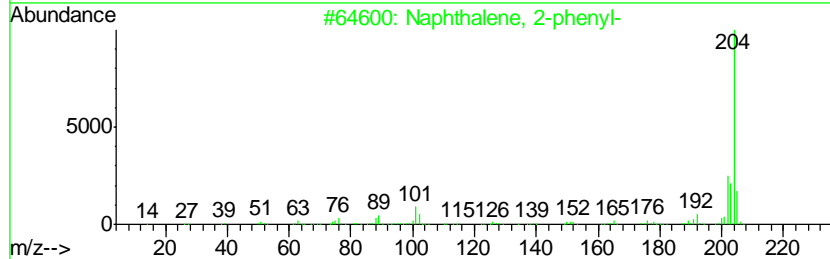
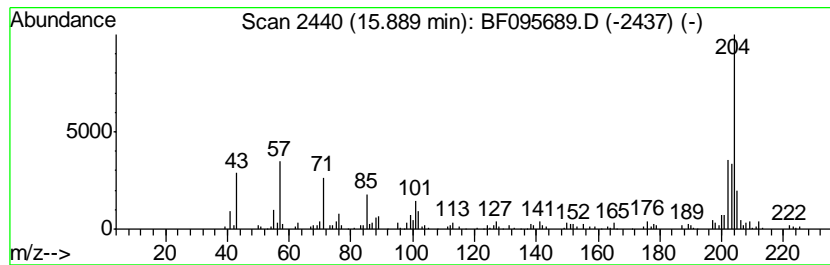
Quant Method : Z:\HPCHEM1\BNA_F\METHODS\8270-BF060517.M
 Quant Title : ASP BNA STANDARDS FOR 5 POINT CALIBRATION

TIC Library : C:\DATABASE\NIST11.L
 TIC Integration Parameters: LSCINT.P

 Peak Number 9 Naphthalene, 2-phenyl- Concentration Rank 17

R.T.	EstConc	Area	Relative to ISTD	R.T.
15.89	6.18 ng	204366	Phenanthrene-d10	14.64

Hit#	of	Tentative ID	MW	MolForm	CAS#	Qual
1	5	Naphthalene, 2-phenyl-	204	C16H12	000612-94-2	91
2		1,2,4,8-Tetramethylbicyclo[6.3.0...]	204	C15H24	137235-51-9	89
3		Tricyclo[8.2.2.2(4,7)]hexadeca-2...	204	C16H12	006572-60-7	78
4		6-Phenylbenzocyclohepten-7-one	232	C17H12O	093327-56-1	64
5		5,16[1',2'] : 8,13[1'',2'']-Dibenz...	408	C32H24	005672-97-9	58



Data Path : Z:\HPCHEM1\BNA_F\DATA\BF060517\
 Data File : BF095689.D
 Acq On : 5 Jun 2017 23:45
 Operator : SJ/MA
 Sample : I3449-01
 Misc :
 ALS Vial : 14 Sample Multiplier: 1

Instrument :
 BNA_F
 ClientSampleId :
 CARSONS-STOCKPILE(COMP)

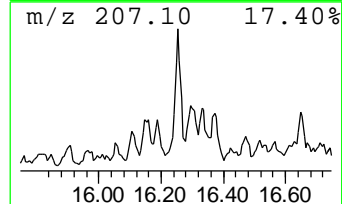
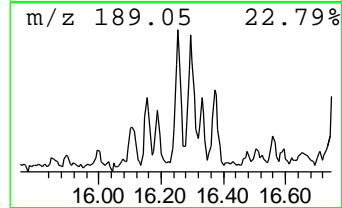
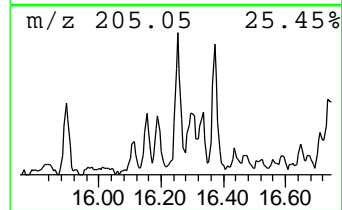
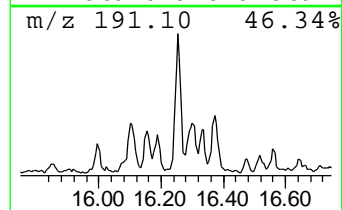
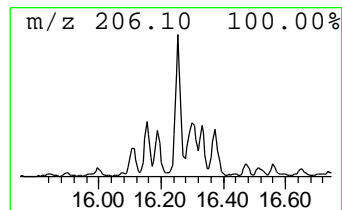
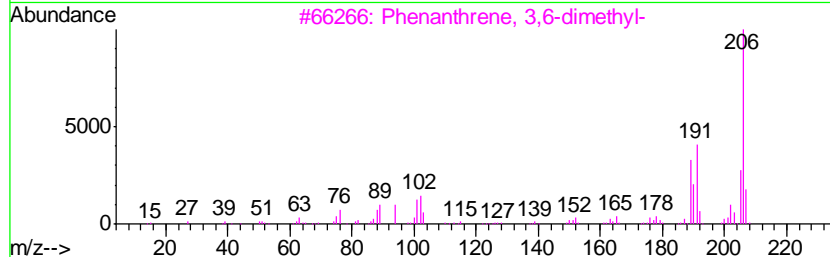
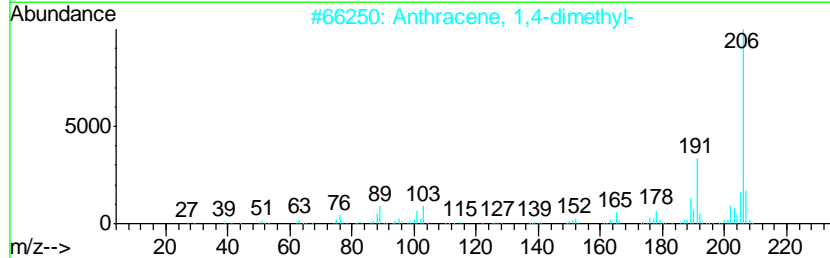
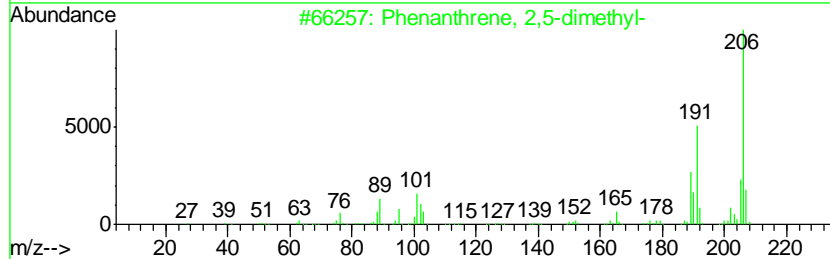
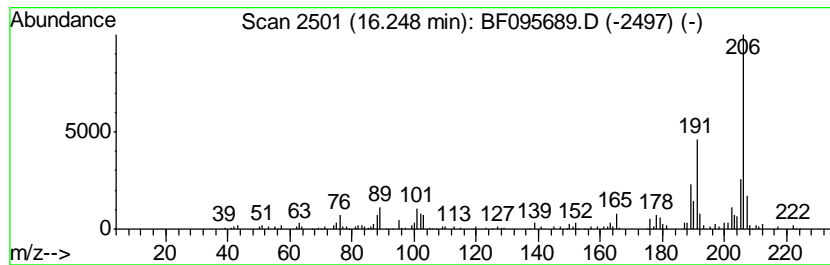
Quant Method : Z:\HPCHEM1\BNA_F\METHODS\8270-BF060517.M
 Quant Title : ASP BNA STANDARDS FOR 5 POINT CALIBRATION

TIC Library : C:\DATABASE\NIST11.L
 TIC Integration Parameters: LSCINT.P

 Peak Number 10 Phenanthrene, 2,5-dimethyl- Concentration Rank 12

R.T.	EstConc	Area	Relative to ISTD	R.T.
16.25	7.36 ng	243341	Phenanthrene-d10	14.64

Hit#	of	Tentative ID	MW	MolForm	CAS#	Qual
1	5	Phenanthrene, 2,5-dimethyl-	206	C16H14	003674-66-6	97
2		Anthracene, 1,4-dimethyl-	206	C16H14	000781-92-0	93
3		Phenanthrene, 3,6-dimethyl-	206	C16H14	001576-67-6	93
4		Phenanthrene, 2,3-dimethyl-	206	C16H14	003674-65-5	93
5		di-p-Tolylacetylene	206	C16H14	002789-88-0	93



Data Path : Z:\HPCHEM1\BNA_F\DATA\BF060517\
 Data File : BF095689.D
 Acq On : 5 Jun 2017 23:45
 Operator : SJ/MA
 Sample : I3449-01
 Misc :
 ALS Vial : 14 Sample Multiplier: 1

Instrument :
 BNA_F
 ClientSampleID :
 CARSONS-STOCKPILE(COMP)

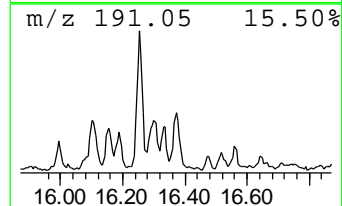
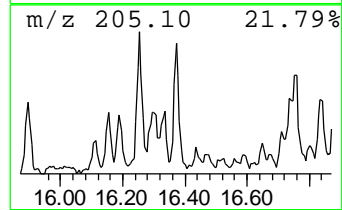
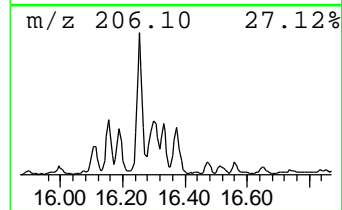
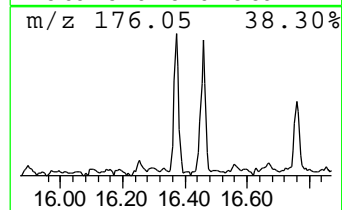
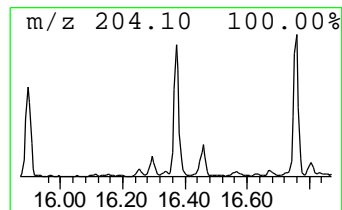
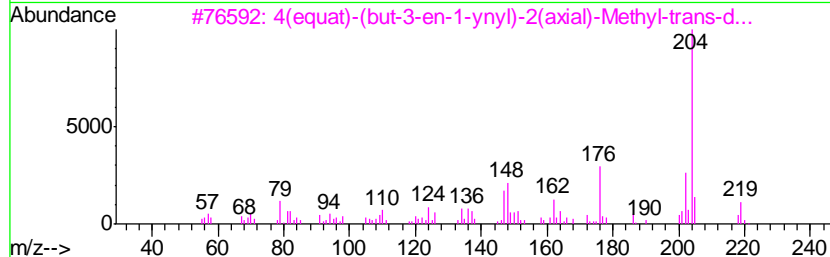
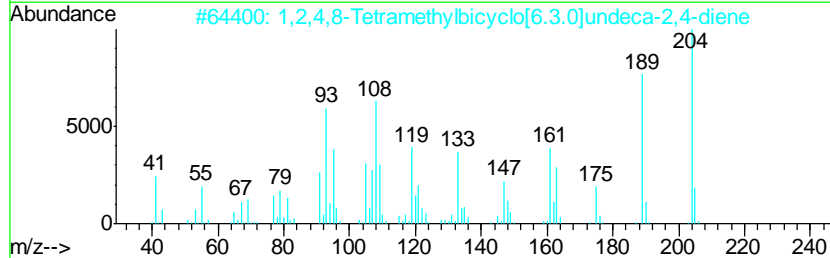
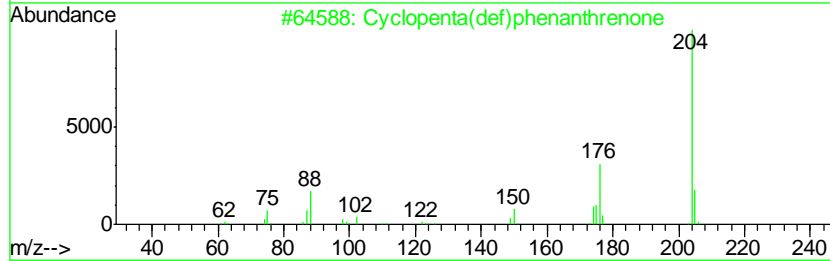
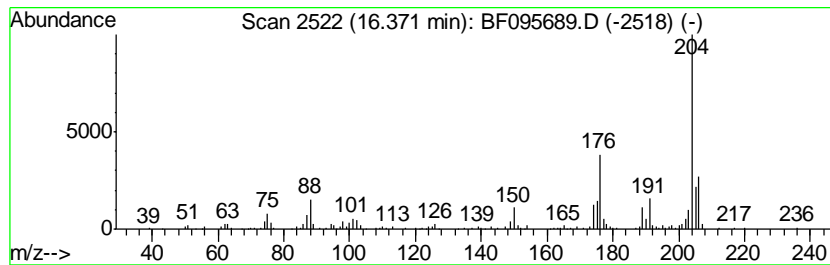
Quant Method : Z:\HPCHEM1\BNA_F\METHODS\8270-BF060517.M
 Quant Title : ASP BNA STANDARDS FOR 5 POINT CALIBRATION

TIC Library : C:\DATABASE\NIST11.L
 TIC Integration Parameters: LSCINT.P

 Peak Number 11 Cyclopenta(def)phenanthrene Concentration Rank 14

R.T.	EstConc	Area	Relative to ISTD	R.T.
16.37	7.05 ng	232915	Phenanthrene-d10	14.64

Hit#	of	Tentative ID	MW	MolForm	CAS#	Qual
1	5	Cyclopenta(def)phenanthrene	204	C15H8O	005737-13-3	96
2		1,2,4,8-Tetramethylbicyclo[6.3.0...]	204	C15H24	137235-51-9	55
3		4(equat)-(but-3-en-1-ynyl)-2(axi...]	219	C14H21NO	038423-22-2	50
4		[1,1'-Biphenyl]-2-ol, 5-chloro-	204	C12H9ClO	000607-12-5	43
5		6-Cyanophenanthridine	204	C14H8N2	002176-28-5	38



Data Path : Z:\HPCHEM1\BNA_F\DATA\BF060517\
 Data File : BF095689.D
 Acq On : 5 Jun 2017 23:45
 Operator : SJ/MA
 Sample : I3449-01
 Misc :
 ALS Vial : 14 Sample Multiplier: 1

Instrument :
 BNA_F
 ClientSampleID :
 CARSONS-STOCKPILE(COMP)

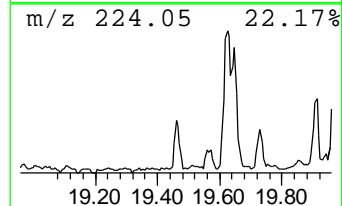
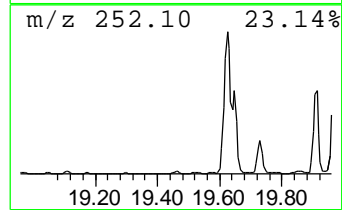
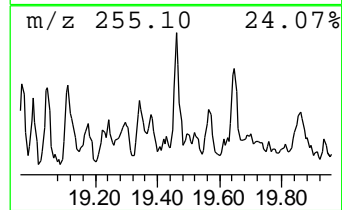
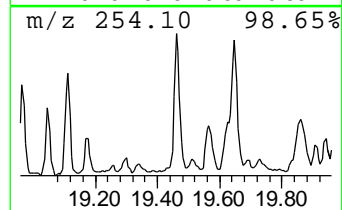
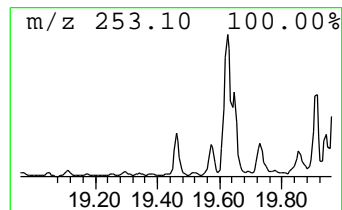
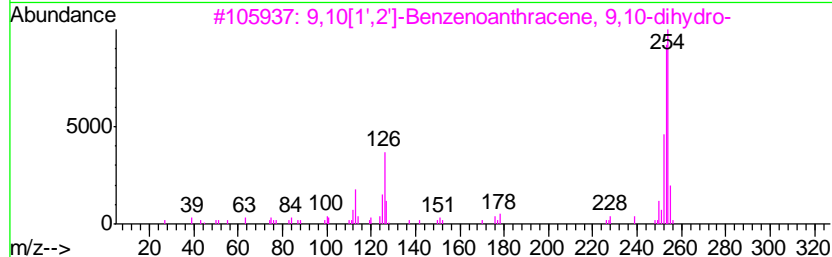
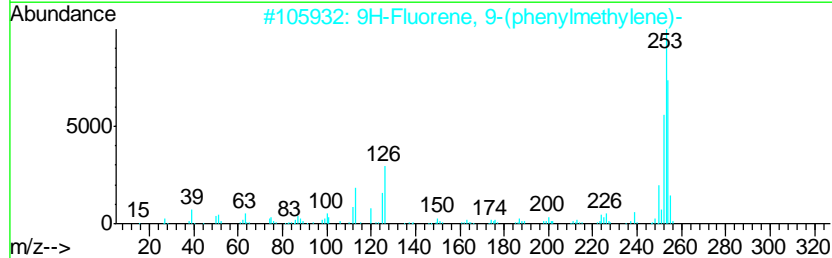
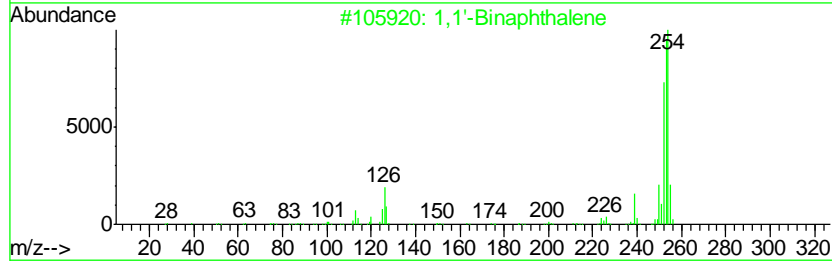
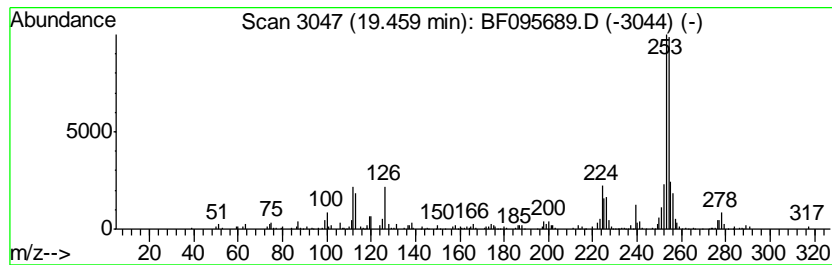
Quant Method : Z:\HPCHEM1\BNA_F\METHODS\8270-BF060517.M
 Quant Title : ASP BNA STANDARDS FOR 5 POINT CALIBRATION

TIC Library : C:\DATABASE\NIST11.L
 TIC Integration Parameters: LSCINT.P

 Peak Number 12 1,1'-Binaphthalene Concentration Rank 8

R.T.	EstConc	Area	Relative to ISTD	R.T.
19.46	8.39 ng	175264	Perylene-d12	20.02

Hit#	of	Tentative ID	MW	MolForm	CAS#	Qual
1	5	1,1'-Binaphthalene	254	C20H14	000604-53-5	76
2		9H-Fluorene, 9-(phenylmethylene)-	254	C20H14	001836-87-9	68
3		9,10[1',2']-Benzenoanthracene, 9...	254	C20H14	000477-75-8	68
4		4,5-Dihydrobenzo[el]pyrene	254	C20H14	095676-42-9	62
5		1,2'-Binaphthalene	254	C20H14	004325-74-0	58



Data Path : Z:\HPCHEM1\BNA_F\DATA\BF060517\
 Data File : BF095689.D
 Acq On : 5 Jun 2017 23:45
 Operator : SJ/MA
 Sample : I3449-01
 Misc :
 ALS Vial : 14 Sample Multiplier: 1

Instrument :
 BNA_F
 ClientSampleId :
 CARSONS-STOCKPILE(COMP)

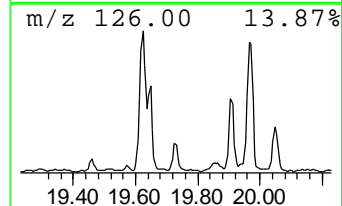
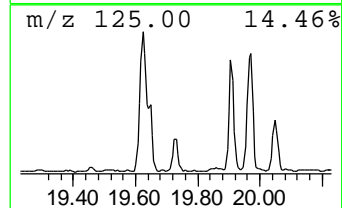
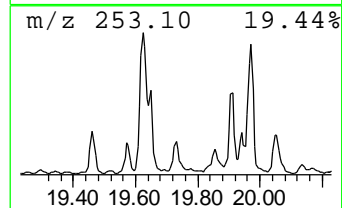
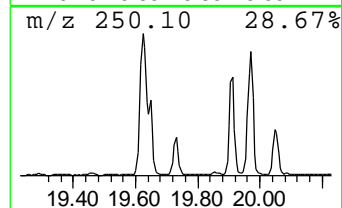
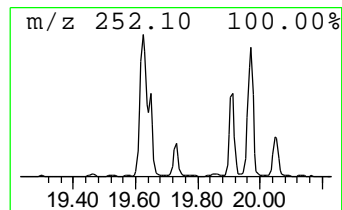
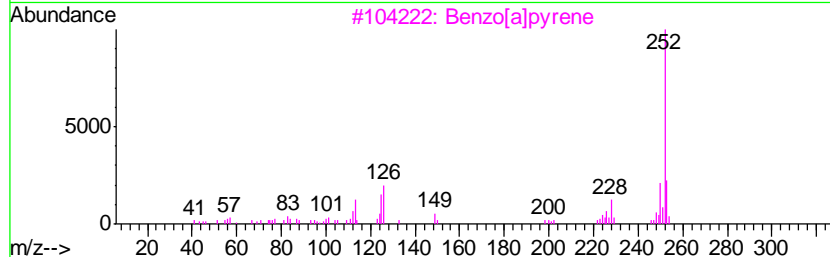
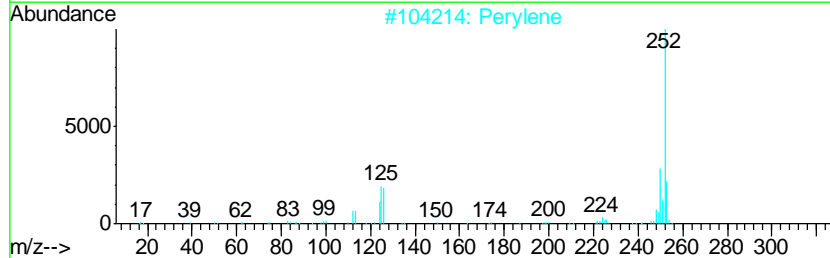
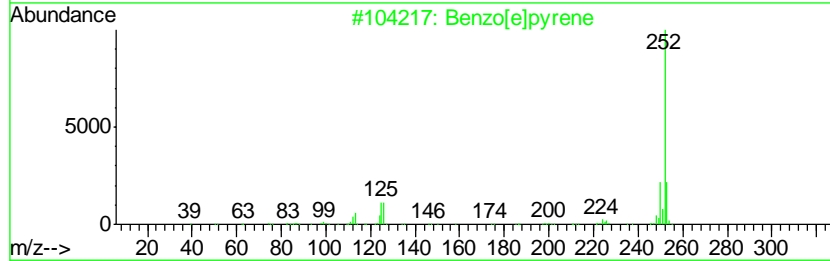
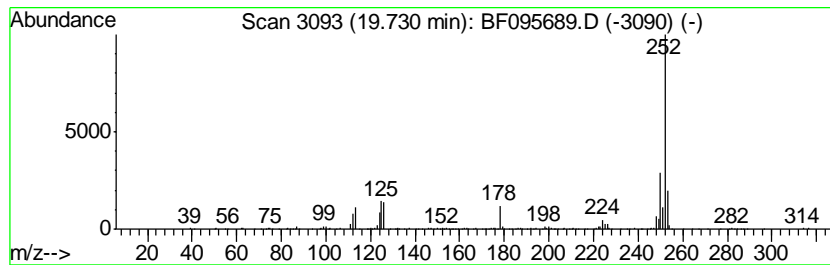
Quant Method : Z:\HPCHEM1\BNA_F\METHODS\8270-BF060517.M
 Quant Title : ASP BNA STANDARDS FOR 5 POINT CALIBRATION

TIC Library : C:\DATABASE\NIST11.L
 TIC Integration Parameters: LSCINT.P

 Peak Number 13 Benzo[e]pyrene Concentration Rank 5

R.T.	EstConc	Area	Relative to ISTD	R.T.
19.73	15.49 ng	323406	Perylene-d12	20.02

Hit#	of	Tentative ID	MW	MolForm	CAS#	Qual
1	5	Benzo[e]pyrene	252	C20H12	000192-97-2	95
2		Perylene	252	C20H12	000198-55-0	94
3		Benzo[a]pyrene	252	C20H12	000050-32-8	93
4		Benzo[k]fluoranthene	252	C20H12	000207-08-9	90
5		Benz[e]acephenanthrylene	252	C20H12	000205-99-2	89



Data Path : Z:\HPCHEM1\BNA_F\DATA\BF060517\
 Data File : BF095689.D
 Acq On : 5 Jun 2017 23:45
 Operator : SJ/MA
 Sample : I3449-01
 Misc :
 ALS Vial : 14 Sample Multiplier: 1

Instrument :
 BNA_F
 ClientSampleID :
 CARSONS-STOCKPILE(COMP)

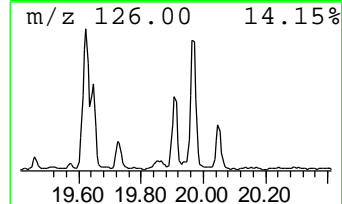
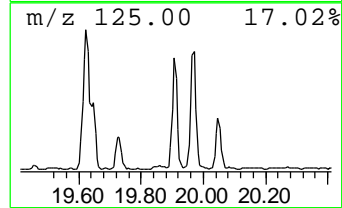
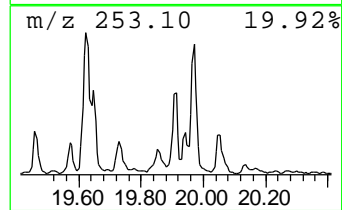
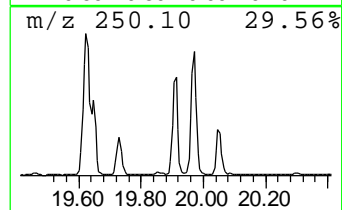
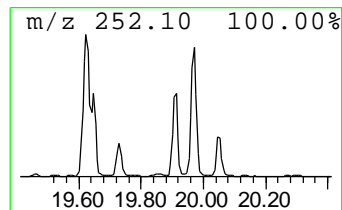
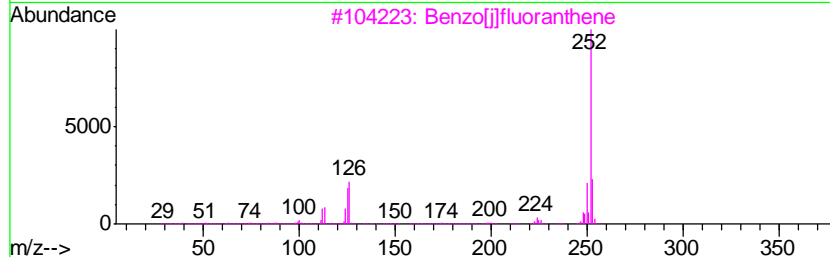
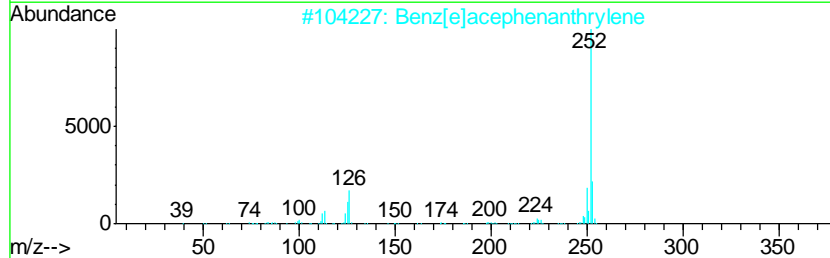
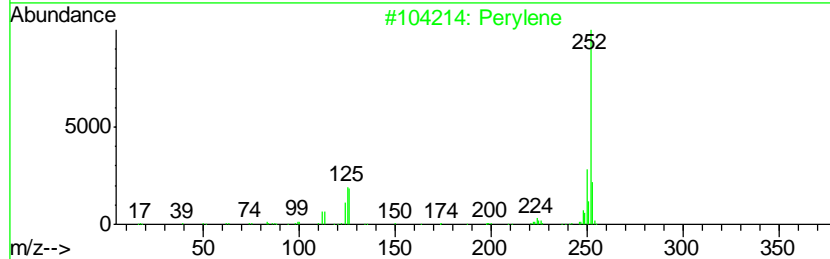
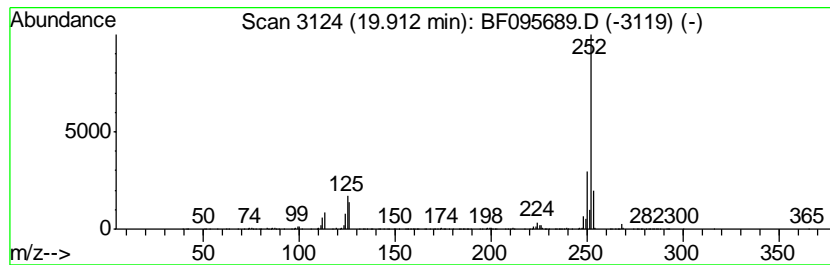
Quant Method : Z:\HPCHEM1\BNA_F\METHODS\8270-BF060517.M
 Quant Title : ASP BNA STANDARDS FOR 5 POINT CALIBRATION

TIC Library : C:\DATABASE\NIST11.L
 TIC Integration Parameters: LSCINT.P

 Peak Number 14 Perylene Concentration Rank 3

R.T.	EstConc	Area	Relative to ISTD	R.T.
19.91	38.82 ng	810741	Perylene-d12	20.02

Hit#	of	Tentative ID	MW	MolForm	CAS#	Qual
1	5	Perylene	252	C20H12	000198-55-0	94
2		Benz[e]acephenanthrylene	252	C20H12	000205-99-2	94
3		Benzo[j]fluoranthene	252	C20H12	000205-82-3	93
4		Benzo[k]fluoranthene	252	C20H12	000207-08-9	93
5		Benzo[e]pyrene	252	C20H12	000192-97-2	93



Data Path : Z:\HPCHEM1\BNA_F\DATA\BF060517\
 Data File : BF095689.D
 Acq On : 5 Jun 2017 23:45
 Operator : SJ/MA
 Sample : I3449-01
 Misc :
 ALS Vial : 14 Sample Multiplier: 1

Instrument :
 BNA_F
 ClientSampleId :
 CARSONS-STOCKPILE(COMP)

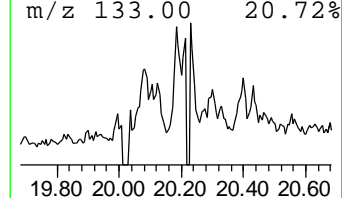
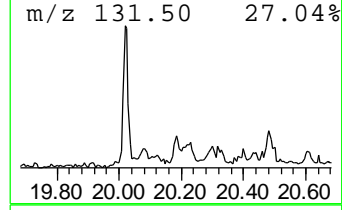
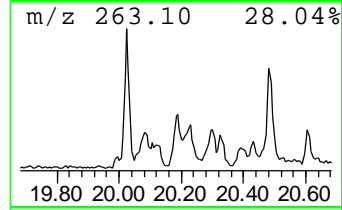
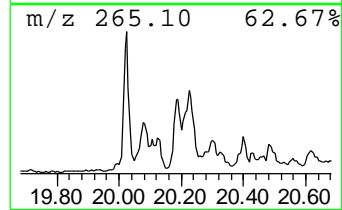
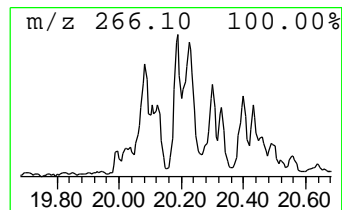
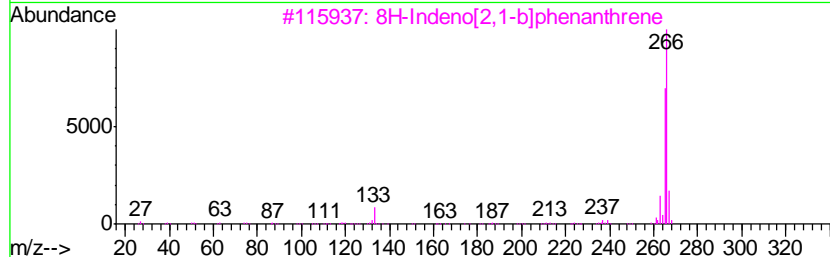
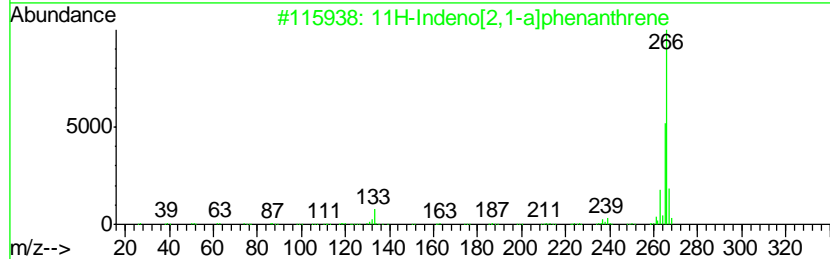
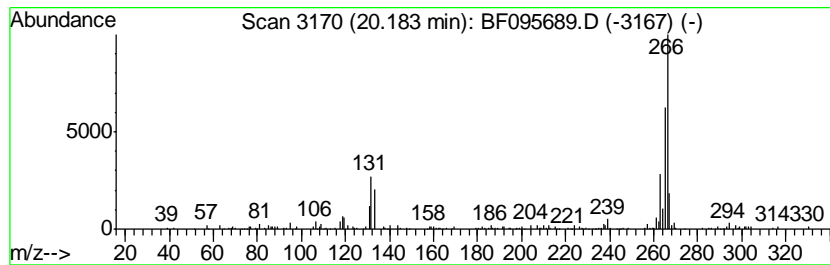
Quant Method : Z:\HPCHEM1\BNA_F\METHODS\8270-BF060517.M
 Quant Title : ASP BNA STANDARDS FOR 5 POINT CALIBRATION

TIC Library : C:\DATABASE\NIST11.L
 TIC Integration Parameters: LSCINT.P

 Peak Number 15 11H-Indeno[2,1-a]phenanthrene Concentration Rank 19

R.T.	EstConc	Area	Relative to ISTD	R.T.
20.18	5.60 ng	116962	Perylene-d12	20.02

Hit#	of	Tentative ID	MW	MolForm	CAS#	Qual
1	5	11H-Indeno[2,1-a]phenanthrene	266	C21H14	000220-97-3	64
2		13H-Dibenzo[a,h]fluorene	266	C21H14	000239-85-0	64
3		8H-Indeno[2,1-b]phenanthrene	266	C21H14	000241-28-1	52
4		Furazano[3,4-g]benzimidazole, 7-...	266	C14H10N4S	129485-61-6	52
5		Thiazole, 4-phenyl-2-(4-tolylami...	266	C16H14N2S	016098-04-7	47



Data Path : Z:\HPCHEM1\BNA_F\DATA\BF060517\
 Data File : BF095689.D
 Acq On : 5 Jun 2017 23:45
 Operator : SJ/MA
 Sample : I3449-01
 Misc :
 ALS Vial : 14 Sample Multiplier: 1

Instrument :
 BNA_F
 ClientSampleID :
 CARSONS-STOCKPILE(COMP)

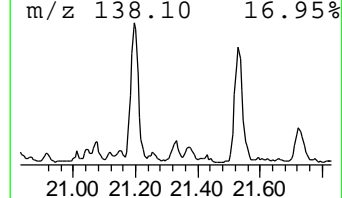
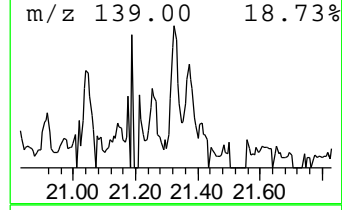
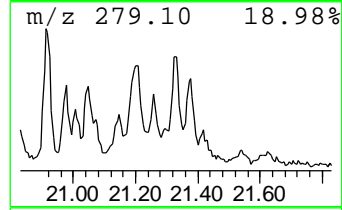
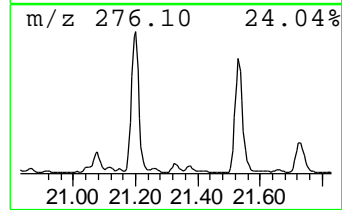
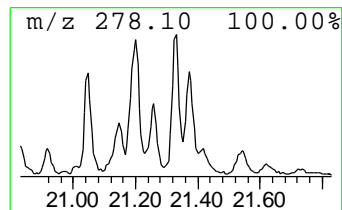
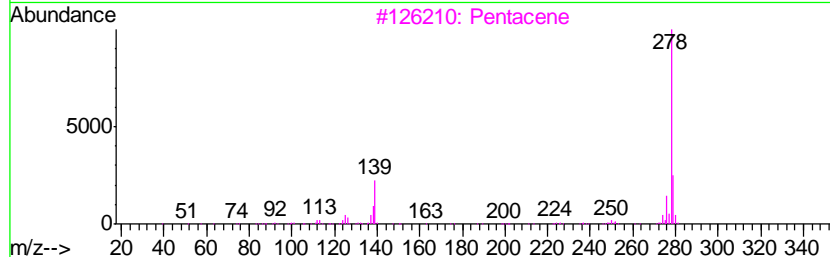
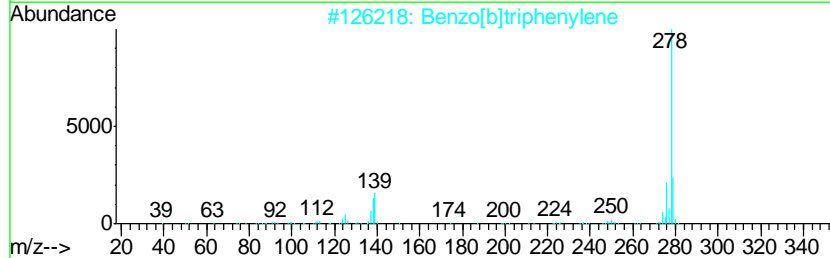
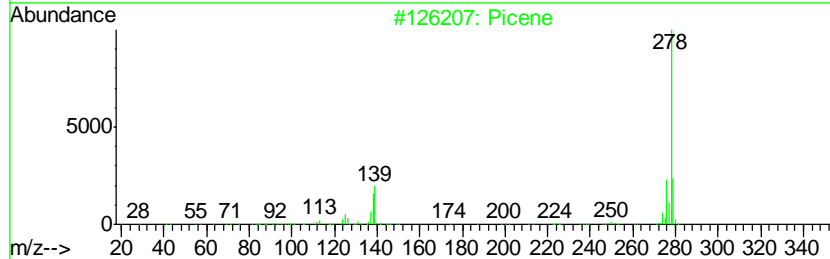
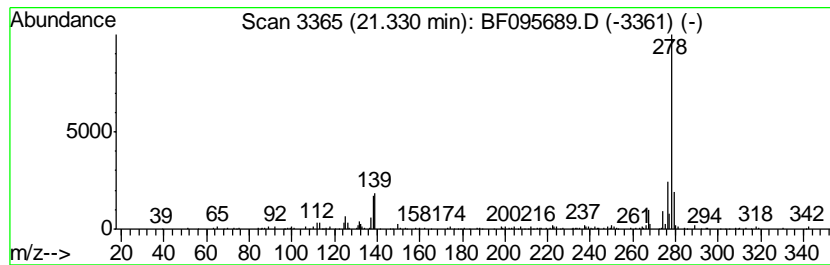
Quant Method : Z:\HPCHEM1\BNA_F\METHODS\8270-BF060517.M
 Quant Title : ASP BNA STANDARDS FOR 5 POINT CALIBRATION

TIC Library : C:\DATABASE\NIST11.L
 TIC Integration Parameters: LSCINT.P

 Peak Number 16 Picene Concentration Rank 15

R.T.	EstConc	Area	Relative to ISTD	R.T.
21.33	6.66 ng	139182	Perylene-d12	20.02

Hit#	of	Tentative ID	MW	MolForm	CAS#	Qual
1	5	Picene	278	C22H14	000213-46-7	97
2		Benzo[b]triphenylene	278	C22H14	000215-58-7	93
3		Pentacene	278	C22H14	000135-48-8	86
4		Benzo[a]naphthacene	278	C22H14	000226-88-0	76
5		Dibenz[a,h]anthracene	278	C22H14	000053-70-3	70



Data Path : Z:\HPCHEM1\BNA_F\DATA\BF060517\
 Data File : BF095689.D
 Acq On : 5 Jun 2017 23:45
 Operator : SJ/MA
 Sample : I3449-01
 Misc :
 ALS Vial : 14 Sample Multiplier: 1

Instrument :
 BNA_F
 ClientSampleId :
 CARSONS-STOCKPILE(COMP)

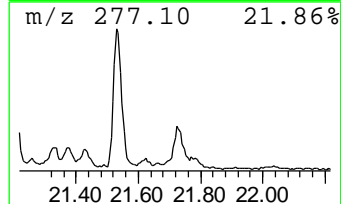
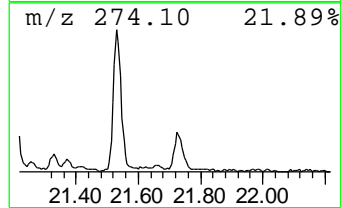
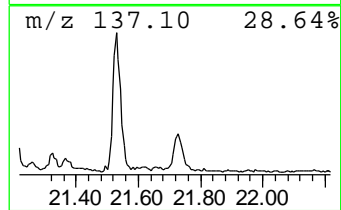
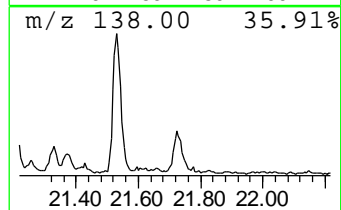
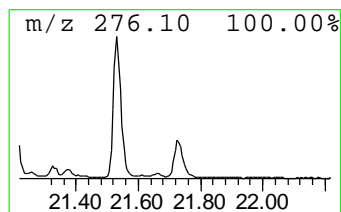
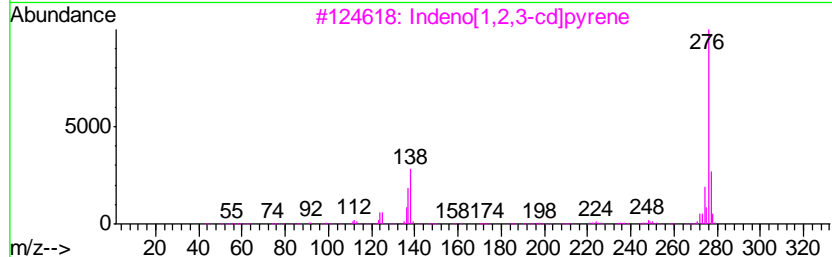
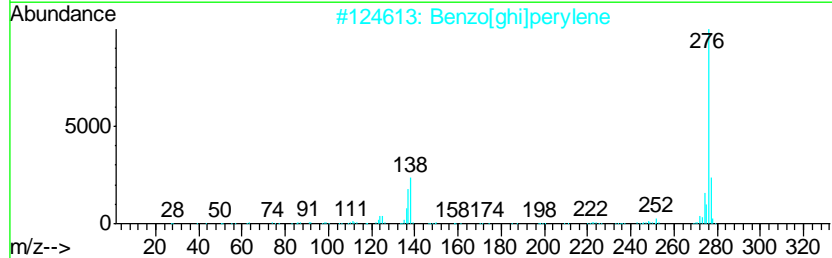
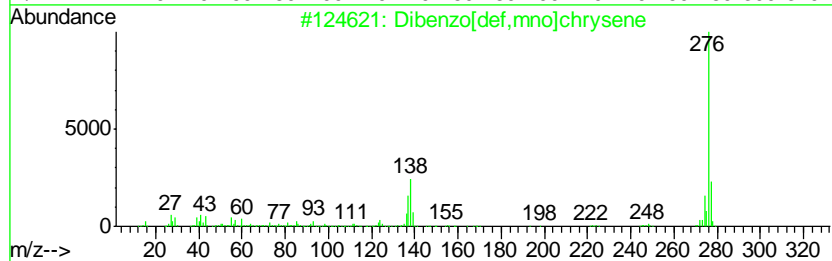
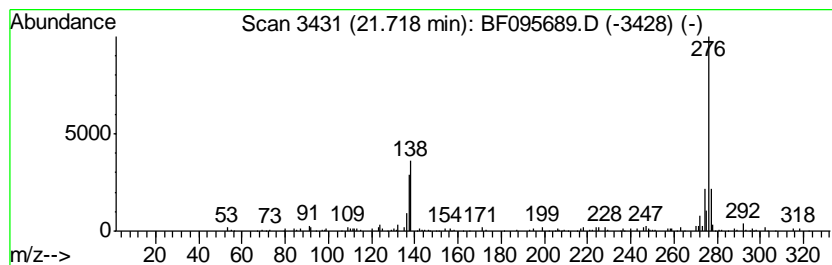
Quant Method : Z:\HPCHEM1\BNA_F\METHODS\8270-BF060517.M
 Quant Title : ASP BNA STANDARDS FOR 5 POINT CALIBRATION

TIC Library : C:\DATABASE\NIST11.L
 TIC Integration Parameters: LSCINT.P

 Peak Number 18 Dibenzo[def,mno]chrysene Concentration Rank 6

R.T.	EstConc	Area	Relative to ISTD	R.T.
21.72	9.12 ng	190526	Perylene-d12	20.02

Hit#	of	Tentative ID	MW	MolForm	CAS#	Qual
1	5	Dibenzo[def,mno]chrysene	276	C22H12	000191-26-4	96
2		Benzo[ghi]perylene	276	C22H12	000191-24-2	93
3		Indeno[1,2,3-cd]pyrene	276	C22H12	000193-39-5	90
4		Indeno[1,2,3-cd]fluoranthene	276	C22H12	000193-43-1	64
5		6H-Pyrido[4,3-b]carbazole, 9-met...	276	C18H16N2O	010371-86-5	46



Data Path : Z:\HPCHEM1\BNA_F\DATA\BF060517\
 Data File : BF095689.D
 Acq On : 5 Jun 2017 23:45
 Operator : SJ/MA
 Sample : I3449-01
 Misc :
 ALS Vial : 14 Sample Multiplier: 1

Instrument :
 BNA_F
 ClientSampleID :
 CARSONS-STOCKPILE(COMP)

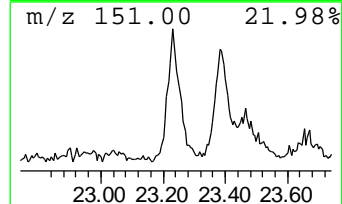
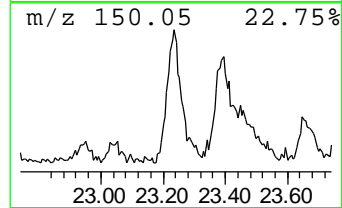
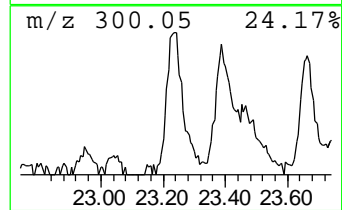
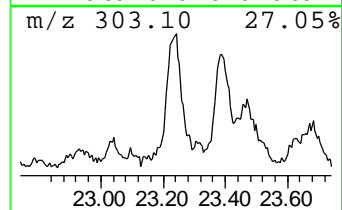
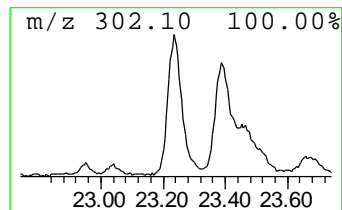
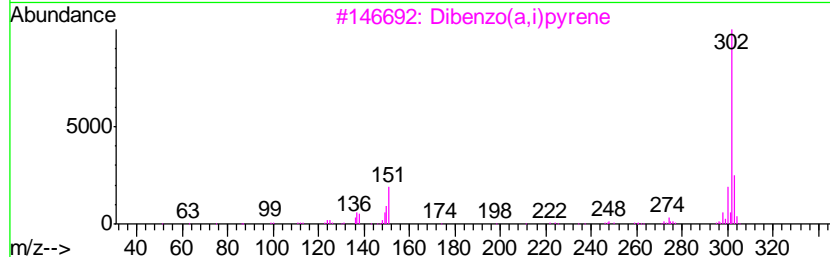
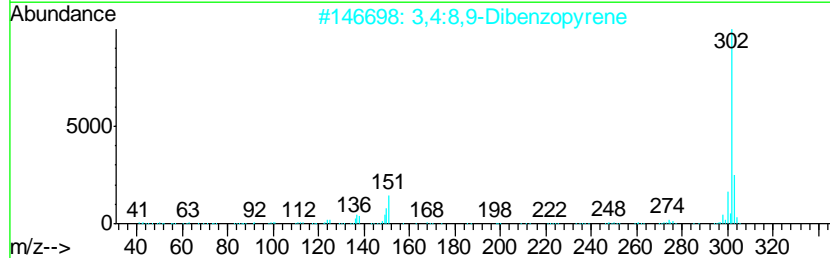
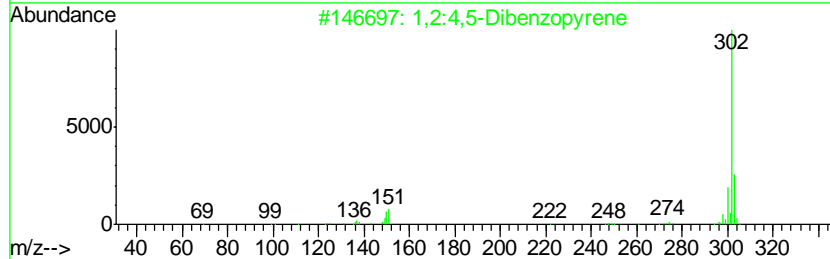
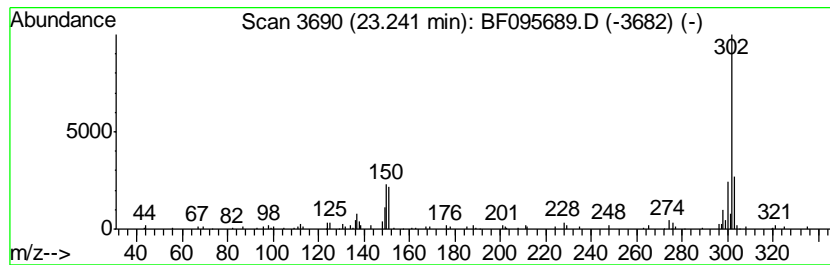
Quant Method : Z:\HPCHEM1\BNA_F\METHODS\8270-BF060517.M
 Quant Title : ASP BNA STANDARDS FOR 5 POINT CALIBRATION

TIC Library : C:\DATABASE\NIST11.L
 TIC Integration Parameters: LSCINT.P

 Peak Number 19 1,2:4,5-Dibenzopyrene Concentration Rank 7

R.T.	EstConc	Area	Relative to ISTD	R.T.
23.24	8.97 ng	187393	Perylene-d12	20.02

Hit#	of	Tentative ID	MW	MolForm	CAS#	Qual
1	5	1,2:4,5-Dibenzopyrene	302	C24H14	000192-65-4	91
2		3,4:8,9-Dibenzopyrene	302	C24H14	000189-64-0	90
3		Dibenzo(a,i)pyrene	302	C24H14	000189-55-9	86
4		1,2,9,10-Dibenzopyrene	302	C24H14	000191-30-0	70
5		Indeno[1,2,3-fg]naphthacene	302	C24H14	000203-11-2	59



Data Path : Z:\HPCHEM1\BNA_F\DATA\BF060517\
 Data File : BF095689.D
 Acq On : 5 Jun 2017 23:45
 Operator : SJ/MA
 Sample : I3449-01
 Misc :
 ALS Vial : 14 Sample Multiplier: 1

Instrument :
 BNA_F
 ClientSampleId :
 CARSONS-STOCKPILE(COMP)

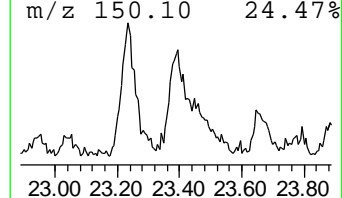
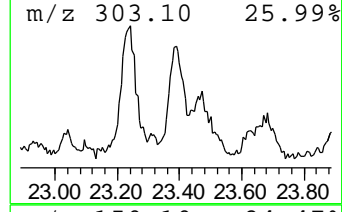
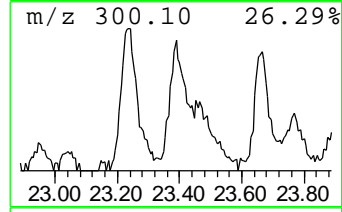
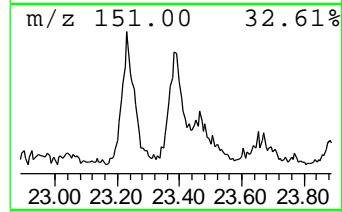
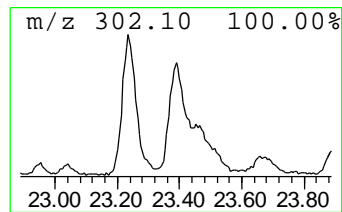
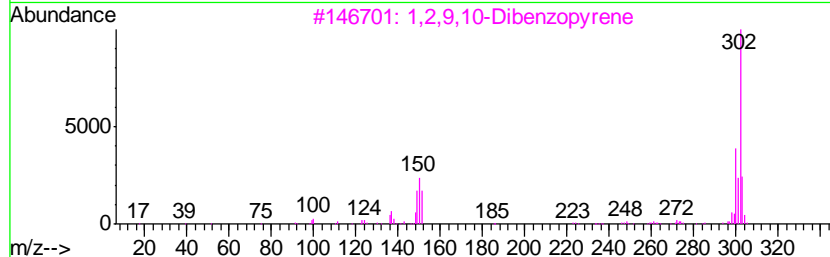
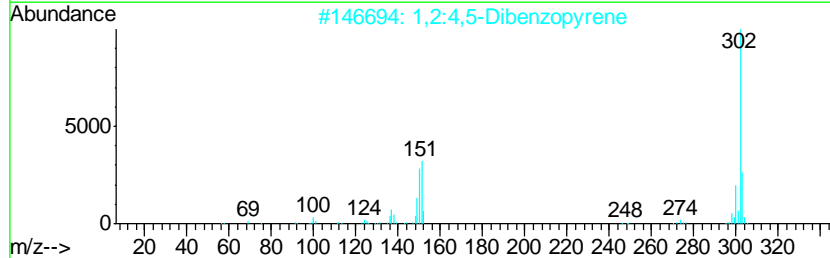
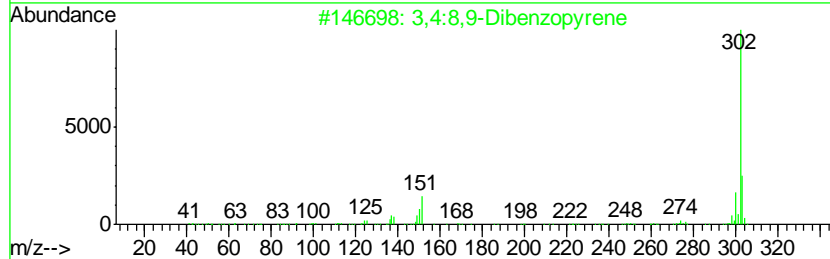
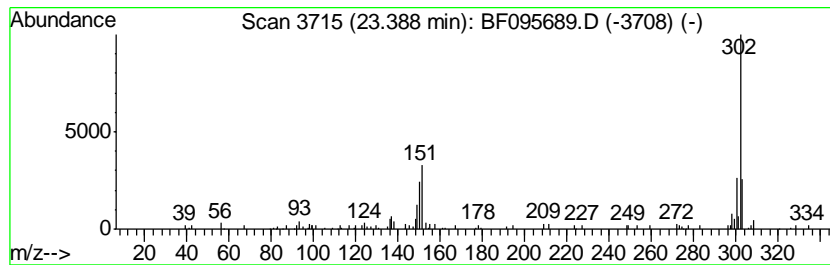
Quant Method : Z:\HPCHEM1\BNA_F\METHODS\8270-BF060517.M
 Quant Title : ASP BNA STANDARDS FOR 5 POINT CALIBRATION

TIC Library : C:\DATABASE\NIST11.L
 TIC Integration Parameters: LSCINT.P

 Peak Number 20 3,4:8,9-Dibenzopyrene Concentration Rank 9

R.T.	EstConc	Area	Relative to ISTD	R.T.
23.39	8.10 ng	169065	Perylene-d12	20.02

Hit#	of	Tentative ID	MW	MolForm	CAS#	Qual
1	5	3,4:8,9-Dibenzopyrene	302	C24H14	000189-64-0	91
2		1,2:4,5-Dibenzopyrene	302	C24H14	000192-65-4	91
3		1,2,9,10-Dibenzopyrene	302	C24H14	000191-30-0	86
4		Dibenzo(a,i)pyrene	302	C24H14	000189-55-9	81
5		Indeno[1,2,3-fg]naphthacene	302	C24H14	000203-11-2	64



Data Path : Z:\HPCHEM1\BNA_F\DATA\BF060517\
 Data File : BF095689.D
 Acq On : 5 Jun 2017 23:45
 Operator : SJ/MA
 Sample : I3449-01
 Misc :
 ALS Vial : 14 Sample Multiplier: 1

Instrument :
 BNA_F
 ClientSampleId :
 CARSONS-STOCKPILE(COMP)

Quant Method : Z:\HPCHEM1\BNA_F\METHODS\8270-BF060517.M
 Quant Title : ASP BNA STANDARDS FOR 5 POINT CALIBRATION

TIC Library : C:\DATABASE\NIST11.L
 TIC Integration Parameters: LSCINT.P

TIC Top Hit name	RT	EstConc	Units	Response	--Internal Standard--			
					#	RT	Resp	Conc
2-Pentanone, 4-hy...	4.61	7.5	ng	235901	1	7.40	633001	20.0
unknown7.05	7.05	81.9	ng	2590990	1	7.40	633001	20.0
2-Bromo dodecane	13.88	7.5	ng	247521	4	14.64	661080	20.0
Phenanthrene, 2-m...	15.48	5.2	ng	171005	4	14.64	661080	20.0
Benzaldehyde, 3,5...	15.59	7.4	ng	243294	4	14.64	661080	20.0
n-Hexadecanoic acid	15.66	6.1	ng	201783	4	14.64	661080	20.0
Naphthalene, 2-ph...	15.89	6.2	ng	204366	4	14.64	661080	20.0
Phenanthrene, 2,5...	16.25	7.4	ng	243341	4	14.64	661080	20.0
Cyclopenta(def)ph...	16.37	7.0	ng	232915	4	14.64	661080	20.0
1,1'-Binaphthalene	19.46	8.4	ng	175264	6	20.02	417655	20.0
Benzo[e]pyrene	19.73	15.5	ng	323406	6	20.02	417655	20.0
Perylene	19.91	38.8	ng	810741	6	20.02	417655	20.0
11H-Indeno[2,1-a]...	20.18	5.6	ng	116962	6	20.02	417655	20.0
Picene	21.33	6.7	ng	139182	6	20.02	417655	20.0
Dibenzo[def,mno]c...	21.72	9.1	ng	190526	6	20.02	417655	20.0
1,2:4,5-Dibenzopy...	23.24	9.0	ng	187393	6	20.02	417655	20.0
3,4:8,9-Dibenzopy...	23.39	8.1	ng	169065	6	20.02	417655	20.0