

Data Path : Z:\HPCHEM1\BNA F\DATA\BF060817\
 Data File : BF095778.D
 Acq On : 8 Jun 2017 12:20
 Operator : SJ/MA
 Sample : I3473-06
 Misc :
 ALS Vial : 5 Sample Multiplier: 1

Instrument :
 BNA_F
ClientSampleId :
 R1-MW-4

Manual Integrations
APPROVED
 mohammad
 6/9/2017 12:08:20 PM

Quant Time: Jun 08 13:01:25 2017
 Quant Method : Z:\HPCHEM1\BNA F\METHODS\8270-BF060517.M
 Quant Title : ASP BNA STANDARDS FOR 5 POINT CALIBRATION
 QLast Update : Thu Jun 08 11:19:45 2017
 Response via : Initial Calibration

Internal Standards	R.T.	QIon	Response	Conc	Units	Dev(Min)
1) 1,4-Dichlorobenzene-d4	7.37	152	60802	20.00	ng	0.00
21) Naphthalene-d8	9.40	136	263132	20.00	ng	0.00
38) Acenaphthene-d10	12.22	164	124933	20.00	ng	0.00
63) Phenanthrene-d10	14.62	188	218419	20.00	ng	0.00
75) Chrysene-d12	18.33	240	176562	20.00	ng	-0.01
86) Perylene-d12	20.00	264	130154	20.00	ng	0.00
System Monitoring Compounds						
5) 2-Fluorophenol	5.26	112	250689	65.70	ng	0.00
7) Phenol-d6	6.93	99	196631	43.04	ng	0.00
23) Nitrobenzene-d5	8.29	82	393738	92.93	ng	0.00
41) 2,4,6-Tribromophenol	13.52	330	158223	143.14	ng	0.00
44) 2-Fluorobiphenyl	11.19	172	809229	90.14	ng	0.00
78) Terphenyl-d14	17.00	244	676777	95.13	ng	0.00
Target Compounds						
2) 1,4-Dioxane	1.72	88	4512	2.49	ng	Qvalue # 83
37) 2-Methylnaphthalene	10.56	142	18721m	2.10	ng	
49) Dimethylphthalate	11.87	163	33112	3.49	ng	98
51) Acenaphthene	12.28	154	352387	44.35	ng	98
57) Fluorene	13.11	166	79524	8.17	ng	96

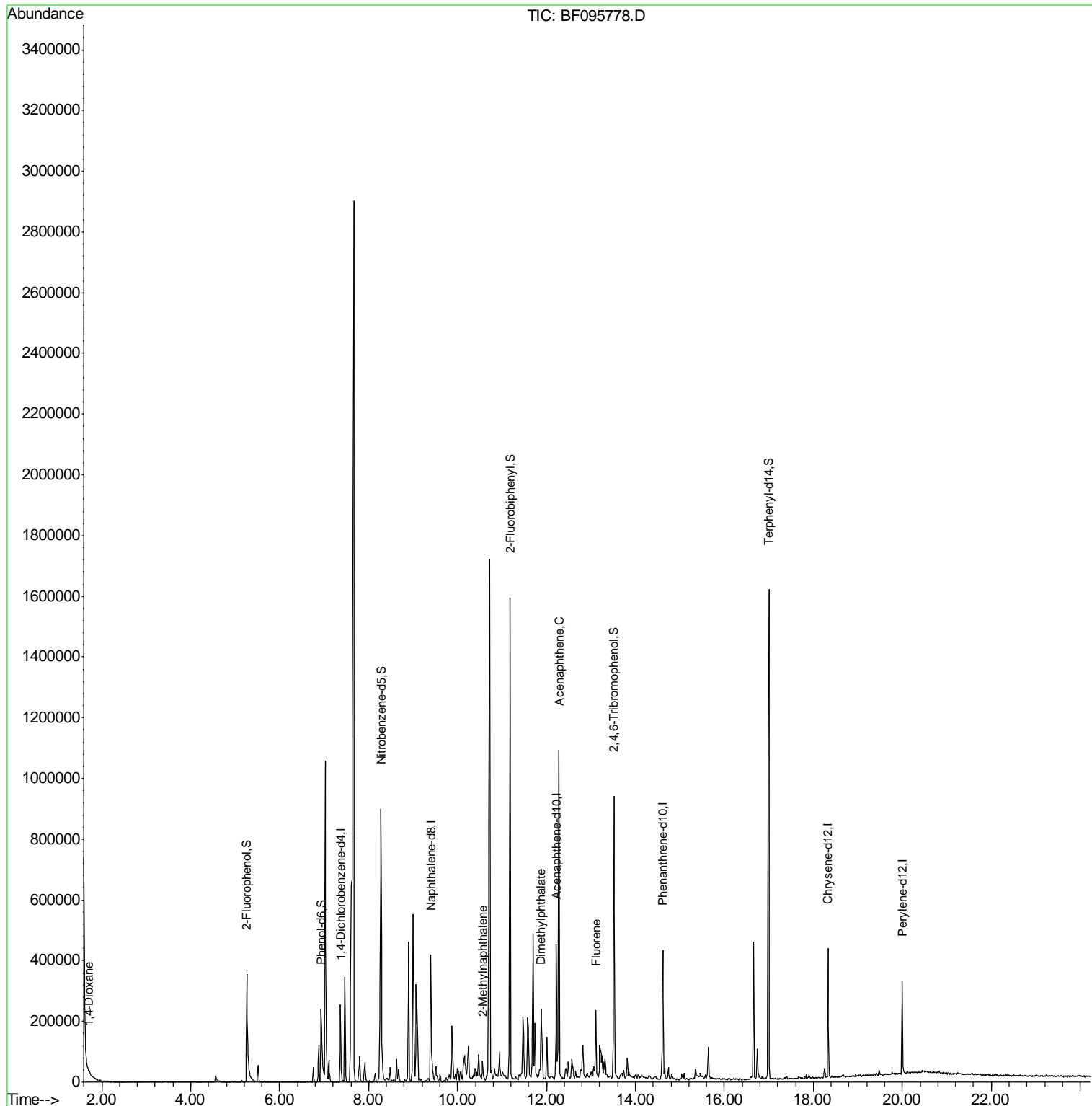
(#) = qualifier out of range (m) = manual integration (+) = signals summed

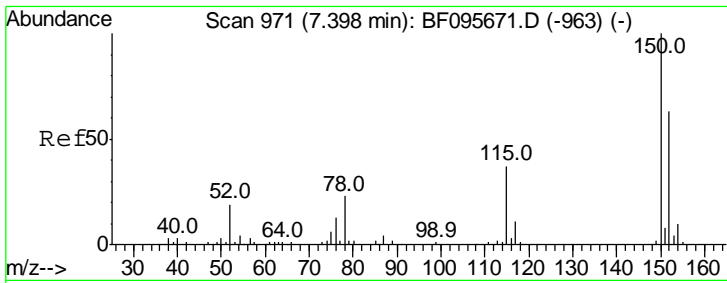
Data Path : Z:\HPCHEM1\BNA F\DATA\BF060817\
 Data File : BF095778.D
 Acq On : 8 Jun 2017 12:20
 Operator : SJ/MA
 Sample : I3473-06
 Misc :
 ALS Vial : 5 Sample Multiplier: 1

Instrument :
 BNA_F
 ClientSampleId :
 R1-MW-4

Manual Integrations
 APPROVED
 mohammad
 6/9/2017 12:08:20 PM

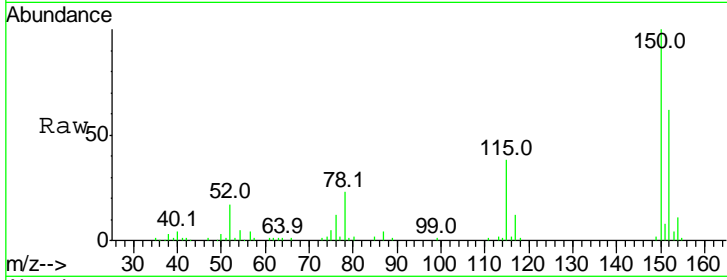
Quant Time: Jun 08 13:01:25 2017
 Quant Method : Z:\HPCHEM1\BNA F\METHODS\8270-BF060517.M
 Quant Title : ASP BNA STANDARDS FOR 5 POINT CALIBRATION
 QLast Update : Thu Jun 08 11:19:45 2017
 Response via : Initial Calibration





#1
 1,4-Dichlorobenzene-d4
 Concen: 20.00 ng
 RT: 7.37 min Scan# 983
 Delta R.T. 0.00 min
 Lab File: BF095778.D
 Acq: 8 Jun 2017 12:20

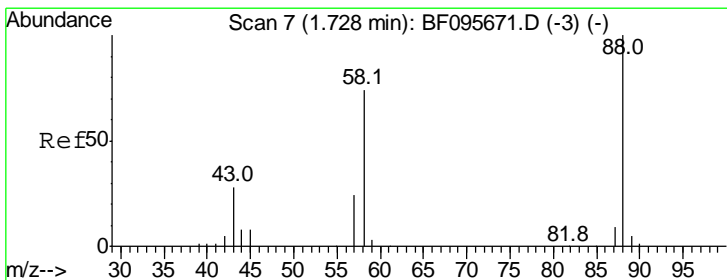
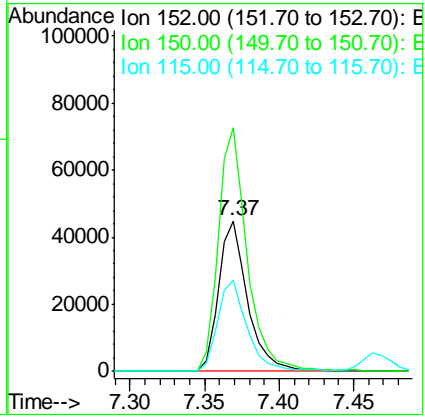
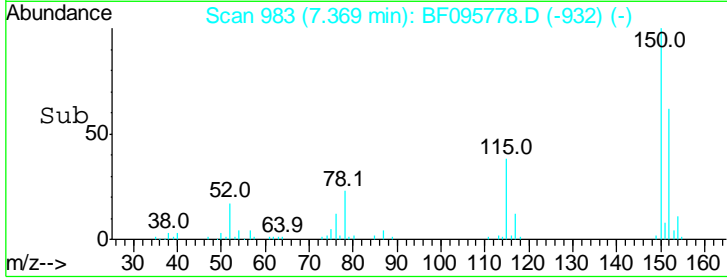
Instrument :
 BNA_F
ClientSampled :
 R1-MW-4



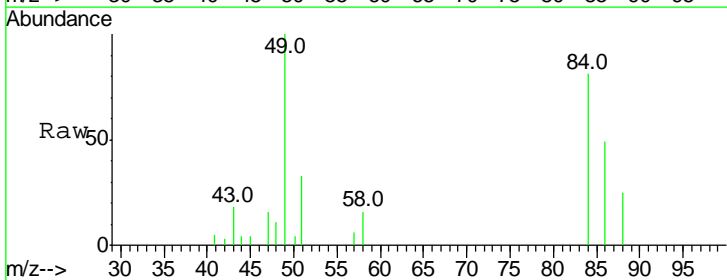
Tgt Ion: 152 Resp: 60802

Ion	Ratio	Lower	Upper
152	100		
150	162.1	126.2	189.2
115	61.1	52.2	78.2

Manual Integrations
APPROVED
 mohammad
 6/9/2017 12:08:20 PM

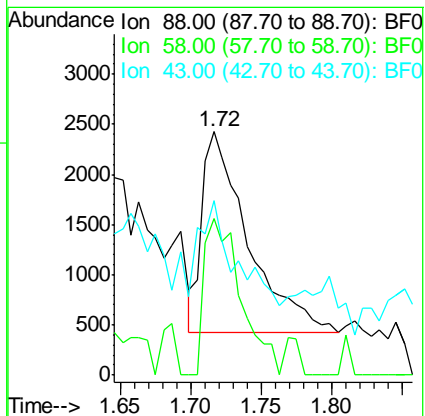
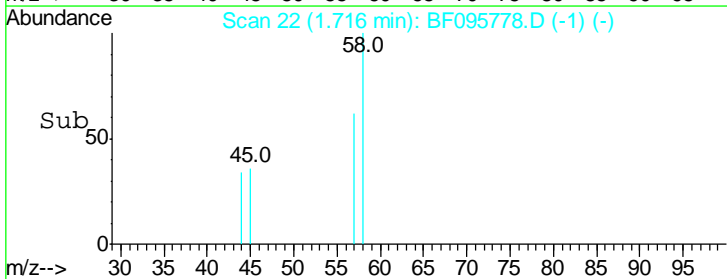


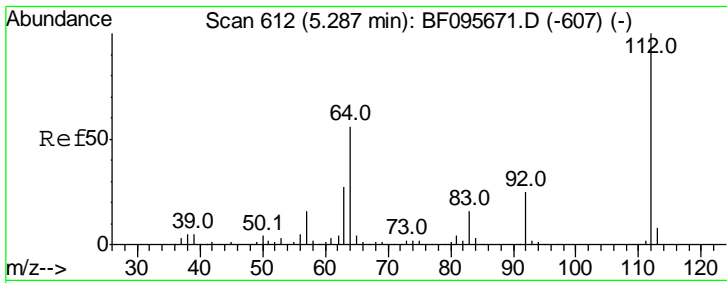
#2
 1,4-Dioxane
 Concen: 2.49 ng
 RT: 1.72 min Scan# 22
 Delta R.T. 0.02 min
 Lab File: BF095778.D
 Acq: 8 Jun 2017 12:20



Tgt Ion: 88 Resp: 4512

Ion	Ratio	Lower	Upper
88	100		
58	62.5	61.4	92.0
43	38.7	23.4	35.0#





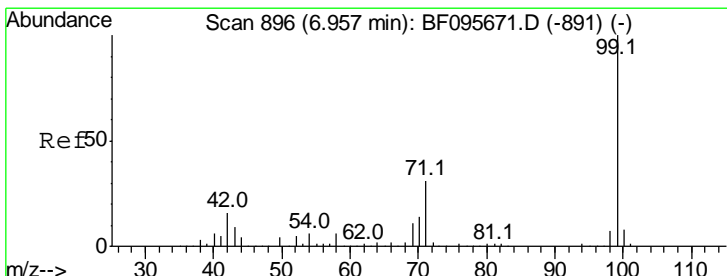
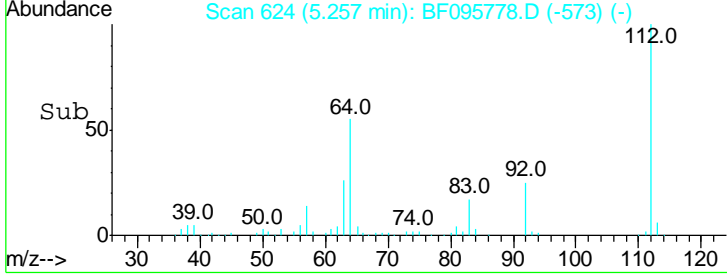
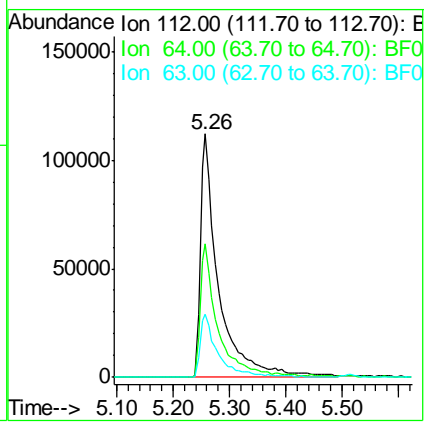
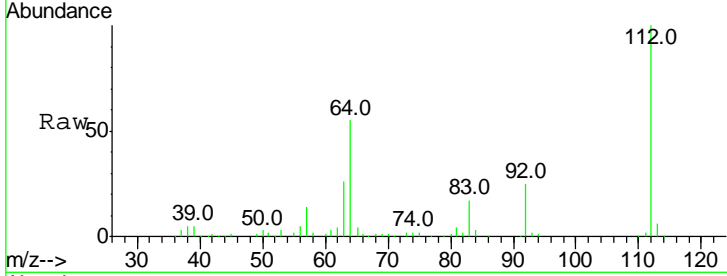
#5
 2-Fluorophenol
 Concen: 65.70 ng
 RT: 5.26 min Scan# 624
 Delta R.T. 0.00 min
 Lab File: BF095778.D
 Acq: 8 Jun 2017 12:20

Instrument :
 BNA_F
ClientSampled :
 R1-MW-4

Tgt Ion: 112 Resp: 250689

Ion	Ratio	Lower	Upper
112	100		
64	54.8	46.0	69.0
63	26.0	23.4	35.0

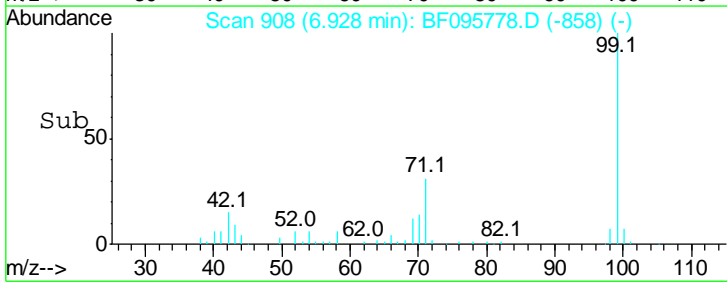
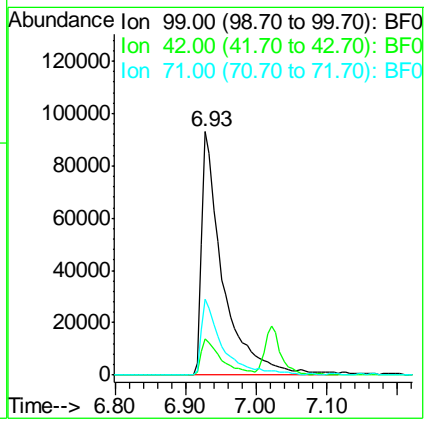
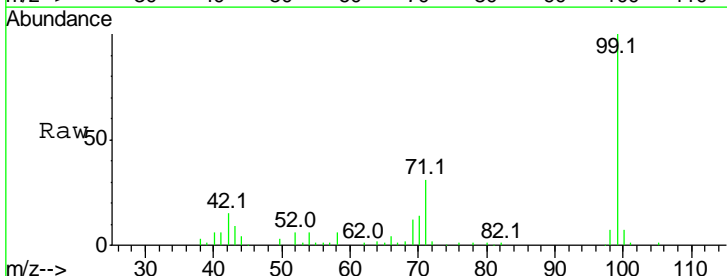
Manual Integrations
APPROVED
 mohammad
 6/9/2017 12:08:20 PM

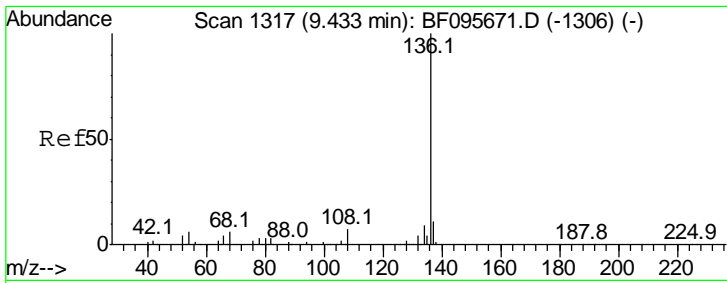


#7
 Phenol-d6
 Concen: 43.04 ng
 RT: 6.93 min Scan# 908
 Delta R.T. -0.01 min
 Lab File: BF095778.D
 Acq: 8 Jun 2017 12:20

Tgt Ion: 99 Resp: 196631

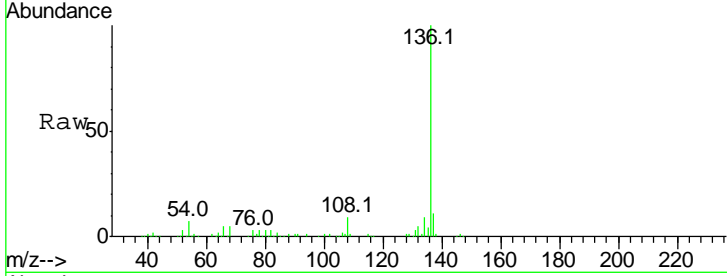
Ion	Ratio	Lower	Upper
99	100		
42	15.1	13.5	20.3
71	31.3	24.5	36.7





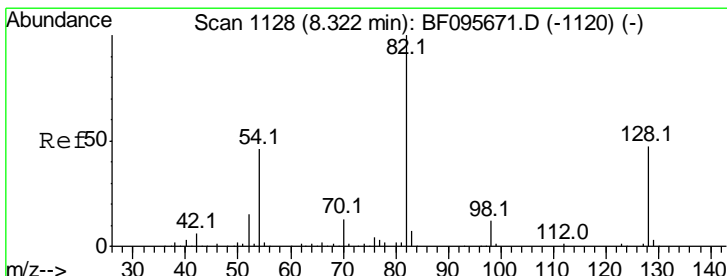
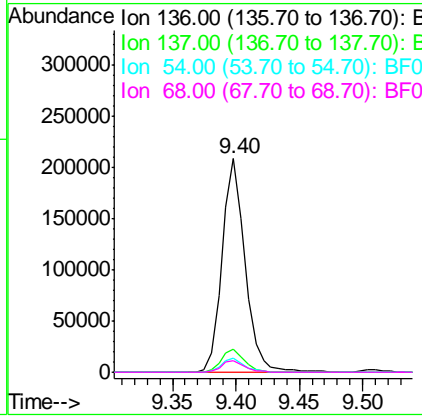
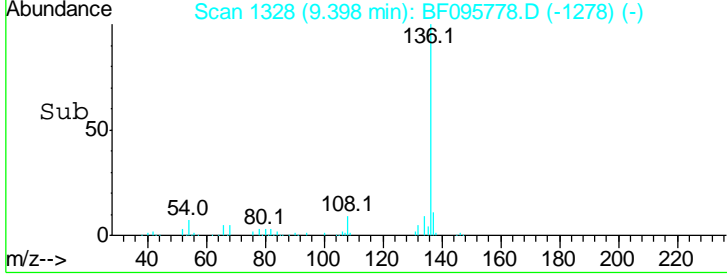
#21
 Naphthalene-d8
 Concen: 20.00 ng
 RT: 9.40 min Scan# 1328
 Delta R.T. -0.01 min
 Lab File: BF095778.D
 Acq: 8 Jun 2017 12:20

Instrument :
 BNA_F
ClientSampled :
 R1-MW-4

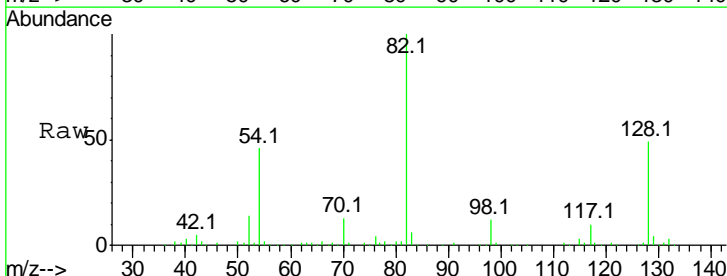


Tgt Ion	Resp	Lower	Upper
136	100		
137	10.7	8.5	12.7
54	6.6	4.9	7.3
68	5.2	4.1	6.1

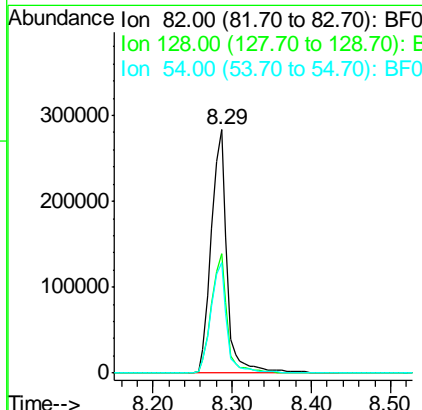
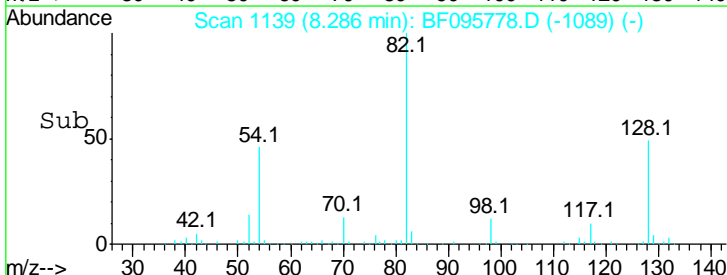
Manual Integrations
APPROVED
 mohammad
 6/9/2017 12:08:20 PM

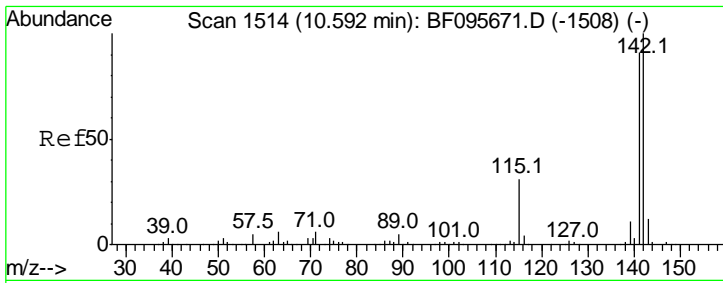


#23
 Nitrobenzene-d5
 Concen: 92.93 ng
 RT: 8.29 min Scan# 1139
 Delta R.T. -0.01 min
 Lab File: BF095778.D
 Acq: 8 Jun 2017 12:20



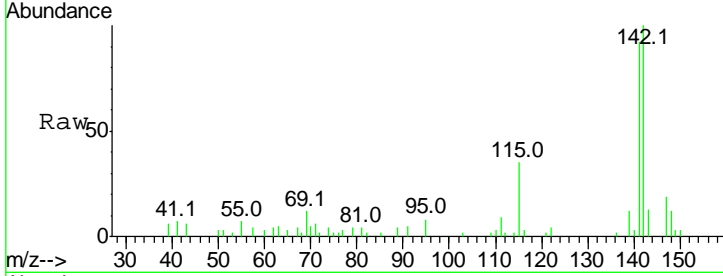
Tgt Ion	Resp	Lower	Upper
82	100		
128	49.1	34.0	51.0
54	45.6	42.2	63.2





#37
 2-Methylnaphthalene
 Concen: 2.10 ng m
 RT: 10.56 min Scan# 1526
 Delta R.T. 0.00 min
 Lab File: BF095778.D
 Acq: 8 Jun 2017 12:20

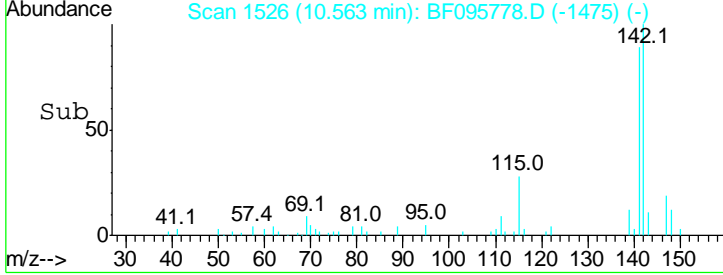
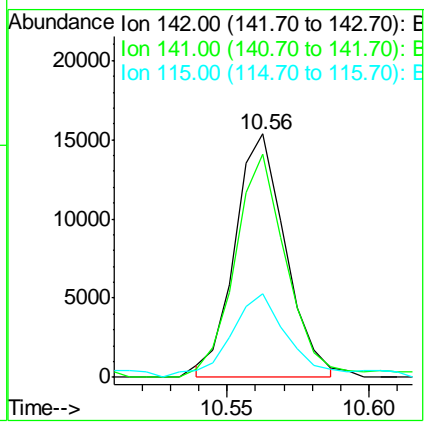
Instrument :
 BNA_F
 ClientSampled :
 R1-MW-4



Tgt Ion: 142 Resp: 18721

Ion	Ratio	Lower	Upper
142	100		
141	91.5	71.3	106.9
115	34.6	27.1	40.7

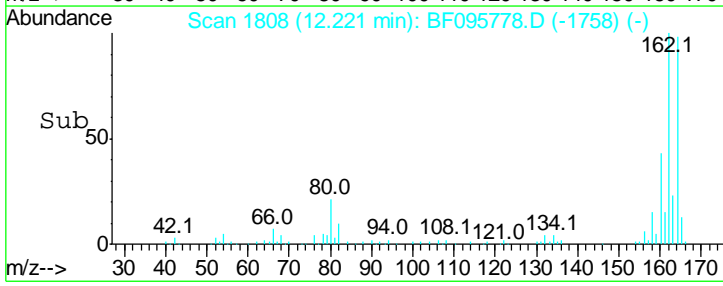
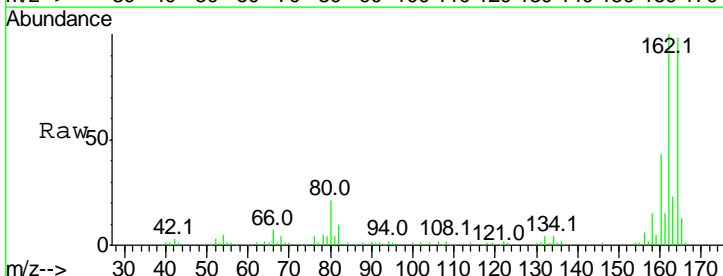
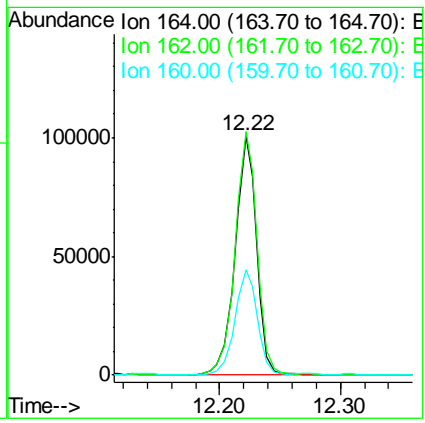
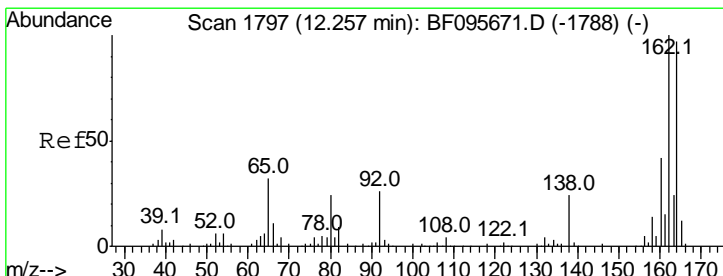
Manual Integrations
APPROVED
 mohammad
 6/9/2017 12:08:20 PM

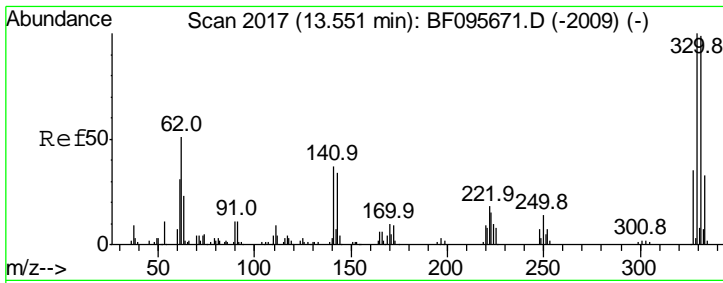


#38
 Acenaphthene-d10
 Concen: 20.00 ng
 RT: 12.22 min Scan# 1808
 Delta R.T. -0.01 min
 Lab File: BF095778.D
 Acq: 8 Jun 2017 12:20

Tgt Ion: 164 Resp: 124933

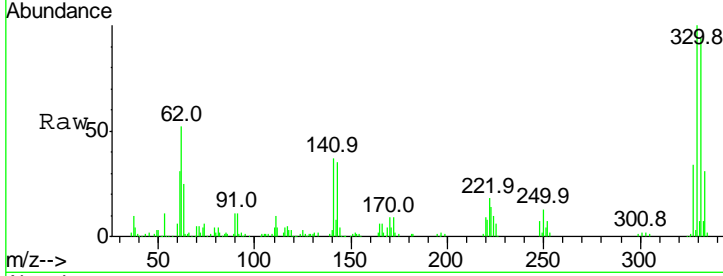
Ion	Ratio	Lower	Upper
164	100		
162	101.9	82.6	123.8
160	44.2	36.2	54.2





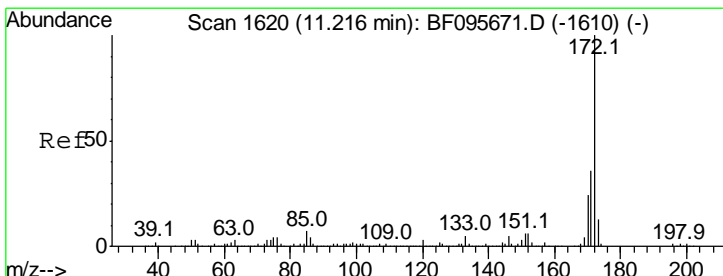
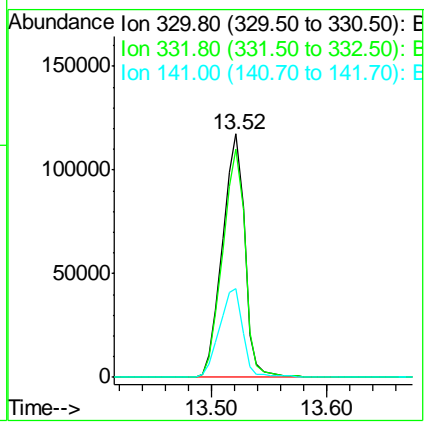
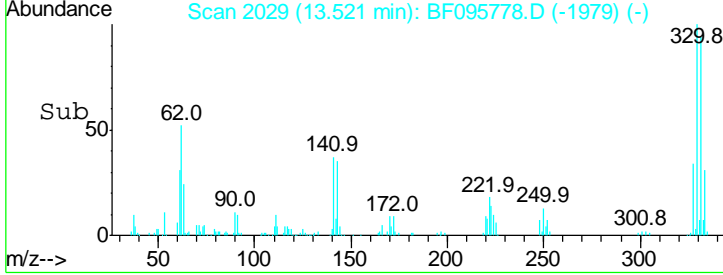
#41
 2,4,6-Tribromophenol
 Concen: 143.14 ng
 RT: 13.52 min Scan# 2029
 Delta R.T. -0.01 min
 Lab File: BF095778.D
 Acq: 8 Jun 2017 12:20

Instrument :
 BNA_F
 ClientSampled :
 R1-MW-4

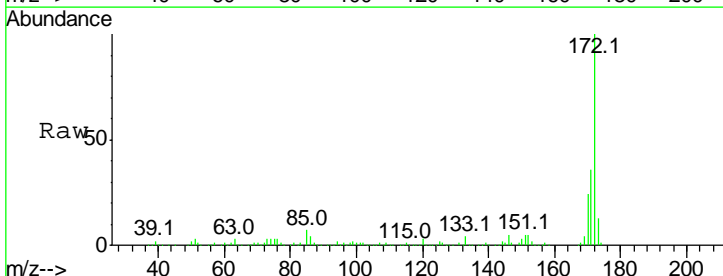


Tgt Ion	Ratio	Lower	Upper
330	100		
332	94.4	76.6	115.0
141	38.1	31.4	47.2

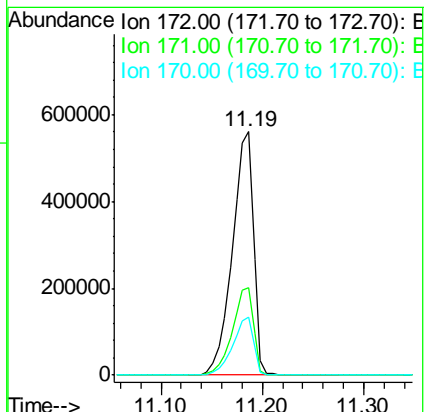
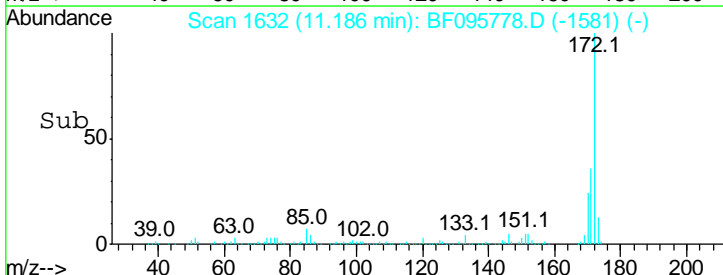
Manual Integrations
APPROVED
 mohammad
 6/9/2017 12:08:20 PM

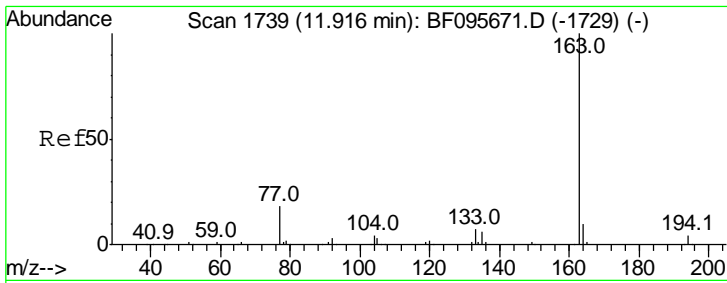


#44
 2-Fluorobiphenyl
 Concen: 90.14 ng
 RT: 11.19 min Scan# 1632
 Delta R.T. 0.00 min
 Lab File: BF095778.D
 Acq: 8 Jun 2017 12:20



Tgt Ion	Ratio	Lower	Upper
172	100		
171	36.0	29.6	44.4
170	24.0	19.8	29.8





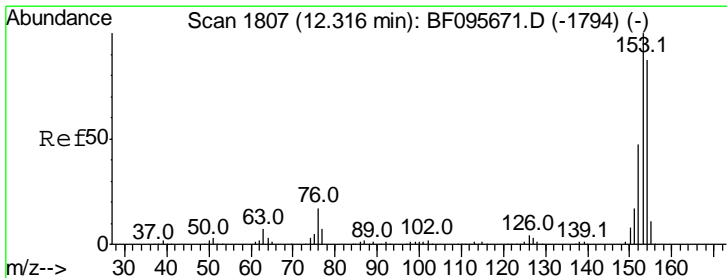
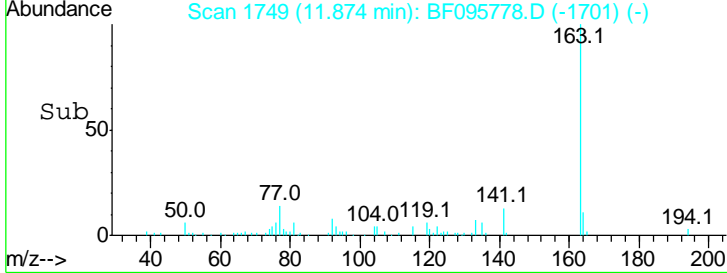
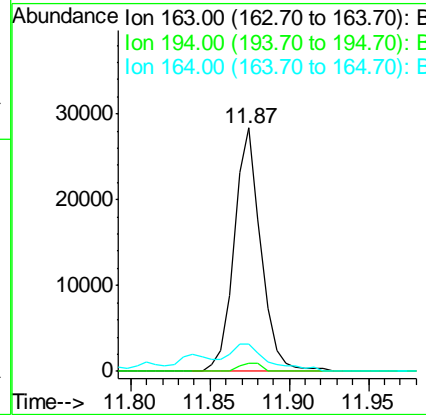
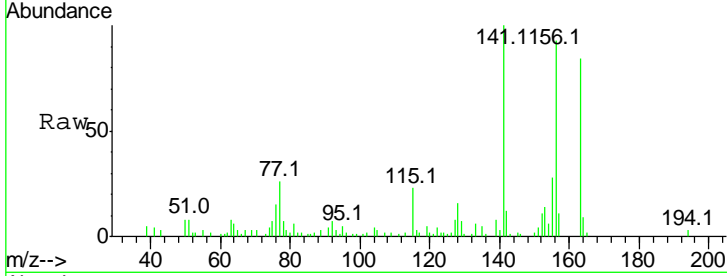
#49
 Dimethylphthalate
 Concen: 3.49 ng
 RT: 11.87 min Scan# 1749
 Delta R.T. -0.02 min
 Lab File: BF095778.D
 Acq: 8 Jun 2017 12:20

Instrument :
 BNA_F
 ClientSampled :
 R1-MW-4

Tgt Ion	Ratio	Lower	Upper
163	100		
194	3.2	2.6	4.0
164	11.3	8.4	12.6

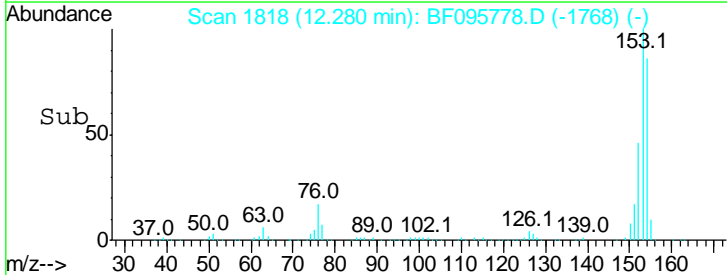
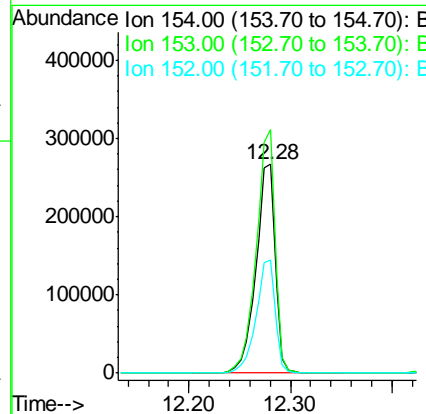
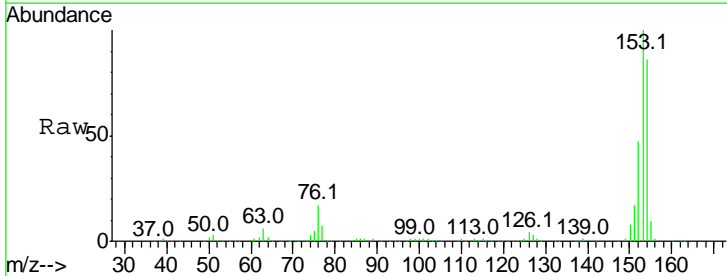
Manual Integrations
 APPROVED

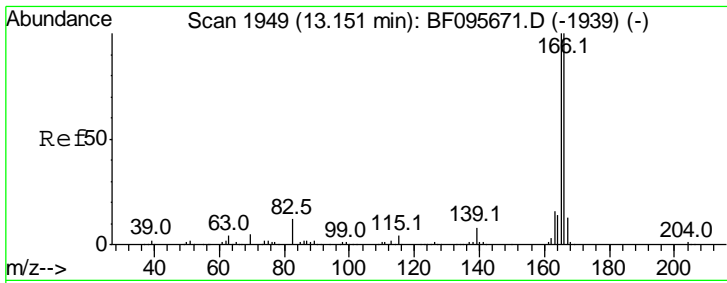
mohammad
 6/9/2017 12:08:20 PM



#51
 Acenaphthene
 Concen: 44.35 ng
 RT: 12.28 min Scan# 1818
 Delta R.T. -0.01 min
 Lab File: BF095778.D
 Acq: 8 Jun 2017 12:20

Tgt Ion	Ratio	Lower	Upper
154	100		
153	116.6	90.5	135.7
152	54.3	43.6	65.4





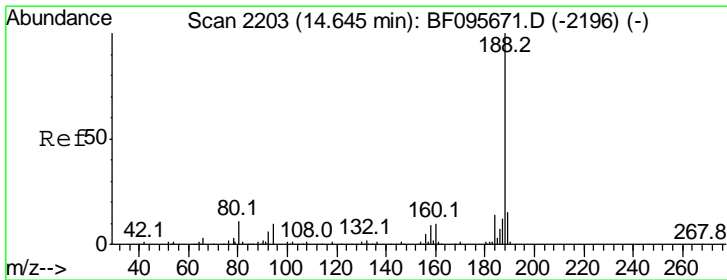
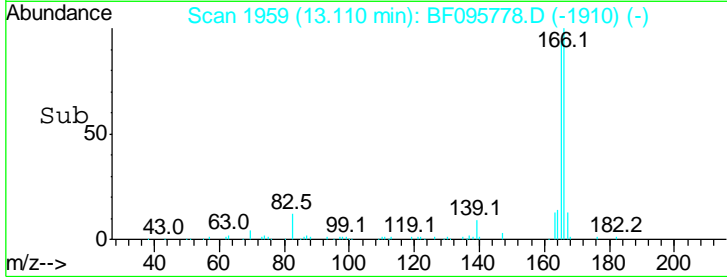
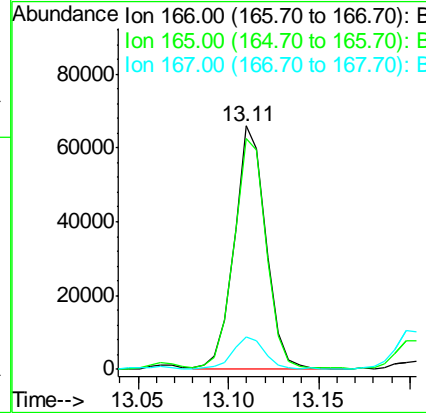
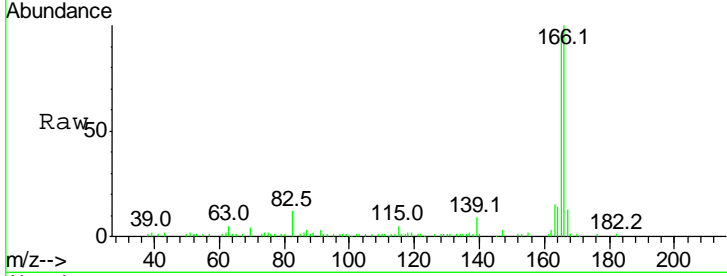
#57
 Fluorene
 Concen: 8.17 ng
 RT: 13.11 min Scan# 1959
 Delta R.T. -0.01 min
 Lab File: BF095778.D
 Acq: 8 Jun 2017 12:20

Instrument :
 BNA_F
 ClientSampled :
 R1-MW-4

Tgt Ion	Resp	Lower	Upper
166	100		
165	94.5	78.8	118.2
167	13.5	10.6	16.0

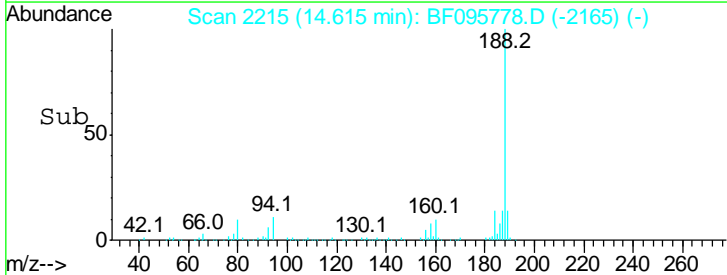
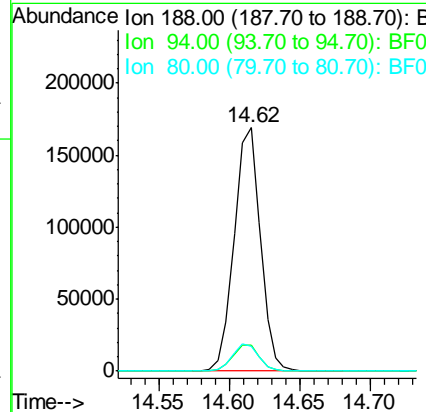
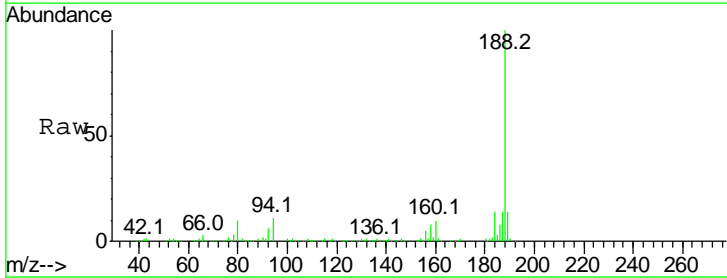
Manual Integrations
 APPROVED

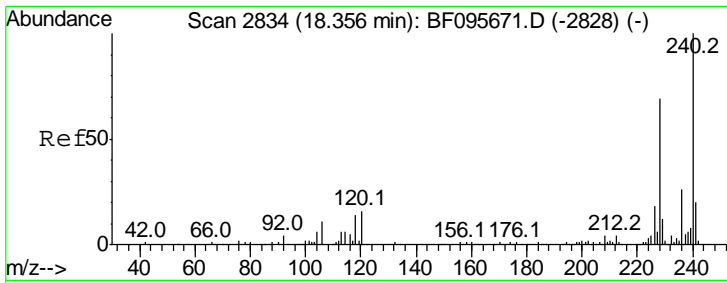
mohammad
 6/9/2017 12:08:20 PM



#63
 Phenanthrene-d10
 Concen: 20.00 ng
 RT: 14.62 min Scan# 2215
 Delta R.T. -0.01 min
 Lab File: BF095778.D
 Acq: 8 Jun 2017 12:20

Tgt Ion	Resp	Lower	Upper
188	100		
94	10.6	9.4	14.2
80	10.1	10.2	15.2#





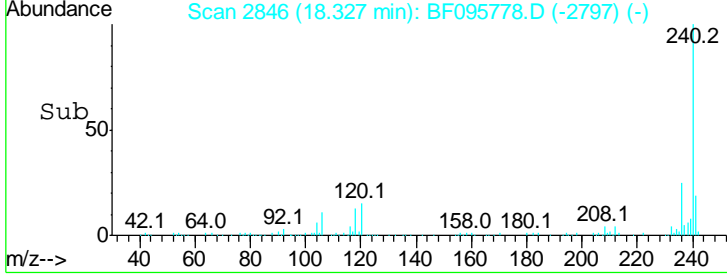
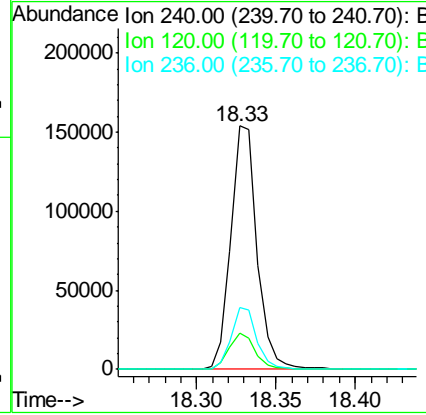
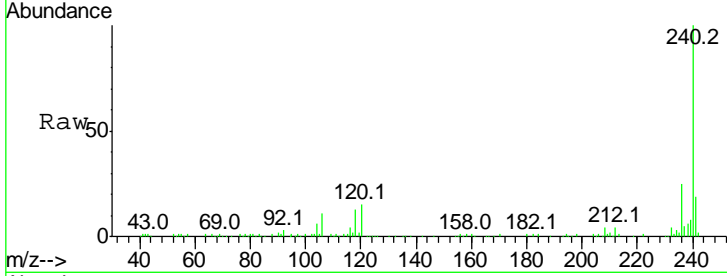
#75
 Chrysene-d12
 Concen: 20.00 ng
 RT: 18.33 min Scan# 2846
 Delta R.T. -0.01 min
 Lab File: BF095778.D
 Acq: 8 Jun 2017 12:20

Instrument :
 BNA_F
ClientSampled :
 R1-MW-4

Tgt Ion	Resp	Lower	Upper
240	100		
120	14.8	5.8	8.8#
236	25.4	20.5	30.7

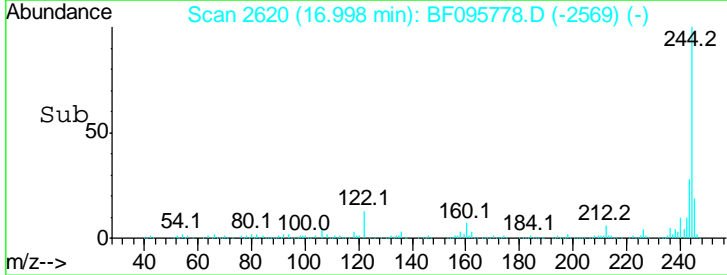
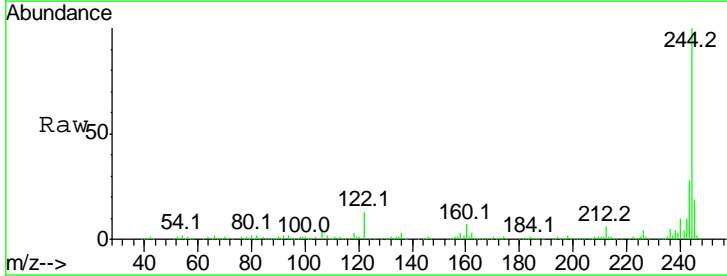
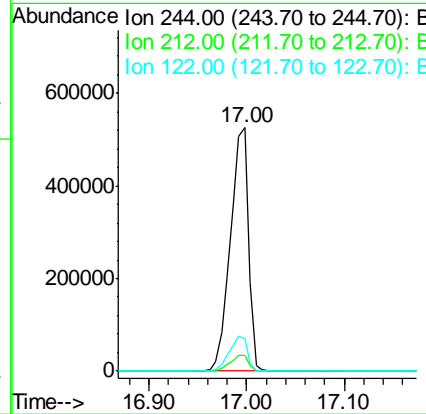
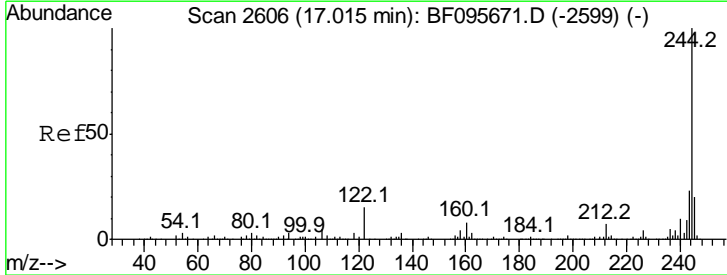
Manual Integrations
APPROVED

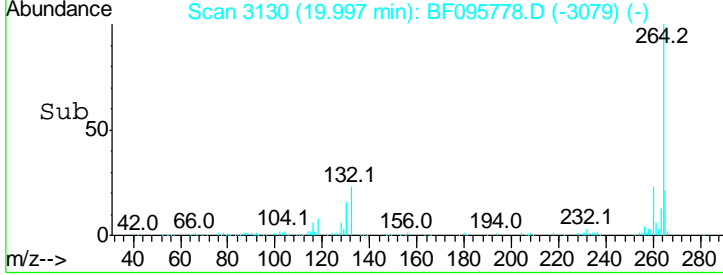
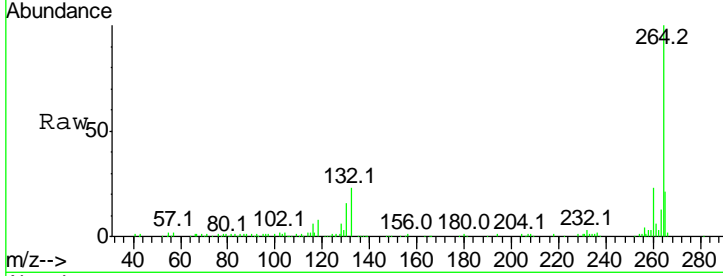
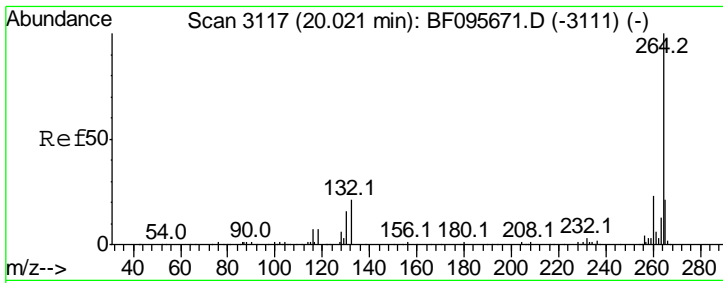
mohammad
 6/9/2017 12:08:20 PM



#78
 Terphenyl-d14
 Concen: 95.13 ng
 RT: 17.00 min Scan# 2620
 Delta R.T. 0.00 min
 Lab File: BF095778.D
 Acq: 8 Jun 2017 12:20

Tgt Ion	Resp	Lower	Upper
244	100		
212	6.4	6.0	9.0
122	13.3	10.3	15.5





#86
 Perylene-d12
 Concen: 20.00 ng
 RT: 20.00 min Scan# 3130
 Delta R.T. 0.00 min
 Lab File: BF095778.D
 Acq: 8 Jun 2017 12:20

Tot Ion: 264 Resp: 130154

Ion	Ratio	Lower	Upper
264	100		
260	23.1	19.5	29.3
265	20.9	17.2	25.8

Instrument :
 BNA_F
ClientSampled :
 R1-MW-4

Manual Integrations
APPROVED
 mohammad
 6/9/2017 12:08:20 PM

