

Data Path : Z:\HPCHEM1\BNA\_F\DATA\BF060915\  
 Data File : BF079846.D  
 Acq On : 9 Jun 2015 22:09  
 Operator : TP/IZ  
 Sample : G2542-02  
 Misc :  
 ALS Vial : 21 Sample Multiplier: 1

Instrument :  
 BNA\_F  
 ClientSampleId :  
 EB-Z2-2015-2

Quant Time: Jun 10 01:36:31 2015  
 Quant Method : Z:\HPCHEM1\BNA\_F\METHODS\8270-BF060915.M  
 Quant Title : ASP BNA STANDARDS FOR 5 POINT CALIBRATION  
 QLast Update : Tue Jun 09 15:11:40 2015  
 Response via : Initial Calibration

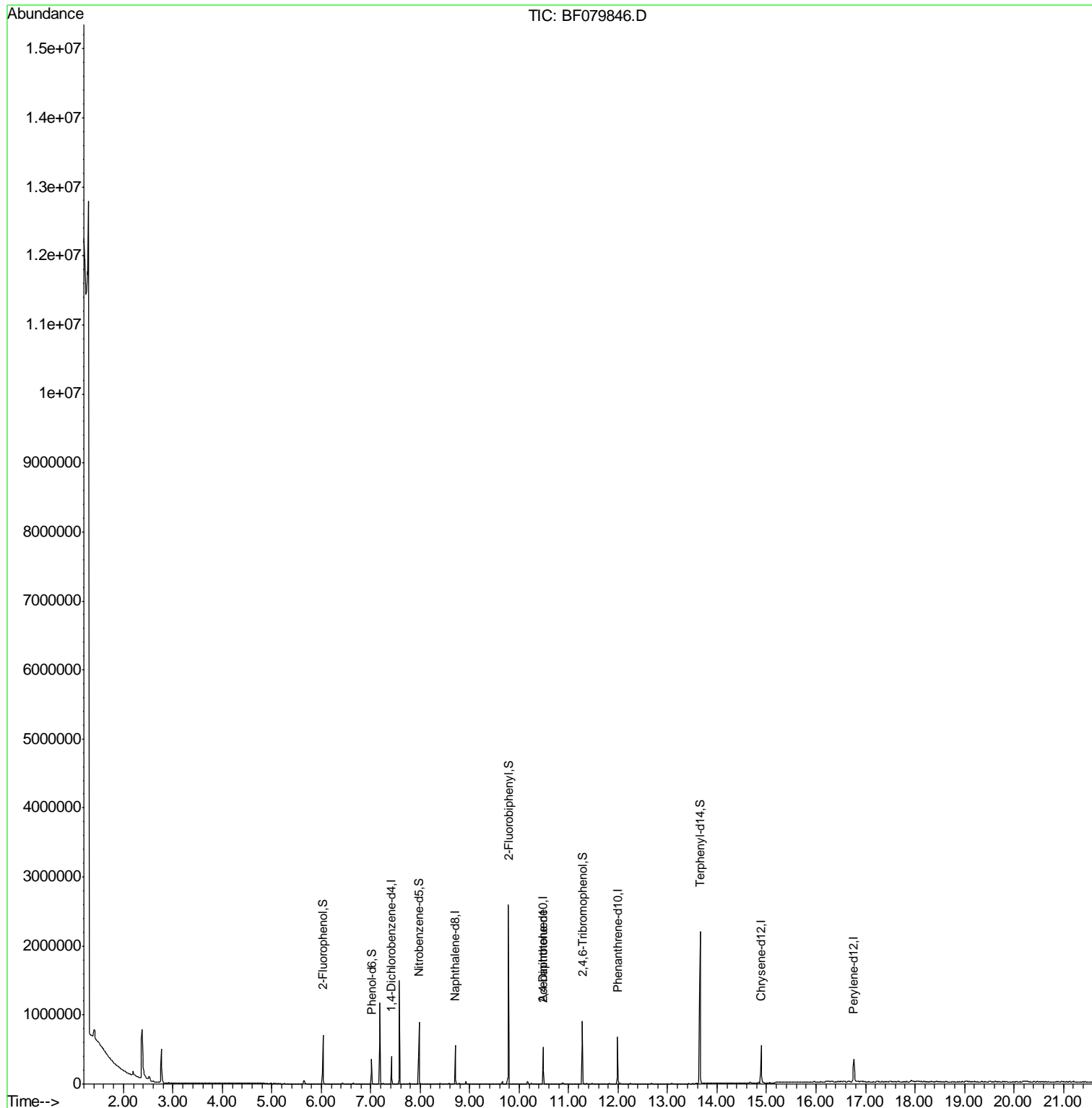
Internal Standards	R.T.	QIon	Response	Conc	Units	Dev(Min)
1) 1,4-Dichlorobenzene-d4	7.42	152	54661	20.00	ng	0.00
21) Naphthalene-d8	8.71	136	217950	20.00	ng	0.00
38) Acenaphthene-d10	10.48	164	109386	20.00	ng	0.00
63) Phenanthrene-d10	11.99	188	233890	20.00	ng	-0.01
75) Chrysene-d12	14.89	240	230227	20.00	ng	-0.17
86) Perylene-d12	16.77	264	212755	20.00	ng	-0.25
System Monitoring Compounds						
5) 2-Fluorophenol	6.03	112	174041	52.47	ng	0.00
7) Phenol-d6	7.02	99	133419	31.09	ng	0.00
23) Nitrobenzene-d5	7.98	82	303346	80.40	ng	0.00
41) 2,4,6-Tribromophenol	11.28	330	130888	138.27	ng	0.00
44) 2-Fluorobiphenyl	9.78	172	723877	93.07	ng	0.00
78) Terphenyl-d14	13.66	244	900442	88.17	ng	-0.08
Target Compounds						Qvalue
56) 2,4-Dinitrotoluene	10.48	165	13948	12.38	ng	# 32

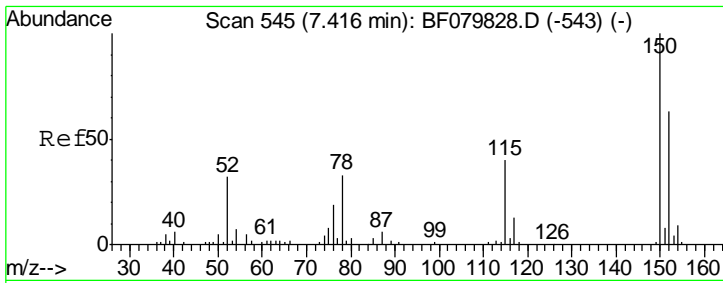
(#) = qualifier out of range (m) = manual integration (+) = signals summed

Data Path : Z:\HPCHEM1\BNA\_F\DATA\BF060915\  
 Data File : BF079846.D  
 Acq On : 9 Jun 2015 22:09  
 Operator : TP/IZ  
 Sample : G2542-02  
 Misc :  
 ALS Vial : 21 Sample Multiplier: 1

Instrument :  
 BNA\_F  
 ClientSampleId :  
 EB-Z2-2015-2

Quant Time: Jun 10 01:36:31 2015  
 Quant Method : Z:\HPCHEM1\BNA\_F\METHODS\8270-BF060915.M  
 Quant Title : ASP BNA STANDARDS FOR 5 POINT CALIBRATION  
 QLast Update : Tue Jun 09 15:11:40 2015  
 Response via : Initial Calibration



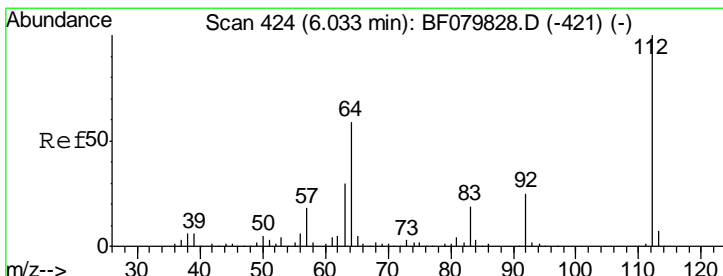
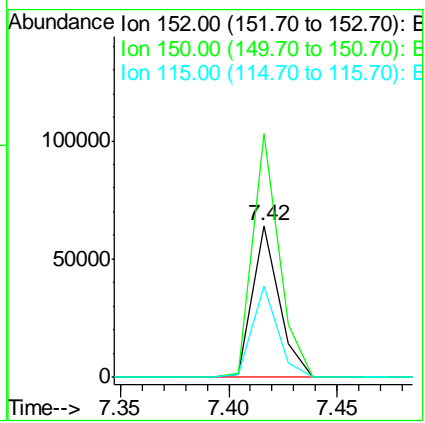
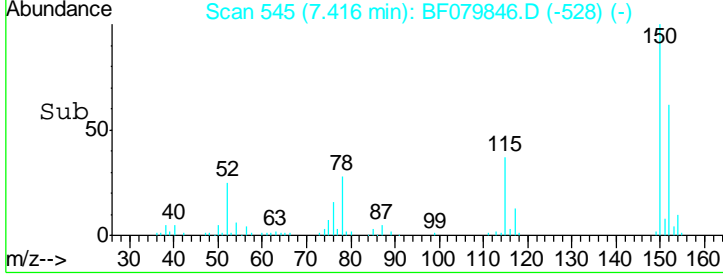
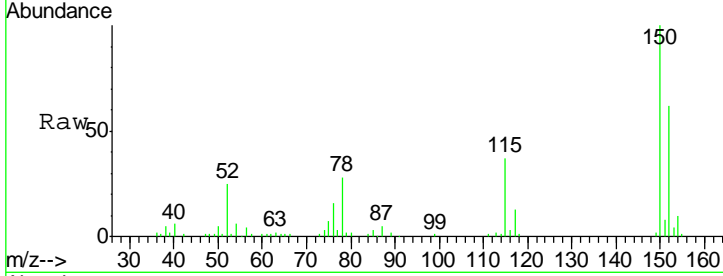


#1  
 1,4-Dichlorobenzene-d4  
 Concen: 20.00 ng  
 RT: 7.42 min Scan# 545  
 Delta R.T. -0.00 min  
 Lab File: BF079846.D  
 Acq: 9 Jun 2015 22:09

**Instrument :**  
 BNA\_F  
**ClientSampleId :**  
 EB-Z2-2015-2

Tgt Ion:152 Resp: 54661

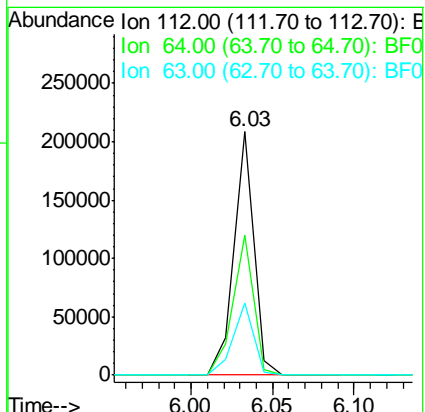
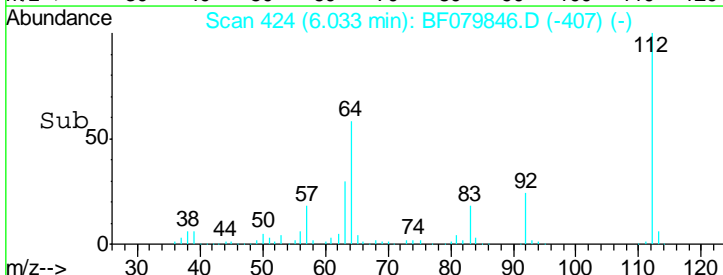
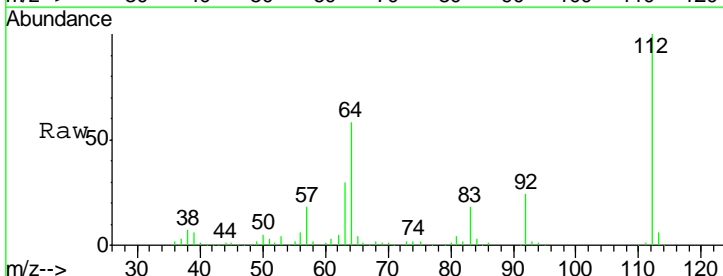
Ion	Ratio	Lower	Upper
152	100		
150	160.6	131.4	197.2
115	60.2	56.5	84.7

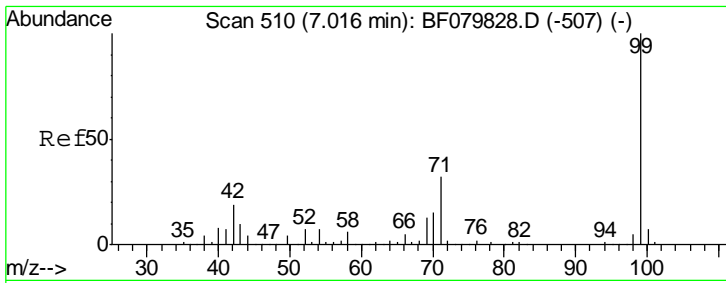


#5  
 2-Fluorophenol  
 Concen: 52.47 ng  
 RT: 6.03 min Scan# 424  
 Delta R.T. -0.00 min  
 Lab File: BF079846.D  
 Acq: 9 Jun 2015 22:09

Tgt Ion:112 Resp: 174041

Ion	Ratio	Lower	Upper
112	100		
64	57.7	44.2	66.4
63	29.6	22.8	34.2

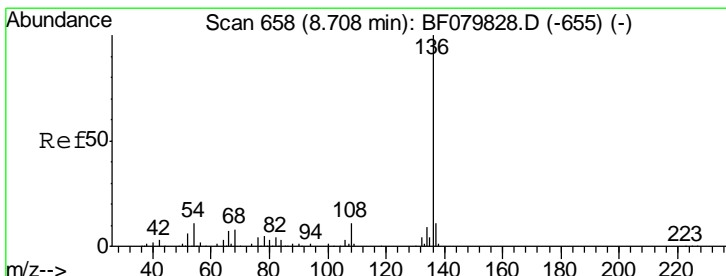
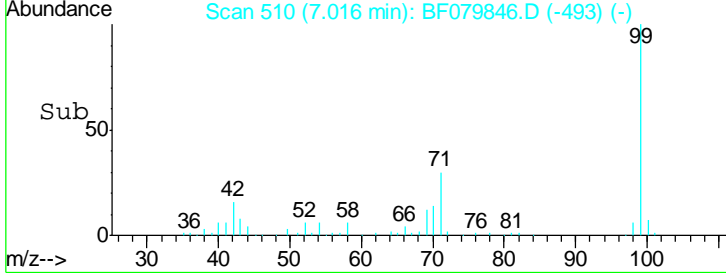
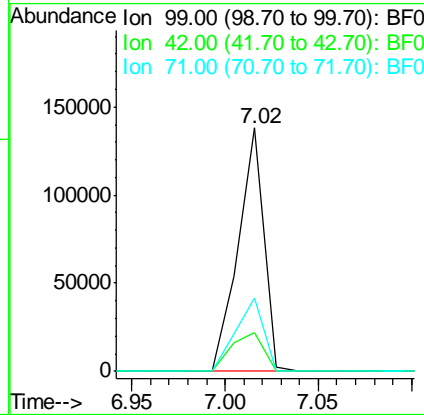
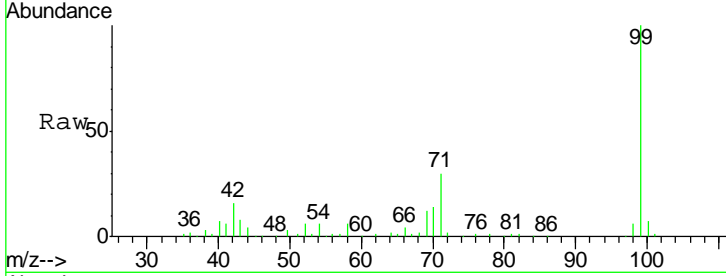




#7  
 Phenol-d6  
 Concen: 31.09 ng  
 RT: 7.02 min Scan# 510  
 Delta R.T. -0.00 min  
 Lab File: BF079846.D  
 Acq: 9 Jun 2015 22:09

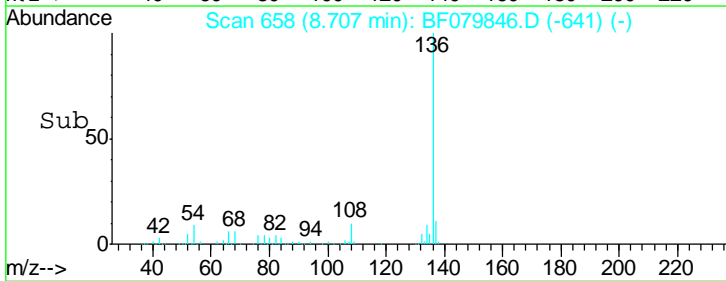
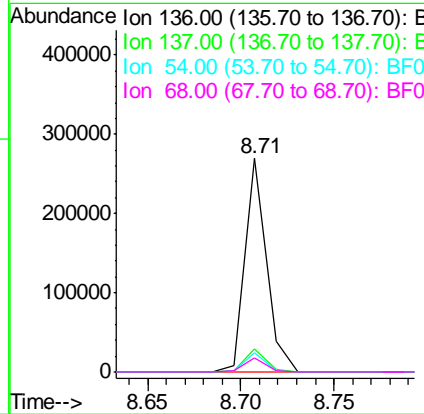
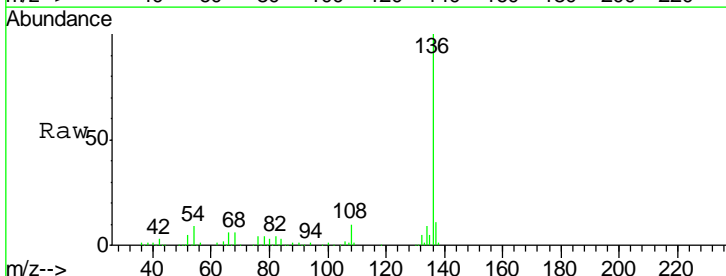
**Instrument :**  
 BNA\_F  
**ClientSampled :**  
 EB-Z2-2015-2

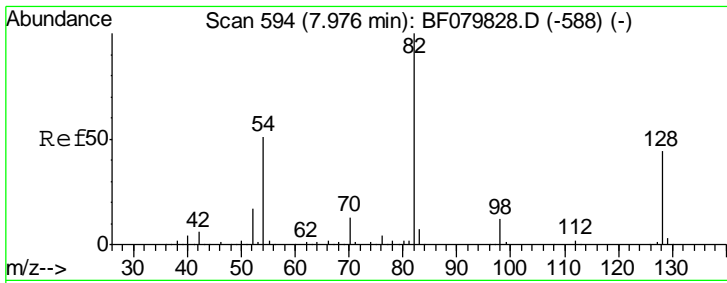
Tgt Ion	Resp	Lower	Upper
99	133419		
42	15.8	13.7	20.5
71	30.1	25.1	37.7



#21  
 Naphthalene-d8  
 Concen: 20.00 ng  
 RT: 8.71 min Scan# 658  
 Delta R.T. -0.00 min  
 Lab File: BF079846.D  
 Acq: 9 Jun 2015 22:09

Tgt Ion	Resp	Lower	Upper
136	217950		
137	10.8	9.3	13.9
54	9.2	8.1	12.1
68	6.5	4.8	7.2

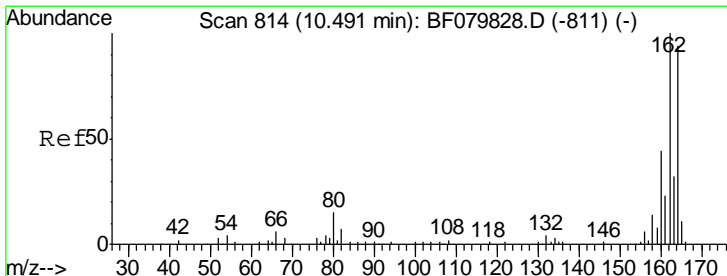
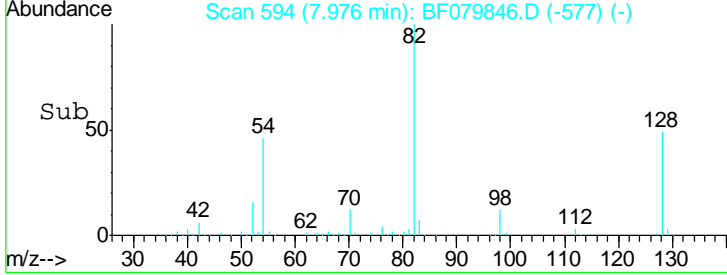
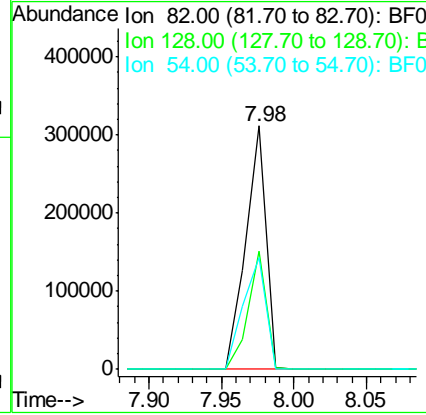
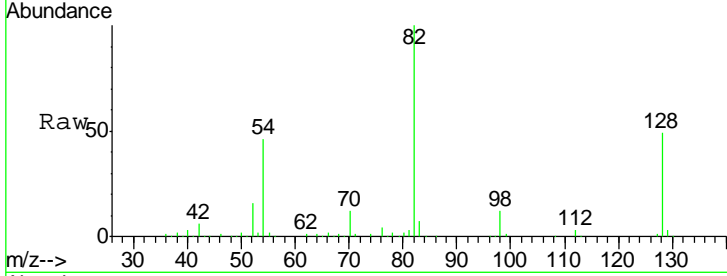




#23  
 Nitrobenzene-d5  
 Concen: 80.40 ng  
 RT: 7.98 min Scan# 594  
 Delta R.T. -0.00 min  
 Lab File: BF079846.D  
 Acq: 9 Jun 2015 22:09

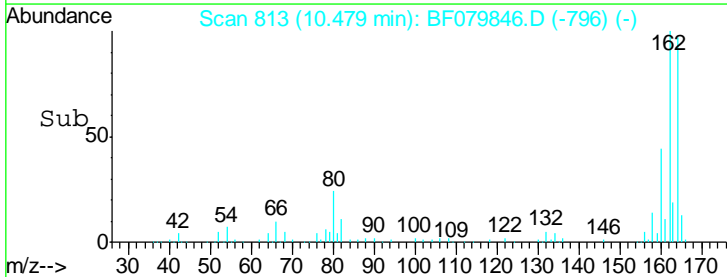
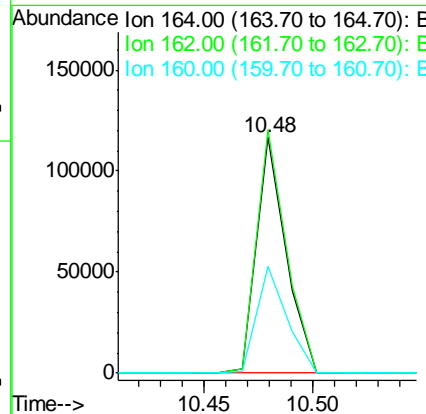
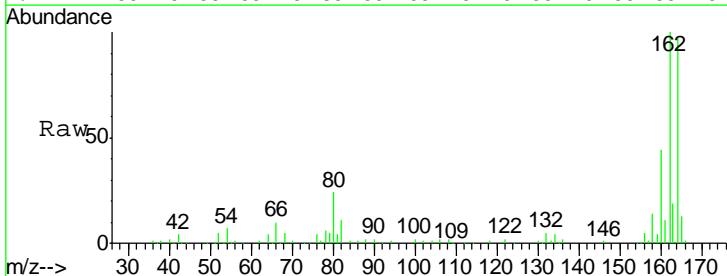
**Instrument :**  
 BNA\_F  
**ClientSampled :**  
 EB-Z2-2015-2

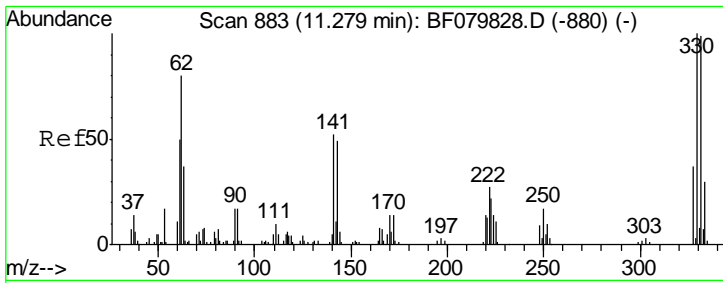
Tgt Ion	Resp	Lower	Upper
82	303346		
128	48.5	35.2	52.8
54	46.0	39.2	58.8



#38  
 Acenaphthene-d10  
 Concen: 20.00 ng  
 RT: 10.48 min Scan# 813  
 Delta R.T. -0.00 min  
 Lab File: BF079846.D  
 Acq: 9 Jun 2015 22:09

Tgt Ion	Resp	Lower	Upper
164	109386		
162	103.3	89.8	134.8
160	45.2	39.6	59.4

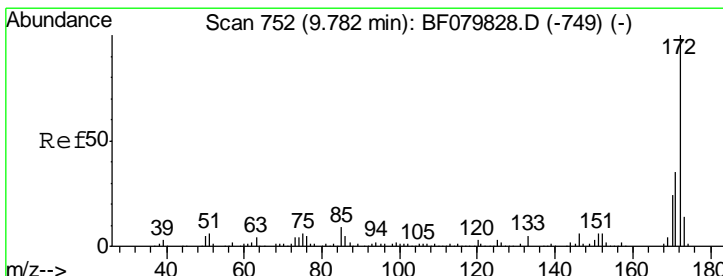
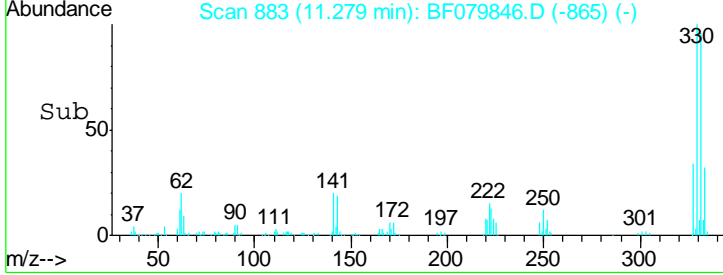
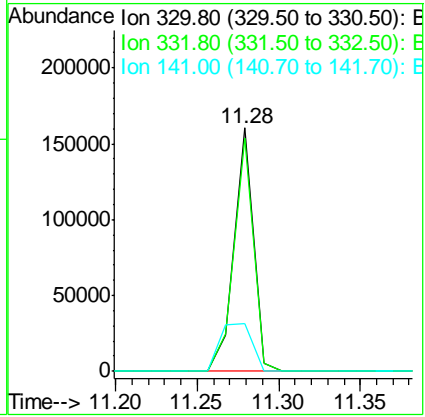
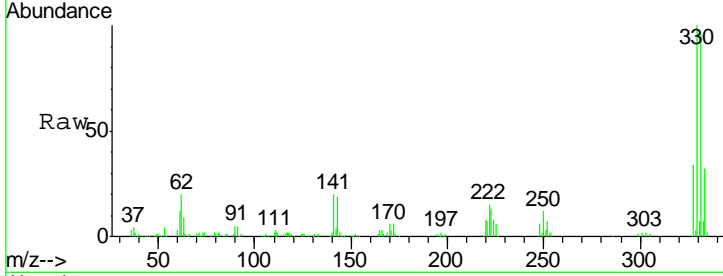




#41  
 2,4,6-Tribromophenol  
 Concen: 138.27 ng  
 RT: 11.28 min Scan# 883  
 Delta R.T. 0.00 min  
 Lab File: BF079846.D  
 Acq: 9 Jun 2015 22:09

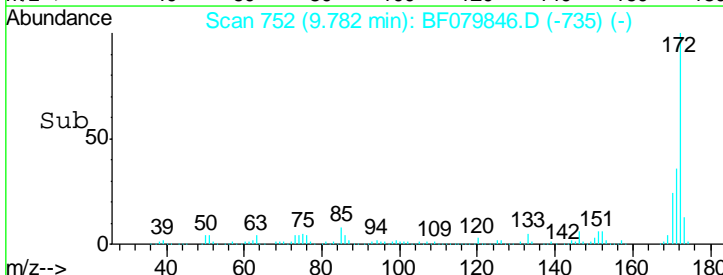
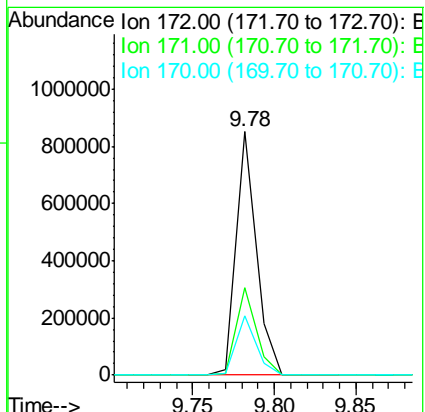
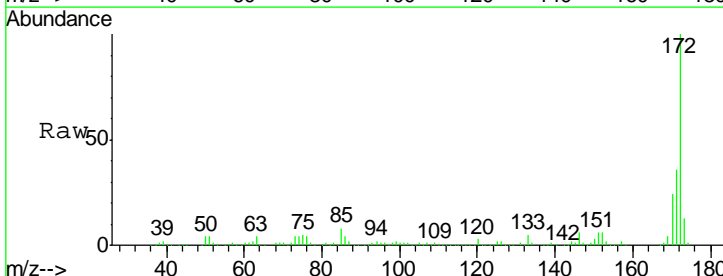
Instrument :  
 BNA\_F  
 ClientSampled :  
 EB-Z2-2015-2

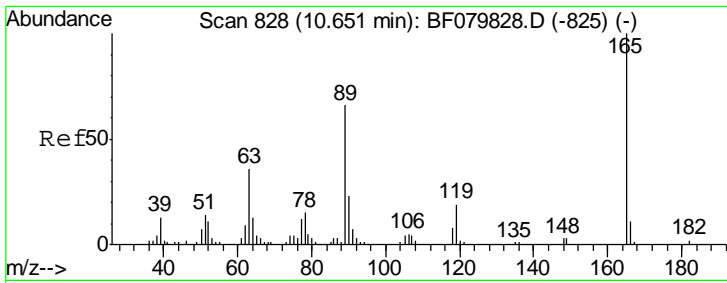
Tgt Ion	Resp	Lower	Upper
330	130888		
332	96.9	76.8	115.2
141	32.9	29.1	43.7



#44  
 2-Fluorobiphenyl  
 Concen: 93.07 ng  
 RT: 9.78 min Scan# 752  
 Delta R.T. -0.00 min  
 Lab File: BF079846.D  
 Acq: 9 Jun 2015 22:09

Tgt Ion	Resp	Lower	Upper
172	723877		
171	35.9	28.5	42.7
170	24.2	18.8	28.2

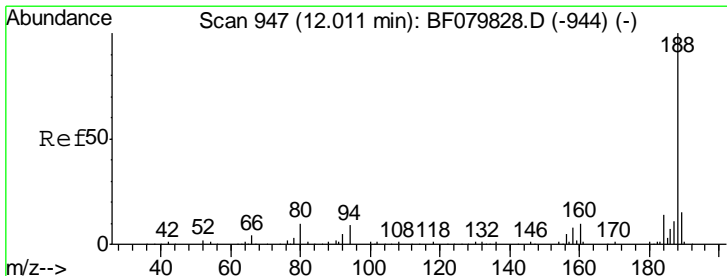
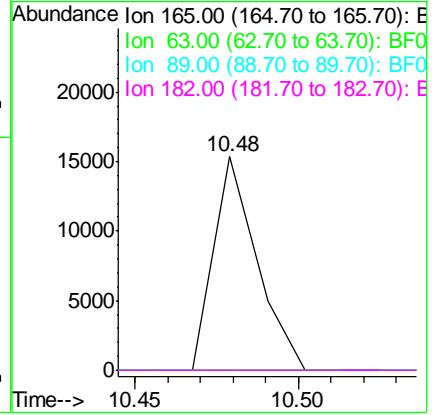
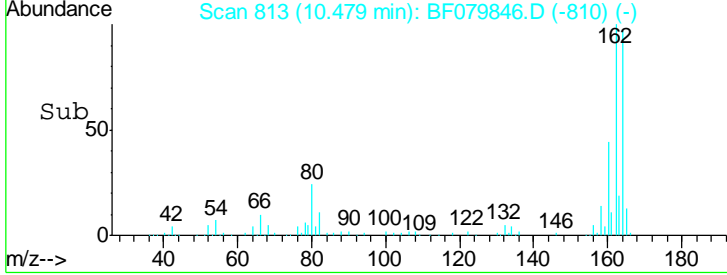
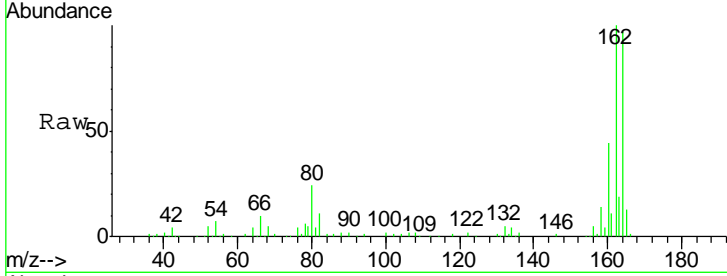




#56  
 2,4-Dinitrotoluene  
 Concen: 12.38 ng  
 RT: 10.48 min Scan# 813  
 Delta R.T. -0.17 min  
 Lab File: BF079846.D  
 Acq: 9 Jun 2015 22:09

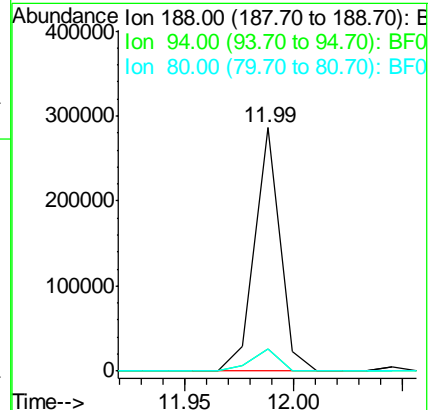
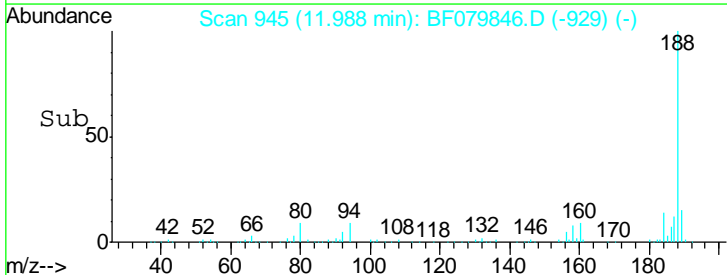
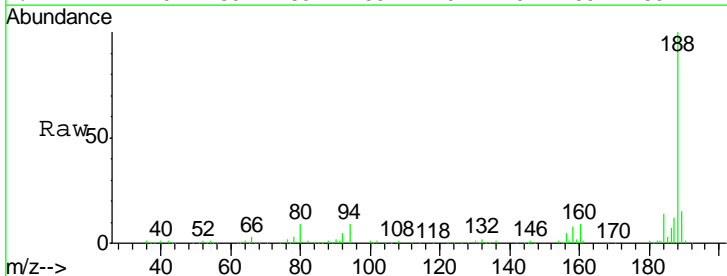
Instrument :  
 BNA\_F  
 ClientSampled :  
 EB-Z2-2015-2

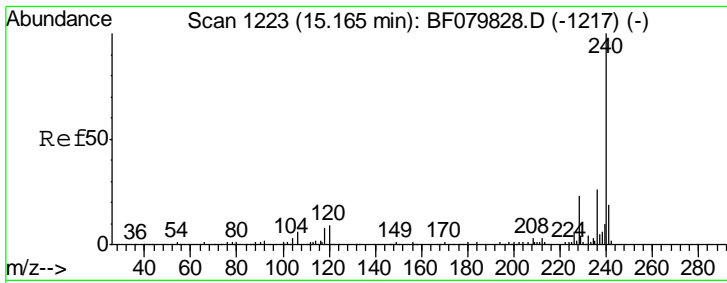
Tgt Ion	Resp	Lower	Upper
165	13948		
63	0.0	24.4	36.6#
89	0.0	45.3	67.9#
182	0.0	2.0	3.0#



#63  
 Phenanthrene-d10  
 Concen: 20.00 ng  
 RT: 11.99 min Scan# 945  
 Delta R.T. -0.01 min  
 Lab File: BF079846.D  
 Acq: 9 Jun 2015 22:09

Tgt Ion	Resp	Lower	Upper
188	233890		
94	8.9	7.4	11.0
80	9.2	8.0	12.0

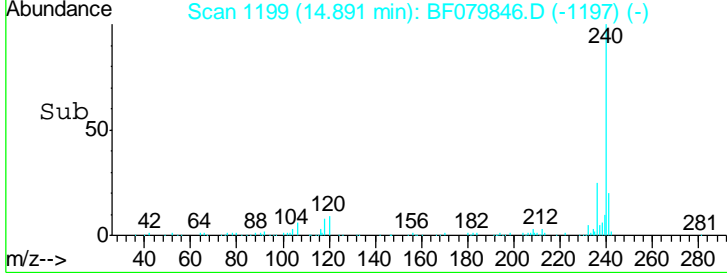
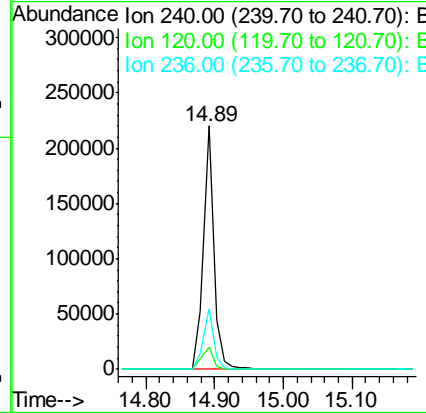
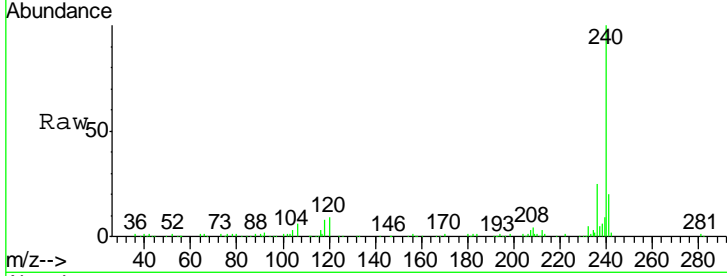




#75  
 Chrysene-d12  
 Concen: 20.00 ng  
 RT: 14.89 min Scan# 1199  
 Delta R.T. -0.17 min  
 Lab File: BF079846.D  
 Acq: 9 Jun 2015 22:09

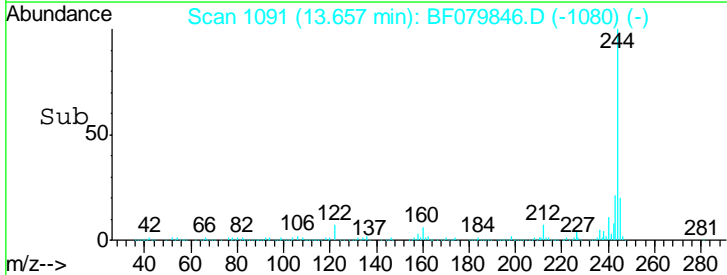
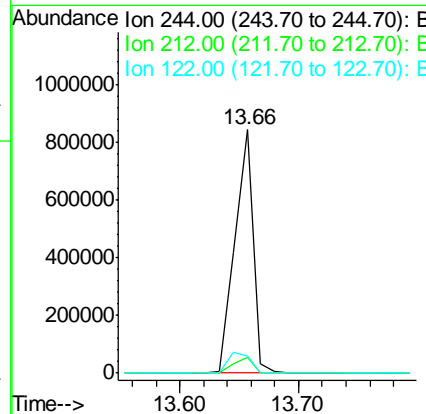
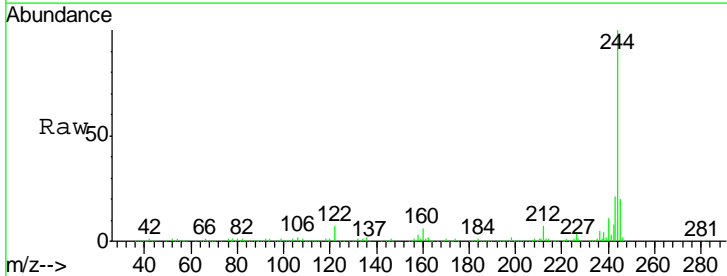
Instrument :  
 BNA\_F  
 ClientSampleId :  
 EB-Z2-2015-2

Tgt Ion	Resp	Lower	Upper
240	100		
120	9.2	6.6	9.8
236	24.8	20.2	30.4

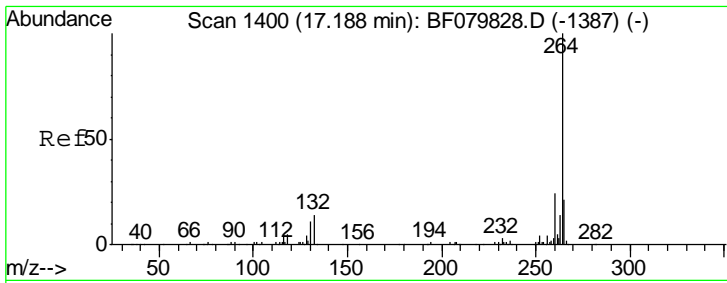


#78  
 Terphenyl-d14  
 Concen: 88.17 ng  
 RT: 13.66 min Scan# 1091  
 Delta R.T. -0.08 min  
 Lab File: BF079846.D  
 Acq: 9 Jun 2015 22:09

Tgt Ion	Resp	Lower	Upper
244	100		
212	6.5	5.6	8.4
122	6.9	8.2	12.2#







#86  
 Perylene-d12  
 Concen: 20.00 ng  
 RT: 16.77 min Scan# 1363  
 Delta R.T. -0.25 min  
 Lab File: BF079846.D  
 Acq: 9 Jun 2015 22:09

Instrument :  
 BNA\_F  
 ClientSampleId :  
 EB-Z2-2015-2

Tgt Ion: 264 Resp: 212755

Ion	Ratio	Lower	Upper
264	100		
260	22.5	19.5	29.3
265	21.5	18.0	27.0

