

Data Path : Z:\svoasrv\HPCHEM1\BNA_F\Data\BF061022\
 Data File : BF128767.D
 Acq On : 10 Jun 2022 19:15
 Operator : CG\JU
 Sample : N3286-03
 Misc :
 ALS Vial : 14 Sample Multiplier: 1

Instrument :
 BNA_F
 ClientSampleId :
 MW-2D

Quant Time: Jun 11 01:27:52 2022
 Quant Method : Z:\svoasrv\HPCHEM1\BNA_F\Methods\8270-BF060222.M
 Quant Title : ASP BNA STANDARDS FOR 5 POINT CALIBRATION
 QLast Update : Wed Jun 08 14:28:39 2022
 Response via : Initial Calibration

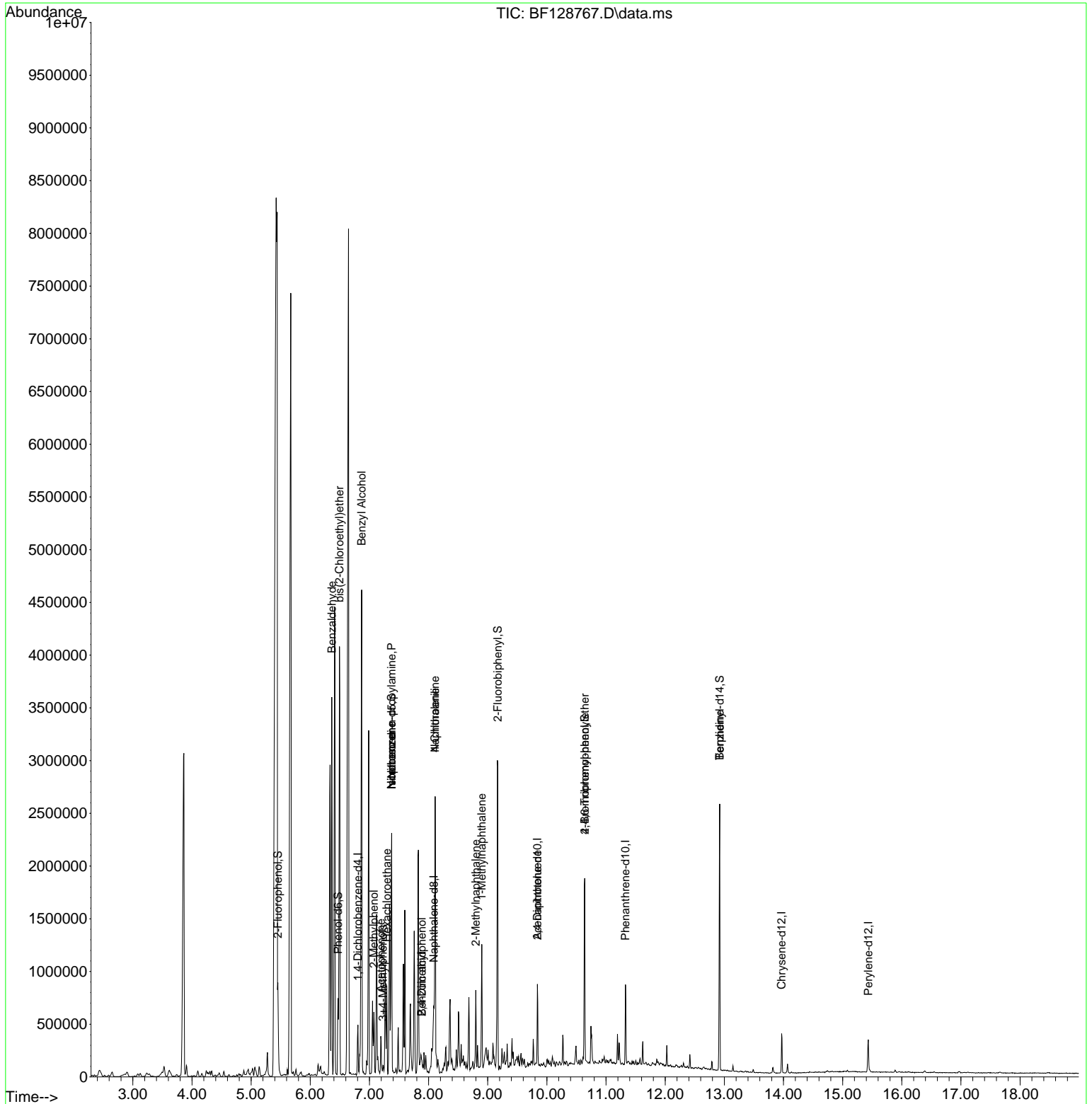
Compound	R.T.	QIon	Response	Conc	Units	Dev(Min)
Internal Standards						
1) 1,4-Dichlorobenzene-d4	6.804	152	63840	20.000	ng	0.00
21) Naphthalene-d8	8.087	136	249969	20.000	ng	-0.01
39) Acenaphthene-d10	9.839	164	141613	20.000	ng	-0.02
64) Phenanthrene-d10	11.328	188	247942	20.000	ng	-0.01
76) Chrysene-d12	13.969	240	127361	20.000	ng	#-0.02
86) Perylene-d12	15.433	264	135079	20.000	ng	-0.01
System Monitoring Compounds						
5) 2-Fluorophenol	5.451	112	234520	58.514	ng	0.00
7) Phenol-d6	6.469	99	188850	38.601	ng	-0.01
23) Nitrobenzene-d5	7.375	82	495761	92.339	ng	0.00
42) 2,4,6-Tribromophenol	10.639	330	224342	134.077	ng	-0.01
45) 2-Fluorobiphenyl	9.169	172	983375	97.273	ng	0.00
79) Terphenyl-d14	12.922	244	832656	113.603	ng	-0.01
Target Compounds						
9) Benzaldehyde	6.363	77	159982	53.675	ng	# 1
11) bis(2-Chloroethyl)ether	6.493	93	8512	2.246	ng	# 1
15) Benzyl Alcohol	6.869	79	161833	39.535	ng	# 10
17) 2-Methylphenol	7.075	107	21794	6.724	ng	# 23
18) Hexachloroethane	7.293	117	22838	12.820	ng	# 1
19) n-Nitroso-di-n-propyla...	7.375	70	73125	24.039	ng	# 76
20) 3+4-Methylphenols	7.228	107	19393	4.482	ng	# 75
22) Acetophenone	7.193	105	148153	22.661	ng	# 56
24) Nitrobenzene	7.375	77	17364	3.523	ng	# 9
25) Isophorone	7.375	82	494053	60.589	ng	# 65
27) 2,4-Dimethylphenol	7.887	122	8233	2.489	ng	84
31) Naphthalene	8.110	128	1103803	86.043	ng	99
32) Benzoic acid	7.887	122	8233	3.508	ng	# 48
33) 4-Chloroaniline	8.110	127	155523	32.155	ng	# 32
37) 2-Methylnaphthalene	8.798	142	168622	20.665	ng	98
38) 1-Methylnaphthalene	8.898	142	190868	24.211	ng	97
57) 2,4-Dinitrotoluene	9.839	165	19326	7.569	ng	# 25
67) 4-Bromophenyl-phenylether	10.639	248	14178	5.128	ng	# 1
77) Benzidine	12.922	184	12733	5.015	ng	# 93

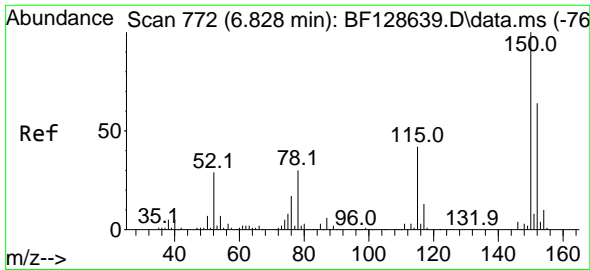
(#) = qualifier out of range (m) = manual integration (+) = signals summed

Data Path : Z:\svoasrv\HPCHEM1\BNA_F\Data\BF061022\
 Data File : BF128767.D
 Acq On : 10 Jun 2022 19:15
 Operator : CG\JU
 Sample : N3286-03
 Misc :
 ALS Vial : 14 Sample Multiplier: 1

Instrument :
 BNA_F
 ClientSampleId :
 MW-2D

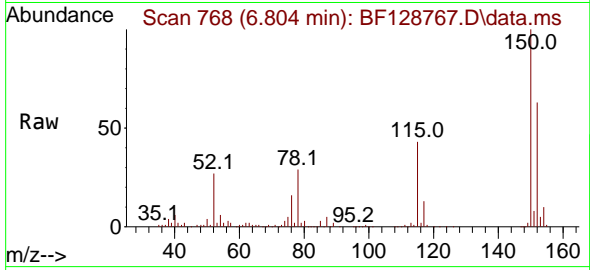
Quant Time: Jun 11 01:27:52 2022
 Quant Method : Z:\svoasrv\HPCHEM1\BNA_F\Methods\8270-BF060222.M
 Quant Title : ASP BNA STANDARDS FOR 5 POINT CALIBRATION
 QLast Update : Wed Jun 08 14:28:39 2022
 Response via : Initial Calibration



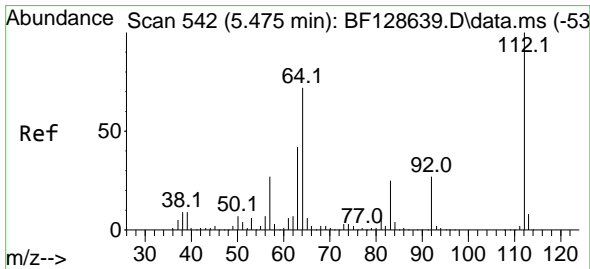
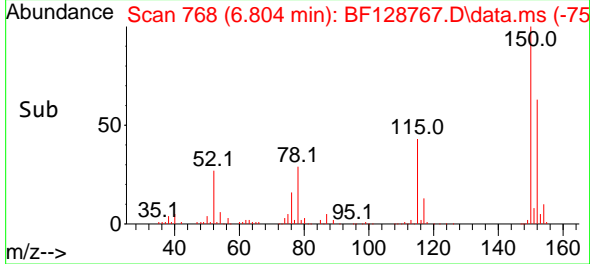
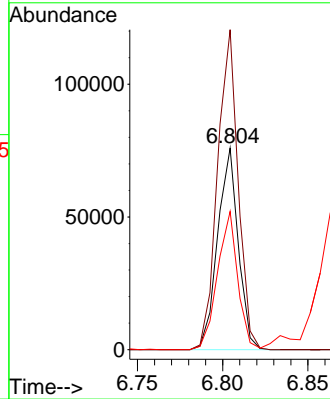


#1
 1,4-Dichlorobenzene-d4
 Concen: 20.000 ng
 RT: 6.804 min Scan# 77
 Delta R.T. -0.006 min
 Lab File: BF128767.D
 Acq: 10 Jun 2022 19:15

Instrument :
 BNA_F
 ClientSampleId :
 MW-2D

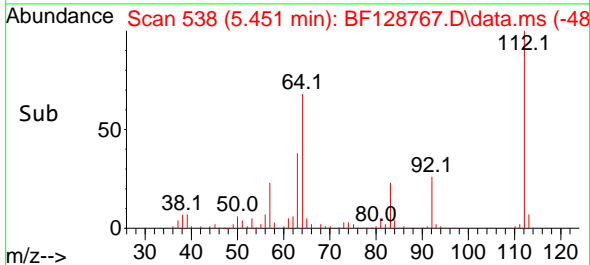
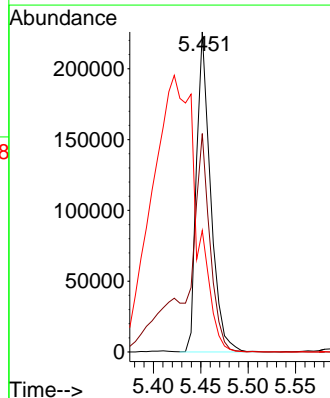
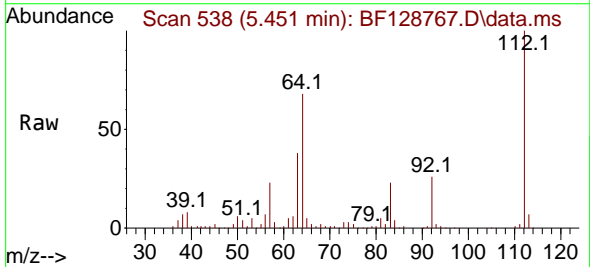


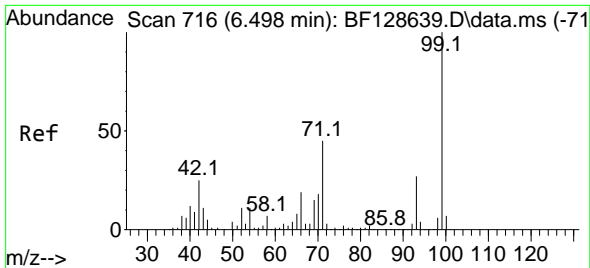
Tgt Ion:152 Resp: 63840
 Ion Ratio Lower Upper
 152 100
 150 158.7 123.7 185.5
 115 68.5 49.9 74.9



#5
 2-Fluorophenol
 Concen: 58.514 ng
 RT: 5.451 min Scan# 538
 Delta R.T. -0.006 min
 Lab File: BF128767.D
 Acq: 10 Jun 2022 19:15

Tgt Ion:112 Resp: 234520
 Ion Ratio Lower Upper
 112 100
 64 68.3 53.3 79.9
 63 37.9 28.0 42.0

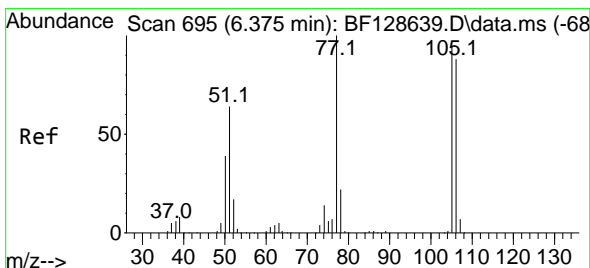
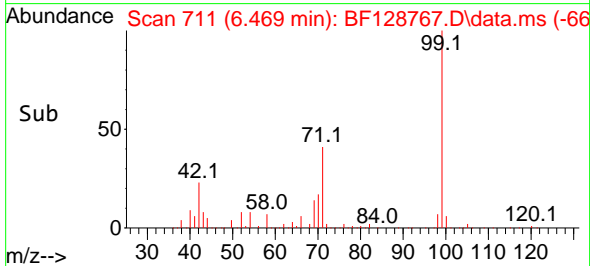
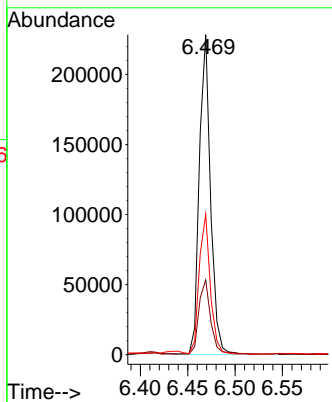
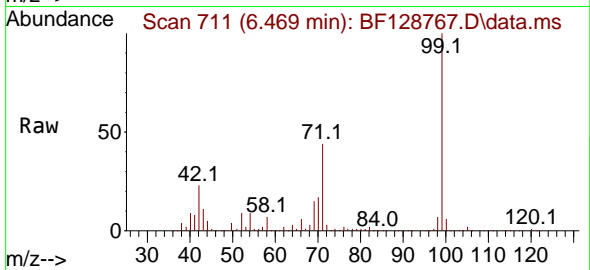




#7
 Phenol-d6
 Concen: 38.601 ng
 RT: 6.469 min Scan# 716
 Delta R.T. -0.012 min
 Lab File: BF128767.D
 Acq: 10 Jun 2022 19:15

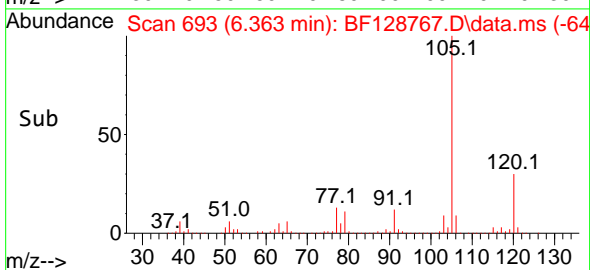
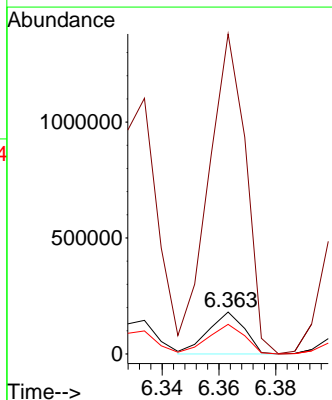
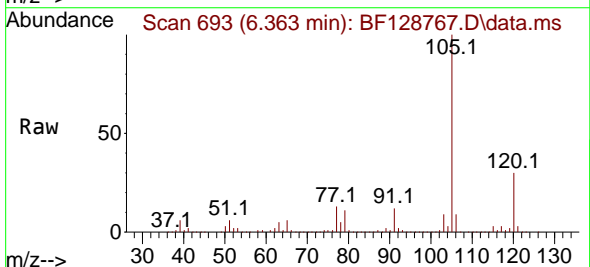
Instrument :
 BNA_F
 ClientSampleId :
 MW-2D

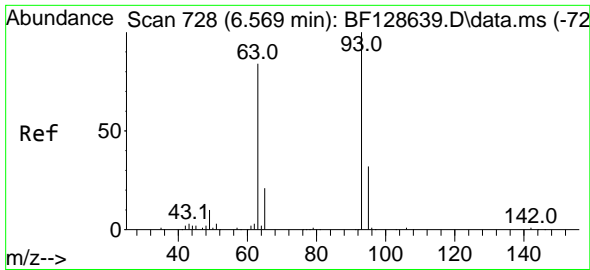
Tgt Ion: 99 Resp: 188850
 Ion Ratio Lower Upper
 99 100
 42 23.3 17.3 25.9
 71 43.9 28.9 43.3#



#9
 Benzaldehyde
 Concen: 53.675 ng
 RT: 6.363 min Scan# 693
 Delta R.T. -0.000 min
 Lab File: BF128767.D
 Acq: 10 Jun 2022 19:15

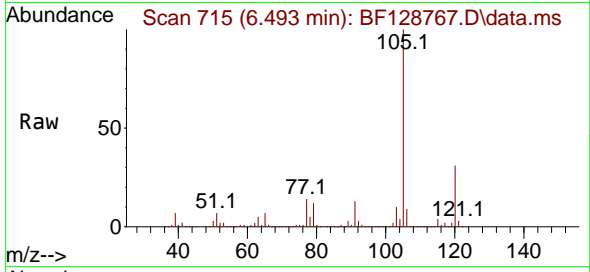
Tgt Ion: 77 Resp: 159982
 Ion Ratio Lower Upper
 77 100
 105 764.5 81.6 121.6#
 106 70.6 76.1 116.1#



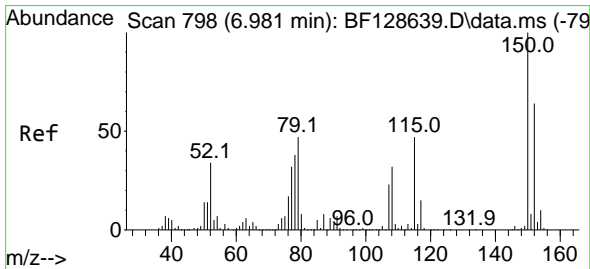
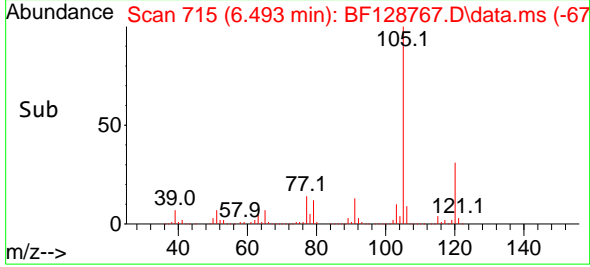
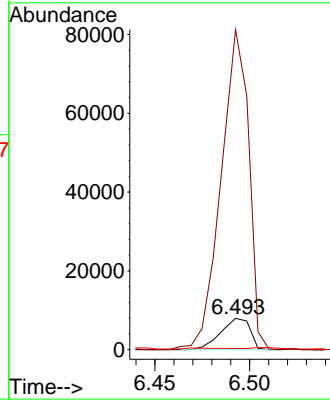


#11
 bis(2-Chloroethyl)ether
 Concen: 2.246 ng
 RT: 6.493 min Scan# 715
 Delta R.T. -0.059 min
 Lab File: BF128767.D
 Acq: 10 Jun 2022 19:15

Instrument : BNA_F
 ClientSampleId : MW-2D

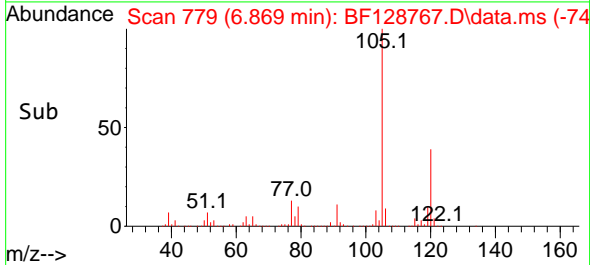
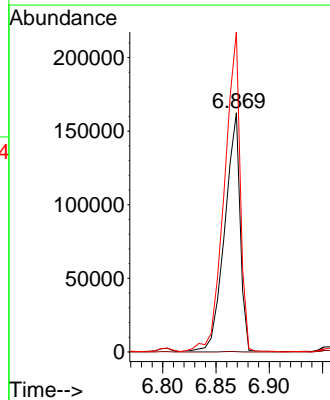
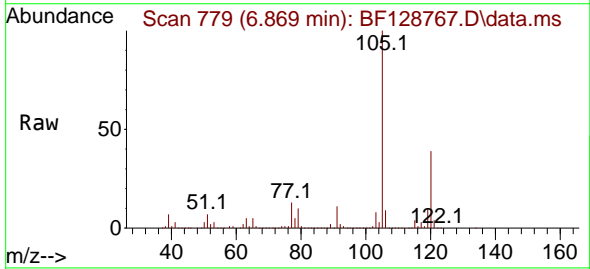


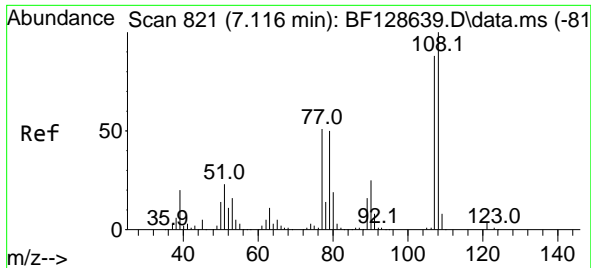
Tgt Ion: 93 Resp: 8512
 Ion Ratio Lower Upper
 93 100
 63 1021.3 67.4 107.4#
 95 3.4 12.7 52.7#



#15
 Benzyl Alcohol
 Concen: 39.535 ng
 RT: 6.869 min Scan# 779
 Delta R.T. -0.094 min
 Lab File: BF128767.D
 Acq: 10 Jun 2022 19:15

Tgt Ion: 79 Resp: 161833
 Ion Ratio Lower Upper
 79 100
 108 0.1 61.8 92.6#
 77 133.7 50.2 75.4#

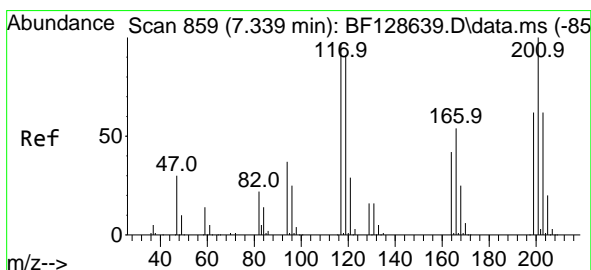
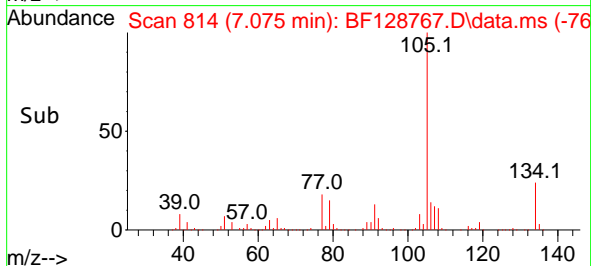
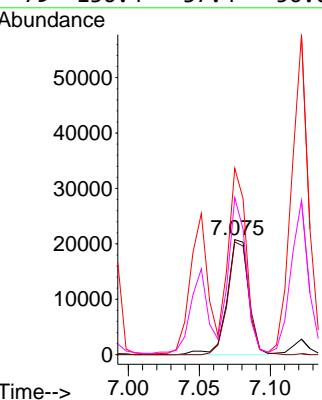
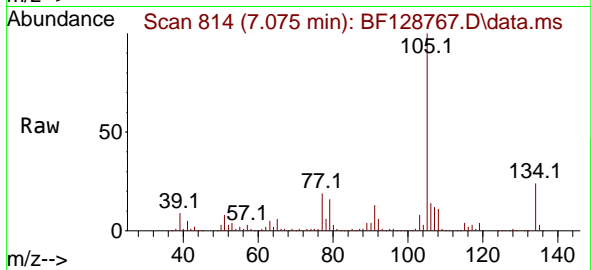




#17
 2-Methylphenol
 Concen: 6.724 ng
 RT: 7.075 min Scan# 81
 Delta R.T. -0.018 min
 Lab File: BF128767.D
 Acq: 10 Jun 2022 19:15

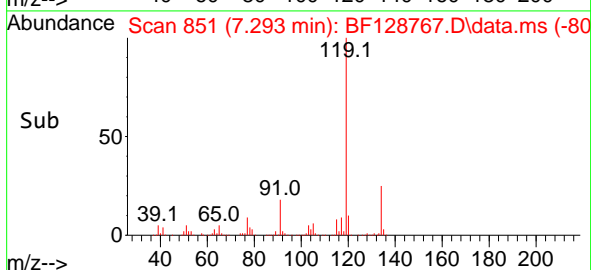
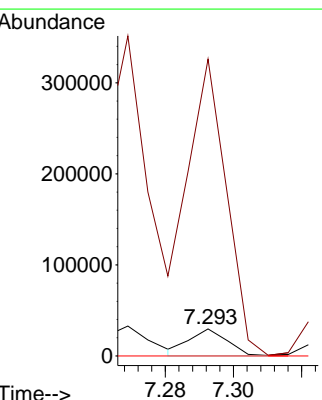
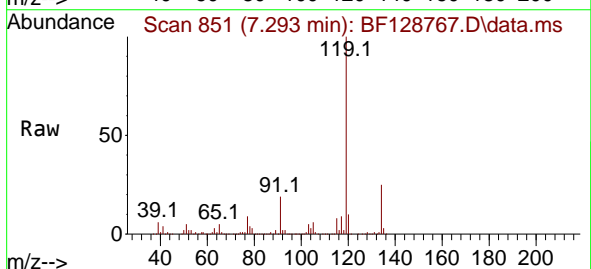
Instrument :
 BNA_F
 ClientSampleId :
 MW-2D

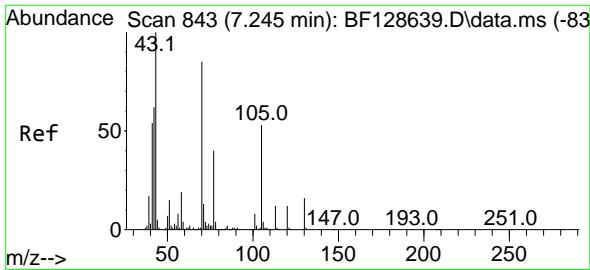
Tgt Ion	Resp	Lower	Upper
107	21794		
108	98.1	91.9	137.9
77	162.0	37.8	56.8#
79	136.4	37.4	56.0#



#18
 Hexachloroethane
 Concen: 12.820 ng
 RT: 7.293 min Scan# 851
 Delta R.T. -0.030 min
 Lab File: BF128767.D
 Acq: 10 Jun 2022 19:15

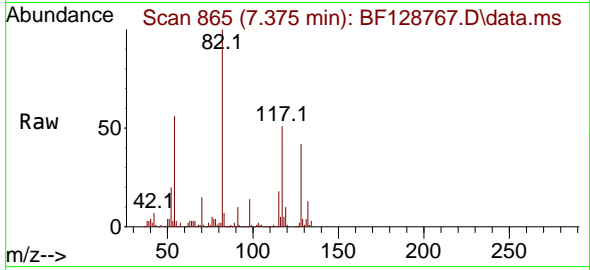
Tgt Ion	Resp	Lower	Upper
117	22838		
119	1098.5	77.4	116.2#
201	0.0	84.6	127.0#



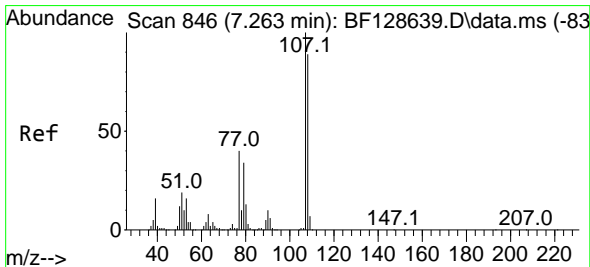
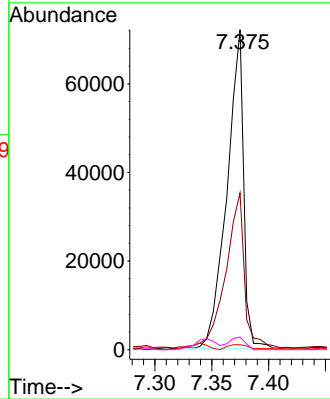
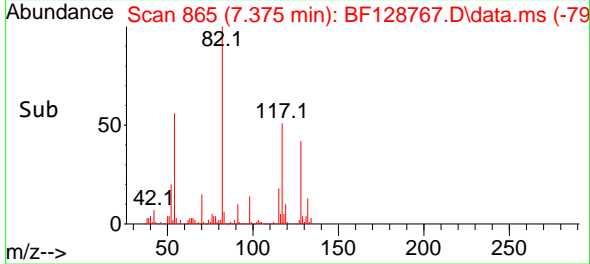


#19
 n-Nitroso-di-n-propylamine
 Concen: 24.039 ng
 RT: 7.375 min Scan# 80
 Delta R.T. 0.141 min
 Lab File: BF128767.D
 Acq: 10 Jun 2022 19:15

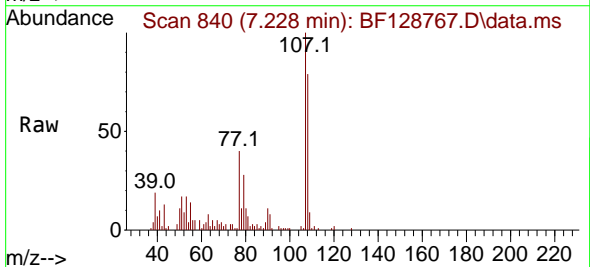
Instrument :
 BNA_F
 ClientSampleId :
 MW-2D



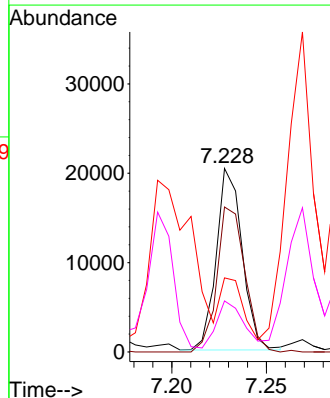
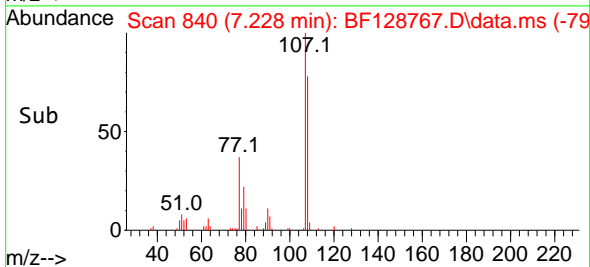
Tgt Ion: 70 Resp: 73125
 Ion Ratio Lower Upper
 70 100
 42 49.0 52.3 78.5#
 101 1.6 7.5 11.3#
 130 3.9 16.1 24.1#

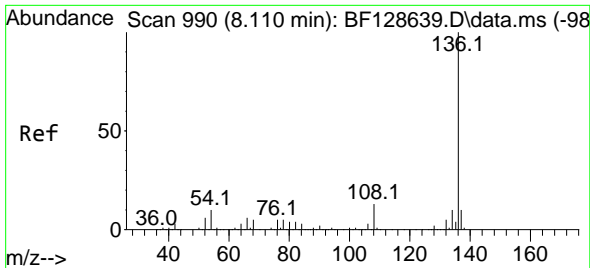


#20
 3+4-Methylphenols
 Concen: 4.482 ng
 RT: 7.228 min Scan# 840
 Delta R.T. -0.018 min
 Lab File: BF128767.D
 Acq: 10 Jun 2022 19:15



Tgt Ion: 107 Resp: 19393
 Ion Ratio Lower Upper
 107 100
 108 79.0 71.8 111.8
 77 40.3 59.3 99.3#
 79 27.8 11.7 51.7



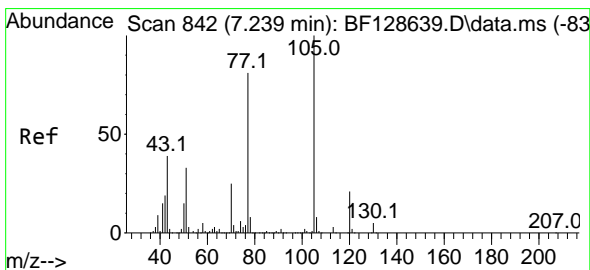
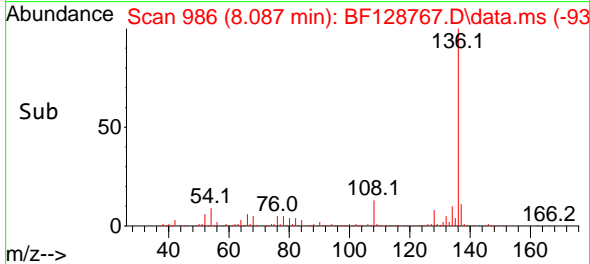
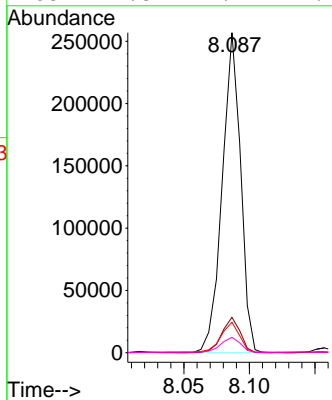
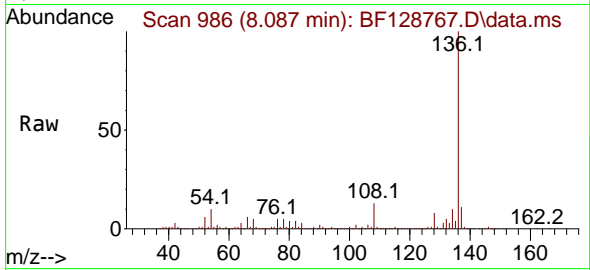


#21
 Naphthalene-d8
 Concen: 20.000 ng
 RT: 8.087 min Scan# 911
 Delta R.T. -0.012 min
 Lab File: BF128767.D
 Acq: 10 Jun 2022 19:15

Instrument :
 BNA_F
 ClientSampleId :
 MW-2D

Tgt Ion:136 Resp: 249969

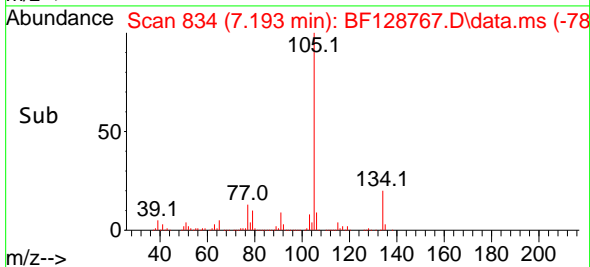
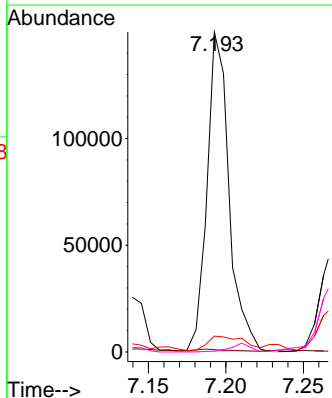
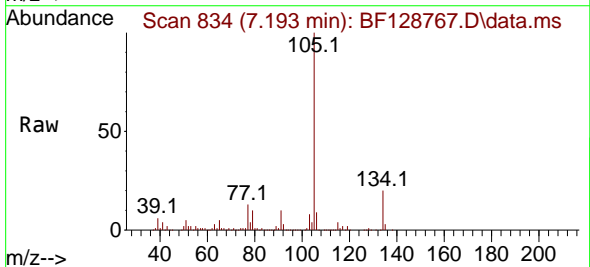
Ion	Ratio	Lower	Upper
136	100		
137	11.0	8.8	13.2
54	9.5	7.5	11.3
68	4.8	4.7	7.1

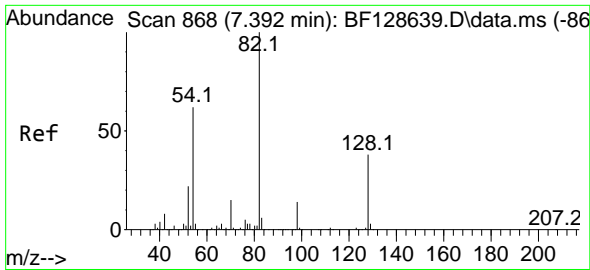


#22
 Acetophenone
 Concen: 22.661 ng
 RT: 7.193 min Scan# 834
 Delta R.T. -0.035 min
 Lab File: BF128767.D
 Acq: 10 Jun 2022 19:15

Tgt Ion:105 Resp: 148153

Ion	Ratio	Lower	Upper
105	100		
71	0.7	5.0	7.4#
51	5.0	25.0	37.4#
120	0.3	17.8	26.8#

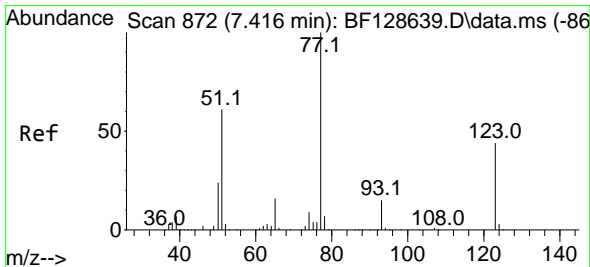
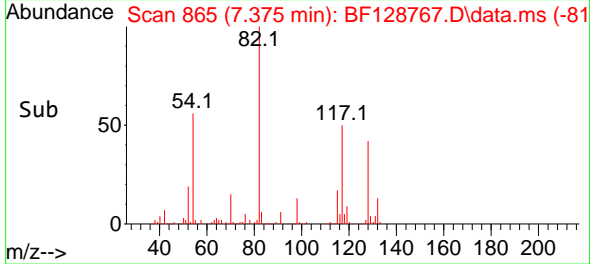
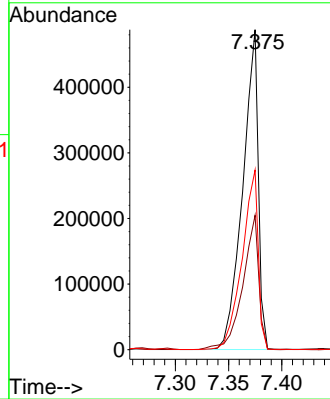
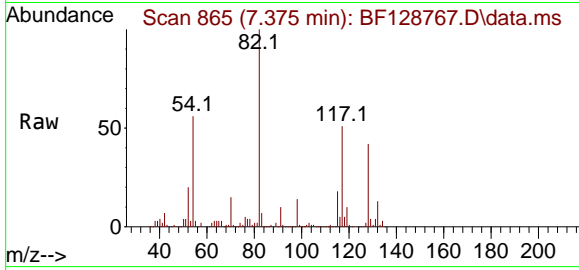




#23
 Nitrobenzene-d5
 Concen: 92.339 ng
 RT: 7.375 min Scan# 865
 Delta R.T. -0.006 min
 Lab File: BF128767.D
 Acq: 10 Jun 2022 19:15

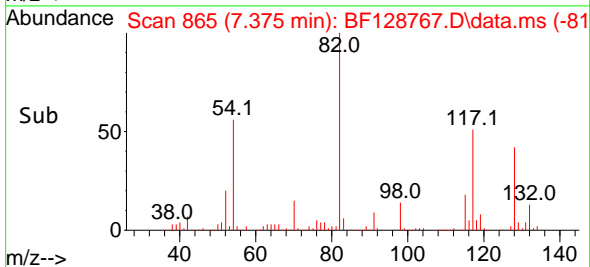
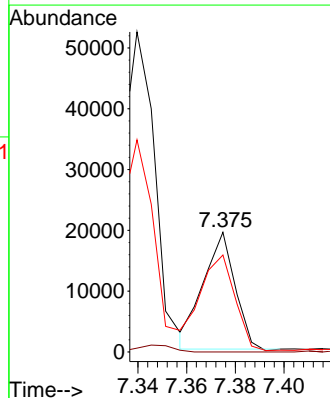
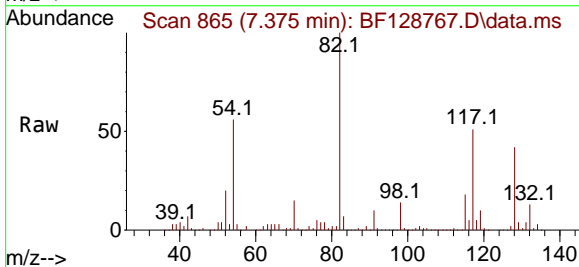
Instrument :
 BNA_F
 ClientSampleId :
 MW-2D

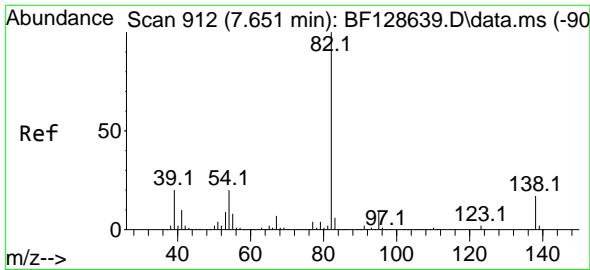
Tgt Ion	Resp	Lower	Upper
82	495761		
128	42.0	34.0	51.0
54	56.1	46.9	70.3



#24
 Nitrobenzene
 Concen: 3.523 ng
 RT: 7.375 min Scan# 865
 Delta R.T. -0.030 min
 Lab File: BF128767.D
 Acq: 10 Jun 2022 19:15

Tgt Ion	Resp	Lower	Upper
77	17364		
123	0.0	35.4	53.2#
65	81.0	11.8	17.8#

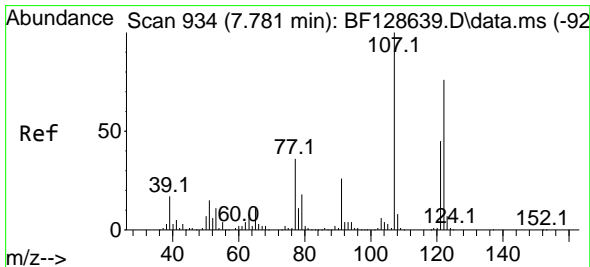
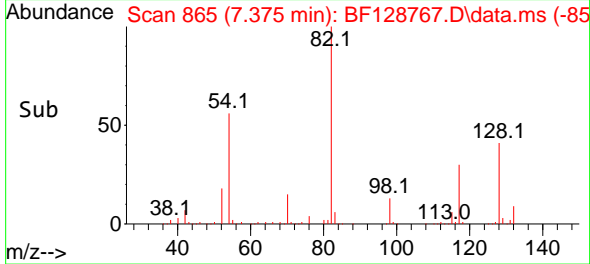
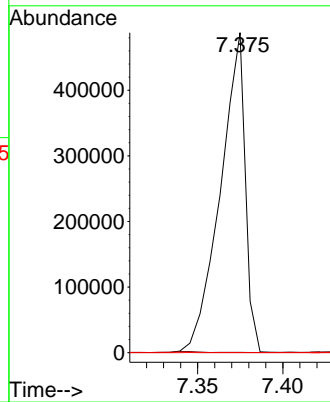
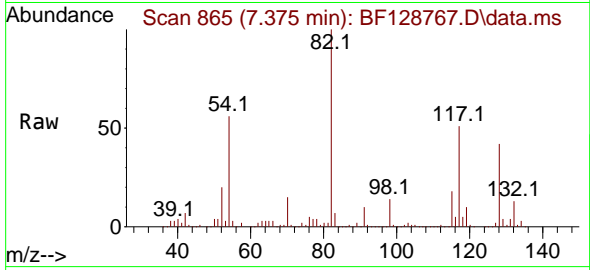




#25
 Isophorone
 Concen: 60.589 ng
 RT: 7.375 min Scan# 80
 Delta R.T. -0.265 min
 Lab File: BF128767.D
 Acq: 10 Jun 2022 19:15

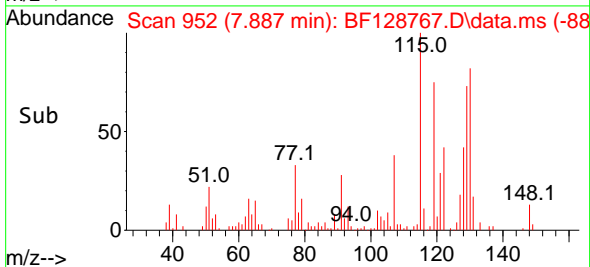
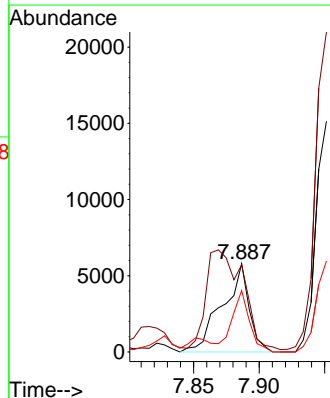
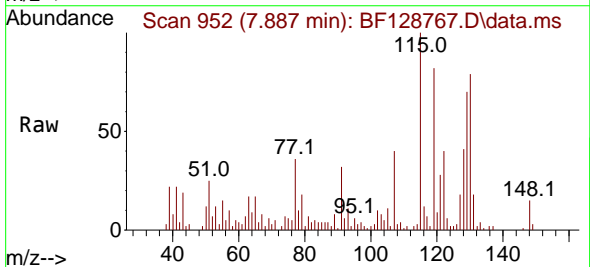
Instrument :
 BNA_F
 ClientSampleId :
 MW-2D

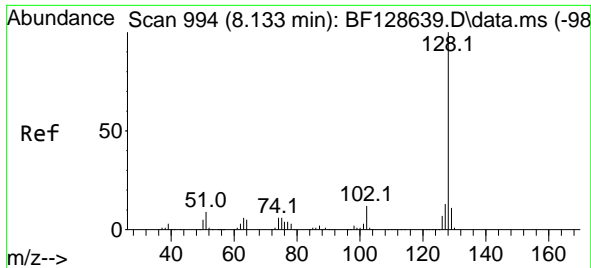
Tgt Ion: 82 Resp: 494053
 Ion Ratio Lower Upper
 82 100
 95 0.1 5.7 8.5#
 138 0.0 14.2 21.2#



#27
 2,4-Dimethylphenol
 Concen: 2.489 ng
 RT: 7.887 min Scan# 952
 Delta R.T. 0.123 min
 Lab File: BF128767.D
 Acq: 10 Jun 2022 19:15

Tgt Ion: 122 Resp: 8233
 Ion Ratio Lower Upper
 122 100
 107 98.5 93.0 139.6
 121 69.5 46.6 70.0

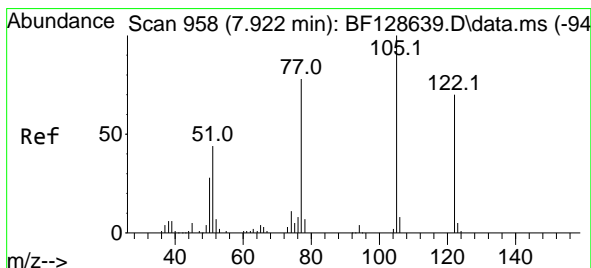
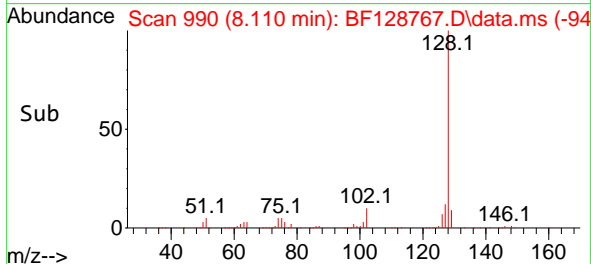
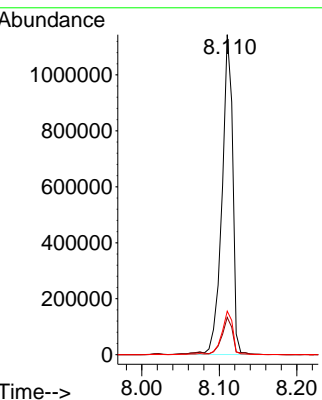
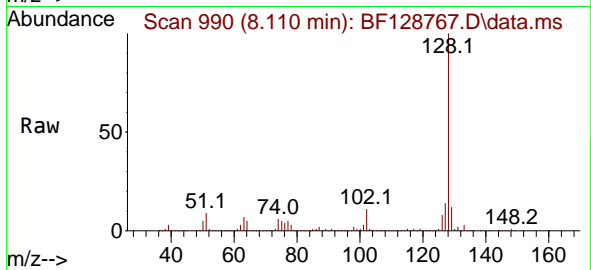




#31
 Naphthalene
 Concen: 86.043 ng
 RT: 8.110 min Scan# 910
 Delta R.T. -0.012 min
 Lab File: BF128767.D
 Acq: 10 Jun 2022 19:15

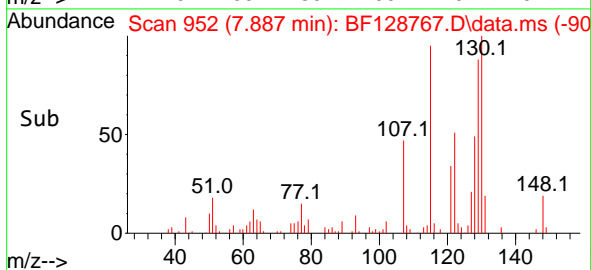
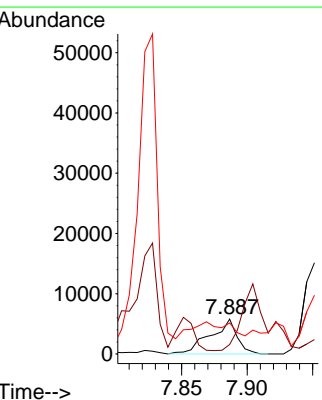
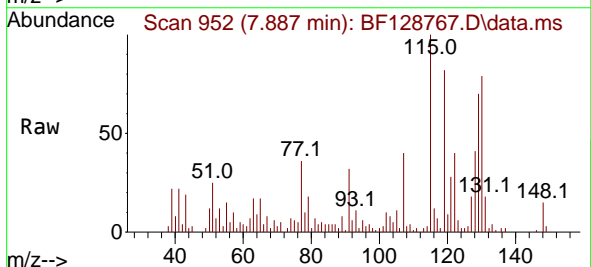
Instrument :
 BNA_F
 ClientSampleId :
 MW-2D

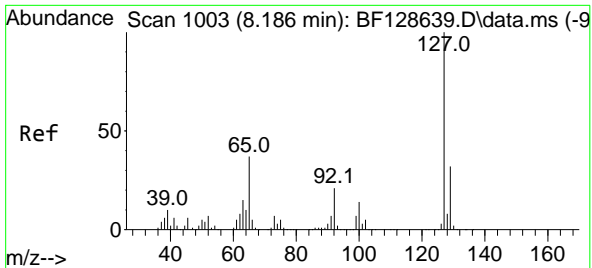
Tgt Ion:128 Resp: 1103803
 Ion Ratio Lower Upper
 128 100
 129 11.6 9.2 13.8
 127 13.6 10.5 15.7



#32
 Benzoic acid
 Concen: 3.508 ng
 RT: 7.887 min Scan# 952
 Delta R.T. -0.024 min
 Lab File: BF128767.D
 Acq: 10 Jun 2022 19:15

Tgt Ion:122 Resp: 8233
 Ion Ratio Lower Upper
 122 100
 105 27.0 107.1 147.1#
 77 89.2 74.2 114.2



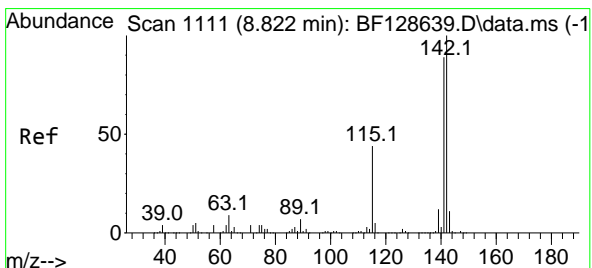
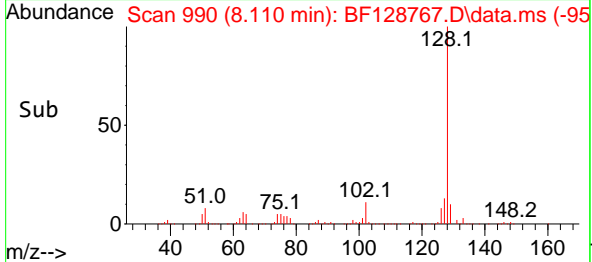
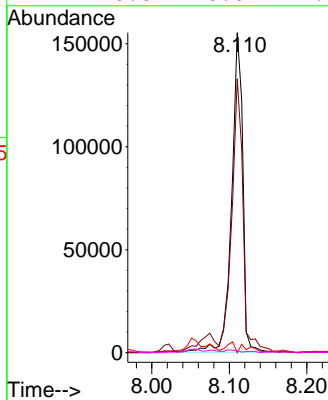
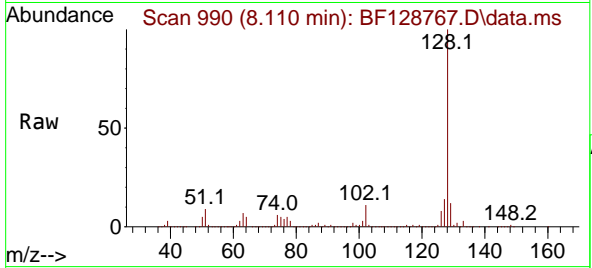


#33
 4-Chloroaniline
 Concen: 32.155 ng
 RT: 8.110 min Scan# 91
 Delta R.T. -0.065 min
 Lab File: BF128767.D
 Acq: 10 Jun 2022 19:15

Instrument :
 BNA_F
 ClientSampleId :
 MW-2D

Tgt Ion:127 Resp: 155523

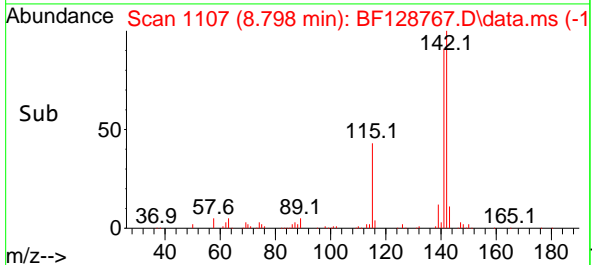
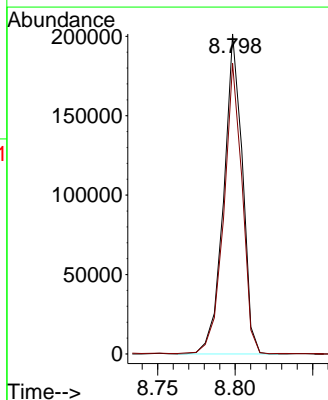
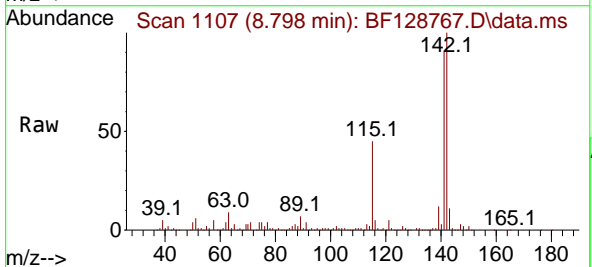
Ion	Ratio	Lower	Upper
127	100		
129	85.6	26.4	39.6#
65	0.0	26.4	39.6#
92	0.6	16.0	24.0#

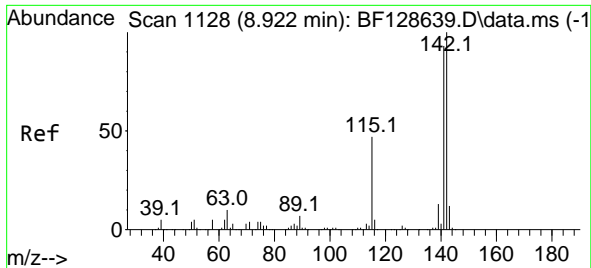


#37
 2-Methylnaphthalene
 Concen: 20.665 ng
 RT: 8.798 min Scan# 1107
 Delta R.T. -0.012 min
 Lab File: BF128767.D
 Acq: 10 Jun 2022 19:15

Tgt Ion:142 Resp: 168622

Ion	Ratio	Lower	Upper
142	100		
141	90.8	71.0	106.4

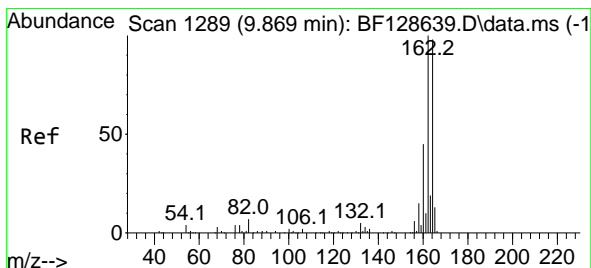
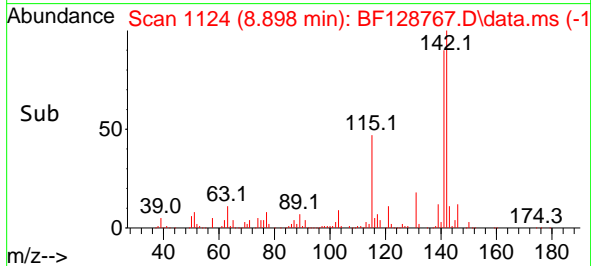
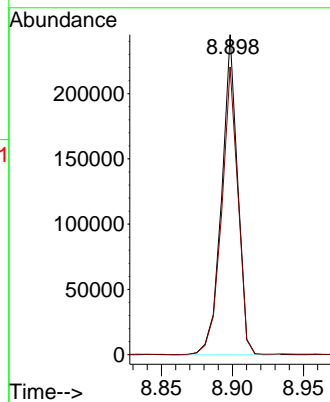
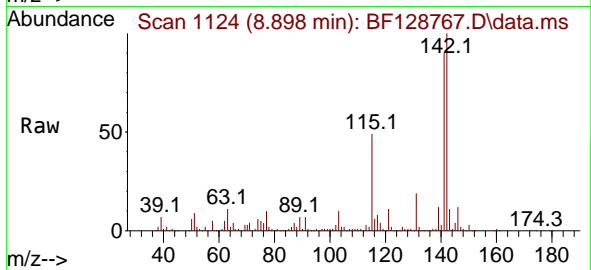




#38
 1-Methylnaphthalene
 Concen: 24.211 ng
 RT: 8.898 min Scan# 1124
 Delta R.T. -0.012 min
 Lab File: BF128767.D
 Acq: 10 Jun 2022 19:15

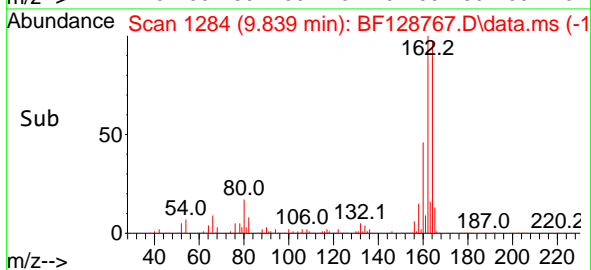
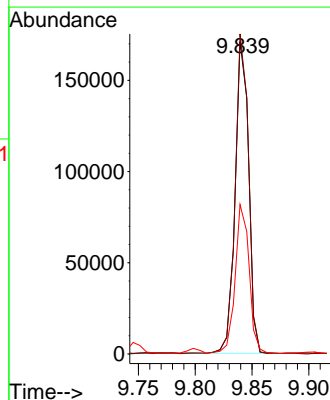
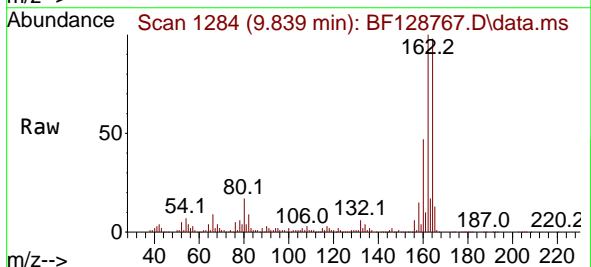
Instrument :
 BNA_F
 ClientSampleId :
 MW-2D

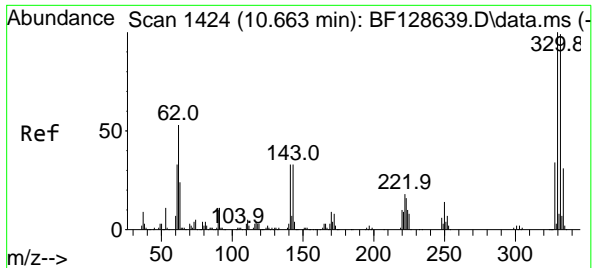
Tgt Ion:142 Resp: 190868
 Ion Ratio Lower Upper
 142 100
 141 89.9 74.2 111.4



#39
 Acenaphthene-d10
 Concen: 20.000 ng
 RT: 9.839 min Scan# 1284
 Delta R.T. -0.018 min
 Lab File: BF128767.D
 Acq: 10 Jun 2022 19:15

Tgt Ion:164 Resp: 141613
 Ion Ratio Lower Upper
 164 100
 162 102.4 79.5 119.3
 160 47.8 34.2 51.4



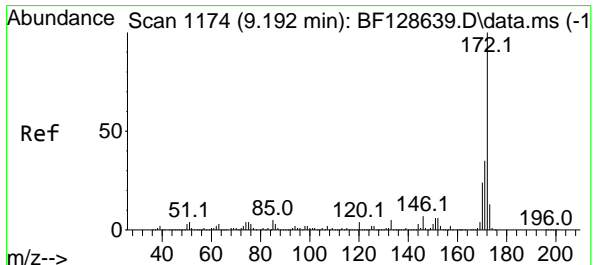
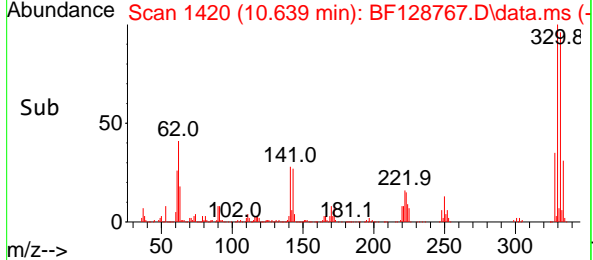
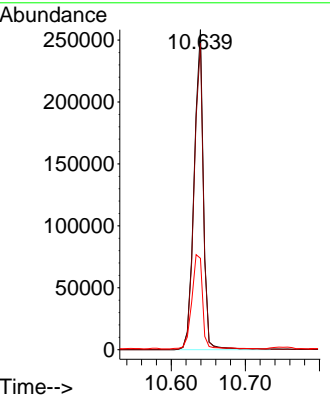
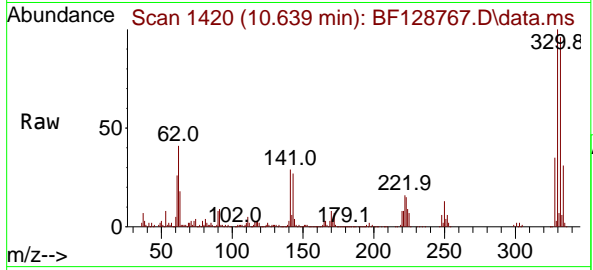


#42
 2,4,6-Tribromophenol
 Concen: 134.077 ng
 RT: 10.639 min Scan# 14
 Delta R.T. -0.012 min
 Lab File: BF128767.D
 Acq: 10 Jun 2022 19:15

Instrument : BNA_F
 ClientSampleId : MW-2D

Tgt Ion:330 Resp: 224342

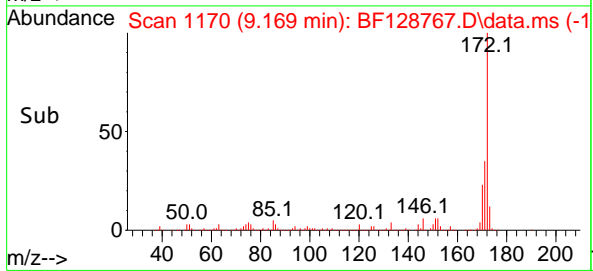
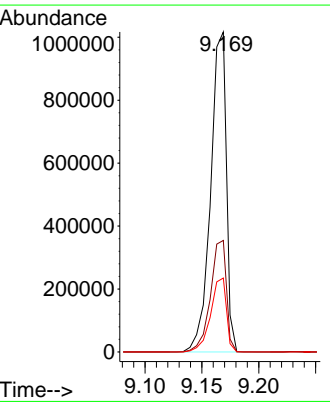
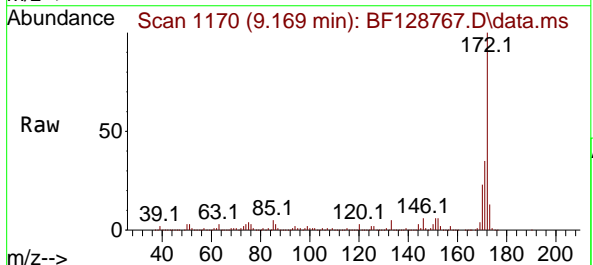
Ion	Ratio	Lower	Upper
330	100		
332	97.1	76.8	115.2
141	34.2	28.0	42.0

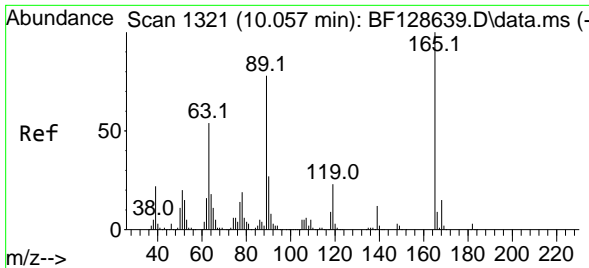


#45
 2-Fluorobiphenyl
 Concen: 97.273 ng
 RT: 9.169 min Scan# 1170
 Delta R.T. -0.006 min
 Lab File: BF128767.D
 Acq: 10 Jun 2022 19:15

Tgt Ion:172 Resp: 983375

Ion	Ratio	Lower	Upper
172	100		
171	34.9	28.8	43.2
170	23.1	19.8	29.8

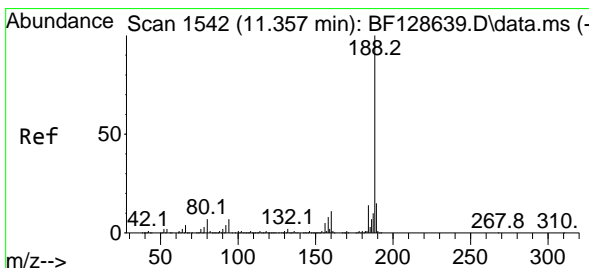
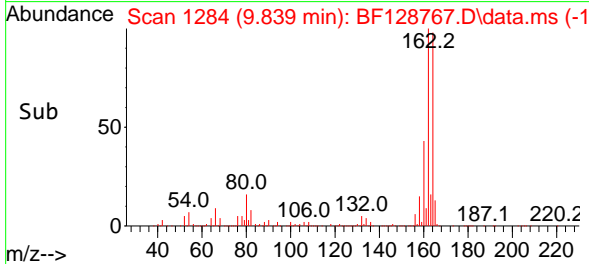
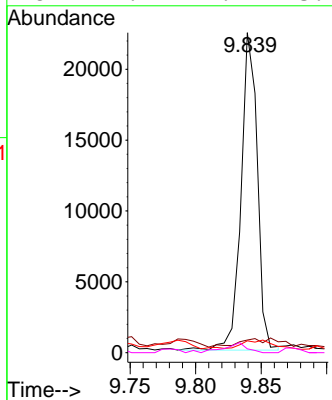
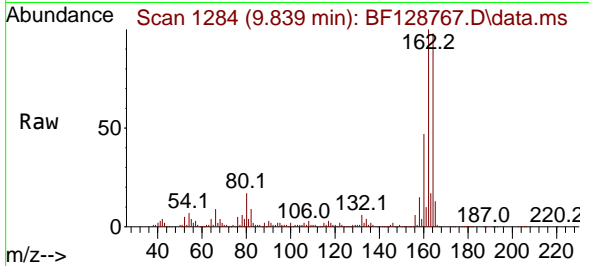




#57
 2,4-Dinitrotoluene
 Concen: 7.569 ng
 RT: 9.839 min Scan# 11
 Delta R.T. -0.206 min
 Lab File: BF128767.D
 Acq: 10 Jun 2022 19:15

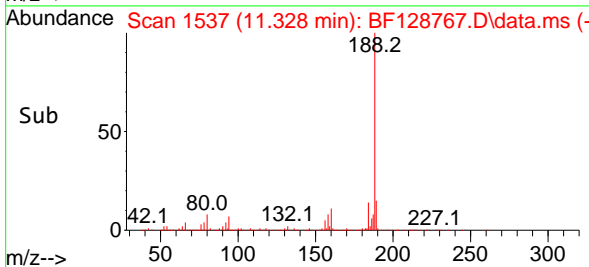
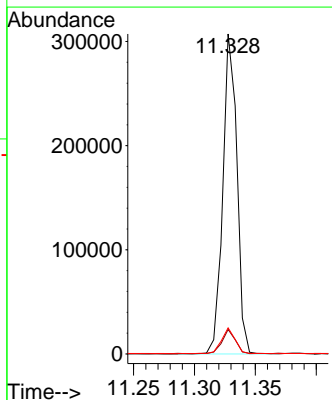
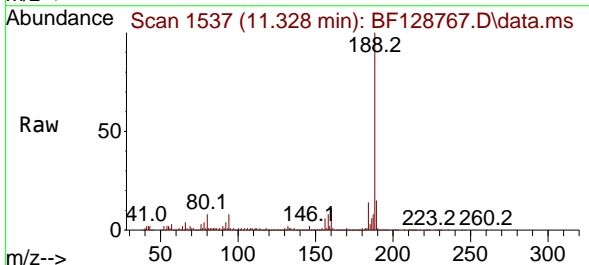
Instrument :
 BNA_F
 ClientSampleId :
 MW-2D

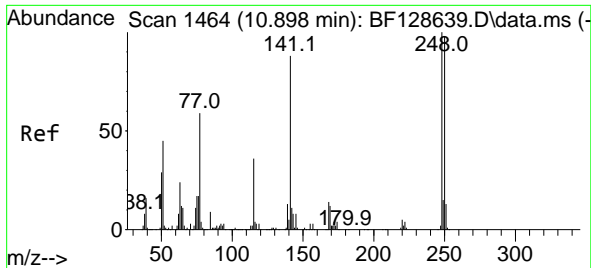
Tgt Ion	Resp	Lower	Upper
165	19326		
63	4.0	39.8	59.6#
89	3.7	60.2	90.2#
182	1.2	2.2	3.2#



#64
 Phenanthrene-d10
 Concen: 20.000 ng
 RT: 11.328 min Scan# 1537
 Delta R.T. -0.012 min
 Lab File: BF128767.D
 Acq: 10 Jun 2022 19:15

Tgt Ion	Resp	Lower	Upper
188	247942		
94	7.7	7.0	10.6
80	8.1	7.6	11.4

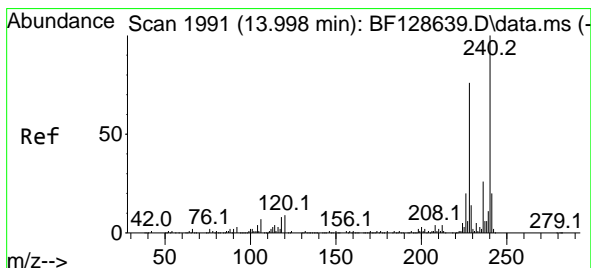
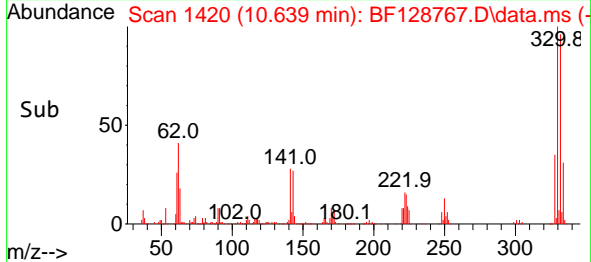
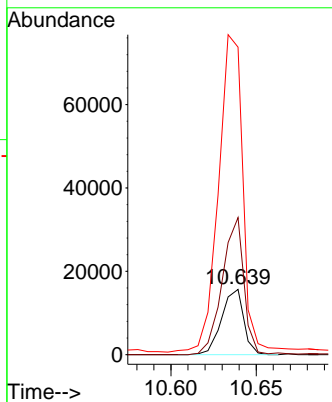
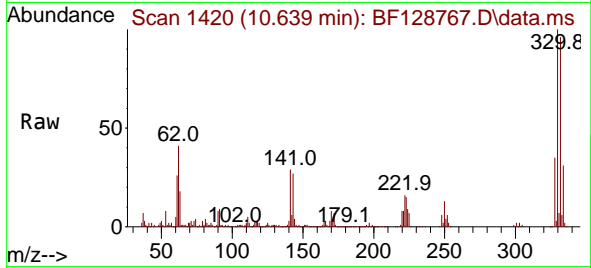




#67
 4-Bromophenyl-phenylether
 Concen: 5.128 ng
 RT: 10.639 min Scan# 14
 Delta R.T. -0.247 min
 Lab File: BF128767.D
 Acq: 10 Jun 2022 19:15

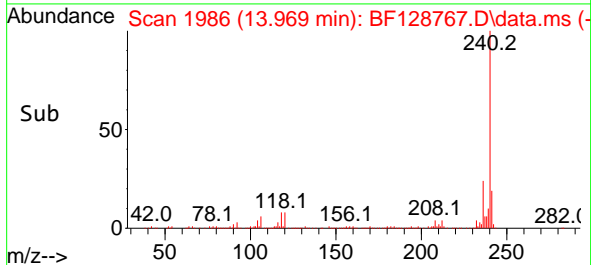
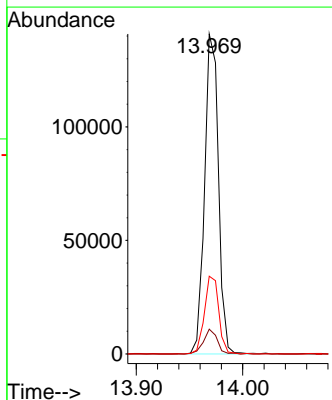
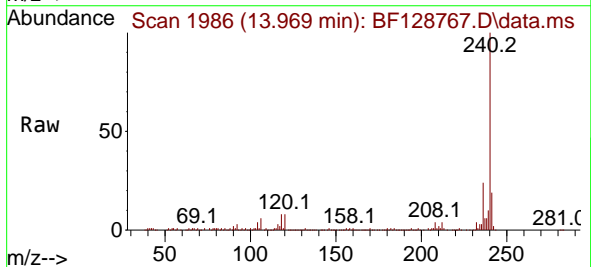
Instrument :
 BNA_F
 ClientSampleId :
 MW-2D

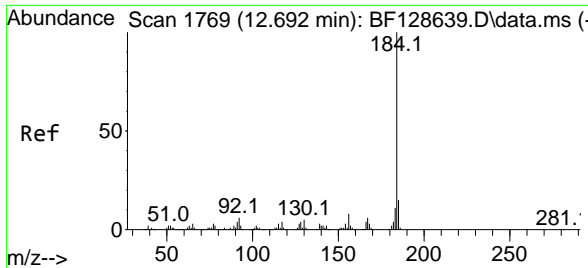
Tgt Ion:248 Resp: 14178
 Ion Ratio Lower Upper
 248 100
 250 210.2 80.6 120.8#
 141 471.1 58.9 88.3#



#76
 Chrysene-d12
 Concen: 20.000 ng
 RT: 13.969 min Scan# 1986
 Delta R.T. -0.018 min
 Lab File: BF128767.D
 Acq: 10 Jun 2022 19:15

Tgt Ion:240 Resp: 127361
 Ion Ratio Lower Upper
 240 100
 120 7.8 8.9 13.3#
 236 24.3 20.8 31.2



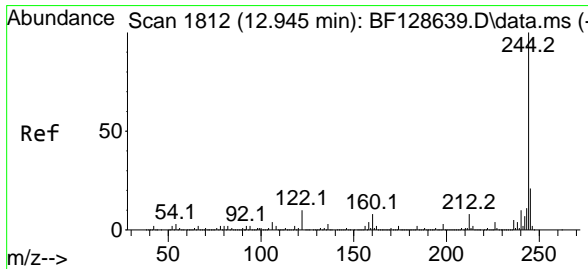
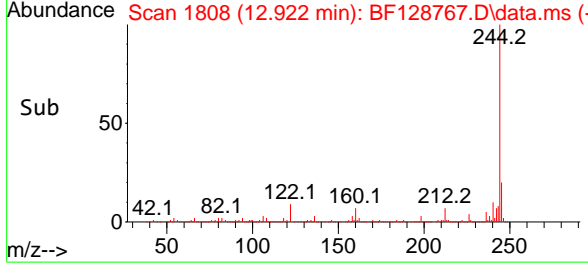
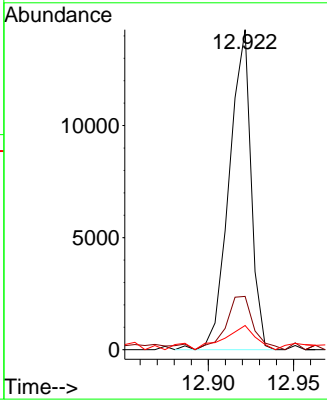
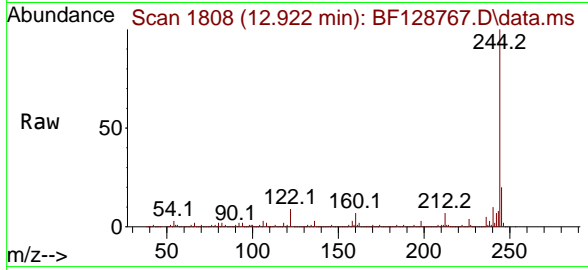


#77
 Benzidine
 Concen: 5.015 ng
 RT: 12.922 min Scan# 1808
 Delta R.T. 0.241 min
 Lab File: BF128767.D
 Acq: 10 Jun 2022 19:15

Instrument : BNA_F
 ClientSampleId : MW-2D

Tgt Ion:184 Resp: 12733

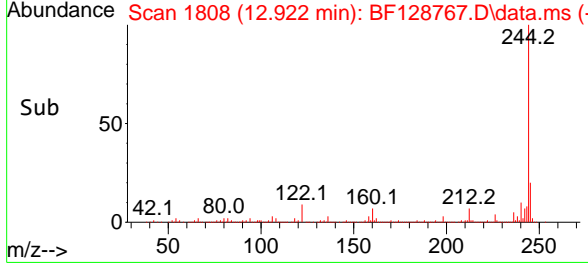
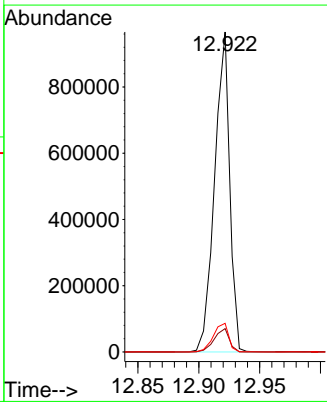
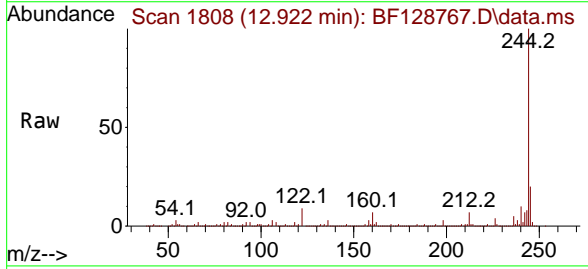
Ion	Ratio	Lower	Upper
184	100		
185	16.7	11.9	17.9
183	7.6	9.3	13.9#

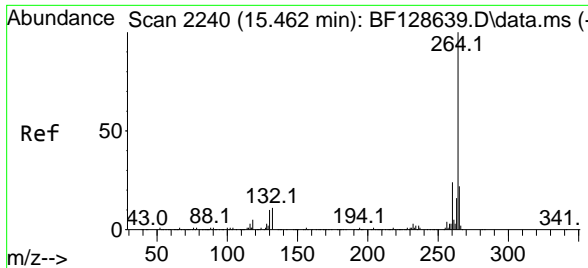


#79
 Terphenyl-d14
 Concen: 113.603 ng
 RT: 12.922 min Scan# 1808
 Delta R.T. -0.012 min
 Lab File: BF128767.D
 Acq: 10 Jun 2022 19:15

Tgt Ion:244 Resp: 832656

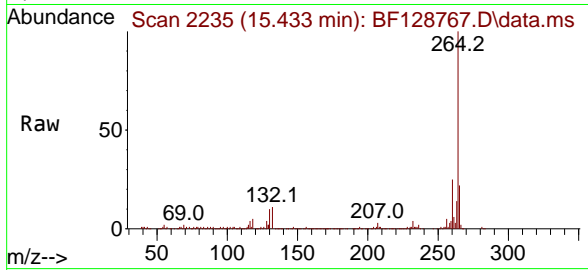
Ion	Ratio	Lower	Upper
244	100		
212	7.3	6.1	9.1
122	9.0	8.8	13.2





#86
 Perylene-d12
 Concen: 20.000 ng
 RT: 15.433 min Scan# 21
 Delta R.T. -0.012 min
 Lab File: BF128767.D
 Acq: 10 Jun 2022 19:15

Instrument :
 BNA_F
 ClientSampleId :
 MW-2D



Tgt Ion:264 Resp: 135079

Ion	Ratio	Lower	Upper
264	100		
260	24.6	18.4	27.6
265	21.6	17.2	25.8

