

Data Path : Z:\HPCHEM1\BNA_F\DATA\BF061215\
 Data File : BF079944.D
 Acq On : 12 Jun 2015 19:36
 Operator : TP/IZ
 Sample : G2536-04
 Misc :
 ALS Vial : 11 Sample Multiplier: 1

Instrument :
 BNA_F
ClientSampleId :
 P5-26(UNFILTERED)

Manual Integrations
APPROVED
 apatel
 6/15/2015 12:43:49 PM

Quant Time: Jun 12 23:39:32 2015
 Quant Method : Z:\HPCHEM1\BNA_F\METHODS\8270-BF061115.M
 Quant Title : ASP BNA STANDARDS FOR 5 POINT CALIBRATION
 QLast Update : Fri Jun 12 22:57:49 2015
 Response via : Initial Calibration

Internal Standards	R.T.	QIon	Response	Conc	Units	Dev(Min)
1) 1,4-Dichlorobenzene-d4	7.38	152	42985	20.00	ng	0.00
21) Naphthalene-d8	8.67	136	164108	20.00	ng	0.00
38) Acenaphthene-d10	10.44	164	91269	20.00	ng	0.00
63) Phenanthrene-d10	11.94	188	197801	20.00	ng	-0.03
75) Chrysene-d12	14.86	240	220548m	20.00	ng	-0.29
86) Perylene-d12	16.72	264	212959m	20.00	ng	-0.38
System Monitoring Compounds						
5) 2-Fluorophenol	5.99	112	158135	67.46	ng	0.00
7) Phenol-d6	6.97	99	132098	41.36	ng	0.00
23) Nitrobenzene-d5	7.93	82	278480	111.96	ng	0.00
41) 2,4,6-Tribromophenol	11.23	330	130623	141.82	ng	-0.01
44) 2-Fluorobiphenyl	9.75	172	664464	101.94	ng	0.00
78) Terphenyl-d14	13.61	244	821348	85.86	ng	-0.16

Target Compounds Qvalue

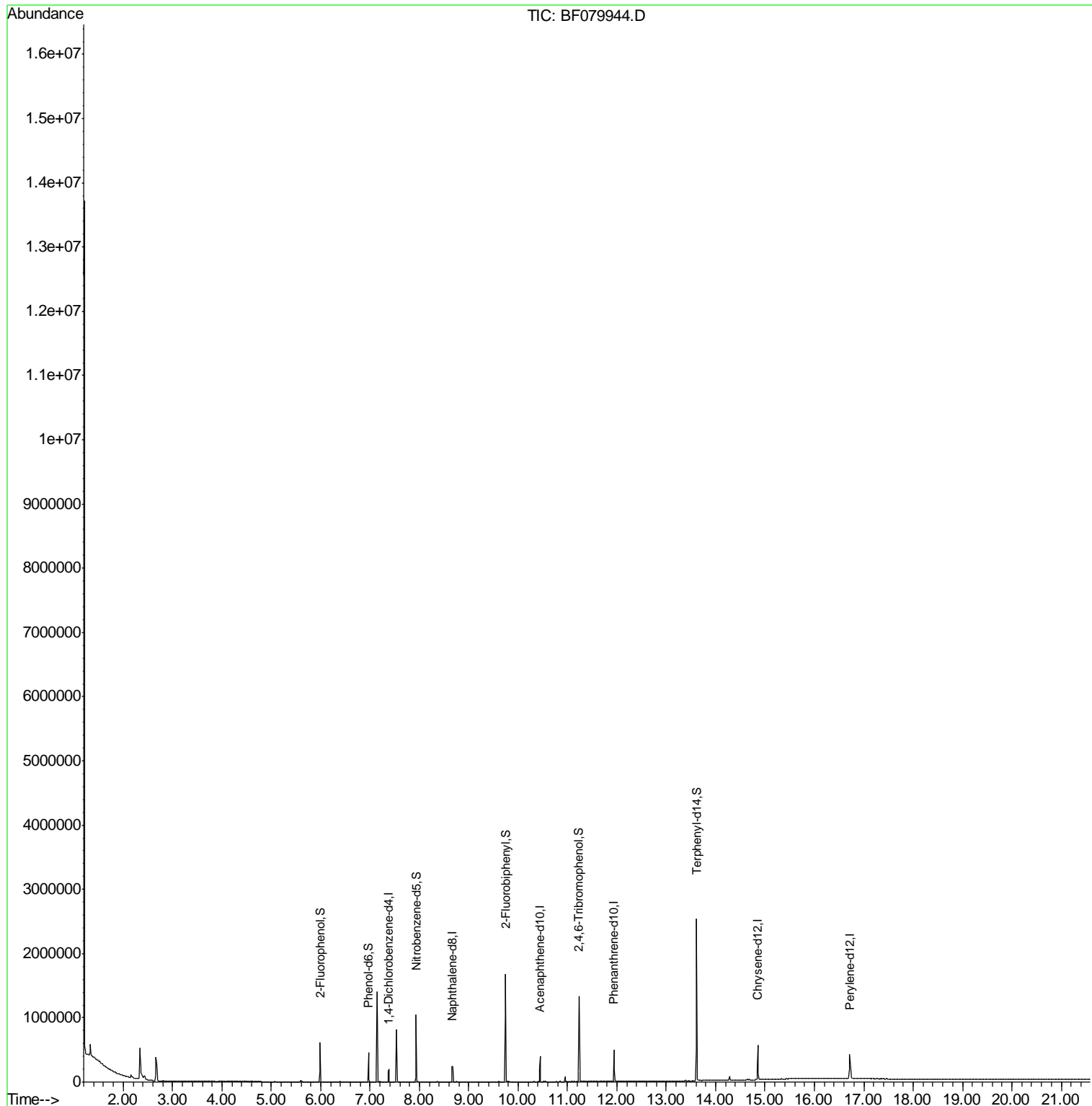
(#) = qualifier out of range (m) = manual integration (+) = signals summed

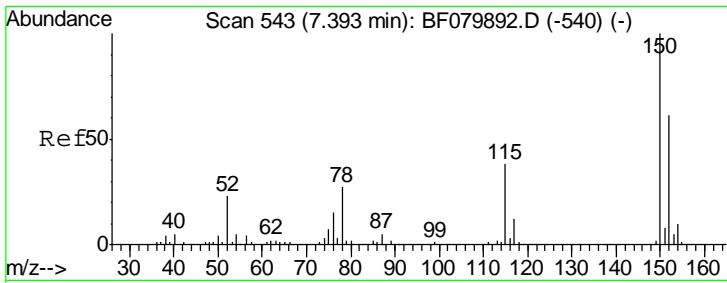
Data Path : Z:\HPCHEM1\BNA_F\DATA\BF061215\
 Data File : BF079944.D
 Acq On : 12 Jun 2015 19:36
 Operator : TP/IZ
 Sample : G2536-04
 Misc :
 ALS Vial : 11 Sample Multiplier: 1

Instrument :
 BNA_F
ClientSampleId :
 P5-26(UNFILTERED)

Manual Integrations
APPROVED
 apatel
 6/15/2015 12:43:49 PM

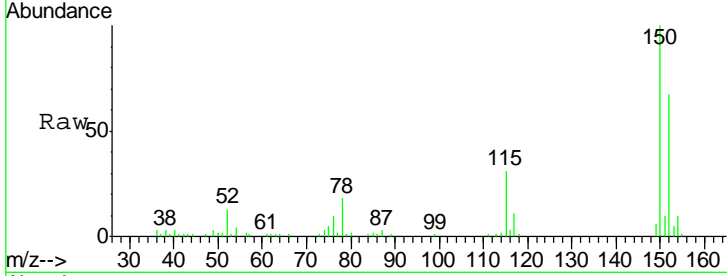
Quant Time: Jun 12 23:39:32 2015
 Quant Method : Z:\HPCHEM1\BNA_F\METHODS\8270-BF061115.M
 Quant Title : ASP BNA STANDARDS FOR 5 POINT CALIBRATION
 QLast Update : Fri Jun 12 22:57:49 2015
 Response via : Initial Calibration





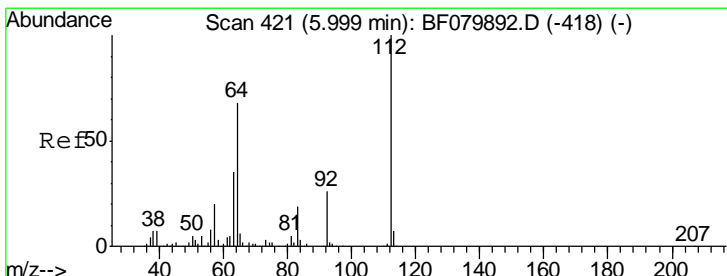
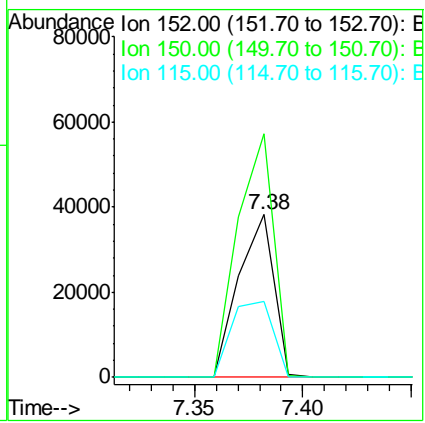
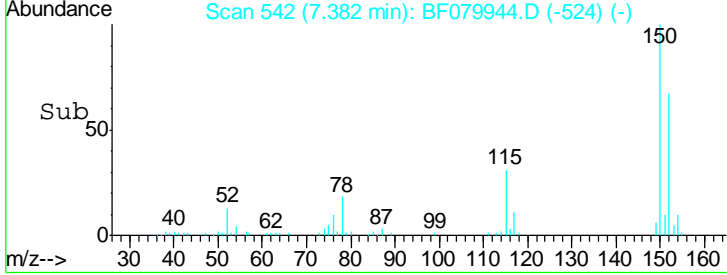
#1
 1,4-Dichlorobenzene-d4
 Concen: 20.00 ng
 RT: 7.38 min Scan# 542
 Delta R.T. 0.00 min
 Lab File: BF079944.D
 Acq: 12 Jun 2015 19:36

Instrument :
 BNA_F
ClientSampled :
 P5-26(UNFILTERED)



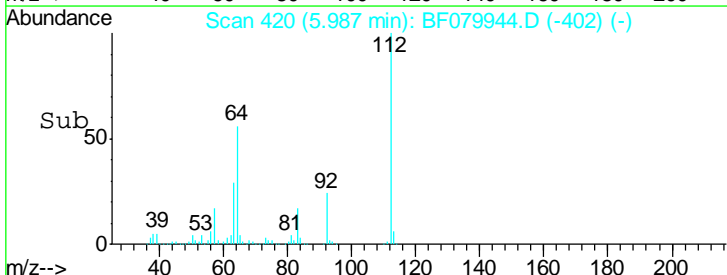
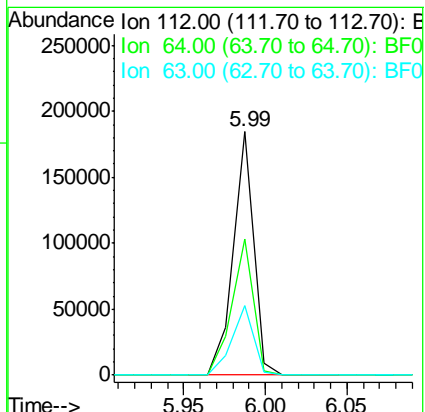
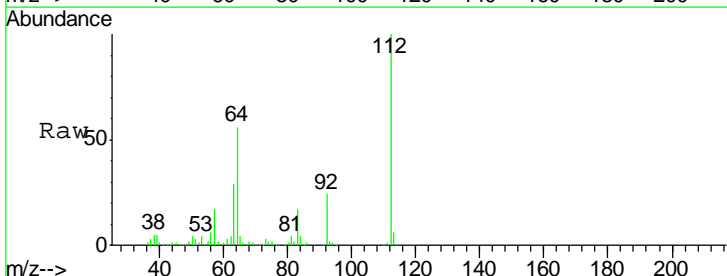
Tgt Ion	Resp	Lower	Upper
152	42985		
152	100		
150	149.6	131.0	196.4
115	46.5	49.8	74.6

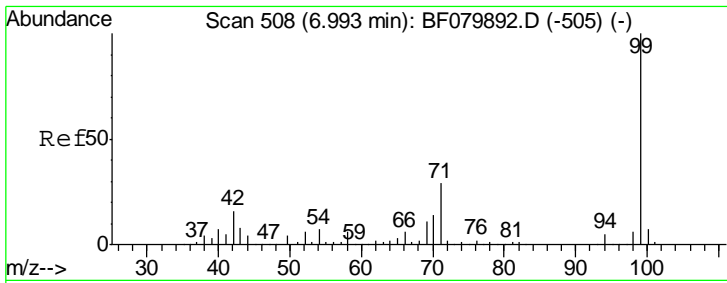
Manual Integrations
APPROVED
 apatel
 6/15/2015 12:43:49 PM



#5
 2-Fluorophenol
 Concen: 67.46 ng
 RT: 5.99 min Scan# 420
 Delta R.T. 0.00 min
 Lab File: BF079944.D
 Acq: 12 Jun 2015 19:36

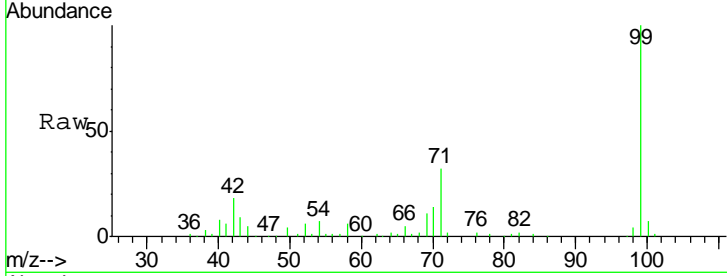
Tgt Ion	Resp	Lower	Upper
112	158135		
112	100		
64	56.0	54.5	81.7
63	28.6	27.9	41.9





#7
 Phenol-d6
 Concen: 41.36 ng
 RT: 6.97 min Scan# 506
 Delta R.T. 0.00 min
 Lab File: BF079944.D
 Acq: 12 Jun 2015 19:36

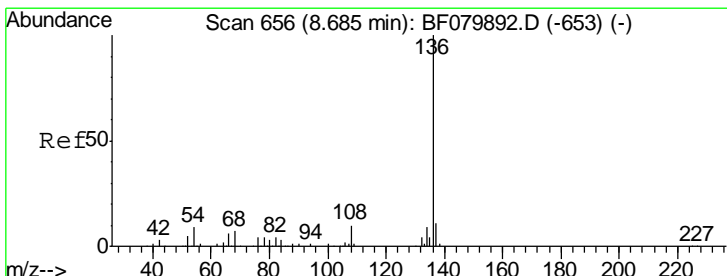
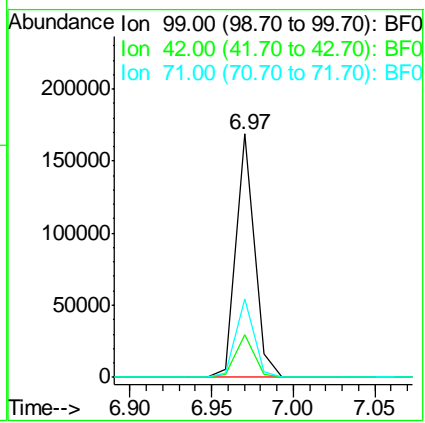
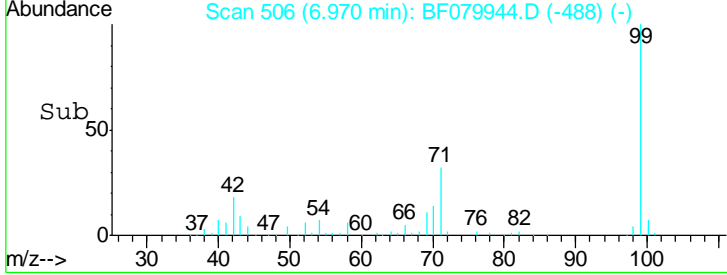
Instrument :
 BNA_F
ClientSampled :
 P5-26(UNFILTERED)



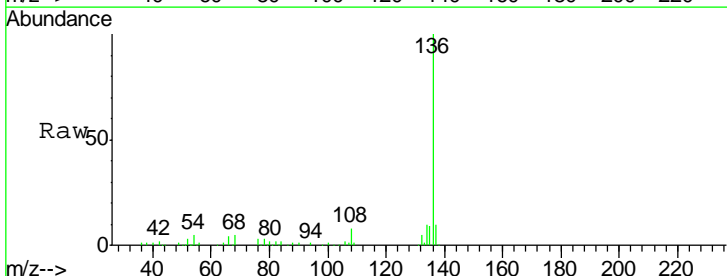
Tgt Ion: 99 Resp: 132098

Ion	Ratio	Lower	Upper
99	100		
42	17.6	12.9	19.3
71	32.4	23.4	35.2

Manual Integrations
APPROVED
 apatel
 6/15/2015 12:43:49 PM

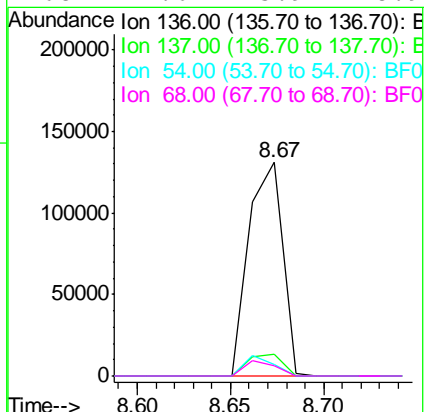
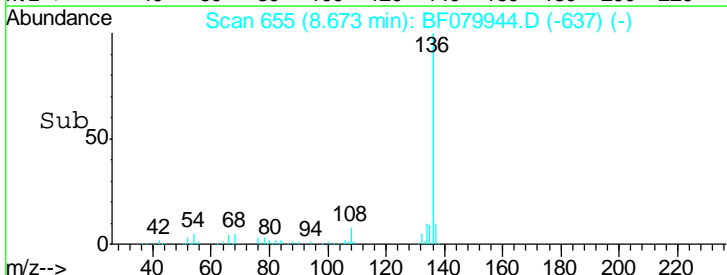


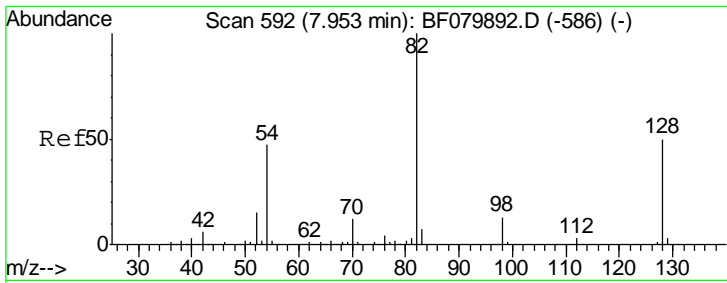
#21
 Naphthalene-d8
 Concen: 20.00 ng
 RT: 8.67 min Scan# 655
 Delta R.T. 0.00 min
 Lab File: BF079944.D
 Acq: 12 Jun 2015 19:36



Tgt Ion: 136 Resp: 164108

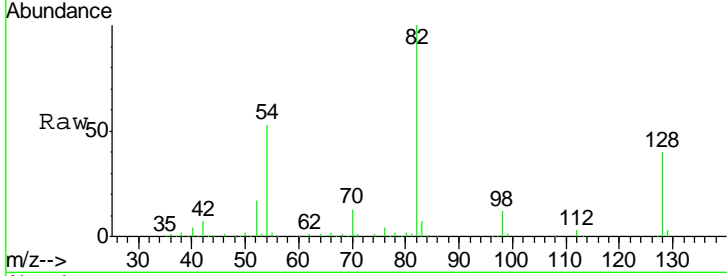
Ion	Ratio	Lower	Upper
136	100		
137	9.9	8.7	13.1
54	5.2	7.3	10.9#
68	4.6	5.9	8.9#





#23
 Nitrobenzene-d5
 Concen: 111.96 ng
 RT: 7.93 min Scan# 590
 Delta R.T. 0.00 min
 Lab File: BF079944.D
 Acq: 12 Jun 2015 19:36

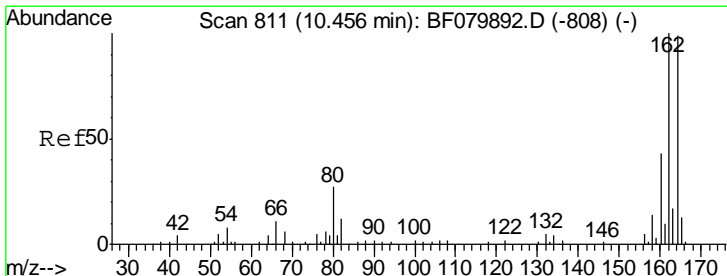
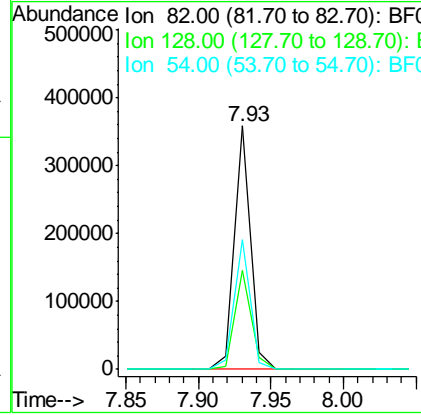
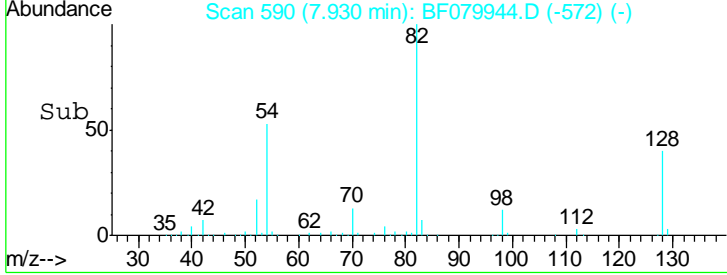
Instrument :
 BNA_F
ClientSampled :
 P5-26(UNFILTERED)



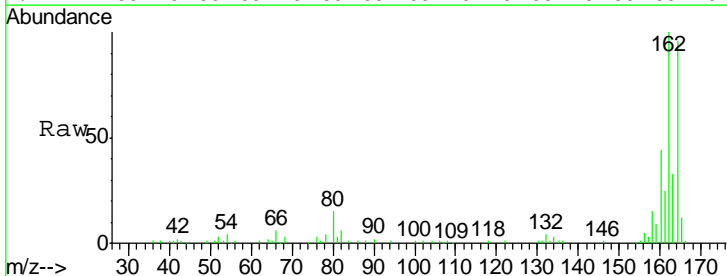
Tgt Ion: 82 Resp: 278480

Ion	Ratio	Lower	Upper
82	100		
128	40.4	40.3	60.5
54	53.2	38.0	57.0

Manual Integrations
APPROVED
 apatel
 6/15/2015 12:43:49 PM

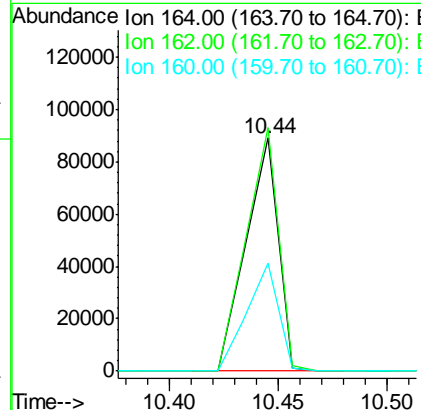
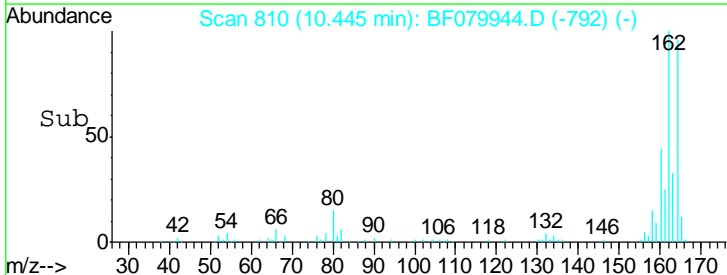


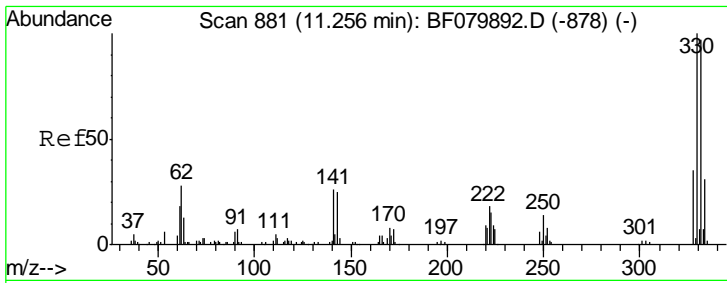
#38
 Acenaphthene-d10
 Concen: 20.00 ng
 RT: 10.44 min Scan# 810
 Delta R.T. 0.00 min
 Lab File: BF079944.D
 Acq: 12 Jun 2015 19:36



Tgt Ion: 164 Resp: 91269

Ion	Ratio	Lower	Upper
164	100		
162	104.4	80.7	121.1
160	46.5	34.6	51.8



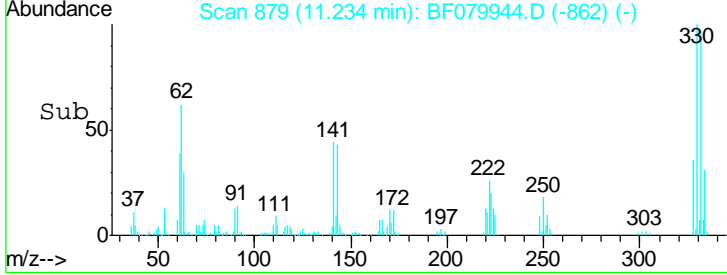
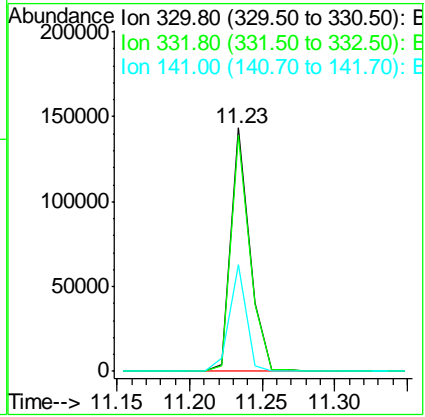
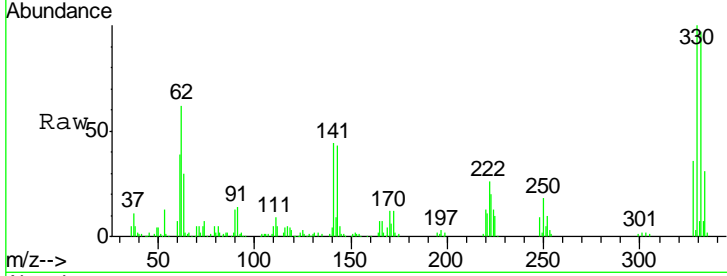


#41
 2,4,6-Tribromophenol
 Concen: 141.82 ng
 RT: 11.23 min Scan# 879
 Delta R.T. -0.01 min
 Lab File: BF079944.D
 Acq: 12 Jun 2015 19:36

Instrument :
 BNA_F
ClientSampled :
 P5-26(UNFILTERED)

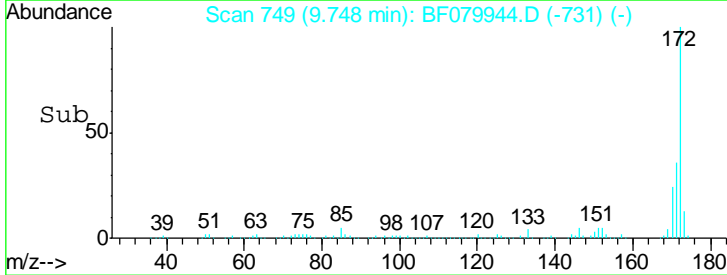
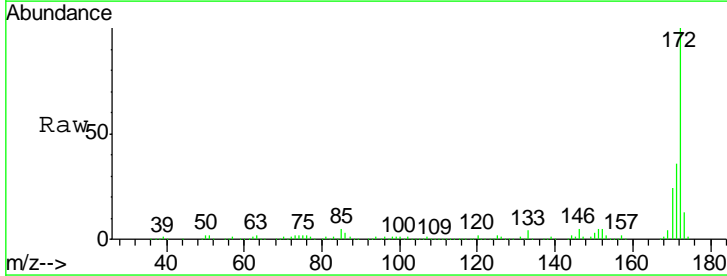
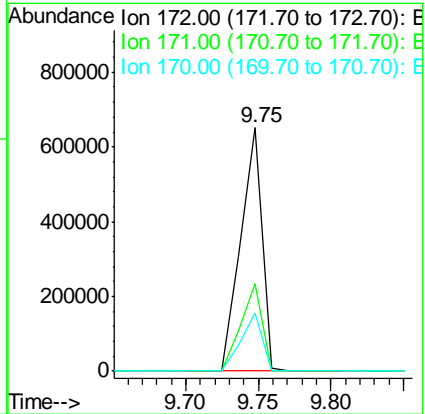
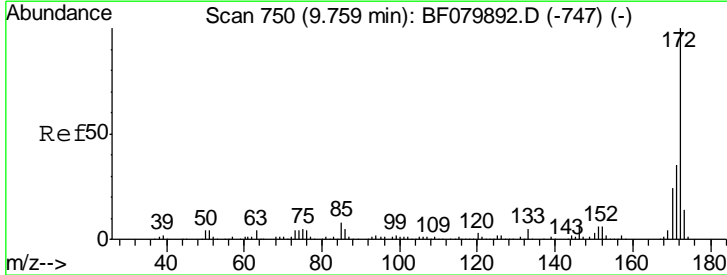
Tgt Ion	Resp	Lower	Upper
330	100		
332	96.9	77.3	115.9
141	39.4	26.8	40.2

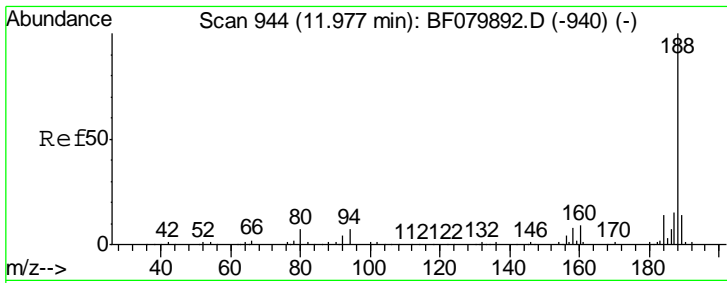
Manual Integrations
APPROVED
 apatel
 6/15/2015 12:43:49 PM



#44
 2-Fluorobiphenyl
 Concen: 101.94 ng
 RT: 9.75 min Scan# 749
 Delta R.T. 0.00 min
 Lab File: BF079944.D
 Acq: 12 Jun 2015 19:36

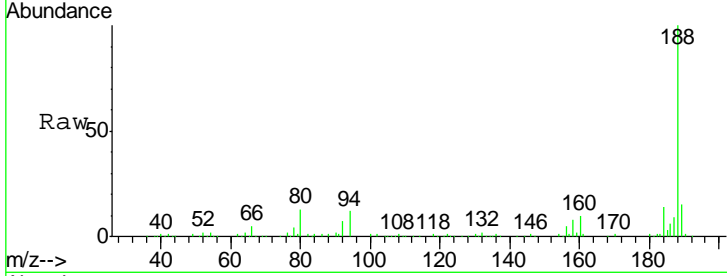
Tgt Ion	Resp	Lower	Upper
172	100		
171	35.9	28.3	42.5
170	24.0	19.0	28.4





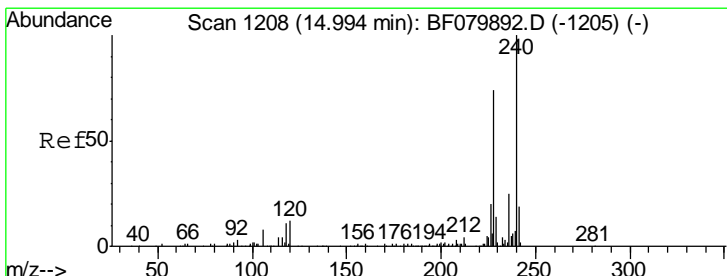
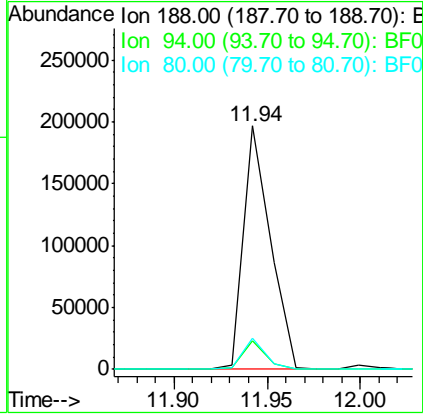
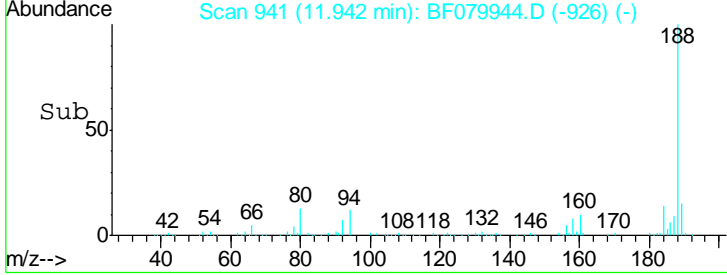
#63
 Phenanthrene-d10
 Concen: 20.00 ng
 RT: 11.94 min Scan# 941
 Delta R.T. -0.03 min
 Lab File: BF079944.D
 Acq: 12 Jun 2015 19:36

Instrument :
 BNA_F
Client Sampled :
 P5-26(UNFILTERED)

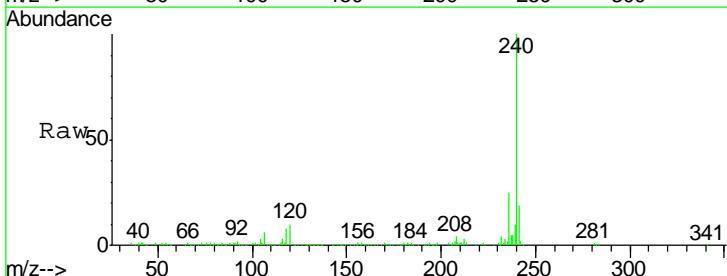


Tgt Ion	Ratio	Lower	Upper
188	100		
94	11.8	5.8	8.8#
80	13.0	5.9	8.9#

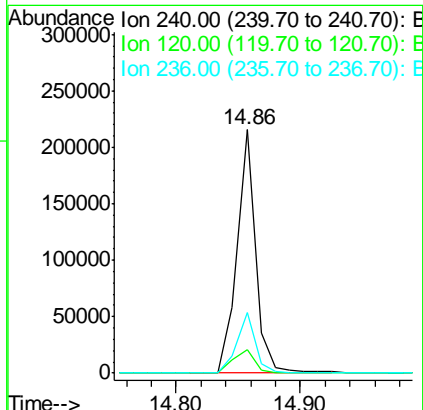
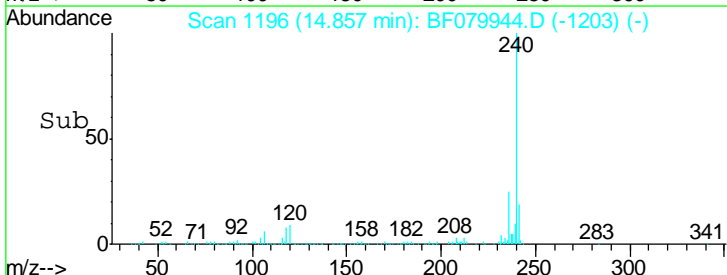
Manual Integrations
APPROVED
 apatel
 6/15/2015 12:43:49 PM

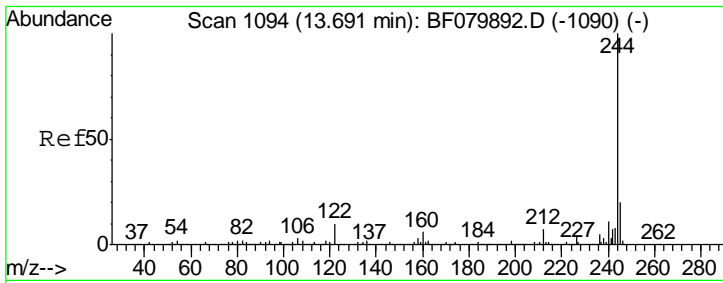


#75
 Chrysene-d12
 Concen: 20.00 ng m
 RT: 14.86 min Scan# 1196
 Delta R.T. -0.29 min
 Lab File: BF079944.D
 Acq: 12 Jun 2015 19:36



Tgt Ion	Ratio	Lower	Upper
240	100		
120	9.5	9.4	14.2
236	25.1	19.6	29.4



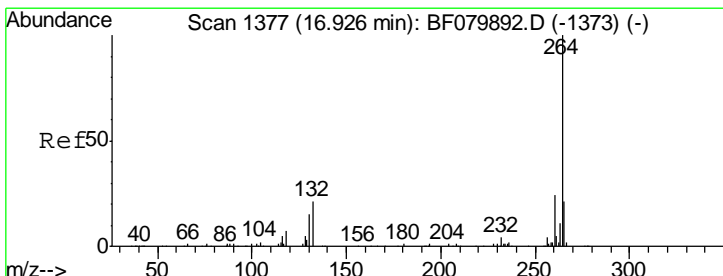
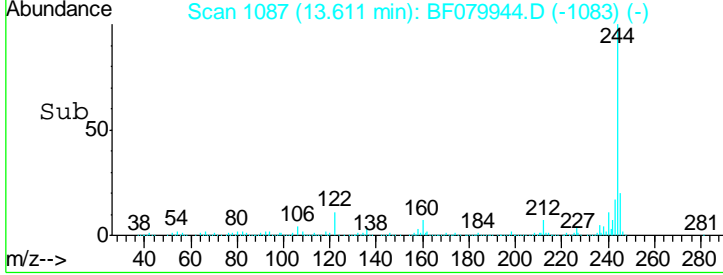
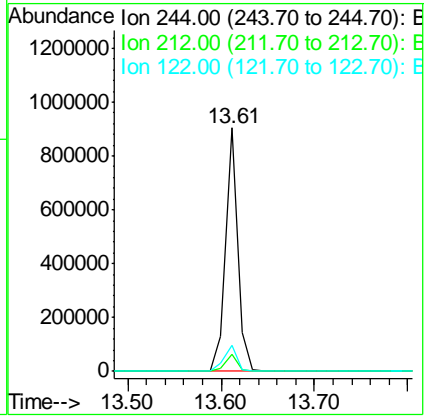
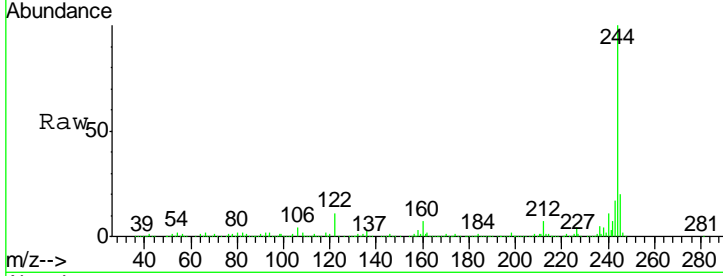


#78
 Terphenyl-d14
 Concen: 85.86 ng
 RT: 13.61 min Scan# 1087
 Delta R.T. -0.16 min
 Lab File: BF079944.D
 Acq: 12 Jun 2015 19:36

Instrument :
 BNA_F
ClientSampled :
 P5-26(UNFILTERED)

Tgt Ion	Resp	Lower	Upper
244	100		
212	6.9	5.4	8.2
122	10.8	7.8	11.8

Manual Integrations
APPROVED
 apatel
 6/15/2015 12:43:49 PM



#86
 Perylene-d12
 Concen: 20.00 ng m
 RT: 16.72 min Scan# 1359
 Delta R.T. -0.38 min
 Lab File: BF079944.D
 Acq: 12 Jun 2015 19:36

Tgt Ion	Resp	Lower	Upper
264	100		
260	23.4	19.3	28.9
265	21.2	17.0	25.6

