

Data Path : Z:\svoasrv\HPCHEM1\BNA_F\Data\BF061225\
 Data File : BF142765.D
 Acq On : 12 Jun 2025 18:57
 Operator : RC/JU
 Sample : Q2225-01 5X
 Misc :
 ALS Vial : 19 Sample Multiplier: 1

Instrument :
 BNA_F
ClientSampleId :
 SU-03-06042025

Manual Integrations
APPROVED
 Reviewed By :Rahul Chavli 06/13/2025
 Supervised By :mohammad ahmed 06/13/2025

Quant Time: Jun 13 01:00:46 2025
 Quant Method : Z:\svoasrv\HPCHEM1\BNA_F\Methods\8270-BF061125.M
 Quant Title : ASP BNA STANDARDS FOR 5 POINT CALIBRATION
 QLast Update : Wed Jun 11 05:56:09 2025
 Response via : Initial Calibration

Compound	R.T.	QIon	Response	Conc	Units	Dev(Min)	
Internal Standards							
1) 1,4-Dichlorobenzene-d4	6.892	152	45541	20.000	ng	0.00	
21) Naphthalene-d8	8.175	136	144110	20.000	ng	0.00	
39) Acenaphthene-d10	9.933	164	75141	20.000	ng	0.00	
64) Phenanthrene-d10	11.422	188	154485	20.000	ng	0.00	
76) Chrysene-d12	14.068	240	125780	20.000	ng	0.00	
86) Perylene-d12	15.562	264	90249	20.000	ng	0.00	
System Monitoring Compounds							
5) 2-Fluorophenol	5.504	112	68215	25.511	ng	0.00	
7) Phenol-d6	6.516	99	72499	23.039	ng	0.00	
23) Nitrobenzene-d5	7.451	82	41311	15.688	ng	0.00	
42) 2,4,6-Tribromophenol	10.722	330	21932	26.632	ng	0.00	
45) 2-Fluorobiphenyl	9.245	172	96492	17.061	ng	-0.01	
79) Terphenyl-d14	13.004	244	144174	15.743	ng	0.00	
Target Compounds							
58) Fluorene	10.480	166	10553	2.088	ng		Qvalue # 98
71) Phenanthrene	11.445	178	80605	9.739	ng		99
72) Anthracene	11.498	178	26149	3.054	ng		98
75) Fluoranthene	12.639	202	169791	21.575	ng		99
78) Pyrene	12.869	202	145532	12.451	ng		99
81) Benzo(a)anthracene	14.057	228	66156	7.937	ng		# 93
83) Chrysene	14.092	228	51647	6.711	ng		# 95
87) Indeno(1,2,3-cd)pyrene	17.074	276	21517	3.217	ng		95
88) Benzo(b)fluoranthene	15.127	252	50355m	9.476	ng		
89) Benzo(k)fluoranthene	15.139	252	21395m	4.150	ng		
90) Benzo(a)pyrene	15.498	252	38176	7.556	ng		# 91
92) Benzo(g,h,i)perylene	17.539	276	19188	3.534	ng		92

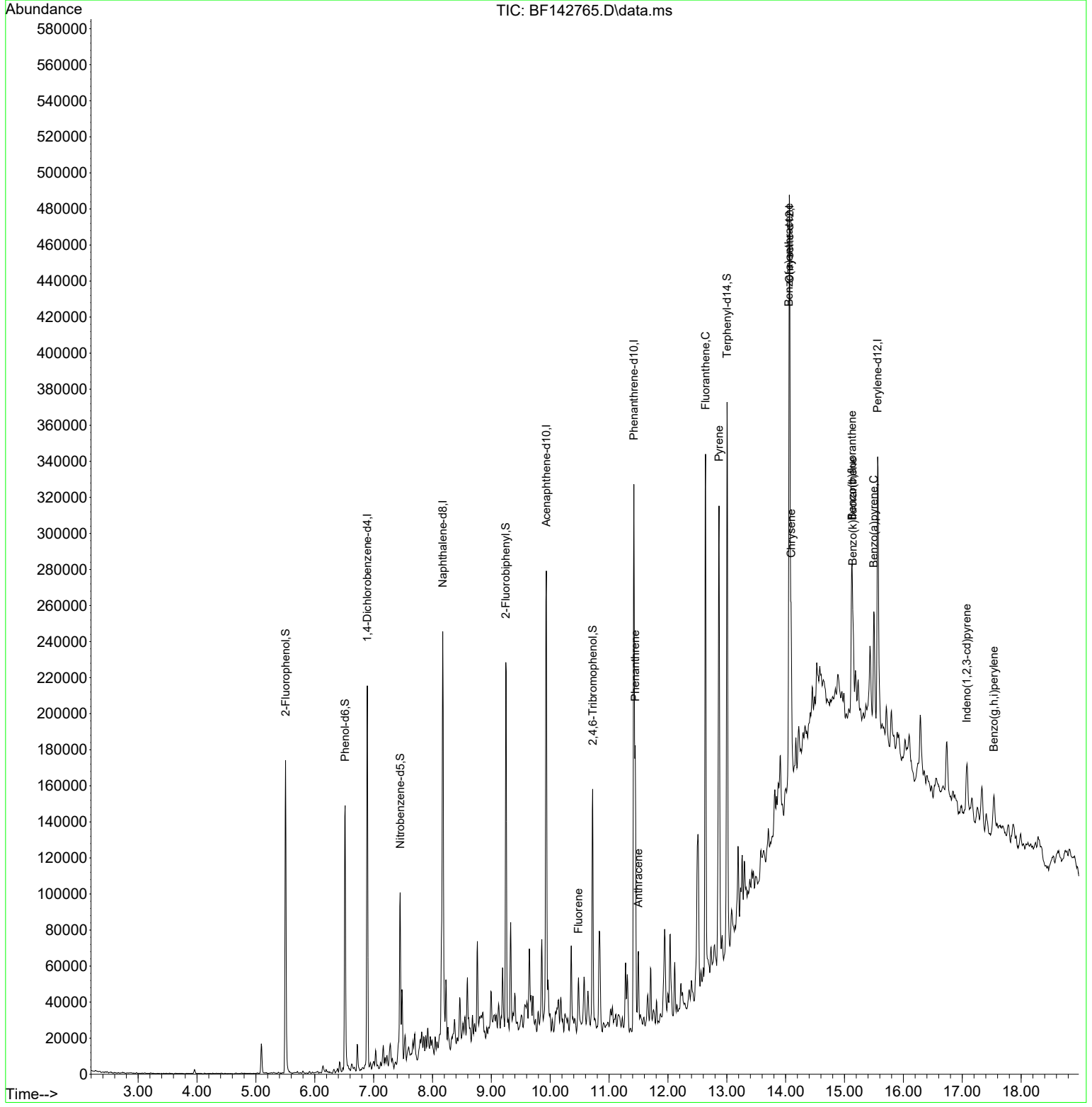
(#) = qualifier out of range (m) = manual integration (+) = signals summed

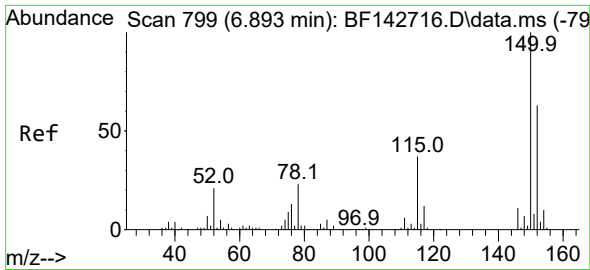
Data Path : Z:\svoasrv\HPCHEM1\BNA_F\Data\BF061225\
 Data File : BF142765.D
 Acq On : 12 Jun 2025 18:57
 Operator : RC/JU
 Sample : Q2225-01 5X
 Misc :
 ALS Vial : 19 Sample Multiplier: 1

Instrument :
 BNA_F
ClientSampleId :
 SU-03-06042025

Quant Time: Jun 13 01:00:46 2025
 Quant Method : Z:\svoasrv\HPCHEM1\BNA_F\Methods\8270-BF061125.M
 Quant Title : ASP BNA STANDARDS FOR 5 POINT CALIBRATION
 QLast Update : Wed Jun 11 05:56:09 2025
 Response via : Initial Calibration

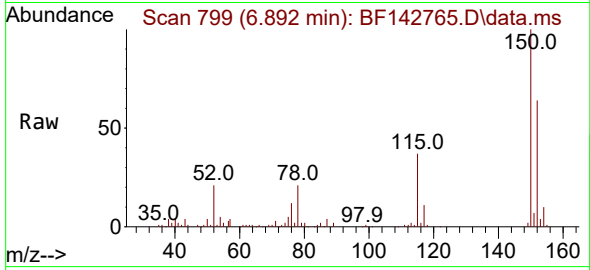
Manual Integrations
APPROVED
 Reviewed By :Rahul Chavli 06/13/2025
 Supervised By :mohammad ahmed 06/13/2025





#1
 1,4-Dichlorobenzene-d4
 Concen: 20.000 ng
 RT: 6.892 min Scan# 799
 Delta R.T. -0.001 min
 Lab File: BF142765.D
 Acq: 12 Jun 2025 18:57

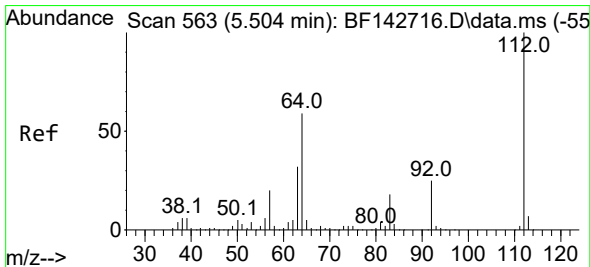
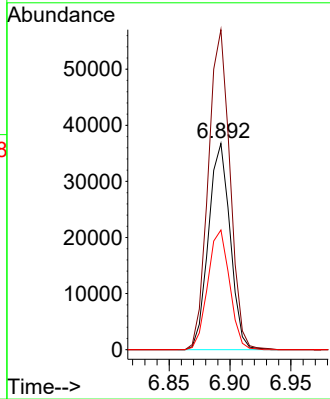
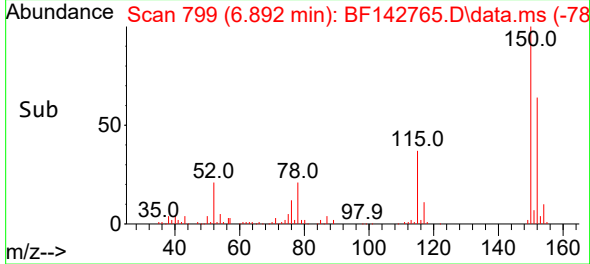
Instrument : BNA_F
 ClientSampleId : SU-03-06042025



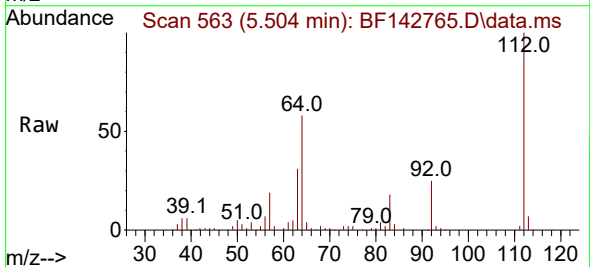
Tgt Ion:152 Resp: 4554
 Ion Ratio Lower Upper
 152 100
 150 155.1 126.9 190.3
 115 58.0 47.0 70.6

Manual Integrations
 APPROVED

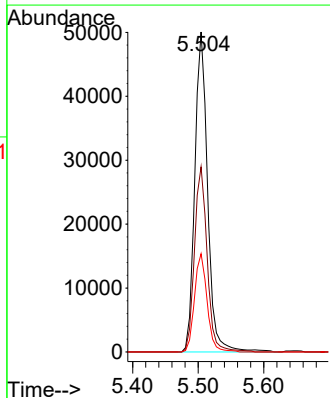
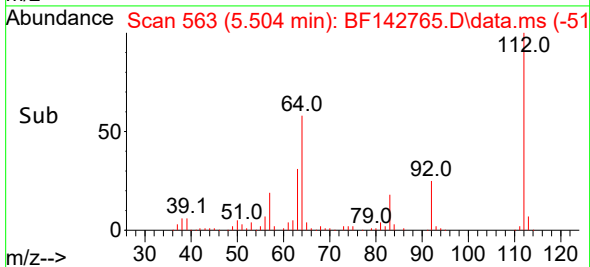
Reviewed By :Rahul Chavli 06/13/2025
 Supervised By :mohammad ahmed 06/13/2025

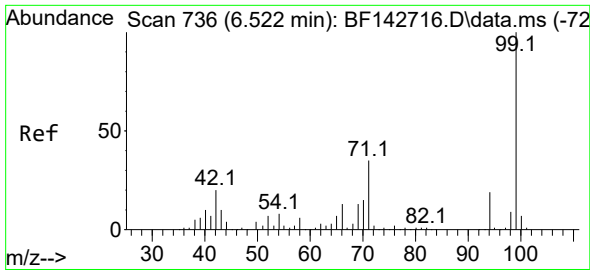


#5
 2-Fluorophenol
 Concen: 25.511 ng
 RT: 5.504 min Scan# 563
 Delta R.T. 0.000 min
 Lab File: BF142765.D
 Acq: 12 Jun 2025 18:57



Tgt Ion:112 Resp: 68215
 Ion Ratio Lower Upper
 112 100
 64 57.8 47.4 71.2
 63 30.7 25.4 38.0





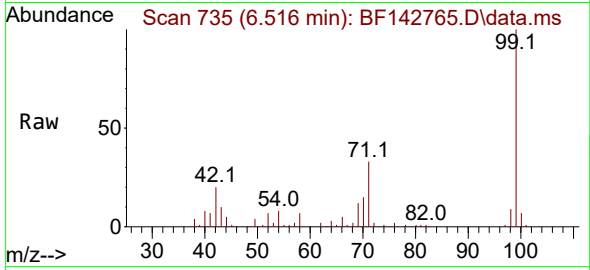
#7
 Phenol-d6
 Concen: 23.039 ng
 RT: 6.516 min Scan# 71
 Delta R.T. -0.006 min
 Lab File: BF142765.D
 Acq: 12 Jun 2025 18:57

Instrument :

BNA_F

ClientSampleId :

SU-03-06042025



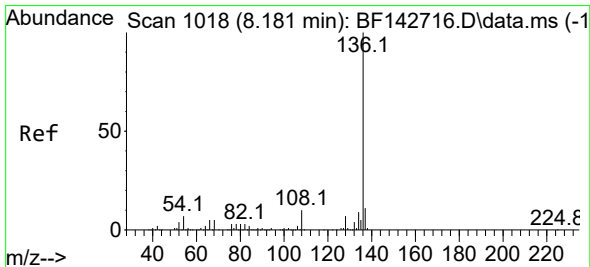
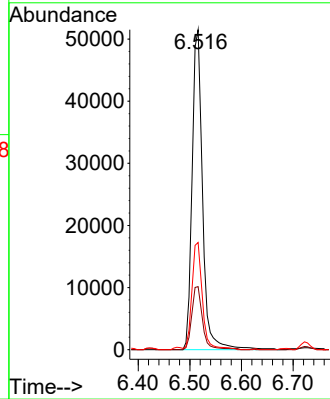
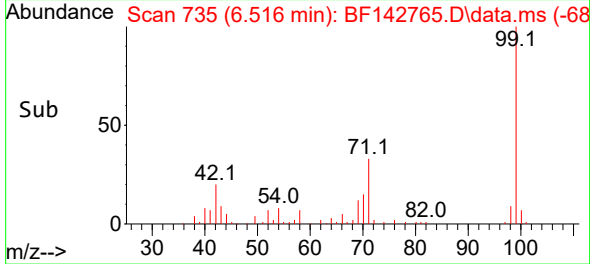
Tgt Ion: 99 Resp: 72499
 Ion Ratio Lower Upper
 99 100
 42 19.7 15.9 23.9
 71 33.5 28.0 42.0

Manual Integrations

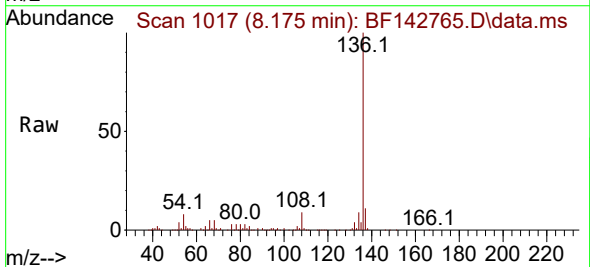
APPROVED

Reviewed By :Rahul Chavli 06/13/2025

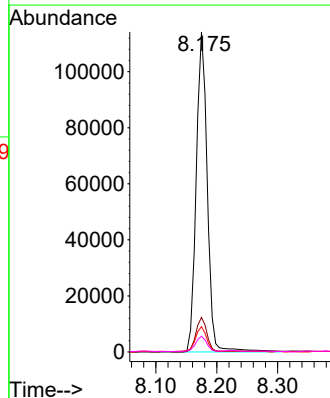
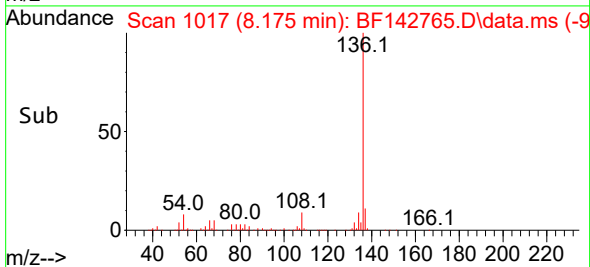
Supervised By :mohammad ahmed 06/13/2025

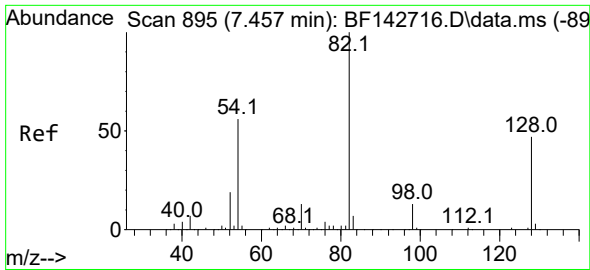


#21
 Naphthalene-d8
 Concen: 20.000 ng
 RT: 8.175 min Scan# 1017
 Delta R.T. -0.006 min
 Lab File: BF142765.D
 Acq: 12 Jun 2025 18:57



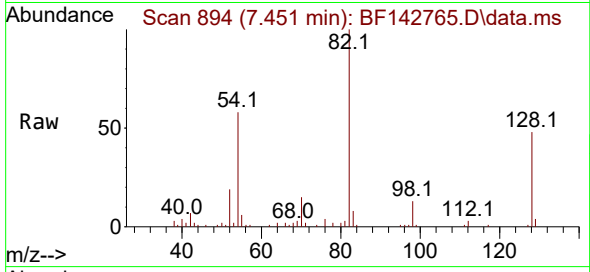
Tgt Ion:136 Resp: 144110
 Ion Ratio Lower Upper
 136 100
 137 10.8 8.7 13.1
 54 7.9 5.9 8.9
 68 4.9 3.7 5.5





#23
 Nitrobenzene-d5
 Concen: 15.688 ng
 RT: 7.451 min Scan# 894
 Delta R.T. -0.006 min
 Lab File: BF142765.D
 Acq: 12 Jun 2025 18:57

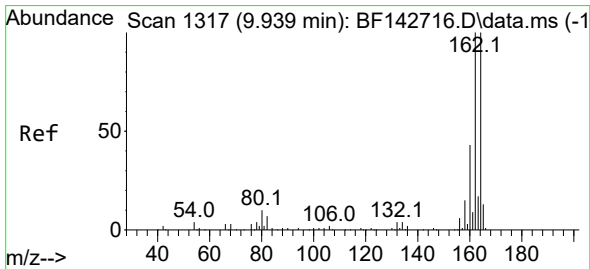
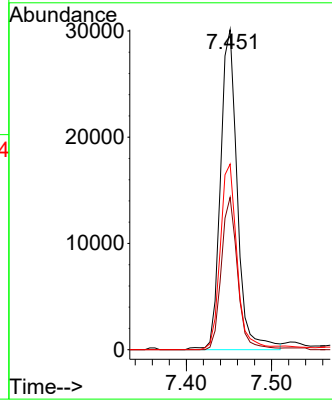
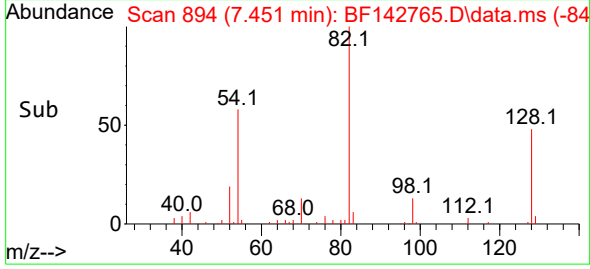
Instrument : BNA_F
 Client Sample Id : SU-03-06042025



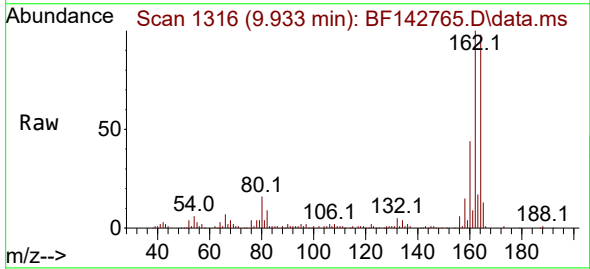
Tgt Ion: 82 Resp: 4131
 Ion Ratio Lower Upper
 82 100
 128 47.6 37.8 56.8
 54 58.0 44.9 67.3

Manual Integrations
 APPROVED

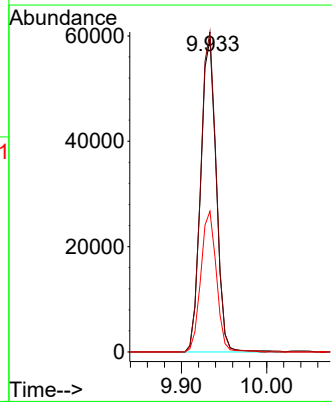
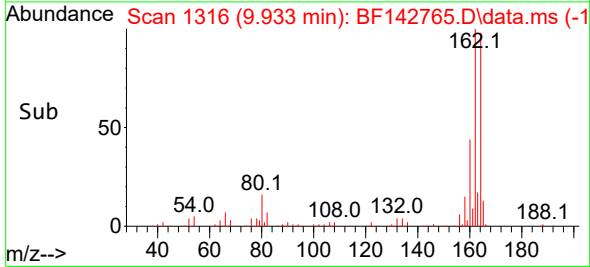
Reviewed By :Rahul Chavli 06/13/2025
 Supervised By :mohammad ahmed 06/13/2025

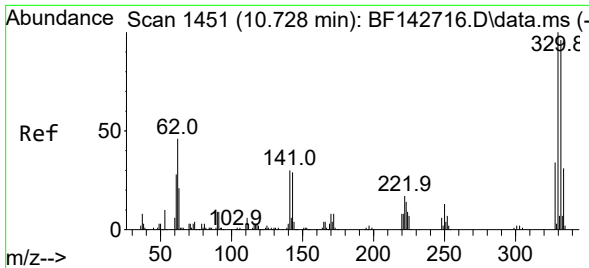


#39
 Acenaphthene-d10
 Concen: 20.000 ng
 RT: 9.933 min Scan# 1316
 Delta R.T. -0.006 min
 Lab File: BF142765.D
 Acq: 12 Jun 2025 18:57



Tgt Ion:164 Resp: 75141
 Ion Ratio Lower Upper
 164 100
 162 102.3 79.9 119.9
 160 45.0 34.8 52.2





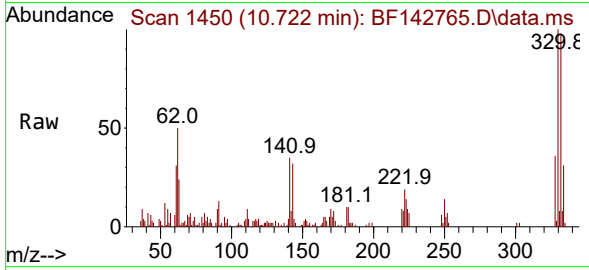
#42
 2,4,6-Tribromophenol
 Concen: 26.632 ng
 RT: 10.722 min Scan# 1450
 Delta R.T. -0.006 min
 Lab File: BF142765.D
 Acq: 12 Jun 2025 18:57

Instrument :

BNA_F

ClientSampleId :

SU-03-06042025



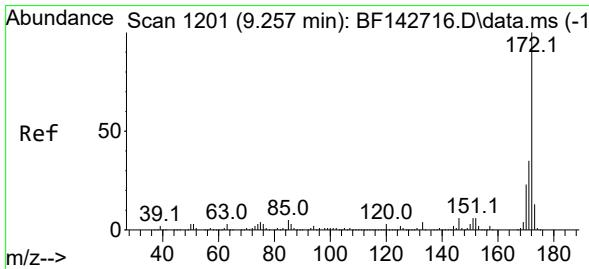
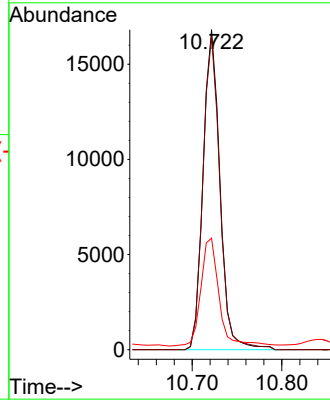
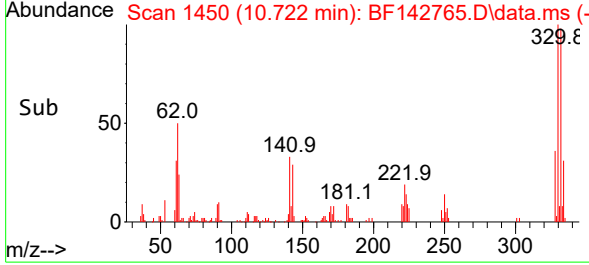
Tgt Ion: 330 Resp: 2193
 Ion Ratio Lower Upper
 330 100
 332 98.6 77.0 115.6
 141 36.1 25.4 38.0

Manual Integrations

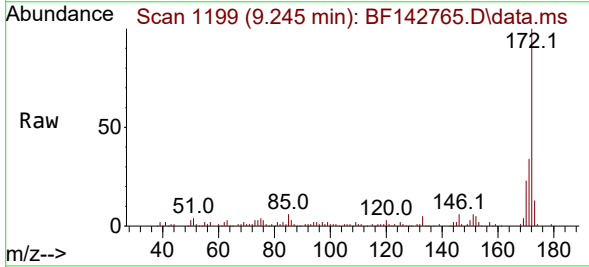
APPROVED

Reviewed By :Rahul Chavli 06/13/2025

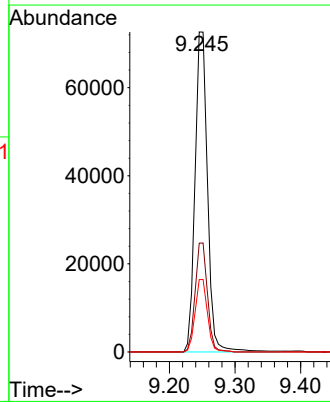
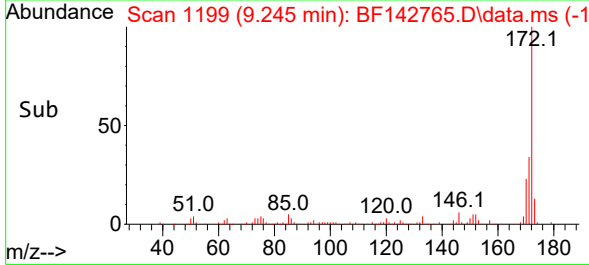
Supervised By :mohammad ahmed 06/13/2025

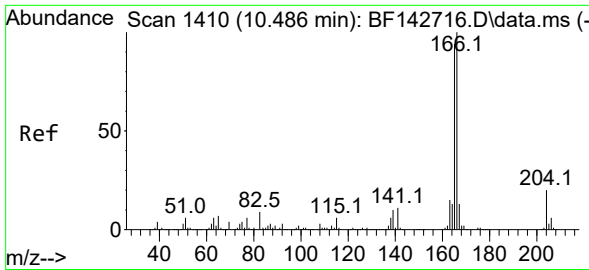


#45
 2-Fluorobiphenyl
 Concen: 17.061 ng
 RT: 9.245 min Scan# 1199
 Delta R.T. -0.012 min
 Lab File: BF142765.D
 Acq: 12 Jun 2025 18:57



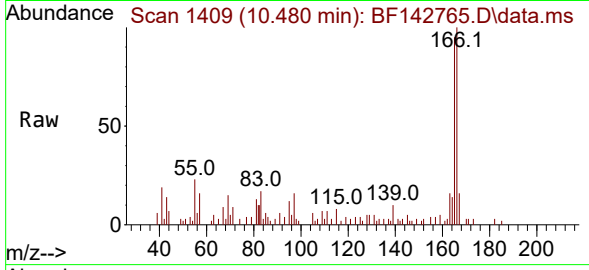
Tgt Ion: 172 Resp: 96492
 Ion Ratio Lower Upper
 172 100
 171 34.0 28.1 42.1
 170 22.6 18.6 27.8





#58
 Fluorene
 Concen: 2.088 ng
 RT: 10.480 min Scan# 1410
 Delta R.T. -0.006 min
 Lab File: BF142765.D
 Acq: 12 Jun 2025 18:57

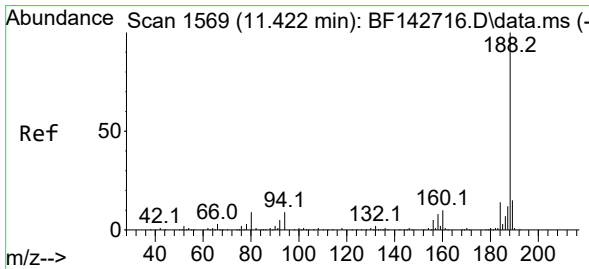
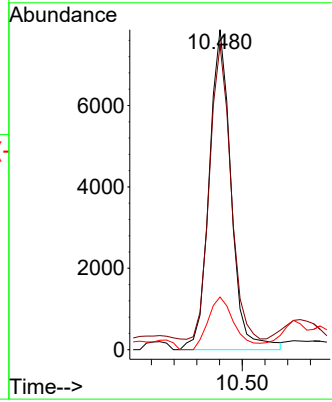
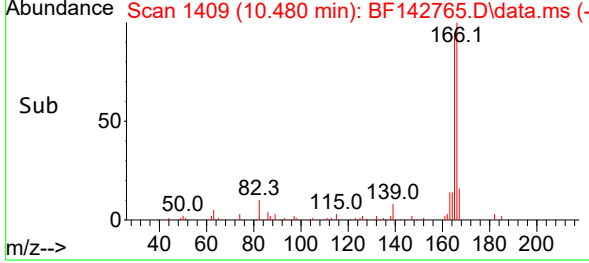
Instrument : BNA_F
 ClientSampleId : SU-03-06042025



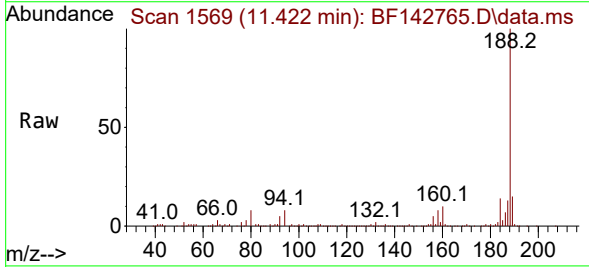
Tgt Ion:166 Resp: 1055
 Ion Ratio Lower Upper
 166 100
 165 95.2 74.9 112.3
 167 16.4 10.7 16.1

Manual Integrations
 APPROVED

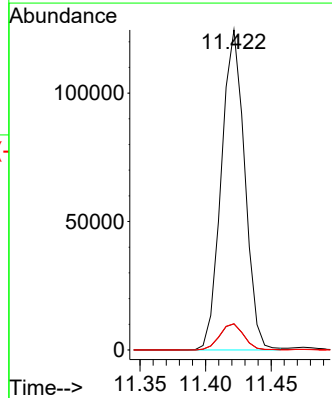
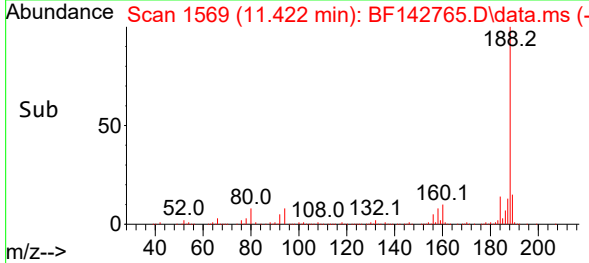
Reviewed By :Rahul Chavli 06/13/2025
 Supervised By :mohammad ahmed 06/13/2025

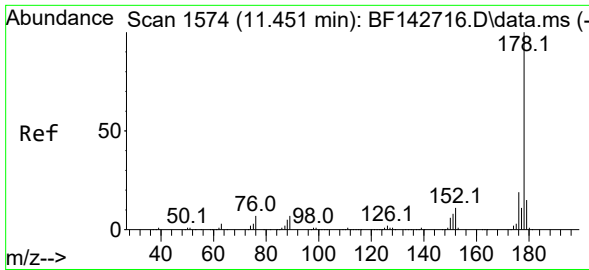


#64
 Phenanthrene-d10
 Concen: 20.000 ng
 RT: 11.422 min Scan# 1569
 Delta R.T. -0.000 min
 Lab File: BF142765.D
 Acq: 12 Jun 2025 18:57



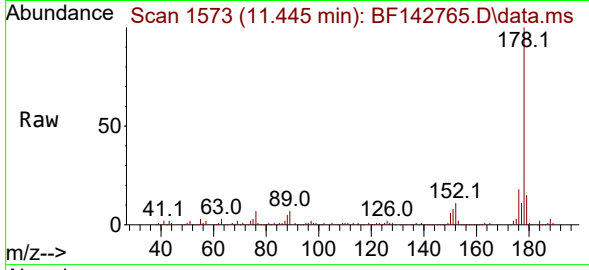
Tgt Ion:188 Resp: 154485
 Ion Ratio Lower Upper
 188 100
 94 8.2 6.8 10.2
 80 8.2 7.1 10.7





#71
 Phenanthrene
 Concen: 9.739 ng
 RT: 11.445 min Scan# 1573
 Delta R.T. -0.006 min
 Lab File: BF142765.D
 Acq: 12 Jun 2025 18:57

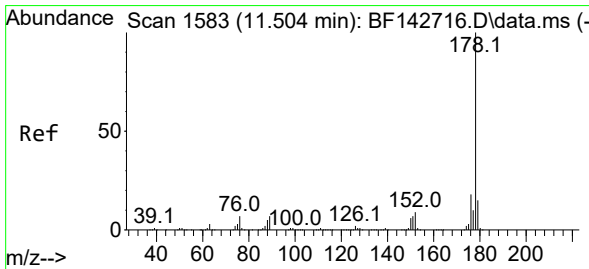
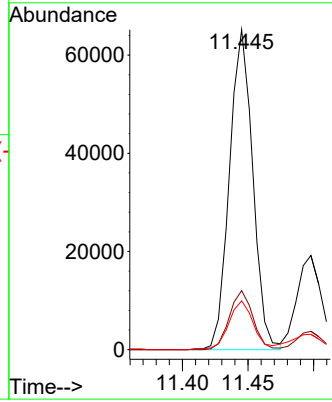
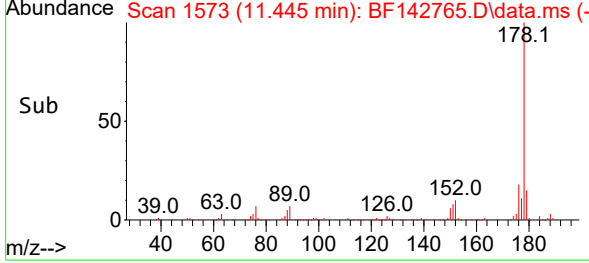
Instrument : BNA_F
 ClientSampleId : SU-03-06042025



Tgt Ion:178 Resp: 8060
 Ion Ratio Lower Upper
 178 100
 176 18.5 15.4 23.2
 179 15.3 12.2 18.4

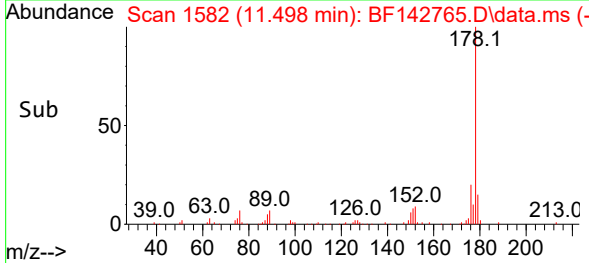
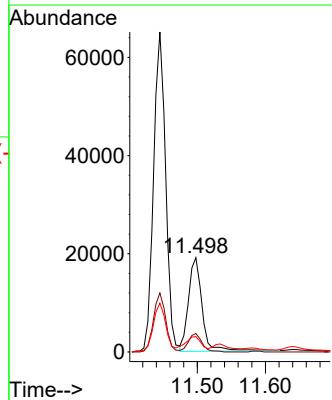
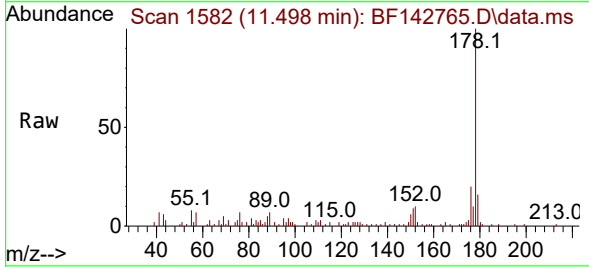
Manual Integrations
 APPROVED

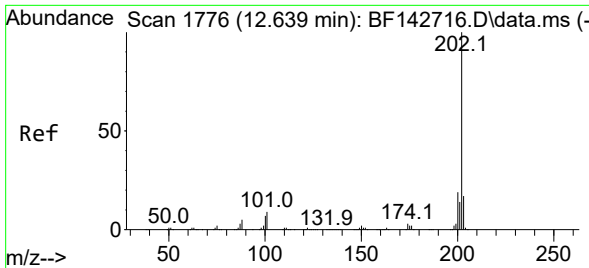
Reviewed By :Rahul Chavli 06/13/2025
 Supervised By :mohammad ahmed 06/13/2025



#72
 Anthracene
 Concen: 3.054 ng
 RT: 11.498 min Scan# 1582
 Delta R.T. -0.006 min
 Lab File: BF142765.D
 Acq: 12 Jun 2025 18:57

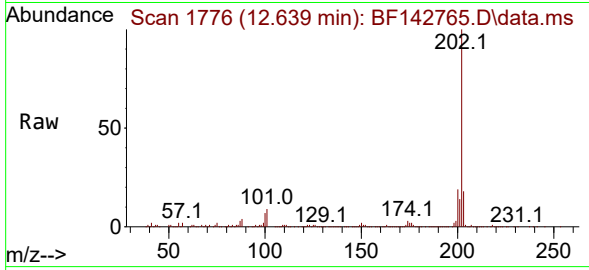
Tgt Ion:178 Resp: 26149
 Ion Ratio Lower Upper
 178 100
 176 19.6 14.8 22.2
 179 16.2 12.2 18.2





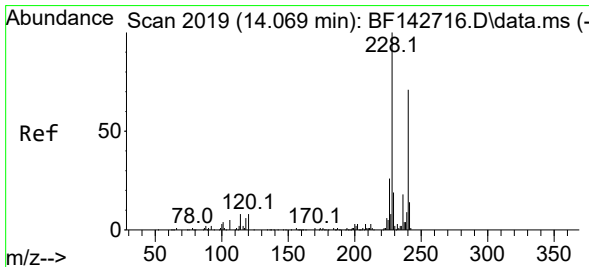
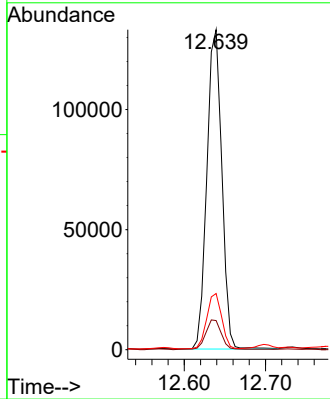
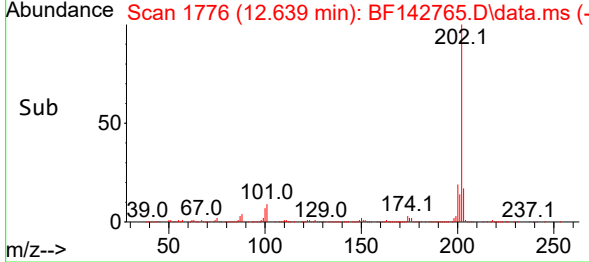
#75
 Fluoranthene
 Concen: 21.575 ng
 RT: 12.639 min Scan# 1776
 Delta R.T. -0.000 min
 Lab File: BF142765.D
 Acq: 12 Jun 2025 18:57

Instrument : BNA_F
 ClientSampleId : SU-03-06042025

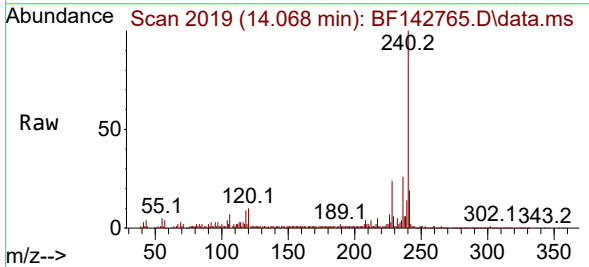


Tgt Ion:202 Resp: 16979
 Ion Ratio Lower Upper
 202 100
 101 9.1 0.0 29.5
 203 17.5 0.0 37.0

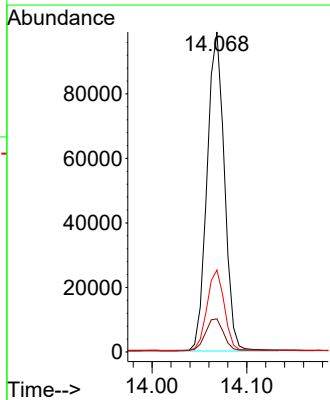
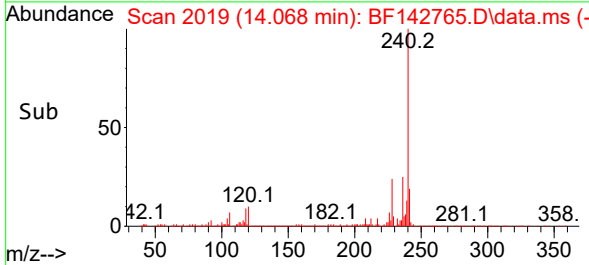
Manual Integrations
APPROVED
 Reviewed By :Rahul Chavli 06/13/2025
 Supervised By :mohammad ahmed 06/13/2025

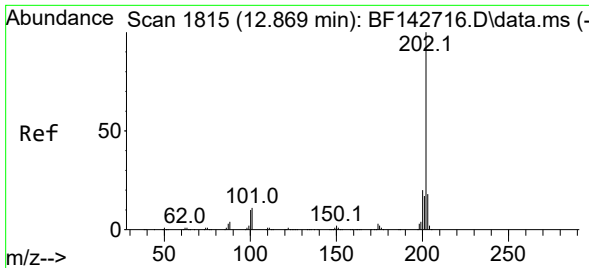


#76
 Chrysene-d12
 Concen: 20.000 ng
 RT: 14.068 min Scan# 2019
 Delta R.T. -0.000 min
 Lab File: BF142765.D
 Acq: 12 Jun 2025 18:57



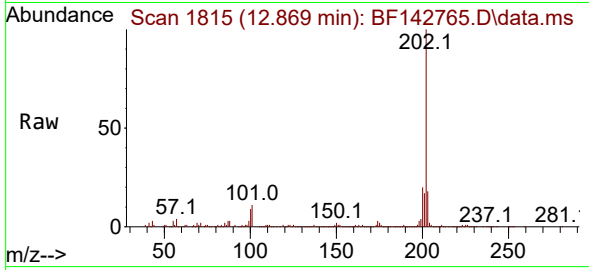
Tgt Ion:240 Resp: 125780
 Ion Ratio Lower Upper
 240 100
 120 10.4 8.5 12.7
 236 25.6 20.1 30.1





#78
 Pyrene
 Concen: 12.451 ng
 RT: 12.869 min Scan# 1815
 Delta R.T. -0.000 min
 Lab File: BF142765.D
 Acq: 12 Jun 2025 18:57

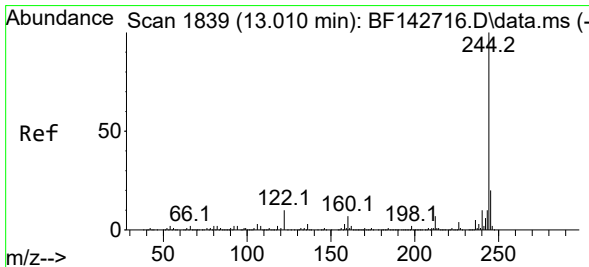
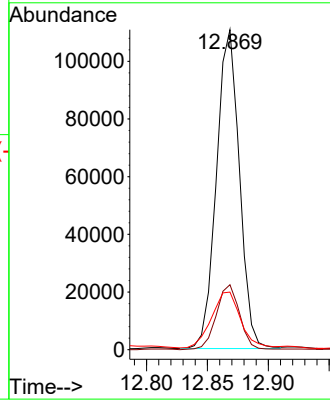
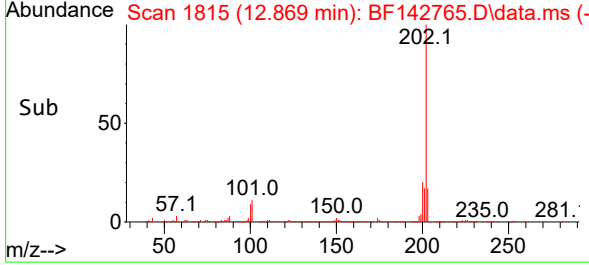
Instrument : BNA_F
 Client Sample Id : SU-03-06042025



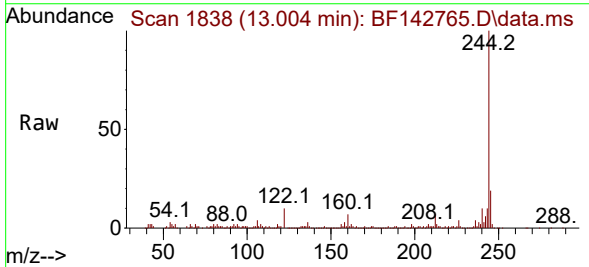
Tgt Ion: 202 Resp: 14553
 Ion Ratio Lower Upper
 202 100
 200 20.3 15.8 23.8
 203 18.0 14.1 21.1

Manual Integrations
 APPROVED

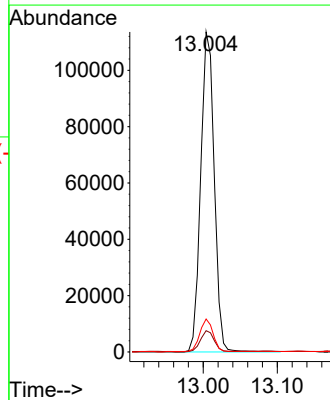
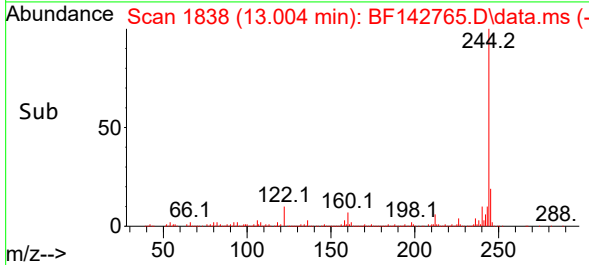
Reviewed By :Rahul Chavli 06/13/2025
 Supervised By :mohammad ahmed 06/13/2025

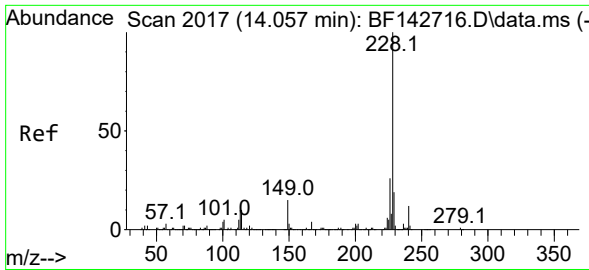


#79
 Terphenyl-d14
 Concen: 15.743 ng
 RT: 13.004 min Scan# 1838
 Delta R.T. -0.006 min
 Lab File: BF142765.D
 Acq: 12 Jun 2025 18:57



Tgt Ion: 244 Resp: 144174
 Ion Ratio Lower Upper
 244 100
 212 6.6 5.4 8.0
 122 10.3 8.3 12.5





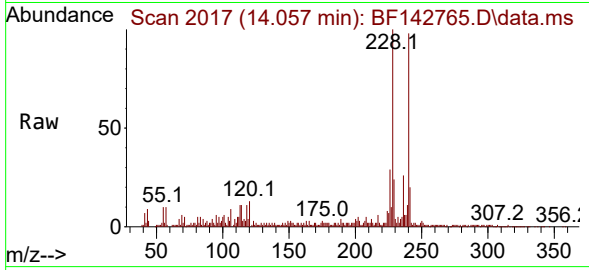
#81
 Benzo(a)anthracene
 Concen: 7.937 ng
 RT: 14.057 min Scan# 20
 Delta R.T. -0.000 min
 Lab File: BF142765.D
 Acq: 12 Jun 2025 18:57

Instrument :

BNA_F

ClientSampleId :

SU-03-06042025



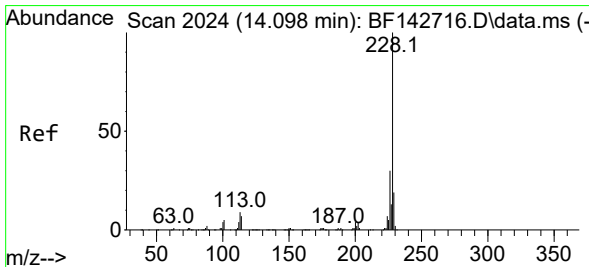
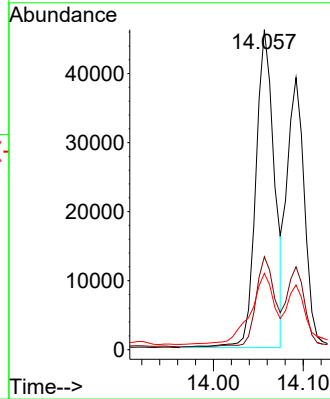
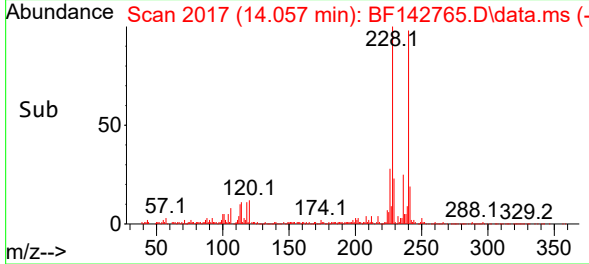
Tgt Ion:228 Resp: 66150
 Ion Ratio Lower Upper
 228 100
 226 29.1 21.0 31.4
 229 23.8 15.5 23.3

Manual Integrations

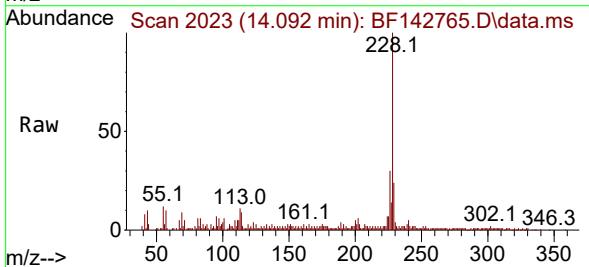
APPROVED

Reviewed By :Rahul Chavli 06/13/2025

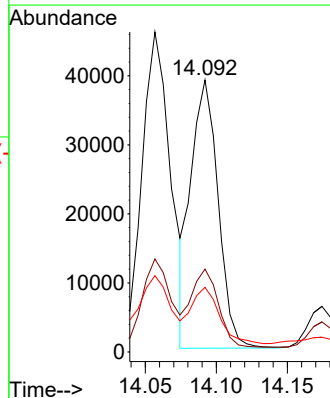
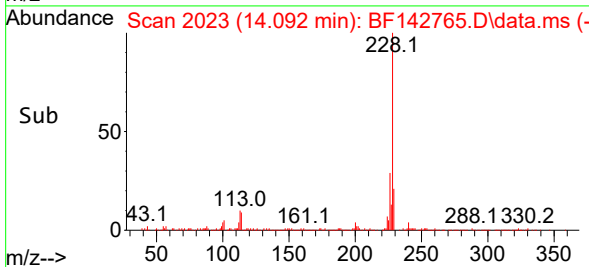
Supervised By :mohammad ahmed 06/13/2025

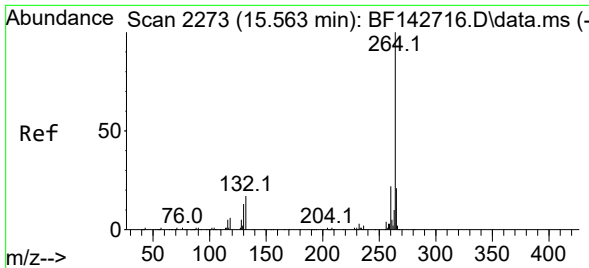


#83
 Chrysene
 Concen: 6.711 ng
 RT: 14.092 min Scan# 2023
 Delta R.T. -0.006 min
 Lab File: BF142765.D
 Acq: 12 Jun 2025 18:57



Tgt Ion:228 Resp: 51647
 Ion Ratio Lower Upper
 228 100
 226 30.5 23.6 35.4
 229 23.8 15.5 23.3





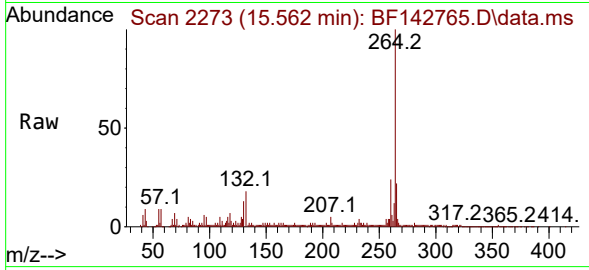
#86
 Perylene-d12
 Concen: 20.000 ng
 RT: 15.562 min Scan# 21
 Delta R.T. -0.000 min
 Lab File: BF142765.D
 Acq: 12 Jun 2025 18:57

Instrument :

BNA_F

ClientSampleId :

SU-03-06042025



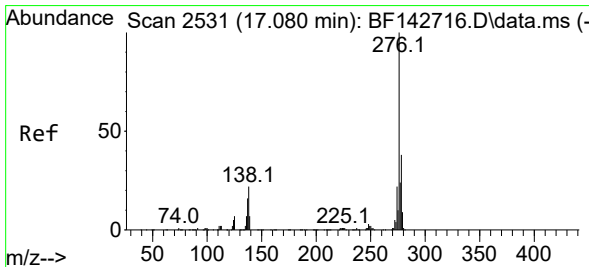
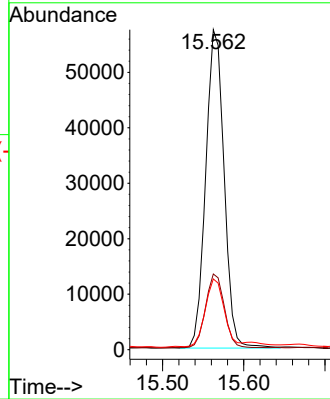
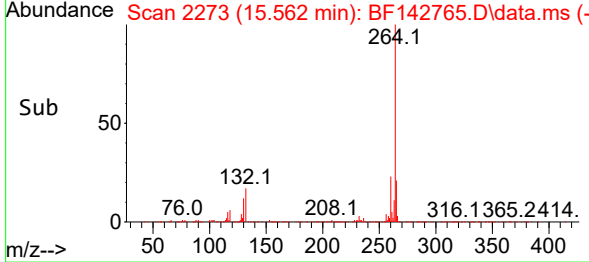
Tgt Ion:264 Resp: 90249
 Ion Ratio Lower Upper
 264 100
 260 23.7 17.8 26.6
 265 22.1 16.6 25.0

Manual Integrations

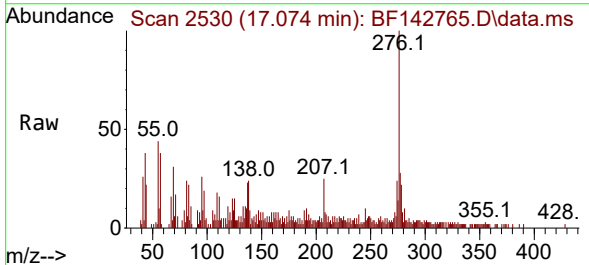
APPROVED

Reviewed By :Rahul Chavli 06/13/2025

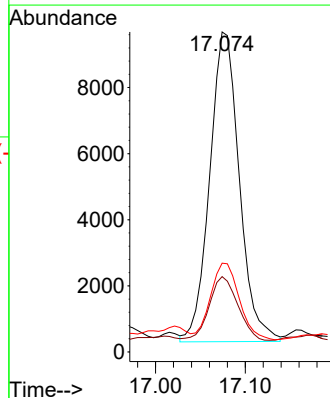
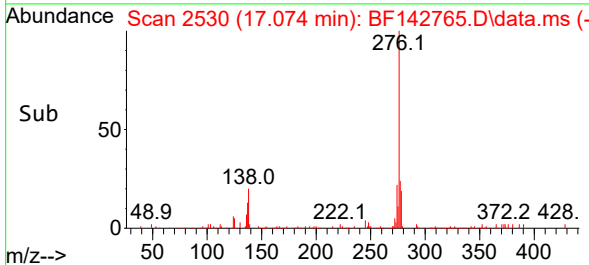
Supervised By :mohammad ahmed 06/13/2025

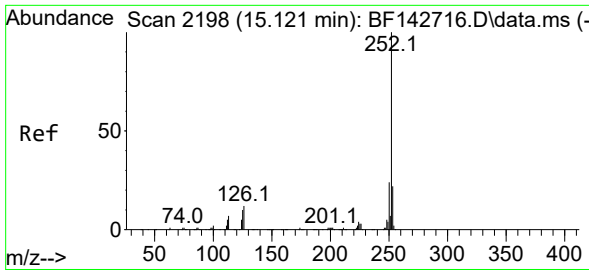


#87
 Indeno(1,2,3-cd)pyrene
 Concen: 3.217 ng
 RT: 17.074 min Scan# 2530
 Delta R.T. -0.006 min
 Lab File: BF142765.D
 Acq: 12 Jun 2025 18:57



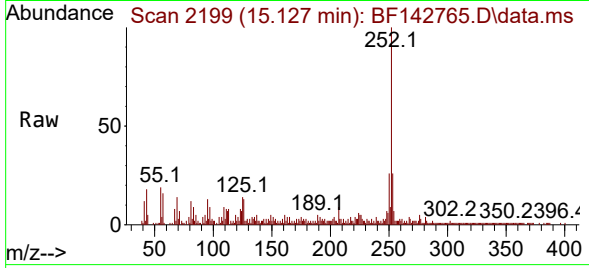
Tgt Ion:276 Resp: 21517
 Ion Ratio Lower Upper
 276 100
 138 19.8 19.3 28.9
 277 24.0 20.2 30.2





#88
 Benzo(b)fluoranthene
 Concen: 9.476 ng m
 RT: 15.127 min Scan# 2198
 Delta R.T. 0.006 min
 Lab File: BF142765.D
 Acq: 12 Jun 2025 18:57

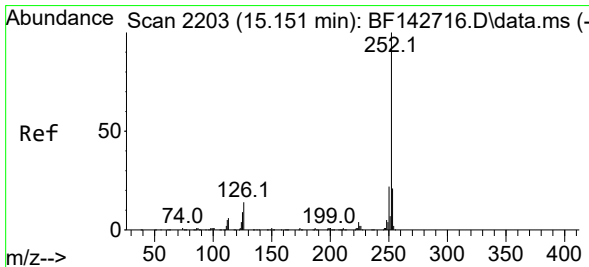
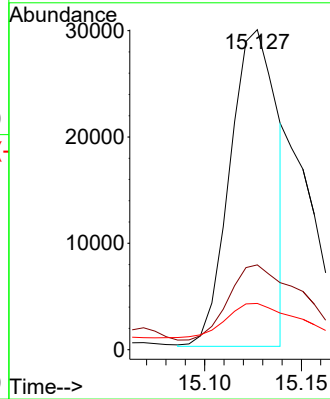
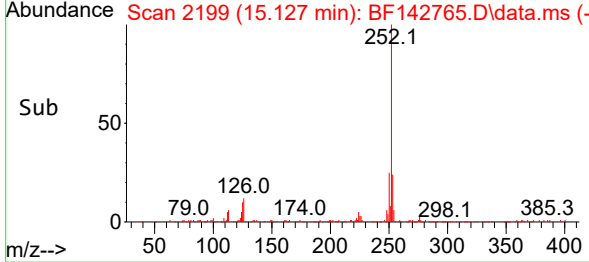
Instrument : BNA_F
 ClientSampleId : SU-03-06042025



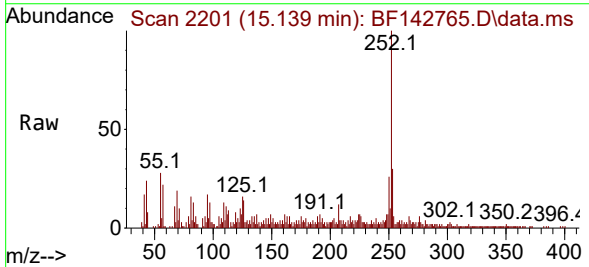
Tgt Ion:252 Resp: 5035
 Ion Ratio Lower Upper
 252 100
 253 26.5 17.7 26.5
 125 14.5 7.8 11.6

Manual Integrations
 APPROVED

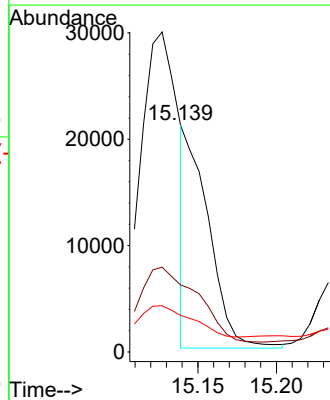
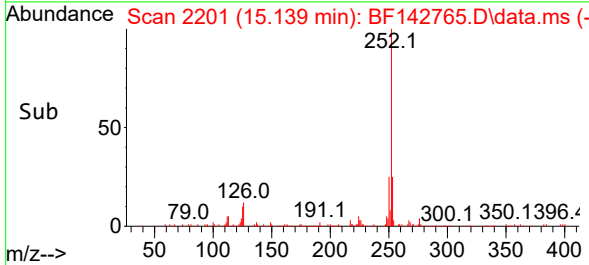
Reviewed By :Rahul Chavli 06/13/2025
 Supervised By :mohammad ahmed 06/13/2025

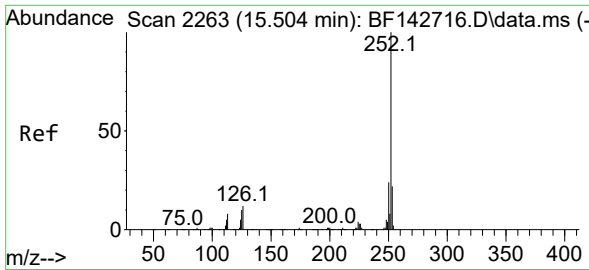


#89
 Benzo(k)fluoranthene
 Concen: 4.150 ng m
 RT: 15.139 min Scan# 2201
 Delta R.T. -0.012 min
 Lab File: BF142765.D
 Acq: 12 Jun 2025 18:57



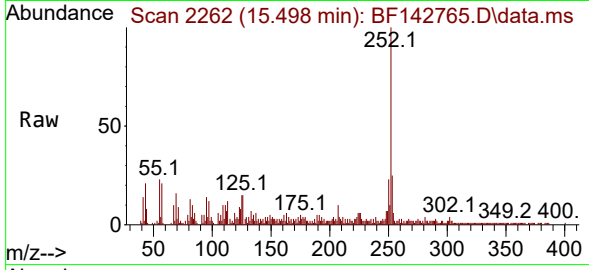
Tgt Ion:252 Resp: 21395
 Ion Ratio Lower Upper
 252 100
 253 29.6 17.3 25.9#
 125 16.2 7.5 11.3#





#90
 Benzo(a)pyrene
 Concen: 7.556 ng
 RT: 15.498 min Scan# 210
 Delta R.T. -0.006 min
 Lab File: BF142765.D
 Acq: 12 Jun 2025 18:57

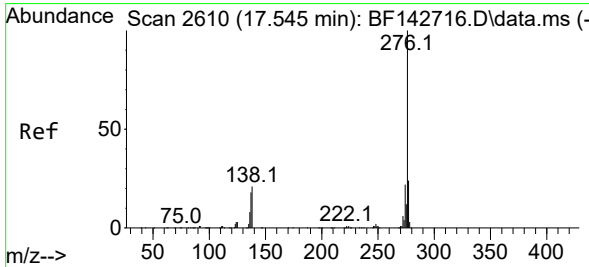
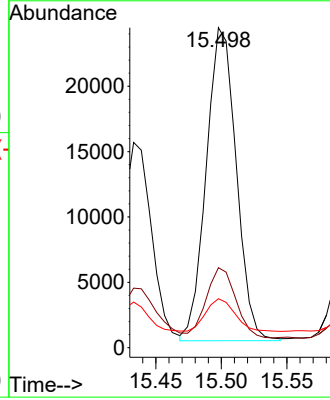
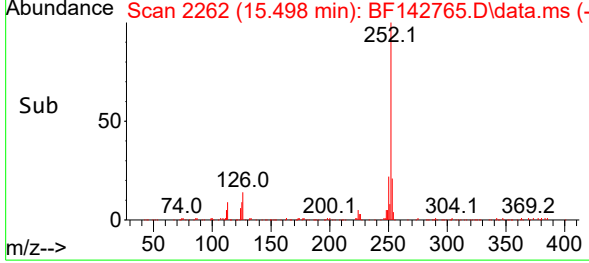
Instrument :
 BNA_F
 ClientSampleId :
 SU-03-06042025



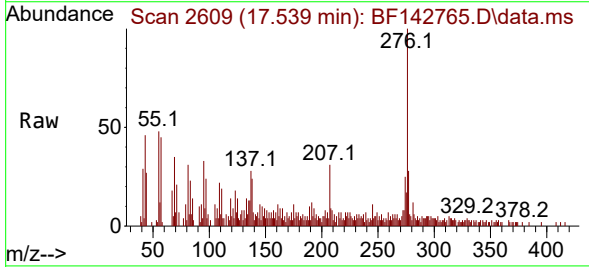
Tgt Ion:252 Resp: 38170
 Ion Ratio Lower Upper
 252 100
 253 25.0 17.3 25.9
 125 15.3 8.0 12.0

Manual Integrations
APPROVED

Reviewed By :Rahul Chavli 06/13/2025
 Supervised By :mohammad ahmed 06/13/2025



#92
 Benzo(g,h,i)perylene
 Concen: 3.534 ng
 RT: 17.539 min Scan# 2609
 Delta R.T. -0.006 min
 Lab File: BF142765.D
 Acq: 12 Jun 2025 18:57



Tgt Ion:276 Resp: 19188
 Ion Ratio Lower Upper
 276 100
 277 27.6 18.8 28.2
 138 24.3 16.4 24.6

