

Data Path : Z:\SVOASRV\HPCHEM1\BNA_F\DATA\BF061518\
 Data File : BF106519.D
 Acq On : 16 Jun 2018 4:18
 Operator : JU/SJ
 Sample : J3449-05
 Misc :
 ALS Vial : 32 Sample Multiplier: 1

Instrument :
 BNA_F
 ClientSampleId :
 W-22

Quant Time: Jun 16 05:49:29 2018
 Quant Method : Z:\SVOASRV\HPCHEM1\BNA_F\METHODS\8270-BF061118.M
 Quant Title : ASP BNA STANDARDS FOR 5 POINT CALIBRATION
 QLast Update : Fri Jun 15 11:11:47 2018
 Response via : Initial Calibration

Internal Standards	R.T.	QIon	Response	Conc	Units	Dev(Min)
1) 1,4-Dichlorobenzene-d4	6.97	152	103192	20.00	ng	0.00
21) Naphthalene-d8	8.25	136	345141	20.00	ng	0.00
38) Acenaphthene-d10	10.01	164	131656	20.00	ng	0.00
63) Phenanthrene-d10	11.49	188	252764	20.00	ng	0.00
75) Chrysene-d12	14.15	240	280448	20.00	ng	0.00
86) Perylene-d12	15.68	264	195597	20.00	ng	0.00

System Monitoring Compounds

5) 2-Fluorophenol	5.61	112	346315	56.80	ng	0.00
7) Phenol-d6	6.61	99	261163	33.90	ng	0.00
23) Nitrobenzene-d5	7.53	82	518572	88.39	ng	0.00
41) 2,4,6-Tribromophenol	10.80	330	176184	139.08	ng	0.00
44) 2-Fluorobiphenyl	9.32	172	799244	123.81	ng	0.00
78) Terphenyl-d14	13.08	244	959780	85.00	ng	0.00

Target Compounds

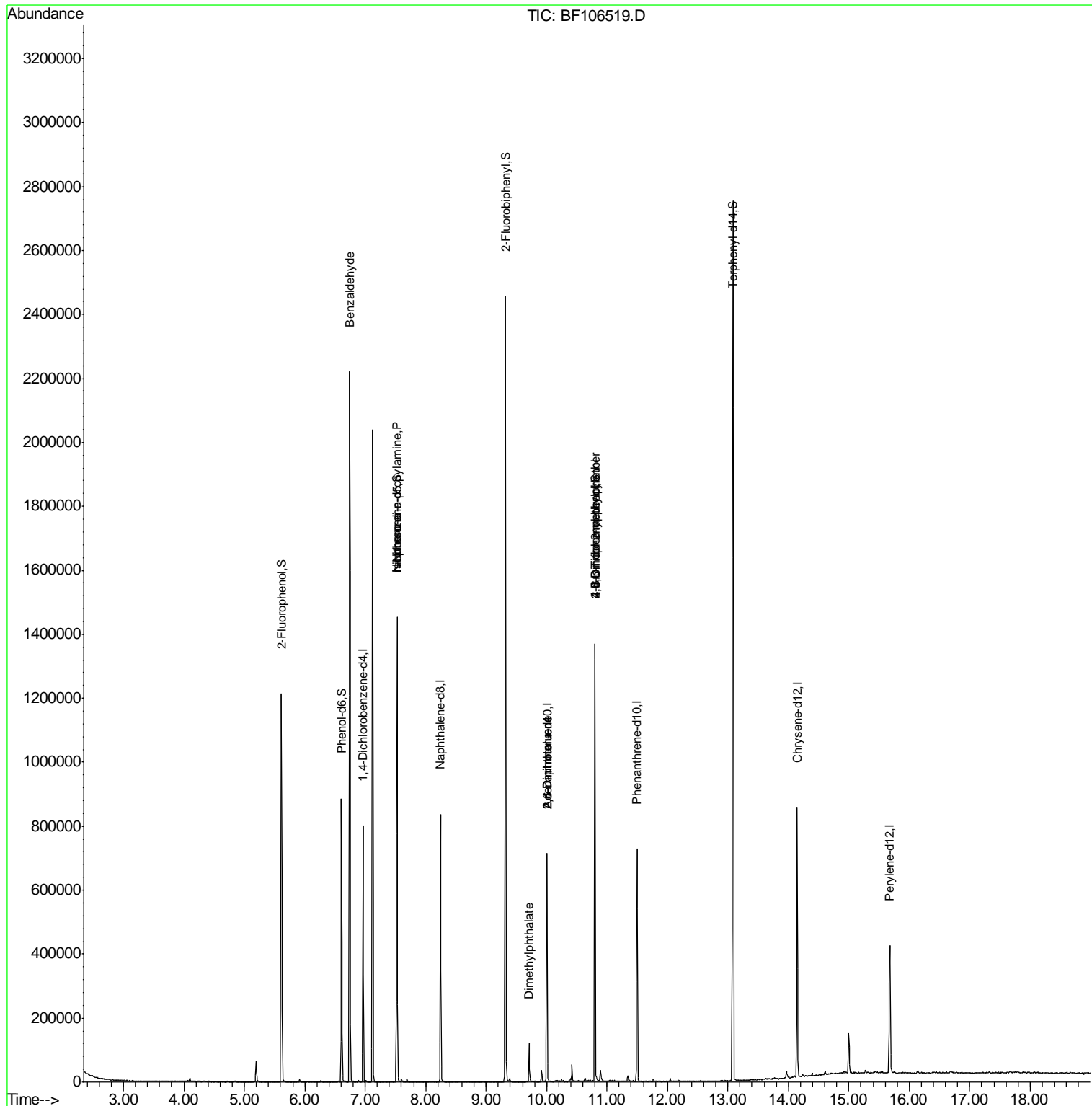
						Qvalue
9) Benzaldehyde	6.74	77	12635	2.162	ng	86
19) n-Nitroso-di-n-propylamine	7.52	70	69917	12.098	ng	# 76
25) Isophorone	7.53	82	518568	45.253	ng	# 64
49) Dimethylphthalate	9.71	163	47711	5.072	ng	99
50) 2,6-Dinitrotoluene	10.01	165	15914	8.283	ng	# 25
56) 2,4-Dinitrotoluene	10.01	165	15914	6.596	ng	# 23
64) 4,6-Dinitro-2-methylphenol	10.79	198	248	6.453	ng	# 1
66) 4-Bromophenyl-phenylether	10.80	248	11803	4.106	ng	# 1

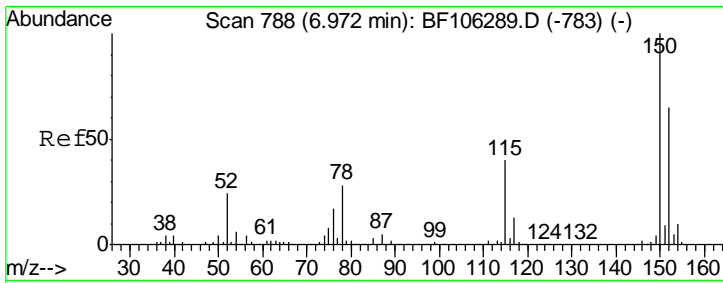
(#) = qualifier out of range (m) = manual integration (+) = signals summed

Data Path : Z:\SVOASRV\HPCHEM1\BNA_F\DATA\BF061518\
 Data File : BF106519.D
 Acq On : 16 Jun 2018 4:18
 Operator : JU/SJ
 Sample : J3449-05
 Misc :
 ALS Vial : 32 Sample Multiplier: 1

Instrument :
 BNA_F
 Client Sampled :
 W-22

Quant Time: Jun 16 05:49:29 2018
 Quant Method : Z:\SVOASRV\HPCHEM1\BNA_F\METHODS\8270-BF061118.M
 Quant Title : ASP BNA STANDARDS FOR 5 POINT CALIBRATION
 QLast Update : Fri Jun 15 11:11:47 2018
 Response via : Initial Calibration

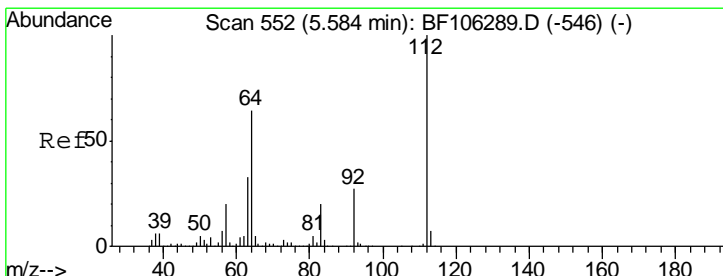
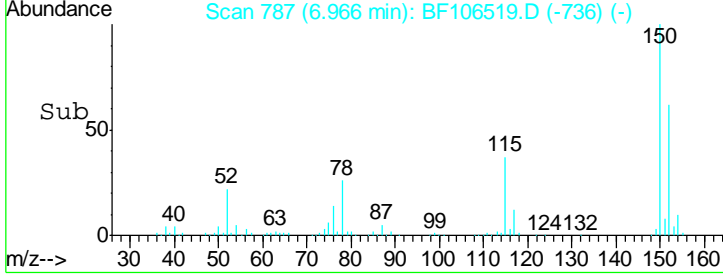
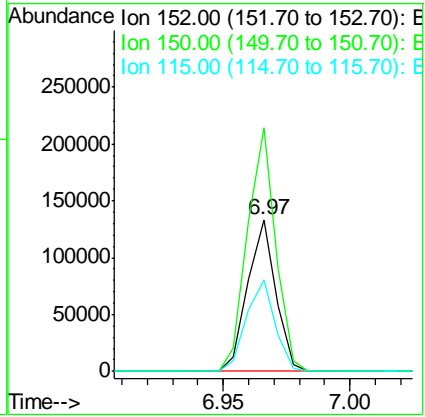
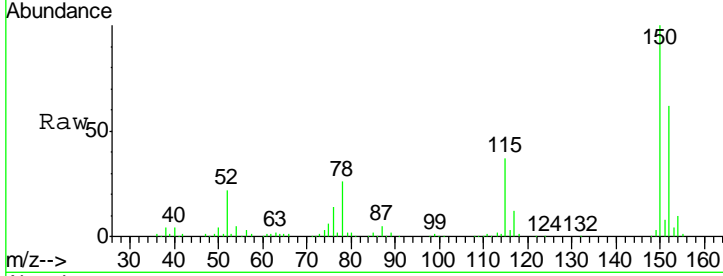




#1
 1,4-Dichlorobenzene-d4
 Concen: 20.000 ng
 RT: 6.97 min Scan# 787
 Delta R.T. -0.00 min
 Lab File: BF106519.D
 Acq: 16 Jun 2018 4:18

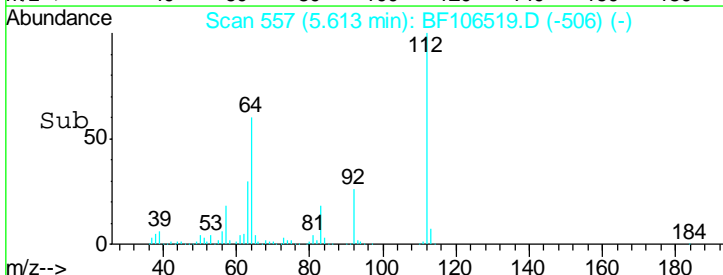
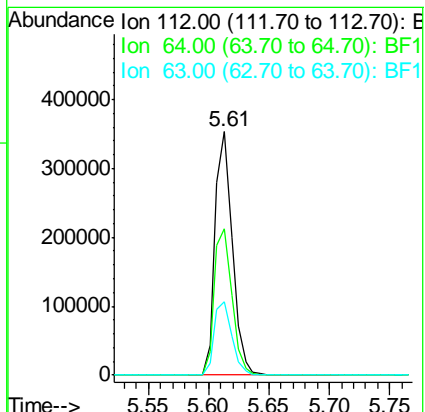
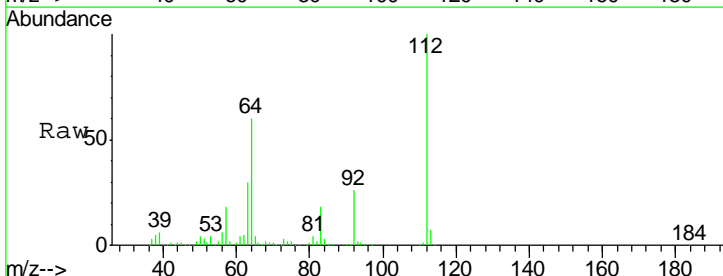
Instrument :
 BNA_F
 ClientSampled :
 W-22

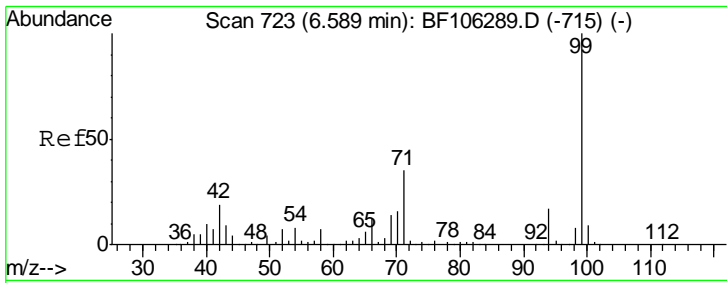
Tgt Ion	Resp	Lower	Upper
152	103192		
150	160.4	124.6	186.8
115	59.9	50.1	75.1



#5
 2-Fluorophenol
 Concen: 56.801 ng
 RT: 5.61 min Scan# 557
 Delta R.T. -0.00 min
 Lab File: BF106519.D
 Acq: 16 Jun 2018 4:18

Tgt Ion	Resp	Lower	Upper
112	346315		
64	60.0	47.9	71.9
63	30.2	23.7	35.5

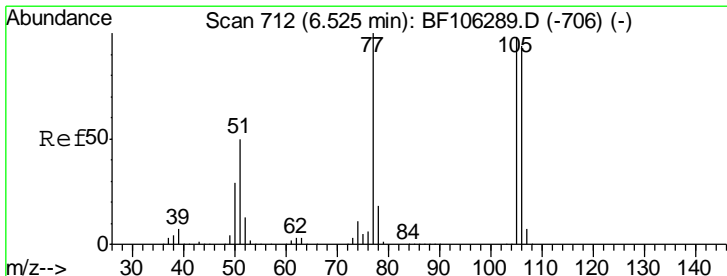
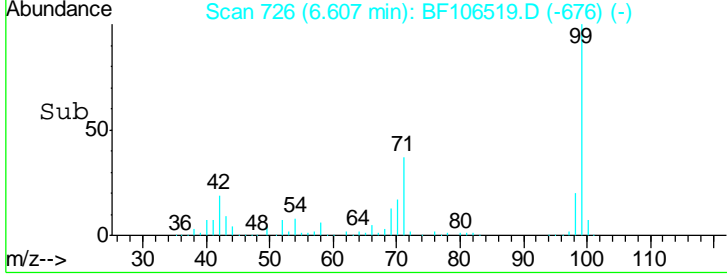
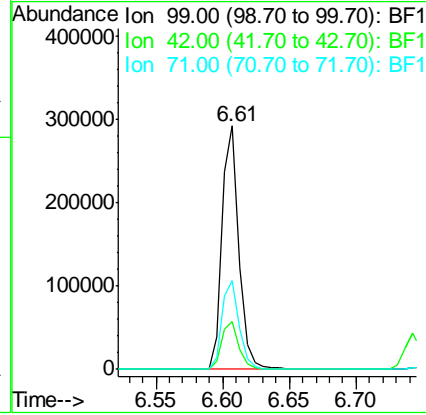
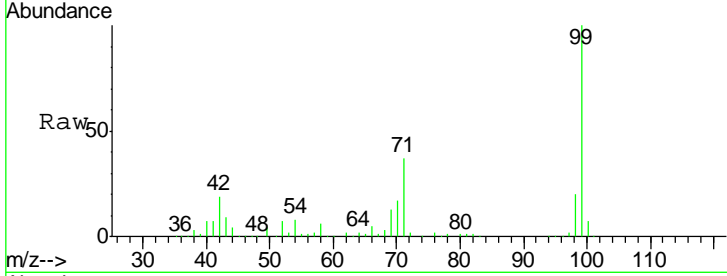




#7
 Phenol-d6
 Concen: 33.904 ng
 RT: 6.61 min Scan# 726
 Delta R.T. -0.01 min
 Lab File: BF106519.D
 Acq: 16 Jun 2018 4:18

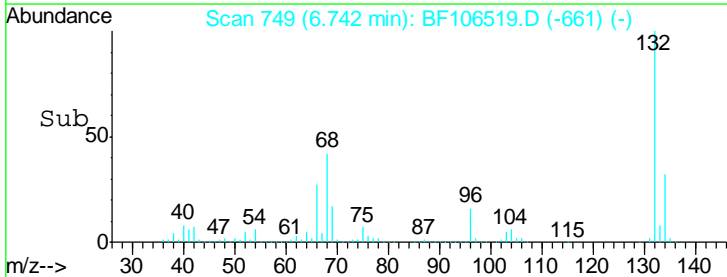
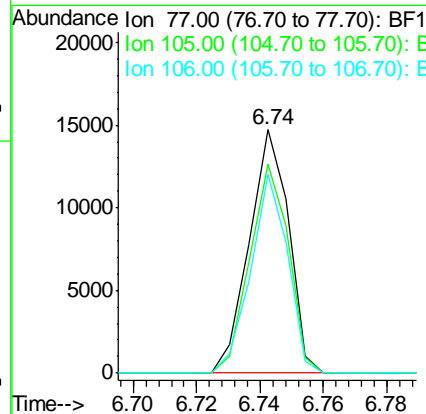
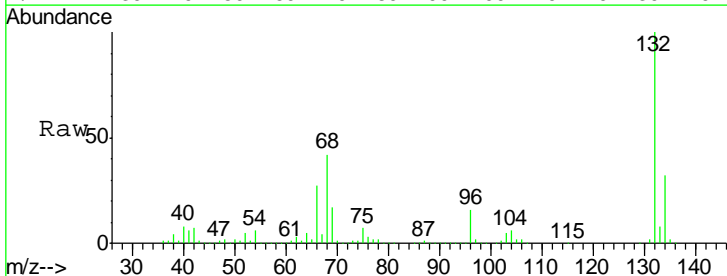
Instrument :
 BNA_F
 ClientSampled :
 W-22

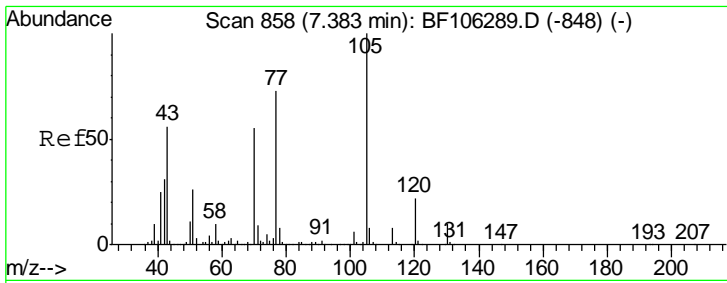
Tgt Ion	Resp	Lower	Upper
99	261163		
42	19.5	14.5	21.7
71	36.6	25.4	38.0



#9
 Benzaldehyde
 Concen: 2.162 ng
 RT: 6.74 min Scan# 749
 Delta R.T. 0.22 min
 Lab File: BF106519.D
 Acq: 16 Jun 2018 4:18

Tgt Ion	Resp	Lower	Upper
77	12635		
105	85.6	81.1	121.1
106	81.8	74.5	114.5

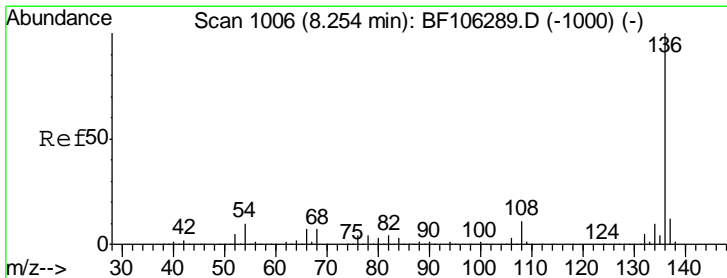
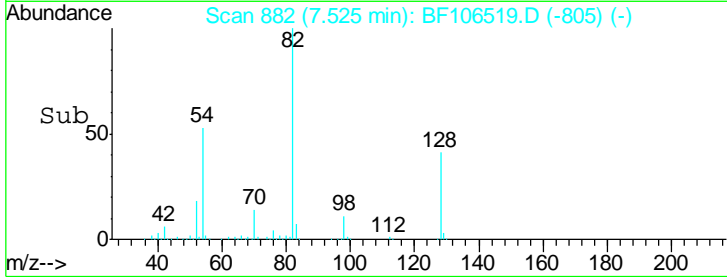
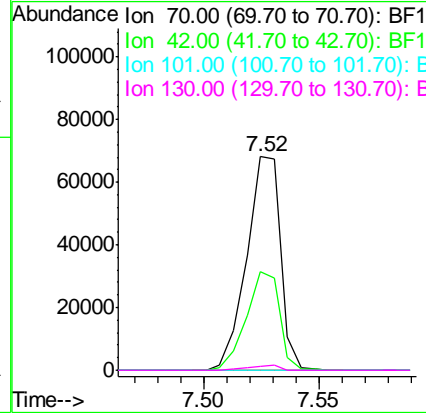
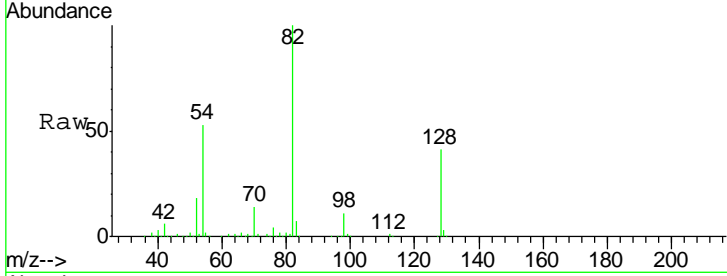




#19
 n-Nitroso-di-n-propylamine
 Concen: 12.098 ng
 RT: 7.52 min Scan# 882
 Delta R.T. 0.15 min
 Lab File: BF106519.D
 Acq: 16 Jun 2018 4:18

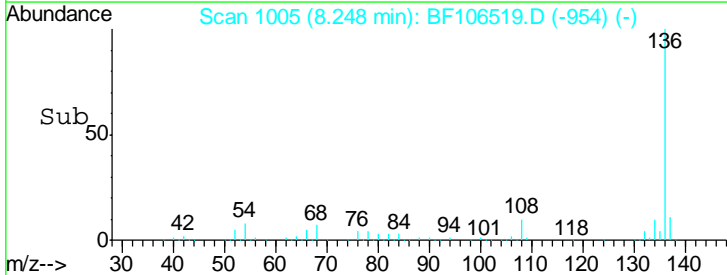
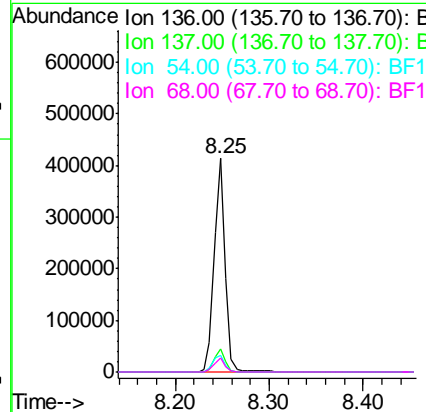
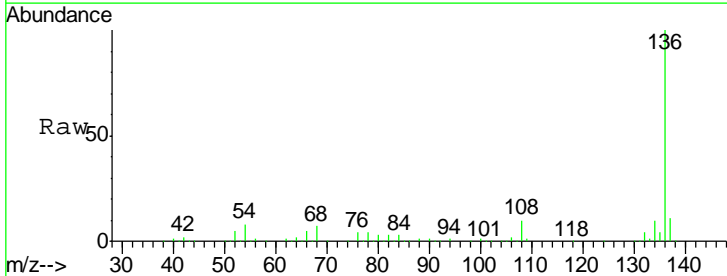
Instrument :
 BNA_F
 ClientSampled :
 W-22

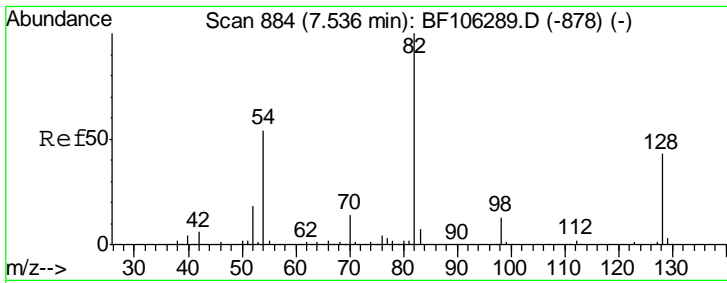
Tgt Ion	Resp	Lower	Upper
70	100		
42	46.2	47.5	71.3#
101	0.0	7.4	11.2#
130	2.0	16.6	25.0#



#21
 Naphthalene-d8
 Concen: 20.000 ng
 RT: 8.25 min Scan# 1005
 Delta R.T. -0.00 min
 Lab File: BF106519.D
 Acq: 16 Jun 2018 4:18

Tgt Ion	Resp	Lower	Upper
136	100		
137	10.7	8.9	13.3
54	8.1	6.6	9.8
68	6.6	5.0	7.4

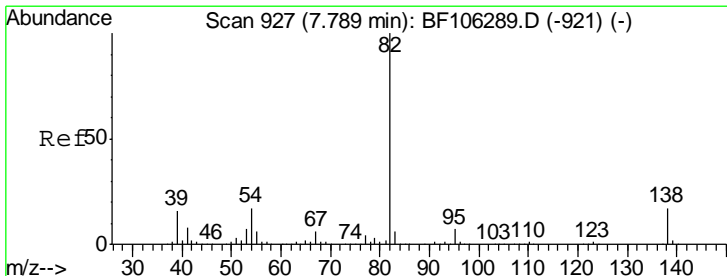
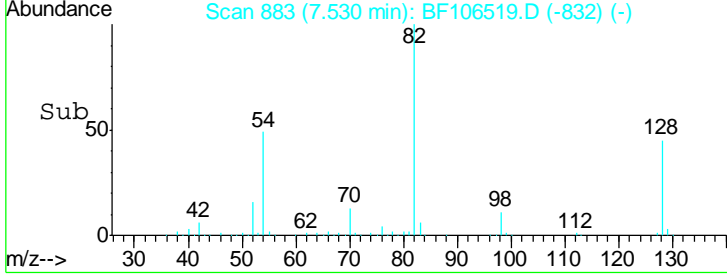
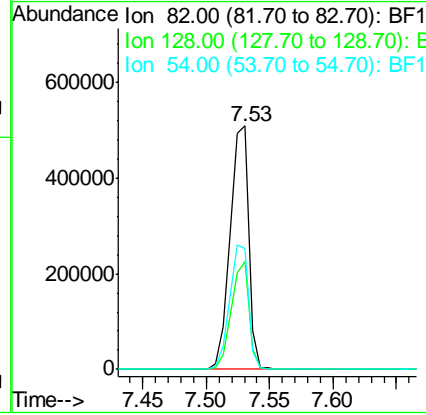
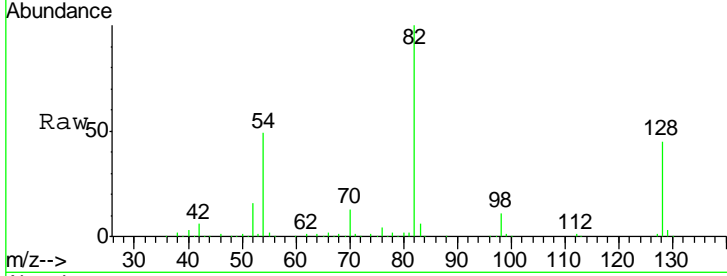




#23
 Nitrobenzene-d5
 Concen: 88.389 ng
 RT: 7.53 min Scan# 883
 Delta R.T. -0.00 min
 Lab File: BF106519.D
 Acq: 16 Jun 2018 4:18

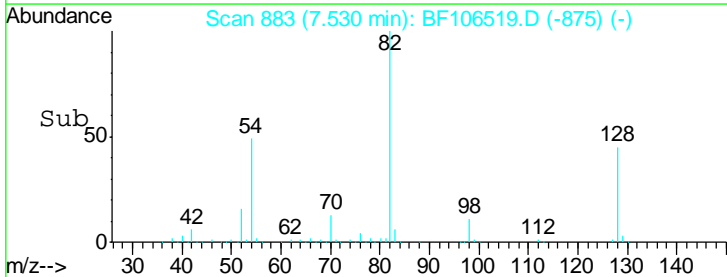
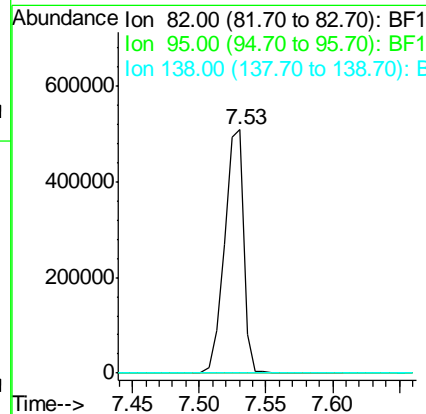
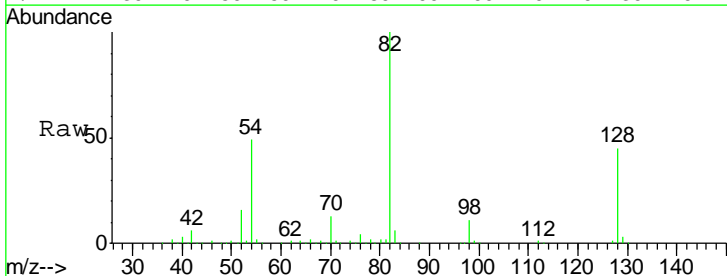
Instrument :
 BNA_F
 ClientSampled :
 W-22

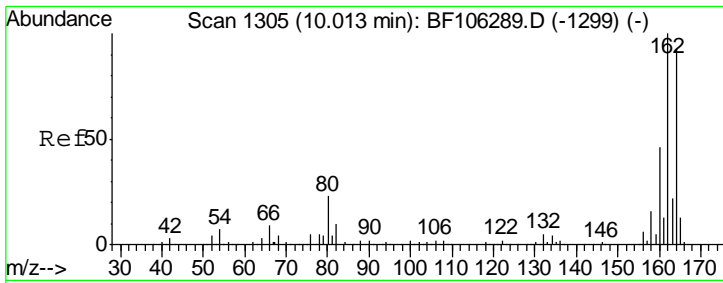
Tgt Ion	Resp	Lower	Upper
82	100		
128	44.6	36.1	54.1
54	49.5	41.4	62.2



#25
 Isophorone
 Concen: 45.253 ng
 RT: 7.53 min Scan# 883
 Delta R.T. -0.25 min
 Lab File: BF106519.D
 Acq: 16 Jun 2018 4:18

Tgt Ion	Resp	Lower	Upper
82	100		
95	0.0	5.2	7.8#
138	0.0	14.9	22.3#

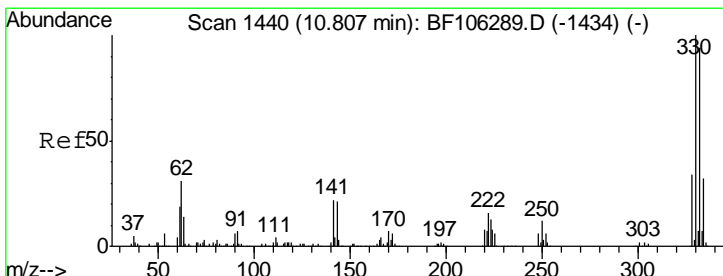
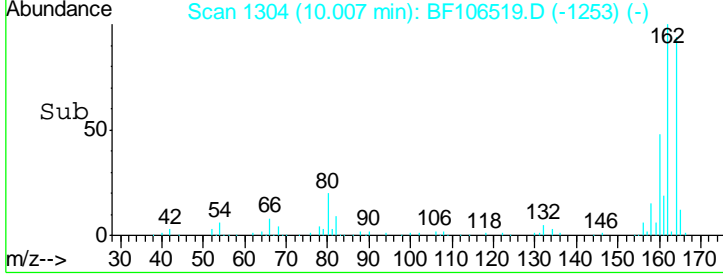
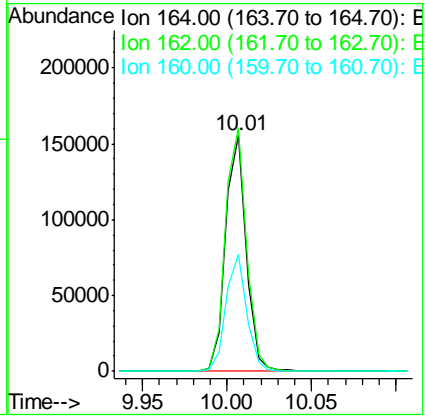
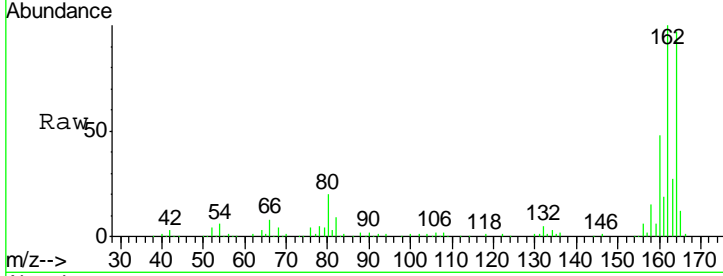




#38
 Acenaphthene-d10
 Concen: 20.000 ng
 RT: 10.01 min Scan# 1304
 Delta R.T. -0.00 min
 Lab File: BF106519.D
 Acq: 16 Jun 2018 4:18

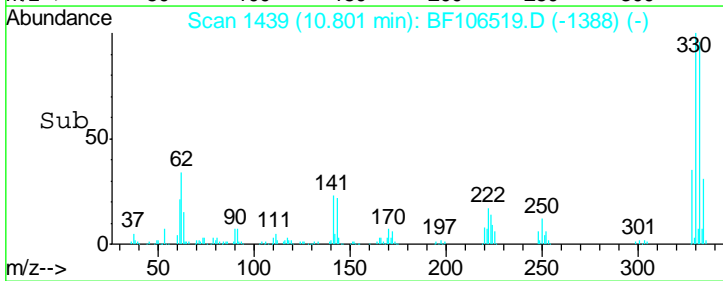
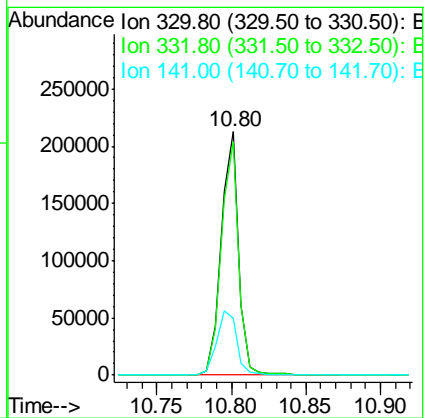
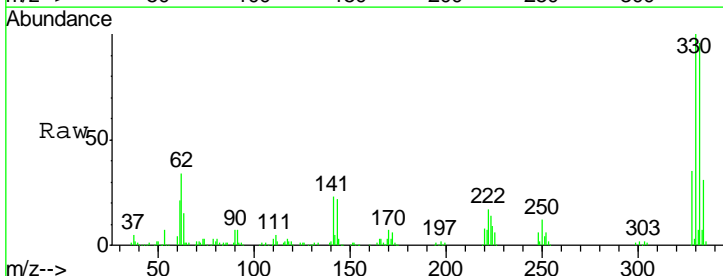
Instrument :
 BNA_F
 ClientSampled :
 W-22

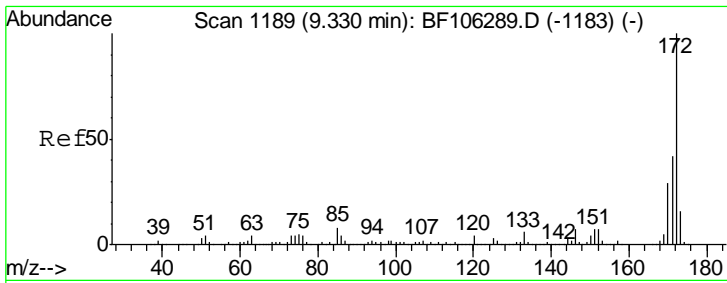
Tgt Ion	Resp	Lower	Upper
164	131656		
162	103.4	86.1	129.1
160	49.6	38.3	57.5



#41
 2,4,6-Tribromophenol
 Concen: 139.083 ng
 RT: 10.80 min Scan# 1439
 Delta R.T. -0.00 min
 Lab File: BF106519.D
 Acq: 16 Jun 2018 4:18

Tgt Ion	Resp	Lower	Upper
330	176184		
332	96.3	77.0	115.6
141	30.2	29.9	44.9



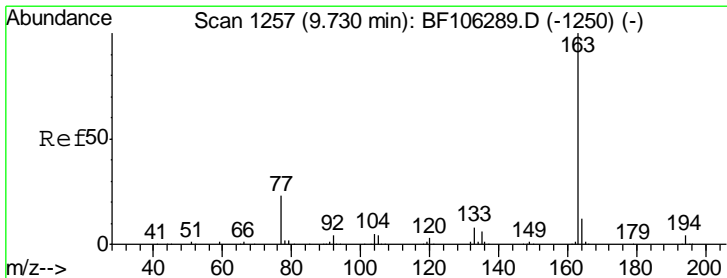
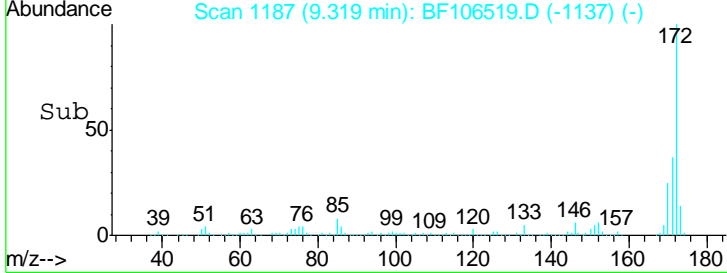
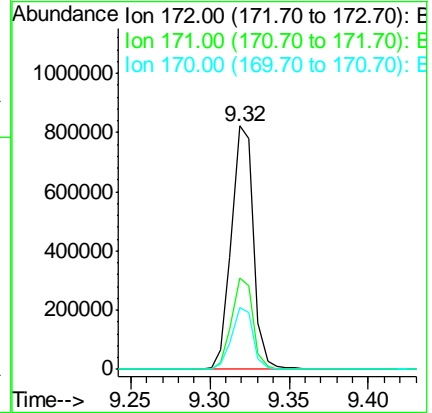
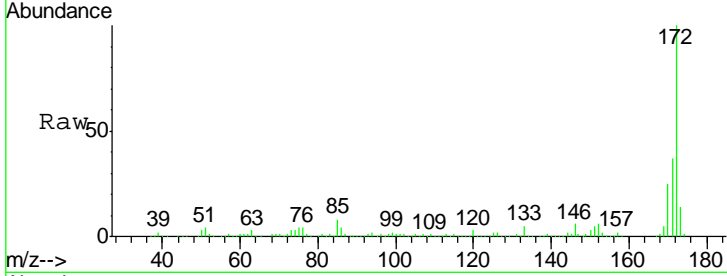


#44
 2-Fluorobiphenyl
 Concen: 123.814 ng
 RT: 9.32 min Scan# 1187
 Delta R.T. -0.01 min
 Lab File: BF106519.D
 Acq: 16 Jun 2018 4:18

Instrument :
 BNA_F
 ClientSampled :
 W-22

Tgt Ion:172 Resp: 799244

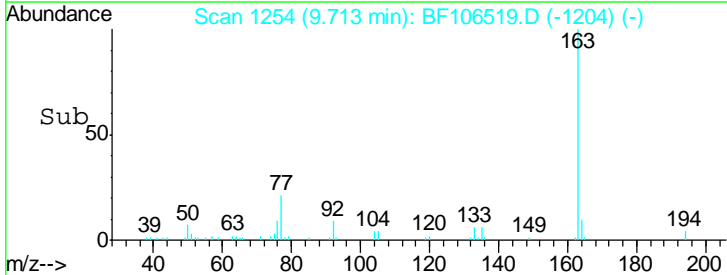
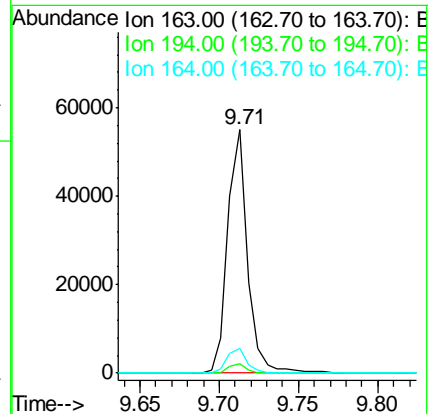
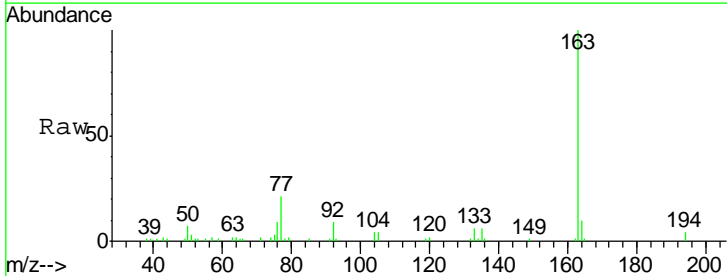
Ion	Ratio	Lower	Upper
172	100		
171	37.5	29.7	44.5
170	25.5	19.6	29.4

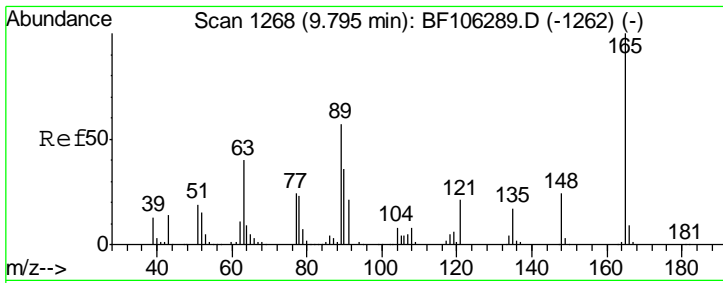


#49
 Dimethylphthalate
 Concen: 5.072 ng
 RT: 9.71 min Scan# 1254
 Delta R.T. -0.01 min
 Lab File: BF106519.D
 Acq: 16 Jun 2018 4:18

Tgt Ion:163 Resp: 47711

Ion	Ratio	Lower	Upper
163	100		
194	3.9	2.7	4.1
164	9.9	8.2	12.2

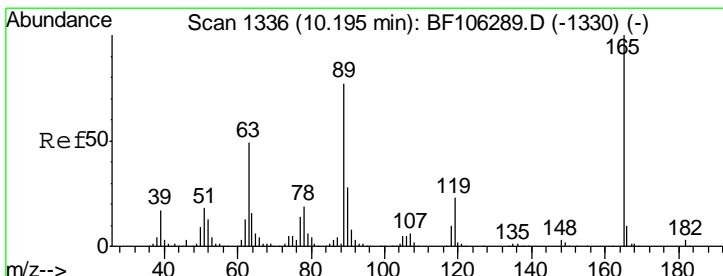
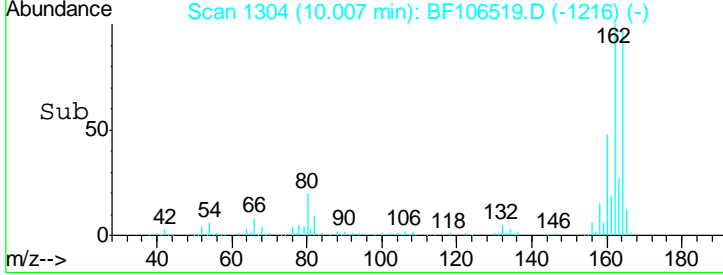
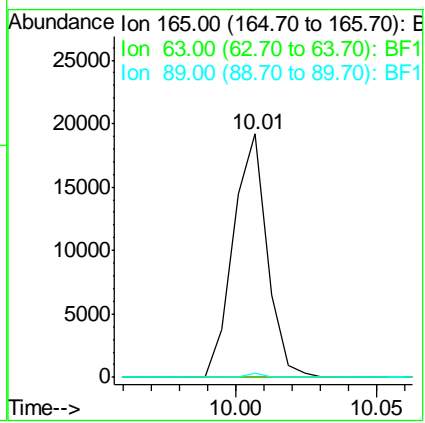
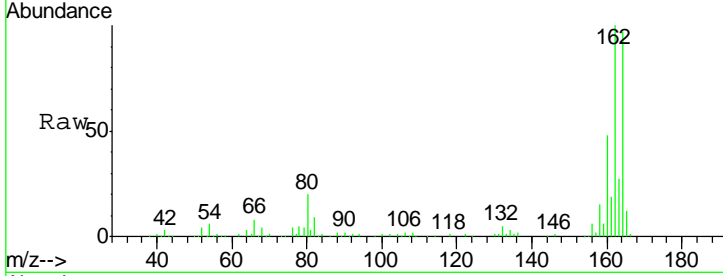




#50
 2,6-Dinitrotoluene
 Concen: 8.283 ng
 RT: 10.01 min Scan# 1304
 Delta R.T. 0.22 min
 Lab File: BF106519.D
 Acq: 16 Jun 2018 4:18

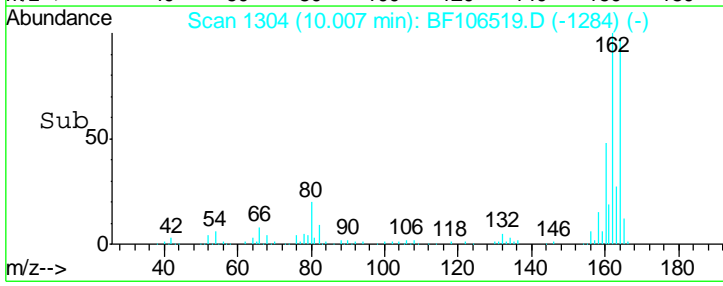
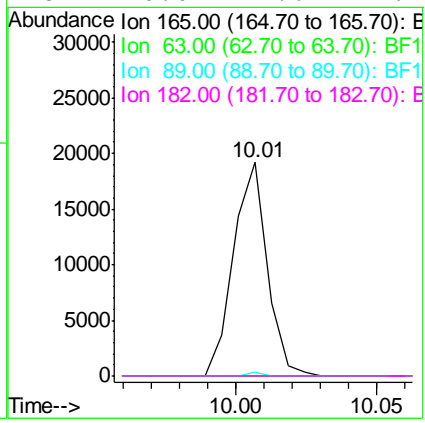
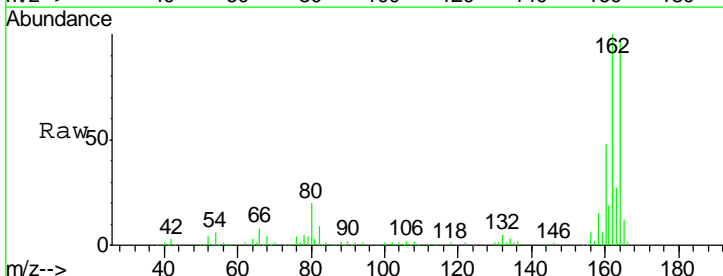
Instrument :
 BNA_F
 ClientSampled :
 W-22

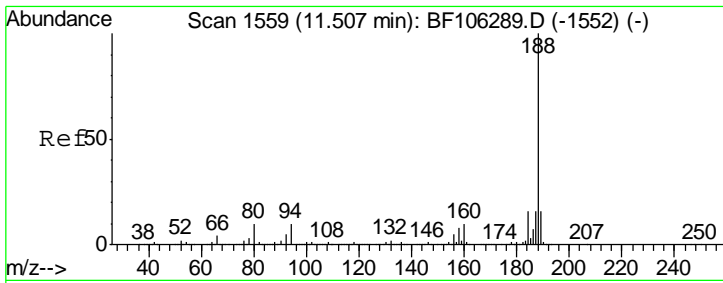
Tgt Ion	Resp	Lower	Upper
165	100		
63	0.0	44.7	67.1#
89	2.0	44.0	66.0#



#56
 2,4-Dinitrotoluene
 Concen: 6.596 ng
 RT: 10.01 min Scan# 1304
 Delta R.T. -0.18 min
 Lab File: BF106519.D
 Acq: 16 Jun 2018 4:18

Tgt Ion	Resp	Lower	Upper
165	100		
63	0.0	36.4	54.6#
89	2.0	57.8	86.6#
182	0.0	1.6	2.4#

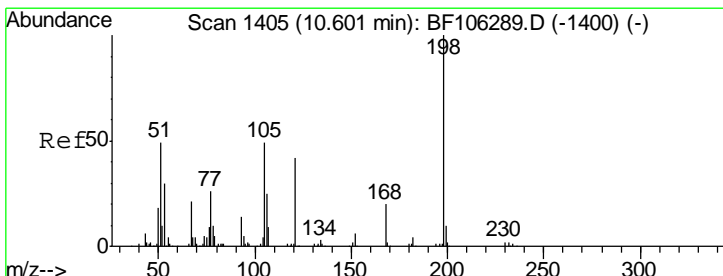
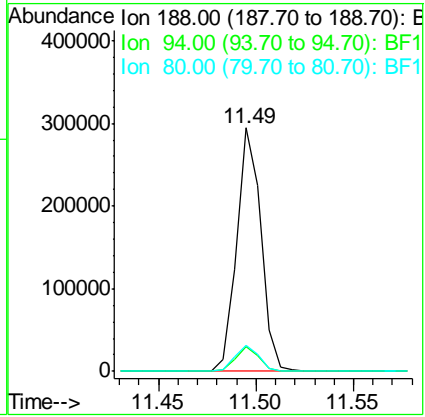
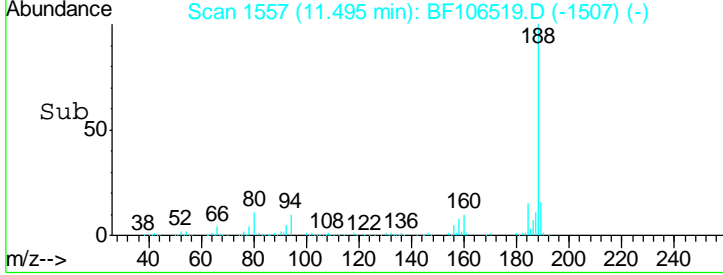
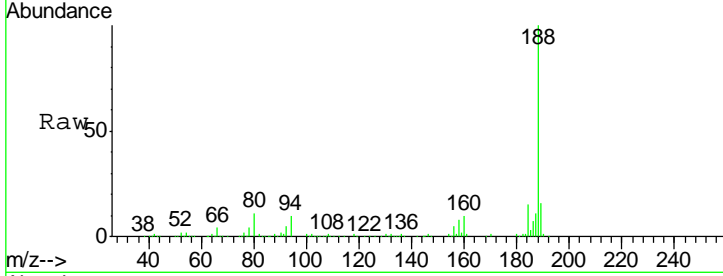




#63
 Phenanthrene-d10
 Concen: 20.000 ng
 RT: 11.49 min Scan# 1557
 Delta R.T. -0.01 min
 Lab File: BF106519.D
 Acq: 16 Jun 2018 4:18

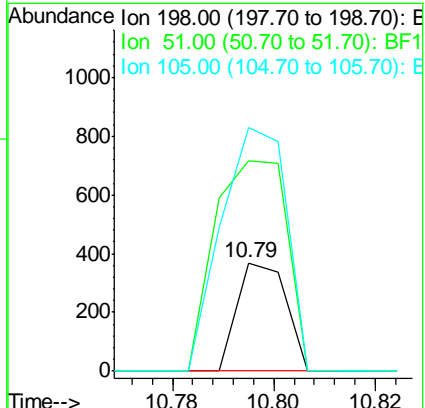
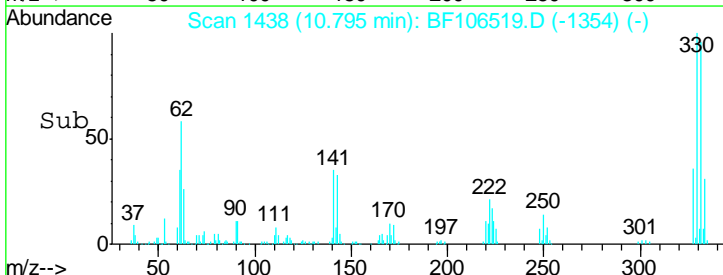
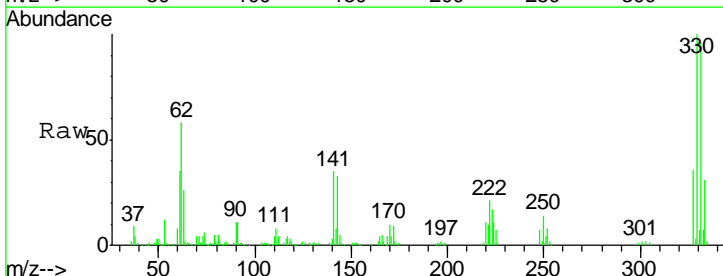
Instrument :
 BNA_F
 ClientSampled :
 W-22

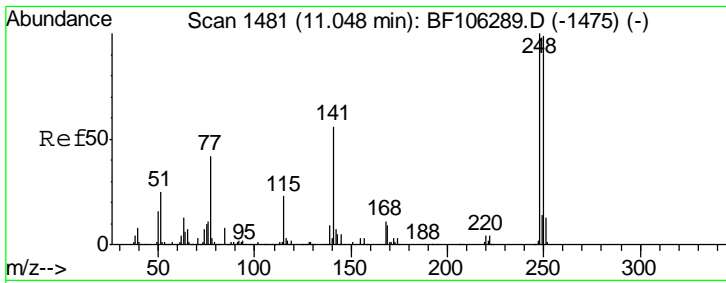
Tgt Ion	Resp	Lower	Upper
188	100		
94	10.1	8.5	12.7
80	10.9	9.2	13.8



#64
 4,6-Dinitro-2-methylphenol
 Concen: 6.453 ng
 RT: 10.79 min Scan# 1438
 Delta R.T. 0.19 min
 Lab File: BF106519.D
 Acq: 16 Jun 2018 4:18

Tgt Ion	Resp	Lower	Upper
198	100		
51	194.3	37.7	77.7#
105	225.3	36.3	76.3#

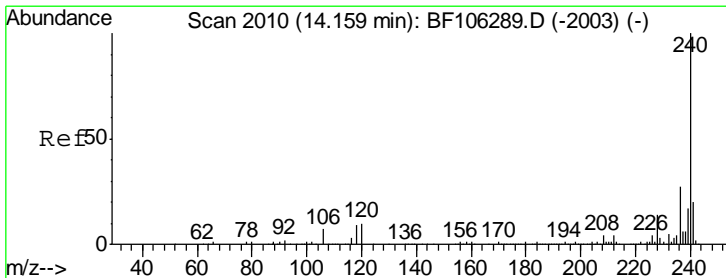
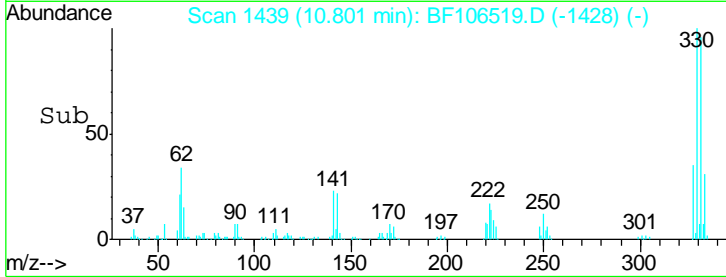
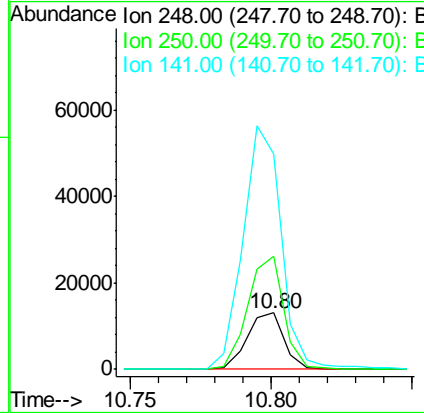
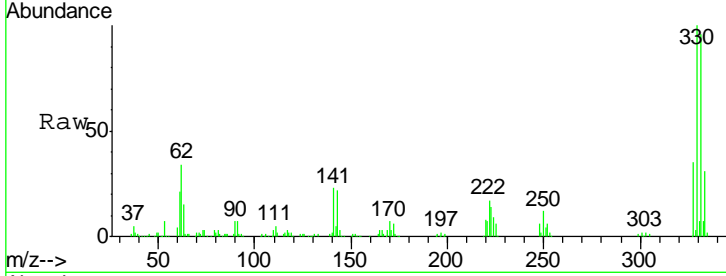




#66
 4-Bromophenyl-phenylether
 Concen: 4.106 ng
 RT: 10.80 min Scan# 1439
 Delta R.T. -0.24 min
 Lab File: BF106519.D
 Acq: 16 Jun 2018 4:18

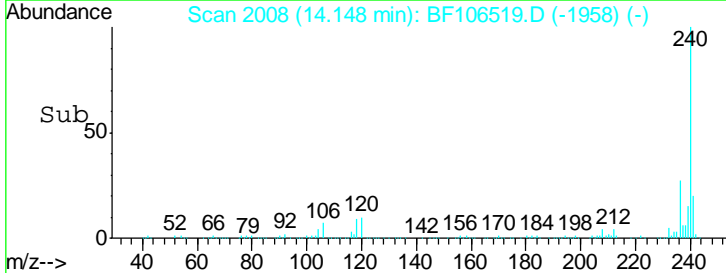
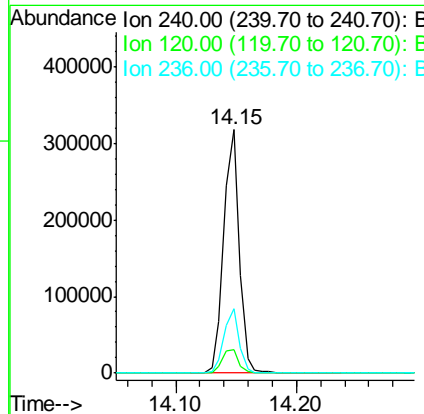
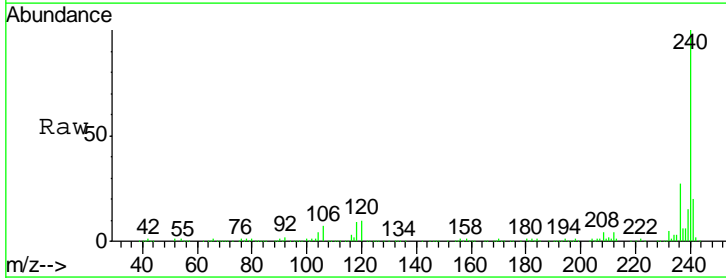
Instrument :
 BNA_F
 ClientSampled :
 W-22

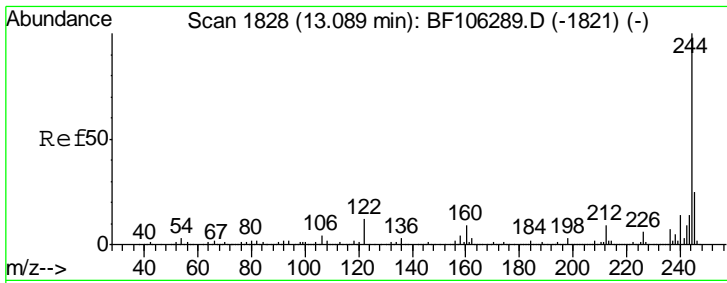
Tgt Ion	Resp	Lower	Upper
248	11803		
250	200.4	76.9	115.3#
141	380.5	74.4	111.6#



#75
 Chrysene-d12
 Concen: 20.000 ng
 RT: 14.15 min Scan# 2008
 Delta R.T. -0.01 min
 Lab File: BF106519.D
 Acq: 16 Jun 2018 4:18

Tgt Ion	Resp	Lower	Upper
240	280448		
240	100		
120	9.7	9.5	14.3
236	26.5	20.7	31.1

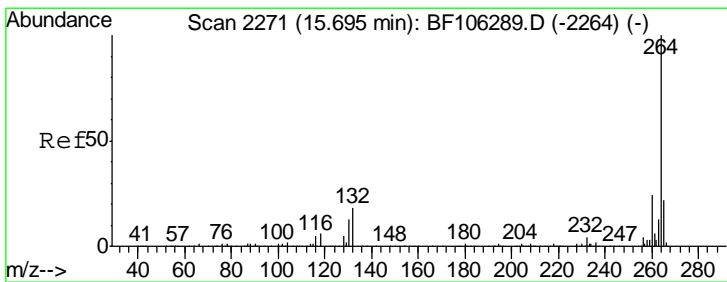
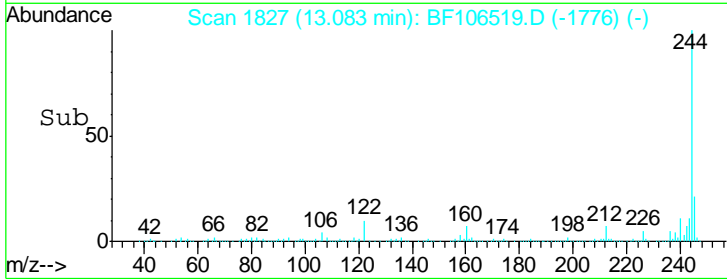
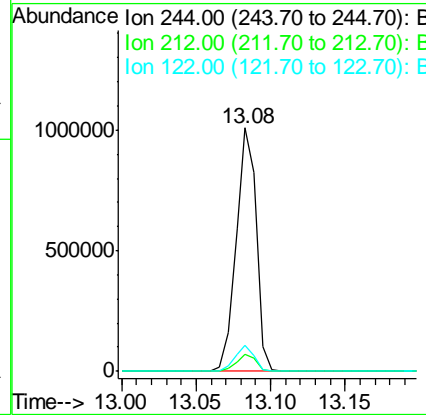
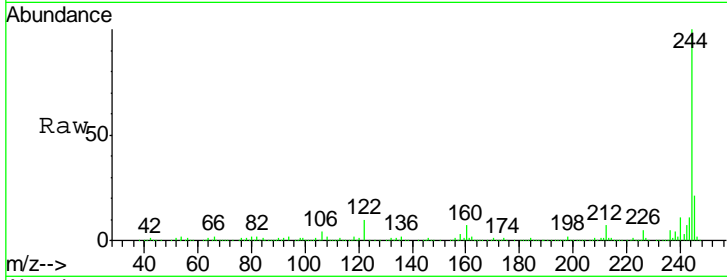




#78
 Terphenyl-d14
 Concen: 85.003 ng
 RT: 13.08 min Scan# 1827
 Delta R.T. -0.00 min
 Lab File: BF106519.D
 Acq: 16 Jun 2018 4:18

Instrument :
 BNA_F
 ClientSampled :
 W-22

Tgt Ion	Resp	Lower	Upper
244	100		
212	7.0	5.4	8.0
122	10.5	11.0	16.4



#86
 Perylene-d12
 Concen: 20.000 ng
 RT: 15.68 min Scan# 2268
 Delta R.T. -0.01 min
 Lab File: BF106519.D
 Acq: 16 Jun 2018 4:18

Tgt Ion	Resp	Lower	Upper
264	100		
260	22.6	19.2	28.8
265	21.5	17.5	26.3

