

Data Path : Z:\svoasrv\HPCHEM1\BNA_F\Data\BF061621\
 Data File : BF124352.D
 Acq On : 16 Jun 2021 20:48
 Operator : JU/CG
 Sample : M2672-33
 Misc :
 ALS Vial : 15 Sample Multiplier: 1

Instrument :
 BNA_F
 ClientSampleId :
 17-B6(56-60)

Quant Time: Jun 17 07:33:44 2021
 Quant Method : Z:\SVOASRV\HPCHEM1\BNA_F\METHODS\8270-BF060321.M
 Quant Title : ASP BNA STANDARDS FOR 5 POINT CALIBRATION
 QLast Update : Tue Jun 15 20:09:26 2021
 Response via : Initial Calibration

Compound	R.T.	QIon	Response	Conc	Units	Dev(Min)
Internal Standards						
1) 1,4-Dichlorobenzene-d4	6.781	152	32048	20.000	ng	0.00
21) Naphthalene-d8	8.063	136	124671	20.000	ng	-0.01
39) Acenaphthene-d10	9.822	164	75592	20.000	ng	0.00
64) Phenanthrene-d10	11.310	188	146756	20.000	ng	0.00
76) Chrysene-d12	13.951	240	98830	20.000	ng	-0.01
86) Perylene-d12	15.409	264	81380	20.000	ng	0.00
System Monitoring Compounds						
5) 2-Fluorophenol	5.422	112	269448	126.564	ng	0.00
7) Phenol-d6	6.434	99	324840	113.515	ng	-0.01
23) Nitrobenzene-d5	7.351	82	273119	86.887	ng	0.00
42) 2,4,6-Tribromophenol	10.616	330	145662	136.011	ng	0.00
45) 2-Fluorobiphenyl	9.145	172	523623	87.167	ng	0.00
79) Terphenyl-d14	12.904	244	676480	93.977	ng	0.00

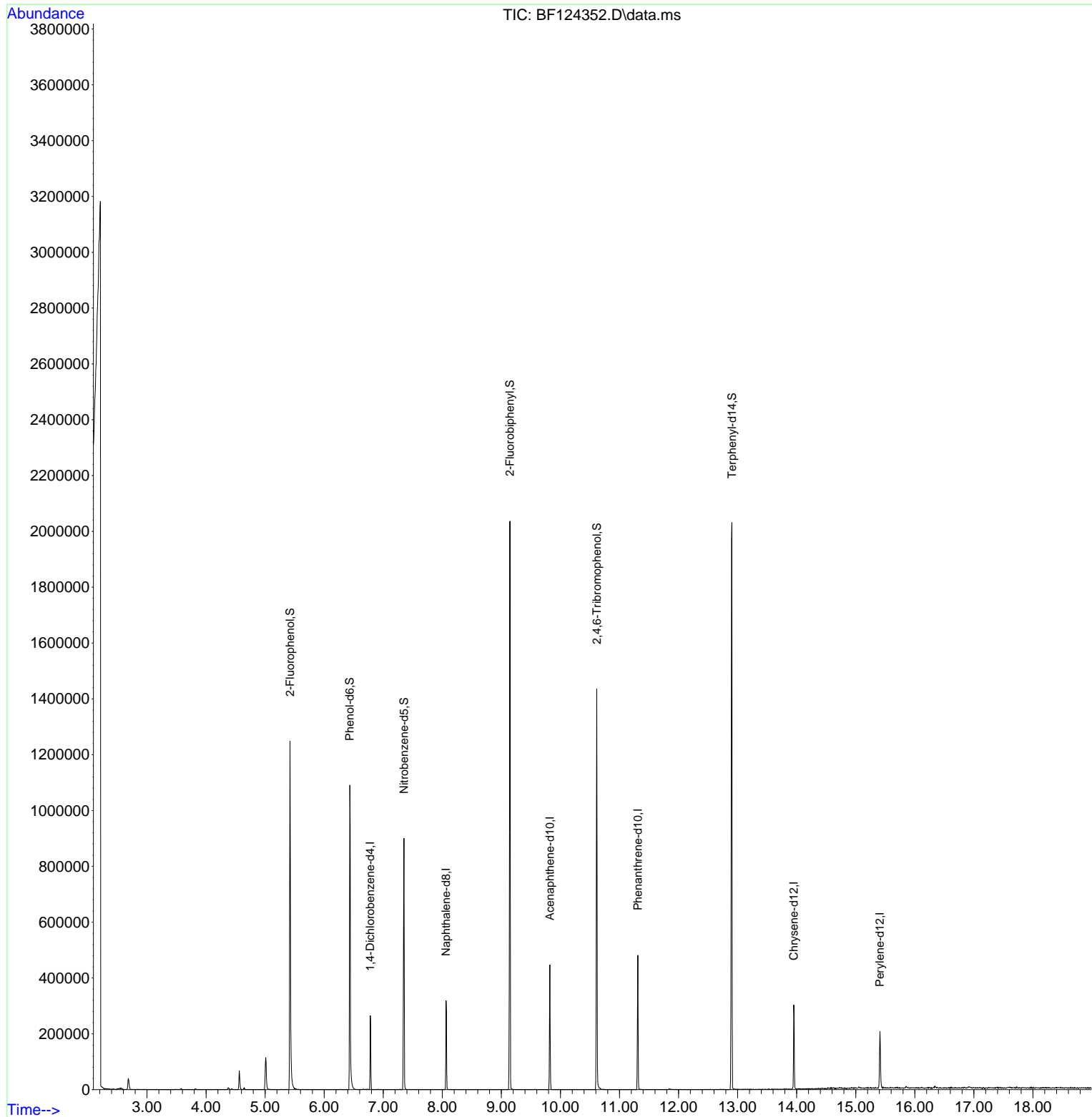
Target Compounds Qvalue

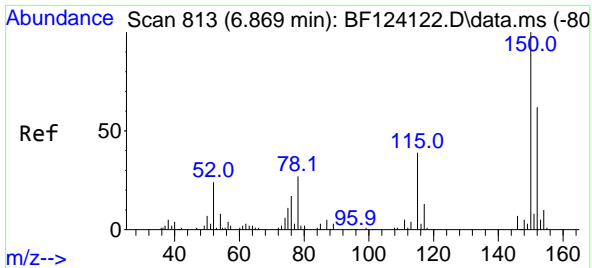
(#) = qualifier out of range (m) = manual integration (+) = signals summed

Data Path : Z:\svoasrv\HPCHEM1\BNA_F\Data\BF061621\
Data File : BF124352.D
Acq On : 16 Jun 2021 20:48
Operator : JU/CG
Sample : M2672-33
Misc :
ALS Vial : 15 Sample Multiplier: 1

Instrument :
BNA_F
ClientSampleId :
17-B6(56-60)

Quant Time: Jun 17 07:33:44 2021
Quant Method : Z:\SVOASRV\HPCHEM1\BNA_F\METHODS\8270-BF060321.M
Quant Title : ASP BNA STANDARDS FOR 5 POINT CALIBRATION
QLast Update : Tue Jun 15 20:09:26 2021
Response via : Initial Calibration

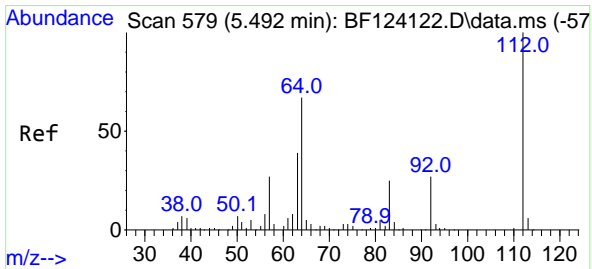
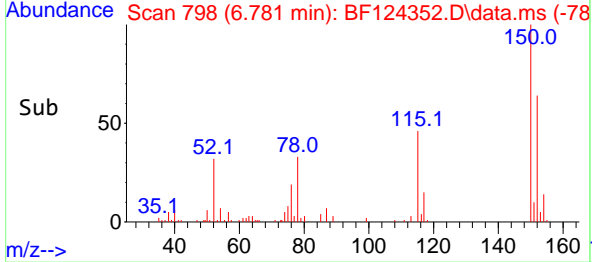
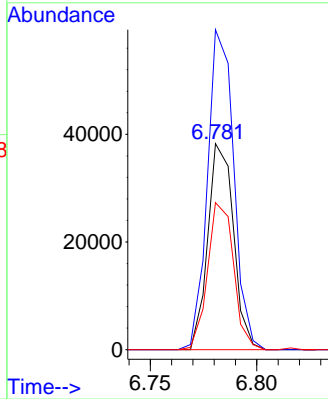
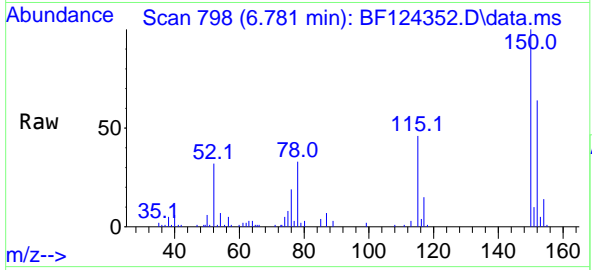




#1
 1,4-Dichlorobenzene-d4
 Concen: 20.000 ng
 RT: 6.781 min Scan# 798
 Delta R.T. -0.005 min
 Lab File: BF124352.D
 Acq: 16 Jun 2021 20:48

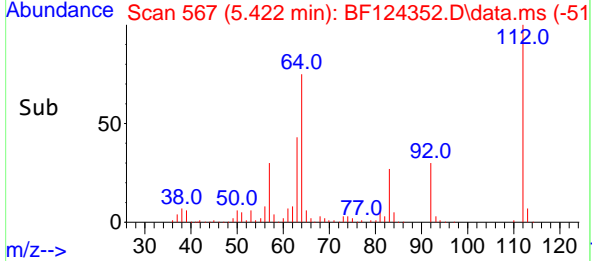
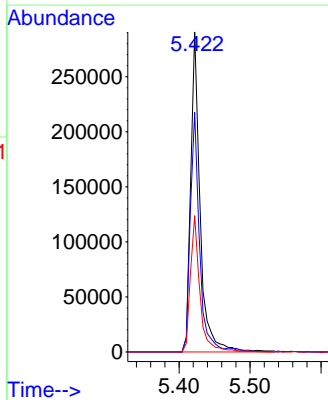
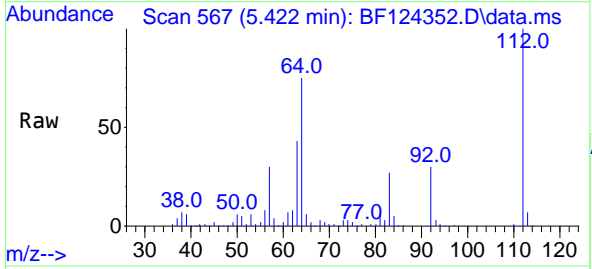
Instrument :
 BNA_F
 ClientSampled :
 17-B6(56-60)

Tgt Ion:152 Resp: 32048
 Ion Ratio Lower Upper
 152 100
 150 155.3 127.0 190.6
 115 71.3 54.3 81.5

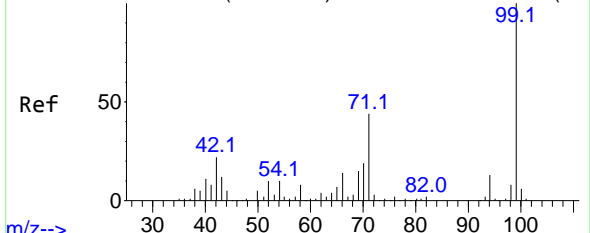


#5
 2-Fluorophenol
 Concen: 126.564 ng
 RT: 5.422 min Scan# 567
 Delta R.T. 0.006 min
 Lab File: BF124352.D
 Acq: 16 Jun 2021 20:48

Tgt Ion:112 Resp: 269448
 Ion Ratio Lower Upper
 112 100
 64 74.9 61.4 92.0
 63 42.6 33.0 49.4

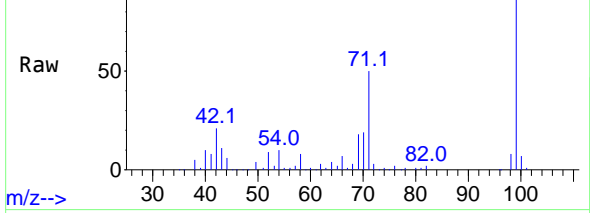


Abundance Scan 752 (6.510 min): BF124122.D\data.ms (-74



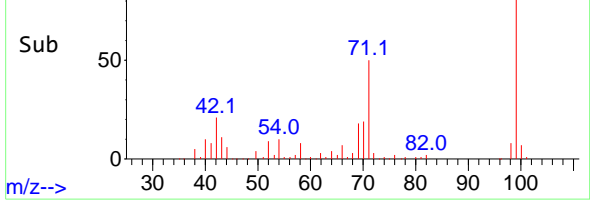
m/z-->

Abundance Scan 739 (6.434 min): BF124352.D\data.ms



m/z-->

Abundance Scan 739 (6.434 min): BF124352.D\data.ms (-69



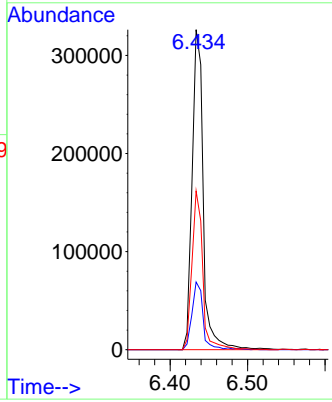
m/z-->

#7

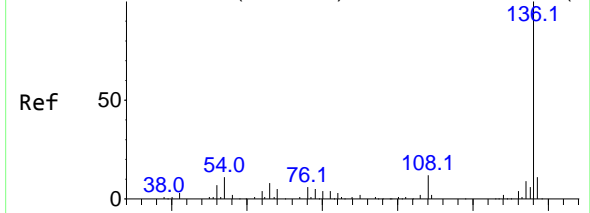
Phenol-d6
Concen: 113.515 ng
RT: 6.434 min Scan# 739
Delta R.T. -0.012 min
Lab File: BF124352.D
Acq: 16 Jun 2021 20:48

Tgt Ion:	99	Resp:	324840
Ion Ratio	Lower	Upper	
99	100		
42	21.1	19.8	29.8
71	49.6	31.1	46.7#

Instrument :
BNA_F
ClientSampled :
17-B6(56-60)

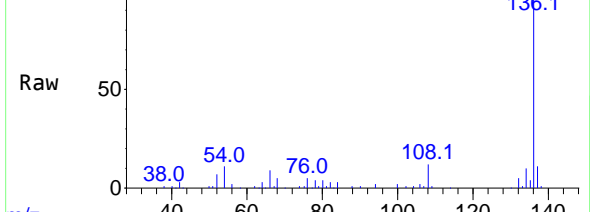


Abundance Scan 1031 (8.151 min): BF124122.D\data.ms (-1



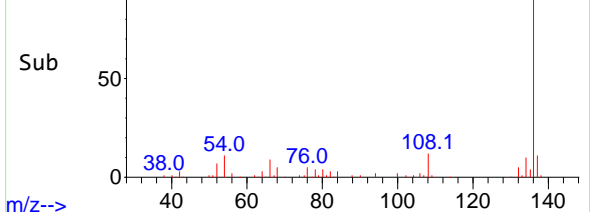
m/z-->

Abundance Scan 1016 (8.063 min): BF124352.D\data.ms



m/z-->

Abundance Scan 1016 (8.063 min): BF124352.D\data.ms (-9

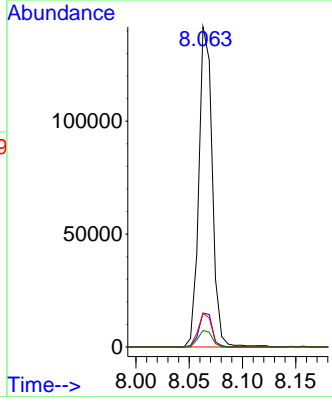


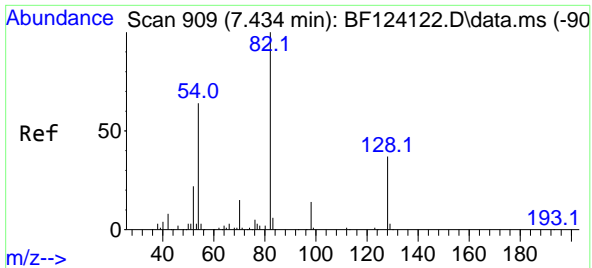
m/z-->

#21

Naphthalene-d8
Concen: 20.000 ng
RT: 8.063 min Scan# 1016
Delta R.T. -0.012 min
Lab File: BF124352.D
Acq: 16 Jun 2021 20:48

Tgt Ion:	136	Resp:	124671
Ion Ratio	Lower	Upper	
136	100		
137	10.6	8.7	13.1
54	10.5	9.8	14.6
68	5.1	4.1	6.1

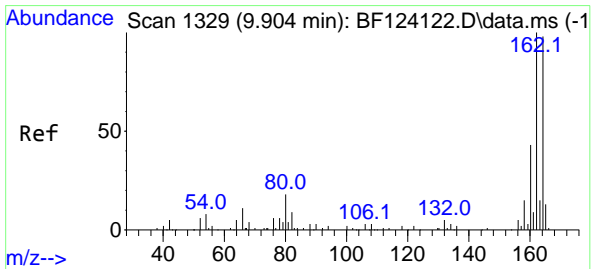
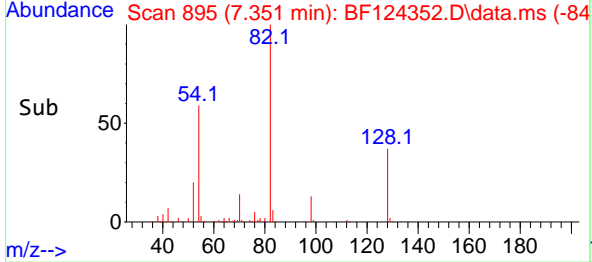
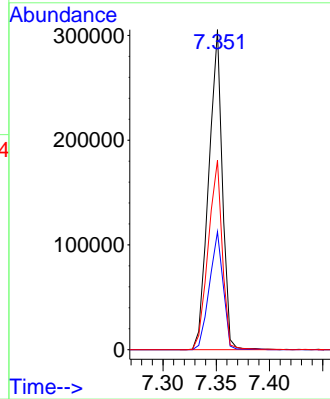
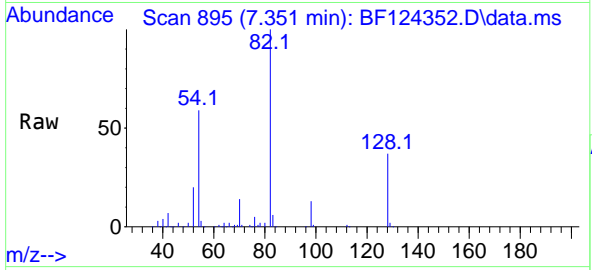




#23
 Nitrobenzene-d5
 Concen: 86.887 ng
 RT: 7.351 min Scan# 895
 Delta R.T. -0.006 min
 Lab File: BF124352.D
 Acq: 16 Jun 2021 20:48

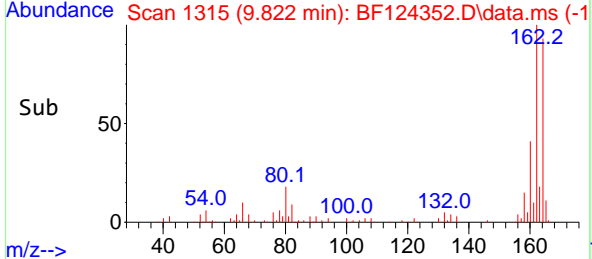
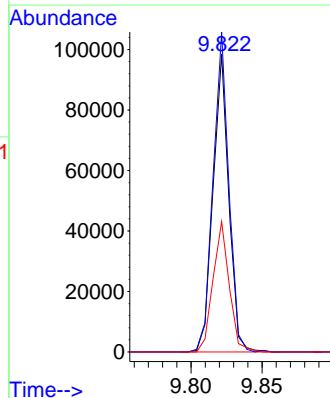
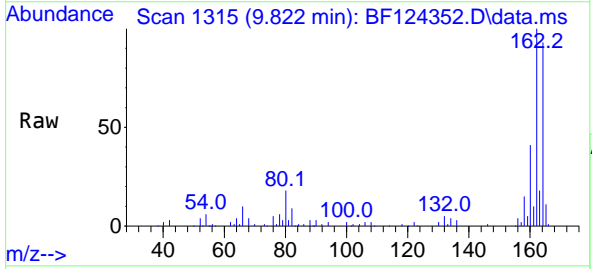
Instrument :
 BNA_F
 ClientSampled :
 17-B6(56-60)

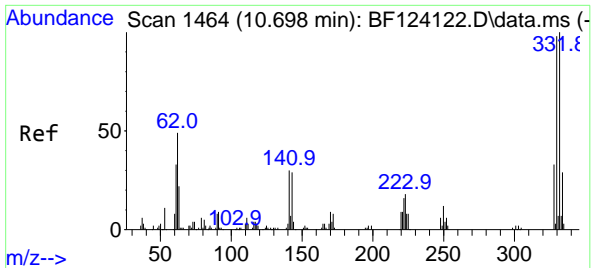
Tgt Ion: 82 Resp: 273119
 Ion Ratio Lower Upper
 82 100
 128 36.8 29.4 44.2
 54 59.2 54.1 81.1



#39
 Acenaphthene-d10
 Concen: 20.000 ng
 RT: 9.822 min Scan# 1315
 Delta R.T. -0.006 min
 Lab File: BF124352.D
 Acq: 16 Jun 2021 20:48

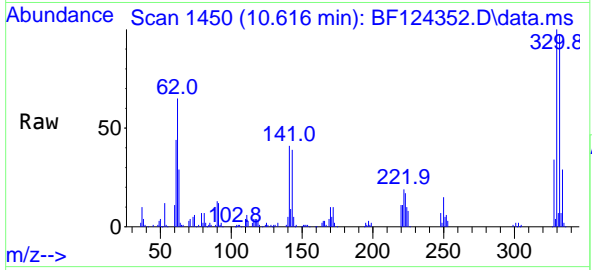
Tgt Ion: 164 Resp: 75592
 Ion Ratio Lower Upper
 164 100
 162 107.4 80.7 121.1
 160 43.7 37.3 55.9



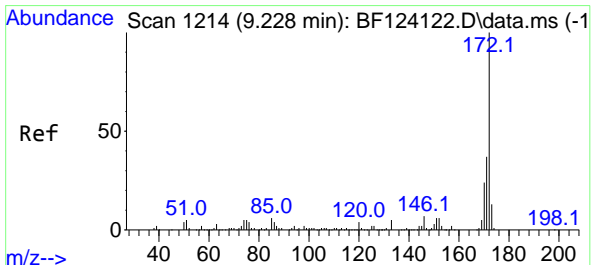
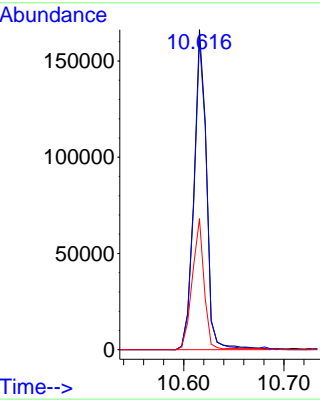
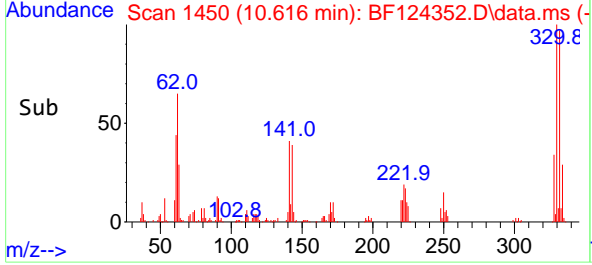


#42
 2,4,6-Tribromophenol
 Concen: 136.011 ng
 RT: 10.616 min Scan# 1450
 Delta R.T. -0.006 min
 Lab File: BF124352.D
 Acq: 16 Jun 2021 20:48

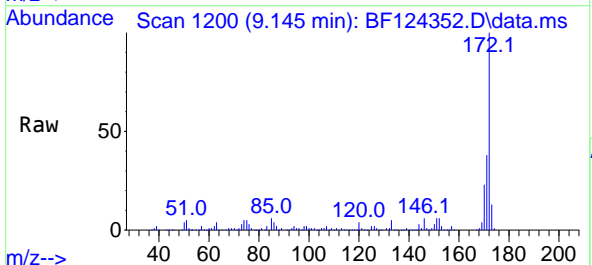
Instrument :
 BNA_F
ClientSampled :
 17-B6(56-60)



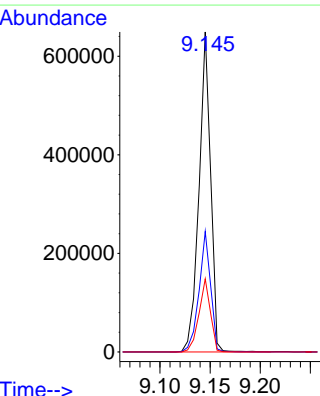
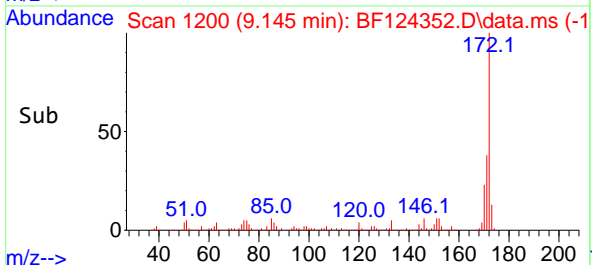
Tgt Ion:330 Resp: 145662
 Ion Ratio Lower Upper
 330 100
 332 96.6 77.1 115.7
 141 38.7 27.9 41.9

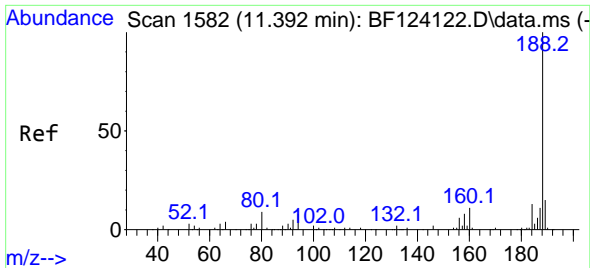


#45
 2-Fluorobiphenyl
 Concen: 87.167 ng
 RT: 9.145 min Scan# 1200
 Delta R.T. -0.006 min
 Lab File: BF124352.D
 Acq: 16 Jun 2021 20:48



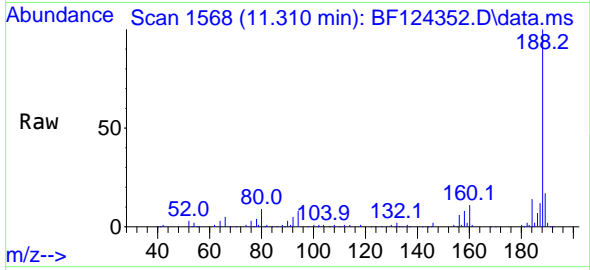
Tgt Ion:172 Resp: 523623
 Ion Ratio Lower Upper
 172 100
 171 37.7 28.1 42.1
 170 22.8 19.2 28.8





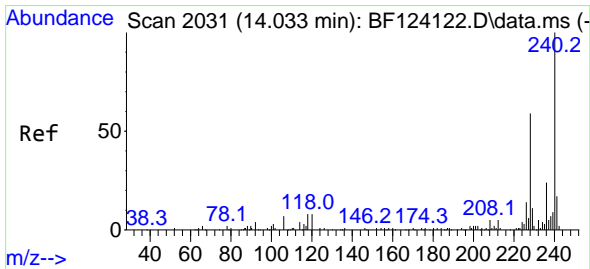
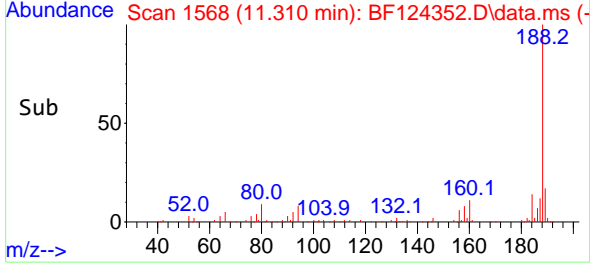
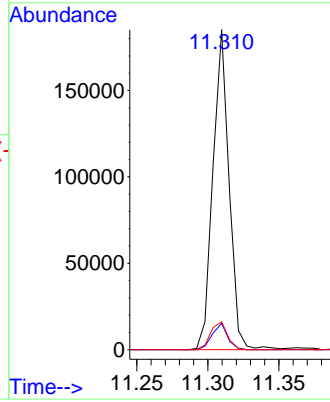
#64
 Phenanthrene-d10
 Concen: 20.000 ng
 RT: 11.310 min Scan# 1568
 Delta R.T. -0.006 min
 Lab File: BF124352.D
 Acq: 16 Jun 2021 20:48

Instrument :
 BNA_F
 Client Sampled :
 17-B6(56-60)



Tgt Ion:188 Resp: 146756

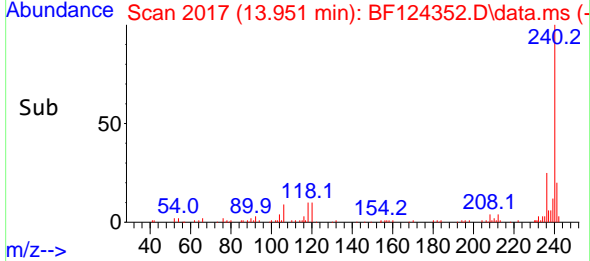
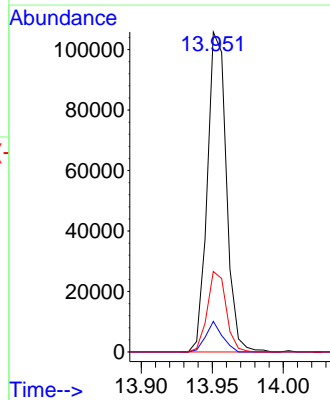
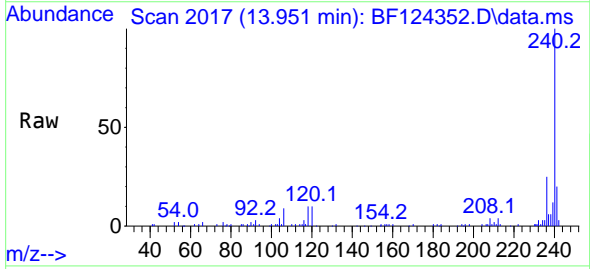
Ion	Ratio	Lower	Upper
188	100		
94	8.2	6.9	10.3
80	8.7	8.2	12.2

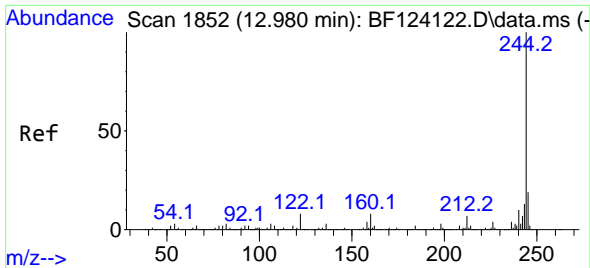


#76
 Chrysene-d12
 Concen: 20.000 ng
 RT: 13.951 min Scan# 2017
 Delta R.T. -0.012 min
 Lab File: BF124352.D
 Acq: 16 Jun 2021 20:48

Tgt Ion:240 Resp: 98830

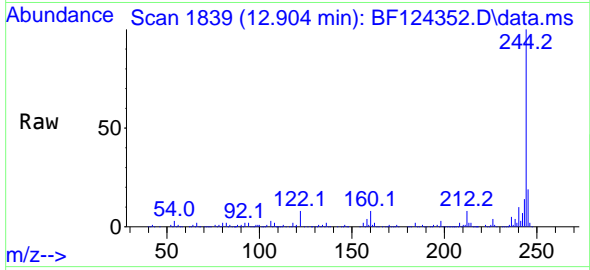
Ion	Ratio	Lower	Upper
240	100		
120	9.6	7.2	10.8
236	25.2	19.0	28.4





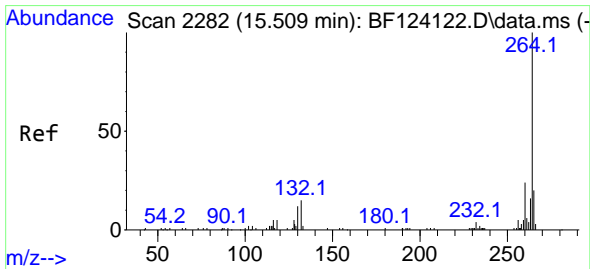
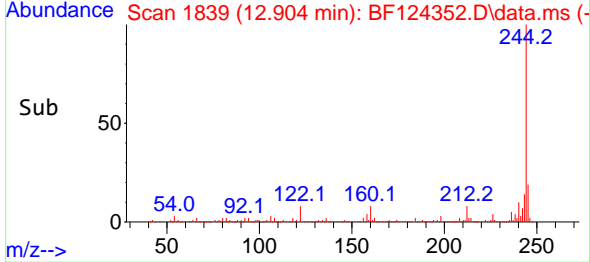
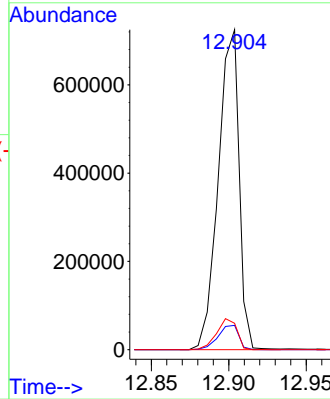
#79
 Terphenyl-d14
 Concen: 93.977 ng
 RT: 12.904 min Scan# 1839
 Delta R.T. 0.000 min
 Lab File: BF124352.D
 Acq: 16 Jun 2021 20:48

Instrument :
 BNA_F
ClientSampled :
 17-B6(56-60)

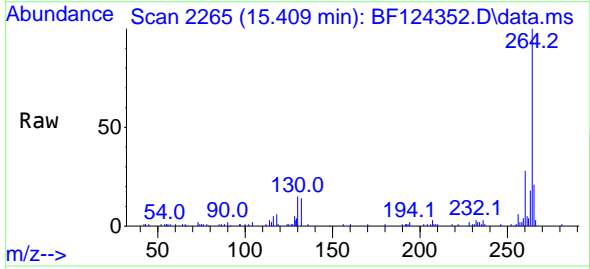


Tgt Ion:244 Resp: 676480

Ion	Ratio	Lower	Upper
244	100		
212	7.6	5.7	8.5
122	8.2	9.7	14.5#



#86
 Perylene-d12
 Concen: 20.000 ng
 RT: 15.409 min Scan# 2265
 Delta R.T. -0.006 min
 Lab File: BF124352.D
 Acq: 16 Jun 2021 20:48



Tgt Ion:264 Resp: 81380

Ion	Ratio	Lower	Upper
264	100		
260	27.6	18.7	28.1
265	21.4	17.8	26.8

