

Data Path : Z:\HPCHEM1\BNA_F\DATA\BF061715\
 Data File : BF080034.D
 Acq On : 17 Jun 2015 21:01
 Operator : TP/IZ
 Sample : G2649-01
 Misc :
 ALS Vial : 12 Sample Multiplier: 1

Instrument :
 BNA_F
 ClientSampleId :
 AST-TS-001

Integration Parameters: rteint.p
 Integrator: RTE
 Smoothing : ON
 Sampling : 1
 Start Thrs: 0.2
 Stop Thrs : 0

Filtering: 5
 Min Area: 3 % of largest Peak
 Max Peaks: 100
 Peak Location: TOP

If leading or trailing edge < 100 prefer < Baseline drop else tangent >
 Peak separation: 5

Method : Z:\HPCHEM1\BNA_F\METHODS\8270-BF061715.M
 Title : ASP BNA STANDARDS FOR 5 POINT CALIBRATION

Signal : TIC

peak #	R.T. min	first scan	max scan	last scan	PK TY	peak height	corr. area	corr. % max.	% of total
1	5.556	213	216	218	rBV	288759	297535	25.71%	1.775%
2	5.944	248	250	253	rBV	1017338	902624	78.00%	5.385%
3	6.344	283	285	287	rVB	23345	22689	1.96%	0.135%
4	6.561	303	304	309	rBV	17751	24971	2.16%	0.149%
5	6.939	335	337	339	rBV	1171526	986477	85.25%	5.886%
6	7.099	349	351	354	rVB	991436	941972	81.40%	5.620%
7	7.339	370	372	374	rVB	302544	240883	20.82%	1.437%
8	7.499	384	386	388	rBV	866640	731736	63.23%	4.366%
9	7.887	418	420	423	rBV	541683	541884	46.83%	3.233%
10	8.630	483	485	487	rBV	388858	324004	28.00%	1.933%
11	9.704	575	579	581	rBV	1292472	1045960	90.39%	6.241%
12	10.047	608	609	611	rBV	12257	13061	1.13%	0.078%
13	10.093	611	613	614	rVV	83422	84918	7.34%	0.507%
14	10.287	625	630	634	rBV2	23460	62598	5.41%	0.373%
15	10.402	638	640	642	rBV	432847	379423	32.79%	2.264%
16	10.813	672	676	678	rVB3	7656	16363	1.41%	0.098%
17	10.950	686	688	691	rVB	22579	19931	1.72%	0.119%
18	11.190	706	709	711	rBV	897471	777996	67.23%	4.642%
19	11.282	715	717	718	rBV	16980	17452	1.51%	0.104%
20	11.419	724	729	731	rBV	8180	16533	1.43%	0.099%
21	11.499	732	736	738	rBV	11606	17563	1.52%	0.105%
22	11.739	755	757	759	rBV	17423	15316	1.32%	0.091%
23	11.899	769	771	775	rBV	467453	632885	54.69%	3.776%
24	11.979	775	778	779	rVV	52239	42894	3.71%	0.256%
25	12.013	779	781	782	rVV	17700	19381	1.67%	0.116%
26	12.093	786	788	790	rBV	24130	22064	1.91%	0.132%
27	12.413	814	816	818	rBV	55059	69155	5.98%	0.413%
28	12.448	818	819	822	rVV	93687	74653	6.45%	0.445%
29	12.493	822	823	825	rVV	17104	18586	1.61%	0.111%
30	12.539	825	827	831	rVB3	73525	133793	11.56%	0.798%
31	12.596	831	832	836	rBV2	8187	12804	1.11%	0.076%
32	12.722	841	843	844	rVV	25716	24154	2.09%	0.144%
33	12.756	844	846	849	rVB2	9055	15191	1.31%	0.091%
34	12.882	855	857	859	rBV2	13506	15073	1.30%	0.090%

Data Path : Z:\HPCHEM1\BNA_F\DATA\BF061715\
 Data File : BF080034.D
 Acq On : 17 Jun 2015 21:01
 Operator : TP/IZ
 Sample : G2649-01
 Misc :
 ALS Vial : 12 Sample Multiplier: 1

Instrument :
 BNA_F
 ClientSampleId :
 AST-TS-001

Integration Parameters: rteint.p
 Integrator: RTE
 Smoothing : ON
 Sampling : 1
 Start Thrs: 0.2
 Stop Thrs : 0

Filtering: 5
 Min Area: 3 % of largest Peak
 Max Peaks: 100
 Peak Location: TOP

If leading or trailing edge < 100 prefer < Baseline drop else tangent >
 Peak separation: 5

Method : Z:\HPCHEM1\BNA_F\METHODS\8270-BF061715.M
 Title : ASP BNA STANDARDS FOR 5 POINT CALIBRATION

35	12.916	859	860	862	rBV	20518	24229	2.09%	0.145%
36	12.996	865	867	869	rBV	46942	61157	5.28%	0.365%
37	13.042	869	871	874	rVV2	25715	52547	4.54%	0.314%
38	13.099	874	876	881	rVB2	21594	41500	3.59%	0.248%
39	13.179	881	883	885	rBV	321408	282122	24.38%	1.683%
40	13.362	896	899	901	rBV3	20133	28518	2.46%	0.170%
41	13.431	901	905	908	rBV	246505	386919	33.44%	2.309%
42	13.488	908	910	913	rVB	21428	26159	2.26%	0.156%
43	13.579	916	918	921	rVV	1170178	1157208	100.00%	6.904%
44	13.671	923	926	931	rBV3	30072	62923	5.44%	0.375%
45	13.808	933	938	939	rBV	45884	89803	7.76%	0.536%
46	13.876	942	944	946	rBV	31392	33418	2.89%	0.199%
47	13.922	946	948	950	rBV2	49475	61119	5.28%	0.365%
48	14.036	956	958	959	rBV	48828	41570	3.59%	0.248%
49	14.071	959	961	967	rVB	41965	61339	5.30%	0.366%
50	14.174	967	970	974	rBV3	15554	27245	2.35%	0.163%
51	14.242	974	976	977	rVV2	11011	17447	1.51%	0.104%
52	14.299	980	981	985	rVB2	12346	16770	1.45%	0.100%
53	14.402	985	990	993	rBV2	24965	52206	4.51%	0.311%
54	14.539	998	1002	1004	rBV3	24357	53104	4.59%	0.317%
55	14.574	1004	1005	1007	rVV	27204	24334	2.10%	0.145%
56	14.631	1007	1010	1015	rVV5	134497	241938	20.91%	1.443%
57	14.745	1018	1020	1022	rVV	17175	17546	1.52%	0.105%
58	14.848	1025	1029	1031	rVV2	524811	747604	64.60%	4.461%
59	14.882	1031	1032	1036	rVV	156111	142511	12.32%	0.850%
60	14.985	1040	1041	1044	rVV	15812	18424	1.59%	0.110%
61	15.042	1044	1046	1048	rVV3	21965	39367	3.40%	0.235%
62	15.122	1052	1053	1056	rBV2	10994	21016	1.82%	0.125%
63	15.294	1067	1068	1070	rBV	13710	21946	1.90%	0.131%
64	15.351	1070	1073	1075	rVV	42815	78678	6.80%	0.469%
65	15.385	1075	1076	1079	rVV	22284	35407	3.06%	0.211%
66	15.454	1079	1082	1085	rVV3	116980	180310	15.58%	1.076%
67	15.511	1085	1087	1088	rVV	29350	38596	3.34%	0.230%
68	15.534	1088	1089	1092	rVV	19078	30773	2.66%	0.184%
69	15.614	1092	1096	1098	rVB3	8297	21256	1.84%	0.127%
70	15.785	1109	1111	1115	rVB4	8817	21078	1.82%	0.126%
71	15.854	1115	1117	1119	rBV2	26236	45628	3.94%	0.272%

Data Path : Z:\HPCHEM1\BNA_F\DATA\BF061715\
 Data File : BF080034.D
 Acq On : 17 Jun 2015 21:01
 Operator : TP/IZ
 Sample : G2649-01
 Misc :
 ALS Vial : 12 Sample Multiplier: 1

Instrument :
 BNA_F
 ClientSampleId :
 AST-TS-001

Integration Parameters: rteint.p
 Integrator: RTE
 Smoothing : ON Filtering: 5
 Sampling : 1 Min Area: 3 % of largest Peak
 Start Thrs: 0.2 Max Peaks: 100
 Stop Thrs : 0 Peak Location: TOP

If leading or trailing edge < 100 prefer < Baseline drop else tangent >
 Peak separation: 5

Method : Z:\HPCHEM1\BNA_F\METHODS\8270-BF061715.M
 Title : ASP BNA STANDARDS FOR 5 POINT CALIBRATION

72	15.957	1123	1126	1127	rVV2	22487	30318	2.62%	0.181%
73	16.059	1131	1135	1138	rVV5	9362	30653	2.65%	0.183%
74	16.185	1143	1146	1152	rBV	104039	284321	24.57%	1.696%
75	16.288	1152	1155	1161	rVB2	229557	376404	32.53%	2.246%
76	16.562	1176	1179	1183	rBV	65608	112077	9.69%	0.669%
77	16.642	1183	1186	1190	rVB	92616	139424	12.05%	0.832%
78	16.722	1190	1193	1196	rBV	334817	494520	42.73%	2.951%
79	16.768	1196	1197	1203	rVB4	29520	52221	4.51%	0.312%
80	17.042	1218	1221	1223	rVB3	17109	25401	2.20%	0.152%
81	17.191	1231	1234	1239	rVB3	30207	69879	6.04%	0.417%
82	17.351	1244	1248	1251	rBV	114895	241636	20.88%	1.442%
83	17.397	1251	1252	1259	rVV7	33313	92731	8.01%	0.553%
84	17.545	1263	1265	1268	rVB3	17863	29424	2.54%	0.176%
85	17.682	1274	1277	1282	rVB2	50943	118367	10.23%	0.706%
86	17.865	1291	1293	1298	rVB5	12711	27431	2.37%	0.164%
87	18.368	1333	1337	1342	rBV4	29293	69771	6.03%	0.416%
88	18.574	1352	1355	1362	rBV2	34591	98602	8.52%	0.588%
89	18.768	1368	1372	1375	rBV5	16742	48744	4.21%	0.291%
90	18.860	1376	1380	1390	rVB9	27280	124032	10.72%	0.740%
91	19.134	1401	1404	1413	rVB	36531	113769	9.83%	0.679%
92	19.374	1420	1425	1431	rBV3	84553	274061	23.68%	1.635%
93	19.477	1431	1434	1441	rVB5	34708	114851	9.92%	0.685%
94	19.648	1446	1449	1455	rVB3	46729	124124	10.73%	0.741%
95	19.785	1457	1461	1467	rBV4	47055	132770	11.47%	0.792%
96	19.957	1473	1476	1480	rBV2	25058	67020	5.79%	0.400%
97	20.094	1484	1488	1496	rVB4	72792	272064	23.51%	1.623%
98	20.403	1510	1515	1518	rBV3	62753	203580	17.59%	1.215%
99	20.586	1529	1531	1536	rVB5	18223	44025	3.80%	0.263%
100	20.688	1536	1540	1545	rBV5	31237	82066	7.09%	0.490%

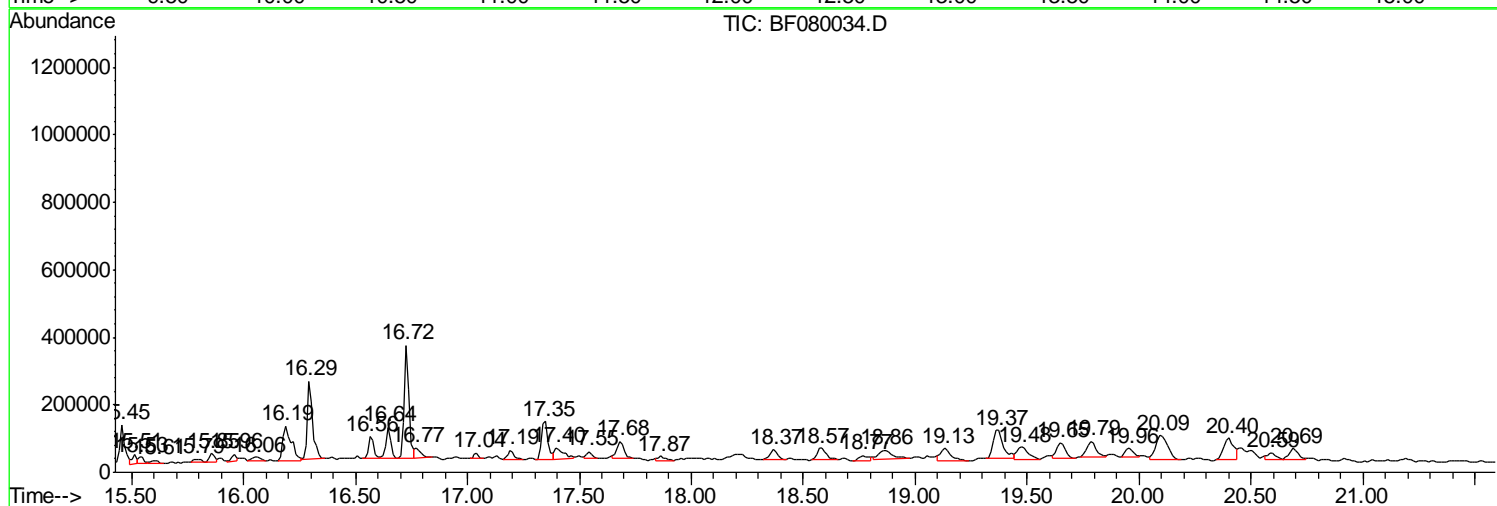
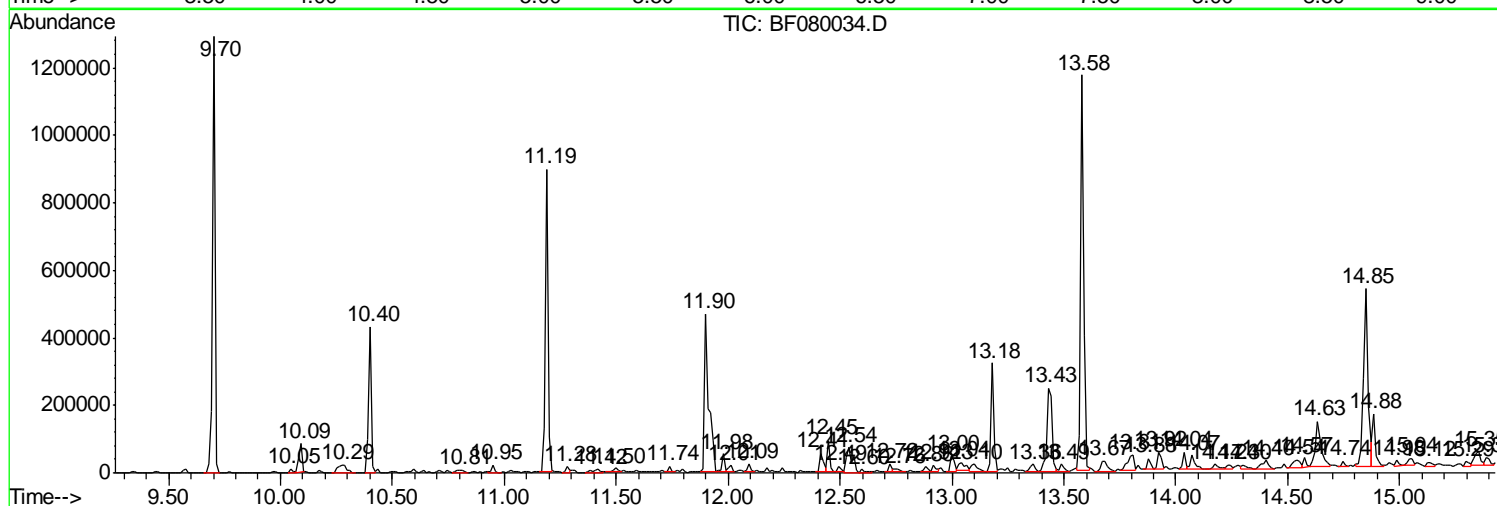
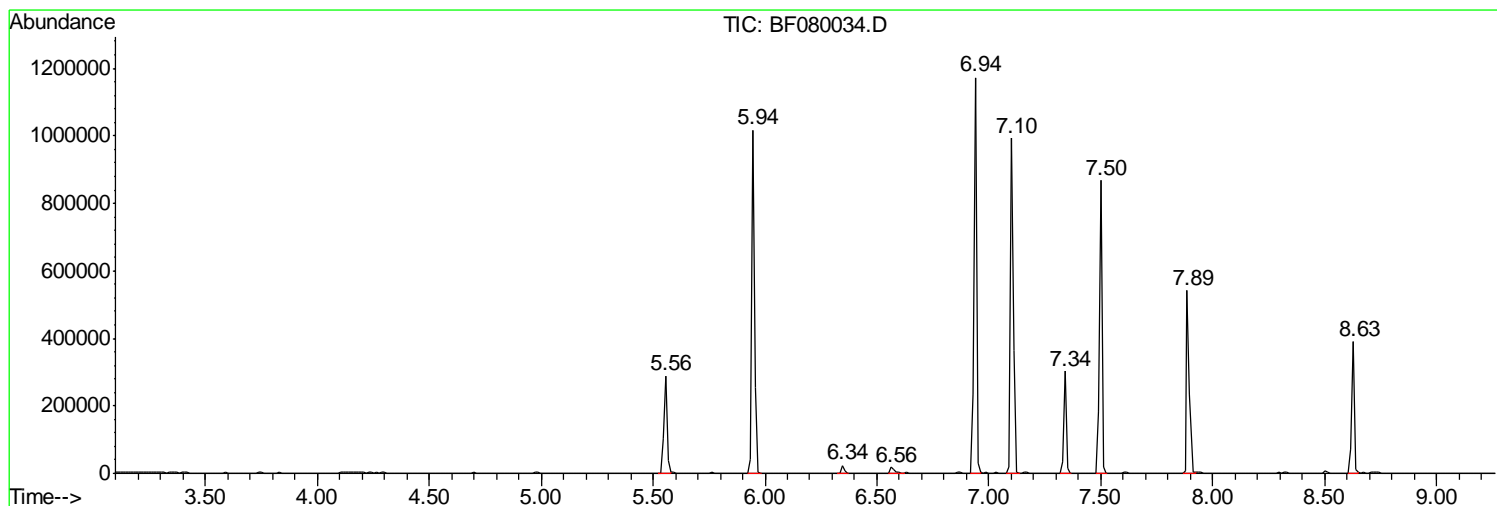
Sum of corrected areas: 16760523

Data Path : Z:\HPCHEM1\BNA_F\DATA\BF061715\
 Data File : BF080034.D
 Acq On : 17 Jun 2015 21:01
 Operator : TP/IZ
 Sample : G2649-01
 Misc :
 ALS Vial : 12 Sample Multiplier: 1

Instrument :
 BNA_F
ClientSampleId :
 AST-TS-001

Quant Method : Z:\HPCHEM1\BNA_F\METHODS\8270-BF061715.M
 Quant Title : ASP BNA STANDARDS FOR 5 POINT CALIBRATION

TIC Library : C:\DATABASE\NIST02.L
 TIC Integration Parameters: LSCINT.P



Data Path : Z:\HPCHEM1\BNA_F\DATA\BF061715\
 Data File : BF080034.D
 Acq On : 17 Jun 2015 21:01
 Operator : TP/IZ
 Sample : G2649-01
 Misc :
 ALS Vial : 12 Sample Multiplier: 1

Instrument :
 BNA_F
 ClientSampleID :
 AST-TS-001

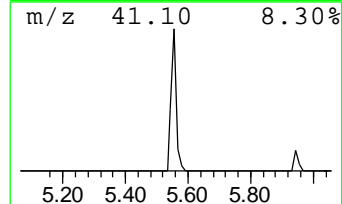
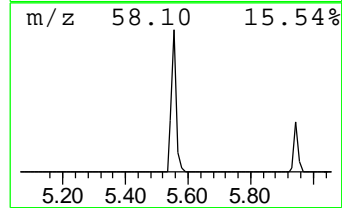
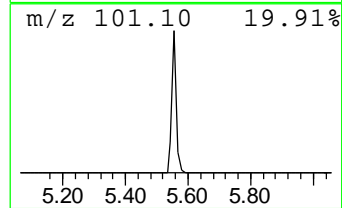
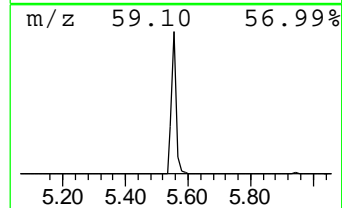
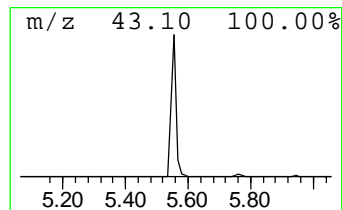
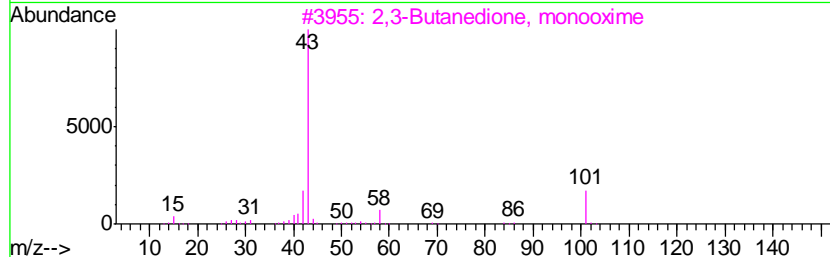
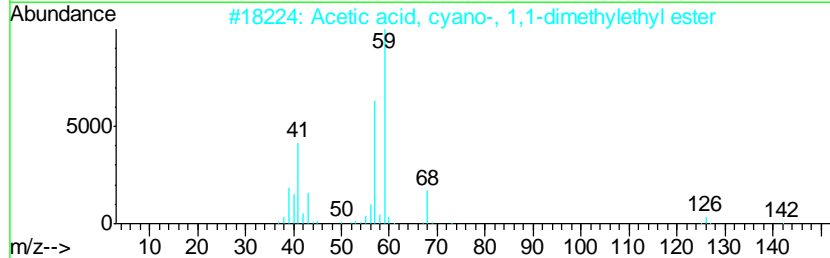
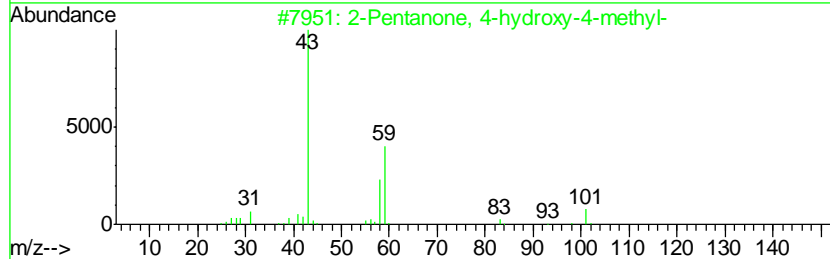
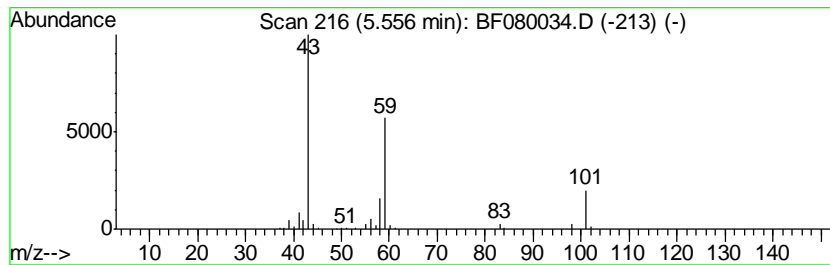
Quant Method : Z:\HPCHEM1\BNA_F\METHODS\8270-BF061715.M
 Quant Title : ASP BNA STANDARDS FOR 5 POINT CALIBRATION

TIC Library : C:\DATABASE\NIST02.L
 TIC Integration Parameters: LSCINT.P

 Peak Number 1 2-Pentanone, 4-hydroxy-4-me... Concentration Rank 3

R.T.	EstConc	Area	Relative to ISTD	R.T.
5.56	24.70 ng	297535	1,4-Dichlorobenzene-d4	7.34

Hit#	of	Tentative ID	MW	MolForm	CAS#	Qual
1	5	2-Pentanone, 4-hydroxy-4-methyl-	116	C6H12O2	000123-42-2	42
2		Acetic acid, cyano-, 1,1-dimethyl...	141	C7H11NO2	001116-98-9	32
3		2,3-Butanedione, monooxime	101	C4H7NO2	000057-71-6	9
4		Morpholine, 4-methyl-	101	C5H11NO	000109-02-4	9
5		4-Hydroxy-3-hexanone	116	C6H12O2	004984-85-4	9



Data Path : Z:\HPCHEM1\BNA_F\DATA\BF061715\
 Data File : BF080034.D
 Acq On : 17 Jun 2015 21:01
 Operator : TP/IZ
 Sample : G2649-01
 Misc :
 ALS Vial : 12 Sample Multiplier: 1

Instrument :
 BNA_F
 ClientSampleID :
 AST-TS-001

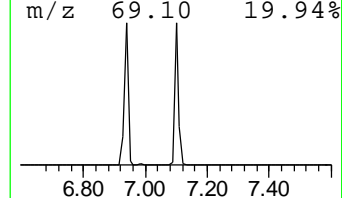
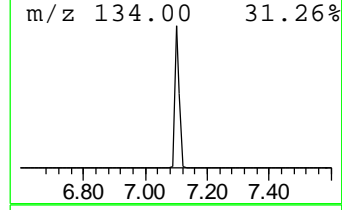
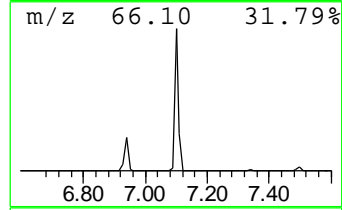
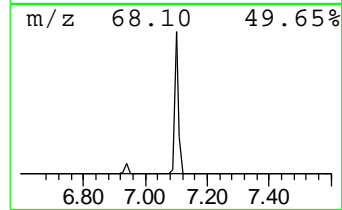
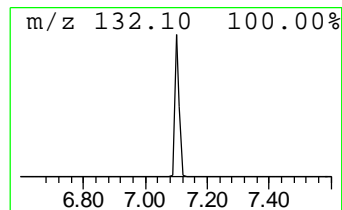
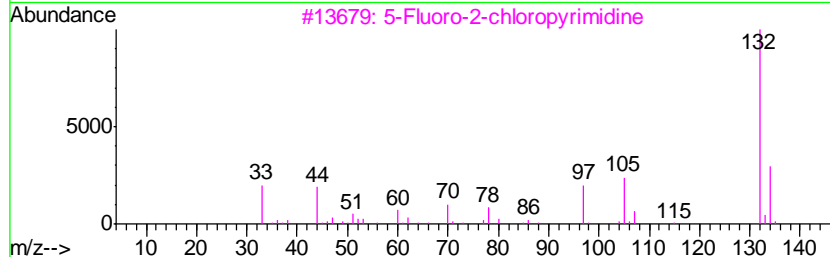
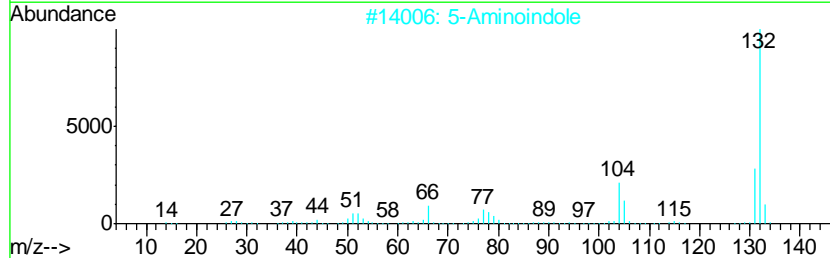
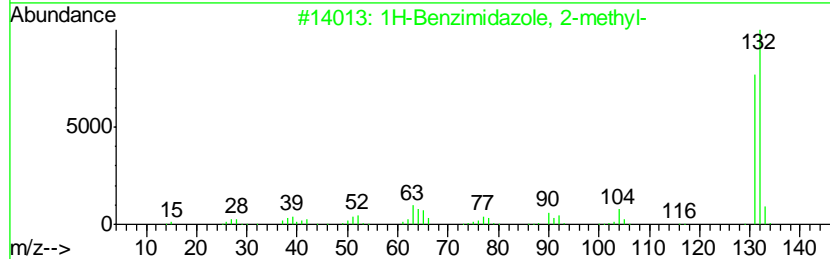
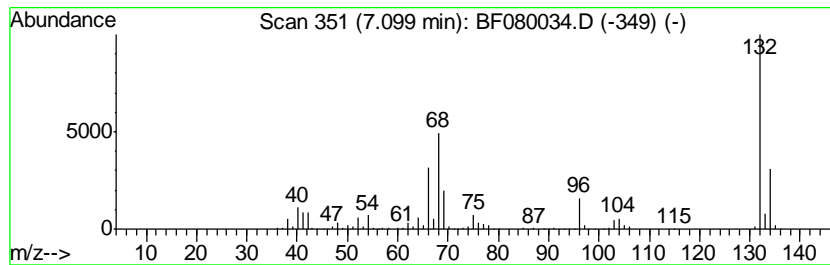
Quant Method : Z:\HPCHEM1\BNA_F\METHODS\8270-BF061715.M
 Quant Title : ASP BNA STANDARDS FOR 5 POINT CALIBRATION

TIC Library : C:\DATABASE\NIST02.L
 TIC Integration Parameters: LSCINT.P

 Peak Number 2 unknown7.10 Concentration Rank 1

R.T.	EstConc	Area	Relative to ISTD	R.T.
7.10	78.21 ng	941972	1,4-Dichlorobenzene-d4	7.34

Hit#	of	Tentative ID	MW	MolForm	CAS#	Qual
1	5	1H-Benzimidazole, 2-methyl-	132	C8H8N2	000615-15-6	22
2		5-Aminoindole	132	C8H8N2	005192-03-0	22
3		5-Fluoro-2-chloropyrimidine	132	C4H2ClFN2	062802-42-0	12
4		Tranylcypramine-propionyl	189	C12H15NO	1000123-86-3	10
5		(5-METHYL-2-PYRIDYL)ACETONITRILE	132	C8H8N2	1000241-93-9	10



Data Path : Z:\HPCHEM1\BNA_F\DATA\BF061715\
 Data File : BF080034.D
 Acq On : 17 Jun 2015 21:01
 Operator : TP/IZ
 Sample : G2649-01
 Misc :
 ALS Vial : 12 Sample Multiplier: 1

Instrument :
 BNA_F
 ClientSampled :
 AST-TS-001

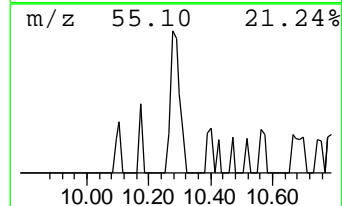
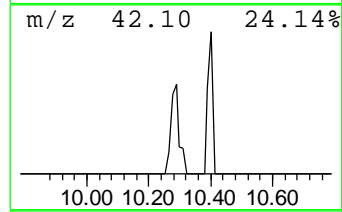
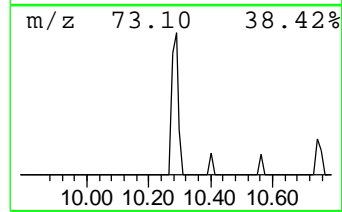
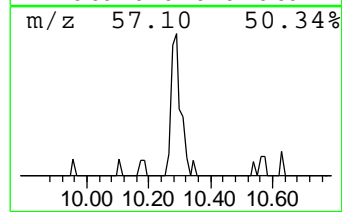
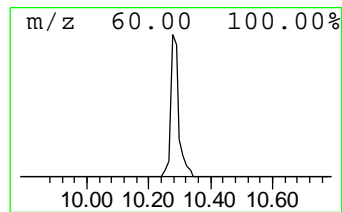
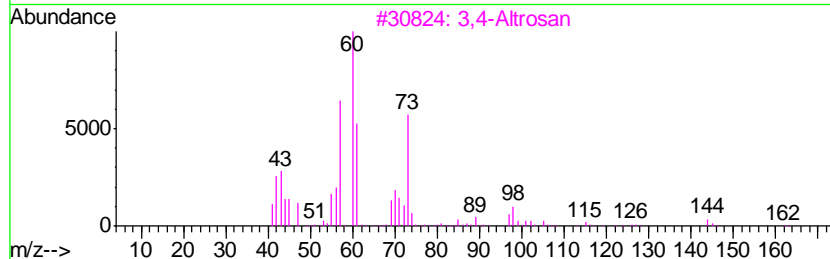
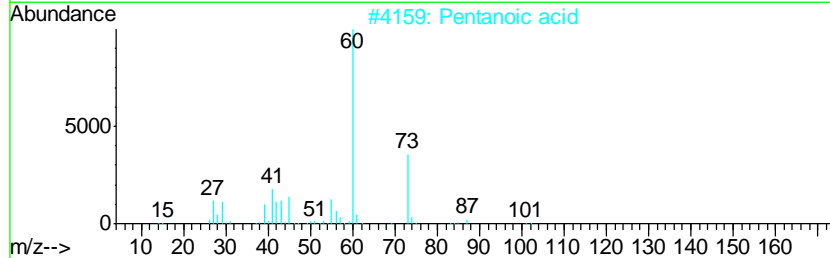
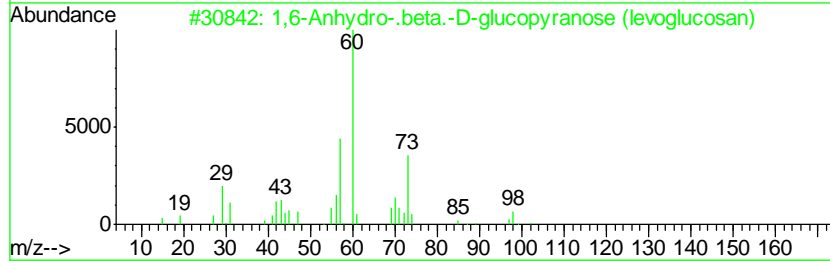
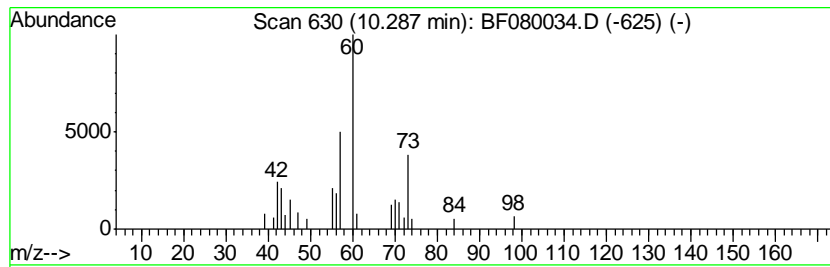
Quant Method : Z:\HPCHEM1\BNA_F\METHODS\8270-BF061715.M
 Quant Title : ASP BNA STANDARDS FOR 5 POINT CALIBRATION

TIC Library : C:\DATABASE\NIST02.L
 TIC Integration Parameters: LSCINT.P

 Peak Number 4 1,6-Anhydro-.beta.-D-glucop... Concentration Rank 20

R.T.	EstConc	Area	Relative to ISTD	R.T.
10.29	3.30 ng	62598	Acenaphthene-d10	10.40

Hit#	of	Tentative ID	MW	MolForm	CAS#	Qual
1	5	1,6-Anhydro-.beta.-D-glucopyrano...	162	C6H10O5	000498-07-7	64
2		Pentanoic acid	102	C5H10O2	000109-52-4	40
3		3,4-Altrosan	162	C6H10O5	1000129-76-4	40
4		Hexanoic acid	116	C6H12O2	000142-62-1	40
5		Amyl Nitrite	117	C5H11NO2	000110-46-3	38



Data Path : Z:\HPCHEM1\BNA_F\DATA\BF061715\
 Data File : BF080034.D
 Acq On : 17 Jun 2015 21:01
 Operator : TP/IZ
 Sample : G2649-01
 Misc :
 ALS Vial : 12 Sample Multiplier: 1

Instrument :
 BNA_F
 ClientSampleID :
 AST-TS-001

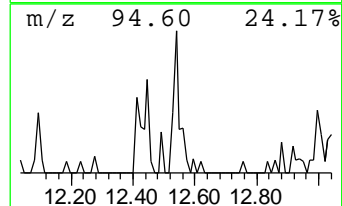
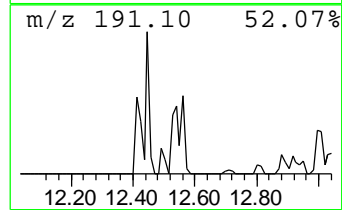
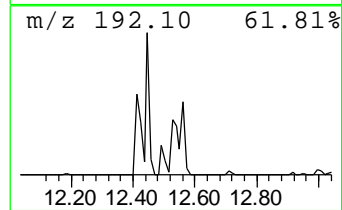
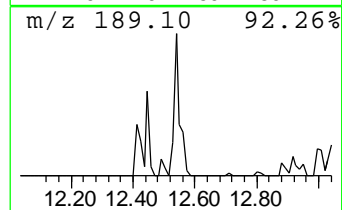
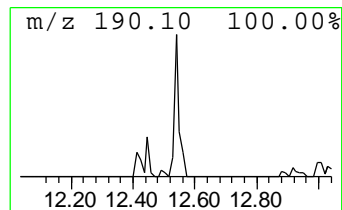
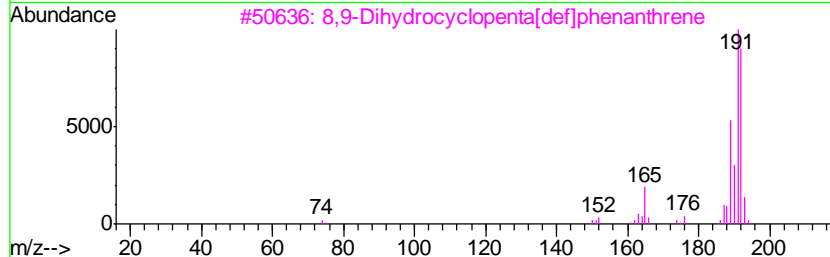
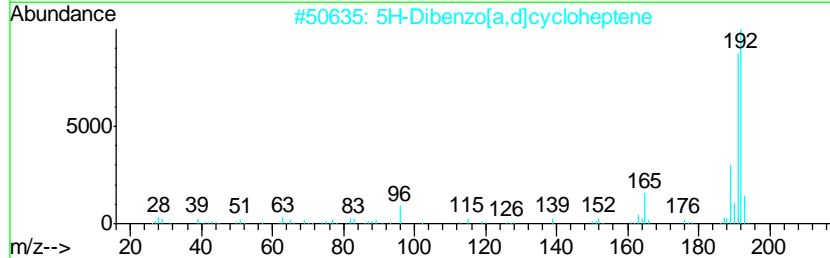
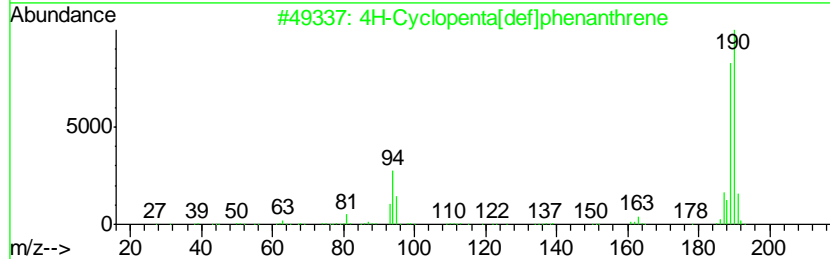
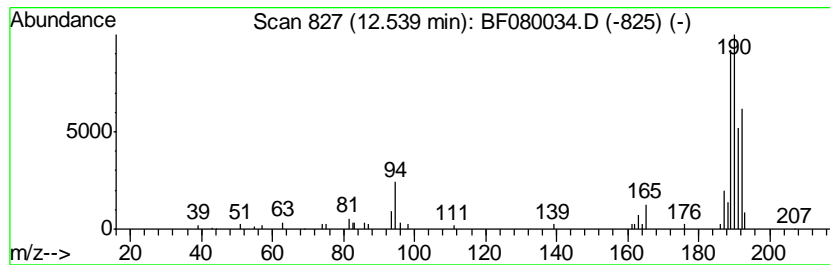
Quant Method : Z:\HPCHEM1\BNA_F\METHODS\8270-BF061715.M
 Quant Title : ASP BNA STANDARDS FOR 5 POINT CALIBRATION

TIC Library : C:\DATABASE\NIST02.L
 TIC Integration Parameters: LSCINT.P

 Peak Number 5 4H-Cyclopenta[def]phenanthrene Concentration Rank 17

R.T.	EstConc	Area	Relative to ISTD	R.T.
12.54	4.23 ng	133793	Phenanthrene-d10	11.90

Hit#	of	Tentative ID	MW	MolForm	CAS#	Qual
1	5	4H-Cyclopenta[def]phenanthrene	190	C15H10	000203-64-5	70
2		5H-Dibenzo[a,d]cycloheptene	192	C15H12	000256-81-5	25
3		8,9-Dihydrocyclopenta[def]phenan...	192	C15H12	027410-55-5	18
4		1a,9b-Dihydro-1H-cyclopropa[a]an...	192	C15H12	006109-24-6	14
5		4-Cyano-4-hydroxy-3-methyl-2-phe...	216	C13H16N2O	1000216-11-7	14



Data Path : Z:\HPCHEM1\BNA_F\DATA\BF061715\
 Data File : BF080034.D
 Acq On : 17 Jun 2015 21:01
 Operator : TP/IZ
 Sample : G2649-01
 Misc :
 ALS Vial : 12 Sample Multiplier: 1

Instrument :
 BNA_F
 ClientSampleID :
 AST-TS-001

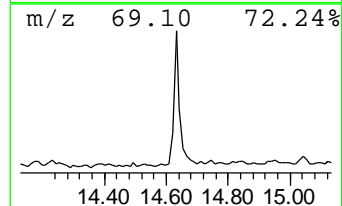
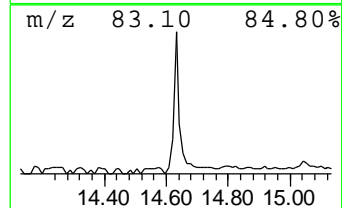
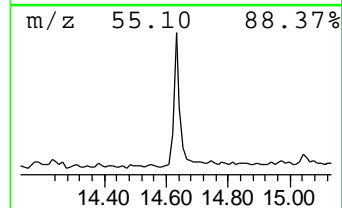
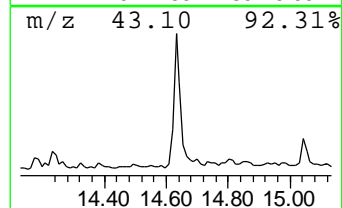
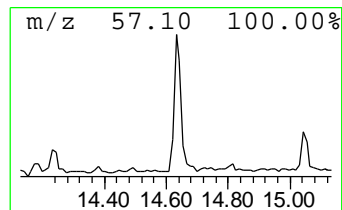
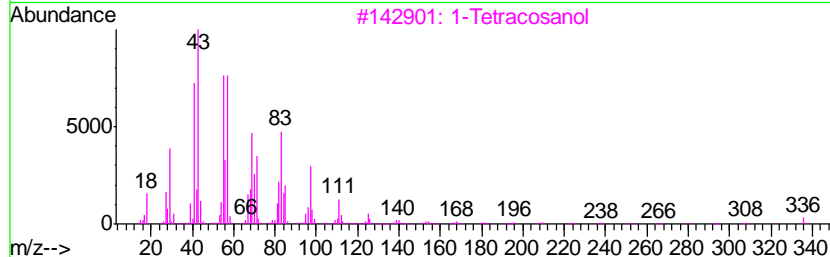
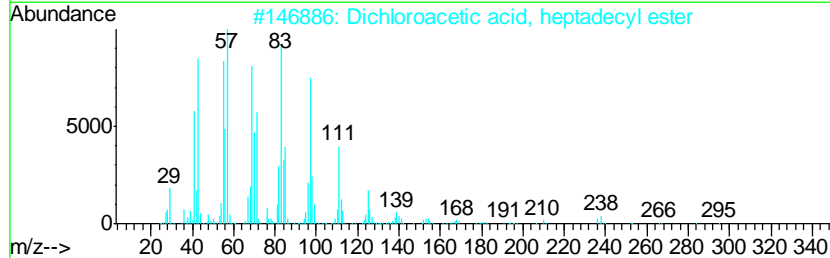
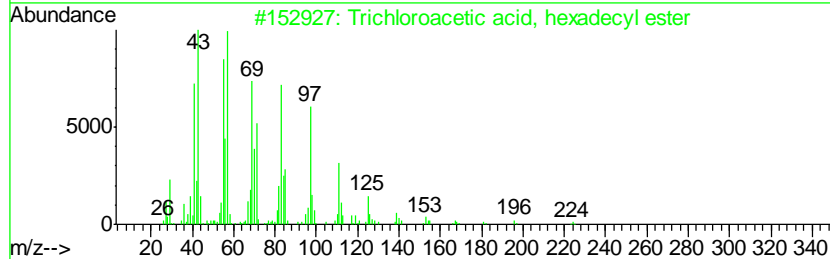
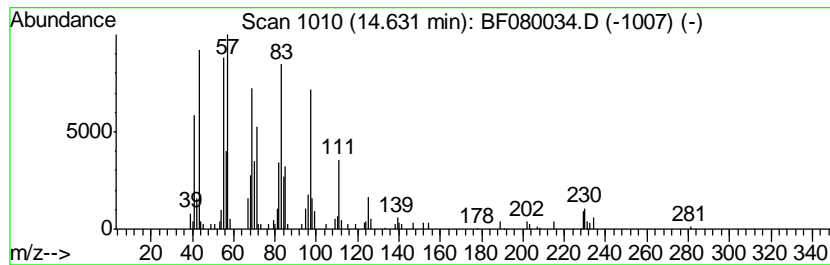
Quant Method : Z:\HPCHEM1\BNA_F\METHODS\8270-BF061715.M
 Quant Title : ASP BNA STANDARDS FOR 5 POINT CALIBRATION

TIC Library : C:\DATABASE\NIST02.L
 TIC Integration Parameters: LSCINT.P

 Peak Number 6 Trichloroacetic acid, hexad... Concentration Rank 9

R.T.	EstConc	Area	Relative to ISTD	R.T.
14.63	6.47 ng	241938	Chrysene-d12	14.85

Hit#	of	Tentative ID	MW	MolForm	CAS#	Qual
1	5	Trichloroacetic acid, hexadecyl ...	386	C18H33Cl3O2	074339-54-1	90
2		Dichloroacetic acid, heptadecyl ...	366	C19H36Cl2O2	1000282-98-2	90
3		1-Tetracosanol	354	C24H50O	000506-51-4	90
4		1-Docosene	308	C22H44	001599-67-3	90
5		2-Chloropropionic acid, hexadec...	332	C19H37ClO2	086711-81-1	87



Data Path : Z:\HPCHEM1\BNA_F\DATA\BF061715\
 Data File : BF080034.D
 Acq On : 17 Jun 2015 21:01
 Operator : TP/IZ
 Sample : G2649-01
 Misc :
 ALS Vial : 12 Sample Multiplier: 1

Instrument :
 BNA_F
 ClientSampleID :
 AST-TS-001

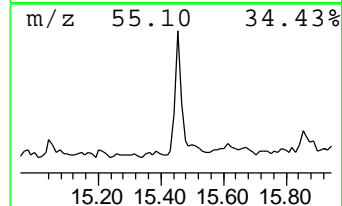
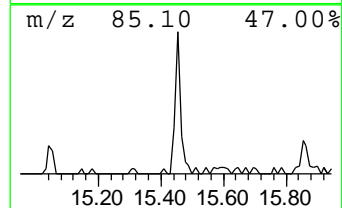
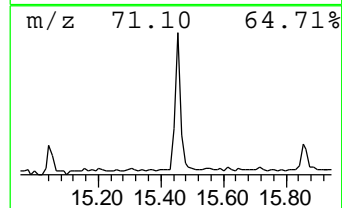
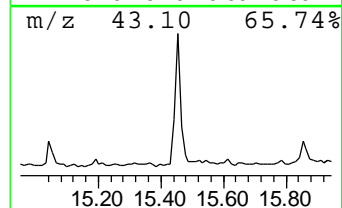
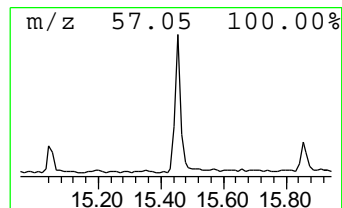
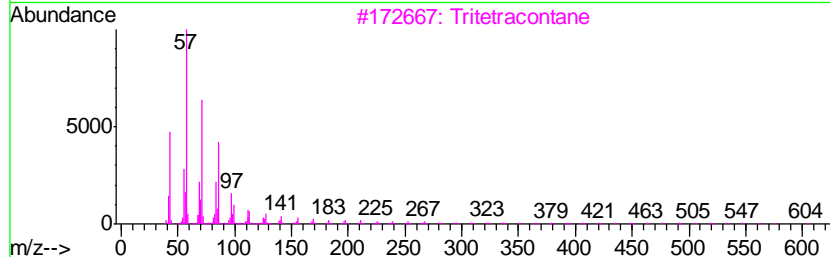
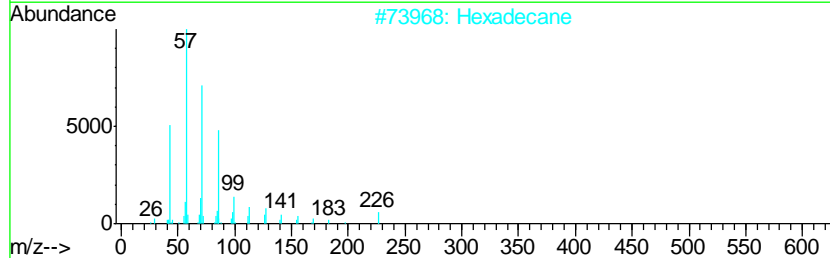
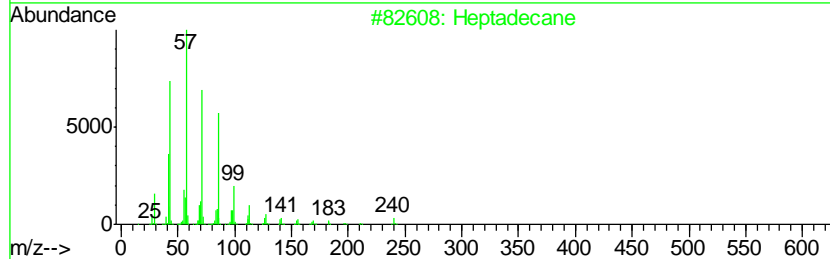
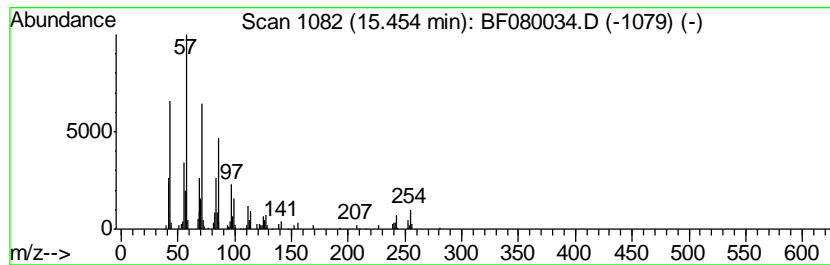
Quant Method : Z:\HPCHEM1\BNA_F\METHODS\8270-BF061715.M
 Quant Title : ASP BNA STANDARDS FOR 5 POINT CALIBRATION

TIC Library : C:\DATABASE\NIST02.L
 TIC Integration Parameters: LSCINT.P

 Peak Number 7 Heptadecane Concentration Rank 13

R.T.	EstConc	Area	Relative to ISTD	R.T.
15.45	4.82 ng	180310	Chrysene-d12	14.85

Hit#	of	Tentative ID	MW	MolForm	CAS#	Qual
1	5	Heptadecane	240	C17H36	000629-78-7	96
2		Hexadecane	226	C16H34	000544-76-3	91
3		Tritetracontane	605	C43H88	007098-21-7	87
4		Octadecane	254	C18H38	000593-45-3	86
5		Octadecane, 1-chloro-	288	C18H37Cl	003386-33-2	80



Data Path : Z:\HPCHEM1\BNA_F\DATA\BF061715\
 Data File : BF080034.D
 Acq On : 17 Jun 2015 21:01
 Operator : TP/IZ
 Sample : G2649-01
 Misc :
 ALS Vial : 12 Sample Multiplier: 1

Instrument :
 BNA_F
 ClientSampleID :
 AST-TS-001

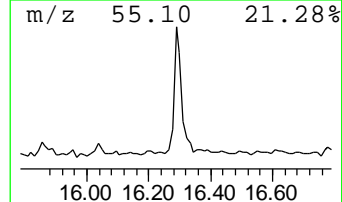
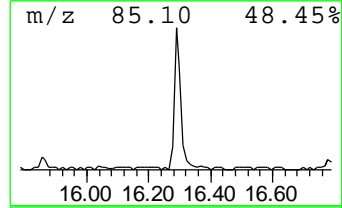
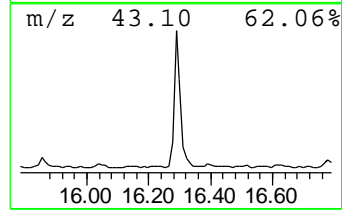
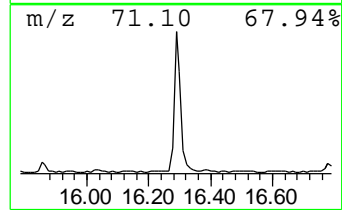
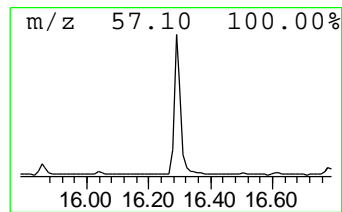
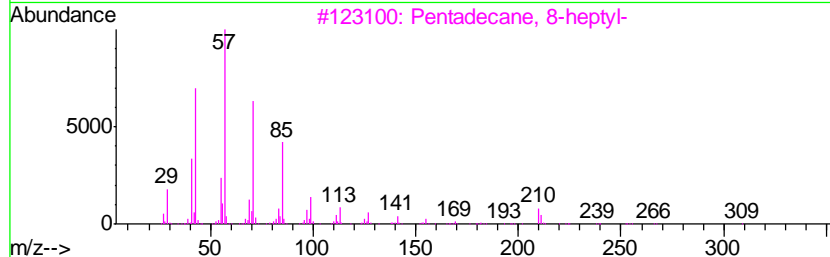
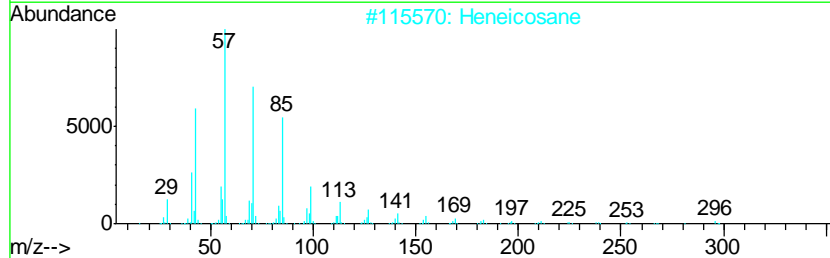
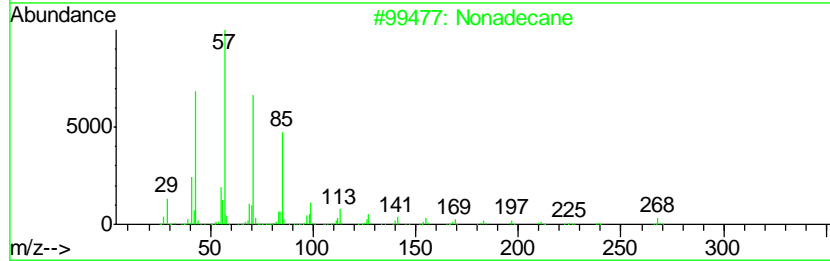
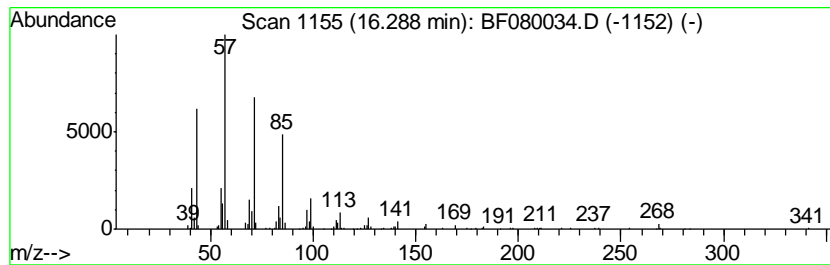
Quant Method : Z:\HPCHEM1\BNA_F\METHODS\8270-BF061715.M
 Quant Title : ASP BNA STANDARDS FOR 5 POINT CALIBRATION

TIC Library : C:\DATABASE\NIST02.L
 TIC Integration Parameters: LSCINT.P

 Peak Number 8 Nonadecane Concentration Rank 4

R.T.	EstConc	Area	Relative to ISTD	R.T.
16.29	15.22 ng	376404	Perylene-d12	16.72

Hit#	of	Tentative ID	MW	MolForm	CAS#	Qual
1	5	Nonadecane	268	C19H40	000629-92-5	93
2		Heneicosane	296	C21H44	000629-94-7	91
3		Pentadecane, 8-heptyl-	310	C22H46	071005-15-7	91
4		Eicosane	282	C20H42	000112-95-8	86
5		Heptacosane	380	C27H56	000593-49-7	83



Data Path : Z:\HPCHEM1\BNA_F\DATA\BF061715\
 Data File : BF080034.D
 Acq On : 17 Jun 2015 21:01
 Operator : TP/IZ
 Sample : G2649-01
 Misc :
 ALS Vial : 12 Sample Multiplier: 1

Instrument :
 BNA_F
 ClientSampleID :
 AST-TS-001

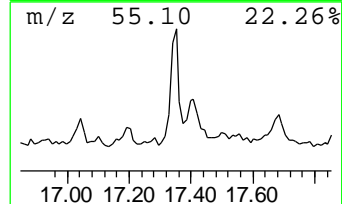
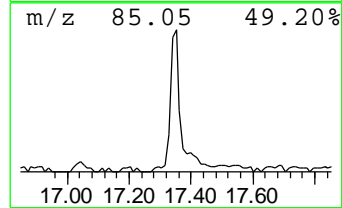
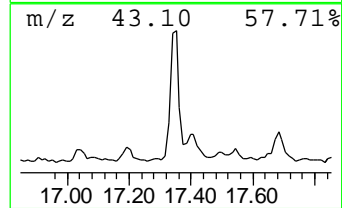
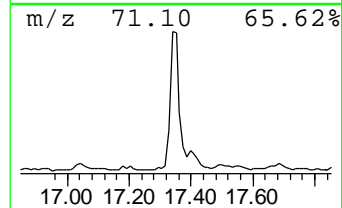
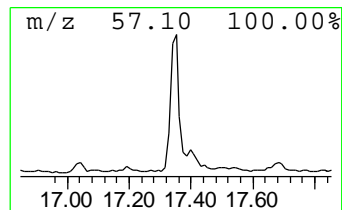
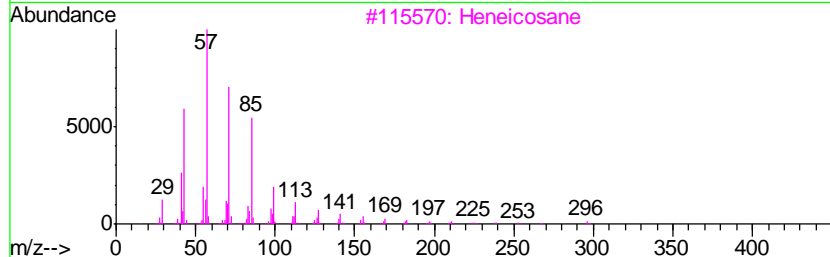
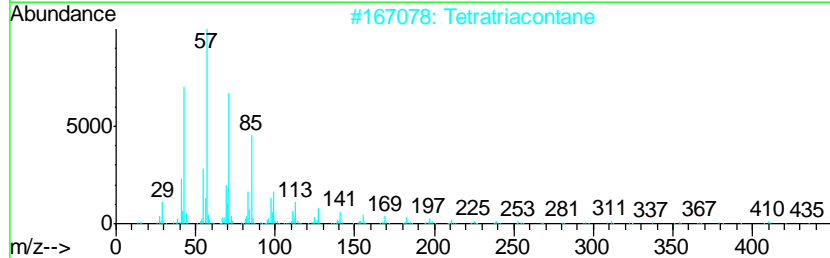
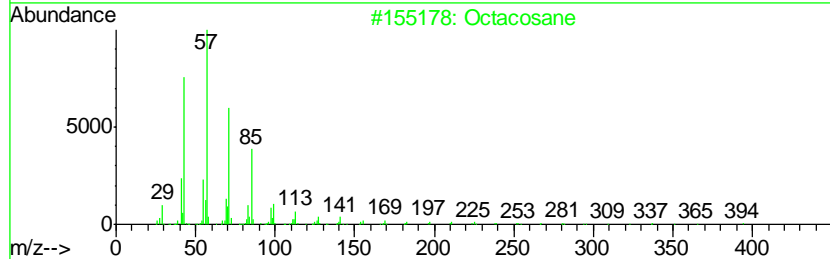
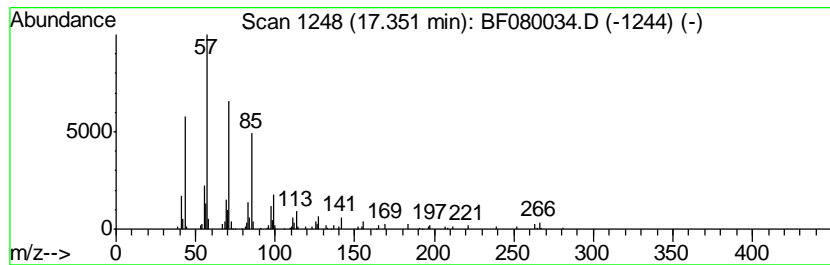
Quant Method : Z:\HPCHEM1\BNA_F\METHODS\8270-BF061715.M
 Quant Title : ASP BNA STANDARDS FOR 5 POINT CALIBRATION

TIC Library : C:\DATABASE\NIST02.L
 TIC Integration Parameters: LSCINT.P

 Peak Number 10 Octacosane Concentration Rank 7

R.T.	EstConc	Area	Relative to ISTD	R.T.
17.35	9.77 ng	241636	Perylene-d12	16.72

Hit#	of	Tentative ID	MW	MolForm	CAS#	Qual
1	5	Octacosane	394	C28H58	000630-02-4	90
2		Tetratriacontane	479	C34H70	014167-59-0	90
3		Heneicosane	296	C21H44	000629-94-7	90
4		Tetratetracontane	619	C44H90	007098-22-8	90
5		Tetracosane	338	C24H50	000646-31-1	90



Data Path : Z:\HPCHEM1\BNA_F\DATA\BF061715\
 Data File : BF080034.D
 Acq On : 17 Jun 2015 21:01
 Operator : TP/IZ
 Sample : G2649-01
 Misc :
 ALS Vial : 12 Sample Multiplier: 1

Instrument :
 BNA_F
 ClientSampleID :
 AST-TS-001

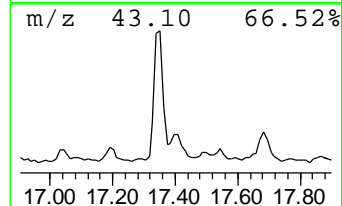
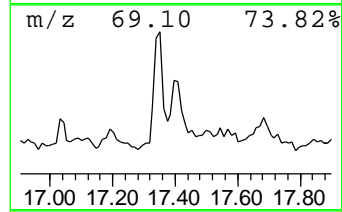
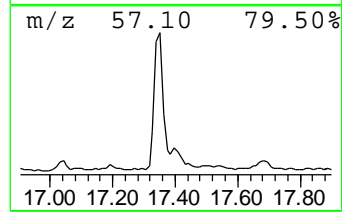
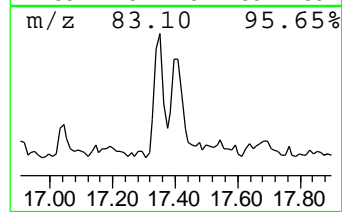
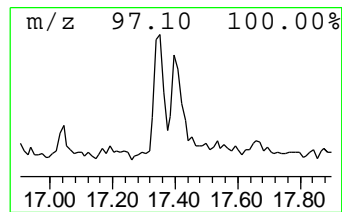
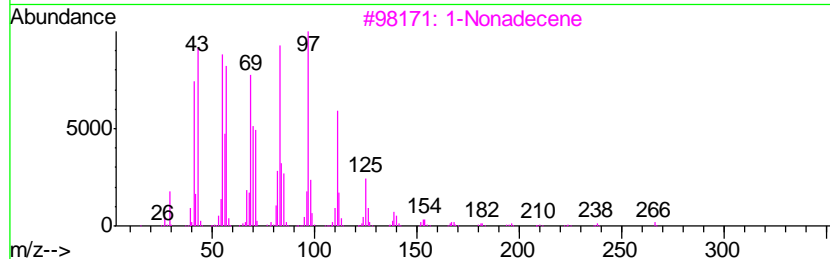
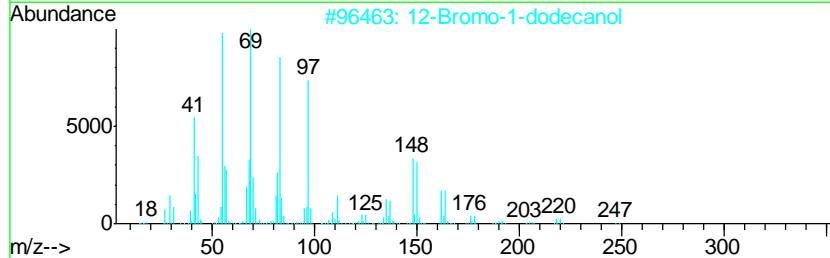
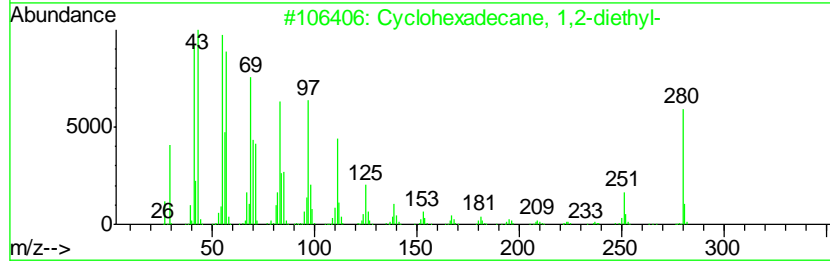
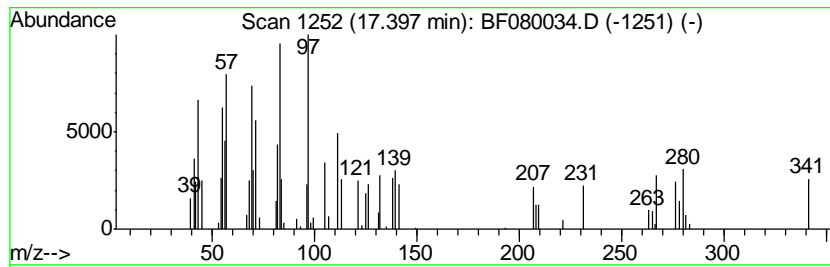
Quant Method : Z:\HPCHEM1\BNA_F\METHODS\8270-BF061715.M
 Quant Title : ASP BNA STANDARDS FOR 5 POINT CALIBRATION

TIC Library : C:\DATABASE\NIST02.L
 TIC Integration Parameters: LSCINT.P

 Peak Number 11 Cyclohexadecane, 1,2-diethyl- Concentration Rank 18

R.T.	EstConc	Area	Relative to ISTD	R.T.
17.40	3.75 ng	92731	Perylene-d12	16.72

Hit#	of	Tentative ID	MW	MolForm	CAS#	Qual
1	5	Cyclohexadecane, 1,2-diethyl-	280	C20H40	1000155-85-3	55
2		12-Bromo-1-dodecanol	264	C12H25BrO	003344-77-2	50
3		1-Nonadecene	266	C19H38	018435-45-5	47
4		1-Eicosene	280	C20H40	003452-07-1	46
5		Chloroacetic acid, tetradecyl ester	290	C16H31ClO2	018277-86-6	42



Data Path : Z:\HPCHEM1\BNA_F\DATA\BF061715\
 Data File : BF080034.D
 Acq On : 17 Jun 2015 21:01
 Operator : TP/IZ
 Sample : G2649-01
 Misc :
 ALS Vial : 12 Sample Multiplier: 1

Instrument :
 BNA_F
 ClientSampled :
 AST-TS-001

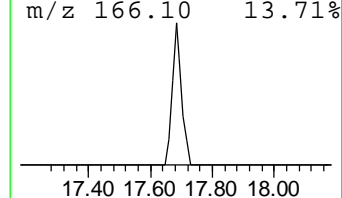
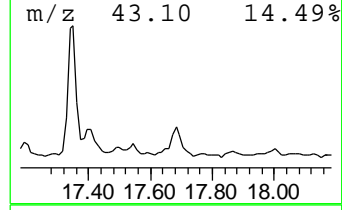
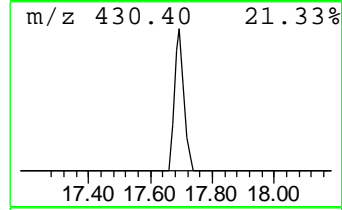
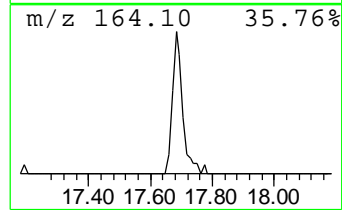
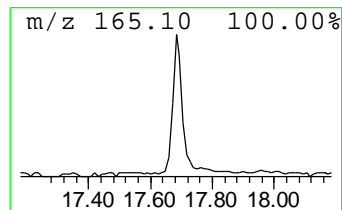
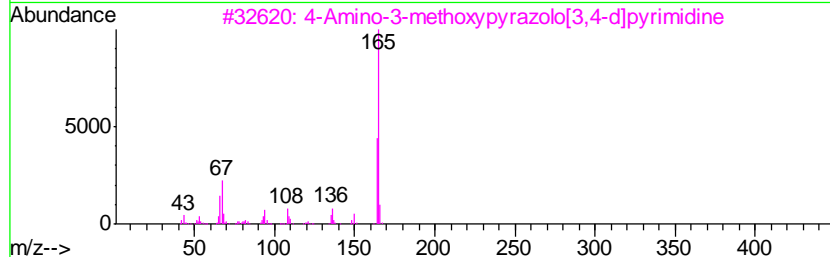
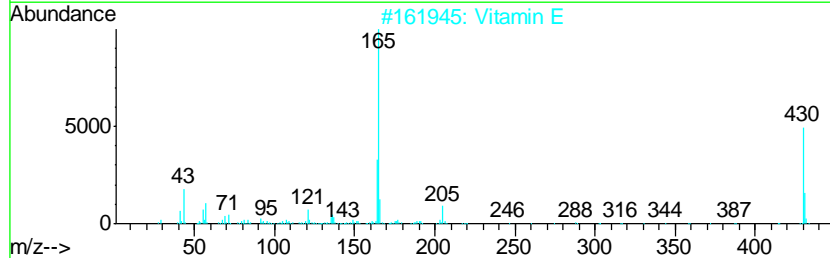
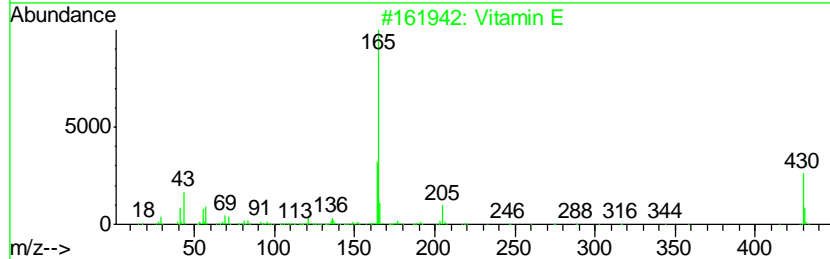
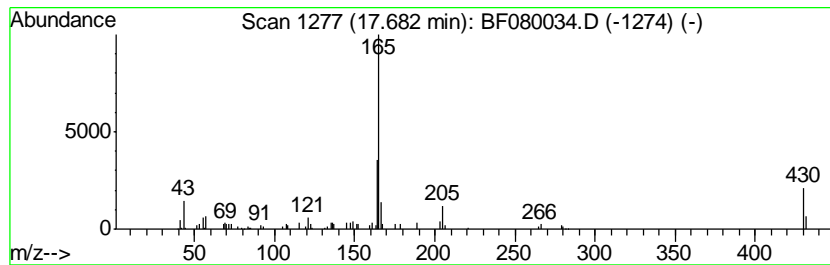
Quant Method : Z:\HPCHEM1\BNA_F\METHODS\8270-BF061715.M
 Quant Title : ASP BNA STANDARDS FOR 5 POINT CALIBRATION

TIC Library : C:\DATABASE\NIST02.L
 TIC Integration Parameters: LSCINT.P

 Peak Number 12 Vitamin E Concentration Rank 14

R.T.	EstConc	Area	Relative to ISTD	R.T.
17.68	4.79 ng	118367	Perylene-d12	16.72

Hit#	of	Tentative ID	MW	MolForm	CAS#	Qual
1	5	Vitamin E	430	C29H50O2	010191-41-0	95
2		Vitamin E	430	C29H50O2	000059-02-9	93
3		4-Amino-3-methoxypyrazolo[3,4-d]...	165	C6H7N5O	111375-22-5	53
4		Propanenitrile, 3-[methyl(4-nitr...	205	C10H11N3O2	097473-81-9	50
5		Isoxaben	332	C18H24N2O4	082558-50-7	47



Data Path : Z:\HPCHEM1\BNA_F\DATA\BF061715\
 Data File : BF080034.D
 Acq On : 17 Jun 2015 21:01
 Operator : TP/IZ
 Sample : G2649-01
 Misc :
 ALS Vial : 12 Sample Multiplier: 1

Instrument :
 BNA_F
 ClientSampled :
 AST-TS-001

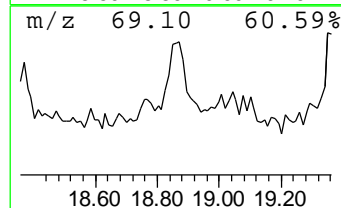
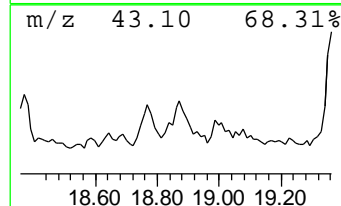
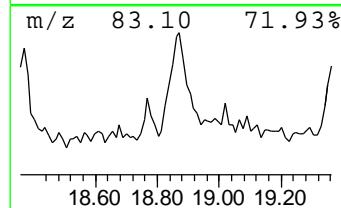
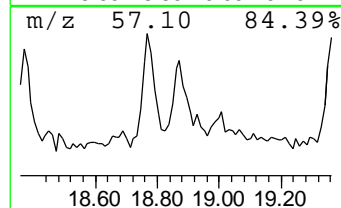
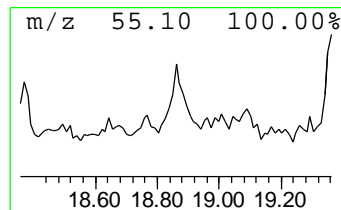
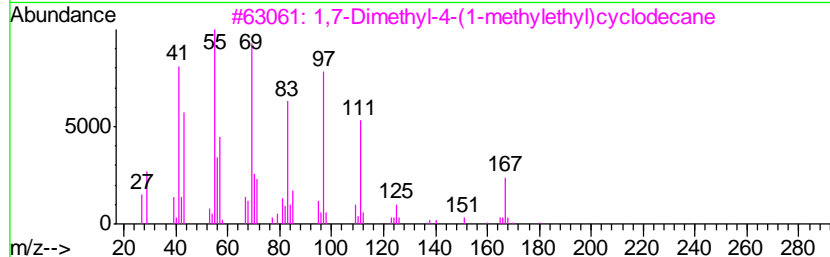
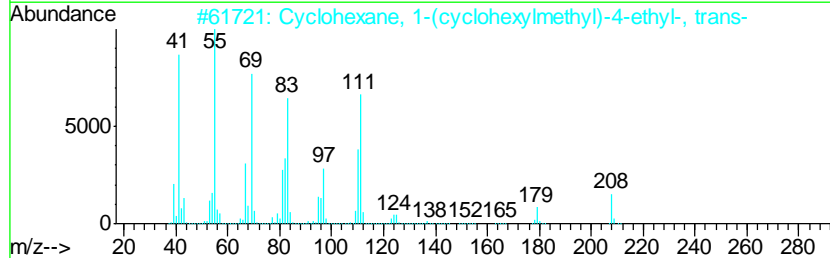
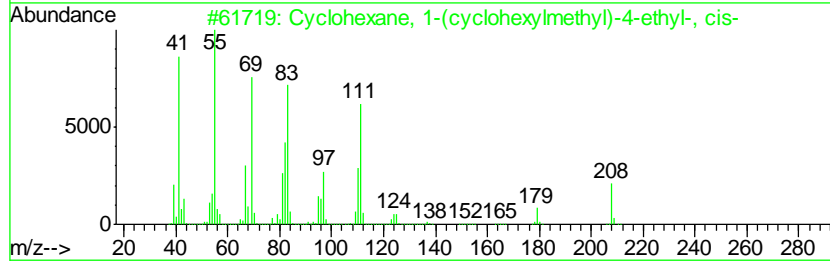
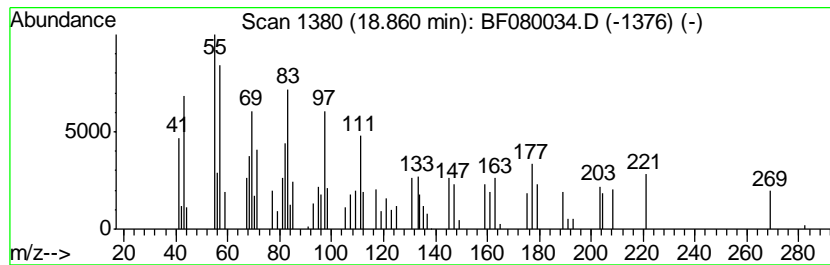
Quant Method : Z:\HPCHEM1\BNA_F\METHODS\8270-BF061715.M
 Quant Title : ASP BNA STANDARDS FOR 5 POINT CALIBRATION

TIC Library : C:\DATABASE\NIST02.L
 TIC Integration Parameters: LSCINT.P

 Peak Number 13 unknown18.86 Concentration Rank 12

R.T.	EstConc	Area	Relative to ISTD	R.T.
18.86	5.02 ng	124032	Perylene-d12	16.72

Hit#	of	Tentative ID	MW	MolForm	CAS#	Qual
1	5	Cyclohexane, 1-(cyclohexylmethyl...	208	C15H28	054934-95-1	30
2		Cyclohexane, 1-(cyclohexylmethyl...	208	C15H28	054934-94-0	22
3		1,7-Dimethyl-4-(1-methylethyl)cy...	210	C15H30	000645-10-3	14
4		1-Eicosanol	298	C20H42O	000629-96-9	11
5		1-Heptadecene	238	C17H34	006765-39-5	11



Data Path : Z:\HPCHEM1\BNA_F\DATA\BF061715\
 Data File : BF080034.D
 Acq On : 17 Jun 2015 21:01
 Operator : TP/IZ
 Sample : G2649-01
 Misc :
 ALS Vial : 12 Sample Multiplier: 1

Instrument :
 BNA_F
 ClientSampleID :
 AST-TS-001

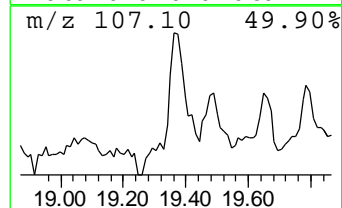
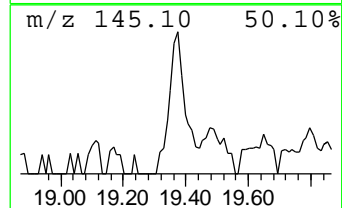
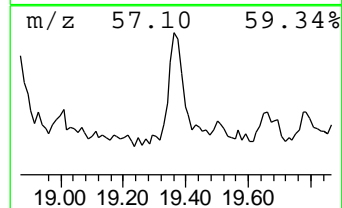
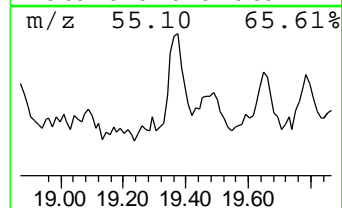
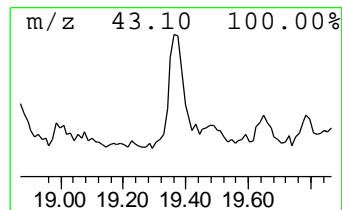
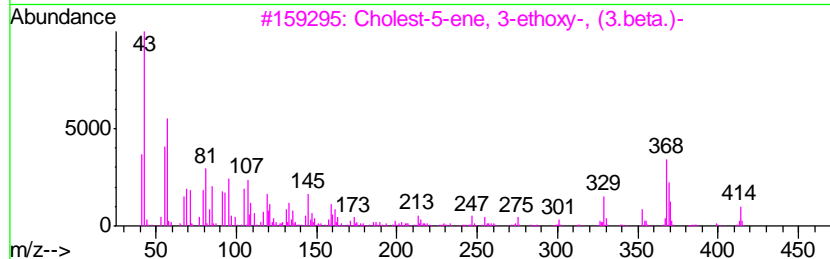
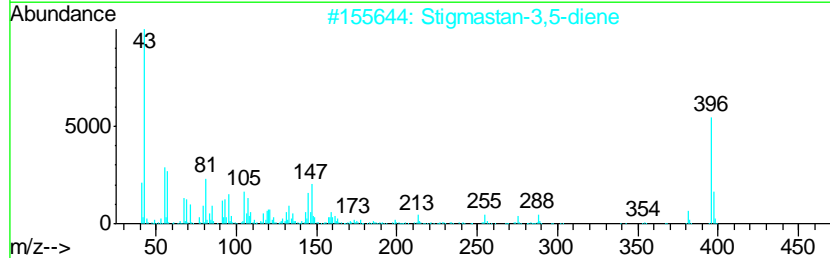
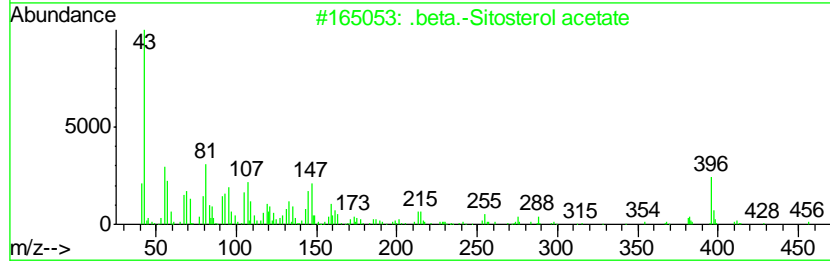
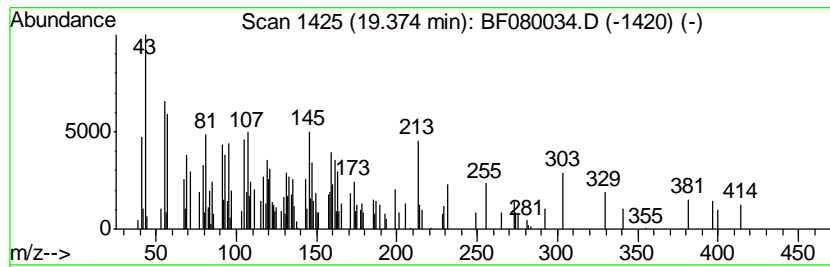
Quant Method : Z:\HPCHEM1\BNA_F\METHODS\8270-BF061715.M
 Quant Title : ASP BNA STANDARDS FOR 5 POINT CALIBRATION

TIC Library : C:\DATABASE\NIST02.L
 TIC Integration Parameters: LSCINT.P

 Peak Number 14 unknown19.37 Concentration Rank 5

R.T.	EstConc	Area	Relative to ISTD	R.T.
19.37	11.08 ng	274061	Perylene-d12	16.72

Hit#	of	Tentative ID	MW	MolForm	CAS#	Qual
1	5	.beta.-Sitosterol acetate	456	C31H52O2	000915-05-9	38
2		Stigmastan-3,5-diene	396	C29H48	1000214-16-4	32
3		Cholest-5-ene, 3-ethoxy-, (3.beta...	414	C29H50O	000986-19-6	22
4		Azuleno[5,6-c]furan-3(1H)-one, 8...	310	C17H26O5	071305-64-1	12
5		5-Cholene, 3,24-dihydroxy-	360	C24H40O2	1000251-69-2	10



Data Path : Z:\HPCHEM1\BNA_F\DATA\BF061715\
 Data File : BF080034.D
 Acq On : 17 Jun 2015 21:01
 Operator : TP/IZ
 Sample : G2649-01
 Misc :
 ALS Vial : 12 Sample Multiplier: 1

Instrument :
 BNA_F
 ClientSampled :
 AST-TS-001

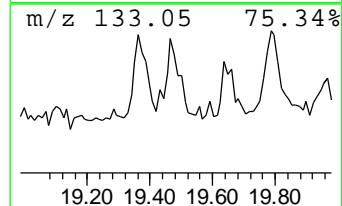
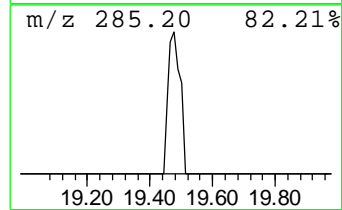
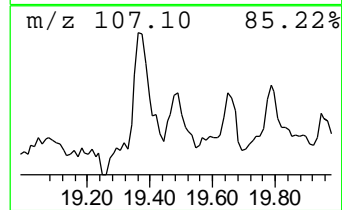
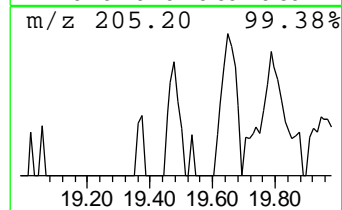
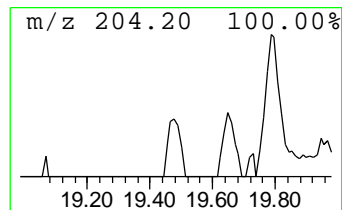
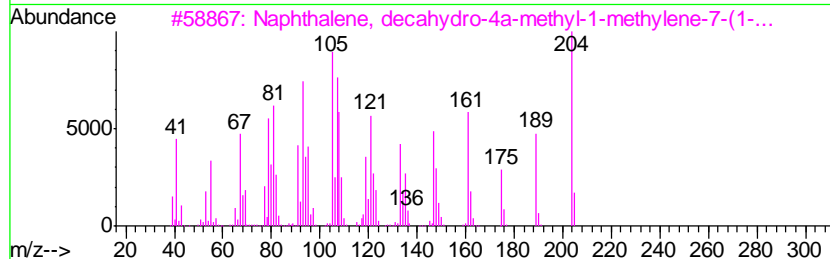
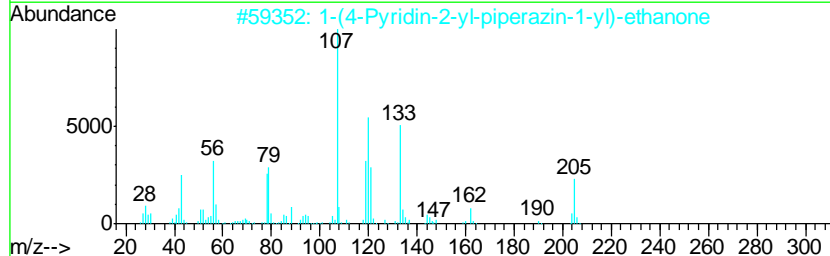
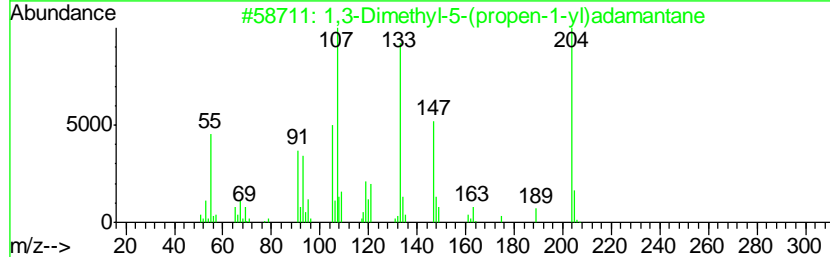
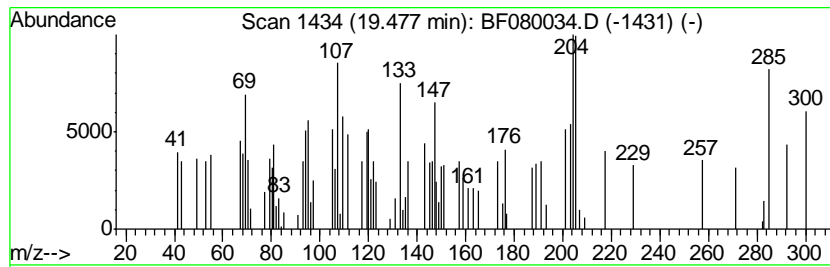
Quant Method : Z:\HPCHEM1\BNA_F\METHODS\8270-BF061715.M
 Quant Title : ASP BNA STANDARDS FOR 5 POINT CALIBRATION

TIC Library : C:\DATABASE\NIST02.L
 TIC Integration Parameters: LSCINT.P

 Peak Number 15 unknown19.48 Concentration Rank 15

R.T.	EstConc	Area	Relative to ISTD	R.T.
19.48	4.64 ng	114851	Perylene-d12	16.72

Hit#	of	Tentative ID	MW	MolForm	CAS#	Qual
1	5	1,3-Dimethyl-5-(propen-1-yl)adam...	204	C15H24	057040-48-9	35
2		1-(4-Pyridin-2-yl-piperazin-1-yl)...	205	C11H15N3O	1000192-41-6	27
3		Naphthalene, decahydro-4a-methyl...	204	C15H24	017066-67-0	20
4		Azulene, 1,2,3,4,5,6,7,8-octahyd...	204	C15H24	003691-12-1	12
5		1H-Cycloprop[elazulene, 1a,2,3,4...	204	C15H24	000489-40-7	11



Data Path : Z:\HPCHEM1\BNA_F\DATA\BF061715\
 Data File : BF080034.D
 Acq On : 17 Jun 2015 21:01
 Operator : TP/IZ
 Sample : G2649-01
 Misc :
 ALS Vial : 12 Sample Multiplier: 1

Instrument :
 BNA_F
 ClientSampleID :
 AST-TS-001

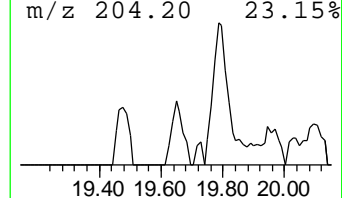
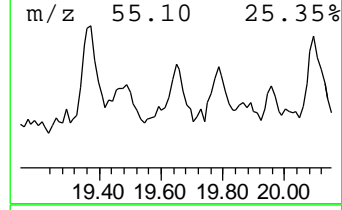
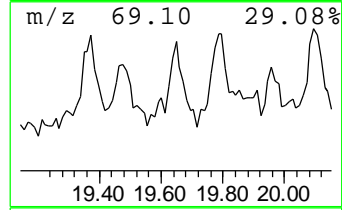
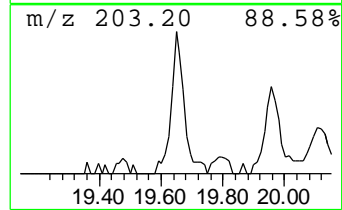
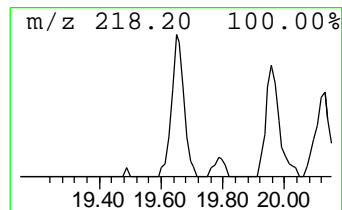
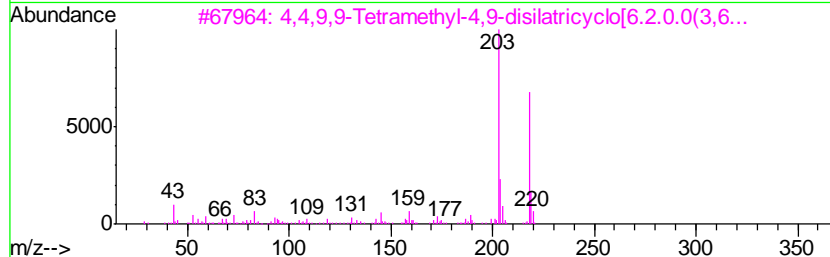
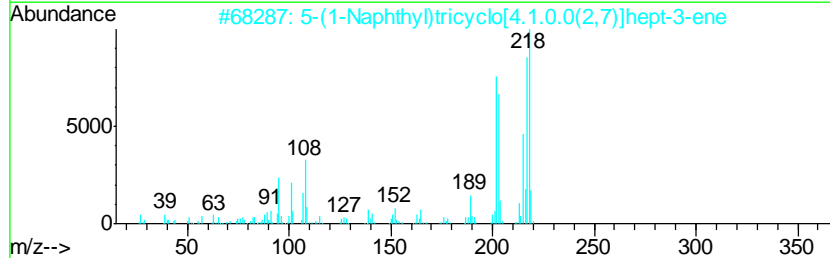
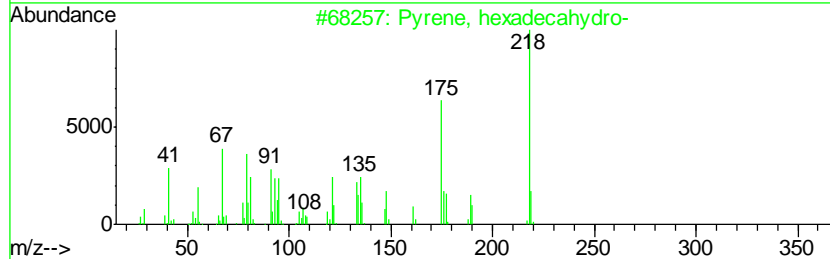
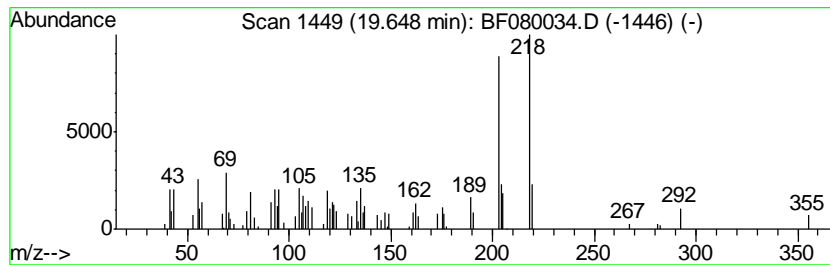
Quant Method : Z:\HPCHEM1\BNA_F\METHODS\8270-BF061715.M
 Quant Title : ASP BNA STANDARDS FOR 5 POINT CALIBRATION

TIC Library : C:\DATABASE\NIST02.L
 TIC Integration Parameters: LSCINT.P

 Peak Number 16 Pyrene, hexadecahydro- Concentration Rank 11

R.T.	EstConc	Area	Relative to ISTD	R.T.
19.65	5.02 ng	124124	Perylene-d12	16.72

Hit#	of	Tentative ID	MW	MolForm	CAS#	Qual
1	5	Pyrene, hexadecahydro-	218	C16H26	002435-85-0	53
2		5-(1-Naphthyl)tricyclo[4.1.0.0(2...	218	C17H14	107729-05-5	53
3		4,4,9,9-Tetramethyl-4,9-disilatr...	218	C12H18Si2	1000280-67-7	53
4		2H-Cyclopropa[a]naphthalen-2-one...	218	C15H22O	006831-17-0	53
5		2-Chloro-5,6-dimethyl-1-(2-propy...	218	C12H11ClN2	080276-20-6	50



Data Path : Z:\HPCHEM1\BNA_F\DATA\BF061715\
 Data File : BF080034.D
 Acq On : 17 Jun 2015 21:01
 Operator : TP/IZ
 Sample : G2649-01
 Misc :
 ALS Vial : 12 Sample Multiplier: 1

Instrument :
 BNA_F
 ClientSampleID :
 AST-TS-001

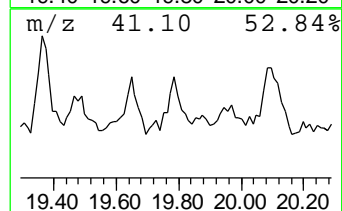
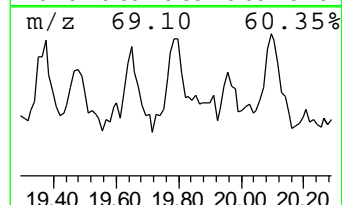
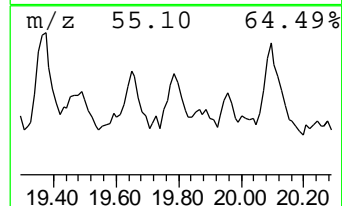
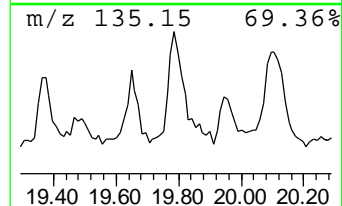
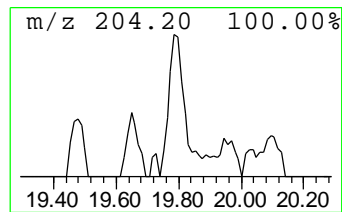
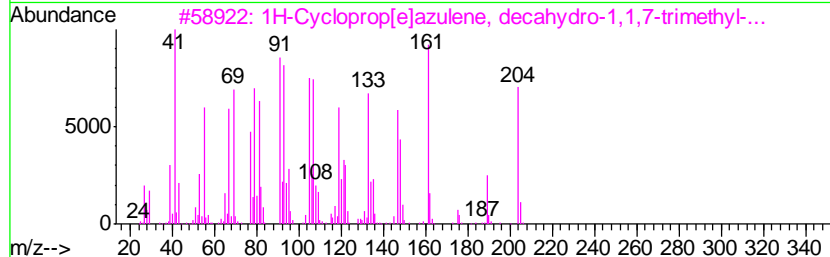
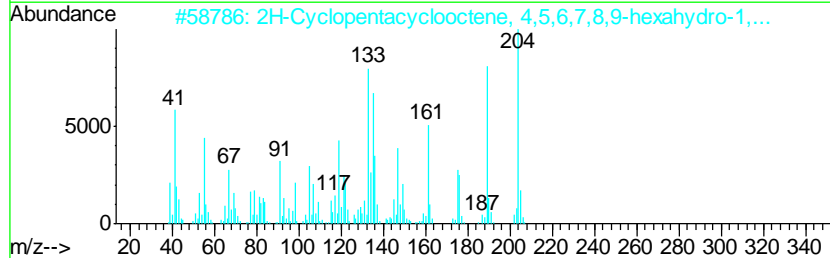
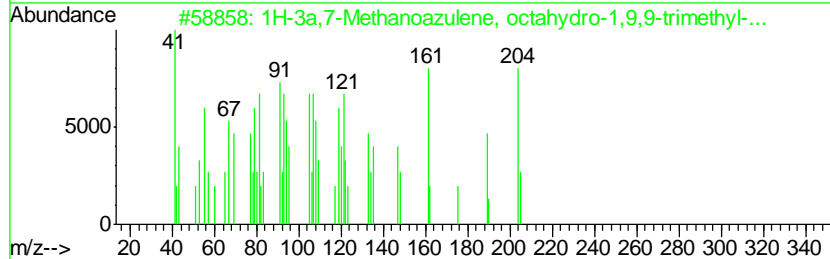
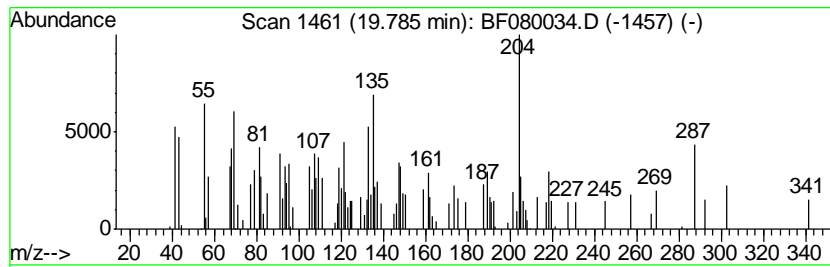
Quant Method : Z:\HPCHEM1\BNA_F\METHODS\8270-BF061715.M
 Quant Title : ASP BNA STANDARDS FOR 5 POINT CALIBRATION

TIC Library : C:\DATABASE\NIST02.L
 TIC Integration Parameters: LSCINT.P

 Peak Number 17 1H-3a,7-Methanoazulene, oct... Concentration Rank 10

R.T.	EstConc	Area	Relative to ISTD	R.T.
19.79	5.37 ng	132770	Perylene-d12	16.72

Hit#	of	Tentative ID	MW	MolForm	CAS#	Qual
1	5	1H-3a,7-Methanoazulene, octahydr...	204	C15H24	000508-55-4	64
2		2H-Cyclopentacyclooctene, 4,5,6,...	204	C15H24	1000221-85-8	55
3		1H-Cycloprop[elazulene, decahydr...	204	C15H24	000489-39-4	46
4		Guaia-3,9-diene	204	C15H24	000489-83-8	46
5		1H-Cycloprop[elazulene, 1a,2,3,4...	204	C15H24	000489-40-7	45



Data Path : Z:\HPCHEM1\BNA_F\DATA\BF061715\
 Data File : BF080034.D
 Acq On : 17 Jun 2015 21:01
 Operator : TP/IZ
 Sample : G2649-01
 Misc :
 ALS Vial : 12 Sample Multiplier: 1

Instrument :
 BNA_F
 ClientSampled :
 AST-TS-001

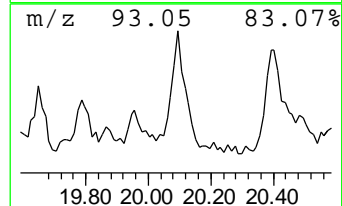
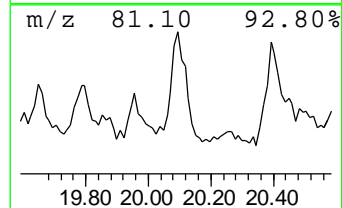
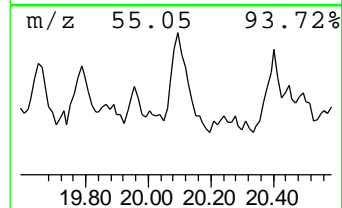
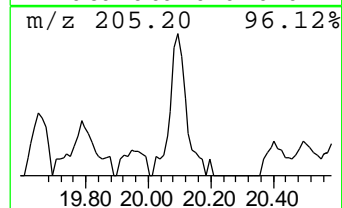
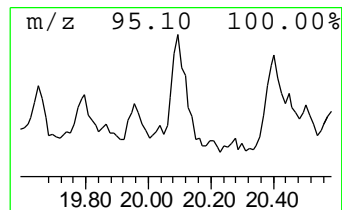
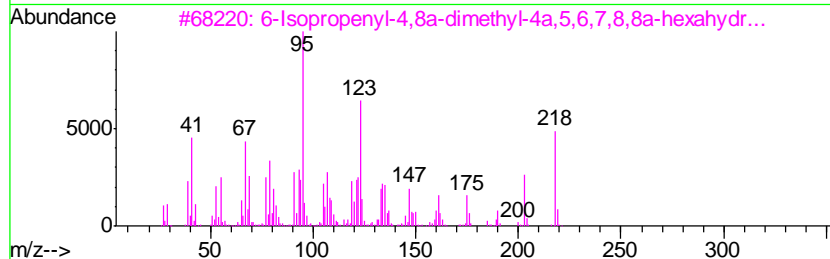
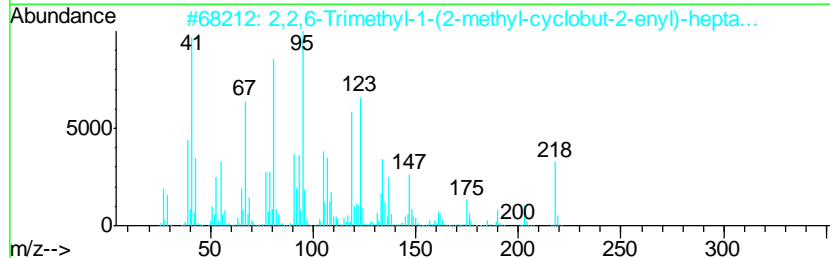
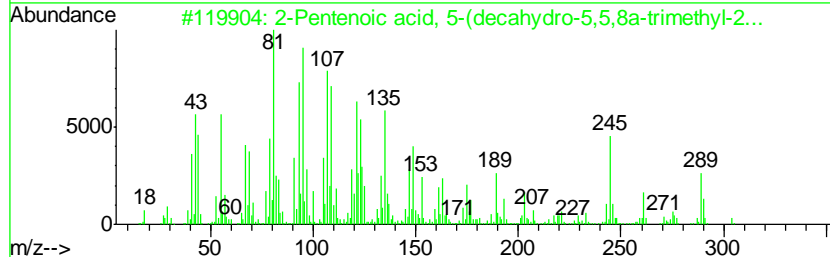
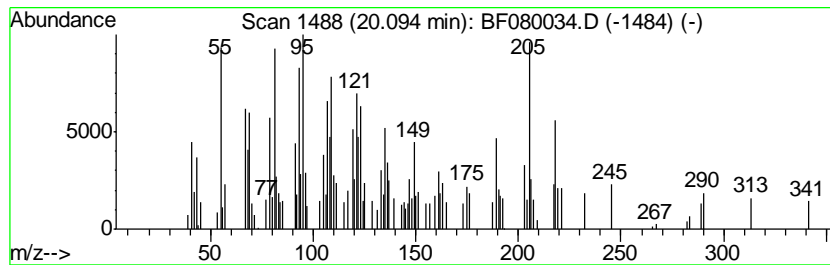
Quant Method : Z:\HPCHEM1\BNA_F\METHODS\8270-BF061715.M
 Quant Title : ASP BNA STANDARDS FOR 5 POINT CALIBRATION

TIC Library : C:\DATABASE\NIST02.L
 TIC Integration Parameters: LSCINT.P

 Peak Number 18 2-Pentenoic acid, 5-(decahy... Concentration Rank 6

R.T.	EstConc	Area	Relative to ISTD	R.T.
20.09	11.00 ng	272064	Perylene-d12	16.72

Hit#	of	Tentative ID	MW	MolForm	CAS#	Qual
1	5	2-Pentenoic acid, 5-(decahydro-5...	304	C20H32O2	024470-48-2	58
2		2,2,6-Trimethyl-1-(2-methyl-cycl...	218	C15H22O	1000188-72-8	55
3		6-Isopropenyl-4,8a-dimethyl-4a,5...	218	C15H22O	086917-79-5	55
4		9-Cedranone	220	C15H24O	1000156-23-2	46
5		1-Isopropenyl-4,5-dimethylbicycl...	330	C21H30OS	1000195-85-4	38



Data Path : Z:\HPCHEM1\BNA_F\DATA\BF061715\
 Data File : BF080034.D
 Acq On : 17 Jun 2015 21:01
 Operator : TP/IZ
 Sample : G2649-01
 Misc :
 ALS Vial : 12 Sample Multiplier: 1

Instrument :
 BNA_F
 ClientSampled :
 AST-TS-001

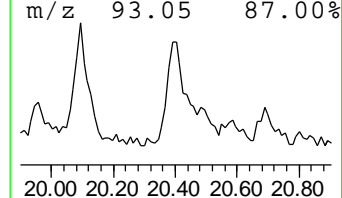
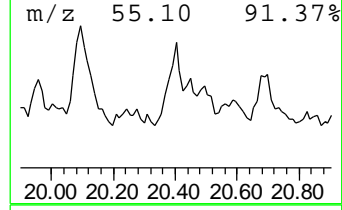
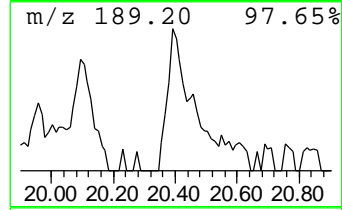
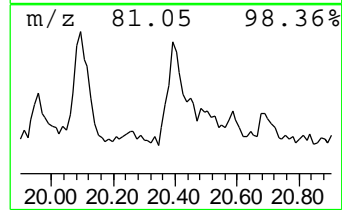
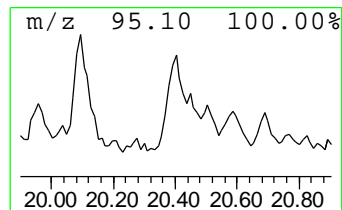
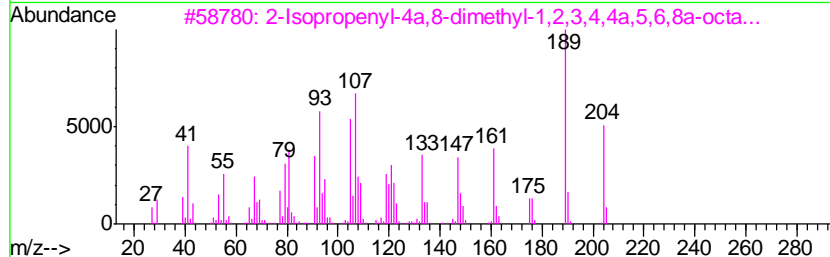
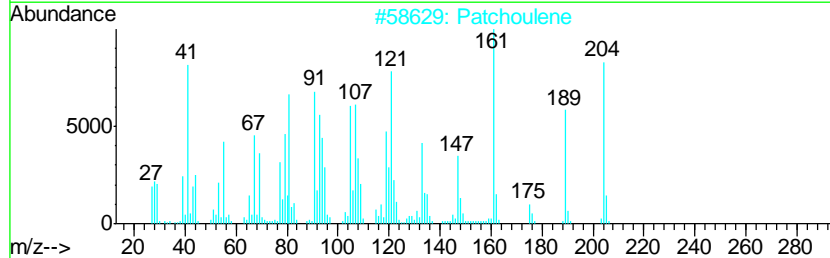
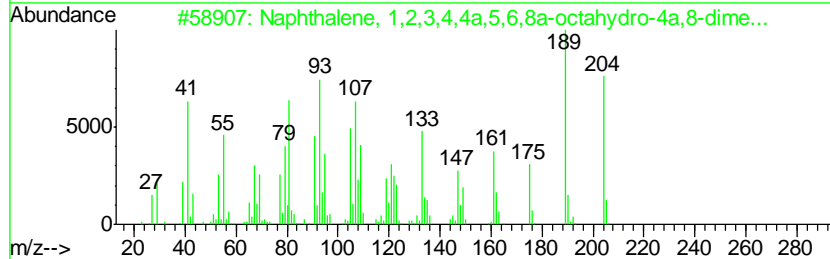
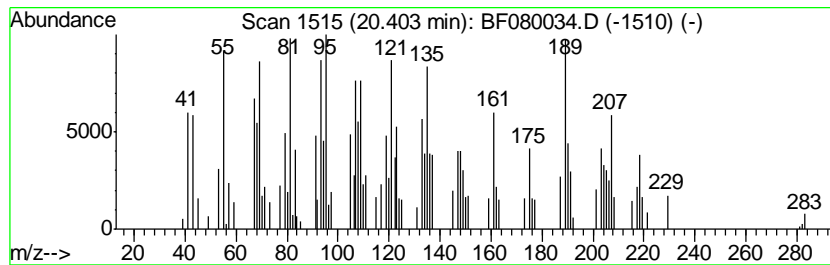
Quant Method : Z:\HPCHEM1\BNA_F\METHODS\8270-BF061715.M
 Quant Title : ASP BNA STANDARDS FOR 5 POINT CALIBRATION

TIC Library : C:\DATABASE\NIST02.L
 TIC Integration Parameters: LSCINT.P

 Peak Number 19 Naphthalene, 1,2,3,4,4a,5,6... Concentration Rank 8

R.T.	EstConc	Area	Relative to ISTD	R.T.
20.40	8.23 ng	203580	Perylene-d12	16.72

Hit#	of	Tentative ID	MW	MolForm	CAS#	Qual
1	5	Naphthalene, 1,2,3,4,4a,5,6,8a-o...	204	C15H24	000473-13-2	74
2		Patchoulene	204	C15H24	001405-16-9	64
3		2-Isopropenyl-4a,8-dimethyl-1,2,...	204	C15H24	1000193-57-0	62
4		1-Naphthalenepropanol, .alpha.-e...	306	C20H34O2	004549-12-6	58
5		Solavetivone	218	C15H22O	054878-25-0	55



Data Path : Z:\HPCHEM1\BNA_F\DATA\BF061715\
 Data File : BF080034.D
 Acq On : 17 Jun 2015 21:01
 Operator : TP/IZ
 Sample : G2649-01
 Misc :
 ALS Vial : 12 Sample Multiplier: 1

Instrument :
 BNA_F
 ClientSampled :
 AST-TS-001

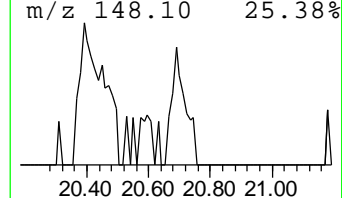
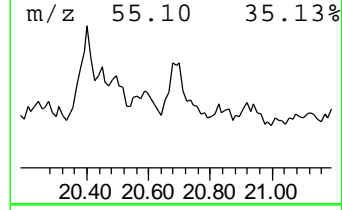
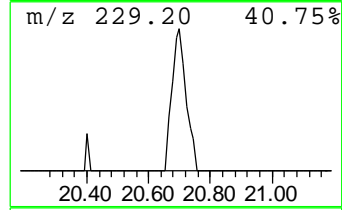
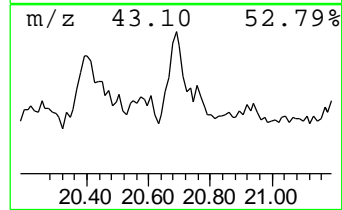
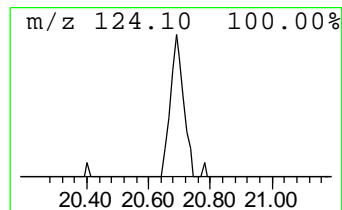
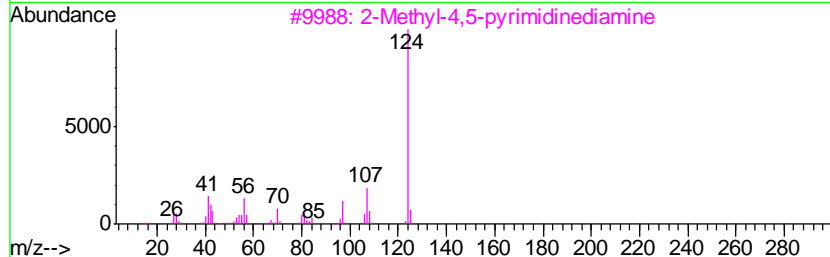
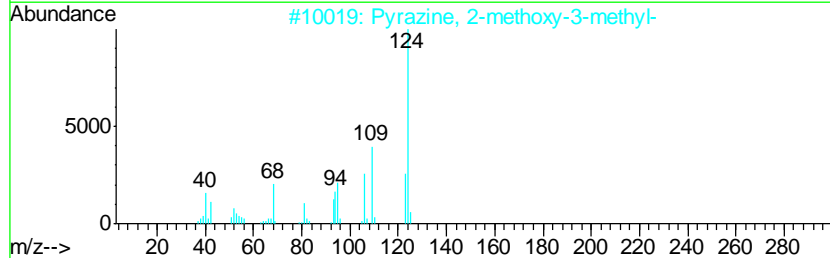
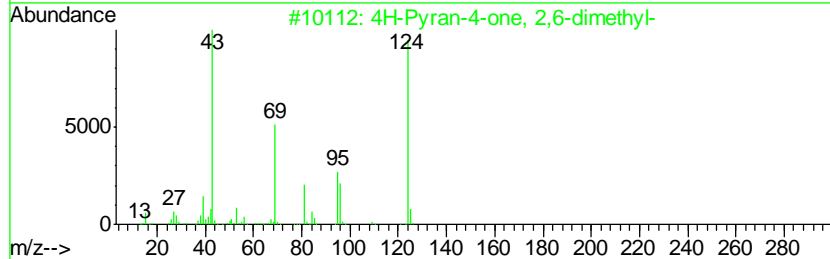
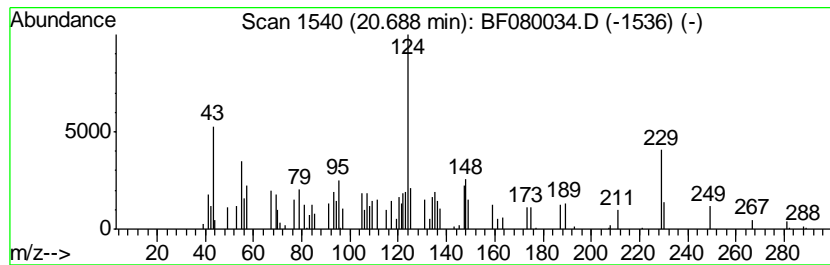
Quant Method : Z:\HPCHEM1\BNA_F\METHODS\8270-BF061715.M
 Quant Title : ASP BNA STANDARDS FOR 5 POINT CALIBRATION

TIC Library : C:\DATABASE\NIST02.L
 TIC Integration Parameters: LSCINT.P

 Peak Number 20 unknown20.69 Concentration Rank 19

R.T.	EstConc	Area	Relative to ISTD	R.T.
20.69	3.32 ng	82066	Perylene-d12	16.72

Hit#	of	Tentative ID	MW	MolForm	CAS#	Qual
1	5	4H-Pyran-4-one, 2,6-dimethyl-	124	C7H8O2	001004-36-0	27
2		Pyrazine, 2-methoxy-3-methyl-	124	C6H8N2O	002847-30-5	22
3		2-Methyl-4,5-pyrimidinediamine	124	C5H8N4	015579-63-2	18
4		3,6-Dimethyl-5-hepten-1-ol acetate	184	C11H20O2	1000131-31-1	16
5		2,6,8-Trimethylbicyclo[4.2.0]oct...	182	C11H18O2	1000187-22-4	16



Data Path : Z:\HPCHEM1\BNA_F\DATA\BF061715\
 Data File : BF080034.D
 Acq On : 17 Jun 2015 21:01
 Operator : TP/IZ
 Sample : G2649-01
 Misc :
 ALS Vial : 12 Sample Multiplier: 1

Instrument :
 BNA_F
 ClientSampleId :
 AST-TS-001

Quant Method : Z:\HPCHEM1\BNA_F\METHODS\8270-BF061715.M
 Quant Title : ASP BNA STANDARDS FOR 5 POINT CALIBRATION

TIC Library : C:\DATABASE\NIST02.L
 TIC Integration Parameters: LSCINT.P

TIC Top Hit name	RT	EstConc	Units	Response	--Internal Standard--			
					#	RT	Resp	Conc
2-Pentanone, 4-hy...	5.56	24.7	ng	297535	1	7.34	240883	20.0
unknown7.10	7.10	78.2	ng	941972	1	7.34	240883	20.0
1,6-Anhydro-.beta...	10.29	3.3	ng	62598	3	10.40	379423	20.0
4H-Cyclopenta[def...	12.54	4.2	ng	133793	4	11.90	632885	20.0
Trichloroacetic a...	14.63	6.5	ng	241938	5	14.85	747604	20.0
Heptadecane	15.45	4.8	ng	180310	5	14.85	747604	20.0
Nonadecane	16.29	15.2	ng	376404	6	16.72	494520	20.0
Octacosane	17.35	9.8	ng	241636	6	16.72	494520	20.0
Cyclohexadecane, ...	17.40	3.8	ng	92731	6	16.72	494520	20.0
Vitamin E	17.68	4.8	ng	118367	6	16.72	494520	20.0
unknown18.86	18.86	5.0	ng	124032	6	16.72	494520	20.0
unknown19.37	19.37	11.1	ng	274061	6	16.72	494520	20.0
unknown19.48	19.48	4.6	ng	114851	6	16.72	494520	20.0
Pyrene, hexadecah...	19.65	5.0	ng	124124	6	16.72	494520	20.0
1H-3a,7-Methanoaz...	19.79	5.4	ng	132770	6	16.72	494520	20.0
2-Pentenoic acid,...	20.09	11.0	ng	272064	6	16.72	494520	20.0
Naphthalene, 1,2,...	20.40	8.2	ng	203580	6	16.72	494520	20.0
unknown20.69	20.69	3.3	ng	82066	6	16.72	494520	20.0