

Data Path : Z:\SVOASRV\HPCHEM1\BNA F\DATA\BF061820\
 Data File : BF120650.D
 Acq On : 18 Jun 2020 19:04
 Operator : JU/CG
 Sample : L3046-10
 Misc :
 ALS Vial : 10 Sample Multiplier: 1

Instrument :
 BNA_F
ClientSampled :
 ISS-A-C

Manual Integrations
APPROVED
 mohammad
 6/19/2020 12:58:01 PM

Quant Time: Jun 19 01:28:51 2020
 Quant Method : Z:\SVOASRV\HPCHEM1\BNA F\METHODS\8270-BF061020.M
 Quant Title : ASP BNA STANDARDS FOR 5 POINT CALIBRATION
 QLast Update : Thu Jun 11 11:28:22 2020
 Response via : Initial Calibration

Internal Standards	R.T.	QIon	Response	Conc	Units	Dev(Min)	
1) 1,4-Dichlorobenzene-d4	6.80	152	131639	20.00	ng	0.00	
21) Naphthalene-d8	8.08	136	487093	20.00	ng	0.00	
39) Acenaphthene-d10	9.83	164	249343	20.00	ng	0.00	
64) Phenanthrene-d10	11.32	188	480475	20.00	ng	0.00	
76) Chrysene-d12	13.96	240	410127	20.00	ng	0.00	
86) Perylene-d12	15.40	264	380474	20.00	ng	0.00	
System Monitoring Compounds							
5) 2-Fluorophenol	5.42	112	842018	109.66	ng	0.00	
7) Phenol-d6	6.44	99	1053822	110.20	ng	0.00	
23) Nitrobenzene-d5	7.36	82	633151	72.66	ng	0.00	
42) 2,4,6-Tribromophenol	10.63	330	329517	113.67	ng	0.00	
45) 2-Fluorobiphenyl	9.16	172	1290363	79.18	ng	0.00	
79) Terphenyl-d14	12.91	244	1552274	83.60	ng	0.00	
Target Compounds							
50) Dimethylphthalate	9.55	163	98345	5.476	ng		98
71) Phenanthrene	11.35	178	62475	2.616	ng		99
75) Fluoranthene	12.53	202	146503	5.365	ng		96
78) Pyrene	12.76	202	140964	4.852	ng		98
81) Benzo(a)anthracene	13.94	228	80330	3.260	ng		96
83) Chrysene	13.98	228	74902	2.964	ng		95
88) Benzo(b)fluoranthene	14.99	252	100432m	4.431	ng		
90) Benzo(a)pyrene	15.34	252	64926	3.201	ng	#	90
92) Benzo(g,h,i)perylene	17.25	276	41112	2.198	ng		96

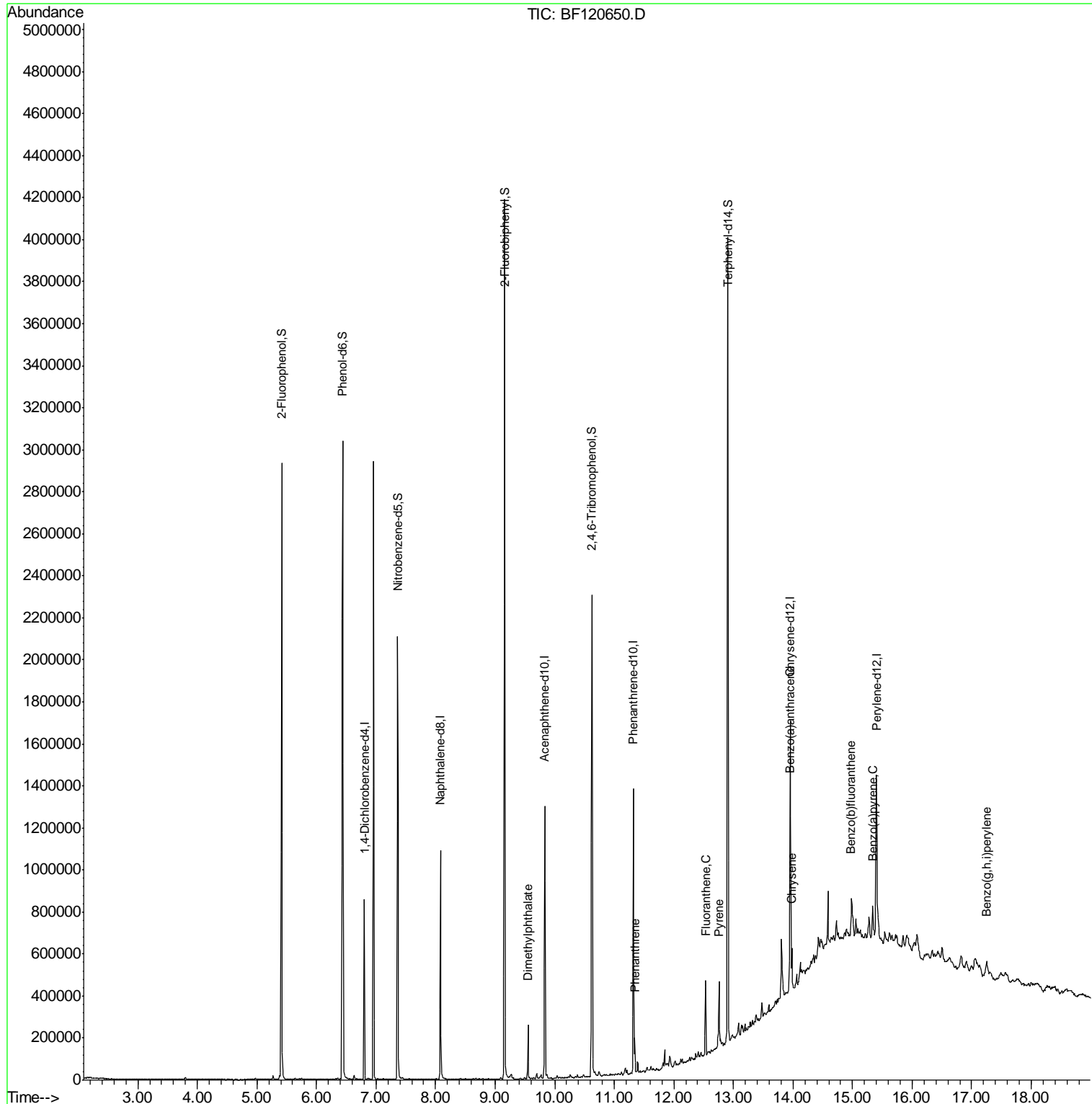
(#) = qualifier out of range (m) = manual integration (+) = signals summed

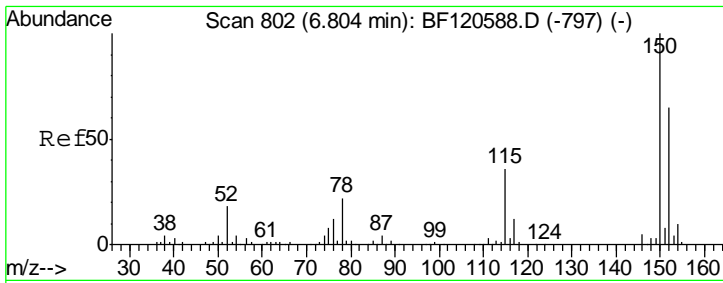
Data Path : Z:\SVOASRV\HPCHEM1\BNA F\DATA\BF061820\
 Data File : BF120650.D
 Acq On : 18 Jun 2020 19:04
 Operator : JU/CG
 Sample : L3046-10
 Misc :
 ALS Vial : 10 Sample Multiplier: 1

Instrument :
 BNA_F
 ClientSampled :
 ISS-A-C

Manual Integrations
APPROVED
 mohammad
 6/19/2020 12:58:01 PM

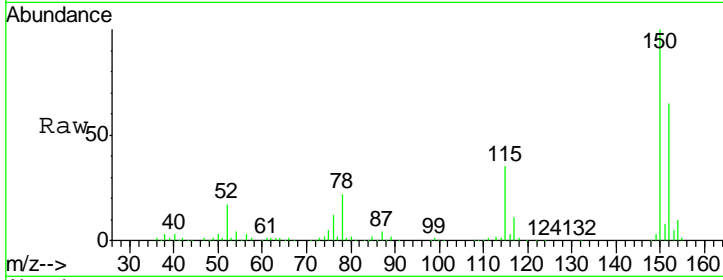
Quant Time: Jun 19 01:28:51 2020
 Quant Method : Z:\SVOASRV\HPCHEM1\BNA F\METHODS\8270-BF061020.M
 Quant Title : ASP BNA STANDARDS FOR 5 POINT CALIBRATION
 QLast Update : Thu Jun 11 11:28:22 2020
 Response via : Initial Calibration





#1
 1,4-Dichlorobenzene-d4
 Concen: 20.000 ng
 RT: 6.80 min Scan# 802
 Delta R.T. 0.00 min
 Lab File: BF120650.D
 Acq: 18 Jun 2020 19:04

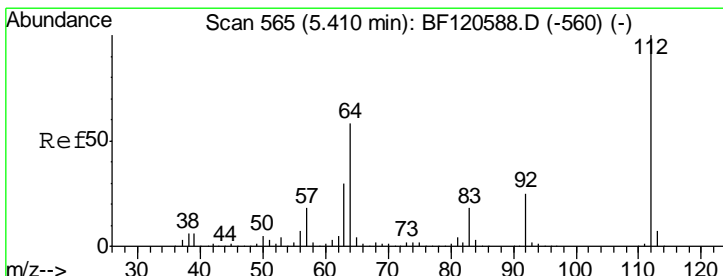
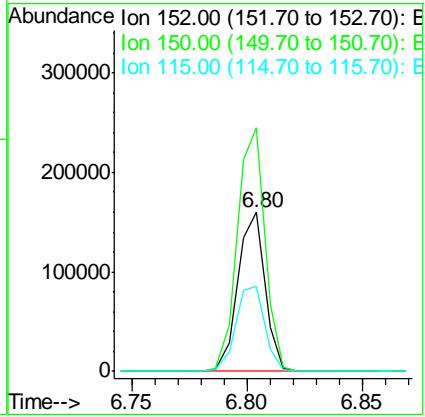
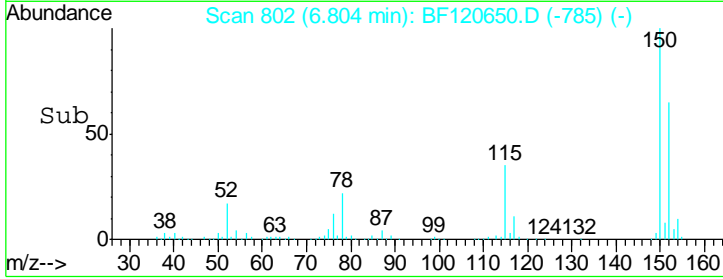
Instrument :
 BNA_F
ClientSampled :
 ISS-A-C



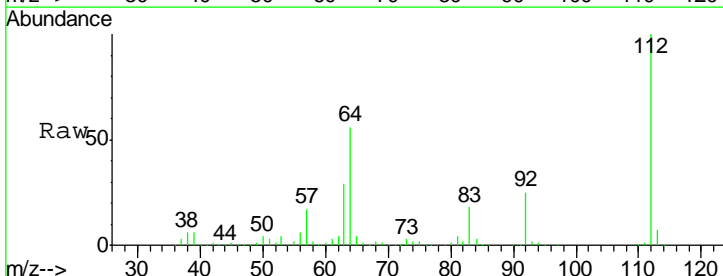
Tgt Ion:152 Resp: 131639

Ion	Ratio	Lower	Upper
152	100		
150	153.2	123.2	184.8
115	53.7	43.9	65.9

Manual Integrations
APPROVED
 mohammad
 6/19/2020 12:58:01 PM

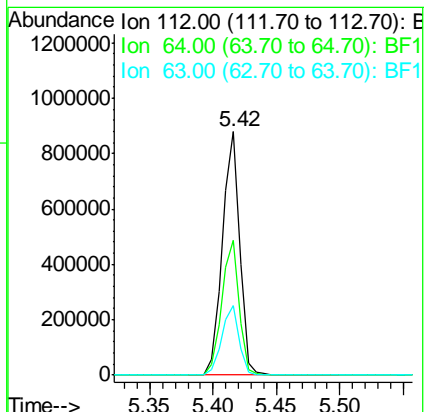
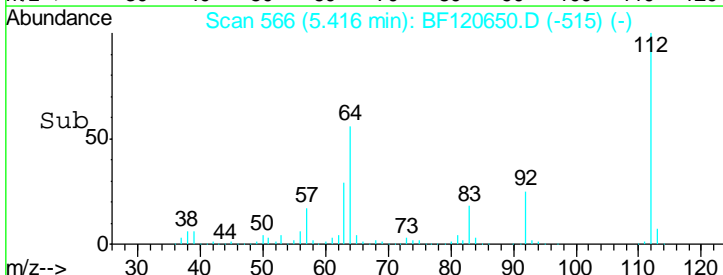


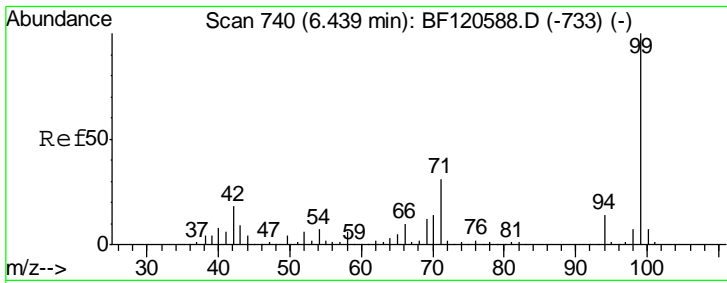
#5
 2-Fluorophenol
 Concen: 109.664 ng
 RT: 5.42 min Scan# 566
 Delta R.T. 0.00 min
 Lab File: BF120650.D
 Acq: 18 Jun 2020 19:04



Tgt Ion:112 Resp: 842018

Ion	Ratio	Lower	Upper
112	100		
64	55.6	46.1	69.1
63	28.5	23.7	35.5





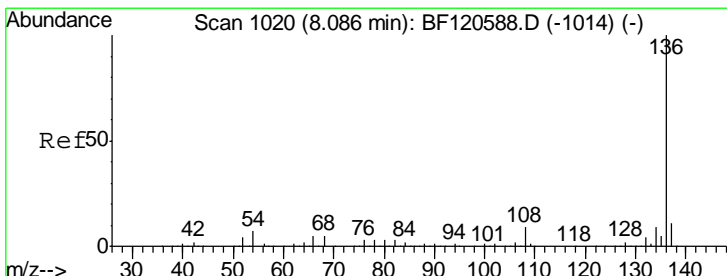
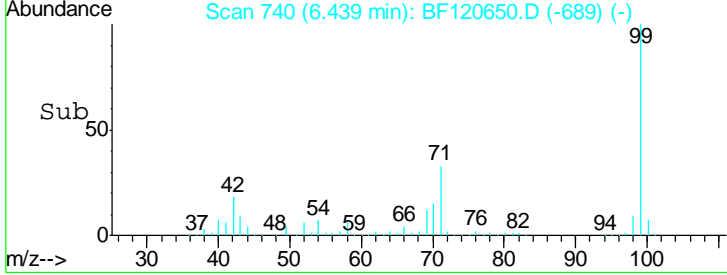
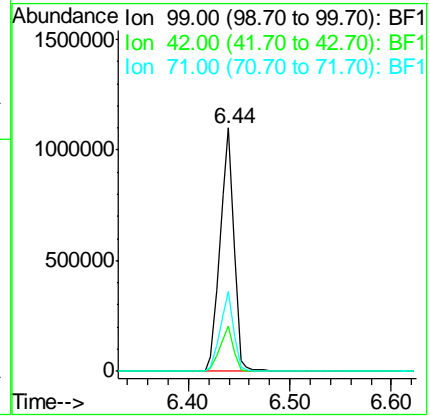
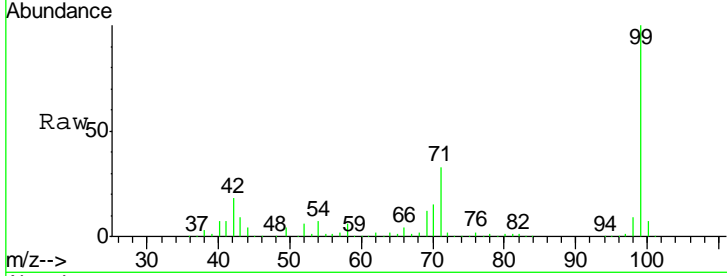
#7
 Phenol-d6
 Concen: 110.196 ng
 RT: 6.44 min Scan# 740
 Delta R.T. 0.00 min
 Lab File: BF120650.D
 Acq: 18 Jun 2020 19:04

Instrument :
 BNA_F
ClientSampled :
 ISS-A-C

Tot Ion: 99 Resp: 1053822

Ion	Ratio	Lower	Upper
99	100		
42	18.4	14.0	21.0
71	32.6	24.9	37.3

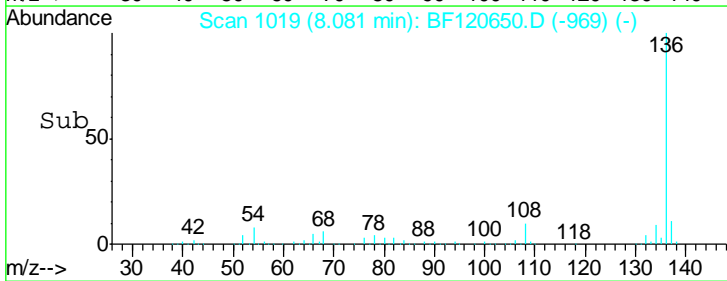
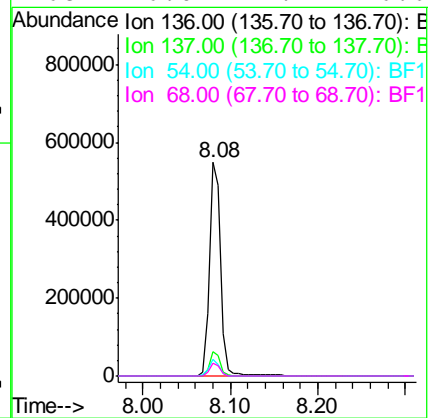
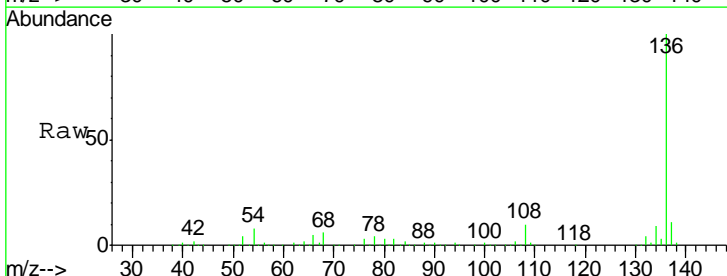
Manual Integrations
APPROVED
 mohammad
 6/19/2020 12:58:01 PM

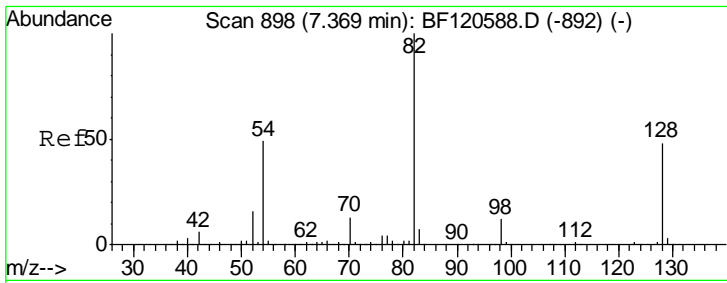


#21
 Naphthalene-d8
 Concen: 20.000 ng
 RT: 8.08 min Scan# 1019
 Delta R.T. -0.01 min
 Lab File: BF120650.D
 Acq: 18 Jun 2020 19:04

Tgt Ion: 136 Resp: 487093

Ion	Ratio	Lower	Upper
136	100		
137	11.4	8.6	13.0
54	8.0	5.8	8.6
68	6.0	4.4	6.6





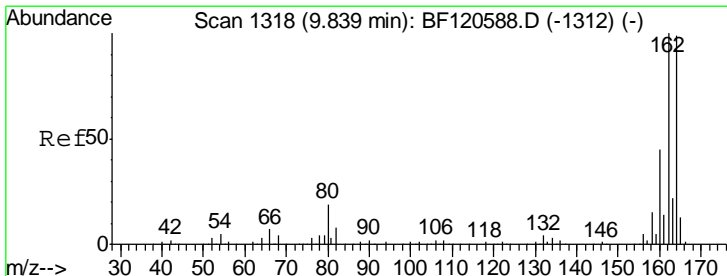
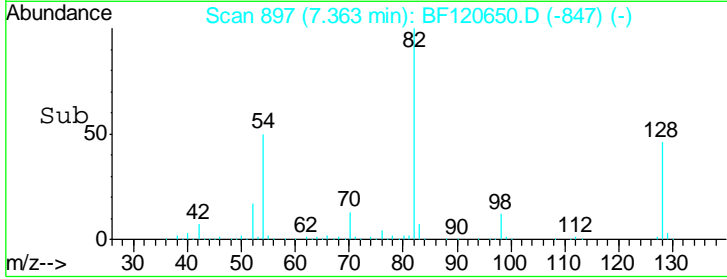
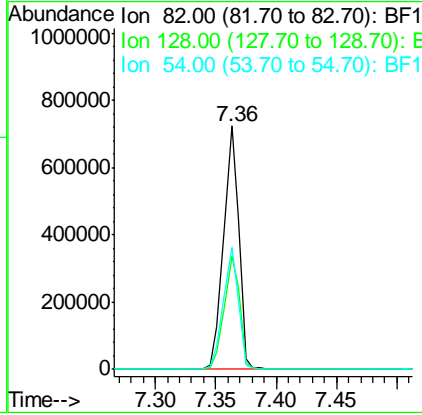
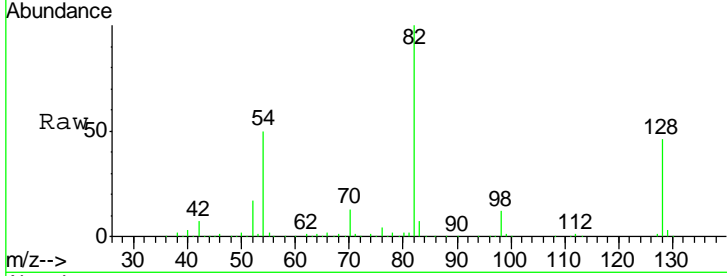
#23
 Nitrobenzene-d5
 Concen: 72.658 ng
 RT: 7.36 min Scan# 897
 Delta R.T. -0.01 min
 Lab File: BF120650.D
 Acq: 18 Jun 2020 19:04

Instrument :
 BNA_F
ClientSampled :
 ISS-A-C

Tgt Ion	Resp	Lower	Upper
82	100		
128	46.3	38.0	57.0
54	50.3	38.8	58.2

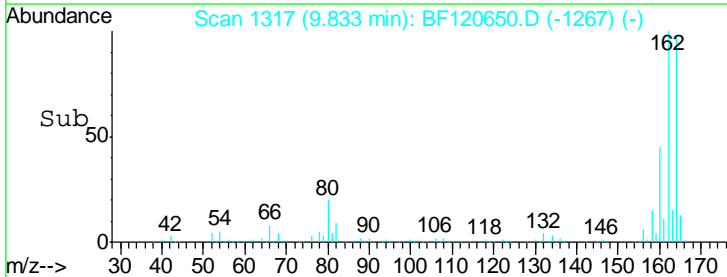
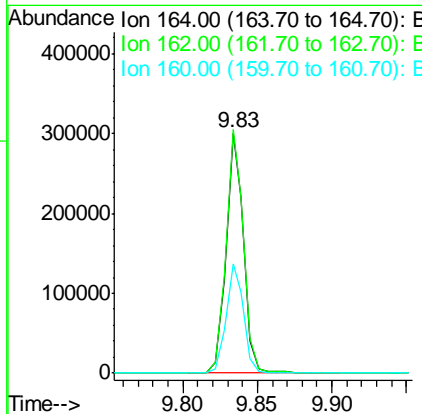
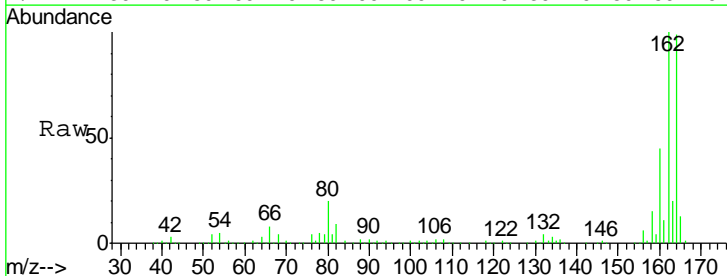
Manual Integrations
APPROVED

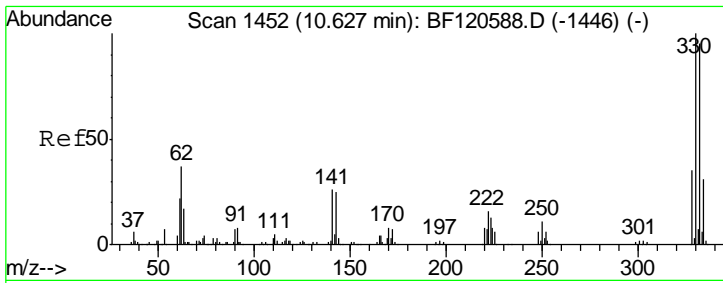
mohammad
 6/19/2020 12:58:01 PM



#39
 Acenaphthene-d10
 Concen: 20.000 ng
 RT: 9.83 min Scan# 1317
 Delta R.T. -0.01 min
 Lab File: BF120650.D
 Acq: 18 Jun 2020 19:04

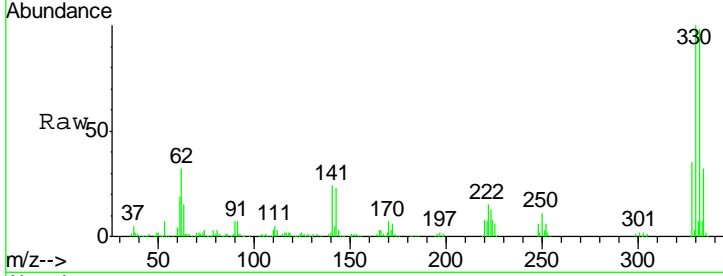
Tgt Ion	Resp	Lower	Upper
164	100		
162	101.5	80.6	120.8
160	45.3	36.2	54.2





#42
 2,4,6-Tribromophenol
 Concen: 113.667 ng
 RT: 10.63 min Scan# 1452
 Delta R.T. 0.00 min
 Lab File: BF120650.D
 Acq: 18 Jun 2020 19:04

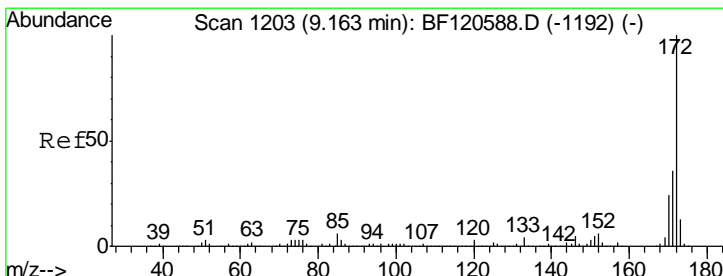
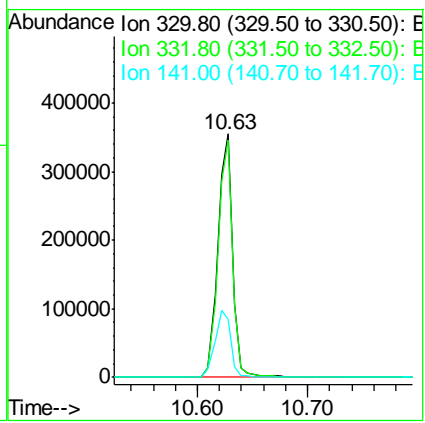
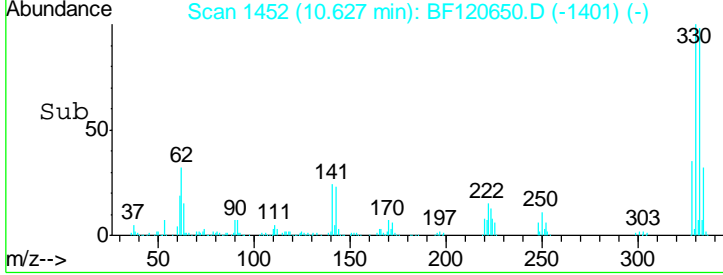
Instrument :
 BNA_F
 ClientSampled :
 ISS-A-C



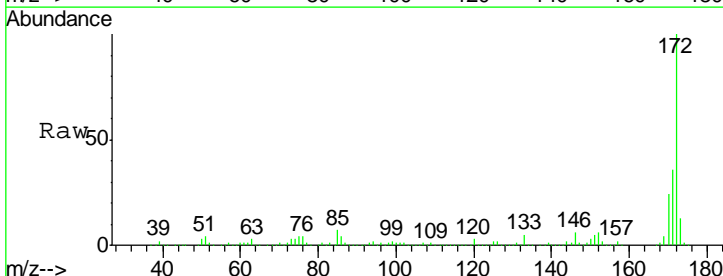
Tgt Ion: 330 Resp: 329517

Ion	Ratio	Lower	Upper
330	100		
332	96.5	76.8	115.2
141	29.1	23.2	34.8

Manual Integrations
APPROVED
 mohammad
 6/19/2020 12:58:01 PM

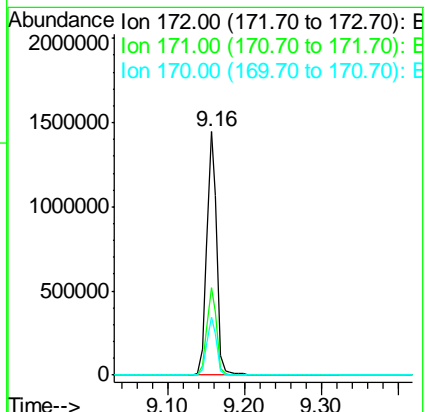
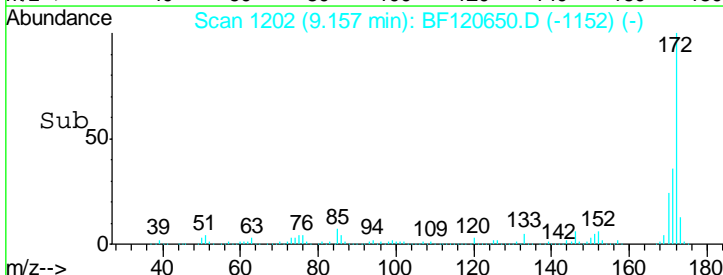


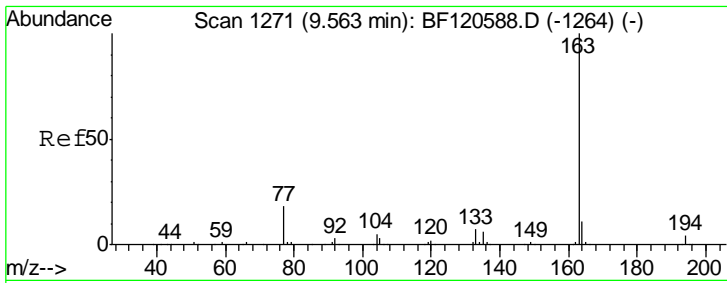
#45
 2-Fluorobiphenyl
 Concen: 79.178 ng
 RT: 9.16 min Scan# 1202
 Delta R.T. -0.01 min
 Lab File: BF120650.D
 Acq: 18 Jun 2020 19:04



Tgt Ion: 172 Resp: 1290363

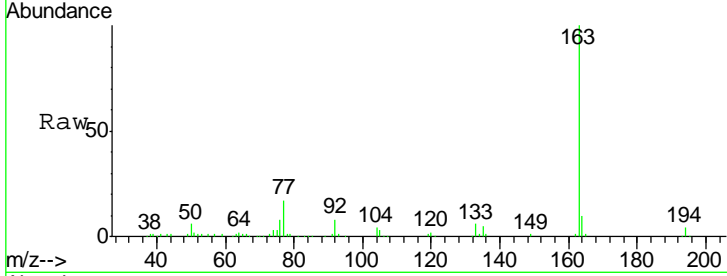
Ion	Ratio	Lower	Upper
172	100		
171	35.9	29.0	43.4
170	24.0	19.4	29.2





#50
 Dimethylphthalate
 Concen: 5.476 ng
 RT: 9.55 min Scan# 1269
 Delta R.T. -0.01 min
 Lab File: BF120650.D
 Acq: 18 Jun 2020 19:04

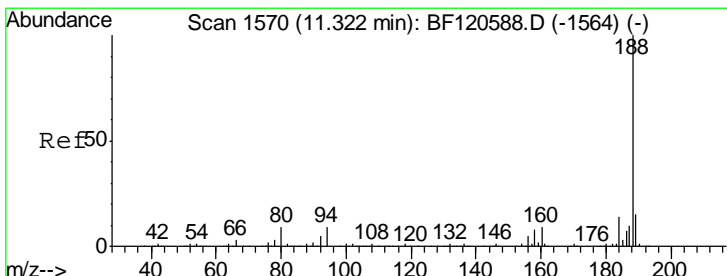
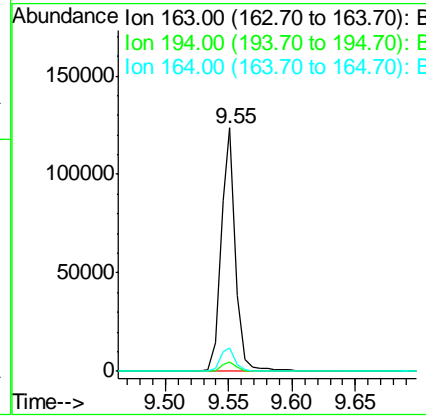
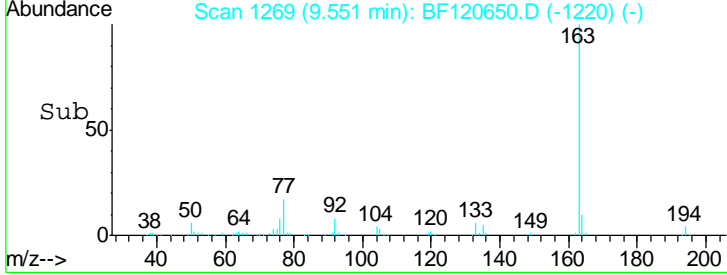
Instrument :
 BNA_F
ClientSampled :
 ISS-A-C



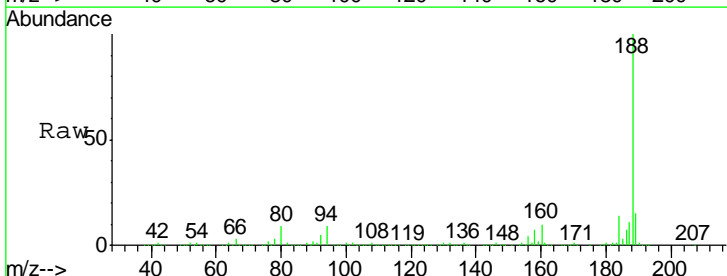
Tgt Ion: 163 Resp: 98345

Ion	Ratio	Lower	Upper
163	100		
194	3.9	3.1	4.7
164	9.6	8.5	12.7

Manual Integrations
APPROVED
 mohammad
 6/19/2020 12:58:01 PM

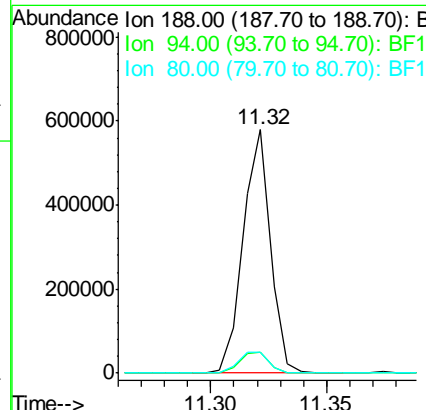
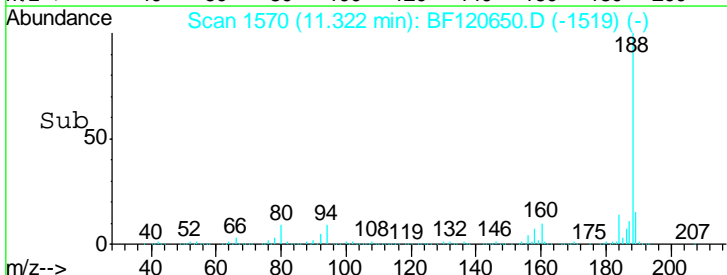


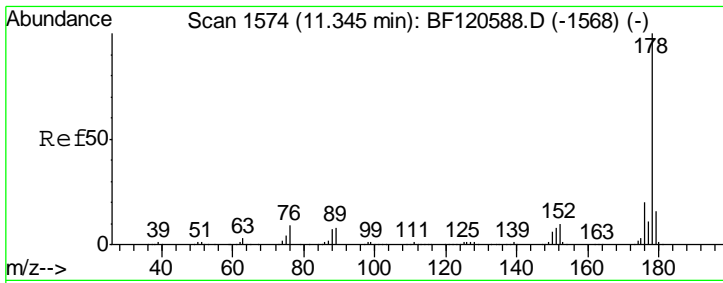
#64
 Phenanthrene-d10
 Concen: 20.000 ng
 RT: 11.32 min Scan# 1570
 Delta R.T. 0.00 min
 Lab File: BF120650.D
 Acq: 18 Jun 2020 19:04



Tgt Ion: 188 Resp: 480475

Ion	Ratio	Lower	Upper
188	100		
94	8.7	7.2	10.8
80	8.8	7.4	11.2





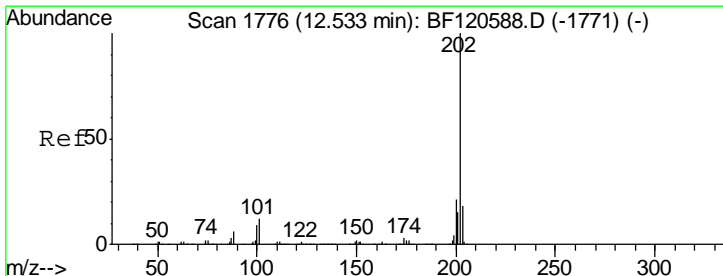
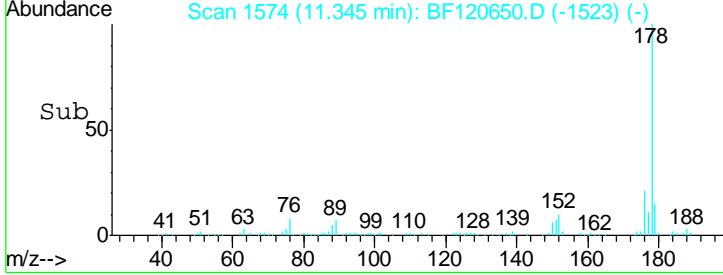
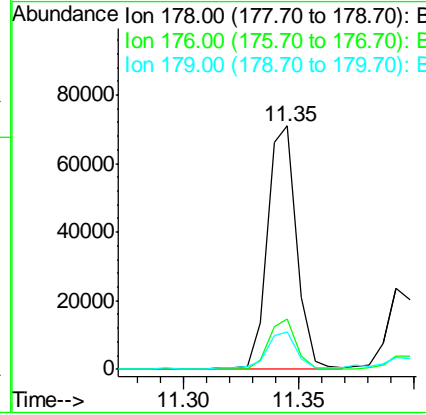
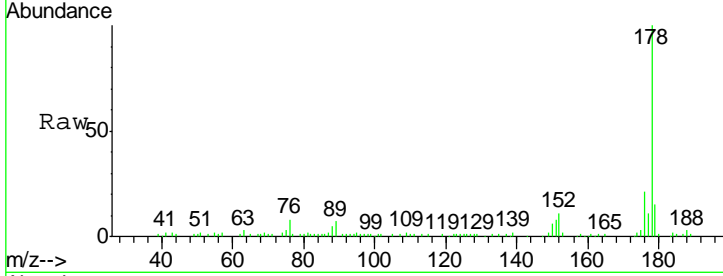
#71
 Phenanthrene
 Concen: 2.616 ng
 RT: 11.35 min Scan# 1574
 Delta R.T. 0.00 min
 Lab File: BF120650.D
 Acq: 18 Jun 2020 19:04

Instrument :
 BNA_F
ClientSampled :
 ISS-A-C

Tgt Ion	Resp	Lower	Upper
178	100		
176	20.6	15.9	23.9
179	15.5	12.8	19.2

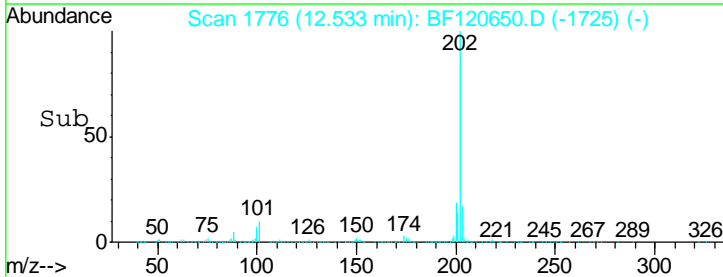
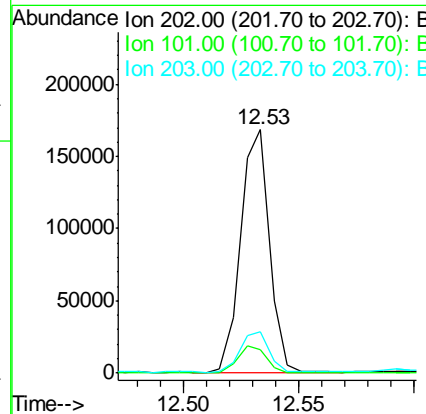
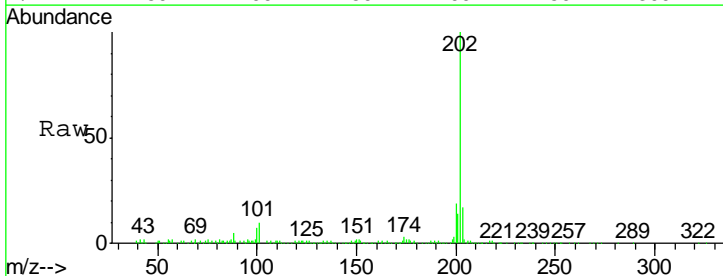
Manual Integrations
APPROVED

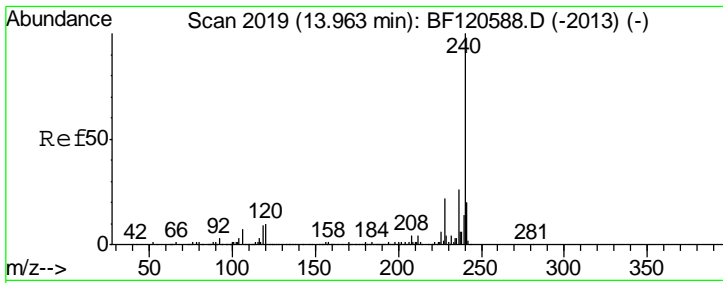
mohammad
 6/19/2020 12:58:01 PM



#75
 Fluoranthene
 Concen: 5.365 ng
 RT: 12.53 min Scan# 1776
 Delta R.T. 0.00 min
 Lab File: BF120650.D
 Acq: 18 Jun 2020 19:04

Tgt Ion	Resp	Lower	Upper
202	100		
101	9.8	0.0	32.0
203	17.1	0.0	38.3



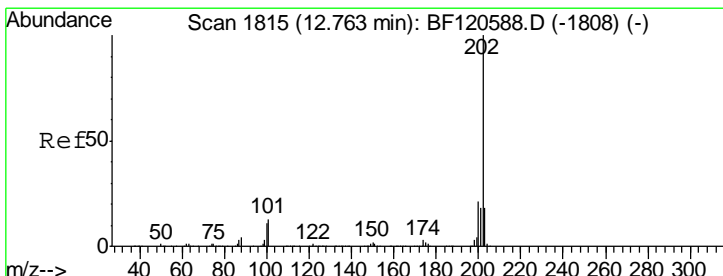
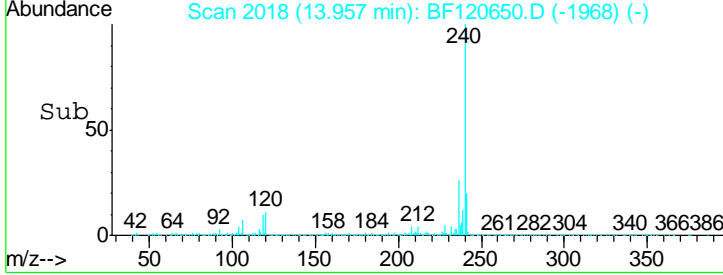
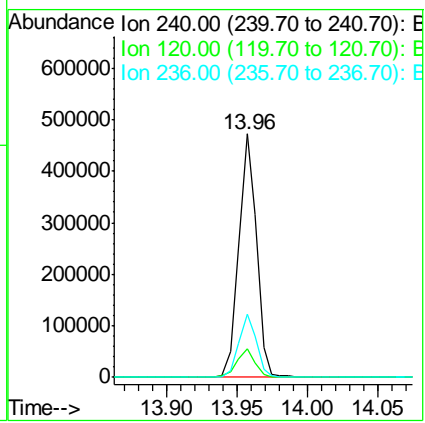
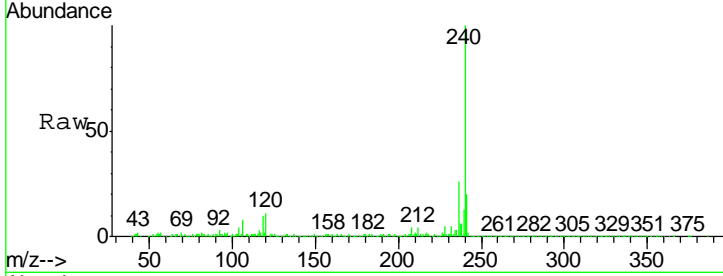


#76
 Chrysene-d12
 Concen: 20.000 ng
 RT: 13.96 min Scan# 2018
 Delta R.T. -0.01 min
 Lab File: BF120650.D
 Acq: 18 Jun 2020 19:04

Instrument :
 BNA_F
 ClientSampled :
 ISS-A-C

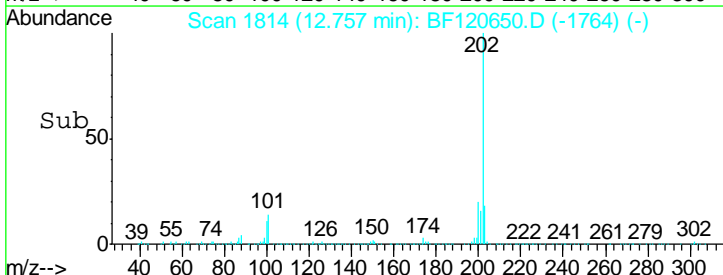
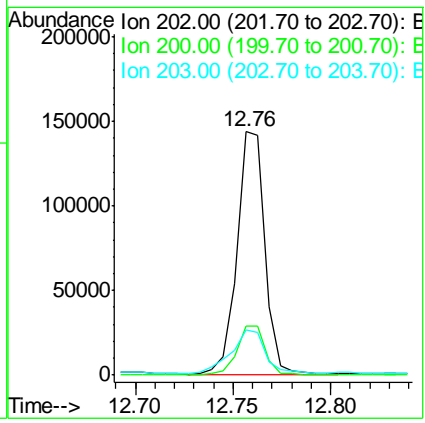
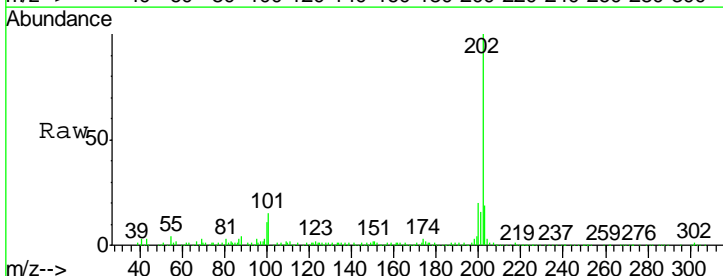
Tgt Ion	Ratio	Lower	Upper
240	100		
120	11.5	8.3	12.5
236	25.9	21.0	31.4

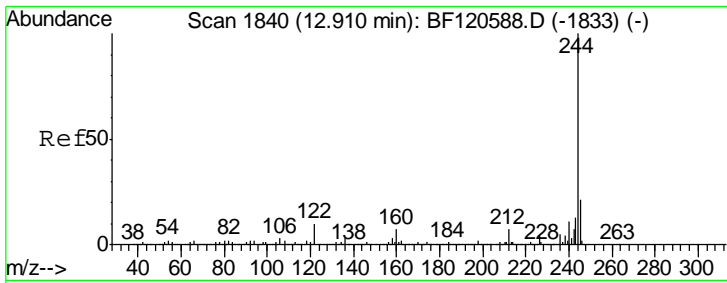
Manual Integrations
 APPROVED
 mohammad
 6/19/2020 12:58:01 PM



#78
 Pyrene
 Concen: 4.852 ng
 RT: 12.76 min Scan# 1814
 Delta R.T. -0.01 min
 Lab File: BF120650.D
 Acq: 18 Jun 2020 19:04

Tgt Ion	Ratio	Lower	Upper
202	100		
200	20.0	16.8	25.2
203	18.6	14.3	21.5





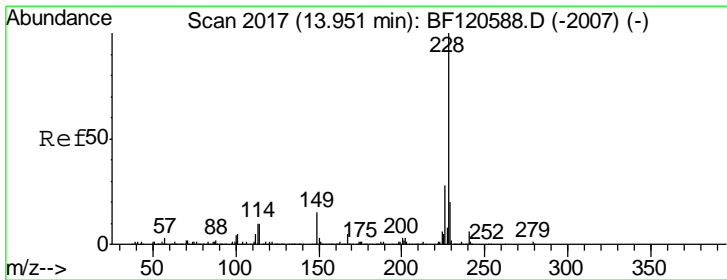
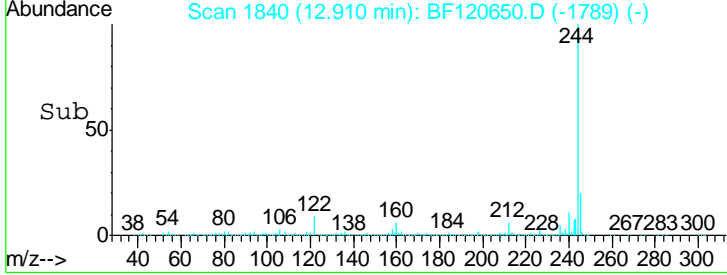
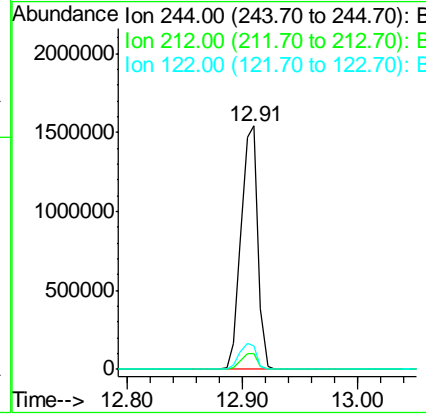
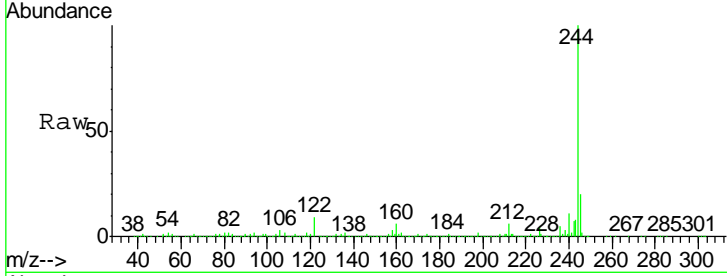
#79
 Terphenyl-d14
 Concen: 83.603 ng
 RT: 12.91 min Scan# 1840
 Delta R.T. 0.00 min
 Lab File: BF120650.D
 Acq: 18 Jun 2020 19:04

Instrument :
 BNA_F
ClientSampled :
 ISS-A-C

Tgt Ion: 244 Resp: 1552274

Ion	Ratio	Lower	Upper
244	100		
212	6.5	5.7	8.5
122	9.5	8.3	12.5

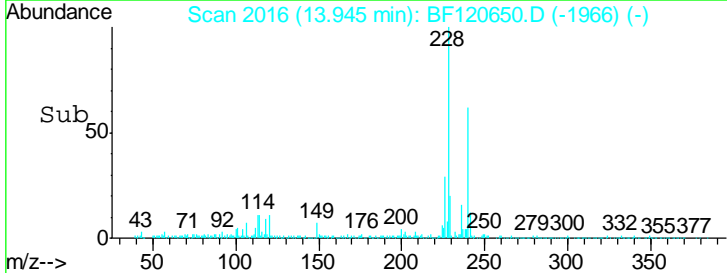
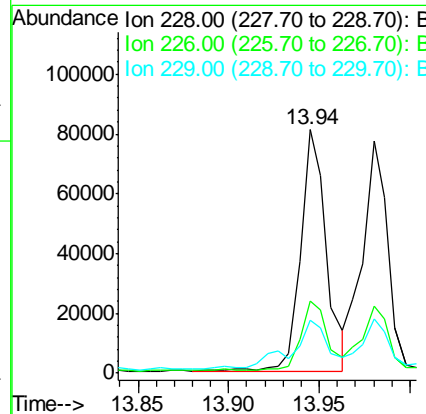
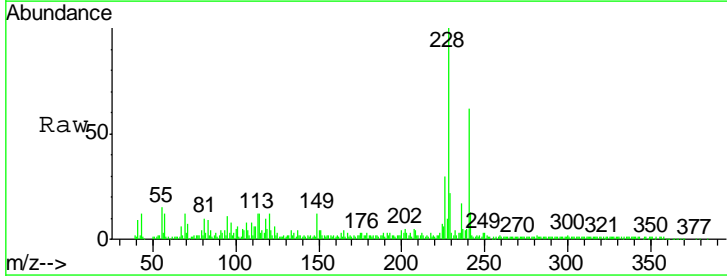
Manual Integrations
APPROVED
 mohammad
 6/19/2020 12:58:01 PM

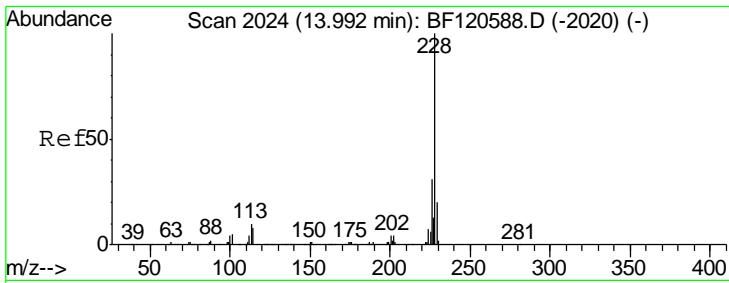


#81
 Benzo(a)anthracene
 Concen: 3.260 ng
 RT: 13.94 min Scan# 2016
 Delta R.T. -0.01 min
 Lab File: BF120650.D
 Acq: 18 Jun 2020 19:04

Tgt Ion: 228 Resp: 80330

Ion	Ratio	Lower	Upper
228	100		
226	29.8	22.5	33.7
229	21.9	16.1	24.1



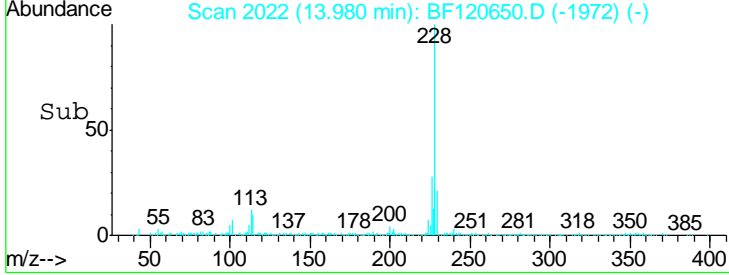
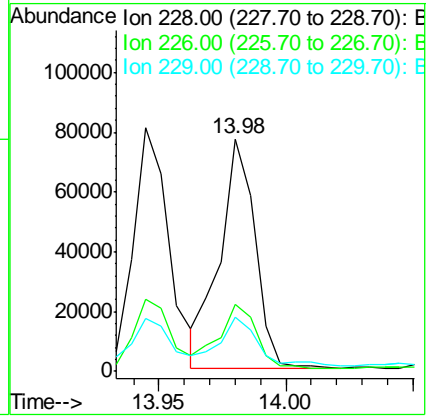
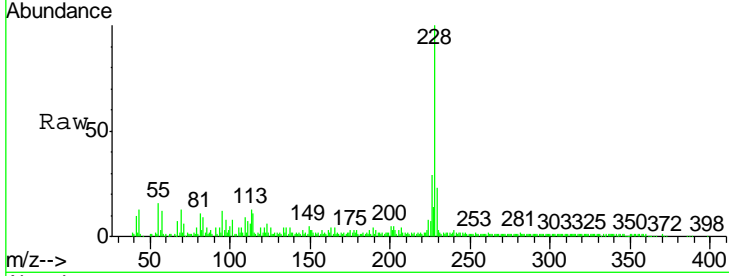


#83
 Chrysene
 Concen: 2.964 ng
 RT: 13.98 min Scan# 2022
 Delta R.T. -0.01 min
 Lab File: BF120650.D
 Acq: 18 Jun 2020 19:04

Instrument :
 BNA_F
ClientSampled :
 ISS-A-C

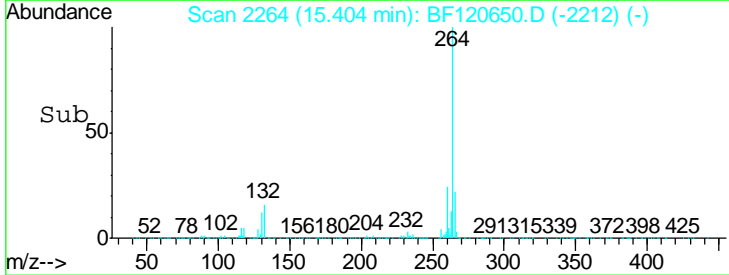
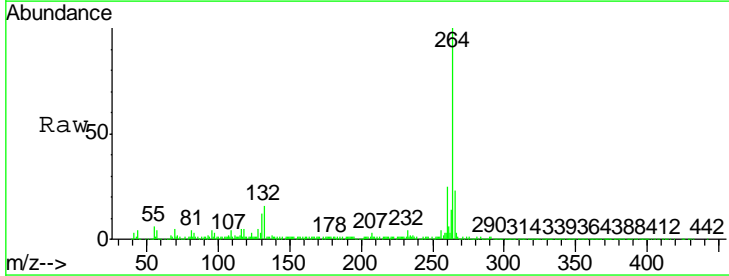
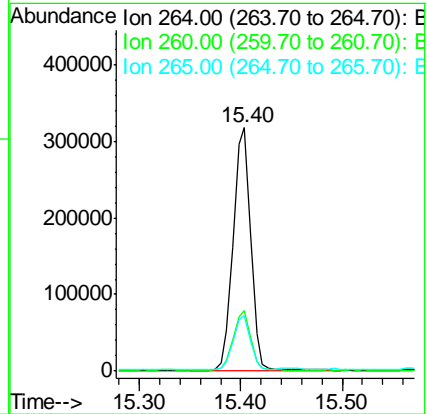
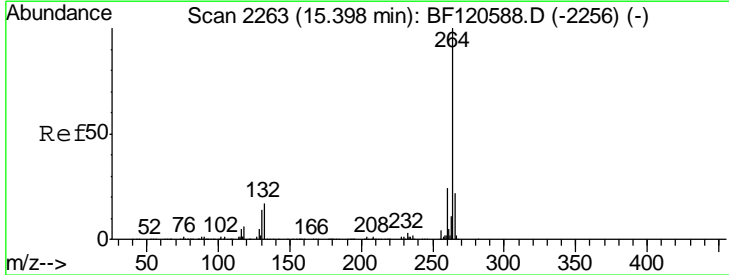
Tgt Ion	Resp	Lower	Upper
228	100		
226	29.0	24.9	37.3
229	23.3	16.1	24.1

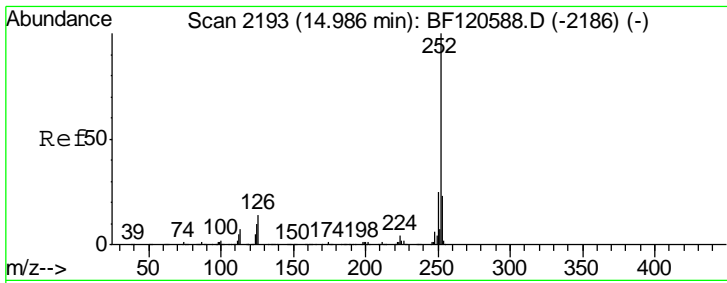
Manual Integrations
APPROVED
 mohammad
 6/19/2020 12:58:01 PM



#86
 Perylene-d12
 Concen: 20.000 ng
 RT: 15.40 min Scan# 2264
 Delta R.T. 0.01 min
 Lab File: BF120650.D
 Acq: 18 Jun 2020 19:04

Tgt Ion	Resp	Lower	Upper
264	100		
260	24.7	19.3	28.9
265	22.6	17.8	26.8



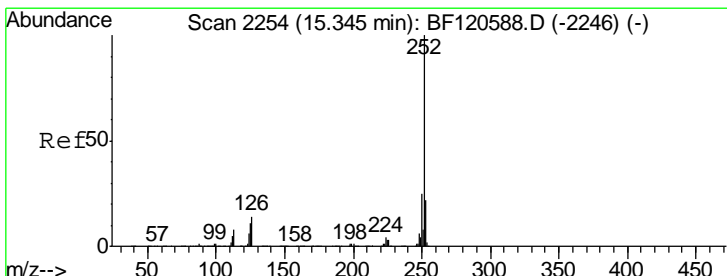
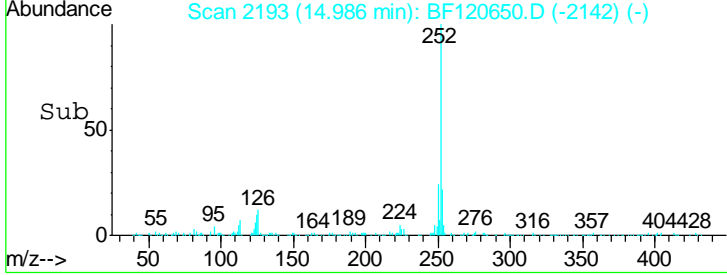
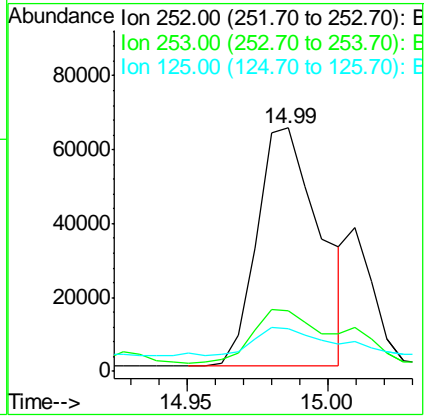
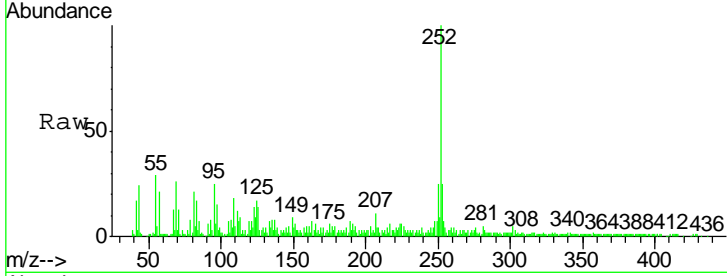


#88
 Benzo(b)fluoranthene
 Concen: 4.431 ng m
 RT: 14.99 min Scan# 2193
 Delta R.T. 0.00 min
 Lab File: BF120650.D
 Acq: 18 Jun 2020 19:04

Instrument :
 BNA_F
 ClientSampled :
 ISS-A-C

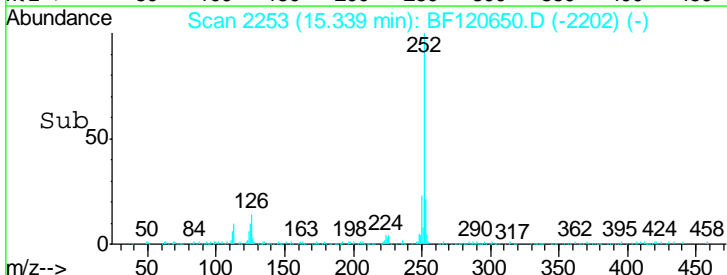
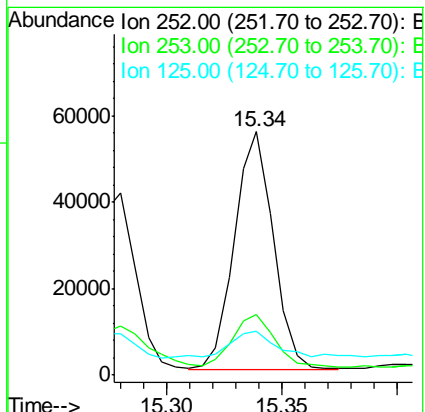
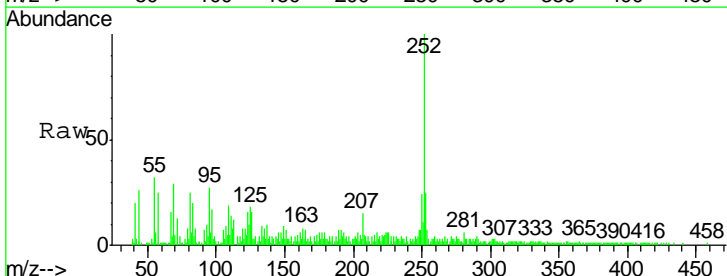
Tgt Ion	Resp	Lower	Upper
252	100432		
253	24.8	18.1	27.1
125	17.3	8.3	12.5#

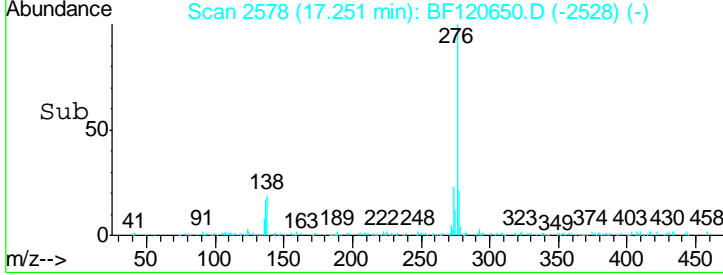
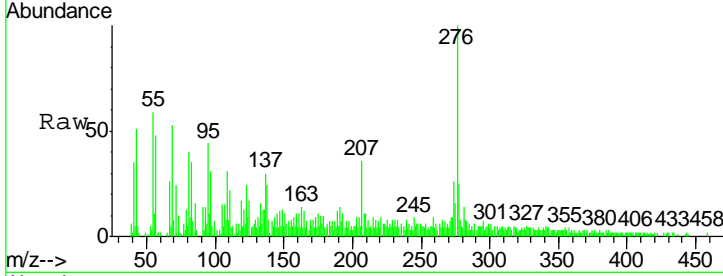
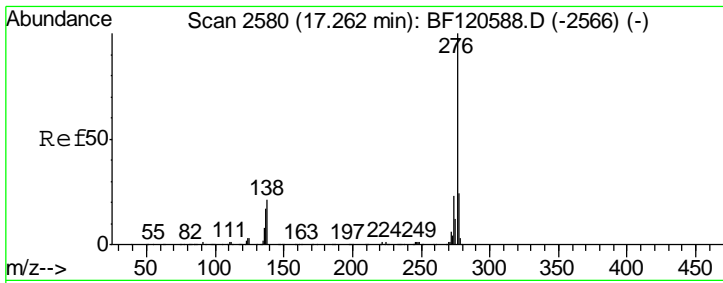
Manual Integrations
 APPROVED
 mohammad
 6/19/2020 12:58:01 PM



#90
 Benzo(a)pyrene
 Concen: 3.201 ng
 RT: 15.34 min Scan# 2253
 Delta R.T. 0.00 min
 Lab File: BF120650.D
 Acq: 18 Jun 2020 19:04

Tgt Ion	Resp	Lower	Upper
252	64926		
253	24.7	17.8	26.8
125	17.9	8.6	12.8#





#92
 Benzo(a,h,i)perylene
 Concen: 2.198 ng
 RT: 17.25 min Scan# 2578
 Delta R.T. -0.01 min
 Lab File: BF120650.D
 Acq: 18 Jun 2020 19:04

Tot Ion	Ratio	Lower	Upper
276	100		
277	25.1	19.6	29.4
138	24.2	16.5	24.7

Instrument :
 BNA_F
 ClientSampled :
 ISS-A-C

Manual Integrations
APPROVED
 mohammad
 6/19/2020 12:58:01 PM

