

Data Path : Z:\svoasrv\HPCHEM1\BNA\_F\Data\BF061824\  
 Data File : BF138230.D  
 Acq On : 18 Jun 2024 17:59  
 Operator : CG\JU  
 Sample : P2915-04  
 Misc :  
 ALS Vial : 14 Sample Multiplier: 1

Instrument :  
 BNA\_F  
 ClientSampleId :  
 WC-SOUTH-1

Quant Time: Jun 18 18:32:03 2024  
 Quant Method : Z:\svoasrv\HPCHEM1\BNA\_F\Methods\8270-BF061224.M  
 Quant Title : ASP BNA STANDARDS FOR 5 POINT CALIBRATION  
 QLast Update : Thu Jun 13 01:52:47 2024  
 Response via : Initial Calibration

Compound	R.T.	QIon	Response	Conc	Units	Dev(Min)
Internal Standards						
1) 1,4-Dichlorobenzene-d4	6.893	152	359661	20.000	ng	0.00
21) Naphthalene-d8	8.169	136	1383351	20.000	ng	0.00
39) Acenaphthene-d10	9.922	164	698701	20.000	ng	0.00
64) Phenanthrene-d10	11.410	188	973150	20.000	ng	0.00
76) Chrysene-d12	14.045	240	653079	20.000	ng	0.00
86) Perylene-d12	15.516	264	498078	20.000	ng	0.00
System Monitoring Compounds						
5) 2-Fluorophenol	5.534	112	2630056	122.327	ng	0.02
7) Phenol-d6	6.522	99	3084698	113.146	ng	0.00
23) Nitrobenzene-d5	7.457	82	2094138	88.129	ng	0.00
42) 2,4,6-Tribromophenol	10.716	330	770947	110.836	ng	0.00
45) 2-Fluorobiphenyl	9.251	172	3675660	83.653	ng	0.00
79) Terphenyl-d14	12.998	244	3214163	77.949	ng	0.00

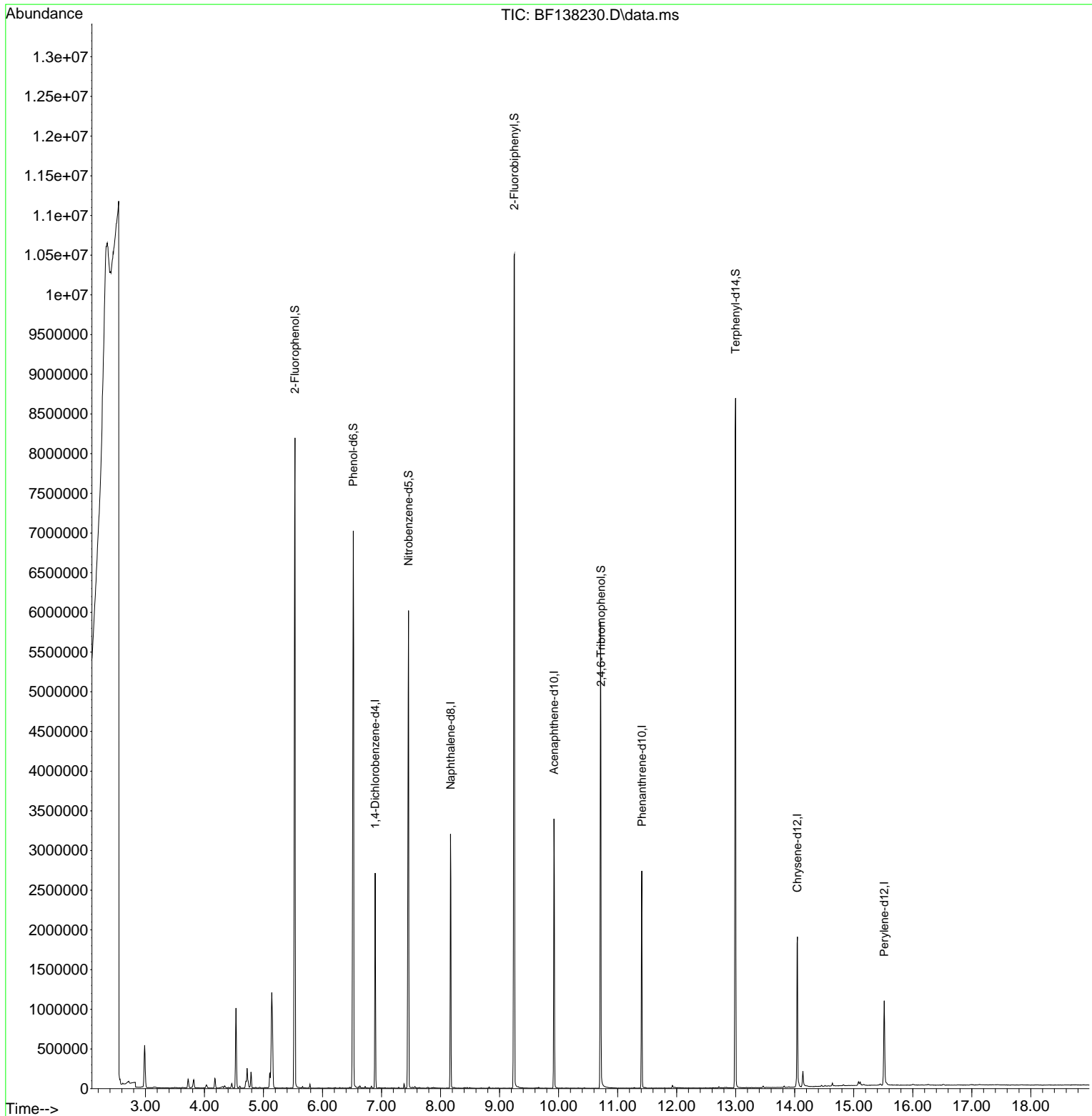
Target Compounds Qvalue

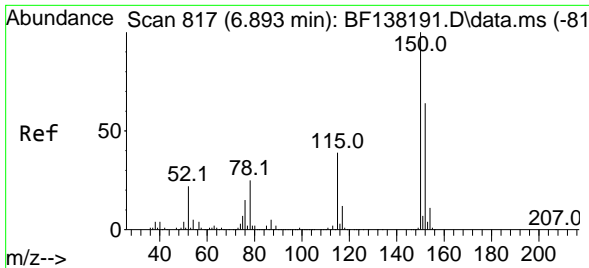
(#) = qualifier out of range (m) = manual integration (+) = signals summed

Data Path : Z:\svoasrv\HPCHEM1\BNA\_F\Data\BF061824\  
 Data File : BF138230.D  
 Acq On : 18 Jun 2024 17:59  
 Operator : CG\JU  
 Sample : P2915-04  
 Misc :  
 ALS Vial : 14 Sample Multiplier: 1

Instrument :  
 BNA\_F  
 ClientSampleId :  
 WC-SOUTH-1

Quant Time: Jun 18 18:32:03 2024  
 Quant Method : Z:\svoasrv\HPCHEM1\BNA\_F\Methods\8270-BF061224.M  
 Quant Title : ASP BNA STANDARDS FOR 5 POINT CALIBRATION  
 QLast Update : Thu Jun 13 01:52:47 2024  
 Response via : Initial Calibration

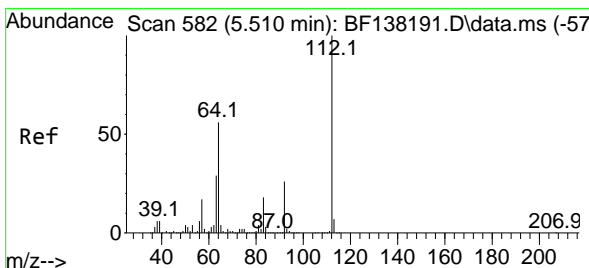
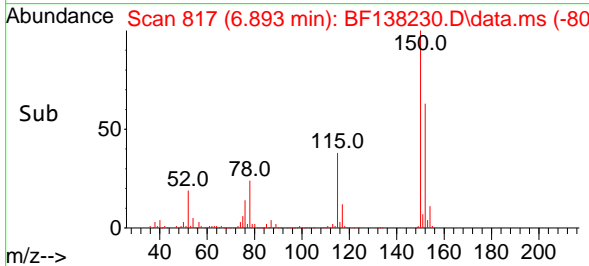
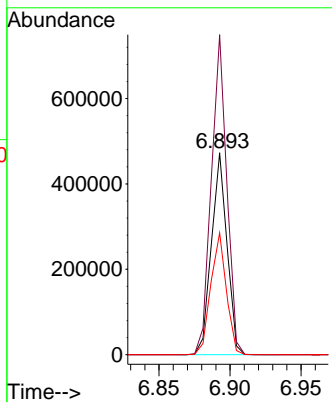
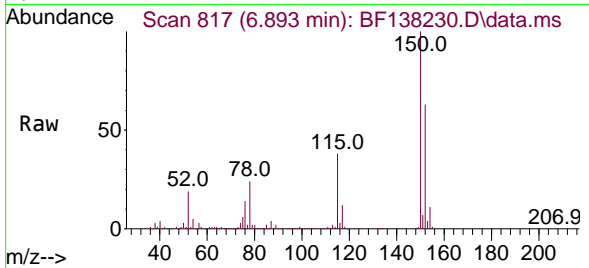




#1  
 1,4-Dichlorobenzene-d4  
 Concen: 20.000 ng  
 RT: 6.893 min Scan# 81  
 Delta R.T. -0.000 min  
 Lab File: BF138230.D  
 Acq: 18 Jun 2024 17:59

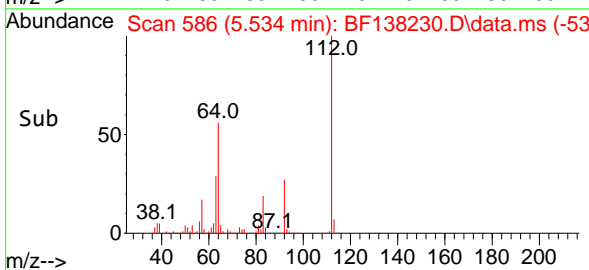
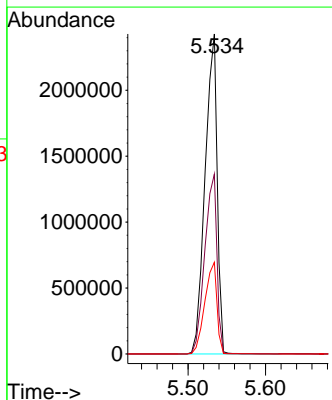
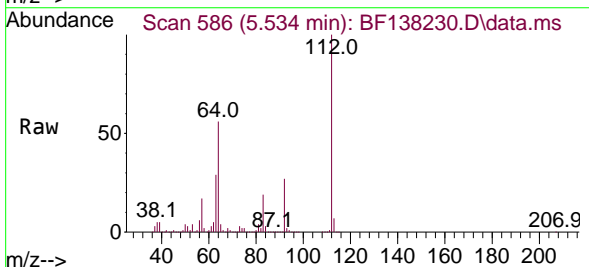
Instrument :  
 BNA\_F  
 ClientSampleId :  
 WC-SOUTH-1

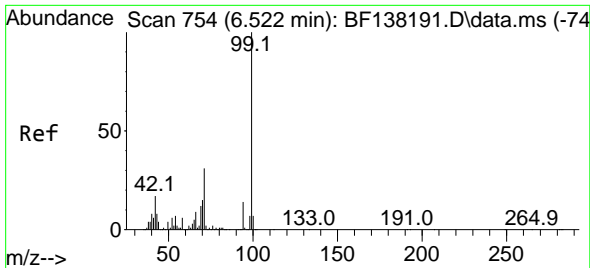
Tgt Ion:152 Resp: 359661  
 Ion Ratio Lower Upper  
 152 100  
 150 158.5 125.0 187.4  
 115 60.3 48.4 72.6



#5  
 2-Fluorophenol  
 Concen: 122.327 ng  
 RT: 5.534 min Scan# 586  
 Delta R.T. 0.024 min  
 Lab File: BF138230.D  
 Acq: 18 Jun 2024 17:59

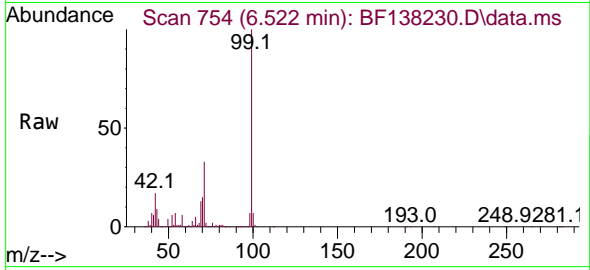
Tgt Ion:112 Resp: 2630056  
 Ion Ratio Lower Upper  
 112 100  
 64 56.2 45.2 67.8  
 63 28.7 22.9 34.3





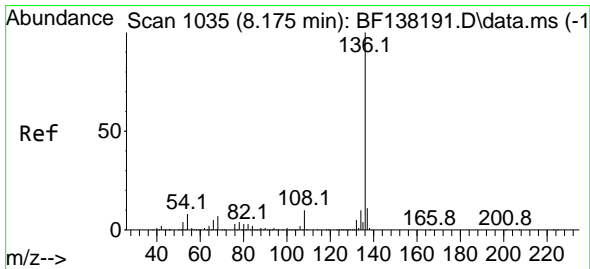
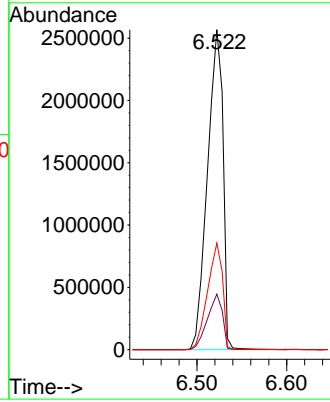
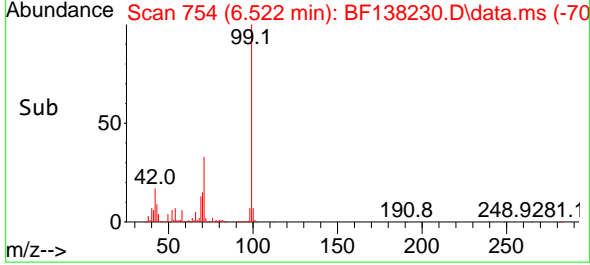
#7  
 Phenol-d6  
 Concen: 113.146 ng  
 RT: 6.522 min Scan# 71  
 Delta R.T. 0.000 min  
 Lab File: BF138230.D  
 Acq: 18 Jun 2024 17:59

Instrument :  
 BNA\_F  
 ClientSampleId :  
 WC-SOUTH-1

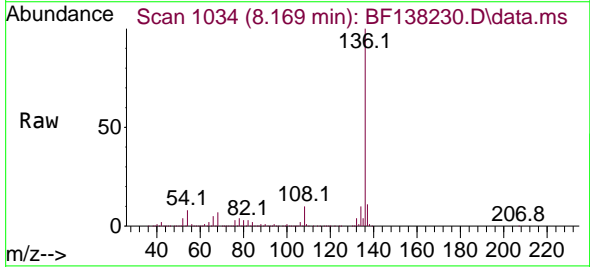


Tgt Ion: 99 Resp: 3084698

Ion	Ratio	Lower	Upper
99	100		
42	17.4	13.7	20.5
71	33.3	25.0	37.6

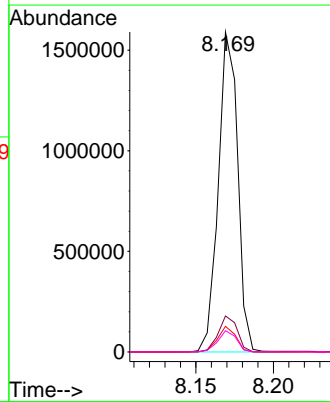
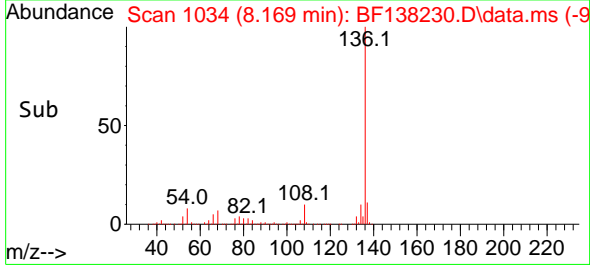


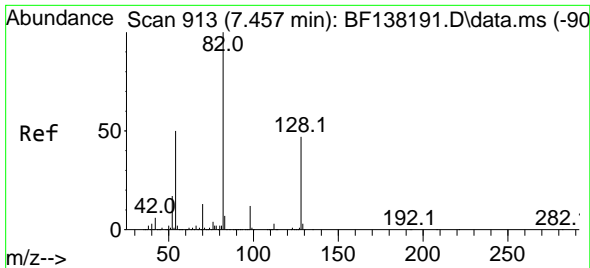
#21  
 Naphthalene-d8  
 Concen: 20.000 ng  
 RT: 8.169 min Scan# 1034  
 Delta R.T. -0.006 min  
 Lab File: BF138230.D  
 Acq: 18 Jun 2024 17:59



Tgt Ion: 136 Resp: 1383351

Ion	Ratio	Lower	Upper
136	100		
137	11.2	9.1	13.7
54	8.0	6.6	10.0
68	6.7	5.4	8.2



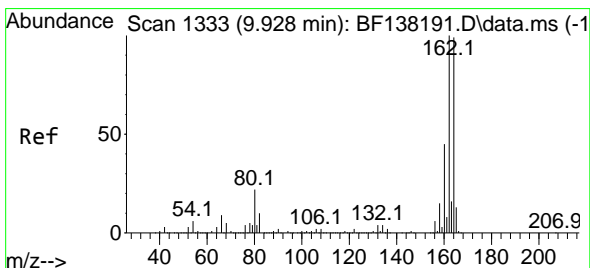
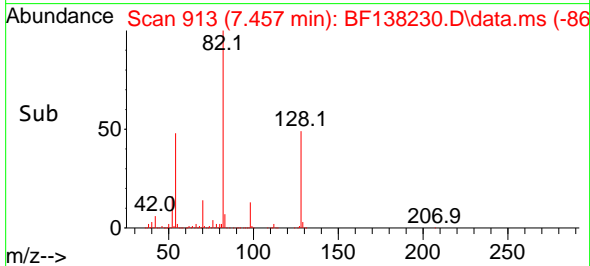
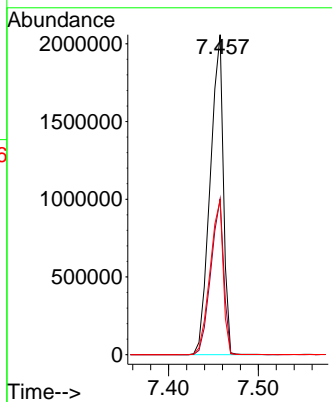
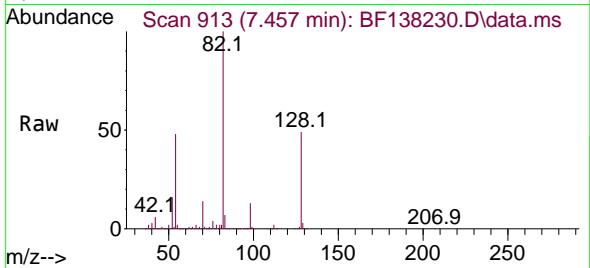


#23  
 Nitrobenzene-d5  
 Concen: 88.129 ng  
 RT: 7.457 min Scan# 913  
 Delta R.T. 0.000 min  
 Lab File: BF138230.D  
 Acq: 18 Jun 2024 17:59

Instrument :  
 BNA\_F  
 ClientSampleId :  
 WC-SOUTH-1

Tgt Ion: 82 Resp: 2094138

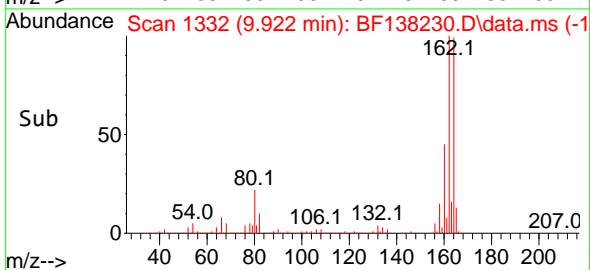
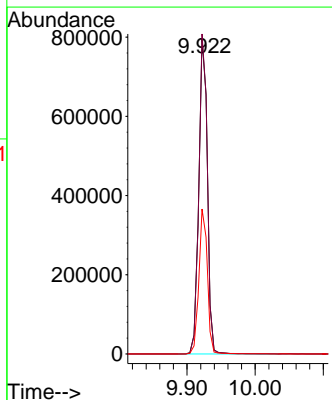
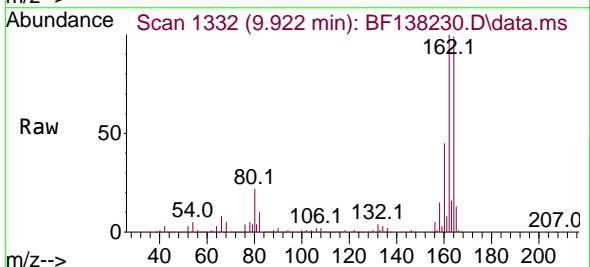
Ion	Ratio	Lower	Upper
82	100		
128	48.7	37.2	55.8
54	48.3	39.8	59.6

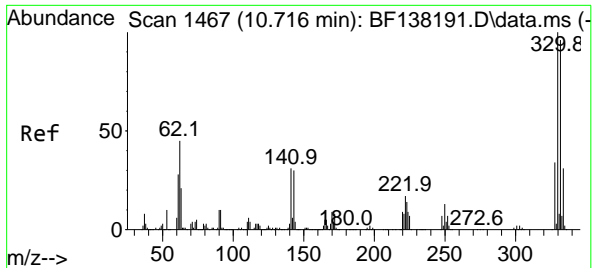


#39  
 Acenaphthene-d10  
 Concen: 20.000 ng  
 RT: 9.922 min Scan# 1332  
 Delta R.T. -0.006 min  
 Lab File: BF138230.D  
 Acq: 18 Jun 2024 17:59

Tgt Ion: 164 Resp: 698701

Ion	Ratio	Lower	Upper
164	100		
162	101.5	80.6	121.0
160	46.0	36.3	54.5



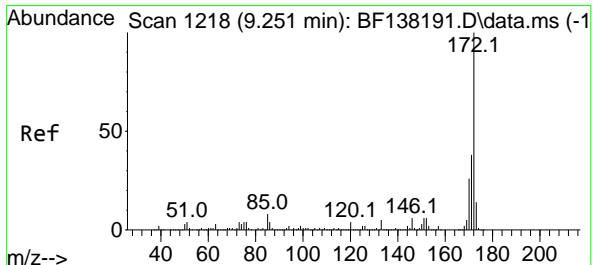
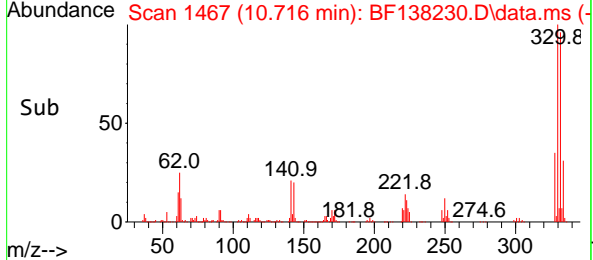
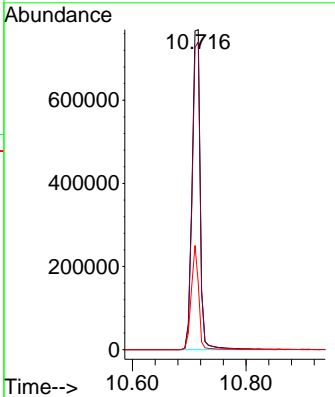
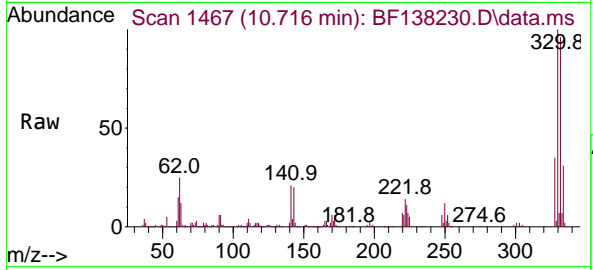


#42  
 2,4,6-Tribromophenol  
 Concen: 110.836 ng  
 RT: 10.716 min Scan# 1467  
 Delta R.T. 0.000 min  
 Lab File: BF138230.D  
 Acq: 18 Jun 2024 17:59

Instrument : BNA\_F  
 ClientSampleId : WC-SOUTH-1

Tgt Ion: 330 Resp: 770947

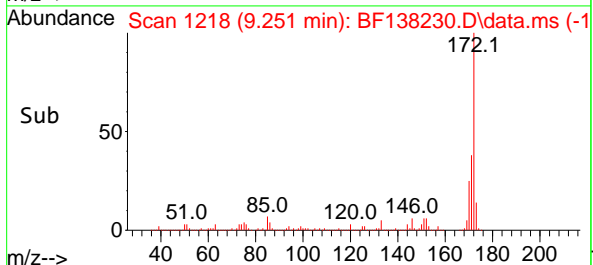
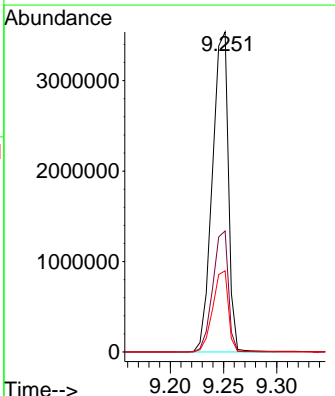
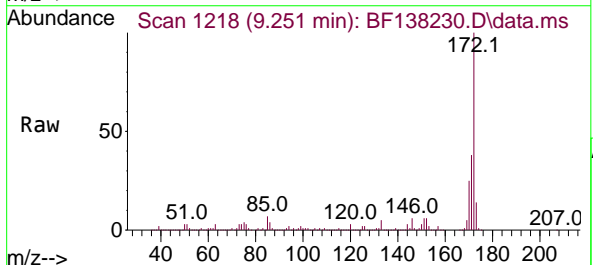
Ion	Ratio	Lower	Upper
330	100		
332	95.5	76.6	115.0
141	29.7	23.9	35.9

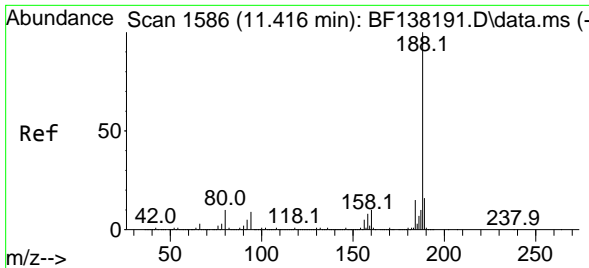


#45  
 2-Fluorobiphenyl  
 Concen: 83.653 ng  
 RT: 9.251 min Scan# 1218  
 Delta R.T. 0.000 min  
 Lab File: BF138230.D  
 Acq: 18 Jun 2024 17:59

Tgt Ion: 172 Resp: 3675660

Ion	Ratio	Lower	Upper
172	100		
171	37.8	30.3	45.5
170	25.4	20.6	30.8





#64  
 Phenanthrene-d10  
 Concen: 20.000 ng  
 RT: 11.410 min Scan# 11  
 Delta R.T. -0.006 min  
 Lab File: BF138230.D  
 Acq: 18 Jun 2024 17:59

Instrument :

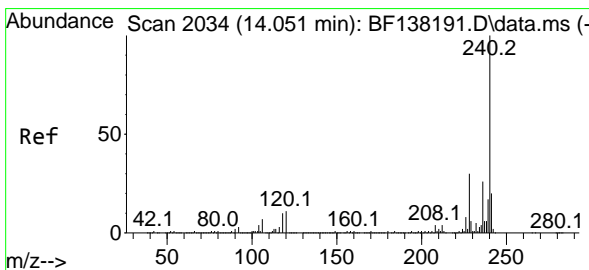
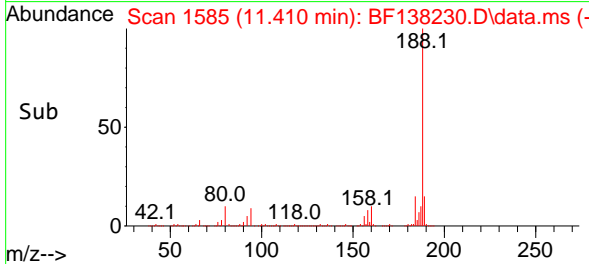
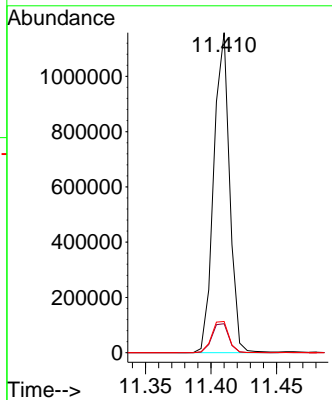
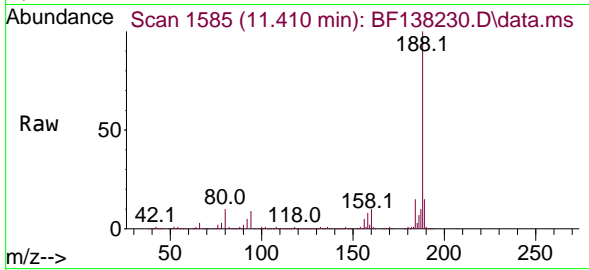
BNA\_F

Client SampleId :

WC-SOUTH-1

Tgt Ion:188 Resp: 973150

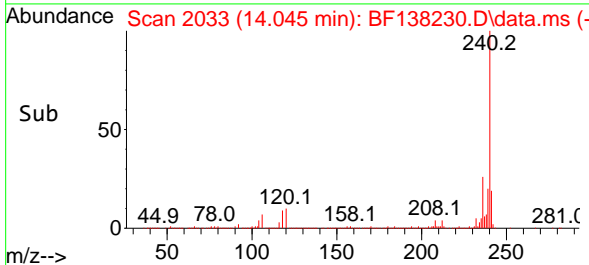
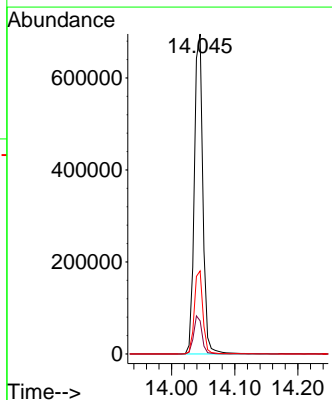
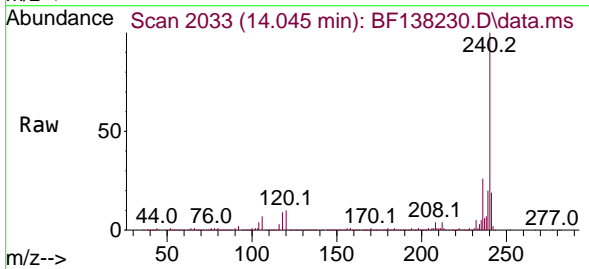
Ion	Ratio	Lower	Upper
188	100		
94	9.1	7.6	11.4
80	9.7	8.1	12.1

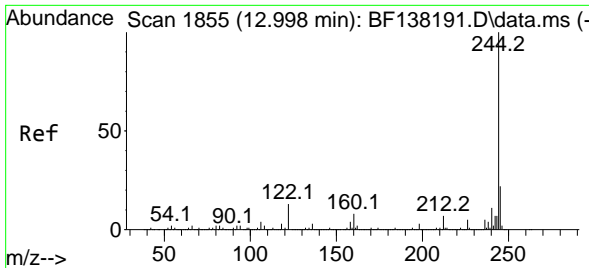


#76  
 Chrysene-d12  
 Concen: 20.000 ng  
 RT: 14.045 min Scan# 2033  
 Delta R.T. -0.006 min  
 Lab File: BF138230.D  
 Acq: 18 Jun 2024 17:59

Tgt Ion:240 Resp: 653079

Ion	Ratio	Lower	Upper
240	100		
120	10.3	9.2	13.8
236	25.9	21.0	31.6





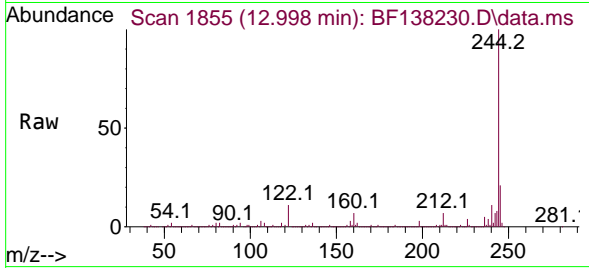
#79  
 Terphenyl-d14  
 Concen: 77.949 ng  
 RT: 12.998 min Scan# 11  
 Delta R.T. 0.000 min  
 Lab File: BF138230.D  
 Acq: 18 Jun 2024 17:59

Instrument :

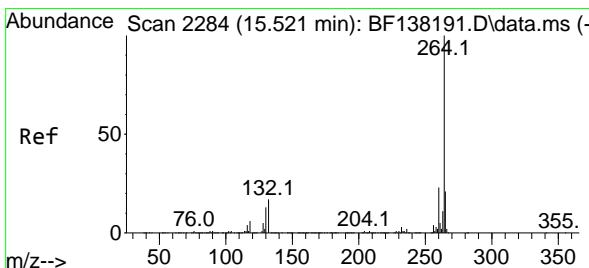
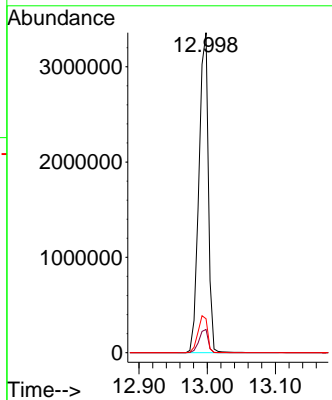
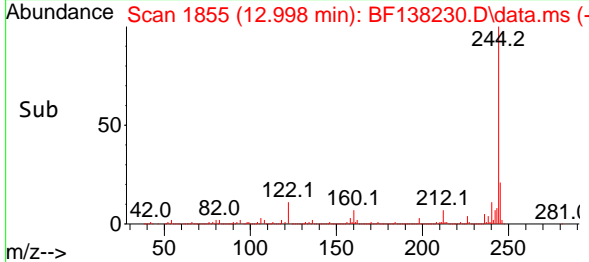
BNA\_F

ClientSampleId :

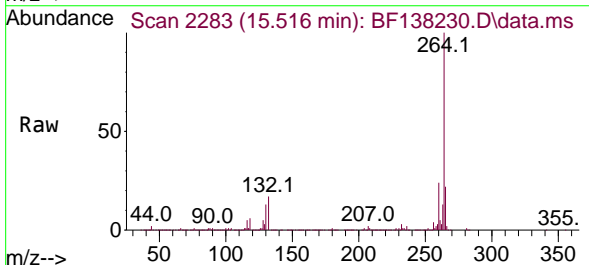
WC-SOUTH-1



Tgt Ion:244 Resp: 3214163  
 Ion Ratio Lower Upper  
 244 100  
 212 7.2 5.9 8.9  
 122 10.6 10.6 15.8



#86  
 Perylene-d12  
 Concen: 20.000 ng  
 RT: 15.516 min Scan# 2283  
 Delta R.T. -0.006 min  
 Lab File: BF138230.D  
 Acq: 18 Jun 2024 17:59



Tgt Ion:264 Resp: 498078  
 Ion Ratio Lower Upper  
 264 100  
 260 24.2 18.7 28.1  
 265 21.6 17.0 25.6

