

Data Path : Z:\HPCHEM1\BNA_F\DATA\BF061915\
 Data File : BF080075.D
 Acq On : 20 Jun 2015 2:09
 Operator : TP/IZ
 Sample : G2653-03
 Misc : LOD-SVOC-SOIL-8PPM
 ALS Vial : 22 Sample Multiplier: 1

Instrument :
 BNA_F
 ClientSampleId :
 LOD-SOIL2015-01

Quant Time: Jun 20 04:16:20 2015
 Quant Method : Z:\HPCHEM1\BNA_F\METHODS\8270-BF061715.M
 Quant Title : ASP BNA STANDARDS FOR 5 POINT CALIBRATION
 QLast Update : Wed Jun 17 16:41:53 2015
 Response via : Initial Calibration

Internal Standards	R.T.	QIon	Response	Conc	Units	Dev(Min)
1) 1,4-Dichlorobenzene-d4	7.33	152	43368	20.00	ng	-0.01
21) Naphthalene-d8	8.62	136	181465	20.00	ng	-0.01
38) Acenaphthene-d10	10.39	164	98606	20.00	ng	-0.01
63) Phenanthrene-d10	11.90	188	203943	20.00	ng	-0.01
75) Chrysene-d12	14.77	240	240138	20.00	ng	-0.09
86) Perylene-d12	16.60	264	220237	20.00	ng	-0.15
System Monitoring Compounds						
5) 2-Fluorophenol	5.94	112	307924	125.69	ng	0.00
7) Phenol-d6	6.93	99	371173	113.85	ng	-0.01
23) Nitrobenzene-d5	7.89	82	240390	77.12	ng	-0.01
41) 2,4,6-Tribromophenol	11.19	330	118247	122.64	ng	-0.01
44) 2-Fluorobiphenyl	9.69	172	477472	69.05	ng	-0.01
78) Terphenyl-d14	13.54	244	705372	68.60	ng	-0.05

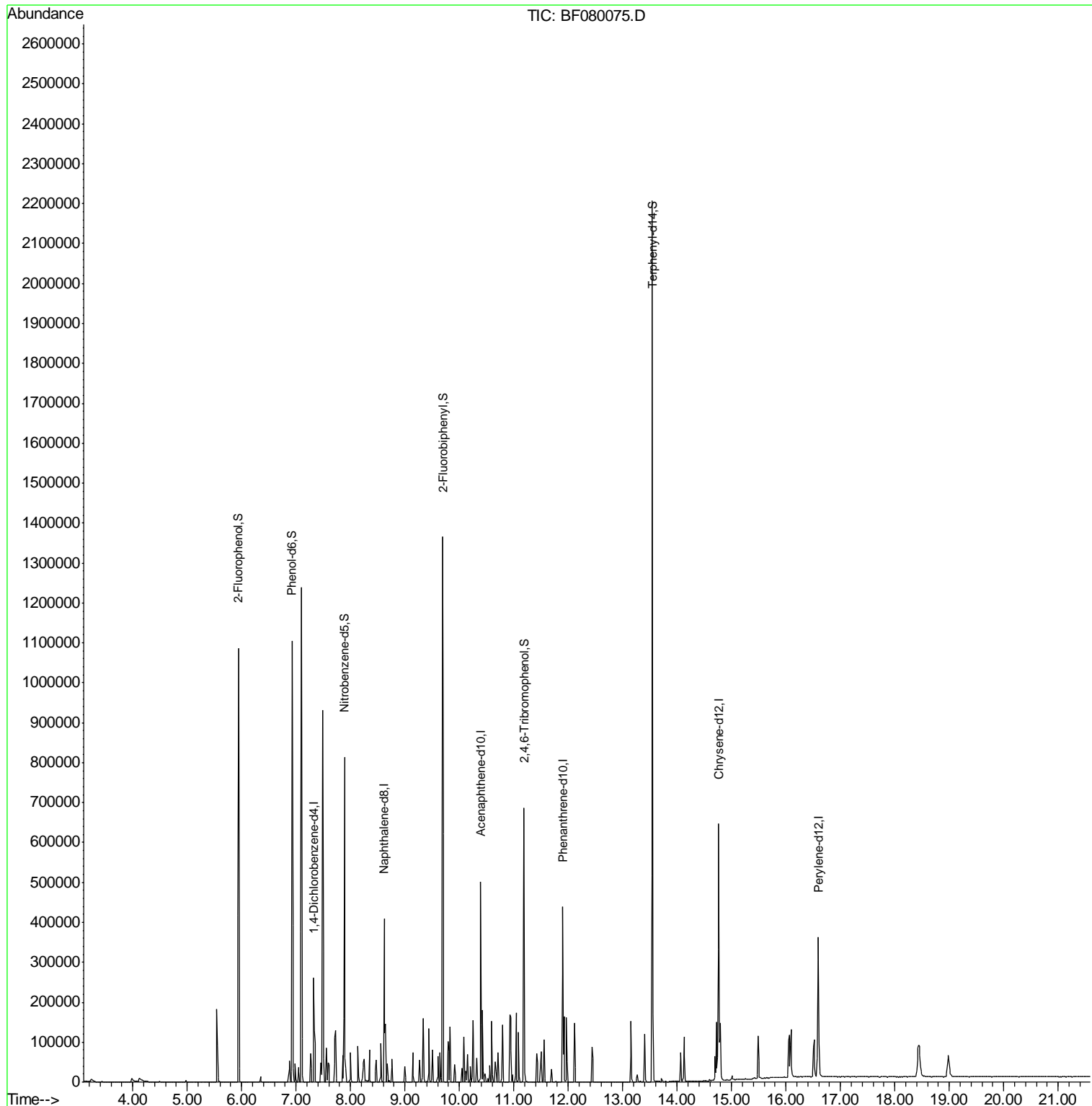
Target Compounds Qvalue

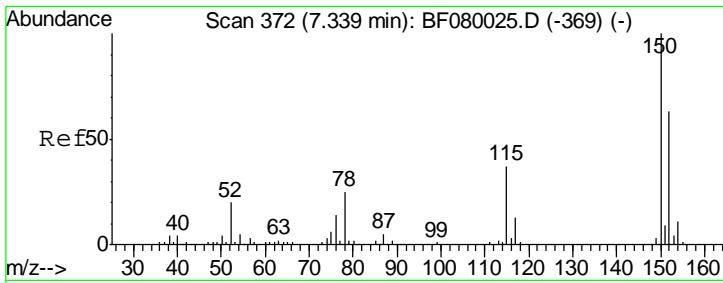
(#) = qualifier out of range (m) = manual integration (+) = signals summed

Data Path : Z:\HPCHEM1\BNA_F\DATA\BF061915\
 Data File : BF080075.D
 Acq On : 20 Jun 2015 2:09
 Operator : TP/IZ
 Sample : G2653-03
 Misc : LOD-SVOC-SOIL-8PPM
 ALS Vial : 22 Sample Multiplier: 1

Instrument :
 BNA_F
 ClientSampleId :
 LOD-SOIL2015-01

Quant Time: Jun 20 04:16:20 2015
 Quant Method : Z:\HPCHEM1\BNA_F\METHODS\8270-BF061715.M
 Quant Title : ASP BNA STANDARDS FOR 5 POINT CALIBRATION
 QLast Update : Wed Jun 17 16:41:53 2015
 Response via : Initial Calibration

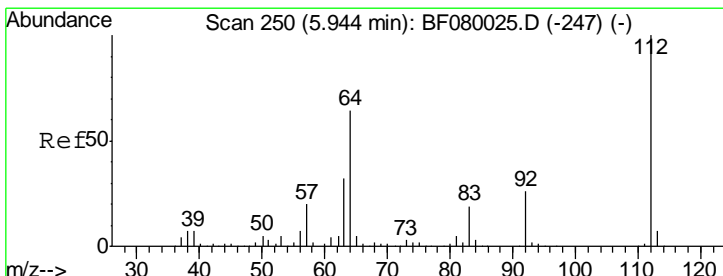
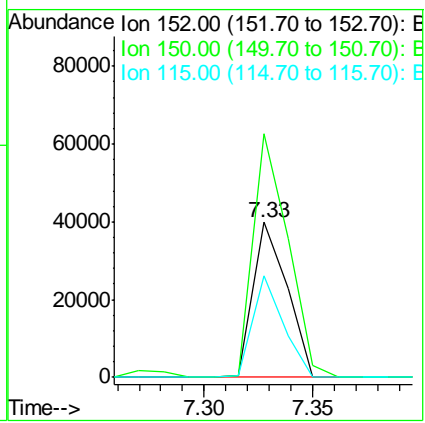
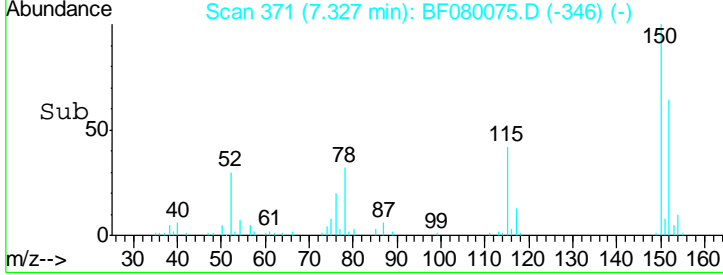
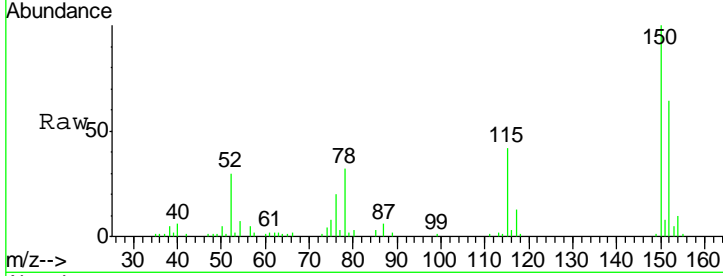




#1
 1,4-Dichlorobenzene-d4
 Concen: 20.00 ng
 RT: 7.33 min Scan# 371
 Delta R.T. -0.01 min
 Lab File: BF080075.D
 Acq: 20 Jun 2015 2:09

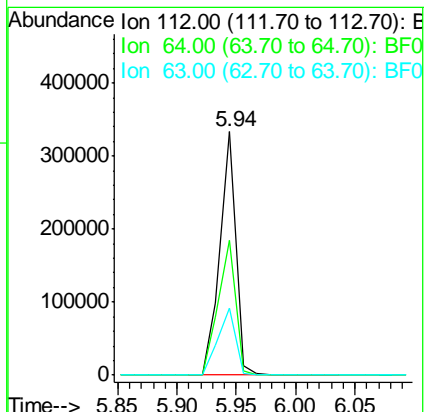
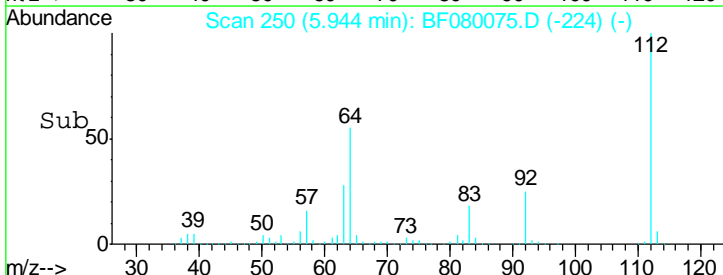
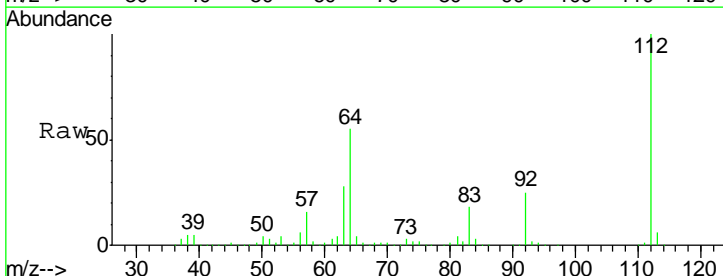
Instrument :
 BNA_F
ClientSampleId :
 LOD-SOIL2015-01

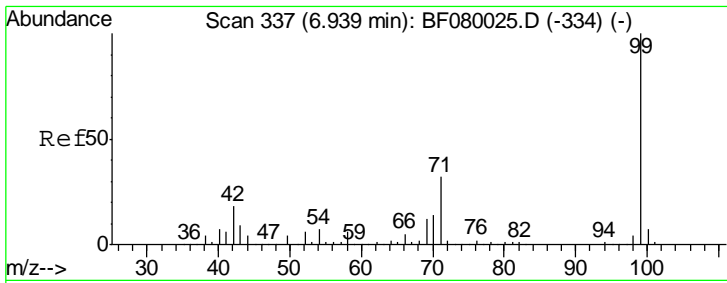
Tgt Ion	Resp	Lower	Upper
152	43368		
150	156.8	124.7	187.1
115	65.7	39.0	58.4



#5
 2-Fluorophenol
 Concen: 125.69 ng
 RT: 5.94 min Scan# 250
 Delta R.T. 0.00 min
 Lab File: BF080075.D
 Acq: 20 Jun 2015 2:09

Tgt Ion	Resp	Lower	Upper
112	307924		
64	55.3	39.7	59.5
63	27.7	17.4	26.0

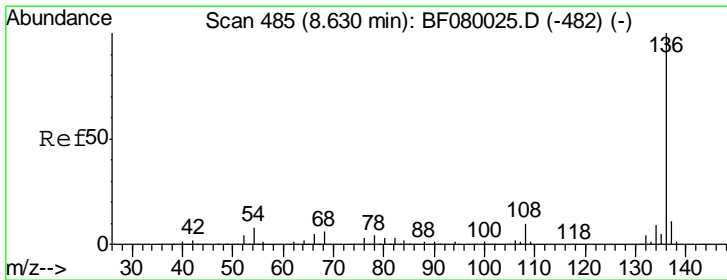
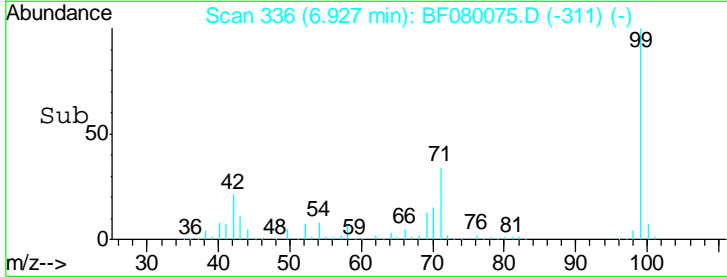
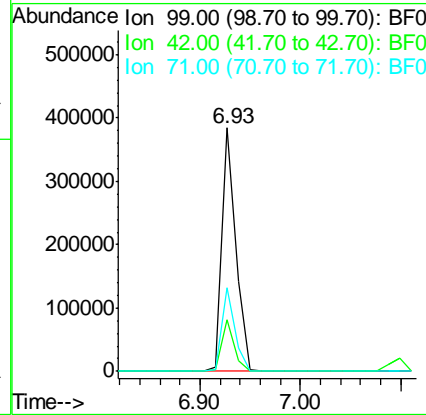
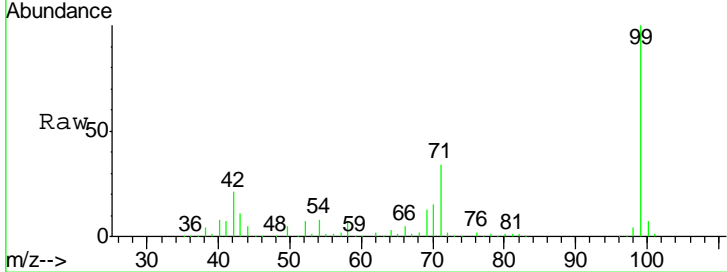




#7
 Phenol-d6
 Concen: 113.85 ng
 RT: 6.93 min Scan# 336
 Delta R.T. -0.01 min
 Lab File: BF080075.D
 Acq: 20 Jun 2015 2:09

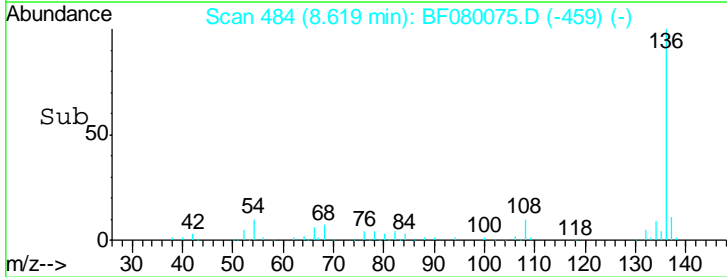
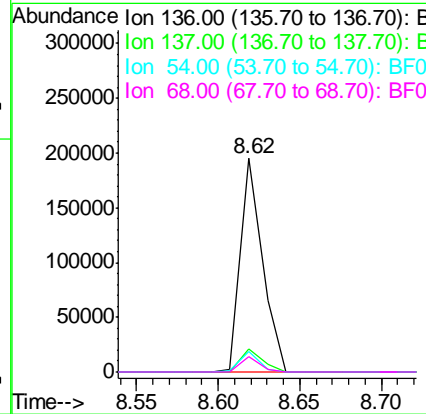
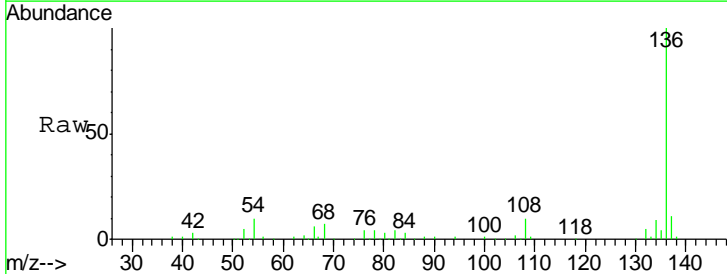
Instrument :
 BNA_F
ClientSampled :
 LOD-SOIL2015-01

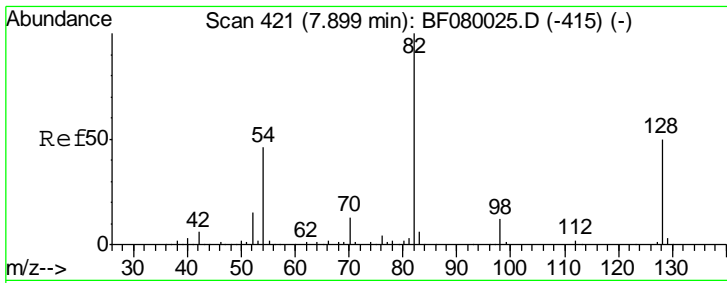
Tgt Ion	Resp	Lower	Upper
99	371173		
42	21.3	13.7	20.5#
71	34.4	14.2	21.2#



#21
 Naphthalene-d8
 Concen: 20.00 ng
 RT: 8.62 min Scan# 484
 Delta R.T. -0.01 min
 Lab File: BF080075.D
 Acq: 20 Jun 2015 2:09

Tgt Ion	Resp	Lower	Upper
136	181465		
137	10.9	9.0	13.6
54	9.6	8.2	12.2
68	7.0	5.8	8.6

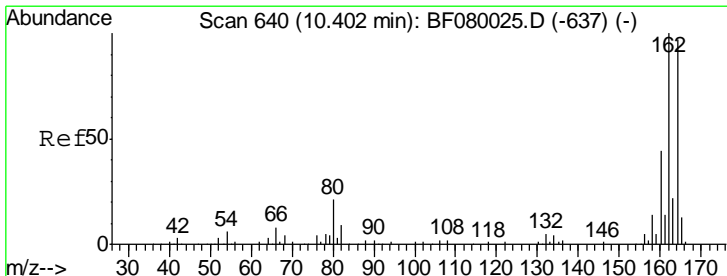
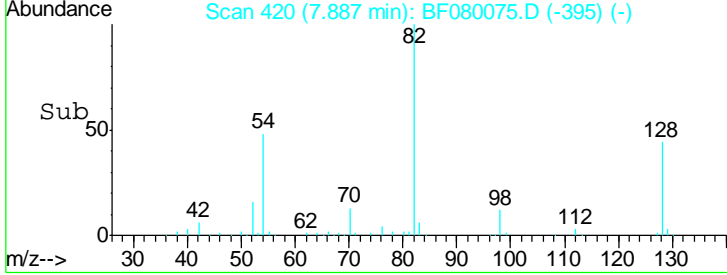
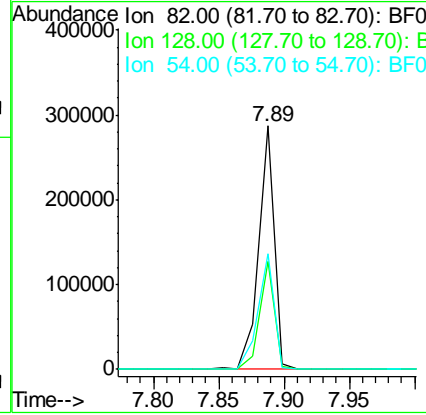
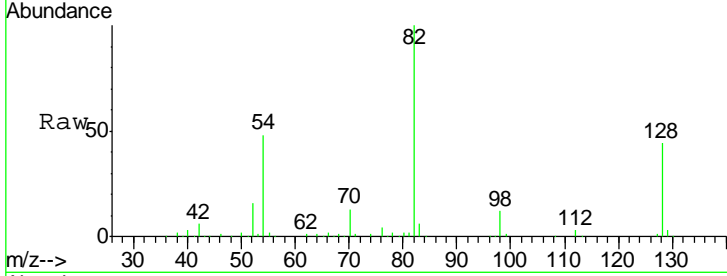




#23
 Nitrobenzene-d5
 Concen: 77.12 ng
 RT: 7.89 min Scan# 420
 Delta R.T. -0.01 min
 Lab File: BF080075.D
 Acq: 20 Jun 2015 2:09

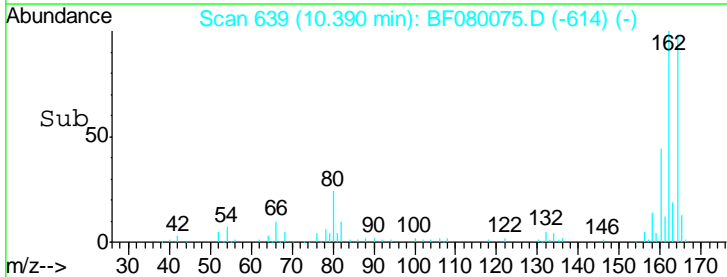
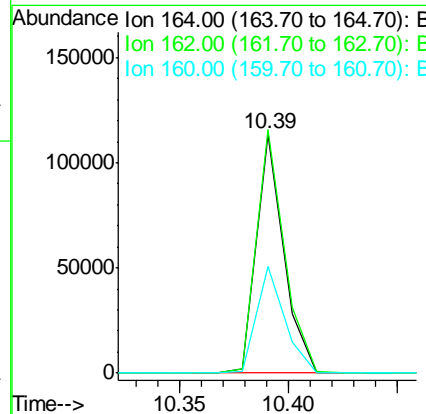
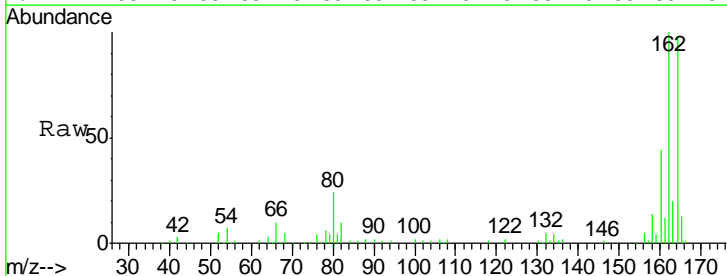
Instrument :
 BNA_F
ClientSampled :
 LOD-SOIL2015-01

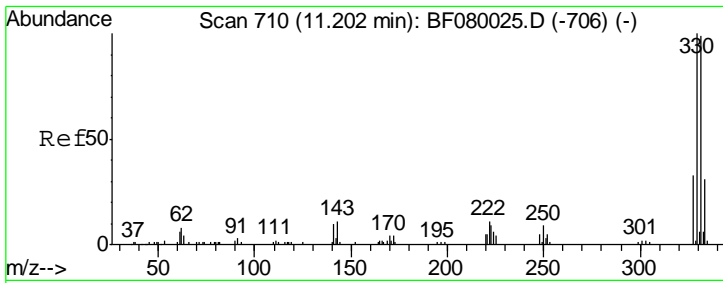
Tgt Ion	Resp	Lower	Upper
82	240390		
128	44.2	51.0	76.6#
54	47.6	47.5	71.3



#38
 Acenaphthene-d10
 Concen: 20.00 ng
 RT: 10.39 min Scan# 639
 Delta R.T. -0.01 min
 Lab File: BF080075.D
 Acq: 20 Jun 2015 2:09

Tgt Ion	Resp	Lower	Upper
164	98606		
162	101.9	75.2	112.8
160	44.8	31.5	47.3

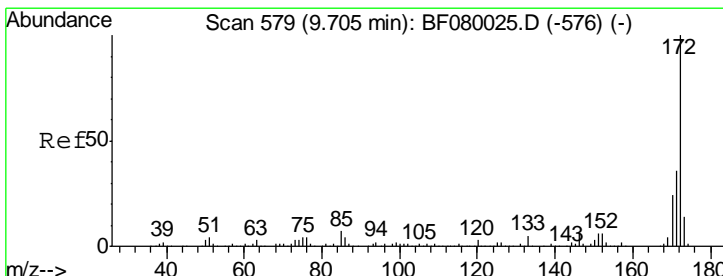
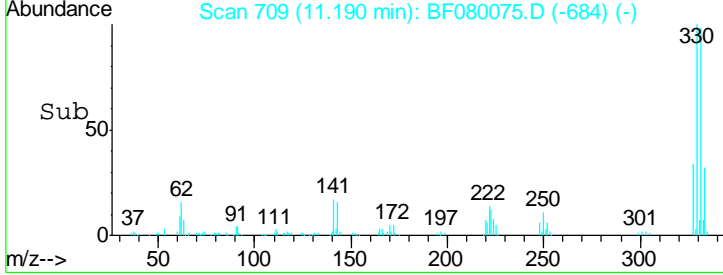
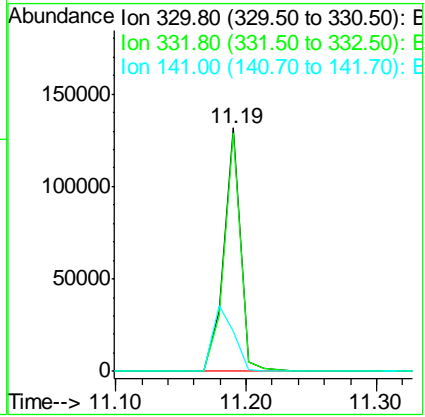
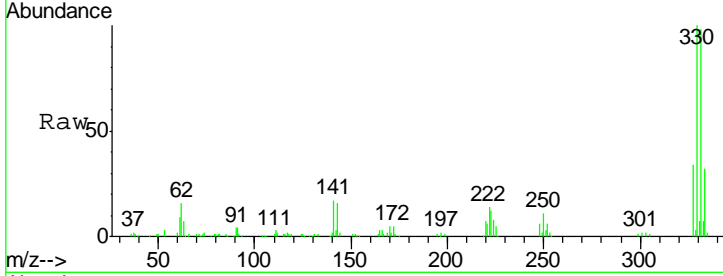




#41
 2,4,6-Tribromophenol
 Concen: 122.64 ng
 RT: 11.19 min Scan# 709
 Delta R.T. -0.01 min
 Lab File: BF080075.D
 Acq: 20 Jun 2015 2:09

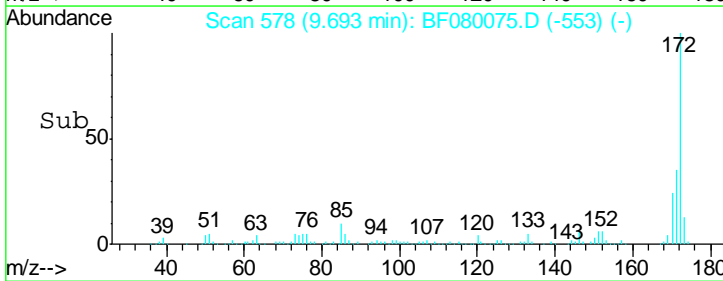
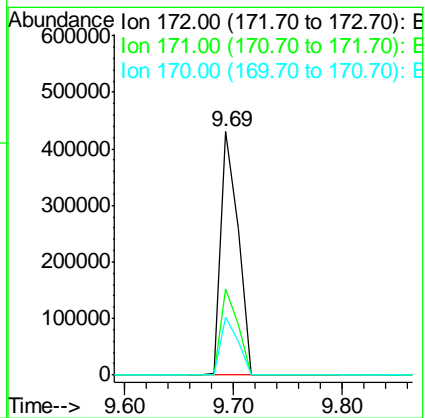
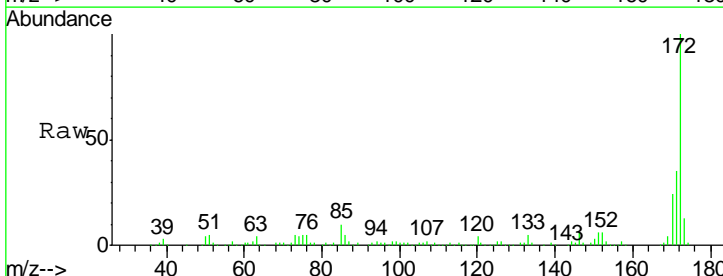
Instrument :
 BNA_F
ClientSampled :
 LOD-SOIL2015-01

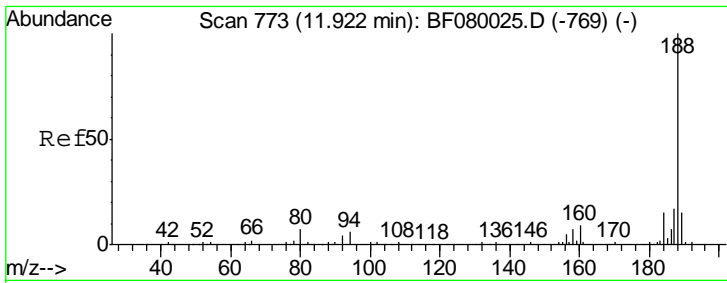
Tgt Ion	Resp	Lower	Upper
330	118247		
332	96.4	76.6	114.8
141	34.2	29.7	44.5



#44
 2-Fluorobiphenyl
 Concen: 69.05 ng
 RT: 9.69 min Scan# 578
 Delta R.T. -0.01 min
 Lab File: BF080075.D
 Acq: 20 Jun 2015 2:09

Tgt Ion	Resp	Lower	Upper
172	477472		
171	35.4	26.1	39.1
170	23.6	17.4	26.2

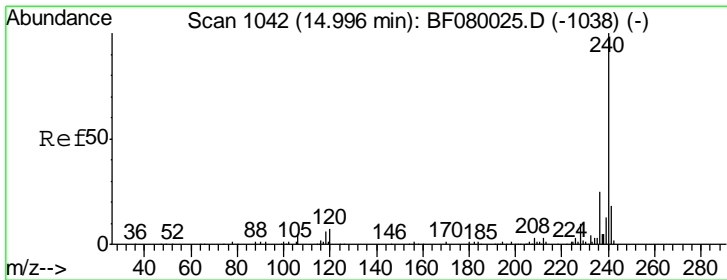
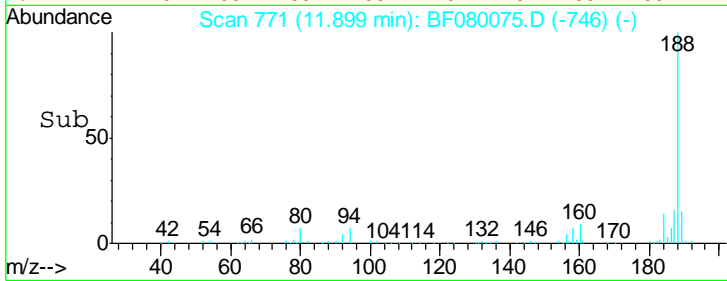
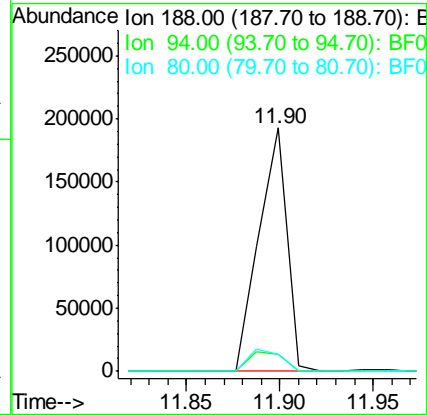
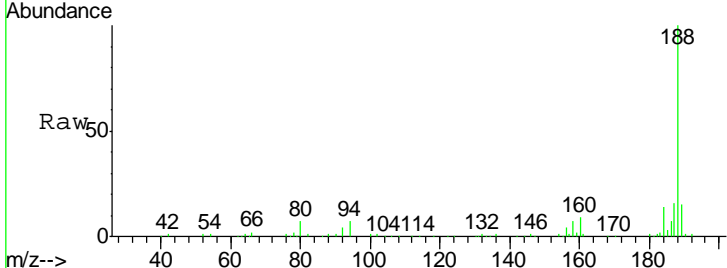




#63
 Phenanthrene-d10
 Concen: 20.00 ng
 RT: 11.90 min Scan# 771
 Delta R.T. -0.01 min
 Lab File: BF080075.D
 Acq: 20 Jun 2015 2:09

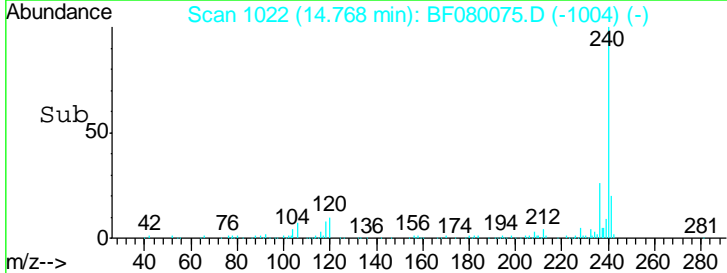
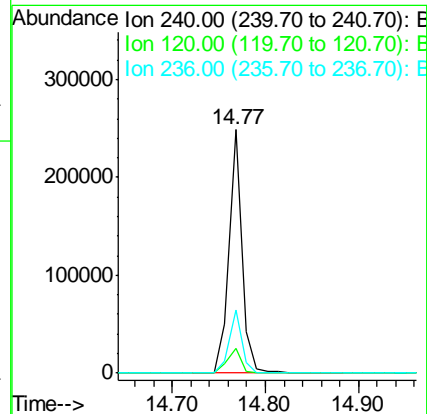
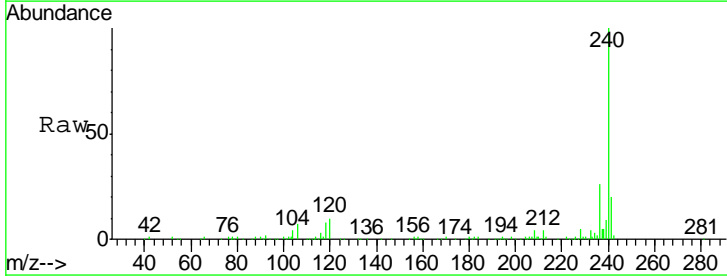
Instrument :
 BNA_F
 ClientSampleID :
 LOD-SOIL2015-01

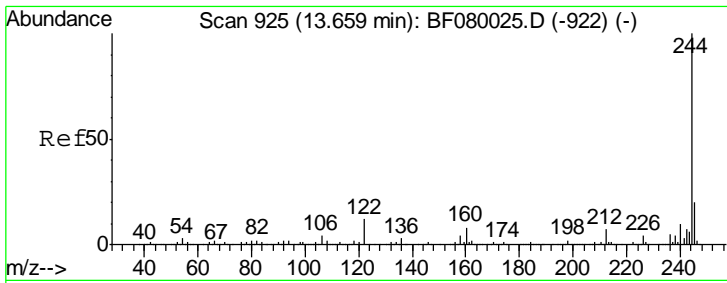
Tgt Ion	Resp	Lower	Upper
188	100		
94	6.8	11.1	16.7#
80	6.9	11.0	16.4#



#75
 Chrysene-d12
 Concen: 20.00 ng
 RT: 14.77 min Scan# 1022
 Delta R.T. -0.09 min
 Lab File: BF080075.D
 Acq: 20 Jun 2015 2:09

Tgt Ion	Resp	Lower	Upper
240	100		
120	9.9	16.2	24.2#
236	26.0	18.4	27.6

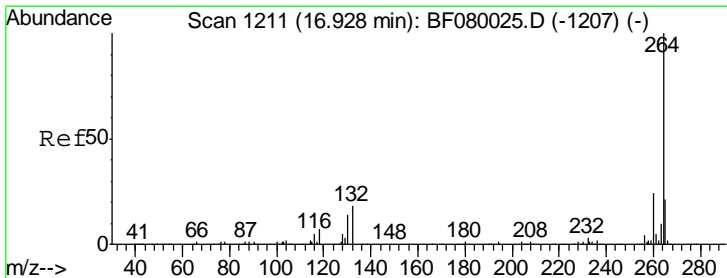
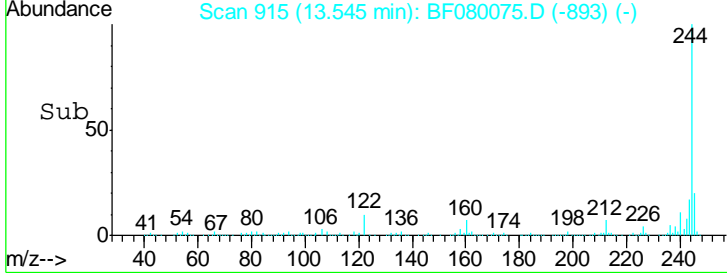
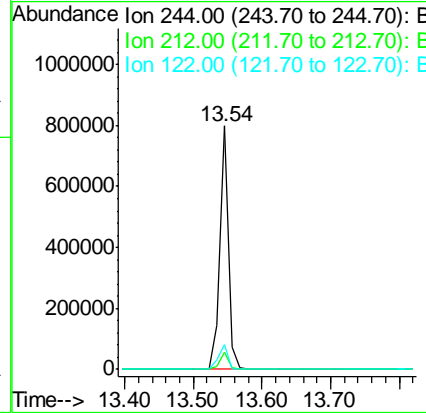
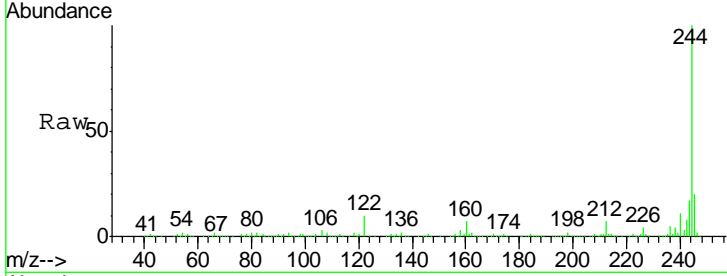




#78
 Terphenyl-d14
 Concen: 68.60 ng
 RT: 13.54 min Scan# 915
 Delta R.T. -0.05 min
 Lab File: BF080075.D
 Acq: 20 Jun 2015 2:09

Instrument :
 BNA_F
 ClientSampled :
 LOD-SOIL2015-01

Tgt Ion	Ratio	Lower	Upper
244	100		
212	7.1	4.3	6.5#
122	10.2	17.4	26.2#



#86
 Perylene-d12
 Concen: 20.00 ng
 RT: 16.60 min Scan# 1182
 Delta R.T. -0.15 min
 Lab File: BF080075.D
 Acq: 20 Jun 2015 2:09

Tgt Ion	Ratio	Lower	Upper
264	100		
260	22.9	16.7	25.1
265	20.9	17.2	25.8

