

Data Path : Z:\HPCHEM1\BNA F\DATA\BF061917\
 Data File : BF096004.D
 Acq On : 19 Jun 2017 14:02
 Operator : SJ/MA
 Sample : I3715-08
 Misc :
 ALS Vial : 7 Sample Multiplier: 1

Instrument :
 BNA_F
 ClientSampleId :
 WC061417-2

Integration Parameters: rteint.p
 Integrator: RTE
 Smoothing : ON Filtering: 5
 Sampling : 1 Min Area: 3 % of largest Peak
 Start Thrs: 0.2 Max Peaks: 100
 Stop Thrs : 0 Peak Location: TOP

If leading or trailing edge < 100 prefer < Baseline drop else tangent >
 Peak separation: 5

Method : Z:\HPCHEM1\BNA F\METHODS\8270-BF060517.M
 Title : ASP BNA STANDARDS FOR 5 POINT CALIBRATION

Signal : TIC

peak #	R.T. min	first scan	max scan	last scan	PK TY	peak height	corr. area	corr. % max.	% of total
1	1.557	10	12	55	rVB	1787708	3818733	100.00%	17.167%
2	4.510	509	514	535	rBV	53291	181111	4.74%	0.814%
3	5.192	626	630	656	rBV	886510	1804292	47.25%	8.111%
4	6.875	912	916	926	rBV	1085985	1730616	45.32%	7.780%
5	6.963	926	931	947	rVB	1373616	2181095	57.12%	9.805%
6	7.304	985	989	1006	rVB	292513	419015	10.97%	1.884%
7	7.539	1024	1029	1043	rBV	1041460	1495317	39.16%	6.722%
8	8.227	1141	1146	1175	rBV	732230	1185900	31.05%	5.331%
9	9.333	1330	1334	1351	rBV	382903	595115	15.58%	2.675%
10	11.116	1631	1637	1654	rBV	1739030	2373336	62.15%	10.669%
11	11.815	1751	1756	1767	rBV	376497	508033	13.30%	2.284%
12	12.157	1809	1814	1819	rBV2	525306	688032	18.02%	3.093%
13	12.198	1819	1821	1827	rVB2	32458	39819	1.04%	0.179%
14	13.010	1953	1959	1965	rBV	38299	51781	1.36%	0.233%
15	13.451	2029	2034	2050	rBV	855513	1289568	33.77%	5.797%
16	13.780	2086	2090	2093	rBV2	42082	61154	1.60%	0.275%
17	14.551	2217	2221	2236	rVB	470875	699454	18.32%	3.144%
18	15.574	2392	2395	2402	rVB3	28824	41505	1.09%	0.187%
19	16.698	2580	2586	2594	rBV3	32349	67776	1.77%	0.305%
20	16.933	2620	2626	2636	rVB	1645016	2047693	53.62%	9.205%
21	18.192	2835	2840	2850	rBV2	42427	74883	1.96%	0.337%
22	18.280	2850	2855	2865	rBV	355851	533793	13.98%	2.400%
23	19.950	3135	3139	3153	rBV	224969	356734	9.34%	1.604%

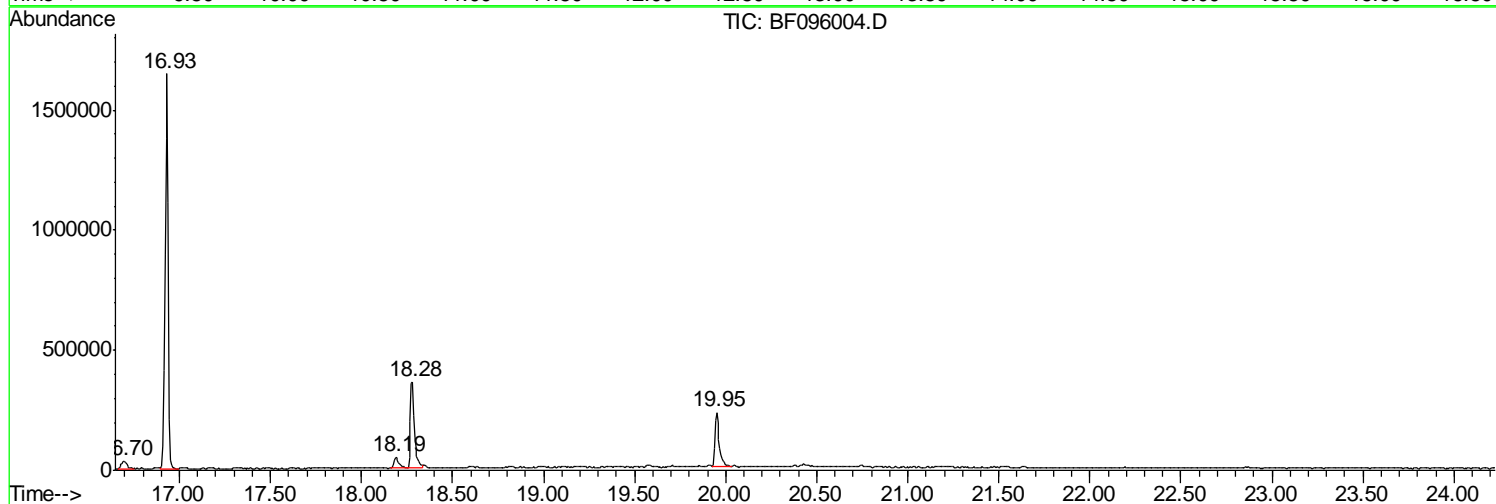
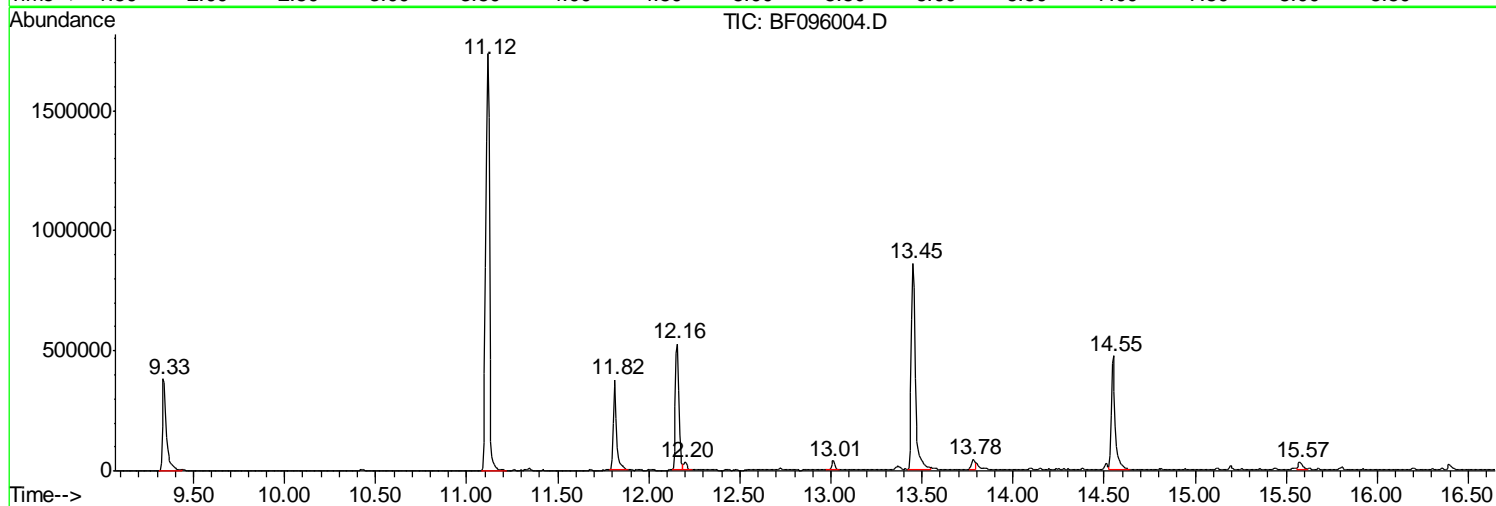
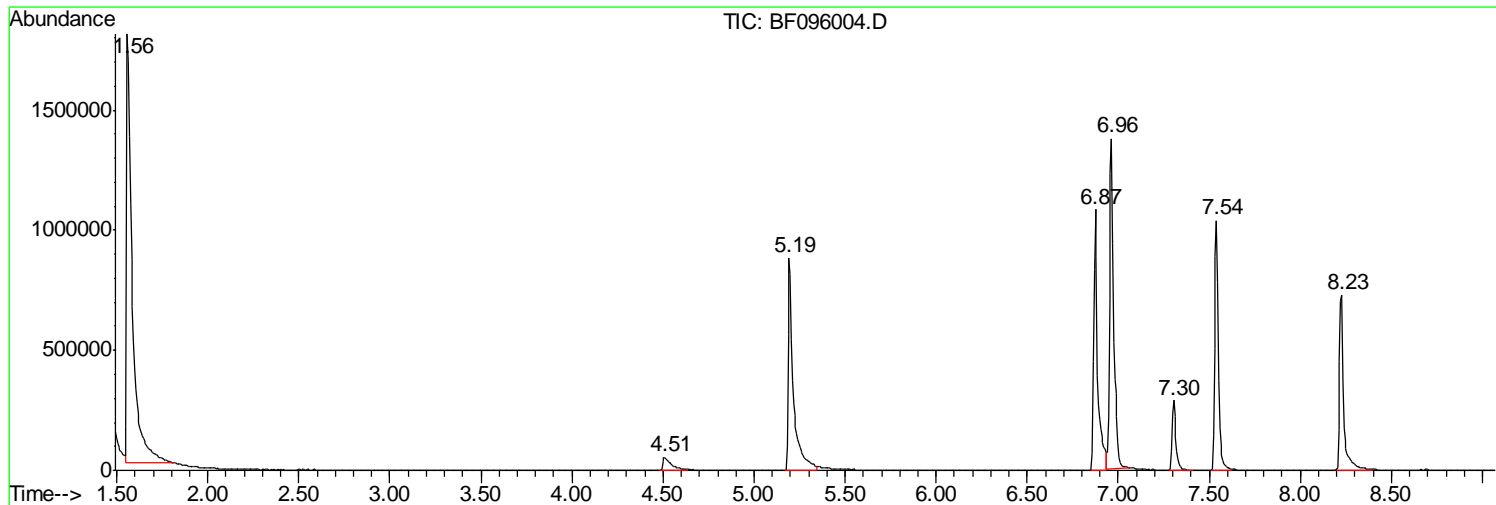
Sum of corrected areas: 22244755

Data Path : Z:\HPCHEM1\BNA F\DATA\BF061917\
Data File : BF096004.D
Acq On : 19 Jun 2017 14:02
Operator : SJ/MA
Sample : I3715-08
Misc :
ALS Vial : 7 Sample Multiplier: 1

Instrument :
BNA_F
ClientSampleID :
WC061417-2

Quant Method : Z:\HPCHEM1\BNA F\METHODS\8270-BF060517.M
Quant Title : ASP BNA STANDARDS FOR 5 POINT CALIBRATION

TIC Library : C:\DATABASE\NIST11.L
TIC Integration Parameters: LSCINT.P



Data Path : Z:\HPCHEM1\BNA F\DATA\BF061917\
 Data File : BF096004.D
 Acq On : 19 Jun 2017 14:02
 Operator : SJ/MA
 Sample : I3715-08
 Misc :
 ALS Vial : 7 Sample Multiplier: 1

Instrument :
 BNA_F
 ClientSampleID :
 WC061417-2

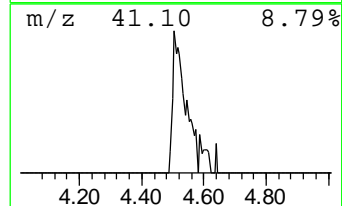
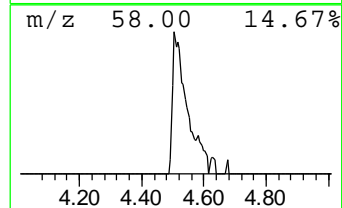
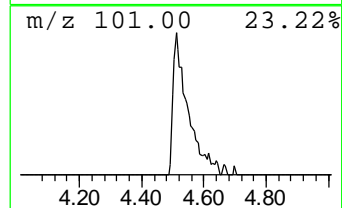
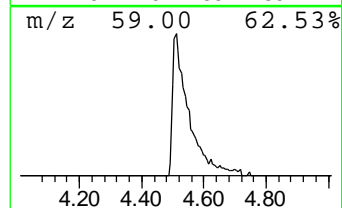
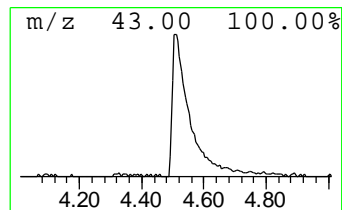
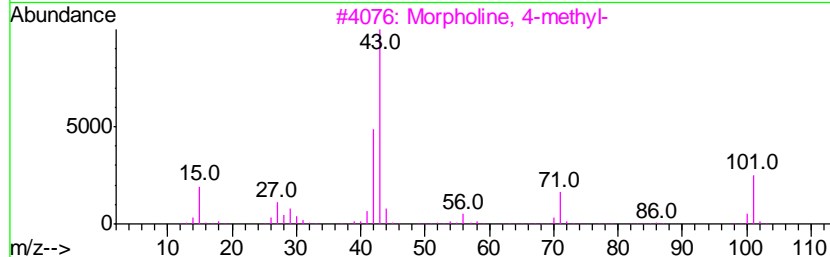
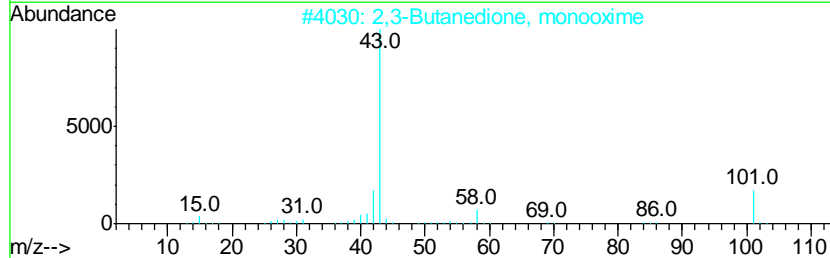
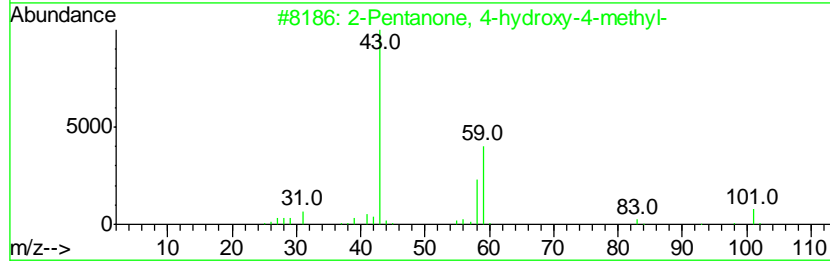
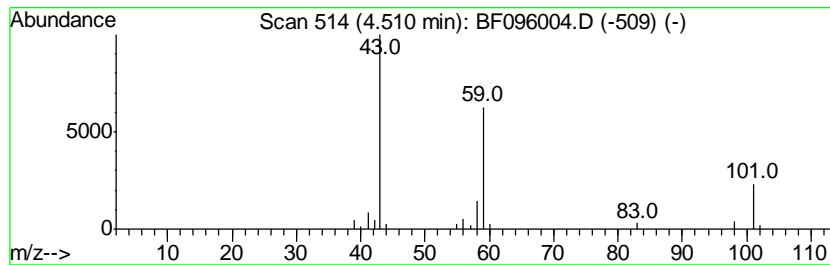
Quant Method : Z:\HPCHEM1\BNA F\METHODS\8270-BF060517.M
 Quant Title : ASP BNA STANDARDS FOR 5 POINT CALIBRATION

TIC Library : C:\DATABASE\NIST11.L
 TIC Integration Parameters: LSCINT.P

 Peak Number 2 2-Pentanone, 4-hydroxy-4-me... Concentration Rank 4

R.T.	EstConc	Area	Relative to ISTD	R.T.
4.51	8.64 ng	181111	1,4-Dichlorobenzene-d4	7.30

Hit#	of	Tentative ID	MW	MolForm	CAS#	Qual
1	5	2-Pentanone, 4-hydroxy-4-methyl-	116	C6H12O2	000123-42-2	56
2		2,3-Butanedione, monooxime	101	C4H7NO2	000057-71-6	35
3		Morpholine, 4-methyl-	101	C5H11NO	000109-02-4	9
4		(+)-4-Amino-4,5-dihydro-2(3H)-f...	101	C4H7NO2	016504-58-8	9
5		Butane, 1-ethoxy-	102	C6H14O	000628-81-9	9



Data Path : Z:\HPCHEM1\BNA F\DATA\BF061917\
 Data File : BF096004.D
 Acq On : 19 Jun 2017 14:02
 Operator : SJ/MA
 Sample : I3715-08
 Misc :
 ALS Vial : 7 Sample Multiplier: 1

Instrument :
 BNA_F
 ClientSampleID :
 WC061417-2

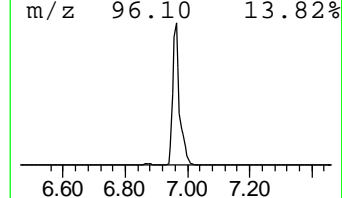
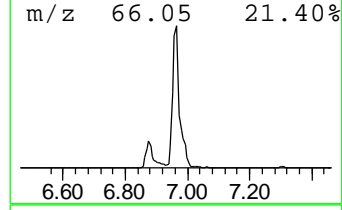
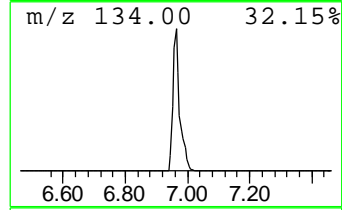
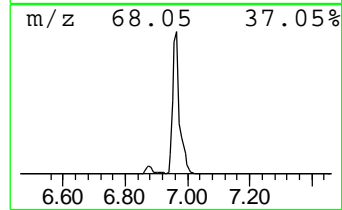
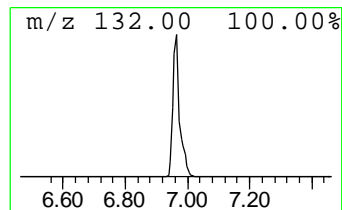
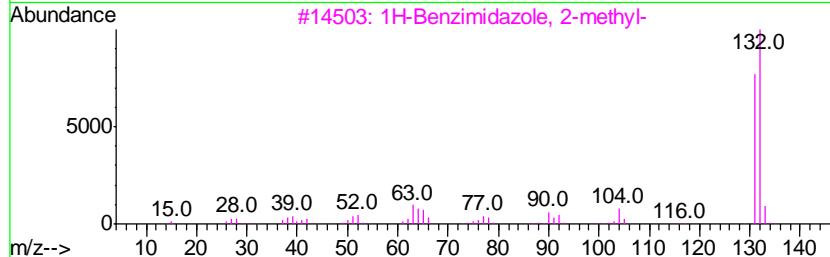
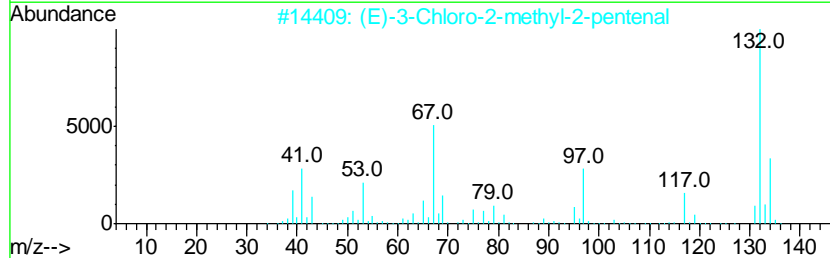
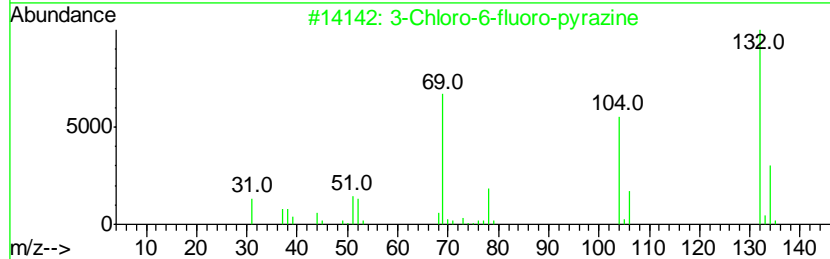
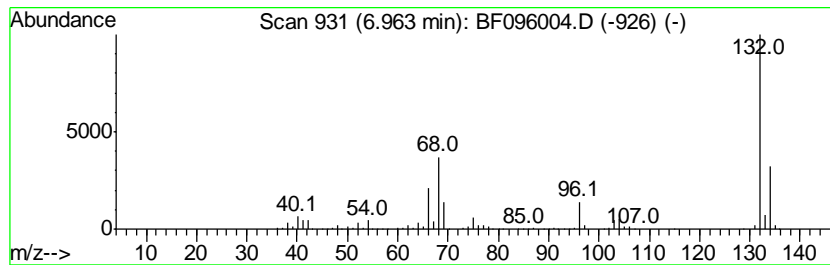
Quant Method : Z:\HPCHEM1\BNA F\METHODS\8270-BF060517.M
 Quant Title : ASP BNA STANDARDS FOR 5 POINT CALIBRATION

TIC Library : C:\DATABASE\NIST11.L
 TIC Integration Parameters: LSCINT.P

 Peak Number 3 unknown6.96 Concentration Rank 2

R.T.	EstConc	Area	Relative to ISTD	R.T.
6.96	104.11 ng	2181100	1,4-Dichlorobenzene-d4	7.30

Hit#	of	Tentative ID	MW	MolForm	CAS#	Qual
1	5	3-Chloro-6-fluoro-pyrazine	132	C4H2ClFN2	1000146-10-7	38
2		(E)-3-Chloro-2-methyl-2-pentenal	132	C6H9ClO	031357-76-3	25
3		1H-Benzimidazole, 2-methyl-	132	C8H8N2	000615-15-6	10
4		(5-Methyl-2-pyridyl)acetonitrile	132	C8H8N2	1000241-93-9	9
5		Xenon	132	Xe	007440-63-3	9



Data Path : Z:\HPCHEM1\BNA F\DATA\BF061917\
 Data File : BF096004.D
 Acq On : 19 Jun 2017 14:02
 Operator : SJ/MA
 Sample : I3715-08
 Misc :
 ALS Vial : 7 Sample Multiplier: 1

Instrument :
 BNA_F
 ClientSampleId :
 WC061417-2

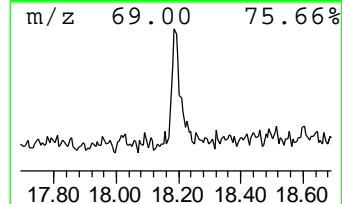
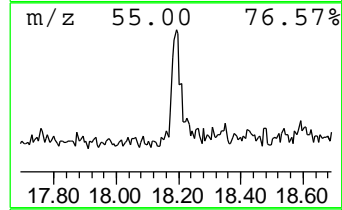
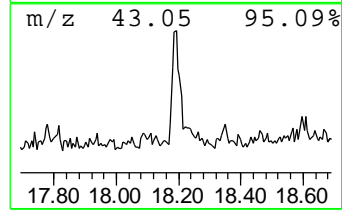
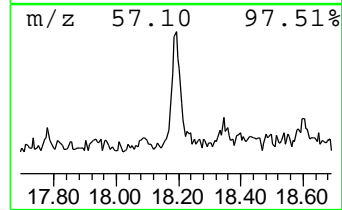
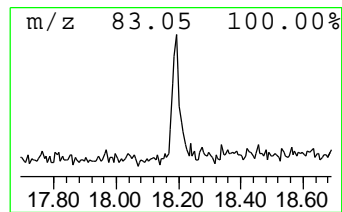
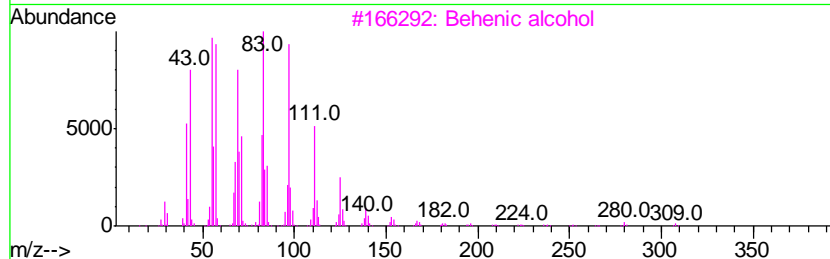
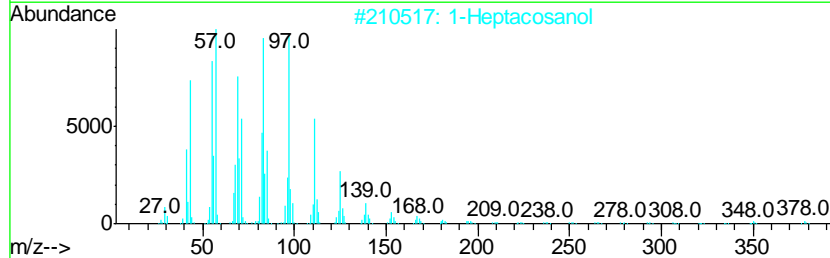
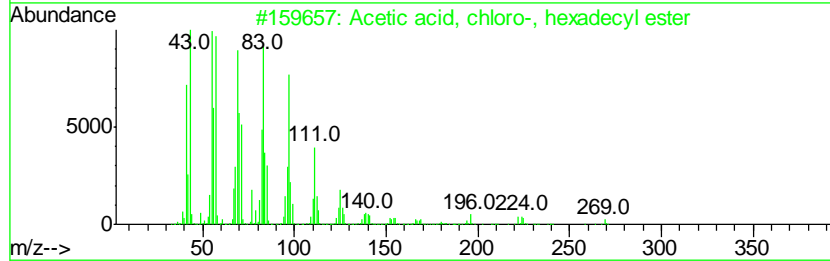
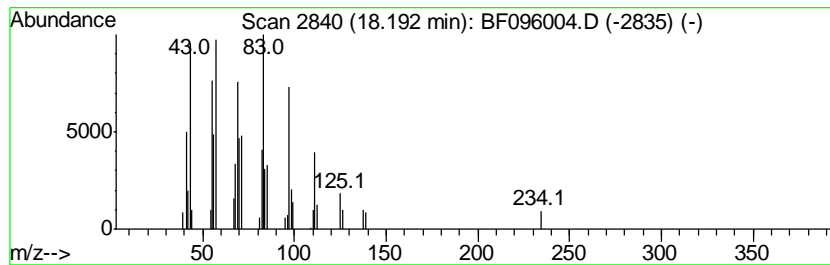
Quant Method : Z:\HPCHEM1\BNA F\METHODS\8270-BF060517.M
 Quant Title : ASP BNA STANDARDS FOR 5 POINT CALIBRATION

TIC Library : C:\DATABASE\NIST11.L
 TIC Integration Parameters: LSCINT.P

 Peak Number 6 Acetic acid, chloro-, hexad... Concentration Rank 5

R.T.	EstConc	Area	Relative to ISTD	R.T.
18.19	2.81 ng	74883	Chrysene-d12	18.28

Hit#	of	Tentative ID	MW	MolForm	CAS#	Qual
1	5	Acetic acid, chloro-, hexadecyl ...	318	C18H35ClO2	052132-58-8	94
2		1-Heptacosanol	396	C27H56O	002004-39-9	91
3		Behenic alcohol	326	C22H46O	000661-19-8	91
4		3-Chloropropionic acid, heptadec...	346	C20H39ClO2	1000283-05-1	91
5		n-Heptadecanol-1	256	C17H36O	001454-85-9	90



Data Path : Z:\HPCHEM1\BNA_F\DATA\BF061917\
Data File : BF096004.D
Acq On : 19 Jun 2017 14:02
Operator : SJ/MA
Sample : I3715-08
Misc :
ALS Vial : 7 Sample Multiplier: 1

Instrument :
BNA_F
ClientSampleId :
WC061417-2

Quant Method : Z:\HPCHEM1\BNA_F\METHODS\8270-BF060517.M
Quant Title : ASP BNA STANDARDS FOR 5 POINT CALIBRATION

TIC Library : C:\DATABASE\NIST11.L
TIC Integration Parameters: LSCINT.P

TIC Top Hit name	RT	EstConc	Units	Response	--Internal Standard--			
					#	RT	Resp	Conc
2-Pentanone, 4-hy...	4.51	8.6	ng	181111	1	7.30	419015	20.0
unknown6.96	6.96	104.1	ng	2181100	1	7.30	419015	20.0
Acetic acid, chlo...	18.19	2.8	ng	74883	5	18.28	533793	20.0