

Data Path : Z:\svoasrv\HPCHEM1\BNA_F\Data\BF061925\
 Data File : BF142794.D
 Acq On : 19 Jun 2025 20:10
 Operator : RC/JU
 Sample : SSTDICC060
 Misc :
 ALS Vial : 8 Sample Multiplier: 1

Instrument :
 BNA_F
 ClientSampleId :
 SSTDICC060

Quant Time: Jun 20 04:41:29 2025
 Quant Method : Z:\svoasrv\HPCHEM1\BNA_F\Methods\8270-BF061925.M
 Quant Title : ASP BNA STANDARDS FOR 5 POINT CALIBRATION
 QLast Update : Fri Jun 20 04:36:38 2025
 Response via : Initial Calibration

Compound	R.T.	QIon	Response	Conc Units	Dev(Min)	
Internal Standards						
1) 1,4-Dichlorobenzene-d4	6.881	152	83273	20.000 ng	0.00	
21) Naphthalene-d8	8.169	136	313390	20.000 ng	0.00	
39) Acenaphthene-d10	9.928	164	161044	20.000 ng	0.00	
64) Phenanthrene-d10	11.410	188	264336	20.000 ng	0.00	
76) Chrysene-d12	14.057	240	133196	20.000 ng	0.00	
86) Perylene-d12	15.551	264	166457	20.000 ng	0.00	
System Monitoring Compounds						
5) 2-Fluorophenol	5.498	112	585158	119.852 ng	0.00	
7) Phenol-d6	6.516	99	689436	120.255 ng	0.00	
23) Nitrobenzene-d5	7.451	82	680402	119.003 ng	0.00	
42) 2,4,6-Tribromophenol	10.716	330	198721	113.541 ng	0.00	
45) 2-Fluorobiphenyl	9.245	172	1360586	112.392 ng	0.00	
79) Terphenyl-d14	12.998	244	1107704	115.747 ng	0.00	
Target Compounds						
2) 1,4-Dioxane	2.640	88	119634	61.705 ng		Qvalue 99
3) Pyridine	3.410	79	302137	62.244 ng		99
4) n-Nitrosodimethylamine	3.375	42	157914	63.520 ng		99
6) Aniline	6.545	93	466855	60.761 ng		93
8) 2-Chlorophenol	6.669	128	317743	59.767 ng		99
9) Benzaldehyde	6.434	77	170843	48.878 ng		100
10) Phenol	6.528	94	382126	59.780 ng		92
11) bis(2-Chloroethyl)ether	6.622	93	278869	58.802 ng		98
12) 1,3-Dichlorobenzene	6.822	146	353155	58.337 ng		98
13) 1,4-Dichlorobenzene	6.898	146	356089	58.035 ng		99
14) 1,2-Dichlorobenzene	7.051	146	338121	57.645 ng		99
15) Benzyl Alcohol	7.028	79	257749	60.062 ng		99
16) 2,2'-oxybis(1-Chloropr...	7.157	45	439082	58.763 ng		97
17) 2-Methylphenol	7.134	107	242711	59.716 ng		100
18) Hexachloroethane	7.392	117	124457	56.741 ng		98
19) n-Nitroso-di-n-propyla...	7.304	70	202914	56.123 ng		97
20) 3+4-Methylphenols	7.292	107	298960	58.442 ng		99
22) Acetophenone	7.298	105	402615	58.063 ng		99
24) Nitrobenzene	7.469	77	306032	60.229 ng		99
25) Isophorone	7.710	82	548612	57.216 ng		100
26) 2-Nitrophenol	7.786	139	175072	61.836 ng		98
27) 2,4-Dimethylphenol	7.822	122	288532	59.859 ng		99
28) bis(2-Chloroethoxy)met...	7.916	93	343925	57.620 ng		100
29) 2,4-Dichlorophenol	8.028	162	260228	58.574 ng		99
30) 1,2,4-Trichlorobenzene	8.110	180	282721	57.608 ng		99
31) Naphthalene	8.192	128	886614	57.524 ng		100
32) Benzoic acid	7.945	122	169471	63.369 ng		96
33) 4-Chloroaniline	8.239	127	369911	59.887 ng		99
34) Hexachlorobutadiene	8.304	225	173425	55.768 ng		99
35) Caprolactam	8.622	113	73108	61.157 ng		98
36) 4-Chloro-3-methylphenol	8.722	107	261249	56.927 ng		99
37) 2-Methylnaphthalene	8.881	142	548439	56.406 ng		100
38) 1-Methylnaphthalene	8.980	142	567801	56.247 ng		99
40) 1,2,4,5-Tetrachloroben...	9.045	216	278551	59.918 ng		99
41) Hexachlorocyclopentadiene	9.033	237	181771	61.835 ng		99
43) 2,4,6-Trichlorophenol	9.157	196	187708	62.392 ng		100

Data Path : Z:\svoasrv\HPCHEM1\BNA_F\Data\BF061925\
 Data File : BF142794.D
 Acq On : 19 Jun 2025 20:10
 Operator : RC/JU
 Sample : SSTDICC060
 Misc :
 ALS Vial : 8 Sample Multiplier: 1

Instrument :
 BNA_F
 ClientSampleId :
 SSTDICC060

Quant Time: Jun 20 04:41:29 2025
 Quant Method : Z:\svoasrv\HPCHEM1\BNA_F\Methods\8270-BF061925.M
 Quant Title : ASP BNA STANDARDS FOR 5 POINT CALIBRATION
 QLast Update : Fri Jun 20 04:36:38 2025
 Response via : Initial Calibration

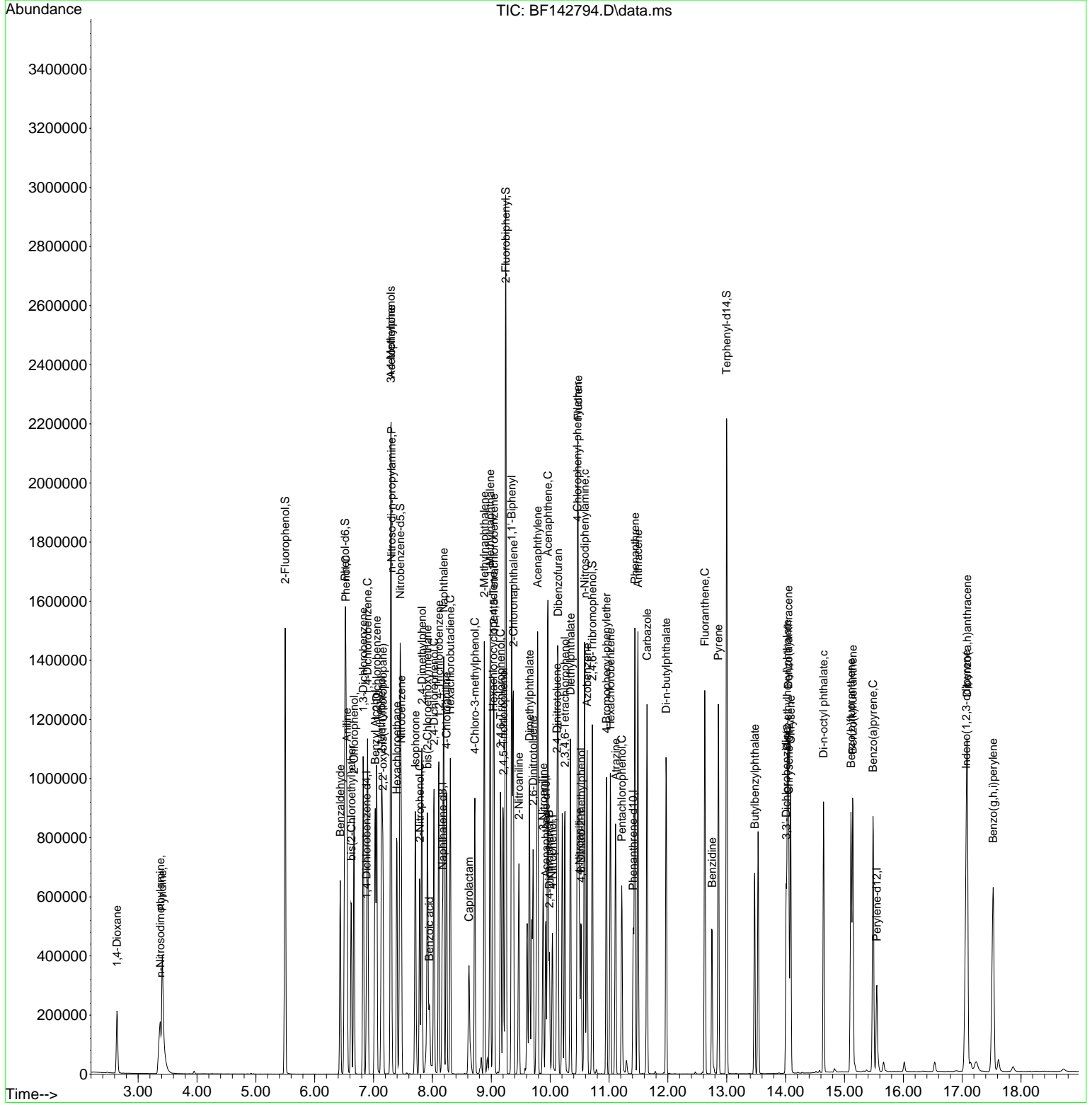
Compound	R.T.	QIon	Response	Conc	Units	Dev(Min)
44) 2,4,5-Trichlorophenol	9.204	196	196769	60.565	ng	99
46) 1,1'-Biphenyl	9.345	154	736970	58.937	ng	99
47) 2-Chloronaphthalene	9.375	162	553304	59.966	ng	99
48) 2-Nitroaniline	9.469	65	162701	62.067	ng	96
49) Acenaphthylene	9.786	152	913540	58.892	ng	100
50) Dimethylphthalate	9.651	163	617097	57.767	ng	100
51) 2,6-Dinitrotoluene	9.710	165	137318	59.299	ng	99
52) Acenaphthene	9.963	154	566138	58.980	ng	100
53) 3-Nitroaniline	9.880	138	154402	61.386	ng	99
54) 2,4-Dinitrophenol	9.986	184	78750	62.843	ng	99
55) Dibenzofuran	10.133	168	802087	58.567	ng	99
56) 4-Nitrophenol	10.039	139	110658	64.811	ng	100
57) 2,4-Dinitrotoluene	10.116	165	184840	60.367	ng	97
58) Fluorene	10.475	166	608786	56.322	ng	99
59) 2,3,4,6-Tetrachlorophenol	10.251	232	159997	58.739	ng	97
60) Diethylphthalate	10.345	149	611873	57.662	ng	100
61) 4-Chlorophenyl-phenyle...	10.463	204	294444	56.089	ng	98
62) 4-Nitroaniline	10.498	138	144821	64.135	ng	98
63) Azobenzene	10.627	77	542118	58.460	ng	98
65) 4,6-Dinitro-2-methylph...	10.527	198	103180	62.814	ng	100
66) n-Nitrosodiphenylamine	10.586	169	531713	58.540	ng	98
67) 4-Bromophenyl-phenylether	10.957	248	180519	58.311	ng	97
68) Hexachlorobenzene	11.022	284	199479	58.041	ng	99
69) Atrazine	11.110	200	144880	60.075	ng	98
70) Pentachlorophenol	11.216	266	107141	60.023	ng	98
71) Phenanthrene	11.439	178	815330	57.611	ng	99
72) Anthracene	11.492	178	844549	57.653	ng	100
73) Carbazole	11.645	167	729372	59.457	ng	100
74) Di-n-butylphthalate	11.969	149	784514	57.759	ng	100
75) Fluoranthene	12.627	202	770481	57.300	ng	99
77) Benzidine	12.751	184	287238	60.916	ng	100
78) Pyrene	12.857	202	744567	60.812	ng	99
80) Butylbenzylphthalate	13.474	149	238584	65.755	ng	97
81) Benzo(a)anthracene	14.045	228	550008	62.892	ng	99
82) 3,3'-Dichlorobenzidine	14.010	252	177798	62.787	ng	100
83) Chrysene	14.086	228	470124	57.743	ng	100
84) Bis(2-ethylhexyl)phtha...	14.027	149	336951	62.326	ng	99
85) Di-n-octyl phthalate	14.645	149	627090	60.871	ng	100
87) Indeno(1,2,3-cd)pyrene	17.068	276	768324	62.432	ng	99
88) Benzo(b)fluoranthene	15.110	252	597533	61.638	ng	100
89) Benzo(k)fluoranthene	15.139	252	518514	54.792	ng	99
90) Benzo(a)pyrene	15.486	252	569694	61.408	ng	99
91) Dibenzo(a,h)anthracene	17.086	278	619236	61.889	ng	99
92) Benzo(g,h,i)perylene	17.527	276	626847	62.795	ng	100

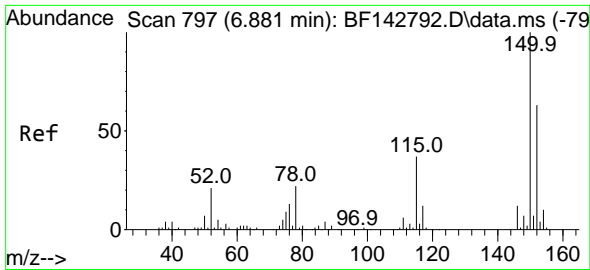
(#) = qualifier out of range (m) = manual integration (+) = signals summed

Data Path : Z:\svoasrv\HPCHEM1\BNA_F\Data\BF061925\
 Data File : BF142794.D
 Acq On : 19 Jun 2025 20:10
 Operator : RC/JU
 Sample : SSTDICC060
 Misc :
 ALS Vial : 8 Sample Multiplier: 1

Instrument :
 BNA_F
 ClientSampleId :
 SSTDICC060

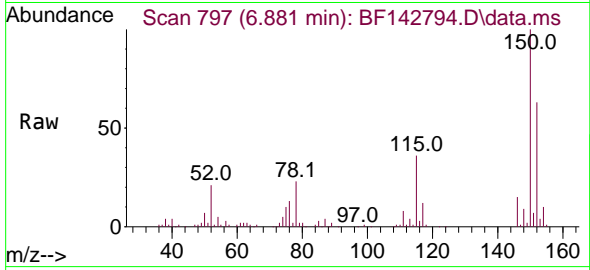
Quant Time: Jun 20 04:41:29 2025
 Quant Method : Z:\svoasrv\HPCHEM1\BNA_F\Methods\8270-BF061925.M
 Quant Title : ASP BNA STANDARDS FOR 5 POINT CALIBRATION
 QLast Update : Fri Jun 20 04:36:38 2025
 Response via : Initial Calibration



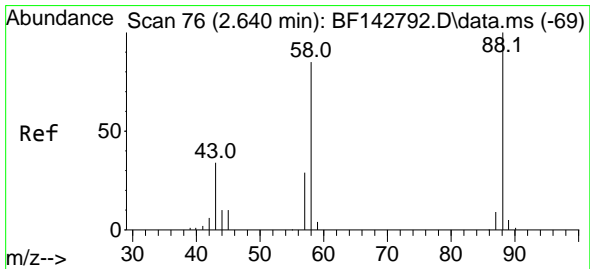
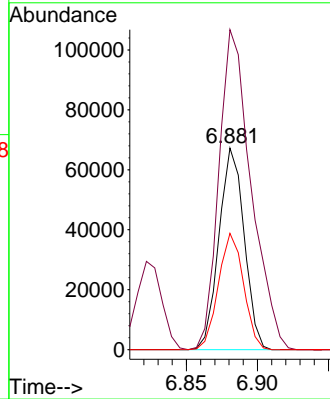
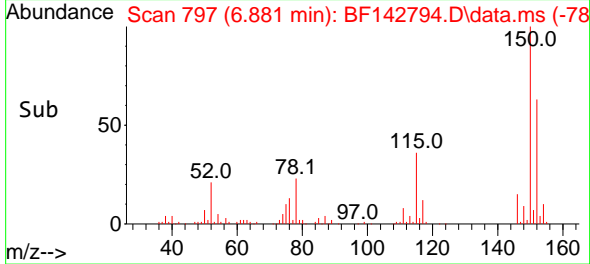


#1
 1,4-Dichlorobenzene-d4
 Concen: 20.000 ng
 RT: 6.881 min Scan# 79
 Delta R.T. -0.000 min
 Lab File: BF142794.D
 Acq: 19 Jun 2025 20:10

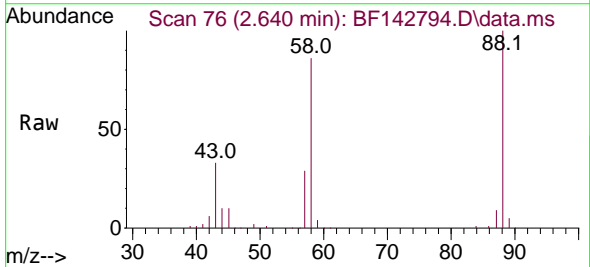
Instrument :
 BNA_F
 ClientSampleId :
 SSTDICC060



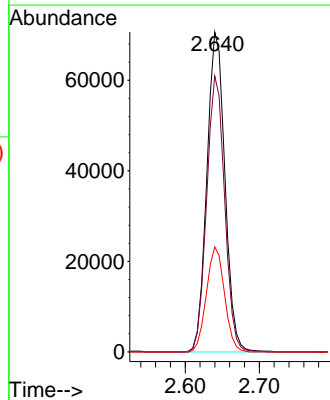
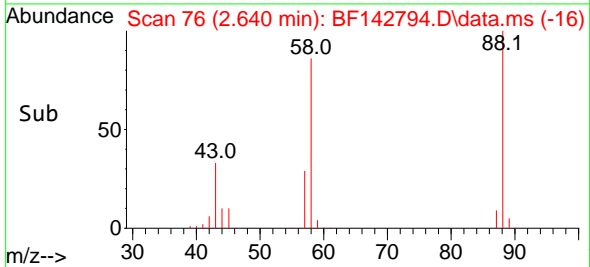
Tgt Ion:152 Resp: 83273
 Ion Ratio Lower Upper
 152 100
 150 158.8 127.2 190.8
 115 57.7 46.6 69.8

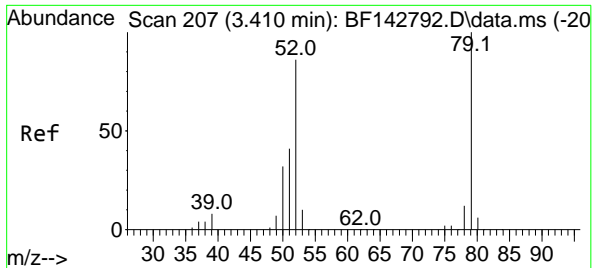


#2
 1,4-Dioxane
 Concen: 61.705 ng
 RT: 2.640 min Scan# 76
 Delta R.T. 0.000 min
 Lab File: BF142794.D
 Acq: 19 Jun 2025 20:10



Tgt Ion: 88 Resp: 119634
 Ion Ratio Lower Upper
 88 100
 58 85.7 69.1 103.7
 43 32.8 27.4 41.2



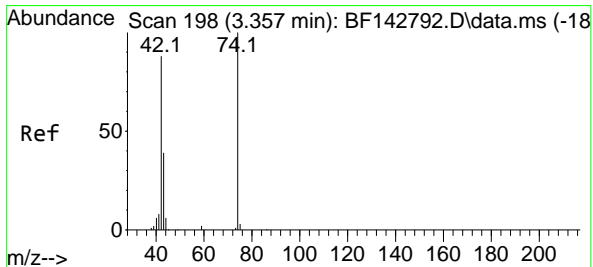
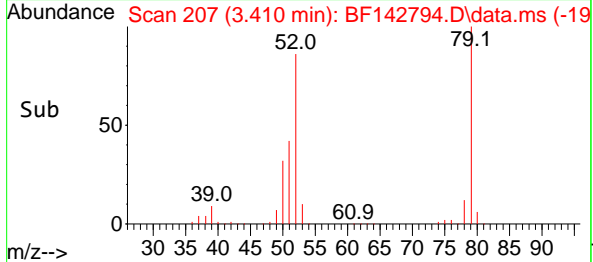
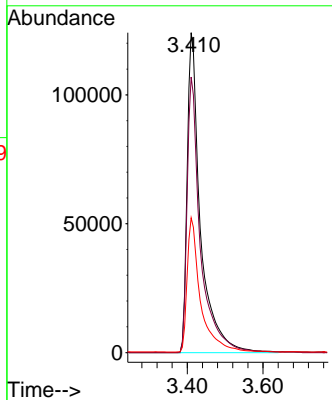
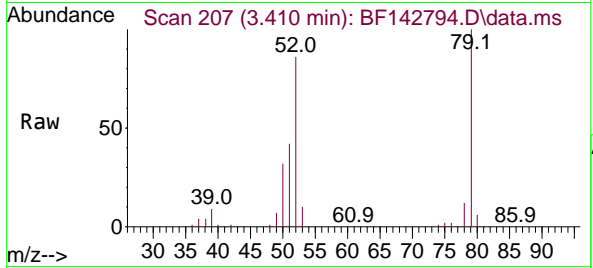


#3
 Pyridine
 Concen: 62.244 ng
 RT: 3.410 min Scan# 20
 Delta R.T. 0.000 min
 Lab File: BF142794.D
 Acq: 19 Jun 2025 20:10

Instrument : BNA_F
 ClientSampleId : SSTDICC060

Tgt Ion: 79 Resp: 302137

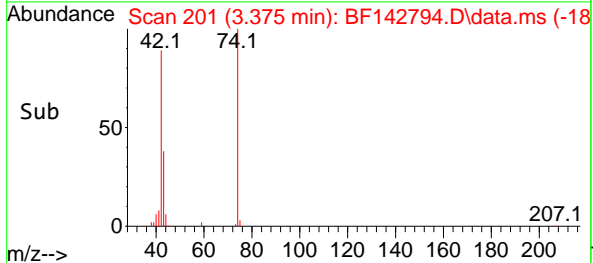
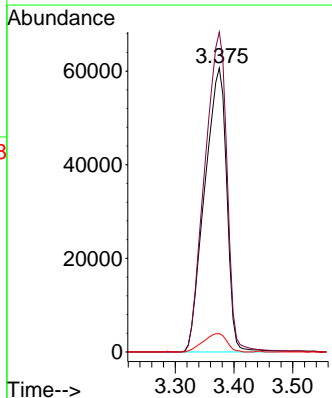
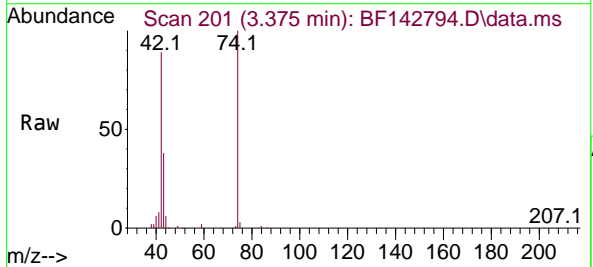
Ion	Ratio	Lower	Upper
79	100		
52	86.1	69.2	103.8
51	42.1	33.2	49.8

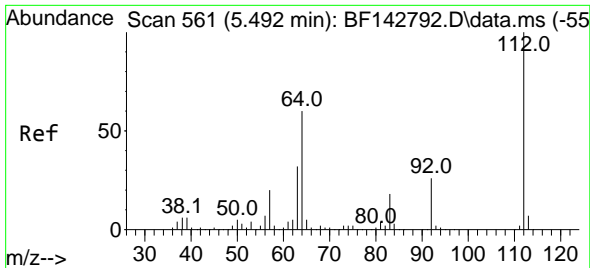


#4
 n-Nitrosodimethylamine
 Concen: 63.520 ng
 RT: 3.375 min Scan# 201
 Delta R.T. 0.018 min
 Lab File: BF142794.D
 Acq: 19 Jun 2025 20:10

Tgt Ion: 42 Resp: 157914

Ion	Ratio	Lower	Upper
42	100		
74	112.7	90.9	136.3
44	6.4	5.8	8.6



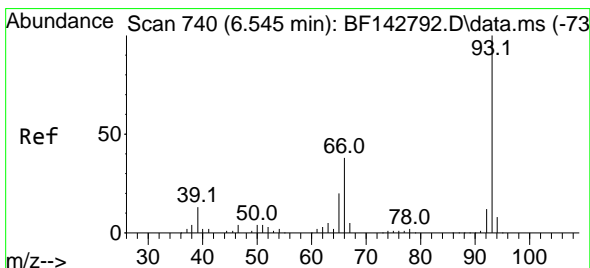
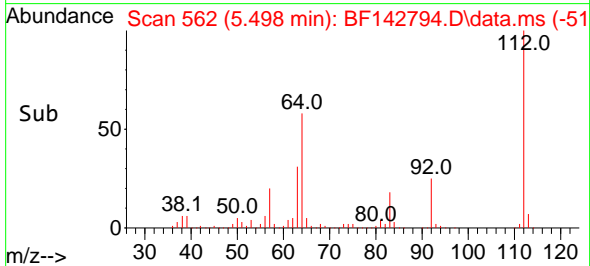
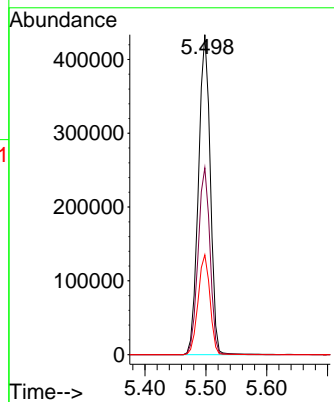
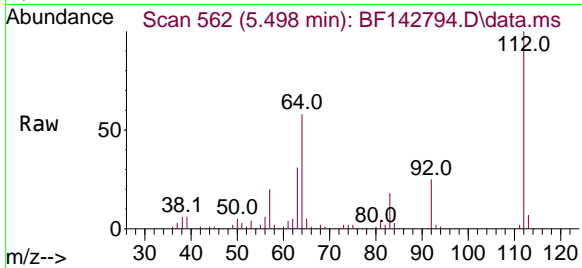


#5
 2-Fluorophenol
 Concen: 119.852 ng
 RT: 5.498 min Scan# 50
 Delta R.T. 0.006 min
 Lab File: BF142794.D
 Acq: 19 Jun 2025 20:10

Instrument :
 BNA_F
 ClientSampleId :
 SSTDICC060

Tgt Ion: 112 Resp: 585158

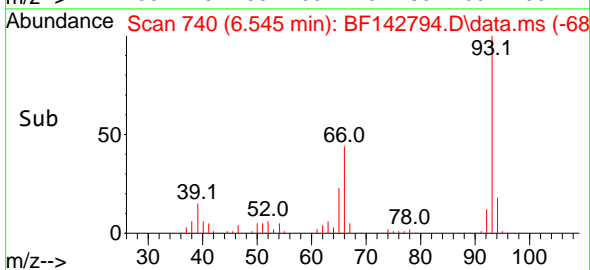
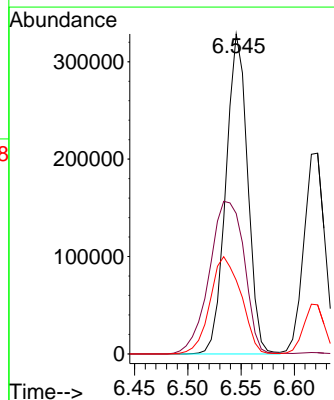
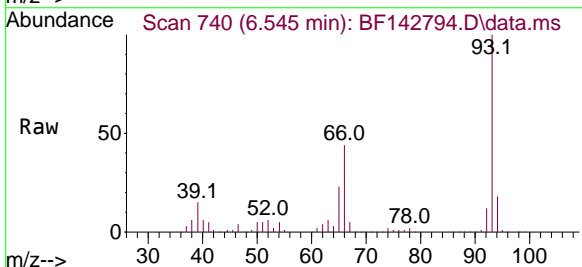
Ion	Ratio	Lower	Upper
112	100		
64	58.4	48.2	72.2
63	31.2	25.7	38.5

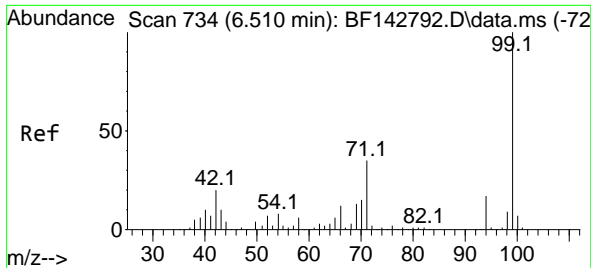


#6
 Aniline
 Concen: 60.761 ng
 RT: 6.545 min Scan# 740
 Delta R.T. 0.000 min
 Lab File: BF142794.D
 Acq: 19 Jun 2025 20:10

Tgt Ion: 93 Resp: 466855

Ion	Ratio	Lower	Upper
93	100		
66	43.9	31.8	47.6
65	23.0	16.2	24.2

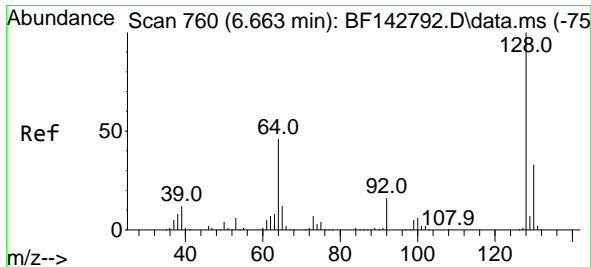
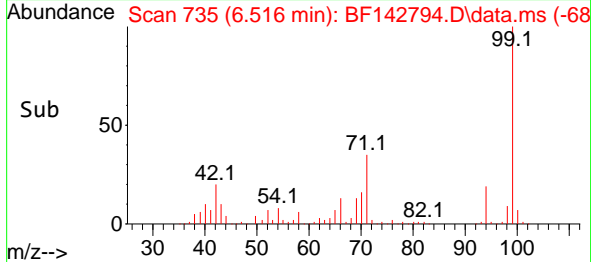
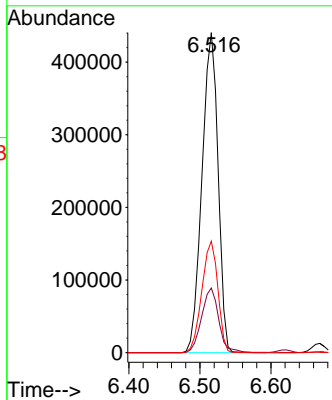
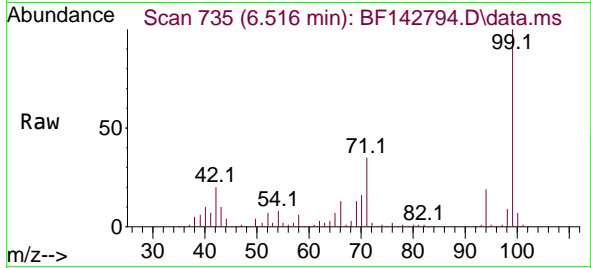




#7
 Phenol-d6
 Concen: 120.255 ng
 RT: 6.516 min Scan# 735
 Delta R.T. 0.006 min
 Lab File: BF142794.D
 Acq: 19 Jun 2025 20:10

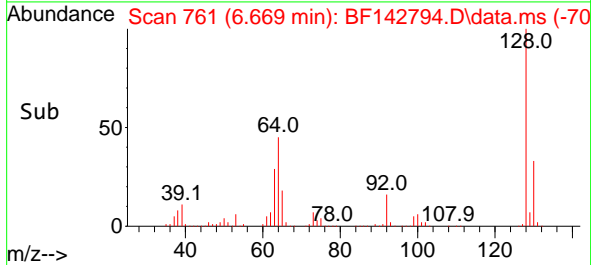
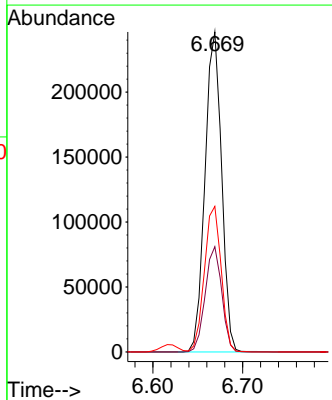
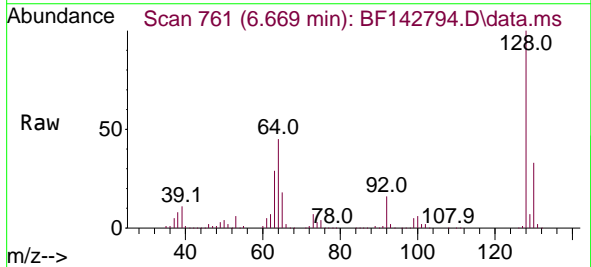
Instrument : BNA_F
 ClientSampleId : SSTDICC060

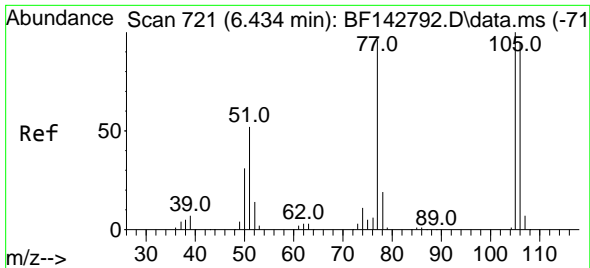
Tgt Ion	Resp	Lower	Upper
99	689436		
99	100		
42	20.2	15.9	23.9
71	34.8	27.8	41.8



#8
 2-Chlorophenol
 Concen: 59.767 ng
 RT: 6.669 min Scan# 761
 Delta R.T. 0.006 min
 Lab File: BF142794.D
 Acq: 19 Jun 2025 20:10

Tgt Ion	Resp	Lower	Upper
128	317743		
128	100		
130	32.9	12.7	52.7
64	45.5	26.5	66.5





#9
Benzaldehyde
Concen: 48.878 ng
RT: 6.434 min Scan# 71
Delta R.T. 0.000 min
Lab File: BF142794.D
Acq: 19 Jun 2025 20:10

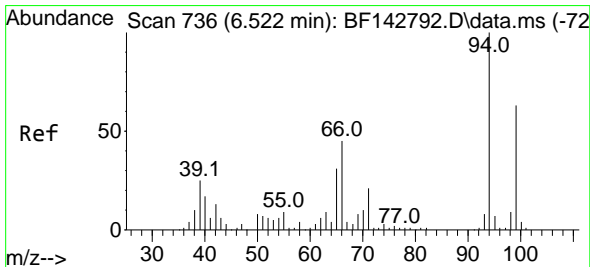
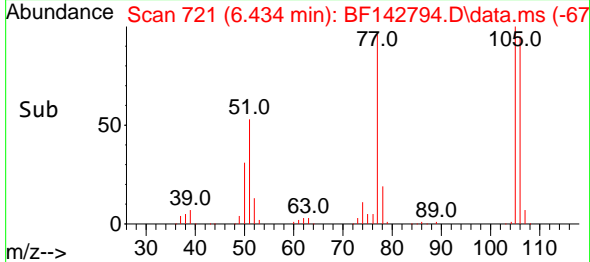
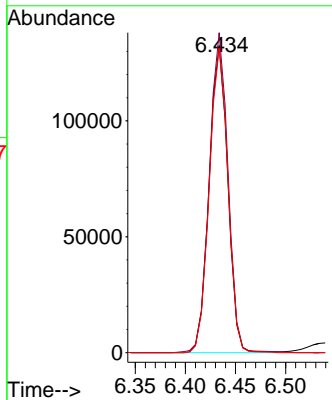
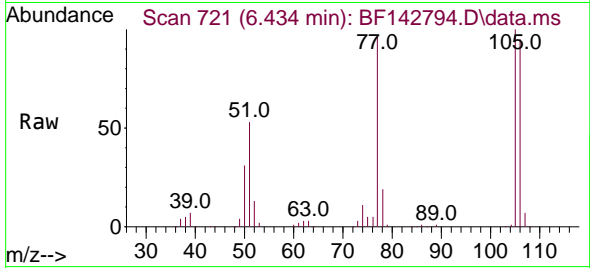
Instrument :

BNA_F

ClientSampleId :

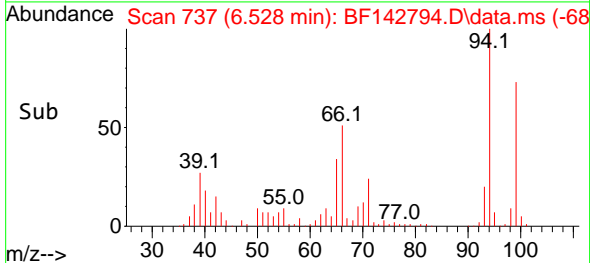
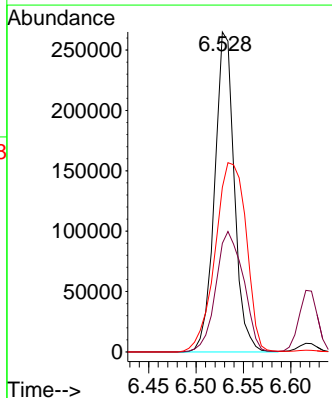
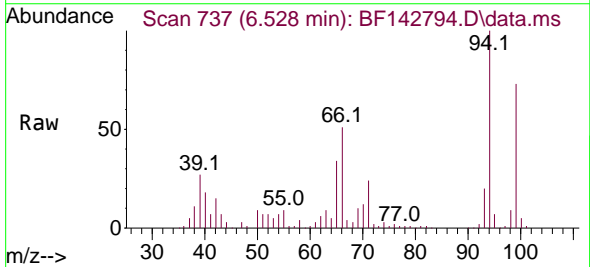
SSTDICC060

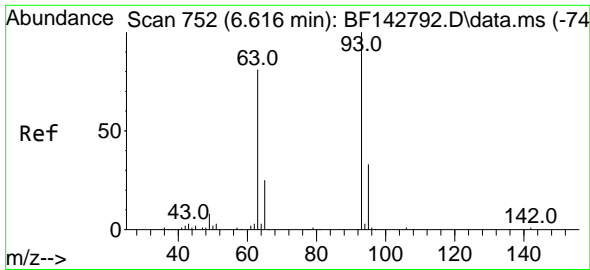
Tgt Ion: 77 Resp: 170843
Ion Ratio Lower Upper
77 100
105 104.2 83.8 123.8
106 99.1 78.7 118.7



#10
Phenol
Concen: 59.780 ng
RT: 6.528 min Scan# 737
Delta R.T. 0.006 min
Lab File: BF142794.D
Acq: 19 Jun 2025 20:10

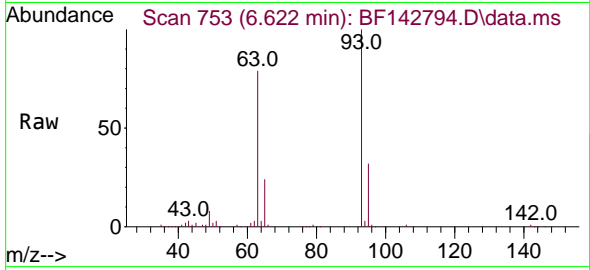
Tgt Ion: 94 Resp: 382126
Ion Ratio Lower Upper
94 100
65 34.0 11.3 51.3
66 51.4 24.9 64.9





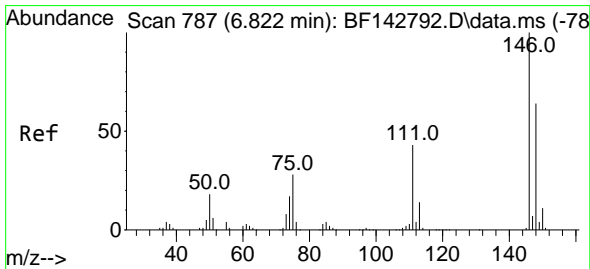
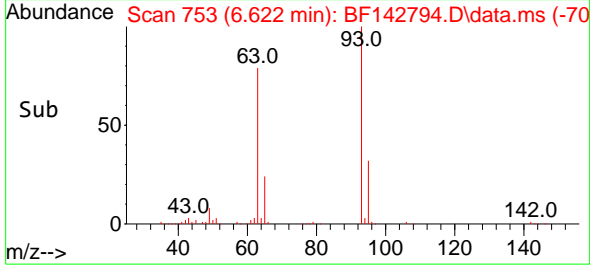
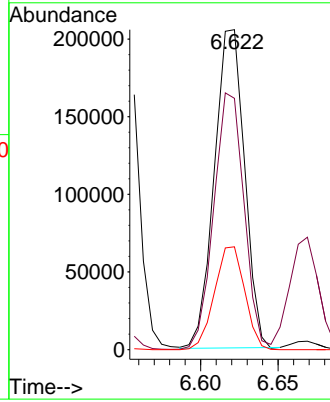
#11
 bis(2-Chloroethyl)ether
 Concen: 58.802 ng
 RT: 6.622 min Scan# 753
 Delta R.T. 0.006 min
 Lab File: BF142794.D
 Acq: 19 Jun 2025 20:10

Instrument : BNA_F
 ClientSampleId : SSTDICC060



Tgt Ion: 93 Resp: 278869

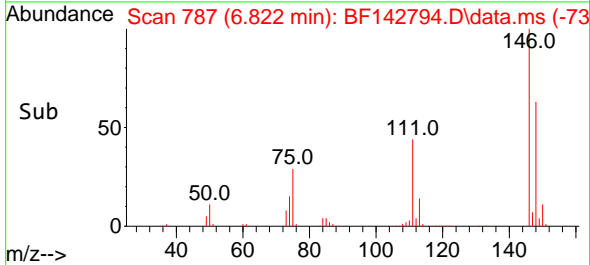
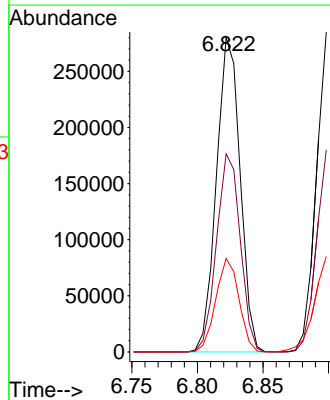
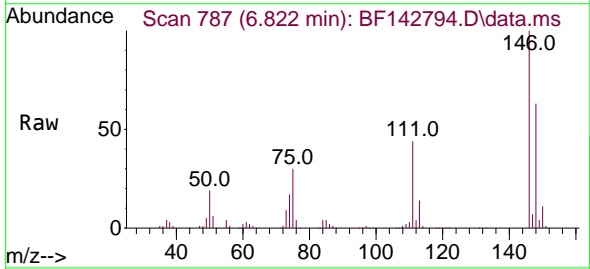
Ion	Ratio	Lower	Upper
93	100		
63	78.5	60.3	100.3
95	32.1	12.5	52.5

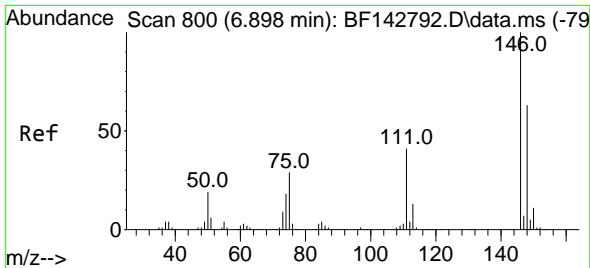


#12
 1,3-Dichlorobenzene
 Concen: 58.337 ng
 RT: 6.822 min Scan# 787
 Delta R.T. 0.000 min
 Lab File: BF142794.D
 Acq: 19 Jun 2025 20:10

Tgt Ion: 146 Resp: 353155

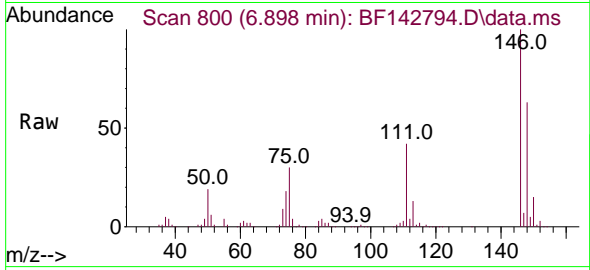
Ion	Ratio	Lower	Upper
146	100		
148	63.0	51.1	76.7
75	29.7	22.7	34.1



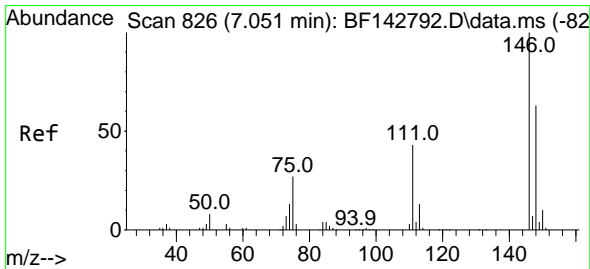
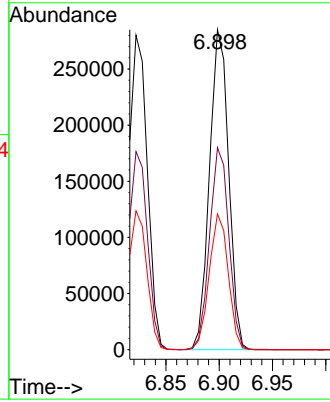
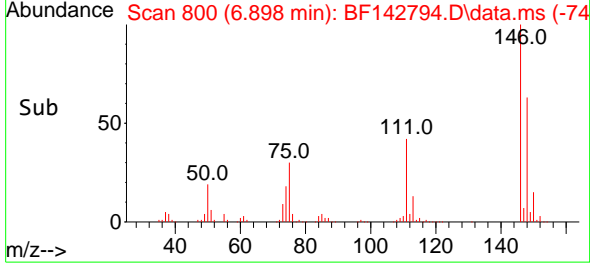


#13
 1,4-Dichlorobenzene
 Concen: 58.035 ng
 RT: 6.898 min Scan# 800
 Delta R.T. 0.000 min
 Lab File: BF142794.D
 Acq: 19 Jun 2025 20:10

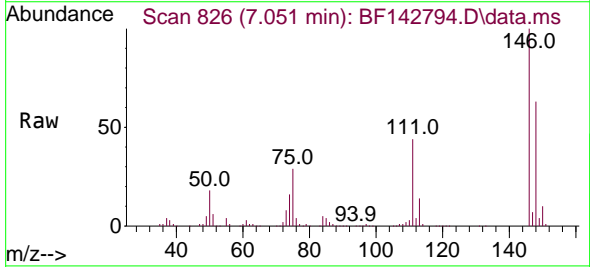
Instrument :
 BNA_F
 ClientSampleId :
 SSTDICC060



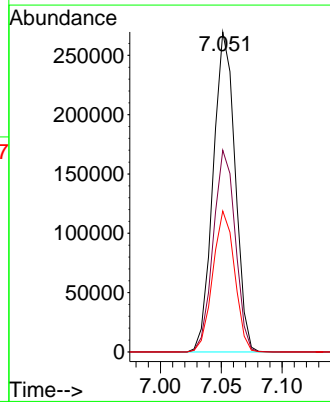
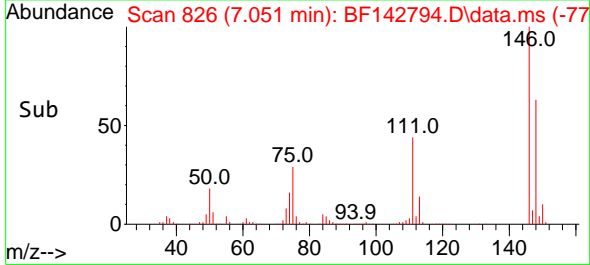
Tgt Ion:146 Resp: 356089
 Ion Ratio Lower Upper
 146 100
 148 63.1 50.2 75.2
 111 42.4 33.2 49.8

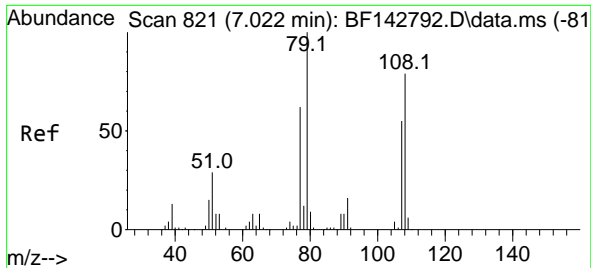


#14
 1,2-Dichlorobenzene
 Concen: 57.645 ng
 RT: 7.051 min Scan# 826
 Delta R.T. 0.000 min
 Lab File: BF142794.D
 Acq: 19 Jun 2025 20:10



Tgt Ion:146 Resp: 338121
 Ion Ratio Lower Upper
 146 100
 148 63.0 50.4 75.6
 111 44.0 34.1 51.1

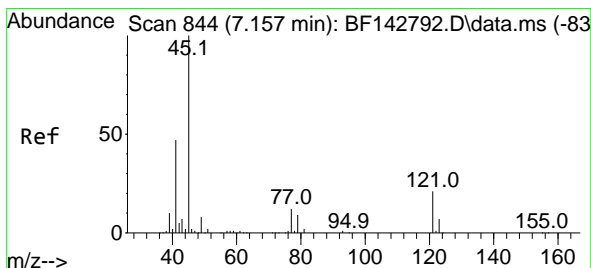
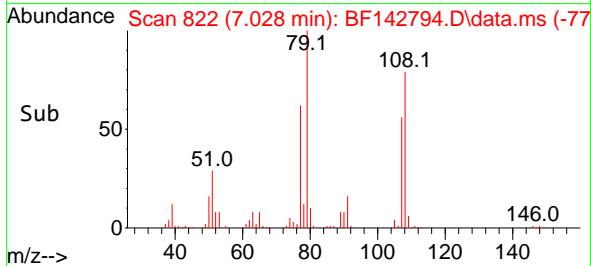
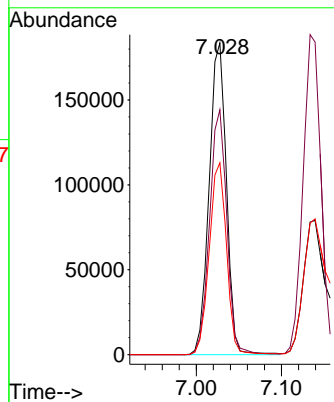
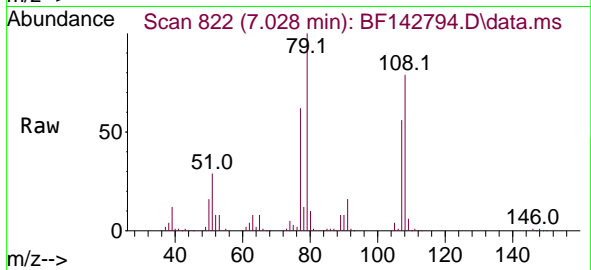




#15
 Benzyl Alcohol
 Concen: 60.062 ng
 RT: 7.028 min Scan# 811
 Delta R.T. 0.006 min
 Lab File: BF142794.D
 Acq: 19 Jun 2025 20:10

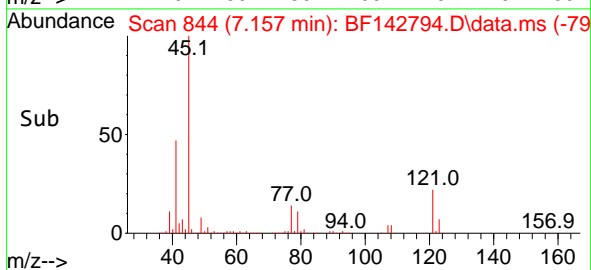
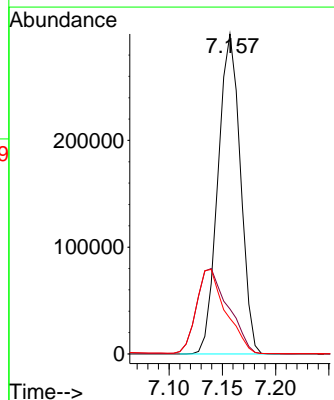
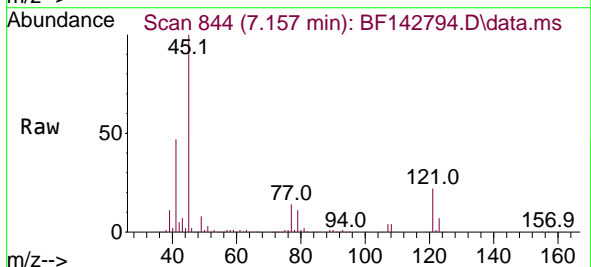
Instrument :
 BNA_F
 ClientSampleId :
 SSTDICC060

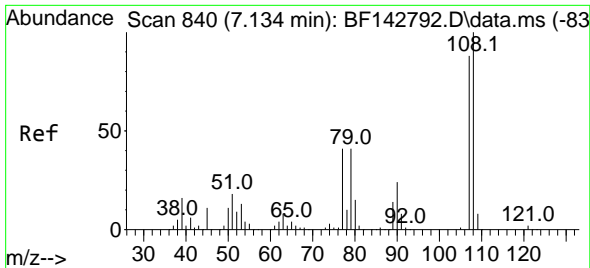
Tgt Ion: 79 Resp: 257749
 Ion Ratio Lower Upper
 79 100
 108 78.6 63.4 95.0
 77 61.5 49.5 74.3



#16
 2,2'-oxybis(1-Chloropropane)
 Concen: 58.763 ng
 RT: 7.157 min Scan# 844
 Delta R.T. 0.000 min
 Lab File: BF142794.D
 Acq: 19 Jun 2025 20:10

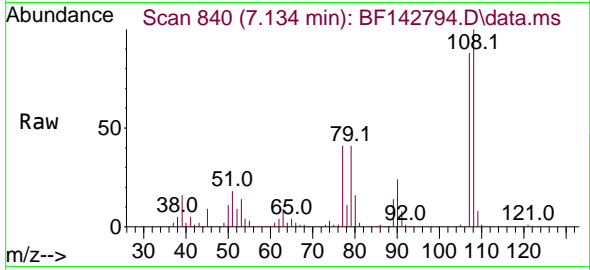
Tgt Ion: 45 Resp: 439082
 Ion Ratio Lower Upper
 45 100
 77 14.0 0.0 32.8
 79 11.1 0.0 29.8





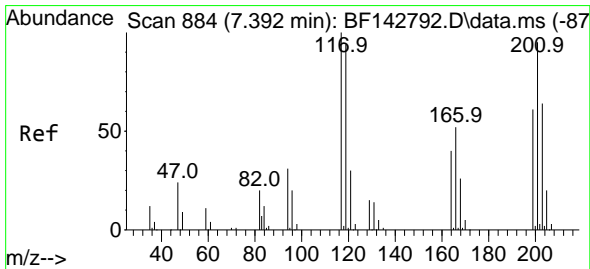
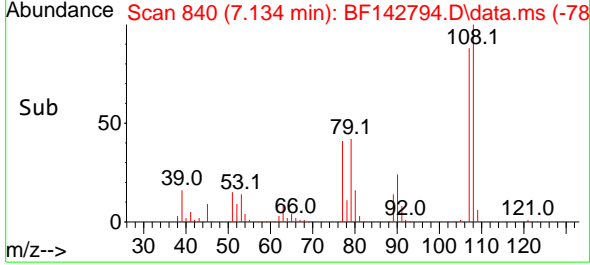
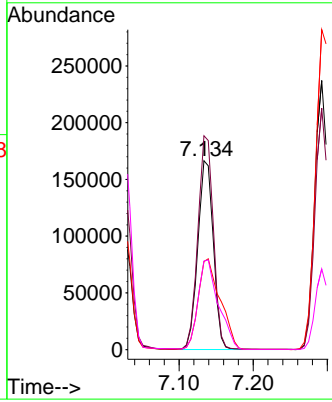
#17
 2-Methylphenol
 Concen: 59.716 ng
 RT: 7.134 min Scan# 84
 Delta R.T. 0.000 min
 Lab File: BF142794.D
 Acq: 19 Jun 2025 20:10

Instrument :
 BNA_F
 ClientSampleId :
 SSTDICC060



Tgt Ion:107 Resp: 242711

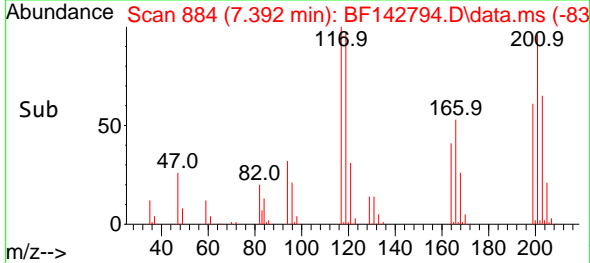
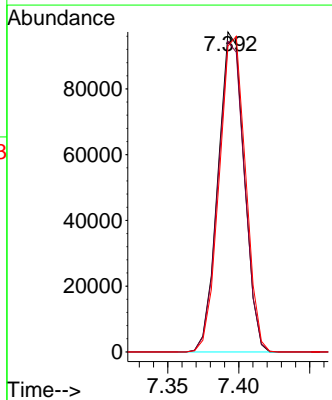
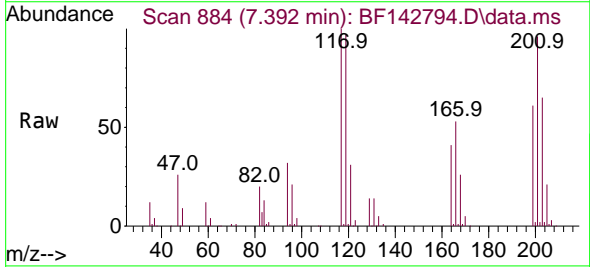
Ion	Ratio	Lower	Upper
107	100		
108	113.2	90.9	136.3
77	46.6	37.3	55.9
79	46.9	37.2	55.8

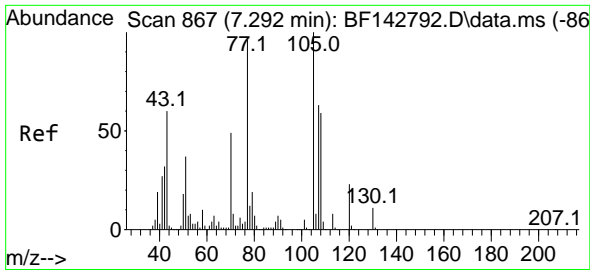


#18
 Hexachloroethane
 Concen: 56.741 ng
 RT: 7.392 min Scan# 884
 Delta R.T. 0.000 min
 Lab File: BF142794.D
 Acq: 19 Jun 2025 20:10

Tgt Ion:117 Resp: 124457

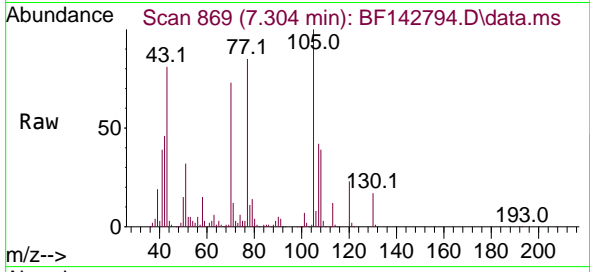
Ion	Ratio	Lower	Upper
117	100		
119	97.0	75.4	113.0
201	95.6	75.9	113.9



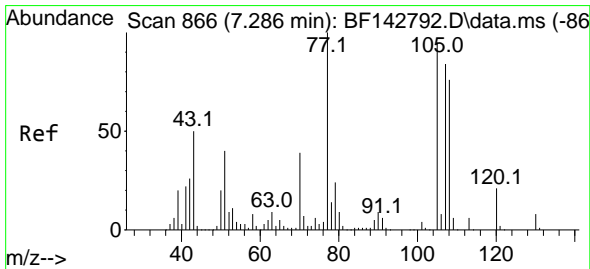
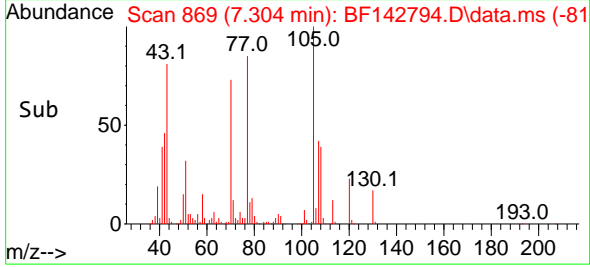
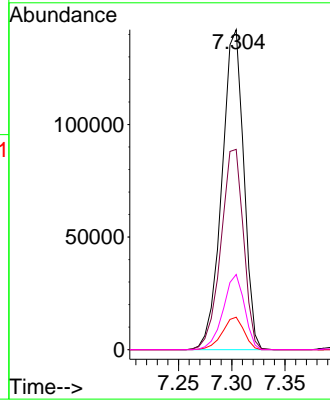


#19
 n-Nitroso-di-n-propylamine
 Concen: 56.123 ng
 RT: 7.304 min Scan# 80
 Delta R.T. 0.012 min
 Lab File: BF142794.D
 Acq: 19 Jun 2025 20:10

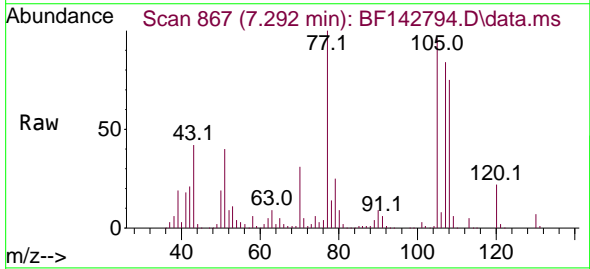
Instrument :
 BNA_F
 ClientSampleId :
 SSTDICC060



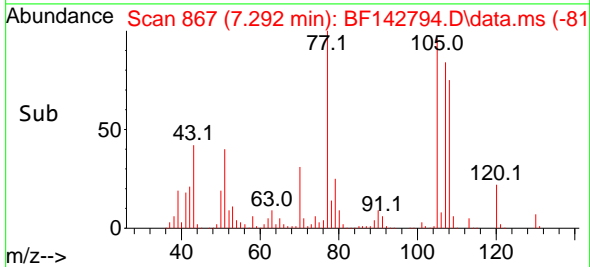
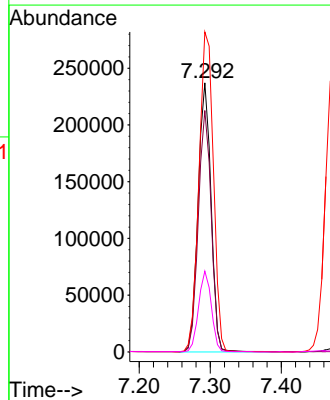
Tgt Ion: 70 Resp: 202914
 Ion Ratio Lower Upper
 70 100
 42 62.6 52.1 78.1
 101 10.1 8.2 12.2
 130 23.5 18.2 27.2

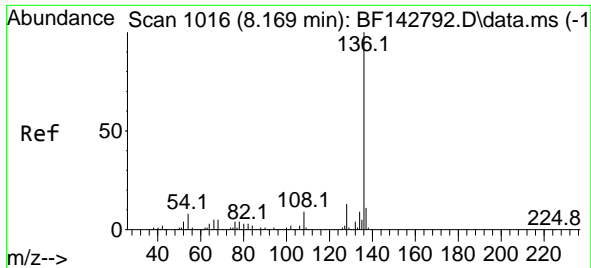


#20
 3+4-Methylphenols
 Concen: 58.442 ng
 RT: 7.292 min Scan# 867
 Delta R.T. 0.006 min
 Lab File: BF142794.D
 Acq: 19 Jun 2025 20:10



Tgt Ion: 107 Resp: 298960
 Ion Ratio Lower Upper
 107 100
 108 89.7 70.0 110.0
 77 118.9 98.5 138.5
 79 30.0 8.8 48.8





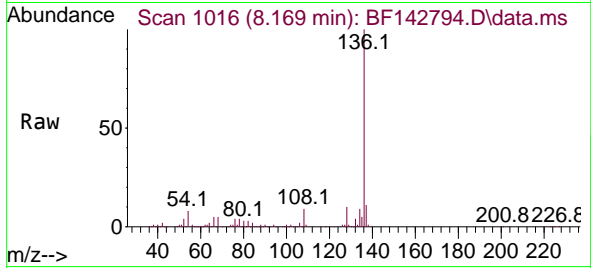
#21
 Naphthalene-d8
 Concen: 20.000 ng
 RT: 8.169 min Scan# 10
 Delta R.T. 0.000 min
 Lab File: BF142794.D
 Acq: 19 Jun 2025 20:10

Instrument :

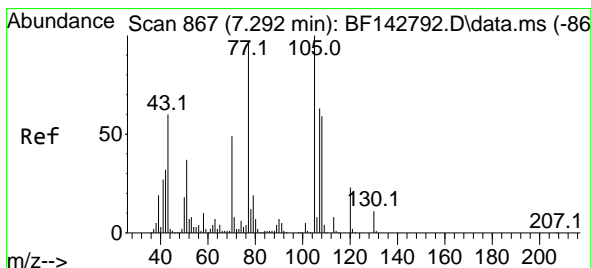
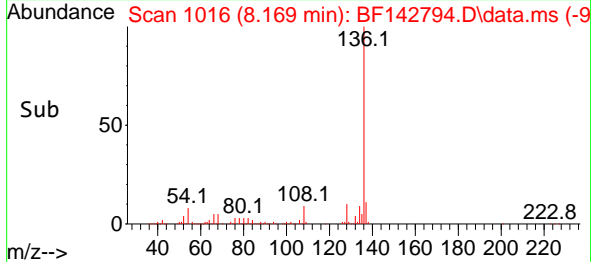
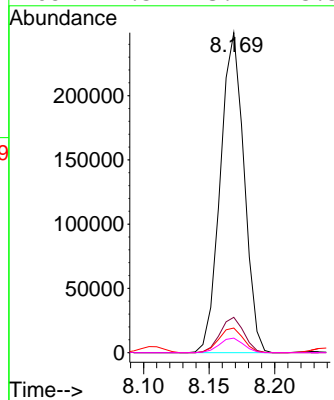
BNA_F

ClientSampleId :

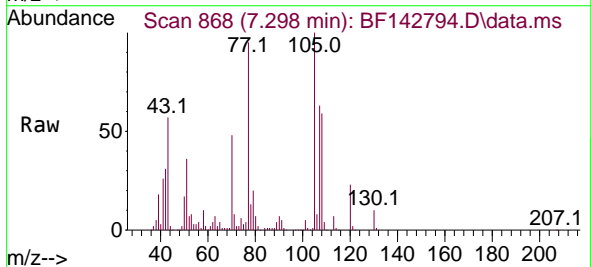
SSTDICC060



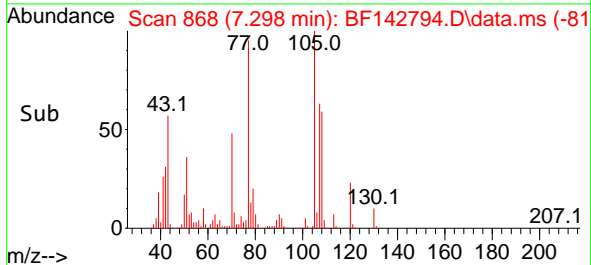
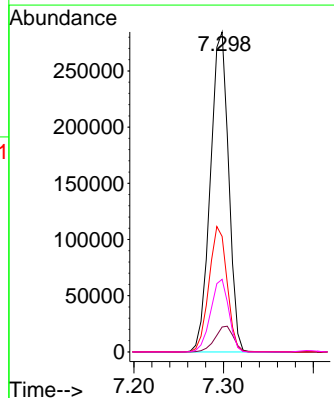
Tgt Ion:136 Resp: 313390
 Ion Ratio Lower Upper
 136 100
 137 11.0 8.4 12.6
 54 7.7 6.3 9.5
 68 4.5 3.7 5.5

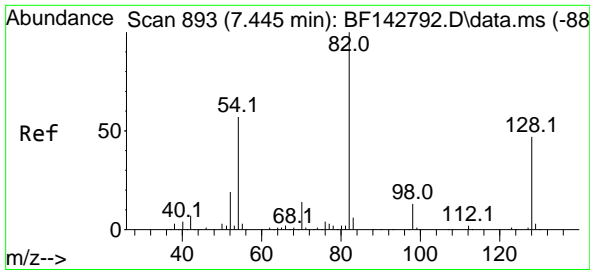


#22
 Acetophenone
 Concen: 58.063 ng
 RT: 7.298 min Scan# 868
 Delta R.T. 0.006 min
 Lab File: BF142794.D
 Acq: 19 Jun 2025 20:10



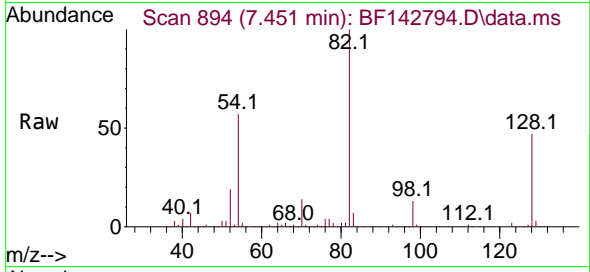
Tgt Ion:105 Resp: 402615
 Ion Ratio Lower Upper
 105 100
 71 7.8 6.5 9.7
 51 36.1 29.8 44.8
 120 22.7 18.2 27.2



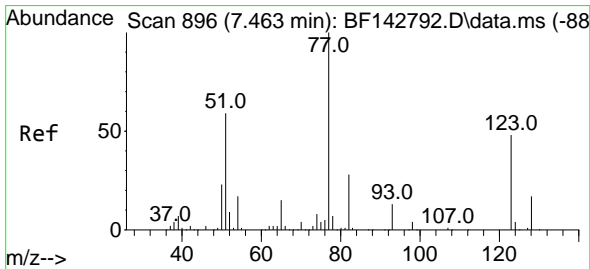
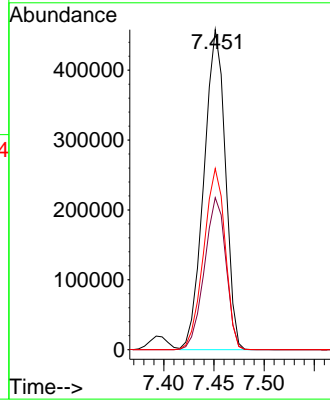
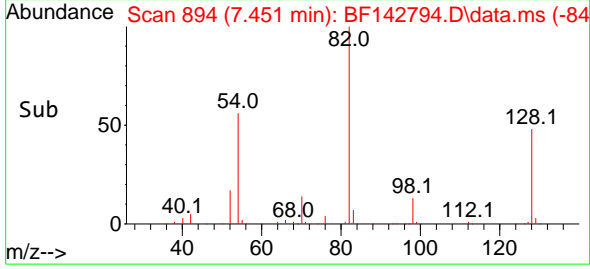


#23
 Nitrobenzene-d5
 Concen: 119.003 ng
 RT: 7.451 min Scan# 894
 Delta R.T. 0.006 min
 Lab File: BF142794.D
 Acq: 19 Jun 2025 20:10

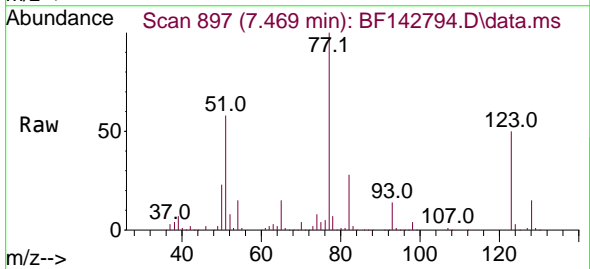
Instrument :
 BNA_F
 ClientSampleId :
 SSTDICC060



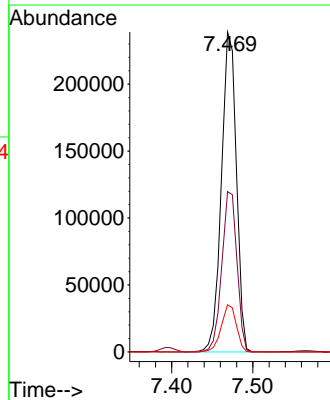
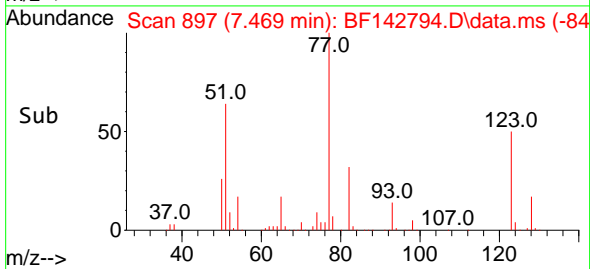
Tgt Ion: 82 Resp: 680402
 Ion Ratio Lower Upper
 82 100
 128 47.5 37.7 56.5
 54 56.6 45.7 68.5

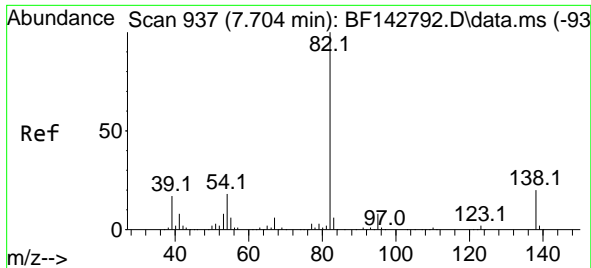


#24
 Nitrobenzene
 Concen: 60.229 ng
 RT: 7.469 min Scan# 897
 Delta R.T. 0.006 min
 Lab File: BF142794.D
 Acq: 19 Jun 2025 20:10



Tgt Ion: 77 Resp: 306032
 Ion Ratio Lower Upper
 77 100
 123 50.1 39.2 58.8
 65 14.7 11.6 17.4





#25
 Isophorone
 Concen: 57.216 ng
 RT: 7.710 min Scan# 91
 Delta R.T. 0.006 min
 Lab File: BF142794.D
 Acq: 19 Jun 2025 20:10

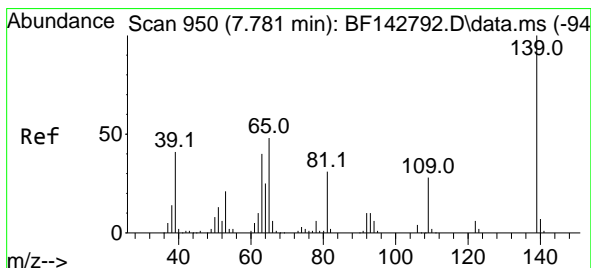
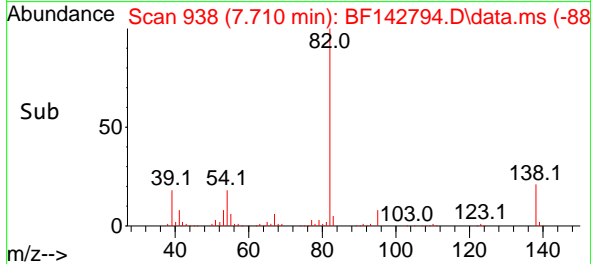
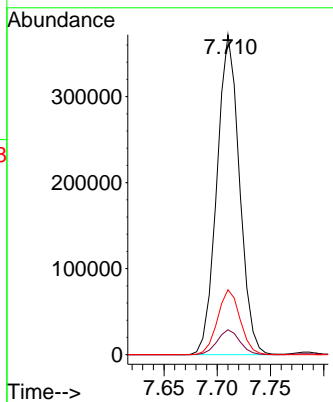
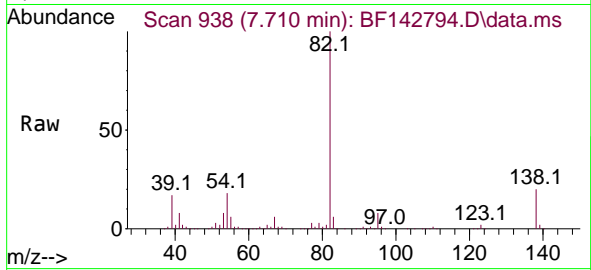
Instrument :

BNA_F

ClientSampleId :

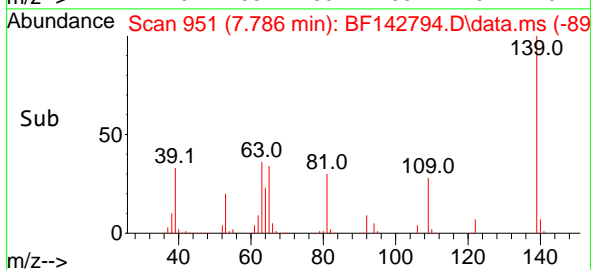
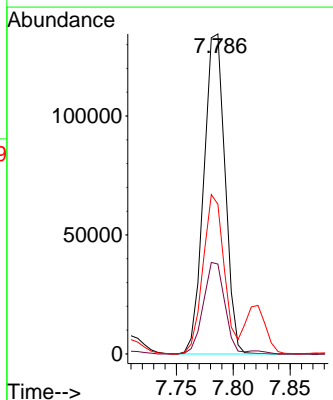
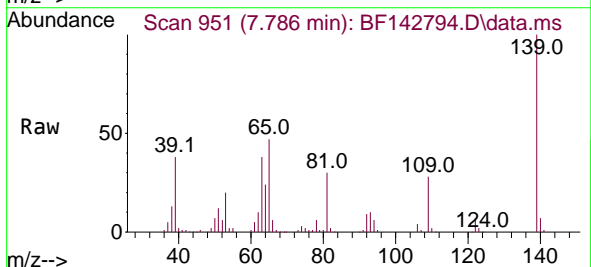
SSTDICC060

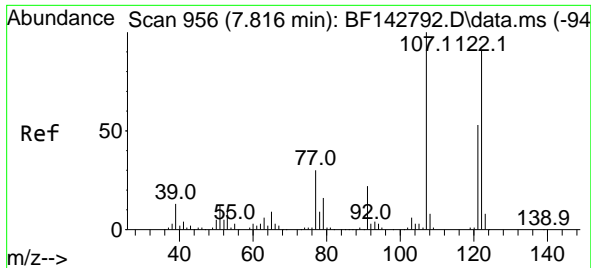
Tgt Ion: 82 Resp: 548612
 Ion Ratio Lower Upper
 82 100
 95 7.8 6.2 9.2
 138 20.3 16.2 24.4



#26
 2-Nitrophenol
 Concen: 61.836 ng
 RT: 7.786 min Scan# 951
 Delta R.T. 0.006 min
 Lab File: BF142794.D
 Acq: 19 Jun 2025 20:10

Tgt Ion:139 Resp: 175072
 Ion Ratio Lower Upper
 139 100
 109 28.1 22.7 34.1
 65 46.8 38.6 58.0



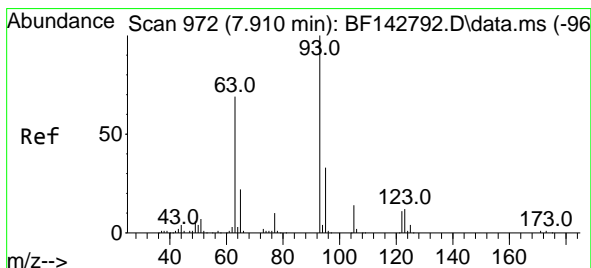
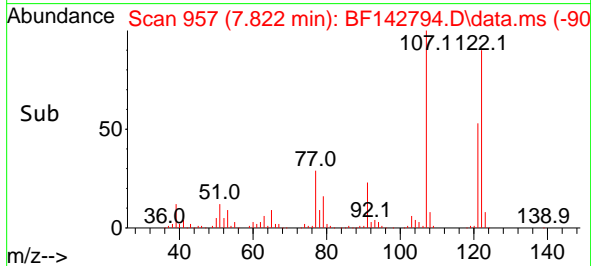
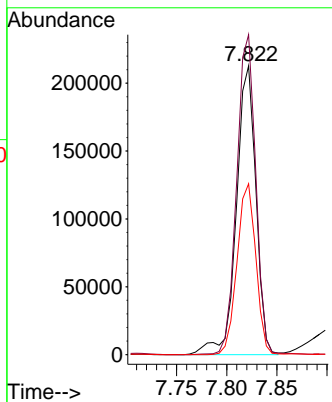
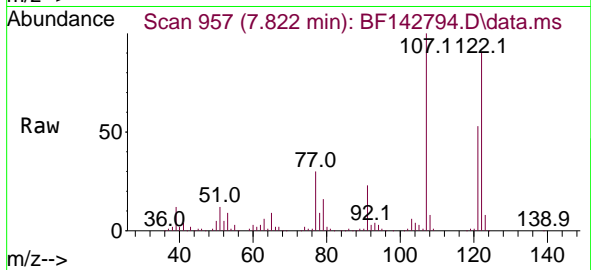


#27
 2,4-Dimethylphenol
 Concen: 59.859 ng
 RT: 7.822 min Scan# 91
 Delta R.T. 0.006 min
 Lab File: BF142794.D
 Acq: 19 Jun 2025 20:10

Instrument :
 BNA_F
 ClientSampleId :
 SSTDICC060

Tgt Ion:122 Resp: 288532

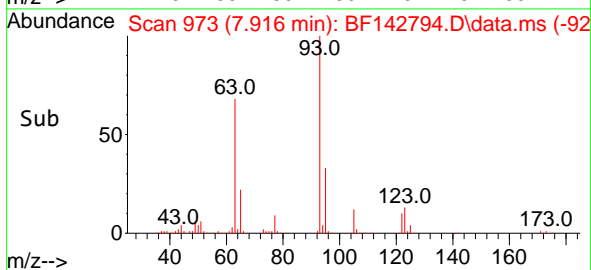
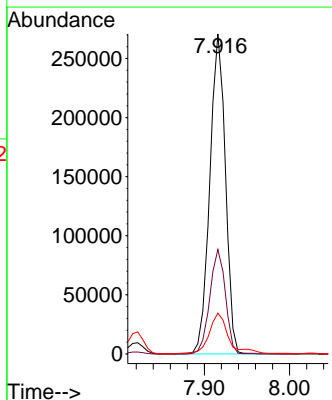
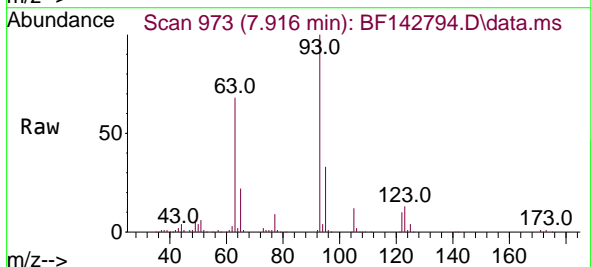
Ion	Ratio	Lower	Upper
122	100		
107	110.8	88.0	132.0
121	59.1	46.3	69.5

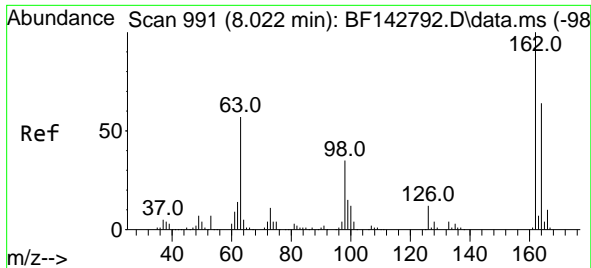


#28
 bis(2-Chloroethoxy)methane
 Concen: 57.620 ng
 RT: 7.916 min Scan# 973
 Delta R.T. 0.006 min
 Lab File: BF142794.D
 Acq: 19 Jun 2025 20:10

Tgt Ion: 93 Resp: 343925

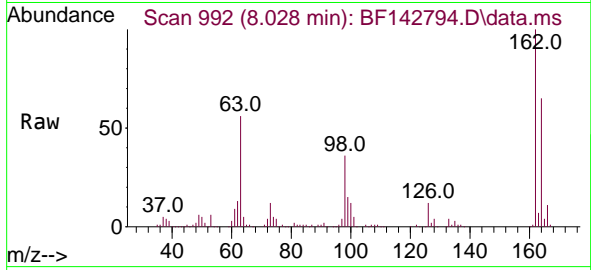
Ion	Ratio	Lower	Upper
93	100		
95	32.6	26.2	39.2
123	12.8	9.9	14.9



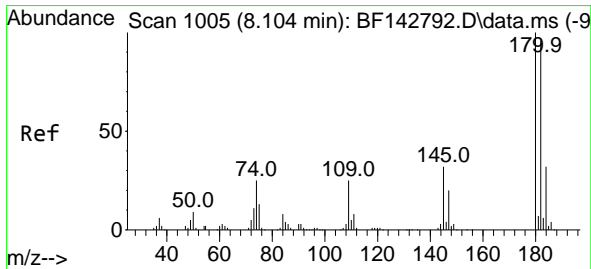
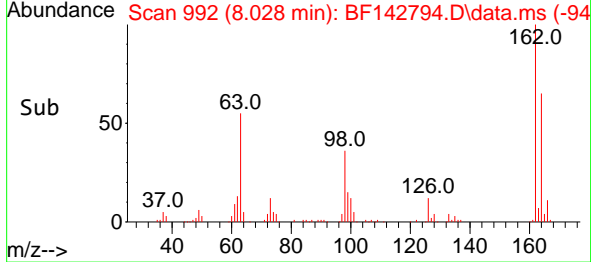
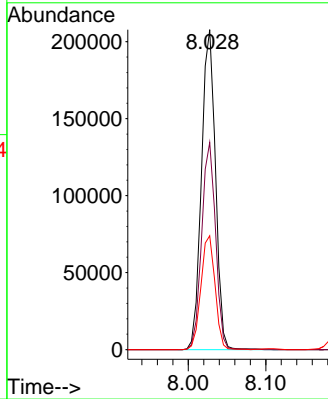


#29
 2,4-Dichlorophenol
 Concen: 58.574 ng
 RT: 8.028 min Scan# 991
 Delta R.T. 0.006 min
 Lab File: BF142794.D
 Acq: 19 Jun 2025 20:10

Instrument : BNA_F
 Client Sample Id : SSTDICC060

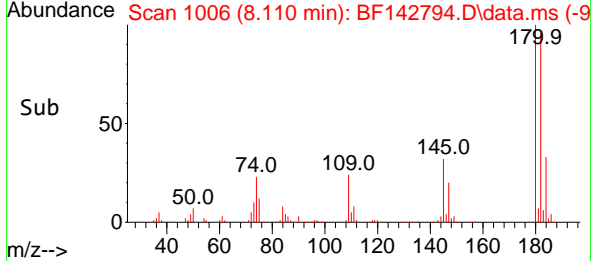
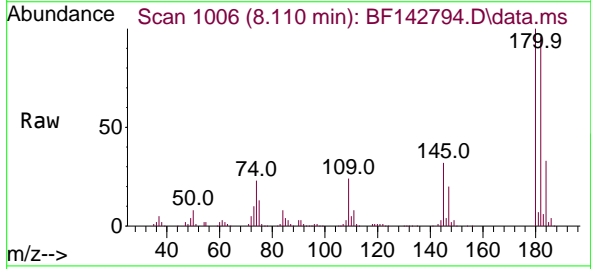
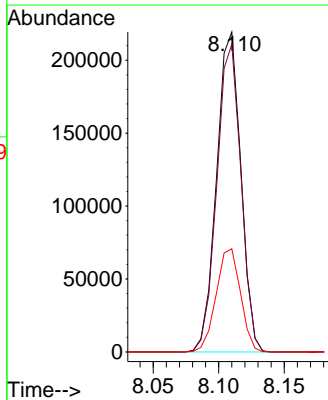


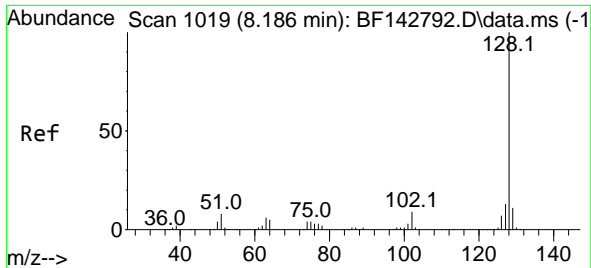
Tgt Ion:162 Resp: 260228
 Ion Ratio Lower Upper
 162 100
 164 64.7 44.0 84.0
 98 35.6 15.4 55.4



#30
 1,2,4-Trichlorobenzene
 Concen: 57.608 ng
 RT: 8.110 min Scan# 1006
 Delta R.T. 0.006 min
 Lab File: BF142794.D
 Acq: 19 Jun 2025 20:10

Tgt Ion:180 Resp: 282721
 Ion Ratio Lower Upper
 180 100
 182 96.2 76.4 114.6
 145 32.2 25.8 38.8





#31
 Naphthalene
 Concen: 57.524 ng
 RT: 8.192 min Scan# 10
 Delta R.T. 0.006 min
 Lab File: BF142794.D
 Acq: 19 Jun 2025 20:10

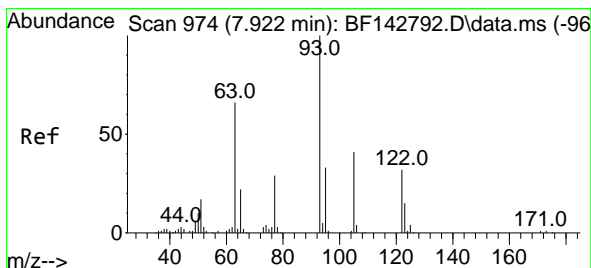
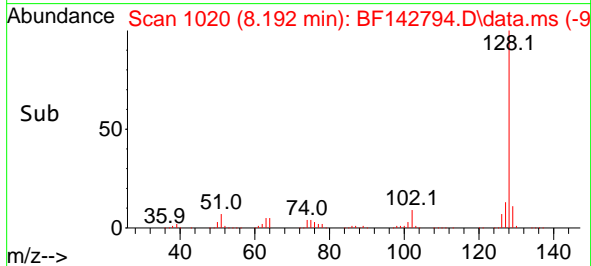
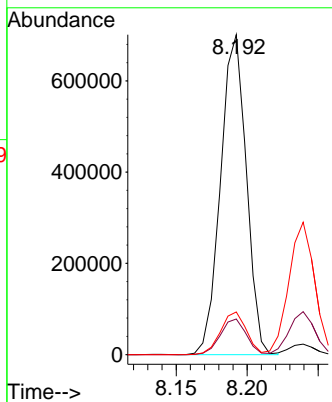
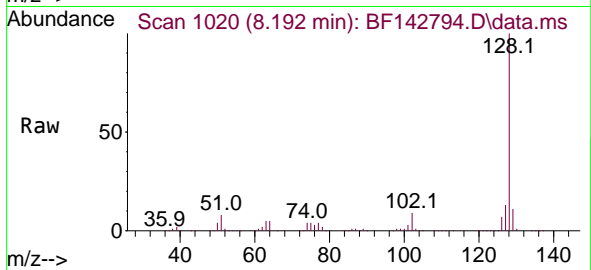
Instrument :

BNA_F

ClientSampleId :

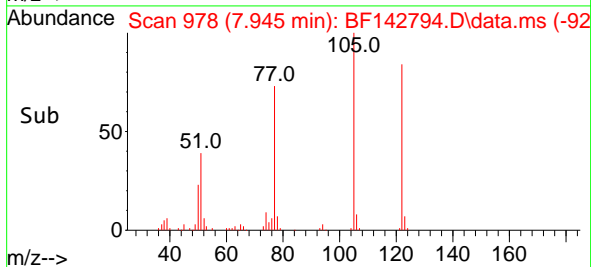
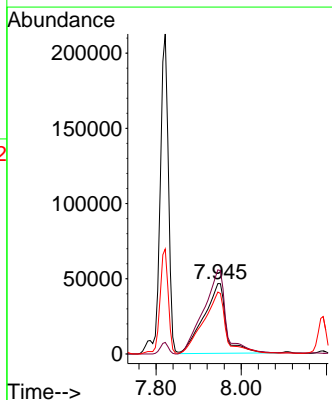
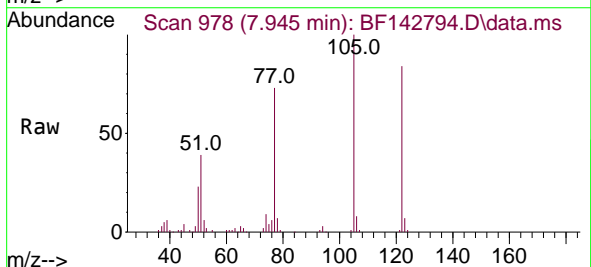
SSTDICC060

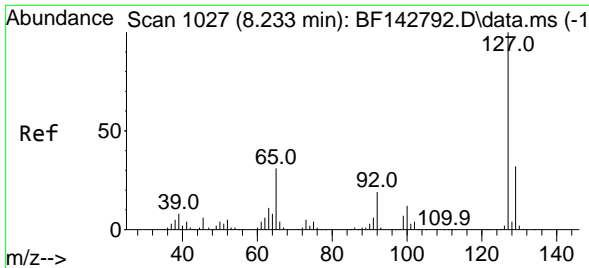
Tgt Ion:128 Resp: 886614
 Ion Ratio Lower Upper
 128 100
 129 11.1 8.9 13.3
 127 13.3 10.4 15.6



#32
 Benzoic acid
 Concen: 63.369 ng
 RT: 7.945 min Scan# 978
 Delta R.T. 0.024 min
 Lab File: BF142794.D
 Acq: 19 Jun 2025 20:10

Tgt Ion:122 Resp: 169471
 Ion Ratio Lower Upper
 122 100
 105 119.7 104.7 144.7
 77 87.9 70.2 110.2



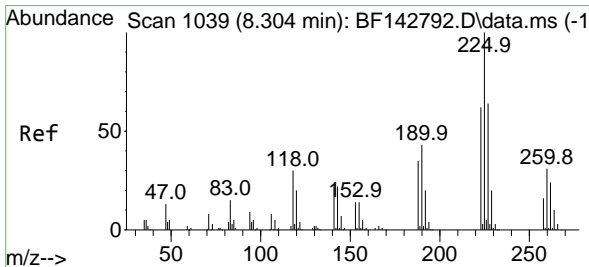
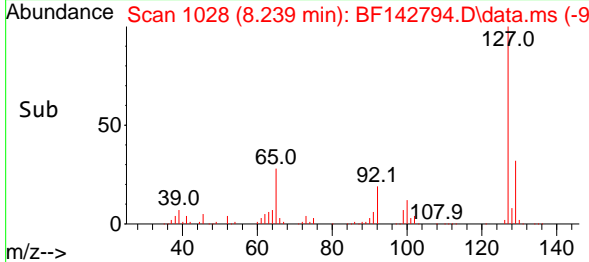
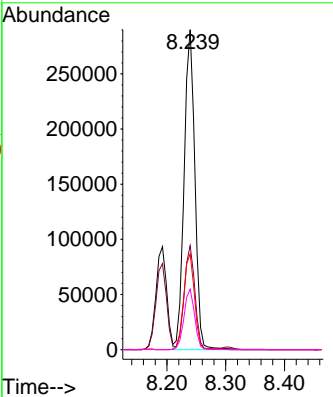
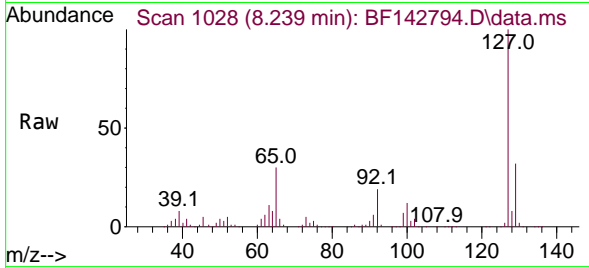


#33
 4-Chloroaniline
 Concen: 59.887 ng
 RT: 8.239 min Scan# 1028
 Delta R.T. 0.006 min
 Lab File: BF142794.D
 Acq: 19 Jun 2025 20:10

Instrument : BNA_F
 ClientSampleId : SSTDICC060

Tgt Ion:127 Resp: 369911

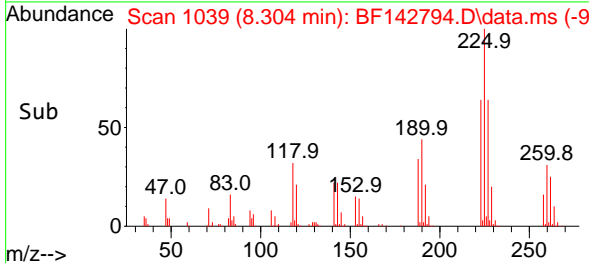
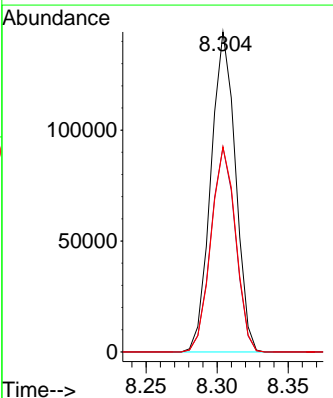
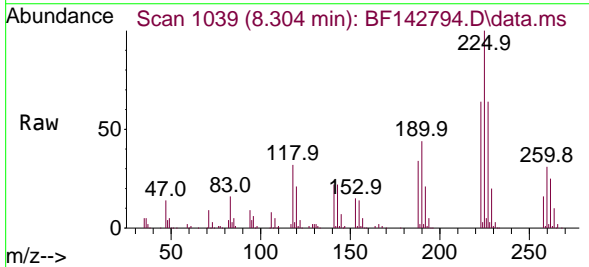
Ion	Ratio	Lower	Upper
127	100		
129	32.5	25.9	38.9
65	29.9	24.6	36.8
92	18.9	15.4	23.0

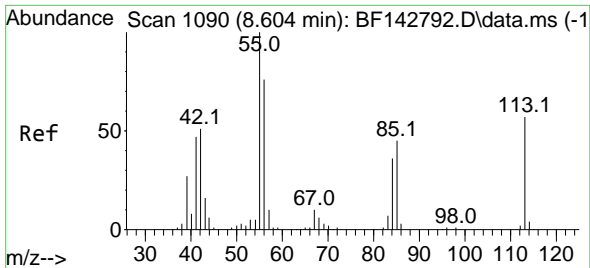


#34
 Hexachlorobutadiene
 Concen: 55.768 ng
 RT: 8.304 min Scan# 1039
 Delta R.T. 0.000 min
 Lab File: BF142794.D
 Acq: 19 Jun 2025 20:10

Tgt Ion:225 Resp: 173425

Ion	Ratio	Lower	Upper
225	100		
223	64.0	49.9	74.9
227	64.0	51.4	77.0

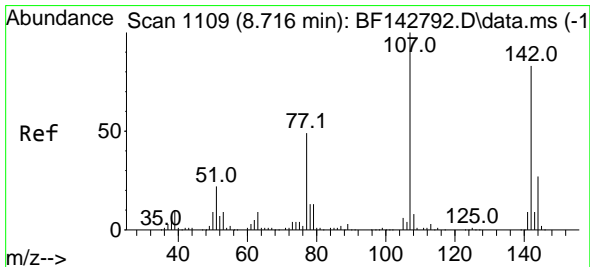
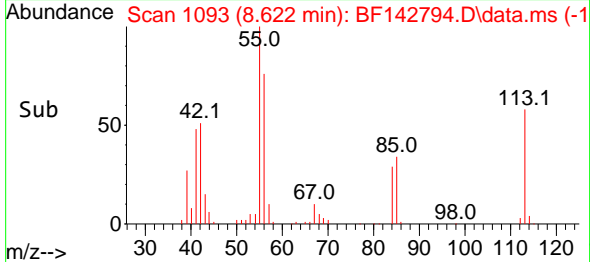
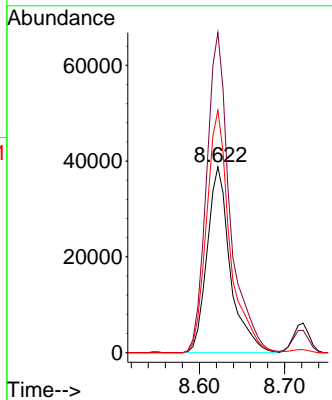
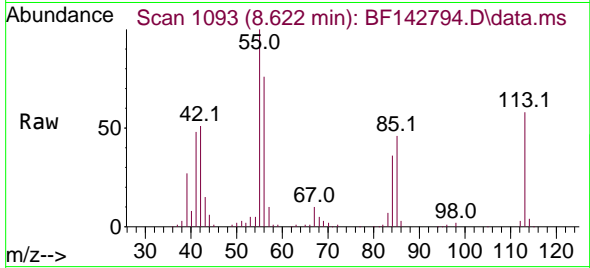




#35
 Caprolactam
 Concen: 61.157 ng
 RT: 8.622 min Scan# 1093
 Delta R.T. 0.018 min
 Lab File: BF142794.D
 Acq: 19 Jun 2025 20:10

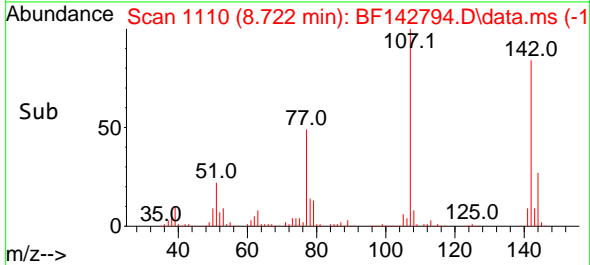
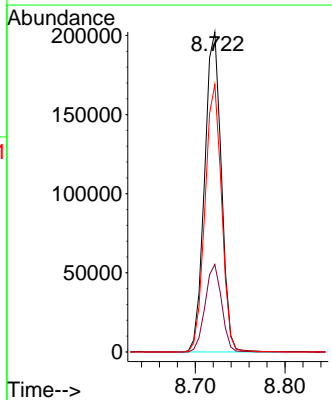
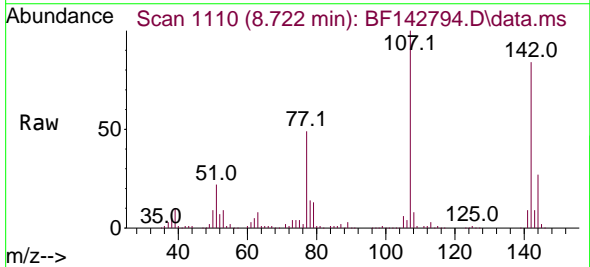
Instrument : BNA_F
 ClientSampleId : SSTDICC060

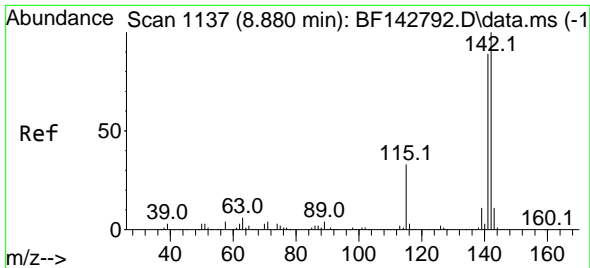
Tgt Ion	Resp	Lower	Upper
113	100		
55	172.2	154.4	194.4
56	130.3	112.1	152.1



#36
 4-Chloro-3-methylphenol
 Concen: 56.927 ng
 RT: 8.722 min Scan# 1110
 Delta R.T. 0.006 min
 Lab File: BF142794.D
 Acq: 19 Jun 2025 20:10

Tgt Ion	Resp	Lower	Upper
107	100		
144	27.3	21.3	31.9
142	83.6	66.6	100.0

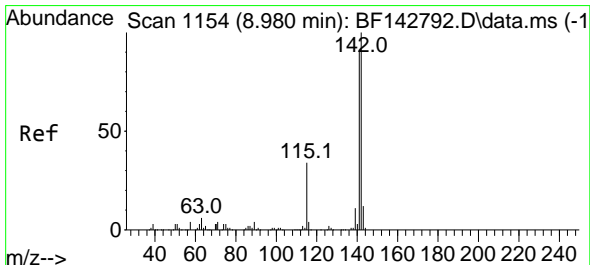
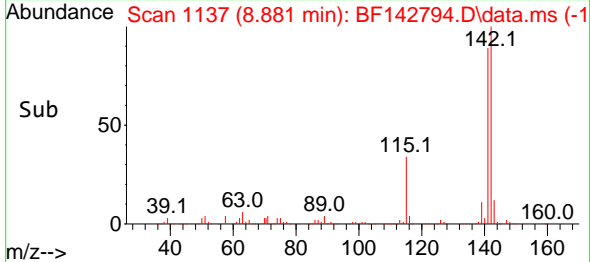
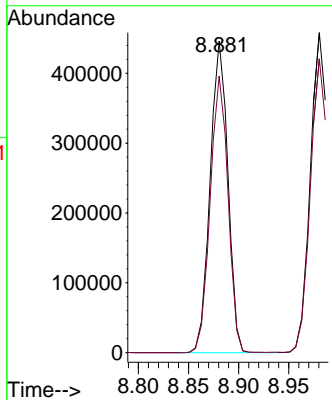
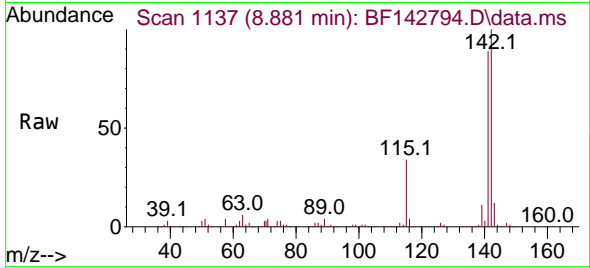




#37
 2-Methylnaphthalene
 Concen: 56.406 ng
 RT: 8.881 min Scan# 1137
 Delta R.T. 0.000 min
 Lab File: BF142794.D
 Acq: 19 Jun 2025 20:10

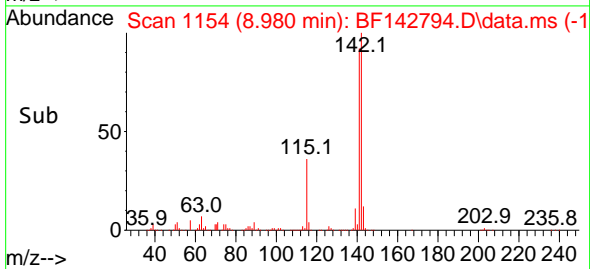
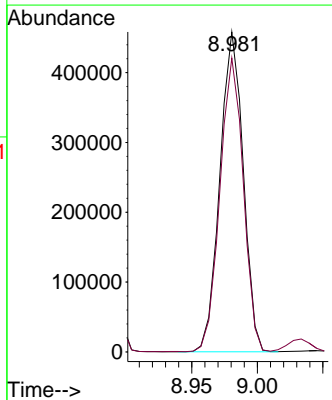
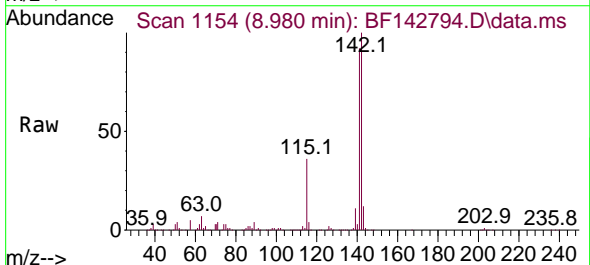
Instrument : BNA_F
 ClientSampleId : SSTDICC060

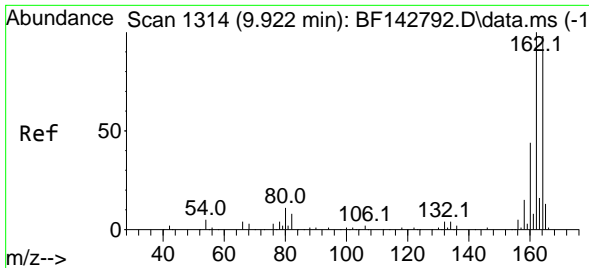
Tgt Ion:142 Resp: 548439
 Ion Ratio Lower Upper
 142 100
 141 88.7 70.9 106.3



#38
 1-Methylnaphthalene
 Concen: 56.247 ng
 RT: 8.980 min Scan# 1154
 Delta R.T. 0.000 min
 Lab File: BF142794.D
 Acq: 19 Jun 2025 20:10

Tgt Ion:142 Resp: 567801
 Ion Ratio Lower Upper
 142 100
 141 91.8 73.0 109.4



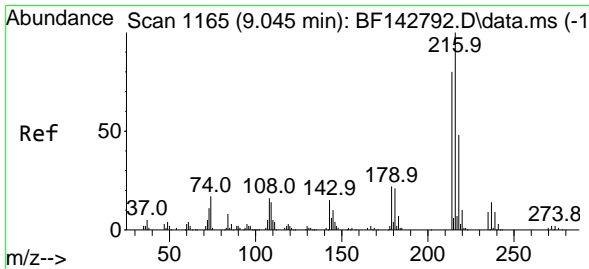
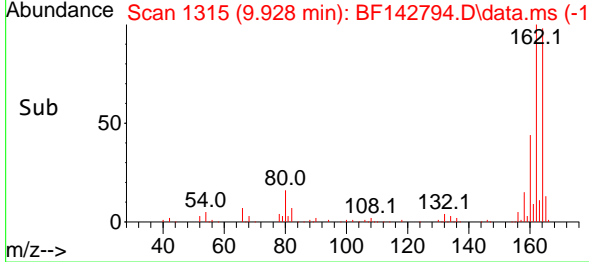
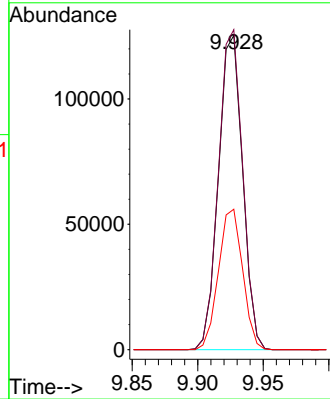
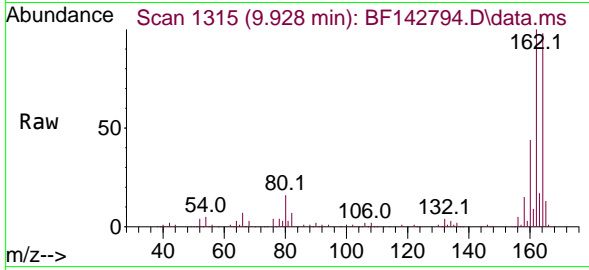


#39
 Acenaphthene-d10
 Concen: 20.000 ng
 RT: 9.928 min Scan# 1315
 Delta R.T. 0.006 min
 Lab File: BF142794.D
 Acq: 19 Jun 2025 20:10

Instrument :
 BNA_F
 ClientSampleId :
 SSTDICC060

Tgt Ion:164 Resp: 161044

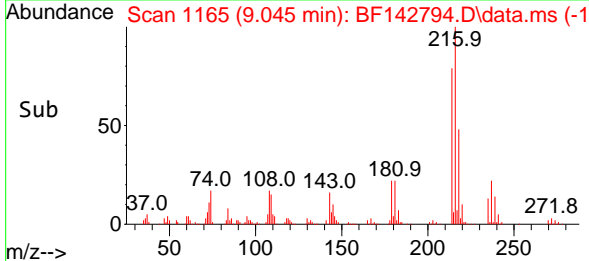
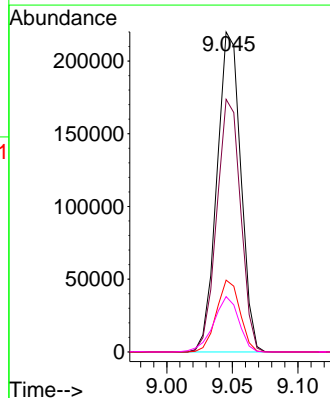
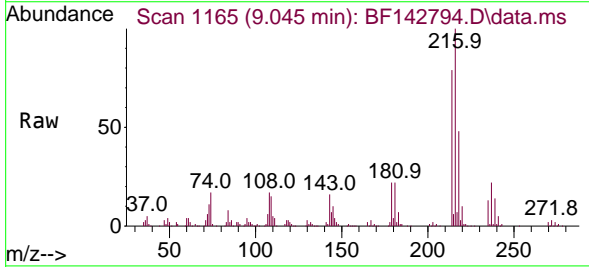
Ion	Ratio	Lower	Upper
164	100		
162	101.9	81.8	122.8
160	44.7	36.0	54.0

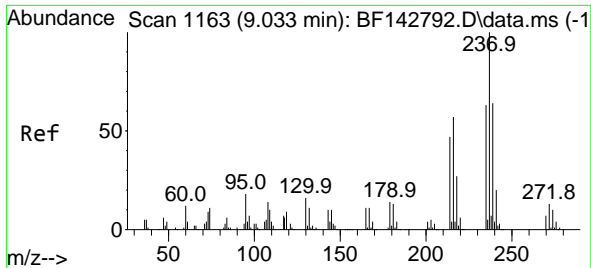


#40
 1,2,4,5-Tetrachlorobenzene
 Concen: 59.918 ng
 RT: 9.045 min Scan# 1165
 Delta R.T. 0.000 min
 Lab File: BF142794.D
 Acq: 19 Jun 2025 20:10

Tgt Ion:216 Resp: 278551

Ion	Ratio	Lower	Upper
216	100		
214	78.8	63.7	95.5
179	22.1	17.6	26.4
108	18.2	14.3	21.5



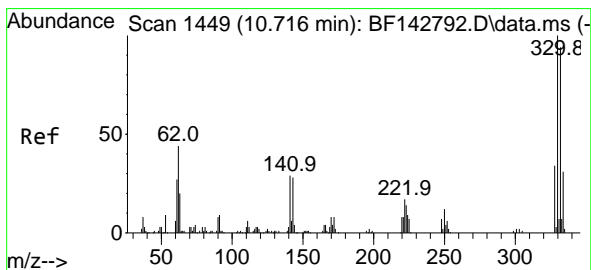
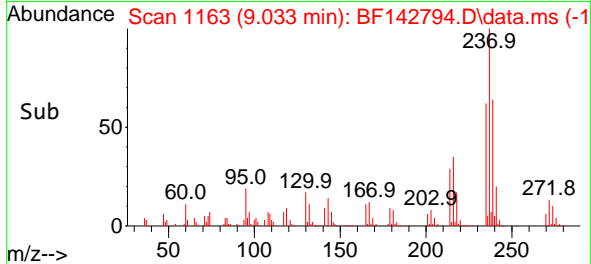
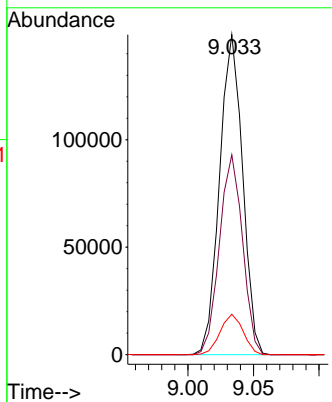
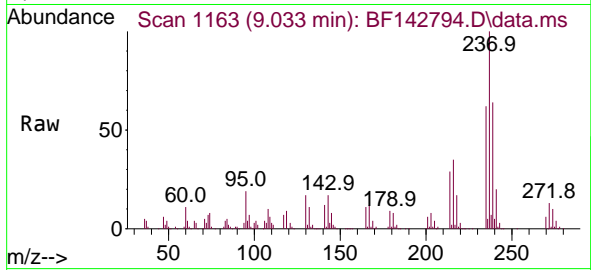


#41
 Hexachlorocyclopentadiene
 Concen: 61.835 ng
 RT: 9.033 min Scan# 1163
 Delta R.T. 0.000 min
 Lab File: BF142794.D
 Acq: 19 Jun 2025 20:10

Instrument : BNA_F
 ClientSampleId : SSTDICC060

Tgt Ion:237 Resp: 181771

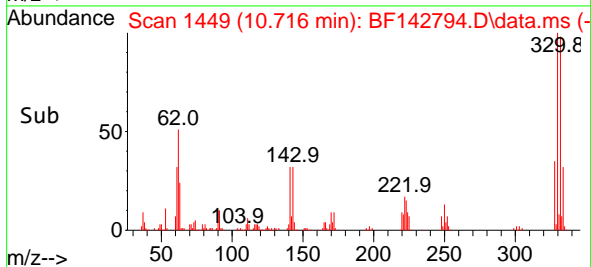
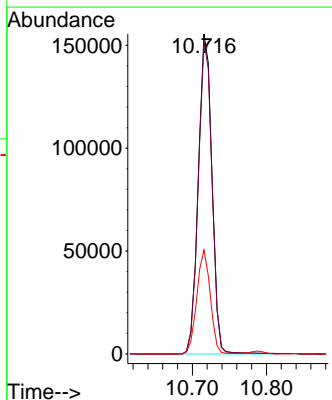
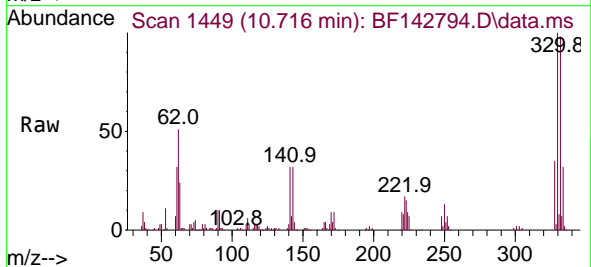
Ion	Ratio	Lower	Upper
237	100		
235	62.4	43.4	83.4
272	12.6	0.0	32.7

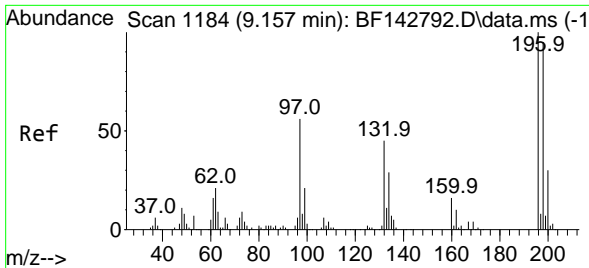


#42
 2,4,6-Tribromophenol
 Concen: 113.541 ng
 RT: 10.716 min Scan# 1449
 Delta R.T. 0.000 min
 Lab File: BF142794.D
 Acq: 19 Jun 2025 20:10

Tgt Ion:330 Resp: 198721

Ion	Ratio	Lower	Upper
330	100		
332	98.3	75.0	112.6
141	32.0	25.3	37.9

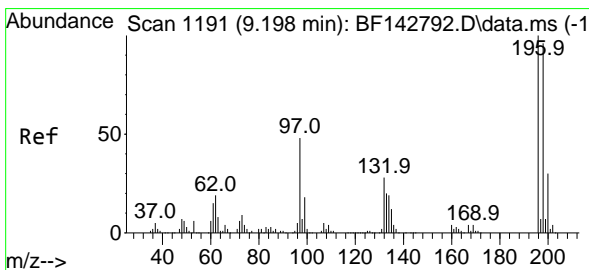
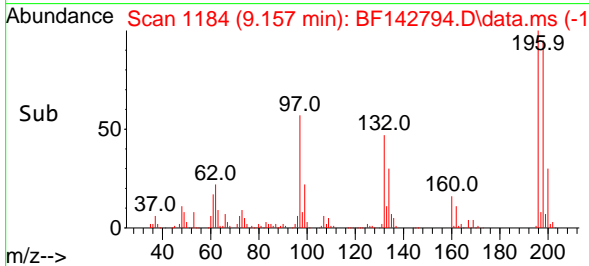
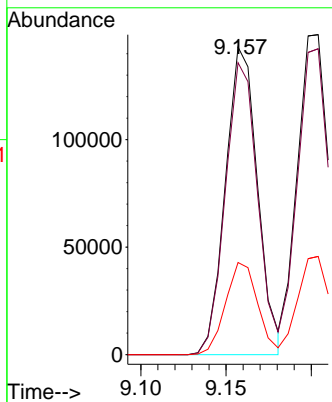
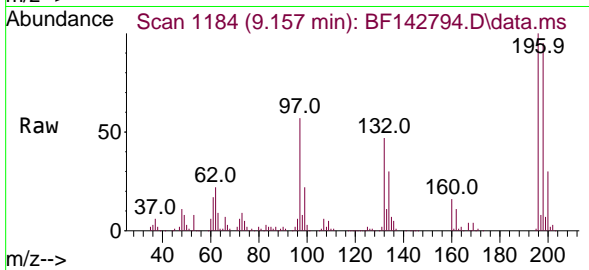




#43
 2,4,6-Trichlorophenol
 Concen: 62.392 ng
 RT: 9.157 min Scan# 1184
 Delta R.T. 0.000 min
 Lab File: BF142794.D
 Acq: 19 Jun 2025 20:10

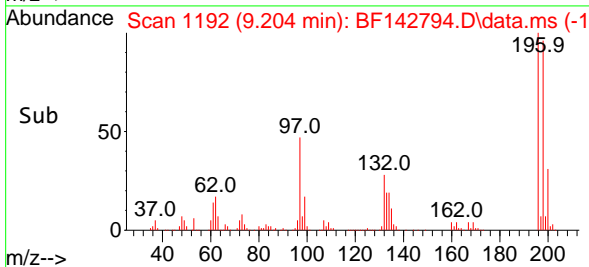
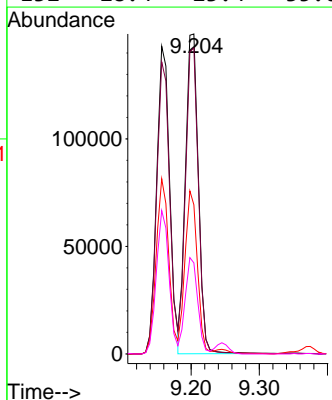
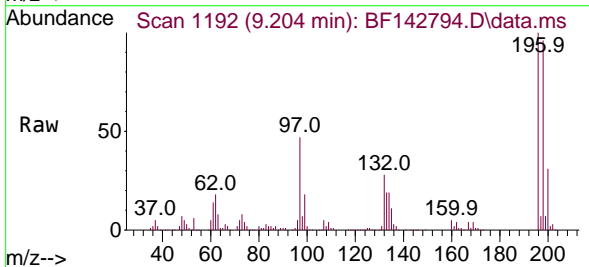
Instrument :
 BNA_F
 ClientSampleId :
 SSTDICC060

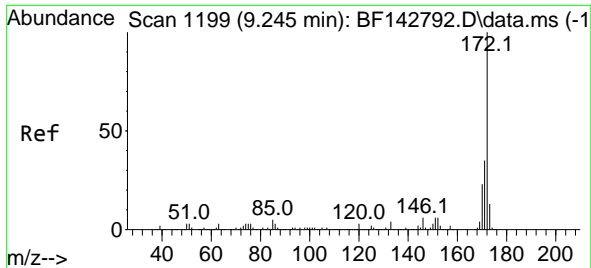
Tgt Ion:196 Resp: 187708
 Ion Ratio Lower Upper
 196 100
 198 94.9 76.2 114.2
 200 29.9 24.1 36.1



#44
 2,4,5-Trichlorophenol
 Concen: 60.565 ng
 RT: 9.204 min Scan# 1192
 Delta R.T. 0.006 min
 Lab File: BF142794.D
 Acq: 19 Jun 2025 20:10

Tgt Ion:196 Resp: 196769
 Ion Ratio Lower Upper
 196 100
 198 95.6 76.6 115.0
 97 46.6 38.2 57.2
 132 28.4 23.4 35.0



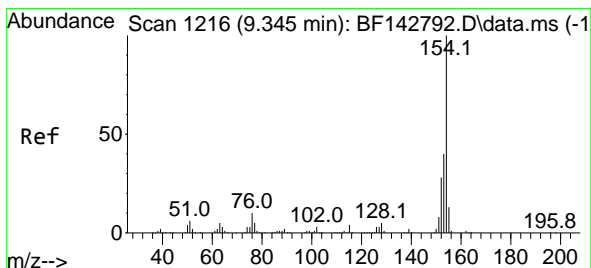
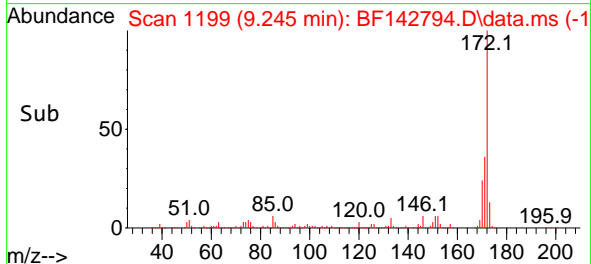
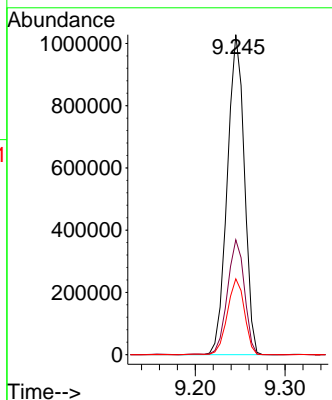
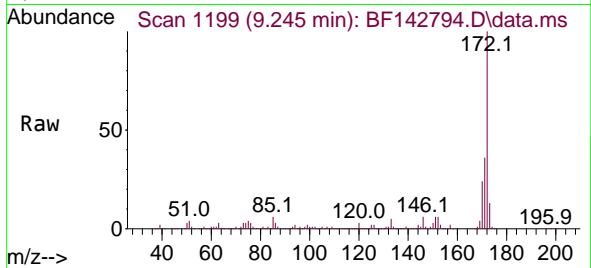


#45
 2-Fluorobiphenyl
 Concen: 112.392 ng
 RT: 9.245 min Scan# 1199
 Delta R.T. 0.000 min
 Lab File: BF142794.D
 Acq: 19 Jun 2025 20:10

Instrument :
 BNA_F
 ClientSampleId :
 SSTDICC060

Tgt Ion:172 Resp: 1360586

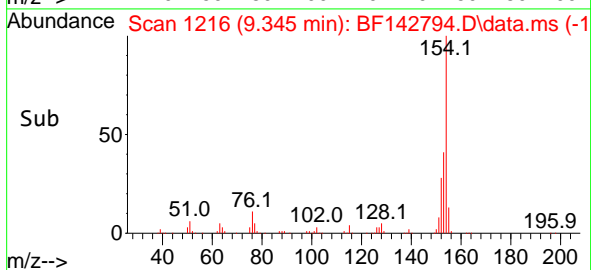
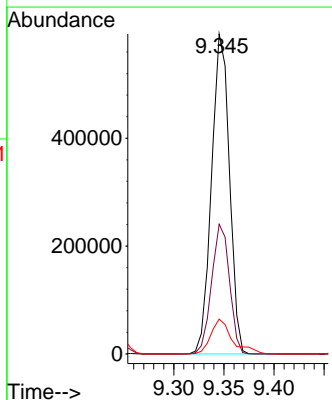
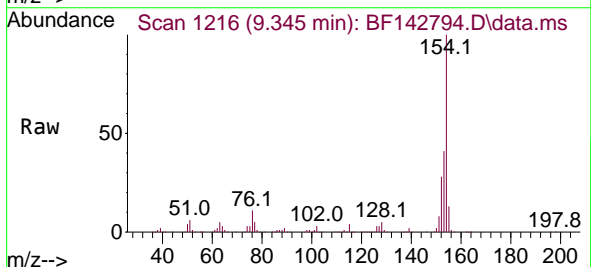
Ion	Ratio	Lower	Upper
172	100		
171	35.9	28.2	42.4
170	23.7	18.5	27.7

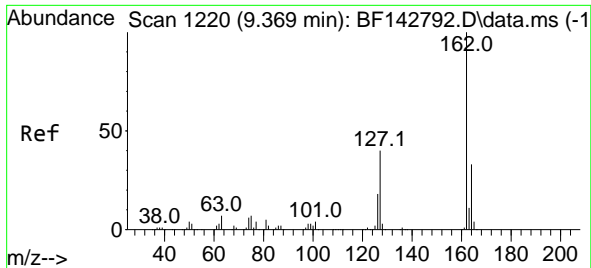


#46
 1,1'-Biphenyl
 Concen: 58.937 ng
 RT: 9.345 min Scan# 1216
 Delta R.T. 0.000 min
 Lab File: BF142794.D
 Acq: 19 Jun 2025 20:10

Tgt Ion:154 Resp: 736970

Ion	Ratio	Lower	Upper
154	100		
153	40.5	20.3	60.3
76	10.9	0.0	30.3





#47
 2-Chloronaphthalene
 Concen: 59.966 ng
 RT: 9.375 min Scan# 11
 Delta R.T. 0.006 min
 Lab File: BF142794.D
 Acq: 19 Jun 2025 20:10

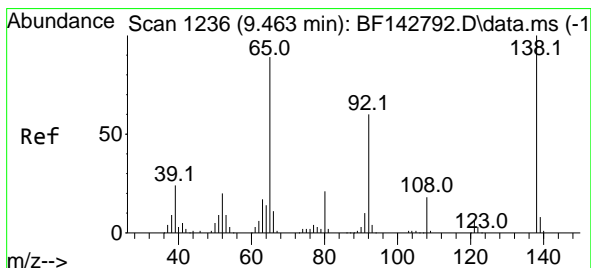
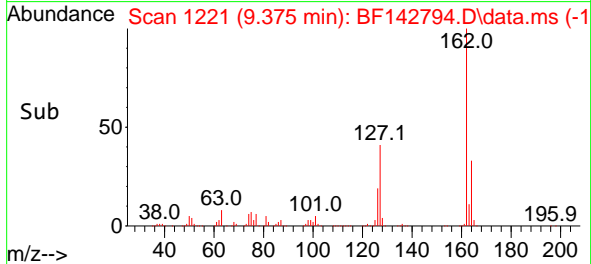
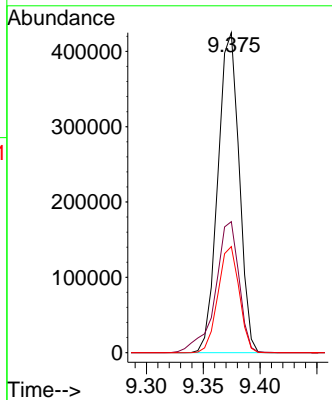
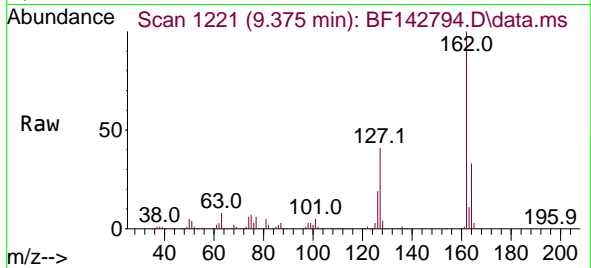
Instrument :

BNA_F

ClientSampleId :

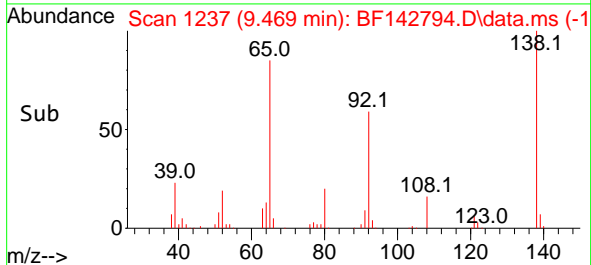
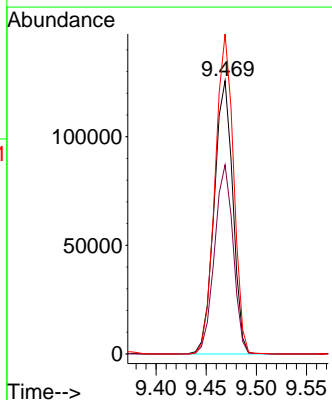
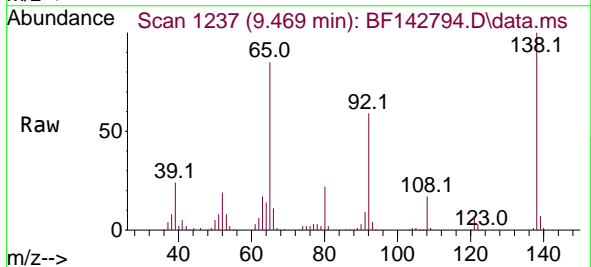
SSTDICC060

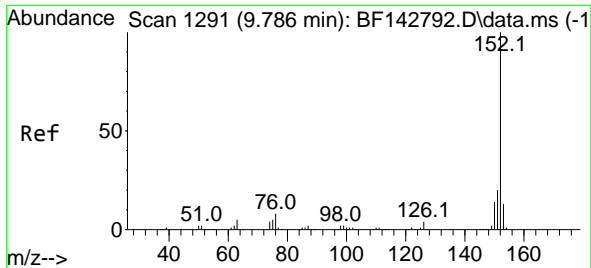
Tgt Ion:162 Resp: 553304
 Ion Ratio Lower Upper
 162 100
 127 40.9 32.2 48.2
 164 33.1 26.1 39.1



#48
 2-Nitroaniline
 Concen: 62.067 ng
 RT: 9.469 min Scan# 1237
 Delta R.T. 0.006 min
 Lab File: BF142794.D
 Acq: 19 Jun 2025 20:10

Tgt Ion: 65 Resp: 162701
 Ion Ratio Lower Upper
 65 100
 92 69.2 53.8 80.6
 138 117.1 89.6 134.4



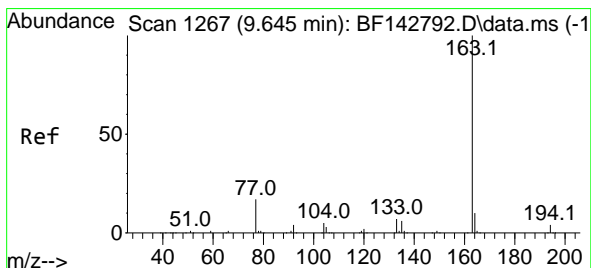
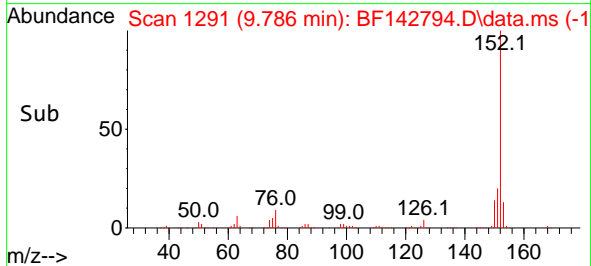
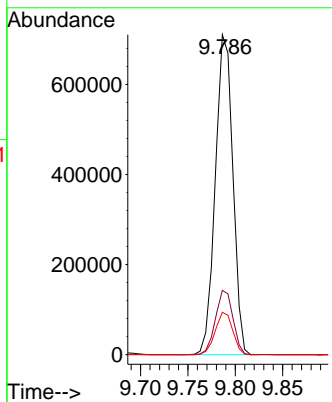
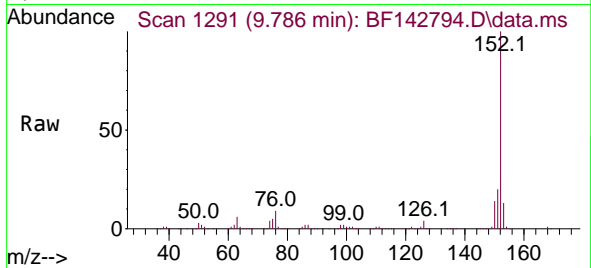


#49
 Acenaphthylene
 Concen: 58.892 ng
 RT: 9.786 min Scan# 11
 Delta R.T. 0.000 min
 Lab File: BF142794.D
 Acq: 19 Jun 2025 20:10

Instrument : BNA_F
 ClientSampleId : SSTDICC060

Tgt Ion:152 Resp: 913540

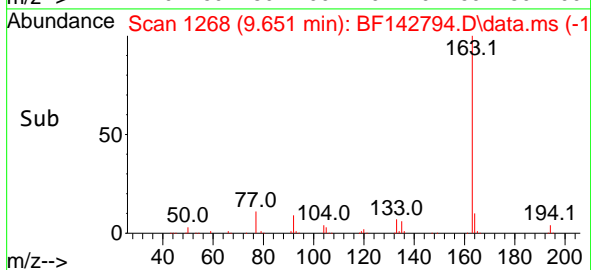
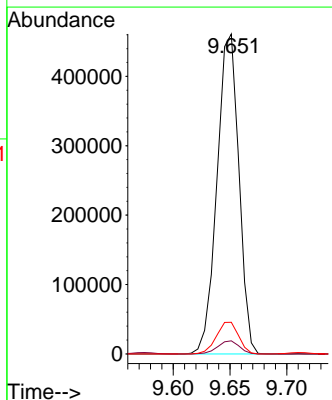
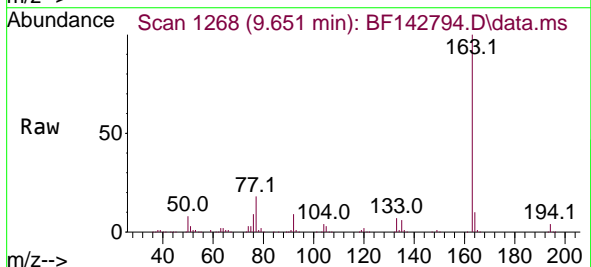
Ion	Ratio	Lower	Upper
152	100		
151	20.1	16.1	24.1
153	13.2	10.4	15.6

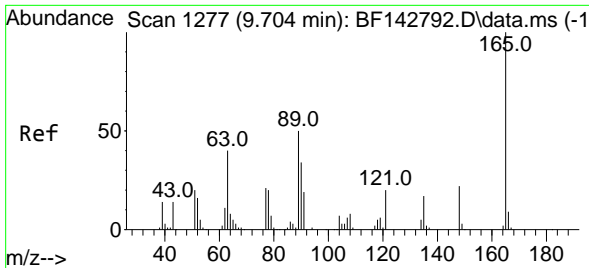


#50
 Dimethylphthalate
 Concen: 57.767 ng
 RT: 9.651 min Scan# 1268
 Delta R.T. 0.006 min
 Lab File: BF142794.D
 Acq: 19 Jun 2025 20:10

Tgt Ion:163 Resp: 617097

Ion	Ratio	Lower	Upper
163	100		
194	4.1	3.3	4.9
164	9.9	8.0	12.0



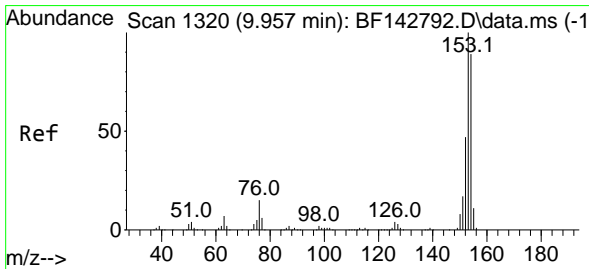
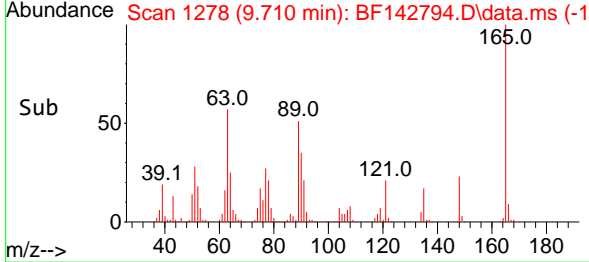
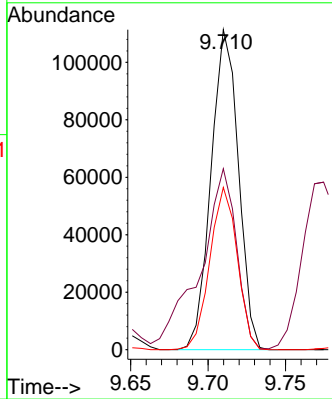
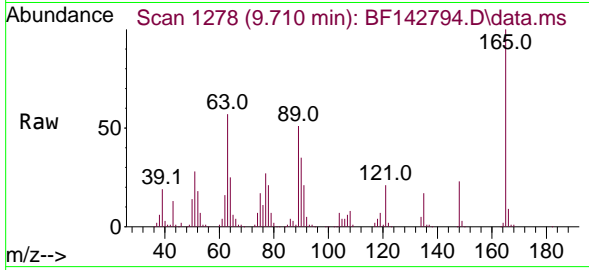


#51
 2,6-Dinitrotoluene
 Concen: 59.299 ng
 RT: 9.710 min Scan# 11
 Delta R.T. 0.006 min
 Lab File: BF142794.D
 Acq: 19 Jun 2025 20:10

Instrument :
 BNA_F
 ClientSampleId :
 SSTDICC060

Tgt Ion:165 Resp: 137318

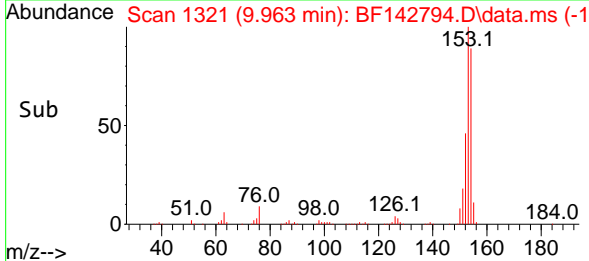
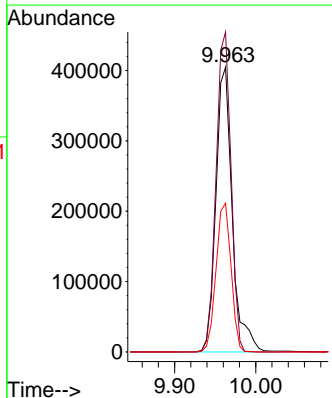
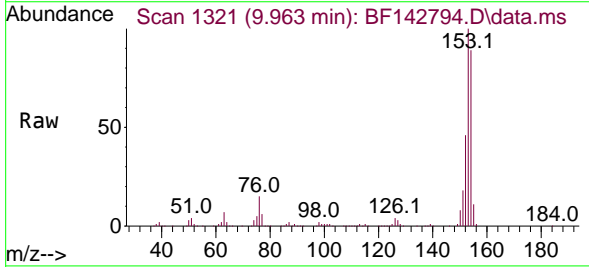
Ion	Ratio	Lower	Upper
165	100		
63	56.5	44.2	66.4
89	50.7	39.8	59.8

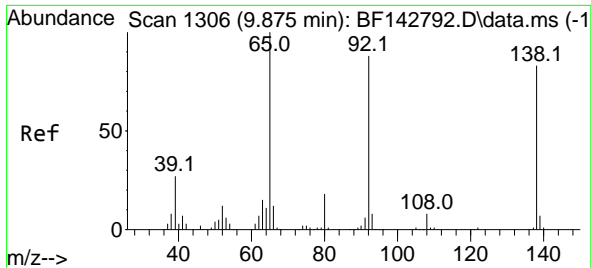


#52
 Acenaphthene
 Concen: 58.980 ng
 RT: 9.963 min Scan# 1321
 Delta R.T. 0.006 min
 Lab File: BF142794.D
 Acq: 19 Jun 2025 20:10

Tgt Ion:154 Resp: 566138

Ion	Ratio	Lower	Upper
154	100		
153	112.4	90.0	135.0
152	52.2	41.9	62.9





#53
 3-Nitroaniline
 Concen: 61.386 ng
 RT: 9.880 min Scan# 1307
 Delta R.T. 0.006 min
 Lab File: BF142794.D
 Acq: 19 Jun 2025 20:10

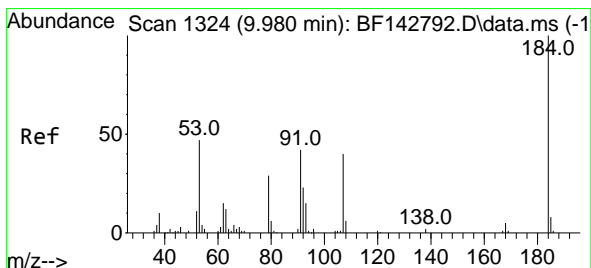
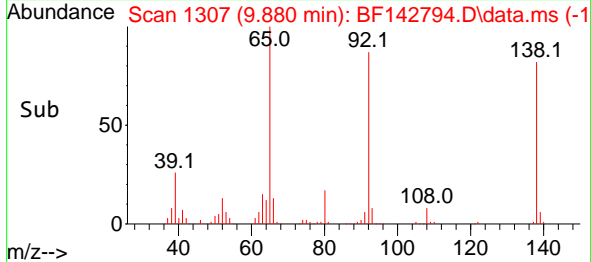
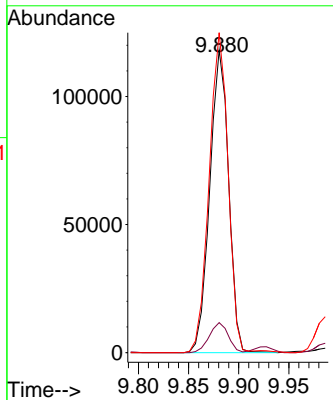
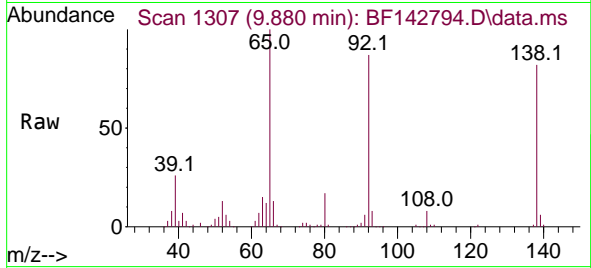
Instrument :

BNA_F

ClientSampleId :

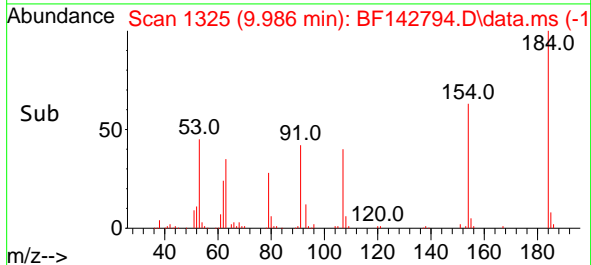
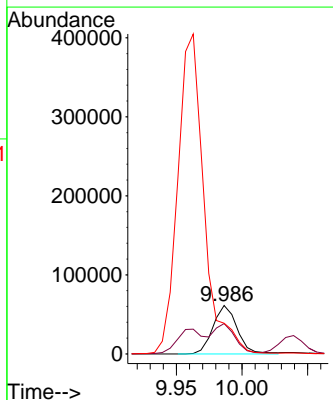
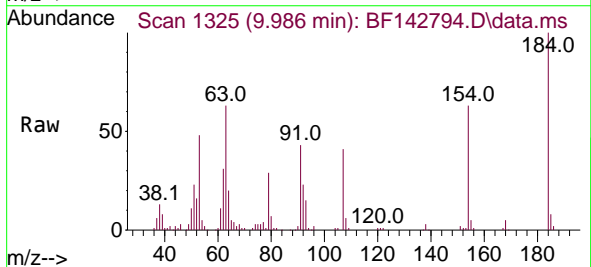
SSTDICC060

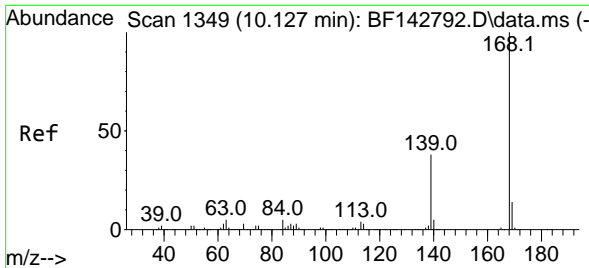
Tgt Ion:138 Resp: 154402
 Ion Ratio Lower Upper
 138 100
 108 9.9 8.1 12.1
 92 105.7 85.1 127.7



#54
 2,4-Dinitrophenol
 Concen: 62.843 ng
 RT: 9.986 min Scan# 1325
 Delta R.T. 0.006 min
 Lab File: BF142794.D
 Acq: 19 Jun 2025 20:10

Tgt Ion:184 Resp: 78750
 Ion Ratio Lower Upper
 184 100
 63 62.6 50.6 75.8
 154 63.4 51.8 77.8



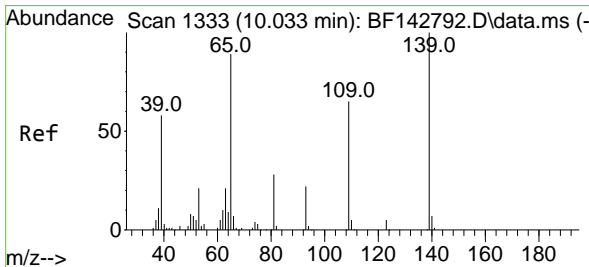
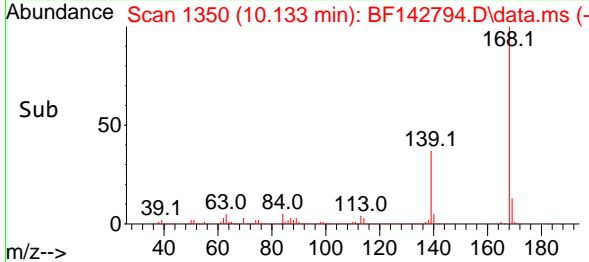
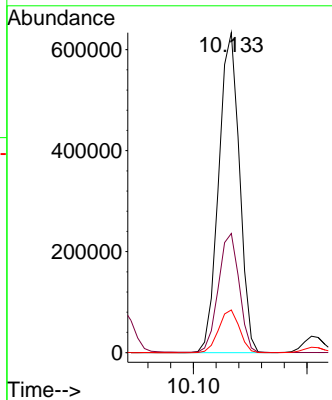
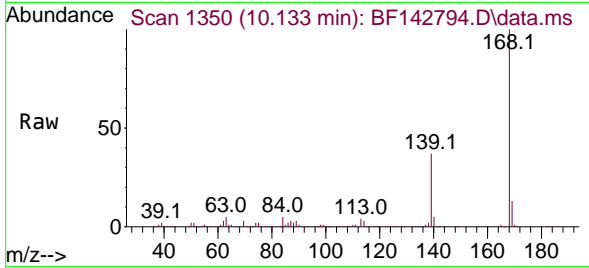


#55
 Dibenzofuran
 Concen: 58.567 ng
 RT: 10.133 min Scan# 1349
 Delta R.T. 0.006 min
 Lab File: BF142794.D
 Acq: 19 Jun 2025 20:10

Instrument : BNA_F
 ClientSampleId : SSTDICC060

Tgt Ion:168 Resp: 802087

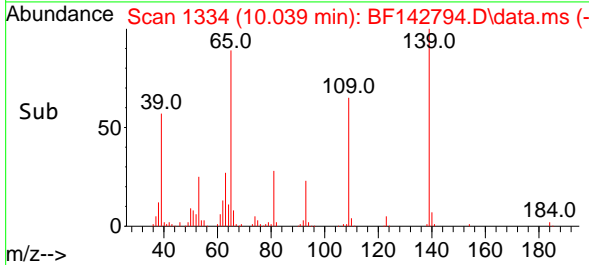
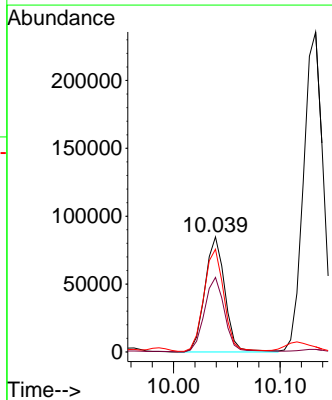
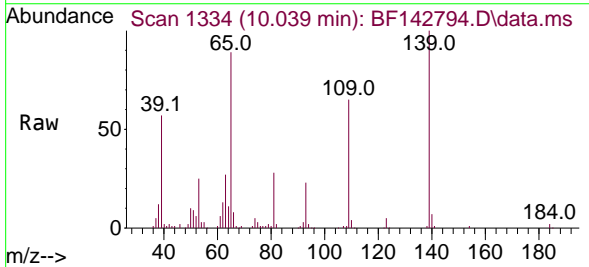
Ion	Ratio	Lower	Upper
168	100		
139	37.2	30.2	45.4
169	13.3	10.8	16.2

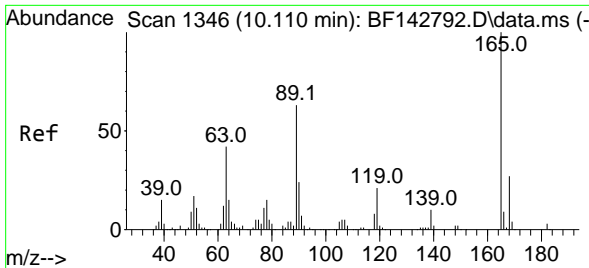


#56
 4-Nitrophenol
 Concen: 64.811 ng
 RT: 10.039 min Scan# 1334
 Delta R.T. 0.006 min
 Lab File: BF142794.D
 Acq: 19 Jun 2025 20:10

Tgt Ion:139 Resp: 110658

Ion	Ratio	Lower	Upper
139	100		
109	64.8	44.7	84.7
65	89.3	69.8	109.8



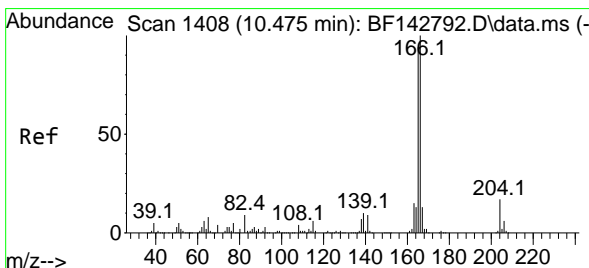
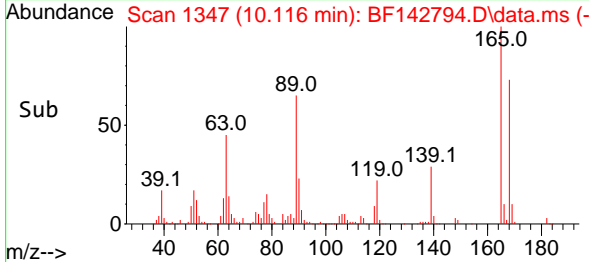
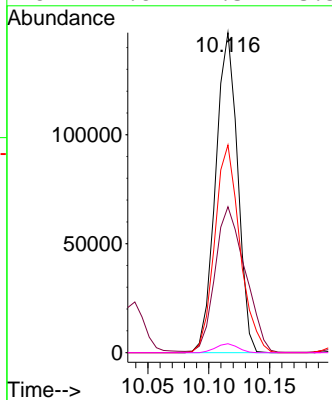
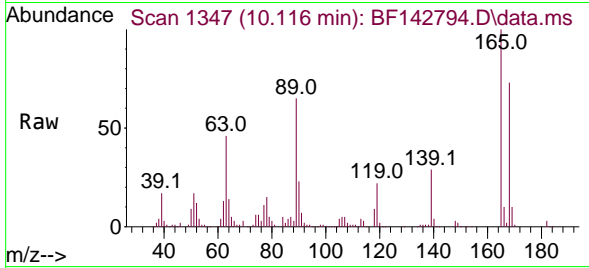


#57
 2,4-Dinitrotoluene
 Concen: 60.367 ng
 RT: 10.116 min Scan# 1346
 Delta R.T. 0.006 min
 Lab File: BF142794.D
 Acq: 19 Jun 2025 20:10

Instrument : BNA_F
 ClientSampleId : SSTDICC060

Tgt Ion:165 Resp: 184840

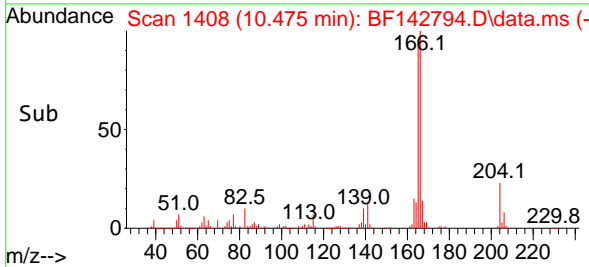
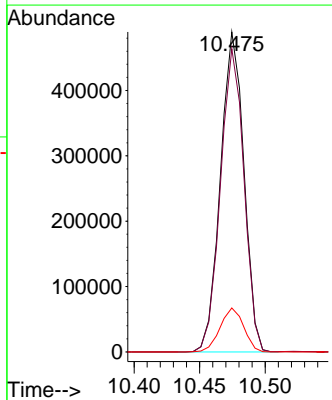
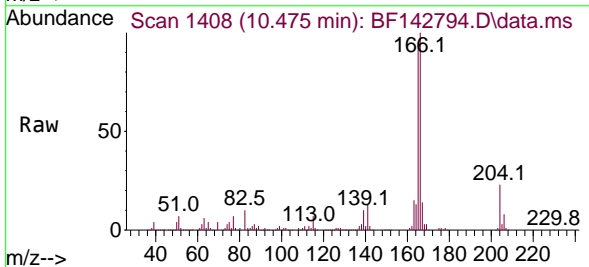
Ion	Ratio	Lower	Upper
165	100		
63	45.6	33.9	50.9
89	64.9	50.6	75.8
182	2.8	2.3	3.5

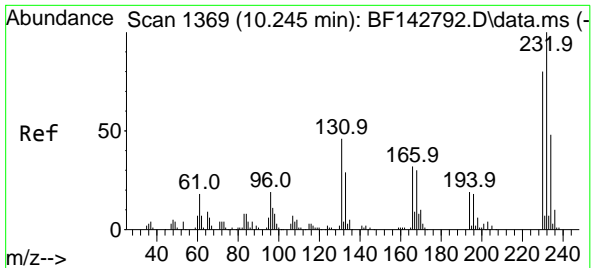


#58
 Fluorene
 Concen: 56.322 ng
 RT: 10.475 min Scan# 1408
 Delta R.T. 0.000 min
 Lab File: BF142794.D
 Acq: 19 Jun 2025 20:10

Tgt Ion:166 Resp: 608786

Ion	Ratio	Lower	Upper
166	100		
165	94.7	75.2	112.8
167	13.7	10.6	15.8



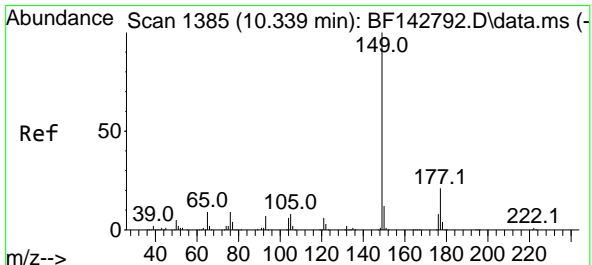
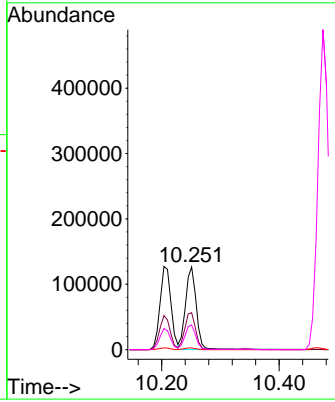
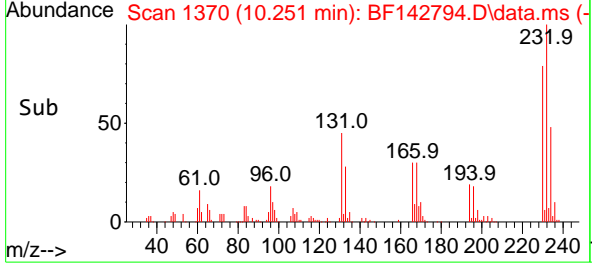
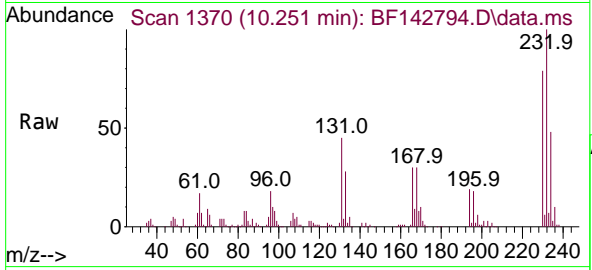


#59
 2,3,4,6-Tetrachlorophenol
 Concen: 58.739 ng
 RT: 10.251 min Scan# 1369
 Delta R.T. 0.006 min
 Lab File: BF142794.D
 Acq: 19 Jun 2025 20:10

Instrument : BNA_F
 ClientSampleId : SSTDICC060

Tgt Ion:232 Resp: 159997

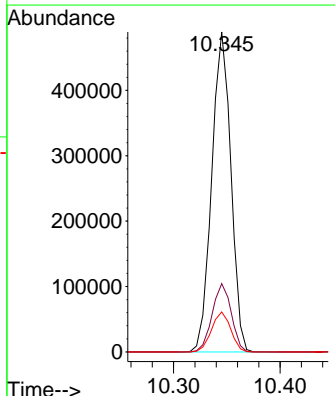
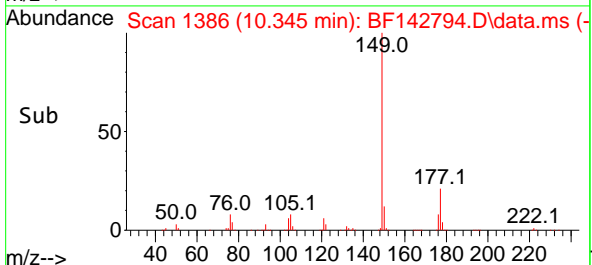
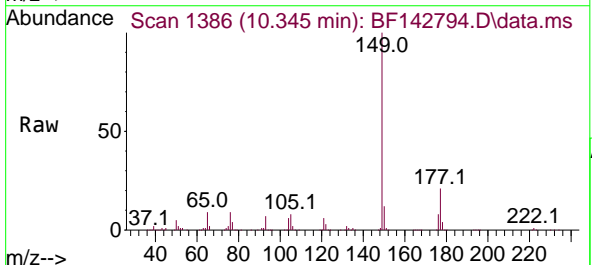
Ion	Ratio	Lower	Upper
232	100		
131	45.6	37.6	56.4
130	2.2	1.7	2.5
166	29.6	25.8	38.6

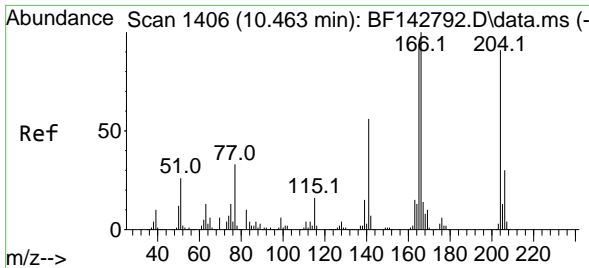


#60
 Diethylphthalate
 Concen: 57.662 ng
 RT: 10.345 min Scan# 1386
 Delta R.T. 0.006 min
 Lab File: BF142794.D
 Acq: 19 Jun 2025 20:10

Tgt Ion:149 Resp: 611873

Ion	Ratio	Lower	Upper
149	100		
177	21.3	17.0	25.6
150	12.5	9.8	14.6

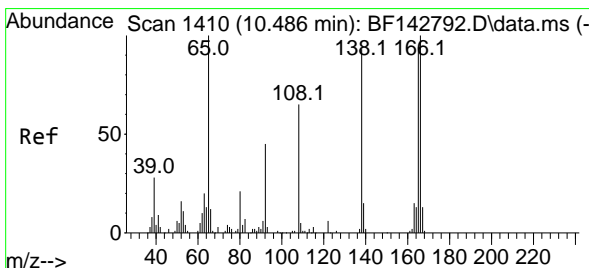
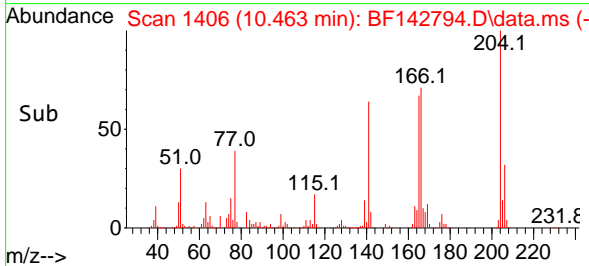
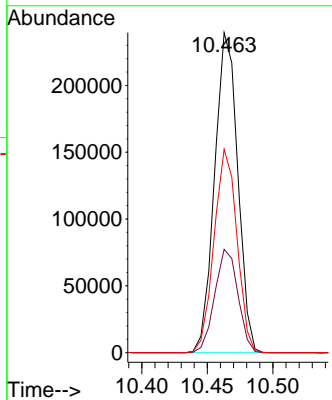
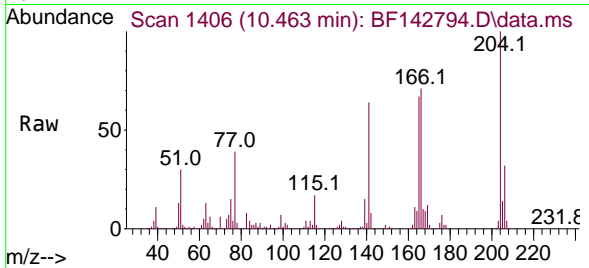




#61
 4-Chlorophenyl-phenylether
 Concen: 56.089 ng
 RT: 10.463 min Scan# 1406
 Delta R.T. 0.000 min
 Lab File: BF142794.D
 Acq: 19 Jun 2025 20:10

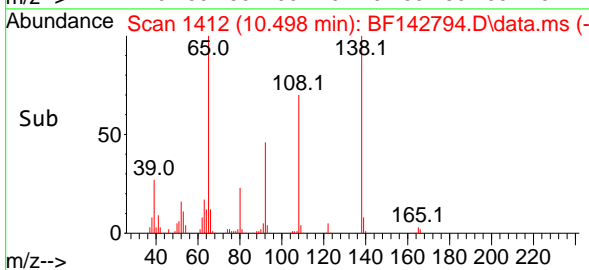
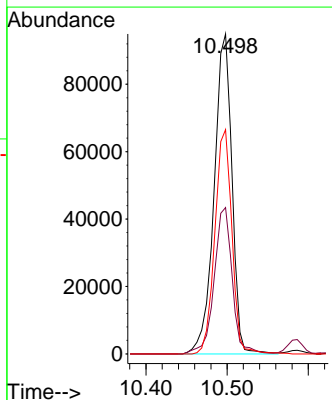
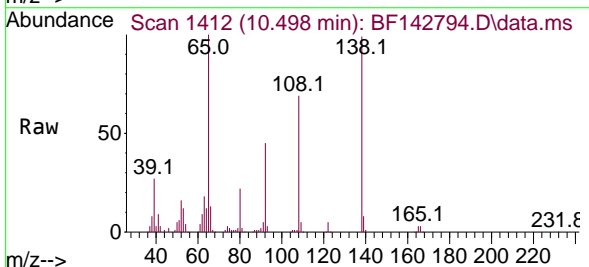
Instrument : BNA_F
 ClientSampleId : SSTDICC060

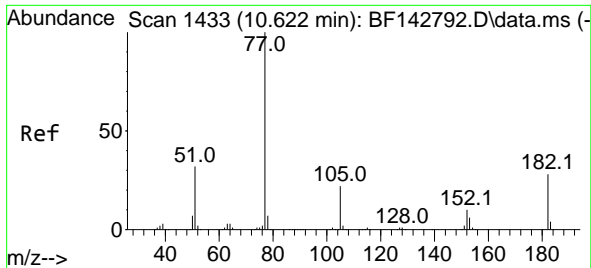
Tgt Ion	Resp	Lower	Upper
204	294444		
206	32.3	26.3	39.5
141	63.5	49.1	73.7



#62
 4-Nitroaniline
 Concen: 64.135 ng
 RT: 10.498 min Scan# 1412
 Delta R.T. 0.012 min
 Lab File: BF142794.D
 Acq: 19 Jun 2025 20:10

Tgt Ion	Resp	Lower	Upper
138	144821		
92	45.7	28.4	68.4
108	70.1	50.2	90.2





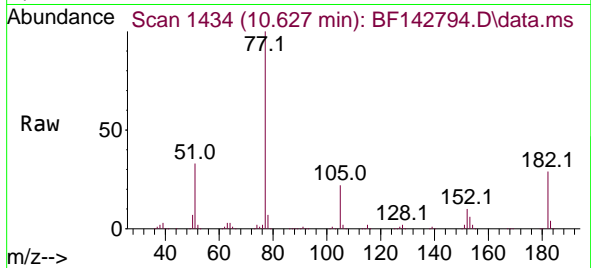
#63
 Azobenzene
 Concen: 58.460 ng
 RT: 10.627 min Scan# 14
 Delta R.T. 0.006 min
 Lab File: BF142794.D
 Acq: 19 Jun 2025 20:10

Instrument :

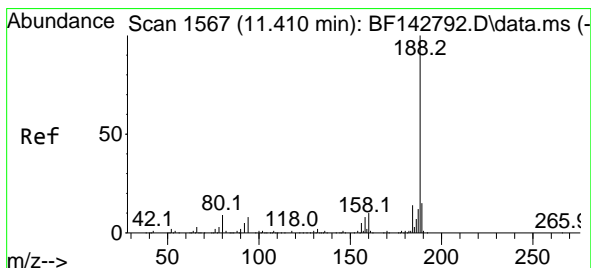
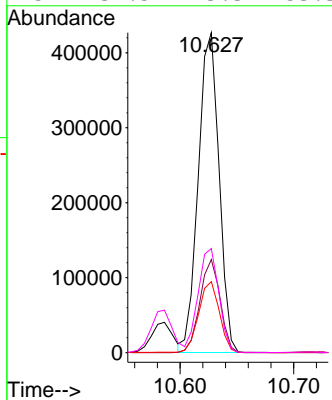
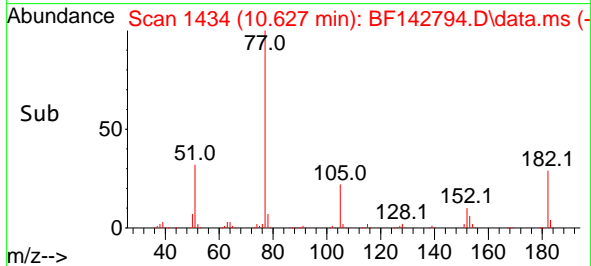
BNA_F

ClientSampleId :

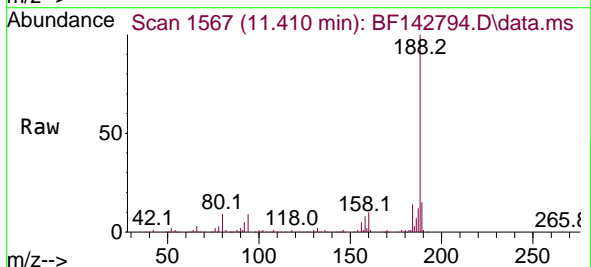
SSTDICC060



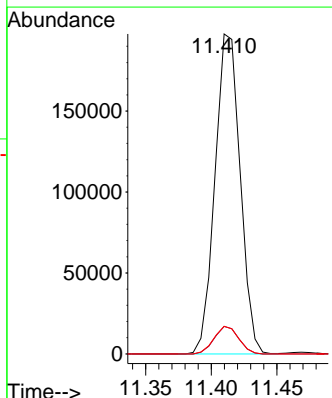
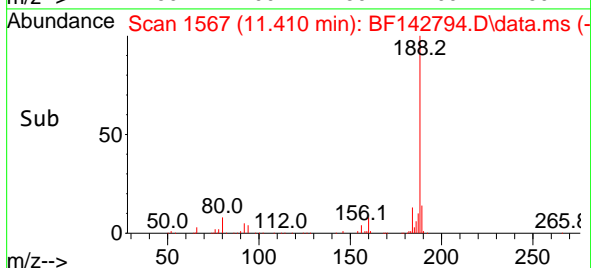
Tgt Ion: 77 Resp: 542118
 Ion Ratio Lower Upper
 77 100
 182 29.1 7.7 47.7
 105 22.2 1.9 41.9
 51 32.5 13.3 53.3

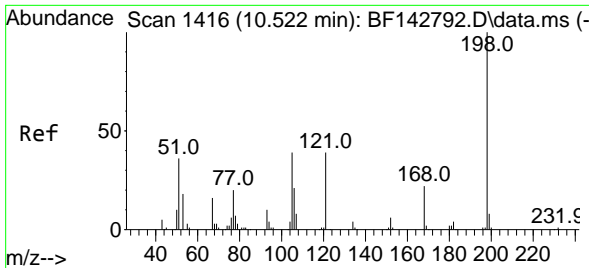


#64
 Phenanthrene-d10
 Concen: 20.000 ng
 RT: 11.410 min Scan# 1567
 Delta R.T. 0.000 min
 Lab File: BF142794.D
 Acq: 19 Jun 2025 20:10



Tgt Ion: 188 Resp: 264336
 Ion Ratio Lower Upper
 188 100
 94 8.6 6.7 10.1
 80 8.6 6.9 10.3

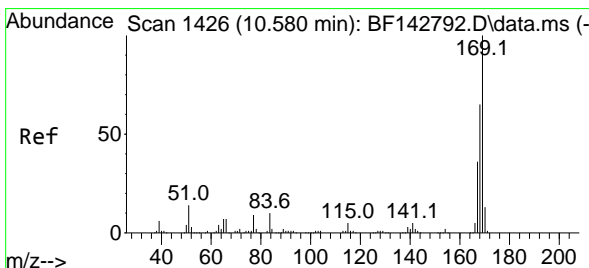
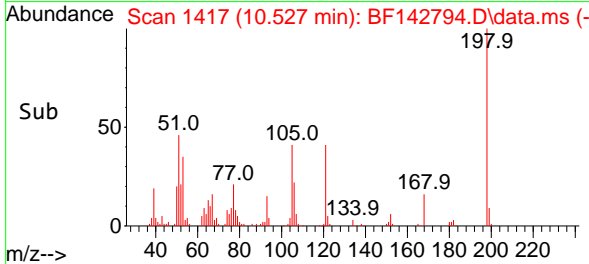
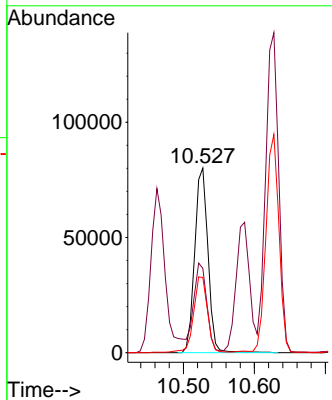
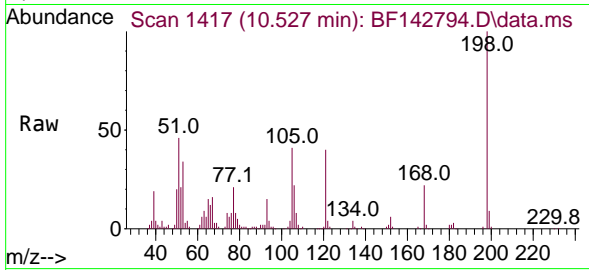




#65
 4,6-Dinitro-2-methylphenol
 Concen: 62.814 ng
 RT: 10.527 min Scan# 1416
 Delta R.T. 0.006 min
 Lab File: BF142794.D
 Acq: 19 Jun 2025 20:10

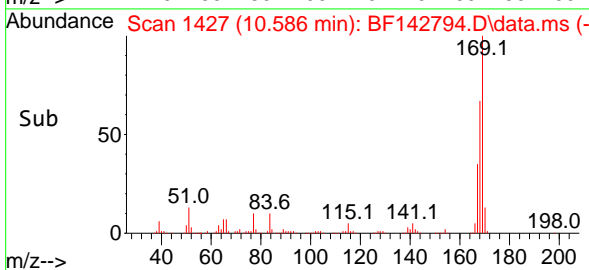
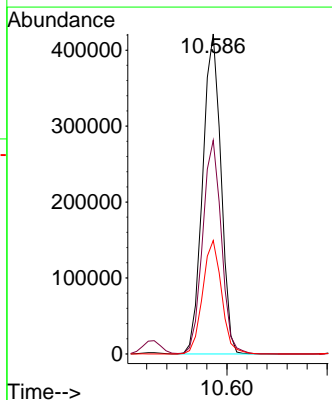
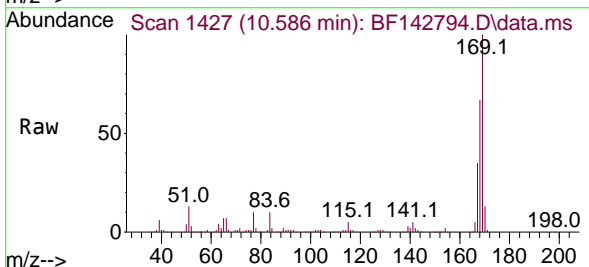
Instrument :
 BNA_F
 ClientSampleId :
 SSTDICC060

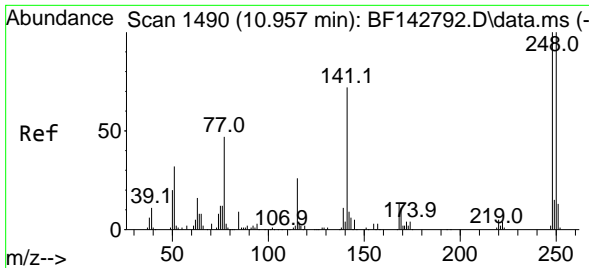
Tgt Ion:198 Resp: 103180
 Ion Ratio Lower Upper
 198 100
 51 45.7 25.4 65.4
 105 40.7 20.4 60.4



#66
 n-Nitrosodiphenylamine
 Concen: 58.540 ng
 RT: 10.586 min Scan# 1427
 Delta R.T. 0.006 min
 Lab File: BF142794.D
 Acq: 19 Jun 2025 20:10

Tgt Ion:169 Resp: 531713
 Ion Ratio Lower Upper
 169 100
 168 66.7 51.9 77.9
 167 35.4 28.5 42.7





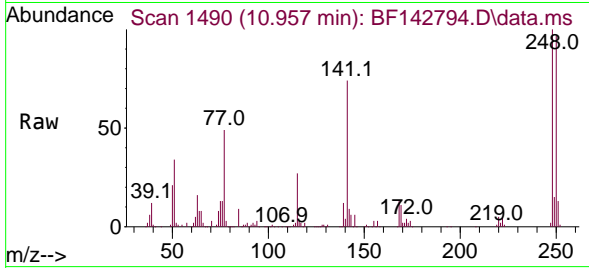
#67
 4-Bromophenyl-phenylether
 Concen: 58.311 ng
 RT: 10.957 min Scan# 14
 Delta R.T. 0.000 min
 Lab File: BF142794.D
 Acq: 19 Jun 2025 20:10

Instrument :

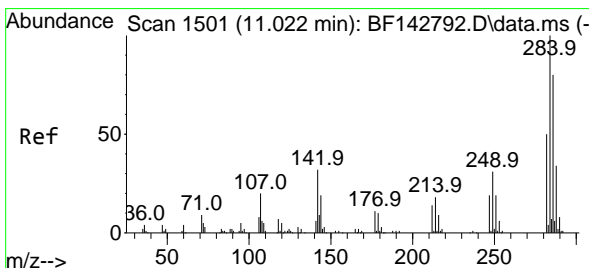
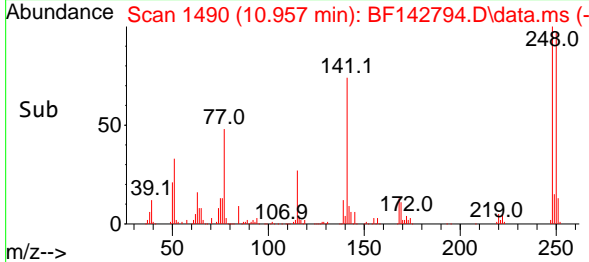
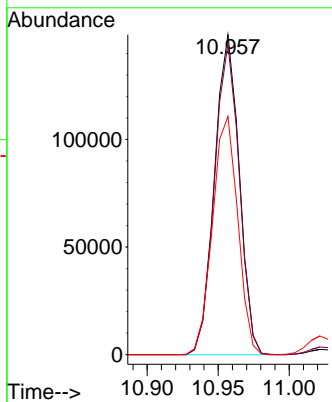
BNA_F

ClientSampleId :

SSTDICC060

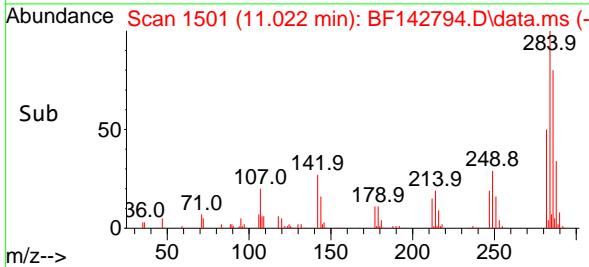
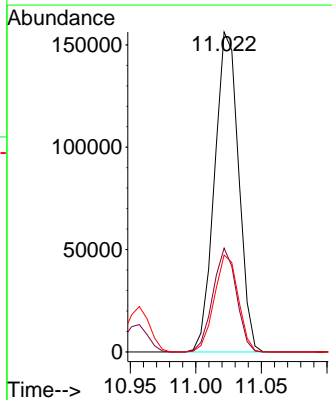
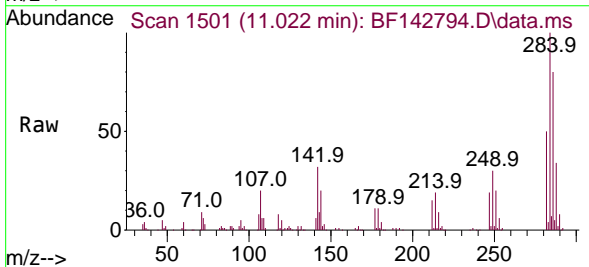


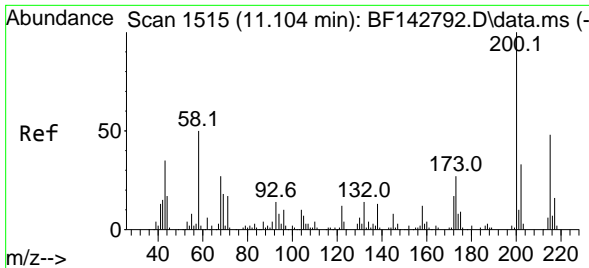
Tgt Ion:248 Resp: 180519
 Ion Ratio Lower Upper
 248 100
 250 97.1 79.8 119.8
 141 74.4 57.8 86.6



#68
 Hexachlorobenzene
 Concen: 58.041 ng
 RT: 11.022 min Scan# 1501
 Delta R.T. 0.000 min
 Lab File: BF142794.D
 Acq: 19 Jun 2025 20:10

Tgt Ion:284 Resp: 199479
 Ion Ratio Lower Upper
 284 100
 142 32.4 25.5 38.3
 249 30.3 24.9 37.3





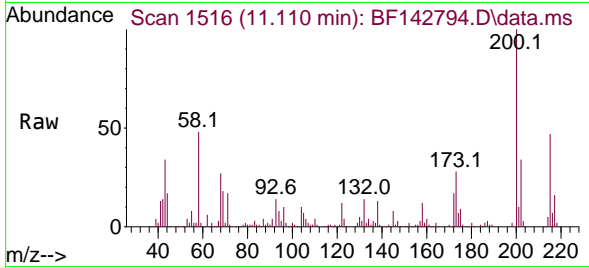
#69
 Atrazine
 Concen: 60.075 ng
 RT: 11.110 min Scan# 11
 Delta R.T. 0.006 min
 Lab File: BF142794.D
 Acq: 19 Jun 2025 20:10

Instrument :

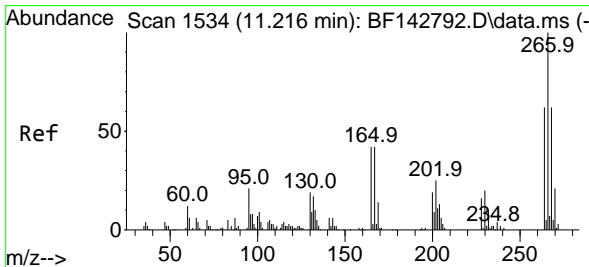
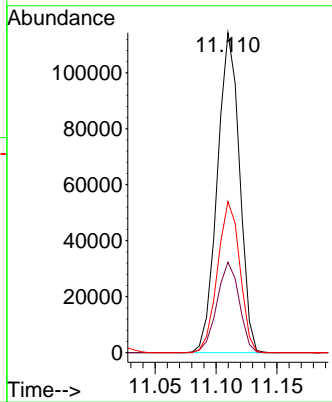
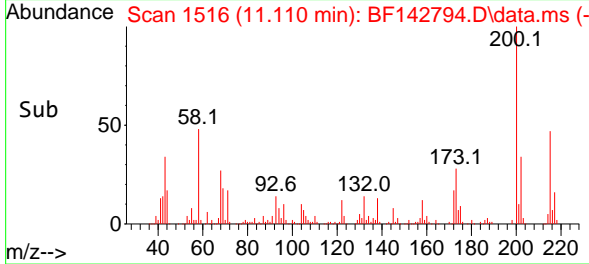
BNA_F

ClientSampleId :

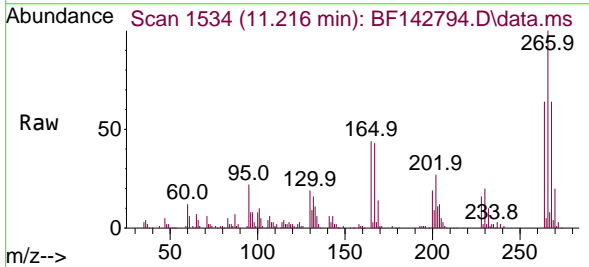
SSTDIC060



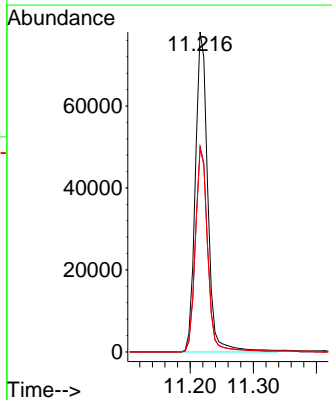
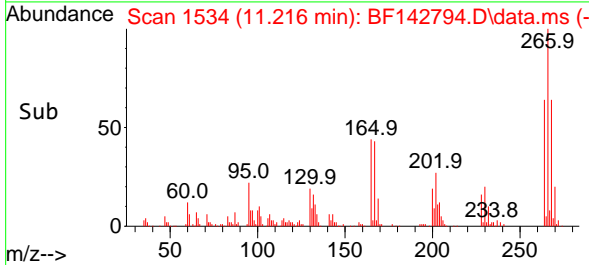
Tgt Ion:200 Resp: 144880
 Ion Ratio Lower Upper
 200 100
 173 28.3 7.4 47.4
 215 47.2 28.4 68.4

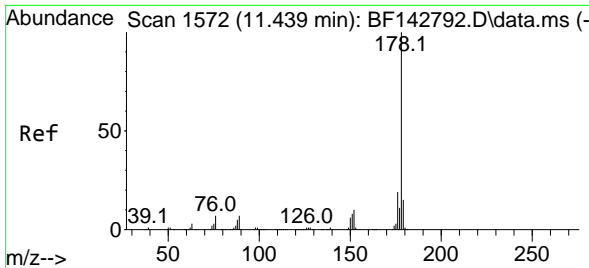


#70
 Pentachlorophenol
 Concen: 60.023 ng
 RT: 11.216 min Scan# 1534
 Delta R.T. 0.000 min
 Lab File: BF142794.D
 Acq: 19 Jun 2025 20:10



Tgt Ion:266 Resp: 107141
 Ion Ratio Lower Upper
 266 100
 268 64.2 49.8 74.8
 264 63.5 49.9 74.9



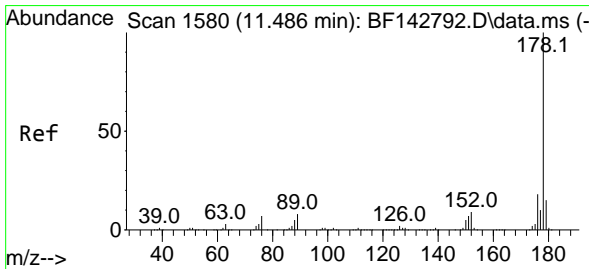
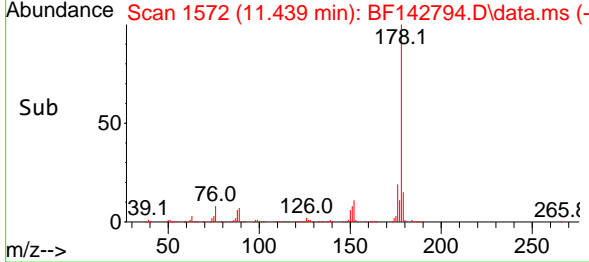
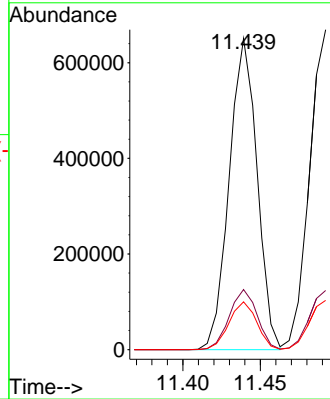
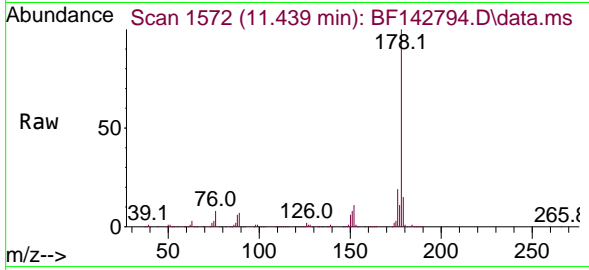


#71
 Phenanthrene
 Concen: 57.611 ng
 RT: 11.439 min Scan# 1572
 Delta R.T. 0.000 min
 Lab File: BF142794.D
 Acq: 19 Jun 2025 20:10

Instrument : BNA_F
 Client Sample Id : SSTDICC060

Tgt Ion:178 Resp: 815330

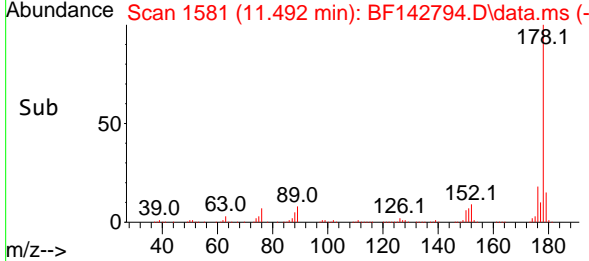
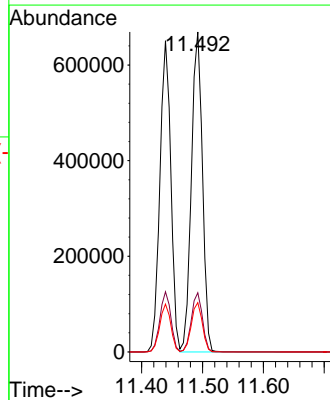
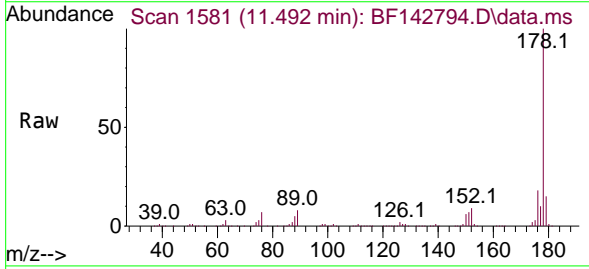
Ion	Ratio	Lower	Upper
178	100		
176	19.3	15.1	22.7
179	15.4	12.0	18.0

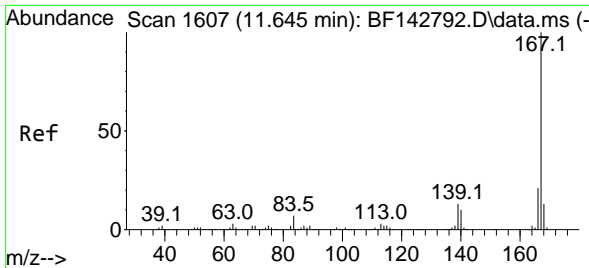


#72
 Anthracene
 Concen: 57.653 ng
 RT: 11.492 min Scan# 1581
 Delta R.T. 0.006 min
 Lab File: BF142794.D
 Acq: 19 Jun 2025 20:10

Tgt Ion:178 Resp: 844549

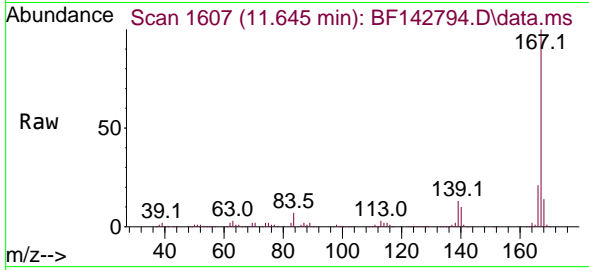
Ion	Ratio	Lower	Upper
178	100		
176	18.5	14.6	21.8
179	15.4	12.4	18.6



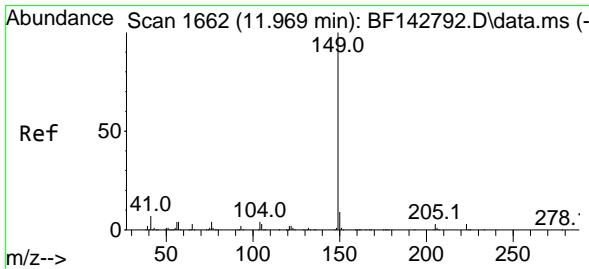
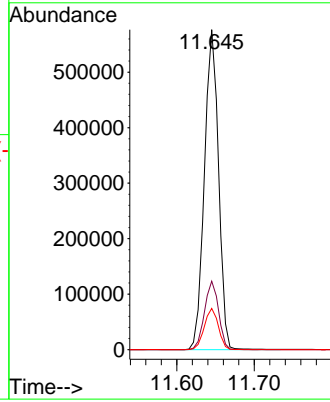
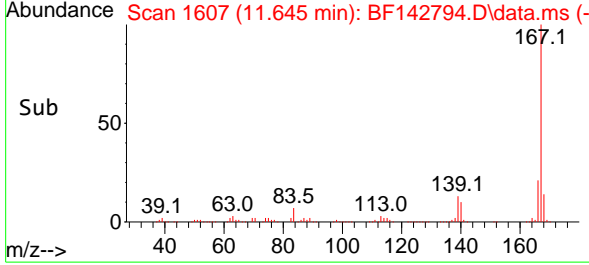


#73
 Carbazole
 Concen: 59.457 ng
 RT: 11.645 min Scan# 1607
 Delta R.T. 0.000 min
 Lab File: BF142794.D
 Acq: 19 Jun 2025 20:10

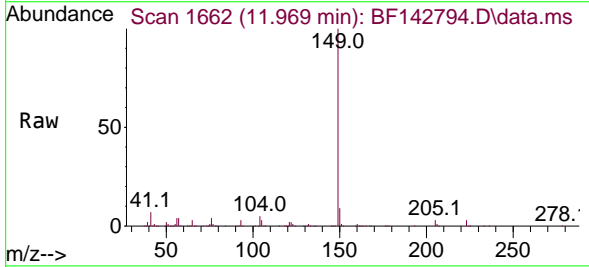
Instrument : BNA_F
 Client Sample Id : SSTDICC060



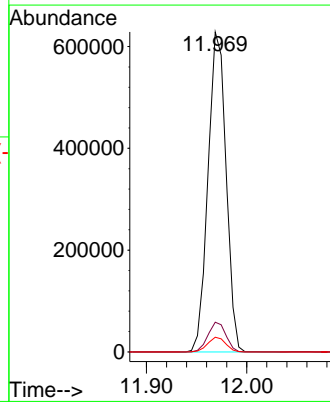
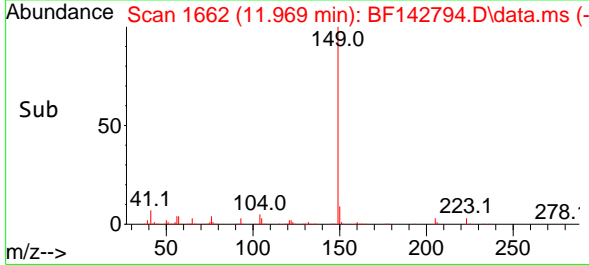
Tgt Ion:167 Resp: 729372
 Ion Ratio Lower Upper
 167 100
 166 21.4 17.0 25.4
 139 12.9 10.2 15.2

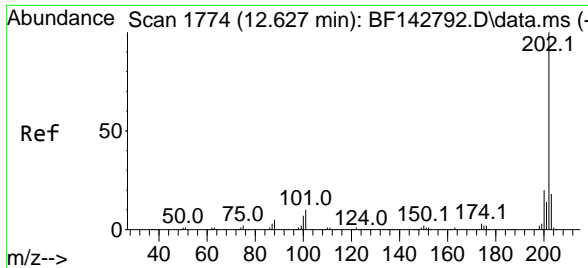


#74
 Di-n-butylphthalate
 Concen: 57.759 ng
 RT: 11.969 min Scan# 1662
 Delta R.T. 0.000 min
 Lab File: BF142794.D
 Acq: 19 Jun 2025 20:10



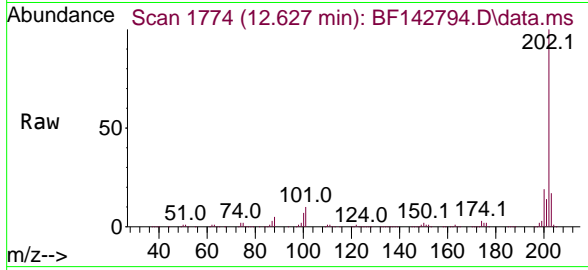
Tgt Ion:149 Resp: 784514
 Ion Ratio Lower Upper
 149 100
 150 9.3 7.4 11.0
 104 4.6 3.5 5.3





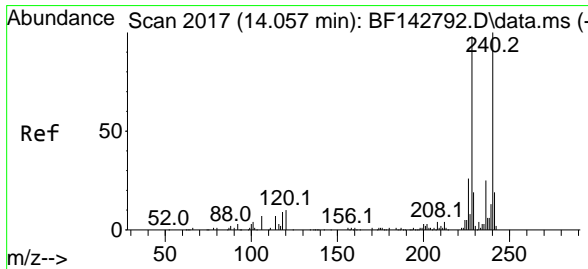
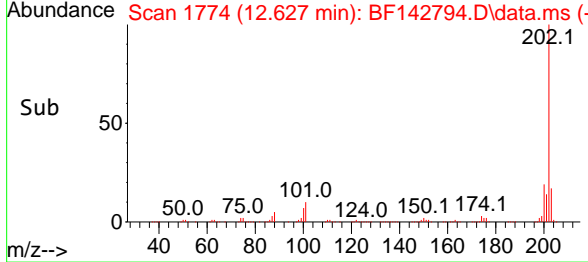
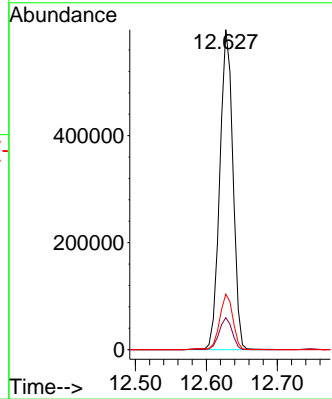
#75
 Fluoranthene
 Concen: 57.300 ng
 RT: 12.627 min Scan# 11
 Delta R.T. 0.000 min
 Lab File: BF142794.D
 Acq: 19 Jun 2025 20:10

Instrument : BNA_F
 ClientSampleId : SSTDICC060



Tgt Ion:202 Resp: 770481

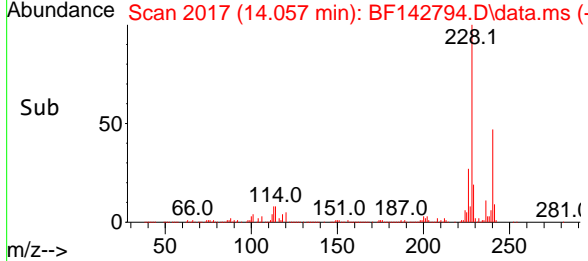
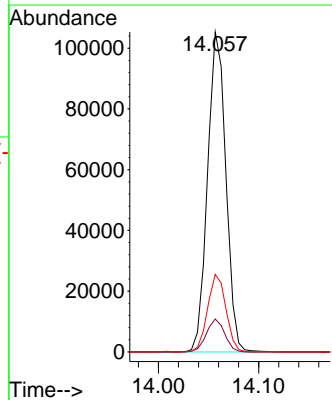
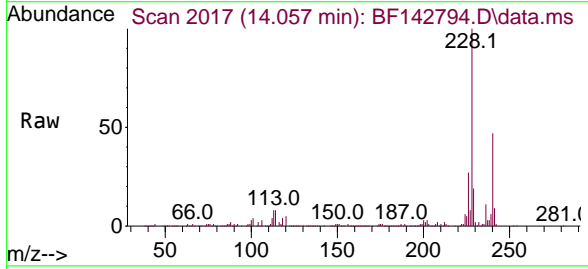
Ion	Ratio	Lower	Upper
202	100		
101	10.0	0.0	29.7
203	17.3	0.0	37.5

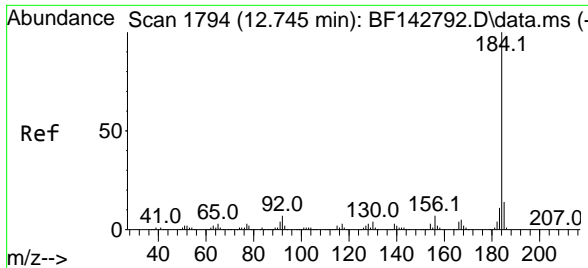


#76
 Chrysene-d12
 Concen: 20.000 ng
 RT: 14.057 min Scan# 2017
 Delta R.T. 0.000 min
 Lab File: BF142794.D
 Acq: 19 Jun 2025 20:10

Tgt Ion:240 Resp: 133196

Ion	Ratio	Lower	Upper
240	100		
120	10.3	8.2	12.2
236	24.2	19.8	29.8



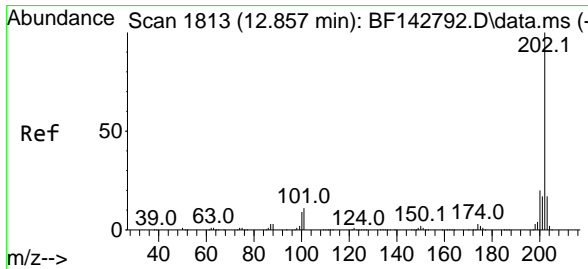
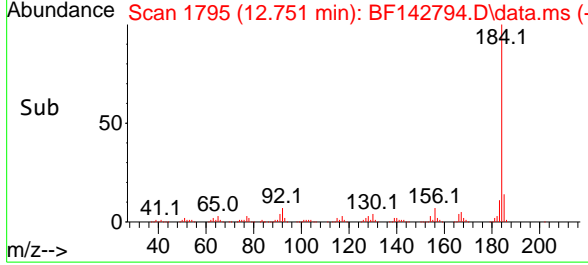
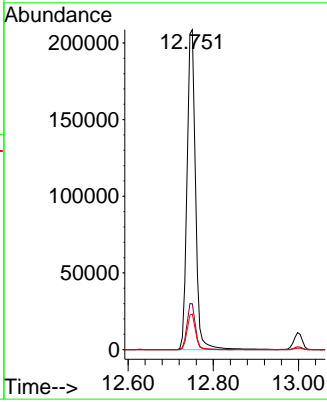
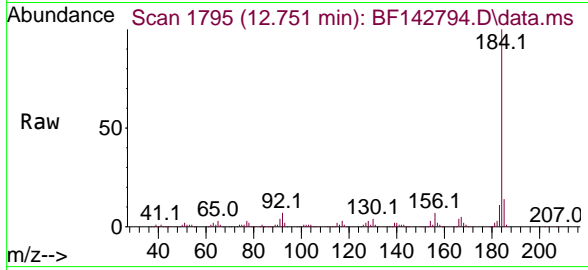


#77
 Benzidine
 Concen: 60.916 ng
 RT: 12.751 min Scan# 11
 Delta R.T. 0.006 min
 Lab File: BF142794.D
 Acq: 19 Jun 2025 20:10

Instrument : BNA_F
 ClientSampleId : SSTDICC060

Tgt Ion:184 Resp: 287238

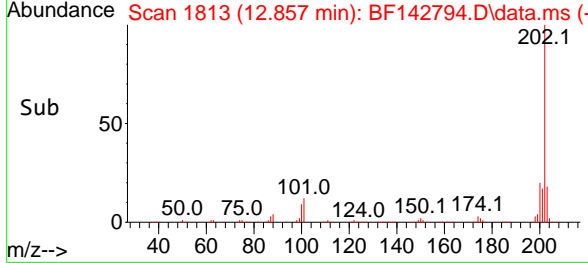
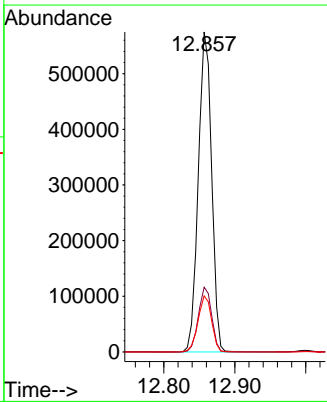
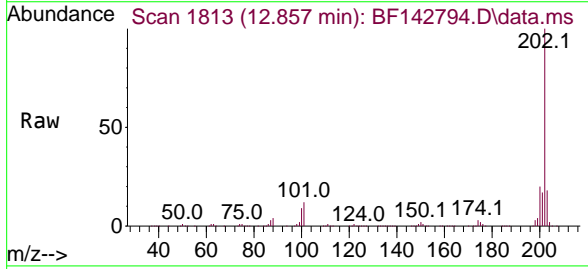
Ion	Ratio	Lower	Upper
184	100		
185	14.3	11.5	17.3
183	11.1	9.0	13.4

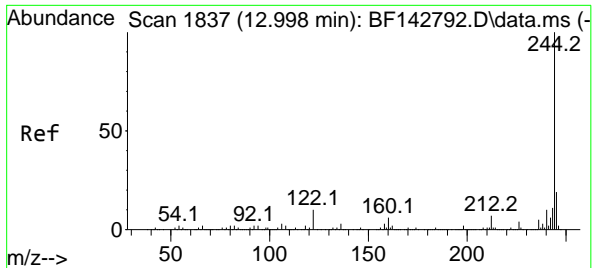


#78
 Pyrene
 Concen: 60.812 ng
 RT: 12.857 min Scan# 1813
 Delta R.T. 0.000 min
 Lab File: BF142794.D
 Acq: 19 Jun 2025 20:10

Tgt Ion:202 Resp: 744567

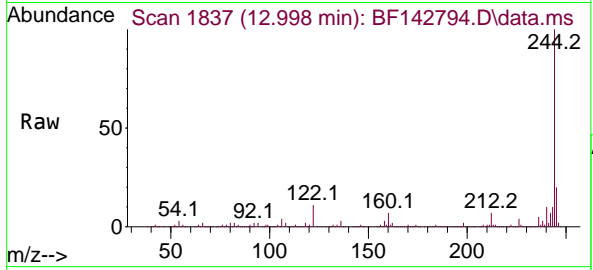
Ion	Ratio	Lower	Upper
202	100		
200	20.2	15.7	23.5
203	17.5	13.8	20.6



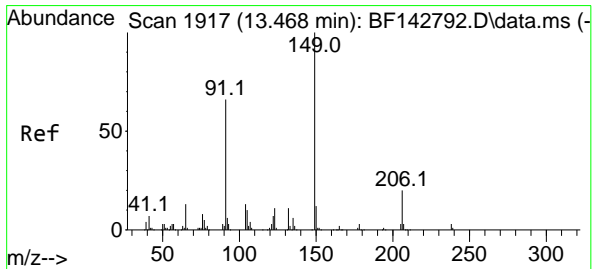
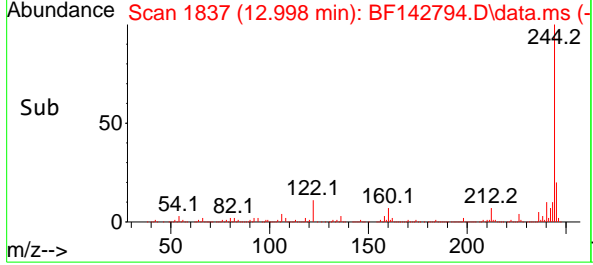
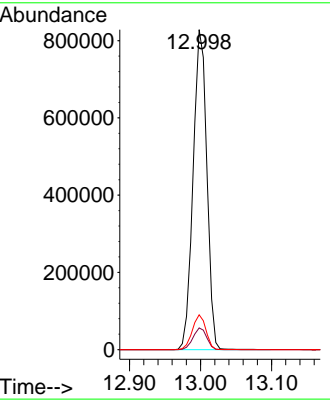


#79
 Terphenyl-d14
 Concen: 115.747 ng
 RT: 12.998 min Scan# 1818
 Delta R.T. 0.000 min
 Lab File: BF142794.D
 Acq: 19 Jun 2025 20:10

Instrument : BNA_F
 ClientSampleId : SSTDICC060

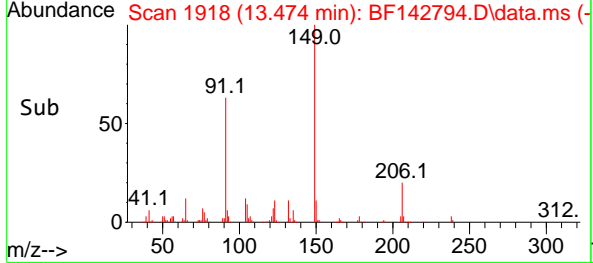
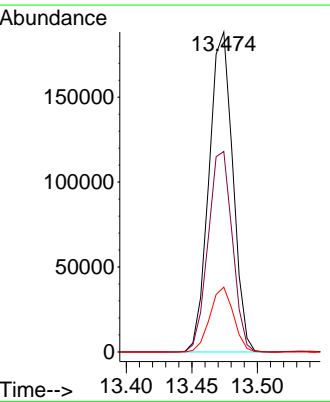
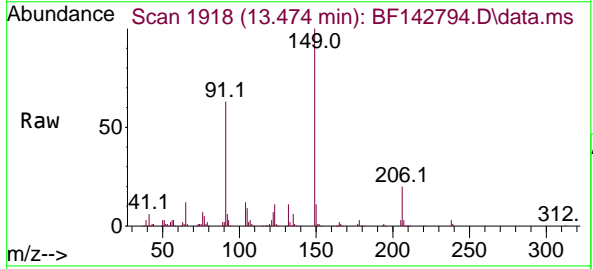


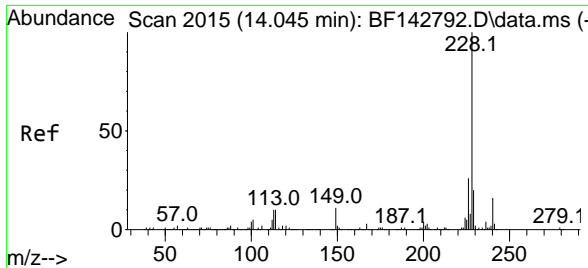
Tgt Ion:244 Resp: 1107704
 Ion Ratio Lower Upper
 244 100
 212 6.8 5.4 8.0
 122 10.9 8.2 12.2



#80
 Butylbenzylphthalate
 Concen: 65.755 ng
 RT: 13.474 min Scan# 1918
 Delta R.T. 0.006 min
 Lab File: BF142794.D
 Acq: 19 Jun 2025 20:10

Tgt Ion:149 Resp: 238584
 Ion Ratio Lower Upper
 149 100
 91 62.6 52.9 79.3
 206 20.2 16.3 24.5



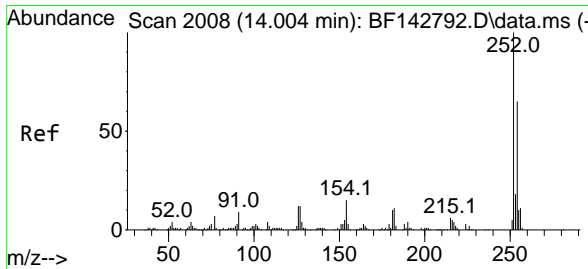
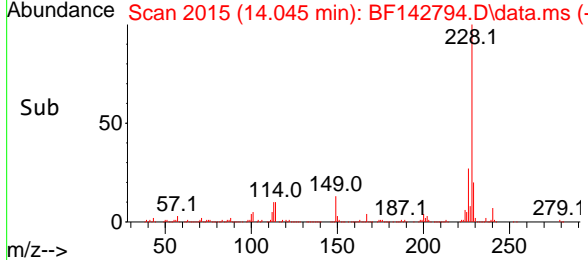
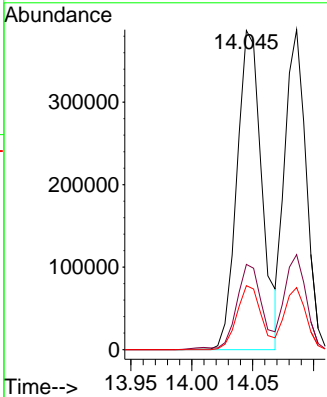
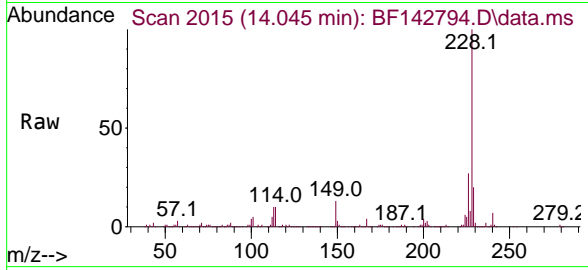


#81
 Benzo(a)anthracene
 Concen: 62.892 ng
 RT: 14.045 min Scan# 2009
 Delta R.T. 0.000 min
 Lab File: BF142794.D
 Acq: 19 Jun 2025 20:10

Instrument : BNA_F
 ClientSampleId : SSTDICC060

Tgt Ion:228 Resp: 550008

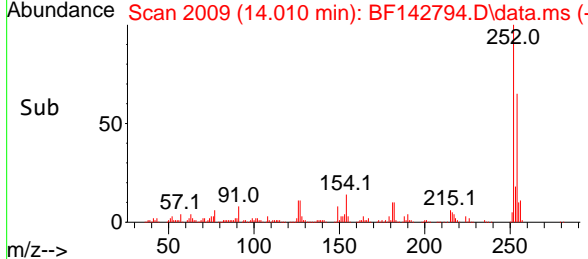
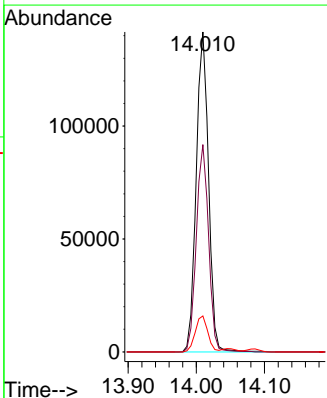
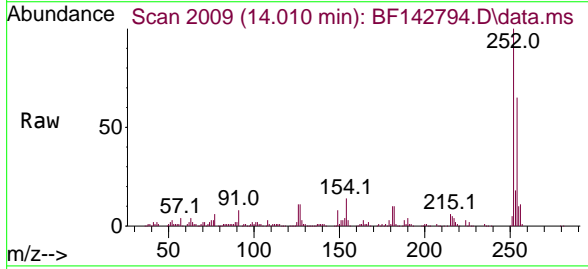
Ion	Ratio	Lower	Upper
228	100		
226	26.7	21.2	31.8
229	20.0	15.6	23.4

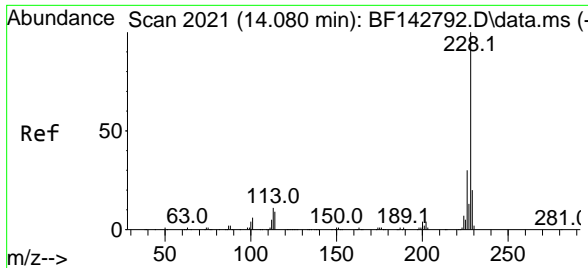


#82
 3,3'-Dichlorobenzidine
 Concen: 62.787 ng
 RT: 14.010 min Scan# 2009
 Delta R.T. 0.006 min
 Lab File: BF142794.D
 Acq: 19 Jun 2025 20:10

Tgt Ion:252 Resp: 177798

Ion	Ratio	Lower	Upper
252	100		
254	64.8	51.7	77.5
126	11.2	9.4	14.2

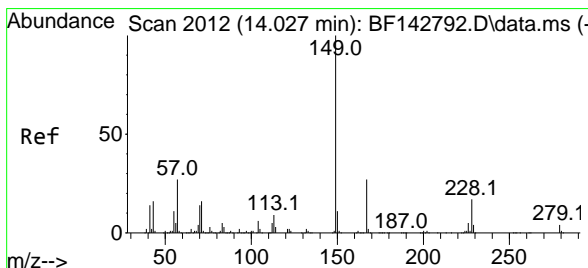
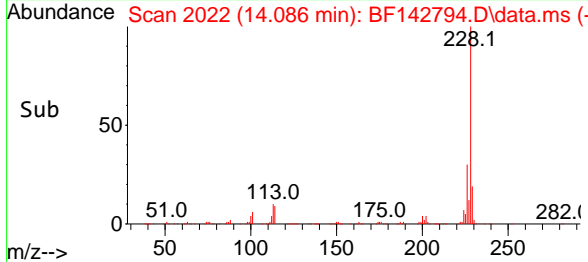
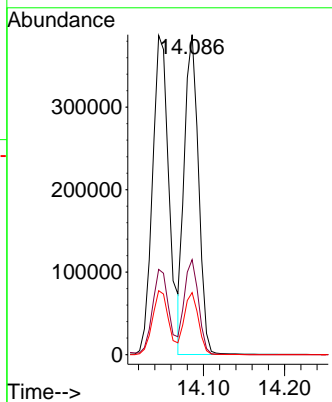
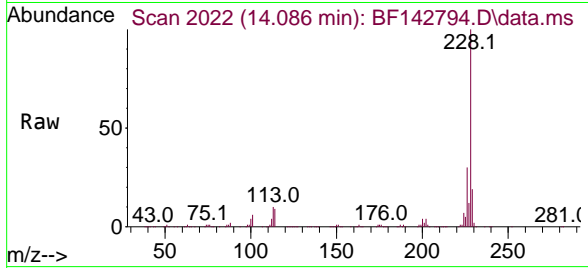




#83
 Chrysene
 Concen: 57.743 ng
 RT: 14.086 min Scan# 2021
 Delta R.T. 0.006 min
 Lab File: BF142794.D
 Acq: 19 Jun 2025 20:10

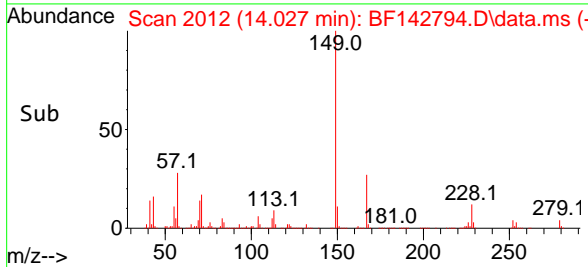
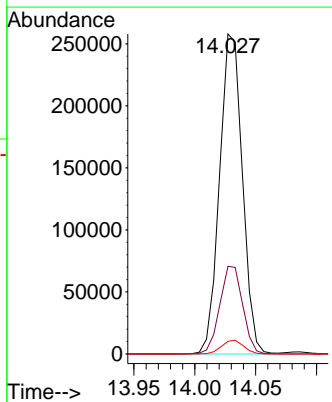
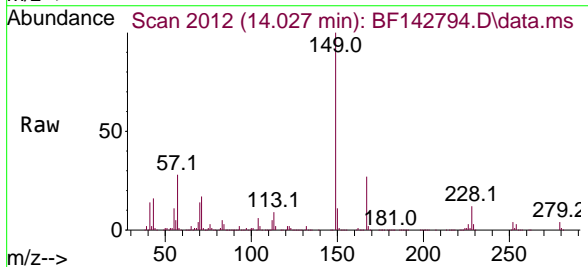
Instrument : BNA_F
 ClientSampleId : SSTDICC060

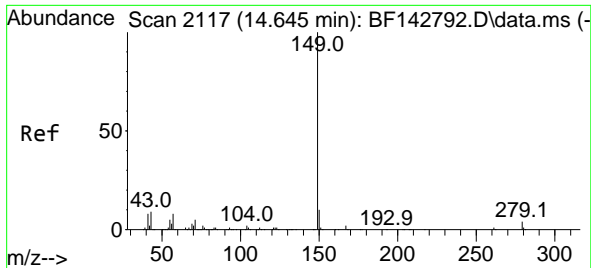
Tgt Ion:228 Resp: 470124
 Ion Ratio Lower Upper
 228 100
 226 29.7 23.7 35.5
 229 19.4 15.7 23.5



#84
 Bis(2-ethylhexyl)phthalate
 Concen: 62.326 ng
 RT: 14.027 min Scan# 2012
 Delta R.T. 0.000 min
 Lab File: BF142794.D
 Acq: 19 Jun 2025 20:10

Tgt Ion:149 Resp: 336951
 Ion Ratio Lower Upper
 149 100
 167 27.4 21.4 32.0
 279 3.9 3.0 4.6





#85
 Di-n-octyl phthalate
 Concen: 60.871 ng
 RT: 14.645 min Scan# 2117
 Delta R.T. 0.000 min
 Lab File: BF142794.D
 Acq: 19 Jun 2025 20:10

Instrument :

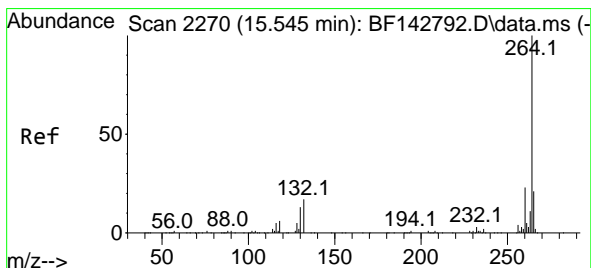
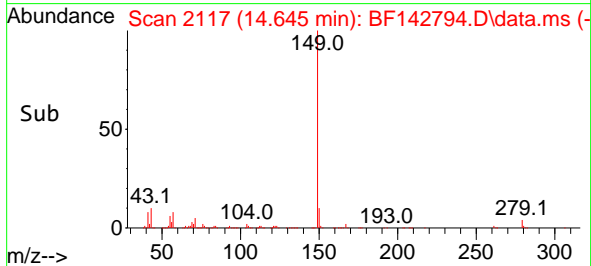
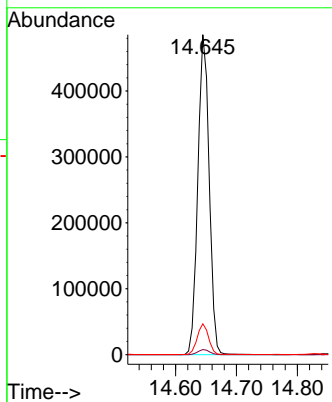
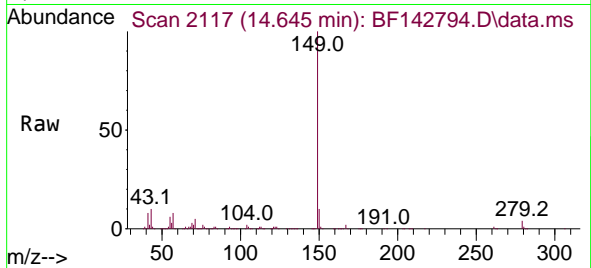
BNA_F

ClientSampleId :

SSTDICC060

Tgt Ion:149 Resp: 627090

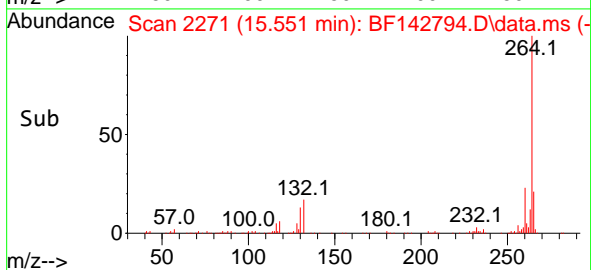
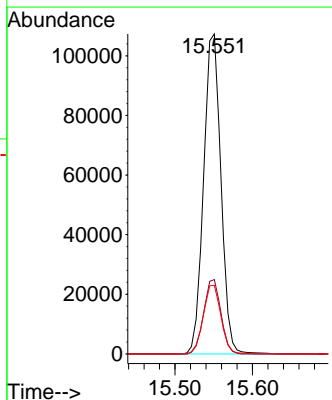
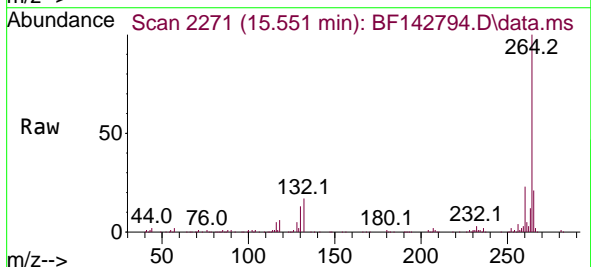
Ion	Ratio	Lower	Upper
149	100		
167	1.6	1.3	1.9
43	9.6	7.6	11.4

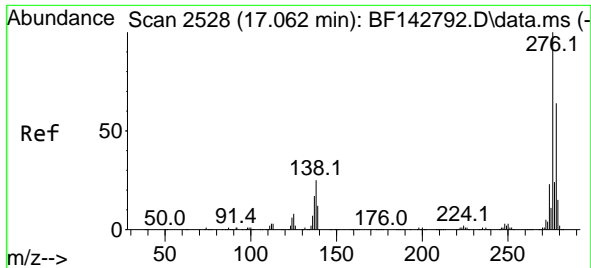


#86
 Perylene-d12
 Concen: 20.000 ng
 RT: 15.551 min Scan# 2271
 Delta R.T. 0.006 min
 Lab File: BF142794.D
 Acq: 19 Jun 2025 20:10

Tgt Ion:264 Resp: 166457

Ion	Ratio	Lower	Upper
264	100		
260	23.3	18.1	27.1
265	21.4	16.6	25.0





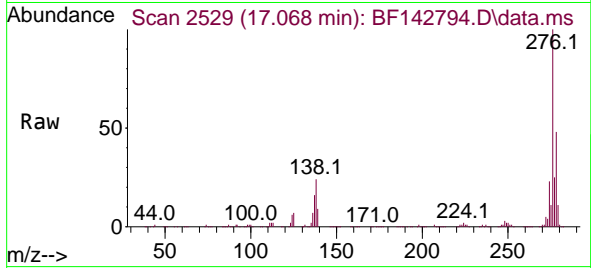
#87
 Indeno(1,2,3-cd)pyrene
 Concen: 62.432 ng
 RT: 17.068 min Scan# 2196
 Delta R.T. 0.006 min
 Lab File: BF142794.D
 Acq: 19 Jun 2025 20:10

Instrument :

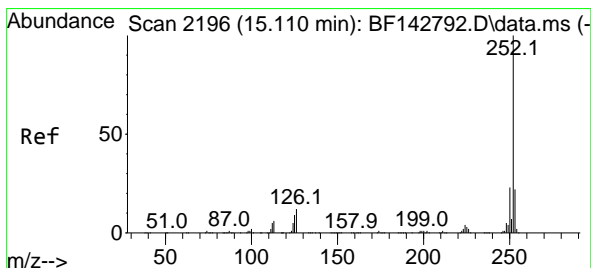
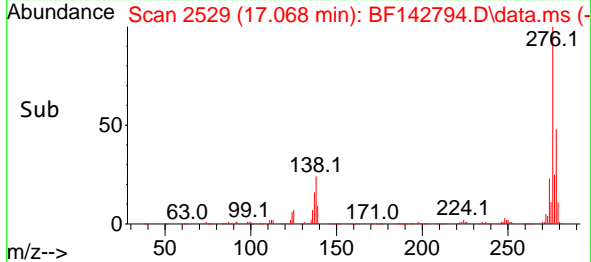
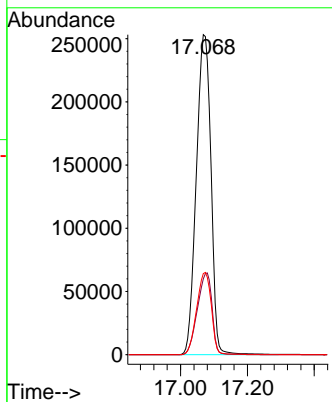
BNA_F

ClientSampleId :

SSTDIC060

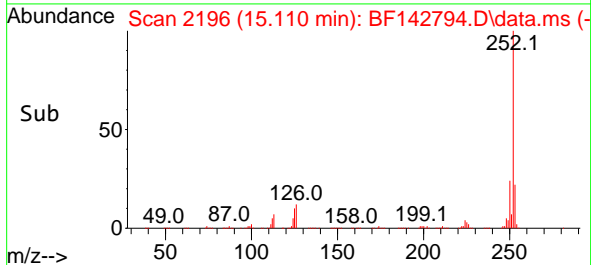
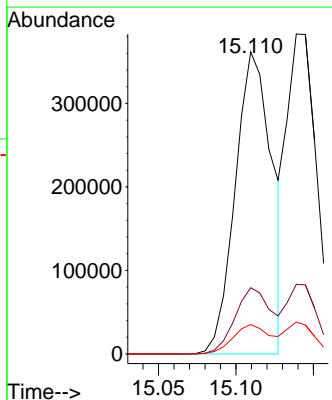
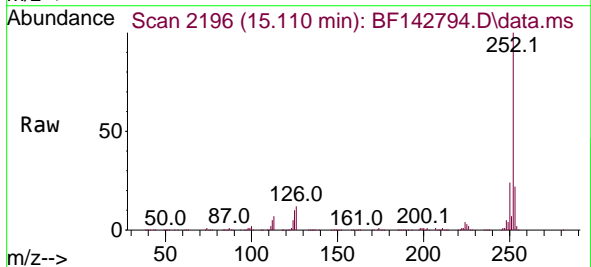


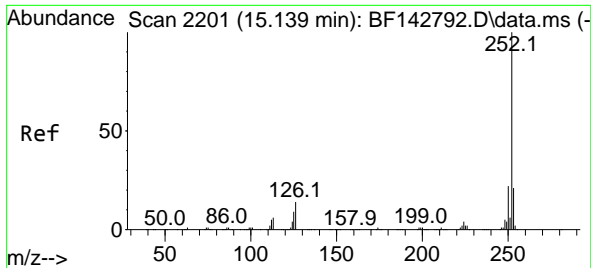
Tgt Ion:276 Resp: 768324
 Ion Ratio Lower Upper
 276 100
 138 25.4 20.2 30.4
 277 25.6 19.8 29.6



#88
 Benzo(b)fluoranthene
 Concen: 61.638 ng
 RT: 15.110 min Scan# 2196
 Delta R.T. 0.000 min
 Lab File: BF142794.D
 Acq: 19 Jun 2025 20:10

Tgt Ion:252 Resp: 597533
 Ion Ratio Lower Upper
 252 100
 253 21.9 17.5 26.3
 125 9.7 7.4 11.0

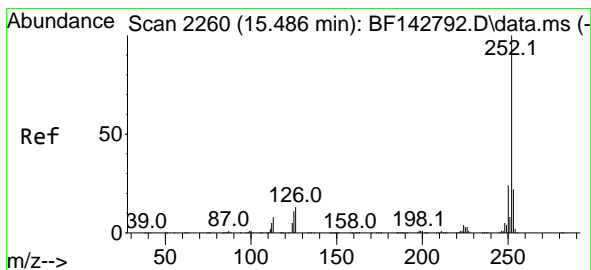
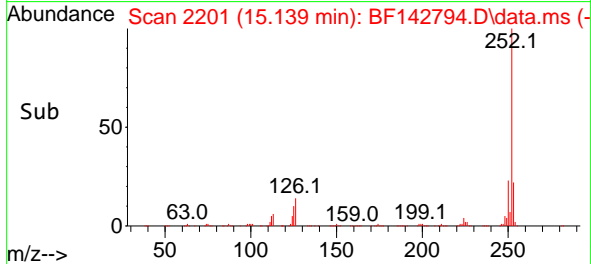
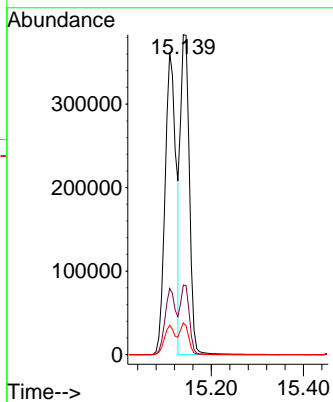
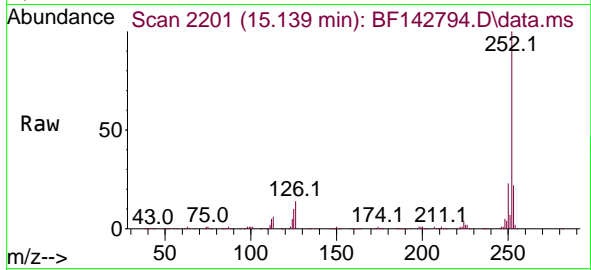




#89
 Benzo(k)fluoranthene
 Concen: 54.792 ng
 RT: 15.139 min Scan# 21
 Delta R.T. 0.000 min
 Lab File: BF142794.D
 Acq: 19 Jun 2025 20:10

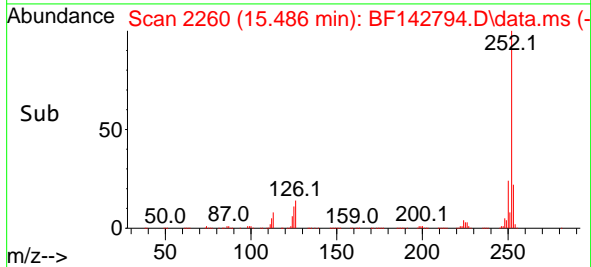
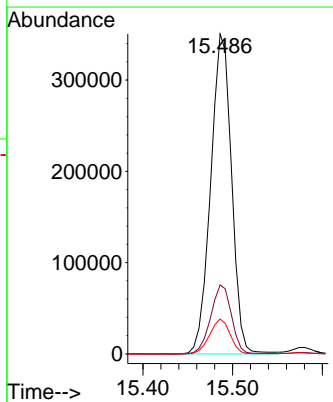
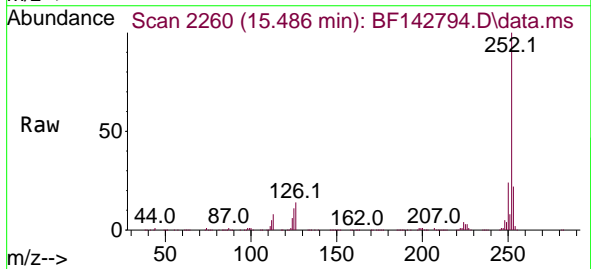
Instrument :
 BNA_F
 ClientSampleId :
 SSTDICC060

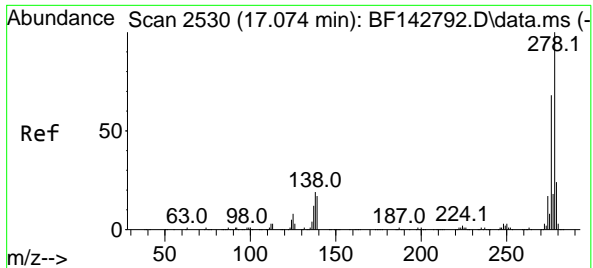
Tgt Ion:252 Resp: 518514
 Ion Ratio Lower Upper
 252 100
 253 21.7 17.2 25.8
 125 9.9 7.4 11.2



#90
 Benzo(a)pyrene
 Concen: 61.408 ng
 RT: 15.486 min Scan# 2260
 Delta R.T. 0.000 min
 Lab File: BF142794.D
 Acq: 19 Jun 2025 20:10

Tgt Ion:252 Resp: 569694
 Ion Ratio Lower Upper
 252 100
 253 21.6 17.5 26.3
 125 10.9 8.6 12.8



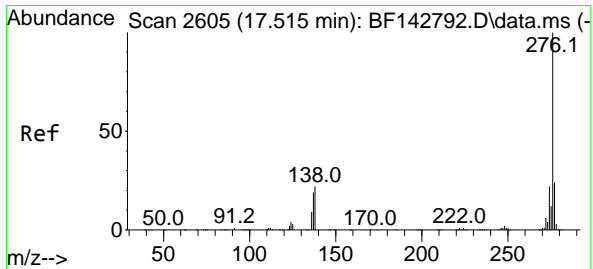
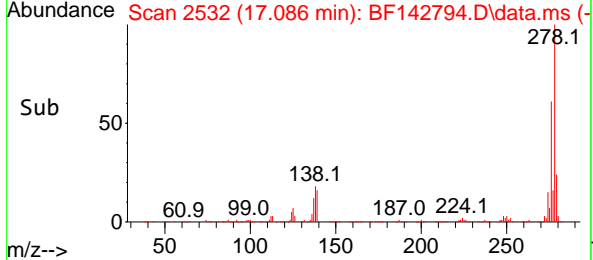
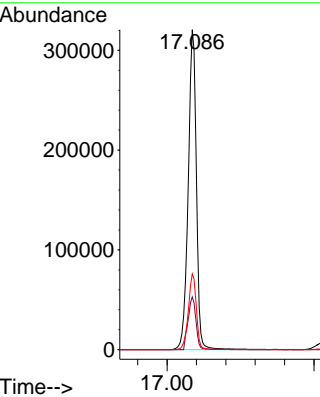
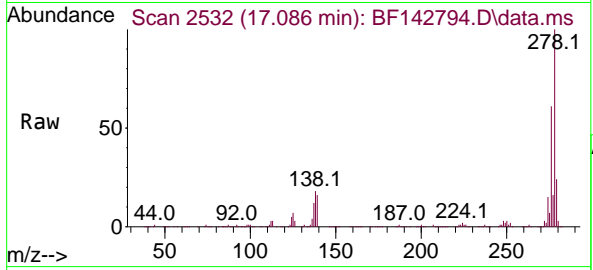


#91
 Dibenzo(a,h)anthracene
 Concen: 61.889 ng
 RT: 17.086 min Scan# 21
 Delta R.T. 0.012 min
 Lab File: BF142794.D
 Acq: 19 Jun 2025 20:10

Instrument : BNA_F
 ClientSampleId : SSTDICC060

Tgt Ion: 278 Resp: 619236

Ion	Ratio	Lower	Upper
278	100		
139	16.5	13.5	20.3
279	23.7	18.8	28.2



#92
 Benzo(g,h,i)perylene
 Concen: 62.795 ng
 RT: 17.527 min Scan# 2607
 Delta R.T. 0.012 min
 Lab File: BF142794.D
 Acq: 19 Jun 2025 20:10

Tgt Ion: 276 Resp: 626847

Ion	Ratio	Lower	Upper
276	100		
277	23.2	18.8	28.2
138	22.0	17.6	26.4

