

Data Path : Z:\svoasrv\HPCHEM1\BNA_F\Data\BF062121\
 Data File : BF124390.D
 Acq On : 21 Jun 2021 13:15
 Operator : JU/CG
 Sample : M2773-08MS
 Misc :
 ALS Vial : 5 Sample Multiplier: 1

Instrument :
 BNA_F
 ClientSampleId :
 SB-8MS

Quant Time: Jun 21 13:39:14 2021
 Quant Method : Z:\SVOASRV\HPCHEM1\BNA_F\METHODS\8270-BF060321.M
 Quant Title : ASP BNA STANDARDS FOR 5 POINT CALIBRATION
 QLast Update : Tue Jun 15 20:09:26 2021
 Response via : Initial Calibration

Compound	R.T.	QIon	Response	Conc	Units	Dev(Min)	
Internal Standards							
1) 1,4-Dichlorobenzene-d4	6.787	152	36426	20.000	ng	#	0.00
21) Naphthalene-d8	8.069	136	123302	20.000	ng	#	0.00
39) Acenaphthene-d10	9.828	164	75318	20.000	ng		0.00
64) Phenanthrene-d10	11.316	188	138995	20.000	ng	#	0.00
76) Chrysene-d12	13.963	240	83753	20.000	ng		0.00
86) Perylene-d12	15.421	264	80953	20.000	ng		0.00
System Monitoring Compounds							
5) 2-Fluorophenol	5.416	112	106094	43.844	ng		0.00
7) Phenol-d6	6.434	99	166666	51.241	ng		-0.01
23) Nitrobenzene-d5	7.351	82	141519	45.521	ng		0.00
42) 2,4,6-Tribromophenol	10.616	330	28388	26.604	ng		0.00
45) 2-Fluorobiphenyl	9.145	172	274762	45.906	ng		0.00
79) Terphenyl-d14	12.898	244	309886	50.799	ng		0.00
Target Compounds							
2) 1,4-Dioxane	2.522	88	35339	33.371	ng		Qvalue 87
3) Pyridine	3.257	79	80434	29.658	ng	#	80
4) n-Nitrosodimethylamine	3.222	42	52811	32.771	ng		95
6) Aniline	6.522	93	101836	27.412	ng	#	54
8) 2-Chlorophenol	6.575	128	106164	39.429	ng		93
9) Benzaldehyde	6.340	77	71494	49.451	ng		97
10) Phenol	6.445	94	129818	36.932	ng	#	61
11) bis(2-Chloroethyl)ether	6.522	93	101836	39.741	ng		86
12) 1,3-Dichlorobenzene	6.728	146	120720	38.352	ng		94
13) 1,4-Dichlorobenzene	6.804	146	125666	39.802	ng		94
14) 1,2-Dichlorobenzene	6.957	146	119134	39.444	ng		92
15) Benzyl Alcohol	6.940	79	144997	49.451	ng		93
16) 2,2'-oxybis(1-Chloropr...	7.063	45	128145	32.056	ng	#	30
17) 2-Methylphenol	7.057	107	86450	39.497	ng	#	82
18) Hexachloroethane	7.293	117	46496	37.395	ng		93
19) n-Nitroso-di-n-propyla...	7.204	70	84245	36.691	ng	#	82
20) 3+4-Methylphenols	7.210	107	111037	38.286	ng	#	74
22) Acetophenone	7.198	105	155653	44.282	ng		93
24) Nitrobenzene	7.375	77	120533	38.647	ng		97
25) Isophorone	7.610	82	213066	38.032	ng		99
26) 2-Nitrophenol	7.692	139	63251	45.401	ng	#	88
27) 2,4-Dimethylphenol	7.734	122	95469	48.596	ng		94
28) bis(2-Chloroethoxy)met...	7.822	93	125902	45.332	ng		94
29) 2,4-Dichlorophenol	7.940	162	98170	43.186	ng		91
30) 1,2,4-Trichlorobenzene	8.010	180	112209	44.047	ng		95
31) Naphthalene	8.092	128	308341	41.827	ng		97
32) Benzoic acid	7.875	122	36040	29.897	ng		89
33) 4-Chloroaniline	8.145	127	32963	12.022	ng		97
34) Hexachlorobutadiene	8.204	225	71366	39.661	ng		98
35) Caprolactam	8.528	113	20602	32.990	ng	#	56
36) 4-Chloro-3-methylphenol	8.645	107	104478	42.009	ng	#	84
37) 2-Methylnaphthalene	8.787	142	217692	42.110	ng		93
38) 1-Methylnaphthalene	8.886	142	205130	42.462	ng		94
40) 1,2,4,5-Tetrachloroben...	8.951	216	115709	43.360	ng		97
41) Hexachlorocyclopentadiene	8.939	237	72460	52.946	ng		96
43) 2,4,6-Trichlorophenol	9.069	196	70931	40.755	ng		97

Data Path : Z:\svoasrv\HPCHEM1\BNA_F\Data\BF062121\
 Data File : BF124390.D
 Acq On : 21 Jun 2021 13:15
 Operator : JU/CG
 Sample : M2773-08MS
 Misc :
 ALS Vial : 5 Sample Multiplier: 1

Instrument :
 BNA_F
 ClientSampled :
 SB-8MS

Quant Time: Jun 21 13:39:14 2021
 Quant Method : Z:\SVOASRV\HPCHEM1\BNA_F\METHODS\8270-BF060321.M
 Quant Title : ASP BNA STANDARDS FOR 5 POINT CALIBRATION
 QLast Update : Tue Jun 15 20:09:26 2021
 Response via : Initial Calibration

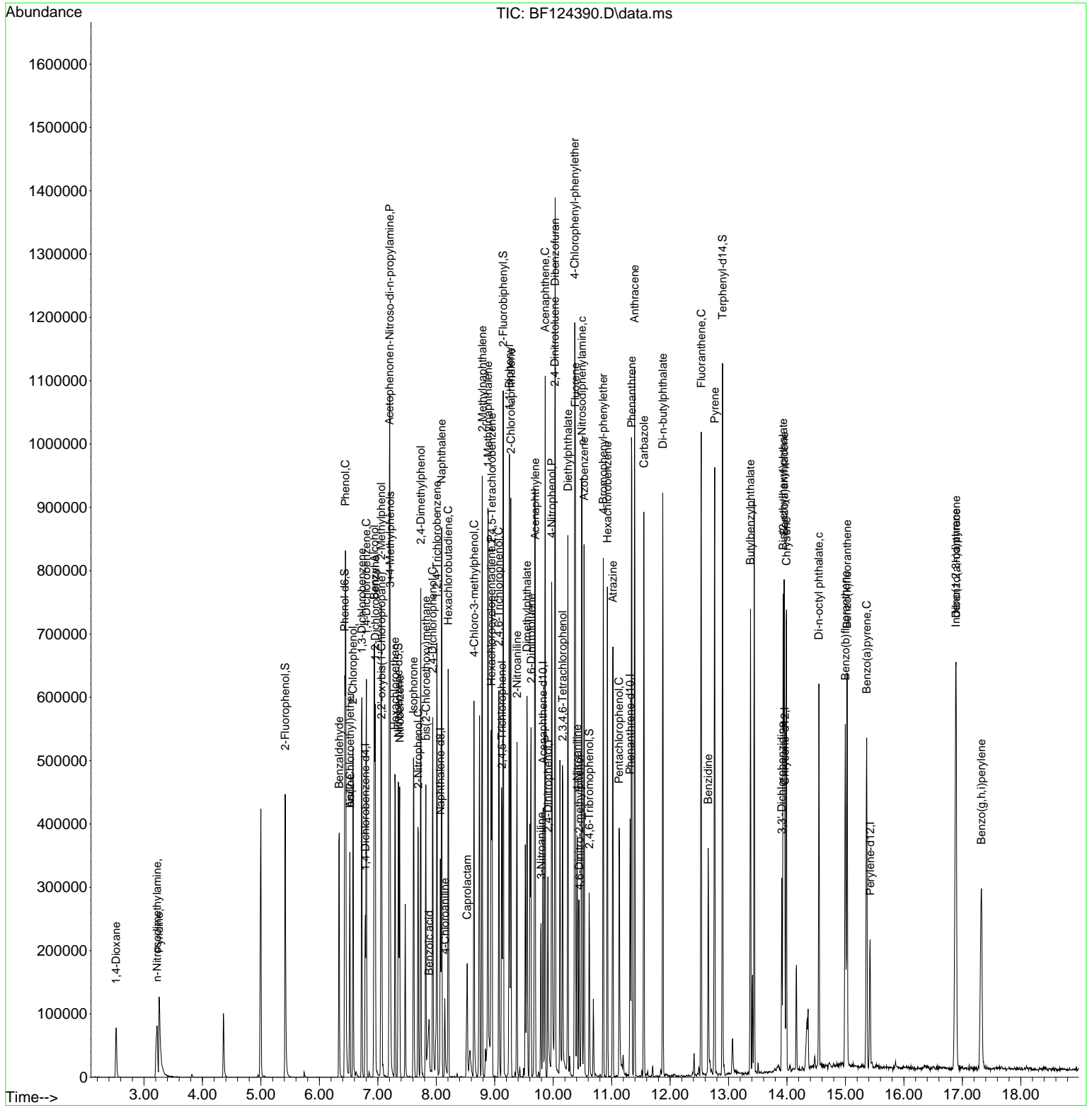
Compound	R.T.	QIon	Response	Conc	Units	Dev(Min)
44) 2,4,5-Trichlorophenol	9.122	196	77274	41.359	ng	# 87
46) 1,1'-Biphenyl	9.251	154	271354	42.679	ng	93
47) 2-Chloronaphthalene	9.275	162	215019	41.548	ng	95
48) 2-Nitroaniline	9.381	65	78314	41.933	ng	92
49) Acenaphthylene	9.692	152	317233	42.171	ng	98
50) Dimethylphthalate	9.551	163	263403	42.270	ng	99
51) 2,6-Dinitrotoluene	9.622	165	61451	43.009	ng	# 75
52) Acenaphthene	9.863	154	204062	41.533	ng	96
53) 3-Nitroaniline	9.792	138	33070	24.730	ng	90
54) 2,4-Dinitrophenol	9.910	184	40970	57.135	ng	83
55) Dibenzofuran	10.034	168	322137	41.892	ng	98
56) 4-Nitrophenol	9.975	139	63383	66.323	ng	90
57) 2,4-Dinitrotoluene	10.028	165	81601	43.305	ng	# 89
58) Fluorene	10.381	166	250983	42.520	ng	89
59) 2,3,4,6-Tetrachlorophenol	10.163	232	60759	40.130	ng	91
60) Diethylphthalate	10.251	149	261300	41.550	ng	95
61) 4-Chlorophenyl-phenyle...	10.369	204	126384	41.875	ng	97
62) 4-Nitroaniline	10.410	138	53251	39.605	ng	90
63) Azobenzene	10.528	77	254356	38.801	ng	96
65) 4,6-Dinitro-2-methylph...	10.445	198	38187	34.187	ng	# 54
66) n-Nitrosodiphenylamine	10.492	169	227526	43.082	ng	97
67) 4-Bromophenyl-phenylether	10.857	248	78468	41.130	ng	97
68) Hexachlorobenzene	10.928	284	85582	39.606	ng	# 93
69) Atrazine	11.022	200	78511	52.516	ng	97
70) Pentachlorophenol	11.128	266	48253	44.569	ng	93
71) Phenanthrene	11.345	178	385097	44.352	ng	98
72) Anthracene	11.392	178	393304	44.978	ng	98
73) Carbazole	11.551	167	315732	41.433	ng	96
74) Di-n-butylphthalate	11.875	149	413981	42.272	ng	100
75) Fluoranthene	12.533	202	388687	42.647	ng	95
77) Benzidine	12.651	184	130076	65.062	ng	# 95
78) Pyrene	12.763	202	377070	46.885	ng	97
80) Butylbenzylphthalate	13.374	149	138553	42.468	ng	98
81) Benzo(a)anthracene	13.951	228	269179	44.118	ng	95
82) 3,3'-Dichlorobenzidine	13.910	252	48748	27.234	ng	95
83) Chrysene	13.992	228	257156	43.685	ng	99
84) Bis(2-ethylhexyl)phtha...	13.933	149	178896	46.097	ng	98
85) Di-n-octyl phthalate	14.545	149	251879	48.631	ng	# 89
87) Indeno(1,2,3-cd)pyrene	16.886	276	286806	43.058	ng	97
88) Benzo(b)fluoranthene	14.998	252	258314	41.077	ng	98
89) Benzo(k)fluoranthene	15.027	252	215476	36.195	ng	100
90) Benzo(a)pyrene	15.363	252	239977	43.935	ng	99
91) Dibenzo(a,h)anthracene	16.892	278	238932	42.115	ng	95
92) Benzo(g,h,i)perylene	17.327	276	240528	42.833	ng	97

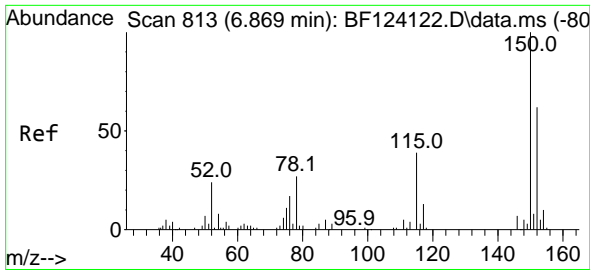
(#) = qualifier out of range (m) = manual integration (+) = signals summed

Data Path : Z:\svoasrv\HPCHEM1\BNA_F\Data\BF062121\
 Data File : BF124390.D
 Acq On : 21 Jun 2021 13:15
 Operator : JU/CG
 Sample : M2773-08MS
 Misc :
 ALS Vial : 5 Sample Multiplier: 1

Instrument :
 BNA_F
 Client Sampled :
 SB-8MS

Quant Time: Jun 21 13:39:14 2021
 Quant Method : Z:\SVOASRV\HPCHEM1\BNA_F\METHODS\8270-BF060321.M
 Quant Title : ASP BNA STANDARDS FOR 5 POINT CALIBRATION
 QLast Update : Tue Jun 15 20:09:26 2021
 Response via : Initial Calibration

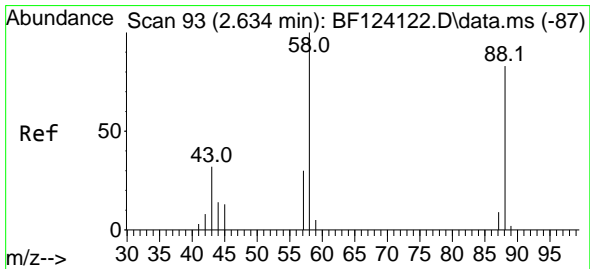
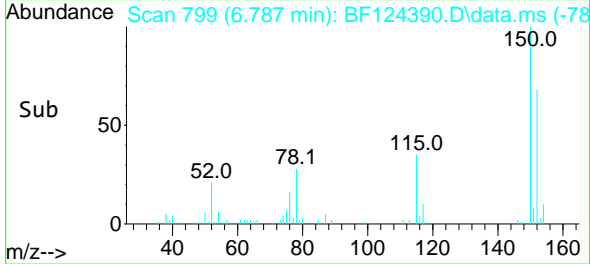
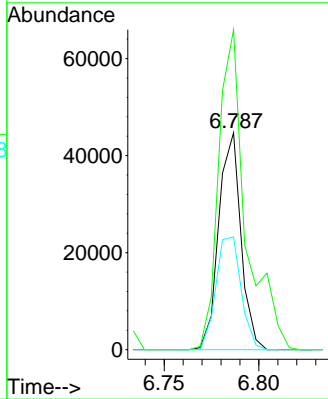
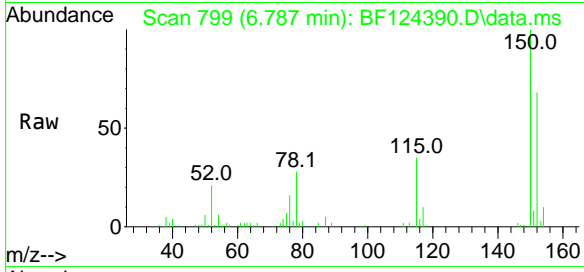




#1
 1,4-Dichlorobenzene-d4
 Concen: 20.000 ng
 RT: 6.787 min Scan# 799
 Delta R.T. 0.001 min
 Lab File: BF124390.D
 Acq: 21 Jun 2021 13:15

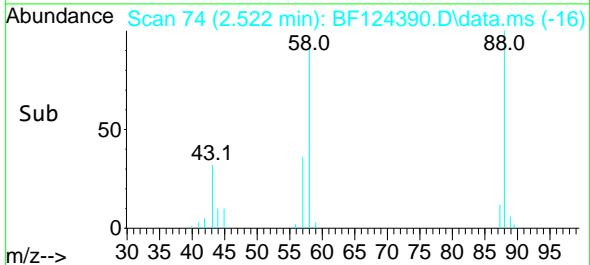
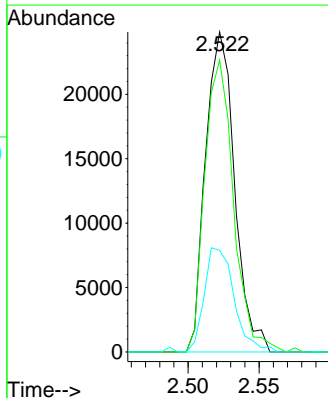
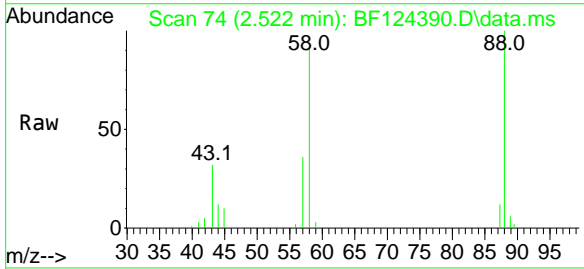
Instrument :
 BNA_F
 ClientSampled :
 SB-8MS

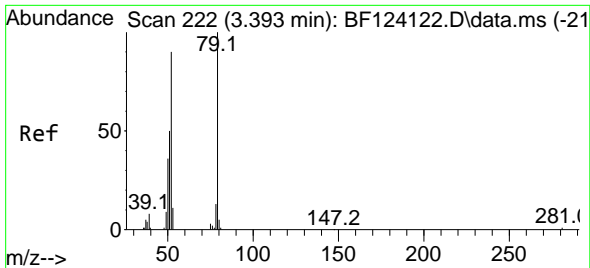
Tgt Ion:152 Resp: 36426
 Ion Ratio Lower Upper
 152 100
 150 147.5 127.0 190.6
 115 52.0 54.3 81.5#



#2
 1,4-Dioxane
 Concen: 33.371 ng
 RT: 2.522 min Scan# 74
 Delta R.T. 0.041 min
 Lab File: BF124390.D
 Acq: 21 Jun 2021 13:15

Tgt Ion: 88 Resp: 35339
 Ion Ratio Lower Upper
 88 100
 58 90.5 83.8 125.8
 43 33.4 32.2 48.4

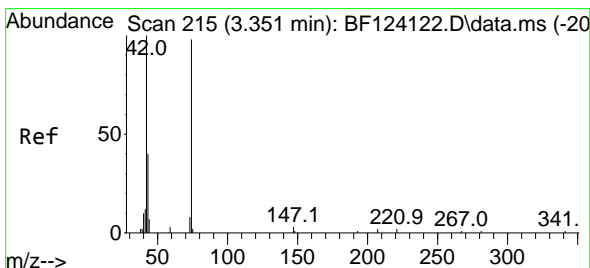
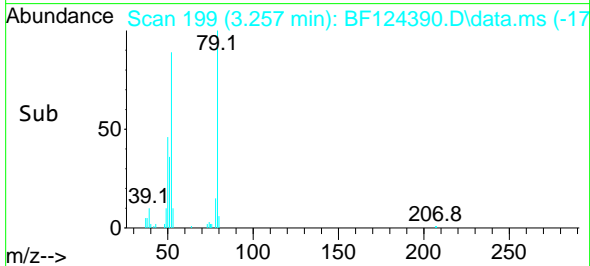
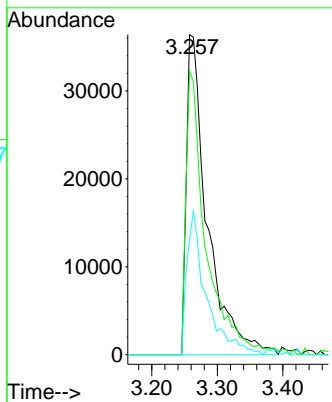
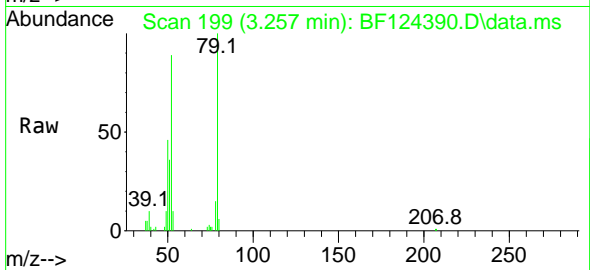




#3
Pyridine
Concen: 29.658 ng
RT: 3.257 min Scan# 199
Delta R.T. 0.030 min
Lab File: BF124390.D
Acq: 21 Jun 2021 13:15

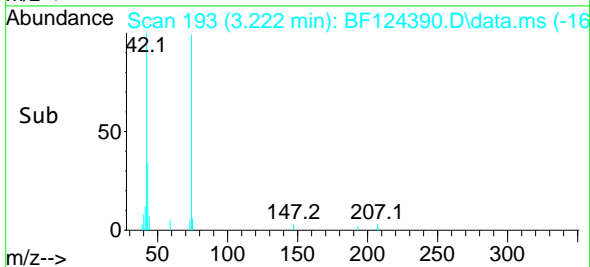
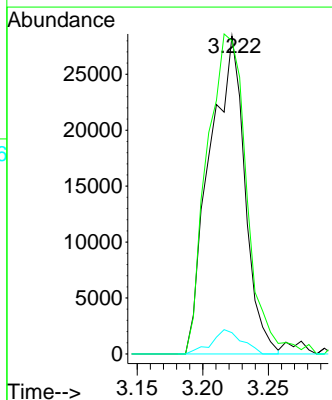
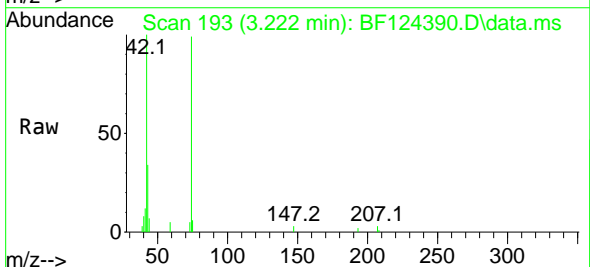
Instrument :
BNA_F
ClientSampled :
SB-8MS

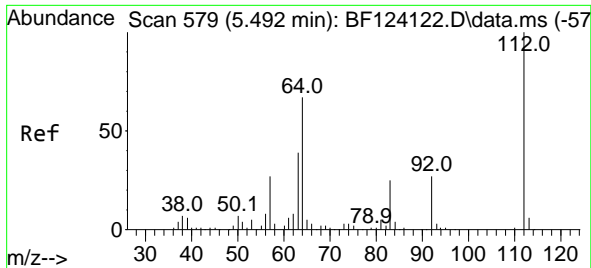
Tgt Ion: 79 Resp: 80434
Ion Ratio Lower Upper
79 100
52 88.6 87.4 131.0
51 36.1 41.4 62.0#



#4
n-Nitrosodimethylamine
Concen: 32.771 ng
RT: 3.222 min Scan# 193
Delta R.T. 0.041 min
Lab File: BF124390.D
Acq: 21 Jun 2021 13:15

Tgt Ion: 42 Resp: 52811
Ion Ratio Lower Upper
42 100
74 98.5 83.5 125.3
44 6.7 5.7 8.5

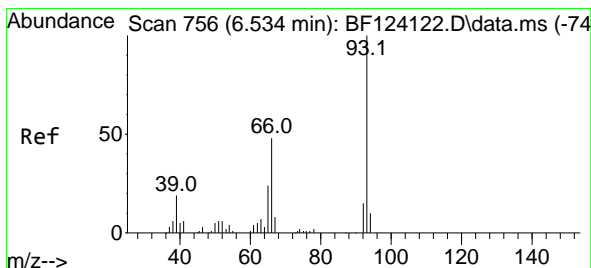
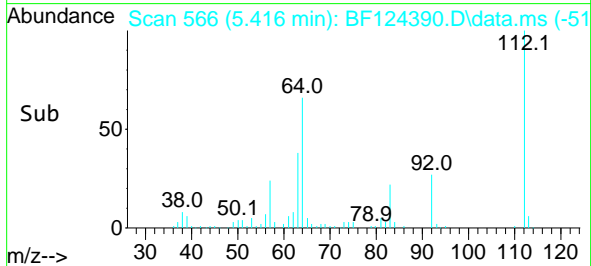
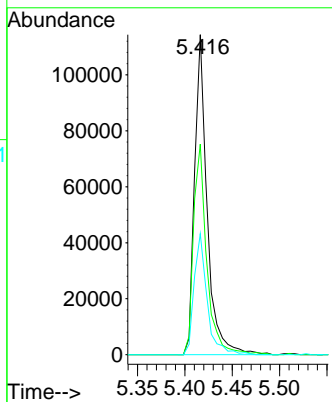
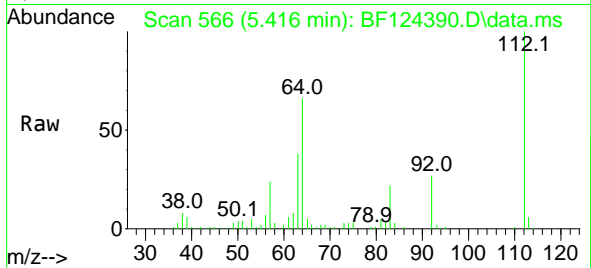




#5
 2-Fluorophenol
 Concen: 43.844 ng
 RT: 5.416 min Scan# 566
 Delta R.T. 0.000 min
 Lab File: BF124390.D
 Acq: 21 Jun 2021 13:15

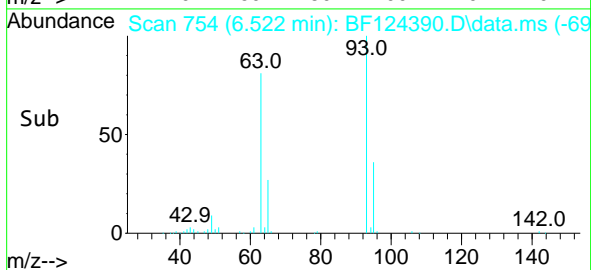
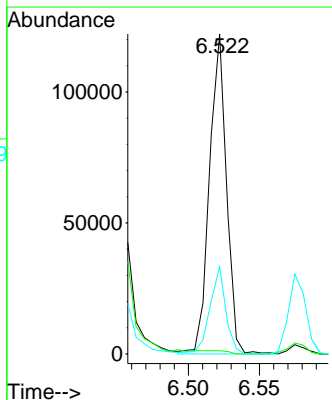
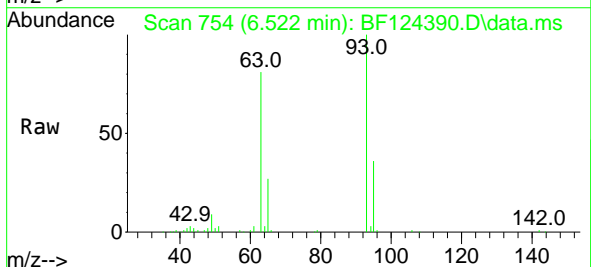
Instrument :
 BNA_F
 ClientSampled :
 SB-8MS

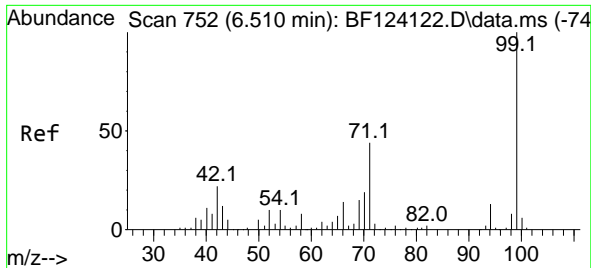
Tgt Ion	Resp	Lower	Upper
112	106094		
64	65.8	61.4	92.0
63	37.8	33.0	49.4



#6
 Aniline
 Concen: 27.412 ng
 RT: 6.522 min Scan# 754
 Delta R.T. 0.035 min
 Lab File: BF124390.D
 Acq: 21 Jun 2021 13:15

Tgt Ion	Resp	Lower	Upper
93	101836		
66	1.0	36.4	54.6#
65	27.3	19.4	29.0

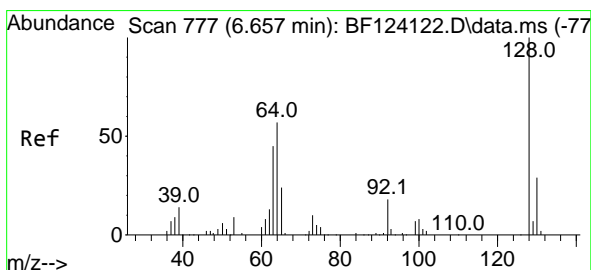
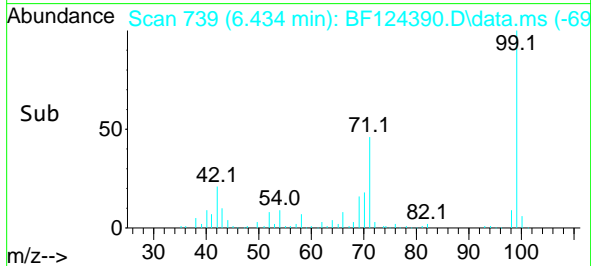
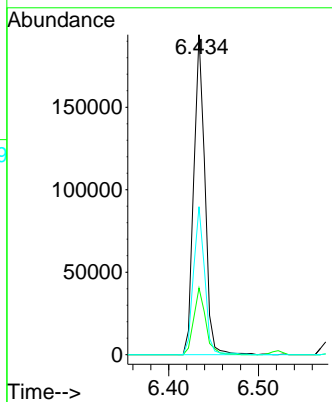
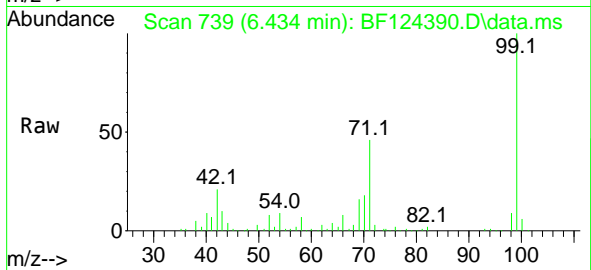




#7
 Phenol-d6
 Concen: 51.241 ng
 RT: 6.434 min Scan# 739
 Delta R.T. -0.012 min
 Lab File: BF124390.D
 Acq: 21 Jun 2021 13:15

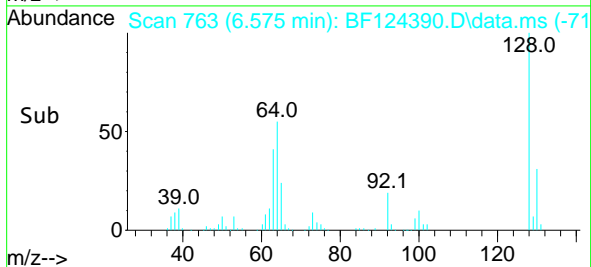
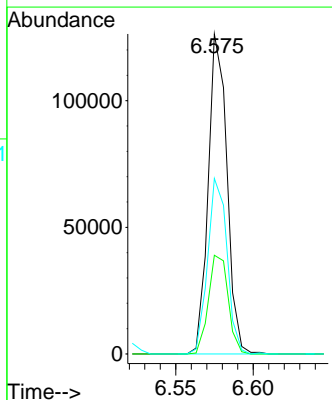
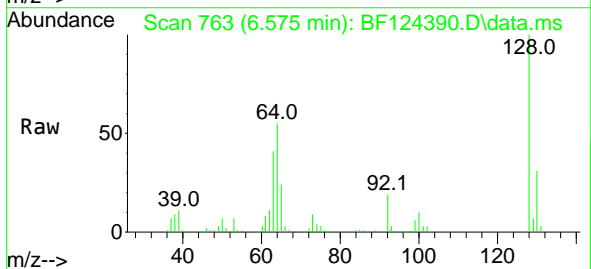
Instrument :
 BNA_F
 ClientSampled :
 SB-8MS

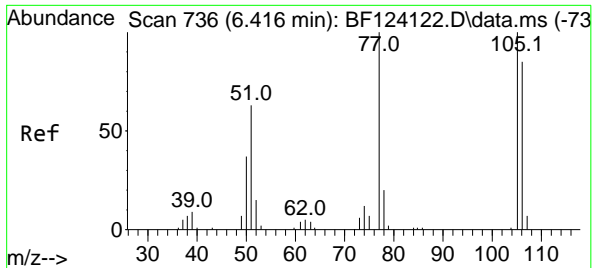
Tgt Ion	Resp	Lower	Upper
99	166666		
99	100		
42	20.8	19.8	29.8
71	46.3	31.1	46.7



#8
 2-Chlorophenol
 Concen: 39.429 ng
 RT: 6.575 min Scan# 763
 Delta R.T. -0.012 min
 Lab File: BF124390.D
 Acq: 21 Jun 2021 13:15

Tgt Ion	Resp	Lower	Upper
128	106164		
128	100		
130	30.9	12.6	52.6
64	54.9	41.5	81.5

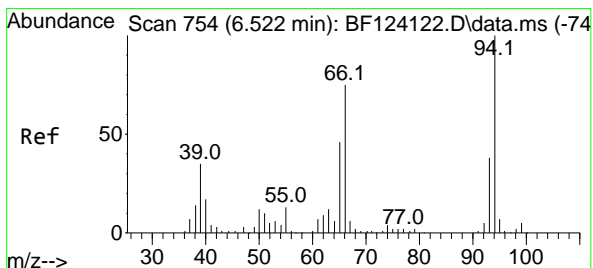
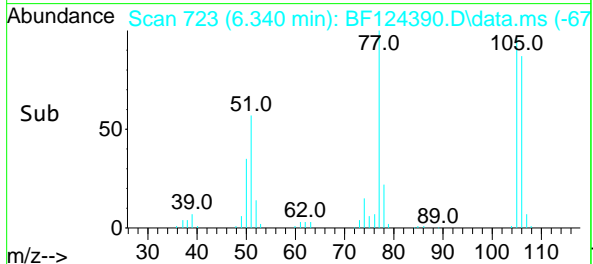
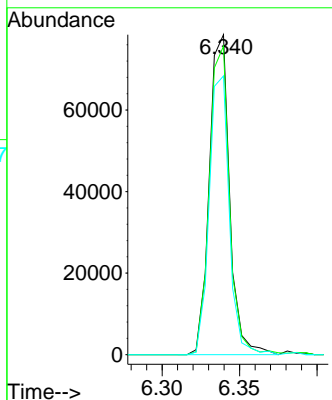
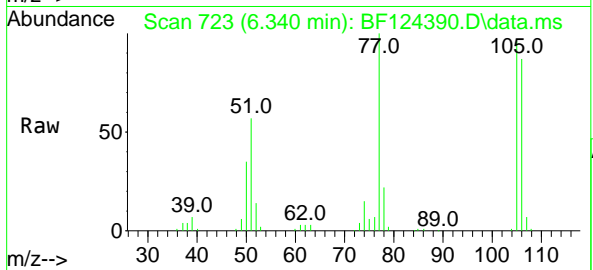




#9
 Benzaldehyde
 Concen: 49.451 ng
 RT: 6.340 min Scan# 723
 Delta R.T. 0.000 min
 Lab File: BF124390.D
 Acq: 21 Jun 2021 13:15

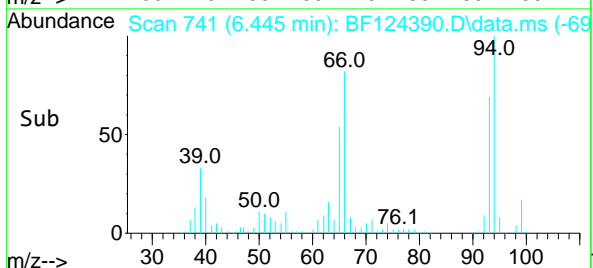
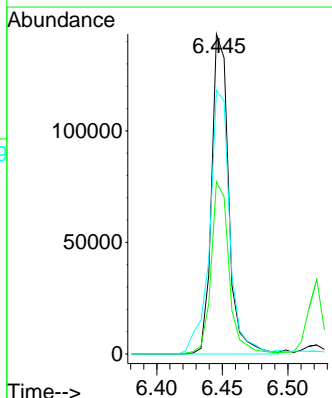
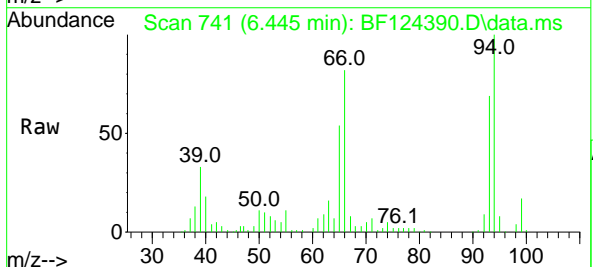
Instrument :
 BNA_F
 ClientSampled :
 SB-8MS

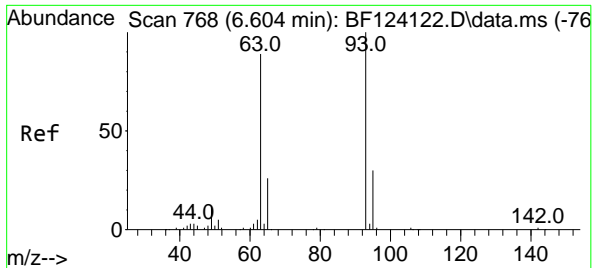
Tgt Ion	Resp	Lower	Upper
77	100		
105	96.4	75.2	115.2
106	87.1	71.6	111.6



#10
 Phenol
 Concen: 36.932 ng
 RT: 6.445 min Scan# 741
 Delta R.T. -0.012 min
 Lab File: BF124390.D
 Acq: 21 Jun 2021 13:15

Tgt Ion	Resp	Lower	Upper
94	100		
65	53.9	18.1	58.1
66	82.4	29.0	69.0#



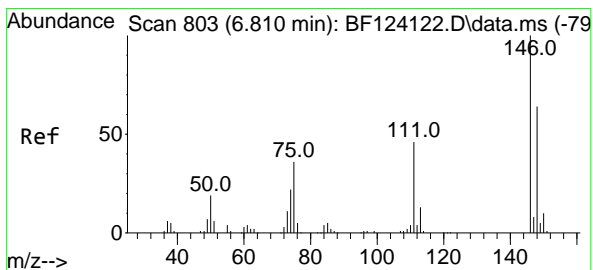
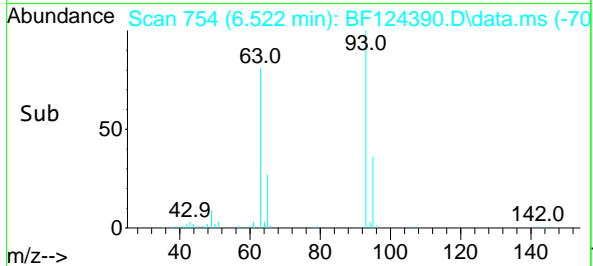
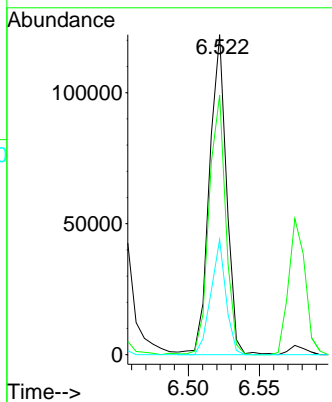
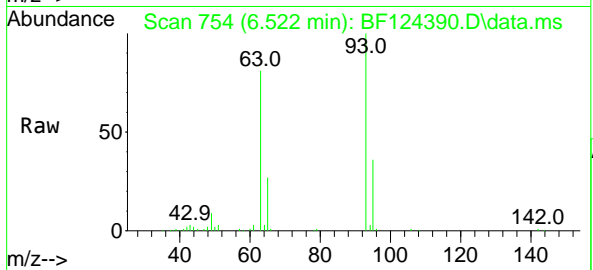


#11
 bis(2-Chloroethyl)ether
 Concen: 39.741 ng
 RT: 6.522 min Scan# 754
 Delta R.T. -0.006 min
 Lab File: BF124390.D
 Acq: 21 Jun 2021 13:15

Instrument :
 BNA_F
 ClientSampled :
 SB-8MS

Tgt Ion: 93 Resp: 101836

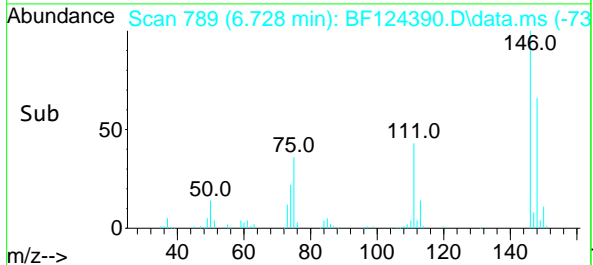
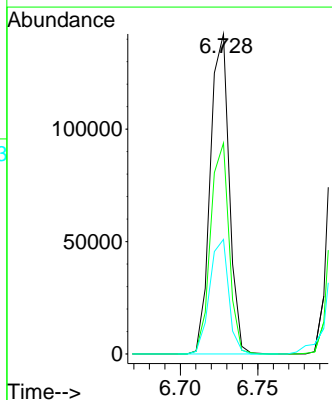
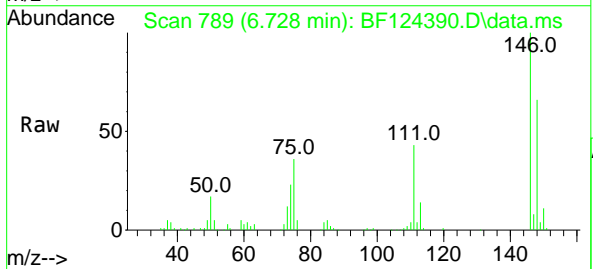
Ion	Ratio	Lower	Upper
93	100		
63	81.1	76.1	116.1
95	36.0	11.5	51.5

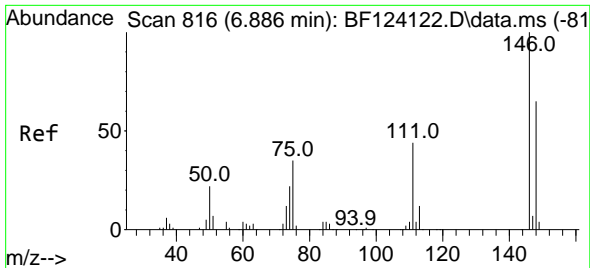


#12
 1,3-Dichlorobenzene
 Concen: 38.352 ng
 RT: 6.728 min Scan# 789
 Delta R.T. 0.000 min
 Lab File: BF124390.D
 Acq: 21 Jun 2021 13:15

Tgt Ion: 146 Resp: 120720

Ion	Ratio	Lower	Upper
146	100		
148	65.9	50.9	76.3
75	35.8	34.2	51.4

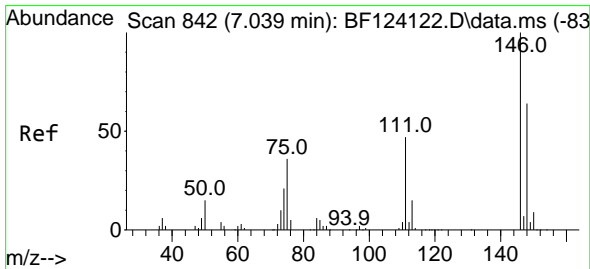
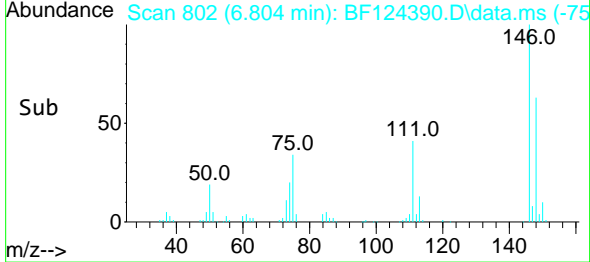
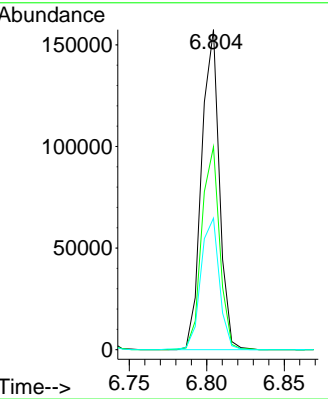
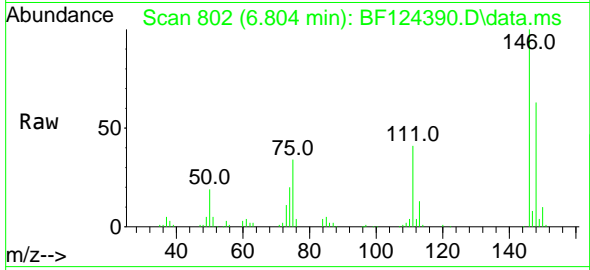




#13
 1,4-Dichlorobenzene
 Concen: 39.802 ng
 RT: 6.804 min Scan# 802
 Delta R.T. 0.000 min
 Lab File: BF124390.D
 Acq: 21 Jun 2021 13:15

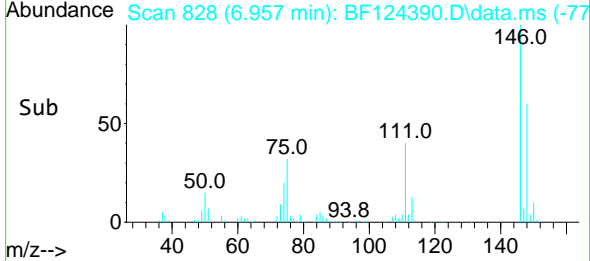
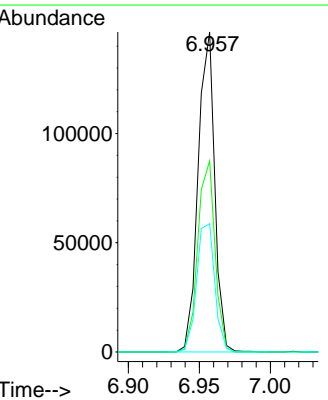
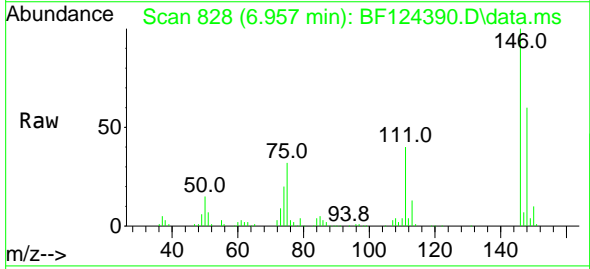
Instrument :
 BNA_F
 ClientSampled :
 SB-8MS

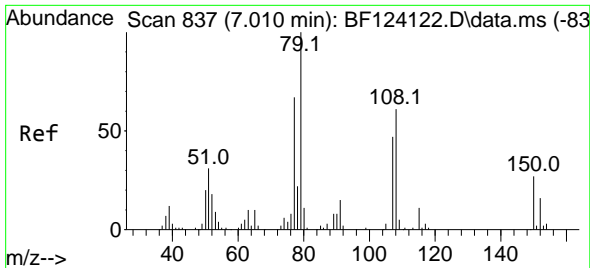
Tgt Ion:146 Resp: 125666
 Ion Ratio Lower Upper
 146 100
 148 63.4 49.9 74.9
 111 41.1 39.5 59.3



#14
 1,2-Dichlorobenzene
 Concen: 39.444 ng
 RT: 6.957 min Scan# 828
 Delta R.T. -0.006 min
 Lab File: BF124390.D
 Acq: 21 Jun 2021 13:15

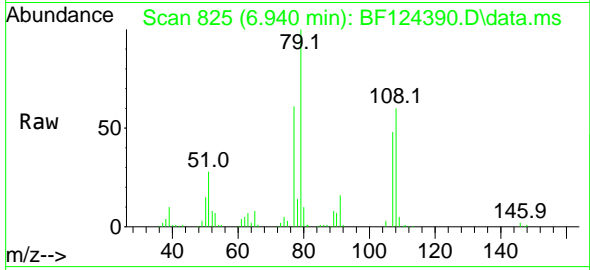
Tgt Ion:146 Resp: 119134
 Ion Ratio Lower Upper
 146 100
 148 59.7 51.6 77.4
 111 40.1 38.4 57.6





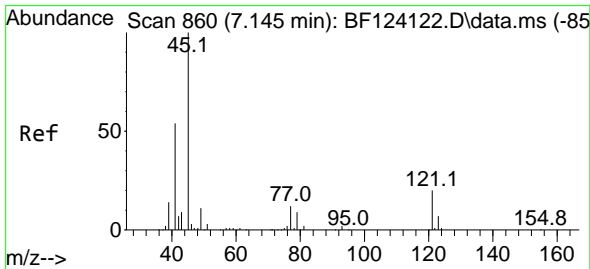
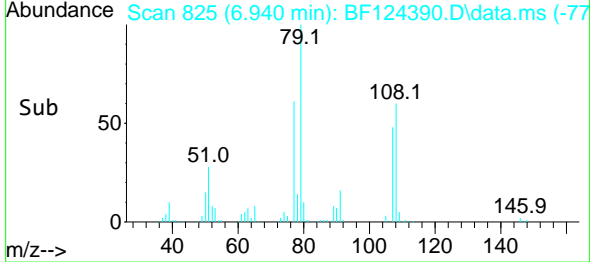
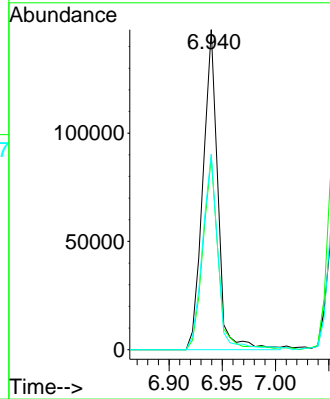
#15
 Benzyl Alcohol
 Concen: 49.451 ng
 RT: 6.940 min Scan# 825
 Delta R.T. 0.000 min
 Lab File: BF124390.D
 Acq: 21 Jun 2021 13:15

Instrument :
 BNA_F
 ClientSampled :
 SB-8MS

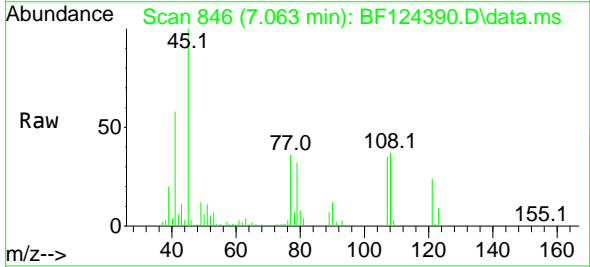


Tgt Ion: 79 Resp: 144997

Ion	Ratio	Lower	Upper
79	100		
108	60.0	55.8	83.8
77	61.1	49.9	74.9

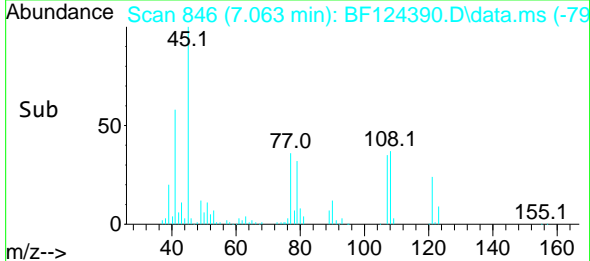
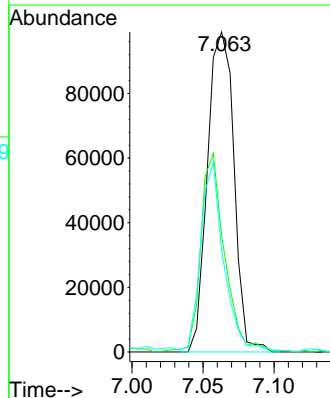


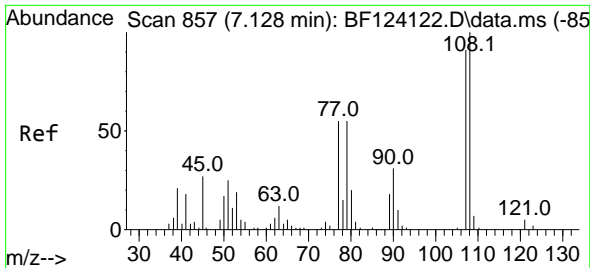
#16
 2,2'-oxybis(1-Chloropropane)
 Concen: 32.056 ng
 RT: 7.063 min Scan# 846
 Delta R.T. 0.000 min
 Lab File: BF124390.D
 Acq: 21 Jun 2021 13:15



Tgt Ion: 45 Resp: 128145

Ion	Ratio	Lower	Upper
45	100		
77	36.2	0.0	30.0#
79	31.6	0.0	27.3#

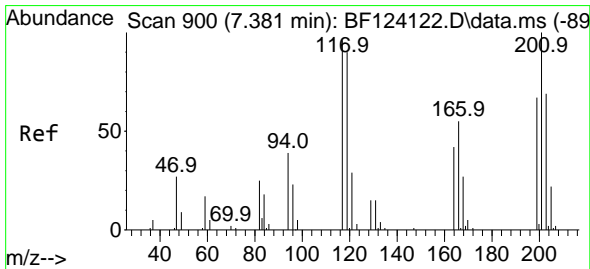
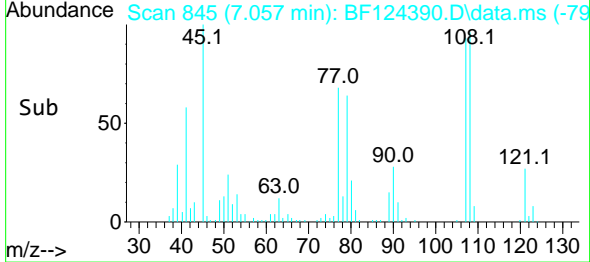
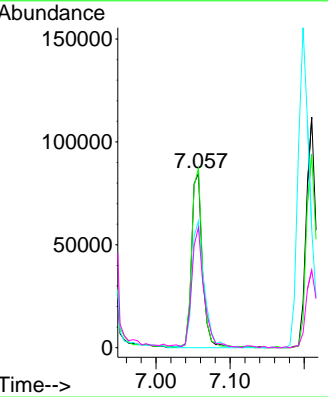
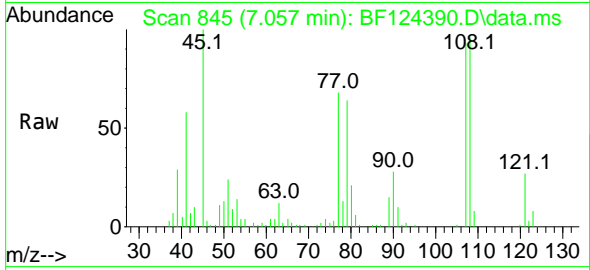




#17
 2-Methylphenol
 Concen: 39.497 ng
 RT: 7.057 min Scan# 845
 Delta R.T. -0.006 min
 Lab File: BF124390.D
 Acq: 21 Jun 2021 13:15

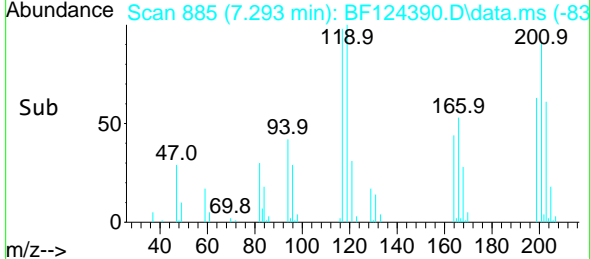
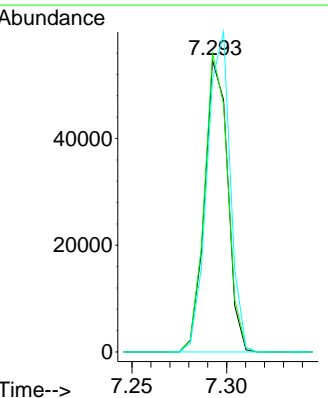
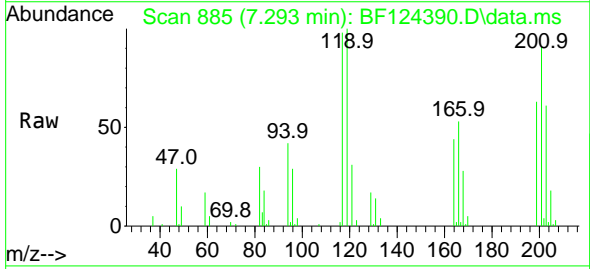
Instrument :
 BNA_F
 ClientSampled :
 SB-8MS

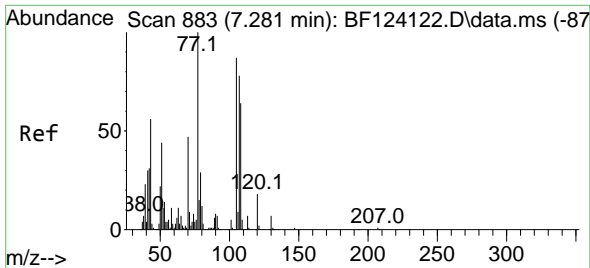
Tgt Ion	Resp	Lower	Upper
107	86450		
107	100		
108	103.1	89.8	134.8
77	72.7	40.9	61.3#
79	69.1	40.2	60.4#



#18
 Hexachloroethane
 Concen: 37.395 ng
 RT: 7.293 min Scan# 885
 Delta R.T. -0.006 min
 Lab File: BF124390.D
 Acq: 21 Jun 2021 13:15

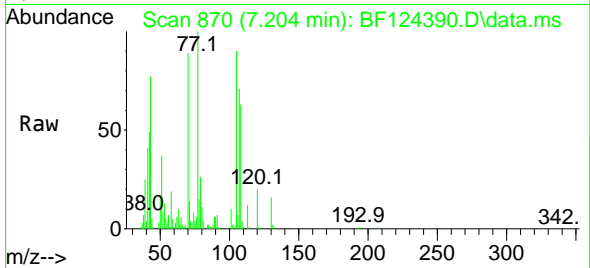
Tgt Ion	Resp	Lower	Upper
117	46496		
117	100		
119	102.4	77.8	116.8
201	93.3	67.8	101.8



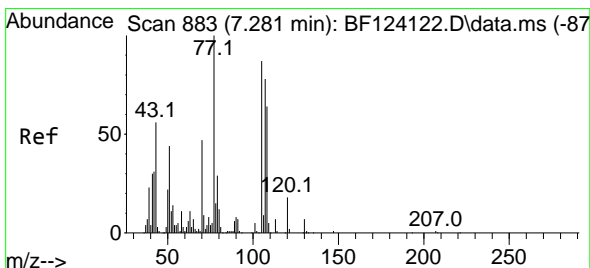
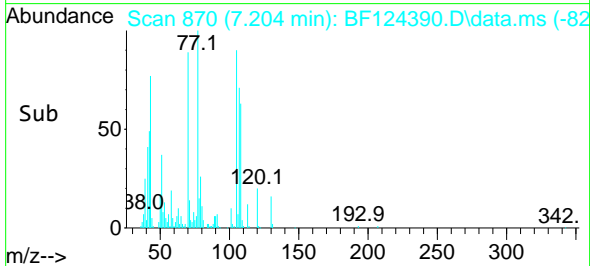
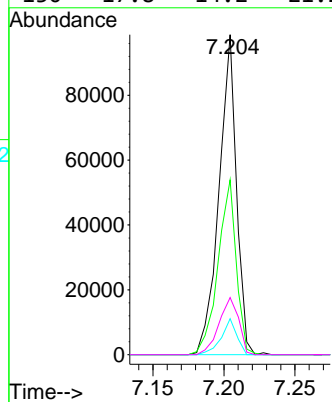


#19
 n-Nitroso-di-n-propylamine
 Concen: 36.691 ng
 RT: 7.204 min Scan# 870
 Delta R.T. -0.006 min
 Lab File: BF124390.D
 Acq: 21 Jun 2021 13:15

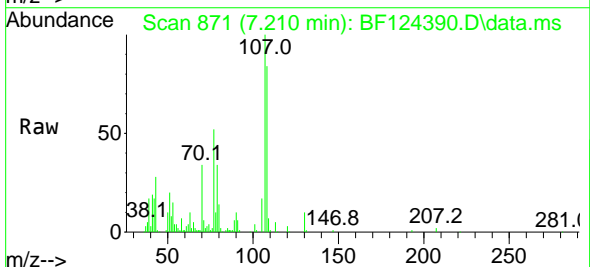
Instrument :
 BNA_F
 ClientSampleId :
 SB-8MS



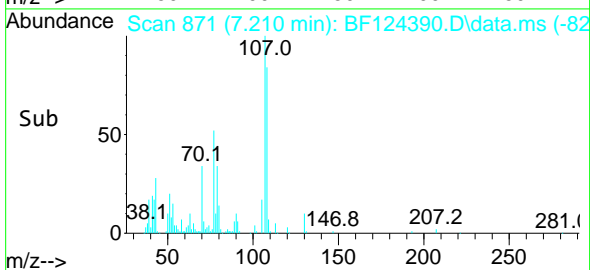
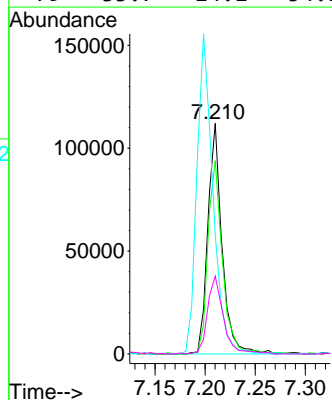
Tgt Ion: 70 Resp: 84245
 Ion Ratio Lower Upper
 70 100
 42 54.7 60.1 90.1#
 101 11.3 7.4 11.2#
 130 17.8 14.2 21.2

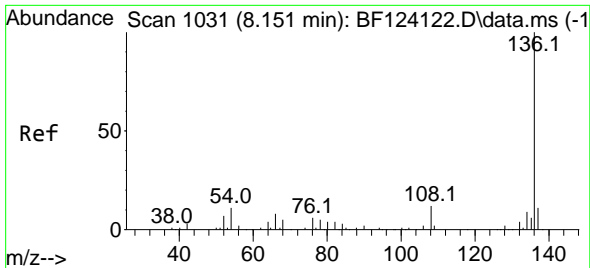


#20
 3+4-Methylphenols
 Concen: 38.286 ng
 RT: 7.210 min Scan# 871
 Delta R.T. -0.006 min
 Lab File: BF124390.D
 Acq: 21 Jun 2021 13:15



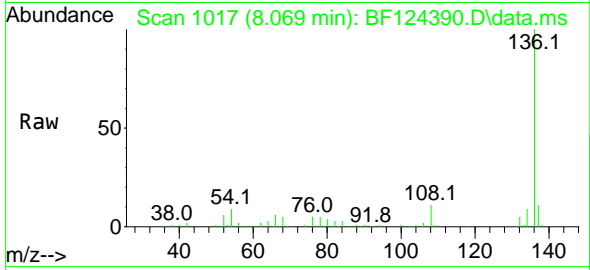
Tgt Ion: 107 Resp: 111037
 Ion Ratio Lower Upper
 107 100
 108 83.8 71.5 111.5
 77 51.5 82.0 122.0#
 79 33.7 14.1 54.1





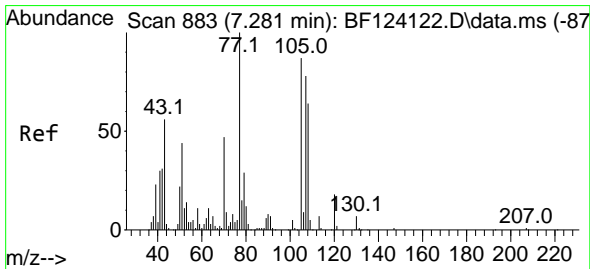
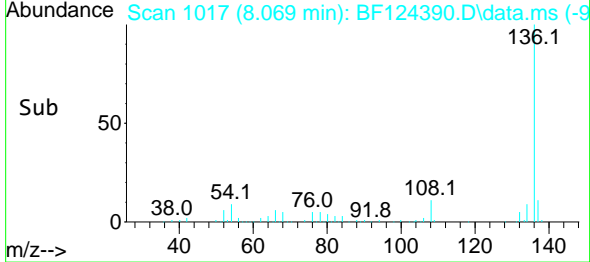
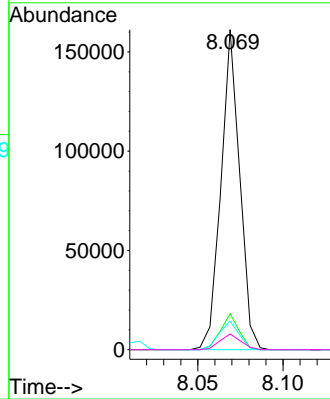
#21
 Naphthalene-d8
 Concen: 20.000 ng
 RT: 8.069 min Scan# 1017
 Delta R.T. -0.006 min
 Lab File: BF124390.D
 Acq: 21 Jun 2021 13:15

Instrument :
 BNA_F
 ClientSampled :
 SB-8MS

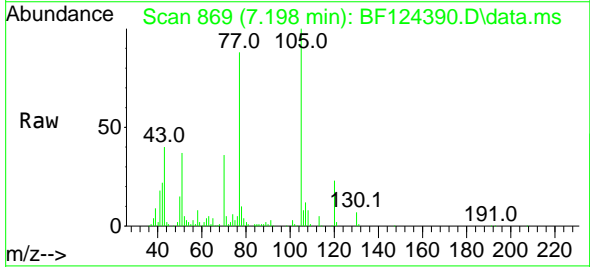


Tgt Ion:136 Resp: 123302

Ion	Ratio	Lower	Upper
136	100		
137	11.3	8.7	13.1
54	9.0	9.8	14.6#
68	4.9	4.1	6.1

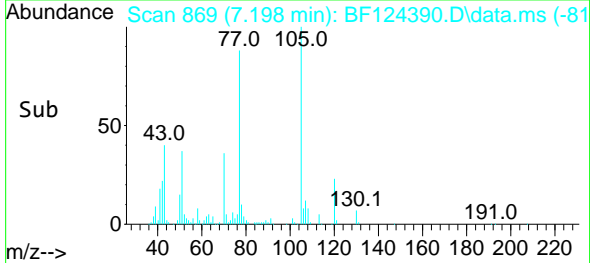
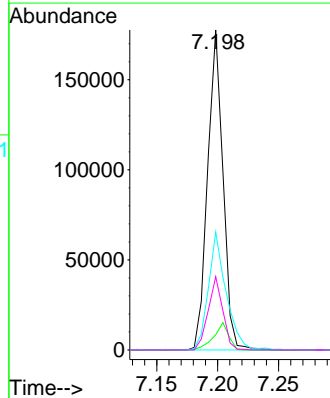


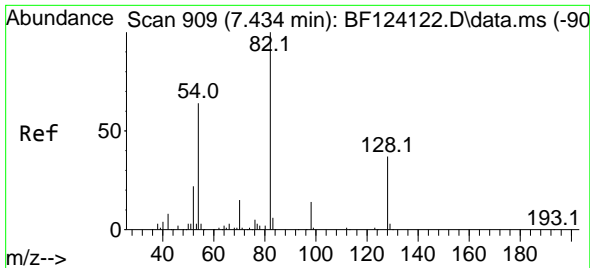
#22
 Acetophenone
 Concen: 44.282 ng
 RT: 7.198 min Scan# 869
 Delta R.T. -0.006 min
 Lab File: BF124390.D
 Acq: 21 Jun 2021 13:15



Tgt Ion:105 Resp: 155653

Ion	Ratio	Lower	Upper
105	100		
71	4.8	4.2	6.4
51	36.8	33.6	50.4
120	22.9	16.3	24.5

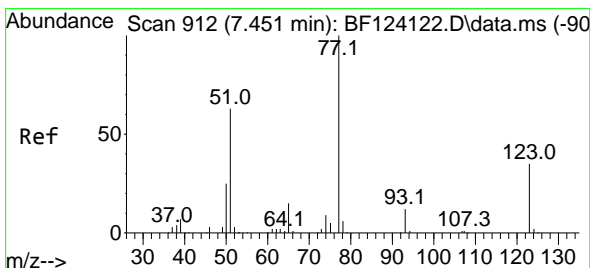
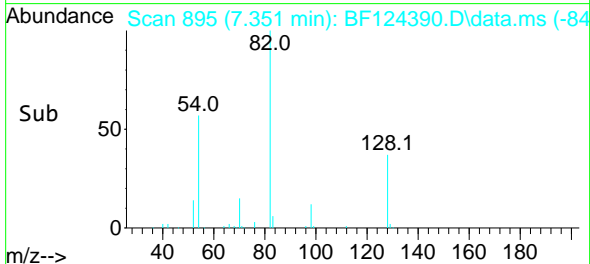
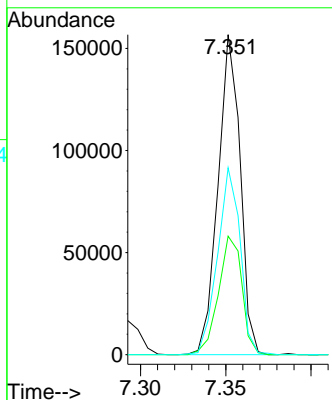
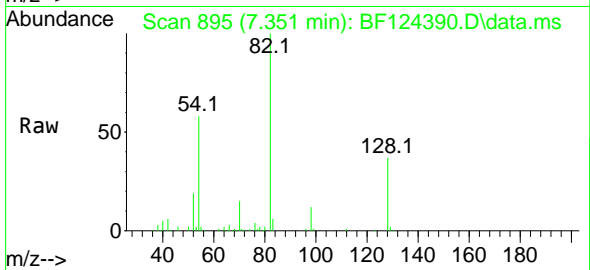




#23
 Nitrobenzene-d5
 Concen: 45.521 ng
 RT: 7.351 min Scan# 895
 Delta R.T. -0.006 min
 Lab File: BF124390.D
 Acq: 21 Jun 2021 13:15

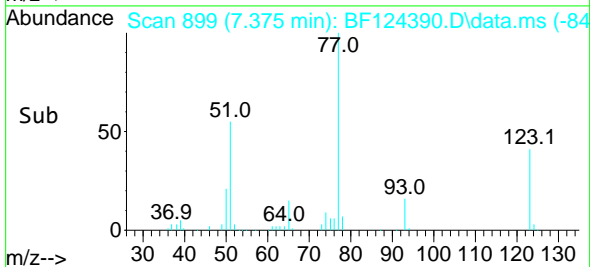
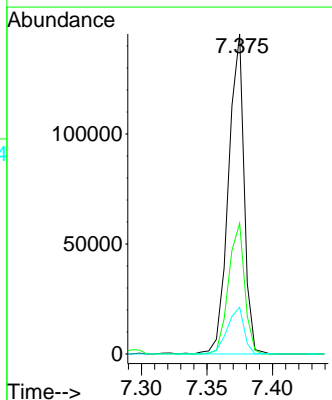
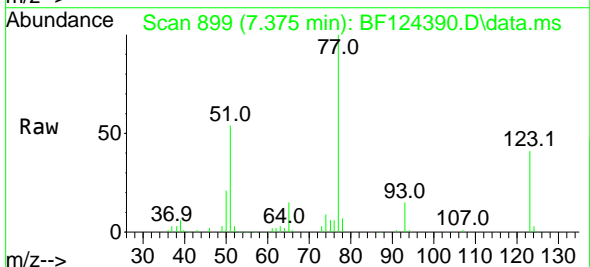
Instrument :
 BNA_F
 ClientSampled :
 SB-8MS

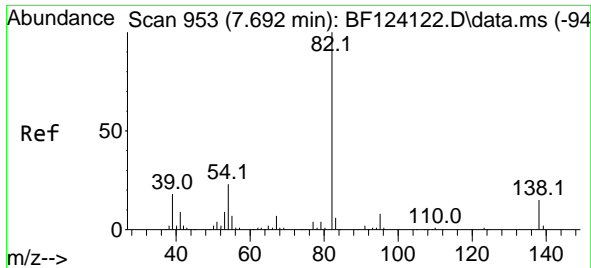
Tgt Ion	Resp	Lower	Upper
82	141519		
128	37.0	29.4	44.2
54	58.4	54.1	81.1



#24
 Nitrobenzene
 Concen: 38.647 ng
 RT: 7.375 min Scan# 899
 Delta R.T. -0.006 min
 Lab File: BF124390.D
 Acq: 21 Jun 2021 13:15

Tgt Ion	Resp	Lower	Upper
77	120533		
123	40.9	34.5	51.7
65	14.6	12.2	18.2



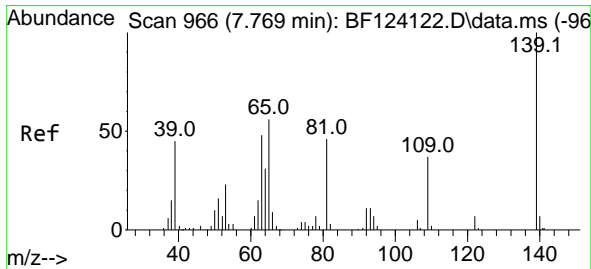
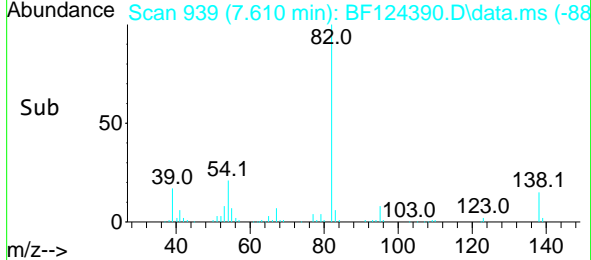
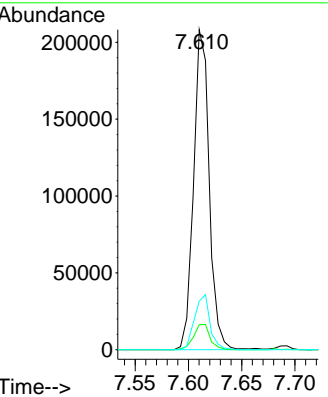
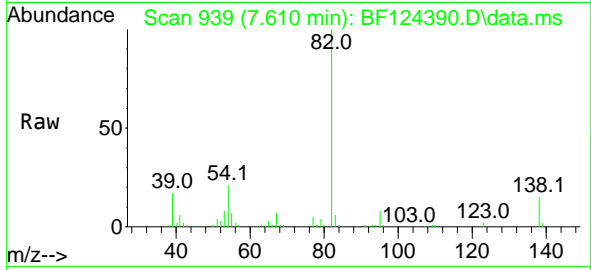


#25
 Isophorone
 Concen: 38.032 ng
 RT: 7.610 min Scan# 939
 Delta R.T. -0.006 min
 Lab File: BF124390.D
 Acq: 21 Jun 2021 13:15

Instrument :
 BNA_F
 ClientSampled :
 SB-8MS

Tgt Ion: 82 Resp: 213066

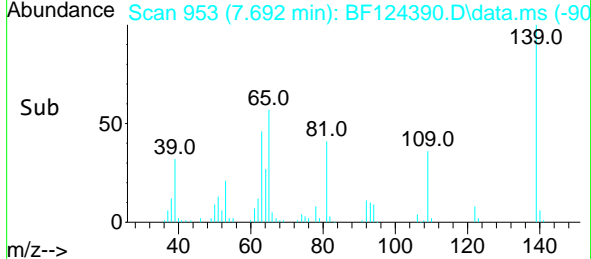
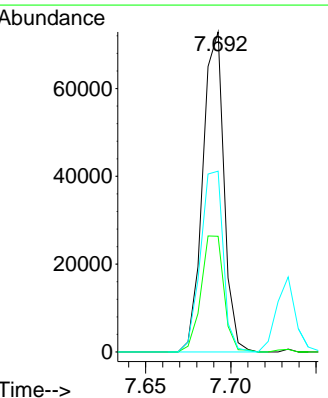
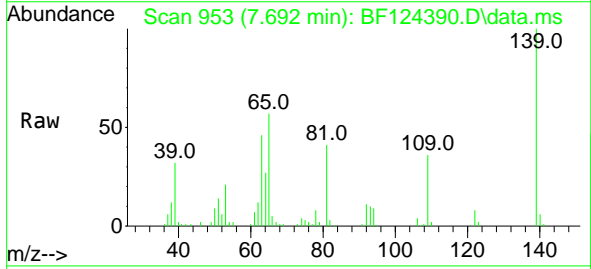
Ion	Ratio	Lower	Upper
82	100		
95	7.8	5.8	8.6
138	15.1	11.8	17.8

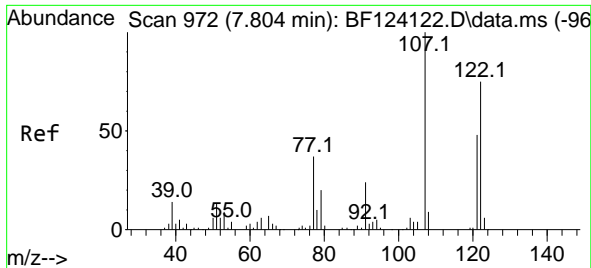


#26
 2-Nitrophenol
 Concen: 45.401 ng
 RT: 7.692 min Scan# 953
 Delta R.T. 0.000 min
 Lab File: BF124390.D
 Acq: 21 Jun 2021 13:15

Tgt Ion: 139 Resp: 63251

Ion	Ratio	Lower	Upper
139	100		
109	36.2	28.6	43.0
65	56.5	56.8	85.2#

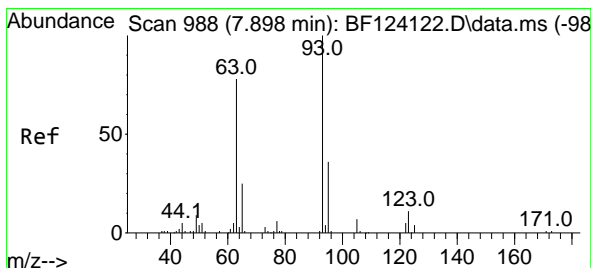
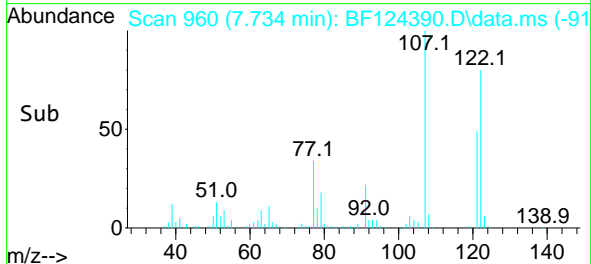
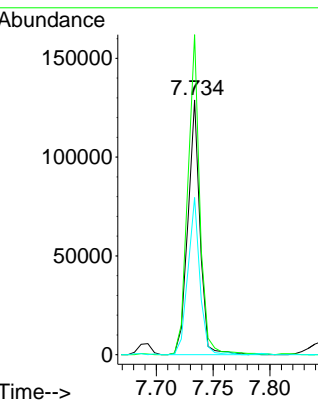
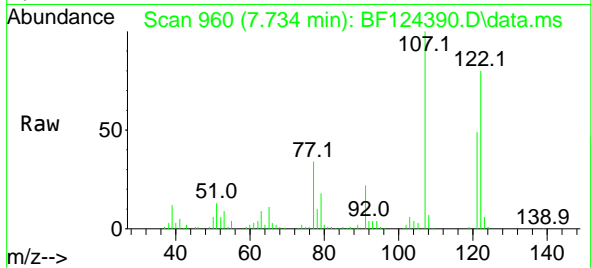




#27
 2,4-Dimethylphenol
 Concen: 48.596 ng
 RT: 7.734 min Scan# 960
 Delta R.T. -0.006 min
 Lab File: BF124390.D
 Acq: 21 Jun 2021 13:15

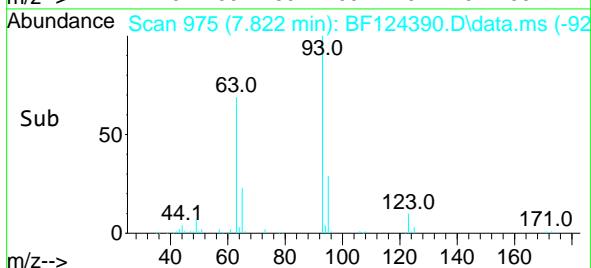
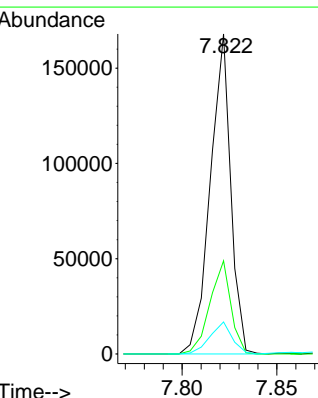
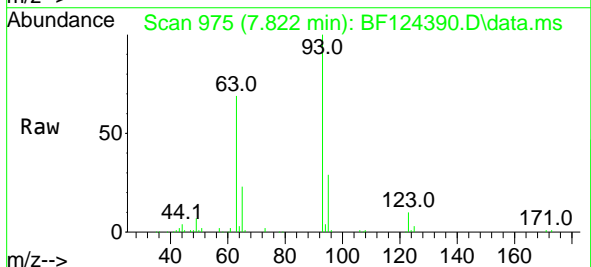
Instrument :
 BNA_F
 ClientSampled :
 SB-8MS

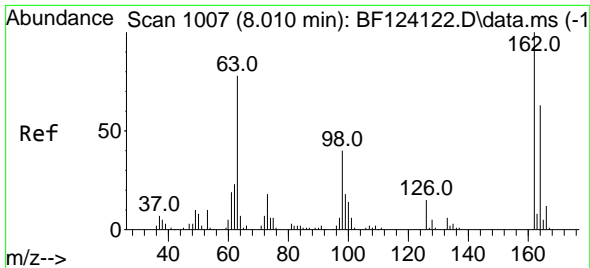
Tgt Ion	Resp	Lower	Upper
122	95469		
107	125.6	106.3	159.5
121	61.7	45.4	68.0



#28
 bis(2-Chloroethoxy)methane
 Concen: 45.332 ng
 RT: 7.822 min Scan# 975
 Delta R.T. 0.000 min
 Lab File: BF124390.D
 Acq: 21 Jun 2021 13:15

Tgt Ion	Resp	Lower	Upper
93	125902		
95	29.1	26.5	39.7
123	10.0	8.4	12.6



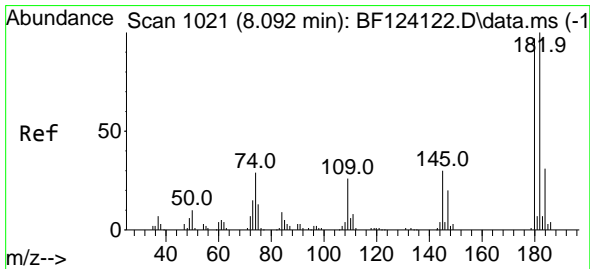
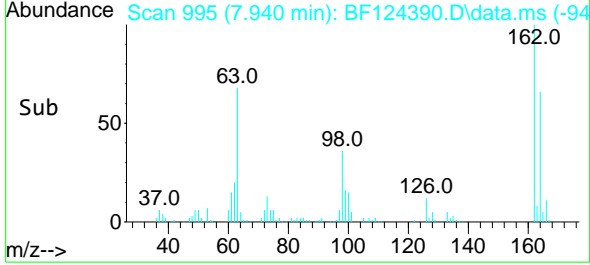
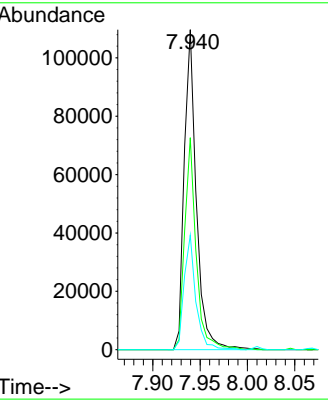
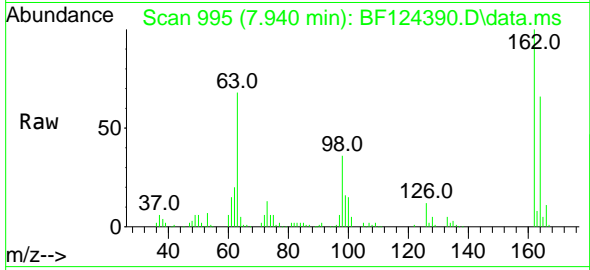


#29
 2,4-Dichlorophenol
 Concen: 43.186 ng
 RT: 7.940 min Scan# 995
 Delta R.T. -0.006 min
 Lab File: BF124390.D
 Acq: 21 Jun 2021 13:15

Instrument :
 BNA_F
 ClientSampled :
 SB-8MS

Tgt Ion:162 Resp: 98170

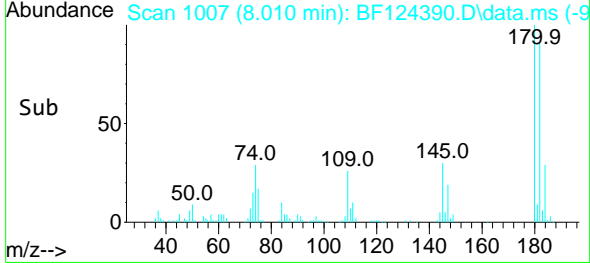
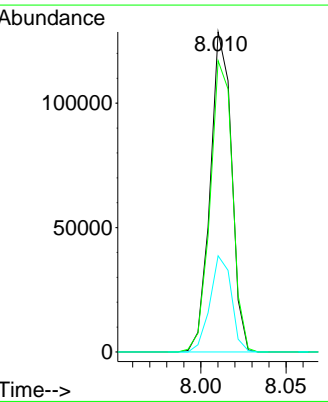
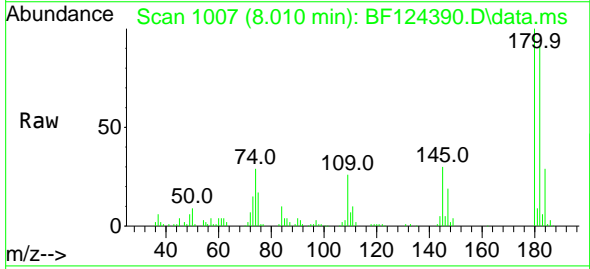
Ion	Ratio	Lower	Upper
162	100		
164	66.2	44.1	84.1
98	35.8	27.3	67.3

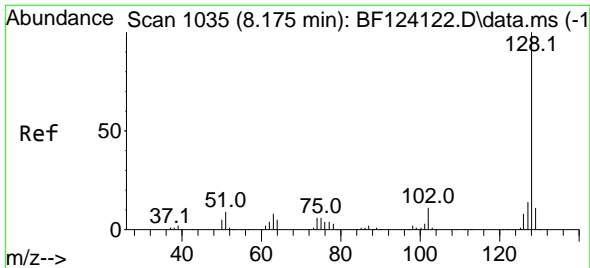


#30
 1,2,4-Trichlorobenzene
 Concen: 44.047 ng
 RT: 8.010 min Scan# 1007
 Delta R.T. -0.006 min
 Lab File: BF124390.D
 Acq: 21 Jun 2021 13:15

Tgt Ion:180 Resp: 112209

Ion	Ratio	Lower	Upper
180	100		
182	91.0	77.2	115.8
145	30.0	26.0	39.0



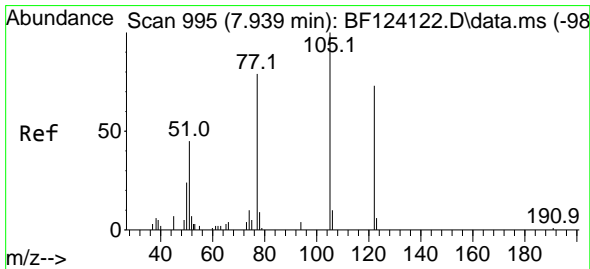
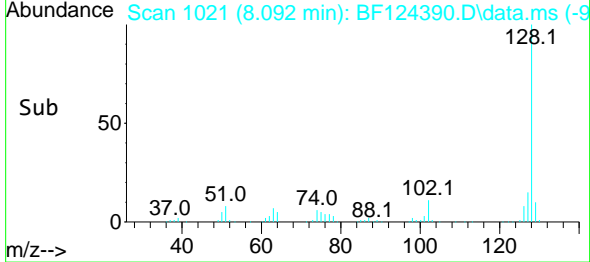
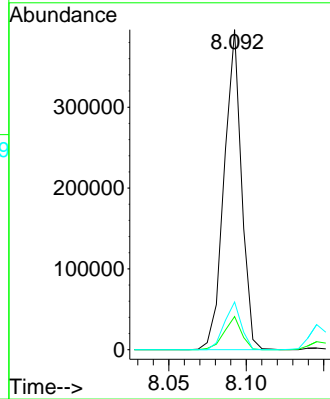
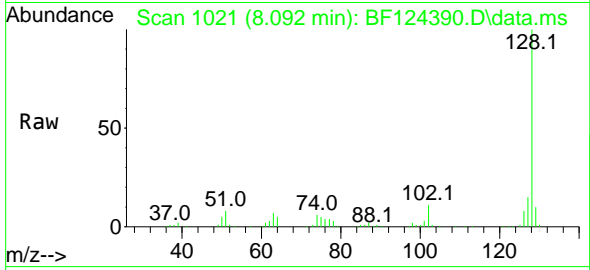


#31
 Naphthalene
 Concen: 41.827 ng
 RT: 8.092 min Scan# 1021
 Delta R.T. 0.000 min
 Lab File: BF124390.D
 Acq: 21 Jun 2021 13:15

Instrument :
 BNA_F
 ClientSampled :
 SB-8MS

Tgt Ion:128 Resp: 308341

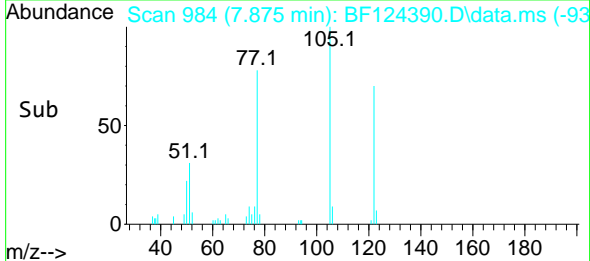
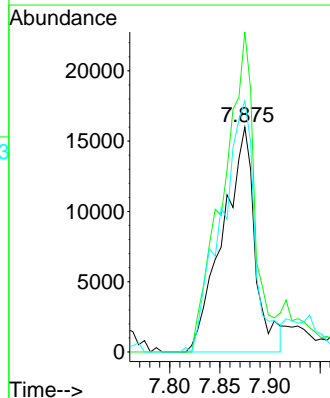
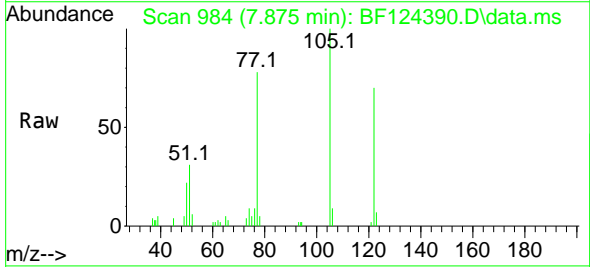
Ion	Ratio	Lower	Upper
128	100		
129	10.4	8.9	13.3
127	14.9	10.8	16.2

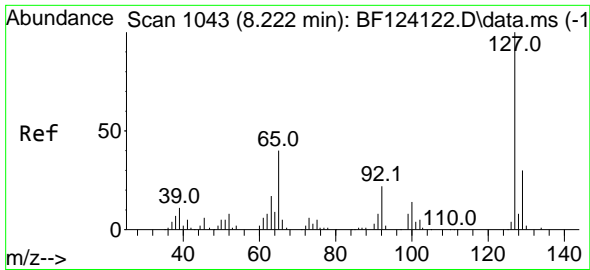


#32
 Benzoic acid
 Concen: 29.897 ng
 RT: 7.875 min Scan# 984
 Delta R.T. -0.006 min
 Lab File: BF124390.D
 Acq: 21 Jun 2021 13:15

Tgt Ion:122 Resp: 36040

Ion	Ratio	Lower	Upper
122	100		
105	142.3	107.8	147.8
77	111.7	81.6	121.6

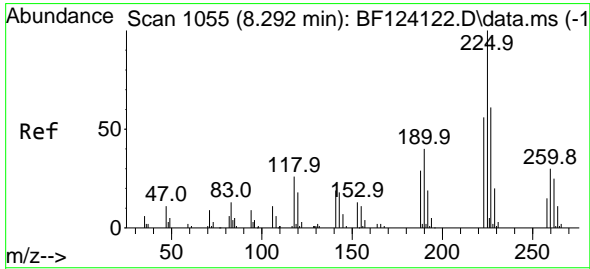
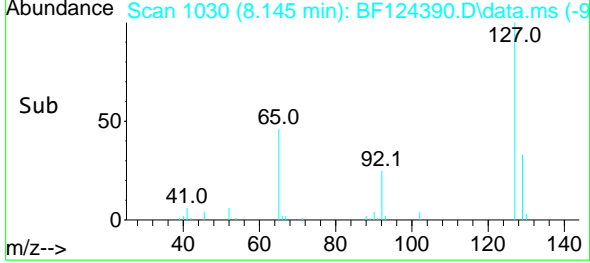
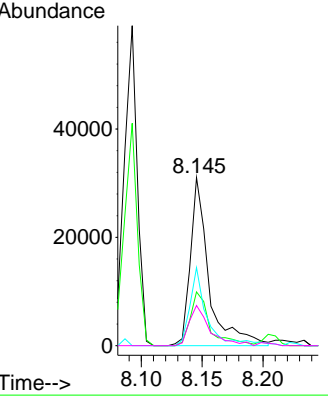
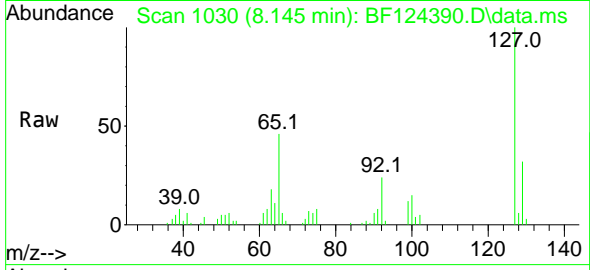




#33
 4-Chloroaniline
 Concen: 12.022 ng
 RT: 8.145 min Scan# 1030
 Delta R.T. -0.088 min
 Lab File: BF124390.D
 Acq: 21 Jun 2021 13:15

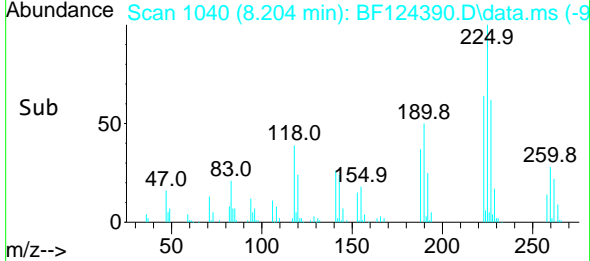
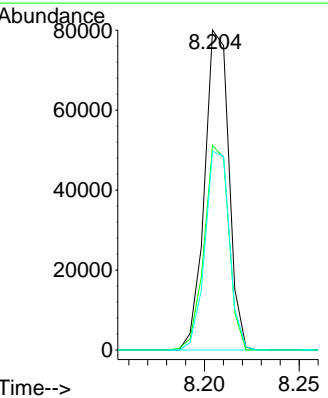
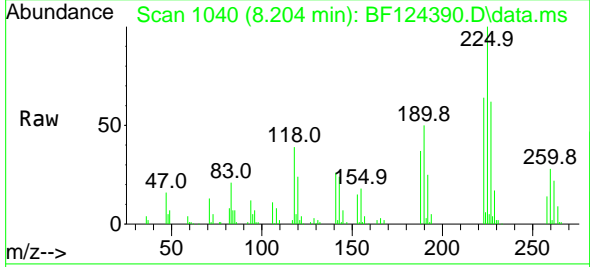
Instrument :
 BNA_F
 ClientSampled :
 SB-8MS

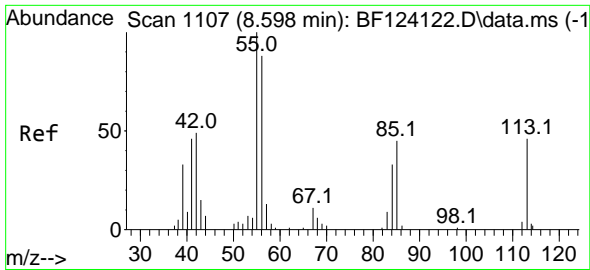
Tgt Ion	Resp	Lower	Upper
127	32963		
127	100		
129	32.0	25.7	38.5
65	46.4	34.5	51.7
92	23.9	17.4	26.0



#34
 Hexachlorobutadiene
 Concen: 39.661 ng
 RT: 8.204 min Scan# 1040
 Delta R.T. -0.006 min
 Lab File: BF124390.D
 Acq: 21 Jun 2021 13:15

Tgt Ion	Resp	Lower	Upper
225	71366		
225	100		
223	63.9	50.4	75.6
227	62.1	51.4	77.0

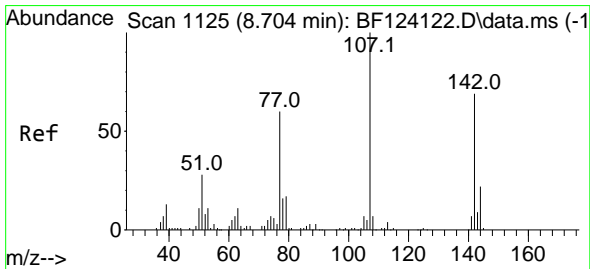
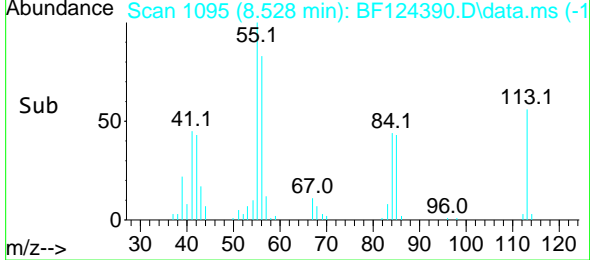
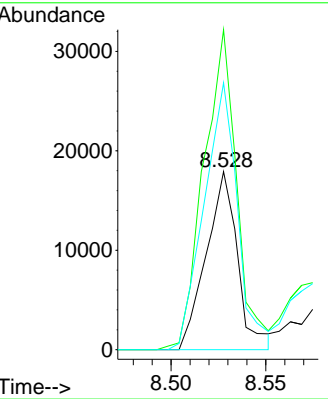
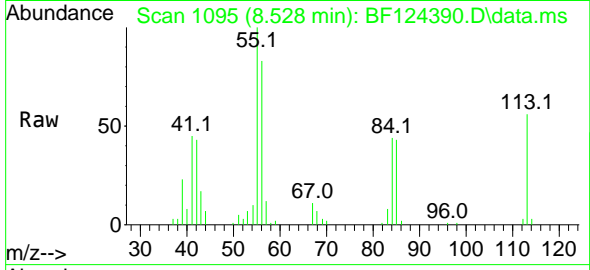




#35
 Caprolactam
 Concen: 32.990 ng
 RT: 8.528 min Scan# 1095
 Delta R.T. -0.012 min
 Lab File: BF124390.D
 Acq: 21 Jun 2021 13:15

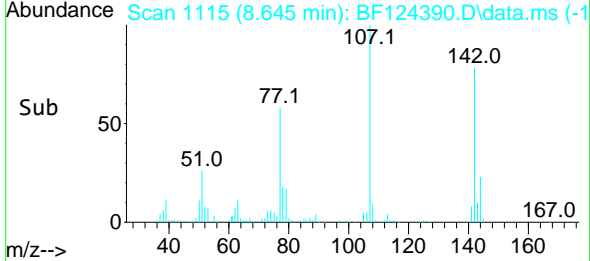
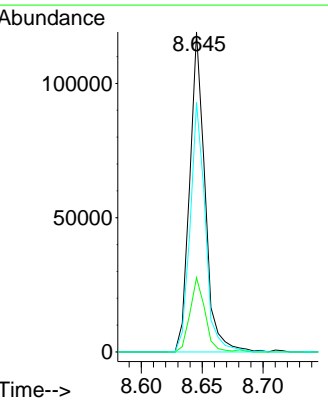
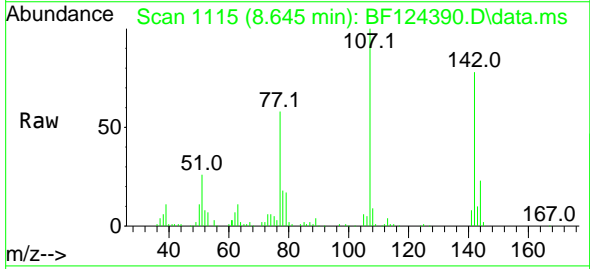
Instrument :
 BNA_F
 ClientSampled :
 SB-8MS

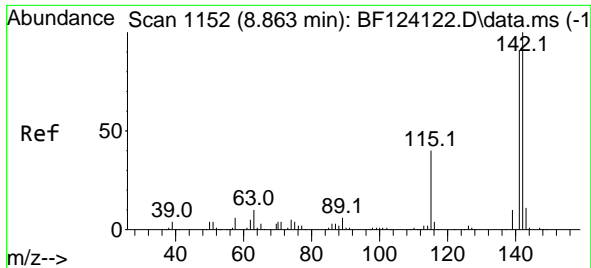
Tgt Ion:113 Resp: 20602
 Ion Ratio Lower Upper
 113 100
 55 179.7 254.9 294.9#
 56 149.9 179.4 219.4#



#36
 4-Chloro-3-methylphenol
 Concen: 42.009 ng
 RT: 8.645 min Scan# 1115
 Delta R.T. -0.006 min
 Lab File: BF124390.D
 Acq: 21 Jun 2021 13:15

Tgt Ion:107 Resp: 104478
 Ion Ratio Lower Upper
 107 100
 144 23.2 16.3 24.5
 142 78.0 50.1 75.1#

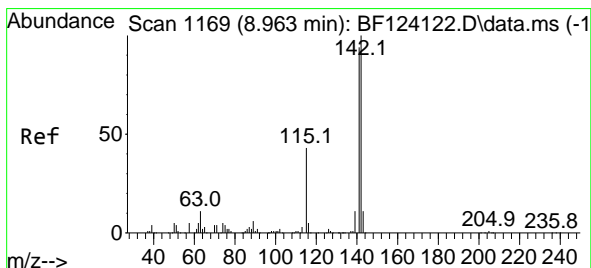
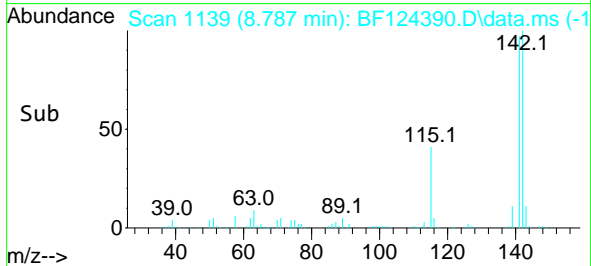
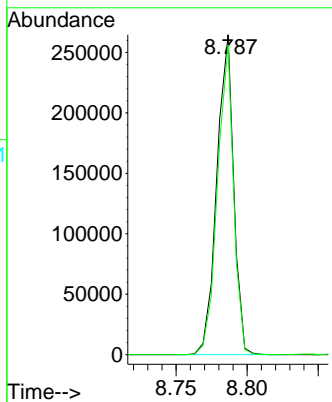
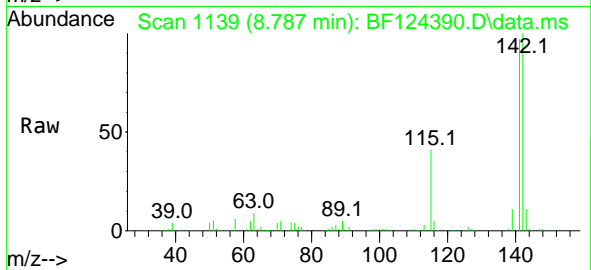




#37
 2-Methylnaphthalene
 Concen: 42.110 ng
 RT: 8.787 min Scan# 1139
 Delta R.T. 0.000 min
 Lab File: BF124390.D
 Acq: 21 Jun 2021 13:15

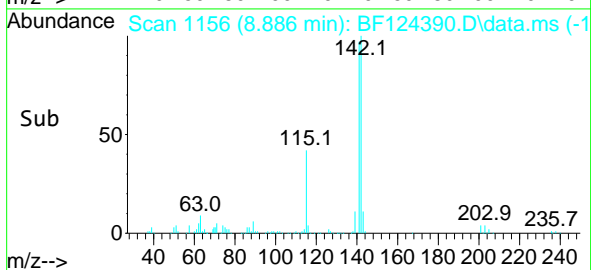
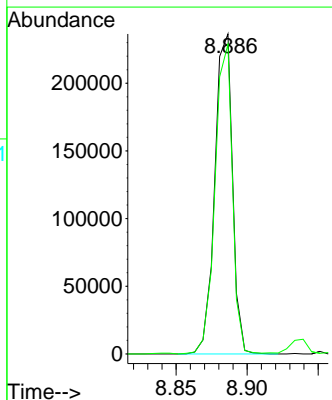
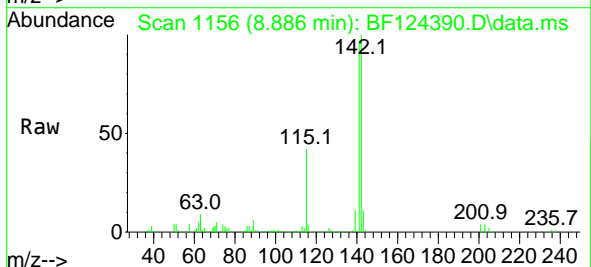
Instrument :
 BNA_F
 ClientSampled :
 SB-8MS

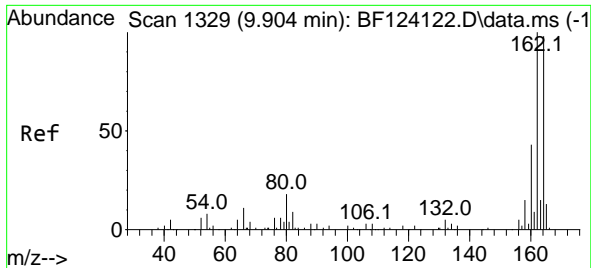
Tgt Ion:142 Resp: 217692
 Ion Ratio Lower Upper
 142 100
 141 96.7 71.8 107.6



#38
 1-Methylnaphthalene
 Concen: 42.462 ng
 RT: 8.886 min Scan# 1156
 Delta R.T. 0.000 min
 Lab File: BF124390.D
 Acq: 21 Jun 2021 13:15

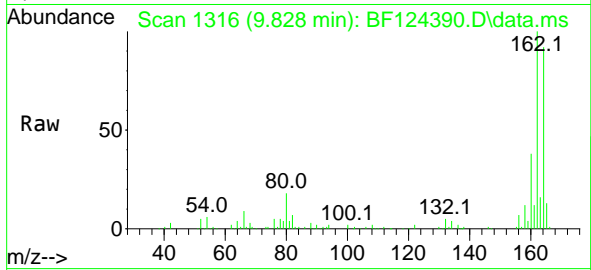
Tgt Ion:142 Resp: 205130
 Ion Ratio Lower Upper
 142 100
 141 96.8 72.8 109.2



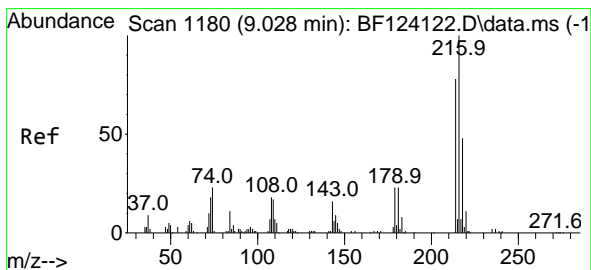
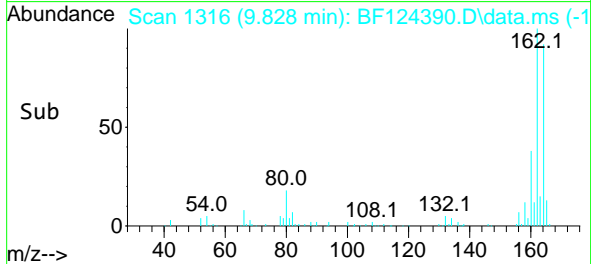
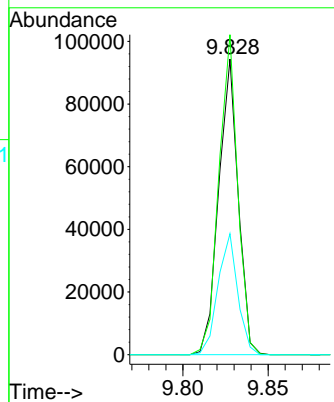


#39
 Acenaphthene-d10
 Concen: 20.000 ng
 RT: 9.828 min Scan# 1316
 Delta R.T. 0.000 min
 Lab File: BF124390.D
 Acq: 21 Jun 2021 13:15

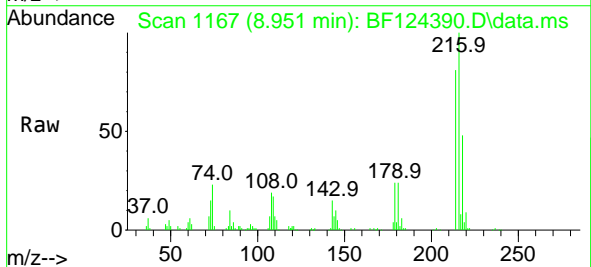
Instrument :
 BNA_F
 ClientSampled :
 SB-8MS



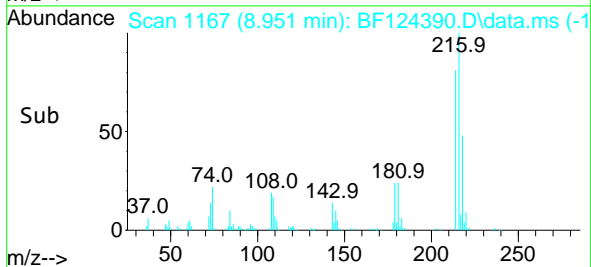
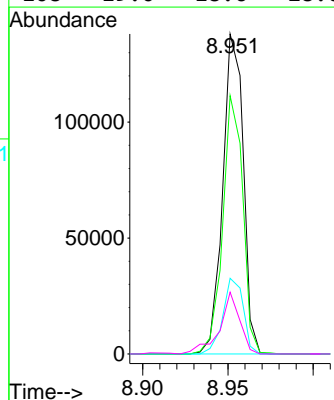
Tgt Ion:164 Resp: 75318
 Ion Ratio Lower Upper
 164 100
 162 108.2 80.7 121.1
 160 40.9 37.3 55.9

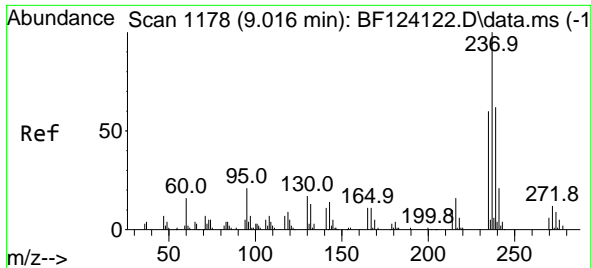


#40
 1,2,4,5-Tetrachlorobenzene
 Concen: 43.360 ng
 RT: 8.951 min Scan# 1167
 Delta R.T. -0.006 min
 Lab File: BF124390.D
 Acq: 21 Jun 2021 13:15



Tgt Ion:216 Resp: 115709
 Ion Ratio Lower Upper
 216 100
 214 79.0 63.8 95.8
 179 23.5 17.9 26.9
 108 19.0 18.6 28.0



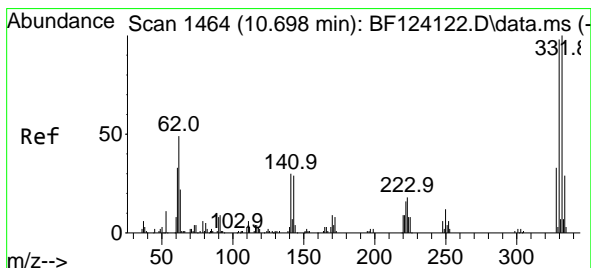
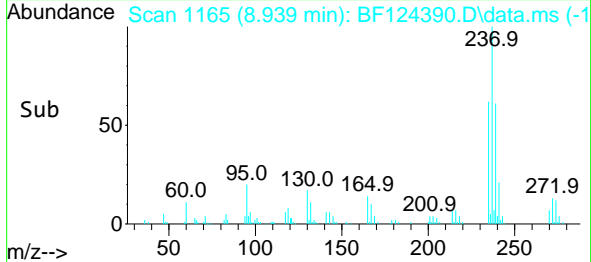
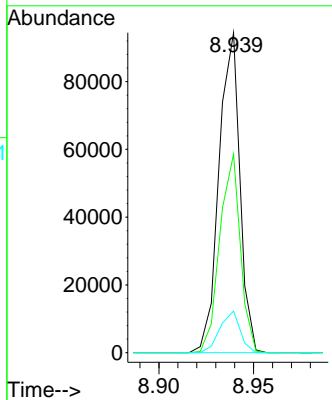
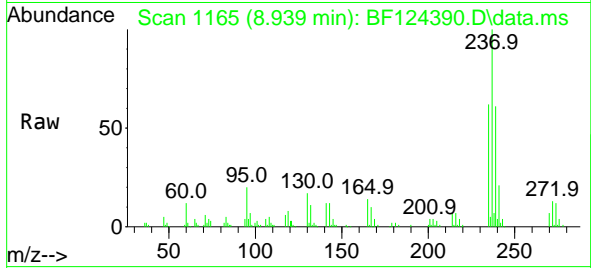


#41
 Hexachlorocyclopentadiene
 Concen: 52.946 ng
 RT: 8.939 min Scan# 1165
 Delta R.T. 0.000 min
 Lab File: BF124390.D
 Acq: 21 Jun 2021 13:15

Instrument :
 BNA_F
ClientSampled :
 SB-8MS

Tgt Ion:237 Resp: 72460

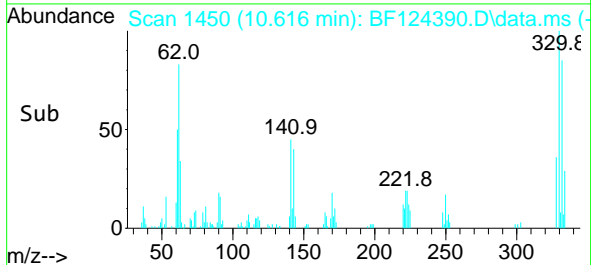
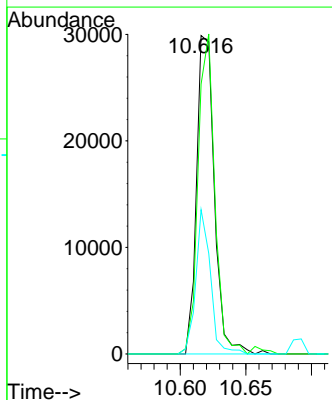
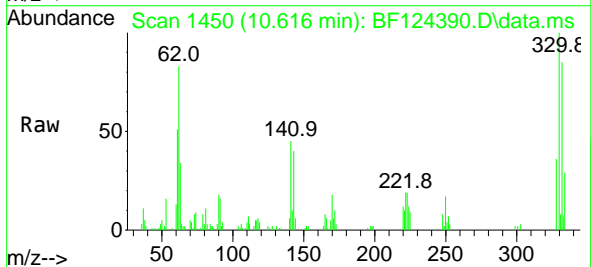
Ion	Ratio	Lower	Upper
237	100		
235	62.1	38.8	78.8
272	13.0	0.0	32.4

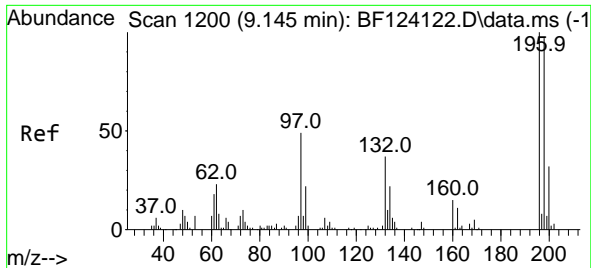


#42
 2,4,6-Tribromophenol
 Concen: 26.604 ng
 RT: 10.616 min Scan# 1450
 Delta R.T. -0.006 min
 Lab File: BF124390.D
 Acq: 21 Jun 2021 13:15

Tgt Ion:330 Resp: 28388

Ion	Ratio	Lower	Upper
330	100		
332	93.8	77.1	115.7
141	37.2	27.9	41.9

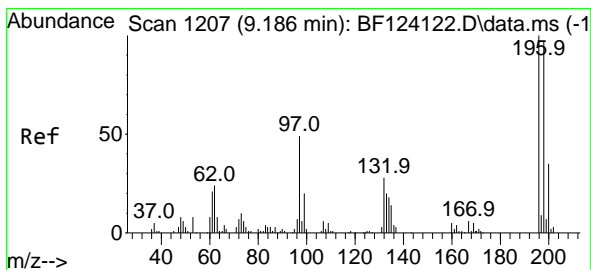
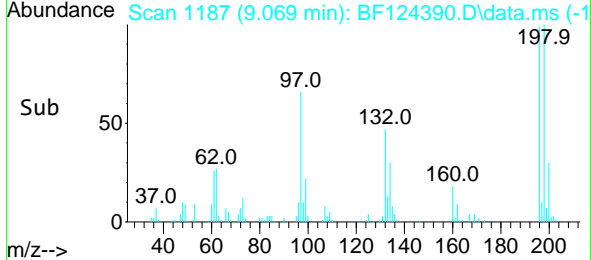
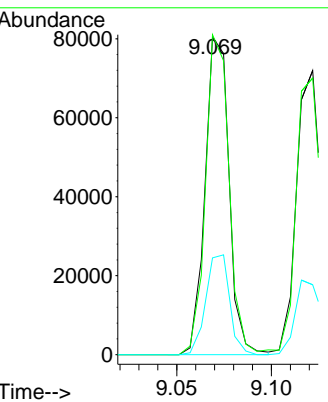
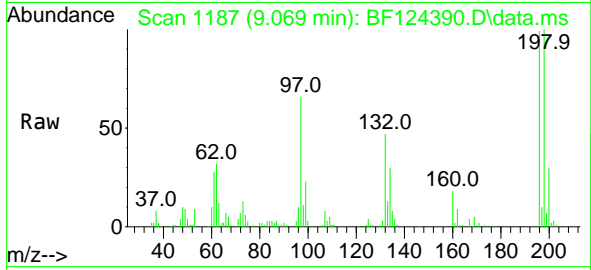




#43
 2,4,6-Trichlorophenol
 Concen: 40.755 ng
 RT: 9.069 min Scan# 1187
 Delta R.T. -0.006 min
 Lab File: BF124390.D
 Acq: 21 Jun 2021 13:15

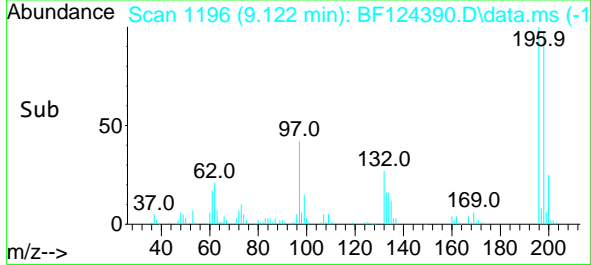
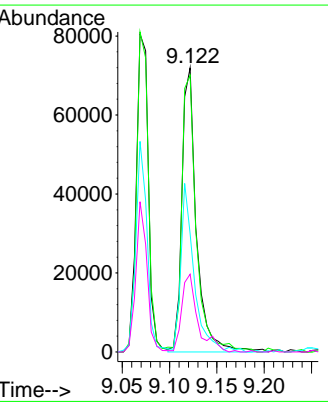
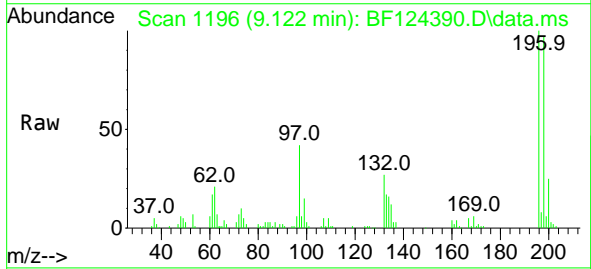
Instrument :
 BNA_F
 ClientSampled :
 SB-8MS

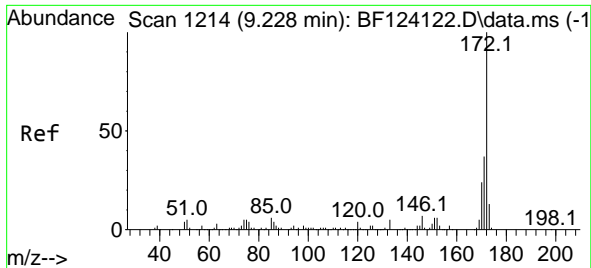
Tgt Ion	Resp	Lower	Upper
196	70931		
196	100		
198	100.6	78.2	117.2
200	30.5	25.0	37.6



#44
 2,4,5-Trichlorophenol
 Concen: 41.359 ng
 RT: 9.122 min Scan# 1196
 Delta R.T. -0.006 min
 Lab File: BF124390.D
 Acq: 21 Jun 2021 13:15

Tgt Ion	Resp	Lower	Upper
196	77274		
196	100		
198	97.4	76.5	114.7
97	41.6	52.9	79.3#
132	27.4	25.3	37.9

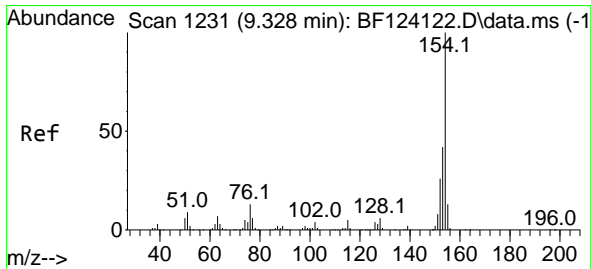
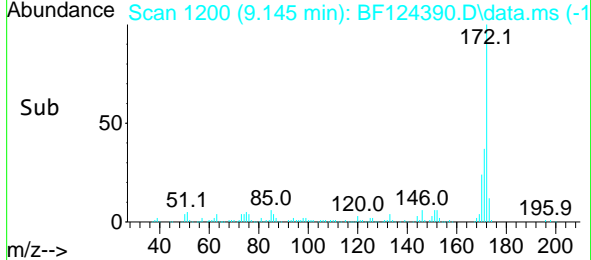
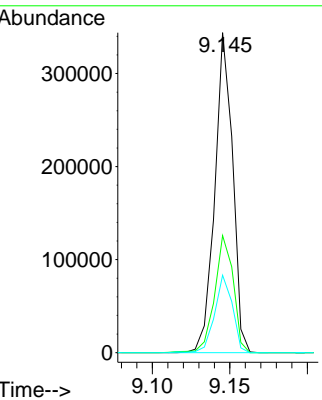
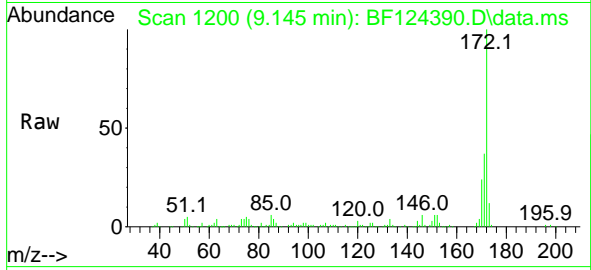




#45
 2-Fluorobiphenyl
 Concen: 45.906 ng
 RT: 9.145 min Scan# 1200
 Delta R.T. -0.006 min
 Lab File: BF124390.D
 Acq: 21 Jun 2021 13:15

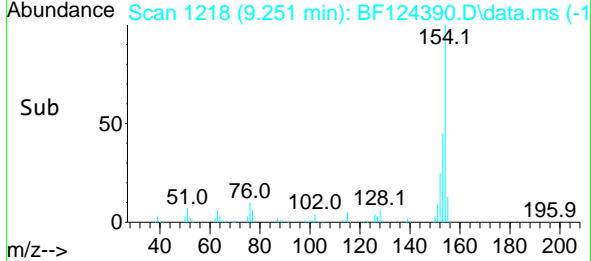
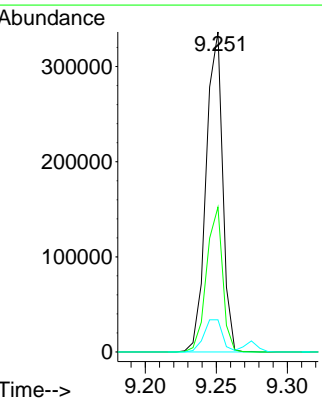
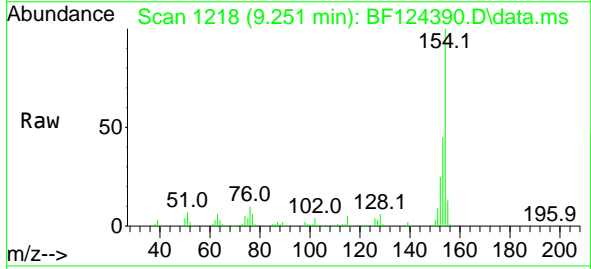
Instrument :
 BNA_F
ClientSampled :
 SB-8MS

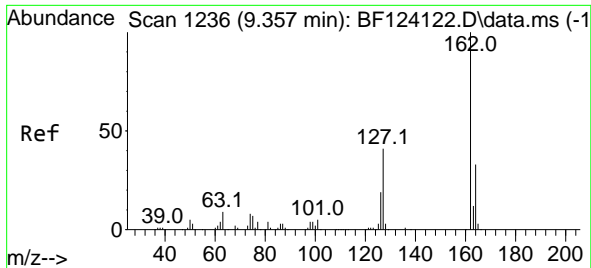
Tgt Ion	Resp	Lower	Upper
172	100		
171	36.6	28.1	42.1
170	24.2	19.2	28.8



#46
 1,1'-Biphenyl
 Concen: 42.679 ng
 RT: 9.251 min Scan# 1218
 Delta R.T. 0.000 min
 Lab File: BF124390.D
 Acq: 21 Jun 2021 13:15

Tgt Ion	Resp	Lower	Upper
154	100		
153	45.2	20.7	60.7
76	10.1	0.0	31.7

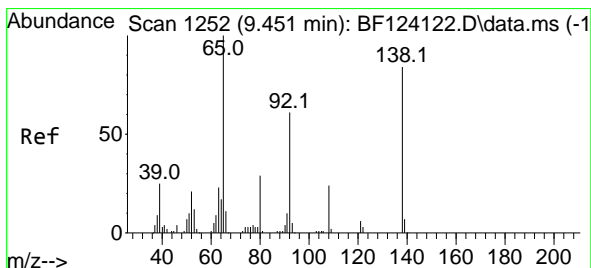
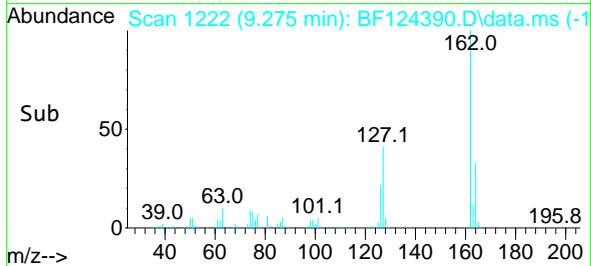
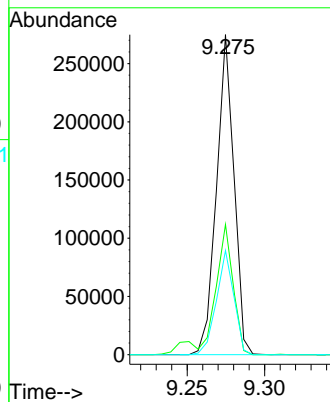
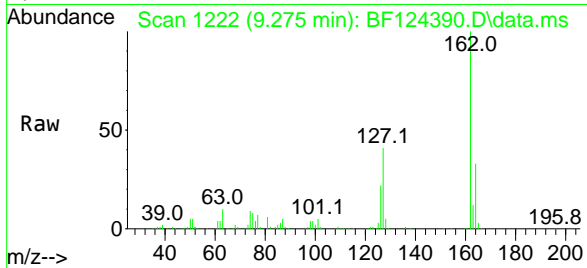




#47
 2-Chloronaphthalene
 Concen: 41.548 ng
 RT: 9.275 min Scan# 1222
 Delta R.T. -0.006 min
 Lab File: BF124390.D
 Acq: 21 Jun 2021 13:15

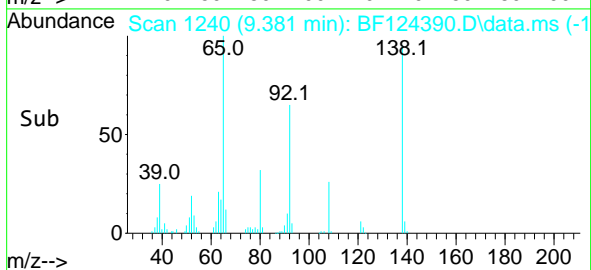
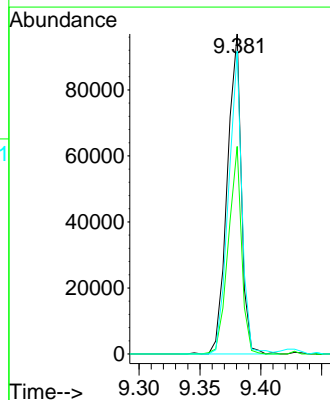
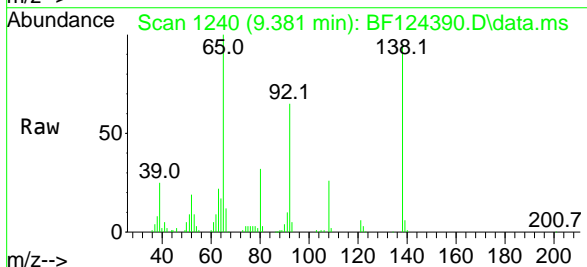
Instrument :
 BNA_F
 ClientSampled :
 SB-8MS

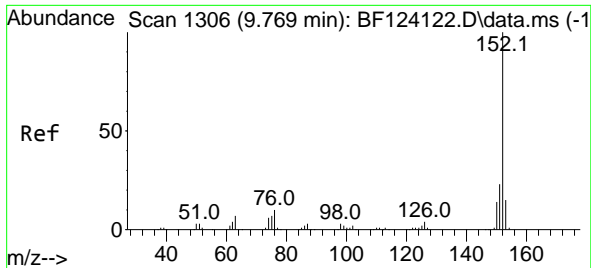
Tgt Ion	Resp	Lower	Upper
162	215019		
162	100		
127	40.7	36.2	54.2
164	32.6	25.4	38.2



#48
 2-Nitroaniline
 Concen: 41.933 ng
 RT: 9.381 min Scan# 1240
 Delta R.T. 0.000 min
 Lab File: BF124390.D
 Acq: 21 Jun 2021 13:15

Tgt Ion	Resp	Lower	Upper
65	78314		
65	100		
92	64.8	47.1	70.7
138	94.6	70.2	105.2

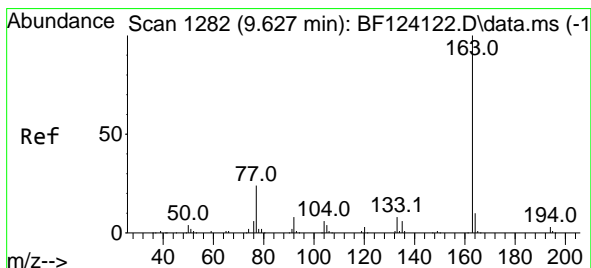
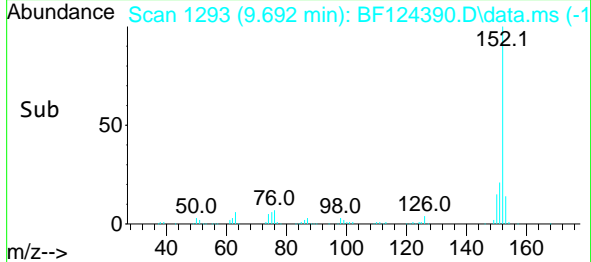
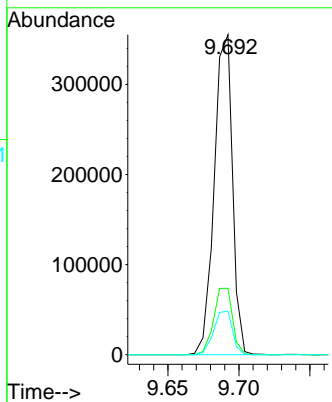
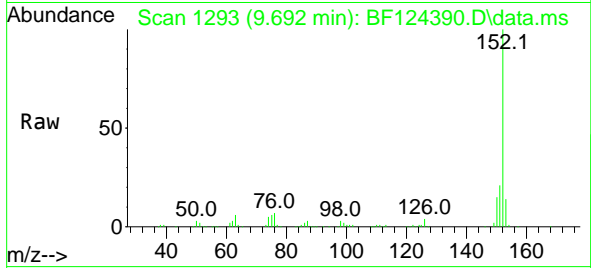




#49
 Acenaphthylene
 Concen: 42.171 ng
 RT: 9.692 min Scan# 1293
 Delta R.T. 0.000 min
 Lab File: BF124390.D
 Acq: 21 Jun 2021 13:15

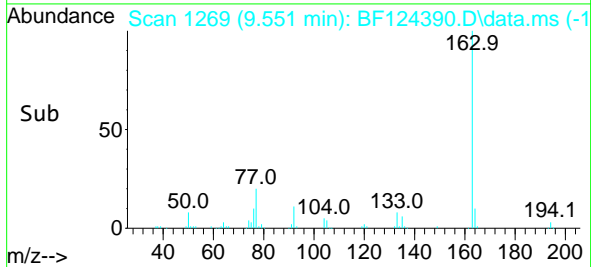
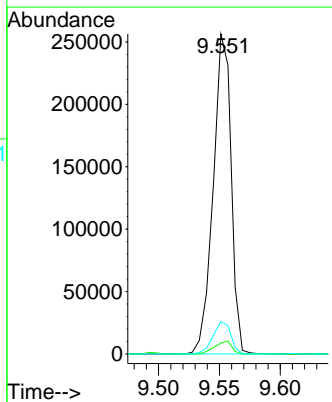
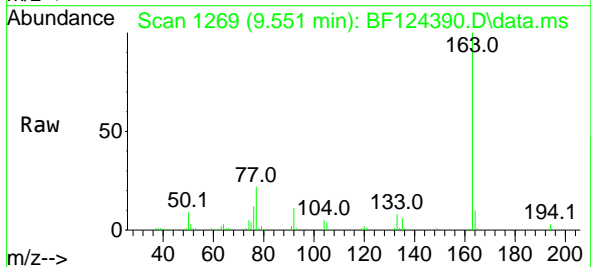
Instrument :
 BNA_F
ClientSampled :
 SB-8MS

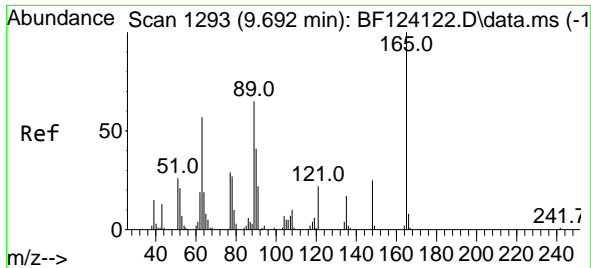
Tgt Ion	Resp	Lower	Upper
152	317233		
151	20.7	16.0	24.0
153	13.6	10.4	15.6



#50
 Dimethylphthalate
 Concen: 42.270 ng
 RT: 9.551 min Scan# 1269
 Delta R.T. -0.006 min
 Lab File: BF124390.D
 Acq: 21 Jun 2021 13:15

Tgt Ion	Resp	Lower	Upper
163	263403		
194	3.4	3.1	4.7
164	10.1	8.2	12.2



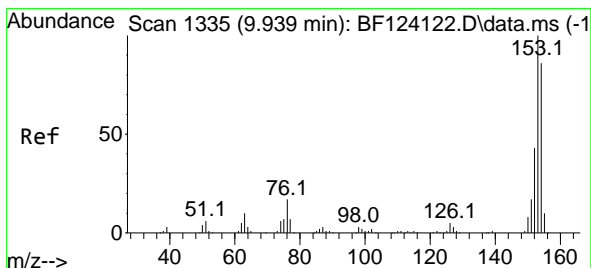
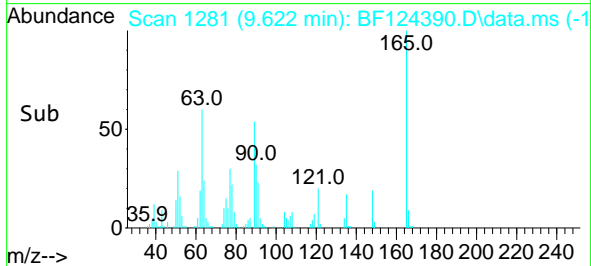
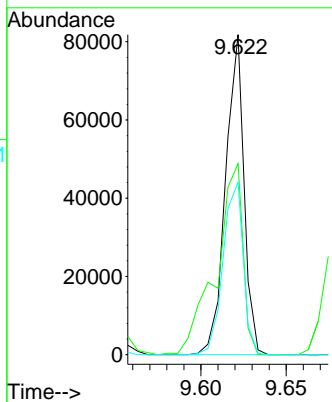
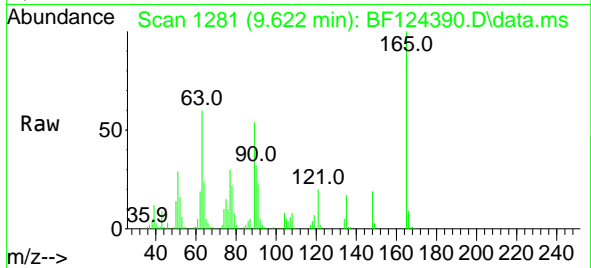


#51
 2,6-Dinitrotoluene
 Concen: 43.009 ng
 RT: 9.622 min Scan# 1281
 Delta R.T. 0.000 min
 Lab File: BF124390.D
 Acq: 21 Jun 2021 13:15

Instrument :
 BNA_F
 ClientSampled :
 SB-8MS

Tgt Ion:165 Resp: 61451

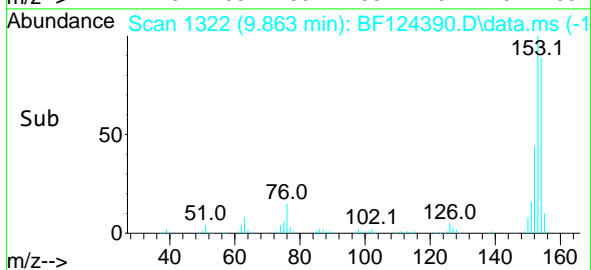
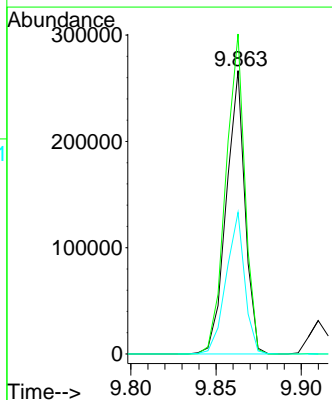
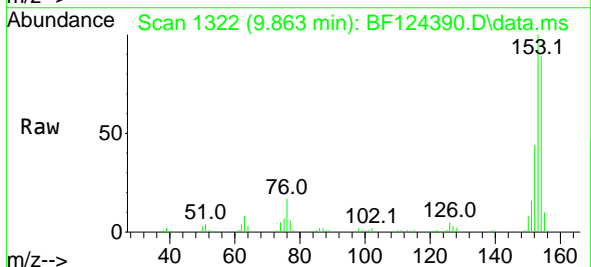
Ion	Ratio	Lower	Upper
165	100		
63	59.7	67.7	101.5#
89	53.9	58.8	88.2#

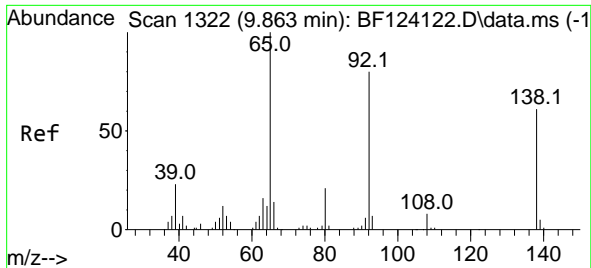


#52
 Acenaphthene
 Concen: 41.533 ng
 RT: 9.863 min Scan# 1322
 Delta R.T. 0.000 min
 Lab File: BF124390.D
 Acq: 21 Jun 2021 13:15

Tgt Ion:154 Resp: 204062

Ion	Ratio	Lower	Upper
154	100		
153	112.9	88.1	132.1
152	50.0	43.4	65.0



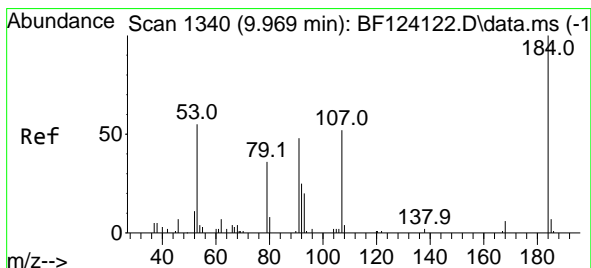
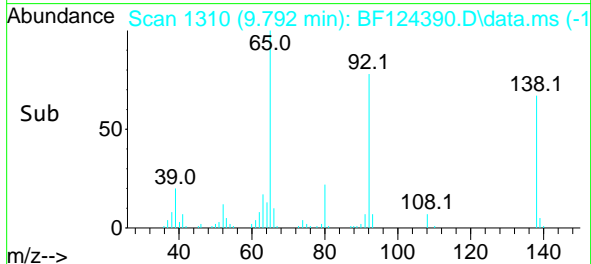
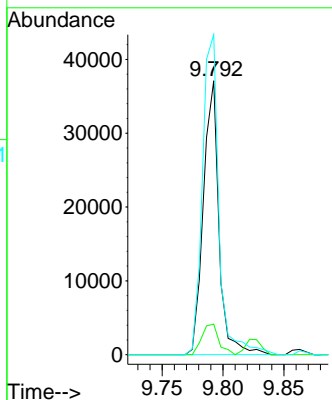
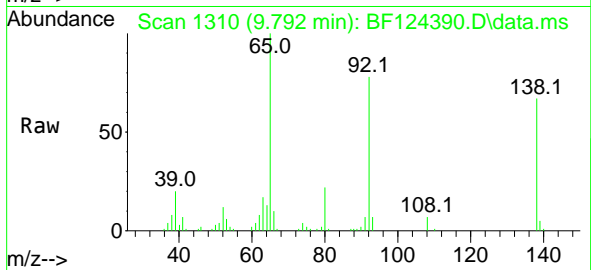


#53
 3-Nitroaniline
 Concen: 24.730 ng
 RT: 9.792 min Scan# 1310
 Delta R.T. -0.006 min
 Lab File: BF124390.D
 Acq: 21 Jun 2021 13:15

Instrument :
 BNA_F
 ClientSampled :
 SB-8MS

Tgt Ion:138 Resp: 33070

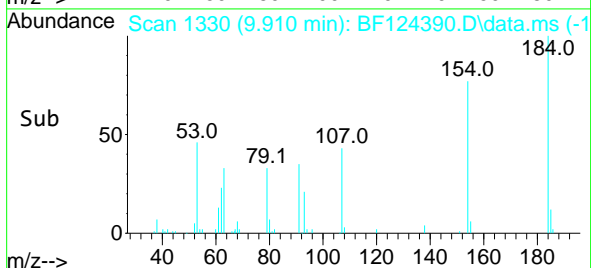
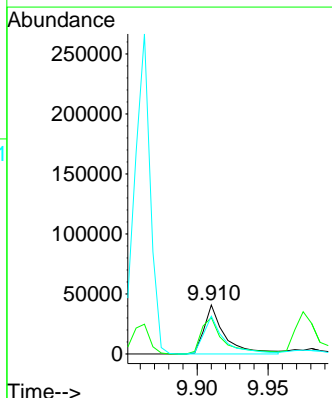
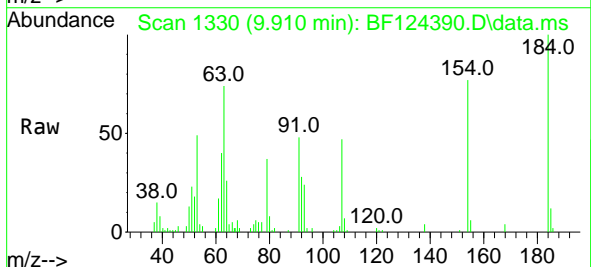
Ion	Ratio	Lower	Upper
138	100		
108	11.2	10.2	15.4
92	116.8	103.3	154.9

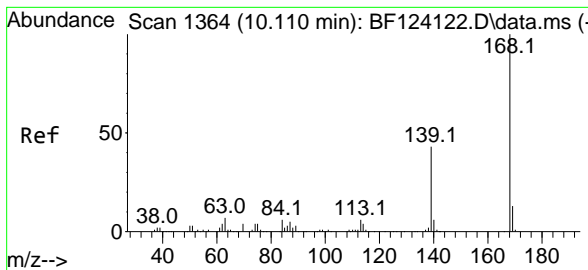


#54
 2,4-Dinitrophenol
 Concen: 57.135 ng
 RT: 9.910 min Scan# 1330
 Delta R.T. 0.000 min
 Lab File: BF124390.D
 Acq: 21 Jun 2021 13:15

Tgt Ion:184 Resp: 40970

Ion	Ratio	Lower	Upper
184	100		
63	74.5	73.5	110.3
154	77.0	52.5	78.7



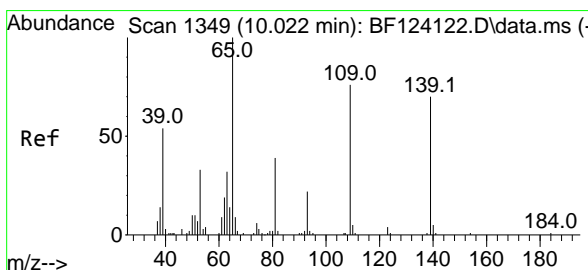
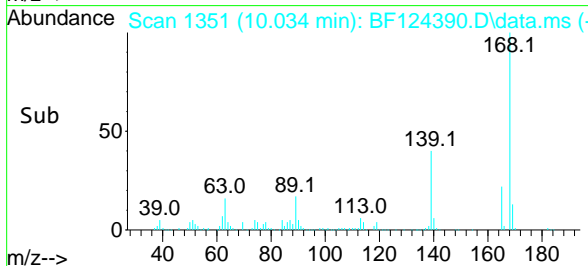
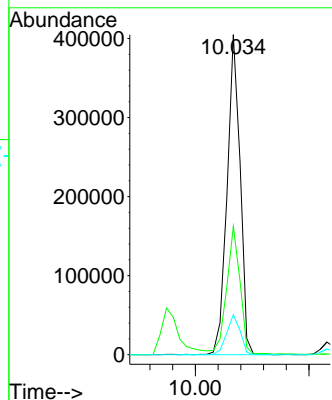
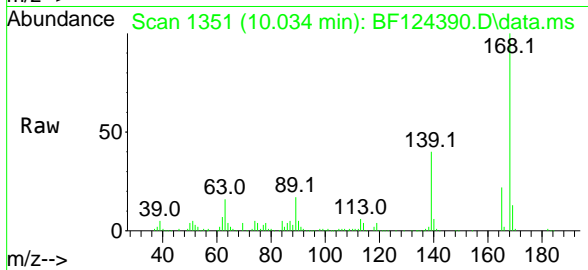


#55
 Dibenzenofuran
 Concen: 41.892 ng
 RT: 10.034 min Scan# 1351
 Delta R.T. -0.006 min
 Lab File: BF124390.D
 Acq: 21 Jun 2021 13:15

Instrument :
 BNA_F
 ClientSampled :
 SB-8MS

Tgt Ion:168 Resp: 322137

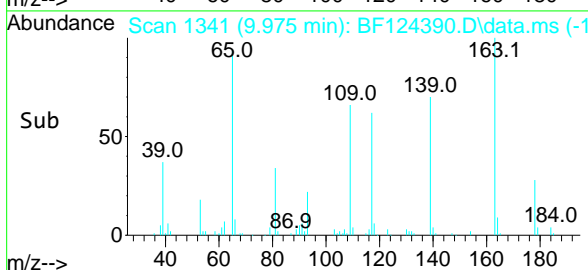
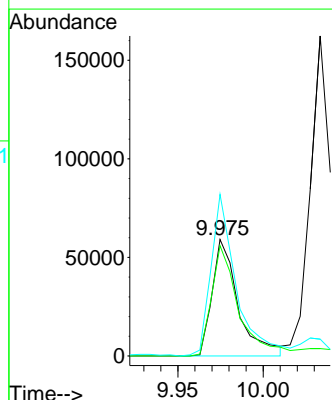
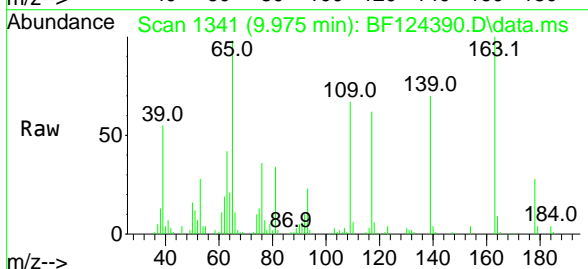
Ion	Ratio	Lower	Upper
168	100		
139	40.1	33.2	49.8
169	12.5	10.8	16.2

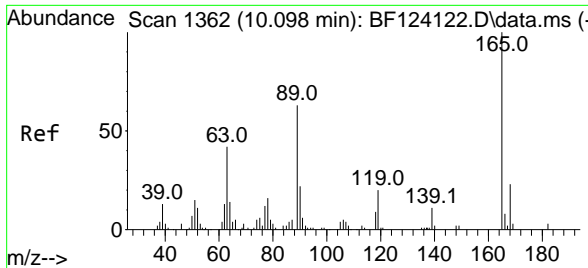


#56
 4-Nitrophenol
 Concen: 66.323 ng
 RT: 9.975 min Scan# 1341
 Delta R.T. -0.006 min
 Lab File: BF124390.D
 Acq: 21 Jun 2021 13:15

Tgt Ion:139 Resp: 63383

Ion	Ratio	Lower	Upper
139	100		
109	94.6	63.2	103.2
65	138.8	110.0	150.0



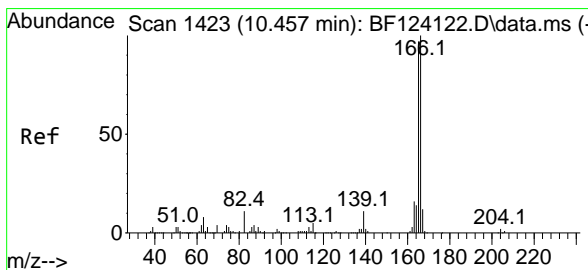
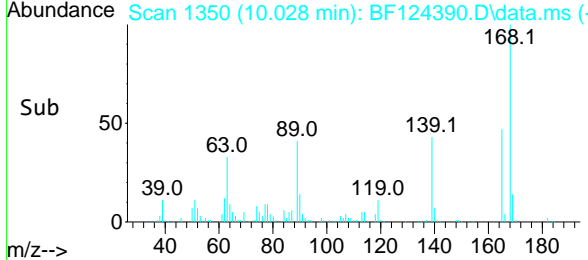
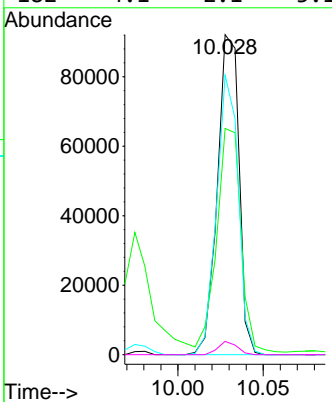
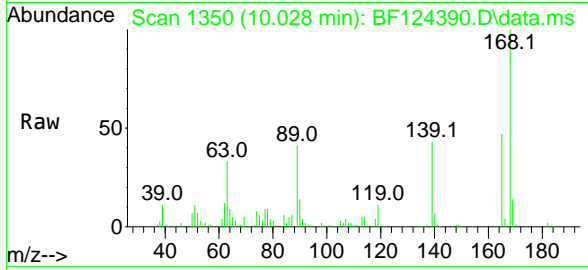


#57
 2,4-Dinitrotoluene
 Concen: 43.305 ng
 RT: 10.028 min Scan# 1350
 Delta R.T. 0.000 min
 Lab File: BF124390.D
 Acq: 21 Jun 2021 13:15

Instrument :
 BNA_F
ClientSampled :
 SB-8MS

Tgt Ion:165 Resp: 81601

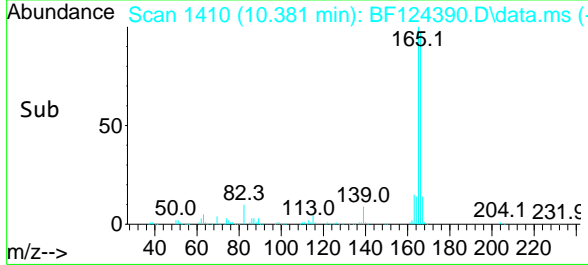
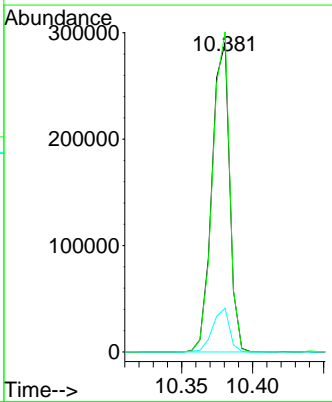
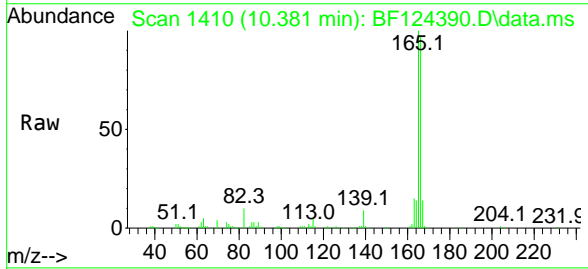
Ion	Ratio	Lower	Upper
165	100		
63	70.7	43.5	65.3#
89	87.3	67.7	101.5
182	4.1	2.1	3.1#

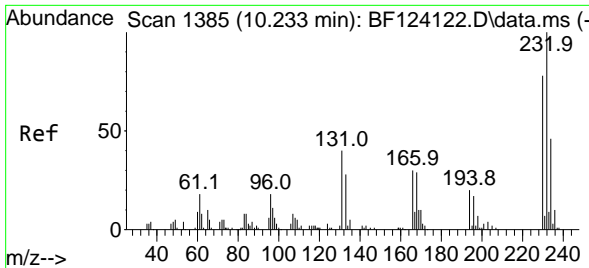


#58
 Fluorene
 Concen: 42.520 ng
 RT: 10.381 min Scan# 1410
 Delta R.T. 0.000 min
 Lab File: BF124390.D
 Acq: 21 Jun 2021 13:15

Tgt Ion:166 Resp: 250983

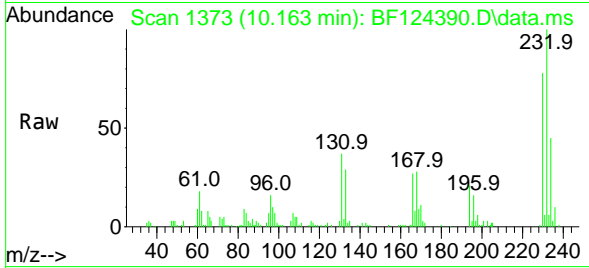
Ion	Ratio	Lower	Upper
166	100		
165	103.4	73.5	110.3
167	14.1	10.7	16.1



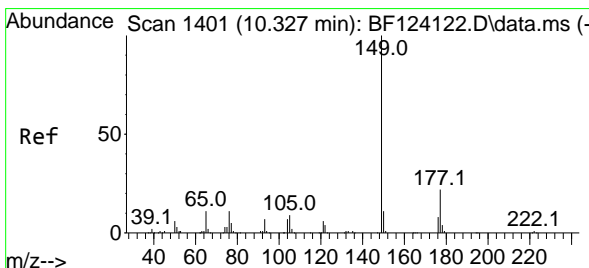
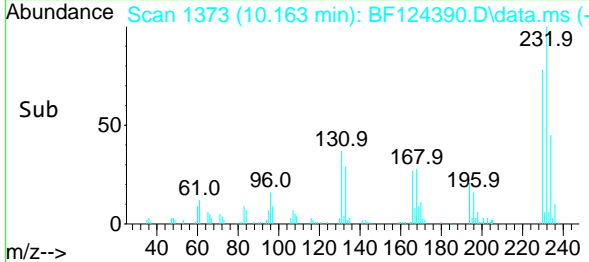
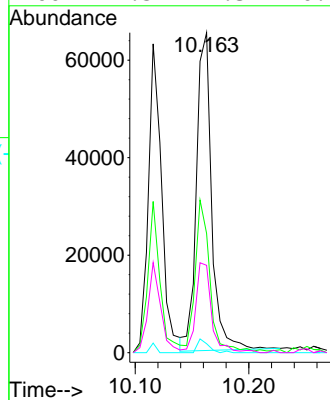


#59
 2,3,4,6-Tetrachlorophenol
 Concen: 40.130 ng
 RT: 10.163 min Scan# 1373
 Delta R.T. 0.000 min
 Lab File: BF124390.D
 Acq: 21 Jun 2021 13:15

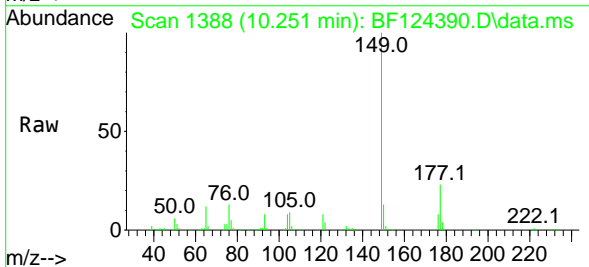
Instrument :
 BNA_F
 ClientSampled :
 SB-8MS



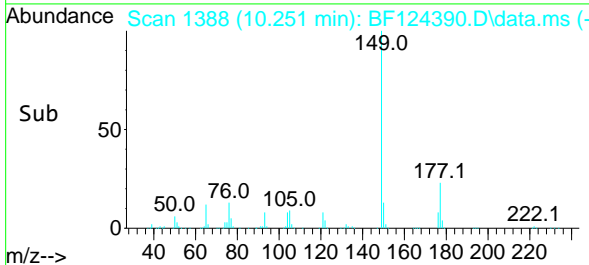
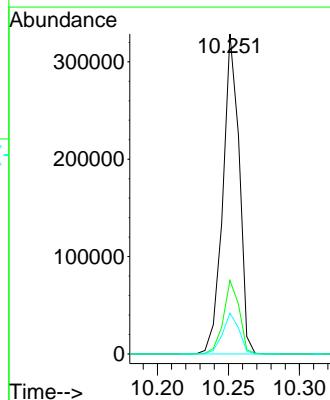
Tgt Ion:232 Resp: 60759
 Ion Ratio Lower Upper
 232 100
 131 47.4 43.2 64.8
 130 3.2 2.2 3.2
 166 29.5 27.3 40.9

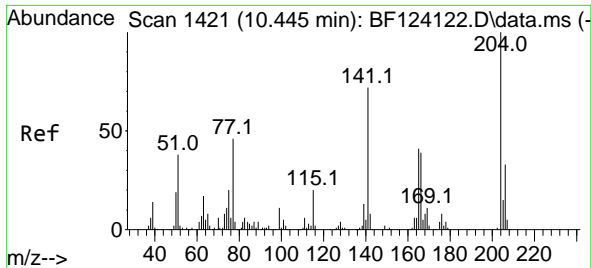


#60
 Diethylphthalate
 Concen: 41.550 ng
 RT: 10.251 min Scan# 1388
 Delta R.T. -0.006 min
 Lab File: BF124390.D
 Acq: 21 Jun 2021 13:15



Tgt Ion:149 Resp: 261300
 Ion Ratio Lower Upper
 149 100
 177 23.0 15.4 23.2
 150 12.7 9.9 14.9



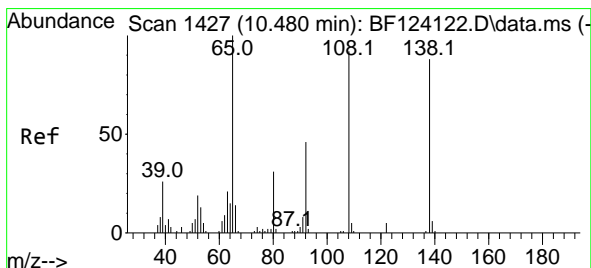
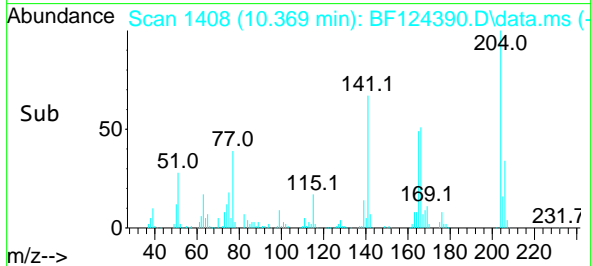
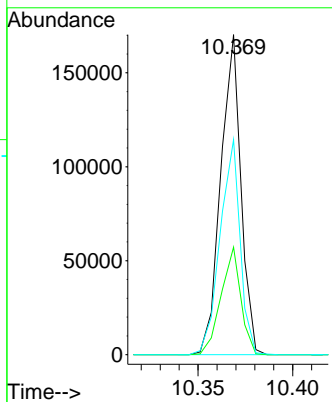
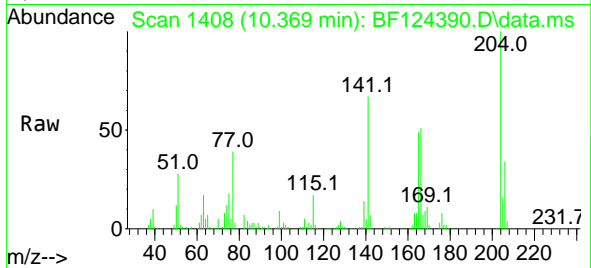


#61
 4-Chlorophenyl-phenylether
 Concen: 41.875 ng
 RT: 10.369 min Scan# 1408
 Delta R.T. 0.000 min
 Lab File: BF124390.D
 Acq: 21 Jun 2021 13:15

Instrument :
 BNA_F
 ClientSampled :
 SB-8MS

Tgt Ion: 204 Resp: 126384

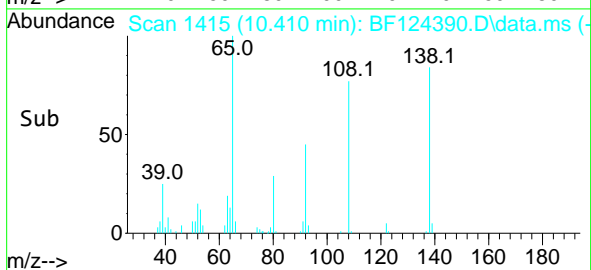
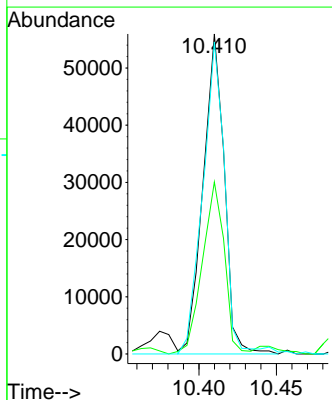
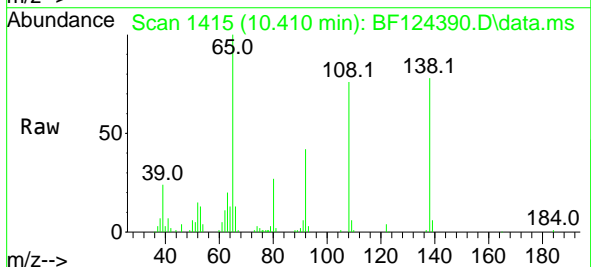
Ion	Ratio	Lower	Upper
204	100		
206	33.6	25.7	38.5
141	67.2	55.5	83.3

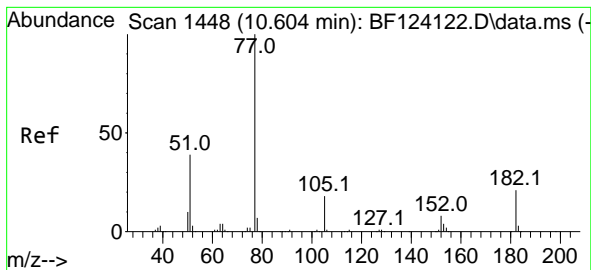


#62
 4-Nitroaniline
 Concen: 39.605 ng
 RT: 10.410 min Scan# 1415
 Delta R.T. -0.006 min
 Lab File: BF124390.D
 Acq: 21 Jun 2021 13:15

Tgt Ion: 138 Resp: 53251

Ion	Ratio	Lower	Upper
138	100		
92	53.8	35.8	75.8
108	97.5	63.6	103.6



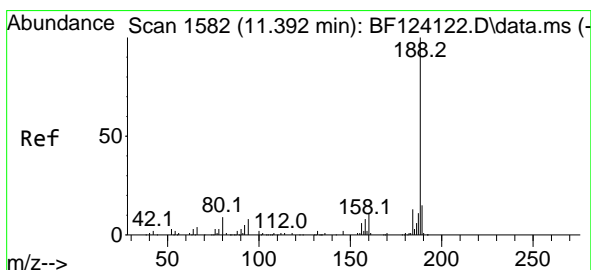
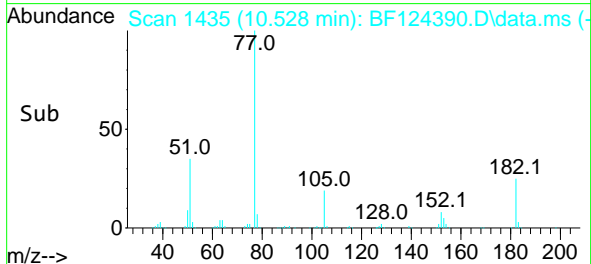
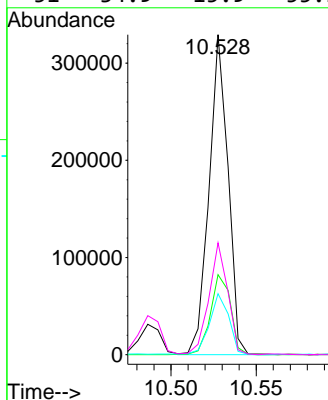
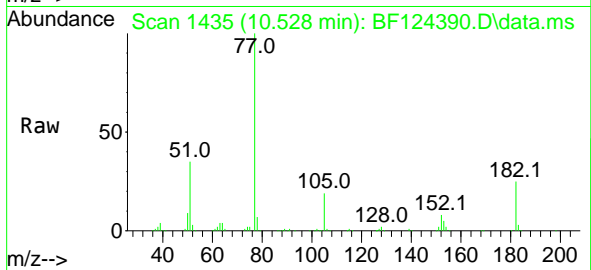


#63
 Azobenzene
 Concen: 38.801 ng
 RT: 10.528 min Scan# 1435
 Delta R.T. -0.006 min
 Lab File: BF124390.D
 Acq: 21 Jun 2021 13:15

Instrument :
 BNA_F
 ClientSampleId :
 SB-8MS

Tgt Ion: 77 Resp: 254356

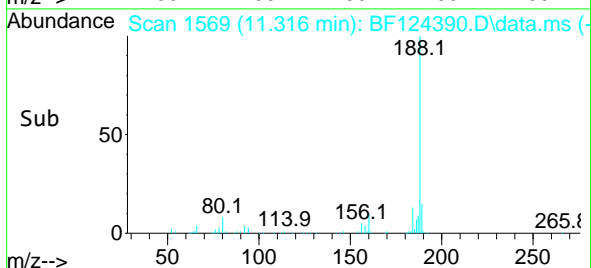
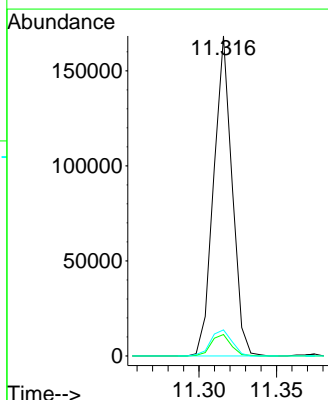
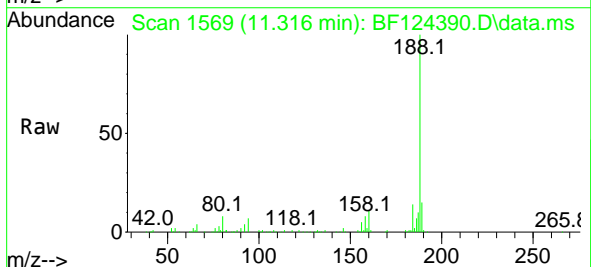
Ion	Ratio	Lower	Upper
77	100		
182	25.0	1.7	41.7
105	19.1	1.7	41.7
51	34.9	15.9	55.9

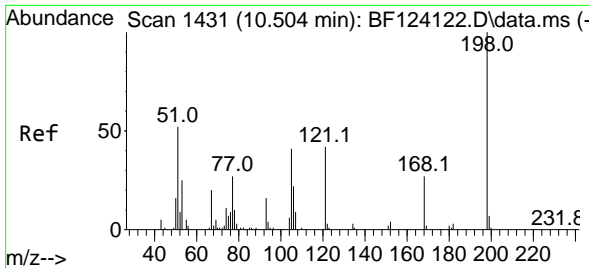


#64
 Phenanthrene-d10
 Concen: 20.000 ng
 RT: 11.316 min Scan# 1569
 Delta R.T. 0.000 min
 Lab File: BF124390.D
 Acq: 21 Jun 2021 13:15

Tgt Ion: 188 Resp: 138995

Ion	Ratio	Lower	Upper
188	100		
94	6.7	6.9	10.3#
80	8.2	8.2	12.2



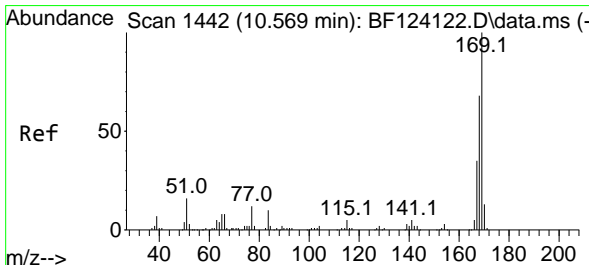
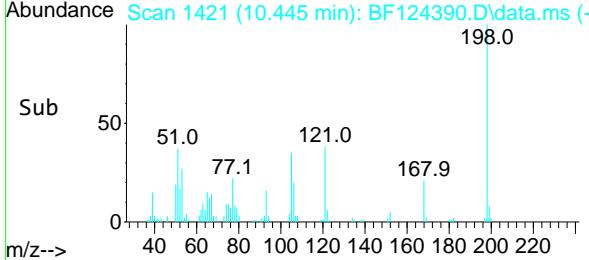
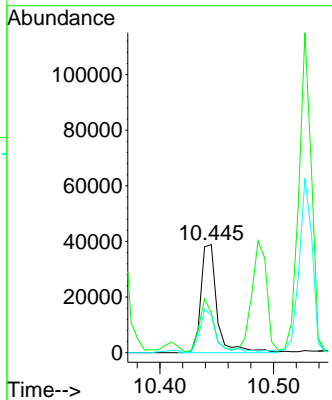
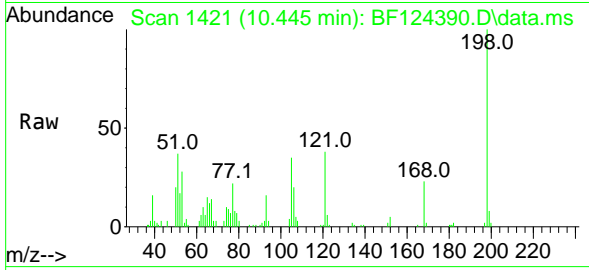


#65
 4,6-Dinitro-2-methylphenol
 Concen: 34.187 ng
 RT: 10.445 min Scan# 1421
 Delta R.T. 0.006 min
 Lab File: BF124390.D
 Acq: 21 Jun 2021 13:15

Instrument :
 BNA_F
ClientSampled :
 SB-8MS

Tgt Ion:198 Resp: 38187

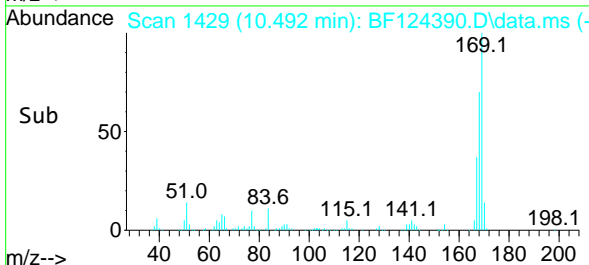
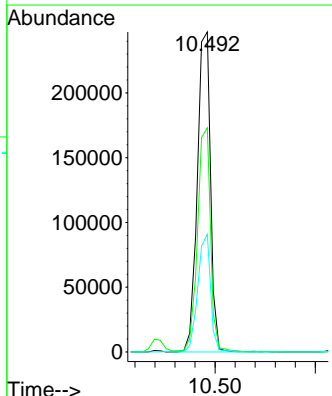
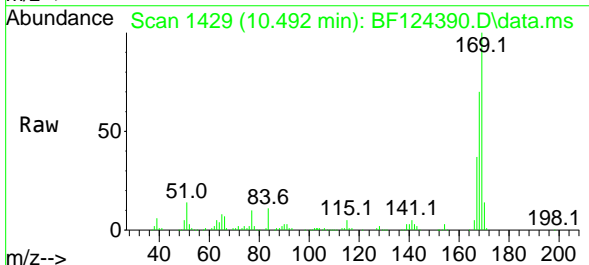
Ion	Ratio	Lower	Upper
198	100		
51	37.0	64.8	104.8#
105	34.7	42.6	82.6#

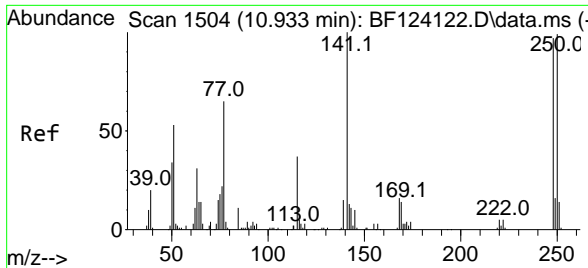


#66
 n-Nitrosodiphenylamine
 Concen: 43.082 ng
 RT: 10.492 min Scan# 1429
 Delta R.T. 0.000 min
 Lab File: BF124390.D
 Acq: 21 Jun 2021 13:15

Tgt Ion:169 Resp: 227526

Ion	Ratio	Lower	Upper
169	100		
168	70.1	53.3	79.9
167	36.8	29.9	44.9

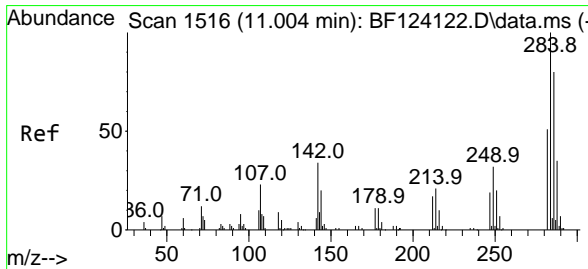
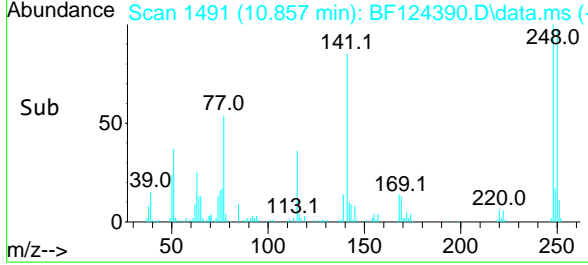
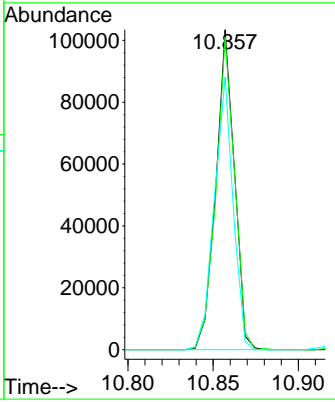
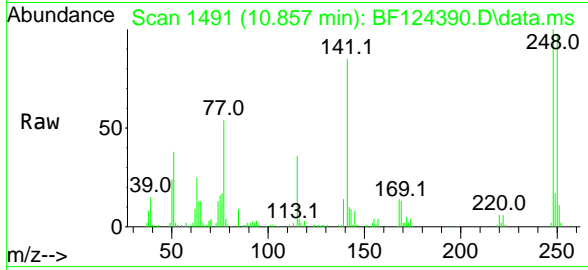




#67
 4-Bromophenyl-phenylether
 Concen: 41.130 ng
 RT: 10.857 min Scan# 1491
 Delta R.T. -0.006 min
 Lab File: BF124390.D
 Acq: 21 Jun 2021 13:15

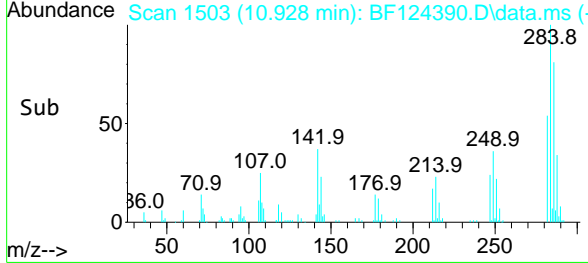
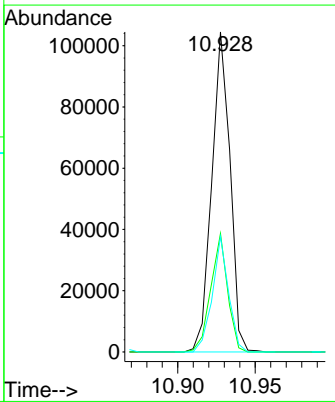
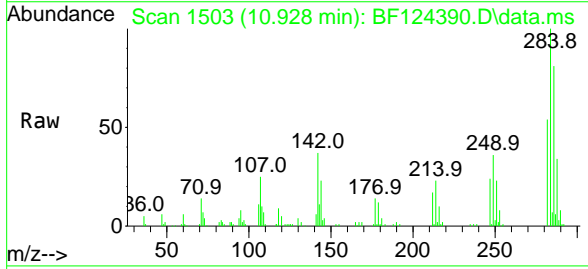
Instrument :
 BNA_F
ClientSampled :
 SB-8MS

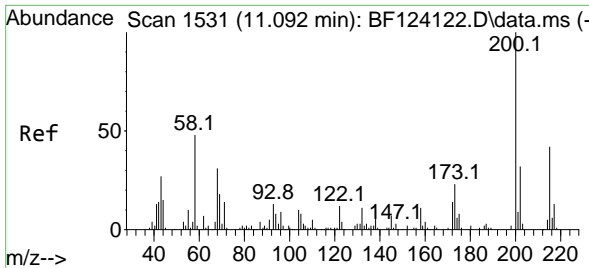
Tgt Ion	Resp	Lower	Upper
248	100		
250	97.6	77.4	116.2
141	85.2	63.7	95.5



#68
 Hexachlorobenzene
 Concen: 39.606 ng
 RT: 10.928 min Scan# 1503
 Delta R.T. 0.000 min
 Lab File: BF124390.D
 Acq: 21 Jun 2021 13:15

Tgt Ion	Resp	Lower	Upper
284	100		
142	37.0	28.3	42.5
249	36.1	23.5	35.3#

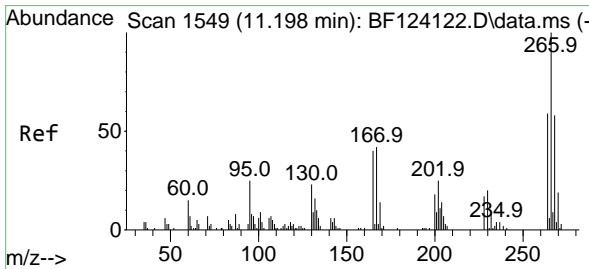
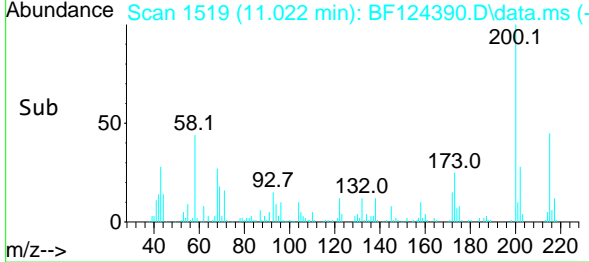
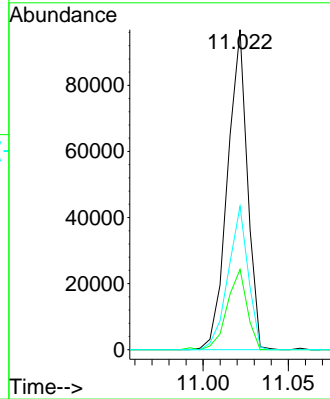
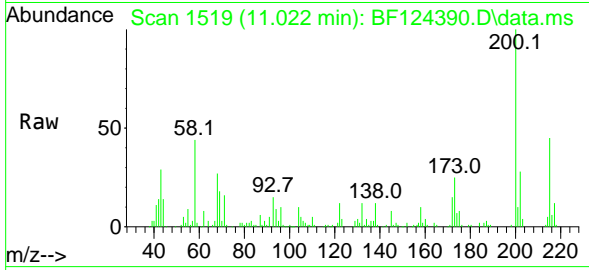




#69
Atrazine
 Concen: 52.516 ng
 RT: 11.022 min Scan# 1519
 Delta R.T. 0.000 min
 Lab File: BF124390.D
 Acq: 21 Jun 2021 13:15

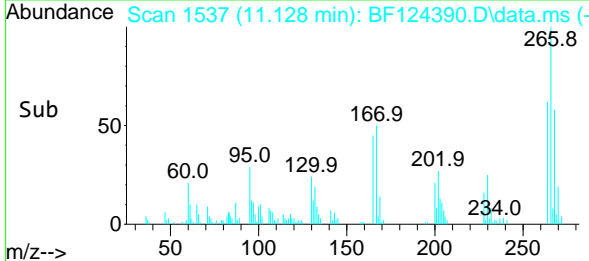
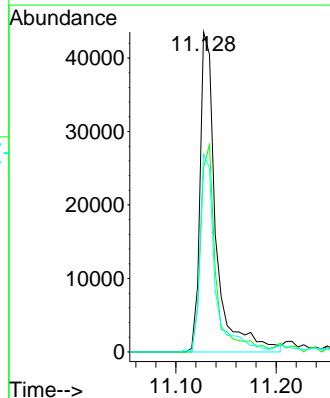
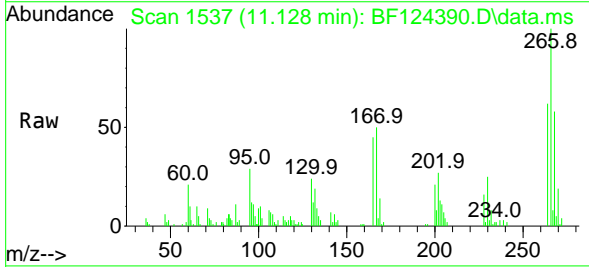
Instrument :
 BNA_F
ClientSampled :
 SB-8MS

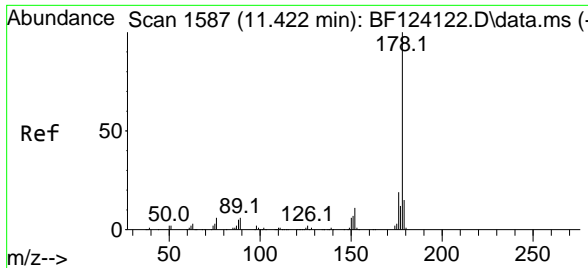
Tgt Ion	Resp	Lower	Upper
200	100		
173	25.1	6.9	46.9
215	44.8	26.5	66.5



#70
Pentachlorophenol
 Concen: 44.569 ng
 RT: 11.128 min Scan# 1537
 Delta R.T. 0.000 min
 Lab File: BF124390.D
 Acq: 21 Jun 2021 13:15

Tgt Ion	Resp	Lower	Upper
266	100		
268	57.6	51.6	77.4
264	61.8	52.6	78.8

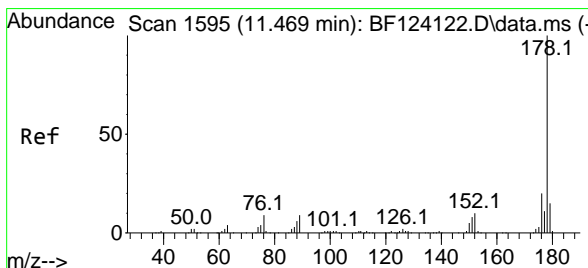
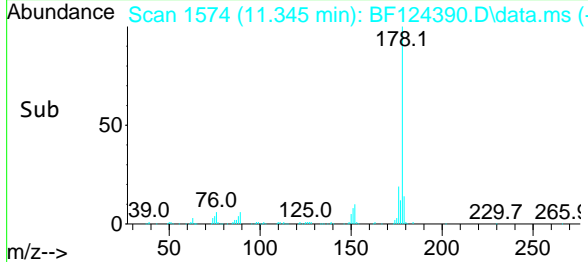
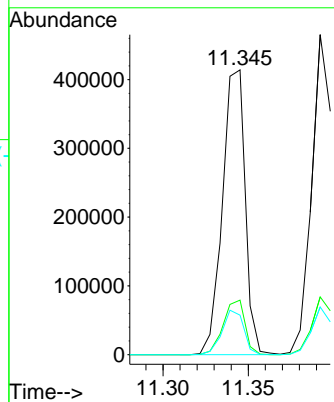
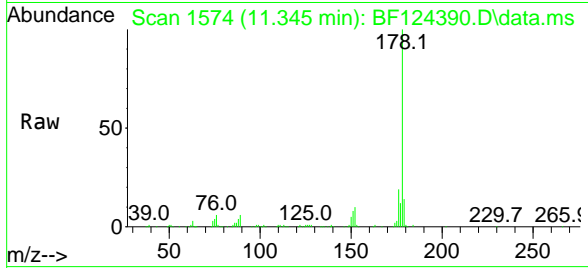




#71
 Phenanthrene
 Concen: 44.352 ng
 RT: 11.345 min Scan# 1574
 Delta R.T. 0.000 min
 Lab File: BF124390.D
 Acq: 21 Jun 2021 13:15

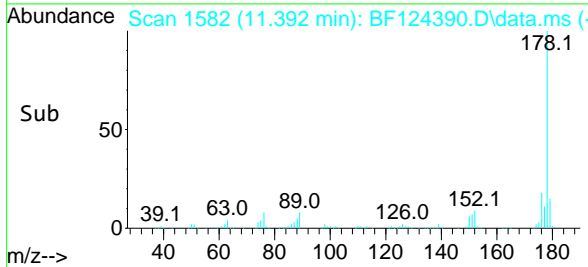
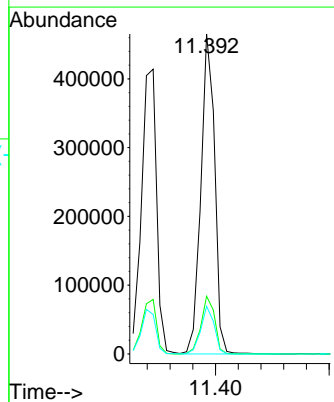
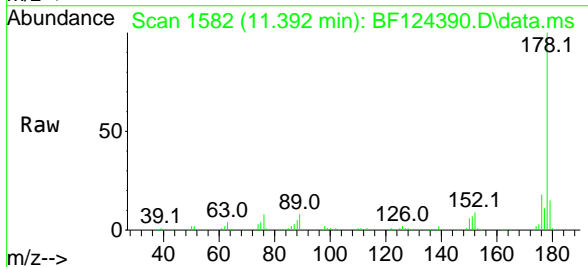
Instrument :
 BNA_F
 ClientSampled :
 SB-8MS

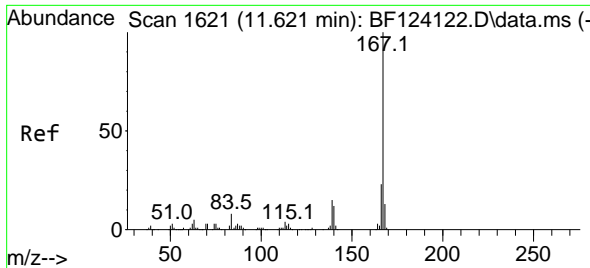
Tgt Ion	Resp	Lower	Upper
178	385097		
176	19.2	15.6	23.4
179	13.9	12.5	18.7



#72
 Anthracene
 Concen: 44.978 ng
 RT: 11.392 min Scan# 1582
 Delta R.T. -0.006 min
 Lab File: BF124390.D
 Acq: 21 Jun 2021 13:15

Tgt Ion	Resp	Lower	Upper
178	393304		
176	18.0	15.4	23.0
179	14.9	12.6	18.8



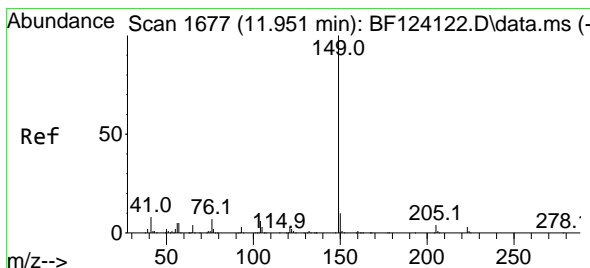
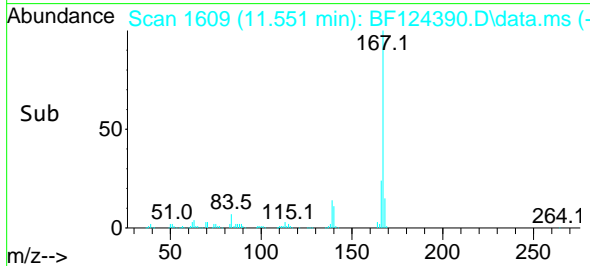
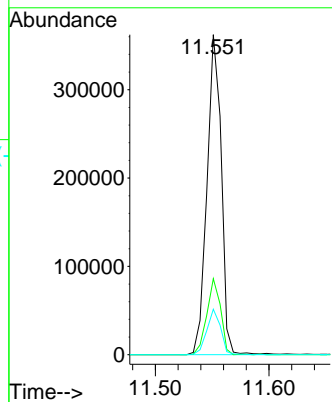
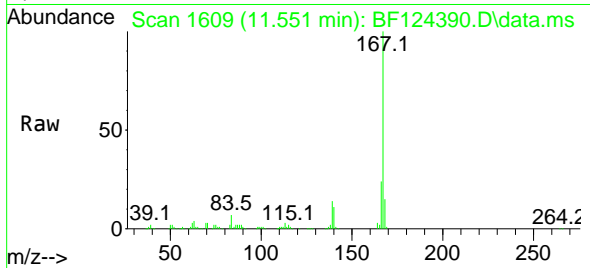


#73
 Carbazole
 Concen: 41.433 ng
 RT: 11.551 min Scan# 1609
 Delta R.T. -0.006 min
 Lab File: BF124390.D
 Acq: 21 Jun 2021 13:15

Instrument :
 BNA_F
 ClientSampleId :
 SB-8MS

Tgt Ion:167 Resp: 315732

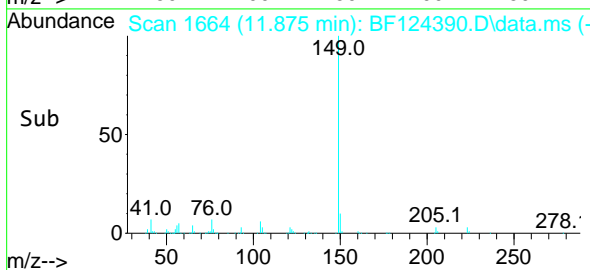
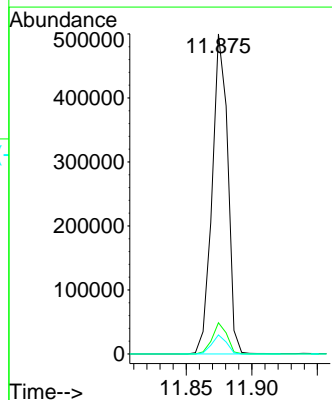
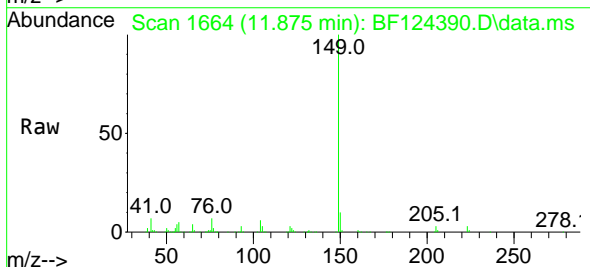
Ion	Ratio	Lower	Upper
167	100		
166	23.8	17.0	25.6
139	14.2	10.4	15.6

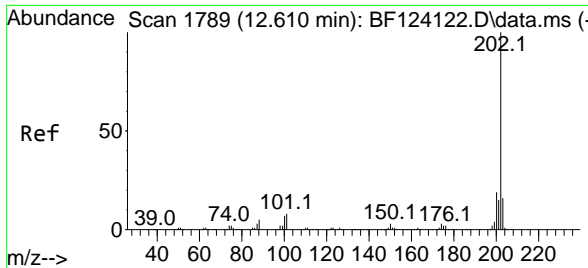


#74
 Di-n-butylphthalate
 Concen: 42.272 ng
 RT: 11.875 min Scan# 1664
 Delta R.T. -0.006 min
 Lab File: BF124390.D
 Acq: 21 Jun 2021 13:15

Tgt Ion:149 Resp: 413981

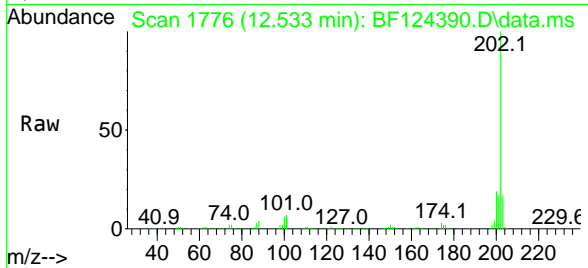
Ion	Ratio	Lower	Upper
149	100		
150	9.8	7.8	11.8
104	5.9	4.6	6.8



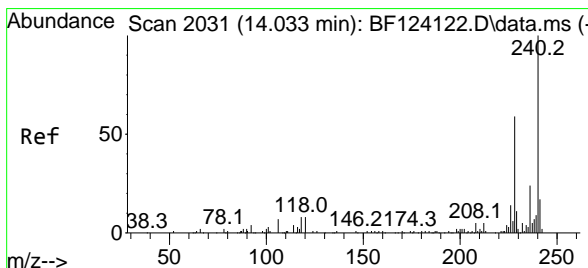
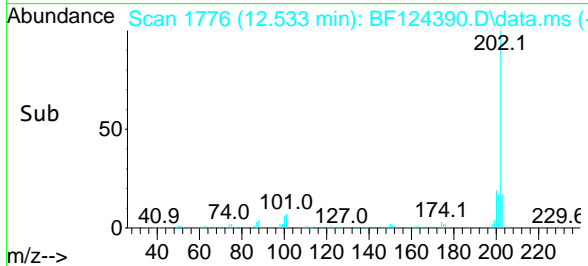
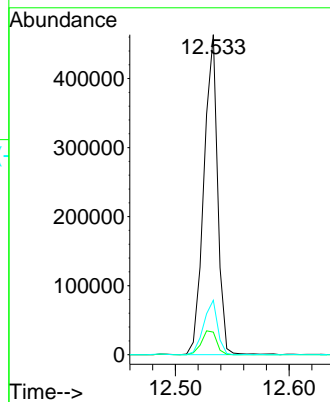


#75
 Fluoranthene
 Concen: 42.647 ng
 RT: 12.533 min Scan# 1776
 Delta R.T. 0.000 min
 Lab File: BF124390.D
 Acq: 21 Jun 2021 13:15

Instrument :
 BNA_F
 ClientSampled :
 SB-8MS

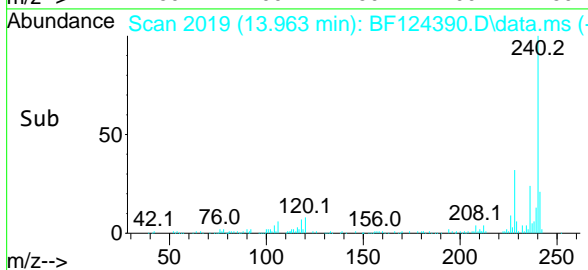
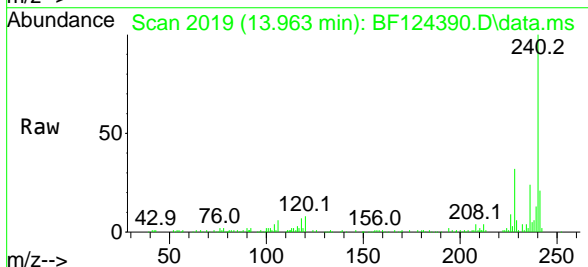
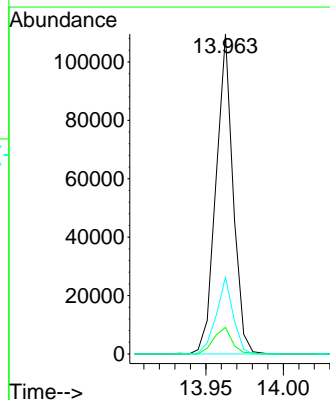


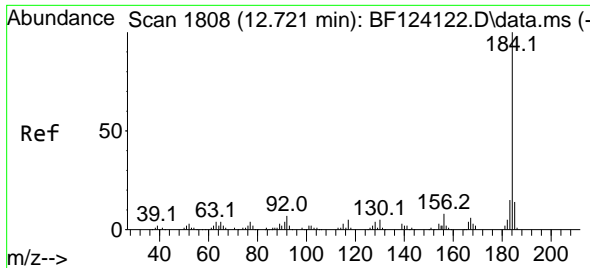
Tgt Ion: 202 Resp: 388687
 Ion Ratio Lower Upper
 202 100
 101 7.1 0.0 30.9
 203 17.0 0.0 37.5



#76
 Chrysene-d12
 Concen: 20.000 ng
 RT: 13.963 min Scan# 2019
 Delta R.T. 0.000 min
 Lab File: BF124390.D
 Acq: 21 Jun 2021 13:15

Tgt Ion: 240 Resp: 83753
 Ion Ratio Lower Upper
 240 100
 120 8.3 7.2 10.8
 236 24.0 19.0 28.4

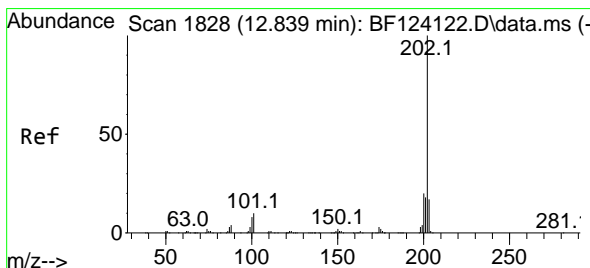
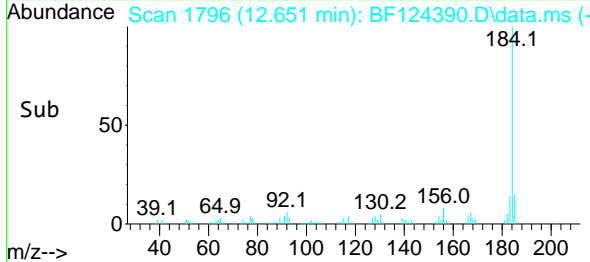
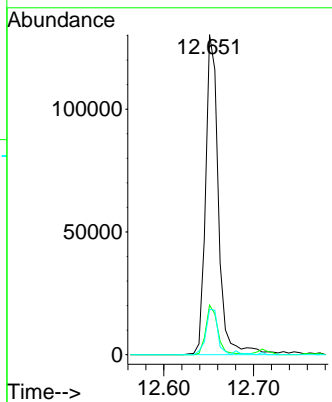
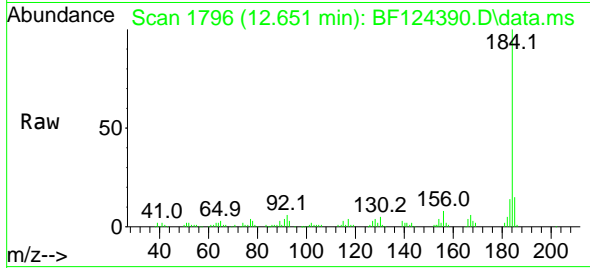




#77
 Benzidine
 Concen: 65.062 ng
 RT: 12.651 min Scan# 1796
 Delta R.T. -0.047 min
 Lab File: BF124390.D
 Acq: 21 Jun 2021 13:15

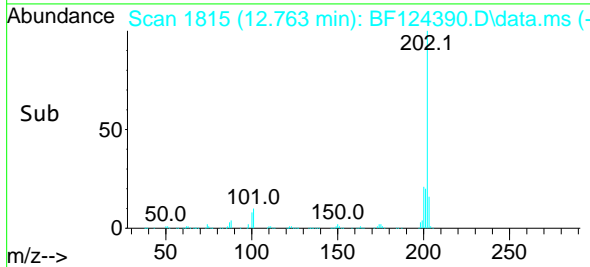
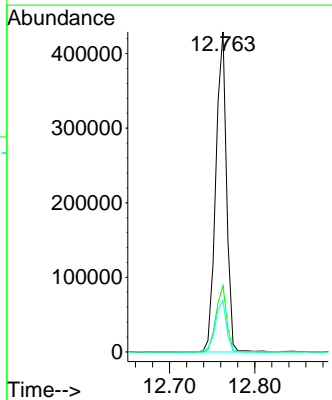
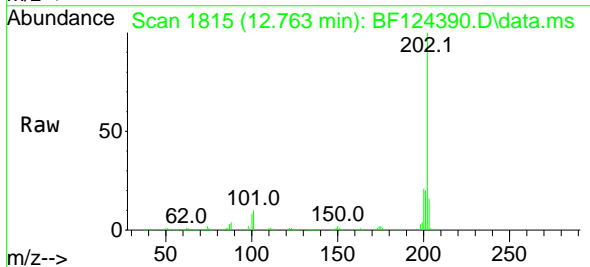
Instrument :
 BNA_F
ClientSampled :
 SB-8MS

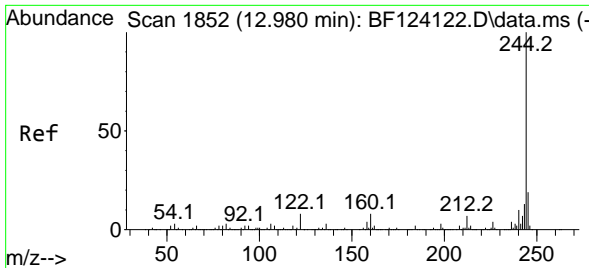
Tgt Ion:184 Resp: 130076
 Ion Ratio Lower Upper
 184 100
 185 15.5 12.1 18.1
 183 14.2 7.8 11.8#



#78
 Pyrene
 Concen: 46.885 ng
 RT: 12.763 min Scan# 1815
 Delta R.T. 0.000 min
 Lab File: BF124390.D
 Acq: 21 Jun 2021 13:15

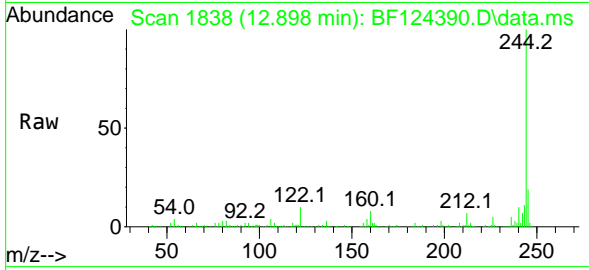
Tgt Ion:202 Resp: 377070
 Ion Ratio Lower Upper
 202 100
 200 20.8 16.1 24.1
 203 16.1 14.8 22.2





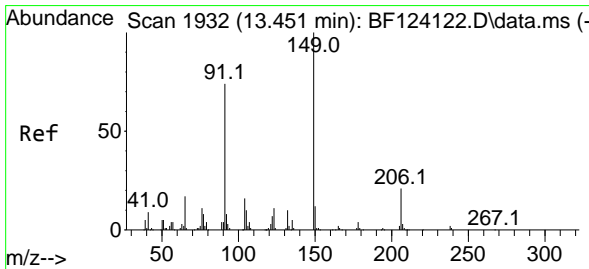
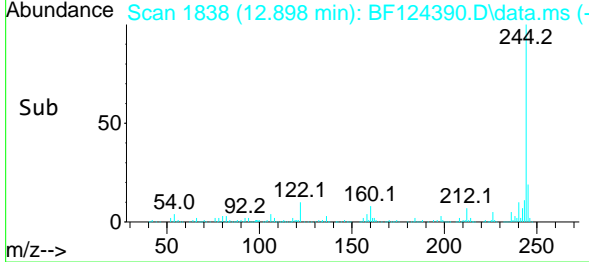
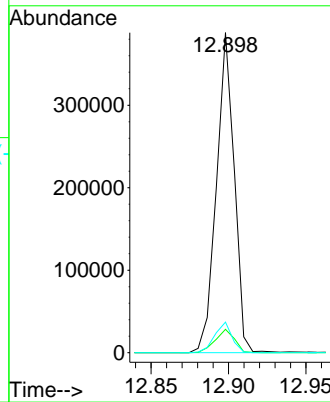
#79
 Terphenyl-d14
 Concen: 50.799 ng
 RT: 12.898 min Scan# 1838
 Delta R.T. -0.006 min
 Lab File: BF124390.D
 Acq: 21 Jun 2021 13:15

Instrument :
 BNA_F
ClientSampled :
 SB-8MS



Tgt Ion:244 Resp: 309886

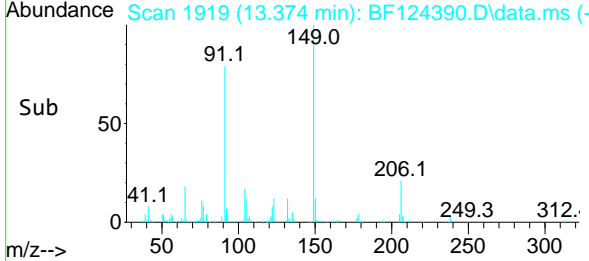
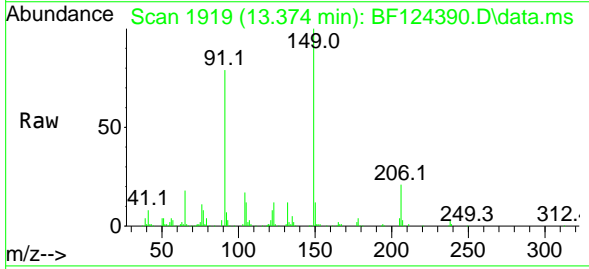
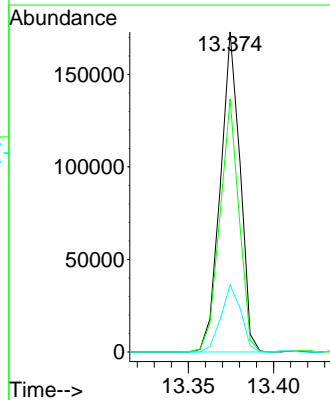
Ion	Ratio	Lower	Upper
244	100		
212	7.3	5.7	8.5
122	9.6	9.7	14.5#

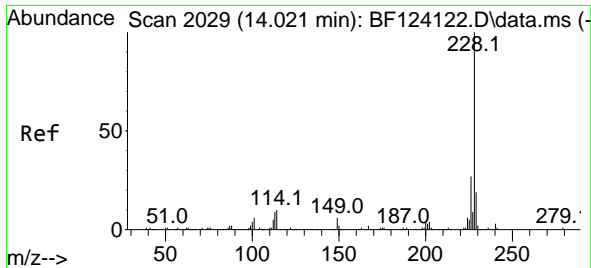


#80
 Butylbenzylphthalate
 Concen: 42.468 ng
 RT: 13.374 min Scan# 1919
 Delta R.T. -0.006 min
 Lab File: BF124390.D
 Acq: 21 Jun 2021 13:15

Tgt Ion:149 Resp: 138553

Ion	Ratio	Lower	Upper
149	100		
91	79.1	63.6	95.4
206	21.0	14.5	21.7

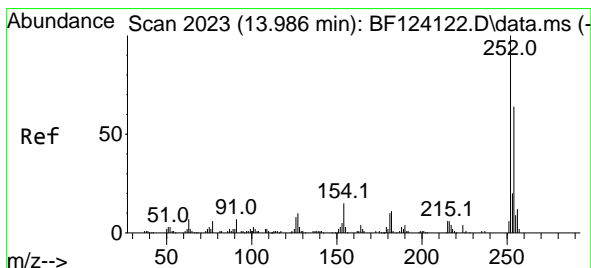
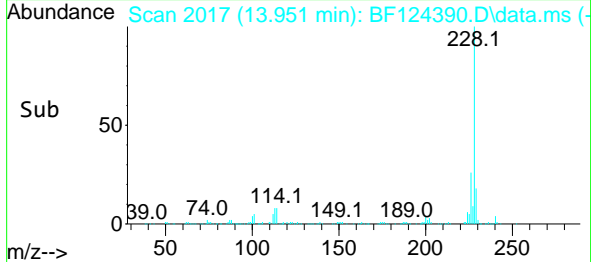
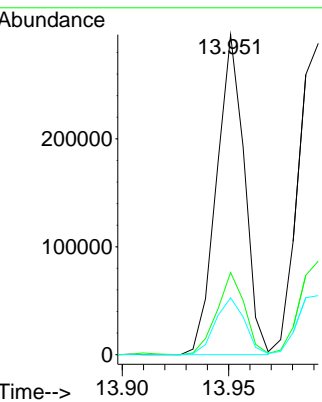
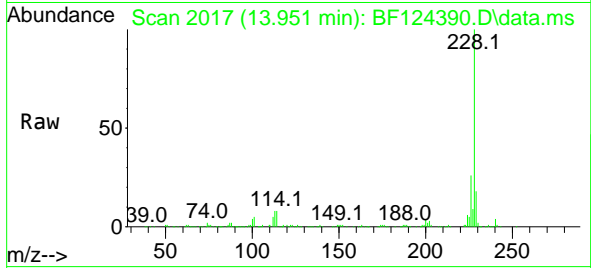




#81
 Benzo(a)anthracene
 Concen: 44.118 ng
 RT: 13.951 min Scan# 2017
 Delta R.T. 0.000 min
 Lab File: BF124390.D
 Acq: 21 Jun 2021 13:15

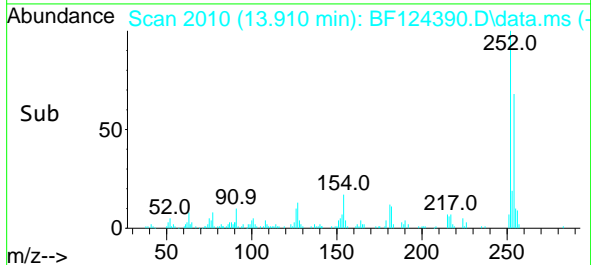
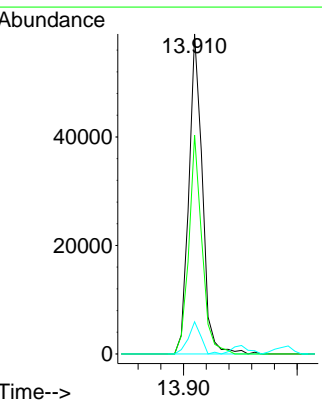
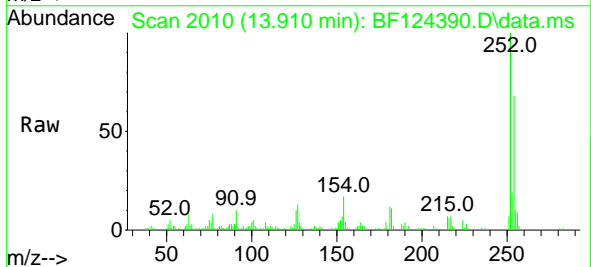
Instrument :
 BNA_F
 ClientSampled :
 SB-8MS

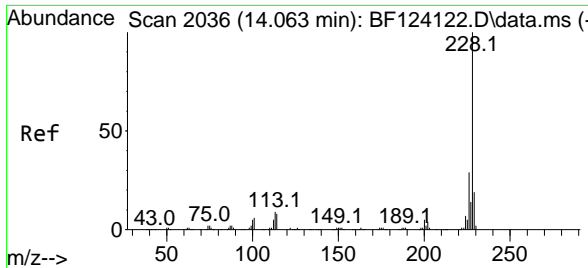
Tgt Ion	Resp	Lower	Upper
228	100		
226	25.7	22.4	33.6
229	17.8	16.0	24.0



#82
 3,3'-Dichlorobenzidine
 Concen: 27.234 ng
 RT: 13.910 min Scan# 2010
 Delta R.T. -0.006 min
 Lab File: BF124390.D
 Acq: 21 Jun 2021 13:15

Tgt Ion	Resp	Lower	Upper
252	100		
254	68.4	51.1	76.7
126	10.1	7.7	11.5

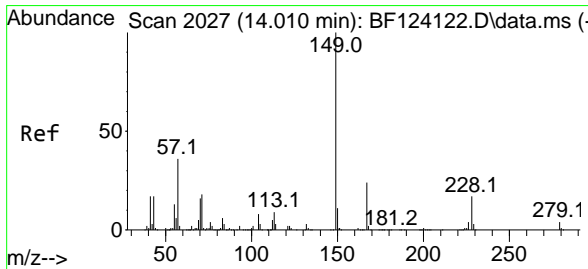
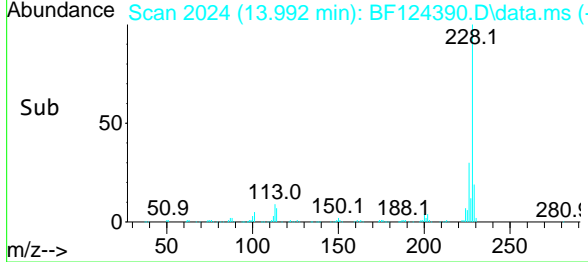
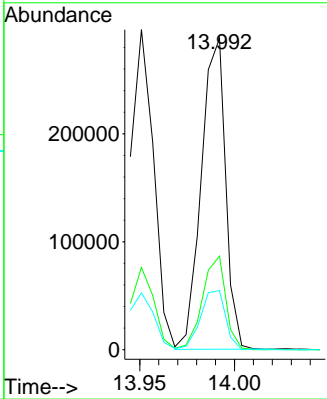
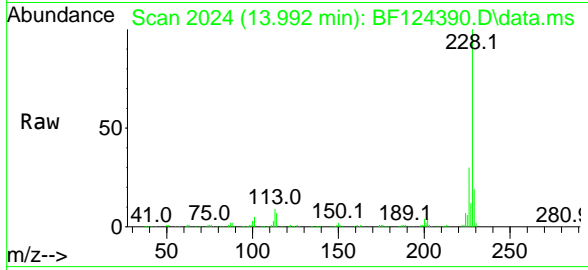




#83
 Chrysene
 Concen: 43.685 ng
 RT: 13.992 min Scan# 2024
 Delta R.T. 0.000 min
 Lab File: BF124390.D
 Acq: 21 Jun 2021 13:15

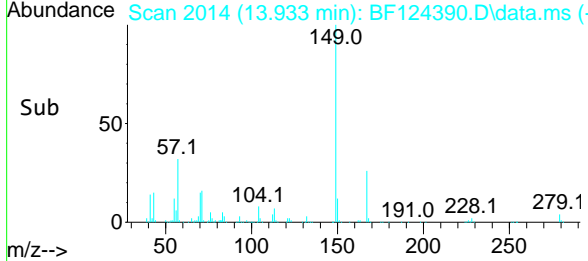
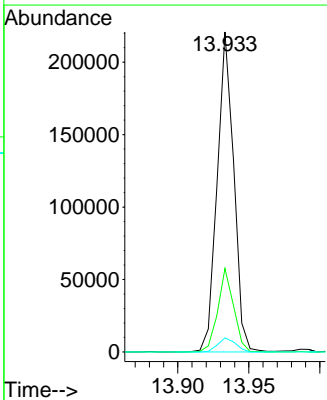
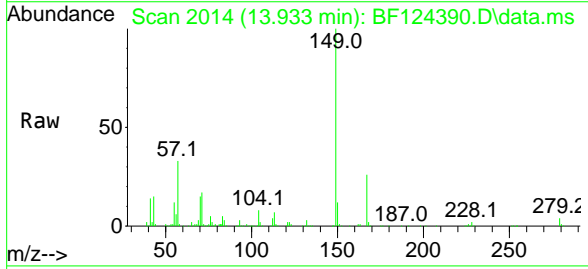
Instrument :
 BNA_F
 ClientSampled :
 SB-8MS

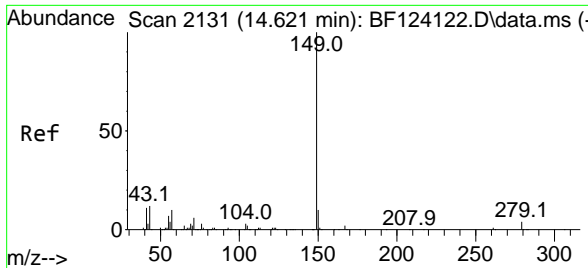
Tgt Ion	Resp	Lower	Upper
228	100		
226	30.1	24.3	36.5
229	18.9	16.2	24.2



#84
 Bis(2-ethylhexyl)phthalate
 Concen: 46.097 ng
 RT: 13.933 min Scan# 2014
 Delta R.T. -0.006 min
 Lab File: BF124390.D
 Acq: 21 Jun 2021 13:15

Tgt Ion	Resp	Lower	Upper
149	100		
167	26.1	21.8	32.6
279	4.4	3.3	4.9

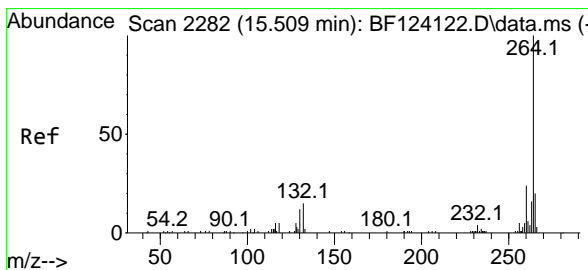
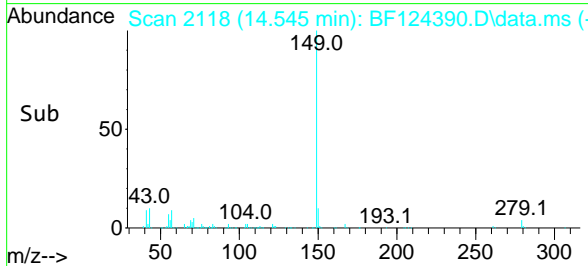
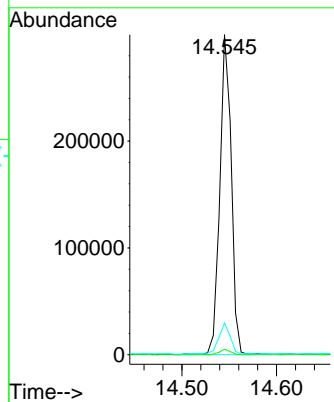
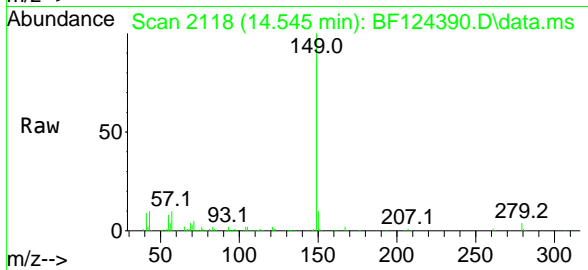




#85
 Di-n-octyl phthalate
 Concen: 48.631 ng
 RT: 14.545 min Scan# 2118
 Delta R.T. -0.006 min
 Lab File: BF124390.D
 Acq: 21 Jun 2021 13:15

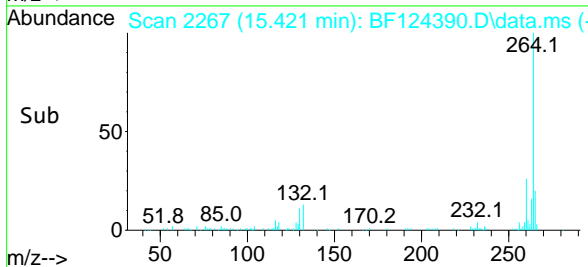
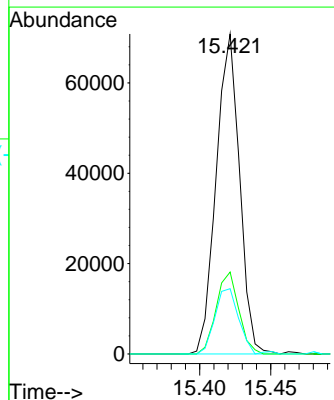
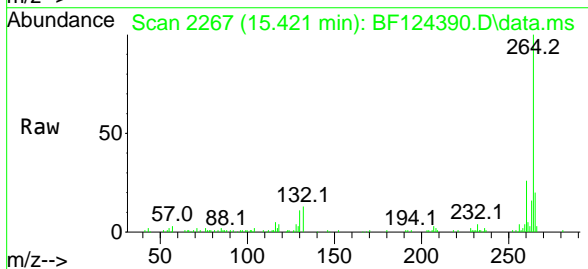
Instrument :
 BNA_F
 ClientSampled :
 SB-8MS

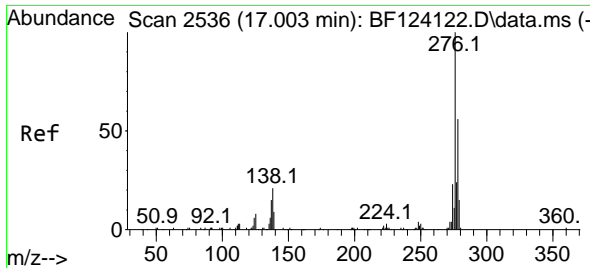
Tgt Ion:149 Resp: 251879
 Ion Ratio Lower Upper
 149 100
 167 1.7 1.2 1.8
 43 9.8 11.8 17.6#



#86
 Perylene-d12
 Concen: 20.000 ng
 RT: 15.421 min Scan# 2267
 Delta R.T. 0.006 min
 Lab File: BF124390.D
 Acq: 21 Jun 2021 13:15

Tgt Ion:264 Resp: 80953
 Ion Ratio Lower Upper
 264 100
 260 25.6 18.7 28.1
 265 20.4 17.8 26.8

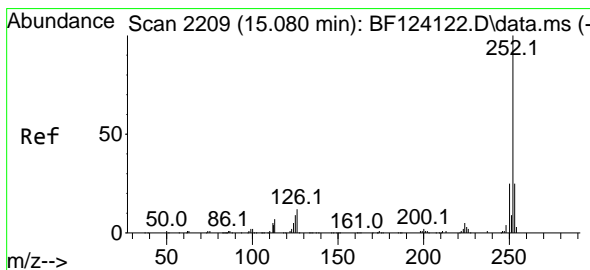
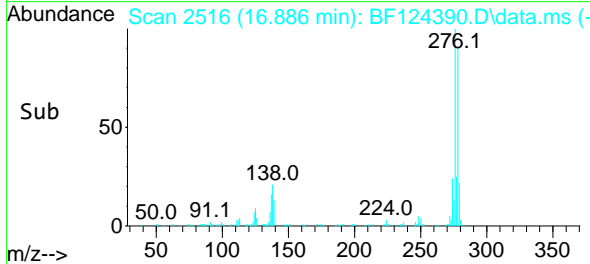
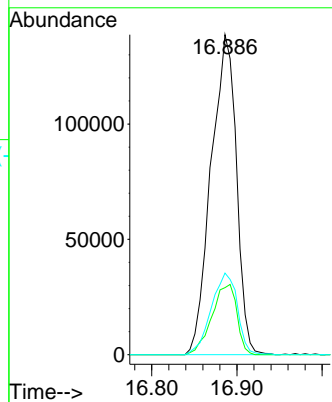
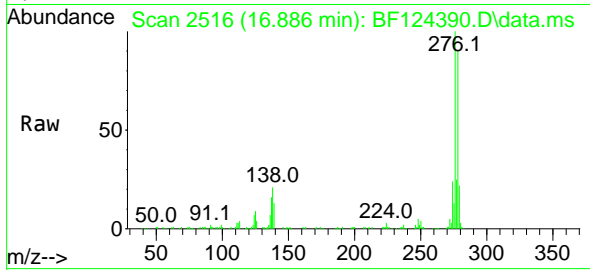




#87
 Indeno(1,2,3-cd)pyrene
 Concen: 43.058 ng
 RT: 16.886 min Scan# 2516
 Delta R.T. 0.012 min
 Lab File: BF124390.D
 Acq: 21 Jun 2021 13:15

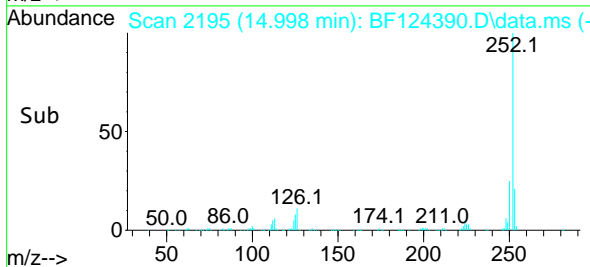
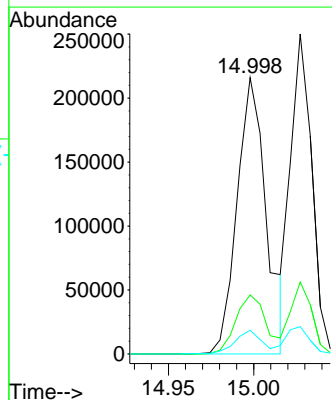
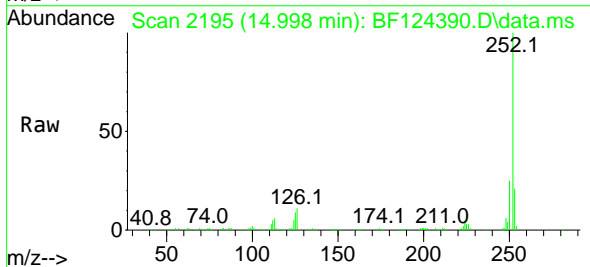
Instrument :
 BNA_F
 ClientSampled :
 SB-8MS

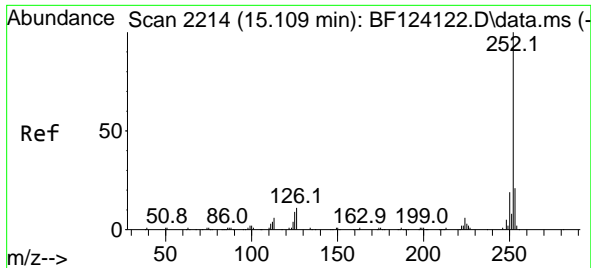
Tgt Ion:276 Resp: 286806
 Ion Ratio Lower Upper
 276 100
 138 21.6 16.2 24.2
 277 26.3 20.1 30.1



#88
 Benzo(b)fluoranthene
 Concen: 41.077 ng
 RT: 14.998 min Scan# 2195
 Delta R.T. 0.000 min
 Lab File: BF124390.D
 Acq: 21 Jun 2021 13:15

Tgt Ion:252 Resp: 258314
 Ion Ratio Lower Upper
 252 100
 253 21.3 18.1 27.1
 125 8.6 6.2 9.4

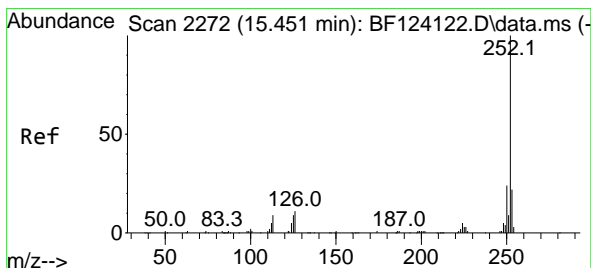
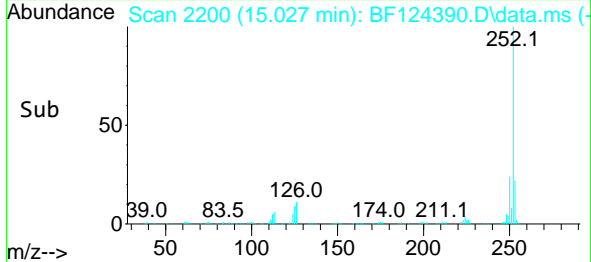
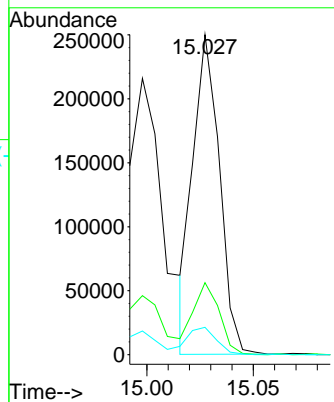
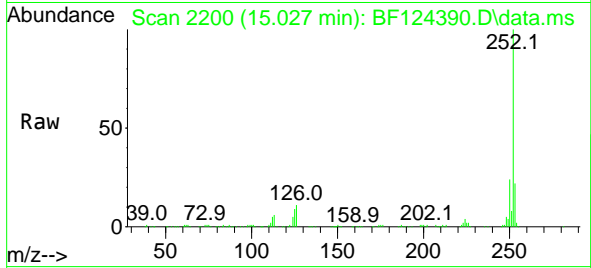




#89
 Benzo(k)fluoranthene
 Concen: 36.195 ng
 RT: 15.027 min Scan# 2200
 Delta R.T. 0.000 min
 Lab File: BF124390.D
 Acq: 21 Jun 2021 13:15

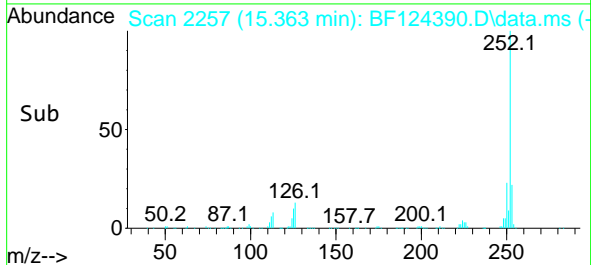
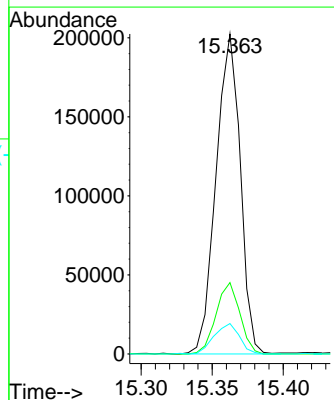
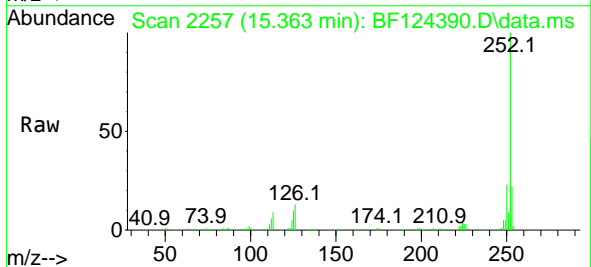
Instrument :
 BNA_F
 ClientSampled :
 SB-8MS

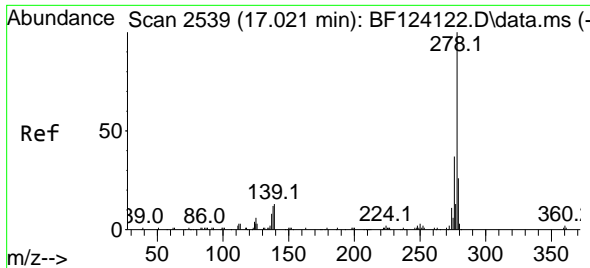
Tgt Ion:252 Resp: 215476
 Ion Ratio Lower Upper
 252 100
 253 22.5 17.9 26.9
 125 8.5 7.0 10.6



#90
 Benzo(a)pyrene
 Concen: 43.935 ng
 RT: 15.363 min Scan# 2257
 Delta R.T. 0.006 min
 Lab File: BF124390.D
 Acq: 21 Jun 2021 13:15

Tgt Ion:252 Resp: 239977
 Ion Ratio Lower Upper
 252 100
 253 22.3 18.4 27.6
 125 9.5 8.0 12.0



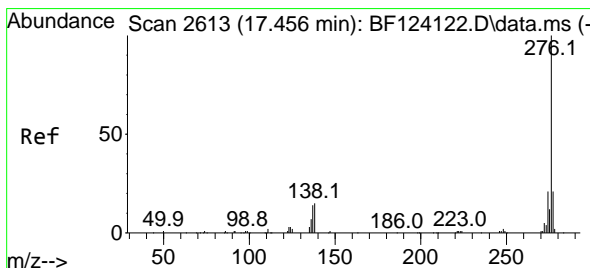
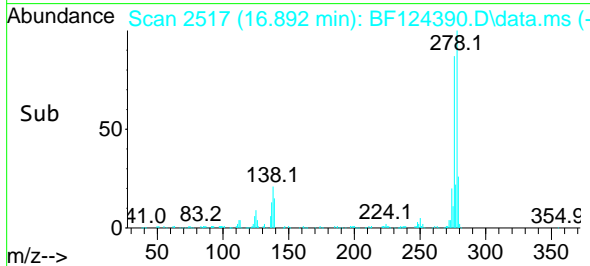
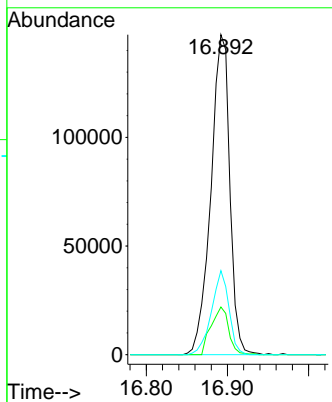
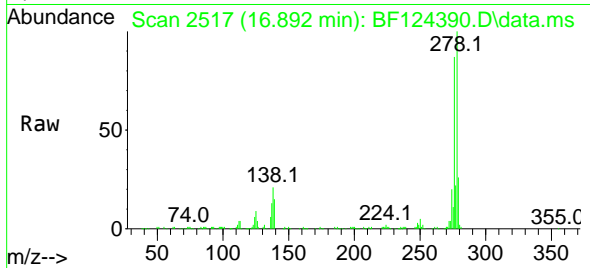


#91
 Dibenzo(a,h)anthracene
 Concen: 42.115 ng
 RT: 16.892 min Scan# 2517
 Delta R.T. 0.006 min
 Lab File: BF124390.D
 Acq: 21 Jun 2021 13:15

Instrument :
 BNA_F
 ClientSampled :
 SB-8MS

Tgt Ion:278 Resp: 238932

Ion	Ratio	Lower	Upper
278	100		
139	14.9	10.2	15.2
279	26.3	19.4	29.0



#92
 Benzo(g,h,i)perylene
 Concen: 42.833 ng
 RT: 17.327 min Scan# 2591
 Delta R.T. 0.012 min
 Lab File: BF124390.D
 Acq: 21 Jun 2021 13:15

Tgt Ion:276 Resp: 240528

Ion	Ratio	Lower	Upper
276	100		
277	24.3	18.2	27.2
138	17.9	13.8	20.6

