

Data Path : Z:\HPCHEM1\BNA_F\DATA\BF062415\
 Data File : BF080155.D
 Acq On : 25 Jun 2015 4:33
 Operator : TP/IZ
 Sample : G2750-10
 Misc :
 ALS Vial : 25 Sample Multiplier: 1

Instrument :
 BNA_F
 ClientSampled :
 CF-2

Integration Parameters: rteint.p
 Integrator: RTE
 Smoothing : ON Filtering: 5
 Sampling : 1 Min Area: 3 % of largest Peak
 Start Thrs: 0.2 Max Peaks: 100
 Stop Thrs : 0 Peak Location: TOP

If leading or trailing edge < 100 prefer < Baseline drop else tangent >
 Peak separation: 5

Method : Z:\HPCHEM1\BNA_F\METHODS\8270-BF061715.M
 Title : ASP BNA STANDARDS FOR 5 POINT CALIBRATION

Signal : TIC

peak #	R.T. min	first scan	max scan	last scan	PK TY	peak height	corr. area	corr. % max.	% of total
1	5.533	211	214	216	rBV	360773	363634	21.30%	2.852%
2	5.921	246	248	251	rBV	827979	1060902	62.14%	8.321%
3	6.321	282	283	285	rVB	34190	31092	1.82%	0.244%
4	6.550	301	303	307	rBV2	17861	30345	1.78%	0.238%
5	6.916	333	335	338	rBV	1146547	1049192	61.45%	8.229%
6	7.076	347	349	352	rBV	821843	1125104	65.90%	8.824%
7	7.316	368	370	372	rBB	269781	212791	12.46%	1.669%
8	7.476	382	384	386	rBV	1044441	854887	50.07%	6.705%
9	7.876	416	419	421	rBV	526908	669364	39.21%	5.250%
10	8.607	481	483	485	rBV	346977	286622	16.79%	2.248%
11	9.682	575	577	579	rVB	1690216	1320357	77.33%	10.355%
12	10.070	609	611	613	rBV	177167	136748	8.01%	1.072%
13	10.379	636	638	640	rBV	395112	327383	19.18%	2.568%
14	11.168	705	707	710	rBV	914909	908765	53.23%	7.127%
15	11.876	767	769	772	rBV2	311006	369281	21.63%	2.896%
16	12.082	785	787	790	rBV	34092	41794	2.45%	0.328%
17	12.653	832	837	839	rBV2	18691	22879	1.34%	0.179%
18	13.145	878	880	883	rBV	46647	48342	2.83%	0.379%
19	13.328	894	896	899	rBV2	18341	23978	1.40%	0.188%
20	13.396	899	902	909	rBV	61087	108317	6.34%	0.850%
21	13.545	912	915	917	rBV	1949460	1707340	100.00%	13.390%
22	14.082	957	962	964	rBV	319182	507772	29.74%	3.982%
23	14.162	967	969	970	rVV	31683	33488	1.96%	0.263%
24	14.185	970	971	976	rVB2	20716	31001	1.82%	0.243%
25	14.574	1002	1005	1013	rVB2	128552	196997	11.54%	1.545%
26	14.791	1021	1024	1029	rBV	450789	494822	28.98%	3.881%
27	14.985	1038	1041	1043	rBV2	15530	23646	1.38%	0.185%
28	15.282	1064	1067	1069	rBV3	17535	30092	1.76%	0.236%
29	15.385	1073	1076	1080	rVB	35039	57247	3.35%	0.449%
30	15.774	1108	1110	1113	rBV2	11600	19955	1.17%	0.157%
31	16.105	1136	1139	1141	rBV2	29132	63876	3.74%	0.501%
32	16.197	1145	1147	1149	rBV2	16010	22451	1.31%	0.176%
33	16.562	1176	1179	1182	rVB	24077	45524	2.67%	0.357%
34	16.642	1183	1186	1189	rBV	288277	432017	25.30%	3.388%

Data Path : Z:\HPCHEM1\BNA_F\DATA\BF062415\
Data File : BF080155.D
Acq On : 25 Jun 2015 4:33
Operator : TP/IZ
Sample : G2750-10
Misc :
ALS Vial : 25 Sample Multiplier: 1

Instrument :
BNA_F
ClientSampleId :
CF-2

Integration Parameters: rteint.p
Integrator: RTE
Smoothing : ON Filtering: 5
Sampling : 1 Min Area: 3 % of largest Peak
Start Thrs: 0.2 Max Peaks: 100
Stop Thrs : 0 Peak Location: TOP

If leading or trailing edge < 100 prefer < Baseline drop else tangent >
Peak separation: 5

Method : Z:\HPCHEM1\BNA_F\METHODS\8270-BF061715.M
Title : ASP BNA STANDARDS FOR 5 POINT CALIBRATION

35	17.305	1242	1244	1249	rBV5	14473	35632	2.09%	0.279%
36	18.471	1344	1346	1352	rVB2	19831	56801	3.33%	0.445%

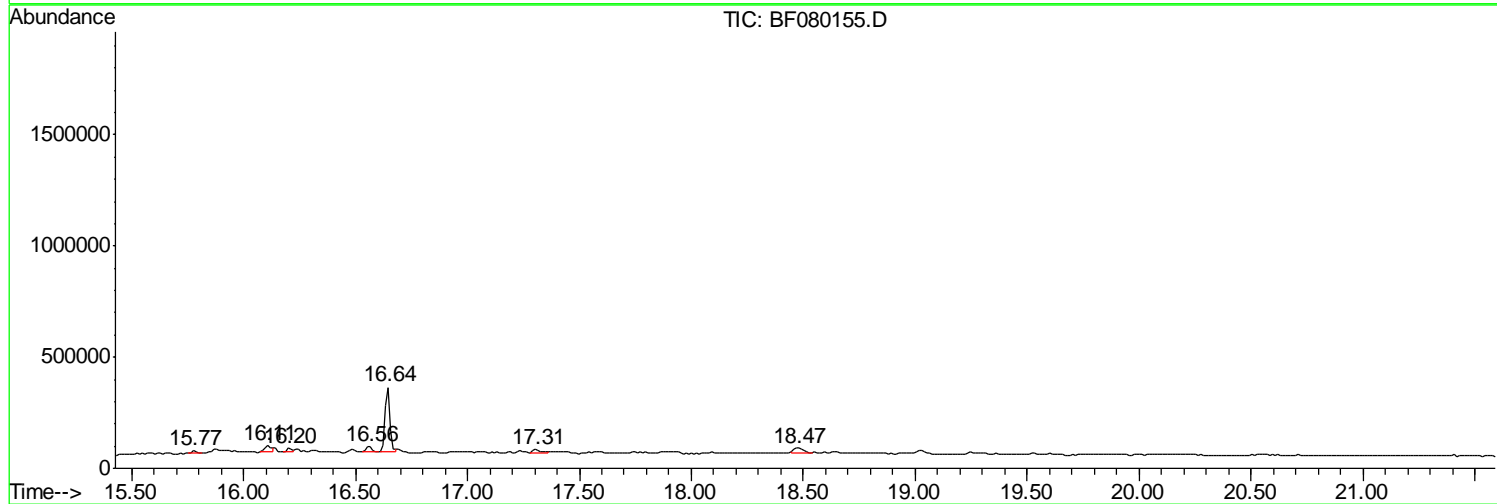
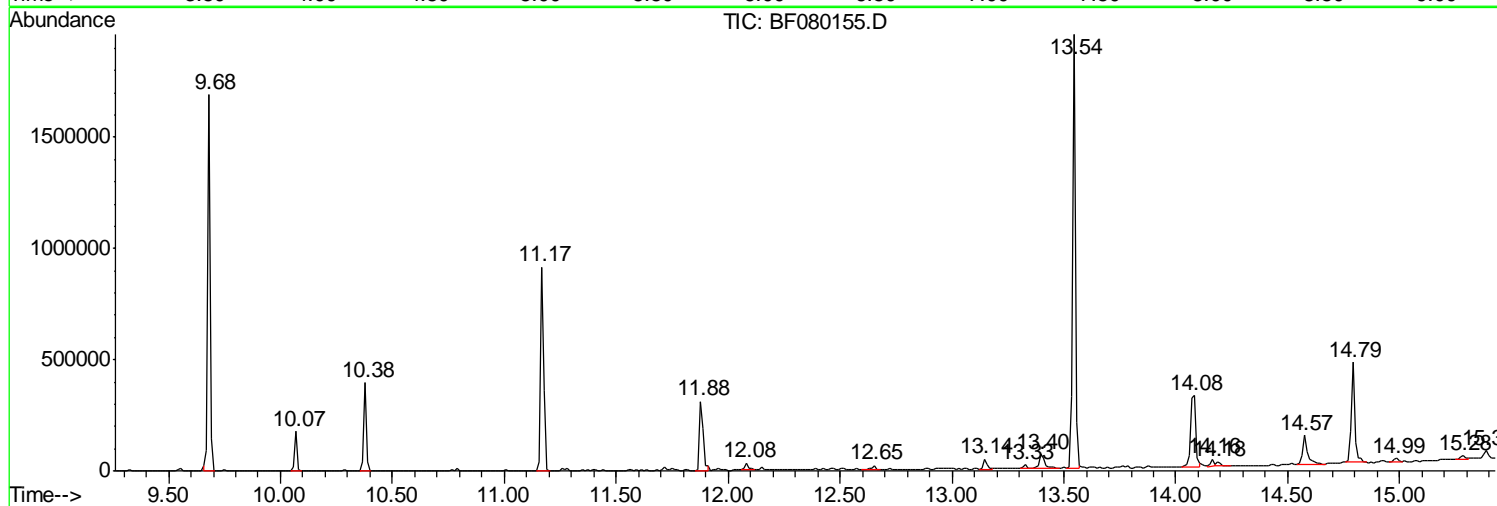
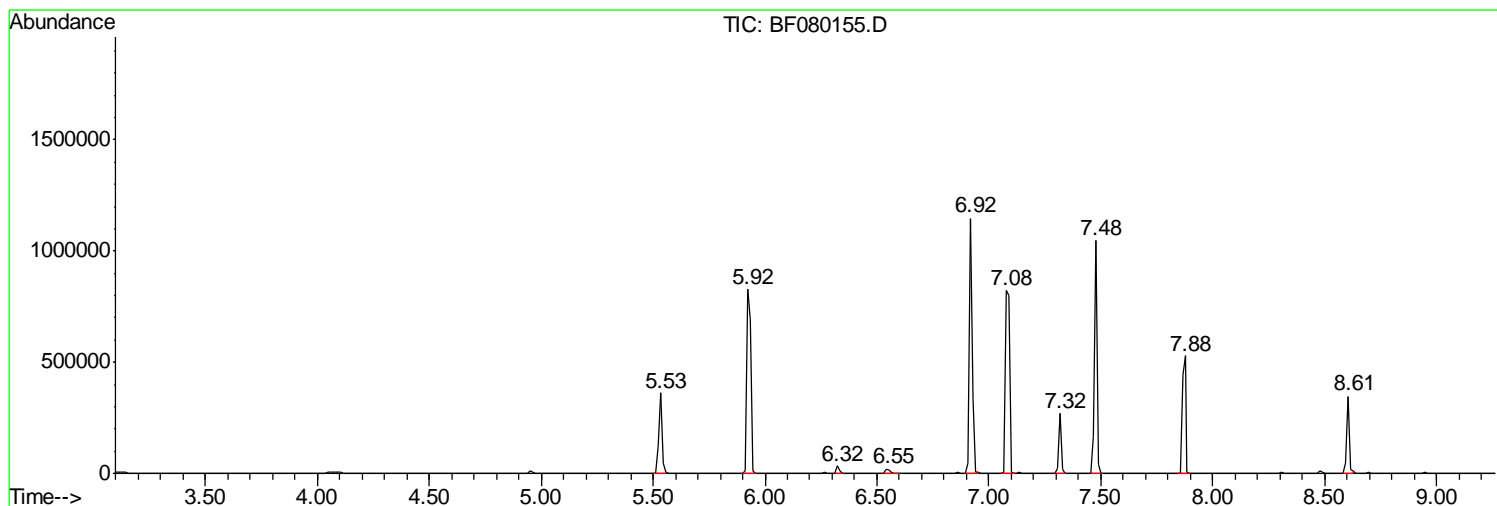
Sum of corrected areas: 12750438

Data Path : Z:\HPCHEM1\BNA_F\DATA\BF062415\
 Data File : BF080155.D
 Acq On : 25 Jun 2015 4:33
 Operator : TP/IZ
 Sample : G2750-10
 Misc :
 ALS Vial : 25 Sample Multiplier: 1

Instrument :
 BNA_F
 ClientSampleId :
 CF-2

Quant Method : Z:\HPCHEM1\BNA_F\METHODS\8270-BF061715.M
 Quant Title : ASP BNA STANDARDS FOR 5 POINT CALIBRATION

TIC Library : C:\DATABASE\NIST02.L
 TIC Integration Parameters: LSCINT.P



Data Path : Z:\HPCHEM1\BNA_F\DATA\BF062415\
 Data File : BF080155.D
 Acq On : 25 Jun 2015 4:33
 Operator : TP/IZ
 Sample : G2750-10
 Misc :
 ALS Vial : 25 Sample Multiplier: 1

Instrument :
 BNA_F
 ClientSampleID :
 CF-2

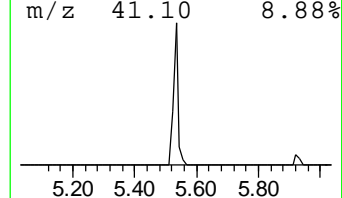
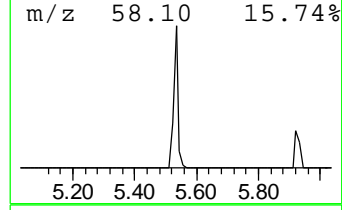
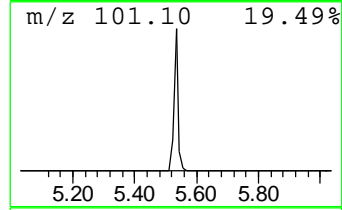
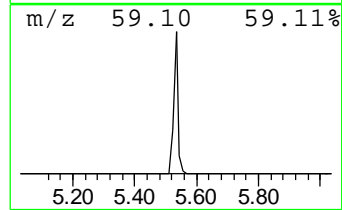
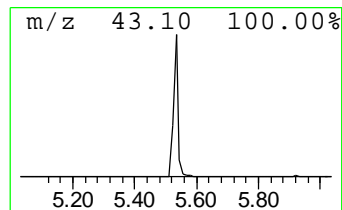
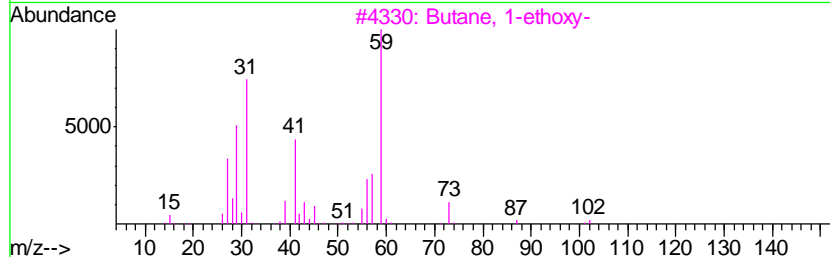
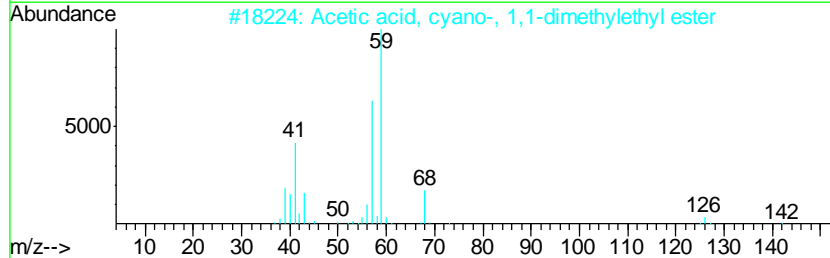
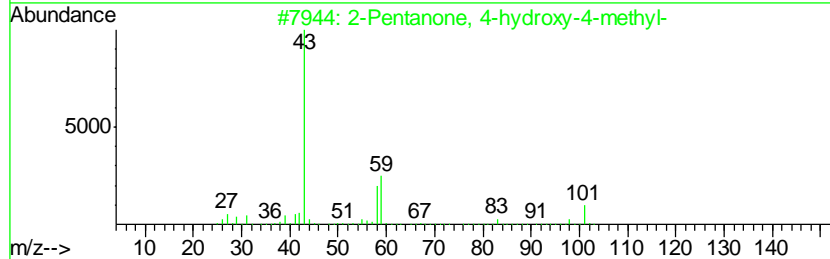
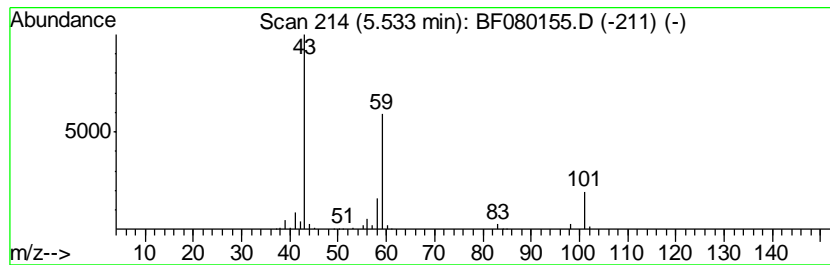
Quant Method : Z:\HPCHEM1\BNA_F\METHODS\8270-BF061715.M
 Quant Title : ASP BNA STANDARDS FOR 5 POINT CALIBRATION

TIC Library : C:\DATABASE\NIST02.L
 TIC Integration Parameters: LSCINT.P

 Peak Number 1 2-Pentanone, 4-hydroxy-4-me... Concentration Rank 3

R.T.	EstConc	Area	Relative to ISTD	R.T.
5.53	34.18 ng	363634	1,4-Dichlorobenzene-d4	7.32

Hit#	of	Tentative ID	MW	MolForm	CAS#	Qual
1	5	2-Pentanone, 4-hydroxy-4-methyl-	116	C6H12O2	000123-42-2	64
2		Acetic acid, cyano-, 1,1-dimethyl...	141	C7H11NO2	001116-98-9	23
3		Butane, 1-ethoxy-	102	C6H14O	000628-81-9	9
4		Morpholine, 4-methyl-	101	C5H11NO	000109-02-4	9
5		Acetic acid, 1,1-dimethylethyl e...	116	C6H12O2	000540-88-5	9



Data Path : Z:\HPCHEM1\BNA_F\DATA\BF062415\
 Data File : BF080155.D
 Acq On : 25 Jun 2015 4:33
 Operator : TP/IZ
 Sample : G2750-10
 Misc :
 ALS Vial : 25 Sample Multiplier: 1

Instrument :
 BNA_F
 ClientSampled :
 CF-2

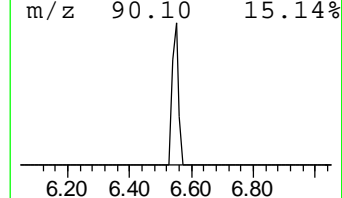
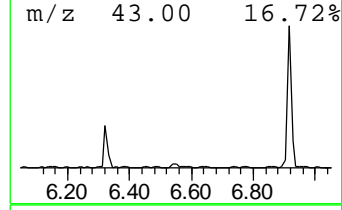
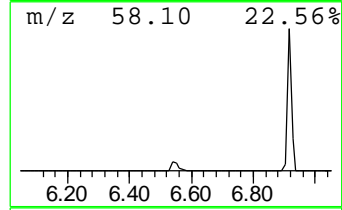
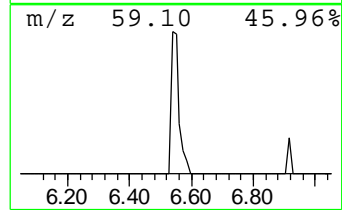
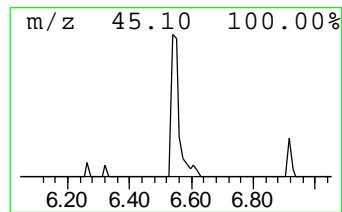
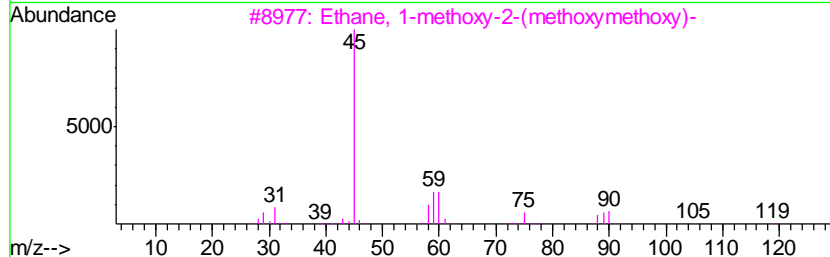
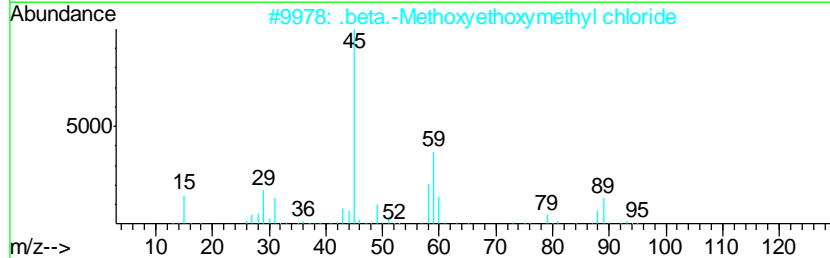
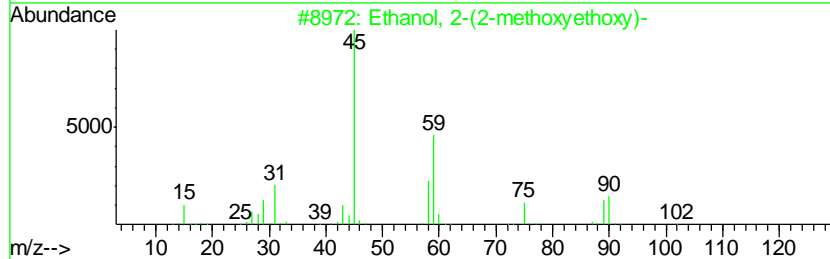
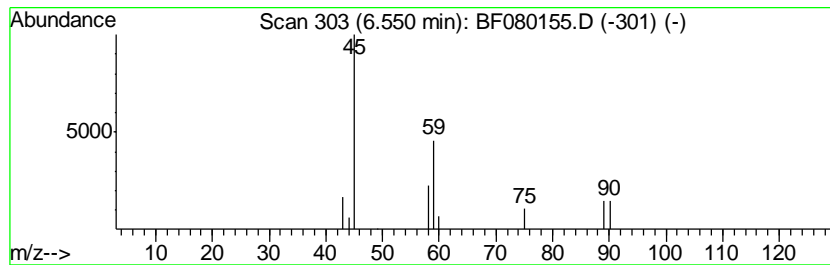
Quant Method : Z:\HPCHEM1\BNA_F\METHODS\8270-BF061715.M
 Quant Title : ASP BNA STANDARDS FOR 5 POINT CALIBRATION

TIC Library : C:\DATABASE\NIST02.L
 TIC Integration Parameters: LSCINT.P

 Peak Number 3 Ethanol, 2-(2-methoxyethoxy)- Concentration Rank 9

R.T.	EstConc	Area	Relative to ISTD	R.T.
6.55	2.85 ng	30345	1,4-Dichlorobenzene-d4	7.32

Hit#	of	Tentative ID	MW	MolForm	CAS#	Qual
1	5	Ethanol, 2-(2-methoxyethoxy)-	120	C5H12O3	000111-77-3	83
2		.beta.-Methoxyethoxymethyl chloride	124	C4H9ClO2	003970-21-6	56
3		Ethane, 1-methoxy-2-(methoxymeth...	120	C5H12O3	074498-88-7	9
4		Carbonic acid, dimethyl ester	90	C3H6O3	000616-38-6	9
5		Acetic acid, hydroxy-, methyl ester	90	C3H6O3	000096-35-5	7



Data Path : Z:\HPCHEM1\BNA_F\DATA\BF062415\
 Data File : BF080155.D
 Acq On : 25 Jun 2015 4:33
 Operator : TP/IZ
 Sample : G2750-10
 Misc :
 ALS Vial : 25 Sample Multiplier: 1

Instrument :
 BNA_F
 ClientSampled :
 CF-2

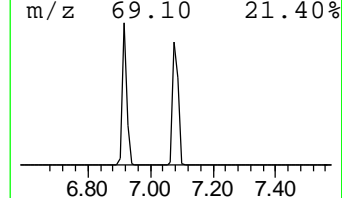
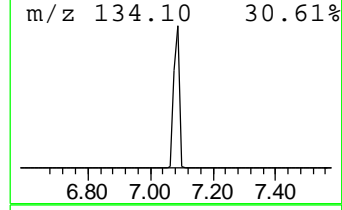
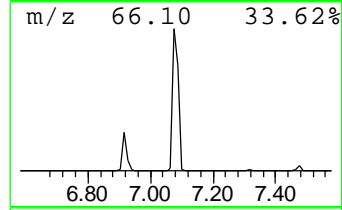
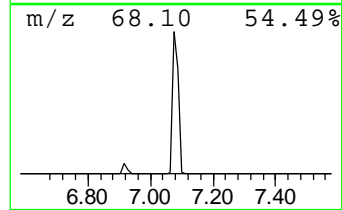
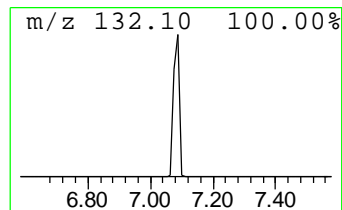
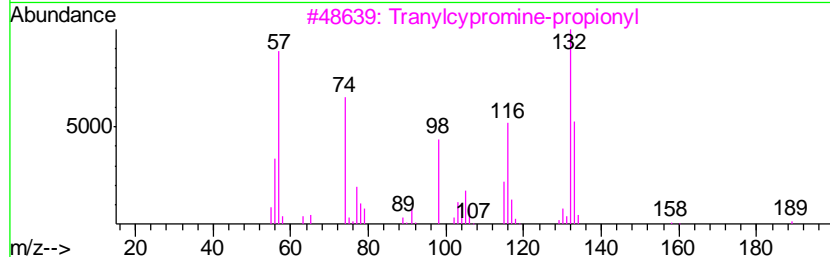
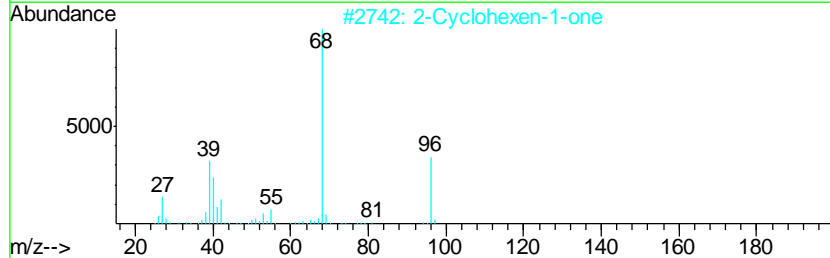
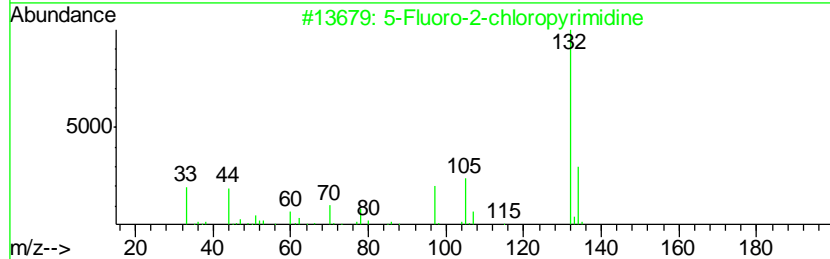
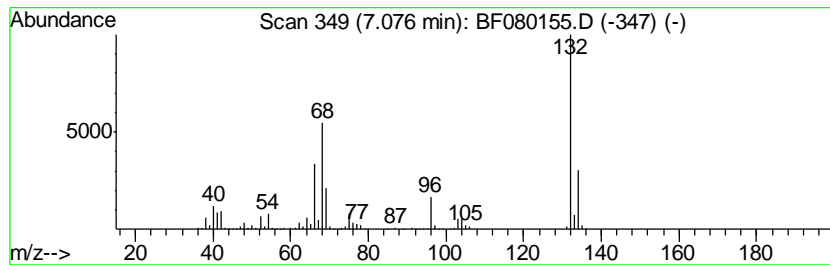
Quant Method : Z:\HPCHEM1\BNA_F\METHODS\8270-BF061715.M
 Quant Title : ASP BNA STANDARDS FOR 5 POINT CALIBRATION

TIC Library : C:\DATABASE\NIST02.L
 TIC Integration Parameters: LSCINT.P

 Peak Number 4 unknown7.08 Concentration Rank 1

R.T.	EstConc	Area	Relative to ISTD	R.T.
7.08	105.75 ng	1125100	1,4-Dichlorobenzene-d4	7.32

Hit#	of	Tentative ID	MW	MolForm	CAS#	Qual
1	5	5-Fluoro-2-chloropyrimidine	132	C4H2ClFN2	062802-42-0	12
2		2-Cyclohexen-1-one	96	C6H8O	000930-68-7	10
3		Tranlycypromine-propionyl	189	C12H15NO	1000123-86-3	10
4		5-Aminoindole	132	C8H8N2	005192-03-0	10
5		Bicyclo[4.2.0]octa-1,3,5-triene,...	132	C10H12	028749-81-7	9



Data Path : Z:\HPCHEM1\BNA_F\DATA\BF062415\
 Data File : BF080155.D
 Acq On : 25 Jun 2015 4:33
 Operator : TP/IZ
 Sample : G2750-10
 Misc :
 ALS Vial : 25 Sample Multiplier: 1

Instrument :
 BNA_F
 ClientSampled :
 CF-2

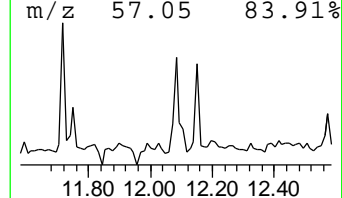
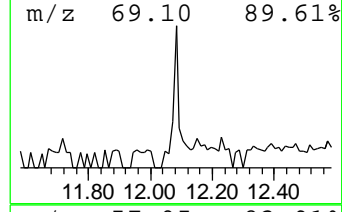
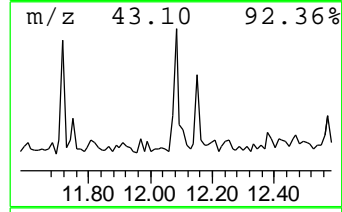
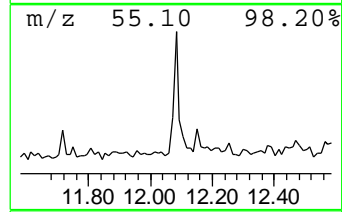
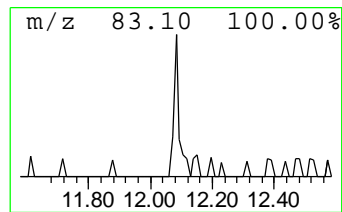
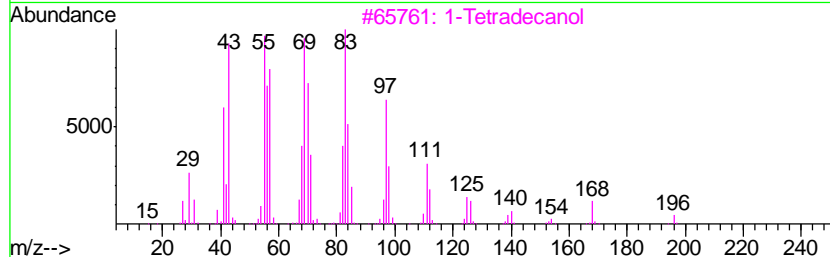
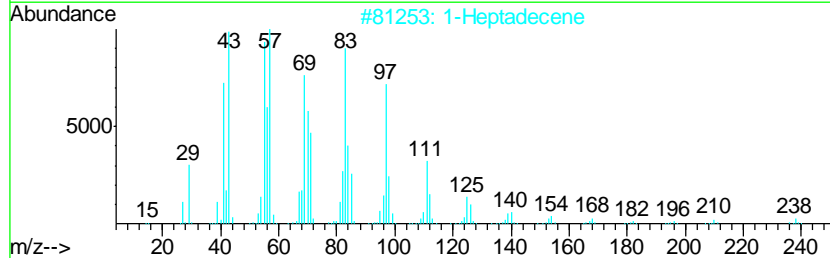
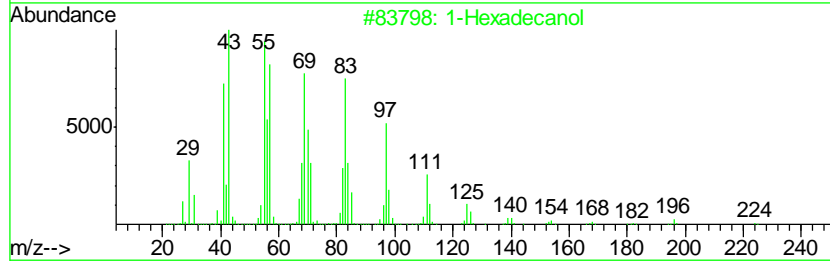
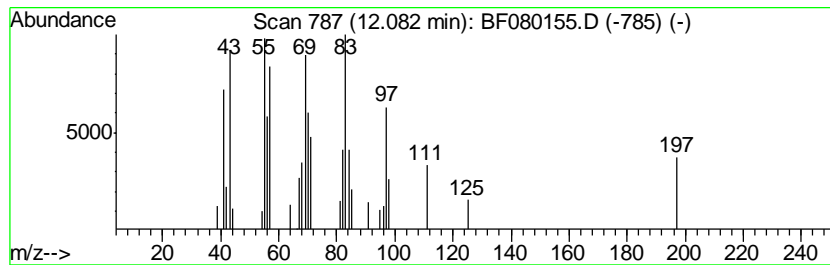
Quant Method : Z:\HPCHEM1\BNA_F\METHODS\8270-BF061715.M
 Quant Title : ASP BNA STANDARDS FOR 5 POINT CALIBRATION

TIC Library : C:\DATABASE\NIST02.L
 TIC Integration Parameters: LSCINT.P

 Peak Number 6 1-Hexadecanol Concentration Rank 12

R.T.	EstConc	Area	Relative to ISTD	R.T.
12.08	2.26 ng	41794	Phenanthrene-d10	11.88

Hit#	of	Tentative ID	MW	MolForm	CAS#	Qual
1	5	1-Hexadecanol	242	C16H34O	036653-82-4	91
2		1-Heptadecene	238	C17H34	006765-39-5	90
3		1-Tetradecanol	214	C14H30O	000112-72-1	90
4		1-Pentadecanol	228	C15H32O	000629-76-5	90
5		Chloroacetic acid, tetradecyl ester	290	C16H31ClO2	018277-86-6	90



Data Path : Z:\HPCHEM1\BNA_F\DATA\BF062415\
 Data File : BF080155.D
 Acq On : 25 Jun 2015 4:33
 Operator : TP/IZ
 Sample : G2750-10
 Misc :
 ALS Vial : 25 Sample Multiplier: 1

Instrument :
 BNA_F
 ClientSampled :
 CF-2

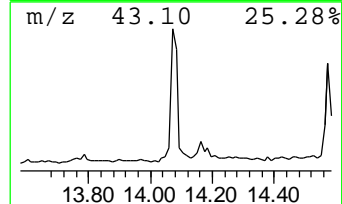
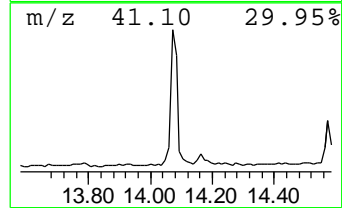
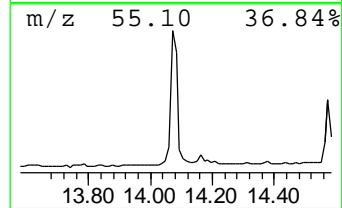
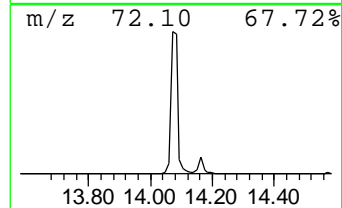
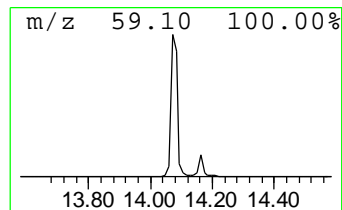
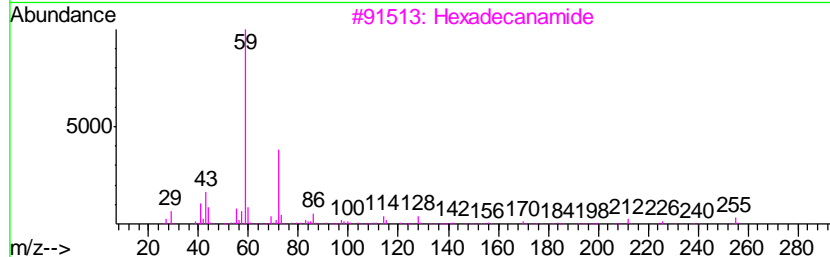
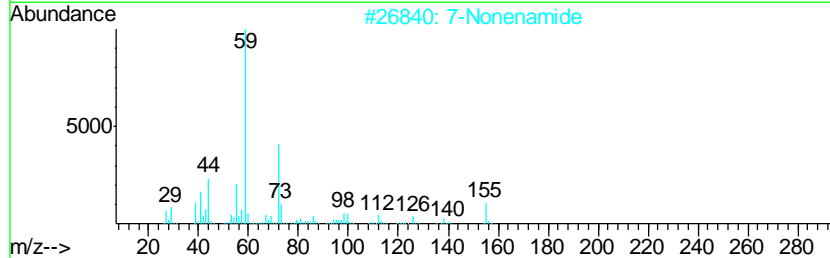
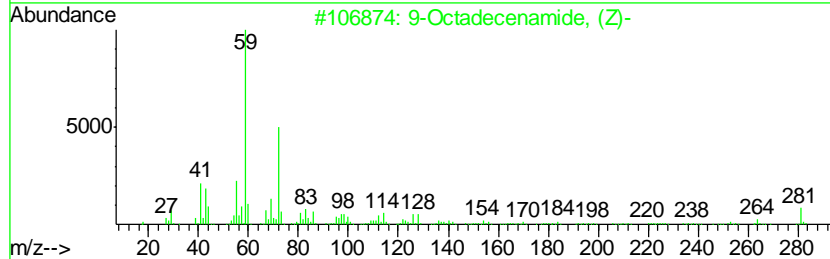
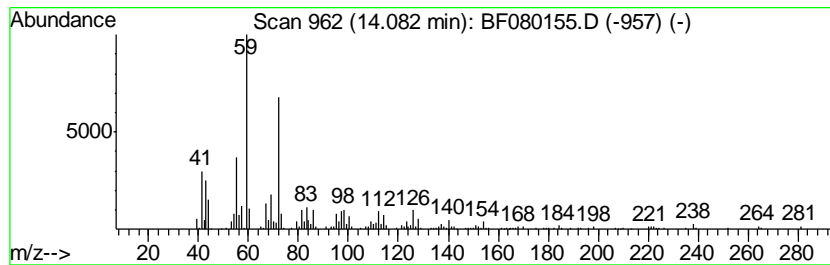
Quant Method : Z:\HPCHEM1\BNA_F\METHODS\8270-BF061715.M
 Quant Title : ASP BNA STANDARDS FOR 5 POINT CALIBRATION

TIC Library : C:\DATABASE\NIST02.L
 TIC Integration Parameters: LSCINT.P

 Peak Number 8 9-Octadecenamide, (Z)- Concentration Rank 4

R.T.	EstConc	Area	Relative to ISTD	R.T.
14.08	20.52 ng	507772	Chrysene-d12	14.79

Hit#	of	Tentative ID	MW	MolForm	CAS#	Qual
1	5	9-Octadecenamide, (Z)-	281	C18H35NO	000301-02-0	94
2		7-Nonenamide	155	C9H17NO	090949-53-4	78
3		Hexadecanamide	255	C16H33NO	000629-54-9	64
4		Dodecanamide	199	C12H25NO	001120-16-7	50
5		Pentanamide, 4-methyl-	115	C6H13NO	001119-29-5	50



Data Path : Z:\HPCHEM1\BNA_F\DATA\BF062415\
 Data File : BF080155.D
 Acq On : 25 Jun 2015 4:33
 Operator : TP/IZ
 Sample : G2750-10
 Misc :
 ALS Vial : 25 Sample Multiplier: 1

Instrument :
 BNA_F
 ClientSampled :
 CF-2

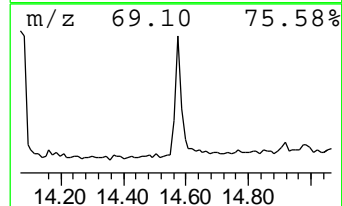
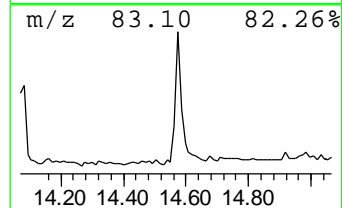
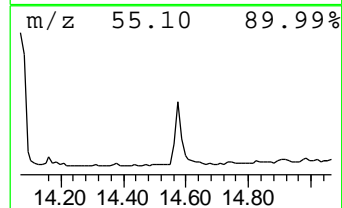
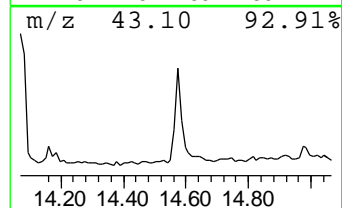
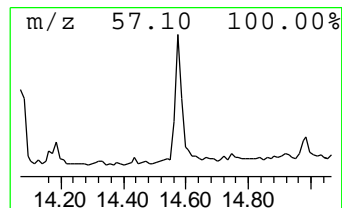
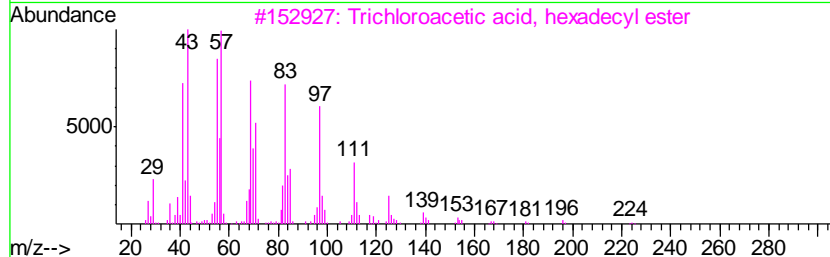
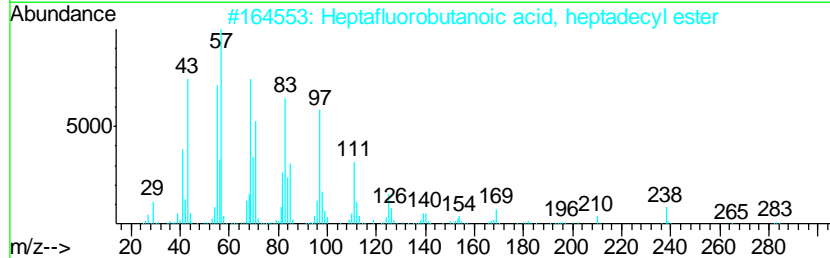
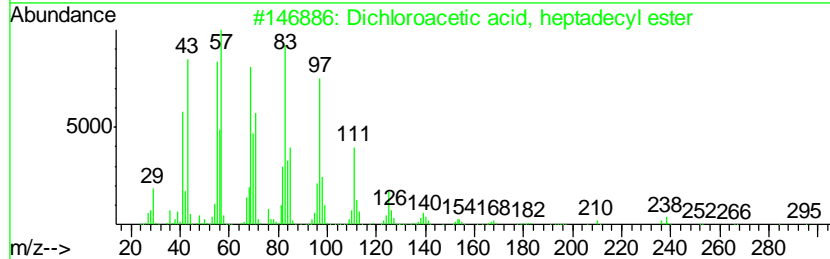
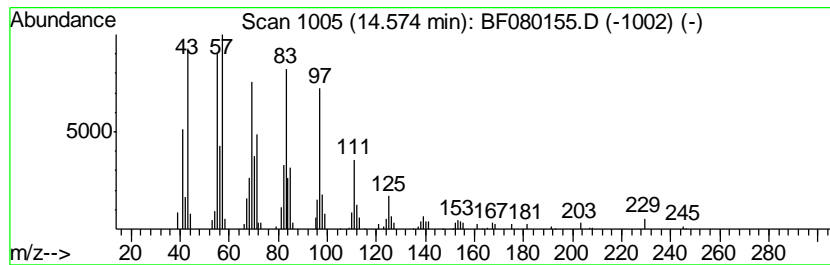
Quant Method : Z:\HPCHEM1\BNA_F\METHODS\8270-BF061715.M
 Quant Title : ASP BNA STANDARDS FOR 5 POINT CALIBRATION

TIC Library : C:\DATABASE\NIST02.L
 TIC Integration Parameters: LSCINT.P

 Peak Number 9 Dichloroacetic acid, heptad... Concentration Rank 5

R.T.	EstConc	Area	Relative to ISTD	R.T.
14.57	7.96 ng	196997	Chrysene-d12	14.79

Hit#	of	Tentative ID	MW	MolForm	CAS#	Qual
1	5	Dichloroacetic acid, heptadecyl ...	366	C19H36Cl2O2	1000282-98-2	95
2		Heptafluorobutanoic acid, heptad...	452	C21H35F7O2	1000282-97-3	94
3		Trichloroacetic acid, hexadecyl ...	386	C18H33Cl3O2	074339-54-1	94
4		Trichloroacetic acid, pentadecyl...	372	C17H31Cl3O2	074339-53-0	94
5		3-Eicosene, (E)-	280	C20H40	074685-33-9	91



Data Path : Z:\HPCHEM1\BNA_F\DATA\BF062415\
 Data File : BF080155.D
 Acq On : 25 Jun 2015 4:33
 Operator : TP/IZ
 Sample : G2750-10
 Misc :
 ALS Vial : 25 Sample Multiplier: 1

Instrument :
 BNA_F
 ClientSampled :
 CF-2

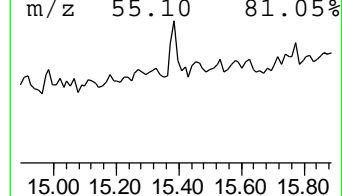
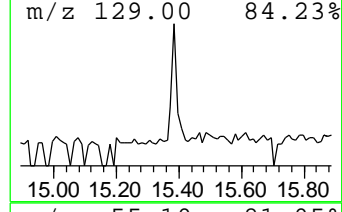
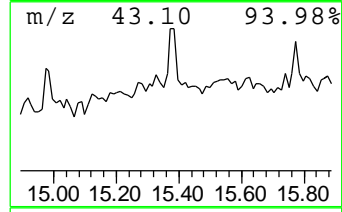
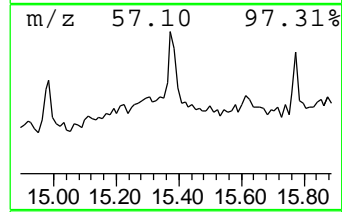
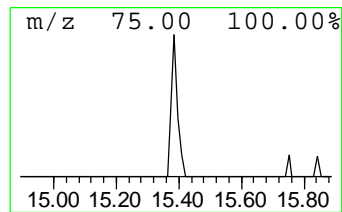
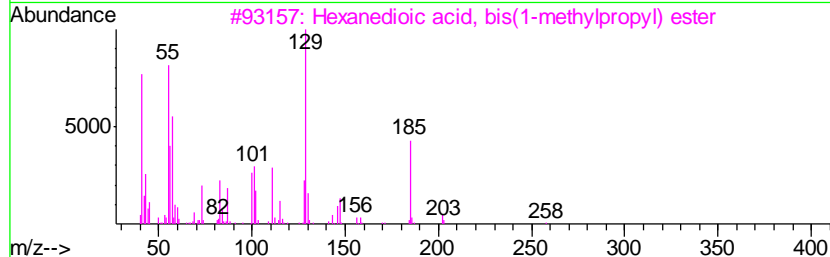
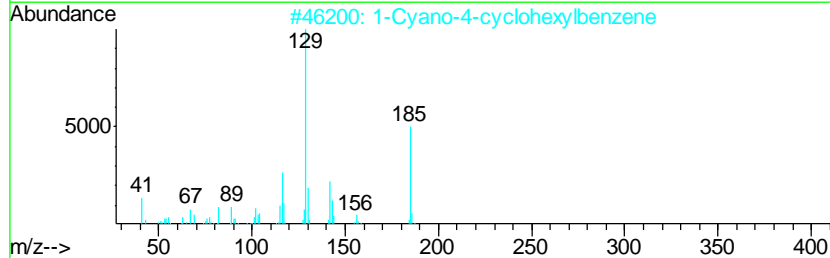
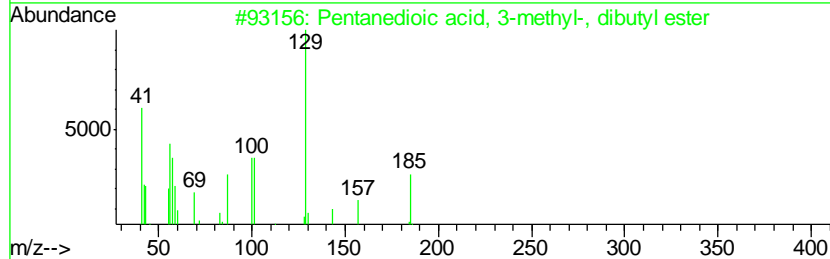
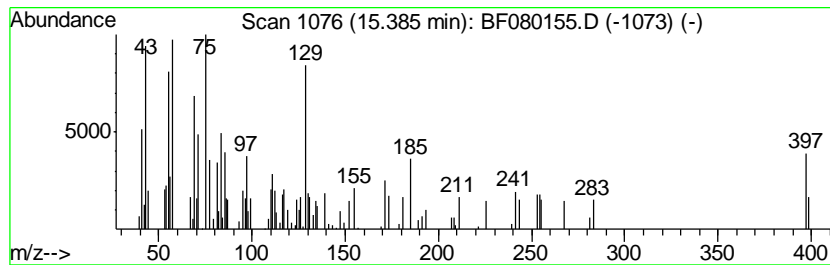
Quant Method : Z:\HPCHEM1\BNA_F\METHODS\8270-BF061715.M
 Quant Title : ASP BNA STANDARDS FOR 5 POINT CALIBRATION

TIC Library : C:\DATABASE\NIST02.L
 TIC Integration Parameters: LSCINT.P

 Peak Number 10 unknown15.39 Concentration Rank 11

R.T.	EstConc	Area	Relative to ISTD	R.T.
15.39	2.31 ng	57247	Chrysene-d12	14.79

Hit#	of	Tentative ID	MW	MolForm	CAS#	Qual
1	5	Pentanedioic acid, 3-methyl-, di...	258	C14H26O4	056051-60-6	14
2		1-Cyano-4-cyclohexylbenzene	185	C13H15N	027634-88-4	14
3		Hexanedioic acid, bis(1-methylpr...	258	C14H26O4	038447-22-2	14
4		Ethane, 1-[(2-chloroethyl)thio]-...	184	C6H13ClS2	092569-22-7	11
5		Hexanedioic acid, bis(2-methylpr...	258	C14H26O4	000141-04-8	10



Data Path : Z:\HPCHEM1\BNA_F\DATA\BF062415\
 Data File : BF080155.D
 Acq On : 25 Jun 2015 4:33
 Operator : TP/IZ
 Sample : G2750-10
 Misc :
 ALS Vial : 25 Sample Multiplier: 1

Instrument :
 BNA_F
 ClientSampleID :
 CF-2

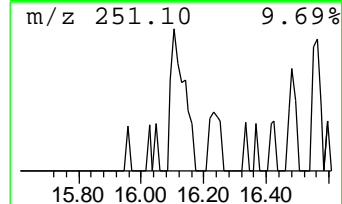
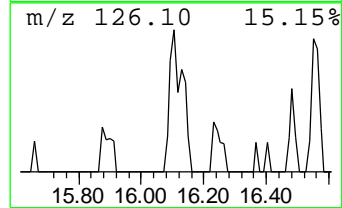
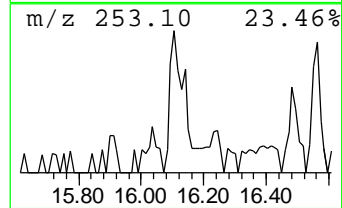
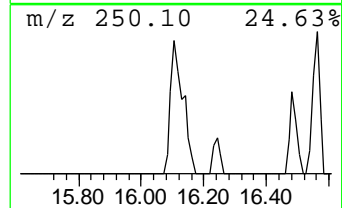
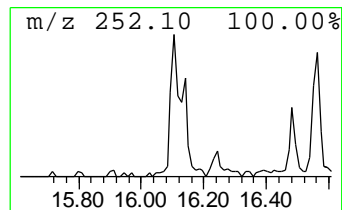
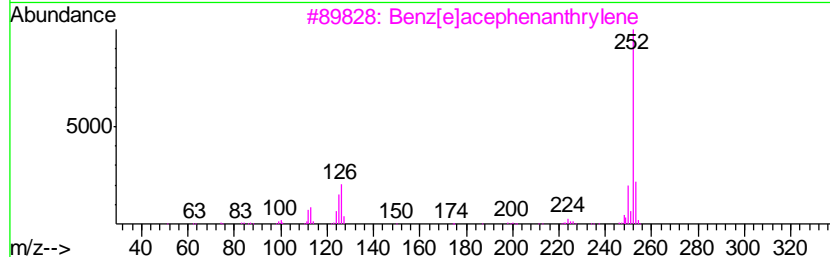
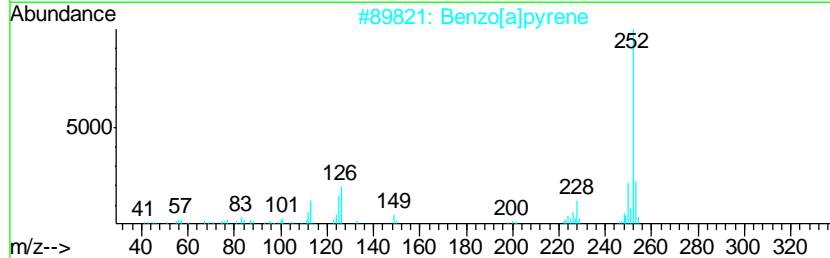
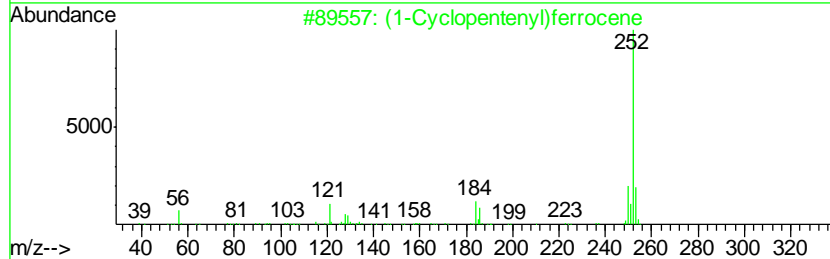
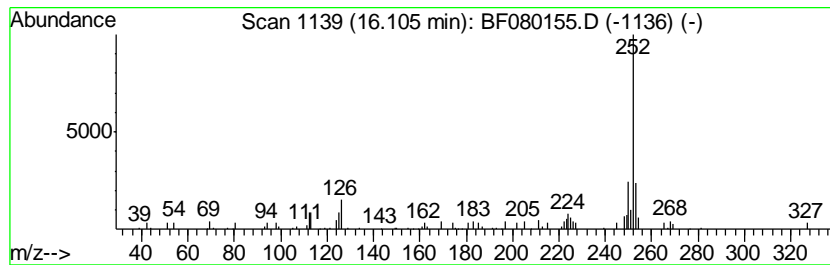
Quant Method : Z:\HPCHEM1\BNA_F\METHODS\8270-BF061715.M
 Quant Title : ASP BNA STANDARDS FOR 5 POINT CALIBRATION

TIC Library : C:\DATABASE\NIST02.L
 TIC Integration Parameters: LSCINT.P

 Peak Number 11 (1-Cyclopentenyl)ferrocene Concentration Rank 7

R.T.	EstConc	Area	Relative to ISTD	R.T.
16.11	2.96 ng	63876	Perylene-d12	16.64

Hit#	of	Tentative ID	MW	MolForm	CAS#	Qual
1	5	(1-Cyclopentenyl)ferrocene	252	C15H16Fe	012260-67-2	80
2		Benzo[a]pyrene	252	C20H12	000050-32-8	76
3		Benz[e]acephenanthrylene	252	C20H12	000205-99-2	76
4		Benzo[e]pyrene	252	C20H12	000192-97-2	76
5		Benzo[k]fluoranthene	252	C20H12	000207-08-9	68



Data Path : Z:\HPCHEM1\BNA_F\DATA\BF062415\
 Data File : BF080155.D
 Acq On : 25 Jun 2015 4:33
 Operator : TP/IZ
 Sample : G2750-10
 Misc :
 ALS Vial : 25 Sample Multiplier: 1

Instrument :
 BNA_F
 ClientSampled :
 CF-2

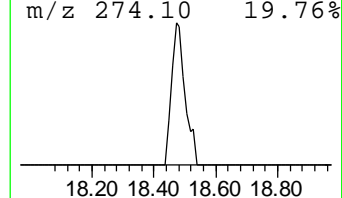
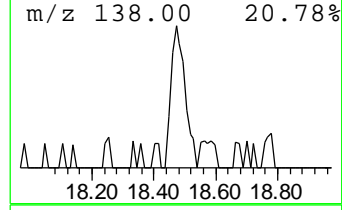
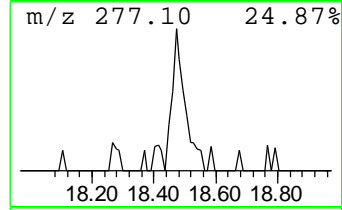
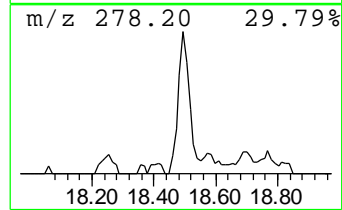
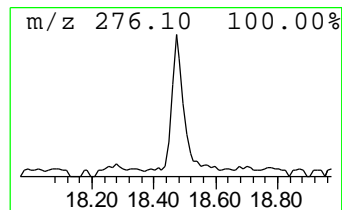
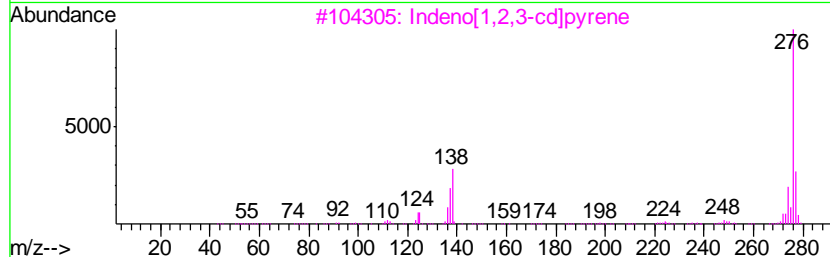
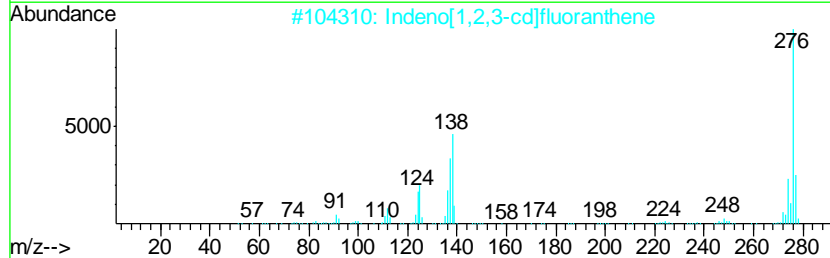
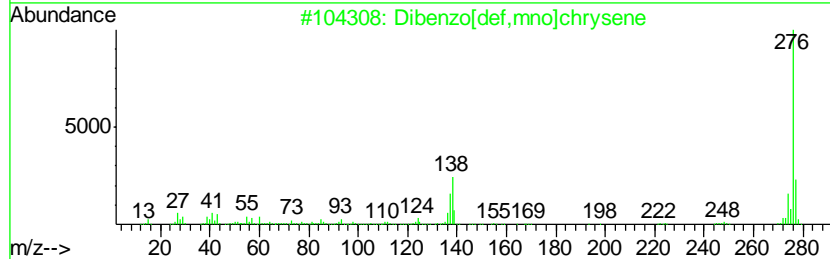
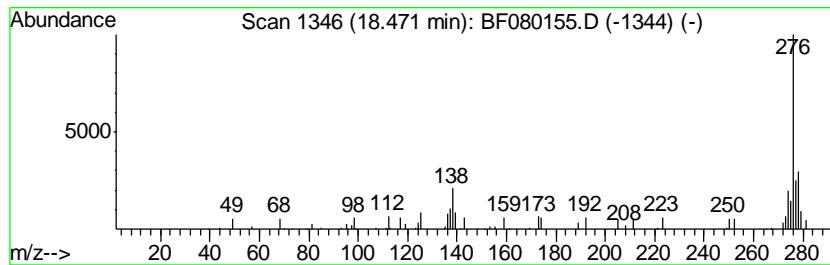
Quant Method : Z:\HPCHEM1\BNA_F\METHODS\8270-BF061715.M
 Quant Title : ASP BNA STANDARDS FOR 5 POINT CALIBRATION

TIC Library : C:\DATABASE\NIST02.L
 TIC Integration Parameters: LSCINT.P

 Peak Number 13 Dibenzo[def,mno]chrysene Concentration Rank 10

R.T.	EstConc	Area	Relative to ISTD	R.T.
18.47	2.63 ng	56801	Perylene-d12	16.64

Hit#	of	Tentative ID	MW	MolForm	CAS#	Qual
1	5	Dibenzo[def,mno]chrysene	276	C22H12	000191-26-4	70
2		Indeno[1,2,3-cd]fluoranthene	276	C22H12	000193-43-1	62
3		Indeno[1,2,3-cd]pyrene	276	C22H12	000193-39-5	58
4		Phenol, 2-(4-chlorophenyliminome...	276	C13H9ClN2O3	1000262-90-3	53
5		Benzo[ghi]perylene	276	C22H12	000191-24-2	53



Data Path : Z:\HPCHEM1\BNA_F\DATA\BF062415\
 Data File : BF080155.D
 Acq On : 25 Jun 2015 4:33
 Operator : TP/IZ
 Sample : G2750-10
 Misc :
 ALS Vial : 25 Sample Multiplier: 1

Instrument :
 BNA_F
 ClientSampleId :
 CF-2

Quant Method : Z:\HPCHEM1\BNA_F\METHODS\8270-BF061715.M
 Quant Title : ASP BNA STANDARDS FOR 5 POINT CALIBRATION

TIC Library : C:\DATABASE\NIST02.L
 TIC Integration Parameters: LSCINT.P

TIC Top Hit name	RT	EstConc	Units	Response	--Internal Standard--			
					#	RT	Resp	Conc
2-Pentanone, 4-hy...	5.53	34.2	ng	363634	1	7.32	212791	20.0
Ethanol, 2-(2-met...	6.55	2.9	ng	30345	1	7.32	212791	20.0
unknown7.08	7.08	105.8	ng	1125100	1	7.32	212791	20.0
1-Hexadecanol	12.08	2.3	ng	41794	4	11.88	369281	20.0
9-Octadecenamamide,...	14.08	20.5	ng	507772	5	14.79	494822	20.0
Dichloroacetic ac...	14.57	8.0	ng	196997	5	14.79	494822	20.0
unknown15.39	15.39	2.3	ng	57247	5	14.79	494822	20.0
(1-Cyclopentenyl)...	16.11	3.0	ng	63876	6	16.64	432017	20.0
Dibenzo[def,mno]c...	18.47	2.6	ng	56801	6	16.64	432017	20.0