

Data Path : Z:\svoasrv\HPCHEM1\BNA_F\Data\BF062425\
 Data File : BF142812.D
 Acq On : 24 Jun 2025 10:46
 Operator : RC/JU
 Sample : PB168582BL
 Misc :
 ALS Vial : 3 Sample Multiplier: 1

Instrument :
 BNA_F
 ClientSampleId :
 PB168582BL

Integration Parameters: rteint.p
 Integrator: RTE
 Smoothing : ON Filtering: 5
 Sampling : 1 Min Area: 3 % of largest Peak
 Start Thrs: 0.2 Max Peaks: 100
 Stop Thrs : 0 Peak Location: TOP

If leading or trailing edge < 100 prefer < Baseline drop else tangent >
 Peak separation: 5

Method : Z:\svoasrv\HPCHEM1\BNA_F\Methods\8270-BF061925.M
 Title : ASP BNA STANDARDS FOR 5 POINT CALIBRATION

Signal : TIC: BF142812.D\data.ms

peak #	R.T. min	first scan	max scan	last scan	PK TY	peak height	corr. area	corr. % max.	% of total
1	5.116	490	497	514	rBV	328633	562612	17.50%	2.992%
2	5.510	557	564	569	rBV	1805188	2504677	77.93%	13.322%
3	6.510	727	734	739	rBV	1626980	2473011	76.94%	13.153%
4	6.875	791	796	802	rBV	374167	463703	14.43%	2.466%
5	7.440	885	892	897	rBV	1156615	1629034	50.68%	8.664%
6	8.163	1009	1015	1023	rBV	456973	609120	18.95%	3.240%
7	9.239	1191	1198	1203	rBV	2408861	3214088	100.00%	17.095%
8	9.916	1308	1313	1319	rBV	540617	686278	21.35%	3.650%
9	10.710	1442	1448	1453	rBV	1520715	1975661	61.47%	10.508%
10	11.404	1561	1566	1573	rBV	539301	704077	21.91%	3.745%
11	12.998	1831	1837	1842	rBV	2268505	3001682	93.39%	15.965%
12	14.051	2011	2016	2023	rVB	351238	443147	13.79%	2.357%
13	15.539	2263	2269	2281	rBV	266670	411388	12.80%	2.188%
14	17.221	2542	2555	2569	rBV3	29269	123266	3.84%	0.656%

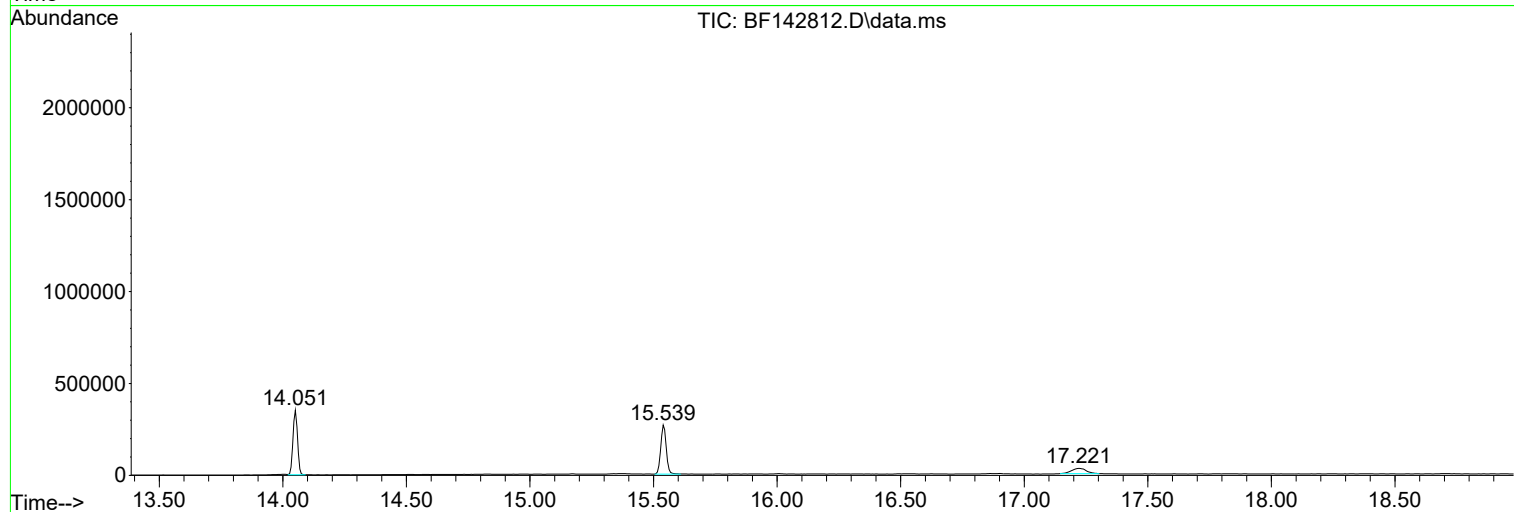
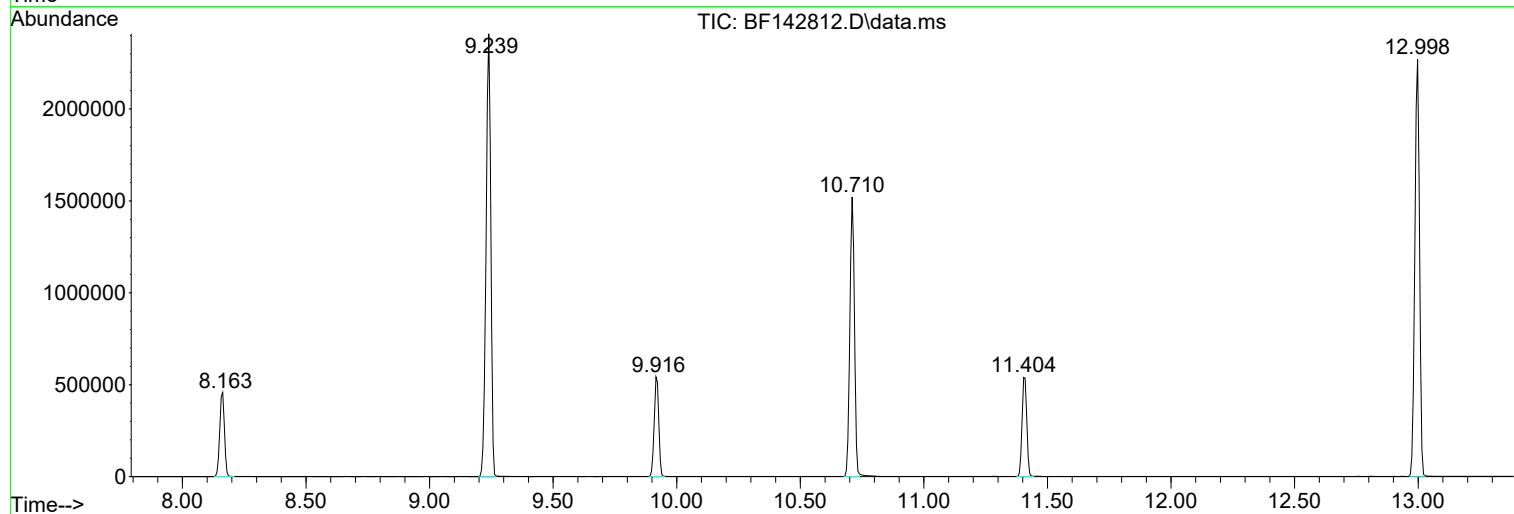
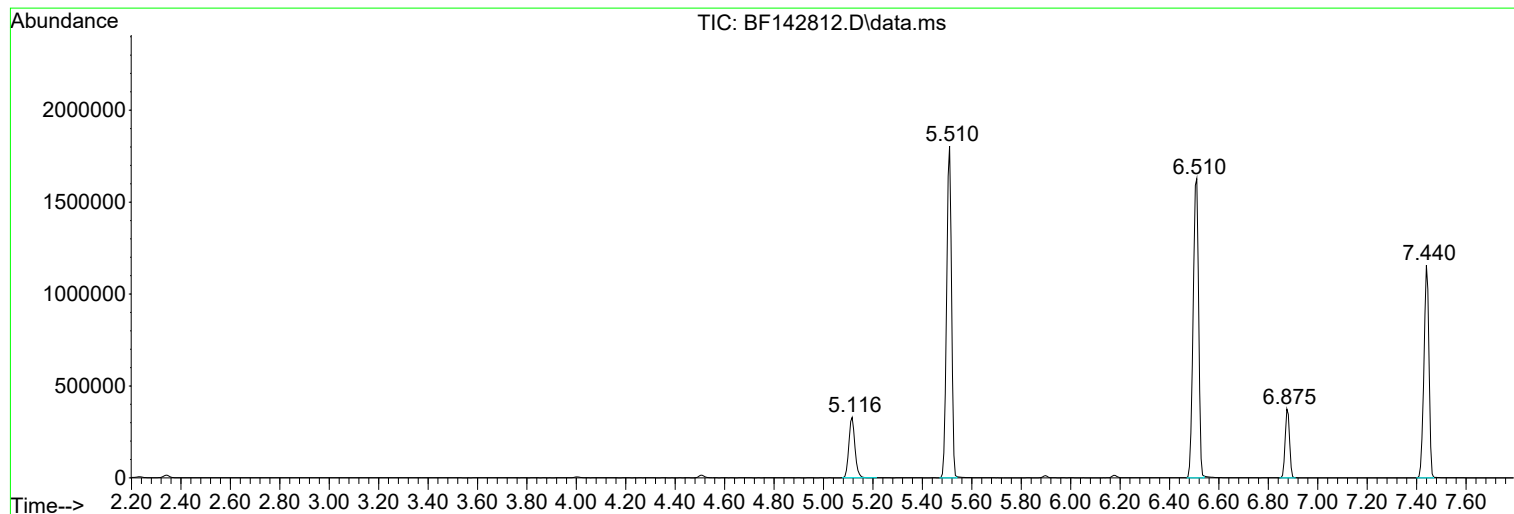
Sum of corrected areas: 18801744

Data Path : Z:\svoasrv\HPCHEM1\BNA_F\Data\BF062425\
Data File : BF142812.D
Acq On : 24 Jun 2025 10:46
Operator : RC/JU
Sample : PB168582BL
Misc :
ALS Vial : 3 Sample Multiplier: 1

Instrument :
BNA_F
ClientSampleId :
PB168582BL

Quant Method : Z:\svoasrv\HPCHEM1\BNA_F\Methods\8270-BF061925.M
Quant Title : ASP BNA STANDARDS FOR 5 POINT CALIBRATION

TIC Library : C:\Database\NIST20.L
TIC Integration Parameters: LSCINT.P



Data Path : Z:\svoasrv\HPCHEM1\BNA_F\Data\BF062425\
 Data File : BF142812.D
 Acq On : 24 Jun 2025 10:46
 Operator : RC/JU
 Sample : PB168582BL
 Misc :
 ALS Vial : 3 Sample Multiplier: 1

Instrument :
 BNA_F
 ClientSampleId :
 PB168582BL

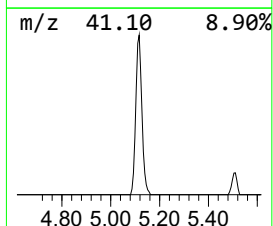
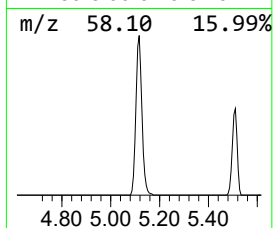
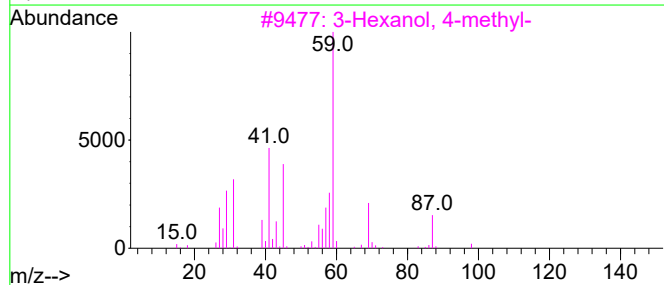
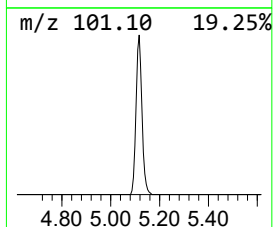
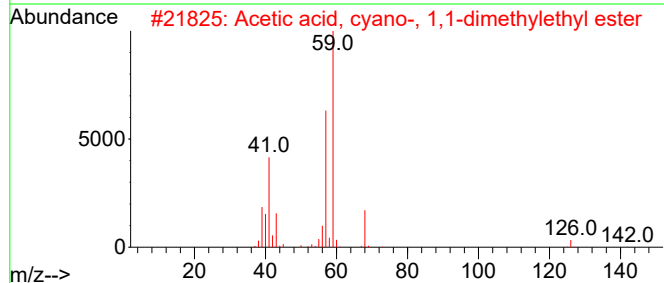
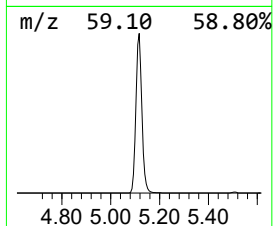
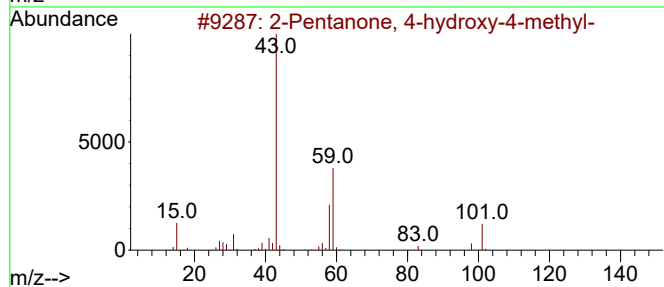
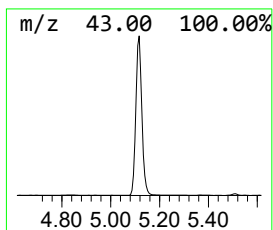
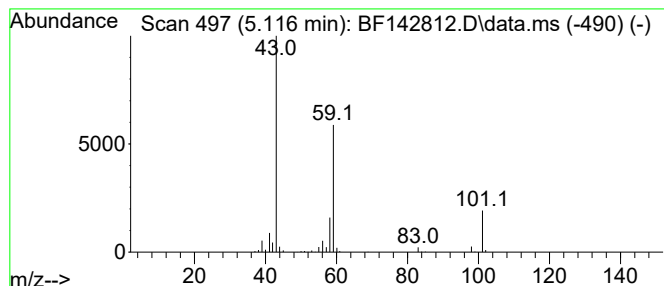
Quant Method : Z:\svoasrv\HPCHEM1\BNA_F\Methods\8270-BF061925.M
 Quant Title : ASP BNA STANDARDS FOR 5 POINT CALIBRATION

TIC Library : C:\Database\NIST20.L
 TIC Integration Parameters: LSCINT.P

 Peak Number 1 2-Pentanone, 4-hydroxy-4-me... Concentration Rank 1

R.T.	EstConc	Area	Relative to ISTD	R.T.
5.116	24.27 ng	562612	1,4-Dichlorobenzene-d4	6.875

Hit#	of 5	Tentative ID	MW	MolForm	CAS#	Qual
1		2-Pentanone, 4-hydroxy-4-methyl-	116	C6H12O2	000123-42-2	53
2		Acetic acid, cyano-, 1,1-dimethy...	141	C7H11NO2	001116-98-9	32
3		3-Hexanol, 4-methyl-	116	C7H16O	000615-29-2	28
4		2,3-Butanedione, monooxime	101	C4H7NO2	000057-71-6	25
5		1-Propen-2-ol, acetate	100	C5H8O2	000108-22-5	10



Data Path : Z:\svoasrv\HPCHEM1\BNA_F\Data\BF062425\
 Data File : BF142812.D
 Acq On : 24 Jun 2025 10:46
 Operator : RC/JU
 Sample : PB168582BL
 Misc :
 ALS Vial : 3 Sample Multiplier: 1

Instrument :
 BNA_F
 ClientSampleId :
 PB168582BL

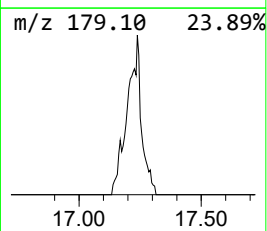
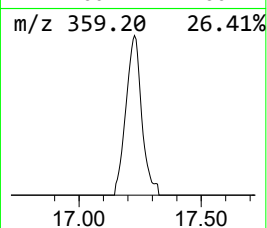
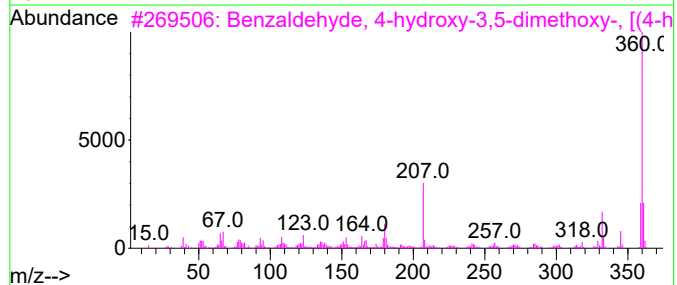
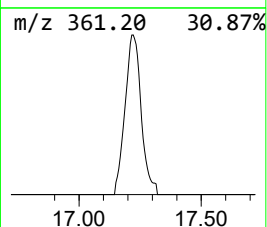
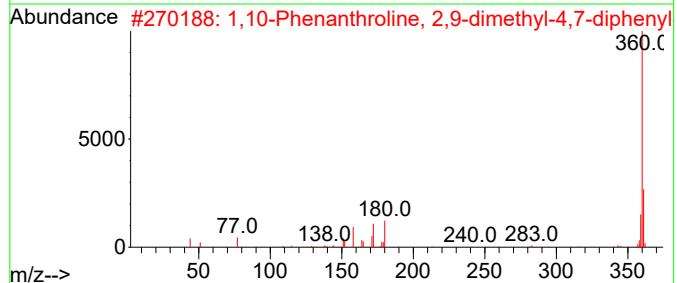
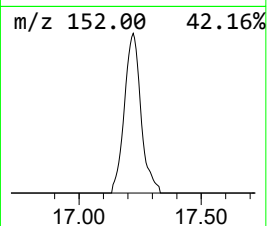
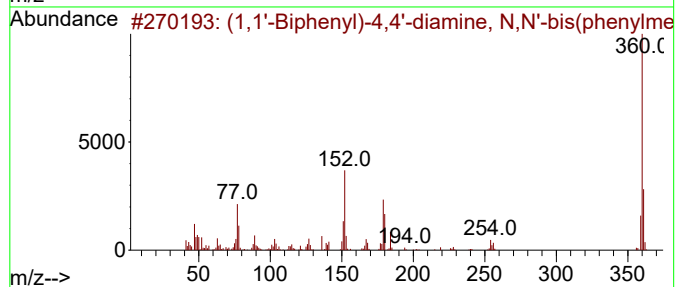
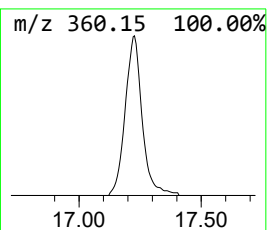
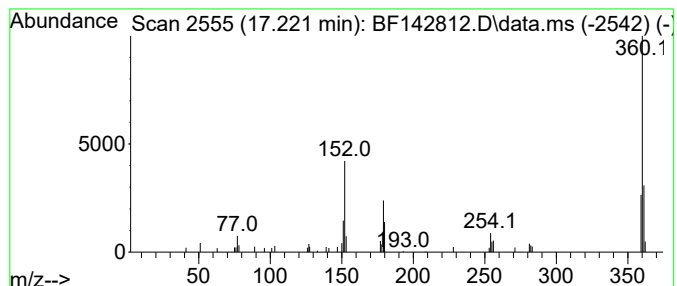
Quant Method : Z:\svoasrv\HPCHEM1\BNA_F\Methods\8270-BF061925.M
 Quant Title : ASP BNA STANDARDS FOR 5 POINT CALIBRATION

TIC Library : C:\Database\NIST20.L
 TIC Integration Parameters: LSCINT.P

 Peak Number 2 (1,1'-Biphenyl)-4,4'-diamin... Concentration Rank 2

R.T.	EstConc	Area	Relative to ISTD	R.T.
17.221	5.99 ng	123266	Perylene-d12	15.539

Hit#	of	5	Tentative ID	MW	MolForm	CAS#	Qual
1			(1,1'-Biphenyl)-4,4'-diamine, N,...	360	C26H20N2	006311-48-4	93
2			1,10-Phenanthroline, 2,9-dimethy...	360	C26H20N2	004733-39-5	49
3			Benzaldehyde, 4-hydroxy-3,5-dime...	360	C18H20N2O6	014414-32-5	49
4			Androst-4-ene-3,17-dione, 12-hyd...	360	C21H32N2O3	069688-31-9	47
5			Ethene, 1-(anthracen-9-yl)-2-(4-...	360	C27H20O	1000163-55-1	43



Data Path : Z:\svoasrv\HPCHEM1\BNA_F\Data\BF062425\
Data File : BF142812.D
Acq On : 24 Jun 2025 10:46
Operator : RC/JU
Sample : PB168582BL
Misc :
ALS Vial : 3 Sample Multiplier: 1

Instrument :
BNA_F
ClientSampleId :
PB168582BL

Quant Method : Z:\svoasrv\HPCHEM1\BNA_F\Methods\8270-BF061925.M
Quant Title : ASP BNA STANDARDS FOR 5 POINT CALIBRATION

TIC Library : C:\Database\NIST20.L
TIC Integration Parameters: LSCINT.P

TIC Top Hit name	RT	EstConc	Units	Response	--Internal Standard--			
					#	RT	Resp	Conc
2-Pentanone, 4-...	5.116	24.3	ng	562612	1	6.875	463703	20.0
(1,1'-Biphenyl)...	17.221	6.0	ng	123266	6	15.539	411388	20.0