

Data Path : Z:\HPCHEM1\BNA_F\DATA\BF062516\
 Data File : BF088407.D
 Acq On : 26 Jun 2016 7:58
 Operator : UM/SJ
 Sample : H3602-13
 Misc :
 ALS Vial : 55 Sample Multiplier: 1

Instrument :
 BNA_F
 ClientSampleId :
 Q8-B5(0-16)C

Quant Time: Jun 27 04:10:29 2016
 Quant Method : Z:\HPCHEM1\BNA_F\METHODS\8270-BF060716.M
 Quant Title : ASP BNA STANDARDS FOR 5 POINT CALIBRATION
 QLast Update : Wed Jun 22 14:55:14 2016
 Response via : Initial Calibration

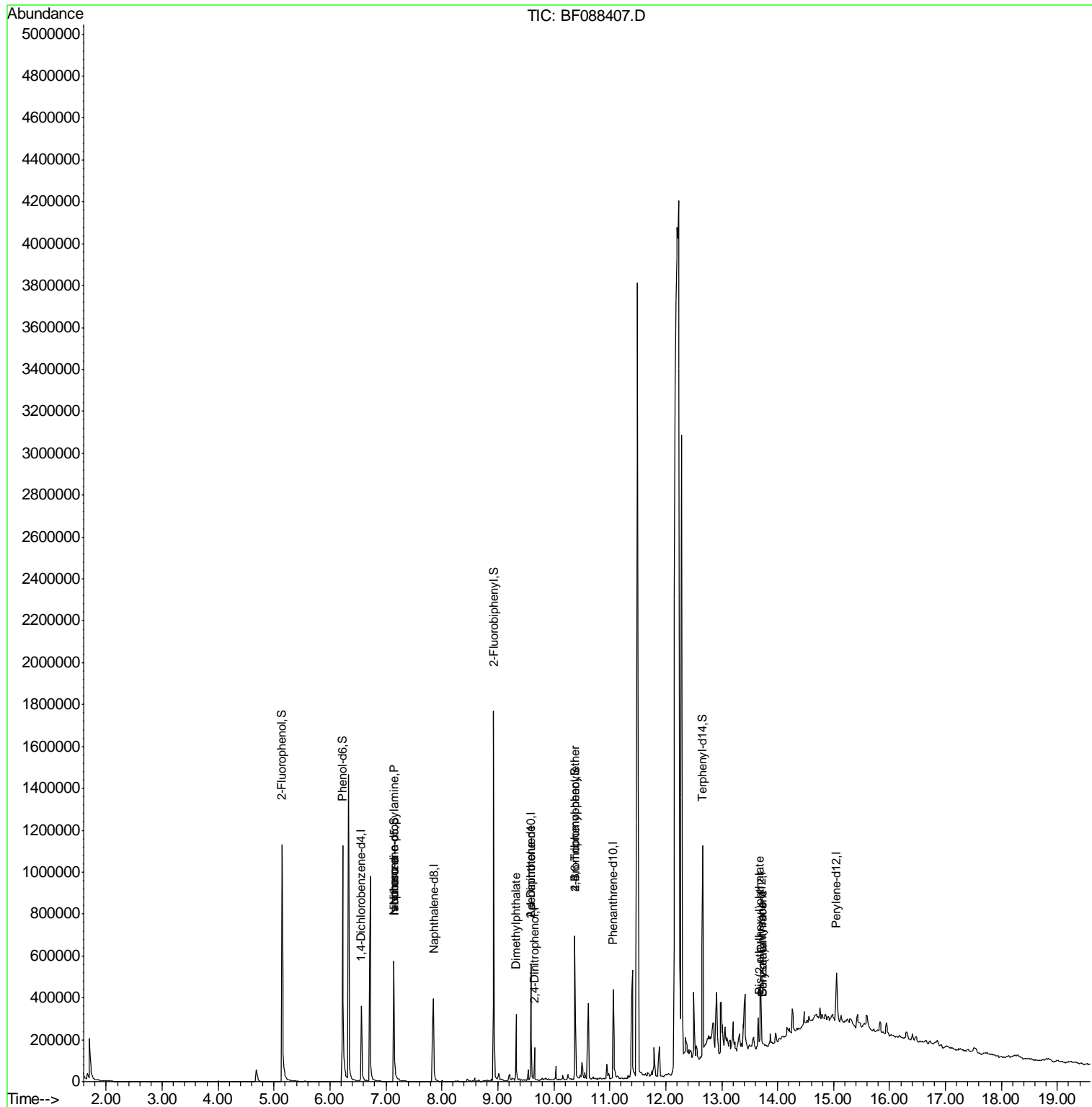
Internal Standards	R.T.	QIon	Response	Conc	Units	Dev(Min)
1) 1,4-Dichlorobenzene-d4	6.56	152	73548	20.00	ng	-0.05
21) Naphthalene-d8	7.85	136	277230	20.00	ng	-0.05
38) Acenaphthene-d10	9.59	164	118728	20.00	ng	-0.06
63) Phenanthrene-d10	11.06	188	191549	20.00	ng	-0.06
75) Chrysene-d12	13.70	240	150831	20.00	ng	-0.05
86) Perylene-d12	15.05	264	109540	20.00	ng	-0.06
System Monitoring Compounds						
5) 2-Fluorophenol	5.14	112	454758	105.70	ng	-0.03
7) Phenol-d6	6.23	99	545664	104.66	ng	-0.03
23) Nitrobenzene-d5	7.14	82	347665	73.23	ng	-0.03
41) 2,4,6-Tribromophenol	10.38	330	97790	78.00	ng	-0.06
44) 2-Fluorobiphenyl	8.92	172	600397	79.05	ng	-0.05
78) Terphenyl-d14	12.66	244	406048	61.26	ng	-0.03
Target Compounds						
10) Phenol	6.24	94	2755	Below Cal	#	1
19) n-Nitroso-di-n-propylamine	7.14	70	43419	13.02	ng	67
25) Isophorone	7.14	82	341491	38.83	ng	65
45) 1,1'-Biphenyl	9.03	154	333	Below Cal	#	43
49) Dimethylphthalate	9.32	163	127291	14.80	ng	99
53) 2,4-Dinitrophenol	9.66	184	213	3.35	ng	15
56) 2,4-Dinitrotoluene	9.59	165	15106	5.97	ng	36
57) Fluorene	10.14	166	1291	Below Cal	#	94
66) 4-Bromophenyl-phenylether	10.38	248	6137	2.99	ng	1
80) Benzo(a)anthracene	13.73	228	18158	2.11	ng	85
82) Chrysene	13.73	228	18158	2.25	ng	89
83) Bis(2-ethylhexyl)phthalate	13.68	149	17672	2.93	ng	92

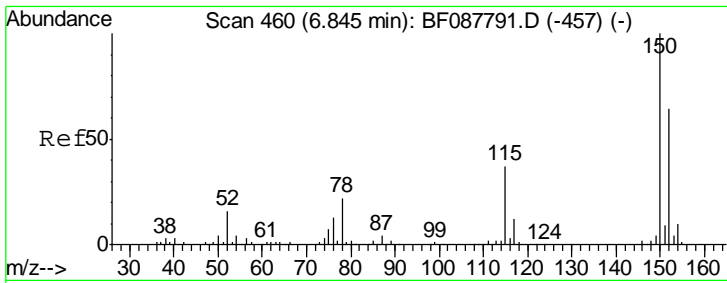
(#) = qualifier out of range (m) = manual integration (+) = signals summed

Data Path : Z:\HPCHEM1\BNA_F\DATA\BF062516\
 Data File : BF088407.D
 Acq On : 26 Jun 2016 7:58
 Operator : UM/SJ
 Sample : H3602-13
 Misc :
 ALS Vial : 55 Sample Multiplier: 1

Instrument :
 BNA_F
 ClientSampleId :
 Q8-B5(0-16)C

Quant Time: Jun 27 04:10:29 2016
 Quant Method : Z:\HPCHEM1\BNA_F\METHODS\8270-BF060716.M
 Quant Title : ASP BNA STANDARDS FOR 5 POINT CALIBRATION
 QLast Update : Wed Jun 22 14:55:14 2016
 Response via : Initial Calibration



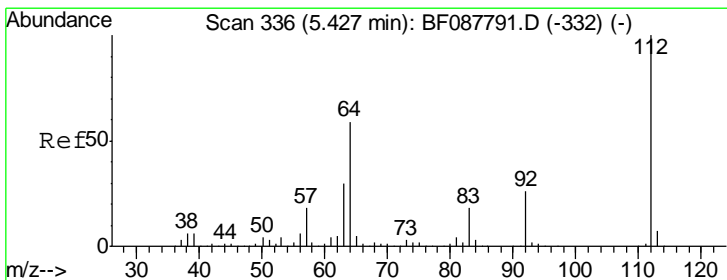
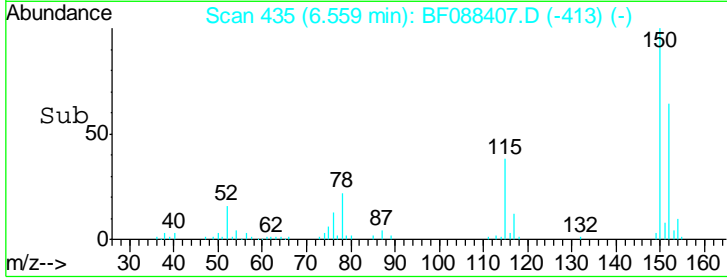
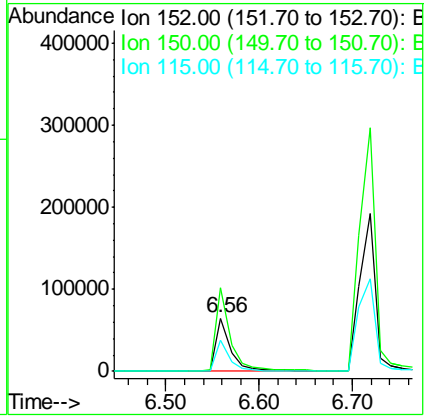
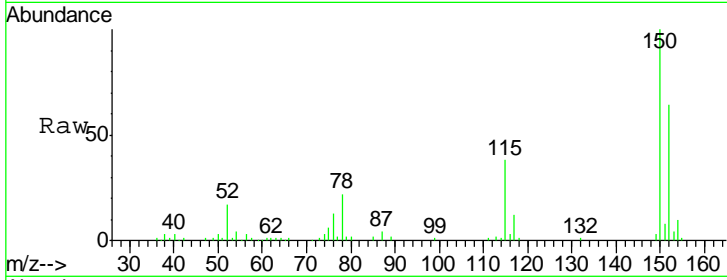


#1
 1,4-Dichlorobenzene-d4
 Concen: 20.00 ng
 RT: 6.56 min Scan# 435
 Delta R.T. -0.05 min
 Lab File: BF088407.D
 Acq: 26 Jun 2016 7:58

Instrument :
 BNA_F
ClientSampled :
 Q8-B5(0-16)C

Tgt Ion:152 Resp: 73548

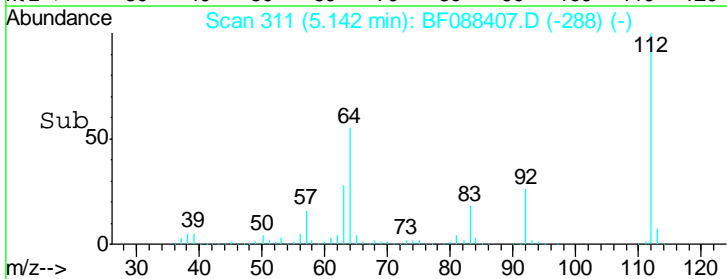
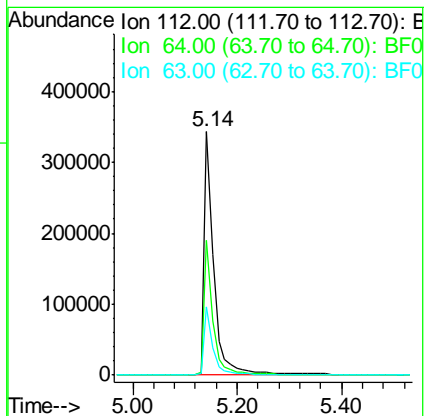
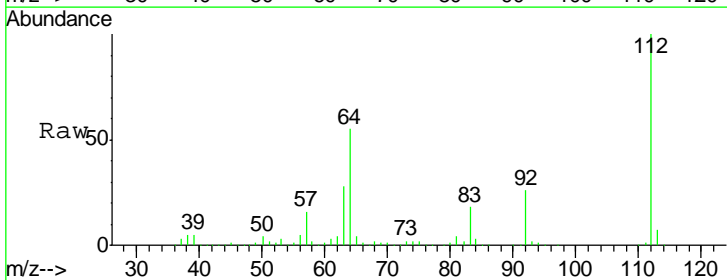
Ion	Ratio	Lower	Upper
152	100		
150	156.4	123.8	185.6
115	59.0	39.6	59.4

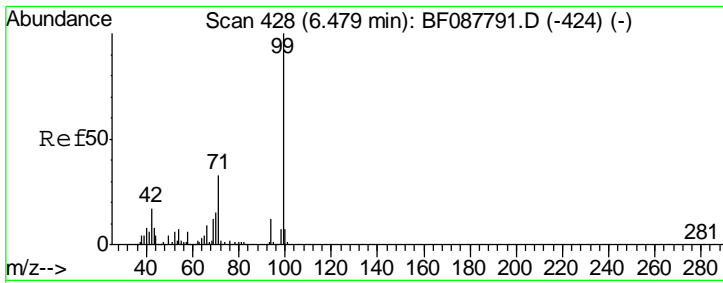


#5
 2-Fluorophenol
 Concen: 105.70 ng
 RT: 5.14 min Scan# 311
 Delta R.T. -0.03 min
 Lab File: BF088407.D
 Acq: 26 Jun 2016 7:58

Tgt Ion:112 Resp: 454758

Ion	Ratio	Lower	Upper
112	100		
64	55.1	42.2	63.2
63	28.3	21.8	32.8

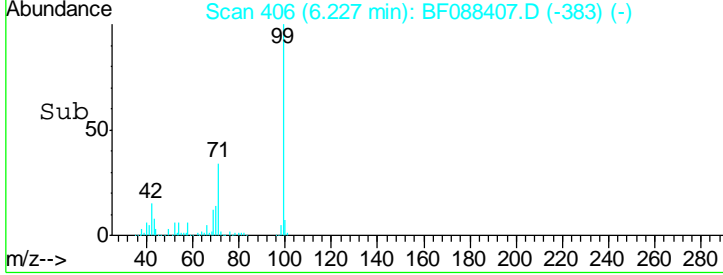
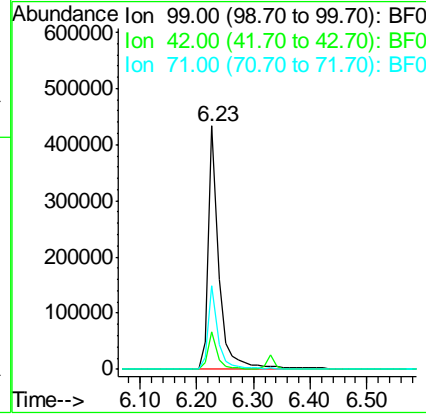
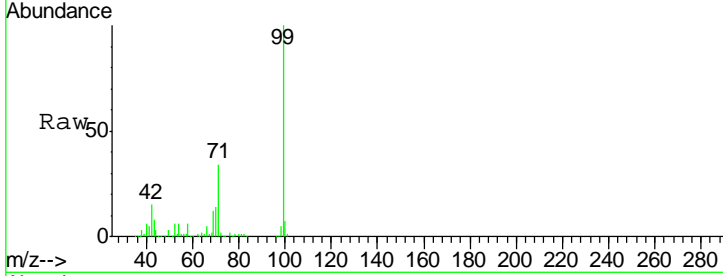




#7
 Phenol-d6
 Concen: 104.66 ng
 RT: 6.23 min Scan# 406
 Delta R.T. -0.03 min
 Lab File: BF088407.D
 Acq: 26 Jun 2016 7:58

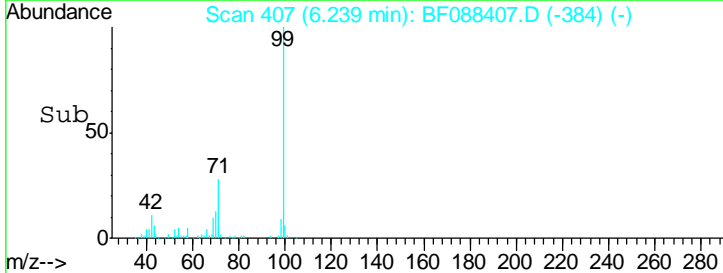
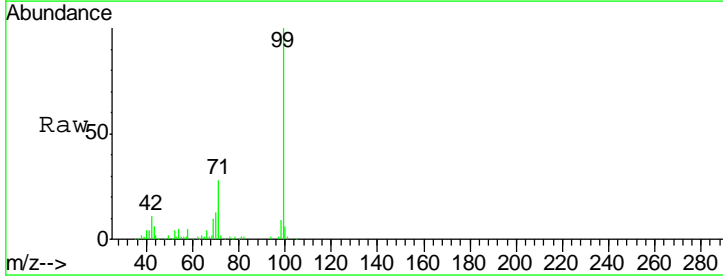
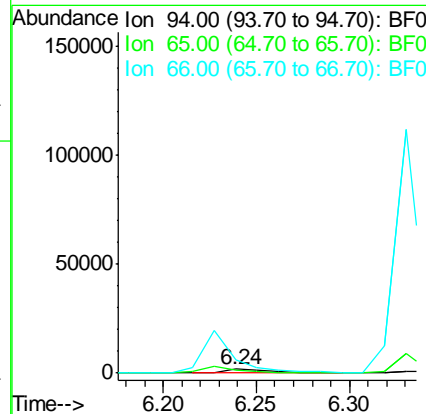
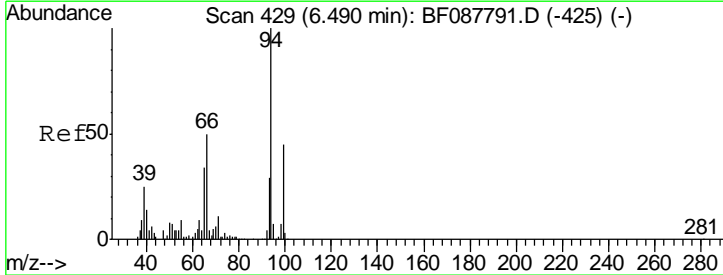
Instrument :
 BNA_F
ClientSampled :
 Q8-B5(0-16)C

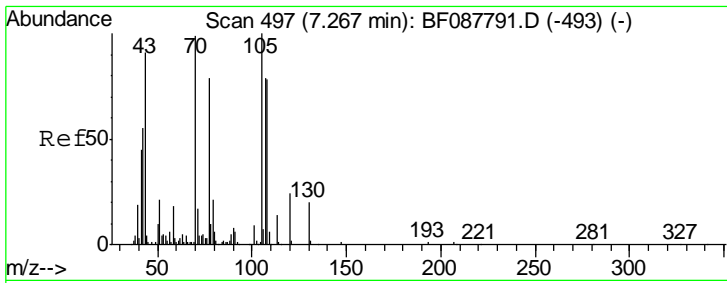
Tgt Ion	Resp	Lower	Upper
99	100		
42	15.4	12.2	18.2
71	34.1	23.4	35.0



#10
 Phenol
 Concen: Below Cal
 RT: 6.24 min Scan# 407
 Delta R.T. -0.03 min
 Lab File: BF088407.D
 Acq: 26 Jun 2016 7:58

Tgt Ion	Resp	Lower	Upper
94	100		
65	88.8	5.9	45.9#
66	340.9	14.0	54.0#

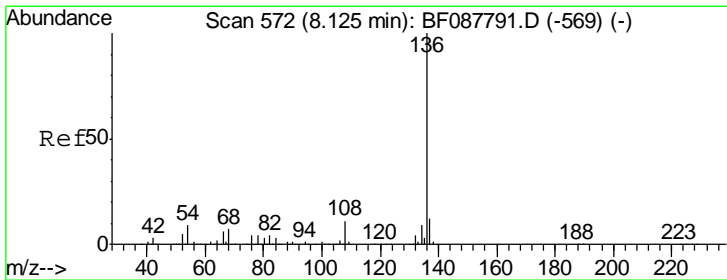
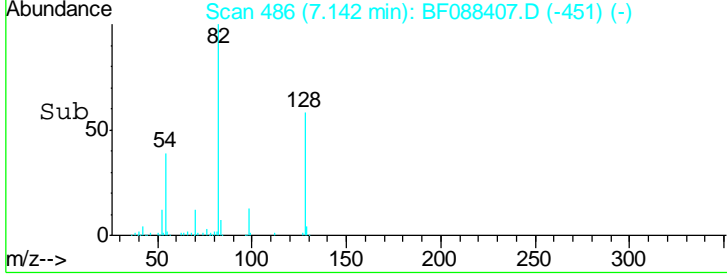
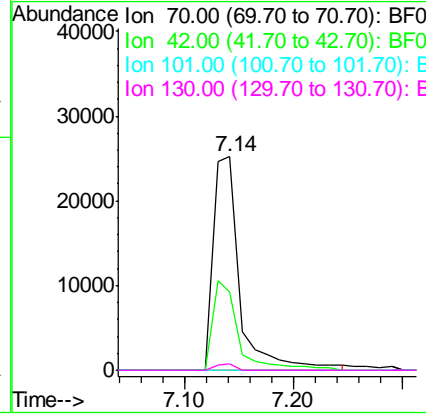
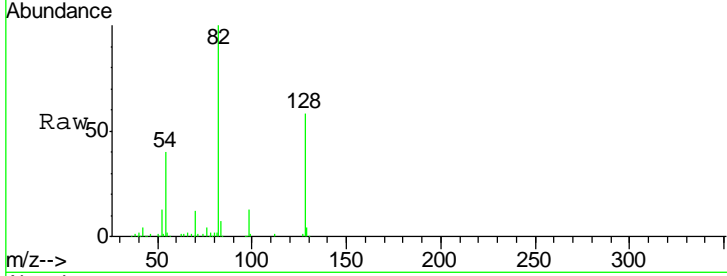




#19
 n-Nitroso-di-n-propylamine
 Concen: 13.02 ng
 RT: 7.14 min Scan# 486
 Delta R.T. 0.10 min
 Lab File: BF088407.D
 Acq: 26 Jun 2016 7:58

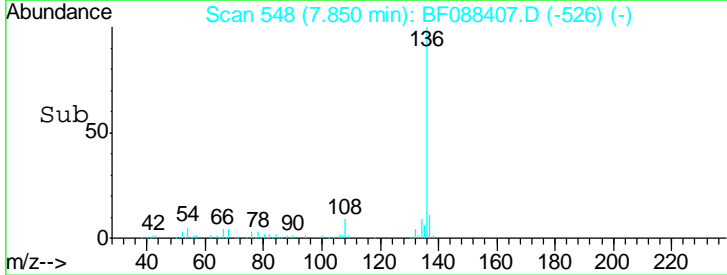
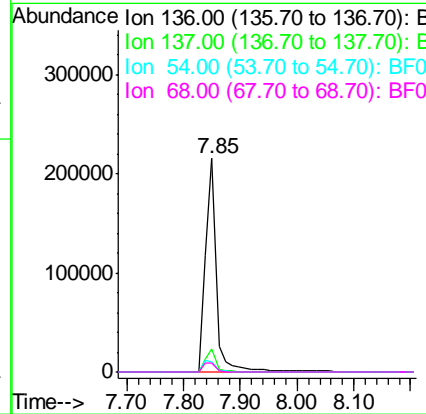
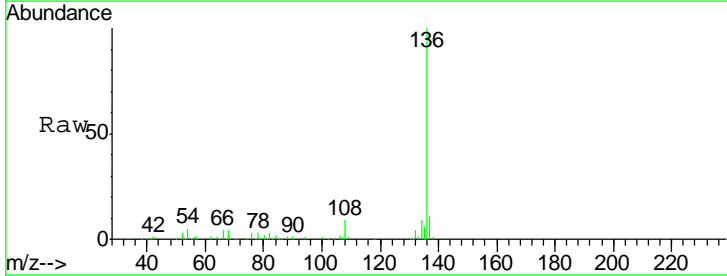
Instrument :
 BNA_F
ClientSampled :
 Q8-B5(0-16)C

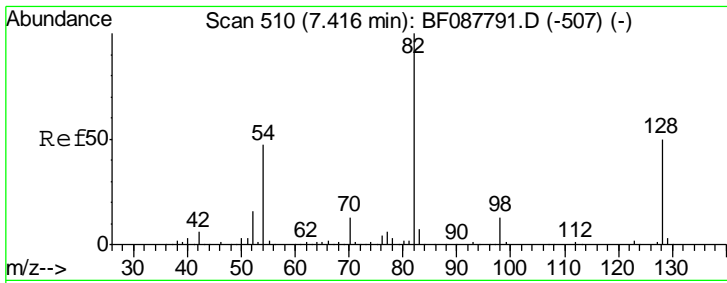
Tgt Ion	Resp	Lower	Upper
70	43419		
70	100		
42	36.5	49.6	74.4#
101	0.0	7.1	10.7#
130	2.9	15.4	23.2#



#21
 Naphthalene-d8
 Concen: 20.00 ng
 RT: 7.85 min Scan# 548
 Delta R.T. -0.05 min
 Lab File: BF088407.D
 Acq: 26 Jun 2016 7:58

Tgt Ion	Resp	Lower	Upper
136	277230		
136	100		
137	10.8	9.1	13.7
54	5.0	6.6	10.0#
68	4.4	5.1	7.7#

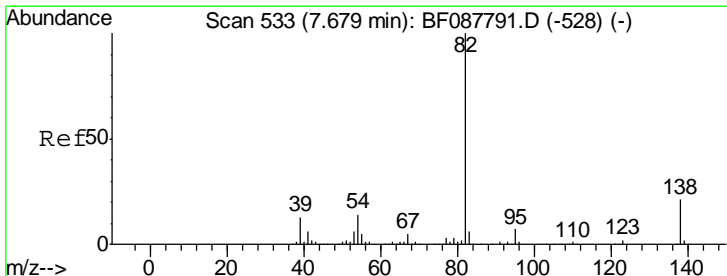
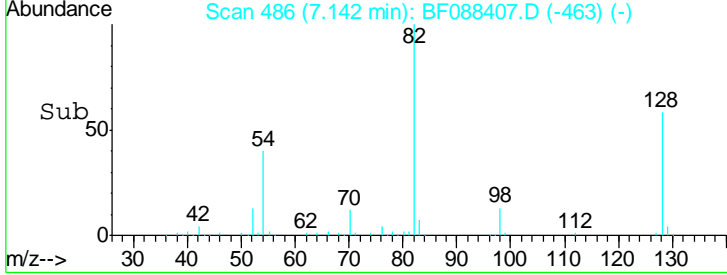
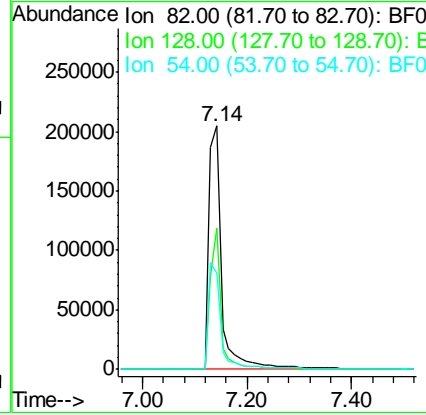
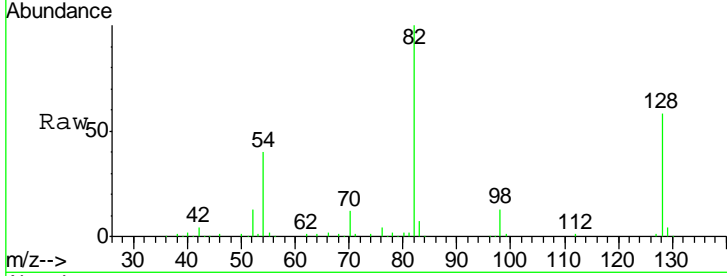




#23
 Nitrobenzene-d5
 Concen: 73.23 ng
 RT: 7.14 min Scan# 486
 Delta R.T. -0.03 min
 Lab File: BF088407.D
 Acq: 26 Jun 2016 7:58

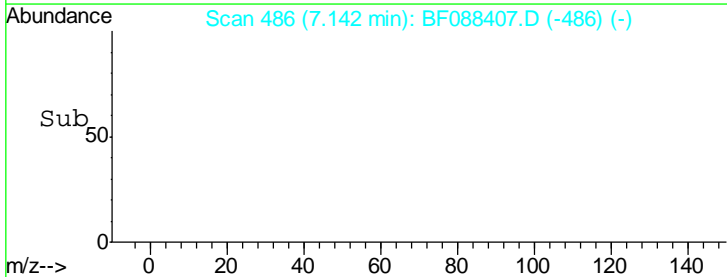
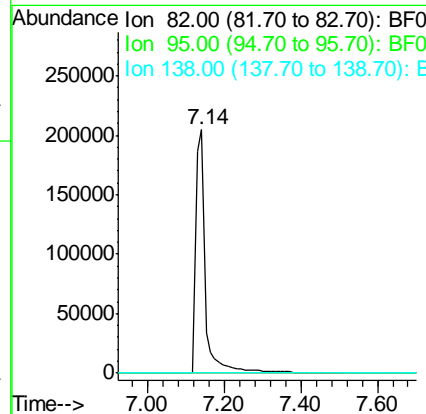
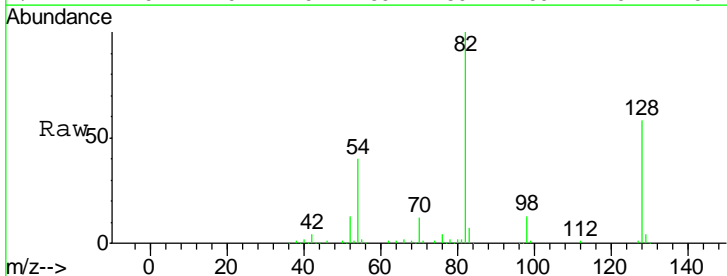
Instrument :
 BNA_F
ClientSampled :
 Q8-B5(0-16)C

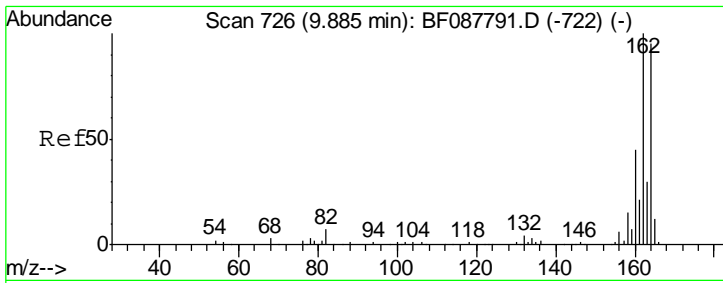
Tgt Ion	Resp	Lower	Upper
82	100		
128	57.8	35.9	53.9#
54	39.7	40.9	61.3#



#25
 Isophorone
 Concen: 38.83 ng
 RT: 7.14 min Scan# 486
 Delta R.T. -0.30 min
 Lab File: BF088407.D
 Acq: 26 Jun 2016 7:58

Tgt Ion	Resp	Lower	Upper
82	100		
95	0.0	5.4	8.2#
138	0.0	14.6	21.8#

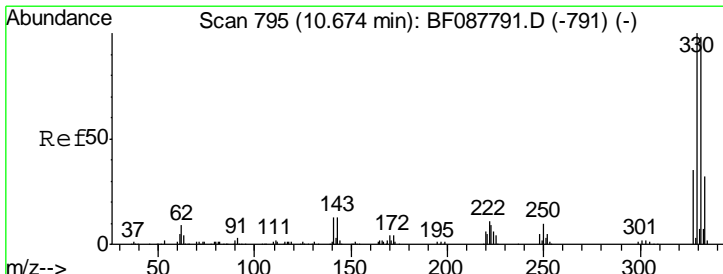
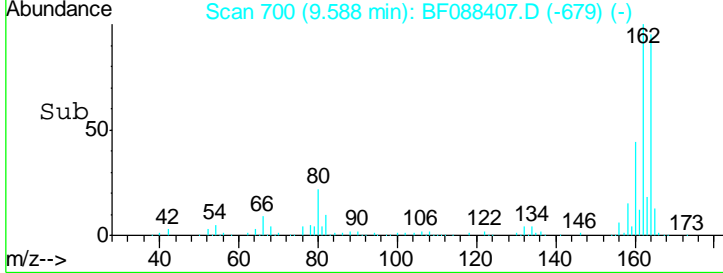
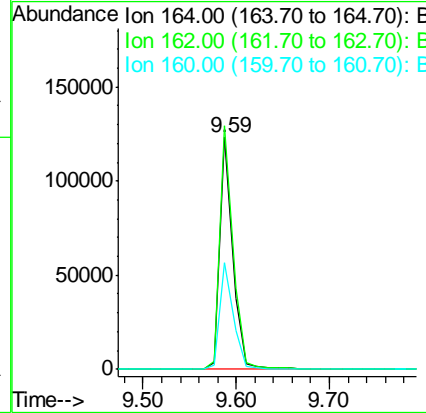
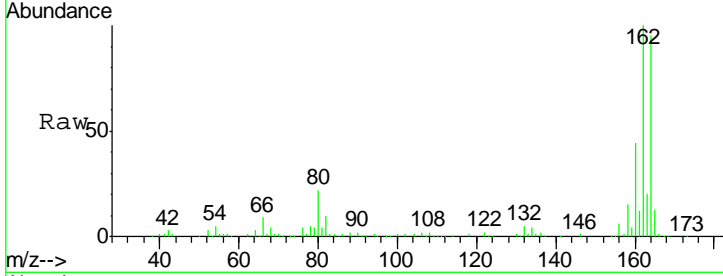




#38
 Acenaphthene-d10
 Concen: 20.00 ng
 RT: 9.59 min Scan# 700
 Delta R.T. -0.06 min
 Lab File: BF088407.D
 Acq: 26 Jun 2016 7:58

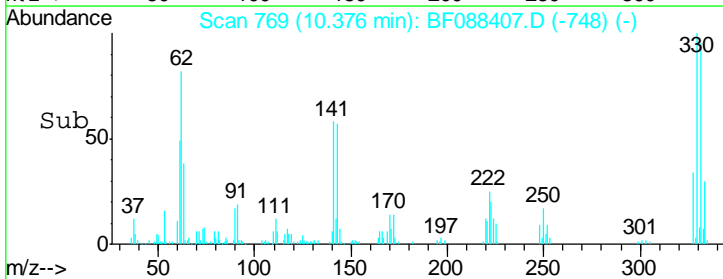
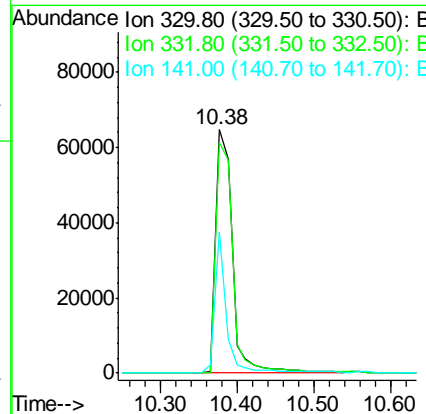
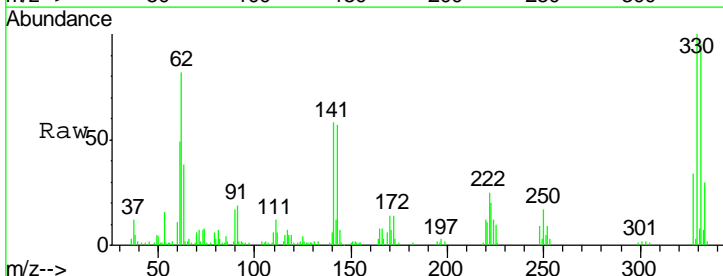
Instrument :
 BNA_F
ClientSampled :
 Q8-B5(0-16)C

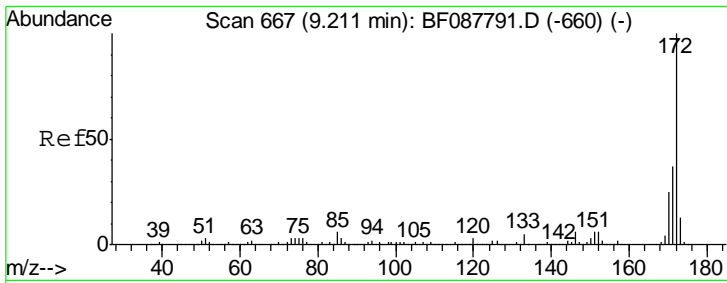
Tgt Ion	Resp	Lower	Upper
164	100		
162	105.0	85.4	128.2
160	46.1	39.5	59.3



#41
 2,4,6-Tribromophenol
 Concen: 78.00 ng
 RT: 10.38 min Scan# 769
 Delta R.T. -0.06 min
 Lab File: BF088407.D
 Acq: 26 Jun 2016 7:58

Tgt Ion	Resp	Lower	Upper
330	100		
332	97.8	0.0	0.0#
141	39.5	0.0	0.0#

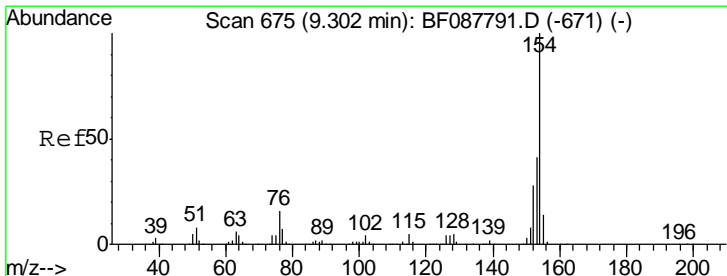
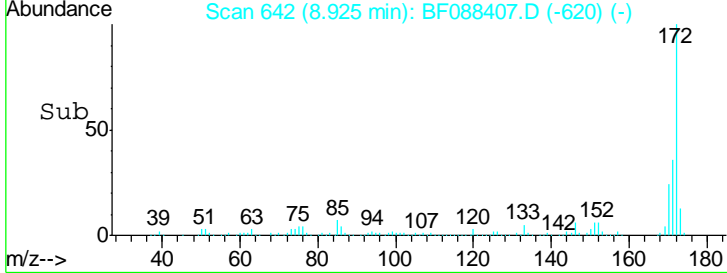
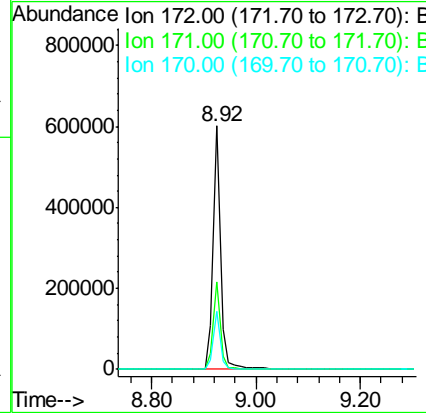
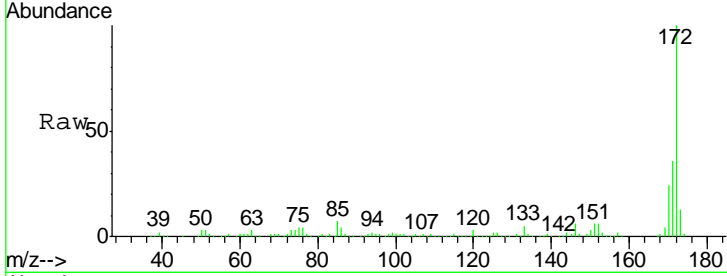




#44
 2-Fluorobiphenyl
 Concen: 79.05 ng
 RT: 8.92 min Scan# 642
 Delta R.T. -0.05 min
 Lab File: BF088407.D
 Acq: 26 Jun 2016 7:58

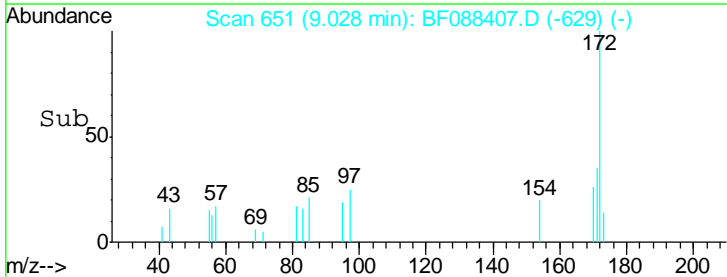
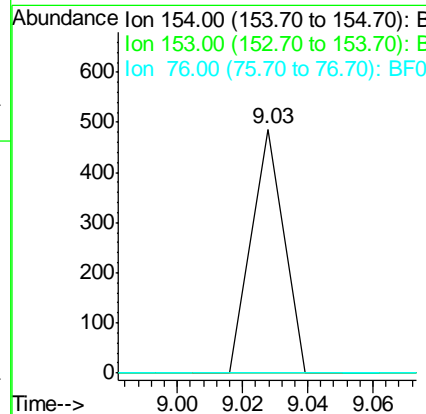
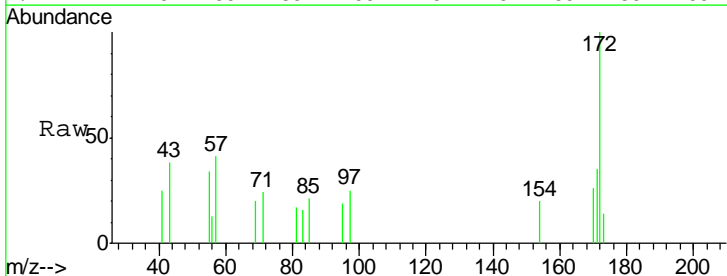
Instrument :
 BNA_F
 ClientSampled :
 Q8-B5(0-16)C

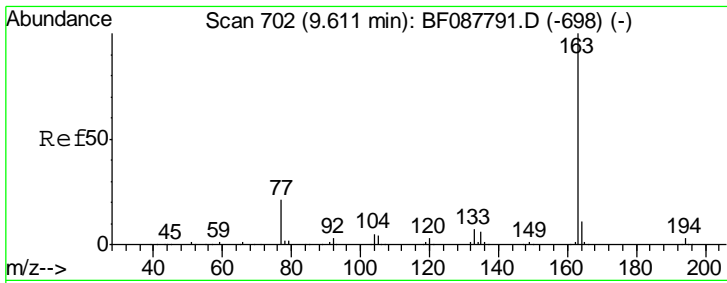
Tgt Ion	Resp	Lower	Upper
172	100		
171	35.9	28.6	43.0
170	23.8	19.2	28.8



#45
 1,1'-Biphenyl
 Concen: Below Cal
 RT: 9.03 min Scan# 651
 Delta R.T. -0.05 min
 Lab File: BF088407.D
 Acq: 26 Jun 2016 7:58

Tgt Ion	Resp	Lower	Upper
154	100		
153	0.0	20.6	60.6#
76	0.0	0.0	35.1

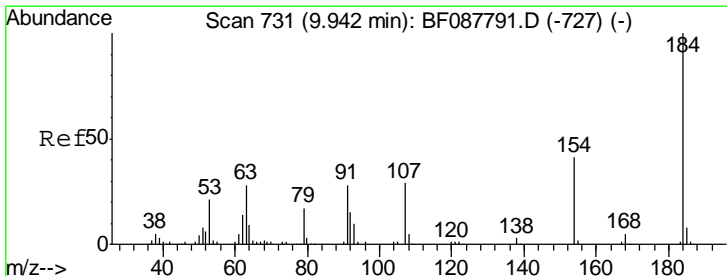
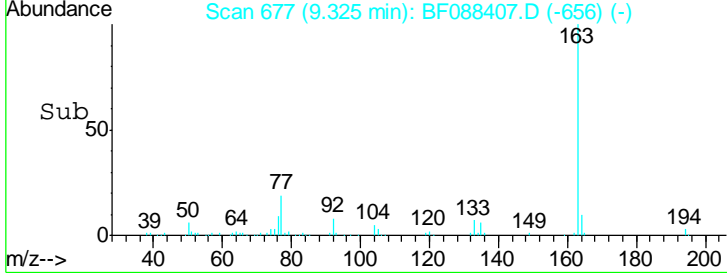
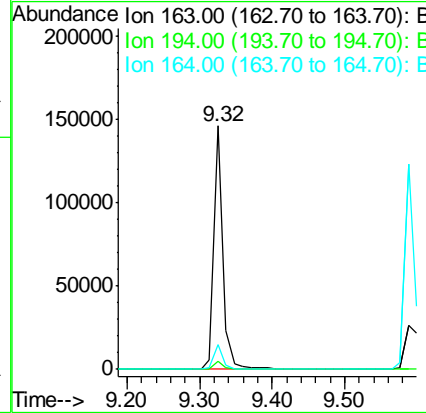
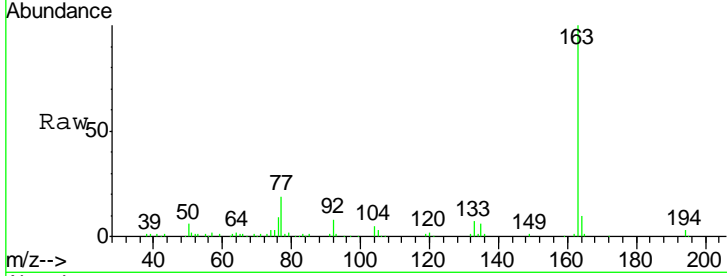




#49
 Dimethylphthalate
 Concen: 14.80 ng
 RT: 9.32 min Scan# 677
 Delta R.T. -0.06 min
 Lab File: BF088407.D
 Acq: 26 Jun 2016 7:58

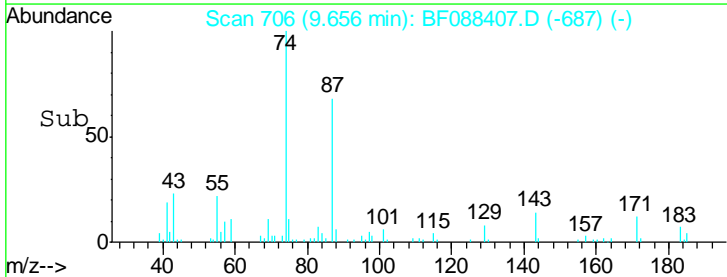
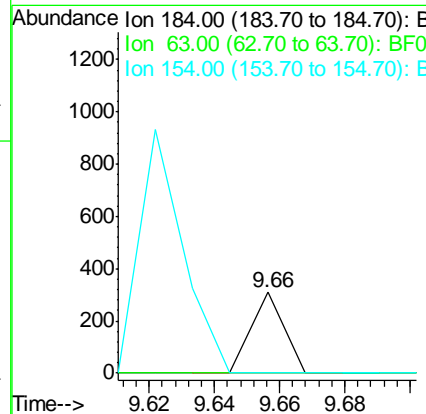
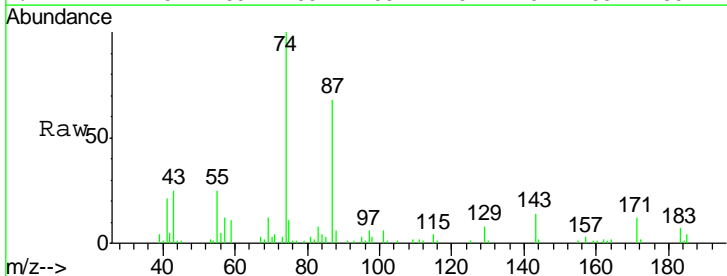
Instrument :
 BNA_F
 ClientSampled :
 Q8-B5(0-16)C

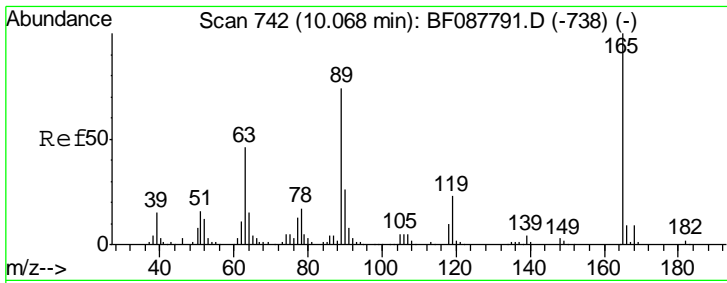
Tgt Ion	Resp	Lower	Upper
163	127291		
194	3.4	2.8	4.2
164	10.0	8.3	12.5



#53
 2,4-Dinitrophenol
 Concen: 3.35 ng
 RT: 9.66 min Scan# 706
 Delta R.T. -0.08 min
 Lab File: BF088407.D
 Acq: 26 Jun 2016 7:58

Tgt Ion	Resp	Lower	Upper
184	213		
63	0.0	57.6	86.4#
154	0.0	53.5	80.3#

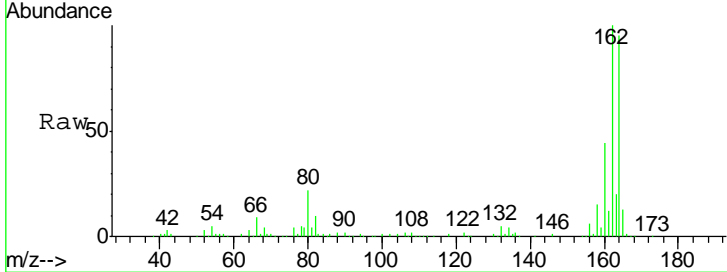




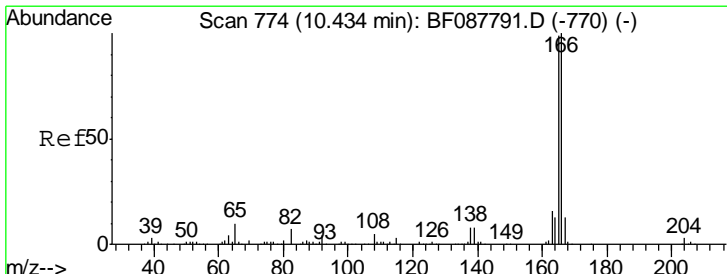
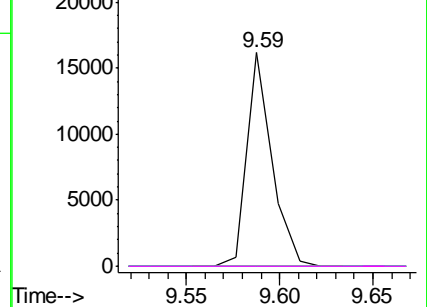
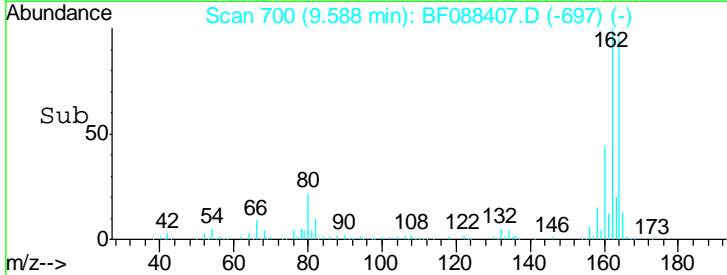
#56
 2,4-Dinitrotoluene
 Concen: 5.97 ng
 RT: 9.59 min Scan# 700
 Delta R.T. -0.26 min
 Lab File: BF088407.D
 Acq: 26 Jun 2016 7:58

Instrument :
 BNA_F
 ClientSampleID :
 Q8-B5(0-16)C

Tgt Ion	Resp	Lower	Upper
165	15106		
63	0.0	22.0	33.0#
89	0.0	41.1	61.7#
182	0.0	2.0	3.0#

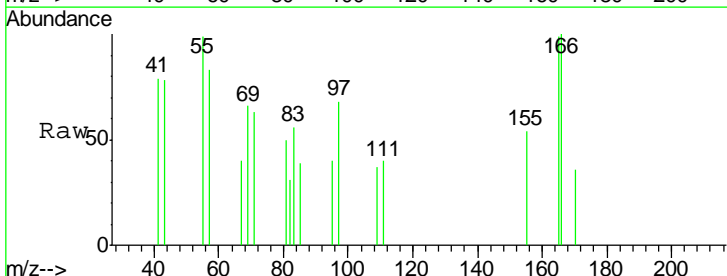


Abundance Ion 165.00 (164.70 to 165.70): E
 Ion 63.00 (62.70 to 63.70): BF0
 Ion 89.00 (88.70 to 89.70): BF0
 Ion 182.00 (181.70 to 182.70): E

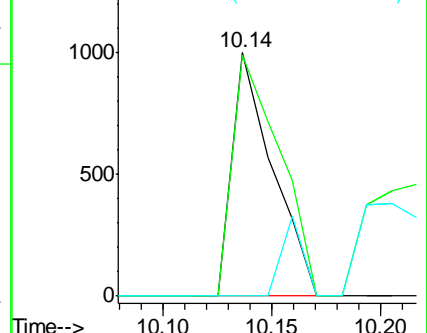
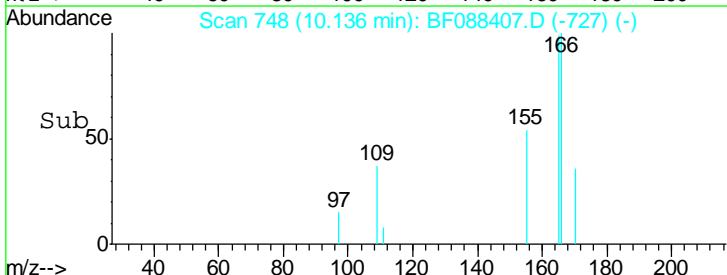


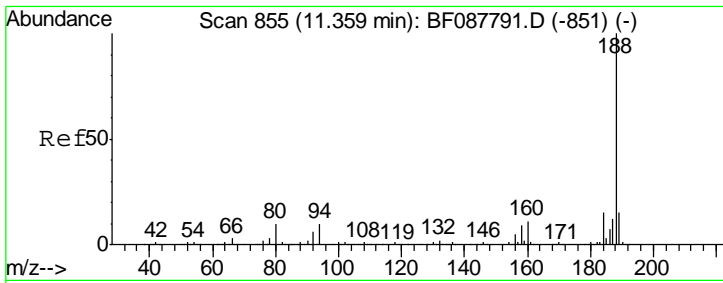
#57
 Fluorene
 Concen: Below Cal
 RT: 10.14 min Scan# 748
 Delta R.T. -0.06 min
 Lab File: BF088407.D
 Acq: 26 Jun 2016 7:58

Tgt Ion	Resp	Lower	Upper
166	1291		
165	99.1	77.8	116.8
167	0.0	11.2	16.8#



Abundance Ion 166.00 (165.70 to 166.70): E
 Ion 165.00 (164.70 to 165.70): E
 Ion 167.00 (166.70 to 167.70): E

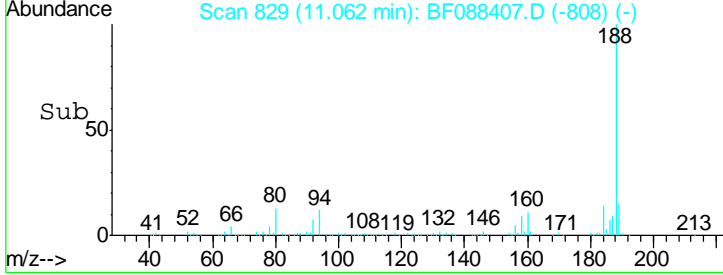
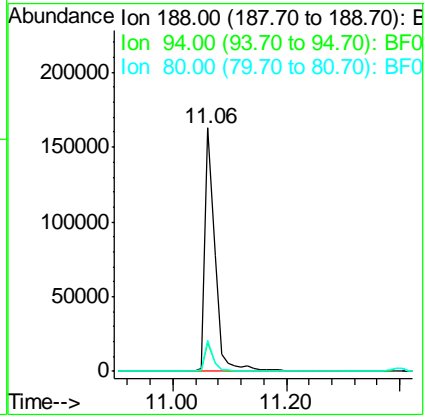
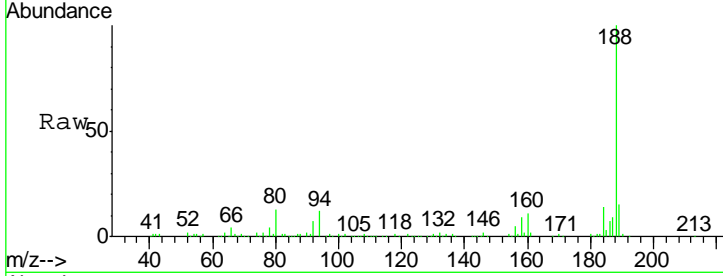




#63
 Phenanthrene-d10
 Concen: 20.00 ng
 RT: 11.06 min Scan# 829
 Delta R.T. -0.06 min
 Lab File: BF088407.D
 Acq: 26 Jun 2016 7:58

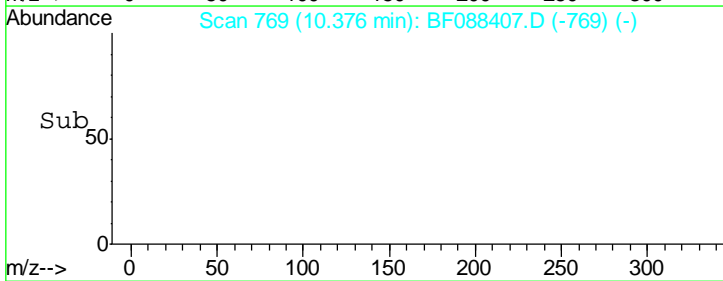
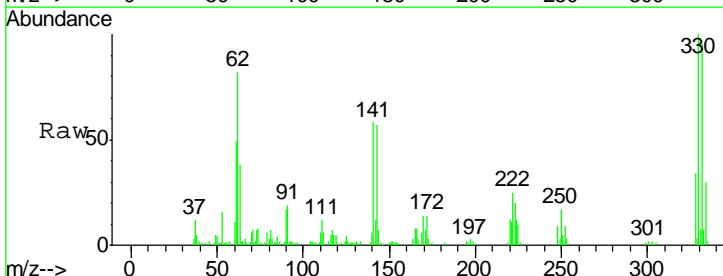
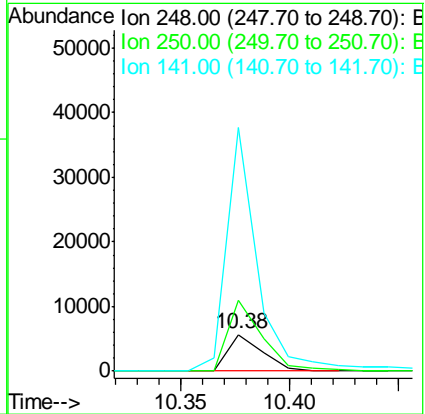
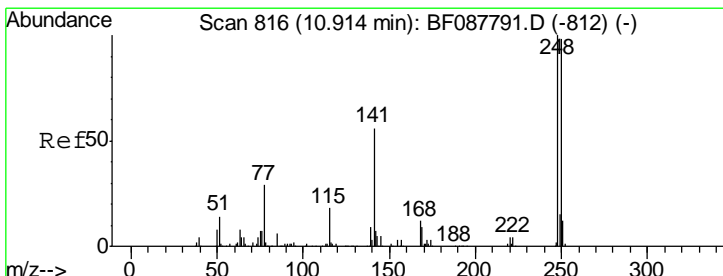
Instrument :
 BNA_F
 ClientSampled :
 Q8-B5(0-16)C

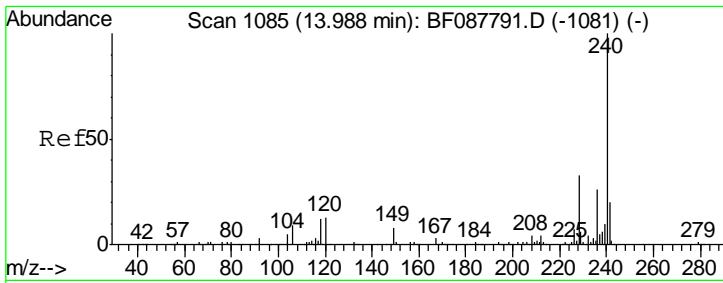
Tgt Ion	Resp	Lower	Upper
188	191549		
94	12.0	9.0	13.6
80	12.7	10.0	15.0



#66
 4-Bromophenyl-phenylether
 Concen: 2.99 ng
 RT: 10.38 min Scan# 769
 Delta R.T. -0.30 min
 Lab File: BF088407.D
 Acq: 26 Jun 2016 7:58

Tgt Ion	Resp	Lower	Upper
248	6137		
250	193.4	77.1	115.7#
141	662.0	50.6	76.0#

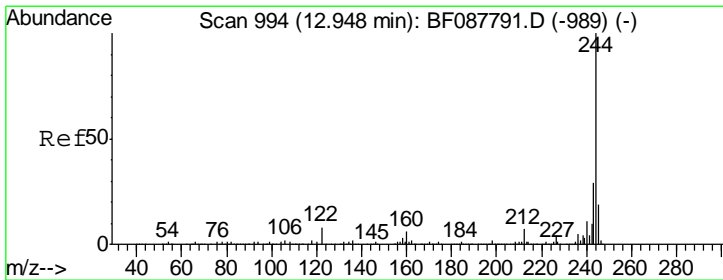
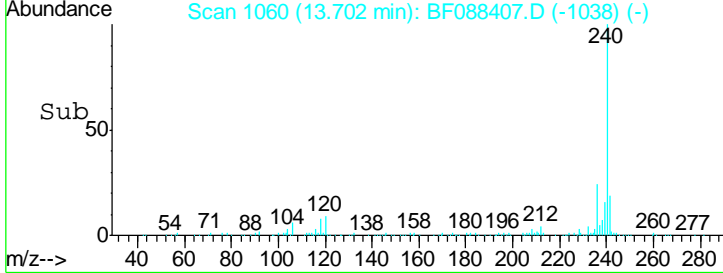
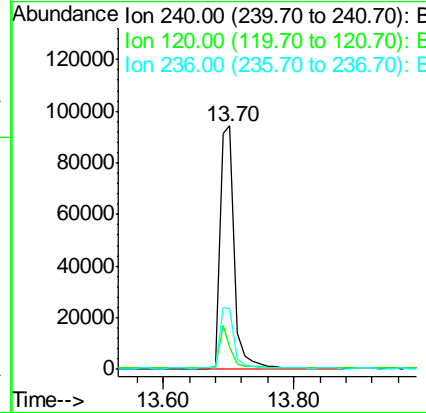
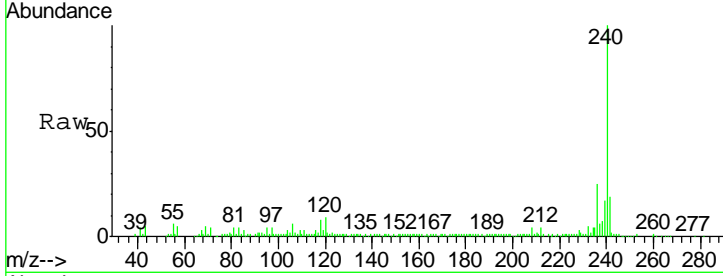




#75
 Chrysene-d12
 Concen: 20.00 ng
 RT: 13.70 min Scan# 1060
 Delta R.T. -0.05 min
 Lab File: BF088407.D
 Acq: 26 Jun 2016 7:58

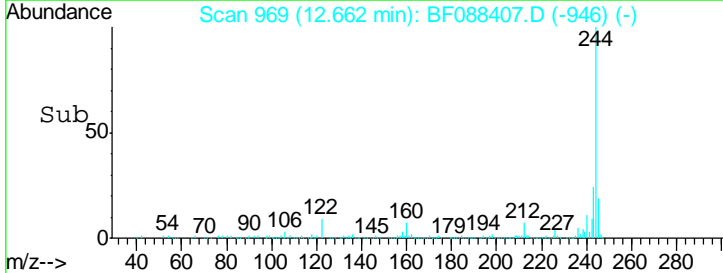
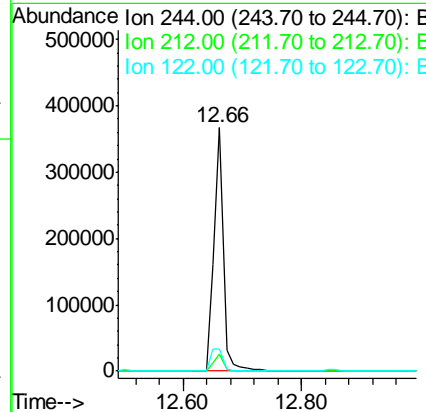
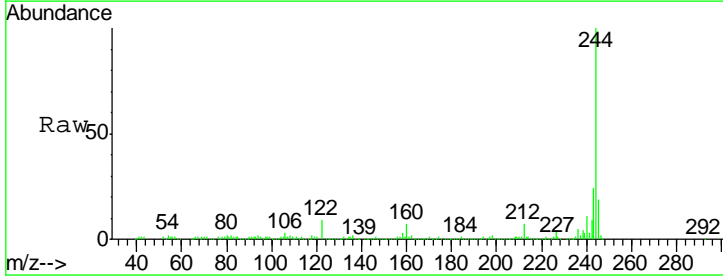
Instrument :
 BNA_F
 ClientSampleId :
 Q8-B5(0-16)C

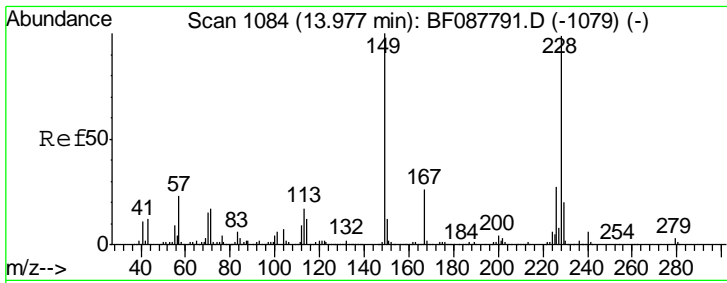
Tgt Ion	Resp	Lower	Upper
240	150831		
120	9.3	6.8	10.2
236	24.8	20.2	30.2



#78
 Terphenyl-d14
 Concen: 61.26 ng
 RT: 12.66 min Scan# 969
 Delta R.T. -0.03 min
 Lab File: BF088407.D
 Acq: 26 Jun 2016 7:58

Tgt Ion	Resp	Lower	Upper
244	406048		
212	6.8	6.0	9.0
122	9.3	11.2	16.8#

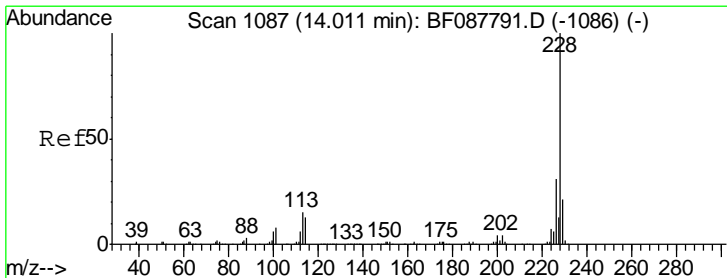
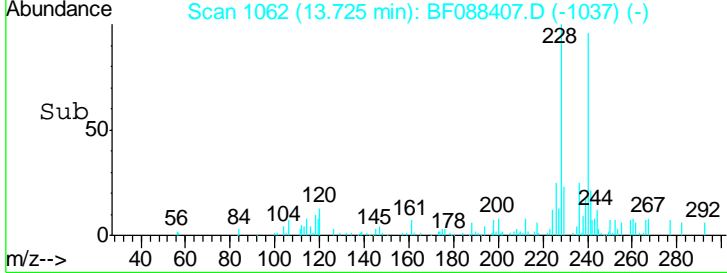
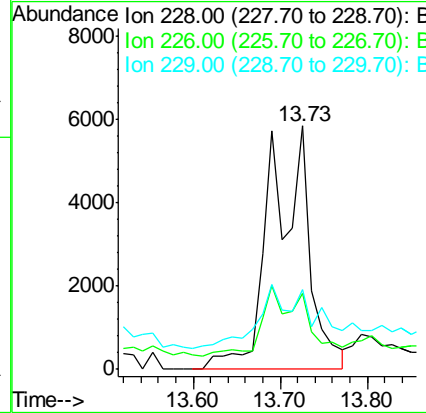
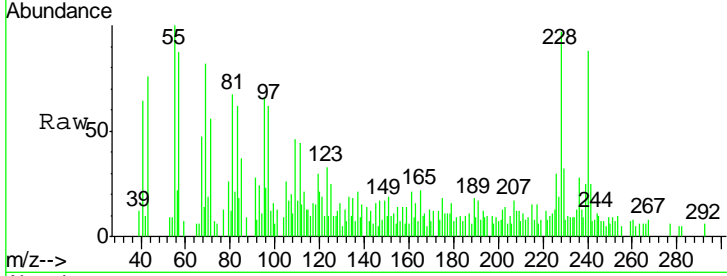




#80
 Benzo(a)anthracene
 Concen: 2.11 ng
 RT: 13.73 min Scan# 1062
 Delta R.T. -0.01 min
 Lab File: BF088407.D
 Acq: 26 Jun 2016 7:58

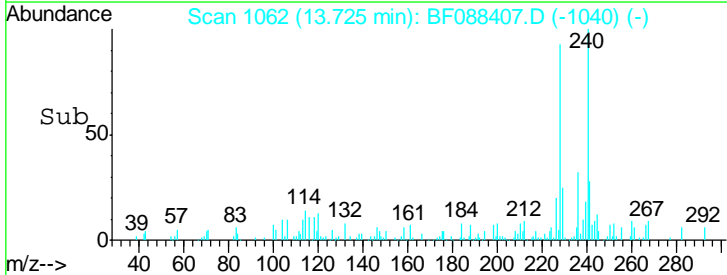
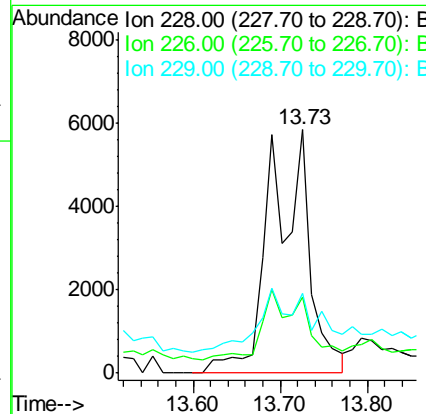
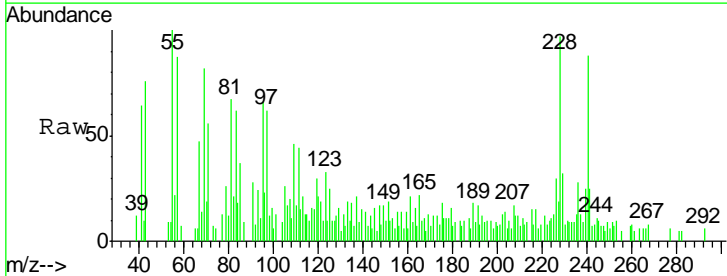
Instrument : BNA_F
 ClientSampleId : Q8-B5(0-16)C

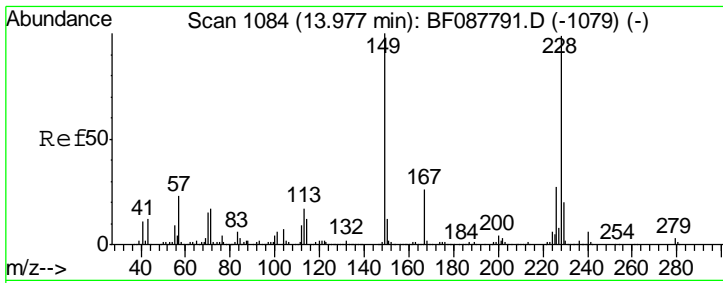
Tgt Ion	Resp	Lower	Upper
228	18158		
226	31.1	22.3	33.5
229	32.7	16.0	24.0



#82
 Chrysene
 Concen: 2.25 ng
 RT: 13.73 min Scan# 1062
 Delta R.T. -0.05 min
 Lab File: BF088407.D
 Acq: 26 Jun 2016 7:58

Tgt Ion	Resp	Lower	Upper
228	18158		
226	31.1	25.4	38.2
229	32.7	16.3	24.5

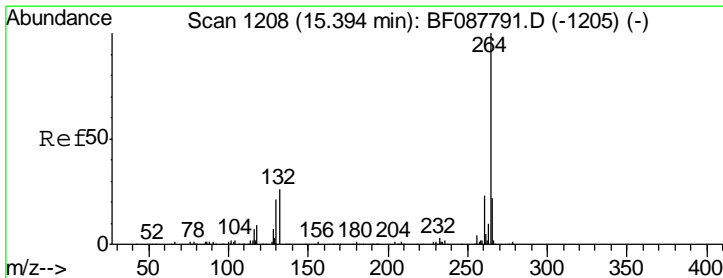
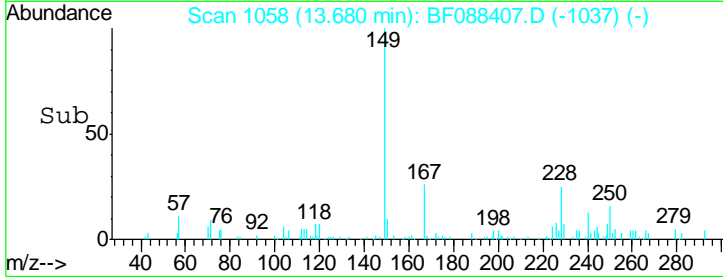
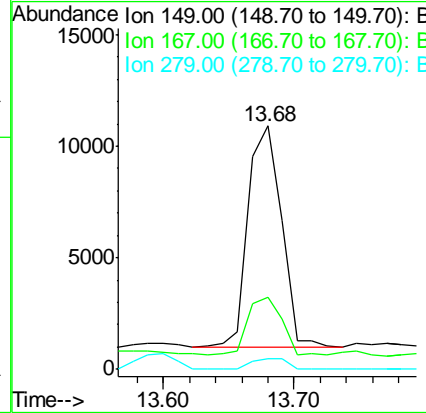
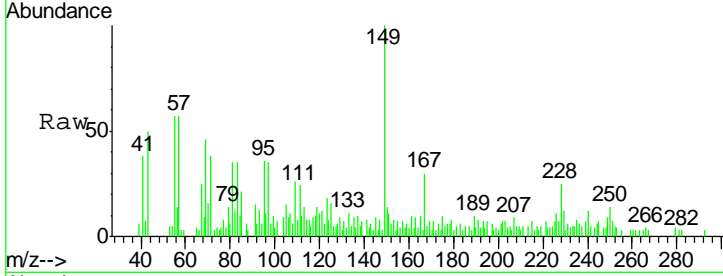




#83
 Bis(2-ethylhexyl)phthalate
 Concen: 2.93 ng
 RT: 13.68 min Scan# 1058
 Delta R.T. -0.06 min
 Lab File: BF088407.D
 Acq: 26 Jun 2016 7:58

Instrument :
 BNA_F
 ClientSampleID :
 Q8-B5(0-16)C

Tgt Ion	Resp	Lower	Upper
149	17672		
167	29.8	20.5	30.7
279	4.3	2.0	3.0



#86
 Perylene-d12
 Concen: 20.00 ng
 RT: 15.05 min Scan# 1178
 Delta R.T. -0.06 min
 Lab File: BF088407.D
 Acq: 26 Jun 2016 7:58

Tgt Ion	Resp	Lower	Upper
264	109540		
260	23.6	19.2	28.8
265	22.0	16.9	25.3

