

Data Path : Z:\SVOASRV\HPCHEM1\BNA F\DATA\BF062520\
 Data File : BF120703.D
 Acq On : 25 Jun 2020 15:00
 Operator : JU/CG
 Sample : L3087-01
 Misc :
 ALS Vial : 7 Sample Multiplier: 1

Instrument :
 BNA_F
 ClientSampleId :
 FM1296

Quant Time: Jun 25 15:39:16 2020
 Quant Method : Z:\SVOASRV\HPCHEM1\BNA F\METHODS\8270-BF061020.M
 Quant Title : ASP BNA STANDARDS FOR 5 POINT CALIBRATION
 QLast Update : Thu Jun 11 11:28:22 2020
 Response via : Initial Calibration

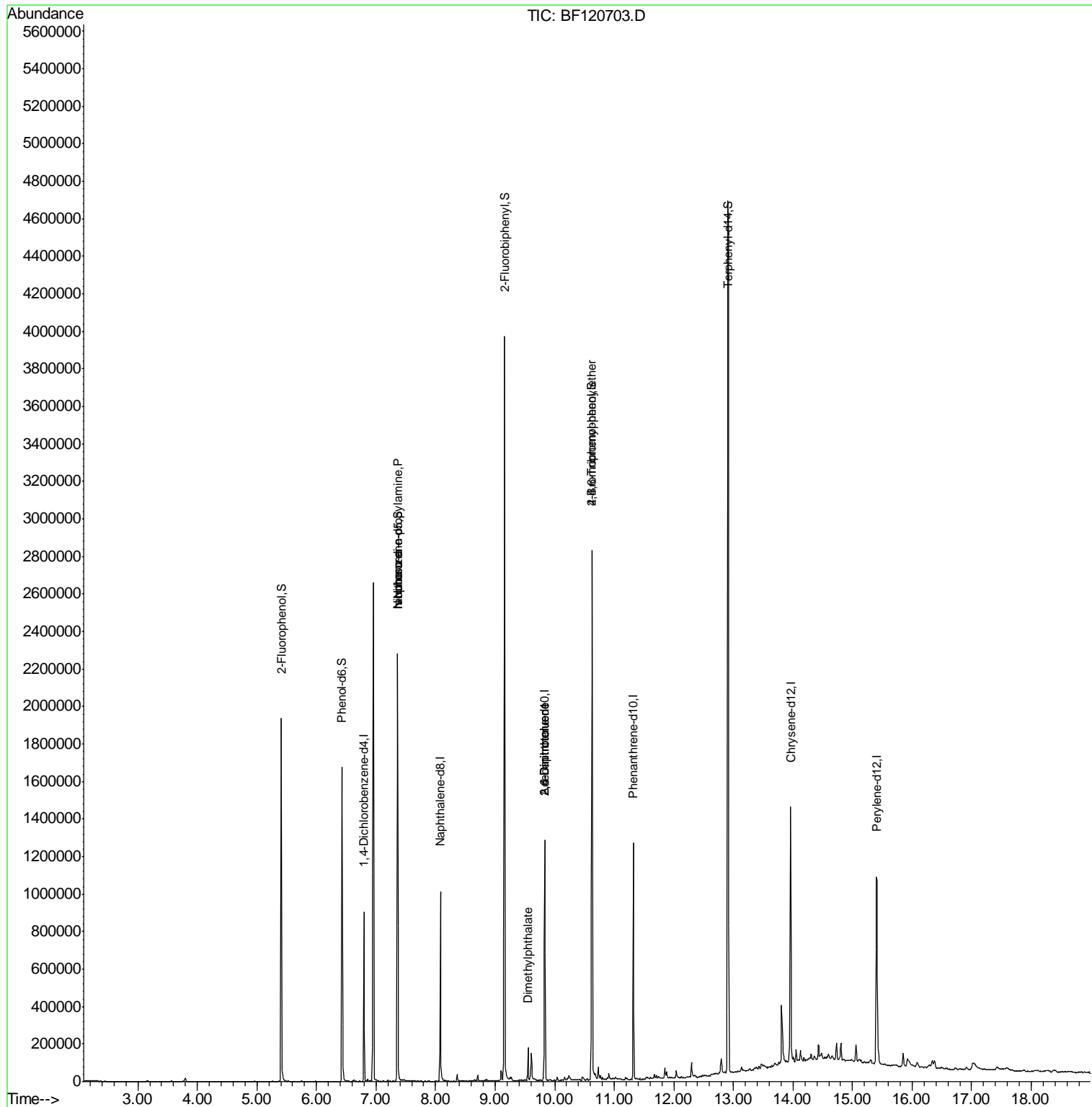
Internal Standards	R.T.	QIon	Response	Conc	Units	Dev(Min)
1) 1,4-Dichlorobenzene-d4	6.80	152	132759	20.00	ng	0.00
21) Naphthalene-d8	8.08	136	456835	20.00	ng	0.00
39) Acenaphthene-d10	9.83	164	241621	20.00	ng	0.00
64) Phenanthrene-d10	11.32	188	454247	20.00	ng	0.00
76) Chrysene-d12	13.96	240	474890	20.00	ng	0.00
86) Perylene-d12	15.40	264	467553	20.00	ng	0.00
System Monitoring Compounds						
5) 2-Fluorophenol	5.41	112	590389	76.24	ng	0.00
7) Phenol-d6	6.43	99	600127	62.22	ng	-0.01
23) Nitrobenzene-d5	7.36	82	726812	88.93	ng	0.00
42) 2,4,6-Tribromophenol	10.63	330	392105	139.58	ng	0.00
45) 2-Fluorobiphenyl	9.16	172	1301088	82.39	ng	0.00
79) Terphenyl-d14	12.92	244	2064812	96.04	ng	0.00
Target Compounds						
19) n-Nitroso-di-n-propylamine	7.36	70	94980	16.978	ng	# 77
25) Isophorone	7.36	82	726800	45.652	ng	# 62
50) Dimethylphthalate	9.55	163	80291	4.614	ng	98
51) 2,6-Dinitrotoluene	9.83	165	30685	7.781	ng	# 27
57) 2,4-Dinitrotoluene	9.83	165	30685	5.864	ng	# 29
67) 4-Bromophenyl-phenylether	10.63	248	22609	4.386	ng	# 1

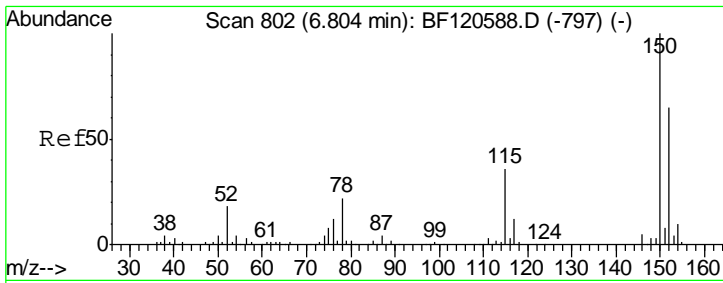
(#) = qualifier out of range (m) = manual integration (+) = signals summed

Data Path : Z:\SVOASRV\HPCHEM1\BNA F\DATA\BF062520\
 Data File : BF120703.D
 Acq On : 25 Jun 2020 15:00
 Operator : JU/CG
 Sample : L3087-01
 Misc :
 ALS Vial : 7 Sample Multiplier: 1

Instrument :
 BNA_F
 ClientSampleId :
 FM1296

Quant Time: Jun 25 15:39:16 2020
 Quant Method : Z:\SVOASRV\HPCHEM1\BNA F\METHODS\8270-BF061020.M
 Quant Title : ASP BNA STANDARDS FOR 5 POINT CALIBRATION
 QLast Update : Thu Jun 11 11:28:22 2020
 Response via : Initial Calibration

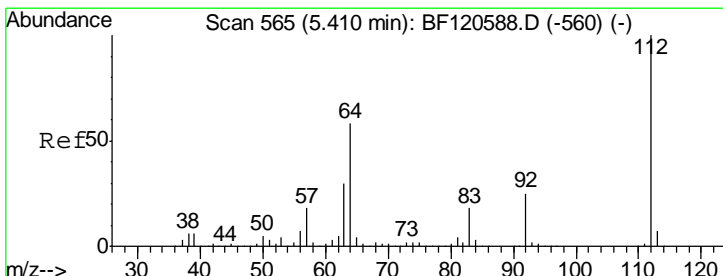
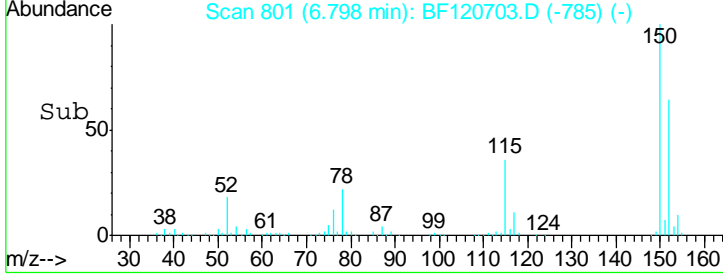
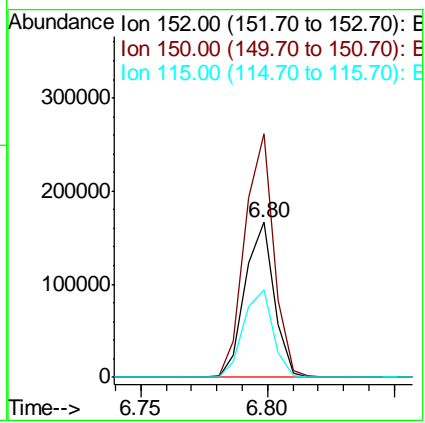
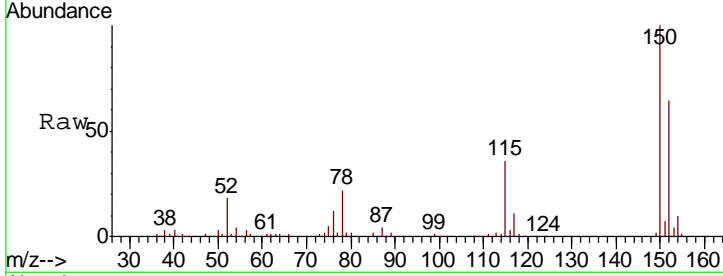




#1
 1,4-Dichlorobenzene-d4
 Concen: 20.000 ng
 RT: 6.80 min Scan# 801
 Delta R.T. -0.01 min
 Lab File: BF120703.D
 Acq: 25 Jun 2020 15:00

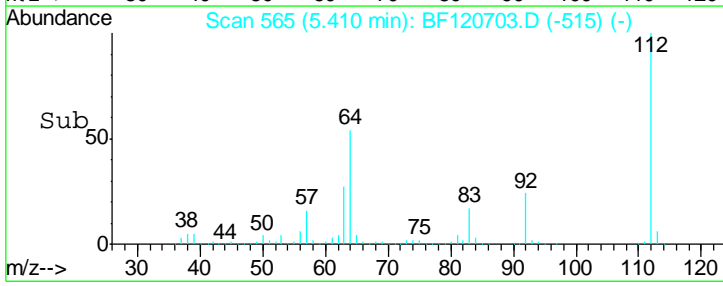
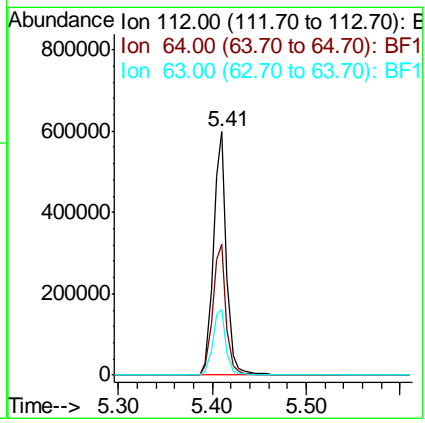
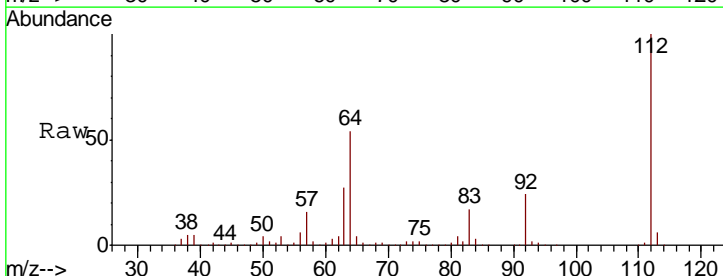
Instrument :
 BNA_F
ClientSampled :
 FM1296

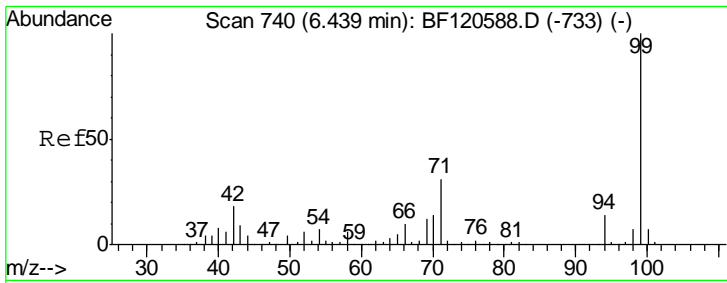
Tgt Ion	Resp	Lower	Upper
152	132759		
150	156.9	123.2	184.8
115	56.7	43.9	65.9



#5
 2-Fluorophenol
 Concen: 76.243 ng
 RT: 5.41 min Scan# 565
 Delta R.T. -0.01 min
 Lab File: BF120703.D
 Acq: 25 Jun 2020 15:00

Tgt Ion	Resp	Lower	Upper
112	590389		
64	53.8	46.1	69.1
63	27.2	23.7	35.5

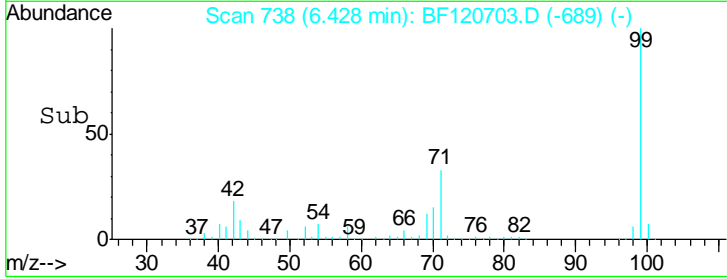
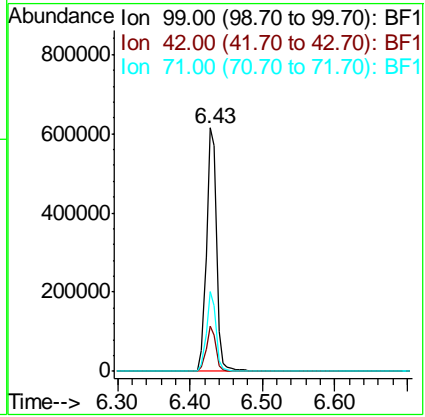
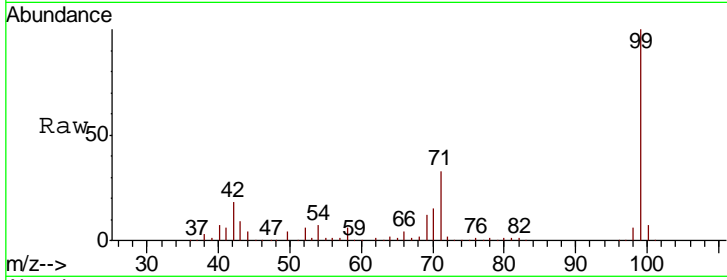




#7
 Phenol-d6
 Concen: 62.225 ng
 RT: 6.43 min Scan# 738
 Delta R.T. -0.01 min
 Lab File: BF120703.D
 Acq: 25 Jun 2020 15:00

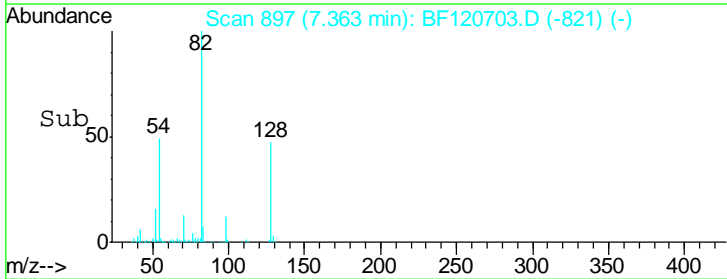
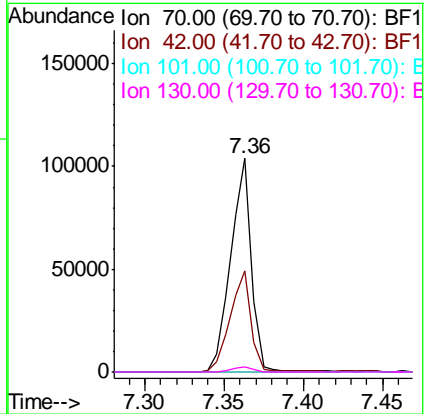
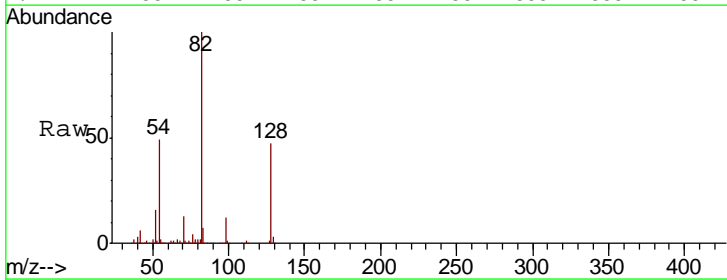
Instrument :
 BNA_F
ClientSampled :
 FM1296

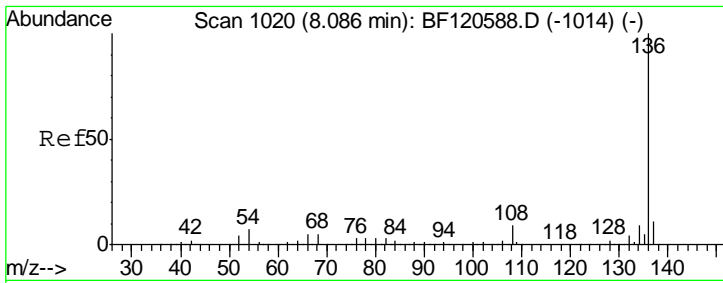
Tgt Ion	Resp	Lower	Upper
99	100		
42	18.5	14.0	21.0
71	32.9	24.9	37.3



#19
 n-Nitroso-di-n-propylamine
 Concen: 16.978 ng
 RT: 7.36 min Scan# 897
 Delta R.T. 0.15 min
 Lab File: BF120703.D
 Acq: 25 Jun 2020 15:00

Tgt Ion	Resp	Lower	Upper
70	100		
42	47.4	47.7	71.5#
101	0.0	7.6	11.4#
130	2.3	16.7	25.1#

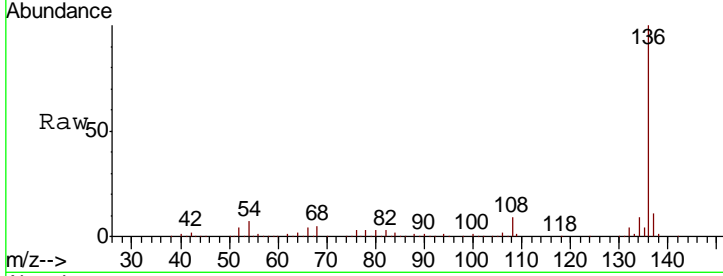




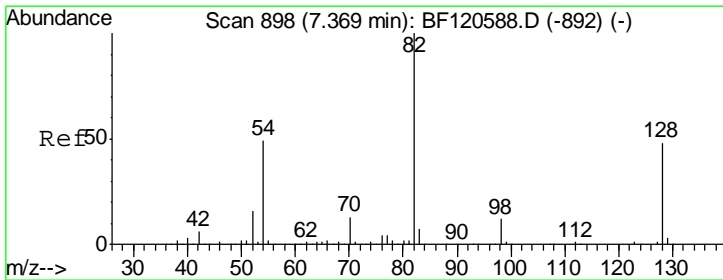
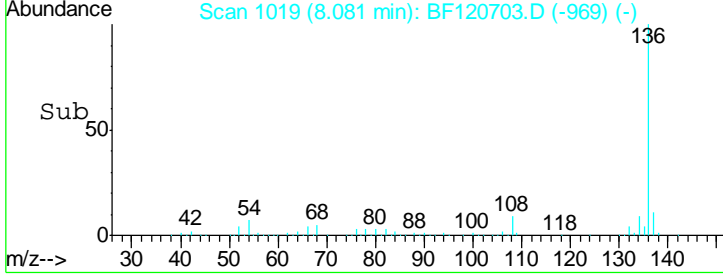
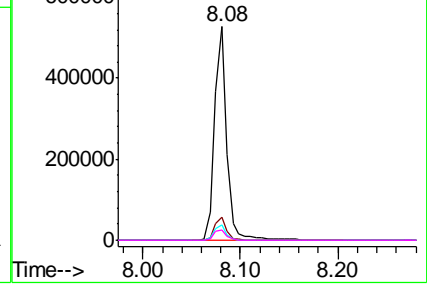
#21
 Naphthalene-d8
 Concen: 20.000 ng
 RT: 8.08 min Scan# 1019
 Delta R.T. -0.01 min
 Lab File: BF120703.D
 Acq: 25 Jun 2020 15:00

Instrument :
 BNA_F
 ClientSampled :
 FM1296

Tgt Ion	Resp	Lower	Upper
136	456835		
137	10.8	8.6	13.0
54	7.1	5.8	8.6
68	5.0	4.4	6.6

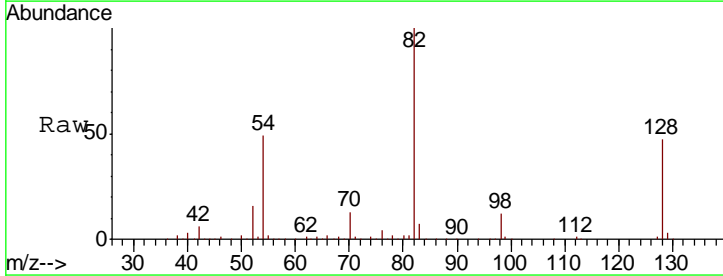


Abundance Ion 136.00 (135.70 to 136.70): E
 Ion 137.00 (136.70 to 137.70): E
 Ion 54.00 (53.70 to 54.70): BF1
 Ion 68.00 (67.70 to 68.70): BF1

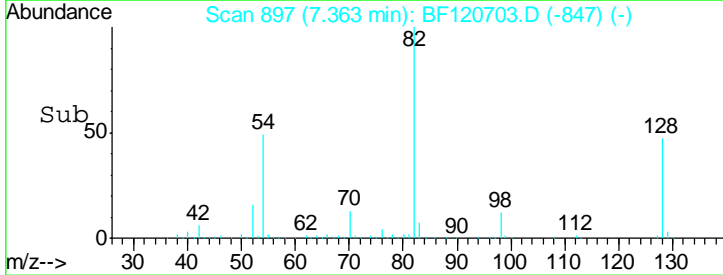
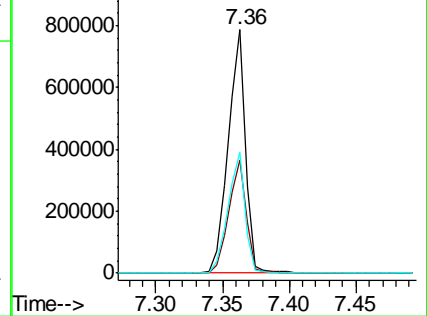


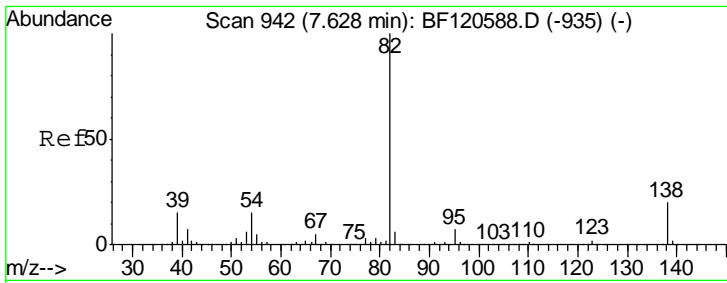
#23
 Nitrobenzene-d5
 Concen: 88.930 ng
 RT: 7.36 min Scan# 897
 Delta R.T. -0.01 min
 Lab File: BF120703.D
 Acq: 25 Jun 2020 15:00

Tgt Ion	Resp	Lower	Upper
82	726812		
128	46.7	38.0	57.0
54	49.4	38.8	58.2



Abundance Ion 82.00 (81.70 to 82.70): BF1
 Ion 128.00 (127.70 to 128.70): E
 Ion 54.00 (53.70 to 54.70): BF1

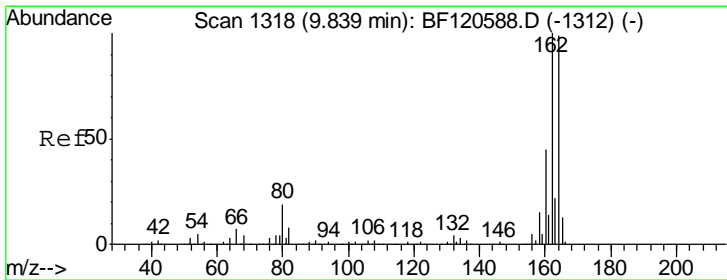
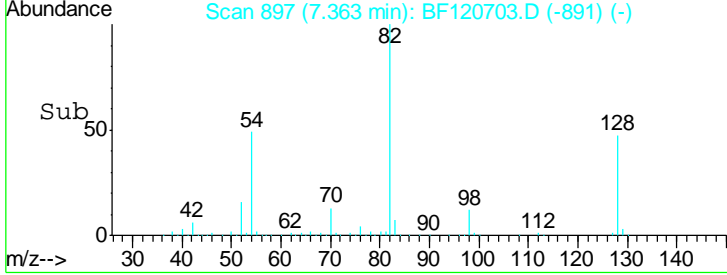
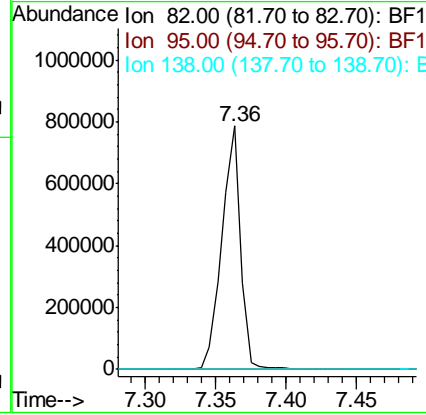
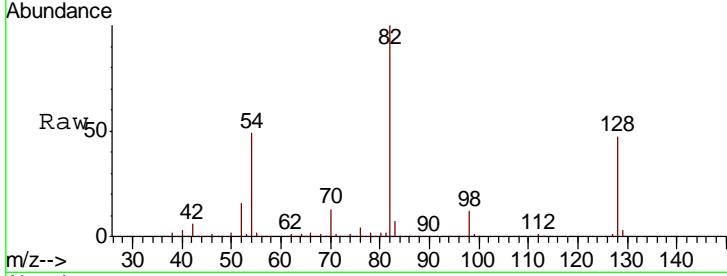




#25
 Isophorone
 Concen: 45.652 ng
 RT: 7.36 min Scan# 897
 Delta R.T. -0.26 min
 Lab File: BF120703.D
 Acq: 25 Jun 2020 15:00

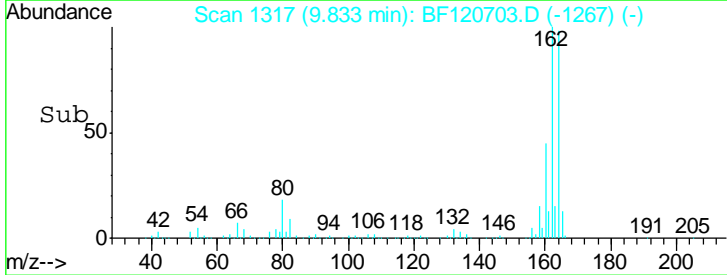
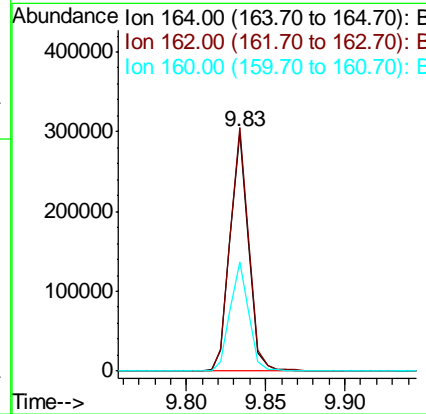
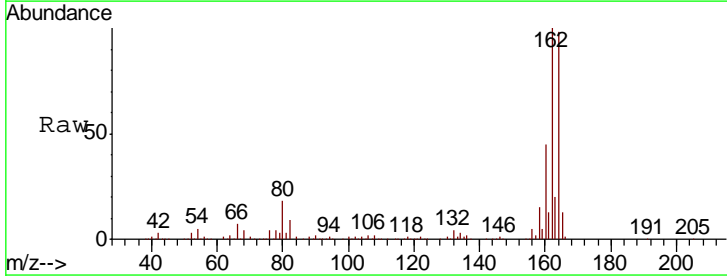
Instrument :
 BNA_F
 ClientSampled :
 FM1296

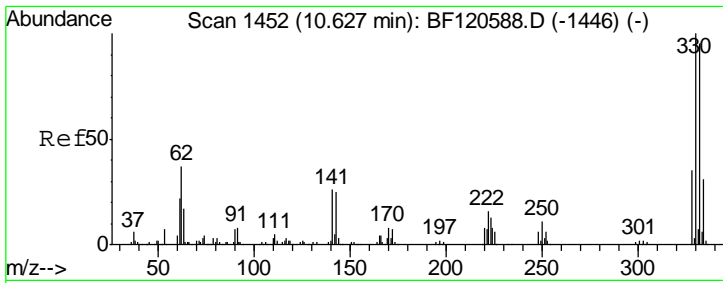
Tgt Ion	Resp	Lower	Upper
82	100		
95	0.0	5.7	8.5#
138	0.0	16.2	24.4#



#39
 Acenaphthene-d10
 Concen: 20.000 ng
 RT: 9.83 min Scan# 1317
 Delta R.T. -0.01 min
 Lab File: BF120703.D
 Acq: 25 Jun 2020 15:00

Tgt Ion	Resp	Lower	Upper
164	100		
162	101.9	80.6	120.8
160	45.5	36.2	54.2

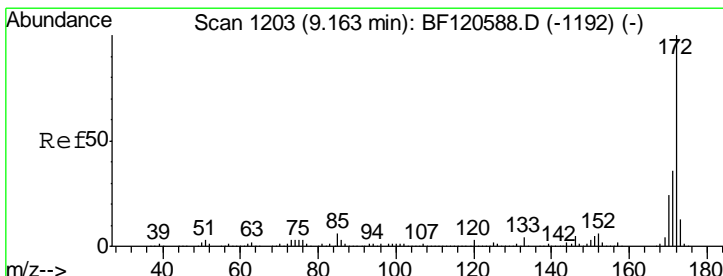
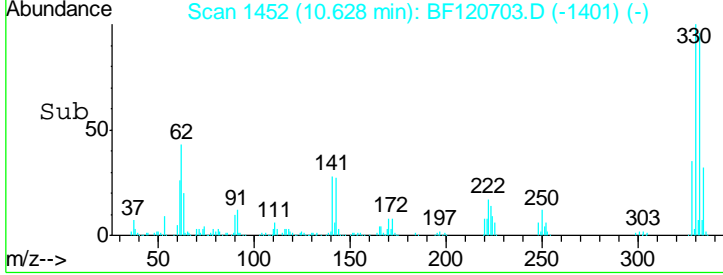
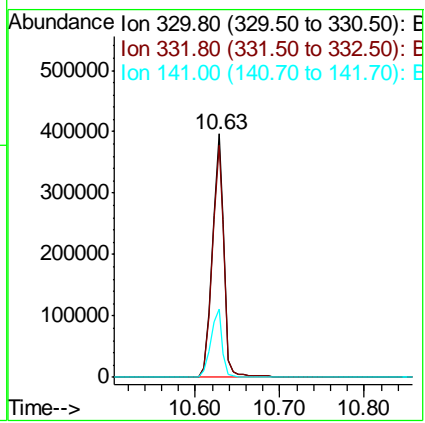
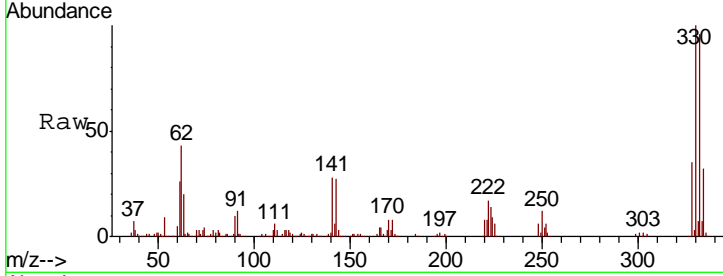




#42
 2,4,6-Tribromophenol
 Concen: 139.580 ng
 RT: 10.63 min Scan# 1452
 Delta R.T. 0.00 min
 Lab File: BF120703.D
 Acq: 25 Jun 2020 15:00

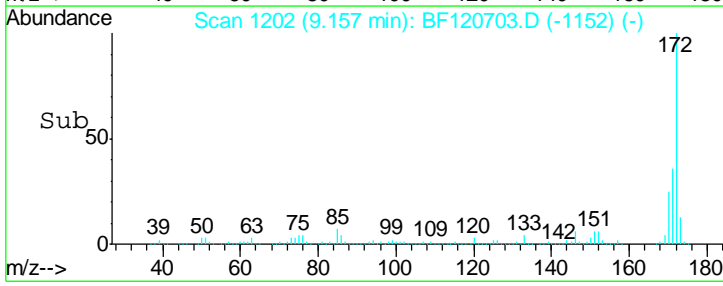
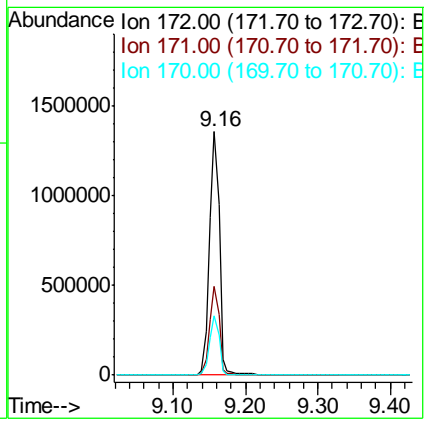
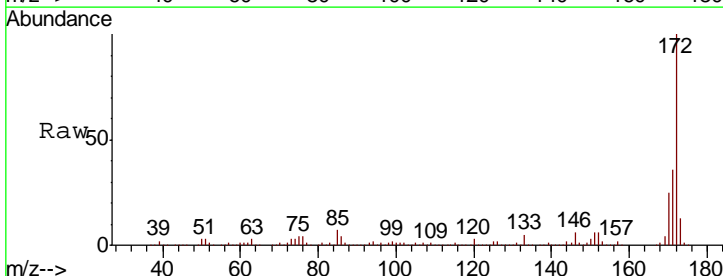
Instrument :
 BNA_F
 ClientSampled :
 FM1296

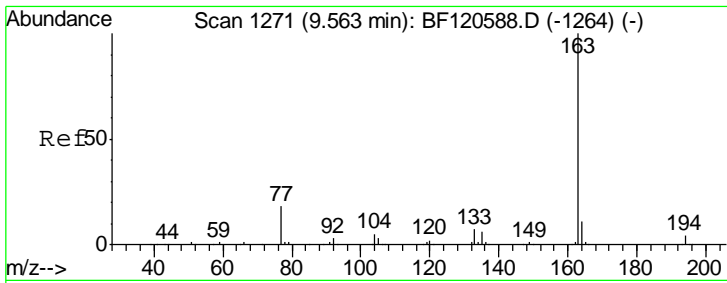
Tgt Ion	Resp	Lower	Upper
330	100		
332	96.0	76.8	115.2
141	28.1	23.2	34.8



#45
 2-Fluorobiphenyl
 Concen: 82.387 ng
 RT: 9.16 min Scan# 1202
 Delta R.T. -0.01 min
 Lab File: BF120703.D
 Acq: 25 Jun 2020 15:00

Tgt Ion	Resp	Lower	Upper
172	100		
171	36.4	29.0	43.4
170	24.6	19.4	29.2

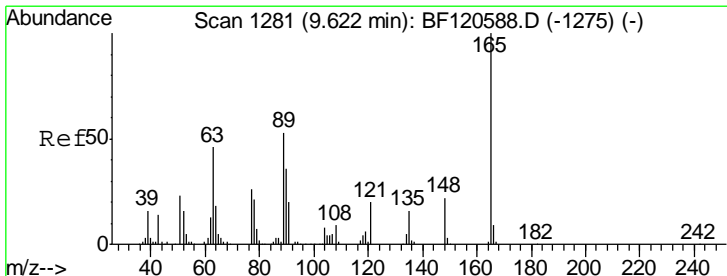
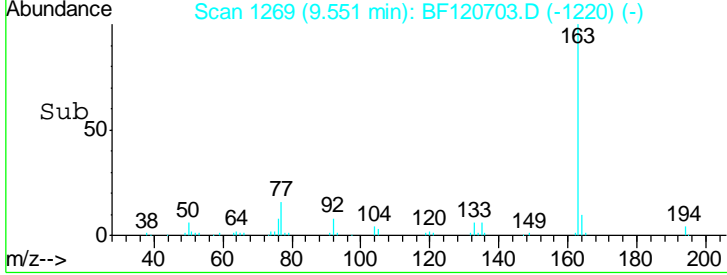
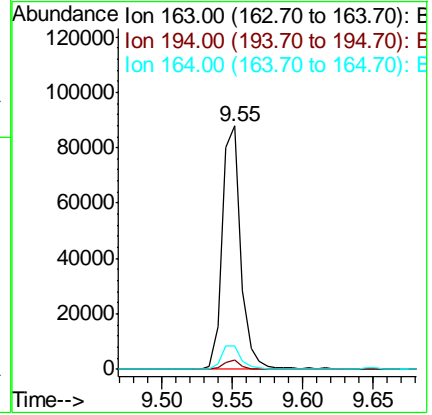
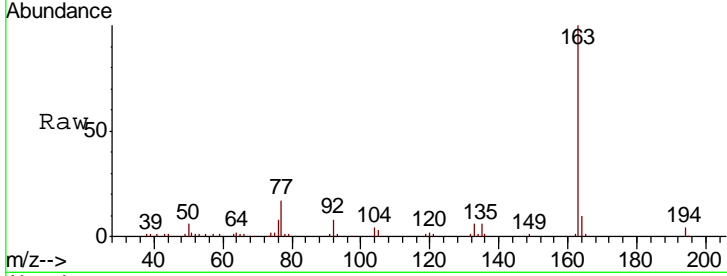




#50
 Dimethylphthalate
 Concen: 4.614 ng
 RT: 9.55 min Scan# 1269
 Delta R.T. -0.01 min
 Lab File: BF120703.D
 Acq: 25 Jun 2020 15:00

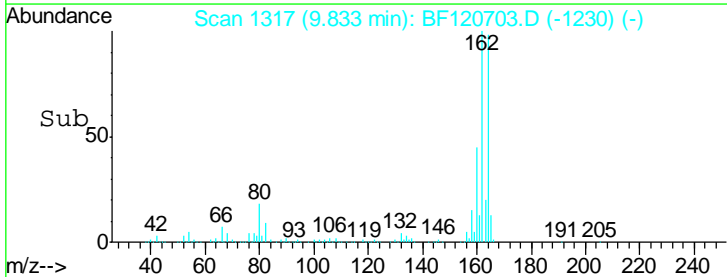
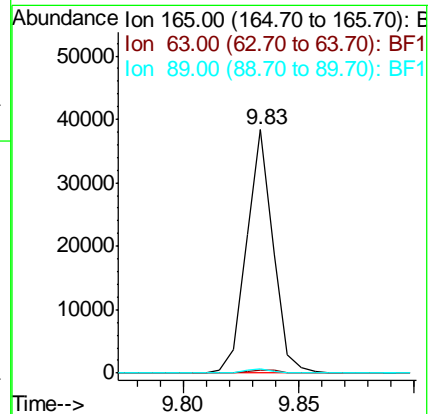
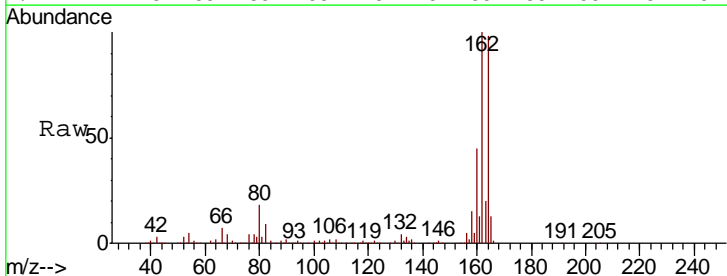
Instrument :
 BNA_F
 ClientSampleId :
 FM1296

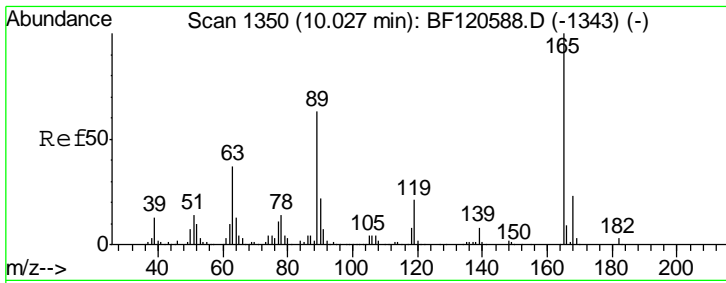
Tgt Ion	Resp	Lower	Upper
163	100		
194	3.9	3.1	4.7
164	9.7	8.5	12.7



#51
 2,6-Dinitrotoluene
 Concen: 7.781 ng
 RT: 9.83 min Scan# 1317
 Delta R.T. 0.21 min
 Lab File: BF120703.D
 Acq: 25 Jun 2020 15:00

Tgt Ion	Resp	Lower	Upper
165	100		
63	1.3	41.7	62.5#
89	1.5	42.6	64.0#

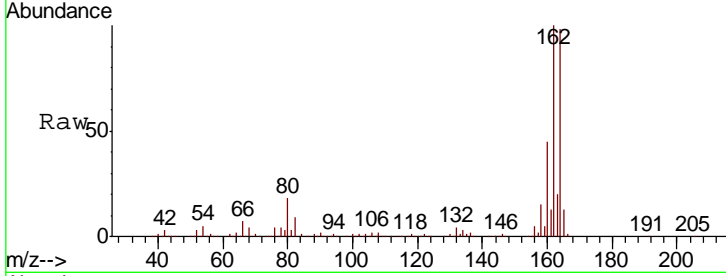




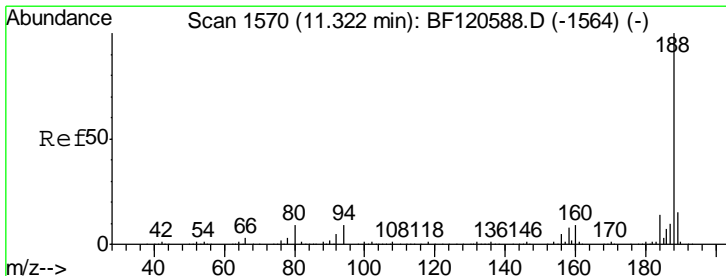
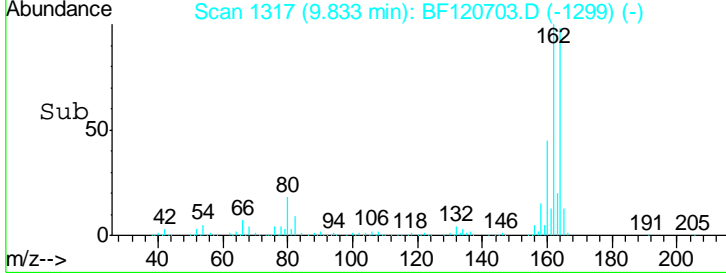
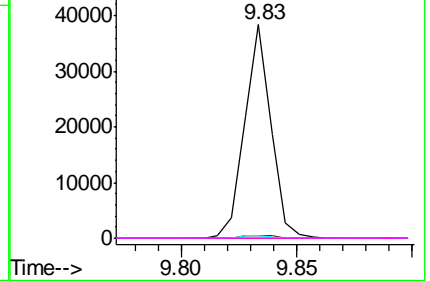
#57
 2,4-Dinitrotoluene
 Concen: 5.864 ng
 RT: 9.83 min Scan# 1317
 Delta R.T. -0.19 min
 Lab File: BF120703.D
 Acq: 25 Jun 2020 15:00

Instrument :
 BNA_F
 ClientSampleId :
 FM1296

Tgt Ion	Resp	Lower	Upper
165	100		
63	1.3	29.8	44.8#
89	1.5	50.4	75.6#
182	0.0	2.1	3.1#

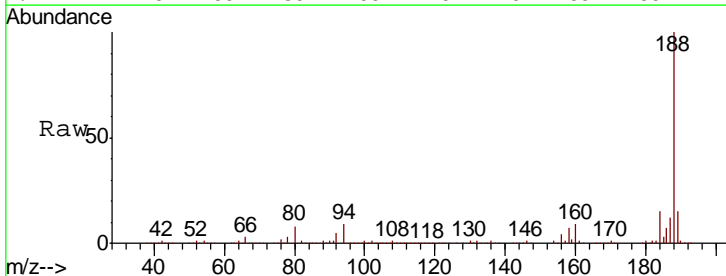


Abundance Ion 165.00 (164.70 to 165.70): E
 Ion 63.00 (62.70 to 63.70): BF1
 Ion 89.00 (88.70 to 89.70): BF1
 Ion 182.00 (181.70 to 182.70): E

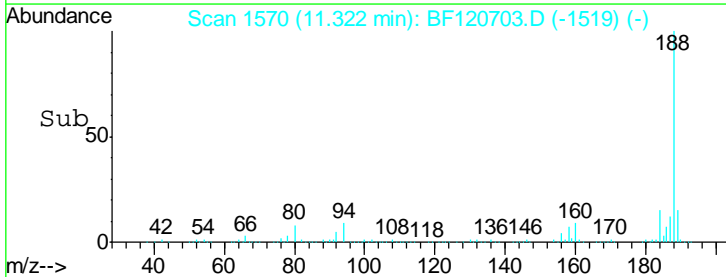
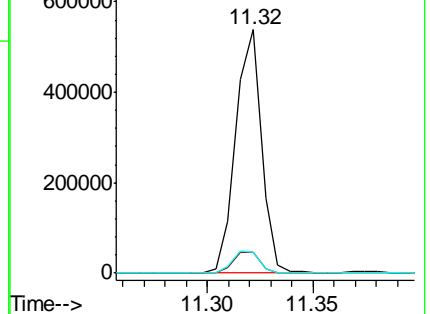


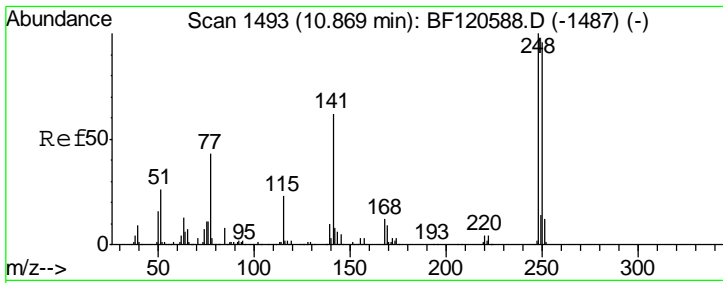
#64
 Phenanthrene-d10
 Concen: 20.000 ng
 RT: 11.32 min Scan# 1570
 Delta R.T. 0.00 min
 Lab File: BF120703.D
 Acq: 25 Jun 2020 15:00

Tgt Ion	Resp	Lower	Upper
188	100		
94	8.5	7.2	10.8
80	8.3	7.4	11.2



Abundance Ion 188.00 (187.70 to 188.70): E
 Ion 94.00 (93.70 to 94.70): BF1
 Ion 80.00 (79.70 to 80.70): BF1

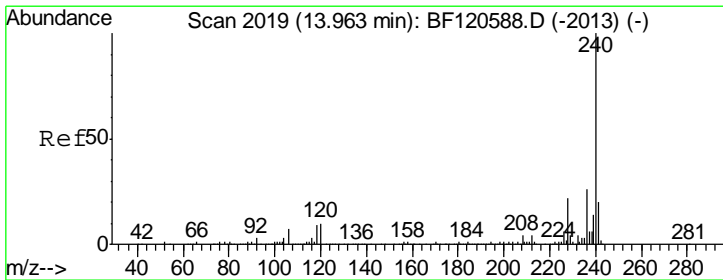
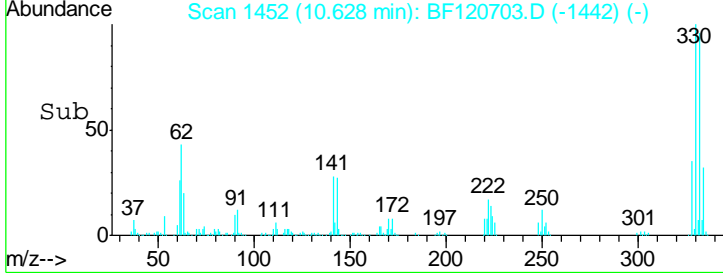
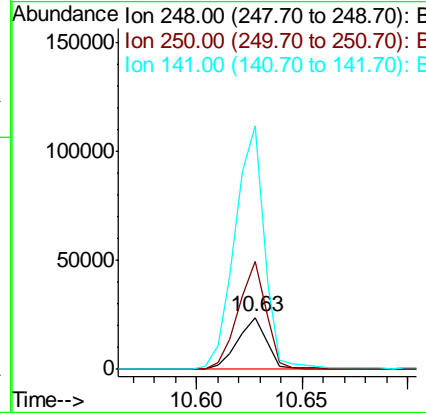
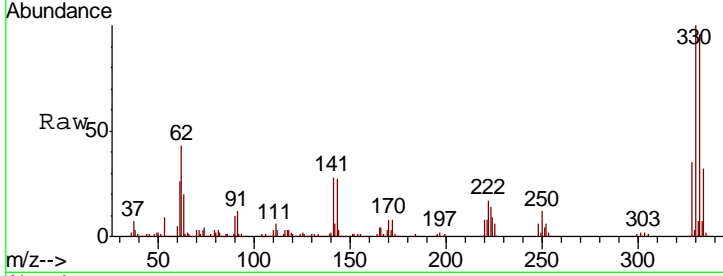




#67
 4-Bromophenyl-phenylether
 Concen: 4.386 ng
 RT: 10.63 min Scan# 1452
 Delta R.T. -0.24 min
 Lab File: BF120703.D
 Acq: 25 Jun 2020 15:00

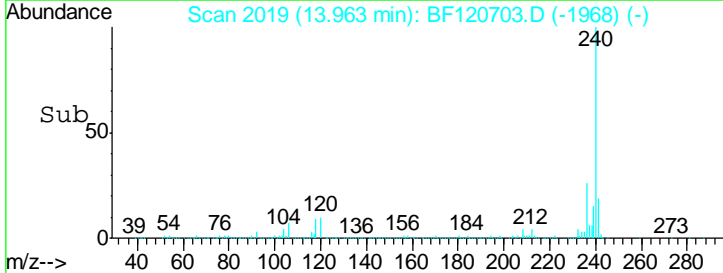
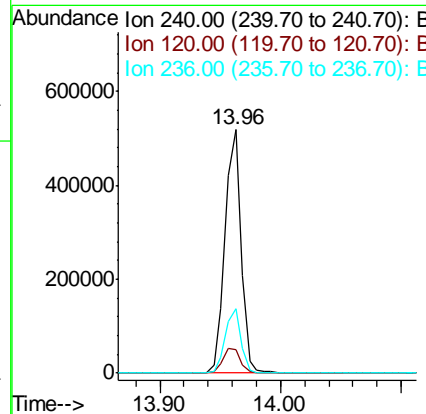
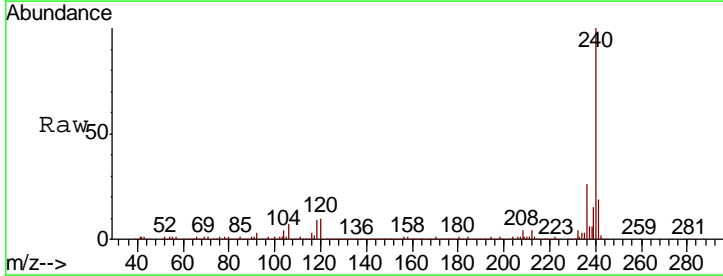
Instrument :
 BNA_F
 ClientSampled :
 FM1296

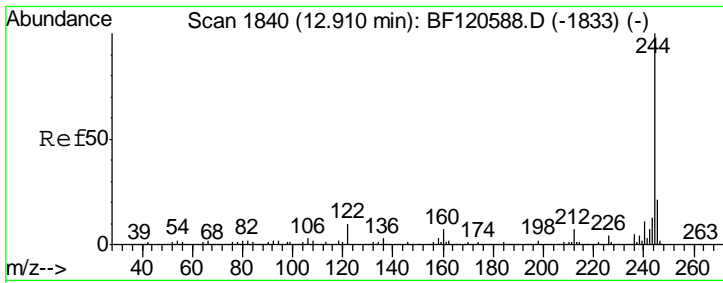
Tgt Ion	Resp	Lower	Upper
248	100		
250	207.2	76.7	115.1#
141	467.9	49.4	74.0#



#76
 Chrysene-d12
 Concen: 20.000 ng
 RT: 13.96 min Scan# 2019
 Delta R.T. 0.00 min
 Lab File: BF120703.D
 Acq: 25 Jun 2020 15:00

Tgt Ion	Resp	Lower	Upper
240	100		
120	9.8	8.3	12.5
236	26.2	21.0	31.4



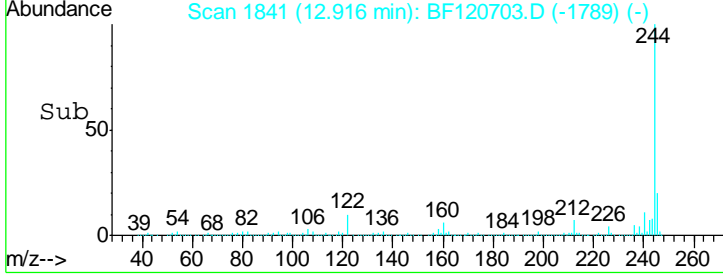
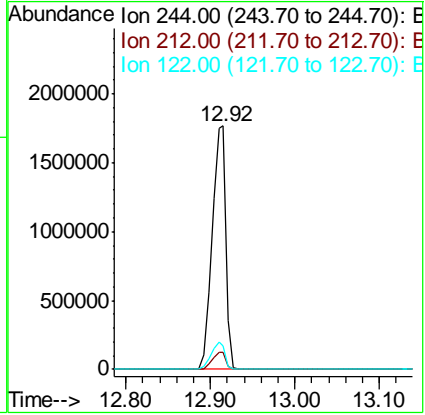
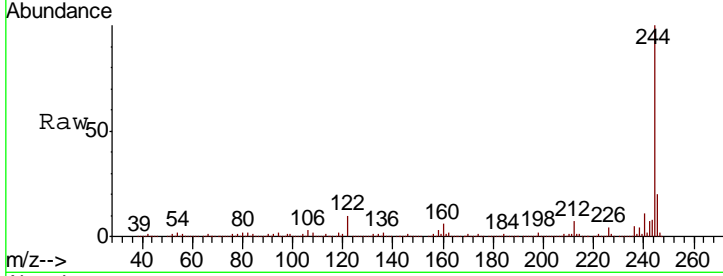


#79
 Terphenyl-d14
 Concen: 96.042 ng
 RT: 12.92 min Scan# 1841
 Delta R.T. 0.01 min
 Lab File: BF120703.D
 Acq: 25 Jun 2020 15:00

Instrument :
 BNA_F
ClientSampled :
 FM1296

Tgt Ion: 244 Resp: 2064812

Ion	Ratio	Lower	Upper
244	100		
212	6.8	5.7	8.5
122	9.7	8.3	12.5



#86
 Perylene-d12
 Concen: 20.000 ng
 RT: 15.40 min Scan# 2264
 Delta R.T. 0.01 min
 Lab File: BF120703.D
 Acq: 25 Jun 2020 15:00

Tgt Ion: 264 Resp: 467553

Ion	Ratio	Lower	Upper
264	100		
260	23.9	19.3	28.9
265	22.1	17.8	26.8

